

287 Eurasian Wryneck

Put your logo here



Wryneck. Spring. Adult (12-IV).

EURASIAN WRYNECK (*Jynx torquilla*)

IDENTIFICATION

16-18 cm. Brown and grey upperparts; grey underparts, with buff and barred breast; tail with grey and brown bars; grey-brown bill and legs.

AGEING

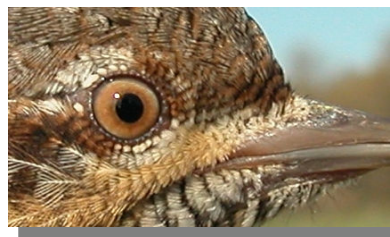
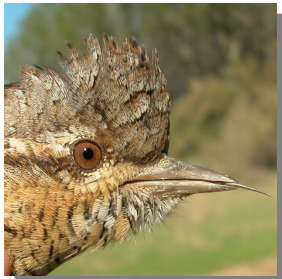
4 age groups can be recognized:

Juvenile with grey iris; the outermost primary (10th) long and broad reaching half length of the 9th.

1st year autumn with dull brown iris; **juvenile** primary coverts with pointed tips; fresh secondaries with only one age (**adults** have worn retained secondaries which will be moulted in wintering sites); minute 10th primary after moult.

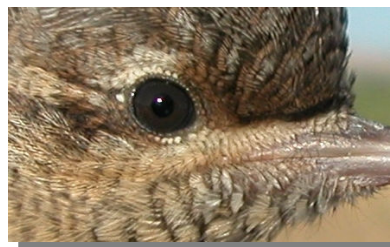
2nd year spring with poor differences in wear between primaries and secondaries; sometimes with some retained **juvenile** secondary, more worn than neighbours; retained primary coverts very worn and pointed; iris grey brown in the center and grey in its distal part.

Adult in spring with primaries more eroded than secondaries; in **autumn** with fresh body feathers, primaries, tertials and tail but secondaries are worn; iris reddish brown.



Wryneck. Pattern of head, upperparts and breast.

Wryneck. Ageing. Colour of iris: top adult; middle 2nd year; bottom juvenile.



SIMILAR SPECIES

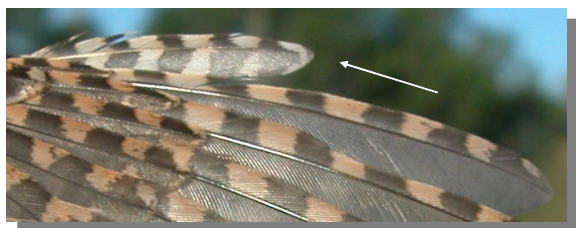
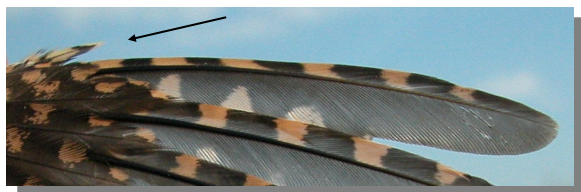
This species is unmistakable.

SEXING

Plumage of both sexes alike.

287 Eurasian Wryneck

Put your logo here



Wryneck. Ageing. Length of the 10th primary: top adult; bottom juvenile.



Wryneck. Spring. Juvenile (15-VI).

MOULT

Complete **postbreeding** moult, changing in breeding areas all feathers except secondaries, which are usually moulted in wintering sites. Partial **postjuvenile** moult, changing all feathers except some secondaries and all or part of primary coverts and tertials which are moulted in wintering sites. Both age classes have a **prebreeding** moult involving body feathers, wing coverts and part or all of tail.

PHENOLOGY

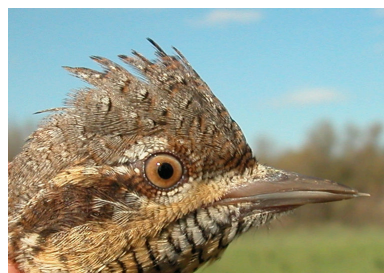
I	II	III	IV	V	VI	VII	VIII	IX	X	XI	XII

STATUS IN ARAGON

Summer visitor breeding in forests from mountainous areas and Ebro river.



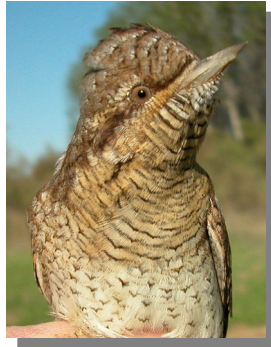
Wryneck. Spring. 2nd year (12-IV).



Wryneck. Spring. Head pattern and iris colour: top adult (12-IV); middle 2nd year (12-IV); bottom juvenile (15-VI).

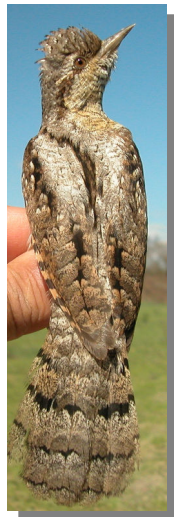
287 Eurasian Wryneck

Put your logo here



Wryneck. Spring. Breast pattern: top left adult (12-IV); top right 2nd year (12-IV); left juvenile (15-VI).

Wryneck. Spring. Adult: pattern of tail (12-IV).



Wryneck. Spring. 2nd year: pattern of tail (12-IV).



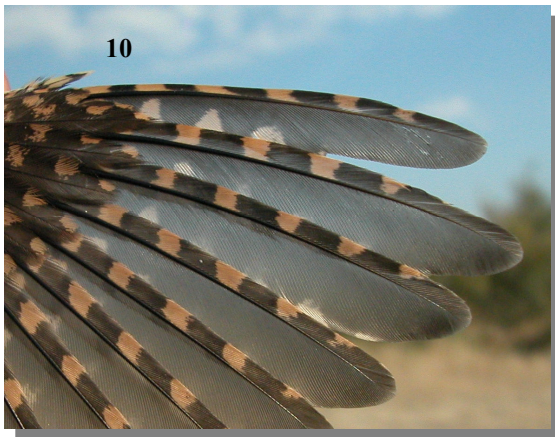
Wryneck. Spring. Upperparts pattern: top left adult (12-IV); top right 2nd year (12-IV); left juvenile (15-VI).



Wryneck. Spring. Juvenile: pattern of tail (15-VI).

287 Eurasian Wryneck

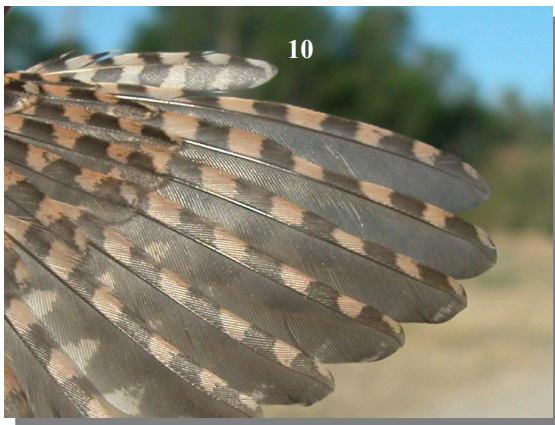
Put your logo here



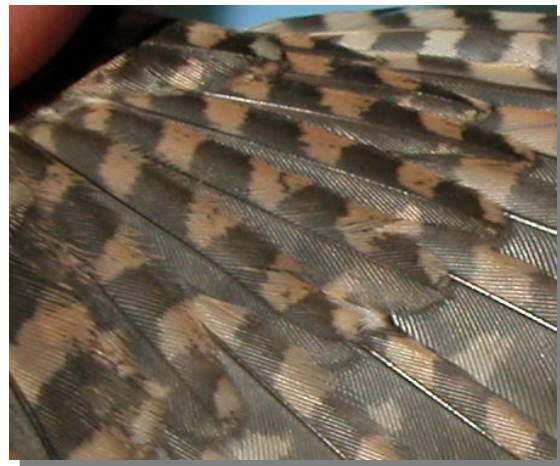
Wryneck. Spring. Adult/2nd year: length of 10th primary (12-IV).



Wryneck. Spring. 2nd year: pattern of tips of primary coverts (12-IV).



Wryneck. Spring. Juvenile: length of 10th primary (05-VII).



Wryneck. Spring. Juvenile: patch on tips of primary coverts with "V" shaped pattern (15-VI).



Wryneck. Spring. Adult: pattern of tips of primary coverts (12-IV).



Wryneck. Spring. Juvenile: patch on tips of primary coverts without "V" shaped pattern (15-VI).

287 Eurasian Wryneck

Put your logo here



Wryneck. Spring. Adult: pattern of strongly worn primaries (06-VI).



Wryneck. Spring. Juvenile: pattern of primaries (15-VI).



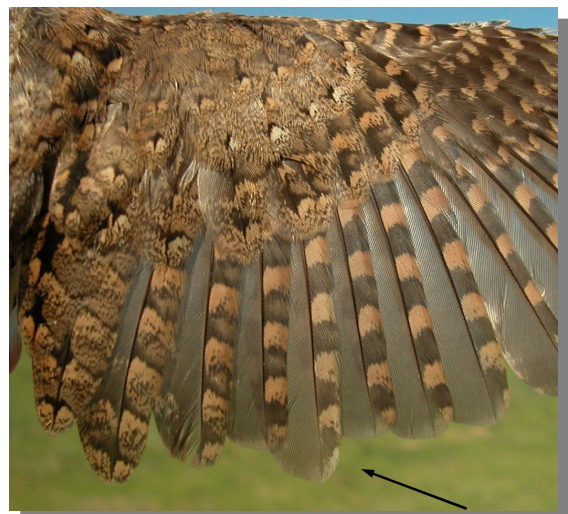
Wryneck. Spring. Adult: pattern of little worn primaries (05-IV).



Wryneck. Spring. Adult: pattern of secondaries (05-IV).



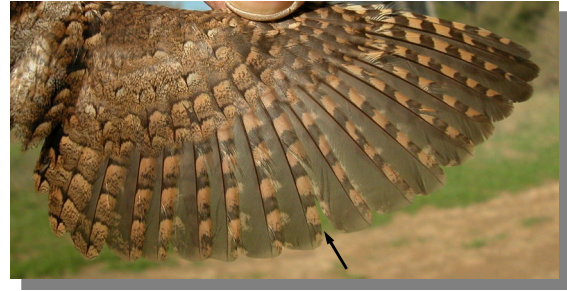
Wryneck. Spring. 2nd year: pattern of primaries (05-IV).



Wryneck. Spring. 2nd year: pattern of secondaries with one juvenile secondary retained (05-IV).

287 Eurasian Wryneck

Put your logo here

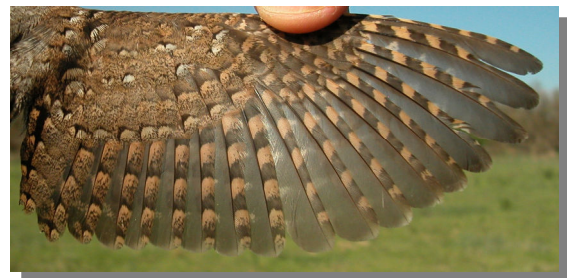


Wryneck. Spring. Adult: pattern of wing with little worn primaries (05-IV).

Wryneck. Spring. 2nd year: pattern of secondaries with all feathers moulted (05-IV).



Wryneck. Spring. 2nd year: pattern of wing with one juvenile secondary retained (05-IV).



Wryneck. Spring. Juvenile: pattern of secondaries (15-VI).

Wryneck. Spring. 2nd year: pattern of wing with all feathers moulted (05-IV).



Wryneck. Spring. Adult: pattern of wing with strongly worn primaries (06-VI).

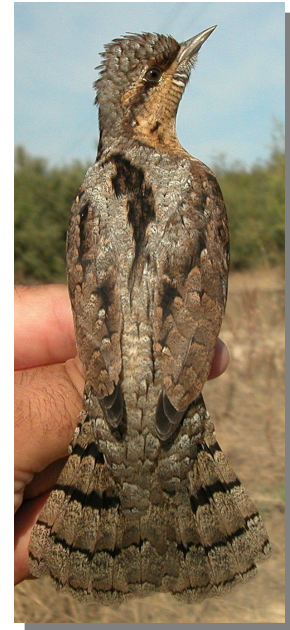
Wryneck. Spring. Juvenile: pattern of wing (15-VI).

287 Eurasian Wryneck

Put your logo here



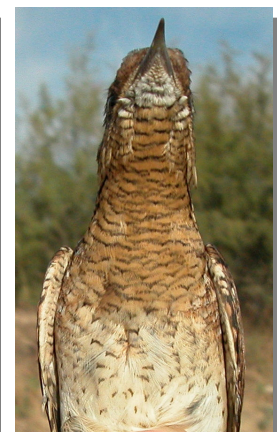
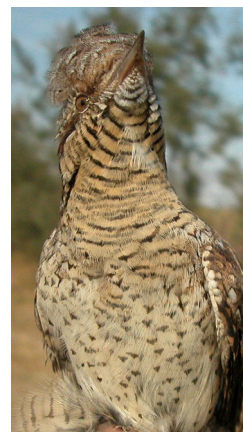
Wryneck. Autumn. Adult (06-IX).



Wryneck. Autumn. Upperparts pattern: left adult (06-IX); right 1st year (14-VIII).



Wryneck. Autumn. 1st year (14-VIII).



Wryneck. Autumn. Breast pattern: left adult (06-IX); right 1st year (14-VIII).



Wryneck. Autumn. Head pattern and iris colour: top adult (06-IX); bottom 1st year (14-VIII).



Wryneck. Autumn. Adult: pattern of tail (06-VIII).

287 Eurasian Wryneck

Put your logo here



Wryneck. Autumn. 1st year: pattern of tail (14-VIII).



Wryneck. Autumn. Adult: pattern of secondaries (09-IX).



Wryneck. Autumn. Adult: pattern of primaries (09-IX).



Wryneck. Autumn. 1st year: pattern of secondaries (14-VIII).



Wryneck. Autumn. 1st year: pattern of primaries (14-VIII).



Wryneck. Autumn. Adult: pattern of wing (09-IX).

287 Eurasian Wryneck

Put your logo here



Wryneck. Autumn. 1st year: pattern of wing (14-VIII).