

323 Eurasian Wren

[Put your logo here](#)

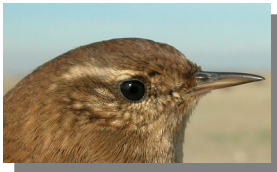


Wren. Adult (10-XI).

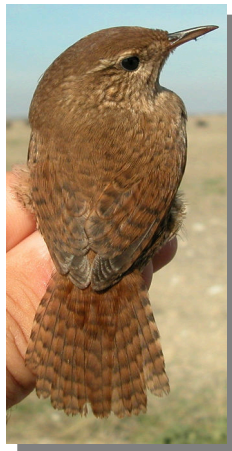
EURASIAN WREN (*Troglodytes troglodytes*)

IDENTIFICATION

9-10 cm. Brown-reddish plumage and rounded body; upperparts with fair transversal barred; buff underparts; tail short and barred.



Wren. Pattern of head and upperparts.



SIMILAR SPECIES

This species is unmistakable

SEXING

Plumage of both sexes alike.

AGEING

3 age groups can be recognized:

Juvenile similar to **adult** but with less contrasted and more fluffy plumage; with very fresh feathers.

1st year autumn/2nd year spring with differences in colour and pattern within moulted greater coverts (longer, with a brown-grey colour, more distinct dark markings and often with a white spot on tips) and **juvenile** retained (shorter, reddish-brown, less distinct dark marks and lacking a white spot on tips); if none or few greater coverts moulted then with contrast between darker moulted lesser and median coverts and paler retained **juvenile** greater coverts; if some tertial moulted, then with contrast within these feathers; dark bars of the flight feathers forming lines with a regular parallel pattern across the wing.

Adult without moult limits on wing; greater coverts with well marked dark marking and often, but not always, with whitish tips; dark bars of the flight feathers forming lines with an irregular zigzag pattern across the wing.



Wren. Summer. Ageing. Pattern of upperparts: left adult; right juvenile.



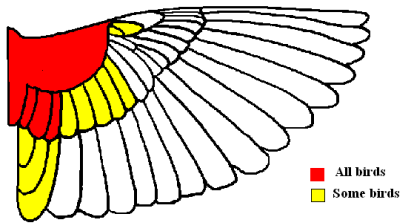
Wren. Ageing. Moul limit on wing coverts and pattern of dark bars: top adult; bottom 1st year.

323 Eurasian Wren

Put your logo here

MOULT

Complete **postbreeding** moult, usually finished in October. Partial **postjuvenile** moult involving body feathers, lesser and median coverts, a variable number of greater coverts and sometimes tertials and tail feathers; usually finished in October. Both age classes have a **prebreeding** moult including only body feathers.



Wren. Extent of postjuvenile moult.

PHENOLOGY

I	II	III	IV	V	VI	VII	VIII	IX	X	XI	XII

STATUS IN ARAGON

Resident. Widely distributed throughout the Region in woodlands with dense undergrowth.



Wren. 1st year (10-XI).



Wren. Juvenile (15-VI).



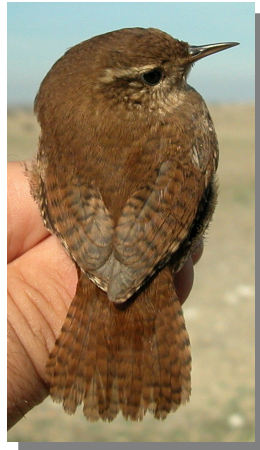
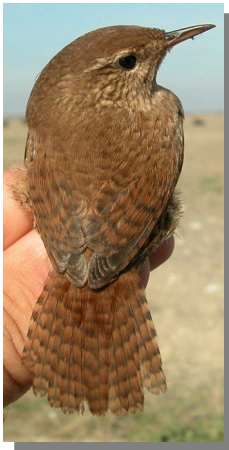
Wren. Head pattern: top adult (10-XI); middle 1st year (10-XI); bottom juvenile (15-VI).



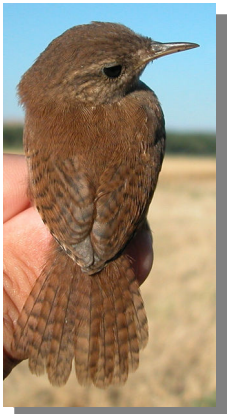
Wren. Breast pattern: top left adult (10-XI); top right 1st year (10-XI); left juvenile (15-VI).

323 Eurasian Wren

Put your logo here



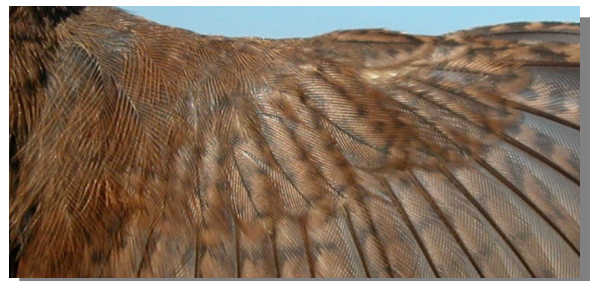
Wren. Adult: pattern of wing coverts (24-XII).



Wren. Upperpart pattern: top left adult (10-XI); top right 1st year (10-XI); left juvenile (15-VI).



Wren. 1st year: pattern of wing coverts (10-XI)



Wren. Juvenile: pattern of wing coverts (15-VI)



Wren. Tail pattern: top left adult (10-XI); top right 1st year (10-XI); left juvenile (15-VI).



Wren. Adult: pattern of wing (24-XII).

323 Eurasian Wren

Put your logo here



Wren. 1st year: pattern of wing (10-XI)



Wren. Juvenile: pattern of wing (15-VI).