

344 Common Blackbird

Put your logo here



Blackbird. Summer. Adult. Male (27-V).

COMMON BLACKBIRD (*Turdus merula*)

IDENTIFICATION

24-26 cm. Dark plumage with long tail. **Male** black, with bill and eye-ring yellow. **Female** with bill and plumage brown; paler on underparts. **Juvenile** similar to **female**, but spotted and more reddish.



Blackbird. Female: pattern of breast, tail and wing.



Blackbird. Male: pattern of breast, tail and wing.



Blackbird. Juvenile: pattern of breast, tail and wing.

344 Common Blackbird

Put your logo here

SIMILAR SPECIES

Male recalls a **Spotless Starling** with shorter tail and bill never all yellow. **Female** and **juvenile** different from **Thrushes** by lacking white underparts. **Female Blue Rock Thrush** has similar size, but different pattern on flanks and underparts. **Ring Ouzel** has a white patch on breast or, if missing, wing feathers with pale edges.



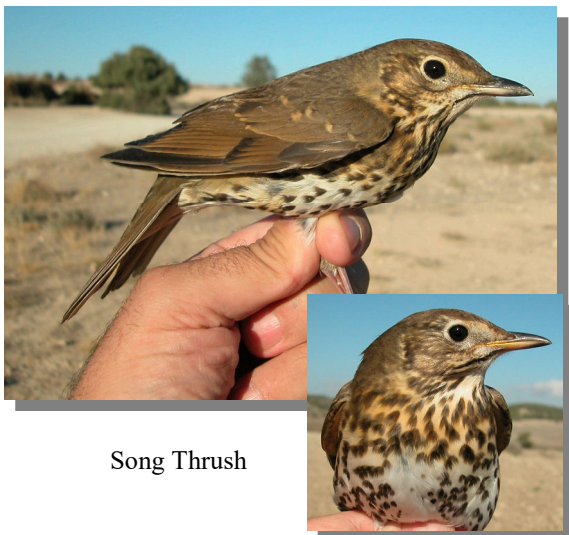
Blue Rock Thrush. Female



Spotless Starling



Ring Ouzel. Female



Song Thrush

SEXING

Male with black plumage; yellow bill (dark in **young males**). **Female** with dark brownish plumage, with olive tinge on upperparts; pale throat and breast with spots or streaks; dull yellowish-brown bill (dark in **young females**). Some **juveniles** can be sexed before their **postjuvenile** moult: **male** with deep black tail feathers; **female** with brown-olive tail feathers (**CAUTION**: much overlap and many cannot be sexed).



Blackbird. Adult. Sexing. Pattern of head and breast: left male; right female.

344 Common Blackbird

Put your logo here



Blackbird. Juvenile. Sexing. Pattern of tail: left male; right female.

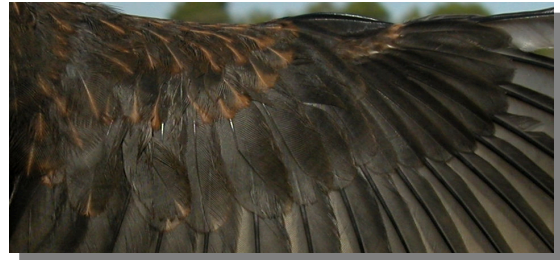
AGEING

3 age groups can be recognized:

Juvenile resembles a **female**, but more red-dish; spotted upperparts; wing coverts streaked pale on tips; brown blackish bill; fresh plumage.

1st year autumn/2nd year spring with moult limit between darker moulted wing coverts and rest of **juvenile** retained wing feathers, browner and worn; dark bill usually till December.

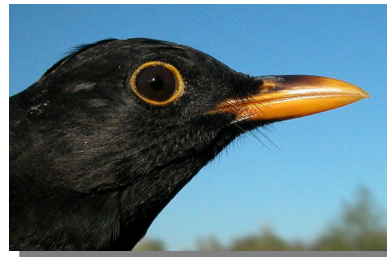
Adult without moult limits on wing feathers; bill yellow (**males**) or brown-yellowish (**females**).



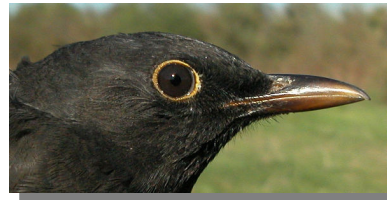
Blackbird. Ageing. Pattern of wing coverts: top adult female; bottom juvenile.



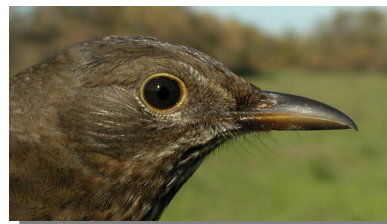
Blackbird. Ageing. Pattern of breast: left adult female; right juvenile.



Blackbird. Autumn. Male. Ageing. Colour of bill: top adult; bottom 1st year.



Blackbird. Autumn. Female. Ageing. Colour of bill: top adult; bottom 1st year.



344 Common Blackbird

Put your logo here



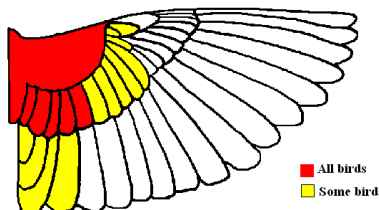
Blackbird. Male. Ageing. Moulting limit on wing coverts: top adult; bottom 1st year.



Blackbird. Female. Ageing. Moulting limit on wing coverts: top adult; bottom 1st year.

MOULT

Complete **postbreeding** moult, usually finished in October. Partial **postjuvenile** moult involving body feathers, lesser and median coverts and some inner greater coverts; some birds can extend their moult to all greater coverts, tertials, some secondaries and rarely some tail feathers; usually finished in October.



Blackbird. Extent of postjuvenile moult.

PHENOLOGY

I	II	III	IV	V	VI	VII	VIII	IX	X	XI	XII

STATUS IN ARAGON

Resident, with contribution of wintering European birds. Widely distributed throughout the Region, absent only from the most deforested areas of the Ebro Basin.



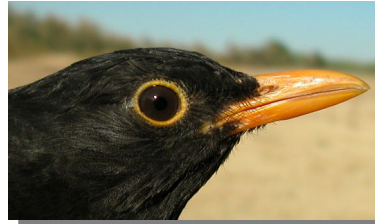
Blackbird. Summer. Adult. Female (09-V).

344 Common Blackbird

Put your logo here



Blackbird. Summer. 2nd year. Male (27-V).



Blackbird.
Summer.
Adult. Head pattern and iris colour: top male (27-V); bottom female (09-V).



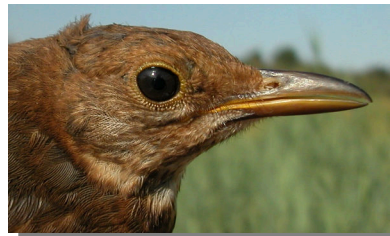
Blackbird. Summer. 2nd year. Female (17-VI).



Blackbird.
Summer. 2nd year. Head pattern and iris colour: top male (27-V); bottom female (17-VI).



Blackbird. Summer. Juvenile. Male (17-VI).



Blackbird.
Summer.
Juvenile. Head pattern and iris colour: top male (17-VI); bottom female (17-VI).



Blackbird. Summer. Juvenile. Female (17-VI).

344 Common Blackbird

Put your logo here



Blackbird. Summer. Adult. Breast pattern: left male (27-V); right female (09-V).



Blackbird. Summer. 2nd year. Tail pattern: left male (27-V); right female (17-VI).



Blackbird. Summer. 2nd year. Breast pattern: left male (27-V); right female (17-VI).



Blackbird. Summer. Juvenile. Tail pattern: left male (17-VI); right female (17-VI).



Blackbird. Summer. Juvenile. Breast pattern: left male (17-VI); right female (17-VI).



Blackbird. Summer. Adult. Male: pattern of wing (06-VI).



Blackbird. Summer. Adult. Tail pattern: left male (27-V); right female (09-V).

344 Common Blackbird

Put your logo here



Blackbird. Summer. Adult. Female: pattern of wing (09-V).



Blackbird. Summer. Juvenile. Male: pattern of wing (17-VI).



Blackbird. Summer. 2nd year. Male: pattern of wing (27-V).



Blackbird. Summer. Juvenile. Female: pattern of wing (17-VI).



Blackbird. Summer. 2nd year. Female: pattern of wing (17-VI).



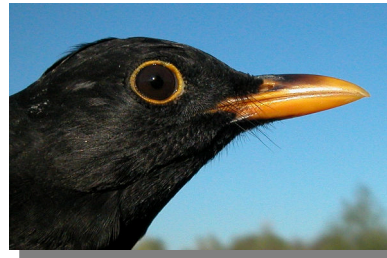
Blackbird. Winter. Adult. Male (13-X).

344 Common Blackbird

Put your logo here



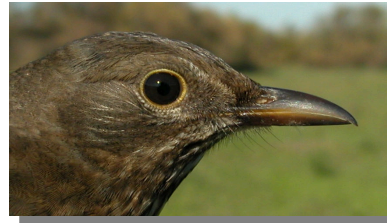
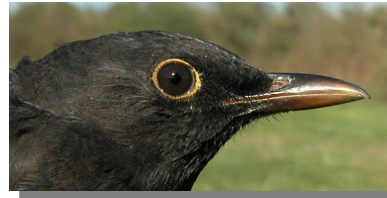
Blackbird. Winter. Adult. Female (13-X).



Blackbird.
Winter. Adult. Head pattern and iris colour: top male (13-X); bottom female (13-X).



Blackbird. Winter. 1st year. Male (13-X).



Blackbird.
Winter. 1st year. Head pattern and iris colour: top male (06-XI); bottom female (30-XI).



Blackbird. Winter. 1st year. Female (13-X).



Blackbird. Winter. Adult. Breast pattern: left male (13-X); right female (13-X).

344 Common Blackbird

Put your logo here



Blackbird. Winter. 1st year. Breast pattern: left male (13-X); right female (13-X).



Blackbird. Winter. Adult. Female: pattern of wing (13-X).



Blackbird. Winter. Adult. Tail pattern: left male (13-X); right female (13-X).



Blackbird. Winter. 1st year. Male: pattern of wing (13-X).



Blackbird. Winter. 1st year. Tail pattern: left male (13-X); right female (13-X).



Blackbird. Winter. 1st year. Female: pattern of wing (13-X).



Blackbird. Winter. Adult. Male: pattern of wing (13-X).