

# 401 Red-backed Shrike

Put your logo here



Red-backed Shrike. Adult. Male (11-VII).

**RED-BACKED SHRIKE** (*Lanius collurio*)

### IDENTIFICATION

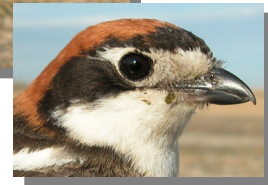
17-18 cm. **Adults** with reddish/brown upperparts; **male** with grey crown and black eye-stripe; pale underparts; **female** with ochre head, without black eye-stripe. **Juvenile** with reddish plumage and barred.

### SIMILAR SPECIES

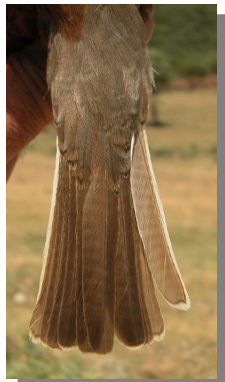
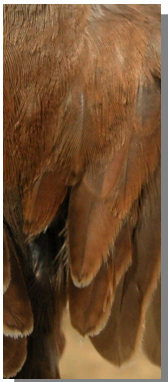
Recalls a **Woodchat Shrike**, with grey upperparts and chestnut head. **Juveniles** of both species are quite similar, but **Woodchat Shrike** has greyer on upperparts, with white on scapulars and with the outermost tail feathers with broad pale patch on the tip.



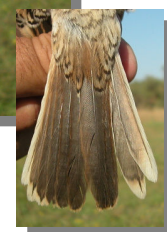
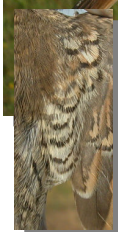
Woodchat Shrike. Adult. Male.



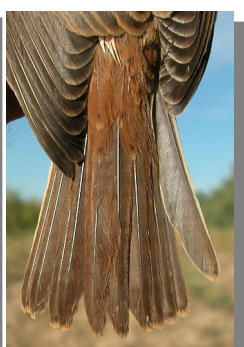
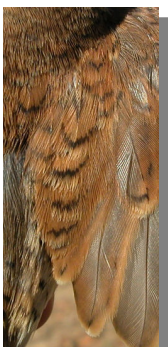
Red-backed Shrike. Adult. Male: pattern of head.



Red-backed Shrike. Adult. Female: pattern of scapulars and tail.



Woodchat Shrike. Juvenile: pattern of scapulars and tail.



Red-backed Shrike. Juvenile: pattern of scapulars and tail.

### SEXING

**Male** with white-pinkish underparts, without bars; grey-ash head with black eye-stripe; black and white tail. **Female** with white-buff and barred underparts; brownish head with grey-reddish ear-coverts; dark brown tail feathers with the outermost feather paler and with white edge. **Juveniles** cannot be sexed using plumage pattern. **CAUTION:** some **females** are quite similar to **males** but always have vermiculated underparts.

**401 Red-backed Shrike**

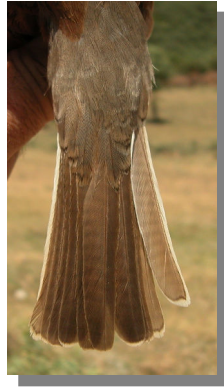
Put your logo here



Red-backed Shrike. Sexing. Adult. Pattern of head: top male; bottom female.



Red-backed Shrike. Ageing. Pattern of upperparts: left adult female; right juvenile.



Red-backed Shrike. Sexing. Adult. Pattern of tail: left male; right female.



Red-backed Shrike. Ageing. Pattern of wing coverts: top adult female; bottom juvenile.

**AGEING**

2 age groups can be recognized safely:

**Juvenile** with fresh plumage; upperparts with feathers having a dark subterminal bar; wing coverts with a dark line on tip.

**Adult** with worn plumage in **summer**; plumage pattern described in **SEXING**.

**NOTE:** in **females**, two different patterns have been described:

**Adult-like female** recognized by tertials with pale brown tips without dark subterminal bars (often with just a dark mark); without bars on upperparts except very slight barred on uppertail coverts.

**Juvenile-like female** with tertials with pale tips and blackish subterminal bars; with bars on upperparts from crown to uppertail coverts.

If all **females** with **juvenile-like** pattern are invariably **2nd year** birds is unknown, so after **prebreeding** moult ageing is not possible using plumage pattern.



Red-backed Shrike. Ageing. Female. Pattern of tertials: left adult-like; right juvenile-like.

# 401 Red-backed Shrike

Put your logo here

## MOULT

Partial **postbreeding** and **postjuvenile** moults involving, before migration, body feathers and, in some birds, tertials, central pair of tail feathers or wing coverts (**CAUTION:** some adults no moult before migration). Both age classes have a complete **prebreeding** moult in winter quarters.

## PHENOLOGY

I	II	III	IV	V	VI	VII	VIII	IX	X	XI	XII

## STATUS IN ARAGON

Summer visitor, breeding in open pastures with small trees; widely distributed in Pyrenees and very located in Sistema Iberico.



Red-backed Shrike. Juvenile (12-IX).



Red-backed Shrike. Adult. Adult-like female (11-VII).



Red-backed Shrike. Head pattern: top male (11-VII); bottom adult-like female (11-VII).



Red-backed Shrike. Adult. Juvenile-like female (11-V).



Red-backed Shrike. Head pattern: top juvenile-like female (11-V); bottom juvenile (12-IX).



# 401 Red-backed Shrike

Put your logo here



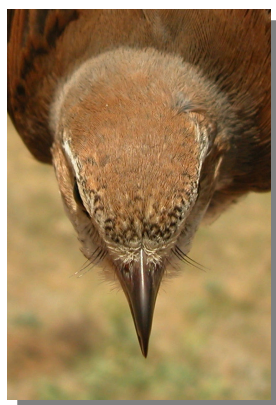
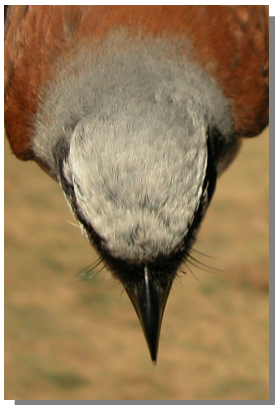
Red-backed Shrike. Breast pattern: left male (11-VII); right adult-like female (11-VII).



Red-backed Shrike. Pattern of flank: top of flank: top male (11-VII); middle female (11-VII); bottom juvenile (12-IX).



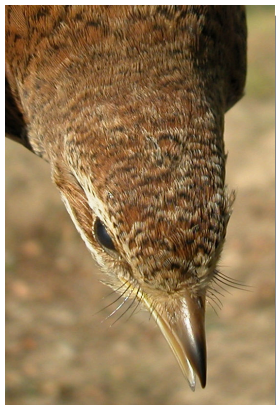
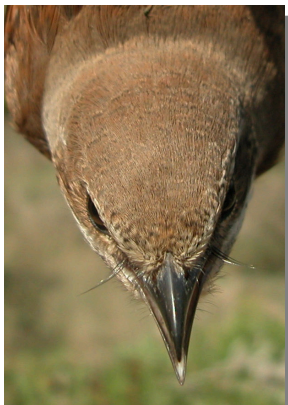
Red-backed Shrike. Breast pattern: left juvenile-like female (11-V); right juvenile (12-IX).



Red-backed Shrike. Crown pattern: left male (11-VII); right adult-like female (11-VII).



Red-backed Shrike. Upperpart pattern: left male (11-VII); right adult-like female (11-VII).



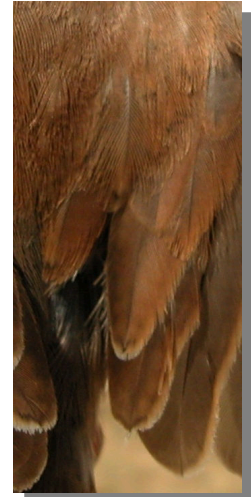
Red-backed Shrike. Crown pattern: left juvenile-like female (11-V); right juvenile (12-IX).

# 401 Red-backed Shrike

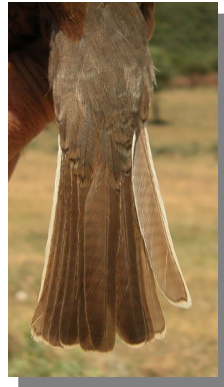
Put your logo here



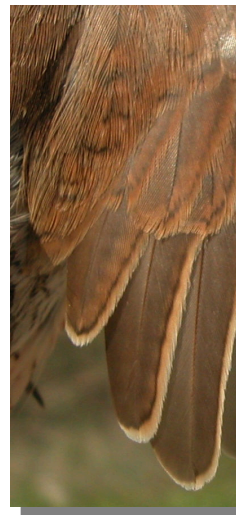
Red-backed Shrike. Upperpart pattern: left juvenile-like female (11-V); right juvenile (12-IX).



Red-backed Shrike. Pattern of tertials: left male (11-VII); right adult-like female (11-VII).



Red-backed Shrike. Tail pattern: left male (11-VII); right adult-like female (11-VII).



Red-backed Shrike. Pattern of tertials: left juvenile-like female (11-V); right juvenile (12-IX).



Red-backed Shrike. Tail pattern: left juvenile-like female (11-V); right juvenile (12-IX).



Red-backed Shrike. Adult. Male: pattern of wing (11-VII).

## 401 Red-backed Shrike

Put your logo here



Red-backed Shrike. Adult-like. Female: pattern of wing (11-VII).



Red-backed Shrike. juvenile-like. Female: pattern of wing (11-V).



Red-backed Shrike. Juvenile: pattern of wing (12-IX).