

414 Carrion Crow

Put your logo here



Carrion Crow. Adult (20-X).

CARRION CROW (*Corvus corone*)

IDENTIFICATION

43-47 cm. Black plumage; squared tail; black bill and legs.



Carrion Crow. Pattern of bill and tail.

SIMILAR SPECIES

This species recalls that of **Raven**, which has a bigger size (51-63 cm) and edge of tail is wedge-shaped.



Raven

SEXING

Both sexes alike in plumage. Size can be helpful with extreme birds: **male** with wing longer than 335 mm; **female** with wing shorter than 300 mm.

AGEING

3 age classes can be recognized:

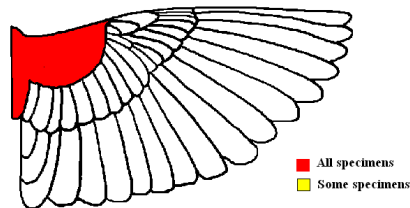
Juvenile with fresh plumage; black colour without bright; inside of upper mandible pinkish.

1st year autumn/2nd year spring with dull blackish-brown **juvenile** wing and tail feathers contrasting with moulted glossy black feathers; worn flight and tail feathers; inside of upper mandible with pinkish areas.

Adult with fresh and glossy black plumage on wing and tail, without moult limits; inside of upper mandible totally dark.

MOULT

Complete **postbreeding** moult, usually finished in October. Partial **postjuvenile** moult involving body feathers, all lesser and median coverts, usually some inner greater coverts (sometimes from none to all) and often central pair of tail feathers; some birds extend their moult to some tertials; finished in October.



Carrion Crow. Extent of postjuvenile moult.

PHENOLOGY

I	II	III	IV	V	VI	VII	VIII	IX	X	XI	XII

STATUS IN ARAGÓN

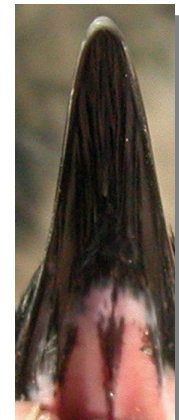
Resident. Widely distributed throughout the Region, absent from the highest mountains and the deforested areas of the Ebro Basin.

414 Carrion Crow

Put your logo here



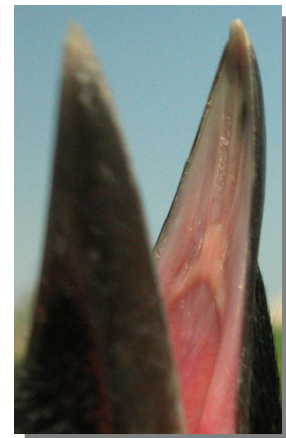
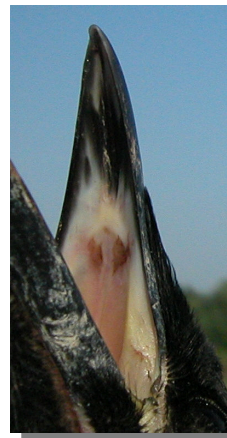
Carrion Crow. 2nd year (30-III)



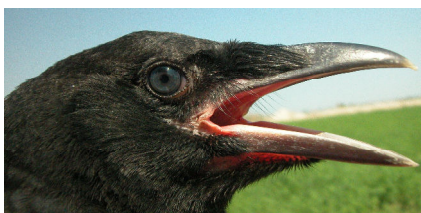
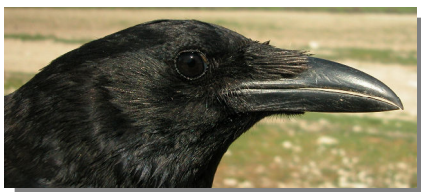
Carrion Crow. Inside of upper mandible: left adult (22-V); right 2nd year (18-II)



Carrion Crow. Juvenile (18-VI)



Carrion Crow. Inside of upper mandible: left juvenile (18-VI); right young (12-VI).



Carrion Crow. Iris colour: top adult (20-X); bottom 2nd year (30-III).

Carrion Crow. Iris colour: top juvenile (18-VI); bottom young (12-VI).



Carrion Crow. Breast pattern: top left adult (31-III); top right 2° year (30-III); left juvenile (18-VI).

414 Carrion Crow

Put your logo here



Carrion Crow. Adult: pattern of alula (20-X).



Carrion Crow. Upperpart pattern: top left adult (31-III); top right 2nd year (30-III); left juvenile (18-VI).



Carrion Crow. 2nd year: pattern of alula (30-III).



Carrion Crow. Tail pattern: top left adult (31-III); top right 2nd year (30-III); left juvenile (18-VI).



Carrion Crow. Juvenile: pattern of alula (18-VI).

414 Carrion Crow

Put your logo here



Carrion Crow. Adult: pattern of wing (20-X).



Carrion Crow. 2nd year: pattern of wing (30-III).



Carrion Crow. Juvenile: pattern of wing (18-VI).