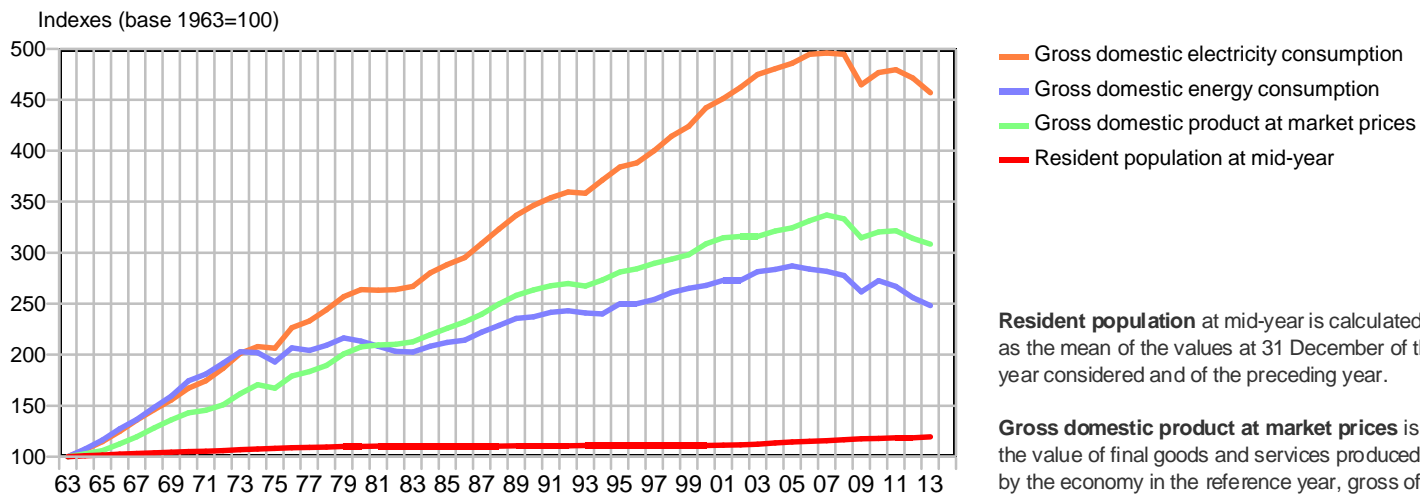


GENERAL DATA

Population, income and energy consumption in Italy

Figure 1



Resident population at mid-year is calculated as the mean of the values at 31 December of the year considered and of the preceding year.

Gross domestic product at market prices is the value of final goods and services produced by the economy in the reference year, gross of provisions for depreciation and of indirect taxes.

Gross domestic consumption of energy represents the sum of the quantities of primary sources produced, primary and secondary sources imported and the variation of inventories of primary and secondary sources held by producers and importers, less the quantities of exported primary and secondary sources.

Gross domestic electricity consumption represents the sum of gross electricity production and net electricity imports. It is defined as net of pumping if the electricity produced by pumping in hydro plants is not included.

Final energy consumption consists of gross domestic energy consumption, less the consumption by the energy sector (the latter including the related inventory variations).

Gross electricity production by a group of power plants in a given period is the sum of the quantities of electricity produced, measured at the generator terminals.

Table 1

		2012 (1)	2013	2013/2012
resident population at mid-year	thousand inhabitants	59,446	59,855	+ 0.7 %
gross domestic product at market prices	in millions of 2005 euros (2)	1,391,018	1,365,227	- 1.9 %
final energy consumption (3)	in millions of toe	164.7	158.9	- 3.5 %
energy used in power plants (3)	in millions of toe	67.5	65.7	- 2.7 %
energy used in power plants (3)	% of gross domestic energy consumption	38.3	38.4	+ 0.3 %
gross domestic electricity consumption (before pumping)	GWh	342,379	331,941	- 3.0 %

millions of toe and % breakdown	2012 (1)		2013		2013/2012
gross domestic energy consumption (3)	176.3	100.0%	171.0	100.0%	- 3.0 %
of which:					
petroleum products	62.2	35.3%	59.0	34.5%	- 5.2 %
natural gas	61.4	34.8%	57.4	33.6%	- 6.5 %
solid fuels	16.6	9.4%	14.6	8.5%	- 12.2 %
renewables	26.6	15.1%	30.8	18.0%	+ 15.8 %
primary electricity (net imports)	9.5	5.4%	9.3	5.4%	- 2.2 %

GWh and % breakdown	2012 (1)		2013		2013/2012
Gross domestic electricity consumption (net of pumping)	340,400	100.0%	330,043	100.0%	- 3.0 %
of which:					
Traditional sources	205,074	60.2%	175,897	53.3%	- 14.2 %
<i>Solid fuels</i>	49,141	14.4%	45,104	13.7%	- 8.2 %
<i>Natural Gas</i>	129,058	37.9%	108,876	33.0%	- 15.6 %
<i>Petroleum products</i>	7,023	2.1%	5,418	1.6%	- 22.9 %
<i>Other fuels</i>	19,852	5.8%	16,499	5.0%	- 16.9 %
Renewables	92,222	27.1%	112,008	33.9%	+ 21.5 %
<i>Hydro from natural inflows</i>	41,875	12.3%	52,773	16.0%	+ 26.0 %
<i>Geothermal</i>	5,592	1.6%	5,659	1.7%	+ 1.2 %
<i>Wind</i>	13,407	3.9%	14,897	4.5%	+ 11.1 %
<i>Photovoltaic</i>	18,862	5.5%	21,589	6.5%	+ 14.5 %
<i>Bioenergy</i>	12,487	3.7%	17,090	5.2%	+ 36.9 %
Net imports	43,103	12.7%	42,138	12.8%	- 2.2 %

(1) Revised figure.

(2) Annual series resulting from the General Revision of National Accounts carried out by Istat. Figures linked to the 2005 benchmark year.

(3) The conversion into toe of hydro, geothermal energy and net imports of electricity was calculated on the basis of a conventional average gross heat rate in conventional thermal power plants equivalent to 2,200 kcal/kWh.

SOURCES: General report on the Economic Situation of the Country, "National Energy Balance".

Electricity in Italy

Table 2

Situation of plants

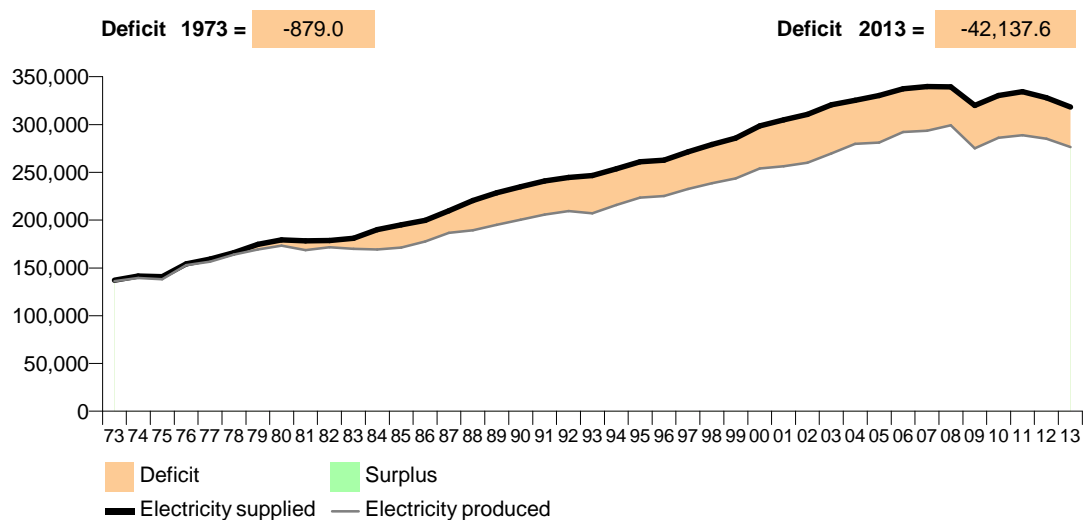
at 31 Dec. 2013

		Producers	Autoproducers	Italy
Hydro plants				
Plants	no.	3,187	70	3,257
Gross maximum capacity	MW	22,260.2	122.7	22,382.9
Net maximum capacity	MW	21,890.5	118.8	22,009.3
Average annual production	GWh	55,454.3	615.3	56,069.6
Thermal plants (*)				
Plants	no.	3,434 (34)	637	4,071
Sections	no.	4,501 (35)	908	5,409
Gross maximum capacity	MW	74,903.5 (773.0)	4,370.4	79,273.8
Net maximum capacity	MW	71,595.7 (729.0)	4,182.9	75,778.6
Wind plants				
Plants	no.	1,385	1	1,386
Gross maximum capacity	MW	8,560.8	..	8,560.8
Photovoltaic plants				
Plants	no.	579,524	-	579,524
Gross maximum capacity	MW	18,420.3	-	18,420.3

(*) The figures in brackets refer to geothermal plants.

Energy Supplied

Energy Supplied in Italy	GWh	318,475.1
Deficit (-) Surplus (+) of production versus demand	GWh	-42,137.6 (-13.2%)



Consumption: total 297,287.6 GWh; per inhabitant 4,967 kWh

Consumption by category of consumer

GWh	Agriculture	Industry	Service sector (1)	Household	Total (1)
Italy	5,677.1	124,870.8	94,966.5	66,983.2	292,497.6

(1) Net of railway consumption for traction equal to GWh 4,790.0

Electricity balance

GWh		2013		
		Electricity market participants (2)	Autoproducers	Italy
Gross production				
- hydro		54,044.7	626.9	54,671.6
- conventional thermal		177,543.6	15,443.2	192,986.8
- geothermal		5,659.2	-	5,659.2
- wind		14,897.0	..	14,897.0
- photovoltaic		21,588.6	-	21,588.6
Total gross production		273,733.1	16,070.0	289,803.2
		-	-	-
Auxiliary services of production		10,353.5	617.0	10,970.5
		=	=	=
Net production				
- hydro		53,446.3	622.1	54,068.4
- conventional thermal		168,573.0	14,830.9	183,403.9
- geothermal		5,320.1	-	5,320.1
- wind		14,811.6	..	14,811.6
- photovoltaic		21,228.7	-	21,228.7
Total net production		263,379.6	15,453.0	278,832.6
		-	-	-
Pumping consumption		2,495.2	-	2,495.2
		=	=	=
Production allocated for consumption		260,884.4	15,453.0	276,337.4
		+	+	+
Electricity sold by Autoproducers to Participants		+2,524.8	-2,524.8	-
		+	+	+
Net import/export		+42,137.6	-	+42,137.6
		=	=	=
Energy Supplied		305,546.9	12,928.2	318,475.1
		-	-	-
Losses		20,855.3	332.2	21,187.5
		=	=	=
Final consumption	Self-consumption	13,242.7	11,739.4	24,982.0
	Free market (3)	206,978.3	856.7	207,834.9
	Captive market	64,470.6	-	64,470.6
	Total consumption	284,691.6	12,596.0	297,287.6

(2) Producers, Distributors and Traders.

(3) "Safeguarding Service" is included.

Electricity supplied to the Italian network in each month of 2013

Table 3

	January	February	March	April
GWh				
Gross production	25,006.2	22,774.4	24,743.2	22,756.6
- of hydro production	3,371.1	3,072.1	3,878.9	4,822.4
- of conventional thermal production	18,500.2	16,749.7	16,977.2	14,041.6
- of geothermal production	470.7	416.1	468.9	467.2
- of wind production	1,804.3	1,407.0	1,916.2	1,327.2
- of photovoltaic production	860.0	1,129.5	1,502.1	2,098.2
electricity consumed by auxiliary services	986.5	885.1	943.9	833.4
- of hydro production	44.5	38.4	48.2	52.3
- of conventional thermal production	881.5	796.7	833.9	712.3
- of geothermal production	28.2	24.5	28.0	27.6
- of wind production	9.5	7.1	9.2	7.3
- of photovoltaic production	22.8	18.3	24.6	33.9
net production	24,019.7	21,889.4	23,799.3	21,923.2
electricity consumed by pumping	145.2	150.0	261.1	273.6
production allocated for consumption	23,874.5	21,739.4	23,538.3	21,649.7
net imports-exports	4,102.1	4,317.2	3,666.1	3,011.0
electricity supplied to the Italian network	27,976.6	26,056.6	27,204.4	24,660.7
variation of electricity supplied in 2013 - 2012	-1.6%	-6.8%	-1.6%	-1.6%

May	June	July	August	September	October	November	December	Year
23,920.7	24,207.0	27,364.4	23,809.5	24,281.0	23,559.3	23,207.7	24,173.2	289,803.2
6,792.9	6,415.1	6,056.1	4,634.3	3,426.7	3,922.8	4,505.5	3,773.6	54,671.6
12,731.2	13,622.9	17,217.7	15,236.4	17,251.2	16,999.4	15,740.2	17,919.0	192,986.8
488.2	459.9	493.7	500.5	464.7	482.4	469.6	477.4	5,659.2
1,529.8	994.8	720.2	799.4	999.4	747.3	1,554.2	1,097.4	14,897.0
2,378.5	2,714.3	2,876.7	2,638.9	2,139.0	1,407.5	938.3	905.7	21,588.6
817.5	870.0	979.6	908.6	933.6	958.6	866.0	987.8	10,970.5
60.9	59.8	66.5	47.0	40.6	42.8	46.7	55.6	603.2
681.0	732.7	831.2	783.6	824.0	857.4	767.2	881.4	9,582.8
29.0	27.7	30.3	30.7	28.3	29.4	27.6	27.9	339.2
8.2	6.1	5.8	5.4	6.3	5.2	8.4	6.8	85.4
38.3	43.7	45.9	41.9	34.5	23.8	16.2	16.0	360.0
23,103.2	23,337.0	26,384.8	22,900.8	23,347.4	22,600.7	22,341.7	23,185.4	278,832.6
309.8	236.6	142.0	150.7	123.3	282.2	210.6	210.1	2,495.2
22,793.4	23,100.4	26,242.9	22,750.1	23,224.1	22,318.5	22,131.1	22,975.3	276,337.4
3,079.1	3,210.9	3,461.8	2,398.6	2,844.8	4,441.3	4,034.6	3,570.1	42,137.6
25,872.5	26,311.3	29,704.7	25,148.7	26,068.8	26,759.8	26,165.7	26,545.4	318,475.1
-2.2%	-6.0%	-4.0%	-6.9%	-2.6%	-1.3%	-0.1%	-0.5%	-3.0%

Exchange of electricity between Italy and neighbouring countries

Table 4

	Electricity imported to Italy from						Electricity exported from Italy to						Net imports
	France	Switzerland	Austria	Slovenia	Greece	Total	France	Switzerland	Austria	Slovenia	Greece	Total	
GWh													2012
january	1,368.2	2,453.2	89.9	306.0	170.5	4,387.7	119.4	16.6	4.4	13.1	43.7	197.2	+4,190.4
february	874.9	1,993.7	97.8	243.7	66.8	3,276.7	199.7	33.2	0.2	10.3	131.8	375.2	+2,901.5
march	1,429.3	2,624.2	88.9	380.6	201.3	4,724.3	74.5	10.2	0.2	3.8	38.1	126.8	+4,597.5
april	1,111.4	2,031.1	81.3	330.3	304.4	3,858.4	86.1	56.1	3.4	13.1	1.7	160.4	+3,698.0
may	1,094.3	1,780.6	79.8	345.5	182.8	3,483.0	54.9	121.5	0.8	8.9	4.5	190.7	+3,292.3
june	1,023.4	1,914.0	112.5	307.3	159.9	3,517.0	86.6	126.2	0.2	6.4	12.2	231.6	+3,285.5
july	767.8	2,080.8	119.3	236.8	218.0	3,422.7	91.2	88.0	0.4	8.9	44.7	233.1	+3,189.6
august	594.1	1,205.1	57.5	157.3	223.7	2,237.7	121.1	115.1	10.2	28.4	34.9	309.8	+1,927.9
september	662.4	2,028.0	109.8	304.2	206.0	3,310.4	137.0	13.8	..	6.4	13.1	170.3	+3,140.1
october	1,283.5	2,632.3	108.2	452.0	193.3	4,669.3	68.0	7.3	0.0	3.3	0.5	79.2	+4,590.1
november	1,273.2	2,504.8	113.1	419.7	303.7	4,614.5	67.3	13.8	0.3	3.4	1.2	86.0	+4,528.6
december	1,095.7	2,049.6	88.2	366.0	306.4	3,905.9	102.2	27.9	3.4	10.3	0.2	144.0	+3,761.9
year	12,578.2	25,297.3	1,146.0	3,849.4	2,536.7	45,407.6	1,208.0	629.9	23.4	116.3	326.7	2,304.3	+43,103.4
GWh													2013
january	1,152.6	2,300.2	150.2	524.2	113.5	4,240.7	103.6	27.5	..	5.6	1.8	138.6	+4,102.1
february	1,193.1	2,335.7	167.0	464.4	267.8	4,428.0	98.2	11.0	..	0.9	0.7	110.8	+4,317.2
march	928.4	1,918.0	168.4	458.4	318.9	3,792.2	78.4	41.8	0.3	5.4	0.0	126.0	+3,666.1
april	837.8	1,559.6	137.8	408.2	261.8	3,205.3	50.9	127.7	3.2	7.5	5.0	194.2	+3,011.0
may	1,100.2	1,640.4	136.4	440.6	44.4	3,361.9	45.0	223.9	3.3	8.2	2.3	282.8	+3,079.1
june	1,139.8	1,555.6	113.3	472.5	192.0	3,473.3	62.9	183.0	2.2	7.5	6.9	262.4	+3,210.9
july	822.0	2,198.9	122.0	458.9	75.3	3,677.1	62.7	151.4	..	1.1	0.1	215.4	+3,461.8
august	909.0	1,406.1	60.4	209.4	129.4	2,714.3	61.3	182.5	6.7	62.5	2.8	315.7	+2,398.6
september	924.8	1,525.1	70.6	333.6	106.8	2,960.9	57.1	29.4	2.4	15.6	11.8	116.2	+2,844.8
october	1,487.4	2,388.0	118.2	480.2	72.3	4,546.1	55.9	28.5	0.6	11.8	8.1	104.8	+4,441.3
november	1,080.4	2,336.9	138.9	570.5	14.9	4,141.7	69.6	34.4	0.8	0.6	1.7	107.1	+4,034.6
december	960.4	2,176.9	122.9	495.6	40.6	3,796.4	112.0	53.8	0.6	5.6	54.3	226.3	+3,570.1
year	12,536.0	23,341.5	1,506.2	5,316.5	1,637.7	44,337.9	857.5	1,094.7	20.1	132.5	95.4	2,200.2	+42,137.6

Exchanges with foreign countries are measured in the substations closest to the border.

Exchange of electricity between Italy and neighbouring countries from 1963 to 2013

Figure 2

