

MICRONESIAN

JOURNAL OF THE HUMANITIES AND SOCIAL SCIENCES

Vol. 4 n° 2

Rainy Season Issue

December 2005

RESOURCES

TIME TABLE & BRIEF HISTORY OF SERVICE OF THE JALUIT GESELLSCHAFT MAIL STEAMER *GERMANIA* 1904–1914: A Contribution to the Communications History of Micronesia

by

Dirk HR Spennemann

Institute for Land, Water and Society, Charles Sturt University

To effectively administer the newly acquired German possessions of the Caroline, Palau and Mariana Islands, Germany had to establish reliable communications with Berlin as well as between the islands themselves. As a result the Jaluit Line was formed, connecting German Micronesia with Sydney and Hong Kong. From 1904 onwards main stay of this shipping line was the steamer *Germania*. This paper sets out a brief history of the ship and provides a timetable of its voyages, as reconstructed from various published sources.

Until the acquisition of the Spanish possessions in Micronesia by the German Empire in late 1899, all communications between the German Marshall Islands and the rest of the world depended on letters being transported by various trading vessels. Reliable shipping services were needed to administer the newly established of the German district administration of the 'Inselgebiet' in 1899, with its district administrations in Pohnpei, Yap and Saipan.

To provide a reliable communication with its colonies, the German government contracted the Jaluit Gesellschaft to provide a mail service connecting Sydney with Jaluit and Yap. At the latter point the mails could be transhipped to the Norddeutscher Lloyd steamers on the newly established Hong Kong–Saipan–Yap–Pohnpei–Sydney run.

The Jaluit Gesellschaft was to commence in 1901. In its annual report for 1899 the Jaluit Gesellschaft mentioned that its proposal to op-

erate a twelve-weekly shipping service running the route Sydney–Jaluit–Kosrae–Pohnpei–Chuuk–Yap–Palau and back was accepted and that a steamer had been bought.

When the Norddeutscher Lloyd terminated its Sydney-Hong Kong run by the end of 1901, the Jaluit Gesellschaft was asked—or saw the opportunity and requested—to extend its Micronesian run to Hong Kong. The German administration centre at Herbertshöhe on New Britain was to be included as a mandatory stop, while Matupi was time-tabled as a stop over if the need arose. The new service was conducted on a bi-monthly roster.

The initial service was operated by the *Oceana*, an 1891-built steel screw steam ship of 684 tons, which the Jaluit Gesellschaft had acquired the *Harold* and refitted for the tropical conditions. On 29 December 1903 the *Oceana* ran aground on a reef on Jaluit. When, after preliminary repairs, the vessel arrived in Sydney

This is contribution is not peer-reviewed.

© *Micronesian Journal of the Humanities and Social Sciences* ISSN 1449-7336

HeritageFutures International, PO Box 3440, Albury NSW 2640, Australia

158

it was found that full repairs were prohibitively expensive and the vessel was best be sold as scrap and broken up. Rather than acquiring an existing vessel as replacement, the decision was made to replace her by a purpose-built vessel, the *Germania*.

The remainder of this brief paper sets out a history of the ship and provides a timetable of its voyages, as reconstructed from various published sources.

THE SHIP

The *Germania* was a steel screw steamship of 1096 tons, built in 1904 by Friedrich Krupp AG on the Germania Werft at Kiel, Germany. The Jaluit Gesellschaft had ordered the vessel as replacement for the inadequate and damaged *Oceana*. It was purpose-built to serve as an island passenger vessel and trader in tropical conditions.

The *Germania* commenced sea-trials on 12 September 1904. They were brief but intensive, as the vessel was to depart as soon as possible for the Pacific. A departure in late September was envisaged, as the regular service was to recommence on 9 December. The *Germania* was fitted with three life boats and a gig. On the bridge deck the ship had ten twin-cabins. In addition, provisions were made for 12 second class passengers and 50 passengers on deck. A dining room was on the bridge deck, and a smoking salon on the rear. Contemporary accounts mention that the dining room was decorated with three paintings, one each of Hong Kong, Sydney and Jaluit.

To satisfy the requirements of the postal service, one cabin was designed to serve as a ship's post office and fitted out accordingly.

The *Germania*, call sign RNGL, commenced its regular service on 9 December 1904 as planned, departing Hong Kong for Sydney. The *Germania* completed her maiden voyage from Hong Kong when she reached Sydney on 24 January 1905. From then on she operated on the Sydney-Hong Kong route, making about three round trips a year. The service was terminated with voyage no. 57 when the *Germania* was requisitioned in Sydney in the first days of World War I.

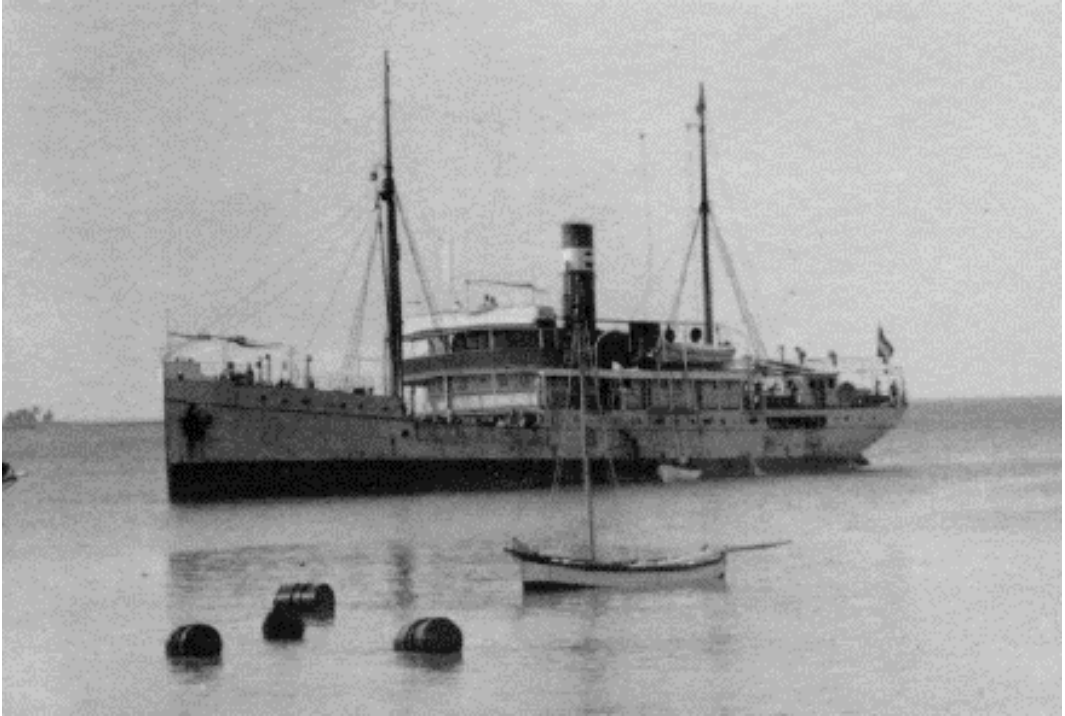
The Jaluit Gesellschaft utilised the *Germania* both to fulfill its mail contract with the German government, and to provide a backbone to its own trading operations and general cargo deliveries throughout Micronesia.

The *Germania* survived several typhoons, including the one which struck Jaluit on 30 June 1905. On her last voyage under German flag she went through the eye of a typhoon in the Caroline Islands. The life boats were smashed and the bilge clogged with ashes from the flooded stokehold. She arrived on 30 July 1914 in Sydney. Before the necessary repairs could be carried out, however, she was overtaken by the outbreak of World War I and interned by the Australian government

From 4 August 1914 the *Germania* became part of the Commonwealth fleet of steamers. It was leased to Burns Philp & Co, the main competitor of the Jaluit Gesellschaft, and later had a career in Australia, New Caledonia and Japan, incl. the Japanese navy. It sank on 29 March 1945.

Table 1. Technical Data

Name:	<i>Germania</i> (1904-1915) <i>Mawatta</i> (1915-1937) <i>Elsie Moller</i> (1937-1941) <i>Esashi Maru</i> (1941-1945)
Reg No:	ON139034
Displacement:	1096 GRT
Length overall:	64 (210.6 feet)
Breadth:	9.95 (32.7 feet)
Height:	5.13 (16.8 feet)
Draught:	4.57 (14.6 feet)
Crew:	
Passengers:	20 (cabin 1st class) 12 (cabin 2nd class) 50 (deck)
Range:	539 nm
Engine:	Triple expansion steam
Power:	156 NHP
Screws:	1
Speed:	11 1/4 knots



*Figure 1. The Germania at Jaluit 1905
(Photo: F. Jensen)*



*Figure 2. The Germania at Chuuk 1907
(Photo: Georg Fritz)*

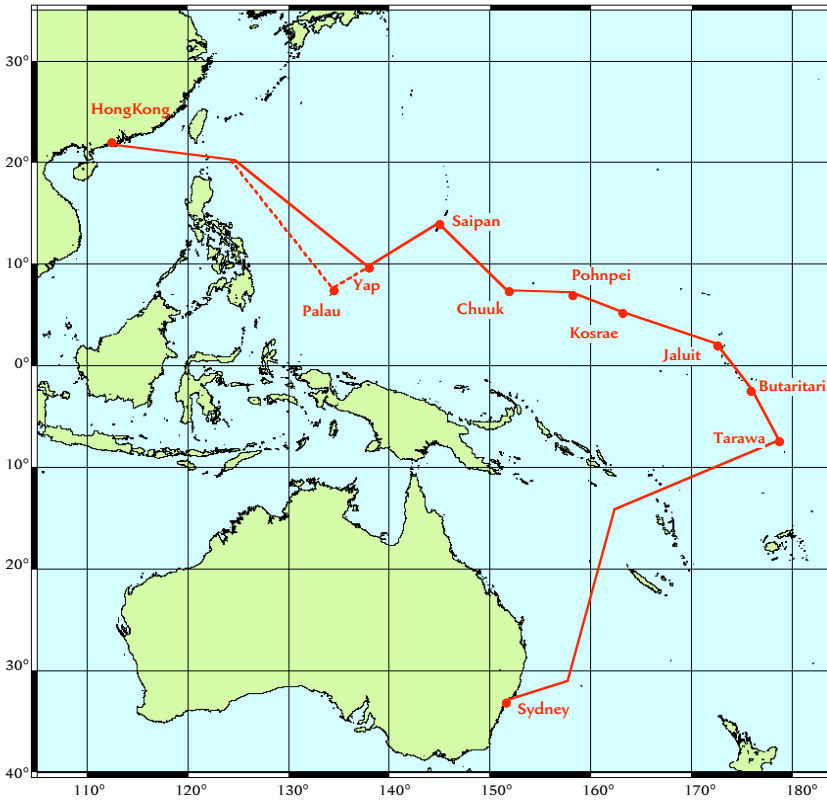


Figure 3. The route of the Germania in 1904

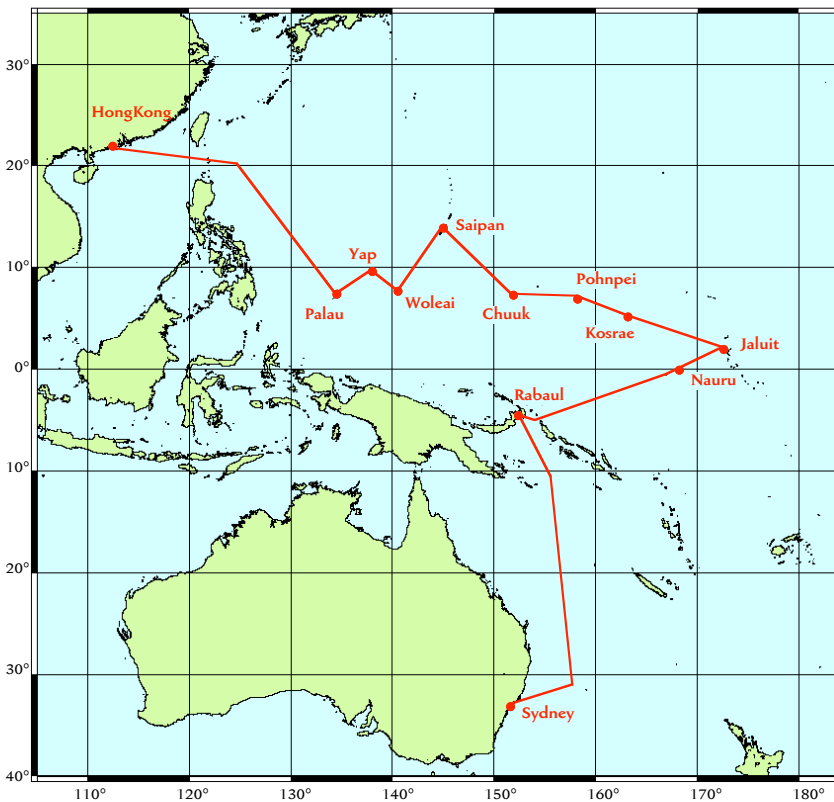


Figure 4. The route of the Germania in 1913

BIBLIOGRAPHY

- Anon. (1907) Postdampfschiffsverbindungen nach den deutschen Schutzgebieten für den Monat Januar 1907. *Deutsches Kolonialblatt* vol. 18, n° 2, pp. 93–95.
- Anon. (1907) Postdampfschiffsverbindungen nach den deutschen Schutzgebieten für den Monat Februar 1907. *Deutsches Kolonialblatt* vol. 18, n° 4, pp. 188–191.
- Anon. (1907) Postdampfschiffsverbindungen nach den deutschen Schutzgebieten für den Monat März 1907. *Deutsches Kolonialblatt* vol. 18, n° 6, pp. 271–273.
- Anon. (1907) Postdampfschiffsverbindungen nach den deutschen Schutzgebieten für den Monat April 1907. *Deutsches Kolonialblatt* vol. 18, n° 7, pp. 324–326.
- Anon. (1907) Postdampfschiffsverbindungen nach den deutschen Schutzgebieten für den Monat Mai 1907. *Deutsches Kolonialblatt* vol. 18, n° 9, pp. 422–425.
- Anon. (1907) Postdampfschiffsverbindungen nach den deutschen Schutzgebieten für den Monat Juni 1907. *Deutsches Kolonialblatt* vol. 18, n° 11, pp. 543–545.
- Anon. (1907) Postdampfschiffsverbindungen nach den deutschen Schutzgebieten für den Monat Juli 1907. *Deutsches Kolonialblatt* vol. 18, n° 13, pp. 649–651.
- Anon. (1907) Postdampfschiffsverbindungen nach den deutschen Schutzgebieten für den Monat August 1907. *Deutsches Kolonialblatt* vol. 18, n° 15 pp. 784–786.
- Anon. (1907) Postdampfschiffsverbindungen nach den deutschen Schutzgebieten für den Monat September 1907. *Deutsches Kolonialblatt* vol. 18, n° 17, pp. 876–878.
- Anon. (1907) Postdampfschiffsverbindungen nach den deutschen Schutzgebieten für den Monat October 1907. *Deutsches Kolonialblatt* vol. 18, n° 19, pp. 974–977.
- Anon. (1907) Postdampfschiffsverbindungen nach den deutschen Schutzgebieten für den Monat November 1907. *Deutsches Kolonialblatt* vol. 18, n° 21, pp. 1076–1079.
- Anon. (1907) Postdampfschiffsverbindungen nach den deutschen Schutzgebieten für den Monat Dezember 1907. *Deutsches Kolonialblatt* vol. 18, n° 23, pp. 1173–1175.
- Anon. (1908) Postdampfschiffsverbindungen nach den deutschen Schutzgebieten für den Monat Januar 1908. *Deutsches Kolonialblatt* vol. 19, n° 2, pp. 95–98.
- Anon. (1908) Postdampfschiffsverbindungen nach den deutschen Schutzgebieten für den Monat Februar 1908. *Deutsches Kolonialblatt* vol. 19, n° 4, pp. 202–204.
- Anon. (1908) Postdampfschiffsverbindungen nach den deutschen Schutzgebieten für den Monat März 1908. *Deutsches Kolonialblatt* vol. 19, n° 6, pp. 314–317.
- Anon. (1908) Postdampfschiffsverbindungen nach den deutschen Schutzgebieten für den Monat April 1908. *Deutsches Kolonialblatt* vol. 19, n° 8, pp. 402–405.
- Anon. (1908) Postdampfschiffsverbindungen nach den deutschen Schutzgebieten für den Monat Mai 1908. *Deutsches Kolonialblatt* vol. 19, n° 10, pp. 504–507.
- Anon. (1908) Postdampfschiffsverbindungen nach den deutschen Schutzgebieten für den Monat Juni 1908. *Deutsches Kolonialblatt* vol. 19, n° 12, pp. 611–614.
- Anon. (1908) Postdampfschiffsverbindungen nach den deutschen Schutzgebieten für den Monat Juli 1908. *Deutsches Kolonialblatt* vol. 19, n° 13, pp. 652–655.
- Anon. (1908) Postdampfschiffsverbindungen nach den deutschen Schutzgebieten für den Monat August 1908. *Deutsches Kolonialblatt* vol. 19, n° 15, pp. 766–769.
- Anon. (1908) Postdampfschiffsverbindungen nach den deutschen Schutzgebieten für den Monat September 1908. *Deutsches Kolonialblatt* vol. 19, n° 17, pp. 877–879.
- Anon. (1908) Postdampfschiffsverbindungen nach den deutschen Schutzgebieten für den Monat October 1908. *Deutsches Kolonialblatt* vol. 19, n° 19, pp. 984–987.
- Anon. (1908) Postdampfschiffsverbindungen nach den deutschen Schutzgebieten für den Monat November 1908. *Deutsches Kolonialblatt* vol. 19, n° 21, pp. 1080–1083.
- Anon. (1908) Postdampfschiffsverbindungen nach den deutschen Schutzgebieten für den Monat Dezember 1908. *Deutsches Kolonialblatt* vol. 19, n° 23, pp. 1191–1193.
- Anon. (1909) Postdampfschiffsverbindungen nach den deutschen Schutzgebieten für den Monat Januar 1909. *Deutsches Kolonialblatt* vol. 20, n° 1, pp. 44–46.
- Anon. (1909) Postdampfschiffsverbindungen nach den deutschen Schutzgebieten für den Monat Februar 1909. *Deutsches Kolonialblatt* vol. 20, n° 3, pp. 135–138.
- Anon. (1909) Postdampfschiffsverbindungen nach den deutschen Schutzgebieten für den Monat März 1909. *Deutsches Kolonialblatt* vol. 20, n° 5, pp. 236–238.
- Anon. (1909) Postdampfschiffsverbindungen nach den deutschen Schutzgebieten für den Monat April 1909. *Deutsches Kolonialblatt* vol. 20, n° 7, pp. 356–358.
- Anon. (1909) Postdampfschiffsverbindungen nach den deutschen Schutzgebieten für den Monat Mai 1909. *Deutsches Kolonialblatt* vol. 20, n° 9, pp. 472–474.
- Anon. (1909) Postdampfschiffsverbindungen nach den deutschen Schutzgebieten für den Monat Juni 1909. *Deutsches Kolonialblatt* vol. 20, n° 11, pp. 562–564.
- Anon. (1909) Postdampfschiffsverbindungen nach den deutschen Schutzgebieten für den Monat Juli 1909. *Deutsches Kolonialblatt* vol. 20, n°13, pp. 660–662.
- Anon. (1909) Postdampfschiffsverbindungen nach den deutschen Schutzgebieten für den Monat August 1909. *Deutsches Kolonialblatt* vol. 20, n° 15, pp. 762–764.
- Anon. (1909) Postdampfschiffsverbindungen nach den deutschen Schutzgebieten für den Monat September 1909. *Deutsches Kolonialblatt* vol. 20, n° 17, pp. 849–852.
- Anon. (1909) Postdampfschiffsverbindungen nach den deutschen Schutzgebieten für den Monat October 1909. *Deutsches Kolonialblatt* vol. 20, n° 19 pp. 930–932.
- Anon. (1909) Postdampfschiffsverbindungen nach den deutschen Schutzgebieten für den Monat November 1909. *Deutsches Kolonialblatt* vol. 20, n° 21, pp. 1030–1032.

- Anon. (1909) Postdampfschiffsverbindungen nach den deutschen Schutzgebieten für den Monat Dezember 1909. *Deutsches Kolonialblatt* vol. 20, n° 23, pp. 1115–1118.
- Anon. (1910) Postdampfschiffsverbindungen nach den deutschen Schutzgebieten für den Monat Januar 1910. *Deutsches Kolonialblatt* vol. 21, n° 1, pp. 34–37.
- Anon. (1910) Postdampfschiffsverbindungen nach den deutschen Schutzgebieten für den Monat Februar 1910. *Deutsches Kolonialblatt* vol. 21, n° 3, pp. 111–113.
- Anon. (1910) Postdampfschiffsverbindungen nach den deutschen Schutzgebieten für den Monat März 1910. *Deutsches Kolonialblatt* vol. 21, n° 5, pp. 203–205.
- Anon. (1910) Postdampfschiffsverbindungen nach den deutschen Schutzgebieten für den Monat April 1910. *Deutsches Kolonialblatt* vol. 21, n° 7, pp. 304–306.
- Anon. (1910) Postdampfschiffsverbindungen nach den deutschen Schutzgebieten für den Monat Mai 1910. *Deutsches Kolonialblatt* vol. 21, n° 9, pp. 404–406.
- Anon. (1910) Postdampfschiffsverbindungen nach den deutschen Schutzgebieten für den Monat Juni 1910. *Deutsches Kolonialblatt* vol. 21, n° 11, pp. 486–488.
- Anon. (1910) Postdampfschiffsverbindungen nach den deutschen Schutzgebieten für den Monat Juli 1910. *Deutsches Kolonialblatt* vol. 21, n° 13, pp. 582–584.
- Anon. (1910) Postdampfschiffsverbindungen nach den deutschen Schutzgebieten für den Monat Juli 1910. *Deutsches Kolonialblatt* vol. 21, n° 14, pp. 641–644.
- Anon. (1910) Postdampfschiffsverbindungen nach den deutschen Schutzgebieten für den Monat August 1910. *Deutsches Kolonialblatt* vol. 21, n° 15, pp. 710–713.
- Anon. (1910) Postdampfschiffsverbindungen nach den deutschen Schutzgebieten für den Monat September 1910. *Deutsches Kolonialblatt* vol. 21, n° 17, pp. 783–785.
- Anon. (1910) Postdampfschiffsverbindungen nach den deutschen Schutzgebieten für den Monat October 1910. *Deutsches Kolonialblatt* vol. 21, n° 19, pp. 842–845.
- Anon. (1910) Postdampfschiffsverbindungen nach den deutschen Schutzgebieten für den Monat November 1910. *Deutsches Kolonialblatt* vol. 21, n° 21, pp. 873–876.
- Anon. (1910) Postdampfschiffsverbindungen nach den deutschen Schutzgebieten für den Monat Dezember 1910. *Deutsches Kolonialblatt* vol. 21, n° 23, pp. 954–956.
- Anon. (1911) Postdampfschiffsverbindungen nach den deutschen Schutzgebieten für den Monat Januar 1911. *Deutsches Kolonialblatt* vol. 22, n° 1, pp. 71–73.
- Anon. (1911) Postdampfschiffsverbindungen nach den deutschen Schutzgebieten für den Monat Februar 1911. *Deutsches Kolonialblatt* vol. 22, n° 3, pp. 147–149.
- Anon. (1911) Postdampfschiffsverbindungen nach den deutschen Schutzgebieten für den Monat März 1911. *Deutsches Kolonialblatt* vol. 22, n° 5, pp. 260–263.
- Anon. (1911) Postdampfschiffsverbindungen nach den deutschen Schutzgebieten für den Monat April 1911. *Deutsches Kolonialblatt* vol. 22, n° 7, pp. 329–331.
- Anon. (1911) Postdampfschiffsverbindungen nach den deutschen Schutzgebieten für den Monat Mai 1911. *Deutsches Kolonialblatt* vol. 22, n° 9, pp. 402–404.
- Anon. (1911) Postdampfschiffsverbindungen nach den deutschen Schutzgebieten für den Monat Juni 1911. *Deutsches Kolonialblatt* vol. 22, n° 11, pp. 471–473.
- Anon. (1911) Postdampfschiffsverbindungen nach den deutschen Schutzgebieten für den Monat Juli 1911. *Deutsches Kolonialblatt* vol. 22, n° 13, pp. 537–539.
- Anon. (1911) Postdampfschiffsverbindungen nach den deutschen Schutzgebieten für den Monat August 1911. *Deutsches Kolonialblatt* vol. 22, n° 15, pp. 607–609.
- Anon. (1911) Postdampfschiffsverbindungen nach den deutschen Schutzgebieten für den Monat September 1911. *Deutsches Kolonialblatt* vol. 22, n° 17, pp. 676–679.
- Anon. (1911) Postdampfschiffsverbindungen nach den deutschen Schutzgebieten für den Monat October 1911. *Deutsches Kolonialblatt* vol. 22, n° 19, pp. 776–779.
- Anon. (1911) Postdampfschiffsverbindungen nach den deutschen Schutzgebieten für den Monat November 1911. *Deutsches Kolonialblatt* vol. 22, n° 21, pp. 862–865.
- Anon. (1911) Postdampfschiffsverbindungen nach den deutschen Schutzgebieten für den Monat Dezember 1911. *Deutsches Kolonialblatt* vol. 22, n° 23, pp. 998–1001.
- Anon. (1912) Postdampfschiffsverbindungen nach den deutschen Schutzgebieten für den Monat Januar 1912. *Deutsches Kolonialblatt* vol. 23, n° 1, pp. 62–65.
- Anon. (1912) Postdampfschiffsverbindungen nach den deutschen Schutzgebieten für den Monat Februar 1912. *Deutsches Kolonialblatt* vol. 23, n° 3, pp. 186–189.
- Anon. (1912) Postdampfschiffsverbindungen nach den deutschen Schutzgebieten für den Monat März 1912. *Deutsches Kolonialblatt* vol. 23.
- Anon. (1912) Postdampfschiffsverbindungen nach den deutschen Schutzgebieten für den Monat April 1912. *Deutsches Kolonialblatt* vol. 23, n° 7, pp. 321–324.
- Anon. (1912) Postdampfschiffsverbindungen nach den deutschen Schutzgebieten für den Monat Mai 1912. *Deutsches Kolonialblatt* vol. 23, n° 9, pp. 425–428.
- Anon. (1912) Postdampfschiffsverbindungen nach den deutschen Schutzgebieten für den Monat Juni 1912. *Deutsches Kolonialblatt* vol. 23, n° 11, pp. 517–520.
- Anon. (1912) Postdampfschiffsverbindungen nach den deutschen Schutzgebieten für den Monat Juli 1912. *Deutsches Kolonialblatt* vol. 23, n° 13, pp. 631–634.
- Anon. (1912) Postdampfschiffsverbindungen nach den deutschen Schutzgebieten für den Monat August 1912. *Deutsches Kolonialblatt* vol. 23, n° 15, pp. 739–743.
- Anon. (1912) Postdampfschiffsverbindungen nach den deutschen Schutzgebieten für den Monat September 1912. *Deutsches Kolonialblatt* vol. 23, n° 17, pp. 882–885.
- Anon. (1912) Postdampfschiffsverbindungen nach den deutschen Schutzgebieten für den Monat October 1912. *Deutsches Kolonialblatt* vol. 23, n° 20, pp. 1026–1029.

- Anon. (1912) Postdampfschiffsverbindungen nach den deutschen Schutzgebieten für den Monat November 1912. *Deutsches Kolonialblatt* vol. 23, n° 22, pp. 1120–1123.
- Anon. (1912) Postdampfschiffsverbindungen nach den deutschen Schutzgebieten für den Monat Dezember 1912. *Deutsches Kolonialblatt* vol. 23, n° 23, pp. 1155–1158.
- Anon. (1913) Postdampfschiffsverbindungen nach den deutschen Schutzgebieten für den Monat Januar 1913. *Deutsches Kolonialblatt* vol. 24, n° 1, pp. 19–22.
- Anon. (1913) Postdampfschiffsverbindungen nach den deutschen Schutzgebieten für den Monat Januar 1913. Printing error for 'February'. *Deutsches Kolonialblatt* vol. 24, n° 3, pp. 129–132.
- Anon. (1913) Postdampfschiffsverbindungen nach den deutschen Schutzgebieten für den Monat März 1913. *Deutsches Kolonialblatt* vol. 24, n° 5, pp. 249–252.
- Anon. (1913) Postdampfschiffsverbindungen nach den deutschen Schutzgebieten für den Monat April 1913. *Deutsches Kolonialblatt* vol. 24, n° 7, pp. 339–342.
- Anon. (1913) Postdampfschiffsverbindungen nach den deutschen Schutzgebieten für den Monat Mai 1913. *Deutsches Kolonialblatt* vol. 24, n° 9, pp. 423–426.
- Anon. (1913) Postdampfschiffsverbindungen nach den deutschen Schutzgebieten für den Monat Juni 1913. *Deutsches Kolonialblatt* vol. 24, n° 11, pp. 554–557.
- Anon. (1913) Postdampfschiffsverbindungen nach den deutschen Schutzgebieten für den Monat Juli 1913. *Deutsches Kolonialblatt* vol. 24, n° 13, pp. 607–610.
- Anon. (1913) Postdampfschiffsverbindungen nach den deutschen Schutzgebieten für den Monat August 1913. *Deutsches Kolonialblatt* vol. 24, n° 15, pp. 699–702.
- Anon. (1913) Postdampfschiffsverbindungen nach den deutschen Schutzgebieten für den Monat September 1913. *Deutsches Kolonialblatt* vol. 24, n° 17, pp. 779–782.
- Anon. (1913) Postdampfschiffsverbindungen nach den deutschen Schutzgebieten für den Monat October 1913. *Deutsches Kolonialblatt* vol. 24, n° 19, pp. 887–901.
- Anon. (1913) Postdampfschiffsverbindungen nach den deutschen Schutzgebieten für den Monat November 1913. *Deutsches Kolonialblatt* vol. 24, n° 21, pp. 961–963.
- Anon. (1913) Postdampfschiffsverbindungen nach den deutschen Schutzgebieten für den Monat Dezember 1913. *Deutsches Kolonialblatt* vol. 24, n° 23, pp. 1047–1050.
- Jaluit Gesellschaft (1904). Fahrplan des Postdampfers 'Germania' zwischen HongKong, den Marianen-, Karolinen-, Marshall-Inseln und Sydney. *Deutsches Kolonialblatt* 15, n° 23, pp. 716–717.
- Jaluit Gesellschaft (1906). Fahrplan des Postdampfers 'Germania' zwischen HongKong, den Marianen-, Karolinen-, Marshall-Inseln und Sydney. *Deutsches Kolonialblatt* 17, n° 2, pp. 58–59.
- Jaluit Gesellschaft (1909). Fahrplan des Postdampfers 'Germania' zwischen HongKong, den Palau-, Karolinen-, Marshall-Inseln, Simpsonhafen und Sydney. Resein 25–30. *Koloniales Handels Adressbuch* 1909, pp. 232–233.
- Jaluit Gesellschaft (1911). Fahrplan des Postdampfers 'Germania' zwischen Sydney, Rabaul, den Marshall-, Karolinen-, Palau-, Inseln, Simpsonhafen und HongKong. Resein 36–43. *Koloniales Handels Adressbuch* 1911, pp. 309–310.
- Jaluit Gesellschaft (1911b). Fahrplan des Postdampfers 'Germania' zwischen Sydney, Rabaul, den Marshall-, Karolinen-, Marianen-, Palau Inseln und HongKong Reisen 36–43. Hamburg: Jaluit Gesellschaft, Hamburg.
- Prive, E. (1912) Deutsche Südsee-Dampferposten. *Friedemann's Philatelistische Berichte* 50, pp. 893–897.

CONTACT: A/Professor Dirk H.R. Spennemann, Institute for Land, Water and Society, Charles Sturt University, P.O. Box 789, Albury NSW 2640, Australia.
e-mail dspennemann@csu.edu.au.

Table 3. Time Table of the Germania on the Hongkong–Sydney run

Mail from Germany						
dep Berlin	8-Nov-04	14-Mar-05	18-Jul-05	21-Nov-05	27-Mar-06	31-Jul-06
dep Bremerhaven	26-Oct-04		5-Jul-05		14-Mar-06	
Goods from Germany						
dep Hamburg		2-Mar-05		9-Nov-05		19-Jul-06
dep Naples	10-Nov-04	16-Mar-05	20-Jul-05	23-Nov-05	29-Mar-06	2-Aug-06
arr Hong Kong	9-Dec-04	13-Apr-05	17-Aug-05	22-Dec-05	26-Apr-06	30-Aug-06
Voyage N°	1	3	5	7	9	11
dep Hong Kong	9-Dec-04	14-Apr-05	18-Aug-05	22-Dec-05	27-Apr-06	31-Aug-06
arr Palau	—	—	—	—	—	—
dep Palau	—	—	—	—	—	—
arr Yap	17-Dec-04	22-Apr-05	26-Aug-05	30-Dec-05	5-May-06	8-Sep-06
dep Yap	19-Dec-04	24-Apr-05	28-Aug-05	31-Dec-05	6-May-06	9-Sep-06
arr Oleai	—	—	—	—	—	—
dep Oleai	—	—	—	—	—	—
arr Saipan	22-Dec-04	27-Apr-05	31-Aug-05	3-Jan-06	9-May-06	12-Sep-06
dep Saipan	23-Dec-04	28-Apr-05	1-Sep-05	4-Jan-06	10-May-06	13-Sep-06
arr Chuuk	26-Dec-04	1-May-05	4-Sep-05	7-Jan-06	13-May-06	16-Sep-06
dep Chuuk	28-Dec-04	3-May-05	6-Sep-05	9-Jan-06	15-May-06	18-Sep-06
arr Pohnpei	30-Dec-04	5-May-05	8-Sep-05	11-Jan-06	17-May-06	20-Sep-06
dep Pohnpei	2-Jan-05	8-May-05	11-Sep-05	14-Jan-06	20-May-06	23-Sep-06
arr Kosrae	4-Jan-05	10-May-05	13-Sep-05	16-Jan-06	22-May-06	25-Sep-06
dep Kosrae	5-Jan-05	11-May-05	14-Sep-05	16-Jan-06	22-May-06	25-Sep-06
arr Jaluit	7-Jan-05	13-May-05	16-Sep-05	18-Jan-06	24-May-06	27-Sep-06
dep Jaluit	11-Jan-05	17-May-05	20-Sep-05	23-Jan-06	29-May-06	2-Oct-06
arr Butaritari	12-Jan-05	18-May-05	21-Sep-05	24-Jan-06	30-May-06	3-Oct-06
dep Butaritari	12-Jan-05	18-May-05	21-Sep-05	24-Jan-06	30-May-06	3-Oct-06
arr Tarawa	—	—	—	25-Jan-06	31-May-06	4-Oct-06
dep Tarawa	—	—	—	25-Jan-06	31-May-06	4-Oct-06
arr Ocean Island	13-Jan-05	19-May-05	22-Sep-05	26-Jan-06	1-Jun-06	5-Oct-06
dep Ocean Island	13-Jan-05	19-May-05	22-Sep-05	26-Jan-06	1-Jun-06	5-Oct-06
arr Nauru	14-Jan-05	20-May-05	23-Sep-05	27-Jan-06	2-Jun-06	6-Oct-06
dep Nauru	14-Jan-05	20-May-05	23-Sep-05	27-Jan-06	2-Jun-06	6-Oct-06
arr Rabaul	—	—	—	—	—	—
dep Rabaul	—	—	—	—	—	—
arr Sydney	<u>24-Jan-05</u>	<u>30-May-05</u>	<u>2-Oct-05</u>	<u>7-Feb-06</u>	<u>12-Jun-06</u>	<u>2-Oct-06</u>
Mail to Berlin						
dep Sydney	24-Jan-05	30-May-05	3-Oct-05	6-Feb-06	12-Jun-06	16-Oct-06
arr Brindisi						
arr Berlin	25-Feb-05	2-Jul-05	4-Nov-05	10-Mar-06	15-Jul-06	17-Nov-06
Goods to Germany						
dep Sydney	28-Jan-05	24-Jun-05	14-Oct-05	3-Mar-06	23-Jun-06	10-Nov-06
arr Naples	8-Mar-05	8-Aug-05	22-Nov-05	11-Apr-06	3-Aug-06	19-Dec-06
arr Bremerhaven	22-Mar-05	18-Aug-05	6-Dec-05	25-Apr-06	17-Aug-06	2-Jan-07

Table 3 (ct'd) Time Table of the Germania on the Hongkong–Sydney run

Mail from Germany						
dep Berlin	4-Dec-06	9-Apr-07	13-Aug-07	17-Dec-07	5-Feb-08	11-Sep-08
dep Bremerhaven	21-Nov-06		31-Jul-07			
Goods from Germany						
dep Hamburg		28-Mar-07		5-Dec-07		
dep Naples	6-Dec-06	11-Apr-07	15-Aug-07	19-Dec-07	12-Jan-08	18-Aug-08
arr Hong Kong	2-Jan-07	7-May-07	10-Sep-07	15-Jan-08	7-Feb-08	13-Sep-08
Voyage N°	13	15	17	19	21	23
dep Hong Kong	4-Jan-07	10-May-07	13-Sep-07	17-Jan-08	5-Jun-08	11-Oct-08
arr Palau	12-Jan-07	18-May-07	21-Sep-07	25-Jan-08	13-Jun-08	19-Oct-08
dep Palau	12-Jan-07	18-May-07	21-Sep-07	25-Jan-08	13-Jun-08	19-Oct-08
arr Yap	13-Jan-07	19-May-07	22-Sep-07	26-Jan-08	15-Jun-08	21-Oct-08
dep Yap	14-Jan-07	20-May-07	23-Sep-07	27-Jan-08	16-Jun-08	22-Oct-08
arr Oleai	—	—	—	—	—	—
dep Oleai	—	—	—	—	—	—
arr Saipan	17-Jan-07	23-May-07	26-Sep-07	30-Jan-08	20-Jun-08	26-Oct-08
dep Saipan	18-Jan-07	24-May-07	27-Sep-07	31-Jan-08	21-Jun-08	27-Oct-08
arr Chuuk	21-Jan-07	27-May-07	30-Sep-07	3-Feb-08	23-Jun-08	29-Oct-08
dep Chuuk	23-Jan-07	29-May-07	2-Oct-07	5-Feb-08	25-Jun-08	31-Oct-08
arr Pohnpei	25-Jan-07	31-May-07	4-Oct-07	7-Feb-08	27-Jun-08	2-Nov-08
dep Pohnpei	28-Jan-07	3-Jun-07	7-Oct-07	10-Feb-08	29-Jun-08	4-Nov-08
arr Kosrae	30-Jan-07	5-Jun-07	9-Oct-07	12-Feb-08	1-Jul-08	6-Nov-08
dep Kosrae	30-Jan-07	5-Jun-07	9-Oct-07	12-Feb-08	1-Jul-08	6-Nov-08
arr Jaluit	1-Feb-07	7-Jun-07	11-Oct-07	14-Feb-08	3-Jul-08	11-Nov-08
dep Jaluit	6-Feb-07	12-Jun-07	16-Oct-07	19-Feb-08	8-Jul-08	16-Nov-08
arr Butaritari	7-Feb-07	13-Jun-07	17-Oct-07	20-Feb-08	9-Jul-08	17-Nov-08
dep Butaritari	7-Feb-07	13-Jun-07	17-Oct-07	20-Feb-08	9-Jul-08	17-Nov-08
arr Tarawa	8-Feb-07	14-Jun-07	18-Oct-07	21-Feb-08	10-Jul-08	18-Nov-08
dep Tarawa	8-Feb-07	14-Jun-07	18-Oct-07	21-Feb-08	10-Jul-08	18-Nov-08
arr Ocean Island	9-Feb-07	15-Jun-07	19-Oct-07	22-Feb-08	11-Jul-08	19-Nov-08
dep Ocean Island	9-Feb-07	15-Jun-07	19-Oct-07	22-Feb-08	11-Jul-08	19-Nov-08
arr Nauru	10-Feb-07	16-Jun-07	20-Oct-07	23-Feb-08	12-Jul-08	20-Nov-08
dep Nauru	10-Feb-07	16-Jun-07	20-Oct-07	23-Feb-08	12-Jul-08	20-Nov-08
arr Rabaul	—	—	—	—	—	—
dep Rabaul	—	—	—	—	—	—
arr Sydney	<u>18-Feb-07</u>	<u>27-Jun-07</u>	<u>29-Oct-07</u>	<u>9-Mar-08</u>	<u>22-Jul-08</u>	<u>23-Nov-08</u>
Mail to Berlin						
dep Sydney	19-Feb-07	25-Jun-07	29-Oct-07	3-Mar-08		
arr Brindisi						
arr Berlin	23-Mar-06	28-Jul-07	30-Nov-07	4-Apr-08		
Goods to Germany						
dep Sydney	2-Mar-07	13-Jul-07	2-Nov-07	21-Mar-08		
arr Naples	10-Apr-07	17-Aug-07	7-Dec-07	25-Apr-08		
arr Bremerhaven	24-Apr-07	30-Aug-07	20-Dec-07	8-May-08		

Table 3 (*ct'd*) Time Table of the Germania on the Hongkong–Sydney run

Mail from Germany						
dep Berlin	13-Jan-09	2-Jun-09	20-Oct-09	9-Mar-10	27-Jul-10	14-Dec-10
dep Bremerhaven					14-Jul-10	1-Dec-10
Goods from Germany		20-May-09	7-Oct-09	24-Feb-10		
dep Hamburg	31-Dec-08					
dep Naples	15-Jan-09	4-Jun-09	22-Oct-09	11-Mar-10	29-Jul-10	16-Dec-10
arr Hong Kong	11-Jan-09	30-Jun-09	18-Nov-09	6-Apr-10	24-Aug-10	11-Jan-11
Voyage N°	25	27	29	31	33	35
dep Hong Kong	11-Feb-09	2-Jul-09	19-Nov-09	13-Apr-10	31-Aug-10	18-Jan-11
arr Palau	20-Feb-09	10-Jul-09	27-Nov-09	21-Apr-10	8-Sep-10	26-Jan-11
dep Palau	21-Feb-09	11-Jul-09	18-Nov-09	21-Apr-10	8-Sep-10	26-Jan-11
arr Yap	23-Feb-09	13-Jul-09	30-Nov-09	23-Apr-10	10-Sep-10	28-Jan-11
dep Yap	24-Feb-09	14-Jul-09	1-Dec-09	24-Apr-10	11-Sep-10	29-Jan-11
arr Oleai		—	—	—	—	—
dep Oleai	—	—	—	—	—	—
arr Saipan	27-Feb-09	17-Jul-09	4-Dec-09	27-Apr-10	14-Sep-10	1-Feb-11
dep Saipan	28-Feb-09	18-Jul-09	5-Dec-09	28-Apr-10	15-Sep-10	2-Feb-11
arr Chuuk	4-Mar-09	21-Jul-09	8-Dec-09	30-Apr-10	18-Sep-10	4-Feb-11
dep Chuuk	5-Mar-09	23-Jul-09	10-Dec-09	2-May-10	20-Sep-10	6-Feb-11
arr Pohnpei	7-Mar-09	25-Jul-09	12-Dec-09	4-May-10	23-Sep-10	8-Feb-11
dep Pohnpei	9-Mar-09	27-Jul-09	14-Dec-09	6-May-10	25-Sep-10	10-Feb-11
arr Kosrae	11-Mar-09	29-Jul-09	16-Dec-09	8-May-10	27-Sep-10	12-Feb-11
dep Kosrae	11-Mar-09	29-Jul-09	16-Dec-09	8-May-10	27-Sep-10	12-Feb-11
arr Jaluit	13-Mar-09	<u>10-Aug-09</u>	<u>21-Dec-09</u>	<u>11-May-10</u>	<u>25-Sep-10</u>	14-Feb-11
dep Jaluit	18-Mar-09	<u>10-Aug-09</u>	<u>25-Dec-09</u>	<u>15-May-10</u>	<u>1-Oct-10</u>	19-Feb-11
arr Butaritari	19-Mar-09	6-Aug-09	24-Dec-09	16-May-10	3-Oct-10	20-Feb-11
dep Butaritari	19-Mar-09	6-Aug-09	24-Dec-09	16-May-10	3-Oct-10	20-Feb-11
arr Tarawa	20-Mar-09	7-Aug-09	25-Dec-09	17-May-10	4-Oct-10	21-Feb-11
dep Tarawa	20-Mar-09	7-Aug-09	25-Dec-09	17-May-10	4-Oct-10	21-Feb-11
arr Ocean Island	21-Mar-09	8-Aug-09	26-Dec-09	18-May-10	5-Oct-10	22-Feb-11
dep Ocean Island	21-Mar-09	8-Aug-09	26-Dec-09	18-May-10	5-Oct-10	22-Feb-11
arr Nauru	22-Mar-09	9-Aug-09	27-Dec-09	19-May-10	6-Oct-10	23-Feb-11
dep Nauru	22-Mar-09	9-Aug-09	27-Dec-09	19-May-10	6-Oct-10	23-Feb-11
arr Rabaul	27-Mar-09 (S)	14-Aug-09(S)	1-Jan-10			
dep Rabaul	28-Mar-09 (S)	5-Aug-09(S)	2-Jan-10			
arr Sydney	<u>4-Apr-09</u>	<u>23-Aug-09</u>	<u>10-Jan-10</u>	<u>31-May-10</u>	<u>16-Oct-10</u>	<u>7-Mar-11</u>
Mail to Berlin						
dep Sydney	6-Apr-09	24-Aug-09	11-Jan-10			
arr Brindisi	9-May-09	26-Sep-09	11-Feb-10			
arr Berlin	11-May-09	28-Sep-09	13-Feb-10			
Goods to Germany						
dep Sydney	17-Apr-09	4-Sep-09	22-Jan-10			
arr Naples	22-May-09	9-Oct-09	26-Feb-10			
arr Bremerhaven	4-Jun-09	22-Oct-09	11-Mar-10			

Table 3 (ct'd) Time Table of the Germania on the Hongkong–Sydney run

Mail from Germany						
dep Berlin	19-Apr-11	9-Aug-11	29-Nov-11	20-Mar-12	10-Jul-12	28-Oct-12
dep Bremerhaven						
Goods from Germany						
dep Hamburg	5-Apr-11	26-Jul-11	15-Nov-11	6-Mar-12		
dep Naples	21-Apr-11	11-Aug-11	1-Dec-11	22-Mar-12	12-Jul-12	30-Oct-12
arr Hong Kong	17-May-11	6-Sep-11	28-Dec-11	17-Apr-12	7-Aug-12	25-Nov-12
Voyage N°	37	39	41	43	45	47
dep Hong Kong	19-May-11	8-Sep-11	29-Dec-11	19-Apr-11	9-Aug-12	29-Nov-12
arr Palau	27-May-11	16-Sep-11	6-Jan-12	27-Apr-12	17-Aug-12	7-Dec-12
dep Palau	27-May-11	16-Sep-11	6-Jan-12	27-Apr-12	17-Aug-12	7-Dec-12
arr Yap	28-May-11	17-Sep-11	7-Jan-12	28-Apr-12	18-Aug-12	8-Dec-12
dep Yap	29-May-11	18-Sep-11	8-Jan-12	29-Apr-12	19-Aug-12	9-Dec-12
arr Oleai	31-May-11	20-Sep-11	10-Jan-12	1-May-12	21-Aug-12	11-Dec-12
dep Oleai	1-Jun-11	21-Sep-11	11-Jan-12	2-May-12	22-Aug-12	12-Dec-12
arr Saipan	3-Jun-11	23-Sep-11	13-Jan-12	4-May-12	24-Aug-12	14-Dec-12
dep Saipan	3-Jun-11	<i>23-Sep-11</i>	<i>13-Jan-12</i>	4-May-12	24-Aug-12	14-Dec-12
arr Chuuk	<i>6-Jun-11</i>	<i>26-Sep-11</i>	<i>16-Jan-12</i>	7-May-12	27-Aug-12	17-Dec-12
dep Chuuk	<i>8-Jun-11</i>	<i>28-Sep-11</i>	<i>18-Jan-12</i>	9-May-12	29-Aug-12	19-Dec-12
arr Pohnpei	10-Jun-11	<i>30-Sep-11</i>	<i>20-Jan-12</i>	11-May-12	31-Aug-12	21-Dec-12
dep Pohnpei	11-Jun-11	1-Oct-11	21-Jan-12	12-May-12	1-Sep-12	22-Dec-12
arr Kosrae	<i>13-Jun-11</i>	<i>3-Oct-11</i>	<i>23-Jan-12</i>	<i>14-May-12</i>	3-Sep-12	24-Dec-12
dep Kosrae	<i>13-Jun-11</i>	<i>3-Oct-11</i>	<i>23-Jan-12</i>	<i>14-May-12</i>	3-Sep-12	24-Dec-12
arr Jaluit	15-Jun-11	5-Oct-11	25-Jan-12	16-May-12	5-Sep-12	26-Dec-12
dep Jaluit	<i>18-Jun-11</i>	<i>8-Oct-11</i>	<i>28-Jan-12</i>	<i>19-May-12</i>	10-Sep-12	31-Dec-12
arr Butaritari	—	—	—	—	—	—
dep Butaritari	—	—	—	—	—	—
arr Tarawa	—	—	—	—	—	—
dep Tarawa	—	—	—	—	—	—
arr Ocean Island	—	—	—	—	—	—
dep Ocean Island	—	—	—	—	—	—
arr Nauru	<i>20-Jun-11</i>	<i>10-Oct-11</i>	<i>30-Jan-12</i>	<i>21-May-12</i>	12-Sep-12	2-Jan-13
dep Nauru	<i>20-Jun-11</i>	<i>10-Oct-11</i>	<i>30-Jan-12</i>	<i>21-May-12</i>	12-Sep-12	2-Jan-13
arr Rabaul	<i>24-Jun-11</i>	<i>14-Oct-11</i>	<i>3-Feb-12</i>	<i>25-May-12</i>	16-Sep-12	6-Jan-13
dep Rabaul	<i>24-Jun-11</i>	<i>14-Oct-11</i>	<i>3-Feb-12</i>	<i>25-May-12</i>	16-Sep-12	6-Jan-13
arr Sydney	<u>3-Jul-11</u>	<u>23-Oct-11</u>	<u>12-Feb-12</u>	<u>2-Jun-12</u>	<u>23-Sep-12</u>	<u>14-Jan-13</u>
Mail to Berlin						
dep Sydney	4-Aug-11	22-Nov-11	<i>12-Feb-12</i>	3-Jun-12	2-Oct-12	22-Jan-13
arr Brindisi	6-Aug-11	24-Nov-11	13-Mar-12	5-Jul-12	25-Oct-12	14-Feb-13
arr Berlin	15-Jul-11		15-Mar-12	7-Jul-12		
Goods to Germany						
dep Sydney	21-Aug-11	4-Nov-11				
arr Naples	4-Sep-11	10-Dec-11	24-Feb-12	15-Jun-12		
arr Berlin		24-Dec-11	31-Mar-12	22-Jul-12		
arr Bremerhaven			14-Apr-12	5-Aug-12		

Table 3 (ct'd) Time Table of the Germania on the Hongkong–Sydney run

Mail fr Germany							
dep Berlin	17-Feb-13	11-Jun-13	1-Oct-13	21-Jan-14	13-May-14	2-Sep-14	
dep Bremerhaven							
Goods fr Germany							
dep Hamburg				8-Jan-14	30-Apr-14	20-Aug-14	
dep Naples	19-Feb-13	13-Jun-13	3-Oct-13	23-Jan-14	15-May-14	4-Sep-14	
arr Hong Kong	17-Mar-13	9-Jul-13	29-Oct-13	19-Feb-14	10-Jun-14	30-Sep-14	
Voyage N°	49	51	53	55	57	59	61
dep Hong Kong	21-Mar-13	11-Jul-13	<u>31-Oct-13</u>	<u>20-Feb-14</u>	<u>12-Jun-14</u>	2-Oct-14	22-Jan-15
arr Palau	29-Mar-13	19-Jul-13	<u>7-Nov-13</u>	<u>27-Feb-14</u>	<u>21-Jun-14</u>	10-Oct-14	30-Jan-15
dep Palau	29-Mar-13	19-Jul-13	<u>8-Nov-13</u>	<u>28-Feb-14</u>	<u>21-Jun-14</u>	10-Oct-14	30-Jan-15
arr Yap	30-Mar-13	20-Jul-13	<u>9-Nov-13</u>	<u>1-Mar-14</u>	<u>22-Jun-14</u>	11-Oct-14	31-Jan-15
dep Yap	31-Mar-13	21-Jul-13	<u>10-Nov-13</u>	<u>2-Mar-14</u>	<u>22-Jun-14</u>	12-Oct-14	1-Feb-15
arr Oleai	2-Apr-13	23-Jul-13	<u>12-Nov-13</u>	<u>4-Mar-14</u>	<u>28-Jun-14</u>	14-Oct-14	3-Feb-15
dep Oleai	3-Apr-13	24-Jul-13	<u>12-Nov-13</u>	<u>4-Mar-14</u>	<u>28-Jun-14</u>	15-Oct-14	4-Feb-15
arr Saipan	5-Apr-12	26-Jul-13	<u>14-Nov-13</u>	<u>6-Mar-14</u>	<u>1-Jul-14</u>	17-Oct-14	6-Feb-15
dep Saipan	5-Apr-13	26-Jul-13	<u>14-Nov-13</u>	<u>7-Mar-14</u>	<u>1-Jul-14</u>	17-Oct-14	6-Feb-15
arr Chuuk	8-Apr-13	28-Jul-13	<u>17-Nov-13</u>	<u>10-Mar-14</u>	<u>4-Jul-14</u>	20-Oct-14	9-Feb-15
dep Chuuk	10-Apr-13	30-Jul-13	<u>18-Nov-13</u>	<u>10-Mar-14</u>	<u>5-Jul-14</u>	22-Oct-14	11-Feb-15
arr Pohnpei	12-Apr-13	2-Aug-13	<u>22-Nov-13</u>	<u>12-Mar-14</u>	<u>7-Jul-14</u>	24-Oct-14	13-Feb-15
dep Pohnpei	13-Apr-13	3-Aug-13	<u>23-Nov-13</u>	<u>14-Mar-14</u>	<u>8-Jul-14</u>	25-Oct-14	14-Feb-15
arr Kosrae	15-Apr-13	5-Aug-13	<u>25-Nov-13</u>	<u>16-Mar-14</u>	<u>9-Jul-14</u>	27-Oct-14	16-Feb-15
dep Kosrae	15-Apr-13	5-Aug-13	<u>25-Nov-13</u>	<u>16-Mar-14</u>	<u>9-Jul-14</u>	27-Oct-14	16-Feb-15
arr Jaluit	17-Apr-13	7-Aug-13	<u>27-Nov-13</u>	<u>18-Mar-14</u>	<u>11-Jul-14</u>	29-Oct-14	18-Feb-15
dep Jaluit	22-Apr-13	12-Aug-13	<u>30-Nov-13</u>	<u>22-Mar-14</u>	<u>14-Jul-14</u>	1-Nov-14	21-Feb-15
arr Butaritari	—	—	—	—	—	—	—
dep Butaritari	—	—	—	—	—	—	—
arr Tarawa	—	—	—	—	—	—	—
dep Tarawa	—	—	—	—	—	—	—
arr Ocean Island	—	—	—	—	—	—	—
dep Ocean Island	—	—	—	—	—	—	—
arr Nauru	24-Apr-13	14-Aug-13	<u>2-Dec-13</u>	<u>24-Mar-14</u>	<u>17-Jul-14</u>	3-Nov-14	23-Feb-15
dep Nauru	24-Apr-13	14-Aug-13	<u>2-Dec-13</u>	<u>24-Mar-14</u>	<u>17-Jul-14</u>	3-Nov-14	23-Feb-15
arr Rabaul	28-Apr-13	18-Aug-13	<u>6-Dec-13</u>	<u>28-Mar-14</u>	<u>22-Jul-14</u>	7-Nov-14	27-Feb-15
dep Rabaul	28-Apr-13	18-Aug-13	<u>5-Dec-13</u>	<u>28-Mar-14</u>	<u>22-Jul-14</u>	7-Nov-14	27-Feb-15
arr Sydney	<u>4-May-13</u>	<u>26-Aug-13</u>	<u>14-Dec-13</u>	<u>5-Apr-14</u>	<u>30-Jul-14</u>	10-Nov-14	8-Mar-15
Mail to Berlin							
dep Sydney	14-May-13	3-Sep-13	24-Dec-13	8-May-14	27-Jul-14	10-Nov-14	
arr Brindisi	8-Jun-13			10-May-14	28-Aug-14	16-Dec-14	
arr Berlin					30-Aug-14	18-Dec-14	
Goods to Germany							
dep Sydney				22-May-14	5-Aug-14	25-Nov-14	
arr Naples				6-Jun-14	11-Sep-14	31-Dec-14	
arr Bremerhaven					26-Sep-14	15-Jan-15	

Table 4 Time Table of the Germania on the Sydney– Hongkong run

Mail from Berlin						
dep Berlin	6-Jan-05	12-May-05	15-Sep-05	19-Jan-06	25-May-06	28-Sep-06
dep Brindisi	8-Jan-05	14-May-05	17-Sep-05	21-Jan-06	27-May-06	30-Sep-06
arr Sydney	8-Feb-05	14-Jun-05	18-Oct-05	21-Feb-06	27-Jun-06	31-Oct-06
Goods from Germany						
dep Bremerhaven	14-Dec-04	19-Apr-05	9-Aug-05	27-Dec-06	18-Apr-06	5-Sep-06
dep Naples	28-Dec-04	4-May-05	23-Aug-05	10-Jan-07	2-May-06	19-Sep-06
arr Sydney	6-Feb-05	12-Jun-05	2-Oct-05	19-Feb-07	11-Jun-06	29-Oct-06
Voyage N°	2	4	6	8	10	12
dep Sydney	<u>9-Feb-05</u>	<u>15-Jun-05</u>	<u>19-Oct-05</u>	<u>22-Feb-06</u>	<u>28-Jun-06</u>	<u>1-Nov-06</u>
arr Rabaul						
dep Rabaul						
arr Nauru	19-Feb-05	25-Jun-05	29-Oct-05	5-Mar-06	9-Jul-06	12-Nov-06
dep Nauru	19-Feb-05	25-Jun-05	29-Oct-05	5-Mar-06	9-Jul-06	12-Nov-06
arr Ocean Island	20-Feb-05	26-Jun-05	30-Oct-05	6-Mar-06	10-Jul-06	13-Nov-06
dep Ocean Island	20-Feb-05	26-Jun-05	30-Oct-05	6-Mar-06	10-Jul-06	13-Nov-06
arr Tarawa	—	—	—	7-Mar-06	11-Jul-06	14-Nov-06
dep Tarawa	—	—	—	7-Mar-06	11-Jul-06	14-Nov-06
arr Butaritari	21-Feb-05	27-Jun-05	31-Oct-05	8-Mar-06	12-Jul-06	15-Nov-06
dep Butaritari	21-Feb-05	27-Jun-05	31-Oct-05	8-Mar-06	12-Jul-06	15-Nov-06
arr Jaluit	22-Feb-05	28-Jun-05	1-Nov-05	9-Mar-06	13-Jul-06	16-Nov-06
dep Jaluit	27-Feb-05	3-Jul-05	6-Nov-05	14-Mar-06	18-Jul-06	21-Nov-06
arr Kosrae	1-Mar-05	5-Jul-05	8-Nov-05	16-Mar-06	20-Jul-06	23-Nov-06
dep Kosrae	2-Mar-05	6-Jul-05	9-Nov-05	16-Mar-06	20-Jul-06	23-Nov-06
arr Pohnpei	4-Mar-05	8-Jul-05	11-Nov-05	18-Mar-06	22-Jul-06	25-Nov-06
dep Pohnpei	8-Mar-05	12-Jul-05	15-Nov-05	22-Mar-06	26-Jul-06	29-Nov-06
arr Chuuk	10-Mar-05	14-Jul-05	17-Nov-05	24-Mar-06	28-Jul-06	1-Dec-06
dep Chuuk	12-Mar-05	16-Jul-05	19-Nov-05	26-Mar-06	30-Jul-06	3-Dec-06
arr Saipan	15-Mar-05	19-Jul-05	22-Nov-05	29-Mar-06	2-Aug-06	6-Dec-06
dep Saipan	16-Mar-05	20-Jul-05	23-Nov-05	30-Mar-06	3-Aug-06	7-Dec-06
arr Oleai	—	—	—	—	—	—
dep Oleai	—	—	—	—	—	—
arr Yap	19-Mar-05	23-Jul-05	26-Nov-05	2-Apr-06	6-Aug-06	10-Dec-06
dep Yap	21-Mar-05	25-Jul-05	28-Nov-05	3-Apr-06	7-Aug-06	11-Dec-06
arr Palau	—	—	—	—	—	—
dep Palau	—	—	—	—	—	—
arr Hong Kong	29-Mar-05	2-Aug-05	6-Dec-05	11-Apr-06	15-Aug-06	19-Dec-06
Mail to Germany						
dep Hong Kong	29-Mar-05	3-Aug-05	6-Dec-05	11-Apr-06	16-Aug-06	19-Dec-06
arr Berlin	28-Apr-05	3-Sep-05	5-Jan-06	11-May-06	16-Sep-06	18-Jan-07
Goods to Germany						
dep Hong Kong	Mar 1905	3-Aug-05	6-Dec-05	11-Apr-06	16-Aug-06	19-Dec-06
arr Naples	25-Apr-05	31-Aug-05	2-Jan-06	8-May-06	13-Sep-06	15-Jan-07
arr Bremerhaven	9-May-05	14-Sep-05	26-Jan-06	22-May-06	27-Sep-06	29-Jan-07

Table 4 (ct'd) Time Table of the Germanina on the Sydney– Hongkong run

Mail from Berlin						
dep Berlin	1-Feb-07	7-Jun-07	11-Oct-07	1-Feb-08	3-Jul-08	6-Nov-08
dep Brindisi	3-Feb-07	9-Jun-07	13-Oct-07	3-Feb-08	5-Jul-08	8-Nov-08
arr Sydney	6-Mar-07	10-Jul-07	13-Nov-07	5-Mar-08	5-Aug-08	9-Dec-08
Goods from Germany						
dep Bremerhaven	26-Dec-06	15-May-07	4-Sep-07	22-Jan-08		
dep Naples	9-Jan-07	27-May-07	16-Sep-07	3-Feb-08		
arr Sydney	18-Feb-07	1-Jul-07	21-Oct-07	9-Mar-08		
Voyage N°	14	16	18	20	22	24
dep Sydney	<u>7-Mar-07</u>	<u>12-Jul-07</u>	<u>14-Nov-07</u>	<u>6-Apr-08</u>	<u>7-Aug-08</u>	<u>10-Dec-08</u>
arr Rabaul					—	—
dep Rabaul					—	—
arr Nauru	17-Mar-07	21-Jul-07	24-Nov-07	29-Mar-08	17-Aug-08	20-Dec-08
dep Nauru	17-Mar-07	21-Jul-07	24-Nov-07	29-Mar-08	17-Aug-08	20-Dec-08
arr Ocean Island	18-Mar-07	22-Jul-07	25-Nov-07	30-Mar-08	18-Aug-08	21-Dec-08
dep Ocean Island	18-Mar-07	22-Jul-07	25-Nov-07	30-Mar-08	18-Aug-08	21-Dec-08
arr Tarawa	19-Mar-07	23-Jul-07	26-Nov-07	31-Mar-08	19-Aug-08	22-Dec-08
dep Tarawa	19-Mar-07	23-Jul-07	26-Nov-07	31-Mar-08	19-Aug-08	22-Dec-08
arr Butaritari	20-Mar-07	24-Jul-07	27-Nov-07	1-Apr-08	20-Aug-08	23-Dec-08
dep Butaritari	20-Mar-07	24-Jul-07	27-Nov-07	1-Apr-08	20-Aug-08	23-Dec-08
arr Jaluit	21-Mar-07	25-Jul-07	28-Nov-07	2-Apr-08	21-Aug-08	24-Dec-08
dep Jaluit	26-Mar-07	30-Jul-07	3-Dec-07	7-Apr-08	26-Aug-08	29-Dec-08
arr Kosrae	28-Mar-07	1-Aug-07	5-Dec-07	9-Apr-08	28-Aug-08	31-Dec-08
dep Kosrae	28-Mar-07	1-Aug-07	5-Dec-07	9-Apr-08	28-Aug-08	31-Dec-08
arr Pohnpei	30-Mar-07	3-Aug-07	7-Dec-07	11-Apr-08	28-Aug-08	1-Jan-09
dep Pohnpei	3-Apr-07	7-Aug-07	11-Dec-07	15-Apr-08	1-Sep-08	5-Jan-09
arr Chuuk	5-Apr-07	9-Aug-07	13-Dec-07	17-Apr-08	3-Sep-08	7-Jan-09
dep Chuuk	7-Apr-07	11-Aug-07	15-Dec-07	19-Apr-08	5-Sep-08	9-Jan-09
arr Saipan	10-Apr-07	14-Aug-07	18-Dec-07	22-Apr-08	7-Sep-08	12-Jan-09
dep Saipan	11-Apr-07	15-Aug-07	19-Dec-07	23-Apr-08	8-Sep-08	13-Jan-09
arr. Oleai	—	—	—	—	—	—
dep Oleai	—	—	—	—	—	—
arr Yap	14-Apr-07	18-Aug-07	22-Dec-07	26-Apr-08	11-Sep-08	16-Jan-09
dep Yap	15-Apr-07	19-Aug-07	23-Dec-07	27-Apr-08	13-Sep-08	18-Jan-09
arr Palau	16-Apr-07	20-Aug-07	24-Dec-07	28-Apr-08	14-Sep-08	18-Jan-09
dep Palau	16-Apr-07	20-Aug-07	24-Dec-07	28-Apr-08	14-Sep-08	18-Jan-09
arr Hong Kong	24-Apr-07	28-Aug-07	1-Jan-08	6-May-08	22-Sep-08	26-Jan-09
Mail to Germany						
dep Hong Kong	24-Apr-07	28-Aug-07	1-Jan-08	6-May-08		
arr Berlin	23-May-07	27-Sep-07	29-Jan-08	4-Jun-08		
Goods to Germany						
dep Hong Kong	24-Apr-07	28-Aug-07	1-Jan-08	6-May-08		
arr Naples	21-May-07	24-Sep-07	26-Jan-08	31-May-08		
arr Bremerhaven	3-Jun-07	8-Oct-07	9-Feb-08			

Table 4 (ct'd) Time Table of the Germania on the Sydney– Hongkong run

Mail from Berlin						
dep Berlin	19-Mar-09	6-Aug-09	24-Dec-09	13-May-10	30-Sep-10	17-Feb-11
dep Brindisi	21-Mar-09	8-Aug-09	26-Dec-09	15-May-10	2-Oct-10	19-Feb-11
arr Sydney	<i>19-Apr-09</i>	<i>6-Sep-09</i>	<i>24-Jan-10</i>	15-Jun-10	2-Nov-10	20-Mar-11
Goods from Germany						
dep Bremerhaven	19-Feb-09	9-Jul-09	26-Nov-09	15-Apr-10	31-Aug-10	18-Jan-11
dep Naples	3-Mar-09	21-Jul-09	8-Dec-09	27-Apr-10	14-Sep-10	1-Feb-11
arr Sydney	7-Apr-09	25-Aug-09	<i>12-Jan-10</i>	5-Jun-10	21-Oct-10	10-Mar-11
Voyage N°	26	28	30	32	34	36
dep Sydney	<u>22-Apr-09</u>	<u>9-Sep-09</u>	<u>27-Jan-10</u>	<u>13-Jun-10</u>	<u>31-Oct-10</u>	<u>25-Mar-11</u>
arr Rabaul	1-May-09(S)	18-Sep-09(S)	5-Feb-10(S)	—	—	3-Apr-11
dep Rabaul	2-May-09(S)	19-Sep-09(S)	6-Feb-09(S)	—	—	3-Apr-11
arr Nauru	<i>7-May-09</i>	<i>24-Sep-09</i>	<i>11-Feb-10</i>	28-Jun-10	14-Nov-10	8-Apr-11
dep Nauru	<i>7-May-09</i>	<i>24-Sep-09</i>	<i>11-Feb-10</i>	28-Jun-10	14-Nov-10	8-Apr-11
arr Ocean Island	<i>8-May-09</i>	<i>25-Sep-09</i>	<i>12-Feb-10</i>	29-Jun-10	15-Nov-10	—
dep Ocean Island	<i>8-May-09</i>	<i>25-Sep-09</i>	<i>12-Feb-10</i>	29-Jun-10	15-Nov-10	—
arr Tarawa	<i>9-May-09</i>	<i>26-Sep-09</i>	<i>13-Feb-10</i>	30-Jun-10	16-Nov-10	—
dep Tarawa	<i>9-May-09</i>	<i>26-Sep-09</i>	<i>13-Feb-10</i>	30-Jun-10	16-Nov-10	—
arr Butaritari	<i>10-May-09</i>	<i>27-Sep-09</i>	<i>14-Feb-10</i>	1-Jul-10	17-Nov-10	—
dep Butaritari	<i>10-May-09</i>	<i>27-Sep-09</i>	<i>14-Feb-10</i>	1-Jul-10	17-Nov-10	—
arr Jaluit	<u>20-May-09</u>	<u>29-Sep-09</u>	15-Feb-10	2-Jul-10	18-Nov-10	10-Apr-11
dep Jaluit	<u>21-May-09</u>	<u>3-Oct-09</u>	<i>19-Feb-10</i>	<u>6-Jul-10</u>	<u>22-Nov-10</u>	12-Apr-11
arr Kosrae	<i>17-May-09</i>	<i>4-Oct-09</i>	<i>21-Feb-10</i>	<i>8-Jul-10</i>	<i>24-Nov-10</i>	14-Apr-11
dep Kosrae	<i>17-May-09</i>	<i>4-Oct-09</i>	<i>21-Feb-10</i>	<i>8-Jul-10</i>	<i>26-Nov-10</i>	14-Apr-11
arr Pohnpei	19-May-09	6-Oct-09	23-Feb-10	<i>10-Jul-10</i>	<i>28-Nov-10</i>	16-Apr-11
dep Pohnpei	<i>22-May-09</i>	<i>9-Oct-09</i>	26-Feb-10	12-Jul-10	29-Nov-10	18-Apr-11
arr Chuuk	<i>24-May-09</i>	<i>11-Oct-09</i>	<i>28-Feb-10</i>	14-Jul-10	1-Dec-10	20-Apr-11
dep Chuuk	<i>26-May-09</i>	<i>13-Oct-09</i>	<i>3-Mar-10</i>	15-Jul-10	2-Dec-10	21-Apr-11
arr Saipan	30-May-09	17-Oct-09	4-Mar-10	19-Jul-10	6-Dec-10	24-Apr-11
dep Saipan	<i>31-May-09</i>	<i>18-Oct-09</i>	6-Mar-10	20-Jul-10	7-Dec-10	24-Apr-11
arr. Oleai	—	—	—	—	—	26-Apr-11
dep Oleai	—	—	—	—	—	27-Apr-11
arr Yap	3-Jun-09	21-Oct-09	10-Mar-10	23-Jul-10	10-Dec-10	29-Apr-11
dep Yap	<i>5-Jun-09</i>	<i>23-Oct-09</i>	12-Mar-10	25-Jul-10	12-Dec-10	30-Apr-11
arr Palau	6-Jun-09	24-Oct-09	13-Mar-10	26-Jul-10	13-Dec-10	1-May-11
dep Palau	<i>7-Jun-09</i>	<i>25-Oct-09</i>	4-Mar-10	27-Jul-10	14-Dec-10	1-May-11
arr Hong Kong	<i>16-Jun-09</i>	<i>3-Nov-09</i>	<i>23-Mar-10</i>	4-Aug-10	22-Dec-10	9-May-11
Mail to Germany						
dep Hong Kong	16-Jun-09	3-Nov-09	<i>23-Mar-10</i>	6-Aug-10	22-Dec-10	13-May-11
arr Berlin	15-Jul-09	1-Dec-09	20-Apr-10	4-Sep-10	20-Jan-11	11-Jun-11
Goods to Germany						
dep Hong Kong	16-Jun-09	3-Nov-09	23-Mar-10			17-May-11
arr Naples	13-Jul-09	28-Nov-09	17-Apr-10			13-Jun-11
arr Bremerhaven	26-Jul-09	12-Dec-09	1-May-10			26-Jun-11

Table 4 (ct'd) Time Table of the Germanina on the Sydney– Hongkong run

Mail from Berlin						
dep Berlin	9-Jun-11	29-Sep-11	19-Jan-12	8-May-12	30-Aug-12	18-Dec-12
dep Brindisi	11-Jun-11	1-Oct-11	21-Jan-12	10-May-12	1-Sep-12	20-Dec-12
arr Sydney	10-Jul-11	20-Oct-11	19-Feb-12	8-Jun-12	30-Sep-12	18-Jan-13
Goods from Germany						
dep Bremerhaven	10-May-11	30-Aug-11	20-Dec-11	13-Apr-09	3-Aug-12	23-Nov-12
dep Naples	24-May-11	13-Sep-11	3-Jan-12	27-Apr-09	17-Aug-12	7-Dec-12
arr Sydney	30-Jun-11	20-Oct-11	9-Feb-12	3-Jun-09	23-Sep-12	13-Jan-13
Voyage N°	38	40	42	44	46	48
dep Sydney	<u>15-Jul-11</u>	<u>4-Nov-11</u>	<u>24-Feb-12</u>	<u>16-Jun-12</u>	<u>5-Oct-12</u>	<u>25-Jan-13</u>
arr Rabaul	24-Jul-11	13-Nov-11	4-Mar-12	24-Jun-12	14-Oct-12	4-Feb-13
dep Rabaul	24-Jul-11	13-Nov-11	4-Mar-12	24-Jun-12	14-Oct-12	4-Feb-13
arr Nauru	29-Jul-11	18-Nov-11	9-Mar-12	29-Jun-12	19-Oct-12	9-Feb-13
dep Nauru	29-Jul-11	18-Nov-11	9-Mar-12	29-Jun-12	19-Oct-12	9-Feb-13
arr Ocean Island	—	—	—	—	—	—
dep Ocean Island	—	—	—	—	—	—
arr Tarawa	—	—	—	—	—	—
dep Tarawa	—	—	—	—	—	—
arr Butaritari	—	—	—	—	—	—
dep Butaritari	—	—	—	—	—	—
arr Jaluit	31-Jul-11	20-Nov-11	11-Mar-12	1-Jul-12	21-Oct-12	11-Feb-13
dep Jaluit	2-Aug-11	22-Nov-11	13-Mar-12	3-Jul-12	23-Oct-12	13-Feb-13
arr Kosrae	4-Aug-11	24-Nov-11	15-Mar-12	5-Jul-12	25-Oct-12	15-Feb-13
dep Kosrae	4-Aug-11	24-Nov-11	15-Mar-12	5-Jul-12	25-Oct-12	15-Feb-13
arr Pohnpei	6-Aug-11	26-Nov-11	17-Mar-12	7-Jul-12	27-Oct-12	16-Feb-13
dep Pohnpei	8-Aug-11	28-Nov-11	19-Mar-12	9-Jul-12	29-Oct-12	18-Feb-13
arr Chuuk	10-Aug-11	30-Nov-11	21-Mar-12	11-Jul-12	30-Sep-12	20-Feb-13
dep Chuuk	11-Aug-11	1-Dec-11	22-Mar-12	12-Jul-12	1-Nov-12	21-Feb-13
arr Saipan	14-Aug-11	4-Dec-11	25-Mar-12	15-Jul-12	4-Nov-12	24-Feb-13
dep Saipan	14-Aug-11	4-Dec-11	25-Mar-12	15-Jul-12	4-Nov-12	24-Feb-13
arr. Oleai	16-Aug-11	6-Dec-11	27-Mar-12	17-Jul-12	6-Nov-12	26-Feb-13
dep Oleai	17-Aug-11	7-Dec-11	28-Mar-12	18-Jul-12	7-Nov-12	27-Feb-13
arr Yap	19-Aug-11	9-Dec-11	30-Mar-12	20-Jul-12	9-Nov-12	1-Mar-13
dep Yap	20-Aug-11	10-Dec-11	31-Mar-12	21-Jul-12	10-Nov-12	2-Mar-13
arr Palau	21-Aug-11	11-Dec-11	1-Apr-12	22-Jul-12	11-Nov-12	3-Mar-13
dep Palau	21-Aug-11	11-Dec-11	1-Apr-12	22-Jul-12	11-Nov-12	3-Mar-13
arr Hong Kong	29-Aug-11	19-Dec-11	9-Apr-12	30-Jul-12	19-Nov-12	11-Mar-13
Mail to Germany						
dep Hong Kong	2-Sep-11	23-Dec-11	13-Apr-12	5-Aug-12	23-Nov-12	18-Mar-13
arr Berlin	1-Oct-11	19-Jan-12	10-May-12	1-Sep-12	20-Dec-12	14-Apr-13
Goods to Germany						
dep Hong Kong	6-Sep-11	27-Dec-11	16-Apr-12			
arr Naples	3-Oct-11	21-Dec-12	13-May-12			
arr Bremerhaven	16-Oct-11	4-Feb-12	26-May-12			

Table 4 (ct'd) Time Table of the Germania on the Sydney– Hongkong run

Mail from Berlin						
dep Berlin	11-Apr-13	1-Aug-13	21-Nov-13	13-Mar-14	3-Jul-14	23-Oct-14
dep Brindisi	13-Apr-13	3-Aug-13	23-Nov-13	15-Mar-14	5-Jul-14	25-Oct-14
arr Sydney	12-May-13	1-Sep-13	22-Dec-13	13-Apr-14	3-Aug-14	23-Nov-14
Goods from Germany						
dep Bremerhaven	15-Mar-13		22-Oct-13	11-Feb-14	3-Jun-14	23-Sep-14
dep Naples	29-Mar-13		5-Nov-13	25-Feb-14	17-Jun-14	7-Oct-14
arr Sydney	5-May-13		12-Dec-13	3-Apr-14	24-Jul-14	13-Nov-14
Voyage N°	50	52	54	56	58	60
dep Sydney	<u>17-May-13</u>	<u>6-Sep-13</u>	<u>27-Dec-13</u>	<u>18-Apr-14</u>	8-Aug-14	28-Nov-14
arr Rabaul	26-May-13	<u>14-Sep-13</u>	<u>5-Jan-14</u>	<u>26-Apr-14</u>	17-Aug-14	7-Dec-14
dep Rabaul	26-May-13	<u>14-Sep-13</u>	<u>5-Jan-14</u>	<u>27-Apr-14</u>	17-Aug-14	7-Dec-14
arr Nauru	31-May-13	<u>18-Sep-13</u>	<u>9-Jan-14</u>	<u>3-May-14</u>	22-Aug-14	12-Dec-14
dep Nauru	31-May-13	<u>18-Sep-13</u>	<u>9-Jan-14</u>	<u>3-May-14</u>	22-Aug-14	12-Dec-14
arr Ocean Island	—	—	—	—	—	—
dep Ocean Island	—	—	—	—	—	—
arr Tarawa	—	—	—	—	—	—
dep Tarawa	—	—	—	—	—	—
arr Butaritari	—	—	—	—	—	—
dep Butaritari	—	—	—	—	—	—
arr Jaluit	2-Jun-13	<u>20-Sep-13</u>	<u>11-Jan-14</u>	<u>5-May-14</u>	24-Aug-14	14-Dec-14
dep Jaluit	4-Jun-13	<u>23-Sep-13</u>	<u>14-Jan-14</u>	<u>7-May-14</u>	26-Aug-14	16-Dec-14
arr Kosrae	6-Jun-13	<u>25-Sep-13</u>	<u>16-Jan-14</u>	<u>9-May-14</u>	28-Aug-14	18-Dec-14
dep Kosrae	6-Jun-13	<u>25-Sep-13</u>	<u>16-Jan-14</u>	<u>9-May-14</u>	28-Aug-14	18-Dec-14
arr Pohnpei	8-Jun-13	<u>27-Sep-13</u>	<u>18-Jan-14</u>	<u>11-May-14</u>	30-Aug-14	20-Dec-14
dep Pohnpei	10-Jun-13	<u>29-Sep-13</u>	<u>20-Jan-14</u>	<u>12-May-14</u>	1-Sep-14	22-Dec-14
arr Chuuk	12-Jun-13	<u>1-Oct-13</u>	<u>22-Jan-14</u>	<u>14-May-14</u>	3-Sep-14	24-Dec-14
dep Chuuk	13-Jun-13	<u>3-Oct-13</u>	<u>23-Jan-14</u>	<u>15-May-14</u>	4-Sep-14	25-Dec-14
arr Saipan	16-Jun-13	<u>5-Oct-13</u>	<u>27-Jan-14</u>	<u>18-May-14</u>	7-Sep-14	28-Dec-14
dep Saipan	16-Jun-13	<u>5-Oct-13</u>	<u>27-Jan-14</u>	<u>18-May-14</u>	7-Sep-14	28-Dec-14
arr. Oleai	18-Jun-13	<u>7-Oct-13</u>	<u>30-Jan-14</u>	<u>20-May-14</u>	9-Sep-14	30-Dec-14
dep Oleai	19-Jun-13	<u>8-Oct-13</u>	<u>30-Jan-14</u>	<u>21-May-14</u>	10-Sep-14	31-Dec-14
arr Yap	29-Jun-13	<u>10-Oct-13</u>	<u>1-Feb-14</u>	<u>22-May-14</u>	12-Sep-14	1-Jan-15
dep Yap	30-Jun-13	<u>11-Oct-13</u>	<u>2-Feb-14</u>	<u>24-May-14</u>	13-Sep-14	3-Jan-15
arr Palau	23-Jun-13	<u>12-Oct-13</u>	<u>3-Feb-14</u>	<u>25-May-14</u>	14-Sep-14	4-Jan-15
dep Palau	23-Jun-13	<u>12-Oct-13</u>	<u>3-Feb-14</u>	<u>26-May-14</u>	14-Sep-14	4-Jan-15
arr Hong Kong	1-Jul-13	<u>19-Oct-13</u>	<u>10-Feb-14</u>	<u>4-Jun-14</u>	22-Sep-14	12-Jan-15
Mail to Germany						
dep Hong Kong			14-Feb-14	6-Jun-14	26-Sep-14	
arr Berlin			13-Mar-14	5-Jul-14	23-Oct-14	
Goods to Germany						
dep Hong Kong			18-Feb-14	10-Jun-14	30-Sep-14	
arr Naples			15-Mar-14	7-Jul-14	25-Oct-14	
arr Bremerhaven			29-Mar-14	20-Jul-14	8-Nov-14	