

MECHANICAL PROPERTIES OF THE HEART AND ITS INTERACTION WITH THE VASCULAR SYSTEM

Daniel Burkhoff MD PhD, Associate Professor of Medicine, Columbia University

November 11, 2002

MECHANICAL PROPERTIES OF THE HEART AND ITS INTERACTION WITH THE VASCULAR SYSTEM

Daniel Burkhoff MD PhD, Associate Professor of Medicine, Columbia University

Recommended Reading:

- Guyton, A. *Textbook of Medical Physiology*, 10th Edition. Chapters 9, 14, 20.
Berne & Levy. *Principles of Physiology*. 4th Edition. Chapter 23.
Katz, AM. *Physiology of the Heart*, 3rd Edition. Chapter 15.
Bers, DM. *Cardiac excitation-contraction coupling*. Nature 2002;415:198

Learning Objectives:

1. To understand the basic structure of the cardiac muscle cell.
2. To understand how the strength of cardiac contraction is regulated with particular emphasis on understanding the impact of intracellular calcium and sarcomere length (i.e., the basic concepts of excitation–contraction coupling)
3. To understand the basic anatomy of the heart and how whole organ ventricular properties relate to the properties of the muscle cells.
4. To understand the hemodynamic events occurring during the different phases of the cardiac cycle and to be able to explain these on the pressure-volume diagram and on curves of pressure and volume versus time.
5. To understand how the end-diastolic pressure volume relationship (EDPVR) and the end-systolic pressure-volume relationship (ESPVR) characterize ventricular diastolic and systolic properties, respectively.
6. To understand the concepts of *contractility*, *preload*, *afterload*, *compliance*.
7. To understand what *Frank-Starling Curves* are and how they are influenced by ventricular afterload and contractility.
8. To understand how afterload resistance can be represented on the PV diagram using the *Ea* concept and to understand how *Ea* can be used in concert with the ESPVR to predict how cardiac performance varies with contractility, preload and afterload.

I. INTRODUCTION

The heart is a muscular pump connected to the systemic and pulmonary vascular systems. Working together, the principle job of the heart and vasculature is to maintain an adequate supply of nutrients in the form of oxygenated blood and metabolic substrates to all of the tissues of the body under a wide range of conditions. The goal of this manuscript is to provide a detailed understanding of the heart as a muscular pump and of the interaction between the heart and the vasculature. The concepts of *contractility*, *preload* and *afterload* are paramount to this understanding and will be the focus and repeating theme throughout the text. A sound understanding of cardiac physiology begins with basic understanding of cardiac anatomy and of the physiology of muscular contraction. These aspects will be reviewed in brief and the interested reader is referred to the supplemental reading material for more detail. Readers already having such knowledge can jump to section IV of the manuscript which begins the discussion of ventricular properties in terms of pressure-volume relationships.

II. ANATOMY OF THE HEART

The normal adult human heart is divided into four distinct muscular chambers, two atria and two ventricles, which are arranged to form functionally separate left and right heart pumps. The left heart, composed of the left atrium and left ventricle, pumps blood from the pulmonary veins to the aorta. The human left ventricle is an axisymmetric, truncated ellipsoid with ~1 cm wall thickness. This structure is constructed from billions of cardiac muscle cells (myocytes) connected end-to-end at their *gap junctions* to form a network of branching muscle fibers which wrap around the chamber in a highly organized manner. The right heart, composed of right atrium and right ventricle, pumps blood from the vena cavae to the pulmonary arteries. The right ventricle is a roughly crescent shaped structure formed by a 3-to-5 millimeter thick sheet of myocardial fibers (the *right ventricular free wall*) which interdigitate at the anterior and posterior insertion points with the muscle fibers of the outer layer of the left ventricle. The right and left ventricular chambers share a common wall, the *interventricular septum*, which divide the chambers. Both right and left atria are thin walled muscular structures which receive blood from low pressure venous systems. Valves (the *tricuspid valve* in the right heart and the *mitral valve* in the left heart) separate each atrium from its associated ventricle and are arranged in a manner to ensure one-way flow through the pump by prohibiting backward flow during the forceful contraction of the ventricles. These valves attach to fibrous rings which encircle each valve annulus; the free ends of these valves attach via *chordae tendinae* to *papillary muscles* which emerge from the ventricular walls. The primary factor that determines valve opening and closure is the pressure gradient between the atrium and the ventricle. However, the papillary muscles contract synchronously with the other heart muscles and help maintain proper valve leaflet position, thus helping prevent regurgitant (backward) flow during contraction. A second set of valves, the *aortic valve* and

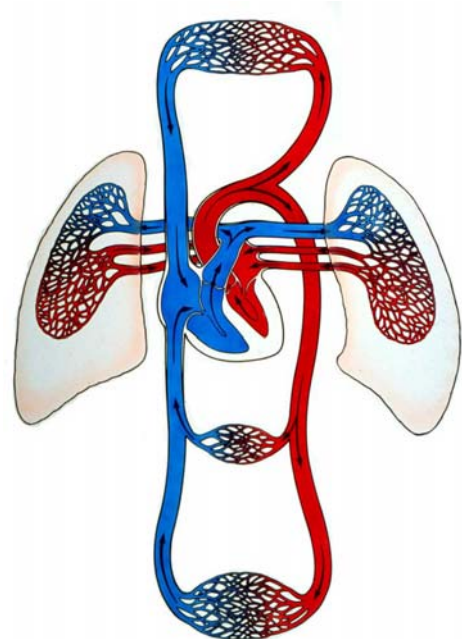


Figure 1

the *pulmonary valve*, separate each ventricle from its accompanying arterial connection and ensure unidirectional flow by preventing blood from flowing from the artery back into the ventricle. The pressure gradient across the valves is the major determinant of whether they are open or closed.

The Circulatory Loop (Figure 1). The cardiovascular system is a closed loop comprised of two main fluid pumps and a network of vascular tubes. The loop can be divided into the *pulmonary* vascular system which contains the right ventricle, the pulmonary arteries, the pulmonary capillaries and pulmonary veins and the *systemic* vascular system which contains the left ventricle, the systemic arteries, the systemic capillaries and the systemic veins. Each pump provides blood with energy to circulate through its respective vascular network. While these pumps are pulsatile (i.e. blood is delivered into the circulatory system intermittently with each heart beat), the flow of blood in the vasculature becomes more steady as it approaches the capillary networks.

III. CARDIAC MUSCLE PHYSIOLOGY

Basic Muscle Anatomy. The ability of the ventricles to generate blood flow and pressure is derived from the ability of individual myocytes to shorten and generate force. Myocytes are tubular structures. During contraction, the muscles shorten and generate force along their long axis. Force production and shortening of cardiac muscle are created by regulated interactions between contractile proteins which are assembled in an ordered and repeating structure called the *sarcomere* (Figure 2). The lateral boundaries of each sarcomere are defined on both sides by a band of structural proteins (the Z disc) into which the so called *thin filaments* attach. The *thick filaments* are centered between the Z-disc and are held in register by a strand of proteins at the central M-line. The sarcomere is a 3 dimensional structure with each heavy chain surrounded by 6 thin filaments in a honeycomb arrangement. Alternating light and dark bands seen in cardiac muscle under light microscopy result from the alignment of the thick and thin filaments giving cardiac muscle its typical striated appearance.

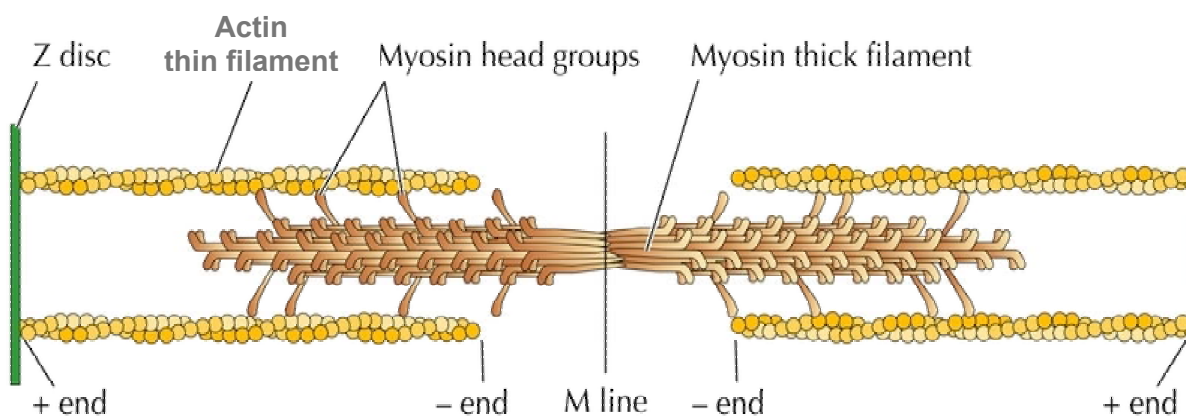


Figure 2

The thin filaments are composed of linearly arranged globular actin molecules. The thick filaments are composed of bundles of myosin strands with each strand having a tail, a hinge and a head region. The tail regions bind to each other in the central portion of the filament and the

strands are aligned along a single axis. The head regions extend out from the thick filament, creating a central bare zone and head-rich zones on both ends of the thick filament. Each actin globule has a binding site for the myosin head. The hinge region allows the myosin head to protrude from the thick filament and make contact with the actin filament at that binding site. In addition to the actin binding site, the myosin head contains an enzymatic site for cleaving the terminal phosphate molecule of ATP (myosin ATPase) which provides the energy used for force generation. Force is produced when myosin binds to actin and, with the hydrolysis of ATP, the head rotates and extends the hinge region. Force generated by a single sarcomere is proportional to the number of actin-myosin bonds and the free energy of ATP hydrolysis. The state of actin-myosin binding following ATP hydrolysis is referred to as the *rigor state*, because in the absence of additional ATP the actin-myosin bond will persist and maintain high muscle tension. Relaxation requires uncoupling of the actin-myosin bond which occurs when a new ATP molecule binds to the ATPase site on the myosin head.

Actin-myosin interactions are regulated by troponin and tropomyosin. Tropomyosin is a thin protein strand that sits on the actin strand and, under normal resting conditions, covers the actin-myosin binding site thus inhibiting their interaction and preventing force production. Troponin is a macromolecule with three subunits: troponin T bind the troponin complex to tropomyosin, troponin C has binding sites for calcium and troponin I binds to actin. When intracellular calcium concentrations are low, the troponin complex pulls the tropomyosin from its preferred resting state to block the actin-myosin binding sites. When calcium concentrations rises and calcium binds to troponin C, troponin I releases from actin allowing the tropomyosin molecule to be pulled away from the actin-myosin binding site. This eliminates inhibition of actin-myosin interaction and allows force to be produced. This arrangement of proteins provides a means by which variations in intracellular calcium can readily modify instantaneous force production. Calcium rises and falls during each beat and this underlies the cyclic rise and fall of muscle force. The greater the peak calcium the greater the number of potential actin-myosin bonds, the greater the amount of force production.

Excitation-contraction coupling (Figure 3, from Bers 2002). The sequence of events that lead to myocardial contraction is triggered by electrical depolarization of the cell. Membrane depolarization increases the probability of transmembrane calcium channel openings and thus causes calcium influx into the cell into a small cleft next to the sarcoplasmic reticular (SR) terminal cisterne. This rise of local calcium concentration causes release of a larger pool of calcium stored in the SR through calcium release channels (also known as *ryanodine receptors*, RyR). This process whereby local calcium regulates SR calcium dumping is referred to as *calcium induced calcium release*. The calcium released from the SR diffuses through the myofilament lattice and is available for binding to troponin which dysinhibits actin and myosin interactions and results in force production.

Calcium release is rapid and does not require energy because of the large calcium concentration gradient between the SR and the cytosol during diastole. In contrast, removal of calcium from the cytosol and from troponin occurs up a concentration gradient and is an energy requiring process. Calcium sequestration is primarily accomplished by pumps on the SR membrane that consume ATP (SR Ca^{2+} ATPase pumps); these pumps are located in the central portions of the SR and are in close proximity to the myofilaments. SR Ca^{2+} ATPase activity is regulated by the phosphorylation status of another SR protein, phospholamban (PLB). In order to maintain calcium homeostasis, an amount of calcium equal to that which entered the cell through the sarcolemmal calcium channels must also exit with each beat. This is accomplished primarily by the sarcolemmal sodium-calcium exchanger (NCX), a transmembrane protein which translocates calcium across the membrane against its concentration gradient in exchange

for sodium ions moved in the opposite direction and, to a lesser extent, an ATP-dependent calcium pump. Sodium homeostasis is in turn regulated largely by the ATP requiring sodium-potassium pump on the sarcolemma.

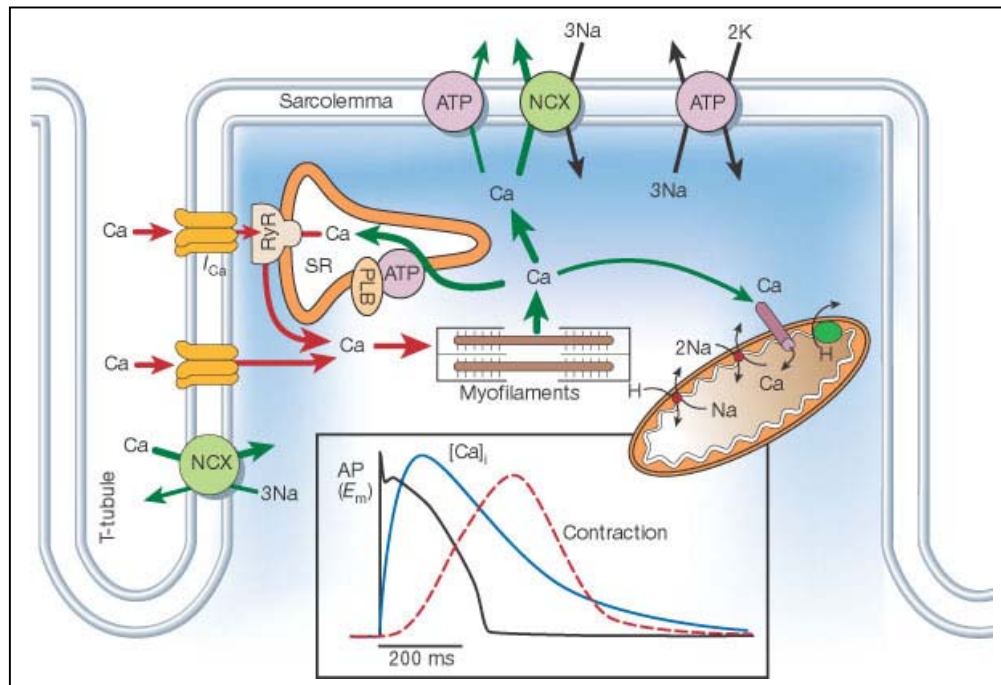


Figure 3

Force-Length Relations. In addition to calcium, cardiac muscle length exerts a major influence on force production. Since each muscle is composed of a linear array of sarcomere bundles from one end of the cell to the other, muscle length is directly proportional to average sarcomere length. Total force on the sarcomeric proteins is determined by two components: the passive (diastolic) force and the active (generated) force (Figure 4). Even when calcium is low and there are now sarcomere interactions, passive (*diastolic*) force increases non-linearly with sarcomere length. This force is believed to be borne by a structural protein called *titin* which connects the thick filaments to the Z discs. Understanding of influence of sarcomere length on generated force is aided by understanding some details of sarcomere geometry. Thin filaments are approximately 1 μm in length, whereas thick filaments are approximately 1.5 μm in length. When the myofilaments are activated by calcium during contraction (*systole*), optimal force generation is achieved when sarcomere length is about 2.2-2.3 microns, a length which allows maximal myosin head interactions with actin with no interactions between the thin filaments on the opposite sides of the sarcomeres. As sarcomere length is decreased below about ~ 2.0 microns, the tips of apposing thin filaments hit each other and the distance between thick and thin filaments

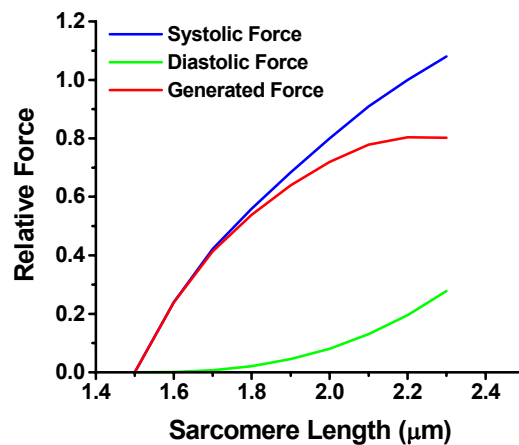


Figure 4

increases. These factors contribute to a reduction in force with decreasing sarcomere length. At a sarcomere length of $\sim 1.5 \mu\text{m}$, the ends of the thick filaments hit the Z discs and force is largely eliminated. In skeletal muscle, sarcomeres can be stretched beyond 2.3 microns and this causes a decrease in force because fewer myosin heads can reach and bind with actin; skeletal muscle can typically operate in this so called *descending limb* of the sarcomere force-length relationship. In cardiac muscle, however, constraints imposed by the sarcolemma prevent myocardial sarcomeres from being stretched beyond ~ 2.3 microns, even under conditions of severe heart failure when very high stretching pressures are imposed on the heart. Cardiac muscle is therefore constrained to operate on the so called *ascending limb* (i.e., the part of the curve where force increases as sarcomere length increases) of the force-length relationship.

Similar relationships describe the contractile and passive properties of bundles of cardiac muscle (Figure 5). These are measured by isolating a piece of muscle from the heart, holding the ends and measuring the force developed at different muscle lengths while preventing muscles from shortening (*isometric contractions*). As the muscle is stretched from its slack length (the length at which no force is generated), both the resting (end-diastolic) force and the peak (end-systolic) force increase. As for the individual sarcomere, the end-diastolic (passive) force-length relationship (EDFLR) is nonlinear, exhibiting a shallow slope at low lengths and a steeper slope at higher lengths which reflects the nonlinear mechanical restraints imposed by the sarcolemma and extracellular matrix that prevent overstretch of the sarcomeres. End-systolic (peak activated) force increases with increasing muscle length to a much greater degree than does end-diastolic force. End-systolic force decreases to zero at the *slack length*, which is generally $\sim 70\%$ of the length at which maximum force is generated. The difference in force at any given muscle length between the end-diastolic and end-systolic relations increases as muscle length increases, indicating a greater amount of developed force as the muscle is stretched. This fundamental property of cardiac muscle is referred to as the *Frank-Starling Law of the Heart* in recognition of its two discoverers and has as its basis the sarcomeric contractile properties described above. If a drug is administered which increases the amount of calcium released to the myofilaments (for example epinephrine, which belongs to a class called *inotropic agents*), the end-systolic force-length relationship (ESFLR) will be shifted upwards, indicating that at any given length the muscle can generate more force. Conversely, negative inotropic agents generally decrease the amount of calcium released to the myofilaments and shift the ESFLR downward. Inotropic agents typically do not affect the end-diastolic force-length relationship. Because of its sensitivity to inotropic agents, the ESFLR is typically used to index contractile strength of cardiac muscle.

From Muscle to Chamber. In order to understand how the heart performs its task, in addition to an understanding of the force-generating properties of cardiac muscle one must also develop an appreciation for the factors which regulate the transformation of muscle force into intraventricular pressure, the functioning of the cardiac valves, and something about the load against which the ventricles contract (i.e., the properties of the systemic and pulmonic vascular systems). On a simplistic level, the ventricle is a

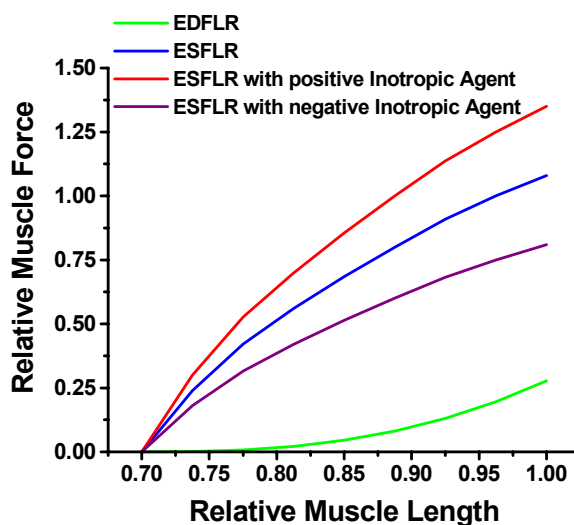


Figure 5

chamber composed of muscle fibers running circumferentially around the chamber. Force generated by the muscles translates into pressure within the chamber. As the volume within the chamber increases and decreases muscle length, and therefore sarcomere lengths, increase and decrease. Complex mathematical models are available to interrelate muscle length and force generation to ventricular chamber pressure and volumes, but there are still many unanswered questions about this transformation. In addition to geometric and architectural considerations, it is also a fact that the muscles do not all contract at the same time. The consequences of dyssynchronous contraction are exacerbated when the degree of dyssynchrony increases as may occur with disease of the conduction system.

The remainder of this manuscript will focus on a description of the pump function of the ventricles with particular attention to a description of those properties as represented on the **pressure-volume diagram**. Emphasis will be given to the clinically relevant concepts of *contractility*, *afterload* and *preload*. In addition, we will review how the ventricle and the arterial system interact to determine cardiovascular performance (cardiac output and blood pressure). By way of a preview, just as end-systolic and end-diastolic force-length relationships can be used to characterize systolic and diastolic properties of cardiac muscle fibers, so too can end-systolic and end-diastolic **pressure-volume relationships** (ESPVR and EDPVR, respectively) be used to characterize peak systolic and end diastolic properties of the ventricular chambers. Analogous to muscle, the EDPVR is nonlinear, with a shallow incline at low pressures and a steep rise at pressures in excess of 20 mmHg. However, the ESPVR is typically linear and, as for muscle, ventricular pressure-generating capability is increased as ventricular volume is increased. Also analogous to muscle, the ESPVR is used to index ventricular chamber contractility. Because the ESPVR is roughly linear, it can be characterized by a slope and volume axis intercept. The slope of the line indicates the degree of myocardial stiffness or *elastance* (like the elastance of a spring) at the peak of contraction (end-systole) and is therefore called E_{es} (end-systolic elastance). The volume axis intercept (analogous to slack length of the muscle) is referred to as V_o . When muscle contractility is increased (for example by administration of a positive inotropic agent), the slope of the ESPVR (E_{es}) increases, whereas there is little change in V_o (discussed further below).

IV. THE CARDIAC CYCLE AND PRESSURE-VOLUME LOOPS

The cardiac cycle (the period of time required for one heart beat) is divided into two major phases: systole and diastole. Systole (from Greek, meaning "contracting") is the period of time during which the muscle transforms from its totally relaxed state (with crossbridges uncoupled) to the instant of maximal mechanical activation (point of maximal crossbridge coupling). The onset of systole occurs when the cell membrane depolarizes and calcium enters the cell to initiate a sequence of events which results in cross-bridge interactions (excitation-contraction coupling). Diastole (from Greek, meaning "dilation") is the period of time during which the muscle relaxes from the end-systolic (maximally activated) state back towards its resting state. Systole is considered to start at the onset of electrical activation of the myocardium (onset of the ECG); systole ends and diastole begins as the activation process of the myofilaments passes through a maximum. In the discussion to follow, we will review the hemodynamic events occurring during the cardiac cycle in the *left* ventricle. The events in the *right* ventricle are similar, though occurring at slightly different times and at different levels of pressure than in the left ventricle.

The mechanical events occurring during the cardiac cycle consist of changes in pressure in the ventricular chamber which cause blood to move in and out of the ventricle. Thus, we can

characterize the cardiac cycle by tracking changes in pressures and volumes in the ventricle as shown in the Figure 6 where ventricular volume (LVV), ventricular pressure (LVP), left atrial pressure (LAP) and aortic pressure (AoP) are plotted as a function of time.

Shortly prior to time "A" LVP and LVV are relatively constant and AoP is gradually declining. During this time the heart is in its relaxed (diastolic) state; AoP falls as the blood ejected into the arterial system on the previous beat gradually moves from the large arteries to the capillary bed. At time **A** there is electrical activation of the heart, contraction begins, and pressure rises inside the chamber. Early after contraction begins, LVP rises to be greater than left atrial pressure and the mitral valve closes. Since LVP is less than AoP, the aortic valve is closed as well. Since both valves are closed, no blood can enter or leave the ventricle during this time, and therefore the ventricle is contracting *isovolumically* (i.e., at a constant volume). This period is called *isovolumic contraction*. Eventually (at time **B**), LVP slightly exceeds AoP and the aortic valve opens. During the time when the aortic valve is open there is very little difference between LVP and AoP, provided that AoP is measured just on the distal side of the aortic valve. During this time, blood is ejected from the ventricle into the aorta and LV volume decreases. The exact shapes of the aortic pressure and LV volume waves during this *ejection* phase are determined by the complex interaction between the ongoing contraction process of the cardiac muscles and the properties of the arterial system and is beyond the scope of this lecture. As the contraction process of the cardiac muscle reaches its maximal effort, ejection slows down and ultimately, as the muscles begin to relax, LVP falls below AoP (time **C**) and the aortic valve closes. At this point ejection has ended and the ventricle is at its lowest volume. The relaxation process continues as indicated by the continued decline of LVP, but LVV is constant at its low level. This is because, once again, both mitral and aortic valves are closed; this phase is called *isovolumic relaxation*. Eventually, LVP falls below the pressure existing in the left atrium and the mitral valve opens (at time **D**). At this point, blood flows from the left atrium into the LV as indicated by the rise of LVV; also note the slight rise in LVP as filling proceeds. This phase is called *filling*. In general terms, systole includes isovolumic contraction and ejection; diastole includes isovolumic relaxation and filling.

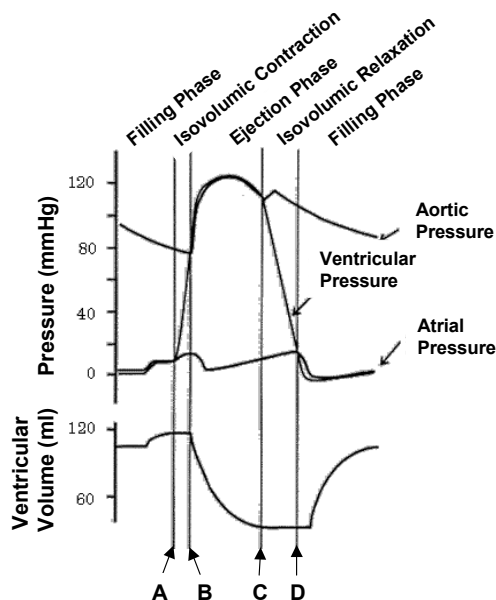


Figure 6

Whereas the four phases of the cardiac cycle are clearly illustrated on the plots of LVV, LVP, LAP and AoP as a function of time, it turns out that there are many advantages to displaying LVP as a function of LVV on a "pressure-volume diagram" (these advantages will be made clear by the end of the hand out). This is accomplished simply by plotting the simultaneously measured LVV and LVP on appropriately scaled axes; the resulting pressure-volume diagram corresponding to the curves of Figure 6 is shown in Figure 7, with volume on the x-axis and pressure on the y-axis. As shown, the plot of pressure versus volume for one cardiac cycle forms a loop. This loop is called the *pressure-volume loop* (abbreviated PV loop). As time proceeds, the PV points go around the loop in a counter clockwise direction. The point of maximal volume and minimal pressure (i.e., the bottom right corner of the loop) corresponds to time **A** on Figure 6, the onset of systole. During the first part of the cycle, pressure rises but

volume stays the same (isovolumic contraction). Ultimately LVP rises above AoP, the aortic valve opens (B), ejection begins and volume starts to go down. With this representation, AoP is not explicitly plotted; however as will be reviewed below, several features of AoP are readily obtained from the PV loop. After the ventricle reaches its maximum activated state (C, upper left corner of PV loop), LVP falls below AoP, the aortic valve closes and isovolumic relaxation commences. Finally, filling begins with mitral valve opening (D, bottom left corner).

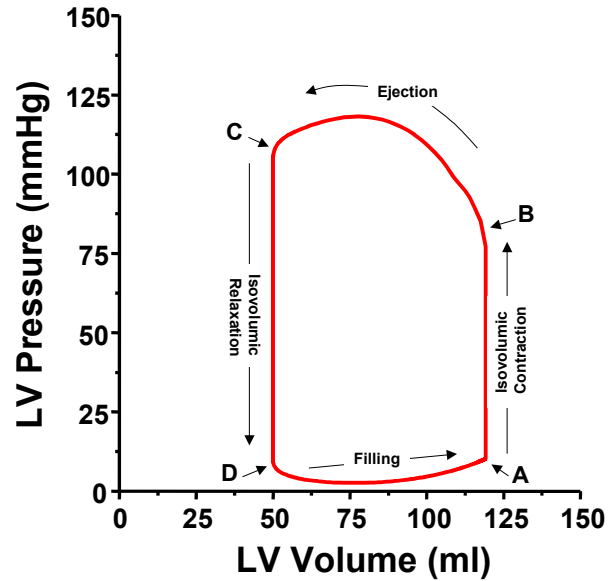


Figure 7

Physiologic measurements retrievable from the pressure-volume loop .

As reviewed above, the ventricular pressure-volume loop displays the instantaneous relationship between intraventricular pressure and volume throughout the cardiac cycle. It turns out that with this representation it is easy to ascertain values of several parameters and variables of physiologic importance.

Consider first the volume axis (Figure 8). It is appreciated that we can readily pick out the maximum volume of the cardiac cycle. This volume is called the *end-diastolic volume (EDV)* because this is the ventricular volume at the end of a cardiac cycle. Also, the minimum volume the heart attains is also retrieved; this volume is known as the *end-systolic volume (ESV)* and is the ventricular volume at the end of the ejection phase. The difference between EDV and ESV represents the amount of blood ejected during the cardiac cycle and is called the *stroke volume (SV)*.

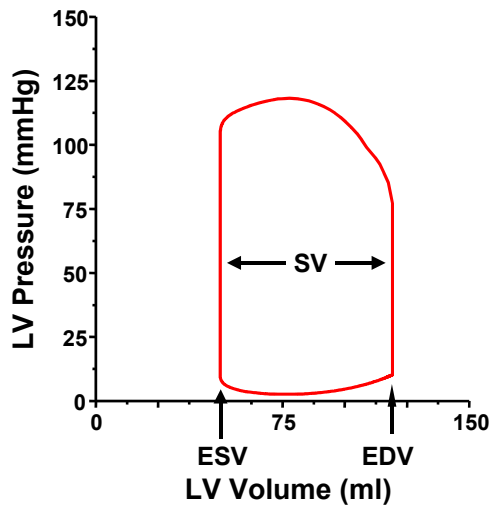


Figure 8

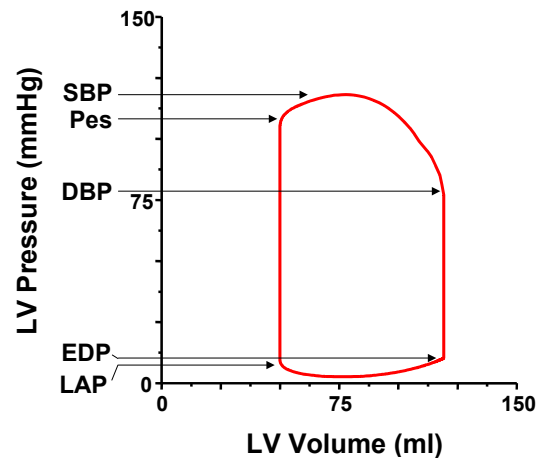


Figure 9

Now consider the pressure axis (Figure 9). Near the top of the loop we can identify the point at which the ventricle begins to eject (that is, the point at which volume starts to decrease) is the point at which ventricular pressure just exceeds aortic pressure; this pressure therefore reflects the pressure existing in the aorta at the onset of ejection and is called the *diastolic blood*

pressure (DBP). During the ejection phase, aortic and ventricular pressures are essentially equal; therefore, the point of greatest pressure on the loop also represents the greatest pressure in the aorta, and this is called the *systolic blood pressure (SBP)*. One additional pressure, the *end-systolic pressure (Pes)* is identified as the pressure of the left upper corner of the loop; the significance of this pressure will be discussed in detail below. Moving to the bottom of the loop, we can reason that the pressure of the left lower corner (the point at which the mitral valve opens and ejection begins) is roughly equal to the pressure existing in the left atrium (**LAP**) at that instant in time (recall that atrial pressure is not a constant, but varies with atrial contraction and instantaneous atrial volume). The pressure of the point at the bottom right corner of the loop is the pressure in the ventricle at the end of the cardiac cycle and is called the *end-diastolic pressure (EDP)*.

V. PRESSURE-VOLUME RELATIONSHIPS

It is readily appreciated that with each cardiac cycle, the muscles in the ventricular wall contract and relax causing the chamber to stiffen (reaching a maximal *stiffness* at the end of systole) and then to become less stiff during the relaxation phase (reaching its minimal *stiffness* at end-diastole). Thus, the mechanical properties of the ventricle are time-varying, they vary in a cyclic manner, and the period of the cardiac cycle is the interval between beats. In the following discussion we will explore one way to represent the time-varying mechanical properties of the heart using the pressure-volume diagram. We will start with a consideration of ventricular properties at the extreme states of *stiffness* -- end systole and end diastole -- and then explore the mechanical properties throughout the cardiac cycle.

End-diastolic pressure-volume relationship (EDPVR)

Let us first examine the properties of the ventricle at end-diastole. Imagine the ventricle frozen in time in a state of complete relaxation. We can think of the properties of this ventricle with weak, relaxed muscles, as being similar to those of a floppy balloon. What would happen to pressure inside a floppy balloon if we were to vary its volume. Let's start with no volume inside the balloon; naturally there would be no pressure. As we start blowing air into the balloon there is initially little resistance to our efforts as the balloon wall expands to a certain point. Up to that point, the volume increases but pressure does not change. We will refer to this volume as V_0 , or the maximal volume at which pressure is still zero mmHg; this volume is also frequently referred to as the unstressed volume. As the volume increases we meet with increasing resistance to our efforts to expand the balloon, indicating that the pressure inside the balloon is becoming higher and higher. The ventricle, *frozen* in its diastolic state, is much like this balloon. A typical relationship between pressure and volume in the ventricle at end-diastole is shown in Figure 10. As volume is increased initially, there is little increase in pressure

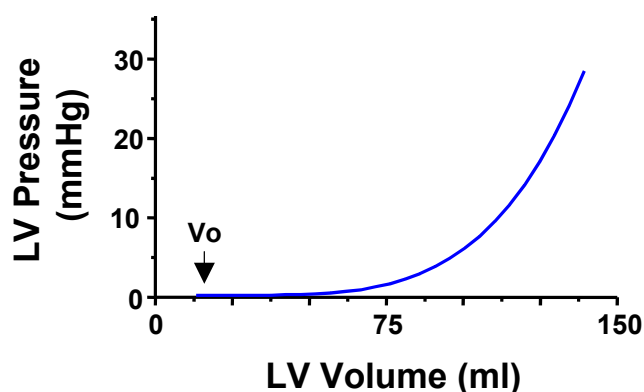


Figure 10

until a certain point, designated "Vo". After this point, pressure increases with further increases in volume. Quantitative analysis of such curves measured from animal as well as from patient hearts has shown that pressure and volume are related by a nonlinear function such as:

$$\text{EDP} = P_0 + \beta V^\alpha \quad [1]$$

where EDP is the end-diastolic pressure, V is the volume inside the ventricle, P₀ is the pressure asymptote at low volumes (generally close to 0 mmHg), and α and β are constants which specify the curvature of the line and are determined by the mechanical properties of the muscle as well as the structural features of the ventricle. This curve is called the "end-diastolic pressure-volume relationship" (EDPVR).

Under normal conditions, the heart would never exist in such a frozen state as proposed above. However, during each contraction there is a period of time during which the mechanical properties of the heart are characterized by the EDPVR; knowledge of the EDPVR allows one to specify, for the end of diastole, EDP if EDV is known, or visa versa. Furthermore, since the EDPVR provides the pressure-volume relation with the heart in its most relaxed state, the EDPVR provides a boundary on which the PV loop falls at the end of the cardiac cycle as shown in Figure 11.

Under certain circumstances, the EDPVR may change. Physiologically, the EDPVR changes as the heart grows during childhood. Most other changes in the EDPVR accompany pathologic situations. Examples include the changes which occur with hypertrophy, the healing of an infarct, and the evolution of a dilated cardiomyopathy, to name a few.

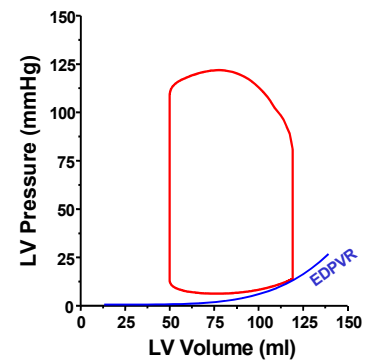


Figure 11

Compliance is a term which is frequently used in discussions of the end-diastolic ventricular. Technically, *compliance* is the change in volume for a given change in pressure or, expressed in mathematical terms, it is the reciprocal of the derivative of the EDPVR ($[dP/dV]^{-1}$). Since the EDPVR is nonlinear, the compliance varies with volume; compliance is greatest at low volume and smallest at high volumes (Figure 12). In the clinical arena, however, *compliance* is used in two different ways. First, it is used to express the idea that the diastolic properties are, in a general way, altered compared to normal; that is, that the EDPVR is either elevated or

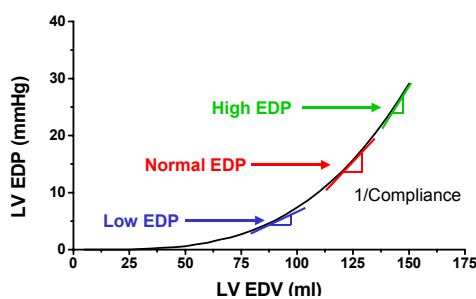


Figure 12

depressed compared to normal. Second, it is used to express the idea that the heart is working at a point on the EDPVR where its slope is either high or low (this usage is technically more correct). Undoubtedly you will hear this word used in the clinical setting, usually in a casual manner: "The patient's heart is noncompliant". Such a statement relays no specific information about what is going on with the diastolic properties of the heart. Statements specifying changes in the EDPVR or changes in the working volume range relay much more information.

Understanding of these concepts has been highlighted recently with growing appreciation for the fact that some patients can experience heart failure when the EDPVR becomes elevated (as in hypertrophy) despite the fact that the strength of the heart during contraction is normal. This clinical phenomenon has been referred to as *diastolic dysfunction*.

End-systolic pressure-volume relationship (ESPVR)

Let us move now to the opposite extreme in the cardiac cycle: end-systole. At that instant of the cardiac cycle, the muscles are in their maximally *activated* state and it is easy to imagine the heart as a much stiffer chamber. As for end diastole, we can construct a pressure-volume relationship at end systole if we imagine the heart frozen in this state of maximal activation. An example is shown in Figure 13. As for the EDPVR, the end-systolic pressure volume relationship (ESPVR) intersects the volume axis at a slightly positive value (V_0), indicating that a finite amount of volume must fill the ventricle before it can generate any pressure. For our purposes, we can assume that the V_0 of the ESPVR and the V_0 of the EDPVR are the same (this is not exactly true, but little error is made in assuming this and it simplifies further discussions). In contrast to the nonlinear EDPVR, the ESPVR has been shown to be reasonably linear over a wide range of conditions, and can therefore be expressed by a simple equation:

$$P_{es} = E_{es} (V - V_0) \quad [2]$$

where P_{es} is the end-systolic pressure, V_0 is as defined above, V is the volume of interest and E_{es} is the slope of the linear relation. **There is no *a priori* reason to expect that this relationship should be linear, it is simply an experimental observation.** E_{es} stands for *end systolic elastance*. *Elastance* means essentially the same thing as *stiffness* and is defined as the change in pressure for a given change in volume within a chamber; the higher the elastance, the stiffer the wall of the chamber.

As discussed above for the EDPVR, the heart would never exist in a *frozen* state of maximal activation. However, it does pass through this state during each cardiac cycle. The ESPVR provides a line which the PV loop will hit at end-systole, thus providing a second boundary for the upper left hand corner of the PV loop (Figure 14). Examples of different PV loops bounded by the ESPVR and EDPVR are shown in Figure 15. In the panel on the left, there are three PV loops which have the same EDV but have different aortic pressures; in obtaining these loops the properties of the arterial system were changed (specifically, the total peripheral

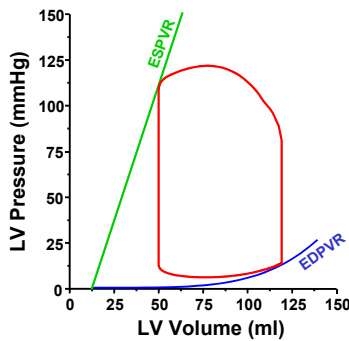


Figure 14

resistance was modified) without modifying anything about the way the ventricle works. The upper left hand corner of each loop falls on the ESPVR, while the bottom right part of the loop falls on the EDPVR. In the panel on the right, three different loops are shown which have different EDVs and different aortic pressures. Here, the loops were obtained by modifying only the EDV without modifying anything about the heart or the arterial system. The upper left hand corner of each loop falls on the ESPVR, while the bottom right part of

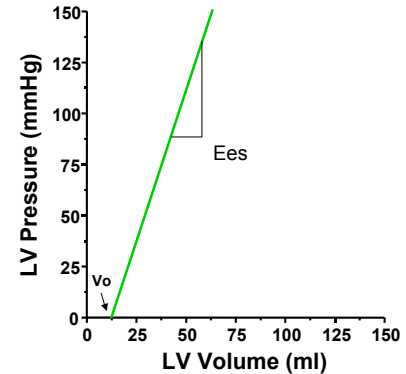


Figure 13

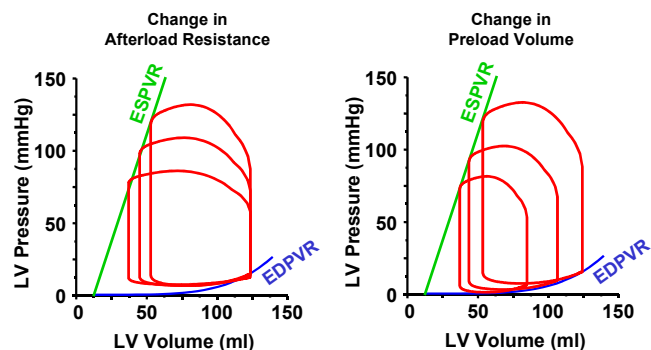


Figure 15

the loop falls on the EDPVR.

Time varying elastance: $E(t)$

In the above discussion we have described the pressure-volume relationships at two instances in the cardiac cycle: end diastole and end systole. The idea of considering the pressure-volume relation with the heart frozen in a given state can be generalized to any point during the cardiac cycle. That is, at each instant of time during the cardiac cycle there exists a pressure-volume relationship. Such relations have been determined in the physiology laboratory.

These experiments show, basically, that there is a relatively smooth transition from the EDPVR to the ESPVR and back. For most parts of the cardiac cycle these relations can be considered 1) to be linear and 2) to intersect at a common point, namely V_0 . This idea is schematized in Figure 16. In the left panel the transition from the EDPVR towards the ESPVR during the contraction phase is illustrated, and the relaxation phase is depicted in the right panel. Since the instantaneous pressure-volume relations (**PVR**) are reasonably linear and intersect at a common point, it is possible to characterize the time course of change in ventricular mechanical properties by plotting the time course of change in the slope of the instantaneous PVR. Above, we referred to the slope of the ESPVR as an *elastance*. Similarly, we can refer to the slopes of the instantaneous PVRs as *elastances*. A rough approximation of the instantaneous elastance throughout a cardiac cycle is shown in Figure 17. Note that the maximal value, E_{es} , is the slope of the ESPVR. The minimum slope, E_{min} , is the slope of the EDPVR in the low volume range. We refer to the function depicted in Figure 16 as the *time varying elastance* and it is referred to as $E(t)$. With this function it is possible to relate the instantaneous pressure (P) and volume (V) throughout the cardiac cycle: $P(V,t) = E(t) [V(t) - V_0]$, where V_0 and $E(t)$ are as defined above and $V(t)$ is the time varying volume. This relationship breaks down near end-diastole and early systole when there are significant nonlinearities in the pressure-volume relations at higher volumes. More detailed mathematical representations, beyond the scope of this hand out, are now available to describe the time-varying contractile properties of the ventricle which account for the nonlinear EDPVR. Nevertheless, the implication of this equation is that if one knows the $E(t)$ function and if one knows the time course of volume changes during the cycle, one can predict the time course of pressure changes throughout the cycle.

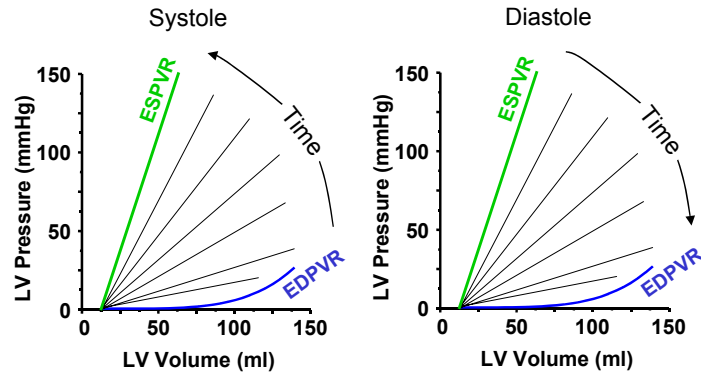


Figure 16

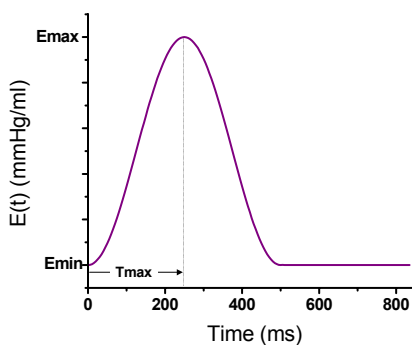


Figure 17

VI. CONTRACTILITY

Contractility is an ill-defined concept used when referring to the intrinsic strength of the ventricle or cardiac muscle. By *intrinsic strength* we mean those features of the cardiac contraction process that are intrinsic to the ventricle (and cardiac muscle) and are independent of external conditions imposed by either the preload or afterload (i.e., the venous, atrial or arterial) systems. For example consider, once again, the PV loops in Figure 10. We see that in the panel on the left that the actual amount of pressure generated by the ventricle and the stroke volume are different in the three cases, although we stated that these loops were obtained by modifying the arterial system and not changing anything about the ventricle. Thus, the changes in pressure generation in that figure do not represent changes in *contractility*. Similarly, the changes in pressure generation and stroke volume shown in the panel on the right side of the figure were brought about simply by changing the EDV of the ventricle and do not represent changes in ventricular *contractility*.

Now that we have demonstrated changes in ventricular performance (i.e., pressure generation and SV) which do **not** represent changes in contractility, let's explore some changes that do result from changes in contractility. First, how can contractility be changed? Basically, we consider ventricular contractility to be altered when any one or combination of the following events occurs:

- 1) the amount of calcium released to the myofilaments is changed
- 2) the affinity of the myofilaments for calcium is changed
- 3) there is an alteration in the number of myofilaments available to participate in the contraction process.

You will recall that calcium interacts with troponin to trigger a sequence of events which allows actin and myosin to interact and generate force. The more calcium available for this process, the greater the number of actin-myosin interactions. Similarly, the greater troponin's affinity for calcium the greater the amount of calcium bound and the greater the number of actin-myosin interactions. Here we are linking *contractility* to cellular mechanisms which underlie excitation-contraction coupling and thus, changes in ventricular contractility would be the global expression of changes in contractility of the cells that make up the heart. Stated another way, ventricular contractility reflects *myocardial contractility* (the contractility of individual cardiac cells).

Through the third mechanism, changes in the number of muscle cells, as apposed to the functioning of any given muscle cell, cause changes in the performance of the ventricle as an organ. In acknowledging this as a mechanism through which ventricular contractility can be modified we recognize that ventricular contractility and myocardial contractility are not always linked to each other.

Humoral and pharmacologic agents can modify ventricular contractility by the first two mechanisms. β -adrenergic agonists (e.g. norepinephrine) increase the amount of calcium released to the myofilaments and cause an increase in contractility. In contrast, β -adrenergic antagonists (e.g., propranolol) blocks the effects of circulating epinephrine and norepinephrine and reduce contractility. Nifedipine is a drug that blocks entry of calcium into the cell and therefore reduces contractility when given at high doses. One example of how ventricular contractility can be modified by the third mechanism mentioned above is the reduction in ventricular contractility following a myocardial infarction where there is loss of myocardial tissue, but the unaffected regions of the ventricle function normally.

While it is true that when contractility is changed there are generally changes in ventricular pressure generation and stroke volume, we have seen above that both of these can occur as a result of changes in EDV or arterial properties alone. Thus, measures like stroke volume and pressure would not be reliable indices of contractility. It turns out that we can look towards changes in the ESPVR to indicate changes in contractility, as shown in Figure 18. When agents known to increase ventricular contractility are administered to the heart there is an increase in E_{es} , the slope of the ESPVR. Such agents are known as positive "inotropic" agents. (*Inotropic*: from Greek meaning influencing the contractility of muscular tissue). Conversely, agents which are negatively inotropic reduce E_{es} . It is significant that neither V_0 (the volume-axis intercept of the ESPVR) nor the EDPVR are affected significantly by these acute changes in contractility. Thus, because E_{es} varies with ventricular contractility but is not affected by changes in the arterial system properties nor changes in EDV, E_{es} is considered to be an index of contractility.

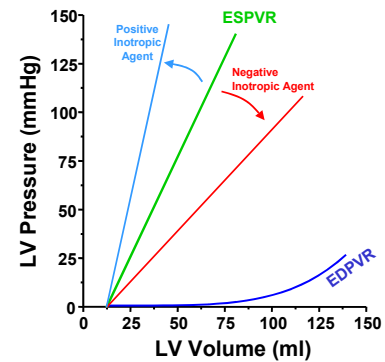


Figure 18

The major draw back to the use of E_{es} in the clinical setting is that it is very difficult to measure ventricular volume. Clearly, it is required that volume be measured in the assessment of E_{es} . Currently, the most commonly employed index of contractility in the clinical arena is *ejection fraction* (EF). EF is defined as the ratio between EDV and SV:

$$EF = SV/EDV * 100. \quad [3]$$

This number ranges from 0% to 100% and represents the percentage of the volume present at the start of the contraction that is ejected during the contraction. The normal value of EF ranges between 55% and 65%. EF can be estimated by a number of techniques, including echocardiography and nuclear imaging techniques. The main disadvantage of this index is that it is a function of the properties of the arterial system. This can be appreciated by examination of the PV loops in the panel on the left of Figure 15, where ventricular contractility is constant yet EF is changing as a result of modified arterial properties. Nevertheless, because of its ease of measurement, and the fact that it does vary with contractility, EF remains and will most likely continue to be the preferred index of contractility in clinical practice for the foreseeable future.

VII. PRELOAD

Preload is the hemodynamic load or *stretch* on the myocardial wall at the end of diastole just before contraction begins. The term was originally coined in studies of isolated strips of cardiac muscle where a weight was hung from the muscle to pre-stretch it to the specified load before (*pre-*) contraction. For the ventricle, there are several possible measures of *preload*: 1) EDP, 2) EDV, 3) wall stress at end-diastole and 4) end-diastolic sarcomere length. Sarcomere length probably provides the most meaningful measure of muscle preload, but this is not possible to measure in the intact heart. In the clinical setting, EDP probably provides the most meaningful measure of preload in the ventricle. EDP can be assessed clinically by measuring the pulmonary capillary wedge pressure (PCWP) using a Swan-Ganz catheter that is placed through the right ventricle into the pulmonary artery.

VIII. AFTERLOAD

Afterload is the hydraulic *load* imposed on the ventricle during ejection. This load is usually imposed on the heart by the arterial system, but under pathologic conditions when either the mitral valve is incompetent (i.e., leaky) or the aortic valve is stenotic (i.e., constricted) *afterload* is determined by factors other than the properties of the arterial system (we won't go into this further in this hand out). There are several measures of afterload that are used in different settings (clinical *versus* basic science settings). We will briefly mention four different measures of afterload.

1) **Aortic Pressure.** This provides a measure of the pressure that the ventricle must overcome to eject blood. It is simple to measure, but has several shortcomings. First, aortic pressure is not a constant during ejection. Thus, many people use the mean value when considering this as the measure of afterload. Second, as will become clear below, aortic pressure is determined by properties of both the arterial system and of the ventricle. Thus, mean aortic pressure is not a measure which uniquely indexes arterial system properties.

2) **Total Peripheral Resistance.** The total peripheral resistance (**TPR**) is the ratio between the mean pressure drop across the arterial system [which is equal to the mean aortic pressure (MAP) minus the central venous pressure (CVP)] and mean flow into the arterial system [which is equal to the cardiac output (**CO**)]. Unlike aortic pressure by itself, this measure is independent of the functioning of the ventricle. Therefore, it is an index which describes arterial properties. According to its mathematical definition, it can only be used to relate mean flows and pressures through the arterial system.

3) **Arterial Impedance.** This is an analysis of the relationship between pulsatile flow and pressure waves in the arterial system. It is based on the theories of Fourier analysis in which flow and pressure waves are decomposed into their harmonic components and the ratio between the magnitudes of pressure and flow waves are determined on a harmonic-by-harmonic basis. Thus, in simplistic terms, impedance provides a measure of resistance at different driving frequencies. Unlike TPR, impedance allows one to relate instantaneous pressure and flow. It is more difficult to understand, most difficult to measure, but the most comprehensive description of the intrinsic properties of the arterial system as they pertain to understanding the influence of afterload on ventricular performance.

4) **Myocardial Peak Wall Stress.** During systole, the muscle contracts and generates force, which is transduced into intraventricular pressure, the amount of pressure being dependent upon the amount of muscle and the geometry of the chamber. By definition, *wall stress* (σ) is the force per unit cross sectional area of muscle and is simplistically interrelated to intraventricular pressure (LVP) using Laplace's law: $\sigma = LVP * r / h$, where r is the internal radius of curvature of the chamber and h is the wall thickness. In terms of the muscle performance, the peak wall stress relates to the amount of force and work the muscle does during a contraction. Therefore, peak wall stress is sometimes used as an index of afterload. While this is a valid approach when trying to explain forces experienced by muscles within the wall of the ventricular chamber, wall stress is mathematically linked to aortic pressure which, as discussed above, does not provide a measure of the arterial properties and therefore is not useful within the context of indexing the afterload of the ventricular chamber.

IX. QUANTIFYING THE DETERMINANTS OF VENTRICULAR PERFORMANCE

Two primary measures of overall cardiovascular performance are the arterial blood pressure and the cardiac output. These parameters are also of primary concern in the clinical setting since both an adequate blood pressure and an adequate cardiac output are necessary to maintain life. It is important to appreciate, however, that both cardiac output and blood pressure are determined by the interaction between the heart, the arterial system (afterload) and the venous system (preload); this is a fundamental concept. Furthermore, it is important to develop an appreciation for how the heart and vasculature interact to determine these indices of performance. This is highlighted by the fact that one major facet of intensive care medicine deals with maintaining adequate blood pressure and cardiac output by manipulating ventricular contractility, heart rate, arterial resistance and ventricular preload. Two approaches to understanding how these parameters regulate cardiovascular performance will be reviewed: a classical approach, commonly referred to as *Frank-Starling Curves*, and a more modern approach based upon pressure-volume analyses.

Frank-Starling Curves

Otto Frank (1899) is credited with the seminal observation that peak ventricular pressure increases as the end-diastolic volume is increased (as in Figure 13). This observation was made in an isolated frog heart preparation in which ventricular volume could be measured with relative ease. Though of primary importance, the significance may not have been appreciated to the degree it could have been because it was (and remains) difficult to measure ventricular volume in more intact settings (e.g., experimental animals or patients). Thus it was difficult for other investigators to study the relationship between pressure and volume in these more relevant settings.

Around the mid 1910's, Starling and coworkers observed a related phenomenon, which they presented in a manner that was much more useful to physiologists and ultimately to clinicians. They measured the relationship between ventricular filling pressure (related to end-diastolic volume) and cardiac output ($CO = SV \times HR$). They showed that there was a nonlinear relationship between end-diastolic pressure (EDP, also referred to as ventricular *filling pressure*) and CO as shown in Figure 19; as filling pressure was increased in the low range there is a marked increase in CO, whereas the slope of this relationship becomes less steep at higher filling pressures.

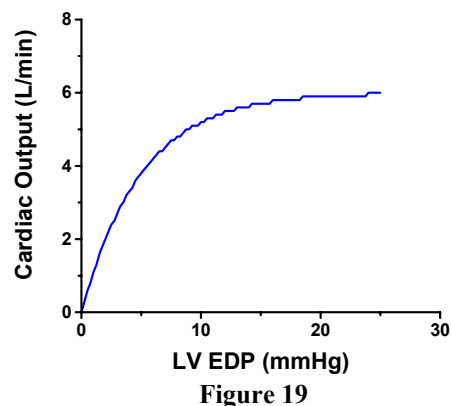


Figure 19

The observations of Frank and of Starling form one of the basic concepts of cardiovascular physiology that is referred to as the Frank-Starling Law of the Heart: ***cardiac performance (its ability to generate pressure or to pump blood) increases as preload is increased.*** There are a few caveats, however. Recall from the anatomy of the cardiovascular system that left ventricular filling pressure is approximately equal to pulmonary venous pressure. As pulmonary venous pressure rises there is an increased tendency (*Starling Forces*) for fluid to leak out of the capillaries and into the interstitial space and alveoli. When this happens, there is impairment of gas exchange across the alveoli and hemoglobin oxygen saturation can be markedly diminished. This phenomenon typically comes into play when pulmonary venous pressure rises above

~20mmHg and becomes increasingly prominent with further increases. When pulmonary venous pressures increases above 25-30 mmHg, there can be profound transudation of fluid into the alveoli and *pulmonary edema* is usually prominent. Therefore, factors extrinsic to the heart dictate a practical limit to how high filling pressure can be increased.

As noted above, factors other than preload are important for determining cardiac performance: ventricular *contractility* and afterload properties. Both of these factors can influence the Frank-Starling Curves. When ventricular contractile state is increased, CO for a given EDP will increase and when contractile state is depressed, CO will decrease (Figure 20). When arterial resistance is increased, CO will decrease for a given EDP while CO will increase when arterial resistance is decreased (Figure 21). Thus, shifts of the Frank-Starling curve are nonspecific in that they may signify either a change in contractility or a change in afterload. It is for this reason that Starling-Curves are *not* used as a means of indexing ventricular contractile strength.

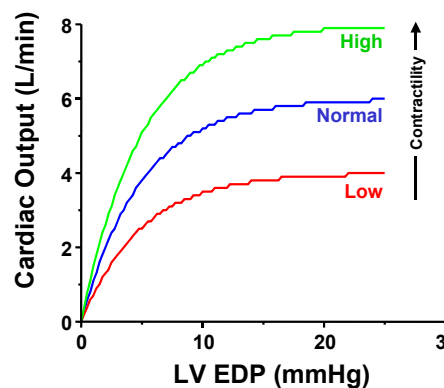


Figure 20

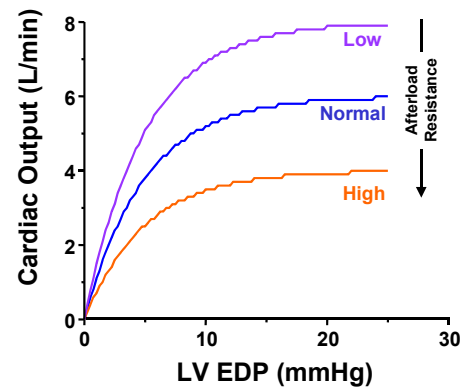


Figure 21

Ventricular-Vascular Coupling Analyzed on the Pressure-Volume Diagram

We have already discussed in detail how ventricular properties are represented on the PV diagram and how these are modified by inotropic agents. We have seen examples of PV loops obtained with constant ventricular properties at different EDVs and arterial properties (Figure 10). Therefore, let us now turn to a discussion of how arterial properties can be represented on the PV diagram. Specifically, we will explore how TPR can be represented on the PV diagram an index of afterload, called E_a which stands for *effective arterial elastance*, that is closely related to TPR. The ultimate goal of the discussion to follow is to provide a quantitative method of uniting ventricular afterload, heart rate, preload and contractility on the PV diagram so that cardiovascular variables such as cardiac output (stroke volume) and arterial pressure can be determined from ventricular and vascular properties.

Let us start with the definition of TPR:

$$\text{TPR} = [\text{MAP} - \text{CVP}] / \text{CO} \quad [4]$$

where CVP is the central venous pressure and MAP is the mean arterial pressure. Cardiac output (CO) represents the mean flow during the cardiac cycle and can be expressed as:

$$\text{CO} = \text{SV} * \text{HR} \quad [5]$$

where SV is the stroke volume and HR is heart rate. Substituting Eq. [5] into Eq. [4] we obtain:

$$\text{TPR} = [\text{MAP} - \text{CVP}] / (\text{SV} * \text{HR}) . \quad [6]$$

At this point we make two simplifying assumptions. First, we assume that CVP is negligible

compared to MAP. This is reasonable under normal conditions, since the CVP is generally around 0-5 mmHg. Second, we will make the assumption that MAP is approximately equal to the end-systolic pressure in the ventricle (P_{es}). Making these assumptions, we can rewrite Eq. [6] as:

$$TPR \cdot P_{es} / (SV \cdot HR) \quad [7]$$

which can be rearranged to:

$$RPR \cdot HR \cdot P_{es} / SV \quad [8]$$

Note, as shown in Figure 17, that the quantity P_{es}/SV can be easily ascertained from the pressure volume loop by taking the negative value of the slope of the line connecting the point on the volume-axis equal to the EDV with the end-systolic pressure-volume point. Let us define the slope of this line as E_a :

$$E_a = P_{es}/SV \quad [9]$$

This term is designated E for "elastance" because the units of this index are mmHg/ml (same as for E_{es}). The "a" denotes that this term is for the arterial system. Note that this measure is dependent on the TPR and heart rate. If the TPR or HR goes up, then E_a goes up, as illustrated in Figure 23; reduction in either TPR or HR cause a reduction in E_a . As shown in this Figures 22 and 23, the E_a line is drawn on the pressure-volume diagram (the same set of axes as the ESPVR and EDPVR); it starts at EDV and has a slope of $-E_a$ and intersects with the ESPVR at one point.

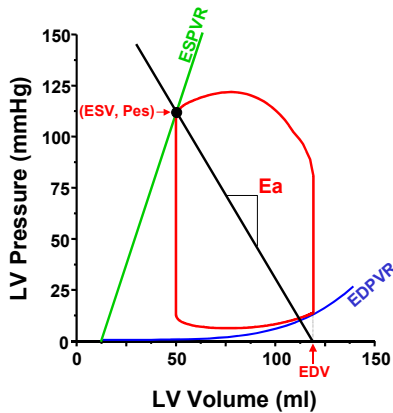


Figure 22

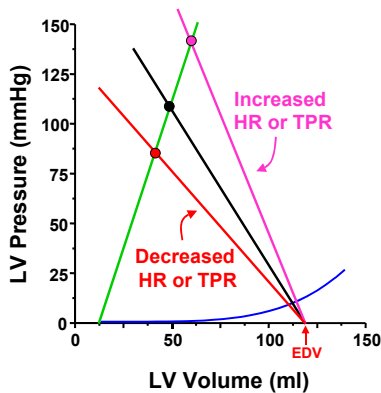


Figure 23

Next, we will use these features of the pressure-volume diagram to demonstrate that it is possible to estimate how the ventricle and arterial system interact to determine such things as mean arterial pressure (MAP) and SV when contractility, TPR, EDV or HR are changed. In order to do this, we reiterate the parameters which characterize the state of the cardiovascular system. First, are those parameters necessary to quantify the systolic pump function of the ventricle; these are E_{es} and V_0 , the parameters which specify the ESPVR. Second, are the parameters which specify the properties of the arterial system; we will take E_a as our measure of this, which is dependent on TPR and heart rate. Finally we must specify a preload; this can be done by simply specifying EDV or, if the EDPVR is known, we can specify EDP. If we specify each of these parameters, then we can estimate a value for MAP and SV (and CO, since $CO=SV \cdot HR$) as depicted in Figure 24.

In order to do this, first draw the ESPVR line (panel A). Second (panel B), mark the EDV on the volume axis and draw a line through this EDV point with a slope of $-E_a$. The ESPVR and the E_a line will intersect at one point. This point is the estimate of the end-systolic pressure-volume point. With that knowledge you can draw a box which represents an approximation of the PV loop under the specified conditions, with the bottom of the box determined by the EDPVR (Panel C). SV and P_{es} can be measured directly from the diagram. Recall that P_{es} is roughly equal to MAP.

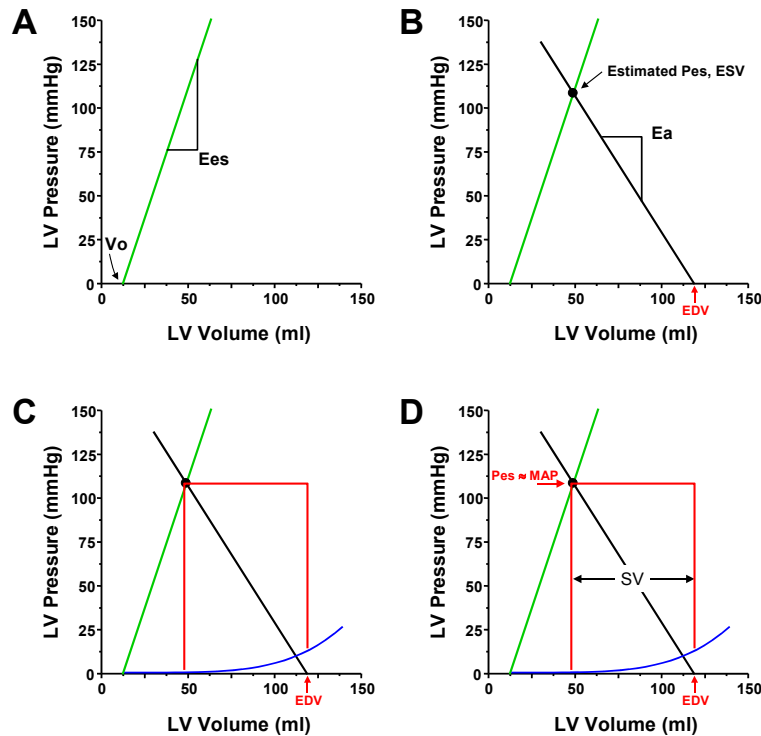


Figure 24

Use of this technique is illustrated in Figure. 25 through 28. In each case, the ESPVR and E_a for the specified conditions are drawn on the pressure-volume diagram superimposed on actual PV loops. In Figure 25 we see what happens if TPR is altered, but EDV is kept constant. As TPR is increased, the slope of the E_a line increases and intersects the ESPVR at an increasingly higher pressure and higher volume. Thus, increasing TPR increases MAP but decreases SV (and CO) when ventricular properties (E_{es} , V_o and HR) are constant.

The influence of preload (EDV) is shown in the three loops of Figure 26. Here, the ESPVR, HR and TPR are constant so that E_a is also constant. The slope of the E_a line is not altered when preload is increased, the E_a line is simply shifted in a parallel fashion. With each increase in preload volume, P_{es} and SV increase, and clearly it is possible to make a quantitative prediction of precisely how much.

The influence of contractility is shown in Figure 27. In this case, nothing is changed in the arterial system and the EDV is constant; E_{es} is the only thing to change. When E_{es} is increased, the E_a line intersects the ESPVR at a higher pressure and lower volume. Therefore, despite increased MAP, SV increases (which contrasts with the decreased SV obtained with increased MAP when TPR is increased).

Finally, the influence of HR is shown in Figure 28. The effect of increasing HR is similar to the effect of increasing TPR as predicted by the fact that both influence E_a in the same way.

For those of you that are quantitatively inclined, you can derive the following equations which mathematically predict P_{es} (MAP) and SV based on the graphical techniques described above:

$$P_{es} = [EDV - V_0] / [1/E_a + 1/E_{es}]$$

$$SV = [EDV - V_0] / [1 + E_a/E_{es}]$$
[10]

The technique described above is useful in predicting P_{es} and SV when the parameters of the system are known. It is also useful in making qualitative predictions (e.g., does SV increase or decrease) when only rough estimates of the parameters are available. Thus, this system provides a simple means of understanding the determinants of cardiac output and arterial pressure.

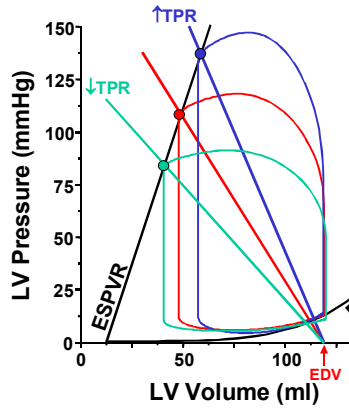


Figure 25

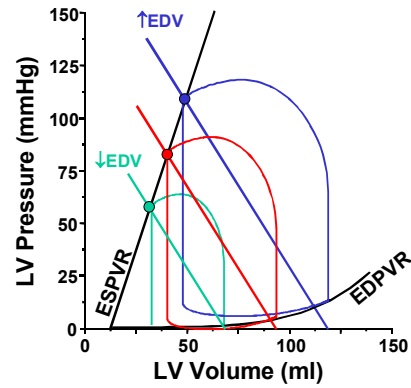


Figure 26

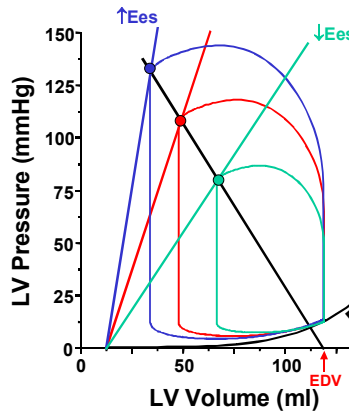


Figure 27

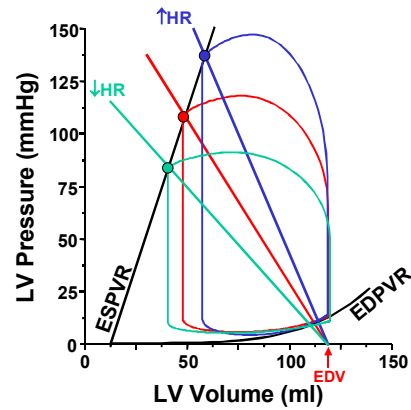


Figure 28

Glossary of Terms

Afterload: The mechanical "load" on the ventricle during ejection. Under normal physiological conditions, this is determined by the arterial system. Indices of afterload include, aortic pressure, ejection wall stress, total peripheral resistance (TPR) and arterial impedance.

Compliance: A term used in describing diastolic properties of the ventricle. Technically, it is defined as the reciprocal of the slope of the EDPVR ($[dP/dV]^{-1}$). Colloquially, it is frequently used in describing the elevation of the EDPVR. Stiffness (dV/dP) is the reciprocal of compliance.

Contractility: An ill-defined concept referring the *intrinsic strength* of the ventricle or cardiac muscle. In this regard, the notion of *intrinsic strength* is considered to be independent of the phenomenon whereby changes in loading conditions (preload or afterload) result in changes in pressure (or force) generation.

Diastole: (Greek, "dilate"). The phase of the cardiac cycle during which contractile properties are in their resting state.

EDPVR : End-Diastolic Pressure-Volume Relationship - The relationship between pressure and volume with the ventricle in its most relaxed state (end-diastole).

EDV: End-diastolic Volume – the volume in the ventricle at the end of diastole.

Ees: End-Systolic Elastance - the slope of the ESPVR; has units of mmHg/ml and is considered to be an index of "contractility."

EF: Ejection Fraction - the ratio between stroke volume and end-diastolic volume. It is the most commonly used index of contractility, mostly because it is relatively easy to measure in the clinical setting. Its major limitation is that it is influenced by afterload conditions.

Elastance: The change in pressure for a given change in volume within a chamber and is an indication of the "stiffness" of the chamber. It has units of mmHg/ml. The higher the elastance the stiffer the wall of the chamber.

ESPVR: End-Systolic Pressure-Volume Relationship - The relationship between ventricular pressure and volume at the instant of maximal activation (end-systole) during the cardiac cycle. This relationship is reasonably linear and reasonably independent of the loading conditions: $P_{es} = E_{es} [ESV - V_0]$.

ESV: End-systolic Volume – the volume in the ventricle at the end of systole.

Preload: The "load" imposed on the ventricle at the end of diastole. Measures of preload include end-diastolic volume, end-diastolic pressure and end-diastolic wall stress.

Systole: The first phase of the cardiac cycle which includes the period of time during which the electrical events responsible for initiating contraction and the mechanical events responsible for contraction occur. It ends when the muscles are in the maximal state of activation during the contraction.

SV: Stroke Volume - the amount of blood expelled during each cardiac cycle. $SV = EDV - ESV$ where EDV is the end-diastolic volume and ESV is the end-systolic volume.