

Preface



I am pleased to present to you the 2009 Tourism Report with information on tourism statistics for Malawi.

This report covers all visitors to Malawi in 2009. It provides in a single volume, statistics on origin of tourists, their expenditures and, reasons for coming to Malawi, nature of their accommodation and gender distribution by country of permanent residence, amongst others.

Some of the main results for the years prior to 2009 are given in the Summary of Results. An attempt has been made in the Summary of Results to draw the reader's attention to some interesting points regarding the pattern of tourism in Malawi during the period.

It is my hope that the information which is presented in this report will be invaluable in the development and promotion of the tourism industry in Malawi.

We welcome feedback from you our valuable readers for further improvement of this report. Many thanks.

Charles Machinjili

COMMISSIONER OF STATISTICS

SUMMARY OF RESULTS

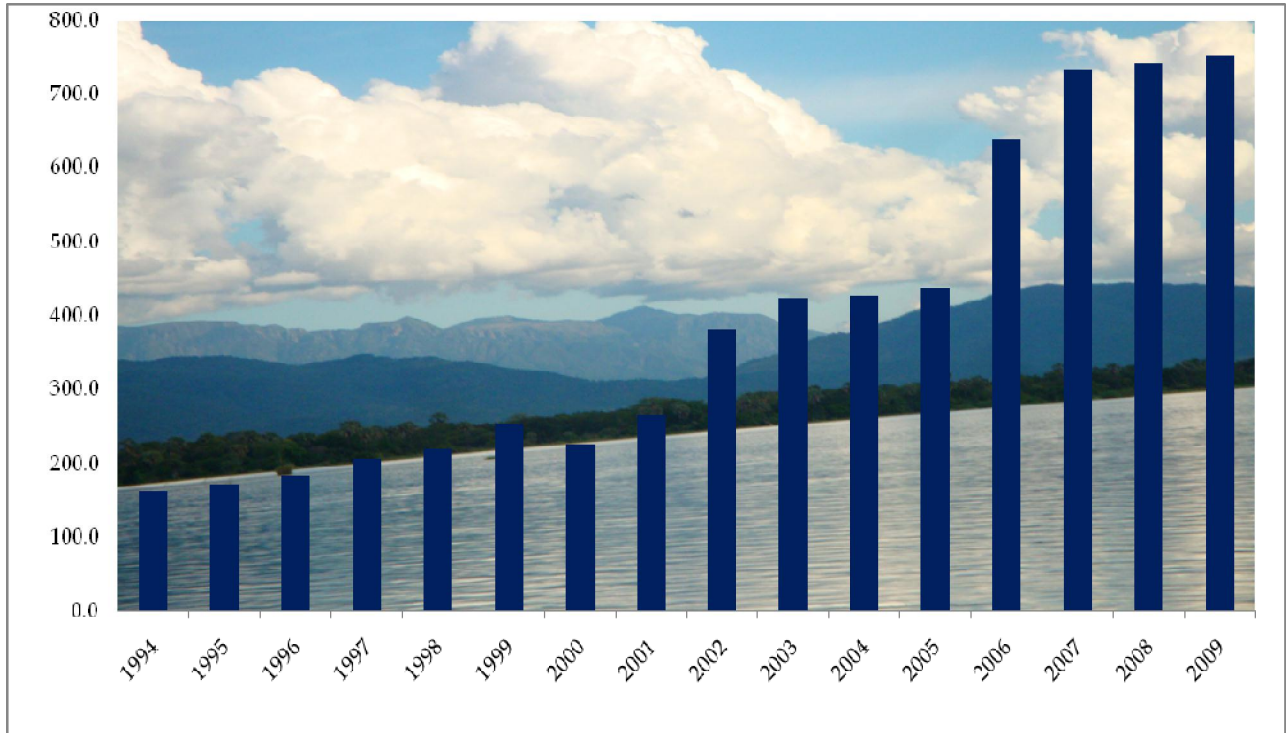
Number of Departing Visitors By Reason Of Entry 1994-2009

Malawi continues to demonstrate remarkable growth in the number of tourists despite the 2009 adverse impact of the global economic downturn on tourism performance worldwide. In the decade (2000 to 2009) there was a steady rise in the number of visitors, from 227,000 in 2000 to 755,000 in 2009 as shown in Table 1 and figure 1.

Table 1: Departing visitors by reason of entry into Malawi, 1994-2009

	Reason for visit											
	Total		Work or Business		Holiday/ vacation		Visit friends or relatives		Conference/ Convention		Other	
	No. ('000)	%	No. ('000)	%	No. ('000)	%	No. ('000)	%	No. ('000)	%	No. ('000)	%
1994	162.6	100	70.2	43.2	53.3	32.8	38.7	23.8	0.3	0.2	0.1	0.1
1995	173.2	100	74.4	43.0	55.6	32.1	43.0	24.8	0.2	0.1	0.0	0.0
1996	183.8	100	78.5	42.7	58.0	31.6	47.1	25.6	0.1	0.1	0.1	0.1
1997	207.3	100	96.6	46.6	61.1	29.5	49.2	23.7	0.3	0.1	0.1	0.0
1998	219.7	100	115.4	52.5	62.3	28.4	41.7	19.0	0.3	0.1	0.0	0.0
1999	254.3	100	142.5	56.0	69.3	27.3	42.1	16.6	0.3	0.1	0.1	0.0
2000	227.6	100	125.5	55.1	62.1	27.3	39.7	17.4	0.2	0.1	0.1	0.0
2001	266.3	100	144.3	54.2	71.4	26.8	49.7	18.7	0.6	0.3	0.3	0.1
2002	382.6	100	205.6	53.7	101.4	26.5	74.5	19.5	0.8	0.4	0.3	0.1
2003	424.0	100	207.6	49.0	112.2	26.5	103.0	24.3	0.8	0.4	0.4	0.1
2004	427.3	100	207.5	48.6	94.7	22.2	124.3	29.1	0.6	0.3	0.2	0.0
2005	438.0	100	227.1	51.8	114.3	26.1	94.9	21.7	1.0	0.5	0.3	0.1
2006	638.0	100	312.1	48.9	167.7	26.3	156.9	24.6	0.8	0.1	0.3	0.0
2007	734.4	100	260.4	35.5	212.2	28.9	134.2	18.3	44.9	6.1	82.8	11.3
2008	742.4	100	366.4	49.4	179.3	24.1	190.9	25.7	5.8	0.8	0.0	0.0
2009	755.0	100	381.1	50.5	245.5	32.5	127.7	16.9	0.7	0.1	0.0	0.0

Figure 1: Number of departing visitors, 1994-2009 ('000)



From a slump of about 10 percent in 2000, Malawi tourism attained a significant average annual growth rate of about 12 percent during the decade as shown in figure 2.

Figure 2: Trend in the number of visitors to Malawi, 1994-2009

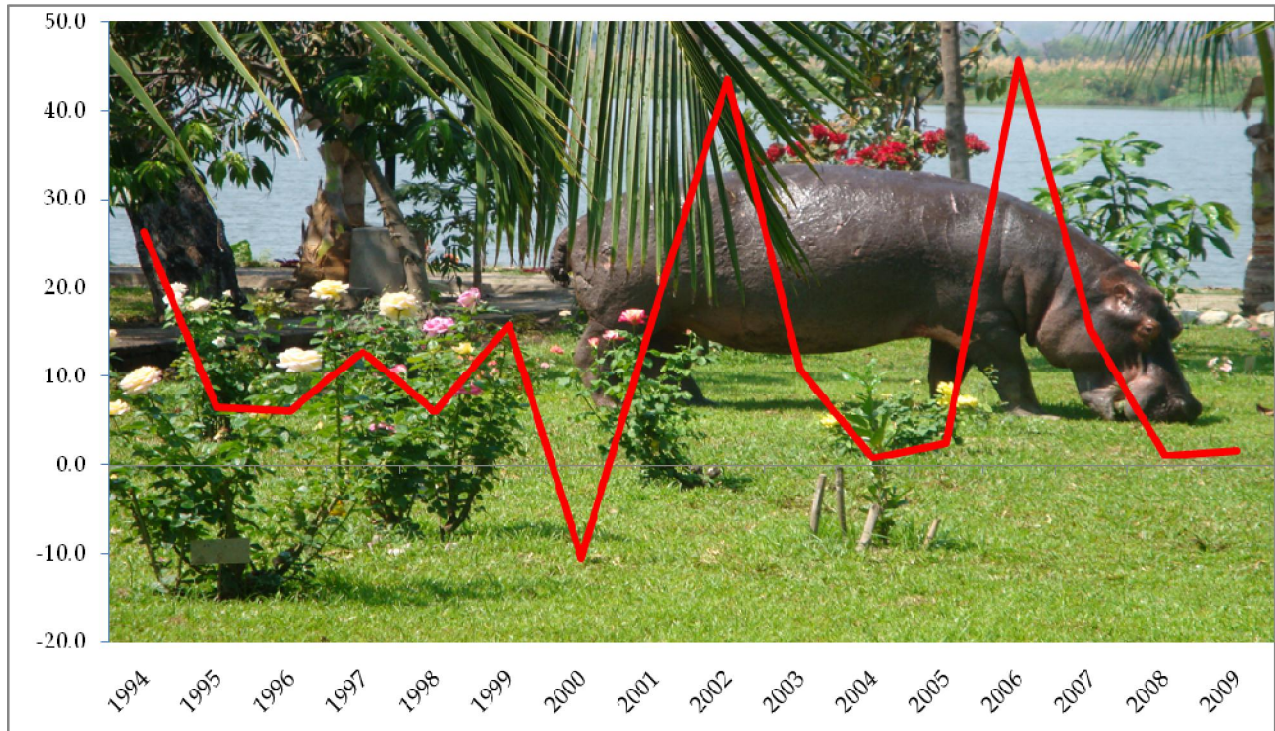
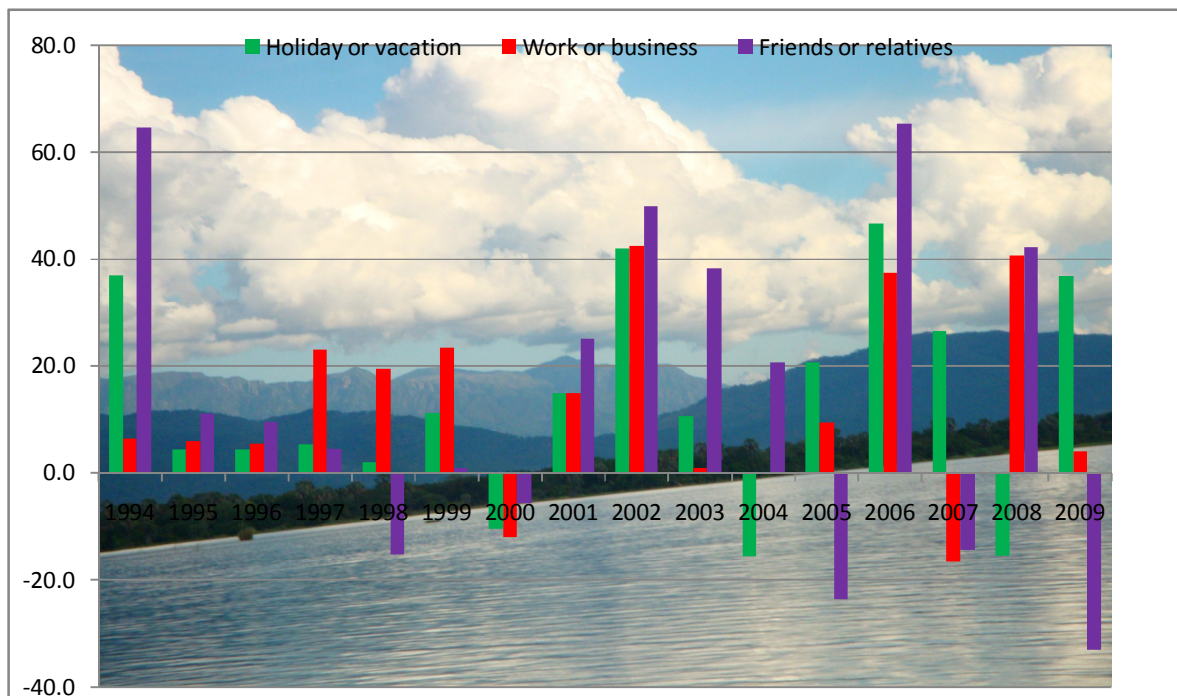


Figure 3 shows that in the last decade the holiday or vacation category grew on average by about 15 percent annually. In 2009 the segment registered an increase of about 37 percent (245,000 in 2009 from 179,000 in 2008). The work/business segment which had an average growth of about 12 percent between 2000 and 2009, experienced a substantially slow growth of about 4 percent (from 366,000 in 2008 to 381,000 in 2009).

Those visiting friends or relatives who in the decade grew on average by 16.5 percent, significantly dropped by about 33 percent in 2009 (from 190,000 in 2008 to 127,000 in 2009).

Figure 3: Departing visitors by reason for entry into Malawi annual growth rate 1994-2009



Utilization of Accommodation Enterprises and Occupancy Figures by Region or Zones

For the purposes of analyzing the utilization of accommodation enterprises, the country has been divided into zones according to geographical locations. This is important to help in policy planning as well as investment decisions. As shown in Table ..., the cities and lakeshore areas posted higher room occupancies possibly due to high number of visitors who come for leisure, meetings and conferences.

Table 2: Hotel Room and Bed Occupancy Rates for Malawi according to Zones, 2009

	2009		2008	
Zone	Room Occupancy (%)	Bed Occupancy (%)	Room Occupancy (%)	Bed Occupancy (%)
Lilongwe	74.9	64.46	75.6	66.5
Blantyre	72.9	63.16	73.4	64.8
Mzuzu	64.8	58.59	66.2	61.7
Northern Lakeshore	63.5	49.88	65.8	53.2
Central Lakeshore	66.1	59.94	67.7	54.1
Southern Lakeshore	67.1	55.19	68.5	59.8
Protected Areas	46.4	37.13	46.8	39.2
Zomba/Liwonde/Balaka	60.1	53.37	63.9	57.9
Kasungu/ Mchinji	47.6	46.17	52.9	48.3
Thyolo/ Phalombe/ Mulanje	49.9	41.96	52.4	47.9
Other Areas	48.6	41.04	51.5	46.6

Source: Department of Tourism

National room occupancy rate increased from 57.6% in 2008 to 59.8% in 2009 whilst the national bed occupancy rate rose from 53.4% in 2008 to 55.1% in 2009. The increase could be attributed to growth in domestic tourism especially the business and meetings segment. The last quarter of 2009 recorded high occupancies with December being the highest as indicated in Table 3 below.

Table 3: Monthly Distribution of Hotel Room and Bed Occupancy for Malawi, 2009

Month	Room Occupancy (%)	Bed Occupancy (%)
January	48.9	44.3
February	48.5	44.1
March	52.5	47.6
April	55.3	51.2
May	54.8	51.7
June	58.2	53.9
July	59.9	56.7
August	62.8	58.7
September	66.2	59.2
October	68.3	63.4
November	70.1	65.1
December	71.6	65.5
Annual Average	59.8	55.1

Source: Department of Tourism

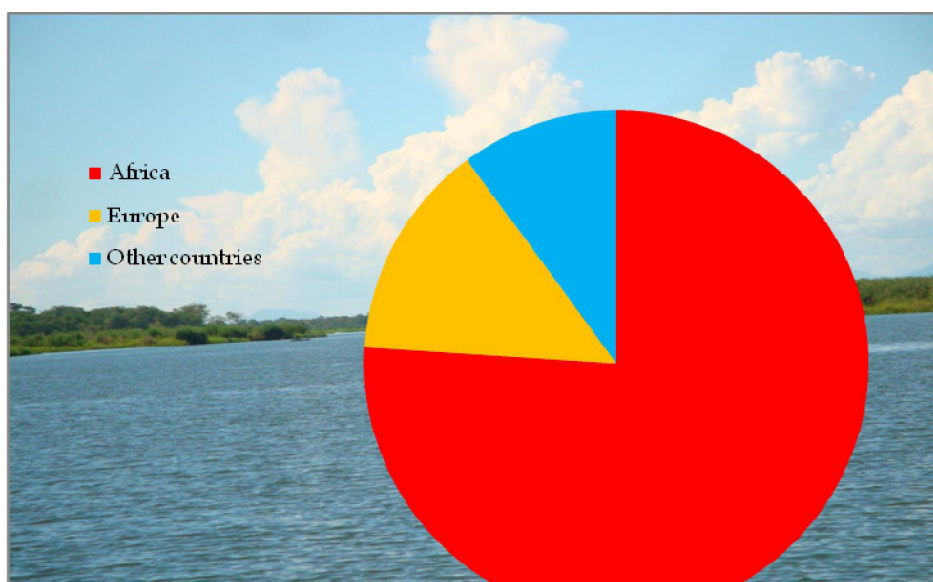
Table 4 shows departing visitors by region of permanent residence for the years 1994 through 2009. Detailed 2009 figures by country of permanent residence can be found in tables [6 through 10](#).

Table 4: Departing Visitors from Malawi by their permanent residence, 1994 -2009

Year	Total		Permanent Residence					
			Africa		Europe		Other Countries	
	No. ('000)	%	No. ('000)	%	No. ('000)	%	No. ('000)	%
1994	162.6	100	120.6	74.2	28.6	17.6	13.4	8.2
1995	173.2	100	131.8	76.1	25.4	14.7	16.0	9.2
1996	183.8	100	143.1	77.9	22.1	12.0	18.6	10.1
1997	207.3	100	170.2	82.1	20.4	9.9	16.6	8.0
1998	219.7	100	175.6	79.9	24.7	11.2	19.4	8.8
1999	254.3	100	199.0	78.3	40.2	15.8	15.1	5.9
2000	227.6	100	171.3	75.3	37.9	16.7	18.4	8.1
2001	266.3	100	203.3	76.4	43.0	16.2	19.9	7.5
2002	382.6	100	300.0	78.4	55.2	14.4	27.4	7.2
2003	424.0	100	324.9	76.6	67.5	15.9	31.6	7.5
2004	427.3	100	339.4	79.4	48.9	11.4	39.0	9.1
2005	437.7	100	340.3	77.7	60.4	13.8	37.0	4.2
2006	638.0	100	483.6	75.8	93.4	14.6	59.9	9.4
2007	734.4	100	558.9	76.1	98.4	13.4	77.1	10.5
2008	742.4	100	572.6	77.1	97.8	13.1	72.0	9.8
2009	755.0	100	574.1	76.0	104.6	13.9	76.3	10.1

During the period 1994 to 2009, on average, 77 percent of departing visitors came from the Africa region and those from the European market averaged about 14 percent. The other countries market averages 10 percent.

Figure 4: Visitors departing Malawi by place of permanent residence, 2009



The Africa region continued its overall dominance as a source of visitors in 2009. Out of 755,000 departing visitors, 574,100 came from the region, Europe remains a distant second in overall share of visitors with 104,600 and 76,300 came from other continents.

Trend in type of accommodation used in Malawi 1994-2009

Table 5: Departing visitors from Malawi by type of accommodation used, 1994 – 2009

	Total		Type of Accommodation							
			Hotel/Inn/Lodge		Rest House		Private House		Other Accommodation	
Year	No. ('000)	%	No. ('000)	%	No. ('000)	%	No. ('000)	%	No. ('000)	%
1994	162.6	100	24.6	15.1	16.9	10.4	45.6	28.0	75.5	46.4
1995	173.2	100	35.3	20.4	24.9	14.4	53.1	30.7	59.9	34.6
1996	183.8	100	46.0	25.0	33.0	18.0	60.5	32.9	44.3	24.1
1997	207.3	100	44.1	21.3	42.5	20.5	65.2	31.5	55.5	26.8
1998	219.7	100	53.2	24.2	44.2	20.1	62.6	28.5	59.7	27.2
1999	254.3	100	57.3	22.5	46.5	18.3	75.1	29.5	75.4	29.7
2000	227.6	100	59.0	25.9	53.3	23.4	63.6	27.9	51.7	22.7
2001	266.3	100	69.9	26.2	66.7	25.0	73.6	27.6	56.1	21.1
2002	382.6	100	88.6	23.2	77.2	20.2	107.8	28.2	109.0	28.5
2003	424.0	100	94.7	22.3	49.0	11.6	169.5	40.0	110.8	26.1
2004	427.3	100	98.0	22.9	54.9	12.9	180.3	42.2	94.1	22.0
2005	437.7	100	104.7	23.9	190.4	43.5	83.7	19.1	58.8	13.4
2006	638.0	100	187.4	29.4	274.8	43.1	116.2	18.2	59.4	9.3
2007	734.4	100	214.8	29.2	302.2	41.1	211.0	28.7	6.4	1.0
2008	742.4	100	220.9	29.8	252.1	34.0	226.1	30.4	43.3	5.8
2009	755.0	100	202.0	26.8	174.3	23.1	308.4	40.8	70.2	9.3

Table 5 above shows the volumes of departing visitors by type of accommodation used for period 1994 –2009. From the table above, Private homes are a preferred accommodation for visitors seconded by rest houses during the period. On average, about 24% of visitors into Malawi used Hotels/Inns/Lodges for their accommodation.

Figure 5 and Table 6 below show the annual growth rates (1994-2009) of departing visitors by type of accommodation they used whilst in Malawi. Over the period 2008 -2009 “other types of accommodation” registered the highest growth of about 62.1percent followed by

private houses (36.4 percent). However, there was a drop in growth of visitors using Hotels/Inn/Lodges and rest houses of about 8.6 percent and 30.9 percent respectively.

Figure 5: Departing visitors by type of accommodation used in Malawi, 1994-2009 annual growth rates

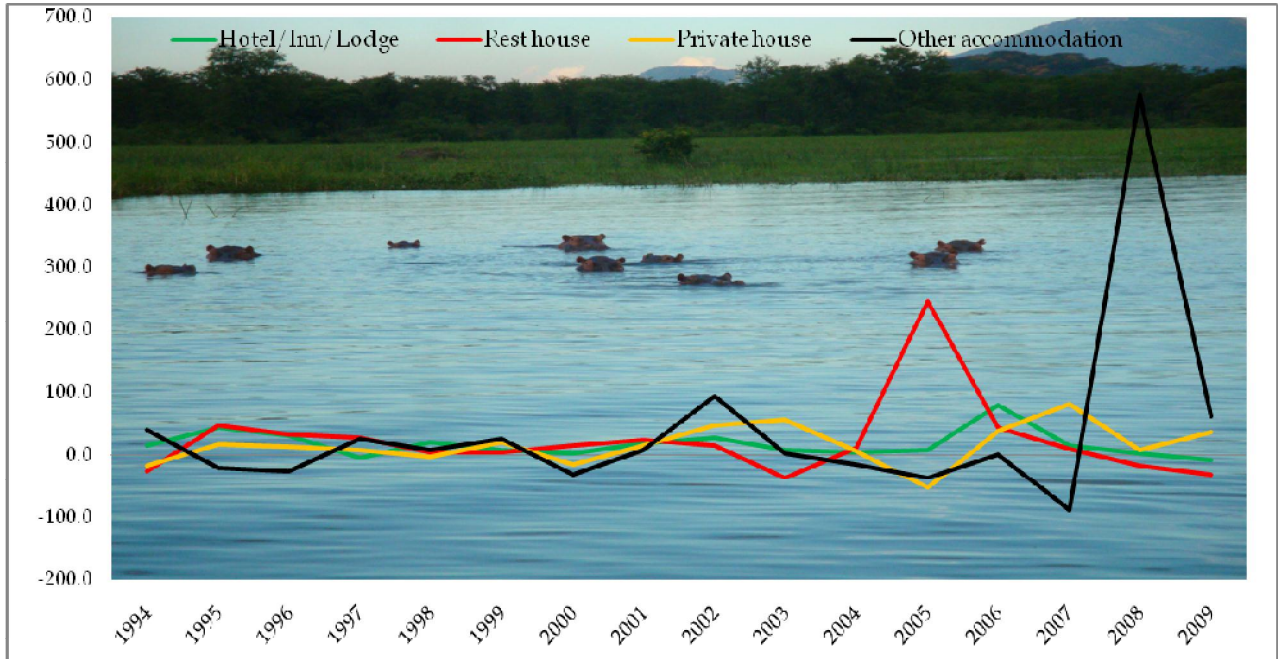


Table 6: Annual growth rate - Departing visitors by type of accommodation used, 1994 - 2009

	Type of accommodation			
	Hotel/Inn /Lodge	Rest house	Private house	Other accommodation
1994	13.9	-25.9	-17.5	40.9
1995	43.5	47.3	16.4	-20.7
1996	30.3	32.5	13.9	-26.0
1997	-4.1	28.8	7.8	25.3
1998	20.6	4.0	-4.0	7.6
1999	7.7	5.2	20.0	26.3
2000	3.0	14.6	-15.3	-31.4
2001	18.5	25.1	15.7	8.5
2002	26.8	15.7	46.5	94.3
2003	6.9	-36.5	57.2	1.7
2004	3.5	12.0	6.4	-15.1
2005	6.8	246.8	-53.6	-37.5
2006	79.0	44.3	38.8	1.0
2007	14.6	10.0	81.6	-89.2
2008	2.8	-16.6	7.2	576.6
2009	-8.6	-30.9	36.4	62.1

Departing visitors by type of port of exit used in Malawi, 2009

In 2009, Kamuzu International Airport was the major port of exit handling about 23.1 percent of all departing visitors. This meant that in 2009, Kamuzu International Airport had overtaken Mwanza as a major exit port. Mwanza was the second major port handling 18.8 percent of all departing visitors followed by Songwe, Mchinji/ Chimaliro and Chileka registering 12 percent, 10.9 percent and 10.1 percent respectively.

Kamuzu International Airport registered the highest number of departing visitors in the month of August registering about 21,729 visitors whilst the lean month was October registering about 9,481 departures. The second busiest port of Mwanza reached its peak in June when it registered almost 28,237 departing visitors. On the other hand, Chileka Airport had the highest number of departures in February with about 9,583 while the least number of departures were registered in May handling only 3,587. (Table 7 and Figure 6 below)

Table 7: Departing visitors from Malawi by port of exit and month, 2009

Port of Exit	Total		January		February		March		April		May		June		July		August		September		October		November		December	
	No.	%	No.	%	No.	%	No.	%	No.	%	No.	%	No.	%	No.	%	No.	%	No.	%	No.	%	No.	%	No.	%
Total	755031	100	78101	100	70312	100	79844	100	72515	100	63598	100	98549	100	30749	100	65853	100	52375	100	23830	100	52426	100	66878	100
Chitipa/Chisenga	6816	0.9	666	0.9	205	0.3	359	0.4	410	0.6	820	1.3	974	1.0	512	1.7	769	1.2	666	1.3	461	1.9	410	0.8	564	0.8
Nkhata Bay/Likoma	13376	1.8	461	0.6	769	1.1	717	0.9	1025	1.4	1127	1.8	1332	1.4	3331	10.8	1179	1.8	769	1.5	615	2.6	1332	2.5	717	1.1
Kaporo/Songwe	90350	12.0	9225	11.8	10403	14.8	11479	14.4	6406	8.8	3229	5.1	2152	2.2	5381	17.5	2767	4.2	11479	21.9	2511	10.5	10403	19.8	14913	22.3
Mqocha Mzuzu	5176	0.7	461	0.6	256	0.4	205	0.3	717	1.0	359	0.6	564	0.6	256	0.8	564	0.9	461	0.9	307	1.3	359	0.7	666	1.0
Biriwiri/Mlangeni	13939	1.8	461	0.6	666	0.9	1896	2.4	1179	1.6	2562	4.0	410	0.4	717	2.3	410	0.6	2972	5.7	615	2.6	615	1.2	1435	2.1
Lilongwe (KIA)	174652	23.1	10916	14.0	10352	14.7	14042	17.6	16604	22.9	15118	23.8	21114	21.4	10455	34.0	21729	33.0	14093	26.9	9481	39.8	14401	27.5	16348	24.4
Dedza	10916	1.4	1640	2.1	1384	2.0	922	1.2	461	0.6	512	0.8	1384	1.4	769	2.5	307	0.5	717	1.4	1230	5.2	922	1.8	666	1.0
Mchinji/Chimaliro	82304	10.9	14708	18.8	12146	17.3	11992	15.0	13529	18.7	9788	15.4	16758	17.0	1076	3.5	359	0.5	359	0.7	461	1.9	359	0.7	769	1.1
Namizana	4971	0.7	256	0.3	410	0.6	307	0.4	307	0.4	461	0.7	615	0.6	666	2.2	359	0.5	410	0.8	359	1.5	461	0.9	359	0.5
Salima	3639	0.5	154	0.2	256	0.4	102	0.1	256	0.4	205	0.3	359	0.4	256	0.8	256	0.4	359	0.7	359	1.5	666	1.3	410	0.6
Muloza	41203	5.5	6303	8.1	4766	6.8	3792	4.7	3639	5.0	3382	5.3	4151	4.2	1230	4.0	3690	5.6	1947	3.7	871	3.7	3844	7.3	3587	5.4
Mwanza	141956	18.8	19628	25.1	13734	19.5	14862	18.6	13786	19.0	13939	21.9	28237	28.7	1025	3.3	13581	20.6	564	1.1	256	1.1	7585	14.5	14759	22.1
Nayuchi	14759	2.0	1332	1.7	974	1.4	1435	1.8	1435	2.0	1947	3.1	3997	4.1	154	0.5	1794	2.7	102	0.2	205	0.9	154	0.3	1230	1.8
Chiponde	52836	7.0	3741	4.8	2101	3.0	3997	5.0	5381	7.4	5842	9.2	9737	9.9	564	1.8	9122	13.9	5945	11.4	564	2.4	2357	4.5	3485	5.2
Chileka	76308	10.1	6662	8.5	9583	13.6	9481	11.9	6816	9.4	3587	5.6	4920	5.0	3690	12.0	6970	10.6	8866	16.9	3690	15.5	7482	14.3	4561	6.8
Nsanje/Marka	17322	2.3	1179	1.5	2050	2.9	3485	4.4	256	0.4	512	0.8	1537	1.6	359	1.2	1691	2.6	2306	4.4	1537	6.5	871	1.7	1537	2.3
Zomba	3331	0.4	154	0.2	205	0.3	461	0.6	307	0.4	205	0.3	307	0.3	102	0.3	307	0.5	307	0.6	307	1.3	154	0.3	512	0.8
Monkey Bay	1179	0.2	154	0.2	51	0.1	307	0.4	0	0.0	0	0.0	0	0.0	205	0.7	0	0.0	51	0.1	0	0.0	51	0.1	359	0.5

The month of June in 2009 with 98, 549 visitors was the peak month compared to March of 2008 with 103, 255 visitors. The lean month for 2009 was October registering 23, 830 departing visitors against August of 2008 which recorded 39, 000.

Figure 6: Peak and lean months for visitors 2007-2009

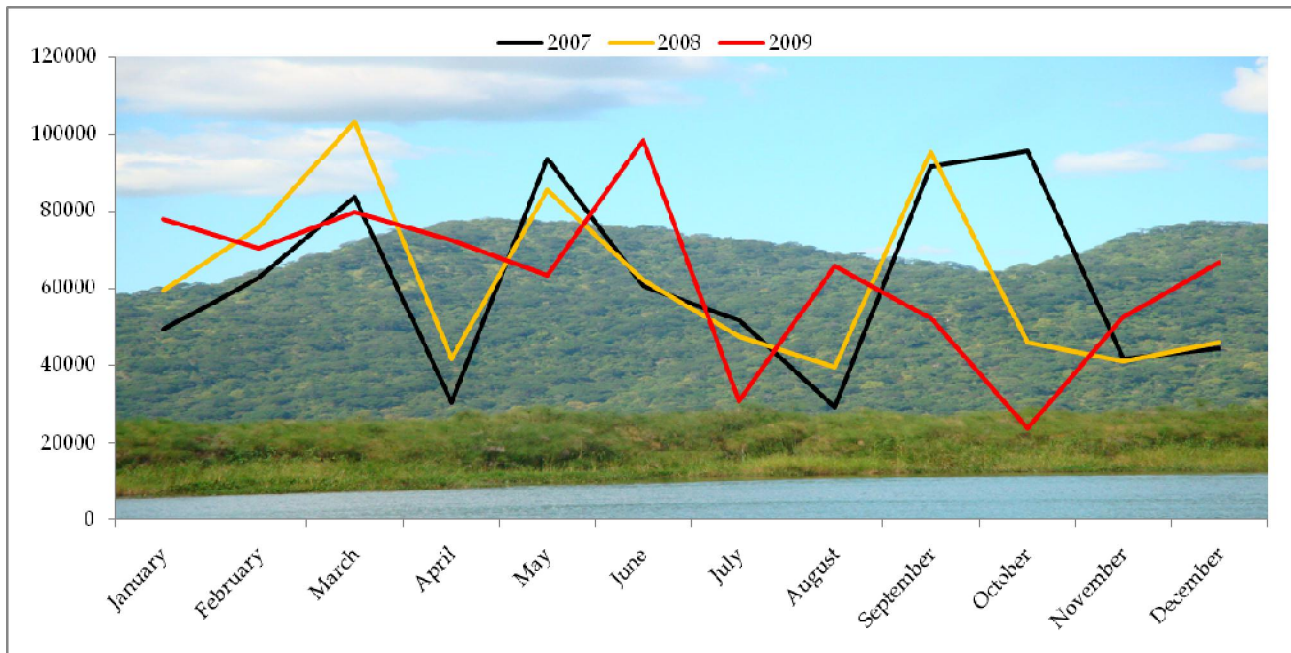


Table 8: Number and proportion of visitors departing Malawi by port of exit and reason for entry and sex, 2009

Port of Exit	Reason for visit																	
	Total		Holiday or vacation				Work or business				Visit friends or relatives				Conference/convention			
	Total		Male		Female		Male		Female		Male		Female		Male		Female	
	No.	%	No.	%	No.	%	No.	%	No.	%	No.	%	No.	%	No.	%	No.	%
Total	755031	100	161994	100	83534	100	325884	100	55245	100	80203	100	47455	100	359	100	359	100
Chitipa/Chisenga	6816	0.9	769	0.5	512	0.6	4254	1.3	256	0.5	974	1.2	51	0.1	0	0.0	0	0.0
Nkhata Bay/Likoma	13376	1.8	6252	3.9	1332	1.6	3741	1.1	922	1.7	871	1.1	256	0.5	0	0.0	0	0.0
Kaporo/Songwe	90350	12.0	17065	10.5	7533	9.0	35771	11.0	3075	5.6	18142	22.6	8712	18.4	51	14.3	0	0.0
Mqocha Mzuzu	5176	0.7	1742	1.1	205	0.2	1896	0.6	256	0.5	666	0.8	410	0.9	0	0.0	0	0.0
Birwiri/Mlangeni	13939	1.8	1640	1.0	205	0.2	7585	2.3	1025	1.9	2767	3.5	615	1.3	0	0.0	102	28.6
Lilongwe (KIA)	174652	23.1	28084	17.3	17117	20.5	89837	27.6	17527	31.7	15221	19.0	6560	13.8	205	57.1	102	28.6
Dedza	10916	1.4	5688	3.5	4049	4.8	307	0.1	154	0.3	256	0.3	461	1.0	0	0.0	0	0.0
Mchinji/Chimaliro	82304	10.9	11018	6.8	5842	7.0	41716	12.8	5074	9.2	10864	13.5	7790	16.4	0	0.0	0	0.0
Namizana	4971	0.7	769	0.5	410	0.5	2101	0.6	512	0.9	666	0.8	512	1.1	0	0.0	0	0.0
Salima	3639	0.5	410	0.3	359	0.4	1486	0.5	102	0.2	410	0.5	871	1.8	0	0.0	0	0.0
Muloza	41203	5.5	17527	10.8	8251	9.9	9327	2.9	1845	3.3	2716	3.4	1537	3.2	0	0.0	0	0.0
Mwanza	141956	18.8	23523	14.5	16758	20.1	62010	19.0	8866	16.0	18449	23.0	12351	26.0	0	0.0	0	0.0
Nayuchi	14759	2.0	6047	3.7	2716	3.3	4561	1.4	1230	2.2	205	0.3	0	0.0	0	0.0	0	0.0
Chiponde	52836	7.0	28391	17.5	10250	12.3	8968	2.8	2511	4.5	1179	1.5	1537	3.2	0	0.0	0	0.0
Chileka	76308	10.1	8353	5.2	7226	8.7	42638	13.1	9378	17.0	5022	6.3	3587	7.6	51	14.3	51	14.3
Nsanje/Marka	17322	2.3	2716	1.7	564	0.7	9532	2.9	1947	3.5	1230	1.5	1281	2.7	51	14.3	0	0.0
Zomba	3331	0.4	1127	0.7	154	0.2	154	0.0	564	1.0	359	0.4	871	1.8	0	0.0	102	28.6
Monkey Bay	1179	0.2	871	0.5	51	0.1	0	0.0	0	0.0	205	0.3	51	0.1	0	0.0	0	0.0

Table 9 and figure 7 shows the number and proportion of visitors departing Malawi by port of exit, reason of entry and sex in 2009. The year 2009 saw 568, 440 male visitors and 186, 593 females exiting the borders of Malawi, representing 75.3% and 24.7% respectively.

Figure 7: Proportion of visitors departing Malawi by sex and port of exit, 2009

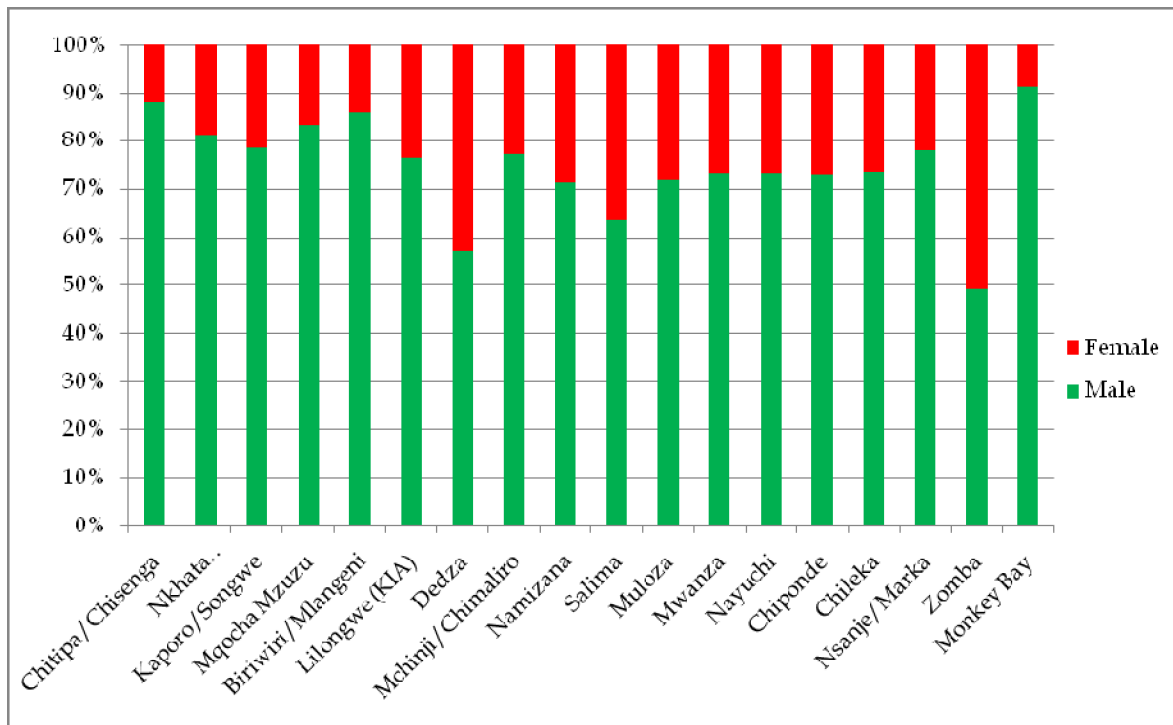


Table 9: Number and proportion of visitors departing Malawi by month and reason for entry, 2009

	Reason for visit									
	Total		Holiday or Vacation		Work or Business		Visit friends or relatives		Conference/ Convention	
	No	%	No	%	No	%	No	%	No	%
Total	755031	100	245527	100	381128	100	127658	100	717	100
January	78101	10.3	28596	11.6	36232	9.5	13222	10.4	51	7.1
February	70312	9.3	23471	9.6	33772	8.9	13068	10.2	0	0.0
March	79844	10.6	23010	9.4	41101	10.8	15733	12.3	0	0.0
April	72515	9.6	21473	8.7	35617	9.3	15272	12.0	154	21.4
May	63598	8.4	23318	9.5	31107	8.2	9122	7.1	51	7.1
June	98549	13.1	38794	15.8	43714	11.5	16041	12.6	0	0.0
July	30749	4.1	7380	3.0	16707	4.4	6508	5.1	154	21.4
August	65853	8.7	31159	12.7	27212	7.1	7431	5.8	51	7.1
September	52375	6.9	17014	6.9	26290	6.9	8968	7.0	102	14.3
October	23830	3.2	7072	2.9	12761	3.3	3895	3.1	102	14.3
November	52426	6.9	10352	4.2	34490	9.0	7533	5.9	51	7.1
December	66878	8.9	13888	5.7	42126	11.1	10864	8.5	0	0.0

Table 10: Number and proportion of visitors departing Malawi by reason for entry, mode of transport and total expenditure, 2009

	Total Expenditure (MK)	Mode of transport								Average expenditure whilst in Malawi MK
		Air		Road		Rail		Water		
		No.	%	No.	%	No.	%	No.	%	
Total	67,802,137,862	250,960	100	467,788	100	14,759	100	21,524	100	89,800
Holiday or Vacation	18,170,185,360	60,780	24.2	165,427	35.4	8,763	59.4	10,557	49.0	74,005
Work or Business	46,370,168,502	159,380	63.5	208,988	44.7	5,791	39.2	6,970	32.4	121,665
Visit friends or relatives	2,886,254,652	30,390	12.1	93,168	19.9	205	1.4	3,895	18.1	22,609
Conference/Convention	375,529,348	410	0.2	205	0.0	0	0.0	102	0.5	523,410

*Exchange Rate: USD\$1 = MK151

Euro 1 = MK

While departures by road decreased in 2009 as compared to the 2008 figures from 487, 539 to 467, 788, Road transportation continues to dominate the transport mode used by departing visitors as shown in Table 8 above. In 2009, the Road transport represented 62% of all traffic into Malawi. Those who used air transportation were 250, 960 constituting 33% while departures by rail and water were 14, 759 and 21, 524 respectively.

Visitors into Malawi contributed MK67 billion to the Malawi economy in 2009, spending on average MK89, 800.00 against MK60 billion and average expenditure of MK81, 566.00 in 2008. The big spenders were those who came for Conferences/ Conventions with an average expenditure of MK523, 410 followed by Work/Business segment at MK121, 665. Least spenders (MK22, 609) came to visit friends and relatives.

Table 9 below contains the number of visitors departing Malawi by country of permanent residence, reason for entry and length of stay. Most visitors departing Malawi in 2009 were from Mozambique at 188, 694, an increase from

139, 296 in 2008 followed by Zambia at 102 956. South Africa recorded 92, 861 a drop from 97, 574 in 2008. Zimbabwe which had been contributing highest number of departing visitors for the past three years, posted a drop of almost 50% from 143363 in 2008 to 77, 281 in 2009. Tanzania also posted a drop from 82, 285 in 2008 to 71, 798 in 2009.

United Kingdom and the United States of America have a relatively significant share of the market of 6.8% and 4.8% respectively. In relative terms, these markets show a stagnant growth between 2008 and 2009.

However, the average number of nights continues to show a declining trend from 9.2 nights in 2008 to 8 nights in 2009.

Table 11: Number of visitors departing Malawi by country of permanent residence, reason for entry and average number of nights spent, 2009

Country	Reason for visit										Average number of nights
	Total		Holiday or Vacation		Work or Business		Visit friends or relatives		Conference/ Convention		
	No.	%	No.	%	No.	%	No.	%	No.	%	
Total	755,031	100	245,527	100	381,128	100	127,658	100	717	100	8.0
Afghanistan	154	0.0	154	0.1	0	0.0	0	0.0	0	0.0	4.3
Algeria	102	0.0	0	0.0	102	0.0	0	0.0	0	0.0	1.0
Angola	154	0.0	102	0.0	51	0.0	0	0.0	0	0.0	5.3
Argentina	666	0.1	102	0.0	564	0.1	0	0.0	0	0.0	2.3
Australia	10,250	1.4	7226	2.9	2255	0.6	769	0.6	0	0.0	7.9
Austria	1,230	0.2	769	0.3	205	0.1	256	0.2	0	0.0	19.0
Bahrain	102	0.0	0	0.0	0	0.0	102	0.1	0	0.0	28.0
Bangladesh	307	0.0	256	0.1	51	0.0	0	0.0	0	0.0	4.7
Barbados	51	0.0	0	0.0	0	0.0	51	0.0	0	0.0	18.0
Belgium	3,126	0.4	1742	0.7	974	0.3	410	0.3	0	0.0	9.4
Bolivia	51	0.0	51	0.0	0	0.0	0	0.0	0	0.0	1.0
Botswana	2,972	0.4	871	0.4	1589	0.4	512	0.4	0	0.0	5.9
Brazil	871	0.1	256	0.1	564	0.1	51	0.0	0	0.0	3.5
Burundi	256	0.0	154	0.1	102	0.0	0	0.0	0	0.0	3.0
Ethiopia	1,127	0.1	512	0.2	615	0.2	0	0.0	0	0.0	6.1
Cameroon	154	0.0	51	0.0	102	0.0	0	0.0	0	0.0	12.3
Canada	7,380	1.0	4664	1.9	1742	0.5	974	0.8	0	0.0	13.0
Sri Lanka	205	0.0	102	0.0	102	0.0	0	0.0	0	0.0	2.8
Chile	102	0.0	51	0.0	51	0.0	0	0.0	0	0.0	8.0
China	4,715	0.6	1691	0.7	2460	0.6	564	0.4	0	0.0	13.7
Colombia	51	0.0	51	0.0	0	0.0	0	0.0	0	0.0	1.0
Congo	512	0.1	154	0.1	256	0.1	102	0.1	0	0.0	8.1
Congo-Zaire	102	0.0	51	0.0	51	0.0	0	0.0	0	0.0	3.0
Czech Republic	307	0.0	256	0.1	51	0.0	0	0.0	0	0.0	5.0
Benin	51	0.0	0	0.0	51	0.0	0	0.0	0	0.0	7.0
Denmark	2,357	0.3	1435	0.6	615	0.2	256	0.2	51	7.1	10.7
Ecuador	51	0.0	51	0.0	0	0.0	0	0.0	0	0.0	28.0
El Salvador	102	0.0	102	0.0	0	0.0	0	0.0	0	0.0	6.0
Eritrea	51	0.0	0	0.0	51	0.0	0	0.0	0	0.0	7.0
Finland	410	0.1	307	0.1	102	0.0	0	0.0	0	0.0	28.4
France	4,100	0.5	2409	1.0	1281	0.3	410	0.3	0	0.0	9.8
Djibouti	205	0.0	205	0.1	0	0.0	0	0.0	0	0.0	3.8
Gabon	102	0.0	102	0.0	0	0.0	0	0.0	0	0.0	6.5
Gambia	410	0.1	102	0.0	102	0.0	205	0.2	0	0.0	6.4
Germany	7,943	1.1	5586	2.3	1384	0.4	974	0.8	0	0.0	13.3

Ghana	1,127	0.1	410	0.2	410	0.1	307	0.2	0	0.0	7.4
Greece	256	0.0	154	0.1	102	0.0	0	0.0	0	0.0	4.6
Guinea	205	0.0	102	0.0	51	0.0	51	0.0	0	0.0	6.0
Hong Kong	102	0.0	51	0.0	0	0.0	51	0.0	0	0.0	2.0

Hungary	51	0.0	0	0.0	51	0.0	0	0.0	0	0.0	24.0
Iceland	256	0.0	102	0.0	102	0.0	51	0.0	0	0.0	12.2
India	4,612	0.6	1896	0.8	1845	0.5	871	0.7	0	0.0	16.4
Indonesia	256	0.0	102	0.0	154	0.0	0	0.0	0	0.0	23.4
Iran, Islamic Republic of	154	0.0	51	0.0	51	0.0	51	0.0	0	0.0	3.0
Saudi Arabia	102	0.0	51	0.0	51	0.0	0	0.0	0	0.0	3.5
Ireland	3,331	0.4	2050	0.8	974	0.3	307	0.2	0	0.0	10.8
Israel	717	0.1	615	0.3	0	0.0	102	0.1	0	0.0	11.8
Italy	5,279	0.7	3485	1.4	615	0.2	1179	0.9	0	0.0	10.8
Cote d'Ivoire	102	0.0	0	0.0	102	0.0	0	0.0	0	0.0	2.5
Japan	2,460	0.3	1384	0.6	717	0.2	359	0.3	0	0.0	8.7
Kenya	18,398	2.4	6252	2.5	10301	2.7	1742	1.4	102	14.3	6.4
Korea, Democratic Peoples Republic	307	0.0	102	0.0	205	0.1	0	0.0	0	0.0	4.3
Korea, Republic of	717	0.1	359	0.1	205	0.1	154	0.1	0	0.0	3.1
Lao, Peoples Democratic Republic	102	0.0	0	0.0	102	0.0	0	0.0	0	0.0	2.0
Lebanon	102	0.0	102	0.0	0	0.0	0	0.0	0	0.0	18.0
Lesotho	769	0.1	256	0.1	461	0.1	51	0.0	0	0.0	4.7
Liberia	307	0.0	51	0.0	154	0.0	102	0.1	0	0.0	22.8
Lithuania	102	0.0	102	0.0	0	0.0	0	0.0	0	0.0	5.0
Luxembourg	102	0.0	102	0.0	0	0.0	0	0.0	0	0.0	4.0
Madagascar	51	0.0	0	0.0	0	0.0	51	0.0	0	0.0	21.0
Malaysia	307	0.0	0	0.0	205	0.1	102	0.1	0	0.0	21.7
Mali	615	0.1	307	0.1	307	0.1	0	0.0	0	0.0	2.8
Mauritania	51	0.0	0	0.0	51	0.0	0	0.0	0	0.0	6.0
Mauritius	564	0.1	359	0.1	205	0.1	0	0.0	0	0.0	10.1
Mexico	205	0.0	205	0.1	0	0.0	0	0.0	0	0.0	1.0
Monaco	102	0.0	51	0.0	51	0.0	0	0.0	0	0.0	3.0
Mozambique	188,694	25.0	31261	12.7	124019	32.5	33055	25.9	359	50.0	3.3
Namibia	1,691	0.2	717	0.3	974	0.3	0	0.0	0	0.0	11.0
Nepal	102	0.0	51	0.0	0	0.0	51	0.0	0	0.0	19.0
Netherlands Holland	11,684	1.5	8148	3.3	2870	0.8	666	0.5	0	0.0	13.3
Netherlands Antilies	51	0.0	51	0.0	0	0.0	0	0.0	0	0.0	6.0
New Zealand	1,589	0.2	1025	0.4	307	0.1	256	0.2	0	0.0	4.8
Nicaragua	154	0.0	102	0.0	51	0.0	0	0.0	0	0.0	3.3
Nigeria	1,845	0.2	512	0.2	871	0.2	461	0.4	0	0.0	22.9
Norway	4,305	0.6	2767	1.1	1179	0.3	359	0.3	0	0.0	8.1
Northern Mariana Islands	51	0.0	0	0.0	51	0.0	0	0.0	0	0.0	1.0
Pakistan	512	0.1	205	0.1	154	0.0	154	0.1	0	0.0	25.2
Philippines	512	0.1	154	0.1	154	0.0	205	0.2	0	0.0	22.8
Poland	205	0.0	205	0.1	0	0.0	0	0.0	0	0.0	4.3

Portugal	820	0.1	564	0.2	154	0.0	102	0.1	0	0.0	3.4
Guinea Bissau	102	0.0	102	0.0	0	0.0	0	0.0	0	0.0	5.0
Romania	102	0.0	0	0.0	102	0.0	0	0.0	0	0.0	109.0
Russian Federation	154	0.0	0	0.0	154	0.0	0	0.0	0	0.0	1.7

Rwanda	1,486	0.2	461	0.2	769	0.2	256	0.2	0	0.0	8.3
Saudi Arabia	51	0.0	0	0.0	0	0.0	51	0.0	0	0.0	37.0
Senegal	102	0.0	0	0.0	102	0.0	0	0.0	0	0.0	4.0
Sierra Leone	51	0.0	0	0.0	51	0.0	0	0.0	0	0.0	9.0
Singapore	410	0.1	205	0.1	205	0.1	0	0.0	0	0.0	3.1
Viet Nam	51	0.0	0	0.0	51	0.0	0	0.0	0	0.0	5.0
Slovenia	256	0.0	205	0.1	51	0.0	0	0.0	0	0.0	2.4
South Africa	92,861	12.3	38231	15.6	41101	10.8	13529	10.6	0	0.0	8.0
Zimbabwe	77,281	10.2	18295	7.5	42433	11.1	16553	13.0	0	0.0	7.6
Spain	1,640	0.2	1076	0.4	359	0.1	205	0.2	0	0.0	8.6
Western Sahara	51	0.0	51	0.0	0	0.0	0	0.0	0	0.0	59.0
Sudan	410	0.1	154	0.1	256	0.1	0	0.0	0	0.0	9.6
Swaziland	1,845	0.2	871	0.4	922	0.2	51	0.0	0	0.0	4.2
Sweden	2,665	0.4	1537	0.6	974	0.3	154	0.1	0	0.0	11.0
Switzerland	2,409	0.3	1384	0.6	820	0.2	205	0.2	0	0.0	7.3
Thailand	256	0.0	51	0.0	205	0.1	0	0.0	0	0.0	6.4
United Arab Emirates	769	0.1	512	0.2	205	0.1	51	0.0	0	0.0	12.0
Tunisia	461	0.1	154	0.1	307	0.1	0	0.0	0	0.0	6.2
Turkey	359	0.0	154	0.1	205	0.1	0	0.0	0	0.0	4.6
Turks and Caicos Islands	51	0.0	0	0.0	51	0.0	0	0.0	0	0.0	2.0
Uganda	3,485	0.5	1384	0.6	1589	0.4	512	0.4	0	0.0	7.2
Egypt	461	0.1	102	0.0	307	0.1	51	0.0	0	0.0	6.3
United Kingdom	51,145	6.8	35463	14.4	10096	2.6	5535	4.3	51	7.1	11.6
United Republic of Tanzania	71,798	9.5	8148	3.3	52324	13.7	11274	8.8	51	7.1	8.4
United States of America	36,386	4.8	22293	9.1	9020	2.4	5022	3.9	51	7.1	10.5
Burkina Faso	205	0.0	0	0.0	205	0.1	0	0.0	0	0.0	2.0
Zambia	102,956	13.6	20653	8.4	54527	14.3	27725	21.7	51	7.1	3.8

Figure 8 and Table 12 show the distribution of departing visitors from Malawi by age groups. Visitors in the age groups 25-44 and 45-59 continue to dominate during the year both contributing 34 percent each to the 2009 figures.

Out of the 51, 145 departing visitors from United Kingdom, 5 percent were from the age group of less than 15, 21.6 percent from 15-24 age group, 28.6 percent between the ages of 25-44, 21.7 percent from 45-59 age group, and about 23.1 percent from ages of 60 and above (Table 12).

Figure 8: Distribution of departing visitors by age group, 2009

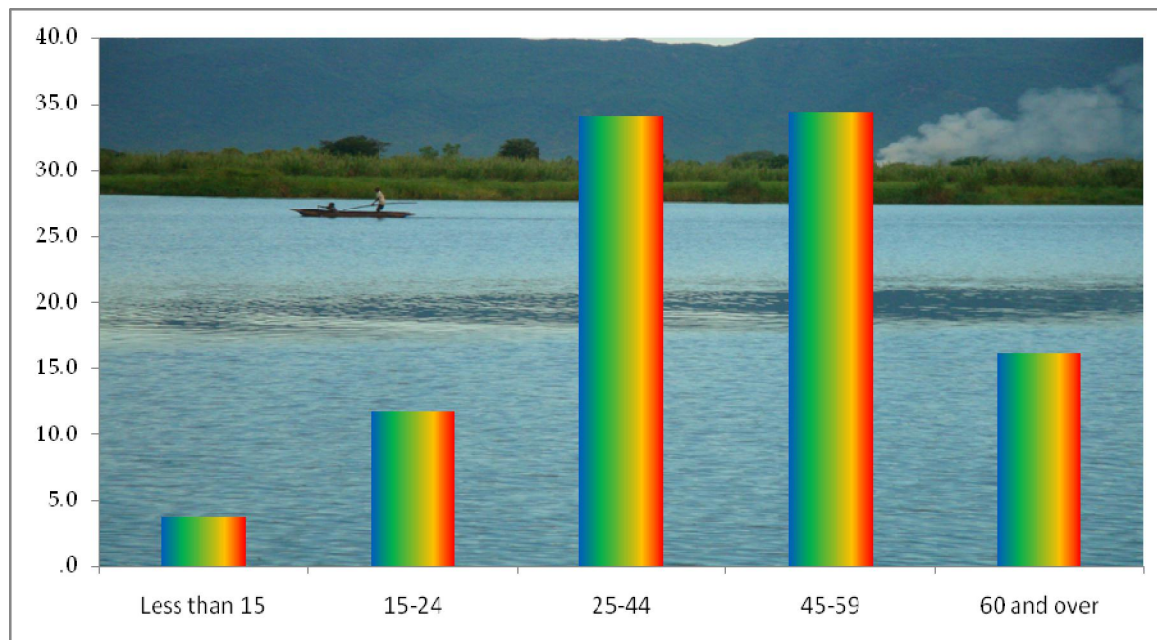


Table 12: Visitors departing Malawi by country of permanent residence and age group, 2009

Country	Age category											
	Total		Less than 15		15-24		25-44		45-59		60 and over	
	No.	%	No.	%	No.	%	No.	%	No.	%	No.	%
Total	755,031	100	28,442	100	88,402	100	257,365	100	259,108	100	121,713	100
Afghanistan	154	0.0	0	0.0	0	0.0	51	0.0	51	0.0	51	0.0
Algeria	102	0.0	0	0.0	0	0.0	0	0.0	102	0.0	0	0.0
Angola	154	0.0	0	0.0	0	0.0	0	0.0	102	0.0	51	0.0
Argentina	666	0.1	51	0.2	51	0.1	154	0.1	51	0.0	359	0.3
Australia	10,250	1.4	256	0.9	2050	2.3	4766	1.9	1742	0.7	1435	1.2
Austria	1,230	0.2	0	0.0	102	0.1	307	0.1	410	0.2	410	0.3
Bahrain	102	0.0	0	0.0	0	0.0	102	0.0	0	0.0	0	0.0
Bangladesh	307	0.0	0	0.0	0	0.0	102	0.0	51	0.0	154	0.1
Barbados	51	0.0	0	0.0	0	0.0	0	0.0	0	0.0	51	0.0
Belgium	3,126	0.4	51	0.2	512	0.6	1025	0.4	615	0.2	922	0.8
Benin	51	0.0	0	0.0	0	0.0	0	0.0	51	0.0	0	0.0
Bolivia	51	0.0	0	0.0	0	0.0	0	0.0	0	0.0	51	0.0
Botswana	2,972	0.4	102	0.4	205	0.2	410	0.2	1537	0.6	717	0.6
Brazil	871	0.1	0	0.0	102	0.1	205	0.1	307	0.1	256	0.2
Burkina Faso	205	0.0	0	0.0	102	0.1	102	0.0	0	0.0	0	0.0
Burundi	256	0.0	0	0.0	0	0.0	0	0.0	102	0.0	154	0.1
Cameroon	154	0.0	0	0.0	0	0.0	102	0.0	51	0.0	0	0.0
Canada	7,380	1.0	461	1.6	1742	2.0	1127	0.4	1435	0.6	2614	2.1
Chile	102	0.0	0	0.0	0	0.0	102	0.0	0	0.0	0	0.0
China	4,715	0.6	0	0.0	717	0.8	1794	0.7	1589	0.6	615	0.5
Colombia	51	0.0	0	0.0	0	0.0	0	0.0	51	0.0	0	0.0

Congo	512	0.1	51	0.2	0	0.0	154	0.1	256	0.1	51	0.0
Congo-Zaire	102	0.0	0	0.0	0	0.0	0	0.0	51	0.0	51	0.0
Cote d'Ivoire	102	0.0	0	0.0	0	0.0	51	0.0	51	0.0	0	0.0
Czech Republic	307	0.0	0	0.0	0	0.0	154	0.1	154	0.1	0	0.0
Denmark	2,357	0.3	102	0.4	512	0.6	410	0.2	666	0.3	666	0.5
Djibouti	205	0.0	0	0.0	0	0.0	0	0.0	51	0.0	154	0.1
Ecuador	51	0.0	0	0.0	0	0.0	51	0.0	0	0.0	0	0.0
Egypt	461	0.1	0	0.0	51	0.1	51	0.0	256	0.1	102	0.1
El Salvador	102	0.0	0	0.0	0	0.0	0	0.0	0	0.0	102	0.1
Eritrea	51	0.0	0	0.0	0	0.0	0	0.0	51	0.0	0	0.0
Ethiopia	1,127	0.1	51	0.2	51	0.1	461	0.2	205	0.1	359	0.3
Finland	410	0.1	0	0.0	154	0.2	154	0.1	102	0.0	0	0.0
France	4,100	0.5	205	0.7	205	0.2	1230	0.5	1332	0.5	1127	0.9
Gabon	102	0.0	0	0.0	0	0.0	0	0.0	51	0.0	51	0.0
Gambia	410	0.1	51	0.2	0	0.0	51	0.0	102	0.0	205	0.2
Germany	7,943	1.1	154	0.5	1230	1.4	1947	0.8	2306	0.9	2306	1.9
Ghana	1,127	0.1	0	0.0	102	0.1	359	0.1	512	0.2	154	0.1
Greece	256	0.0	0	0.0	0	0.0	51	0.0	205	0.1	0	0.0
Guinea	205	0.0	51	0.2	0	0.0	154	0.1	0	0.0	0	0.0
Guinea Bissau	102	0.0	0	0.0	102	0.1	0	0.0	0	0.0	0	0.0
Hong Kong	102	0.0	0	0.0	0	0.0	0	0.0	102	0.0	0	0.0

Hungary	51	0.0	0	0.0	0	0.0	51	0.0	0	0.0	0	0.0
Iceland	256	0.0	0	0.0	102	0.1	154	0.1	0	0.0	0	0.0
India	4,612	0.6	154	0.5	461	0.5	1537	0.6	1691	0.7	769	0.6
Indonesia	256	0.0	0	0.0	51	0.1	0	0.0	51	0.0	154	0.1
Iran, Islamic Republic of	154	0.0	0	0.0	0	0.0	51	0.0	51	0.0	51	0.0
Ireland	3,331	0.4	0	0.0	1076	1.2	564	0.2	717	0.3	974	0.8
Israel	717	0.1	0	0.0	256	0.3	359	0.1	51	0.0	51	0.0
Italy	5,279	0.7	102	0.4	307	0.3	1230	0.5	1896	0.7	1742	1.4
Japan	2,460	0.3	0	0.0	154	0.2	974	0.4	820	0.3	512	0.4
Kenya	18,398	2.4	359	1.3	2614	3.0	6560	2.5	6765	2.6	2101	1.7
Korea, Democratic Peoples Republic	307	0.0	0	0.0	0	0.0	102	0.0	154	0.1	51	0.0
Korea, Republic of	717	0.1	102	0.4	102	0.1	256	0.1	154	0.1	102	0.1
Lao, Peoples Democratic Republic	102	0.0	0	0.0	0	0.0	102	0.0	0	0.0	0	0.0
Lebanon	102	0.0	0	0.0	0	0.0	51	0.0	51	0.0	0	0.0
Lesotho	769	0.1	0	0.0	0	0.0	256	0.1	461	0.2	51	0.0
Liberia	307	0.0	0	0.0	102	0.1	102	0.0	51	0.0	51	0.0
Lithuania	102	0.0	0	0.0	0	0.0	102	0.0	0	0.0	0	0.0
Luxembourg	102	0.0	0	0.0	0	0.0	0	0.0	0	0.0	102	0.1
Madagascar	51	0.0	0	0.0	0	0.0	0	0.0	51	0.0	0	0.0
Malaysia	307	0.0	0	0.0	0	0.0	51	0.0	205	0.1	51	0.0
Mali	615	0.1	51	0.2	102	0.1	205	0.1	205	0.1	51	0.0
Mauritania	51	0.0	0	0.0	0	0.0	0	0.0	51	0.0	0	0.0
Mauritius	564	0.1	51	0.2	0	0.0	256	0.1	154	0.1	102	0.1
Mexico	205	0.0	51	0.2	51	0.1	0	0.0	0	0.0	102	0.1
Monaco	102	0.0	0	0.0	0	0.0	0	0.0	102	0.0	0	0.0
Mozambique	188,694	25.0	4971	17.5	17629	19.9	73233	28.5	72515	28.0	20345	16.7

Namibia	1,691	0.2	51	0.2	51	0.1	615	0.2	666	0.3	307	0.3
Nepal	102	0.0	0	0.0	0	0.0	51	0.0	51	0.0	0	0.0
Netherlands Antilies	51	0.0	0	0.0	0	0.0	0	0.0	51	0.0	0	0.0
Netherlands Holland	11,684	1.5	564	2.0	2870	3.2	2357	0.9	2357	0.9	3536	2.9
New Zealand	1,589	0.2	51	0.2	359	0.4	564	0.2	307	0.1	307	0.3
Nicaragua	154	0.0	0	0.0	0	0.0	0	0.0	0	0.0	154	0.1
Nigeria	1,845	0.2	0	0.0	256	0.3	769	0.3	769	0.3	51	0.0
Northern Mariana Islands	51	0.0	0	0.0	0	0.0	0	0.0	51	0.0	0	0.0
Norway	4,305	0.6	307	1.1	666	0.8	1025	0.4	1589	0.6	717	0.6
Pakistan	512	0.1	0	0.0	51	0.1	154	0.1	256	0.1	51	0.0
Philippines	512	0.1	51	0.2	0	0.0	154	0.1	256	0.1	51	0.0
Poland	205	0.0	0	0.0	0	0.0	102	0.0	102	0.0	0	0.0
Portugal	820	0.1	0	0.0	0	0.0	359	0.1	307	0.1	154	0.1
Romania	102	0.0	0	0.0	0	0.0	102	0.0	0	0.0	0	0.0
Russian Federation	154	0.0	0	0.0	102	0.1	51	0.0	0	0.0	0	0.0

Rwanda	1,486	0.2	0	0.0	205	0.2	512	0.2	615	0.2	154	0.1
Saudi Arabia	51	0.0	0	0.0	0	0.0	51	0.0	0	0.0	0	0.0
Saudi Arabia	102	0.0	0	0.0	51	0.1	51	0.0	0	0.0	0	0.0
Senegal	102	0.0	0	0.0	0	0.0	0	0.0	51	0.0	51	0.0
Sierra Leone	51	0.0	0	0.0	0	0.0	0	0.0	0	0.0	51	0.0
Singapore	410	0.1	0	0.0	0	0.0	154	0.1	205	0.1	51	0.0
Slovenia	256	0.0	0	0.0	0	0.0	154	0.1	102	0.0	0	0.0
South Africa	92,861	12.3	6201	21.8	7687	8.7	23625	9.2	33721	13.0	21626	17.8
Spain	1,640	0.2	154	0.5	51	0.1	666	0.3	564	0.2	205	0.2
Sri Lanka	205	0.0	0	0.0	0	0.0	51	0.0	51	0.0	102	0.1
Sudan	410	0.1	0	0.0	102	0.1	205	0.1	102	0.0	0	0.0
Swaziland	1,845	0.2	154	0.5	205	0.2	410	0.2	769	0.3	307	0.3
Sweden	2,665	0.4	0	0.0	615	0.7	1025	0.4	666	0.3	359	0.3
Switzerland	2,409	0.3	0	0.0	102	0.1	512	0.2	820	0.3	974	0.8
Thailand	256	0.0	0	0.0	0	0.0	154	0.1	102	0.0	0	0.0
Tunisia	461	0.1	0	0.0	0	0.0	256	0.1	154	0.1	51	0.0
Turkey	359	0.0	0	0.0	0	0.0	51	0.0	205	0.1	102	0.1
Turks and Caicos Islands	51	0.0	0	0.0	0	0.0	0	0.0	51	0.0	0	0.0
Uganda	3,485	0.5	205	0.7	256	0.3	1127	0.4	1435	0.6	461	0.4
United Arab Emirates	769	0.1	102	0.4	102	0.1	154	0.1	256	0.1	154	0.1
United Kingdom	51,145	6.8	2562	9.0	11069	12.5	14606	5.7	11121	4.3	11787	9.7
United Republic of Tanzania	71,798	9.5	1076	3.8	8097	9.2	28904	11.2	28186	10.9	5535	4.5
United States of America	36,386	4.8	1589	5.6	7072	8.0	9993	3.9	7841	3.0	9891	8.1
Viet Nam	51	0.0	0	0.0	0	0.0	0	0.0	0	0.0	51	0.0
Western Sahara	51	0.0	0	0.0	0	0.0	0	0.0	0	0.0	51	0.0
Zambia	102,956	13.6	4356	15.3	10813	12.2	41716	16.2	34387	13.3	11684	9.6
Zimbabwe	77,281	10.2	3587	12.6	6611	7.5	24855	9.7	30031	11.6	12197	10.0

Table 13: Visitors departing Malawi by country of permanent residence, period of stay and proportion of prepaid visitors, 2009

Country	Period of stay												Proportion of persons on prepaid visit
	Total		1-7		8-14		15-45		46-100		101 and over		
	No.	%	No.	%	No.	%	No.	%	No.	%	No.	%	
Total	755,031	100	600,929	100	76,461	100	62,573	100	12,453	100	2,614	100	19.8
Afghanistan	154	0.0	102	0.0	51	0.1	0	0.0	0	0.0	0	0.0	33.3
Algeria	102	0.0	102	0.0	0	0.0	0	0.0	0	0.0	0	0.0	0.0
Angola	154	0.0	102	0.0	51	0.1	0	0.0	0	0.0	0	0.0	0.0
Argentina	666	0.1	615	0.1	51	0.1	0	0.0	0	0.0	0	0.0	0.0
Australia	10,250	1.4	7,790	1.3	922	1.2	1,435	2.3	102	0.8	0	0.0	40.5
Austria	1,230	0.2	666	0.1	154	0.2	256	0.4	102	0.8	51	2.0	37.5
Bahrain	102	0.0	0	0.0	0	0.0	102	0.2	0	0.0	0	0.0	0.0
Bangladesh	307	0.0	307	0.1	0	0.0	0	0.0	0	0.0	0	0.0	33.3
Barbados	51	0.0	0	0.0	0	0.0	51	0.1	0	0.0	0	0.0	100.0
Belgium	3,126	0.4	2,050	0.3	564	0.7	359	0.6	154	1.2	0	0.0	41.0
Bolivia	51	0.0	51	0.0	0	0.0	0	0.0	0	0.0	0	0.0	0.0
Botswana	2,972	0.4	2,255	0.4	461	0.6	256	0.4	0	0.0	0	0.0	22.4
Brazil	871	0.1	820	0.1	0	0.0	51	0.1	0	0.0	0	0.0	41.2
Burundi	256	0.0	256	0.0	0	0.0	0	0.0	0	0.0	0	0.0	60.0
Ethiopia	1,127	0.1	717	0.1	307	0.4	102	0.2	0	0.0	0	0.0	54.5
Cameroon	154	0.0	51	0.0	0	0.0	102	0.2	0	0.0	0	0.0	0.0
Canada	7,380	1.0	3,844	0.6	1,230	1.6	2,050	3.3	256	2.1	0	0.0	16.7
Sri Lanka	205	0.0	205	0.0	0	0.0	0	0.0	0	0.0	0	0.0	75.0
Chile	102	0.0	51	0.0	51	0.1	0	0.0	0	0.0	0	0.0	0.0
China	4,715	0.6	2,665	0.4	564	0.7	1,281	2.0	205	1.6	0	0.0	34.8
Colombia	51	0.0	51	0.0	0	0.0	0	0.0	0	0.0	0	0.0	0.0
Congo	512	0.1	359	0.1	102	0.1	51	0.1	0	0.0	0	0.0	50.0
Congo-Zaire	102	0.0	102	0.0	0	0.0	0	0.0	0	0.0	0	0.0	50.0
Czech Republic	307	0.0	307	0.1	0	0.0	0	0.0	0	0.0	0	0.0	33.3
Benin	51	0.0	51	0.0	0	0.0	0	0.0	0	0.0	0	0.0	0.0
Denmark	2,357	0.3	1,384	0.2	359	0.5	512	0.8	102	0.8	0	0.0	26.1
Ecuador	51	0.0	0	0.0	0	0.0	51	0.1	0	0.0	0	0.0	0.0
El Salvador	102	0.0	102	0.0	0	0.0	0	0.0	0	0.0	0	0.0	100.0
Eritrea	51	0.0	51	0.0	0	0.0	0	0.0	0	0.0	0	0.0	0.0
Finland	410	0.1	205	0.0	51	0.1	51	0.1	102	0.8	0	0.0	62.5
France	4,100	0.5	2,767	0.5	769	1.0	512	0.8	0	0.0	51	2.0	47.5
Djibouti	205	0.0	154	0.0	51	0.1	0	0.0	0	0.0	0	0.0	0.0
Gabon	102	0.0	51	0.0	51	0.1	0	0.0	0	0.0	0	0.0	50.0
Gambia	410	0.1	256	0.0	154	0.2	0	0.0	0	0.0	0	0.0	25.0
Germany	7,943	1.1	4,305	0.7	1,845	2.4	1,230	2.0	461	3.7	102	3.9	37.4
Ghana	1,127	0.1	820	0.1	154	0.2	154	0.2	0	0.0	0	0.0	36.4
Greece	256	0.0	205	0.0	51	0.1	0	0.0	0	0.0	0	0.0	20.0
Guinea	205	0.0	102	0.0	102	0.1	0	0.0	0	0.0	0	0.0	50.0
Hong Kong	102	0.0	102	0.0	0	0.0	0	0.0	0	0.0	0	0.0	0.0

Hungary	51	0.0	0	0.0	0	0.0	51	0.1	0	0.0	0	0.0	0.0
Iceland	256	0.0	102	0.0	102	0.1	51	0.1	0	0.0	0	0.0	0.0
India	4,612	0.6	3,177	0.5	256	0.3	564	0.9	512	4.1	102	3.9	17.8
Indonesia	256	0.0	154	0.0	0	0.0	51	0.1	51	0.4	0	0.0	20.0
Iran, Islamic Republic of	154	0.0	154	0.0	0	0.0	0	0.0	0	0.0	0	0.0	0.0
Saudi Arabia	102	0.0	102	0.0	0	0.0	0	0.0	0	0.0	0	0.0	50.0
Ireland	3,331	0.4	1,486	0.2	974	1.3	769	1.2	102	0.8	0	0.0	30.8
Israel	717	0.1	359	0.1	102	0.1	256	0.4	0	0.0	0	0.0	71.4
Italy	5,279	0.7	3,280	0.5	769	1.0	1,025	1.6	205	1.6	0	0.0	34.0
Cote d'Ivoire	102	0.0	102	0.0	0	0.0	0	0.0	0	0.0	0	0.0	100.0
Japan	2,460	0.3	1,742	0.3	461	0.6	205	0.3	0	0.0	51	2.0	43.8
Kenya	18,398	2.4	14,503	2.4	2,460	3.2	1,179	1.9	256	2.1	0	0.0	18.7
Korea, Democratic Peoples Republic	307	0.0	256	0.0	51	0.1	0	0.0	0	0.0	0	0.0	50.0
Korea, Republic of	717	0.1	666	0.1	51	0.1	0	0.0	0	0.0	0	0.0	28.6
Lao, Peoples Democratic Republic	102	0.0	102	0.0	0	0.0	0	0.0	0	0.0	0	0.0	100.0
Lebanon	102	0.0	51	0.0	0	0.0	51	0.1	0	0.0	0	0.0	50.0
Lesotho	769	0.1	717	0.1	0	0.0	51	0.1	0	0.0	0	0.0	33.3
Liberia	307	0.0	154	0.0	51	0.1	0	0.0	102	0.8	0	0.0	0.0
Lithuania	102	0.0	102	0.0	0	0.0	0	0.0	0	0.0	0	0.0	100.0
Luxembourg	102	0.0	102	0.0	0	0.0	0	0.0	0	0.0	0	0.0	0.0
Madagascar	51	0.0	0	0.0	0	0.0	51	0.1	0	0.0	0	0.0	0.0
Malaysia	307	0.0	102	0.0	154	0.2	0	0.0	51	0.4	0	0.0	16.7
Mali	615	0.1	564	0.1	51	0.1	0	0.0	0	0.0	0	0.0	41.7
Mauritania	51	0.0	51	0.0	0	0.0	0	0.0	0	0.0	0	0.0	0.0
Mauritius	564	0.1	512	0.1	0	0.0	0	0.0	51	0.4	0	0.0	27.3
Mexico	205	0.0	205	0.0	0	0.0	0	0.0	0	0.0	0	0.0	0.0
Monaco	102	0.0	102	0.0	0	0.0	0	0.0	0	0.0	0	0.0	50.0
Mozambique	188,694	25.0	178,854	29.8	6,047	7.9	3,126	5.0	461	3.7	205	7.8	11.4
Namibia	1,691	0.2	1,179	0.2	256	0.3	154	0.2	102	0.8	0	0.0	18.2
Nepal	102	0.0	51	0.0	0	0.0	51	0.1	0	0.0	0	0.0	50.0
Netherlands Holland	11,684	1.5	7,431	1.2	1,486	1.9	1,999	3.2	615	4.9	154	5.9	36.0
Netherlands Antilies	51	0.0	51	0.0	0	0.0	0	0.0	0	0.0	0	0.0	100.0
New Zealand	1,589	0.2	1,486	0.2	51	0.1	51	0.1	0	0.0	0	0.0	48.4
Nicaragua	154	0.0	154	0.0	0	0.0	0	0.0	0	0.0	0	0.0	0.0
Nigeria	1,845	0.2	922	0.2	205	0.3	461	0.7	205	1.6	51	2.0	22.2
Norway	4,305	0.6	2,819	0.5	769	1.0	717	1.1	0	0.0	0	0.0	23.8
Northern Mariana Islands	51	0.0	51	0.0	0	0.0	0	0.0	0	0.0	0	0.0	0.0
Pakistan	512	0.1	205	0.0	154	0.2	51	0.1	102	0.8	0	0.0	20.0
Philippines	512	0.1	410	0.1	0	0.0	51	0.1	0	0.0	51	2.0	40.0
Poland	205	0.0	205	0.0	0	0.0	0	0.0	0	0.0	0	0.0	25.0
Portugal	820	0.1	717	0.1	102	0.1	0	0.0	0	0.0	0	0.0	50.0
Guinea Bissau	102	0.0	102	0.0	0	0.0	0	0.0	0	0.0	0	0.0	0.0
Romania	102	0.0	0	0.0	0	0.0	0	0.0	51	0.4	51	2.0	100.0
Russian Federation	154	0.0	154	0.0	0	0.0	0	0.0	0	0.0	0	0.0	66.7

Rwanda	1,486	0.2	1,076	0.2	154	0.2	256	0.4	0	0.0	0	0.0	34.5
Saudi Arabia	51	0.0	0	0.0	0	0.0	51	0.1	0	0.0	0	0.0	0.0
Senegal	102	0.0	102	0.0	0	0.0	0	0.0	0	0.0	0	0.0	0.0
Sierra Leone	51	0.0	0	0.0	51	0.1	0	0.0	0	0.0	0	0.0	100.0
Singapore	410	0.1	410	0.1	0	0.0	0	0.0	0	0.0	0	0.0	37.5
Viet Nam	51	0.0	51	0.0	0	0.0	0	0.0	0	0.0	0	0.0	100.0
Slovenia	256	0.0	256	0.0	0	0.0	0	0.0	0	0.0	0	0.0	80.0
South Africa	92,861	12.3	69,748	11.6	11,326	14.8	9,532	15.2	1,947	15.6	307	11.8	23.8
Zimbabwe	77,281	10.2	61,548	10.2	9,071	11.9	4,971	7.9	1,127	9.1	564	21.6	21.9
Spain	1,640	0.2	1,025	0.2	256	0.3	359	0.6	0	0.0	0	0.0	37.5
Western Sahara	51	0.0	0	0.0	0	0.0	0	0.0	51	0.4	0	0.0	0.0
Sudan	410	0.1	154	0.0	154	0.2	102	0.2	0	0.0	0	0.0	62.5
Swaziland	1,845	0.2	1,589	0.3	102	0.1	154	0.2	0	0.0	0	0.0	36.1
Sweden	2,665	0.4	1,896	0.3	307	0.4	359	0.6	51	0.4	51	2.0	26.9
Switzerland	2,409	0.3	1,691	0.3	461	0.6	256	0.4	0	0.0	0	0.0	27.7
Thailand	256	0.0	205	0.0	0	0.0	51	0.1	0	0.0	0	0.0	40.0
United Arab Emirates	769	0.1	461	0.1	51	0.1	256	0.4	0	0.0	0	0.0	26.7
Tunisia	461	0.1	359	0.1	51	0.1	51	0.1	0	0.0	0	0.0	22.2
Turkey	359	0.0	307	0.1	51	0.1	0	0.0	0	0.0	0	0.0	0.0
Turks and Caicos Islands	51	0.0	51	0.0	0	0.0	0	0.0	0	0.0	0	0.0	0.0
Uganda	3,485	0.5	2,819	0.5	359	0.5	256	0.4	0	0.0	51	2.0	14.7
Egypt	461	0.1	307	0.1	102	0.1	51	0.1	0	0.0	0	0.0	55.6
United Kingdom	51,145	6.8	30,851	5.1	8,968	11.7	8,815	14.1	2,204	17.7	307	11.8	29.3
United Republic of Tanzania	71,798	9.5	53,298	8.9	8,251	10.8	8,661	13.8	1,486	11.9	102	3.9	12.5
United States of America	36,386	4.8	20,089	3.3	9,378	12.3	5,996	9.6	717	5.8	205	7.8	17.9
Burkina Faso	205	0.0	205	0.0	0	0.0	0	0.0	0	0.0	0	0.0	100.0
Zambia	102,956	13.6	94,757	15.8	4,715	6.2	2,819	4.5	512	4.1	154	5.9	16.8

Table 14: Visitors departing Malawi by country of permanent residence and month, 2009

Country	Month of exit																											
	Total		January		February		March		April		May		June		July		August		September		October		November		December			
	No.	%	No.	%	No.	%	No.	%	No.	%	No.	%	No.	%	No.	%	No.	%	No.	%	No.	%	No.	%	No.	%		
Total	755,031	100	78,101	100	70,312	100	79,844	100	72,515	100	63,598	100	98,549	100	30,749	100	65,853	100	52,375	100	23,830	100	52,426	100	66,878	100		
Afghanistan	154	0.0	0	0.0	51	0.1	0	0.0	0	0.0	0	0.0	51	0.1	0	0.0	51	0.1	0	0.0	0	0.0	0	0.0	0	0.0	0	0.0
Algeria	102	0.0	0	0.0	0	0.0	0	0.0	0	0.0	0	0.0	0	0.0	0	0.0	0	0.0	0	0.0	51	0.2	0	0.0	51	0.1		
Angola	154	0.0	51	0.1	51	0.1	0	0.0	0	0.0	0	0.0	0	0.0	0	0.0	0	0.0	0	0.0	51	0.2	0	0.0	0	0.0		
Argentina	666	0.1	154	0.2	0	0.0	102	0.1	154	0.2	51	0.1	0	0.0	51	0.2	0	0.0	0	0.0	51	0.2	51	0.1	51	0.1		
Australia	10,250	1.4	1127	1.4	1025	1.5	1230	1.5	615	0.8	1025	1.6	871	0.9	820	2.7	1435	2.2	564	1.1	307	1.3	410	0.8	820	1.2		
Austria	1,230	0.2	154	0.2	154	0.2	205	0.3	154	0.2	154	0.2	154	0.2	0	0.0	102	0.2	51	0.1	51	0.2	0	0.0	51	0.1		
Bahrain	102	0.0	102	0.1	0	0.0	0	0.0	0	0.0	0	0.0	0	0.0	0	0.0	0	0.0	0	0.0	0	0.0	0	0.0	0	0.0	0	0.0
Bangladesh	307	0.0	0	0.0	102	0.1	0	0.0	0	0.0	51	0.1	0	0.0	51	0.2	51	0.1	0	0.0	0	0.0	51	0.1	0	0.0		
Barbados	51	0.0	0	0.0	0	0.0	0	0.0	0	0.0	0	0.0	51	0.1	0	0.0	0	0.0	0	0.0	0	0.0	0	0.0	0	0.0	0	0.0
Belgium	3,126	0.4	359	0.5	666	0.9	102	0.1	154	0.2	205	0.3	512	0.5	0	0.0	461	0.7	154	0.3	51	0.2	307	0.6	154	0.2		
Bolivia	51	0.0	0	0.0	0	0.0	0	0.0	0	0.0	0	0.0	0	0.0	0	0.0	51	0.1	0	0.0	0	0.0	0	0.0	0	0.0	0	0.0
Botswana	2,972	0.4	307	0.4	359	0.5	205	0.3	0	0.0	205	0.3	205	0.2	359	1.2	256	0.4	154	0.3	256	1.1	307	0.6	359	0.5		
Brazil	871	0.1	102	0.1	102	0.1	51	0.1	102	0.1	102	0.2	154	0.2	51	0.2	102	0.2	0	0.0	51	0.2	0	0.0	51	0.1		
Burundi	256	0.0	0	0.0	0	0.0	0	0.0	0	0.0	0	0.0	51	0.1	0	0.0	0	0.0	51	0.1	102	0.4	51	0.1	0	0.0		
Ethiopia	1,127	0.1	0	0.0	154	0.2	102	0.1	0	0.0	51	0.1	51	0.1	256	0.8	154	0.2	154	0.3	0	0.0	205	0.4	0	0.0		
Cameroon	154	0.0	51	0.1	0	0.0	0	0.0	0	0.0	0	0.0	0	0.0	0	0.0	0	0.0	0	0.0	0	0.0	102	0.2	0	0.0		
Canada	7,380	1.0	1127	1.4	871	1.2	615	0.8	410	0.6	717	1.1	1384	1.4	0	0.0	1025	1.6	154	0.3	102	0.4	461	0.9	512	0.8		
Sri Lanka	205	0.0	0	0.0	102	0.1	51	0.1	0	0.0	0	0.0	0	0.0	51	0.2	0	0.0	0	0.0	0	0.0	0	0.0	0	0.0		
Chile	102	0.0	0	0.0	0	0.0	0	0.0	51	0.1	51	0.1	0	0.0	0	0.0	0	0.0	0	0.0	0	0.0	0	0.0	0	0.0		
China	4,715	0.6	666	0.9	307	0.4	205	0.3	205	0.3	307	0.5	820	0.8	0	0.0	922	1.4	256	0.5	154	0.6	512	1.0	359	0.5		
Colombia	51	0.0	0	0.0	0	0.0	51	0.1	0	0.0	0	0.0	0	0.0	0	0.0	0	0.0	0	0.0	0	0.0	0	0.0	0	0.0		
Congo	512	0.1	51	0.1	51	0.1	51	0.1	51	0.1	0	0.0	0	0.0	51	0.2	205	0.3	0	0.0	0	0.0	51	0.1	0	0.0		
Congo-Zaire	102	0.0	0	0.0	0	0.0	0	0.0	0	0.0	0	0.0	102	0.1	0	0.0	0	0.0	0	0.0	0	0.0	0	0.0	0	0.0		
Czech Republic	307	0.0	51	0.1	51	0.1	0	0.0	51	0.1	51	0.1	0	0.0	0	0.0	102	0.2	0	0.0	0	0.0	0	0.0	0	0.0		
Benin	51	0.0	0	0.0	0	0.0	0	0.0	0	0.0	0	0.0	0	0.0	51	0.2	0	0.0	0	0.0	0	0.0	0	0.0	0	0.0		
Denmark	2,357	0.3	359	0.5	102	0.1	102	0.1	154	0.2	205	0.3	256	0.3	51	0.2	564	0.9	307	0.6	102	0.4	102	0.2	51	0.1		
Ecuador	51	0.0	51	0.1	0	0.0	0	0.0	0	0.0	0	0.0	0	0.0	0	0.0	0	0.0	0	0.0	0	0.0	0	0.0	0	0.0		
El Salvador	102	0.0	0	0.0	0	0.0	51	0.1	0	0.0	0	0.0	0	0.0	0	0.0	51	0.1	0	0.0	0	0.0	0	0.0	0	0.0		
Eritrea	51	0.0	0	0.0	0	0.0	0	0.0	0	0.0	0	0.0	0	0.0	0	0.0	0	0.0	0	0.0	0	0.0	51	0.1	0	0.0		
Finland	410	0.1	0	0.0	0	0.0	0	0.0	0	0.0	102	0.2	102	0.1	0	0.0	0	0.0	0	0.0	0	0.0	154	0.3	51	0.1		
France	4,100	0.5	820	1.0	564	0.8	256	0.3	205	0.3	307	0.5	564	0.6	51	0.2	564	0.9	51	0.1	154	0.6	359	0.7	205	0.3		

Djibouti	205	0.0	51	0.1	0	0.0	0	0.0	0	0.0	0	0.0	0	0.0	0	0.0	0	0.0	0	0.0	51	0.1	102	0.2		
Gabon	102	0.0	51	0.1	0	0.0	0	0.0	0	0.0	0	0.0	0	0.0	51	0.1	0	0.0	0	0.0	0	0.0	0	0.0		
Gambia	410	0.1	51	0.1	102	0.1	0	0.0	0	0.0	0	0.0	102	0.1	51	0.2	102	0.2	0	0.0	0	0.0	0	0.0		
Germany	7,943	1.1	717	0.9	615	0.9	410	0.5	512	0.7	615	1.0	1332	1.4	102	0.3	1127	1.7	615	1.2	205	0.9	871	1.7	820	1.2
Ghana	1,127	0.1	154	0.2	51	0.1	102	0.1	51	0.1	51	0.1	102	0.1	102	0.3	51	0.1	154	0.3	0	0.0	205	0.4	102	0.2
Greece	256	0.0	0	0.0	0	0.0	0	0.0	51	0.1	0	0.0	102	0.1	0	0.0	51	0.1	0	0.0	0	0.0	51	0.1	0	0.0
Guinea	205	0.0	0	0.0	0	0.0	51	0.1	51	0.1	0	0.0	0	0.0	51	0.2	0	0.0	51	0.1	0	0.0	0	0.0	0	0.0
Hong Kong	102	0.0	0	0.0	51	0.1	0	0.0	51	0.1	0	0.0	0	0.0	0	0.0	0	0.0	0	0.0	0	0.0	0	0.0	0	0.0
Hungary	51	0.0	0	0.0	0	0.0	0	0.0	0	0.0	0	0.0	0	0.0	51	0.1	0	0.0	0	0.0	0	0.0	0	0.0	0	0.0
Iceland	256	0.0	51	0.1	0	0.0	51	0.1	0	0.0	0	0.0	102	0.1	0	0.0	51	0.1	0	0.0	0	0.0	0	0.0	0	0.0
India	4,612	0.6	512	0.7	615	0.9	154	0.2	154	0.2	461	0.7	461	0.5	51	0.2	1076	1.6	359	0.7	102	0.4	512	1.0	154	0.2
Indonesia	256	0.0	0	0.0	0	0.0	0	0.0	0	0.0	0	0.0	51	0.1	0	0.0	102	0.2	0	0.0	51	0.2	0	0.0	51	0.1
Iran, Islamic Republic of	154	0.0	51	0.1	0	0.0	0	0.0	0	0.0	51	0.1	51	0.1	0	0.0	0	0.0	0	0.0	0	0.0	0	0.0	0	0.0
Saudi Arabia	102	0.0	102	0.1	0	0.0	0	0.0	0	0.0	0	0.0	0	0.0	0	0.0	0	0.0	0	0.0	0	0.0	0	0.0	0	0.0
Ireland	3,331	0.4	461	0.6	410	0.6	256	0.3	256	0.4	256	0.4	205	0.2	0	0.0	769	1.2	102	0.2	51	0.2	307	0.6	256	0.4
Israel	717	0.1	0	0.0	51	0.1	102	0.1	51	0.1	0	0.0	359	0.4	0	0.0	51	0.1	0	0.0	0	0.0	0	0.0	102	0.2
Italy	5,279	0.7	1025	1.3	717	1.0	461	0.6	461	0.6	102	0.2	871	0.9	51	0.2	410	0.6	512	1.0	102	0.4	461	0.9	102	0.2
Cote d'Ivoire	102	0.0	0	0.0	51	0.1	0	0.0	0	0.0	0	0.0	0	0.0	51	0.2	0	0.0	0	0.0	0	0.0	0	0.0	0	0.0
Japan	2,460	0.3	359	0.5	307	0.4	102	0.1	102	0.1	102	0.2	307	0.3	51	0.2	564	0.9	51	0.1	102	0.4	307	0.6	102	0.2
Kenya	18,398	2.4	2921	3.7	1537	2.2	922	1.2	922	1.3	1281	2.0	1589	1.6	2101	6.8	1589	2.4	1691	3.2	1332	5.6	974	1.9	1537	2.3
Korea, Democratic Peoples Republic	307	0.0	102	0.1	0	0.0	0	0.0	0	0.0	0	0.0	154	0.2	0	0.0	51	0.1	0	0.0	0	0.0	0	0.0	0	0.0
Korea, Republic of	717	0.1	51	0.1	102	0.1	205	0.3	0	0.0	0	0.0	0	0.0	0	0.0	51	0.1	102	0.2	0	0.0	205	0.4	0	0.0
Lao, Peoples Democratic Republic	102	0.0	0	0.0	0	0.0	0	0.0	51	0.1	0	0.0	0	0.0	0	0.0	0	0.0	51	0.1	0	0.0	0	0.0	0	0.0
Lebanon	102	0.0	102	0.1	0	0.0	0	0.0	0	0.0	0	0.0	0	0.0	0	0.0	0	0.0	0	0.0	0	0.0	0	0.0	0	0.0
Lesotho	769	0.1	102	0.1	51	0.1	0	0.0	0	0.0	102	0.2	0	0.0	0	0.0	102	0.2	51	0.1	256	1.1	0	0.0	102	0.2
Liberia	307	0.0	51	0.1	0	0.0	0	0.0	0	0.0	0	0.0	0	0.0	0	0.0	102	0.2	51	0.1	51	0.2	51	0.1	0	0.0
Lithuania	102	0.0	0	0.0	0	0.0	0	0.0	102	0.1	0	0.0	0	0.0	0	0.0	0	0.0	0	0.0	0	0.0	0	0.0	0	0.0
Luxembourg	102	0.0	0	0.0	51	0.1	0	0.0	0	0.0	0	0.0	51	0.1	0	0.0	0	0.0	0	0.0	0	0.0	0	0.0	0	0.0
Madagascar	51	0.0	0	0.0	51	0.1	0	0.0	0	0.0	0	0.0	0	0.0	0	0.0	0	0.0	0	0.0	0	0.0	0	0.0	0	0.0
Malaysia	307	0.0	0	0.0	0	0.0	0	0.0	51	0.1	51	0.1	102	0.1	0	0.0	102	0.2	0	0.0	0	0.0	0	0.0	0	0.0
Mali	615	0.1	51	0.1	102	0.1	154	0.2	0	0.0	51	0.1	51	0.1	51	0.2	51	0.1	51	0.1	51	0.2	0	0.0	0	0.0
Mauritania	51	0.0	0	0.0	0	0.0	0	0.0	0	0.0	0	0.0	0	0.0	0	0.0	0	0.0	51	0.2	0	0.0	0	0.0	0	0.0

Mauritius	564	0.1	102	0.1	102	0.1	0	0.0	51	0.1	0	0.0	102	0.1	51	0.2	0	0.0	0	0.0	51	0.2	0	0.0	102	0.2
Mexico	205	0.0	0	0.0	0	0.0	0	0.0	0	0.0	0	0.0	0	0.0	0	0.0	205	0.3	0	0.0	0	0.0	0	0.0	0	0.0
Monaco	102	0.0	0	0.0	0	0.0	0	0.0	51	0.1	0	0.0	0	0.0	0	0.0	0	0.0	0	0.0	0	0.0	51	0.1	0	0.0
Mozambique	188,694	25.0	15631	20.0	12504	17.8	25163	31.5	27776	38.3	14196	22.3	20140	20.4	11787	38.3	6713	10.2	15528	29.6	6406	26.9	10455	19.9	22395	33.5
Namibia	1,691	0.2	307	0.4	256	0.4	51	0.1	0	0.0	51	0.1	256	0.3	0	0.0	256	0.4	256	0.5	51	0.2	51	0.1	154	0.2
Nepal	102	0.0	0	0.0	51	0.1	0	0.0	51	0.1	0	0.0	0	0.0	0	0.0	0	0.0	0	0.0	0	0.0	0	0.0	0	0.0
Netherlands	11,684	1.5	1537	2.0	2152	3.1	1486	1.9	461	0.6	512	0.8	1589	1.6	51	0.2	1486	2.3	461	0.9	512	2.2	717	1.4	717	1.1
Holland	51	0.0	0	0.0	0	0.0	0	0.0	0	0.0	51	0.1	0	0.0	0	0.0	0	0.0	0	0.0	0	0.0	0	0.0	0	0.0
Netherlands Antilles	51	0.0	0	0.0	0	0.0	0	0.0	0	0.0	51	0.1	0	0.0	0	0.0	0	0.0	0	0.0	0	0.0	0	0.0	0	0.0
New Zealand	1,589	0.2	205	0.3	51	0.1	256	0.3	102	0.1	256	0.4	154	0.2	0	0.0	154	0.2	102	0.2	51	0.2	154	0.3	102	0.2
Nicaragua	154	0.0	0	0.0	0	0.0	0	0.0	0	0.0	102	0.2	0	0.0	51	0.2	0	0.0	0	0.0	0	0.0	0	0.0	0	0.0
Nigeria	1,845	0.2	205	0.3	256	0.4	51	0.1	205	0.3	154	0.2	154	0.2	0	0.0	205	0.3	154	0.3	205	0.9	205	0.4	51	0.1
Norway	4,305	0.6	307	0.4	922	1.3	256	0.3	154	0.2	307	0.5	564	0.6	0	0.0	871	1.3	461	0.9	154	0.6	205	0.4	102	0.2
Northern Mariana Islands	51	0.0	0	0.0	0	0.0	0	0.0	0	0.0	0	0.0	0	0.0	0	0.0	51	0.1	0	0.0	0	0.0	0	0.0	0	0.0
Pakistan	512	0.1	51	0.1	154	0.2	0	0.0	0	0.0	102	0.2	154	0.2	0	0.0	51	0.1	0	0.0	0	0.0	0	0.0	0	0.0
Philippines	512	0.1	154	0.2	51	0.1	0	0.0	0	0.0	0	0.0	102	0.1	51	0.2	0	0.0	0	0.0	0	0.0	102	0.2	51	0.1
Poland	205	0.0	0	0.0	0	0.0	0	0.0	0	0.0	0	0.0	51	0.1	0	0.0	102	0.2	51	0.1	0	0.0	0	0.0	0	0.0
Portugal	820	0.1	51	0.1	0	0.0	51	0.1	0	0.0	102	0.2	307	0.3	102	0.3	102	0.2	51	0.1	0	0.0	0	0.0	51	0.1
Guinea Bissau	102	0.0	51	0.1	51	0.1	0	0.0	0	0.0	0	0.0	0	0.0	0	0.0	0	0.0	0	0.0	0	0.0	0	0.0	0	0.0
Romania	102	0.0	0	0.0	0	0.0	0	0.0	51	0.1	0	0.0	0	0.0	0	0.0	51	0.1	0	0.0	0	0.0	0	0.0	0	0.0
Russian Federation	154	0.0	0	0.0	0	0.0	0	0.0	0	0.0	0	0.0	102	0.1	0	0.0	0	0.0	0	0.0	0	0.0	51	0.1	0	0.0
Rwanda	1,486	0.2	256	0.3	102	0.1	51	0.1	51	0.1	51	0.1	410	0.4	51	0.2	102	0.2	154	0.3	51	0.2	0	0.0	205	0.3
Saudi Arabia	51	0.0	51	0.1	0	0.0	0	0.0	0	0.0	0	0.0	0	0.0	0	0.0	0	0.0	0	0.0	0	0.0	0	0.0	0	0.0
Senegal	102	0.0	0	0.0	51	0.1	0	0.0	0	0.0	0	0.0	0	0.0	0	0.0	0	0.0	0	0.0	51	0.2	0	0.0	0	0.0
Sierra Leone	51	0.0	0	0.0	0	0.0	0	0.0	0	0.0	0	0.0	0	0.0	0	0.0	0	0.0	0	0.0	0	0.0	0	0.0	51	0.1
Singapore	410	0.1	0	0.0	0	0.0	102	0.1	0	0.0	51	0.1	51	0.1	0	0.0	51	0.1	0	0.0	51	0.2	51	0.1	51	0.1
Viet Nam	51	0.0	0	0.0	51	0.1	0	0.0	0	0.0	0	0.0	0	0.0	0	0.0	0	0.0	0	0.0	0	0.0	0	0.0	0	0.0
Slovenia	256	0.0	0	0.0	0	0.0	0	0.0	0	0.0	0	0.0	102	0.1	0	0.0	0	0.0	0	0.0	51	0.2	51	0.1	51	0.1
South Africa	92,861	12.3	10557	13.5	7328	10.4	7995	10.0	9020	12.4	6150	9.7	15221	15.4	1845	6.0	7226	11.0	7277	13.9	3690	15.5	6252	11.9	10301	15.4
Zimbabwe	77,281	10.2	6765	8.7	6662	9.5	9993	12.5	12402	17.1	3792	6.0	9122	9.3	1025	3.3	3587	5.4	7021	13.4	1691	7.1	6611	12.6	8610	12.9
Spain	1,640	0.2	205	0.3	307	0.4	51	0.1	205	0.3	154	0.2	256	0.3	0	0.0	51	0.1	154	0.3	51	0.2	51	0.1	154	0.2
Western Sahara	51	0.0	0	0.0	0	0.0	0	0.0	0	0.0	0	0.0	0	0.0	51	0.2	0	0.0	0	0.0	0	0.0	0	0.0	0	0.0

Sudan	410	0.1	51	0.1	0	0.0	0	0.0	0	0.0	0	0.0	0	0.0	0	0.0	102	0.2	102	0.2	0	0.0	102	0.2	51	0.1
Swaziland	1,845	0.2	102	0.1	205	0.3	102	0.1	256	0.4	205	0.3	205	0.2	0	0.0	154	0.2	154	0.3	0	0.0	307	0.6	154	0.2
Sweden	2,665	0.4	205	0.3	205	0.3	256	0.3	256	0.4	205	0.3	154	0.2	102	0.3	512	0.8	154	0.3	102	0.4	102	0.2	410	0.6
Switzerland	2,409	0.3	307	0.4	154	0.2	0	0.0	102	0.1	102	0.2	461	0.5	51	0.2	512	0.8	102	0.2	102	0.4	154	0.3	359	0.5
Thailand	256	0.0	51	0.1	0	0.0	0	0.0	0	0.0	51	0.1	51	0.1	0	0.0	0	0.0	51	0.1	0	0.0	0	0.0	51	0.1
United Arab Emirates	769	0.1	102	0.1	154	0.2	0	0.0	0	0.0	0	0.0	51	0.1	51	0.2	154	0.2	51	0.1	102	0.4	51	0.1	51	0.1
Tunisia	461	0.1	0	0.0	102	0.1	0	0.0	0	0.0	0	0.0	154	0.2	0	0.0	51	0.1	51	0.1	51	0.2	51	0.1	0	0.0
Turkey	359	0.0	0	0.0	51	0.1	51	0.1	0	0.0	0	0.0	0	0.0	0	0.0	102	0.2	51	0.1	0	0.0	0	0.0	102	0.2
Turks and Caicos Islands	51	0.0	51	0.1	0	0.0	0	0.0	0	0.0	0	0.0	0	0.0	0	0.0	0	0.0	0	0.0	0	0.0	0	0.0	0	0.0
Uganda	3,485	0.5	871	1.1	102	0.1	154	0.2	154	0.2	307	0.5	820	0.8	0	0.0	307	0.5	205	0.4	102	0.4	205	0.4	256	0.4
Egypt	461	0.1	154	0.2	0	0.0	0	0.0	0	0.0	0	0.0	51	0.1	51	0.2	154	0.2	0	0.0	0	0.0	51	0.1	0	0.0
United Kingdom	51,145	6.8	6047	7.7	6457	9.2	4254	5.3	2614	3.6	3177	5.0	6867	7.0	717	2.3	8712	13.2	3126	6.0	2665	11.2	3997	7.6	2511	3.8
United Republic of Tanzania	71,798	9.5	11069	14.2	2306	3.3	2921	3.7	2767	3.8	17680	27.8	4766	4.8	5586	18.2	8661	13.2	3280	6.3	871	3.7	1742	3.3	10147	15.2
United States of America	36,386	4.8	4510	5.8	3690	5.2	1537	1.9	1589	2.2	2357	3.7	5381	5.5	871	2.8	7687	11.7	2152	4.1	1230	5.2	3434	6.5	1947	2.9
Burkina Faso	205	0.0	0	0.0	0	0.0	0	0.0	0	0.0	0	0.0	205	0.2	0	0.0	0	0.0	0	0.0	0	0.0	0	0.0	0	0.0
Zambia	102,956	13.6	5637	7.2	16245	23.1	18705	23.4	9020	12.4	6765	10.6	19218	19.5	3741	12.2	4869	7.4	5483	10.5	1691	7.1	10045	19.2	1537	2.3

Table 15: Visitors departing Malawi by country of permanent residence and type of accommodation used, 2009

Country	Type of accommodation									
	Total		Hotel/Inn/ Lodge		Private House		Rest House		Caravan/ Camping	
	No.	%	No.	%	No.	%	No.	%	No.	%
Total	755,031	100	202,018	100	308,408	100	174,344	100	70,260	100
Afghanistan	154	0.0	51	0.0	102	0.0	0	0.0	0	0.0
Algeria	102	0.0	0	0.0	102	0.0	0	0.0	0	0.0
Angola	154	0.0	51	0.0	102	0.0	0	0.0	0	0.0
Argentina	666	0.1	205	0.1	410	0.1	51	0.0	0	0.0
Australia	10,250	1.4	4202	2.1	2152	0.7	461	0.3	3434	4.9
Austria	1,230	0.2	512	0.3	410	0.1	51	0.0	256	0.4
Bahrain	102	0.0	0	0.0	102	0.0	0	0.0	0	0.0
Bangladesh	307	0.0	307	0.2	0	0.0	0	0.0	0	0.0
Barbados	51	0.0	0	0.0	51	0.0	0	0.0	0	0.0
Belgium	3,126	0.4	2101	1.0	717	0.2	205	0.1	102	0.1
Bolivia	51	0.0	0	0.0	51	0.0	0	0.0	0	0.0
Botswana	2,972	0.4	1486	0.7	1025	0.3	410	0.2	51	0.1
Brazil	871	0.1	564	0.3	205	0.1	102	0.1	0	0.0
Burundi	256	0.0	154	0.1	0	0.0	102	0.1	0	0.0
Ethiopia	1,127	0.1	666	0.3	410	0.1	51	0.0	0	0.0
Cameroon	154	0.0	0	0.0	102	0.0	51	0.0	0	0.0
Canada	7,380	1.0	3741	1.9	2460	0.8	615	0.4	564	0.8
Sri Lanka	205	0.0	154	0.1	51	0.0	0	0.0	0	0.0
Chile	102	0.0	0	0.0	51	0.0	0	0.0	51	0.1
China	4,715	0.6	2460	1.2	1691	0.5	512	0.3	51	0.1
Colombia	51	0.0	0	0.0	51	0.0	0	0.0	0	0.0
Congo	512	0.1	205	0.1	205	0.1	102	0.1	0	0.0
Congo-Zaire	102	0.0	51	0.0	51	0.0	0	0.0	0	0.0
Czech Republic	307	0.0	154	0.1	102	0.0	51	0.0	0	0.0
Benin	51	0.0	51	0.0	0	0.0	0	0.0	0	0.0
Denmark	2,357	0.3	1127	0.6	871	0.3	307	0.2	51	0.1
Ecuador	51	0.0	0	0.0	51	0.0	0	0.0	0	0.0
El Salvador	102	0.0	102	0.1	0	0.0	0	0.0	0	0.0
Eritrea	51	0.0	51	0.0	0	0.0	0	0.0	0	0.0
Finland	410	0.1	256	0.1	102	0.0	0	0.0	51	0.1
France	4,100	0.5	2921	1.4	871	0.3	205	0.1	102	0.1
Djibouti	205	0.0	0	0.0	102	0.0	102	0.1	0	0.0
Gabon	102	0.0	0	0.0	51	0.0	51	0.0	0	0.0
Gambia	410	0.1	307	0.2	102	0.0	0	0.0	0	0.0
Germany	7,943	1.1	3997	2.0	2204	0.7	717	0.4	1025	1.5
Ghana	1,127	0.1	461	0.2	564	0.2	102	0.1	0	0.0
Greece	256	0.0	154	0.1	102	0.0	0	0.0	0	0.0
Guinea	205	0.0	102	0.1	51	0.0	51	0.0	0	0.0
Hong Kong	102	0.0	0	0.0	102	0.0	0	0.0	0	0.0

Hungary	51	0.0	0	0.0	51	0.0	0	0.0	0	0.0
Iceland	256	0.0	0	0.0	256	0.1	0	0.0	0	0.0
India	4,612	0.6	1076	0.5	3024	1.0	512	0.3	0	0.0
Indonesia	256	0.0	205	0.1	0	0.0	51	0.0	0	0.0
Iran, Islamic Republic of	154	0.0	51	0.0	51	0.0	51	0.0	0	0.0
Saudi Arabia	102	0.0	102	0.1	0	0.0	0	0.0	0	0.0
Ireland	3,331	0.4	2101	1.0	564	0.2	205	0.1	461	0.7
Israel	717	0.1	512	0.3	102	0.0	0	0.0	102	0.1
Italy	5,279	0.7	1794	0.9	2357	0.8	717	0.4	410	0.6
Cote d'Ivoire	102	0.0	102	0.1	0	0.0	0	0.0	0	0.0
Japan	2,460	0.3	1640	0.8	512	0.2	154	0.1	154	0.2
Kenya	18,398	2.4	6918	3.4	5740	1.9	4766	2.7	974	1.4
Korea, Democratic Peoples Republic	307	0.0	307	0.2	0	0.0	0	0.0	0	0.0
Korea, Republic of	717	0.1	410	0.2	256	0.1	51	0.0	0	0.0
Lao, Peoples Democratic Republic	102	0.0	102	0.1	0	0.0	0	0.0	0	0.0
Lebanon	102	0.0	0	0.0	102	0.0	0	0.0	0	0.0
Lesotho	769	0.1	410	0.2	359	0.1	0	0.0	0	0.0
Liberia	307	0.0	102	0.1	205	0.1	0	0.0	0	0.0
Lithuania	102	0.0	0	0.0	0	0.0	0	0.0	102	0.1
Luxembourg	102	0.0	0	0.0	51	0.0	51	0.0	0	0.0
Madagascar	51	0.0	51	0.0	0	0.0	0	0.0	0	0.0
Malaysia	307	0.0	205	0.1	102	0.0	0	0.0	0	0.0
Mali	615	0.1	205	0.1	256	0.1	154	0.1	0	0.0
Mauritania	51	0.0	51	0.0	0	0.0	0	0.0	0	0.0
Mauritius	564	0.1	154	0.1	256	0.1	154	0.1	0	0.0
Mexico	205	0.0	102	0.1	102	0.0	0	0.0	0	0.0
Monaco	102	0.0	0	0.0	51	0.0	0	0.0	51	0.1
Mozambique	188,694	25.0	14554	7.2	81125	26.3	68723	39.4	24291	34.6
Namibia	1,691	0.2	512	0.3	974	0.3	154	0.1	51	0.1
Nepal	102	0.0	102	0.1	0	0.0	0	0.0	0	0.0
Netherlands Holland	11,684	1.5	6765	3.3	3126	1.0	974	0.6	820	1.2
Netherlands Antilies	51	0.0	51	0.0	0	0.0	0	0.0	0	0.0
New Zealand	1,589	0.2	769	0.4	205	0.1	51	0.0	564	0.8
Nicaragua	154	0.0	154	0.1	0	0.0	0	0.0	0	0.0
Nigeria	1,845	0.2	717	0.4	820	0.3	307	0.2	0	0.0
Norway	4,305	0.6	2562	1.3	1076	0.3	359	0.2	307	0.4
Northern Mariana Islands	51	0.0	0	0.0	0	0.0	51	0.0	0	0.0
Pakistan	512	0.1	102	0.1	359	0.1	51	0.0	0	0.0
Philippines	512	0.1	256	0.1	256	0.1	0	0.0	0	0.0
Poland	205	0.0	154	0.1	0	0.0	0	0.0	51	0.1
Portugal	820	0.1	359	0.2	307	0.1	102	0.1	51	0.1
Guinea Bissau	102	0.0	0	0.0	0	0.0	102	0.1	0	0.0
Romania	102	0.0	102	0.1	0	0.0	0	0.0	0	0.0
Russian Federation	154	0.0	102	0.1	51	0.0	0	0.0	0	0.0

Rwanda	1,486	0.2	922	0.5	410	0.1	154	0.1	0	0.0
Senegal	102	0.0	102	0.1	0	0.0	0	0.0	0	0.0
Saudi Arabia	51	0.0	0	0.0	51	0.0	0	0.0	0	0.0
Sierra Leone	51	0.0	51	0.0	0	0.0	0	0.0	0	0.0
Singapore	410	0.1	154	0.1	154	0.0	0	0.0	102	0.1
Viet Nam	51	0.0	51	0.0	0	0.0	0	0.0	0	0.0
Slovenia	256	0.0	154	0.1	51	0.0	0	0.0	51	0.1
South Africa	92,861	12.3	36642	18.1	35668	11.6	13837	7.9	6713	9.6
Zimbabwe	77,281	10.2	16194	8.0	33823	11.0	18347	10.5	8917	12.7
Spain	1,640	0.2	769	0.4	359	0.1	307	0.2	205	0.3
Western Sahara	51	0.0	51	0.0	0	0.0	0	0.0	0	0.0
Sudan	410	0.1	256	0.1	154	0.0	0	0.0	0	0.0
Swaziland	1,845	0.2	1025	0.5	410	0.1	410	0.2	0	0.0
Sweden	2,665	0.4	1486	0.7	615	0.2	0	0.0	564	0.8
Switzerland	2,409	0.3	1640	0.8	410	0.1	205	0.1	154	0.2
Thailand	256	0.0	256	0.1	0	0.0	0	0.0	0	0.0
United Arab Emirates	769	0.1	410	0.2	307	0.1	51	0.0	0	0.0
Tunisia	461	0.1	307	0.2	51	0.0	0	0.0	102	0.1
Turkey	359	0.0	51	0.0	154	0.0	154	0.1	0	0.0
Turks and Caicos Islands	51	0.0	0	0.0	51	0.0	0	0.0	0	0.0
Uganda	3,485	0.5	871	0.4	1486	0.5	1025	0.6	102	0.1
Egypt	461	0.1	307	0.2	154	0.0	0	0.0	0	0.0
United Kingdom	51,145	6.8	24701	12.2	16604	5.4	4254	2.4	5586	8.0
United Republic of Tanzania	71,798	9.5	9993	4.9	28237	9.2	27212	15.6	6355	9.0
United States of America	36,386	4.8	19474	9.6	12761	4.1	3229	1.9	922	1.3
Burkina Faso	205	0.0	205	0.1	0	0.0	0	0.0	0	0.0
Zambia	102,956	13.6	15477	7.7	58012	18.8	23113	13.3	6355	9.0

Table 16: Distribution of visitors departing Malawi by sex and country of permanent residence, 2009

Country	Male	Female	Total
	%	%	%
Total	75.3	24.7	100.0
Afghanistan	33.3	66.7	100.0
Algeria	100.0	0.0	100.0
Angola	100.0	0.0	100.0
Argentina	84.6	15.4	100.0
Australia	54.0	46.0	100.0
Austria	66.7	33.3	100.0
Bahrain	0.0	100.0	100.0
Bangladesh	83.3	16.7	100.0
Barbados	0.0	100.0	100.0
Belgium	52.5	47.5	100.0
Bolivia	100.0	0.0	100.0
Botswana	67.2	32.8	100.0
Brazil	70.6	29.4	100.0
Burundi	100.0	0.0	100.0
Ethiopia	77.3	22.7	100.0
Cameroon	66.7	33.3	100.0
Canada	54.2	45.8	100.0
Sri Lanka	25.0	75.0	100.0
Chile	50.0	50.0	100.0
China	70.7	29.3	100.0
Colombia	100.0	0.0	100.0
Congo	90.0	10.0	100.0
Congo-Zaire	50.0	50.0	100.0
Czech Republic	66.7	33.3	100.0
Benin	100.0	0.0	100.0
Denmark	60.9	39.1	100.0
Ecuador	100.0	0.0	100.0
El Salvador	100.0	0.0	100.0
Eritrea	100.0	0.0	100.0
Finland	12.5	87.5	100.0
France	70.0	30.0	100.0
Djibouti	75.0	25.0	100.0
Gabon	0.0	100.0	100.0
Gambia	100.0	0.0	100.0
Germany	65.2	34.8	100.0
Ghana	77.3	22.7	100.0
Greece	20.0	80.0	100.0
Guinea	75.0	25.0	100.0
Hong Kong	50.0	50.0	100.0
Hungary	100.0	0.0	100.0
Iceland	40.0	60.0	100.0
India	83.3	16.7	100.0
Indonesia	80.0	20.0	100.0
Iran, Islamic Republic of	100.0	0.0	100.0
Saudi Arabia	50.0	50.0	100.0
Ireland	78.5	21.5	100.0
Israel	71.4	28.6	100.0
Italy	69.9	30.1	100.0
Cote d'Ivoire	100.0	0.0	100.0
Japan	66.7	33.3	100.0
Kenya	83.8	16.2	100.0
Korea, Democratic Peoples Republic	83.3	16.7	100.0
Korea, Republic of	57.1	42.9	100.0
Lao, Peoples Democratic Republic	100.0	0.0	100.0
Lebanon	50.0	50.0	100.0
Lesotho	86.7	13.3	100.0
Liberia	50.0	50.0	100.0
Lithuania	100.0	0.0	100.0
Luxembourg	0.0	100.0	100.0
Madagascar	0.0	100.0	100.0
Malaysia	83.3	16.7	100.0
Mali	83.3	16.7	100.0
Mauritania	100.0	0.0	100.0
Mauritius	63.6	36.4	100.0
Mexico	50.0	50.0	100.0
Monaco	100.0	0.0	100.0
Mozambique	86.4	13.6	100.0
Namibia	66.7	33.3	100.0
Nepal	100.0	0.0	100.0
Netherlands Holland	52.6	47.4	100.0
Netherlands Antilies	100.0	0.0	100.0
New Zealand	51.6	48.4	100.0
Nicaragua	66.7	33.3	100.0
Nigeria	94.4	5.6	100.0
Norway	54.8	45.2	100.0
Northern Mariana Islands	100.0	0.0	100.0
Pakistan	90.0	10.0	100.0
Philippines	60.0	40.0	100.0
Poland	75.0	25.0	100.0
Portugal	75.0	25.0	100.0
Guinea Bissau	0.0	100.0	100.0

Spain	56.3	43.8	100.0	Romania	100.0	0.0	100.0
Western Sahara	0.0	100.0	100.0	Russian Federation	100.0	0.0	100.0
Sudan	75.0	25.0	100.0	Rwanda	86.2	13.8	100.0
Swaziland	80.6	19.4	100.0	Saudi Arabia	100.0	0.0	100.0
Sweden	48.1	51.9	100.0	Senegal	100.0	0.0	100.0
Switzerland	63.8	36.2	100.0	Sierra Leone	100.0	0.0	100.0
Thailand	100.0	0.0	100.0	Singapore	62.5	37.5	100.0
United Arab Emirates	80.0	20.0	100.0	Viet Nam	100.0	0.0	100.0
Tunisia	100.0	0.0	100.0	Slovenia	60.0	40.0	100.0
Turkey	100.0	0.0	100.0	South Africa	76.8	23.2	100.0
Turks and Caicos Islands	100.0	0.0	100.0	Zimbabwe	70.4	29.6	100.0
Uganda	91.2	8.8	100.0	United Republic of Tanzania	88.9	11.1	100.0
Egypt	88.9	11.1	100.0	United States of America	54.8	45.2	100.0
United Kingdom	57.3	42.7	100.0	Burkina Faso	100.0	0.0	100.0
				Zambia	72.8	27.2	100.0

Table 17: Visitors departing Malawi by month and type of accommodation used, 2009

	Type of accommodation									
	Total		Hotel/Inn/Lodge		Private House		Rest House		Caravan/Camping	
	No.	%	No.	%	No.	%	No.	%	No.	%
Total	755,031	100	202,018	100	308,408	100	174,344	100	70,260	100
January	78,101	10.3	20,807	10.3	29,570	9.6	18,142	10.4	9,583	13.6
February	70,312	9.3	19,525	9.7	29,570	9.6	13,478	7.7	7,738	11.0
March	79,844	10.6	14,196	7.0	35,566	11.5	21,780	12.5	8,302	11.8
April	72,515	9.6	14,196	7.0	31,364	10.2	17,988	10.3	8,968	12.8
May	63,598	8.4	14,606	7.2	21,217	6.9	18,244	10.5	9,532	13.6
June	98,549	13.1	30,236	15.0	41,613	13.5	17,680	10.1	9,020	12.8
July	30,749	4.1	8,815	4.4	11,326	3.7	7,380	4.2	3,229	4.6
August	65,853	8.7	24,496	12.1	26,136	8.5	11,941	6.8	3,280	4.7
September	52,375	6.9	12,351	6.1	24,906	8.1	13,376	7.7	1,742	2.5
October	23,830	3.2	7,892	3.9	9,993	3.2	4,715	2.7	1,230	1.8
November	52,426	6.9	17,988	8.9	20,140	6.5	11,889	6.8	2,409	3.4
December	66,878	8.9	16,912	8.4	27,007	8.8	17,732	10.2	5,227	7.4

Table 18: Visitors departing Malawi by reason for entry, type of accommodation used and average number of nights spent, 2009

Reason for entry	Type of accommodation used										Average number of nights spent
	Total		Hotel/Inn/Lodge		Private House		Rest House		Caravan/Camping		
	No.	%	No.	%	No.	%	No.	%	No.	%	
Total	755,031	100	202,018	100	308,408	100	174,344	100	70,260	100	8
Holiday or Vacation	245,527	32.5	87,326	43.2	100,035	32.4	34,951	20.0	23,215	33.0	7
Work or Business	381,128	50.5	100,445	49.7	114,948	37.3	122,431	70.2	43,304	61.6	6
Visit friends or relatives	127,658	16.9	14,093	7.0	93,014	30.2	16,809	9.6	3,741	5.3	11
Conference/Convention	717	.1	154	.1	410	.1	154	.1	0	.0	9

Although the number of departing visitors on holiday/vacation has gone up from 179,300 in 2008 to 245,527, the average number of nights spent has gone down from 10.8 to 7. The same trend has happened to work and business which has gone down from 7 nights to 6 nights. Those visiting friends/ relatives and conferences/conventions spent more nights in 2009 than the previous year. (Table 18)

Table 19: Number and proportion of departing visitors by age group and mode of transportation, 2009

	Type of transport used into Malawi									
	Total		Air		Road		Rail		Water	
	No.	%	No.	%	No.	%	No.	%	No.	%
Total	755,031	100.0	250,960	33.2	467,788	62.0	14,759	2.0	21,524	2.9
Less than 15	28,442	100.0	7,738	27.2	19,833	69.7	461	1.6	410	1.4
15-24	88,402	100.0	28,237	31.9	56,526	63.9	1,589	1.8	2,050	2.3
25-44	257,365	100.0	88,607	34.4	155,895	60.6	5,125	2.0	7,738	3.0
45-59	259,108	100.0	86,557	33.4	159,636	61.6	4,920	1.9	7,995	3.1
60 and over	121,713	100.0	39,819	32.7	75,898	62.4	2,665	2.2	3,331	2.7

Across the age group, the majority , about 62 percent, used road transport

