



# FLATIRON SHARED STREET

---

CB 5 Transportation Committee

March 27<sup>th</sup>, 2017

04.18.2016



2007



2008



276

CRASHES  
(2005 - 2008)



29%

DECREASE  
(2009 - 2011)



**45 East 22<sup>nd</sup> Street**

**7 West 21<sup>st</sup> Street**

**200 Fifth Avenue**

- Tiffany & Co.
- Grey Group
- Eataly
- Marimekko
- Lego
- Johnston & Murphy

**The New York  
EDITION Hotel**

**11 Madison Avenue**

- Credit Suisse
- Yelp

**1107 Broadway  
(10 Madison  
Square West)**

**Sony  
Corporation  
of America**

**Porcelanosa**

**212 Fifth  
Avenue**

# Planned and Active Residential Developments

## 212 Fifth Avenue

- Under Construction
- Residential Condos
- 24 Stories; 48 Units
- Architect: Helpern Architects
- Developer: Thor Equities, Madison Equities, Building and Land Technology

## 39 West 23rd Street

- In Planning
- Residential condos with ground-floor retail
- 24 stories; 48 Units
- Developer: Anbau Enterprises
- Architect: COOKFOX

## 7 West 21st Street

- Under Construction
- 17 Stories
- 230 Market Rate Units
- 58 Affordable Units
- Architect: Morris Adjmi
- Developer: Friedland Properties
- Anticipated: Late Fall 2016



## 45 East 22nd Street

- Under Construction
- Residential Condos
- 65 stories; 83 Units
- Architect: Kohn Pedersen Fox
- Developer: The Continuum Company/Company/Bruce Eichner

## 287 Park Avenue South

- In Planning
- Residential Condos
- 17 stories; 40 Units
- Developer: CL Investment Group

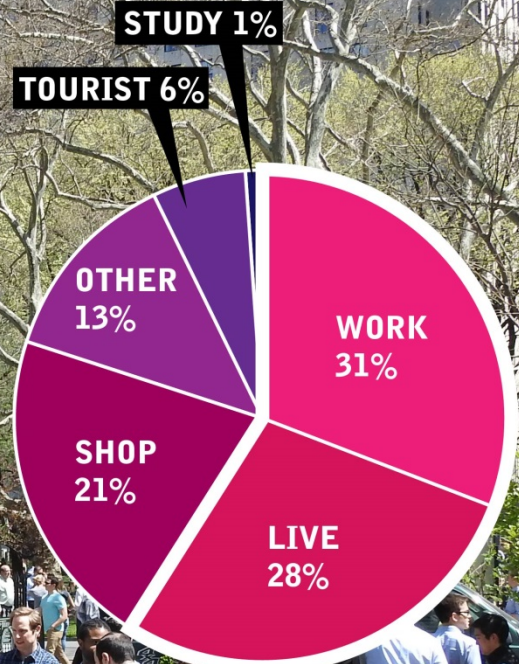
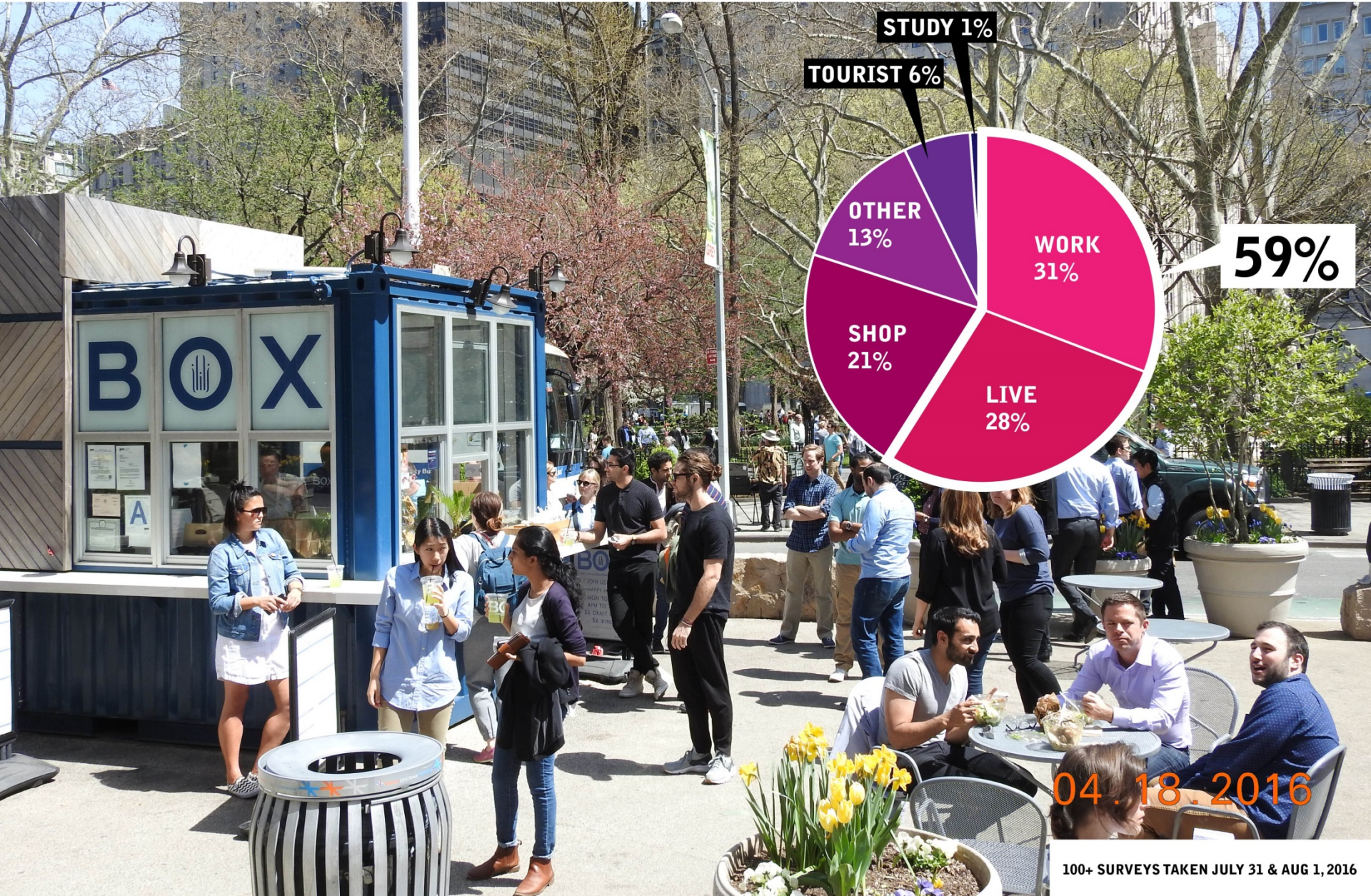
## 122-130 East 23rd Street

- In Planning
- Residential Condos
- 152 Units
- Developer: Toll Brothers
- Anticipated: Summer 2018

## 150-154 East 23rd Street

- Under Construction
- Residential condos with ground floor retail
- 20 Stories; 46 Units
- Developer: Bill Cheng/LKH 23rd LLC
- Architect: ODA Architecture

# FLATIRON PLAZA IS LOCAL



04.18.2016

100+ SURVEYS TAKEN JULY 31 & AUG 1, 2016

# FLATIRON PLAZA IS LOCAL





# CAPITAL PROJECT

---

## Background

Complicated Utility  
Infrastructure

Awarded CPSD Funding

Project is managed by  
DDC, expected timeline is  
18 months commencing  
Summer 2017.



**Close  
Broadway**

**Remove  
Structure**

**Fix Drainage**

**Improve Safety  
at Pedestrian  
Crossing**

**Accessibility**

**More Seating**

**Improve  
Lighting**

**Historic Context-  
Flatiron Building  
View**

**Relocate  
CitiBike  
Station**

**More  
Greenery**

**Improve Safety  
at Pedestrian  
Crossing**

**Community Feedback**  
1st Workshop- Nov. 10 2015



25TH STREET

5TH AVE

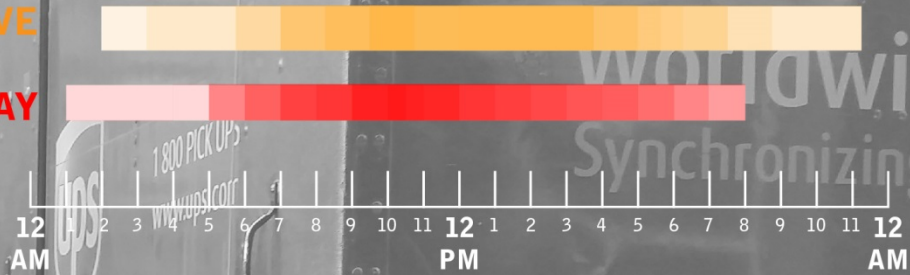
BROADWAY

BROADWAY

5TH AVENUE

21ST STREET

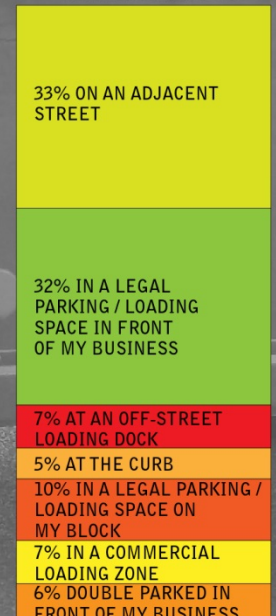
### DELIVERY TIMES

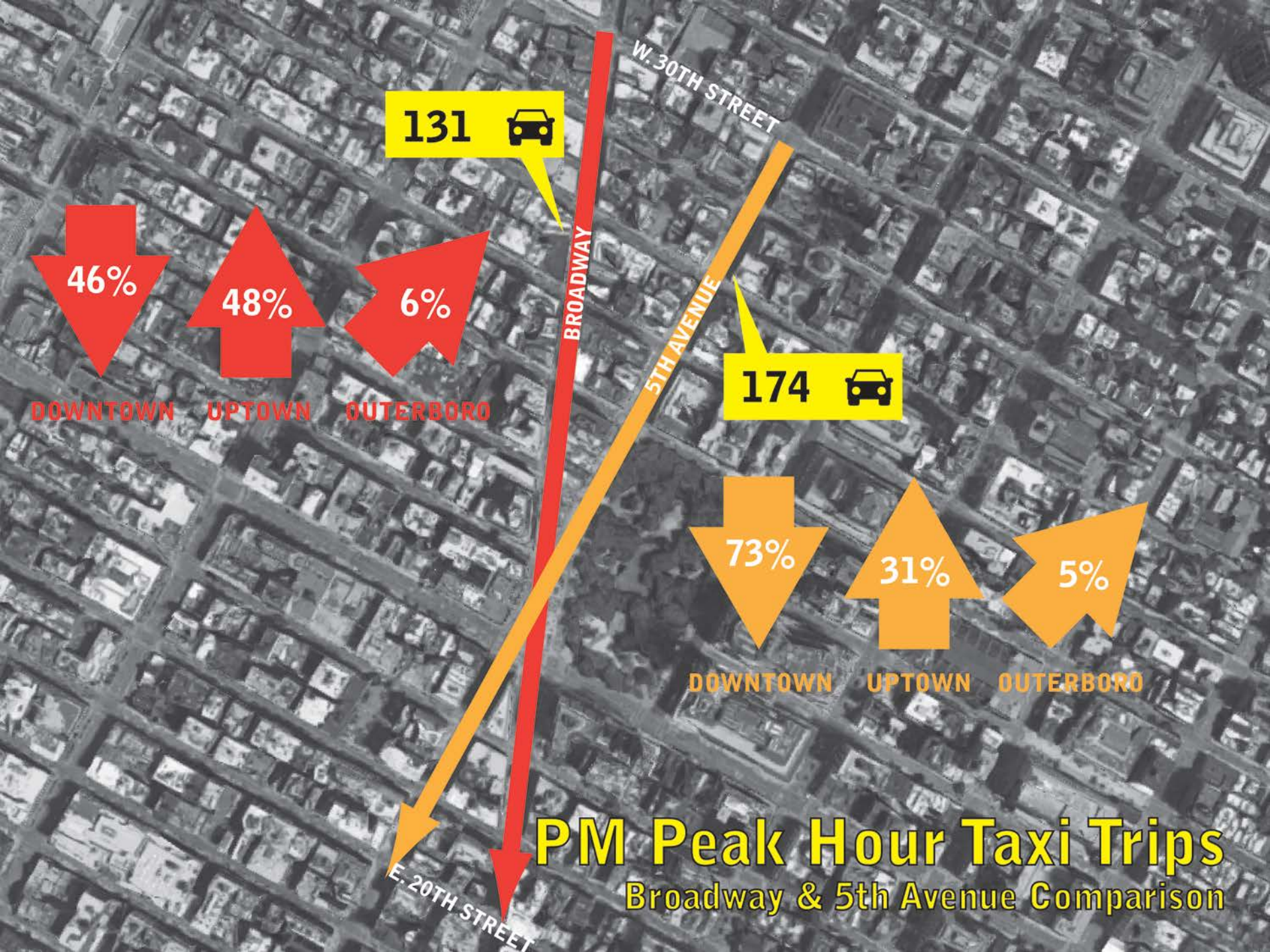


### HOW OFTEN DO YOU OBSERVE DOUBLE PARKING OUTSIDE YOUR STORE?



### WHERE DO DELIVERY VEHICLES TYPICALLY PARK?





131 

46%

48%

6%

DOWNTOWN

UPTOWN

OUTERBORO

BROADWAY

W. 30TH STREET

5TH AVENUE

174 

73%

31%

5%

DOWNTOWN

UPTOWN

OUTERBORO

E. 20TH STREET

# PM Peak Hour Taxi Trips

Broadway & 5th Avenue Comparison

MADISON  
SQUARE  
PARK  
RETAIL

PORCELANOSA

WO  
ZRO  
OUR  
IFTH

04.18.2016

Enhance pedestrian circulation



**Provide missing crosswalk**

04.18.2016



04.18.2016

**Normalize intersection**



04.18.2016

**Respond to pedestrian desire lines**





Flatiron  
23rd Street  
Public Space

Flatiron  
23rd Street  
Public Space

NO STOPPING  
ANYTIME

FLAT IRON  
CAFE

04.18.2016

Increase available public space

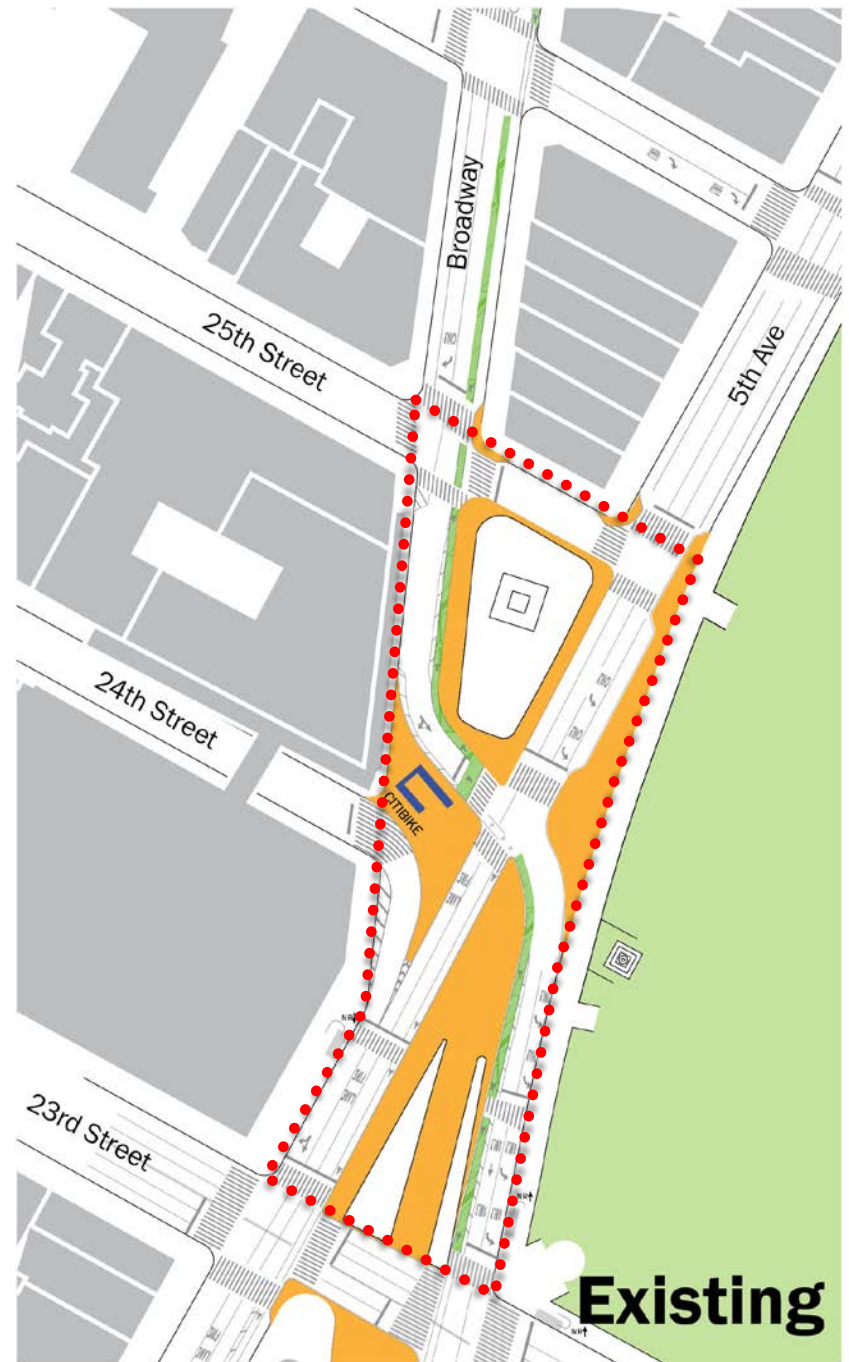


**Repair damaged surfacing**

# 2017 IMPLEMENTATION

## Objectives

1. Enhance pedestrian safety and circulation.
2. Maintain vehicular access and circulation.
3. Enhance existing public space.



431



3,674



3,012



1,181



1,991



5,722



8,276



1,330



613

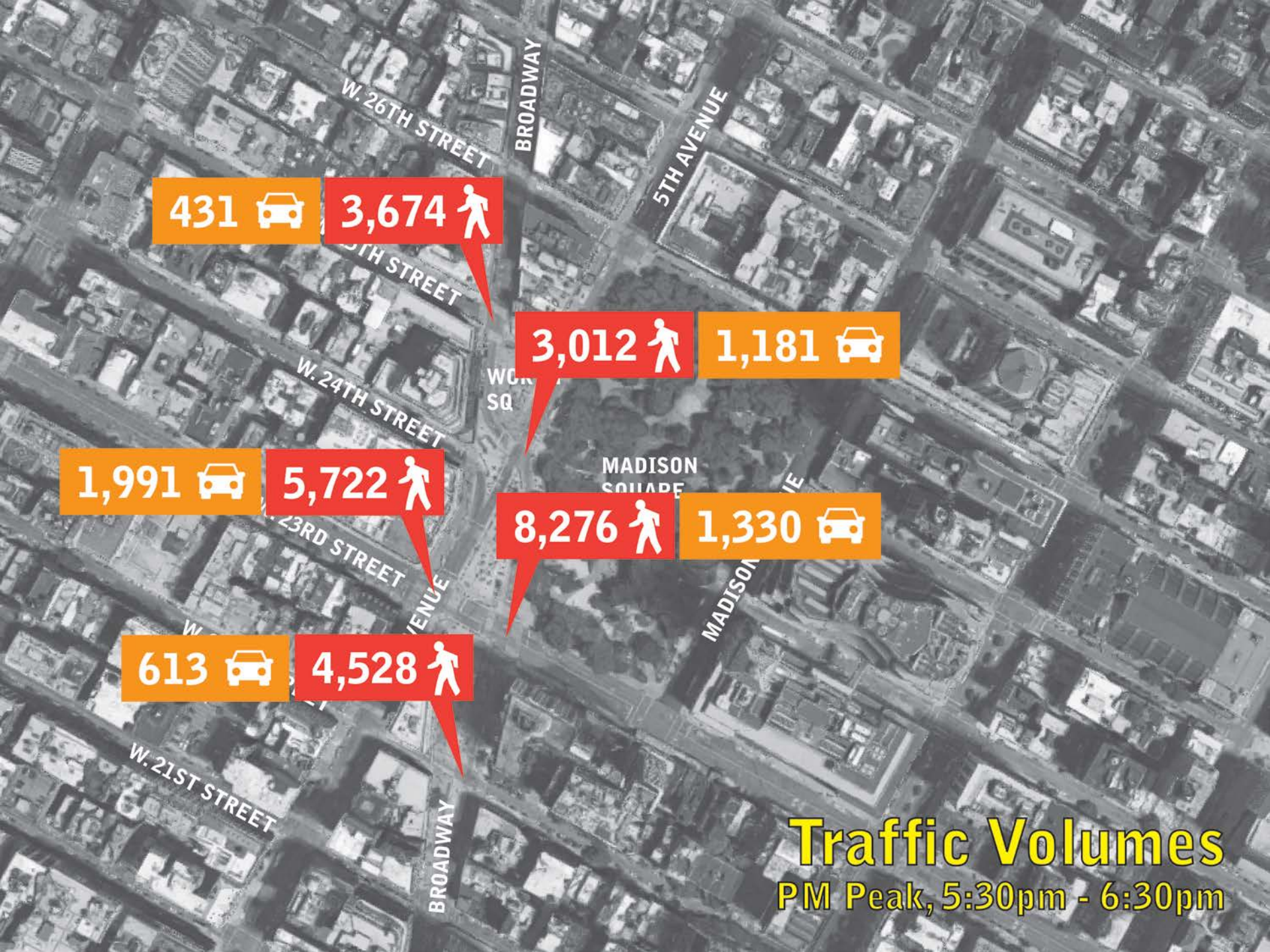


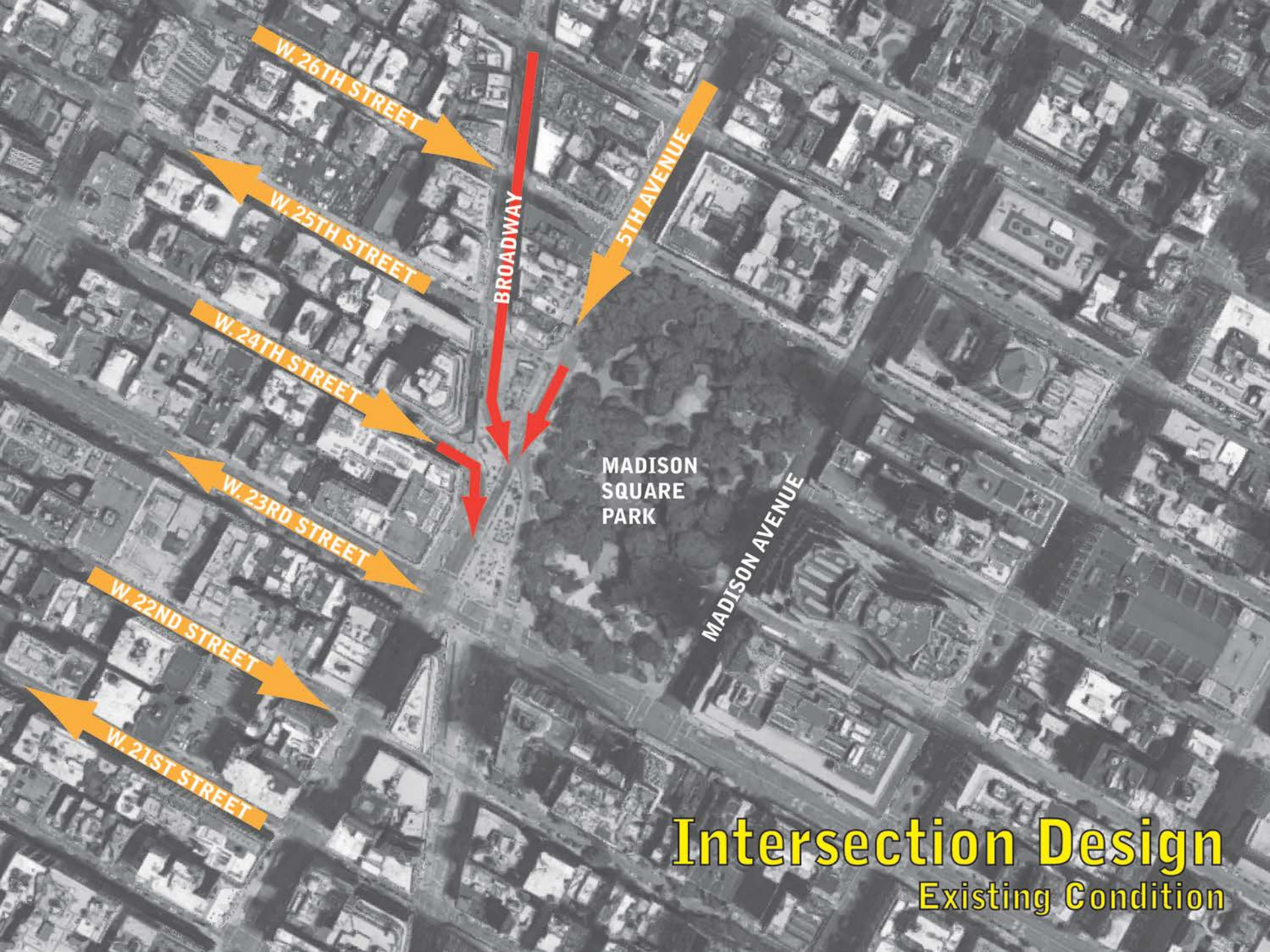
4,528



# Traffic Volumes

PM Peak, 5:30pm - 6:30pm





W. 26TH STREET

W. 25TH STREET

W. 24TH STREET

W. 23RD STREET

W. 22ND STREET

W. 21ST STREET

BROADWAY

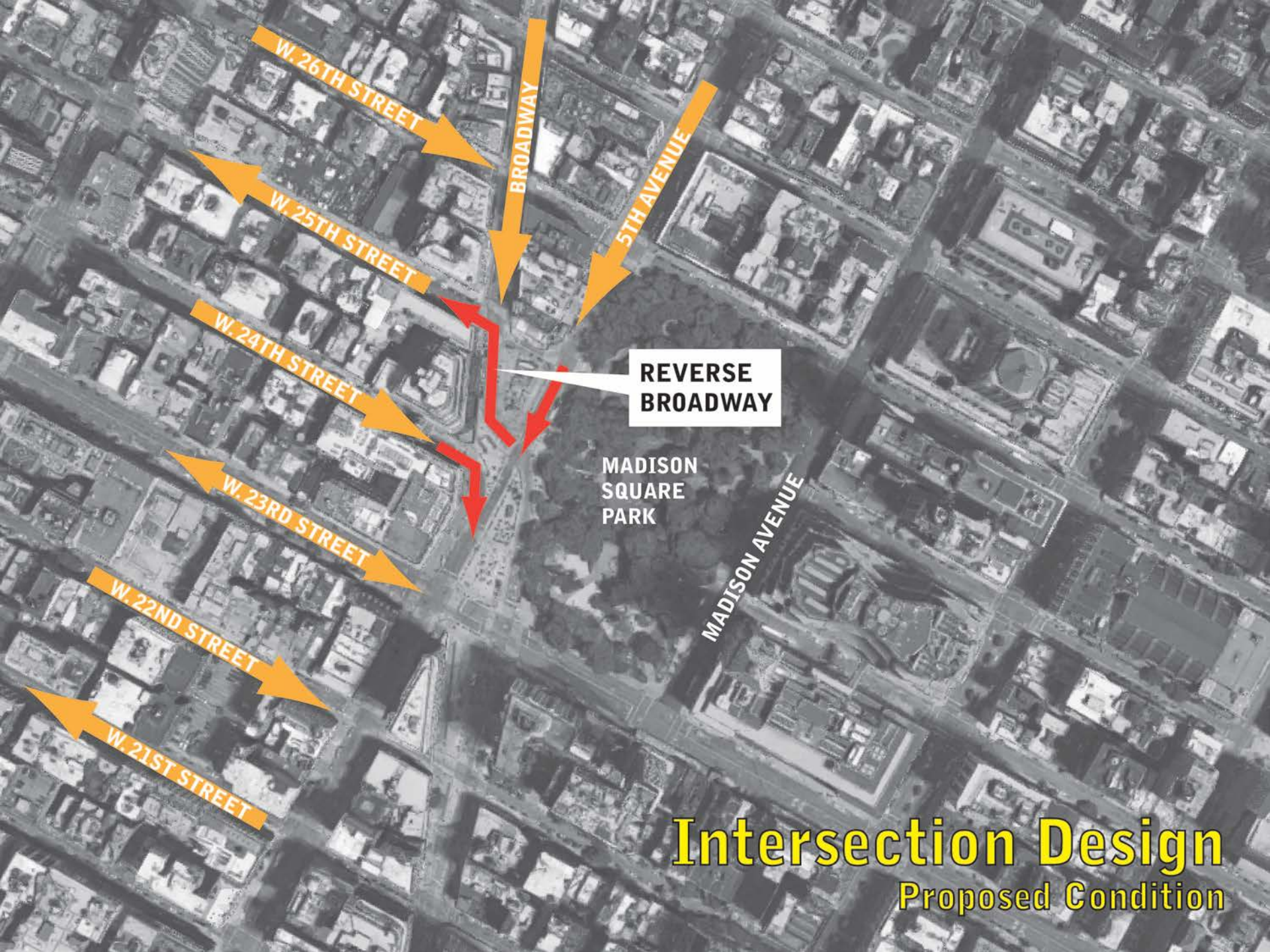
5TH AVENUE

MADISON SQUARE PARK

MADISON AVENUE

# Intersection Design

Existing Condition



W. 26TH STREET

W. 25TH STREET

W. 24TH STREET

W. 23RD STREET

W. 22ND STREET

W. 21ST STREET

BROADWAY

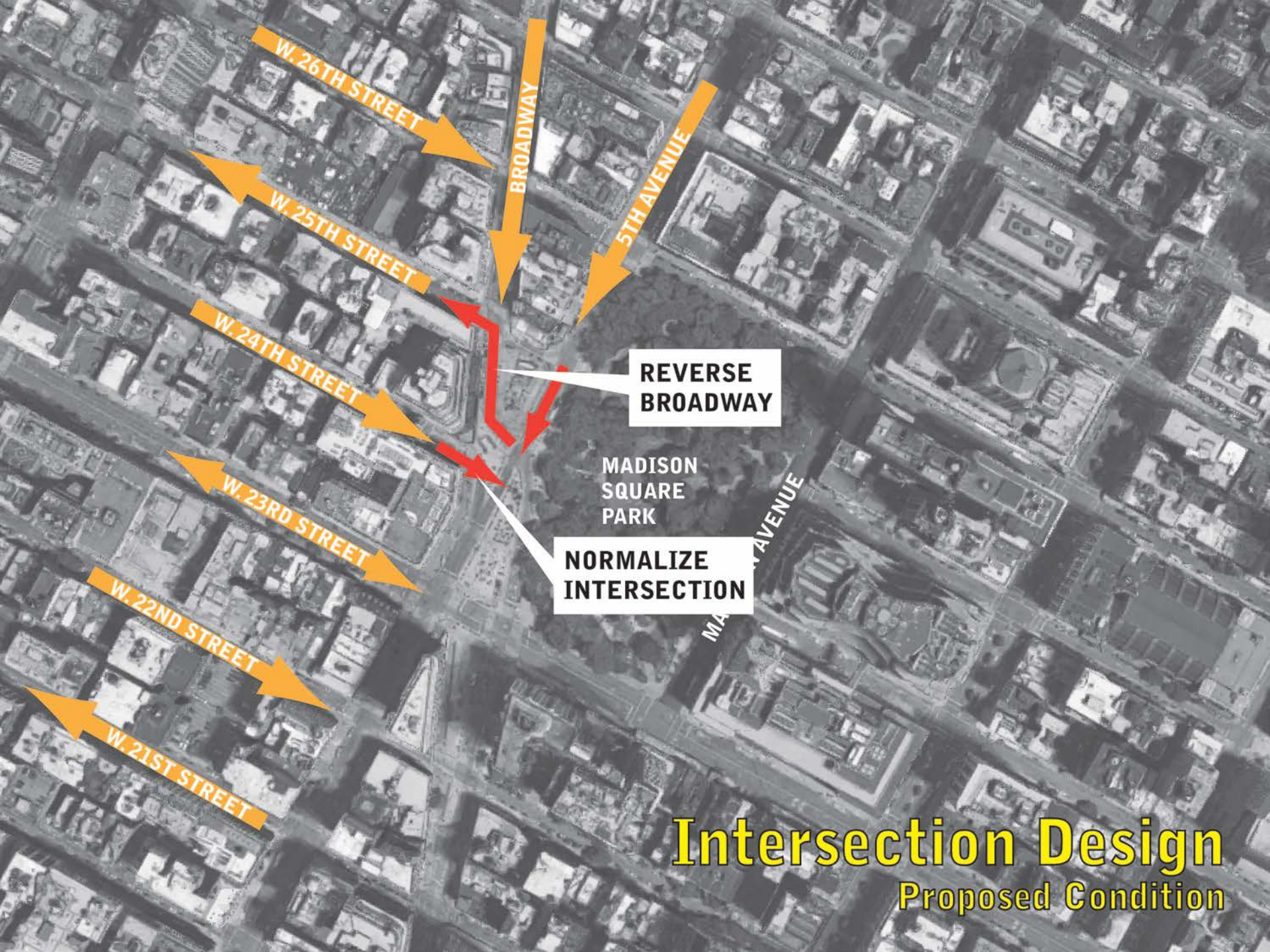
5TH AVENUE

MADISON AVENUE

REVERSE  
BROADWAY

MADISON  
SQUARE  
PARK

**Intersection Design**  
Proposed Condition



W. 26TH STREET

W. 25TH STREET

W. 24TH STREET

W. 23RD STREET

W. 22ND STREET

W. 21ST STREET

BROADWAY

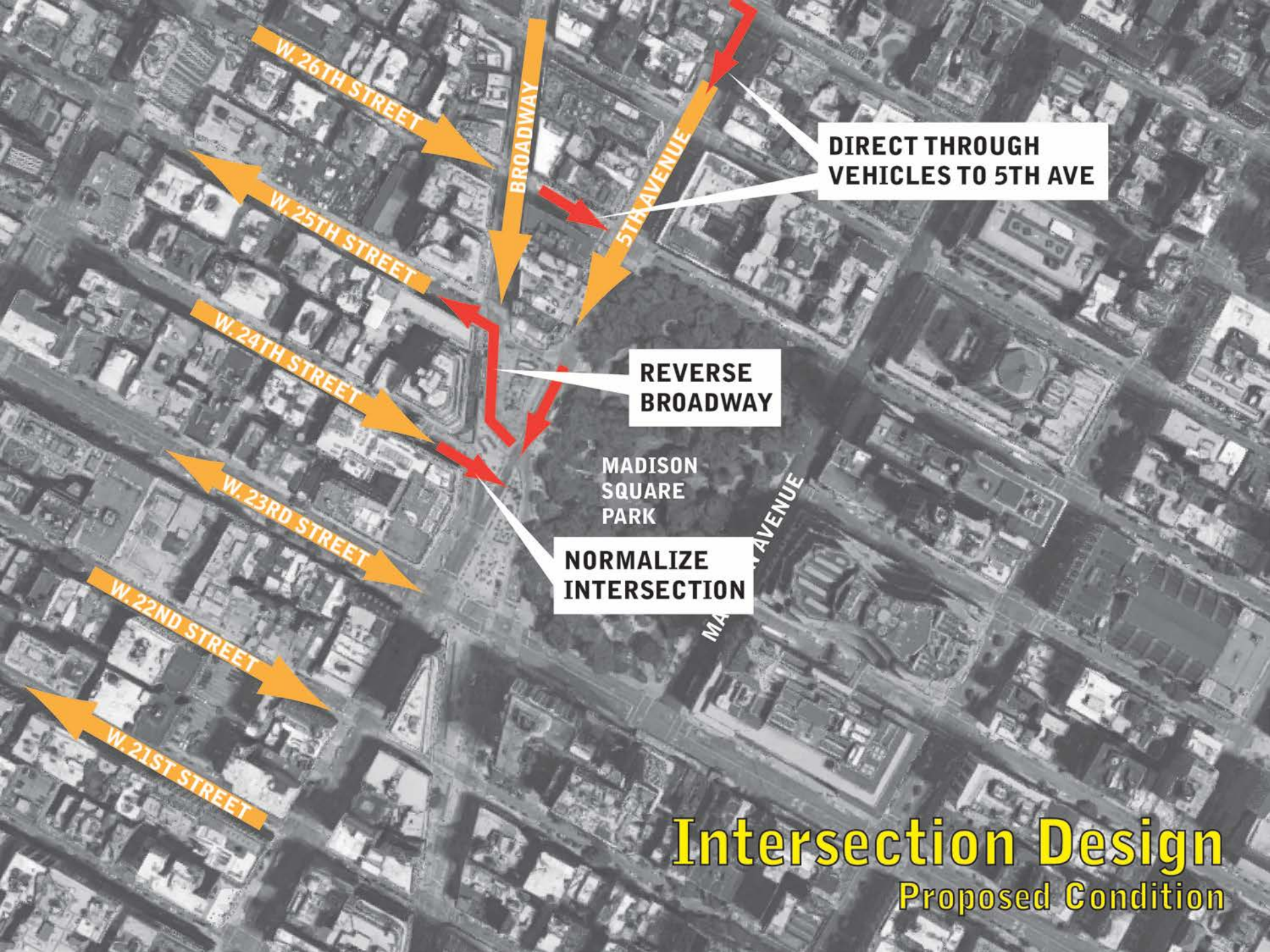
5TH AVENUE

MADISON  
SQUARE  
PARK  
MADISON AVENUE

REVERSE  
BROADWAY

NORMALIZE  
INTERSECTION

**Intersection Design**  
Proposed Condition



W. 26TH STREET

W. 25TH STREET

W. 24TH STREET

W. 23RD STREET

W. 22ND STREET

W. 21ST STREET

BROADWAY

5TH AVENUE

MADISON SQUARE PARK

DIRECT THROUGH VEHICLES TO 5TH AVE

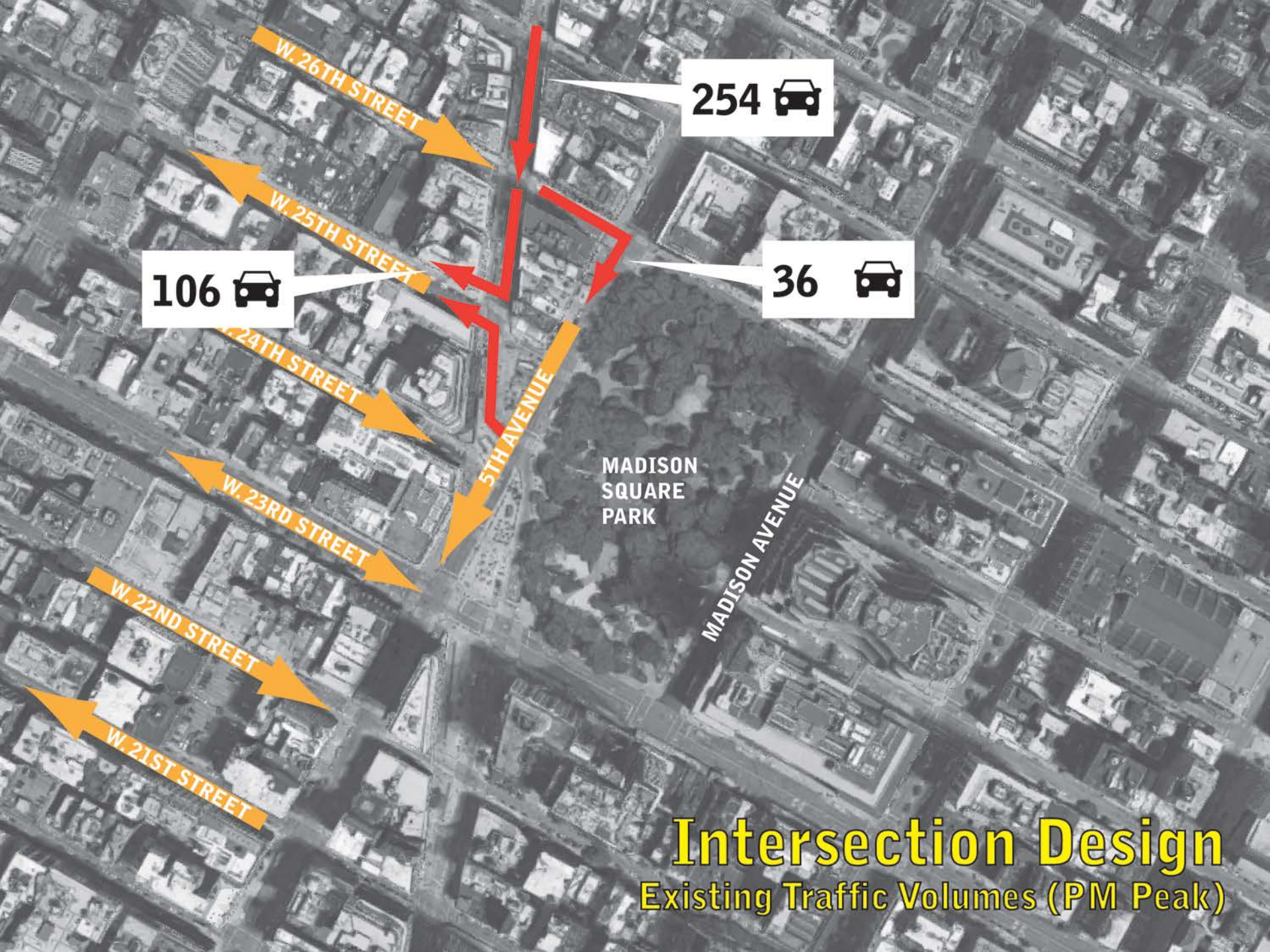
REVERSE BROADWAY

NORMALIZE INTERSECTION

# Intersection Design

Proposed Condition





254 

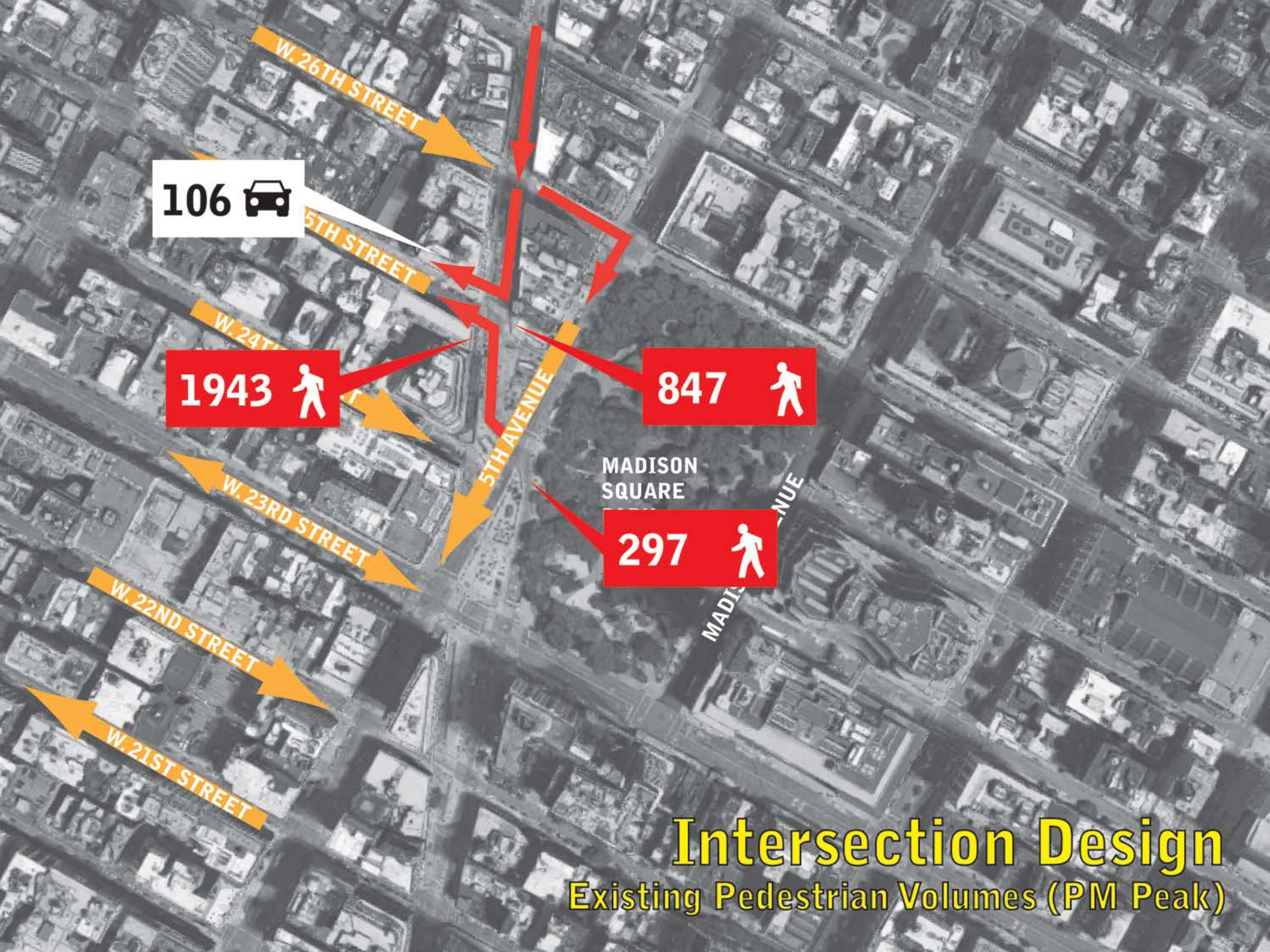
106 

36 

MADISON  
SQUARE  
PARK

# Intersection Design

Existing Traffic Volumes (PM Peak)



106 

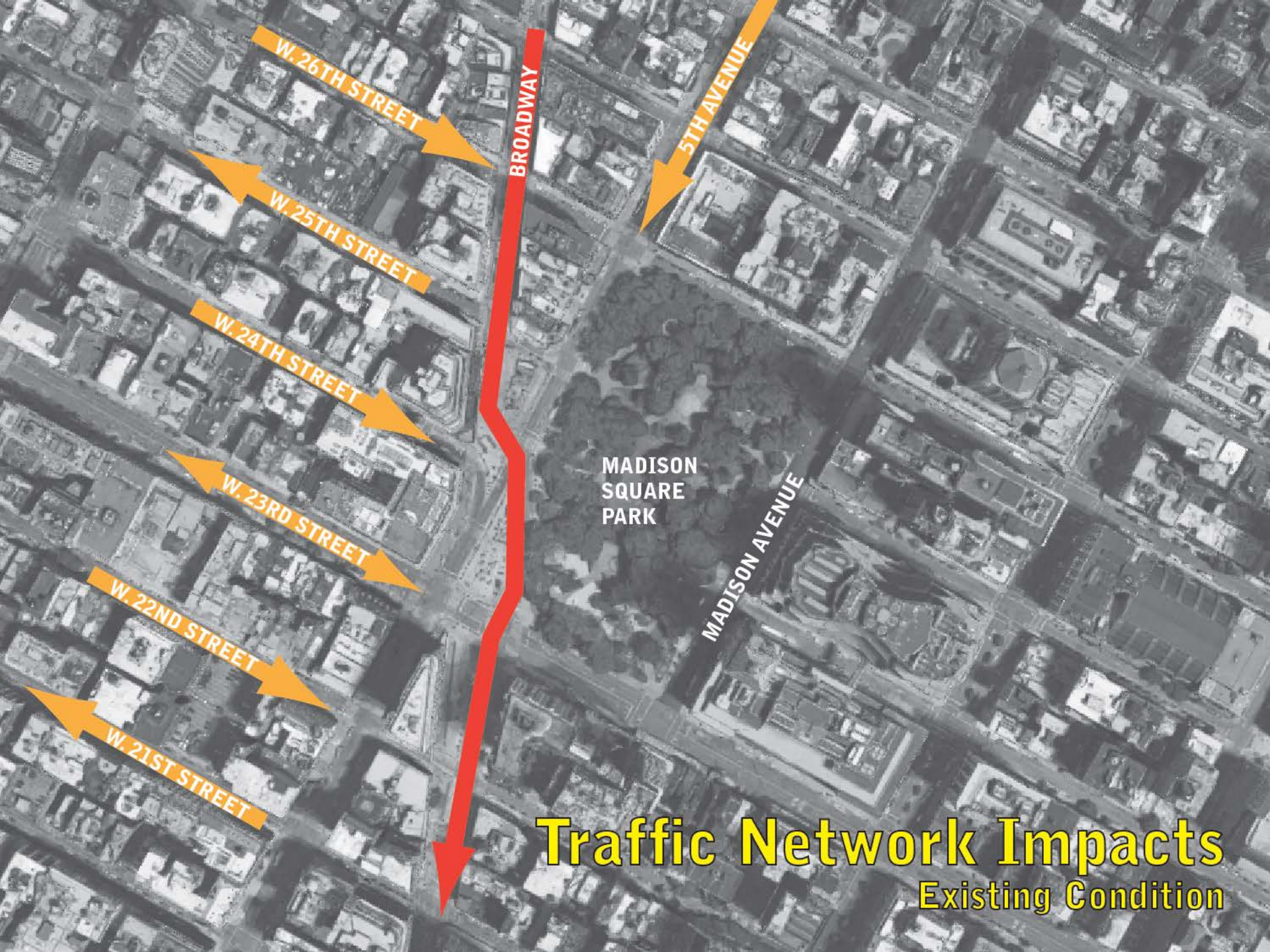
1943 

847 

297 

# Intersection Design

Existing Pedestrian Volumes (PM Peak)



W. 26TH STREET

W. 25TH STREET

W. 24TH STREET

W. 23RD STREET

W. 22ND STREET

W. 21ST STREET

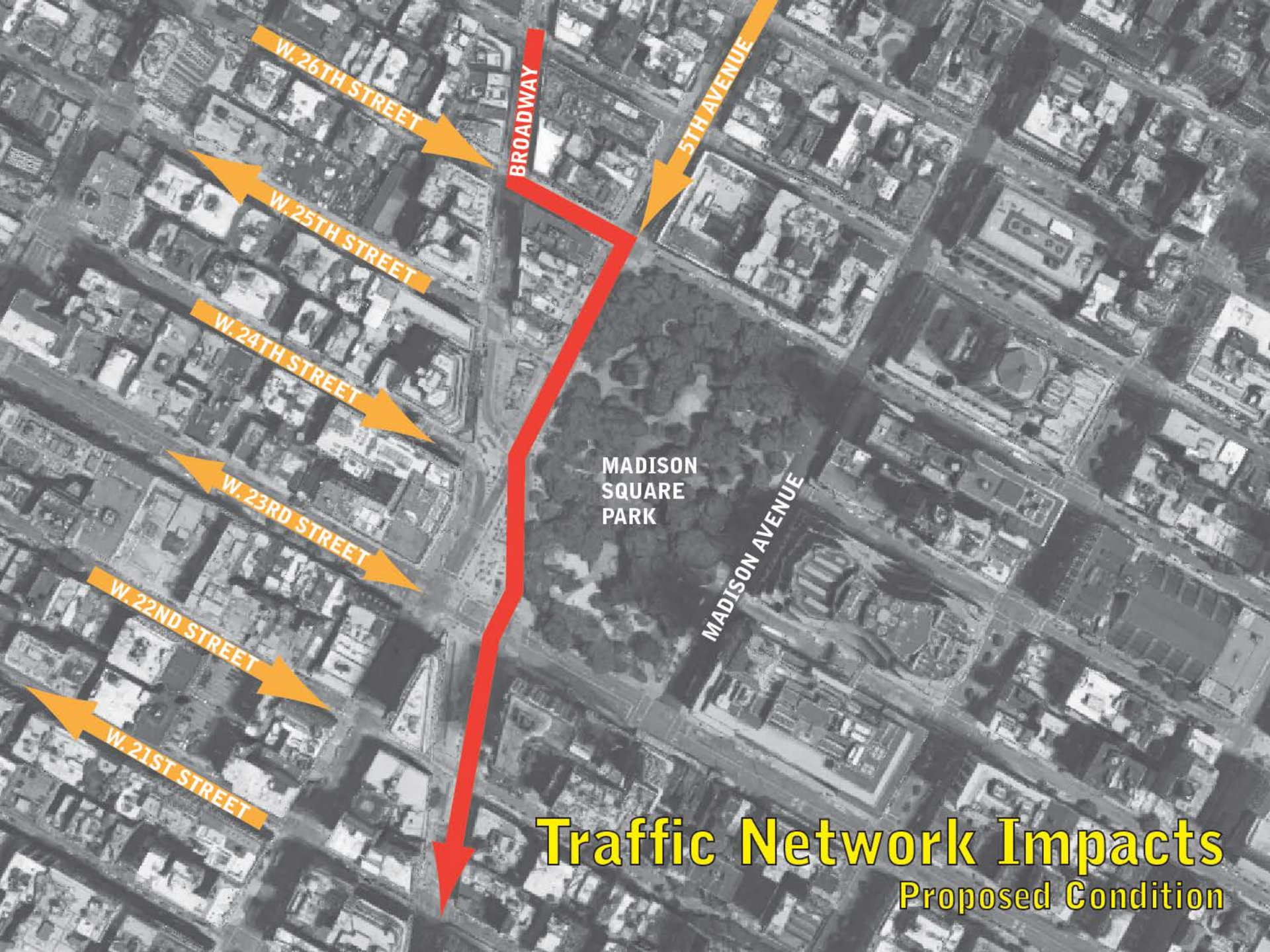
BROADWAY

5TH AVENUE

MADISON  
SQUARE  
PARK

MADISON AVENUE

**Traffic Network Impacts**  
Existing Condition



W. 26TH STREET

BROADWAY

5TH AVENUE

W. 25TH STREET

W. 24TH STREET

W. 23RD STREET

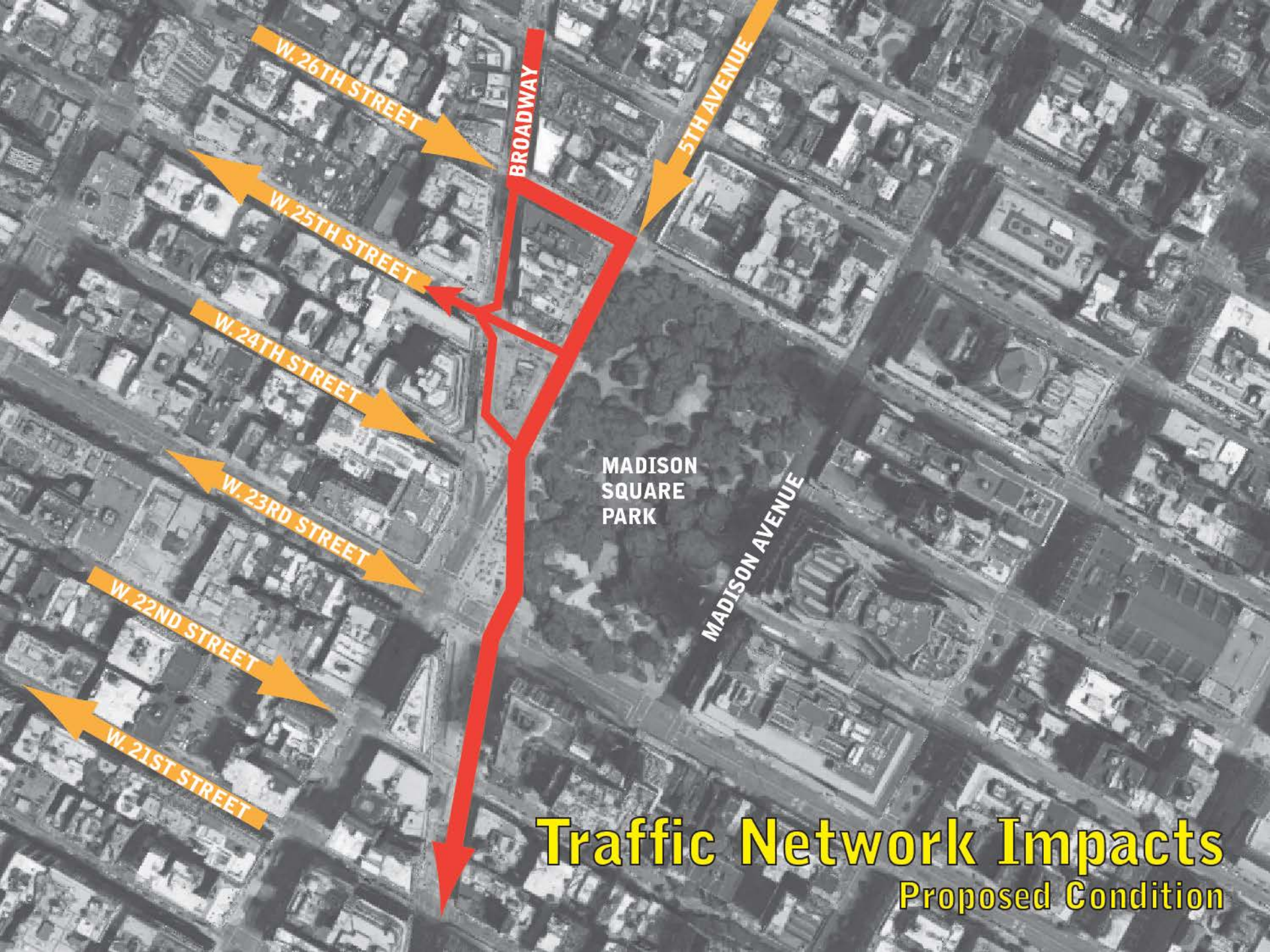
W. 22ND STREET

W. 21ST STREET

MADISON  
SQUARE  
PARK

MADISON AVENUE

**Traffic Network Impacts**  
Proposed Condition



W. 26TH STREET

BROADWAY

5TH AVENUE

W. 25TH STREET

W. 24TH STREET

W. 23RD STREET

W. 22ND STREET

W. 21ST STREET

MADISON  
SQUARE  
PARK

MADISON AVENUE

**Traffic Network Impacts**  
Proposed Condition

# DESIGN



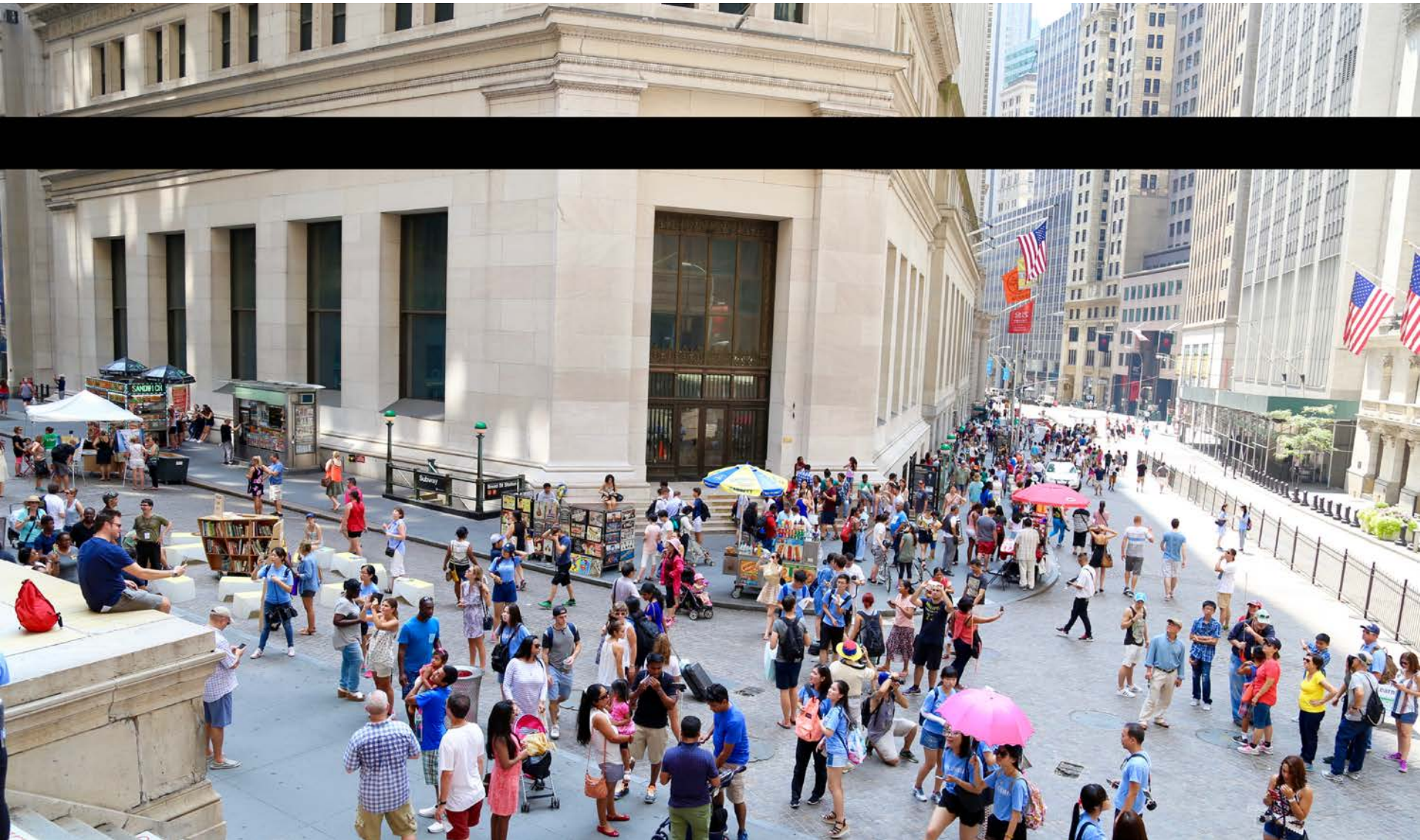
**Existing**



**Proposed**

# SHARED STREETS

LOWER MANHATTAN, AUG 2016



# SHARED STREETS

165<sup>TH</sup> STREET, JAMAICA, QN





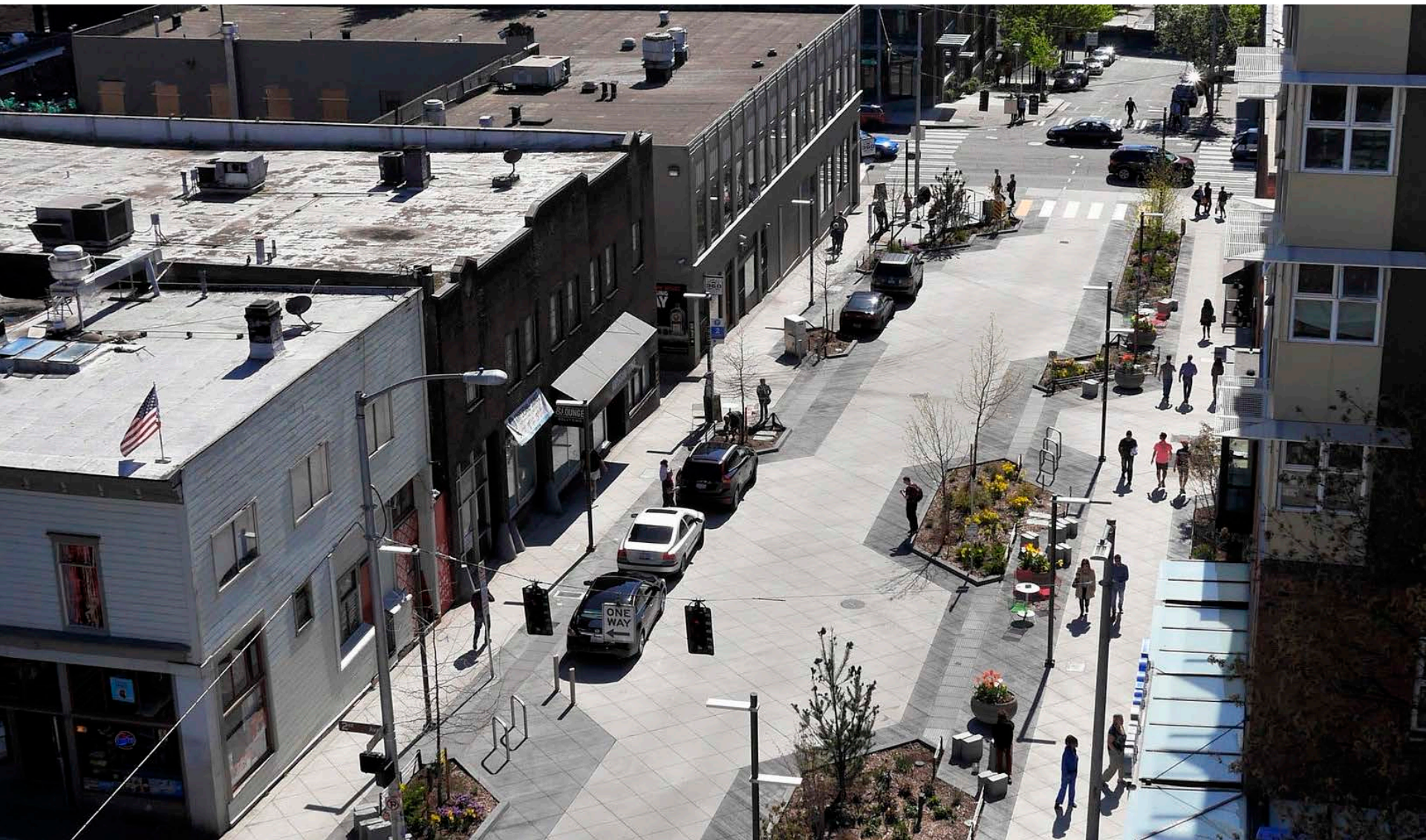
# SHARED STREETS

## MARKET SQUARE, PITTSBURGH



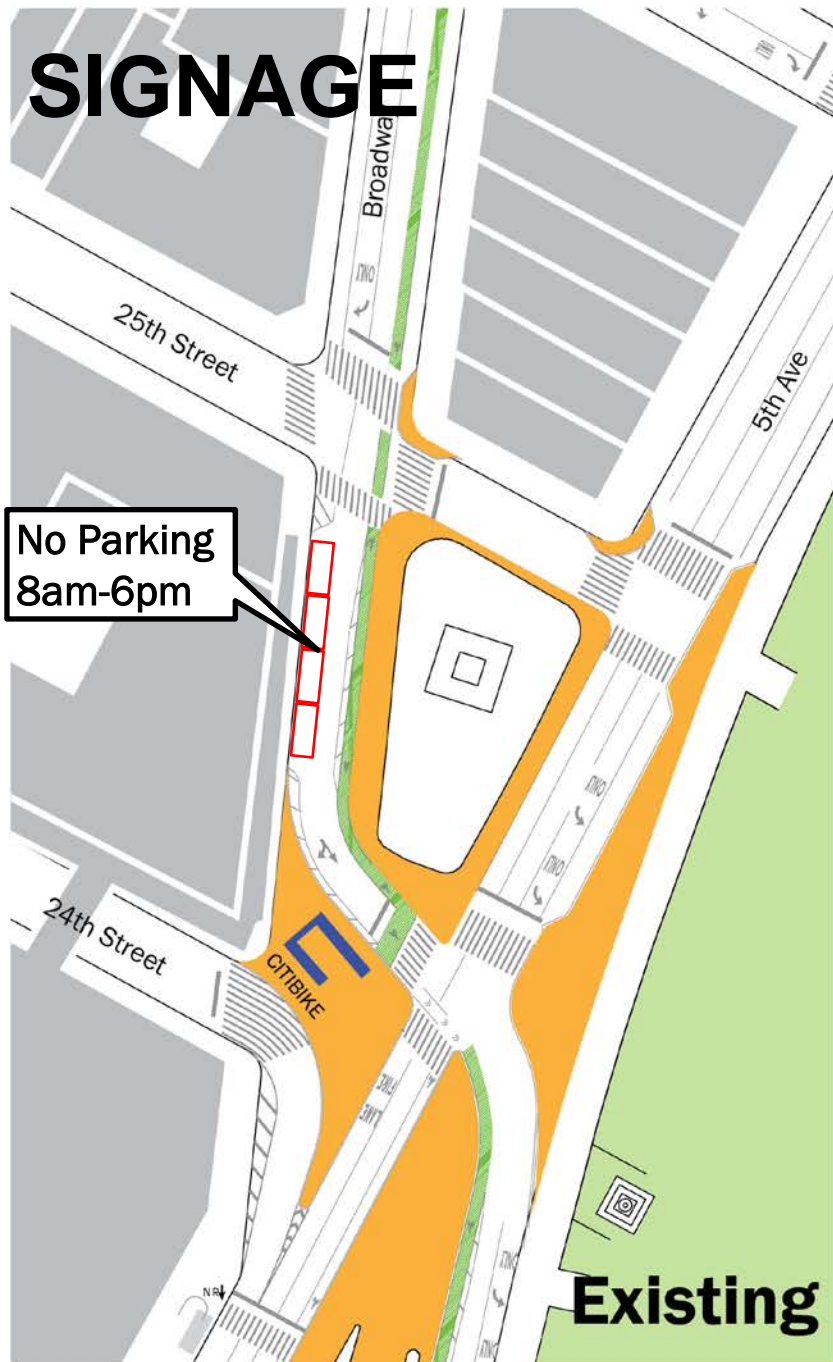
# SHARED STREETS

BELL STREET, SEATTLE



# SIGNAGE

No Parking  
8am-6pm

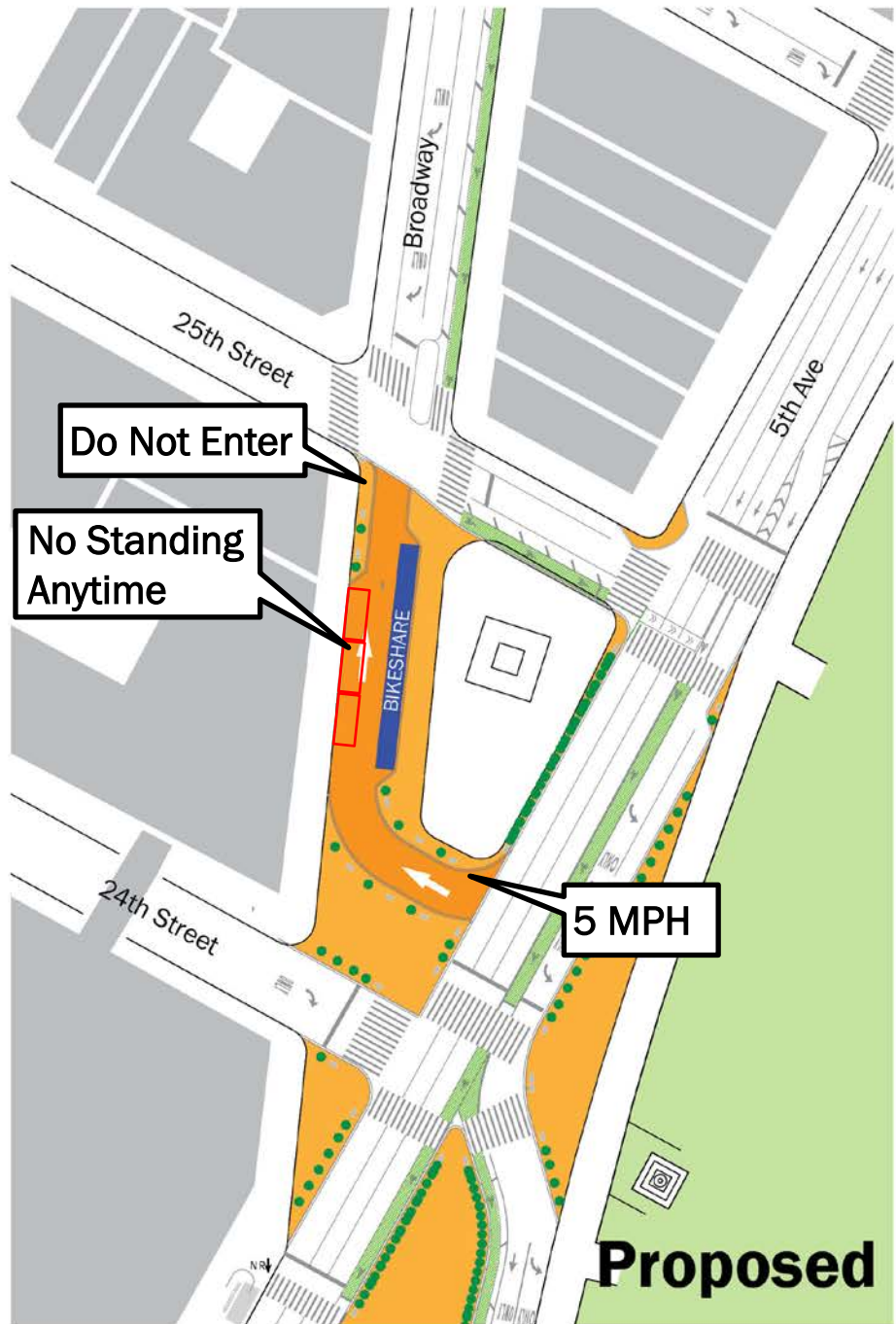


**Existing**

Do Not Enter

No Standing  
Anytime

5 MPH



**Proposed**

# 2017 IMPLEMENTATION

## Materials & Signage



# 2017 IMPLEMENTATION

---

## Schedule

March / April	CB5 presentations
April	Traffic signal removals / relocations
April / May	Milling and Repaving
May	Roadway markings
May / June	Plaza/Shared Street surfacing
Summer	Outreach to public & trainers
Fall	CB5 progress report

# THANK YOU!

---

## Questions?



NYC DOT



NYC DOT



nyc\_dot



NYC DOT