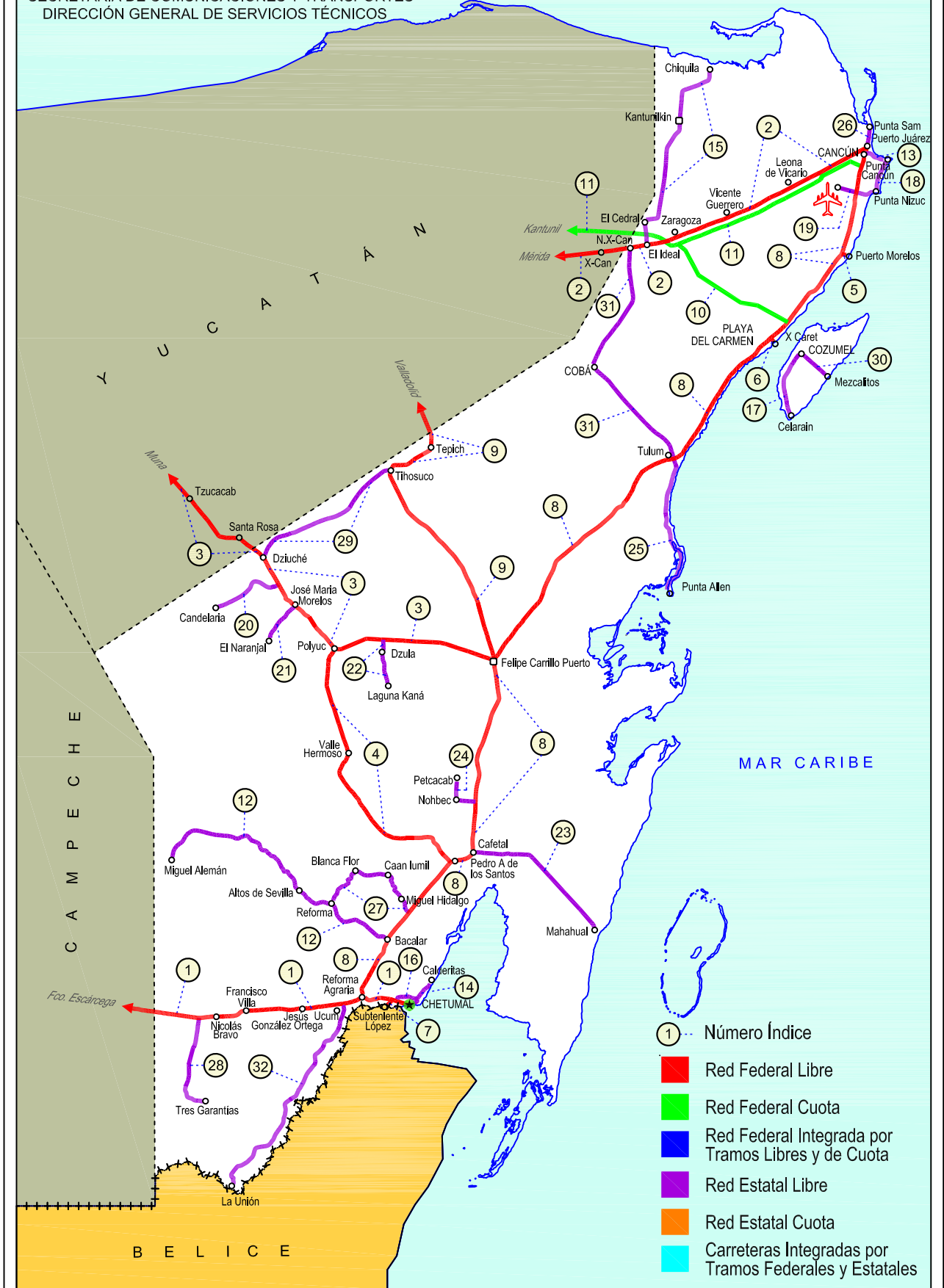
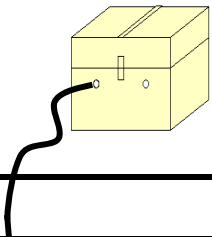


23 QUINTANA ROO

SECRETARÍA DE COMUNICACIONES Y TRANSPORTES
DIRECCIÓN GENERAL DE SERVICIOS TÉCNICOS





QUINTANA ROO

---RED FEDERAL LIBRE---

1	Francisco Escárcega - Chetumal	MEX-186
2	Mérida - Puerto Juárez	MEX-180
3	Muna - Felipe Carrillo Puerto	MEX-184
4	Polyuc - T. C. (Reforma Agraria - Puerto Juárez)	MEX-293
5	Ramal a Puerto Morelos	MEX
6	Ramal a Punta Piedra	MEX
7	Ramal a Subteniente López	MEX-186
8	Reforma Agraria - Puerto Juárez	MEX-307
9	Valladolid - Felipe Carrillo Puerto	MEX-295

---RED FEDERAL DE CUOTA---

10	El Cedral - Playa del Carmen (Cuota)	MEX-180D
11	Mérida - Cancún (Cuota)	MEX-180D

---RED ESTATAL LIBRE---

12	Bacalar - Miguel Alemán	QR
13	Cancún - Punta Cancún	QR
14	Chetumal - Calderitas	QR-004
15	El Ideal - Chiquila	QR-005
16	Libramiento de Chetumal	QR
17	Perimetral Cozumel	QR
18	Punta Nizuc - Cancún	QR
19	Ramal a Aeropuerto Cancún	QR
20	Ramal a Candelaria	QR
21	Ramal a El Naranja	QR
22	Ramal a Laguna de Kaná	QR
23	Ramal a Mahahual	QR
24	Ramal a Petcacab	QR-018
25	Ramal a Punta Allen	QR-015
26	Ramal a Punta Sam	QR
27	Ramal a Reforma	QR-016
28	Ramal a Tres Garantías	QR
29	Tihosuco - Dziuche	QR
30	Transversal de Cozumel	QR
31	Tulum - Nuevo X-Can	QR
32	Ucum - Unión	QR

QUINTANA ROO

1 CARR: Francisco Escárcega - Chetumal

CLAVE: 00093

RUTA: MEX-186

AÑO: 2016

LUGAR	ESTACION				CLASIFICACION VEHICULAR EN PORCIENTO													COORDENADAS		
	KM	TE	SC	TDPA	M	A	B	C2	C3	T3S2	T3S3	T3S2R4	OTROS	A	B	C	K'	D	LATITUD	LONGITUD
Francisco Escárcega	0.00	3	0	3406	5.1	68.0	3.5	7.2	1.5	7.0	1.6	5.3	0.8	73.1	3.5	23.4	0.077	0.516	18.604073	-90.717395
Adolfo López Mateos	41.50	1	0	2561	3.7	67.6	5.5	8.4	1.7	6.0	1.3	5.2	0.6	71.3	5.5	23.2	0.077	0.548	18.639613	-90.306410
T. Der. Silvituc	55.70	1	0	2279	3.2	75.7	2.2	6.9	1.8	4.1	1.9	3.6	0.6	78.9	2.2	18.9	0.069	0.527	18.651222	-90.278071
T. Der. Silvituc	55.70	3	0	2022	4.7	60.6	6.0	8.8	2.3	7.5	2.2	6.9	1.0	65.3	6.0	28.7	0.070	0.510	18.648302	-90.254123
Conhuás	100.00	1	0	1890	7.4	65.3	7.0	8.1	1.6	5.1	1.9	2.8	0.8	72.7	7.0	20.3	0.099	0.524	18.539830	-89.908904
Xpujil	155.73	1	0	2688	3.4	66.2	3.9	10.1	2.5	6.2	1.8	5.2	0.7	69.6	3.9	26.5	0.073	0.547	18.509262	-89.408843
Lim. Edos. Term. Camp. Ppia. Qroo.	179.90																			
Nicolás Bravo	206.01	1	0	2758	6.0	70.1	4.3	6.9	0.8	5.9	1.5	4.0	0.5	76.1	4.3	19.6	0.087	0.515	18.458503	-88.940732
Nicolás Bravo	206.01	3	0	2963	5.2	69.5	5.2	7.9	1.1	5.2	1.1	4.4	0.4	74.7	5.2	20.1	0.086	0.525	18.459137	-88.920331
T. Izq. Morocoy	214.90	1	0	2991	4.0	70.0	4.8	9.0	1.3	4.7	1.4	4.0	0.8	74.0	4.8	21.2	0.075	0.522	18.478705	-88.820080
T. Izq. Morocoy	214.90	3	0	3009	2.9	70.7	5.1	8.1	1.4	5.6	1.0	4.7	0.5	73.6	5.1	21.3	0.073	0.509	18.478860	-88.814456
T. Der. Unión	247.50	1	0	5142	6.0	70.6	3.2	8.7	1.5	5.4	1.3	2.5	0.8	76.6	3.2	20.2	0.074	0.506	18.504425	-88.531252
T. Der. Unión	247.50	3	0	6797	6.0	75.6	2.0	5.5	0.6	6.5	1.0	1.9	0.9	81.6	2.0	16.4	0.077	0.517	18.506020	-88.519057
T. Izq. Fpe. Carrillo Puerto	255.15	1	0	7039	3.9	77.6	2.3	6.9	1.4	4.6	0.8	2.0	0.5	81.5	2.3	16.2	0.083	0.503	18.523891	-88.473387
T. Der. Subteniente López	268.57	1	1	7869	2.9	90.9	0.8	2.8	0.6	0.8	0.7	0.3	0.2	93.8	0.8	5.4	0.120	0.510	18.517066	-88.379544
T. Der. Subteniente López	268.57	1	2	8193	2.6	90.2	0.3	3.8	0.4	1.4	0.8	0.2	0.3	92.8	0.3	6.9	0.097	0.510	18.516980	-88.379558
T. Izq. Av. Insurgentes	270.00	1	1	11066	3.7	90.1	0.7	2.9	0.5	1.0	0.7	0.2	0.2	93.8	0.7	5.5	0.109	0.502	18.513690	-88.364752
T. Izq. Av. Insurgentes	270.00	1	2	10991	3.9	89.2	0.7	3.5	0.5	1.0	0.8	0.2	0.2	93.1	0.7	6.2	0.095	0.502	18.513834	-88.364737
T. Izq. Av. Insurgentes	270.00	3	1	5284	3.9	88.7	0.5	5.6	0.3	0.6	0.2	0.1	0.1	92.6	0.5	6.9	0.079	0.524	18.510598	-88.353855
T. Izq. Av. Insurgentes	270.00	3	2	5825	3.6	88.1	0.5	6.4	0.3	0.6	0.2	0.2	0.1	91.7	0.5	7.8	0.082	0.524	18.510487	-88.353940
Chetumal	277.36	1	1	7324	5.5	88.7	0.2	3.9	0.2	0.9	0.4	0.1	0.1	94.2	0.2	5.6	0.090	0.527	18.501659	-88.320555
Chetumal	277.36	1	2	6580	5.4	88.1	0.3	4.7	0.3	0.5	0.5	0.1	0.1	93.5	0.3	6.2	0.092	0.527	18.501678	-88.320555

2 CARR: Mérida - Puerto Juárez

CLAVE: 00067

RUTA: MEX-180

AÑO: 2016

LUGAR	ESTACION				CLASIFICACION VEHICULAR EN PORCIENTO													COORDENADAS		
	KM	TE	SC	TDPA	M	A	B	C2	C3	T3S2	T3S3	T3S2R4	OTROS	A	B	C	K'	D	LATITUD	LONGITUD
Mérida	0.00																			
X. Periférico de Mérida	5.60	1	1	11061	6.6	85.7	1.5	3.5	0.3	1.2	0.8	0.1	0.3	92.3	1.5	6.2	0.076	0.501	20.957557	-89.572235
X. Periférico de Mérida	5.60	1	2	11095	8.7	83.0	1.7	3.8	0.3	1.3	0.8	0.1	0.3	91.7	1.7	6.6	0.068	0.501	20.957558	-89.572234
X. Periférico de Mérida	5.60	3	1	13260	4.6	82.5	1.3	5.1	1.4	1.9	1.5	1.0	0.7	87.1	1.3	11.6	0.079	0.504	20.955055	-89.566530
X. Periférico de Mérida	5.60	3	2	13475	5.6	80.5	1.3	5.6	1.5	2.0	1.7	1.0	0.8	86.1	1.3	12.6	0.079	0.504	20.955059	-89.566531
Teya	13.00	1	1	10659	4.3	79.4	2.3	7.3	2.2	1.8	0.7	1.8	0.2	83.7	2.3	14.0	0.085	0.523	20.936570	-89.532343
Teya	13.00	1	2	9719	4.6	78.1	2.4	7.9	2.4	1.9	0.6	1.9	0.2	82.7	2.4	14.9	0.079	0.523	20.936569	-89.532343

QUINTANA ROO

2 CARR: Mérida - Puerto Juárez

CLAVE: 00067

ruta: MEX-180

AÑO: 2016

LUGAR	ESTACION				CLASIFICACION VEHICULAR EN PORCIENTO													COORDENADAS		
	KM	TE	SC	TDPA	M	A	B	C2	C3	T3S2	T3S3	T3S2R4	OTROS	A	B	C	K'	D	LATITUD	LONGITUD
T. Der. Seyé	28.79	1	1	5371	0.3	84.7	2.0	6.9	1.8	2.3	0.7	1.1	0.2	85.0	2.0	13.0	0.097	0.508	20.894887	-89.389814
T. Der. Seyé	28.79	1	2	5548	0.7	82.7	2.1	7.6	2.1	2.5	0.9	1.2	0.2	83.4	2.1	14.5	0.070	0.508	20.894888	-89.389810
T. Der. Seyé	28.79	3	1	5363	1.0	82.2	2.5	6.2	1.7	2.2	0.7	3.3	0.2	83.2	2.5	14.3	0.087	0.507	20.891904	-89.371445
T. Der. Seyé	28.79	3	2	5212	1.1	79.5	3.7	8.2	2.0	2.2	0.7	2.3	0.3	80.6	3.7	15.7	0.088	0.507	20.891905	-89.371443
Tahmek	42.00	1	1	5425	1.4	84.6	2.1	4.6	1.5	2.1	0.9	2.4	0.4	86.0	2.1	11.9	0.090	0.512	20.875994	-89.279130
Tahmek	42.00	1	2	5681	0.9	84.1	2.4	5.0	1.6	2.2	0.9	2.4	0.5	85.0	2.4	12.6	0.091	0.512	20.875994	-89.279131
T. Izq. Hochtún (1º Acceso)	46.65	1	0	2158	9.5	72.9	3.9	9.9	1.6	1.1	0.6	0.4	0.1	82.4	3.9	13.7	0.083	0.521	20.867542	-89.214340
T. Izq. Hochtún (2º Acceso)	48.62	1	0	1026	7.8	73.0	1.7	10.8	2.9	2.0	1.1	0.4	0.3	80.8	1.7	17.5	0.092	0.512	20.858541	-89.201685
T. Izq. Hochtún (2º Acceso)	48.62	3	0	1909	13.0	68.7	2.8	10.9	1.5	2.0	0.7	0.4	0.0	81.7	2.8	15.5	0.075	0.510	20.854185	-89.195780
Kantunil	67.28	3	0	3046	2.6	79.9	3.4	8.4	3.6	1.1	0.3	0.6	0.1	82.5	3.4	14.1	0.085	0.506	20.791207	-89.019129
Libre Unión	92.91	1	0	2590	0.7	80.8	3.6	9.4	3.6	1.0	0.2	0.5	0.2	81.5	3.6	14.9	0.095	0.558	20.708474	-88.816632
Libre Unión	92.91	3	0	3336	3.0	79.6	2.7	12.4	1.4	0.4	0.2	0.1	0.2	82.6	2.7	14.7	0.096	0.522	20.706897	-88.799957
Piste	116.30	3	0	7304	6.7	78.8	2.4	4.8	1.4	4.2	0.8	0.3	0.6	85.5	2.4	12.1	0.100	0.527	20.690842	-88.579585
1er. Acceso a Zona Arqueológica de Chichen-Itzá	117.90	3	0	5482	8.6	77.2	2.9	8.0	2.0	0.7	0.3	0.3	0.0	85.8	2.9	11.3	0.084	0.507	20.688521	-88.571486
2do. Acceso a Zona Arqueológica de Chichen-Itzá	121.10	3	0	4777	1.8	85.0	2.7	7.9	1.1	1.3	0.1	0.1	0.0	86.8	2.7	10.5	0.096	0.536	20.668512	-88.556123
T. Der. Chankom	127.00	1	0	3923	2.5	80.8	4.2	8.9	2.0	0.7	0.4	0.4	0.1	83.3	4.2	12.5	0.101	0.517	20.644146	-88.495032
T. Der. Chankom	127.00	3	0	4024	3.0	79.6	4.2	8.1	2.0	2.1	0.5	0.4	0.1	82.6	4.2	13.2	0.108	0.502	20.640981	-88.485118
Valladolid	160.68	1	0	5584	9.0	80.9	1.4	3.1	0.5	2.6	1.2	0.4	0.9	89.9	1.4	8.7	0.070	0.518	20.683170	-88.232917
Valladolid	160.68	3	0	6480	11.0	78.5	1.5	5.9	0.7	1.6	0.3	0.3	0.2	89.5	1.5	9.0	0.086	0.531	20.694316	-88.167605
T. Der. Coba	187.80	1	0	5530	2.2	79.7	1.9	12.2	1.4	1.1	0.5	0.9	0.1	81.9	1.9	16.2	0.108	0.514	20.659378	-87.960208
T. Der. Chemax	189.79	1	0	4078	2.2	85.9	2.0	6.9	1.0	1.7	0.1	0.1	0.1	88.1	2.0	9.9	0.109	0.511	20.657852	-87.951355
T. Der. Chemax	189.79	3	0	3185	3.4	84.1	2.8	6.9	1.3	1.0	0.2	0.2	0.1	87.5	2.8	9.7	0.125	0.529	20.665099	-87.924661
X-Can	225.00	3	0	2833	1.8	84.5	2.5	6.5	1.8	1.8	0.5	0.5	0.1	86.3	2.5	11.2	0.116	0.502	20.860810	-87.654767
Lim. Edos. Term. Yuc. Ppia. Q. R.	230.40																			
Nuevo X-Can	231.90	3	0	3129	1.7	84.9	2.0	6.6	2.3	1.7	0.4	0.3	0.1	86.6	2.0	11.4	0.110	0.507	20.871596	-87.590990
Zaragoza	239.00	1	0	4636	2.9	87.1	2.0	6.0	1.1	0.5	0.2	0.1	0.1	90.0	2.0	8.0	0.098	0.569	20.881287	-87.533433
Vicente Guerrero	261.00	1	0	3236	2.2	85.8	2.5	6.5	1.6	0.8	0.2	0.4	0.0	88.0	2.5	9.5	0.104	0.521	20.940831	-87.331907
Leona Vicario	275.50	1	0	5506	5.2	80.7	1.9	5.8	1.5	2.9	0.8	0.6	0.6	85.9	1.9	12.2	0.078	0.511	20.982207	-87.219741
Leona Vicario	275.50	3	0	5972	5.8	80.8	1.8	5.4	1.3	3.0	0.9	0.5	0.5	86.6	1.8	11.6	0.087	0.504	20.993739	-87.187934
T. Der. Aeropuerto	302.50	1	0	7124	1.7	80.6	1.2	8.5	3.2	3.1	1.2	0.3	0.2	82.3	1.2	16.5	0.085	0.507	21.096248	-86.983235
T. Der. Aeropuerto	302.50	3	1	4592	2.5	82.3	1.8	6.2	2.3	1.9	1.1	1.5	0.4	84.8	1.8	13.4	0.106	0.501	21.103347	-86.969327
T. Der. Aeropuerto	302.50	3	2	4565	2.7	80.6	2.1	6.8	2.5	2.1	1.2	1.6	0.4	83.3	2.1	14.6	0.110	0.501	21.103344	-86.969328
T. Der. Alfredo V. Bonfil	310.00	1	1	22147	4.8	81.4	0.4	3.9	0.4	2.5	4.5	0.8	1.3	86.2	0.4	13.4	0.065	0.507	21.138454	-86.898680
T. Der. Alfredo V. Bonfil	310.00	1	2	22790	5.0	83.2	0.2	2.7	0.4	2.4	4.3	0.6	1.2	88.2	0.2	11.6	0.058	0.507	21.138454	-86.898680

QUINTANA ROO

2 CARR: Mérida - Puerto Juárez

CLAVE: 00067

RUTA: MEX-180

AÑO: 2016

LUGAR	ESTACION	CLASIFICACION VEHICULAR EN PORCIENTO												COORDENADAS					
		KM	TE	SC	TDPA	M	A	B	C2	C3	T3S2	T3S3	T3S2R4	OTROS	A	B	C	K'	D

Puerto Juárez 321.41

3 CARR: Muna - Felipe Carrillo Puerto

CLAVE: 00148

RUTA: MEX-184

AÑO: 2016

LUGAR	ESTACION	CLASIFICACION VEHICULAR EN PORCIENTO												COORDENADAS					
		KM	TE	SC	TDPA	M	A	B	C2	C3	T3S2	T3S3	T3S2R4	OTROS	A	B	C	K'	D

Muna	0.00	3	0	4030	7.6	77.5	1.1	9.1	1.1	2.3	0.6	0.4	0.3	85.1	1.1	13.8	0.070	0.502	20.474672	-89.694694
Ticul	19.10	1	0	3805	6.5	80.7	0.8	8.4	1.4	1.5	0.4	0.3	0.0	87.2	0.8	12.0	0.072	0.512	20.404693	-89.569863
Ticul	19.10	3	0	6599	34.5	55.5	0.6	4.4	0.5	3.5	0.5	0.1	0.4	90.0	0.6	9.4	0.070	0.503	20.372192	-89.516451
Oxkutzcab	40.50	3	0	5997	23.3	65.2	0.5	7.6	0.6	2.1	0.3	0.1	0.3	88.5	0.5	11.0	0.079	0.523	20.281910	-89.374933
Tekax	53.90	3	0	3578	27.8	63.6	0.3	5.1	0.5	2.3	0.3	0.0	0.1	91.4	0.3	8.3	0.073	0.515	20.187900	-89.267412
Tzucacab	86.60	1	0	1561	17.3	68.4	0.8	10.7	1.1	1.4	0.2	0.1	0.0	85.7	0.8	13.5	0.083	0.502	20.078328	-89.061949
Tzucacab	86.60	3	0	1406	29.3	61.7	0.3	6.8	0.6	1.0	0.2	0.1	0.0	91.0	0.3	8.7	0.079	0.505	20.063626	-89.037002
Santa Rosa	109.60	3	0	2550	5.1	76.2	2.4	9.9	2.0	1.5	0.9	1.9	0.1	81.3	2.4	16.3	0.069	0.512	19.946557	-88.879135
Lim. Edos. Term. Yuc. Ppia. Q. R.	117.00																			
Dziuche	118.00	1	0	2465	3.7	77.0	2.4	10.0	2.1	1.6	1.0	2.0	0.2	80.7	2.4	16.9	0.067	0.509	19.905570	-88.819781
Dziuche	118.00	3	0	2893	3.8	78.5	2.1	5.9	2.5	2.8	1.3	2.4	0.7	82.3	2.1	15.6	0.058	0.512	19.888416	-88.803537
José María Morelos	138.60	1	0	3883	6.6	81.5	1.6	6.3	1.5	0.9	0.5	1.0	0.1	88.1	1.6	10.3	0.078	0.521	19.764755	-88.725309
José María Morelos	138.60	3	0	2838	8.4	76.1	2.3	8.8	1.5	1.0	0.6	1.0	0.3	84.5	2.3	13.2	0.079	0.509	19.738726	-88.693931
Polyuc	161.94	1	0	2697	8.5	70.9	1.9	17.2	0.3	0.6	0.3	0.1	0.2	79.4	1.9	18.7	0.072	0.516	19.611783	-88.571778
Polyuc	161.94	3	0	1340	6.6	79.5	2.0	7.3	1.9	1.7	0.3	0.6	0.1	86.1	2.0	11.9	0.078	0.513	19.609502	-88.556569
T. Der. Dzulá	178.11	3	0	1328	4.4	81.9	1.4	8.9	1.4	1.1	0.7	0.2	0.0	86.3	1.4	12.3	0.087	0.506	19.643509	-88.406150
Felipe Carrillo Puerto	216.97	1	0	5455	15.7	71.3	1.0	5.8	1.8	2.9	0.8	0.3	0.4	87.0	1.0	12.0	0.076	0.531	19.584458	-88.057796

4 CARR: Polyuc - T. C. (Reforma Agraria - Puerto Juárez)

CLAVE: 23014

RUTA: MEX-293

AÑO: 2016

LUGAR	ESTACION	CLASIFICACION VEHICULAR EN PORCIENTO												COORDENADAS					
		KM	TE	SC	TDPA	M	A	B	C2	C3	T3S2	T3S3	T3S2R4	OTROS	A	B	C	K'	D

Polyuc	0.00	3	0	2396	5.5	75.1	2.8	11.1	1.8	1.3	1.0	0.9	0.5	80.6	2.8	16.6	0.073	0.533	19.608383	-88.571097
T. Der. Ramonal	24.00	1	0	1430	2.1	78.7	2.8	8.0	1.8	2.6	1.2	2.7	0.1	80.8	2.8	16.4	0.080	0.502	19.400778	-88.565066
T. Der. Ramonal	24.00	3	0	1592	2.8	77.9	3.0	7.6	2.5	2.5	0.9	2.7	0.1	80.7	3.0	16.3	0.079	0.513	19.398382	-88.564338
T. Izq. Santa María Poniente	35.00	1	0	1681	2.6	76.6	2.4	9.1	3.1	2.4	1.3	2.2	0.3	79.2	2.4	18.4	0.075	0.511	19.341034	-88.547037
T. Izq. Santa María Poniente	35.00	3	0	1651	2.3	77.7	2.4	7.0	5.3	2.2	1.0	1.9	0.2	80.0	2.4	17.6	0.081	0.511	19.339826	-88.546661
Valle Hermoso	50.00	3	0	1527	7.0	74.9	2.6	6.5	2.3	2.7	1.2	2.7	0.1	81.9	2.6	15.5	0.090	0.507	19.180911	-88.523266

QUINTANA ROO

4 CARR: Polyuc - T. C. (Reforma Agraria - Puerto Juárez)

CLAVE: 23014

RUTA: MEX-293

AÑO: 2016

LUGAR	ESTACION				CLASIFICACION VEHICULAR EN PORCIENTO												COORDENADAS			
	KM	TE	SC	TDPA	M	A	B	C2	C3	T3S2	T3S3	T3S2R4	OTROS	A	B	C	K'	D	LATITUD	LONGITUD
T. Izq. Chacchoben	93.50	1	0	1693	4.9	73.4	3.8	7.7	2.9	2.5	2.2	2.6	0.0	78.3	3.8	17.9	0.093	0.505	18.983489	-88.219276
T. Izq. Chacchoben	93.50	3	0	1652	5.4	76.1	3.0	8.5	1.7	1.8	1.0	2.3	0.2	81.5	3.0	15.5	0.087	0.506	18.968866	-88.205837
T. C. Reforma Agraria - Puerto Juárez	99.00	1	0	1609	3.6	80.5	2.2	5.8	2.0	2.3	1.1	2.3	0.2	84.1	2.2	13.7	0.089	0.501	18.949372	-88.187701

5 CARR: Ramal a Puerto Morelos

CLAVE: 23569

RUTA: MEX

AÑO: 2016

LUGAR	ESTACION				CLASIFICACION VEHICULAR EN PORCIENTO												COORDENADAS			
	KM	TE	SC	TDPA	M	A	B	C2	C3	T3S2	T3S3	T3S2R4	OTROS	A	B	C	K'	D	LATITUD	LONGITUD
T. C. Reforma Agraria - Puerto Juárez	0.00	3	0	9845	4.1	83.1	0.4	5.9	0.5	5.0	0.3	0.1	0.6	87.2	0.4	12.4	0.084	0.500	20.854330	-86.893339
Puerto Morelos	2.20																			

6 CARR: Ramal a Punta Piedra

CLAVE: 23575

RUTA: MEX

AÑO: 2016

LUGAR	ESTACION				CLASIFICACION VEHICULAR EN PORCIENTO												COORDENADAS			
	KM	TE	SC	TDPA	M	A	B	C2	C3	T3S2	T3S3	T3S2R4	OTROS	A	B	C	K'	D	LATITUD	LONGITUD
T. C. Reforma Agraria - Puerto Juárez	0.00	3	1	8098	8.0	80.3	1.0	3.7	0.8	1.8	2.7	0.8	0.9	88.3	1.0	10.7	0.062	0.517	20.626242	-87.081237
T. C. Reforma Agraria - Puerto Juárez	0.00	3	2	8679	7.5	79.2	1.0	4.4	0.8	2.0	3.1	1.0	1.0	86.7	1.0	12.3	0.067	0.517	20.626168	-87.081267
Punta Piedra (Playa del Carmen)	1.50																			

7 CARR: Ramal a Subteniente López

CLAVE: 23567

RUTA: MEX-186

AÑO: 2016

LUGAR	ESTACION				CLASIFICACION VEHICULAR EN PORCIENTO												COORDENADAS			
	KM	TE	SC	TDPA	M	A	B	C2	C3	T3S2	T3S3	T3S2R4	OTROS	A	B	C	K'	D	LATITUD	LONGITUD
T. C. Francisco Escárcega - Chetumal	0.00	3	1	4338	3.6	88.7	0.5	5.3	0.8	0.7	0.2	0.1	0.1	92.3	0.5	7.2	0.094	0.510	18.512044	-88.376484
T. C. Francisco Escárcega - Chetumal	0.00	3	2	4510	4.1	87.8	0.6	5.5	0.9	0.7	0.2	0.1	0.1	91.9	0.6	7.5	0.092	0.510	18.512039	-88.376488
Subteniente López	3.00																			

8 CARR: Reforma Agraria - Puerto Juárez

CLAVE: 23132

RUTA: MEX-307

AÑO: 2016

LUGAR	ESTACION				CLASIFICACION VEHICULAR EN PORCIENTO												COORDENADAS			
	KM	TE	SC	TDPA	M	A	B	C2	C3	T3S2	T3S3	T3S2R4	OTROS	A	B	C	K'	D	LATITUD	LONGITUD
T. C. Francisco Escárcega - Chetumal	0.00	3	1	5242	3.4	81.6	1.8	7.8	0.9	2.0	0.6	1.6	0.3	85.0	1.8	13.2	0.084	0.507	18.532179	-88.467304
T. C. Francisco Escárcega - Chetumal	0.00	3	2	5395	2.5	80.5	2.1	8.9	1.0	2.4	0.6	1.7	0.3	83.0	2.1	14.9	0.087	0.507	18.532137	-88.467420
Bacalar	19.15	1	1	3966	2.5	82.9	2.0	6.6	0.9	2.3	0.7	1.9	0.2	85.4	2.0	12.6	0.084	0.505	18.659906	-88.405267

QUINTANA ROO

8 CARR: Reforma Agraria - Puerto Juárez

CLAVE: 23132

RUTA: MEX-307

AÑO: 2016

LUGAR	ESTACION				CLASIFICACION VEHICULAR EN PORCIENTO													COORDENADAS		
	KM	TE	SC	TDPA	M	A	B	C2	C3	T3S2	T3S3	T3S2R4	OTROS	A	B	C	K'	D	LATITUD	LONGITUD
Bacalar	19.15	1	2	4040	2.3	81.7	2.4	7.1	1.0	2.6	0.7	2.0	0.2	84.0	2.4	13.6	0.094	0.505	18.659903	-88.405225
Bacalar	19.15	3	0	8060	4.6	77.9	2.3	6.6	0.8	4.5	0.8	1.9	0.6	82.5	2.3	15.2	0.079	0.512	18.694754	-88.388328
T. Izq. Reforma	22.24	3	0	6168	3.4	75.3	1.9	10.1	1.2	4.3	1.0	2.3	0.5	78.7	1.9	19.4	0.082	0.532	18.706965	-88.384460
Buenavista	46.90	1	0	4819	1.1	73.1	4.0	10.4	1.6	4.7	1.1	3.4	0.6	74.2	4.0	21.8	0.079	0.506	18.878171	-88.247331
Buenavista	46.90	3	0	4957	1.6	76.0	3.5	8.5	1.3	4.5	1.0	3.2	0.4	77.6	3.5	18.9	0.088	0.511	18.889676	-88.237378
T. Izq. Lazáro Cárdenas	56.30	1	0	5102	1.4	75.3	4.0	8.5	1.3	4.7	1.0	3.3	0.5	76.7	4.0	19.3	0.088	0.506	18.942266	-88.189145
T. Izq. Lazáro Cárdenas	56.30	3	0	4295	1.6	78.6	3.5	7.3	1.0	4.3	0.8	2.6	0.3	80.2	3.5	16.3	0.092	0.503	18.950677	-88.180856
T. Izq. Chacchoben	70.80	1	0	4111	2.8	75.8	4.2	7.1	1.0	4.6	1.3	2.7	0.5	78.6	4.2	17.2	0.088	0.517	19.009440	-88.111324
T. Izq. Chacchoben	70.80	3	0	3671	2.9	71.3	3.8	10.3	1.4	5.3	1.0	3.5	0.5	74.2	3.8	22.0	0.093	0.502	19.036571	-88.110000
T. Izq. Noh-Bec	81.94	1	0	3774	1.1	77.1	4.7	6.6	1.2	4.6	1.0	3.2	0.5	78.2	4.7	17.1	0.083	0.510	19.131143	-88.105385
T. Izq. Noh-Bec	81.94	3	0	3786	1.8	75.0	5.2	7.9	1.0	4.7	0.7	3.3	0.4	76.8	5.2	18.0	0.084	0.504	19.141822	-88.104821
Felipe Carrillo Puerto	132.00	1	0	4140	2.7	76.1	4.3	7.0	1.1	4.7	0.8	2.7	0.6	78.8	4.3	16.9	0.087	0.523	19.556959	-88.043458
Felipe Carrillo Puerto	132.00	3	0	3331	1.0	73.6	4.2	9.4	1.3	5.6	1.2	3.0	0.7	74.6	4.2	21.2	0.099	0.514	19.605941	-88.026859
Tulum Pueblo	227.00	1	0	6605	3.2	79.4	2.2	6.8	0.9	4.6	0.8	1.7	0.4	82.6	2.2	15.2	0.085	0.503	20.205007	-87.481802
Tulum Pueblo	227.00	3	1	7188	7.6	89.3	0.2	2.4	0.2	0.1	0.2	0.0	0.0	96.9	0.2	2.9	0.077	0.538	20.209559	-87.467567
Tulum Pueblo	227.00	3	2	8363	8.4	88.1	0.2	2.8	0.2	0.1	0.2	0.0	0.0	96.5	0.2	3.3	0.073	0.538	20.209565	-87.467565
T. Izq. Cobá	229.19	1	1	8729	3.5	90.6	0.5	2.2	0.3	1.0	1.4	0.2	0.3	94.1	0.5	5.4	0.071	0.530	20.213179	-87.456734
T. Izq. Cobá	229.19	1	2	9841	3.8	89.7	0.5	2.6	0.3	1.1	1.5	0.2	0.3	93.5	0.5	6.0	0.073	0.530	20.213053	-87.456643
T. Izq. Cobá	229.19	3	1	8747	2.6	85.3	1.1	4.7	0.5	1.9	2.3	0.8	0.8	87.9	1.1	11.0	0.086	0.517	20.215380	-87.449787
T. Izq. Cobá	229.19	3	2	8171	3.8	82.4	1.2	5.4	0.6	2.2	2.6	0.9	0.9	86.2	1.2	12.6	0.073	0.517	20.215242	-87.449841
X. C. Tulum - Aeropuerto	231.19	1	1	8118	1.8	87.2	1.8	5.0	0.6	1.6	0.8	0.8	0.4	89.0	1.8	9.2	0.092	0.503	20.217838	-87.442337
X. C. Tulum - Aeropuerto	231.19	1	2	8221	1.9	86.2	1.9	5.4	0.8	1.6	0.9	0.9	0.4	88.1	1.9	10.0	0.092	0.503	20.217838	-87.442337
X. C. Tulum - Aeropuerto	231.19	3	1	7753	1.2	85.4	2.3	6.4	1.0	1.7	0.8	1.0	0.2	86.6	2.3	11.1	0.102	0.503	20.220574	-87.433643
X. C. Tulum - Aeropuerto	231.19	3	2	7651	1.0	84.1	2.6	7.4	1.0	1.8	0.8	1.1	0.2	85.1	2.6	12.3	0.096	0.503	20.220568	-87.433640
T. Der. Xel-Ha	244.80	1	1	7690	0.6	87.2	2.3	6.0	0.8	1.5	0.4	1.0	0.2	87.8	2.3	9.9	0.107	0.505	20.314421	-87.368069
T. Der. Xel-Ha	244.80	1	2	7544	0.7	86.2	2.6	6.3	1.0	1.5	0.4	1.1	0.2	86.9	2.6	10.5	0.103	0.505	20.314422	-87.368065
T. Der. Xel-Ha	244.80	3	1	7863	0.6	86.8	2.1	6.1	1.1	1.5	0.7	0.9	0.2	87.4	2.1	10.5	0.119	0.505	20.330780	-87.358362
T. Der. Xel-Ha	244.80	3	2	8027	1.2	85.6	2.3	6.3	1.1	1.5	0.8	1.0	0.2	86.8	2.3	10.9	0.100	0.505	20.330781	-87.358393
T. Der. Akumal	254.44	1	1	9696	0.9	87.7	2.0	5.9	0.7	1.3	0.5	0.8	0.2	88.6	2.0	9.4	0.108	0.514	20.395017	-87.321660
T. Der. Akumal	254.44	1	2	9175	0.7	86.6	2.3	6.6	0.8	1.4	0.6	0.8	0.2	87.3	2.3	10.4	0.105	0.514	20.395007	-87.321646
Playa del Carmen	289.70	1	1	21045	3.2	84.2	2.0	7.6	1.2	0.8	0.5	0.4	0.1	87.4	2.0	10.6	0.112	0.539	20.609645	-87.104860
Playa del Carmen	289.70	1	2	20692	2.4	83.7	2.2	8.5	1.3	0.9	0.5	0.4	0.1	86.1	2.2	11.7	0.099	0.539	20.610317	-87.104332
Playa del Carmen	295.00	3	1	27123	2.4	87.4	1.5	6.4	0.7	0.6	0.6	0.3	0.1	89.8	1.5	8.7	0.074	0.505	20.661153	-87.057892
Playa del Carmen	295.00	3	2	27642	2.6	86.2	1.7	7.1	0.7	0.6	0.7	0.3	0.1	88.8	1.7	9.5	0.075	0.505	20.662584	-87.057037

QUINTANA ROO

8 CARR: Reforma Agraria - Puerto Juárez

CLAVE: 23132

RUTA: MEX-307

AÑO: 2016

LUGAR	ESTACION				CLASIFICACION VEHICULAR EN PORCIENTO										COORDENADAS					
	KM	TE	SC	TDPA	M	A	B	C2	C3	T3S2	T3S3	T3S2R4	OTROS	A	B	C	K'	D	LATITUD	LONGITUD
T. Der. Puerto Morelos	321.48	1	1	18682	0.6	78.0	2.6	17.3	0.5	0.5	0.2	0.2	0.1	78.6	2.6	18.8	0.082	0.502	20.838066	-86.909893
T. Der. Puerto Morelos	321.48	1	2	18803	0.5	74.5	3.2	20.3	0.5	0.5	0.2	0.2	0.1	75.0	3.2	21.8	0.087	0.502	20.838115	-86.910103
T. Der. Puerto Morelos	321.48	3	1	24580	0.8	85.7	1.8	10.2	0.5	0.5	0.2	0.2	0.1	86.5	1.8	11.7	0.081	0.503	20.867385	-86.892811
T. Der. Puerto Morelos	321.48	3	2	24924	0.9	84.4	2.0	11.2	0.5	0.5	0.2	0.2	0.1	85.3	2.0	12.7	0.073	0.503	20.867361	-86.892819
T. Izq. Aeropuerto Cancún	341.50	1	1	28446	0.5	85.0	2.5	10.5	0.5	0.5	0.1	0.3	0.1	85.5	2.5	12.0	0.081	0.551	21.022187	-86.853653
T. Izq. Aeropuerto Cancún	341.50	1	2	29042	0.7	83.1	2.8	11.8	0.6	0.5	0.1	0.3	0.1	83.8	2.8	13.4	0.081	0.551	21.022162	-86.853661
T. Izq. Aeropuerto Cancún	341.50	3	1	27403	1.3	85.9	1.7	8.4	0.4	0.9	1.1	0.2	0.1	87.2	1.7	11.1	0.093	0.534	21.040329	-86.850180
T. Izq. Aeropuerto Cancún	341.50	3	2	31459	1.4	85.3	1.7	9.0	0.4	0.9	1.0	0.2	0.1	86.7	1.7	11.6	0.087	0.534	21.040350	-86.850164
T. Izq. Alfredo V. Bonfil	348.22	1	1	33424	1.7	87.1	2.0	7.6	0.2	0.6	0.5	0.1	0.2	88.8	2.0	9.2	0.102	0.500	21.083134	-86.843282
T. Izq. Alfredo V. Bonfil	348.22	1	2	33472	1.7	86.0	2.3	8.2	0.2	0.6	0.7	0.1	0.2	87.7	2.3	10.0	0.092	0.500	21.083138	-86.843296
Cancún	355.48	1	1	39140	1.4	87.9	1.1	6.6	0.2	0.8	1.6	0.1	0.3	89.3	1.1	9.6	0.089	0.508	21.107539	-86.839471
Cancún	355.48	1	2	37846	1.6	87.3	1.3	6.7	0.2	0.8	1.7	0.1	0.3	88.9	1.3	9.8	0.094	0.508	21.107623	-86.839507
T. C. Mérida - Puerto Juárez	357.48																			

9 CARR: Valladolid - Felipe Carrillo Puerto

CLAVE: 00010

RUTA: MEX-295

AÑO: 2016

LUGAR	ESTACION				CLASIFICACION VEHICULAR EN PORCIENTO										COORDENADAS					
	KM	TE	SC	TDPA	M	A	B	C2	C3	T3S2	T3S3	T3S2R4	OTROS	A	B	C	K'	D	LATITUD	LONGITUD
Valladolid	0.00	3	0	4432	18.8	76.9	0.2	1.5	0.1	2.1	0.1	0.1	0.2	95.7	0.2	4.1	0.071	0.512	20.672870	-88.204635
Chichimilá	6.90	3	0	2041	12.1	81.8	0.3	4.1	0.4	1.0	0.1	0.1	0.1	93.9	0.3	5.8	0.080	0.508	20.623471	-88.231040
Tekom	12.05	3	0	1368	11.3	80.7	0.4	5.5	0.6	1.0	0.3	0.1	0.1	92.0	0.4	7.6	0.091	0.507	20.590566	-88.265393
Tixcacalcupul	19.80	3	0	933	12.0	80.4	0.5	5.5	0.5	0.7	0.3	0.1	0.0	92.4	0.5	7.1	0.096	0.510	20.528407	-88.271418
Lim. Edos. Term. Yuc. Ppia. Q. R.	46.00																			
Tepich	51.40	1	0	728	8.4	80.6	0.4	9.0	0.5	0.7	0.3	0.1	0.0	89.0	0.4	10.6	0.093	0.501	20.255505	-88.255087
Tihosuco	65.00	1	0	865	6.7	82.5	1.5	7.6	0.5	0.8	0.3	0.1	0.0	89.2	1.5	9.3	0.086	0.510	20.193210	-88.360447
Tihosuco	65.00	3	0	928	12.1	79.2	0.5	5.9	0.6	1.2	0.3	0.1	0.1	91.3	0.5	8.2	0.087	0.504	20.190683	-88.386804
T. Izq. San Felipe Berriozábal	99.00	1	0	647	6.6	81.2	0.9	8.4	1.7	1.0	0.1	0.1	0.0	87.8	0.9	11.3	0.087	0.505	19.963504	-88.242668
T. Izq. San Felipe Berriozábal	99.00	3	0	659	6.2	82.2	1.4	7.5	1.8	0.7	0.1	0.1	0.0	88.4	1.4	10.2	0.088	0.504	19.961321	-88.240509
Señor	116.50	1	0	917	9.8	80.4	1.1	6.1	1.6	0.8	0.2	0.0	0.0	90.2	1.1	8.7	0.080	0.521	19.852827	-88.144878
Señor	116.50	3	0	1182	7.6	81.1	1.8	7.1	1.5	0.7	0.1	0.1	0.0	88.7	1.8	9.5	0.079	0.503	19.830957	-88.130782
Felipe Carrillo Puerto	147.70	1	0	1179	7.6	83.2	0.9	6.2	0.5	1.1	0.4	0.1	0.0	90.8	0.9	8.3	0.131	0.538	19.603683	-88.053925

QUINTANA ROO

10 CARR: El Cedral - Playa del Carmen (Cuota)

CLAVE:

RUTA: MEX-180D

AÑO: 2016

LUGAR	ESTACION				CLASIFICACION VEHICULAR EN PORCIENTO													COORDENADAS		
	KM	TE	SC	TDPA	M	A	B	C2	C3	T3S2	T3S3	T3S2R4	OTROS	A	B	C	K'	D	LATITUD	LONGITUD
El Cedral	0.00																			
X. C. Mérida - Cancún (Cuota)	10.05	1	0	1503	3.3	85.4	0.9	7.4	1.5	0.6	0.3	0.5	0.1	88.7	0.9	10.4	0.098	0.508	20.951549	-87.322295
X. C. Mérida - Cancún (Cuota)	10.05	3	0	1533	3.4	85.1	0.8	7.6	1.4	0.8	0.3	0.5	0.1	88.5	0.8	10.7	0.098	0.509	20.934995	-87.322498
Playa del Carmen	51.90																			

11 CARR: Mérida - Cancún (Cuota)

CLAVE: 00071

RUTA: MEX-180D

AÑO: 2016

LUGAR	ESTACION				CLASIFICACION VEHICULAR EN PORCIENTO													COORDENADAS		
	KM	TE	SC	TDPA	M	A	B	C2	C3	T3S2	T3S3	T3S2R4	OTROS	A	B	C	K'	D	LATITUD	LONGITUD
T. C. Mérida - Puerto Juárez	0.00																			
Caseta de Cobro Piste	51.00	1	1	1872	0.4	77.4	3.8	6.9	1.0	3.1	1.0	6.0	0.4	77.8	3.8	18.4	0.090	0.514	20.729700	-88.586116
Caseta de Cobro Piste	51.00	1	2	1980	0.4	75.3	4.3	7.6	1.0	3.2	1.2	6.6	0.4	75.7	4.3	20.0	0.129	0.514	20.729698	-88.586114
Caseta de Cobro X-Can	155.00	1	1	1256	0.8	74.5	5.6	7.7	0.8	3.2	0.9	6.3	0.2	75.3	5.6	19.1	0.156	0.512	20.877180	-87.630665
Caseta de Cobro X-Can	155.00	1	2	1315	0.9	70.8	5.0	6.5	1.1	4.0	1.4	9.8	0.5	71.7	5.0	23.3	0.143	0.512	20.877519	-87.629996
Lim. Edos. Term. Yuc. Ppia. Q. R.	160.00																			
T. C. Mérida - Puerto Juárez	292.00	1	1	1378	3.7	72.3	5.5	6.8	1.0	3.5	0.9	6.1	0.2	76.0	5.5	18.5	0.107	0.502	21.094990	-86.980482
T. C. Mérida - Puerto Juárez	292.00	1	2	1367	3.0	74.7	4.4	7.2	0.5	3.1	0.4	6.5	0.2	77.7	4.4	17.9	0.101	0.502	21.095422	-86.980304
T. C. Reforma Agraria - Puerto Juárez	308.10	1	0	10474	2.1	78.9	1.7	8.4	1.9	3.6	1.1	1.7	0.6	81.0	1.7	17.3	0.098	0.507	21.020799	-86.859466

12 CARR: Bacalar - Miguel Alemán

CLAVE: 20030

RUTA: QR

AÑO: 2016

LUGAR	ESTACION				CLASIFICACION VEHICULAR EN PORCIENTO													COORDENADAS		
	KM	TE	SC	TDPA	M	A	B	C2	C3	T3S2	T3S3	T3S2R4	OTROS	A	B	C	K'	D	LATITUD	LONGITUD
T. C. (Reforma Agraria - Puerto Juárez)	0.00																			
Reforma	21.00	3	0	709	18.0	72.1	0.7	7.4	0.4	1.1	0.3	0.0	0.0	90.1	0.7	9.2	0.107	0.507	18.813296	-88.580452
Altos de Sevilla	31.00	1	0	621	13.6	75.3	0.6	7.8	0.9	1.2	0.6	0.0	0.0	88.9	0.6	10.5	0.110	0.509	18.848330	-88.674391
Altos de Sevilla	31.00	3	0	483	22.1	69.6	0.5	6.7	0.3	0.6	0.2	0.0	0.0	91.7	0.5	7.8	0.112	0.503	18.854922	-88.677500
Miguel Alemán	110.00																			

13 CARR: Cancún - Punta Cancún

CLAVE: 23581

RUTA: QR

AÑO: 2016

LUGAR	ESTACION				CLASIFICACION VEHICULAR EN PORCIENTO													COORDENADAS		
	KM	TE	SC	TDPA	M	A	B	C2	C3	T3S2	T3S3	T3S2R4	OTROS	A	B	C	K'	D	LATITUD	LONGITUD
Cancún	0.00	3	1	25152	5.0	85.7	0.5	8.4	0.1	0.1	0.2	0.0	0.0	90.7	0.5	8.8	0.103	0.506	21.158605	-86.808687

QUINTANA ROO

13 CARR: Cancún - Punta Cancún

CLAVE: 23581

RUTA: QR

AÑO: 2016

LUGAR	ESTACION				CLASIFICACION VEHICULAR EN PORCIENTO													COORDENADAS		
	KM	TE	SC	TDPA	M	A	B	C2	C3	T3S2	T3S3	T3S2R4	OTROS	A	B	C	K'	D	LATITUD	LONGITUD
Cancún	0.00	3	2	24603	3.1	86.7	0.5	9.3	0.1	0.1	0.2	0.0	0.0	89.8	0.5	9.7	0.084	0.506	21.158606	-86.808687
T. Der. Colibrí	7.00	1	1	23852	4.6	83.8	0.5	10.4	0.1	0.1	0.3	0.0	0.2	88.4	0.5	11.1	0.080	0.502	21.136699	-86.766142
T. Der. Colibrí	7.00	1	2	24074	4.5	83.2	0.5	11.1	0.1	0.1	0.3	0.0	0.2	87.7	0.5	11.8	0.083	0.502	21.136701	-86.766143
Punta Cancún	8.00	1	1	22838	5.0	81.1	0.7	12.9	0.1	0.0	0.2	0.0	0.0	86.1	0.7	13.2	0.072	0.512	21.134666	-86.756637
Punta Cancún	8.00	1	2	23949	4.4	81.1	0.8	13.4	0.1	0.0	0.2	0.0	0.0	85.5	0.8	13.7	0.087	0.512	21.134666	-86.756636

14 CARR: Chetumal - Calderitas

CLAVE: 23004

RUTA: QR-004

AÑO: 2016

LUGAR	ESTACION				CLASIFICACION VEHICULAR EN PORCIENTO													COORDENADAS		
	KM	TE	SC	TDPA	M	A	B	C2	C3	T3S2	T3S3	T3S2R4	OTROS	A	B	C	K'	D	LATITUD	LONGITUD
Chetumal	0.00	3	1	11183	11.5	84.2	0.0	1.7	0.1	1.2	0.9	0.1	0.3	95.7	0.0	4.3	0.082	0.501	18.534748	-88.276954
Chetumal	0.00	3	2	11160	12.0	83.2	0.0	1.9	0.1	1.3	1.1	0.1	0.3	95.2	0.0	4.8	0.081	0.501	18.534758	-88.276931
Calderitas	9.00	1	1	3565	13.8	83.3	0.0	2.3	0.1	0.4	0.1	0.0	0.0	97.1	0.0	2.9	0.114	0.502	18.553755	-88.257657
Calderitas	9.00	1	2	3598	9.7	87.3	0.0	2.4	0.1	0.4	0.1	0.0	0.0	97.0	0.0	3.0	0.105	0.502	18.553754	-88.257655

15 CARR: El Ideal - Chiquila

CLAVE: 23005

RUTA: QR-005

AÑO: 2016

LUGAR	ESTACION				CLASIFICACION VEHICULAR EN PORCIENTO													COORDENADAS		
	KM	TE	SC	TDPA	M	A	B	C2	C3	T3S2	T3S3	T3S2R4	OTROS	A	B	C	K'	D	LATITUD	LONGITUD
T. C. Mérida - Puerto Juárez	0.00	3	0	1133	5.6	88.1	0.5	4.4	0.8	0.6	0.0	0.0	0.0	93.7	0.5	5.8	0.088	0.503	20.897816	-87.547067
Kantunilkin	31.20	1	0	2243	5.5	83.2	0.9	6.2	1.8	1.6	0.4	0.3	0.1	88.7	0.9	10.4	0.081	0.510	21.082004	-87.488705
Kantunilkin	31.20	3	0	1915	7.3	83.9	0.7	5.7	1.0	1.2	0.1	0.0	0.1	91.2	0.7	8.1	0.096	0.502	21.118900	-87.484476
Chiquila	75.60	1	0	1264	11.0	81.2	0.6	5.9	0.6	0.4	0.1	0.0	0.2	92.2	0.6	7.2	0.136	0.517	21.419581	-87.337470

16 CARR: Libramiento de Chetumal

CLAVE: 23130

RUTA: QR

AÑO: 2016

LUGAR	ESTACION				CLASIFICACION VEHICULAR EN PORCIENTO													COORDENADAS		
	KM	TE	SC	TDPA	M	A	B	C2	C3	T3S2	T3S3	T3S2R4	OTROS	A	B	C	K'	D	LATITUD	LONGITUD
T. C. Francisco Escárcega - Chetumal	0.00	3	1	8461	4.5	87.7	0.9	3.9	0.7	1.0	0.6	0.3	0.4	92.2	0.9	6.9	0.082	0.501	18.517568	-88.345634
T. C. Francisco Escárcega - Chetumal	0.00	3	2	8483	3.6	88.1	1.1	4.0	0.7	1.1	0.7	0.3	0.4	91.7	1.1	7.2	0.075	0.501	18.517571	-88.345634
T. C. Chetumal - Calderitas	5.00																			

QUINTANA ROO

17 CARR: Perimetral Cozumel

CLAVE: 00148

RUTA: QR

AÑO: 2016

LUGAR	ESTACION				CLASIFICACION VEHICULAR EN PORCIENTO												COORDENADAS			
	KM	TE	SC	TDPA	M	A	B	C2	C3	T3S2	T3S3	T3S2R4	OTROS	A	B	C	K'	D	LATITUD	LONGITUD
Cozumel	0.00	3	0	11417	13.9	75.3	0.4	6.8	0.2	1.7	0.7	0.2	0.8	89.2	0.4	10.4	0.093	0.540	20.466210	-86.976480
El Cedral	13.40	1	1	1758	10.6	83.5	0.5	4.6	0.2	0.1	0.4	0.1	0.0	94.1	0.5	5.4	0.130	0.519	20.386304	-87.018425
El Cedral	13.40	1	2	1631	12.6	81.1	0.6	5.0	0.2	0.1	0.3	0.1	0.0	93.7	0.6	5.7	0.118	0.519	20.386304	-87.018425
El Cedral	13.40	3	1	536	7.5	89.0	0.3	3.0	0.0	0.2	0.0	0.0	0.0	96.5	0.3	3.2	0.203	0.510	20.363118	-87.018059
El Cedral	13.40	3	2	558	4.7	92.0	0.3	2.8	0.0	0.2	0.0	0.0	0.0	96.7	0.3	3.0	0.167	0.510	20.363111	-87.018079
Celarain	25.00	1	0	920	8.5	87.5	0.7	1.9	0.2	0.8	0.2	0.0	0.2	96.0	0.7	3.3	0.228	0.581	20.294053	-86.964348

18 CARR: Punta Nizuc - Cancún

CLAVE: 23014

RUTA: QR

AÑO: 2016

LUGAR	ESTACION				CLASIFICACION VEHICULAR EN PORCIENTO												COORDENADAS			
	KM	TE	SC	TDPA	M	A	B	C2	C3	T3S2	T3S3	T3S2R4	OTROS	A	B	C	K'	D	LATITUD	LONGITUD
Punta Nizuc	0.00	3	1	12096	1.2	83.8	0.8	12.8	0.2	0.5	0.6	0.0	0.1	85.0	0.8	14.2	0.086	0.526	21.042427	-86.782890
Punta Nizuc	0.00	3	2	10890	1.1	77.5	1.3	17.9	0.3	1.0	0.7	0.0	0.2	78.6	1.3	20.1	0.084	0.526	21.042428	-86.782890
Punta Cancún	12.40																			

19 CARR: Ramal a Aeropuerto Cancún

CLAVE: 23574

RUTA: QR

AÑO: 2016

LUGAR	ESTACION				CLASIFICACION VEHICULAR EN PORCIENTO												COORDENADAS			
	KM	TE	SC	TDPA	M	A	B	C2	C3	T3S2	T3S3	T3S2R4	OTROS	A	B	C	K'	D	LATITUD	LONGITUD
T. C. Reforma Agraria - Puerto Juárez	0.00	3	1	15098	0.6	81.1	0.7	14.5	0.3	0.6	1.8	0.2	0.2	81.7	0.7	17.6	0.096	0.503	21.035556	-86.857373
T. C. Reforma Agraria - Puerto Juárez	0.00	3	2	14910	0.7	78.1	0.7	17.3	0.3	0.6	1.9	0.2	0.2	78.8	0.7	20.5	0.088	0.503	21.035556	-86.857371
Aeropuerto Cancún	2.00	1	1	16298	0.5	89.2	0.6	6.7	0.2	0.4	1.8	0.3	0.3	89.7	0.6	9.7	0.100	0.506	21.040382	-86.864984
Aeropuerto Cancún	2.00	1	2	15904	0.6	87.9	0.7	7.7	0.2	0.4	1.9	0.3	0.3	88.5	0.7	10.8	0.085	0.506	21.040382	-86.864984

20 CARR: Ramal a Candelaria

CLAVE: 23027

RUTA: QR

AÑO: 2016

LUGAR	ESTACION				CLASIFICACION VEHICULAR EN PORCIENTO												COORDENADAS			
	KM	TE	SC	TDPA	M	A	B	C2	C3	T3S2	T3S3	T3S2R4	OTROS	A	B	C	K'	D	LATITUD	LONGITUD
T. C. Muna - Felipe Carrillo Puerto	0.00	3	0	1311	18.6	77.1	0.3	3.9	0.1	0.0	0.0	0.0	0.0	95.7	0.3	4.0	0.127	0.632	19.806740	-88.757798
Candelaria	15.30																			

QUINTANA ROO

21 CARR: Ramal a El Naranjal

CLAVE: 23579

RUTA: QR

AÑO: 2016

LUGAR	ESTACION	CLASIFICACION VEHICULAR EN PORCIENTO													COORDENADAS					
		KM	TE	SC	TDPA	M	A	B	C2	C3	T3S2	T3S3	T3S2R4	OTROS	A	B	C	K'	D	LATITUD
José María Morelos	0.00	3	0	829	36.3	57.8	0.3	3.4	0.8	0.9	0.5	0.0	0.0	94.1	0.3	5.6	0.084	0.509	19.734490	-88.717223
El Naranjal	16.00																			

22 CARR: Ramal a Laguna de Kaná

CLAVE: 23213

RUTA: QR

AÑO: 2016

LUGAR	ESTACION	CLASIFICACION VEHICULAR EN PORCIENTO													COORDENADAS					
		KM	TE	SC	TDPA	M	A	B	C2	C3	T3S2	T3S3	T3S2R4	OTROS	A	B	C	K'	D	LATITUD
T. C. Muna - Felipe Carrillo Puerto	0.00	3	0	337	14.7	76.4	0.9	7.6	0.2	0.2	0.0	0.0	0.0	91.1	0.9	8.0	0.107	0.535	19.641410	-88.411666
Laguna de Kaná	12.20																			

23 CARR: Ramal a Mahahual

CLAVE: 23583

RUTA: QR

AÑO: 2016

LUGAR	ESTACION	CLASIFICACION VEHICULAR EN PORCIENTO													COORDENADAS					
		KM	TE	SC	TDPA	M	A	B	C2	C3	T3S2	T3S3	T3S2R4	OTROS	A	B	C	K'	D	LATITUD
T. C. Reforma Agraria - Puerto Juárez	0.00	3	0	1115	4.5	87.5	1.5	4.9	0.4	0.8	0.3	0.0	0.1	92.0	1.5	6.5	0.170	0.537	18.980023	-88.109651
Mahahual	60.09																			

24 CARR: Ramal a Petcacab

CLAVE: 23018

RUTA: QR-018

AÑO: 2016

LUGAR	ESTACION	CLASIFICACION VEHICULAR EN PORCIENTO													COORDENADAS					
		KM	TE	SC	TDPA	M	A	B	C2	C3	T3S2	T3S3	T3S2R4	OTROS	A	B	C	K'	D	LATITUD
T. C. Reforma Agraria - Puerto Juárez	0.00	3	0	660	18.4	74.6	0.2	4.3	0.4	1.1	0.6	0.1	0.3	93.0	0.2	6.8	0.086	0.512	19.135511	-88.106811
Petcacab	37.00																			

25 CARR: Ramal a Punta Allen

CLAVE: 23015

RUTA: QR-015

AÑO: 2016

LUGAR	ESTACION	CLASIFICACION VEHICULAR EN PORCIENTO													COORDENADAS					
		KM	TE	SC	TDPA	M	A	B	C2	C3	T3S2	T3S3	T3S2R4	OTROS	A	B	C	K'	D	LATITUD
T. C. Reforma Agraria - Puerto Juárez	0.00	3	0	10421	7.5	87.2	0.2	4.8	0.1	0.1	0.1	0.0	0.0	94.7	0.2	5.1	0.101	0.518	20.205590	-87.450244
Beh-Ha	10.20	1	0	879	5.5	88.4	0.2	5.7	0.0	0.1	0.1	0.0	0.0	93.9	0.2	5.9	0.130	0.533	20.128838	-87.465417
Punta Allen	57.00																			

QUINTANA ROO

26 CARR: Ramal a Punta Sam

CLAVE: 23582

RUTA: QR

AÑO: 2016

LUGAR	ESTACION				CLASIFICACION VEHICULAR EN PORCIENTO													COORDENADAS		
	KM	TE	SC	TDPA	M	A	B	C2	C3	T3S2	T3S3	T3S2R4	OTROS	A	B	C	K'	D	LATITUD	LONGITUD
Puerto Juárez	0.00	3	0	7331	6.6	82.8	0.5	3.2	0.1	5.4	0.4	0.1	0.9	89.4	0.5	10.1	0.095	0.505	21.190610	-86.806948
Punta Sam	5.00	1	0	1722	5.3	90.3	0.3	2.3	0.1	1.5	0.1	0.0	0.1	95.6	0.3	4.1	0.117	0.542	21.216436	-86.802421

27 CARR: Ramal a Reforma

CLAVE: 23016

RUTA: QR-016

AÑO: 2016

LUGAR	ESTACION				CLASIFICACION VEHICULAR EN PORCIENTO													COORDENADAS		
	KM	TE	SC	TDPA	M	A	B	C2	C3	T3S2	T3S3	T3S2R4	OTROS	A	B	C	K'	D	LATITUD	LONGITUD
T. C. Reforma Agraria - Puerto Juárez	0.00	3	0	1545	14.8	75.7	0.3	7.3	0.2	1.4	0.2	0.0	0.1	90.5	0.3	9.2	0.083	0.503	18.705254	-88.388429
Reforma	44.00																			

28 CARR: Ramal a Tres Garantías

CLAVE: 23585

RUTA: QR

AÑO: 2016

LUGAR	ESTACION				CLASIFICACION VEHICULAR EN PORCIENTO													COORDENADAS		
	KM	TE	SC	TDPA	M	A	B	C2	C3	T3S2	T3S3	T3S2R4	OTROS	A	B	C	K'	D	LATITUD	LONGITUD
T. C. Francisco Escárcega - Chetumal	0.00	3	0	173	20.0	68.6	0.3	6.4	0.8	1.6	2.2	0.0	0.1	88.6	0.3	11.1	0.110	0.503	18.452789	-89.001333
Tres Garantías	30.00																			

29 CARR: Tihosuco - Dziuche

CLAVE: 23576

RUTA: QR

AÑO: 2016

LUGAR	ESTACION				CLASIFICACION VEHICULAR EN PORCIENTO													COORDENADAS		
	KM	TE	SC	TDPA	M	A	B	C2	C3	T3S2	T3S3	T3S2R4	OTROS	A	B	C	K'	D	LATITUD	LONGITUD
T. C. Valladolid - Felipe Carrillo Puerto	0.00	3	0	410	10.6	82.5	0.4	5.1	0.8	0.3	0.3	0.0	0.0	93.1	0.4	6.5	0.110	0.515	20.177480	-88.398782
Dziuche	60.50	1	0	890	24.3	70.6	0.4	3.8	0.7	0.1	0.1	0.0	0.0	94.9	0.4	4.7	0.096	0.514	19.913794	-88.808063

30 CARR: Transversal de Cozumel

CLAVE: 23577

RUTA: QR

AÑO: 2016

LUGAR	ESTACION				CLASIFICACION VEHICULAR EN PORCIENTO													COORDENADAS		
	KM	TE	SC	TDPA	M	A	B	C2	C3	T3S2	T3S3	T3S2R4	OTROS	A	B	C	K'	D	LATITUD	LONGITUD
Cozumel	0.00	3	1	3000	36.8	58.9	0.2	2.2	0.3	0.9	0.5	0.1	0.1	95.7	0.2	4.1	0.139	0.514	20.482759	-86.914897
Cozumel	0.00	3	2	2833	38.5	56.9	0.2	2.4	0.3	1.0	0.5	0.1	0.1	95.4	0.2	4.4	0.131	0.514	20.482761	-86.914895
Mezcalitos	14.00																			

QUINTANA ROO

31 CARR: Tulum - Nuevo X-Can

CLAVE: 23570

RUTA: QR

AÑO: 2016

LUGAR	ESTACION				CLASIFICACION VEHICULAR EN PORCIENTO													COORDENADAS		
	KM	TE	SC	TDPA	M	A	B	C2	C3	T3S2	T3S3	T3S2R4	OTROS	A	B	C	K'	D	LATITUD	LONGITUD
T. C. Reforma Agraria - Puerto Juárez	0.00	3	1	3985	4.4	77.1	2.0	5.7	1.2	5.6	1.3	1.9	0.8	81.5	2.0	16.5	0.097	0.526	20.215873	-87.453949
T. C. Reforma Agraria - Puerto Juárez	0.00	3	2	3594	2.2	77.4	2.3	6.0	1.3	6.6	1.4	1.9	0.9	79.6	2.3	18.1	0.083	0.526	20.215873	-87.453949
T. Izq. Ruinas Cobá	42.95	1	0	3590	2.6	86.0	2.1	6.1	0.8	1.2	0.4	0.7	0.1	88.6	2.1	9.3	0.140	0.514	20.502726	-87.713695
T. Izq. Ruinas Cobá	42.95	3	0	472	5.6	81.4	1.3	10.6	0.2	0.4	0.4	0.1	0.0	87.0	1.3	11.7	0.104	0.504	20.511205	-87.716478
Nuevo X-Can	87.40	1	0	439	3.0	88.2	0.9	6.9	0.2	0.2	0.4	0.1	0.1	91.2	0.9	7.9	0.082	0.514	20.858742	-87.600844

32 CARR: Ucum - Unión

CLAVE: 23571

RUTA: QR

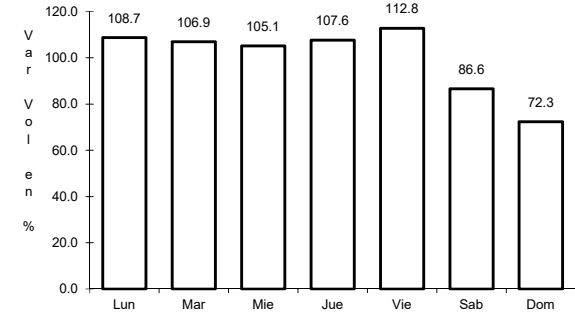
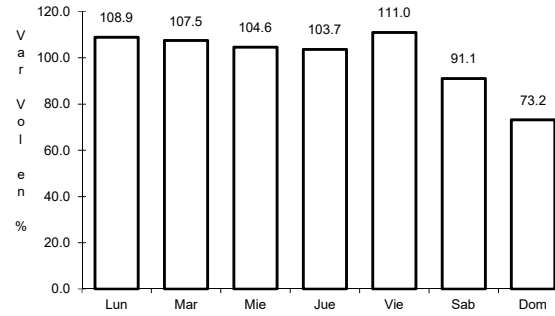
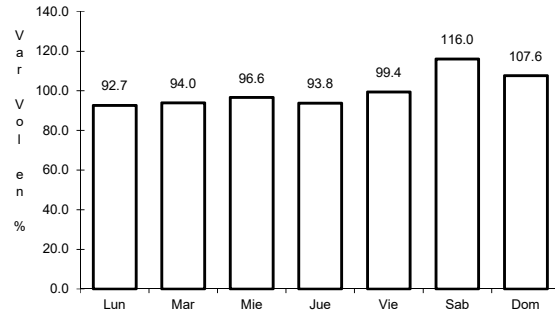
AÑO: 2016

LUGAR	ESTACION				CLASIFICACION VEHICULAR EN PORCIENTO													COORDENADAS		
	KM	TE	SC	TDPA	M	A	B	C2	C3	T3S2	T3S3	T3S2R4	OTROS	A	B	C	K'	D	LATITUD	LONGITUD
Ucum	0.00	3	0	3506	8.0	84.7	0.4	3.3	0.8	1.7	0.2	0.6	0.3	92.7	0.4	6.9	0.094	0.509	18.482496	-88.519095
T. Der. Ingenio Álvaro Obregón	31.00	1	0	1272	5.9	81.4	0.5	7.6	1.1	0.9	0.6	2.0	0.0	87.3	0.5	12.2	0.088	0.513	18.251688	-88.649220
T. Der. Ingenio Álvaro Obregón	31.00	3	0	1815	16.0	76.5	0.2	5.5	0.6	0.9	0.2	0.1	0.0	92.5	0.2	7.3	0.090	0.502	18.243056	-88.653527
T. Der. U. A. Galeras	75.00	1	0	166	14.1	68.6	0.9	14.8	1.1	0.4	0.1	0.0	0.0	82.7	0.9	16.4	0.127	0.529	17.990432	-88.847059
T. Der. U. A. Galeras	75.00	3	0	186	21.0	65.9	1.0	11.3	0.5	0.2	0.0	0.0	0.1	86.9	1.0	12.1	0.102	0.518	17.987002	-88.854938
Unión	88.00	1	0	491	56.8	34.1	0.4	8.3	0.4	0.0	0.0	0.0	0.0	90.9	0.4	8.7	0.122	0.521	17.908205	-88.881292

1 CARR: Francisco Escárcega - Chetumal

CLAVE: 00093

RUTA: MEX-186



Km: 0.00 Tipo: 3 Sent: 0

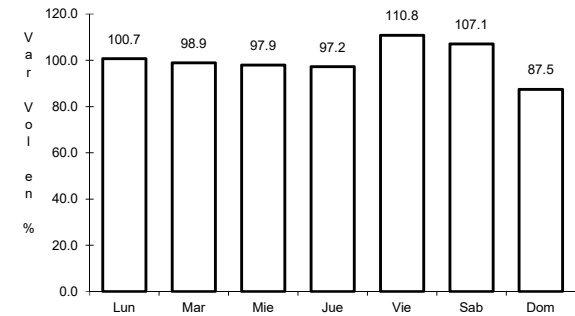
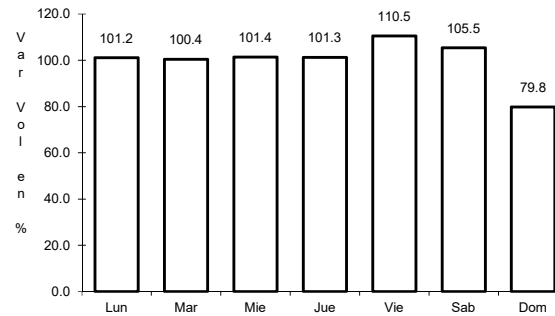
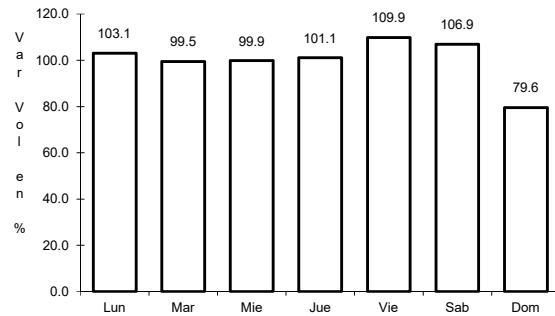
Km: 277.36 Tipo: 1 Sent: 1

Km: 277.36 Tipo: 1 Sent: 2

2 CARR: Mérida - Puerto Juárez

CLAVE: 00067

RUTA: MEX-180



Km: 5.60 Tipo: 1 Sent: 1

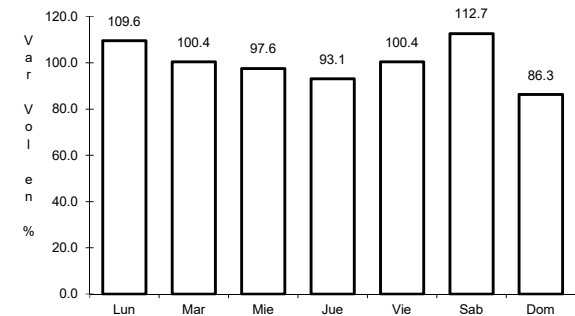
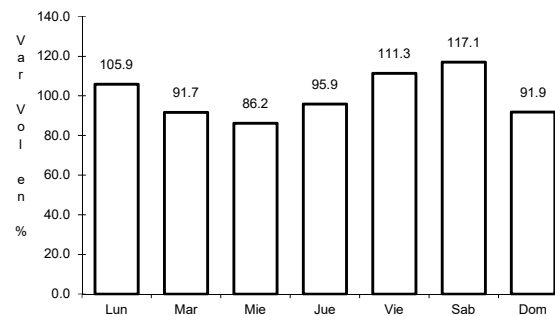
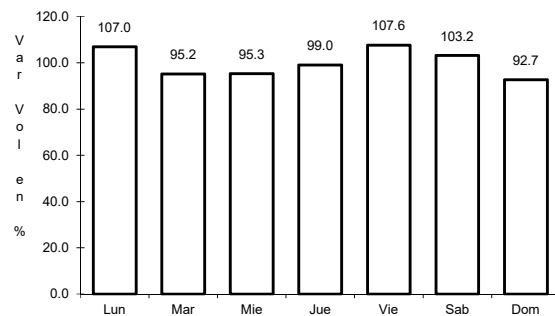
Km: 5.60 Tipo: 1 Sent: 2

Km: 160.68 Tipo: 1 Sent: 0

3 CARR: Muna - Felipe Carrillo Puerto

CLAVE: 00148

RUTA: MEX-184



Km: 0.00 Tipo: 3 Sent: 0

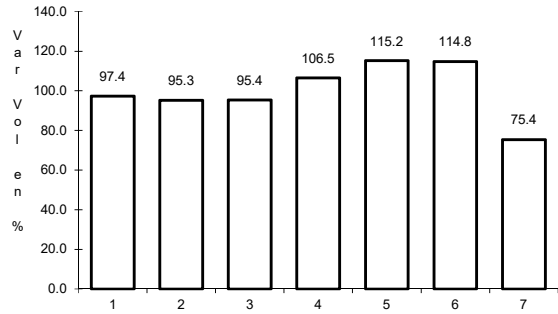
Km: 109.60 Tipo: 3 Sent: 0

Km: 216.97 Tipo: 1 Sent: 0

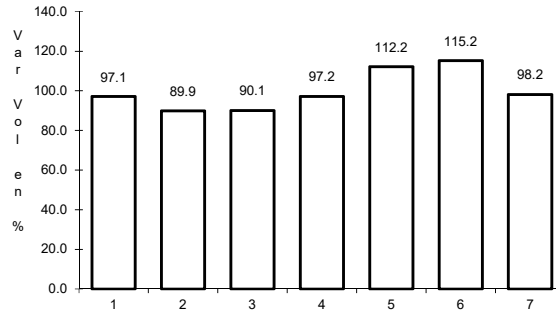
4 CARR: Polyuc - T. C. (Reforma Agraria - Puerto Juárez)

CLAVE: 23014

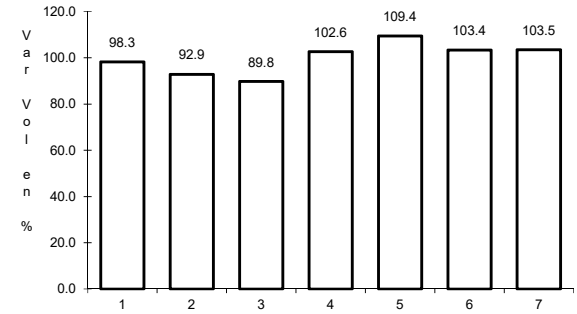
RUTA: MEX-293



Km: 0.00 Tipo: 3 Sent: 0



Km: 50.00 Tipo: 3 Sent: 0

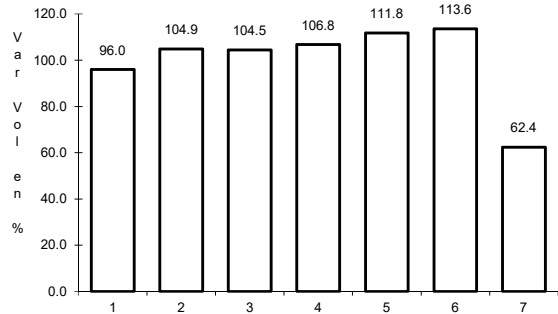


Km: 99.00 Tipo: 1 Sent: 0

5 CARR: Ramal a Puerto Morelos

CLAVE: 23569

RUTA: MEX

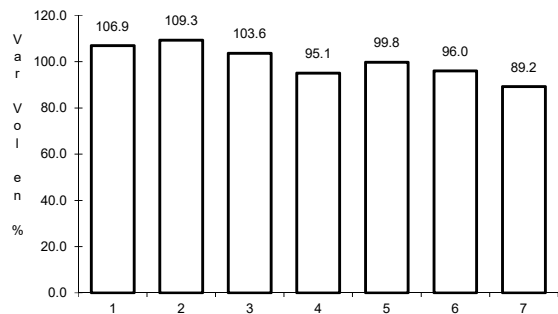


Km: 0.00 Tipo: 3 Sent: 0

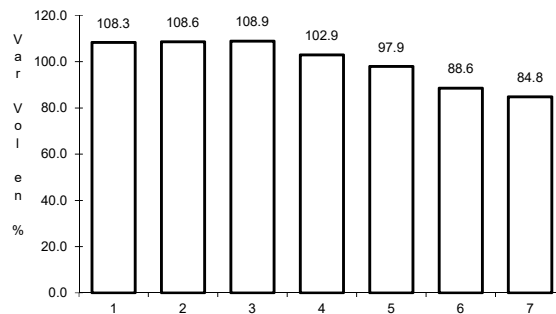
6 CARR: Ramal a Punta Piedra

CLAVE: 23575

RUTA: MEX



Km: 0.00 Tipo: 3 Sent: 1

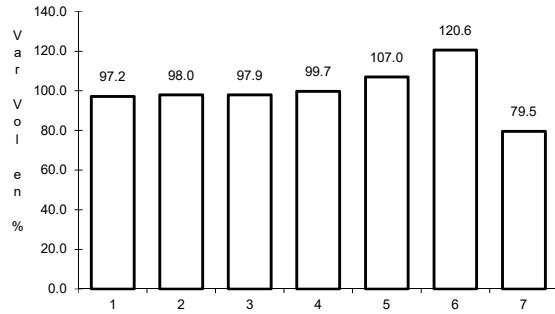


Km: 0.00 Tipo: 3 Sent: 2

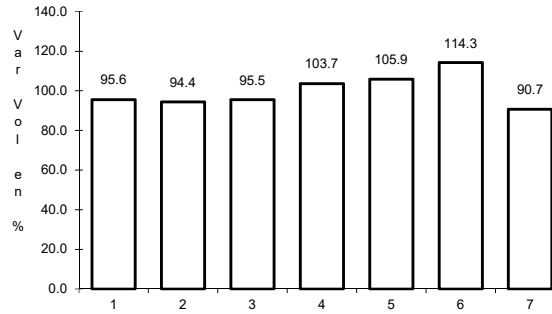
7 CARR: Ramal a Subteniente López

CLAVE: 23567

RUTA: MEX-186



Km: 0.00 Tipo: 3 Sent: 1

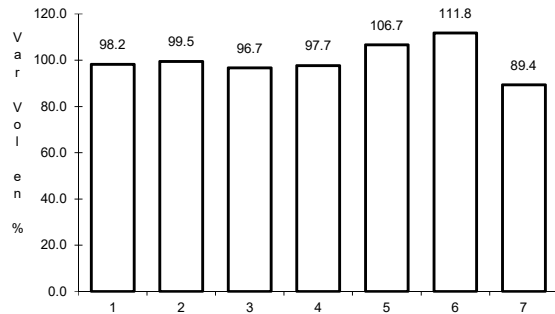


Km: 0.00 Tipo: 3 Sent: 2

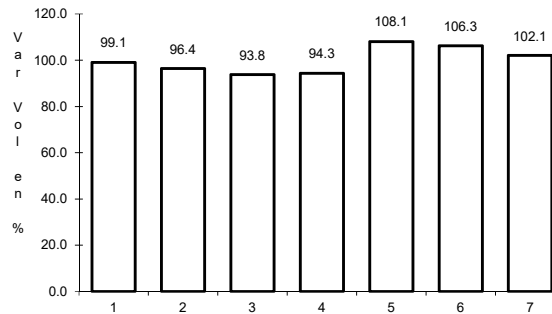
8 CARR: Reforma Agraria - Puerto Juárez

CLAVE: 23132

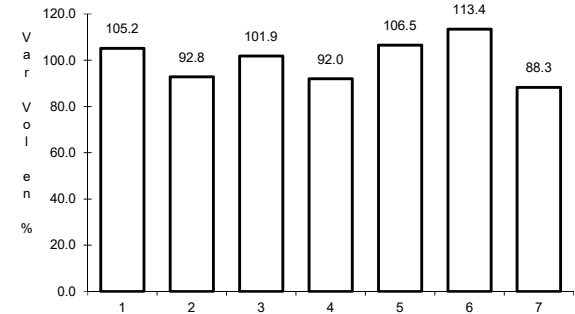
RUTA: MEX-307



Km: 0.00 Tipo: 3 Sent: 1



Km: 0.00 Tipo: 3 Sent: 2

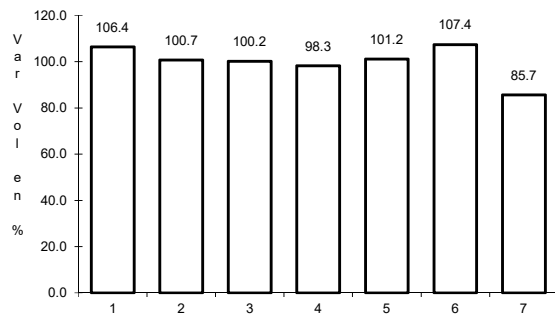


Km: 132.00 Tipo: 3 Sent: 0

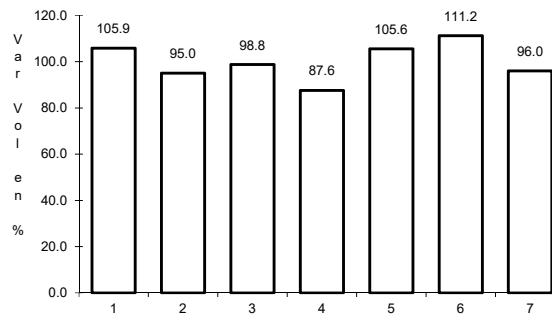
9 CARR: Valladolid - Felipe Carrillo Puerto

CLAVE: 00010

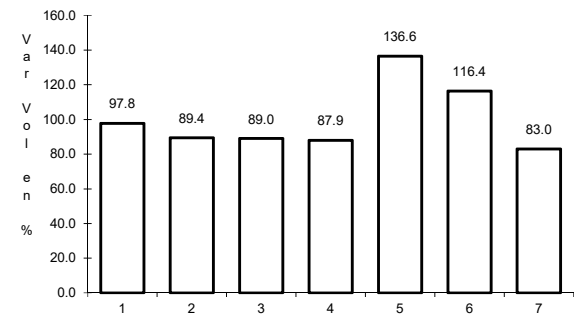
RUTA: MEX-295



Km: 0.00 Tipo: 3 Sent: 0



Km: 99.00 Tipo: 1 Sent: 0

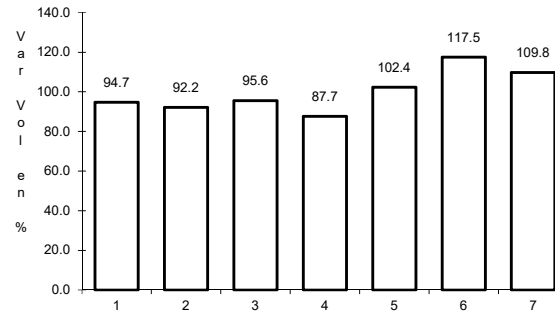
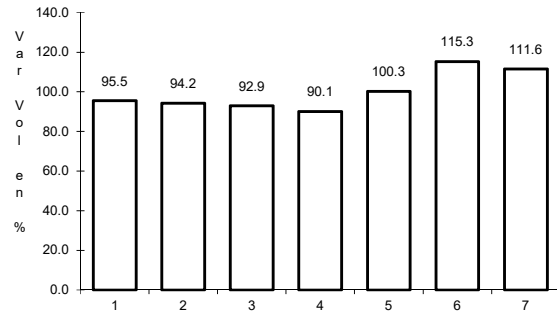


Km: 147.70 Tipo: 1 Sent: 0

10 CARR: El Cedral - Playa del Carmen (Cuota)

CLAVE:

RUTA: MEX-180D



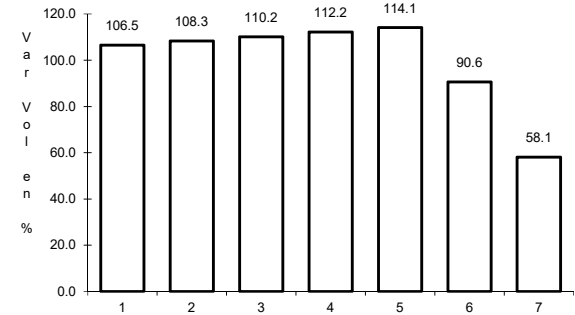
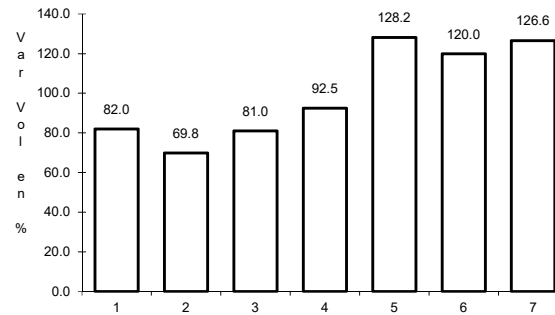
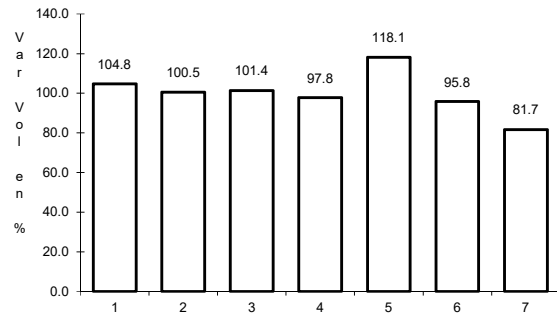
Km: 10.05 Tipo: 1 Sent: 0

Km: 10.05 Tipo: 3 Sent: 0

11 CARR: Mérida - Cancún (Cuota)

CLAVE: 00071

RUTA: MEX-180D



Km: 51.00 Tipo: 1 Sent: 1

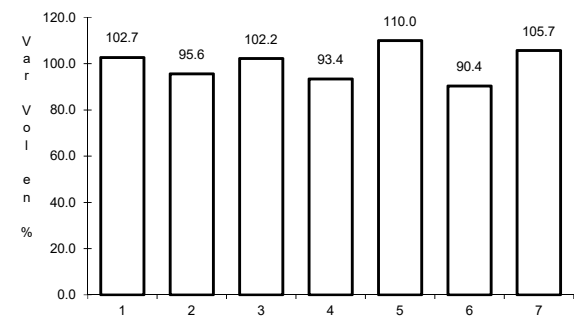
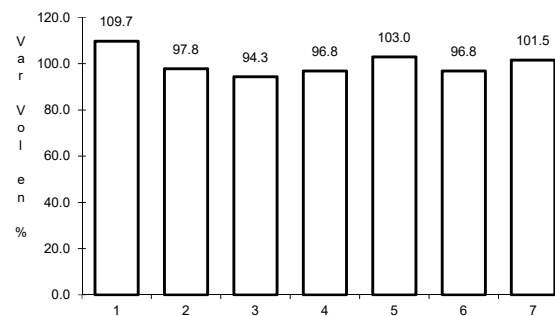
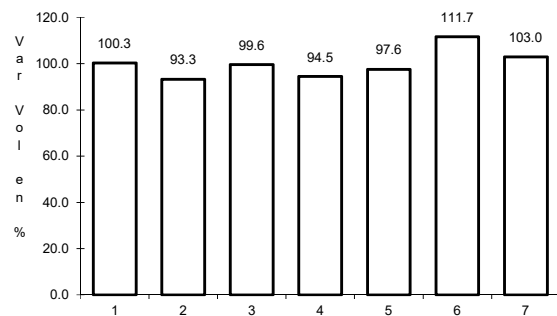
Km: 51.00 Tipo: 1 Sent: 2

Km: 308.10 Tipo: 1 Sent: 0

12 CARR: Bacalar - Miguel Alemán

CLAVE: 20030

RUTA: QR



Km: 21.00 Tipo: 3 Sent: 0

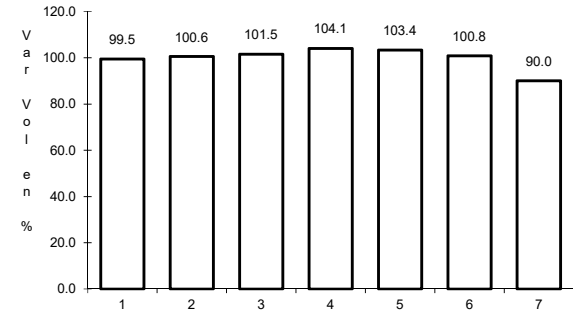
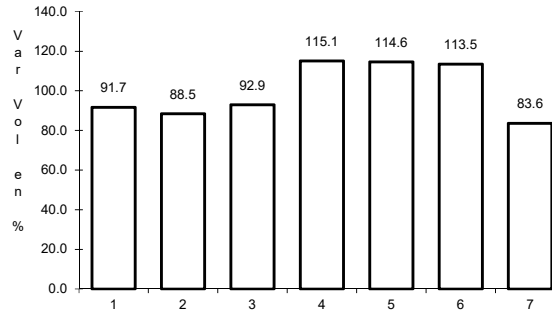
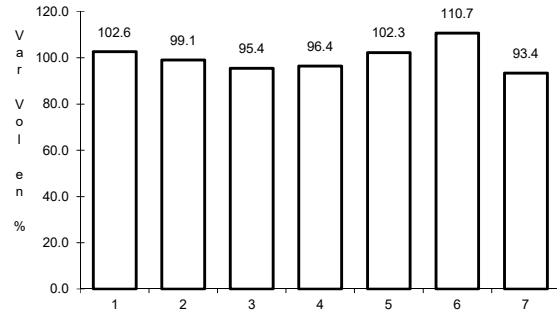
Km: 31.00 Tipo: 1 Sent: 0

Km: 31.00 Tipo: 3 Sent: 0

13 CARR: Cancún - Punta Cancún

CLAVE: 23581

RUTA: QR



Km: 0.00 Tipo: 3 Sent: 1

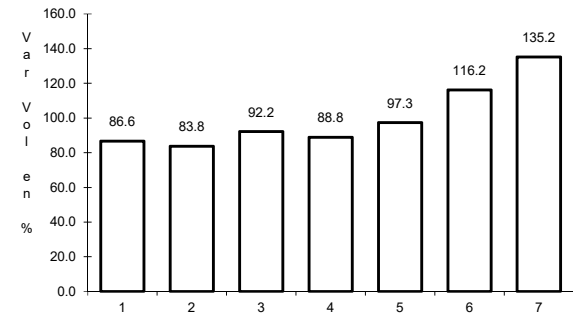
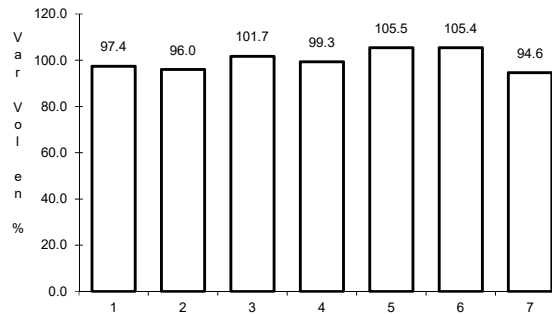
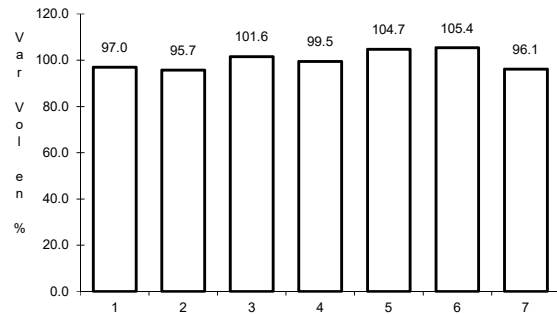
Km: 0.00 Tipo: 3 Sent: 2

Km: 8.00 Tipo: 1 Sent: 1

14 CARR: Chetumal - Calderitas

CLAVE: 23004

RUTA: QR-004



Km: 0.00 Tipo: 3 Sent: 1

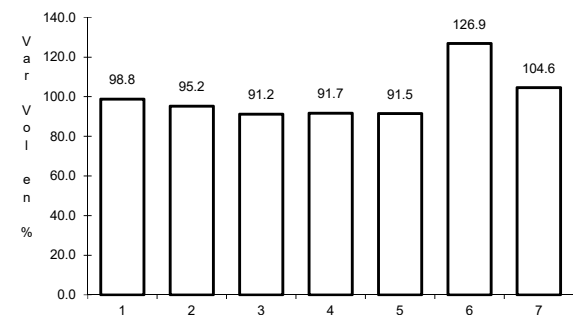
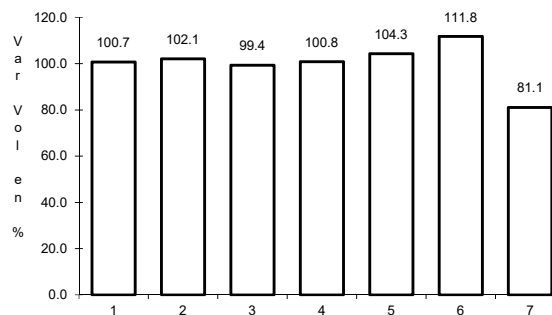
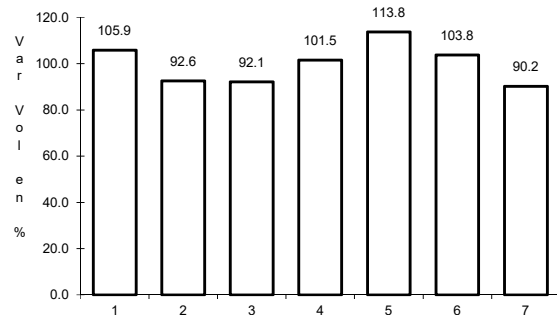
Km: 0.00 Tipo: 3 Sent: 2

Km: 9.00 Tipo: 1 Sent: 1

15 CARR: El Ideal - Chiquila

CLAVE: 23005

RUTA: QR-005



Km: 0.00 Tipo: 3 Sent: 0

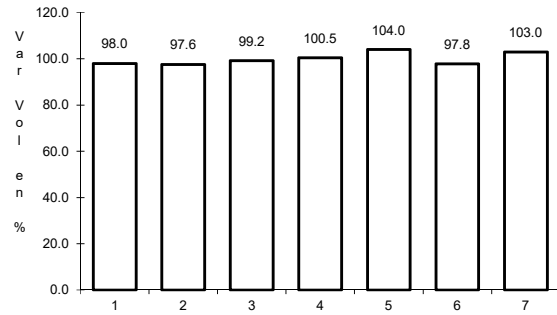
Km: 31.20 Tipo: 1 Sent: 0

Km: 75.60 Tipo: 1 Sent: 0

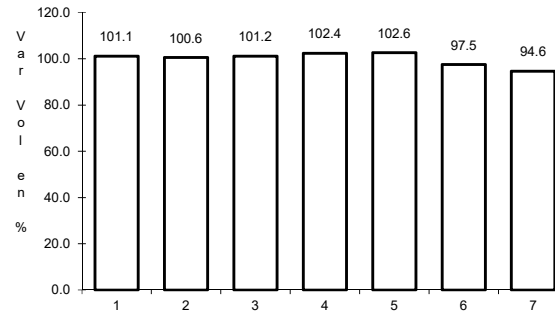
16 CARR: Libramiento de Chetumal

CLAVE: 23130

RUTA: QR



Km: 0.00 Tipo: 3 Sent: 1

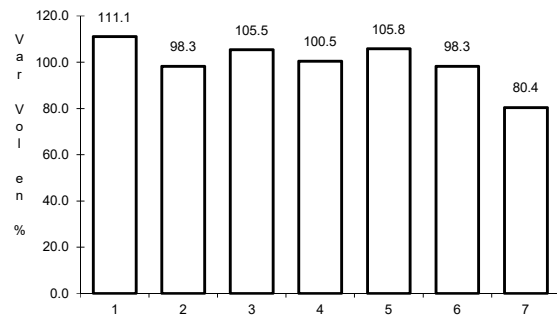


Km: 0.00 Tipo: 3 Sent: 2

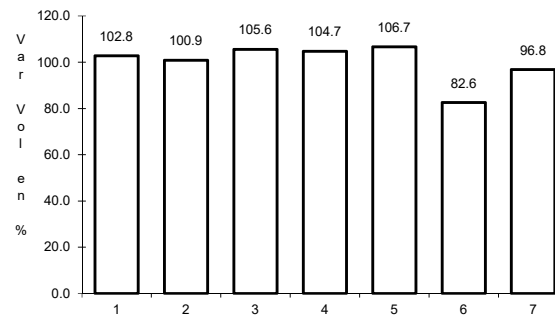
17 CARR: Perimetral Cozumel

CLAVE: 00148

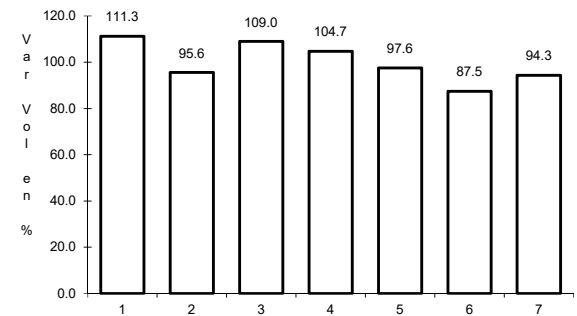
RUTA: QR



Km: 0.00 Tipo: 3 Sent: 0



Km: 13.40 Tipo: 3 Sent: 1

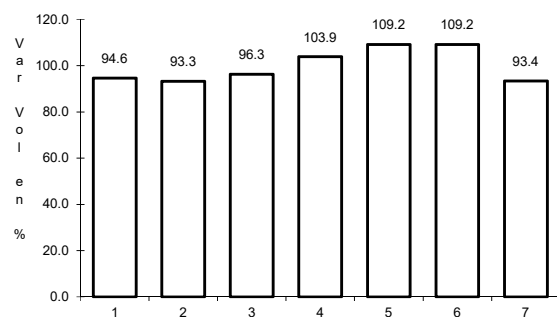


Km: 13.40 Tipo: 3 Sent: 2

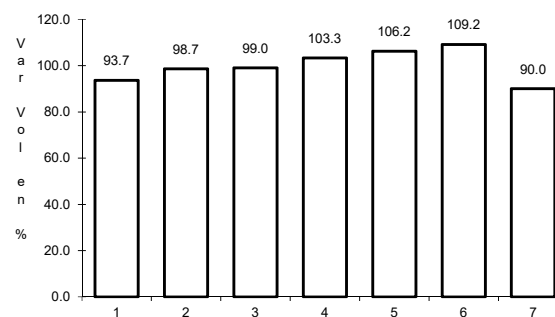
18 CARR: Punta Nizuc - Cancún

CLAVE: 23014

RUTA: QR



Km: 0.00 Tipo: 3 Sent: 1

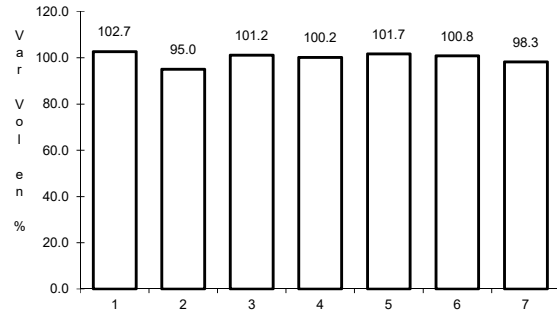


Km: 0.00 Tipo: 3 Sent: 2

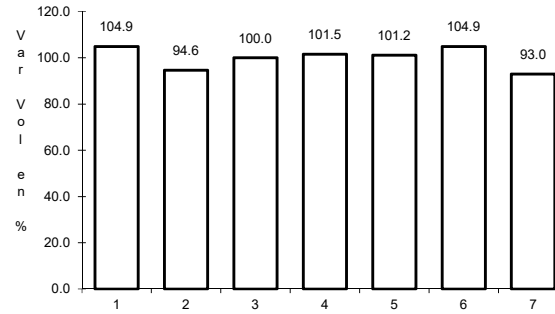
19 CARR: Ramal a Aeropuerto Cancún

CLAVE: 23574

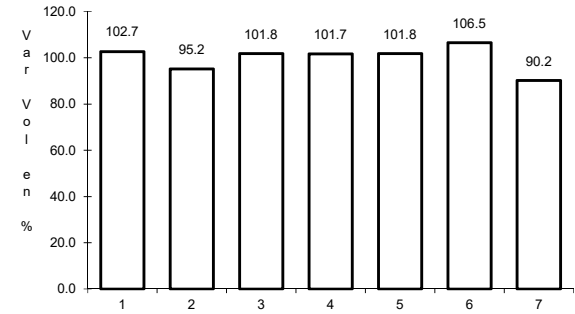
RUTA: QR



Km: 0.00 Tipo: 3 Sent: 1



Km: 0.00 Tipo: 3 Sent: 2

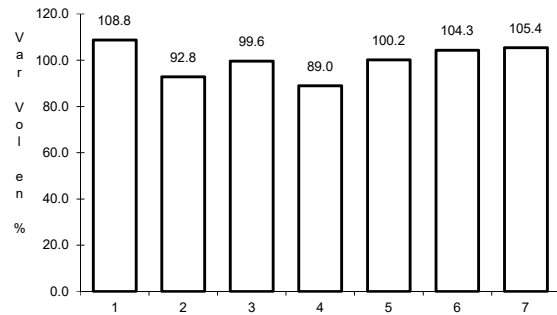


Km: 2.00 Tipo: 1 Sent: 1

20 CARR: Ramal a Candelaria

CLAVE: 23027

RUTA: QR

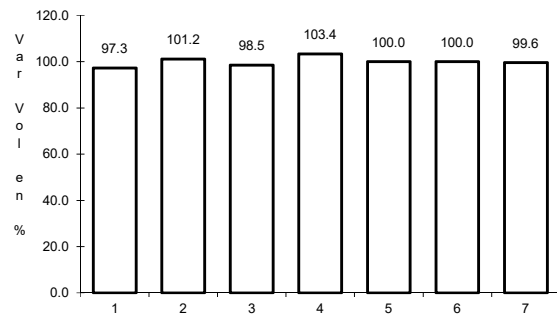


Km: 0.00 Tipo: 3 Sent: 0

21 CARR: Ramal a El Naranjal

CLAVE: 23579

RUTA: QR

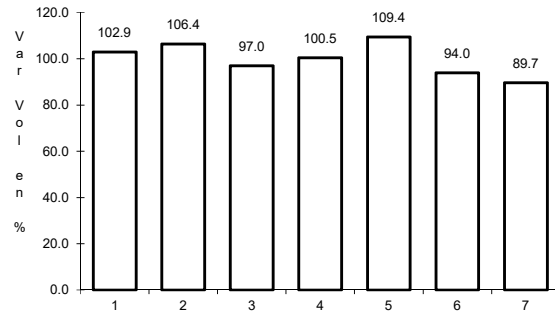


Km: 0.00 Tipo: 3 Sent: 0

22 CARR: Ramal a Laguna de Kaná

CLAVE: 23213

RUTA: QR



Km: 0.00

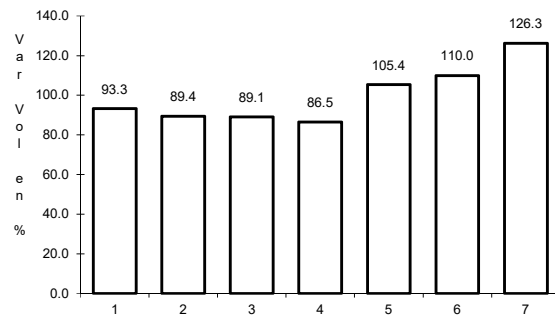
Tipo: 3

Sent: 0

23 CARR: Ramal a Mahahual

CLAVE: 23583

RUTA: QR



Km: 0.00

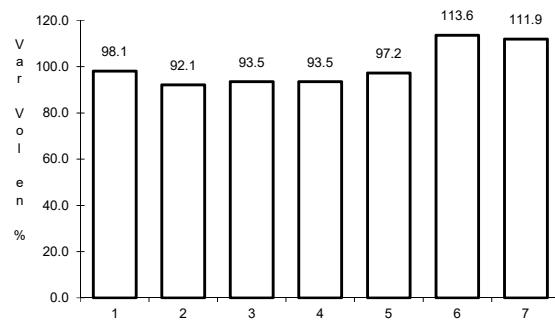
Tipo: 3

Sent: 0

24 CARR: Ramal a Petcacab

CLAVE: 23018

RUTA: QR-018



Km: 0.00

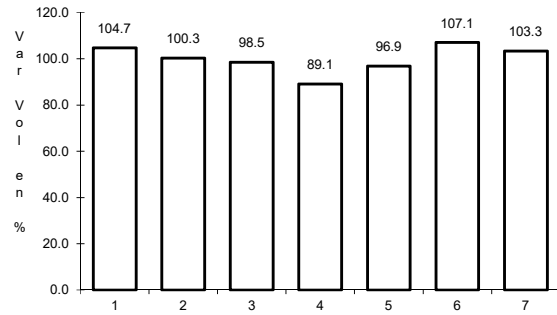
Tipo: 3

Sent: 0

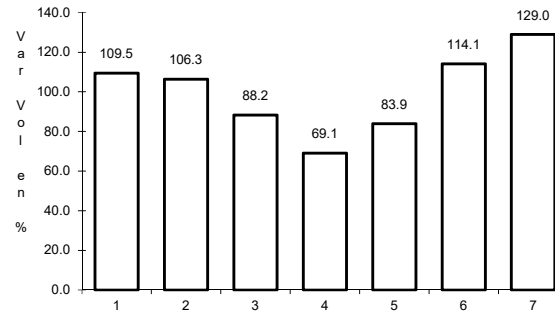
25 CARR: Ramal a Punta Allen

CLAVE: 23015

RUTA: QR-015



Km: 0.00 Tipo: 3 Sent: 0

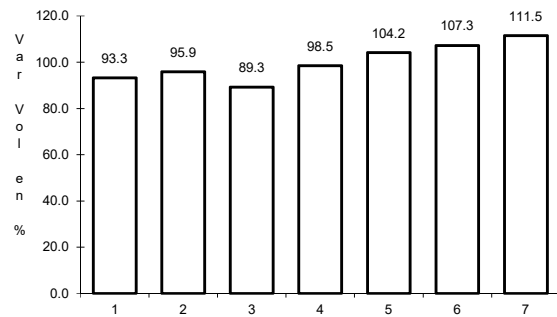


Km: 10.20 Tipo: 1 Sent: 0

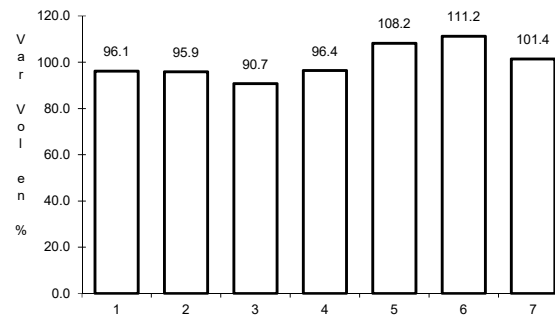
26 CARR: Ramal a Punta Sam

CLAVE: 23582

RUTA: QR



Km: 0.00 Tipo: 3 Sent: 0

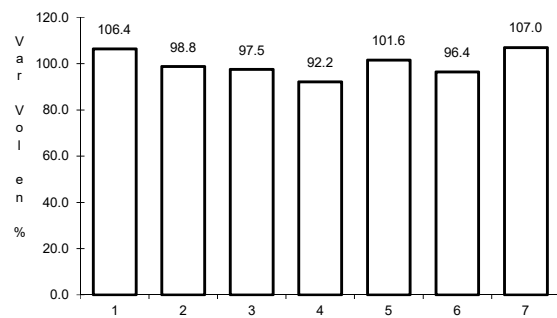


Km: 5.00 Tipo: 1 Sent: 0

27 CARR: Ramal a Reforma

CLAVE: 23016

RUTA: QR-016

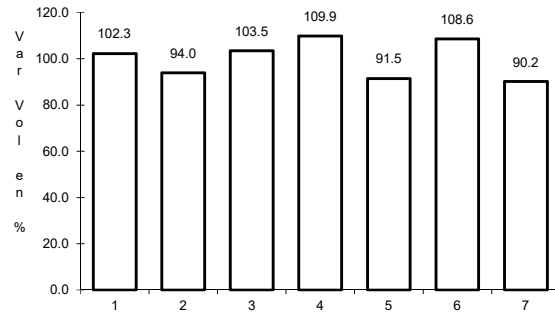


Km: 0.00 Tipo: 3 Sent: 0

28 CARR: Ramal a Tres Garantías

CLAVE: 23585

RUTA: QR

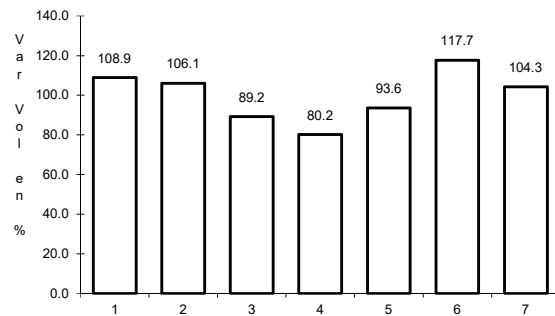


Km: 0.00 Tipo: 3 Sent: 0

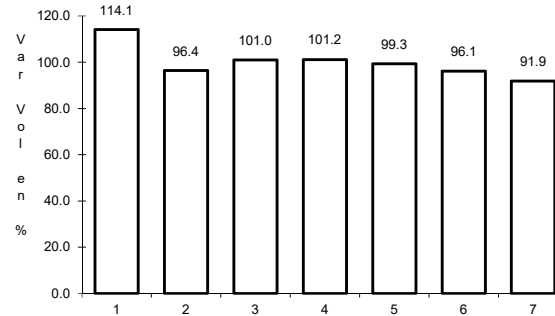
29 CARR: Tihosuco - Dziuche

CLAVE: 23576

RUTA: QR



Km: 0.00 Tipo: 3 Sent: 0

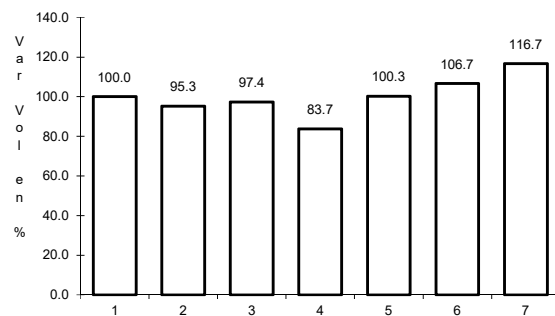


Km: 60.50 Tipo: 1 Sent: 0

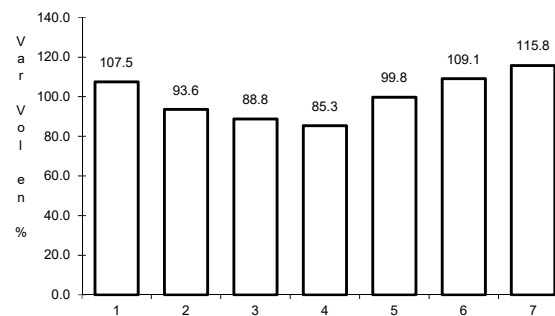
30 CARR: Transversal de Cozumel

CLAVE: 23577

RUTA: QR



Km: 0.00 Tipo: 3 Sent: 1

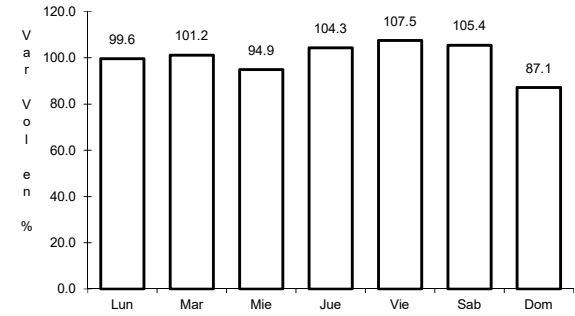
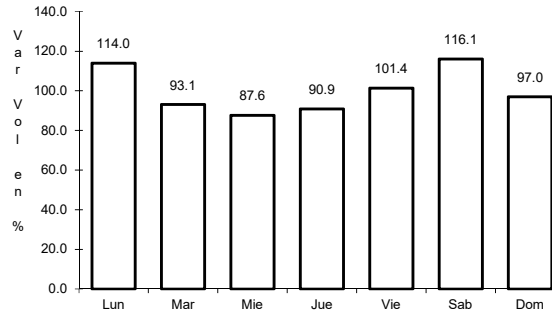
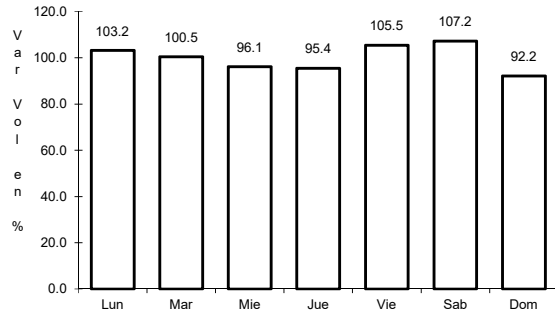


Km: 0.00 Tipo: 3 Sent: 2

31 CARR: Tulum - Nuevo X-Can

CLAVE: 23570

RUTA: QR



Km: 0.00 Tipo: 3 Sent: 1

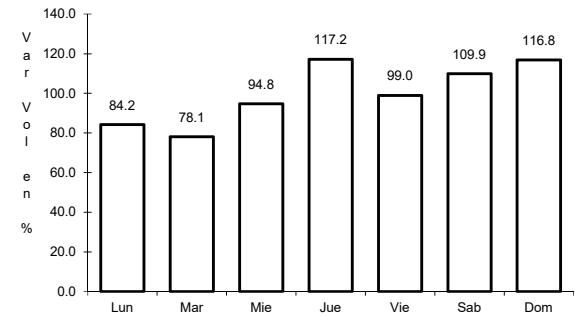
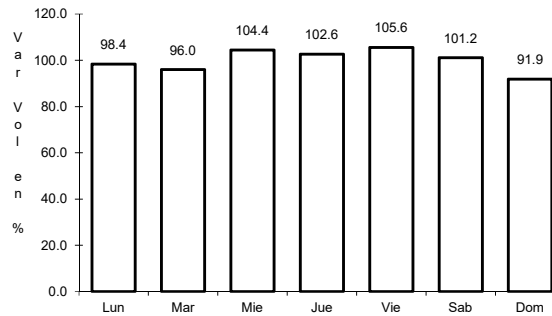
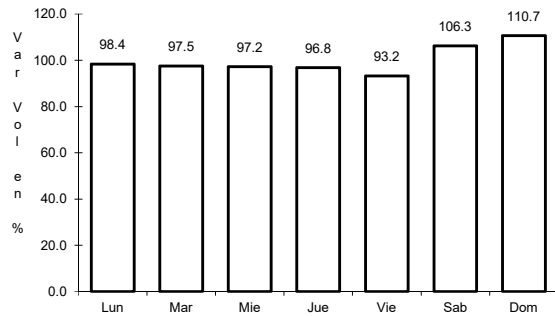
Km: 42.95 Tipo: 1 Sent: 0

Km: 87.40 Tipo: 1 Sent: 0

32 CARR: Ucum - Unión

CLAVE: 23571

RUTA: QR



Km: 0.00 Tipo: 3 Sent: 0

Km: 31.00 Tipo: 3 Sent: 0

Km: 88.00 Tipo: 1 Sent: 0