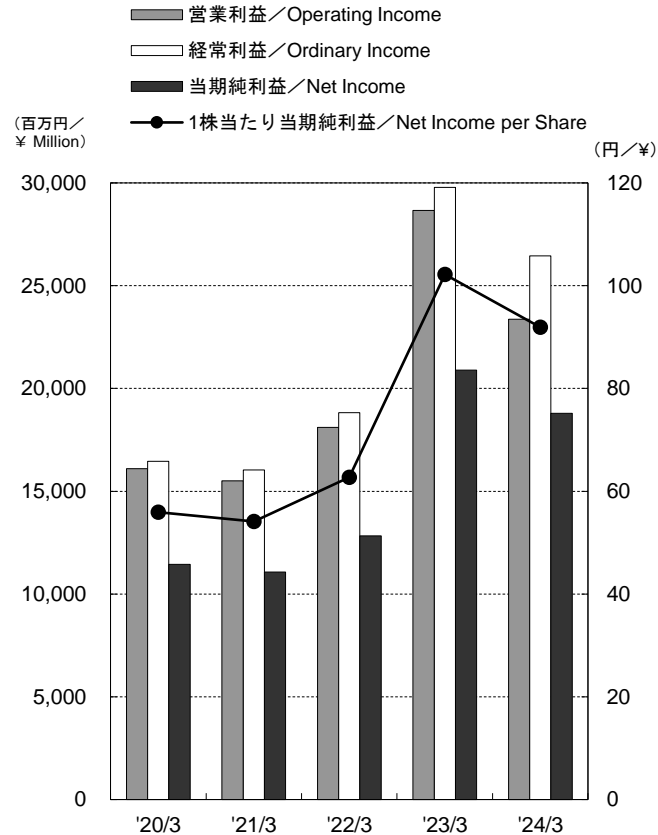
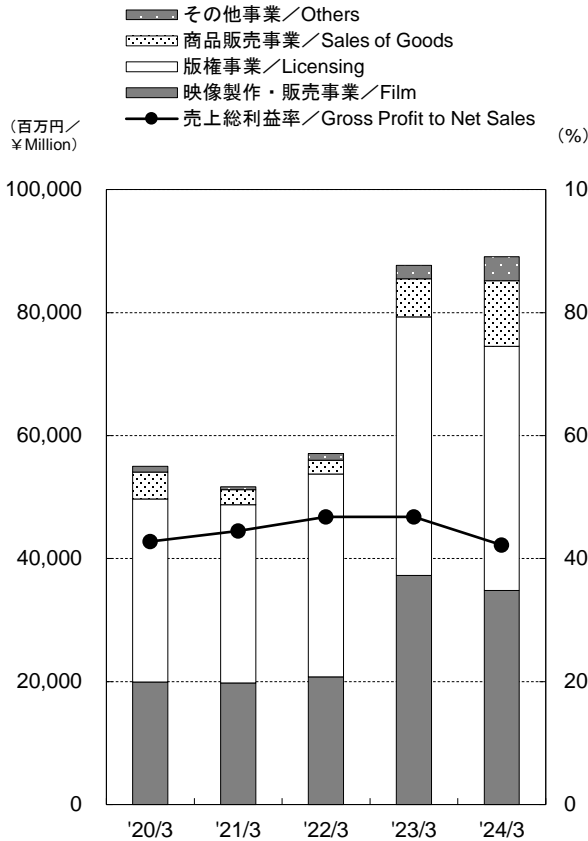


●連結業績推移／Consolidated Operating Results

部門別売上高／売上総利益率
Net Sales/Gross Profit to Net Sales

営業利益／経常利益／当期純利益／
1株当たり当期純利益
Operating Income/Ordinary Income/Net Income/
Net Income per Share



百万円/¥Million

決算期／Fiscal Year Ended	2020/3	2021/3	2022/3	2023/3	2024/3	増減%
売上高／Net Sales	54,819	51,595	57,020	87,457	88,654	1.4
映像製作・販売事業／Film	19,925	19,766	20,769	37,267	34,828	△ 6.5
版權事業／Licensing	29,751	28,997	32,995	42,060	39,671	△ 5.7
商品販売事業／Sales of Goods	4,401	2,466	2,231	6,149	10,681	73.7
その他事業／Others	911	446	1,104	2,216	3,922	77.0
セグメント比率(%)[映像/版權/商品販売/その他] ／Share [Film/Licensing/Sales of Goods/Others]	36/54/8/2	38/56/5/1	36/58/4/2	42/48/7/3	39/45/12/4	-
内部売上消去／Intra-company Sales	170	81	80	237	449	-
売上原価率(%)/Cost of Sales to Net Sales(%)	57.2	55.5	53.2	53.2	57.8	-
売上総利益率(%)/Gross Profit to Net Sales(%)	42.8	44.5	46.8	46.8	42.2	-
営業利益／Operating Income	16,094	15,503	18,107	28,669	23,364	△ 18.5
経常利益／Ordinary Income	16,455	16,040	18,822	29,791	26,453	△ 11.2
当期純利益／Net Income	11,437	11,067	12,820	20,900	18,795	△ 10.1
1株当たり当期純利益(円)／Net Income per Share(¥)	55.92	54.12	62.69	102.22	91.93	△ 10.1

注: 当社は、2024年4月1日付で普通株式1株につき5株の株式分割を行っております。2020年3月期の期首に当該株式分割が行われたものと仮定して、「1株当たり当期純利益(1株当たり純資産)」を算定しております。

Notes: The Company implemented a five-for-one split of its common stock on April 1, 2024. The net income per share (net assets per share) have been calculated by assuming that this stock split was carried out at the beginning of the fiscal year ended March 31, 2020.



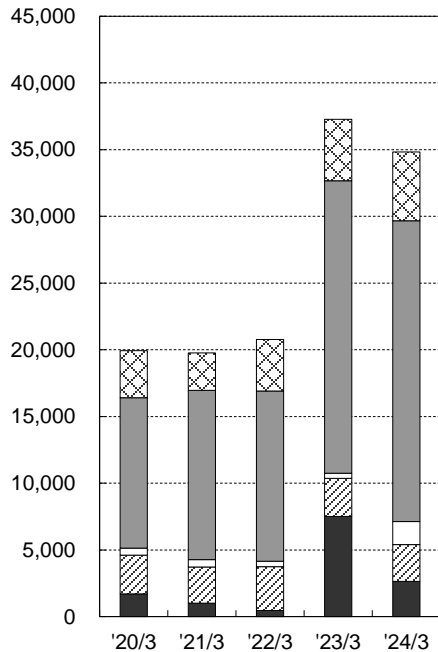
●連結セグメント別業績推移①／Consolidated Results by Segment

映像製作・販売事業

Film

- その他／Others
- 海外映像／Overseas Film
- コンテンツ事業／Contents
- ▨ テレビアニメ／TVs
- 劇場アニメ／Movies

(百万円／
¥Million)

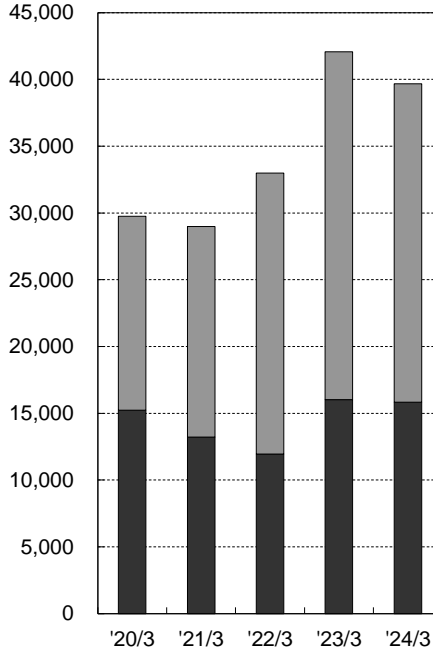


著作権事業

Licensing

- 海外版權／Overseas Licensing
- 国内版權／Domestic Licensing

(百万円／
¥Million)

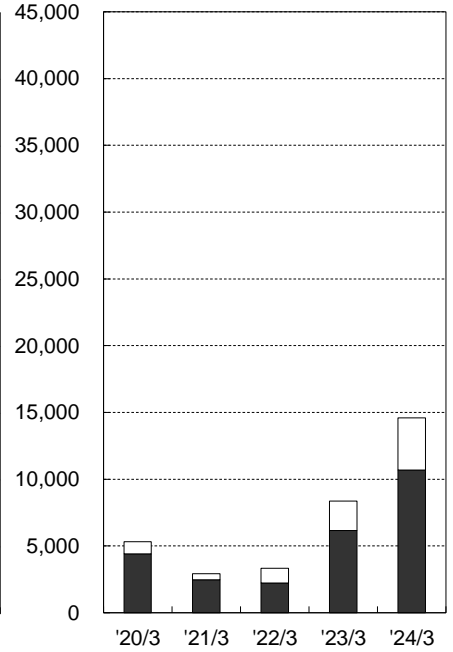


商品販売事業・その他事業

Sales of Goods/Others

- その他／Others
- 商品販売／Sales of Goods

(百万円／
¥Million)

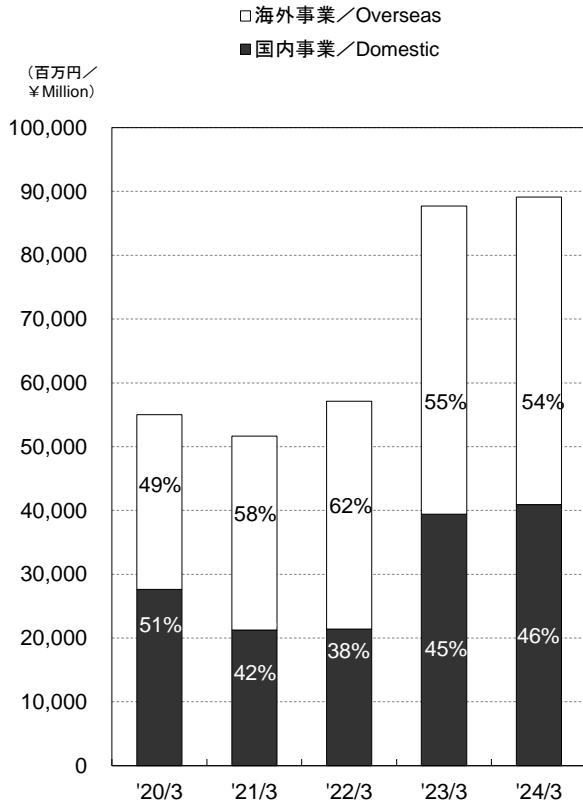


百万円／¥Million

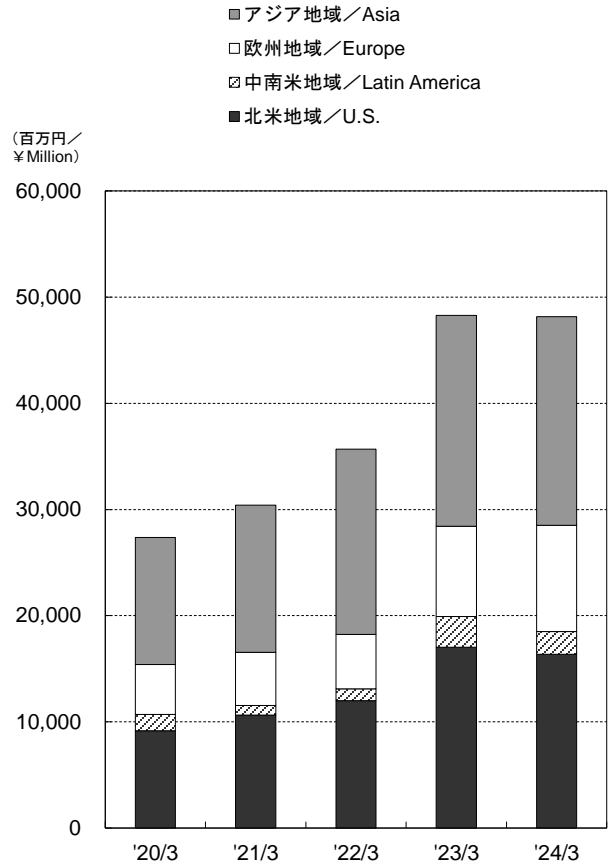
決算期／Fiscal Year Ended	2020/3	2021/3	2022/3	2023/3	2024/3	増減%
売上高／Net Sales	54,819	51,595	57,020	87,457	88,654	1.4
映像製作・販売事業／Film	19,925	19,766	20,769	37,267	34,828	△ 6.5
劇場アニメ／Movies	1,714	1,010	452	7,500	2,635	△ 64.9
テレビアニメ／TVs	2,891	2,720	3,302	2,868	2,761	△ 3.7
コンテンツ事業／Contents	531	553	402	389	1,730	344.3
海外映像／Overseas Film	11,264	12,664	12,747	21,917	22,532	2.8
その他／Others	3,523	2,815	3,864	4,592	5,169	12.5
営業利益／Operating Income	4,533	4,798	5,753	10,680	6,832	△ 36.0
著作権事業／Licensing	29,751	28,997	32,995	42,060	39,671	△ 5.7
国内版權／Domestic Licensing	15,235	13,207	11,958	16,033	15,830	△ 1.3
海外版權／Overseas Licensing	14,516	15,790	21,037	26,027	23,841	△ 8.4
営業利益／Operating Income	14,503	14,257	15,957	20,945	18,956	△ 9.5
商品販売事業／Sales of Goods	4,401	2,466	2,231	6,149	10,681	73.7
営業利益／Operating Income	△7	△183	△189	648	1,825	181.8
その他事業／Others	911	446	1,104	2,216	3,922	77.0
営業利益／Operating Income	△26	△191	△253	103	134	30.8
内部売上消去／Intra-company Sales	170	81	80	237	449	-

●連結セグメント別業績推移②／Consolidated Results by Segment

国内／海外別売上高
Sales breakdown of Overseas and Domestic



海外事業地域別売上高
Overseas Sales by Region



百万円／¥Million

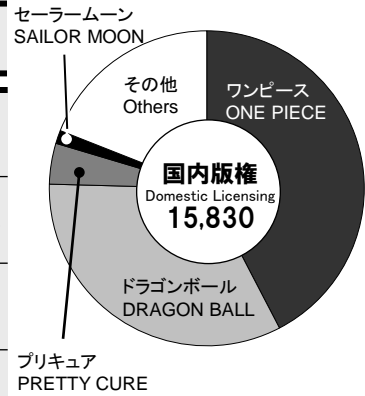
決算期／Fiscal Year Ended	2020/3	2021/3	2022/3	2023/3	2024/3	増減%
売上高／Net Sales	54,819	51,595	57,020	87,457	88,654	1.4
国内事業／Domestic	27,630	21,254	21,426	39,414	40,936	3.9
海外事業／Overseas	27,359	30,422	35,674	48,279	48,167	△ 0.2
北米地域／U.S.	9,176	10,626	12,008	17,027	16,374	△ 3.8
中南米地域／Latin America	1,526	927	1,105	2,886	2,131	△ 26.2
欧州地域／Europe	4,708	5,004	5,112	8,502	9,996	17.6
アジア地域／Asia	11,947	13,863	17,448	19,862	19,665	△ 1.0
売上高比率(%) (国内/海外) / Share(Domestic/Overseas)	51/49	42/58	38/62	45/55	46/54	-
内部売上消去／Intra-company Sales	170	81	80	237	449	-



●主要セグメント別作品内訳／Consolidated Sales of Major Titles by Segment

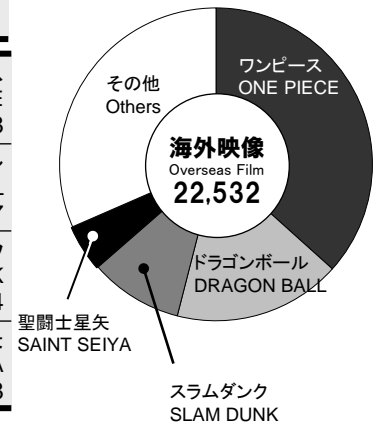
国内版權 売上上位4作品／Domestic Licensing Top 4 百万円／¥Million

2020/3	2021/3	2022/3	2023/3	2024/3
全体／total 15,235	13,207	11,958	16,033	15,830
ドラゴンボール DRAGON BALL 7,656	ドラゴンボール DRAGON BALL 6,479	ドラゴンボール DRAGON BALL 5,487	ワンピース ONE PIECE 6,553	ワンピース ONE PIECE 6,706
ワンピース ONE PIECE 3,836	ワンピース ONE PIECE 3,409	ワンピース ONE PIECE 3,496	ドラゴンボール DRAGON BALL 6,149	ドラゴンボール DRAGON BALL 5,234
プリキュア PRETTY CURE 801	プリキュア PRETTY CURE 635	プリキュア PRETTY CURE 528	プリキュア PRETTY CURE 553	プリキュア PRETTY CURE 663
聖闘士星矢 SAINT SEIYA 382	セーラームーン SAILOR MOON 390	セーラームーン SAILOR MOON 257	セーラームーン SAILOR MOON 273	セーラームーン SAILOR MOON 215



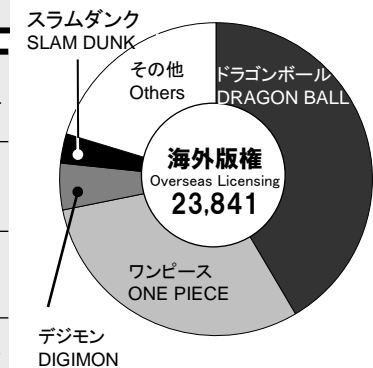
海外映像 売上上位4作品／Overseas Film Top 4 百万円／¥Million

2020/3	2021/3	2022/3	2023/3	2024/3
全体／total 11,264	12,664	12,747	21,917	22,532
ドラゴンボール DRAGON BALL 3,451	ワンピース ONE PIECE 3,478	ワンピース ONE PIECE 4,184	ワンピース ONE PIECE 7,234	ワンピース ONE PIECE 8,258
ワンピース ONE PIECE 3,042	ドラゴンボール DRAGON BALL 2,847	ドラゴンボール DRAGON BALL 2,474	ドラゴンボール DRAGON BALL 5,403	ドラゴンボール DRAGON BALL 3,907
プリキュア PRETTY CURE 684	プリキュア PRETTY CURE 711	聖闘士星矢 SAINT SEIYA 844	聖闘士星矢 SAINT SEIYA 1,474	スラムダンク SLAM DUNK 2,164
聖闘士星矢 SAINT SEIYA 422	デジモン DIGIMON 596	プリキュア PRETTY CURE 715	スラムダンク SLAM DUNK 1,063	聖闘士星矢 SAINT SEIYA 1,098



海外版權 売上上位4作品／Overseas Licensing Top 4 百万円／¥Million

2020/3	2021/3	2022/3	2023/3	2024/3
全体／total 14,516	15,790	21,037	26,027	23,841
ドラゴンボール DRAGON BALL 8,763	ドラゴンボール DRAGON BALL 7,751	ドラゴンボール DRAGON BALL 9,328	ドラゴンボール DRAGON BALL 11,590	ドラゴンボール DRAGON BALL 9,898
ワンピース ONE PIECE 2,723	ワンピース ONE PIECE 2,481	ワンピース ONE PIECE 4,394	ワンピース ONE PIECE 5,930	ワンピース ONE PIECE 7,228
聖闘士星矢 SAINT SEIYA 731	スラムダンク SLAM DUNK 2,316	スラムダンク SLAM DUNK 1,673	デジモン DIGIMON 2,208	デジモン DIGIMON 1,147
デジモン DIGIMON 341	聖闘士星矢 SAINT SEIYA 717	デジモン DIGIMON 1,532	スラムダンク SLAM DUNK 855	スラムダンク SLAM DUNK 724



注: 海外子会社は、12月31日が決算日となっており、連結決算日との間に生じた重要な取引については、調整を行っております。

Notes: Because the fiscal year of the overseas subsidiaries ends Dec. 31, appropriate adjustments are made concerning to important business deals occurred till the closing date of the parent company.

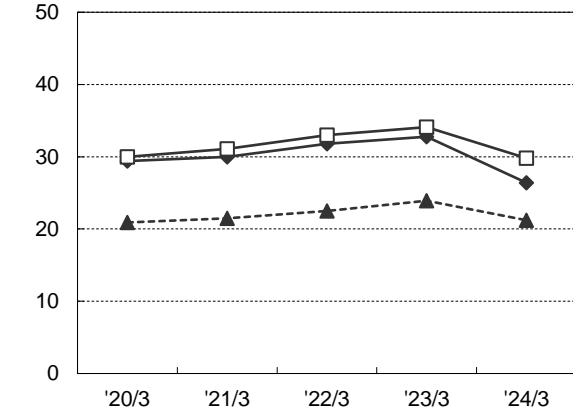
●収益性／Profitability

売上高営業利益率／経常利益率／当期純利益率

Operating Income to Net Sales/

Ordinary Income to Net Sales/Net Income to Net Sales

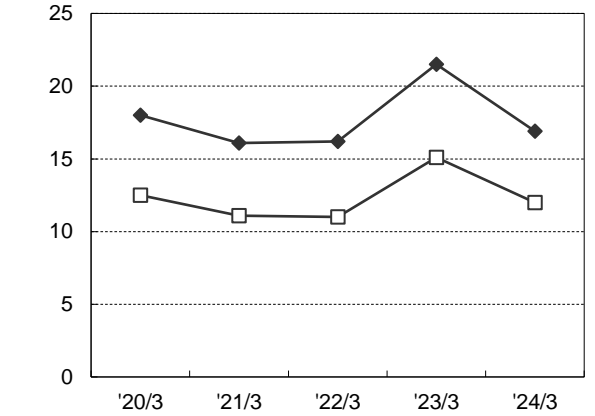
—◆— 売上高営業利益率／Operating Income to Net Sales
 —□— 売上高経常利益率／Ordinary Income to Net Sales
 - - -▲- - 売上高当期純利益率／Net Income to Net Sales



使用総資産経常利益率／当期純利益率

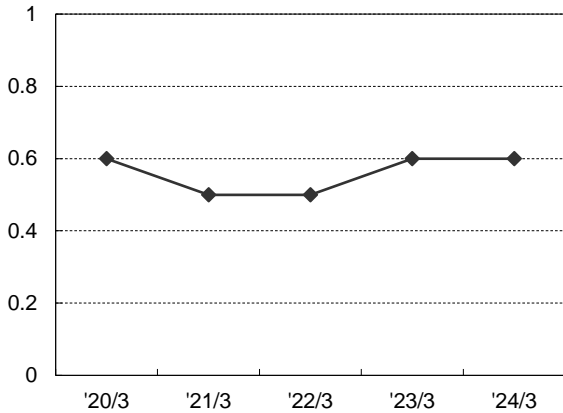
Ordinary Income to Total Assets/Net Income to Total Assets

—◆— 使用総資産経常利益率／Ordinary Income to Total Assets
 —□— 使用総資産当期純利益率／Net Income to Total Assets



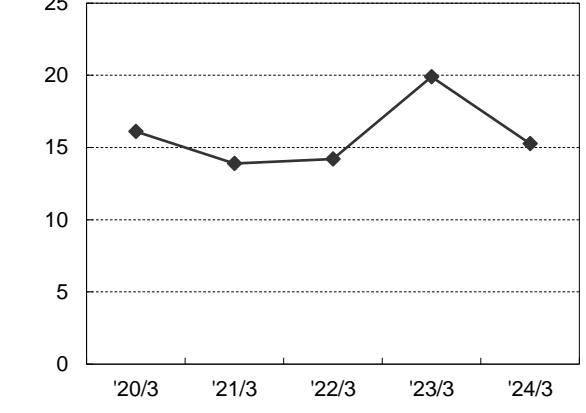
総資産回転率(回) Total Assets Turnover (Times)

(回/Times)



自己資本当期純利益率 Return on Equity

(%)



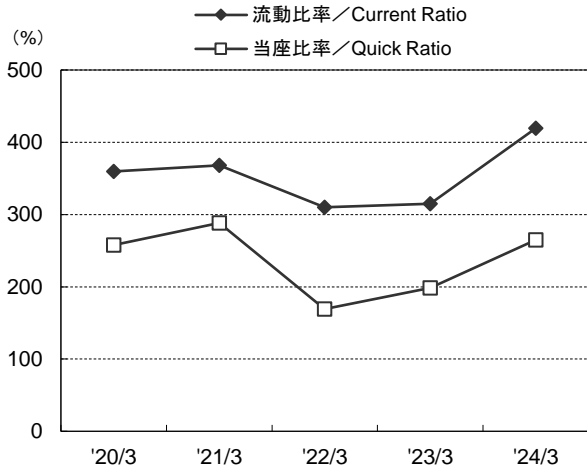
決算期／Fiscal Year Ended	2020/3	2021/3	2022/3	2023/3	2024/3
売上高営業利益率／Operating Income to Net Sales	29.4	30.0	31.8	32.8	26.4
売上高経常利益率／Ordinary Income to Net Sales	30.0	31.1	33.0	34.1	29.8
売上高当期純利益率／Net Income to Net Sales	20.9	21.5	22.5	23.9	21.2
使用総資産経常利益率／Ordinary Income to Total Assets	18.0	16.1	16.2	21.5	16.9
使用総資産当期純利益率／Net Income to Total Assets	12.5	11.1	11.0	15.1	12.0
総資産回転率(回)／Total Assets Turnover (Times)	0.6	0.5	0.5	0.6	0.6
自己資本当期純利益率／Return on Equity	16.1	13.9	14.2	19.9	15.3

注: 使用総資産経常利益率=経常利益／総資産(期中平均)×100
 使用総資産当期純利益率=当期純利益／総資産(期中平均)×100
 総資産回転率=売上高／総資産(期中平均)
 自己資本当期純利益率=当期純利益／自己資本(期中平均)×100

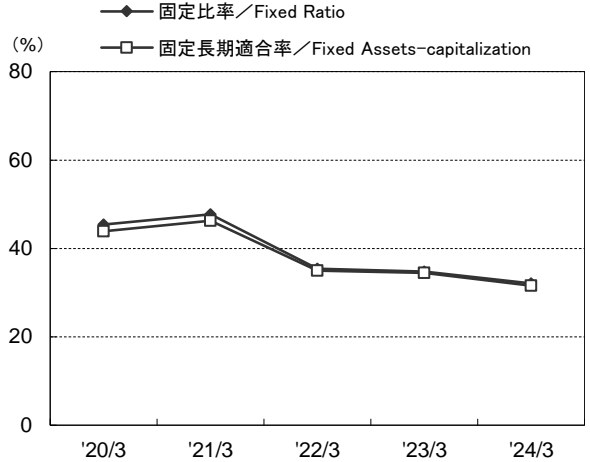
Notes: Ordinary Income to Total Assets=Ordinary Income/Total Assets (Yearly Average) × 100
 Net Income to Total Assets=Net Income/Total Assets (Yearly Average) × 100
 Total Assets Turnover=Net Sales/Total Assets (Yearly Average)
 Return on Equity=Net Income/Shareholder's Equity (Yearly Average) × 100

●安定性／Stability

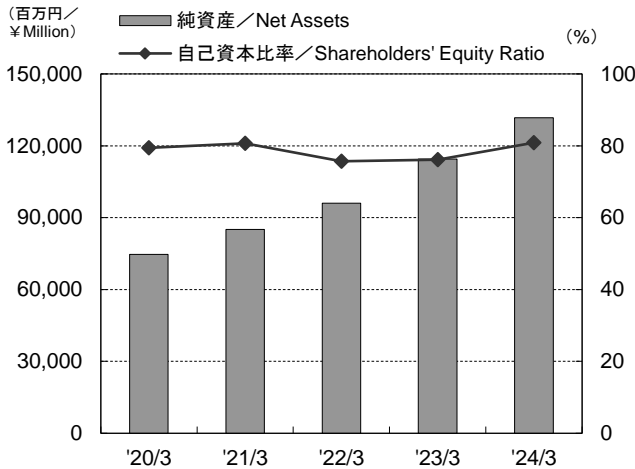
流動比率／当座比率
Current Ratio/Quick Ratio



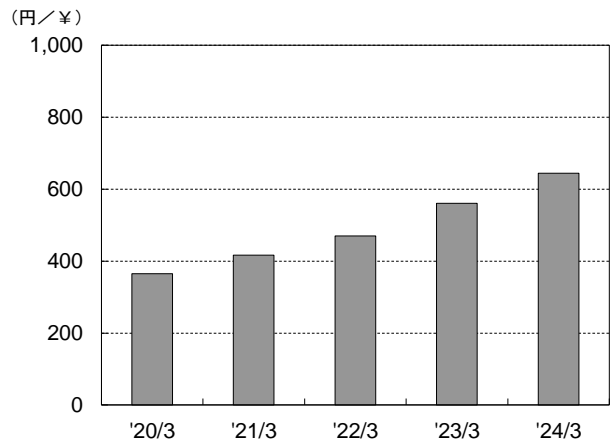
固定比率／固定長期適合率
Fixed Ratio/Fixed Assets-capitalization



純資産／自己資本比率
Net Assets/Shareholders' Equity Ratio



1株当たり純資産
Net Assets per Share



決算期／Fiscal Year Ended	2020/3	2021/3	2022/3	2023/3	2024/3
流動比率／Current Ratio	359.7	367.9	310.1	314.9	419.3
当座比率／Quick Ratio	257.7	288.5	169.4	198.7	264.9
固定比率／Fixed Ratio	45.4	47.7	35.4	34.8	32.1
固定長期適合率／Fixed Assets-capitalization	43.9	46.3	35.0	34.5	31.6
純資産(百万円)／Net Assets (¥ Million)	74,692	85,120	96,044	114,502	131,713
1株当たり純資産(円)／Net Assets per Share (¥)	365.30	416.25	469.67	560.89	644.15
自己資本比率／Shareholders' Equity Ratio	79.4	80.7	75.7	76.1	80.9

注: 流動比率=流動資産(期末)／流動負債(期末)×100 当座比率=(現金及び預金(期末)+売上債権(期末)+有価証券(期末))／流動負債(期末)×100
固定比率=固定資産(期末)／純資産(期末)×100 固定長期適合率=固定資産(期末)／(純資産(期末)+固定負債(期末))×100

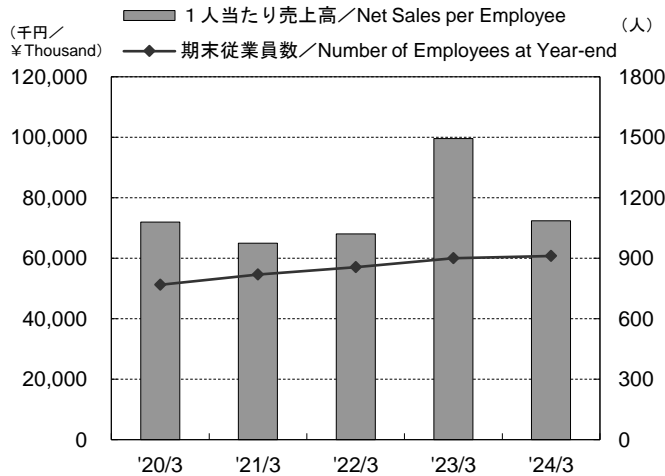
Notes: Current Ratio=Current Assets (Fiscal Year-end)/Current Liabilities (Fiscal Year-end) × 100
Quick Ratio=(Cash and Time Deposits (Fiscal Year-end) +Accounts Receivable (Fiscal Year-end) +Securities (Fiscal Year-end))/Current Liabilities (Fiscal Year-end) × 100
Fixed Ratio=Fixed Assets (Fiscal Year-end)/Net Assets × 100
Fixed Assets-capitalization=Fixed Assets (Fiscal Year-end)/(Net Assets (Fiscal Year-end) +Long-term Liabilities (Fiscal Year-end)) × 100

注: 当社は、2024年4月1日付で普通株式1株につき5株の株式分割を行っております。2020年3月期の期首に当該株式分割が行われたものと仮定して、「1株当たり当期純利益(1株当たり純資産)」を算定しております。

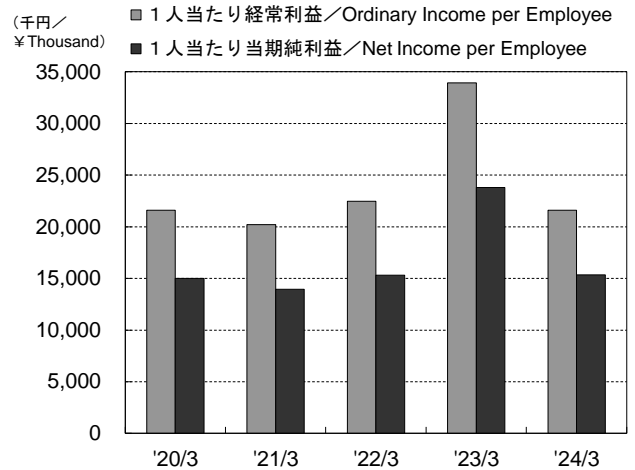
Notes: The Company implemented a five-for-one split of its common stock on April 1, 2024. The net income per share (net assets per share) have been calculated by assuming that this stock split was carried out at the beginning of the fiscal year ended March 31, 2020.

●効率性／Efficiency

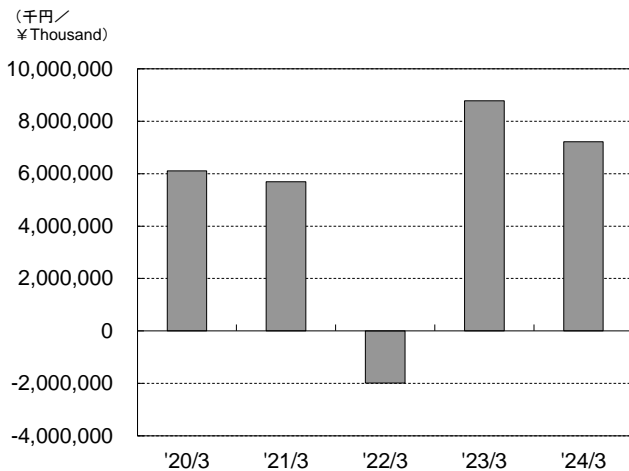
1人当たり売上高／期末従業員数
Net Sales per Employee/Number of Employees at Year-end



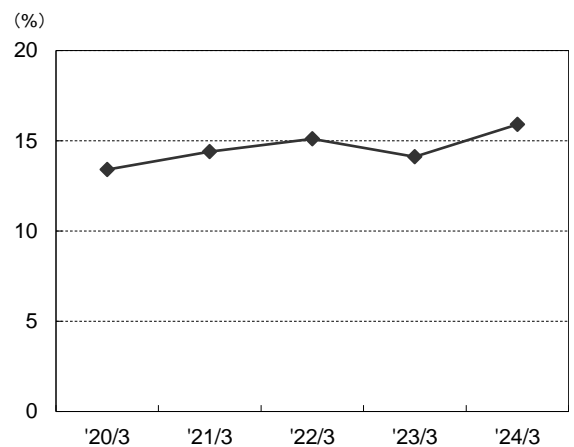
1人当たり経常利益／当期純利益
Ordinary Income per Employee/Net Income per Employee



キャッシュ・フロー
Cash Flows



売上高販管費率
Selling, General and Administrative Expenses to Net Sales



千円／¥Thousand

決算期／Fiscal Year Ended	2020/3	2021/3	2022/3	2023/3	2024/3
1人当たり売上高／Net Sales per Employee	71,941	64,982	68,084	99,609	97,907
期末従業員数(名)／Number of Employees at Year-end	769	819	856	900	911
1人当たり経常利益／Ordinary Income per Employee	21,595	20,202	22,474	33,931	29,214
1人当たり当期純利益／Net Income per Employee	15,010	13,939	15,307	23,804	20,757
減価償却費／Depreciation and Amortization	696,912	601,885	602,849	603,426	790,255
キャッシュ・フロー／Cash Flows	6,109,481	5,690,056	△1,981,441	8,781,818	7,217,342
期末発行済株式数(株)／Number of Shares Outstanding	40,894,010	40,898,723	40,898,651	40,887,650	40,895,344
売上高販管費率(%)／SG&A Expenses to Net Sales (%)	13.4	14.4	15.1	14.1	15.9

注： 従業員1人当たり指標は、期中平均従業員数に基づいて算出しています。
Notes: Per Employee Data are based on the yearly average number of employees.

●連結貸借対照表／Consolidated Balance Sheets

百万円／¥Million

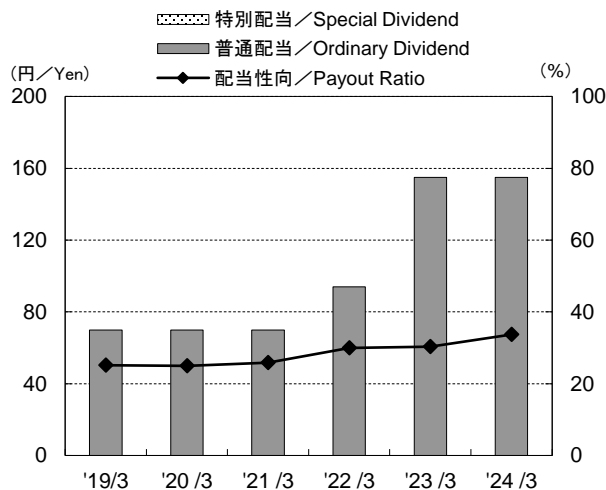
決算期／Fiscal Year Ended	2020/3	2021/3	2022/3	2023/3	2024/3	増減
【資産の部】／Assets						
流動資産／Current Assets	60,081	64,834	92,929	110,702	120,455	9,753
現金及び預金／Cash and Time Deposits	39,984	43,041	60,149	66,909	79,007	12,098
受取手形及び売掛金／Notes Receivable and Accounts Receivable	10,622	12,790	14,659	24,975	24,012	△962
製作品／Finished Products	90	60	74	3,716	99	△3,617
商品／Merchandise	241	269	336	1,095	1,295	200
仕掛品／Work in Progress	5,414	7,507	12,816	8,417	8,562	144
原材料及び貯蔵品／Raw Materials and Supplies	90	88	86	107	123	16
関係会社短期貸付金／Short-term Loans receivable from subsidiaries and affiliates	3,053	54	3,059	3,187	3,136	△50
その他／Other	663	1,053	1,778	2,315	4,276	1,960
貸倒引当金／Allowance for Doubtful Accounts	△77	△30	△29	△21	△58	△36
固定資産／Fixed Assets	33,937	40,643	33,953	39,806	42,283	2,477
有形固定資産／Tangible Fixed Assets	8,935	8,582	8,516	8,392	8,180	△211
建物及び構築物(純額)／Buildings and Structures, Net	6,983	6,761	6,570	6,581	6,406	△175
土地／Land	1,315	1,315	1,315	1,315	1,315	-
建設仮勘定／Construction in Progress	0	-	125	6	3	△2
その他／Other	635	505	504	489	455	△33
無形固定資産／Intangible Fixed Assets	454	527	633	1,184	1,321	136
投資その他の資産／Investments and Other Assets	24,547	31,533	24,803	30,229	32,782	2,552
投資有価証券／Investment Securities	12,258	13,706	12,715	12,522	15,888	3,366
関係会社長期貸付金／Long-term Loans receivable from subsidiaries and affiliates	3,024	6,018	3,012	3,006	3,000	△6
長期預金／Long-term Deposits	7,500	10,500	7,500	13,000	12,000	△1,000
その他／Other	1,801	1,346	1,610	1,704	1,896	192
貸倒引当金／Allowance for Doubtful Accounts	△37	△37	△34	△2	△2	△0
資産合計／Total Assets	94,019	105,477	126,883	150,508	162,739	12,230
【負債の部】／Liabilities						
流動負債／Current Liabilities	16,701	17,623	29,966	35,150	28,730	△6,419
支払手形及び買掛金／Notes Payable and Accounts Payable-trade	9,663	11,015	20,007	22,763	20,370	△2,393
未払法人税等／Accrued Income Taxes	2,798	2,820	2,926	5,334	2,119	△3,214
賞与引当金／Allowance for Employees' Bonuses	411	439	461	547	545	△1
その他／Other	3,828	3,347	6,571	6,505	5,695	△810
固定負債／Fixed Liabilities	2,624	2,733	871	855	2,295	1,439
役員株式給付引当金／Provision for share-based remuneration for directors	49	63	100	158	175	17
退職給付に係る負債／Net Defined Benefit Liability	2,086	2,130	137	225	302	77
その他／Other	488	539	633	472	1,817	1,345
負債合計／Total Liabilities	19,326	20,356	30,838	36,006	31,025	△4,980
【純資産の部】／Net Assets						
株主資本／Shareholders' Equity	73,669	81,894	91,849	108,768	121,273	12,504
資本金／Common Stock	2,867	2,867	2,867	2,867	2,867	-
資本剰余金／Capital Surplus	3,409	3,409	3,409	3,409	3,409	-
利益剰余金／Retained Earnings	68,087	76,290	86,245	103,298	115,751	12,452
自己株式／Treasury Stock	△694	△672	△673	△807	△754	52
その他の包括利益累計額／Accumulated other comprehensive Income	1,023	3,226	4,195	5,734	10,440	4,705
純資産合計／Total Net Assets	74,692	85,120	96,044	114,502	131,713	17,210
負債純資産合計／Total Liabilities and Net Assets	94,019	105,477	126,883	150,508	162,739	12,230

●連結損益計算書／Consolidated Statements of Income

百万円／¥Million

決算期／Fiscal Year Ended	2020/3	2021/3	2022/3	2023/3	2024/3	増減
売上高／Net Sales	54,819	51,595	57,020	87,457	88,654	1,197
売上原価／Cost of Sales	31,358	28,655	30,327	46,490	51,205	4,714
売上総利益／Gross Profit	23,461	22,939	26,693	40,966	37,449	△3,516
販売費及び一般管理費／Selling, General and Administrative Expenses	7,367	7,436	8,585	12,296	14,085	1,788
営業利益／Operating Income	16,094	15,503	18,107	28,669	23,364	△5,305
営業外収益／Non-operating Income	509	809	859	1,650	3,161	1,510
営業外費用／Non-operating Expenses	147	271	144	528	71	△456
経常利益／Ordinary Income	16,455	16,040	18,822	29,791	26,453	△3,338
特別利益／Extraordinary Gains	2	-	1	-	253	253
特別損失／Extraordinary Losses	31	46	204	-	-	-
税金等調整前当期純利益／Income before Income Taxes	16,426	15,994	18,619	29,791	26,707	△3,084
法人税、住民税及び事業税／Income Taxes, Inhabitant Taxes and Enterprise Taxes	5,047	5,009	5,672	8,995	7,529	△1,466
法人税等調整額／Income Taxes Adjustment	△58	△83	126	△103	382	486
当期純利益／Net Income	11,437	11,067	12,820	20,900	18,795	△2,104
親会社株主に帰属する当期純利益／Net Income Attributable to Owners of Parent	11,437	11,067	12,820	20,900	18,795	△2,104

●配当の状況／Dividends



円／¥

決算期／Fiscal Year Ended	2019/3	2020/3	2021/3	2022/3	2023/3	2024/3
1株当たり配当金／Dividends per Share	70.00	70.00	70.00	94.00	155.00	155.00
普通配当／Ordinary Dividend	70.00	70.00	70.00	94.00	155.00	155.00
特別配当／Special Dividend	-	-	-	-	-	-
配当金総額(百万円)／Total Dividend (¥ Million)	2,888	2,888	2,888	3,878	6,395	6,395
配当性向(%)／Payout Ratio (%)	25.2	25.0	25.9	30.0	30.3	33.7
純資産配当率(%)／Dividend on Equity Ratio (%)	4.6	4.0	3.6	4.2	6.0	5.1

注： 当社は、2024年4月1日付で普通株式1株につき5株の割合で株式分割を行っておりますが、「1株当たり配当金」については、当該株式分割前の実際の配当額を記載しております。

Notes: While the Company implemented a five-for-one split of its common stock on April 1, 2024, the dividend per share represents the actual amount of the dividend before this stock split.

