



**FOOTBALL**  
**NSW**

## **FOOTBALL NSW BY-LAWS**

Adopted on 2 December 2015  
Amended on 22 September 2016,  
11 December 2017, 17 December 2019,  
15 March 2021, 29 October 2021, 2 November 2021  
and 16 January 2023

**Contents**

|  |    |
|--|----|
| 1. APPLICATION AND COMMENCEMENT.....   | 3  |
| 2. DEFINITIONS.....  | 3  |
| 3. ZONES.....  | 3  |
| 4. STANDING COMMITTEES .....   | 3  |
| 5. REGULATIONS .....   | 3  |
| 6. JURISDICTION .....  | 3  |
| 7. OBLIGATIONS ON MEMBERS .....  | 4  |
| 8. BRANCHES.....   | 5  |
| 9. COMMITTEES, COMMISSIONS AND TRIBUNALS.....                                | 6  |
| 10. COMPETITIONS.....  | 6  |
| 11. FINANCIAL RECORDS .....  | 6  |
| SCHEDULE 1 – DEFINITIONS .....   | 7  |
| SCHEDULE 2 - ZONES .....   | 11 |
| 1. PURPOSE OF THIS SCHEDULE 2.....   | 11 |
| 2. ZONES.....  | 11 |
| 3. ZONE COUNCILS .....   | 12 |
| 4. MEMBERSHIP OF ZONE COUNCILS .....   | 14 |
| 5. ZONE COUNCILLORS - CASUAL VACANCIES, VACATION OF OFFICE AND REMOVAL.....  | 14 |
| 6. PROCEEDINGS OF A ZONE COUNCIL OF AN ASSOCIATION ZONE OR A BRANCH ZONE ... | 15 |
| 7. PROCEEDINGS OF A ZONE COUNCIL OF AN INTER-CLUB ZONE.....                  | 15 |
| 8 MEMBERSHIP OF THE COMPANY FOR ZONE COUNCILLORS .....                       | 16 |
| SCHEDULE 3 – STANDING COMMITTEES.....  | 17 |
| 1. PURPOSE OF THIS SCHEDULE 3.....   | 17 |
| 2. FUNCTIONS OF STANDING COMMITTEES.....                                     | 17 |
| 3. MEMBERSHIP OF STANDING COMMITTEES .....                                   | 17 |
| 4. TERM OF OFFICE, CASUAL VACANCIES, VACATION OF OFFICE AND REMOVAL.....     | 19 |
| 5. PROCEEDINGS OF STANDING COMMITTEES.....                                   | 21 |
| 6. MEMBERSHIP OF THE COMPANY FOR CHAIRS AND DEPUTY CHAIRS .....              | 24 |
| 7. DISPUTES.....   | 25 |
| 8. NPL MEN’S STANDING COMMITTEE .....  | 25 |
| 9. LEAGUE ONE MEN’S STANDING COMMITTEE .....                                 | 26 |
| 10. LEAGUE TWO MEN’S STANDING COMMITTEE.....                                 | 27 |
| 11. NPL WOMEN’S AND LEAGUE ONE WOMEN’S STANDING COMMITTEE .....              | 28 |
| 12. COACHES AND TECHNICAL ADVISORY PANEL .....                               | 29 |
| 13. WOMEN’S STANDING COMMITTEE.....  | 30 |
| 14. REFEREES ADVISORY PANEL .....  | 31 |
| 15. ASSOCIATIONS STANDING COMMITTEE .....                                    | 32 |
| 16. FUTSAL STANDING COMMITTEE .....  | 33 |
| SCHEDULE 4 – ZONE BOUNDARIES.....  | 35 |

## 1. APPLICATION AND COMMENCEMENT

- (a) The Directors have the power to make these By-Laws pursuant to article 15 of the Constitution.
- (b) These By-Laws have effect on and from 1 January 2016 and supersede and replace the By-Laws adopted on 26 July 2006 (as amended in May 2010, on 18 July 2013, 28 July 2015, 10 September 2015 and 22 October 2015). As contemplated by article 15 of the Constitution, these By-Laws remain subject to any alterations, additions or deletions that may be made from time to time by the Directors.
- (c) These By-Laws remain subject to the terms of the Constitution and to the extent of any inconsistency between the Constitution and these By-Laws, the Constitution shall prevail.

## 2. DEFINITIONS

Definitions used in these By-Laws are set out in **Schedule 1** of these By-Laws.

## 3. ZONES

In accordance with articles 3.4 and 3.5 of the Constitution, the provisions of **Schedule 2** of these By-Laws shall apply to Zones and Zone Councils.

## 4. STANDING COMMITTEES

In accordance with articles 3.7 of the Constitution, the provisions of **Schedule 3** of these By-Laws shall apply to Standing Committees.

## 5. REGULATIONS

- (a) The Executive shall make such regulations, rules and policies as it deems necessary in respect of any matter arising from or incidental to the implementation of these By-Laws.
- (b) The power to make regulations, rules and policies includes the power to amend, delete or add to any regulations, rules or policies made.
- (c) Where there is any inconsistency between these By-Laws and any regulations, rules or policies, the By-Laws shall prevail.

## 6. JURISDICTION

- (a) For the purposes of these By-Laws, the following persons and entities shall be considered Members:
  - i. Association Zones;
  - ii. Inter-Club Zones;
  - iii. Branch Zones;
  - iv. Futsal Centres;
  - v. Clubs;
  - vi. any Referees Body; and
  - vii. Participants,(together, "**Members**").

- (b) For the avoidance of any doubt, a person who is considered to be a Member for the purposes of these By-Laws is not a member of the Company. Pursuant to articles 3.2 and 3.8 of the Constitution only Registered Voting Members can be a member of the Company.
- (c) Each Member and each Registered Voting Member agrees to be bound by and to comply with the FA Rules and Regulations and Football NSW Rules and Regulations (including these By-Laws) and agrees to submit exclusively to the jurisdiction of FA and Football NSW.

## 7. OBLIGATIONS ON MEMBERS

### 7.1 Clubs

- (a) In order to participate in any Competition under the jurisdiction of Football NSW, a Club must maintain its status as a Registered Entity.
- (b) Where a Club fails to maintain its status as a Registered Entity, Football NSW may, in its absolute discretion, determine that Club as ineligible to participate in any Competition as it sees fit
- (c) In order to determine whether a Club is in compliance with this paragraph 7.1, Football NSW may require the Club to provide any documentation Football NSW considers to be relevant.

### 7.2 Association Zones

- (a) An Association Zone must be a Registered Entity.
- (b) In order to be entitled to:
  - i. represent Clubs in a particular Association (in accordance with the Zone boundaries set out in Schedule 2, paragraph 2.1 of these By-Laws);
  - ii. be represented on the Associations Standing Committee (in accordance with Schedule 3, paragraph 15.2 of these By-Laws); or
  - iii. elect individuals to apply for membership (in accordance with article 3.2 of the Constitution),an Association Zone must maintain its status as a Registered Entity.
- (c) Where an Association Zone fails to maintain its status as a Registered Entity, Football NSW may determine that the Association Zone is not eligible to do or undertake any of the actions or activities set out in paragraph 7.2(b).
- (d) In order to determine whether an Association Zone is in compliance with this paragraph 7.2, Football NSW may require the Association Zone to provide any documentation Football NSW considers to be relevant.

### 7.3 Branch Zones

- (a) A Branch Zone must be a Registered Entity.
- (b) In order to be entitled to:
  - i. represent Clubs in a particular Association (in accordance with the Zone boundaries set out in Schedule 2, paragraph 2.1 of these By-Laws);
  - ii. be represented on the Associations Standing Committee (in accordance with Schedule 3, paragraph 15.2 of these By-Laws); or

- iii. elect individuals to apply for membership (in accordance with article 3.2 of the Constitution),

a Branch Zone must maintain its status as a Registered Entity.

- (c) Where a Branch Zone fails to maintain its status as a Registered Entity, Football NSW may determine that the Branch Zone is not eligible to do or undertake any of the actions or activities set out in paragraph 7.3(b).
- (d) In order to determine whether a Branch Zone is in compliance with this paragraph 7.3, Football NSW may require the Branch Zone to provide any documentation Football NSW considers to be relevant.

#### **7.4 Constitution Amendments**

- (a) This clause 7.4 applies to all Members except Participants.
- (b) A Member must not amend its constitution without the consent of Football NSW. Any amendment to its constitution in breach of this clause will be invalid.
- (c) Where there is any inconsistency between the constitution, rules or regulations of a Member and the Football NSW Rules and Regulations, then to the extent of such inconsistency, the Football NSW Rules and Regulations shall apply.
- (d) A Member must provide in its constitution or relevant rules or regulations:
  - i. procedures to facilitate the expeditious and fair resolution of disciplinary complaints and disputes within its jurisdiction;
  - ii. provisions such that:
    - A. upon registration with a Member, its membership agree to comply and be bound by the constitution, by-laws, rules and regulations of that Member, the Football NSW Rules and Regulations and FA Rules and Regulations;
    - B. to the extent of any inconsistency between the constitution, by-laws, rules and regulations of that Member, then to the extent of any such inconsistency, the Football NSW Rules and Regulations shall prevail; and
    - C. its members agree not to commence or pursue any proceedings in a court of law until such time as the grievance or disciplinary processes of the Member, Football NSW and FA have been exhausted.

#### **7.5 Winding Up**

On the winding up of any Member, any surplus assets of the Member shall be transferred to a like body having objects similar to those set out in its constitution or alternatively such surplus may be disposed of in such other manner as the members of the Member consider fit subject to the consent of Football NSW.

### **8. BRANCHES**

- (a) Branch committees shall be established by the Directors. The persons to serve on the Branch committees shall be elected by Association Zones representing each Branch.
- (b) The Branch committee shall comprise no more than eight persons.

- (c) A Branch shall act as a forum to co-ordinate and promote the interests of Associations in each Branch.
- (d) With the consent of the Directors, a Branch may establish a Branch tribunal to investigate and determine any dispute or matter relating to an incident, dispute or grievance and shall act as the last avenue before a matter is referred or appealed to Football NSW in accordance with the Football NSW Grievance and Disciplinary Regulations, adopted on 21 February 2013 and amended from time to time.

## 9. COMMITTEES, COMMISSIONS AND TRIBUNALS

The Directors may establish such committees, commissions and tribunals as they may from time to time determine and designate to each of them their respective functions and powers.

## 10. COMPETITIONS

### 10.1 Competition Regulations

In accordance with paragraph 5 of these By-Laws, the Executive shall make Competition regulations as it deems necessary in respect of all Competitions administered by Football NSW.

### 10.2 Admission and Suspension

- (a) The Executive shall conduct Competitions as the Directors may from time to time determine and such Competitions shall be conducted in accordance with Competition regulations made by the Executive pursuant to paragraph 10.1 of these By-Laws.
- (b) The Directors may, in their absolute discretion, determine to admit, suspend, promote, relegate, expel or accept the withdrawal of any Club from a Competition. Such a decision by the Directors is final and not subject to an appeal.
- (c) The Directors may admit a Club from another state or Member Federation to participate in a Competition.

### 10.3 Eligibility for admission

- (a) Eligibility for admission to a Competition shall be determined by the Directors who shall set the admission criteria.
- (b) Applications shall be conducted in accordance with the Competition regulations or any other rules, regulations, policies or directives issued by the Executive.

## 11. FINANCIAL RECORDS

- (a) All Members (except Participants) shall keep accounting records to record the fact and nature of all payments and receipts in a manner as to disclose with reasonable accuracy at any time its financial position including assets and liabilities.
- (b) Each Member (except a Participant) is to make available at the request of the Executive all annual financial statements prepared in accordance with applicable legislation.
- (c) Any material errors or omissions in the accounting records or financial statements of Members (except Participants) must be reported to Football NSW where accounting records and annual returns have already been lodged.

## SCHEDULE 1 – DEFINITIONS

---

Capitalised terms used in the Constitution shall bear the same meaning when those terms are used in these By-Laws (save for the capitalised terms “**Standing Committee Member**”, “**Member**” and “**Director**” which shall bear the meaning given below when used in these By-Laws). In addition, the following capitalised terms shall have the following meanings when used in these By-Laws.

**AFC** means the Asian Football Confederation;

**Appointed Member** means a person appointed by the Board as a member of a Standing Committee pursuant to Schedule 3, paragraph 3(e);

**Association** means a body corporate or incorporated association recognised by Football NSW as representative of Clubs within a geographic area;

**Association Zone Councils** means the Zone Councils established for Association Zones in accordance with Schedule 2, paragraph 3.1 of these By-Laws;

**Association Zones** means each of the Zones numbered 1 to 15 in Schedule 2, paragraph 2.1 of these By-Laws under the heading “Association Zones”;

**Board** means the Board of Directors of Football NSW;

**Branch Zone Councils** means the Zone Councils established for Branch Zones in accordance with Schedule 2, paragraph 3.1 of these By-Laws;

**Branch Zones** means each of the Zones numbered 16 to 18 in Schedule 2, paragraph 2.1 of these By-Laws under the heading “Branch Zones”, being the Southern Branch, Western Branch and Riverina Branch which respectively represent the individual Associations listed under that heading;

**By-Laws** means these Football NSW By-Laws, as amended by the Directors from time to time;

**Chair** means a person appointed to the position of Chair of an Inter-Club Zone Council pursuant to Schedule 2, paragraph 7.2 or of a Standing Committee pursuant to Schedule 3, paragraph 5(e);

**Club** means:

- (a) a body corporate or incorporated association recognised by Football NSW and having the following characteristics:
- i. it organises teams to participate in competitions sanctioned by Football NSW or FA;
  - ii. all members of its teams are entitled to club membership;
  - iii. club members (or their parent or guardian) may vote in an election for any club officeholders; or
- (b) any legal entity deemed to be a Club by Football NSW.

For the avoidance of any doubt, “Club” includes “Futsal Club”.

**Club Official** means any person involved with the administration, management or organisation of a Club or Futsal Centre (whether paid or unpaid), including employees, contractors, directors, representatives and volunteers;

**Company** means Football New South Wales Limited ACN 003 215 923;

**Competition** means any or all of the football matches or competitions, tournaments or events conducted by Football NSW;

**Constitution** means the Constitution of Football NSW;

**Director** means a director of the Company and includes the Chairman and Deputy Chairman, the Appointed Directors and the Elected Directors;

**Deputy Chair** means a person appointed to the position of Deputy Chair of an Inter-Club Zone Council pursuant to Schedule 2, paragraph 7.3 or of a Standing Committee pursuant to Schedule 3, paragraph 5(e);

**Eligible Nominator** means where the context requires a Registered Participant, Association Zone, Branch Zone, Club, Futsal Club or Futsal Centre;

**Executive** means the Chief Executive Officer of Football NSW or his or her nominee(s) appointed from time to time;

**Executive Officer** means the member of the Executive appointed to the position of Executive Officer of a Standing Committee pursuant to Schedule 3, paragraph 5(j);

**Ex Officio Member** means a Director nominated by the Board to attend the meetings of a Standing Committee pursuant to Schedule 3, paragraph 5(i);

**FA** means Football Australia Limited, the governing body for football (soccer) in Australia;

**FA Rules and Regulations** means the FA Statutes and any other rules, regulations, policies, procedures, codes of conduct and guidelines developed, promulgated and implemented by FA from time to time, as they apply to Football NSW and Members as amended from time to time;

**FIFA** means Federation Internationale de Football Association, its successor or assignee;

**Football NSW** means Football New South Wales Limited ACN 003 215 923;

**Football NSW Rules and Regulations** means the Constitution, these By-Laws and any other rules, regulations, policies, procedures, codes of conduct, directives and guidelines developed, promulgated and implemented by Football NSW from time to time;

**Futsal Centre** means a Registered Entity which conducts futsal competitions and is affiliated with Football NSW;

**Futsal Club** means a Club which plays futsal in competitions governed or sanctioned by Football NSW or in competitions conducted by a Futsal Centre;

**Inter-Club Zone Councils** means the Zone Councils established for Inter-Club Zones in accordance with Schedule 2, paragraph 3.1;

**Inter-Club Zones** means the Zones numbered 19 to 20 in Schedule 2, paragraph 2.1, being the Inter-Club 1 Zone and Inter-Club 2 Zone which represent the Clubs referred to in that paragraph;

**League One Men's** means the competition or competitions conducted by Football NSW from time to time known as Football NSW League One Men's, or such other name designated by Football NSW;

**League One Women's** means the competition or competitions conducted by Football NSW from time to time known as Football NSW League One Women's, or such other name designated by Football NSW;



**League Two Men's** means the competition or competitions conducted by Football NSW from time to time known as Football NSW League Two Men's, or such other name designated by Football NSW;

**Match Official** means a referee, assistant referee, fourth official, match commissioner, any person in charge of safety or any other person appointed by FA, Football NSW, a Referees Body, a Futsal Centre, an Association Zone, a Branch Zone or a Club to assume responsibility in connection with a match;

**Members** means those members set out in paragraph 6(a) of these By-Laws;

**National Curriculum** means the guidelines produced by FA from time to time which provide the framework for coach and player development for Football in Australia;

**Nominated Member** means a person elected as a member of a Standing Committee pursuant to Schedule 3, paragraph 3 of these By-Laws;

**NPL Men's** means the competition or competitions conducted by Football NSW from time to time known as National Premier Leagues NSW Men's, or such other name designated by Football NSW;

**NPL Women's** means the competition or competitions conducted by Football NSW from time to time known as National Premier Leagues NSW Women's, or such other name designated by Football NSW;

**Official** means a Club Official, Match Official or Team Official;

**Participant** means a Player, Official or Spectator;

**Player** means any person who participates in a match governed or sanctioned by FA or Football NSW (irrespective of whether he or she is registered with FA, junior or senior or an amateur or professional);

**Referees Body** means a body made up Match Officials who provide services to Football NSW or a Member;

**Registered Entity** means the following:

- (a) a body corporate registered under the Corporations Act 2001 (Cth); or
- (b) an incorporated association registered under the *Associations Incorporation Act 2009* (NSW);

**Registered Participant** means a person registered by Football NSW under article 7.3 of the Constitution in the category of:

- (a) player (including junior players) in any competition recognised by the Company;
- (b) Accredited referee;
- (c) Accredited coach; or
- (d) any other individual that Football NSW recognises as contributing to Football in the State;

**Registered Voting Member** means a member of the Company, being those individuals described in article 3.2, and admitted pursuant to article 3.8, of the Constitution and who are entitled to vote at a general meeting of Football NSW;

**Spectator** means a person in attendance at a stadium, venue, ground or Futsal Centre during any match, competition or training session sanctioned or administered by Football NSW, a Futsal Centre, an Association Zone, Branch Zone or a Club;

**Standing Committee** means a standing committee established by the Board under Schedule 3 of these By-Laws in accordance with article 3.7 of the Constitution;

**Standing Committee Code of Conduct** means the Code of Conduct of Standing Committee Members approved by the Board from time to time;

**Standing Committee Members** means the Nominated Members and the Appointed Members of a Standing Committee;

**State** means the state of New South Wales with the exception of the northern regions of NSW which are identified by FA as “Northern NSW”;

**Team Official** means any person involved with the management, preparation or participation of a team (whether paid or unpaid), including the coaches, managers, medical staff, other support staff or any other person acting for or on behalf of a Club, a Futsal Centre, an Association Zone or a Branch Zone; and

**Zone** means a geographic area or grouping of Clubs determined to be an Association Zone, Branch Zone or Inter-Club Zone in accordance with article 3.4 of the Constitution and Schedule 2, paragraph 2 of these By-Laws.

## SCHEDULE 2 - ZONES

### 1. PURPOSE OF THIS SCHEDULE 2

The purpose of this Schedule 2 is to establish:

- (a) the Zones and identify their boundaries pursuant to article 3.4 of the Constitution; and
- (b) the Zone Councils for each Zone and the governance framework that will apply to those Zone Councils pursuant to article 3.5 of the Constitution.

### 2. ZONES

#### 2.1 Zones

As contemplated by article 3.4 of the Constitution, the Zones are as follows and their boundaries are as identified in Schedule 4:

| Zone Number   | Geographical area incorporated in Zone            |  |
|---|---|--|
| <b>Association Zones</b>  |   |  |
| 1   | Bankstown District Amateur Soccer Association     |  |
| 2   | Blacktown & Districts Soccer Football Association |  |
| 3   | Canterbury & District Soccer Football Association |  |
| 4   | Central Coast Football                            |  |
| 5   | Eastern Suburbs Football Association              |  |
| 6   | North West Sydney Football                        |  |
| 7   | Granville & Districts Soccer Football Association |  |
| 8   | Football South Coast                              |  |
| 9   | Northern Suburbs Football Association             |  |
| 10  | Macarthur Football Association                    |  |
| 11  | Manly Warringah Football Association              |  |
| 12  | Nepean Districts Soccer Football Association      |  |
| 13  | Southern Districts Soccer Football Association    |  |
| 14  | Football St George                                |  |
| 15  | Sutherland Shire Football Association             |  |
| <b>Branch Zones (incorporating the Associations listed below)</b> |   |  |
| 16  | Southern Branch                                   | Eurobodalla Soccer Association                 |
|   |   | Far South Coast Soccer Association             |
|   |   | Highlands Soccer Association Inc.              |
|   |   | Shoalhaven District Soccer Association         |
|   |   | Southern Tablelands Football Association       |
| 17  | Riverina Branch                                   | Griffith & District Amateur Soccer Association |
|   |   | South West Slopes Soccer Association           |
|   |   | Soccer Albury Wodonga                          |
|   |   | Football Wagga Wagga                           |
| 18  | Western Branch                                    | Bathurst District Football Association         |
|   |   | Dubbo & District Soccer Association            |
|   |   | Lachlan Amateur Soccer Association             |
|   |   | Lithgow District Soccer Association            |
|   |   | Orange & Districts Soccer Association          |
|   |   | Western Plains Soccer Amateur Association      |

| Clubs incorporated in Inter-Club Zones |              |  |
|--|--------------|--|
| 19                                     | Inter-Club 1 | Clubs participating in the NPL Men's, League One Men's and League Two Men's competitions                   |
| 20                                     | Inter-Club 2 | Clubs participating in the NPL Women's and League One Women's competitions (except Football NSW Institute) |

## 2.2 Company must assign Clubs and eligible voters to Zones

(a) Football NSW must:

- i. maintain a register of all Clubs; and
- ii. assign each Club to a Zone, and record that fact in the register.

(b) Eligible voters who are accredited coaches or accredited referees are deemed to be assigned to the Zone within which they reside or participate as a coach or a referee, as Football NSW sees fit on a case by case basis.

## 2.3 Voting by Clubs

A Club may only be assigned to one Zone under Schedule 2, paragraph 2.2 of these By-Laws and must not vote in an election for a Zone Council other than for the Zone Council to which it is assigned.

## 3. ZONE COUNCILS

### 3.1 Establishment

As contemplated by article 3.5 of the Constitution, there was established under previous and now superseded By-Laws a Zone Council for each Zone, it being acknowledged that the governing bodies of the Association Zones and the Branch Zones, and the Zone Councils of the Inter-Club Zones, in place as at the date of the adoption of these By-Laws (2 December 2015) constitute the Zone Councils that are required to be established by article 3.5 of the Constitution.

### 3.2 Functions and obligations of a Zone Council of an Association Zone

(a) A Zone Council of an Association Zone must:

- i. foster development of Football within its Zone;
- ii. conduct Football competitions within its Zone;
- iii. administer Football within its Zone;
- iv. identify and secure safe facilities for the conduct of Football competitions within its Zone;
- v. uphold and promote the objects of Football NSW and FA;
- vi. facilitate the implementation of Football NSW policies, programs and initiatives;
- vii. act as a conduit for the flow of information on issues of relevance from Football NSW to the Zone and from the Zone to Football NSW;
- viii. charge and collect fees and levies approved by Football NSW and FA from Registered Participants and others involved in Football; and
- ix. enforce rules, regulations and by-laws set by Football NSW and FA.

- (b) In addition, a Zone Council of an Association Zone must determine how the Zone Councillors elected by them to become Registered Voting Members of the Company are to exercise their votes at any meeting of the Company.
- (c) A Zone Council of an Association Zone shall manage its Zone in accordance with the constitution of the Zone and otherwise act in a manner the Zone Council considers will best enable it to perform the functions and discharge the obligations specified in this paragraph 3.2.

### **3.3 Functions and obligations of a Zone Council of a Branch Zone**

- (a) A Zone Council of a Branch Zone must ensure Associations in the Branch Zone:
  - i. foster development of Football within its Zone;
  - ii. conduct Football competitions within its Zone;
  - iii. administer Football within its Zone;
  - iv. identify and secure safe facilities for the conduct of Football competitions within its Zone;
  - v. uphold and promote the objects of Football NSW and FA;
  - vi. facilitate the implementation of Football NSW policies, programs and initiatives;
  - vii. act as a conduit for the flow of information on issues of relevance from Football NSW to the Zone and from the Zone to Football NSW;
  - viii. charge and collect fees and levies approved by Football NSW and FA from Registered Participants and others involved in Football; and
  - ix. enforce rules, regulations and by-laws set by Football NSW and FA.
- (b) In addition, a Zone Council of a Branch Zone must determine how the Zone Councillors elected by them to become Registered Voting Members of the Company are to exercise their votes at any meeting of the Company.
- (c) A Zone Council of a Branch Zone shall ensure an Association in the Branch Zone is managed in accordance with the constitution of the Association and otherwise act in a manner the Association considers will best enable it to perform the functions and discharge the obligations specified in this paragraph 3.3.

### **3.4 Functions and obligations of a Zone Council of an Inter-Club Zone**

- (a) A Zone Council of an Inter-Club Zone must ensure Clubs in the Inter-Club Zone:
  - i. foster development of Football within its Zone;
  - ii. identify and secure safe facilities for the conduct of Football competitions;
  - iii. uphold and promote the objects of Football NSW and FA;
  - iv. facilitate the implementation of Football NSW policies, programs and initiatives;
  - v. act as a conduit for the flow of information on issues of relevance from Football NSW to the Zone and from the Zone to Football NSW;
  - vi. charge and collect fees and levies approved by Football NSW and FA from Registered Participants and others involved in Football; and

- vii. enforce rules, regulations and by-laws set by Football NSW and FA.
- (b) In addition, a Zone Council of an Inter-Club Zone must determine how the Zone Councillors elected by them to become Registered Voting Members of the Company are to exercise their votes at any meeting of the Company.
- (c) A Zone Council of an Inter-Club Zone shall ensure a Club in the Inter-Club Zone is managed in accordance with the constitution of that Club and otherwise act in a manner the Club considers will best enable it to perform the functions and discharge the obligations specified in this paragraph 3.4.

#### **4. MEMBERSHIP OF ZONE COUNCILS**

- (a) The Zone Councillors of a Zone Council of an Association Zone will comprise the board or the committee of the governing body of the Association constituting the Association Zone.
- (b) The Zone Councillors of a Zone Council of a Branch Zone will comprise the board or committee of the governing body of the Branch Zone.
- (c) The Zone Councillors of a Zone Council of an Inter-Club Zone will comprise one nominee of each Club in that Inter-Club Zone, for a term as determined by Football NSW.

#### **5. ZONE COUNCILLORS - CASUAL VACANCIES, VACATION OF OFFICE AND REMOVAL**

##### **5.1 Casual Vacancy**

- (a) A casual vacancy on the Zone Council of an Association Zone or a Branch Zone will be filled in accordance with the constitution of that Association Zone or Branch Zone (as the case may be).
- (b) In the event a Zone Councillor of an Inter-Club Zone vacates or is removed from that position, that position will be filled by the Club that nominated that Zone Councillor or, where that Club is no longer eligible to remain in that Inter-Club Zone, by the Club that replaced it (if any).

##### **5.2 Vacation of office**

A Zone Councillor vacates that office if they:

- (a) become of unsound mind or a person whose person or estate is liable to be dealt with in any way under a law relating to mental health;
- (b) resign office by notice in writing to Football NSW;
- (c) cease to be eligible to hold office; or
- (d) in the case of a Zone Councillor of an Inter-Club Zone Council, have their:
  - i. nomination as a member revoked or rescinded by the Club that nominated them or that Club is no longer in the Inter-Club Zone (for example, due to promotion or relegation, or a change to the Clubs incorporated in that Inter-Club Zone under Schedule 2, paragraph 2.1 of these By-Laws); or
  - ii. term as a Zone Councillor, as determined by Football NSW under Schedule 2, paragraph 4(c) above, expire.

##### **5.3 Removal of a Zone Councillor of an Inter-Club Zone**

- (a) This paragraph 5.3 applies only to Zone Councillors of Inter-Club Zones.

- (b) Subject to the requirements of this provision, the Directors may by resolution remove a Zone Councillor.
- (c) The Zone Council of which the Zone Councillor is a member must resolve to recommend to the Directors the removal of the Zone Councillor from office.
- (d) Written notification of a resolution by the Zone Council referred to in paragraph (c), including matters taken into account by the Zone Council in making the resolution, must be given to Football NSW.
- (e) Football NSW must give the Zone Councillor named in the resolution a copy of the notification referred to in paragraph 5.3(d) as soon as practicable after it is received by Football NSW.
- (f) The Directors must not consider the recommendation to remove the Zone Councillor unless the member receives at least 14 days' notice of the meeting of Directors at which the recommendation will be considered.
- (g) At the meeting of Directors at which the recommendation to remove the Zone Councillor is considered the Zone Councillor is entitled to put their case to the Directors by speaking at the meeting.

#### **6. PROCEEDINGS OF A ZONE COUNCIL OF AN ASSOCIATION ZONE OR A BRANCH ZONE**

A Zone Council of an Association Zone or a Branch Zone will conduct proceedings in accordance with the constitution of that Association Zone or Branch Zone.

#### **7. PROCEEDINGS OF A ZONE COUNCIL OF AN INTER-CLUB ZONE**

##### **7.1 Meetings**

- (a) The Zone Councillors of a Zone Council of an Inter-Club Zones may meet together for conducting business, adjourn and otherwise regulate their meetings as they think fit.
- (b) A Zone Council of an Inter-Club Zone must meet at least once in each year.
- (c) No-one other than a Zone Councillor of the relevant Inter-Club Zone Council and officers or delegates of Football NSW are entitled to attend meetings of an Inter-Club Zone Council.

##### **7.2 Chair**

The Zone Councillors of an Inter-Club Zone must elect one of their number as Chair and may determine the period for which that person is to hold office.

##### **7.3 Deputy Chair**

The Zone Councillors of an Inter-Club Zone must elect one of their number as Deputy Chair and may determine the period for which that person is to hold office.

##### **7.4 Absence of Chair at a meeting of the Zone Council of an Inter-Club Zone**

- (a) The Chair is entitled to preside at meetings of a Zone Council of an Inter-Club Zone.
- (b) If the Chair is not present and able and willing to act within 15 minutes after the time appointed for a meeting, or has indicated their intention not to be present or is unable or unwilling to act, the following may preside (in order of entitlement):
  - i. the Deputy Chair; or

- ii. a Zone Councillor chosen by a majority of the Zone Councillors present.

#### **7.5 Use of technology**

A meeting of a Zone Council of an Inter-Club Zone may be called or held using teleconferencing or video conferencing facilities or any other technology agreed to by all its Zone Councillors. The agreement may be a standing one. A Zone Councillor may only withdraw their agreement within a reasonable period before the meeting.

### **8 MEMBERSHIP OF THE COMPANY FOR ZONE COUNCILLORS**

#### **8.1 Becoming a member of the Company**

- (a) The Zone Councillors of each Zone Council must elect from amongst their number from time to time two Zone Councillors who will apply for membership of Football NSW in accordance with article 3.2 of the Constitution.
- (b) A Zone Councillor who is also a Chair or Deputy Chair of a Standing Committee is not eligible for election under this Schedule 2, paragraph 8.
- (c) The Zone Councillors so elected by each Zone Council must agree:
  - i. to apply for membership of the Company; and
  - ii. that, once admitted as a Registered Voting Member of the Company, they will maintain that membership until their membership ceases under the Constitution or these By-Laws.

#### **8.2 Ceasing to be a member of the Company**

A Zone Councillor automatically ceases to be a Registered Voting Member of the Company if:

- (a) their membership ceases under article 3.9 of the Constitution;
- (b) they cease to be a Zone Councillor;
- (c) they are removed under Schedule 2, paragraph 5.3 of these By-Laws;
- (d) the Zone Councillors who elected them in accordance with this paragraph 8, elect another Zone Councillor to apply for membership of the Company in their place; or
- (e) in the case of a Zone Councillor of an Inter-Club Zone, Football NSW changes the composition of the Clubs incorporated in that Inter-Club Zone under Schedule 2, paragraph 2.1 of these By-Laws, from the date those changes take effect under the By-Laws.



## SCHEDULE 3 – STANDING COMMITTEES

---

### 1. PURPOSE OF THIS SCHEDULE 3

The purpose of this Schedule 3 is to:

- (a) confirm the ongoing operation of the following Standing Committees established pursuant to article 3.7(a) of the Constitution under previous and now superseded By-Laws; and
- (b) prescribe the functions, membership and method of operation of those Standing Committees pursuant to article 3.7(d) of the Constitution:
  - i. the “**NPL Men’s Standing Committee**”;
  - ii. the “**League One Men’s Standing Committee**”;
  - iii. the “**League Two Men’s Standing Committee**”;
  - iv. the “**NPL Women’s and League One Women’s Standing Committee**”;
  - v. the coaches’ Standing Committee, to be known as the “**Coaches and Technical Advisory Panel**”;
  - vi. the women’s Standing Committee, to be known as the “**Women’s Standing Committee**”;
  - vii. the referees’ Standing Committee, to be known as the “**Referees Advisory Panel**”;
  - viii. the associations Standing Committee, to be known as the “**Associations Standing Committee**”; and
  - ix. the futsal Standing Committee, to be known as the “**Futsal Standing Committee**”.

Paragraphs 2 to 7 of this Schedule 3 apply to all Standing Committees, and paragraphs 8 to 16 of this Schedule 3 apply to the individual Standing Committees referred to in those paragraphs.

### 2. FUNCTIONS OF STANDING COMMITTEES

The functions of each of the Standing Committees are set out in paragraphs 8 to 16 of this Schedule 3.

### 3. MEMBERSHIP OF STANDING COMMITTEES

#### (a) Number

The number of members on each Standing Committee is set out in paragraphs 8 to 16 of this Schedule 3.

#### (b) Eligibility

A person is eligible to be a Standing Committee Member if:

- i. they are 18 years of age or over;
- ii. they undertake to be bound by the Standing Committee Code of Conduct;
- iii. they reside in the State; and
- iv. in the case of Nominated Members only, they are nominated pursuant to Schedule 3, paragraph 3(c) and approved pursuant to Schedule 3, paragraph 3(d).

#### (c) Nomination of Nominated Members

- i. The Board may from time to time and as may be necessary for the purposes of these By-Laws call for nominations of Nominated Members to sit on Standing Committees.
- ii. In order for a nomination for membership on a Standing Committee to be valid, it must:

- A. be in writing in the form prescribed by Football NSW from time to time and include an undertaking by the nominee to be bound by the Standing Committee Code of Conduct;
  - B. where the nomination is for the NPL Men's Standing Committee, the League One Men's Standing Committee, the League Two Men's Standing Committee, the NPL Women's and League One Women's Standing Committee or the Associations Standing Committee, be signed by one Eligible Nominator (whose entitlement to nominate is further defined in paragraphs 8 to 16 of this Schedule 3) and the nominee;
  - C. where the nomination is for the Coaches and Technical Advisory Panel, the Women's Standing Committee, the Referees Advisory Panel or the Futsal Standing Committee, specify the category of membership in respect of which the nominee is being nominated (if relevant), include a short biography (no more than 1,000 words) of the nominee (and addressing the Selection Criteria) and be signed by the relevant Eligible Nominators (whose entitlement to nominate is further defined in paragraphs 8 to 16 of this Schedule 3) and the nominee;
  - D. specify the Standing Committee in respect of which the nominee is being nominated; and
  - E. be lodged at Football NSW's registered office by the time and date specified by Football NSW.
- iii. Subject to paragraph 3(c)(iv) below, an Eligible Nominator may only nominate one nominee for membership of each Standing Committee.
  - iv. Notwithstanding the provisions of paragraph 3(c)(iii) above, each of the Association Zones and Branch Zones may nominate up to two nominees for membership of the Women's Standing Committee.

**(d) Nominations Exceed Available Positions**

The Board must, from time to time and for such period as it determines, establish a Nominations Committee comprising the independent members of the Football NSW Legal & Regulatory Committee.

In the event the number of valid nominations exceeds the number of positions to be filled by Nominated Members on a Standing Committee, the Nominations Committee will consider each nominee and will:

- i. assess the nominee's experience and qualifications;
- ii. assess that the nominee has not been involved in activities which could, or could reasonably be perceived to, materially interfere with the nominee's ability to act in the best interests of the relevant Standing Committee and/or Football NSW;
- iii. assess that the nominee is free from any interest and any relationship which could, or could reasonably be perceived to, materially interfere with the nominee's ability to act in the best interests of the relevant Standing Committee and/or Football NSW;
- iv. assess the nominee's commitment to and record of ethical and disciplinary behaviour including not having been the subject of an adverse finding or the current subject of an

inquiry or investigation by any statutory, regulatory or law enforcement authority or agency including a disciplinary body of FIFA, the AFC, FA or Football NSW relating to any ethical or disciplinary matter (collectively, the **Selection Criteria**), and

- v. in the case of nominees for the Coaches and Technical Advisory Panel, the Women's Standing Committee and the Referees Advisory Panel, take into account the recommended structure of those Standing Committees as set out in Schedule 3, paragraphs 12.2, 13.2 and 14.2, respectively,

and may, in its absolute discretion and acting in good faith, approve or object to the nominee becoming a Nominated Member of the relevant Standing Committee.

A decision made by the Nominations Committee under this paragraph 3(d) is final and not subject to challenge.

Unless the Nominations Committee approves a nominee under this paragraph 3(d), the nominee is not eligible to become a Nominated Member of the relevant Standing Committee.

The Board must ratify the nomination of a nominee approved by the Nominations Committee under this paragraph 3(d).

#### **(e) Appointment of Appointed Members**

In addition to Nominated Members, the Board must also, at its discretion, appoint no less than two Appointed Members and may, subject to Schedule 3, paragraph 12.2, at its discretion, appoint up to six Appointed Members to the Coaches and Technical Advisory Panel on terms determined by the Board

In addition to Nominated Members, the Board must, at its discretion, appoint no less than four Appointed Members and may, subject to Schedule 3, paragraph 14.2, at its discretion, appoint up to six Appointed Members to the Referees Advisory Panel on terms determined by the Board.

#### **4. TERM OF OFFICE, CASUAL VACANCIES, VACATION OF OFFICE AND REMOVAL**

##### **(a) Term of office**

- (i) Subject to paragraphs 4(a)(ii), 4(a)(iv), 4(a)(v) and 4(a)(vi) below, each Standing Committee Member will serve a term of up to two years and will be eligible to be nominated or appointed to serve three further terms of two years on that particular Standing Committee.
- (ii) Notwithstanding the provisions of paragraph 4(a)(i) above, the term of office of the Nominated Member of any replacement or new Club in respect of the NPL Men's Standing Committee, the League One Men's Standing Committee, the League Two Men's Standing Committee and the NPL Women's and League One Women's Standing Committee shall be determined in accordance with the respective provisions applying to those Standing Committees in paragraphs 8.2, 9.2, 10.2 and 11.2 of this Schedule 3.
- (iii) Subject to paragraphs 4(a)(iv), 4(a)(v) and 4(a)(vi) below, a Standing Committee Member may not serve more than four consecutive terms on any Standing Committee. If a Standing Committee Member has served four consecutive terms, they must not be nominated for or appointed to any Standing Committee again until the expiration of a period of two years.
- (iv) Notwithstanding the provisions of paragraphs 4(a)(i) and 4(a)(iii) above, it is acknowledged that the Standing Committee Members in office as at the date of adoption of these By-Laws (2 December 2015)

shall remain eligible to be nominated or appointed to serve up to four further terms of up to two years upon the expiry of their current terms of office.

- (v) Notwithstanding the provisions of paragraphs 4(a)(i) and 4(a)(iii) above, the:
- A. initial Nominated Members of the Women's NPL and League One Women's Standing Committee (that is, the Nominated Members of that Standing Committee who took office on or around 1 January 2023); and
  - B. newly added Nominated Members of each of the NPL Men's Standing Committee, League One Men's Standing Committee and League Two Men's Standing Committee that commence on or around 1 January 2023,

will serve an initial term expiring on 31 December 2023 and will be eligible to serve four further consecutive terms of two years.

- (vi) Notwithstanding the provisions of paragraphs 4(a)(i) and 4(a)(iii) above, any newly added Nominated Members to any of the NPL Men's Standing Committees, League One Men's Standing Committee, League Two Men's Standing Committee or Women's NPL and League One Women's Standing Committee, as provided for under Schedule 3 paragraphs 8.2(iv), 9.2(iv), 10.2(iv) and 11.2(iv) respectively, will serve an initial term as provided in those paragraphs, and will be eligible to serve four further consecutive terms of two years.

- (vii) A Standing Committee Member cannot serve on more than one Standing Committee at a time.

**(b) Nominated Member casual vacancy**

- (i) Subject to paragraph 4(b)(ii) below, a casual vacancy arising in respect of a Nominated Member will be filled by the Board.
- (ii) Where a casual vacancy arises in the NPL Men's Standing Committee, the League One Men's Standing Committee, the League Two Men's Standing Committee, the Women's NPL and League One Women's Standing Committee or the Associations Standing Committee, that vacancy may be filled by a Nominated Member provided that Nominated Member:
- A. is nominated by the relevant Club or Association Zone/Branch Zone in accordance with paragraph 3(c)(ii) and (iii) above; and
  - B. is a member of the governing body of, or a senior staff member of, the relevant Club; or
  - C. is a Zone Councillor of, or a senior staff member of, the relevant Association Zone/Branch Zone.
- (iii) A Director or employee of Football NSW cannot fill a casual vacancy.
- (iv) A person appointed under this paragraph 4(b) to fill a casual vacancy will hold office until the end of the term of the person in whose place they were appointed.

**(c) Vacation of office by a Nominated Member**

A Nominated Member vacates that office if they:

- i. cease to reside in the State;
- ii. become of unsound mind or a person whose person or estate is liable to be dealt with in any way under a law relating to mental health;

- iii. resign office by notice in writing to Football NSW;
- iv. have their nomination as a Nominated Member revoked or rescinded by an Eligible Nominator who nominated them;
- v. are suspended or removed from a Standing Committee in accordance with paragraph 4(d) below (including as a result of a breach of the Standing Committee Code of Conduct); or
- vi. are not personally present at two consecutive meetings without leave of absence from the Chair of the Nominated Member's Standing Committee.

**(d) Suspension or Removal of a Standing Committee Member**

The Board may suspend or remove a Nominated Member from a Standing Committee if:

- i they receive a written recommendation to that effect from that Nominated Member's Standing Committee, together with the matters taken into account in making that recommendation; or
- ii the Board forms the view that the Nominated Member has breached the Standing Committee Code of Conduct,

provided that the following steps are taken in relation to that suspension or removal:

- A. Football NSW must give the Nominated Member a copy of the written notification provided to Football NSW by the Standing Committee as soon as practicable after it is received by Football NSW, or a written notification that details the Board's reasons for forming the view that the Nominated Member has breached the Standing Committee Code of Conduct;
- B. the Nominated Member must be given at least 14 days' notice of the Board meeting at which the suspension or removal of the Nominated Member is to be considered; and.
- C. at the Board meeting at which the suspension or removal of the Nominated Member is to be considered, the Nominated Member is given the opportunity to put their case to the Board by speaking at the meeting.

Any decision made by the Board under this paragraph 4(d) is final and not subject to any review or appeal.

The Board may suspend or remove an Appointed Member from a Standing Committee at any time in its absolute discretion.

**5. PROCEEDINGS OF STANDING COMMITTEES**

**(a) Frequency of Meetings**

A Standing Committee must meet at least three times in a calendar year.

**(b) Convening Meetings**

The Chair or the Executive Officer of a Standing Committee are authorised to convene meetings of that Standing Committee.

**(c) Notice of Meeting**

The Executive Officer of a Standing Committee will notify each Standing Committee Member and the Ex Officio Member of that Standing Committee of the date, time, venue and agenda of each meeting of that Standing Committee no less than seven days in advance of the meeting. A meeting of a Standing Committee is invalid if the meeting is not convened and/or notice of the meeting is not provided in accordance with this paragraph 5(c), unless all Standing Committee Members agree in writing that a meeting of that Standing Committee may be called on less than seven days' notice.

**(d) Quorum for Meetings**

The quorum for meetings of Standing Committees shall be 50% of Standing Committee Members (rounded up to the nearest whole number), except that the quorum for a meeting of the Associations Standing Committee must include at least one Nominated Member nominated by a Branch Zone.

A person appointed to fill a casual vacancy under Schedule 3, paragraph 4(b) will count towards establishing a quorum.

A person appointed as an alternate or representative of a Standing Committee Member under Schedule 3, paragraph 5(h) will count towards establishing a quorum.

**(e) Chair and Deputy Chair**

Subject to paragraphs 8 to 16 of this Schedule 3, the Standing Committee Members must elect one of their number as Chair and one of their number as Deputy Chair, and may determine the period for which those persons are to hold office.

A Standing Committee Member who is also one of the Zone Councillors of a Zone who has been elected by their Zone Council to become a Registered Voting Member of the Company in accordance with Schedule 2, paragraph 8 is not eligible for election under this paragraph 5(e).

**(f) Term of office for Chair and Deputy Chair**

- (i) Subject to paragraphs 5(f)(ii) and (iii) below, each Chair and Deputy Chair of a Standing Committee may serve a term of up to two years and is eligible to be elected to serve one further term of up to two years, after which the relevant Standing Committee must elect a different Standing Committee Member in each position in accordance with the provisions of this Schedule 3. If a Chair or Deputy Chair has served two consecutive terms, they must not be elected to the position of either Chair or Deputy Chair of that Standing Committee until the expiration of a further period of two years.
- (ii) Notwithstanding the provisions of paragraph 5(f)(i) above, it is acknowledged that the Chairs and Deputy Chairs of Standing Committees in office as at the date of adoption of these By-Laws (2 December 2015) shall remain eligible to be elected to serve two further consecutive terms of up to two years as Chair or Deputy Chair of their Standing Committee upon the expiry of their current terms of office on 31 December 2015.
- (iii) For clarity, the Chair and Deputy Chair of what was known as the League Three Men's Standing Committee, which was dissolved on 31 December 2022, ceased to hold those positions on that date.

**(g) Absence of Chair at Standing Committee meeting**

The Chair is entitled to preside at meetings of a Standing Committee.

If the Chair is not present and able and willing to act within 15 minutes after the time appointed for a meeting, or has indicated their intention not to be present and able and willing to act, the following may preside at a meeting (in order of entitlement):

- i. the Deputy Chair; or
- ii. a Standing Committee Member chosen by a majority of the members of that Standing Committee present at the meeting.

A person appointed as an alternate or representative of a Standing Committee Member (including the Chair and Deputy Chair) under Schedule 3, paragraph 5(h) is not entitled to preside at a meeting of a Standing Committee.

**(h) Appointment of Alternates or Representatives**

This paragraph 5(h) applies only to Standing Committee Members of the NPL Men's Standing Committee, the League One Men's Standing Committee, the League Two Men's Standing Committee, the NPL Women's and League One Women's Standing Committee and the Associations Standing Committee.

If a Standing Committee Member is unable to attend a meeting of a Standing Committee, the Standing Committee Member may appoint an alternate or representative to attend the meeting and discharge his or her duties as a Standing Committee Member, provided that:

- i. the alternate or representative must be a member of the governing body of, or senior staff member of, the relevant Club or a Zone Councillor of, or senior staff member of, the relevant Association Zone/Branch Zone (as the case may be); and
- ii. prior to the meeting, the Standing Committee Member's alternate or representative has provided to Football NSW a signed undertaking to comply with the Football NSW Rules and Regulations and to be bound by the Standing Committee Code of Conduct.

A person appointed as an alternate or representative of a Standing Committee Member (including the Chair and Deputy Chair) under this paragraph 5(h) is not entitled to preside at a meeting of a Standing Committee.

For the avoidance of doubt, appointment as an alternate or representative under this paragraph 5(h) does not:

- i. entitle the alternate or representative to membership of the Company; or
- ii. constitute the appointment of the alternate or representative as a proxy or Attorney (as that term is defined in the Constitution) under the Constitution.

For the further avoidance of doubt, a Standing Committee Member of the Women's Standing Committee, the Futsal Standing Committee, the Referees Advisory Panel and the Coaches and Technical Advisory Panel is **not** entitled to appoint an alternate or representative to attend meetings or discharge his or her duties as a Standing Committee Member.

**(i) Ex Officio Member**

The Board will from time to time nominate one of their number who will be entitled to attend each meeting of a Standing Committee as the Ex Officio Member. An Ex Officio Member will not be counted when determining the number of Standing Committee Members.

**(j) Executive Officer**

The Board will from time to time nominate one or more Executive Officers for a Standing Committee who will be entitled to attend each meeting of a Standing Committee. An Executive Officer will not be counted when determining the number of Standing Committee Members.

**(k) Reports**

A Standing Committee will ensure that an accurate written report of each meeting is provided to Football NSW within seven days of each Standing Committee meeting.

**(l) Meetings by telephone or other electronic means**

- I. The contemporaneous linking together by telephone or other electronic means of a number of the Standing Committee Members sufficient to constitute a quorum constitutes a meeting of that Standing Committee and all the provisions in these By-Laws relating to a meeting of that Standing Committee apply, so far as they can and with such changes as are necessary, to a meeting of that Standing Committee by telephone or other electronic means.
- II. A Standing Committee Member participating in a meeting by telephone or other electronic means is taken to be present in person at the meeting.
- III. A meeting by telephone or other electronic means is to be taken to be held at the place determined by the Chair of that meeting provided that at least one of the Standing Committee Members involved was at that place for the duration of the meeting.

**(m) Decisions**

A question arising at a meeting of a Standing Committee is to be decided by a majority of votes of Standing Committee Members present and entitled to vote.

**(n) Circulating Resolution**

If all Standing Committee Members assent to a document containing a statement to the effect that an act, matter or thing has been done or resolution has been passed, then the act, matter, thing or resolution is to be taken as having been done at or passed by a meeting of Standing Committee Members.

**6. MEMBERSHIP OF THE COMPANY FOR CHAIRS AND DEPUTY CHAIRS**

Each person who occupies the position of Chair or Deputy Chair of a Standing Committee:

- i. agrees to apply for membership of the Company in accordance with the Constitution;
- ii. agrees that, once admitted as a Registered Voting Member of the Company, they will maintain that membership for as long as they remain the Chair or Deputy Chair of the relevant Standing Committee; and



- iii. automatically ceases to be a Registered Voting Member of the Company upon vacating the position of Chair or Deputy Chair (for whatever reason) of the relevant Standing Committee.

For clarity, the persons who occupied the positions of Chair and Deputy Chair of what was known as the League Three Men's Standing Committee, which was dissolved on 31 December 2022, ceased to be Registered Voting Members of the Company on that date.

## 7. DISPUTES

The Board will determine all disputes arising in relation to this Schedule 3, including without limitation, disputes arising out or in relation to the establishment, membership or operation of a Standing Committee. A decision made by the Board in relation to a dispute is final and not subject to any review or appeal.

## 8. NPL MEN'S STANDING COMMITTEE

### 8.1 Functions

The NPL Men's Standing Committee is to advise the Board on strategic matters relating to NPL Men's.

The Board may at its discretion refer any matter relating to NPL Men's to the NPL Men's Standing Committee for advice.

The NPL Men's Standing Committee may give any advice requested of it, and may (whether or not requested to do so) make recommendations to the Board on:

- i. measures to promote, develop and improve NPL Men's in accordance with the National Curriculum; and
- ii. any other matter relating to the conduct of NPL Men's.

The Board will use its best endeavours to review the recommendations at the next scheduled meeting of the Directors after the recommendation is received.

In addition, the NPL Men's Standing Committee must determine how the Chair and Deputy Chair are to exercise their votes as Registered Voting Members of the Company at any meeting of the Company.

### 8.2 Membership

The Nominated Members of the NPL Men's Standing Committee will comprise one person nominated by each of the Clubs in NPL Men's.

If a Club is no longer eligible to participate in NPL Men's, the Nominated Member nominated by that Club will immediately cease to be a member of the NPL Men's Standing Committee and will cease to be entitled to attend meetings of the NPL Men's Standing Committee. If:

- i. that Club has been replaced in NPL Men's by another Club; or
- ii. new Clubs are added to NPL Men's by Football NSW,

then:

- iii. in the case of (i), that other Club shall be entitled to nominate one person to become a Nominated Member of the NPL Men's Standing Committee in place of the original Club's Nominated Member for a period equal to the remainder of the term of that original Club's Nominated Member; or

- iv. in the case of (ii), the newly added Club(s) shall be entitled to nominate one person to become a Nominated Member of the NPL Men's Standing Committee, as a newly added Nominated Member, for a period equal to the remainder of the term of the existing Clubs' Nominated Members.

### **8.3 Number of Members**

The number of members of the NPL Men's Standing Committee shall be equal to the number of Clubs in NPL Men's.

## **9. LEAGUE ONE MEN'S STANDING COMMITTEE**

### **9.1 Functions**

The League One Men's Standing Committee is to advise the Board on strategic matters relating to League One Men's.

The Board may at its discretion refer any matter relating to League One Men's to the League One Men's Standing Committee for advice.

The League One Men's Standing Committee may give any advice requested of it, and may (whether or not requested to do so) make recommendations to the Board on:

- i. measures to promote, develop and improve League One Men's in accordance with the National Curriculum; and
- ii. any other matter relating to the conduct of League One Men's.

The Board will use its best endeavours to review the recommendations at the next scheduled meeting of the Directors after the recommendation is received.

In addition, the League One Men's Standing Committee must determine how the Chair and Deputy Chair are to exercise their votes as Registered Voting Members of the Company at any meeting of the Company.

### **9.2 Membership**

The Nominated Members of the League One Men's Standing Committee will comprise one person nominated by each of the Clubs in League One Men's.

If a Club is no longer eligible to participate in League One Men's, the Nominated Member nominated by that Club will immediately cease to be a member of the League One Men's Standing Committee and will cease to be entitled to attend meetings of the League One Men's Standing Committee. If:

- i. that Club has been replaced in League One Men's by another Club; or
- ii. new Clubs are added to League One Men's by Football NSW,

then:

- iii. in the case of (i), that other Club shall be entitled to nominate one person to become a Nominated Member of the League One Men's Standing Committee in place of the original Club's Nominated Member for a period equal to the remainder of the term of that original Club's Nominated Member; or
- iv. in the case of (ii), the newly added Club(s) shall be entitled to nominate one person to become a Nominated Member of the League One Men's Standing Committee, as a newly added Nominated Member, for a period equal to the remainder of the term of the existing Clubs' Nominated Members.

### **9.3 Number of Members**

The number of members of the League One Men's Standing Committee shall be equal to the number of Clubs in League One Men's.

## **10. LEAGUE TWO MEN'S STANDING COMMITTEE**

### **10.1 Functions**

The League Two Men's Standing Committee is to advise the Board on strategic matters relating to League Two Men's.

The Board may at its discretion refer any matter relating to League Two Men's to the League Two Men's Standing Committee for advice.

The League Two Men's Standing Committee may give any advice requested of it, and may (whether or not requested to do so) make recommendations to the Board on:

- i. measures to promote, develop and improve League Two Men's in accordance with the National Curriculum; and
- ii. any other matter relating to the conduct of League Two Men's.

The Board will use its best endeavours to review the recommendations at the next scheduled meeting of the Directors after the recommendation is received.

In addition, the League Two Men's Standing Committee must determine how the Chair and Deputy Chair are to exercise their votes as Registered Voting Members of the Company at any meeting of the Company.

### **10.2 Membership**

The Nominated Members of the League Two Men's Standing Committee will comprise one person nominated by each of the Clubs in League Two Men's.

If a Club is no longer eligible to participate in League Two Men's, the Nominated Member nominated by that Club will immediately cease to be a member of the League Two Men's Standing Committee and will cease to be entitled to attend meetings of the League Two Men's Standing Committee. If:

- i. that Club has been replaced in League Two Men's by another Club; or
- ii. new Clubs are added to League Two Men's by Football NSW,

then:

- iii. in the case of (i), that other Club shall be entitled to nominate one person to become a Nominated Member of the League Two Men's Standing Committee in place of the original Club's Nominated Member for a period equal to the remainder of the term of that original Club's Nominated Member; or
- iv. in the case of (ii), the newly added Club(s) shall be entitled to nominate one person to become a Nominated Member of the League Two Men's Standing Committee, as a newly added Nominated Member, for a period equal to the remainder of the term of the existing Clubs' Nominated Members.

### **10.3 Number of Members**

The number of members of the League Two Men's Standing Committee shall be equal to the number of Clubs in League Two Men's.

## **11. NPL WOMEN'S AND LEAGUE ONE WOMEN'S STANDING COMMITTEE**

### **11.1 Functions**

The NPL Women's and League One Women's Standing Committee is to advise the Board on strategic matters relating to NPL's Women's and League One Women's.

The Board may at its discretion refer any matter relating to NPL Women's and League One Women's to the NPL Women's and League One Women's Standing Committee for advice.

The NPL Women's and League One Women's Standing Committee may give any advice requested of it, and may (whether or not requested to do so) make recommendations to the Board on:

- i. measures to promote, develop and improve NPL Women's and League One Women's in accordance with the National Curriculum; and
- ii. any other matter relating to the conduct of NPL Women's and League Three Women's.

The Board will use its best endeavours to review the recommendations at the next scheduled meeting of the Directors after the recommendation is received.

In addition, the NPL Women's and League One Women's Standing Committee must determine how the Chair and Deputy Chair are to exercise their votes as Registered Voting Members of the Company at any meeting of the Company.

### **11.2 Membership**

The Nominated Members of the NPL Women's and League One Women's Standing Committee will comprise one person nominated by each of the Clubs in NPL Women's and League One Women's, except for Football NSW Institute.

If a Club is no longer eligible to participate in NPL Women's or League One Women's, the Nominated Member nominated by that Club will immediately cease to be a member of the NPL Women's and League One Women's Standing Committee and will cease to be entitled to attend meetings of the NPL Women's and League One Women's Standing Committee. If:

- i. that Club has been replaced in NPL Women's or League One Women's by another Club; or
- ii. new Clubs are added to NPL Women's or League One Women's Football NSW,

then:

- iii. that other Club shall be entitled to nominate one person to become a Nominated Member of the NPL Women's and League One Women's Standing Committee in place of the original Club's Nominated Member for a period equal to the remainder of the term of that original Club's Nominated Member; or
- iv. in the case of (ii), the newly added Club(s) shall be entitled to nominate one person to become a Nominated Member of the NPL Women's and League One Women's Standing Committee, as a newly added Nominated Member, for a period equal to the remainder of the term of the existing Clubs' Nominated Members.

### 11.3 Number of Members

The number of members of the NPL Women's and League One Women's Standing Committee shall be equal to the number of Clubs in NPL Women's and League One Women's, excluding Football NSW Institute.

## 12. COACHES AND TECHNICAL ADVISORY PANEL

### 12.1 Functions

The Coaches and Technical Advisory Panel is to advise the Board on strategic matters relating to Football coaches and coaching.

The Board may at its discretion refer any matter relating to Football coaches and coaching to the Coaches and Technical Advisory Panel for advice.

The Coaches and Technical Advisory Panel may give any advice requested of it, and may (whether or not requested to do so) make recommendations to the Board on:

- i. methods of improving talent identification and development, and development pathways, for coaches in the State;
- ii. delivery of programs for improving the coaching and teaching of Football in the State;
- iii. delivery of coach accreditation courses and levels in the State;
- iv. coaching standards such as the National Curriculum; and
- v. coach behavior and safety matters.

The Board will use its best endeavours to review the recommendations at the next scheduled meeting of the Directors after the recommendation is received.

In addition, the Coaches and Technical Advisory Panel must determine how the Chair and Deputy Chair are to exercise their votes as Registered Voting Members of the Company at any meeting of the Company.

### 12.2 Membership

There will be a maximum of six Nominated Members nominated by two Eligible Nominators and a minimum of two Appointed Members of the Coaches and Technical Advisory Panel.

In the event the number of valid nominations is less than the number of positions to be filled by Nominated Members, the Board must appoint a sufficient number of Appointed Members such that the Coaches and Technical Advisory Panel has not less than six members.

Subject to the number of valid nominations received, their compliance with the Selection Criteria and the background and experience of the Appointed Members, the members of the Coaches and Technical Advisory Panel should consist of:

- i. at least two persons who have an "A" license, "B" license or "C" license for coaches (or the equivalent thereof) (**Advanced Licence**) and who have been nominated by two Eligible Nominators (in the case of a Nominated Member);
- ii. no more than one person who has a "goalkeeper" diploma (**Goalkeeper Diploma**) and who has been nominated by two Eligible Nominators (in the case of a Nominated Member);

- iii. at least one person who has a “junior” license, “youth” license or a “grassroots” licence (or the equivalent thereof) (**Community License**) and who has been nominated by two Eligible Nominators (in the case of a Nominated Member);
- iv. at least one person who coaches a Women’s football team in the State (at any level), or who has done so in the last 12 months, who has been nominated by two Eligible Nominators (in the case of a Nominated Member); and
- v. no more than one person who coaches a futsal team in the State (at any level) or who has done so in the last 12 months, who has been nominated by two Eligible Nominators (in the case of a Nominated Member).

### **12.3 Number of Members**

The Coaches and Technical Advisory Panel shall have not less than six but not greater than eight members.

## **13. WOMEN’S STANDING COMMITTEE**

### **13.1 Functions**

The Women’s Standing Committee is to advise the Board on strategic matters relating to Women’s Football.

The Board may at its discretion refer any matter relating to Women’s Football to the Women’s Standing Committee for advice.

The Women’s Standing Committee may give any advice requested of it, and may (whether or not requested to do so) make recommendations to the Board on:

- i. methods to improve accessibility so more females can participate as players, coaches, referees, administrators, volunteers and/or committee members at all levels of football;
- ii. methods to improve talent identification, growth, retention and development of female players;
- iii. connection with the W-League or the equivalent national competition for women;
- iv. measures to promote, develop and improve women’s Competitions in the State in accordance with the National Curriculum;
- v. strategies to assist Clubs and Associations to raise standards of female football facilities, implement effective female-friendly programs, including behaviour initiatives, and to encourage and provide more opportunities for women to become involved in key decision-making roles; and
- vi. any other matter relating to the conduct of women’s Football in the State.

The Board will use its best endeavours to review the recommendations at the next scheduled meeting of the Directors after the recommendation is received.

In addition, the Women’s Standing Committee must determine how the Chair and Deputy Chair are to exercise their votes as Registered Voting Members of the Company at any meeting of the Company.

### **13.2 Membership**

At least 50% of the members of the Women’s Standing Committee must be female.

Subject to the number of valid nominations received and their compliance with the Selection Criteria, the Nominated Members of the Women's Standing Committee should consist of:

- i. no more than two persons who play for, coach, manage or administer a Women's team or Club in an Association Zone or Branch Zone competition, or who have done so in the last 12 months, who have been nominated by two Eligible Nominators;
- ii. no more than two persons who play for, coach, manage or administer a Women's premier league or state league Club, or who have done so in the last 12 months, who have been nominated by two Eligible Nominators;
- iii. no more than two persons who play for, coach, manage or administer a Women's team or Club in the State (at any level), or who have done so in the last 12 months, nominated by two Association Zones as the Eligible Nominators; and
- iv. no more than two persons who play for, coach, manage or administer a Women's team or Club in the State (at any level), or who have done so in the last 12 months, nominated by two Branch Zones as the Eligible Nominators.

### **13.3 Number of Members**

The Women's Standing Committee shall have not less than six but not greater than eight members.

## **14. REFEREES ADVISORY PANEL**

### **14.1 Functions**

The Referees Advisory Panel is to advise the Board on strategic matters relating to referees.

The Board may at its discretion refer any matter relating to referees to the Referees Advisory Panel for advice.

The Referees Advisory Panel may give any advice requested of it, and may (whether or not requested to do so) make recommendations to the Board on:

- i. incorporation of the National Curriculum prepared by FA into strategic plans for the State;
- ii. development of a referee assessment program for the State;
- iii. development of a referee coaching and development program for the State;
- iv. development of a referee education program for the State;
- v. elite referee panel selections for the State;
- vi. nominations of referees to the FA's elite referee panel and youth championships; and
- vii. referee policy development for the State.

The Board will use its best endeavours to review the recommendations at the next scheduled meeting of the Directors after the recommendation is received.

In addition, the Referees Advisory Panel must determine how the Chair and Deputy Chair are to exercise their votes as Registered Voting Members of the Company at any meeting of the Company.

## **14.2 Membership**

There will be a maximum of two Nominated Members nominated by two Eligible Nominators or Referees Bodies (as the case may be) and a minimum of four Appointed Members of the Referees Advisory Panel.

Subject to the number of valid nominations received, their compliance with the Selection Criteria and the background and experience of the Appointed Members, the members of the Referees Advisory Panel should consist of:

- i. at least two persons who hold Level 1 Referee accreditation and have officiated at FIFA or national level, who have been nominated by two Eligible Nominators (in the case of a Nominated Member);
- ii. at least one person who holds Level 1 Referee accreditation and has officiated at premier league or state league level (men's or women's), who has been nominated by two Eligible Nominators (in the case of a Nominated Member);
- iii. at least one person who holds Level 3 Referee accreditation and is a member of a Referees Body, who has been nominated by two Referees Bodies (in the case of a Nominated Member); and
- iv. no more than one person who holds Level 3 Futsal Referee accreditation and officiates for the NSW Futsal Referees Association, or who has done so in the last five years, who has been nominated by the NSW Futsal Referees Association (in the case of a Nominated Member).

## **14.3 Number of Members**

The Referees Advisory Panel shall have not less than six but not greater than eight members.

## **15. ASSOCIATIONS STANDING COMMITTEE**

### **15.1 Functions**

The Associations Standing Committee is to advise the Board on matters relating to grassroots football in the State.

The Board may at its discretion refer any matter relating to grassroots football to the Associations Standing Committee for advice.

The Associations Standing Committee may give any advice requested of it, and may (whether or not requested to do so) make recommendations to the Board on:

- i. methods of improving talent identification and development, growth, retention of community players, coaches and referees and development pathways, for grassroots Football players in the State in accordance with the National Curriculum;
- ii. delivery of programs for improving the teaching of Football in the State in accordance with the National Curriculum;
- iii. measures to promote, develop and improve grassroots Football competitions in the State in accordance with the National Curriculum; and
- iv. player behavior and safety matters.



The Board will use its best endeavours to review the recommendations at the next scheduled meeting of the Directors after the recommendation is received.

In addition, the Associations Standing Committee must determine how the Chair and Deputy Chair are to exercise their votes as Registered Voting Members of the Company at any meeting of the Company.

### **15.2 Membership**

The Nominated Members of the Associations Standing Committee will comprise:

- i. one person nominated by each of the Association Zones; and
- ii. one person nominated by each of the Branch Zones.

### **15.3 Number of Members**

The number of members of the Associations Standing Committee shall be equal to the number of Association Zones and Branch Zones. Each Association Zone or Branch Zone shall be required to nominate one person to become a member of the Associations Standing Committee but no Association Zone or Branch Zone shall be entitled to nominate more than one person as a member of the Associations Standing Committee.

## **16. FUTSAL STANDING COMMITTEE**

### **16.1 Functions**

The Futsal Standing Committee is to advise the Board on matters relating to Futsal in the State.

The Board may at its discretion refer any matter relating to Futsal to the Futsal Standing Committee for advice.

The Futsal Standing Committee may give any advice requested of it, and may (whether or not requested to do so) make recommendations to the Board on:

- i. measures to identify, and promote the development of, talented athletes, to participate in Futsal in accordance with the National Curriculum;
- ii. policies and processes to ensure the consistent application of the Laws of the Game and of refereeing standards in Futsal;
- iii. measures to promote, develop and improve Futsal Competitions in the State in accordance with the National Curriculum;
- iv. any other matter relating to the conduct of Futsal in the State;
- v. player standards and player behaviour; and
- vi. any other matter relating to policy and development of Futsal in the State.

The Board will use its best endeavours to review the recommendations at the next scheduled meeting of the Directors when the recommendation is received.

In addition, the Futsal Standing Committee must determine how the Chair and Deputy Chair are to exercise their votes as Registered Voting Members of the Company at any meeting of the Company.

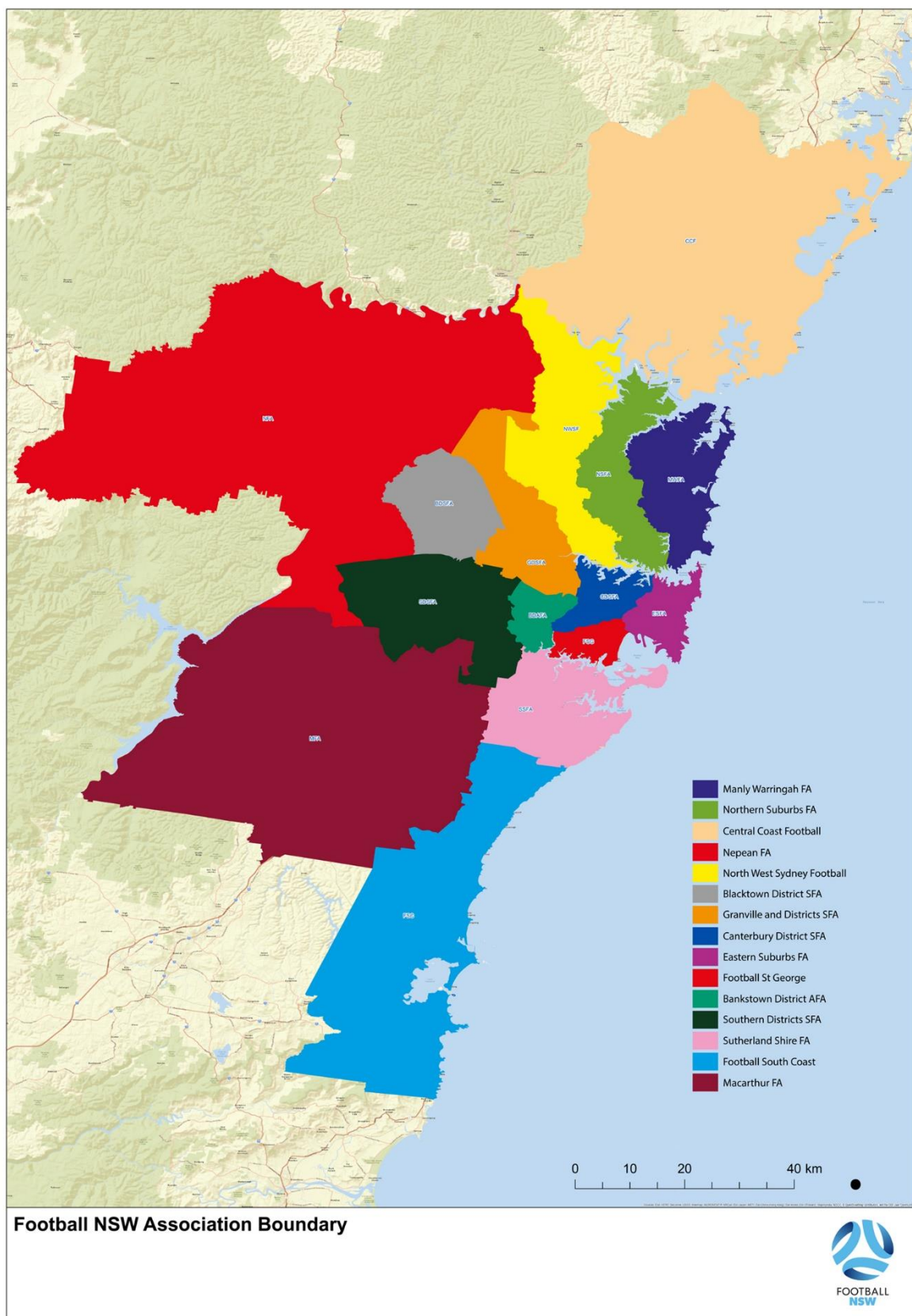
**16.2 Membership**

The Nominated Members of the Futsal Standing Committee will be not more than eight persons with two Futsal Clubs or Futsal Centres as Eligible Nominators.

**16.3 Number of Members**

The Futsal Standing Committee shall have not less than six but not greater than eight members.

**SCHEDULE 4 – ZONE BOUNDARIES**



**BANKSTOWN DISTRICT AMATEUR FOOTBALL ASSOCIATION**

**Northern boundary:** Along this boundary the southern side of all boundaries applies.

From the western end where the Bankstown municipal boundary leaves Woodville Rd, eastwards along that municipal boundary to Liverpool Rd at Chullora and on to the junction of Liverpool Rd and Homebush Rd.

**Eastern boundary:** Along this boundary the western side of all boundaries applies.

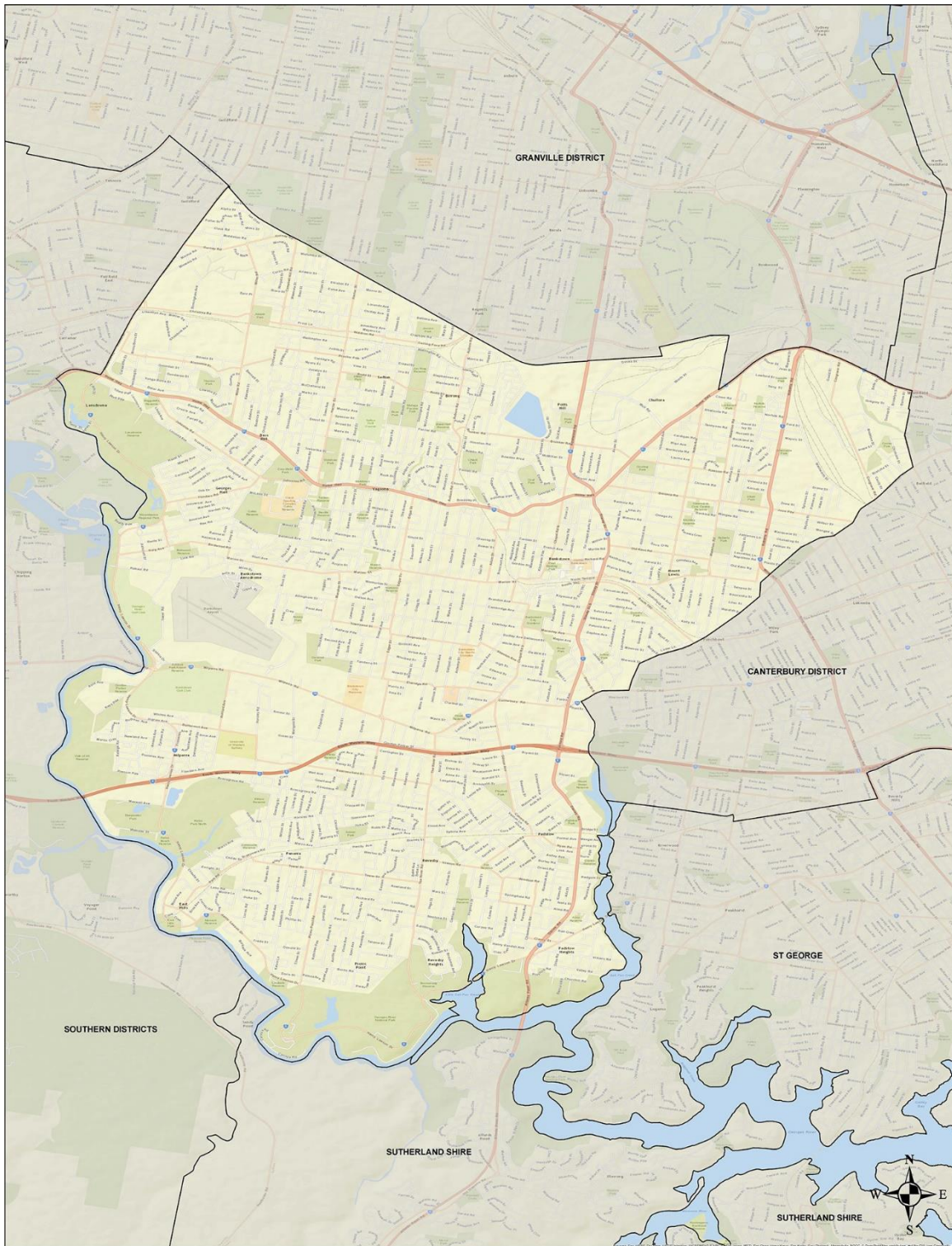
From the junction of Liverpool and Homebush Rds, south along Homebush Rd to Waters St; then along Waters St to Punchbowl Rd at Belfield; then along Punchbowl Rd to Canterbury Rd; along Canterbury Rd to Salt Pan Ck; then down the western banks of Salt Pan Ck to Alford's Point bridge.

**Southern boundary:** Along this boundary the northern side of all boundaries applies.

From Alford's Point bridge westwards along the north bank of the Georges River (including all bays and inlets) to East Hills Park adjacent to Lawson Dve.

**Western boundary:** Along this boundary the eastern side of all boundaries applies.

Along the northern bank of Georges River from East Hills Park north to Prospect Ck; then along the eastern bank of Prospect Ck to Lansdowne bridge; then along Liverpool Rd to its junction with Woodville Rd; then along Woodville Rd to where the Bankstown municipal boundary leaves Woodville Rd at the water supply line.



**Bankstown District Amateur Football Association Boundary**



**BLACKTOWN & DISTRICTS SOCCER FOOTBALL ASSOCIATION**

**Northern boundary:** Along this boundary the Southern sides of all boundaries apply.

Following the Blacktown Municipal boundary from the junction of Old Windsor Rd & Windsor Rd at Kellyville and heading in a north westerly and westerly direction along the Windsor Rd to its junction with Brandon Rd at Vineyard.

**Western Boundary:** Along this boundary the Eastern sides of all boundaries apply.

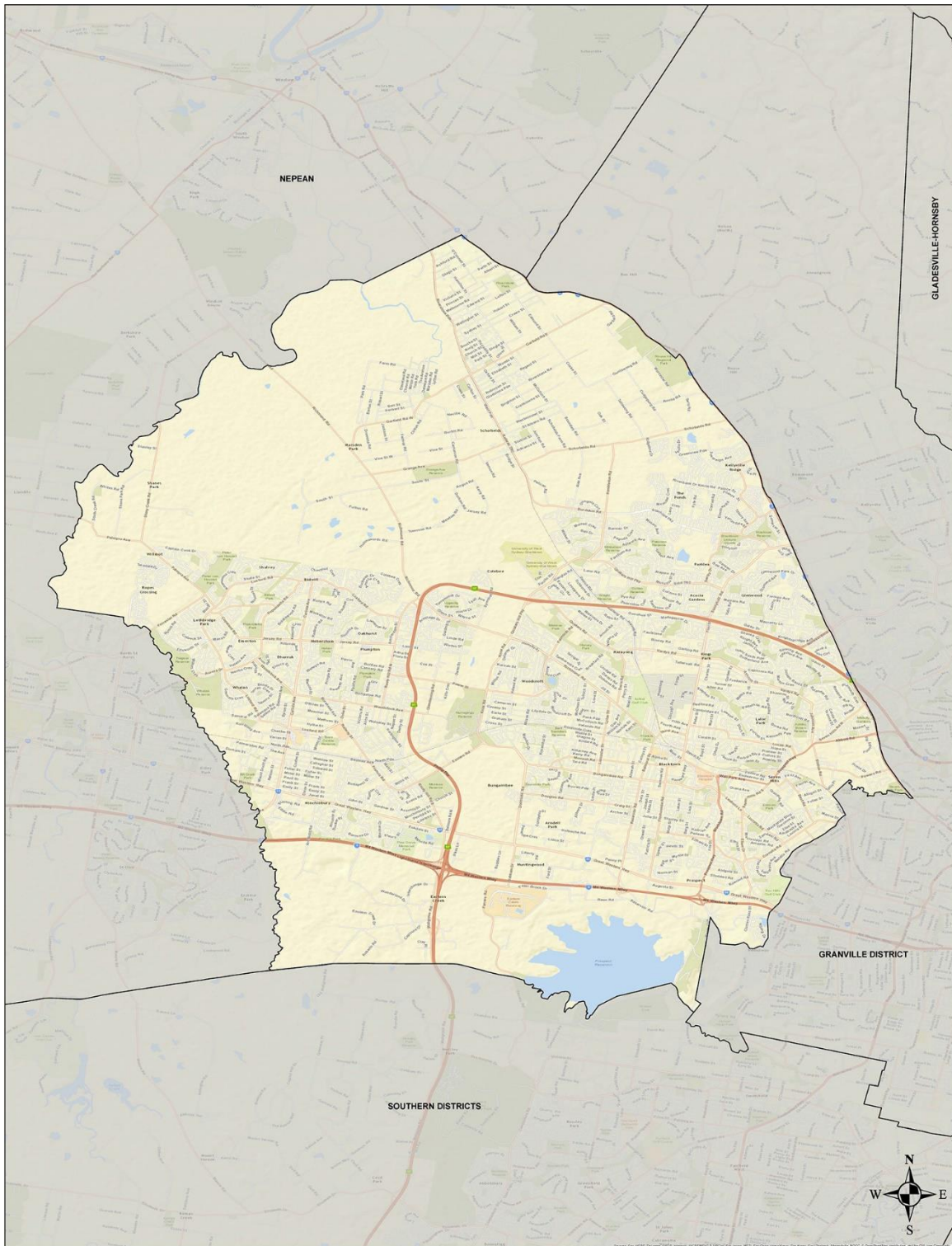
Following the Blacktown Municipal boundary from the junction of Windsor Rd and Brandon Rd at Vineyard, then south-west along Brandon Rd to Eastern Creek, then West to South Creek, then southwards along South Creek to North of Dunheved, then East to Ropes Creek, and South along Ropes Creek) to where that boundary is crossed by the Warragamba Dam- Prospect Reservoir (Sydney Water Supply) pipeline.

**Southern boundary:** Along this boundary the southern sides of all boundaries applies.

Following the Blacktown Municipal boundary from where the Sydney Water Supply pipeline crosses Ropes Creek South of Erskine, east along the pipeline to the Prospect Reservoir, around the southern bank of the reservoir to the Sydney Water Supply pipeline

**Eastern Boundary:** Along this boundary the western sides of all boundaries apply.

Following the Blacktown Municipal Boundary northwards to Reservoir Rd at Prospect, then south east along Reconciliation Rd, then following Greystanes Creek northwards to the Railway Line west of Toongabbie Station, then westwards along the railway until McCoy Street, then North East along the edge of McCoy Park, until Toongabbie Creek, then eastwards along the creek to its junction with Old Windsor Rd, then North along Old Windsor Rd to its junction with Windsor Rd.



**Blacktown District Soccer Football Association Boundary**



**CANTERBURY & DISTRICT SOCCER FOOTBALL ASSOCIATION**

**Northern boundary:** Along this boundary the southern side of all boundaries applies.

Begins where Powells Ck joins Homebush Bay and follows the southern bank of the Parramatta River eastwards to York St and the southern approach to the Sydney Harbour Bridge.

**Eastern boundary:** Along this boundary the western side of all boundaries applies.

Begins where the southern bank of the Parramatta River reaches the southern approaches of the Sydney Harbour Bridge, then south along York St to Town Hall then south along George St to Railway Square; then along Broadway to City Rd; along City Rd to King St, Newtown and along King St to the Illawarra Railway Line; then along the western side of the Illawarra Railway Line to the southern bank of Cooks River at Tempe.

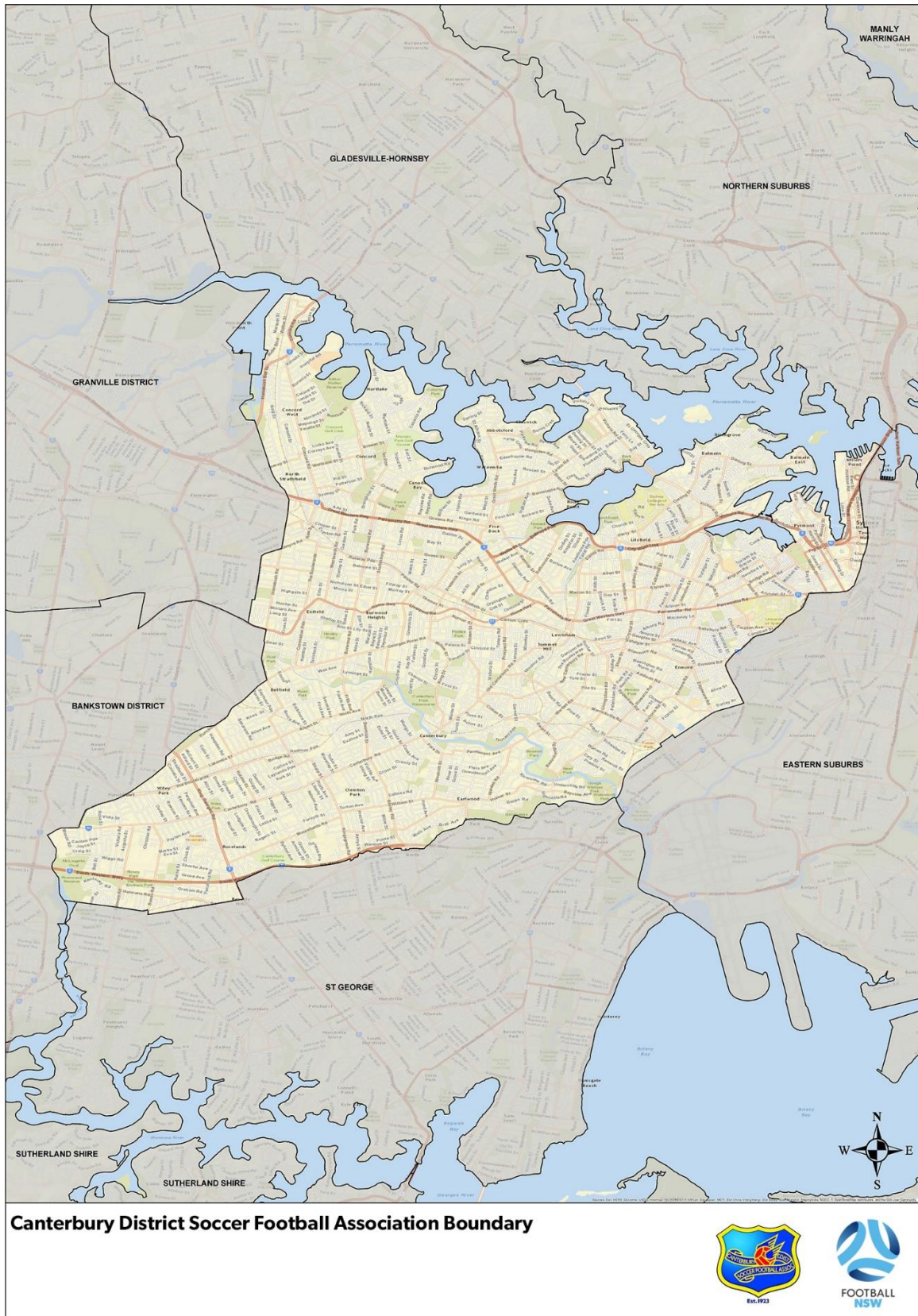
**Southern boundary:** Along this boundary the western side of all boundaries applies.

Begins where the Illawarra Railway Line crosses the southern bank of Cooks River at Tempe; then along the northern bank of Wollie Creek, follows the Canterbury Municipal Boundary line to King Georges Rd; then along the Canterbury Municipal Boundary line to Salt Pan Ck at Riverwood.

**Western boundary:** Along this boundary the eastern side of all boundaries applies.

Begins where the Canterbury Municipal Boundary meets Salt Pan Creek at Riverwood; then along the Canterbury Municipal Boundary line to where it meets Water Rd at Belfield; then north on Water St to Hume Hwy; west on Hume Hwy to Rickard Rd; then north on Rickard Rd-Chalmers St-Redmyre Rd to Homebush Rd; then north to Powells Creek stormwater drain and along the stormwater drain to Powells Creek; then along the eastern side of Powells Ck to where it joins Homebush Bay.





## CENTRAL COAST FOOTBALL

**Northern boundary.** Along this boundary the southern side of all boundaries applies.

Following the Wyong Shire Boundary from the junction of Walkers Hills Rd and Wollombi Forest Road to its junction with the Pacific Ocean at the Basin as below.

*Traveling in a south easterly direction along Watagan State Forest Rd until the road turns south, then south east along the ridge to the Mandalay Rd (north of Mandalay and south-west of Morriset), then south west along Mandalay Rd through Mandalong to Durren Durren, then following the shire boundary south east to the junction of Woods Rd and the Hue Hue Rd. The north east along the Hue Hue Rd to a point just past the junction of Toepfers Rd, then in a line south to Bushells Ridge Rd.*

*Following Bushells Ridge Rd North East to the junction with Wye Rd at Doyalson, then following Wye Rd east until the shire boundary turns north through the centre of Mannering Lake, and north along the channel east of Mannering Bay to Mannering Point, then, following the southern shore of Lake Macquarie eastwards to the southernmost point of Crangan Bay, then north along the eastern shore, before turning east in a line following an easterly direction to The Basin just south of Catherine Hill Bay.*

**Eastern boundary.** Along this boundary the western side of all boundaries applies.

From the Basin south along the east coast until its junction with the Hawkesbury River at Box Head.

**Southern boundary.** Along this boundary the northern side of all boundaries applies.

Following the Gosford City Council Boundary from Box Head at the Mouth of the Hawkesbury to the Wisemans Ferry as below.

*From Box Head at the mouth of the Hawkesbury River (north of Barrenjoey Head on the southern bank), following the Hawkesbury River westwards, and incorporating all land on the northern bank, and including those islands within the shire boundary (eg Lion Island, Spectacle island, and the unnamed island on the northern banks of the river at Brooklyn). Continuing westwards along the north bank of the Hawkesbury until where the council boundary turns north, just west of the ferry at Rosedale (immediately east of the confluence with the MacDonald River).*

**Western boundary.** Along this boundary the eastern side of all boundaries applies.

From the Wisemans Ferry travelling along the Gosford Council Shire Boundary along the Old Great North Rd and George Downes Rd to its junction with the Wyong Shire Boundary east of Bucketty then north along the Walkers Ridge Rd as below.

*From the point where the council boundary turns north just west of the Wisemans Ferry, following the city boundary in a northerly direction until it intersects with the Old Great North Rd approximately north of the Wisemans Ferry and east of the junction of the Old Great North Rd and Shepherds Gully Rd.*

*Following the Old Great North Rd in a north easterly direction (and encompassing Ten Mile Hollow, Upper Mangrove and Kulnura) until its junction with George Downes Rd at Bucketty. Following George Downes Rd in an Easterly direction until its junction with Walkers Ridge Rd (and the Wyong Shire Boundary).*

*Henceforth following the Wyong Shire Boundary in a north-easterly direction (following Walkers Ridge Rd north east to its junction with Wollombi Forest Rd).*



## EASTERN SUBURBS FOOTBALL ASSOCIATION

**Northern boundary:** Along this boundary the southern side of all boundaries applies.

From where the southern shore of Port Jackson reaches the southern approaches of the Sydney Harbour Bridge, then along the southern shore of Port Jackson to Inner South Head.

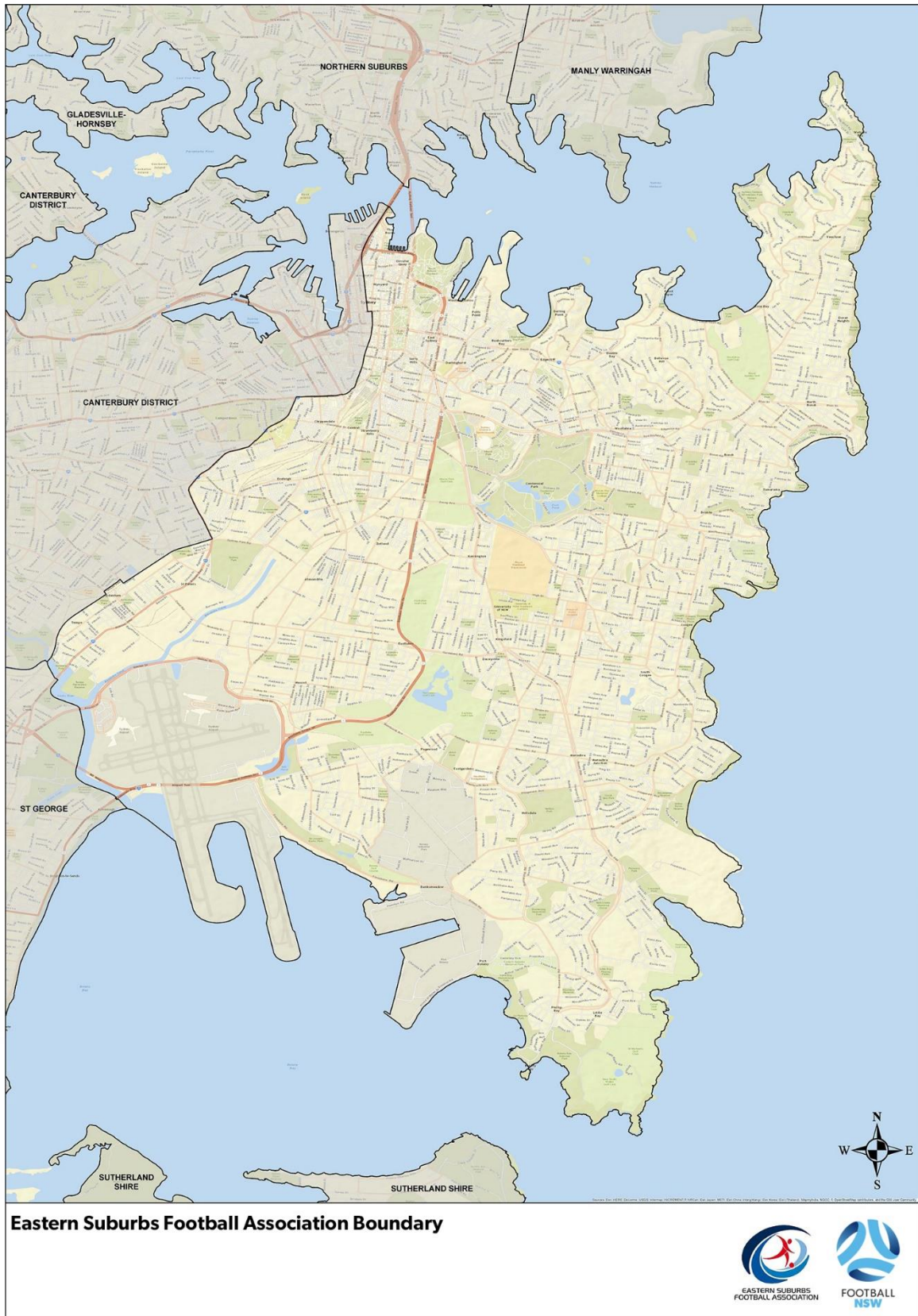
**Eastern boundary:** From Inner South Head following the coastline to Cape Banks.

**Southern boundary:** Along this boundary the northern side of all boundaries applies.

From Cape Banks along the northern shore of Botany Bay to Cooks River; then along the southern bank of Cooks River to where the Illawarra Railway Line crosses that bank at Tempe

**Western boundary:** Along this boundary the eastern side of all boundaries applies.

From where the Illawarra Railway Line crosses the northern bank of Cooks River at Tempe along the western side of the railway line to King St at St Peters; then along King St to City Rd; along City Rd to Broadway and along Broadway to Railway Square; then along George St to Sydney Town Hall, then along York St to the southern approaches to Sydney Harbour Bridge; then north to the southern shore of Port Jackson.



## FOOTBALL SOUTH COAST

**Northern boundary:** Along this boundary the southern side of all boundaries applies.

This line is the northern boundary of the City of Wollongong from Garvie Beach to the Woronora River.

### **Eastern boundary**

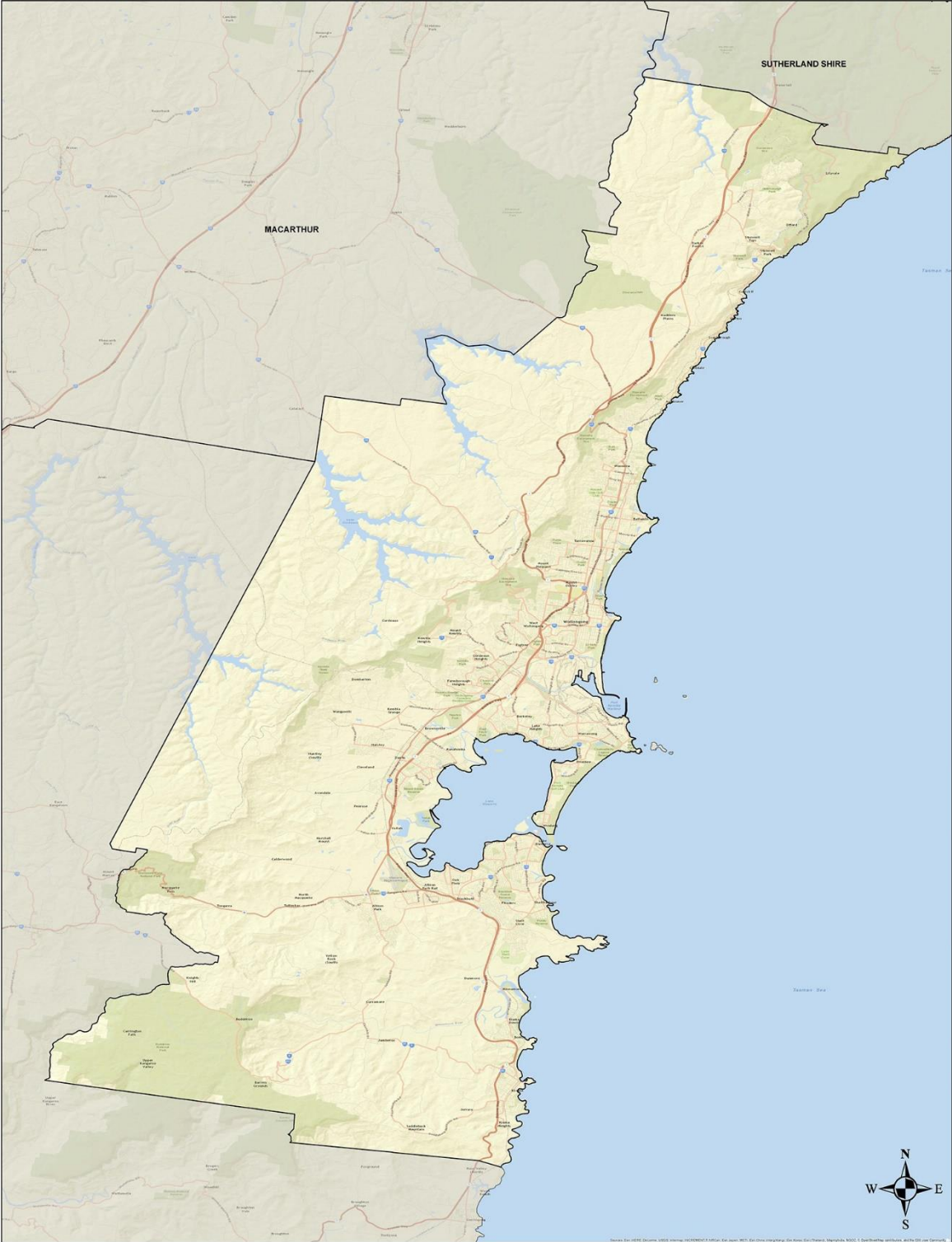
From Garvie Beach south following the coastline to the small beach south east of the Mt Pleasant Lookout on the southern end of the Kiama Bends.

### **Western boundary**

From the point where the Wollongong City Boundary meets the Woronora River, then southwards along the western boundary of the City of Wollongong, following the Woronora River until it meets Dahwaral State Conservation area, then along the eastern edge of that area, then southwards over Appin Rd to Cataract Dam, then westwards along the southern bank of the northern arm, then eastwards along the northern bank of the southern arm, to a point west of Bulli then following the City boundary west, then south across the face of Lake Cordeaux, then in a straight line south-south-west to Mt Murray (near Macquarie Pass) before following the Shell Harbour Shire boundary South-East to its junction with the Kiama Shire Boundary north-west of Pheasants Nest, then south to the upper reaches of the Kangaroo River and south along that river until the Kiama Shire boundary turns east at the Upper Kanagaroo River.

### **Southern boundary**

From the small beach south-east of the Mt Pleasant Look-out (southern end of Kiama Bends, north of Warri Beach, to the lookout (marked by the water tower). Then westwards across to meet the Kiama Shire Boundary near Barren Ground, then North and West along that boundary until it meets the Upper Kangaroo River.



**Football South Coast Boundary**





## NORTH WEST SYDNEY FOOTBALL

**Northern boundary:** Along this boundary the southern side of all boundaries applies.

From Bar Point on the Hawkesbury River in the east, along the southern bank of the Hawkesbury to Wisemans Ferry.

**Eastern boundary:** Along this boundary the western side of all boundaries applies.

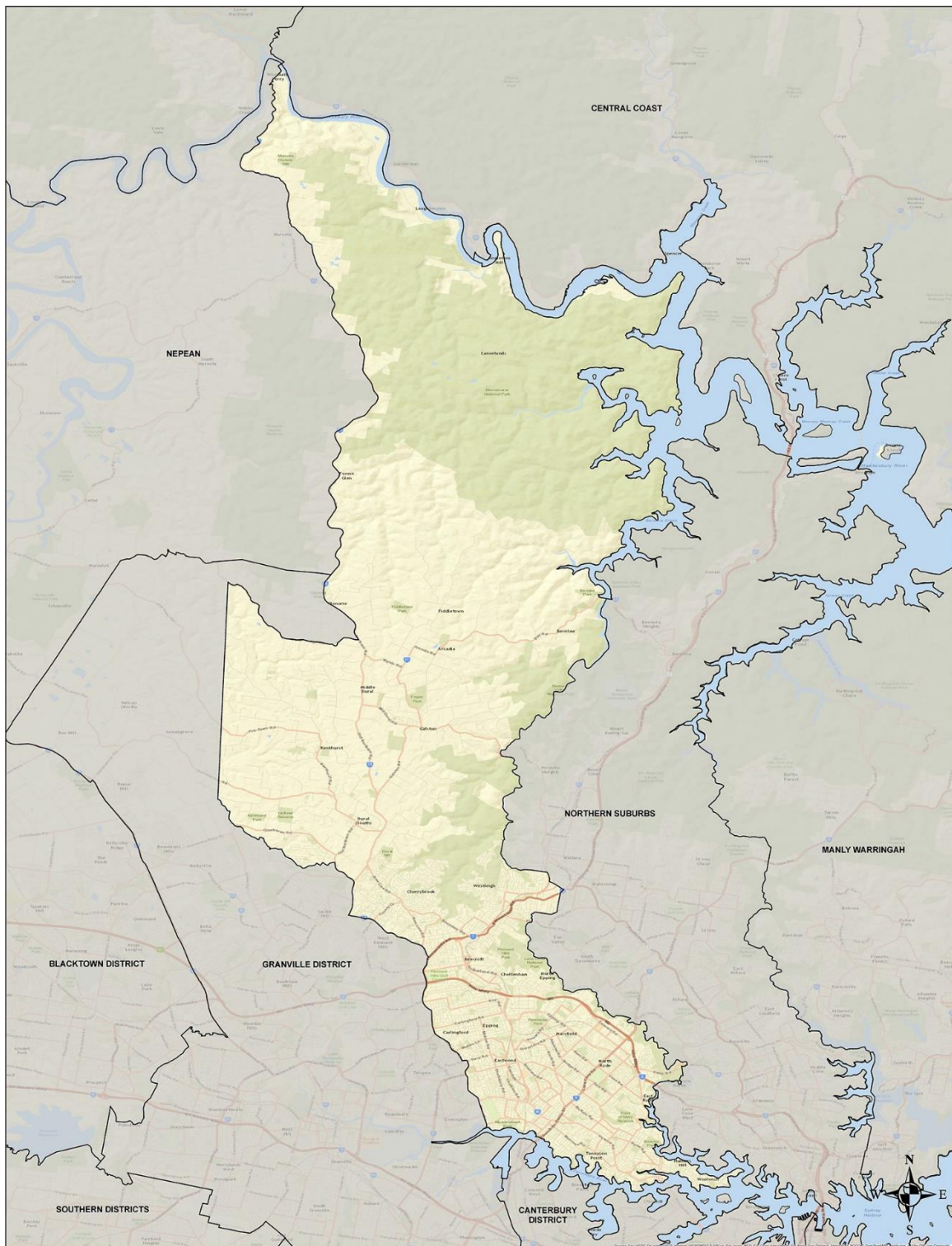
From Bar Point on the Hawkesbury River south along Berowra Ck to Galston Gorge; then south on an imaginary line to Norman Ave at Thornleigh; along Norman Ave to meet an imaginary eastwards extension of Clarke Rd; east along Clarke Rd to the Strathfield- Hornsby railway line and south from there to Edwards St Normanhurst; along Edwards St to its junction with Pennant Hills Rd; south on Pennant Hills Rd to its junction with Hinemoa Ave; then south along Hinemoa Ave to the Hornsby Shire boundary and south along that boundary line to the Lane Cove River; down the western bank of the Lane Cove River to its confluence with the Parramatta River at Woolwich.

**Southern boundary:** Along this boundary the northern side of all boundaries applies.

The northern bank of the Parramatta River (including all bays and inlets) from its confluence with the Lane Cove River at Woolwich, westwards to Wharf Rd near Meadowbank Park.

**Western boundary:** Along this boundary the eastern side of all boundaries applies.

From where Parramatta River meets Wharf Rd near Meadowbank Park; along Wharf Rd, across Victoria Ave and along Marsden Rd to Pennant Hills Rd; then along Pennant Hills Rd to Castle Hill Rd; along Castle Hill Rd to Old Northern Rd; from the junction of Crego Rd and Old northern Rd west to the head of the westwards flowing creek, north of Greenback Cres and Ridgescrop Dve (Fullers Rd Res), and northwest along Cattai Creek to where it crosses between Fulton Pl and Colbran Ave; thence north to meet Annangrove Rd to meet an imaginary north-south line drawn through Campbells Rd/Nicholii Pl, extended northwards to meet Cattai Ridge Rd at Hillside; along Cattai Ridge Rd eastwards to Old Northern Rd and northwards along Old Northern Rd to Wisemans Ferry.



**North West Sydney Football Boundary**



**GRANVILLE & DISTRICTS SOCCER FOOTBALL ASSOCIATION**

**Northern boundary.** Along this boundary the southern side of all boundaries applies.

From a point on Old Northern Rd just north of the Les Shore Recreation Reserve, Glenorie west to and along the southern edge of Maroota State Forest to Cattai Ridge Rd; west and southwest on Cattai Ridge Rd to its junction with Boundary Rd.

**Eastern boundary.** Along this boundary the western side of all boundaries applies.

From a point on Old Northern Rd just north of the Les Shore Recreation Reserve, Glenorie to the junction of Cattai Ridge Rd and Old Northern Rd, west along Cattai Ridge Rd to Hillside to meet a northwards extension of an imaginary north-south line dropping down to Campbells Rd/Nicholii Place, such line extending south to Annangrove Rd then to where Fulton Place and Colbran Av are separated by Cattai creek; then east along that creek, taking the eastern arm (north of Greenback Cres and Ridgecrop Dve (Fullers Rd Reserve) to Crego Rd; east to Old Northern Rd, down Northern Rd to Castle Hill Rd; along Castle Hill Rd to Pennant Hills Rd to the junction with Marsden Rd; south along Marsden Rd and Wharf Rd to the Parramatta River west of Meadowbank Park; then extending along the western side of Homebush Bay and Powells Creek and drain south to Homebush Bay Rd. Southwards along Homebush Bay Rd, Redmyre Rd, Chalmers Rd and Rickard Rd to its junction with the Hume Highway.

**Southern boundary.** Along this boundary the northern side of all boundaries applies.

From the junction of Rickard Rd and the Hume Highway then westwards along Hume Hwy to where it meets the Bankstown Municipal Boundary; along the Bankstown Municipal Boundary to Woodville Rd at Guildford, then across Woodville Rd and along the Sydney water supply pipeline to Railway Tce; south along Railway Tce to Military Rd, then west along Military, Loftus and Dursley Rds to Fairfield Rd; north along Fairfield Rd, but diverting west about the Guildford West Sports Ground, to the Sydney water supply pipeline, along which west to its junction with the Blacktown Municipal Boundary.

**Western boundary.** Along this boundary the eastern side of all boundaries applies.

Following the Blacktown Municipal Boundary northwards to Reservoir Rd at Prospect, then south east along Reconciliation Rd, then following Greystanes Creek northwards to the Railway Line west of Toongabbie Station, then westwards along the railway until McCoy Creek, then North East along the edge of McCoy Park, turning east and following Toongabbie Creek to its junction with Old Windsor Rd, then North along Old Windsor Rd to its junction with Windsor Rd. Then north about the Blacktown Municipal Boundary to Boundary Rd near Vineyard; north along Boundary Rd to Cattai Ridge Rd.



## MACARTHUR FOOTBALL ASSOCIATION

***Northern Boundary:*** Along this boundary the southern side of all boundaries pertains.

From where the railway line meets the eastern side of the Georges River north of Cambridge Avenue, due west along an imaginary line to Glenfield Road, then north and then west along Glenfield Road until it intersects with Old Glenfield Road, then on an imaginary line northwest to the intersection of Campbelltown Road and the Hume Highway, then south along Campbelltown Road to Denham Court Road, then northwest along Denham Court Road to its junction with Camden Valley Way. Then southwest along Camden Valley Way until it intersects with Deepfields Road, then northwest along Deepfields Road and Barry Avenue. Then, from where Barry Avenue becomes Allenby Road, north along an imaginary line to the junction of Masterfield Street and Bringelly Road. Then west along Bringelly Road to the intersection of The Northern Road, Bringelly Road and Greendale Road.

### ***Western boundary***

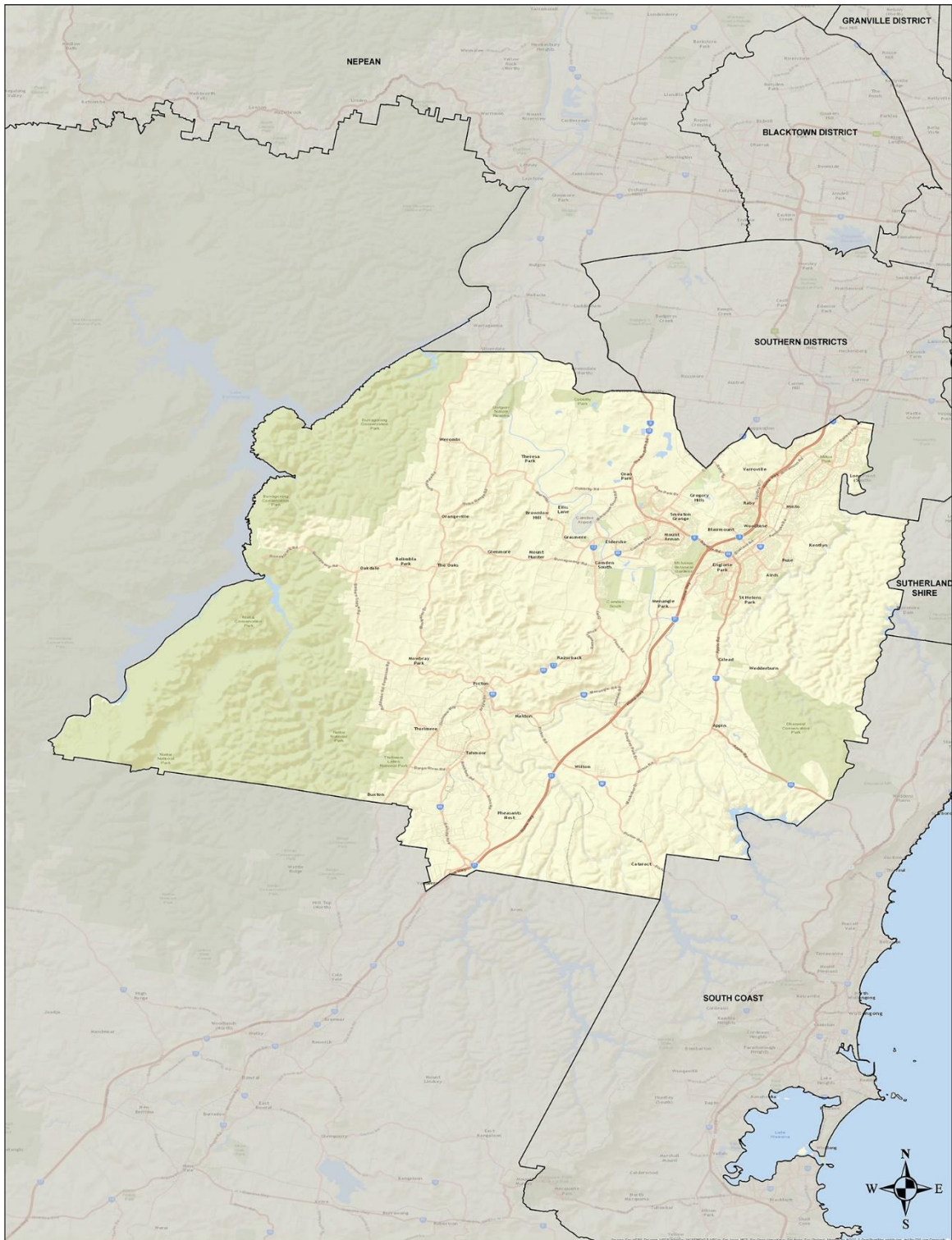
The crest of the Blue Mountains south from the Nepean boundary to the northern boundary of Southern Highlands Association and Southern Branch (incorporating the shire of Wollondilly. (Note: For practical and mapping purposes, along the eastern bank of the Warragamba dam from Silverdale to its junction with the Wingecarribee Shire)

### ***Eastern boundary***

Following the Campbelltown City boundary from the Georges River at Cross Roads, south and east around the Hoslworthy Army base until its junction with the Sutherland Shire, then south along the Campbelltown City boundary until its junction with the Wollondilly Shire, then southwards along the Wollondilly Shire Boundary (just west of the crest of the Wollongong escarpment) to its junction with the Wingecarribee Shire boundary.

### ***Southern boundary***

Following the Wollondilly Shire boundary from its junction with the Wingecarribee and Wollongong City boundaries westwards. (This would include towns such as Wilton, Tahmoor, Bargo and Yanderra, and Buxton on the Syd-Melb railway).



**Macarthur Football Association Boundary**



### MANLY WARRINGAH FOOTBALL ASSOCIATION

**Northern boundary:** Along this boundary the southern side of all boundaries applies.

From Bobbin Head proceed eastwards along the Warringah Shire and Pittwater Shire boundaries to Barrenjoey Head.

**Eastern boundary:** From Barrenjoey Hd south along the coast to outer North Head.

**Southern boundary:** Along this boundary the northern side of all boundaries applies.

From Outer North Head across the entrance of Middle Harbour in a straight line to Middle Head; then along the boundary of Mosman municipal boundary to where it leaves the northern shore of Sydney Harbour at Mosman Bay.

**Western boundary:** Along this boundary the eastern side of all boundaries applies.

Northwards Along the Mosman Municipal boundary from where it leaves Sydney Harbour at Mosman Bay and following Spofforth St and Macpherson St to where it joins Middle Harbour at Long Bay, then following the Manly and Warringah Shire boundaries along Middle Harbour to Boundary St, Roseville, and from there following the Warringah Shire boundaries to Bobbin Head.





**NEPEAN DISTRICT SOCCER FOOTBALL ASSOCIATION**

***Northern boundary:*** Along this boundary the southern side of all boundaries applies.

From Wisemans Ferry on the Hawkesbury River westwards to the confluence of the Colo River, then west along the Colo River to the confluence of the Wollomgambe and Colo Rivers then southwards along the Hawkesbury Shire and Blue Mountains City Council Boundaries following the Wollomgambe River and Du Faur Creek (incorporating the townships of Mt Wilson and Mt Irvine) then following the Blue Mountains city council boundary west, north and west until it turns south north-west of Bell.

***Eastern boundary:*** Along this boundary the western side of all boundaries applies.

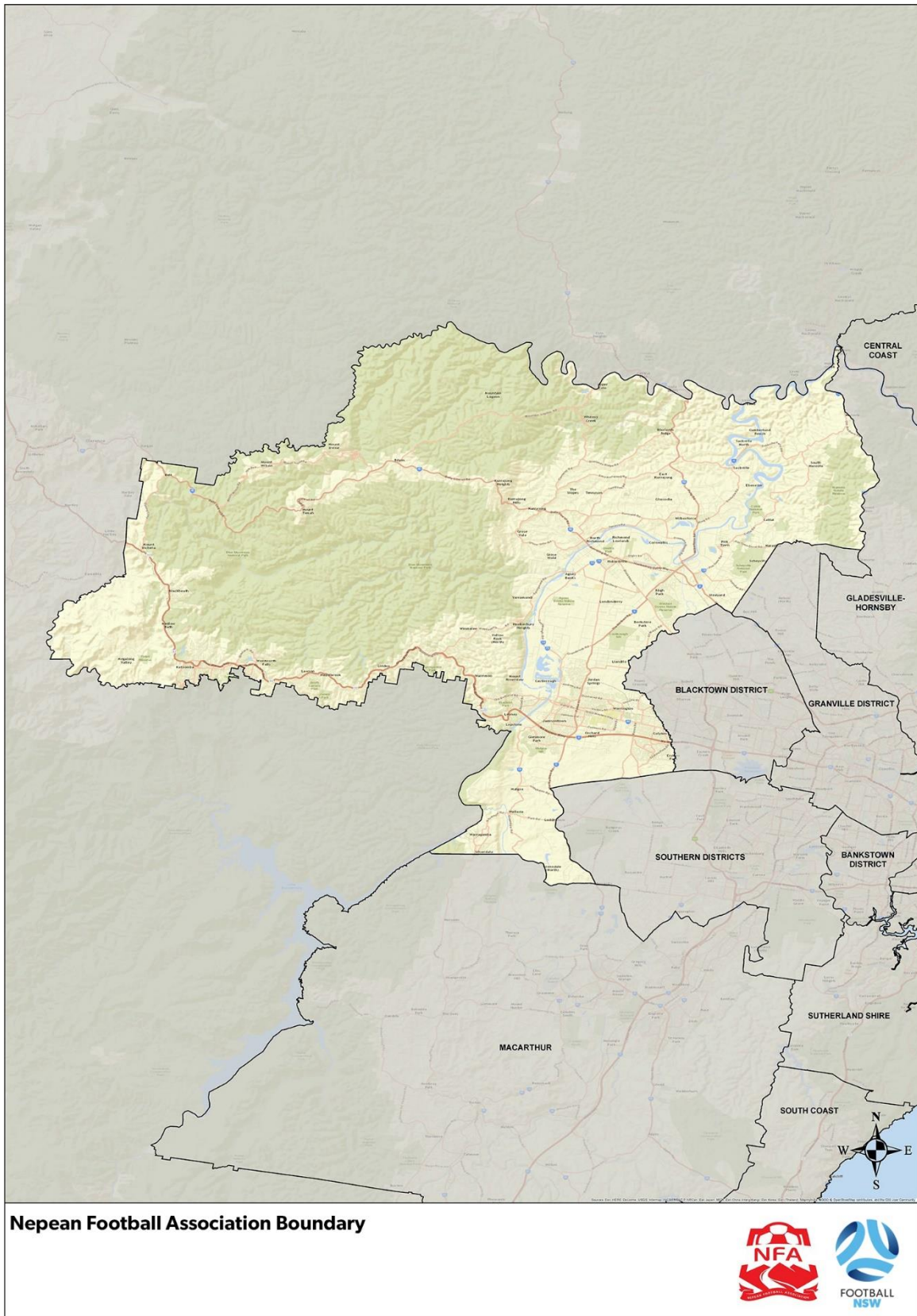
From Wisemans Ferry south on Old Northern Rd to a point just north of the Les Shore Recreation Reserve at Glenorie, then west to and along the southern edge of Maroota State Forest to Cattai Ridge Rd; west and southwest on Cattai Ridge Rd to its junction with Boundary Rd; south along Boundary Rd to where it meets the Blacktown Municipal boundary at Windsor Rd; then following the Blacktown Municipal boundary in an anti- clockwise direction (west along Windsor Rd to Bandon Rd at Vineyard, then south-west along Bandon Rd to Eastern Creek, then west to South Creek, then southwards along South Creek to North of Dunheved, then East to Ropes Creek, and South along Ropes Creek) to where that boundary is crossed by the Warragamba Dam-Prospect Reservoir (Sydney Water Supply) pipeline.

***Southern boundary:*** Along this boundary the northern side of all boundaries applied.

From where the Blacktown municipal boundary crosses the Warragamba Dam-Sydney Water Supply pipeline at Ropes Creek, west along the pipeline to The Northern Rd; then south on The Northern Rd to its junction with Bringelly/Northern Rd and Greendale Rd; then west along Greendale Rd and, where Greendale Rd turns north on the northern side of Greendale, on a line directly west from Greendale Rd North of Bents basin, through Taylors Rd and westwards to meet the south-eastern arm of Lake Warragamba.

***Western boundary***

From the northwest point of the Blue Mountains City Council boundary north-west of Bell, then southwards along that boundary, (crossing the Bell Line of Roads between Bell & Newnes), incorporating the townships of Bell and Mt Victoria until it meets the edge of the Blue Mts National Park, then eastwards along that boundary incorporating those towns east of and including Mt Victoria along the Great Western Highway until the BMCC boundary meets the Warragamba Dam, then along the Eastern shore of Warragamba Dam (incorporating the Warragamba, Wallacia, and Mulgoa Districts).



**NORTHERN SUBURBS FOOTBALL ASSOCIATION**

**Northern boundary:** Along this boundary the southern side of all boundaries applies.

From Bar Pt on the Hawkesbury River in the west, along the south bank of the Hawkesbury eastwards to where the western bank of Cowan Ck joins the Hawkesbury River.

**Eastern boundary:** Along this boundary the western side of all boundaries applies.

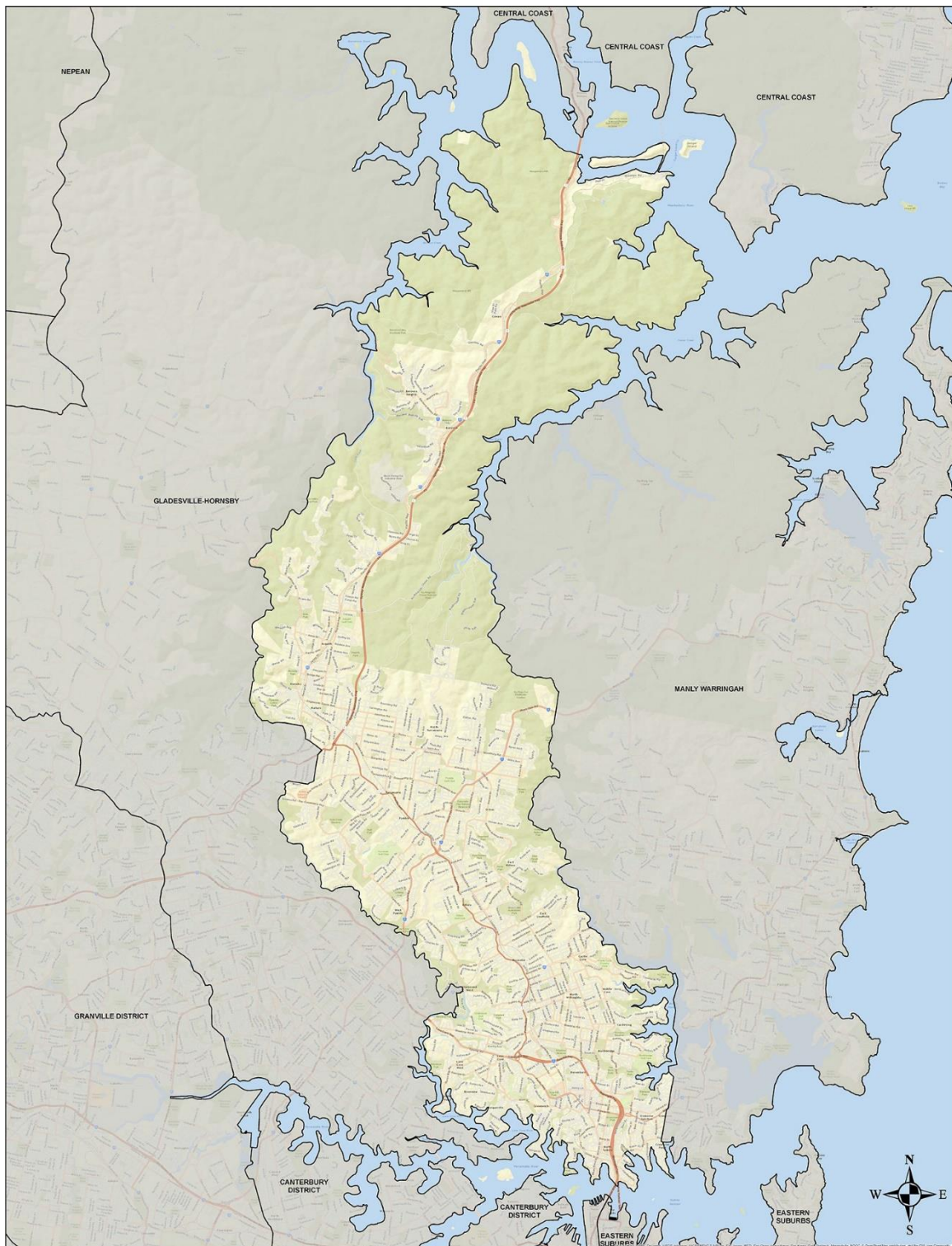
From the west bank of the confluence of the Hawkesbury River and Cowan Ck to Bobbin Head; along the Ku-ring-gai municipal boundary (southwards along Cowan Creek, Davidson Creeks) to Boundary St, Roseville; then along the southern shore of Middle Harbour to where the Mosman municipal boundary joins the shore of Middle Harbour near Shellbank Ave; then southwards along the Mosman municipal boundary (Macpherson & Spofforth Sts) to where that boundary joins Sydney Harbour at Mosman Bay.

**Southern boundary:** Along this boundary the northern side of all boundaries applies.

From where the Mosman municipal boundary meets Sydney Harbour at Mosman Bay, westwards to where the Lane Cove River joins Sydney Harbour.

**Western boundary:** Along this boundary the eastern side of all boundaries applies.

From Bar Pt on the Hawkesbury River south along Berowra Ck to Galston Gorge; then due south along an imaginary line to Norman Ave at Thornleigh; along Norman Ave to meet an imaginary eastwards extension of Clarke Rd; east on Clarke Rd to the Strathfield- Hornsby railway line, south from there to Edwards St, Normanhurst, along Edwards St to its junction with Pennant Hills Rd; south on Pennant Hills Rd to its junction with Hinemoa Ave to the Hornsby Shire boundary and south along that boundary line to the Lane Cove River; south along the eastern bank of the Lane Cove River to its confluence with the Parramatta River at Woolwich.



**Northern Suburbs Football Association Boundary**



## SOUTHERN DISTRICTS SOCCER FOOTBALL ASSOCIATION

**Northern boundary:** Along this boundary the southern sides of all boundaries applies.

From where the Sydney Water Supply pipeline crosses the Northern (Bringelly) Rd north of Luddenham, east along the pipeline to the Prospect Reservoir, around the southern bank of the reservoir to the Sydney Water Supply pipeline, and thence along the pipeline to Woodville Rd and the Bankstown Municipal boundary except for a southwards diversion at Fairfield Rd south to Dursley St, but diverting westabout the Guildford Sports Ground, east along Dursley, Loftus and Military Rds to Railway Tce and north along Railway Tce to the Sydney Water Supply pipeline.

**Eastern boundary:** Along this boundary the western side of all boundaries applies.

From where the Sydney Water Supply pipeline intersects Woodville Rd, then south along Woodville Rd to the junction with Liverpool Rd; then along Liverpool Rd to Lansdowne Bridge, then south along the southern bank (including all bays and inlets) of Georges River to Deadmans Ck; then follow the City of Liverpool boundary south and west until it reaches the Georges River east of Minto, then north along the river to where the City of Liverpool boundary leaves the Georges River east of Cross Roads.

**Southern boundary:** Along this boundary the northern side of all boundaries applies.

From where the railway line meets the eastern side of the Georges River north of Cambridge Avenue, due west along an imaginary line to Glenfield Road, then north and then west along Glenfield Road until it intersects with Old Glenfield Road, then on an imaginary line northwest to the intersection of Campbelltown Road and the Hume Highway, then south along Campbelltown Road to Denham Court Road, then northwest along Denham Court Road to its junction with Camden Valley Way. Then southwest along Camden Valley Way until it intersects with Deepfields Road, then northwest along Deepfields Road and Barry Avenue. Then, from where Barry Avenue becomes Allenby Road, north along an imaginary line to the junction of Masterfield Street and Bringelly Road. Then west along Bringelly Road to the intersection of The Northern Road, Bringelly Road and Greendale Road.

**Western boundary:** Along this boundary the eastern side of all boundaries applies.

From the junction of Northern/Bringelly Rd and Cobbity Rd, northwest along an imaginary line across the northern edge of Bents Basin State Recreation Park to Taylors Rd south of Silverdale, then due east to meet Greendale Rd and east again along Greendale Rd to Bringelly Rd, then north along The Northern Road to the Sydney Water Supply pipeline north of Luddenham.



## FOOTBALL ST GEORGE

**Northern boundary:** Along this boundary the southern side of all boundaries applies.

From where the southern bank of the Cooks River joins Botany Bay; along the southern banks of the Cooks River to where the Illawarra Railway Line crosses that bank at Tempe; then along the southern bank at Wollie Ck and the northern boundaries of the Rockdale then Hurstville municipalities to Salt Pan Ck at Riverwood.

**Western boundary:** Along this boundary the eastern side of all boundaries applies.

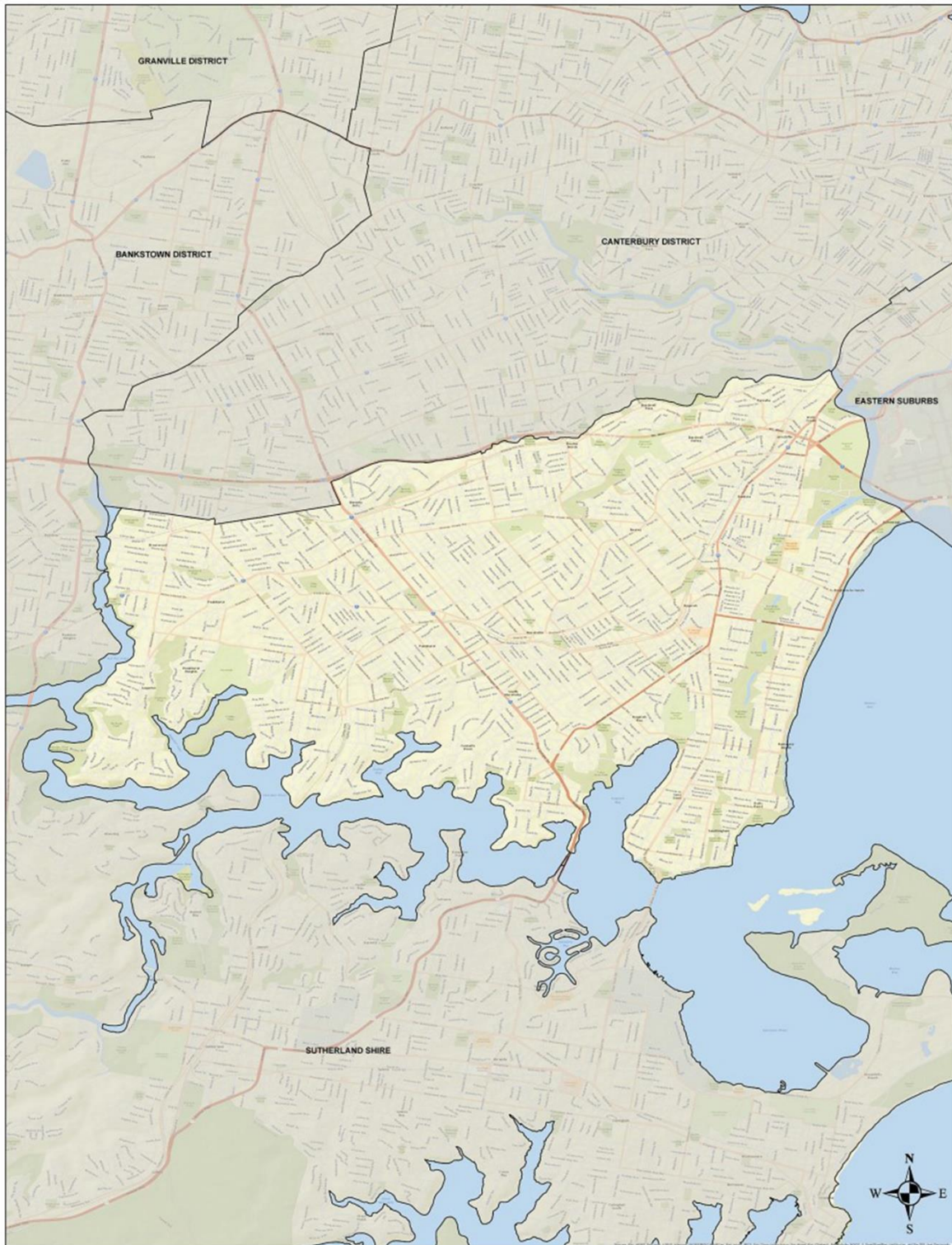
South along the eastern bank of Salt Pan Ck from the Hurstville Municipal boundary to the point where Salt Pan Ck joins Georges River; then along the bank of Georges River to Sandy Bottom Point on the Georges River.

**Southern boundary:** Along this boundary the northern side of all boundaries applies.

From Sandy Bottom Pt on the Georges River along the northern bank of the Georges River to Dolls Pt.

**Eastern boundary:** Along this boundary the western side of all boundaries applies.

From Dolls Pt on the Georges River along the shore of Botany Bay to the southern bank of Cooks River at the mouth of Cooks River.



**Football St George Boundary**





## SUTHERLAND SHIRE FOOTBALL ASSOCIATION

**Northern boundary:** Along this boundary the southern side of all boundaries applies.

The southern bank of Georges River and Botany Bay (including all bays and inlets) from Deadmans Ck eastwards to Inscription Point.

**Eastern boundary:** Along this boundary the western side of all boundaries applies.

The coastline south from Inscription Pt. Across the entrance to Port Hacking and down the coast to the point where the Sutherland Shire boundary leaves the coastline at Garie Beach.

**Southern boundary:** Along this boundary the northern side of all boundaries applies The

Sutherland Shire boundary from Garvie Beach westwards to the Woronora River.

**Western boundary:** Along this boundary the eastern side of all boundaries applies.

North along the Sutherland Shire boundary line from where it joins the Woronora River to where it reaches Georges River at Deadmans Ck.

