



The NDL collects, preserves and provides records in cooperation with the following organizations:

## Archives cooperating with HINAGIKU

### Local government

Aomori Disaster Archive [Hachinohe City, Misawa City, Oirase Town and Hashikami Town in Aomori Prefecture] / Kuji-Noda-Fudai Disaster Archive [Kuji City, Noda Village and Fudai Village in Iwate Prefecture] / Koriyama Disaster Archive [Koriyama City, Tomioka Town, Futaba Town and Kawauchi Village in Fukushima Prefecture] / Great East Japan Earthquake Archive Miyagi [Miyagi Prefecture and its cities, towns and villages] / Urayasu Disaster Archive [Urayasu City in Chiba Prefecture] / Iwate Earthquake Tsunami Archive: Hope [Iwate prefecture] / Kumamoto Earthquake Digital Archive [Kumamoto prefecture]

### Libraries

Great Hanshin-Awaji Earthquake Disaster Materials Collection [Kobe University Library] / Shinsai bunko (Sendai Shimin Library Collection of materials related to the Great East Japan Earthquake of March 11, 2011) [Sendai City Library] / Great East Japan Earthquake Disaster Library for Reconstruction of Fukushima Prefecture [Fukushima Prefectural Library] / Great East Japan Earthquake Disaster Materials Collection [Iwate Prefectural Library] / Record of earthquakes in the histories of municipalities [Saitama Prefectural Kumagaya Library] / Nagaoka Post-Disaster Reconstruction Collection [Historical Archive Section in Nagaoka City Central Library]

### University and research institutes

CiNii Articles, JAIRO [National Institute of Informatics] / J-STAGE [Japan Science and Technology Agency] / Japan Atomic Energy Agency's Library Catalog / Research Center for Cooperative Civil Societies (Rikkyo University) / Japan Disasters Digital Archive [Edwin O. Reischauer Institute of Japanese Studies at Harvard University] / Michinoku Shinrokuden System [International Research Institute of Disaster Science at Tohoku University] / Remembering 3.11 [Tohoku Gakuin] / Japan Society of Civil Engineers Great East Japan Earthquake Archive / Archives of agricultural, fishery and forestry cooperative organizations' activities for the restoration from the Great East Japan Earthquake [Norinchukin Research Institute Co., Ltd.] / Disaster Information Laboratory, National Research Institute for Earth Science and Disaster Resilience Catalog / Memories of Hamadoori: Disaster Archive for the future [Iwaki Meisei University] / Mie Disaster Mitigation Archive [Mie Prefecture Mie University Mie Disaster Mitigation Center] / Fukushima Nuclear Accident Archive (FNAA) [Japan Atomic Energy Agency] / Radiation Medical Science Center for the Fukushima Health Management Survey digital archive [Fukushima Medical University Radiation Medical Science Center]

### Media organizations

NHK Great East Japan Earthquake Archives [Japan Broadcasting Corporation] / FNN Remembering 3/11 [Fuji Television Network, FNN (Fuji News Network)] / KAHOKU SHIMPO DISASTERS ARCHIVE [Kahoku Shimpō Publishing Co.]

### Companies and various organizations

East Japan Earthquake Picture Project [Yahoo Japan Corporation] / Memories for the Future [Google Inc.] / Great East Japan Earthquake Archives Fukushima / NVEC Women and Disaster Archive [National Women's Education Center of Japan] / Red Cross Nuclear Disaster Resource Center Digital Archives [Japanese Red Cross Society] / Simplest Explanation of The National Diet of Japan Fukushima Nuclear Accident Independent Investigation Commission / Center for Remembering 3.11 [sendai mediatheque] / Disaster Management Library Catalog [National Association of Mutual Aid for Municipal Property Damages] / Database of Disaster Information Materials [Chuetsu Organization for Safe and Secure Society] / niconico [DWANGO Co., Ltd.] / 311 Documentary Film Archive [YAMAGATA International Documentary Film Festival]

\* order of commencement date of cooperation with HINAGIKU  
The above list does not contain NDL databases.

## Main contents preserved in HINAGIKU

### National organs

House of Representatives, House of Councillors [videos of the House floor proceedings from March 11, 2011 to the 190th Diet session] / Cabinet Office, Reconstruction Agency, Government of Japan [videos on the Japanese Government Internet TV] / Cabinet Secretariat, Ministry of Health, Labour and Welfare, Ministry of the Environment, Nuclear Regulation Authority, Ministry of Defense, Government of Japan [videos on the Official YouTube channel, etc.] / Geospatial Information Authority of Japan (GSI) [aerial photographs of area affected by the Great East Japan Earthquake] / NAIIC (National Diet of Japan, Fukushima Nuclear Accident Independent Investigation Commission) [videos of meetings and press conferences, etc.] / Nuclear Regulation Authority (Archived Information on the Fukushima Daiichi Accident)

### Libraries

Higashi-Matsushima Library (Miyagi Prefecture) [ICT Project for Preserving Community Ties "Telling the Story of the Great East Japan Earthquake"] / Shinchi Town Library (Fukushima Prefecture) [photos taken in and around the Shinchi Town Library just after the Great East Japan Earthquake]

### Research institutes

Disaster Information Laboratory, National Research Institute for Earth Science and Disaster Resilience [preliminary reports of survey, photos of monuments to the tsunami, etc.]

### Media organizations

Tohokai Shimpō Co. ["Tohokai Shimpō"] / "Higashi Nihon Gekisai Fukko Shinbun"

### Companies and various organizations

Aero Asahi Corporation, Kokusai Kogyo Co., Ltd., PASCO CORPORATION [aerial photographs of area affected by the Great East Japan Earthquake] / Tokyo Electric Power Company Holdings, Inc. [videos related to the accident at the Tokyo Electric Power Company's Fukushima Daiichi Nuclear Power Station] / Nippon Foundation [photos and videos submitted to the contest hold by the Nippon Foundation] / Ajinomoto Co., Inc. [Red Apron Project to support Tohoku] / Iwate Future Organization [photographs and others of the workshops]

Further information is available at "Searchable database list"  
kn.ndl.go.jp/static/db  
Information in this pamphlet is as of December 2018

### To institutions interested in cooperating with the HINAGIKU

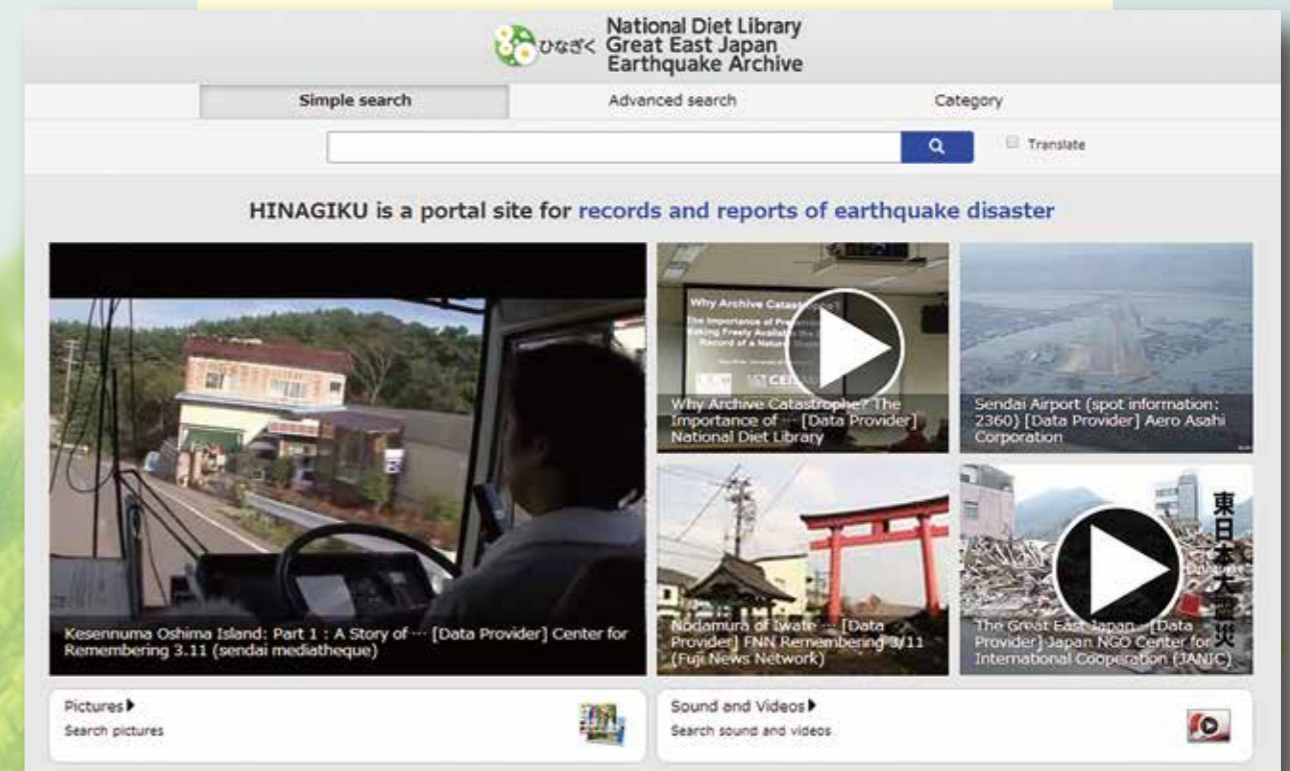
To be searchable on the HINAGIKU, it is needed to provide for your metadata to us. Our collection target is all content type of records of earthquake disasters. For more detail please contact the address below.

## National Diet Library (NDL) Great East Japan Earthquake Archive

# HINAGIKU

To hand down all records and lessons related to earthquake disasters to future generations

[kn.ndl.go.jp/en/](http://kn.ndl.go.jp/en/)



### Why "HINAGIKU" ?

The "HINAGIKU", another name of the National Diet Library (NDL) Great East Japan Earthquake Archive, is a partial acronym of the "Hybrid Infrastructure for National Archive of the Great East Japan Earthquake and Innovative Knowledge Utilization." In the language of flowers, hinagiku (daisy) – meaning "future," "hope" and "sympathy" – includes the aim of the project supporting the earthquake recovery.

# What is the National Diet Library (NDL) Great East Japan Earthquake Archive (HINAGIKU) ?

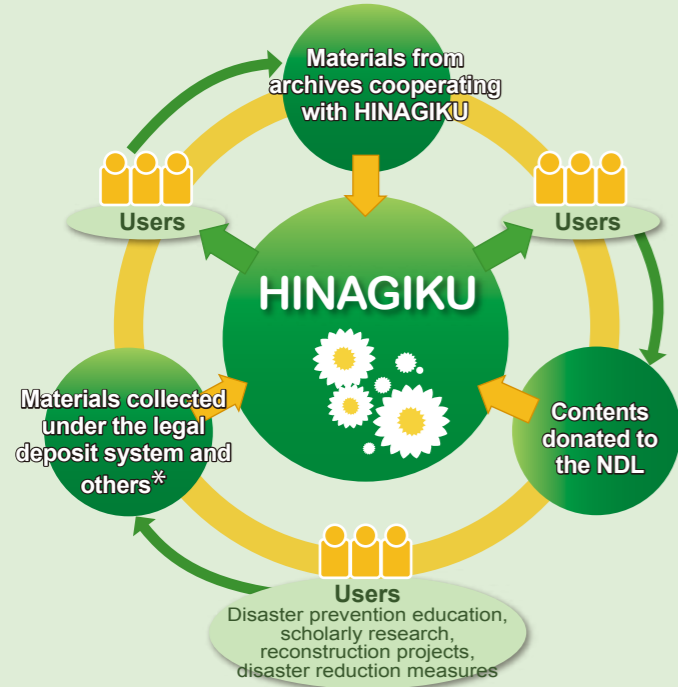
HINAGIKU is a portal site which enables integrated search of records and reports of the Great East Japan Earthquake disaster by public institutions, private organizations and media, and of research products by universities, academic societies and research institutes. Its aim is to hand down all records and lessons to future generations and to utilize them for the restoration and reconstruction of the affected areas and for disaster prevention measures.

The search target of the HINAGIKU contains contents from 47 archives cooperating with HINAGIKU, as well as contents collected by the NDL. In addition, contents collected in the digital storage of HINAGIKU are lastingly preserved.

Through the "Seven Principles for the Reconstruction Framework" (adopted at a meeting held May 10, 2011, by the Reconstruction Design Council in Response to the Great East Japan Earthquake) and the "Basic Guidelines for Reconstruction in response to the Great East Japan Earthquake" (adopted at a meeting held July 29, 2011, and revised the following August 11 by the Reconstruction Headquarters in response to the Great East Japan Earthquake), the Japanese government emphasized the need to develop a system for collecting, preserving and providing records and lessons of the Great East Japan Earthquake, and to construct a mechanism for utilizing them in an integrated manner, accessible to everyone. Based on them, the NDL developed and released HINAGIKU in collaboration with the Ministry of Internal Affairs and Communications on March 7th, 2013.

As mentioned in the "Basic Guidelines for Reconstruction in Response to the Great East Japan Earthquake in the 'Reconstruction and Revitalization Period'" (approved by the Cabinet on March 11, 2016), HINAGIKU has an important role in handing down the lessons learned from earthquake disasters.

**HINAGIKU: a portal site devoted to collecting, preserving and providing records of the Great East Japan Earthquake throughout the whole nation**



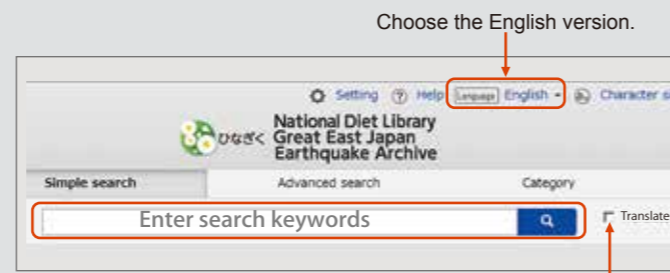
**Newly created records and research works are also added to the HINAGIKU**

- \* NDL collects the following materials in accordance with the NDL Law.
- 1) Domestic Japanese publications collected under the legal deposit system,
- 2) Internet materials of the government agencies and local governments
- 3) Charge-free private online publications without Digital Rights Management (DRM)

Among the materials mentioned above, materials on earthquake disasters are the search target of the HINAGIKU

## How to use the HINAGIKU

### Top page, Simple search



By checking the "Translate" box when searching, the keyword(s) will automatically be translated into Japanese.

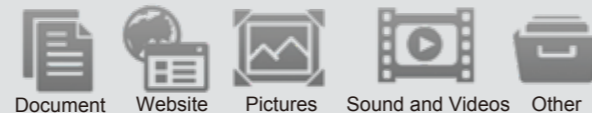
Target scope:

**47 archives\*** and digital storage of HINAGIKU,

amounting to some

**4.02 million metadata**

See the last page for details.  
\*including 5 databases of NDL.



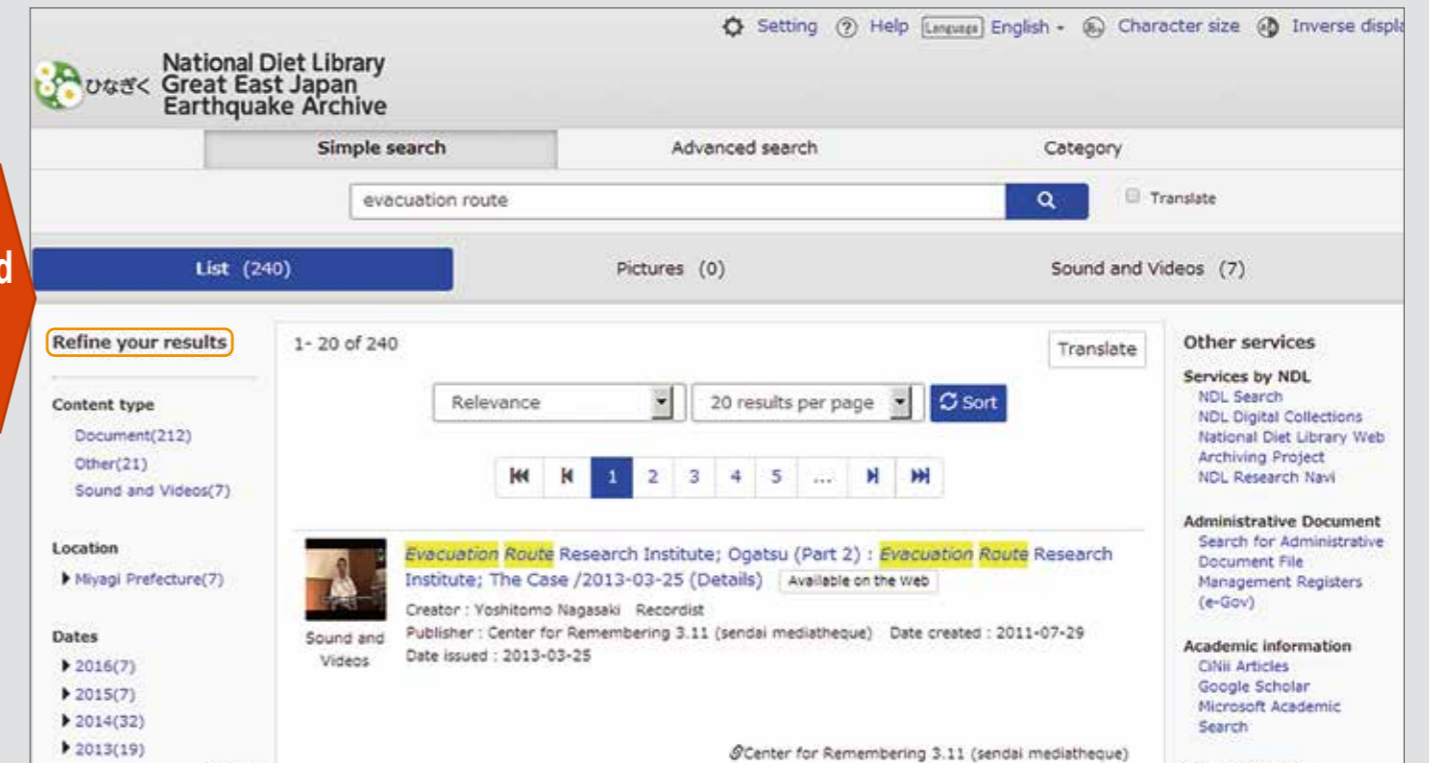
Interfaces in English, Chinese and Korean are available. You can search for materials written in other languages (English, Chinese and Korean) by the function to translate search keywords and results.

**Integrated search**

### List of search results

The left pane of the search results screen gives various ways to narrow down (or "refine") the results by content types, locations, dates, data providers, language, and availability.

The number next to each choice reflects the number of items in your results list that match that category.



**Viewing digital contents**

## Contents available on the Web

On the Search Results List View, when you choose "Available on the Web" from the category "Availability" on the left pane, you can narrow the results to contents readable via Internet.



Kesenuma Oshima Island: Part 1 : A Story of the tsunami by Ryokan Tsubaki-so Inn Young Owner

[Data Provider](#)

Center for Remembering 3.11 (sendai mediatheque)



Why Archive Catastrophe? The Importance of Preserving and Making Freely Available the Digital Record of a Natural Disaster movie

[Data Provider](#)

National Diet Library



Sendai Airport (spot information: 2360)

[Data Provider](#)

Aerial photographs (Diagonal photographs) by Aero Asahi Corporation



Nodamura of Iwate prefecture suffering great damage (Fourth day following the earthquake)

[Data Provider](#)

FNN Remembering 3/11 (Fuji News Network)



The Great East Japan Earthquake and Japanese NGOs : From emergency relief to reconstruction? A turning point for the future

[Data Provider](#)

Japan NGO Center for International Cooperation (JANIC)



A foreigner focused collection of responses to the Great East Japan Earthquake [International relations section, City of Sendai]

[Data Provider](#)

National Diet Library Digital Collections