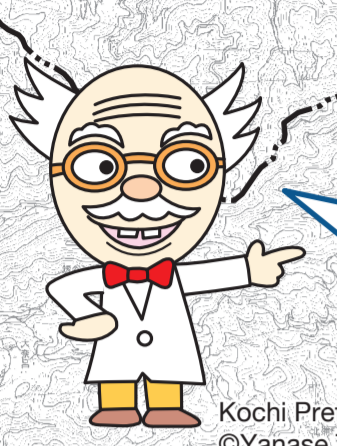


~After an earthquake, evacuate immediately!~

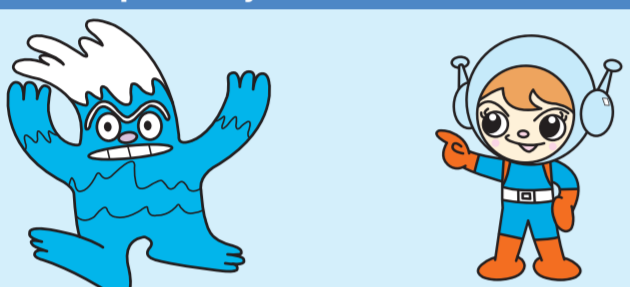
Kochi City Tsunami Hazard Map



This map, published by Kochi Prefecture in December 2012, shows the projected tsunami inundation heights for the Nankai Trough Earthquake. Please discuss evacuation routes and evacuation area locations with your family and community regularly.

Kochi Prefecture disaster prevention character ©Yanase Takashi

How to protect yourself from a tsunami



- 1 First, when tremors begin, protect yourself.
- 2 Next, move quickly to elevated ground.
- 3 Don't be afraid to be the first to evacuate. Evacuate immediately!
- 4 Do not go near the ocean or rivers until the tsunami warning or advisory warning has been cancelled.
- 5 Think about evacuation procedures on a regular basis.



Prefectural Japanese Archery Training Hall (Kenritsu Kyūdō-jiyō)
Tsunami inundation height of 30cm in over 60 minutes

Kochi Station (Kōchi Eki)
Tsunami inundation height of 30cm in over 60 minutes

Kochi Jibasan Center (Kōchi Jibasan Sentā)
Tsunami inundation height of 30cm in over 60 minutes

Kochi Castle

Kochi City Hall (Kōchi Shiyaku-sho)
Tsunami inundation height of 30cm in over 60 minutes

Harimaya Bridge (Harimaya-bashi)
Tsunami inundation height of 30cm in over 60 minutes

Wanpaku Kochi
Tsunami inundation height of 30cm in 40-60 minutes

Haruno Higashi Elementary School (Haruno Higashi Shōgakkō)
Tsunami inundation height of 30cm in 40-60 minutes

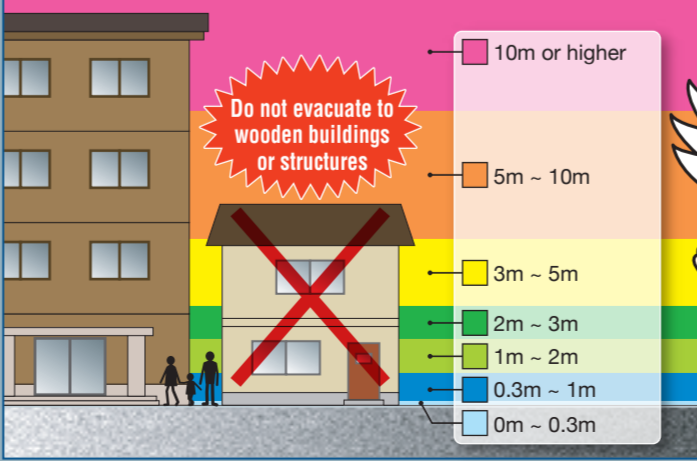
Haruno Ajsai Hall (Haruno Ajsai Kaikan)
Tsunami Inundation height of 30cm in over 60 minutes

Haruno Fishing Port (Haruno Gyokō)
Tsunami inundation height of 30cm in 0-5 minutes

Kochi New Port (Kōchi Shinkō)
Tsunami inundation height of 30cm in 5-10 minutes

Katsurahama
Tsunami inundation height of 30cm in 5-10 minutes

Tsunami Inundation Heights Indicated on the Map



Different colors indicate the heights the tsunami will reach as it comes ashore. Even an inundation height of only 30cm can make evacuation difficult. If you feel tremors begin, evacuate immediately to elevated ground or a tall, sturdy building!

Tsunami-related Signs

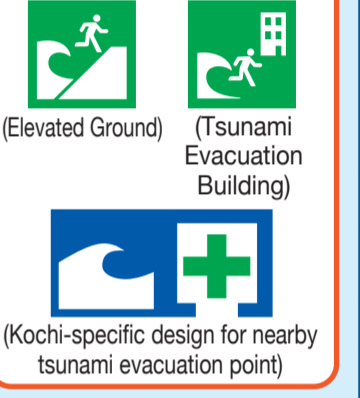
Tsunami Advisory Signs



This place is at high risk should a tsunami strike. As soon as you feel tremors, evacuate immediately!



Tsunami Evacuation Area Signs



These are signs that indicate tsunami evacuation areas. There are many different types, so please try and learn them all!



"After the tremors subside, a tsunami might come, so please keep the radio or television on to get more information."

"If you live outside of Kochi City, you can check your area's situation using the Kochi Nankai Trough Earthquake Preparedness Division's website or with your respective municipal offices."



Inundation heights and ranges can sometimes exceed predictions so don't be caught off guard. Evacuate to as high and safe a place as you can as soon as possible.

Key	
	Emergency Transport Routes
	1st (Expressway)
	2nd
	3rd

Characteristics of a Tsunami



I'll teach you about the scariness of tsunamis

- 1 Tsunamis are fast and high!
- 2 Tsunamis strike multiple times!
- 3 Tsunamis can travel upstream along rivers and canals!

Do the Following Straight Away When the *Nankai Torafu Jishin* Occurs!

When a large earthquake occurs, casualties will also be high so it is difficult to save everyone. The first thing to do is to protect your head from falling items.

It is important to remember that you are responsible for **PROTECTING YOUR LIFE!**

What Should I Do if I am in a House or Building When an Earthquake Occurs?

●If you are in a house

Large furniture, bookshelves and picture frames may fall, so you should take cover under a sturdy table or desk.



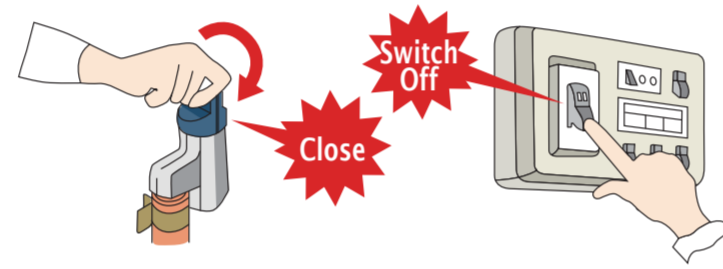
※If something heavy is capable of crushing the table, please run to somewhere safer.

●If you are in a facility with many people

Follow the person in charge.
Remain calm and move accordingly.
Don't rush to the exits.

●When the shaking stops

Turn off all flames from gas appliances and shut the valve. Also flip the breaker for your electricity.



●If you are in an elevator

If you feel shaking, press the buttons for every floor and get off at the first floor it stops at.

Some elevators may detect the shaking and automatically stop at the nearest floor.



What Should I Do if I am Outside When an Earthquake Occurs?

●If you are in the street

If you are walking near a building, beware of falling objects like glass and signboards, cover your head with whatever you are carrying, and find a safe place to take refuge.



●If you are near a concrete wall or vending machine

Immediately move away as there is a danger that it will collapse.



●If you are in the mountains

Move away from cliffs as there is the possibility of landslides.



●Be aware of aftershocks (*yoshin*)

After a large earthquake, earthquakes may occur several times so please be cautious.

The Meteorological Agency will advise of aftershocks so please listen to the TV and radio carefully.

Do not enter damaged houses as it is dangerous, and stay away from places where rocks and dirt could fall such as mountains and cliff sides.

●If you are driving

As soon as you feel a tremor, gradually slow down, pull over to the left and turn off your engine. Turn on your hazard lights to make your car easily noticed by other vehicles.

Avoid parking if you are at the base of a wide slope or at the mouth of a tunnel as there is the danger of landslides.

When you leave the car, **leave the doors unlocked and keys in the ignition.**

Take your valuables with you.

Get out of your car and evacuate. Beware of passing vehicles.



Characteristics of a Worst Case *Nankai Torafu Jishin*

When a worst case earthquake and tsunami occur, damage will occur on a massive scale from the sea west of Tokyo to Kyushu, so help cannot be expected to arrive from outside the prefecture.

The ground will shake hard and for a long time

In the event of a large earthquake, 26 municipalities will experience severe shaking at an intensity of 7, and the remaining 8 municipalities will experience a strong 6.

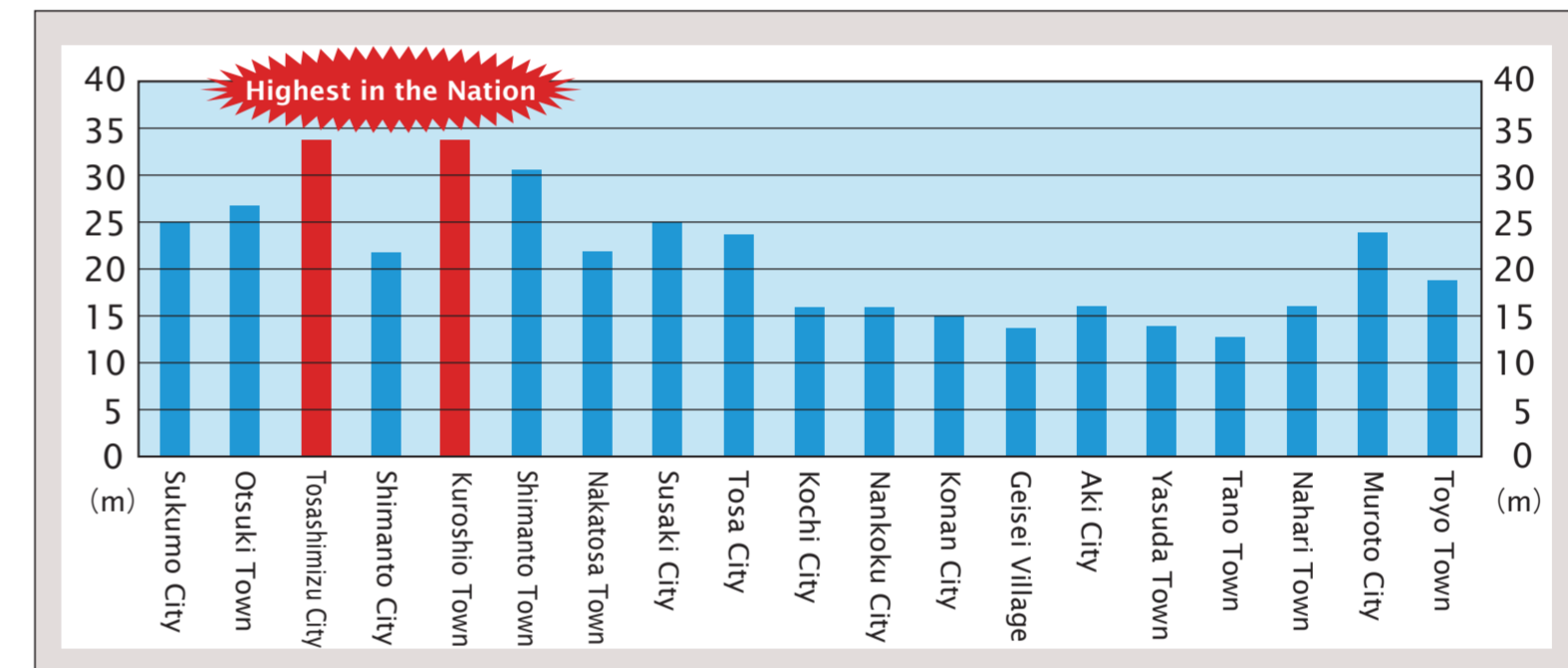
All of the epicenters of the Great Eastern Japan Earthquake were underwater, however the hypothesized epicenter of the *Nankai Torafu Jishin* also includes landmass, of which Kochi is included. This is why the shaking will be large.

High Tsunami Will Arrive Quickly

In Kochi a 1 meter tsunami will arrive at the coast within 3 minutes after the earthquake. Ports along the shore and bays and most areas along the coast except the Uranouchi Bay and the Urado Bay are expected to receive tsunami with a maximum of over 10 meters high.

■The height of tsunami along the coast (published by the Cabinet Office, August 2012)

You can see the height of tsunami that will arrive at the municipalities along the coast.



How to Escape from a Tsunami

Tremors ↓	When tremors begin, protect yourself. After large tremors, or tremors that continue for a long time, assume that a tsunami will come.	
Get Ready ↓	When the tremors stop collect only what you need and run. (Glasses, medicine, portable radio, flashlight, keep them ready so that you can evacuate any time.) Do not wait for a Tsunami Alarm Warning (<i>Tsunami Keihou</i>) or Tsunami Advisory Warning (<i>Tsunami Chuuhou</i>) just take yourself and run.	
Quickly ↓	Evacuate quickly to the meeting place you decided on. When you are in an unknown place and are unaware of where you should evacuate, go to elevated ground (<i>takadai</i>) or up a building. Depending on the waves, you may want to move even higher. Generally, move quickly and do not use a car. (You may be caught in traffic or unable to find your car keys and unable to escape in time.)	
Until the <i>tsunami keihou</i> is lifted	Tsunami come several times. Please confirm on a radio etc that the tsunami has finished before you return home. Never return home until the <i>tsunami keihou</i> has been lifted.	

発行者：(公財) 高知県国際交流協会

このパンフレットは一般財団法人自治体国際化協会 (CLAIR) の助成事業により作成されています。



Issued by the Kochi International Association (KIA)

"This pamphlet was created with the support of the Council of Local Authorities for International Relations (CLAIR)."