



2018 Malawi Population & Housing  
**Census**

**Be Counted. Leave No One Behind.**

**Preliminary Report**

**December 2018**

**National Statistical Office**

**P.O. Box 333, Zomba, Malawi**

**Telephone: +265 1 524 377/111**

**Fax: +265 1 525 130**

**Email: [enquiries@statistics.gov.mw](mailto:enquiries@statistics.gov.mw) or**

**[demography@statistics.gov.mw](mailto:demography@statistics.gov.mw)**

**Website: [www.nsomalawi.mw](http://www.nsomalawi.mw)**



**Government of Malawi**

**NATIONAL STATISTICAL OFFICE**

**2018 POPULATION AND HOUSING CENSUS**

**PRELIMINARY REPORT**

**December 2018**

# 1 PREFACE

The 2018 Population and Housing Census (PHC) provides a strategic opportunity to enumerate past achievements and benchmark future development monitoring and evaluation plans and strategies. This is why the Government of Malawi and Development Partners have provided a lot of resources towards the implementation of the 2018 PHC. I am personally gratified that the 2018 PHC was a success and that reliable and timely data has been made available to the general public and that more reports will be generated by the National Statistical Office and experts from various sectors including the academia.

I would like to thank UNFPA for its coordination role throughout the phases of the census and for its financial support towards the implementation of the 2018 Population and Housing Census. Let me recognize the US Census Bureau for their technical support in all phases of the census.

I would also like to extend my gratitude to DFID, USAID, Government of Norway, Government of Ireland, German Government, Government of Iceland, the People's Republic of China, the UN family and the Standard Bank of Malawi for their financial contributions in support of the 2018 PHC.

Lastly, let me thank and commend the National Statistical Office for a job well done. The office demonstrated the highest level of professionalism, dedication and hard work which has enabled us to obtain these reliable results that shall be a very critical development tool for the next decade also.

Hon. Goodall Gondwe

**Minister of Finance Economic Planning and Development**

## 2 FOREWORD AND ACKNOWLEDGEMENTS

The 2018 Population and Housing Census (2018 PHC) was conducted by the National Statistical Office (NSO). The 2018 PHC is the sixth in the series having conducted the previous ones in 1966, 1977, 1987, 1998 and 2008. The 2018 Population and Housing Census was the first one to be conducted on Computer Assisted Personal Interview (CAPI) programme. The data was collected and captured on tablets and transmitted to the NSO server electronically via internet. This process is very efficient and reduces time for data processing and cleaning as these processes are done at data capture stage in the field.

The 2018 PHC was implemented between 3<sup>rd</sup> and 23<sup>rd</sup> September 2018 and this report presents preliminary results that NSO has produced. The selected tables include *interalia* total population, intercensal growth rate, population distribution and population density. The other tables with detailed analysis will appear in the main report expected to be released end of April 2019 and over 15 Thematic Reports expected to be released between May 2019 and April 2020.

I would like to extend my gratitude to UNFPA for playing the coordination role for the census and for their financial support. Let me also thank US Census Bureau who provided technical and backstopping support for the CAPI census. Our acknowledgements extend to the Government of Malawi, DFID, USAID, Government of Norway, Government of Ireland, German Government, Government of Iceland, the People's Republic of China, the UN family and Standard Bank of Malawi for providing the much-needed financial support.

Finally, I wish to thank all the staff from National Statistical Office, District Supervisors, Control Centre Supervisors, Field Supervisors and Enumerators for their dedication and hard work which has enabled us produce this quality data. My acknowledgements would be incomplete if I don't mention the general public who provided the much-needed information without let of hindrance.

Mercy Kanyuka  
**COMMISSIONER OF STATISTICS**

## Contents

<b>1</b>	<b>PREFACE</b> .....	<b>3</b>
<b>2</b>	<b>FOREWORD AND ACKNOWLEDGEMENTS</b> .....	<b>4</b>
<b>1.</b>	<b>INTRODUCTION</b> .....	<b>7</b>
<b>2.</b>	<b>SUMMARY OF RESULTS</b> .....	<b>8</b>
<b>2.1</b>	<b>Total Population</b> .....	<b>8</b>
<b>2.2</b>	<b>Intercensal Population Increase and Annual Growth Rate</b> .....	<b>10</b>
<b>2.3</b>	<b>Spatial Population Distribution</b> .....	<b>13</b>
<b>2.4</b>	<b>Population Density</b> .....	<b>15</b>
<b>2.5</b>	<b>Population of Persons Aged 18 Years and Above</b> .....	<b>18</b>
<b>2.6</b>	<b>Population Distribution by Age, Rural and Urban</b> .....	<b>20</b>
<b>2.7</b>	<b>Households and Household Sizes.</b> .....	<b>22</b>
<b>2.8</b>	<b>Comparison of Enumerated Population (de-jure) and Population projections</b> .....	<b>25</b>
<b>3</b>	<b>SUMMARY</b> .....	<b>27</b>
<b>4</b>	<b>Annexes</b> .....	<b>28</b>

## List of Tables

Table 1: Malawi 2018 Census Preliminary results: Total Population (de-jure) by Sex, Region and District .....	9
Table 2: Malawi 2018 Census Preliminary results: Annual Population (de-jure) Intercensal growth rates and increases, 2008 and 2018 .....	11
Table 3: Malawi 2018 Census Preliminary results: Population (de-jure) Distribution by Region and Districts, 2008 and 2018 .....	14
Table 4: Malawi 2018 Census Preliminary results: Population (de-jure) Density by Region, Districts and Year .....	16
Table 5: Malawi 2018 Census Preliminary results: Population (de-jure) Distribution of Persons Ages 18 years and Over by Region .....	19
Table 6: Malawi 2018 Population (de-jure) by Age Group, Sex and Urban/Rural Residence at National and Regional Levels, 2018 .....	21
Table 7: Malawi 2018 Census Preliminary results: Households and Household Size 2008 and 2018 .....	23
Table 8: Malawi 2018 Census Preliminary results: Distribution of Household by sex, number of households by region/District .....	24
Table 9: Malawi 2018 Census Preliminary results: Comparing enumerated population (de-jure) and projected population by Region .....	26

## List of Figures

Figure 1: Annual Intercensal Growth Rates 1966-2018 .....	10
Figure 2: Map of Malawi showing annual growth rates by district 2008-2018 .....	12
Figure 3: Map of Malawi showing Population Density by district, 2018 .....	17

## Annexes

Annex 1: Malawi 2018 Census Preliminary results: Population (de-jure) by Sex, Region and District (2008 and 2018) .....	28
Annex 2: Malawi 2018 Census Preliminary results: Population (de-jure) Distribution of Persons Ages 18 years and Over by Region, District and TA/STA/Town .....	29
Annex 3: Malawi 2018 Census Preliminary results: Total Population (de-jure) by Sex, Region District, TA/TA .....	41

## 1. INTRODUCTION

The 2018 Population and Housing Census (PHC) is the sixth in the series of conducting censuses in Malawi and it falls in the 2020 round of world censuses advocated by the United Nations. The first census in Malawi was conducted in 1966 with the subsequent ones being conducted in 1977, 1987, 1998 and 2008. Malawi decided to conduct a CAPI census for the first time, a shift from previous censuses which were conducted using Pen and Paper for data collection. This entailed thorough preparations from questionnaire and programme design, tool testing, piloting through to training. National Statistical Office (NSO), implementers of Population and Housing Censuses in Malawi, engaged the services of US Census Bureau who provided technical support for designing a CAPI based census.

The main census process started in 2016 with the drafting of the Main Census Project Document which was approved by the Cabinet the same year. Prior to this, the Census Mapping Strategy was developed in 2015 and implementation started the same year. National Statistical Office conducted census mapping using satellite imagery, the first such maps to be produced for the whole country. The country was demarcated into Enumeration Area (EAs) in the computer lab and teams were only sent to the field to verify. Technical support for census mapping was provided by the Regional Centre for Mapping of Resources for Development (RCMRD) based in Nairobi, Kenya, a regional mapping group to which Malawi is a member state. The design of the questionnaire and CAPI programme started in January 2017.

The programme was pretested three times in June and July 2017 and in April 2018. The CAPI census was piloted in September 2017 exactly one year prior to the main census. The pilot census was a dry run of the main census aimed at assessing the completeness of preparations from technical, to logistical and administrative arrangements. Another key component for the success of the census was community mobilization and census publicity. The 2018 PHC publicity and count down campaign was launched by the Minister of Finance, Economic Planning and Development Honorable Goodall Gondwe in June 2018. Various campaign tools were utilized including use of airing of jingles, radio theatre, radio feature programmes, television adverts, TV debates and live phone-in programmes, newspaper publications and adverts, printing and distribution of IEC materials which culminated into the community sensitization week, one week prior to the recruitment of enumerators. Training of enumerators was conducted between 27th August and 1st September 2018. Field enumeration was conducted between 3rd and 23rd September 2018. Data was captured electronically on tablets by Enumerators and was transmitted by Control Centre supervisors through a private internet connection directly to the server at NSO.

The census implementation was highly decentralized with each of the 40 census districts acting like an autonomous structure. The district was manned by two District Supervisors, one from NSO and the other from the District Commissioner's (DC) Office. Below the census district were Control Centres which were manned by Control Centre Supervisors. There was a total of 485 Control Centres across the country. Each Control Centre Supervisor was supervising about 8 Field Supervisors who were in turn supervising around 5 Enumerators each. In total each Control Centre Supervisor had 40 Enumerators and 8 Field Supervisors. There was a total of 18,772 enumerators manning the same number of Enumeration Areas (EAs) and 3,791 Field Supervisors in this census. At the national level, a Steering Committee was constituted chaired by the Minister of Finance, Economic Planning and Development. The Steering Committee provided direction



for the census and acted as an overseer for the census activities. The Steering Committee was also very instrumental in resource mobilization.

The questionnaire development was a very consultative process where stakeholders were consulted on questions they would like to be included in the census while bearing in mind the need to keep the questionnaire short. Topics included in the questionnaire were among others: household and housing characteristics, migration, mortality, fertility, economic activities, and disability. For disability, set of questions recommended by the Washington Group on disability was used. Notably the 2018 Malawi Population and Housing Census included questions on albinism and garbage disposal.

## 2. SUMMARY OF RESULTS

### 2.1 Total Population

Preliminary results for the 2018 Population and Housing Census puts the total population (de-jure) at 17,563,749 up from 13,029,498 in 2008. The total population has grown by 35 percent between the 2008 and 2018. The population for males is 8,521,456 representing 49 percent of the total population while the population for females is 9,042,293 representing 51 percent of the total population. Table 1 gives the total population by region, district and sex.

At regional level, the results show that the southern region has the highest number of people with 7,750,629 or 44 percent. The central region is the second most populous with 7,526,160 people representing 43 percent of the total population while 2,286,960 people (13 percent) live in the northern region.

Among the districts, Lilongwe rural has the highest population standing at 1,637,583 followed by Mangochi with a population of 1,148,611. Likoma district on the other hand has the lowest population of 14,527. Lilongwe City continues to be the biggest city in Malawi population wise with a total population of 989,318 followed by Blantyre with a population of 800,264. Mzuzu City is the third largest with 221,272 people followed by Zomba with 105,013 people.

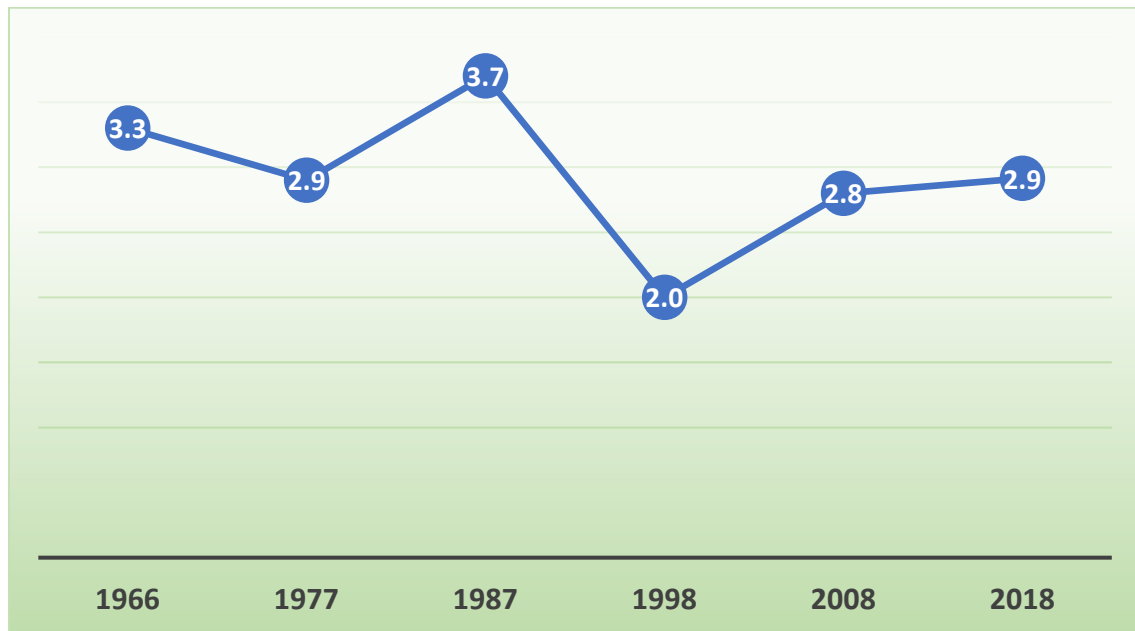
**Table 1: Malawi 2018 Census Preliminary results: Total Population (de-jure) by Sex, Region and District**

Region and District	Population		
	Total	Male	Female
<b>Malawi</b>	<b>17,563,749</b>	<b>8,521,456</b>	<b>9,042,293</b>
<b>Northern</b>	<b>2,286,960</b>	<b>1,113,089</b>	<b>1,173,871</b>
Chitipa	234,927	114,392	120,535
Karonga	365,028	176,197	188,831
Nkhata Bay	285,795	139,904	145,891
Rumphi	229,161	112,652	116,509
Mzimba	936,250	453,896	482,354
Likoma	14,527	7,200	7,327
Mzuzu City	221,272	108,848	112,424
<b>Central</b>	<b>7,526,160</b>	<b>3,680,960</b>	<b>3,845,200</b>
Kasungu	842,953	417,295	425,658
Nkhotakota	395,897	194,020	201,877
Ntchisi	317,069	154,843	162,226
Dowa	772,569	378,160	394,409
Salima	478,346	231,930	246,416
Lilongwe	1,637,583	795,427	842,156
Mchinji	602,305	296,786	305,519
Dedza	830,512	395,882	434,630
Ntcheu	659,608	319,416	340,192
Lilongwe City	989,318	497,201	492,117
<b>Southern</b>	<b>7,750,629</b>	<b>3,727,407</b>	<b>4,023,222</b>
Mangochi	1,148,611	545,500	603,111
Machinga	735,438	350,742	384,696
Zomba	746,724	356,718	390,006
Chiradzulu	356,875	169,679	187,196
Blantyre	451,220	218,464	232,756
Mwanza	130,949	63,533	67,416
Thyolo	721,456	340,760	380,696
Mulanje	684,107	325,115	358,992
Phalombe	429,450	207,006	222,444
Chikwawa	564,684	276,890	287,794
Nsanje	299,168	143,578	155,590
Balaka	438,379	209,274	229,105
Neno	138,291	67,357	70,934
Zomba City	105,013	51,619	53,394
Blantyre City	800,264	401,172	399,092

## 2.2 Intercensal Population Increase and Annual Growth Rate

The total Malawian population increased by 35 percent between 2008 and 2018 representing an intercensal growth rate of 2.9 percent per annum. Figure 1 below shows intercensal population growth rate for all the censuses conducted since independence. The general trend is that the population growth rate has remained high in Malawi except for 1987 to 1998 when the country experienced mass repatriation of refugees to Mozambique.

**Figure 1: Annual Intercensal Growth Rates 1966-2018**

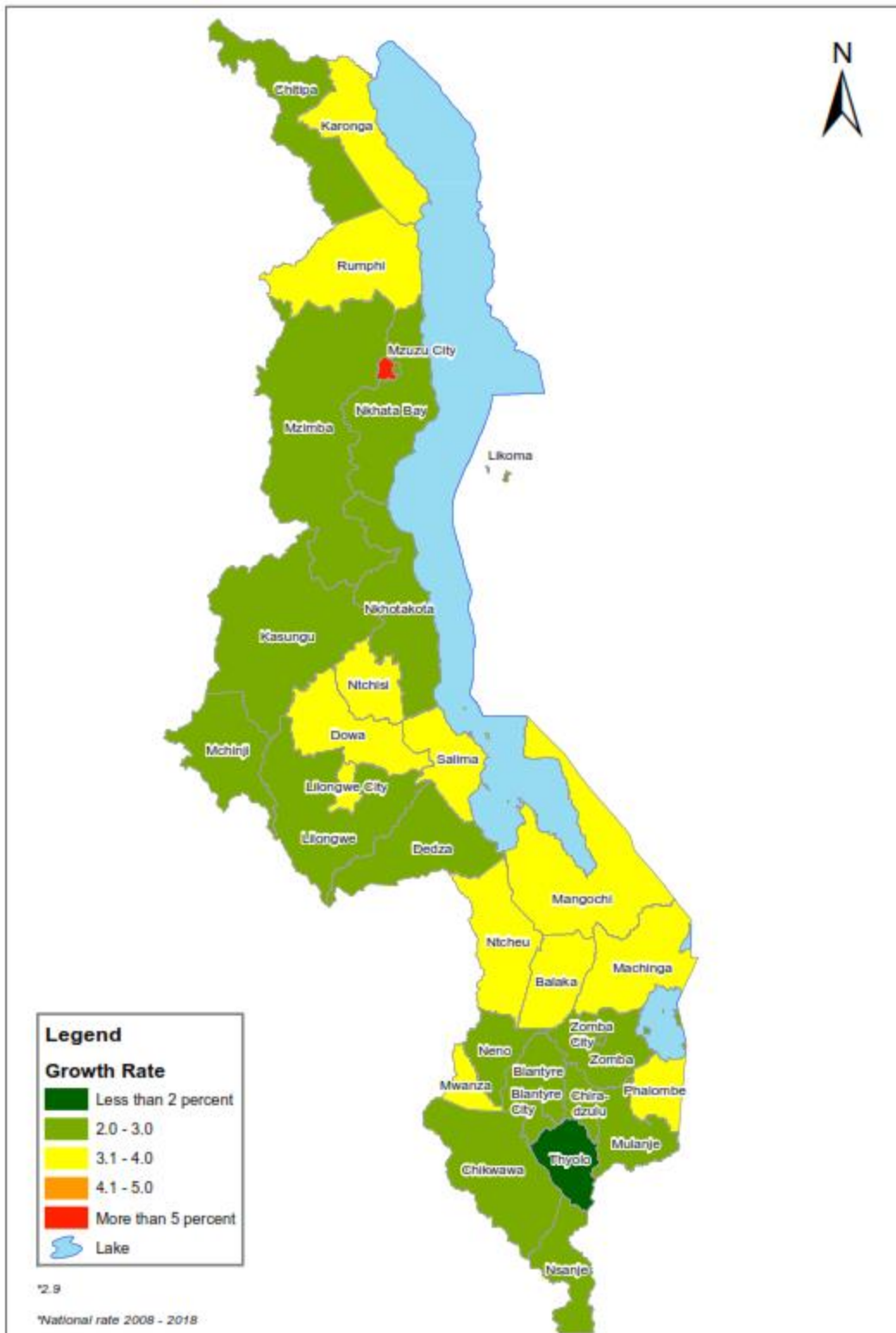


At regional level, central region has the highest intercensal growth rate at 3.1 percent per annum followed by the northern region with an intercensal growth rate of 3.0 percent and southern region 2.7 percent. Among the cities, Mzuzu city experienced the highest intercensal growth rate at 5.4 percent, Lilongwe city 3.8 percent, Zomba city 2.5 percent and Blantyre city 2.0 percent. At district level Machinga has the highest intercensal growth rate of 3.9 percent followed by Mangochi 3.6 percent while Thyolo had the lowest intercensal population growth rate of 2.0 percent.

**Table 2: Malawi 2018 Census Preliminary results: Annual Population (de-jure) Intercensal growth rates and increases, 2008 and 2018**

Region and District	Intercensal Annual Growth Rate (percent) 2008-2018			Intercensal Population Increase 2008-2018		
	Total	Male	Female	Total	Male	Female
<b>Malawi</b>	<b>2.9</b>	<b>2.8</b>	<b>3.0</b>	<b>4,534,251</b>	<b>2,150,521</b>	<b>2,383,730</b>
<b>Northern</b>	<b>3.0</b>	<b>3.0</b>	<b>3.0</b>	<b>607,469</b>	<b>293,598</b>	<b>313,871</b>
Chitipa	2.8	2.8	2.7	58,092	28,680	29,412
Karonga	3.2	3.1	3.2	100,916	48,127	52,789
Nkhata Bay	2.8	2.8	2.7	70,366	34,612	35,754
Rumphi	3.1	3.1	3.2	62,701	30,384	32,317
Mzimba	2.6	2.6	2.6	217,848	104,990	112,858
Likoma	3.0	3.3	2.6	3,813	2,090	1,723
Mzuzu City	5.4	5.2	5.6	93,733	44,715	49,018
<b>Central</b>	<b>3.1</b>	<b>3.0</b>	<b>3.2</b>	<b>2,028,908</b>	<b>965,520</b>	<b>1,063,388</b>
Kasungu	2.9	2.8	3.0	219,361	105,101	114,260
Nkhotakota	2.7	2.6	2.9	96,657	45,343	51,314
Ntchisi	3.5	3.4	3.5	94,695	45,546	49,149
Dowa	3.1	3.1	3.2	212,720	102,076	110,644
Salima	3.4	3.3	3.5	140,418	66,475	73,943
Lilongwe	2.8	2.7	2.9	404,611	189,953	214,658
Mchinji	2.7	2.6	2.9	147,721	69,166	78,555
Dedza	2.8	2.7	2.8	204,684	95,572	109,112
Ntcheu	3.3	3.4	3.2	188,255	93,020	95,235
Lilongwe City	3.8	3.6	4.0	319,786	153,268	166,518
<b>Southern</b>	<b>2.7</b>	<b>2.7</b>	<b>2.8</b>	<b>1,897,874</b>	<b>891,403</b>	<b>1,006,471</b>
Mangochi	3.6	3.5	3.7	352,575	163,270	189,305
Machinga	3.9	3.8	4.0	240,603	112,287	128,316
Zomba	2.5	2.5	2.5	167,958	79,650	88,308
Chiradzulu	2.1	2.2	2.1	69,271	33,704	35,567
Blantyre	2.8	2.8	2.8	111,814	53,719	58,095
Mwanza	3.4	3.5	3.4	38,712	18,933	19,779
Thyolo	2.0	1.9	2.0	130,984	58,945	72,039
Mulanje	2.6	2.7	2.6	160,158	77,545	82,613
Phalombe	3.0	3.1	2.9	114,265	56,561	57,704
Chikwawa	2.5	2.3	2.6	126,792	58,376	68,416
Nsanje	2.1	1.9	2.3	58,061	24,819	33,242
Balaka	3.2	3.1	3.2	121,805	56,939	64,866
Neno	2.4	2.4	2.4	29,952	14,606	15,346
Zomba City	2.5	2.3	2.7	23,512	10,777	12,735
Blantyre City	2.0	1.9	2.2	151,412	71,272	80,140

**Figure 2: Map of Malawi showing annual growth rates by district 2008-2018**



## 2.3 Spatial Population Distribution

Table 3 below shows population distribution by region and district. As stated above, the southern region has the highest population with 44 percent of the total population living there. Central Region is the second most populous with 43 percent of the population while northern region population constitute 13 percent of the total population.

At district level Lilongwe rural has the highest proportion of the population at 9.3 percent followed by Mangochi at 6.5 percent while Likoma has the smallest proportion at 0.1 percent. Among the four Malawian cities, Lilongwe city population constitute 5.6 percent of the total population, Blantyre city 5.1 percent, while Mzuzu city and Zomba city constitute 1.0 percent and 0.6 percent respectively.

**Table 3: Malawi 2018 Census Preliminary results: Population (de-jure) Distribution by Region and Districts, 2008 and 2018**

Region and District	Population Census		Population Distribution	
	2018	2008	2018	2008
<b>Malawi</b>	<b>17,563,749</b>	<b>13,029,498</b>	<b>100.0</b>	<b>100.0</b>
Northern	2,286,960	1,679,491	13.0	12.9
Chitipa	234,927	176,835	1.3	1.4
Karonga	365,028	264,112	2.1	2.0
Nkhata Bay	285,795	215,429	1.6	1.7
Rumphi	229,161	166,460	1.3	1.3
Mzimba	936,250	718,402	5.3	5.5
Likoma	14,527	10,714	0.1	0.1
Mzuzu City	221,272	127,539	1.3	1.0
<b>Central</b>	<b>7,526,160</b>	<b>5,497,252</b>	<b>42.9</b>	<b>42.2</b>
Kasungu	842,953	623,592	4.8	4.8
Nkhotakota	395,897	299,240	2.3	2.3
Ntchisi	317,069	222,374	1.8	1.7
Dowa	772,569	559,849	4.4	4.3
Salima	478,346	337,928	2.7	2.6
Lilongwe	1,637,583	1,232,972	9.3	9.5
Mchinji	602,305	454,584	3.4	3.5
Dedza	830,512	625,828	4.7	4.8
Ntcheu	659,608	471,353	3.8	3.6
Lilongwe City	989,318	669,532	5.6	5.1
<b>Southern</b>	<b>7,750,629</b>	<b>5,852,755</b>	<b>44.1</b>	<b>44.9</b>
Mangochi	1,148,611	796,036	6.5	6.1
Machinga	735,438	494,835	4.2	3.8
Zomba	746,724	578,766	4.3	4.4
Chiradzulu	356,875	287,604	2.0	2.2
Blantyre	451,220	339,406	2.6	2.6
Mwanza	130,949	92,237	0.7	0.7
Thyolo	721,456	590,472	4.1	4.5
Mulanje	684,107	523,949	3.9	4.0
Phalombe	429,450	315,185	2.4	2.4
Chikwawa	564,684	437,892	3.2	3.4
Nsanje	299,168	241,107	1.7	1.9
Balaka	438,379	316,574	2.5	2.4
Neno	138,291	108,339	0.8	0.8
Zomba City	105,013	81,501	0.6	0.6
Blantyre City	800,264	648,852	4.6	5.0

## 2.4 Population Density

Table 4 below gives population density by region and district for 2008 and 2018 Population and Housing Censuses. Malawi's population density continues to grow while the land area remains static. During the 2018 PHC Malawi population density stood at 186 persons per square kilometer up from 138 in the 2008 census representing a 35 percent jump. Across the regions, southern region has the highest population density at 244 persons per square kilometer followed by the central region with 211 persons per square kilometer and the northern region with an average of 84 persons per square kilometer.

Likoma district though with the smallest population has the highest population density at district level standing at 710 persons per square kilometer. Chiradzulu is the second most densely populated district at 469 persons per square kilometer and Thyolo at 433. Rumphu and Chitipa districts have the lowest population densities at 50 and 54 persons per square kilometer respectively.

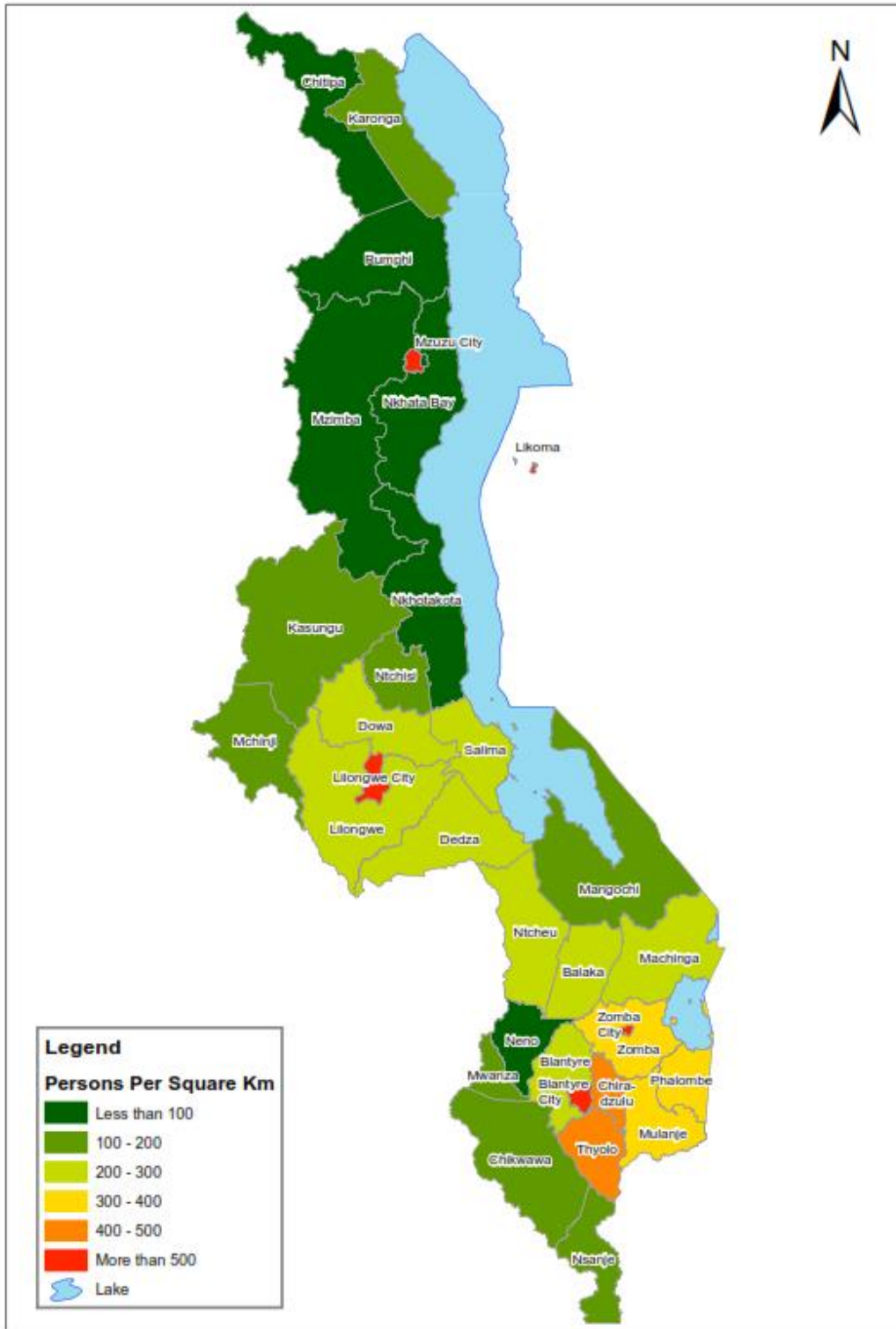
Among the cities, the population density for Blantyre city is 3,328 persons per square kilometer followed by Zomba city 2,511 persons per square kilometer, Lilongwe city 2,453 and Mzuzu city 1,516 persons per square kilometer. All the four cities have registered sharp increases in the population densities between the 2008 and 2018 Population and Housing Census.



**Table 4: Malawi 2018 Census Preliminary results: Population (de-jure) Density by Region, Districts and Year**

Region and District	Land Area	Population Census		Population Density	
	(Sq. Km.)	2018	2008	2018	2008
<b>Malawi</b>	<b>94,552</b>	<b>17,563,749</b>	<b>13,029,498</b>	<b>186</b>	<b>138</b>
<b>Northern Region</b>	<b>27,131</b>	<b>2,286,960</b>	<b>1,679,491</b>	<b>84</b>	<b>62</b>
Chitipa	4,334	234,927	176,835	54	41
Karonga	3,416	365,028	264,112	107	77
Nkhata Bay	4,182	285,795	215,429	68	52
Rumphi	4,560	229,161	166,460	50	37
Mzimba	10,473	936,250	718,402	89	69
Likoma	20	14,527	10,714	710	524
Mzuzu City	146	221,272	127,539	1,516	874
<b>Central Region</b>	<b>35,641</b>	<b>7,526,160</b>	<b>5,497,252</b>	<b>211</b>	<b>154</b>
Kasungu	8,017	842,953	623,592	105	78
Nkhotakota	4,338	395,897	299,240	91	69
Ntchisi	1,709	317,069	222,374	185	130
Dowa	3,077	772,569	559,849	251	182
Salima	2,151	478,346	337,928	222	157
Lilongwe	5,808	1,637,583	1,232,972	282	212
Mchinji	3,131	602,305	454,584	192	145
Dedza	3,754	830,512	625,828	221	167
Ntcheu	3,251	659,608	471,353	203	145
Lilongwe City	403	989,318	669,532	2,453	1,660
<b>Southern Region</b>	<b>31,780</b>	<b>7,750,629</b>	<b>5,852,755</b>	<b>244</b>	<b>184</b>
Mangochi	6,729	1,148,611	796,036	171	118
Machinga	3,582	735,438	494,835	205	138
Zomba	2,363	746,724	578,766	316	245
Chiradzulu	761	356,875	287,604	469	378
Blantyre	1,785	451,220	339,406	253	190
Mwanza	756	130,949	92,237	173	122
Thyolo	1,666	721,456	590,472	433	354
Mulanje	2,005	684,107	523,949	341	261
Phalombe	1,323	429,450	315,185	325	238
Chikwawa	4,878	564,684	437,892	116	90
Nsanje	1,945	299,168	241,107	154	124
Balaka	2,142	438,379	316,574	205	148
Neno	1,561	138,291	108,339	89	69
Zomba City	42	105,013	81,501	2,511	1,949
Blantyre City	240	800,264	648,852	3,328	2,698

Figure 3: Map of Malawi showing Population Density by district, 2018



## 2.5 Population of Persons Aged 18 Years and Above

Table 5 below gives distribution of population aged 18 years and above by region, district and sex. Annex 2 provides further information by Traditional Authority (TA). The table shows that the population of persons aged 18 and over is 8,669,215 representing 49 percent of the total population of which 4,120,104 are males and 4,549,111 are females.

Across the regions, the population aged 18 and above is 3,778,805 in the southern region representing 44 percent of the population above 18. The central region has 3,761,964 persons above 18 representing 43 percent while the northern region has 1,128,446 people above 18 representing 13 percent of all people above this age.

**Table 5: Malawi 2018 Census Preliminary results: Population (de-jure) Distribution of Persons Ages 18 years and Over by Region**

Region and District	Age		
	Total 18+	Male 18+	Female 18+
<b>Malawi</b>	<b>8,669,215</b>	<b>4,120,104</b>	<b>4,549,111</b>
<b>Northern</b>	<b>1,128,446</b>	<b>541,149</b>	<b>587,297</b>
Chitipa	114,719	54,926	59,793
Karonga	176,536	83,569	92,967
Nkhata Bay	138,660	66,491	72,169
Rumphi	112,281	54,683	57,598
Mzimba	455,099	216,053	239,046
Likoma	8,056	4,024	4,032
Mzuzu City	123,095	61,403	61,692
<b>Central</b>	<b>3,761,964</b>	<b>1,820,791</b>	<b>1,941,173</b>
Kasungu	408,792	202,776	206,016
Nkhotakota	186,900	90,544	96,356
Ntchisi	154,433	74,449	79,984
Dowa	390,932	189,406	201,526
Salima	224,569	105,816	118,753
Lilongwe	812,578	387,863	424,715
Mchinji	292,451	143,214	149,237
Dedza	411,631	189,230	222,401
Ntcheu	326,874	153,246	173,628
Lilongwe City	552,804	284,247	268,557
<b>Southern</b>	<b>3,778,805</b>	<b>1,758,164</b>	<b>2,020,641</b>
Mangochi	516,976	231,852	285,124
Machinga	328,195	149,298	178,897
Zomba	360,222	164,967	195,255
Chiradzulu	184,005	83,430	100,575
Blantyre	230,510	108,966	121,544
Mwanza	64,983	30,922	34,061
Thyolo	359,588	161,364	198,224
Mulanje	337,325	152,461	184,864
Phalombe	200,958	93,608	107,350
Chikwawa	274,939	132,861	142,078
Nsanje	141,074	65,404	75,670
Balaka	205,421	92,951	112,470
Neno	66,612	31,591	35,021
Zomba City	58,376	28,903	29,473
Blantyre City	449,621	229,586	220,035

## 2.6 Population Distribution by Age, Rural and Urban

Table 6 shows the population by urban and rural according to age groups. A population of 2,783,364 people live in the urban representing 16 percent of the population while the rest (14,780,385) live in the rural of the country representing 84 percent of the total population. This indicates that Malawi's population is still predominantly rural based. Approximately the same number of male and female populations live in the urban, 1,385,218 and 1,398,146 respectively. However, significantly more females live in the rural than men, 7,644,147 and 7,136,238 respectively.

The results also show that the Malawian population is still very young. A population of 8,894,534 are below the age of 18 representing 51 percent of the total population.

**Table 6: Malawi 2018 Population (de-jure) by Age Group, Sex and Urban/Rural Residence at National and Regional Levels, 2018**

Age Group	MALAWI								
	Total			Urban			Rural		
	Both Sexes	Male	Female	Both Sexes	Male	Female	Both Sexes	Male	Female
<b>Malawi</b>	<b>17,563,749</b>	<b>8,521,456</b>	<b>9,042,293</b>	<b>2,783,364</b>	<b>1,385,218</b>	<b>1,398,146</b>	<b>14,780,385</b>	<b>7,136,238</b>	<b>7,644,147</b>
<1 yr	522,802	258,965	263,837	76,362	37,967	38,395	446,440	220,998	225,442
1-4	2,029,604	1,007,006	1,022,598	282,690	140,578	142,112	1,746,914	866,428	880,486
5-9	2,632,878	1,298,962	1,333,916	352,068	172,968	179,100	2,280,810	1,125,994	1,154,816
10-14	2,533,303	1,247,212	1,286,091	352,982	168,713	184,269	2,180,321	1,078,499	1,101,822
15-19	2,035,945	1,004,780	1,031,165	322,791	156,130	166,661	1,713,154	848,650	864,504
20-24	1,651,576	777,576	874,000	322,209	152,462	169,747	1,329,367	625,114	704,253
25-29	1,229,411	582,864	646,547	259,442	126,303	133,139	969,969	456,561	513,408
30-34	1,107,226	516,505	590,721	232,671	114,640	118,031	874,555	401,865	472,690
35-39	968,998	468,187	500,811	196,105	102,700	93,405	772,893	365,487	407,406
40-44	729,600	367,170	362,430	135,015	75,899	59,116	594,585	291,271	303,314
45-49	535,868	273,749	262,119	83,479	47,970	35,509	452,389	225,779	226,610
50-54	387,812	188,401	199,411	55,611	30,365	25,246	332,201	158,036	174,165
55-59	306,921	144,045	162,876	37,817	19,993	17,824	269,104	124,052	145,052
60-64	234,918	107,820	127,098	27,160	14,714	12,446	207,758	93,106	114,652
65-69	240,551	107,912	132,639	20,339	10,810	9,529	220,212	97,102	123,110
70-74	144,788	63,805	80,983	11,392	6,033	5,359	133,396	57,772	75,624
75-79	124,718	51,598	73,120	7,592	3,738	3,854	117,126	47,860	69,266
80-84	63,675	24,130	39,545	3,674	1,625	2,049	60,001	22,505	37,496
85-89	54,754	20,751	34,003	2,590	1,090	1,500	52,164	19,661	32,503
90-94	15,130	5,245	9,885	771	288	483	14,359	4,957	9,402
95+	13,271	4,773	8,498	604	232	372	12,667	4,541	8,126

## 2.7 Households and Household Sizes.

Table 7 shows households and household sizes by region and district in the 2018 and 2008 Population and Housing Censuses. Table 8 further collates number of households and household sizes against population by region and district. There are 3,984,929 households in Malawi up from 2,869,933 in 2008 representing a 39 percent rise. The average household size is at 4.4 persons per household, a marginal drop from 4.6 in 2008.

At regional level, southern region has the largest number of households at 1,799,576 representing 45 percent of the total households in the country. Central region has 1,713,490 households representing 43 percent of the households while northern region has 471,863 households representing 12 percent of the total households in Malawi.

Northern region has the highest average household size at 4.8 persons per household, while the central region stands at 4.4 and the southern region has an average of 4.3 members per household.

Across districts, Nkhata Bay has the highest average household size of 5.5 persons per household followed by Likoma at 5.0 persons per household, Chiradzulu has the lowest average household size of 3.9 persons per household.

**Table 7: Malawi 2018 Census Preliminary results: Households and Household Size 2008 and 2018**

Region and District	2018		2008	
	Total Number of Households	Average Household Size	Total Number of Households	Average Household Size
<b>Malawi</b>	<b>3,984,929</b>	<b>4.4</b>	<b>2,869,933</b>	<b>4.6</b>
<b>Northern Region</b>	<b>471,863</b>	<b>4.8</b>	<b>336,602</b>	<b>5.1</b>
Chitipa	49,661	4.7	36,708	4.9
Karonga	74,953	4.9	55,447	4.9
Nkhata Bay	52,274	5.5	41,054	5.3
Rumphi	47,060	4.9	35,208	4.9
Mzimba	195,459	4.8	138,949	5.2
Likoma	2,892	5.0	1,968	5.3
Mzuzu City	49,564	4.5	27,268	4.9
<b>Central</b>	<b>1,713,490</b>	<b>4.4</b>	<b>1,192,139</b>	<b>4.6</b>
Kasungu	179,677	4.7	125,902	5.0
Nkhotakota	80,401	4.9	61,058	5.0
Ntchisi	70,672	4.5	46,127	4.9
Dowa	176,250	4.4	119,011	4.7
Salima	105,558	4.5	74,569	4.5
Lilongwe	384,899	4.3	269,845	4.6
Mchinji	134,797	4.5	147,063	4.6
Dedza	195,998	4.2	95,190	4.8
Ntcheu	154,973	4.3	142,797	4.4
Lilongwe City	230,265	4.3	110,577	4.3
<b>Southern</b>	<b>1,799,576</b>	<b>4.3</b>	<b>1,341,192</b>	<b>4.4</b>
Mangochi	252,869	4.5	178,580	4.5
Machinga	164,174	4.5	112,196	4.4
Zomba	177,679	4.2	138,164	4.2
Chiradzulu	90,550	3.9	18,408	4.8
Blantyre	109,962	4.1	68,720	4.2
Mwanza	30,344	4.3	79,347	4.3
Thyolo	174,103	4.1	146,079	4.5
Mulanje	160,147	4.3	21,040	4.4
Phalombe	98,847	4.3	137,277	4.3
Chikwawa	127,198	4.4	122,644	4.3
Nsanje	63,971	4.7	73,486	4.3
Balaka	101,575	4.3	94,981	4.6
Neno	31,488	4.4	51,505	4.6
Zomba City	24,993	4.2	74,195	4.3
Blantyre City	191,676	4.2	24,570	4.4



**Table 8: Malawi 2018 Census Preliminary results: Distribution of Household by sex, number of households by region/District**

Region and District	Total Population	Total Number of Households	Average Household Size
<b>Malawi</b>	<b>17,563,749</b>	<b>3,984,929</b>	<b>4.4</b>
<b>Northern</b>	<b>2,286,960</b>	<b>471,863</b>	<b>4.8</b>
Chitipa	234,927	49,661	4.7
Karonga	365,028	74,953	4.9
Nkhata Bay	285,795	52,274	5.5
Rumphi	229,161	47,060	4.9
Mzimba	936,250	195,459	4.8
Likoma	14,527	2,892	5.0
Mzuzu City	221,272	49,564	4.5
<b>Central</b>	<b>7,526,160</b>	<b>1,713,490</b>	<b>4.4</b>
Kasungu	842,953	179,677	4.7
Nkhotakota	395,897	80,401	4.9
Ntchisi	317,069	70,672	4.5
Dowa	772,569	176,250	4.4
Salima	478,346	105,558	4.5
Lilongwe	1,637,583	384,899	4.3
Mchinji	602,305	134,797	4.5
Dedza	830,512	195,998	4.2
Ntcheu	659,608	154,973	4.3
Lilongwe City	989,318	230,265	4.3
<b>Southern</b>	<b>7,750,629</b>	<b>1,799,576</b>	<b>4.3</b>
Mangochi	1,148,611	252,869	4.5
Machinga	735,438	164,174	4.5
Zomba	746,724	177,679	4.2
Chiradzulu	356,875	90,550	3.9
Blantyre	451,220	109,962	4.1
Mwanza	130,949	30,344	4.3
Thyolo	721,456	174,103	4.1
Mulanje	684,107	160,147	4.3
Phalombe	429,450	98,847	4.3
Chikwawa	564,684	127,198	4.4
Nsanje	299,168	63,971	4.7
Balaka	438,379	101,575	4.3
Neno	138,291	31,488	4.4
Zomba City	105,013	24,993	4.2
Blantyre City	800,264	191,676	4.2

## 2.8 Comparison of Enumerated Population (de-jure) and Population projections

Table 9 is a comparison of enumerated population (de-jure) against projected population. The projected population of 17,931,637 is higher than the actual enumerated population of 17,563,749 representing a ratio of 0.979. The projected is higher for both the northern and central regions with a ratio of 0.957 and 0.960 respectively. The southern region though has a higher enumerated population than the projected representing a ratio of 1.006.

**Table 9: Malawi 2018 Census Preliminary results: Comparing enumerated population (de-jure) and projected population by Region**

Region and District	Enumerated Population	Projected Population based on 2008 census	Ratio
	(1)	(2)	(1)/(2)
<b>Malawi</b>	<b>17,563,749</b>	<b>17,931,637</b>	<b>0.979</b>
<b>Northern Region</b>	<b>2,286,960</b>	<b>2,389,699</b>	<b>0.957</b>
Chitipa	234,927	234,797	1.001
Karonga	365,028	370,370	0.986
Nkhata Bay	285,795	296,351	0.964
Rumphi	229,161	225,922	1.014
Mzimba	936,250	980,374	0.955
Likoma	14,527	10,493	1.384
Mzuzu City	221,272	271,393	0.815
<b>Central Region</b>	<b>7,526,160</b>	<b>7,840,359</b>	<b>0.960</b>
Kasungu	842,953	927,543	0.909
Nkhotakota	395,897	417,073	0.949
Ntchisi	317,069	315,892	1.004
Dowa	772,569	866,218	0.892
Salima	478,346	458,357	1.044
Lilongwe	1,637,583	1,564,527	1.047
Mchinji	602,305	655,430	0.919
Dedza	830,512	788,195	1.054
Ntcheu	659,608	620,070	1.064
Lilongwe City	989,318	1,227,054	0.806
<b>Southern Region</b>	<b>7,750,629</b>	<b>7,701,579</b>	<b>1.006</b>
Mangochi	1,148,611	1,131,378	1.015
Machinga	735,438	668,233	1.101
Zomba	746,724	698,636	1.069
Chiradzulu	356,875	331,497	1.077
Blantyre	451,220	427,131	1.056
Mwanza	130,949	108,941	1.202
Thyolo	721,456	679,163	1.062
Mulanje	684,107	595,520	1.149
Phalombe	429,450	403,953	1.063
Chikwawa	564,684	583,461	0.968
Nsanje	299,168	303,514	0.986
Balaka	438,379	436,937	1.003
Neno	138,291	173,450	0.797
Zomba City	105,013	165,248	0.635
Blantyre City	800,264	994,517	0.805

### 3 SUMMARY

In summary, the 2018 Population and Housing Census preliminary results show that

- a) The total population of Malawi from the 2018 Population and Housing Census is 17,563,749 (de-jure) up from 13,029,498 (de-jure) in 2008 representing an overall population increase of 35 percent.
- b) The intercensal growth rate between 2008 and 2018 is 2.9 percent per annum compared to 2.8 percent intercensal growth between 1998 and 2008.
- c) Forty four percent of the people live in the southern region, 43 percent live in the central region while 13 percent live in the northern region.
- d) There is a rapid increase in the population density from 138 people per square kilometer in the 2008 census to 186 people per square kilometer in the 2018 Population and Housing Census.
- e) The population aged above 18 years of age is 8,669,215 representing 49 percent of the total population.
- f) The results also show that the Malawian population is still very young. A population of 8,894,534 is below the age of 18 representing 51 percent of the total population.
- g) The population is also predominantly rural based with 14,780,385 people living in the rural representing 84 percent of the total population. Only 2,783,364 live in the urban constituting 16 percent of the total population of Malawi.
- h) There are 3,984,929 households in Malawi up from 2,869,933 in 2008 representing a 39 percent rise.
- i) The average household size is at 4.4 persons per household, a marginal drop from 4.6 in 2008.

## 4 Annexes

**Annex 1: Malawi 2018 Census Preliminary results: Population (de-jure) by Sex, Region and District (2008 and 2018)**

Region and District	Population Census					
	2018			2008		
	Total	Male	Female	Total	Male	Female
<b>Malawi</b>	<b>17,563,749</b>	<b>8,521,456</b>	<b>9,042,293</b>	<b>13,029,498</b>	<b>6,370,935</b>	<b>6,658,563</b>
<b>Northern</b>	<b>2,286,960</b>	<b>1,113,089</b>	<b>1,173,871</b>	<b>1,679,491</b>	<b>819,491</b>	<b>860,000</b>
Chitipa	234,927	114,392	120,535	176,835	85,712	91,123
Karonga	365,028	176,197	188,831	264,112	128,070	136,042
Nkhata Bay	285,795	139,904	145,891	215,429	105,292	110,137
Rumphi	229,161	112,652	116,509	166,460	82,268	84,192
Mzimba	936,250	453,896	482,354	718,402	348,906	369,496
Likoma	14,527	7,200	7,327	10,714	5,110	5,604
Mzuzu City	221,272	108,848	112,424	127,539	64,133	63,406
<b>Central</b>	<b>7,526,160</b>	<b>3,680,960</b>	<b>3,845,200</b>	<b>5,497,252</b>	<b>2,715,440</b>	<b>2,781,812</b>
Kasungu	842,953	417,295	425,658	623,592	312,194	311,398
Nkhotakota	395,897	194,020	201,877	299,240	148,677	150,563
Ntchisi	317,069	154,843	162,226	222,374	109,297	113,077
Dowa	772,569	378,160	394,409	559,849	276,084	283,765
Salima	478,346	231,930	246,416	337,928	165,455	172,473
Lilongwe	1,637,583	795,427	842,156	1,232,972	605,474	627,498
Mchinji	602,305	296,786	305,519	454,584	227,620	226,964
Dedza	830,512	395,882	434,630	625,828	300,310	325,518
Ntcheu	659,608	319,416	340,192	471,353	226,396	244,957
Lilongwe City	989,318	497,201	492,117	669,532	343,933	325,599
<b>Southern</b>	<b>7,750,629</b>	<b>3,727,407</b>	<b>4,023,222</b>	<b>5,852,755</b>	<b>2,836,004</b>	<b>3,016,751</b>
Mangochi	1,148,611	545,500	603,111	796,036	382,230	413,806
Machinga	735,438	350,742	384,696	494,835	238,455	256,380
Zomba	746,724	356,718	390,006	578,766	277,068	301,698
Chiradzulu	356,875	169,679	187,196	287,604	135,975	151,629
Blantyre	451,220	218,464	232,756	339,406	164,745	174,661
Mwanza	130,949	63,533	67,416	92,237	44,600	47,637
Thyolo	721,456	340,760	380,696	590,472	281,815	308,657
Mulanje	684,107	325,115	358,992	523,949	247,570	276,379
Phalombe	429,450	207,006	222,444	315,185	150,445	164,740
Chikwawa	564,684	276,890	287,794	437,892	218,514	219,378
Nsanje	299,168	143,578	155,590	241,107	118,759	122,348
Balaka	438,379	209,274	229,105	316,574	152,335	164,239
Neno	138,291	67,357	70,934	108,339	52,751	55,588
Zomba City	105,013	51,619	53,394	81,501	40,842	40,659
Blantyre City	800,264	401,172	399,092	648,852	329,900	318,952

**Annex 2: Malawi 2018 Census Preliminary results: Population (de-jure) Distribution of Persons Ages 18 years and Over by Region, District and TA/STA/Town**

Region and District	Population 18 Yrs +		
	Total	Male	Female
<b>Malawi</b>	<b>8,669,215</b>	<b>4,120,104</b>	<b>4,549,111</b>
<b>Northern</b>	<b>1,128,446</b>	<b>541,149</b>	<b>587,297</b>
Chitipa	114,719	54,926	59,793
TA Mwabulambya	33,369	16,033	17,336
STA Bulambya Songwe	16,249	7,720	8,529
TA Mwenemisuku	13,543	6,570	6,973
STA Lwangwa	2,957	1,409	1,548
TA Mwenewenya	11,045	5,223	5,822
TA Nthalire	9,174	4,359	4,815
STA Nthengatenga	4,498	2,169	2,329
STA Wavikaza	3,106	1,505	1,601
TA Kameme	11,385	5,376	6,009
Chitipa Boma	9,393	4,562	4,831
Karonga	176,536	83,569	92,967
TA Kilupula	36,645	17,208	19,437
TA Mwakaboko	11,885	5,596	6,289
TA Kyungu	42,685	20,308	22,377
TA Wasambo	35,217	16,383	18,834
TA Mwirang'ombe	17,521	8,275	9,246
Karonga Town	32,583	15,799	16,784
Nkhata Bay	138,660	66,491	72,169
TA Kabunduli	24,557	12,118	12,439
TA Fukamapiri	9,736	4,567	5,169
TA Malenga Mzoma	5,369	2,487	2,882
TA Malanda	13,653	6,566	7,087
TA Zilakoma	9,129	4,295	4,834
TA Mankhambira	11,734	5,569	6,165
TA Fukamalaza	6,762	3,093	3,669
TA Mkumbira	7,244	3,427	3,817
TA M'bwana	11,625	5,517	6,108
STA Nyaluwanga	6,351	3,297	3,054
STA Kondowe	1,070	488	582
TA Timbiri	22,898	10,894	12,004
TA Boghoyo	794	366	428
Nkhata Bay Boma	7,738	3,807	3,931

**Annex 2: Malawi 2018 Census Preliminary results: Population (de-jure) Distribution of Persons Ages 18 years and Over by Region, District and TA/STA/Town**

Region and District	Population 18 Yrs +		
	Total	Male	Female
Rumphi	112,281	54,683	57,598
TA Chikulamayembe	33,971	16,550	17,421
TA Mwamlowe	4,224	1,976	2,248
TA Mwahenga	9,747	4,852	4,895
TA Mwalweni	13,632	6,549	7,083
STA Kachulu	6,094	3,010	3,084
STA Chapinduka	1,830	845	985
TA Mwankhunikira	12,537	6,189	6,348
TA Katumbi	7,785	3,691	4,094
STA Zolokere	2,991	1,439	1,552
STA Chisovya	4,620	2,297	2,323
STA Njikula	1,925	920	1,005
Nyika National Park	878	447	431
Vwaza Marsh Reserve	20	10	10
Rumphi Boma	12,027	5,908	6,119
Mzimba	455,099	216,053	239,046
TA M'Mbelwa	61,860	27,764	34,096
TA Mtwalo	94,631	46,220	48,411
TA Kapingo Sibande	32,913	15,424	17,489
TA Jaravikuba Munthali	8,840	4,274	4,566
TA Chindi	76,362	34,449	41,913
TA Mzikubola	49,018	23,786	25,232
TA Mabulabo	31,026	14,881	16,145
TA Khosolo Gwaza Jere	25,407	12,531	12,876
TA Mpherembe	32,527	16,488	16,039
TA Mzukuzuku	19,021	8,955	10,066
STA Levi Jere	9,300	4,472	4,828
Mzimba Boma	14,194	6,809	7,385
Likoma	8,056	4,024	4,032
TA Mkumpha	7,259	3,574	3,685
Likoma Boma	797	450	347
Mzuzu City	123,095	61,403	61,692
Chibavi East Ward	4,613	2,349	2,264
Chibavi West Ward	7,108	3,509	3,599
Chibanja Ward	6,838	3,458	3,380
Chiputula Ward	6,888	3,451	3,437
Jombo - Kaning'ina Ward	3,810	1,902	1,908

**Annex 2: Malawi 2018 Census Preliminary results: Population (de-jure) Distribution of Persons Ages 18 years and Over by Region, District and TA/STA/Town**

Region and District	Population 18 Yrs +		
	Total	Male	Female
Katawa Ward	3,495	1,671	1,824
Luwinga Ward	15,657	7,617	8,040
Masasa Ward	12,525	6,315	6,210
Mchengautuwa East Ward	15,061	7,527	7,534
Mchengautuwa West Ward	16,000	8,019	7,981
Msongwe Ward	5,242	2,628	2,614
Mzilawaingwe Ward	4,076	1,961	2,115
Nkhorongo - Lupaso Ward	5,390	2,684	2,706
Zolozolo East Ward	4,761	2,417	2,344
Zolozolo West Ward	11,631	5,895	5,736
<b>Central</b>	<b>3,761,964</b>	<b>1,820,791</b>	<b>1,941,173</b>
Kasungu	408,792	202,776	206,016
TA Kaluluma	18,626	8,917	9,709
TA Chisemphere	5,770	2,758	3,012
TA Simlemba	19,142	9,539	9,603
STA M'nyanja	18,447	8,981	9,466
STA Chisikwa	3,922	1,883	2,039
TA Kaomba	25,992	12,767	13,225
TA Kawamba	21,306	10,597	10,709
STA Nthunduwala	5,194	2,562	2,632
TA Njombwa	24,490	12,037	12,453
TA Chilowamatambe	17,250	8,670	8,580
STA Chambwe	6,322	3,076	3,246
TA Chulu	16,085	7,853	8,232
STA Chisinga	10,708	5,115	5,593
STA Mphomwa	10,966	5,361	5,605
STA Chaima	12,180	6,011	6,169
TA Kaphaizi	1,008	468	540
STA Mangwazu	2,835	1,423	1,412
STA Mawawa	3,917	1,984	1,933
TA Lukwa	14,881	7,486	7,395
TA Santhe	28,119	13,923	14,196
TA Chidzuma	9,880	4,885	4,995
TA Wimbe	59,758	30,241	29,517
TA Kapelula	15,000	7,564	7,436
STA Kapichira	3,246	1,630	1,616
STA Mdunga	6,416	3,226	3,190
TA Mwase	15,646	7,828	7,818



**Annex 2: Malawi 2018 Census Preliminary results: Population (de-jure) Distribution of Persons Ages 18 years and Over by Region, District and TA/STA/Town**

Region and District	Population 18 Yrs +		
	Total	Male	Female
Kasungu National Park	439	239	200
Kasungu Boma	31,247	15,752	15,495
Nkhotakota	186,900	90,544	96,356
TA Kanyenda	57,302	28,989	28,313
TA Kafuzila	12,412	5,957	6,455
STA Kalimanjira	9,090	4,157	4,933
TA Malenga Chanzi	20,187	9,435	10,752
TA Mphonde	14,051	6,673	7,378
TA Mwadzama	45,338	21,796	23,542
TA Mwansambo	13,836	6,691	7,145
Nkhotakota Boma	14,684	6,846	7,838
Ntchisi	154,433	74,449	79,984
TA Kasakula	9,290	4,383	4,907
TA Chikho	11,634	5,584	6,050
TA Kalumo	37,046	17,702	19,344
TA Nthondo	15,459	7,412	8,047
TA Chilooko	43,232	21,048	22,184
TA Vuso Jere	7,869	3,789	4,080
TA Malenga	24,829	11,982	12,847
Ntchisi Boma	5,074	2,549	2,525
Dowa	390,932	189,406	201,526
TA Dzoole	47,518	22,781	24,737
TA Chakhaza	77,666	37,722	39,944
TA Kayembe	55,677	27,032	28,645
TA Chiwere	54,691	26,069	28,622
TA Mkukula	64,584	31,445	33,139
TA Msakambewa	47,499	23,270	24,229
TA Mponela	25,921	12,426	13,495
Dowa Boma	4,120	2,032	2,088
Mponela Urban	13,256	6,629	6,627
Salima	224,569	105,816	118,753
TA Maganga	32,949	15,483	17,466
TA Karonga	36,895	17,867	19,028
TA Pemba	10,794	4,426	6,368
TA Kambwiri	18,829	8,862	9,967
TA Ndindi	20,938	9,264	11,674
TA Kambalame	9,912	4,421	5,491

**Annex 2: Malawi 2018 Census Preliminary results: Population (de-jure) Distribution of Persons Ages 18 years and Over by Region, District and TA/STA/Town**

Region and District	Population 18 Yrs +		
	Total	Male	Female
TA Khombedza	45,432	21,760	23,672
TA Mwanza	12,763	6,098	6,665
TA Kuluunda	8,919	4,252	4,667
TA Msosa	4,498	2,171	2,327
Salima Town	19,558	9,771	9,787
Chipoka Urban	3,082	1,441	1,641
Lilongwe	812,578	387,863	424,715
TA Chadza	70,573	33,145	37,428
TA Kalolo	88,714	42,714	46,000
TA Masula	37,458	17,277	20,181
TA Masumbankhunda	41,530	19,482	22,048
TA Chiseka	73,302	34,802	38,500
TA Mazengera	59,027	27,089	31,938
STA Chitekwele	22,998	10,720	12,278
TA Khongoni	66,507	32,080	34,427
TA Chimutu	58,632	28,449	30,183
TA Chitukula	12,568	6,045	6,523
TA Mtema	25,511	12,234	13,277
TA Kalumbu	34,255	15,657	18,598
TA Tsabango	32,681	16,312	16,369
TA Kalumba	21,388	10,686	10,702
TA Njewa	25,694	12,991	12,703
TA Malili	58,383	27,969	30,414
TA Kabudula	77,594	37,441	40,153
STA Mbang'ombe	5,763	2,770	2,993
Mchinji	292,451	143,214	149,237
TA Mlonyeni	37,517	18,438	19,079
TA Mavwere	41,406	19,904	21,502
TA Zulu	35,461	17,455	18,006
TA Simphasi	24,344	11,876	12,468
TA Mduwa	30,983	15,065	15,918
STA Nyoka	20,020	9,761	10,259
TA Mkanda	35,956	17,683	18,273
STA Gumba	7,712	3,746	3,966
STA Pitala	2,269	1,120	1,149
STA Kapunula	4,469	2,220	2,249
TA Kazyozyo	3,251	1,663	1,588
TA Dambe	29,107	14,356	14,751

**Annex 2: Malawi 2018 Census Preliminary results: Population (de-jure) Distribution of Persons Ages 18 years and Over by Region, District and TA/STA/Town**

Region and District	Population 18 Yrs +		
	Total	Male	Female
TA Kapondo	5,001	2,413	2,588
Mchinji Boma	14,955	7,514	7,441
Dedza	411,631	189,230	222,401
TA Kachere	84,394	38,906	45,488
TA Chilikumwendo	39,293	18,454	20,839
TA Kaphuka	86,169	39,677	46,492
TA Tambala	40,463	17,477	22,986
TA Chauma	11,148	4,913	6,235
TA Kasumbu	52,634	23,210	29,424
TA Kachindamoto	61,224	29,207	32,017
TA Kamenya Gwaza	19,240	8,965	10,275
Dedza Boma	17,066	8,421	8,645
Ntcheu	326,874	153,246	173,628
TA Phambala	21,721	10,377	11,344
STA Tsikulamowa	19,826	9,524	10,302
TA Mpando	36,856	18,067	18,789
TA Kwataine	27,386	12,594	14,792
TA Makwangwala	43,864	20,005	23,859
STA Mkutumula	14,231	6,646	7,585
TA Champiti	11,244	5,323	5,921
TA Njolomole	36,099	16,388	19,711
TA Chakhumbira	17,901	8,405	9,496
TA Goodson Ganya	69,237	32,119	37,118
TA Masasa	16,792	8,051	8,741
Ntcheu Boma	11,717	5,747	5,970
Lilongwe City	552,804	284,247	268,557
Area 1	5,809	2,813	2,996
Area 2	1,744	1,005	739
Area 3	2,168	1,180	988
Area 4	51	38	13
Area 5	213	115	98
Area 6	1,087	577	510
Area 7	15,892	7,872	8,020
Area 8	10,646	5,409	5,237
Area 9	1,367	708	659
Area 10	2,046	1,042	1,004
Area 11	315	169	146
Area 12	1,772	847	925

**Annex 2: Malawi 2018 Census Preliminary results: Population (de-jure) Distribution of Persons Ages 18 years and Over by Region, District and TA/STA/Town**

Region and District	Population 18 Yrs +		
	Total	Male	Female
Area 14	513	247	266
Area 15	888	416	472
Area 17	278	188	90
Area 18	6,243	2,690	3,553
Area 21	25,840	13,024	12,816
Area 22	19,184	9,783	9,401
Area 23	29,021	14,905	14,116
Area 24	20,252	10,531	9,721
Area 25	61,180	30,917	30,263
Area 26	3,508	1,753	1,755
Area 27	1,739	925	814
Area 28	58	37	21
Area 29	246	149	97
Area 30	1,406	721	685
Area 32	72	41	31
Area 33	431	198	233
Area 34	30	12	18
Area 35	5,742	2,887	2,855
Area 36	50,666	26,224	24,442
Area 37	331	176	155
Area 38	11,448	5,903	5,545
Area 39	3,398	1,867	1,531
Area 41	151	86	65
Area 43	3,694	1,969	1,725
Area 44	33,676	17,760	15,916
Area 45	2,003	1,063	940
Area 46	3,824	1,967	1,857
Area 47	8,076	3,926	4,150
Area 49	32,003	15,729	16,274
Area 50	44,703	24,281	20,422
Area 51	9,177	5,063	4,114
Area 52	3,129	1,556	1,573
Area 53	12,392	6,218	6,174
Area 54	3,326	1,613	1,713
Area 55	11,097	5,434	5,663
Area 56	35,665	19,156	16,509
Area 57	46,790	24,426	22,364
Area 58	17,514	8,631	8,883

**Annex 2: Malawi 2018 Census Preliminary results: Population (de-jure) Distribution of Persons Ages 18 years and Over by Region, District and TA/STA/Town**

Region and District	Population 18 Yrs +		
	Total	Male	Female
<b>Southern</b>	<b>3,778,805</b>	<b>1,758,164</b>	<b>2,020,641</b>
Mangochi	516,976	231,852	285,124
TA Mponda	75,223	34,512	40,711
TA Chimwala	41,952	18,599	23,353
TA Chilipa	16,511	7,226	9,285
TA Nankumba	74,223	35,785	38,438
TA Jalasi	45,379	18,949	26,430
TA Mbwana Nyambi	51,244	21,988	29,256
TA Chowe	49,547	21,009	28,538
TA Katuli	31,551	13,670	17,881
TA Makanjila	29,720	13,247	16,473
STA Lulanga	19,633	9,271	10,362
TA Namabvi	20,691	8,787	11,904
Lake Malawi National Park	59	31	28
STA Ntonda	9,504	4,370	5,134
STA Chiunda	17,128	7,612	9,516
Mangochi Town	26,750	12,896	13,854
Monkey Bay Urban	7,861	3,900	3,961
Machinga	328,195	149,298	178,897
TA Liwonde	39,577	17,449	22,128
STA Nsanama	17,068	7,816	9,252
TA Sitola	11,553	5,104	6,449
TA Nkula	12,593	5,501	7,092
STA Nchinguza	14,040	6,511	7,529
TA Kawinga	41,459	18,885	22,574
TA Nkoola	23,842	10,819	13,023
TA Chamba	15,077	6,675	8,402
TA Mposa	16,615	7,855	8,760
TA Mlomba	27,147	12,295	14,852
TA Chikweo	35,847	16,697	19,150
TA Ngokwe	16,557	7,865	8,692
TA Chiwalo	5,690	2,429	3,261
TA Kapoloma	7,190	3,305	3,885
TA Nyambi	24,548	10,660	13,888
STA Chesale	6,239	2,931	3,308
Liwonde National Park	96	57	39
Machinga Boma	950	446	504
Liwonde Town	12,107	5,998	6,109

**Annex 2: Malawi 2018 Census Preliminary results: Population (de-jure) Distribution of Persons Ages 18 years and Over by Region, District and TA/STA/Town**

Region and District	Population 18 Yrs +		
	Total	Male	Female
Zomba	360,222	164,967	195,255
TA Kuntumanji	22,739	10,631	12,108
TA Mwambo	71,693	33,268	38,425
TA Mkumbira	2,860	1,449	1,411
TA Chikowi	31,834	14,316	17,518
TA Mbiza	40,420	18,495	21,925
TA Malemia	41,357	19,170	22,187
TA Mlumbe	62,795	28,221	34,574
STA Nkagula	25,143	11,679	13,464
STA Ntholowa	25,066	11,437	13,629
STA Ngwelero	15,059	6,981	8,078
STA Nkapita	21,256	9,320	11,936
Chiradzulu	184,005	83,430	100,575
TA Mpama	26,532	12,018	14,514
TA Likoswe	36,064	16,703	19,361
TA Kadewere	27,464	12,339	15,125
TA Nkalo	27,906	12,556	15,350
TA Chitera	11,394	5,141	6,253
TA Nchema	10,768	4,865	5,903
STA Mpunga	21,304	9,487	11,817
STA Sandareki	11,564	5,351	6,213
STA Onga	9,395	4,240	5,155
Chiradzulu Boma	1,614	730	884
Blantyre	230,510	108,966	121,544
TA Kapeni	55,406	26,653	28,753
TA Lundu	15,762	7,300	8,462
TA Chigaru	25,267	11,595	13,672
TA Kunthembwe	21,866	10,043	11,823
TA Makata	9,782	4,486	5,296
TA Kuntaja	43,914	20,968	22,946
TA Machinjiri	15,728	7,461	8,267
TA Somba	42,785	20,460	22,325
Mwanza	64,983	30,922	34,061
TA Kanduku	24,459	11,443	13,016
TA Nthache	21,298	10,124	11,174
STA Govati	9,635	4,664	4,971
Mwanza Boma	9,591	4,691	4,900
Thyolo	359,588	161,364	198,224

**Annex 2: Malawi 2018 Census Preliminary results: Population (de-jure) Distribution of Persons Ages 18 years and Over by Region, District and TA/STA/Town**

Region and District	Population 18 Yrs +		
	Total	Male	Female
TA Nsabwe	19,615	8,211	11,404
STA Thukuta	9,767	4,391	5,376
STA Mbawela	23,337	9,817	13,520
TA Changata	20,266	8,758	11,508
TA Mphuka	31,727	14,484	17,243
TA Kwethemule	29,699	13,187	16,512
TA Kapichi	29,844	12,688	17,156
TA Nchilamwela	37,129	17,226	19,903
TA Chimaliro	28,458	12,860	15,598
TA Bvumbwe	56,295	25,980	30,315
TA Thomas	18,206	8,039	10,167
TA Nanseta	16,224	7,433	8,791
TA Ngolongoliwa	16,668	7,708	8,960
STA Boyidi	11,159	5,209	5,950
Thyolo Boma	4,384	2,103	2,281
Luchenza Town	6,810	3,270	3,540
Mulanje	337,325	152,461	184,864
TA Mabuka	53,778	24,138	29,640
TA Laston Njema	44,447	20,690	23,757
TA Chikumbu	45,044	20,082	24,962
TA Nthiramanja	25,413	11,022	14,391
TA Nkanda	61,031	27,472	33,559
TA Juma	52,612	24,081	28,531
STA Sunganinzeru	35,007	15,814	19,193
STA Tombondiya	11,511	5,063	6,448
Mulanje Mountain Reserve	147	72	75
Mulanje Boma	8,335	4,027	4,308
Phalombe	200,958	93,608	107,350
TA Mkhumba	52,842	24,337	28,505
TA Nazombe	28,237	13,232	15,005
TA Chiwalo	19,687	9,310	10,377
TA Nkhulambe	19,210	8,877	10,333
TA Jenala	39,721	18,610	21,111
TA Kaduya	37,944	17,636	20,308
Phalombe Boma	3,317	1,606	1,711
Chikwawa	274,939	132,861	142,078
TA Ngabu	79,261	38,247	41,014
TA Lundu	31,342	16,045	15,297

**Annex 2: Malawi 2018 Census Preliminary results: Population (de-jure) Distribution of Persons Ages 18 years and Over by Region, District and TA/STA/Town**

Region and District	Population 18 Yrs +		
	Total	Male	Female
TA Chapananga	42,034	19,972	22,062
TA Maseya	18,743	9,220	9,523
TA Katunga	16,448	7,966	8,482
TA Kasisi	11,663	5,628	6,035
TA Makhwira	38,600	18,131	20,469
STA Ndakwela	11,232	5,343	5,889
TA Mlilima	6,208	2,974	3,234
STA Masache	10,579	5,074	5,505
TA Ngowe	4,987	2,382	2,605
Lengwe National Park	322	160	162
Majete Game Reserve – Chikwawa	119	67	52
Chikwawa Boma	3,401	1,652	1,749
Nsanje	141,074	65,404	75,670
TA Ndamera	15,421	6,916	8,505
TA Chimombo	5,748	2,557	3,191
TA Nyachikadza	3,417	1,604	1,813
TA Mlolo	32,698	15,160	17,538
TA Tengani	19,010	8,867	10,143
TA Malemia	10,584	4,810	5,774
TA Mbenje	25,518	12,108	13,410
TA Ngabu	6,458	2,865	3,593
TA Makoko	4,623	2,130	2,493
Mwabvi Game Reserve	3,896	1,865	2,031
Nsanje Boma	13,701	6,522	7,179
Balaka	205,421	92,951	112,470
TA Msamala	38,865	17,621	21,244
TA Kalembo	34,143	14,698	19,445
STA Kachenga	19,911	8,828	11,083
TA Amidu	20,430	8,847	11,583
TA Nkaya	21,176	9,746	11,430
STA Phalula	9,584	4,580	5,004
TA Chanthunya	14,167	6,502	7,665
TA Sawali	8,977	3,976	5,001
STA Matola	9,608	4,403	5,205
STA Toleza	2,632	1,184	1,448
Balaka Town	19,264	9,330	9,934
Liwonde Town	6,664	3,236	3,428



**Annex 2: Malawi 2018 Census Preliminary results: Population (de-jure) Distribution of Persons Ages 18 years and Over by Region, District and TA/STA/Town**

Region and District	Population 18 Yrs +		
	Total	Male	Female
Neno	66,612	31,591	35,021
TA Dambe	14,978	6,700	8,278
TA Mlauli	16,822	8,114	8,708
TA Symon Likongwe	21,732	10,546	11,186
TA Chekucheku	11,801	5,598	6,203
Neno Boma	1,279	633	646
Zomba City	58,376	28,903	29,473
Mpira Ward	8,939	4,489	4,450
Mbedza Ward	4,333	2,209	2,124
Chinamwali Ward	8,166	3,944	4,222
Chirunga Ward	7,197	3,511	3,686
Mtiya Ward	3,042	1,532	1,510
Masongola Ward	3,293	1,636	1,657
Zomba Central Ward	3,595	1,784	1,811
Likangala Ward	8,365	4,131	4,234
Chambo Ward	3,276	1,616	1,660
Sadzi Ward	8,170	4,051	4,119
Blantyre City	449,621	229,586	220,035
Michiru Ward	46,639	23,736	22,903
South Lunzu Ward	30,496	15,133	15,363
Mapanga Ward	23,541	12,180	11,361
Nkolokoti Ward	31,613	16,423	15,190
Ndirande Matope Ward	19,068	10,031	9,037
Ndirande Makata Ward	15,668	8,212	7,456
Ndirande Gamulani Ward	19,474	10,277	9,197
Nyambadwe Ward	6,022	3,088	2,934
Mbayani Ward	38,146	19,649	18,497
Chilomoni Ward	16,656	8,170	8,486
Blantyre City Centre Ward	12,483	6,267	6,216
Namalimwe Ward	6,933	3,434	3,499
Limbe Central Ward	5,107	2,488	2,619
Mzedi Ward	19,949	10,349	9,600
Bangwe Ward	10,092	5,042	5,050
Bangwe Mthandizi Ward	11,209	5,662	5,547
Soche East Ward	6,684	3,028	3,656
Blantyre South Ward	15,346	7,785	7,561
Green Corner Ward	13,035	6,629	6,406
Soche West Ward	22,294	11,251	11,043
Namiyango Ward	26,884	13,997	12,887
Chigumula Ward	13,522	6,777	6,745
Misesa Ward	38,760	19,978	18,782

**Annex 3: Malawi 2018 Census Preliminary results: Total Population (de-jure) by Sex, Region District, TA/STA/Town**

Region and District	Population		
	Total	Male	Female
<b>Malawi</b>	<b>17,563,749</b>	<b>8,521,456</b>	<b>9,042,293</b>
<b>Northern</b>	<b>2,286,960</b>	<b>1,113,089</b>	<b>1,173,871</b>
Chitipa	234,927	114,392	120,535
TA Mwabulambya	67,232	32,831	34,401
STA Bulambya Songwe	34,137	16,525	17,612
TA Mwenemisuku	25,816	12,588	13,228
STA Lwangwa	5,597	2,701	2,896
TA Mwenewenya	23,721	11,428	12,293
TA Nthalire	19,340	9,464	9,876
STA Nthengatenga	10,410	5,102	5,308
STA Wavikaza	6,778	3,348	3,430
TA Kameme	24,153	11,738	12,415
Chitipa Boma	17,743	8,667	9,076
Karonga	365,028	176,197	188,831
TA Kilupula	78,424	37,721	40,703
TA Mwakaboko	24,889	11,974	12,915
TA Kyungu	89,672	43,428	46,244
TA Wasambo	72,989	35,106	37,883
TA Mwirang'ombe	37,445	18,048	19,397
Karonga Town	61,609	29,920	31,689
Nkhata Bay	285,795	139,904	145,891
TA Kabunduli	50,533	25,185	25,348
TA Fukamapiri	20,676	10,020	10,656
TA Malenga Mzoma	10,892	5,200	5,692
TA Malanda	27,342	13,375	13,967
TA Zilakoma	19,177	9,233	9,944
TA Mankhambira	24,642	12,076	12,566
TA Fukamalaza	14,470	6,962	7,508
TA Mkumbira	15,078	7,403	7,675
TA M'bwana	24,058	11,712	12,346
STA Nyaluwanga	13,058	6,618	6,440
STA Kondowe	2,140	1,035	1,105
TA Timbiri	47,713	23,246	24,467
TA Boghoyo	1,742	825	917
Nkhata Bay Boma	14,274	7,014	7,260

**Annex 3: Malawi 2018 Census Preliminary results: Total Population (de-jure) by Sex, Region District, TA/STA/Town**

Region and District	Population		
	Total	Male	Female
Rumphi	229,161	112,652	116,509
TA Chikulamayembe	70,421	34,744	35,677
TA Mwamlowe	8,481	4,121	4,360
TA Mwahenga	20,067	9,975	10,092
TA Mwalweni	27,976	13,671	14,305
STA Kachulu	13,121	6,404	6,717
STA Chapinduka	3,754	1,824	1,930
TA Mwankhunikira	25,466	12,571	12,895
TA Katumbi	16,028	7,762	8,266
STA Zolokere	6,307	3,124	3,183
STA Chisovya	9,234	4,615	4,619
STA Njikula	4,024	1,983	2,041
Nyika National Park	1,882	929	953
Vwaza Marsh Reserve	42	21	21
Rumphi Boma	22,358	10,908	11,450
Mzimba	936,250	453,896	482,354
TA M'Mbelwa	128,656	60,715	67,941
TA Mtwalo	191,108	94,063	97,045
TA Kapingo Sibande	68,719	33,361	35,358
TA Jaravikuba Munthali	17,699	8,625	9,074
TA Chindi	161,938	76,787	85,151
TA Mzikubola	99,994	48,870	51,124
TA Mabulabo	64,274	31,250	33,024
TA Khosolo Gwaza Jere	54,153	26,694	27,459
TA Mpherembe	67,292	33,729	33,563
TA Mzukuzuku	37,528	17,940	19,588
STA Levi Jere	18,793	9,179	9,614
Mzimba Boma	26,096	12,683	13,413
Likoma	14,527	7,200	7,327
TA Mkumpha	13,204	6,510	6,694
Likoma Boma	1,323	690	633
Mzuzu City	221,272	108,848	112,424
Chibavi East Ward	8,066	3,982	4,084
Chibavi West Ward	12,397	6,072	6,325
Chibanja Ward	11,385	5,672	5,713
Chiputula Ward	12,162	5,946	6,216
Jombo - Kaning'ina Ward	6,286	3,089	3,197
Katawa Ward	5,579	2,604	2,975

**Annex 3: Malawi 2018 Census Preliminary results: Total Population (de-jure) by Sex, Region District, TA/STA/Town**

Region and District	Population		
	Total	Male	Female
Luwinga Ward	28,030	13,596	14,434
Masasa Ward	23,145	11,433	11,712
Mchengautuwa East Ward	26,971	13,228	13,743
Mchengautuwa West Ward	30,591	15,177	15,414
Msongwe Ward	9,856	4,864	4,992
Mzilawaingwe Ward	7,047	3,386	3,661
Nkhorongo - Lupaso Ward	10,148	5,020	5,128
Zolozolo East Ward	8,034	4,053	3,981
Zolozolo West Ward	21,575	10,726	10,849
<b>Central</b>	<b>7,526,160</b>	<b>3,680,960</b>	<b>3,845,200</b>
Kasungu	842,953	417,295	425,658
TA Kaluluma	38,036	18,395	19,641
TA Chisemphe	11,623	5,725	5,898
TA Simlemba	40,406	19,994	20,412
STA M'nyanja	38,726	19,042	19,684
STA Chisikwa	7,830	3,813	4,017
TA Kaomba	51,295	25,282	26,013
TA Kawamba	44,953	22,400	22,553
STA Nthunduwala	11,269	5,561	5,708
TA Njombwa	50,445	24,848	25,597
TA Chilowamatambe	35,464	17,706	17,758
STA Chambwe	13,682	6,723	6,959
TA Chulu	33,700	16,493	17,207
STA Chisinga	23,003	11,195	11,808
STA Mphomwa	22,363	11,054	11,309
STA Chaima	25,841	12,848	12,993
TA Kaphaizi	2,249	1,087	1,162
STA Mangwazu	5,641	2,806	2,835
STA Mawawa	8,115	4,021	4,094
TA Lukwa	30,633	15,290	15,343
TA Santhe	58,065	28,592	29,473
TA Chidzuma	20,156	9,974	10,182
TA Wimbe	125,427	62,712	62,715
TA Kapelula	31,605	15,828	15,777
STA Kapichira	7,283	3,606	3,677
STA Mdunga	13,792	6,846	6,946
TA Mwase	31,814	15,801	16,013
Kasungu National Park	884	466	418
Kasungu Boma	58,653	29,187	29,466

**Annex 3: Malawi 2018 Census Preliminary results: Total Population (de-jure) by Sex, Region District, TA/STA/Town**

Region and District	Population		
	Total	Male	Female
Nkhotakota	395,897	194,020	201,877
TA Kanyenda	116,546	58,425	58,121
TA Kafuzila	26,888	13,132	13,756
STA Kalimanjira	19,662	9,241	10,421
TA Malenga Chanzi	44,219	21,376	22,843
TA Mphonde	31,255	15,205	16,050
TA Mwadzama	99,732	48,803	50,929
TA Mwansambo	29,245	14,289	14,956
Nkhotakota Boma	28,350	13,549	14,801
Ntchisi	317,069	154,843	162,226
TA Kasakula	19,680	9,631	10,049
TA Chikho	24,711	11,981	12,730
TA Kalumo	74,850	36,391	38,459
TA Nthondo	32,219	15,695	16,524
TA Chilooko	89,619	43,876	45,743
TA Vuso Jere	15,946	7,830	8,116
TA Malenga	50,687	24,788	25,899
Ntchisi Boma	9,357	4,651	4,706
Dowa	772,569	378,160	394,409
TA Dzoole	94,079	45,744	48,335
TA Chakhaza	156,985	76,790	80,195
TA Kayembe	115,013	56,352	58,661
TA Chiwere	105,708	51,457	54,251
TA Mkukula	127,134	62,584	64,550
TA Msakambewa	91,421	45,205	46,216
TA Mponela	50,551	24,393	26,158
Dowa Boma	7,135	3,501	3,634
Mponela Urban	24,543	12,134	12,409
Salima	478,346	231,930	246,416
TA Maganga	70,173	33,909	36,264
TA Karonga	78,297	38,481	39,816
TA Pemba	24,734	11,351	13,383
TA Kambwiri	41,701	20,329	21,372
TA Ndindi	47,795	22,640	25,155
TA Kambalame	22,354	10,606	11,748
TA Khombedza	95,391	46,535	48,856
TA Mwanza	25,827	12,682	13,145

**Annex 3: Malawi 2018 Census Preliminary results: Total Population (de-jure) by Sex, Region District, TA/STA/Town**

Region and District	Population		
	Total	Male	Female
TA Kuluunda	19,521	9,550	9,971
TA Msosa	9,369	4,622	4,747
Salima Town	36,789	18,181	18,608
Chipoka Urban	6,395	3,044	3,351
Lilongwe	1,637,583	795,427	842,156
TA Chadza	143,216	68,799	74,417
TA Kalolo	177,087	86,572	90,515
TA Masula	76,666	36,942	39,724
TA Masumbankhunda	86,580	41,699	44,881
TA Chiseka	148,672	72,146	76,526
TA Mazengera	116,352	55,348	61,004
STA Chitekwele	48,184	23,035	25,149
TA Khongoni	140,536	68,498	72,038
TA Chimutu	112,118	54,873	57,245
TA Chitukula	25,482	12,497	12,985
TA Mtema	52,442	25,660	26,782
TA Kalumbu	68,527	32,586	35,941
TA Tsabango	63,076	31,302	31,774
TA Kalumba	42,444	20,970	21,474
TA Njewa	49,769	24,926	24,843
TA Malili	115,931	56,519	59,412
TA Kabudula	158,430	77,143	81,287
STA Mbang'ombe	12,071	5,912	6,159
Mchinji	602,305	296,786	305,519
TA Mlonyeni	75,812	37,499	38,313
TA Mavwere	83,986	41,091	42,895
TA Zulu	69,069	33,887	35,182
TA Simphasi	50,571	24,833	25,738
TA Mduwa	66,854	33,046	33,808
STA Nyoka	41,416	20,454	20,962
TA Mkanda	75,328	37,130	38,198
STA Gumba	16,953	8,304	8,649
STA Pitala	4,736	2,368	2,368
STA Kapunula	9,724	4,816	4,908
TA Kazyozyo	6,971	3,542	3,429
TA Dambe	62,248	30,656	31,592
TA Kapondo	10,626	5,222	5,404
Mchinji Boma	28,011	13,938	14,073

**Annex 3: Malawi 2018 Census Preliminary results: Total Population (de-jure) by Sex, Region District, TA/STA/Town**

Region and District	Population		
	Total	Male	Female
Dedza	830,512	395,882	434,630
TA Kachere	167,652	79,993	87,659
TA Chilikumwendo	78,860	38,022	40,838
TA Kaphuka	168,027	79,972	88,055
TA Tambala	84,103	38,929	45,174
TA Chauma	22,646	10,683	11,963
TA Kasumbu	110,262	51,692	58,570
TA Kachindamoto	131,195	63,633	67,562
TA Kamenya Gwaza	36,839	17,711	19,128
Dedza Boma	30,928	15,247	15,681
Ntcheu	659,608	319,416	340,192
TA Phambala	44,626	21,927	22,699
STA Tsikulamowa	39,628	19,319	20,309
TA Mpando	77,612	38,583	39,029
TA Kwataine	53,379	25,504	27,875
TA Makwangwala	87,215	41,788	45,427
STA Mkutumula	29,361	14,208	15,153
TA Champiti	21,607	10,463	11,144
TA Njolomole	71,003	33,748	37,255
TA Chakhumbira	35,074	16,936	18,138
TA Goodson Ganya	143,536	69,259	74,277
TA Masasa	35,326	17,277	18,049
Ntcheu Boma	21,241	10,404	10,837
Lilongwe City	989,318	497,201	492,117
Area 1	9,310	4,470	4,840
Area 2	2,536	1,407	1,129
Area 3	3,307	1,750	1,557
Area 4	82	56	26
Area 5	326	166	160
Area 6	1,661	856	805
Area 7	26,346	12,929	13,417
Area 8	18,023	8,938	9,085
Area 9	2,019	1,047	972
Area 10	3,223	1,644	1,579
Area 11	454	224	230
Area 12	2,543	1,202	1,341
Area 14	714	355	359
Area 15	1,209	577	632

**Annex 3: Malawi 2018 Census Preliminary results: Total Population (de-jure) by Sex, Region District, TA/STA/Town**

Region and District	Population		
	Total	Male	Female
Area 17	420	253	167
Area 18	8,718	3,883	4,835
Area 21	43,937	21,723	22,214
Area 22	33,501	16,746	16,755
Area 23	51,691	25,978	25,713
Area 24	37,031	18,710	18,321
Area 25	107,316	53,236	54,080
Area 26	6,822	3,315	3,507
Area 27	3,200	1,646	1,554
Area 28	92	54	38
Area 29	398	223	175
Area 30	2,489	1,234	1,255
Area 32	105	59	46
Area 33	646	290	356
Area 34	54	22	32
Area 35	10,274	5,078	5,196
Area 36	92,733	46,684	46,049
Area 37	578	291	287
Area 38	22,551	11,287	11,264
Area 39	6,200	3,253	2,947
Area 41	234	129	105
Area 43	6,208	3,222	2,986
Area 44	63,502	32,457	31,045
Area 45	3,725	1,917	1,808
Area 46	6,630	3,340	3,290
Area 47	11,644	5,676	5,968
Area 48	33	19	14
Area 49	52,915	25,868	27,047
Area 50	82,820	43,077	39,743
Area 51	16,748	8,845	7,903
Area 52	6,025	3,026	2,999
Area 53	22,294	10,969	11,325
Area 54	6,100	2,993	3,107
Area 55	21,894	10,762	11,132
Area 56	66,574	34,491	32,083
Area 57	88,973	44,871	44,102
Area 58	32,490	15,953	16,537



**Annex 3: Malawi 2018 Census Preliminary results: Total Population (de-jure) by Sex, Region District, TA/STA/Town**

Region and District	Population		
	Total	Male	Female
<b>Southern</b>	<b>7,750,629</b>	<b>3,727,407</b>	<b>4,023,222</b>
Mangochi	1,148,611	545,500	603,111
TA Mponda	167,313	80,204	87,109
TA Chimwala	93,858	44,328	49,530
TA Chilipa	36,280	17,059	19,221
TA Nankumba	159,654	78,019	81,635
TA Jalasi	102,879	47,539	55,340
TA Mbwana Nyambi	117,911	55,249	62,662
TA Chowe	112,155	52,171	59,984
TA Katuli	71,100	33,331	37,769
TA Makanjila	66,914	31,702	35,212
STA Lulanga	43,101	21,120	21,981
TA Namabvi	47,783	22,310	25,473
Lake Malawi National Park	121	67	54
STA Ntonda	21,002	10,087	10,915
STA Chiunda	40,087	18,993	21,094
Mangochi Town	53,498	25,921	27,577
Monkey Bay Urban	14,955	7,400	7,555
Machinga	735,438	350,742	384,696
TA Liwonde	89,259	42,032	47,227
STA Nsanama	38,518	18,423	20,095
TA Sitola	25,138	11,824	13,314
TA Nkula	27,349	12,864	14,485
STA Nchinguza	31,816	15,278	16,538
TA Kawinga	92,144	43,833	48,311
TA Nkoola	54,169	25,931	28,238
TA Chamba	33,009	15,652	17,357
TA Mposa	36,000	17,385	18,615
TA Mlomba	62,263	29,613	32,650
TA Chikweo	83,273	40,141	43,132
TA Ngokwe	37,602	18,274	19,328
TA Chiwalo	13,149	6,211	6,938
TA Kapoloma	15,789	7,539	8,250
TA Nyambi	55,989	26,177	29,812
STA Chesale	14,599	7,074	7,525
Liwonde National Park	165	89	76
Machinga Boma	1,833	876	957
Liwonde Town	23,374	11,526	11,848

**Annex 3: Malawi 2018 Census Preliminary results: Total Population (de-jure) by Sex, Region District, TA/STA/Town**

Region and District	Population		
	Total	Male	Female
Zomba	746,724	356,718	390,006
TA Kuntumanji	48,079	23,229	24,850
TA Mwambo	151,997	72,796	79,201
TA Mkumbira	6,211	3,195	3,016
TA Chikowi	64,469	30,548	33,921
TA Mbiza	85,311	40,810	44,501
TA Malemia	82,320	39,501	42,819
TA Mlumbe	127,300	60,480	66,820
STA Nkagula	51,548	24,709	26,839
STA Ntholowa	50,738	24,141	26,597
STA Ngwelero	33,396	16,114	17,282
STA Nkapita	45,355	21,195	24,160
Chiradzulu	356,875	169,679	187,196
TA Mpama	50,846	24,105	26,741
TA Likoswe	68,321	32,928	35,393
TA Kadewere	54,044	25,532	28,512
TA Nkalo	54,475	25,836	28,639
TA Chitera	22,859	10,913	11,946
TA Nchema	21,848	10,460	11,388
STA Mpunga	41,140	19,330	21,810
STA Sandareki	22,713	10,850	11,863
STA Onga	17,668	8,347	9,321
Chiradzulu Boma	2,961	1,378	1,583
Blantyre	451,220	218,464	232,756
TA Kapeni	103,742	50,747	52,995
TA Lundu	32,271	15,535	16,736
TA Chigaru	51,779	24,834	26,945
TA Kunthembwe	45,972	21,915	24,057
TA Makata	20,032	9,520	10,512
TA Kuntaja	84,765	41,082	43,683
TA Machinjiri	29,991	14,543	15,448
TA Somba	82,668	40,288	42,380
Mwanza	130,949	63,533	67,416
TA Kanduku	49,941	24,092	25,849
TA Nthache	43,190	20,977	22,213
STA Govati	19,779	9,741	10,038
Mwanza Boma	18,039	8,723	9,316

**Annex 3: Malawi 2018 Census Preliminary results: Total Population (de-jure) by Sex, Region District, TA/STA/Town**

Region and District	Population		
	Total	Male	Female
Thyolo	721,456	340,760	380,696
TA Nsabwe	42,511	19,621	22,890
STA Thukuta	21,354	10,096	11,258
STA Mbawela	49,022	22,531	26,491
TA Changata	41,828	19,428	22,400
TA Mphuka	63,771	30,294	33,477
TA Kwethemule	58,237	27,309	30,928
TA Kapichi	60,898	28,374	32,524
TA Nchilamwela	71,158	34,144	37,014
TA Chimaliro	56,764	26,897	29,867
TA Bvumbwe	110,031	52,456	57,575
TA Thomas	37,709	17,611	20,098
TA Nanseta	31,797	15,136	16,661
TA Ngolongoliwa	33,839	16,398	17,441
STA Boyidi	22,094	10,647	11,447
Thyolo Boma	7,843	3,752	4,091
Luchenza Town	12,600	6,066	6,534
Mulanje	684,107	325,115	358,992
TA Mabuka	108,442	51,351	57,091
TA Laston Njema	91,742	43,968	47,774
TA Chikumbu	87,148	41,208	45,940
TA Nthiramanja	51,108	23,916	27,192
TA Nkanda	128,070	61,037	67,033
TA Juma	109,821	52,573	57,248
STA Sunganinzeru	68,585	32,458	36,127
STA Tombondiya	24,103	11,309	12,794
Mulanje Mountain Reserve	306	147	159
Mulanje Boma	14,782	7,148	7,634
Phalombe	429,450	207,006	222,444
TA Mkhumba	110,623	53,037	57,586
TA Nazombe	60,745	29,369	31,376
TA Chiwalo	43,933	21,446	22,487
TA Nkhulambe	40,313	19,185	21,128
TA Jenala	88,237	42,744	45,493
TA Kaduya	79,357	38,178	41,179
Phalombe Boma	6,242	3,047	3,195

**Annex 3: Malawi 2018 Census Preliminary results: Total Population (de-jure) by Sex, Region District, TA/STA/Town**

Region and District	Population		
	Total	Male	Female
Chikwawa	564,684	276,890	287,794
TA Ngabu	164,753	80,580	84,173
TA Lundu	62,176	31,318	30,858
TA Chapananga	88,641	43,262	45,379
TA Maseya	37,793	18,614	19,179
TA Katunga	32,943	16,253	16,690
TA Kasisi	23,266	11,421	11,845
TA Makhwira	79,933	38,629	41,304
STA Ndakwela	23,690	11,588	12,102
TA Mlilima	11,947	5,817	6,130
STA Masache	22,216	10,914	11,302
TA Ngowe	10,447	5,131	5,316
Lengwe National Park	544	282	262
Majete Game Reserve - Chikwawa	221	127	94
Chikwawa Boma	6,114	2,954	3,160
Nsanje	299,168	143,578	155,590
TA Ndamera	33,679	16,045	17,634
TA Chimombo	12,334	5,850	6,484
TA Nyachikadza	7,643	3,681	3,962
TA Mlolo	69,110	33,015	36,095
TA Tengani	41,100	19,840	21,260
TA Malemia	22,437	10,691	11,746
TA Mbenje	53,559	25,888	27,671
TA Ngabu	13,381	6,340	7,041
TA Makoko	10,335	5,012	5,323
Mwabvi Game Reserve	8,746	4,278	4,468
Nsanje Boma	26,844	12,938	13,906
Balaka	438,379	209,274	229,105
TA Msamala	80,912	38,771	42,141
TA Kalembo	77,532	36,396	41,136
STA Kachenga	44,075	20,910	23,165
TA Amidu	46,314	21,827	24,487
TA Nkaya	45,351	21,847	23,504
STA Phalula	19,486	9,494	9,992
TA Chanthunya	30,229	14,638	15,591
TA Sawali	19,254	9,037	10,217
STA Matola	20,292	9,817	10,475
STA Toleza	5,579	2,651	2,928

**Annex 3: Malawi 2018 Census Preliminary results: Total Population (de-jure) by Sex, Region District, TA/STA/Town**

Region and District	Population		
	Total	Male	Female
Balaka Town	36,308	17,603	18,705
Liwonde Town	13,047	6,283	6,764
Neno	138,291	67,357	70,934
TA Dambe	33,130	15,663	17,467
TA Mlauli	35,569	17,568	18,001
TA Symon Likongwe	43,657	21,502	22,155
TA Chekucheku	23,652	11,488	12,164
Neno Boma	2,283	1,136	1,147
Zomba City	105,013	51,619	53,394
Mpira Ward	16,932	8,365	8,567
Mbedza Ward	7,783	3,949	3,834
Chinamwali Ward	15,207	7,397	7,810
Chirunga Ward	12,277	5,945	6,332
Mtiya Ward	5,778	2,900	2,878
Masongola Ward	5,494	2,712	2,782
Zomba Central Ward	6,057	2,963	3,094
Likangala Ward	15,682	7,720	7,962
Chambo Ward	5,584	2,684	2,900
Sadzi Ward	14,219	6,984	7,235
Blantyre City	800,264	401,172	399,092
Michiru Ward	83,987	41,821	42,166
South Lunzu Ward	53,831	26,502	27,329
Mapanga Ward	42,233	21,250	20,983
Nkolokoti Ward	57,763	29,132	28,631
Ndirande Matope Ward	33,549	17,281	16,268
Ndirande Makata Ward	28,468	14,660	13,808
Ndirande Gamulani Ward	35,822	18,337	17,485
Nyambadwe Ward	9,928	5,007	4,921
Mbayani Ward	69,764	35,098	34,666
Chilomoni Ward	28,214	13,876	14,338
Blantyre City Centre Ward	21,179	10,524	10,655
Namalimwe Ward	11,323	5,499	5,824
Limbe Central Ward	7,438	3,631	3,807
Mzedi Ward	38,474	19,402	19,072

**Annex 3: Malawi 2018 Census Preliminary results: Total Population (de-jure) by Sex, Region District, TA/STA/Town**

Region and District	Population		
	Total	Male	Female
Bangwe Ward	18,815	9,302	9,513
Bangwe Mthandizi Ward	19,942	9,935	10,007
Soche East Ward	9,590	4,438	5,152
Blantyre South Ward	26,317	13,155	13,162
Green Corner Ward	22,609	11,297	11,312
Soche West Ward	37,847	18,871	18,976
Namiyango Ward	48,642	24,736	23,906
Chigumula Ward	24,869	12,273	12,596
Misesa Ward	69660	35145	34515

**National Statistical Office**

[www.nso.malawi.mw](http://www.nso.malawi.mw)