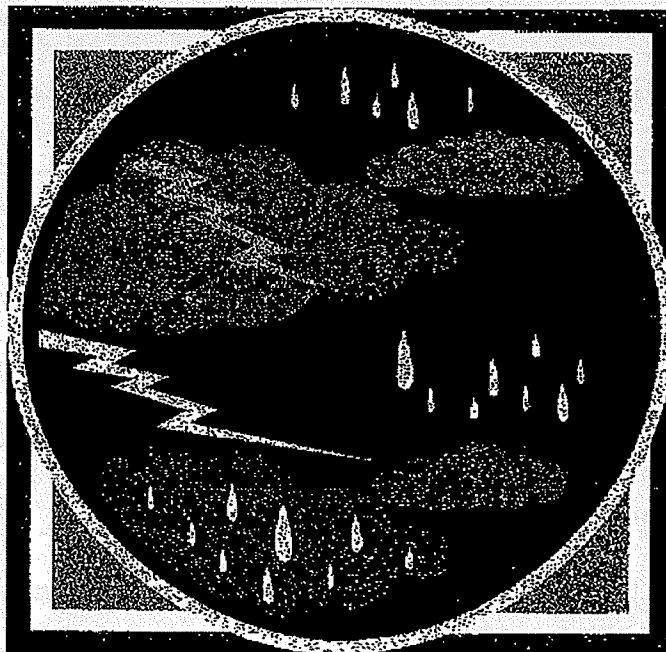


South Dakota State Plan For The Emergency Alert System



EAS Plan FCC Approved December 2016 Revised 10/25/18

For information contact: Monte Loos (605) 342-2000

Table of Contents

SIGNATURES RAPID CITY CONCURRENCES.....	.4
PURPOSE	5
INTRODUCTION	5
AUTHORITY.....	5
ASSUMPTIONS	5
DEFINITIONS	6
OPERATION OF THE EMERGENCY ALERT SYSTEM.....	8
National-level EAS.....	8
State-level EAS	8
Local-level EAS	9
Weather EAS	9
PROCEDURES FOR PUBLIC OFFICIALS	9
PROCEDURES FOR BROADCAST AND CABLE MEDIA.....	11
MEDIA EAS ACTIVITIES	12
MEDIA RESPONSIBILITIES.....	12
TESTS	
Required Weekly Test (RWT).....	13

Required Monthly Test (RMT).....	13
South Dakota EAS Scripts and Formats.....	16
AUTHORITY TO ACTIVATE THE SOUTH DAKOTA STATE EAS SYSTEM.....	18
NATIONAL ACTIVATION EAS CHART.....	19
STATE LEVEL EAS CHART.....	20
LOCAL LEVEL EAS CHART.....	21
NOAA WEATHER RADIO ALL HAZARDS AREAS (With attachment)	22
SOUTH DAKOTA EAS OPERATIONAL AREAS AND LP-1 STATIONS.....	23
EAS LEADER CODE ANALYSIS.....	23
SOUTH DAKOTA ORIGINATOR	
SOUTH DAKOTA "L-CODE" FORMATS.....	24
Broadcasters.....	24
Cable TV.....	24
Weather Service Offices.....	25
Civil Authorities.....	25
FCC Event Codes.....	26
State of South Dakota County Codes.....	27
SOUTH DAKOTA OPERATIONAL AREAS AND SECTIONS.....	28
Aberdeen Operational Area.....	28
Huron Operational Area.....	29
Lemmon Operational Area.....	30
Mobridge Operational Area.....	31
Pierre Operational Area.....	32/33
Rapid City Operational Area.....	34
Sioux Falls Operational Area.....	35
Watertown Operational Area.....	36
Yankton Operational Area.....	37

SOUTH DAKOTA STATE EMERGENCY ALERT SYSTEM (EAS) PLAN

Purpose

The purpose of this plan is to provide procedures for statewide activation of the South Dakota State-Level Emergency Alert System (EAS).

Introduction

These procedures were prepared with the help of the South Dakota Office of Emergency Management, National Weather Service, South Dakota Association of Broadcasters, State Cable systems, and state and local officials of the State of South Dakota. This plan provides the necessary means and operating procedures for designated state and federal officials to issue emergency information and warning to the general public of South Dakota. Because of the existing commercial and public broadcast coverage South Dakota viewers and listeners will be able to receive emergency information in a timely and concise manner.

Acceptance of or participation in this plan shall not be deemed to prohibit a licensee of cable operator from exercising their independent discretion and responsibility in any given situation. The Federal Communications Commission Rules and Regulations provide station management to use discretionary exercise regarding the transmission of emergency messages to the general public. Broadcast stations and cable systems originating emergency communications shall be deemed to have conferred rebroadcast authority as specified in FCC Rules Section 11.54. EAS participants have no discretion on Presidential alerts, and the National Weather Service (NWS) does not provide EAN alerts.

Detailed procedures, agreed upon by the broadcast and cable industries and the local County Emergency Operational Centers, which will permit designated government officials to issue local emergency messages and instructions, via EAS in threatened or actual emergencies, will be published as Local Operational Area Plans.

Authority

Title, 47 U.S.C. 151, 154(i) and (o), 303(r), 544(g) and 606; and 47 C.F.R. Part 11, FCC Rules and Regulations, Emergency Alert System (EAS) as pertains to day-to-day emergency operations

Assumptions

All participants are required to monitor the Federal Emergency Managements Agency's Integrated Public Alert and Warning System (IPAWS) for federal Common Alert Protocol (CAP)- formatted alert messages. EAS Participants must have deployed operational equipment that is capable of acquiring interfacing with IPAWS to enable the distribution of CAP-formatted alert messages from the IPAWS system to EAS Participants' EAS equipment. For more information on monitoring specific CAP-formatted EAS Alerts, please see FEMA's website at <http://www.fema.gov/common-alerting-protocol>.

The listening and viewing habits of the public are inherent factors of consideration and are conducive to the positive effectiveness of the South Dakota EAS. In times of emergency or crisis most people by instinct or habit will turn on his or her radio or television receiver. However, continued public education is required to assure the public that the broadcast medium is the established method of distributing emergency information from local, state and national sources.

All participating broadcast stations and cable media will monitor NOAA Weather Radio, if possible, as a secondary or "other" assignment. If unable to monitor an assigned input, the SECC (State Emergency Communications Committee) will work with the station to find an input that is both receivable and suitable. This is NOT a final draft, but should be considered a living, working document. As conditions within the broadcast community and state change so should the document.

All LP-1 stations should have the capability of monitoring at least three audio inputs; 1) South Dakota Public Radio & Television (where available), 2) NOAA Weather Radio, and 3) the local government activation source.

The State of South Dakota has nine Operational Areas.

The basic monitoring assignments will be as stated in each of the local operational areas.

Definitions

Emergency: A situation posing an extraordinary threat to the safety and life and property. Examples are, but not limited to natural situations such as: floods, heavy snow, high winds, icing conditions, widespread fires, discharge of **hazardous materials**, tornadoes, widespread power failures, industrial explosions, and civil disorders,

Designated Government Officials: The person or persons designated by governments signatory to this procedure to request activation of the EAS and to make emergency announcements.

EAS Designations: These are the FCC's EAS Station Designations reflecting the EAS status of every broadcaster and cable operator.

National Primary (NP) - Source of all national EAS Alerts. This station will be monitored by designated LP stations.

State Primary (SP) - A primary source of the EAS, which can originate with the governor or designated representative, such as a state's Emergency Management Office. (SDOEM)

State Relay (SR) — Will primarily be provided by South Dakota Public Radio and Television. Future state relay options would possibly include the following: satellite service, and/or fiber services. They will relay those state EAS Messages that are received from the South Dakota Office of Emergency Management, when and if they become involved. They can also relay national, local, and weather alerts to those areas where no other means is available.

Local Primary (LP-1) - The local broadcast station in a defined operational area that is designated the primary station to transmit EAS messages. LP-1 stations are primarily sources of Local Area Emergency EAS Messages. They can also relay national, state, and weather alerts.

Local Primary (LP-2) - The local broadcast station in a defined operational area that is designated as the backup to the LP-1 Station in some operational areas. LP-2 stations are secondary sources of Local Area Emergency EAS Messages. They can also relay national, state, and weather alerts.

Participating National (PN) - Most normal broadcasters and cable operators are designated as "PN". These sources are for delivering all levels of EAS to the public.

Emergency Operation Center (EOC) - (State, County, City, etc.) A specifically designed and designated facility within a jurisdiction used for Emergency Operations.

National Warning System (NAWAS) - A dedicated Homeland Defense telephone system, accessible from specific Local Area Control Point (LAC) and Weather Service officials, the South Dakota Highway Patrol State Radio Dispatch.

National Oceanic and Atmospheric Administration (NOAA) - NOAA Weather Radio All Hazards (NWR) stations use EAS codes when sending their alerts. Broadcasters and cable operators can feed their EAS Decoders with the audio from any nominal NOAA Weather Radio receiver, and their EAS Decoder will react just as it does with broadcaster EAS codes.

Local Area Control Point (LAU) - At least one EOC Center with 24-hour answering point, with NAWAS in each area should ultimately have an EAS Encoder to send local alerts to the Area LP-1 station, and all other broadcasters and cable operators that want to receive it directly. If an EAS encoder/decoder cannot be procured, a manual call to the L,P-1 will be used until such time as it can be implemented at a future date.

SOUTH DAKOTA STATE EAS OPERATIONAL PLAN

Operation of the Emergency Alert System

National Level EAS

In a national emergency, the White House directs activation of the Emergency Alert System (EAS) to provide the President with a means of addressing the public on very short notice. The activation is accomplished by disseminating an Emergency Action Notification (EAN) message via dedicated network relaying information to control points of the national Primary Entry Point (PEP) network. All Participating National Stations (PN) and cable systems will continue as outlined in the appropriate checklist and Part 11.11 of the FCC Rules and Regulations until receipt of an Emergency Action Termination (EAT) message, at which time all stations will resume normal broadcasting. Stations originating emergency communications shall be deemed to have conferred rebroadcast authority (see Appendix C).

State-Level EAS

The South Dakota EAS is activated by a request from authorized officials to the State's EAS State Primary (South Dakota Office of Emergency Management – Duty Officer - SDOEM). Local Primary sources in the local EAS area should monitor dissemination of state levels emergency information to all other stations, cable systems and the public.

Activation of the State-Level EAS will be from the following:

Governor

Duty Officer, South Dakota Office of Emergency Management upon consultation with SDOEM Director or Assistant Director.

NWS offices with county warning responsibility in South Dakota

Activation of the State-Level Amber Alert will be by those officials listed as follows:

Division of Criminal Investigation, Officer on Duty.

Local-Level EAS

Activation of the Local EAS will be by the National Weather Service or officials as designated in the Local Operational Area Plan. Normally, the request would be made by the PSAP (Public Safety Answering Point or NAWAS Warning Point), or directly to the Local Primary (LPI) source serving the affected area(s).

Upon receipt of an (Local) Area EAS request for activation, all broadcast stations and cable systems, which are voluntarily participating, may conduct, at the discretion of management,

operations in accordance with the provisions of the State EAS or operational area plan. EAS may be activated for day-to-day emergencies posing a threat to life or property. For unique emergency situations involving local areas, authorities may request EAS activation through the Local Activation of the State-Level EAS will be from the following:

Governor

Duty Officer, South Dakota Office of Emergency Management upon consultation with SDOEM Director or Assistant Director.

EOC Center in the Local Area

NWS offices with county warning responsibility in South Dakota (pg. 17) Primary (LP) source serving the affected EAS local area.

Weather EAS Procedures

Each NWS office with county warning responsibility in South Dakota will provide EAS activation for specific weather alert messages. These messages are mainly of a WATCH, WARNING or ADVISORY nature (e.g. tornado, severe thunderstorm, flash flood, winter storm, etc). In addition, NWS offices can provide EAS activation for authorized messages from designated officials listed in this plan.

Dissemination of authorized messages will be directly through NWS NOAA Weather Radio All Hazards broadcasts.

For unique emergency situations involving local areas, authorities at the county emergency operation center (EOC), may request EAS activation through the LP1 and LP2 stations serving the affected EAS local area.

Procedures for Public Officials

Upon receipt of a state or operational level activation request, all broadcast stations and cable systems may conduct, at the discretion of management, operations in accordance with the provisions of the South Dakota State EAS Plan. Day-to-day emergencies posing a threat to the safety of life and property which would cause activation of the state level EAS include, but are not limited to, floods, heavy snow, high winds, icing conditions, widespread fires, discharge of toxic gases, tornadoes, widespread power failures, industrial explosions, Child Abduction Emergencies and civil disorders. In some instances, a state level EAS activation will be issued through the NWS, from the State Primary, which is the South Dakota Office of Emergency Management Duty Officer (SDOEM) or state emergency operations center in Pierre, South Dakota (SDOEM).

**NATIONAL WEATHER SERVICE
CIVIL EMERGENCY MESSAGE
REQUEST FORM**

THE FOLLOWING MESSAGE IS BEING TRANSMITTED AT THE REQUEST OF (name of agency) _____

A (type of event) _____

HAS OCCURRED AT (location) _____

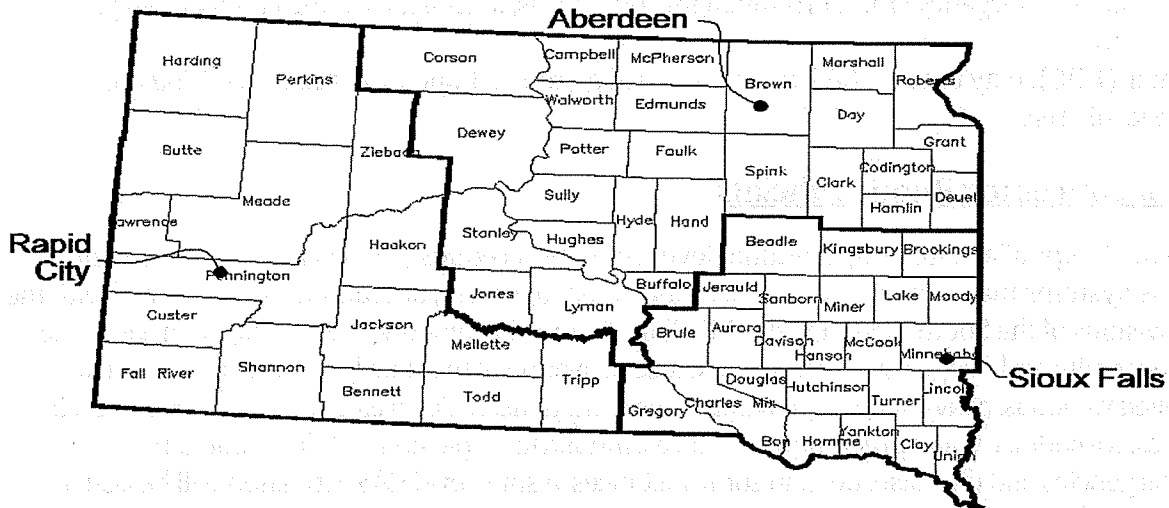
RESIDENTS (where) _____

ARE ASKED TO EVACUATE IMMEDIATELY USING THE FOLLOWING ROUTES:

SHELTERS ARE AVAILABLE (where) _____

ALL OTHERS SHOULD AVOID THIS AREA. FOLLOW THE INSTRUCTIONS OF YOUR LOCAL EMERGENCY MANAGEMENT OR LAW ENFORCEMENT OFFICIALS REGARDING ADDITIONAL EVACUATION ROUTES AND SHELTER LOCATIONS.

STAY TUNED TO (specific station) _____
FOR FURTHER INFORMATION.



1. COMPLETE THE MESSAGE FORM ON THE FOLLOWING PAGE OR COMPOSE YOUR

OWN MESSAGE (NO LONGER THAN 2 MINUTES OR 250 WORDS).

2. FOR EMERGENCIES AFFECTING THE ENTIRE STATE, CONTACT ONLY THE ABERDEEN NATIONAL WEATHER SERVICE (NWS) OFFICE; THEY WILL PROVIDE THE INFORMATION TO THE OTHER OFFICES. FOR LOCAL EMERGENCIES, CONTACT THE NWS OFFICE THAT SERVES THAT AREA (see map on next page). ALL THE OFFICES ARE OPEN 24 HOURS/DAY EVERY DAY.

NWS OFFICE	FORECASTER NUMBER	FAX NUMBER
ABERDEEN	605-225-5547 or 1-800-697-1107	605-225-7417
RAPID CITY	605-341-7435 or 1-800-684-4163	605-341-9867
SIOUX FALLS	605-330-4247 or 1-800-852-9470	605-330-4248

3. ASK FOR THE LEAD FORECASTER AND PROVIDE THE FOLLOWING IDENTIFICATION: **YOUR NAME, AGENCY, THE OFFICIAL AGENCY YOU'RE CALLING FOR, PHONE NUMBERS** (both yours and the requesting official's), TYPE OF EVENT (wildfire, chemical spill, explosion, radioactive release, terrorist act).
4. PROVIDE THE MESSAGE INFORMATION. EITHER READ THE MESSAGE FORM OR FAX IT TO THE NATIONAL WEATHER SERVICE.

The NWS will activate NOAA Weather Radio tone alarm (if the area is served by NWR) and the Emergency Alert System (EAS) for automatic broadcast on local media. The message will also be disseminated as a bulletin to media, State Radio, and surrounding dispatch centers.

PROVIDE ADDITIONAL INFORMATION TO THE NATIONAL WEATHER SERVICE AS IT BECOMES AVAILABLE.

Procedures for Broadcast and Cable Media

Upon receipt of a request to activate the EAS at the state level or operational level by civil authority, the operator at the State Primary Source will authenticate and begin recording, if necessary, all emergency messages and proceed as follows:

1. Broadcast the following announcement: **"We interrupt this program to provide the following emergency instructions."**
2. Transmit the Emergency Alert System header codes and Attention Signal (see Appendix H).
3. Broadcast the following announcement and broadcast the emergency material:
"We interrupt this program to activate the Emergency Alert System in the State of South Dakota at the request of ... The emergency situation is and affects..... (entire state, portion of state)."
Repeat nature of emergency to allow time for other broadcasters to respond.
4. Broadcast the emergency information or common program as received from the activating official. Include the source of information and the time received.
5. Repeat as necessary.
6. When received, broadcast Emergency Action Termination by making the following announcement:
"This concludes emergency programming under the South Dakota State Emergency Alert System. All broadcast stations and cable systems may now resume normal operations."
*Actions 3 through 6 should be less than 2 minutes from receipt of message.
7. Send the End of Message (EOM) code (FCC Regulations, Sec. 11.31).
8. Log or record all activity of the EAS system per FCC Regulations (Sec.11.55).

Each broadcast station and cable system, upon receipt of a State Level or operational level emergency action notification will perform, at the discretion of management, the same procedures outlined above. The emergency information may be automatically or manually rebroadcast (FCC Rules, Sec II.51k) from the monitored source or the information may be presented by station personnel.

Television stations shall transmit a visual message containing the Originator, Event, Location, and valid time period of an EAS message. If the message is a video crawl, it shall be displayed at the TOP of the television screen or where it will not interfere with other visual messages. (Requirements for cable systems are outlined in FCC rules, Sec. 11.51g.)

Broadcasters and cable systems have the option of transmitting only the EAS header and EOM codes without the attention signal and emergency announcement. This is acceptable to quickly relay EAS coded messages through areas unaffected by the emergency.

Media EAS Activities

Monitor the primary station designated as the LP-1 (see Appendix B to Appendix I) for your Operational Area for receipt of any further instructions. When possible, monitor the NWR frequency serving your area, especially if it covers your city of license and the LP-1 monitors another station (for example, Brookings media should monitor the Brookings/Arlington NWR because the LP-1 station in Sioux Falls monitors the Rowena NWR). Where NWR reception is not available, monitor the state relay network LP-1 stations should monitor NWR and a State Primary or State Relay frequency and a local public safety frequency, when it is assigned.

Media Responsibilities

The State Primary, State Relay and LP-1 stations should monitor the NP/SP/NOAA All-Hazards Radio to provide the required national EAS link to the system.

A procedure should be developed by the stations for discontinuing normal operations and broadcasting the alert message, live or recorded either automatically or manually as permitted in the rules (FCC rules, Sec. 11.51)

After receiving notification of the termination of the State-level EAS, participating media may resume regular operations in accordance with their authorization (see EAS Checklist). During emergencies, operation outside normal parameters is allowed. Such operations should be logged.

Each station should ensure that required EAS equipment is properly installed and programmed with appropriate event codes.

Tests

Assure that EAS equipment is operating properly.

1. All stations are required to record information relevant to all EAS tests (FCC rules, Sec 11.61); AM stations should refer to 73.1820.
2. All stations (except Class D FM and Low Power television) must transmit, once a week at random days and times, a Required Weekly Test (RWT) consisting of EAS Header Codes and EOM codes.
3. All stations must transmit a required monthly test (RMT) consisting of EAS Header Codes, Attention Signal, Test Script, and EOM code within 60 minutes of receipt of a test from a Local or State Primary source (Class D FM and Low Power TV transmit only the test script).
Tests of State Emergency Alert facilities, as coordinated between the South Dakota SECC Chair and

state officials, shall be on a random or scheduled basis from a point, which would originate the common emergency program.

- The following requirements regarding both RWTs and RMTs apply to all cable operators and all broadcasters, Even stations that have elected not to participate in local EAS alerts must still rebroadcast their local RMT every month. There are two exceptions to these rules. First, Class "D" FM and LPTV stations need not have an EAS Encoder. They must have an EAS Decoder. Thus, these stations are exempt from running the weekly digital code RWT test. However, they must retransmit monthly RMT tests as outlined below, minus the EAS Header Codes and Attention Signal. In addition, LPTV stations must present all EAS information visually, just as all other TV stations must do. The second exception is for FM Translator and TV Translator stations, which are not required to have any EAS equipment.

Required Weekly Test (RWT)

- Transmission: All broadcasters and cable operators must transmit an RWT once each week at random days and times except for the week of the RMT test. There are no time-of-day restrictions. This is a 10.5-second test, consisting only of the EAS Header and End-of-Message Codes.
- Reception: All broadcasters and cable operators receiving a RWT from one of their monitored sources must log receipt of this test from their one or two required monitored sources. No further action is required.

Required Monthly Test (RMT)

- Transmission: RMT's are to be initiated by the SR, and LP-1 and LP-2 stations. During some months, the test will actually be initiated by the 911-Center or Emergency Operation Center associated with these stations in this State Plan. During the designated week for this test, all other broadcasters and cable operators are to wait for this test and then react as described in (4.) below. These tests shall always use the Event Code "RMT", never codes such as "State Test", or "Local Area Test", etc.

- Scheduling of RMTs / Week and Time-of-Day

RMTs shall always occur during the fourth (4th) Tuesday of the month.

Time frame and origination of the RMT tests shall adhere to the following format:

MONTH'	TIME FRAME	STN.	ORIGINATING SOURCE
JANUARY	DAY / 4 TH TUES 8:30 AM – Local Sunset	SR	STATE RELAY
FEBRUARY	NIGHT / 4 TH TUES Local Sunset – 8:30 AM	LP	STATION STAFF
MARCH	DAY / 4 TH TUES 8:30 AM – Local Sunset	SR	STATE RELAY
APRIL	NIGHT / 4 TH TUES Local Sunset – 8:30 AM	LP	STATION STAFF
MAY	DAY / 4 TH TUES 8:30 AM – Local Sunset	SR	STATE RELAY
JUNE	NIGHT / 4 TH TUES Local Sunset - 8:30 AM	LP	STATION STAFF
JULY	DAY / 4 TH TUES 8:30 AM – Local Sunset	SR	STATE RELAY
AUGUST	NIGHT / 4 TH TUES Local Sunset – 8:30 AM	LP	STATION STAFF
SEPTEMBER	DAY / 4 TH TUES 8:30 AM – Local Sunset	SR	STATE RELAY
OCTOBER	NIGHT / 4 TH TUES Local Sunset – 8:30 AM	LP	STATION STAFF
NOVEMBER	DAY / 4 TH TUES 8:30 AM – Local Sunset	SR	STATE RELAY
DECEMBER	NIGHT / 4 TH TUES Local Sunset – 8:30 AM	LP	STATION STAFF

NOTES:

LP = Test will come from the Local Primary station that you monitor.

South Dakota STATE EOC has the authority to initiate a RMT (Required Monthly Test) through the National Weather Service or South Dakota Public Broadcasting (Vermillion). South Dakota Department of Public Safety through South Dakota State Radio Communications Office conducts daily National Warning System (NAWAS) tests with NAWAS extension lines and participates with the national NAWAS tests via Primary State Warning Point (PSWP) weekly.

The LP and PN stations must then rebroadcast this test within 60 minutes of receiving it.

3. Scheduling of RMT's Recommended Time Constraints:

LP stations, and the State EOC are requested to use judgment in the scheduling of times for RMTs. Since all broadcasters and cable operators are required to rebroadcast this test within 60 minutes of receiving it, care should be taken to not put undue hardship on TV broadcasters in particular, when they are carrying their highest-revenue programming. On a daily basis, these periods would include all major

newscasts: early morning, noontime, evening, and late evening. In addition, the times of major events are recommended to be avoided, such as: pre-planned Presidential speeches, hours of a major national or local news story carried outside of normal newscast hours, local and national election coverage, and major sporting events like World Series games and the Super Bowl.

Broadcasters and cable operators who have a complaint regarding the scheduling of RMTs in their area should make their concerns known to their area Chair (see "The South Dakota SECC" section in this Plan for names). If a satisfactory resolution is not reached at that level, the State EAS Chairs should be contacted.

4. Reception/ re-transmission of RMTs

All broadcasters and cable operators receiving an RMT test must re-transmit this test within 60 minutes after receiving the test. [For Daytime-only stations receiving nighttime RMT, this test must be retransmitted within 60 minutes of the Daytime-only station's sign-on.] Transmission of this RMT test takes the place of the Required Weekly Test (RWT). Times should be logged for both the receipt and retransmission of the RMT test. Broadcast and cable management should impress upon their staff that retransmission of this test is not an option. It is a FCC violation to fail to re-transmit this test within 60 minutes of receiving it. The best policy may be to set your EAS unit for a 60 minute automatic countdown upon

receiving an RMT. If the operator on duty does not send the test manually within that window, the box will do it for him when time runs out. If it is not possible to retransmit the RMT upon sign on, transmit an RWT in place of the RMT. As there are several LPs in the state monitoring stations outside of their Operational Area there is an exception to this rule. A RMT received from outside your Operational Area does not need to be forwarded. It should be properly logged and a comment that it is outside of the stations Operational Area should be made in the log.

5. Time-Duration and County-Location Codes to be used TIME-DURATION codes used in the EAS Header Code for all EAS Tests shall be 60 MINUTES.

COUNTY-LOCATION codes used in the EAS Header Code for EAS Tests shall conform to these guidelines:

6. Miscellaneous: SP & SR Stations: All tests, RWT and RMT, shall use the Location Code for the entire state.

LP Stations: All tests, RWT and RMT, shall include the Location Code for all counties in that LP station's Local Area of responsibility. To determine the counties in their Local Area of responsibility, each LP station should consult the "Boundary Map of South Dakota EAS Local Areas", and/or the cover sheet for the "FCC Mapbook", both found in the Appendix of this Plan. Under the new EAS Plan, some counties have been moved compared to the old EBS Plan. Please read carefully.

PN Stations and Cable Operators: RMT tests shall be re-transmitted unchanged, except for the "L-Code". Thus, RMT's will include all counties present in the original message. For the RWT originated each week by each PN station, and each cable operator, the county-location code used shall be the county for the broadcaster's City of License, or cable operator's Community of License. Other counties in the station's/system's service area may be added at management discretion.

South Dakota EAS Test Scripts and Formats

The following test scripts and formats shall be used by all South Dakota broadcasters, cable operators, and emergency agencies when originating EAS tests.

1. RWT: No script is used for the RWT. Entire test takes 10.5 seconds. Format is as follows:

Stop regular programming

one-second pause

Send EAS Header Code 3 times

one-second pause

Send EAS End-of-Message Code 3 times

one-second pause

Resume normal programming

2. RMT: LP stations and emergency agencies originating this test should use the following format. All other broadcasters and cable operators will receive the test in this format, and must re-transmit it within 60 minutes in the same format. Format is as follows:

Stop regular programming

Optional Intro: "This is a test of the (Local Area) South Dakota Emergency Alert System."

one-second pause

Send EAS Header Code 3 times (All sources must use Event Code "RMT" for this test)

one-second pause

Send EAS Attention Signal (8 seconds)

Read Test Script: " This is a test of the (Local Area) South Dakota Emergency Alert

System. In the event of an emergency, this system would bring you important information. This test is now concluded."

one-second pause

Send EAS End-of-Message Code 3 times

one-second pause

Resume normal programming

Timing Note: The script above can be read in 9-10 seconds. All other elements of the RMT (the Header Codes and an 8-second Attention Signal) take from 19-21 seconds to complete (that length depending on the number of county codes contained in the Header). The goal of writing this short script was to fit the entire test into a 30-second time period. LP stations and emergency agencies should make every attempt to complete this test within 30 seconds. Pre-recording the script at the length needed to achieve this goal would probably be helpful.

Script Note: (Local Area) = LPs: Use the name of your Local Area found in Appendix I. SP's use the phrase, "State of South Dakota".

List of Those with the Authority to Activate the South Dakota State EAS System

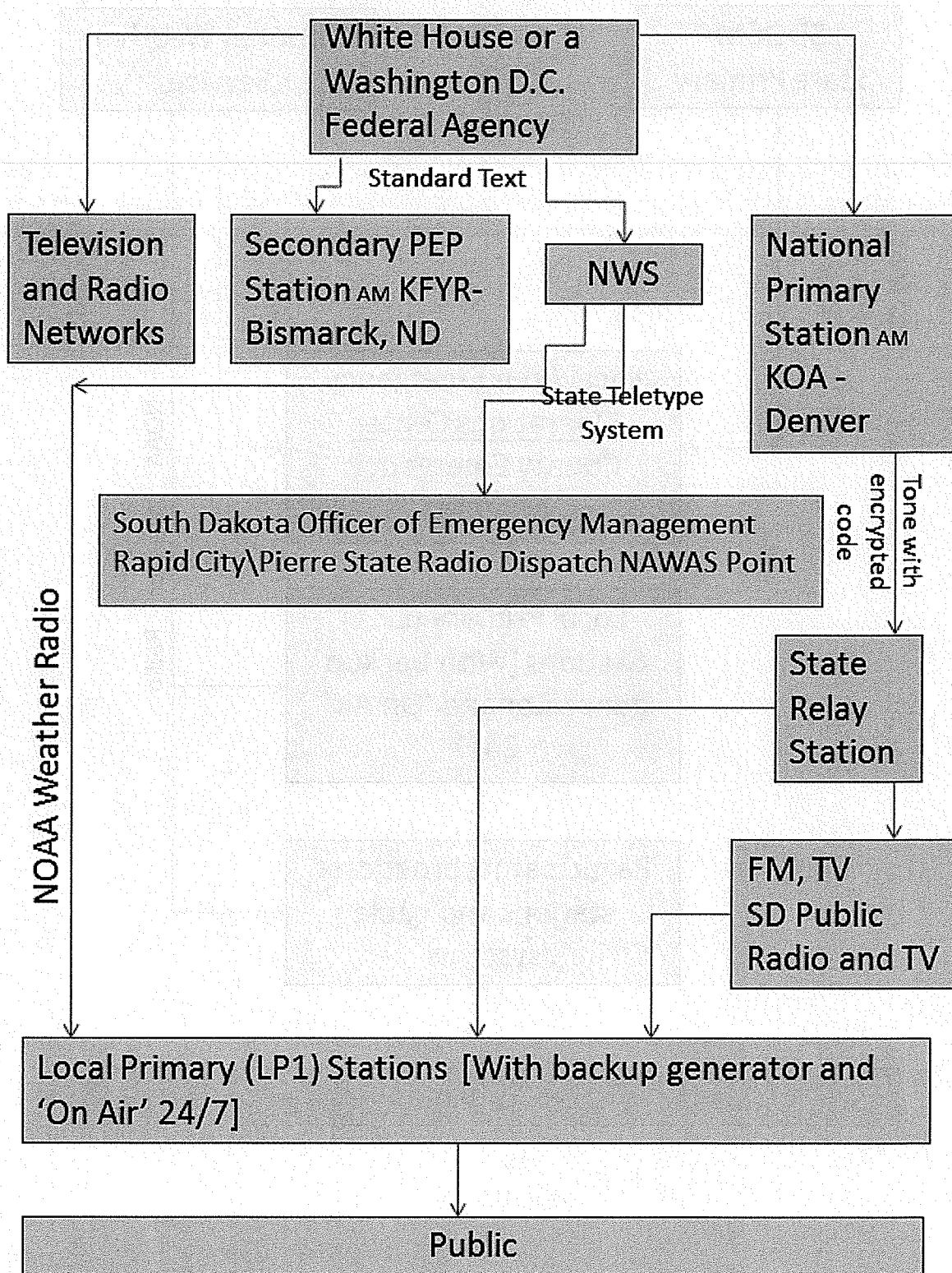
Governor (Dennis Daugaard) (605-773-3231)

**Duty Officer upon consultation w/
the Director or Assistant Director,
South Dakota
Office of Emergency Management (605-773-3231)**

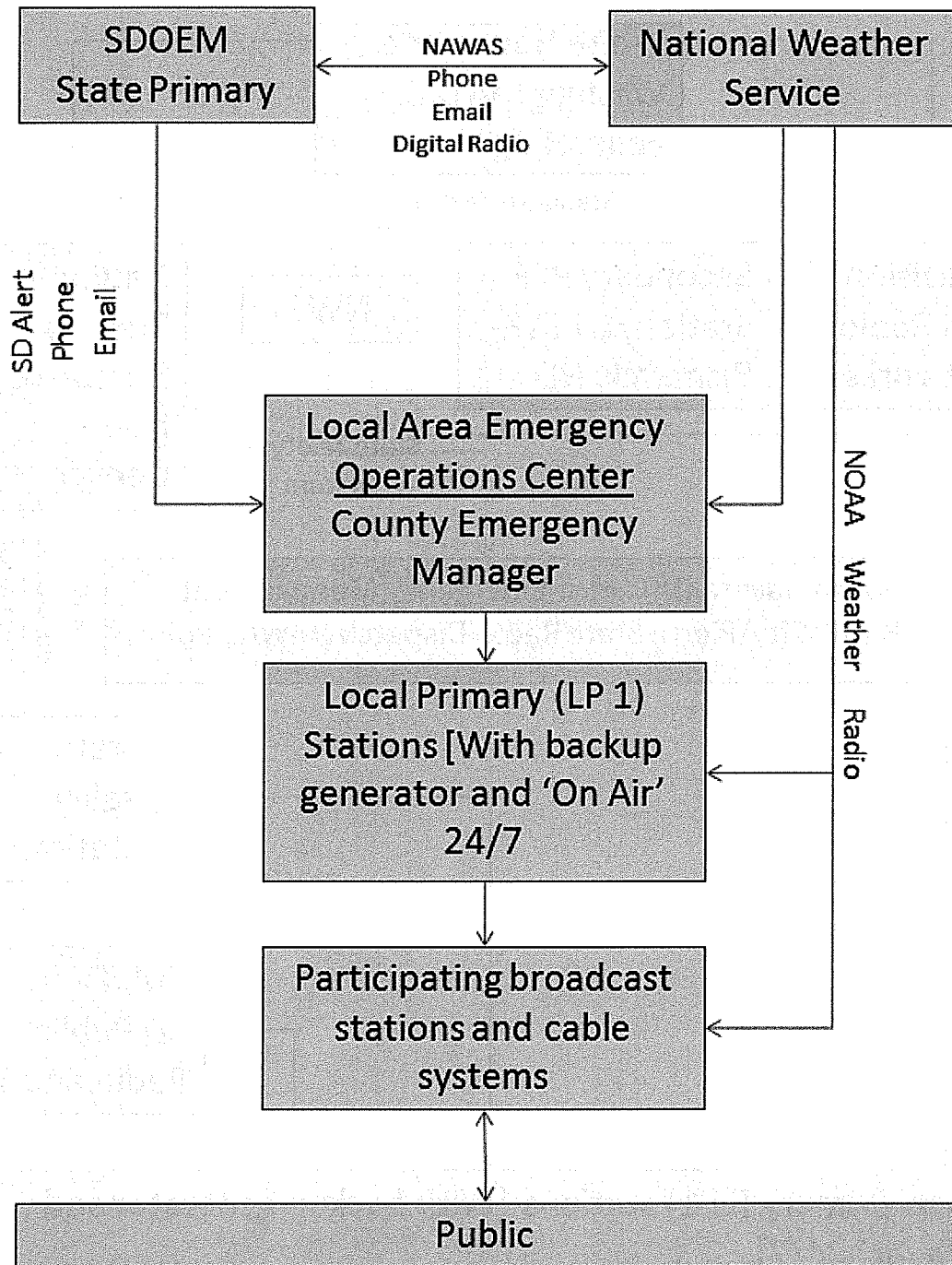
**Meteorologist-in-Charge,
National Weather Service
Aberdeen (James Scarlett) (605-225-0519)
Rapid City (David Hintz) (605-341-9271)
Sioux Falls (Sally Pavlow- Johnson) (605-330-4247)**

**Warning Coordination Meteorologists,
National Weather Service
Aberdeen (Kelly Serr) (605-225-0519)
Rapid City (Susan Sanders) (605-341-9271)
Sioux Falls (Todd Heitkamp) (605-330-4247)**

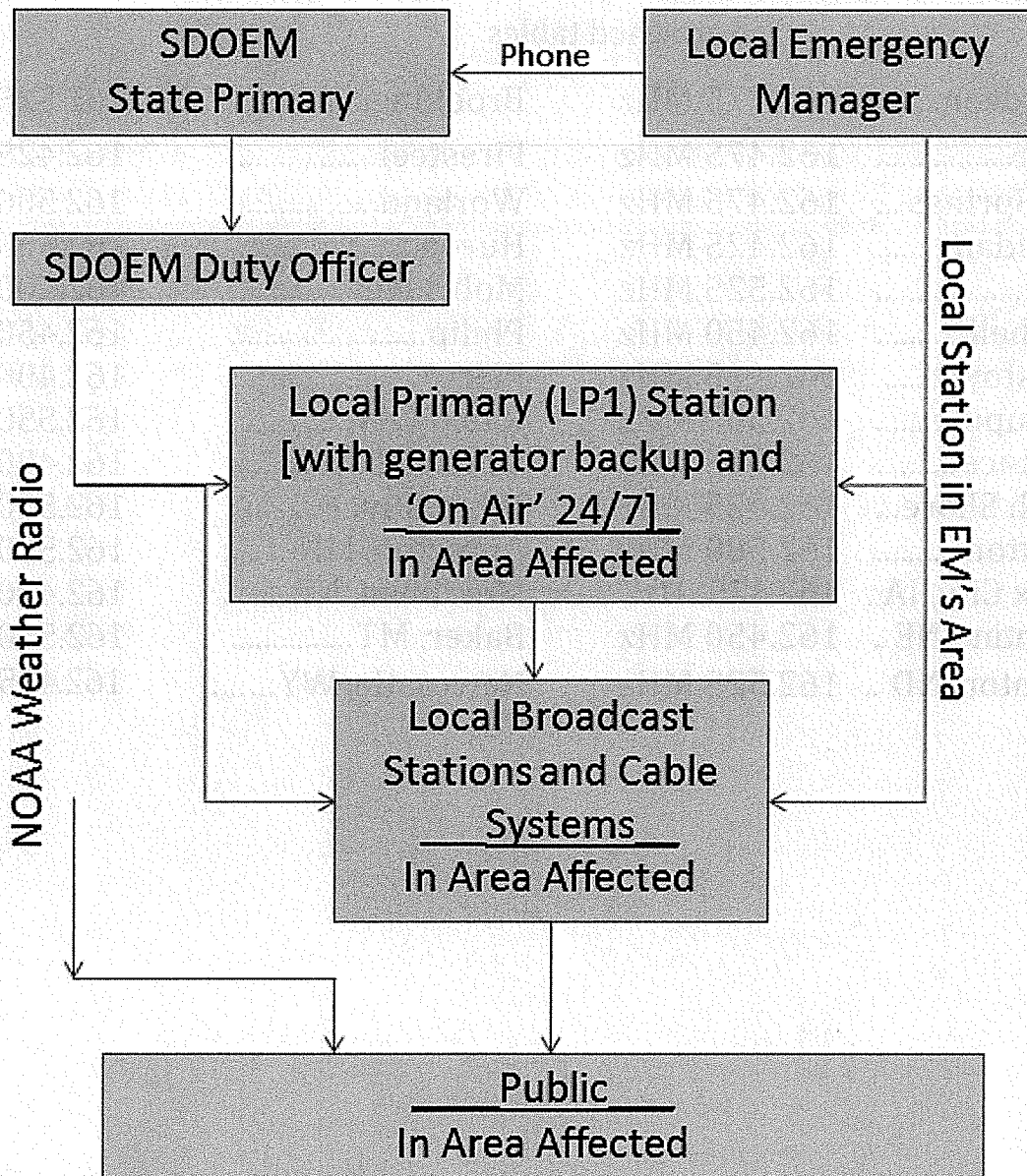
National Level Activation



State Level Activation



Local Level Activation



National Weather Service South Dakota Signal Distribution

See attached tables

Aberdeen.....	162.475 MHz	Brookings.....	162.525
Faith.....	162.475 MHz	Firesteel.....	162.425
Hot Springs ...	162.475 MHz	Worland.....	162.500
Sheridan.....	162.425 MHz	Huron.....	162.550
Lead.....	162.525 MHz	Mobridge.	162.500
Mitchell.....	162.450 MHz	Philip.....	162.450
Pickstown.....	162.425 MHz	Pierre.....	162.400
Porcupine	162.500 MHz	Rapid City.....	162.550
Reliance.....	162.525 MHz	Sioux Falls.....	162.400
South Shore...	162.425 MHz	White River	162.550
Yankton.....	162.500 MHz	Appleton, MN.....	162.550
Sioux City, IA .	162.475 Hz	Merriman, NE.....	162.400
Valentine, NE ..	162.450 MHz	Baker, MT.....	162.550
Scranton, ND ..	162.525 MHz	Newcastle, WY.....	162.475

TABLE 1
SOUTH DAKOTA STATE RELAY (SR) STATIONS
EAS INPUT # 1 FOR LP-1 / LP-2 STATIONS

LOCATION	TV	CHANNEL	FM	FREQ MHZ
Aberdeen	KDSD-TV	17	--	--
*Aberdeen	KO7JD-TV	7	K219CM-FM	91.7
*Belle Fourche	K19CG-TV	19	K201AP-FM	88.1
Brookings	KESD-TV	8	KESD-FM	88.3
Faith/Eagle Butte	KPSD-TV	13	KPSD-FM	97.1
*Edgemont	KF64AL-TV	64	K214BN-FM	90.7
*Hot Springs	--	--	K201AQ-FM	88.1
*Huron	--	--	K217CE-FM	91.3
Lowry	KQSD-TV	11	KQSD-FM	91.9
Martin	KZSD-TV	8	KZSD-FM	102.5
*Mitchell	KO9UN-TV	9	K215A1-FM	90.9
Pierpont	--	--	KDSD-FM	90.9
Pierre	KTSD-TV	10	--	--
*Pierre	--	--	K241AF-FM	96.1
*Pine Ridge	KO6AG-TV	6	--	--
*Pringle/Custer	K55AV-TV	55	K203BN-FM	88.5
Rapid City	KBHE-TV	26	KBHE-FM	89.3
Reliance	--	--	KTSD-FM	91.1
*Sioux Falls	KCSD-TV	24	KCSD-FM	90.9
Sioux Falls	--	--	KRSD-FM	88.1
*Spearfish	KO4GW-TV	4	K216A0-FM	91.1
*Terry Peak/Lead	--	--	K220BA-FM	91.9
Vermillion	KUSD-TV	34	--	--
*Wagner	W55BG-TV	55	--	--
*Wasta	K13PN-TV	13	--	--

* Translator Stations

TABLE 2
NOAA WEATHER RADIO STATIONS
EAS INPUT # 2 FOR LP-1 / LP-2 STATIONS
RECOMMENDED EAS INPUT #3 FOR PN STATIONS

STATION NAME COUNTIES	CALL SIGN	FREQ	NWS OFFICE
ABERDEEN	WXM-25	162.475	ABERDEEN
Brown, Clark, Day, Edmunds, Faulk, Hand, McPherson, Marshall, Spink			
BROOKINGS	KXI-71	162.525	SIOUX FALLS
Brookings, Beadle, Clark, Deuel, Hamlin, Kingsbury, Lake, Miner			
FAITH	WNG-557	162.475	RAPID CITY
Northern Meade, Perkins, Ziebach			
FIRESTEEL	WNG-551	162.425	ABERDEEN
Corson, Dewey, Ziebach			
BATTLE MT/HOT SPRINGS	WXK-64	162.425	RAPID CITY
Custer, Fall River			
HURON	WXM-27	162.550	SIOUX FALLS
Beadle, Buffalo, Hyde, Hand, Jerauld, Kingsbury, Sanborn, Spink			
TERRY DEAK/LEAD	WXL-23	162.525	RAPID CITY
Butte, Lawrence, Western Pennington, Harding			
MOBRIDGE/LOWRY	WXM-40	162.500	ABERDEEN
Campbell, Corson, Dewey, Edmunds, Faulk, McPherson, Potter, Sully, Walworth			
MITCHELL	WWH-36	162.450	SIOUX FALLS
Aurora, Davison, Douglas, Hanson, Hutchinson, McCook, Miner, Sanborn			
PHILIP	WXI-59	162.450	RAPID CITY
Haakon, Jackson, Eastern Pennington			
PICKSTOWN	KXI-25	162.425	SIOUX FALLS
Charles Mix, Douglas, Gregory			
PIERRE	WXM-26	162.400	ABERDEEN
Hughes, Hyde, Jones, Lyman, Stanley, Sully, Mellette, Trip			
PORCUPINE	KZZ-59	162.500	RAPID CITY
Bennett, Jackson, Shannon, Oglala Lakota			

RAPID CITY	WXM-63	162.550	RAPID CITY
Custer, Western Meade, Southern Meade, Western Pennington, Central Pennington, Eastern Pennington			
RELIANCE	KZZ-60	162.525	ABERDEEN
Brule, Buffalo, Lyman, Tripp, & Gregory			
SIOUX FALLS	WXM-28	162.400	SIOUX FALLS
Lake, Lincoln, McCook, Minnehaha, Moody, Turner			
SOUTH SHORE	WXM-41	162.425	ABERDEEN
Codington, Clark, Day, Deuel, Grant, Hamlin, Roberts			
WHITE RIVER	WNG-558	162.550	RAPID CITY
Jones, Mellette, Todd			
YANKTON	KXI-21	162.500	SIOUX FALLS
Bon Homme, Clay, Hutchinson, Turner, Yankton			
STATIONS OUTSIDE SD			
APPLETON, MN	KM-32	162.550	ABERDEEN
Deuel, Grant			
SIOUX CITY, IA	WXL-62	162.475	SIOUX FALLS
Union			
MERRIMAN, NE	WXL-76	162.400	NORTH PLATTE, NE
Bennett			
VALENTINE, NE	WXN-82	162.450	NORTH PLATTE, NE
Todd, Tripp			
BAKER, MT	WXK-57	162.550	BILLINGS, MT
Harding			
SCRANTON, ND	WNG-658	162.525	BISMARCK, ND
Harding, Perkins			
NEWCASTLE, WY	WNG-661	162.475	RAPID CITY, SD
Custer, Fall River			

TABLE 3
SOUTH DAKOTA COUNTIES BY EAS LOCAL AREA

AREA 1— Sioux Falls (7 Counties)				
Lincoln	Brookings	Turner	Lake	Moody
McCook	Minnehaha			
AREA 2 - Yankton (9 Counties)				
Aurora	Douglas	Hutchinson	Bon Homme	Gregory
Charles Mix	Yankton	Clay	Union	
AREA 3 - Watertown (8 Counties)				
Marshall	Roberts	Day	Grant	Clark
Codington	Hamlin	Deuel		
AREA 4 - Aberdeen (5 Counties)				
McPherson	Edmunds	Brown	Faulk	Spink
AREA 5 - Huron 7 Counties)				
Beadle	Jerauld	Sanborn	Davison	Hanson
Kingsbury	Miner			
AREA 6 - Mobridge (5 Counties)				
Corson	Dewey	Campbell	Walworth	Potter
AREA 7 - Lemmon (1 County)				
Perkins				
AREA 8 - Pierre (12 Counties)				
Stanley	Sully	Hughes	Hyde	Hand
Jones	Lyman	Buffalo	Brule	Mellette
Trip	Todd			
AREA 9 - Rapid City (12 Counties)				
Ziebach	Haakon	Jackson	Harding	Bennett
Meade	Pennington	Oglala Lakota	Custer	Fall River
Lawrence	Butte			

**TABLE 4
SOUTH DAKOTA LOCAL PRIMARY (LP-1) STATIONS**

CITY	COUNTY	FIPS CODE	CALL SIGN	FREQUENCY
Aberdeen	Brown	46013	KSDN	930
Aberdeen	Brown	46013	KSDN-FM	94.1
Huron	Beadle	46005	KIJV	1340
Lead	Lawrence	46081	KQME-TV	CH.10
Lemmon	Perkins	46105	KBJM	1400
Mobridge	Walworth	46129	KOLY	1300
Pierre	Hughes	46065	KGFX	1060
Rapid City	Pennington	46103	KOTA	1380
Rapid City	Pennington	46103	KHME-TV	CH 2/18
Reliance	Lyman	46085	KPLO-FM	94.5
Sioux Falls	Minnehaha	46099	KXRB	1140
Sioux Falls	Minnehaha	46099	KMXC-FM	97.3
Watertown	Codington	46029	KWAT	950
Watertown	Codington	46039	KIXX-FM	96.1
Yankton	Yankton	46135	WNAX	570

TABLE 5
SOUTH DAKOTA LOCAL PRIMARY (LP-2) STATIONS

CITY	COUNTY	FIPS CODE	CALL SIGN	FREQUENCY
Aberdeen	Brown	46013	KGIM	1420
Aberdeen	Brown	46013	KNBZ-FM	97.7
Aberdeen	Brown	46013	KABD-FM	107.7
Aberdeen	Brown	46013	KMOM-FM	105.5
Lead	Lawrence	46081	KHSD-TV	CH 5
Lowry	Walworth	46129	KMLO-FM	100.7
Milbank	Grant	46051	KXLG-FM	99.1
Pierre	Hughes	46065	KCCR	1240
Pierre	Hughes	46065	KLXS-FM	95.3
Rapid City	Pennington	46103	KEVN-LD	CH 23
Rapid City	Pennington	46103	KTOQ	1340
Rapid City	Pennington	46103	KIQK-FM	104.1
Rapid City	Pennington	46103	KZLK-FM	106.3
Rapid City	Pennington	46103	KQRQ-FM	92.3
Salem	McCook	46099	KIKN-FM	100.5
Yankton	Yankton	46135	KKYA-FM	93.1
Yankton	Yankton	46135	KYNT	1450

TABLE 6

TABLE OF MONITORING ASSIGNMENTS

All South Dakota broadcasters must monitor the two mandated sources shown as Inputs #1 and #2 for their county. Inputs #3 through #6 are optional, but will add redundancy to receiving alerts at all levels of EAS.

The State Relay (SR) and Local Primary (LP-1 and LP-2) stations have agreed to monitor optional sources shown for their stations, in order to provide the maximum alternate-path options to all broadcasters.

Notes on information shown in EAS Assignment Tables:

* - Some sources are tagged with "if receivable". These sources are shown as an option, and may be monitored if reception is possible.

EAS LEVELS: Identifies what levels of EAS will be available on that particular decoder input.

N — National; S — State; L - Local Civil Emergencies; W - Weather Alerts Area:

State EAS Origination Point

SOUTH DAKOTA PUBLIC RADIO / VERMILLION OPERATION CENTER (VOC)						
INPUT	Input #1	Input #2	Input #3	Input #4	input #5	Input #6
MONITORED SOURCE	SD State EOC	Daytime NP Stn	Nighttime NP Stn			
FREQUENCY	Direct Feed	TBD	TBD			
EAS LEVELS	S	N	N			

ALL STATE RELAY (SR) STATION MONITOR ASSIGNMENTS						
INPUT	Input #1	Input #2	Input #3	Input #4	Input #5	Input #6
MONITORED SOURCE	SP-Station	Available NWR	Geographically nearest LP-1			
FREQUENCY	TBD	TBD				
EAS LEVELS	N/S	W/L	N/S/L/W			

MONITORING ASSIGNMENTS FOR SOUTH DAKOTA LP-1 AND LP-2 STATIONS

Although only two inputs are mandated, LP-1 and LP-2 stations are being asked to monitor other sources, in order to guarantee two paths for every alert.

AREA: Sioux Falls	STATUS: LP - 1		STATION: KXRB, KMXC-FM, Sioux Falls			
INPUT	1-Mandated	2-Mandated	#3-Optional	#4-Optional	#5-Optional	#6-Optional
MONITORED SOURCE	SR Station KCSD-FM	Sioux Falls NWR	SR Station KCSD-TV	Sioux Falls 911-Center		
FREQUENCY	90.9 mHz	162.400	CH 24	???		
EAS LEVELS	N/S/L/W	W/L	N/S/LNV			

AREA: Sioux Falls		STATUS: LP-2		STATION: KIKN-FM, Salem		
INPUT	1-Mandated	2-Mandated	#3-Optional	#4-Optional	#5-Optional	#6-Optional
MONITORED SOURCE	SR Station KCSO-FM	Sioux Falls NWR	SR Station KCSO-11/			
FREQUENCY	90.0 MHz	162.400	CH 24			
EAS LEVELS	N/S/L/W	W/L	N/S/L/VV			

AREA: Yankton		STATUS: LP-1		STATION: WNAX, Yankton		
INPUT	1-Mandated	2-Mandated	#3-Optional	#4-Optional	#5-Optional	#6-Optional
MONITORED SOURCE	SP Station KUSD-FM	Yankton NWR	LP-2 KKYY			
FREQUENCY	89.7 MHz	162.500	93.1 MHz			
EAS LEVELS	N/S/L/W	W/L	N/S/L			

AREA: Yankton		STATUS: LP2		STATION: KKYY-FM, KYNT Yankton		
INPUT	1-Mandated	2-Mandated	#3-Optional	#4-Optional	#5-Optional	#6-Optional
MONITORED SOURCE	SP Station KUSD-FM	Yankton NWR	LP-2 KKYY			
FREQUENCY	89.7 MHz	162.425	93.1 MHz			
EAS LEVELS	N/S/L/W	W/L	N/S/L			

AREA: Watertown		STATUS: LID1		STATION: KWAT, KIXX-FM, Watertown		
INPUT	1-Mandated	2-Mandated	#3-Optional	#4-Optional	#5-Optional	#6-Optional
MONITORED SOURCE	SR Station KDSD	South Shore NWR	Watertown 911 Center			
FREQUENCY	90.0 MHz	162.550	???			
EAS LEVELS	N/S/L/W	W/L				

AREA: Watertown		STATUS: LP2		STATION: KXLG-FM, Milbank/Watertown		
INPUT	1-Mandated	2-Mandated	#3-Optional	#4-Optional	#5-Optional	#6-Optional
MONITORED SOURCE	SP Station KESD-FM	South Shore NWR	Watertown 911 Center			
FREQUENCY	88.3	162.55	???			
EAS LEVELS	N/S/L/W	W/L	L			

AREA: Aberdeen		STATUS: LR1		STATION: KSDN, KSDN-FM, Aberdeen		
INPUT	1-Mandated	2-Mandated	#3-Optional	#4-Optional	#5-Optional	#6-Optional
MONITORED SOURCE	SR Station KDSD-TV	Aberdeen NWR	Aberdeen 911 Center			
FREQUENCY	CH 17	162.475	???			
EAS LEVELS	N/S/L/W	W/L				

AREA: Aberdeen STATUS: LP2 STATION: KGIM, KNBZ-FM, KABD-FM, KMOM-FM Aberdeen						
INPUT	1-Mandated	2-Mandated	#3-Optional	#4-Optional	#5-Optional	#6-Optional
MONITORED SOURCE	SR Station KDSD-1V	Aberdeen NWR	Aberdeen 911 Center			
FREQUENCY	CH 17	162.475	???			
EAS LEVELS	N/S/L/W	W/L	L			

AREA: Huron STATUS: LP-1 STATION: KIJV, Huron						
INPUT	1-Mandated	2-Mandated	#3-Optional	#4-Optional	#5-Optional	#6-Optional
MONITORED SOURCE	SR Station KESD	Huron NWR	Huron 911 Center			
FREQUENCY	88.3 MHz	162.550	???			
EAS LEVELS	N/S/L/W	W/L	L			

AREA: Mobridge STATUS: LP-1 STATION: KOLY, Mobridge						
INPUT	1-Mandated	2-Mandated	#3-Optional	#4-Optional	#5-Optional	#6-Optional
MONITORED SOURCE	SR Station KQSD	Lowry NWR				
FREQUENCY	91.9 MHz	162.500				
EAS LEVELS	N/S/L/W	W/L				

AREA: Mobridge STATUS: LP-2 STATION: KLM-FM, Lowery						
INPUT	1-Mandated	2-Mandated	#3-Optional	#4-Optional	#5-Optional	#6-Optional
MONITORED SOURCE	SR Station KQSD	Lowry NWR				
FREQUENCY	91.9 MHz	162.500				
EAS LEVELS	N/S/L/W	W/L				

AREA: Lemmon STATUS: LP-1 STATION: KBJM, Lemmon						
INPUT	1-Mandated	2-Mandated	#3-Optional	#4-Optional	#5-Optional	#6-Optional
MONITORED SOURCE	SR Station KPSD	Scranton NWR	SR Station KPSD-TV			
FREQUENCY	97.1 MHz	162.525	CH 13			
EAS LEVELS	N/S/L/W	W/L	N/S/LNV			

AREA: Pierre STATUS: LP1 STATION: KGFY, Pierre/KPLO-FM, Reliance						
INPUT	1-Mandated	2-Mandated	#3-Optional	#4-Optional	#5-Optional	#6-Optional
MONITORED SOURCE	SR Station KTSD	Pierre NWR	Pierre 911 Center			
FREQUENCY	91.1 MHz	162.400	???			
EAS LEVELS	N/S/LW	W/L	L			

AREA: Pierre		STATUS: LP 2		STATION: KCCR,		KXLS-FM, Pierre	
INPUT	1-Mandated	2-Mandated	#3-Optional	#4-Optional	#5-Optional	#6-Optional	
MONITORED SOURCE	SR Station KTSD	Pierre NWR	Pierre 911 Center				
FREQUENCY	91.1 MHz	162.400	???				
EAS LEVELS	N/S/L/W	W/L					

AREA: Rapid City		STATUS: LP 1		STATION: KOTA-AM, KHME-TV, Rapid City/KHSD-TV, Lead			
INPUT	1-Mandated	2-Mandated	#3-Optional	#4-Optional	#5-Optional	#6-Optional	
MONITORED SOURCE	SR Station KBHE-FM	Rapid City NWR	PC EOC				
FREQUENCY	89.3 MHz	162.550	155.805				
EAS LEVELS	N/S/L/W	W/L	LNV				

AREA: Rapid City		STATUS: LP 2		STATION: KEVN-LP, KIOK-FM, KTOQ, KQRQ-FM, KZLK-FM, Rapid City, KHSD-TV, Lead			
INPUT	1-Mandated	2-Mandated	#3-Optional	#4-Optional	#5-Optional	#6-Optional	
MONITORED SOURCE	SR Station KBHE-FM	Rapid City NWR	PC EOC				
FREQUENCY	89.3 MHz	162.550	155.805				
EAS LEVELS	N/S/L/W	W/L	UW				

MONITORING ASSIGNMENTS FOR SOUTH DAKOTA PN STATIONS.

All South Dakota - PN Stations Stations / Cable Operators						
INPUT	1-Mandated	2-Mandated	#3-Optional	#4-Optional	#5-Optional	#6-Optional
MONITORED SOURCE	Geographically nearest LP-1	Geographically nearest LP -2	Geographically nearest NOAA			
FREQUENCY	TBD	TBD	TBD			
EAS LEVELS	N/S/L/W	N/S/UW	W			

EAS LEVELS: N = National, S = State, L = Local, W = Weather

EAS Header Code Analysis

An EAS Header Code contains the following elements, sent in the following sequence:

[Preamble] ZCZC-ORG-EEE-PSSCCC-TTTT-JJHHMM-LLLLLLLL
Attention Signal
Aural, Visual, or Text Message
[Preamble] NNNN

[Preamble] = (Clears the system) - Sent automatically by the Encoder.

ZCZC = (Start of ASCII Code) - Sent automatically by the Encoder.

ORG = (Originator Code) - Preset once by user, then sent automatically by the Encoder. See following Section (B.) for code you must use.

EEE = (Event Code) - Determined by user, each time an alert is sent. See following Appendix H for the codes to be used in South Dakota.

PSSCCC = (County-Location Code) - Determined by user, each time an alert is sent. See following Appendix H for the assigned codes of all South Dakota counties.

TTTT = (Duration of Alert) - Determined by user, each time an alert is sent.

JJHHMM = (Date/Time-of-Day) - Sent automatically by the Encoder.

LLLLLLLL = (8-Character ID, Identifying the Broadcaster, Cable TV, Weather Service Office, Nuclear/Industrial Plant, or Civil Authority operating that Encoder.) Preset once by user, then sent automatically by the Encoder. See following below for the format to be followed by all users in constructing their "L-Code".

Attention Signal - Must be sent if aural, visual, or text message is sent.

[Preamble] = (re-clears the system) - Sent automatically by the Encoder when the End-of-Message sequence is initiated.

NNNN = (End-of-Message Code) - Must be initiated manually at the end of every EAS Alert originated by all sources. A failure of the system will occur if this code is not sent to reset the Decoders of all stations/operators that carried that alert.

South Dakota Originator Codes

South Dakota Originator Codes Following are the Originator Codes for State Activation of the EAS.

WXR - To be used by National Weather Service Offices.

CIV - To be used by Emergency Government, Sheriffs, and all other Civil Authorities. EAS - To be used by all Broadcasters and Cable TV Operators.

Whether used under the authority of the State EAS Plan, or any of the County/Local Area EAS Plans, the following are the Event Codes to be used in the State of South Dakota. No codes can be added without FCC approval. County/Local Area EAS Plans that desire to use a code not on this list should submit that code request to the South Dakota Association of Broadcasters for SEOC and FCC approval and subsequent addition to this list. This list will be maintained as a "Master List" for all Event Codes used in the State of South Dakota.

South Dakota "L-Code" Formats

This 8-character code is affixed to every EAS message originated or re-transmitted by every EAS Encoder. The code identifies the particular broadcaster, cable operator, Weather Service Office, nuclear/industrial plant, or civil authority operating that Encoder. "L-Code" ID's must adhere to the following formats. No deviation from these formats is allowed, since using certain other characters would cause an error in the system.

Broadcasters:

Single Station: KXXX(FM)

Two Stations: KXXXKYYY (FM)

Three or more Stations: The call letters of one of the stations or the abbreviated name of the parent company is sufficient. All other stations sending the alert should keep a log of alerts sent, as should the ID station. (Per FCC)

Cable TV:

(To be determined by the to-be-named SECC Cable TV Chair.)

Weather Service Offices

Use the NWS office's location identifier, followed by a "/" and the letters NWS.

Rapid City: KUNR/NWS

Civil Authorities: This code uses three components in constructing its 8-character code: Portion of "L Code" Source of Characters.

State: Office of the Governor = SDGOV

South Dakota Office of Emergency Management = SDOEM

Local Government:

First four characters = First four letters of name of jurisdiction (Name of County, City; etc.)

Next two characters = Abbreviation for type of jurisdiction

For County use "CO"

For City use "CY"

For Town use "TN"

For Village use "VL"

For Township use "TP" For Municipality use "MY"

Last two Characters = Abbreviation for type of agency For Sheriff use "SH"

For Fire Dept. use "FD"

For Police Dept. use "PD"

For Traffic Authority use "TA"

For Emergency Services use "ES"

For Emergency Management use "EM"

Examples: Pennington County Sheriff = "PENCOSH", City of Sioux Falls Police = "SFALLSCYPD South Dakota County Location Codes ("PSSCCC")

The first digit ("P") can be used to indicate one-ninth of the county code it precedes, using the following pattern.

There are no FCG-Approved Special South Dakota Event Codes at this time.

**ORIGINATOR AND EVENT CODE TRANSLATIONS
TABLE 9**

EVENT CODES FOR WHICH YOU MUST PROGRAM YOUR EAS DECODER

EVENT	DESCRIPTION	REMARKS
EAN	National EAS Activation	Must be retransmitted immediately
EAT	National EAS Termination	Must be retransmitted immediately
RMT	Required Monthly Test	Must be retransmitted within 60 minutes of receipt
RWT	Required Weekly Test	Log only; no rebroadcast
TOR	Tornado Warning	Must be retransmitted immediately
FFW	Flash Flood Warning	Must be retransmitted immediately
CAE	Child Abduction Emergency	Must be retransmitted immediately
CDW	Civil Danger Warning	Must be retransmitted immediately
CEM	Civil Emergency Message	Must be retransmitted immediately

TABLE 10

SUGGESTED PROGRAMMING SEQUENCE FOR SETTING UP YOUR EAS DECODER

EVENT	DESCRIPTION	COUNTY CODE	OPERATION MODE
ADR	Administrative Message	All Counties in your Area	Automatic
EAN	National EAS Activation	Not Applicable	Automatic
EAT	National EAS Termination	Not Applicable	Automatic
NIC	National Info Center	Not Applicable	Manual
RMT	Required Monthly Test	Your County of License	<u>Automatic / 60Min</u>
RWT	Required Weekly Test	Your County of License	Manual (for logging)
TOR	Tornado Warning	All Counties in your Area	Automatic
BZW	Blizzard Warning	All Counties in your Area	Manual
FFW	Flash Flood Warning	All Counties in your Area	Automatic
CEM	Civil Emergency Message	All Counties in your Area	Automatic
STA	State Priority Activation	Entire State	Automatic
IAA	Local Area Priority Activation	All-Counties in your Area	Automatic
IPE	Industrial Plant Emergency*	All Counties in your Area	Automatic
"---"	"Any Received Alert"	All Counties in your Area	Manual

* If applicable in your Area

Originator Codes:

Org. Code	English Translatio
EAS	Broadcast Station or Cable System
EAN	National Emergency Action Notification Network
CIV	Civil Authority
WXR	The National Weather Service
PEP	Primary Entry Point

Event Code	English Translation	Model 943 Event Code No.	Event Code	English Translation	Model 943 Event Code
EAN	National Emergency Action Notification	N/A	HWA	High Wind Watch	21
EAT	National Emergency Action Termination	N/A	HWW	High Wind Warning	22
MC	National Information Center Message	N/A	HUA	Hurricane Watch	23
NPT	National Periodic Test	N/A	HUW	Hurricane Warning	24
RMT	Required Monthly Test	33	HLS	Hurricane Statement	25
RWT	Required Weekly Test	34	LEW	Law Enforcement Warning	26
ADR	Administrative Message	1	LAE	Local Area Emergency	27
AVA	Avalanche Watch	2	NMN	Network Message Notification	28
AVW	Avalanche Warning	3	TOE	911 Telephone Outage Emergency	29
BZW	Blizzard Warning	4	NUW	Nuclear Power Plant Warning	30
CAE	Child Abduction Emergency	5	DMO	Practice/Demo Warning	31
CDW	Civil Danger Warning	6	RHW	Radiological Hazard Warning	32
GEM	Civil Emergency Message	7	SVA	Severe Thunderstorm Watch	35
CFA	Coastal Flood Watch	8	SVR	Severe Thunderstorm Warning	36
CFW	Coastal Flood Warning	9	SVS	Severe Weather Statement	37
DSW	Dust Storm Warning	10	SPW	Shelter in Place Warning	38
EQW	Earthquake Warning	11	SMW	Special Marine Warning	39
EVI	Evacuation Immediate Notice	12	SPS	Special Weather Statement	40
FRW	Fire Warning	13	TOA	Tornado Watch	41
FFW	Flash Flood Warning	15	TOR	Tornado Warning	42
FFS	Flash Flood Statement	16	TRA	Tropical Storm Watch	43
FLA	Flood Watch	17	TRW	Tropical Storm Warning	44
FLW	Flood Warning	18	TSA	Tsunami Watch	45
FLS	Flood Statement	19	TSW	Tsunami Warning	46
HMW	Hazardous Materials Warning	20	VOW	Volcano Warning	47
FFA	Flash Flood Watch		WSA	Winter Storm Watch	48
			WSW	Winter Storm Warning	49

South Dakota County-Location Codes ("PSSCCC")

The first digit ("P") can be used to indicate one-ninth of the county code it precedes, using the following pattern:

0 = Entire County		
1 = NW	2 = NC	3 = NE
4 = WC	5 = C	6 = EC
7 = SW	8 = SC	9 = SE

Examples: for all of Pennington County, the Location code would be "046103". Most County-Location Codes in the state of South Dakota will be constructed to indicate the entire county.

STATE OF SOUTH DAKOTA COUNTY CODES

State of South Dakota (used to activate the entire state) 046000

Aurora	04600
Beadle	04600
Bennett	04600
Bon Homme	04600
Brookings	046011
Brown	04601
Brule	04601
Buffalo	04601
Butte	04601
Campbell	04602
Charles Mix	04062
Clark	04602
Clay	04602
Codington	04602
Corson	046031
Custer	046033
Davison	04603
Day	04603
Deuel	046039
Dewey	046041
Douglas	04604
Edmunds	04604
Fall River	04604
Grant	046051
Gregory	046053
Haakon	046055
Hamlin	046057
Hand	046059

Hanson	046061
Harding	046063
Hughes	046065
Hutchinson	04606
Hyde	04606
Jackson	04607
Jerauld	04607
Jones	04607
Kingsbury	04607
Lake	04607
Lawrence	046081
Lincoln	046083
Lyman	046085
Marshall	04609
McCook	04608
McPherson	046089
Meade	046093
Meade (Faith weather)	246093
Meade (Sturgis weather)	44609
Meade (Southern weather)	846093
Mellette	046095
Miner	046097
Minnehaha	046099
Moody	046101
Oglala Lakota	046102
Pennington	046103
Pennington (Rapid City)	546103
Pennington (Hill City weather)	446103
Pennington (Wall weather)	646103
Perkins	046105
Potter	046107
Roberts	046109
Sanborn	04611
Spink	04611
Stanley	04611
Sully	04612
Todd	04612
Tripp	04612
Turner	04612
Union	04612
Walworth	04613
Yankton	04613
Ziebach	04613

TABLE 8
SOUTH DAKOTA EAS LOCAL AREA BROADCAST STATIONS

CALL SIGN	FIPS CODE	CITY OF LICENSE	FREQ	EAS DESIG
ABERDEEN AREA (4)				
KSDN	46013	ABERDEEN	930	LP-1
KSDN-FM	46013	ABERDEEN	94.1	LP-1
KDSD-TV	46013	ABERDEEN	CH 17	SR
KBFO-FM	46013	ABERDEEN	106.7	PN
KKAA	46013	ABERDEEN	1560	PN
KNBZ-FM	46013	REDFIELD	97.7	PN
KGIM	46013	ABERDEEN	1420	LP-2
KLRJ-FM	46013	ABERDEEN	94.9	PN
KQKD	46115	REDFIELD	1380	PN
KGIM-FM	46115	REDFIELD	103.7	PN
KABD-FM	46013	IPSWICH	107.7	LP-2
KMOM-FM	46013	ROSCOE	105.5	LP-2
HURON AREA (5)				
KIJV	46005	HURON	1340	LP-1
KJRV-FM	46005	HURON	93.3	PN
KOKK	46005	HURON	1210	PN
KTTM	46005	HURON	CH 12	PN
KORN	46035	MITCHELL	1490	PN
KORN-FM	46035	MITCHELL	92.1	PN
KMIT-FM	46035	MITCHELL	105.9	PN
KUQL-FM	46035	MITCHELL	98.3	PN
KQRN-FM	46035	MITCHELL	107.3	PN
KGRH-FM	46035	MITCHELL	88.1	PN
LEMMON AREA (7)				
KBJM	46105	LEMMON	1400	LP.1
MOBRIDGE AREA (6)				
KPSD-TV	46041	FAITH/EAGLE BUTTE	CH 13	SR
KQSD-FM	46129	LOWRY	91.9	SR
KQSD-TV	461 29	LOWRY	CH 11	SR
KLND-FM	46129	MOBRIDGE	89.5	PN
KMLO-FM	46129	MOBRIDGE	100.7	PN
KOLY	46129	MOBRIDGE	1300	LP-1
KOLY-FM	46129	MOBRIDGE	99.5	LP-1

PIERRE AREA (8)				
KCCR	46065	PIERRE	1240	LP-2
KGFX	46065	PIERRE	1060	LP-1
KGFX-FM	46065	PIERRE	92.7	PN
KLXS-FM	46065	PIERRE	95.3	LP-2
KPRY-TV	46065	PIERRE	CH 19	PN
KTSD-TV	46065	PIERRE	CH 10	SR
KSQP	46065	PIERRE	1450	PN
KPLO-FM	46085	RELIANCE	94.5	LP-1
KPLO-TV	46085	RELIANCE	CH 13	PN
KTSD-FM	46085	RELIANCE	91.1	SR
KLNI-FM	46085	ST. FRANCIS	96.1	PN
KWYR	46123	WINNER	1260	PN
KWYR-FM	46123	WINNER	93.7	PN
KGRJ-FM	46065	CHAMBERLAIN	89.5	PN
RAPID CITY AREA (9)				
KBFS	46019	BELLE FOURCHE	1450	PN
KZZI-FM	46019	BELLE FOURCHE	95.9	PN
KFCR	46033	CUSTER	1490	PN
KDSJ	46081	DEADWOOD	980	PN
KSQY-FM	46081	DEADWOOD	95.1	PN
KPSD-FM	46093	FAITH/EAGLE BUTTE	97.1	SR
KZMX	46047	HOT SPRINGS	580	PN
KZMX-FM	46047	HOT SPRINGS	96.7	PN
KQME-TV	46081	LEAD	CH 10	LP-1
KHSD-TV	46081	LEAD	CH 5	LP-2
KZSD-FM	46007	MARTIN	102.5	SR
KZSD-TV	46007	MARTIN	CH 8	SR
KILT-FM	46113	PORCUPINE	90.1	PN
KBHE-FM	46103	RAPID CITY	89.3	SR
KBHE-TV	46103	RAPID CITY	CH 26	SR
KNBN-TV	46103	RAPID CITY	CH 21	PN
KKRA-TV	46103	RAPID CITY	CH 24	PN
KWBH-TV	46103	RAPID CITY	CH 27	PN
KCLO-TV	46103	RAPID CITY	CH 16	PN
KEVN-LP	46103	RAPID CITY	CH 23	LP-2
KFXS-FM	46103	RAPID CITY	100.3	PN
KIMM	46103	RAPID CITY	1150	PN
KIQK-FM	46103	RAPID CITY	104.1	LP-2
KKLS	46103	RAPID CITY	920	PN
KKMK-FM	46103	RAPID CITY	93.9	PN
KLMP-FM	46103	RAPID CITY	97.9	PN
KOTA	46103	RAPID CITY	1380	LP-1
KHME-TV	46103	RAPID CITY	CH 2/18	LP-1
KOTA-TV	46103	RAPID CITY	CH 7	PN
KOUT-FM	46103	RAPID CITY	98.7	PN
KTEQ-FM	46103	RAPID CITY	91.3	PN

KTOQ	46103	RAPID CITY	1340	LP-2
KQRQ-FM	46103	RAPID CITY	92.3	LP-2
KZLK-FM	46103	RAPID CITY	106.3	LP-2
KQFR-FM	46103	RAPID CITY	89.9	PN
KBHU-FM	46081	SPEARFISH	89.1	PN
KDDX-FM	46081	SPEARFISH	101.1	PN
KSLT-FM	46081	SPEARFISH	107.3	PN
KBHB	46093	STURGIS	810	PN
KRCS-FM	46093	STURGIS	93.1	PN
SIoux FALLS AREA (1)				
KBRK	46011	BROOKINGS	1430	PN
KBRK-FM	46011	BROOKINGS	93.7	PN
KESD-FM	46011	BROOKINGS	88.3	SR
KESD-TV	46011	BROOKINGS	CH 8	SR
KSDJ-FM	46011	BROOKINGS	90.7	PN
KDBX-FM	46011	BROOKINGS	107.1	PN
KJAM	46079	MADISON	1390	PN
KJAM-FM	46079	MADISON	103.1	PN
KDLV-TV	46099	PLANKINTON	CH 26	PN
KIKN-FM	46087	SALEM	100.5	LP-2
KAU N-TV	46099	SIoux FALLS	CH 42	PN
KAUR-FM	46099	SIoux FALLS	89.1	PN
KCPO-TV	46099	SIoux FALLS	CH. 26	PN
KGWD-FM	46099	SIoux FALLS	94.5	PN
KSQB	46099	SIoux FALLS	1520	PN
KCSD-FM	46099	SIoux FALLS	90.9	SR
KCSD-TV	46099	SIoux FALLS	CH 23	SR
KDLT-TV	46099	SIoux FALLS	CH 47	PN
KELO	46099	SIoux FALLS	1320	PN
KELO-FM	46099	SIoux FALLS	92.5	PN
KELO-TV	46099	SIoux FALLS	CH 11	PN
KKLS-FM	46099	SIoux FALLS	104.7	PN
KMXC-FM	46099	SIoux FALLS	97.3	LP-1
KNWC	46099	SIoux FALLS	1270	PN
KNWC-FM	46099	SIoux FALLS	96.5	PN
KRRO-FM	46099	SIoux FALLS	103.7	PN
KRSD-FM	46099	SIoux FALLS	88.1	PN
KSFY-TV	46099	SIoux FALLS	CH 13	PN
KXR B	46099	SIoux FALLS	1140	LP-1
KSQB-FM	46099	SIoux FALLS	95.7	PN
KTTW-TV	46099	SIoux FALLS	CH 7	PN
KTWB-FM	46099	SIoux FALLS	101.9	PN
KWSD-TV	46099	SIoux FALLS	CH 36	PN
KWSN	46099	SIoux FALLS	1230	PN
KWSF-FM	46099	SIoux FALLS	107.9	PN
KYBB-FM	46099	SIoux FALLS	102.7	PN
KSOO	46099	SIoux FALLS	1000	PN

KJJQ	46011	VOLGA	910	PN
KKQQ-FM	46011	VOLGA	102.3	PN
KDLO-TV	46029	FLORENCE	CH 3	PN
KMSD	46051	MILBANK	1510	PN
KPHR-FM	46051	MILBANK	106.3	PN
KCGN-FM	46051	MILBANK	101.5	PN
KXLG-FM	46051	MILBANK	99.1	LP-2
KDSD-FM	46037	PIERPONT	90.9	SR
KBWS-FM	46109	SISSETON	102.9	PN
KDLO-FM	46029	WATERTOWN	96.9	PN
KIXX-FM	46029	WATERTOWN	96.1	LP-1
KKSD-FM	46029	WATERTOWN	104.3	PN
KSDR	46029	WATERTOWN	1480	PN
KSDR-FM	46029	WATERTOWN	92.9	PN
KWAT	46029	WATERTOWN	950	LP-1
YANKTON AREA (2)				
KVCX-FM	46053	GREGORY	101.5	PN
KAOR-FM	46027	VERMILLION	91.1	PN
KVTK	46027	VERMILLION	1570	PN
KUSD-FM	46027	VERMILLION	89.7	SP
KUSD-TV	46027	VERMILLION	CH 34	SP
KVHT-FM	46027	VERMILLION	106.3	PN
KVCF-FM	46027	FREEMAN	90.5	PN
KKYA-FM	46135	YANKTON	93.1	LP-2
KYNT	46135	YANKTON	1450	LP-2
WNAX	46135	YANKTON	570	LP-1
WNAX-FM	46135	YANKTON	104.1	PN

