

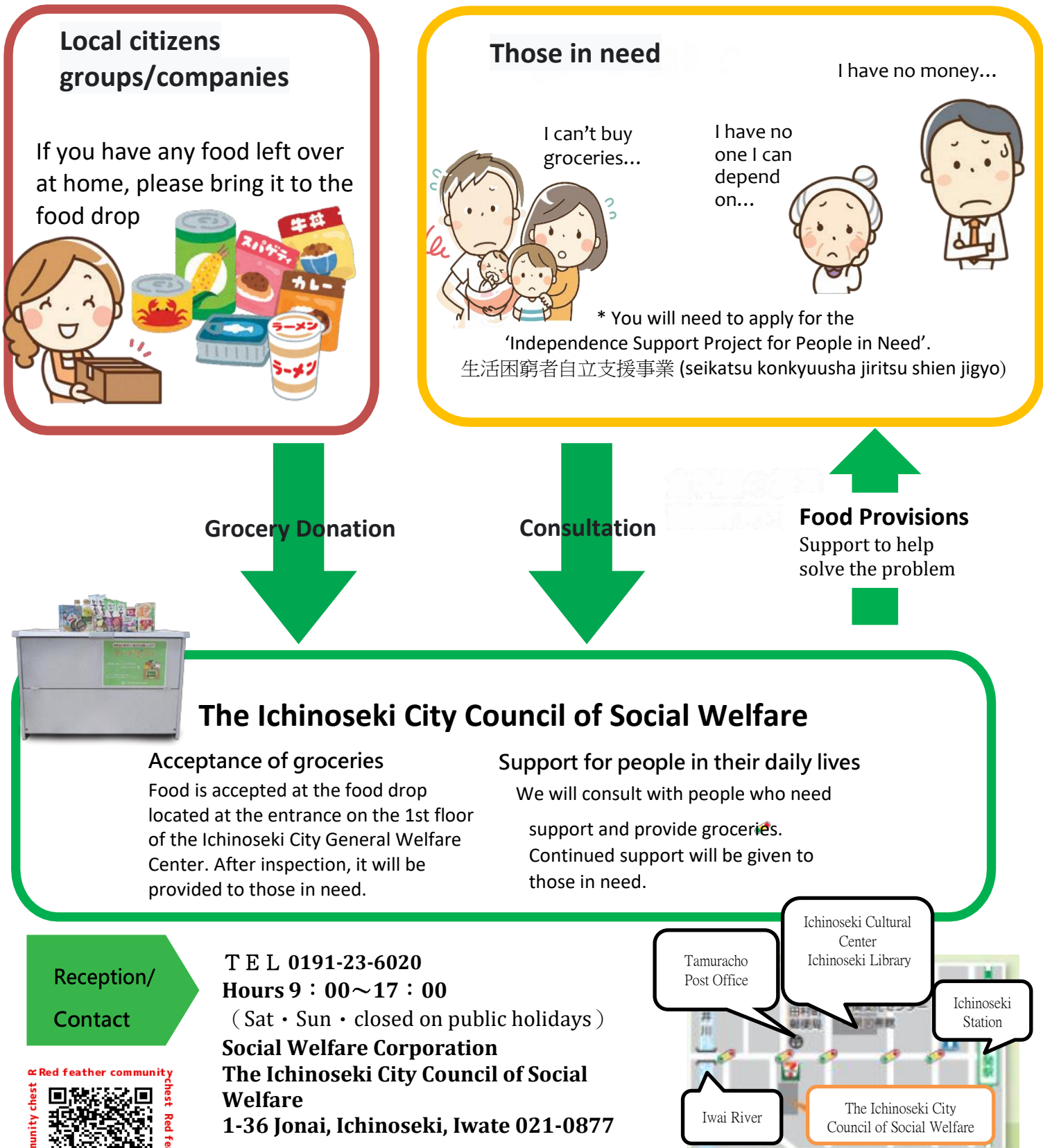
A system that delivers groceries donated by local citizens to those who are in need

英語

~ You're not alone, please reach out to us ~

The Ichinoseki City Council of Social Welfare is carrying out a food support project that distributes items donated by local residents and provides them to people in need.

Overall flow of the food support project



Local citizens groups/companies

If you have any food left over at home, please bring it to the food drop



Those in need



I can't buy groceries...

I have no one I can depend on...



I have no money...

* You will need to apply for the 'Independence Support Project for People in Need'.
生活困窮者自立支援事業 (seikatsu konkyuusha jiritsu shien jigyo)

Grocery Donation

Consultation

Food Provisions
Support to help solve the problem

The Ichinoseki City Council of Social Welfare

Acceptance of groceries

Food is accepted at the food drop located at the entrance on the 1st floor of the Ichinoseki City General Welfare Center. After inspection, it will be provided to those in need.

Support for people in their daily lives

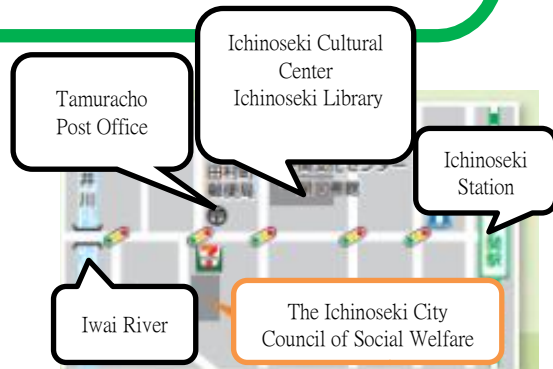
We will consult with people who need support and provide groceries. Continued support will be given to those in need.

Reception/
Contact

TEL 0191-23-6020
Hours 9:00~17:00
(Sat · Sun · closed on public holidays)
Social Welfare Corporation
The Ichinoseki City Council of Social Welfare
1-36 Jonai, Ichinoseki, Iwate 021-0877



Information on the Red Feather Community Chest

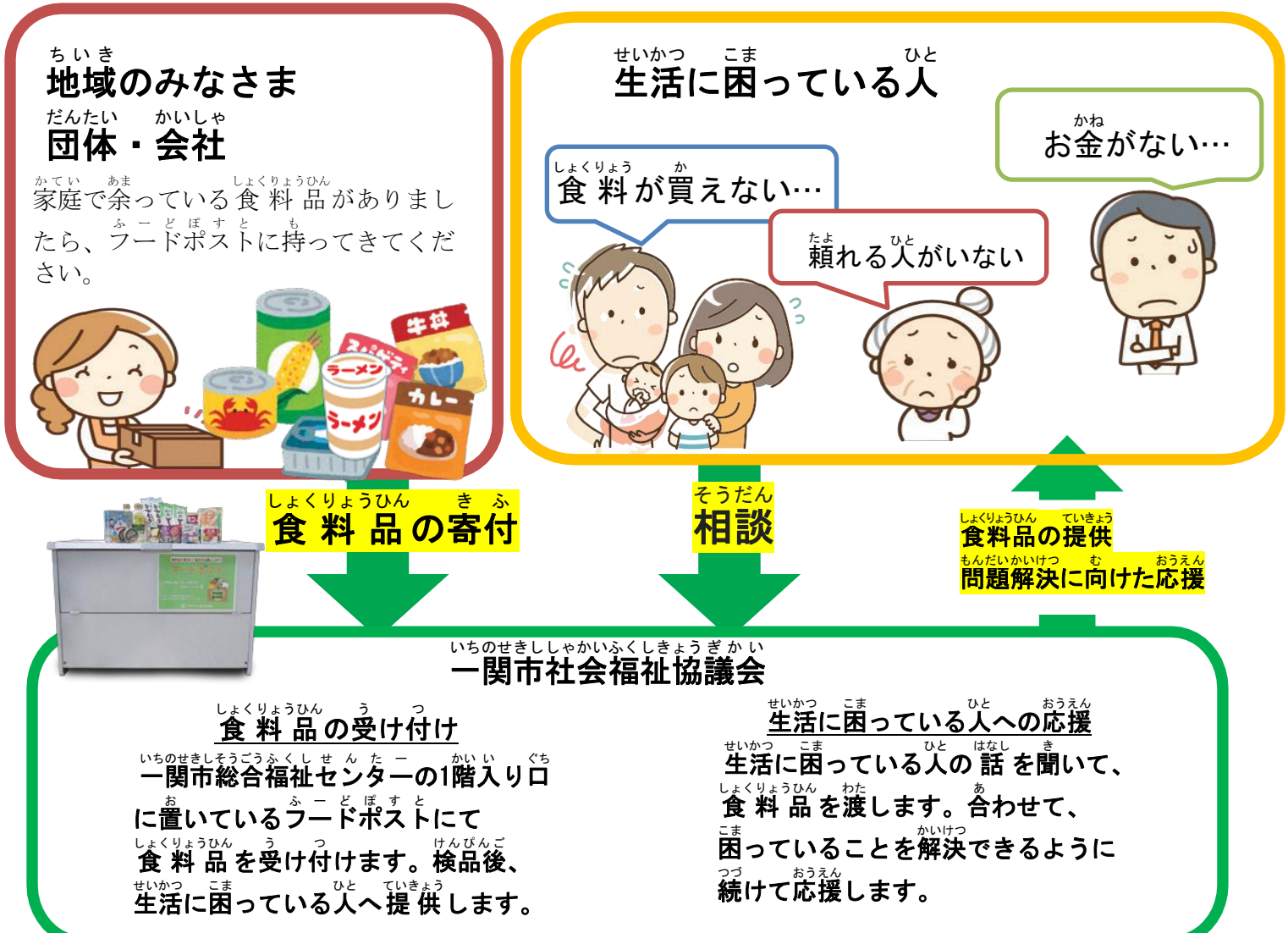


生活に困っている人へ、地域のみなさんから もらった食料品を届けます

～ひとりで悩まず、気軽に相談してください～

一関市社会福祉協議会では、地域のみなさんからもらった食料品を預かり、生活に困っている人へ提供する「食料の応援事業」を行っています。

食料の応援事業の流れ



うけつけ 受付・
と あ きき お問い合わせ先

TEL 0191-23-6020

受付時間 9:00~17:00 (土・日・祝日を除く)

社会福祉法人一関市社会福祉協議会

〒021-0877 岩手県一関市城内1-36

一関市総合福祉センター



この事業は赤い羽根共同募金の助成(お金を助けてもらうこと)で行われています。