

# June 2005 Statewide Keystone Poll

## SUMMARY OF FINDINGS

Prepared by:  
Center for Opinion Research  
Floyd Institute for Public Policy  
Franklin & Marshall College

BERWOOD A YOST  
DIRECTOR, FLOYD INSTITUTE FOR PUBLIC POLICY  
DIRECTOR, CENTER FOR OPINION RESEARCH  
HEAD METHODOLOGIST, KEYSTONE POLL

G. TERRY MADONNA  
DIRECTOR, CENTER FOR POLITICS AND PUBLIC AFFAIRS  
DIRECTOR, KEYSTONE POLL

CHRISTINA L ABBOTT  
ASSISTANT DIRECTOR, CENTER FOR OPINION RESEARCH

JENNIFER L HARDING  
MANAGER OF DATA COLLECTION, CENTER FOR OPINION  
RESEARCH

June 7, 2005



The June 2005 Keystone Poll of Pennsylvania voters shows that incumbent governor Ed Rendell and incumbent US Senator Rick Santorum may both be vulnerable to potential challengers. Also adding to their troubles, the survey finds the state's residents worried about the state's direction and concerned about the state's economy and their own personal finances.

***State Issues***

As many citizens believe that Pennsylvania is off on the wrong track (45%) as believe it is headed in the right direction (43%), a sentiment that has been evident in the state since November 2003 (see Attachment B-1). Economic concerns continue to top residents' list of major state problems, with one in four Pennsylvanians saying that jobs and the economy are the most important problem facing the state at the moment. Taxes are the second most frequently mentioned state problem (see Table 1). Pennsylvanians' major personal concerns are also economic; they are most concerned about their personal finances (27%), their jobs (12%), and health care (12%).

**Table 1. What is the most important problem facing Pennsylvania today?**

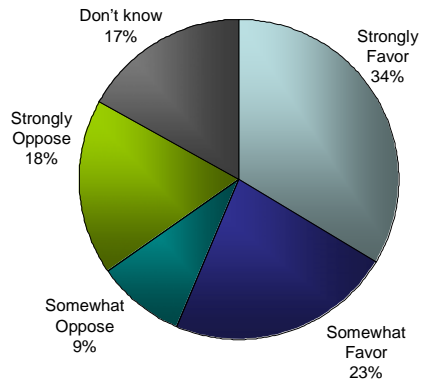
	10/94	4/95	10/96	10/97	3/98	7/98	9/98	10/98	6/99	7/00	10/00	4/01	10/01	1/02	6/02	4/03	11/03	2/04	3/05	6/05
<b>Economy</b>	32%	25%	30%	29%	22%	19%	26%	29%	15%	13%	10%	17%	19%	30%	26%	26%	27%	35%	26%	<b>24%</b>
<b>Crime/Drugs</b>	20%	28%	14%	13%	14%	15%	11%	13%	15%	10%	5%	7%	5%	6%	5%	5%	6%	6%	4%	<b>6%</b>
<b>Education</b>	4%	5%	11%	15%	12%	15%	18%	19%	16%	16%	28%	22%	16%	17%	23%	12%	14%	15%	10%	<b>8%</b>
<b>Taxes</b>	12%	10%	9%	12%	8%	10%	6%	8%	8%	13%	9%	12%	7%	8%	12%	17%	13%	11%	15%	<b>18%</b>
<b>Welfare</b>	3%	5%	5%	2%	6%	2%	6%	4%	3%	1%	1%	3%	1%	1%	1%	1%	1%	0%	1%	<b>0%</b>
<b>Roads</b>	3%	3%	6%	5%	6%	5%	8%	5%	6%	6%	4%	4%	3%	3%	0%	3%	1%	2%	3%	<b>2%</b>
<b>Health Care</b>	6%	1%	3%	1%	2%	2%	4%	3%	1%	5%	8%	5%	2%	5%	6%	5%	10%	4%	8%	<b>6%</b>
<b>Environment</b>	3%	3%	0%	3%	1%	2%	2%	4%	3%	3%	2%	3%	1%	2%	2%	1%	2%	1%	2%	<b>1%</b>
<b>Terrorism/ Safety</b>													17%	2%	3%	4%	0%	1%	0%	<b>1%</b>

*Act 72*

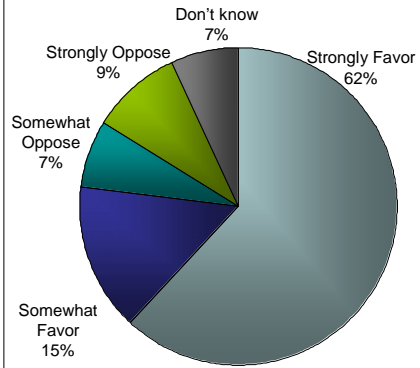
The Pennsylvania legislature passed a slot machine law, known as Act 72, which required local school districts to decide whether they wanted to receive property tax relief. Most (73%) citizens have heard or read about the property tax reductions included as part of Act 72, although most (52%) did not know if their local school district had voted to receive the Act 72 property tax relief. A majority (57%) of state residents favor their school district's participation in the property tax relief program and most (62%) "strongly favor" allowing voters instead of school boards to decide whether their district should participate in the program (see Figure 1). A more detailed analysis of public opinion toward Act 72 will be released later this week.

**Figure 1 Support for District Participation in Act 72**

Whether or not your school district has voted to receive property tax reductions through ACT 72, do you favor or oppose your local district's participation in ACT 72's property tax relief program?



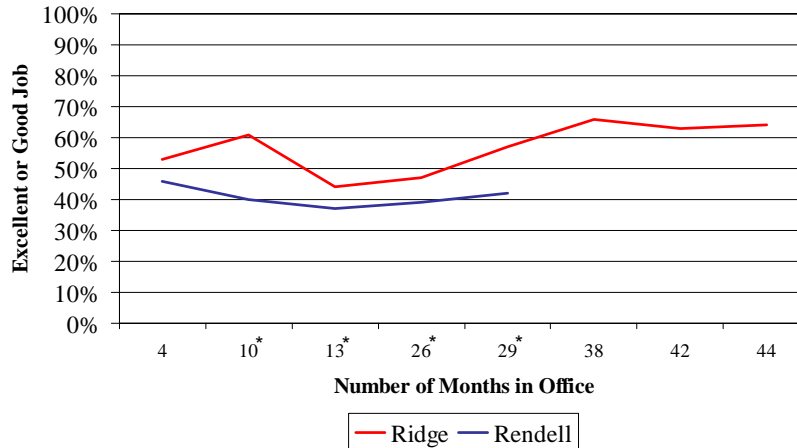
Would you favor or oppose allowing voters instead of school boards to decide whether their school district should participate in the property tax relief program?



***Governor Ed Rendell***

A race that includes an incumbent officeholder normally is about the performance of that incumbent. This makes several measures about the officeholder very useful indicators of how likely that incumbent is to hold his seat. One key measure related to incumbent success is job performance. The public is currently fairly well divided on Ed Rendell as Governor: only two in five (42%) citizens believe the Governor is doing an “excellent” or “good” job while more than half (54%) rate him as doing “only a fair” or “poor” job. These ratings are very similar to the ratings George Bush received from Pennsylvania voters for his job in office prior to the 2004 election (44% excellent or good versus 56% fair or poor)—Bush lost the state to John Kerry. As Figure 2 shows, Rendell’s job performance ratings lag behind those of his predecessor, Tom Ridge, at similar points in his first term.

**Figure 2 Comparisons of Job Performance Ratings, Ed Rendell and Tom Ridge**



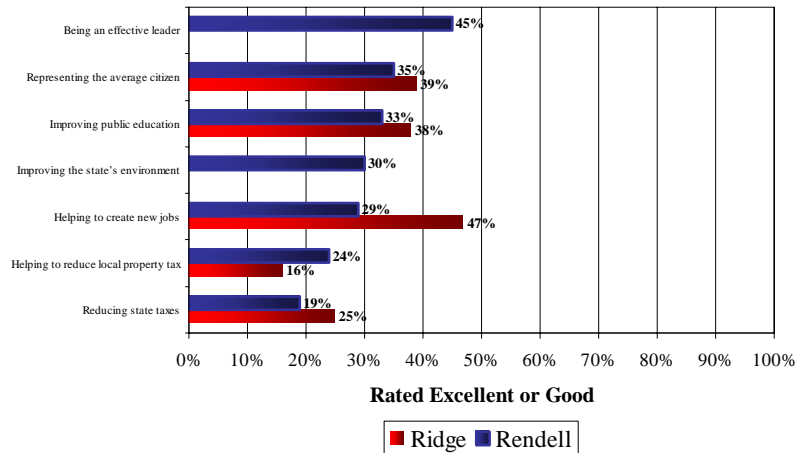
\*Numbers represent number of months Rendell was in office at the time of data collection point. Ridge's data collection points are slightly different (8, 15, 18, and 33 months respectively).

A second important indicator of incumbent performance is a question that asks voters if they believe the candidate has done well enough to deserve re-election or if it is time for a change in that office. At the moment, more voters believe it is time for a change in the Governor's office than believe the Governor deserves re-election (47% "time for a change" versus 38% "deserves re-election"). In October 2004, President Bush's hard re-elect ratings in Pennsylvania also showed more voters wanting a change (54%) than believing the President deserved re-election (42%). Only in Philadelphia and the counties around Philadelphia does a majority of voters believe the Governor deserves another term (see Attachment A-1). More independent voters believe it is time for a change than believe Rendell deserves re-election.

The Keystone Poll asked voters to evaluate the governor on seven different attributes. Voters give Rendell his best ratings for his leadership and his lowest ratings for reducing state taxes. Perhaps of most importance given the public’s economic angst, Rendell gets relatively low scores in helping create new jobs in the state. Figure 3 compares the ratings of Governors Rendell and Ridge.

**Figure 3 Performance on Specific Problems and Issues, Ridge and Rendell**

I’m going to read you a list of problems and issues that the state government is supposed to take care of. For each item, please tell me how well Governor Rendell has performed in each area, using an A, B, C, D, or F. Using an A for excellent, a B for very good, a C for average, a D for below average, and an F for failing, what grade would you give Governor Rendell for...



Number of months in office, Rendell – 29 months, Ridge – 38 months

Although the performance of an incumbent is very important in deciding the outcome of an election, the quality and name recognition of his opponent is also very important. The best news for the Governor’s re-election efforts at the moment is that his potential opponents are virtually unknown around the state—



none of his potential opponents are yet recognized by a majority of the state’s voters. In a head-to-head match up with each, Rendell leads comfortably, although he does not yet receive more than half the vote against any of his opponents.

***Rick Santorum***

Incumbent Republican US Senator Rick Santorum finds himself in a very similar position as Democratic Governor Rendell. His job performance ratings are marginal, with more voters rating his performance as “fair” or “poor” than as “excellent” or “good” (see Table 2). Like Rendell, Santorum also has not convinced a majority of voters that he deserves re-election (42% believe he deserves re-election and 42% believes it is time for a change). In fact, in no region of the state does a majority of voters believe that Santorum deserves to be re-elected (see Attachment A-2). His support is strong among conservatives but is not very strong among moderates, a group to which he will need to appeal if he is to win re-election.

**Table 2 Rick Santorum Job Performance Ratings, Time Series**

	<b>Excellent job</b>	<b>Good job</b>	<b>Only a fair job</b>	<b>Poor job</b>	<b>Do Not Know</b>
<b>June 2005</b>	<b>9%</b>	<b>34%</b>	<b>29%</b>	<b>19%</b>	<b>9%</b>
March 2005	9%	31%	30%	16%	14%
November 2003	11%	35%	28%	14%	13%
April 2003	13%	34%	22%	10%	21%
February 2000	9%	37%	26%	8%	20%
July 1999	8%	36%	27%	12%	18%

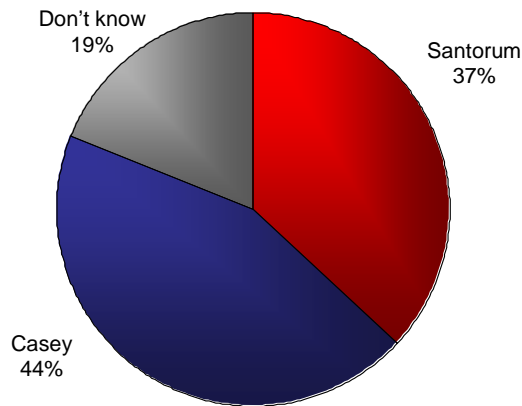
The one big difference in Rendell's and Santorum's prospects for re-election is in the challengers they will likely face. While Rendell faces a list of relatively unknown candidates, Santorum faces one of Pennsylvania's best known political names, Bob Casey. Most Pennsylvania voters recognize Casey's name and many more have a favorable than unfavorable opinion of the candidate. Santorum currently trails in a head-to-head race against Casey (Figure 4).

---

**Figure 4 US Senate Vote Choice, Pennsylvania**

---

If the election for Pennsylvania's U.S. Senator were being held TODAY and the candidates were Bob Casey, Jr. and Rick Santorum, would you vote for...



*Methodology: This release summarizes the findings of a survey of 581 adult Pennsylvanians conducted by Franklin and Marshall College's Center for Opinion Research. The survey interviewing was conducted between May 31 and June 5, 2005. The sample error for the survey is plus or minus 4.1 percent. Telephone numbers for the survey were generated via random digit dialing. Respondents were randomly selected from within each household. A second screener was used to determine respondents' voter registration status. The sub-sample of registered voters includes 467 respondents. The registered voter sample has a margin of error of plus or minus 4.5 percent. The final registered voter sample includes 207 Republicans, 200 Democrats, and 60 Independent/other voters. Final survey results were weighted to adjust for different selection probabilities and non-response.*

**Table A-1. Do you believe that ED RENDELL has done a good enough job as GOVERNOR to DESERVE RE-ELECTION, or do you believe it is TIME FOR A CHANGE?**

	<b>Deserves Re-election</b>	<b>Time for a Change</b>	<b>Don't Know</b>
<b>Region</b>			
Philadelphia	63%	29%	8%
Northeast	38%	39%	22%
Allegheny	39%	48%	13%
Southwest	25%	63%	12%
Northwest	39%	47%	13%
Central	31%	52%	18%
Southeast	51%	38%	11%
<b>Education</b>			
High school graduate or less	36%	50%	14%
Some college	36%	49%	14%
College degree	42%	41%	17%
<b>Party Registration</b>			
Republican	26%	58%	15%
Democrat	52%	33%	16%
Independent/Other	34%	53%	13%
<b>Political Ideology</b>			
Liberal	53%	33%	14%
Moderate	45%	39%	16%
Conservative	22%	65%	13%
<b>Legal</b>			
Legal under any circumstances	51%	34%	15%
Legal under certain circumstances	35%	48%	17%
Illegal in all circumstances	29%	60%	11%
<b>Born Again Christian or Fundamentalist</b>			
Yes	27%	60%	13%
No	42%	42%	15%
<b>Racial Background</b>			
White	37%	46%	16%
Nonwhite	46%	49%	6%
<b>Household Income</b>			
Under \$35,000	36%	49%	14%
\$35 - \$75,000	37%	51%	12%
Over \$75,000	45%	37%	17%
<b>Gender</b>			
Male	43%	41%	16%
Female	34%	51%	14%
<b>Age</b>			
18-24	24%	71%	4%
25-34	44%	37%	19%
35-44	43%	44%	13%
45-54	45%	45%	10%
55-64	34%	50%	16%
Over 65	33%	46%	21%

Note: Percentages in this table reflect all registered voters.

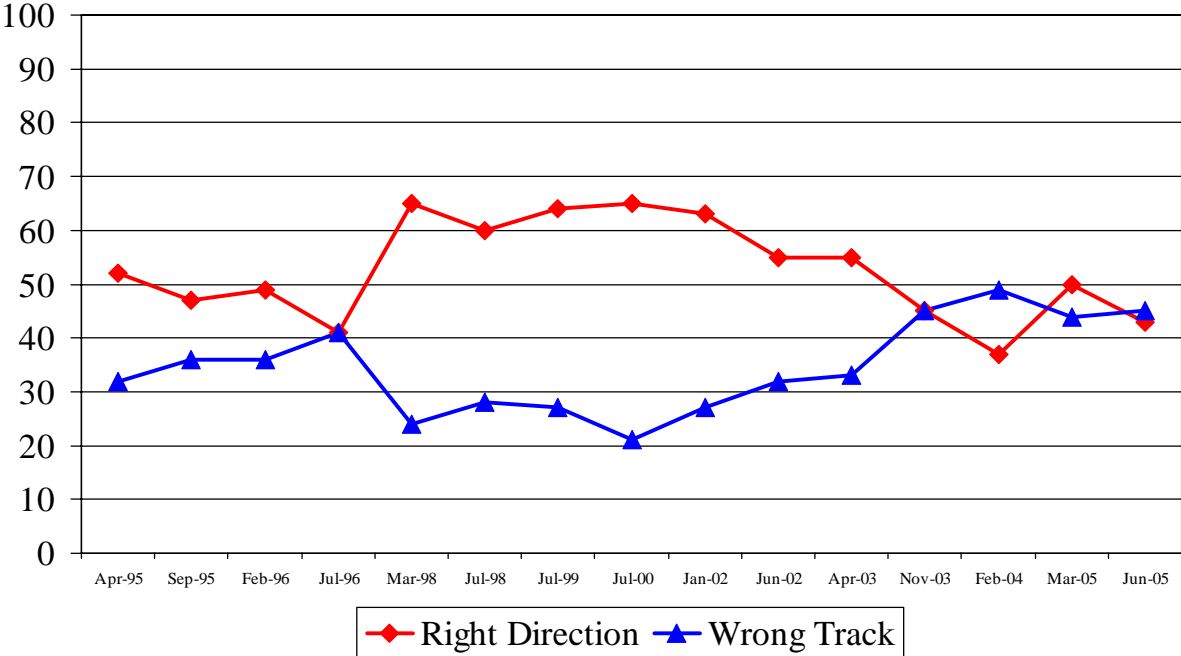
**Table A-2. Do you believe that RICK SANTORUM has done a good enough job as US SENATOR to DESERVE RE-ELECTION, or do you believe it is TIME FOR A CHANGE?**

	<b>Deserves Re-election</b>	<b>Time for a Change</b>	<b>Don't Know</b>
<b>Region</b>			
Philadelphia	39%	39%	22%
Northeast	37%	39%	24%
Allegheny	32%	55%	12%
Southwest	44%	48%	8%
Northwest	44%	45%	11%
Central	46%	35%	20%
Southeast	38%	51%	11%
<b>Education</b>			
High school graduate or less	45%	38%	17%
Some college	42%	41%	17%
College degree	37%	47%	16%
<b>Party Registration</b>			
Republican	60%	24%	16%
Democrat	28%	58%	14%
Independent/Other	25%	47%	28%
<b>Political Ideology</b>			
Liberal	16%	60%	23%
Moderate	40%	45%	15%
Conservative	63%	22%	15%
<b>Legal</b>			
Legal under any circumstances	22%	54%	24%
Legal under certain circumstances	44%	40%	17%
Illegal in all circumstances	62%	29%	9%
<b>Born Again Christian or Fundamentalist</b>			
Yes	36%	45%	19%
No	57%	30%	13%
<b>Racial Background</b>			
White	44%	40%	17%
Nonwhite	25%	61%	15%
<b>Household Income</b>			
Under \$35,000	39%	43%	18%
\$35 - \$75,000	43%	41%	16%
Over \$75,000	42%	41%	17%
<b>Gender</b>			
Male	41%	43%	17%
Female	42%	41%	17%
<b>Age</b>			
18-24	24%	51%	24%
25-34	40%	43%	17%
35-44	51%	31%	18%
45-54	37%	46%	17%
55-64	41%	43%	16%
Over 65	45%	42%	13%

Note: Percentages in this table reflect all registered voters.

**B-1 Direction of the State**

All in all do you think things in Pennsylvania are generally headed in the right direction, or do you feel that things are off on the wrong track?

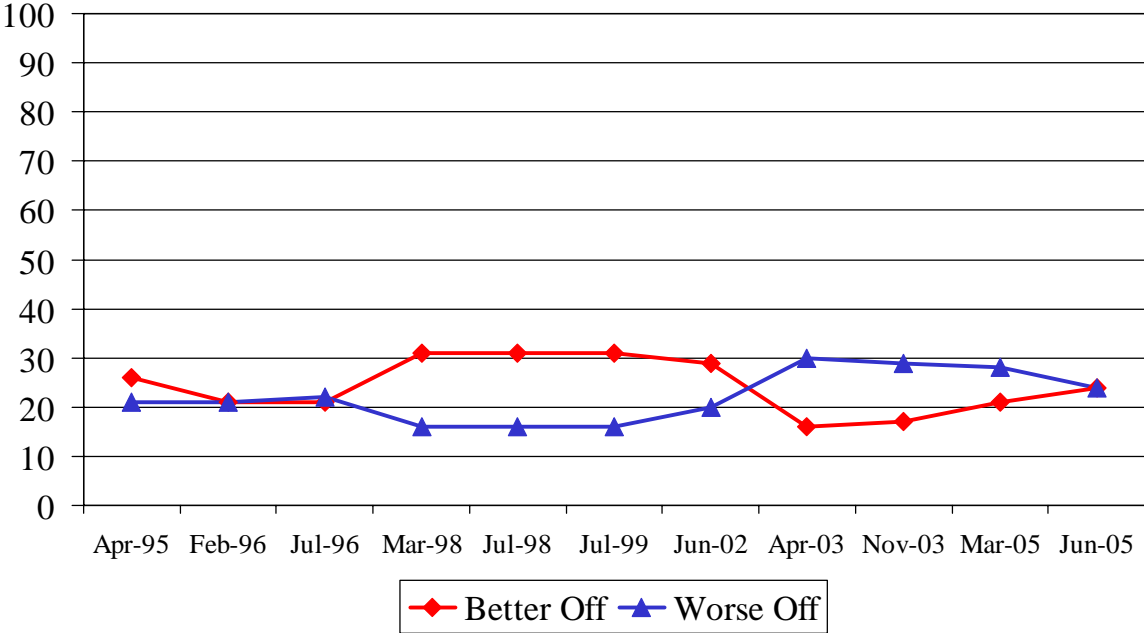


---

### B-2 Pennsylvanians' Current Financial Situation

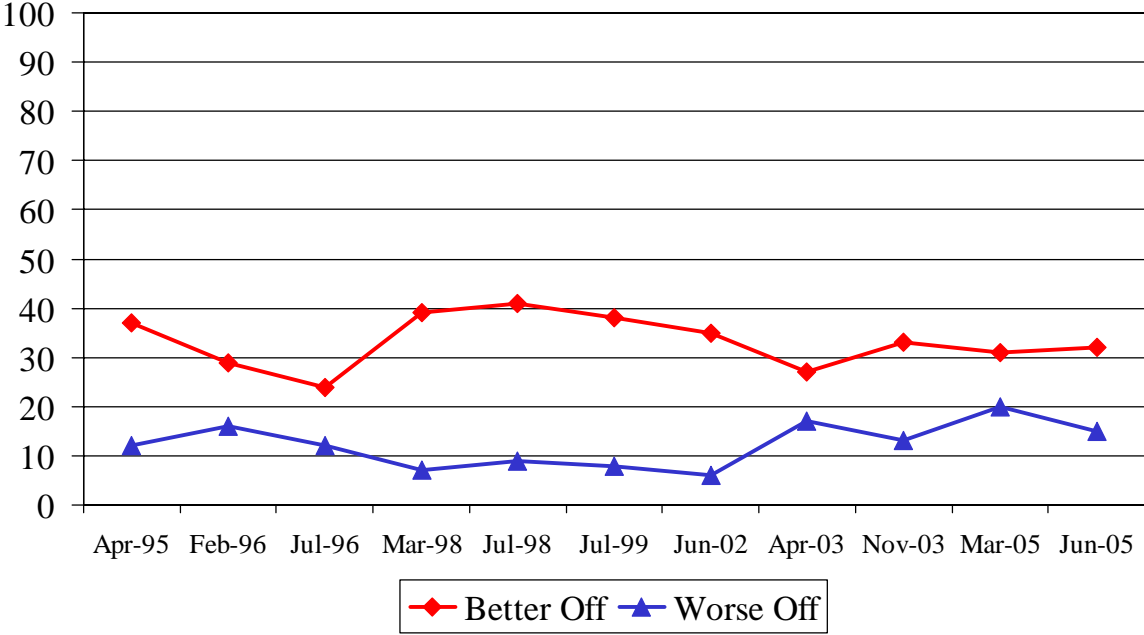
---

We are interested in how people are getting along financially these days. Would you say that you and your family are better off, worse off, or about the same financially as you were a year ago?



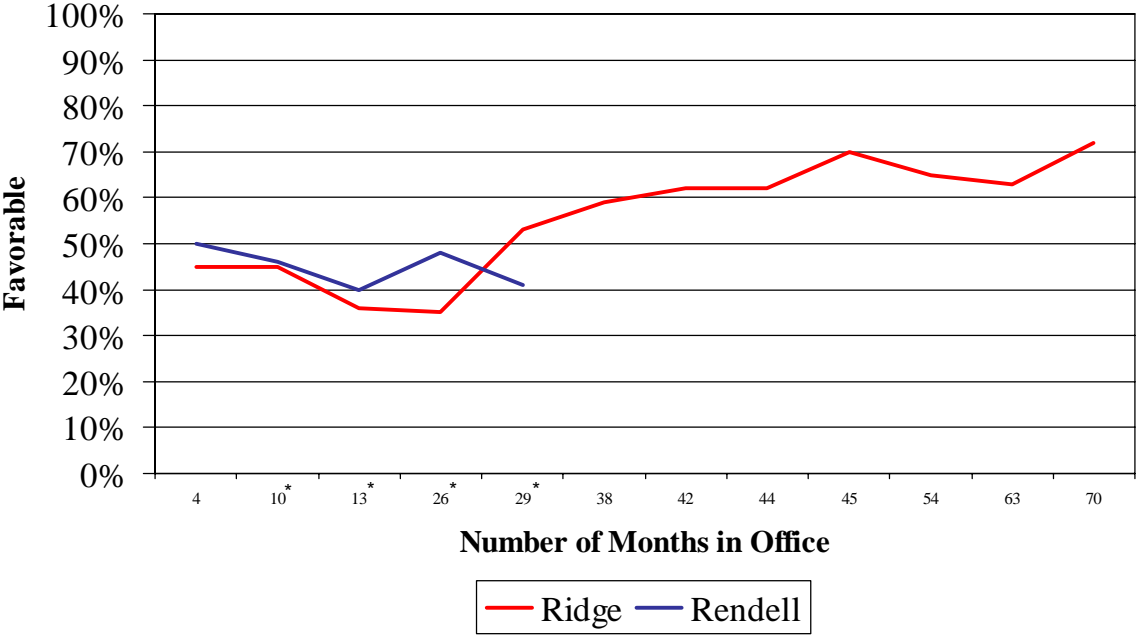
**B-3 Pennsylvanians' Anticipated Financial Situation**

Now looking ahead, do you think that a year from now, you and your family will be better off financially than you are now, worse off, or about the same as you are now?





**B-4 Comparison of Favorability Ratings, Tom Ridge and Ed Rendell**



\*Numbers represent number of months Rendell was in office at the time of data collection point. Ridge's data collection points are slightly different (8,15,18, and 33 months respectively).

Q1. All in all, do you think things in PENNSYLVANIA are generally 'headed in the right direction', or 'off on the wrong track'?

<i>March</i>	<i>June</i>	
<u>2005</u>	<u>2005</u>	
50%	43%	Headed in right direction
44%	45%	Off on the wrong track
6%	12%	Do Not Know

Q2. We are interested in how people are getting along financially these days. Would you say that YOU and YOUR FAMILY are...

<i>March</i>	<i>June</i>	
<u>2005</u>	<u>2005</u>	
21%	24%	better off,
28%	24%	worse off, or
51%	52%	about the same financially as you were a year ago?
1%	0%	Do Not Know

Q3. Now looking AHEAD, do you think that A YEAR FROM NOW, YOU and YOUR FAMILY will be...

<i>March</i>	<i>June</i>	
<u>2005</u>	<u>2005</u>	
31%	32%	better off financially than you are now,
20%	15%	worse off, or
45%	48%	about the same as you are now?
4%	5%	Do Not Know

MIP\_PA. First, what do you think is the MOST IMPORTANT problem facing PENNSYLVANIA today?

<i>March</i>	<i>June</i>	
<u>2005</u>	<u>2005</u>	
26%	24%	Unemployment, economy, stock market
15%	18%	Taxes
10%	8%	Education, school
8%	6%	Government, politicians
8%	6%	Health care
8%	4%	Other
4%	6%	Crime, drugs, violence
3%	2%	Roads
3%	2%	Personal finances, paying bills, retirement
2%	1%	Environment
2%	4%	Population, urban sprawl
2%	1%	Social security
2%	3%	Social issues
1%	2%	Transportation
1%	0%	Welfare
1%	0%	Housing
1%	2%	Nothing
4%	8%	Don't Know
0%	1%	Terrorism
0%	2%	Act 72, Slot machines
0%	1%	Gas prices

MIP\_F. What do you think is the MOST IMPORTANT problem facing YOU and YOUR FAMILY today?

<i>March</i>	<i>June</i>	
<u>2005</u>	<u>2005</u>	
30%	27%	Personal finances, paying bills, retirement
15%	12%	Health care
9%	5%	Other
8%	8%	Taxes
8%	12%	Unemployment, economy, stock market
7%	8%	Nothing
5%	5%	Education, school
5%	4%	Illness, health problems
3%	1%	Social security
3%	3%	Personal family issues
2%	2%	Crime, drugs, violence
1%	1%	Government, politicians
2%	6%	Don't Know
0%	1%	Population, urban sprawl
0%	1%	Terrorism
0%	1%	Day care
0%	3%	Gas prices

Q7. This past year, the governor and state legislature passed a LAW that allows slot machines at seven race tracks and at seven non-racing sites throughout the state. Do you FAVOR or OPPOSE this LAW making SLOT MACHINES available throughout Pennsylvania?

<i>March</i>	<i>June</i>	
<u>2005</u>	<u>2005</u>	
30%	28%	Strongly favor
31%	27%	Somewhat favor
11%	13%	Somewhat oppose
23%	24%	Strongly oppose
5%	9%	Do not know

Q8. As part of the slot machine law, known as ACT 72, school districts can decide whether to apply for local property tax reductions funded by slot machine revenue. Have you read or heard about the property tax reductions included as part of ACT 72, or not?

<i>March</i>	<i>June</i>	
<u>2005</u>	<u>2005</u>	
--	73%	Yes
--	26%	No
--	1%	Do Not Know

Q9. Has your local school district voted to receive property tax reductions through ACT 72, or not?

<i>March</i>	<i>June</i>	
<u>2005</u>	<u>2005</u>	
--	13%	Yes
--	35%	No
--	52%	Do Not Know

Q10. Whether or not your school district has voted to receive property tax reductions through ACT 72, do you favor or oppose your local district's participation in ACT 72's property tax relief program?

<i>March</i>	<i>June</i>	
<u>2005</u>	<u>2005</u>	
--	34%	Strongly favor
--	23%	Somewhat favor
--	9%	Somewhat oppose
--	18%	Strongly oppose
--	17%	Do not know

Q11. Would you favor or oppose a state law that requires all school districts to participate in ACT 72?

<i>March</i>	<i>June</i>	
<u>2005</u>	<u>2005</u>	
--	23%	Strongly favor
--	18%	Somewhat favor
--	17%	Somewhat oppose
--	30%	Strongly oppose
--	12%	Do not know

Q12. Would you favor or oppose allowing voters instead of school boards to decide whether their school district should participate in the property tax relief program?

<i>March</i>	<i>June</i>	
<u>2005</u>	<u>2005</u>	
--	62%	Strongly favor
--	15%	Somewhat favor
--	7%	Somewhat oppose
--	9%	Strongly oppose
--	7%	Do not know

REG. Some people are REGISTERED to vote, and many others are not. Are you CURRENTLY REGISTERED to vote at your present address?

<i>March</i>	<i>June</i>	
<u>2005</u>	<u>2005</u>	
86%	84%	Yes
13%	16%	No
1%	0%	Do not know

RegPARTY. Are you currently registered as a Republican, a Democrat, an Independent, or as something else?

<i>March</i>	<i>June</i>	
<u>2005</u>	<u>2005</u>	
n=452	n=467	
41%	44%	Republican
48%	42%	Democrat
9%	11%	Independent
2%	2%	Something else
1%	1%	Do not know

IDEO. Politically speaking, do you consider yourself to be a liberal, a moderate, or a conservative?

<i>March</i>	<i>June</i>	
<i>2005</i>	<i>2005</i>	
16%	19%	Liberal
40%	42%	Moderate
38%	33%	Conservative
6%	7%	Do Not Know

*Questions Q16 through Q40 were only asked of registered respondent n=467*

I'd like to ask you a few questions about some PEOPLE involved in POLITICS today. Please let me know if your opinion of the person is favorable, not favorable, undecided, or if you haven't heard enough about the person to have an opinion.

	<b>Favorable</b>	<b>Not Favorable</b>	<b>Undecided</b>	<b>Don't know</b>
<b>RICK SANTORUM</b>				
<b>June 2005</b>	<b>42%</b>	<b>26%</b>	<b>13%</b>	<b>18%</b>
March 2005	39%	26%	17%	18%
November 2003	46%	25%	16%	13%
April 2003	45%	17%	14%	24%
October 2000	40%	22%	20%	18%
July 2000	37%	17%	16%	30%
February 2000	38%	17%	24%	21%
July 1999	41%	20%	16%	24%
October 1994	35%	23%	12%	30%
<b>ED RENDELL</b>				
<b>June 2005</b>	<b>41%</b>	<b>33%</b>	<b>17%</b>	<b>9%</b>
March 2005	48%	28%	18%	7%
February 2004	40%	32%	13%	25%
November 2003	46%	26%	21%	7%
April 2003	50%	19%	17%	16%
October 2002	50%	24%	18%	9%
September 2002	43%	19%	25%	14%
June 2002	40%	18%	26%	16%
October 2001	30%	8%	13%	50%
April 2001	29%	7%	11%	52%
June 1999	30%	8%	9%	54%
<b>GEORGE BUSH</b>				
<b>June 2005</b>	<b>44%</b>	<b>45%</b>	<b>10%</b>	<b>1%</b>
March 2005	43%	48%	8%	0%
October 19-23, 2004	43%	46%	10%	1%
Sept 30-Oct 3, 2004	42%	49%	9%	0%
September 2004	46%	44%	10%	0%
August 2004	44%	46%	10%	0%
March 2004	45%	42%	12%	2%
February 2004	46%	43%	9%	3%
November 2003	49%	40%	11%	1%
April 2003	63%	25%	10%	2%
October 2000	43%	36%	18%	3%
July 2000	39%	35%	19%	7%
February 2000	32%	38%	24%	7%
July 1999	38%	16%	18%	28%

<b>BOB CASEY, JR</b>				
<b>June 2005</b>	<b>40%</b>	<b>9%</b>	<b>15%</b>	<b>36%</b>
March 2005	33%	10%	19%	38%
October 2001	28%	7%	22%	43%
April 2001	33%	9%	22%	36%
June 1999	29%	11%	17%	44%
<b>JEFF PICCOLA</b>				
<b>June 2005</b>	<b>4%</b>	<b>2%</b>	<b>6%</b>	<b>88%</b>
March 2005	4%	3%	6%	88%
April 2001	5%	2%	7%	86%
<b>LYNN SWANN</b>				
<b>June 2005</b>	<b>18%</b>	<b>6%</b>	<b>13%</b>	<b>63%</b>
March 2005	17%	8%	12%	63%
<b>BILL SCRANTON</b>				
<b>June 2005</b>	<b>21%</b>	<b>4%</b>	<b>15%</b>	<b>60%</b>
March 2005	17%	6%	14%	62%
<b>BRUCE CASTOR</b>				
<b>June 2005</b>	<b>7%</b>	<b>2%</b>	<b>10%</b>	<b>81%</b>

Question Q24 was only asked of registered Republicans n=203

Q24. If the Republican PRIMARY for Governor were being held TODAY and the candidates were Jeff Picola, Bill Scranton, Lynn Swann, and Bruce Castor would you vote for...

<i>March</i>	<i>June</i>	
<u>2005</u>	<u>2005</u>	
8%	2%	Jeff Piccola
25%	18%	Bill Scranton
17%	18%	Lynn Swann
--	4%	Bruce Castor
50%	57%	Do Not Know

Q25. If the election for Pennsylvania governor was being held TODAY and the candidates were Ed Rendell, and \_\_\_\_\_, who would you vote for?

	Rendell		Other listed candidate		Do Not Know	
	<i>March</i> <i>2005</i>	<i>June</i> <i>2005</i>	<i>March</i> <i>2005</i>	<i>June</i> <i>2005</i>	<i>March</i> <i>2005</i>	<i>June</i> <i>2005</i>
Rendell or Piccola? N=117	53%	45%	23%	22%	24%	33%
Rendell or Scranton? N=107	47%	41%	37%	31%	16%	28%
Rendell or Swann? N=128	59%	42%	29%	34%	12%	24%
Rendell or Castor? N=115	--	49%	--	21%	--	30%

Q26. If the election for Pennsylvania's U.S. Senator were being held TODAY and the candidates were Bob Casey, Jr. and Rick Santorum, would you vote for...

<i>March</i>	<i>June</i>	
<u>2005</u>	<u>2005</u>	
44%	44%	Bob Casey, Jr.
43%	37%	Rick Santorum
13%	19%	Do Not Know

Q27. How would you rate the way that ED RENDELL is handling his job as GOVERNOR? Would you say he is doing...

	<b>Excellent job</b>	<b>Good job</b>	<b>Only a fair job</b>	<b>Poor job</b>	<b>Do Not Know</b>
<b>ED RENDELL, as Governor</b>					
<b>June 2005</b>	6%	36%	41%	14%	3%
March 2005	6%	33%	46%	11%	4%
February 2004	6%	31%	44%	13%	7%
November 2003	7%	33%	35%	15%	10%
April 2003	10%	36%	24%	10%	21%

Q28. Do you believe that ED RENDELL has done a good enough job as GOVERNOR to DESERVE RE-ELECTION, or do you believe it is TIME FOR A CHANGE?

<i>March</i>	<i>June</i>	
<u>2005</u>	<u>2005</u>	
45%	38%	Deserves re-election
43%	47%	Time for Change
12%	15%	Do Not Know

Q29. Would you vote to re-elect ED RENDELL no matter who ran against him, or NOT?

<i>March</i>	<i>June</i>	
<u>2005</u>	<u>2005</u>	
n=198	n=178	
40%	49%	Yes
50%	38%	No
10%	13%	Do not know

I'm going to read you a list of problems and issues that the state government is supposed to take care of. For each item, please tell me how well Governor Rendell has performed in each area, using an A, B, C, D, or F. Using an A for excellent, a B for very good, a C for average, a D for below average, and an F for failing, what grade would you give Governor Rendell for...

	<b>A</b>	<b>B</b>	<b>C</b>	<b>D</b>	<b>F</b>	<b>Don't Know</b>
Helping to create new jobs	5%	24%	40%	12%	11%	9%
Improving public education	6%	27%	34%	15%	11%	7%
Improving the state's environment	4%	26%	37%	12%	7%	14%
Representing the average citizen	9%	26%	31%	13%	15%	6%
Reducing state taxes	4%	15%	37%	20%	17%	9%
Helping to reduce local property tax	5%	19%	27%	21%	19%	9%
Being an effective leader	12%	33%	29%	12%	10%	3%

Q37. How would you RATE the way GEORGE BUSH is handling his job as President? Would you say he is doing...

	Excellent job	Good job	Only a fair job	Poor job	Do Not Know
<b>June 2005</b>	<b>12%</b>	<b>31%</b>	<b>27%</b>	<b>30%</b>	<b>1%</b>
October 2004	14%	27%	30%	29%	0%
September 2004	18%	31%	27%	24%	0%
August 2004	16%	30%	26%	28%	1%
March 2004	15%	34%	26%	24%	1%
February 2004	13%	32%	26%	28%	1%
November 2003	15%	32%	25%	28%	2%
April 2003	33%	31%	19%	15%	2%

Q38. How would you rate the way that RICK SANTORUM is handling his job as US SENATOR? Would you say he is doing...

	Excellent job	Good job	Only a fair job	Poor job	Do Not Know
<b>June 2005</b>	<b>9%</b>	<b>34%</b>	<b>29%</b>	<b>19%</b>	<b>9%</b>
March 2005	9%	31%	30%	16%	14%
November 2003	11%	35%	28%	14%	13%
April 2003	13%	34%	22%	10%	21%
February 2000	9%	37%	26%	8%	20%
July 1999	8%	36%	27%	12%	18%

Q39. Do you believe that RICK SANTORUM has done a good enough job as US SENATOR to DESERVE RE-ELECTION, or do you believe it is TIME FOR A CHANGE?

<i>March</i>	<i>June</i>	
<u>2005</u>	<u>2005</u>	
43%	42%	Deserves re-election
41%	42%	Time for Change
16%	16%	Do Not Know

Q40. Would you vote to re-elect RICK SANTORUM no matter who ran against him, or NOT?

<i>March</i>	<i>June</i>	
<u>2005</u>	<u>2005</u>	
n=202	n=189	
39%	47%	Yes
49%	35%	No
13%	18%	Do not know



I now have a final few questions for statistical purposes only.

CNTY. What is the name of the COUNTY you live in?

*June*  
2005

9%	Philadelphia
12%	Northeast
9%	Allegheny
10%	Southwest
11%	Northwest
35%	Central
15%	Southeast

AGE. What was your AGE on your last birthday?

*June*  
2005

12%	18-24
16%	25-34
19%	35-44
19%	45-54
14%	55-64
20%	65 and older

EDUC. What was the last grade level of schooling you have completed?

*June*  
2005

7%	Non high school graduate
34%	High school graduate
17%	Some college
10%	Two-year or tech degree
18%	Four year college degree
15%	Postgraduate degree

MAR. What is your CURRENT marital status?

*June*  
2005

24%	Single, Never Married
56%	Married
2%	Separated
10%	Divorced
9%	Widow, Widower

ABORT. Do you think that ABORTION should be...

*June*  
2005

22%	Legal under any circumstances,
55%	Legal under certain circumstances, OR
20%	Illegal in ALL circumstances?
4%	Do Not Know

GUN. Are you a gun owner?

*June*  
2005  
28% Yes  
72% No

GUN2. Generally speaking, do you favor or oppose creating more laws that regulate gun ownership?

*June*  
2005  
39% Strongly favor  
17% Somewhat favor  
16% Somewhat oppose  
23% Strongly oppose  
6% Do not know

REL. Do you consider yourself to be Catholic, Protestant, Jewish or something else?

*June*  
2005  
28% Catholic  
39% Protestant  
2% Jewish  
31% Something Else

BAC. Do you consider yourself to be a born-again Christian or fundamentalist?

*June*  
2005  
36% Yes  
60% No  
4% Do Not Know

Hisp. Are you Hispanic or Latino?

*June*  
2005  
3% Yes  
97% No

RACE. Which of the following categories best describes your racial background?

*June*  
2005  
88% White  
12% Non-white

WORK. Are you currently working FULL-time, PART-time, going to school, keeping house or what?

<i>June</i>	
<u>2005</u>	
49%	Full-time
13%	Part-time
4%	Going to school
10%	Keeping house
3%	Unemployed
4%	Disabled
18%	Retired

INC1. And, just for statistical purposes, we need to know if your total family income is above or below \$30,000 per year?

<i>June</i>	
<u>2005</u>	
20%	Under \$25,000
16%	\$25-\$35,000
16%	\$35-50,000
22%	\$50-75,000
10%	\$75-100,000
11%	Over \$100,000
6%	Do Not Know

DONE. Sex of respondent:

<i>June</i>	
<u>2005</u>	
47%	Male
53%	Female