

# September 2005 Statewide Keystone Poll

## SUMMARY OF FINDINGS

Prepared by:  
Center for Opinion Research  
Floyd Institute for Public Policy  
Franklin & Marshall College

BERWOOD A YOST  
DIRECTOR, FLOYD INSTITUTE FOR PUBLIC POLICY  
DIRECTOR, CENTER FOR OPINION RESEARCH  
HEAD METHODOLOGIST, KEYSTONE POLL

G. TERRY MADONNA  
DIRECTOR, CENTER FOR POLITICS AND PUBLIC AFFAIRS  
DIRECTOR, KEYSTONE POLL

CHRISTINA L ABBOTT  
ASSISTANT DIRECTOR, CENTER FOR OPINION RESEARCH

JENNIFER L HARDING  
MANAGER OF DATA COLLECTION, CENTER FOR OPINION RESEARCH

ANGELA KNITTLE  
PROJECT COORDINATOR OF COMMUNITY RESEARCH,  
CENTER FOR OPINION RESEARCH

September 15, 2005



Political conversation in Pennsylvania has been dominated by continued opposition to the pay raise enacted by state legislators in July: the latest Keystone Poll finds many citizens are still disturbed by it more than two months after its enactment. A small portion (2%) of Pennsylvania citizens mention the pay raise as the most important problem facing the state, but when combined with general concerns about politicians and state government, these top-of-mind government concerns are third behind the economy (25%) and taxes (15%) on Pennsylvanians' list of problems. This puts concern about government in Pennsylvania ahead of issues like education, health care, crime, sprawl, and terrorism (Table 1).

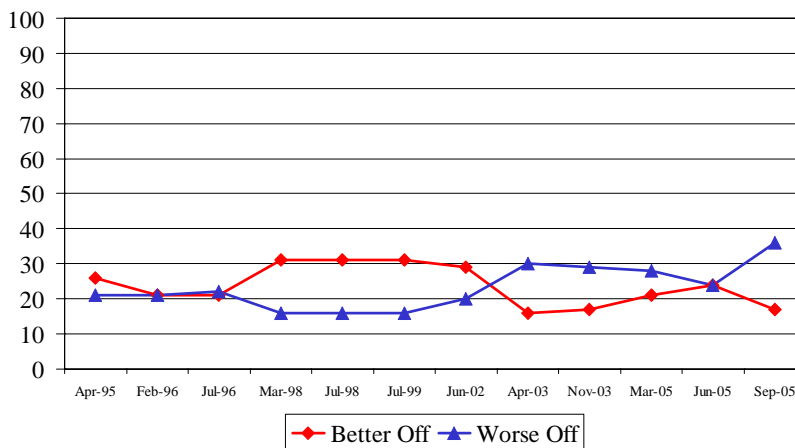
**Table 1 Most Important Problem Facing Pennsylvania and Family**

<i>First, what do you think is the MOST IMPORTANT problem facing PENNSYLVANIA today?</i>		<i>What do you think is the MOST IMPORTANT problem facing YOU and YOUR FAMILY today?</i>	
25%	Economy	23%	Personal finances
15%	Taxes	18%	Economy
9%	Education, school	10%	Health care
9%	Gas prices	9%	Gas prices
8%	Government, politicians	8%	Taxes
8%	Don't know	6%	Other
6%	Other	6%	Nothing
5%	Health care	5%	Don't know
3%	Crime, drugs, violence	5%	Education, school
2%	Roads	3%	Illness, health problems
2%	Gambling, Act 72	2%	Environment
2%	Legislative pay raise	2%	Personal family issues
1%	Personal finances	1%	Social security
1%	Environment	1%	Crime, drugs, violence
1%	Population, sprawl	1%	Government, politicians
1%	Social security	1%	Population, sprawl
1%	Social issues	1%	Welfare
1%	Welfare	1%	Housing costs
1%	Nothing		
1%	Terrorism		
1%	Justice system		

Fueling part of the reaction to the pay raise may be citizens' concerns about their own personal finances. As Table 1 shows, a third (32%) of Pennsylvanians say that personal finances, including rising gas prices, are the biggest problems they face. In fact, the pay raise probably could not have come at a worse time, given citizens' evaluations of their own finances. More than one in three (36%) Pennsylvanians report they are financially worse off today than they were a year ago. The proportion of Pennsylvanians who say they are worse off financially than last year is the highest ever reported in a Keystone Poll (Figure 1).

**Figure 1 Pennsylvanians' Financial Situations, Time Series**

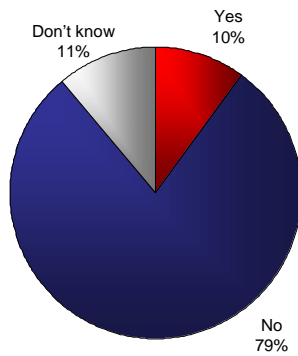
We are interested in how people are getting along financially these days. Would you say that you and your family are better off, worse off, or about the same financially as you were a year ago?



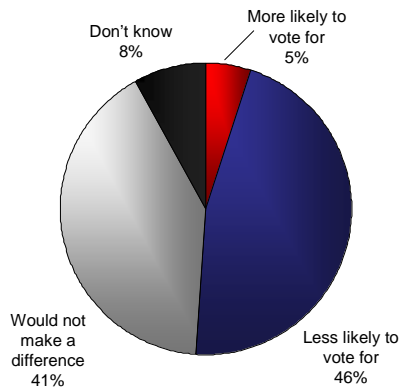
Nearly four out of every five (77%) registered voters in the state has heard or read about the legislative pay raise. Most (79%) voters do not believe the pay raise as enacted was deserved, and nearly half (46%) say they would be less likely to vote for a state representative or senator who they know had voted for the pay raise. The legislature's job approval rating stands at 22 percent excellent or good versus 69 percent fair or poor.

**Figure 2 Reactions to the Legislative Pay Raise**

Do you believe the state's REPRESENTATIVES and SENATORS in Harrisburg DESERVED a pay raise, or not?



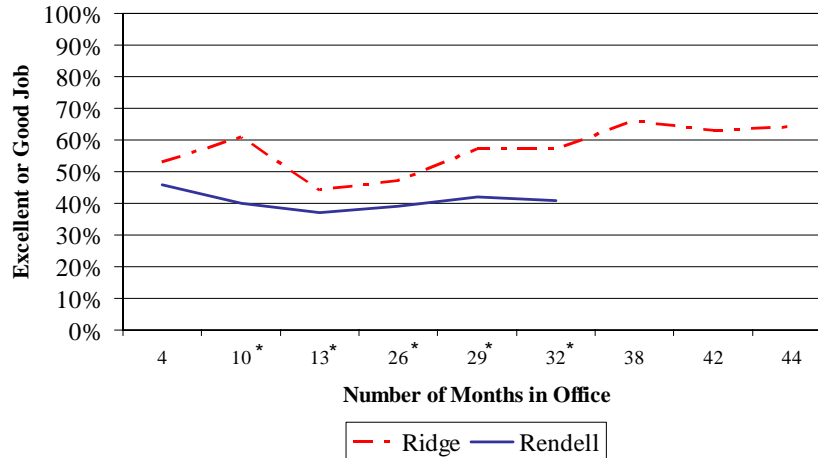
Would you be MORE likely or LESS likely to VOTE FOR your state representative in future elections if he voted for the recent pay raise, or wouldn't it make much of a difference?



## **Governor Ed Rendell**

Citizens' concern about the economy and their own finances could make campaigning much more difficult for incumbent office holders, and incumbents are held more accountable for tough economic times, especially executives, such as the President and governors. Pennsylvania's Governor, Ed Rendell, has relatively low job performance ratings, particularly when compared to his predecessor at the same point in his first term of office (Figure 3). Only two in five (41%) registered voters believe that Rendell is doing an excellent or good job as governor. The same proportion also believes he deserves re-election. One area of strength for Rendell is that his support is very strong in Philadelphia and the Southeast, with 58 and 63 percent respectively, saying he deserves reelection. Nearly half of the state's registered voters believe it is time for a change in the governor's office. Yet, despite his relatively low ratings, Rendell continues to hold sizable leads over his Republican challengers, at least in part because they are little known among the state's voters.

**Figure 3 Comparative Job Performance Ratings, Rendell and Ridge Time Series**



\*Numbers represent number of months Rendell was in office at the time of data collection point. Ridge's data collection points are slightly different (8, 15, 18, and 33 months respectively).

### Senator Rick Santorum

Senator Rick Santorum's prospects for re-election are similar to Governor Rendell's with one major exception. Santorum's job performance rating and the proportion of voters who believe he deserves re-election are slightly lower than Rendell's. Fewer than two in five (38%) voters think he is doing an excellent or good job as US Senator and only about one in three (35%) thinks he deserves re-election. The exception for Santorum is that his likely Democratic challenger, State Treasurer Robert Casey, Jr., is much better known than are Rendell's challengers. In a head-to-head match up of the candidates, Casey leads Santorum, 50 percent to 37 percent. The components of Casey's advantage are interesting to note. For instance, Casey currently leads

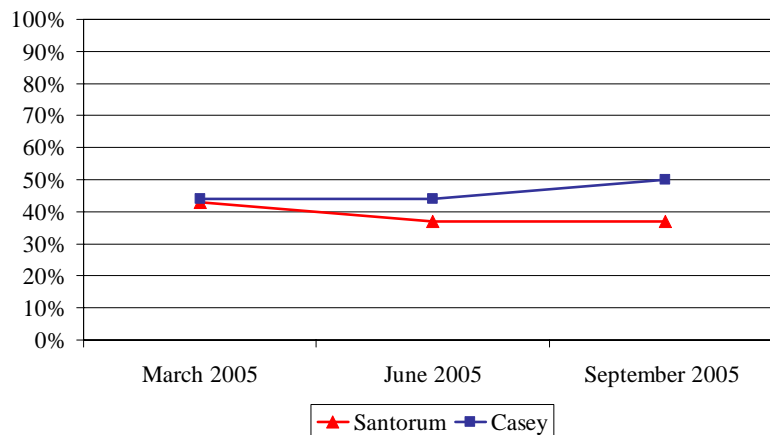
Santorum in Central Pennsylvania, 49 percent to 40 percent, and he leads Santorum in the Philadelphia suburbs, 49 to 30 percent. Casey also attracts more independent voters than Santorum. Perhaps most importantly, Casey only narrowly trails Senator Santorum among fundamentalist Christians and social issues voters. Casey appears to have made significant in-roads into Santorum's core constituency. In his 2000 election race, Santorum defeated his Democratic challenger by nearly 20 points among the most religious voters.

---

**Figure 4 US Senate Race in Pennsylvania, Santorum versus Casey**

---

If the election for Pennsylvania's U.S. Senator were being held TODAY and the candidates were Bob Casey, Jr. and Rick Santorum, would you vote for...



*Methodology: This release summarizes the findings of a survey of 650 adult Pennsylvanians conducted by Franklin and Marshall College's Center for Opinion Research. The survey interviewing was conducted between September 8 and 13, 2005. The sample error for the survey is plus or minus 3.8 percent. Telephone numbers for the survey were generated via random digit dialing. Respondents were randomly selected from within each household. A second screener was used to determine respondents' voter registration status. The sub-sample of registered voters includes 518 respondents. The registered voter sample has a margin of error of plus or minus 4.3 percent. The final registered voter sample includes 240 Republicans, 234 Democrats, and 44 Independent/other voters. Final survey results were weighted to adjust for different selection probabilities and non-response.*

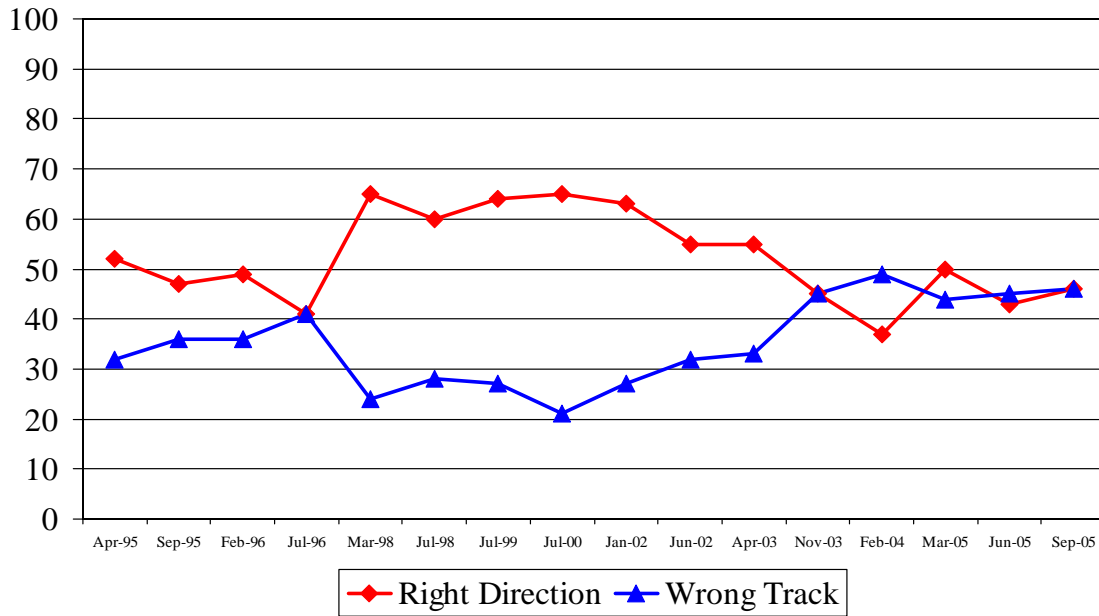


**Table A-1. What is the most important problem facing Pennsylvania today?**

	10/ 94	4/ 95	10/ 96	10/ 97	3/ 98	7/ 98	9/ 98	10/ 98	6/ 99	7/ 00	10/ 00	4/ 01	10/ 01	1/ 02	6/ 02	4/ 03	11 03	2/ 04	3/ 05	6/ 05	9/ 05
<b>Economy</b>	32%	25%	30%	29%	22%	19%	26%	29%	15%	13%	10%	17%	19%	30%	26%	26%	27%	35%	26%	24%	<b>24%</b>
<b>Crime/Drugs</b>	20%	28%	14%	13%	14%	15%	11%	13%	15%	10%	5%	7%	5%	6%	5%	5%	6%	6%	4%	6%	<b>3%</b>
<b>Education</b>	4%	5%	11%	15%	12%	15%	18%	19%	16%	16%	28%	22%	16%	17%	23%	12%	14%	15%	10%	8%	<b>9%</b>
<b>Taxes</b>	12%	10%	9%	12%	8%	10%	6%	8%	8%	13%	9%	12%	7%	8%	12%	17%	13%	11%	15%	18%	<b>15%</b>
<b>Welfare</b>	3%	5%	5%	2%	6%	2%	6%	4%	3%	1%	1%	3%	1%	1%	1%	1%	1%	0%	1%	0%	<b>1%</b>
<b>Roads</b>	3%	3%	6%	5%	6%	5%	8%	5%	6%	6%	4%	4%	3%	3%	0%	3%	1%	2%	3%	2%	<b>2%</b>
<b>Health Care</b>	6%	1%	3%	1%	2%	2%	4%	3%	1%	5%	8%	5%	2%	5%	6%	5%	10%	4%	8%	6%	<b>5%</b>
<b>Environment</b>	3%	3%	0%	3%	1%	2%	2%	4%	3%	3%	2%	3%	1%	2%	2%	1%	2%	1%	2%	1%	<b>1%</b>
<b>Terrorism/ Safety</b>													17%	2%	3%	4%	0%	1%	0%	1%	<b>1%</b>
<b>Gambling, Act 72</b>																				2%	<b>2%</b>
<b>Legislative Pay Raise</b>																					<b>2%</b>
<b>Gas Prices</b>																				1%	<b>9%</b>
<b>Government, Politicians</b>						4%	4%	4%	4%	4%	4%	4%	5%	--	2%	3%	6%	4%	8%	6%	<b>8%</b>

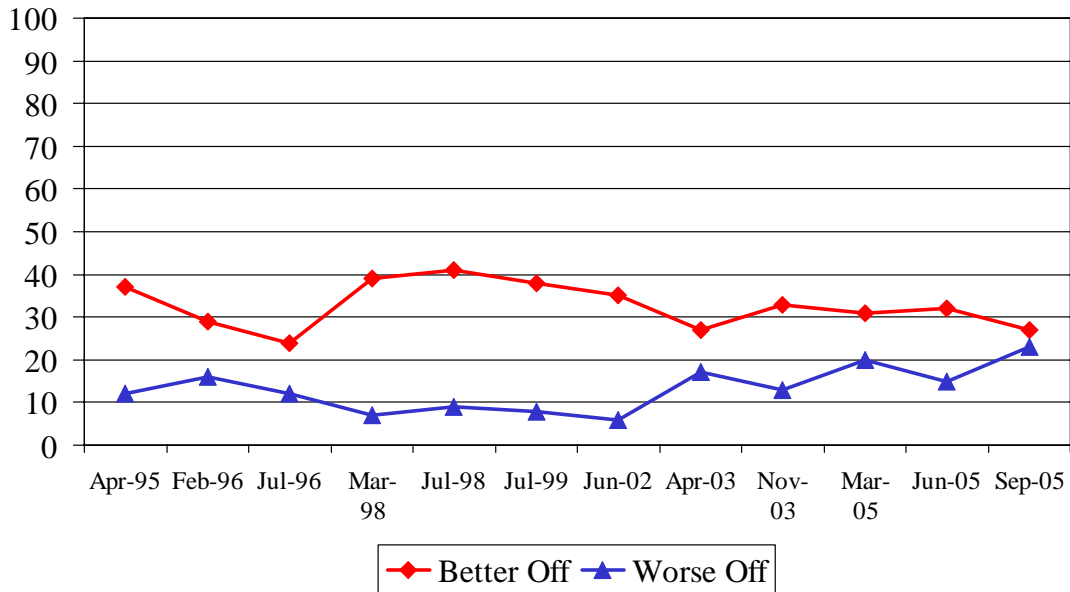
**Figure A-1 Direction of the State**

All in all do you think things in Pennsylvania are generally headed in the right direction, or do you feel that things are off on the wrong track?

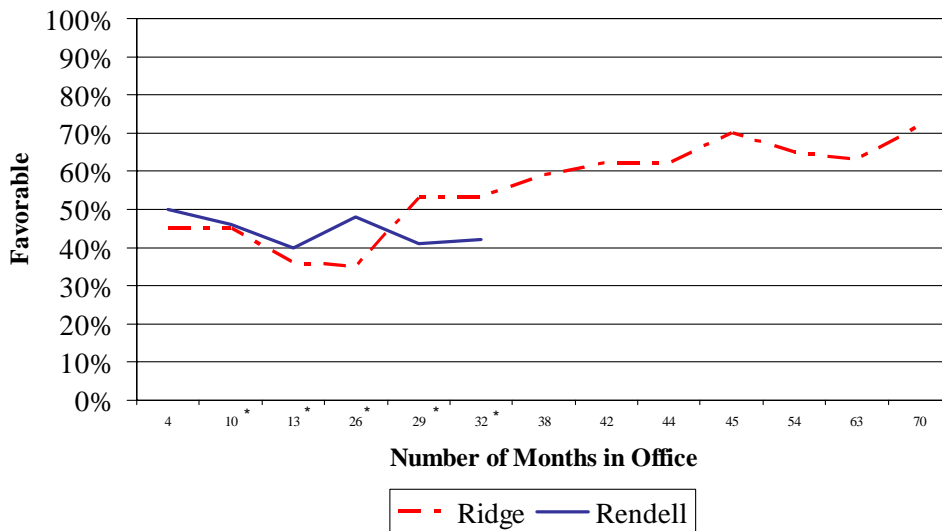


**Figure A-2 Pennsylvanians Anticipated Financial Situation**

Now looking ahead, do you think that a year from now, you and your family will be better off financially than you are now, worse off, or about the same as you are now?

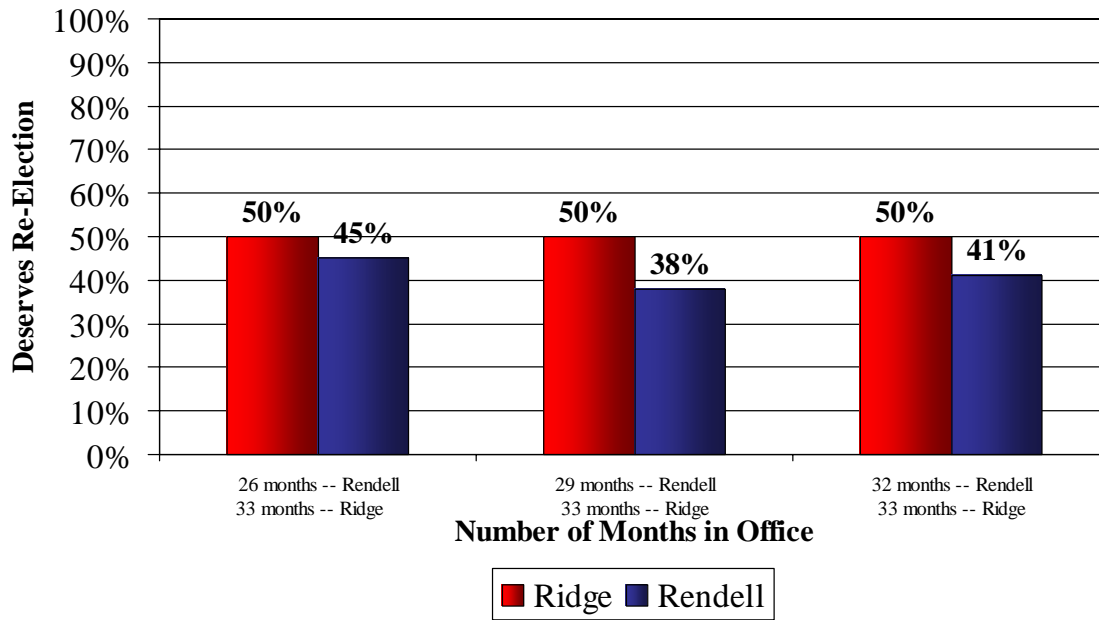


**Figure A-3 Comparison of Favorability Ratings, Tom Ridge and Ed Rendell**



\*Numbers represent number of months Rendell was in office at the time of data collection point. Ridge's data collection points are slightly different (8,15,18, and 33 months respectively).

**Figure A-4 Comparison of Hard Re-Elect, Tom Ridge and Ed Rendell**



**Table A-2 Do you believe that ED RENDELL has done a good enough job as GOVERNOR to DESERVE RE-ELECTION, or do you believe it is TIME FOR A CHANGE?**

	<b>Deserves Re-election</b>	<b>Time for a Change</b>	<b>Don't Know</b>
<b>Region</b>			
Philadelphia	58%	33%	8%
Northeast	39%	46%	15%
Allegheny	48%	45%	7%
Southwest	26%	61%	13%
Northwest	37%	46%	17%
Central	30%	60%	10%
Southeast	63%	28%	9%
<b>Education</b>			
High school graduate or less	42%	48%	11%
Some college	34%	54%	12%
College degree	45%	44%	11%
<b>Party Registration</b>			
Republican	26%	64%	10%
Democrat	56%	35%	9%
Independent/Other	45%	36%	19%
<b>Political Ideology</b>			
Liberal	61%	23%	17%
Moderate	47%	44%	9%
Conservative	24%	67%	10%
<b>Abortion Stance</b>			
Legal under any circumstances	55%	33%	12%
Legal under certain circumstances	41%	49%	9%
Illegal in all circumstances	26%	61%	13%
<b>Born Again Christian or Fundamentalist</b>			
Yes	33%	56%	11%
No	44%	45%	11%
<b>Racial Background</b>			
White	39%	50%	11%
Nonwhite	71%	27%	2%
<b>Household Income</b>			
Under \$35,000	40%	48%	12%
\$35 - \$75,000	43%	48%	9%
Over \$75,000	41%	48%	11%
<b>Gender</b>			
Male	44%	46%	10%
Female	38%	50%	12%
<b>Age</b>			
18-24	51%	42%	7%
25-34	39%	51%	10%
35-44	42%	52%	6%
45-54	40%	48%	13%
55-64	36%	50%	14%
Over 65	43%	43%	15%

	<b>Deserves Re-election</b>	<b>Time for a Change</b>	<b>Don't Know</b>
<b>Voting Habits</b>			
Straight Democrat	73%	18%	8%
Mostly Democrat	56%	32%	12%
A few more Democrats than Republicans	55%	37%	8%
About equally for both parties	37%	53%	10%
A few more Republicans than Democrats	26%	64%	10%
Mostly Republicans	17%	70%	13%
Strictly Republicans	16%	74%	10%
<b>Issues of Importance</b>			
Social Issues	41%	50%	9%
Economic Issues	43%	46%	11%
<b>Belief in Evolution</b>			
Have evolved over time	51%	39%	10%
Have existed in their present form since the beginning of time	33%	58%	8%

Note: Percentages in this table reflect all registered voters.

**Table A-3 If the election for Pennsylvania's U.S. Senator were being held TODAY and the candidates were Bob Casey, Jr. and Rick Santorum, would you vote for...**

	<b>Bob Casey, Jr</b>	<b>Rick Santorum</b>	<b>Don't Know</b>
<b>Region</b>			
Philadelphia	54%	32%	15%
Northeast	46%	41%	13%
Allegheny	64%	22%	14%
Southwest	45%	47%	8%
Northwest	52%	42%	7%
Central	49%	40%	11%
Southeast	49%	30%	20%
<b>Education</b>			
High school graduate or less	50%	38%	13%
Some college	49%	38%	13%
College degree	52%	36%	12%
<b>Party Registration</b>			
Republican	24%	64%	12%
Democrat	78%	12%	10%
Independent/Other	54%	22%	25%
<b>Political Ideology</b>			
Liberal	71%	14%	15%
Moderate	55%	33%	11%
Conservative	32%	56%	12%
<b>Abortion Stance</b>			
Legal under any circumstances	66%	22%	12%
Legal under certain circumstances	47%	41%	12%
Illegal in all circumstances	40%	46%	45%
<b>Born Again Christian or Fundamentalist</b>			
Yes	43%	47%	10%
No	52%	34%	14%
<b>Racial Background</b>			
White	49%	39%	12%
Nonwhite	69%	23%	9%
<b>Household Income</b>			
Under \$35,000	56%	30%	15%
\$35 - \$75,000	49%	39%	12%
Over \$75,000	47%	39%	14%
<b>Gender</b>			
Male	50%	42%	8%
Female	50%	33%	17%
<b>Age</b>			
18-24	63%	30%	7%
25-34	42%	41%	17%
35-44	49%	36%	14%
45-54	46%	43%	11%
55-64	54%	33%	13%
Over 65	54%	35%	12%



	<b>Bob Casey, Jr</b>	<b>Rick Santorum</b>	<b>Don't Know</b>
<b>Voting Habits</b>			
Straight Democrat	84%	4%	12%
Mostly Democrat	82%	10%	8%
A few more Democrats than Republicans	73%	18%	9%
About equally for both parties	51%	33%	16%
A few more Republicans than Democrats	28%	58%	14%
Mostly Republicans	14%	75%	11%
Strictly Republicans	10%	78%	12%
<b>Issues of Importance</b>			
Social Issues	44%	50%	6%
Economic Issues	53%	33%	14%
<b>Belief in Evolution</b>			
Have evolved over time	57%	30%	13%
Have existed in their present form since the beginning of time	44%	47%	9%

Note: Percentages in this table reflect all registered voters.

**Table A-4 Do you believe that RICK SANTORUM has done a good enough job as US SENATOR to DESERVE RE-ELECTION, or do you believe it is TIME FOR A CHANGE?**

	<b>Deserves Re-election</b>	<b>Time for a Change</b>	<b>Don't Know</b>
<b>Region</b>			
Philadelphia	19%	54%	27%
Northeast	30%	49%	21%
Allegheny	33%	53%	14%
Southwest	44%	49%	8%
Northwest	39%	44%	17%
Central	38%	44%	18%
Southeast	32%	46%	22%
<b>Education</b>			
High school graduate or less	35%	45%	19%
Some college	36%	44%	21%
College degree	33%	52%	15%
<b>Party Registration</b>			
Republican	55%	30%	16%
Democrat	16%	65%	18%
Independent/Other	21%	57%	22%
<b>Political Ideology</b>			
Liberal	19%	65%	16%
Moderate	27%	53%	20%
Conservative	52%	30%	18%
<b>Abortion Stance</b>			
Legal under any circumstances	24%	58%	18%
Legal under certain circumstances	36%	45%	19%
Illegal in all circumstances	45%	40%	15%
<b>Born Again Christian or Fundamentalist</b>			
Yes	45%	37%	18%
No	31%	51%	18%
<b>Racial Background</b>			
White	37%	46%	17%
Nonwhite	15%	60%	25%
<b>Household Income</b>			
Under \$35,000	24%	56%	21%
\$35 - \$75,000	39%	44%	17%
Over \$75,000	39%	46%	16%
<b>Gender</b>			
Male	37%	49%	14%
Female	33%	46%	22%
<b>Age</b>			
18-24	30%	50%	20%
25-34	34%	41%	25%
35-44	37%	43%	20%
45-54	38%	48%	14%
55-64	31%	53%	16%
Over 65	33%	51%	16%

	<b>Deserves Re-election</b>	<b>Time for a Change</b>	<b>Don't Know</b>
<b>Voting Habits</b>			
Straight Democrat	15%	69%	16%
Mostly Democrat	16%	68%	16%
A few more Democrats than Republicans	12%	76%	13%
About equally for both parties	33%	46%	21%
A few more Republicans than Democrats	58%	33%	10%
Mostly Republicans	60%	22%	17%
Strictly Republicans	62%	20%	18%
<b>Issues of Importance</b>			
Social Issues	56%	34%	10%
Economic Issues	28%	52%	21%
<b>Belief in Evolution</b>			
Have evolved over time	30%	54%	16%
Have existed in their present form since the beginning of time	42%	41%	17%

Note: Percentages in this table reflect all registered voters.

RightDir. All in all, do you think things in PENNSYLVANIA are generally 'headed in the right direction', or 'off on the wrong track'?

<i>March</i>	<i>June</i>	<i>Sept</i>	
<u>2005</u>	<u>2005</u>	<u>2005</u>	
50%	43%	46%	Headed in right direction
44%	45%	46%	Off on the wrong track
6%	12%	8%	Do Not Know

FinToday. We are interested in how people are getting along financially these days. Would you say that YOU and YOUR FAMILY are...

<i>March</i>	<i>June</i>	<i>Sept</i>	
<u>2005</u>	<u>2005</u>	<u>2005</u>	
21%	24%	17%	better off,
28%	24%	36%	worse off, or
51%	52%	47%	about the same financially as you were a year ago?
1%	0%	0%	Do Not Know

FinNxtYr. Now looking AHEAD, do you think that A YEAR FROM NOW, YOU and YOUR FAMILY will be...

<i>March</i>	<i>June</i>	<i>Sept</i>	
<u>2005</u>	<u>2005</u>	<u>2005</u>	
31%	32%	27%	better off financially than you are now,
20%	15%	23%	worse off, or
45%	48%	45%	about the same as you are now?
4%	5%	5%	Do Not Know

MIP\_PA. First, what do you think is the MOST IMPORTANT problem facing PENNSYLVANIA today?

<i>March</i>	<i>June</i>	<i>Sept</i>	
<u>2005</u>	<u>2005</u>	<u>2005</u>	
26%	24%	25%	Unemployment, economy, stock market
15%	18%	15%	Taxes
10%	8%	9%	Education, school
8%	6%	8%	Government, politicians
8%	6%	5%	Health care
8%	4%	6%	Other
4%	6%	3%	Crime, drugs, violence
3%	2%	2%	Roads
3%	2%	1%	Personal finances, paying bills, retirement
2%	1%	1%	Environment
2%	4%	1%	Population, urban sprawl
2%	1%	1%	Social security
2%	3%	1%	Social issues
1%	2%	0%	Transportation
1%	0%	1%	Welfare
1%	0%	0%	Housing
1%	2%	1%	Nothing
4%	8%	8%	Don't Know
0%	1%	1%	Terrorism
0%	2%	2%	Act 72, Slot machines
0%	1%	9%	Gas prices
--	--	2%	Legislative pay raise
--	--	1%	Justice system

MIP\_F. What do you think is the MOST IMPORTANT problem facing YOU and YOUR FAMILY today?

<i>March</i>	<i>June</i>	<i>Sept</i>	
<u>2005</u>	<u>2005</u>	<u>2005</u>	
30%	27%	23%	Personal finances, paying bills, retirement
15%	12%	10%	Health care
9%	5%	6%	Other
8%	8%	8%	Taxes
8%	12%	18%	Unemployment, economy, stock market
7%	8%	6%	Nothing
5%	5%	5%	Education, school
5%	4%	3%	Illness, health problems
3%	1%	1%	Social security
3%	3%	2%	Personal family issues
2%	2%	1%	Crime, drugs, violence
1%	1%	1%	Government, politicians
2%	6%	5%	Don't Know
0%	1%	0%	Population, urban sprawl
0%	1%	1%	Terrorism
0%	1%	0%	Day care
0%	3%	9%	Gas prices
0%	0%	2%	Environment
0%	0%	1%	Welfare
0%	0%	1%	Housing costs

REG. Some people are REGISTERED to vote, and many others are not. Are you CURRENTLY REGISTERED to vote at your present address?

<i>March</i>	<i>June</i>	<i>Sept</i>	
<u>2005</u>	<u>2005</u>	<u>2005</u>	
86%	84%	79%	Yes
13%	16%	20%	No
1%	0%	1%	Do not know

**[QUESTIONS RegPARTY to ReEL\_Sen ASKED ONLY OF REGISTERED VOTERS n=518]**

RegPARTY. Are you currently registered as a Republican, a Democrat, an Independent, or as something else?

<i>March</i>	<i>June</i>	<i>Sept</i>	
<u>2005</u>	<u>2005</u>	<u>2005</u>	
41%	44%	46%	Republican
48%	42%	44%	Democrat
9%	11%	7%	Independent
2%	2%	2%	Something else
1%	1%	1%	Do not know

VotParty. Thinking about the last few state and national elections, which best describes how you voted...

<i>Sept</i>	
<u>2005</u>	
17%	Straight Democrat
19%	Mostly Democrat
7%	A few more Democrats than Republicans
16%	About equally for both parties
7%	A few more Republicans than Democrats
21%	Mostly Republicans
10%	Strictly Republicans
4%	Don't know

VotIssue. Which kinds of issues are usually more important to you when you are voting....social issues like abortion and gay marriage, or economic issues like poverty, jobs, social security and healthcare?

<i>Sept</i>	
<u>2005</u>	
20%	Social issues
73%	Economic issues
7%	Don't know

IDEO. Politically speaking, do you consider yourself to be a liberal, a moderate, or a conservative?

<i>March</i>	<i>June</i>	<i>Sept</i>	
<u>2005</u>	<u>2005</u>	<u>2005</u>	
16%	19%	22%	Liberal
40%	42%	38%	Moderate
38%	33%	35%	Conservative
6%	7%	5%	Do Not Know

Questions Q16 through Q40 were only asked of registered respondent n=462

I'd like to ask you a few questions about some PEOPLE involved in POLITICS today. Please let me know if your opinion of the person is favorable, not favorable, undecided, or if you haven't heard enough about the person to have an opinion.

	Favorable	Not Favorable	Undecided	Don't know
<b>RICK SANTORUM</b>				
<b>September 2005</b>	<b>40%</b>	<b>32%</b>	<b>14%</b>	<b>14%</b>
June 2005	42%	26%	13%	18%
March 2005	39%	26%	17%	18%
November 2003	46%	25%	16%	13%
April 2003	45%	17%	14%	24%
October 2000	40%	22%	20%	18%
July 2000	37%	17%	16%	30%
February 2000	38%	17%	24%	21%
July 1999	41%	20%	16%	24%
October 1994	35%	23%	12%	30%

<b>ED RENDELL</b>				
<b>September 2005</b>	<b>42%</b>	<b>36%</b>	<b>16%</b>	<b>6%</b>
June 2005	41%	33%	17%	9%
March 2005	48%	28%	18%	7%
February 2004	40%	32%	13%	25%
November 2003	46%	26%	21%	7%
April 2003	50%	19%	17%	16%
October 2002	50%	24%	18%	9%
September 2002	43%	19%	25%	14%
June 2002	40%	18%	26%	16%
October 2001	30%	8%	13%	50%
April 2001	29%	7%	11%	52%
June 1999	30%	8%	9%	54%
<b>GEORGE BUSH</b>				
<b>September 2005</b>	<b>39%</b>	<b>51%</b>	<b>9%</b>	<b>1%</b>
June 2005	44%	45%	10%	1%
March 2005	43%	48%	8%	0%
October 19-23, 2004	43%	46%	10%	1%
Sept 30-Oct 3, 2004	42%	49%	9%	0%
September 2004	46%	44%	10%	0%
August 2004	44%	46%	10%	0%
March 2004	45%	42%	12%	2%
February 2004	46%	43%	9%	3%
November 2003	49%	40%	11%	1%
April 2003	63%	25%	10%	2%
October 2000	43%	36%	18%	3%
July 2000	39%	35%	19%	7%
February 2000	32%	38%	24%	7%
July 1999	38%	16%	18%	28
<b>BOB CASEY, JR</b>				
<b>September 2005</b>	<b>32%</b>	<b>7%</b>	<b>22%</b>	<b>39%</b>
June 2005	40%	9%	15%	36%
March 2005	33%	10%	19%	38%
October 2001	28%	7%	22%	43%
April 2001	33%	9%	22%	36%
June 1999	29%	11%	17%	44%
<b>JEFF PICCOLA</b>				
<b>September 2005</b>	<b>6%</b>	<b>3%</b>	<b>7%</b>	<b>84%</b>
June 2005	4%	2%	6%	88%
March 2005	4%	3%	6%	88%
April 2001	5%	2%	7%	86%
<b>LYNN SWANN</b>				
<b>September 2005</b>	<b>16%</b>	<b>6%</b>	<b>13%</b>	<b>65%</b>
June 2005	18%	6%	13%	63%
March 2005	17%	8%	12%	63%
<b>BILL SCRANTON</b>				
<b>September 2005</b>	<b>20%</b>	<b>8%</b>	<b>17%</b>	<b>55%</b>
June 2005	21%	4%	15%	60%
March 2005	17%	6%	14%	62%
<b>JIM PANYARD</b>				
<b>September 2005</b>	<b>6%</b>	<b>5%</b>	<b>7%</b>	<b>82%</b>

*Question Q24 was only asked of registered Republicans n=230*

RPrVoGov. If the Republican PRIMARY for Governor were being held TODAY and the candidates were Jeff Piccola, Bill Scranton, Lynn Swann, and Jim Panyard would you vote for...

<i>March</i>	<i>June</i>	<i>Sept</i>	
<u>2005</u>	<u>2005</u>	<u>2005</u>	
8%	2%	5%	Jeff Piccola
25%	18%	18%	Bill Scranton
17%	18%	25%	Lynn Swann
--	--	0%	Jim Panyard
50%	57%	52%	Do Not Know

Vote\_Gov. If the election for Pennsylvania governor was being held TODAY and the candidates were Ed Rendell, and \_\_\_\_\_, who would you vote for?

	<b>Rendell</b>			<b>Other listed candidate</b>			<b>Do Not Know</b>		
	<i>March</i> <i>2005</i>	<i>June</i> <i>2005</i>	<i>Sept</i> <i>2005</i>	<i>March</i> <i>2005</i>	<i>June</i> <i>2005</i>	<i>Sept</i> <i>2005</i>	<i>March</i> <i>2005</i>	<i>June</i> <i>2005</i>	<i>Sept</i> <i>2005</i>
Rendell or Piccola? N=145	53%	45%	<b>46%</b>	23%	22%	<b>37%</b>	24%	33%	<b>17%</b>
Rendell or Scranton? N=127	47%	41%	<b>51%</b>	37%	31%	<b>34%</b>	16%	28%	<b>15%</b>
Rendell or Swann? N=129	59%	42%	<b>53%</b>	29%	34%	<b>33%</b>	12%	24%	<b>14%</b>
Rendell or Panyard? N=112	--	--	<b>54%</b>	--	--	<b>24%</b>	--	--	<b>21%</b>

Vote\_Sen. If the election for Pennsylvania's U.S. Senator were being held TODAY and the candidates were Bob Casey, Jr. and Rick Santorum, would you vote for...

<i>March</i>	<i>June</i>	<i>Sept</i>	
<u>2005</u>	<u>2005</u>	<u>2005</u>	
44%	44%	50%	Bob Casey, Jr.
43%	37%	37%	Rick Santorum
13%	19%	13%	Do Not Know

Rate\_Gov. How would you rate the way that ED RENDELL is handling his job as GOVERNOR? Would you say he is doing...

	<b>Excellent job</b>	<b>Good job</b>	<b>Only a fair job</b>	<b>Poor job</b>	<b>Do Not Know</b>
<b>ED RENDELL, as Governor</b>					
<b>September 2005</b>	<b>5%</b>	<b>36%</b>	<b>38%</b>	<b>18%</b>	<b>3%</b>
June 2005	6%	36%	41%	14%	3%
March 2005	6%	33%	46%	11%	4%
February 2004	6%	31%	44%	13%	7%
November 2003	7%	33%	35%	15%	10%
April 2003	10%	36%	24%	10%	21%



DesREGov. Do you believe that ED RENDELL has done a good enough job as GOVERNOR to DESERVE RE-ELECTION, or do you believe it is TIME FOR A CHANGE?

<i>March</i>	<i>June</i>	<i>Sept</i>	
<u>2005</u>	<u>2005</u>	<u>2005</u>	
45%	38%	41%	Deserves re-election
43%	47%	48%	Time for Change
12%	15%	11%	Do Not Know

ReEl\_Gov. Would you vote to re-elect ED RENDELL no matter who ran against him, or NOT?

<i>March</i>	<i>June</i>	<i>Sept</i>	
<u>2005</u>	<u>2005</u>	<u>2005</u>	
n=198	n=178	n=209	
40%	49%	49%	Yes
50%	38%	37%	No
10%	13%	14%	Do not know

RatePres. How would you RATE the way GEORGE BUSH is handling his job as President? Would you say he is doing...

	Excellent job	Good job	Only a fair job	Poor job	Do Not Know
<b>GEORGE BUSH, as President</b>					
<b>September 2005</b>	<b>10%</b>	<b>25%</b>	<b>24%</b>	<b>42%</b>	<b>1%</b>
June 2005	12%	31%	27%	30%	1%
October 2004	14%	27%	30%	29%	0%
September 2004	18%	31%	27%	24%	0%
August 2004	16%	30%	26%	28%	1%
March 2004	15%	34%	26%	24%	1%
February 2004	13%	32%	26%	28%	1%
November 2003	15%	32%	25%	28%	2%
April 2003	33%	31%	19%	15%	2%

Rate\_Sen. How would you rate the way that RICK SANTORUM is handling his job as US SENATOR? Would you say he is doing...

	Excellent job	Good job	Only a fair job	Poor job	Do Not Know
<b>RICK SANTORUM, as US SENATOR</b>					
<b>September 2005</b>	<b>7%</b>	<b>31%</b>	<b>28%</b>	<b>21%</b>	<b>13%</b>
June 2005	9%	34%	29%	19%	9%
March 2005	9%	31%	30%	16%	14%
November 2003	11%	35%	28%	14%	13%
April 2003	13%	34%	22%	10%	21%
February 2000	9%	37%	26%	8%	20%
July 1999	8%	36%	27%	12%	18%

DesRESen. Do you believe that RICK SANTORUM has done a good enough job as US SENATOR to DESERVE RE-ELECTION, or do you believe it is TIME FOR A CHANGE?

<i>March</i>	<i>June</i>	<i>Sept</i>	
<u>2005</u>	<u>2005</u>	<u>2005</u>	
43%	42%	35%	Deserves re-election
41%	42%	47%	Time for Change
16%	16%	18%	Do Not Know

ReEl\_Sen. Would you vote to re-elect RICK SANTORUM no matter who ran against him, or NOT?

<i>March</i>	<i>June</i>	<i>Sept</i>	
<u>2005</u>	<u>2005</u>	<u>2005</u>	
n=202	n=189	n=178	
39%	47%	44%	Yes
49%	35%	38%	No
13%	18%	18%	Do not know

Rate\_StL. What kind of job do you think the state legislature is doing overall? Would you say it is doing ...

	<b>Excellent job</b>	<b>Good job</b>	<b>Only a fair job</b>	<b>Poor job</b>	<b>Do Not Know</b>
<b>September 2005</b>	<b>1%</b>	<b>21%</b>	<b>47%</b>	<b>22%</b>	<b>8%</b>
November 2003	1%	22%	55%	17%	5%
February 2000	3%	33%	49%	7%	9%
July 1999	2%	33%	49%	10%	6%

TrustStL. How much of the time do you think you can trust the state government in Harrisburg to do what is right? Would you say just about always, most of the time, or only some of the time?

	<b>About always</b>	<b>Most of the time</b>	<b>Only some of the time</b>	<b>Don't Know</b>
<b>September 2005</b>	<b>4%</b>	<b>28%</b>	<b>65%</b>	<b>4%</b>
November 2003	2%	28%	67%	3%
February 2000	4%	35%	53%	8%
July 1999	3%	33%	61%	3%
September 1998	2%	40%	55%	3%
September 1995	4%	32%	61%	3%

QualStL. Overall, how would you rate the quality of government in Pennsylvania? Would you say it is excellent, good, only fair, or poor?

	<b>Excellent</b>	<b>Good</b>	<b>Only fair</b>	<b>Poor</b>	<b>Don't know</b>
<b>September 2005</b>	<b>1%</b>	<b>36%</b>	<b>46%</b>	<b>15%</b>	<b>3%</b>
November 2003	2%	36%	48%	13%	2%
January 2002	4%	55%	34%	5%	2%
February 2000	2%	53%	38%	5%	3%
July 1999	2%	47%	41%	8%	2%

StL\_Pay1. Have you read or heard anything recently about Pennsylvania LEGISLATORS giving themselves a PAY RAISE, or not?

*Sept*  
2005  
77% Yes  
21% No  
2% Do not know

StL\_Pay2. Do you believe the state's REPRESENTATIVES and SENATORS in Harrisburg DESERVED a pay raise, or not?

*Sept*  
2005  
10% Yes  
79% No  
11% Do not know

StL\_Pay3. Did YOUR LOCAL representative or senator vote FOR or AGAINST the pay raise, or don't you know if he voted for it or not?

*Sept*  
2005  
24% For pay raise  
11% Against pay raise  
64% Don't know if he voted for it or not

StL\_Pay4. Would you be MORE likely or LESS likely to VOTE FOR your state representative in future elections if he voted for the recent pay raise, or wouldn't it make much of a difference?

*Sept*  
2005  
5% More likely to vote for  
46% Less likely to vote for  
41% Wouldn't make much of a difference  
8% Do Not Know

StL\_Size. Pennsylvania currently has 203 members in the state House of Representatives and 50 state senators. Would you FAVOR or OPPOSE reducing the SIZE of the state LEGISLATURE?

*Sept*  
2005  
30% Strongly favor  
20% Somewhat favor  
23% Somewhat oppose  
8% Strongly oppose  
20% Do not know

StL\_Term. Would you FAVOR or OPPOSE LIMITING the number of YEARS that state senators and representatives can serve in the legislature TO 12?

*Sept*  
2005  
53% Strongly favor  
20% Somewhat favor  
11% Somewhat oppose  
8% Strongly oppose  
9% Do not know

I now have a final few questions for statistical purposes only.

CNTY. What is the name of the COUNTY you live in?

*Sept*  
2005  
10% Philadelphia  
12% Northeast  
10% Allegheny  
10% Southwest  
11% Northwest  
33% Central  
14% Southeast

AGE. What was your AGE on your last birthday?

*Sept*  
2005  
12% 18-24  
16% 25-34  
20% 35-44  
19% 45-54  
13% 55-64  
20% 65 and older

EDUC. What was the last grade level of schooling you have completed?

*Sept*  
2005  
6% Non high school graduate  
37% High school graduate  
13% Some college  
12% Two-year or tech degree  
19% Four year college degree  
13% Postgraduate degree

MAR. What is your CURRENT marital status?

*Sept*  
2005  
27% Single, Never Married  
53% Married  
1% Separated  
9% Divorced  
10% Widow, Widower

ABORT. Do you think that ABORTION should be...

*Sept*  
2005  
24% Legal under any circumstances,  
54% Legal under certain circumstances, OR  
19% Illegal in ALL circumstances?  
3% Do Not Know

GUN. Are you a gun owner?

*Sept*  
2005  
34% Yes  
66% No

GUN2. Generally speaking, do you favor or oppose creating more laws that regulate gun ownership?

*Sept*  
2005  
39% Strongly favor  
16% Somewhat favor  
13% Somewhat oppose  
25% Strongly oppose  
8% Do not know

REL. Do you consider yourself to be Catholic, Protestant, Jewish or something else?

*Sept*  
2005  
33% Catholic  
34% Protestant  
3% Jewish  
30% Something Else

BAC. Do you consider yourself to be a born-again Christian or fundamentalist?

*Sept*  
2005  
38% Yes  
56% No  
7% Do Not Know

Evol\_1. Some people think that humans and other living things have evolved over time others think humans and other living things have existed in their present form since the beginning of time. Which of these comes closest to your view?

*Sept*  
2005  
49% Have evolved over time  
40% Have existed in their present form since the beginning of time  
11% Do Not Know

Evol\_2. do you think that humans and other living things have evolved due to natural processes or do you think that a supreme being guided the evolution of living things?

*Sept*  
2005  
47% Humans and other living things have evolved due to natural processes  
43% A supreme being guided the evolution of living things  
10% Do Not Know

Evol\_3. How certain are you about how life developed on Earth...

*Sept*  
2005  
39% Very certain,  
35% Fairly certain,  
14% Not too certain, or  
8% Not at all certain?  
4% Do Not Know

Hisp. Are you Hispanic or Latino?

*Sept*  
2005  
4% Yes  
96% No

RACE. Which of the following categories best describes your racial background?

*Sept*  
2005  
88% White  
12% Non-white

WORK. Are you currently working FULL-time, PART-time, going to school, keeping house or what?

*Sept*  
2005  
49% Full-time  
10% Part-time  
6% Going to school  
7% Keeping house  
3% Unemployed  
3% Disabled  
21% Retired

INC1. And, just for statistical purposes, we need to know if your total family income is above or below \$30,000 per year?

*Sept*  
2005  
21% Under \$25,000  
17% \$25-\$35,000  
14% \$35-50,000  
20% \$50-75,000  
10% \$75-100,000  
11% Over \$100,000  
7% Do Not Know

DONE. Sex of respondent:

<i>Sept</i>	
<u>2005</u>	
47%	Male
53%	Female