



Freedom of Information Act Publication Scheme	
Protective Marking	Not Protectively Marked
Publication Scheme Y/N	Y
Title	BSMI (Borough Support Management Information) Main Report – March 2007 (covering period March 2006 to February 2007)
Version	1
Summary	BOROUGH SUPPORT MANAGEMENT INFORMATION (BSMI) relates to public complaints and conduct matters (previously known as internal investigations), reports are produced monthly and focus on a rolling 12-month period (some aspects show previous 12 months for comparison). The report includes information on: Public Complaints Recorded – Conduct Matters Recorded – Allegations relating to officer safety equipment – Allegations arising from Stop & Search – Complaints Intervention Scheme– Public Complaints Finalised – Conduct Matters Finalised – Local Resolutions and Written Warnings.
Branch / OCU	Directorate of Professional Standards, Prevention & Organisational Learning, Performance Analysis Unit
Date created	09/03/2007
Review date	09/03/2008



Borough Support Management Information (BSMI)

March 2007

DPS Reception Desk

On extension **58666**

Operating from **8 am to 8 pm**, Monday to Friday

Members of the public can call the Reserve Desk on

020 8785 8666

Reporting Period

01 Mar 06

to

28 Feb 07

Produced by DPS PAU

Public Complaints Recorded (pages 1 - 5)

- a) Public Complaint allegations recorded has increased by 28% from 6621 to 8445. The increase is mainly due to the Muslim Cart demonstration and the Parliament Square demonstration.
- b) City of Westminster have the highest number of allegations recorded (1203), this is primarily due to 553 allegations arising from the Muslim cart demonstration and 47 allegations arising from the Parliament Square demonstration.
- c) The number of officer allegations for the current 12 months has increased by 20% from the previous 12 months (11013 to 13179).

Conduct Matters Recorded (pages 6 - 10)

- a) Conduct Matters allegations recorded has increased by 8% from 1051 to 1133.
- b) Oppressive Behaviour related allegations have increased by 23% from 179 to 221. Discriminatory Behaviour related allegations have decreased by 48% from 29 to 15.
- c) Officers based at Kingston-upon-Thames 450% increase in allegations recorded from last period to this period. Although there has been a huge increase looking at percentages the numbers are very small, from 2 to 11 allegations.

Officer Safety Equipment (pages 11 - 16)

- a) Of the 8445 public complaints allegations recorded 453 relate to officer safety equipment, an increase of 11% (from 409)
- b) Central Operations account for 158 of the 961 officer allegations recorded. The majority related to misuse of handcuffs (104)

Stop & Search (pages 17 - 20)

- a) Of the 8445 public complaints allegations recorded 712 have arisen from a Stop & Search, an increase of 3% (from 690). Of which 124 allegations related to breach of PACE code A Stop & Search. The majority relate to Oppressive Behaviour alleged during the interaction (267 allegations).
- b) Of the 712 allegations arising from a stop & search 56 also relate to use of officer safety equipment.
- c) Central Operations account for the majority of officer allegations (302), of which 263 are against officers based at TSG at the time of incident. There has been a 5% decrease for Central Operations from last period to this period (319 to 302).

Complaints Intervention Scheme (pages 21-23)

- a) There has been an increase in the number of officers of concern from 224 to 287 officers. The majority have received 3 events (207 officers). Officers with 5 events or more has increased, there are currently 25 officers compared to 16 officers last period.
- b) Central Operations currently has 71 officers of concern. 56 of which are TSG officers. (This is based on officers current unit).

Public Complaints Finalised (pages 24 - 28)

- a) Public Complaint allegations finalised has increased 25% from 6586 to 8201.
- b) Unsubstantiated allegations has increased by 23% from 1513 to 2072. This could be partly due to the IC conducting a limited investigation, and the decrease in dispensations.

Conduct Matters Finalised (pages 29 -33)

- a) Conduct Matter allegations finalised has decreased 3% from 1061 to 1089.
- b) Substantiated allegations has reduced by 5% from 637 to 605. This period 56% of finalised allegations are substantiated, compared to 60% for the previous period.
- c) The majority of officer allegations are substantiated, this is due to the majority of conduct matters being resulted with written warnings. Of the 650 officer allegations 367 resulted in a written warning.

Local Resolutions (page 34 - 35)

- a) To reach the 50% target for local resolutions boroughs/business groups need to increase the number done locally (desktop). Currently of the officer allegations locally resolved 38% are being done by boroughs/business groups (desktop). The majority are still being resolved by DPS (62%).
- b) Overall the number of officer allegations locally resolved has increased by 22% from 3446 to 4212.

Written Warnings (pages 36 - 37)

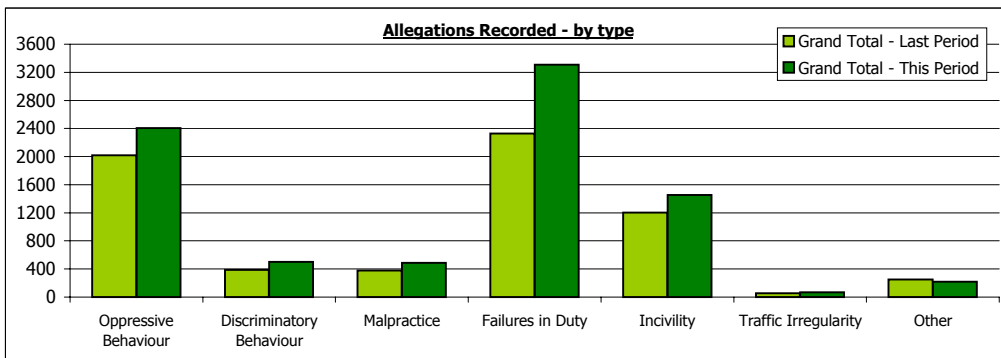
- a) 401 officer allegations resulted in written warnings, 34 were as a result of a public complaint and the remaining 367 were a result of conduct matter. There has been a 20% decrease in written warnings from 501 to 401.
- b) 295 of the written warnings as a result of conduct matters were issued locally by the borough/business group. 72 were as a result of a DPS investigation.

Period: 01 Mar 2006 to 28 Feb 2007
 Data extracted: 01 Mar 2007

Borough of Incident	Oppressive Behaviour	Dis - criminatory Behaviour	Malpractice	Failures in Duty	Incivility	Traffic Irregularity	Other	Grand Total	Grand Total for period: (percentage +/- from current period)	
									01/03/05	to 28/02/06
Barking & Dagenham	28	5	8	53	13	2	2	111	73	52%
Barnet	62	19	16	83	56	2	3	241	148	63%
Bexleyheath	27	5	5	43	19	1	3	103	92	12%
Brent	109	26	17	123	69	2	4	350	284	23%
Bromley	32	6	8	48	24	2	4	124	139	-11%
Camden	90	18	20	131	50	5	6	320	299	7%
City of Westminster	204	34	38	749	117	4	57	1203	943	28%
Croydon	110	20	16	108	62	2	8	326	234	39%
Ealing	120	16	24	109	89	1	9	368	216	70%
Enfield	74	14	15	112	51	1	7	273	147	86%
Greenwich	48	12	19	68	26	1	2	176	142	24%
Hackney	114	19	33	128	47	2	5	348	207	68%
Hammersmith & Fulham	78	9	16	60	34	1	8	206	140	47%
Haringey	85	7	9	100	51	1	3	256	250	2%
Harrow	39	11	8	48	30	2	7	145	144	1%
Havering	24	1	8	46	14	1	2	96	110	-13%
Heathrow Airport	17	3	7	10	20			57	36	58%
Hillingdon	47	6	16	59	32	6	4	170	132	29%
Hounslow	53	11	7	44	35	1	2	153	184	-17%
Islington	67	12	10	72	43	1	2	207	234	-12%
Kensington & Chelsea	42	5	8	32	19	1	1	108	69	57%
Kingston-upon-Thames	42	14	6	50	33	5	3	153	128	20%
Lambeth	153	32	27	124	71	5	5	412	356	16%
Lewisham	107	19	17	87	59	1	7	297	232	28%
Merton	48	8	11	35	20	1	1	124	126	-2%
Motorway	3	1			1			5		0%
Newham	88	16	11	107	47	1	3	273	206	33%
Outside MPD	56	6	15	38	34	9	15	173	88	97%
Redbridge	57	10	8	86	38	1	5	205	122	68%
Richmond-upon-Thames	26	10	9	33	15	2	4	99	87	14%
Southwark	90	16	17	99	76	1	5	304	240	27%
Sutton	28	12	10	42	13			105	69	52%
Tower Hamlets	93	16	16	127	54	4	2	312	185	69%
Unknown Location	26	55	10	75	20	3	29	218	175	23%
Waltham Forest	63	16	10	102	41	2		234	240	-3%
Wandsworth	57	12	11	79	29		2	190	144	32%
Grand Total	2407	502	486	3310	1452	68	220	8445	6621	28%
Grand Total for previous 12 month period: (percentage +/- from current period)	2018	386	379	2327	1203	56	252	6621	19%	30%
									28%	42%
									21%	21%
									-13%	28%

Discriminatory Behaviour allegations - broken down by type

Type	Number of allegations
Disability	6
Gender	4
Homophobic	3
Mental Health	1
Other	11
Race	308
Religion/Faith	62
Total	395



Additional Information

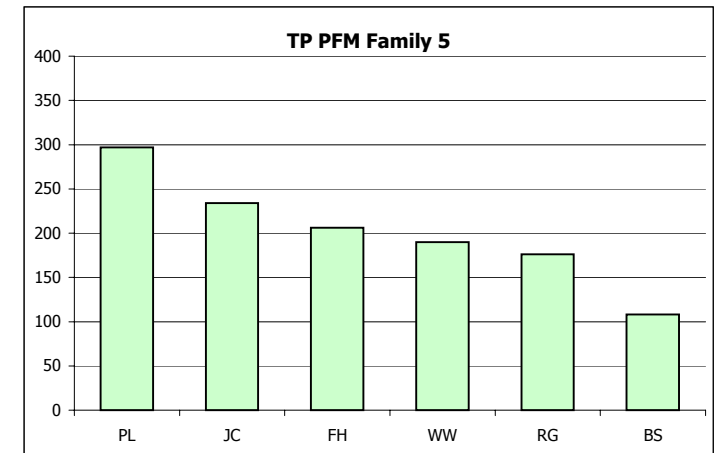
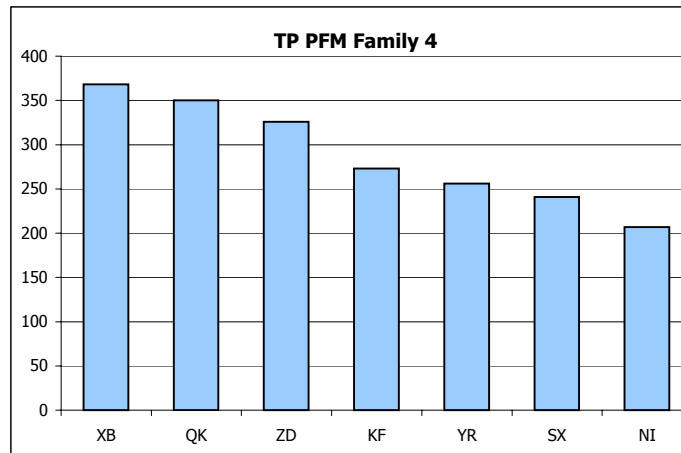
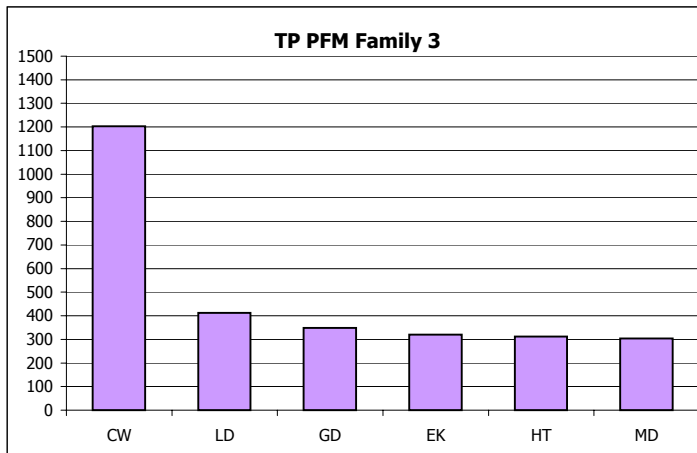
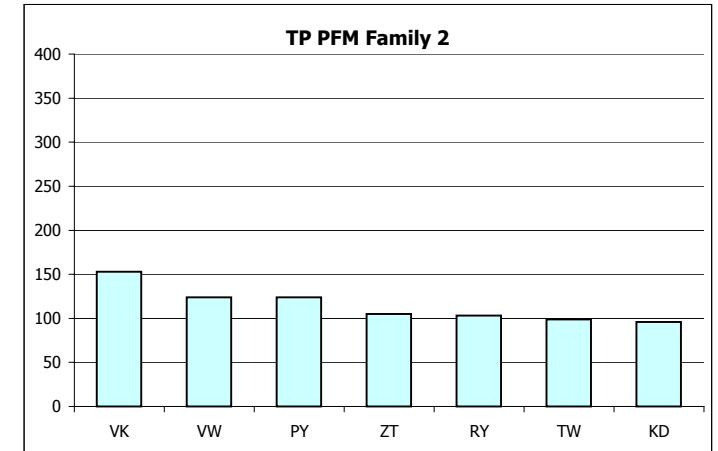
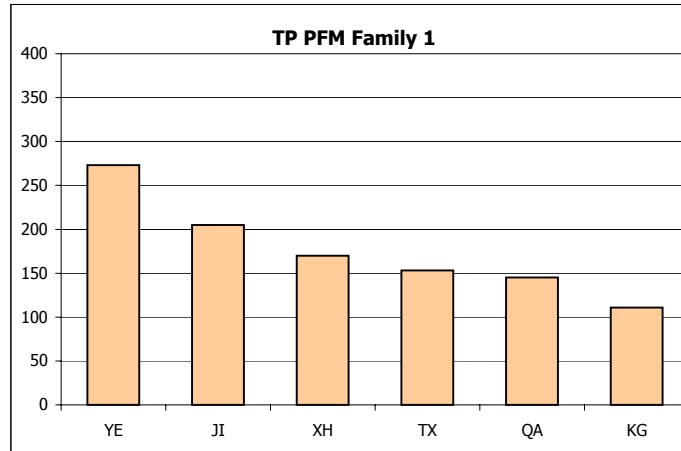
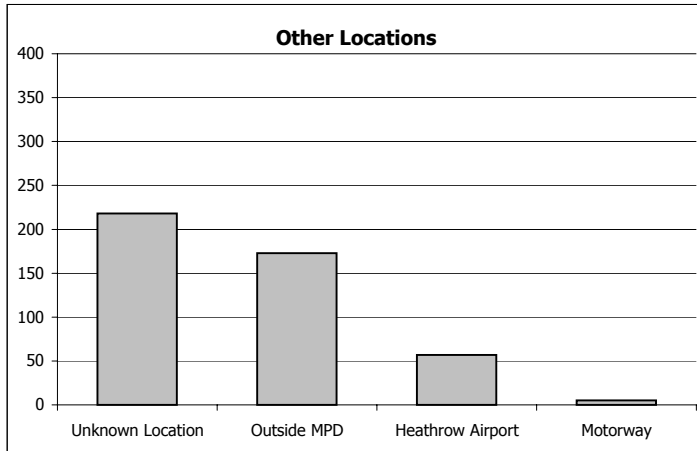
Key: Home Office Subgroups comprises of the following Home Office Allegation Types

Oppressive Behaviour	Type A: Serious non-sexual assault, B: Sexual assault, C: Other assault, D: Oppressive conduct or harassment, E: Unlawful/unnecessary arrest or detention, Y: Other sexual conduct
Discriminatory Behaviour	Type F: Discriminatory Behaviour, Q: Lack of fairness & impartiality
Malpractice	Type G: Irregularity in relation to evidence/perjury, H: Corrupt practice, J: Mishandling of property
Failures in Duty	Type K-P: Breaches of PACE Codes of Practice, R: Multiple breaches, S: Failures in duty, T: Other irregularity in procedure, X: Improper disclosure of information
Incivility	Type U: Incivility
Traffic Irregularity	Type V: Traffic Irregularity
Other	Type W: Other

Boroughs of incident are highlighted according to 'TP PFM Family Groups'

TP PFM Family 1	TP PFM Family 2	TP PFM Family 3	TP PFM Family 4	TP PFM Family 5	Other Units/Locations
-----------------	-----------------	-----------------	-----------------	-----------------	-----------------------

Period: 01 Mar 2006 to 28 Feb 2007
 Data extracted: 01 Mar 2007



Period: 01 Mar 2006 to 28 Feb 2007
Data extracted: 01 Mar 2007

Officers Unit/ Business Group at time of incident	Oppressive Behaviour	Dis - crimINARY Behaviour	Malpractice	Failures in Duty	Incivility	Traffic Irregularity	Other	Grand Total	Grand Total for period: (percentage +/- from current period)		No. of allegations per 100 officers
									01/03/05 to	28/02/06	
Barking & Dagenham	34	4	11	67	7	1	4	128	124	3%	30
Barnet	94	30	15	108	62			309	211	46%	56
Bexleyheath	27	6	2	56	16	1	3	111	131	-15%	31
Brent	147	29	20	187	86	2	3	474	392	21%	71
Bromley	50	7	11	48	27	2	5	150	199	-25%	30
Camden	124	21	21	169	50	6	4	395	456	-13%	49
City of Westminster	232	34	36	765	108	1	55	1231	976	26%	79
Croydon	155	30	21	130	84	2	10	432	393	10%	62
Ealing	152	16	36	135	107	2	6	454	336	35%	68
Enfield	174	28	25	204	127		4	562	226	149%	97
Greenwich	64	15	23	89	40	1	1	233	186	25%	37
Hackney	181	32	57	203	66	2	6	547	327	67%	74
Hammersmith & Fulham	101	10	20	71	29	1	8	240	192	25%	44
Haringey	171	15	13	195	88	1	3	486	422	15%	71
Harrow	55	17	17	69	40	1	11	210	255	-18%	58
Havering	39	5	11	61	30		1	147	148	-1%	38
Heathrow Airport	19	5	13	23	24		1	85	56	52%	18
Hillingdon	87	7	32	81	39	7	14	267	263	2%	54
Hounslow	84	16	12	65	49	1	2	229	240	-5%	45
Islington	88	10	12	111	59	1	7	288	384	-25%	42
Kensington & Chelsea	59	5	11	44	20	1	2	142	116	22%	26
Kingston-upon-Thames	66	17	8	56	39	5	3	194	162	20%	67
Lambeth	219	43	34	171	87		9	563	467	21%	59
Lewisham	143	22	17	113	61	1	7	364	351	4%	58
Merton	62	6	19	43	22		1	153	148	3%	42
Newham	120	26	11	150	49	1	2	359	290	24%	47
Redbridge	95	16	13	129	44	1	8	306	172	78%	65
Richmond-upon-Thames	52	10	10	51	21		3	147	97	52%	48
Southwark	177	37	39	131	101	1	6	492	348	41%	58
Sutton	48	18	8	51	22			147	155	-5%	48
Tower Hamlets	114	16	22	169	66	7	1	395	308	28%	53
Waltham Forest	78	20	11	130	58	2		299	471	-37%	56
Wandsworth	65	13	25	100	37		2	242	188	29%	41
Total	3376	586	636	4175	1765	51	192	10781	9190	17%	56
Recruits	2	1	1	3	1			8	10	-20%	2
TP Non Borough	16	3	7	21	17	2	5	71	101	-30%	14
Central Operations	756	110	95	318	315	12	24	1630	1205	35%	47
DCC	7	7	2	27	20		2	65	56	16%	13
Holding										0%	0
HR	3		1	9	3	4	4	24	11	118%	6
SC	61	12	38	116	41	2	5	275	240	15%	9
SO	18	5	4	22	23	2	1	75	74	1%	2
Left MPS	8	2	1	22	8		2	43	42	2%	n/a
Outside MPD	17	4	6	20	12	2	8	69	18	283%	n/a
Unknown Location	9	54	4	38	9	1	23	138	66	109%	n/a
Grand Total	4273	784	795	4771	2214	76	266	13179	11013	20%	43
Grand Total for previous 12 month period:	3813	672	764	3595	1784	67	318	11013			
(percentage +/- from current period)	12%	17%	4%	33%	24%	13%	-16%	20%			

Additional Information

Key: Home Office Subgroups comprises of the following Home Office Allegation Types

Oppressive Behaviour	Type A: Serious non-sexual assault, B: Sexual assault, C: Other assault, D: Oppressive conduct or harassment, E: Unlawful/unnecessary arrest or detention, Y: Other sexual conduct
Discriminatory Behaviour	Type F: Discriminatory Behaviour, Q: Lack of fairness & impartiality
Malpractice	Type G: Irregularity in relation to evidence/perjury, H: Corrupt practice, J: Mishandling of property
Failures in Duty	Type K-P: Breaches of PACE Codes of Practice, R: Multiple breaches, S: Failures in duty, T: Other irregularity in procedure, X: Improper disclosure of information
Incivility	Type U: Incivility
Traffic Irregularity	Type V: Traffic Irregularity
Other	Type W: Other

Officer Unit/Business Group at time of incident are highlighted according to 'TP PFM Family Groups'

TP PFM Family 1	TP PFM Family 2	TP PFM Family 3	TP PFM Family 4	TP PFM Family 5	Other Units/Locations
-----------------	-----------------	-----------------	-----------------	-----------------	-----------------------

Please note: 'allegations per 100 officers' is based on borough/business group workforce as stated in the latest 'Workforce Planning Report'.
(Figures can be found at the back of this report).

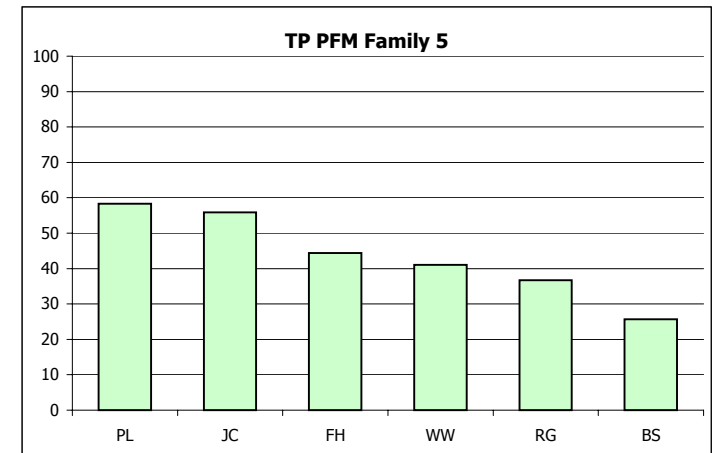
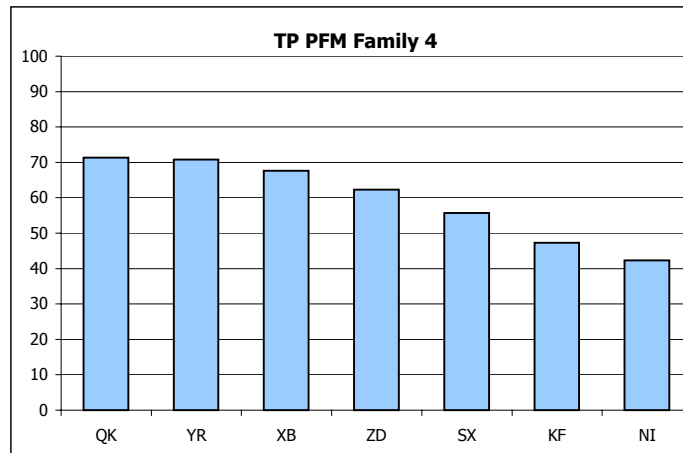
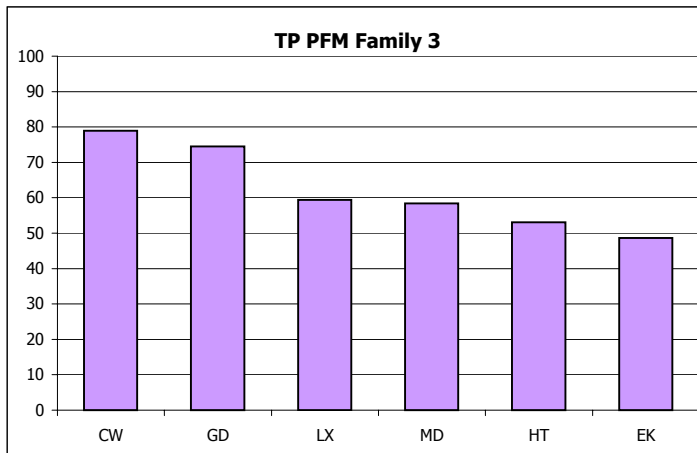
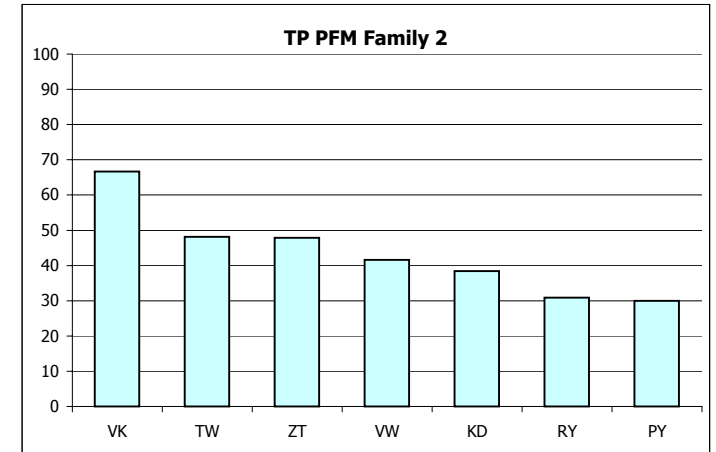
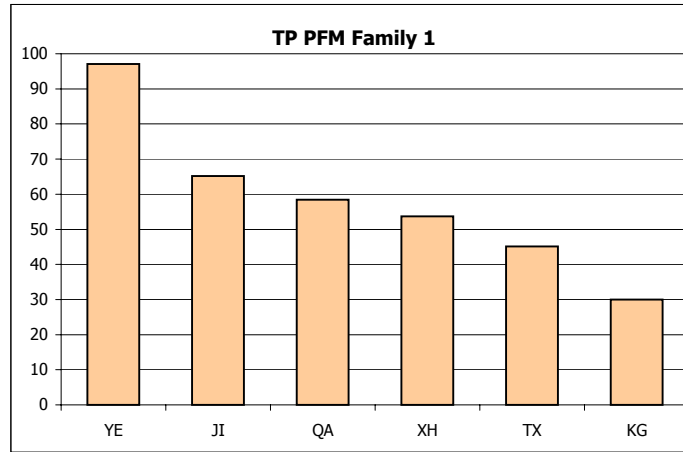
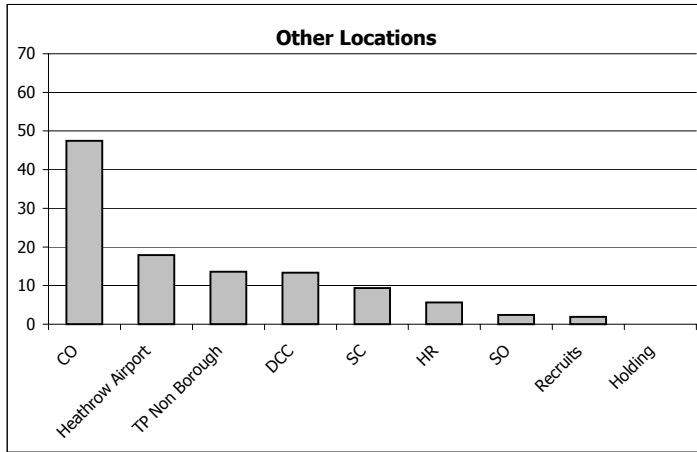
Period: 01 Mar 2006 to 28 Feb 2007
Data extracted: 01 Mar 2007

Officers Unit/ Business Group at time of incident	Month/Year Allegation Recorded												Grand Total
	Mar 06	Apr 06	May 06	Jun 06	Jul 06	Aug 06	Sep 06	Oct 06	Nov 06	Dec 06	Jan 07	Feb 07	
Barking & Dagenham	11	7	12	9	6	12	10	22	13	8	9	9	128
Barnet	45	19	34	7	22	30	30	13	26	25	37	21	309
Bexleyheath	14	12	18	8	8	5	6	5	7	4	10	14	111
Brent	44	49	55	44	32	67	41	17	43	16	39	27	474
Bromley	31	3	10	5	6	12	10	14	14	7	19	19	150
Camden	46	30	21	46	33	44	37	32	32	8	19	47	395
City of Westminster	315	102	133	183	106	53	52	50	94	43	69	31	1231
Croydon	63	43	28	16	46	66	33	30	28	21	30	28	432
Ealing	42	21	40	26	41	55	30	47	30	69	41	12	454
Enfield	30	44	46	35	147	76	51	47	28	17	22	19	562
Greenwich	13	31	22	13	15	23	17	37	22	14	17	9	233
Hackney	45	44	16	50	63	57	47	27	59	30	46	63	547
Hammersmith & Fulham	18	20	11	19	29	19	23	17	34	26	9	15	240
Haringey	46	41	69	16	40	14	64	61	42	47	19	27	486
Harrow	29	20	19	12	16	18	11	22	11	12	23	17	210
Havering	45	4	22	19	15	3	5	5	12	1	10	6	147
Heathrow Airport	12	4	12	10	7	5	9	9	2	5	6	4	85
Hillingdon	19	28	22	50	16	16	21	10	44	28	6	7	267
Hounslow	10	2	12	25	22	26	19	21	27	8	25	32	229
Islington	43	9	46	13	62	9	17	9	31	23	10	16	288
Kensington & Chelsea	19	5	12	9	5	19	15	10	13	9	12	14	142
Kingston-upon-Thames	9	18	18	3	13	17	16	35	21	6	22	16	194
Lambeth	67	42	35	37	50	51	55	58	49	56	42	21	563
Lewisham	24	57	28	32	25	26	54	18	25	19	22	34	364
Merton	17	19	8	30	17	4	9	10	11	4	14	10	153
Newham	33	7	39	24	40	40	31	22	45	33	25	20	359
Redbridge	13	38	21	27	41	31	29	26	47	13	13	7	306
Richmond-upon-Thames	18	4	4	18	5	45	10	12	13	5	8	5	147
Southwark	60	63	49	51	23	50	14	30	55	22	60	15	492
Sutton	9	6	6	16	8	8	14	9	15	12	31	13	147
Tower Hamlets	45	28	40	27	33	48	16	51	18	7	62	20	395
Waltham Forest	15	16	24	39	32	32	33	40	11	9	39	9	299
Wandsworth	36	4	2	23	11	14	21	29	23	15	50	14	242
Total	1286	840	934	942	1035	995	850	845	945	622	866	621	10781
Recruits	1				1				6				8
TP Non Borough	2	6	3	6	2	6	9	9	2	9	13	4	71
Central Operations	171	139	109	194	124	64	162	155	186	111	147	68	1630
DCC	6	7	2	10	10	4	7	4	6	5	1	3	65
Holding													0
HR		3	3	1	2	8			1	1	4	1	24
SC	36	19	7	21	20	55	13	36	25	27	13	3	275
SO	8	8	2	2	13	11	8	1	12	3	4	3	75
Left MPS	8	2	3	6	2	3	8	6	3	1	1		43
Outside MPD	9	2	3	4	8	16	6	8	1	4	6	2	69
Unknown Location	6	1	7	5	19	27	13	2	16	8	26	8	138
Grand Total	1533	1027	1073	1191	1236	1189	1076	1066	1203	791	1081	713	13179

Officer Unit/Business Group at time of incident are highlighted according to 'TP PFM Family Groups'

TP PFM Family 1	TP PFM Family 2	TP PFM Family 3	TP PFM Family 4	TP PFM Family 5	Other Units/Locations
-----------------	-----------------	-----------------	-----------------	-----------------	-----------------------

Period: 01 Mar 2006 to 28 Feb 2007
Data extracted: 01 Mar 2007

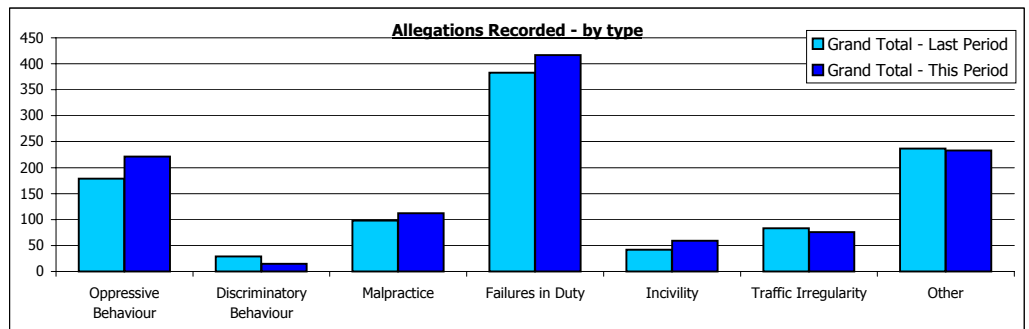


Period: 01 Mar 2006 to 28 Feb 2007
 Data extracted: 01 Mar 2007

Borough of Incident	Oppressive Behaviour	Dis - criminatory Behaviour	Malpractice	Failures in Duty	Incivility	Traffic Irregularity	Other	Grand Total	Grand Total for period: (percentage +/- from current period)	
									01/03/05	28/02/06
Barking & Dagenham	3		1	5			2	11	5	120%
Barnet	10	3	4	25	7	6	4	59	55	7%
Bexleyheath	3		1	12	1		3	20	10	100%
Brent	1	1		14		1	8	25	35	-29%
Bromley	4		2	4		1	6	17	18	-6%
Camden	1		3	17	1	5	9	36	32	13%
City of Westminster	16		9	35	7	2	17	86	78	10%
Croydon	1		1	8			7	17	19	-11%
Ealing	2		2	6	1	1	5	17	22	-23%
Enfield	2	2	1	5	1		7	18	32	-44%
Greenwich	3	1		2			8	14	24	-42%
Hackney	7	1	1	11	1	1	4	26	28	-7%
Hammersmith & Fulham	2		1	7		2	10	22	21	5%
Haringey	4		7	10			5	26	18	44%
Harrow	3		1	4		1	2	11	7	57%
Havering	4		1	5		1	4	15	14	7%
Heathrow Airport					2		1	4	13	-69%
Hillingdon	3	1	3	14		1	6	28	28	0%
Hounslow	1		3	4	2	3	3	16	25	-36%
Islington	2		3	9	1	3	1	19	22	-14%
Kensington & Chelsea	2		1	10	2	1	9	25	32	-22%
Kingston-upon-Thames	3		2	2			3	10	7	43%
Lambeth	2	1	4	10	4		3	24	41	-41%
Lewisham	5		2	13		1	2	23	18	28%
Merton	3		2	2			1	8	10	-20%
Motoway						1		1		100%
Newham	6		4	7	2	1	5	25	27	-7%
Outside MPD	86	2	21	22	13	35	43	222	163	36%
Redbridge	4		1	8	1	4	4	22	24	-8%
Richmond-upon-Thames	3		2	11	2	1	2	21	15	40%
Southwark	3		6	10	1		7	27	22	23%
Sutton	5			8			2	15	4	275%
Tower Hamlets	2		2	20	2		1	27	17	59%
Unknown Location	15	2	16	73	7	3	31	147	140	5%
Waltham Forest	4		2	7	1	1	4	19	14	36%
Wandsworth	6	1	2	17			4	30	11	173%
Grand Total	221	15	112	417	59	76	233	1133	1051	8%
Grand Total for previous 12 month period: (percentage +/- from current period)	179	29	98	383	42	83	237	1051	23%	-48%
									14%	9%
									40%	-8%
									-2%	8%

Discriminatory Behaviour allegations - broken down by type

Type	Number of allegations
Disability	
Gender	
Homophobic	
Mental Health	
Other	
Race	14
Religion/Faith	
Total	14



Additional Information

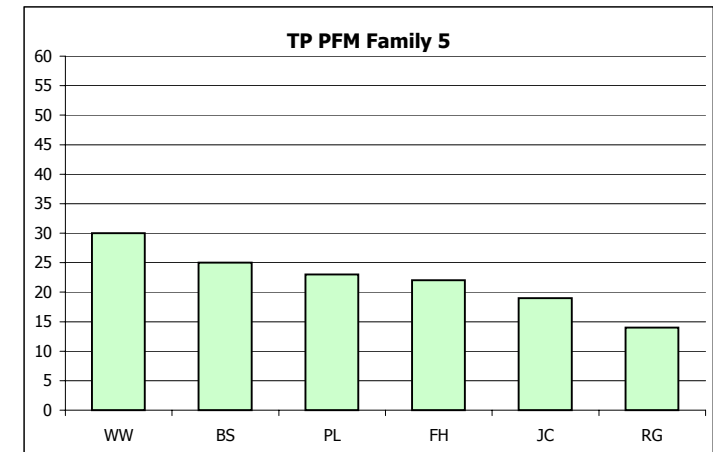
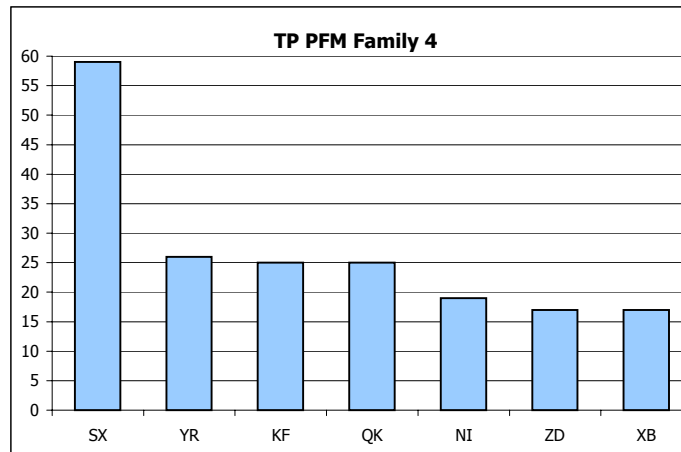
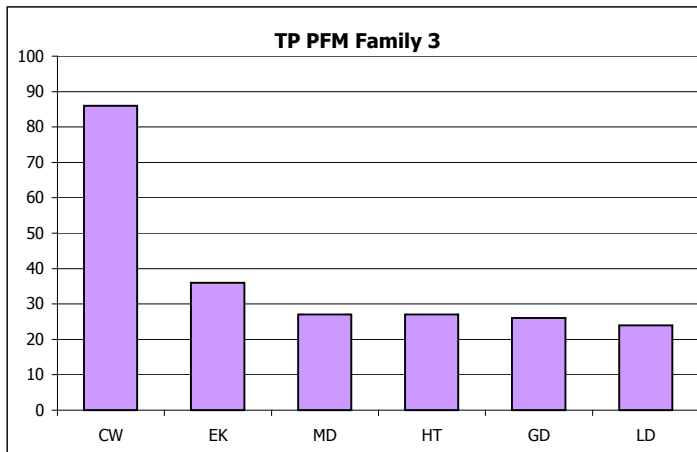
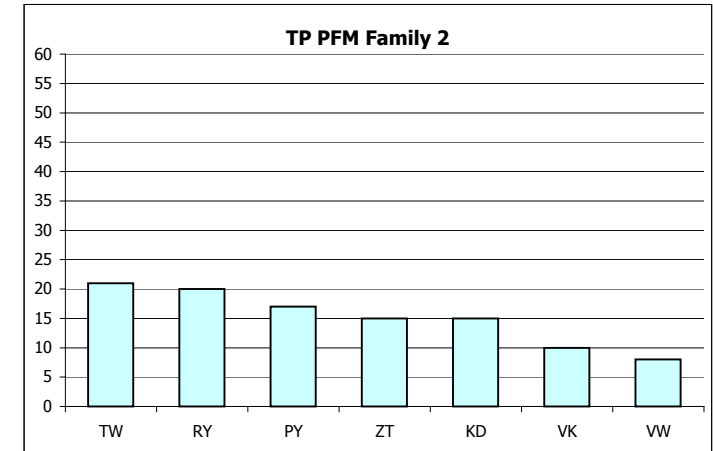
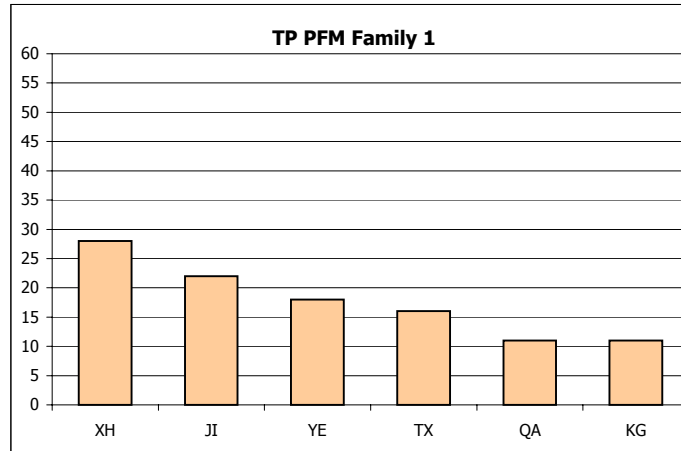
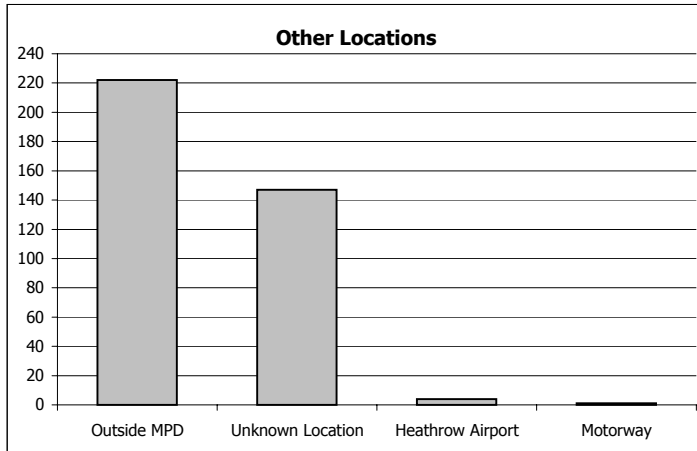
Key: Home Office Subgroups comprises of the following Home Office Allegation Types

Oppressive Behaviour	Type A: Serious non-sexual assault, B: Sexual assault, C: Other assault, D: Oppressive conduct or harassment, E: Unlawful/unnecessary arrest or detention, Y: Other sexual conduct
Discriminatory Behaviour	Type F: Discriminatory Behaviour, Q: Lack of fairness & impartiality
Malpractice	Type G: Irregularity in relation to evidence/perjury, H: Corrupt practice, J: Mishandling of property
Failures in Duty	Type K-P: Breaches of PACE Codes of Practice, R: Multiple breaches, S: Failures in duty, T: Other irregularity in procedure, X: Improper disclosure of information
Incivility	Type U: Incivility
Traffic Irregularity	Type V: Traffic Irregularity
Other	Type W: Other

Boroughs of incident are highlighted according to 'TP PFM Family Groups'

TP PFM Family 1	TP PFM Family 2	TP PFM Family 3	TP PFM Family 4	TP PFM Family 5	Other Units/Locations
-----------------	-----------------	-----------------	-----------------	-----------------	-----------------------

Period: 01 Mar 2006 to 28 Feb 2007
Data extracted: 01 Mar 2007



Period: 01 Mar 2006 to 28 Feb 2007
Data extracted: 01 Mar 2007

Officers Unit/ Business Group at time of incident	Oppressive Behaviour	Dis - crimintory Behaviour	Malpractice	Failures in Duty	Incivility	Traffic Irregularity	Other	Grand Total	Grand Total for period: (percentage +/- from current period) 01/03/05 to 28/02/06	No. of allegations per 100 officers
Barking & Dagenham	4		2	6		2	1	15	5 200%	4
Barnet	4	2	2	11		7	5	31	36 -14%	6
Bexleyheath	2			9	1	1	2	15	5 200%	4
Brent	4	1		13		3	9	30	43 -30%	5
Bromley	4		2	7		1	5	19	17 12%	4
Camden	9		5	19	2	8	10	53	48 10%	7
City of Westminster	16	1	11	32	10	3	17	90	106 -15%	6
Croydon	5		3	12			12	32	17 88%	5
Ealing	1		4	13		1	6	25	32 -22%	4
Enfield	5		2	4	1	1	8	21	34 -38%	4
Greenwich	5	1		7		1	7	21	50 -58%	3
Hackney	10	1	5	21	2	2	7	48	47 2%	7
Hammersmith & Fulham	8		1	5	1	2	10	27	25 8%	5
Haringey	6		7	12	1	1	5	32	24 33%	5
Harrow	5		3	7	2	1	1	19	13 46%	5
Havering	5		1	7		3	2	18	12 50%	5
Heathrow Airport	2		2		1		1	6	14 -57%	1
Hillingdon	8	2	4	15	1	3	6	39	56 -30%	8
Hounslow	2		1	7	2	3	1	16	28 -43%	3
Islington	9	1	3	10	1	2	1	27	30 -10%	4
Kensington & Chelsea	2		3	11	3	2	12	33	37 -11%	6
Kingston-upon-Thames	4		3		2		2	11	2 450%	4
Lambeth	8		8	16	5		5	42	45 -7%	4
Lewisham	4		2	8			1	15	16 -6%	2
Merton	3		2	5			1	11	17 -35%	3
Newham	13		6	8	1	3	9	40	40 0%	5
Redbridge	3			11	1	3	5	23	29 -21%	5
Richmond-upon-Thames	6		2	9	2	2	4	25	13 92%	8
Southwark	2		16	10	2		7	37	26 42%	4
Sutton	4		2	7			1	14	3 367%	5
Tower Hamlets	6		5	23	1	4	3	42	34 24%	6
Waltham Forest	20	1	3	10	6	3	8	51	21 143%	10
Wandsworth	8	1	2	7			3	21	9 133%	4
Total	197	11	112	342	48	62	177	949	934 2%	5
Recruits	5		1	13	2		2	23	31 -26%	5
TP Non Borough	4	1	1	4				10	17 -41%	2
Central Operations	15		17	30	8	6	10	86	87 -1%	3
DCC	7		3	29	3	2	2	46	16 188%	9
Holding									0%	0
HR	6	1	1	8	3	3		22	17 29%	5
SC	12	1	8	20	5	2	18	66	49 35%	2
SO	10		6	13		1	20	50	38 32%	2
Left MPS	1		2	4			4	11	6 83%	n/a
Outside MPD	3	1	1		1		9	15	11 36%	n/a
Unknown Location	2		1	6			10	19	26 -27%	n/a
Grand Total	262	15	153	469	70	76	252	1297	1232 5%	4
Grand Total for previous 12 month period: (percentage +/- from current period)	212 24%	39 -62%	121 26%	475 -1%	47 49%	84 -10%	254 -1%	1232 5%		

Additional Information

Key: Home Office Subgroups comprises of the following Home Office Allegation Types

Oppressive Behaviour	Type A: Serious non-sexual assault, B: Sexual assault, C: Other assault, D: Oppressive conduct or harassment, E: Unlawful/unnecessary arrest or detention, Y: Other sexual conduct
Discriminatory Behaviour	Type F: Discriminatory Behaviour, Q: Lack of fairness & impartiality
Malpractice	Type G: Irregularity in relation to evidence/perjury, H: Corrupt practice, J: Mishandling of property
Failures in Duty	Type K-P: Breaches of PACE Codes of Practice, R: Multiple breaches, S: Failures in duty, T: Other irregularity in procedure, X: Improper disclosure of information
Incivility	Type U: Incivility
Traffic Irregularity	Type V: Traffic Irregularity
Other	Type W: Other

Officer Unit/Business Group at time of incident are highlighted according to 'TP PFM Family Groups'

TP PFM Family 1	TP PFM Family 2	TP PFM Family 3	TP PFM Family 4	TP PFM Family 5	Other Units/Locations
-----------------	-----------------	-----------------	-----------------	-----------------	-----------------------

Please note: 'allegations per 100 officers' is based on borough/business group workforce as stated in the latest 'Workforce Planning Report'.
(Figures can be found at the back of this report).

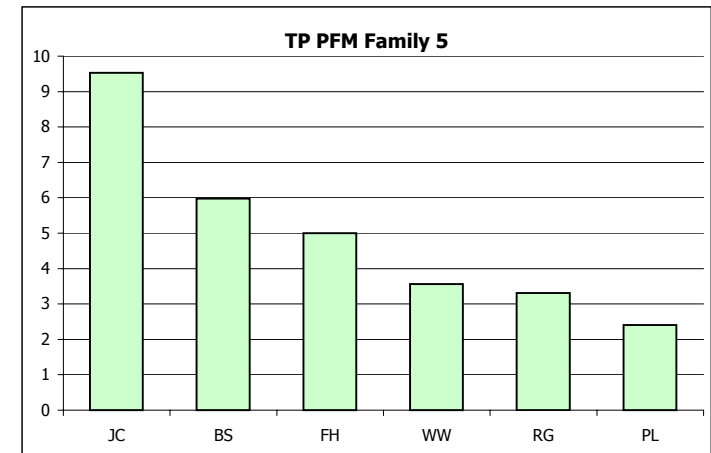
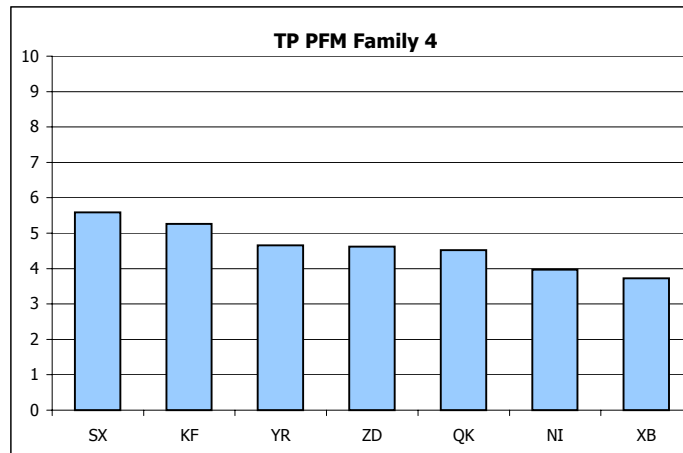
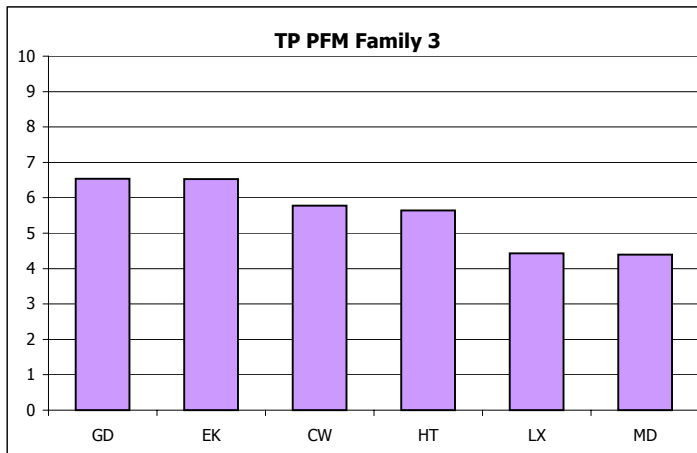
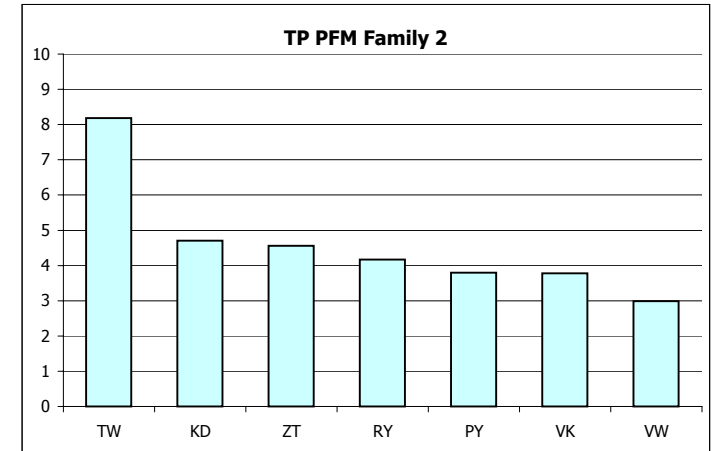
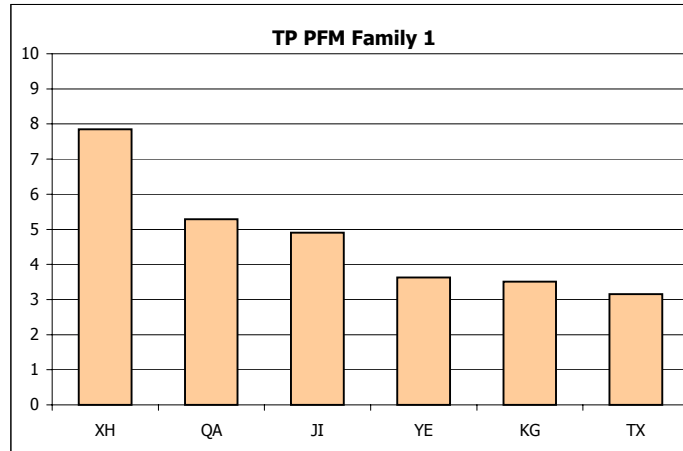
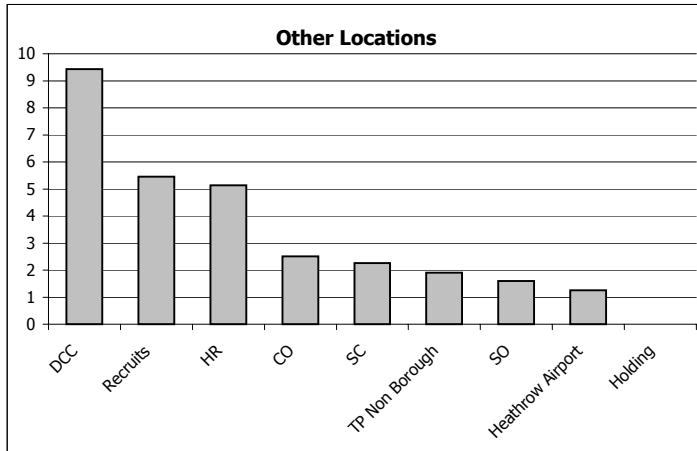
Period: 01 Mar 2006 to 28 Feb 2007
Data extracted: 01 Mar 2007

Officers Unit/ Business Group at time of incident	Month/Year Allegation Recorded												Grand Total
	Mar 06	Apr 06	May 06	Jun 06	Jul 06	Aug 06	Sep 06	Oct 06	Nov 06	Dec 06	Jan 07	Feb 07	
Barking & Dagenham			3		5	2		5					15
Barnet	4	3	3		3	1	3	3	5	3	2	1	31
Bexleyheath	1	1	1		1		1	5	3		2		15
Brent	4	1	3	2	1	5	1	2	3		2	6	30
Bromley	6	1	4	1			1	2	1	1	2		19
Camden	3	2	1	7	4	10	5	7	5	2	4	3	53
City of Westminster	11	6	11	4	15	20	2	5	2	6	6	2	90
Croydon	1	1	1	1	1	1	2	8	6	4	4	2	32
Ealing	3	1	3				1	12	1		3	1	25
Enfield		1		1		1	4	1	5	2	2	4	21
Greenwich				2	9		1	2		2	4	1	21
Hackney	2	2	4	7	4	2	1	4	4	6	4	8	48
Hammersmith & Fulham	3	2	1		2	4	1	7	3		1	3	27
Haringey	4		9	1	3	1	5	4	2	3			32
Harrow	1	1	5	4	2		1	2	1	1	1		19
Havering	2	1	4	2	3			1		2	3		18
Heathrow Airport			2					2	1	1			6
Hillingdon	10	2	1	1	7	2	6	1	2	2	5		39
Hounslow	2			1	1	5	1	2		1	2	1	16
Islington	1	2	6		7	1	3	1	3	2	1		27
Kensington & Chelsea	3	5	2	1	6	6			3	2	4	1	33
Kingston-upon-Thames		4	4		1							2	11
Lambeth			1	1	4	2	2	21	3	1	3	4	42
Lewisham	1		2	5					2		3	2	15
Merton	1	1	1	2	2			4					11
Newham	4	1	3	4	3	3		3	5	1	1	12	40
Redbridge	4	2		3	3		3	1	1	2	3	1	23
Richmond-upon-Thames	6		4	1	4	3		3		2	1	1	25
Southwark	1	4	3	2	1	2	3	5	13	1	2		37
Sutton	1	2	1	2		1	1	6					14
Tower Hamlets	4		1	3	4			4	18	3	4	1	42
Waltham Forest	5	1	7	3	1	1	2	3	1	4	22	1	51
Wandsworth	4	1	3	1		2	1	3		1	4	1	21
Total	92	48	94	62	97	75	51	129	93	55	95	58	949
Recruits	3		3	2	2	1	1	1	4	3	2	1	23
TP Non Borough	1				3	1		1	2		2		10
Central Operations	14	3	3	3	2	12		7	25	1	11	5	86
DCC	6	1	3	1	4	3	11	9	1	3	1	3	46
Holding													
HR	1		1	4		11	1	3				1	22
SC	6	9	5	9	8	4	4	4	7	2	7	1	66
SO		6	10	2	4	4	2	4	5	1	8	4	50
Left MPS			1	4	1		1	2	1		1		11
Outside MPD	1	1	5	2					3	2		1	15
Unknown Location	1		1	2	1	3	2	1		4	1	3	19
Grand Total	125	68	126	91	122	114	73	161	141	71	128	77	1297

Officer Unit/Business Group at time of incident are highlighted according to 'TP PFM Family Groups'

TP PFM Family 1	TP PFM Family 2	TP PFM Family 3	TP PFM Family 4	TP PFM Family 5	Other Units/Locations
-----------------	-----------------	-----------------	-----------------	-----------------	-----------------------

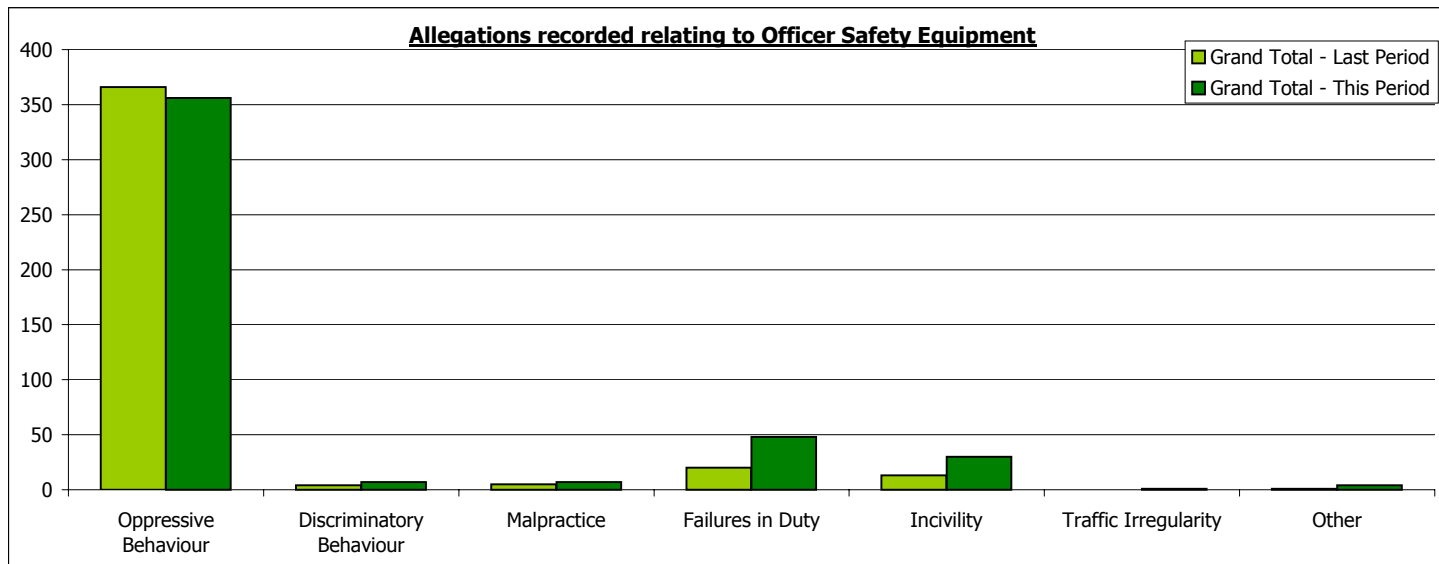
Period: 01 Mar 2006 to 28 Feb 2007
 Data extracted: 01 Mar 2007



Period: 01 Mar 2006 to 28 Feb 2007
 Data extracted: 01 Mar 2007

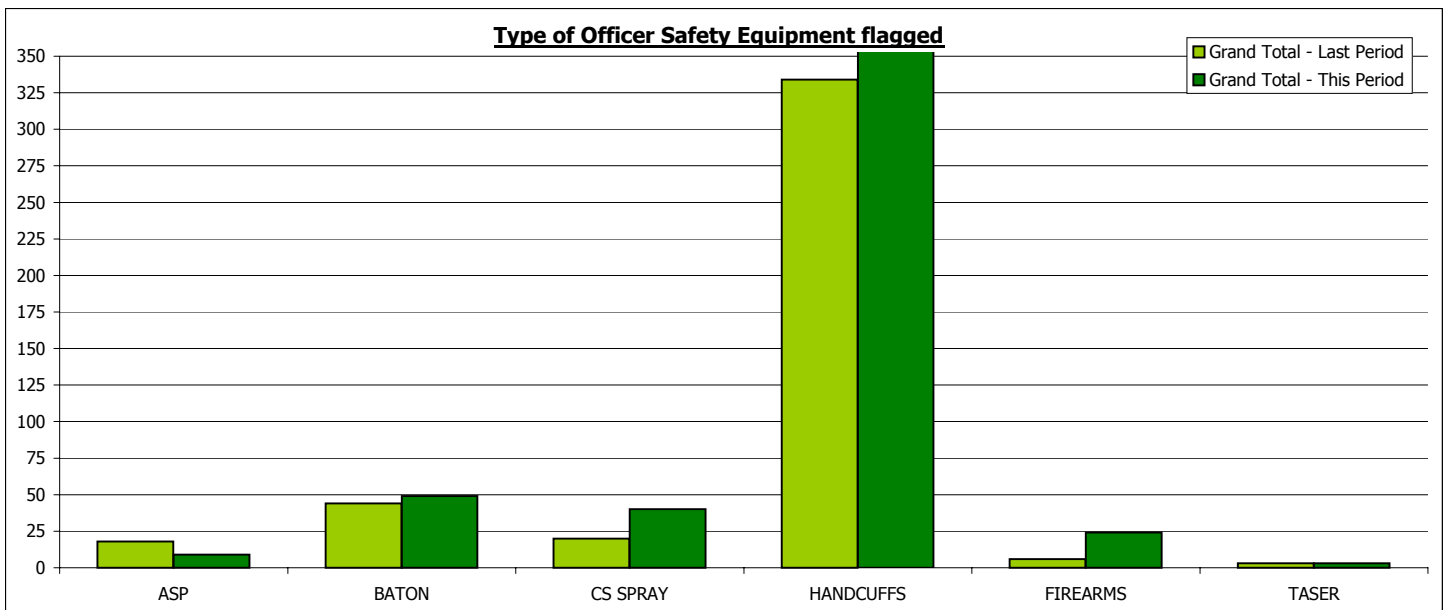
Number of public complaint allegations relating to Officer Safety Equipment - by allegation category

Borough of Incident	Oppressive Behaviour	Dis - criminatory Behaviour	Malpractice	Failures in Duty	Incivility	Traffic Irregularity	Other	Grand Total	Grand Total for period: (percentage +/- from current period)
Barking & Dagenham	4			1				5	3 67%
Barnet	9							9	7 29%
Bexleyheath	6			1				7	5 40%
Brent	9			1				10	27 -63%
Bromley	8				1			9	14 -36%
Camden	14		1	5				20	21 -5%
City of Westminster	15			1				16	26 -38%
Croydon	23	1		2	3		1	30	10 200%
Ealing	14		1	2				17	14 21%
Enfield	14			3	5		1	23	11 109%
Greenwich	7							7	7 0%
Hackney	37		1	5	2	1	1	47	22 114%
Hammersmith & Fulham	3			2				5	7 -29%
Haringey	15		2	3	3			23	23 0%
Harrow	9							9	20 -55%
Havering	3							3	6 -50%
Heathrow Airport	3							3	1 200%
Hillingdon	8			1				9	17 -47%
Hounslow	6				1			7	8 -13%
Islington	12				2			14	25 -44%
Kensington & Chelsea	4							4	3 33%
Kingston-upon-Thames	6			1				7	8 -13%
Lambeth	24	1		3	3			31	25 24%
Lewisham	15		1	1	1			18	14 29%
Merton	2							2	3 -33%
Motorway	2							2	2 0%
Newham	6			3	1			10	16 -38%
Outside MPD	1							1	1 0%
Redbridge	12			1			1	14	6 133%
Richmond-upon-Thames	4			2				6	6 0%
Southwark	22	2		3	3			30	11 173%
Sutton	2			1				3	4 -25%
Tower Hamlets	16		1	2	1			20	7 186%
Unknown Location	2				1			3	5 -40%
Waltham Forest	13	3		2	3			21	18 17%
Wandsworth	6			2				8	8 0%
Grand Total	356	7	7	48	30	1	4	453	409 11%
<i>Grand Total for previous 12 month period: (percentage +/- from current period)</i>	366 -3%	4 75%	5 40%	20 140%	13 131%	0 0%	1 300%	409 11%	



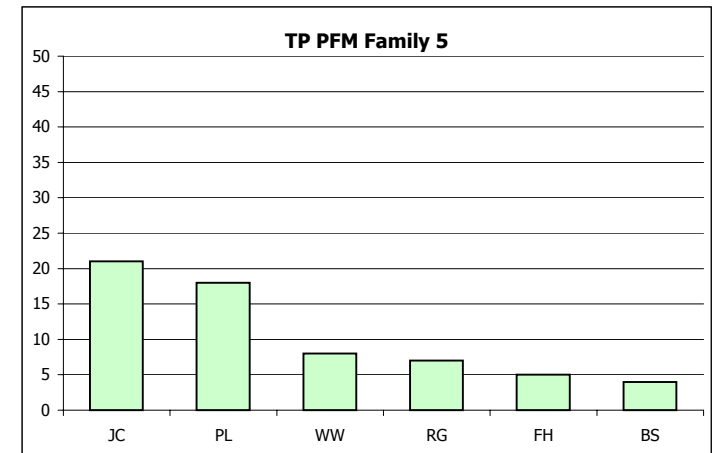
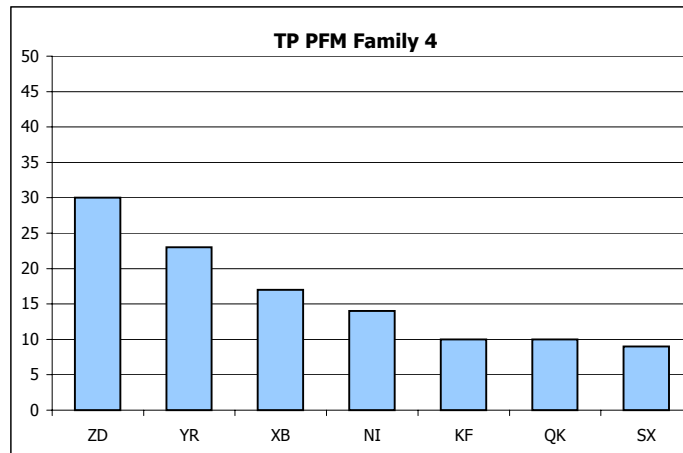
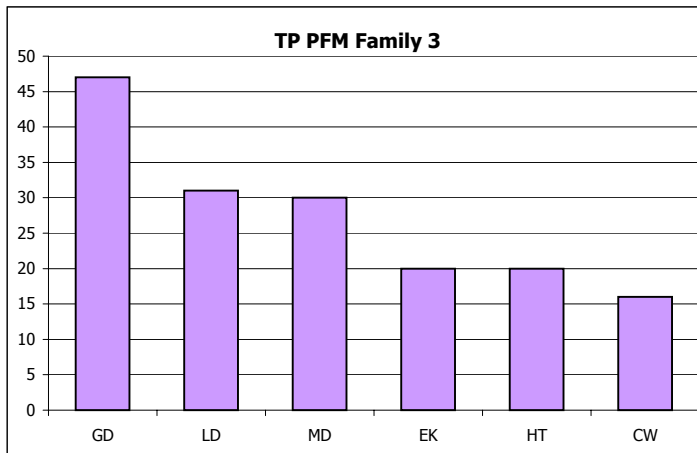
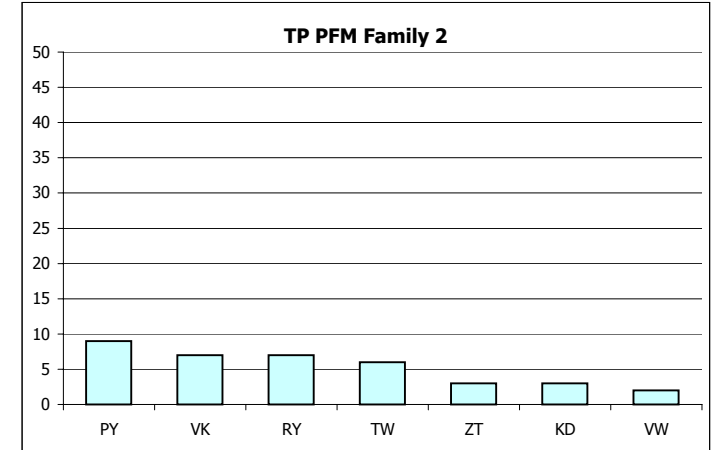
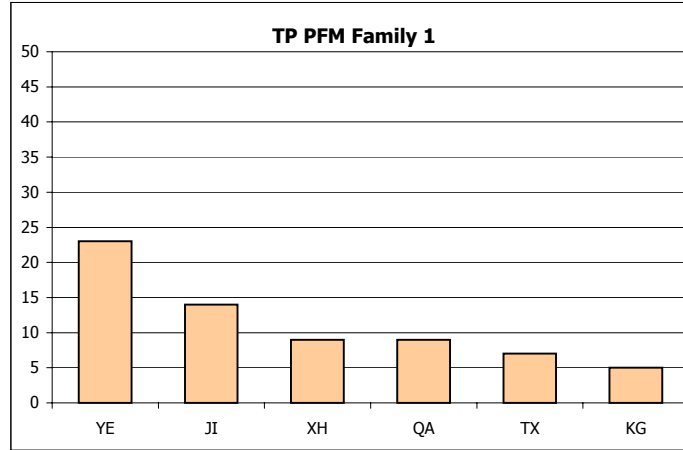
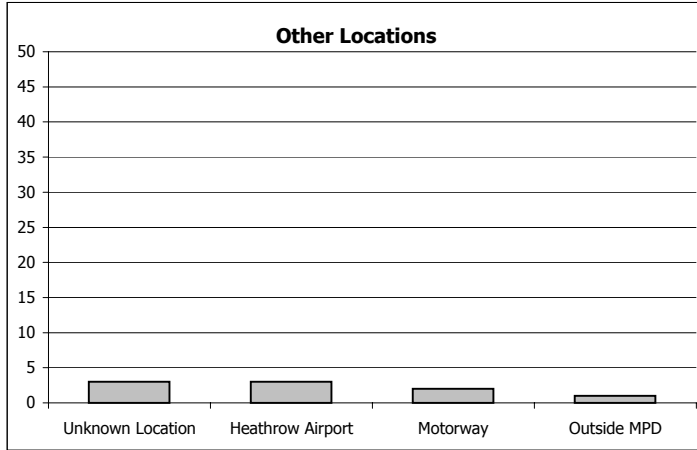
Type of Officer Safety Equipment flagged in allegations on previous page (allegations may relate to multiple types of Officer Safety Equipment)

Borough of Incident	ASP	BATON	CS SPRAY	HANDCUFFS	FIREARMS	TASER	Grand Total
Barking & Dagenham				5			5
Barnet		1	2	7			10
Bexleyheath		1	3	4			8
Brent		2		9			11
Bromley	1	1	2	6			10
Camden		3		15	3		21
City of Westminster	1	4	2	10			17
Croydon	2	2	1	26	1		32
Ealing			1	16			17
Enfield	1	2		17	4	1	25
Greenwich	1	1		6			8
Hackney		4	5	39	2		50
Hammersmith & Fulham		1	1	2	1		5
Haringey		2	9	13			24
Harrow				9			9
Havering				3			3
Heathrow Airport				3			3
Hillingdon		1	1	6	1		9
Hounslow		1	1	5			7
Islington		2	1	11			14
Kensington & Chelsea			2	2			4
Kingston-upon-Thames				7			7
Lambeth	1	6	1	24	1	1	34
Lewisham			1	16	1	1	19
Merton			1	1			2
Motorway			2				2
Newham				8	2		10
Outside MPD				1			1
Redbridge		3		11	3		17
Richmond-upon-Thames		1		4	1		6
Southwark	2	6		25	1		34
Sutton			1	2			3
Tower Hamlets		4		15	1		20
Unknown Location		1	1	1			3
Waltham Forest				21			21
Wandsworth			2	4	2		8
Grand Total	9	49	40	354	24	3	479
<i>Grand Total for previous 12 month period:</i>	18	44	20	334	6	3	425
<i>(percentage +/- from current period)</i>	-50%	11%	100%	6%	300%	0%	13%



Boroughs of incident are highlighted according to 'TP PFM Family Groups'					
TP PFM Family 1	TP PFM Family 2	TP PFM Family 3	TP PFM Family 4	TP PFM Family 5	Other Units/Locations

Period: 01 Mar 2006 to 28 Feb 2007
 Data extracted: 01 Mar 2007



Period: 01 Mar 2006 to 28 Feb 2007
Data extracted 01 Mar 2007

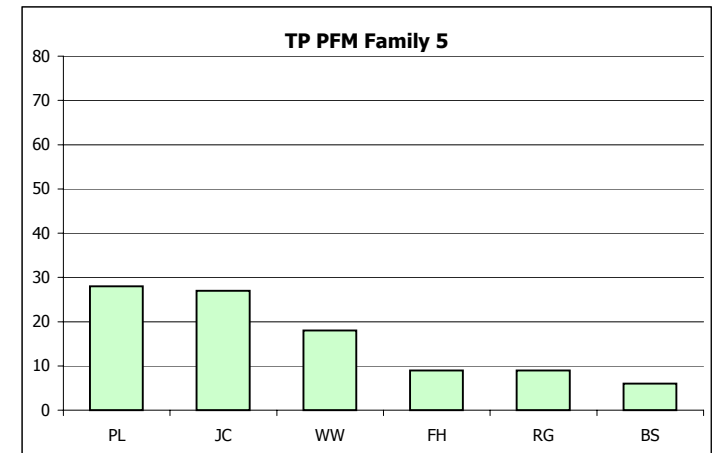
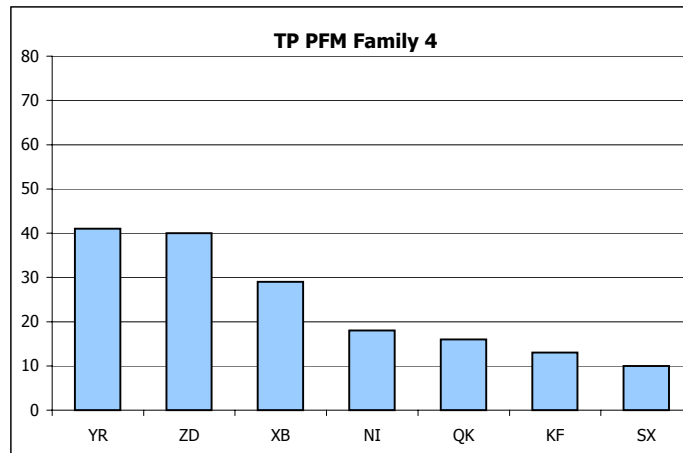
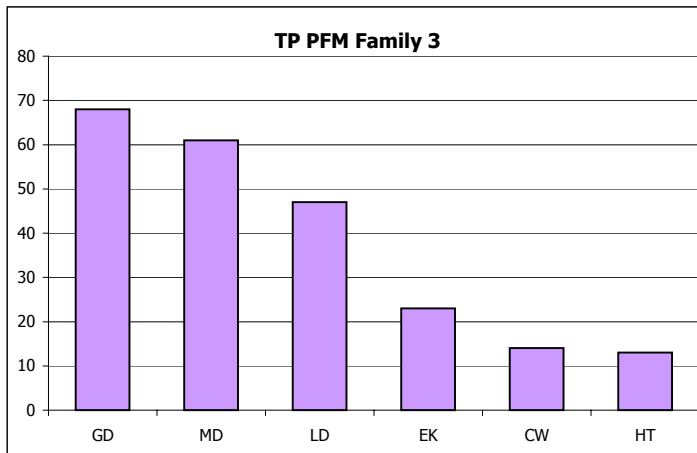
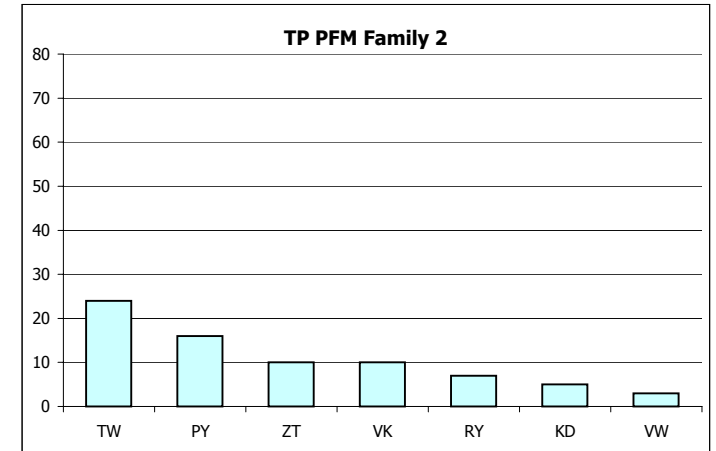
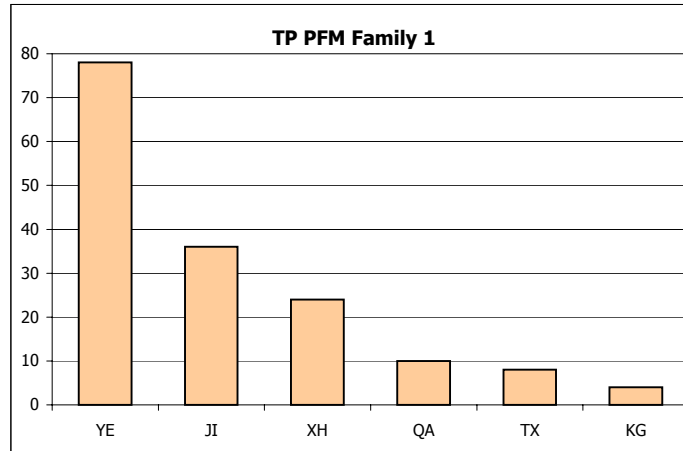
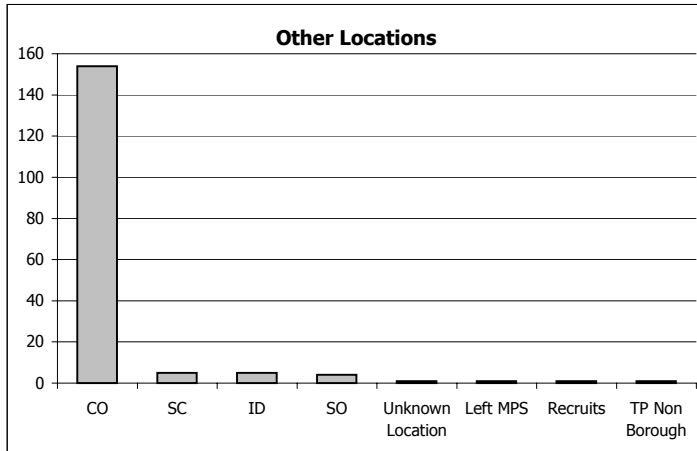
Number of public complaint officer allegations relating to Officer Safety Equipment - by allegation category

Officers Unit/Business Group at time of incident	Oppressive Behaviour	Dis - criminatory Behaviour	Malpractice	Failures in Duty	Incivility	Traffic Irregularity	Other	Grand Total	Grand Total for period: (percentage +/- from current period) 01/03/05 to 28/02/06
Barking & Dagenham	3			1				4	16 -75%
Barnet	10							10	12 -17%
Bexleyheath	6			1				7	3 133%
Brent	15			1				16	42 -62%
Bromley	16							16	18 -11%
Camden	16		1	6				23	39 -41%
City of Westminster	13			1				14	26 -46%
Croydon	30	1		2	6		1	40	14 186%
Ealing	23		3	3				29	58 -50%
Enfield	55			3	20			78	29 169%
Greenwich	9							9	19 -53%
Hackney	59			5	1	1	2	68	27 152%
Hammersmith & Fulham	8			1				9	5 80%
Haringey	26		2	8	5			41	44 -7%
Harrow	10							10	41 -76%
Havering	5							5	10 -50%
Heathrow Airport	4						1	5	2 150%
Hillingdon	23			1				24	37 -35%
Hounslow	7				1			8	12 -33%
Islington	14				4			18	54 -67%
Kensington & Chelsea	5			1				6	5 20%
Kingston-upon-Thames	9			1				10	9 11%
Lambeth	39			7	1			47	38 24%
Lewisham	23		1	1	3			28	31 -10%
Merton	3							3	9 -67%
Newham	8			4	1			13	25 -48%
Redbridge	32			1			3	36	18 100%
Richmond-upon-Thames	13			11				24	14 71%
Southwark	50	5		2	4			61	20 205%
Sutton	6			4				10	8 25%
Tower Hamlets	11		1	1				13	12 8%
Waltham Forest	17	3		2	5			27	33 -18%
Wandsworth	15			2	1			18	6 200%
Total	583	9	8	70	52	1	7	730	736 -1%
Recruits	1							1	1 0%
TP Non Borough	1							1	6 -83%
Central Operations	114	9	1	11	15		4	154	120 28%
DCC									2 -100%
Holding									0 0%
HR									0 0%
SC	4			1				5	6 -17%
SO	3				1			4	2 100%
Left MPS	1							1	2 -50%
Outside MPD									0 0%
Unknown Location					1			1	1 0%
Grand Total	707	18	9	82	69	1	11	897	876 2%
Grand Total for previous 12 month period: (percentage +/- from current period)	779 -9%	4 350%	22 -59%	49 67%	21 229%	0 100%	1 1000%	876 2%	
Officer Unit/Business Group at time of incident are highlighted according to 'TP PFM Family Groups'									
TP PFM Family 1	TP PFM Family 2	TP PFM Family 3	TP PFM Family 4	TP PFM Family 5	Other Units/Locations				

**Type of Officer Safety Equipment flagged in the officer allegations on the previous page -
(allegations may relate to multiple types of Officer Safety Equipment)**

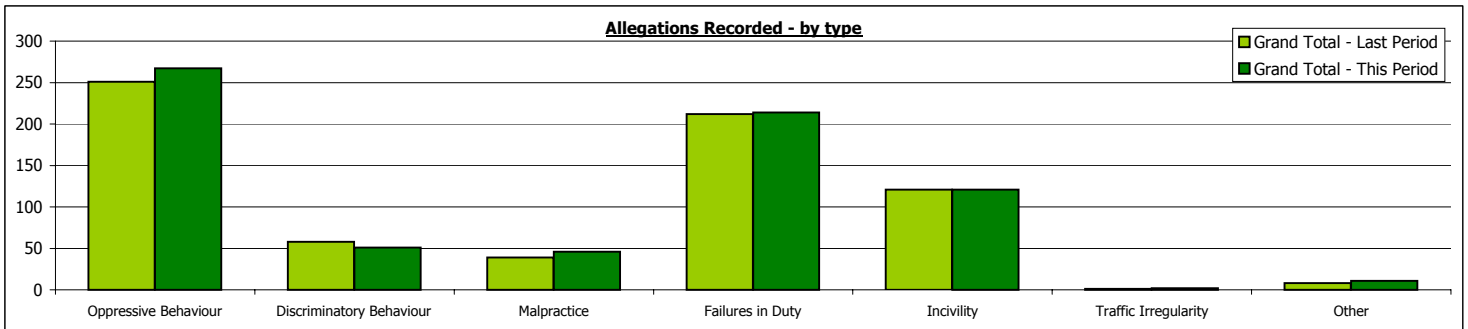
Officers Unit/ Business Group at time of incident	ASP	BATON	CS SPRAY	HANDCUFFS	FIREARMS	TASER	Grand Total
Barking & Dagenham				4			4
Barnet		1	3	7			11
Bexleyheath		1	3	4			8
Brent		4		16			20
Bromley	1	1	1	14			17
Camden		4		17	3		24
City of Westminster	1	3	2	9			15
Croydon	4	4		36			44
Ealing			1	28			29
Enfield	6	6		66	3	3	84
Greenwich	2	2		7			11
Hackney		7	8	57	2		74
Hammersmith & Fulham		3	1	2	3		9
Haringey		3	19	21	1		44
Harrow				10			10
Havering				5			5
Heathrow Airport				4	1		5
Hillingdon		6	4	13	1		24
Hounslow		1	1	6			8
Islington		4	1	13			18
Kensington & Chelsea			2	4			6
Kingston-upon-Thames				10			10
Lambeth	1	10	1	36	4		52
Lewisham			1	26	1	1	29
Merton			3				3
Newham				11	2		13
Redbridge		9		27	3		39
Richmond-upon-Thames		1		22	1		24
Southwark	3	23	2	53	1		82
Sutton			2	8			10
Tower Hamlets		4		9			13
Waltham Forest				27			27
Wandsworth			10	6	2		18
Total	18	97	65	578	28	4	790
Recruits				1			1
TP Non Borough				1			1
Central Operations		30	2	104	17	5	158
DCC							0
Holding							0
HR							0
SC			1	3	1		5
SO				4			4
Left MPS				1			1
Outside MPD							0
Unknown Location		1					1
Grand Total	18	128	68	692	46	9	961
Grand Total for previous 12 month period: (percentage +/- from current period)	38 -53%	97 32%	52 31%	716 -3%	6 667%	3 200%	912 5%
Officer Unit/Business Group at time of incident are highlighted according to 'MPS Family Groups'							
TP PFM Family 1	TP PFM Family 2	TP PFM Family 3	TP PFM Family 4	TP PFM Family 5	Other Units/Locations		

Period: 01 Mar 2006 to 28 Feb 2007
 Data extracted: 01 Mar 2007



Period: 01 Mar 2006 to 28 Feb 2007
 Data extracted: 01 Mar 2007

Borough of Incident	Oppressive Behaviour	Dis - criminyatory Behaviour	Malpractice	Failures in Duty	Incivility	Traffic Irregularity	Other	Grand Total	Grand Total for period: (percentage +/- from current period)	
									01/03/05	28/02/06
Barking & Dagenham	2	2		1		1		6	3	100%
Barnet	2	2	1	4	4			13	15	-13%
Bexleyheath	3	1			1			5	5	0%
Brent	25	4	1	17	13		1	61	74	-18%
Bromley	2			1			1	4	6	-33%
Camden	12	4		16	6		1	39	47	-17%
City of Westminster	22	3	2	25	6		1	59	46	28%
Croydon	12	4	2	10	7		1	36	19	89%
Ealing	15	1	6	13	10		2	47	36	31%
Enfield	6	2		4	4			16	17	-6%
Greenwich	5	1	1	3	2			12	6	100%
Hackney	16	2	6	6	4			34	30	13%
Hammersmith & Fulham	8	1	4	6	1		2	22	9	144%
Haringey	7		1	5	1			14	42	-67%
Harrow	6	2	2	6	2		1	19	14	36%
Havering				1				1	4	-75%
Heathrow Airport	2	1	2	2	3			10	3	233%
Hillingdon	4	1	1	5	1	1		13	10	30%
Hounslow	5	2	2	4	2			15	4	275%
Islington	10	3		1	2			16	36	-56%
Kensington & Chelsea	4				2			6	8	-25%
Kingston-upon-Thames	4			3	3			10	12	-17%
Lambeth	13	1	2	14	10			40	55	-27%
Lewisham	13	3	1	7	9			33	43	-23%
Merton	2		2	3	3			10	5	100%
Motorway									0	0%
Newham	9		2	4	4			19	31	-39%
Outside MPD	2			3	1			6	0	600%
Redbridge	6			3				9	7	29%
Richmond-upon-Thames	2	1						3	3	0%
Southwark	12		1	14	9			36	32	13%
Sutton	1	1		1				3	6	-50%
Tower Hamlets	11	6	2	17	7			43	12	258%
Unknown Location	4			3				7	5	40%
Waltham Forest	8	1	1	10	2			22	33	-33%
Wandsworth	12	2	4	2	2		1	23	12	92%
Grand Total	267	51	46	214	121	2	11	712	690	3%
<i>Grand Total for previous 12 month period: (percentage +/- from current period)</i>	251	58	39	212	121	1	8	690		
	6%	-12%	18%	1%	0%	100%	38%	3%		



Additional Information

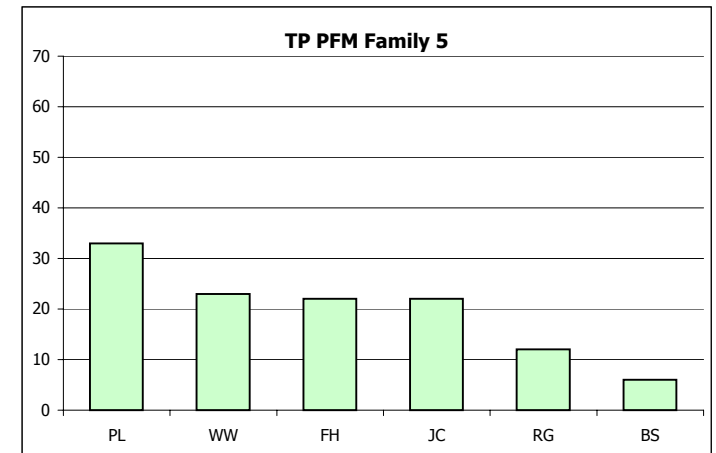
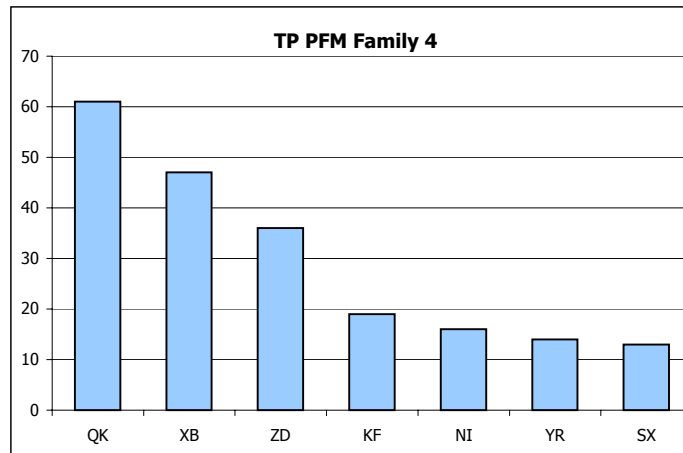
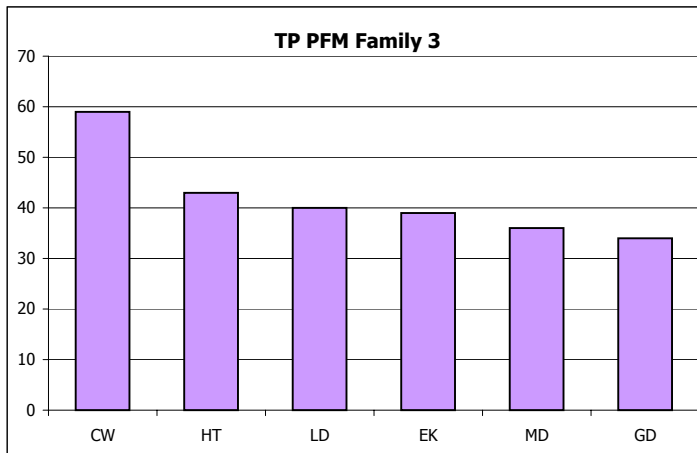
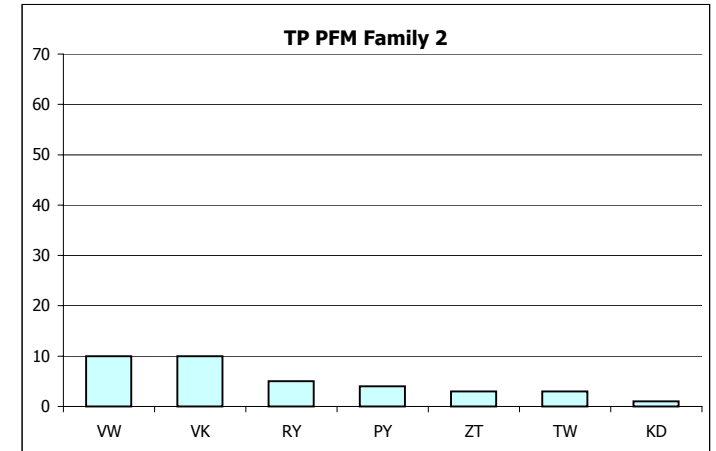
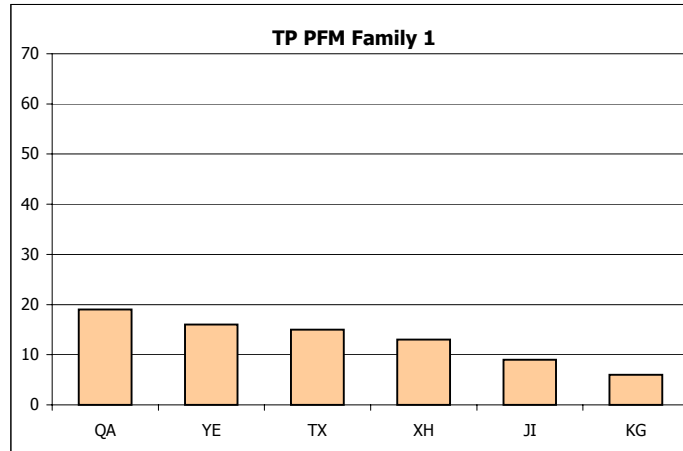
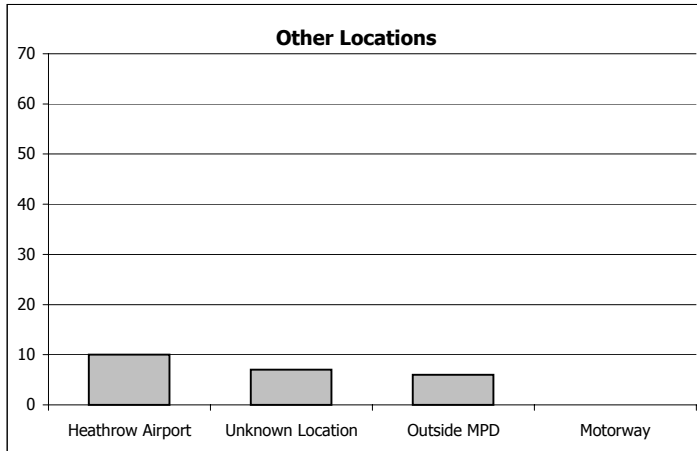
Key: Home Office Subgroups comprises of the following Home Office Allegation Types

Oppressive Behaviour	Type A: Serious non-sexual assault, B: Sexual assault, C: Other assault, D: Oppressive conduct or harassment, E: Unlawful/unnecessary arrest or detention, Y: Other sexual conduct
Discriminatory Behaviour	Type F: Discriminatory Behaviour, Q: Lack of fairness & impartiality
Malpractice	Type G: Irregularity in relation to evidence/perjury, H: Corrupt practice, J: Mishandling of property
Failures in Duty	Type K-P: Breaches of PACE Codes of Practice, R: Multiple breaches, S: Failures in duty, T: Other irregularity in procedure, X: Improper disclosure of information
Incivility	Type U: Incivility
Traffic Irregularity	Type V: Traffic Irregularity
Other	Type W: Other

Boroughs of incident are highlighted according to 'TP PFM Family Groups'

TP PFM Family 1	TP PFM Family 2	TP PFM Family 3	TP PFM Family 4	TP PFM Family 5	Other Units/Locations
-----------------	-----------------	-----------------	-----------------	-----------------	-----------------------

Period: 01 Mar 2006 to 28 Feb 2007
Data extracted: 01 Mar 2007



Period: 01 Mar 2006 to 28 Feb 2007
Data extracted: 01 Mar 2007

Officers Unit/Business Group at time of incident	Oppressive Behaviour	Dis - criminary Behaviour	Malpractice	Failures in Duty	Incivility	Traffic Irregularity	Other	Grand Total	Grand Total for period: (percentage +/- from current period)	
									01/03/05	28/02/06
Barking & Dagenham	3	1		4				8	0	800%
Barnet	1	6	1	6	9			23	25	-8%
Bexleyheath	4	2		1	1			8	7	14%
Brent	23	6		20	11			60	96	-38%
Bromley	2						2	4	10	-60%
Camden	17	1		22	7			47	70	-33%
City of Westminster	28	3	2	21	7		1	62	61	2%
Croydon	19	4	5	14	11		1	54	26	108%
Ealing	13		8	12	11		2	46	58	-21%
Enfield	3	1		6	8			18	49	-63%
Greenwich	7	1	1	5	4			18	23	-22%
Hackney	36	6	9	9	3			63	32	97%
Hammersmith & Fulham	12	3	7	5	3		2	32	8	300%
Haringey	10	1	1	8	1			21	46	-54%
Harrow	8	2	4	6	2		1	23	19	21%
Havering				2				2	11	-82%
Heathrow Airport	2	2	6	8	5			23	2	1050%
Hillingdon	6	3	1	5		1		16	19	-16%
Hounslow	13	6	4	5	3			31	6	417%
Islington	13	1			4			18	80	-78%
Kensington & Chelsea	5			2	3			10	19	-47%
Kingston-upon-Thames	8			3	4			15	18	-17%
Lambeth	14	1	2	20	9			46	58	-21%
Lewisham	16	5	1	8	8			38	81	-53%
Merton	3		3	2	5			13	6	117%
Newham	20	4	5	10	5			44	38	16%
Redbridge	13			3				16	8	100%
Richmond-upon-Thames	5	1						6	6	0%
Southwark	9		1	14	11			35	51	-31%
Sutton	1	1		1				3	10	-70%
Tower Hamlets	16	8	3	21	8			56	14	300%
Waltham Forest	9	1		13	2			25	39	-36%
Wandsworth	11	2	4	3	1		1	22	17	29%
Total	350	72	68	259	146	1	10	906	1013	-11%
Recruits								0	0	0%
TP Non Borough								0	13	-100%
Central Operations	132	26	8	83	49	1	3	302	319	-5%
DCC									2	-100%
Holding									0	0%
HR									0	0%
SC									13	-100%
SO		1		6	5			12	1	1100%
Left MPS	1			1	1			3	1	200%
Outside MPD				1				1	0	100%
Unknown Location									3	-100%
Grand Total	483	99	76	350	201	2	13	1224	1365	-10%
Grand Total for previous 12 month period: (percentage +/- from current period)	540 -11%	109 -9%	99 -23%	401 -13%	201 0%	1 100%	14 -7%	1365 -10%		

Additional Information

Key: Home Office Subgroups comprises of the following Home Office Allegation Types

Oppressive Behaviour	Type A: Serious non-sexual assault, B: Sexual assault, C: Other assault, D: Oppressive conduct or harassment, E: Unlawful/unnecessary arrest or detention, Y: Other sexual conduct
Discriminatory Behaviour	Type F: Discriminatory Behaviour, Q: Lack of fairness & impartiality
Malpractice	Type G: Irregularity in relation to evidence/perjury, H: Corrupt practice, J: Mishandling of property
Failures in Duty	Type K-P: Breaches of PACE Codes of Practice, R: Multiple breaches, S: Failures in duty, T: Other irregularity in procedure, X: Improper disclosure of information
Incivility	Type U: Incivility
Traffic Irregularity	Type V: Traffic Irregularity
Other	Type W: Other

Officer Unit/Business Group at time of incident are highlighted according to 'TP PFM Family Groups'

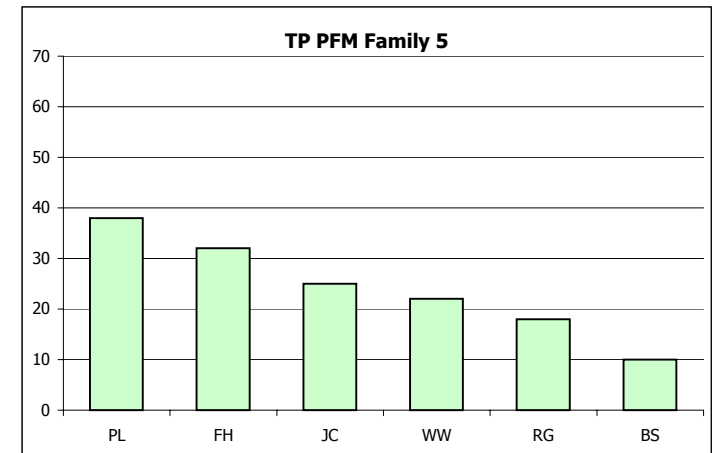
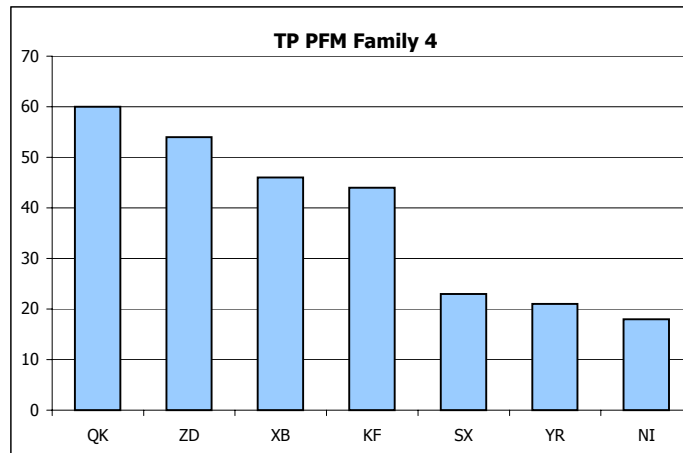
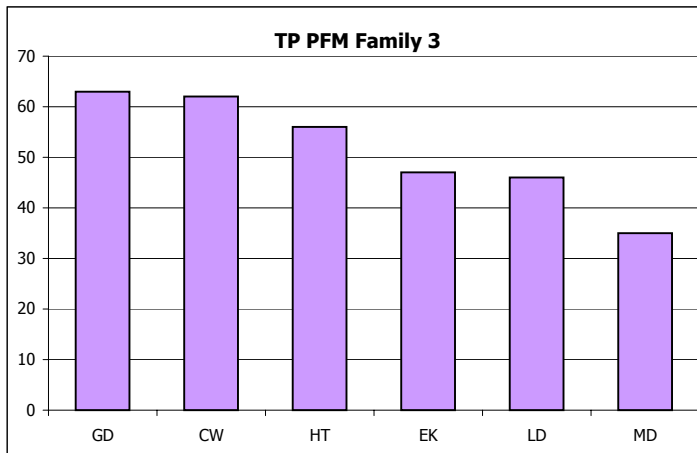
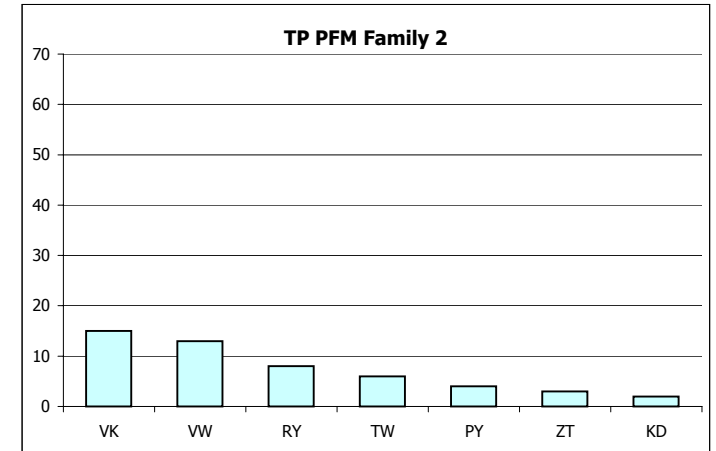
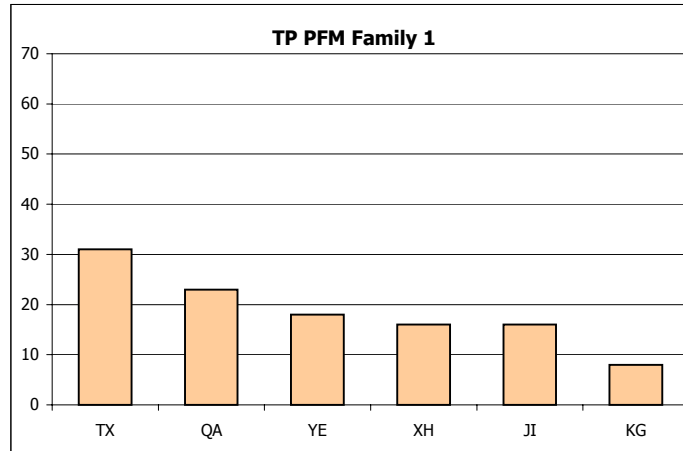
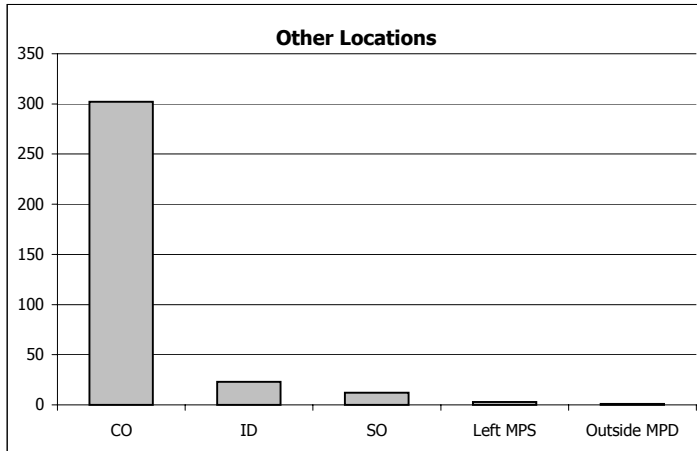
TP PFM Family 1	TP PFM Family 2	TP PFM Family 3	TP PFM Family 4	TP PFM Family 5	Other Units/Locations
-----------------	-----------------	-----------------	-----------------	-----------------	-----------------------

Officer Level

Stop Search - Officer Allegations Recorded

Not Protectively Marked

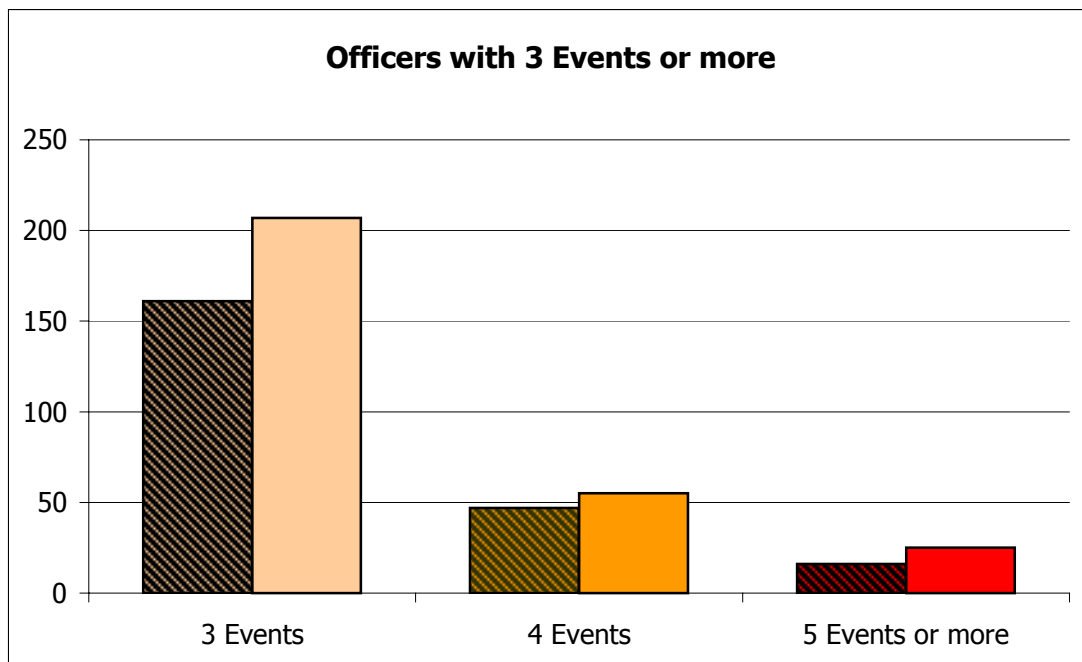
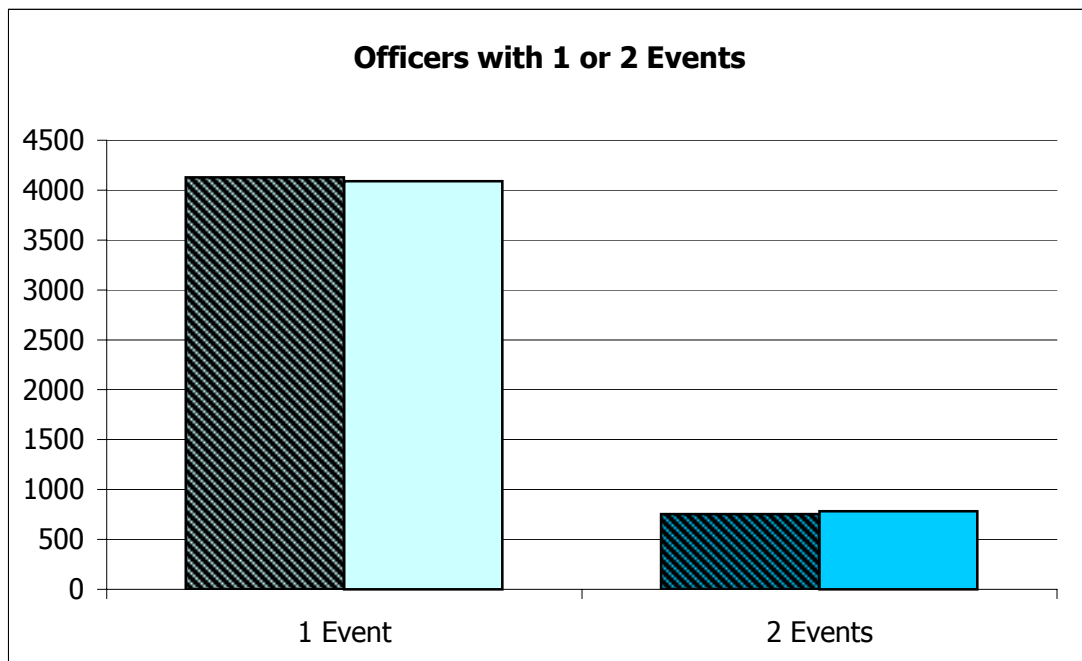
Period: 01 Mar 2006 to 28 Feb 2007
Data extracted: 01 Mar 2007



Period: 01 Mar 2006 to 28 Feb 2007
Data extracted: 06 Mar 2007

Number of officers - by number of events received within 12 month period

	Number of Events					Grand Total
	1 Event	2 Events	3 Events	4 Events	5 Events or more	
Last Period	4127	753	161	47	16	5104
This Period	4088	782	207	55	25	5157



An event is defined as either a 'Public Complaint' or 'Conduct Matter' recorded in the 12 months periods shown.

An '**Officer of Concern**' is one who has received 3 events or more within 12 months.

Period: 01 Mar 2006

to

28 Feb 2007

Data extracted: 06 Mar 2007

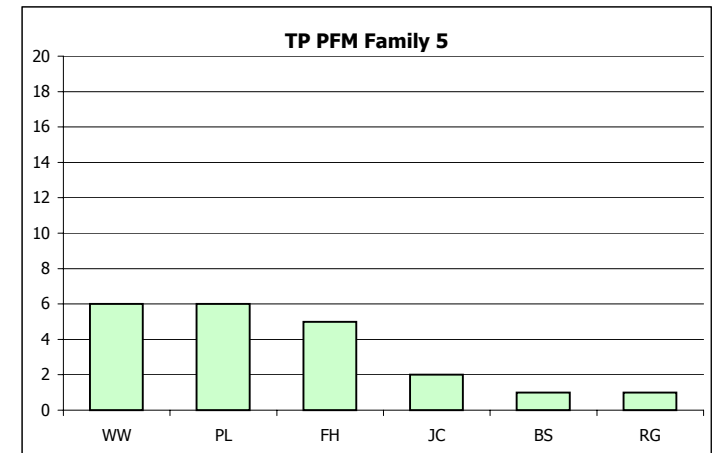
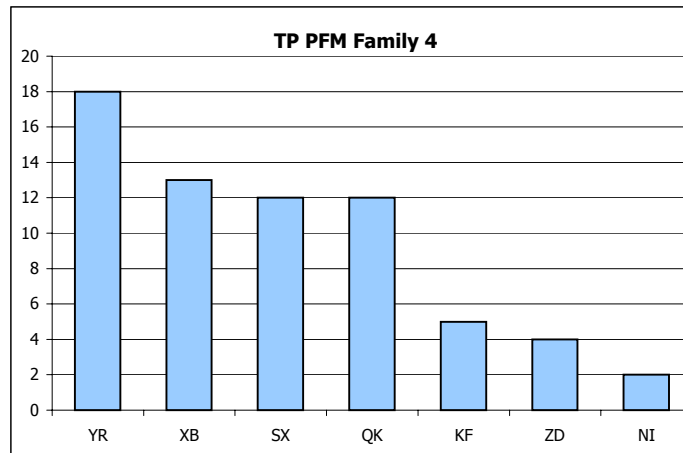
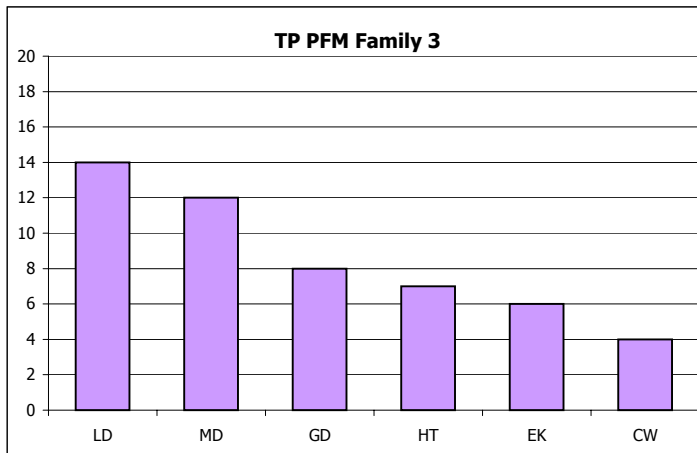
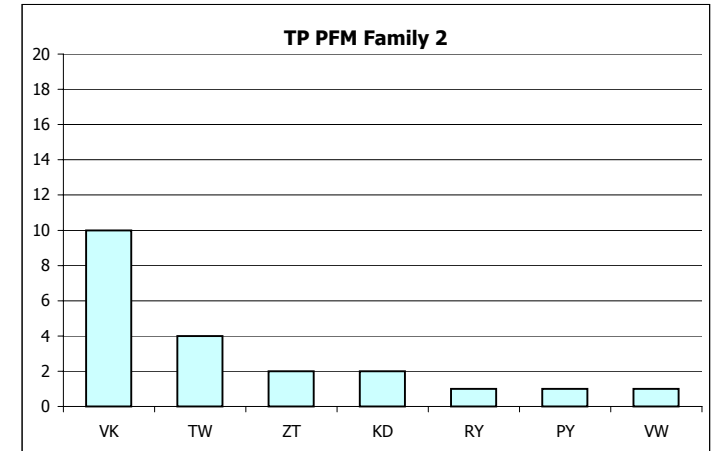
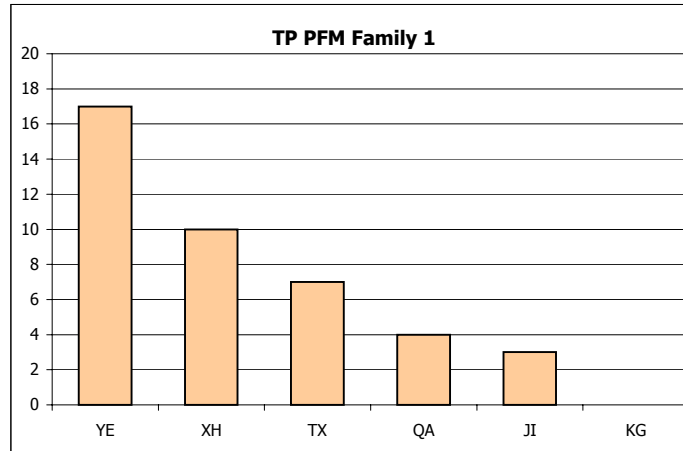
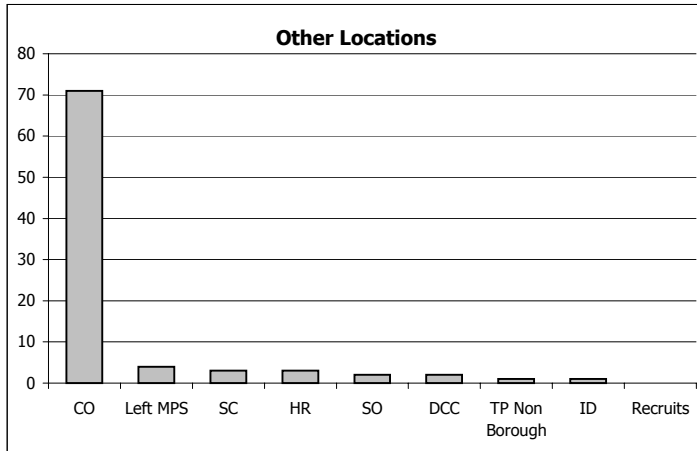
Officers Current Unit	3 Events		4 Events		5 Events or more		Grand Total	
	This Period	Last Period	This Period	Last Period	This Period	Last Period	This Period	Last Period
Barking & Dagenham	0	(1)	0	(0)	0	(0)	0	(1)
Barnet	8	(2)	1	(0)	3	(0)	12	(2)
Bexleyheath	1	(0)	0	(0)	0	(0)	1	(0)
Brent	7	(7)	4	(4)	1	(1)	12	(12)
Bromley	1	(1)	0	(0)	0	(0)	1	(1)
Camden	4	(8)	2	(3)	0	(3)	6	(14)
City of Westminster	4	(8)	0	(1)	0	(1)	4	(10)
Croydon	2	(4)	0	(0)	2	(0)	4	(4)
Ealing	10	(2)	2	(1)	1	(0)	13	(3)
Enfield	11	(3)	5	(1)	1	(2)	17	(6)
Greenwich	1	(0)	0	(0)	0	(0)	1	(0)
Hackney	6	(6)	2	(1)	0	(0)	8	(7)
Hammersmith & Fulham	4	(2)	1	(2)	0	(0)	5	(4)
Haringey	16	(11)	1	(3)	1	(0)	18	(14)
Harrow	2	(6)	1	(2)	1	(0)	4	(8)
Havering	2	(2)	0	(0)	0	(0)	2	(2)
Heathrow Airport	1	(1)	0	(0)	0	(0)	1	(1)
Hillingdon	3	(3)	6	(3)	1	(0)	10	(6)
Hounslow	6	(2)	0	(2)	1	(0)	7	(4)
Islington	1	(3)	1	(3)	0	(0)	2	(6)
Kensington & Chelsea	1	(1)	0	(2)	0	(0)	1	(3)
Kingston-upon-Thames	7	(1)	0	(0)	3	(0)	10	(1)
Lambeth	11	(9)	3	(1)	0	(3)	14	(13)
Lewisham	3	(6)	2	(0)	1	(0)	6	(6)
Merton	1	(2)	0	(0)	0	(0)	1	(2)
Newham	5	(4)	0	(0)	0	(0)	5	(4)
Redbridge	2	(3)	1	(0)	0	(0)	3	(3)
Richmond-upon-Thames	3	(1)	1	(0)	0	(0)	4	(1)
Southwark	12	(2)	0	(2)	0	(0)	12	(4)
Sutton	1	(1)	1	(0)	0	(0)	2	(1)
Tower Hamlets	5	(5)	2	(1)	0	(0)	7	(6)
Waltham Forest	1	(11)	0	(2)	1	(0)	2	(13)
Wandsworth	4	(1)	0	(0)	2	(0)	6	(1)
Total	146	(119)	36	(34)	19	(10)	201	(163)
Recruits	0	(0)	0	(0)	0	(0)	0	(0)
TP Non Borough	1	(0)	0	(0)	0	(0)	1	(0)
Central Operations	50	(22)	17	(6)	4	(5)	71	(33)
DCC	1	(1)	0	(0)	1	(0)	2	(1)
Holding	0	(0)	0	(0)	0	(0)	0	(0)
HR	3	(1)	0	(1)	0	(0)	3	(2)
SC	2	(1)	1	(0)	0	(0)	3	(1)
SO	2	(1)	0	(1)	0	(0)	2	(2)
Left MPS	2	(16)	1	(5)	1	(1)	4	(22)
Grand Total	207	(161)	55	(47)	25	(16)	287	(224)

An event is defined as either a 'Public Complaint' or 'Conduct Matter' recorded in the 12 months periods shown.

Officer Unit/Business Group at time of incident are highlighted according to 'TP PFM Family Groups'

TP PFM Family 1	TP PFM Family 2	TP PFM Family 3
TP PFM Family 4	TP PFM Family 5	Other Units/Locations

Period: 01 Mar 2006 to 28 Feb 2007
 Data extracted: 06 Mar 2007

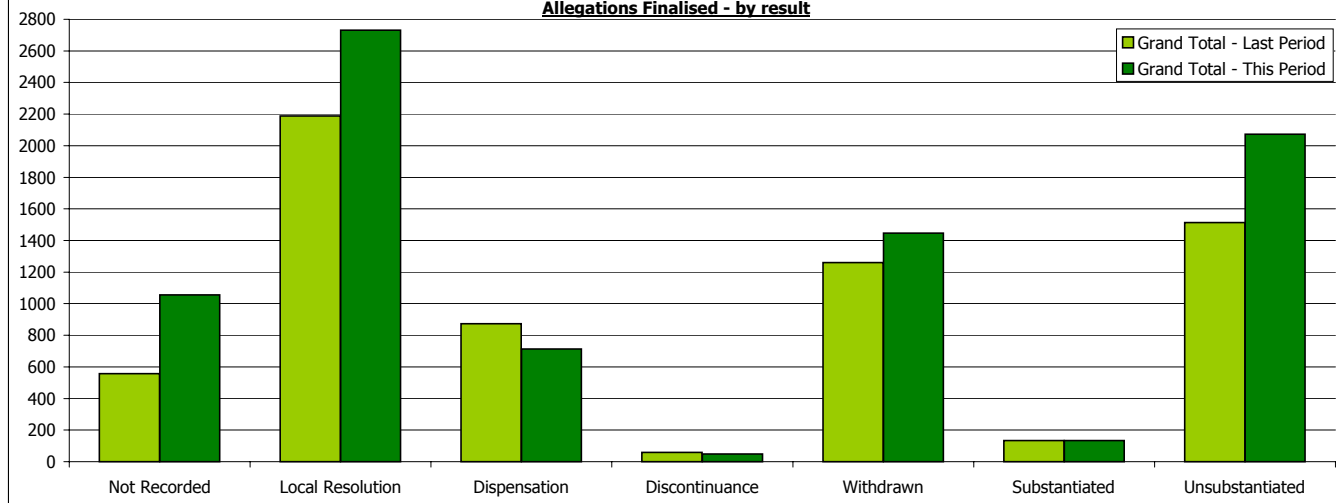


Period: 01 Mar 2006 to 28 Feb 2007
 Data extracted: 01 Mar 2007

Borough of Incident	Not Recorded		Local Resolution		Dispensation		Discontinuance		Withdrawn		Substantiated		Unsubstantiated		Grand Total
	No. of allegs	% of total	No. of allegs	% of total	No. of allegs	% of total	No. of allegs	% of total	No. of allegs	% of total	No. of allegs	% of total	No. of allegs	% of total	
Barking & Dagenham	6	(7%)	32	(37%)	12	(14%)			16	(18%)	1	(1%)	20	(23%)	87
Barnet	20	(9%)	90	(40%)	17	(7%)			32	(14%)	7	(3%)	61	(27%)	227
Bexleyheath	4	(4%)	57	(50%)	4	(4%)			32	(28%)	2	(2%)	14	(12%)	113
Brent	26	(7%)	162	(43%)	47	(12%)	3	(1%)	67	(18%)			76	(20%)	381
Bromley	16	(10%)	50	(32%)	6	(4%)			24	(15%)	6	(4%)	53	(34%)	155
Camden	17	(5%)	135	(43%)	24	(8%)	1	(0%)	62	(20%)	2	(1%)	75	(24%)	316
City of Westminster	627	(55%)	134	(12%)	67	(6%)	5	(0%)	118	(10%)	18	(2%)	165	(15%)	1134
Croydon	21	(6%)	106	(33%)	27	(8%)	3	(1%)	62	(19%)	6	(2%)	101	(31%)	326
Ealing	28	(8%)	131	(39%)	18	(5%)			83	(25%)			73	(22%)	333
Enfield	8	(4%)	141	(62%)	24	(11%)	2	(1%)	22	(10%)	1	(0%)	28	(12%)	226
Greenwich	12	(7%)	44	(25%)	10	(6%)	3	(2%)	30	(17%)	5	(3%)	69	(40%)	173
Hackney	8	(3%)	106	(37%)	44	(15%)			62	(21%)	7	(2%)	62	(21%)	289
Hammersmith & Fulham	10	(5%)	95	(45%)	13	(6%)	4	(2%)	36	(17%)	6	(3%)	48	(23%)	212
Haringey	19	(7%)	116	(40%)	24	(8%)			44	(15%)	4	(1%)	82	(28%)	289
Harrow	1	(1%)	68	(49%)	14	(10%)			33	(24%)			24	(17%)	140
Havering	5	(6%)	43	(48%)	11	(12%)			17	(19%)	3	(3%)	11	(12%)	90
Heathrow Airport	1	(2%)	36	(64%)	3	(5%)	1	(2%)	4	(7%)	1	(2%)	10	(18%)	56
Hillingdon	4	(2%)	61	(34%)	3	(2%)	3	(2%)	61	(34%)	1	(1%)	47	(26%)	180
Hounslow	8	(6%)	53	(40%)	7	(5%)			28	(21%)	6	(4%)	32	(24%)	134
Islington	13	(5%)	69	(28%)	24	(10%)	2	(1%)	54	(22%)	4	(2%)	84	(34%)	250
Kensington & Chelsea	9	(9%)	22	(23%)	6	(6%)	1	(1%)	23	(24%)			35	(36%)	96
Kingston-upon-Thames	6	(4%)	65	(45%)	14	(10%)	1	(1%)	34	(24%)			23	(16%)	143
Lambeth	27	(7%)	128	(32%)	74	(19%)	3	(1%)	51	(13%)	7	(2%)	105	(27%)	395
Lewisham	17	(6%)	92	(32%)	34	(12%)	2	(1%)	45	(16%)	2	(1%)	96	(33%)	288
Merton			32	(32%)	3	(3%)			25	(25%)	2	(2%)	39	(39%)	101
Motorway		(0%)		(0%)		(0%)		(0%)		(0%)		(0%)		(0%)	
Newham	10	(5%)	90	(42%)	25	(12%)			42	(20%)	2	(1%)	43	(20%)	212
Outside MPD	40	(27%)	41	(28%)	8	(5%)	4	(3%)	19	(13%)	5	(3%)	32	(21%)	149
Redbridge	5	(3%)	85	(45%)	15	(8%)	4	(2%)	36	(19%)	3	(2%)	41	(22%)	189
Richmond-upon-Thames	4	(4%)	42	(45%)	9	(10%)			19	(20%)			19	(20%)	93
Southwark	21	(7%)	112	(38%)	23	(8%)	4	(1%)	49	(16%)	10	(3%)	78	(26%)	297
Sutton	3	(4%)	16	(20%)	8	(10%)			19	(23%)			36	(44%)	82
Tower Hamlets	5	(2%)	77	(31%)	33	(13%)			56	(22%)			81	(32%)	252
Unknown Location	42	(12%)	30	(9%)	13	(4%)			36	(10%)	4	(1%)	220	(64%)	345
Waltham Forest	9	(3%)	116	(42%)	40	(14%)	2	(1%)	53	(19%)	14	(5%)	43	(16%)	277
Wandsworth	4	(2%)	54	(32%)	9	(5%)			53	(31%)	5	(3%)	46	(27%)	171
Grand Total	1056	(13%)	2731	(33%)	713	(9%)	48	(1%)	1447	(18%)	134	(2%)	2072	(25%)	8201
Grand Total for previous 12 month period: (percentage +/- from current period)	558	(8%)	2188	(33%)	874	(13%)	58	(1%)	1261	(19%)	134	(2%)	1513	(23%)	6586
		89%		25%		-18%		-17%		15%		0%		37%	25%

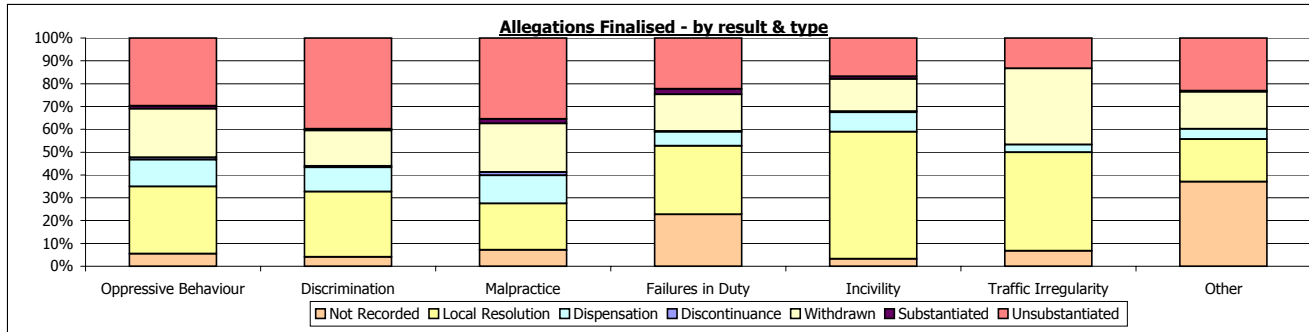
Grand Total for period: (percentage +/- from current period)		
01/03/05	to	28/02/06
71		23%
190		19%
98		15%
259		47%
126		23%
268		18%
805		41%
215		52%
194		72%
166		36%
145		19%
170		70%
154		38%
236		22%
160		-13%
114		-21%
42		33%
130		38%
185		-28%
194		29%
88		9%
118		21%
366		8%
286		1%
118		-14%
		0%
236		-10%
103		45%
134		41%
82		13%
263		13%
78		5%
246		2%
139		148%
219		26%
188		-9%
6586		25%

Allegations Finalised - by result



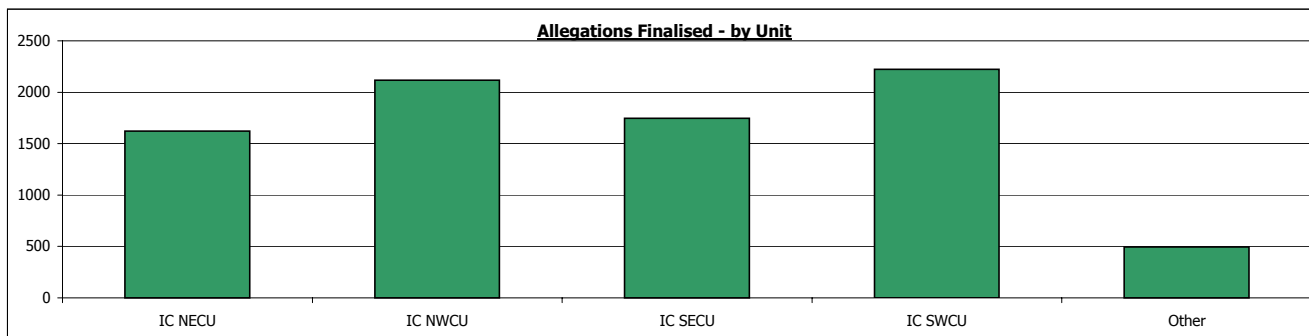
Allegation Result by Allegation Category

Allegation Category	Not Recorded		Local Resolution		Dispensation		Discontinuance		Withdrawn		Substantiated		Unsub -stantiated		Grand Total
	No. of allegs	% of total	No. of allegs	% of total	No. of allegs	% of total	No. of allegs	% of total	No. of allegs	% of total	No. of allegs	% of total	No. of allegs	% of total	
Oppressive Behaviour	125	(5%)	682	(30%)	273	(12%)	23	(1%)	490	(21%)	31	(1%)	686	(30%)	2310
Discrimination	21	(4%)	145	(29%)	54	(11%)	3	(1%)	79	(16%)	4	(1%)	202	(40%)	508
Malpractice	33	(7%)	93	(20%)	57	(12%)	6	(1%)	98	(21%)	9	(2%)	163	(36%)	459
Failures in Duty	738	(23%)	976	(30%)	200	(6%)	10	(0%)	525	(16%)	75	(2%)	725	(22%)	3249
Incivility	44	(3%)	763	(56%)	116	(8%)	6	(0%)	195	(14%)	14	(1%)	231	(17%)	1369
Traffic Irregularity	4	(7%)	26	(43%)	2	(3%)	0	(0%)	20	(33%)	0	(0%)	8	(13%)	60
Other	91	(37%)	46	(19%)	11	(4%)	0	(0%)	40	(16%)	1	(0%)	57	(23%)	246
Grand Total	1056	(13%)	2731	(33%)	713	(9%)	48	(1%)	1447	(18%)	134	(2%)	2072	(25%)	8201



Allegation Result by Area referred to deal

Unit	Not Recorded		Local Resolution		Dispensation		Discontinuance		Withdrawn		Substantiated		Unsub -stantiated		Grand Total
	No. of allegs	% of total	No. of allegs	% of total	No. of allegs	% of total	No. of allegs	% of total	No. of allegs	% of total	No. of allegs	% of total	No. of allegs	% of total	
IC NECU	56	(3%)	690	(43%)	204	(13%)	8	(0%)	304	(19%)	31	(2%)	329	(20%)	1622
IC NWCUC	128	(6%)	832	(39%)	171	(8%)	9	(0%)	436	(21%)	18	(1%)	522	(25%)	2116
IC SECU	118	(7%)	589	(34%)	178	(10%)	15	(1%)	293	(17%)	38	(2%)	516	(30%)	1747
IC SWCU	672	(30%)	549	(25%)	139	(6%)	12	(1%)	359	(16%)	38	(2%)	453	(20%)	2222
Other	82	(17%)	71	(14%)	21	(4%)	4	(1%)	55	(11%)	9	(2%)	252	(51%)	494
Grand Total	1056	(13%)	2731	(33%)	713	(9%)	48	(1%)	1447	(18%)	134	(2%)	2072	(25%)	8201



Additional Information

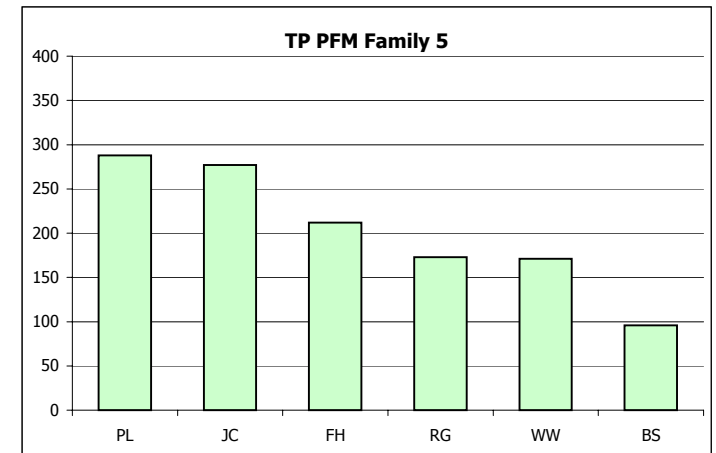
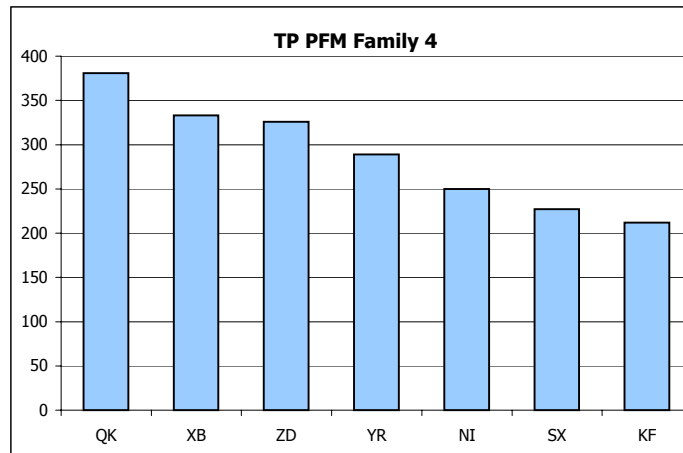
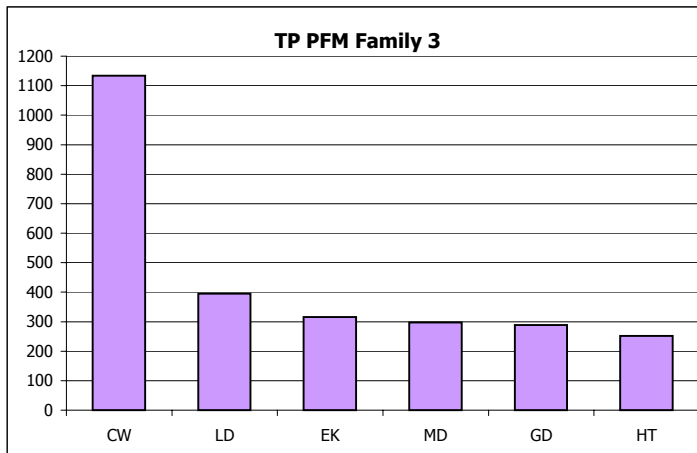
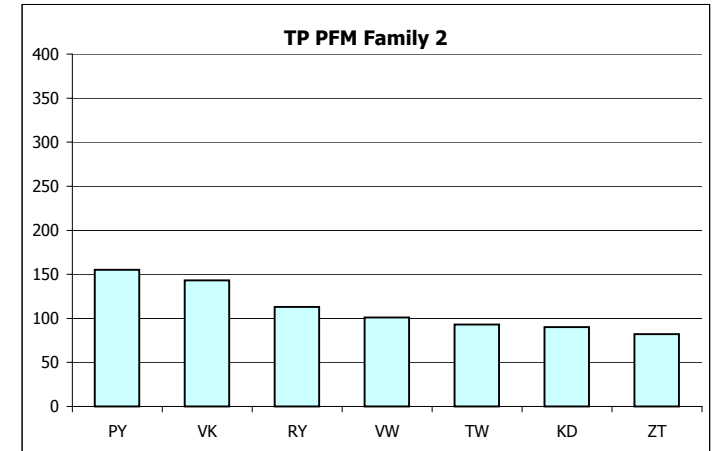
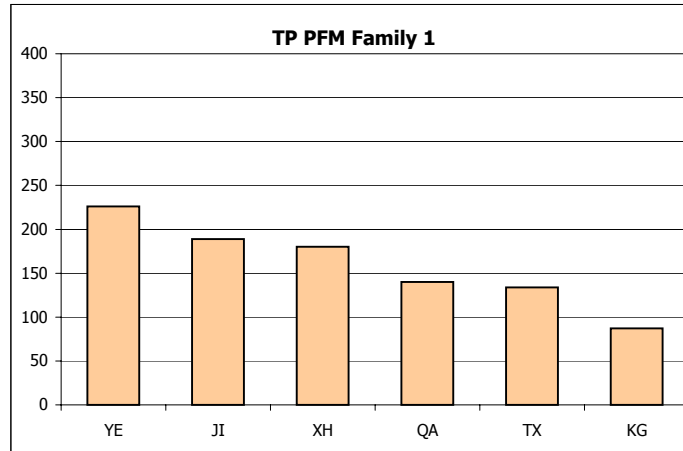
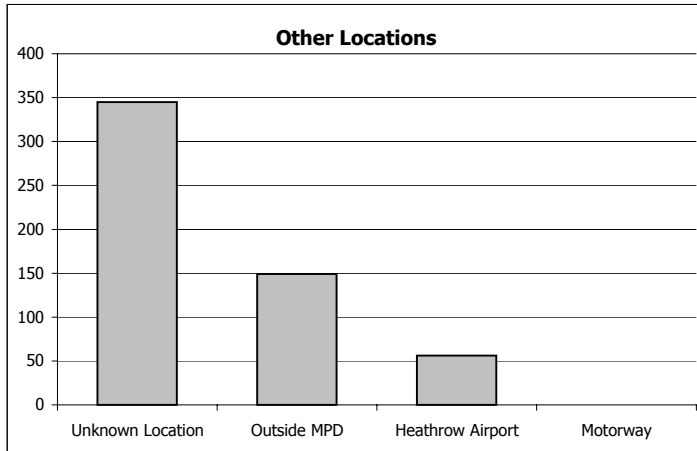
Key: Home Office Subgroups comprises of the following Home Office Allegation Types

Oppressive Behaviour	Type A: Serious non-sexual assault, B: Sexual assault, C: Other assault, D: Oppressive conduct or harassment, E: Unlawful/unnecessary arrest or detention, Y: Other sexual conduct
Discriminatory Behaviour	Type F: Discriminatory Behaviour, Q: Lack of fairness & impartiality
Malpractice	Type G: Irregularity in relation to evidence/perjury, H: Corrupt practice, J: Mishandling of property
Failures in Duty	Type K-P: Breaches of PACE Codes of Practice, R: Multiple breaches, S: Failures in duty, T: Other irregularity in procedure, X: Improper disclosure of information
Incivility	Type U: Incivility
Traffic Irregularity	Type V: Traffic Irregularity
Other	Type W: Other

Boroughs of incident are highlighted according to 'TP PFM Family Groups'

TP PFM Family 1	TP PFM Family 2	TP PFM Family 3	TP PFM Family 4	TP PFM Family 5	Other Units/Locations
-----------------	-----------------	-----------------	-----------------	-----------------	-----------------------

Period: 01 Mar 2006 to 28 Feb 2007
 Data extracted: 01 Mar 2007



Period: 01 Mar 2006 to 28 Feb 2007
Data extracted: 01 Mar 2007

Officers unit/ Business group at time of incident	Not Recorded		Local Resolution		Dispensation		Discontinuance		Withdrawn		Substantiated		Unsub-stantiated		Grand Total
	No. of alleg	% of total	No. of alleg	% of total	No. of alleg	% of total	No. of alleg	% of total	No. of alleg	% of total	No. of alleg	% of total	No. of alleg	% of total	
Barking & Dagenham	14	(12%)	47	(39%)	17	(14%)			18	(15%)			24	(20%)	120
Barnet	17	(6%)	133	(45%)	26	(9%)			38	(13%)	9	(3%)	73	(25%)	296
Bexleyheath	5	(4%)	66	(51%)	6	(5%)			36	(28%)			16	(12%)	129
Brent	28	(6%)	198	(39%)	63	(12%)			81	(16%)	2	(0%)	134	(26%)	506
Bromley	25	(11%)	66	(29%)	6	(3%)			38	(16%)	7	(3%)	89	(39%)	231
Camden	15	(3%)	192	(42%)	32	(7%)	1	(0%)	93	(20%)	1	(0%)	128	(28%)	462
City of Westminster	629	(53%)	125	(11%)	61	(5%)	3	(0%)	106	(9%)	16	(1%)	241	(20%)	1181
Croydon	39	(7%)	121	(22%)	32	(6%)	7	(1%)	91	(16%)	10	(2%)	252	(46%)	552
Ealing	28	(6%)	130	(30%)	21	(5%)			123	(28%)	1	(0%)	130	(30%)	433
Enfield	9	(2%)	246	(60%)	33	(8%)	2	(0%)	60	(15%)	3	(1%)	60	(15%)	413
Greenwich	12	(5%)	55	(24%)	17	(7%)	5	(2%)	28	(12%)	7	(3%)	110	(47%)	234
Hackney	8	(2%)	164	(35%)	64	(14%)			92	(20%)	10	(2%)	125	(27%)	463
Hammersmith & Fulham	8	(3%)	118	(43%)	6	(2%)	7	(3%)	49	(18%)	9	(3%)	75	(28%)	272
Haringey	35	(6%)	210	(37%)	29	(5%)			132	(23%)	5	(1%)	163	(28%)	574
Harrow	1	(0%)	107	(46%)	16	(7%)			56	(24%)	1	(0%)	50	(22%)	231
Havering	6	(4%)	76	(54%)	16	(11%)			25	(18%)			19	(13%)	142
Heathrow Airport	1	(1%)	55	(71%)	2	(3%)	1	(1%)	6	(8%)	1	(1%)	12	(15%)	78
Hillingdon	5	(2%)	63	(22%)	2	(1%)	18	(6%)	117	(41%)	2	(1%)	80	(28%)	287
Hounslow	8	(4%)	69	(35%)	12	(6%)			47	(24%)	7	(4%)	56	(28%)	199
Islington	14	(3%)	104	(20%)	33	(6%)	2	(0%)	72	(14%)	7	(1%)	279	(55%)	511
Kensington & Chelsea	13	(9%)	40	(29%)	7	(5%)	12	(9%)	28	(20%)			37	(27%)	137
Kingston-upon-Thames	5	(3%)	94	(51%)	20	(11%)	1	(1%)	37	(20%)			28	(15%)	185
Lambeth	30	(6%)	156	(33%)	84	(18%)	2	(0%)	75	(16%)	8	(2%)	121	(25%)	476
Lewisham	26	(7%)	104	(26%)	53	(13%)			50	(13%)	1	(0%)	163	(41%)	397
Merton	33	(29%)	33	(29%)	3	(3%)			30	(26%)	2	(2%)	47	(41%)	115
Newham	10	(3%)	127	(42%)	23	(8%)			66	(22%)			78	(26%)	304
Redbridge	5	(2%)	101	(37%)	17	(6%)	8	(3%)	55	(20%)	5	(2%)	79	(29%)	270
Richmond-upon-Thames	3	(2%)	58	(42%)	7	(5%)			27	(20%)			43	(31%)	138
Southwark	37	(8%)	133	(28%)	34	(7%)	2	(0%)	79	(16%)	14	(3%)	181	(38%)	480
Sutton	5	(4%)	26	(20%)	8	(6%)			23	(18%)			67	(52%)	129
Tower Hamlets	5	(1%)	113	(33%)	38	(11%)			61	(18%)			128	(37%)	345
Waltham Forest	15	(4%)	156	(37%)	61	(14%)			69	(16%)	22	(5%)	99	(23%)	422
Wandsworth	8	(4%)	48	(23%)	13	(6%)			56	(27%)	5	(2%)	79	(38%)	209
Total	1069	(10%)	3534	(32%)	862	(8%)	71	(1%)	1964	(18%)	155	(1%)	3266	(30%)	10921
Recruits			3	(100%)											3
TP Non Borough	1	(1%)	27	(25%)			1	(1%)	26	(24%)			52	(49%)	107
Central Operations	29	(2%)	482	(30%)	178	(11%)	32	(2%)	340	(21%)	17	(1%)	551	(34%)	1629
DCC	1	(1%)	31	(36%)	4	(5%)			11	(13%)	2	(2%)	36	(42%)	85
Holding															0
HR	7	(22%)	4	(13%)	2	(6%)			5	(16%)			14	(44%)	32
SC	9	(3%)	71	(23%)	11	(4%)			44	(14%)	4	(1%)	167	(55%)	306
SO	2	(2%)	28	(35%)	6	(7%)			9	(11%)			36	(44%)	81
Left MPS			22	(33%)	3	(4%)			18	(27%)	1	(1%)	23	(34%)	67
Outside MPD	38	(69%)	4	(7%)	3	(5%)			5	(9%)			5	(9%)	55
Unknown Location	38	(31%)	6	(5%)	6	(5%)			14	(11%)			60	(48%)	124
Grand Total	1194	(9%)	4212	(31%)	1075	(8%)	104	(1%)	2436	(18%)	179	(1%)	4210	(31%)	13410
Grand Total for previous 12 month period	628	(6%)	3446	(30%)	1579	(14%)	98	(1%)	2041	(18%)	178	(2%)	3335	(30%)	11305
(percentage +/- from current period)		90%		22%		-32%		6%		19%		1%		26%	19%

Grand Total for period: (percentage +/- from current period)	
01/03/05 to	28/02/06
116	3%
273	8%
146	-12%
398	27%
172	34%
396	17%
896	32%
286	93%
287	51%
267	55%
223	5%
249	86%
203	34%
319	80%
234	-1%
172	-17%
79	-1%
249	15%
255	-22%
339	51%
151	-9%
144	28%
561	-15%
430	8%
161	-29%
340	-11%
191	41%
82	68%
446	8%
143	-10%
455	-24%
427	-1%
331	-37%
9421	16%
13	-77%
107	0%
1299	25%
48	77%
0	0%
8	300%
211	45%
70	16%
44	52%
21	162%
63	97%
11305	19%

Local Resolutions broken down by type

Type	Number of officer allegations	
	Last Period	This Period
Desktop (dealt with at station/borough)	1593 46%	1618 38%
Management (dealt with by DPS)	1853 54%	2594 62%
Mediation	0 0%	0 0%
Unknown type	0 0%	0 0%
Total	3446 100%	4212 100%

Officer Unit/Business Group at time of incident are highlighted according to 'TP PFM Family Groups'

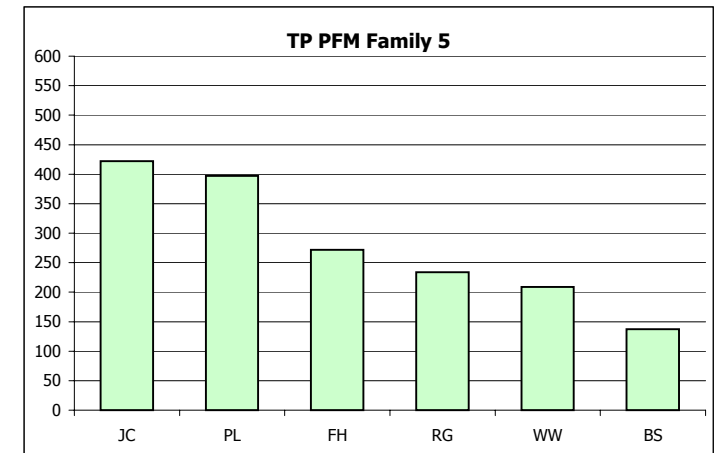
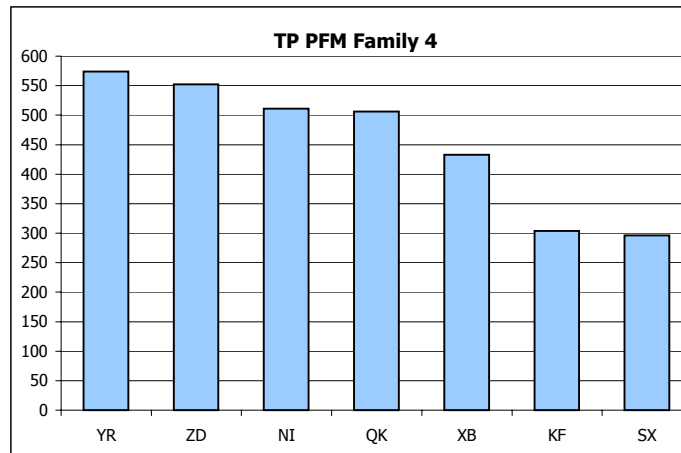
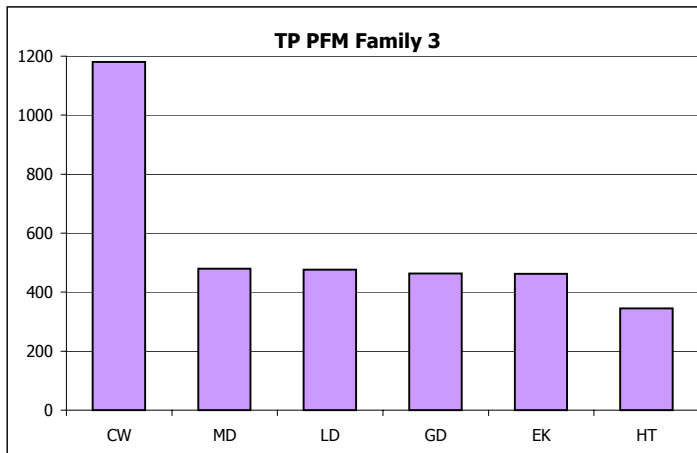
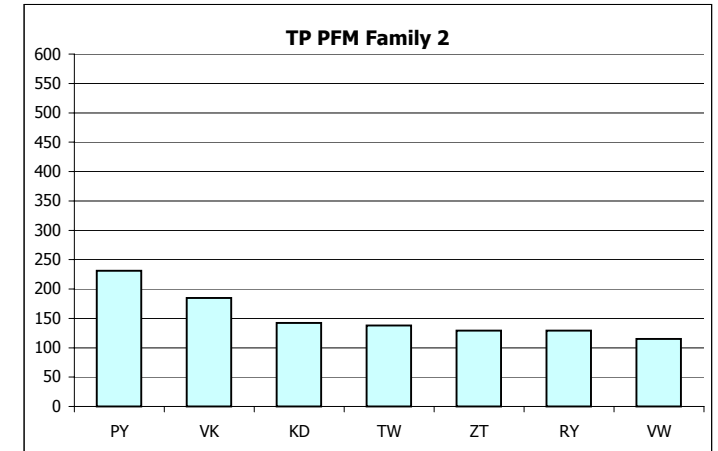
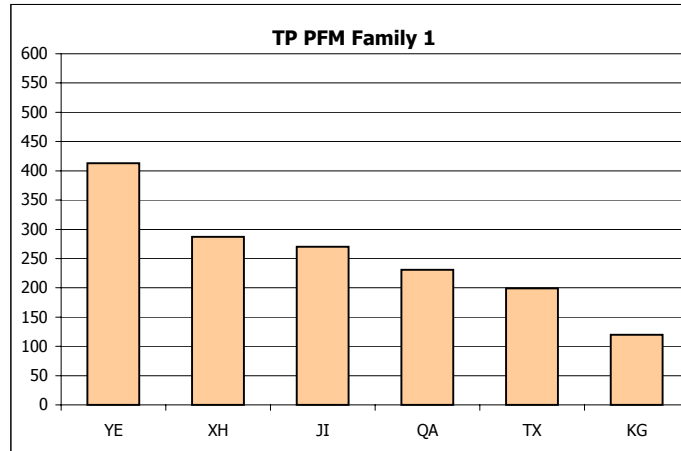
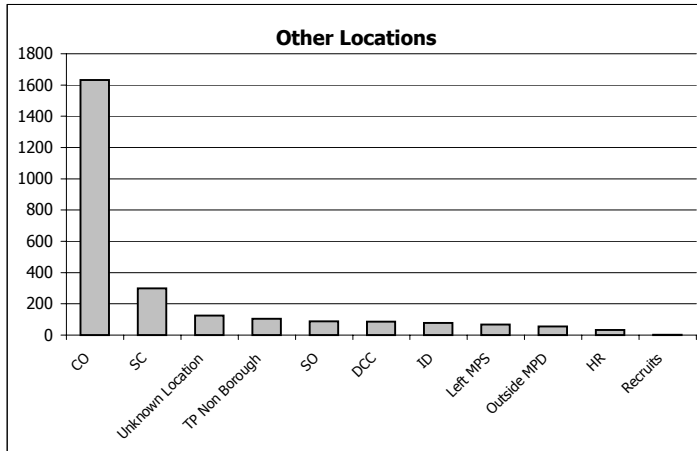
TP PFM Family 1	TP PFM Family 2	TP PFM Family 3	TP PFM Family 4	TP PFM Family 5	Other Units/Locations
-----------------	-----------------	-----------------	-----------------	-----------------	-----------------------

Officer Level

Public Complaints - Officer Allegations Finalised

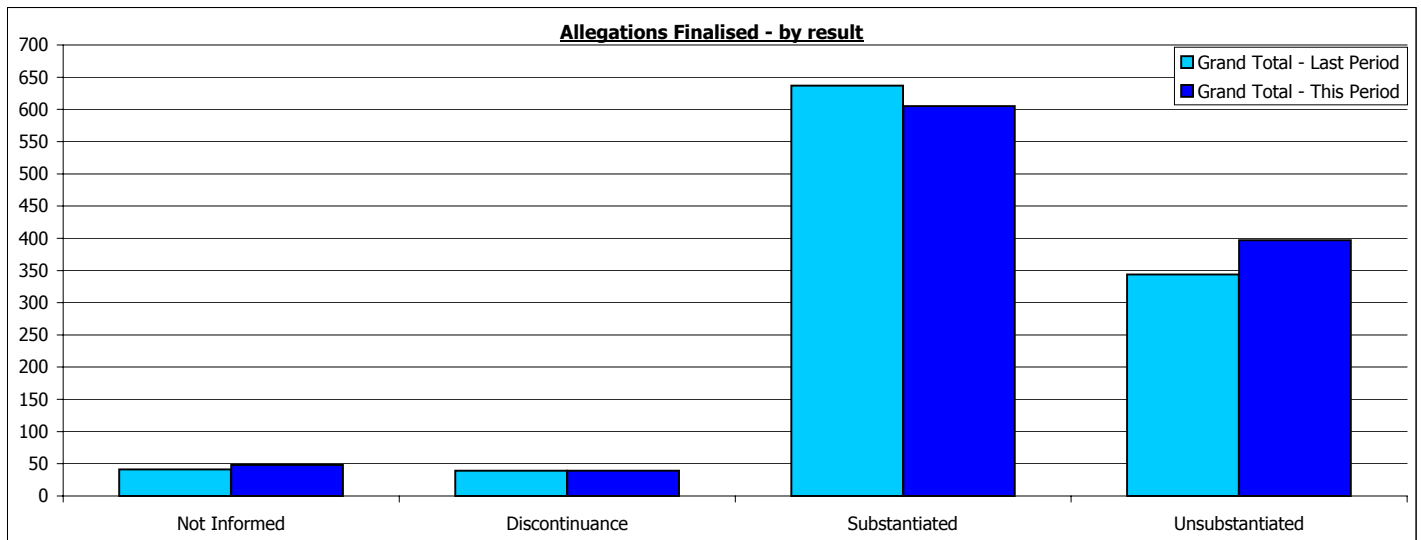
Not Protectively Marked

Period: 01 Mar 2006 to 28 Feb 2007
Data extracted: 01 Mar 2007



Period: 01 Mar 2006 to 28 Feb 2007
Data extracted: 01 Mar 2007

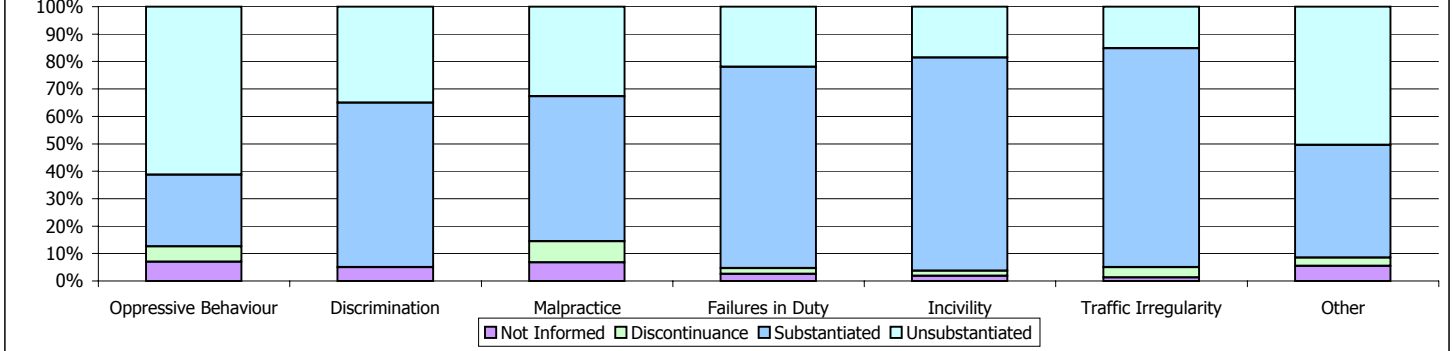
Borough of Incident	Not Informed		Discontinuance		Substantiated		Unsubstantiated		Grand Total	Grand Total for period: (percentage +/- from current period)				
	No. of allegs	% of total	No. of allegs	% of total	No. of allegs	% of total	No. of allegs	% of total		01/03/05 to 28/02/06				
Barking & Dagenham	3	(33%)			3	(33%)	3	(33%)	9	5	80%			
Barnet	2	(4%)	2	(4%)	34	(63%)	16	(30%)	54	65	-17%			
Bexleyheath			1	(8%)	9	(69%)	3	(23%)	13	16	-19%			
Brent	1	(4%)	1	(4%)	17	(61%)	9	(32%)	28	32	-13%			
Bromley			2	(13%)	6	(38%)	8	(50%)	16	12	33%			
Camden					15	(58%)	11	(42%)	26	35	-26%			
City of Westminster	6	(7%)	5	(5%)	52	(57%)	28	(31%)	91	79	15%			
Croydon			1	(8%)	7	(54%)	5	(38%)	13	20	-35%			
Ealing	1	(4%)			12	(48%)	12	(48%)	25	18	39%			
Enfield					4	(40%)	6	(60%)	10	46	-78%			
Greenwich			1	(11%)	1	(11%)	7	(78%)	9	22	-59%			
Hackney	2	(7%)	2	(7%)	14	(52%)	9	(33%)	27	22	23%			
Hammersmith & Fulham					16	(64%)	9	(36%)	25	22	14%			
Haringey	3	(13%)			12	(52%)	8	(35%)	23	15	53%			
Harrow					5	(38%)	8	(62%)	13	6	117%			
Havering	1	(6%)	1	(6%)	6	(38%)	8	(50%)	16	25	-36%			
Heathrow Airport					4	(100%)			4	15	-73%			
Hillingdon	3	(11%)			19	(68%)	6	(21%)	28	32	-13%			
Hounslow					13	(72%)	5	(28%)	18	22	-18%			
Islington					10	(67%)	5	(33%)	15	30	-50%			
Kensington & Chelsea					28	(85%)	5	(15%)	33	26	27%			
Kingston-upon-Thames					2	(33%)	4	(67%)	6	4	50%			
Lambeth					23	(70%)	10	(30%)	33	28	18%			
Lewisham	1	(5%)			15	(71%)	5	(24%)	21	24	-13%			
Merton			3	(33%)	4	(44%)	2	(22%)	9	8	13%			
Motorway					1	(100%)			1	1	0%			
Newham	5	(21%)	1	(4%)	12	(50%)	6	(25%)	24	19	26%			
Outside MPD	10	(5%)	6	(3%)	81	(40%)	107	(52%)	204	140	46%			
Redbridge	1	(3%)	2	(7%)	18	(62%)	8	(28%)	29	28	4%			
Richmond-upon-Thames					14	(78%)	4	(22%)	18	16	13%			
Southwark			6	(21%)	18	(64%)	4	(14%)	28	19	47%			
Sutton					3	(43%)	4	(57%)	7	5	40%			
Tower Hamlets			1	(3%)	20	(57%)	14	(40%)	35	33	6%			
Unknown Location	8	(6%)	2	(1%)	95	(66%)	40	(28%)	145	142	2%			
Waltham Forest					5	(38%)	8	(62%)	13	19	-32%			
Wandsworth	1	(5%)	2	(10%)	7	(35%)	10	(50%)	20	10	100%			
Grand Total	48	(4%)	39	(4%)	605	(56%)	397	(36%)	1089	1061	3%			
Grand Total for previous 12 month period: (percentage +/- from current period)	41	(4%)	39	(4%)	637	(60%)	344	(32%)	1061	17%	0%	-5%	15%	3%



Allegation Result by Allegation Category

Allegation Category	Not Informed		Discontinuance		Substantiated		Unsubstantiated		Grand Total
	No. of allegs	% of total	No. of allegs	% of total	No. of allegs	% of total	No. of allegs	% of total	
Oppressive Behaviour	15	(7%)	12	(6%)	56	(26%)	131	(61%)	214
Discrimination	1	(5%)	0	(0%)	12	(60%)	7	(35%)	20
Malpractice	7	(7%)	8	(8%)	55	(53%)	34	(33%)	104
Failures in Duty	10	(3%)	8	(2%)	280	(73%)	84	(22%)	382
Incivility	1	(2%)	1	(2%)	42	(78%)	10	(19%)	54
Traffic Irregularity	1	(1%)	3	(4%)	63	(80%)	12	(15%)	79
Other	13	(6%)	7	(3%)	97	(41%)	119	(50%)	236
Grand Total	48	(4%)	39	(4%)	605	(56%)	397	(36%)	1089

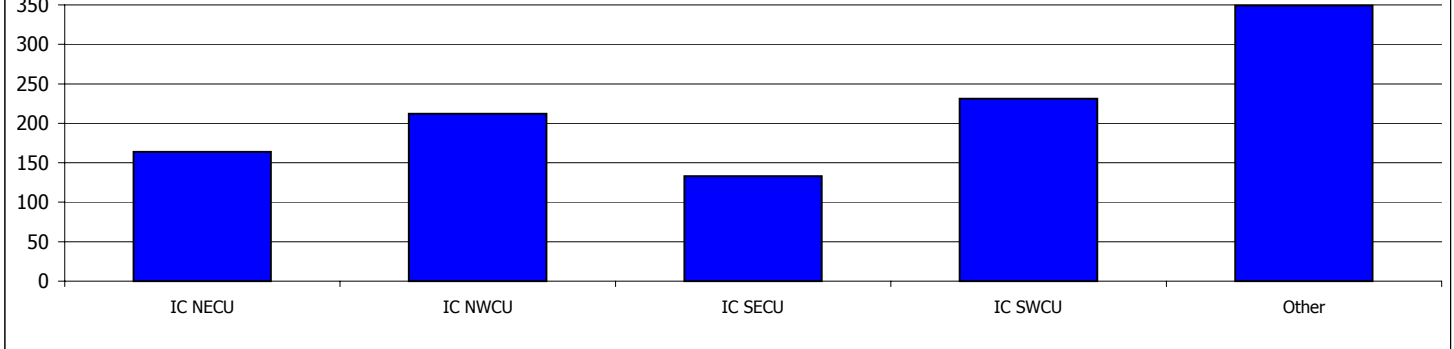
Allegations Finalised - by result & type



Allegation Result by Area referred to deal

Unit	Not Informed		Discontinuance		Substantiated		Unsubstantiated		Grand Total
	No. of allegs	% of total	No. of allegs	% of total	No. of allegs	% of total	No. of allegs	% of total	
IC NECU	12	(7%)	7	(4%)	83	(51%)	62	(38%)	164
IC NWCU	10	(5%)	3	(1%)	124	(58%)	75	(35%)	212
IC SECU	1	(1%)	11	(8%)	79	(59%)	42	(32%)	133
IC SWCU	7	(3%)	10	(4%)	143	(62%)	71	(31%)	231
Other	18	(5%)	8	(2%)	176	(50%)	147	(42%)	349
Grand Total	48	(4%)	39	(4%)	605	(56%)	397	(36%)	1089

Allegations Finalised - by Unit



Additional Information

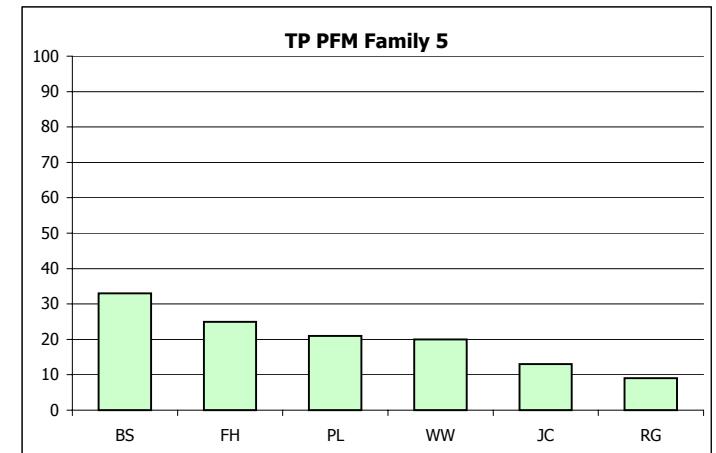
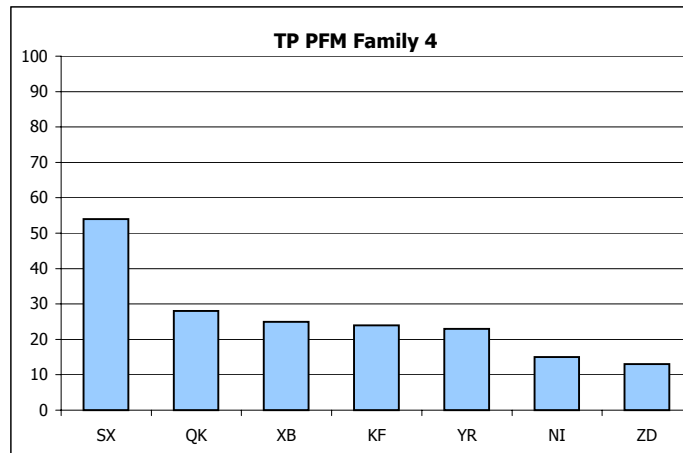
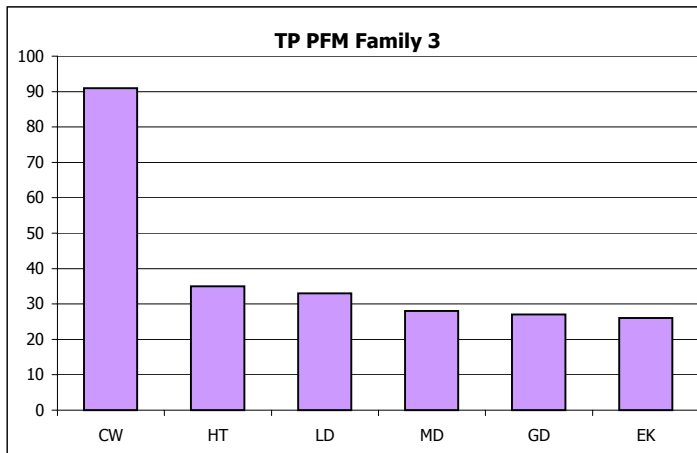
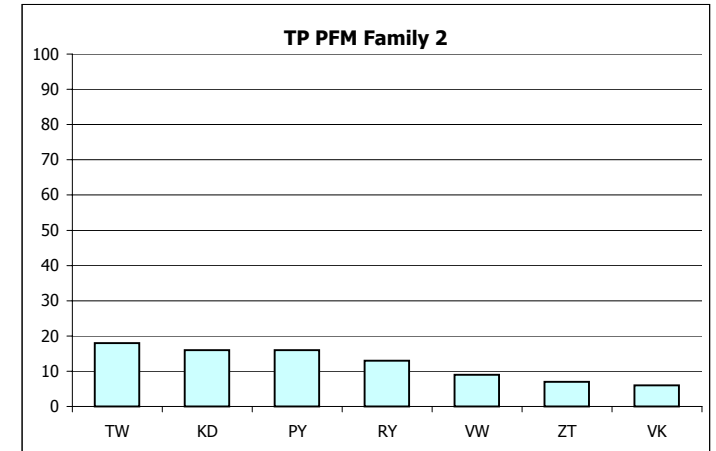
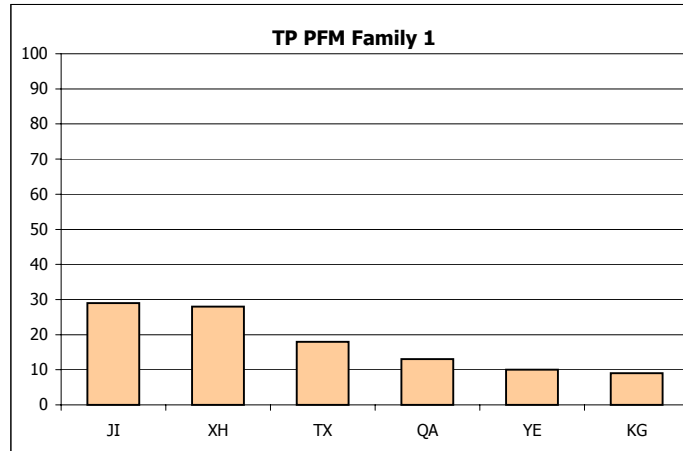
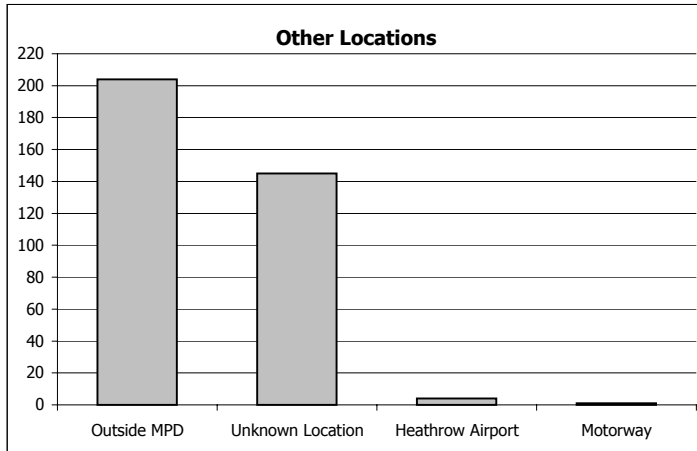
Key: Home Office Subgroups comprises of the following Home Office Allegation Types

Oppressive Behaviour	Type A: Serious non-sexual assault, B: Sexual assault, C: Other assault, D: Oppressive conduct or harassment, E: Unlawful/unnecessary arrest or detention, Y: Other sexual conduct
Discriminatory Behaviour	Type F: Discriminatory Behaviour, Q: Lack of fairness & impartiality
Malpractice	Type G: Irregularity in relation to evidence/perjury, H: Corrupt practice, J: Mishandling of property
Failures in Duty	Type K-P: Breaches of PACE Codes of Practice, R: Multiple breaches, S: Failures in duty, T: Other irregularity in procedure, X: Improper disclosure of information
Incivility	Type U: Incivility
Traffic Irregularity	Type V: Traffic Irregularity
Other	Type W: Other

Boroughs of incident are highlighted according to 'TP PFM Family Groups'

TP PFM Family 1	TP PFM Family 2	TP PFM Family 3	TP PFM Family 4	TP PFM Family 5	Other Units/Locations
-----------------	-----------------	-----------------	-----------------	-----------------	-----------------------

Period: 01 Mar 2006 to 28 Feb 2007
 Data extracted: 01 Mar 2007



Period: 01 Mar 2006
Data extracted: 01 Mar 2007

to 28 Feb 2007

Officers unit/ Business group at time of incident	Not Informed		Discontinuance		Substantiated		Unsubstantiated		Grand Total	Grand Total for period: (percentage +/- from current period)	
	No. of allegs	% of total	No. of allegs	% of total	No. of allegs	% of total	No. of allegs	% of total		01/03/05	to 28/02/06
Barking & Dagenham	3	(23%)			4	(31%)	6	(46%)	13	4	225%
Barnet	2	(6%)	2	(6%)	15	(48%)	12	(39%)	31	34	-9%
Bexleyheath					7	(78%)	2	(22%)	9	12	-25%
Brent					18	(64%)	10	(36%)	28	48	-42%
Bromley			2	(11%)	11	(61%)	5	(28%)	18	9	100%
Camden					26	(55%)	21	(45%)	47	42	12%
City of Westminster	6	(5%)	6	(5%)	48	(42%)	53	(47%)	113	95	19%
Croydon			5	(29%)	6	(35%)	6	(35%)	17	22	-23%
Ealing	1	(3%)			15	(38%)	24	(60%)	40	24	67%
Enfield					5	(42%)	7	(58%)	12	48	-75%
Greenwich			5	(38%)	1	(8%)	7	(54%)	13	33	-61%
Hackney	3	(6%)	2	(4%)	27	(52%)	20	(38%)	52	47	11%
Hammersmith & Fulham					17	(55%)	14	(45%)	31	28	11%
Haringey	4	(13%)			18	(60%)	8	(27%)	30	24	25%
Harrow			1	(5%)	7	(32%)	14	(64%)	22	12	83%
Havering			1	(7%)	8	(53%)	6	(40%)	15	29	-48%
Heathrow Airport					4	(80%)	1	(20%)	5	25	-80%
Hillingdon	3	(7%)			29	(63%)	14	(30%)	46	53	-13%
Hounslow					14	(67%)	7	(33%)	21	24	-13%
Islington					9	(38%)	15	(63%)	24	45	-47%
Kensington & Chelsea					37	(79%)	10	(21%)	47	31	52%
Kingston-upon-Thames			1	(14%)	1	(14%)	5	(71%)	7	4	75%
Lambeth			18	(32%)	28	(50%)	10	(18%)	56	28	100%
Lewisham	1	(8%)			8	(62%)	4	(31%)	13	28	-54%
Merton	1	(8%)	3	(23%)	6	(46%)	3	(23%)	13	14	-7%
Newham	10	(25%)	1	(3%)	14	(35%)	15	(38%)	40	28	43%
Redbridge	1	(5%)	2	(11%)	16	(84%)			19	40	-53%
Richmond-upon-Thames					18	(69%)	8	(31%)	26	12	117%
Southwark			3	(10%)	21	(70%)	6	(20%)	30	27	11%
Sutton			1	(10%)	2	(20%)	7	(70%)	10	4	150%
Tower Hamlets			1	(1%)	45	(64%)	24	(34%)	70	48	46%
Waltham Forest	2	(8%)	1	(4%)	10	(40%)	12	(48%)	25	22	14%
Wandsworth	1	(8%)	2	(17%)	4	(33%)	5	(42%)	12	8	50%
Total	38	(4%)	57	(6%)	499	(52%)	361	(38%)	955	952	0%

Recruits					23	(82%)	5	(18%)	28	33	-15%
TP Non Borough					3	(38%)	5	(63%)	8	22	-64%
Central Operations	5	(7%)			25	(35%)	41	(58%)	71	66	8%
DCC			3	(7%)	24	(53%)	18	(40%)	45	13	246%
Holding											0%
HR					8	(38%)	13	(62%)	21	20	5%
SC			1	(2%)	39	(63%)	22	(35%)	62	46	35%
SO	2	(5%)	2	(5%)	22	(55%)	14	(35%)	40	27	48%
Left MPS	1	(11%)			5	(56%)	3	(33%)	9	2	350%
Outside MPD	7	(50%)	1	(7%)	1	(7%)	5	(36%)	14	7	100%
Unknown Location	4	(31%)			1	(8%)	8	(62%)	13	35	-63%

Grand Total	57	(5%)	64	(5%)	650	(51%)	495	(39%)	1266	1223	4%
Grand Total for previous 12 month period	44	(4%)	43	(4%)	684	(56%)	452	(37%)	1223		
(percentage +/- from current period)	30%		49%		-5%		10%		4%		

Officer Unit/Business Group at time of incident are highlighted according to 'TP PFM Family Groups'

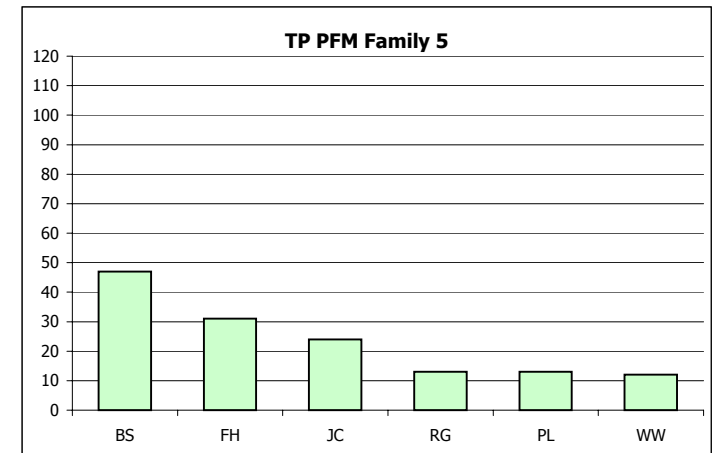
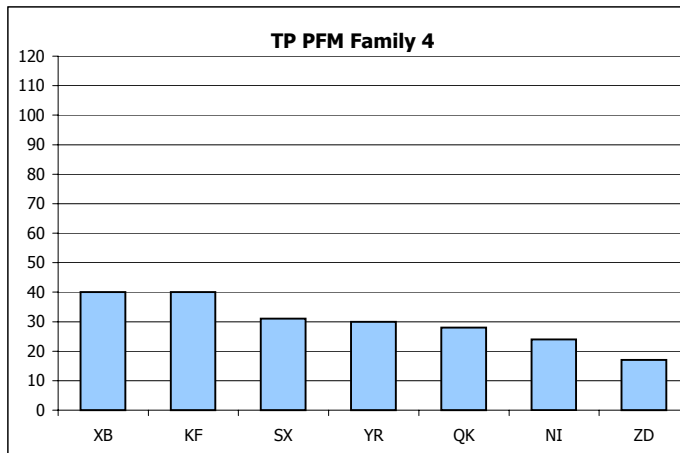
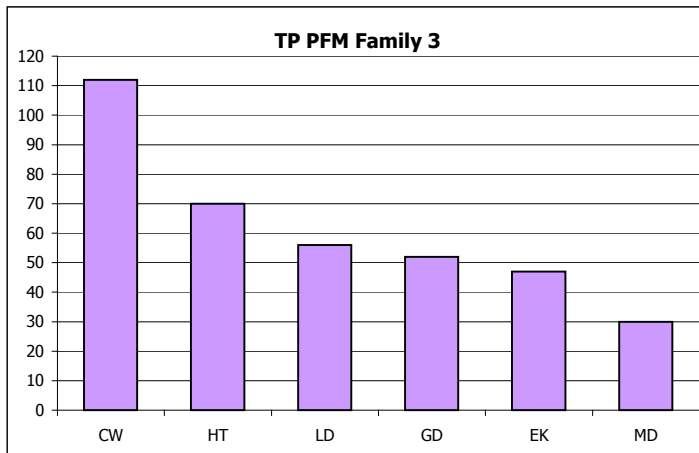
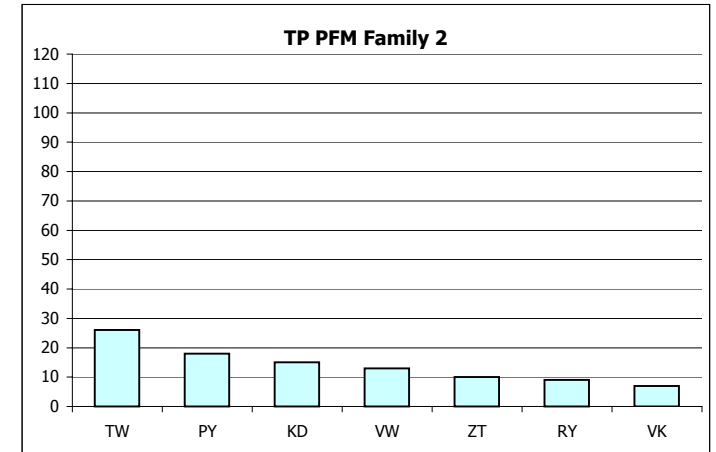
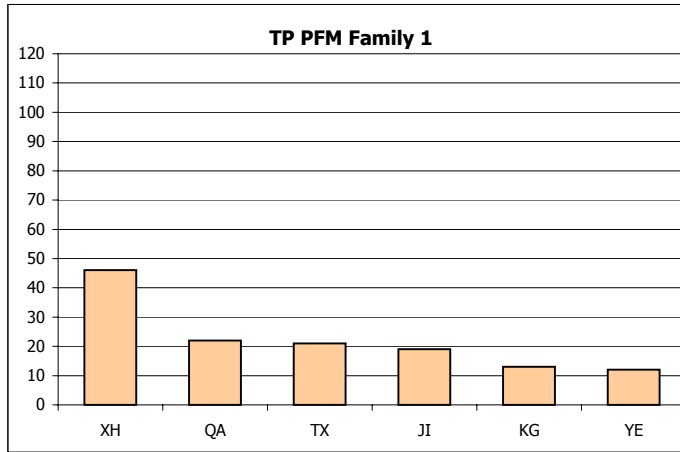
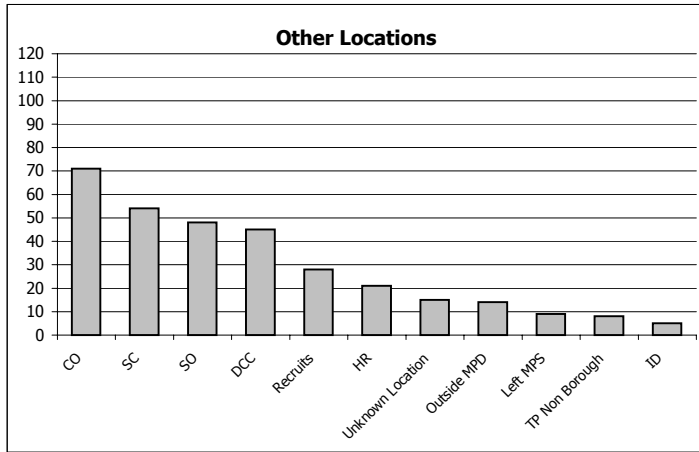
TP PFM Family 1	TP PFM Family 2	TP PFM Family 3	TP PFM Family 4	TP PFM Family 5	Other Units/Locations
-----------------	-----------------	-----------------	-----------------	-----------------	-----------------------

Officer Level

Conduct Matters - Officer Allegations Finalised

Not Protectively Marked

Period: 01 Mar 2006 to 28 Feb 2007
Data extracted: 01 Mar 2007



Officer Allegations Locally Resolved

Period: 01 Mar 2006 to 28 Feb 2007
 Data extracted: 01 Mar 2007

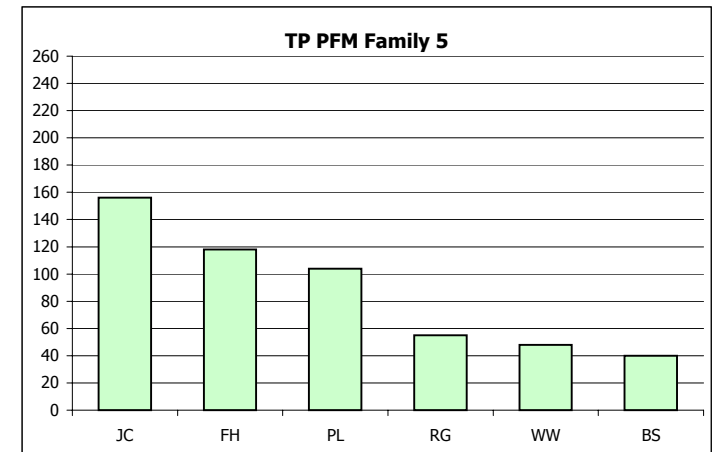
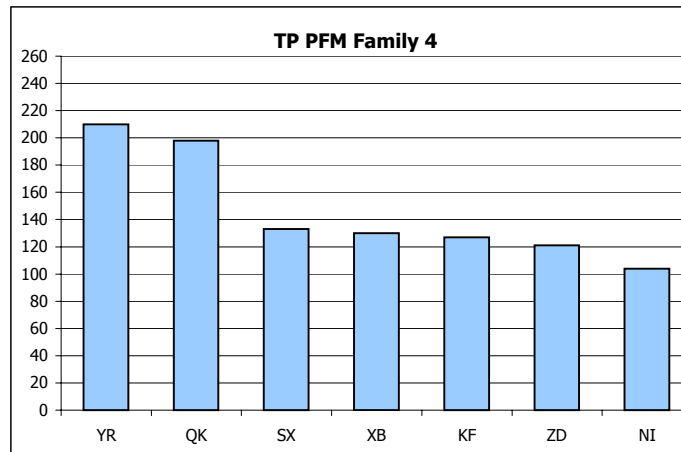
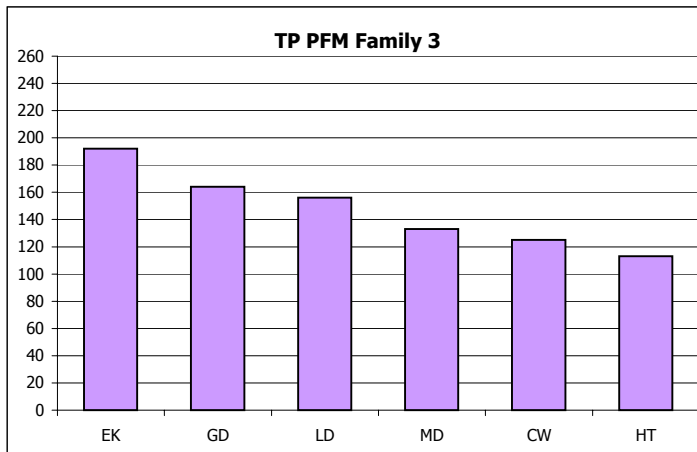
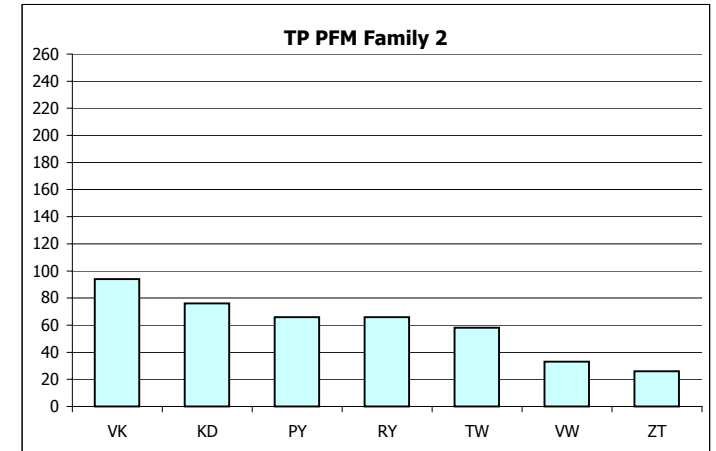
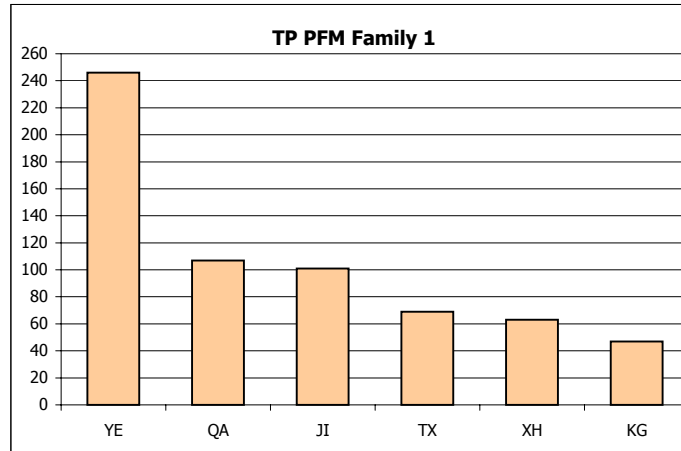
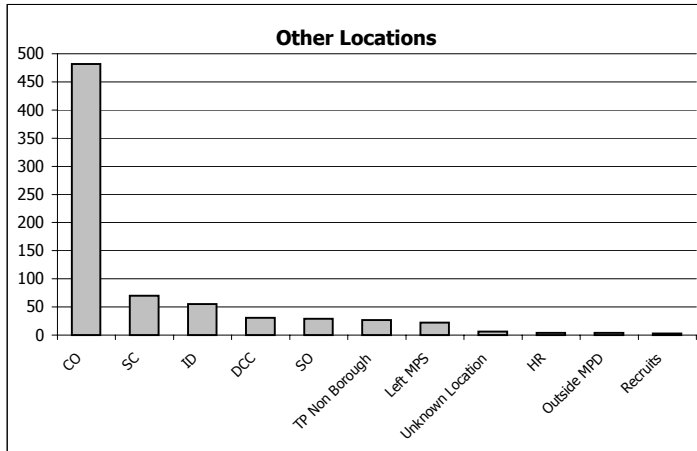
Officers unit/ Business group at time of incident	Desktop		Management		Mediation		Grand Total
	No. of alleg	% of total	No. of alleg	% of total	No. of alleg	% of total	
Barking & Dagenham	11	(23%)	36	(77%)			47
Barnet	47	(35%)	86	(65%)			133
Bexleyheath	33	(50%)	33	(50%)			66
Brent	100	(51%)	98	(49%)			198
Bromley	22	(33%)	44	(67%)			66
Camden	89	(46%)	103	(54%)			192
City of Westminster	78	(62%)	47	(38%)			125
Croydon	43	(36%)	78	(64%)			121
Ealing	63	(48%)	67	(52%)			130
Enfield	150	(61%)	96	(39%)			246
Greenwich	23	(42%)	32	(58%)			55
Hackney	36	(22%)	128	(78%)			164
Hammersmith & Fulham	83	(70%)	35	(30%)			118
Haringey	33	(16%)	177	(84%)			210
Harrow	46	(43%)	61	(57%)			107
Havering	20	(26%)	56	(74%)			76
Heathrow Airport	22	(40%)	33	(60%)			55
Hillingdon	29	(46%)	34	(54%)			63
Hounslow	28	(41%)	41	(59%)			69
Islington	46	(44%)	58	(56%)			104
Kensington & Chelsea	21	(53%)	19	(48%)			40
Kingston-upon-Thames	38	(40%)	56	(60%)			94
Lambeth	48	(31%)	108	(69%)			156
Lewisham	39	(38%)	65	(63%)			104
Merton	15	(45%)	18	(55%)			33
Newham	13	(10%)	114	(90%)			127
Redbridge	45	(45%)	56	(55%)			101
Richmond-upon-Thames	31	(53%)	27	(47%)			58
Southwark	59	(44%)	74	(56%)			133
Sutton	11	(42%)	15	(58%)			26
Tower Hamlets	38	(34%)	75	(66%)			113
Waltham Forest	25	(16%)	131	(84%)			156
Wandsworth	28	(58%)	20	(42%)			48
Total	1413	(40%)	2121	(60%)			3534
Recruits	1	(33%)	2	(67%)			3
TP Non Borough	9	(33%)	18	(67%)			27
Central Operations	143	(30%)	339	(70%)			482
DCC	17	(55%)	14	(45%)			31
Holding							0
HR	1	(25%)	3	(75%)			4
SC	15	(21%)	56	(79%)			71
SO	12	(43%)	16	(57%)			28
Left MPS	4	(18%)	18	(82%)			22
Outside MPD	1	(25%)	3	(75%)			4
Unknown Location	2	(33%)	4	(67%)			6
Grand Total	1618	(38%)	2594	(62%)	0	(0%)	4212
Grand Total for previous 12 month period	1593	(46%)	1853	(54%)	0	(0%)	3446
(percentage +/- from current period)		2%		40%		0%	22%
Grand Total for period: (percentage +/- from current period) 01/03/05 to 28/02/06							
							58
							-19%
							68
							96%
							51
							29%
							120
							65%
							54
							22%
							162
							19%
							140
							-11%
							94
							29%
							127
							2%
							65
							278%
							71
							-23%
							90
							82%
							59
							100%
							118
							78%
							88
							22%
							89
							-15%
							30
							83%
							92
							-32%
							81
							-15%
							80
							30%
							29
							38%
							62
							52%
							147
							6%
							148
							-30%
							50
							-34%
							143
							-11%
							61
							66%
							32
							81%
							94
							41%
							45
							-42%
							101
							12%
							157
							-1%
							61
							-21%
							2867
							23%
							10
							-70%
							26
							4%
							435
							11%
							14
							121%
							0
							0%
							5
							-20%
							44
							61%
							26
							8%
							12
							83%
							3
							33%
							4
							50%
							3446
							22%
Officer Unit/Business Group at time of incident are highlighted according to 'TP PFM Family Groups'							
TP PFM Family 1	TP PFM Family 2	TP PFM Family 3	TP PFM Family 4	TP PFM Family 5	Other Units/Locations		

Officer Level

Local Resolutions - Officer Allegations Finalised

Not Protectively Marked

Period: 01 Mar 2006 to 28 Feb 2007
Data extracted: 01 Mar 2007



Period: 01 Mar 2006 to 28 Feb 2007
Data extracted: 01 Mar 2007

Officers Unit/ Business Group at time of incident	Oppressive Behaviour		Discrimination		Malpractice		Failures in Duty		Incivility		Traffic Irregularity		Other		Grand Total	Grand Total for period: (percentage +/- from current period)	
	result of public complaint	result of conduct matter	result of public complaint	result of conduct matter	result of public complaint	result of conduct matter	result of public complaint	result of conduct matter	result of public complaint	result of conduct matter	result of public complaint	result of conduct matter	result of public complaint	result of conduct matter			
Barking & Dagenham							2	4							2	1 100%	
Barnet					1		2	4							7	17 -57%	
Bexleyheath								3		1					4	7 -43%	
Brent						2		11				1		3	17	26 -35%	
Bromley								4							4	7 -43%	
Camden								13				1		4	18	25 -28%	
City of Westminster				1		1		21		3		1		4	32	45 -29%	
Croydon	1							4						1	6	12 -50%	
Ealing					1			4				1		1	7	15 -53%	
Enfield								2						1	3	30 -90%	
Greenwich							1	3							1	2 -50%	
Hackney	2					1		8		1		1			13	22 -41%	
Hammersmith & Fulham	1					1		4		1				6	13	13 0%	
Haringey		1						2		7				2	12	12 0%	
Harrow								3							3	2 50%	
Havering								2				1			3	9	2
Heathrow Airport							1	1		1				1	4	3 33%	
Hillingdon								10						1	11	17 -35%	
Hounslow				1				3				1		1	6	8 0%	
Islington							2	3				1		1	8	9	-44%
Kensington & Chelsea						1		9		3				9	22	8 175%	
Kingston-upon-Thames															0	0 0%	
Lambeth		3						10		3			1	1	17	12 42%	
Lewisham						1		7				1			9	7 29%	
Merton								3							3	2 50%	
Newham								5		1				2	8	14 -43%	
Redbridge						1		7		1		1		4	14	27 -48%	
Richmond-upon-Thames							1	6						2	10	6 67%	
Southwark						3		5		2				5	17	12 42%	
Sutton								1						1	2	5	-50%
Tower Hamlets								4		1				1	6	21 -71%	
Waltham Forest								3	2	1	1		1		8	6 33%	
Wandsworth								3	1					1	5	5 0%	
Total	4	5	0	2	0	14	17	169	1	19	0	11	0	52	294	407	-28%
Recruits						1		9		2					12	14 -14%	
TP Non Borough				1											1	9	-89%
Central Operations	3	1			1		4	8	1	2			1	3	24	34 -29%	
DCC	1					2		9		3				1	16	7 129%	
Holding															0	0 0%	
HR						1		2		2					5	1 400%	
SC		1		1		3	1	14		1				7	28	16 75%	
SO						1		11				1		7	20	12 67%	
Left MPS								1							1	0 100%	
Outside MPD															0	0 0%	
Unknown Location															0	1 -100%	
Grand Total	8	7	0	4	1	22	22	223	2	29	0	12	1	70	401	501	-20%
Grand Total for previous 12 month period	7	11	0	6	2	26	15	304	2	24	0	31	0	73	501		
(percentage +/- from current period)	14%	-36%	0%	-33%	-50%	-15%	47%	-27%	0%	21%	0%	-61%	100%	-4%	-20%		

Written Warnings as a result of a conduct matter by type of investigation

	Last Period		This Period	
Local (issued by borough)	394	83%	295	80%
Recordable (issued by DPS)	81	17%	72	20%
Total	475	100%	367	100%

Officer Unit/Business Group at time of incident are highlighted according to 'TP PFM Family Groups'					
TP PFM Family 1	TP PFM Family 2	TP PFM Family 3	TP PFM Family 4	TP PFM Family 5	Other Units/Locations

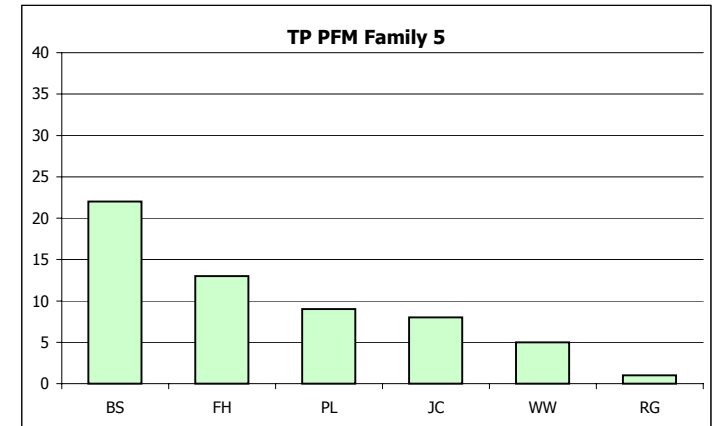
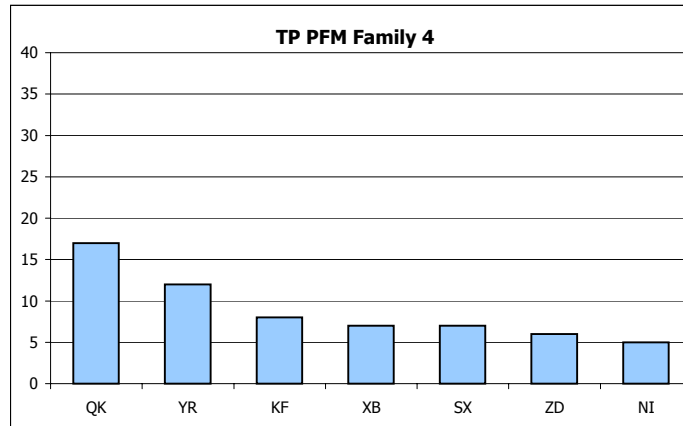
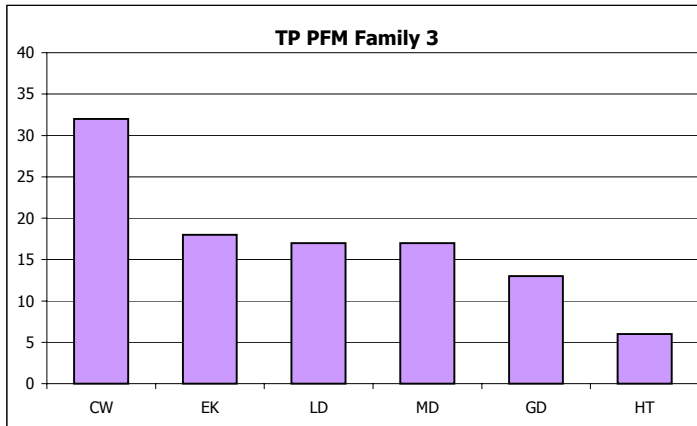
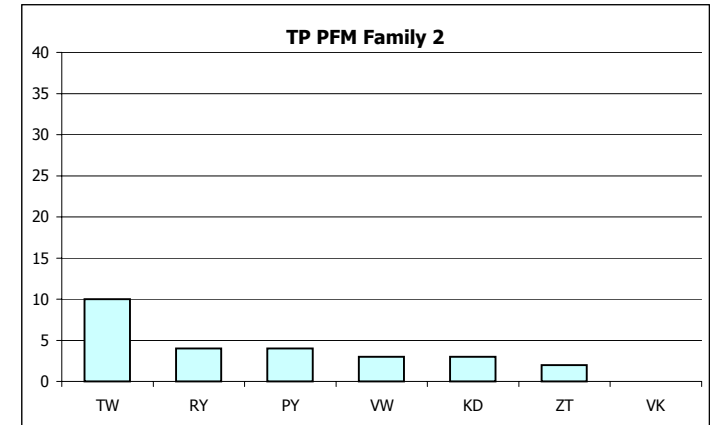
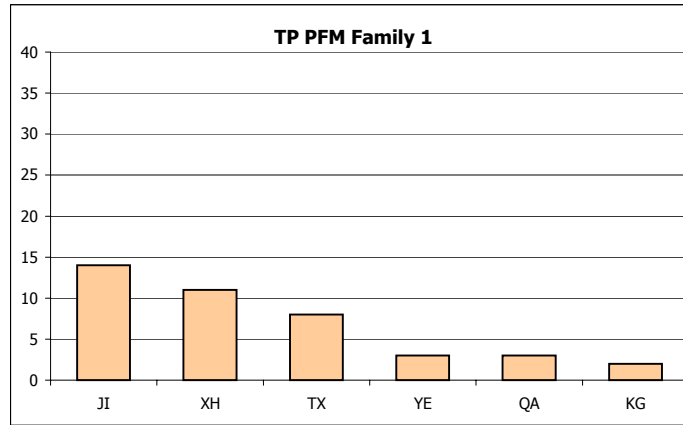
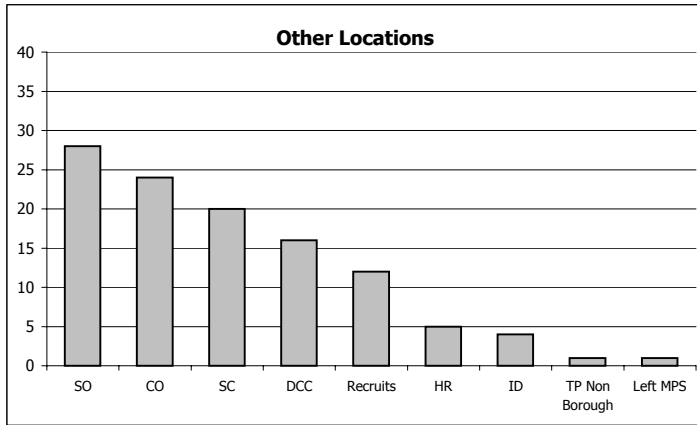
Officer Level

Written Warnings - Officer Allegations Finalised

Not Protectively Marked

Period: 01 Mar 2006 to 28 Feb 2007

Data extracted: 01 Mar 2007



**Workforce Figures -
Strength by Business Group**

Figures as at the end of January 2007

		Police				
		BWT		Variation (strength - BWT)		
				Strength	number	%
Territorial Policing - Boroughs		RAF based				
KG	Barking & Dagenham	Awaits	427.00			
SX	Barnet	Awaits	554.44			
RY	Bexley	Awaits	359.63			
QK	Brent	Awaits	664.20			
PY	Bromley	Awaits	500.10			
EK	Camden	Awaits	812.32			
CW	City of Westminster	Awaits	1,558.89			
ZD	Croydon	Awaits	693.13			
XB	Ealing	Awaits	671.46			
YE	Enfield	Awaits	578.68			
RG	Greenwich	Awaits	634.18			
GD	Hackney	Awaits	734.25			
FH	Hammersmith & Fulham	Awaits	540.15			
YR	Haringey	Awaits	686.56			
QA	Harrow	Awaits	359.12			
KD	Havering	Awaits	382.78			
XH	Hillingdon	Awaits	497.02			
TX	Hounslow	Awaits	507.06			
NI	Islington	Awaits	680.41			
BS	Kensington & Chelsea	Awaits	552.55			
VK	Kingston upon Thames	Awaits	291.01			
LX	Lambeth	Awaits	947.05			
PL	Lewisham	Awaits	624.12			
VW	Merton	Awaits	367.87			
KF	Newham	Awaits	759.75			
JI	Redbridge	Awaits	469.26			
TW	Richmond upon Thames	Awaits	305.65			
MD	Southwark	Awaits	842.61			
ZT	Sutton	Awaits	307.25			
HT	Tower Hamlets	Awaits	743.87			
JC	Waltham Forest	Awaits	535.14			
WW	Wandsworth	Awaits	589.40			
Borough Total			19,573.70	19,176.91	-396.79	-2.03%
Recruits			406.00	422.00	16.00	3.94%
Borough and Recruits Total			19979.70	19,598.91	-380.79	-1.91%
Non Borough Units			485.90	523.50	37.60	7.74%
HQ Business Groups		CO	3483.80	3,433.42	-50.38	-1.45%
		SO	3252.00	3,139.00	-113.00	-3.47%
		SC	3058.00	2,925.08	-132.92	-4.35%
		HR	411.60	428.65	17.05	4.14%
		CenServ/Stand.Intel	580.00	487.45	-92.55	-15.96%
		DOI	127.70	102.83	-24.87	-19.48%
		Resources	5.00	1.00	-4.00	-80.00%
		Holding	175.00	215.80	40.80	23.31%
TOTAL			31,558.70	30,855.64	-703.06	-2.23%