



# 2005-06 ANNUAL SCHOOL REPORT SUPPLEMENT

## Region 03

## H.S. 525

### TOWNSEND HARRIS HIGH SCHOOL

New York City Public Schools

Joel I. Klein, Chancellor

Grade Levels:

Students on Oct. 31, 2005: 1,048

Students on May 1, 2006:

#### School Mission Statement

*The mission established for our special high school is to maintain a school of ethnically integrated, highly motivated students who represent all parts of our diverse urban population. Our major educational priorities are to ensure academic excellence in the humanities tradition, but accommodated to the needs of the twenty-first century; to incorporate into all aspects of school life respect and regard for people and ideas; and to realize these priorities by emphasizing clear thinking, precision of language, and sensible decision-making. It is our expectation that a strong base in humanities study, bolstered by mathematics, science, and the appropriate integration of current technology, will equip students to tackle the ethical and intellectual questions of the next generation. An instructional program of quality moves students beyond the conventional classroom education.*

#### Principal's Statement

The Townsend Harris H.S. program is a successful collaborative with Queens College. Our unique Senior Bridge Year Program provides all seniors with Queens College courses. In addition, the partnership offers curriculum enrichment, staff development, college library and Internet services. A community service component is a requirement. We maintain the highest attendance rate and have one of the lowest incident rates in New York City. We are recognized as a National School of Excellence and are a 21st Century School of Distinction. Our school facility provides outstanding computer technology and social science and science research opportunities.

#### Special Academic Programs

All classes are either honors, advanced placement, or college level courses. Academic programs include: science & social science research, a Latin or Classical Greek requirement, elective courses in all subjects, and computerized instruction. Students are prepared for SAT II exams in all areas.

#### Extracurricular Activities

Thirty-one clubs including Free the Children, Model UN, Amnesty International, Art, and Dance. Twenty-six teams in track, basketball, handball, bowling, volleyball, swimming, fencing, soccer, softball, tennis & basketball; debate & mock trial; Arista Honor Society, Archon Service Society; The Classic newspaper and other award-winning publications.

#### Community Support

Partnerships include: Queens College (Bridge Year Program, College Now), New York Historical Society, 92nd Street Y, TDF, Taft Institute, Pratt Institute, Cooper Union, Whitney Museum, Museum of Modern Art, Metropolitan Museum of Art, Long Island Jewish-North Shore Hospital, US-Japan Foundation and Repertorio Espanol.

#### Parent/School Support

Our community benefits from an active SLT, a joint PTA/Alumni office, appreciation breakfasts and dinners, training opportunities in technology, instructional support assistance, PTA newsletter, and distribution of parent handbooks, school handbooks and orientation packets.



#### 2006-07 School Accountability Status:

In Good Standing

#### This school received Title I Funding in:

2004-05: NO; 2005-06: NO; 2006-07: NO

The Division of Assessment and Accountability (DAA) compiled this report primarily from central databases and information provided by this school's principal. Throughout the report, N/A indicates that information was not available or did not apply to this school. The 2005-2006 Annual School Report is a supplement to the New York State Education Department's School Report Card for New York City Schools. Consult the Parent Guide for an explanation of the data in this report. Other DAA reports can be obtained online at [www.nyc.gov/daa](http://www.nyc.gov/daa).

# STUDENTS

## Involved In Police Department Incidents

The total enrollment in this consolidated location is 1048 students. Please keep this number in mind as you review the numbers of incidents.

	This school	Consolidated Locations	Similar Size schools
<b>Major Crimes</b>			
Property Crimes	0		0.7
Crimes Against Persons	0		0.5
Other Crimes	1		4.9
Non- Criminal	0		7.0

Similar-Size Schools include all schools and consolidated locations with enrollments of 1001-1250 students.

<http://schools.nyc.gov/ourschools/schoolsafety.htm>

## Recent Immigrants\*

Percent of enrollment	2004	2005	2006
This school	0.9	0.8	0.2
Similar schools	2.4	2.0	0.8
City schools	11.6	9.8	7.6

\* Students enrolled as of Oct. 31, 2005 who immigrated to the U.S. within the last three years.

## Recent Immigrants' Place of Birth

Percent of students	2006
GUYANA	0.1
INDONESIA	0.1

## Profile of Entering Ninth and Tenth Graders\*

Characteristics	This School	Similar Schools	City Schools
	Percent	Percent	Percent
Gender Male	30.9	48.7	50.5
Gender Female	69.1	51.3	49.5
Part-time Special Education	0	2.1	5.8
Full-time Special Education	0	0.1	5.2
ELL	0	1	12.8
Over-age for grade	3.7	7.3	29.9
Percent eligible for free lunch	3.7	7.3	29.9
Avg. daily attend. during prior sem.	96	95.2	89.8
Percent meeting standard in:			
ELA (tested only)	100	88.6	32.7
Mathematics (tested only)	100	91.2	40.8

\* This information is for the students who were on register as new 9th and 10th graders on October 31, 2005 and came from another school.

\* Not applicable to elementary and middle schools

## Admission to Other Schools in September 2005

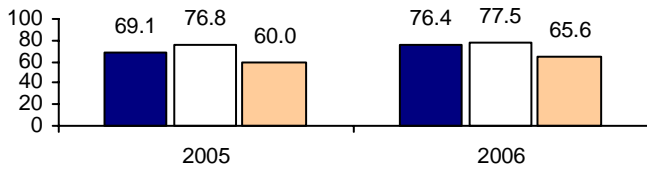
School Name	Boro	District	School	Leavers*	
			Number	Number	Percent

\* Leavers are students who left their school for any reason.

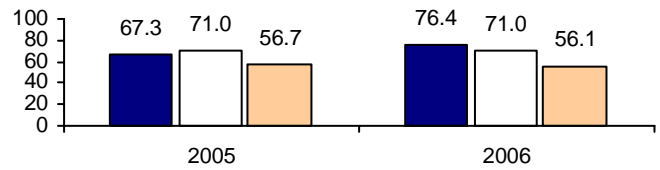
# SCHOOL CHARACTERISTICS

## TEACHERS

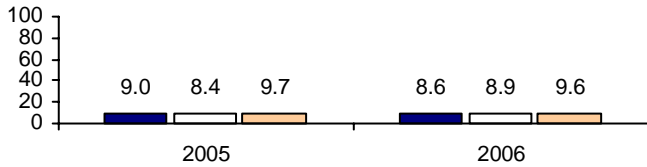
**Percent More Than Two Years Teaching in This School**



**Percent More Than Five Years Teaching Anywhere**



**Average Days Absent**



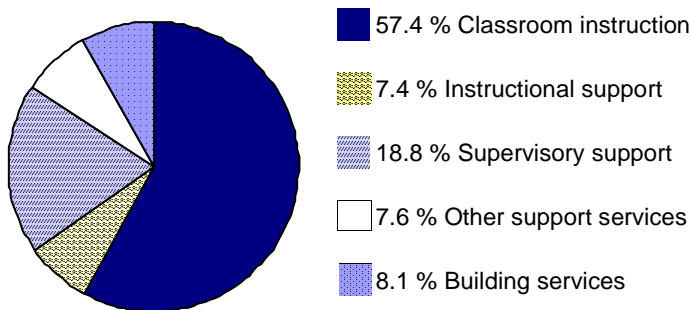
## SCHOOL EXPENDITURES

**Average Spending Per Student (Direct Services Only)**

	2004	2005	2006
This school	\$8,652	\$9,900	N/A
Similar schools	\$8,711	\$9,424	N/A
City schools	\$11,138	\$11,607	N/A

Note: The state calculation of school expenditures per student for direct and indirect services in 2004 was \$12,896 for all New York City schools. An average of \$13,085 was calculated for all New York State schools including those in New York City.

**How money was spent in this school in 2005 (Direct Services Only)**



0.7% is used for District Support.

## OTHER SCHOOL INFORMATION

**School Capacity**

Percent of utilization*	2004	2005	2006
This school	110.5	110.4	108.2
Similar schools	93.0	93.5	97.3
City schools	106.0	106.4	103.5

\*When over 100%, school has exceeded official capacity.

# PERFORMANCE OF ALL STUDENTS ON REGENTS EXAMINATIONS

	2004-2005				2005-2006			
	Number	55 - 100	65 - 100	85 - 100	Number	55 - 100	65 - 100	85 - 100
	Tested	Percent	Percent	Percent	Tested	Percent	Percent	Percent
<b>ENGLISH</b>								
<b>This School</b>	257	100.0	100.0	97.7	273	100.0	100.0	98.2
<b>Similar Schools</b>	3806	99.1	97.6	68.6	3643	99.2	98.0	67.9
<b>City Schools</b>	63738	78.1	61.6	16.6	70344	77.6	62.9	16.6
<b>MATH A</b>								
<b>This School</b>	197	100.0	100.0	80.2	215	100.0	100.0	93.5
<b>Similar Schools</b>	3225	98.9	97.3	76.6	2935	99.5	98.0	81.9
<b>City Schools</b>	74616	81.2	61.0	13.6	76930	83.1	62.3	13.9
<b>MATH B</b>								
<b>This School</b>	260	99.2	95.8	48.8	267	98.9	95.5	46.1
<b>Similar Schools</b>	3363	92.9	87.1	40.9	3490	92.5	86.3	42.1
<b>City Schools</b>	18163	70.4	58.5	16.3	21205	68.9	56.4	15.5
<b>CHEMISTRY</b>								
<b>This School</b>	262	99.6	99.2	63.4	279	99.3	99.3	64.9
<b>Similar Schools</b>	3731	97.8	90.5	34.3	3891	97.4	90.4	38.9
<b>City Schools</b>	23988	77.5	55.9	10.5	24062	79.3	58.0	13.1
<b>LIVING ENVIRONMENT</b>								
<b>This School</b>	232	100.0	100.0	66.8	225	100.0	100.0	77.3
<b>Similar Schools</b>	3717	99.0	98.2	65.5	3821	98.5	97.9	61.6
<b>City Schools</b>	62307	72.7	55.2	10.6	65322	76.0	56.5	9.7
<b>GLOBAL HISTORY AND GEOGRAPHY</b>								
<b>This School</b>	274	100.0	100.0	90.9	273	100.0	100.0	84.2
<b>Similar Schools</b>	3711	98.7	97.0	74.8	4014	98.1	96.2	73.8
<b>City Schools</b>	73666	68.8	51.1	15.3	77999	66.6	49.4	16.5
<b>U.S. HISTORY AND GOVERNMENT</b>								
<b>This School</b>	258	100.0	100.0	96.1	265	100.0	100.0	99.2
<b>Similar Schools</b>	3639	98.6	97.1	82.1	3590	99.1	98.1	87.2
<b>City Schools</b>	60352	76.4	61.9	25.6	65271	79.8	64.0	27.7
<b>LANGUAGES OTHER THAN ENGLISH</b>								
<b>This School</b>	263	100.0	100.0	97.7	214	99.5	99.5	95.3
<b>Similar Schools</b>	2915	99.8	99.3	79.7	2948	99.8	99.2	79.4
<b>City Schools</b>	22273	98.1	96.3	66.7	21600	98.2	96.2	67.4

These data are based on all students, including General Education and Special Education students, regardless of services received.

# OTHER INDICATORS

## SCHOLASTIC APTITUDE TEST (SAT) IN 2005-2006

### Percent of 11th and 12th graders taking SAT

	This School	Similar Schools	City Schools
11th and 12th grade enrollment	530	8089	100890
Percent taking SAT	48.3	47.5	36.1

#### Average SAT Scores\*

SAT Section	This School	Similar Schools	City Schools
Verbal	628	551	444
Mathematics	632	565	467

\* Scores on each segment of this test range from 200 to 800.

## STUDENT PLANS AFTER GRADUATION

### Post-high school plans of the 2006 graduates\*

	This School Percent	Similar Schools Percent	City Schools Percent
4-Year college	0	76.2	44.3
2-Year college	0	1.5	16.2
Employment	0	0.2	3.3
Military services	0	0.2	0.9
Other	100	21.8	35.2

\*\* Data are not reported if the total number of 2006 graduates are less than 20.

\* These are student reports, which do not include IEP diplomas or local certificates.