

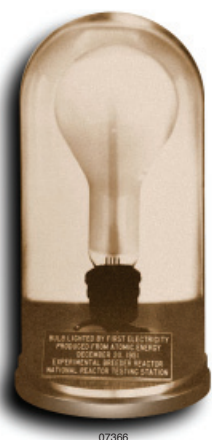
The Birth of Nuclear Power



Part of the EBR-I team posing in front of the reactor facility's chalkboard where their historic achievement was recorded.

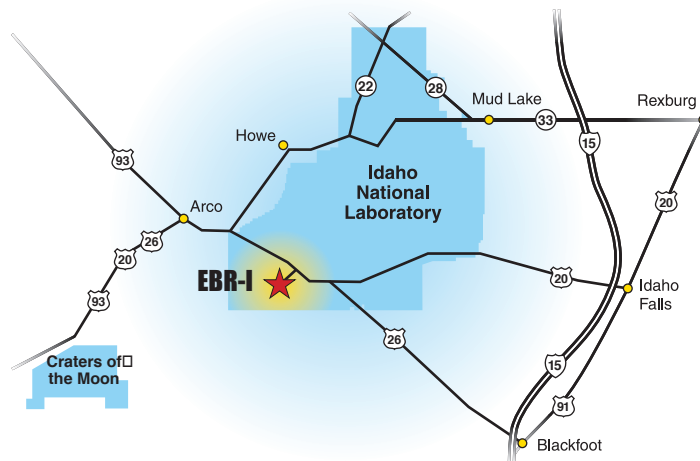
The first production of usable electric power from a nuclear reactor occurred in December 1951 at the National Reactor Testing Station in Southeast Idaho, now known as the Department of Energy's

Idaho National Laboratory. Since then, more than 50 other pioneering nuclear reactors have been designed and built at the Idaho site.



This bulb is one of four lit by nuclear-generated electricity in 1951.

How to get there...



Distance in miles to EBR-I road junction from:

Arco	18
Blackfoot	40
Idaho Falls	50
Boise	225

Come see one of Idaho's historic landmarks...

EBR-I



Visitors to the EBR-I National Historic Landmark may also be interested in seeing the Craters of the Moon National Monument, located 46 miles to the west on Highway 20/26.

Experimental Breeder Reactor-I (EBR-I) generated the world's first usable amount of electricity from nuclear energy in December 1951.

The INL is a U.S. Department of Energy National Laboratory
Operated by Batelle Energy Alliance, LLC.



An Energy Landmark

Have you ever seen a nuclear reactor? Ever wonder how electricity is generated from nuclear energy? Satisfy your curiosity by visiting the Experimental Breeder Reactor-I (EBR-I) visitor center, located on U.S. Highway 20-26 between Idaho Falls and Arco (see map on back).

The facility, a National Historic Landmark where usable electricity was first generated from nuclear energy in 1951, is open to the public from Memorial Day weekend through Labor Day weekend—seven days a week—from 9 a.m. to 5 p.m. Admission is free.

You'll see four nuclear reactors, including two aircraft nuclear propulsion prototypes, a reactor control room, remote handling devices for radioactive materials, radiation detection equipment, and much more. You'll learn how electricity is produced from splitting atoms and

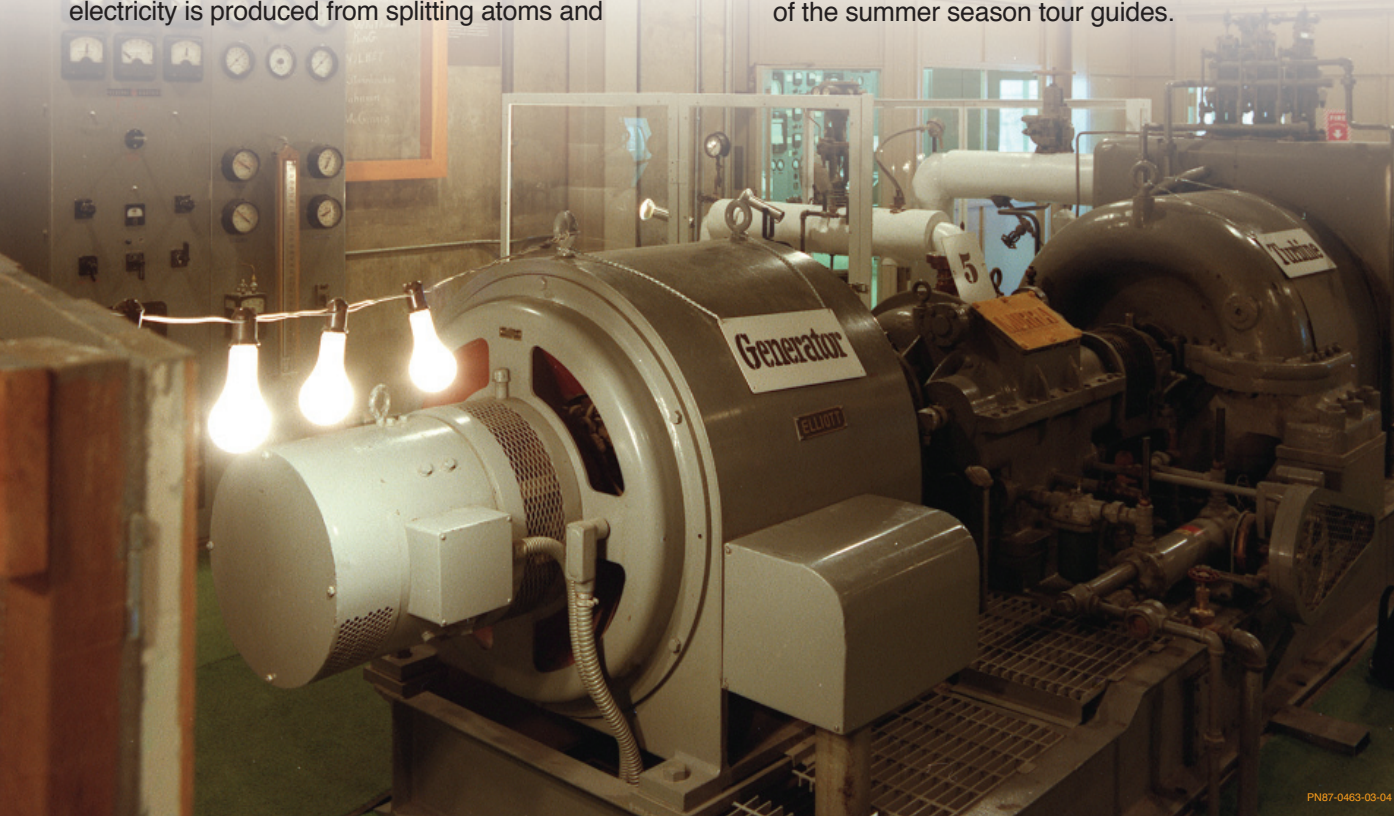
see numerous explanatory displays and exhibits. You can walk through the plant using the printed tour instructions, or take a guided tour with one of the summer season tour guides.

After Labor Day weekend, you can schedule group tours for weekdays only by going to www.inl.gov and clicking on "Request a Tour."

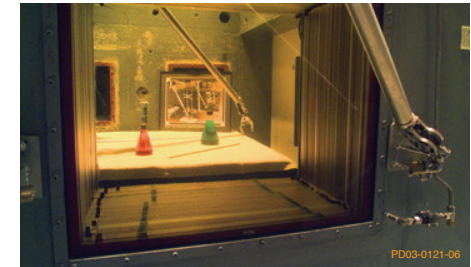


Groups, such as this one visiting the EBR-I control room, can arrange tours by calling (208) 526-0050.

PN97-0633-01-07A



PN87-0463-03-04



PD03-0121-06

Remote manipulators offer visitors a hands-on experience.



PN99-0446-01-08A

The EBR-I site is also home to these nuclear aircraft engine prototypes.