

GREECE

in figures

NATIONAL STATISTICAL SERVICE OF GREECE

2008

The NATIONAL STATISTICAL SERVICE OF GREECE (NSSG) through this issue presents certain general statistical data which depict the current demographic, social and economic situation of Greece. The data published herein are a selection of those available by the end of the first semester 2008.

The general publications of the NSSG are: the STATISTICAL YEARBOOK OF GREECE, the CONCISE STATISTICAL YEARBOOK OF GREECE and the MONTHLY STATISTICAL BULLETIN, which is being updated with the most recent data. Special issues by subject are published as well. We would also like to inform you that the Library Section of the NSSG provides users with data on statistics concerning EU, eurozone members states and other countries.

Apart from the statistical data appearing in the publications, the NSSG provides more recent ones upon request. Besides, users can be provided with data on magnetic means upon settlement of the related invoice.

For the publications, the price-list and any other general information, one should apply to the National Statistical Service of Greece:

Statistical Information and Publications Division,

46, Pireos and Eponiton str., 185 10 Pireas

tel.: 210 4852346

fax: 210 4852312

e-mail: library@statistics.gr

info@statistics.gr

data.dissem@statistics.gr

Symbols:

- . = Provision of data impossible. Not applicable.
- ... = No data available.
- = Magnitudes negligible.
- * = Provisional data.

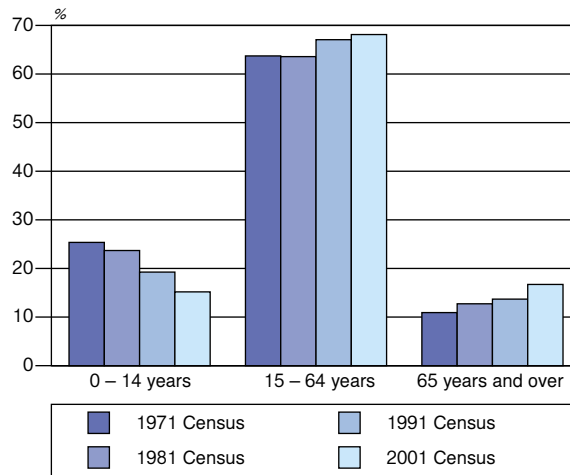
I. POPULATION

1a. De facto population of Greece, by sex and age groups

	Censuses			
	1971 ⁽¹⁾	1981 ⁽¹⁾	1991 ⁽¹⁾	2001 ⁽¹⁾
Greece, total	8.768.372	9.739.589	10.259.900	10.964.020
Males	4.286.748	4.779.571	5.055.408	5.427.682
Females	4.481.624	4.960.018	5.204.492	5.536.338
0 – 14 years	2.223.904	2.307.297	1.974.867	1.664.085
15 – 64 years	5.587.352	6.192.751	6.880.681	7.468.395
65 years and over	957.116	1.239.541	1.404.352	1.831.540
Percentage distribution				
Males	48,89	49,07	49,27	49,50
Females	51,11	50,93	50,73	50,50
0 – 14 years	25,36	23,69	19,25	15,18
15 – 64 years	63,72	63,58	67,06	68,12
65 years and over	10,92	12,73	13,69	16,71

(1) 25% and 10% sample elaboration of the 1971 and 1981 Censuses returns, correspondingly. Complete elaboration of the 1991 and 2001 Censuses returns.

Percentage distribution of population, by age groups



lb. De facto and usual resident population of Greece, by geographic region

Geographic region	2001 Census	
	De facto	Usual resident
Greece, total	10.964.020	10.934.097
Central Greece and Evia	4.591.568	4.671.809
thereof:		
Department of Attiki	3.761.810	3.894.573
Prefecture of Athens	2.664.776	2.805.262
» of E. Attiki	403.918	386.067
» of W. Attiki	151.612	149.794
Prefecture of Pireas	541.504	553.450
Peloponnissos	1.155.019	1.100.071
Ionian Islands	212.984	209.608
Ipiros	353.820	336.392
Thessalia	753.888	740.115
Makedonia	2.424.765	2.414.558
Thraki	362.038	363.479
Aegean Islands	508.807	503.697
Kriti	601.131	594.368

Note: The administrative structure of Attiki department in Prefectures is in use according to the L. 2539/97.

lc. Vital statistics

	1991	2001	2003	2004	2005	2006
Marriages	65.568	58.491	61.081	51.377	61.043	57.802
Per 1.000 inhabitants	(1)6,4	(1)5,3	(1)5,5	(1)4,6	(1)5,5	(1)5,2
Divorces	6.351	11.184	12.033	12.307	13.494	13.218
Per 1.000 marriages:	96,9	191,2	197,0	239,5	221,1	228,7
Live births	102.620	102.282	104.420	105.655	107.545	112.042
Per 1.000 inhabitants	(1)10,0	(1)9,4	(1)9,5	(1)9,6	(1)9,7	(1)10,0
Deaths	95.498	102.559	105.529	104.942	105.091	105.476
Per 1.000 inhabitants	(1)9,3	(1)9,4	(1)9,6	(1)9,5	(1)9,5	(1)9,5
Main causes of death:						
– Heart diseases	29.765	31.797	33.145	32.370	31.447	32.347
– Neoplasms	19.968	24.408	24.799	25.448	25.896	25.718
– Cerebrovascular diseases	18.791	18.538	18.468	17.599	17.223	17.086
– Diseases of the respiratory system	4.676	5.179	4.953	4.976	5.021	6.119
– Accidents	3.646	3.944	3.544	3.693	3.725	3.528

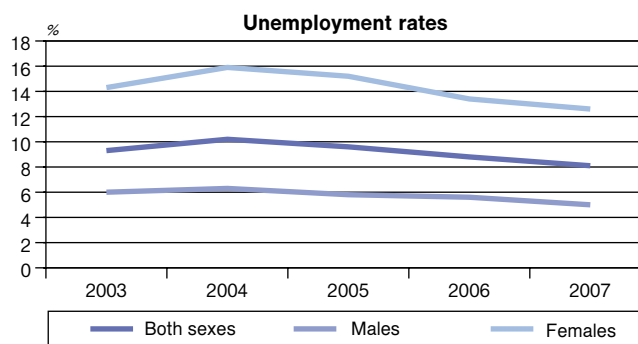
(1) The compilation of the demographic indices for the years 1991, 2001, 2003, 2004, 2005 and 2006 is based on the estimated de facto population, which has been revised according to the 2001 Population Census.

II. EMPLOYMENT – UNEMPLOYMENT

Ila. Labour force

in thousands

	2003	2004	2005	2006	2007
Labour force	4.728,4	4.823,2	4.848,8	4.880,2	4.917,9
Persons employed	4.286,6	4.330,5	4.381,9	4.452,8	4.519,9
<i>% of the total labour force</i>	90,7	89,8	90,4	91,2	91,9
<i>By branch:</i>					
Agriculture, livestock, fishing	655,5	545,6	544,6	536,1	522,4
Mining	12,6	14,7	17,7	18,2	18,1
Manufacturing	565,0	569,7	560,3	563,2	558,9
Electricity, gas	42,4	39,1	37,7	40,9	40,0
Construction and public works	345,9	350,1	367,3	358,5	394,4
Trade, restaurants, hotels	1.035,4	1.028,1	1.086,2	1.090,2	1.118,5
Transport, storage, communication	263,1	272,4	267,7	281,7	267,6
Banking, insurance and management of real estate	355,0	395,4	402,3	399,9	407,5
Other services	1.011,7	1.115,6	1.098,1	1.164,2	1.192,5
Not declared	—	—	—	—	—
Persons unemployed .	441,8	492,7	466,9	427,4	398,0
<i>% of the total labour force</i>	9,3	10,2	9,6	8,8	8,1



IIb. Population of 15 years and over,
by employment status

in thousands

Reference period	Grand total	Labour force						Economically inactive population
		Total	% over population	Employed	% over labour force	Unemployed	% over labour force	
2003: 1st Quarter	8.996,7	4.712,2	52,4	4.224,5	89,6	487,7	10,4	4.284,6
2nd »	9.008,9	4.728,4	52,5	4.286,6	90,7	441,8	9,3	4.280,5
3rd »	9.020,8	4.748,3	52,6	4.309,1	90,7	439,2	9,3	4.272,5
4th Quarter	9.033,1	4.748,9	52,6	4.277,9	90,1	471,1	9,9	4.284,2
2004: 1st Quarter	9.044,8	4.792,9	53,0	4.249,1	88,7	543,8	11,3	4.251,9
2nd »	9.056,9	4.823,2	53,2	4.330,5	89,8	492,7	10,2	4.233,7
3rd »	9.069,9	4.827,5	53,2	4.341,6	89,9	485,9	10,1	4.242,4
4th Quarter	9.082,5	4.831,8	53,2	4.331,4	89,6	500,4	10,4	4.250,7
2005: 1st Quarter	9.094,5	4.827,5	53,1	4.325,0	89,6	502,4	10,4	4.267,1
2nd »	9.102,6	4.848,8	53,3	4.381,9	90,4	466,9	9,6	4.253,9
3rd »	9.112,9	4.855,3	53,3	4.385,6	90,3	469,8	9,7	4.257,5
4th Quarter	9.122,3	4.854,3	53,2	4.383,4	90,3	470,9	9,7	4.268,0
2006: 1st Quarter	9.136,0	4.873,1	53,3	4.400,0	90,3	473,1	9,7	4.262,9
2nd »	9.150,1	4.880,2	53,3	4.452,8	91,2	427,4	8,8	4.269,9
3rd »	9.164,2	4.902,5	53,5	4.494,2	91,7	408,3	8,3	4.261,8
4th Quarter	9.179,1	4.891,2	53,3	4.462,1	91,2	429,1	8,8	4.287,9
2007: 1st Quarter	9.195,4	4.906,9	53,4	4.461,2	90,9	445,7	9,1	4.288,5
2nd »	9.206,7	4.917,9	53,4	4.519,9	91,9	398,0	8,1	4.288,8
3rd »	9.211,3	4.926,8	53,5	4.539,3	92,1	387,5	7,9	4.284,5
4th Quarter	9.216,0	4.915,6	53,3	4.519,1	91,9	396,5	8,1	4.300,4

IIc. Annual average unemployment percentage

2003	2004	2005	2006	2007
9,7	10,5	9,9	8,9	8,3

Notes: a) Beginning with 2000 and onwards the labour force survey results (tables IIa – IIc) have been readjusted according to the estimated population, which is also based on the 2001 Census.

b) The data of the table IIa refer to the 2nd quarter of each year.

III. HEALTH – SOCIAL PROTECTION AND SOCIAL INSURANCE

IIIa. Public health

	2001	2002	2003	2004	2005	2006
Hospital units	336	326	327	319	317	317
Public	145	147	148	141	141	141
Private	191	179	179	178	176	176
<i>Per 100,000 inhabitants:</i>						
Beds	477,4	471,3	471,1	468,9	473,8	482,7
Hospital doctors	223,0	215,0	220,5	223,5	230,7	229,2
Nursing personnel	399,5	421,3	430,2	428,1	423,4	430,0
Patients discharged <i>(thousands)</i>	1.803	1.879	1.940	2.036
Days of treatment <i>(thousands)</i>	14.337	14.775	17.055	16.043
Occupancy %	75	78	90	85

IIIb. Social protection expenditures and persons insured

	2001	2002	2003	2004	2005*
Social insurance expenditures <i>(million drachmae)</i> ⁽¹⁾	9.049.644	29.465.821	33.491.558	37.037.854	39.700.912
<i>Persons directly insured</i> <i>(thousands):</i>					
Principal pension	3.864	4.011	4.030	4.012	4.059
Subsidiary pension	2.960	3.086	3.078	3.229	3.139
Welfare benefits	1.029	1.071	1.071	1.070	1.126
Sickness benefits	5.897	5.828	5.983	5.979	5.941
Other benefits	1.702	1.705	1.704	1.705	1.705

Note: Since 2002 in thousand euro.

(1) Source: Ministry of Labour and Social Insurance.

IV. EDUCATION

School units, educational institutions. Teaching staff,
pupils – students, by education level

	1991/92	2001/02	2003/04	2004/05	2005/06	2006/07 ⁽¹⁾
1. Primary education						
<i>a. Pre-school education:</i>						
Nursery schools	5.529	5.628	5.646	5.676	5.672	5.763
Kindergartners	8.377	10.682	11.543	12.012	12.334	11.846
Infants	135.014	144.653	141.008	142.369	143.637	142.666
<i>b. Elementary education:</i>						
School units	7.526	5.989	5.854	5.778	5.675	5.668
Teachers	42.991	54.320	(6)60.770	(6)62.882	64.416	58.981
Pupils	784.707	646.331	654.780	647.543	643.200	639.083
2. Secondary general education						
<i>a. High schools – lycea</i>						
School units	2.993	3.105	3.208	3.216	3.298	3.361
Teaching staff	50.732	66.301	70.427	73.480	77.194	64.465
Pupils	720.511	566.315	557.056	560.248	573.210	573.123
<i>b. Secondary technical – vocational and ecclesiastic education⁽²⁾:</i>						
School units	611	677	663	664	654	643
Teaching staff	12.066	23.529	23.092	22.433	22.124	15.785
Students	149.724	161.667	146.148	135.663	125.067	107.366
3. Third-level education						
<i>a. Higher technical – vocational and ecclesiastic education:</i>						
Schools	77	68	71	73	75	75
Teaching staff	5.693	10.997	12.009	12.049	11.906	11.258
Students ⁽³⁾	55.559	120.169	144.153	143.033	146.380	142.254
Graduates with certificate or diploma	7.953	11.451	15.270	17.681	18.408	.
<i>b. Third-level higher education:</i>						
Educational institutions	17	18	19	21	21	21
Teaching staff	9.124	11.133	(4)11.074	(5)11.794	12.684	12.603
Students ⁽³⁾	115.464	160.582	(4)169.188	(5)168.660	170.629	171.857
Graduates with certificate or diploma	18.898	25.231	(4)28.113	(5)34.489	32.781	.

(1) Data at the beginning of the school – academic year.

(2) Since the beginning of the school year 2006/07 (L. 3475/06) the Unified Lycea have been renamed General Lycea.

(3) Excluding students who have completed attendance but still have some lessons to pass.

(4) Excluding data from the Medical School of the University of Athens and Medical School of the University of Thessaloniki.

(5) Excluding data from the Medical School of the University of Athens.

(6) Including teachers and other teaching staff (foreign language and music teachers), full time teachers present and absent.

V. AGRICULTURE – LIVESTOCK – FORESTRY – FISHING

Va. Holdings and utilized agricultural area

(Data from the 2005 Structural Agriculture and Livestock Holdings Survey)

areas in thousand stremmas

Regions ⁽¹⁾	Holdings		Utilized agricultural area
	Total	With utilized agricultural area	
Greece, total	833.590	828.157	39.838
Eastern Makedonia and Thraki	65.390	64.413	3.979
Central Makedonia	117.770	116.754	7.013
Western Makedonia	30.393	29.899	2.335
Thessalia	80.165	78.725	4.403
Ipiros	43.316	43.035	1.234
Ionian Islands	31.883	31.860	959
Western Greece	94.763	94.482	3.716
Central Greece	81.177	80.849	3.871
Peloponnissos	105.885	105.785	4.024
Attiki	26.649	26.234	573
Northern Egeo	33.799	33.752	1.923
Southern Egeo	24.340	24.330	1.284
Kriti	98.061	98.040	4.525

Note: Possible differences between sums and total are due to round up.

(1) Great administrative areas.

Vb. Persons employed in the total of holdings,
by category and working days

(Data from the 2005 Structural Agriculture and
Livestock Holdings Survey)

Regions ⁽¹⁾	Managers of holdings owned by legal entities	Number of employed persons in holdings owned by natural persons	Permanent workers	Seasonal workers	
				Total	Working days
Greece, total	511	1.510.446	24.861	1.241.295	23.477.884
Eastern Makedonia and Thraki	50	131.588	2.236	91.357	1.490.478
Central Makedonia	146	218.245	5.963	173.782	4.902.289
Western Makedonia	6	54.484	1.441	17.995	499.398
Thessalia	25	145.345	2.954	113.236	1.669.911
Ipiros	49	71.398	1.462	37.049	487.293
Ionian Islands	10	54.409	338	21.659	522.308
Western Greece	25	167.362	1.082	192.403	3.298.539
Central Greece	34	145.377	1.975	155.699	2.479.349
Peloponnissos	36	188.338	1.369	201.324	3.600.959
Attiki	53	44.888	2.699	44.115	709.933
Northern Egeo	11	58.515	351	29.798	641.097
Southern Egeo	42	41.085	280	7.149	118.233
Kriti	25	189.411	2.710	155.729	3.058.096

Note: See note, table Va (page 11).

(1) Great administrative areas.

Vc. Agricultural areas and production

	1981	1991	2001	2004	2005	2006
1. Areas under crops (thous. stremmas)						
Total	35.723	35.343	34.656	33.847	33.719	33.067
Crops on arable land	24.238	23.344	22.190	21.368	21.243	20.599
Vegetables	1.221	1.236	1.163	1.164	1.113	1.090
Vines (grapes and raisins)	1.864	1.517	1.321	1.258	1.263	1.261
Areas under trees	8.400	9.246	9.982	10.057	10.100	10.117
2. Production of selected agricultural products (thous. tons)						
Wheat	2.932	3.162	2.196	2.092	2.019	1.779
Cotton	385	594	1.355	1.243	1.241	1.040
Tobacco	131	173	142	133	124	37
Must	521	466	421	443	377	391
Olive oil	250	198	435	321	415	393
Oranges	726	805	1.112	698	936	896
Lemons	214	177	179	68	84	88
Mandarins	49	83	130	91	127	109

Vd. Animal capital and production

	1981	1991	2001	2004	2005	2006
1. Animal capital (thous. heads)						
Cattle	831	602	621	604	618	629
Pigs	1.017	986	934	940	949	902
Sheep	8.144	8.692	9.124	8.827	8.792	8.830
Goats	4.526	5.336	5.662	5.509	5.422	5.402
Beehives (thousands) ..	1.167	1.196	1.294	1.302	1.314	1.331
2. Animal production (thous. tons)						
Meat	508	501	462	494	498	461
Milk	1.691	1.805	2.032	2.038	2.054	2.077
Cheese, hard	35	38	36	47	45	38
Cheese, soft	108	117	126	123	126	120
Honey	11	14	15	16	16	16

Ve. Sea fishery

	1991	2003	2004	2005	2006
Motor propelled fishing vessels (20 HP and over)	9.336	7.018	6.845	6.598	6.475
Quantity of catch (thous. tons)	139	90	91	90	97
Value (million drachmae) ⁽¹⁾	79.652,0	274.913,8	291.913,7	314.718,4	343.662,9

(1) Since 2002 in thousand euro.

Ve1. Aquaculture and pisciculture

	2001	2002	2003	2004	2005	2006
Quantity of catch (thous. tons)	97,4	87,9	101,4	97,1	106,2	113,2
Value (million drachmae) ⁽¹⁾	93.732	244.645,5	284.768,2	302.439,4	346.846,1	373.913,6

(1) Since 2002 in thousand euro.

Vf. Forests

	1981	1991	2001	2005	2006	2007
Total area (thous. stremmas)	29.510,9	29.378,1	22.411,6
Forest fires (stremmas) ⁽¹⁾	814.173	235.737	183.423	64.374	126.610	2.257.746
Area reafforested (stremmas) ⁽¹⁾	36.776	41.395	18.364	15.234	10.735	10.920

(1) Source: Ministry of Rural Development and Food.

VI. ENVIRONMENTAL POLLUTION

Sampling stations	Pollutants per m ³ of atmospheric air (mg) ⁽¹⁾				
	Sulphur dioxide SO ₂ ⁽²⁾	Nitrogen dioxide NO ₂ ⁽³⁾	Ozone O ₃ ⁽³⁾	Carbon monoxide CO ⁽³⁾	Particulate matter PM ₁₀ ⁽⁴⁾
<i>Patission Station</i>					
2006 Maximum	359	261	123	13,5	.
Mean	21	86	19	2,5	.
Intermediate	13	83	12	2,0	.
2007 Maximum	101	340	114	12,3	.
Mean	20	100	19	2,4	.
Intermediate	15	98	10	2,1	.
<i>Aristotelous Station</i>					
2006 Maximum	.	238	.	.	386
Mean	.	68	.	.	57
Intermediate	.	66	.	.	51
2007 Maximum	.	229	.	.	139
Mean	.	65	.	.	52
Intermediate	.	61	.	.	49
<i>Peristeri Station</i>					
2006 Maximum	142	191	219	7,4	.
Mean	12	41	57	0,7	.
Intermediate	7	34	56	0,5	.
2007 Maximum	46	287	284	8,3	.
Mean	12	41	55	0,7	.
Intermediate	10	37	51	0,5	.
<i>Pireas Station</i>					
2006 Maximum	275	198	182	9,8	.
Mean	20	66	43	1,3	.
Intermediate	13	66	36	1,0	.
2007 Maximum	78	296	190	7,2	118
Mean	24	72	39	1,2	47
Intermediate	22	72	30	1,0	44
<i>Nea Smirni Station</i>					
2006 Maximum	197	241	216	11,1	.
Mean	11	44	51	0,9	.
Intermediate	6	35	41	0,5	.
2007 Maximum	70	270	320	10,5	.
Mean	13	43	65	0,7	.
Intermediate	11	33	65	0,5	.

Source: Ministry of Environment, Physical Planning and Public Works.

Note: Since 2005, according to the national and european legislation, the particulate – matter measurement method has been changed. The method of "black smoke" has been replaced by the gravimetric method for the measurement of particles of less than 10µm diameter.

(1) All the values of pollution are in µg/m³, except from carbon monoxide (CO), the values of which are in mg/m³.

(2) Average 24-hour values resulting from hourly measurements.

(3) Calculated from hourly values.

(4) Average 24-hour values resulting from 24-hour measurements.

VII. CONSTRUCTION

Private building activity

	2002	2003	2004	2005	2006	2007
New buildings (<i>number</i>)	45.195	45.233	43.431	56.341	45.390	41.779
Volume (<i>thous. m³</i>)	64.996	65.686	61.966	88.776	67.136	62.819
Surface (<i>thous. m²</i>)	18.969	18.359	17.291	25.877	18.489	16.908
Value ⁽¹⁾	520.059	494.962	645.410	1.003.974	738.226	658.764
Extensions (<i>number</i>)	17.143	16.774	17.175	17.596	17.541	16.596
Volume (<i>thous. m³</i>)	12.184	12.322	12.721	13.455	15.452	15.022
Surface (<i>thous. m²</i>)	3.167	3.116	3.241	3.479	3.837	3.672
Value ⁽¹⁾	87.370	81.231	113.046	128.005	146.100	137.361
New dwellings (<i>number</i>)	128.236	127.008	122.135	195.206	125.368	103.865
1 – 2 rooms	45.836	48.146	46.419	73.810	45.551	36.781
3 – 4 rooms	66.607	64.601	62.356	103.763	65.642	53.966
5 rooms and over	15.793	14.261	13.360	17.633	14.175	13.118

Note: The extensions also include revisions, renovations, legalizations, modifications.

(1) Since 2002 in thousand euro.

VIII. MINING – MANUFACTURING – ENERGY

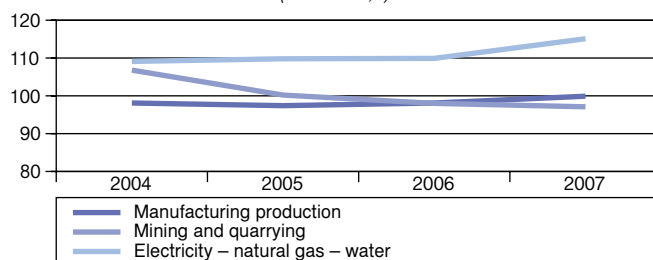
VIIIa. Mining production

	2000	2001	2002	2003	2004	2005
Production (<i>thous. tons</i>):						
Bauxite	1.818	1.903	2.437	2.442	2.480	2.484
Lignite	63.948	66.621	70.958	69.783	71.787	68.531
Magnesite	-	-

VIIIb. Index of mining, manufacturing and electricity – natural gas – water⁽¹⁾
(2000=100,0)

	2004	2005	2006	2007
Overall index	100,4	99,6	100,1	102,2
<i>Mining and quarrying production index</i>	106,8	100,2	98,0	97,1
<i>Electricity – natural gas – water production index</i>	109,1	109,8	109,9	115,1
<i>Manufacturing production index</i>	98,1	97,4	98,1	99,9
Food products and beverages	105,0	103,5	106,0	109,8
Tobacco	116,4	109,4	99,9	104,0
Textiles	78,1	63,8	55,6	57,2
Wearing apparel	82,7	70,5	61,3	67,6
Leather and footwear	73,6	64,6	61,2	62,7
Wood and cork	84,1	79,2	77,1	76,0
Paper and paper products	89,2	93,1	94,1	94,4
Printing and publishing	107,1	121,8	127,9	126,8
Oil and coal products	98,7	101,2	107,8	110,9
Chemical products	118,2	120,4	112,1	121,0
Rubber and plastic products	95,9	91,9	97,6	100,4
Non-metallic minerals	106,0	106,9	109,6	103,0
Basic metals	114,5	116,0	118,8	119,4
Manufacture of final metallic products	107,6	111,9	116,8	107,7
Machinery and equipment	86,7	99,2	109,6	102,7
Office machinery and computers	36,6	12,1	211,4	20,9
Electrical machinery apparatus, etc.	101,3	106,4	112,6	117,3
Radio, television and communication apparatus	50,1	30,9	9,2	17,6
Medical and precision instruments	108,9	116,2	151,1	184,8
Transport equipment	72,9	46,3	43,7	57,6
Other transport equipment	88,8	86,7	93,0	91,7
Furniture and other industries	60,3	71,5	73,2	75,2
Recycling	128,8	127,7	115,6	130,8

Index of mining, manufacturing and electricity – natural gas – water⁽¹⁾
(2000=100,0)



(1) Since 2005 "Industrial Production Index".

VIIIc. Electricity

	1991	2001	2003	2004	2005	2006
Installed capacity (thous. kw)	9.232	11.158	12.138	12.224	12.276	12.695
Thermal	6.718	8.097	9.078	9.126	9.178	9.634
Hydroelectric	2.514	3.061	3.061	3.061	3.061	3.061
Production (million kwh)	31.946	48.051	52.214	52.034	52.943	52.065
Consumption (million kwh)	29.607	44.475	48.422	49.560	50.037	53.034

IX. EXTRENAL TRADE

in million euro

	2005		2006		2007	
	Intracom-munity*	With third countries	Intracom-munity*	With third countries	Intracom-munity*	With third countries
Imports, cif	26.582	19.297	27.787	22.935	32.066	23.456
Exports, fob	8.195	6.593	8.941	7.506	11.838	6.010
Balance of trade*	-18.387	-12.704	-18.846	-15.429	-20.228	-17.446

X. TRANSPORT – COMMUNICATION – TOURISM

Xa. Land transports

	2002	2003	2004	2005	2006	2007
Passengers (thousands):						
Railway	14.238	8.884	9.483	9.959	9.521	...
Bus	870.947
Urban lines	736.668
Interurban lines	134.279
Thermal buses	363.944	380.173	394.584	394.476	375.817	...
Trolley buses	70.078	73.543	78.460	74.179	80.212	...
Athens – Pireus Electric Railways SA.	108.366	111.597	125.849	109.233	110.069	...
Attiko Metro	137.178	153.025	169.548	169.042	168.693	...
Tram SA.	3.287	8.246	15.770	...
Railway freight (thous. tons)	2.027	2.592	2.968	3.058	3.884	...
Vehicles operated ...	5.693.008	5.967.610	6.302.033	6.640.613	6.995.659	7.380.265
Passenger	3.646.069	3.839.549	4.073.511	4.303.129	4.543.016	4.798.530
Buses	27.247	27.139	26.780	26.829	26.938	27.102
Trucks	1.109.137	1.131.027	1.159.137	1.186.483	1.219.889	1.255.945
Motorcycles	910.555	969.895	1.042.605	1.124.172	1.205.816	1.298.688
Road traffic accidents	16.810	15.751	15.547	16.914	16.019	*15.092
Persons injured	24.093	22.342	21.849	23.706	22.332	*20.464
thereof dead	1.634	1.605	1.670	1.658	1.657	*1.578

Xb. Sea transports

	1991	2001	2003	2004	2005	2006
Greek merchant fleet:						
Number of vessels . . .	2.062	2.052	2.092	2.094	2.035	2.014
Capacity (thous. GRT) . .	24.090	30.623	33.433	34.332	33.020	34.266
Passengers (thousands)	32.146	57.655	52.800	50.980	44.717	46.440
<i>Domestic</i>	30.230	54.646	50.018	48.631	42.114	43.804
<i>Foreign</i>	1.916	3.009	2.782	2.349	2.603	2.636
Goods transport (thous. tons)	75.981	94.935	119.963	116.560	113.906	119.581
<i>Domestic</i>	19.184	25.985	41.958	40.174	37.471	39.337
<i>Foreign</i>	56.797	68.950	78.005	76.386	76.435	80.244

Xc. Air transports (Olympic Airlines SA)

	1991	2001	2003	2004	2005	2006
Passengers (thous.) . .	4.937	6.129	5.340	5.727	5.702	5.635
<i>Domestic</i>	3.204	3.240	2.948	3.130	2.902	3.026
<i>International</i> ⁽¹⁾	1.733	2.889	2.392	2.597	2.800	2.609
Freight – Mail (tons) . .	63.121	47.106	33.956	29.027	29.737	31.314
<i>Domestic</i>	28.992	17.567	14.392	11.489	11.231	10.842
<i>International</i> ⁽¹⁾	34.129	29.539	19.564	17.538	18.506	20.472

(1) Including Olympic Airlines SA traffic among international airports.

Xd. Telecommunications (Hellenic Telecommunications Organization)

	1991	2001	2003	2004	2005	2006
Installed capacity (capacity of automatic telephone exchanges – thousands)	4.436	6.071	6.028	6.022	6.002	...
New services						
1. ISDN						
Installed capacity		284.231	512.504	595.073	654.730	...
Customers		204.418	455.158	532.564	585.599	604.080
2. HELLASCOM						
Operating circuits		9.136	13.479	13.624	13.451	13.009
3. HELLASPAC						
Permanent connections		7.914	8.043	7.700	7.441	7.247
Dial up connections		2.089	1.094	1.000	956	887
4. HELLASTREAM						
Operating connections		354	1.010	1.393	1.385	...

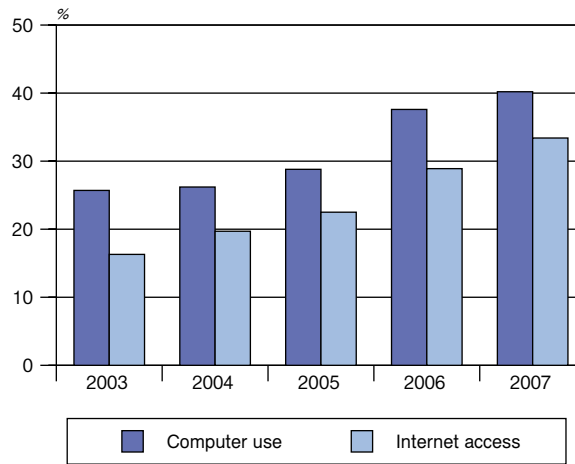
Xe. Computer use – internet access:1st quarter 2007
(Survey on the Use of Information and Communication Technologies, 2007)

	Total	%	Students	%	Employees	%
Total population aged 16 – 74	8.201.532	100,0	674.923	8,2	2.905.559	35,4
<i>thereof:</i>						
Computer use	3.296.674	40,2	609.935	18,5	1.675.590	50,8
Internet access	2.739.607	33,4	556.007	20,3	1.367.383	49,9

Table Xe (continued)

	Self-employed	%	Unemployed	%	Retired, housewives, in military service and other economically inactive persons	%
Total population aged 16 – 74	1.440.086	17,6	361.754	4,4	2.819.209	34,4
<i>thereof:</i>						
Computer use	591.006	17,9	170.476	5,2	249.668	7,6
Internet access	490.125	17,9	144.308	5,3	181.783	6,6

**Computer use – internet access:
1st quarter 2003 – 2007**



Xf. Number of households having access to information and communication technologies

(Survey on the Use of Information and Communication Technologies, 2007)

Device	Total	%
Households	3.689.737	100,00
<i>having access to:</i>		
Conventional analogue (terrestrial) TV . .	3.670.671	99,48
<i>Satellite dish connected to TV</i>	270.178	7,36
<i>Cable TV</i>	15.009	0,40
<i>Digital terrestrial TV</i>	266.019	7,24
Telephone	3.505.237	94,99
Mobile phone	2.936.045	79,57
<i>Internet enabled</i>	1.240.750	42,25
Games console	519.233	14,07
Desktop computer	1.256.824	34,06
Portable computer	492.538	13,34
Handheld computer (palmtop)	16.408	0,44

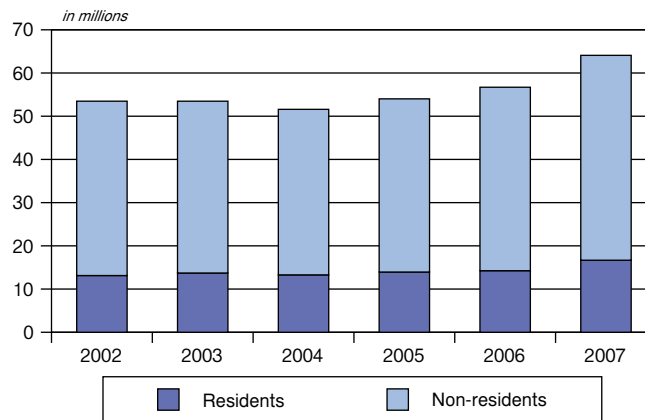
Xg. Tourist movement

	2003	2004	2005	2006	2007
Foreigners arriving in Greece (including cruise passengers)	14.784.560	14.267.420	15.938.131	17.283.910	18.754.593

Xh. Nights spent in collective accommodation establishments (except campings) and capacity of hotels and similar establishments

	2002	2003	2004	2005	2006	2007
Nights spent (thousands)	53.478	53.476	51.590	54.017	56.708	64.085
Residents	13.128	13.716	13.280	13.942	14.249	16.675
Non-residents	40.350	39.760	38.310	40.075	42.459	47.410
Hotel establishments:						
Units	8.329	8.689	8.899	9.036	9.111	9.207
Rooms	319.689	339.540	351.891	358.721	364.179	367.992
Beds	606.330	644.898	668.271	682.050	693.252	700.933

Nights spent in all hotel units

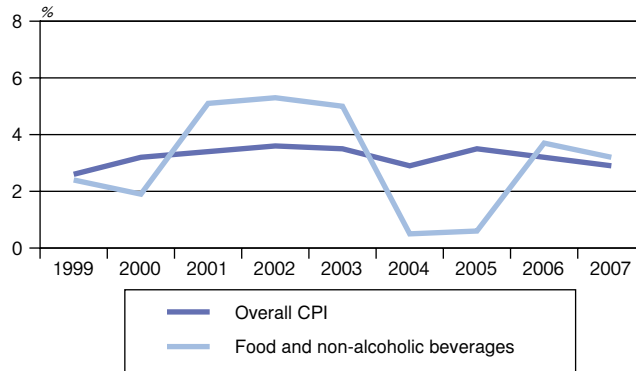


XI. ECONOMIC INDICES

X1a. Annual average sub-indices of CPI groups of items
(2005=100,0)

Groups of goods and services	Weights %	2001	2002	2003	2004	2005	2006	2007
Overall index	1,000,00	87,48	90,65	93,86	96,58	100,00	103,20	106,18
Food and non-alcoholic beverages	178,21	89,43	94,19	98,88	99,39	100,00	103,74	107,10
Alcoholic beverages and tobacco	41,60	83,74	89,80	93,56	97,89	100,00	105,73	112,42
Clothing and footwear	87,01	86,86	89,97	91,78	95,54	100,00	102,41	105,93
Housing	116,51	81,23	83,93	87,65	91,85	100,00	106,49	109,76
Durable household goods, supplies and services	78,22	93,04	94,56	96,41	97,97	100,00	101,98	104,39
Health	74,55	84,08	88,07	91,86	96,12	100,00	102,70	105,75
Transport	132,21	88,82	89,49	92,21	95,44	100,00	102,44	104,28
Communication	47,02	114,81	109,52	104,93	100,40	100,00	100,24	100,30
Recreation and culture	50,30	89,74	92,71	95,38	98,09	100,00	101,76	103,76
Education	26,63	84,70	88,04	91,99	96,06	100,00	103,92	108,21
Hotels, cafés and restaurants	100,19	83,15	88,74	92,99	96,94	100,00	102,66	106,66
Other goods and services	67,56	88,88	92,06	94,96	97,08	100,00	102,43	104,74

Comparisons of annual average rates of change of Overall Consumer Price Index and the group "Food and non-alcoholic beverages"



XIb. Evolution of the annual rates of change
of the Overall Consumer Price Index
(2005=100,0)

Year	Annual rate of change		Annual average rate of change	
	December index	Rate of change %	Annual average index	Rate of change %
1972	1,808	6,6	1,735	4,3
1973	2,362	30,7	2,004	15,5
1974	2,680	13,5	2,542	26,9
1975	3,100	15,7	2,882	13,4
1976	3,463	11,7	3,266	13,3
1977	3,906	12,8	3,664	12,2
1978	4,356	11,5	4,123	12,5
1979	5,434	24,8	4,908	19,0
1980	6,858	26,2	6,129	24,9
1981	8,401	22,5	7,628	24,5
1982	10,001	19,0	9,240	21,1
1983	12,016	20,2	11,104	20,2
1984	14,185	18,0	13,154	18,5
1985	17,706	24,8	15,694	19,3
1986	20,716	17,0	19,306	23,0
1987	23,982	15,8	22,472	16,4
1988	27,331	14,0	25,510	13,5
1989	31,389	14,8	29,005	13,7
1990	38,572	22,9	34,932	20,4
1991	45,522	18,0	41,728	19,5
1992	52,078	14,4	48,354	15,9
1993	58,335	12,0	55,322	14,4
1994	64,557	10,7	61,338	10,9
1995	69,671	7,9	66,818	8,9
1996	74,750	7,3	72,293	8,2
1997	78,274	4,7	76,296	5,5
1998	81,303	3,9	79,932	4,8
1999	83,534	2,7	82,039	2,6
2000	86,796	3,9	84,624	3,2
2001	89,440	3,0	87,480	3,4
2002	92,469	3,4	90,655	3,6
2003	95,313	3,1	93,856	3,5
2004	98,261	3,1	96,576	2,9
2005	101,819	3,6	100,000	3,5
2006	104,781	2,9	103,196	3,2
2007	108,849	3,9	106,183	2,9

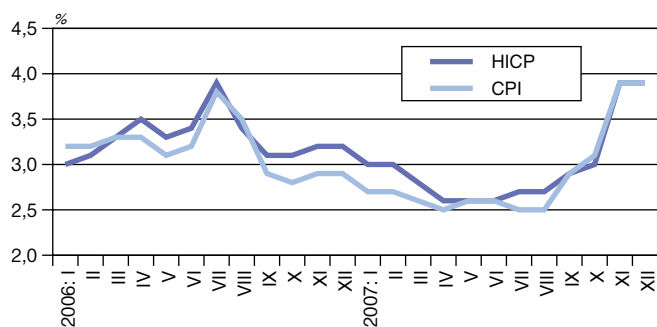
Xlc. Comparisons between HICP and CPI

HICP 2005=100,0

CPI 2005=100,0

Year and month	HICP	Rate of change %		CPI	Rate of change %	
		Annual	Annual average		Annual	Annual average
2006: I	101,67	3,0	3,4	101,70	3,2	3,5
II	100,07	3,1	3,4	100,47	3,2	3,5
III	102,82	3,3	3,4	102,82	3,3	3,5
IV	103,84	3,5	3,4	103,57	3,3	3,5
V	103,96	3,3	3,4	103,73	3,1	3,5
VI	103,90	3,4	3,5	103,62	3,2	3,5
VII	103,02	3,9	3,5	102,95	3,8	3,5
VIII	101,96	3,4	3,5	102,19	3,5	3,5
IX	104,05	3,1	3,4	103,82	2,9	3,4
X	104,73	3,1	3,4	104,40	2,8	3,3
XI	104,57	3,2	3,3	104,30	2,9	3,3
XII	105,16	3,2	3,3	104,78	2,9	3,2
2007: I	104,76	3,0	3,3	104,48	2,7	3,2
II	103,11	3,0	3,3	103,15	2,7	3,1
III	105,66	2,8	3,3	105,52	2,6	3,0
IV	106,50	2,6	3,2	106,19	2,5	3,0
V	106,69	2,6	3,1	106,45	2,6	2,9
VI	106,64	2,6	3,1	106,35	2,6	2,9
VII	105,83	2,7	3,0	105,55	2,5	2,8
VIII	104,75	2,7	2,9	104,77	2,5	2,7
IX	107,11	2,9	2,9	106,86	2,9	2,7
X	107,86	3,0	2,9	107,63	3,1	2,7
XI	108,67	3,9	2,9	108,40	3,9	2,8
XII	109,22	3,9	3,0	108,85	3,9	2,9

Comparison of the twelve-month rates of change of the HICP and CPI: 2005 and 2006



XId. Monthly evolution of the overall harmonized index
of consumer prices

(2005=100,0)

Month	Indices							
	2000	2001	2002	2003	2004	2005	2006	2007
Annual average	84,18	87,26	90,67	93,79	96,63	100,00	103,31	106,40
January	82,28	84,89	88,96	91,87	94,71	98,70	101,67	104,76
February	81,91	84,75	87,95	91,65	94,05	97,03	100,07	103,11
March	84,02	86,71	90,49	93,98	96,74	99,50	102,82	105,66
April	84,53	87,66	91,22	94,20	97,10	100,30	103,84	106,50
May	84,75	88,09	91,44	94,63	97,54	100,67	103,96	106,69
June	84,24	88,02	91,22	94,49	97,32	100,45	103,90	106,64
July	82,79	86,27	89,40	92,53	95,43	99,14	103,02	105,83
August	82,93	86,27	89,55	92,53	95,14	98,56	101,96	104,75
September	84,68	88,09	91,44	94,42	97,18	100,88	104,05	107,11
October	85,62	88,38	91,87	94,78	97,90	101,54	104,73	107,86
November	85,98	88,46	91,94	94,92	97,98	101,32	104,57	108,67
December	86,42	89,47	92,60	95,51	98,49	101,90	105,16	109,22

XIe. Input – output price index in agricultural – livestock production

(2000=100,0)

	2002	2003	2004	2005	2006	2007
Received prices (output), (excluding subsidies)	113,6	123,6	121,2	125,0	133,2	142,6
Purchased prices (input)	105,0	109,1	117,3	123,3	128,2	136,3

XIf. Producer price index in industry

(2000=100,0)

	2002	2003	2004	2005	2006	2007
Total market	104,8	106,5	110,6	116,4	123,5	127,1
Domestic market	106,0	108,5	112,3	118,9	127,1	131,3
Non-domestic market	101,8	101,5	106,6	110,6	115,2	117,3
Eurozone ⁽¹⁾			107,8	108,7	112,2	113,5
Non-eurozone ⁽¹⁾			105,5	112,3	117,9	120,7

(1) The availability of data of PPI with the distinction of non-domestic index in eurozone and non-eurozone starts from 2004 and onwards.

Xlg. Import price index in industry
(2000=100,0)

	2002	2003	2004	2005	2006	2007
Overall market	103,4	104,1	107,4	116,9	122,0	125,6
Eurozone market ⁽¹⁾			105,0	106,5	109,5	113,3
Non-eurozone market ⁽¹⁾			111,6	135,6	144,6	148,1

(1) The availability of data of MPI with the distinction of Import Index in eurozone and non-eurozone starts from 2004 and onwards.

Xlh. Price indices of work categories and construction costs indices of new residential buildings
(2000=100,0)

	2001	2002	2003	2004	2005	2006	2007
Index of Work Categories	102,2	103,8	106,2	108,7	111,6	114,8	118,0
Construction Costs Index	102,7	105,0	107,9	111,1	114,7	119,3	124,6
Material Costs Index	102,4	104,7	107,6	111,8	115,7	122,1	129,8
Labour Costs Index	103,3	106,1	108,9	111,4	114,9	117,8	120,6

Xlii. Turnover index⁽¹⁾ in retail trade
(2000=100,0)

Categories	2002	2003	2004	2005	2006	2007
Overall index	117,8	127,1	135,0	143,0	158,5	167,5
Super markets	122,5	137,8	149,4	158,8	182,1	193,1
Department stores	120,3	131,0	140,1	146,9	176,1	184,0
Food, beverages and tobacco	114,8	120,9	127,4	131,5	138,5	141,6
Pharmaceutical products	116,1	127,2	135,3	144,1	149,3	153,5
Clothing and footwear	113,5	116,8	122,7	129,9	134,2	139,8
Furniture, electrical, household fixtures	110,0	114,5	119,3	125,6	147,7	158,7
Books, stationery, other goods	115,1	127,4	137,0	145,0	152,0	164,3
Dealing, telemarketing, etc.	105,0	109,1	112,1	113,3	116,3	119,7

(1) The turnover index in retail trade (base year 2000=100,0) replaces the index of retailed sales value, compiled by the NSSG up to 2004.

Xlj. Retail trade volume index⁽¹⁾
(2000=100,0)

Categories	2002	2003	2004	2005	2006	2007
Overall index	109,2	114,0	119,1	122,6	132,4	135,4
Super markets	110,3	118,7	127,6	134,3	149,2	152,2
Department stores	115,5	123,2	130,3	131,6	155,9	160,1
Food, beverages and tobacco	101,6	101,8	106,6	109,8	111,4	109,0
Pharmaceutical products	115,3	123,9	130,4	132,3	135,7	138,0
Clothing and footwear	106,6	107,6	109,1	110,5	111,4	112,6
Furniture, electrical, household fixtures	109,3	113,5	118,0	118,7	139,7	149,1
Books, stationery, other goods	111,4	119,7	125,4	124,0	128,7	137,2
Dealing, telemarketing, etc. ⁽²⁾						

(1) The retail trade volume index derives from the disinflation of the turnover index of retail trade, by using the consumer price index as disinflator.

(2) The volume index is not computed for dealing, telemarketing, etc.

Xlk. Employment index in retail trade
(2000=100,0)

	2002	2003	2004	2005	2006	2007
General index	107,0	109,4	113,9	116,4	118,4	119,2
Food sector	108,2	112,0	119,1	121,8	125,4	127,2
Non-food sector	105,6	106,3	107,4	109,5	109,9	109,8

XII. PUBLIC FINANCE

Deficit and debt of General Government

in million euro

	2000	2003*	2004*	2005*	2006*	2007*
GDP at market prices	136.281	171.257	185.225	198.611	213.985	228.949
Government deficit(-)/surplus(+) . .	- 5.031	- 9.611	- 13.672	- 10.204	- 5.646	- 6.514
% of GDP	- 3,7	- 5,6	- 7,4	- 5,1	- 2,6	- 2,8
Government debt	138.758	167.723	182.702	194.666	204.018	216.362
% of GDP	101,8	97,9	98,6	98,0	95,3	94,5

XIII. HOUSEHOLD EXPENDITURES

XIIIa. Average monthly purchases of households, by urban, semi-urban and rural areas

(2004/2005 Household Budget Survey)

in euro

	All areas	Urban	Semi-urban	Rural
Total purchases	1.792,28	1.940,59	1.712,18	1.353,17
Food and non-alcoholic beverages	306,44	315,11	325,52	266,67
Alcoholic beverages and tobacco	71,52	73,53	71,22	65,06
Clothing and footwear	150,15	166,00	136,88	106,00
Housing, water, fuel and light of main, secondary or country residence	191,60	212,98	176,77	130,24
Durable household goods, household supplies and household services	134,49	147,94	119,05	99,53
Health	128,17	134,71	119,18	112,03
Transport	225,83	242,98	225,60	169,72
Communication	80,95	88,09	79,02	58,71
Recreation and culture	90,11	104,66	77,83	49,67
Education	51,34	60,20	49,66	23,28
Hotels, cafés and restaurants	172,24	189,75	150,91	127,44
Other goods and services	189,42	204,62	180,54	144,81

XIIIb. Risk-of-poverty rate
(under the poverty line after social transfers)

(European Union Statistics on Income and Living Conditions, EU-SILC 2005)

I. By age groups and sex

	Total	Male	Female
Σύνολο	19,6	20,9	18,3
0 – 15	19,4	19,5	19,3
0 – 64	17,8	18,6	16,9
16 +	19,7	21,1	18,1
16 – 64	17,4	18,4	16,4
16 – 24	22,7	24,8	20,5
25 – 49	15,5	16,6	14,4
50 – 64	18,3	18,5	18,0
65 +	27,9	30,0	25,2

II. By activity status and sex

	Total	Male	Female
Total	19,6	21,1	18,0
Employed	12,9	11,6	13,7
Not employed	25,9	26,7	24,5
<i>thereof:</i>			
Unemployed	32,8	28,5	38,6
Pensioners	25,0	29,0	21,7
Other inactive	25,3	25,3	25,4

XIV: NATIONAL INCOME

Main macroeconomic aggregates,

in million euro

	2000	2002*	% ⁽¹⁾
Output approach			
Gross value added	120.382	139.250	9,6
Taxes less subsidies on products	15.899	18.336	1,8
Expenditure approach			
Final consumption expenditure	122.899	141.741	6,8
Households	97.354	111.359	7,8
Private non-profit institutes serving households (PNPISH)	1.274	1.726	12,7
General Government	24.271	28.656	2,6
Individual	8.093	9.409	15,5
Collective	16.178	19.247	- 3,7
Actual individual consumption	106.720	122.494	8,4
Gross fixed capital formation	29.450	35.341	17,8
Change in stocks	2.328	- 711	
Exports of goods and services	33.882	33.174	4,8
Goods	14.253	13.878	8,2
Services	19.629	19.297	2,3
Imports of goods and services	52.277	51.960	8,9
Goods	40.730	41.522	14,2
Services	11.548	10.438	- 12,0
Balance of exports and imports	- 18.395	- 18.786	16,2
Income approach			
Compensation of employees	45.313	54.956	7,5
Gross operating surplus of the economy and gross mixed income	74.679	84.119	10,9
Taxes less subsidies on production and imports	16.290	18.512	1,8
Gross domestic product at market prices	136.281	157.587	8,7
Primary incomes receivable from abroad	6.948	5.220	- 3,4
Primary incomes payable abroad	6.581	5.697	18,1
Gross national income at market prices	136.648	157.109	7,9
Consumption of fixed capital	15.541	17.948	6,2
Net national income at market prices	121.107	139.160	8,2
Current transfers receivable from abroad	3.100	2.467	9,4
Current transfers payable abroad	1.482	1.557	12,3
Net national disposable income	122.725	140.070	8,1

(1) Percentage change.

AND EXPENDITURE

at current prices

2003*	%(1)	2004*	%(1)	2005*	%(1)	2006*	%(1)	2007*
152.601	8,6	165.775	7,4	178.017	6,8	190.098	6,6	202.696
18.657	4,2	19.450	5,9	20.592	16,0	23.887	9,9	26.253
151.339	7,3	162.405	7,0	173.800	6,9	185.813	7,8	200.370
119.991	7,2	128.638	7,6	138.475	7,9	149.453	6,4	159.046
1.946	11,7	2.174	7,6	2.340	6,8	2.500	6,3	2.657
29.402	7,5	31.594	4,4	32.986	2,7	33.860	14,2	38.667
10.869	6,6	11.587	9,5	12.689	8,0	13.704	12,9	15.467
18.533	8,0	20.007	1,4	20.297	-0,7	20.156	15,1	23.200
132.805	7,2	142.399	7,8	153.503	7,9	165.657	7,0	177.170
41.625	8,6	45.196	3,0	46.539	18,5	55.160	6,6	58.785
125		577		722		- 104		22
34.764	16,0	40.335	6,9	43.107	8,7	46.868	8,4	50.785
15.021	3,1	15.492	12,7	17.452	17,0	20.424	3,7	21.188
19.743	25,8	24.844	3,3	25.655	3,1	26.443	11,9	29.597
56.594	11,8	63.289	3,6	65.560	12,5	73.752	9,8	81.014
47.410	11,8	53.012	4,6	55.443	13,2	62.755	9,1	68.447
9.184	11,9	10.277	- 1,6	10.117	8,7	10.997	14,3	12.567
- 21.830	5,1	- 22.954	- 2,2	- 22.453	19,7	- 26.884	12,4	- 30.229
59.086	10,2	65.122	7,8	70.186	9,3	76.743	8,6	83.369
93.318	7,6	100.410	7,2	107.635	6,9	115.055	5,2	120.993
18.853	4,5	19.693	5,6	20.790	6,7	22.187	10,8	24.587
171.257	8,2	185.225	7,2	198.611	7,7	213.985	7,0	228.949
5.041	3,2	5.200	5,2	5.468	33,2	7.282	9,7	7.985
6.730	9,0	7.339	28,8	9.453	18,4	11.189	20,6	13.495
169.568	8,0	183.086	6,3	194.626	7,9	210.077	6,4	223.438
19.062	6,5	20.306	6,6	21.643	6,7	23.085	6,7	24.641
150.508	8,2	162.780	6,3	172.981	8,1	186.992	6,3	198.797
2.700	- 2,7	2.626	- 2,8	2.552	7,2	2.735	- 13,6	2.364
1.749	23,0	2.151	27,1	2.733	3,7	2.835	48,4	4.209
151.459	7,8	163.255	5,8	172.800	8,2	186.892	5,4	196.953