



Summer 2007
Volume 57, no. 2

American Schools of Oriental Research Newsletter

ASOR

ASOR at Boston University, 656 Beacon Street, 5th floor, Boston, MA 02215-2010

TIM HARRISON ELECTED ASOR PRESIDENT

Timothy P. Harrison, ASOR President-Elect

Having virtually 'grown up' in ASOR and benefited immeasurably from its many programs over the years, I am deeply honored and grateful for this opportunity to serve the organization as its next president. These are truly exciting and dynamic times for the organization. ASOR is in a key time of transition and faces important decisions about its mission and future direction. This has generated a lively dialogue that has been both timely and healthy. It has helped to reaffirm ASOR's core mission "to initiate, encourage and support research into, and public understanding of, the peoples and cultures of the Near East," while also creating the opportunity to contemplate new strategies and initiatives that may help better achieve this mission.

It is my strong belief that ASOR has the capacity to resume its historical role as a standard bearer in the profession and to do so through promotion of the best research methods and practices, the encouragement of innovative ideas and approaches, and an uncompromising commitment to the conduct of ethically based research. As President, therefore, I will work to develop strategies aimed at realizing this potential, including a rethinking of the role of CAP (now the Committee on Archaeological Research and Policy) and the launching of research initiatives (in the form of thematically focused symposia and publication efforts) that accentuate the rich interdisciplinary perspectives and diverse experience of our membership.

Central to accomplishing these broader goals will be the need to place ASOR on a secure financial footing. As President, I will make it a priority to build on the hard-earned success over the past few years achieving a balanced budget by working to develop a sustainable financial plan in consultation with ASOR's stakeholders, without sacrificing the organization's assets or its core mission. In future issues of the

Newsletter, I will outline in more detail the specific initiatives and goals we wish to achieve over the next few years, and I will report periodically on our progress.

It is a true privilege to have been entrusted with guiding the organization through this important time of transition. I look forward to getting to know more of you in the years ahead and to hearing your views and concerns about ASOR.

Dr. Timothy P. Harrison is Professor of Near Eastern Archaeology in the Department of Near and Middle Eastern Civilizations at the University of Toronto, a position he filled in 1997. Prior to his appointment at Toronto, he was a Research Associate at the Oriental Institute of the University of Chicago, where he began working on the Megiddo Stratum VI Publication Project. He earned his Ph.D in Near Eastern Archaeology from the University of Chicago in 1995, completing a dissertation on the Early Bronze Age in the Highlands of Central Jordan. Since finishing his doctoral studies, he has directed excavations at the Bronze and Iron Age site of Tell Madaba in Jordan, and more recently has



launched a long-term project at Tell Ta'yinat, in the Plain of Antioch in southeastern Turkey. These projects form part of a wider, interregional research effort that seeks to shed light on the early development of urban life and state-ordered society amidst the diverse communities and cultures that have given shape to the ancient eastern Mediterranean world. In addition to his own projects, Dr. Harrison has participated in numerous other excavations and field expeditions in Israel, Jordan and Turkey.

ASOR ANNOUNCES HERITAGE AND PLATT GRANT AWARDS FOR 2007

ASOR's launch of the new series of Heritage and Platt Grants this spring was welcomed with enthusiasm well beyond what was imagined possible, given the late announcement date and the short window of opportunity for applicant responses. A total of 65 applications were received: 38 seeking Heritage support and 27 for Platt assistance. Overall, applications were received for participation in the work of 29 separate projects in six different countries. Support for volunteer participation was requested in 37 applications and staff assistance was sought in 17 others. The remaining applications were for participation by a variety of specialists, assistance in publication work and materials processing, and with field logistics.

Heritage Grants

Jodi Magness – for object and materials processing at Yotvata, Israel.

Sarah Graff – for survey work and staff participation at Qarqur, Syria.

Alan Simmons – for support of volunteer participation at Ais Yorkis, Cyprus.

Susan Cohen – for field transportation support at Tel Zahara, Israel

Oded Borowski – for maintenance support for two staff participants at Tell Halif, Israel.

Jenifer Elam – for participation as a supervisor at Khirbet Qana, Israel.

Suzanne Richard – for support of a land survey program at Khirbet Iskandar, Jordan.

Danielle Parks – for support of publication work on objects, Kourion, Cyprus.

Christopher Mavromatis – for participation as topographer at Kourion, Cyprus.

Alexandra Ratzlaff – for participation as a supervisor at Yotvata, Israel.

Megan Bettilyon – for participation as a volunteer at Wadi ath-Thamad, Jordan.

Paula Cooper – for participation as a volunteer at Tel Zayit, Israel.

Andrea Creel – for participation as a volunteer at Askelon, Israel.

Platt Fellowships

Robbyn Gordan – for research and participation at Humayma, Jordan.

Elizabeth Warkentin – for participation as archaeological assistant at Tel Tayinat, Turkey.

Kevin Cooney – for participation as lithic analyst and field tech at Ulucak, Turkey.

Emily Hammer – for participation as member of a survey team at Hirbemerdon Tepe, Turkey.

Melanie Poupart – for participation as a volunteer at Ma'in Paleolithic, Jordan.

Sherry Robison – for participation as a volunteer at Wadi ath-Thamad, Jordan.

Christopher Hays – for participation as a volunteer at Tell Halif, Israel.

Harris Grants

Nancy Lapp – for publication of Early Persian and Hellenistic pottery from Shechem

Jonathan Ferguson – for salvage excavations at Khirbat as-Zona

Garth Gilmour – for publication work on *Gezer VI: The Objects from Phase I and Phase II*

William Caraher – for the Pyla-Koutsopetria Archaeological Project

* For more information on becoming a Heritage Member and supporting our excavation fellowship program, please visit our website www.asor.org/asormemb.htm

The American Schools of Oriental Research is a nonprofit, scientific and educational organization founded in 1900.

P. E. MacAllister
Chairman of the Board

Eric M. Meyers
President

Lawrence Geraty
Past President

Andrew G. Vaughn
Executive Director

Tammi J. Schneider
Vice President for Membership

Eric H. Cline
Vice President for Programs

Christopher Rollston
Interim Vice President for Publications

Burton MacDonald
Vice President for the Committee on Archaeological Research and Policy

James Strange
Secretary

Sheldon Fox
Treasurer

ASOR
656 Beacon Street, 5th floor
Boston, MA 02215-2010
Tel. (617) 353-6570
Fax. (617) 353-6575
E-mail: asor@bu.edu



The ASOR Newsletter

Alexandra Ratzlaff, Editor
Susanne Wilhelm, Assistant Editor

The ASOR Newsletter (ISSN 0361-6029) is published quarterly by the American Schools of Oriental Research

© 2007 by
The American Schools of Oriental Research

www.asor.org

**Morag Kersel and Michael Homan
Elected Co-Vice Presidents for Programs**

Morag M. Kersel is a Social Sciences and Humanities Research Council (SSHRC) postdoctoral fellow in the Department of Anthropology at the University of Toronto, where she is examining the legal remedies employed in the eastern Mediterranean to protect against archaeological site destruction as a result of the market demand for archaeological artifacts. Recently, Morag was an ACOR-CAORC fellow in Jordan, where she tracked the movement of illegally excavated artifacts and the Jordanian efforts to stem archaeological looting. Dr. Kersel is a co-editor of *Archaeology, Cultural Heritage, and the Antiquities Trade*, University Press Florida (2006). She also directs the Keros Archaeological Project field school at the Early Bronze Age site of Keros in the Cyclades, Greece. As a member of ASOR, she helped to formalize the Junior Scholars Committee, which provides a voice for the student and junior members of the organization.



Michael M. Homan is an Associate Professor in the Department of Theology at Xavier University of Louisiana. He received his Ph.D. in Ancient History in 2000 from the University of California, San Diego, specializing in Hebrew Bible with a minor in archaeology. He is the author of several articles and books, including *To Your Tents, O Israel!* (Brill, 2002), which won the 2003 Frank Moore Cross Publications Award from the American Schools of Oriental Research, and he is the co-author of *The Bible for Dummies* (Wiley, 2002). Michael has participated in and supervised many archaeological excavations in Israel and Jordan, including the Jabal Hamrat Fidan Project in Jordan and, most recently, the Zeitah Excavations. He has twice been a fellow at the Albright Institute of Archaeological Research (Kress 1999, USIA 2001), and once at the American Center for Oriental Research in Amman (USIA 1999).



**Tammi J. Schneider
Re-elected Vice President for Membership**

Tammi J. Schneider is a Professor of Religion at Claremont Graduate University. She teaches a variety of courses on ancient history (covering Mesopotamia, Syria-Palestine, Egypt, Anatolia, and the Aegean from the third millennium to the end of the first), ancient Near Eastern languages and literature, archaeology (primarily of Israel), and women in the Hebrew Bible (Genesis, Judges, Samuel).

continued on page 4

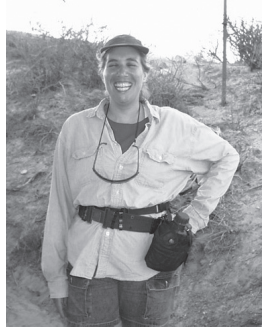
**Ann Killebrew
Elected Vice President
for the Committee on
Archaeological Research
and Policy (CARP)**

Ann Killebrew is an Associate Professor of the Archaeology of the Levant at the Pennsylvania State University. For the past thirty years, she has participated in or directed numerous archaeological projects in Israel, Egypt, and most recently Cilicia, Turkey. Her research focuses on the Bronze and Iron Ages in the eastern Mediterranean, ancient ceramic studies, Roman and Byzantine Palestine, and public archaeology. Her recent publications include: *Biblical Peoples and Ethnicity: An Archaeological Study of Canaanites, Egyptians, Philistines, and Israelites 1300–1100 BCE* (Society of Biblical Literature, 2005); *Deir el-Balah: A*



Geological, Archaeological and Historical Reassessment of an Egyptianizing 13th and 12th century B.C.E. Center. Bulletin of the American Schools of Oriental Research 343 (2006): 97–119; From Dialogue to Polylogue: Exploring the Israeli and Palestinian Past in the Present. Archaeologies 2/2 (2006): 7–21; and Reflections on a Reconstruction of the Ancient Qasrin Synagogue and Village. In: The Reconstructed Past: Reconstructions in the Public Interpretation of Archaeology and History (ed. John H. Jameson Jr.). New York 2004. pp. 127–46.

Her research draws together the varied fields of archaeology, Assyriology, and Biblical Studies in an effort to understand the ancient Near East, especially the interactions among various peoples. Her books include: *Sarah: Mother of Nations*, published by The Continuum International Publishing Group and *Judges*, in the *Berit Olam* series published by Liturgical Press. She is the editor for the ancient Near East section of the journal *Religious Studies Review*. She currently co-directs the renewed excavations at Tel el-Far'ah (South) in Israel, and she is also a project director at the Institute for Antiquity and Christianity at Claremont Graduate University.



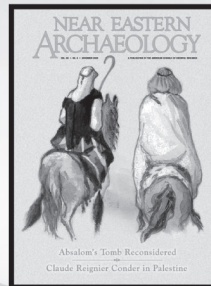
Terry Hoffecker Elected Vice President for Development

Dr. Terry Hoffecker is the newly elected Vice President of Development for ASOR. A resident of Dublin, Ohio, Terry has a background in small business development and parish work. He has participated in raising millions of dollars for several non-profit organizations and foundations, including international projects. His present academic involvement includes serving as Adjunct Faculty at Grace Theological Seminary (Winona Lake, Indiana) and as a Senior Fellow with the Sandberg Leadership Center at Ashland Theological Seminary (Ashland, Ohio). His experience in archaeology includes field and staff work at Horvat 'Uza, Tel Malhata, Tel Rehov, Tel Zayit, and Tel Gezer. Recently, he assisted Dr. Steven Ortiz and Dr. Sam Wolff in raising the funding and preparing the logistics of the Tel Gezer Excavation and Publication Project as Project Administrator. He is married to Deborah and they have two children, Sarah (Washington, D.C.) and Benjamin (Columbus, Ohio).



Archaeological discoveries continually enrich our understanding of the people, culture, history, and literature of the Middle East. The heritage of its peoples - from urban civilizations to the Bible - both inspires and fascinates. *Near Eastern Archaeology*, featuring articles by archaeologists currently excavating in the region, brings to life the ancient world from Mesopotamia to the Mediterranean with vibrant images and authoritative analyses.

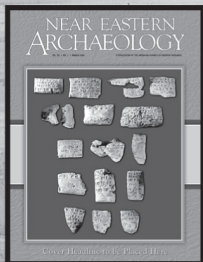
Absalom's Tomb Reconsidered



Offering a new
vision of the
ancient world for
the 21st century!

Order on-line at:

www.asor.org/pubs/howtoorder.html



Mapping the
Assyrian Empire
in Southeastern
Turkey

Near Eastern Archaeology

Photo by Bruce Schroeder

THE KERSHAW FAMILY ENDOWED CHAIRS

In order to support research and help build the future of Near Eastern Archaeology, the Kershaw Family Trust has recently endowed two new academic chairs. While many people support the archaeological community by funding excavation and publication projects, the Kershaws' generosity aims to benefit the future of the profession itself. In the last two years, the Kershaw Family has endowed two faculty chairs in the field of Archaeology and Ancient Eastern Mediterranean Studies. The University of California, San Diego, and the Univer-

sity of California, Los Angeles, were the recipients of the Kershaw family's philanthropy. The endowment of these positions ensures the continuing education of the next generation of archaeologists and near eastern scholars. "Both Reuben and I feel privileged to be able to play a part in strengthening scholarship and contributing to the success of understanding our past," said Norma Kershaw.

Norma Kershaw has been associated with ASOR ever since first visiting the Albright Institute in Jerusalem. She has served on the Albright Board for a

number of years and continues her active role with the institute as an Honorary Trustee. Kershaw's activities have not been limited to her work with the AIAR; she served as the first president of CAARI and aided in the establishment of ACOR. She has served several terms as an ASOR trustee and was awarded the prestigious Scheuer Medal in 1997. Norma's involvement in ASOR continues in her current role as an Honorary Trustee of the ASOR Board.

Dr. Thomas E. Levy

The Norma Kershaw Chair in the Archaeology of Israel and Neighboring Lands at the University of California - San Diego

Norma Kershaw, retired Orange County educator, lecturer and volunteer in the fields of archaeology and cultural studies, first met UC San Diego professor of Anthropology and Judaic Studies Thomas Levy, Ph.D., some 20 years ago while she was excavating at a site in Israel. Their shared interest in the history and archaeology of the Levantine region has kept the two in touch since they met. But it still was a surprise to Levy last year when Kershaw and her husband, Reuben, made a significant donation to UCSD through the Kershaw Family Trust to establish the Norma Kershaw Endowed Chair in the Archaeology of Ancient Israel and Neighboring Lands.

The campus has named Levy as founding chairholder. His most recent books are *Journey to the Copper Age - Archaeology in the Holy Land* (San Diego Museum of Man), *Anthropology, Archaeology and Cult - The Sanctuary at Gilat, Israel* (London, Equinox), *Crossing Jordan - North American Contributions to the Archaeology of Jordan* (edited with Michelle Daviaiu, Randall Younker, and May Shaer), and (edited with T. Higham) *The Bible and Radiocarbon Dating - Archaeology, Text and Science* (London, Equinox). Based on his publications and fieldwork in both Israel and Jordan, Levy is recog-

nized as one of the leading experts on the archaeology of the Middle East.

"Our goal is to strengthen the research and scholarship of already superb programs in Judaic Studies and the Department of Anthropology at UCSD," said Norma Kershaw. "We reside in Southern California and find it natural to help support a Southern California university and provide for UCSD's outstanding faculty and students. We're pleased to provide this support to Dr. Levy, an outstanding scholar who can also communicate with the public. His work is highly respected in academia and across political borders."

"We are very grateful to the Kershaw family for their generous support of UCSD's Department of Anthropology and for the recognition of Tom Levy's outstanding work," added Paul Drake, Dean of the Division of Social Sciences. "The impact of this gift will make a significant difference for generations of faculty and students who are committed to studying this critical region."

Levy indicated that the funding provided through the endowment will help offset a variety of expenses related to researching distant archaeological sites, such as annual travel costs for himself and some of his graduate students, processing radiocarbon dating samples,



Reuben and Norma Kershaw with Tom Levy at the UCLA Symposium to mark the occasion of the newly Endowed Kershaw Chair in Ancient Mediterranean Studies.

procuring expensive remote sensing data such as satellite imagery, and other research-related activities.

"On the personal side, it's wonderful to have the recognition of my peers and the community, and have this level of support for my work," added Levy. "In terms of the bigger picture, it's also great to know that, through this chair, the study of the archaeology of Israel and neighboring lands will be a component of UCSD's curriculum in perpetuity."

A member of the UCSD faculty since 1992, Levy has chaired the Department of Anthropology and is currently director of the Judaic Studies Program. An anthropological archaeologist, Levy has directed and been the principal in-

continued on page 7

HIGHLIGHTS FROM THE SPRING EXECUTIVE COMMITTEE AND BOARD OF TRUSTEES MEETINGS

Andrew Vaughn, Executive Director

*The Executive Committee and the Board of Trustees approved Andy Vaughn's appointment for a three-year term (January 1, 2008 - December 31, 2010). He will work two-thirds time but live in Maine and travel periodically to Boston in order to maintain a presence in the office and at Boston University.

*The Executive Committee and Board of Trustees unanimously voted to elect a slate of new officers (see cover article and pp. 3-4): Tim Harrison as President (January 1, 2008 - December 31, 2010); Ann Killebrew as Vice-President for Committee on Archaeological Research and Policy (CARP) and Terry Hofecker as Vice-President for Development (both with terms of July 1, 2007 - June 30, 2010); Tammi J. Schneider as Vice-President for Membership; and Morag Kersal and Mike Homan as co-Vice-Presidents for Programs (terms of office for Schneider, Kersal and Homan will be January 1, 2008 - December 31, 2010).

*The Executive Committee and Board of Trustees passed a resolution that clarifies a current membership issue: "Professional membership is required for a person to serve as a section chair for the annual meeting, to serve on an academic committee, or to present a paper at the annual meeting. A person who is enrolled as a student at an ASOR corporate member institution is exempted from this rule."

*The Executive Committee endorsed the work of an ad-hoc committee to be appointed by Board Chair P. E. MacAllister to study membership issues, including whether or not to combine subscription fees with memberships. Tammi J. Schneider will chair the committee with representation from individuals on the Publications Committee.

*The Board received a report from the Finance Committee stating that ASOR would not spend any money from the endowment this fiscal year (FY 07), in order to allow for money allocated from the endowment to be earned before it was spent. ASOR will use revenue in the FY 08 budget based on earnings the

previous year. This is a substantial improvement from previous years.

*The Executive Committee and Board received a report from the treasurer that explained that ASOR should once again have a balanced budget (pending receipt of an additional \$20,000 in our annual fund drive for a total of \$100,000).

*The Executive Committee and Board approved a resolution regarding an administrative recovery fee (5%) for funds passed through ASOR. The percentage charged for grants will be governed by the guidelines of the agency awarding the grant. This resolution only applies to new funds coming into ASOR.

*Øystein LaBianca and Andy Vaughn were appointed as co-chairs of an ad-hoc committee to explore a venue or venues for a conference on research and publication of materials from politically contested areas. The membership of the committee will be drawn from current and in-coming vice-presidents and others.

UPDATE FROM THE DEVELOPMENT COMMITTEE

Ann Killebrew, Interim Development Committee Chair

As a result of the reorganization of ASOR during the past year and a half, the development committee was reconstituted. The interim development members included Ann Killebrew (chair), PE MacAllister, Eric Meyers, Andy Vaughn, Tammi Schneider, Randy Younker, Sandra Scham, Ben Porter, Margaret Cohen, Susan Sheridan, and Holly Andrews. Based on my experience as interim chair of the development committee, I

recommend that in the future increased efforts should be made to include the various committee heads and VPs in development plans in order to maximize the fund raising synergies and talents of ASOR's members.

In the last year, the focus of the committee has been centered on well-defined projects that are directly related to ASOR's mandate and interest of the general membership. Our first targeted appeal included a drive for *Near Eastern Archaeology*. The NEA drive resulted in raising approximately \$80,000. The second campaign is the ongoing fundraiser for the ASOR Archive Project and the Junior Scholars' workshop at the Annual

Meeting. Thus far approximately \$3,500 has been donated or pledged, with goal of reaching \$12,500.

ASOR's most immediate development goal for 2007 has been raising \$100,000 for the Annual Fund, as included in the budget approved by the board last year. Approximately \$80,000 in contributions has been deposited in the general fund for 2007. An additional \$10,000 dollars has been donated to publications and the Albright/IES/ASOR pottery volume. As of early April, we are more than three quarters of the way to achieving our goal of raising \$100,000.00 for the Annual Fund.

continued on page 7

continued from page 5

investigator of a number of multi-year excavation projects in the Middle East. His current research focuses primarily on the Iron Age (ca. 1200–500 BCE) in southern Jordan – a time when the first historic state-level societies evolved in the region and the period that coincides with much of biblical history .

At the University of California, endowed chairs are teaching/research positions occupied by distinguished scholars. The university provides the teaching/research position and pays the salary of the person appointed to the endowed chairs. The permanent endowed fund created by philanthropic gifts provides perpetual annual income in support of the teaching and research activities of the person holding the chair.

William Schniedewind

Kershaw Chair in Ancient Eastern Mediterranean Studies at the University of California - Los Angeles

UCLA marked the establishment of the Norma Kershaw Endowed Chair in Ancient Eastern Mediterranean Studies with a symposium held last October. The program titled “Writing in the Ancient Near East” featured several scholars from the UCLA Department of Near Eastern Languages and Cultures. Papers were given on topics ranging from the “Emergence of Writing in Egypt” to “Scribes and Letters in Ancient Mesopotamia” and “Writing, Archaeology and the Bible.” William Schniedewind was also honored at the event as the first to hold the newly endowed chair.

William Schniedewind is currently Professor of Biblical Studies and Northwest Semitic Languages at UCLA, the Chair of the Department of Near Eastern Languages and Cultures, and the Kershaw Chair of Ancient Eastern Mediterranean



Studies. He received a B.A. from George Fox University, an M.A. from Jerusalem University College, and his Ph.D. from Brandeis University. He has been a Visiting Scholar at the Hebrew University in Jerusalem and a Fellow at the Albright Institute of Archaeological Research. He is the author of numerous articles and four books. His articles and books cover a wide range of topics relating to biblical studies and the Dead Sea Scrolls. His recent book, *How the Bible Became a Book*, which was published in 2004 by Cambridge University Press (and now has French, Italian, and Korean editions), employs anthropological theory about the social function of writing to explore the formation of the Hebrew Bible. He has recently co-authored a textbook that tries to utilize an innovative socio-linguistic approach to the study of Ugaritic: *A Ugaritic Primer: Language, Culture and Literature* (Cambridge University Press, 2007). His research focuses on the intellectual, social, and linguistic history of ancient Israel and early Judaism.

Schniedewind’s research and teaching tries to combine the study of literature, language and archaeology. His current book project is *A Social History of Hebrew: its Origins until the Rabbinic Period*. Together with his UCLA archaeological colleague, Aaron Burke, he has also been working on “virtual archaeology,” that is, the use of virtual reality modeling for research and to reconstruct ancient archaeological sites. Their most recent model of Khirbet Qumran will be featured in the San Diego Natural History Museum’s exhibit on the Dead Sea Scrolls. Their new project is a virtual reality model of ancient Ugarit. Schniedewind teaches undergraduate classes on “Jerusalem,” “Introduction to Biblical Literature,” and “Dead Sea Scrolls and Early Judaism.” His graduate teaching focuses on biblical literature and Northwest Semitic Languages. This includes seminars on the History of the Hebrew Language, Ugaritic, and various biblical and Dead Sea Scroll texts.

The Kershaw Chair will allow UCLA to continue to build their programs and research in Levantine archaeology and biblical studies. In the coming year, the endowment will help to bring scholars from Israel as Visiting Professors at UCLA and support the work in virtual archaeology, reconstructing sites such as Qumran and Ugarit. ✨

continued from page 6

Future Directions for Development

During my term as interim chair of development, I have coordinated with the Management Committee and Executive Committee as well as ASOR’s Interim Executive Director, Andy Vaughn, to work toward enabling ASOR to operate from the income generated by memberships, subscriptions, institutional memberships, publications, and the interest from the endowment. Institutional memberships are one of the keys to creating a self-sustaining society. A second focus should be increasing the number of professional, student, and lay memberships in ASOR. Key to this effort is emphasizing ASOR’s

inclusive character and expanding the scope and number of our Annual Meeting sessions. ASOR’s attractiveness over other similar professional societies (e.g. AIA, SAA, and SBL) includes its more open and friendly environment, providing excellent opportunities for younger scholars to give papers and meet more senior and well-known scholars, and its more inclusive climate. A third focus of the Development Committee, in coordination with Joe Seger and Chair of CARP, should be the recruitment of additional donors to the Heritage Initiative. A fourth focus should continue to be targeted campaigns, such as the Archival and Junior Scholars’ program currently under way.

Longer-term development plans should include outreach programs for both professional and lay members. Other areas of outreach that should be developed include the re-establishment our public lecture series and to begin to develop a modest public archaeology component. Following a successful reorganization of ASOR with the ability to be a self-sustaining society and the implementation of well-defined programs that embody ASOR’s mission (such as the Heritage Initiative and the ASOR archival project), development goals could be expanded to include more ambitious research and outreach projects that would promote the interests of the general membership and ASOR’s mandate. ✨

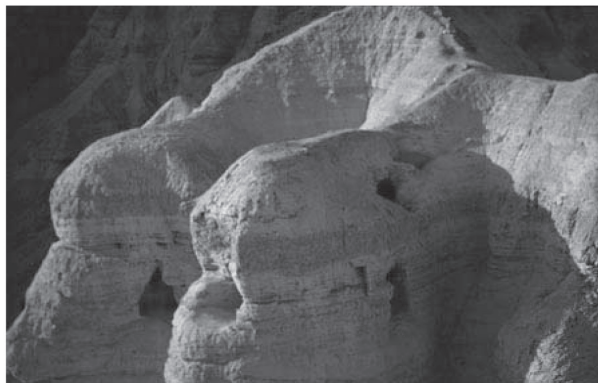
ASOR ANNUAL MEETING

November 14-17, 2007
The Sheraton Hotel & Marina
San Diego, CA

PLENARY SPEAKER

JODI MAGNESS

Professor, Department of Religious Studies
University of North Carolina - Chapel Hill



“THE CURRENT STATE OF QUMRAN ARCHAEOLOGY”

Ever since de Vaux conducted excavations at Qumran in the 1950s, a majority of scholars have agreed with him that it was the community center of a Jewish sect who deposited the Dead Sea Scrolls in the nearby caves. However, over the last 20 years a vocal minority of scholars have identified Qumran differently - as a villa, manor house, fort, and commercial entrepot, for example. Yizhak Magen and Yuval Peleg, who recently conducted renewed excavations at Qumran, claim that it was a pottery production center. In this lecture we review the history of scholarly interpretation of the Qumran site and examine the validity of the different identifications.



Jodi Magness is the Kenan Distinguished Professor for Teaching Excellence in Early Judaism in the Department of Religious Studies at the University of North Carolina at Chapel Hill. She received her B.A. in Archaeology and History from the Hebrew University of Jerusalem and her Ph.D. in Classical Archaeology from the University of Pennsylvania. Her books include *The Archaeology of Qumran and the Dead Sea Scrolls*, *The Archaeology of the Early Islamic Settlement in Palestine*, and *Debating Qumran: Collected Essays on Its Archaeology*



2007 ASOR ANNUAL MEETING REGISTRATION

NOVEMBER 14 - 17 ♦ SAN DIEGO, CA

Supersaver Preregistration Deadline:
September 24, 2007

JERUSALEM ♦ AMMAN ♦ NICOSIA ♦ BAGHDAD ♦ DAMASCUS

MEMBER ID # _____
Or MEMBER INSTITUTION NAME _____

Check box if you have applied for membership in the past 30 days

Last Name _____ First Name _____

Institution (for name badge) _____

Mailing Address _____

City _____ State _____ Postal Code _____ Country _____

Home Tel. _____ Work Tel. _____ Fax No. _____ Email _____

PAYMENT:

- My check or money order payable to ASOR is enclosed in the amount of \$ _____
- Please bill my credit card in the amount of \$ _____ Mastercard Visa

Card Number _____

Expiration Date ____ / ____

Zip Code of Billing Address _____

Name of Card Holder _____

Signature _____

TAX DEDUCTIBLE CONTRIBUTIONS:

- \$25 \$100
- \$50 Other \$ _____

REGISTRATION FEE [check appropriate box(es)]: *[Prices will increase after Sept. 24th]*

- Member Registration \$125
- Annual Meeting Registration + New Associate Membership \$150
- Nonmember Registration \$200
- Student Registration \$70
- Retired Member \$95
- Spouse / Partner Registration \$80

S/P's Name: _____

S/P's Institution: _____

One Day (date): _____

- Member Registration \$85
- One Day Annual Meeting Registration + New Associate Membership \$85
- Nonmember Registration \$100

MAIL FORM TO:

ASOR Annual Meeting Preregistration ♦ ASOR at Boston University
656 Beacon St., 5th floor ♦ Boston, MA 02215-2010 ♦ TEL: 617-353-6570 ♦ FAX: 617-353-6575

IS YOUR INSTITUTION A MEMBER OF ASOR?

Join other esteemed institutions in the ASOR Consortium. Membership is not only prestigious, but offers tremendous benefits to the faculty, staff and students of your college, university or seminary. If you would like to apply for institutional membership, please have the appropriate official fill out the form below and send to the ASOR office. Please be sure to designate an Institutional Representative. You can also find the application on our website at www.asor.org under the "Membership" link.

Look at all the great Benefits of ASOR Consortium members:

- * Voice and vote at the annual Membership Meeting (through institutional representative).
- * Copies of ASOR publications for your library (including *Near Eastern Archaeology*, *Bulletin of the American Schools of Oriental Research (BASOR)* and, upon request, *Journal of Cuneiform Studies*).

- * Copies of the ASOR *Newsletter* (published quarterly), which includes notices about meetings and events; announcements about scholarships, grants, and fellowships; reports on current research in the field; and information on recent discoveries in the field.

- * Discount of 33% on ASOR books purchased by your library.

- * Discounts on Annual Meeting registration for faculty, staff, and students affiliated with your institution (who may register at the 'member' rate).

- * Eligibility to apply for ASOR fellowships, grants, and scholarships.

- * Access to and, in some instances, preference for fellowships, grants, and scholarships offered by our affiliate Overseas Centers in Amman, Jerusalem, and Nicosia

- * Access to ASOR-I listserv, which includes announcements, job offerings, scholarly discussions, and networking opportunities.

- * Recognition in ASOR publications such as BASOR.

- * Students (undergraduates, seminary, and graduate) of Institutional Members are eligible to apply for
 - \$250.00 travel grants to the ASOR Annual Meeting.

- Platt Fellowships of \$1,500 each for participation in excavations (ASOR will award at least 7 Platt Fellowships for the summer of 2007).

- Heritage Grants of \$2,000 each for support of ASOR affiliated excavations (ASOR will award at least 6 Heritage Grants for the summer of 2007).

- * Students of Institutional Members pay a discounted registration fee of only \$50.00 for ASOR Annual Meeting (normally \$65.00 for students).

- * Focus articles on special events, programs, and faculty of Institutional Member institutions in NEA.

- * Quarter page advertisement or announcement of special programs of Institutional Member events once a year in NEA.

Please encourage your institution to take advantage of this great opportunity!

ASOR would like to thank the following Institutional Members for their continuing support, which makes it possible to fulfill our mission of promoting research into the peoples and cultures of the Near East

Andrews University
Asbury Theological Seminary
Austin Presbyterian Theological Seminary
Baltimore Hebrew University
Baptist Bible College and Seminary
Baylor University
Boston College
Boston University
Brigham Young University
Brown University
Calvin College and Seminary
Carroll College

Catholic University of America
Christian Theological Seminary
Claremont Graduate University
Cobb Institute of Archaeology
Concordia College
Concordia Lutheran Seminary
Concordia Seminary in St. Louis, MO
Cornell University
Cotsen Institute of Archaeology, UCLA
Drew University
Duke University
Dumbarton Oaks
Emmanuel School of Religion

Emory University
Fernbank Museum of Natural History
Gannon University
General Theological Seminary
George Washington University
Golden Gate Baptist Theological Seminary
Gordon-Conwell Theological Seminary
Grace Theological Seminary
Harvard University, Semitic Museum
Hebrew Union College
Illinois Wesleyan University

John Carroll University
 Johns Hopkins University
 La Sierra University
 Loyola Marymount University
 Lycoming College
 McCormick Theological Seminary
 McGill University
 Metropolitan Museum of Art
 Midwestern Baptist Theological Seminary
 Missouri State University
 New Orleans Baptist Theological Seminary
 New York University
 North Carolina State University
 Ohio State University
 Pennsylvania State University
 Pepperdine University
 Pittsburgh Theological Seminary
 Protestant Episcopal Theological Seminary (Virginia)
 Smith College

Southeastern Baptist Theological Seminary
 Southern Adventist University
 Southern Baptist Theological Seminary
 Southern Methodist University
 Southwestern Baptist Theological Seminary
 SUNY at Binghamton
 SUNY at Buffalo
 Texas A & M University
 Trinity Lutheran Seminary
 University of Arizona
 University of Arkansas, King Fahd Center for Middle East & Islamic Studies
 University of California, Berkeley
 University of California, Los Angeles (see Cotsen Institute above)
 University of California, San Diego
 University of Chicago
 University of Cincinnati
 University of Judaism

University of Kansas
 University of La Verne
 University of Mary Hardin-Baylor
 University of Michigan
 University of Missouri, Columbia
 University of North Carolina at Chapel Hill
 University of Notre Dame
 University of Pennsylvania Museum
 University of Southern California
 University of the Holy Land
 University of Toronto
 University of Victoria
 Valparaiso University
 Vanderbilt University Divinity School
 Wake Forest University
 Wellesley College
 Wesley Theological Seminary
 Willamette University
 Yale Divinity School



Sheraton®
 HOTELS & RESORTS

HOTEL RESERVATION FORM for ASOR Annual Meeting 2007

RESERVATIONS MUST BE MADE BY OCTOBER 15, 2007 TO RECEIVE THESE ROOM RATES

Group: American Schools of Oriental Research (ASOR)
Meeting Dates: November 14 – 17, 2007
Meeting Rates Available: November 12 – 19, 2007
Group Rates: \$161.00 for a single, double, triple or quad..

Bed Types
 K = 1 King Bed
 DD = 2 Double Beds

Guest Name	Arr.Date	Depart.Date	Smoking	Bed Type	Credit Card #	Exp. Date	Sharing Room w/	ETA*

Guest Contact Information:

Name _____
 Company/ Univ. _____
 Address _____
 City _____ State _____ Zip _____
 Country _____ Phone (h) _____
 Phone (w) _____ Fax _____
 Email _____

Special Requests:

*ETA = estimated Time of Arrival
 Cancellation Policy: reservations must be cancelled at least 72 hours prior to arrival.
 Rates do NOT include applicable taxes
 Check-In Time is 3:00 PM Check-Out Time is 12 Noon

Fax form to: 619-692-2337 Or call for a reservation: (619)-291-2900
 Sheraton San Diego Hotel & Marina
 1380 Harbor Island Drive, San Diego, CA 92101



W.F. ALBRIGHT INSTITUTE OF ARCHAEOLOGICAL RESEARCH, JERUSALEM



2008–2009 FELLOWSHIPS IN ANCIENT NEAR EASTERN STUDIES

Fellowships are open to those in Near Eastern studies from prehistory through the early Islamic period, including the fields of archaeology, anthropology, art history, Bible, epigraphy, historical geography, history, language, literature, philology and religion and related disciplines. The research period should be continuous, without frequent trips outside the country. Residence at the Albright is required. The option to accommodate dependents is subject to space available at the Albright.

Annual Professorship: \$32,500 award for 10 months. Open to post-doctoral scholars who are US citizens. Non-US citizens are eligible for half of the award. Deadline: October 1, 2007.

National Endowment for the Humanities (NEH) Fellowships: Maximum grant of \$40,000 for 12 months and \$20,000 for 6 months (up to four awards from 4-12 months). Open to post-doctoral scholars who are U.S. citizens (or alien residents for at least three years). Deadline: October 1, 2007.

Ernest S. Frerichs Fellow and Program Coordinator: \$19,000 for 10 months. Open to doctoral and post-doctoral scholars. Recipient is expected to assist the Albright's Director in planning and implementing the Ernest S. Frerichs Program for Albright Fellows, which requires a working knowledge of living and traveling in Israel. Deadline: October 1, 2007.

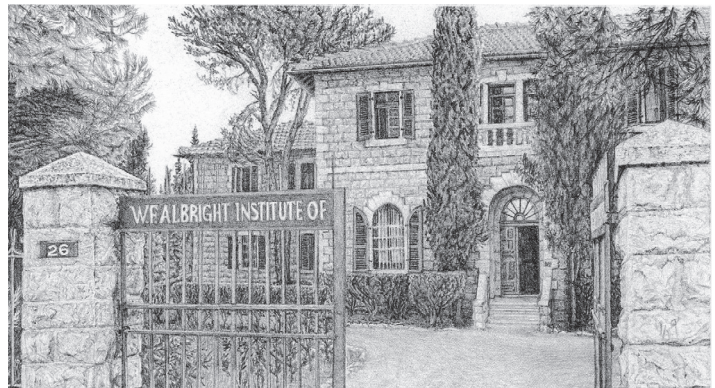
Samuel H. Kress Fellowship: \$18,500 award for ten months. A doctoral dissertation research fellowship for students specializing in architecture, art history, archaeology and classical studies. Applicants must be U.S. citizens or students matriculating at U.S. universities. Deadline: October 1, 2007.

Samuel H. Kress Traveling Fellowship (Jerusalem & Amman, Athens, Nicosia, Rome): \$18,500 award for residency at the Albright (5 months) and one of the following schools: the American Center of Oriental Research in Amman (5 months), the Cyprus American Archaeological Research Institute in Nicosia (5 months), the American School of Classical Studies at Athens (5 months), or the American Academy in Rome (minimum 6 weeks). A doctoral dissertation research fellowship for students specializing in architecture, art history, archaeology and classical studies. Applicants must demonstrate the necessity of being resident at the Albright and at one of the other four institutions mentioned above in order to complete their research. Applicants must be U.S. citizens or students matriculating at U.S. institutions. Deadline: October 1, 2007.

George A. Barton Fellowship: \$7,000 for 5 months. Open to all doctoral students and recent Ph.D. recipients. Deadline: October 1, 2007.

Educational and Cultural Affairs Fellowships (ECA)*: Junior Research Fellowships: \$48,000 for three awards of \$16,000 each for 10 months. Open to doctoral students and recent Ph.D. recipients who are U.S. citizens.

Associate Fellowships: 13 administrative fee awards for senior and junior fellows (for one or two semesters). No deadline.



Glassman Holland Research Fellowship (NEW!): \$12,000 for 3 months. Open to all European post-doctoral researchers who are permanently resident in Europe. Deadline: March 15, 2008.

Andrew W. Mellon Foundation Fellowships: \$34,500 for three awards of \$11,500 each for three months. Open to Bulgarian, Czech, Estonian, Hungarian, Latvian, Lithuanian, Polish, Romanian, and Slovak scholars. Candidates should not be permanently resident outside the nine countries concerned, and should have obtained a doctorate by the time the fellowship is awarded. Deadline: March 15, 2008.

W.F. Albright Associate Fellowships: No stipend. Open to senior, post-doctoral, and doctoral researchers. Administrative fee required. No deadline.

Council of American Overseas Research Centers (CAORC) Multi-Country Research Fellowships: The program is open to U.S. doctoral candidates and scholars who have already earned their Ph.D. in fields in the humanities, social sciences, or allied natural sciences and wish to conduct research of regional or trans-regional significance. Fellowships require scholars to conduct research in more than one country, at least one of which hosts a participating American overseas research center. It is anticipated that approximately ten fellowships of up to \$9,000 each will be awarded. For more information: <http://www.caorc.org>, fellowships@caorc.org, 202-633-1599. Deadline: January 11, 2008.

For complete information, contact: Dr. Joan R. Branham, Chair, AIAR Fellowships and AIAR Vice President, Department of Art and Art History, Providence College, Providence, RI 02918. Tel: 401-865-1789 Fax: 401-865-1036. Email: jbranham@providence.edu. Or visit the Albright's website at: www.aiar.org

*Awards are subject to availability of funds.

The Albright Institute does not discriminate on the basis of race, age, sex, sexual orientation, color, religion, national or ethnic origin, or disability.

REPORTS FROM ASOR REGIONAL MEETINGS

Mid-Atlantic ASOR/SBL [eastern PA, NJ, NY, MD, DE]

ASOR rep: Barry M. Gittlen, gittlen@bhu.edu

A conference at Baltimore Hebrew University, supported by the Eden Foundation, inaugurated this newly revitalized ASOR region and collaboration with SBL. The goal was to renew interest among ASOR members in participating in future ASOR sections at the Mid-Atlantic regional meetings. The conference, "The Archaeology of Worship in Biblical Israel," was held on April 22–23, 2007. The presenters were (<http://www.bhu.edu>): Susan Ackerman (*Dartmouth College*), Elizabeth Bloch-Smith (*St. Joseph's University*), Susanna Garfein (*Baltimore Hebrew University*), Barry M. Gittlen, Conference Chair (*Baltimore Hebrew University*), Ronald Hendel (*University of California, Berkeley*), David Ilan (*Hebrew Union College, Jerusalem*), Theodore J. Lewis (*Johns Hopkins University*), Carol Meyers (*Duke University*), Beth Alpert Nakhai (*University of Arizona*), Saul Olyan (*Brown University*), Ziony Zevit (*University of Judaism*).

Pacific Northwest AAR/SBL/ASOR [AK, AB, BC, ID, MT, OT, WA]

ASOR rep: Gloria London, glondon@earthlink.net

This regional conference met at the University of Lethbridge in Alberta, May 4–6, 2007. In addition to the regular academic sessions there was a pre-meeting Student Conference, where students presented papers. The ASOR Plenary session speaker was Professor Jon Cole, Walla Walla College, School of Engineering, who spoke about his ground penetrating radar studies of sites in Israel, Jordan and the Oregon coast. Chairing the ASOR session was Professor Shawn Bubel, U. of Lethbridge, who presented her Tell Beth Shemesh GIS research. Other papers pertained to the Dead Sea Scrolls (G. Doudna) and Cyprus goddesses (B. Bazemore). [Http://www.pnw-aarsbl.org](http://www.pnw-aarsbl.org).

Mid-West Region AOS/SBL/ASOR [IL, WI, MI, IN]

ASOR rep: K. Lawson Younger, lyounger@tiu.edu

The Olivet Nazaree University (Bourbonais, IL) hosted this conference on February 16–18, 2007. The plenary session included Elizabeth Bloch-Smith (*St. Joseph's University*) "Identifying Israelite Sacred Space"; Timothy P. Harrison (*University of Toronto*) "Neo-Assyrian *Langraum* or West Syrian Megaron? The Form and Function of Building II at Tayinat in Light of Recent Investigations"; and John Monson (*Wheaton College*) "Solomon's Temple in Geographical, Cultural, and Temporal Perspective." The Presidential Address was delivered by K. Lawson Younger, Jr. (*Trinity International University*): "Some Aspects of Aramean-Luwian Religion in Light of Recent Discoveries." Two additional sessions of AOS/ASOR papers were included in this year's meeting. [Http://www.midwestsbl.org](http://www.midwestsbl.org).

Pacific Southwest Region of AAR/SBL/ASOR [CA, AZ]

ASOR rep: Beth Alpert Nakhai, bnakhai@email.arizona.edu

ASOR met as part of WECSOR at the Graduate Theological Union in Berkeley, CA from March 24–26, 2007. The participants in the two sessions were Chang Ho (*La Sierra Univ.*), who

discussed the sanctuary and high place at 'Ataruz, Jordan; Aaron Brody (*PSR*) spoke about household archaeology at Tell en-Nasbeh; Gary P. Arbino (*Golden Gate Baptist Theological Seminary*) gave the 2006 Field report on Tel Gezer, Israel; David Hilton Jackson (*Claremont*) gave a paper on Philistine Cultural Identity; William H. Krieger (*U. of Rhode Island*) spoke on the state of theoretical archaeology in Israel; and Don C. Benjamin (*ASU*) spoke on Stones & Stories: an Introduction to Archaeology and the Bible. There was a tour of the Bade Museum at PSR. [Http://www.sjsu.edu/wecor](http://www.sjsu.edu/wecor).

ASOR Southeast – SECSOR [FL, GA, AL, MS, TN, KY, NC, SC]

ASOR rep: John Laughlin, laughlin@averett.edu

ASOR met as part of SECSOR in Nashville, TN, March 16–18, 2007. The presidential address, "Christian Artifacts in the Public Sphere: the James Ossuary and the Legitimation of Faith in the Modern Media," by Milton Moreland, was well attended and created a lot of questions and discussion. Jodi Magness spoke about the controversial issues concerning the nature and history of the Qumran community. This session was also well attended and created helpful discussion. A third session, on the theme of recent Research in Archaeology, included four papers. [Http://www.secsor.appstate.edu](http://www.secsor.appstate.edu).

Eastern Great Lakes Biblical Society-SBL/ASOR/in association with CBA [PA, NY, East MI, OH, East IN, WV, East KY, MD]

ASOR rep: Suzanne Richard, richard@gannon.edu

The regional conference convened at the Deer Creek Resort & Conference Center in Mount Sterling, Ohio, on April 12–13, 2007. This year's presentations included Jonathan Lawrence's talk on Jewish Ritual Bathing and Christian Baptism in India; Margaret Cohen on a proposed stratigraphic sequence at Ashdod for the LB/IA transition; Brad Crowel on a Literary Ostrakon from Horvat 'Uzza and the Edomite Wisdom Hypothesis; and Terry Hofecker gave a great overview of the Gezer Excavations, past and present, especially the important discoveries in the area of the Solomonic Gate. [Http://www.jcu.edu/bible/EGLBS](http://www.jcu.edu/bible/EGLBS).

Rocky Mountain/Great Plains region AAR/SBL/ASOR

[CO, NE, WY, NM, UT, MN]

ASOR rep: Rami Arav, rarav@mail.unomaha.edu

The conference was held March 23–24, 2007 at the Hilton Garden Inn in downtown Omaha, NE, sponsored by Creighton University. RMGP President Nicolae Roddy chaired the ASOR session, which included the following papers: "Nationalism and Archaeology in Israel" (Ashley Barrett, *U. of NE*); "An Untapped IA Textual Source: Luwian & the Biblical World (Richard Hess, *Denver Seminary*); and "In the Name of God – what does it actually mean and when did it come into use" (Rami Arav, *U of NE*). Plenary speakers included Ivan Strenski (*UC Riverside*) and Jodi Magness (*UNC Chapel Hill*). [Http://moses.creighton.edu/aar/index.html](http://moses.creighton.edu/aar/index.html).

continued on page 14

ASOR SW-SWCRS [OK, TX, AK, LA, MO, KS, NM, CO]

ASOR rep: Jesse. C. Long, Jr., jesse.long@lcu.edu

This meeting took place March 3-4, 2007 in Dallas at the Westin DFW Airport Hotel. The well-attended archaeology sessions included varied papers: An Iron-Age West Semitic Inscription: Where is Bet Harash? (J. Andrew Dearman, *Austin Presbyterian Theological Seminary*); A Reevaluation of Siaman's Campaign in Light of Recent Archaeological Discoveries (Steve Ortiz, *Southwestern Baptist Theological Seminary*); A Mitannian House at Late Bronze Age Alalakh: House 37 Reconsidered (Brian Briscoe, *University of Chicago*); The Re-Conservation of Area C at Khirbet Iskander: Redoing Previous Restoration to Better Reflect the Early Bronze Age (Bill Libby & Henry Squires, *McMurry University*). [Http://www.swcrs-online.org](http://www.swcrs-online.org).

Upper Midwest – AAR/SBL/ASOR

[IA, MN, ND, SD, WI, ON, SK, MB, NT, NU]

ASOR rep: Mark Chavalas, chavalas.mark@uwlax.edu

This region's conference took place April 13-14, 2007 at Luther Seminary in St. Paul, MN. The SBL plenary speaker for the conference was Jodi Magness (UNC), who delivered a paper on "The Arch of Titus in Rome and the Destruction of the Jerusalem Temple." This region is hoping to interest more ASOR participants in participating. Please consider sending in an abstract for an ASOR session at next year's conference. [Http://www.umw-aarsbl.org](http://www.umw-aarsbl.org).

Central States SBL/ASOR Chapter [IL, IA, KS, KY, MO, NE, OK, TN]

ASOR rep: Victor Matthews, VictorMatthews@missouristate.edu

On March 25-26, 2007, in St. Louis, the region met at the Marriott West for a wide-ranging meeting, including papers on methodology, textual and artifactual interpretation, and excavation reports from several sites (survey work in Oman, Abila, Gezer, Bethsaida). There were presentations by faculty and graduate students from seven different institutions. The plenary speaker for the 2008 meeting will be Jim VanderKam (*Notre Dame*), and the focus of at least one session will be on Qumran.

ASOR ARCHIVE PROJECT UPDATE

Rachel Hallote, Chair, Archive Committee

Work is progressing on schedule on the ASOR archival project. The results of the preliminary assessment conducted by Martha Mahard of Simmons Library School confirmed that ASOR is indeed the holder of a treasure trove, including letters from Albright, Wright, Barton, Speiser, Sukenik, and Detweiler. Additionally, Harvard's Semitic Museum is home to many ASOR materials relating to Nelson Glueck's excavation work, all of which will become part of the larger archive.

The archival materials include a variety of collections of photographic items, most notably the recently acquired 19th-century photographs of Tancrede Dumas, a well-known photographer who worked for the American Palestine Exploration Society, ASOR's predecessor organization. These albumen prints were brought to ASOR via the generosity of P. E. Macalister, and will be properly conserved during the course of the archival project.

Additional material that is housed in the Albright Institute in Jerusalem is in the process of being assessed as well, and we would like to thank the director and board of the AIAR for their help in the process, as well as Ann Killebrew who has helped facilitate various aspects of the work. We have now begun the writing phase of the NEH application with the help of Britt Hartenberger and a grant writer, Sarah Brophy. Sarah has facilitated many grants for small museum collections and archives.

The archival committee is made up of Rachel Hallote, Eric Meyers, Joseph Greene, and Jeffrey Blakely.

ASOR DONATION FORM

I would like to make a \$_____ contribution to ASOR.

- My check payable to ASOR in the amount of \$_____ is enclosed
- Please charge my credit card:

Visa MC Number _____ Exp. ____/____

Name _____

Address _____

City _____ State _____ Zip _____

Phone _____ Fax _____ E-mail _____

Signature _____



Give online: If you would like to submit your gift online, please go to the following URL: <http://www.bu.edu/asor/gift.html>. You may also email your pledge to asor@bu.edu.

*Donations received by June 30, 2007 will be applied to fiscal year 2007 (July 1, 2006 - June 30, 2007).

ASOR INDIVIDUAL MEMBERSHIP APPLICATION FORM

New
 Renewing
 Permanent Address Change
Membership #: _____

Name _____ Title _____

Mailing Address _____

City _____ State _____ Postal Code _____

Country _____ E-mail _____

Office Phone _____ Home Phone _____ Fax _____

Method of payment

check or money order (payable to ASOR)
 VISA
 MasterCard
Credit Card # _____ (charge will appear as ASOR)

Circle level of membership desired below.
(If a student or retired, proof of status must accompany this form.)
Credit Card Expiration Date _____/_____/_____

Total Enclosed US\$ _____ Signature _____

Complete this order form and return it with your payment to **ASOR Member/Subscriber Services**, 656 Beacon St., 5th Flr., Boston, MA 02215. Phone (toll-free): (888) 847-8753; (617) 358-4376. Fax: (617) 353-6575. Payment may be made by charge or by check drawn on a U.S. or Canadian bank in U.S. funds.

2007 Individual Membership Dues

	Sustaining	Professional	Professional Student/Retired	Associate
US Resident	\$250	\$110	\$85	\$50
Non-US Resident	\$250	\$135	\$110	\$63
Professional Members, select two of the following:			<input type="checkbox"/> JCS <input type="checkbox"/> NEA <input type="checkbox"/> BASOR	

Membership Benefits

Sustaining Individual. Receives BASOR, NEA, JCS and ASOR Newsletter, and special recognition in ASOR publications. Member discount on books and Annual Meeting registration. Eligible to present papers at the Annual Meeting and serve on editorial boards and academic committees. Eligible to apply for ASOR fellowships and grants. Eligible to vote as member of ASOR Corporation.

Professional Individual. Receives two of BASOR, NEA or JCS, and ASOR Newsletter. Member discount on books and Annual Meeting registration. Eligible to present papers at the Annual Meeting and serve on editorial boards and academic committees. Eligible to apply for ASOR fellowships and grants. Eligible to vote as member of ASOR Corporation.

Associate Individual. Receives ASOR Newsletter. Member discount on books and Annual Meeting registration. Eligible to apply for ASOR fellowships and grants. Not eligible to serve on editorial boards and academic committees. Not eligible to vote as member of ASOR Corporation.

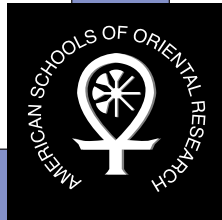
I DO NOT WISH TO JOIN ASOR BUT I WANT TO RECEIVE THE FOLLOWING PUBLICATION(S) AT THE SUBSCRIPTION RATE(S):

	Individual	Institutional	Overseas add	
<input type="checkbox"/> <i>Near Eastern Archaeology</i>	\$35	\$100	\$13	\$ _____
<input type="checkbox"/> <i>Bulletin of the American Schools of Oriental Research</i>	\$70	\$150	\$13	\$ _____
<input type="checkbox"/> <i>Journal of Cuneiform Studies</i>	\$45	\$70	\$10	\$ _____
<input type="checkbox"/> <i>Newsletter of the American Schools of Oriental Research</i>	\$20	\$35	\$13	\$ _____

With inquiries regarding membership in ASOR or for subscriptions to the journals NEA, JCS and BASOR, contact:

ASOR Member/Subscriber Services

Located at Boston University
656 Beacon Street, Fifth Floor
Boston, MA 02215
Toll free: (888) 847-8753, or
(617) 358-4376
Fax: (617) 353-6575
E-mail: asorpubs@asor.org
Web: www.asor.org



To purchase ASOR monographs or journal back issues, contact:

The David Brown Book Co.

P.O. Box 511
Oakville, CT 06779
Tel.: (800) 791-9354
Fax: (860) 945-9468
E-mail: david.brown.bk.co@snet.net
Web: www.oxbowbooks.com

The American Schools of Oriental Research
Located at Boston University
656 Beacon Street, Fifth Floor
Boston, MA 02215

Non Profit Org.
U.S. Postage
PAID
Permit #1040
Leesburg, FL 34748

Moving? Please fill in the information below and return with this mailing label to:

ASOR Membership/Subscriber Services

Located at Boston University
656 Beacon Street, Fifth Floor
Boston, MA 02215

Name _____
Address _____

City _____
State _____ Zip _____
Country _____
Moving Date _____
Membership Number _____