

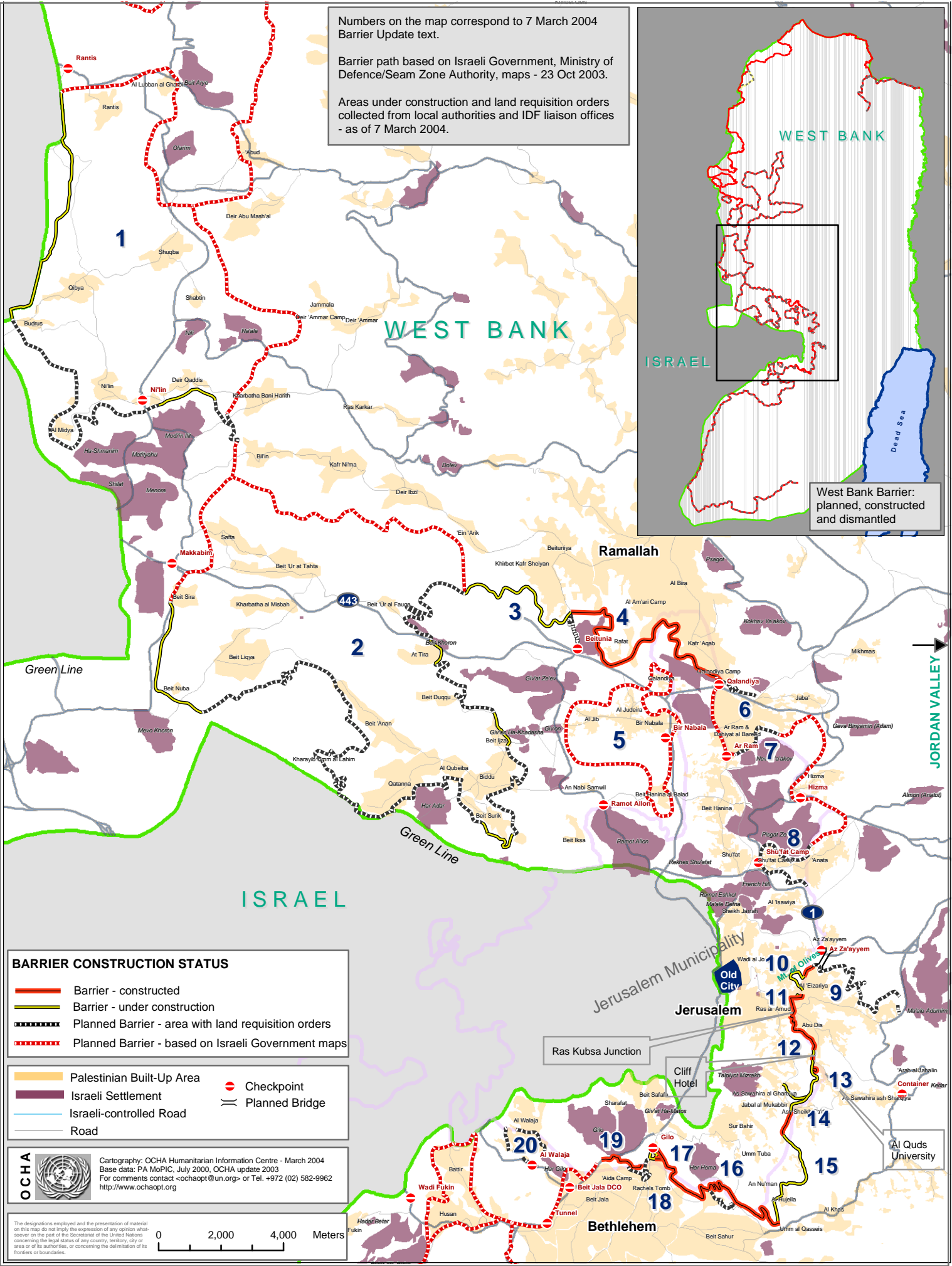
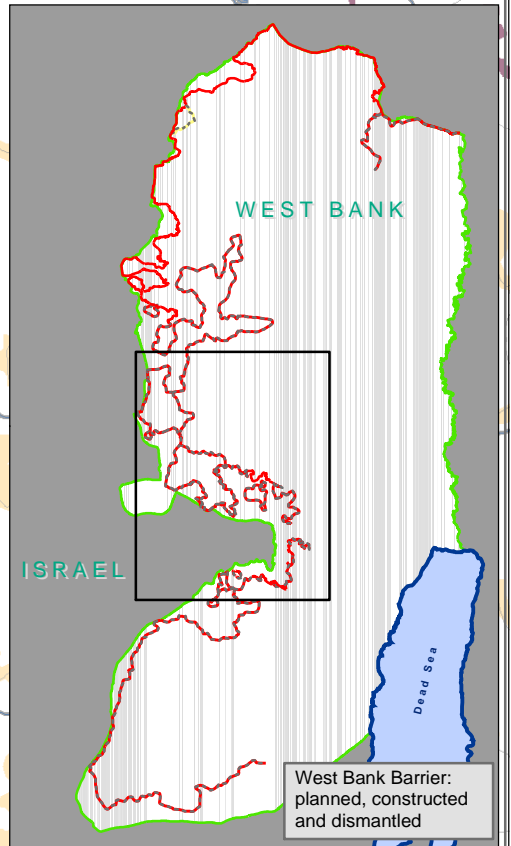
Central West Bank Barrier - March 2004

| JERUSALEM | RAMALLAH | BETHLEHEM |

Numbers on the map correspond to 7 March 2004 Barrier Update text.

Barrier path based on Israeli Government, Ministry of Defence/Seam Zone Authority, maps - 23 Oct 2003.

Areas under construction and land requisition orders collected from local authorities and IDF liaison offices - as of 7 March 2004.



BARRIER CONSTRUCTION STATUS

- Barrier - constructed
- Barrier - under construction
- Planned Barrier - area with land requisition orders
- Planned Barrier - based on Israeli Government maps

- Palestinian Built-Up Area
- Israeli Settlement
- Israeli-controlled Road
- Road
- Checkpoint
- Planned Bridge

OCHA Cartography: OCHA Humanitarian Information Centre - March 2004
 Base data: PA MoPIC, July 2000, OCHA update 2003
 For comments contact ochaopt@un.org or Tel. +972 (02) 582-9962
<http://www.ochaopt.org>

The designations employed and the presentation of material on this map do not imply the expression of any opinion whatsoever on the part of the Secretariat of the United Nations concerning the legal status of any country, territory, city or area or of its authorities, or concerning the delimitation of its frontiers or boundaries.

