



Georgia Department of Transportation Fact Sheet

Fall Line Freeway

CORRIDOR FACTS

- ◆ The corridor traverses the entire width of the state from the Alabama State Line in Columbus to Macon and then to Augusta at the South Carolina State Line.
- ◆ This corridor is approximately **215 miles** in length.
- ◆ Completed projects in provide **4-lanes** of roadway, usually divided with a 44 feet wide grass median.
- ◆ There are approximately **185 miles (86%)** open to traffic.
- ◆ The current estimated cost to complete the 4-lane construction of the Fall Line Freeway is **\$190,195,000**.
- ◆ The section from Columbus to Macon is **100%** open to traffic.
- ◆ The section from Macon to Augusta is **66%** under construction or open to traffic.

PREPARING A HIGHWAY PROJECT FOR CONSTRUCTION

Highway construction demands adherence to an exact project development process, as specified in federal and state laws. This process incorporates a number of key stages that are vital to the development of a highway construction project:

- ◆ Concept Development: Data analysis, conceptual studies and alternatives analysis
- ◆ Environmental Approval: Surveys for environmental resources, public meetings and environmental document approval
- ◆ Preliminary Design Plans: Design and preparation of preliminary roadway plans and utility coordination
- ◆ Right of Way Acquisition: Property title research, right of way plans, property appraisal, purchase of right of way
- ◆ Final Design Plans: Design and preparation of final construction plans and contract documents
- ◆ Let to Contract: Advertise for bids, award to construction contract and begin construction

FALL LINE FREEWAY CORRIDOR STATUS FROM COLUMBUS TO AUGUSTA



Fall Line Freeway from the City of Columbus in Muscogee County
through Junction City in Talbot County

The corridor is complete and open to traffic from Columbus in Muscogee County to Junction City in Talbot County.

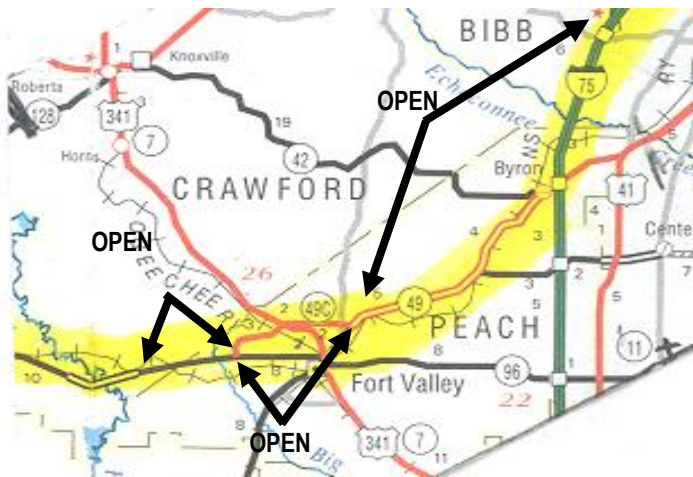
FALL LINE FREEWAY CORRIDOR STATUS FROM COLUMBUS TO AUGUSTA (CONTINUED)



OPEN

Fall Line Freeway from Junction City in Talbot County to the Crawford County Line

The corridor is complete and open to traffic from Junction City in Talbot County to the Flint River in Taylor County.

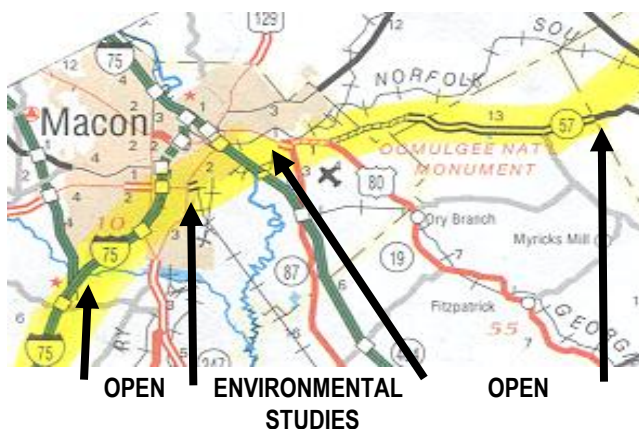


Fall Line Freeway from the Crawford County Line to City of Macon in Bibb County

The corridor is complete and open to traffic from the Flint River to the Fort Valley Bypass.

The Fort Valley Bypass is complete and open to traffic.

The next 23.8 miles of the corridor are complete and open to traffic. This section follows SR49 from Fort Valley to I-75 at Byron then follows I-75 to Macon.

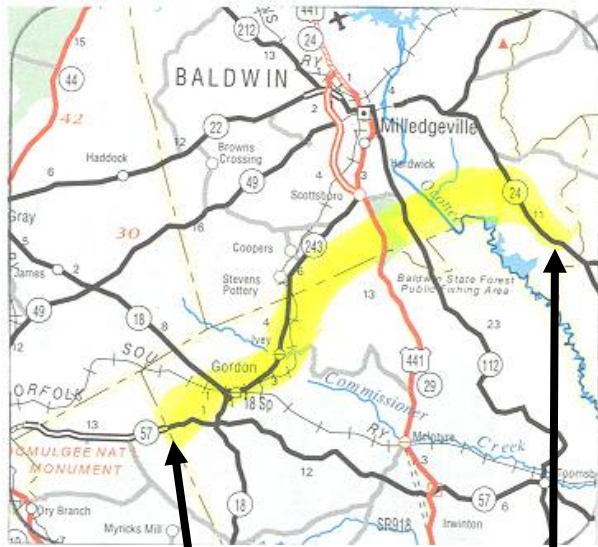


Fall Line Freeway from the City of Macon in Bibb County to the Wilkinson County Line

From I-75 the Fall Line Freeway turns east along US80/Eisenhower Parkway in southeast Macon and ends at Lower Boundary Street. From here, environmental studies were conducted to determine a corridor route; however, no prudent or feasible alternative was identified. The existing interstate along I-75 then I-16 will be utilized to US 80.

From US 80 in northeast Macon to the Wilkinson County line, the corridor follows SR 57 and is open to traffic.

FALL LINE FREEWAY CORRIDOR STATUS FROM COLUMBUS TO AUGUSTA (CONTINUED)

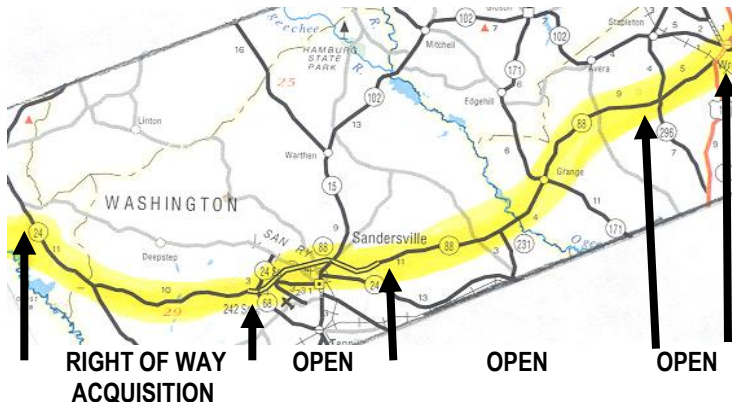


Under Construction
(Gordon Bypass to US 441)

Fall Line Freeway from the Wilkinson County Line to SR 24
in southeast Baldwin County

The corridor departs from SR 57 just east of the Twiggs/ Wilkinson County line and extends on new location around the north side of Gordon and intersects SR 243 just southwest of Ivey. This section is under construction. **(Project No. 221870-)**

The corridor extends along SR 243 through Ivey and continues parallel to SR 243 to approximately seven-tenths of a mile south of the Baldwin County line. At this point the alignment turns east on new location to US 441. This section is under construction. **(Project No. 262470-)** The next project crosses the Oconee River, and ties to SR 24 just south of Crawford Road in southeast Baldwin County. This section is in the right of way acquisition phase and acquisition is 50% complete. **(Project No. 0000346)**



RIGHT OF WAY
ACQUISITION

OPEN

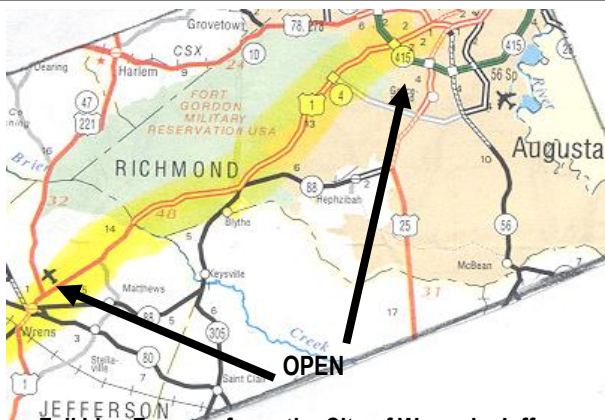
OPEN

OPEN

Fall Line Freeway from SR 24 in southeast Baldwin County
to the City of Wrens in Jefferson County

The corridor continues along SR 24 from Crawford Road to SR 68 at the Sandersville Bypass in Washington County. This section is in the right of way acquisition phase and acquisition is 90% complete. **(Project Nos. 222280-, 222285-)**

The corridor is complete and open to traffic from the Sandersville Bypass to Wrens.



OPEN

Fall Line Freeway from the City of Wrens in Jefferson
County to the City of Augusta in Richmond County

The corridor is complete and open to traffic from Wrens to I-520 in the City of Augusta.