

**ELECTRICITY AUTHORITY  
OF CAMBODIA**

**REPORT  
ON  
POWER SECTOR OF  
THE KINGDOM OF CAMBODIA  
2010 EDITION**

**Compiled by Electricity Authority of  
Cambodia from Data for the year 2009  
received from Licensees**

## **PREFACE**

The Annual Report on Power Sector of the Kingdom of Cambodia, 2009 Edition is compiled from informations for the year 2009 received from licensees, MIME and other organizations in the power sector. This report is for dissemination to the Royal Government, institutions, investors and public desirous to know about the situation during the year 2009 of the power sector of the Kingdom of Cambodia.

This report is compiled from information collected by EAC and information taken from licensees' annual summary report on their activities during the Year 2009. Till the end of year 2009, 249 licensed electricity service providers share more than 99% of power market in the kingdom of Cambodia. Among them EDC, the distribution licensees, the licensees supplying electricity in provincial towns and other big towns manage the service well, and keep their operational records to the required level of quality. Most of the small licensees supplying electricity in rural areas, are improving the level of management of their operation, still there may be inaccuracies in their data record. However as the power market share of this group of licensees is small (less than 2%); this will not materially affect the overall accuracy of the data furnished in this report. However, EAC gives special attention to the collection of the data done by it from these licensees and trains them to record the required data correctly as the data is important in assessing the real situation of rural electrification.

Any comments or suggestions from Royal Government, institutions, investors or public are welcome and will be considered by EAC to publish more useful reports in future reflecting the actual situation of the sector.

EAC expects that this report will be a valuable document for the information for the year 2009 on the power sector of the Kingdom of Cambodia.

**Chairman**  
**Electricity Authority of Cambodia**

**TY NORIN**

## Table of Contents

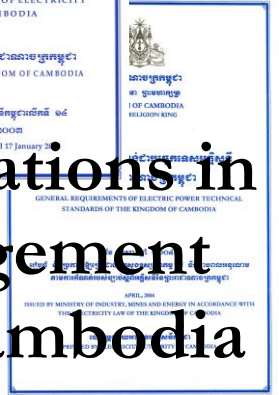
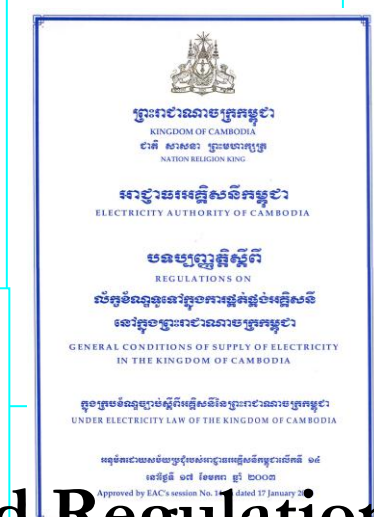
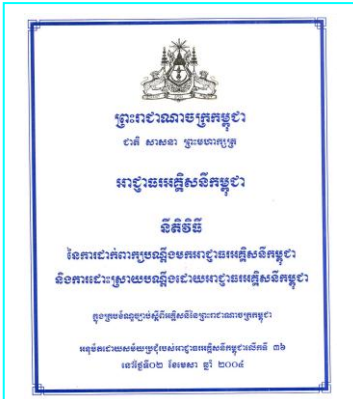
<b>CHAPTER 1 Basic Law and Regulations in Power Sector Management in the Kingdom of Cambodia.....</b>	<b>6</b>
1.1 Electricity Law of the Kingdom of Cambodia .....	6
1.2 Responsibilities of Ministry of Industry, Mines and Energy and Electricity Authority of Cambodia in Power sector .....	7
1.3 Duties of the Electricity Authority of Cambodia in the Power sector .....	8
1.3.1 Regulation of the Electric Power Services .....	8
1.3.2 Governance of relation between Delivery, Receiving and Use of Electricity .....	8
1.3.3 Powers and Duties of Electricity Authority of Cambodia.....	8
1.3.4 Legal Documents for Governing and Regulating Electric Power Services and use of Electricity.....	9
<b>CHAPTER 2 Information on Electricity Authority of Cambodia – the Regulator for the Power Sector in the Kingdom of Cambodia .....</b>	<b>13</b>
2.1 Regulator in Power Sector.....	13
2.2 Organization of Electricity Authority of Cambodia .....	13
2.3 The Budget of EAC and License Fees.....	14
2.4 Financial Statements of EAC .....	14
<b>CHAPTER 3 General Information .....</b>	<b>17</b>
3.1 Introduction.....	17
3.2 Developments in Power Sector till 2009.....	17
3.2.1 Extension of Grid Supply to new areas .....	17
3.2.2 Strengthening and expansion of Isolated supply Systems .....	18
3.3- Projects finalized and under implementation .....	18
3.4- Projects planned and under different stages of implementation .....	21
<b>CHAPTER 4 Information on Licenses and Licensees in the Kingdom of Cambodia.....</b>	<b>23</b>
4.1 Licenses for Providing Electric Power Services .....	23
4.2 Licenses issued and revoked .....	24
4.3 Revision of Licenses .....	25
4.4 Licenses in operation during 2009 .....	26
4.5 Efforts of Government of Cambodia, Rural Electrification Fund and EAC to assist licensees .....	27
<b>CHAPTER 5 Electricity Tariff of Licensees .....</b>	<b>30</b>
5.1 Electricity Tariff.....	30
5.2 Electricity Tariff with Fuel Cost Adjustment Table approved by EAC .....	30
5.3 Approval of expanded range of Fuel Cost in Fuel Cost Adjustment Table .....	34
5.4 Electricity Tariff (without Fuel Cost Adjustment Table) approved by EAC .....	36
5.5 Tariff of EDC during 2009 .....	37
5.5.1 Tariff of EDC for Phnom Penh, Kandal Province and Provincial Town of Kampong Speu .....	37
5.5.2 Electricity Tariff of EDC at Provincial Towns, Cities and Town Centers .....	38
5.5.3 Electricity Tariff for electricity supply areas of other licensees .....	40
5.6 Electricity Tariff for sale to Licensees.....	40
<b>CHAPTER 6 Report on Generation, Import, Transmission and Supply of Electricity .....</b>	<b>44</b>
6.1 Electricity Generation, Import and consumption in Cambodia at a glance .....	44
6.2 Grid connected Systems and isolated systems in Cambodia .....	44
6.3 Generation in Cambodia .....	47
6.3.1 Generation by Type of License.....	47
6.3.2 Generation by Type of Generation Facilities .....	47
6.4 Energy Imported from Neighboring Countries .....	48
6.5 Electricity Transmission .....	50
6.6 Electricity Distribution .....	52

<b>Annex 1 Province wise Area of supply served by Distribution, Retail and Consolidated Licensees at the end of Year 2009.....</b>	<b>54</b>
<b>Annex 2(a) Summary Information about Generation Installed Capacity and Energy Sent out .....</b>	<b>72</b>
<b>Annex 2(b) Summary Information about Generation Facilities and Energy Sent-out classified by Generation Type .....</b>	<b>72</b>
<b>Annex 3 Information on Generation Licensees for the Year 2009.....</b>	<b>73</b>
<b>Annex 4 Summery Information on Distribution Licensees for year 2009 .....</b>	<b>75</b>
<b>Annex 5 Summery Information on Transmission Licensees for year 2009 .....</b>	<b>775</b>
<b>Annex 6 Summery Information on Electricité du Cambodge for year 2009 .....</b>	<b>79</b>
<b>Annex 7 Information on Consolidated and Retail Licensees for year 2009 .....</b>	<b>80</b>
<b>Annex 8 Information on Grid Systems in Cambodia .....</b>	<b>90</b>
<b>Annex 8A Phnom Penh Grid.....</b>	<b>91</b>
<b>Annex 8B Banteay Meanchey Grid.....</b>	<b>92</b>
<b>Annex 8C Kampong Cham Grid .....</b>	<b>93</b>
<b>Annex 8D Vietnam Grid at Medium Voltage .....</b>	<b>94</b>
<b>Annex 8E Thai Grid at Medium Voltage.....</b>	<b>95</b>
<b>Annex 9 Information on Licenses not valid at the end of year 2009 .....</b>	<b>96</b>
<b>Annex 10 Tariff of Licensees for the Year 2009.....</b>	<b>97</b>
<b>Annex 11 Provincewise Number of Villages electrified by licensees .....</b>	<b>108</b>

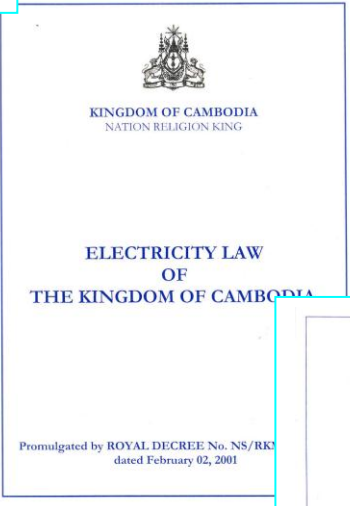
## List of Table

Table 1: Legal Documents for Governing and Regulating Electric Power Services and use of Electricity.....	9
Table 2: Legal Documents in Force for Managing and Regulating Provision of Services and Use of Electricity.....	10
Table 3: License Fees to be paid by Licensees .....	14
Table 4: Income statement Reports for the years 2007 and 2008 .....	15
Table 5: Number of Licenses issued each year.....	24
Table 6: Types and Number of Licenses issued and valid.....	25
Table 7 : Current Term of Licenses .....	26
Table 8 : Number of different types of Licensees operating in each Province/City.....	27
Table 9 : Number of new connections for which Subsidy Disbursement was done by REF.....	28
Table 10: Licensees whose Tariff with Fuel Cost Adjustment Table was approved by EAC during 2009 .....	30
Table 11: Licensees for whom the range of Fuel Cost was expended in the Fuel Cost Adjustment Table during 2009.....	35
Table 12: Charges for Sub-transmission in Shanoukville.....	36
Table 13: Tariff of EDC for Phnom Penh and Kandal Province .....	37
Table 14: Electricity Tariff of EDC for Provincial Town of Kampong Speu.....	37
Table 15: Tariff of EDC for Phnom Penh and Kandal Province and Provincial Town of Kampong Speu for Commercial and Industrial Consumers .....	38
Table 16: Electricity Tariff of EDC for Sihanoukville .....	39
Table 17: Electricity Tariff of EDC for Provincial Town of Siem Reap.....	39
Table 18: Electricity Tariff of EDC for Provincial Towns of Battambang and Banteay Meanchey and Monkol Borey District Town.....	39
Table 19: Electricity Tariff of EDC for other Provincial Towns and Town Centers .....	40
Table 20: Electricity Tariff for sale to Licensees .....	40
Table 21: Data of Licensees operating in Electricity Sector of Cambodia at a glance .....	44
Table 22: Data on Grid Systems.....	45
Table 23: Province wise Data on isolated systems for 2009.....	46
Table 24: Contracted capacity, Energy Imported and Average Cost during 2009.....	49
Table 25: Information about High Voltage Transmission Lines .....	50
Table 26: Information about High Voltage Grid-Substation .....	51

# Chapter 1



## Basic Law and Regulations in Power Sector Management in the Kingdom of Cambodia



## **CHAPTER 1**

### **Basic Law and Regulations in Power Sector Management in the Kingdom of Cambodia**

#### **1.1 Electricity Law of the Kingdom of Cambodia**

Under the framework of reform in power sector, Royal Government of Cambodia has established the Electricity Law of the Kingdom of Cambodia in order to open for and attract private investors to participate in the development of the power sector in the Kingdom of Cambodia. The Electricity Law of the Kingdom of Cambodia was adopted by National Assembly on November 06, 2000 at the plenary session No.5 of term 2, agreed by the Senate on the form and content of the law on December 13, 2000 at the plenary session No.4 of term 1 and announced to be consistent with the Constitution by the Constitutional Council on January 15, 2001. The Law was finally promulgated by ROYAL DECREE No. NS/RKM/0201/03 dated February 02, 2001 by Preah Bath Samdech **Preah Norodom Sihanouk**, King of Cambodia.

In preparation of a framework for the electric power supply and services throughout the Kingdom of Cambodia, the Law provides for the establishment of an institution called “Electricity Authority of Cambodia”, a legal public entity, being granted the right by the Royal Government to be an autonomous agency to regulate the power sector in the Kingdom of Cambodia.

The Electricity Law provides that the Electricity Authority of Cambodia shall consist of 3 Members, including the Chairman. The Chairman and Members shall be designated and proposed by the Prime Minister and shall be appointed by Royal KRET. Each Member shall have a 3 (three) years term, which shall be staggered so that the term of the initial members shall expire at different times.

As per the Electricity Law of the Kingdom of Cambodia, “no person may operate as an electric power utility or provide electric power services unless he/she has performed under and in accordance with the terms of a valid license issued by the Authority. Any person, who is operating as an electric power utility at the time of promulgation of the Electricity Law, shall apply to the Electricity Authority of Cambodia for a license within 6 month of receiving the initial notice from the Authority”.

Regulations, orders and decisions issued by the Electricity Authority of Cambodia are enforceable as per the Electricity Law. Electricity Authority of Cambodia is competent to file complaints in the courts of the Kingdom of Cambodia for any violation of the Electricity Law or the regulations, orders, decisions as well as licenses issued by EAC.

The Law also provides for the rights, obligations and penalty on the service providers as well as the consumers in order to establish fair condition in the business and the use of electricity.

The enactment of the Electricity Law of the Kingdom of Cambodia is a big leap forward in bringing reforms in the electricity sector. This reform will encourage the private investors to invest in the power sector in a fair, just and efficient manner for the benefit of our society.

## 1.2 Responsibilities of Ministry of Industry, Mines and Energy and Electricity Authority of Cambodia in Power sector

Article 3 of the Electricity Law of the Kingdom of Cambodia defines the responsibility of Ministry of Industry, Mines and Energy and Electricity Authority of Cambodia separately. As per the provisions of this article, after EAC has started its operation, the governing of the power sector in the Kingdom of Cambodia shall be bifurcated, 1-the Ministry of Industry, Mines and Energy shall be responsible for setting and administrating the government policies, strategies and planning in the power sector and 2-the Electricity Authority of Cambodia shall ensure that the provision of services and the use of electricity shall be performed efficiently, qualitatively, sustain ably and in a transparent manner.

It means that, the Ministry of Industry, Mines and Energy, through its duty for setting and administering the government policies, strategies and planning in the power sector, is the institution of the Royal Government to chalk out the path that power sector of the Kingdom of Cambodia is going to take. This institution is also responsible for setting the technical standards for the power sector.

EAC is responsible to issue rules, regulations and procedures and also is responsible to monitor, guide, coordinate including requiring the operators in power sectors both suppliers and consumers to follow the policy and guidelines and technical standards issued by Ministry of Industry, Mines and Energy and ensure that the provision of services and the use of electricity shall be performed efficiently, qualitatively, sustain ably and in a transparent manner.

The roles of the two organizations in governing power sector in the Kingdom of Cambodia as provided in the Electricity Law of the Kingdom of Cambodia is shown in the following diagram:

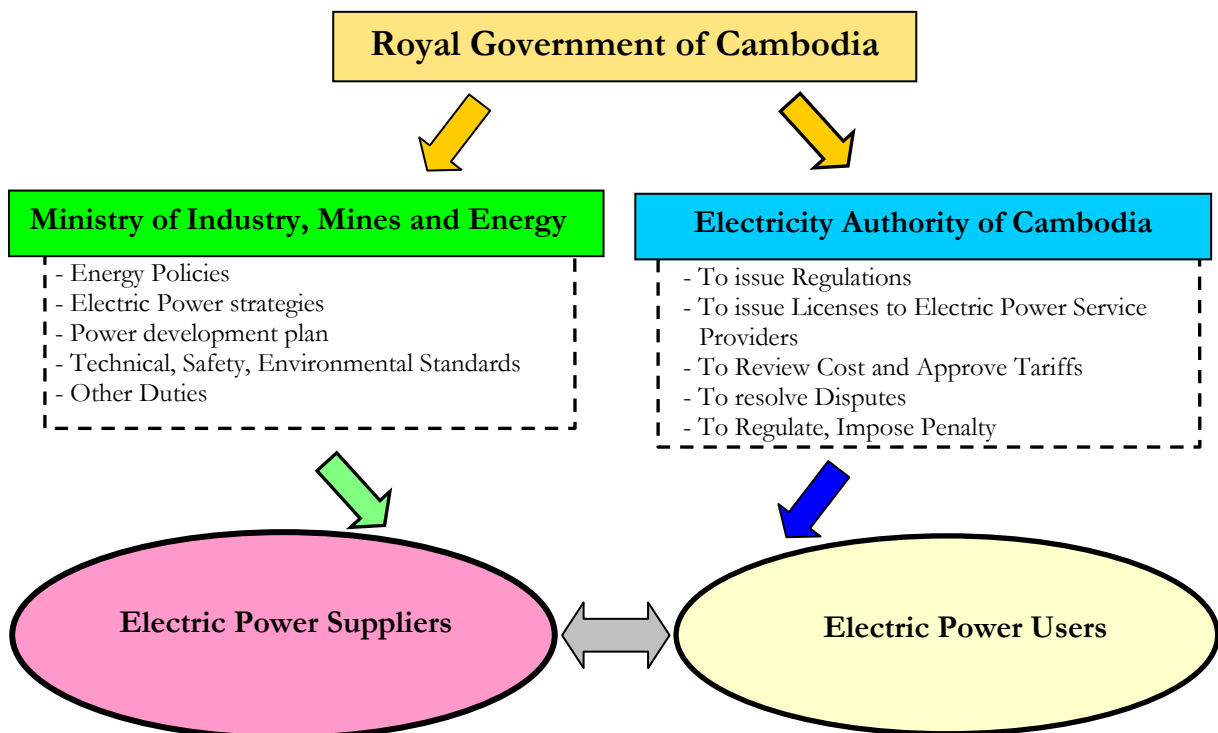


Figure 1: Separation of role between MIME and EAC



### **1.3 Duties of the Electricity Authority of Cambodia in the Power sector**

#### **1.3.1 Regulation of the Electric Power Services**

Providing Electric Power Services mean the business of providing electric power services. Electricity Law of the Kingdom of Cambodia has granted the right and autonomy to EAC to regulate the activities of these services in order to ensure that the services and the business of the electric power service providers are actually carried out efficiently, qualitatively, sustainably and in a transparent manner. Granting the right and autonomy to EAC to regulate these services does not mean that Law has provided for EAC to get involved in or to manage the internal business of the electric power service providers. But it allows EAC to advise, guide or direct the service provider, to modify or cease such activity which affects the service being performed efficiently, qualitatively, sustainable and in a transparent manner. The guiding action or direction to revise or cease any activity is to be carried out in public interest and to protect the interest of the consumers.

#### **1.3.2 Governance of relation between Delivery, Receiving and Use of Electricity**

The relation between Delivery, Receiving and Use of Electricity means the relation between generators and transmitters, between generators and distributors, between transmitters and distributors or between suppliers and consumers. These relations relate only to the cycle of delivery, receiving and use of electricity. The relations can cover the conditions of delivery and receiving electric power services between above parties; the obligations and rights of the above parties in delivery and receiving electric power services; the cost of electric power services that one party pays to the other party; the quality of electric power services that one party provides to other parties etc.

Electric Power Services mean services in electricity sector provided by one party to other parties. Electric power services does not only mean provision of **“Electricity”** by suppliers to the consumers or the generation, transmission or distribution services provided by one service provider to other service providers but can be any electricity work such as the installation of electrical equipments and network, operation and maintenance, the services in relation to providing the electric power services, the implementation of any work of electric power services etc., which one electric service provider delivers to other electric service providers or to consumers.

The Electricity Law of the Kingdom of Cambodia has granted the right and autonomy to EAC to govern these relations between the Delivery, Receiving and Use of Electricity.

#### **1.3.3 Powers and Duties of Electricity Authority of Cambodia**

According to the Article 7 of Electricity Law of the Kingdom of Cambodia, EAC has the following powers and duties:

- (a) To issue, revise, suspend, revoke or deny the licenses for the provision of electric power services as provided in article 29 of the Law;
- (b) To approve tariff rates and charges and terms and conditions of electric power services of licensees, except where the Authority consider those rates or charges and terms and conditions are established pursuant to a competitive, market-based process;

- (c) To enforce regulations, procedures and standards for investment programs by licensees;
- (d) To review the financial activities and corporate organization structure of licensees to the extent that these activities and organization directly affect the operation of the power sector and the efficiency of electricity supply;
- (e) To approve and enforce the performance standards for licensees;
- (f) To evaluate and resolve consumer complaints and contract disputes involving licensees, to the extent that the complaints and disputes relate to the violation of the conditions of license;
- (g) To approve and enforce a uniform system of accounts for all licensees;
- (h) To prepare and publish reports of power sector and relevant information received from licensees for the benefit of the Government and the public;
- (i) To prescribe fees applicable to licensees;
- (j) To determine the procedures for informing the public about its activities within its duties, in order to ensure that the Electricity Authority of Cambodia complies with the principle of transparency as set forth in Article 3 of this law;
- (k) To issue rules and regulations and to make appropriate orders, and to issue temporary and permanent injunction for electric power services;
- (l) To impose monetary penalty, disconnect power supply, suspend or revoke the license for the violations of this Law, standards and regulations of the Electricity Authority of Cambodia;
- (m) To require the electric power service providers and the consumers to obey the rules relating to the national energy security, economic, environmental and other Government policies;
- (n) To perform any other function incidental or consequential to any of the duties as describes above; and
- (o) To establish the terms and conditions of employment of the officers or employees including experts/advisors of Electricity Authority of Cambodia.

#### 1.3.4 Legal Documents for Governing and Regulating Electric Power Services and use of Electricity

The Legal Documents for governing and regulating electric power services and use of electricity in the Kingdom of Cambodia are classified in Table 1 below:

**Table 1: Legal Documents for Governing and Regulating Electric Power Services and use of Electricity**

<b>1 Law</b>	The Electricity Law of the Kingdom of Cambodia and other Laws to manage and regulate the power sectors. Laws are main documents in regulating all activities in power sector and also the main base for preparation of other legal documents needed for managing and regulating the power sector.
<b>2 Legal Documents of Government Class</b>	Sub-Decree, Decision, Notification etc. of the Royal Government. These documents are for determining the power sector policy and for regulating the activities in power sector and are issued by the Royal Government under the provisions of the Electricity Law. The main principles of the power sector, which are not defined in the Law, can also be issued for application as a

	standard document of the Royal Government.
<b>3 Legal Documents of Ministry Class</b>	<p>Declaration (Prakas) and Decisions of the Ministry of Industry, Mines and Energy. These are the documents for managing the works, which are under the duties of Ministry of Industry, Mines and Energy such as policy, development, planning, strategy, technical standards and other determinations in power sector such as:</p> <ul style="list-style-type: none"> <li>- Investments in the rehabilitation and development of power sector in the short, medium and long term;</li> <li>- Restructuring, private sector participation and privatization of Public Utilities;</li> <li>- Promotion of the use of indigenous energy resources in the generation of electricity;</li> <li>- Planning and agreements on the export and import of electricity;</li> <li>- Subsidies to specific classes of customers and priorities regarding consumers of electricity;</li> <li>- Promotion of efficiency in generation, transmission, distribution and consumption of electricity and action taken to create a Comprehensive Electricity Conservation Program for Cambodia; and</li> <li>- Electricity sector emergency and energy security strategies.</li> </ul>
<b>4 Legal Documents of EAC</b>	Licenses, regulations, procedures and decisions of Electricity Authority of Cambodia (EAC), which are issued by EAC under the framework of the Electricity Law. These documents are for managing and regulating the electric power services and the use of electricity in the Kingdom of Cambodia.

The legal documents prepared and put into force for managing and regulating provision of services and use of electricity in the Kingdom of Cambodia up to the end of the year 2009 are shown in the table 2 below:

**Table 2: Legal Documents in Force for Managing and Regulating Provision of Services and Use of Electricity**

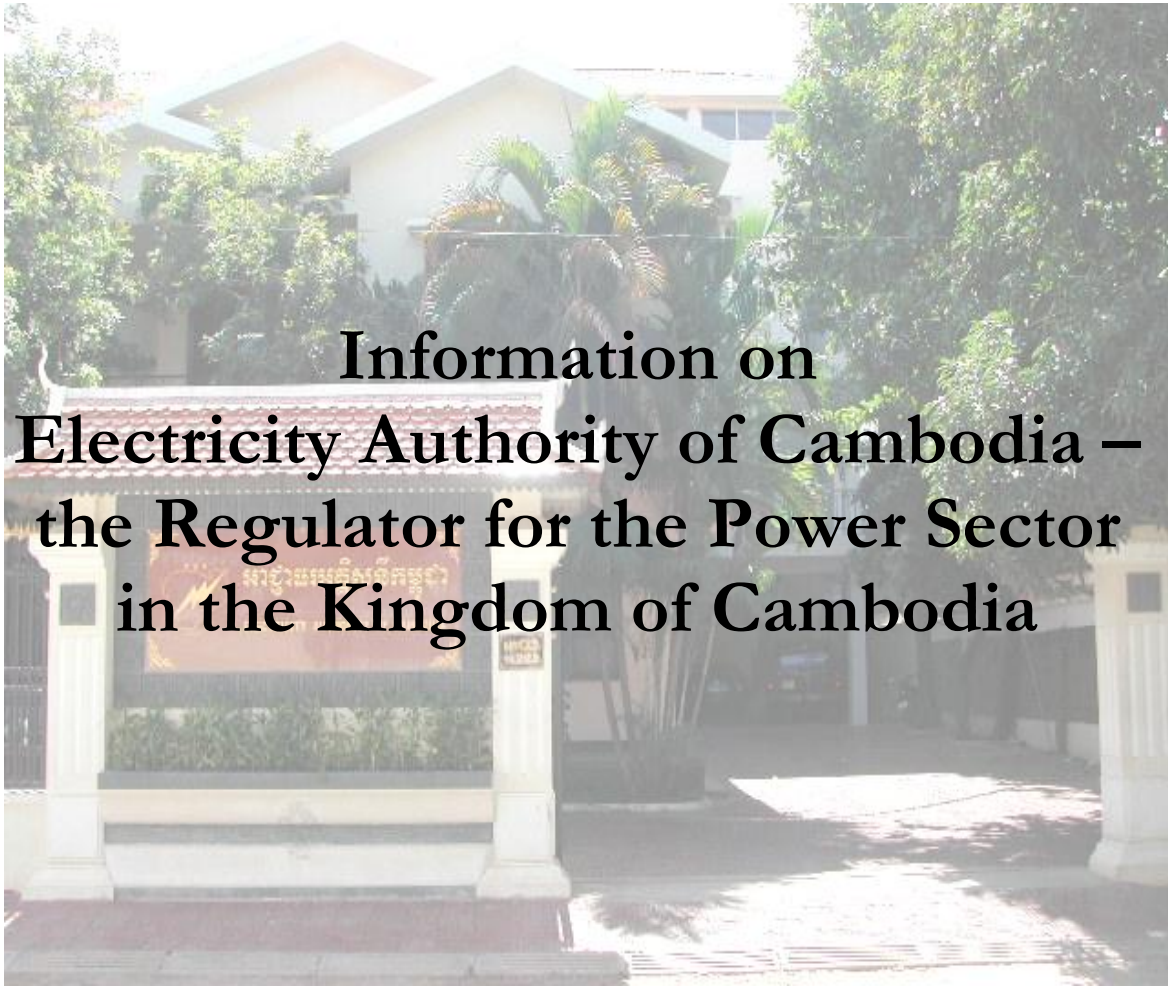
No.	Name of Standard Documents	Promulgated by	Date Promulgated
1	Electricity Law of the Kingdom of Cambodia	The King	February 2, 2001
2	Sub-Decree on the Rate of the Maximum License Fees applicable to Electric Power Service Providers in the Kingdom of Cambodia	Royal Government	December 27, 2001
3	Procedures for Issuing, Revising, Suspending, Revoking, or Denying Licenses	Electricity Authority of Cambodia	September 14, 2001
	Revision 1		December 12, 2002
	Revision 2		March 16, 2004
4	Regulations on General Conditions of supply of Electricity in the Kingdom of Cambodia	Electricity Authority of	January 17, 2003

## Electricity Authority of Cambodia

	Revision 1	Cambodia	December 17, 2004
5	Regulatory Treatment of Extension of Transmission and Distribution Grid in the Kingdom of Cambodia	Electricity Authority of Cambodia	October 28, 2003
6	Regulations on Overall Performance Standards for Electricity Suppliers in the Kingdom of Cambodia	Electricity Authority of Cambodia	April 2, 2004
7	Procedure for Filing Complaint to EAC and for Resolution of Complaint by EAC	Electricity Authority of Cambodia	April 2, 2004
8	General Requirements of Electric Power Technical Standards of the Kingdom of Cambodia	Ministry of Industry, Mines and Energy	July 16, 2004
	First Ammendment		August 9, 2007
9	Sub-Decree on Creation of Rural Electricity Fund of the Kingdom of Cambodia	The King	December 4, 2004
10	Sub-Decree on Principles for Determining the Reasonable Cost in Electricity Business	Royal Government	April 8, 2005
11	Prokas on Principles and Conditions for issuing Special Purpose Transmission License in the Kingdom of Cambodia	Ministry of Industry, Mines and Energy	July 21, 2006
12	Specific Requirements of Electric Power Technical Standards of the Kingdom of Cambodia	Ministry of Industry, Mines and Energy	July 17, 2007
13	Regulations on General Principles for Regulating Electricity Tariffs in the Kingdom of Cambodia	Electricity Authority of Cambodia	October 26, 2007
14	Procedures for Data Monitoring, Application, Review and Determination of Electricity Tariff	Electricity Authority of Cambodia	October 26, 2007
15	Grid Code	Electricity Authority of Cambodia	May 22, 2009

The contents of the legal documents stated in table 2 above, are available at EAC website [www.eac.gov.kh](http://www.eac.gov.kh).

## Chapter 2



**Information on  
Electricity Authority of Cambodia –  
the Regulator for the Power Sector  
in the Kingdom of Cambodia**

**CHAPTER 2**  
**Information on Electricity Authority of Cambodia –**  
**the Regulator for the Power Sector in the Kingdom of Cambodia**

**2.1 Regulator in Power Sector**

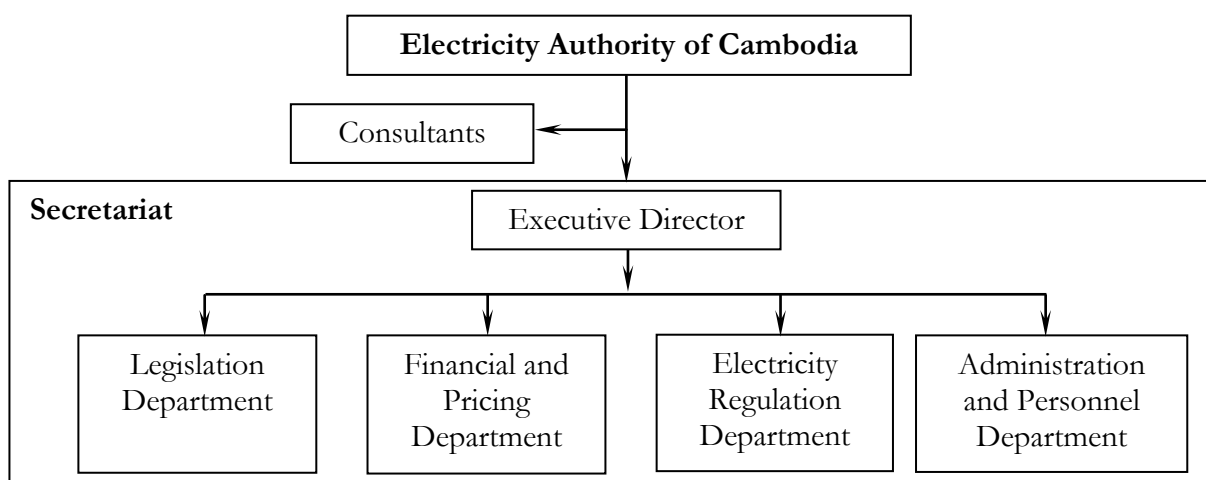
According to the Electricity Law, the Electricity Authority of Cambodia (EAC) shall consist of 3 (three) members. The members of EAC shall be designated and proposed by the Prime Minister and shall be appointed by the Royal KRET. During the year 2009, the regulators for the power sector, appointed by the Royal KRET, are as follows:

1. **H.E. Dr. Ty Norin**, Chairman
2. **H.E. Yao Bunmeng**, First Vice-Chairman
3. **H.E. Sam Oeun Kim Hoeun**, Second Vice-Chairman

**2.2 Organization of Electricity Authority of Cambodia**

As provided by Electricity Law, EAC shall consist of three members and shall have one secretariat for assistance. This secretariat shall be headed by an Executive Director. The Executive Director shall be appointed by Chairman of EAC after consulting with other members.

At present, EAC has its organization structure as per the schematic diagram below. The highest authorities of EAC are the three regulators i.e. the chairman of EAC and the two vice-chairmen. Under the chairman and vice-chairmen, there is one secretariat headed by the executive director. Secretariat provides support to EAC for administrative and technical works and controlling the specialized departments under it. This secretariat consists of four departments for performing the works in their specialized fields separately and they are 1 – Department of Administration and Personnel, which is in charge of administration and personnel works; 2 – Department of Electricity Regulation, which is in charge of electricity technical works; 3 – Department of Financial and Pricing, which is in charge of financing, accounting and analyzing the electricity tariff works; and 4 – Department of Legislation, which is in charge of Legal works and resolution of dispute and imposition of fines.



**Figure 2: Organization chart of EAC**



### 2.3 The Budget of EAC and License Fees

The Electricity Authority of Cambodia is an autonomous agency working for the interest of all electric power service providers and electricity users in the Kingdom of Cambodia. Therefore the expenditure of EAC for its operation is to be borne by all electric power service providers in the form of payment of license fees. Article 27 of the Electricity Law provides that EAC shall have an autonomous budget for its operation. This budget shall come through License Fees paid by applicants and licensees as determined by EAC. For governing the license fees charged by EAC, The Electricity Law has further provisions that “The maximum license fees are to be determined by a Sub-Decree of the Royal Government”.

Under the provisions of the Electricity Law of the Kingdom of Cambodia, the Royal Government have issued sub-decree No. 131-OR-N-KR/BK dated December 27, 2001 determining the maximum license fees applicable to the electric power service providers in the Kingdom of Cambodia.

According to Electricity Law, EAC shall determine the rate of the license fees to be paid by the licensees every year based on the maximum license fees determined by the sub-decree. For the year 2009, EAC has determined the license fees to be paid by licensees vide Notification No. 044SR-09-EAC dated March 16, 2009; which made no change in the License Fee of 2008. The license fees determined for the years 2007 to 2009 are given in Table 3 below.

**Table 3: License Fees to be paid by Licensees**

Type	Riel per kWh		
	Year 2007	Year 2008	Year 2009
Generated or Power Purchased from any other Country	1.40	1.30	1.30
Transmission	0.50	0.50	0.50
Distribution and Sale	0.70	0.60	0.60
Retail	0.40	0.30	0.30
Other services license fee	0.1%	0.1%	0.1%

### 2.4 Financial Statements of EAC

The Electricity Law provides that the annual financial statement, together with the accounting books of the Authority and related records shall be audited by auditor and inspected by the National Audit Authority. Within 1 (one) month after auditing, the Authority shall submit all reports to the Prime Minister for approval, and shall publish the approved reports to the public. The audited income statement of Electricity Authority of Cambodia for the years 2007 and 2008 is given below.

**Table 4: Income statement Reports for the years 2007 and 2008**(After Audit)  
All figures in Riels

	<b>2007</b>	<b>2008</b>
<b><u>Revenues</u></b>		
License Fees	2,938,314,797	3,260,934,800
Application Fees	8,900,000	11,400,000
Adjustment License Fees	227,700	181,700
Other Revenue	516,903	-
Transfer fund from Project	-	-
<b>Total Revenues</b>	<b>2,947,959,400</b>	<b>3,272,516,500</b>
<b><u>Expenses</u></b>		
Fixed Assets	586,726,595	856,390,510
Salary	1,029,564,965	1,181,434,500
General Administration	1,230,638,674	1,438,847,528
<b>Total Expenses</b>	<b>2,846,930,234</b>	<b>3,476,672,538</b>
Opening Balance	683,592,345	784,621,512
Income	2,947,959,400	<b>3,272,516,500</b>
Expenditure	2,846,930,234	<b>3,476,672,538</b>
Surplus/Deficit (Income-Exp)	101,029,167	(204,156,038)
Closing Balance	784,621,512	580,465,474



# Chapter 3

## General Information

## **CHAPTER 3**

### **General Information**

#### **3.1 Introduction**

The Kingdom of Cambodia, a member country of the Association of South East Asian Nations (ASEAN), with an area of 181,035 square Kilometers, is situated in the Lower Mekong region. Its neighboring countries are Thailand in the West, Vietnam in the East and Laos in the North. In Cambodia 80.5% of population live in rural areas where the rate of electrification is low. The rural electrification strategy sets the goal: by year 2020 all villages have access to electricity of at least one of different forms, including access to mini-grid and off-grid electricity. Potential of hydropower in Cambodia is high (more than 10,000 Megawatts) and has more certainty of development compared to other energy resources like petroleum and gas whose development is in the initial stages at present. To ensure a sustainable development of power sector Royal Government of Cambodia worked out an electrification master plan, which provides for (1) electricity generation development including hydropower resources development and development of coal or gas power plant, (2) electricity import to coordinate the development of the border zones of the Kingdom and (3) the development of transmission grid throughout the country in order to establish the electricity transmission system of Cambodia.

#### **3.2 Developments in Power Sector till 2009**

##### **3.2.1 Extension of Grid Supply to new areas**

During 2009, Grid supply was strengthened and extended to new areas by commissioning of 230 kV lines and substations and extension of 22 kV sub-transmission systems. The major developments in extension of grid supply in 2009 are as follows:

1. Commissioning of 230 kV line from Vietnam border to Takeo and Takeo to Phnom Penh and grid substations at Takeo and Phnom Penh. Cambodia imported power over this line up to 100 MW. With this, EDC terminated the high cost diesel generation PPA with SHC (Cambodia) International Pte Ltd for purchase of power at Phnom Penh. 22 kV feeders were commissioned at Takeo and Phnom Penh to extend the grid supply to more areas in provinces of Takeo, Kandal and Kampong Speu and to strengthen the Phnom Penh System.
2. The 22 kV sub transmission systems in Battambang, Banteay Meanchey and Siem Reap were strengthened and expanded to supply more consumers and some rural areas.
3. One more connection point for Import of power from Vietnam at 22 kV was added in Takeo province. Imported power supply from Vietnam at 22 kV was extended to more areas.
4. With the expansion of 22 kV sub-transmission system from Kampong Cham provincial town, the supply from Kampong cham system was extended to more areas.

### **3.2.2 Strengthening and expansion of Isolated supply Systems**

In addition to the expansion of Grid supply, schemes were undertaken to strengthen and expand isolated supply system to cover new areas. Many licensees installed new MV system or expanded MV system to cover larger area of supply and to improve the quality of supply..

The licensees have taken action to improve their facilities following advice and suggestion from EAC in order to increase economic efficiency of their generation facilities and distribution facilities and on this basis have received right to provide electricity service for longer term.

### **3.3- Projects finalized and under implementation**

The following power supply development plans are finalized and at the end of 2009, are at different stages of implementation:

#### **Project 1: Upgrading capacity of 115 kV system in Phnom Penh**

Scheduled Year of operation: 2009

Scope: 1) Add 2 circuit of 115 kV line from WPP substation to existing 115 kV system of Phnom Penh, 2) Add second circuit to the existing 115 kV line connecting substations in Phnom Penh, 3) Deviate 115 kV line from Kirirom Hydro Power Plant to WPP substation, 4) Modification of substation GS1 and connection of 10 MVAR reactive compensation on 22 kV side 5) Add one transformer 115/22kV 30/50 MVA at GS2 substation and connection of 15 MVAR reactive compensation on 22 kV side 6) Add one transformer 115/22 kV 30/50 MVA at GS3 substation and connection of 15 MVAR reactive compensation on 22 kV side. All these works are being done to upgrade transmission and distribution capacity of Phnom Penh power supply system and to receive electricity from Vietnam and new power plants.

Implementer: EDC under WB loan, Major work completed

#### **Project 2: Construction of 230 kV transmission line connecting Phnom Penh, Takeo and Vietnam including substations at WPP and Takeo**

Scheduled Year of operation: 2009

Scope: Build substations at West Phnom Penh (WPP) and Takeo and 230 kV transmission line connecting Phnom Penh to Takeo and to Vietnam in order to purchase electricity from Vietnam.

Implementer: EDC under ADB loan. Major work completed

#### **Project 3: Construction of 22 kV sub-transmission lines in the provinces of Takeo, Phnom Penh, Kampong Speu, Kampot, Sihanouk ville and Battambang**

Scheduled Year of operation: 2009, 2010, 2011

Scope: Construction of 22 kV sub-transmission lines in the provinces of Takeo, Phnom Penh, Kampong Speu, Kampot, Sihanouk ville and Battambang to take the grid supply to areas around the grid substations

Implementer: EDC under WB, ADB and other loans. Work in progress

#### **Project 4: Build National Dispatching Center**

Scheduled Operation year: 2011

Scope: Build National Dispatching Center in Phnom Penh in order to manage all connected power supply systems in the country.

Implementer: EDC under WB loan. Bidding in progress

**Project 5: Build 230 kV line connecting Takeo to Kampot and substation in Kampot provincial town**

Scheduled Operation year: 2011

Scope: Build 230 kV transmission line connecting Takeo and Kampot, and build 230 kV substation at Kampot provincial town in order to connect Kamchay Hydro Power Plant to the grid system.

Implementer: EDC, KFW gives grant to RGC and RGC give this grant to EDC as loan to implement the project. Bidding in progress

**Project 6: Build 230 kV line connecting Kampot to Sihanoukville and substation in Sihanoukville**

Scheduled Operation year: 2011

Scope: Build 230 kV transmission line connecting Kampot and Sihanoukville, and build 230 kV substation at Sihanoukville in order to connect Coal Fired Power Plant at Sihanoukville to the Grid system.

Implementer: This project is under joint loan of ADB and JBIC and EDC is implementer of the project. Work in progress

**Project 7: Build 193 MW Kamchay Hydro Power Plant and transmission line connecting KHPP to Kampot substation**

Scheduled Operation year: 2011

Scope: Build 193 MW Kamchay Hydro Power Plant and transmission line connecting this power plant to substation in Kampot provincial town in order to sell electricity to EDC.

Implementer: The investment for this project is by SINOHYDRO from People's Republic of China, who received special investment concession from RGC. Work in progress

**Project 8: Build 18 MW Kirirom III Hydro Power Plant and transmission line connecting Kirirom III plant to Kirirom I substation**

Scheduled Operation year: 2012

Scope: Build 18 MW Kirirom III Hydro Power Plant and transmission line connecting Kirirom III plant to Kirirom I substation in order to sell electricity to EDC.

Implementer: This project is the second phase of investment of Chinese company CETIC from People's Republic of China, who built Kirirom I Hydro Power Plant in the first phase. This project is in the same concession package with Kirirom I Hydro Power Plant. Work in progress

**Project 9: Development of Stung Atay Hydro Power Plant, Common switching substation at Ou Saom and 230 kV transmission line connecting switching substation and Pursat substation.**

Scheduled Operation year: 2012

Scope: Build 120 MW Stung Atay Hydro Power Plant, common switching substation, transmission line connecting this plant to common switching substation and 230 kV line connecting common switching substation to substation at Pursat provincial town.

Implementer: This project is under private investment and is being implemented by C.H.D (Cambodia) Hydropower Development Co., Ltd Work in progress

**Project 10: Build 230 kV transmission line connecting Phnom Penh, Kampong Chhnang, Pursat and Battambang with substations at Kampong Chhnang, Pursat and Battambang**

Scheduled Operation year: 2012

Scope: Build 230 kV transmission line connecting Phnom Penh, Kampong Chhnang, Pursat and Battambang and build substations near Kampong Chhnang, Pursat and Battambang in order to connect southern zone system with western zone system to become one system.

Implementer: This project is being implemented by Cambodian Power Grid Co. Ltd under private investment.

Present Position: The Transmission agreement and IA have been signed. Work in progress

**Project 11: Build 100 MW Coal Fired Power Plant in Sihanoukville and transmission line connecting this plant to Sihanoukville substation**

Scheduled Operation year: 2013

Scope: Build 100 MW Coal Fired Power Plant (operated on imported coal) and transmission line connecting this plant to Sihanoukville substation.

Implementer: The investment for this project will be by the private company Cambodian Energy Limited on the BOO basis.

Present Position: The PPA, IA and Novation Agreement have been signed. Financial closing is achieved.

**Project 12: Build Stung Tatay Hydro Power Plant and transmission line to common switching substation.**

Scheduled Operation year: 2013

Scope: Build 246 MW Stung Tatay Hydro Power Plant and transmission line connecting this plant to common switching substation.

Implementer: The project is being implemented by Cambodian Tatay Hydropower Limited (CTHL).

Present Position: The PPA and IA have been signed. Preparation to start the work in progress

**Project 13: Build Lower Stung Russey Chrum Hydro Power Plant and transmission line to common switching substation.**

Scheduled Operation year: 2014

Scope: Build 338 MW Lower Stung Russey Chrum Hydro Power Plant and transmission line connecting this plant to common switching substation.

Implementer: The project is being implemented by China Huadian Lower Stung Russey Chrum Hydroelectric Project (Cambodia) Co., Ltd (CHDPC).

Present Position: The PPA and IA have been signed. Preparation to start the work in progress

**Project 14: Build 230 kV transmission line connecting Phnom Penh to Kampong Cham and new grid substation in Kampong Cham provincial town**

Scheduled Operation year: 2012

Scope: Build NPP sub station in Phnom Penh, and 230 kV transmission line connecting NPP to Kampong Cham provincial town and build substation in Kampong Cham provincial town in order to connect southern zone system with power supply system in Kampong Cham area together into one system.

Implementer: This project is being undertaken in private sector by Cambodia Transmission Limited (CTL).

### **3.4- Projects planned and under different stages of implementation**

The following power supply development projects are planned and at the end of 2009 are at different stages of planning:

**Project 15: Build 115 kV line connecting Kampong Cham to Suong and Kraek towns and to Vietnam power system**

Scheduled Operation year: 2011

Scope: Build 115 kV line connecting Kampong Cham, Suong, Kraek and Taininh in Vietnam and build 115 kV substations at 3 places, 1) in Kampong Cham provincial town, 2) in Suong town and 3) in Kraek town in order to import electricity from Vietnam to supply all above areas.

Implementer: This project is planned to be undertaken in private sector.

**Project 16: Build 115 kV line connecting Steung Treng to Laos's power system**

Scheduled Operation year: 2011

Scope: Build 115 kV line connecting Steung Treng, Suong, to Lao power system and build 115 kV substation at Steung Treng provincial town in order to import electricity from Laos to supply Steung Treng province.

Implementer: This project is under grant of WB to RGC, and RGC is providing a loan to EDC to implement the project.

**Project 17: Strengthen Phnom Penh System.**

Scheduled Operation year: 2012

Scope: Build 115 kV substations in eastern area of Phnom Penh (EPP). Build 115 kV transmission line connecting GS1 to NPP and NPP to EPP to meet the load of new growing areas of Phnom Penh.

Study: This project is included in 2006 Master Plan but neither detail technical study nor the feasibility study has yet been done.

Implementer: EDC shall seek fund to implement this project.

**Project 18: Upgrade capacity of Phnom Penh power supply system.**

Scheduled Operation year: 2015

Scope: Build 230 kV part of EPP substation in Phnom Penh, upgrade transformer capacity in WPP substation, build new substation and 230 kV transmission line connecting WPP to new substation and 230 kV transmission line connecting new substation to EPP.

Study: This project is included in 2006 Master Plan but neither detail technical study nor the feasibility study has yet been done.

Implementer: EDC shall seek fund to implement this project.

**Project 19: Build 230 kV transmission line connecting Phnom Penh to Sihanoukville substation**

Scheduled Operation year: 2015

Scope: Build 230 kV transmission line connecting EPP substation in Phnom Penh to Sihanoukville in order to transport electricity from Coal Fired Power Plants to be built in Sihanoukville.

Study: This project is included in 2006 Master Plan but neither detail technical study nor the feasibility study has yet been done.

Implementer: EDC shall seek fund to implement this project.

# **Information on Licenses and Licensees in the Kingdom of Cambodia**

## CHAPTER 4

### Information on Licenses and Licensees in the Kingdom of Cambodia

#### 4.1 Licenses for Providing Electric Power Services

As per the provisions of the Electricity Law, each electricity service provider is required to have a license issued by EAC and to abide by the provisions of the Electricity Law, its license, and regulations and procedures issued by EAC. License for providing electric power services is an authorization document confirming to the provisions of the Electricity Law, which EAC decides to grant to an individual or legal entity to give it the right to provide electric services as per the provisions stated in the license (called the Conditions of License). A license has two main parts:

- a. Decision to grant the right to provide the electric power service, and
- b. Conditions of license.

Types of licenses that can be issued and regulated by EAC are stated below:

1. **The Generation License:** It grants the right to generate electric power from specified generation facilities.
2. **The Transmission License:** It grants the right to provide transmission service. There are 2 types of Transmission License: National Transmission License and Special Purpose Transmission License.
  - i. **The National Transmission License** can be issued only to state power transmission company which is under the Government control, to have the right to provide the transmission service for delivering the electric power to the distribution companies and bulk power consumers throughout the Kingdom of Cambodia
  - ii. **The Special Purpose Transmission License** grants the right to construct, own, and operate specified transmission facilities in the Kingdom of Cambodia for the specified purpose.
3. **The Distribution License:** It grants the right to provide the electricity distribution services in a determined contiguous territory.
4. **The Consolidated License:** It is a license, which may be the combination of some or all types of licenses. The Consolidated License can be issued to EDC and to the isolated systems to grant the right to generate, transmit, dispatch, distribute and sale electric power to the consumers. Consolidate License can also be issued on consideration of long term planning and the objectives of Government policy to reduce long run marginal cost for supply of electricity to consumers, establish a national grid and progressively expand this grid throughout Kingdom of Cambodia.



5. **The Dispatch License:** It grants the right to control, manage, and operate the dispatch facilities for facilitating delivery and receiving electricity from the generation, transmission and distribution systems.
6. **The Bulk Sale License:** It grants the right to buy electricity from any Generation Licensee or from the power systems of neighboring countries for sale to Distribution Licensees or to large customers in one connected power system.
7. **The Retail License:** It grants the right to engage in the sale of electric power to consumers in a contiguous service territory.
8. **The Subcontract License:** It grants the right to provide electric power services according to the subcontract agreement with the existing licensee.

## 4.2 Licenses issued and revoked

The number of licenses issued, revoked and valid each year since 2002 is given in the Table below.

Table 5: Number of Licenses issued each year

Year	Licenses issued during the year	Licenses issued up to end of the year	Licenses revoked during the year	Licenses valid at the end of the year
2002	21	21	-	21
2003	64	85	1	84
2004	22	107	2	104
2005	16	123	1	119
2006	28	151	4	143
2007	41	192	4	180
2008	42	234	4	218
2009	33	267	2	249

During 2009, EAC has issued 33 licenses to the electric power service providers to grant the right to provide electric power services pursuant to the Electricity Law. During 2009, the type of licenses issued to Mrs Iv Mala (License No. 211), Vonn Virek Service Co. Ltd (License no. 35) and Mr. Khoeun Sambath (License No. 61) were changed from Consolidated (Generation + Distribution) to Distribution License.

During 2009 the following two licenses were revoked:

1. Generation License No. 4 issued to Global Technological Support SDN BHD for providing generation service at Kampong Cham as the Power Purchase Agreement between the licensee and EDC expired
2. Generation License No.147 issued to Omo Energy (Cambodia) Co. Ltd for providing generation service for Eat Leang Kheng at Phum Andaung Trang, Khum Sarmor, Cheung Prey District, Kampong Cham Province as the licensee failed to install the generation facilities within a reasonable time

Types and number of licenses issued during 2009 and licenses valid at the end of year 2009 are given in the Table below.

**Table 6: Types and Number of Licenses issued and valid**

No.	Type of License Issued	Licenses valid at end of 2008	Issued during 2009	Revoked during 2009	Change of type during 2009	Valid at end of 2009
1	Consolidated License consisting of Generation, Distribution and National Transmission Licenses	1				1
2	Generation License	20	1	2		19
3	Special Purpose Transmission License	1	2			3
4	Consolidated License consisting of Special Purpose Transmission and Distribution Licenses	2	1			3
5	Distribution License	21	1		+3	25
6	Retail License	1				1
7	Consolidated License consisting of Generation and Distribution Licenses	172	28		-3	197
	<b>TOTAL</b>	<b>218</b>	<b>33</b>	<b>2</b>	<b>+3-3</b>	<b>249</b>

Up to 31<sup>st</sup> December 2009, EAC has issued 267 licenses to the electric power service providers to grant the right to provide electric power services pursuant to the Electricity Law, out of which 18 licenses have been revoked. The list of licenses no more valid at the end of year 2009 is given in **Annex 9**.

All the licensees except three are in the private sector. The three licensees in Government sector are (i) Electricite Du Cambodge – having Consolidate License No. 001L consisting of Generation, National Transmission and Distribution License, (ii) Electricity of Kratie Province – having Consolidate License No. 059L consisting of Generation and Distribution License, and (iii) Electricity Unit of Mondulkiri Province – having Consolidate License No. 158L consisting of Generation and Distribution License

Province wise area of supply served by Consolidated Licensees, Distribution Licensees and Retail Licensees and the normal hours of supply in these areas are given in **Annex 1**.

Maps of Provinces of Cambodia showing the location of the licensed area of supply and license number of licenses issued by EAC up to end of 2008 is given separately in this report.

#### **4.3 Revision of Licenses**

Licenses are revised from time to time as required for various reasons. 101 Licenses were revised during 2009. 27 licenses were revised for extension of their term. A licensee with infrastructure complying with technical standards and better operation and management gets a longer term for his license. As the licensees are improving their infrastructure, operation and

management, year by year the number of licenses with longer terms is increasing. The Table below gives the number of Consolidated (with Distribution) and Distribution Licenses having the same term at the end of 2007, 2008 and 2009. From the Table it can be seen that the number of Consolidated Licenses having a term of 5 years or more has progressively increase from 71 in 2007 to 128 in 2008 and 167 in 2009.

**Table 7 : Current Term of Licenses**

Current Term	Licenses at the end of 2007		Licenses at the end of 2008		Licenses at the end of 2009	
	Number	%	Number	%	Number	%
<b>Consolidated License</b>						
2 years	35	23.65	23	13.14	12	5.97
3 years	28	18.92	16	9.14	14	6.97
4 years	14	9.46	8	4.57	8	3.98
5 years	45	30.41	74	42.29	102	50.75
6 years			9	5.14	12	5.97
7 years	12	8.11	22	12.57	29	14.43
8 years	2	1.35	2	1.14	2	1.00
10 years	10	6.76	15	8.57	14	6.97
15 years			3	1.71	5	2.49
Till revoked	2	1.35	3	1.71	3	1.49
Total	148	100	175	100	201	100
Average term	4.43		5.49		5.65	
<b>Distribution License</b>						
5 years	2	12.50	2	9.52	3	12.00
7 years	1	6.25	2	9.52	2	8.00
10 years	4	25.00	5	23.81	7	28.00
15 years	7	43.75	11	52.38	12	48.00
20 years	1	6.25	1	4.76	1	4.00
Till revoked	1	6.25				
Total	16	100	21	100	25	100
Average term	12.63		12.33		11.96	

During 2009, forty one licenses were revised to enlarge the licensed area of supply and one license was revised to withdraw a part of the area of supply.

During 2009, eleven licenses were revised to add more generation capacity and seventeen licenses were revised as the existing licensee transferred the business to a new owner. Three licenses were revised to change the type of license and one license was revised to revoke the right to generate at one of the locations.

#### 4.4 Licenses in Operation during 2009

Out of 249 licenses valid at the end of 2009, eighteen licensees, as indicated in Annex 1, Annex 3 and Annex 5 had not started regular operation till the end of 2009. Out of the balance 231 licensees in operation at end of 2009, some licensees operate in more than one province. The number of different types of licensees operating in each province is given in the table below.

**Table 8 : Number of different types of Licensees operating in each Province/City**

No.	Name of Province/ City	Consolidate License (Gen., National Trans. and Distr.)	Generation License	Special Purpose Transmission	Consolidate License (SPTL and Distr)	Retail License	Distribution License	Consolidate License (Gen. and Distr.)	Total
1	Banteay Meanchey	1	-	1	-	-	2	10	14
2	Battambang	1	-	1	-	-	1	15	18
3	Kampong Cham	1	2	-	1	-	2	24	30
4	Kampong Chhnang	-	1	-	-	-	1	7	9
5	Kampong Speu	1	-	1	-	-	2	14	18
6	Kampong Thom	-	-	-	-	-	-	10	10
7	Kampot	1	1	-	-	-	1	5	8
8	Kandal	1	1	-	1	-	9	33	45
9	Koh Kong	-	1	-	-	-	1	2	4
10	Kratie	-	1	-	-	-	-	4	5
11	Krong Kep	-	-	-	-	-	1	-	1
12	Mondol Kiri	-	-	-	-	-	-	1	1
13	Oddor Meanchay	-	-	-	-	-	1	2	3
14	Pailin	-	-	-	-	-	2	-	2
15	Phnom Penh	1	7	1	-	1	1	2	13
16	Preah Vihear	-	-	-	-	-	-	4	4
17	Prey Veng	1	-	-	-	-	1	9	11
18	Pursat	-	1	-	-	-	1	7	9
19	Rattanakiri	1	2	-	-	-	-	-	3
20	Siem Reap	1	-	1	-	-	1	14	17
21	Sihanoukville	1	1	-	-	-	-	5	7
22	Stueng Treang	1	-	-	-	-	-	1	2
23	Svay Rieng	1	-	-	-	-	-	-	1
24	Takeo	1	-	-	1	-	-	26	28
	<b>Total</b>	<b>14</b>	<b>18</b>	<b>5</b>	<b>3</b>	<b>1</b>	<b>27</b>	<b>195</b>	<b>263</b>

#### 4.5 Efforts of Government of Cambodia, Rural Electrification Fund and EAC to assist licensees

The annual licensee meet for the year 2009 was organized by EAC on 22<sup>nd</sup> December 2009. During the meet the H.E. Minister of Industry, Mines and Energy stressed on extending the grid supply to more areas and to promote larger licensed area of supply. The representative from EDC explained the plan of EDC for extension of the 22 kV system to cover more areas and the procedure to be followed by licensees to get connected to the 22 kV system. The Chairman EAC explained the requirement and importance of Data-Keeping by licensees. The annual licensee meet provides an excellent opportunity of interaction among licensees and with EAC.

The Rural Electrification Fund (REF) continued with its program of providing grant assistance to licensees for new connections to households in rural areas. For this program REF received funds from Government of Cambodia through loan from World Bank. During 2009, REF has disbursed grant assistance at the rate of US\$ 45 for each new connection to households in rural areas for 3,911 new connections to 28 licensees. The details are given in the Table below.

**Table 9 : Number of new connections for which Subsidy Disbursement was done by REF**

<b>License No.</b>	<b>Name of Licensee</b>	<b>Number of new connections for which disbursement made in 2009</b>
019	Mr. Te Kok Eng	100
200	Electricity Chi Paing Enterprise	160
176	Mr. Moul Tit	8
197	Mrs. Chaing Sam Ath	111
173	Mrs. Ke Varin	200
205	Mr. Try Soban	176
169	Mr. Bun Huy	65
091	Mr. Sun Pov	176
062	Mr. Keb Borey	92
118	Mrs. Sok Kheng	80
044	Mr. Kong Puthy	120
211	Mrs. Iv Mala	100
216	Mrs. Tek Nimol	175
217	Mr. Heang Pov	176
212	Mr. Ngeth Meng	88
150	Akissni Keansvay Co., Ltd	76
209	Mr. Sok Pin	88
046	Mr. Seng Sokun	20
118	Mrs. Sok Kheng	400
219	Mr. Phoeurn Saroeurn	48
150	Akissni Keansvay Co., Ltd	160
201	Mr. Ou Chanrat	120
105	Mr. Soeung Sovanna	120
182	Mr. Khun Sarun	160
212	Mr. Ngeth Meng	176
233	Mr. Srun Sokun	176
235	Mr. Cheng Sophal	400
186	Mr. Heng Kosal	140

## **Chapter 5**

# **Electricity Tariff of Licensees**

## CHAPTER 5

### Electricity Tariff of Licensees

#### 5.1 Electricity Tariff

The cost of electricity either from own generation or from purchase from IPP, neighboring country or other licensee is the single largest component of the cost of electric supply by licensees to the consumers. About 93% of the electricity generated by licensees in Cambodia use Diesel/HFO as fuel. Hence for the licensees generating electricity using Diesel/HFO or purchasing electricity from IPPs with cost of purchase linked to the price of fuel, the cost of electric supply is related to the cost of Diesel/HFO. In order to quickly reflect the change in the cost of fuel in the tariff for consumers in a simple and transparent manner, EAC implemented Fuel Cost Adjustment (FCA) mechanism in the tariff of licensees. Under this mechanism, the tariff for different slab rates of fuel (diesel/HFO) is determined after public consultation, so that for only a change in the cost of fuel, the corresponding tariff is fixed by EAC without the need of further public consultation. This process was implemented for some licensees in 2007. During 2008, Tariff with FCA mechanism for more licensees as well expansion of the existing table to cover wider range of fuel cost was approved by EAC and the process is continued in 2009.

The cost of generation from hydro power plant, purchases from neighboring country or from other licensees did not fluctuate much. Hence the tariff for licenses getting electric supply from such sources did not have frequent fluctuations and EAC approved the tariff without any price variation mechanism.

#### 5.2 Electricity Tariff with Fuel Cost Adjustment Table approved by EAC

The licensees for whom EAC approved tariff with Fuel Cost Adjustment table during 2009 are given in the following Table.

Table 10: Licensees whose Tariff with Fuel Cost Adjustment Table was approved by EAC during 2009

EAC Session Number	Date of Session	License Number	Licensee for whom FCA was approved	Area of supply
150	20-02-09	048L	Mr. Chhom Sophay	Khum Domdek, Phsar Domdek Town, Sot Nikum District, Siem Reap
150	20-02-09	083L	Mr. Tun Yoeun	Phsar Thnal Chek Town, Khum Kien Sangke and Khum Dam Dek, Sotnikom District, Siem Reap
150	20-02-09	068L	Mrs. Touch Mantha	Khum Phnom Sampov, Banoan District, Battambang
150	20-02-09	069L	Mr. Nop Bin	Rattanak Mondol District Town, Battambang

153	24-03-09	073L	Mr. Treung San	Santuk District, Kg Thom
153	24-03-09	063L	Mr. Ong Hok Sin	Stong District Town, Kg Thom
153	24-03-09	199L	Mr. Some Lai Y	Sandann District Town, Kampong Thom
153	24-03-09	185L	Mr. Phlok Vannak	Khum Kantraing, Prasatbakong District, Siem Reap
153	24-03-09	029L	Mr. Sok Thy	Phsar Vealrinh Town and Phum Chheng Kor, Khan Preynob, Sihanoukville
153	24-03-09	098L	Mr. San Ke	Phsar Smachdeng Town, Sangkat Ream, Khan Preynop, Sihanoukville
153	24-03-09	184L	Mrs. Chea Kimthat	Khum Prey Nob, Khum Toul Toetueng, Khum Angdong Thmor and Khum O Oknha Heng, Prey Nob District, Sihanoukville
154	28-04-09	096L	Mr. Chea Sareth	Phsar Pong Ro Town, Khum Pong Ro and Svay Chrum, Rolea Phear District, Kampong Chnang
154	28-04-09	102L	Mr. Preap Vannaret	Khum O-ta Pong, Bakan District, Pursat
154	28-04-09	072L	Mr. Ya Sambat	Phsar Svay Daun Keo Town, Khum Svay Daun Keo, Bakan District, Pursat
154	28-04-09	021L	Mrs. Nov SreyPich	Phsar Neak Loeung Town (West of Mekong River), Khum Prek Tonlap and Khum Kampong Phnom, Leukdek District, Kandal
154	28-04-09	111L	Mr. Kong Vun	Chikreng District Town, Siem Reap
154	28-04-09	112L	Mr. Ly Kang	Chikreng District Town, Siem Reap
156	22-05-09	139L	Mr. Duong Narin	Angkor Chum District Town, Siem Reap
156	22-05-09	183L	Mrs. Meas Keav	Khum Samrong, Sotnikum District, Siem Reap
156	22-05-09	203L	Mr. Tan Kang	Khum Roluos, Khum Meanchey and Khum Trapiangthom, Prasat Bakong District, Siem Reap
159	26-06-09	039L	Mr. Kim Chantara	Phsar Baray Town, Khum Baray, Baray District, Kampong Thom
159	26-06-09	019L	Mr. Te Kok Eng	Khum Treal, Khum Sralov, Khum Chralorng, Khum Andoung Pur and Khum Chraneang, Baray District, Kampong Thom
159	26-06-09	032L	Mr. Nhen Kong	Khum Chraneang, Khum Svayphleung, Khum Soyong, Khum Pongro and Khum Chralorng, Baray District, Kampong Thom
159	26-06-09	155L	Mr. Samret Kiri	Phsar Krangchek Town, Khum Krangchek, Udong District, Kampong Speu
159	26-06-09	099L	Mr. Leng Mov	Phsar Bat Doeung, Khum khsem



				Khsan, Odong District, Kampong Speu and Khum Tomnob Thom, Ponhea Leu District, and Khum Mkak, Angsnoul District, Kandal
159	26-06-09	076L	Mr. Quach Edward	Khum Ponnhealeu, Khum Vihealuong, Khum Phsar Dek, Khum Phnom Bath, Khum Tomnobthom, and Khum Kampongluong, Punnhea leu District, Kandal and Khum Vaing Chas, O'Dong District, Kg Speu
159	26-06-09	190L	Mr. Mak Van	Svay Chek District Town, Banteay Meanchey Province
159	26-06-09	108L	Mrs Sin Savuon	Preahnet Preah District town, Banteay Meanhey
161	15-07-09	082L	Mr. Ly Sok Kry	Khum Treng Trayeng, Phnom Srouch District, Kg Speu
161	15-07-09	136L	Mr. Men Kunthae	Talat Town, Khum O, Phnom Sruoch District, Kampong Speu
161	15-07-09	067L	Mr. Sok Hoy	Trapaing Kraloeung Town, Khum Kirivoan and Khum Taing Sya, Phnom Srouch District, Kg Speu
161	15-07-09	058L	Mr. Chay Neng	Phsar Kampong Kantuot, Khum Bakou and Khum Anlong Romeat, Kandal Stung District, Kandal
161	15-07-09	144L	Mr. Ouk Sopheap	Phsar Siem Reap town, Khum Siem Reap, Kandal Stung District, Kandal
161	15-07-09	175L	Mr. Toeng Samouv	Phsar Slableng Town, Khum Pheary Meanchey and Khum Svayrompear, Borsat District, Kampong Speu
161	15-07-09	130L	Mr. Try Leng	Thnal Keng Town, Khum Taingkrang and Khum Chea Lea, Bathay District, Kampong Cham
161	15-07-09	045L	Mrs. Choup Neang	Khum Kampong Popel and Khum Kampong Praing, Pearang District, Prey Veng and Khum Kampong Chamlorng, Khsach Kandal District, Kandal
162	28-07-09	159L	Mr. Khun Sopheap	Batheay District Town, Kampong Cham
162	28-07-09	156L	Mr. Men Sambath	Khum Trapeang Kong, Samraong Tong District, Kampong Speu
162	28-07-09	154L	Mr. Uy Sopath	Khum Roleang Kreul, Samraong Tong District and Khum Roka Koh, Kongpisei District, Kampong Speu
162	28-07-09	137L	Mr. Meng Sokleng	Area along RN 4 (north) from Khum Vorsar and along RN 51 to the end border of Khum Mkak, Samarongtong District, Oddong District, Kampong Speu and Angsnoul District, Kandal
167	26-08-09	081L	Mr. Muon Han	Phsar Phnom Srok Town, Khum Sras

				Chik, Phnom Srok District, Banteay Meanchey
167	26-08-09	161L	Mr. Kea Kimseng	Khum Anlong Samnor and Khum Chikreng, Chikreng District, Siem Reap
167	26-08-09	214L	All Stars Entertainment Co., Ltd	Anlong Veng District Town, Oddor Meanchey Province and along road no.67 from Anlong Veng District Town to Thai Border
167	26-08-09	015L	Electricity Samrong Yornng Enterprise	Khum Trapaingsab and Khum Chompey, Baty District, Takeo
167	26-08-09	020L	Mr. Chhou Lay	Khum Snor, Khum Char and Khum Preylvear, Preykabas District, Takeo
167	26-08-09	054L	Mrs. Ouch Por	Phsar Sayva Town, Prey Kabas District, Takeo
167	26-08-09	195L	Mr. Ouch Kea	Khum Angkanh, Preykabas District, Takeo
170	22-09-09	064L	Electricity Tramkhnar	Parts of Baty District and Samrong district, Takeo and parts of Korng Pisey District and Borseth District, Kampong Speu
170	22-09-09	101L	Mr. ChhinSong	Khum Beungtranh Northern and Khum Beungtranh Southern, Samrong District, Takeo and Khum Por Ankrang, Bor Seth District, Kampong Speu
170	22-09-09	121L	Mrs. Kang Gechseam	Khum Nheng Nhoung and Khum Tramkork, Tramkork District, Takeo
170	22-09-09	040L	Mr. Mak Heat	Boribo District Town with Zones of Khum Punley, Khum Popel and Khum Khunrong, Boribo District, Kampong Chhnang
170	22-09-09	095L	Mrs Chan Simoly	Khum Andong Snay, Khum Rolea Phear and Khum Kouk Banteay, Rolea Phear District, Kampong Chnang
170	22-09-09	119L	Mr. Un Sothea	Teuk Phos District Town, Kampong Chhanang
171	25-09-09	208L	Mr. Keo Cham Reun	Kanh Chreach District Town, Prey Veng
171	25-09-09	133L	Mr. Hak Lyseng	Khum Preyromdeng and Khum Prek-Ampok,, Kirivong District, Takeo
171	25-09-09	197L	Mr. Chith Ponnara	Khum Trapaing Thom, Khum Cheangtong and Khum Osaray, Tramkork District, Takeo
171	25-09-09	196L	Mr. Chaing Kim	Khum Kondeung, Khum Kraing Thnong and Khum Chompey, Baty District, Takeo
171	25-09-09	174L	Mr. Moeun Sokhan	Khum Poutsor and Khum Kraingthong, Baty District, Takeo
171	25-09-09	113L	Mr. Nou Kruey	Khum Prek Phtol, Khum Angkorborey

				and District Town of Angkorborey, Takeo
172	06-11-09	062L	Mr. Er Long	Eastern Phsar Prek Kdam Town, Khum Kohchen, Ponhealeu District, Kandal
172	06-11-09	176L	Mr. Moul Tit	Khum Samrong and Prektateng, Ponghealeu District, Kandal
172	06-11-09	216L	Mrs. Tek Nimol	Khum Sam Bor, Batheay District, Kampong Cham
172	06-11-09	118L	Mrs Sok Kheng	Baty District Town, Takeo
172	06-11-09	016L	Mr. Ke Kuyhuoy	Phsar Kampongchrey Town, Districts of Trang and Koh Andet, Takeo
172	06-11-09	022L	Mr. Kong Phat	Khum Korkpor, Khum Dongkpos and Khum Angkagh, Boreycholsar District, Takeo
176	29-12-09	090L	Veasna New Land Power Co., Ltd	Khan Rusey Keo, Phnom Penh and Muk Kampoul District and Pongaleu District, Kandal
176	29-12-09	066L	Mr. Pean Sokhalay	Phsar Prek Anh Chanh Town, Khum Prek Anh Chanh, Muk Kampoul District, Kandal
176	29-12-09	219L	Mr. Phoeurn Saroeurn	Phsar Prey Toteung Town, Khum Trapaing Veng, Kandal Steung District, Kandal and Khum Preahnipean, kongpisey District, Kampong speu
176	29-12-09	212L	Mr. Ngeth Meng	Khum Taing Yap and Khum Kdanh, Prey Kabas District, Takeo
176	29-12-09	103L	Mr. Nhem Phanny	Sangkat Prek Lep, Khan Rusey Keo, Phnom Penh and Khum Bak Kheng, Mukkompul District, Kandal
176	29-12-09	153L	Mrs Nguon Socheatey	Khum Beng Kyang, Khum Prek Sleng, Khum Prek Roka and Khum Trea, Kandal Steung District, Kandal
176	29-12-09	046L	Mr. Seng Sokun	Kampong Leav, Svay Antor and Pearing District Area, Prey Veng
176	29-12-09	143L	Mrs. Leang Chhunny	Khum Kohdach, Muk Kampoul District, Kandal
176	29-12-09	187L	Mr. Khem Rany	Kampong Trabek District Town, Prey Veng

### 5.3 Approval of expanded range of Fuel Cost in Fuel Cost Adjustment Table

As it was observed that the range of fuel cost in the Fuel Cost Adjustment Table, approved earlier by EAC, is in-adequate to cover the likely fuel cost in future, in 2009 EAC approved Fuel Cost Adjustment table with additional range of fuel cost for the licensees stated in the following Table.

Table 11: Licensees for whom the range of Fuel Cost was expended in the Fuel Cost Adjustment Table during 2009

EAC Session Number	Date of Session	License Number	Licensee for whom FCA Table was expended	Area of supply
148	13-01-09	023L	Electricity Preychhor Enterprise	Phsar Preytoteung Town, Preychhor District, Kompong Cham
148	13-01-09	088L	Mr. Khun Sophal	Oreang Ov District Town, Kampong Cham
148	13-01-09	038L	Mr. Sieng Seng	Phsar Chamkar Leu Town, Chamkaleu District, Kampong Cham
148	13-01-09	056L	Mrs. Nhek Theary	Phsar Bos Knor Town, Chamkar Leu District, and Traeung Town, Prey Chhor District, Kg Cham
148	13-01-09	074L	Mr. Mean Vanna	Phsar Svay Teab Town, Khum Svay Teab, Chamkar Leu District, Kg Cham
148	13-01-09	075L	Mr. Chhay Kim Huor	Phsar Speu Town, Khum Speu and Khum Chayo, ChamKar leu District, Kg Cham
148	13-01-09	060L	Mrs. Eam Sreng	Khum Mesorchrey, Stung Trang District, Kg Cham
148	13-01-09	140L	Mr. Chea Channaroen	Phum Taong, Khum Taong, Chamkar Leu District, Kampong Cham
148	13-01-09	057L	Mr. Chin Sohin	Phsar Stung Trang Town, Khum Prek Kok, Stung Trang District, Kg Cham
149	14-01-09	006L	Mr. Huor Peng	Kampong Thmar town, Baray District and Khum Kampong Thmar, Sontuk District, Kg Thom
149	14-01-09	041L	Mr. Ty Sokorn	Kampong Tralach District Town and Khum Chres, Kampong Tralach District, Kampong Chnang
149	14-01-09	028L	Mr. Samreth Sothy	Sre Ambel District Town, Koh Kong
149	14-01-09	037L	Mr. Eang Seng Hy	Phsar Rokakang Town, Muk Kompul District, Kandal
149	14-01-09	109L	Mrs Tieng Chenda	District Town of Mongrusey (Left hand side of National Road No.5, direction from Phnom Penh to Battambang), Battambang
149	14-01-09	110L	Mrs Sea Kech	Mongrusey District (Right hand side of National Road No.5, direction from Phnom Penh to

				Battambang), Battambang
149	14-01-09	120L	Mr. Chan Keat	Sangkat Otresh, Khan Steung Hav, Sihanoukville
149	14-01-09	030L	Mr. Ly Bunthy	Sangkat Tumnub Rolok and Sangkat Kampenh, Khan Stoeung Hav, Sihanoukville
149	14-01-09	012L	Sung Jin & Chilbo Industrial Co., Ltd.	Kampong Thom Provincial Town

#### 5.4 Electricity Tariff (without Fuel Cost Adjustment Table) approved by EAC

During 2009, EAC also approved the tariff as stated below for the following licensees.

##### 1. Tariff of EDC for MV Consumers at Sihanoukville

The Charges for supply to MV consumers in Sihanoukville is equal to the charges for energy supplied per month plus charges for the Sub-transmission services.

The charges for energy supplied in a month = Energy actually supplied as metered x Average cost of energy received by EDC Sihanoukville during the month from all supply sources.

The charges for the Sub-transmission service shall be as given in the Table below:

Table 12: Charges for Sub-transmission in Sihanoukville

Contract Demand	kVA	5,000	4,000	3,000	2,500	2,000	1,600	1,250	1,000	630	400	250
Charges for Sub-trans.	US\$	15,100	12,500	9,900	8,600	7,300	6,250	5,300	4,650	3,000	2,100	1,350

Additional charges for Sub-transmission for over drawal = Drawal in excess of contract Demand in kVA x 4 US\$

The power factor of the MV Supply each month should be 0.85 or more. For power factor less than 0.85 during a month, charges for over drawal of reactive energy shall be payable as given below:

Charges for over drawal of Reactive energy in a month = Quantity of Reactive Energy over drawn in a month in kVARh x 0.025 US\$

Quantity of Reactive Energy over drawn in a month = Total reactive energy drawn in kVARh – 0.6197 x Active energy drawn in the month in kWh

##### 2. Tariff of Licensee Electricity Skun - Chamkar Leu Enterprise for supply to Licensees and Consumers at Medium Voltage

The Charges for supply to MV consumers and licensees by Electricity Skun - Chamkar Leu Enterprise is equal to the charges for the Sub-transmission services plus charges for energy

supplied per month. The charges for the Sub-transmission services are 5.50 US Cents per kWh for Licensees and 6.50 US Cents per kWh for Bulk Consumers supplied at MV. The charges for energy supplied in a month will be equal to the tariff of EDC Kampong cham during the previous month which varies according to the cost of HFO.

## 5.5 Tariff of EDC during 2009

### 5.5.1 Tariff of EDC for Phnom Penh, Kandal Province and Provincial Town of Kampong Speu

The electricity tariff of EDC for Phnom Penh and Kandal Province and for Provincial Town of Kampong Speu as on 31<sup>st</sup> December 2009 is given in the Tables below.

**Table 13: Tariff of EDC for Phnom Penh and Kandal Province**

Category of Consumer	Electricity Tariff, Riels/kWh	Condition
Domestic	390	All kWh if consumption up to 50 kWh/Month
	610	All kWh if consumption between 51 to 100 kWh/Month
	720	All kWh if consumption more than 100 kWh/Month.
Embassy, NGO and Foreigner's Residence	890	
Customer paying by Government budget	780	
Commercial (business) and Industrial customers	Tariff rate = average cost of total electricity purchased in previous month + 3.6 US Cents/kWh	For small commercial and Industrial customers
	Tariff rate = average cost of total electricity purchased in previous month + 2.8 US Cents/kWh	For medium commercial and Industrial customers
	Tariff rate = average cost of total electricity purchased in previous month + 2.4 USCents/kWh	For big commercial and Industrial customers
	Tariff rate = average cost of total electricity purchased in previous month + 2.0 USCents/kWh	For commercial and Industrial Customer who is directly connected to MV

**Table 14: Electricity Tariff of EDC for Provincial Town of Kampong Speu**

Category of Consumer	Electricity Tariff, Riels/kWh	Condition
----------------------	-------------------------------	-----------

Domestic	720	
Embassy, NGO and Foreigner's Residence	890	
Customer paid by Government budget	780	
Commercial (business) and Industrial customers	Tariff rate = average cost of total electricity purchased in previous month + 3.6 US Cents/kWh	For small commercial and Industrial customers
	Tariff rate = average cost of total electricity purchased in previous month + 2.8 US Cents/kWh	For medium commercial and Industrial customers
	Tariff rate = average cost of total electricity purchased in previous month + 2.4 US Cents/kWh	For big commercial and Industrial customers
	Tariff rate = average cost of total electricity purchased in previous month + 2.0 US Cents/kWh	For commercial and Industrial Customer who is directly connected to MV

The tariff for commercial and industrial consumers calculated on the basis given in the Tables above for different months of consumption is given in the following Table.

**Table 15: Tariff of EDC for Phnom Penh and Kandal Province and Provincial Town of Kampong Speu for Commercial and Industrial Consumers**

Category of Consumers	Tariff in US Cents for Consumption during the month of					
	Jan 2009	Feb 2009	Mar 2009	Apr 2009	May 2009	Jun 2009
Small	16.41	17.16	17.28	17.35	18.36	19.49
Medium	15.61	16.36	16.48	16.55	17.56	18.69
Big	15.21	15.96	16.08	16.15	17.16	18.29
MV	14.81	15.56	15.68	15.75	16.76	17.89

Category of Consumers	Tariff in US Cents for Consumption during the month of					
	July 2009	August 2009	Sept 2009	Oct 2009	Nov 2009	Dec 2009
Small	19.75	20.51	21.45	21.23	21.91	22.99
Medium	18.95	19.71	20.65	20.43	21.11	22.19
Big	18.55	19.31	20.25	20.03	20.71	21.79
MV	18.15	18.91	19.85	19.63	20.31	21.39

### 5.5.2 Electricity Tariff of EDC at Provincial Towns, Cities and Town Centers

The electricity tariff of EDC for Provincial Towns, Cities and Town centers as on 31<sup>st</sup> December 2009 is given in the Tables below.

**Table 16: Electricity Tariff of EDC for Sihanoukville**

<b>Consumer</b>	<b>Category</b>	<b>Electricity Tariff per kWh</b>
Domestic	all	720 Riels
Embassy, NGO and Foreigner's Residence	Small	20.0 USCents
	Medium	18.4 USCents
	Big	17.0 USCents
Customer paid by Government budget	all	760 Riels
Commercial customer	Small	19.5 USCents
	Medium	18.0 USCents
	Big	16.4 USCents
Industrial and workshop customer	Small	17.5 USCents
	Medium	16.0 USCents
	Big	14.7 USCents
Medium Voltage	all	Energy Charge = Average cost of energy received by EDC Sihanoukville during the month from all supply sources Plus Sub-transmission charges

**Table 17: Electricity Tariff of EDC for Provincial Town of Siem Reap**

<b>Category of Consumer</b>	<b>Electricity Tariff, Riels/kWh</b>
Small consumer	820
Medium consumer	800
Big consumer	750
MV Customer	700
Sou Ching Electronic Company Ltd.	600
Licensees	600

**Table 18: Electricity Tariff of EDC for Provincial Towns of Battambang and Banteay Meanchey and Monkol Borey District Town**

<b>Category of Consumer</b>	<b>Electricity Tariff, Riels/kWh</b>
Small consumer	1000
Medium consumer	900
Big consumer	850
MV Customer	750
Licensees	600



**Table 19: Electricity Tariff of EDC for other Provincial Towns and Town Centers**

Distribution Areas of EDC	Electricity Tariff per kWh	Condition
Provincial Town of Kampong Cham	940 Riels	all consumer
Provincial Town of Steung Treng	1,220 Riels	all consumer
Provincial Town of Rattanakiri	670 Riels	all consumer
Provincial Town of Kampot	1,100 Riels	all consumer
Provincial Town of Prey Veng	1,220 Riels	all consumer
Provincial Town of Takeo and Ang Tasom Center	1,000 Riels	all consumer
Memot	500 Riels	Bun Rany Hun Sen Primary and High School
	650 Riels	Small Consumers
	12.5 US Cents	Medium Consumers
	11.5 US Cents	Medium Voltage
Pohnea Krek and Bavet	650 Riels	Small Consumers
	12.5 US Cents	Medium Consumers
	11.5 US Cents	Medium Voltage
Kampong Trach	650 Riels	Small and medium consumers
	11.5 US Cents	Big consumers
Svay Rieng, Kampong Row, Svay Teap	650 Riels	all consumers

### 5.5.3 Electricity Tariff for electricity supply areas of other licensees

Information on electricity tariffs for the consumption during different months of 2009 for electricity supply areas of other licensees is given in **Annex 10**.

### 5.6 Electricity Tariff for sale to Licensees

With the extension of Sub-Transmission System at 22 kV, gradually more and more licensees are purchasing electricity from neighboring licensees. The details of Distribution licensees and Consolidate licensees selling electricity to other licensees and the tariff for such sale during 2009 is given in the table below.

Table 20: Electricity Tariff for sale to Licensees

Licensee selling electricity		Licensee purchasing electricity		Energy Purchase kWh	Tariff
License No.	Name of Licensee	License No.	Name of Licensee		
001L	EDC (Phnom Penh)	050L	Reeco Company	1,873,396	530
		053L	Mr. Nget Hong	1,075,930	700
		061L	Mr. Khoecun Sambath	422,887	630

## Electricity Authority of Cambodia

		138L	Lim Heng Group Co, Ltd	1,238,243	Big Consumer
		150L	Akissni Keansvay Co. Ltd	1,731,751	630
		151L	Khmer electricity Service Co., Ltd	11,433,670	630
		222L	Akisni Dangkor Co., Ltd	828,148	630
		223L	L.M.K.Co., Ltd	180,000	12.25 cent
		224L	Sokha Electricity Co., Ltd	733,600	12.25 cent
		226L	Mrs. Hen Bonith	176,461	630
		260L	Transco Energy (Cambodia) Co., Ltd	187,200	12.25 cent
001L	EDC Banteay Meanchey	077L	Mrs Chao Nuy	159,690	600
		079L	Mr. Thon Thoeurn	37,993	600
		080L	Mr. Sok Vitith	94,851	600
		105L	Mr. Soeung Sovanna	124,559	600
001L	EDC Battambang	091L	Mr. Sun Pov	838,666	600
		201L	Mr. Ou Chanrat	39,353	630
		202L	Mrs. Kung Samon	61,194	630
001L	EDC Siem Reap	035L	Vonn Virek Service Co, Ltd	2,014,237	600
001L	EDC (Kampong Cham)	085L	Electricity Tbong Khmum Enterprise	5,928,330	GenCost Pr month +0.01\$
		165L	Electricity Kang Meas Enterprise	135,127	GenCost +0.005\$
		220L	Electricity Skun - Chamkar Leu Enterprise	927,594	GenCost +0.005\$
001L	EDC (Pohnea Krek)	122L	Electricity Dev. and Construction Company	17,722,998	\$0.10
		200L	Electricity Chi Paing Enterprise	437,482	\$0.10
001L	EDC (Kampong Trach)	180L	Kep Power Supply Co. Ltd	12,440,795	\$0.069 + Taxes + \$8,000 Annually
085L	Electricity Tbong Khmum Enterprise	027L	Electricity Suong Enterprise	2,060,209	Pur Cost + \$0.03
		088L	Mr. Khun Sophal	129,722	Pur Cost + \$0.04
151L	Khmer electricity Service Co., Ltd	086L	Mr. Koeung Rithy	3,274,668	730
		211L	Mrs. Iv Mala	238,086	730
206L	Bun Liv Co., Ltd Development Import Export	001L	EDC Prey Veng	771,053	\$0.135
		017L	Mrs. Bun Liv	1,297,092	13.5 cents
		198L	Mrs. Nov Sophea	227,960	13.5 cents
224L	Sokha Electricity Co., Ltd	064L	Electricity Tramkhnar	159,600	630
009L	M.S.P.Development Co. Ltd	089L	Vanakpheap Development Co., Ltd	2,590,400	6 Baht
011L	Anco Brothers co.,	078L	Mr. Pak Sun Heng	120,200	5.8 Baht

## Electricity Authority of Cambodia

	Ltd.				
051L	Sovanny Electricity Development Co. Ltd.	173L	Mrs. Ke Varin	225,234	Purchase cost + \$0.04
086L	Mr. Koeung Rithy	071L	Mr. Heng Tray	1,094,007	780
150L	Akissni Keansvay Co. Ltd	169L	Mr. Bun Huy	102,251	865
180L	Kep Power Supply Co. Ltd	001L	EDC Kampot	9,762,452	Wheeling charge 3.4 cent/kWh
220L	Electricity Skun - Chamkar Leu Enterprise	165L	Electricity Kang Meas Enterprise	309,055	Purchase Cost from EDC + 5.5 Cents

## Chapter 6

# Report on Generation, Import, Transmission and Supply of Electricity

## CHAPTER 6

### Report on Generation, Import, Transmission and Supply of Electricity

#### 6.1 Electricity Generation, Import and consumption in Cambodia at a glance

During 2009, the double circuit 230 kV line from Vietnam to Phnom Penh with Grid Substations at Takeo and GS4 at Phnom Penh was commissioned. Initially Vietnam has agreed to supply a maximum of 100 MW through this inter-country connection. After this import has stabilized, EDC was able to terminate the PPA with SHC (Cambodia) International Pte Ltd for the high cost diesel generation at Phnom Penh. With the commissioning of Takeo and GS4 grid substations and import from Vietnam, EDC is gradually extending grid supply to more areas. A comparison of data on electricity Generation, Import from neighboring countries by licensees and data on consumers and consumption by them for Cambodia for the years 2008 and 2009 is given in the Table below.

**Table 21: Data of Licensees operating in Electricity Sector of Cambodia at a glance**

Description	Unit	Data for 2008	Data for 2009	Percentage Increase
Energy Generated	million kWh	1,484.111	1,234.594	(16.81)
Energy Imported from Thailand	million kWh	274.113	324.247	18.29
Energy Imported from Vietnam	million kWh	100.140	518.149	417.4
Total Import	million kWh	374.253	842.396	125.09
Total Energy Available	million kWh	1858.364	2076.990	11.76
Generation Capacity	kW	384,620.6	372,129	(3.25)
Number of Consumers	Number	487,426	552,521	13.35
Energy sale to consumers	million kWh	1,664.395	1,853.495	11.36
Overall Loss Percentage	Percent	10.44	10.76	

#### 6.2 Grid connected Systems and isolated systems in Cambodia

With expansion of MV system, more and more areas, which till now were having supply from isolated system, are connected to different grid systems. By end of 2009, there were three distinct grid systems operating in Cambodia and two systems, one connected to the system in Thailand and other connected to the system in Vietnam through MV connections.

1. The Phnom Penh Grid System – In 2009, The Phnom Penh Grid System was connected to the Vietnam Grid by double circuit 230 kV line from Chau Doc in Vietnam to grid substation at Takeo and GS4 in Phnom Penh. By end of 2009 the sources of power connected to Phnom Penh Grid System are Vietnam system at 230 kV, CETIC Hydro station at Kirirom, Khmer Electrical Power Co. Ltd and (Cambodia) Electricity Private Co. Ltd at Phnom Penh at 115 kV and Cambodia Utilities Pte Ltd., City Power Group Corporation, Colben Energy (Cambodia) Limited, SL Garment Processing (Cambodia) Ltd at Phnom Penh at 22 kV. The Phnom Penh Grid System supplies power to Phnom Penh, parts of Kandal, Kampong Speu and Takeo Provinces.
2. The Banteay Meanchey Grid System – The 115/22 kV grid substations at Banteay Meanchey, Battambang and Siem Reap getting power supply from Thailand through 115 kV feeder forms the Banteay Meanchey Grid System. This system supplies electricity to parts of Banteay Meanchey, Battambang and Siem Reap Provinces.
3. The Kampong Cham Grid System – 22 kV lines from the generating station of GTS Power Ltd have been extended to supply electricity to areas of EDC in Kampong Cham town and other licensees in nearby areas. This system forms the Kampong Cham Grid System.
4. The Vietnam MV Grid System – A number of 22 kV feeders from Vietnam supply power to different areas of Cambodia near Vietnam border. Even though these 22 kV feeders are not connected to each other in Cambodia, they are connected to each other through the Vietnam Grid System and hence are considered as a grid. Some of these feeders supply the area of supply of one licensee, where as some supply the areas of more than one licensee.
5. The Thai MV Grid System – A number of 22 kV feeders from Thailand supply power to different areas of Cambodia near Thai border. Even though these 22 kV feeders are not connected to each other in Cambodia, they are connected to each other through the Thai Grid System and hence are considered as a grid. Most of these feeders supply the area of supply of one licensee, where as some supply the areas of more than one licensee.

The data on the licensees connected to each of the grid systems at the end of the year 2009, energy input and sale and number of consumer etc. are given in the Annexures 8, 8A, 8B, 8C and 8D. An abstract is given below.

Table 22: Data on Grid Systems

Sl. No	Name of Grid System	Energy input to the System million kWh	Energy input in %	Energy Sold to consumers million kWh	Energy Sold to consumers %	Number of consumers served	consumers served %
1	Phnom Penh	1,395.241	67.18	1,245.836	67.23	254,662	46.09
2	Banteay Meanchey	226.793	10.92	196.016	10.58	62,935	11.39
3	Kampong Cham	25.428	1.22	21.378	1.15	16,481	2.98
4	Vietnam at MV	148.245	7.14	134.848	7.28	51,835	9.38

5	Thai at MV	98.942	4.76	90.845	4.90	20,954	3.79
6	Isolated systems	182.340	8.78	164.083	8.85	145,654	26.36
7	<b>Total</b>	<b>2,076.990</b>	<b>100.00</b>	<b>1,853.005</b>	<b>100.00</b>	<b>552,521</b>	<b>100.00</b>

The rest of supply systems in Cambodia are isolated systems consisting of its own generation and supplying a small area generally belonging to one licensee. The information on number of consumers, energy available and consumed for these isolated systems has been estimated province wise and given in the following Table. The contiguous area of supply of a few licensees exists in two provinces and provincewise information is not available and in these cases the province wise data has been estimated or assumed.

Table 23: Province wise Data on isolated systems for 2009

Name of City/Province/Grid	Number of Licensees	Number of consumers	Installed Capacity on 31 <sup>st</sup> Dec 2009, kW	Energy generated, kWh	Energy Sold to consumers kWh
Banteay Meanchey	5	2,470	736	402,000	291,478
Battambang	11	6,701	2,226	1,942,064	1,467,287
Kampong Cham	20	12,957	4,272	4,132,327	3,193,679
Kampong Chhnang	8	7,504	4,210	5,549,950	4,468,499
Kampong Speu	12	6,194	2,718	2,108,665	1,628,903
Kampong Thom	10	11,453	3,533	7,416,803	5,927,263
Kampot	6	3,224	24,540	67,265,648	67,094,508
Kandal	31	21,754	5,536	5,608,487	4,378,743
Koh Kong	2	2,597	856	1,067,276	812,328
Kratie	4	7,037	2,340	5,466,950	4,092,806
Mondol Kiri	1	1,224	670	1,428,662	1,151,219
Phnom Penh	2	875	578	488,955	383,350
Preah Vihear	4	2,845	1,632	1,541,803	1,193,683
Prey Veng	7	3,896	1,462	1,290,219	1,017,701
Pursat	8	11,957	3,727	7,017,254	5,707,866
Ratanakiri	1	2,770	2,960	6,414,801	5,765,763
Siem Reap	14	6,090	2,383	1,150,459	881,377
Sihanouk	6	13,738	21,774	52,761,892	46,804,355
Stueng Treang	2	2,569	1,660	4,336,651	4,098,111
Svay Rieng	-	-	-	-	-
Takeo	24	16,111	3,291	3,776,866	2,934,646
Oddor Meanchay	2	1,688	1,180	1,172,137	789,206
Kep	-	-	-	-	-
Pailin	-	-	-	-	-
<b>Total</b>	<b>162</b>	<b>145,654</b>	<b>92,285</b>	<b>182,339,868</b>	<b>164,082,770</b>

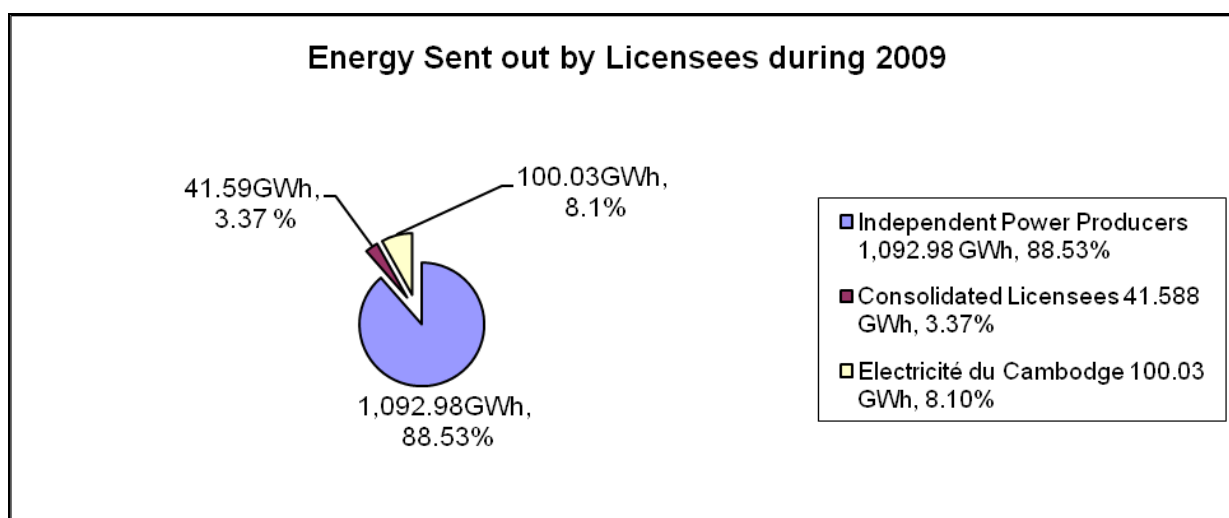
## 6.3 Generation in Cambodia

### 6.3.1 Generation by Type of License

Two types of licensees generate electricity in the Kingdom of Cambodia. Independent Power Producers having generation license generate and sell electricity to suppliers or industries as per Power Purchase Agreement with that supplier or industry. And Consolidated Licensees generate electricity for supply to consumers through their distribution system.

The information on operation data of individual Generation Licensees, Electricite du Cambodge and Consolidated Licensees is given in **Annex 3**, **Annex 6** and **Annex 7** respectively. The summary information about installed capacity and energy sent out by the Independent Power Producers, EDC and Consolidated licensees is given in **Annex 2(a)**.

The quantum of energy sent-out by the Independent Power Producers, EDC and Consolidated licensees is shown in the graphic given below.



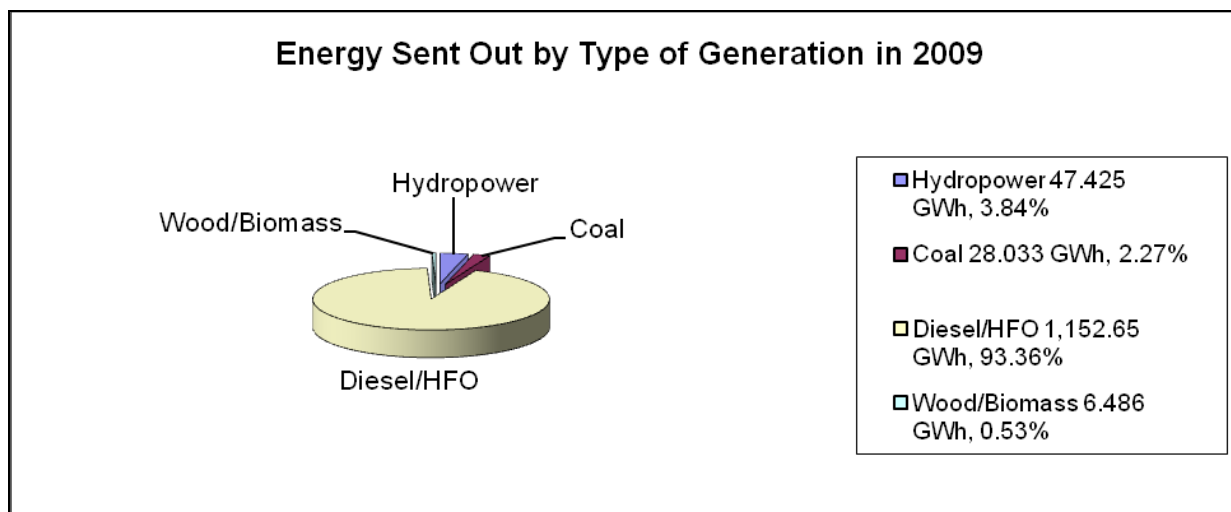
### 6.3.2 Generation by Type of Generation Facilities

Electricity generation facilities in the Kingdom of Cambodia for the year 2009 can be divided into 4 types: 1 - Hydropower Plants, 2 - Diesel power Plants, 3- Thermal Power Plants using coal and 4 – Plants using wood and other biomass. There are four Hydropower Plants, 1. Kirirom connected to Phnom Penh power system, 2. Ratanakiri connected to Ratanakiri power system of EDC, 3. Mondulkiri, which supplies electricity to provincial town of Mondulkiri, and 4. Khum Koh Sampeay, Seambouk District, Steung Treng Province supplying electricity to the distribution area of Mr. Seang Savot having License No. 218L. Mr. Dung Ly, supplying electricity to Ang Long Tamey (Battambang Province), SL Garment Processing (Cambodia) Ltd, supplying part of its generation to EDC Phnom Penh, and Tai Seng Import Export & Construction co., Ltd supplying power to EDC Rattanakiri use wood, agricultural products or waste as fuel for generation of electricity. Sovanna Phum Investment Co., Ltd, an IPP, having License No. 213L, uses coal to generate electricity and supplies to EDC Phnom Penh. All other power plants of the licensees are



diesel power plants using Heavy Fuel Oil (HFO) and/or Light Diesel Oil (LDO). The summary information on installed capacity and energy sent out by type of generation is given in **Annex 2(b)**.

The quantum of energy sent-out by the Independent Power Producers, EDC and Consolidated licensees classified by generation type is shown in the graphic given below.



#### 6.4 Energy Imported from Neighboring Countries

As a result of the cooperation between the Royal Government of Cambodia and the Government of Thailand and the Government of Vietnam, Cambodia imports electricity from Thailand and Vietnam. Initially this import was only at MV (22 kV or 15 kV) but since November 2007, import from Thailand is also at 115 kV to supply to Banteay Meanchey, Battambang and Siem Reap provinces and since April 2009, import from Vietnam is also at 230 kV to supply to Takeo, Phnom Penh, Kandal and Kampong Speu provinces.

Based on the Electricity Trade Agreement between Ministry of Industry, Mines and Energy of Cambodia with the Ministry of Industry of Vietnam, government companies/organisations such as EDC, Electricity of Kratie and Electricity of Monduliri have signed Power Purchase Agreements with Vietnam Power No.2 for import of electricity at a number of points for supply of electricity to areas located near the Cambodia – Vietnam border either by them or through other licensees. Vietnam Power No.2 charges a fixed tariff of 6.9 US Cents per kWh for supply to Cambodia at MV. The tariff for import by EDC at 230 kV is a time of use tariff in USD/kWh being different during rainy season and rest of the year.

Some private companies have received the right from MIME to purchase electricity from Provincial Electricity Authority of Thailand for supply to areas near Cambodia – Thai border. Cost of electricity imported from Thailand at 22 kV is as per the two part – time of use tariff of Provincial Electricity Authority for the applicable category of consumer. The tariff has demand charges (Baht per kilowatt of maximum demand), energy charges (Baht per kWh with different rates for energy drawn during peak and off-peak hours), service charges (fixed charge as Baht per month), power factor penalty (Baht per excess KVAR) and Ft (change in expenses charge in Baht/kWh). Because of such tariff structure, the cost of electricity varies in different months due

to different use conditions. The tariff for import by EDC at 115 kV from Thailand consists of fixed energy charge as Baht per kWh and Ft (change in expenses charge in Baht/kWh).

Contracted capacity, quantity of electricity imported for years 2008 and 2009 by licensees and average cost per kWh in 2009 is given in the Table below:

**Table 24: Contracted capacity, Energy Imported and Average Cost during 2009**

Name of the Licensee	Area of Supply	Contracted Capacity, kW	Energy Imported, kWh			Average cost per kWh
			Year 2008	Year 2009	Incremental %	
<b>1. Energy Imported from Thailand</b>						<b>In Baht</b>
Fransie Import Export Co., Ltd	District Center of Kamrieng	1,000	4,083,560	4,276,786	4.73	3.2249
	District Center of Phnom Preuk	1,000	1,546,548	2,159,464	39.63	3.2605
	District Center of Sampeou Loun	1,000	2,452,884	3,240,456	32.11	3.3497
M.S.P. Development Co. Ltd	Phum Phsar Prum	2,500	9,981,495	10,680,756	7.01	3.1747
Anco Brothers Co., Ltd.	Ochraov District	5,000	40,033,920	46,417,440	15.95	3.1608
L.Y.P. Group Co., Ltd	Provincial Town of Koh Kong	2,000	18,648,480	19,627,500	5.25	3.1181
	Osmarch Town	2,000	10,475,320	11,325,940	8.12	2.9337
Sinn Khim Import Export Co, Ltd	Malay District town	1,000	896,723	1,195,680	33.34	3.1301
Electricité du Cambodge	North-Western Grid	80,000	185,994,001	225,322,800	21.15	3.083
Total		95,500	274,112,931	324,246,822	18.29	
<b>2. Energy Imported from Vietnam</b>						<b>In US Cents</b>
Electricité du Cambodge	Takeo-Phnom Penh	100,000		374,166,348		6.223
	Ponhea Krek District	700	18,372,200	26,917,000	46.51	6.9
	Memot District	1,750	9,193,900	10,563,600	14.90	6.9
	Bavit commune	800	37,417,200	55,254,490	47.67	6.9
	Kampong Trach	1,000	13,108,486	17,833,143	36.04	6.9
	Svay Rieng	2,000	9,296,500	12,924,510	39.03	6.9
Anco Brothers Co., Ltd	Chrey Thom and Saang District	1,000	10,298,000	13,344,700	29.59	6.9

Electricity of Kratie Province	Snoul District, Kratie Province	1000	1,928,200	2,590,900	34.37	6.9
Electricity Unit of Mondolkiri Province	Keoseyma District Town, Monolkiri Province	1,000	465,500	607,100	30.42	6.9
Bun Liv Co., Ltd Dev. Import Export	Prahsdach District Town	1,000	59,900	3,380,100	5542.90	6.9
Mr. Mak Thom	Kirivong and Traing Districts	1,000		567,400		6.9
Total		111,250	100,139,886	518,149,291	417.43	
<b>3. Total from Thailand and Vietnam</b>		<b>206,750</b>	<b>374,252,817</b>	<b>842,396,113</b>	<b>125.09</b>	

## 6.5 Electricity Transmission

By end of the year 2009, four high voltage lines were in operation: (1) 115kV line around Phnom Penh, (2) 115kV line from Kirirom 1 hydropower plant to Phnom Penh distribution system, (3) 115 kV line from Thai border to Banteay Meanchey – Siem Reap and Battambang and (4) 230kV line from Vietnam border to Takeo & Phnom Penh. Considering the purpose of utilization, the 115kV line around Phnom Penh is considered as operating for distribution services and 115kV transmission line transmitting electricity from Kirirom 1 hydropower plant to Phnom Penh's distribution system, 115kV transmission line transmitting electricity from Thailand to Banteay Meanchey – Siem Reap and Battambang and 230kV line transmitting electricity from Vietnam to the Phnom Penh Grid System is considered as operating for transmitting electricity.

The summary information on High Voltage Transmission and on Grid-Substation is given in Tables below.

**Table 25: Information about High Voltage Transmission Lines**

No.	Name of Transmission Line	Ownership	Detail Information
1	Transmission line around Phnom Penh	EDC	Voltage: 115 kV Length: 82.71 Km Purpose: connects all 4 Grid - substation in Phnom Penh to stabilize and provide continuous of electricity supply
2	Transmission (Overhead Line) Kirirom 1 – Kampong Speu – Phnom Penh	EDC	Voltage: 115 kV Length: 111.24 Km Purpose: transmit electricity from Kirirom 1 hydropower plant to Kampong Speu and Phnom Penh
3	Transmission Line from Thai Border to Banteay Meanchey –	CPTL	Voltage 115 kV Length: 221 Km

	Siem Reap and Battambang		Purpose: Import Electricity from Thailand to supply to Banteay Meanchey – Siem Reap and Battambang Areas
4	Transmission Line from Vietnam Border to Takeo to GS4 Phnom Penh	EDC	Voltage 230 kV Length: 91 Km Purpose: Import Electricity from Vietnam to supply to areas supplied by Phnom Penh Grid

**Table 26: Information about High Voltage Grid-Substation**

No .	Name of Substation	Ownership	Detail Information
1	Substation No. 1 – Phnom Penh	EDC	Voltage: 115/22/15 kV Number and Size of Transformers: 1 x 30 – 50 MVA Voltage: 115/22 kV Number and Size of Transformers: 1 x 30 – 50 MVA Number of Outgoing Distribution Feeders: 15 Number of Incoming Distribution Feeders: 4 Total Number of Distribution Feeders: 19
2	Substation No. 2 – Phnom Penh	EDC	Voltage: 115/22/15 kV Number and Size of Transformers: 1 x 30 – 50 MVA Voltage: 115/22 kV Number and Size of Transformers: 1 x 30 – 50 MVA Number of Outgoing Distribution Feeders: 13 Number of Incoming Distribution Feeders: 7 Total Number of Distribution Feeders: 20
3	Substation No. 3 – Phnom Penh	EDC	Voltage: 115/22 kV Number and Size of Transformers: 2 x 30 – 50 MVA Voltage: 22/15/11 kV Number and Size of Transformers: 1 x 10 MVA Number of Outgoing Distribution Feeders: 12 Number of Incoming Distribution Feeders: 4 Total Number of Distribution Feeders: 16
4	Substation No. 4 – Phnom Penh	EDC	Voltage: 230/115 kV Number and Size of Transformers: 2 x 200 MVA and 2 x 30-50 MVA Voltage: 115/22 kV Number and Size of Transformers: 2 x 30-50 MVA
5	Substation - Takeo	EDC	Voltage: 230/22 kV Number and Size of Transformers: 1 x 16 MVA

6	Substation – Kampong Speu	EDC	Voltage: 115/22 kV Number and Size of Transformers: 1 x 6.3 MW Number of Outgoing Distribution Feeders: 1 Number of Incoming Distribution Feeders: 1 Total Number of Distribution Feeders: 2
7	Substation Industrial Zone at Thai Border	CPTL	Voltage: 115 kV Number of 115 kV feeder bays: 2
8	Substation Banteay Meanchey	CPTL	Voltage: 115/22 kV Number of 115 kV feeder bays: 3 Number and Size of Transformers: 1 x 25 MVA Number of Outgoing Distribution Feeders: 3
9	Substation Siem Reap	CPTL	Voltage: 115/22 kV Number of 115 kV feeder bays: 1 Number and Size of Transformers: 1 x 50 MVA Number of Outgoing Distribution Feeders: 5
10	Substation Battambang	CPTL	Voltage: 115/22 kV Number of 115 kV feeder bays: 1 Number and Size of Transformers: 1 x 25 MVA Number of Outgoing Distribution Feeders: 3

## 6.6 Electricity Distribution

In general in the Kingdom of Cambodia, the consolidated licensees and distribution licensees, having the right to distribute electricity in their authorized areas, own the electricity distribution facilities in their area.

Information on the quantity of generation, purchase, sold, loss and number of consumers of each licensee are **shown in Annex 4, Annex 5, Annex 6 and Annex 7.**

## Annex 1

## Province wise Area of supply served by Distribution, Retail and Consolidated Licensees at the end of Year 2009

Province/city	Area of supply	License Number	Name of Licensee	Hours of Supply per Day
1-Banteay Meanchey	Provincial Town of Banteay Meanchey and Mongkul Borei District Town	001L	EDC	24 hours
	Some areas of O Chrov District	011L	Anco Brothers Co., Ltd	24 hours
	Khum O-Prasat and Khum Banteay Neang, Mongkul borei District	077L	Mrs Chao Nuy	24 hours
	Phsar Kotsat Town, Khum Nimit, Khum Kob and Khum Samrong, O-chrov District	078L	Mr.Pak Sun Heng	24 hours
	Khum Phnom Toch, Mongkul borei District	079L	Mr.Thon Thoeurn	10 hours: From 11:00 to 15:00 and from 18:00 to 24:00
	Phsar Banteay Neang Town, Khum Banteay Neang, Mongkulborei District	080L	Mr. Sok Vitith	24 hours
	Phsar Phnom Srok Town, Khum Sras Chik, Phnom Srok District	081L	Mr. Muon Han	6 hours: From 17:00 to 23:00
	Phsar Phnom Thom Tbong Town, Khum O-Prasat, Mongkul Borei District	105L	Mr. Soeung Sovanna	16 hours: From 11:00 to 15:00 and from 18:00 to 06:00
	Preahnet Preah District Town	108L	Mrs. Sin Savuon	7:30 hours: From 11:00 to 13:30 and from 18:00 to 23:00
	Malay District Town	149L	Sinn Khim Import Export Co., Ltd	24 hours
	Along the road from Boeung Trakuon Town, Khum Kokromeat toThmor Pouk District Town	189L	Phum Nimit Co, Ltd	24 hours
	Svay Chek District Town	190L	Mr. Mak Van	5 hours: 18:00 to 23:00

## Electricity Authority of Cambodia

	Khum Changha, O-Chrov District	257L	Mr. Koung Leangheng	5 hours: 18:00 to 23:00
2-Battambang	Provincial Town of Battambang	001L	EDC	24 hours
	District Center of Kamrieng	008L	Franasie Import Export Co., Ltd	24 hours
	District Center of Phnom Proeuk	008L	Franasie Import Export Co., Ltd	24 hours
	District Center of Sampeou Loun	008L	Franasie Import Export Co., Ltd	24 hours
	Thmor Kol District Town	043L	Mr. Som Visal	24 hours
	Khum Phnom Sampov, Banoan District	068L	Mrs. Tuoch Mantha	11 hours: 04:30 to 07:00, 11:00 to 14:00 and 17:00 to 22:30
	Rattanak Mondol District Town	069L	Mr. Nop Bin	16 h: From 04:30 to 08:00 and from 10:30 to 23:00
	Khum Boeung Pring, Thmarkol District	079L	Mr. Thon Thoeurn	10 hours: From 11:00 to 15:00 and from 18:00 to 24:00
	Khum Prek Khpob, Khum Prek Luong and Khum Prek Norin, Ek Phnom District	091L	Mr. Sun Pov	24 hours
	District Town of Mongrussey (Left Hand Side of National Road No. 5, Direction from Phnom Penh to Battambang)	109L	Mrs. Tieng Chenda	24 hours
	District Town of Mongrussey (Right Hand Side of National Road No. 5, Direction from Phnom Penh to Battambang)	110L	Mrs. Sea Kech	24 hours
	Phum Ang Long Tamey, Khum Chheuteal, Banorn District	117L	Mr. Dung Ly	11 hours: From 09:00 to 14:00 and from 17:00 to 23:00
	Bovil District Town	182L	Mr. Khun Sarun	24 hours
	Khum Tamoeun and Khum Chrouy Sdov, Thmarkol District	201L	Mr. Ou Chanrat	24 hours
Khum Chrey, Thmarkol District	202L	Mrs. Kung Samon	24 hours	

## Electricity Authority of Cambodia

	Khum Lvea and Khum Prey Khpous, Bovil District	242L	Miss San Chhan	9 hours: From 11:00 to 15:00 and from 17:00 to 22:00
	Khum Kantoeu II, Khum Chheurteal and Khum Baydamram, Banan District	244L	Mr. Lun Rith	12 hours: From 11:00 to 23:00
	Khum Kampong Preang, Khum Kampong Preh and Khum Raing Kesey, Sangke District	246L	Mr. Sam Nang Sathia	5:30 hours: From 17:30 to 23:00
	Khum Wat Tameum, Khum Baydamram and Khum Cheuteal, Banan District	248L	Mrs. Oun Neang	<b>Not Operated in 2009</b>
	Khum Takream and Khum Phnom Sampov, Banan District	251L	Mrs. Ouch Sophalla	24 hours
	Khum Tapon and Khum Roka, Sangke District	262L	Mr. Tin Savet	<b>Not Operated in 2009</b>
3-Kampong Cham	Provincial Town of Kampong Cham	001L	EDC	24 hours
	Ponhea Krek District	001L	EDC	24 hours
	Memut District	001L	EDC	24 hours
	Phsar Prey Toteung Town, Prey Chhor District	023L	Electricity Preychhor Enterprise	24 hours
	Phsar Phaav Town, Khum Phaav, Batheay District	026L	Mr. Chang Bunnaret	24 hours
	Phsar Suong Town, Tbongkhmum District	027L	Electricity Suong Enterprise	24 hours
	Phsar Chamkar Leu Town, Chamkar Leu District	038L	Mr. Sieng Seng	24 hours
	Khum Sotep, Khum Sramor, Khum pdovchum and Khum Prey Char, Cheung Prey District	047L	Mrs. Sar Malis	24 hours
	Phsaar Bos Knor Town, Chamkar Leu District, and Traeung Town, Prey Chhor District	056L	Mrs. Nhek Theary	24 hours



Electricity Authority of Cambodia

Phsar Steung Trang Town, Khum Prek Kok, Steung Trang District	057L	Mr. Chin Sohin	15 hours: From 07:00 to 22:00
Khum Mesorchrey, Steung Trang District	060L	Mrs. Eam Sreng	13 hours: From 09:00 to 22:00
Phsar Svay Teab Town, Khum Svay Teab, Chamkar Leu District	074L	Mr. Mean Vanna	19hours: From 04:00 to 23:00
Phsar Speu Town, Khum Speu and Chayo, Chamkar Leu District	075L	Mr. Chhay Kim Huor	19hours: From 04:00 to 23:00
Phsar Tnaloteung Town, Khum Chob, Tbongkmom District	085L	Electricity Tbong Khmum Enterprise	24 hours
Oreang Ov District Town	088L	Mr. Khun Sophal	24 hours
PonheaKrek and Tbong khmum District area	122L	Electricity Development and Construction Company	24 hours
Thnal Keng Town, Khum Taingkrang and Khum Chea Lea, Bathay District	130L	Mr. Try Leng	20hours: From 1800 to 14:00
Phum Taong, Khum Taong, Chamkar Leu District	140L	Mr Chea Chan Narooun	20 hours: From 04:00 to 24:00
Batheay District Town	159L	Mr. Khun Sopheap	24 hours
Khum Ptas Kandal, Khum Prekpo and Khum Meanchey, Srey Santhor District	160L	Mr. Seng Chinleang	24 hours
Kang Meas and Kampong Siem District towns	165L	Electricity Kang Meas Enterprise	24 hours
Dambe District Town	181L	Mr. Kim Meng	4 hours: From 18:00 to 22:00
Krouch Chhmar District Town	192L	Mr. Path Seang Hun	24 hours
Khum Krek, Ponhea Krek District	200L	Electricity Chi Paing Enterprise	24 hours
Khum Prekdombouk, Srey Sonthor District	207L	Mr. Lay Veng Kheang	8 hours: From 04:00 to 07:00 and from 18:00 to 23:00
Khum Sam Bor, Batheay District	216L	Mrs. Tek Nimol	13 hours: From 06:00 to 14:00 and from 18:00 to 23:00

## Electricity Authority of Cambodia

	Khum Krala, Kampong Siem District	220L	Electricity Skun - Chamkar Leu Enterprise	24 hours
	Khum Thmar Poun, Prey Chhor District	241L	Mr. Ung Kimsean	5 hours: From 18:00 to 23:00
	Khum Tomnoub and Khum Cheung Prey, Batheay District	254L	Mrs. Pheng Sophat	<b>Not Operated in 2009</b>
	Khum Chealea, Batheay District	255L	Mrs.Som Sokhalin	13 hours: From 06:00 to 14:00 and from 18:00 to 23:00
	Khum Chamkar Andoung, Chamkar Leu District	256L	Mr. Toek Hong	4 hours: From 18:00 to 22:00
4-Kampong Chhnang	Boribo District Town with Zones of Khum Punley, Khum Popel and Khum Khunrong	040L	Mr. Mak Heat	24 hours
	Kampong Tralach District Town and Khum Chres, Kampong Tralach District	041L	Mr. Ty Sokorn	24 hours
	Provincial Town of Kampong Chhnang	051L	Sovanny Electricity Development Co.Ltd	24 hours
	Khum Andong Snay, Khum Rolea Phear and Khum Kouk Banteay, Rolea Phear District	095L	Mrs. Chan Simoly	20 hours: From 04:00 to 24:00
	Phsar Pong Ro Town, Khum Pong Ro and Svay Chrum, Rolea Phear District	096L	Mr. Chea Sareth	20 hours: From 04:00 to 24:00
	Teuk Phos District Town	119L	Mr. Un Sothea	20 hours: From 04:00 to 24:00
	Khum Longvek and Khum Svay, Kampong Tralach District	166L	Mr. Or Ratana	24 hours
	Rolear Phear, Teuk Phos and Kampong Tralach District area	167L	Electricity Rolear Phear Enterprise	<b>Not Operated in 2009</b>
	Rolear Phear and Teuk Phos District	173L	Mrs. Ke Varin	24 hours
5-Kampong Speu	Provincial town of Kampong Speu	001L	EDC	24 hours
	Khum Trapaing Kong, Samrong Tong District	053L	Mr. Nget Hong	24 hours

Khum Veal, Khum Chung Rouk, Khum Shnom Kroper, Khum Maharesey and Khum Preah Vihear, Korng Pisey District and Khum Tuol Ampil, Borseth District	064L	Electricity Tramkhnar	24 hours
Trapaing Kralleng Town, Khum Kirivoan, and Khum Taing Sya, Phnom Sruoch District	067L	Mr. Sok Hoy	24 hours
Khum Viang Chas, O'dong District	076L	Mr. Quach Edward	24 hour
Khum Treng Trayeng, Phnom Srouch District	082L	Mr. Ly Sok Kry	24 hours
Phsar Bat Doeung, Khum Khsem Khsan, Odong District	099L	Mr. Leng Mov	24 hours
Khum Por Ankrang, Bor Seth District	101L	Mr. Chhin Song	24 hours
Talat Town, Khum O, Phnom Sruoch District	136L	Mr. Men Kunthae	18 hours: From 05:00 to 23:00
Area along RN 4 (north) from Khum Vorsar and along RN 51 to the end border of Khum Mkak, Samarongtong District, Oddong District	137L	Mr. Meng Sokleng	5 hours: From 17:00 to 22:00
Khum Roleang Kreul, Samraong Tong District and Khum Roka Koh, Kongpisei District	154L	Mr. Uy Sopath	20 hours: From 04:00 to 24:00
Phsar Krangchek Town, Khum Krangchek, Udong District	155L	Mr. Samret Kiri	24 hours
Khum Trapeang Kong, Samraong Tong District	156L	Mr. Men Sambath	10 hours: From 10:00 to 14:00 and from 17:00 to 23:00
Phsar Slableng Town, Khum Pheary Meanchey and Khum Svayrompear, Borsat District	175L	Mr. Toeng Samouv	24 hours
Khum Preahnipean, Kongpisey District	219L	Mr. Phoeurn Saroeurn	16 hours: From 06:00 to 22:00

Electricity Authority of Cambodia

	Samraong Tong and Korng Pisey District	224L	Sokha Electricity Co., Ltd	24 hours
	Khum Preyromduol, Khum O and Khum Kirivoan, Phnom Sruoch District	237L	Mr. Ly Chinlong	24 hours
6-Kampong Thom	Kampong Thmar town consistng of Khum Balang and Khum Chong Daung Baray District and Khum Kampong Thmar, Sontuk District	006L	Mr. Huor Pheng	24 hours
	Provincial Town of Kampong Thom	012L	Sung Jin & Chilbo Industrial Co., Ltd	24 hours
	Khum Treal, Khum Sralov, Khum Chralong, Khum Andoung Pur and Khum Chraneang, Baray District	019L	Mr. Te Kok Eng	24 hours
	Khum Chraneang, Khum Svayphleung, Khum Soyong, Khum Pongro and Khum Chralong, Baray Distric	032L	Mr. Nhen Kong	24 hours
	Phsar Baray Town, Khum Baray, Baray District	039L	Mr. Kim Chantara	24 hours
	Stong District Town	063L	Mr. Ong Hok Sin	24 hours
	Santuk District	073L	Mr. Treung San	24 hours
	Sandann District Town	199L	Mr. Some Lai Y	17 hours: from 06:00 to 23:00
	Khum Sankor, Kampong Svay District	228L	Mr. Saeu Tiengkok	6 hours: from 17:00 to 23:00
	Khum Treal and Khum Chhouk Khsach, Baray District	245L	Mr. Chhea Sokhom	11 hours: From 04:00 to 07:00, from 11:00 to 14:00 and from 18:00 to 23:00
	7-Kampot	Kampot provincial town	001L	EDC
Kompong Trach district Town, Khum Oeuseysrok Khanglech and Khum Kompong Trach Khangkeut, and Khum Kanthor Khanglech, Kompong Trach District		001L	EDC	24 hours
Khum Prekthnot, Khum Kohtoch and Khum Beungtok, Kampot District		042L	Mr. Kong Sophal	24 hours

## Electricity Authority of Cambodia

	Phsar Chhouk Town, Chhouk District, Chumkiri District Town, Dong Tong District area	044L	Mr. Kong Puthy	24 hours
	Banteay Meas District and Khum Kanthor Khang Keut-Khang Tbong, Kampong Trach District	093L	Banteay Meas Electricity	24 hours
	Angkor Chey District Town	097L	Mr. Yin Ech	24 hours
	Some areas along 22 kV line from Lork Town, Khum Svaytong Khangtboung, Kampongtrach District, to Authorised Distribution area of EDC at Kampot	180L	Kep Power Supply Co. Ltd	24 hours
	Dorng Tong District Town	225L	Mrs. Chann Sokim	24 hours
8-Kandal	Area around Phnom Penh	001L	EDC	24 hours
	Some area of Koh Thom District and Sa-Ang District	011L	Anco Brothers Co., Ltd	24 hours
	Phsar Neak Loeung Town (West of Mekong River), Khum Prek Tonlap and Khum Kampong Phnom, Leukdek District	021L	Mrs. Nov SreyPich	24 hours
	Phsar Rokakong Town, Mukkampoul District	037L	Mr. Eang Seng Hy	24 hours
	Khum Kampong Chamlorng, Khsach Kandal District	045L	Mrs. Choup Neang	12hours: From 04:00 to 07:00, from 11:00 to 14:00 and from 17:00 to 23:00
	Khum Troeuysla, Khum Talun, Khum Khpob, Saang District, Khum Pouthiban, Khum Kamponkong, Khum Chrouytakhaev, Khum Chheu Khmau, Khum Prek Chrey and Khum Leudek, Koh Thom District	049L	Eastern Power Supply Enterprise	24 hours
	Khum Prekthmey and Khum Chheu Teal, Kean Svay District	050L	Reeco Company	24 hours

Electricity Authority of Cambodia

Phsar Thnal Toteung Town, Khum Damnak-Ampil, Ang Snoul District	053L	Mr. Nget Hong	24 hours
Phsar Kampong Kantuot, Khum Bakou and Khum Anlong Romeat, Kandal Stung District	058L	Mr. Chay Neng	24 hours
Phsar Ang Snoul Town, Khum Peuk, Ang Snoul District	061L	Mr. Khoeun Sambath	24 hours
Estern Phsar Prek Kdam Town, Khum Kohchen, Ponhealeu District	062L	Mr. Er Long	24 hours
Phsar Prek Anh Chanh Town, Khum Prek Anh chanh, Muk Kampoul District	066L	Mr. Pean Sokhalay	24 hours
Southern Phsar Saang Town, Khum Prek Koy and Khum Saang Phnom, Saang District	071L	Mr. Heng Tray	24 hours
Khum Ponnhealeu, Khum Vihealuong, Khum Phsar Dek, Khum Phnom Bath, Khum Tomnobthom, and Khum Kampongluong, Punnhea leu District	076L	Mr. Quach Edward	24 hours
Phsar Northern Saang Town, Saang District	086L	Mr. Koeung Rithy	24 hours
Muk Kampoul District and Pongeaieu District	090L	Veasna New Land Power Co., Ltd	24 hours
Khum Tomnob Thom, Ponhea Leu District and Khum Mkak, Ang Snoul District	099L	Mr. Leng Mov	24 hours
Khum Bak Kheng, Mukkompul District	103L	Mr. Nhem Phany	24 hours
Phum Areyksat, Khum Areyksat, Lavea-Em District	114L	Ms. Chea Ting	5 hours: From 17:00 to 22:00

Electricity Authority of Cambodia

Area along RN 4 (north) from Khum Vorsar and along RN 51 to the end border of Khum Mkak, Angsnoul District	137L	Mr. Meng Sokleng	5 hours: From 17:00 to 22:00
Phum Kballoh, Khum Kohdach, Muk Kampoul District	143L	Mrs. Leang Chhunmy	5:30 hours: From 17:30 to 23:00
Phsar Siem Reap town, Khum Siem Reap, Kandal Stung District	144L	Mr Ouk Sopheap	24 hours
Khum Korky, Khum Dey-Et, Khum Banteay Dek, Khum Chheur Teal, Khum Khalkoh and Khum Kampong Svay, Keansvay District	150L	Akkisni Kien Svay Co., Ltd	24 hours
Khum Svayrolum and Khum Setbo, Sa-Ang District	151L	Khmer Electricity Service Co., Ltd	24 hours
Khum Beng Kyang, Khum Prek Sleng, Khum Prek Roka and Khum Trea, Kandal Steung District	153L	Mrs Nguon Socheatey	24 hours
Khum Svayproteal and Khum Troeysla, Saang District	168L	Mrs. Ou Kimheng	18 hours: From 05:00 to 23:00
Khum Banteaydek, Kien Svay District	169L	Mr. Bun Huy	24 hours
Phum Raing Dek, Khum Kokythom, Kien Svay District	170L	Mr. Chhun Ly	9 hours: 4:30 to 6:30, 11:00 to 13:00 and 17:30 to 22:30
Khum Prek Takov and Phum Leu, Khum Svay Chrum, Khsach Kandal District	171L	Mrs Nhem Sotheary	12 hours: From 11:00 to 23:00
Khum Samrong and Prektateng, Ponhnealeu District	176L	Mr. Moul Tit	24 hours
Khum Kraing Youv, Saang District	179L	Mr. Nhoek My	24 hours
Khum Vihearsuor, Khsach Kandal District	186L	Mr. Heng Kosal	24 hours
Khum Preah Prosob, Khum Svay Romeat and Khum Prek Tameak, Ksach Kandal District	204L	Mr. Chhay Chansophea	15 hours: From 04:00 to 07:00, and from 11:00 to 23:00

## Electricity Authority of Cambodia

	Khum Prek ampil and Khum Pukrussey, Khsach Kandal District	209L	Mr. Sok Pin	24 hours
	Khum Koh Anlongchen, Saang District	211L	Mrs. Iv Mala	24 hours
	Phsar Prey Toteung Town, Khum Trapaing Veng, Kandal Steung District	219L	Mr. Phoeurn Saroeurn	16 hours: From 06:00 to 22:00
	Khum Prek Kompoeus and Khum Cheung Keub, Kandal Stoeung District	223L	L.M.K.Co., Ltd	24 hours
	Khum Samroangthom, Kiensvay District	226L	Mrs. Hen Bonith	24 hours
	Khasach Kandal District Town	230L	Mrs. Thauy Vorun	9 hours: From 04:00 to 06:00, and from 16:00 to 23:00
	Khum Ruessey Chrouy, Muk Kampoul District	234L	Mrs. Kak Srey On	6 hours: From 17:00 to 23:00
	Khum Prekluong and Khum Prektakov, Khasach Kandal District	235L	Mr. Cheng Sophal	20 hours: From 04:00 to 24:00
	Khum Ponhea Pon, Pohnea Leu District	243L	Mr. Nouv Tim	5 hours: From 18:00 to 23:00
	Khum Areyksat and Khum Sarikakeo, Lvea Em District	249L	Mr. Vann Ramon	8 hours: From 11:00 to 14:00 and from 17:00 to 22:00
	Khum Koh Oknhatey, Kasach Kandal District	250L	Mrs. Suy Chamnan	11 hours: From 12:00 to 23:00
	Khum Snao, Khum Chauk Cher Neang, Khum Ovloak and Khum Pongsaing, Angsnoul District	261L	Sahakreas Aphivath Akisni Chunabort	<b>Not Operated in 2009</b>
	Khum Prektaten, Ponhealeu District	264L	Mr. El Henghuot	<b>Not Operated in 2009</b>
	Khum Ampov Prey, Kandal Stueng District	266L	Mr. Lors Toeur	<b>Not Operated in 2009</b>
9-Koh Kong	Provincial Town of Koh Kong	014L	L.Y.P Group Co., Ltd	24 hours
	Sre Ambil District Town	028L	Mr. Samreth Sothy	24 hours
	Phum Koh Sdech, Khum Koh Sdech, Kirisakor District	106L	Mrs. Ann Samlan	24 hours
10-Kratie	Provincial Town of Kratie	059L	Electricity of Kratie	24 hours



## Electricity Authority of Cambodia

			Province	
	Part of Snuol District	059L	Electricity of Kratie Province	24 hours
	Chhloung and Chetburey District	191L	Mrs. Phin Vipheavy	24 hours
	Khum Cham Bork and Khum Rossey Keo, Prek Brasorb District	217L	Mr. Heang Pov	5 hours: From 17:30 to 22:30
	Prek Prasob District Town	227L	Mr. Phin Ham	24 hours
	Sambo District Town	263L	Mrs. Sam Bun Kich	<b>Not Operated in 2009</b>
11-Kep	Kep City and some areas along 22 kV line from Lork Town, Khum Svaytong Khangtbourg, Kampongtrach District, Kampot Province to Authorised Distribution area of EDC at Kampot	180L	Kep Power Supply Co. Ltd	24 hours
12-Mondulkiri	Keoseyma District Town	158L	Electricity Unit of Mondulkiri Province	24 hours
	Provincial Town of Mondul Kiri	158L	Electricity Unit of Mondulkiri Province	24 hours
13-Oddor Meanchey	Osmach Town, Khum Osmach, Samrong District	014L	L.Y.P Group Co., Ltd	24 hours
	Provincial Town of Oddor Meanchey and area along Road 68 from Osmach to Oddor Meanchey	014L	L.Y.P Group Co., Ltd	24 hours
	Trapaing Prasat District Town	163L	Mr. Phom Phal	18 hours: From 05:00 to 12:00, and from 12:00 to 23:00
	Anlong Veng District Town, and along road no.67 from Anlong Veng District Town to Thai Border	214L	All Stars Entertainment Co., Ltd	24 hours

## Electricity Authority of Cambodia

14-Pailin	Salakrao District	009L	MSP Development co., Ltd	24 hours
	Pailin City	089L	Vannak Pheap Development Co., Ltd	24 hours
15-Phnom Penh	Phnom Penh	001L	EDC	24 hours
	Khan Rusey Keo	090L	Veasna New Land Power Co., Ltd	24 hours
	Sangkat Prek Lep, Khan Rusey Keo	103L	Mr. Nhem Phany	24 hours
	O-Rusey Market, Phnom Penh	138L	Lim Heng Group Co, Ltd	24 hours
	Along National Road No. 3 located in Khan Dangkor	222L	Akisni Dangkor Co., Ltd	24 hours
16-Preah Vihear	Provincial Town of Preah Vihear	031L	Mr. Chan Thun	24 hours
	Rovieng District town	128L	Mr Ieng Khun	12 hours: from 04:00-11:00, and from 18:00-23:00
	Chum Ksan District Town	162L	Mr. Hay Tina	9 hours: From 11:00 to 15:00 and from 18:00 to 23:00
	Khum Srayang, Koulén District	172L	Mr. Mor Malen	6 hours: From 17:00 to 23:00
17-Prey Veng	Provincial Town of Prey Veng	001L	EDC	24 hours
	Neak Loeung Town (East of Mekong River), Peamro District	017L	Mrs. Bun Liv	24 hours
	Phsar Snay Pul Town, Khum Roka, Pearang District	018L	Mr. Ky Sophear	24 hours
	Kar-Andoek Town, Khum Prasat, Kampong Trabek District	036L	Mrs. Pauch Kim	24 hours
	Khum Kampong Popel and Khum Kampong Praing, Pearang District	045L	Mrs. ChoupNeang	12hours: From 04:00 to 07:00, from 11:00 to 14:00 and from 17:00 to 23:00
	Kampong Leav, Svay Antor and Pearaing District Area	046L	Mr. Seng Sokun	14hours: From 04:00 to 06:00, from 11:00 to 23:00

## Electricity Authority of Cambodia

	Kampong Trabek District Town	187L	Mr. Khem Rany	24 hours
	Khum Prek Ksay "A", Khum Peamro and Khum Bapong, Peamro District	198L	Mrs. Nov Sophea	24 hours
	Prahsdach District Town and along the road from Prah Sdach District Town to Distribution area of Neak Loeung Town, Peam Ro District	206L	Bun Liv Co., Ltd Development Import Export	24 hours
	Kanh Chreach District Town	208L	Mr. Keo Cham Reun	16 hours: from 07:00 to 23:00
	Mesang District Town	239L	Mr. Ean Sam Ath	6 hours: from 18:00 to 24:00
	Khum Chea Klang, Svay Antor District, Khum Chrey, Khum Daun Keung, Khum Smaung Cheung and Khum Kranhoung, Kamchay Mea District	259L	Cambodian Electrical Equipment Corporation	<b>Not Operated in 2009</b>
	Baphnom District Town	267L	Mr. But Bunchea	<b>Not Operated in 2009</b>
18-Pursat	Phsar Beung Khna Town, Khum Beung Khna, Bakan District	033L	Mr. Chhuor Nguon	12 hours: From 7:00 to 15:00 and from 18:00 to 22:00
	Khum Trapeang Chong , Bakan District	034L	Mr. Toem Touch	24 hours
	Provincial Town of Pursat and parts of Kandeang District	052L	Nareth Co. Ltd Electricity Development	24 hours
	Phsar Svay Daun Keo Town, Khum Svay Doun Keo, Bakan District	072L	Mr. Ya Sambat	12 hours: From 10:00 to 22:00
	Khum O-Tapong, Bakan District	102L	Mr. Preap Vannaret	4 hours: From 18:00 to 22:00
	Phnom Kravanh District Town	124L	Mrs. Ear Lay Sien	18 hours: From 5:00 to 23:00
	Krakor District town	125L	Mr. York Savong	24 hours
	Khum Chheutom, Krakor District	233L	Mr. Srun Sokun	18 hours: From 06:00 to 24:00
19-Ratanakiri	Provincial Town of Ratanakiri	001L	EDC	24 hours

## Electricity Authority of Cambodia

20-Siem Reap	Provincial Town of Siem Reap	001L	EDC	24 hours
	Pouk District Town	035L	Vonn Virek Service Co, Ltd	24 hours
	Khum Domdek, Phsar Domdek Town, Sotnikum District	048L	Mr. Chhom Sophay	24 hours
	Phsar Thnal Chek Town, Khum Kien Sangke and Khum Dam Dek, Sotnikum District	083L	Mr. Tun Yoeun	10 hours: From 4:00 to 5:00, from 11:00 to 16:00 and from 18:00 to 22:00
	Chikreng District Town	111L	Mr. Kong Vun	24 hours
	Chikreng District Town	112L	Mr. Ly Kang	24 hours
	Phum Phsar Kleang, Khum Kampong Kleang, Sotnikum District	127L	Mr Te Hong Cheng	4 hours: From 18:00 to 22:00
	Phum Chork, Khum Sangveuy, Chikreng District	129L	Mrs Chrun Leang Suor	4 hours: From 18:00 to 22:00
	Angkor Chum District Town	139L	Mr Duong Narin	16 hours: From 07:00 to 23:00
	Zone 1, zone 2, Tourist and Cultural Zones, Siemreap	145L	Souching Electronic Company Ltd	<b>Not Operated in 2009</b>
	Khum Anlong Samnor and Khum Chikreng, Chikreng District	161L	Mr. Kea Kimseng	5 hours: From 17:30 to 22:30
	Kralanh District Town	164L	Mrs Tek Sina	24 hours
	Khum Samrong, Sotnikum District	183L	Mrs. Meas Keav	4 hours: From 18:00 to 22:00
	Khum Kantraing, Prasatbakong District	185L	Mr. Phlok Vannak	13 hours: From 08:00 to 21:00
	Khum Roluos, Khum Meanchey and Khum Trapiangthom, Prasat Bakong District	203L	Mr. Tan Kang	15 hours: From 07:00 to 22:00
	Svay Lue District Town	229L	Mr. Khean Kev	4 hours: From 18:00 to 22:00
	Khum Srey Noy, Varin District	240L	Mrs. Long Kimheng	16 hours: From 07:00 to 23:00
21-Sihanouk	Sihanoukville	001L	EDC	24 hours
	Phsar Veal Reinh Town and Phum Chheng Kor, Khan Preynob	029L	Mr. Sok Thy	24 hours
	Sangkat Tumnob Rolok and Sangkat Kampenh, Khan Stoeung Hav	030L	Mr. Ly Bunthy	24 hours

## Electricity Authority of Cambodia

	Phsar Smachdeng Town, Sangkat Ream, Khan Preynop	098L	Mr. San Ke	8hours: From 05:00 to 07:00, and from 17:00 to 23:00
	Sangkat Otresh, Khan Steung Hav	120L	Mr. Chan Keat	20 hours: From 10:00 to 15:00 and from 17:00 to 08:00
	Khum Prey Nob, Khum Toul Toetueung, Khum Angdong Thmor and Khum O Oknha Heng, Prey Nob District	184L	Mrs. Chea Kimthat	8 hours: From 05:00 to 07:00 and from 18:00 to 24:00
22-Steung Treng	Provincial Town of Steung Treng	001L	EDC	24 hours
	Khum Koh sampeay, Seambouk District	218L	Mr. Seang Savot	5:30 hours: From 17:30 to 22:00
23- Svay Rieng	Svay Rieng Area including Bavit Area	001L	EDC	24 hours
	Khum Krolko, Svaychrum District	247L	Mr. Sean Narith	<b>Not Operated in 2009</b>
24-Takeo	Takeo provincial town and Ang Tasom District town	001L	EDC	24 hours
	Areas along the National Road No. 2 from Cambodia-Vietnam border to the end of Commune Pech Sar and derivated at Preah Bat Cheun Chum to Prey Ampork Commune, Kirivong District and Traing District excluding DOUNGCHHIV PHNOMDIN SEZ	013L	Mr. Mak Thorn	24 hours
	Khum Trapaingsab and Khum Chompey, Baty District	015L	Electricity Samrong Yornng Enterprise	24 hours
	Phsar Kampong Chrey Town, Districts of Trang and Koh Andet	016L	Mr. Ke Kuyhuoy	4:30 hours: From 18:00 to 22:30
	Khum Snor, Khum Char and Khum Preylvear, Preykabas District,	020L	Mr. Chhou Lay	24 hours
	Khum Korkpor, Khum Dongkpos and Khum Angkagh, Boreycholsar District	022L	Mr. Kong Phat	12 hours: From 09:00 to 16:00 and from 18:00 to 23:00;
	Phsar Sayva Town, Preykabas District	054L	Mrs. Ouch Por	24 hours

Electricity Authority of Cambodia

Along National Route No. 2 from Takeo Electricity border to the border of Licensee No. 016LD, Traing District	055L	Mr. Mak Khom	24 hours
Khum Tangdong, Khum Sophy, Khum Komarachea and Khum Krangleuv, Baty District and Khum Khvao, Samrong district	064L	Electricity Tramkhnar	24 hours
Khum Beungtranh Northern and Khum Beungtranh Southern, Samrong District	101L	Mr. Chhin Song	24 hours.
Khum Prek Phtol, Khum Angkorborey and District Town of Angkorborey	113L	Mr. Nou Kruey	24 hours
Baty District Town	118L	Mrs. Sok Kheng	24 hours
Khum Nheng Nhoung and Khum Tramkork, Tramkork District	121L	Mrs. Kaing Gech Seam	24 hours
Khum Prey Romdeng and Khum Prey Ampork, Kirivong District	133L	Mr Hak Ly Seng	7 hours: From 16:00 to 23:00
Khum Thleaprachom, Khum Prey Khla and Khum Romenh, Koh Andet District, and Khum Smaong, Trang District	134L	Mr Try Khlauk	24 hours
Khum Roveang, Khum Chomrapeng and Khum Sla, Samrong District, and Khum Trapaing Krasaing, Baty District	141L	Mr Chaing Kun	24 hours
Khum Poutsor and Khum Kraingthong, Baty Distric	174L	Mr. Moeun Sokhan	24 hours
Khum Samrong, Samrong District	178L	Mr. Pech Sopheap	13 hours: From 04:00 to 06:00, from 09:00 to 14:00 and from 17:00 to 23:00

Electricity Authority of Cambodia

Khum Otdam Soriya, Tram Kork District and Khum Boeng Tranh Khang Thoung, Khum Boeng Tranh Khang Cheung, Khum Samruang, Khum Chomraspen, Khum Seung and Khum Lomchong, Samraung District	188L	Mr. Chaing Kea	24 hours
Khum Kompongkrosaing, Boreycholsar District	194L	Mr. Rov Trorhuot	24 hours
Khum Angkanh, Preykabas District	195L	Mr. Ouch Kea	10 hours: From 11:00 to 16:00 and from 15:30 to 22:30
Khum Kondeung, Khum Kraing Thnong and Khum Chompey, Baty District	196L	Mr. Chaing Kim	24 hours
Khum Trapaing Thom, Khum Cheangtong and Khum Osaray, Tramkork District	197L	Mr. Chith Ponnara	24 hours
Khum Srange and Khum Sambour, Traing District	205L	Mr. Mao Phai	20 hours: From 10:00 to 15:00 and from 17:00 to 08:00
Khum Taing Yap and Khum Kdanh, Prey Kabas District	212L	Mr. Ngeth Meng	10 hours: From 04:30 to 06:00, from 10:00 to 13:00 and from 17:30 to 23:00
Khum Daung, Baty District	231L	Mr. Mey Sina	13 hours: From 04:00 to 06:00 and from 11:00 to 22:00
Khum Ponley, Angkorborey District	238L	Mr. Hou Veasna	5 hours: From 17:00 to 22:00
Special Economic Zone of Duong Chhiv Phnom Den, located in Khum Phnom Den, Kirivong District	253L	Chhivtimex Group (Duong Chhiv Import Export) Co., Ltd	<b>Not Operated in 2009</b>
Khum Som, Kirivong District	258L	Mr. Snguon Saran	<b>Not Operated in 2009</b>
Khum Basre and Khum Prey Pkhom , Angkorborey District	265L	Mr. Prak Sokha	<b>Not Operated in 2009</b>

**Annex 2(a)**  
**Summary Information about Generation Installed Capacity and Energy Sent out**

		Number of Licensees operating		Installed Capacity, kW		Proportion of Installed Capacity in % for 2009	Energy Sent Out, Million kWh		Proportion of energy sent out in % for 2009
		End of Year 2008	End of Year 2009	End of Year 2008	End of Year 2009		Year 2008	Year 2009	
1	Independent Power Producers	16	17	264,977	259,294	69.68	1,286.470	1,092.976	88.53
2	Consolidated Licensees	165	185	42,783.6	37,775	10.15	37.629	41.588	3.37
3	Electricité du Cambodge	1	1	76,860	75,060	20.17	160.012	100.030	8.10
<b>Total</b>		<b>182</b>	<b>203</b>	<b>384,620.6</b>	<b>372,129</b>	<b>100.00</b>	<b>1484.111</b>	<b>1234.594</b>	<b>100.00</b>

**Annex 2(b)**  
**Summary Information about Generation Facilities and Energy Sent-out classified by Generation Type**

No.	Type of Generation	Installed Capacity, kW		Proportion of Installed Capacity in % for 2009	Energy Sent Out, Million kWh		Proportion of Energy Sent Out in % for 2009
		End of Year 2008	End of Year 2009		Year 2008	Year 2009	
1	Hydropower	13,386	13,350	3.59	46.284	47.425	3.84
2	Diesel/HFO	353,142.6	340,003	91.37	1,409.937	1,152.650	93.36
3	Wood, other bio mass	5,092	5,776	1.55	4.532	6.486	0.53
4	Coal	13,000	13,000	3.49	23.359	28.033	2.27
<b>Total</b>		<b>384,620.6</b>	<b>372,129</b>	<b>100</b>	<b>1,484.111</b>	<b>1234.594</b>	<b>100</b>



**Annex 3**  
**Information on Generation Licensees for the Year 2009**

License No.	Name of Licensee	Location of the Generation Plant	Installed Capacity, kW	Energy Sent Out, kWh
			2009	2009
002L	Cambodia Utilities Pte. Limited	C 2 Power Plant, Phnom Penh	37,100	182,224,350
007L	CETIC International Hydropower Development Co., Ltd	Kirirom Plateau of Koh kong Province, (Koh Kong and Kampong Speu)	12,000	44,380,072
115L	Khmer Electrical Power Co., Ltd	Phum Dam Nak Thom, Sangkat Steung Mean Chey (Phnom Penh)	48,192	256,247,340
116L	City Power Group Corporation	Phum Tror Peang Chrey, Sangkat Kar Kap, Khan Dang Kor (Phnom Penh)	8,100	34,112,653
123L	Colben Energy (CAMBODIA) Ltd	Land Lot No. 283, Phum Boung Salang, Sangkat Russey Keo, Phnom Penh	21,400	53,235,123
123L	Colben Energy (CAMBODIA) Ltd	EDC's power plant, Phum No. 3, Khum no.3, Sngkat Mita Pheap, sihanoukville	14,600	46,731,795
126L	SHC (Cambodia) International Pte Ltd	EDC's power plant No. 1, 3, and 5 in Phnom Penh	10,911	17,307,300
126L	SHC (Cambodia) International Pte Ltd	Rattanakiri's power plant	800	2,876,890
132L	(Cambodia) Electricity Private Co, Ltd	Phum Tuol Pongro, Sangkat Chom Chao, Khan Dang Kor, Phnom Penh	48,192	269,480,360
142L	Kampot Power Plant co., Ltd	Cement factory of Kampot cement Co., Ltd at Banteay Meas District, Kampot Province	23,160	66,094,410
146L	SL Garment Processing (Cambodia) Ltd	Phum Russey, Sangkat Steungmeanchey, Khan Meanchey, Phnom Penh	4,500	5,758,200
148L	Han Seng Land and Property Co. Ltd	Khum Roleab, Sampouvmeas District, Pursat Province	2,000	5,821,260

Electricity Authority of Cambodia

157L	S.O.K. Company Limited	Road No.1, Group 7, Phum 7, Khum khsam, Kampong Chhanang	2160	4,506,889
210L	Mr. Sok Serey	Phum Pana, Khum Sotib, Cheung Prey District, Kampong Cham Province	720	689,920
213L	Sovanna Phum Investment Co., Ltd	Khum Samrong Thom, Kean Svay District, Kandal Province	13,000	28,032,700
215L	Colben Energy (Cambodia) PPSEZ Limited	Phnom Penh Special Economic Zone	13,000	45,061,496
221L	Tai Seng Import Export & Construction Co. Ltd	Khum Kachanh, Banlung District, Ratnakiri Province	1,200	704,111
232L	Kratie City Power Co., Ltd	Phum O-Reusey 2, Khum O-Reusey, Kratie District, Kratie Province	1,670	4,466,797
236L	GTS Power Ltd	Phum Beung Kok, Khum Beung Kok, Kampong Cham District, Kampong Cham Province	7,500	25,244,035
<b>Total</b>			<b>270,205</b>	<b>1,092,975,701</b>

**Remarks:**

- Kampot Power Plant co., Ltd supplies power to the industry of Kampot Cement Co. Ltd
- Data for SL Garment is for energy sold to EdC only, which is part of the total generation
- Data for SHC (Cambodia) International Pte Ltd for operation at Phnom Penh is up to August 2009
- Data for Tai Seng Import Export & Construction Co. Ltd is from February 2009
- Following Generation Licensees have not operated in 2009
  - 177L – Sinohydro Kamchay Hydroelectric Project Co. Ltd
  - 193L – Angkor Bio Cogen Co. Ltd

**Annex 4**  
**Summary Information on Distribution Licensees for year 2009**

License No.	Name of Licensee	Area of Supply	Number of consumers	Energy purchased kWh	Energy Sold to consumers & licensees kWh	Loss in %
008L	Franasie Import Export Co., Ltd	District Center of Komrieng (Battambang)	1,768	4,276,786	3,745,290	12.43
		District Center of Phnom Proek (Battambang)	1,851	2,159,464	1,693,978	21.56
		District Center of Sampeu Loun (Battambang)	1,798	3,240,456	2,658,135	17.97
009L	MSP Development Co., Ltd	Phsar Prom Town (Krong Pailin)	1,175	10,680,756	9,989,396	6.47
011L	Anco Brothers Co., Ltd	Ochraov District (Banteay Meanchey)	4,343	46,417,440	42,257,622	8.96
		Koh Thom and Saang District (Kandal)	9,163	13,344,700	12,372,302	7.29
014L	L.Y.P. Group Co., Ltd	Osmach Town (Oddor Meanchey)	2,084	11,325,940	10,969,989	3.14
		Koh Kong Provincial Town	3,902	19,627,500	18,741,844	4.51
035L	Vonn Virek Service Co, Ltd	Pouk District, Siem Reap Province	2,509	2,014,237	1,611,445	20.00
050L	Reeco Company	Khum Prekthmey and Chheu Teal, Kean Svay District (Kandal)	3,441	1,873,396	1,723,722	7.99
051L	Sovanny Electricity Development Co., Ltd	Provincial Town of Kampong Chnnang (Kampong Chnnang)	3,395	4,506,889	3,638,570	19.27
052L	Nareth Electricity Development Co., Ltd	Provincial Town of Pursat (Pursat) and Kandeang District	7,641	5,821,260	4,786,029	17.78
053L	Mr. Nget Hong	Phsar Thnal Tatoeung Town, Khum Damnak Ampil, Angsnoul District, Kandal Province and Khum Trapeang Krong, Somrong Tong District, Kampong Speu Province	1,099	1,075,930	882,259	18.00
061L	Mr. Khoeun Sambath	Phsar Ang Snoul Town, Khum Peuk, Ang Snoul District, Kandal Province	1,300	422,887	383,024	9.43
071L	Mr. Heng Tray	Southern Phsar Saang Town, Khum Prek Koy	1,751	1,094,007	949,323	13.23

Electricity Authority of Cambodia

		and Khum Saang Phnom, Saang District, Kandal Province				
086L	Mr. Koeung Rithy	Phsar Northern Saang Town, Saang District (Kandal)	2,055	3,274,668	2,846,273	13.08
089L	Vannak Pheap Development Co., Ltd	Pailin City	2,379	2,590,400	2,363,021	8.78
122L	Electricity Development and Construction Co., Ltd	Pohneakrek and Tbong Khmum District area, (Kampong Cham)	2,908	17,722,998	15,518,687	12.44
149L	Sinn Khim Import Export Co., Ltd	Malay District Town (Banteay Meanchey)	951	1,195,680	1,024,257	14.34
150L	Akissni Keansvay Co. Ltd	Khum Korky, Khum Dey-Et, Khum Chheur Teal and Khum Kampong Svay, Keansvay District (Kandal)	2,224	1,731,751	1,611,444	6.95
151L	Khmer electricity Service Co., Ltd	Khum Svayrolum and Khum Setbb, Sa-Ang District (Kandal)	2,163	11,433,670	9,791,708	14.36
180L	Kep Power Supply Co. Ltd	Kep City and some areas along 22 kV line from Lork Town, Kampongtrach District to Authorised area of EDC at Kampot (Kep and Kampot)	1,550	12,440,795	11,886,246	4.46
200L	Electricity Chi Paing Enterprise	Khum Krek, Pohnea Krek District (Kampong Cham)	435	437,482	385,514	11.88
206L	Bun Liv Co., Ltd Development Import Export	Prahsdach District Town and areas along road from Prah Sdach to Neak Loeung (Prey Veng)	570	3,380,100	2,824,950	16.42
211L	Mrs. Iv Mala	Khum Koh Anlongchen, Saang District (Kandal)	780	238,086	193,790	18.61
222L	Akisni Dangkor Co., Ltd	Along National Road No.3 in Khan Dangkor (Phnom Penh)	1,655	828,148	687,363	17.00
224L	Sokha Electricity Co., Ltd	Samraong Tong and Korng Pisey District, (Kampong Speu)	4	733,600	726,524	0.96

Electricity Authority of Cambodia

**Remarks:**

-Following Distribution Licensees have not operated in 2009

145L – Sou Ching Electronic Company Ltd

253L – Chhivtimex Group (Duong Chhiv Import Export) Co. Ltd

**Annex 5**  
**Summery Information on Transmission Licensees for the year 2009**

License No.	Name of Licensee	Transmission facilities	No. of Consumers, if any	Energy input kWh
152L	(Cambodia) Power Transmission Lines Co., Ltd	115 kV line from Thai border to Banteay Meanchey, Siem Reap and Battambang	-	225,322,800
220L	Electricity Skun - Chamkar Leu Enterprise	22 kV line along National Road No.7 from Kampong cham Provincial Town to Chheung Prey District Town, and along road No.71 from Treung Town, Prey chhor District to Chamkar Leu District Town, Kampong Cham Province	360	927,594
223L	L.M.K.Co., Ltd	22 kV line along Road No. 2, from Phum Prekhon Khanglech, Khum Prekhon, Takhmau District, Kandal Province to area of EDC at Takeo	113	180,000
260L	Transco Energy (Cambodia) Co., Ltd	22 kV line from GS4 to PPSEZ located along National Road No.4 in Sangkat Phleung Chhes Rotes, Khan Dang Kor, Phnom Penh City	1	187,200

**Remarks:**

- Following Transmission Licensees have not operated in 2009:
  - 252L - TPLC Holdings Ltd
  - 259L - Cambodian Electrical Equipment Corporation (C.E.E)

**Annex 6**  
**Summary Information on Electricité du Cambodge for year 2009**

Area of Supply	Installed Capacity as on 31 <sup>st</sup> Dec 2009 kW	Energy purchased kWh	Energy Sent Out by Generation kWh	Total Energy kWh	Number of consumers	Energy Sold to consumers and licensees kWh	Loss in %
Phnom Penh Grid System	47,560	1,310,005,942	84,514,024	1,394,519,966	230,231	1,248,342,942	10.48
Sihanoukville	5,600	46,731,795	4,246,300	50,978,095	9,767	45,479,627	10.79
Banteay Meanchey Grid System	13,580	225,322,800	1,095,616	226,418,416	56,072	196,330,969	13.29
Provincial Town of Kampong Cham	-	25,244,035	-	25,244,035	8,225	22,220,235	11.98
Provincial Town of Kampot	3,080	9,762,452	388,071	10,150,523	6,314	9,085,420	10.49
Provincial Town of Prey Veng	1,640	771,053	2,524,314	3,295,367	3,554	2,878,345	12.65
Provincial Town of Steung Treng	1,640	-	4,328,256	4,328,256	2,502	4,092,707	5.44
Provincial Town of Svay Rieng	1,000	12,924,510	99,870	13,024,380	8,565	11,812,783	9.30
Provincial Town of Ratanakiri	960	3,581,001	2,833,800	6,414,801	2,770	5,765,763	10.12
Khum Bavit	-	55,254,490	-	55,254,490	2,301	52,218,862	5.49
Memot District	-	10,563,600	-	10,563,600	3,731	9,980,803	5.52
Ponhea Krek District	-	26,917,000	-	26,917,000	2,210	25,561,301	5.04
Kampong Trach	-	5,392,348	-	5,392,348	2,287	5,115,831	5.13
Total	75,060	1,732,471,026	100,030,251	1,832,501,277	338,529	1,638,885,588	10.57

**Remarks:** The data on “Energy Purchased” for Kampong Trach does not include the energy purchased from Vietnam and supplied to Kep Power Supply Co. Ltd.

### Annex 7

#### Information on Consolidated and Retail Licensees for year 2009

License No.	Name of Licensee	Area of Supply	Number of consumers	Installed Capacity on 31 <sup>st</sup> Dec 2009, kW	Energy generated, kWh	Energy purchased, kWh	Energy Sold kWh	Loss in %
006L	Mr. Huor Peng	Kampong Thmar town - Khum Balang and Khum Chong Daung Baray District and Khum Kampong Thmar, Sontuk District (Kampong Thom)	2,341	672	953,703		730,632	23.39
012L	Sung Jin & Chilbo Industrial Co., Ltd	Provincial Town of Kampong Thom (Kampong Thom)	5,000	960	5,116,560		4,210,125	17.72
013L	Mr. Mak Thorn	Areas along National Road No. 2 from Vietnam border to end of Commune Pech Sar and derivated at Preah Bat Cheun Chum to Prey Ampork Commune, Kirivong District and Traing District, excluding DOUNGCHHIV PHNOMDIN S.E.Z. (Takeo)	3,589		519,380	567,400	793,349	27.00
015L	Electricity Samrong Yornng Enterprise	Khum Trapaingsab and Khum Chompey, Baty District, (Takeo)	1,834	192	500,000		333,737	33.25
016L	Mr. Ke Kuyhuoy	Phsar Kampong Chrey Town, Trang and Koh Andet District (Takeo)	467	180	180,320		149,665	17.00
017L	Mrs. Bun Liv	Eastern Neak Leung, Peamro District (Prey Veng)	2,586		730,900	1,297,092	1,689,608	16.69
018L	Mr. Ky Sophear	Phsar Snaypul Town, Khum Roka, Pearang District (Prey Veng)	1,226	256	297,133		237,676	20.01
019L	Mr. Te Kok Eng	Khum Treal, Khum Sralov, Khum Chralorng, Khum Andoung Pur and Khum Chreaneang, Baray District (Kampong Thom)	790	262	203,127		160,644	20.91
020L	Mr. Chhou Lay	Khum Snor, Khum Char and Khum Preylvear, Prey Kabas District, (Takeo)	1,995	172	403,440		363,057	10.01
021L	Mrs. Nov Srey Pich	Western Neakleung Town, Khum Prek Tonlap and Khum Kampong Phnom, Luek Dek District (Kandal)	875	380	424,751		347,848	18.11
022L	Mr. Kong Phat	Khum Korkpor, Khum Dongkpos and Khum Angkagh, Boreycholsar District (Takeo)	155	104	27,996		25,213	9.94
023L	Electricity Preychhor Enterprise	Phsar Preytoteung Town, Preychhor District (Kampong Cham)	1025	418.4	498,959		357,874	28.28
026L	Mr. Chang Bunnaret	Phsar Phaav Town, Khum Phaav, Batheay District (Kampong Cham)	746	172	387,034		282,492	27.01



## Electricity Authority of Cambodia

027L	Electricity Suong Enterprise	Phsar Suong Town, Tbongkhmom District (Kampong Cham)	3,357			2,060,209	1,779,527	13.62
028L	Mr. Samreth Sothy	Sre Ambil District Town (Koh Kong)	1,897	760	641,756		476,032	25.82
029L	Mr. Sok Thy	Phsar Vealrinh Town and Phum Chheng Kor, Khan Preynob (Sihanoukville)	1,846	820	851,766		609,053	28.50
030L	Mr. Ly Bunthy	Sangkat Tomnub Rolok and Kompenh, Khan Steung Hav (Sihanoukville)	900	480	542,088		411,527	24.08
031L	Mr. Chan Thon	Provincial Town of Preah Vihear (Preah Vihear)	1,745	1,429.6	1,374,838		1,067,591	22.35
032L	Mr. Nhen Kong	Khums Chreaneang, Svayphleung, Soyong, Pongro and Chralong, Baray District (Kampong Thom)	750	310	170,305		131,349	22.87
033L	Mr. Chhuor Nguon	Phsar Boeung Khna Town, Khum Boeung khna, Bakan District (Pursat)	420	90	134,290		107,436	20.00
034L	Mr. Toem Touch	Khum Trapaing Chong, Bakan District (Pursat)	511	420	213,475		177,404	16.90
036L	Mrs. Pauch Kim	Kar-Andoek Town, Khum Brasat, Kampong Trabek District (Prey Veng)	977	372	458,424		367,785	19.77
037L	Mr. Ieng Seng Hy	Phar Rokakang Town, Muk Kompul District (Kandal)	1,057	416	391,582		291,139	25.65
038L	Mr. Sieng Seng	Phsar Chamkar Leu Town, Chamkaleu District (Kampong Cham)	890	480	442,660		381,070	13.91
039L	Mr. Kim Chantara	Phsar Baray Town, Khum Baray, Baray District (Kampong Thom)	450	270	135,774		103,752	23.58
040L	Mrs. Mak Heat	Boribo District Town with Zones of Khum Punley, Khum Popel and Khum Khunrong, Boribor District (Kampong Chhnang)	660	290	191,605		152,526	20.40
041L	Mr. Ty Sokorn	Kampong Tralach District Twon and Khum Chres (Kampong Chhnang)	1030	840	367,470		325,861	11.32
042L	Mr. Kong Sophal	Khum Prekthnot, Khum Kohtoch and Khum Beungtok, Kampot District (Kampot)	350	216	88,173		70,538	20.00
043L	Mr. Som Visal	Thmor Kol Town, ThmorKol District (Battambang)	1,500	240	468,068		389,346	16.82
044L	Mr. Kong Puthy	Phsar Chhouk Town, Chhouk District and Chumkiri District Town, Dong Tong District area (Kampot)	950	640	409,783		333,157	18.70
045L	Mrs. Choup Neang	Khums Kampong Popel and Kampong Praing, Pearang District (Prey Veng) and Khum Kampong Chamlong, Khsach Kandal District (Kandal)	350	232	98,279		73,116	25.60
046L	Mr. Seng Sokun	Kampong Leav, Svay Antor and Pearaing District Area (Prey Veng)	630	284	207,104		177,062	14.51
047L	Mrs. Sar Malis	Khums Sotep, Sramor, Pdvouchum and Prey Char,	750			689,920	537,397	22.11

Electricity Authority of Cambodia

		Cheung Prey district (Kampong Cham)						
048L	Mr. Chhom Sophay	Phsar Domdek Town, Khum Domdek, Sot Nikum District, (Siem Reap)	750	300	198,320		146,940	25.91
049L	Eastern Power Supply Enterprise	Khums Troeuysla, Talun, and Khpob, Saang District, Khums Pouthiban, Kampongkong, Chrouytakhaev, Chheu Khmau, Prek Chrey and Leudek, Koh Thom District (Kandal)	920	270	142,206		132,916	6.53
054L	Mrs. Ouch Por	Phsar Sayva Town, Prey Kabas District (Takeo)	675	73.6	108,692		100,621	7.43
055L	Mr. Mak Khom	Along National Route No. 2 from Takeo Electricity Border to the border of Licensee No. 016LD, Trang District (Takeo)	400	336	190,100		133,183	29.94
056L	Mrs. Nhek Theary	Phsar Bokhnor Town, Chamkaleur District and Traeung Town, Prey Chhor District (Kampong Cham)	852	199	351,682		253,673	27.87
057L	Mr. Chin Sohin	Phsar Steung Trang Town, Khum Prek Kok, Steung Trang District (Kampong Cham)	330	80	83,740		66,020	21.16
058L	Mr. Chhay Neng	Phsar Kampong Kantuot, Khum Bakou and Khum Anlong Romeat, Kandalsteung District (Kandal)	1210	240	451,004		336,598	25.37
059L	Electricity of Kratie Province	Provincial Town of Kratie	3,476			4,466,797	3,292,655	26.29
059L	Electricity of Kratie Province	Part of Snoul District (Kratie)	926			2,590,900	2,193,866	15.32
060L	Mrs. Eam Sreng	Khum Mesorchrey, Steung Trang District (Kampong Cham)	943	220	201,377		153,968	23.54
062L	Mr. Er Long	Estern Phsar Prek Kdam Town, Khum Kohchen, Ponhealeu District (Kandal)	350	116	74,635		63,120	15.43
063L	Mr. Ong Hoksine	Stong District Town (Kampong Thom)	975	308	302,100		237,875	21.26
064L	Electricity Trankhnar	Khums Tangdong, Sophy, Komarachea and Krangleuv, Baty District and Khum Khvao, Samrong district (Takeo) and Khums Veal, Chung Rouk, Shnom Kroper, Maharesy and Preah Vihear, Korng Pisey District and Khum Tuol Ampil, Borseth District (Kampong Speu)	2,553		536,838	159,600	573,963	17.59
066L	Mr. Pean Sokhalay	Phsar Prek Anh Chanh Town, Khum Prek Anh Chanh Mokampoul District (Kandal)	1338	424	364,510		266,092	27.00
067L	Mr. Sok Hoy	Trapaing Krangleung Town, Khums Kirivoan and Taing Sya, Phnom Sruoch District (Kampong Speu)	490	160	182,081		131,098	28.00
068L	Mrs. Tuoch Montha	Khum Phnom Sampao, Banan District (Battambang)	550	120	108,220		70,183	35.15
069L	Mr. Nop Bin	Rattanakmondul District Town (Battambang)	539	208	114,839		88,869	22.61

## Electricity Authority of Cambodia

072L	Mr. Ya Sambat	Phsar Svay Daun Keo Town, Khum Svay Daun Keo, Bakan District (Pursat)	350	100	50,968		45,563	10.60
073L	Mr. Treung San	Santuk District (Kampong Thom)	600	440	441,120		283,336	35.77
074L	Mr. Mean Vanna	Phsar Svayteap Town, Khum Svayteap, Chamkar Leu District (Kampong Cham)	1,000	153.6	171,860		139,864	18.62
075L	Mr. Chhay Kim Huor	Phsar Speu Town, Khums Speu and Chayyo, Chamkaleu District (Kampong Cham)	910	240	233,670		174,523	25.31
076L	Mr. Quach Edward	Khum Viangchas, O'dong District (Kampong Speu) and Khums Ponnhealeu, Vihealuong, Phsar Dek, Phnom Bath, Tomnobthom, and Kampongluong,, Ponnhea Leu District(Kandal)	4,545	1200	1,710,376		1,379,797	19.33
077L	Mrs. Chao Nuy	Khums O-Prasat and Banteay Neang , Monkul Borey District (Banteay Meanchey)	315		35,382	159,690	171,253	12.21
078L	Mr. Pak Sun Heng	Phsar Kotasat Town, Khum Nimit, Kob and Samrong, O-chrov District (Banteay Meanchey)	703		18,171	120,200	111,845	19.17
079L	Mr. Thon Thoeurn	Khum Phnom Toch, Monkul Borey District (Banteay Meanchey)	714		100,054	37,993	107,268	22.30
080L	Mr. Sok Vitith	Phsar Banteay Neang Town, Khum Banteay Neang, Monkul Borey District (Banteay Meanchey)	520		42,092	94,851	112,489	17.86
081L	Mr. Moun Han	Phsar Phnom Srok Town, Khum Sras Chik, Phnom Srok District (Banteay Meanchey)	550	190	71,568		53,656	25.03
082L	Mr. Ly Sok Kry	Khum Treng Trayeng, Phnom Srouch District (Kampong Speu)	965	264	357,692		260,022	27.31
083L	Mr. Tun Yoeun	Phsar Tnal Chek Town, Khum Kien Sangke and Dam Dek, Sotnikum District (Siem Reap)	372	216.8	65,411		53,926	17.56
085L	Electricity Tbong Khmum Enterprise	Phsar Tnaltoteung Town, Khum Chob, Tbongkhmom District (Kampong Cham)	1,689			5,928,330	5,336,626	9.98
088L	Mr. Khun Sophal	Oreang Ov District Town, (Kampong Cham)	750		183,893	129,722	244,865	21.92
090L	Veasna New Land Power Co., Ltd	Khan Rusey Keo (Phnom Penh) and Muk Kampoul District and Pongaleu District (Kandal)	650	270	346,246		282,121	18.52
091L	Mr. Sun Pov	Khum Prek Khpob, Khum Prek Luong and Khum Prek Norin, Ek Phnom District, (Battambang)	1,330			838,666	714,727	14.78
093L	Banteay Meas Electricity	Banteay Meas District and Khum Kanthor Khang Keut-Khang Tbong, Kampong Trach District (Kampot)	1,211	164	479,910		421,798	12.11
095L	Mrs. Chan Simoly	Khums Andong Snay, Rolea Phear and Kouk Banteay, Rolea Phear District, (Kampong Chhnang)	650	142.4	107,943		92,817	14.01
096L	Mr. Chea Sareth	Phsar Pong Ro Town, Khum Pong Ro and Svay	375	132	85,826		66,346	22.70

Electricity Authority of Cambodia

		Chrum, Rolea Phear District, (Kampong Chhnang)						
097L	Mr. Yin Ech	Angkor Chey District Town, (Kampot)	550	196	170,900		153,810	10.00
098L	Mr. San Ke	Phsar Smachdeng Town, Sangkat Ream, Khan Preynop, (Sihanoukville)	410	100	189,040		139,800	26.05
099L	Mr. Leng Mov	Phsar Bat Doeung, Khum khsem Khsan, Odong District (Kampong Speu) and Khum Tomnob Thom, Ponhea Leu District, and Khum Mkak, Angsnoul District (Kandal)	950	299.6	347,420		268,760	22.64
101L	Mr. Chhin Song	Khum Beungtranh Northern and Khum Beungtranh Southern, Samrong District (Takeo) and Khum Por Ankrang, Bor Seth District (Kampong Speu)	482	212	228,686		160,226	29.94
102L	Mr. Preab Vannareth	Khum O-Tapong, Bakan District, (Pursat)	232	80	29,092		26,275	9.68
103L	Mr. Nhem Phany	Sangkat Prek Lep, Khan Rusey Keo (Phnom Penh) and Khum Bak Kheng, Mukkompul District (Kandal)	1,100	308	631,663		484,578	23.29
105L	Mr. Soeung Sovanna	Phsar Phnom Thom Tbong Town, Khum O-Prasat, Mongkul Borei District, (Banteay Meanchay)	600		55,823	124,559	144,023	20.16
106L	Mrs. Ann Samlan	Phum Koh Sdech, Khum Koh Sdech, Kirisakor District, (Koh Kong)	700	96	425,520		336,296	20.97
108L	Mrs. Sin Savuon	Preahnet Preah District Town ( Banteay Meanchey)	501	190	105,916		74,373	29.78
109L	Mrs. Tieng Chenda	District Town of Mongrussey (Left Hand Side of National Road No. 5, Direction from Phnom Penh to Battambang) (Battambang)	950	290	285,015		212,220	25.54
110L	Mrs. Sea Kech	Mongrussey District (Right hand side of National Road No.5, direction from Phnom Penh to Battambang) (Battambang)	791	220	310,250		195,823	36.88
111L	Mr. Kong Vun	Chikreng District Town (Siem Reap)	960	508	321,634		226,134	29.69
112L	Mr. Ly Kang	Chikreng District Town (Siem Reap)	315	120	99,666		87,794	11.91
113L	Mr. Nou Krui	Khum Prek Phtol, Khum Angkorborey and District Town of Angkor Borey (Takeo)	1,160	170	210,200		150,656	28.33
114L	Ms. Chea Ting	Phum Areyksat, Khum Areyksat, Lavea-Em District (Kandal)	315	94	62,018		43,947	29.14
117L	Mr. Dung Ly	Ang Long Tamey, Khum Chheuteal, Banorn District (Battambang)	311	76	23,825		20,593	13.57
118L	Mrs. Sok Kheng	Baty District Town (Takeo)	1,425	314	402,511		301,883	25.00
119L	Mr. Un Sothea	Teuk Phos District Town (Kampong Chhnang)	551	246	125,494		100,399	20.00

## Electricity Authority of Cambodia

120L	Mr. Chan Keat	Sangkat Otresh, Khan Steung Hav (Sihanoukville)	355	84	114,227		90,689	20.61
121L	Mrs. Kaing Gech Seam	Khum Nheng Nhong and Khum Tramkork, Tramkork District (Takeo)	483	108	226,832		157,139	30.72
124L	Mrs. Ear Lay Sien	Kravanh District Town, (Pursat)	1,180	376.8	252,448		192,389	23.79
125L	Mr. York Savong	Krokor District Town (Pursat)	1,203	500	409,016		303,395	25.82
127L	Mr. Te Hong Cheng	Phum Phsar Kleang, Khum Kampong Kleang, Sotnikumr District (Siem Reap)	500	156	35,563		23,660	33.47
128L	Mr. Eang Khun	Rovieng District Town (Preah Vihear)	430	54.4	65,302		53,149	18.61
129L	Mrs. Chrun Leangsour	Phum Chork, Khum Sangvey, Chikreng District, (Siem Reap)	107	20	9,210		6,494	29.49
130L	Mr. Try Leng	Thnal Keng Town, Khum Taingkrang and Khum Chea Lea, Bathay District (Kampong Cham)	295	76	61,720		51,010	17.35
133L	Mr. Hak Ly Seng	Khum Preyromdeng and Khum Prek- Ampok,, Kirivong District (Takeo)	395	50	48,552		43,200	11.02
134L	Mr. Try Khlauk	Khums Thleaprachom, Prey Khla and Romenh, Koh Andet District, and Khum Smaong, Trang District (Takeo)	785	196	126,500		89,000	29.64
136L	Mr. Men Kunthae	Talat Town, Khum O, Phnom Sruoch District (Kampong Speu)	298	64	82,601		68,530	17.03
137L	Mr. Meng Sokleng	Area along RN 4 (north) from Khum Vorsar and along RN 51 to the end border of Khum Mkak, Samarongtong District, Oddong District (Kampong Speu) and Angsnoul District (Kandal)	373	60	44,779		32,200	28.09
138L	Lim Heng Group Co, Ltd	Phsar O Russey, Phnom Penh	3,768			1,238,243	1,176,331	5.00
139L	Mr. Doung Narin	Angkor Chum District Town (Siem Reap)	385	94	81,628		66,580	18.43
140L	Mr. Chea Channarooun	Phum Taong, Khum Taong, Chamkar Leu District (Kampong Cham)	650	140	141,549		114,886	18.84
141L	Mr. Chaing Kun	Khums Roveang, Chomrapeng and Sla, Samrong District, and Khum Trapeang Krasaing, Baty District (Takeo)	550	128	71,899		63,228	12.06
143L	Mrs. Leang Chhunny	Khum Kohdach, Muk kampoul District (Kandal)	412	122.4	62,180		45,742	26.44
144L	Mr. Ouk Sopheap	Phsar Siem Reap town, Khum Siem Reap, Kandal Stung District (Kandal)	902	152	208,050		153,074	26.42
153L	Mrs. Nguon Socheatey	Khums Beng Kyang, Prek Sleng, Prek Roka and Trea, Kandal Steung District (Kandal)	765	108	150,473		115,311	23.37
154L	Mr. Uy Sopath	Khum Roleang Kreul, Samraong Tong District and Khum Roka Koh, Kongpisei District (Kampong	340	116	73,915		61,599	16.66

Electricity Authority of Cambodia

		Speu)						
155L	Mr. Samret Kiri	Phsar Krangchek Town, Khum Krangchek, Udong District (Kampong Speu)	316	116	125,782		95,241	24.28
156L	Mr. Men Sambath	Khum Trapeang Kong, Samraong Tong District (Kampong Speu)	300	66	39,435		33,072	16.14
158L	Electricity Unit of Mondulkiri Province	Keoseyma District Town (Mondulkiri)	728			607,100	533,795	12.07
158L	Electricity Unit of Mondulkiri Province	Provincial Town of Mondul Kiri	1224	670	1,428,662		1,151,219	19.42
159L	Mr. Khun Sopheap	Batheay District Town (Kampong Cham)	740	148	158,848		121,989	23.20
160L	Mr. Seng Chinleang	Khums Ptas Kandal, Prekpo and Meanchey, Srey Santhor District (Kampong Cham)	930	184	257,192		190,600	25.89
161L	Mr. Kea Kimseng	Khum Anlong Samnor and Khum Chikreng, Chikreng District (Siem Reap)	714	200	66,905		55,789	16.61
162L	Mr. Hay Tina	Chum Ksan District Town (Preah Vihear)	420	88	64,700		46,884	27.54
163L	Mr. Phom Phal	Trapaing Prasat District Town (Oddor Meanchey)	515	260	93,361		70,020	25.00
164L	Mrs Tek Sina	Kralanh District Town (Siem Reap)	819	360	43,740		39,769	9.08
165L	Electricity Kang Meas Enterprise	Krong Meas District area and Kampong Siem District area (Kampong Cham)	2,100			444,182	396,840	10.66
166L	Mr. Or Ratana	Khum Longvek and Khum Svay, Kampong Tralach District (Kampong Chhanang)	376	400	164,723		123,765	24.86
168L	Mrs. Ou Kimheng	Khum Svayproteal and Khum Troeysla, Saang District (Kandal)	663	120	145,667		118,804	18.44
169L	Mr. Bun Huy	Khum Banteaydek, Kien Svay District (Kandal)	420		8,104	102,251	90,765	17.75
170L	Mr. Chhun Ly	Phum Raing Dek, Khum Kokythom, Kien Svay District (Kandal)	385	188	66,151		42,073	36.40
171L	Mrs Nhem Sotheary	Khum Prek Takov and Phum Leu, Khum Svay Chrum, Khsach Kandal District (Kandal)	432	90	102,631		78,063	23.94
172L	Mr. Mor Malen	Khum Srayang, Koulén District (Preah Vihear)	250	60	36,963		26,059	29.50
173L	Mrs. Ke Varin	Rolear Phear and Teuk Phos District (Kampong Chhanang)	467			225,234	193,449	14.11
174L	Mr. Moeun Sokhan	Khum Poutsor and Khum Kraingthong, Baty District (Takeo)	1,390	171.2	247,758		196,098	20.85
175L	Mr. Toeng Samouv	Phsar Slableng Town, Khum Pheary Meanchey and Khum Svayrompear, Borsat District (Kampong Speu)	174		176,310	22,864	157,829	20.76
176L	Mr. Moul Tit	Khum Samrong and Prekrateng, Pohnnealeu	750	256	233,998		166,332	28.92

## Electricity Authority of Cambodia

		District (Kandal)						
178L	Mr. Pech Sopheap	Khum Samrong, Samrong District (Takeo)	350	134.4	87,870		74,067	15.71
179L	Mr. Nhoek My	Khum Kraing Youv, Saang District (Kandal)	800	116	119,554		97,170	18.72
181L	Mr. Kim Meng	Dambe District Town (Kampong Cham)	172	113	24,770		20,542	17.07
182L	Mr. Khun Sarun	Bovil District Town (Battambang)	1,300	700	580,718		451,385	22.27
183L	Mrs. Meas Keav	Khum Samrong, Sotnikum District (Siem Reap)	304	60	30,702		26,090	15.02
184L	Mrs. Chea Kimthat	Khum Prey Nob, Khum Toul Toetueung, Khum Angdong Thmor and Khum O Oknha Heng,, Prey Nob District (Sihanoukville)	460	90	86,676		73,659	15.02
185L	Mr. Phlok Vannak	Khum Kantraing, Prasatbakong District (Siem Reap)	174	70	79,094		56,360	28.74
186L	Mr. Heng Kosal	Khum Vihearsuor, Khsach Kandal District (Kandal)	1,407	488	296,983		253,256	14.72
187L	Mr. Khem Rany	Kampong Trabek District Town (Prey Veng)	398	130	159,229		113,233	28.89
188L	Mr. Lim Sisophon	Khum Otdam Soriya, Tram Kork District and Khums Boeng Tranh Khang Thoung, Boeng Tranh Khang Cheung, Samruang, Chomraspen, Seung and Lomchong, Samraung District (Takeo)	203	110	52,158		43,711	16.20
189L	Phum Nimit Co, Ltd	Along the road from Boeung Trakuon Town, Khum Kokromeat to Thmor Pouk District Town (Banteay Meanchey)	915	152	178,961		129,068	27.88
190L	Mr. Mak Van	Svay Chek District Town (Banteay Meanchey)	284	102	42,432		31,956	24.69
191L	Mrs. Phin Vipheavy	Chhloung and Chetburey District (Kratie)	2,121	350.4	760,244		608,199	20.00
192L	Mr. Path Seang Hun	Krouch Chhmar District Town (Kampong Cham)	950	420	233,263		195,603	16.14
194L	Mr. Rov Trorhuot	Khum Kompongkrosaing, Boreycholsar District (Takeo)	158	160	223,295		171,331	23.27
195L	Mr. Ouch Kea	Khum Angkanh, Preykabas District, Takeo	290	80	57,609		46,087	20.00
196L	Mr. Chaing Kim	Khums Kondeung, Kraing Thnong, and Chompey Baty District (Takeo)	853	136	156,761		136,977	12.62
197L	Mr. Chith Ponnara	Khum Trapaing Thom, Khum Cheangtong and Khum Osaray, Tramkork District (Takeo)	600	164	214,617		166,003	22.65
198L	Mrs. Nov Sophea	Khum Prek Ksay "A", Khum Peamro and Khum Bapong, Peamro District (Prey Veng)	418			227,960	214,880	5.74
199L	Mr. Some Lai Y	Sandann District Town (Kampong Thom)	250	203.2	70,572		52,108	26.16
201L	Mr. Ou Chanrat	Khum Tamoeun and Khum Chrouy Sdov Thmarkol District (Battambang)	700		94,065	39,353	105,498	20.93

Electricity Authority of Cambodia

202L	Mrs. Kung Samon	Khum Chrey, Thmarkol District (Battambang)	175		47,476	61,194	88,982	18.12
203L	Mr. Tan Kang	Khum Roluos, Khum Meanchey and Khum Trapiangthom, Prasat Bakang District (Siem Reap)	300	88	60,099		44,505	25.95
204L	Mr. Chhay Chansophea	Khums Preah Prosob, Svay Romeat and Prek Tameak, Ksach Kandal District (Kandal)	1,029	372	162,086		127,209	21.52
205L	Mr. Mao Phai	Khums Srange and Sambour, Traing District (Takeo)	312	108	9,600		6,588	31.38
207L	Mr. Lay Veng Kheang	Khum Prekdombouk, Srey Sonthor District (Kampong Cham)	720	174	82,335		60,930	26.00
208L	Mr. Keo Cham Reun	Kanh Chreach District Town (Prey Veng)	345	124	92,202		67,492	26.80
209L	Mr. Sok Pin	Khum Prek ampil and Khum Pukrussey, Khsach Kandal District (Kandal)	1,531	368	250,092		192,066	23.20
212L	Mr. Ngeth Meng	Khum Taingyap and Khum Kdanh, Prey Kabas District (Takeo)	1,020	130	95,663		85,392	10.74
214L	All Stars Entertainment Co., Ltd	Anlong Veng District Town (Oddor Meanchey)	1,173	920	1,078,776		719,186	33.33
216L	Mrs. Tek Nimol	Khum Sam Bor, Batheay District (Kampong Cham)	520	96	65,804		53,240	19.09
217L	Mr. Heang Pov	Khum Cham Bork and Khum Rossey Keo, Prek Brasorb District (Kratie)	950	200	69,800		55,861	19.97
218L	Mr. Seang Savot	Khum Koh Sampeay, Seambouk District, Steung Treng	67	20	8,395		5,404	35.63
219L	Mr. Phoeurn Saroeurn	Phsar Prey Toteung Town, Khum Trapaing Veng, Kandal Steung District (Kandal) and Khum Preahnipean, kongpisey District (Kampong speu)	320	116	79,557		59,402	25.33
220L	Electricity Skun - Chamkar Leu Enterprise	Khum Krala, Kampong Siem District (Kampong Cham)	360			927,594	890,032	4.05
223L	L.M.K.Co., Ltd	Khum Prek Kompoeus and Khum Cheung Keub, Kandal Stoeung District (Kandal)	113			180,000	144,000	20.00
225L	Mrs. Chann Sokim	Dorng Tong District Town (Kampot)	162	164	22,472		20,795	7.46
226L	Mrs. Hen Bonith	Khum Samroangthom, Kiensvay District (Kandal)	930			176,461	140,385	20.44
227L	Mr. Phin Ham	Prek Prasob District Town (Kratie)	490	120	170,109		136,091	20.00
228L	Mr. Saeu Tiengkok	Khum Sankor, Kampong Svay District (Kampong Thom)	180	40	17,210		12,420	27.83
229L	Mr. Khean Kev	Svay Lue District Town (Siem Reap)	180	30	21,335		15,270	28.43
230L	Mrs. Thauy Vorun	Khasach Kandal District Town (Kandal)	289	310	27,540		20,428	25.82
231L	Mr. Mey Sina	Khum Daung, Baty District (Takeo)	170	44	11,600		10,057	13.30



Electricity Authority of Cambodia

233L	Mr. Srun Sokun	Khum Chheutom, Krakor District (Pursat)	420	160	106,705		69,375	34.98
234L	Mrs. Kak Srey On	Khum Ruessey Chrouy, Muk Kampoul District (Kandal)	350	124	45,717		33,403	26.94
235L	Mr. Cheng Sophal	Khum Prekluong and Khum Prektakov, Khasach Kandal District (Kandal)	852	336	123,526		108,959	11.79
237L	Mr. Ly Chinlong	Khum Preyromduol, Khum O and Khum Kirivoan, Phnom Sruoch District (Kampong Speu)	150	160	41,750		29,148	30.18
238L	Mr. Hou Veasna	Khum Ponley, Angkorborey District (Takeo)	200	30	8,550		7,640	10.64
239L	Mr. Ean Sam Ath	Mesang District Town (Prey Veng)	145	64	26,987		17,895	33.69
240L	Mrs. Long Kimheng	Khum Srey Noy, Varin District (Siem Reap)	210	160	37,152		32,066	13.69
241L	Mr. Ung Kimsean	Khum Thmar Poun, Prey Chhor District (Kampong Cham)	304	76	24,710		21,310	13.76
242L	Miss San Chhan	Khum Lvea and Khum Prey Khpous, Bovil District, Battambang	320	176	26,931		19,252	28.51
243L	Mr. Nouv Tim	Khum Ponhea Pon, Pohnea Leu District (Kandal)	308	30	28,564		21,057	26.28
244L	Mr. Lun Rith	Khum Kantoeu II, Khum Chheurteal and Khum Baydamram, Banan District (Battambang)	290	68	20,620		16,496	20.00
245L	Mr. Chhea Sokhom	Khum Treal and Khum Chhouk Khsach, Baray District (Kampong Thom)	117	68	6,332		5,022	20.69
246L	Mr. Sam Nang Sathia	Khum Kampong Preang, Khum Kampong Preh and Khum Raing Kesey, Sangke District (Battambang)	58	96	953		760	20.25
249L	Mr. Vann Ramon	Khum Areyksat and Khum Sarikakeo, Lvea Em District (Kandal)	220	96	29,779		21,368	28.24
250L	Mrs. Suy Chamnan	Khum Koh Oknhatey, Kasach Kandal District, (Kandal)	450	204	15,630		12,781	18.23
251L	Mrs. Ouch Sophalla	Khum Takream and Khum Phnom Sampov, Banan District (Battambang)	92	32	2,625		2,360	10.10
255L	Mrs. Som Sokhalin	Khum Chealea, Batheay District (Kampong Cham)	160	72	15,317		12,188	20.43
256L	Mr. Toek Hong	Khum Chamkar Andoung, Chamkar Leu District (Kampong Cham)	70	90	5,917		4,500	23.95
257L	Mr. Koung Leangheng	Khum Changha, O-Chrov District (Banteay Meanchey)	220	102	3,123		2,425	22.35

**Annex 8**  
**Information on Grid Systems in Cambodia**

Serial No.	Name of Grid System	Energy input to the Grid System kWh	Energy input in %	Energy Sold to consumers kWh	Energy Sold to consumers %	Number of consumers served	consumers served %
1	Phnom Penh Grid System	1,395,241,218	67.18	1,245,836,083	67.23	254,662	46.09
2	Banteay Meanchey Grid	226,793,308	10.92	196,016,111	10.58	62,935	11.39
3	Kampong Cham Grid	25,427,928	1.22	21,378,088	1.15	16,481	2.98
4	Vietnam Grid at MV	148,245,478	7.14	134,847,505	7.28	51,835	9.38
5	Thai Grid at MV	98,942,193	4.76	90,844,777	4.90	20,954	3.79
6	Isolated systems	182,339,868	8.78	164,082,770	8.85	145,654	26.36
7	<b>Total</b>	<b>2,076,989,993</b>	<b>100.00</b>	<b>1,853,005,334</b>	<b>100.00</b>	<b>552,521</b>	<b>100.00</b>

## Annex 8A Phnom Penh Grid

License No.	Name of Licensee	Area of Supply	Connected to Grid through Licensee	Energy Generated, kWh	Energy purchased, kWh	Energy Sold to other licensees, kWh	Energy Sold to consumers kWh	Number of consumer served
001L	EDC Phnom Penh and Takeo	Areas in Phnom Penh, Kandal, Kampong Speu and Takeo provinces		84,514,024	1,310,005,942	19,881,286	1,228,461,656	230,231
050L	Reeco Company	Khum Prekthmey and Chheu Teal, Kean Svay District (Kandal)	EDC Phnom Penh		1,873,396		1,723,722	3,441
053L	Mr. Nget Hong	Parts of Angsnoul District ( Kandal) and Somrong Tong District ( Kampong Speu)	EDC Phnom Penh		1,075,930		882,259	1,099
061L	Mr. Khoeun Sambath	Phsar Ang Snoul Town, Khum Peuk, Ang Snoul District (Kandal)	EDC Phnom Penh		422,887		383,024	1,300
138L	Lim Heng Group Co, Ltd	Phsar O Russey (Phnom Penh)	EDC Phnom Penh		1,238,243		1,176,331	3,768
150L	Akissni Keansvay Co. Ltd	Parts of Keansvay District (Kandal)	EDC Phnom Penh		1,731,751	102,251	1,509,193	2,224
151L	Khmer electricity Service Co., Ltd	Khum Svayrolum and Khum Setbb, Sa-Ang District (Kandal)	EDC Phnom Penh		11,433,670	3,512,754	6,278,954	2,163
222L	Akisni Dangkor Co., Ltd	Along National Road No.3 in Khan Dangkor (Phnom Penh)	EDC Phnom Penh		828,148		687,363	1,655
223L	L.M.K.Co., Ltd	Khum Prek Kompoeus and Khum Cheung Keub, Kandal Stoeung District (Kandal)	EDC Phnom Penh		180,000		144,000	113
224L	Sokha Electricity Co., Ltd	Samraong Tong and Korng Pisey District (Kampong Speu)	EDC Phnom Penh		733,600	182,464	544,060	4
226L	Mrs. Hen Bonith	Khum Samroangthom, Kiensvay District (Kandal)	EDC Phnom Penh		176,461		140,385	930
086L	Mr. Koeung Rithy	Phsar Northern Saang Town, Saang District (Kandal)	Khmer electricity Service Co., Ltd		3,274,668	1,094,007	1,752,266	2,055
211L	Mrs. Iv Mala	Khum Koh Anlongchen, Saang District (Kandal)	Khmer electricity Service Co., Ltd		238,086		193,790	780
064L	Electricity Tramkhnar	Parts of Baty District and Samrong district (Takeo) and Parts of Korng Pisey District and Borseth District (Kampong Speu)	Sokha Electricity Co., Ltd	536,838	159,600		573,963	2,553
175L	Mr. Toeng Samouv	Phsar Slableng Town, Khum Phary Meanchey and Khum Svayrompear, Borsat District (Kampong Speu)	Sokha Electricity Co., Ltd	176,310	22,864		157,829	174
169L	Mr. Bun Huy	Khum Banteaydek, Kien Svay District (Kandal)	Akissni Keansvay Co. Ltd	8,104	102,251		90,765	420
71L	Mr. Heng Tray	Southern Phsar Saang Town, Khum Prek Koy and Khum Saang Phnom, Saang District (Kandal)	Mr. Koeung Rithy		1,094,007		949,323	1,751
260L	Transco Energy (Cambodia) Co., Ltd	PPSEZ Phnom Penh	EDC Phnom Penh		187,200		187,200	1
	<b>Total</b>			<b>85,235,276</b>	<b>1,310,005,942</b>		<b>1,245,836,083</b>	<b>254,661</b>

### Annex 8B Banteay Meanchey Grid

License No.	Name of Licensee	Area of Supply	Connected to Grid through Licensee	Energy Generated, kWh	Energy purchased, kWh	Energy Sold to other licensees, kWh	Energy Sold to consumers kWh	Number of consumers served
001L	EDC Banteay Meanchey, Battambang, Siem Reap	Banteay Meanchey, Battambang, Siem Reap		1,095,616	225,322,800	3,370,543	192,960,426	56,072
035L	Vonn Virek Service Co, Ltd	Pouk District (Siem Reap)	EDC Siem Reap		2,014,237		1,611,445	2,509
077L	Mrs Chao Nuy	Khums O-Prasat and Banteay Neang , Mongkul Borey District (Banteay Meanchey)	EDC Banteay Meanchey	35,382	159,690		171,253	315
079L	Mr. Thon Thoeurn	Khum Phnom Toch, Mongkul Borey District (Banteay MeanChey) and Khum Boeung Pring, Thmarkol District (Battambang)	EDC Banteay Meanchey	100,054	37,993		107,268	714
080L	Mr. Sok Vitith	Phsar Banteay Neang Town, Khum Banteay Neang, Monkul Borey District (Banteay Meanchey)	EDC Banteay Meanchey	42,092	94,851		112,489	520
091L	Mr. Sun Pov	Khum Prek Khpob, Khum Prek Luong and Khum Prek Norin, Ek Phnom District (Battambang)	EDC Battambang		838,666		714,727	1,330
105L	Mr. Soeung Sovanna	Phsar Phnom Thom Tbong Town, Khum O-Prasat, Mongkul Borei District (Banteay Meanchay)	EDC Banteay Meanchey	55,823	124,559		144,023	600
201L	Mr. Ou Chanrat	Khum Tamoeun and Khum Chrouy Sdov Thmarkol District (Battambang)	EDC Battambang	94,065	39,353		105,498	700
202L	Mrs. Kung Samon	Khum Chrey, Thmarkol District (Battambang)	EDC Battambang	47,476	61,194		88,982	175
	<b>Total</b>			<b>1,470,508</b>	<b>225,322,800</b>		<b>196,016,111</b>	<b>62,935</b>

### Annex 8C Kampong Cham Grid

License No.	Name of Licensee	Area of Supply	Connected to Grid through Licensee	Energy Generated, kWh	Energy purchased, kWh	Energy Sold to other licensees, kWh	Energy Sold to consumers kWh	Number of consumers served
001L	EDC Kampong Cham	Kampong Cham			25,244,035	6,991,051	15,229,184	8,225
085L	Electricity Tbong Khmum Enterprise	Phsar Tnaltoteung Town, Khum Chob, Tbongkhmom District (Kampong Cham)	EDC Kampong Cham		5,928,330	2,189,931	3,146,695	1,689
165L	Electricity Kang Meas Enterprise	Krong Meas District area and Kampong Siem District area (Kampong Cham)	EDC Kampong Cham		135,127		396,840	2,100
			Electricity Skun - Chamkar Leu Enterprise		309,055			
220L	Electricity Skun - Chamkar Leu Enterprise	Khum Krala, Kampong Siem District (Kampong Cham)	EDC Kampong Cham		927,594	309,055	580,977	360
088L	Mr. Khun Sophal	Oreang Ov District Town, (Kampong Cham)	Electricity Tbong Khmum Enterprise	183,893	129,722		244,865	750
27	Electricity Suong Enterprise	Phsar Suong Town, Tbongkhmom District (Kampong Cham)	Electricity Tbong Khmum Enterprise		2,060,209		1,779,527	3,357
	<b>Total</b>			<b>183,893</b>	<b>25,244,035</b>		<b>21,378,088</b>	<b>16,481</b>

### Annex 8D

#### Vietnam Grid at Medium Voltage

License No.	Name of Licensee	Area of Supply	Connected to Grid through Licensee	Energy Generated, kWh	Energy purchased, kWh	Energy Sold to other licensees, kWh	Energy Sold to consumers kWh	Number of consumers served
001L	EDC Pohneakrek	Pohnea Krek (Kampong Cham)			26,917,000	18,160,480	7,400,821	2,210
	EDC Memot	Memot (Kampong Cham)			10,563,600		9,980,803	3,731
	EDC Bavit	Bavit (Svay Rieng)			55,254,490		52,218,862	2,301
	EDC Kampong Trach	Kampong Trach (Kampot)			17,833,143	12,440,795	5,115,831	2,287
	EDC Svay Rieng	Svay Rieng		99,870	12,924,510		11,812,783	8,565
011L	Anco Brothers co., Ltd.	Koh Thom and Saang District (Kandal)			13,344,700		12,372,302	9,163
013L	Mr. Mak Thorn	Areas along National Road No. 2 from Vietnam border to end of Commune Pech Sar and derivated at Preah Bat Cheun Chum to Prey Ampork Commune, Kirivong District and Traing District, excluding DOUNGHIV PHNOMDIN S.E.Z. (Takeo)		519,380	567,400		793,349	3,589
059L	Electricity of Kratie Province at Snoul	Part of Snoul District (Kratie)			2,590,900		2,193,866	926
158L	Electricity Unit of Mondulkiri Province at Keoseyma	Keoseyma District Town (Mondulkiri)			607,100		533,795	728
206L	Bun Liv Co., Ltd Development Import Export	Prahdach District Town and areas along road from Prah Sdach to Neak Loeung (Prey Veng)			3,380,100	2,068,145	756,805	570
122L	Electricity Development and Construction Company	Pohneakrek and Tbong Khmum District area, (Kampong Cham)	EDC Pohneakrek		17,722,998		15,518,687	2,908
200	Electricity Chi Paing Enterprise	Khum Krek, Pohnea Krek District (Kampong Cham)	EDC Pohneakrek		437,482		385,514	435
180L	Kep Power Supply Co. Ltd	Kep City and some areas along 22 kV line from Lork Town, Kampongtrach District to Authorised area of EDC at Kampot (Kep and Kampot)	EDC Kampong Trach		12,440,795	9,762,452	2,123,794	1,550
001L	EDC Kampot	Kampot	Kep Power Supply Co. Ltd	388,071	9,762,452		9,085,420	6,314
001L	EDC Prey Veng	Prey Veng	Bun Liv Co., Ltd Dev. Import Export	2,524,314	771,053		2,878,345	3,554
017L	Mrs. Bun Liv	Neak Loeung Town (east of Mekong River) Peam Ro District, Prey Veng Province		730,900	1,297,092	227,960	1,461,648	2,586
198L	Mrs. Nov Sophea	Khum Prek Ksay "A", Khum Peamro and Khum Bapong, Peamro District (Prey Veng)			227,960		214,880	418
	<b>Total</b>			<b>4,262,535</b>	<b>143,982,943</b>		<b>134,847,505</b>	<b>51,835</b>

### Annex 8E

#### Thai Grid at Medium Voltage

License No.	Name of Licensee	Area of Supply	Connected to Grid through Licensee	Energy Generated, kWh	Energy purchased, kWh	Energy Sold to other licensees, kWh	Energy Sold to consumers kWh	Number of consumer served
008L	Franasie Import Export Co.Ltd	Kamrieng (Battambang)			4,276,786		3,745,290	1,768
		Phnom Proeuk (Battambang)			2,159,464		1,693,978	1,851
		Sampeou Loun (Battambang)			3,240,456		2,658,135	1,798
009L	M.S.P.Development Co. Ltd	Salakrao District, Pailin Province			10,680,756	2,590,400	7,398,996	1,175
011L	Anco Brothers co., Ltd.	Ochraov (Banteay Meanchey)			46,417,440	120,200	42,137,422	4,343
014L	L.Y.P Group Co., Ltd	Koh Kong			19,627,500		18,741,844	3,902
		Osmach (Oddor Meanchey)			11,325,940		10,969,989	2,084
149L	Sinn Khim Import Export Co., Ltd	Malay District Town (Banteay Meanchey)			1,195,680		1,024,257	951
089L	Vanakpheap Development Co., Ltd	Pailin City	M.S.P.Development Co. Ltd		2,590,400		2,363,021	2,379
078L	Mr. Pak Sun Heng	Phsar Kotsat Town, Khum Nimit, Khum Kob and Khum Samrong, O-chrov District (Banteay MeanChey)	Anco Brothers co., Ltd.	18,171	120,200		111,845	703
	<b>Total</b>			<b>18,171</b>	<b>98,924,022</b>		<b>90,844,777</b>	<b>20,954</b>

**Annex 9**  
**Information on Licenses not valid at the end of year 2009**

<b>License Number</b>	<b>Name of Licensee</b>	<b>Type of License</b>	<b>Year during which the validity expired/terminated</b>
010L	Cambodia Wan Long International Industrial Co. Ltd	Generation	2003
005L	Mr. Chea Sopha	Generation	2004
025L	Santepheap Cambodia Investment Co., LTD	Generation	2004
070L	Mr. Bou Boeun	Consolidated (Gen + Dist)	2005
003L	Jupiter Power (Cambodia) Co. Ltd	Generation	2006
024L	Global Power System PTE LTD	Generation	2006
092L	Mr. Som Visal	Consolidated (Gen + Dist)	2006
100L	J.P.N. Cambodia International Co. Ltd	Generation	2006
94L	Edward Energy Supply Co., LTD	Generation	2007
104L	Mr. Suon Sany	Consolidated (Gen + Dist)	2007
131L	Mrs. Nhek Sokon	Consolidated (Gen + Dist)	2007
107L	Union Victory Asia Co., Ltd	Generation	2007
065L	Mr. Chou Sroan	Consolidated (Gen + Dist)	2008
084L	Mr. Mok Chin	Consolidated (Gen + Dist)	2008
087L	Mrs Sok Kongkear	Consolidated (Gen + Dist)	2008
135L	Mrs. Dik Rin	Consolidated (Gen + Dist)	2008
004L	Global Technological Support SDN BHD	Generation	2009
147L	Omo Energy (Cambodia) Co., Ltd	Generation	2009



### Annex 10 Tariff of Licensees for the Year 2009

License No.	Name of Licensee	Conditions	Tariff Rate									
			Mar-09	Apr-09	May-09	Jun-09	Jul-09	Aug-09	Sep-09	Oct-09	Nov-09	Dec-09
<b>Banteay Meanchey Province</b>												
011 L	Anco Brothers Co., Ltd	Small, household	6Bath	6Bath	6Bath	6Bath	6Bath	6Bath	6Bath	6Bath	6Bath	6Bath
		Medium, Govt	5Bath	5Bath	5Bath	5Bath	5Bath	5Bath	5Bath	5Bath	5Bath	5Bath
		MV, Casino	4.3Bath	4.3Bath	4.3Bath	4.3Bath	4.3Bath	4.3Bath	4.3Bath	4.3Bath	4.3Bath	4.3Bath
077 L	Mrs Chao Nuy	General	2100	2300	2300	1700	1700	1700	1600	1600	1600	1500
078 L	Mr.Pak Sun Heng	General	25Baht	25Baht	25Baht	17Baht	16Baht	16Baht	16Baht	16Baht	16Baht	15Baht
079 L	Mr.Thon Thoeurn	General	2300	2300	2300	2300	2300	2500	2500	1600	1600	1500
080 L	Mr. Sok Vitith	General	2100	2300	2300	1700	1700	1700	1600	1600	1600	1500
081 L	Mr. Muon Han	General	2900	2900	2900	2900	2900	2800	2900	2900	2900	2900
105 L	Mr. Soeung Sovanna	General	2100	2300	2300	1700	1700	1700	1600	1600	1600	1500
108 L	Mrs. Sin Savuon	General	2500	2700	2700	2500	2500	2500	2600	2600	2600	2600
149 L	Sinn Khim Import Export Co., Ltd	General	8 Baht	8 Baht	8Bath	8Bath	8Bath	8Bath	8Bath	8Bath	8Bath	8Bath
189 L	Phum Nimit Co, Ltd	General	3000	3000	3000	3000	3000	3000	3000	3000	3000	3000
190 L	Mr. Mak Van	General	3000	3000	3000	2800	2800	2800	2900	2900	2900	2900
257L	Mr. Koung Leangheng	General									3000	3000
<b>Battambang Province</b>												
008 L	Franasie Import Export Co., Ltd Kamrieng	Household	6Bath	6Bath	6Bath	7Bath	7Bath	7Bath	7Bath	7Bath	7Bath	7Bath
		Hotels	5Bath	5Bath	5Bath	6Bath	6Bath	6Bath	6Bath	6Bath	6Bath	6Bath
		Casinos	4Bath	4Bath	4Bath	5Bath	5Bath	5Bath	5Bath	5Bath	5Bath	5Bath

## Electricity Authority of Cambodia

008 L	Franasie Import Export Co., Ltd Phnom Proeuk	Household	7.5Bath	7.5Bath	7.5Bath	7.5Bath	7.5Bath	7.5Bath	7.5Bath	7.5Bath	7.5Bath	7.5Bath
		Hotels, Others	6Bath	6Bath	6Bath	6Bath	6Bath	6Bath	6Bath	6Bath	6Bath	6Bath
008 L	Franasie Import Export Co., Ltd Sampeou Luon	Household	7.5Bath	7.5Bath	7.5Bath	7.5Bath	7.5Bath	7.5Bath	7.5Bath	7.5Bath	7.5Bath	7.5Bath
		Factories	5.5Bath	5.5Bath	5.5Bath	5.5Bath	5.5Bath	5.5Bath	5.5Bath	5.5Bath	5.5Bath	5.5Bath
043 L	Mr. Som Visal	General	1800	1800	1900	2000	2000	2000	2000	2100	2100	2100
068 L	Mrs. Tuoch Mantha	General	2300	2300	2400	2500	2500	2500	2500	2600	2600	2600
069 L	Mr. Nop Bin	General	2300	2300	2400	2500	2500	2500	2500	2500	2600	2600
079 L	Mr.Thon Thoeurn	General	2300	2300	2300	2300	2300	2500	2500	1600	1600	1500
091 L	Mr. Sun Pov	General	1050	1050	1050	1050	1050	1050	1050	1050	1050	1050
109 L	Mrs. Tieng Chenda	General	1800	1900	1900	2000	2100	2100	2100	2250	2250	2250
110 L	Mrs. Sea Kech	General	1800	1900	1900	2000	2100	2100	2100	2250	2250	2250
117 L	Mr. Dung Ly	General	2000	2000	2000	2000	2000	2000	2000	2000	2000	2000
182 L	Mr. Khun Sarun	General	1900	2000	2000	2100	2200	2200	2200	2300	2300	2300
201 L	Mr. Ou Chanrat	General	2500	2500	2500	2200	2300	2300	2300	2300	2400	2400
202 L	Mrs. Kung Samon	General	2700	2700	2700	2700	2700	2500	2500	1700	1700	1700
242 L	Miss San Chhan	General				3200	3200	3200	3200	3200	3200	3000
244 L	Mr. Lun Rith	General								2800	2800	2800
246 L	Mr. Sam Nang Sathia	General										2500
251 L	Mrs. Ouch Sophalla	General				3000	3000	3000	3000	3000	3000	3000
<b>Kampong Cham Province</b>												
023 L	Electricity Preychhor Enterprise	General	2000	2000	2000	2200	2200	2200	2200	2300	2300	2300
026 L	Mr. Chang Bunnaret	General	1900	2000	2000	2200	2200	2200	2200	2300	2300	2300
027 L	Electricity Suong Enterprise	General	1300	1300	1300	1300	1300	1300	1300	1300	1300	1400
038 L	Mr. Sieng Seng	General	2100	2100	2100	2300	2300	2300	2400	2400	2400	2400
047 L	Mrs. Sar Malis	General	1700	1700	1800	1900	1900	1900	1900	1900	1900	1900
056 L	Mrs. Nhek Theary	General	2100	2100	2100	2300	2300	2300	2400	2400	2400	2400
057 L	Mr. Chin Sohin	General	2300	2400	2400	2600	2600	2600	2600	2700	2700	2700
060 L	Mrs. Eam Sreng	General	2100	2100	2200	2300	2300	2300	2400	2400	2400	2400

## Electricity Authority of Cambodia

074 L	Mr. Mean Vanna	General	2100	2100	2100	2300	2300	2300	2400	2400	2400	2400
075 L	Mr. Chhay Kim Huor	General	2100	2100	2100	2300	2300	2300	2400	2400	2400	2400
085 L	Electricity Tbong Khmum Enterprise	General	1400	1400	1400	1300	1300	1300	1300	1300	1300	1400
088 L	Mr. Khun Sophal	General	2000	2000	2000	2200	2200	2200	2200	2200	2200	1500
122 L	Electricity Development and Construction Company	< 20000 kWh	750	750	750	750	750	750	750	750	750	750
		>= 20000 kWh	\$ 0.125	\$ 0.125	\$ 0.125	\$ 0.125	\$ 0.125	\$ 0.125	\$ 0.125	\$ 0.125	\$ 0.125	\$ 0.125
130 L	Mr. Try Leng	General	2800	2800	2800	2800	2800	2800	2900	2900	2900	2900
140 L	Mr Chea Chan Naroeun	General	2100	2100	2200	2300	2300	2300	2400	2400	2400	2400
159 L	Mr. Khun Sopheap	General	1900	2000	2000	2200	2400	2400	2500	2500	2500	2500
160 L	Mr. Seng Chinleang	General	2700	2700	2700	2700	2700	2700	2700	2700	2700	2700
165 L	Electricity Kang Meas Enterprise	General	1700	1700	1700	1700	1700	1700	1700	1700	1700	1700
181 L	Mr. Kim Meng	General	2600	2600	2600	2800	2800	2800	2900	2800	2800	2800
192 L	Mr. Path Seang Hun	General	2900	2900	2900	3000	2900	2900	2900	3000	3000	3000
200 L	Electricity Chi Paing Enterprise	General	940	940	940	940	940	940	940	940	940	940
207 L	Mr. Lay Veng Kheang	General	2900	2900	2900	2900	2900	2900	2900	2900	2900	2900
216 L	Mrs. Tek Nimol	General	3200	3200	3200	3200	3000	3000	3000	3000	3000	3000
220L	Electricity Skun - Chamkar Leu Enterprise											Purchase price + 0.055\$
241 L	Mr. Ung Kimsean	General				3000	3000	3000	3000	3000	3000	3000
255L	Mrs.Som Sokhalin	General				2800	2800	2900	2900	3000	3000	3000
256L	Mr. Toek Hong	General						0.75\$	0.75\$	0.75\$	0.75\$	0.75\$
<b>Kampong Chhanang Province</b>												
040 L	Mr. Mak Heat	General	2700	2700	2700	2800	2900	2900	2600	2600	2600	2600
041 L	Mr. Ty Sokorn	General	1900	1900	2000	2100	2100	2100	2200	2200	2200	2200
051 L	Sovanny Electricity Development Co.Ltd	Small	\$0.32	\$0.34	\$0.36	\$0.38	\$0.38	0.40	0.40	0.40	\$0.42	\$0.42
		Medium	\$0.30	\$0.32	\$0.34	\$0.36	\$0.36	0.38	0.38	0.38	\$0.40	\$0.40
		Big	\$0.28	\$0.30	\$0.32	\$0.34	\$0.34	0.36	0.36	0.36	\$0.38	\$0.38
		MV	\$0.26	\$0.28	\$0.30	\$0.32	\$0.32	0.34	0.34	0.34	\$0.36	\$0.36

## Electricity Authority of Cambodia

095 L	Mrs. Chan Simoly	General	2900	2900	2900	2900	2900	2900	2600	2700	2700	2700
096 L	Mr. Chea Sareth	General	2900	2900	2500	2500	2600	2600	2700	2700	2700	2700
119 L	Mr. Un Sothea	General	2800	2800	2800	2800	2800	2800	2800	2700	2700	2700
166 L	Mr. Or Ratana	General	2500	2400	2400	2400	0.625	0.625	0.625	2550	2650	2650
173L	Mrs. Ke Varin	General	\$0.32	\$0.34	\$0.36	\$0.38	\$0.38	\$0.40	\$0.40	\$0.40	\$0.40	\$0.40
<b>Kampong Speu Province</b>												
053L	Mr. Nget Hong	General	1150	1150	1150	1150	1150	1150	1150	1150	1150	1150
064L	Electricity Tramkhnar	General	2400	2400	2400	2400	2400	2400	2500	2500	2500	2500
067 L	Mr. Sok Hoy	General	2500	2500	2500	2600	2600	2600	2700	2700	2700	2700
076 L	Mr. Quach Edward	General	2000	2000	2000	2000	2000	2000	2300	2100	2100	2100
082 L	Mr. Ly Sok Kry	General	2200	2300	2300	2300	2300	2300	2400	2400	2400	2400
099 L	Mr. Leng Mov	General	2300	2300	2300	2400	2400	2400	2500	2500	2500	2500
101 L	Mr. Chhin Song	General	2800	2400	2400	2400	2500	2500	2600	2600	2600	2600
136 L	Mr. Men Kunthae	General	2700	2600	2600	2700	2700	2700	2800	2800	2800	2800
137 L	Mr. Meng Sokleng	General	2800	2800	2800	2800	2700	2700	2800	2800	2800	2800
154 L	Mr. Uy Sopath	General	2900	2900	2900	2900	2700	2700	2800	2800	2800	2800
155 L	Mr. Samret Kiri	General	2700	2700	2700	2600	2600	2600	2700	2700	2700	2700
156 L	Mr. Men Sambath	General	2900	2900	2900	2900	2800	2800	2900	2900	2900	2900
175 L	Mr. Toeng Samouv	General	2700	2700	2700	2700	2700	2700	2800	2800	2800	2800
219L	Mr. Phoeurn Saroeurn	General	2900	2900	2900	3000	3000	3000	3000	2900	2900	2900
237 L	Mr. Ly Chinlong	General			2700	2700	2700	2700	2700	2700	2700	2700
<b>Kampong Thom Province</b>												
006 L	Mr. Huor Pheng	General	1800	1800	1900	2000	2000	2000	2100	2100	2100	2100
012 L	Sung Jin & Chilbo Industrial Co., Ltd	General	1350	1350	1450	1550	1550	1550	1550	1650	1650	1650
019 L	Mr. Te Kok Eng	General	2500	2500	2500	2500	2500	2500	2600	2600	2600	2600
032 L	Mr. Nhen Kong	General	2500	2500	2500	2500	2500	2500	2500	2600	2600	2600
039 L	Mr. Kim Chantara	General	2600	2600	2600	2600	2600	2600	2600	2600	2600	2600
063 L	Mr. Ong Hok Sin	General	2200	2200	2300	2400	2400	2400	2500	2500	2500	2500
073 L	Mr. Treung San	General	2300	2300	2400	2500	2500	2500	2600	2600	2600	2600

## Electricity Authority of Cambodia

199 L	Mr. Some Lai Y	General	2600	2600	2700	2800	2800	2800	2900	2900	2900	2900
228 L	Mr. Saeu Tiengkok	General	3000	3000	3000	3000	3000	3000	3000	3000	3000	3000
245 L	Mr. Chhea Sokhom	General				2400	2400	2400	2400	2400	2400	2500
<b>Kampot Province</b>												
042 L	Mr. Kong Sophal	General	2500	2500	2400	2400	2500	2500	2500	2600	2600	2800
044 L	Mr. Kong Puthy	General	2300	2300	2300	2300	2300	2300	2300	2300	2300	2400
093 L	Banteay Meas Electricity	General	2500	2500	2500	2500	2500	2500	2500	2500	2500	2500
097 L	Mr. Yin Ech	General	1900	2000	2000	2200	2200	2200	2200	2300	2300	2300
180L	Kep Power Supply Co. Ltd	General	800	800	800	800	800	800	800	800	800	800
225 L	Mrs. Chann Sokim	General			3000	3000	3000	3000	3000	2500	2500	2500
<b>Kandal Province</b>												
011 L	Anco Brothers Co., Ltd	All LV	650	650	650	650	650	650	650	650	650	650
		Big, Industry	\$ 0.115	\$ 0.115	\$ 0.115	\$ 0.115	\$ 0.115	\$ 0.115	\$ 0.115	\$ 0.115	\$ 0.115	\$ 0.115
021 L	Mrs. Nov SreyPich	General	2300	1900	1900	2000	2000	2000	2100	2100	2100	2100
037 L	Mr. Eang Seng Hy	General	2000	2000	2000	2200	2200	2200	2200	2300	2300	2300
045L	Mrs. Choup Neang	General	2800	2800	2800	2800	2800	2800	2900	2900	2900	2900
049 L	Eastern Power Supply Enterprise	General	2800	2800	2800	2800	2500	2500	2500	2800	2800	2800
050 L	Reeco Company	General	720	720	720	720	720	720	720	720	720	720
053 L	Mr. Nget Hong	General	1150	1150	1150	1150	1150	1150	1150	1150	1150	1150
058 L	Mr. Chay Neng	General	2600	2600	2600	2600	2600	2600	2600	2600	2600	2600
061 L	Mr. Khoeun Sambath	General	1150	1150	1150	1150	1150	1150	1150	1150	1150	1150
062 L	Mr. Er Long	General	2700	2700	2700	2700	2700	2700	2700	2800	2800	2800
066 L	Mr. Pean Sokhalay	General	2500	2500	2500	2500	2500	2500	2500	2500	2500	2500
071 L	Mr. Heng Tray	General	1200	1200	1200	1200	1200	1200	1200	1200	1200	1200
076L	Mr. Quach Edward	General	2000	2000	2000	2000	2000	2000	2300	2100	2100	2100
086 L	Mr. Koeung Rithy	General	1150	1150	1150	1150	1150	1150	1150	1150	1150	1150
090L	Veasna New Land Power Co., Ltd	General	2400	2400	2400	2400	2400	2400	2400	2400	2400	2400
099L	Mr. Leng Mov	General	2300	2300	2300	2400	2400	2400	2500	2500	2500	2500
103L	Mr. Nhem Phany	General	2600	2600	2600	2600	2600	2600	2600	2600	2600	2100

## Electricity Authority of Cambodia

114 L	Ms. Chea Ting	General	3100	3300	3300	3100	3200	3200	3200	3100	3100	3100
137L	Mr. Meng Sokleng	General	2800	2800	2800	2800	2700	2700	2800	2800	2800	2800
143 L	Mrs. Leang Chhunny	General	2800	2800	2800	2800	2800	2800	2800	2800	3000	3000
144 L	Mr Ouk Sopheap	General	2900	2900	2600	2600	2600	2600	2600	2600	2600	2600
150 L	Akkisni Kien Svay Co., Ltd	General	1100	1100	1100	1100	1100	1100	1100	1100	1100	1100
151 L	Khmer Electricity Service Co., Ltd	General	1100	1100	1100	1100	1100	1100	1100	1100	1100	1100
153 L	Mrs Nguon Socheatey	General	2800	2800	2800	2800	2800	2800	2800	2700	2700	2600
168 L	Mrs. Ou Kimheng	General	2500	2500	2500	2700	2700	2700	2700	2800	2800	2800
169 L	Mr. Bun Huy	General	1100	1100	1100	1100	1100	1100	1100	1100	1100	1100
170 L	Mr. Chhun Ly	General	2700	2700	2700	3000	2700	3000	3000	2700	3000	3000
171 L	Mrs Nhem Sotheary	General	2800	2800	2800	2800	2800	2800	2900	2800	2800	2900
176 L	Mr. Moul Tit	General	2500	2500	2500	2500	2500	2500	2500	2400	2400	2400
179 L	Mr. Nhoek My	General	2500	2500	2500	2500	2500	2500	2500	2500	2500	2500
186 L	Mr. Heng Kosal	General	2100	2100	2100	2200	2300	2300	2300	2400	2400	2400
204 L	Mr. Chhay Chansophea	General	2700	2700	2700	2700	2700	2700	2700	2700	2700	2700
209 L	Mr. Sok Pin	General	2800	2800	2800	2800	2800	2800	2800	2800	2800	2800
211 L	Mrs. Iv Mala	General	1500	1500	1500	1500	1500	1500	1500	1500	1500	1500
219 L	Mr. Phoeurn Saroeurn	General	2900	2900	2900	3000	3000	3000	3000	2900	2900	2900
223 L	L.M.K.Co., Ltd	General								1500	1500	1500
226 L	Mrs. Hen Bonith	General					1100	1100	1100	1100	1100	1100
230 L	Mrs. Thauy Vorun	General				2800	2800	2800	2800	2800	2800	2800
234 L	Mrs. Kak Srey On	General			3200	3200	3000	3000	3000	3000	3000	2900
235 L	Mr. Cheng Sophal	General			2800	2800	2800	2800	2800	2800	2800	2800
243 L	Mr. Nouv Tim	General				3500	3500	3500	3500	3500	3500	3500
249 L	Mr. Vann Ramon	General						3000	3000	3000	3000	3000
250 L	Mrs. Suy Chamnan	General								2800	2800	2800
<b>Kohkong Province</b>												
014 L	L.Y.P Group Co., Ltd Kohkong	Household	600	600	600	6.5Bath	6.5Bath	6.5Bath	6.5Bath	6.5Bath	6.5Bath	6.5Bath
		Company	300	300	300	4.5Bath	4.5Bath	4.5Bath	4.5Bath	4.5Bath	4.5Bath	4.5Bath
028 L	Mr. Samreth Sothy	General	2000	2000	2000	2100	2200	2200	2200	2300	2300	2300

## Electricity Authority of Cambodia

106 L	Mrs. Ann Samlan	General	3300	3300	3300	3300	3300	3300	3300	3300	3300	3300
<b>Oddor Meanchey Province</b>												
014 L	L.Y.P Group Co., Ltd Osmach	Household	500	500	500	5.5Bath	5.5Bath	5.5Bath	5.5Bath	5.5Bath	5.5Bath	5.5Bath
		Company	480	480	480	5.5Bath	5.5Bath	5.5Bath	5.5Bath	5.5Bath	5.5Bath	5.5Bath
		Company Branch	370	370	370	4.3Bath	4.3Bath	4.3Bath	4.3Bath	4.3Bath	4.3Bath	4.3Bath
014 L	L.Y.P Group Co., Ltd Oddor Meanchey	Household	11Bath	11Bath	11Bath	10Bath	10Bath	10Bath	10Bath	10Bath	10Bath	10Bath
		Big	\$0.115	\$0.115	\$0.115	\$0.115	\$0.115	\$0.115	\$0.115	\$0.115	\$0.115	\$0.115
163 L	Mr. Phom Phal	General	3000	3000	3000	3000	3000	3000	3000	3000	3000	3000
214 L	All Stars Entertainment Co., Ltd	General	2200	2200	2200	2200	2200	2200	2300	2300	2300	2300
<b>Kratie Province</b>												
059 L	Electricity of Kratie Province, Kratie	General	1400	1400	1400	1400	1400	1700	1700	1700	1700	1700
059 L	Electricity of Kratie Province, Snoul	LV		600	600	600	600	600	600	600	600	600
		MV		0.115\$	0.115\$	0.115\$	0.115\$	0.115\$	0.115\$	0.115\$	0.115\$	0.115\$
191 L	Mrs. Phin Vipheavy	General	2500	2700	2700	2700	2700	2700	2700	2700	2800	2800
217 L	Mr. Heang Pov	General	2700	2700	2700	2800	2800	2800	2800	2800	3000	3000
227 L	Mr. Phin Ham	General	3100	3100	3100	3100	3100	3100	3100	3100	3100	3100
<b>Phnom Penh</b>												
090 L	Veasna New Land Power Co., Ltd	General	2400	2400	2400	2400	2400	2400	2400	2400	2400	2400
103 L	Mr. Nhem Phany	General	2600	2600	2600	2600	2600	2600	2600	2600	2600	2100
138 L	Lim Heng Group Co, Ltd	General	1200	1200	1200	1200	1200	1200	1200	1200	1200	1200
222 L	Akisni Dangkor Co., Ltd	General					1100	1100	1100	1100	1100	1100
		Big					900	900	900	900	900	900
<b>Preah Vihear Province</b>												
031 L	Mr. Chan Thun	General	1800	1800	1800	1900	2000	2000	2000	2000	2000	2000
128 L	Mr Ieng Khun	General	3500	3500	3500	3500	3900	3900	3900	3900	3900	3900

## Electricity Authority of Cambodia

162 L	Mr. Hay Tina	General	3500	3500	3500	3500	3500	3500	3500	3500	3500	3500
172 L	Mr. Mor Malen	General	3500	3200	3200	3200	3200	3200	3200	3200	3200	3200
<b>Prey Veng Province</b>												
017 L	Mrs. Bun Liv	General	2200	2200	1700	1700	1200	1200	1200	1100	1100	1100
018 L	Mr. Ky Sophear	General	2100	32100	2100	2100	2300	2300	2300	2400	2400	2400
036 L	Mrs. Pauch Kim	General	1900	1700	1700	1700	1900	1900	1900	1900	1900	1900
045 L	Mrs. ChoupNeang	General	2800	2800	2800	2800	2800	2800	2900	2900	2900	2900
046 L	Mr. Seng Sokun	General	2700	2500	2500	2500	2500	2500	2500	2500	2500	2500
187 L	Mr. Khem Rany	General	2500	2500	2500	2500	2500	2500	2500	2500	2500	2500
198 L	Mrs. Nov Sophea	General	2300	2200	1700	1700	1200	1200	1200	1100	1100	1100
206 L	Bun Liv Co., Ltd Development Import Export	General	1200	1200	1200	1200	1200	1200	1200	1100	1100	1100
208 L	Mr. Keo Cham Reun	General	2500	2500	2500	2800	2800	2800	2900	2900	2900	2900
239 L	Mr. Ean Sam Ath	General				3500	3500	3500	3500	3500	3500	3500
<b>Pursat Province</b>												
033 L	Mr. Chhuor Nguon	General	2300	2300	2300	2500	2500	2500	2600	2600	2600	2600
034 L	Mr. Toem Touch	General	2300	2300	2300	2500	2500	2500	2600	2600	2600	2600
052 L	Nareth Co. Ltd Electricity Development	Small	\$0.32	\$0.34	\$0.36	\$0.38	\$0.38	\$0.38	\$0.40	\$0.40	\$0.42	\$0.42
		Medium	\$0.30	\$0.32	\$0.34	\$0.36	\$0.36	\$0.36	\$0.38	\$0.38	\$0.40	\$0.40
		Big	\$0.28	\$0.30	\$0.32	\$0.34	\$0.34	\$0.34	\$0.36	\$0.36	\$0.38	\$0.38
		MV	\$0.26	\$0.28	\$0.30	\$0.32	\$0.32	\$0.32	\$0.34	\$0.34	\$0.36	\$0.36
072 L	Mr. Ya Sambat	General	3000	2700	2700	2800	2800	2800	2900	2900	2900	2900
102 L	Mr. Preap Vannaret	General	3000	2700	2700	2800	2800	2800	2900	2900	2900	2900
124 L	Mrs. Ear Lay Sien	General	2300	2300	2300	2500	2500	2500	2600	2600	2600	2600
125 L	Mr. York Savong	General	2300	2300	2300	2500	2500	2500	2600	2600	2600	2600
233 L	Mr. Srun Sokun	General				3000	3000	3000	3000	3300	3300	3300
<b>Siem Reap Province</b>												
035 L	Vonn Virek Service Co, Ltd	General	1050	1050	1050	1050	1050	1050	1050	1050	1050	1050
048 L	Mr. Chhom Sophay	General	2300	2300	2400	2500	2500	2500	2500	2600	2600	2600



## Electricity Authority of Cambodia

083 L	Mr. Tun Yoeun	General	2300	2300	2400	2500	2500	2500	2500	2600	2600	2600
111 L	Mr. Kong Vun	General	2500	2300	2300	2400	2400	2400	2500	2500	2500	2500
112 L	Mr. Ly Kang	General	2500	2300	2300	2400	2400	2400	2500	2500	2500	2500
127 L	Mr Te Hong Cheng	General	3500	3500	3500	4000	4000	4000	4000	4000	4000	4000
129 L	Mrs Chrun Leang Suor	General		3500	3500	3500	3500	3500	3500	3500	3500	3500
139 L	Mr Duong Narin	General	3000	3000	2700	2800	2800	2800	2900	2900	2900	2900
161 L	Mr. Kea Kimseng	General	2700	2700	2700	2700	2700	2800	2900	2900	2900	2900
164 L	Mrs Tek Sina	General	2700	2700	2700	2700	2500	2500	2500	2500	2500	2500
183 L	Mrs. Meas Keav	General	2800	2800	2700	2800	2800	2800	2900	2900	2900	2900
185 L	Mr. Phlok Vannak	General	2400	2400	2500	2600	2600	2600	2700	2700	2700	2700
203 L	Mr. Tan Kang	General	2700	2700	2500	2600	2600	2600	2700	2700	2700	2700
229 L	Mr. Khean Kev	General	3000	3000	3000	3000	3000	3000	3000	3000	3000	3000
240 L	Mrs. Long Kimheng	General				2800	2800	2800	2800	3000	3000	3000
<b>Sihanoukville</b>												
029 L	Mr. Sok Thy	General	1700	1700	1800	1900	1900	1900	1900	1900	1900	1900
030 L	Mr. Ly Bunthy	General	1700	1800	1800	1900	1900	1900	2000	2000	2000	2100
098 L	Mr. San Ke	General	2300	2300	2400	2500	2500	2500	2600	2600	2600	2600
120 L	Mr. Chan Keat	General	1700	1800	1800	1900	1900	1900	2000	2000	2000	2000
184 L	Mrs. Chea Kimthat	General	2300	2300	2400	2500	2500	2500	2600	2600	2600	2600
<b>Steung Treng Province</b>												
218 L	Mr. Seang Savot	General	1200	3000	3000	3000	3000	3000	3000	3000	3000	3000
<b>Takeo Province</b>												
013 L	Mr. Mak Thorn	General	2300	2300	2300	2300	2000	2000	1350	1350	1350	1250
015 L	Electricity Samrong Yornng Enterprise	General	2700	2700	2700	2700	2700	2400	2500	2500	2500	2500
016 L	Mr. Ke Kuyhuoy	General	2300	2300	2300	2300	2300	2300	2300	2400	2400	2400
020 L	Mr. Chhou Lay	General	2400	2400	2400	2500	2500	2400	2500	2500	2500	2500
022 L	Mr. Kong Phat	General	2900	2900	2900	2900	2900	2900	2900	2900	2900	2900
054 L	Mrs. Ouch Por	General	2700	2700	2700	2700	2700	2600	2700	2700	2700	2700

## Electricity Authority of Cambodia

055 L	Mr. Mak Khom	General	2300	2300	2300	2300	2300	2300	2300	2300	2500	2500
064 L	Electricity Tramkhnar	General	2400	2400	2400	2400	2400	2400	2400	2500	2500	2500
101L	Mr. Chhin Song	General	2800	2400	2400	2400	2500	2500	2600	2600	2600	2600
113 L	Mr. Nou Kruey	General	2800	2800	2800	2800	2900	2900	2600	2600	2600	2600
118 L	Mrs. Sok Kheng	General	2700	2700	2700	2700	2700	2800	2800	2600	2600	2600
121 L	Mrs. Kaing Gech Seam	General	2500	2400	2400	2400	2500	2500	2600	2600	2600	2600
133 L	Mr Hak Ly Seng	General	2800	2800	2800	2800	2800	2800	2900	2900	2900	2900
134 L	Mr Try Khlauk	General	2300	2300	2300	2300	2300	2300	2300	2300	2300	2500
141 L	Mr Chaing Kun	General	2700	2500	2600	2700	2800	2800	2800	2700	2700	2700
174 L	Mr. Moeun Sokhan	General	2800	2700	2700	2700	2800	2800	2700	2700	2700	2700
178 L	Mr. Pech Sopheap	General	2800	3000	3000	2800	2800	2800	2800	3000	3000	3000
188 L	Mr. Chaing Kea	General	2500	2500	2800	2800	2800	2800	2800	2800	2800	2800
194 L	Mr. Rov Trorhuot	General	2450	2500	2500	2500	2600	2600	2600	2500	2500	2650
195 L	Mr. Ouch Kea	General	3000	3000	3000	3000	3000	2800	2900	2900	2900	2900
196 L	Mr. Chaing Kim	General	2700	2500	2600	2700	2800	2800	2700	2700	2700	2700
197L	Mr. Chith Ponnara	General	2700	2500	2600	2700	2500	2500	2600	2600	2600	2600
205 L	Mr. Mao Phai	General			2300	2300	2300	2300	2300	2300	2500	2500
212L	Mr. Ngeth Meng	General	2600	2600	2600	2750	2750	2800	2800	2700	2700	2700
231 L	Mr. Mey Sina	General								2500	2500	2500
238 L	Mr. Hou Veasna	General			3000	3000	3000	3000	3000	2800	2800	3000
<b>Palin City</b>												
009 L	MSP Development co., Ltd	Small	8Bath	8Bath	8Bath	8Bath	8Bath	8Bath	8Bath	8.1 Baht	8.1 Baht	8.1 Baht
		Big	6Bath	6Bath	6Bath	6Bath	6Bath	6Bath	6Bath			
089 L	Vannak Pheap Development Co., Ltd	General	850	850	8Bath	8Bath	8Bath	8Bath	8Bath	8.5 Baht	8.5 Baht	8.5 Baht
<b>Krong Kep</b>												
180 L	Kep Power Supply Co. Ltd	General	800	800	800	800	800	800	800	800	800	800
<b>Mondolkiri Province</b>												
158 L	Electricity Unit of Mondulkiri	Small,	650	650	650	650	650	650	650	650	650	650

Electricity Authority of Cambodia

	Province, Keoseyma	Medium										
		Big	\$ 0.115	\$ 0.115	\$ 0.115	\$ 0.115	\$ 0.115	\$ 0.115	\$ 0.115	\$ 0.115	\$ 0.115	\$ 0.115
158 L	Electricity Unit of Mondulkiri Province, Mondulkiri	Household	1800	1800	1800	1600	1500	1500	1500	1500	1500	1500
		Hotel & Guet House	2000	2000	2000	1800	1700	1700	1700	1700	1700	1700

**Annex 11**  
**Provincewise Number of Villages electrified by licensees**

<b>Code No.</b>	<b>Name of Province</b>	<b>Total Number of Villages</b>	<b>Number of Villages Electrified</b>	<b>Percent of villages electrified</b>
1	Banteay Meanchey	633	248	39.18
2	Battambang	749	402	53.67
3	Kampong Cham	1768	960	54.30
4	Kampong Chhnang	557	183	32.85
5	Kampong Speu	1358	699	51.47
6	Kampong Thom	737	203	27.54
7	Kampot	482	335	69.50
8	Kandal	1087	894	82.24
9	Kohkong	118	29	24.58
10	Kratie	250	77	30.80
11	Mondolkiri	90	12	13.33

## Electricity Authority of Cambodia

12	Phnom Penh	692	692	100
13	Preah Vihear	208	25	12.02
14	Prey Veng	1137	455	40.02
15	Pursat	501	130	25.95
16	Ratanakiri	240	19	7.92
17	Siem Reap	923	362	39.22
18	Preah Sihanouk	108	82	75.93
19	Steung Treng	128	27	21.09
20	Svay Rieng	690	126	18.26
21	Takeo	1116	555	49.73
22	Oddor Meanchey	231	52	22.51
23	Kep	16	11	68.75
24	Pailin	79	51	64.56
	<b>Total</b>	<b>13898</b>	<b>6629</b>	<b>47.70</b>

