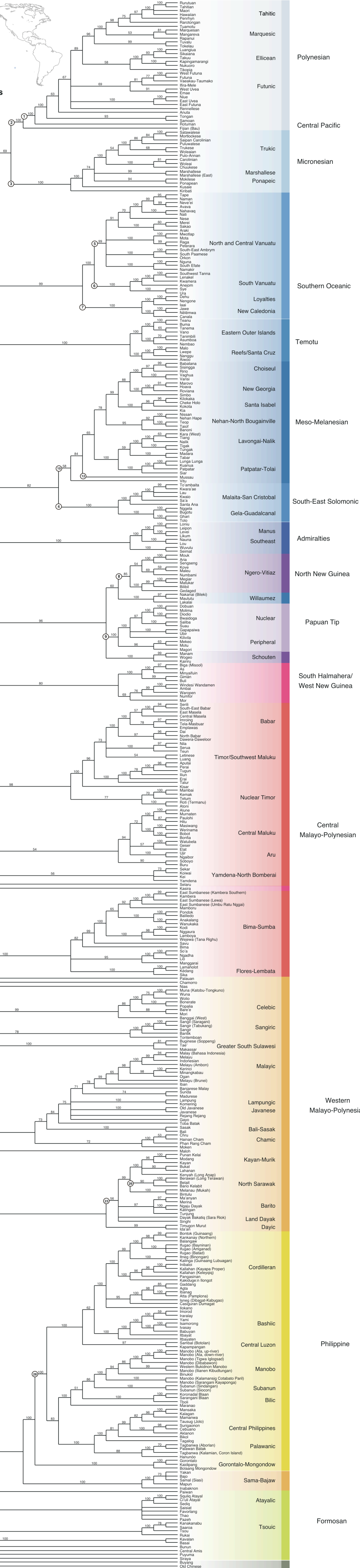


Austronesian Subgroups/Linkages

- ① Polynesian
- ② Central Pacific
- ③ Nuclear Micronesian
- ④ South-East Solomonc
- ⑤ North and central Vanuatu
- ⑥ South Vanuatu
- ⑦ New Caledonia/Loyalties
- ⑧ North New Guinea
- ⑨ Papuan Tip
- ⑩ Meso-Melanesian
- ⑪ Admiralties
- ⑫ St. Matthias
- ⑬ Western Oceanic
- ⑭ Oceanic
- ⑮ South Halmahera/West New Guinea
- ⑯ Eastern Malayo-Polynesian
- ⑰ Central Malayo-Polynesian
- ⑱ Central-Eastern Malayo-Polynesian
- ⑲ Central Maluku
- ⑳ Yamdena-North Bomberai
- ㉑ Celebic
- ㉒ Greater South Sulawesi
- ㉓ Greater Barito
- ㉔ Malayo-Chamic
- ㉕ Barrier Islands/North Sumatra
- ㉖ North Sarawak
- ㉗ North Borneo
- ㉘ Philippines
- ㉙ Greater Central Philippines
- ㉚ Western Malayo-Polynesian
- ㉛ Malayo-Polynesian
- ㉜ Western Plains
- ㉝ East Formosan
- ㉞ Malayo-Sumbawan



- ㉞ Malayo-Sumbawan
- ㉝ East Formosan
- ㉜ Western Plains
- ㉛ Malayo-Polynesian
- ㉚ Western Malayo-Polynesian
- ㉙ Greater Central Philippines
- ㉘ Philippines
- ㉗ North Borneo
- ㉖ North Sarawak
- ㉕ Barrier Islands/North Sumatra
- ㉔ Malayo-Chamic
- ㉓ Greater Barito
- ㉒ Greater South Sulawesi
- ㉑ Celebic
- ⑳ Yamdena-North Bomberai
- ⑲ Central Maluku
- ⑱ Central-Eastern Malayo-Polynesian
- ⑰ Central Malayo-Polynesian
- ⑯ Eastern Malayo-Polynesian
- ⑮ South Halmahera/West New Guinea
- ⑭ Oceanic
- ⑬ Western Oceanic
- ⑫ St. Matthias
- ⑪ Admiralties
- ⑩ Meso-Melanesian
- ⑨ Papuan Tip
- ⑧ North New Guinea
- ⑦ New Caledonia/Loyalties
- ⑥ South Vanuatu
- ⑤ North and central Vanuatu
- ④ South-East Solomonc
- ③ Nuclear Micronesian
- ② Central Pacific
- ① Polynesian