

MICHOACAN

---RED FEDERAL LIBRE---

1	ACAMBARO - ZINAPECUARIO	MEX-120
2	CARAPAN - PLAYA AZUL	MEX-037
3	ENT. PATTI - SAHUAYO	MEX-110
4	ENT. PLAYA AZUL - MANZANILLO	MEX-200
5	HUAJUMBARO - SAN JOSE	MEX-051-120
6	IRAPUATO - ZAPOTLANEJO	MEX-090
7	JIQUILPAN - COLIMA	MEX-110
8	JIQUILPAN - GUADALAJARA	MEX-015
9	LA NORIA - ACAMBARO	MEX-120
10	LA ORILLA - LAS TRUCHAS	MEX
11	LA PIEDAD - CARAPAN	MEX-037
12	MARAVATIO - ACAMBARO	MEX-061
13	MORELIA - JIQUILPAN	MEX-015
14	MORELIA - PATZCUARO	MEX-126
15	MORELIA - SALAMANCA	MEX-043
16	PATZCUARO - URUAPAN	MEX-126
17	QUIROGA - TEPALCATEPEC	MEX-120
18	RINCONADA - LA PIEDAD	MEX
19	T. C. (ZIHUATANEJO - LA MIRA) - LAZARO CARDENAS	MEX
20	TOLUCA - CD. ALTAMIRANO	MEX-134
21	TOLUCA - MORELIA	MEX-015
22	ZAMORA - VISTA HERMOSA	MEX
23	ZIHUATANEJO - LA MIRA	MEX-200
24	ZITACUARO - CD. ALTAMIRANO	MEX-051

---RED FEDERAL DE CUOTA---

25	ATLACOMULCO - ZAPOTLANEJO (CUOTA)	MEX-015D
26	ENT. PATZCUARO - URUAPAN (CUOTA)	MEX-126D
27	ENT. URUAPAN - LAZARO CARDENAS (CUOTA)	MEX-037D
28	MORELIA - SALAMANCA (CUOTA)	MEX-043D

---RED ESTATAL LIBRE---

29	APATZINGAN - AGUILILLA	MICH
30	COMANJA - HUANIQUEO	MICH-024
31	COTIJA - EMILIANO ZAPATA	MICH
32	CUITZEO - ZINAPARO	MICH-027
33	EL CORREO - LAGUNILLAS	MICH
34	EL TEMASCAL - EL LIMON	MICH
35	GABRIEL ZAMORA - DR. MIGUEL SILVA	MICH
36	JACONA - BUENAVISTA TOMATLAN	MICH-016
37	LA PAZ - TEPETONGO	MICH
38	LIBRAMIENTO DE URUAPAN	MICH
39	PATZCUARO - CHUPICUARO	MICH
40	RAMAL A COAHUAYANA	MICH-069
41	RAMAL A INFIERNILLO	MICH-010
42	SAN FELIPE ALZATI - ANGANGUEO	MICH-044
43	SAN JUAN TUMBIO - CHERAN	MICH
44	T. C. (CARAPAN - PLAYA AZUL) - PERIBAN DE RAMOS	MICH
45	T. C. (TOLUCA - MORELIA) - MARAVATIO	MICH-122
46	T. C. (V. VICTORIA - EL ORO DE HIDALGO) - ANGANGUEO	EM-003-MICH
47	TEPALCATEPEC - AQUILA	MICH
48	TIRIPETIO - ERENDIRA	MICH
49	TOCUMBO - COTIJA	MICH-042
50	UCAREO - SAN PEDRO JACUARO	MICH
51	URUAPAN - EL COPETIRO	MICH
52	ZACAPU - VILLACHUATO	MICH-039
53	ZICUIRAN - CHURUMUCO	MICH

---RED ESTATAL DE CUOTA---

54	LIBRAMIENTO DE LA PIEDAD (CUOTA)	MICH-D
----	----------------------------------	--------

---CARRETERAS INTEGRADAS POR TRAMOS FEDERALES Y ESTATALES---

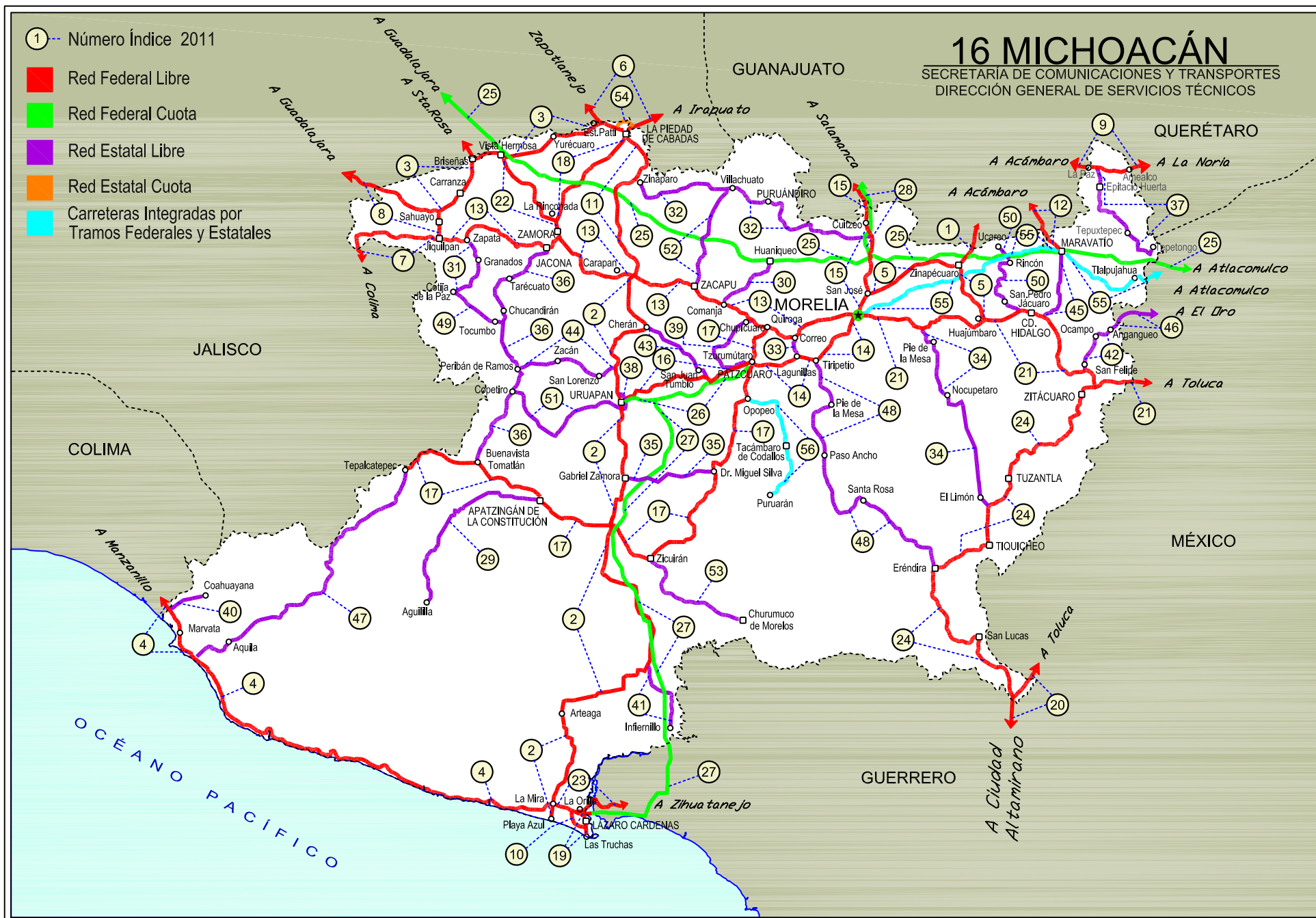
55	ATLACOMULCO - MORELIA	EM-005-MEX-126
56	OPOPEO - PURUARAN	MEX-041-MICH

① Número Índice 2011

- Red Federal Libre
- Red Federal Cuota
- Red Estatal Libre
- Red Estatal Cuota
- Carreteras Integradas por Tramos Federales y Estatales

16 MICHOACÁN

SECRETARÍA DE COMUNICACIONES Y TRANSPORTES
DIRECCIÓN GENERAL DE SERVICIOS TÉCNICOS



MICHOACAN

1 CARR: ACAMBARO - ZINAPECUARO

CLAVE: 00417

RUTA: MEX-120

AÑO: 2010

LUGAR	ESTACION				CLASIFICACION VEHICULAR EN PORCIENTO								COORDENADAS						
	KM	TE	SC	TDPA	A	B	C2	C3	T3S2	T3S3	T3S2R4	OTROS	A	B	C	K'	D	LATITUD	LONGITUD
ACAMBARO	0.00	3	0	5093	79.8	6.6	6.9	3.6	1.1	0.9	0.5	0.6	79.8	6.6	13.6	0.071	0.500	20.002129	-100.730092
LIM. EDOS. TERM. GTO. PPIA. MICH.	12.80																		
ZINAPECUARO	25.00	1	0	3936	83.6	4.7	3.6	1.2	3.6	1.6	1.3	0.4	83.6	4.7	11.7	0.080	0.517	19.875339	-100.816745

2 CARR: CARAPAN - PLAYA AZUL

CLAVE: 16126

RUTA: MEX-037

AÑO: 2010

LUGAR	ESTACION				CLASIFICACION VEHICULAR EN PORCIENTO								COORDENADAS						
	KM	TE	SC	TDPA	A	B	C2	C3	T3S2	T3S3	T3S2R4	OTROS	A	B	C	K'	D	LATITUD	LONGITUD
T. C. MORELIA - JIQUILPAN	0.00	3	0	4250	80.2	4.1	9.0	2.9	1.9	0.9	0.6	0.4	80.2	4.1	15.7	0.066	0.518	19.851000	-102.031563
URUAPAN	72.03	1	0	11738	81.0	3.9	8.8	2.7	1.8	0.8	0.6	0.4	81.0	3.9	15.1	0.097	0.501	19.458340	-102.075939
URUAPAN	72.03	3	0	7509	81.0	3.8	8.7	2.9	1.8	0.8	0.6	0.4	81.0	3.8	15.2	0.073	0.511	19.363620	-102.059046
GABRIEL ZAMORA	113.68	1	0	6026	81.2	3.8	8.7	2.8	1.7	0.8	0.6	0.4	81.2	3.8	15.0	0.064	0.524	19.174804	-102.062901
X. C. QUIROGA - TEPALCATEPEC	137.78	1	0	9106	80.7	4.1	8.6	2.9	1.9	0.8	0.6	0.4	80.7	4.1	15.2	0.058	0.503	18.993843	-102.103862
X. C. QUIROGA - TEPALCATEPEC	137.78	3	0	4982	79.9	4.1	9.5	2.9	1.8	0.8	0.6	0.4	79.9	4.1	16.0	0.066	0.500	18.989079	-102.104852
SAN PEDRO BARAJAS	171.49	1	0	3591	80.8	4.0	8.8	2.7	1.9	0.8	0.6	0.4	80.8	4.0	15.2	0.060	0.501	18.785837	-102.049757
SAN PEDRO BARAJAS	171.49	3	0	3210	80.2	3.9	9.3	2.9	1.9	0.8	0.6	0.4	80.2	3.9	15.9	0.065	0.502	18.785604	-102.048194
T. IZQ. INFIERNILLO	212.61	1	0	2506	80.3	4.3	8.7	2.9	2.0	0.8	0.6	0.4	80.3	4.3	15.4	0.068	0.510	18.524156	-101.980265
T. IZQ. INFIERNILLO	212.61	3	0	1572	80.3	4.1	8.7	3.2	1.9	0.8	0.6	0.4	80.3	4.1	15.6	0.086	0.515	18.519858	-101.983234
ARTEAGA	274.50	1	0	2008	81.2	3.8	8.5	3.0	1.7	0.8	0.6	0.4	81.2	3.8	15.0	0.083	0.515	18.369539	-102.291990
T. IZQ. ZIHUATANEJO	333.80	1	0	3282	81.2	3.9	8.5	2.8	1.8	0.8	0.6	0.4	81.2	3.9	14.9	0.069	0.503	18.044110	-102.328731
T. IZQ. ZIHUATANEJO	333.80	3	0	5585	80.5	4.0	8.8	3.0	1.9	0.8	0.6	0.4	80.5	4.0	15.5	0.064	0.516	18.031938	-102.328890
PLAYA AZUL	340.70	1	0	3364	81.4	4.0	8.3	2.8	1.7	0.8	0.6	0.4	81.4	4.0	14.6	0.072	0.503	17.987956	-102.353584

3 CARR: ENT. PATTI - SAHUAYO

CLAVE: 16181

RUTA: MEX-110

AÑO: 2010

LUGAR	ESTACION				CLASIFICACION VEHICULAR EN PORCIENTO								COORDENADAS						
	KM	TE	SC	TDPA	A	B	C2	C3	T3S2	T3S3	T3S2R4	OTROS	A	B	C	K'	D	LATITUD	LONGITUD
T. C. IRAPUATO - GUADALAJARA	0.00	3	0	9825	72.2	5.2	5.4	5.1	4.0	4.2	3.5	0.4	72.2	5.2	22.6	0.078	0.503	20.371553	-102.117711
T. IZQ. ZAMORA	44.26	1	0	7282	74.8	4.1	4.7	4.4	3.7	3.9	3.8	0.6	74.8	4.1	21.1	0.070	0.506	20.266151	-102.468744
VISTA HERMOSA	44.98	3	0	11022	79.5	4.4	4.0	3.8	3.5	3.4	1.0	0.4	79.5	4.4	16.1	0.057	0.512	20.276468	-102.485066
BRISEÑAS	55.90	3	0	6425	78.8	4.0	3.8	3.2	4.5	4.0	1.4	0.3	78.8	4.0	17.2	0.064	0.511	20.264821	-102.576049
CUMUATILLO	71.87	3	0	5894	73.4	6.2	5.1	4.9	4.5	4.0	1.6	0.3	73.4	6.2	20.4	0.068	0.505	20.146494	-102.627175
T. C. JIQUILPAN - GUADALAJARA	88.00	1	0	10485	77.9	5.9	3.8	3.0	3.3	3.3	2.5	0.3	77.9	5.9	16.2	0.068	0.502	20.081491	-102.713521

MICHOACAN

4 CARR: ENT. PLAYA AZUL - MANZANILLO

CLAVE: 00495

RUTA: MEX-200

AÑO: 2010

LUGAR	ESTACION				CLASIFICACION VEHICULAR EN PORCIENTO								COORDENADAS						
	KM	TE	SC	TDPA	A	B	C2	C3	T3S2	T3S3	T3S2R4	OTROS	A	B	C	K'	D	LATITUD	LONGITUD
T. C. CARAPAN - PLAYA AZUL	0.00	3	0	3561	76.1	2.9	5.9	3.3	3.5	5.8	0.2	2.3	76.1	2.9	21.0	0.062	0.507	18.020137	-102.341453
CALETA DE CAMPOS	50.24	1	0	1337	74.6	3.1	6.5	3.5	3.6	5.9	0.2	2.6	74.6	3.1	22.3	0.073	0.501	18.077532	-102.745948
TIZUAPAN	106.60	1	0	624	75.5	2.7	6.3	3.6	3.3	5.9	0.2	2.5	75.5	2.7	21.8	0.080	0.504	18.226662	-103.126389
MARUATA	149.75	1	0	779	74.9	2.8	6.4	3.6	3.5	6.1	0.2	2.5	74.9	2.8	22.3	0.063	0.502	18.274805	-103.347481
MARUATA	149.75	3	0	886	76.0	2.9	6.1	3.5	3.4	5.6	0.2	2.3	76.0	2.9	21.1	0.077	0.508	18.279211	-103.353971
T. DER. AQUILA	190.10	3	0	2148	74.5	2.9	6.5	3.5	3.6	6.3	0.2	2.5	74.5	2.9	22.6	0.072	0.503	18.566485	-103.623225
LIM. EDOS. TERM. MICH. PPIA. COL.	229.60																		
CERRO DE ORTEGA	233.20	1	0	5301	74.7	3.0	6.4	3.5	3.6	6.1	0.2	2.5	74.7	3.0	22.3	0.063	0.525	18.745627	-103.724139
EL BALCON	242.95	1	0	5381	74.9	2.8	6.6	3.3	3.5	6.1	0.2	2.6	74.9	2.8	22.3	0.061	0.505	18.783340	-103.771602
EL BALCON	242.95	3	0	5982	74.0	3.0	6.9	3.4	3.8	6.2	0.2	2.5	74.0	3.0	23.0	0.056	0.505	18.784781	-103.776020
COFRADIA DE MORELOS	252.45	1	0	7311	75.7	2.7	6.3	3.5	3.5	5.6	0.2	2.5	75.7	2.7	21.6	0.091	0.514	18.861852	-103.836116
COFRADIA DE MORELOS	252.45	3	0	8224	75.3	2.8	6.0	3.6	3.5	6.1	0.2	2.5	75.3	2.8	21.9	0.072	0.526	18.868737	-103.840602
T. C. COLIMA - ENT. TECOMAN	263.75	1	1	4620	68.1	4.5	6.6	5.0	7.8	7.2	0.0	0.8	68.1	4.5	27.4	0.079	0.513	18.899311	-103.860425
T. C. COLIMA - ENT. TECOMAN	263.75	1	2	4385	66.6	4.6	7.0	5.1	8.1	7.8	0.0	0.8	66.6	4.6	28.8	0.076	0.513	18.899311	-103.860425
T. DER. RINCON DE LOPEZ	269.25	1	0	5621	66.1	4.6	6.8	5.4	8.7	7.5	0.0	0.9	66.1	4.6	29.3	0.059	0.502	18.951117	-103.946321
ARMERIA	272.50	1	0	5877	66.5	4.8	6.7	5.0	8.5	7.7	0.0	0.8	66.5	4.8	28.7	0.060	0.503	18.937885	-103.951097
T. IZQ. CUYUTLAN	278.17	1	0	5150	66.3	4.7	7.0	5.3	8.6	7.2	0.0	0.9	66.3	4.7	29.0	0.067	0.514	18.935580	-104.018672
SANTA RITA	292.50	1	0	5489	68.3	4.4	6.7	5.0	7.7	7.1	0.0	0.8	68.3	4.4	27.3	0.084	0.506	19.009545	-104.082755
SANTA RITA	292.50	3	0	5668	66.2	4.9	6.9	5.4	8.6	7.2	0.0	0.8	66.2	4.9	28.9	0.070	0.509	19.013241	-104.102839
LAS NUEVAS JUNTAS	310.65	1	0	6529	66.2	4.8	7.0	5.3	8.3	7.6	0.0	0.8	66.2	4.8	29.0	0.061	0.509	19.042918	-104.218618
T. DER. LIBRAMIENTO DE MANZANILLO (LIBRE)	312.65	1	0	6598	66.0	4.7	7.2	5.5	8.2	7.6	0.0	0.8	66.0	4.7	29.3	0.073	0.511	19.055610	-104.236794
T. DER. LIBRAMIENTO DE MANZANILLO (LIBRE)	312.65	3	0	4765	66.1	4.9	7.0	5.4	8.6	7.2	0.0	0.8	66.1	4.9	29.0	0.066	0.509	19.055643	-104.243444
MANZANILLO	321.12	1	0	6528	66.4	4.8	6.8	5.3	8.2	7.7	0.0	0.8	66.4	4.8	28.8	0.068	0.513	19.049055	-104.296957

5 CARR: HUAJUMBARO - SAN JOSE

CLAVE: 16555

RUTA: MEX-051-120

AÑO: 2010

LUGAR	ESTACION				CLASIFICACION VEHICULAR EN PORCIENTO								COORDENADAS						
	KM	TE	SC	TDPA	A	B	C2	C3	T3S2	T3S3	T3S2R4	OTROS	A	B	C	K'	D	LATITUD	LONGITUD
T. C. TOLUCA - MORELIA	0.00	3	0	3969	86.7	5.2	4.5	2.3	0.6	0.6	0.1	0.0	86.7	5.2	8.1	0.078	0.503	19.675608	-100.738132
X. C. ATLACOMULCO - MORELIA	26.59	3	0	3616	86.7	5.2	4.5	2.3	0.6	0.6	0.1	0.0	86.7	5.2	8.1	0.080	0.511	19.822051	-100.824736
T. DER. LIBRAMIENTO DE ZINAPCUARO	33.83	3	0	5318	86.7	5.3	4.4	2.3	0.6	0.6	0.1	0.0	86.7	5.3	8.0	0.066	0.502	19.860229	-100.846633
T. C. MORELIA - SALAMANCA	71.14	1	0	8552	86.5	5.2	4.7	2.3	0.6	0.6	0.1	0.0	86.5	5.2	8.3	0.077	0.510	19.770502	-101.150340

MICHOACAN

6 CARR: IRAPUATO - ZAPOTLANEJO

CLAVE: 00114

RUTA: MEX-090

AÑO: 2010

LUGAR	ESTACION				CLASIFICACION VEHICULAR EN PORCIENTO								COORDENADAS						
	KM	TE	SC	TDPA	A	B	C2	C3	T3S2	T3S3	T3S2R4	OTROS	A	B	C	K'	D	LATITUD	LONGITUD
IRAPUATO	0.00																		
T. IZQ. QUERETARO - IRAPUATO (CUOTA)	2.78	1	1	14457	64.1	6.2	7.6	4.6	10.6	3.2	2.8	0.9	64.1	6.2	29.7	0.077	0.504	20.653305	-101.370577
T. IZQ. QUERETARO - IRAPUATO (CUOTA)	2.78	1	2	14201	63.2	6.4	7.9	4.7	10.9	3.3	2.7	0.9	63.2	6.4	30.4	0.080	0.504	20.653305	-101.370577
T. IZQ. QUERETARO - IRAPUATO (CUOTA)	2.78	3	1	11317	63.0	6.0	8.0	5.0	11.1	2.9	3.1	0.9	63.0	6.0	31.0	0.087	0.501	20.646803	-101.376175
T. IZQ. QUERETARO - IRAPUATO (CUOTA)	2.78	3	2	11347	61.3	6.6	8.7	5.2	11.5	2.7	2.9	1.1	61.3	6.6	32.1	0.086	0.501	20.646803	-101.376175
T. DER. CUERAMARO	15.00	3	1	13053	62.4	6.8	7.3	5.1	11.5	2.6	3.0	1.3	62.4	6.8	30.8	0.065	0.501	20.558081	-101.449950
T. DER. CUERAMARO	15.00	3	2	12979	62.4	6.7	6.5	5.5	12.1	2.7	3.4	0.7	62.4	6.7	30.9	0.067	0.501	20.558087	-101.449946
ABASOLO	30.00	1	1	9213	63.6	6.4	7.9	4.5	10.2	3.0	3.3	1.1	63.6	6.4	30.0	0.079	0.505	20.471961	-101.502989
ABASOLO	30.00	1	2	9017	62.5	6.9	7.2	5.9	10.3	2.8	3.4	1.0	62.5	6.9	30.6	0.075	0.505	20.471957	-101.502993
ABASOLO	30.00	3	1	8685	63.2	6.3	7.4	5.3	10.1	3.1	3.4	1.2	63.2	6.3	30.5	0.084	0.514	20.450678	-101.552200
ABASOLO	30.00	3	2	8226	64.3	6.2	7.3	5.3	9.8	3.1	3.0	1.0	64.3	6.2	29.5	0.081	0.514	20.450678	-101.552200
PENJAMO	50.65	1	1	8999	63.7	6.9	7.1	5.6	9.3	2.9	3.4	1.1	63.7	6.9	29.4	0.069	0.504	20.436820	-101.692273
PENJAMO	50.65	1	2	8869	64.6	6.8	7.2	5.5	9.1	2.7	3.0	1.1	64.6	6.8	28.6	0.074	0.504	20.436823	-101.692264
PENJAMO	50.65	3	0	19057	62.9	7.4	7.5	5.4	9.7	2.9	3.2	1.0	62.9	7.4	29.7	0.072	0.507	20.412869	-101.732980
T. DER. MANUEL DOBLADO	83.87	1	0	15543	63.6	6.8	7.4	4.9	9.8	3.0	3.4	1.1	63.6	6.8	29.6	0.062	0.508	20.363183	-101.989053
LIM. EDOS. TERM. GTO. PPIA. MICH.	85.01																		
LA PIEDAD	87.00	3	0	15410	63.3	7.0	8.8	5.2	8.3	3.5	3.3	0.6	63.3	7.0	29.7	0.073	0.502	20.356147	-102.060403
T. IZQ. YURECUARO	100.00	3	0	5571	67.5	6.7	7.1	5.2	6.3	3.6	3.0	0.6	67.5	6.7	25.8	0.065	0.507	20.376306	-102.115143
LIM. EDOS. TERM. MICH. PPIA. JAL.	102.10																		
DEGOLLADO	105.40	1	0	6566	76.0	6.9	6.3	3.5	3.8	1.3	0.3	1.9	76.0	6.9	17.1	0.076	0.517	20.425677	-102.128181
AYOTLAN	134.00	1	0	5608	79.0	5.4	6.2	3.3	3.1	1.2	0.2	1.6	79.0	5.4	15.6	0.093	0.515	20.520728	-102.326488
ATOTONILCO EL ALTO	157.00	1	0	6167	79.7	5.1	6.0	3.1	3.2	1.2	0.2	1.5	79.7	5.1	15.2	0.076	0.515	20.556044	-102.493738
ATOTONILCO EL ALTO	157.00	3	0	9099	84.8	4.5	4.7	1.9	1.6	0.6	0.4	1.5	84.8	4.5	10.7	0.086	0.502	20.545735	-102.518874
X. C. SAN MIGUEL EL ALTO - LA BARCA	158.60	3	0	9347	80.4	3.6	5.6	3.3	3.4	1.5	0.4	1.8	80.4	3.6	16.0	0.087	0.502	20.539765	-102.537930
T. IZQ. OCOTLAN	188.00	1	0	8123	81.1	4.5	5.6	2.7	3.2	1.3	0.3	1.3	81.1	4.5	14.4	0.083	0.503	20.546847	-102.780724
T. DER. LIBRAMIENTO ZAPOTLANEJO	215.80	1	0	12498	82.9	6.1	4.9	1.7	1.4	0.6	0.2	2.2	82.9	6.1	11.0	0.072	0.505	20.621887	-103.043306
T. DER. LIBRAMIENTO ZAPOTLANEJO	215.80	3	1	6304	81.5	6.9	4.6	2.8	1.4	0.8	0.5	1.5	81.5	6.9	11.6	0.084	0.511	20.622360	-103.055947
T. DER. LIBRAMIENTO ZAPOTLANEJO	215.80	3	2	6593	82.5	5.9	4.2	2.9	0.9	0.6	0.6	2.4	82.5	5.9	11.6	0.077	0.511	20.622360	-103.055947
ZAPOTLANEJO	217.60																		

7 CARR: JIQUILPAN - COLIMA

CLAVE: 00156

RUTA: MEX-110

AÑO: 2010

LUGAR	ESTACION				CLASIFICACION VEHICULAR EN PORCIENTO								COORDENADAS						
	KM	TE	SC	TDPA	A	B	C2	C3	T3S2	T3S3	T3S2R4	OTROS	A	B	C	K'	D	LATITUD	LONGITUD
JIQUILPAN	0.00	3	0	5100	88.0	4.7	3.2	1.2	1.3	0.5	0.6	0.5	88.0	4.7	7.3	0.077	0.510	19.995716	-102.745099

MICHOACAN

9 CARR: LA NORIA - ACAMBARO

CLAVE: 00131

RUTA: MEX-120

AÑO: 2010

LUGAR	ESTACION				CLASIFICACION VEHICULAR EN PORCIENTO								COORDENADAS						
	KM	TE	SC	TDPA	A	B	C2	C3	T3S2	T3S3	T3S2R4	OTROS	A	B	C	K'	D	LATITUD	LONGITUD
LA NORIA	0.00	3	0	4876	83.6	3.7	4.6	2.5	2.6	1.1	1.1	0.8	83.6	3.7	12.7	0.079	0.504	20.439668	-100.073531
AMEALCO	34.66	1	0	3244	79.4	6.8	4.5	2.3	3.5	2.1	0.8	0.6	79.4	6.8	13.8	0.096	0.509	20.203705	-100.150800
AMEALCO	34.66	3	0	3205	81.6	7.1	4.3	2.0	2.6	1.8	0.4	0.2	81.6	7.1	11.3	0.124	0.501	20.186698	-100.157486
LIM. EDOS. TERM. QRO. PPIA. MICH.	39.15																		
LIM. EDOS. TERM. MICH. PPIA. GTO.	55.90																		
CORONEO	59.35	3	0	1729	81.7	5.3	5.2	2.7	2.3	1.7	0.5	0.6	81.7	5.3	13.0	0.072	0.500	20.195419	-100.379029
JERECUARO	79.70	3	0	4356	82.3	5.4	5.1	2.3	2.3	1.6	0.5	0.5	82.3	5.4	12.3	0.066	0.506	20.146392	-100.516985
ACAMBARO	111.12	1	0	6477	82.7	5.2	4.5	2.6	2.6	1.8	0.2	0.4	82.7	5.2	12.1	0.063	0.501	20.046496	-100.706817

10 CARR: LA ORILLA - LAS TRUCHAS

CLAVE: 16557

RUTA: MEX

AÑO: 2010

LUGAR	ESTACION				CLASIFICACION VEHICULAR EN PORCIENTO								COORDENADAS						
	KM	TE	SC	TDPA	A	B	C2	C3	T3S2	T3S3	T3S2R4	OTROS	A	B	C	K'	D	LATITUD	LONGITUD
T. C. ZIHUATANEJO - LA MIRA	0.00	3	0	12456	86.5	2.1	4.2	2.6	1.6	1.6	0.8	0.6	86.5	2.1	11.4	0.178	0.526	17.993346	-102.232180
LAZARO CARDENAS	5.50	1	0	5784	85.8	2.1	3.7	2.6	1.8	2.0	1.2	0.8	85.8	2.1	12.1	0.114	0.511	17.963308	-102.225698
LAS TRUCHAS	9.00	1	0	7487	87.9	2.4	2.0	2.2	1.7	1.8	1.3	0.7	87.9	2.4	9.7	0.067	0.535	17.950085	-102.189949

11 CARR: LA PIEDAD - CARAPAN

CLAVE: 16476

RUTA: MEX-037

AÑO: 2010

LUGAR	ESTACION				CLASIFICACION VEHICULAR EN PORCIENTO								COORDENADAS						
	KM	TE	SC	TDPA	A	B	C2	C3	T3S2	T3S3	T3S2R4	OTROS	A	B	C	K'	D	LATITUD	LONGITUD
LA PIEDAD	0.00	3	0	10260	81.0	3.1	6.5	4.1	2.5	1.0	1.5	0.3	81.0	3.1	15.9	0.076	0.506	20.307873	-102.002922
T. IZQ. PURUANDIRO	24.45	3	0	2558	81.9	3.0	6.0	3.9	2.6	0.9	1.4	0.3	81.9	3.0	15.1	0.085	0.515	20.171201	-102.004830
PUREPERO	64.00	1	0	3976	80.8	3.1	6.3	4.4	2.6	1.0	1.5	0.3	80.8	3.1	16.1	0.074	0.501	19.922583	-102.031363
T. C. MORELIA - JIQUILPAN	72.61	1	0	4561	81.2	3.1	6.1	4.3	2.5	0.9	1.6	0.3	81.2	3.1	15.7	0.059	0.502	19.855032	-101.999387

12 CARR: MARAVATIO - ACAMBARO

CLAVE: 00418

RUTA: MEX-061

AÑO: 2010

LUGAR	ESTACION				CLASIFICACION VEHICULAR EN PORCIENTO								COORDENADAS						
	KM	TE	SC	TDPA	A	B	C2	C3	T3S2	T3S3	T3S2R4	OTROS	A	B	C	K'	D	LATITUD	LONGITUD
MARAVATIO	0.00	3	0	7993	82.3	3.4	6.2	4.7	1.3	1.1	0.3	0.7	82.3	3.4	14.3	0.081	0.505	19.911440	-100.460623
LIM. EDOS. TERM. MICH. PPIA. GTO.	9.00																		
TARANDACUAO	13.00	3	0	4749	84.2	4.7	5.5	1.2	2.9	0.6	0.1	0.8	84.2	4.7	11.1	0.064	0.503	20.015343	-100.541585
ACAMBARO	39.00	1	0	4620	85.0	4.2	4.9	0.8	3.4	1.0	0.1	0.6	85.0	4.2	10.8	0.087	0.506	20.036375	-100.695897

MICHOACAN

13 CARR: MORELIA - JIQUILPAN

CLAVE: 16029

RUTA: MEX-015

AÑO: 2010

LUGAR	ESTACION				CLASIFICACION VEHICULAR EN PORCIENTO								COORDENADAS						
	KM	TE	SC	TDPA	A	B	C2	C3	T3S2	T3S3	T3S2R4	OTROS	A	B	C	K'	D	LATITUD	LONGITUD
MORELIA	0.00																		
T. IZO. PERIFERICO MORELIA	3.10	3	1	10110	85.1	4.1	4.9	3.2	1.5	1.1	0.0	0.1	85.1	4.1	10.8	0.072	0.502	19.697581	-101.256163
T. IZO. PERIFERICO MORELIA	3.10	3	2	10016	85.5	4.1	4.6	3.2	1.4	1.1	0.0	0.1	85.5	4.1	10.4	0.075	0.502	19.697581	-101.256163
T. IZO. LAGUNILLAS	24.90	1	0	5970	86.4	3.9	4.3	2.9	1.3	1.1	0.0	0.1	86.4	3.9	9.7	0.064	0.505	19.632730	-101.416138
T. IZO. LAGUNILLAS	24.90	3	0	5809	85.9	4.0	4.4	3.2	1.3	1.1	0.0	0.1	85.9	4.0	10.1	0.067	0.504	19.632835	-101.417809
T. IZO. LIBRAMIENTO DE QUIROGA	40.95	3	0	6516	85.0	4.2	5.0	3.1	1.5	1.1	0.0	0.1	85.0	4.2	10.8	0.067	0.503	19.668827	-101.537365
T. DER. ZACAPU Y VILLACHUATO	77.10	1	0	9155	85.4	4.3	4.6	3.1	1.4	1.1	0.0	0.1	85.4	4.3	10.3	0.067	0.503	19.793699	-101.774688
T. DER. LA PIEDAD	105.02	1	0	5519	85.9	4.0	4.4	3.1	1.3	1.2	0.0	0.1	85.9	4.0	10.1	0.095	0.502	19.846169	-101.996973
T. DER. LA PIEDAD	105.02	3	0	5886	85.8	4.1	4.4	3.0	1.5	1.1	0.0	0.1	85.8	4.1	10.1	0.077	0.502	19.857098	-102.027738
T. IZO. TANGANCICUARO	131.20	1	0	10734	85.4	4.0	4.9	3.2	1.3	1.1	0.0	0.1	85.4	4.0	10.6	0.062	0.527	19.876059	-102.198266
T. IZO. TANGANCICUARO	131.20	3	0	12989	85.4	4.1	4.7	3.1	1.5	1.1	0.0	0.1	85.4	4.1	10.5	0.077	0.504	19.902072	-102.203217
ZAMORA	144.44	1	1	8898	85.8	4.0	4.5	3.1	1.4	1.1	0.0	0.1	85.8	4.0	10.2	0.071	0.505	19.967150	-102.263821
ZAMORA	144.44	1	2	9081	85.7	3.9	4.7	3.1	1.4	1.1	0.0	0.1	85.7	3.9	10.4	0.081	0.505	19.967150	-102.263821
JACONA	148.60	3	0	8520	85.8	4.0	4.7	3.0	1.3	1.1	0.0	0.1	85.8	4.0	10.2	0.078	0.511	19.960137	-102.340105
TANGAMANDAPIO	163.00	3	0	5320	85.6	4.0	4.7	3.1	1.4	1.1	0.0	0.1	85.6	4.0	10.4	0.071	0.503	19.965922	-102.441266
T. DER. VILLA MAR	186.20	1	0	3811	85.6	3.9	4.7	3.1	1.5	1.1	0.0	0.1	85.6	3.9	10.5	0.066	0.501	20.022204	-102.590952
T. DER. LIBRAMIENTO DE JIQUILPAN	200.00	1	0	7709	85.8	4.1	4.7	3.0	1.3	1.0	0.0	0.1	85.8	4.1	10.1	0.070	0.500	19.985316	-102.694921
JIQUILPAN	203.40																		

14 CARR: MORELIA - PATZCUARO

CLAVE: 16009

RUTA: MEX-126

AÑO: 2010

LUGAR	ESTACION				CLASIFICACION VEHICULAR EN PORCIENTO								COORDENADAS						
	KM	TE	SC	TDPA	A	B	C2	C3	T3S2	T3S3	T3S2R4	OTROS	A	B	C	K'	D	LATITUD	LONGITUD
T. C. MORELIA - JIQUILPAN	0.00																		
X. PERIFERICO MORELIA	3.00	3	1	14795	89.9	3.6	3.1	1.2	1.2	0.4	0.6	0.0	89.9	3.6	6.5	0.083	0.506	19.668836	-101.223347
X. PERIFERICO MORELIA	3.00	3	2	15129	89.6	3.8	3.2	1.2	1.2	0.4	0.6	0.0	89.6	3.8	6.6	0.073	0.506	19.668836	-101.223347
TIRIPETIO	25.00	3	1	8261	89.3	3.9	3.4	1.2	1.2	0.4	0.6	0.0	89.3	3.9	6.8	0.075	0.506	19.551834	-101.378586
TIRIPETIO	25.00	3	2	8453	90.1	3.7	3.0	1.1	1.1	0.4	0.6	0.0	90.1	3.7	6.2	0.079	0.506	19.551834	-101.378586
HUIRAMBA	37.00	1	1	8818	90.0	3.7	3.0	1.2	1.1	0.4	0.6	0.0	90.0	3.7	6.3	0.084	0.509	19.551294	-101.430930
HUIRAMBA	37.00	1	2	8524	90.0	3.7	3.1	1.1	1.1	0.4	0.6	0.0	90.0	3.7	6.3	0.088	0.509	19.551294	-101.430930
TZURUMUTARO	50.70	1	1	4586	89.3	4.1	3.1	1.2	1.3	0.4	0.6	0.0	89.3	4.1	6.6	0.072	0.504	19.543009	-101.583976
TZURUMUTARO	50.70	1	2	4662	89.5	3.9	3.2	1.2	1.2	0.4	0.6	0.0	89.5	3.9	6.6	0.070	0.504	19.543009	-101.583976

MICHOACAN

15 CARR: MORELIA - SALAMANCA

CLAVE: 00124

RUTA: MEX-043

AÑO: 2010

LUGAR	ESTACION				CLASIFICACION VEHICULAR EN PORCIENTO								COORDENADAS						
	KM	TE	SC	TDPA	A	B	C2	C3	T3S2	T3S3	T3S2R4	OTROS	A	B	C	K'	D	LATITUD	LONGITUD
MORELIA	0.00																		
X. PERIFERICO MORELIA	2.70	3	1	20641	80.2	5.3	7.0	3.1	2.3	0.9	1.0	0.2	80.2	5.3	14.5	0.078	0.502	19.742764	-101.175775
X. PERIFERICO MORELIA	2.70	3	2	20460	79.1	5.8	7.3	3.3	2.2	0.9	1.2	0.2	79.1	5.8	15.1	0.081	0.502	19.742764	-101.175775
T. DER. ZINAPECUARO	8.85	1	1	19548	80.9	5.1	6.8	3.0	2.1	0.8	1.1	0.2	80.9	5.1	14.0	0.072	0.503	19.765554	-101.161433
T. DER. ZINAPECUARO	8.85	1	2	19771	79.6	5.3	7.5	3.0	2.4	0.9	1.1	0.2	79.6	5.3	15.1	0.070	0.503	19.765554	-101.161433
T. DER. ZINAPECUARO	8.85	3	1	13514	80.2	5.2	7.3	3.0	2.2	0.9	1.0	0.2	80.2	5.2	14.6	0.066	0.502	19.772524	-101.156949
T. DER. ZINAPECUARO	8.85	3	2	13596	79.2	5.6	7.4	3.1	2.3	1.0	1.2	0.2	79.2	5.6	15.2	0.071	0.502	19.772524	-101.156949
CUITZEO	33.64	1	0	8408	76.7	7.5	6.0	1.9	3.9	1.8	1.5	0.7	76.7	7.5	15.8	0.073	0.506	19.956168	-101.135978
CUITZEO	33.64	3	0	8012	76.8	7.8	5.7	1.4	3.7	2.0	1.7	0.9	76.8	7.8	15.4	0.071	0.502	19.975017	-101.140393
LIM. EDOS. TERM. MICH. PPIA. GTO.	46.10																		
T. IZQ. MOROLEON	52.36	1	1	2839	79.0	6.6	5.3	3.8	2.6	1.6	0.4	0.7	79.0	6.6	14.4	0.088	0.510	20.094245	-101.158839
T. IZQ. MOROLEON	52.36	1	2	2958	80.0	6.8	5.4	2.6	1.8	1.7	1.1	0.6	80.0	6.8	13.2	0.089	0.510	20.094245	-101.158839
URIANGATO	54.22	3	1	3334	79.3	6.9	5.6	2.5	1.7	1.9	1.3	0.8	79.3	6.9	13.8	0.069	0.508	20.165459	-101.158806
URIANGATO	54.22	3	2	3438	78.6	6.4	5.7	2.6	2.8	2.4	0.5	1.0	78.6	6.4	15.0	0.067	0.508	20.165459	-101.158806
T. DER. YURIRIA	61.36	3	0	5963	76.1	6.8	5.3	2.3	4.3	2.7	1.9	0.6	76.1	6.8	17.1	0.097	0.526	20.205640	-101.165025
MAGDALENA DE ARACEO	77.10	1	0	5615	79.8	7.3	5.1	2.1	2.9	1.9	0.6	0.3	79.8	7.3	12.9	0.100	0.526	20.302042	-101.181718
MAGDALENA DE ARACEO	77.10	3	0	6974	75.5	7.6	5.7	2.8	3.5	2.7	1.4	0.8	75.5	7.6	16.9	0.079	0.502	20.313483	-101.182633
T. DER. JARAL DEL PROGRESO	87.00	1	0	6936	74.4	7.9	7.6	1.5	3.6	3.7	1.3	0.0	74.4	7.9	17.7	0.094	0.502	20.382115	-101.185053
T. DER. JARAL DEL PROGRESO	87.00	3	0	8887	75.3	7.3	6.5	1.8	3.6	2.9	1.9	0.7	75.3	7.3	17.4	0.077	0.511	20.385018	-101.183974
X. C. LIBRAMIENTO DE SALAMANCA	105.10	1	0	13851	76.4	7.4	6.5	1.2	3.8	2.8	1.2	0.7	76.4	7.4	16.2	0.080	0.506	20.539376	-101.205325
SALAMANCA	107.95	1	1	9050	75.7	7.6	6.7	1.5	3.9	3.1	0.8	0.7	75.7	7.6	16.7	0.093	0.503	20.544962	-101.204704
SALAMANCA	107.95	1	2	9146	76.3	7.8	5.6	1.9	4.1	2.9	0.7	0.7	76.3	7.8	15.9	0.090	0.503	20.544962	-101.204704

16 CARR: PATZCUARO - URUAPAN

CLAVE: 16484

RUTA: MEX-126

AÑO: 2010

LUGAR	ESTACION				CLASIFICACION VEHICULAR EN PORCIENTO								COORDENADAS						
	KM	TE	SC	TDPA	A	B	C2	C3	T3S2	T3S3	T3S2R4	OTROS	A	B	C	K'	D	LATITUD	LONGITUD
PATZCUARO	0.00	3	0	7220	80.5	7.3	5.9	2.6	2.4	1.1	0.1	0.1	80.5	7.3	12.2	0.069	0.501	19.532370	-101.622763
T. IZQ. ZIRAHUEN	17.05	1	0	5735	79.3	7.6	6.2	3.0	2.5	1.2	0.1	0.1	79.3	7.6	13.1	0.062	0.502	19.482473	-101.736471
TINGAMBATO	35.77	1	0	5436	79.8	7.3	6.2	2.8	2.6	1.1	0.1	0.1	79.8	7.3	12.9	0.064	0.500	19.501920	-101.842738
TINGAMBATO	35.77	3	0	6167	78.5	7.9	6.6	2.9	2.6	1.3	0.1	0.1	78.5	7.9	13.6	0.067	0.504	19.506061	-101.861421
T. IZQ. LIBRAMIENTO DE URUAPAN	60.05	1	0	13672	89.3	4.0	4.1	1.4	0.9	0.3	0.0	0.0	89.3	4.0	6.7	0.068	0.501	19.433830	-102.021641
URUAPAN	62.60	1	1	12213	88.9	4.1	4.3	1.5	0.9	0.3	0.0	0.0	88.9	4.1	7.0	0.068	0.513	19.431552	-102.026149
URUAPAN	62.60	1	2	12183	88.9	4.2	4.3	1.5	0.8	0.3	0.0	0.0	88.9	4.2	6.9	0.070	0.513	19.431552	-102.026149

MICHOACAN

17 CARR: QUIROGA - TEPALCATEPEC

CLAVE: 16125

RUTA: MEX-120

AÑO: 2010

LUGAR	ESTACION				CLASIFICACION VEHICULAR EN PORCIENTO								COORDENADAS						
	KM	TE	SC	TDPA	A	B	C2	C3	T3S2	T3S3	T3S2R4	OTROS	A	B	C	K'	D	LATITUD	LONGITUD
QUIROGA	0.00	3	0	6498	85.3	4.9	4.7	1.2	1.4	1.2	0.9	0.4	85.3	4.9	9.8	0.063	0.500	19.650757	-101.531212
ZURUMUTARO	19.00	3	0	12409	84.7	4.8	4.9	1.5	1.7	1.4	0.7	0.3	84.7	4.8	10.5	0.068	0.502	19.545360	-101.600425
OPOPEO	40.04	1	0	6252	84.3	4.7	5.2	1.9	1.5	1.2	0.6	0.6	84.3	4.7	11.0	0.076	0.513	19.418724	-101.605516
OPOPEO	40.04	3	0	4530	83.2	4.9	5.3	2.0	1.7	1.8	0.7	0.4	83.2	4.9	11.9	0.064	0.503	19.412374	-101.613718
ARIO DE ROSALES	72.50	1	0	4254	82.6	4.7	5.0	2.4	1.8	1.9	1.0	0.6	82.6	4.7	12.7	0.076	0.502	19.212021	-101.689616
ARIO DE ROSALES	72.50	3	0	4142	83.3	4.8	5.3	2.1	2.1	1.2	0.5	0.7	83.3	4.8	11.9	0.063	0.504	19.206975	-101.718823
LA HUACANA	123.20	3	0	2706	83.2	5.0	5.0	2.1	2.0	1.4	1.0	0.3	83.2	5.0	11.8	0.062	0.504	18.949345	-101.821007
X. C. CARAPAN - PLAYA AZUL	170.00	1	0	6985	82.1	4.6	4.9	2.1	1.9	1.7	2.4	0.3	82.1	4.6	13.3	0.069	0.501	18.991557	-102.097030
X. C. CARAPAN - PLAYA AZUL	170.00	3	0	10650	80.2	4.7	5.0	3.4	2.7	1.5	2.2	0.3	80.2	4.7	15.1	0.058	0.501	18.991624	-102.112426
APATZINGAN	200.90	1	0	12420	84.1	4.2	5.5	1.2	2.5	1.6	0.4	0.5	84.1	4.2	11.7	0.065	0.505	19.060637	-102.326677
APATZINGAN	200.90	3	0	9268	84.5	4.6	5.6	0.8	2.2	1.6	0.4	0.3	84.5	4.6	10.9	0.087	0.506	19.111771	-102.371304
SANTA ANA AMATLAN	223.50	1	0	4735	83.6	4.2	5.9	2.0	2.6	1.5	0.0	0.2	83.6	4.2	12.2	0.074	0.506	19.158460	-102.527043
BUENAVISTA TOMATLAN	233.90	3	0	5737	81.7	4.7	5.6	2.0	3.9	1.4	0.3	0.4	81.7	4.7	13.6	0.071	0.501	19.205760	-102.600815
TEPALCATEPEC	267.90																		

18 CARR: RINCONADA - LA PIEDAD

CLAVE: 16243

RUTA: MEX

AÑO: 2010

LUGAR	ESTACION				CLASIFICACION VEHICULAR EN PORCIENTO								COORDENADAS						
	KM	TE	SC	TDPA	A	B	C2	C3	T3S2	T3S3	T3S2R4	OTROS	A	B	C	K'	D	LATITUD	LONGITUD
T. C. ZAMORA - VISTA HERMOSA	0.00	3	0	10608	88.6	3.3	3.1	1.7	1.4	1.4	0.2	0.3	88.6	3.3	8.1	0.069	0.518	20.046557	-102.281309
T. DER. ECUANDUREO (1º ACCESO)	18.40	1	0	5098	88.4	3.3	3.1	1.8	1.5	1.4	0.2	0.3	88.4	3.3	8.3	0.069	0.518	20.162170	-102.202549
T. C. LA PIEDAD - CARAPAN	46.40	1	0	7003	86.7	3.8	3.2	2.9	1.3	1.5	0.4	0.2	86.7	3.8	9.5	0.074	0.514	20.323849	-102.029729

19 CARR: T. C. (ZIHUATANEJO - LA MIRA) - LAZARO CARDENAS

CLAVE: 16421

RUTA: MEX

AÑO: 2010

LUGAR	ESTACION				CLASIFICACION VEHICULAR EN PORCIENTO								COORDENADAS						
	KM	TE	SC	TDPA	A	B	C2	C3	T3S2	T3S3	T3S2R4	OTROS	A	B	C	K'	D	LATITUD	LONGITUD
T. C. ZIHUATANEJO - LA MIRA	0.00	3	1	17998	84.8	3.1	4.0	3.0	2.0	1.8	1.1	0.2	84.8	3.1	12.1	0.077	0.518	17.991435	-102.221750
T. C. ZIHUATANEJO - LA MIRA	0.00	3	2	16635	84.5	3.0	3.9	3.2	2.1	1.8	1.3	0.2	84.5	3.0	12.5	0.079	0.518	17.991435	-102.221750
LAZARO CARDENAS	6.00	1	1	13607	83.5	2.9	4.4	3.3	2.5	1.9	1.3	0.2	83.5	2.9	13.6	0.066	0.502	17.968583	-102.203385
LAZARO CARDENAS	6.00	1	2	13338	83.3	3.0	3.6	3.3	2.7	2.2	1.6	0.3	83.3	3.0	13.7	0.064	0.502	17.968583	-102.203385

MICHOACAN

21 CARR: TOLUCA - MORELIA

CLAVE: 00448

RUTA: MEX-015

AÑO: 2010

LUGAR	ESTACION				CLASIFICACION VEHICULAR EN PORCIENTO								COORDENADAS						
	KM	TE	SC	TDPA	A	B	C2	C3	T3S2	T3S3	T3S2R4	OTROS	A	B	C	K'	D	LATITUD	LONGITUD
T. DER. LIBRAMIENTO DE HEROICA ZITACUARO	92.80	1	0	11175	75.9	8.3	7.0	2.5	2.6	2.1	0.9	0.7	75.9	8.3	15.8	0.060	0.524	19.449843	-100.309240
T. DER. ANGANGUEO	106.33	3	0	8930	79.7	6.5	4.8	2.2	2.4	1.7	1.9	0.8	79.7	6.5	13.8	0.085	0.504	19.487080	-100.384026
T. IZQ. JUNGAPAO	114.30	3	0	6173	78.6	6.4	5.4	2.6	3.0	1.4	2.1	0.5	78.6	6.4	15.0	0.074	0.512	19.485195	-100.445578
CD. HIDALGO	144.61	1	0	9248	79.5	6.7	5.8	3.0	2.7	1.1	0.8	0.4	79.5	6.7	13.8	0.063	0.506	19.672642	-100.519101
T. IZQ. TZITZIO	188.30	1	0	705	76.8	7.2	6.3	3.3	2.6	2.4	0.5	0.9	76.8	7.2	16.0	0.091	0.506	19.652470	-100.953515
PERIFERICO DE MORELIA	238.60	1	0	3349	76.3	8.0	6.3	4.6	1.8	1.7	1.1	0.2	76.3	8.0	15.7	0.068	0.503	19.688279	-101.117986
MORELIA	240.10																		

22 CARR: ZAMORA - VISTA HERMOSA

CLAVE: 16242

RUTA: MEX

AÑO: 2010

LUGAR	ESTACION				CLASIFICACION VEHICULAR EN PORCIENTO								COORDENADAS						
	KM	TE	SC	TDPA	A	B	C2	C3	T3S2	T3S3	T3S2R4	OTROS	A	B	C	K'	D	LATITUD	LONGITUD
ZAMORA	0.00	3	0	16833	75.7	4.4	5.1	2.5	6.6	2.4	2.9	0.4	75.7	4.4	19.9	0.068	0.546	20.012206	-102.281835
T. DER. LA PIEDAD	6.17	3	0	8812	79.6	4.3	4.2	3.2	3.7	1.4	3.1	0.5	79.6	4.3	16.1	0.065	0.501	20.043711	-102.294949
T. C. PATTY - SAHUAYO	43.30	1	0	7170	73.9	4.4	5.5	4.0	6.9	2.1	2.8	0.4	73.9	4.4	21.7	0.059	0.504	20.262466	-102.475364

23 CARR: ZIHUATANEJO - LA MIRA

CLAVE: 00121

RUTA: MEX-200

AÑO: 2010

LUGAR	ESTACION				CLASIFICACION VEHICULAR EN PORCIENTO								COORDENADAS						
	KM	TE	SC	TDPA	A	B	C2	C3	T3S2	T3S3	T3S2R4	OTROS	A	B	C	K'	D	LATITUD	LONGITUD
ZIHUATANEJO	0.00	3	1	10270	85.2	4.1	2.8	0.6	3.7	1.3	1.6	0.7	85.2	4.1	10.7	0.083	0.500	17.656692	-101.570776
ZIHUATANEJO	0.00	3	2	10265	86.3	4.0	2.5	0.4	3.2	1.2	1.7	0.7	86.3	4.0	9.7	0.085	0.500	17.656692	-101.570776
T. IZQ. IXTAPA ZIHUATANEJO	8.00	3	0	13049	80.7	4.9	6.8	1.8	2.0	1.9	1.2	0.7	80.7	4.9	14.4	0.070	0.503	17.679713	-101.602876
T. DER. CD. ALTAMIRANO	16.30	1	0	6062	81.3	4.3	6.2	2.0	2.5	2.1	1.1	0.5	81.3	4.3	14.4	0.076	0.514	17.726334	-101.603276
T. DER. CD. ALTAMIRANO	16.30	3	0	5711	84.1	4.5	5.1	2.4	1.5	1.0	1.0	0.4	84.1	4.5	11.4	0.072	0.501	17.729239	-101.608322
T. DER. LA UNION	52.00	3	0	3513	87.8	4.0	2.9	2.0	1.1	1.1	0.6	0.5	87.8	4.0	8.2	0.060	0.501	17.942453	-101.837409
ZACATULA	93.50	1	0	4307	88.6	4.2	2.7	1.6	0.9	1.0	0.5	0.5	88.6	4.2	7.2	0.076	0.503	18.003670	-102.174422
LIM. EDOS. TERM. GRO. PPIA. MICH.	102.30																		
LA VILLITA	103.80	3	0	4363	81.1	8.1	4.5	2.4	0.9	2.1	0.3	0.6	81.1	8.1	10.8	0.066	0.507	18.044258	-102.188530
GUACAMAYAS	107.00	1	0	2608	82.8	6.1	4.6	2.6	0.8	2.2	0.5	0.4	82.8	6.1	11.1	0.079	0.508	18.029282	-102.200473
T. IZQ. LAZARO CARDENAS	110.85	1	1	12999	82.1	6.3	3.7	1.1	4.0	2.0	0.6	0.2	82.1	6.3	11.6	0.057	0.504	17.999620	-102.221937
T. IZQ. LAZARO CARDENAS	110.85	1	2	12785	84.3	5.2	3.4	1.0	4.1	1.2	0.4	0.4	84.3	5.2	10.5	0.059	0.504	17.999620	-102.221937
LA MIRA	123.60	1	0	9062	82.2	5.1	3.0	3.0	4.7	1.1	0.5	0.4	82.2	5.1	12.7	0.077	0.501	18.028360	-102.312279

MICHOACAN

26 CARR: ENT. PATZCUARO - URUAPAN (CUOTA)

CLAVE: 16011

RUTA: MEX-126D

AÑO: 2010

LUGAR	ESTACION				CLASIFICACION VEHICULAR EN PORCIENTO								COORDENADAS						
	KM	TE	SC	TDPA	A	B	C2	C3	T3S2	T3S3	T3S2R4	OTROS	A	B	C	K'	D	LATITUD	LONGITUD
T. C. MORELIA - TZURUMUTARO	0.00																		
CASETA DE COBRO ZIRAHUEN	12.55	2	0	8570	82.8	4.3	3.5	1.7	2.4	0.9	4.2	0.2	82.8	4.3	12.9			19.505623	-101.659299
CASETA DE COBRO ZURUMUCAPIO	40.00	3	0	9308	83.8	3.9	3.5	1.7	2.2	0.8	3.9	0.2	83.8	3.9	12.3			19.441169	-101.882244
T. C. ENT. CARAPAN - PLAYA AZUL	60.00																		

27 CARR: ENT. URUAPAN - LAZARO CARDENAS (CUOTA)

CLAVE: 00032

RUTA: MEX-037D

AÑO: 2010

LUGAR	ESTACION				CLASIFICACION VEHICULAR EN PORCIENTO								COORDENADAS						
	KM	TE	SC	TDPA	A	B	C2	C3	T3S2	T3S3	T3S2R4	OTROS	A	B	C	K'	D	LATITUD	LONGITUD
T. C. ENT. PATZCUARO - URUAPAN (CUOTA)	0.00																		
CASETA DE COBRO TARETAN	8.893	1	0	8228	82.0	3.8	3.2	2.2	2.4	1.1	5.0	0.3	82.0	3.8	14.2			19.355413	-101.918127
CASETA DE COBRO TARETAN	8.893	2	0	8240	82.0	3.8	3.2	2.2	2.4	1.1	5.0	0.3	82.0	3.8	14.2			19.355413	-101.918127
CASETA DE COBRO TARETAN	8.893	3	0	6456	78.0	4.8	3.4	2.7	3.0	1.4	6.3	0.4	78.0	4.8	17.2			19.355413	-101.918127
CASETA DE COBRO SANTA CASILDA	39.647	1	0	6247	77.4	4.9	3.4	2.8	3.1	1.5	6.5	0.4	77.4	4.9	17.7			19.152887	-101.978112
CASETA DE COBRO LAS CAÑAS	100.00	2	0	3651	72.8	4.7	3.1	2.8	3.9	2.2	9.9	0.6	72.8	4.7	22.5			18.554190	-101.970337
LIM. EDOS. TERM. MICH. PPIA. GRO.	159.20																		
CASETA DE COBRO FELICIANO	170.60	1	0	3305	69.5	4.3	3.8	2.7	4.3	2.5	12.3	0.6	69.5	4.3	26.2			18.006510	-101.961761
CASETA DE COBRO FELICIANO	170.60	2	0	4911	74.0	4.2	3.6	3.0	3.9	2.2	8.6	0.5	74.0	4.2	21.8			18.006510	-101.961761
CASETA DE COBRO FELICIANO	170.60	3	0	3841	71.2	4.5	3.4	3.0	4.5	2.5	10.2	0.7	71.2	4.5	24.3			18.006510	-101.961761
LIM. EDOS. TERM. GRO. PPIA. MICH.	182.00																		
T. C. LA ORILLA - LAS TRUCHAS	212.00																		

28 CARR: MORELIA - SALAMANCA (CUOTA)

CLAVE:

RUTA: MEX-043D

AÑO: 2010

LUGAR	ESTACION				CLASIFICACION VEHICULAR EN PORCIENTO								COORDENADAS						
	KM	TE	SC	TDPA	A	B	C2	C3	T3S2	T3S3	T3S2R4	OTROS	A	B	C	K'	D	LATITUD	LONGITUD
CASETA DE COBRO CUITZEO	6.70	1	0	7552	81.0	4.2	2.0	1.6	3.5	1.3	6.1	0.3	81.0	4.2	14.8			19.968922	-101.159727
CASETA DE COBRO CUITZEO	6.70	3	0	6011	76.2	5.4	2.1	1.9	4.5	1.5	7.9	0.5	76.2	5.4	18.4			19.968922	-101.159727
CASETA DE COBRO LA CINTA	18.90	3	0	3810	76.8	4.4	2.4	1.6	3.8	1.4	9.1	0.5	76.8	4.4	18.8			20.077474	-101.137803
T.C. MORELIA - SALAMANCA (LIBRE)	26.50	3	0	6600	76.8	4.6	2.4	1.7	3.8	1.3	8.9	0.5	76.8	4.6	18.6	0.076	0.518	19.917239	-101.150051
CASETA DE COBRO URIANGATO	27.20	3	0	4562	82.1	3.5	2.0	1.0	2.9	1.0	7.2	0.3	82.1	3.5	14.4			20.182081	-101.158448
LIM. EDOS. TERM. MICH. PPIA. GTO.	46.15																		
CASETA DE COBRO VALLE DE SANTIAGO	57.00	3	0	3960	81.5	3.0	2.0	1.0	2.9	1.0	8.2	0.4	81.5	3.0	15.5			20.372292	-101.147324
CASETA DE COBRO VALTIERRILLA	81.60	3	0	1825	69.2	2.4	3.0	2.9	5.4	8.2	8.4	0.5	69.2	2.4	28.4			20.542730	-101.137743
T.C. QUERETARO - IRAPUATO (LIBRE)	104.64	1	0	3478	69.9	2.5	3.0	2.8	5.1	7.9	8.3	0.5	69.9	2.5	27.6	0.096	0.522	20.539860	-101.138139

MICHOACAN

28 CARR: MORELIA - SALAMANCA (CUOTA)

CLAVE:

RUTA: MEX-043D

AÑO: 2010

LUGAR	ESTACION				CLASIFICACION VEHICULAR EN PORCIENTO								COORDENADAS						
	KM	TE	SC	TDPA	A	B	C2	C3	T3S2	T3S3	T3S2R4	OTROS	A	B	C	K'	D	LATITUD	LONGITUD
T.C. QUERETARO - IRAPUATO (CUOTA)	109.49	1	0	6775	70.2	2.2	3.0	2.9	5.0	8.0	8.2	0.5	70.2	2.2	27.6	0.088	0.501	20.583780	-101.141405

29 CARR: APATZINGAN - AGUILILLA

CLAVE: 16591

RUTA: MICH

AÑO: 2010

LUGAR	ESTACION				CLASIFICACION VEHICULAR EN PORCIENTO								COORDENADAS						
	KM	TE	SC	TDPA	A	B	C2	C3	T3S2	T3S3	T3S2R4	OTROS	A	B	C	K'	D	LATITUD	LONGITUD
APATZINGAN	0.00	3	0	9766	81.9	3.4	3.3	2.0	4.0	2.7	2.3	0.4	81.9	3.4	14.7	0.069	0.501	19.089996	-102.385124
AGUILILLA	85.00																		

30 CARR: COMANJA - HUANIQUEO

CLAVE: 16024

RUTA: MICH-024

AÑO: 2010

LUGAR	ESTACION				CLASIFICACION VEHICULAR EN PORCIENTO								COORDENADAS						
	KM	TE	SC	TDPA	A	B	C2	C3	T3S2	T3S3	T3S2R4	OTROS	A	B	C	K'	D	LATITUD	LONGITUD
T. C. MORELIA - JIQUILPAN	0.00	3	0	1391	86.5	5.1	4.5	1.3	1.4	0.5	0.2	0.5	86.5	5.1	8.4	0.070	0.501	19.749572	-101.684819
HUANIQUEO	27.10	1	0	1022	86.5	4.5	4.5	1.1	1.3	0.7	0.8	0.6	86.5	4.5	9.0	0.101	0.502	19.885417	-101.508772

31 CARR: COTIJA - EMILIANO ZAPATA

CLAVE:

RUTA: MICH

AÑO: 2010

LUGAR	ESTACION				CLASIFICACION VEHICULAR EN PORCIENTO								COORDENADAS						
	KM	TE	SC	TDPA	A	B	C2	C3	T3S2	T3S3	T3S2R4	OTROS	A	B	C	K'	D	LATITUD	LONGITUD
T. DER. COTIJA DE LA PAZ	0.00	3	0	1986	85.1	3.4	4.3	3.1	2.1	1.1	0.4	0.5	85.1	3.4	11.5	0.082	0.510	19.803318	-102.662601
T.C. MORELIA - JIQUILPAN	34.60	1	0	2550	84.9	3.8	4.1	3.3	1.9	1.3	0.4	0.3	84.9	3.8	11.3	0.083	0.503	19.979555	-102.610741

32 CARR: CUITZEO - ZINAPARO

CLAVE: 16027

RUTA: MICH-027

AÑO: 2010

LUGAR	ESTACION				CLASIFICACION VEHICULAR EN PORCIENTO								COORDENADAS						
	KM	TE	SC	TDPA	A	B	C2	C3	T3S2	T3S3	T3S2R4	OTROS	A	B	C	K'	D	LATITUD	LONGITUD
CUITZEO	0.00	3	0	4292	82.8	5.8	6.2	1.7	1.4	1.1	0.3	0.7	82.8	5.8	11.4	0.079	0.507	19.969886	-101.152087
PURUANDIRO	61.00	1	0	3732	82.8	5.5	5.9	1.7	1.6	1.1	0.3	1.1	82.8	5.5	11.7	0.074	0.500	20.087698	-101.489614
PURUANDIRO	61.00	3	0	3852	81.0	5.7	8.1	2.7	1.4	0.4	0.2	0.5	81.0	5.7	13.3	0.071	0.502	20.092133	-101.534615
T. IZQ. ZACAPU	79.00	3	0	1898	85.8	5.7	3.2	1.4	1.6	1.2	0.6	0.5	85.8	5.7	8.5	0.063	0.504	20.141585	-101.655928
ZINAPARO	123.70	1	0	1960	83.9	3.8	4.0	1.8	3.0	2.1	1.1	0.3	83.9	3.8	12.3	0.081	0.500	20.170940	-101.991243

MICHOACAN

33 CARR: EL CORREO - LAGUNILLAS

CLAVE: 16014

RUTA: MICH

AÑO: 2010

LUGAR	ESTACION				CLASIFICACION VEHICULAR EN PORCIENTO								COORDENADAS						
	KM	TE	SC	TDPA	A	B	C2	C3	T3S2	T3S3	T3S2R4	OTROS	A	B	C	K'	D	LATITUD	LONGITUD
EL CORREO	0.00	3	0	1306	83.3	4.9	6.2	2.4	2.4	0.2	0.2	0.4	83.3	4.9	11.8	0.070	0.502	19.630472	-101.417018
T. C. MORELIA - PATZCUARO	10.60	1	0	1701	80.1	5.6	6.5	4.2	1.1	1.6	0.4	0.5	80.1	5.6	14.3	0.075	0.526	19.559759	-101.422517

34 CARR: EL TEMASCAL - EL LIMON

CLAVE:

RUTA: MICH

AÑO: 2010

LUGAR	ESTACION				CLASIFICACION VEHICULAR EN PORCIENTO								COORDENADAS						
	KM	TE	SC	TDPA	A	B	C2	C3	T3S2	T3S3	T3S2R4	OTROS	A	B	C	K'	D	LATITUD	LONGITUD
EL TEMASCAL	0.00	3	0	986	82.6	3.7	6.3	2.4	2.0	1.4	0.8	0.8	82.6	3.7	13.7	0.082	0.503	19.645414	-100.961343
EL LIMON	92.30	1	0	949	83.4	3.6	5.7	2.9	1.6	1.9	0.6	0.3	83.4	3.6	13.0	0.101	0.500	19.027590	-100.743556

35 CARR: GABRIEL ZAMORA - DR. MIGUEL SILVA

CLAVE:

RUTA: MICH

AÑO: 2010

LUGAR	ESTACION				CLASIFICACION VEHICULAR EN PORCIENTO								COORDENADAS						
	KM	TE	SC	TDPA	A	B	C2	C3	T3S2	T3S3	T3S2R4	OTROS	A	B	C	K'	D	LATITUD	LONGITUD
GABRIEL ZAMORA	0.00	3	0	4723	86.5	3.2	3.1	1.4	2.7	1.6	1.2	0.3	86.5	3.2	10.3	0.060	0.507	19.159355	-102.040065
DR. MIGUEL SILVA	55.20	1	0	5066	84.2	2.8	3.0	1.7	4.6	1.5	2.0	0.2	84.2	2.8	13.0	0.065	0.501	19.169426	-101.726486

36 CARR: JACONA - BUENAVISTA TOMATLAN

CLAVE: 16016

RUTA: MICH-016

AÑO: 2010

LUGAR	ESTACION				CLASIFICACION VEHICULAR EN PORCIENTO								COORDENADAS						
	KM	TE	SC	TDPA	A	B	C2	C3	T3S2	T3S3	T3S2R4	OTROS	A	B	C	K'	D	LATITUD	LONGITUD
JACONA	0.00	3	0	5350	83.6	4.8	4.4	3.1	1.6	1.5	0.5	0.5	83.6	4.8	11.6	0.084	0.514	19.935693	-102.324751
T. DER. COTIJA DE LA PAZ	47.00	1	0	5044	83.6	4.8	4.4	3.6	1.5	1.3	0.6	0.2	83.6	4.8	11.6	0.069	0.503	19.700877	-102.492037
LOS REYES DE SALGADO	60.00	1	0	8271	83.4	5.1	5.0	2.9	1.4	1.5	0.4	0.3	83.4	5.1	11.5	0.081	0.502	19.622795	-102.487213
LOS REYES DE SALGADO	60.00	3	0	10401	82.4	5.4	5.5	3.1	1.4	1.5	0.4	0.3	82.4	5.4	12.2	0.070	0.506	19.566710	-102.457949
PERIBAN DE RAMOS	70.00	1	0	7411	81.7	4.1	5.2	1.5	4.4	0.8	1.7	0.6	81.7	4.1	14.2	0.080	0.515	19.541666	-102.438379
PERIBAN DE RAMOS	70.00	3	0	3974	82.7	4.9	4.7	1.6	2.8	1.5	1.1	0.7	82.7	4.9	12.4	0.066	0.511	19.500909	-102.428200
BUENAVISTA	123.00	1	0	4032	82.2	3.3	6.5	1.6	4.0	0.9	1.0	0.5	82.2	3.3	14.5	0.067	0.501	19.223615	-102.587645

37 CARR: LA PAZ - TEPETONGO

CLAVE:

RUTA: MICH

AÑO: 2010

LUGAR	ESTACION				CLASIFICACION VEHICULAR EN PORCIENTO								COORDENADAS						
	KM	TE	SC	TDPA	A	B	C2	C3	T3S2	T3S3	T3S2R4	OTROS	A	B	C	K'	D	LATITUD	LONGITUD
T.C. LA NORIA - ACAMBARO	0.00	3	0	2173	87.7	3.4	1.4	1.4	2.3	1.5	1.9	0.4	87.7	3.4	8.9	0.081	0.500	20.172607	-100.281481
HEPITACIO HUERTA	5.20	1	0	2032	86.9	3.6	2.1	1.2	1.9	1.0	2.6	0.7	86.9	3.6	9.5	0.076	0.502	20.131620	-100.306608

MICHOACAN

42 CARR: SAN FELIPE ALZATI - ANGANGUEO

CLAVE: 16556

RUTA: MICH-044

AÑO: 2010

LUGAR	ESTACION				CLASIFICACION VEHICULAR EN PORCIENTO								COORDENADAS						
	KM	TE	SC	TDPA	A	B	C2	C3	T3S2	T3S3	T3S2R4	OTROS	A	B	C	K'	D	LATITUD	LONGITUD
T. C. TOLUCA - MORELIA	0.00	3	0	2386	83.0	6.3	3.6	1.0	2.8	0.9	1.8	0.6	83.0	6.3	10.7	0.129	0.505	19.498238	-100.375875
ANGANGUEO	24.00	1	0	3234	82.4	6.2	4.5	3.1	1.0	1.8	0.5	0.5	82.4	6.2	11.4	0.098	0.505	19.612772	-100.312828

43 CARR: SAN JUAN TUMBIO - CHERAN

CLAVE:

RUTA: MICH

AÑO: 2010

LUGAR	ESTACION				CLASIFICACION VEHICULAR EN PORCIENTO								COORDENADAS						
	KM	TE	SC	TDPA	A	B	C2	C3	T3S2	T3S3	T3S2R4	OTROS	A	B	C	K'	D	LATITUD	LONGITUD
SAN JUAN TUMBIO	0.00	3	0	2326	85.5	4.9	3.2	1.9	2.3	1.4	0.6	0.2	85.5	4.9	9.6	0.067	0.500	19.513933	-101.761619
NAHUATZEN	28.50	3	0	3793	84.8	4.7	4.3	1.4	2.9	1.4	0.4	0.1	84.8	4.7	10.5	0.079	0.501	19.658307	-101.929078
CHERAN	35.80	1	0	4623	87.0	2.4	4.0	1.5	2.4	1.7	0.8	0.2	87.0	2.4	10.6	0.068	0.501	19.672405	-101.950350

44 CARR: T. C. (CARAPAN - PLAYA AZUL) - PERIBAN DE RAMOS

CLAVE:

RUTA: MICH

AÑO: 2010

LUGAR	ESTACION				CLASIFICACION VEHICULAR EN PORCIENTO								COORDENADAS						
	KM	TE	SC	TDPA	A	B	C2	C3	T3S2	T3S3	T3S2R4	OTROS	A	B	C	K'	D	LATITUD	LONGITUD
T.C. CARAPAN - PLAYA AZUL	0.00	3	0	4254	86.6	3.1	1.7	1.6	4.8	0.9	1.1	0.2	86.6	3.1	10.3	0.070	0.502	19.529637	-102.077742
PERIBAN DE RAMOS	50.00	1	0	6187	87.7	2.8	1.6	1.5	4.2	0.8	1.2	0.2	87.7	2.8	9.5	0.061	0.505	19.541053	-102.412160

45 CARR: T. C. (TOLUCA - MORELIA) - MARAVATIO

CLAVE: 16584

RUTA: MICH-122

AÑO: 2010

LUGAR	ESTACION				CLASIFICACION VEHICULAR EN PORCIENTO								COORDENADAS						
	KM	TE	SC	TDPA	A	B	C2	C3	T3S2	T3S3	T3S2R4	OTROS	A	B	C	K'	D	LATITUD	LONGITUD
T. C. TOLUCA - MORELIA	0.00	3	0	7431	84.6	2.6	2.7	2.6	4.8	1.3	0.8	0.6	84.6	2.6	12.8	0.069	0.502	19.686949	-100.515632
MARAVATIO DE OCAMPO	28.00	1	0	5854	84.9	2.8	2.9	2.0	4.3	1.3	1.0	0.8	84.9	2.8	12.3	0.075	0.503	19.874469	-100.450428

46 CARR: T. C. (V. VICTORIA - EL ORO DE HIDALGO) - ANGANGUEO

CLAVE: 00195

RUTA: EM-003-MICH

AÑO: 2010

LUGAR	ESTACION				CLASIFICACION VEHICULAR EN PORCIENTO								COORDENADAS						
	KM	TE	SC	TDPA	A	B	C2	C3	T3S2	T3S3	T3S2R4	OTROS	A	B	C	K'	D	LATITUD	LONGITUD
T. C. V. VICTORIA - EL ORO DE HIDALGO	0.00	3	0	4446	80.1	4.1	5.8	2.6	3.4	2.0	1.4	0.6	80.1	4.1	15.8	0.096	0.500	19.651572	-100.135856
LIM. EDOS. TERM. MEX. PPIA. MICH	17.70																		
ANGANGUEO	24.00	1	0	1121	81.8	8.6	3.9	1.5	2.2	0.0	1.4	0.6	81.8	8.6	9.6	0.081	0.501	19.628518	-100.281552

MICHOACAN

47 CARR: TEPALCATEPEC - AQUILA

CLAVE:

RUTA: MICH

AÑO: 2010

LUGAR	ESTACION				CLASIFICACION VEHICULAR EN PORCIENTO								COORDENADAS						
	KM	TE	SC	TDPA	A	B	C2	C3	T3S2	T3S3	T3S2R4	OTROS	A	B	C	K'	D	LATITUD	LONGITUD
TEPALCATEPEC	0.00	3	0	4248	85.1	3.3	5.2	2.3	2.7	0.5	0.8	0.1	85.1	3.3	11.6	0.072	0.502	19.173554	-102.848595
COALCOMAN DE VAZQUEZ PALLARES	70.30	1	0	1482	84.1	3.4	5.5	2.3	1.8	1.6	1.0	0.3	84.1	3.4	12.5	0.065	0.504	18.791677	-103.146503
AQUILA	150.20	1	0	462	82.9	5.2	4.7	1.3	2.6	0.6	2.2	0.5	82.9	5.2	11.9	0.110	0.500	18.597948	-103.495784

48 CARR: TIRIPETIO - ERENDIRA

CLAVE: 16422

RUTA: MICH

AÑO: 2010

LUGAR	ESTACION				CLASIFICACION VEHICULAR EN PORCIENTO								COORDENADAS						
	KM	TE	SC	TDPA	A	B	C2	C3	T3S2	T3S3	T3S2R4	OTROS	A	B	C	K'	D	LATITUD	LONGITUD
T. C. MORELIA - PATZCUARO	0.00	3	0	6757	77.3	6.5	7.7	3.4	2.7	1.6	0.5	0.3	77.3	6.5	16.2	0.084	0.515	19.542430	-101.349726
ACUITZIO DEL CANJE	7.90	3	0	4697	77.4	7.3	6.8	3.2	2.8	1.9	0.2	0.4	77.4	7.3	15.3	0.077	0.508	19.490257	-101.338867
VILLA MADERO	23.20	1	0	3794	76.8	6.4	7.6	3.3	2.5	2.0	0.8	0.6	76.8	6.4	16.8	0.070	0.525	19.396115	-101.284731
T. C. ZITACUARO - CD. ALTAMIRANO	150.00	1	0	865	83.7	4.8	4.6	1.5	2.7	1.8	0.5	0.4	83.7	4.8	11.5	0.077	0.503	18.829106	-100.934334

49 CARR: TOCUMBO - COTIJA

CLAVE: 16042

RUTA: MICH-042

AÑO: 2010

LUGAR	ESTACION				CLASIFICACION VEHICULAR EN PORCIENTO								COORDENADAS						
	KM	TE	SC	TDPA	A	B	C2	C3	T3S2	T3S3	T3S2R4	OTROS	A	B	C	K'	D	LATITUD	LONGITUD
T. C. JACONA - BUENAVISTA	0.00	3	0	3164	84.6	4.9	2.2	3.0	2.4	1.3	1.2	0.4	84.6	4.9	10.5	0.073	0.506	19.697897	-102.495685
COTIJA DE LA PAZ	28.99																		

50 CARR: UCAREO - SAN PEDRO JACUARO

CLAVE:

RUTA: MICH

AÑO: 2010

LUGAR	ESTACION				CLASIFICACION VEHICULAR EN PORCIENTO								COORDENADAS						
	KM	TE	SC	TDPA	A	B	C2	C3	T3S2	T3S3	T3S2R4	OTROS	A	B	C	K'	D	LATITUD	LONGITUD
UCAREO	0.00	3	0	3062	80.9	3.9	7.2	4.2	2.7	0.2	0.7	0.2	80.9	3.9	15.2	0.074	0.509	19.894095	-100.678283
SAN PEDRO JACUARO	33.00	1	0	762	80.3	4.0	7.4	4.3	2.8	0.2	0.8	0.2	80.3	4.0	15.7	0.085	0.503	19.718494	-100.652697

51 CARR: URUAPAN - EL COPETIRO

CLAVE:

RUTA: MICH

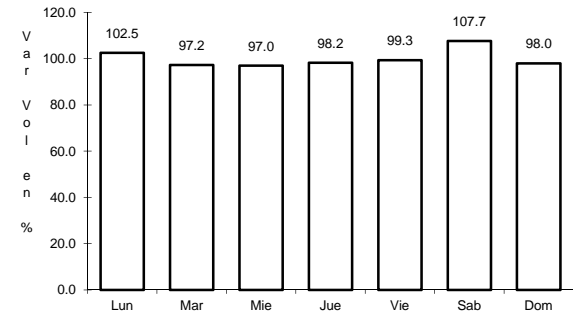
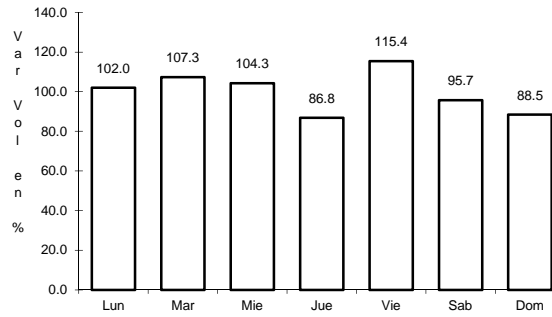
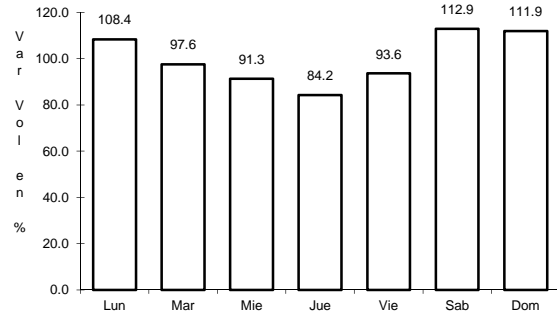
AÑO: 2010

LUGAR	ESTACION				CLASIFICACION VEHICULAR EN PORCIENTO								COORDENADAS						
	KM	TE	SC	TDPA	A	B	C2	C3	T3S2	T3S3	T3S2R4	OTROS	A	B	C	K'	D	LATITUD	LONGITUD
URUAPAN	0.00	3	0	7894	82.2	4.2	3.9	2.6	2.8	2.4	1.6	0.3	82.2	4.2	13.6	0.081	0.508	19.383162	-102.084766
SAN JUAN PARANGARICUTIRO	12.50	3	0	4157	82.0	4.1	4.2	2.7	3.2	2.0	1.6	0.2	82.0	4.1	13.9	0.084	0.505	19.411154	-102.138363
EL COPETIRO	62.50	1	0	1960	82.0	4.6	4.3	2.8	2.5	2.0	1.4	0.4	82.0	4.6	13.4	0.072	0.506	19.454902	-102.454158

4 CARR: ENT. PLAYA AZUL - MANZANILLO

CLAVE: 00495

ruta: MEX-200



Km: 0.00 Tipo: 3 Sent: 0

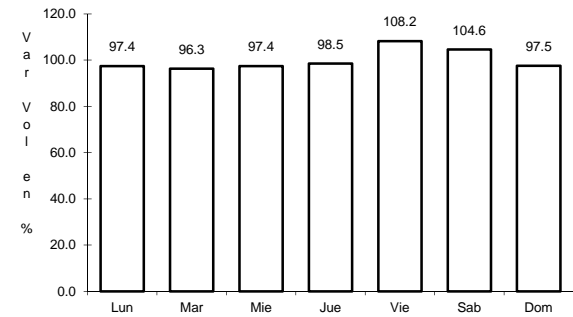
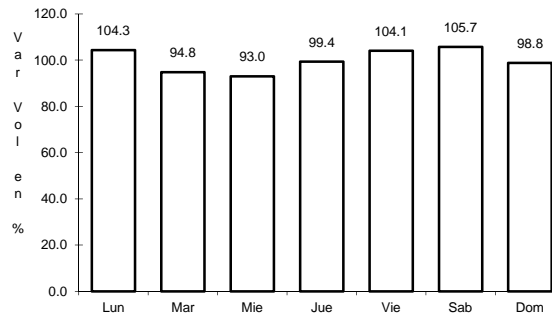
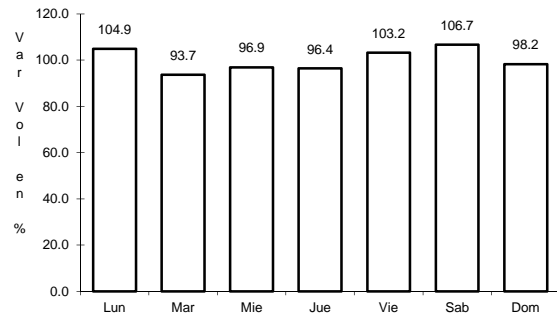
Km: 149.75 Tipo: 1 Sent: 0

Km: 321.12 Tipo: 1 Sent: 0

5 CARR: HUAJUMBARO - SAN JOSE

CLAVE: 16555

ruta: MEX-051-120



Km: 0.00 Tipo: 3 Sent: 0

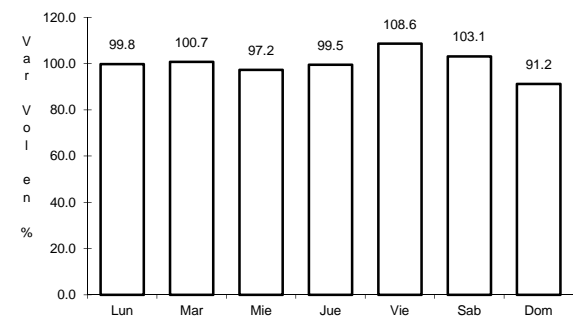
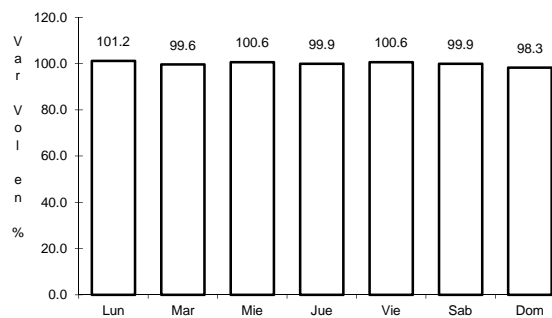
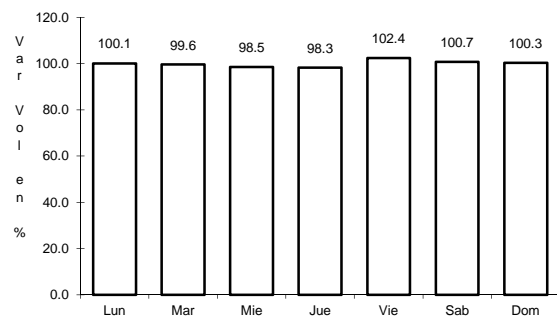
Km: 33.83 Tipo: 3 Sent: 0

Km: 71.14 Tipo: 1 Sent: 0

6 CARR: IRAPUATO - ZAPOTLANEJO

CLAVE: 00114

ruta: MEX-090



Km: 2.78 Tipo: 1 Sent: 1

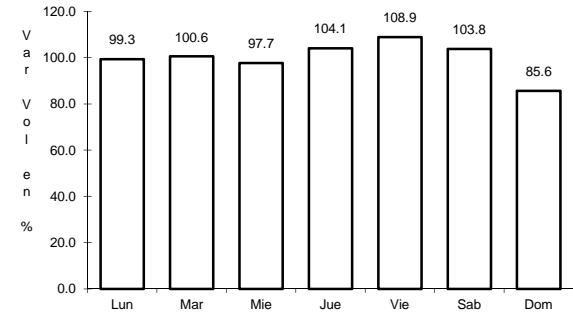
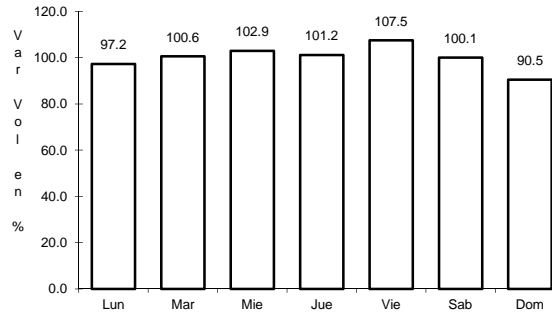
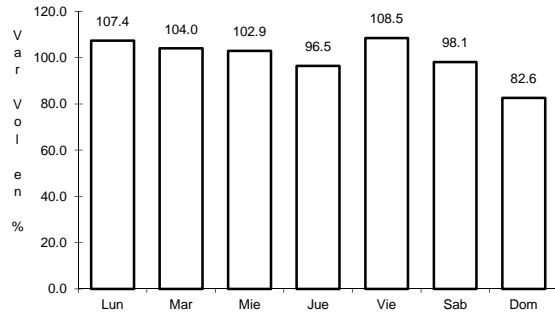
Km: 2.78 Tipo: 1 Sent: 2

Km: 215.80 Tipo: 1 Sent: 0

7 CARR: JIQUILPAN - COLIMA

CLAVE: 00156

RUTA: MEX-110



Km: 0.00 Tipo: 3 Sent: 0

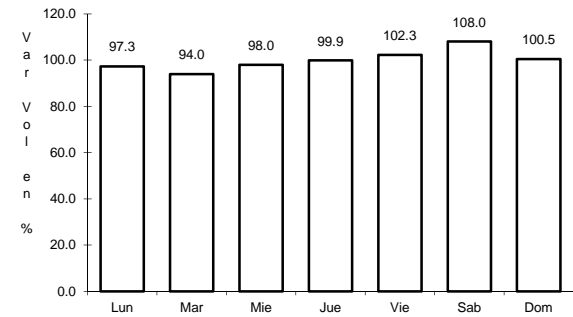
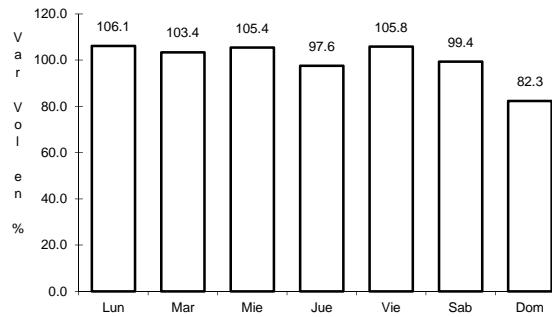
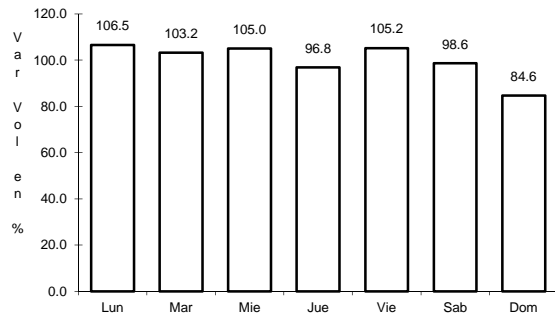
Km: 108.50 Tipo: 3 Sent: 0

Km: 222.00 Tipo: 1 Sent: 0

8 CARR: JIQUILPAN - GUADALAJARA

CLAVE: 00429

RUTA: MEX-015



Km: 0.00 Tipo: 3 Sent: 1

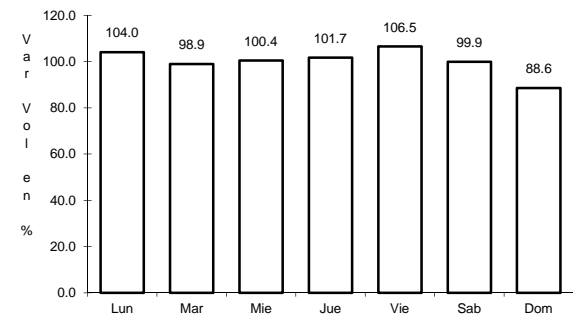
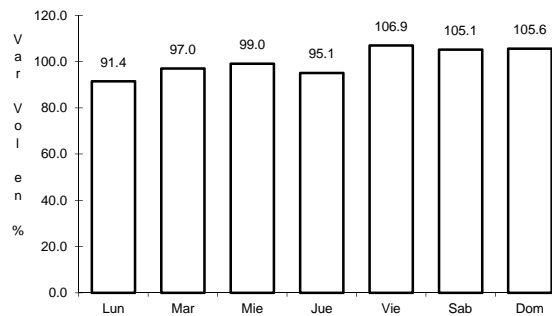
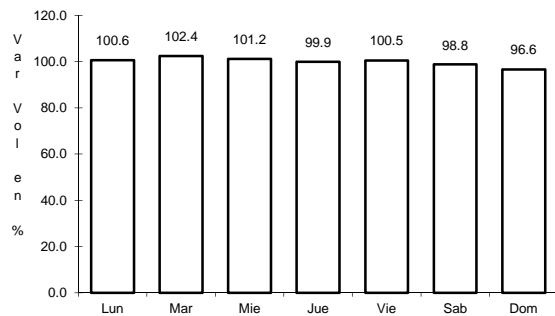
Km: 0.00 Tipo: 3 Sent: 2

Km: 118.96 Tipo: 1 Sent: 0

9 CARR: LA NORIA - ACAMBARO

CLAVE: 00131

RUTA: MEX-120



Km: 0.00 Tipo: 3 Sent: 0

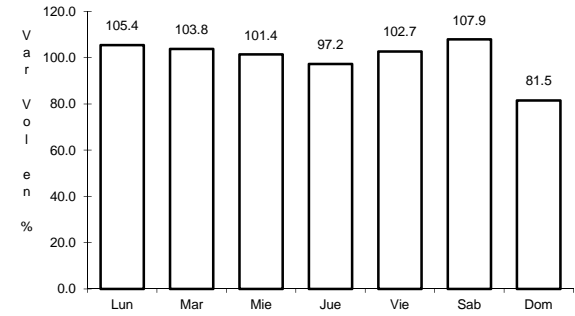
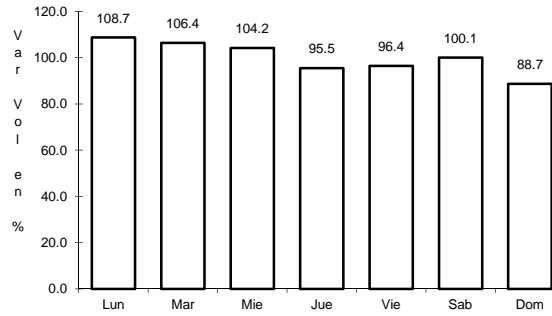
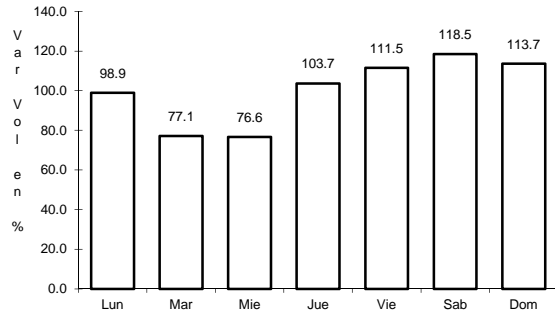
Km: 59.35 Tipo: 3 Sent: 0

Km: 111.12 Tipo: 1 Sent: 0

10 CARR: LA ORILLA - LAS TRUCHAS

CLAVE: 16557

RUTA: MEX



Km: 0.00 Tipo: 3 Sent: 0

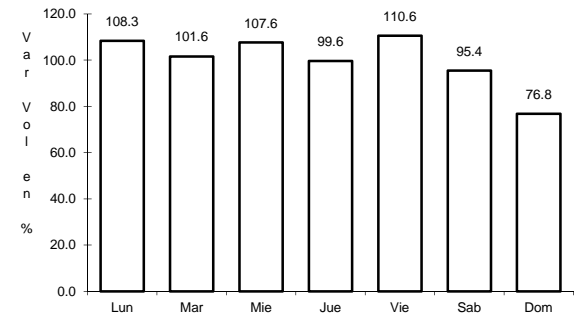
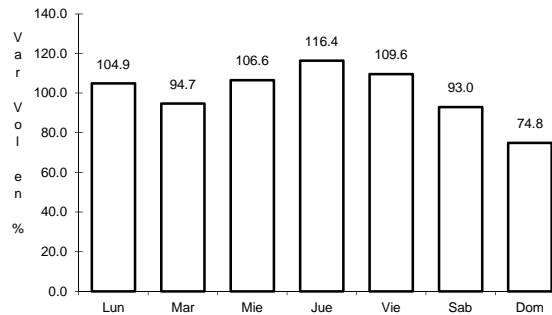
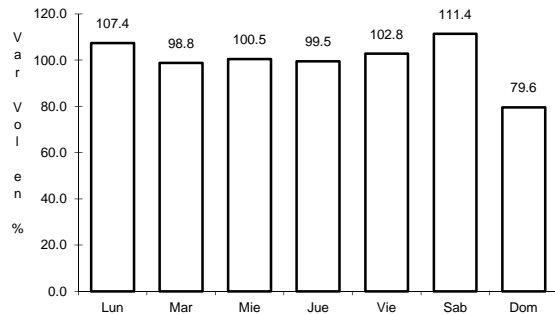
Km: 5.50 Tipo: 1 Sent: 0

Km: 9.00 Tipo: 1 Sent: 0

11 CARR: LA PIEDAD - CARAPAN

CLAVE: 16476

RUTA: MEX-037



Km: 0.00 Tipo: 3 Sent: 0

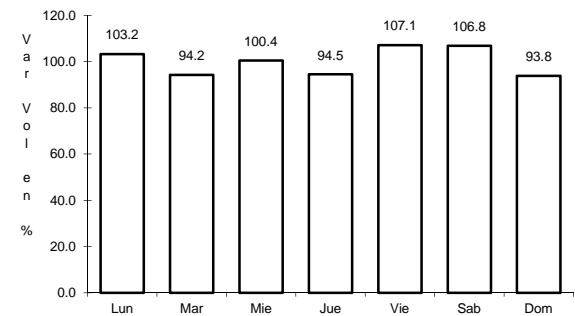
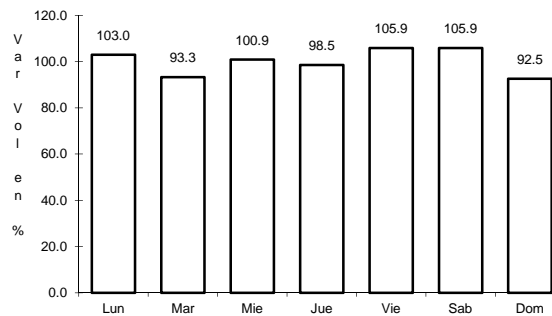
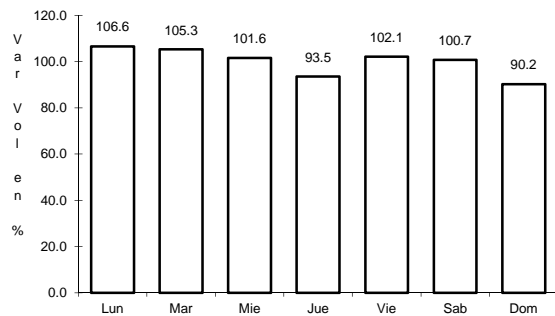
Km: 24.45 Tipo: 3 Sent: 0

Km: 72.61 Tipo: 1 Sent: 0

12 CARR: MARAVATIO - ACAMBARO

CLAVE: 00418

RUTA: MEX-061



Km: 0.00 Tipo: 3 Sent: 0

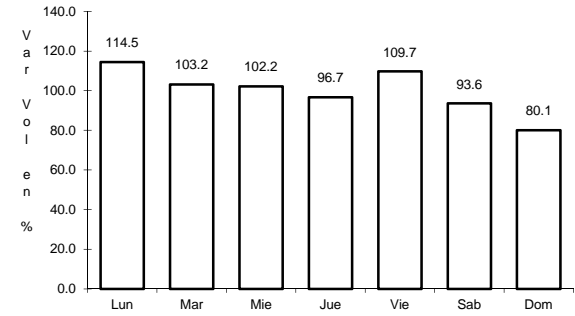
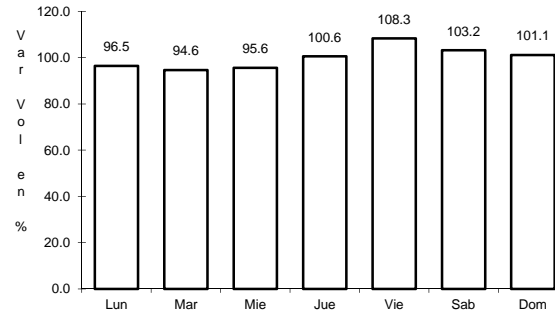
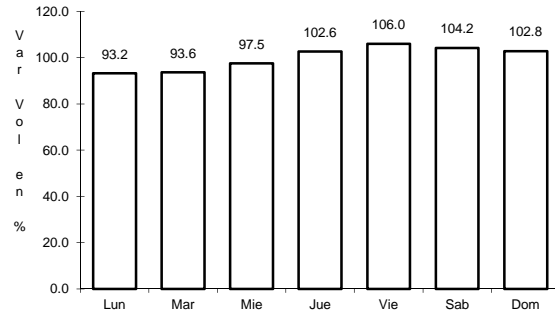
Km: 13.00 Tipo: 3 Sent: 0

Km: 39.00 Tipo: 1 Sent: 0

13 CARR: MORELIA - JIQUILPAN

CLAVE: 16029

RUTA: MEX-015



Km: 3.10

Tipo: 3

Sent: 1

Km: 3.10

Tipo: 3

Sent: 2

Km: 200.00

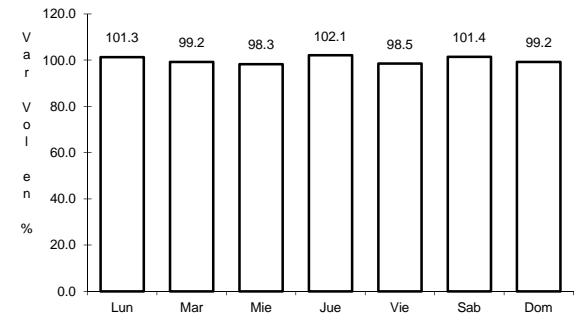
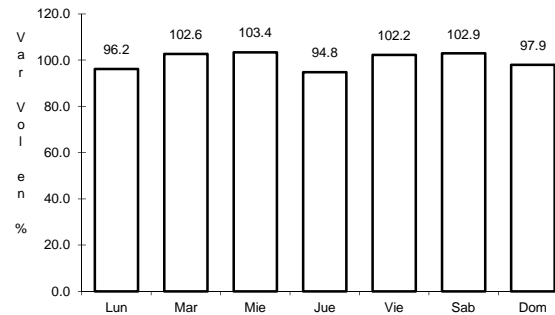
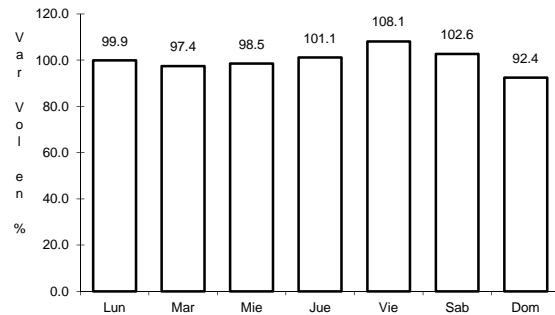
Tipo: 1

Sent: 0

14 CARR: MORELIA - PATZCUARO

CLAVE: 16009

RUTA: MEX-126



Km: 3.00

Tipo: 3

Sent: 1

Km: 3.00

Tipo: 3

Sent: 2

Km: 50.70

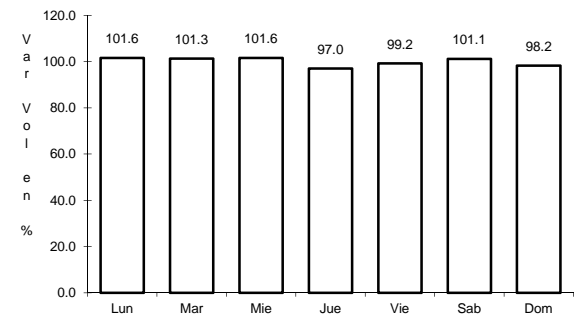
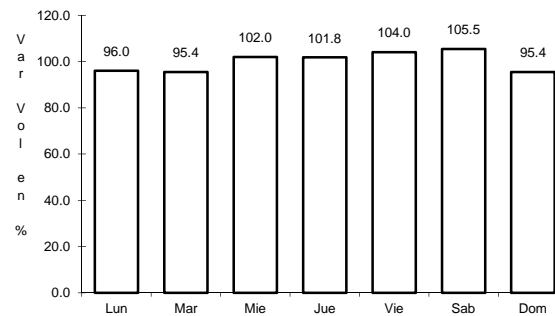
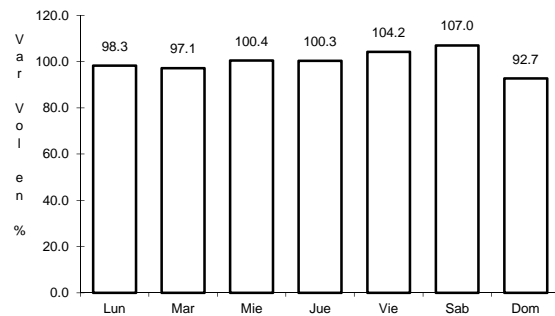
Tipo: 1

Sent: 1

15 CARR: MORELIA - SALAMANCA

CLAVE: 00124

RUTA: MEX-043



Km: 2.70

Tipo: 3

Sent: 1

Km: 2.70

Tipo: 3

Sent: 2

Km: 105.10

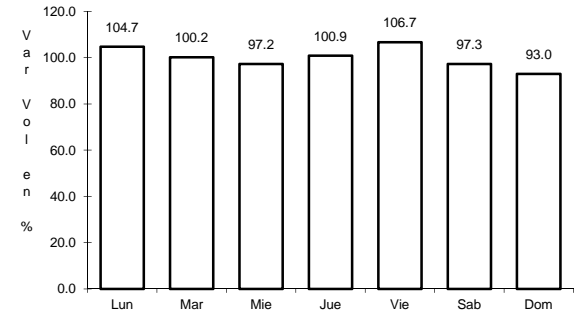
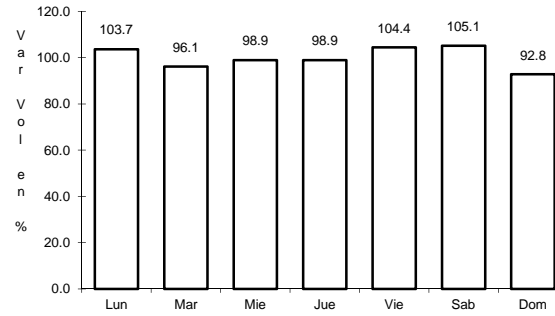
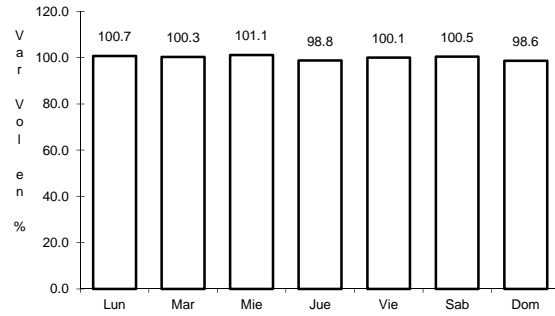
Tipo: 1

Sent: 0

16 CARR: PATZCUARO - URUAPAN

CLAVE: 16484

ruta: MEX-126



Km: 0.00 Tipo: 3 Sent: 0

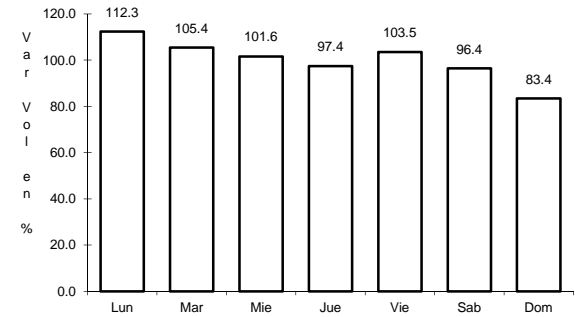
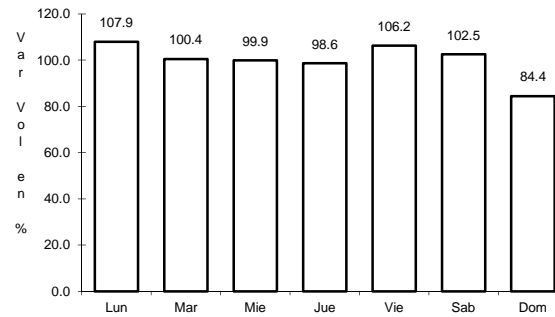
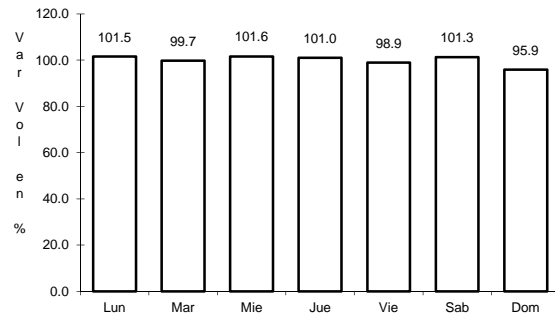
Km: 62.60 Tipo: 1 Sent: 1

Km: 62.60 Tipo: 1 Sent: 2

17 CARR: QUIROGA - TEPALCATEPEC

CLAVE: 16125

ruta: MEX-120



Km: 0.00 Tipo: 3 Sent: 0

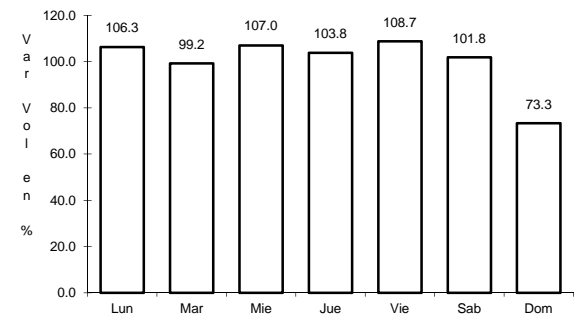
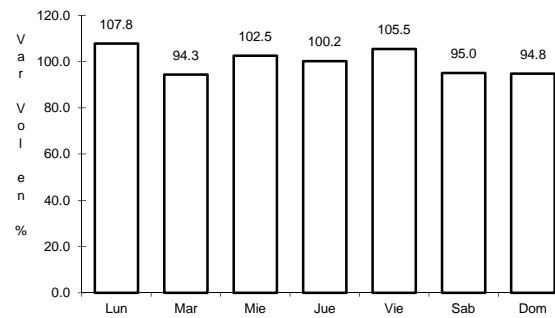
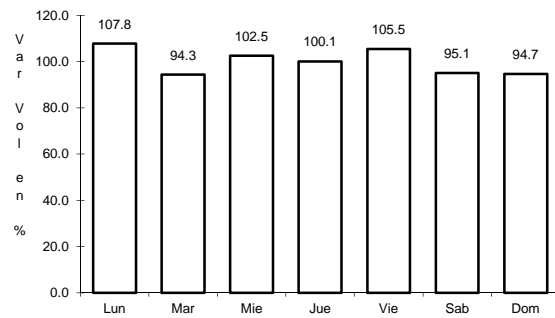
Km: 123.20 Tipo: 3 Sent: 0

Km: 233.90 Tipo: 3 Sent: 0

18 CARR: RINCONADA - LA PIEDAD

CLAVE: 16243

ruta: MEX



Km: 0.00 Tipo: 3 Sent: 0

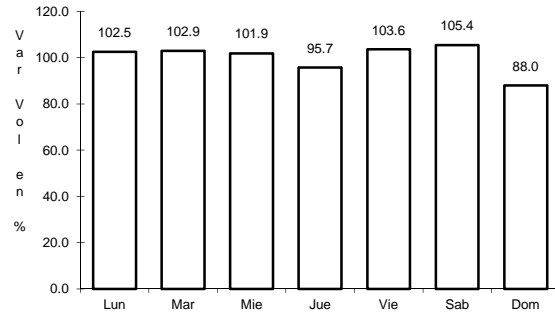
Km: 18.40 Tipo: 1 Sent: 0

Km: 46.40 Tipo: 1 Sent: 0

19 CARR: T. C. (ZIHUATANEJO - LA MIRA) - LAZARO CARDENAS

CLAVE: 16421

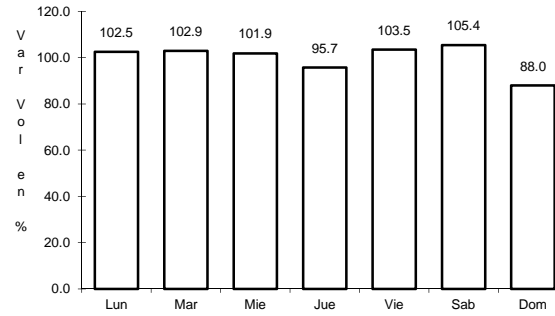
RUTA: MEX



Km: 0.00

Tipo: 3

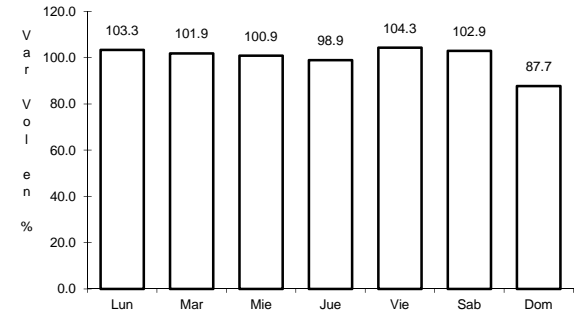
Sent: 1



Km: 0.00

Tipo: 3

Sent: 2



Km: 6.00

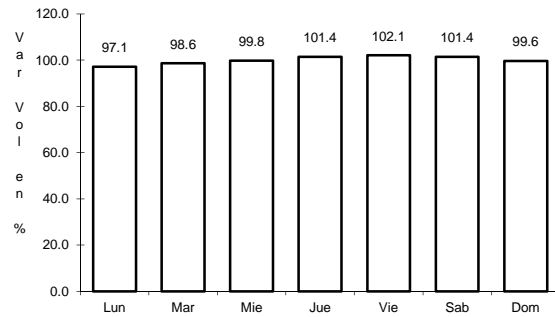
Tipo: 1

Sent: 1

20 CARR: TOLUCA - CD. ALTAMIRANO

CLAVE: 00020

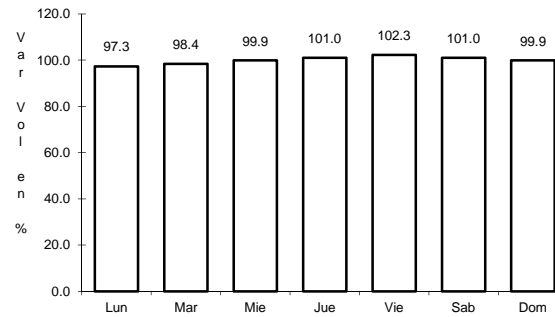
RUTA: MEX-134



Km: 1.78

Tipo: 3

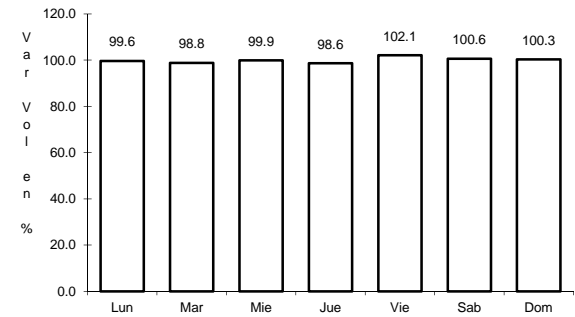
Sent: 1



Km: 1.78

Tipo: 3

Sent: 2



Km: 216.00

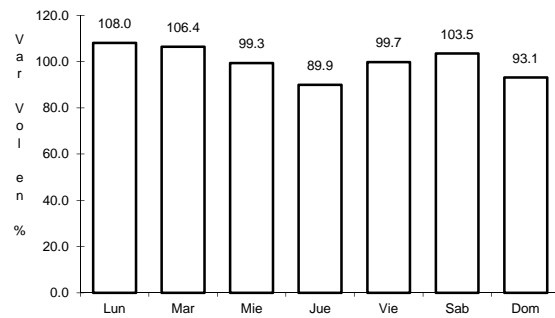
Tipo: 1

Sent: 0

21 CARR: TOLUCA - MORELIA

CLAVE: 00448

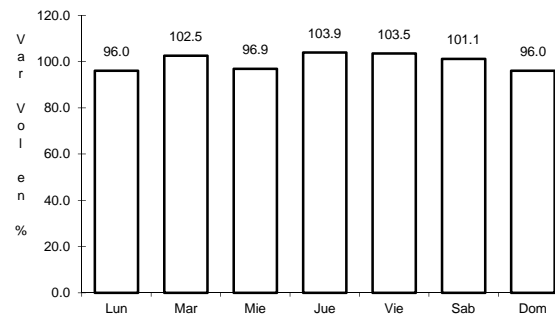
RUTA: MEX-015



Km: 1.00

Tipo: 3

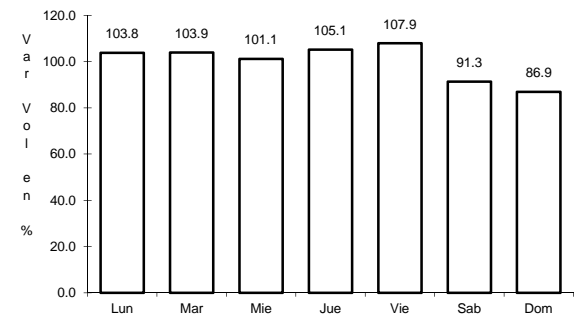
Sent: 1



Km: 1.00

Tipo: 3

Sent: 2



Km: 238.60

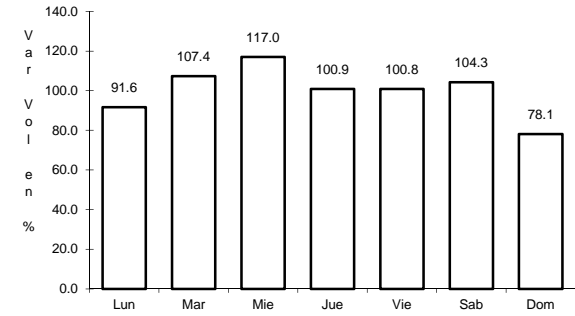
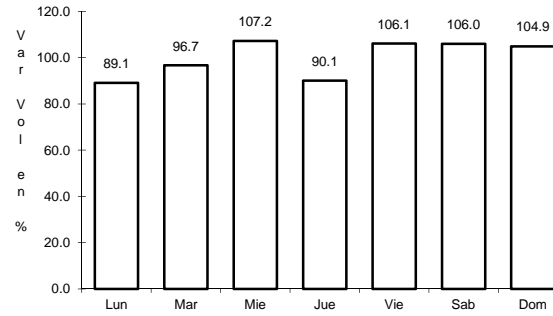
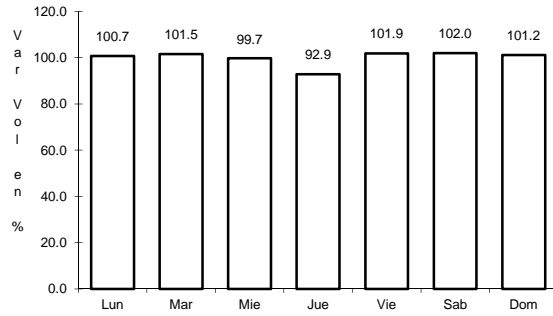
Tipo: 1

Sent: 0

28 CARR: MORELIA - SALAMANCA (CUOTA)

CLAVE:

RUTA: MEX-043D



Km: 26.50 Tipo: 3 Sent: 0

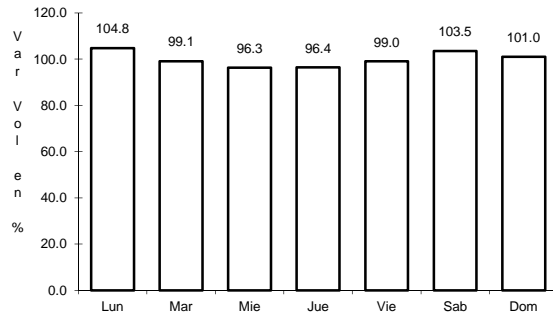
Km: 104.64 Tipo: 1 Sent: 0

Km: 109.49 Tipo: 1 Sent: 0

29 CARR: APATZINGAN - AGUILILLA

CLAVE: 16591

RUTA: MICH

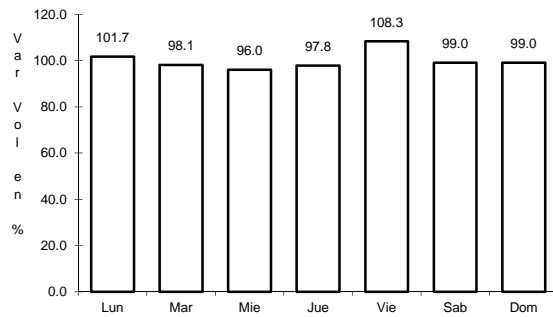


Km: 0.00 Tipo: 3 Sent: 0

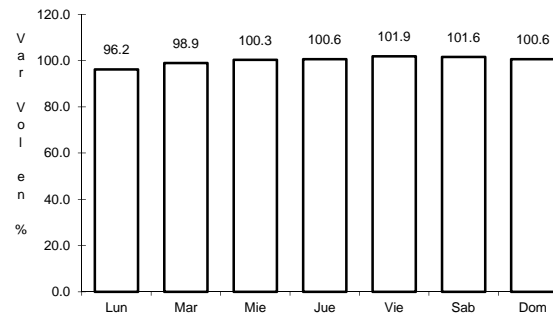
30 CARR: COMANJA - HUANIQUEO

CLAVE: 16024

RUTA: MICH-024



Km: 0.00 Tipo: 3 Sent: 0

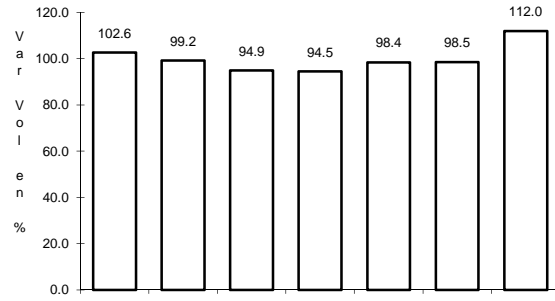


Km: 27.10 Tipo: 1 Sent: 0

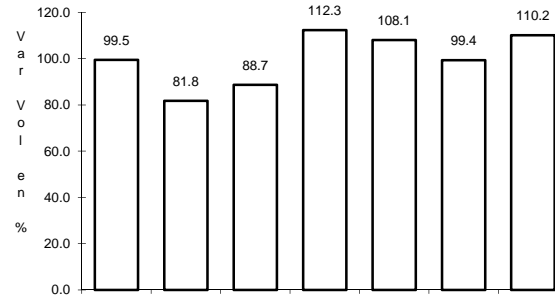
34 CARR: EL TEMASCAL - EL LIMON

CLAVE:

RUTA: MICH



Km: 0.00 Tipo: 3 Sent: 0

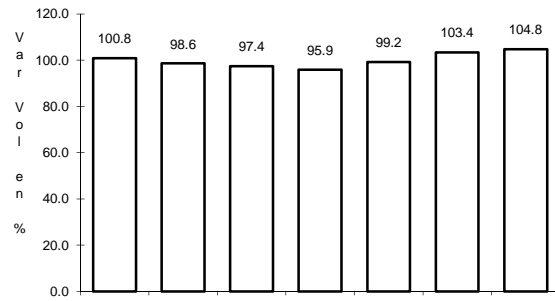


Km: 92.30 Tipo: 1 Sent: 0

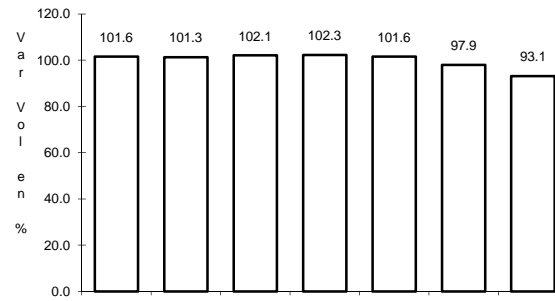
35 CARR: GABRIEL ZAMORA - DR. MIGUEL SILVA

CLAVE:

RUTA: MICH



Km: 0.00 Tipo: 3 Sent: 0

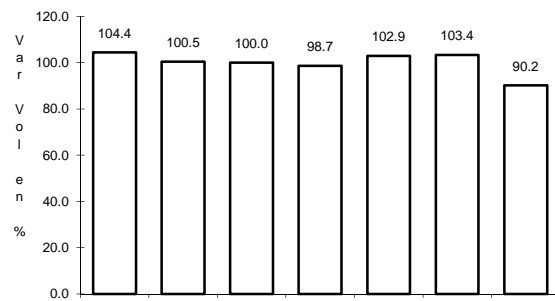


Km: 55.20 Tipo: 1 Sent: 0

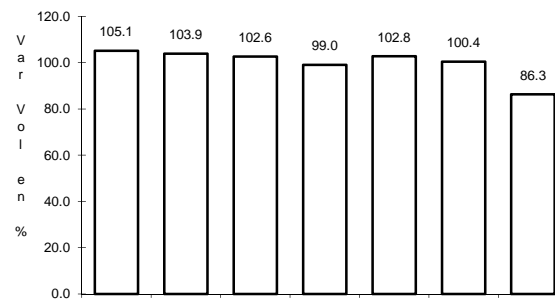
36 CARR: JACONA - BUENAVISTA TOMATLAN

CLAVE: 16016

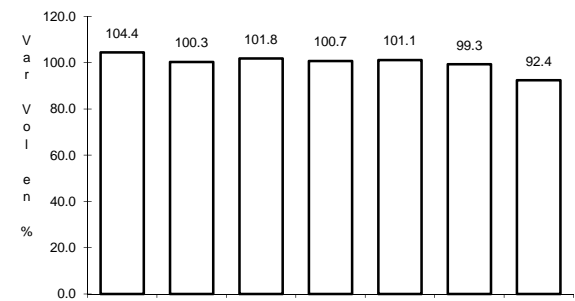
RUTA: MICH-016



Km: 0.00 Tipo: 3 Sent: 0



Km: 60.00 Tipo: 1 Sent: 0

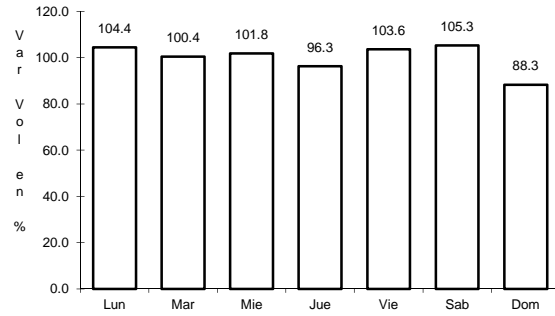


Km: 123.00 Tipo: 1 Sent: 0

40 CARR: RAMAL A COAHUAYANA

CLAVE: 16069

RUTA: MICH-069



Km: 0.00

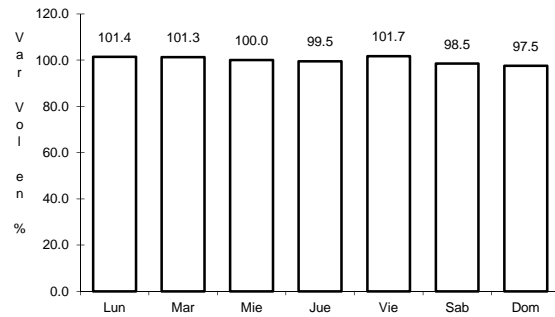
Tipo: 3

Sent: 0

41 CARR: RAMAL A INFIERNILLO

CLAVE: 16010

RUTA: MICH-010



Km: 0.00

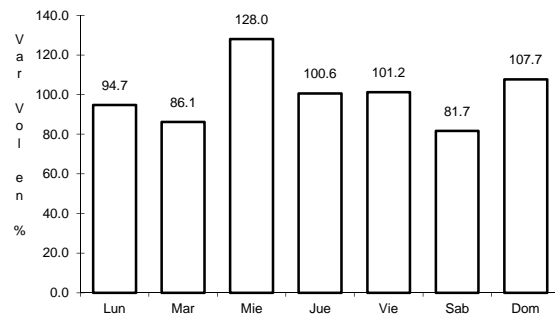
Tipo: 3

Sent: 0

42 CARR: SAN FELIPE ALZATI - ANGANGUEO

CLAVE: 16556

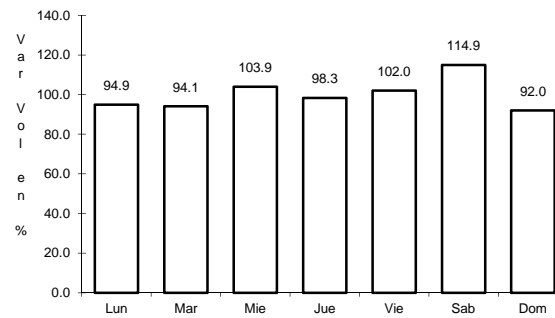
RUTA: MICH-044



Km: 0.00

Tipo: 3

Sent: 0



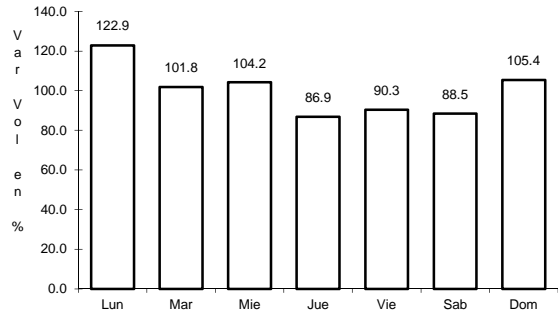
Km: 24.00

Tipo: 1

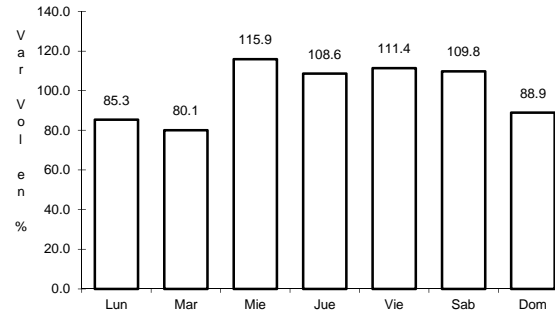
Sent: 0

46 CARR: T. C. (V. VICTORIA - EL ORO DE HIDALGO) - ANGANGUEO CLAVE: 00195

RUTA: EM-003-MICH



Km: 0.00 Tipo: 3 Sent: 0

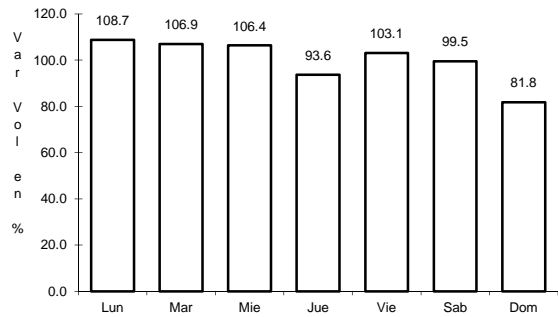


Km: 24.00 Tipo: 1 Sent: 0

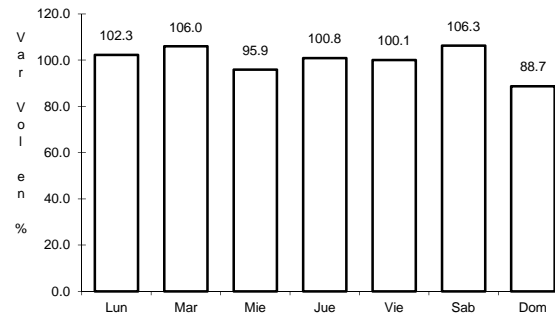
47 CARR: TEPALCATEPEC - AQUILA

CLAVE:

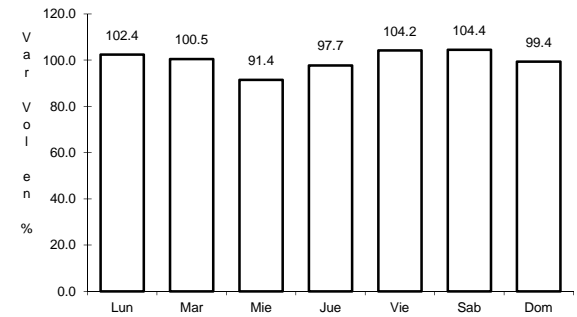
RUTA: MICH



Km: 0.00 Tipo: 3 Sent: 0



Km: 70.30 Tipo: 1 Sent: 0

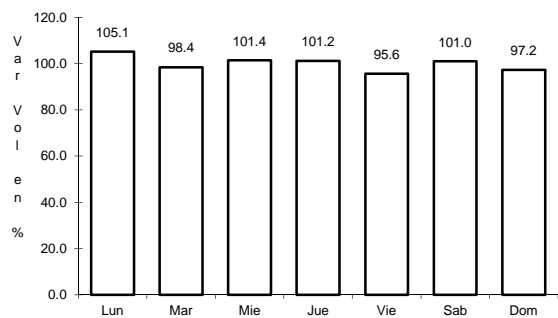


Km: 160.20 Tipo: 1 Sent: 0

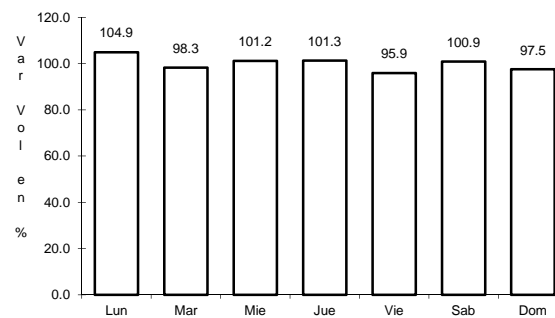
48 CARR: TIRIPETIO - ERENDIRA

CLAVE: 16422

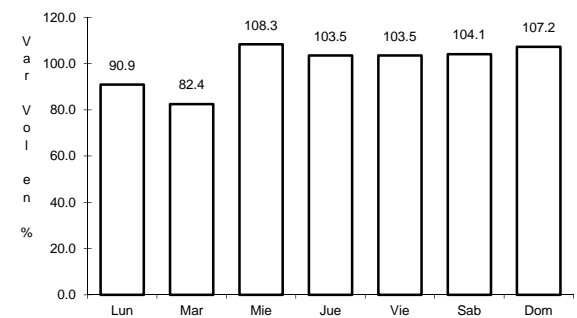
RUTA: MICH



Km: 0.00 Tipo: 3 Sent: 0



Km: 23.20 Tipo: 1 Sent: 0

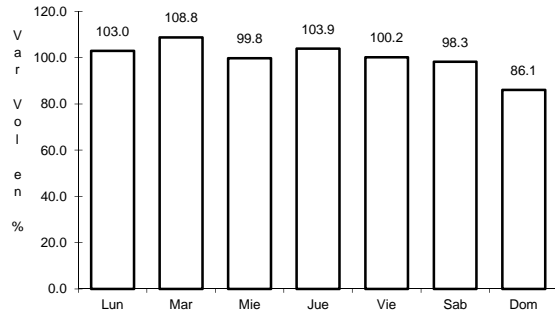


Km: 150.00 Tipo: 1 Sent: 0

49 CARR: TOCUMBO - COTIJA

CLAVE: 16042

RUTA: MICH-042



Km: 0.00

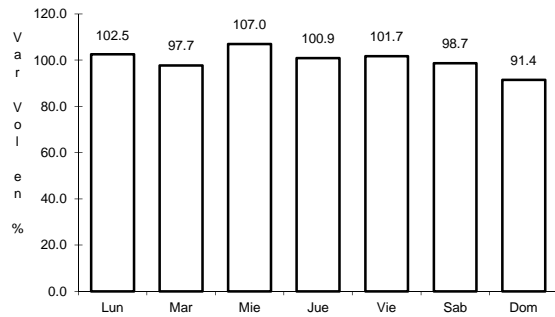
Tipo: 3

Sent: 0

50 CARR: UCAREO - SAN PEDRO JACUARO

CLAVE:

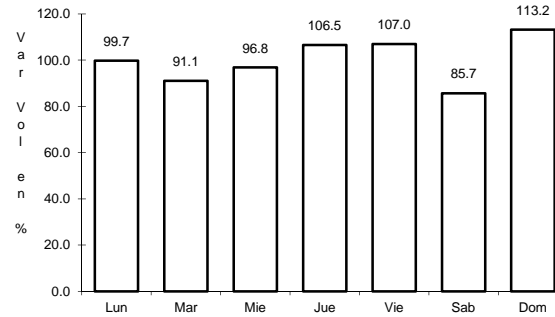
RUTA: MICH



Km: 0.00

Tipo: 3

Sent: 0



Km: 33.00

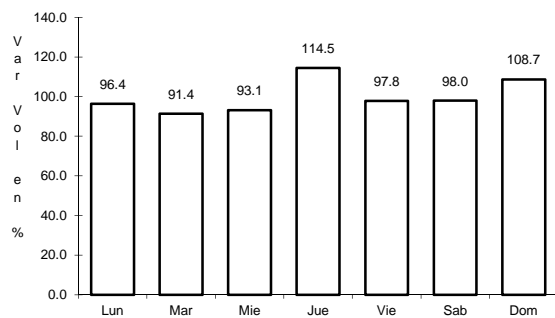
Tipo: 1

Sent: 0

51 CARR: URUAPAN - EL COPETIRO

CLAVE:

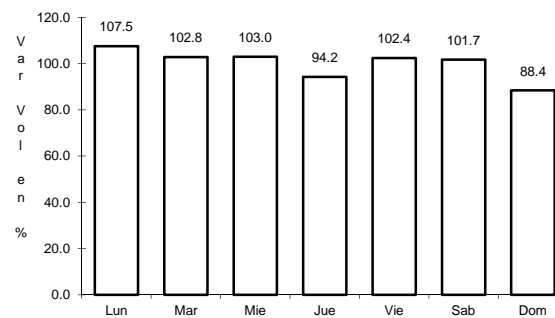
RUTA: MICH



Km: 0.00

Tipo: 3

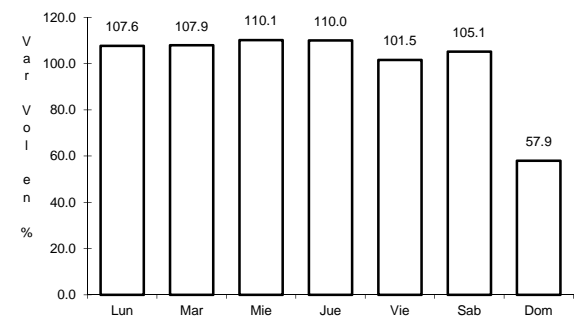
Sent: 0



Km: 12.50

Tipo: 3

Sent: 0



Km: 62.50

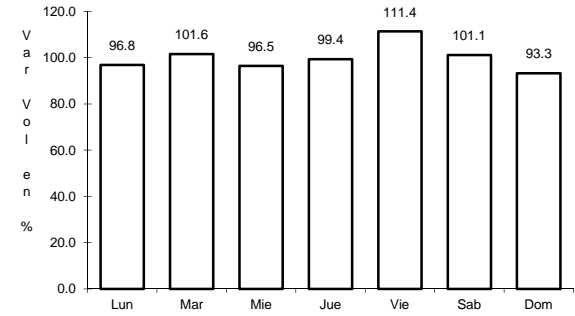
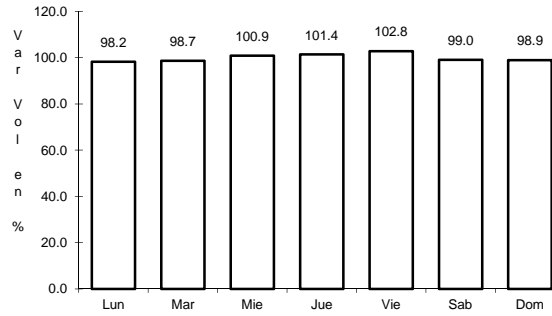
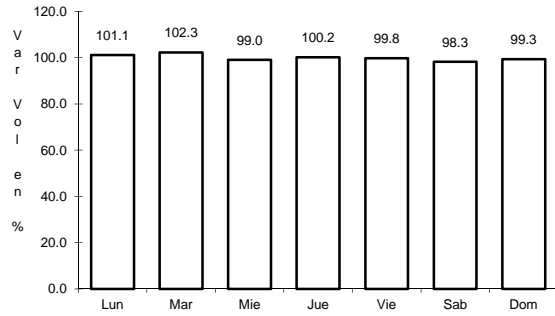
Tipo: 1

Sent: 0

52 CARR: ZACAPU - VILLACHUATO

CLAVE: 16039

RUTA: MICH-039



Km: 0.00 Tipo: 3 Sent: 0

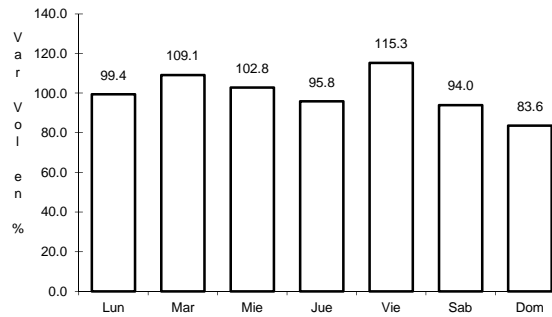
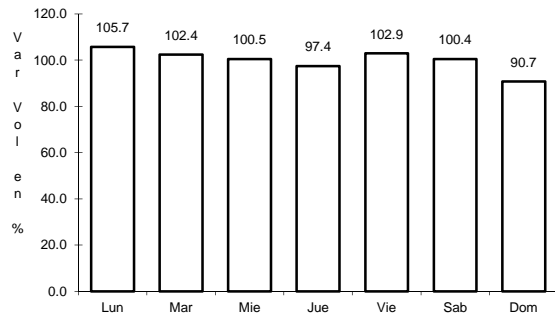
Km: 21.00 Tipo: 3 Sent: 0

Km: 43.00 Tipo: 1 Sent: 0

53 CARR: ZICUIRAN - CHURUMUCO

CLAVE:

RUTA: MICH



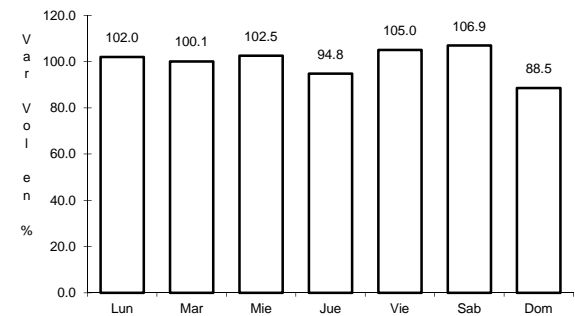
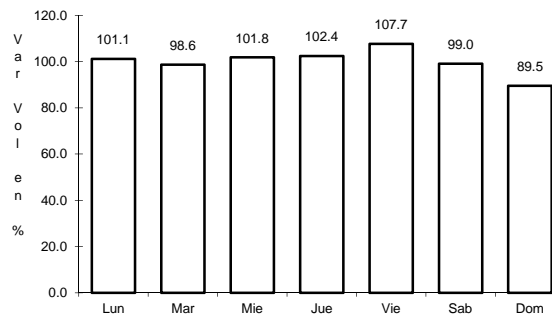
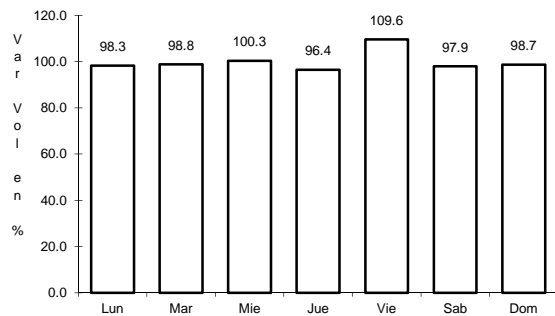
Km: 0.00 Tipo: 3 Sent: 0

Km: 53.42 Tipo: 1 Sent: 0

55 CARR: ATLACOMULCO - MORELIA

CLAVE: 00151

RUTA: EM-005-MEX-126



Km: 0.00 Tipo: 3 Sent: 0

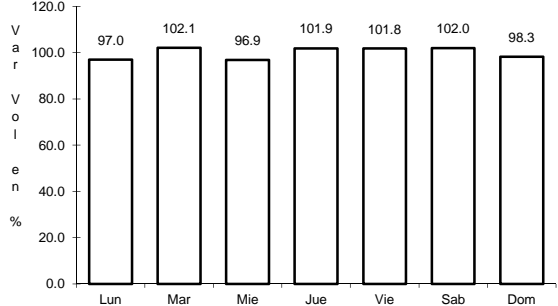
Km: 167.70 Tipo: 1 Sent: 1

Km: 167.70 Tipo: 1 Sent: 2

56 CARR: OPOPEO - PURUARAN

CLAVE: 16241

RUTA: MEX-041-MICH



Km: 0.00

Tipo: 3

Sent: 0