

FAST FACTS ABOUT UNIVERSITY OF JOHANNESBURG



RETHINK EDUCATION.
REINVENT YOURSELF.



UNIVERSITY
OF
JOHANNESBURG

ABOUT THE UNIVERSITY

The University of Johannesburg (UJ), one of the largest residential universities in South Africa, seeks to achieve the highest distinction in scholarship and research within the higher education context. It is equally committed to excellence in all aspects of teaching and learning, and community engagement.

FAST FACTS

FOUNDED

The institution was established in **2005**. A product of the incorporation of the Soweto and East Rand campuses of Vista University into the Rand Afrikaans University (RAU); and the merger of RAU with the Technikon of Witwatersrand (TWR).

CAMPUSES

UJ's unique academic architecture reflects a comprehensive range of learning programmes, leading to a variety of qualifications, from vocational and traditional academic to professional and postgraduate, across four campuses - **Auckland Park Kingsway (APK)**, **Auckland Park Bunting Road (APB)**, **Doornfontein (DFC)** and **Soweto (SWC)**. The campuses vary in size and each has its own character and culture contributing to the institution's rich diversity.



ACADEMIC ARCHITECTURE

UJ comprises of **nine faculties** that are mostly residential communities of scholars – undergraduates, postgraduates and staff.

- **Faculty of Art, Design and Architecture** - eight academic departments with programmes offered on APB
- **Faculty of Economic and Financial Sciences** - four academic departments with programmes offered on APK + SWC
- **Faculty of Education** - four academic departments with programmes offered on APK + SWC
- **Faculty of Engineering and the Built Environment** -13 academic departments with programmes offered on APK + DFC
- **Faculty of Health Sciences** - 12 academic departments with programmes offered on APK + DFC
- **Faculty of Humanities** - 19 academic departments with programmes offered on APK + APB
- **Faculty of Law** - offers the traditional law programmes on APK + SWC
- **Faculty of Management** - eight academic departments with programmes offered on APK, APB + SWC
- **Faculty of Science** - 14 academic departments with programmes offered on APK + DFC

STAFF HEADCOUNT

YEAR	STAFF*	% BLACK STAFF	% FEMALE STAFF	ACADEMIC STAFF
2005	9739	47%	47%	3497
2006	9742	48%	47%	3614
2007	9501	48%	48%	3416
2008	9439	51%	49%	3301
2009	9779	53%	49%	3342
2010	9935	54%	50%	2942

*Includes temporary staff members

NUMBER OF STUDENTS

48 466 students enrolled at UJ in 2010.

Postgraduate student registration exceeded target enrolment, reaching 6 280.

In accordance with the 2011-13 enrolment plan, enrolment growth will be capped at 48 000.

NUMBER OF INTERNATIONAL STUDENTS

2 310 international students enrolled at UJ in 2011 (4.6% of total student enrolment).

STUDENT HEADCOUNT PER CAMPUS IN 2011

CAMPUS	TOTAL
APB – Total	9 255
Undergraduates (UG)	9177
Postgraduates (PG)	78
APK – Total	27 151
UG	21 259
PG	5 892
DFC – Total	7 887
UG	7 634
PG	253
SWC – Total	5561
UG	5500
PG	
UG Total	43 630
PG Total	6280*
UJ Total	49 854

*Mid-year total

STUDENT HEADCOUNT

YEAR	HEADCOUNT	% BLACK	% FEMALE
2005	45 543	71%	53%
2006	42 882	72%	53%
2007	41 739	73%	53%
2008	44 455	77%	54%
2009	49 314	80%	54%
2010	48 466	82%	55%
2011	49 854	81%	55%

With regards to gender representation, female students constituted a steadily increasing proportion of the total, rising from 53% in 2005 to 55% in 2011.

STUDENT GRADUATES

Year	UG	PG	Total
2005	7 266	2 812	10 078
2006	7 728	2 471	10 200
2007	7 371	2 107	9 478
2008	8 041	2 268	10 309
2009	8 025	2 311	10 336
2010	8 034	2 250	10 284

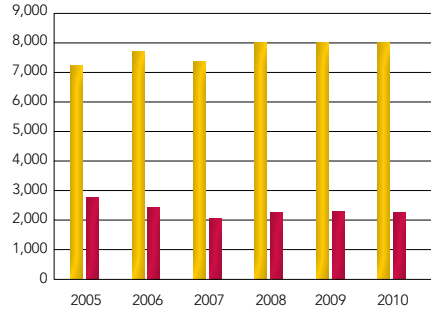
STUDENT SUCCESS RATES

YEAR	%
2005	75%
2006	75.4%
2007	76.6%
2008	76.6%
2009	74.7%
2010	77.7%



UNDERGRADUATE AND POSTGRADUATES

Since 2005, UJ has produced more than 60 000 graduates. This represents a major contribution to the nation's human resource development and labour market.



■ Undergraduate
■ Postgraduate



RESEARCH

Research has been identified as a key differentiator at UJ. In line with this, UJ has identified seven (7) niche areas and thirteen (13) Research Centres. The research output for 2010 was at 629 units*, up 60% since the merger. It is expected that in 2011 we will have doubled the accredited research output to over 600 units since 2005, ahead of the planned 2012 target.

*Claimed units

(submitted; not awarded – 467 awarded in 2009).

RESEARCH CENTRES

- Centre for Culture and Languages in Africa (CCLA)
- Centre for Education Practice Research (CEPR)
- Centre of Social Development in Africa (CSDA)
- Institute of Transport and Logistics Studies (ITLS) in Africa
- Research Centre for Visual Identities in Art and Design
- The Laser Research Centre (LRC)
- The Paleoproterozoic Mineralization (PPM) Research Group
- The Research Centre in Synthesis and Catalysis
- Water and Health Research Centre
- Centre for Sociological Research
- Centre for Information and Knowledge Management
- Industrial Electronics Technology Research Group
- Sustainable Energy, Technology and Research (SeTAR) Centre

RESEARCH NICHE AREAS

- Aquatic Ecotoxicology
- Sociological Research
- Economic Geometallurgy
- Energy and Sustainable Development
- Nanotechnology
- Telecommunications
- Water and Health

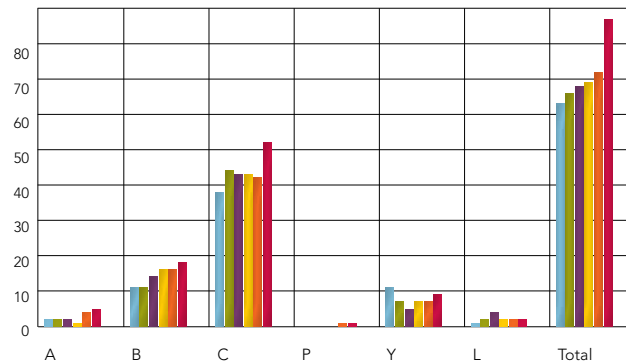
RATED RESEARCHERS

In South African terms one of the benchmarks against which research capability is measured, is the number of National Research Foundation (NRF)-rated researchers affiliated to an institution.

UJ currently has 90 rated researchers, rated by means of a peer-reviewed system managed by the NRF, 5 of whom have been awarded the prestigious **NRF A-rating**. The NRF defines A-rated researchers as “Researchers who are unequivocally recognised by their peers as leading international scholars in their field for the high quality and impact of their recent research outputs”.

NRF-RATED RESEARCHERS PER YEAR AND RATING CATEGORY 2005 - 2010

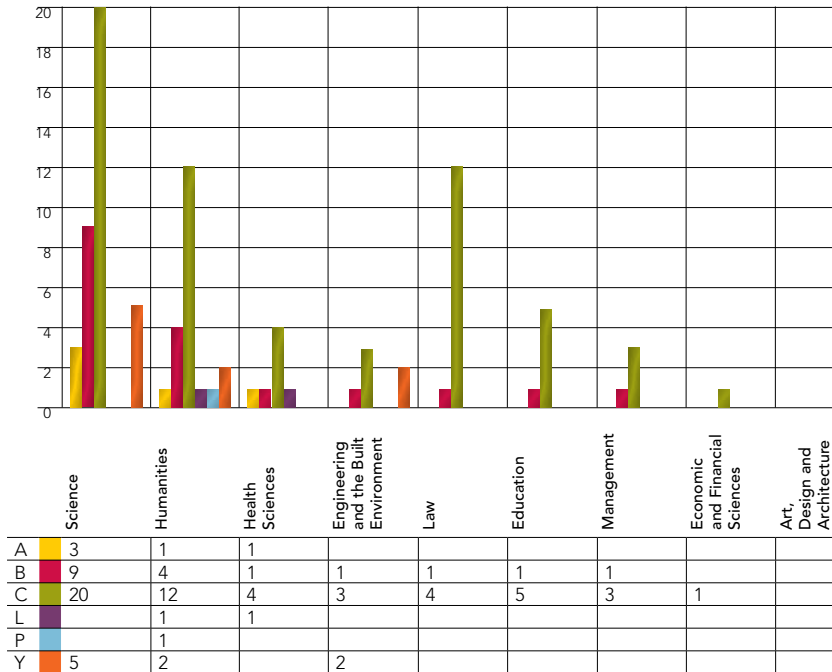
As at November 2010



	A	B	C	P	Y	L	Total
2005	2	11	38	0	11	1	63
2006	2	11	44	0	7	2	66
2007	2	14	43	0	5	4	68
2008	1	16	43	0	7	2	69
2009	4	16	42	1	7	2	72
2010	5	18	52	1	10	2	90

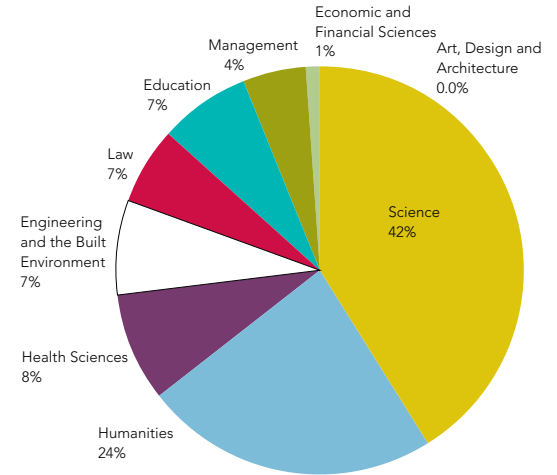
NRF-RATED RESEARCHERS PER FACULTY AND CATEGORY

As at November 2010



TOTAL NRF-RATED RESEARCHERS PER FACULTY (NUMBER, %)

As at November 2010



FACULTIES

RESEARCH FOCUS AREAS

Faculty of Art, Design and Architecture

Visual expressions of identity as a specialised area of knowledge and expertise in art and design research.

Faculty of Economic and Financial Sciences

Economics, Econometrics, Credit Management, Banking, Accounting, Taxation, Auditing, Cost and Management Accounting, Finance.

Faculty of Education

From ecologies of learning to ecologies of practice, Learning to be a teacher – towards learner outcomes in schools, Discourse and performative practice of teachers in language literacy and communication, Keystone species in the science and mathematics classrooms of two schools, Teachers building practice as community counsellors, Teachers and tools: crafting technology education in practice, Teacher identity and the culture of schools, Information and Communication Technology in schools, Values and human rights in education, and Aggression in secondary schools in South Africa.

Faculty of Engineering and the Built Environment

Civil Engineering Materials Research, Chromium Steels, Control and Image Processing , Industrial Electronics Technology, Manufacturing, Mineral Processing and Technology, Optical Communications, Process Optimization of Thermodynamic Systems, Small Scale Mining and Minerals, Speech and Signal Processing ,Telecommunications, Unmanned Aerial Vehicles, Water Research.

Faculty of Health Sciences

Laser Research, Optometric Science, Water and Health Research.

Faculty of Humanities

Social Development in Africa, Sociological Research, Culture and Languages in Africa, African-European Studies, Study of Democracy.

Faculty of Law

Study of Economic Crime , Private International Law in Africa, Banking Law, International Law in Africa, International and Comparative Labour and Social Security Law, Sport Law.

Faculty of Management

Skills in the Transport Arena, Economic Governance and Local Business, The Enterprise of Craft, Practices of Travel Agencies

Faculty of Science

Nanotechnology, Energy and Sustainable Development, Aquatic Ecotoxicology, Economic Geometallurgy.

FACULTIES

INVOLVEMENT IN COMMUNITY ENGAGEMENT

Faculty of Art, Design and Architecture

Phumani Paper.

Faculty of Economic and Financial Sciences

The Thuthuka Programme and the teachers training programme.

Faculty of Education

Social issues (HIV/Aids), workshops for learners from partner schools, Science on a Shoestring, Golden Gate excursion, RAUCALL Mentoring project.

Faculty of Engineering and the Built Environment

Formula One Schools Project; Technology Transfer Project.

Faculty of Health Sciences

Operation Bright Sight eye examinations on patients in informal settlements by senior students and optometrist supervisors. As many as 200 patients are seen.

Nursing and Optometry's Phelophepa Train takes students to rural areas to provide free community service. Third-year students visit Helen Joseph Hospital Breast Cancer Unit to conduct reflexology, the Kopanang treatment, on patients. Chiropractic students offer free health services to detect spinal abnormalities in learners at a primary school.

Faculty of Humanities

The Kopanang Women's Empowerment Project, development of life skills. A group of 50 women generates income with personal artwork and handmade products supporting their families.

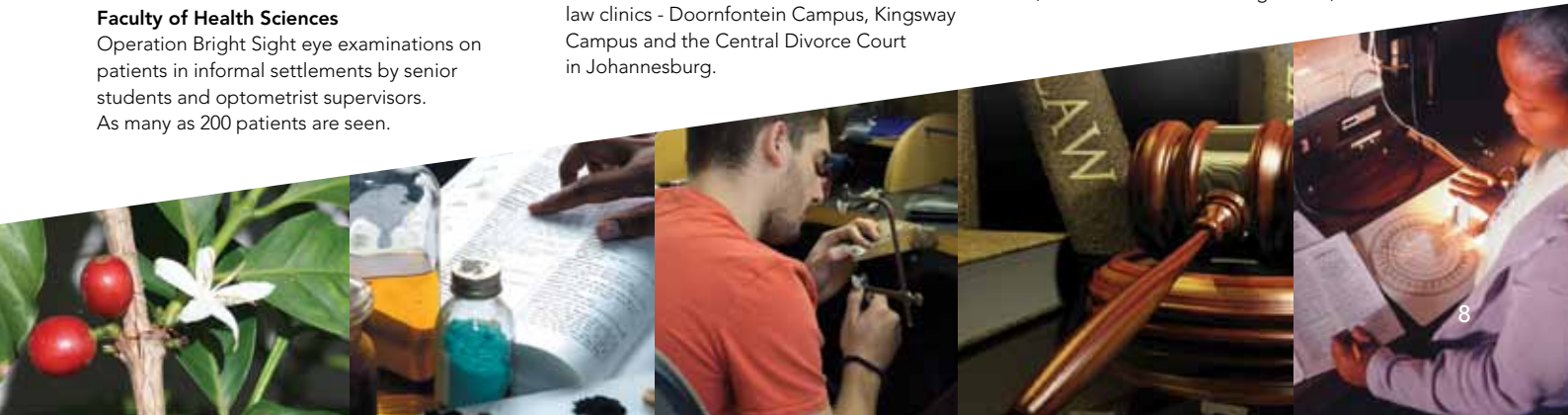
Faculty of Law

Law Clinic, which boasts three operational law clinics - Doornfontein Campus, Kingsway Campus and the Central Divorce Court in Johannesburg.

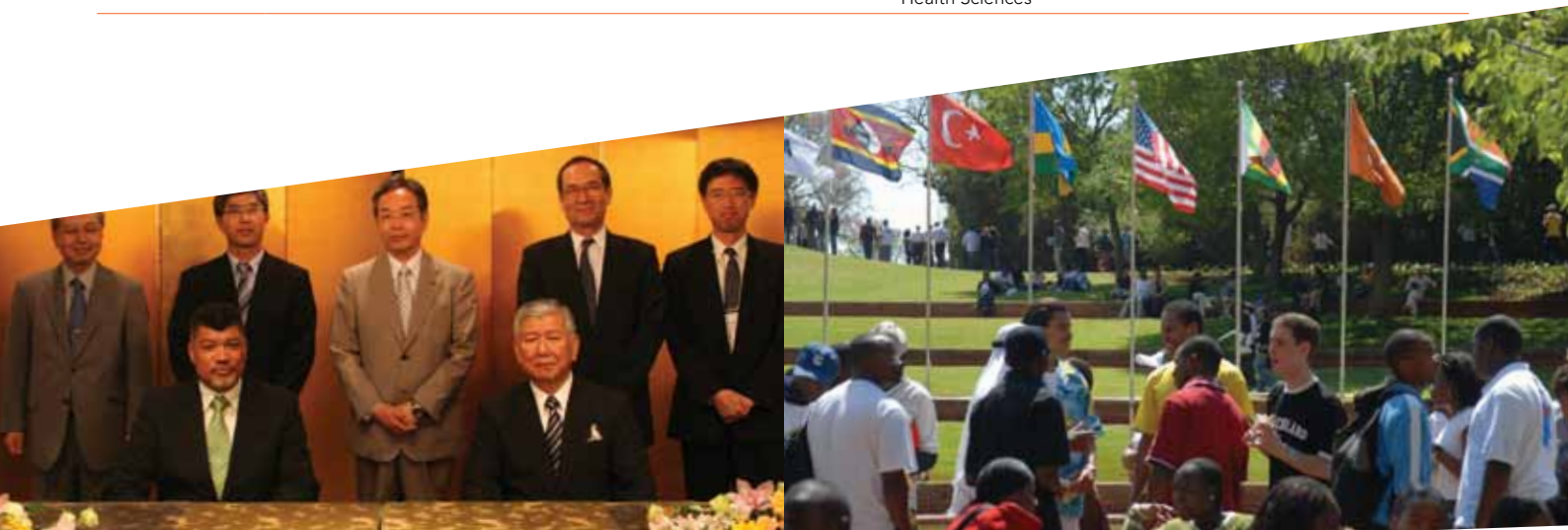
Faculty of Management

Siyampambili Schools Project - 15 schools in Soweto grow calendula flowers for their oil and petals used for colours in painting. The Manica Land Bakery Project - Students worked in Manica, Mozambique to assist the community with a bakery and imparted entrepreneurial skills. Sir Elton John Foundation in Eldorado Park - Three projects: a bakery, bead work and fashion designing. Abraham Kriel Children's Home - orphans are trained to become independent upon leaving Abraham Kriel by engaging in arts to generate income.

Faculty of Science – Scientiae@UJ, Witsblitz, the Parks Alive Project, Scientele Project, UJ MAP (Maths Advancement Programme).



CONTINENT	COUNTRY (NUMBER OF MoUs)	UJ DEPARTMENTS INVOLVED
Africa	Botswana (1), Cameroun (1), DRC (1), Egypt (1), Kenya (2), Madagascar (1), Morocco (1), Mozambique (1), Namibia (1), Reunion (1), Swaziland (1), Tanzania (1), Uganda (1), Zimbabwe (1)	Sociology, Zoology, Botany, Nursing, Tourism, French, Chemical Engineering, Fine Art, Chemical Technology, Fine Art
Asia	Bangladesh (1), China (Hong Kong) (3), India (14), Japan (4), Russia (3)	Fine Art, Industrial Design, Management Sciences, Chemical Technology, Geology, Physics and Zoology
Europe	Austria (1), Belgium (1), Czech Republic (1), Denmark (1), Finland (1), France (7), Germany (20), Greece (3), Hungary (3), Iceland (1), Italy (1), Netherlands (11), Norway (3), Poland (1), Romania (1), Slovakia (1), Spain (1), Sweden (2), Switzerland (2), Turkey (1), United Kingdom (12)	Law, Zoology, French, Biochemistry, Geology, Physics, Greek and Latin Studies, Botany, Fine Art, Business Management, Mechanical Engineering, Economics, Mathematics and Sociology
North America and the Caribbean	Canada (10), USA (33), Bahamas (1)	Electrical and Civil Engineering, Geology, Physics, Journalism, Optometry, Fine Art, Education, Social Work, Nursing and Biochemistry, Tourism and Hospitality
Oceania	Australia (7), New Zealand (2)	Geology, Sociology, Zoology, Civil Engineering
South America	Argentina (2), Brazil (7), Puerto Rico (1)	Geology, Chemical Technology, Zoology, Anthropology and Development Studies, Metallurgy and Chemical Engineering, Health Sciences



GLOBAL REACH

MoUs between UJ and other universities span the globe

By 2010, UJ had entered into MoUs with a large number of universities in numerous countries around the globe. Of particular interest are MoUs entered into with countries such as China and India and those in South America. UJ is also in the process of strengthening ties with universities elsewhere in Africa.

These collaborations aim to investigate problems that developing countries especially have in common, such as poverty, housing, energy and water.





UNIVERSITY
OF
JOHANNESBURG

+27 11 559 2911 | www.uj.ac.za