

# *Jeppesen Services Update Manager*

Quick Start Guide

## Getting Started

The Jeppesen Services Update Manager (JSUM) Quick Start Guide leads you through installation and gets you started using Jeppesen NavData® and chart data download functions.

The JSUM Help function provides more detailed information. It is available in JSUM by clicking **Help > Help Topics**, and online at [www.jeppesen.com/jsum/download](http://www.jeppesen.com/jsum/download).

## JSUM System Requirements

Minimum System Requirements	Recommended System Requirements
<b>PC Type</b>	
<ul style="list-style-type: none"> <li>• Desktop, notebook, or tablet PC with an available USB port<sup>1</sup></li> </ul>	<ul style="list-style-type: none"> <li>• Desktop, notebook, or tablet PC with an available high-powered USB port<sup>1</sup></li> </ul>
<b>Processor</b>	
<ul style="list-style-type: none"> <li>• 500MHz PC (i386 family)</li> </ul>	<ul style="list-style-type: none"> <li>• 1GHz PC or higher</li> </ul>
<b>Memory</b>	
<ul style="list-style-type: none"> <li>• 256MB RAM</li> </ul>	<ul style="list-style-type: none"> <li>• 1GB RAM or higher</li> </ul>
<b>Operating System</b> (English Only)	
<ul style="list-style-type: none"> <li>• Windows® XP 32-bit SP2: Home, Pro, Media Center (MCE), and Tablet PC editions</li> </ul>	<ul style="list-style-type: none"> <li>• Windows XP 32-bit SP3: Home, Pro, Media Center (MCE), and Tablet PC editions</li> <li>• Windows Vista 32-bit SP2 and 64-bit: Home Basic, Home Premium, Business Edition, Enterprise Edition and Ultimate Edition (JSUM version 2.0.1 and higher)</li> <li>• Windows 7 32-bit and 64-bit (as of JSUM 2.2)<sup>2</sup></li> </ul>
<b>Free Hard Drive Space</b> (Terminal Charts) <sup>3</sup>	
<ul style="list-style-type: none"> <li>• USA (48 States): 140MB</li> <li>• Europe: 95MB</li> <li>• Worldwide: 390MB</li> </ul>	<ul style="list-style-type: none"> <li>• 1GB (for multiple coverages)</li> </ul>
<b>Free Hard Drive Space</b> (NavData) <sup>3</sup>	
<ul style="list-style-type: none"> <li>• 10MB</li> </ul>	<ul style="list-style-type: none"> <li>• 20MB</li> </ul>
<b>CD-ROM</b>	
<ul style="list-style-type: none"> <li>• 8X</li> </ul>	<ul style="list-style-type: none"> <li>• 24X or faster</li> </ul>
<b>Internet</b>	
<ul style="list-style-type: none"> <li>• 56K dial-up Internet connection</li> </ul>	<ul style="list-style-type: none"> <li>• Broadband Internet connection</li> </ul>
<b>Browser</b>	
<ul style="list-style-type: none"> <li>• Microsoft Internet Explorer 5.01 or higher</li> </ul>	<ul style="list-style-type: none"> <li>• Microsoft Internet Explorer 7</li> </ul>
<b>Input Device</b>	
<ul style="list-style-type: none"> <li>• Pointer device</li> <li>• Keyboard</li> </ul>	<ul style="list-style-type: none"> <li>• Pointer device</li> <li>• Keyboard</li> </ul>
<b>External Devices</b> (specified by unit mfrs)	
<ul style="list-style-type: none"> <li>• Multiple-slot Skybound USB, single-slot Skybound USB (G2) CompactFlash™ (CF), Secure Digital (SD) card reader/writers, USB Iomega Zip® drive or USB flash drive</li> </ul>	<ul style="list-style-type: none"> <li>• Multiple-slot Skybound USB, single-slot Skybound USB (G2) CompactFlash (CF), Secure Digital (SD) card reader/writers, USB Iomega Zip drive or USB flash drive</li> </ul>

**NOTE: This software may not run properly and Jeppesen is unable to provide technical support on systems that do not meet these requirements.**

1 The Skybound USB adapter requires 300mA of power. To work correctly, some data card adapters require a high-powered USB hub capable of providing more than 100mA of power through the port.

2 Skybound driver support for Windows 7 is scheduled to become available in 2010. Refer to Microsoft or your adapter manufacturer for status on other drivers.

3 Hard drive space required varies based on your subscription coverage of NavData and/or chart data.

## What You Need

The following resources are required to install JSUM, download data updates, and program media:

- The JSUM setup executable, downloaded from [www.jeppesen.com/jsum/download](http://www.jeppesen.com/jsum/download) or opened from the JeppView MFD program CD.
- Appropriate data card adapter for your Global Positioning System (GPS) or Multi-Function Display (MFD):
  - Jeppesen Skybound USB adapter
  - Iomega Zip 250MB or higher USB-powered external drive
  - CompactFlash (CF) reader/writer
  - Secure Digital (SD) reader/writer
- Appropriate media:
  - Garmin NavData or supplemental data card
  - PCMCIA or PC data card
  - PC edge data card
  - Iomega 100MB or 250MB Zip Disk
  - CompactFlash (CF) card
  - Secure Digital (SD) card
  - USB flash drive
- Internet connection

You must have administrative permission on your computer to install new software. In JSUM Help see the Installation topic for steps to elevate your permissions.

Step-by-step multimedia tutorials that guide you through installation are available at [www.jeppesen.com/jsum/download](http://www.jeppesen.com/jsum/download).

## Downloading the Program Installer

The JSUM program is available by download from the Jeppesen web site. To download the installer:

1. Go to [www.jeppesen.com/jsum/download](http://www.jeppesen.com/jsum/download)
2. Click the **Download JSUM v2.x** link and save the JeppesenServicesSetup.exe file on your computer where you can easily find it, such as the desktop. Accept any request for permission to open or download the file.
3. When the download is finished, minimize or close all browser windows.
4. Navigate to the location where you saved JeppesenServicesSetup.exe in step 2, and continue with the installation instructions below.

## Installing JSUM

For additional installation information, view the Help file or follow the step-by-step installation tutorials at [www.jeppesen.com/jsum/download](http://www.jeppesen.com/jsum/download).

Begin by double-clicking JeppesenServicesSetup.exe if you previously downloaded the installer.

Or insert the JeppView MFD program CD in your computer CD-ROM reader.

If you are using the JeppView ECD1 and the program installer does not open automatically, click **Start > Run**. Enter `d:\setup.exe` (d: is the letter of the CD-ROM drive).

In the JeppView installer, check **Install Jeppesen Services**. Complete the JeppView chart update, and then follow the instructions on the following page to complete the JSUM installation.

## Installing JSUM (Continued)

1. Accept any requests for permission to open or run the setup, and follow the onscreen instructions for installing the program, which are also outlined in the following steps.
2. When the Jeppesen Services Setup Welcome window appears, click **Next**.
3. If the installer detects Skybound NDT, Skybound USB, or the DataLoader, you will see a list of applications that must be uninstalled. Click **Next** and follow the prompts to uninstall the listed programs. Uninstalling JeppView for the MX20 is optional. If you need additional details or help uninstalling these programs, please view the Help file at [www.jeppesen.com/jsum/download](http://www.jeppesen.com/jsum/download).
4. Read the software license agreement and accept the terms. Click **Next**.
5. Select the path to install JSUM and click **Next**. It is recommended that you use the default folder, which is C:\Program Files\Jeppesen, or a location where other Jeppesen programs have been installed. To use a different drive or folder, click **Change**, then type the path or browse to the directory (folder).
6. Select a program folder and click **Next**.
7. If you use Jeppesen Skybound adapter hardware, be sure to accept the device software installation.

In the XP Software Installation dialog, click **Continue Anyway**:



In the Vista Windows Security dialog, click **Install**. To avoid seeing this dialog in future program updates, check the box to "Always trust software from Jeppesen."



8. After the program files install, select the appropriate check boxes to place the Jeppesen Services icon on your desktop, launch JSUM immediately, and/or always launch JSUM at startup. Click **Next**.
9. Click **Finish**.

## Login

Once JSUM is installed on your computer:

1. Establish an Internet connection.
2. Click **Start > Programs > Jeppesen Services > Jeppesen Services**, or click the Jeppesen Services icon on your desktop.
3. When the login dialog appears, enter your user name and password if you are an existing customer, or the user name and password given to you when you ordered your service. This is the same user name and password you use on [www.jeppesen.com](http://www.jeppesen.com).



Once a successful login is established, JSUM verifies that the data servers are online, verifies that you have the most recent version of the application, and provides a list of all your subscribed services.

## Login Without Internet Connection

You must be connected to the Internet when you log in to JSUM for the first time. A successful login with an Internet connection is necessary to download data to your hard drive.

Once you have successfully downloaded a service to your hard drive, the Internet connection is not needed to log in later and update your media. When you log in without an Internet connection, only the services you have downloaded and saved to your hard drive are available. If no services are saved on the computer, you cannot log in offline.

## Connecting Your Media

JSUM is compatible with various media used to update GPS or MFD units. If you are using the Jeppesen Skybound USB adapter, view the installation instructions in the Help file by clicking **Help > Help Topics** within JSUM, or follow the Jeppesen Skybound installation tutorial for your operating system at [www.jeppesen.com/jsum/download](http://www.jeppesen.com/jsum/download).

If problems occur while connecting your adapter or updating your media, refer to the Help file for additional information.

## Programming Your Media

You must be connected to the Internet and logged into JSUM before starting the download process for Jeppesen NavData and chart data.

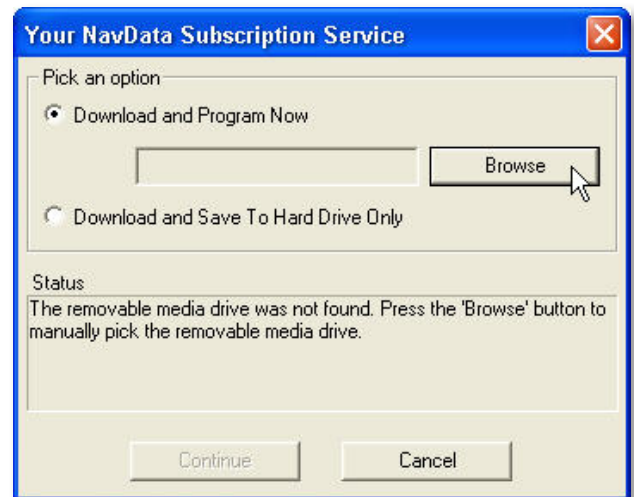
**NOTE** If you are an Avidyne CMax user updating terminal chart data, register at [www.myavidyne.com](http://www.myavidyne.com) before starting the following procedure. You need your Avidyne MFD hardware 8-digit serial number, found on the EX500 or EX5000 Setup or Aux screen, and your 16-digit Jeppesen terminal chart service serial number. Once you have completed registration, use the resulting CMax Key Code for your electronic terminal chart subscription in JSUM. Please refer to the Avidyne section of the JSUM Help file for additional information.

1. Ensure that your media (adapter with appropriate data card or USB flash drive) is properly connected to the computer.
2. Select the service to program from the service list and click **Start**.
3. JSUM opens the dialog shown below. If the card and adapter are recognized, you may not see the second option. The options in the terminal chart services dialog behave the same, although the wording is slightly different:

To download data and update the media at the same time, select the first option, **Download and Program Now**. If the media is not found, click **Browse** to navigate manually to the adapter or USB flash drive. If JSUM is unable to find the media, verify that the adapter or flash drive is connected properly and the correct card is inserted. Review the troubleshooting section in the Help file if necessary.

To save data to your local computer only, and program the card later, select the second option, **Download and Save To Hard Drive Only**. Saving to the hard drive downloads ALL your subscription counts. All the media requiring updates must be programmed from the computer with the downloaded service.

4. Click **Continue** to begin the process, or **Cancel** to exit the dialog.
5. Follow the steps below for downloading data to your computer hard drive and/or completing media programming.



## Programming Your Media (Continued)

### Downloading Data to Your Computer Hard Drive

With this option the selected service downloads to your local computer hard drive and gives you the flexibility to program your card when and where it's most convenient.

As data saves, the status bar and the Download Progress column display percentage complete. When it reaches 100 percent, the download is complete.

Services	Cycle Date	Updates ...	Download ...	Program ...
NavData Coverage	2006-May-11	1	100%	

Once the data has been successfully downloaded to your computer, you can disconnect from the Internet and close JSUM until you want to program your media. An Internet connection is not needed when transferring saved data from your computer to your media.

### To program media from data saved to your computer:

1. Open JSUM and select the downloaded service you want to program in the service list.
2. Connect your media (adaptor with appropriate data card or USB flash drive).
3. When the media is detected, click **Continue**.
4. Continue with the next steps, Programming Cycle.

### Programming Cycle

**WARNING** Do not remove your media until the programming cycle is complete! Otherwise data may be incomplete or corrupt.

The programming cycle automatically performs a sequence of actions that downloads data and writes

it to your media. JSUM downloads data from a server (if the data was not already saved to your hard drive), erases old data, writes new data and verifies the information. As the programming steps are successfully completed, the status bar, Download and Program Progress columns display either the percentage complete or the operation in process (Erasing, Programming, Verifying).

Services	Cycle Date	Updates ...	Download ...	Program ...
NavData Coverage	2006-May-11	1	100%	100%

When programming is complete, a success dialog opens with a link to Alerts and Notifications on [jeppesen.com](http://jeppesen.com). Your media or adapter LED will also signify that programming is complete.



1. Safely remove the media or adapter by double-clicking **Safely Remove Hardware** in the system tray, if applicable.
2. Refer to your GPS or MFD user's manual to transfer updated data to your GPS or MFD system.

**IMPORTANT** Before flying, verify that the data version number in the MFD or GPS system is correct.

If you encounter any problems while using JSUM, please refer to the Help file by clicking **Help > Help Topics** in JSUM, or at [www.jeppesen.com/jsup/download](http://www.jeppesen.com/jsup/download).