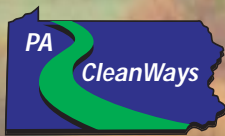
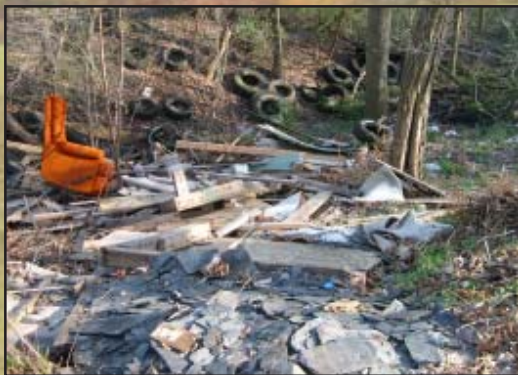


PA CleanWays - Keep Pennsylvania Beautiful Illegal Dump Survey Final Report York County 2010



Empowering people to
eliminate illegal dumping
and littering in Pennsylvania





Empowering people to eliminate illegal dumping and littering in Pennsylvania



PA CleanWays and Keep Pennsylvania Beautiful recently joined forces to promote illegal dump cleanups, anti-litter education, special collections, and beautification projects to make their work with local partners and volunteers more effective. Since 1990, PA CleanWays has been dedicated to empowering people to eliminate illegal dumping and littering. Through the coordinated efforts of nearly 52,000 PA CleanWays volunteers, over 11,900 tons of trash have been removed from illegal dumpsites in Pennsylvania and properly disposed. Through cleanups and special collection events sponsored by PA CleanWays chapters and affiliates, over 410,000 tires and 2,250 tons of scrap metal have been properly disposed and recycled. More than 337,000 youths and adults have been reached through educational presentations. Our experience over two decades proves that local involvement, partnerships, and support are vital to lasting success in addressing illegal dumping and littering.

PA CleanWays – Keep Pennsylvania Beautiful

105 West Fourth Street, Greensburg, PA 15601

Phone: 724-836-4121 • Toll Free: 877-772-3673

Fax: 724-836-1980 • www.pacleanways.org

EXECUTIVE SUMMARY

PA CleanWays is a nonprofit organization that empowers people to eliminate illegal dumping and littering in Pennsylvania through various education and environmental programs. PA CleanWays' illegal dump surveys educate state, county, and local officials about the problem of illegal dumping and provide valuable data about the dumpsites and the community in which they reside to address the problem through cleanups, municipal waste collections, and recycling programs.

Illegal dumpsite identification was completed by driving roads and contacting various constituent groups such as municipal offices and community services, state agencies, and environmental and conservation groups in the area. Limitations of the survey process included poor visibility in high growth areas and surveyors not accessing private lands or high crime/high risk areas. Due to these limitations, it is likely that there were additional dumpsites not accounted for in this report. Farm dumps and private dumps were not included in the survey. The survey process is to document sites where landowners have been the victim of illegal dumping from other parties, not sites where they have been doing the dumping themselves, or past owners did the dumping.

There were 274 dumpsites identified containing an estimated 263.0 tons of trash. Ninety-one percent of the sites were determined to be active and 67% of the sites were located in a rural area. Of 72 municipalities in York County, 48 municipalities offer trash collection. Sixty-one of the municipalities (85%) within York County have a curbside recycling program in their community while 30 municipalities (42%) have access to a recycling drop off program. Thirty-six municipalities (50%) have illegal dumping activity. Eighty sites (29%) were located in municipalities without a curbside recycling program.

One hundred twenty-eight, or 47%, of the surveyed sites were in the vicinity (50 feet and within) of some sort of waterway or body of water. Of those, 42 sites had waste materials directly in the waterway itself. Of the items inventoried at each dumpsite assessed, 81% had recyclables, 68% had tires, 64% of the sites contained household trash, 49% of the sites had bagged trash, and 45% had some sort of construction and demolition waste. There were a total of 2,633 tires itemized, however those account only for tires visible at time of surveying. Many more tires are assumed to be present under buried trash or leaf litter. Recyclables are defined as steel, bi-metallic, and aluminum cans, glass, plastic bottles and containers, newspaper, magazines, cardboard, etc.

TABLE OF CONTENTS

EXECUTIVE SUMMARY	i
BACKGROUND	1
PURPOSE OF ILLEGAL DUMP SURVEYS	1
IMPACTS OF ILLEGAL DUMPING.....	1
SURVEY METHOD.....	2
DEFINITION OF AN ILLEGAL DUMPSITE.....	2
SITE IDENTIFICATION AND ASSESSMENT.....	3
LIMITATIONS	3
FARM/PRIVATE DUMPING.....	4
YORK COUNTY ILLEGAL DUMPSITE SURVEY AREA AND RESULTS	4
SURVEY AREA.....	4
SITE CHARACTERISTICS.....	6
IMPACTS ON WATERWAYS.....	6
WASTE CHARACTERISTICS	6
POSSIBLE CAUSES AND SOLUTIONS	6
POSSIBLE CAUSES.....	7
POSSIBLE SOLUTIONS.....	7
SUMMARY	9
ATTACHMENTS	
#1 York County Illegal Dumpsites and Municipalities Map	
#2 York County Illegal Dumpsites and Population Density Map	
#3 York County Illegal Dumpsites and Environmental Features Map	
#4 Illegal Dumpsite and Trash Collection by Municipality	
#5 Illegal Dumpsite Survey Site Characteristics by Municipality	
#6 Illegal Dumpsite Survey Waste Characteristics by Municipality	
#7 Illegal Dumpsite Survey Summary Chart by County	

BACKGROUND

PA CleanWays is a nonprofit organization that empowers people to eliminate illegal dumping and littering in Pennsylvania. Since 1990, PA CleanWays has helped people who are ready to take action against these destructive problems. By partnering with county and local officials, concerned residents, and community organizations, tangible results can be seen within a community through:

- organization of illegal dump and litter cleanups,
- adoption of local areas,
- prevention of future dumping by the watchful eyes of volunteer monitors,
- placement of physical deterrents, and,
- enforcement action when needed.

PA CleanWays educates the public about proper waste disposal, recycling, and practical alternatives to dumping and littering through the dissemination of literature, presentations, and coordination of collection events for hard-to-dispose of items.

PURPOSE OF ILLEGAL DUMP SURVEYS

The purpose of the illegal dump survey was to assess and document as many illegal dumpsites as possible within the county. Illegal dumping mostly occurs in remote and secluded places, rural areas where few people live and the roads are less traveled. However, for many people who are residents of an urban area, an illegal dump can often be found within a one-mile radius of their home. Illegal dumping, within an urban context, has its own set of unique characteristics. Overall, very few people are aware of the widespread problem of illegal dumping.

The first step in developing an action plan against illegal dumping in a community is to determine the extent of the illegal dumping problem. Once sites are identified, assessed, and mapped, the data gathered can be used to:

- show that a problem does indeed exist,
- prioritize the sites and areas for cleanup and abatement,
- document problem materials within the dumpsites and develop plans for proper disposal, and,
- provide a benchmark to measure cleanup progress.

The survey is also a tool that can be used for planning purposes within the community. It can provide valuable insight into the development and enhancement of solid waste and recycling programs. It can also be used to gain support for funding for public awareness programs and education, as well as to generate funds to clean the existing dumpsites.

IMPACTS OF ILLEGAL DUMPING

Illegal dumping poses a direct threat to the health and safety of humans and animals. Illegal dumping attracts disease-spreading rodents and mosquitoes by giving them a place to live and

breed. West Nile Virus, carried by mosquitoes, has been a primary concern for environmental officials. Illegal dumps also can be a source of physical injury for humans and animals due to broken glass, rusty metals, and toxic substances.

Recently, a new threat has been added to illegal dumping. Methamphetamine labs, used to produce the illegal drug crystal meth, are becoming more and more common. The materials used to make the illegal drug are tossed along the roadsides in illegal dumps and are extremely toxic.

Environmentally, illegal dumping pollutes our soil, surface, and groundwater supplies, as well as the air we breathe if a site catches on fire. The emissions released by the burning plastics and household hazardous waste can be extremely toxic. It is also aesthetically unpleasing and ruins the beauty of natural areas, including many public places such as community parks and state forests, parks, and game lands.

Economically, illegal dumps are expensive to clean up. Government agencies spend millions annually on cleanup efforts. The estimated cost to clean up a site can be anywhere from \$600 to over \$1,000 per ton for clean up and removal.¹

Illegal dumpsites can also impact property values, can be a liability for property owners, and affect property purchases and transfers. Tourism revenue can also be affected by illegal dumps, which project to tourists that trash is not a concern of the community or the persons living there.

Illegal dumping also has social impacts on an area. When illegal dumping in neighborhoods and communities becomes status quo, quality of life is impacted and low-level property crime often increases.² This is what is referred to as the “broken window theory” developed originally by James Q. Wilson and George Kelling. The “broken window theory” suggests that neighborhood strategies help to deter and reduce crime by the fast clean up of illegally dumped items, litter, and spilled garbage, and by the prompt removal of disposed of items.³

SURVEY METHOD

Definition of an Illegal Dumpsite

One of the primary goals of an illegal dump survey is to ultimately address the trash in our communities; therefore, the following were considered illegal dumpsites and included in the survey:

- Areas of concentrated trash,
- Areas of scattered trash that:
 - are not considered roadside litter (bottles, fast food wrappers, cans, etc.)

¹PA CleanWays averaged cost from multiple cleanups throughout 2004 & 2005.

² Wilson, James Q., Kelling, George L., “Broken Windows”, *Atlantic Monthly*, March 1982.

³ Henry G. Cisneros, “Defensible Space: Detering Crime and Building Community”, January 1995.

- appear to have new trash thrown on them occasionally (more than twice a year)
- appear to have new trash thrown on them occasionally, but cleanup maintenance is prevalent to prevent accumulation,
- Areas containing only piles of yard waste (grass, leaves, branches, trees, etc.). These sites can often attract the dumping of other materials and can grow into major dumpsites, and,
- Areas containing isolated or solitary items, such as 1 or 2 appliances or tires that may or may not be dumped on in the future.

Site Identification and Assessment

PA CleanWays has learned through its experiences that, to effectively identify illegal dumpsites in an area, it is necessary to physically travel the roadways. By focusing on high probability areas for dump locations such as pull-offs, roads with hillsides, etc., efficient surveying can be done on large areas within a short amount of time.

Preliminary data gathering was conducted by sending a letter to every municipality within the county concerning the survey project. The letters detailed the survey purpose and plan, and asked for known illegal dumpsites to be reported back to PA CleanWays. Letters were also sent to environmental groups interested in conservation of this area, as well as to state agencies such as the Pennsylvania Department of Environmental Protection, Pennsylvania Department of Conservation and Natural Resources, the Pennsylvania Game Commission, and the Pennsylvania Fish and Boat Commission. Follow up phone calls were made to each municipality prior to beginning assessments in its area.

Once an illegal dumpsite was located, characteristics about the site itself were recorded and documented on standard forms (a copy of the Illegal Dump Survey Assessment Form and Instruction Sheet are available by contacting PA CleanWays). Pictures were also taken of the illegal dumpsites to further document the problem. GPS coordinates were recorded for each site in order to produce illegal dumpsite maps within the county based on municipalities, population density, and environmental features (see Attachments 1, 2, and 3).

Limitations

The primary limitation with road surveys is that they only permit discovery of sites visible from the public right-of-way, therefore, only those sites were assessed by PA CleanWays. PA CleanWays did not enter private property to assess sites. It can be presumed that there are significant numbers of illegal dumpsites out of sight on private property with limited access. Because safety considerations were a priority for this project, areas were not assessed in high crime/risk areas. Most surveying began after the foliage had thinned in the fall and visibility improved, however, some site assessments were limited due to high vegetation and snowfall.

Similar to dense foliage or snow cover, another limitation to the survey is estimating the amount of waste that lies underneath the waterline. As is reported, 128 of the sites are in or within 50 feet of a waterway with 42 sites directly in the waterway itself. There is no way to estimate the amount of waste that lies underneath the waterline thus these estimates could be low.

Due to cleanup efforts after surveying occurred, some sites in this report may no longer be present.

Farm/Private Dumping

While PA CleanWays strives to include as many illegal dumpsites in each county as possible, there are two types of dumpsites we do not include in our reports; farm dumps and private dumps. The survey process is to document sites where landowners have been the victim of illegal dumping from other parties, not sites where they have been doing the dumping themselves, or past owners did the dumping.

Farm dumping is still in practice today, although not to the extent it was decades ago. Typically, there was not a disposal plan in place for many areas in the state, therefore farmers disposed of their household garbage, empty chemical containers, yard waste, and other unneeded materials somewhere on their property. A majority of today's farmers have unfortunately inherited farm dumps on their properties, although some continue the practice to save money and time. Increased public awareness of environmental issues caused by any dumpsites has shed light on the reasons not to continue to use farm dumps. Without regulations or enforcement in place to stop it, farm dumping is still an issue in Pennsylvania and many other agricultural states in the U.S. To learn more about how farmers can clean their own dumps and the legalities of farm dumping, contact the Penn State University Agricultural & Biological Engineering Extension at 814-865-7685.⁴

Private dumpsites, ones that are put on the property by the owners, are also not included. These include sites such as stockpiles of scrap, yard waste, household trash, and other things you may find in an illegal dumpsite. Usually these sites are determined private by its proximity to a residence, or marked private with no trespassing signs. There are many times when the surveyor is not able to distinguish between a private site and an illegal dumpsite. In these cases, the site is surveyed and sent to the PA CleanWays office where, based on the data gathered and photos taken, it is determined whether to include it in the final report as an illegal dumpsite. If a dumpsite in a published report is found to be a farm or private dumpsite, the site is immediately removed from the report.

YORK COUNTY ILLEGAL DUMPSITE SURVEY AREA AND RESULTS

Survey Area

York County encompasses 904.45 square miles and is located in the southeastern part of Pennsylvania. The county is bordered by Cumberland County to the north, Dauphin County to the northeast, Lancaster County to the east, Harford County, MD to the southeast, Baltimore County, MD to the south, Carroll County, MD to the southwest and Adams County to the west. The county has numerous watersheds within its boundaries, including the Codorus Creek Watershed, Conewago Creek Watershed, Kreutz – Muddy Creeks Watershed, Chickies Creek Watershed, Conestoga River Watershed, Clark – Paxton Watershed, Pequea – Octoraro Creeks

⁴ Garthe, J. W. & Shufran, J. L. (1997). Farm Dumps: Problems and Solutions. Penn State Agricultural and Biological Engineering. Retrieved from <http://www.abe.psu.edu/extension/factsheets/c/C28.pdf>.

Watershed, and Yellow Breeches Creek Watershed. According to the Census Bureau, the 2000 census recorded the population as 381,751. The median household income is \$45,268. The per capita income is \$21,086. The percentage of individuals below poverty status is 6.7%, while 4.6% of families are below poverty status. The national average is 12.4% for individuals and 9.1% for families. The percent of high school graduates or higher is 80.7%, which is lower than the state average of 81.9%.

York County was officially formed on August 19, 1749, after its separation from Lancaster County. In 1800, Adams County was separated from York County.

York County was once the second most productive farm county, behind Lancaster County. It is now the seventh most productive farm county, although it leads in wheat and soybeans.⁵ Also, York is the sixth Pennsylvania county in value added to the economy from manufactures. Today, York County is ranked eleventh out of the sixty-seven counties in Pennsylvania by per capita income.

According to the "2006 Population Estimates for Metropolitan and Micropolitan Statistical Areas" (U.S. Census Bureau), the York-Hanover Metropolitan Statistical Area is the fastest-growing metro area in the Northeast region, and is ranked nationally among the fastest-growing in the nation. The estimates listed York-Hanover as the 95th fastest-growing metro area in the nation, increasing 9.1 percent between 2000 and 2006.

Tourism continues to grow based on the historic traditions in the county along with its recreational opportunities.

York County has three popular State Parks in it. Gifford Pinchot State Park was named after the Pennsylvania governor, conservationist, and first US Forest Service Chief. It consists of 2,338-acres with the 340-acre Pinchot Lake as the prime attraction. The Codorus State Park consists of 3,329-acres of land including a 1,275 acre man-made lake named Lake Marburg, after the village it now floods. Samuel S. Lewis State Park is an 85-acre park. It was named after the donor, a Secretary of Department of Forests and Waters. The Park contains Mt. Pisgah, an 885-foot high ridge that is the focus of the park.

In Pennsylvania, municipal solid waste (msw) includes municipal waste, sewage sludge, construction and demolition waste, asbestos, and ash. In York County, 48 municipalities offer trash collection and 61 of York County's municipalities (85%) have a curbside recycling program within their community. There are 30 municipalities (42%) that have access to drop off locations. Thirty-six municipalities (50%) have illegal dumping activity. Eighty sites were located in municipalities without a curbside recycling program (see Attachment 4). In 2005, according to the Pennsylvania Department of Environmental Protection, York County reported a total of 332,123.37 tons of municipal solid waste generated. Of that total, 199,098.2 tons were recycled giving York County a 60% recycling rate. While these numbers are the most recent available for this report, recycling rates fluctuate due to the economy, program availability, and many other factors; thus, this rate may not reflect the current recycling rate in

⁵ Pennsylvania Historical and Museum Commission.

the county. The county has an msw generation rate of 0.87 tons per person per year. The national average is 0.82 tons per person per year.

Site Characteristics

The York County survey resulted in the identification of 274 illegal dumpsites totaling an estimated 263.0 tons of trash. The sites ranged in size from approximately .05 tons to 25 tons of waste. A chart of Site Characteristics by Municipality can be found as Attachment 5 of this report.

Of the 274 dump sites, 67% were in rural areas. The terrain of York County is somewhat hilly. Hillsides provide illegal dumpers with a convenient place for easy unloading. Ninety-one percent of the sites were considered to be a continuous problem where dumping occurs routinely. Nineteen sites (7%) had “No Dumping” signs present. All of these sites were active. Signs, although effective in some areas, often send a message that this is a “safe” place to dump. In some county surveys, the presence of signs resulted in the identification of sites that were not visible from the road. Concerning visibility, 26% of the sites were visible and 72% were partly visible from the road. This fact lends itself to the theory that illegally dumped trash will attract more trash.

Impacts on Waterways

Of all the illegal dumpsites, those posing the most direct and obvious threat to the environment were located in or near waterways. One hundred twenty-eight, or 47%, of the surveyed sites were in the vicinity (50 feet and within) of some sort of waterway or body of water. Of those, 42 sites had waste materials directly in the waterway itself (see Attachment 5). It should, however, be noted that all illegal dumps contaminate our water supply.

Waste Characteristics

York County illegal dumpsites contained a variety of waste types. In some areas, the common presence of a waste type may indicate the need for a refuse/recycling program for that particular material. Twenty-nine percent of the dumpsites found were located in a municipality without a curbside recycling program. Of the items inventoried at each dumpsite assessed, 81% had recyclables, 68% had tires, 64% of the sites contained household trash, 49% of the sites had bagged trash, and 45% had some sort of construction and demolition waste. There were a total of 2,633 tires itemized, however those account only for tires visible at time of surveying. Many more tires are assumed to be present under buried trash or leaf litter. Recyclables are defined as steel, bi-metallic, and aluminum cans, glass, plastic bottles and containers, newspaper, magazines, cardboard, etc. A chart of the Waste Characteristics by Municipality can be found as Attachment 6, as well as a chart showing Illegal Dumpsite Characteristics Summary by County as Attachment 7 of this report.

POSSIBLE CAUSES AND SOLUTIONS

Illegal dumping occurs in every county of the state. There are a multitude of reasons and excuses why people dump: the cost or inconvenience of proper disposal; the lack of, or frustration in, finding proper disposal options; lack of public education; profit making; the result of other criminal activity or malicious mischief.

Possible Causes

- **Municipal curbside trash collection is unavailable**
Because it is not mandated by the state, trash collection options are dependent on the city or municipal government. As many rural and small-town municipalities lack funding for mandatory trash collection, it is up to the resident to pay for trash collection. Communities that depend on private subscription for waste collection services have reported greater dumping problems. Inherent inefficiencies and associated higher costs exist in almost all private subscription systems because trucks must travel long distances between customers.⁶
- **Recycling programs are unavailable or inconvenient**
Act 101 dictates that all communities with populations over 10,000, and densely populated municipalities between 5,000 and 10,000, have recycling programs. Communities that fall outside of these parameters must pay for recycling on their own. Depending on the county, many or all of these communities don't have funding to support a curbside recycling program. Curbside recycling communities have reported a lower incidence of residential waste accumulation problems and a slightly lower incidence of dumping problems.⁷
- **Disposal of Construction and Demolition debris (C&D)**
C&D debris is a serious solid waste management issue because of the amount that is generated each year, along with the lack of convenient and or affordable disposal options available. C&D debris is often found in illegal dumps and creates a compounded problem because some of the materials may be hazardous, such as wood that has been chemically treated or painted with lead based paint, insulation containing asbestos, or shingles.
- **Shortage of enforcement**
Unfortunately, many communities cannot devote people and resources to effectively deal with illegal dumping. As a result, dumpers do not fear prosecution and have no reason to stop their habits.
- **Education**
Illegal dumping has been a learned habit for many. Prior to anti – dumping laws, it was common practice to use open town dumps, burn or bury trash, or dump in a convenient out of the way area. Today we know the harmful effects from illegal dumping. Education is key to diminish the habits learned and teach the public proper and safe disposal practices.

Possible Solutions

- Organize a cleanup

⁶ PA CleanWays and PROP, "Factors Influencing Illegal Dumping in Pennsylvania Communities", Spring 2001.

⁷ PA CleanWays and PROP, "Factors Influencing Illegal Dumping in Pennsylvania Communities", Spring 2001.

Cleanups are an effective way to combat littering and illegal dumping. Cleanups help to build ownership, restore community pride, and send a message that dumping will no longer be tolerated.

- **Organize a special collection event**
Special one-day collection events are worthwhile. These special collection opportunities are very effective when routinely offered, such as each spring or fall as a community cleanup day, but are also successful when offered as community resources permit. These special collections commonly target hard-to-dispose of materials such as tires, appliances, scrap metal, computers, electronics, and household hazardous waste. Most of these items account for what is found in illegal dumps.
- **Physical deterrents**
The placing of guard rails or mounds of dirt at pull-off areas, as well as the planting of trees, can help provide a barrier that will limit accessibility to a site for future dumping.
- **Site monitoring and maintenance**
It is important to monitor a site after an area has been cleaned in order to watch for subsequent dumping or littering, to keep the site clean, and to report any incriminating evidence to the proper enforcement agency. Keeping the site clean makes it easier to spot new trash and discourages subsequent dumping, since trash attracts trash.

Enforcement, with site monitor support, effectively decreases the incidents of dumping and littering. When word gets out that dumping activity will not be tolerated and violators will be caught and prosecuted, dumping decreases.

- **Community education**
Intentional illegal dumping and littering are social problems that require a shift in attitudes and practices. Education is the key to changing values, habits, and attitudes. Education programs should be tailored to inform the community and can take many forms, such as, school/community presentations, press releases, radio and newspaper ads, and publications.
- **Enforcement of existing laws**
Any improper disposal of trash is illegal and violators can be prosecuted. Numerous Pennsylvania agencies enforce laws addressing improper disposal of trash. The Pennsylvania General Assembly creates and enacts our littering and dumping laws.⁸ County and municipal governments create and enact ordinances that are specific within their local boundaries.

⁸ Read about the Pennsylvania Code at www.pacode.com.

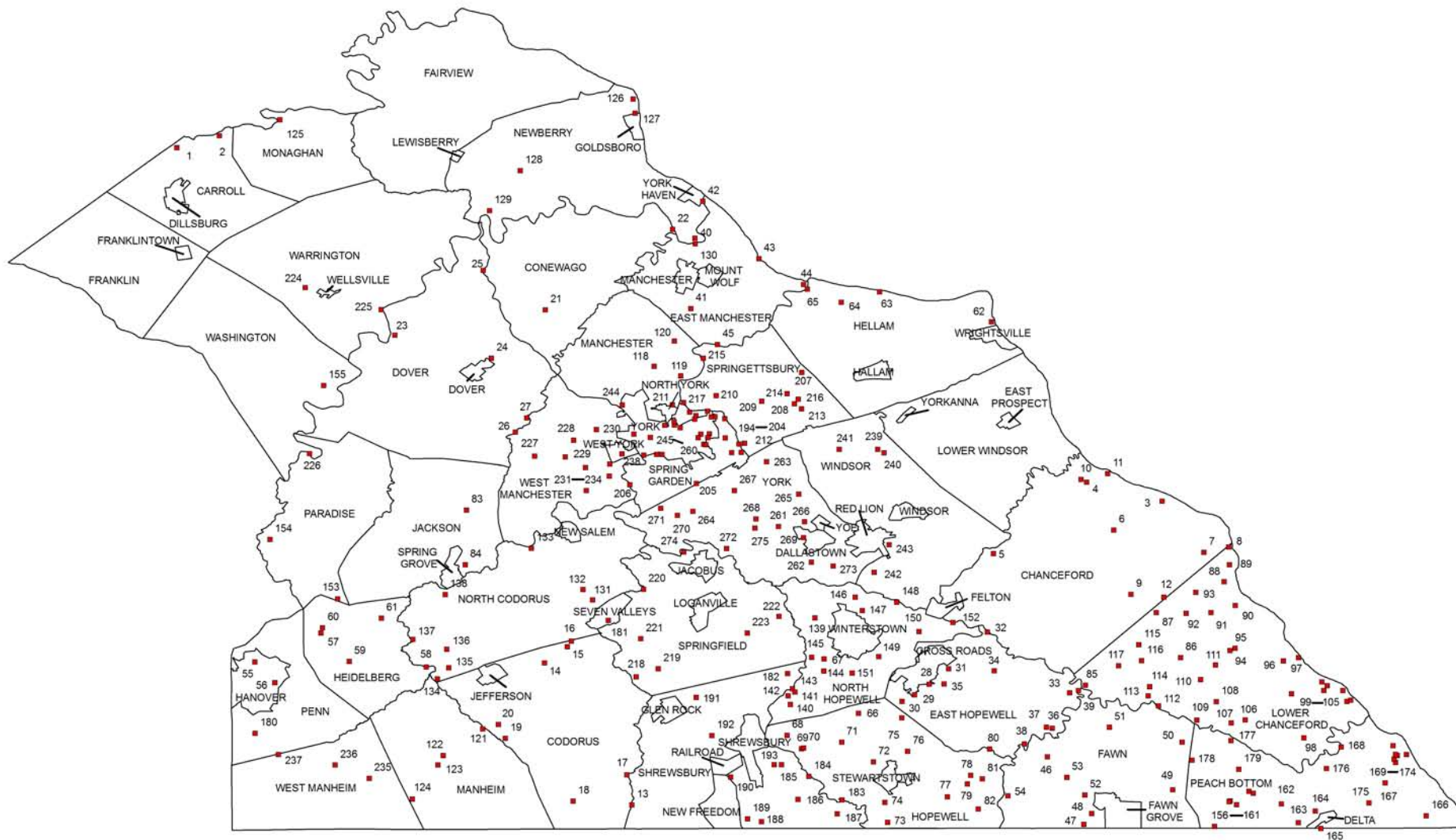
SUMMARY

This survey accounted for 274 illegal dumpsites in York County consisting of an estimated 263.0 tons of trash. This is not a comprehensive survey of the entire county as it is expected that there are many more illegal dumpsites on private lands and farms, as well as ones on public lands that have gone undetected. However, the documentation and assessment of these 274 sites in York County is a strong step forward in the fight against illegal dumping in Pennsylvania. By providing the needed data to address the problem of illegal dumping, constituents can begin doing so through public policy, resource allocation, community education, and cleanups.



York County, Pennsylvania Illegal Dumpsites and Municipalities January 2010

Attachment 1



Legend

■ Illegal Dumpsites as of 01-29-2010

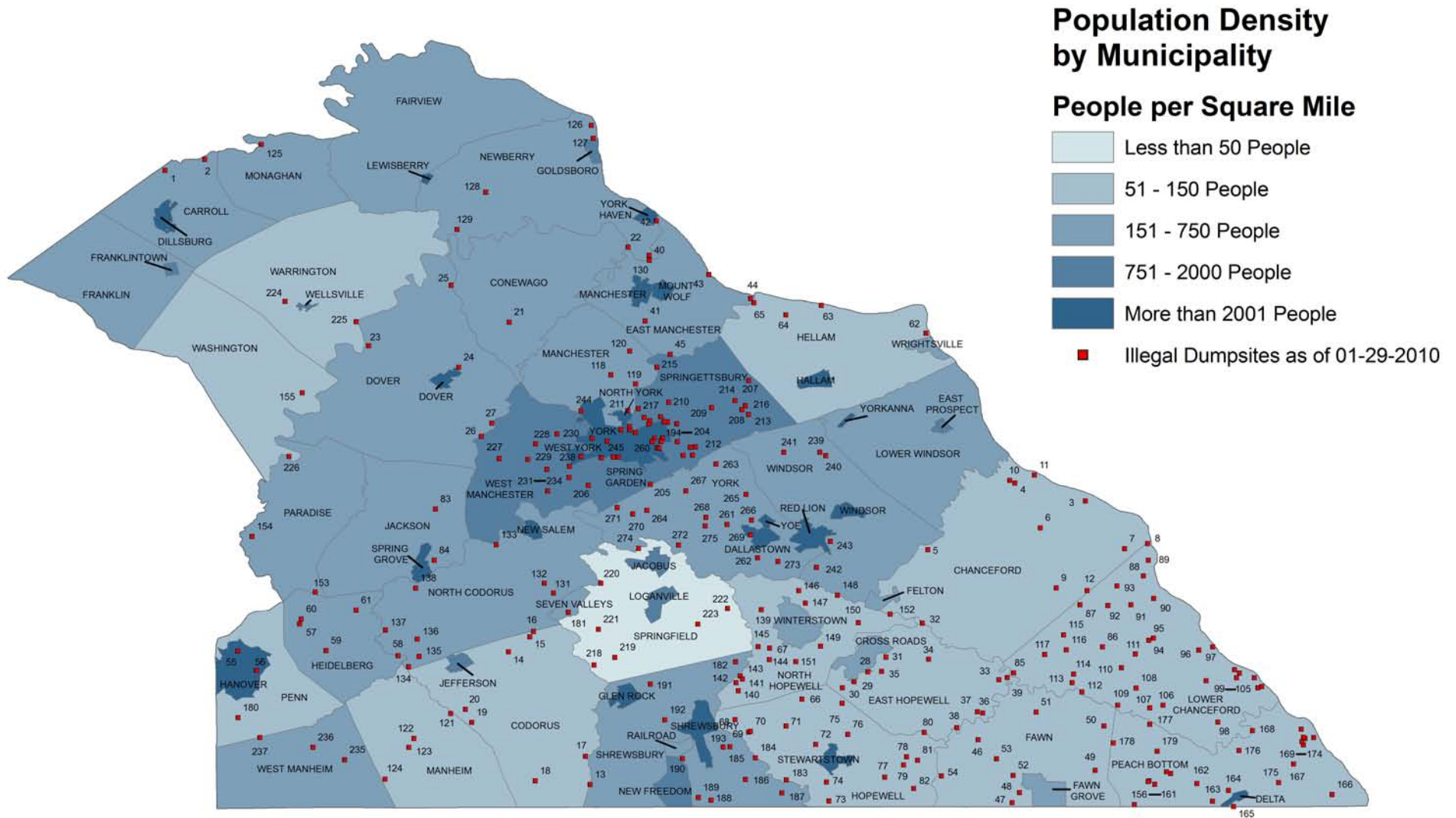
© 2010 PA CleanWays
Map Prepared by Yongfei Zhao
UCSUR, University of Pittsburgh





York County, Pennsylvania Illegal Dumpsites and Population Density January 2010

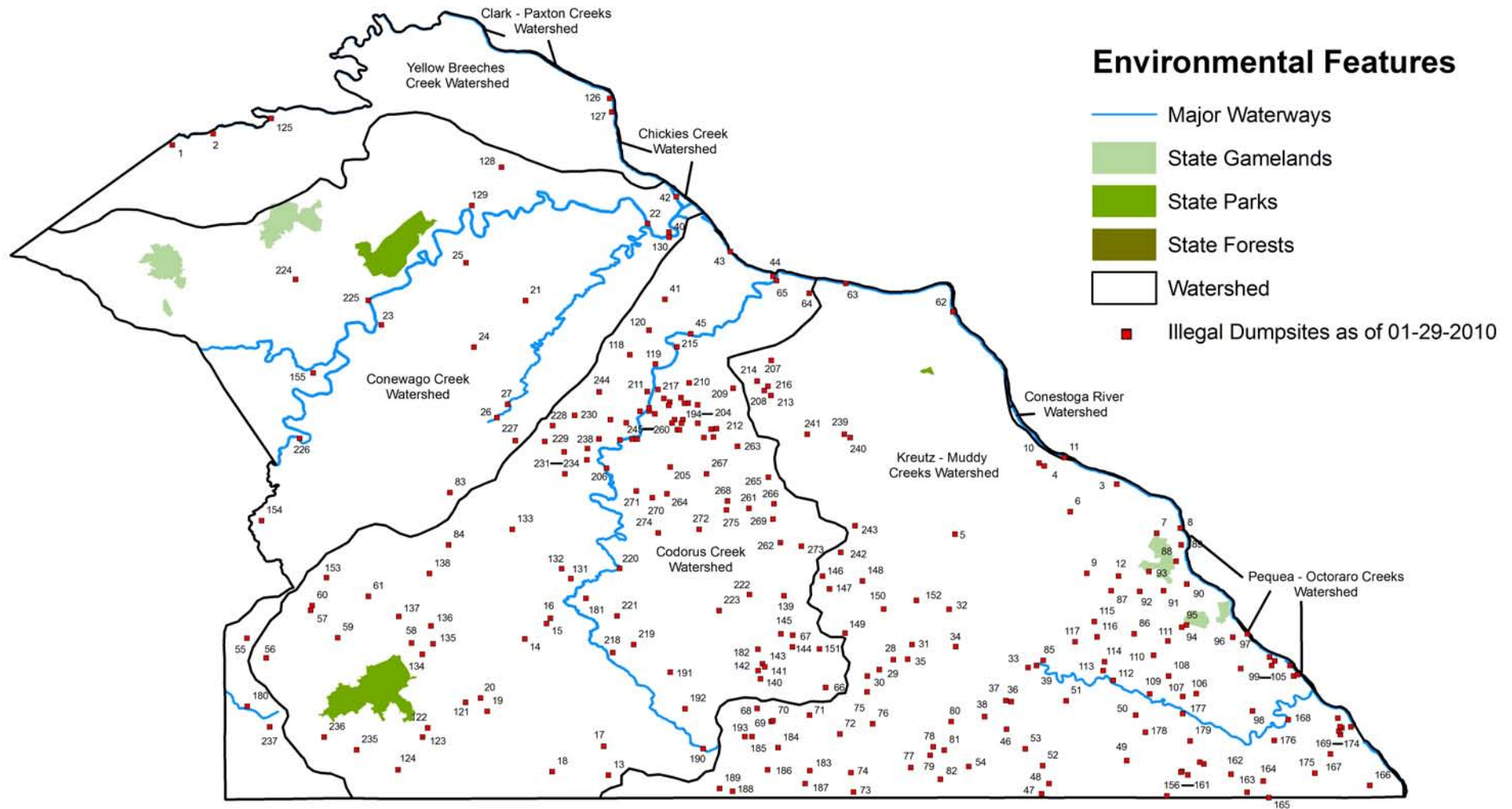
Attachment 2





York County, Pennsylvania Illegal Dumpsites and Environmental Features January 2010

Attachment 3



© 2010 PA CleanWays
Map Prepared by Yongfei Zhao
UCSUR, University of Pittsburgh



Illegal Dumpsites and Trash Collection by Municipality**

Municipality	Illegal Dumpsites	Calculated Tons*	Trash Collection	Curbside Recycling	Drop Off Recycling
Carroll Township	2	2.5	X	X	X
Chanceford Township	10	5.25			X
City of York	17	12.25	X	X	X
Codorus Township	8	3.88	X	X	X
Conewago Township	2	0.375	X	X	
Cross Road Borough	0	0			
Dallastown Borough	0	0	X	X	
Delta Borough	0	0	X	X	
Dillsburg Borough	0	0	X	X	
Dover Borough	0	0	X	X	
Dover Township	5	2	X	X	
East Hopewell Township	12	9.75		X	
East Manchester Township	6	7.875		X	
East Prospect Borough	0	0	X	X	
Fairview Township	0	0	X	X	X
Fawn Grove Borough	0	0	X	X	X
Fawn Township	9	4.625			
Felton Borough	0	0	X	X	
Franklin Township	0	0			X
Franklintown Borough	0	0	X	X	
Glen Rock Borough	0	0	X	X	
Goldsboro Borough	0	0	X	X	
Hallam Borough	0	0	X	X	
Hanover Borough	2	0.75	X	X	X
Heidelberg Township	4	2.125	X	X	
Hellam Township	4	3		X	
Hopewell Township	16	18.375		X	X
Jackson Township	2	1.25	X	X	
Jacobus Borough	0	0	X	X	X
Jefferson Borough	0	0	X	X	
Lewisberry Borough	0	0	X	X	
Loganville Borough	0	0	X	X	
Lower Chanceford Township	33	26.05			X
Lower Windsor Township	0	0			X
Manchester Borough	0	0		X	
Manchester Township	4	6.125	X	X	X
Manheim Township	4	2.625	X	X	
Monaghan Township	1	1		X	X
Mount Wolf Borough	0	0	X	X	
New Freedom Borough	0	0	X	X	
New Salem Borough	0	0	X	X	
Newberry Township	5	4.875	X	X	X
North Codorus Township	8	30.625	X	X	
North Hopewell Township	15	17.15		X	
North York Borough	0	0	X		X
Paradise Township	2	1.125			X
Peach Bottom Township	24	34.125			X
Penn Township	1	0.25		X	X
Railroad Borough	0	0	X	X	
Red Lion Borough	0	0		X	X
Seven Valleys Borough	1	0.5	X	X	
Shrewsbury Borough	0	0	X	X	
Shrewsbury Township	12	12.875	X	X	X
Spring Garden Township	13	13.125		X	
Spring Grove Borough	0	0		X	X
Springettsbury Township	10	12.625		X	X
Springfield Township	6	3.75		X	X
Stewartstown Borough	0	0	X	X	
Warrington Township	2	0.25		X	
Washington Township	2	2			X
Wellsville Borough	0	0	X	X	
West Manchester Township	8	4.25		X	X
West Manheim Township	3	1.625	X	X	X
West York Borough	1	0.25	X	X	
Windsor Borough	0	0	X	X	
Windsor Township*	5	3.25	X	X	X

Municipality	Illegal Dumpsites	Calculated Tons*	Trash Collection	Curbside Recycling	Drop Off Recycling
Winterstown Borough	0	0	X	X	
Wrightsville Borough	0	0	X	X	X
Yoe Borough	0	0	X	X	
York Haven Borough	0	0	X		
York Township	15	10.5	X	X	
Yorkana Borough*	0	0	X	X	X

Fifty percent of York County's municipalities have illegal dumping activity.

Forty-eight of York County's municipalities have trash collection.

Sixty-one of York County's municipalities have a curbside recycling program.

Twenty-nine percent of the sites were located in municipalities without a curbside recycling program.

*Quantities assessed at time of survey were estimates based on what was visible.

**Information concerning mandatory trash collection, curbside recycling, and drop off recycling is deemed correct at time of printing and cannot be guaranteed due to changes in ordinances and funding in each individual municipality. Data was gathered through phone calls to each municipality, county solid waste specialists, county recycling coordinators, governmental websites, and data taken from DEP's Recycling Page Resources and Re-TRAC.

York County IDS Site Characteristics by Municipality*

Municipality	Site Name	Site Number	Calculated Tons	Demographics	Distance from Waterway	Visibility from Roadway	Road Ownership	Terrain Type	Active
Carroll Township	Chestnut Grove Road	0002	1	Suburban	50 to 100 ft	Yes	Municipal	Gently sloped	Yes
Carroll Township	Junction Road	0001	1.5	Suburban	Within 50 ft	Yes	Municipal	Flat	Yes
Chanceford Township	Leiphart Road	0009	0.5	Rural	50 to 100 ft	Yes	Municipal	Gently sloped	No
Chanceford Township	Douglas Road	0004	0.5	Rural	Within 50 ft	Yes	Municipal	Medium slope	Yes
Chanceford Township	Green Branch Road Site 1	0010	0.5	Rural	More than 100 ft	Yes	Municipal	Medium slope	Yes
Chanceford Township	Green Branch Road Site 2	0011	0.5	Rural	Within 50 ft	Partial	Municipal	Extremely steep	Yes
Chanceford Township	Hall Road	0005	1	Rural	Within 50 ft	Yes	Municipal	Gently sloped	Yes
Chanceford Township	Hilltop Road	0006	0.25	Rural	Within 50 ft	Yes	Municipal	Gently sloped	Yes
Chanceford Township	Kohler Road	0003	0.5	Rural	More than 100 ft	Partial	Municipal	Flat	Yes
Chanceford Township	Lower River Road	0008	0.5	Rural	Within 50 ft	Yes	Municipal	Gently sloped	Yes
Chanceford Township	Mill Road	0007	0.5	Rural	Within 50 ft	Partial	Municipal	Steep slope	Yes
Chanceford Township	West Heffner Road	0012	0.5	Rural	More than 100 ft	Partial	Municipal	Gently sloped	Yes
Codorus Township	Birthday Club Road	0013	0.25	Rural	More than 100 ft	Partial	Municipal	Steep slope	No
Codorus Township	Brush Valley Road	0014	0.5	Rural	Within 50 ft	No	Municipal	Gently sloped	Yes
Codorus Township	Heindel Road	0016	0.25	Rural	No waterway nearby	Partial	Municipal	Flat	No
Codorus Township	Panther Hill Road	0015	0.5	Rural	No waterway nearby	Partial	Municipal	Flat	No
Codorus Township	Route 851	0018	0.25	Rural	No waterway nearby	Yes	State	Gently sloped	Yes
Codorus Township	Sunny Slope Road	0017	0.125	Rural	Within 50 ft	Yes	Municipal	Flat	Yes
Codorus Township	Tannery Road	0020	1.5	Rural	In Waterway/Wetland	No	Municipal	Steep slope	Yes
Codorus Township	Watertank Road	0019	0.5	Rural	In Waterway/Wetlands	Partial	Municipal	Medium slope	Yes
Conewago Township	Bowers Bridge Road	0022	0.25	Rural	In Waterway/Wetlands	Yes	Municipal	Flat	Yes
Conewago Township	Jug Road	0021	0.125	Suburban	No waterway nearby	Yes	Municipal	Flat	Yes
Dover Township	Baker Road Site 1	0026	0.125	Suburban	Within 50 ft	Yes	Municipal	Flat	Yes
Dover Township	Bull Road	0025	0.125	Rural	No waterway nearby	Yes	Municipal	Flat	Yes
Dover Township	Fish and Game Road	0023	0.5	Rural	More than 100 ft	Partial	Municipal	Gently sloped	Yes
Dover Township	Fox Run Road	0024	0.25	Suburban	More than 100 ft	Yes	Municipal	Gently sloped	Yes
Dover Township	Mayfield Drive	0027	1	Suburban	50 to 100 ft	Yes	Municipal	Flat	Yes
East Hopewell Township	Bedrock Road	0031	0.125	Rural	Within 50 ft	Partial	Municipal	Gently sloped	Yes
East Hopewell Township	Blue Ball Road	0038	0.25	Rural	50 to 100 ft	Partial	State	Steep slope	Yes
East Hopewell Township	Breneman Road	0028	1	Rural	Within 50 ft	Partial	Municipal	Gently sloped	Yes
East Hopewell Township	Century Farms Road	0032	0.25	Rural	Within 50 ft	Partial	State Forest	Gently sloped	Yes
East Hopewell Township	Coal Hill Road	0029	0.75	Rural	No waterway nearby	Partial	Municipal	Flat	Yes

York County IDS Site Characteristics by Municipality*

Municipality	Site Name	Site Number	Calculated Tons	Demographics	Distance from Waterway	Visibility from Roadway	Road Ownership	Terrain Type	Active
East Hopewell Township	Hyson School Road	0030	0.75	Suburban	More than 100 ft	Partial	Municipal	Flat	Yes
East Hopewell Township	Muddy Creek Forks Road Site 2	0033	0.25	Rural	More than 100 ft	Partial	State	Gently sloped	Yes
East Hopewell Township	Muddy Creek Forks Road Site 3	0039	1.5	Rural	Within 50 ft	Yes	State	Flat	Yes
East Hopewell Township	Mutton Road	0036	0.125	Rural	In Waterway/Wetlands	Partial	Municipal	Gently sloped	Yes
East Hopewell Township	Rambo Hill Road	0034	1	Rural	More than 100 ft	Partial	Municipal	Flat	Yes
East Hopewell Township	Short Road	0035	3	Rural	50 - 100 ft	Partial	Municipal	Medium slope	Yes
East Hopewell Township	Walnut Road	0037	0.75	Rural	More than 100 ft	Partial	Municipal	Steep slope	Yes
East Manchester Township	Creekbottom Road	0040	2.5	Suburban	50 to 100 ft	Partial	Municipal	Steep slope	No
East Manchester Township	Gut Road	0043	3	Suburban	In Waterway/Wetland	Yes	Municipal	Gently sloped	Yes
East Manchester Township	Mundis Race Road	0045	1.625	Suburban	In Waterway/Wetlands	Partial	Municipal	Gently sloped	No
East Manchester Township	Riverview Road	0044	0.5	Suburban	More than 100 ft	Yes	Municipal	Flat	Yes
East Manchester Township	Steamboat Boulevard	0041	0.125	Suburban	No Waterway Nearby	Yes	Municipal	Flat	Yes
East Manchester Township	Wago Road	0042	0.125	Suburban	Within 50 ft	Yes	Municipal	Flat	Yes
Fawn Township	Anderson Road	0047	0.25	Rural	No waterway nearby	Yes	Municipal	Flat	Yes
Fawn Township	Brown Road	0052	1	Rural	Within 50 ft	Partial	Municipal	Flat	Yes
Fawn Township	Cedar Valley Road	0046	0.5	Rural	Within 50 ft	Partial	Municipal	Gently sloped	Yes
Fawn Township	Hopewell Road Site 2	0054	0.25	Rural	More than 100 ft	Partial	Municipal	Gently sloped	Yes
Fawn Township	Hunt Club Road	0048	0.125	Rural	More than 100 ft	Partial	Municipal	Gently sloped	Yes
Fawn Township	Lowe Road	0053	0.5	Rural	No waterway nearby	Partial	Municipal	Flat	No
Fawn Township	McDermott Road	0049	0.125	Rural	More than 100 ft	Yes	Municipal	Flat	No
Fawn Township	Mitchell Road	0050	0.375	Rural	Within 50 ft	Partial	Municipal	Gently sloped	No
Fawn Township	Throne Road	0051	1.5	Rural	No waterway nearby	Partial	Municipal	Flat	Yes
Hanover Borough	Moul Avenue Park	0056	0.5	Suburban	No waterway nearby	Yes	Municipal	Flat	No
Hanover Borough	Wilson Avenue	0055	0.25	Suburban	In Waterway/Wetland	Yes	Municipal	Gently sloped	Yes
Heidelberg Township	Glatco Lodge Road Site 1	0057	0.25	Rural	Within 50 ft	Yes	Municipal	Gently sloped	Yes
Heidelberg Township	Glatco Lodge Road Site 2	0060	0.125	Rural	No waterway nearby	Partial	Municipal	Flat	No
Heidelberg Township	Kraft Mill Road	0058	1.5	Rural	Within 50 ft	Yes	Municipal	Gently sloped	Yes
Heidelberg Township	Sycamore Drive	0061	0.25	Rural	Within 50 ft	Yes	Municipal	Gently sloped	Yes
Hellam Township	North Front Street	0062	1	Suburban	Within 50 ft	Partial	Municipal	Flat	Yes
Hellam Township	River Farm Road Site 1	0064	0.5	Rural	More than 100 ft	Yes	Municipal	Flat	Yes
Hellam Township	River Farm Road Site 2	0065	0.5	Rural	In Waterway/Wetland	Partial	Municipal	Medium slope	Yes
Hellam Township	River Road	0063	1	Rural	Within 50 ft	Partial	Municipal	Medium slope	Yes

York County IDS Site Characteristics by Municipality*

Municipality	Site Name	Site Number	Calculated Tons	Demographics	Distance from Waterway	Visibility from Roadway	Road Ownership	Terrain Type	Active
Hopewell Township	Blevins Road	0073	0.25	Rural	Within 50 ft	Partial	Municipal	Gently sloped	Yes
Hopewell Township	Bowers Road	0066	0.125	Rural	No waterway nearby	Partial	Municipal	Gently sloped	Yes
Hopewell Township	Draco Road	0081	0.25	Rural	Within 50 ft	Partial	State	Gently sloped	Yes
Hopewell Township	Haugh Road	0080	0.375	Rural	In Waterway/Wetlands	Partial	Municipal	Gently sloped	Yes
Hopewell Township	Hopewell Road	0082	0.75	Rural	No Waterway Nearby	Partial	Municipal	Gently sloped	Yes
Hopewell Township	Johnson Road	0074	1	Rural	In Waterway/Wetland	Partial	Municipal	Medium slope	Yes
Hopewell Township	Joy Road	0070	2	Rural	Within 50 ft	Partial	Municipal	Gently sloped	Yes
Hopewell Township	Kilgore Road Site 1	0078	0.125	Rural	No waterway nearby	Partial	Municipal	Gently sloped	Yes
Hopewell Township	Kilgore Road Site 2	0079	7.5	Rural	In Waterway/Wetland	Partial	Municipal	Extremely steep	Yes
Hopewell Township	Kurtz School Road	0076	1	Suburban	In Waterway/Wetlands	Partial	Municipal	Flat	Yes
Hopewell Township	Little Road	0077	1	Rural	No waterway nearby	Partial	Municipal	Gently sloped	Yes
Hopewell Township	Maddox Road	0071	0.25	Rural	Within 50 ft	Partial	Municipal	Flat	Yes
Hopewell Township	Saddler Church Road	0069	2.5	Rural	In Waterway/Wetland	Partial	Municipal	Gently sloped	Yes
Hopewell Township	Seiling Farm Road	0068	0.125	Rural	Within 50 ft	Partial	Municipal	Flat	Yes
Hopewell Township	Shaw Road	0072	1	Rural	In Waterway/Wetland	Partial	Municipal	Gently sloped	Yes
Hopewell Township	Thompson Road	0075	0.125	Rural	50 to 100 ft	Partial	Municipal	Gently sloped	Yes
Jackson Township	Hershey Road	0084	0.5	Rural	No waterway nearby	Partial	Municipal	Flat	No
Jackson Township	KBS Road	0083	0.75	Rural	No waterway nearby	Yes	Municipal	Flat	Yes
Lower Chanceford Township	Bare Road Site 1	0091	0.25	Rural	Within 50 ft	Partial	Municipal	Gently sloped	Yes
Lower Chanceford Township	Bare Road Site 2	0092	0.125	Rural	More than 100 ft	Partial	Municipal	Medium slope	Yes
Lower Chanceford Township	Barkmill Road	0105	0.75	Rural	Within 50 ft	Partial	Municipal	Steep slope	Yes
Lower Chanceford Township	Blain Road	0094	0.5	Rural	Within 50 ft	Partial	Municipal	Medium slope	Yes
Lower Chanceford Township	Burns Road	0087	1	Rural	No waterway nearby	Partial	Municipal	Flat	Yes
Lower Chanceford Township	East Heffner Road	0093	0.125	Rural	No waterway nearby	Partial	Municipal	Flat	Yes
Lower Chanceford Township	East McKinley Road	0098	0.25	Rural	More than 100 ft	Partial	Municipal	Medium slope	Yes
Lower Chanceford Township	Fulton Road	0115	0.125	Rural	In Waterway/Wetland	Partial	Municipal	Flat	Yes
Lower Chanceford Township	Furnance Road	0089	0.125	Rural	50 to 100 ft	Partial	State	Gently sloped	Yes
Lower Chanceford Township	Hunter Mill Road	0110	0.25	Rural	In Waterway/Wetlands	Partial	Municipal	Gently sloped	Yes
Lower Chanceford Township	Indian Steps Road	0090	1	Rural	No waterway nearby	Partial	Municipal	Gently sloped	Yes
Lower Chanceford Township	Kennedy Road	0114	4	Rural	Within 50 ft	Partial	Municipal	Medium slope	Yes
Lower Chanceford Township	Kilgore Road	0095	1	Rural	Within 50 ft	Partial	Municipal	Medium slope	Yes
Lower Chanceford Township	McCalls Ferry Road	0096	5	Rural	In Waterway/Wetlands	Partial	Municipal	Steep slope	Yes

York County IDS Site Characteristics by Municipality*

Municipality	Site Name	Site Number	Calculated Tons	Demographics	Distance from Waterway	Visibility from Roadway	Road Ownership	Terrain Type	Active
Lower Chanceford Township	Muddy Creek Forks Road Site 1	0085	0.25	Rural	In Waterway/Wetland	Partial	State	Gently sloped	Yes
Lower Chanceford Township	Norris Road Site 1	0106	0.75	Rural	Within 50 ft	Partial	Municipal	Gently sloped	Yes
Lower Chanceford Township	Norris Road Site 2	0107	0.125	Rural	More than 100 ft	Partial	Municipal	Medium slope	No
Lower Chanceford Township	Orson Hollow Road	0108	0.375	Rural	In Waterway/Wetlands	Partial	Municipal	Gently sloped	Yes
Lower Chanceford Township	Piney Hill Road Site 1	0112	2.25	Rural	Within 50 ft	Partial	Municipal	Steep slope	Yes
Lower Chanceford Township	Piney Hill Road Site 2	0113	0.625	Rural	In Waterway/Wetland	Partial	Municipal	Flat	Yes
Lower Chanceford Township	Reed Road	0116	0.25	Rural	Within 50 ft	Partial	Municipal	Flat	Yes
Lower Chanceford Township	Richardson Road	0111	0.125	Rural	More than 100 ft	Partial	Municipal	Flat	Yes
Lower Chanceford Township	River Road Site 1	0097	0.25	Rural	Within 50 ft	Partial	Municipal	Gently sloped	Yes
Lower Chanceford Township	River Road Site 2	0099	1.5	Rural	More than 100 ft	Partial	Municipal	Medium slope	Yes
Lower Chanceford Township	River Road Site 3	0100	1	Rural	Within 50 ft	Partial	Municipal	Medium slope	Yes
Lower Chanceford Township	River Road Site 4	0101	1.5	Rural	More than 100 ft	Partial	Municipal	Steep slope	Yes
Lower Chanceford Township	River Road Site 5	0102	0.125	Rural	Within 50 ft	Partial	Municipal	Gently sloped	Yes
Lower Chanceford Township	Sawmill Road	0088	0.125	Rural	In Waterway/Wetland	Partial	Municipal	Steep slope	Yes
Lower Chanceford Township	Slab Road Site 1	0103	0.5	Rural	More than 100 ft	Partial	Municipal	Medium slope	Yes
Lower Chanceford Township	Slab Road Site 2	0104	0.5	Rural	In Waterway/Wetland	Partial	Municipal	Gently sloped	Yes
Lower Chanceford Township	Stewart Road	0117	0.375	Rural	No waterway nearby	Partial	Municipal	Flat	No
Lower Chanceford Township	Woodbine Road Site 1	0109	0.125	Rural	In Waterway/Wetland	Partial	State	Medium slope	Yes
Lower Chanceford Township	Woodbine Road Site 2	0086	0.75	Rural	Within 50 ft	Partial	State	Flat	Yes
Manchester Township	10th Avenue	0211	3	Suburban	In Waterway/Wetland	Partial	Municipal	Gently sloped	Yes
Manchester Township	Blackthorne Court	0119	1	Suburban	No waterway nearby	Partial	Municipal	Flat	Yes
Manchester Township	Church Road	0120	0.125	Suburban	Within 50 ft	Partial	Municipal	Gently sloped	Yes
Manchester Township	Locust Lane	0118	2	Suburban	No waterway nearby	Yes	Municipal	Flat	Yes
Manheim Township	Blooming Grove Road	0122	0.5	Rural	More than 100 ft	Partial	Municipal	Medium slope	No
Manheim Township	Copenhaver Road	0123	1	Rural	No waterway nearby	No	Municipal	Steep slope	Yes
Manheim Township	Lily Springs Road	0124	1	Rural	50 to 100 ft	Partial	Municipal	Medium slope	Yes
Manheim Township	Smoketown Road	0121	0.125	Rural	50 to 100 ft	Partial	Municipal	Gently sloped	Yes
Monaghan Township	Mowery Road	0125	1	Suburban	No waterway nearby	Yes	Municipal	Flat	Yes
Newberry Township	Highland Avenue	0130	1.5	Suburban	No Waterway Nearby	Yes	Municipal	Flat	Yes
Newberry Township	Miller Road	0128	0.125	Rural	50 to 100 ft	Yes	Municipal	Medium slope	Yes
Newberry Township	Railroad Street	0127	2.5	Rural	More than 100 ft	Yes	Municipal	Flat	Yes
Newberry Township	Red Bank Road	0129	0.25	Rural	Within 50 ft	Yes	Municipal	Flat	No

York County IDS Site Characteristics by Municipality*

Municipality	Site Name	Site Number	Calculated Tons	Demographics	Distance from Waterway	Visibility from Roadway	Road Ownership	Terrain Type	Active
Newberry Township	Stillhouse Road	0126	0.5	Rural	More than 100 ft	Yes	Municipal	Flat	Yes
North Codorus Township	Martin Road	0133	2	Suburban	More than 100 ft	Yes	Municipal	Flat	Yes
North Codorus Township	Park Road	0134	1.5	Rural	50 to 100 ft	Yes	Municipal	Medium slope	Yes
North Codorus Township	Prospect Mill Road	0135	0.375	Rural	50 to 100 ft	Partial	Municipal	Gently sloped	Yes
North Codorus Township	Rohrbaugh Road	0131	1	Rural	No waterway nearby	Yes	Municipal	Gently sloped	Yes
North Codorus Township	Senft Road	0137	0.125	Rural	50 to 100 ft	Partial	Municipal	Flat	Yes
North Codorus Township	Seven Valleys Road	0132	0.5	Suburban	No waterway nearby	Yes	Municipal	Flat	Yes
North Codorus Township	Stambaugh Road	0136	0.125	Rural	No waterway nearby	Yes	Municipal	Flat	Yes
North Codorus Township	York Road	0138	25	Suburban	No waterway nearby	Yes	Municipal	Flat	Yes
North Hopewell Township	Blymire Hollow Road Site 1	0067	1	Rural	Within 50 ft	Partial	Municipal	Medium slope	Yes
North Hopewell Township	Blymire Hollow Road Site 2	0145	0.125	Rural	Within 50 ft	Partial	Municipal	Flat	Yes
North Hopewell Township	Cherry Street	0144	0.5	Rural	In Waterway/Wetland	Partial	Municipal	Gently sloped	Yes
North Hopewell Township	Dairy Road	0147	0.25	Rural	More than 100 ft	Partial	Municipal	Gently sloped	Yes
North Hopewell Township	Evergreen Road	0151	0.125	Rural	More than 100 ft	Partial	Municipal	Gently sloped	Yes
North Hopewell Township	Hain Road	0142	0.25	Rural	Within 50 ft	Partial	Municipal	Medium slope	Yes
North Hopewell Township	Herbst Road	0148	11	Rural	50 to 100 ft	Partial	State	Extremely steep	Yes
North Hopewell Township	High Point Road	0149	0.5	Rural	More than 100 ft	Partial	Municipal	Flat	Yes
North Hopewell Township	Hollow Road	0152	0.25	Rural	Within 50 ft	Partial	Municipal	Gently sloped	Yes
North Hopewell Township	Pleasant View Road	0146	0.25	Rural	No waterway nearby	Partial	Municipal	Flat	No
North Hopewell Township	Rehmeyers Hollow Road	0143	0.75	Rural	In Waterway/Wetland	Partial	Municipal	Gently sloped	Yes
North Hopewell Township	Scout Road	0150	0.125	Rural	In Waterway/Wetland	Partial	Municipal	Gently sloped	Yes
North Hopewell Township	Seaks Run Road	0139	1	Rural	Within 50 ft	Partial	Municipal	Gently sloped	Yes
North Hopewell Township	Short Road	0140	1	Rural	In Waterway/Wetland	Partial	Municipal	Gently sloped	Yes
North Hopewell Township	Stoney Brook Road	0141	0.125	Rural	Within 50 ft	Partial	Municipal	Flat	Yes
Paradise Township	Protectory Road	0154	0.125	Rural	No waterway nearby	Yes	Municipal	Flat	No
Paradise Township	Woodland Drive	0153	1	Rural	More than 100 ft	Partial	Municipal	Flat	Yes
Peach Bottom Township	Atom Road	0175	4	Rural	50 to 100 ft	Partial	State	Flat	Yes
Peach Bottom Township	Booker Road	0167	1	Rural	Within 50 ft	Partial	Municipal	Gently sloped	Yes
Peach Bottom Township	Bryansville Road	0161	0.5	Rural	50 to 100 ft	Partial	State	Medium slope	Yes
Peach Bottom Township	Bunker Hill Road	0164	6	Rural	Within 50 ft	Partial	Municipal	Steep slope	Yes
Peach Bottom Township	Burns Road	0178	0.25	Rural	In Waterway/Wetland	Partial	Municipal	Flat	Yes
Peach Bottom Township	Clark Road	0174	0.25	Rural	In Waterway/Wetland	Partial	Municipal	Medium slope	Yes

York County IDS Site Characteristics by Municipality*

Municipality	Site Name	Site Number	Calculated Tons	Demographics	Distance from Waterway	Visibility from Roadway	Road Ownership	Terrain Type	Active
Peach Bottom Township	Cooke Road	0160	0.5	Rural	Within 50 ft	Partial	Municipal	Medium slope	Yes
Peach Bottom Township	Cooper Road	0166	0.875	Rural	Within 50 ft	Partial	Municipal	Gently sloped	Yes
Peach Bottom Township	Gemmill Road	0179	0.75	Suburban	More than 100 ft	Partial	Municipal	Flat	Yes
Peach Bottom Township	Grove Road	0169	1.75	Rural	50 to 100 ft	Partial	Municipal	Medium slope	Yes
Peach Bottom Township	Hillview Road	0177	0.125	Rural	More than 100 ft	Partial	Municipal	Gently sloped	Yes
Peach Bottom Township	Hollow Road Site 1	0156	4.25	Rural	Within 50 ft	Partial	Municipal	Gently sloped	Yes
Peach Bottom Township	Hollow Road Site 2	0157	0.5	Rural	Within 50 ft	Partial	Municipal	Medium slope	Yes
Peach Bottom Township	Hushon Road	0159	0.375	Rural	Within 50 ft	Partial	Municipal	Flat	Yes
Peach Bottom Township	Kilgore Road Site 1	0158	2	Rural	Within 50 ft	Partial	State	Medium slope	Yes
Peach Bottom Township	Kilgore Road Site 2	0162	5	Rural	In Waterway/Wetland	Partial	State	Medium slope	Yes
Peach Bottom Township	Lake View Road	0173	0.5	Rural	Within 50 ft	Partial	Municipal	Gently sloped	Yes
Peach Bottom Township	Lay Road	0170	0.25	Rural	In Waterway/Wetland	Partial	State	Medium slope	Yes
Peach Bottom Township	Line Road	0163	1.5	Rural	More than 100 ft	Partial	State	Gently sloped	Yes
Peach Bottom Township	Murtaugh Road	0172	1	Rural	No waterway nearby	Partial	Municipal	Flat	No
Peach Bottom Township	Paper Mill Road Site 1	0168	0.25	Rural	Within 50 ft	Partial	State	Gently sloped	Yes
Peach Bottom Township	Paper Mill Road Site 2	0171	2	Rural	Within 50 ft	Partial	State	Gently sloped	Yes
Peach Bottom Township	Pikes Peak Road	0176	0.25	Rural	Within 50 ft	Partial	Municipal	Steep slope	Yes
Peach Bottom Township	Quarry Road	0165	0.25	Rural	More than 100 ft	Partial	Municipal	Flat	Yes
Penn Township	Cooper Road	0180	0.25	Rural	50 - 100 ft	Partial	Municipal	Gently sloped	Yes
Seven Valleys Borough	South Road Site 1	0181	0.5	Suburban	50 - 100 ft	Partial	Municipal	Steep slope	Yes
Shrewsbury Township	Cooper Road	0186	0.125	Rural	Within 50 ft	Partial	Municipal	Gently sloped	Yes
Shrewsbury Township	Deer Creek Road	0184	0.75	Rural	50 - 100 ft	Partial	Municipal	Gently sloped	Yes
Shrewsbury Township	Elm Drive	0185	6.5	Rural	More than 100 ft	Partial	Municipal	Gently sloped	Yes
Shrewsbury Township	Hebel Road	0187	0.375	Rural	More than 100 ft	Partial	Municipal	Flat	Yes
Shrewsbury Township	Keller Road	0188	0.25	Rural	No waterway nearby	Partial	Municipal	Flat	Yes
Shrewsbury Township	Kirchner Road	0190	0.25	Rural	Within 50 ft	Partial	Municipal	Flat	Yes
Shrewsbury Township	Kratz Road	0192	0.5	Rural	Within 50 ft	Yes	Municipal	Gently sloped	Yes
Shrewsbury Township	Stewartstown Road	0183	0.75	Rural	Within 50 ft	Partial	Municipal	Gently sloped	Yes
Shrewsbury Township	Tolna Road	0193	1.5	Suburban	50 - 100 ft	Yes	Municipal	Flat	Yes
Shrewsbury Township	Valley Road	0191	0.125	Rural	50 to 100 ft	Partial	Municipal	Gently sloped	Yes
Shrewsbury Township	Waltmyer Road	0189	1.5	Rural	No waterway nearby	Partial	Municipal	Medium slope	Yes
Shrewsbury Township	White Oak Road	0182	0.25	Rural	In Waterway/Wetland	Partial	Municipal	Medium slope	Yes

York County IDS Site Characteristics by Municipality*

Municipality	Site Name	Site Number	Calculated Tons	Demographics	Distance from Waterway	Visibility from Roadway	Road Ownership	Terrain Type	Active
Spring Garden Township	Atlas Alley	0197	0.5	Urban	More than 100 ft	Partial	Municipal	Flat	Yes
Spring Garden Township	Eberts Lane	0195	1	Suburban	Within 50 ft	Yes	Municipal	Steep slope	Yes
Spring Garden Township	Grantley Road	0201	0.75	Urban	50 - 100 ft	Yes	Municipal	Flat	Yes
Spring Garden Township	Green Hill Road	0204	0.75	Suburban	Within 50 ft	Yes	Municipal	Gently sloped	Yes
Spring Garden Township	Indian Rock Dam Road	0206	0.375	Rural	Within 50 ft	Partial	State	Flat	Yes
Spring Garden Township	Kings Mill Road	0200	2.5	Urban	50 - 100 ft	Yes	Municipal	Flat	Yes
Spring Garden Township	Mount Rose Avenue Site 1	0202	0.75	Urban	Within 50 ft	Partial	Municipal	Medium slope	Yes
Spring Garden Township	North Belmont Street	0196	0.125	Urban	Within 50 ft	Partial	Municipal	Flat	Yes
Spring Garden Township	Olive Street	0198	0.25	Urban	More than 100 ft	Partial	County	Flat	Yes
Spring Garden Township	Plum Street	0194	5	Suburban	Within 50 ft	Yes	Municipal	Gently sloped	Yes
Spring Garden Township	Prospect Street	0199	0.125	Urban	More than 100 ft	Partial	Municipal	Flat	Yes
Spring Garden Township	Randow Road	0203	0.75	Suburban	More than 100 ft	Partial	Municipal	Gently sloped	Yes
Spring Garden Township	South George Street	0205	0.25	Suburban	Within 50 ft	Partial	State	Flat	Yes
Springettsbury Township	Alpine Road	0207	0.125	Suburban	50 - 100 ft	No	Municipal	Medium slope	Yes
Springettsbury Township	Arsenal Road	0217	8	Urban	50 to 100 ft	Partial	State	Flat	Yes
Springettsbury Township	Cinema Drive	0213	0.75	Suburban	50 to 100 ft	Partial	Municipal	Flat	Yes
Springettsbury Township	East Market Street	0214	0.5	Suburban	50 to 100 ft	Partial	Municipal	Flat	Yes
Springettsbury Township	East Street	0210	0.75	Suburban	Within 50 ft	Yes	Municipal	Flat	Yes
Springettsbury Township	Eastern Boulevard	0216	0.75	Suburban	More than 100 ft	Partial	Municipal	Medium slope	Yes
Springettsbury Township	Heindel Road	0208	0.375	Suburban	In Waterway/Wetland	Partial	Municipal	Medium slope	Yes
Springettsbury Township	Mount Rose Avenue Site 2	0212	0.75	Urban	In Waterway/Wetland	Partial	State	Medium slope	Yes
Springettsbury Township	Mundis Mill Road	0215	0.125	Suburban	In Waterway/Wetland	Partial	State	Medium slope	Yes
Springettsbury Township	Pearl Drive	0209	0.5	Suburban	50 to 100 ft	Yes	Private	Flat	Yes
Springfield Township	Graydon Road Site 1	0222	0.5	Rural	No waterway nearby	Partial	Municipal	Medium slope	No
Springfield Township	Graydon Road Site 2	0223	0.25	Rural	Within 50 ft	Partial	Municipal	Medium slope	Yes
Springfield Township	South Road Site 2	0221	0.125	Suburban	No waterway nearby	Partial	Municipal	Gently sloped	Yes
Springfield Township	Springfield Road Site 1	0219	0.25	Rural	In Waterway/Wetlands	No	Municipal	Medium slope	Yes
Springfield Township	Springfield Road Site 2	0218	0.5	Rural	Within 50 ft	No	Municipal	Extremely steep	Yes
Springfield Township	Valley Road	0220	2.125	Suburban	Within 50 ft	Partial	Municipal	Gently sloped	Yes
Warrington Township	Detters Mill Road	0225	0.125	Rural	50 - 100 ft	Yes	Municipal	Flat	Yes
Warrington Township	Spring Valley Road	0224	0.125	Rural	No waterway nearby	Yes	Municipal	Flat	No
Washington Township	Berky Road	0226	1	Rural	Within 50 ft	Yes	Municipal	Gently sloped	Yes

York County IDS Site Characteristics by Municipality*

Municipality	Site Name	Site Number	Calculated Tons	Demographics	Distance from Waterway	Visibility from Roadway	Road Ownership	Terrain Type	Active
Washington Township	Cedar Lane	0155	1	Rural	No waterway nearby	Yes	Municipal	Gently sloped	No
West Manchester Township	Baker Road Site 2	0227	0.25	Rural	No waterway nearby	Yes	Municipal	Flat	Yes
West Manchester Township	East Berlin Road	0229	1	Suburban	No waterway nearby	Partial	Private	Flat	Yes
West Manchester Township	Greenwood Road	0228	0.125	Suburban	No waterway nearby	Yes	Municipal	Flat	Yes
West Manchester Township	Haviland Road	0230	1.25	Suburban	No waterway nearby	Yes	Municipal	Flat	Yes
West Manchester Township	Hokes Mill Road	0233	0.125	Suburban	More than 100 ft	Partial	Municipal	Flat	Yes
West Manchester Township	Hull Drive	0231	1	Suburban	No waterway nearby	Yes	Municipal	Flat	Yes
West Manchester Township	Old Salem Road	0234	0.25	Rural	No waterway nearby	Yes	Municipal	Flat	Yes
West Manchester Township	Woodberry Road	0232	0.25	Rural	No waterway nearby	Yes	Municipal	Flat	Yes
West Manheim Township	Musselman Road	0235	0.5	Rural	No waterway nearby	Partial	Municipal	Gently sloped	No
West Manheim Township	Oak Hills Drive	0237	1	Suburban	No waterway nearby	Yes	Municipal	Flat	Yes
West Manheim Township	Oakwood Drive	0236	0.125	Suburban	No waterway nearby	Yes	Municipal	Flat	Yes
West York Borough	Highland Avenue	0238	0.25	Urban	No waterway nearby	Partial	Municipal	Flat	Yes
Windsor Township	Barshinger Road	0242	0.5	Suburban	50 to 100 ft	Yes	Municipal	Flat	No
Windsor Township	Boxwood Road	0243	0.25	Suburban	Within 50 ft	Partial	Municipal	Gently sloped	Yes
Windsor Township	Dietz Road	0241	2	Suburban	50 to 100 ft	Yes	Municipal	Flat	Yes
Windsor Township	Riddle Road	0240	0.25	Rural	No waterway nearby	Partial	Municipal	Flat	Yes
Windsor Township	Taylor Road	0239	0.25	Rural	No waterway nearby	Yes	Municipal	Flat	Yes
York City	Avon Avenue	0246	0.25	Urban	No waterway nearby	Partial	Municipal	Flat	Yes
York City	Clugston Road	0244	0.25	Suburban	More than 100 ft	Partial	Municipal	Flat	Yes
York City	Dallas Street	0256	0.125	Urban	No waterway nearby	Partial	Municipal	Flat	Yes
York City	East Chestnut Street	0251	0.5	Urban	No waterway nearby	Partial	Municipal	Flat	Yes
York City	Euclid Avenue	0254	0.25	Urban	No waterway nearby	Yes	Municipal	Flat	Yes
York City	Girard Avenue	0255	1	Urban	No waterway nearby	Partial	Municipal	Gently sloped	Yes
York City	Hamilton Avenue	0258	0.75	Urban	In Waterway/Wetland	Partial	Municipal	Medium slope	Yes
York City	Hudson Street	0250	0.5	Urban	More than 100 ft	Partial	Municipal	Steep slope	Yes
York City	Lincoln Drive	0247	0.5	Urban	No Waterway Nearby	Partial	Municipal	Medium slope	Yes
York City	North Queen Street	0248	0.75	Urban	No Waterway Nearby	Yes	Municipal	Flat	Yes
York City	North West Street	0245	0.25	Suburban	No waterway nearby	Partial	Municipal	Gently sloped	Yes
York City	Pequea Avenue	0253	0.5	Urban	No waterway nearby	Yes	Municipal	Flat	Yes
York City	Rockdale Avenue	0260	0.75	Urban	More than 100 ft	Partial	Municipal	Flat	Yes
York City	Samson Alley	0257	3.5	Urban	No waterway nearby	Partial	Municipal	Gently sloped	Yes

York County IDS Site Characteristics by Municipality*

Municipality	Site Name	Site Number	Calculated Tons	Demographics	Distance from Waterway	Visibility from Roadway	Road Ownership	Terrain Type	Active
York City	Sheridan Street	0259	0.125	Urban	50 to 100 ft	Yes	Municipal	Gently sloped	Yes
York City	Simpson Street	0252	1.5	Urban	No waterway nearby	Partial	Municipal	Flat	Yes
York City	Wallace Street	0249	0.75	Urban	Within 50 ft	Partial	Municipal	Flat	Yes
York Township	Blymire Road	0262	0.25	Rural	Within 50 ft	Partial	Municipal	Gently sloped	Yes
York Township	Camp Betty Washington Road	0263	2.75	Suburban	Within 50 ft	Partial	Municipal	Flat	Yes
York Township	Dairyland Drive	0274	0.25	Rural	In Waterway/Wetland	Partial	Municipal	Gently sloped	Yes
York Township	Emiray Court	0264	0.125	Suburban	Within 50 ft	Partial	Municipal	Gently sloped	Yes
York Township	Howard Street	0269	1	Suburban	Within 50 ft	Partial	Municipal	Medium slope	Yes
York Township	Imperial Lane	0271	1	Rural	Within 50 ft	Partial	Municipal	Steep slope	Yes
York Township	Locust Hill Road	0261	0.5	Suburban	Within 50 ft	Partial	Municipal	Gently sloped	Yes
York Township	Meadowview Drive	0268	0.25	Suburban	In Waterway/Wetland	Partial	Private	Flat	Yes
York Township	Monument Road	0270	0.125	Rural	More than 100 ft	Partial	Municipal	Flat	Yes
York Township	Oak Road	0266	1.5	Suburban	Within 50 ft	Partial	Municipal	Flat	Yes
York Township	Park Street South	0273	0.5	Rural	In Waterway/Wetland	Partial	Municipal	Medium slope	Yes
York Township	Saint Charles Way	0267	0.125	Suburban	No waterway nearby	Partial	Municipal	Flat	Yes
York Township	South Queen Street	0275	0.125	Suburban	More than 100 ft	Partial	State	Gently sloped	Yes
York Township	Springwood Road	0265	1.5	Suburban	Within 50 ft	Partial	State	Flat	Yes
York Township	Vireo Road	0272	0.5	Rural	In Waterway/Wetland	Partial	Municipal	Flat	Yes

Total Number of Sites: 274

Total Calculated Tons: 263.00

* Characteristics assessed at time of survey were based on what was visible.

York County Illegal Dump Survey Waste Characteristics by Municipality*

Municipality	Site Name	Site Number	Calculated Tons	Bagged Trash	Household Trash	Recyclables	HHW	Tires	Clean Fill	C_D Waste	Yard Waste	White Goods	Electronics	Televisions	Furniture	Mattresses	Vehicle Parts	Car Batteries
Carroll Township	Chestnut Grove Road	0002	1	No	No	No	No	0	Yes	No	Yes	0	0	0	0	0	No	0
Carroll Township	Junction Road	0001	1.5	No	No	No	No	0	Yes	No	Yes	0	0	0	0	0	No	0
Chanceford Township	Douglas Road	0004	0.5	No	Yes	No	No	0	No	No	Yes	0	0	0	0	0	No	0
Chanceford Township	Green Branch Road Site 1	0010	0.5	No	No	No	No	2	No	No	Yes	1	0	0	0	0	No	0
Chanceford Township	Green Branch Road Site 2	0011	0.5	Yes	Yes	No	No	1	No	Yes	No	0	0	0	0	0	No	0
Chanceford Township	Hall Road	0005	1	No	No	No	No	15	No	No	Yes	0	0	0	0	0	No	0
Chanceford Township	Hilltop Road	0006	0.25	No	No	No	No	0	No	No	No	1	0	0	0	0	No	0
Chanceford Township	Kohler Road	0003	0.5	No	No	Yes	No	0	No	No	No	1	0	0	0	0	No	0
Chanceford Township	Leiphart Road	0009	0.5	No	No	No	No	10	No	No	Yes	0	0	0	0	0	No	0
Chanceford Township	Lower River Road	0008	0.5	No	No	No	No	10	No	No	No	0	0	0	0	0	No	0
Chanceford Township	Mill Road	0007	0.5	Yes	Yes	No	No	0	No	Yes	No	0	0	0	2	0	No	0
Chanceford Township	West Heffner Road	0012	0.5	No	No	Yes	No	0	No	No	No	0	0	0	0	0	Yes	0
Codorus Township	Birthday Club Road	0013	0.25	No	Yes	Yes	Yes	2	No	No	Yes	0	0	1	0	0	Yes	0
Codorus Township	Brush Valley Road	0014	0.5	Yes	Yes	Yes	Yes	12	No	No	Yes	0	0	0	0	0	No	0
Codorus Township	Heindel Road	0016	0.25	No	No	Yes	No	10	No	No	No	0	0	0	0	0	No	0
Codorus Township	Panther Hill Road	0015	0.5	No	No	Yes	No	20	No	No	No	0	0	0	0	0	No	0
Codorus Township	Route 851	0018	0.25	No	No	No	No	10	No	No	No	0	0	0	0	0	No	0
Codorus Township	Sunny Slope Road	0017	0.125	No	Yes	Yes	No	1	No	No	No	0	0	0	0	0	No	0
Codorus Township	Tannery Road	0020	1.5	Yes	Yes	Yes	Yes	5	No	No	Yes	2	1	3	2	0	No	0
Codorus Township	Watertank Road	0019	0.5	No	Yes	Yes	Yes	6	No	No	Yes	1	0	0	0	0	No	0
Conewago Township	Bowers Bridge Road	0022	0.25	Yes	Yes	No	No	0	No	No	No	0	0	0	0	0	No	0
Conewago Township	Jug Road	0021	0.125	No	Yes	No	No	2	No	No	No	0	0	0	0	0	No	0
Dover Township	Baker Road Site 1	0026	0.125	No	Yes	Yes	Yes	0	No	No	Yes	0	0	0	0	0	No	0
Dover Township	Bull Road	0025	0.125	No	No	No	No	0	No	Yes	No	0	0	0	0	0	No	0
Dover Township	Fish and Game Road	0023	0.5	Yes	No	Yes	No	25	No	No	No	0	0	0	0	0	No	0
Dover Township	Fox Run Road	0024	0.25	Yes	Yes	Yes	No	2	No	No	Yes	1	0	0	0	1	No	0
Dover Township	Mayfield Drive	0027	1	No	Yes	No	No	0	Yes	No	No	0	0	0	0	0	No	0
East Hopewell Township	Bedrock Road	0031	0.125	No	No	Yes	No	0	No	No	No	0	0	0	0	0	No	0

York County Illegal Dump Survey Waste Characteristics by Municipality*

Municipality	Site Name	Site Number	Calculated Tons	Bagged Trash	Household Trash	Recyclables	HHW	Tires	Clean Fill	C_D Waste	Yard Waste	White Goods	Electronics	Televisions	Furniture	Mattresses	Vehicle Parts	Car Batteries
East Hopewell Township	Blue Ball Road	0038	0.25	Yes	Yes	Yes	No	0	No	Yes	No	0	0	0	0	0	Yes	0
East Hopewell Township	Breneman Road	0028	1	No	Yes	Yes	Yes	6	No	Yes	Yes	0	0	0	0	0	No	0
East Hopewell Township	Century Farms Road	0032	0.25	Yes	No	Yes	No	0	No	No	No	0	0	0	0	0	No	0
East Hopewell Township	Coal Hill Road	0029	0.75	No	Yes	Yes	Yes	25	No	Yes	No	0	0	0	0	0	Yes	0
East Hopewell Township	Hyson School Road	0030	0.75	No	No	Yes	No	1	No	Yes	No	0	0	0	0	0	Yes	0
East Hopewell Township	Muddy Creek Forks Road Site 2	0033	0.25	No	No	Yes	No	2	No	Yes	No	0	0	0	0	0	No	0
East Hopewell Township	Muddy Creek Forks Road Site 3	0039	1.5	No	No	No	No	0	Yes	Yes	No	0	0	0	0	0	No	0
East Hopewell Township	Mutton Road	0036	0.125	No	No	Yes	No	4	No	Yes	No	0	0	0	0	0	No	0
East Hopewell Township	Rambo Hill Road	0034	1	No	Yes	Yes	No	1	No	Yes	Yes	0	0	0	1	0	No	0
East Hopewell Township	Short Road	0035	3	Yes	Yes	Yes	No	20	No	Yes	No	0	0	0	1	0	Yes	0
East Hopewell Township	Walnut Road	0037	0.75	Yes	Yes	Yes	No	10	No	No	No	1	0	1	0	0	Yes	0
East Manchester Township	Creekbottom Road	0040	2.5	No	No	Yes	No	20	Yes	Yes	No	0	0	0	0	0	Yes	0
East Manchester Township	Gut Road	0043	3	Yes	Yes	Yes	Yes	5	Yes	Yes	Yes	0	3	1	2	0	Yes	0
East Manchester Township	Mundis Race Road	0045	1.625	No	No	Yes	No	80	No	No	No	0	0	0	0	0	No	0
East Manchester Township	Riverview Road	0044	0.5	No	Yes	Yes	No	0	Yes	Yes	Yes	0	0	0	0	0	No	0
East Manchester Township	Steamboat Boulevard	0041	0.125	No	No	Yes	Yes	0	Yes	Yes	Yes	0	0	0	0	0	No	0
East Manchester Township	Wago Road	0042	0.125	No	Yes	Yes	Yes	0	No	No	No	0	0	0	0	0	No	0
Fawn Township	Anderson Road	0047	0.25	No	Yes	Yes	Yes	3	No	No	No	0	0	0	2	0	No	0
Fawn Township	Brown Road	0052	1	Yes	Yes	Yes	Yes	3	Yes	Yes	Yes	1	0	0	1	0	Yes	0
Fawn Township	Cedar Valley Road	0046	0.5	Yes	No	Yes	No	5	No	No	Yes	0	0	1	0	0	No	0
Fawn Township	Hopewell Road Site 2	0054	0.25	Yes	Yes	Yes	No	0	No	No	No	0	0	0	0	0	No	0
Fawn Township	Hunt Club Road	0048	0.125	Yes	Yes	Yes	Yes	0	No	No	No	0	0	0	0	0	No	0
Fawn Township	Lowe Road	0053	0.5	No	No	Yes	Yes	0	No	No	Yes	1	0	0	0	0	No	0
Fawn Township	McDermott Road	0049	0.125	No	Yes	Yes	Yes	0	No	No	No	0	0	0	0	0	No	0
Fawn Township	Mitchell Road	0050	0.375	No	No	No	No	15	No	No	No	0	0	0	0	0	No	0
Fawn Township	Throne Road	0051	1.5	Yes	Yes	Yes	Yes	5	Yes	Yes	Yes	2	3	1	3	2	No	0
Hanover Borough	Moul Avenue Park	0056	0.5	No	No	No	No	0	No	Yes	No	0	0	0	0	0	No	0
Hanover Borough	Wilson Avenue	0055	0.25	Yes	Yes	Yes	Yes	0	No	No	Yes	0	0	0	0	0	No	0

York County Illegal Dump Survey Waste Characteristics by Municipality*

Municipality	Site Name	Site Number	Calculated Tons	Bagged Trash	Household Trash	Recyclables	HHW	Tires	Clean Fill	C_D Waste	Yard Waste	White Goods	Electronics	Televisions	Furniture	Mattresses	Vehicle Parts	Car Batteries
Heidelberg Township	Glatco Lodge Road Site 1	0057	0.25	No	No	No	No	6	No	No	Yes	0	0	0	0	0	No	0
Heidelberg Township	Glatco Lodge Road Site 2	0060	0.125	No	No	No	No	6	No	No	No	0	0	0	0	0	No	0
Heidelberg Township	Kraft Mill Road	0058	1.5	Yes	Yes	Yes	Yes	2	Yes	Yes	Yes	0	1	1	5	2	No	0
Heidelberg Township	Sycamore Drive	0061	0.25	Yes	No	No	No	4	Yes	No	Yes	0	0	0	0	0	No	0
Hellam Township	North Front Street	0062	1	No	Yes	No	No	35	No	No	Yes	0	0	0	0	1	No	0
Hellam Township	River Farm Road Site 1	0064	0.5	Yes	No	No	No	0	No	Yes	Yes	0	0	0	0	0	No	0
Hellam Township	River Farm Road Site 2	0065	0.5	No	Yes	No	No	6	No	No	No	1	0	0	0	0	No	0
Hellam Township	River Road	0063	1	No	Yes	No	No	2	No	Yes	Yes	0	0	0	0	0	No	0
Hopewell Township	Blevins Road	0073	0.25	No	No	Yes	No	6	Yes	No	No	0	0	0	0	0	No	0
Hopewell Township	Bowers Road	0066	0.125	No	Yes	No	No	2	No	No	No	0	0	0	0	0	No	0
Hopewell Township	Draco Road	0081	0.25	No	No	Yes	No	4	No	No	Yes	0	0	0	0	0	No	0
Hopewell Township	Haugh Road	0080	0.375	Yes	No	Yes	No	3	No	No	No	0	0	0	0	0	Yes	0
Hopewell Township	Hopewell Road	0082	0.75	No	Yes	Yes	No	1	No	No	Yes	0	0	0	0	0	Yes	0
Hopewell Township	Johnson Road	0074	1	Yes	Yes	Yes	No	8	No	Yes	Yes	0	1	0	3	0	No	0
Hopewell Township	Joy Road	0070	2	Yes	Yes	Yes	No	15	No	No	Yes	1	0	1	1	3	Yes	0
Hopewell Township	Kilgore Road Site 1	0078	0.125	No	Yes	Yes	No	1	No	No	No	0	0	1	0	0	Yes	0
Hopewell Township	Kilgore Road Site 2	0079	7.5	Yes	Yes	Yes	Yes	150	Yes	Yes	No	0	0	6	5	0	Yes	0
Hopewell Township	Kurtz School Road	0076	1	Yes	Yes	Yes	Yes	4	Yes	Yes	Yes	0	0	0	0	0	No	0
Hopewell Township	Little Road	0077	1	No	Yes	Yes	No	5	No	No	No	0	0	0	1	0	Yes	0
Hopewell Township	Maddox Road	0071	0.25	Yes	Yes	Yes	No	1	No	No	No	0	0	0	0	0	No	0
Hopewell Township	Saddler Church Road	0069	2.5	Yes	Yes	Yes	No	100	No	No	Yes	0	0	0	2	0	Yes	0
Hopewell Township	Seiling Farm Road	0068	0.125	No	No	No	No	0	No	No	No	0	0	0	1	0	No	0
Hopewell Township	Shaw Road	0072	1	Yes	No	Yes	No	3	No	Yes	Yes	1	0	0	0	0	No	0
Hopewell Township	Thompson Road	0075	0.125	No	No	Yes	No	4	No	No	No	0	0	0	0	0	No	0
Jackson Township	Hershey Road	0084	0.5	No	Yes	No	Yes	1	No	No	No	0	0	1	2	0	No	0
Jackson Township	KBS Road	0083	0.75	Yes	Yes	Yes	Yes	4	Yes	Yes	Yes	0	0	0	0	0	Yes	0
Lower Chanceford Township	Bare Road Site 1	0091	0.25	No	Yes	Yes	No	2	No	No	No	0	1	0	0	0	No	0
Lower Chanceford Township	Bare Road Site 2	0092	0.125	No	No	No	No	5	No	No	No	0	0	0	0	0	No	0

York County Illegal Dump Survey Waste Characteristics by Municipality*

Municipality	Site Name	Site Number	Calculated Tons	Bagged Trash	Household Trash	Recyclables	HHW	Tires	Clean Fill	C_D Waste	Yard Waste	White Goods	Electronics	Televisions	Furniture	Mattresses	Vehicle Parts	Car Batteries
Lower Chanceford Township	Barkmill Road	0105	0.75	No	Yes	Yes	Yes	26	No	Yes	No	0	0	0	0	0	No	0
Lower Chanceford Township	Blain Road	0094	0.5	No	Yes	Yes	No	1	No	No	No	0	0	0	1	0	Yes	0
Lower Chanceford Township	Burns Road	0087	1	No	Yes	Yes	No	18	Yes	Yes	Yes	0	0	1	0	2	No	0
Lower Chanceford Township	East Heffner Road	0093	0.125	No	No	Yes	No	1	No	No	No	0	0	1	0	0	No	0
Lower Chanceford Township	East McKinley Road	0098	0.25	Yes	No	Yes	No	4	No	No	No	0	0	0	0	0	Yes	0
Lower Chanceford Township	Fulton Road	0115	0.125	No	No	Yes	No	3	No	No	No	0	0	0	0	0	No	0
Lower Chanceford Township	Furnance Road	0089	0.125	No	Yes	Yes	Yes	1	No	No	No	0	0	0	0	0	No	0
Lower Chanceford Township	Hunter Mill Road	0110	0.25	No	Yes	Yes	No	5	No	Yes	No	0	0	0	0	0	No	0
Lower Chanceford Township	Indian Steps Road	0090	1	No	Yes	Yes	No	22	No	Yes	No	0	0	0	0	0	No	0
Lower Chanceford Township	Kennedy Road	0114	4	Yes	Yes	Yes	No	87	No	Yes	No	0	0	0	2	1	No	0
Lower Chanceford Township	Kilgore Road	0095	1	Yes	Yes	Yes	Yes	25	No	No	No	1	0	1	0	0	No	0
Lower Chanceford Township	McCalls Ferry Road	0096	5	Yes	Yes	Yes	Yes	140	Yes	Yes	No	5	0	5	4	1	No	0
Lower Chanceford Township	Muddy Creek Forks Road Site 1	0085	0.25	Yes	Yes	Yes	No	2	No	No	No	0	0	0	0	0	No	0
Lower Chanceford Township	Norris Road Site 1	0106	0.75	No	Yes	Yes	No	2	Yes	Yes	No	2	0	0	0	0	No	0
Lower Chanceford Township	Norris Road Site 2	0107	0.125	No	Yes	Yes	Yes	0	No	No	No	0	0	0	0	0	No	0
Lower Chanceford Township	Orson Hollow Road	0108	0.375	Yes	Yes	Yes	Yes	6	No	No	No	0	0	0	0	0	Yes	0
Lower Chanceford Township	Piney Hill Road Site 1	0112	2.25	No	Yes	Yes	No	25	No	Yes	No	7	0	0	0	0	Yes	0
Lower Chanceford Township	Piney Hill Road Site 2	0113	0.625	Yes	Yes	Yes	No	13	No	No	No	1	0	0	0	0	No	0
Lower Chanceford Township	Reed Road	0116	0.25	Yes	No	Yes	Yes	0	No	Yes	No	0	0	0	0	0	No	0
Lower Chanceford Township	Richardson Road	0111	0.125	No	Yes	Yes	No	2	No	No	No	0	0	0	0	0	No	0
Lower Chanceford Township	River Road Site 1	0097	0.25	Yes	Yes	Yes	Yes	2	No	Yes	No	0	0	0	0	0	Yes	0
Lower Chanceford Township	River Road Site 2	0099	1.5	Yes	Yes	Yes	No	0	No	No	Yes	0	0	0	2	0	No	0
Lower Chanceford Township	River Road Site 3	0100	1	No	Yes	Yes	Yes	2	No	Yes	No	1	0	0	1	0	No	0
Lower Chanceford Township	River Road Site 4	0101	1.5	Yes	Yes	Yes	Yes	5	No	Yes	No	1	0	1	1	1	Yes	0
Lower Chanceford Township	River Road Site 5	0102	0.125	Yes	No	Yes	No	2	No	No	No	0	0	0	0	0	No	0
Lower Chanceford Township	Sawmill Road	0088	0.125	No	Yes	No	No	5	No	No	No	0	0	0	0	0	No	0
Lower Chanceford Township	Slab Road Site 1	0103	0.5	No	No	Yes	No	6	Yes	Yes	No	0	0	0	0	0	No	0
Lower Chanceford Township	Slab Road Site 2	0104	0.5	Yes	Yes	Yes	No	2	No	Yes	No	1	0	0	1	0	No	0

York County Illegal Dump Survey Waste Characteristics by Municipality*

Municipality	Site Name	Site Number	Calculated Tons	Bagged Trash	Household Trash	Recyclables	HHW	Tires	Clean Fill	C_D Waste	Yard Waste	White Goods	Electronics	Televisions	Furniture	Mattresses	Vehicle Parts	Car Batteries
Lower Chanceford Township	Stewart Road	0117	0.375	No	No	No	No	11	No	No	No	0	0	0	0	0	Yes	0
Lower Chanceford Township	Woodbine Road Site 1	0109	0.125	No	Yes	Yes	No	4	No	No	No	0	0	0	0	0	No	0
Lower Chanceford Township	Woodbine Road Site 2	0086	0.75	Yes	Yes	Yes	No	25	No	No	No	0	0	0	0	0	No	0
Manchester Township	10th Avenue	0211	3	Yes	Yes	Yes	Yes	2	Yes	Yes	No	0	0	0	0	2	No	0
Manchester Township	Blackthorne Court	0119	1	Yes	Yes	Yes	No	0	Yes	Yes	Yes	0	0	0	0	0	No	0
Manchester Township	Church Road	0120	0.125	Yes	No	Yes	No	1	No	No	No	0	0	0	0	0	No	0
Manchester Township	Locust Lane	0118	2	No	No	No	Yes	0	Yes	Yes	Yes	0	0	0	0	0	No	0
Manheim Township	Blooming Grove Road	0122	0.5	Yes	Yes	Yes	Yes	10	No	Yes	Yes	1	2	1	1	0	Yes	0
Manheim Township	Copenhaver Road	0123	1	Yes	Yes	Yes	Yes	20	Yes	Yes	Yes	0	1	0	1	0	Yes	0
Manheim Township	Lily Springs Road	0124	1	No	Yes	Yes	Yes	30	No	Yes	Yes	0	0	0	1	0	Yes	0
Manheim Township	Smoketown Road	0121	0.125	Yes	Yes	Yes	Yes	5	No	No	No	0	0	0	0	0	No	0
Monaghan Township	Mowery Road	0125	1	No	Yes	Yes	No	10	Yes	Yes	Yes	0	5	1	0	1	Yes	0
Newberry Township	Highland Avenue	0130	1.5	No	No	No	No	1	Yes	No	No	0	0	0	0	0	No	0
Newberry Township	Miller Road	0128	0.125	No	No	Yes	No	0	No	Yes	Yes	0	0	0	0	0	No	0
Newberry Township	Railroad Street	0127	2.5	Yes	Yes	Yes	Yes	20	Yes	Yes	Yes	2	0	0	10	4	No	0
Newberry Township	Red Bank Road	0129	0.25	No	Yes	No	No	0	Yes	Yes	Yes	0	0	0	0	0	No	0
Newberry Township	Stillhouse Road	0126	0.5	No	Yes	Yes	Yes	4	Yes	Yes	Yes	0	0	0	0	0	No	0
North Codorus Township	Martin Road	0133	2	Yes	No	Yes	Yes	3	Yes	Yes	Yes	0	0	1	0	0	No	0
North Codorus Township	Park Road	0134	1.5	Yes	Yes	Yes	Yes	40	Yes	Yes	Yes	0	0	0	1	2	Yes	0
North Codorus Township	Prospect Mill Road	0135	0.375	No	Yes	Yes	Yes	8	Yes	Yes	No	0	0	0	0	0	No	0
North Codorus Township	Rohrbaugh Road	0131	1	Yes	Yes	Yes	Yes	1	Yes	Yes	Yes	0	0	0	0	0	Yes	0
North Codorus Township	Senft Road	0137	0.125	Yes	Yes	Yes	Yes	2	No	No	Yes	0	0	0	0	0	No	0
North Codorus Township	Seven Valleys Road	0132	0.5	Yes	Yes	Yes	Yes	0	Yes	No	Yes	0	1	0	0	0	No	0
North Codorus Township	Stambaugh Road	0136	0.125	Yes	Yes	Yes	Yes	0	No	No	Yes	0	0	0	0	0	No	0
North Codorus Township	York Road	0138	25	Yes	Yes	Yes	Yes	50	Yes	Yes	Yes	0	2	1	3	2	Yes	0
North Hopewell Township	Blymire Hollow Road Site 1	0067	1	Yes	Yes	Yes	Yes	30	No	No	No	0	0	0	1	1	Yes	0
North Hopewell Township	Blymire Hollow Road Site 2	0145	0.125	No	Yes	Yes	No	2	No	No	No	0	0	0	0	0	No	0
North Hopewell Township	Cherry Street	0144	0.5	No	Yes	No	No	0	No	Yes	No	0	0	0	0	0	No	0

York County Illegal Dump Survey Waste Characteristics by Municipality*

Municipality	Site Name	Site Number	Calculated Tons	Bagged Trash	Household Trash	Recyclables	HHW	Tires	Clean Fill	C_D Waste	Yard Waste	White Goods	Electronics	Televisions	Furniture	Mattresses	Vehicle Parts	Car Batteries
North Hopewell Township	Dairy Road	0147	0.25	No	Yes	Yes	No	1	No	No	No	0	0	0	0	0	Yes	0
North Hopewell Township	Evergreen Road	0151	0.125	Yes	Yes	Yes	Yes	0	No	No	No	0	0	0	0	0	No	0
North Hopewell Township	Hain Road	0142	0.25	Yes	No	Yes	No	0	No	No	No	0	0	0	0	0	No	0
North Hopewell Township	Herbst Road	0148	11	No	Yes	Yes	Yes	200	No	Yes	Yes	10	0	1	0	0	Yes	0
North Hopewell Township	High Point Road	0149	0.5	Yes	Yes	No	No	0	No	No	Yes	0	0	0	0	1	No	0
North Hopewell Township	Hollow Road	0152	0.25	Yes	No	Yes	No	0	No	No	No	0	0	1	0	0	No	0
North Hopewell Township	Pleasant View Road	0146	0.25	No	No	Yes	No	6	No	No	No	0	0	0	0	0	No	0
North Hopewell Township	Rehmeyers Hollow Road	0143	0.75	Yes	Yes	Yes	Yes	2	No	Yes	No	1	0	0	2	0	Yes	0
North Hopewell Township	Scout Road	0150	0.125	No	No	Yes	No	2	No	Yes	No	0	0	0	0	0	No	0
North Hopewell Township	Seaks Run Road	0139	1	Yes	Yes	Yes	Yes	6	No	Yes	No	0	1	0	0	0	No	0
North Hopewell Township	Short Road	0140	1	No	Yes	Yes	No	4	No	No	No	0	0	0	1	0	No	0
North Hopewell Township	Stoney Brook Road	0141	0.125	No	No	Yes	No	0	No	No	No	0	0	0	1	0	No	0
Paradise Township	Protectory Road	0154	0.125	No	No	No	No	7	No	No	No	0	0	0	0	0	No	0
Paradise Township	Woodland Drive	0153	1	Yes	Yes	No	No	2	No	Yes	Yes	0	0	0	0	0	No	0
Peach Bottom Township	Atom Road	0175	4	Yes	Yes	Yes	No	100	No	No	No	0	0	0	0	0	Yes	0
Peach Bottom Township	Booker Road	0167	1	Yes	No	Yes	Yes	1	No	No	Yes	2	0	2	0	0	Yes	0
Peach Bottom Township	Bryansville Road	0161	0.5	Yes	Yes	Yes	No	0	No	No	No	0	0	0	0	0	Yes	0
Peach Bottom Township	Bunker Hill Road	0164	6	Yes	Yes	Yes	Yes	70	No	Yes	No	10	1	5	15	3	Yes	0
Peach Bottom Township	Burns Road	0178	0.25	No	Yes	Yes	No	5	No	No	No	1	0	0	0	0	No	0
Peach Bottom Township	Clark Road	0174	0.25	No	No	Yes	No	4	No	No	No	1	0	0	0	0	No	0
Peach Bottom Township	Cooke Road	0160	0.5	No	Yes	Yes	No	5	No	No	No	0	0	0	0	1	No	0
Peach Bottom Township	Cooper Road	0166	0.875	No	No	Yes	No	10	No	Yes	No	0	0	0	0	0	Yes	0
Peach Bottom Township	Gemmill Road	0179	0.75	No	No	Yes	Yes	1	No	Yes	No	0	0	0	0	0	No	0
Peach Bottom Township	Grove Road	0169	1.75	No	Yes	Yes	Yes	16	No	Yes	No	3	0	0	0	0	Yes	1
Peach Bottom Township	Hillview Road	0177	0.125	No	No	Yes	No	2	No	Yes	No	0	0	0	0	0	No	0
Peach Bottom Township	Hollow Road Site 1	0156	4.25	Yes	Yes	Yes	No	104	No	Yes	Yes	1	0	1	1	1	Yes	0
Peach Bottom Township	Hollow Road Site 2	0157	0.5	Yes	No	Yes	No	3	No	No	No	0	0	0	0	1	No	0
Peach Bottom Township	Hushon Road	0159	0.375	Yes	No	Yes	No	4	No	No	No	0	0	0	0	0	No	0

York County Illegal Dump Survey Waste Characteristics by Municipality*

Municipality	Site Name	Site Number	Calculated Tons	Bagged Trash	Household Trash	Recyclables	HHW	Tires	Clean Fill	C_D Waste	Yard Waste	White Goods	Electronics	Televisions	Furniture	Mattresses	Vehicle Parts	Car Batteries
Peach Bottom Township	Kilgore Road Site 1	0158	2	Yes	Yes	Yes	Yes	2	No	Yes	Yes	0	0	0	0	0	No	0
Peach Bottom Township	Kilgore Road Site 2	0162	5	Yes	Yes	Yes	No	10	No	Yes	Yes	1	0	0	0	0	No	0
Peach Bottom Township	Lake View Road	0173	0.5	No	No	Yes	Yes	2	No	No	No	0	0	0	0	0	Yes	0
Peach Bottom Township	Lay Road	0170	0.25	No	Yes	Yes	No	3	No	No	No	0	0	0	0	0	No	0
Peach Bottom Township	Line Road	0163	1.5	Yes	Yes	Yes	Yes	2	No	Yes	No	0	1	0	0	0	No	0
Peach Bottom Township	Murtaugh Road	0172	1	No	No	Yes	No	0	Yes	Yes	No	3	0	0	0	0	No	0
Peach Bottom Township	Paper Mill Road Site 1	0168	0.25	Yes	Yes	Yes	No	2	No	Yes	No	0	0	0	0	0	No	0
Peach Bottom Township	Paper Mill Road Site 2	0171	2	No	Yes	Yes	No	30	No	No	No	0	0	0	0	0	Yes	0
Peach Bottom Township	Pikes Peak Road	0176	0.25	No	No	Yes	No	0	No	Yes	No	0	0	0	2	0	No	0
Peach Bottom Township	Quarry Road	0165	0.25	Yes	No	Yes	No	6	No	No	No	0	0	0	0	0	No	0
Penn Township	Cooper Road	0180	0.25	No	Yes	Yes	No	8	No	No	No	0	0	0	0	0	No	0
Seven Valleys Borough	South Road Site 1	0181	0.5	No	No	No	No	25	No	No	No	0	0	0	0	0	No	0
Shrewsbury Township	Cooper Road	0186	0.125	Yes	No	Yes	No	0	No	No	No	0	0	0	0	0	No	0
Shrewsbury Township	Deer Creek Road	0184	0.75	No	Yes	Yes	No	2	No	Yes	No	1	0	0	0	0	No	0
Shrewsbury Township	Elm Drive	0185	6.5	Yes	Yes	Yes	Yes	46	Yes	Yes	Yes	0	0	0	2	0	Yes	0
Shrewsbury Township	Hebel Road	0187	0.375	No	Yes	Yes	No	8	No	No	No	0	0	0	0	0	No	0
Shrewsbury Township	Keller Road	0188	0.25	Yes	Yes	Yes	Yes	0	No	Yes	No	0	0	0	0	0	No	0
Shrewsbury Township	Kirchner Road	0190	0.25	Yes	Yes	Yes	Yes	3	No	No	Yes	0	0	0	0	0	No	0
Shrewsbury Township	Kratz Road	0192	0.5	Yes	Yes	Yes	Yes	0	No	No	Yes	2	0	0	0	0	No	0
Shrewsbury Township	Stewartstown Road	0183	0.75	No	Yes	Yes	No	1	No	Yes	Yes	0	0	0	0	0	Yes	0
Shrewsbury Township	Tolna Road	0193	1.5	Yes	Yes	Yes	Yes	0	Yes	No	Yes	0	0	0	0	0	No	0
Shrewsbury Township	Valley Road	0191	0.125	Yes	Yes	Yes	Yes	0	No	No	Yes	0	0	0	0	0	No	0
Shrewsbury Township	Waltmyer Road	0189	1.5	No	Yes	No	Yes	0	Yes	Yes	Yes	0	0	0	0	0	No	0
Shrewsbury Township	White Oak Road	0182	0.25	No	Yes	Yes	No	7	No	Yes	No	0	0	0	0	0	No	0
Spring Garden Township	Atlas Alley	0197	0.5	No	Yes	Yes	No	0	Yes	Yes	No	0	0	0	0	0	No	0
Spring Garden Township	Eberts Lane	0195	1	Yes	No	No	No	1	No	No	Yes	0	0	0	0	3	No	0
Spring Garden Township	Grantley Road	0201	0.75	Yes	Yes	Yes	Yes	15	Yes	Yes	Yes	0	0	0	0	0	Yes	0
Spring Garden Township	Green Hill Road	0204	0.75	Yes	Yes	Yes	No	0	Yes	Yes	Yes	0	0	0	0	0	No	0

York County Illegal Dump Survey Waste Characteristics by Municipality*

Municipality	Site Name	Site Number	Calculated Tons	Bagged Trash	Household Trash	Recyclables	HHW	Tires	Clean Fill	C_D Waste	Yard Waste	White Goods	Electronics	Televisions	Furniture	Mattresses	Vehicle Parts	Car Batteries
Spring Garden Township	Indian Rock Dam Road	0206	0.375	No	Yes	Yes	No	3	No	Yes	No	0	0	0	0	0	Yes	0
Spring Garden Township	Kings Mill Road	0200	2.5	Yes	Yes	Yes	Yes	1	Yes	Yes	Yes	0	0	1	2	1	No	0
Spring Garden Township	Mount Rose Avenue Site 1	0202	0.75	Yes	No	Yes	No	12	No	Yes	Yes	0	0	0	0	0	Yes	0
Spring Garden Township	North Belmont Street	0196	0.125	Yes	Yes	Yes	No	3	No	No	Yes	0	0	0	0	0	No	0
Spring Garden Township	Olive Street	0198	0.25	Yes	No	Yes	No	6	No	No	No	0	0	0	0	0	No	0
Spring Garden Township	Plum Street	0194	5	Yes	Yes	No	No	0	Yes	Yes	Yes	0	0	0	2	0	No	0
Spring Garden Township	Prospect Street	0199	0.125	Yes	No	Yes	Yes	1	No	Yes	No	0	0	0	0	0	Yes	0
Spring Garden Township	Randow Road	0203	0.75	No	No	Yes	No	0	Yes	No	Yes	0	0	0	0	0	No	0
Spring Garden Township	South George Street	0205	0.25	Yes	Yes	Yes	No	0	Yes	Yes	No	0	0	0	0	0	No	0
Springettsbury Township	Alpine Road	0207	0.125	Yes	No	Yes	No	5	No	No	No	0	0	0	0	0	No	0
Springettsbury Township	Arsenal Road	0217	8	Yes	Yes	Yes	No	250	Yes	Yes	No	0	0	1	3	0	Yes	0
Springettsbury Township	Cinema Drive	0213	0.75	No	Yes	Yes	No	0	Yes	Yes	Yes	0	0	0	1	0	No	0
Springettsbury Township	East Market Street	0214	0.5	Yes	Yes	Yes	No	0	Yes	Yes	Yes	0	0	0	0	0	No	0
Springettsbury Township	East Street	0210	0.75	No	No	No	No	6	No	No	Yes	0	0	0	0	0	No	0
Springettsbury Township	Eastern Boulevard	0216	0.75	No	Yes	Yes	No	5	No	Yes	Yes	1	0	1	0	0	No	0
Springettsbury Township	Heindel Road	0208	0.375	No	No	Yes	No	10	No	Yes	Yes	0	0	0	0	0	Yes	0
Springettsbury Township	Mount Rose Avenue Site 2	0212	0.75	Yes	No	Yes	Yes	0	No	Yes	No	0	0	0	2	0	Yes	0
Springettsbury Township	Mundis Mill Road	0215	0.125	Yes	Yes	Yes	No	2	No	No	No	0	0	0	0	0	No	0
Springettsbury Township	Pearl Drive	0209	0.5	Yes	Yes	Yes	Yes	0	No	Yes	No	0	0	0	0	0	No	0
Springfield Township	Graydon Road Site 1	0222	0.5	No	No	No	No	20	No	No	No	0	0	0	0	0	No	0
Springfield Township	Graydon Road Site 2	0223	0.25	No	Yes	Yes	No	0	No	No	No	0	1	1	1	0	No	0
Springfield Township	South Road Site 2	0221	0.125	Yes	No	Yes	Yes	0	No	No	Yes	0	0	0	0	0	No	0
Springfield Township	Springfield Road Site 1	0219	0.25	No	Yes	Yes	Yes	0	No	No	Yes	0	0	0	0	0	No	0
Springfield Township	Springfield Road Site 2	0218	0.5	Yes	Yes	Yes	Yes	4	No	No	Yes	1	0	0	4	0	No	0
Springfield Township	Valley Road	0220	2.125	Yes	Yes	Yes	Yes	6	Yes	Yes	Yes	0	0	0	2	1	No	0
Warrington Township	Detters Mill Road	0225	0.125	No	No	Yes	No	0	No	No	Yes	0	0	0	0	0	No	0
Warrington Township	Spring Valley Road	0224	0.125	No	No	No	No	6	No	No	No	0	0	0	0	0	No	0
Washington Township	Berky Road	0226	1	No	Yes	No	No	3	Yes	Yes	Yes	0	3	1	0	0	No	0

York County Illegal Dump Survey Waste Characteristics by Municipality*

Municipality	Site Name	Site Number	Calculated Tons	Bagged Trash	Household Trash	Recyclables	HHW	Tires	Clean Fill	C_D Waste	Yard Waste	White Goods	Electronics	Televisions	Furniture	Mattresses	Vehicle Parts	Car Batteries
Washington Township	Cedar Lane	0155	1	No	No	No	Yes	0	Yes	Yes	Yes	0	0	0	0	0	No	0
West Manchester Township	Baker Road Site 2	0227	0.25	Yes	Yes	Yes	Yes	0	No	No	Yes	0	0	0	0	0	No	0
West Manchester Township	East Berlin Road	0229	1	Yes	Yes	Yes	Yes	4	Yes	Yes	Yes	0	0	0	0	0	No	0
West Manchester Township	Greenwood Road	0228	0.125	Yes	No	Yes	Yes	0	Yes	Yes	Yes	0	0	0	0	0	No	0
West Manchester Township	Haviland Road	0230	1.25	Yes	Yes	Yes	Yes	2	Yes	Yes	Yes	0	0	0	0	0	No	0
West Manchester Township	Hokes Mill Road	0233	0.125	No	Yes	Yes	No	5	No	No	Yes	0	0	0	0	1	No	0
West Manchester Township	Hull Drive	0231	1	No	No	No	No	0	Yes	No	No	0	0	0	0	0	No	0
West Manchester Township	Old Salem Road	0234	0.25	Yes	Yes	Yes	No	10	No	No	No	0	0	1	1	0	No	0
West Manchester Township	Woodberry Road	0232	0.25	Yes	Yes	Yes	Yes	0	No	No	No	0	0	0	0	0	No	0
West Manheim Township	Musselman Road	0235	0.5	No	Yes	Yes	Yes	2	No	No	Yes	0	0	1	0	0	Yes	0
West Manheim Township	Oak Hills Drive	0237	1	No	No	No	No	0	Yes	Yes	No	0	0	0	0	0	No	0
West Manheim Township	Oakwood Drive	0236	0.125	No	No	No	No	0	No	Yes	No	0	0	1	0	0	No	0
West York Borough	Highland Avenue	0238	0.25	No	No	Yes	No	1	Yes	Yes	Yes	0	0	0	0	0	No	0
Windsor Township	Barshinger Road	0242	0.5	No	No	No	No	0	Yes	Yes	No	0	0	0	0	0	No	0
Windsor Township	Boxwood Road	0243	0.25	Yes	Yes	Yes	Yes	1	No	No	No	0	0	0	0	0	No	0
Windsor Township	Dietz Road	0241	2	Yes	Yes	Yes	Yes	3	Yes	Yes	Yes	1	4	0	6	1	Yes	0
Windsor Township	Riddle Road	0240	0.25	Yes	Yes	Yes	No	10	No	No	Yes	0	0	1	0	0	No	0
Windsor Township	Taylor Road	0239	0.25	Yes	Yes	Yes	Yes	0	No	No	Yes	0	0	0	0	0	No	0
York City	Avon Avenue	0246	0.25	Yes	Yes	Yes	No	1	No	No	No	0	2	2	0	0	No	0
York City	Clugston Road	0244	0.25	No	Yes	Yes	No	4	No	No	No	0	0	0	0	0	No	0
York City	Dallas Street	0256	0.125	No	No	Yes	No	0	No	Yes	No	0	0	0	2	0	No	0
York City	East Chestnut Street	0251	0.5	Yes	Yes	Yes	Yes	0	No	No	Yes	0	0	1	0	0	No	0
York City	Euclid Avenue	0254	0.25	No	No	Yes	No	5	No	Yes	No	0	0	0	0	0	Yes	0
York City	Girard Avenue	0255	1	Yes	Yes	Yes	Yes	5	Yes	Yes	Yes	0	0	0	1	1	No	0
York City	Hamilton Avenue	0258	0.75	Yes	No	Yes	No	6	Yes	Yes	Yes	0	0	0	0	0	No	0
York City	Hudson Street	0250	0.5	Yes	Yes	Yes	No	5	No	No	No	0	0	0	0	0	Yes	0
York City	Lincoln Drive	0247	0.5	Yes	Yes	Yes	Yes	0	No	No	Yes	0	0	0	4	0	No	0
York City	North Queen Street	0248	0.75	Yes	Yes	Yes	No	0	No	Yes	Yes	0	0	0	0	4	No	0

York County Illegal Dump Survey Waste Characteristics by Municipality*

Municipality	Site Name	Site Number	Calculated Tons	Bagged Trash	Household Trash	Recyclables	HHW	Tires	Clean Fill	C_D Waste	Yard Waste	White Goods	Electronics	Televisions	Furniture	Mattresses	Vehicle Parts	Car Batteries
York City	North West Street	0245	0.25	No	Yes	Yes	No	0	Yes	Yes	Yes	0	1	0	0	0	No	0
York City	Pequea Avenue	0253	0.5	No	Yes	Yes	Yes	0	Yes	Yes	Yes	0	0	0	1	0	No	0
York City	Rockdale Avenue	0260	0.75	No	Yes	Yes	No	4	Yes	Yes	Yes	0	0	0	0	0	Yes	0
York City	Samson Alley	0257	3.5	Yes	Yes	Yes	No	30	Yes	Yes	Yes	0	0	0	0	0	No	0
York City	Sheridan Street	0259	0.125	Yes	Yes	Yes	No	0	No	No	No	0	0	0	0	0	No	0
York City	Simpson Street	0252	1.5	Yes	Yes	Yes	Yes	20	Yes	Yes	Yes	0	1	0	0	1	Yes	0
York City	Wallace Street	0249	0.75	No	Yes	Yes	No	0	Yes	Yes	Yes	0	1	2	0	0	No	0
York Township	Blymire Road	0262	0.25	Yes	Yes	Yes	No	0	No	No	No	0	0	0	1	0	No	0
York Township	Camp Betty Washington Road	0263	2.75	Yes	Yes	Yes	Yes	25	Yes	Yes	Yes	0	0	0	5	1	No	0
York Township	Dairyland Drive	0274	0.25	Yes	Yes	Yes	No	6	No	No	No	0	0	0	0	0	No	0
York Township	Emiray Court	0264	0.125	No	No	Yes	No	3	No	No	Yes	0	0	0	0	0	No	0
York Township	Howard Street	0269	1	Yes	No	Yes	No	0	Yes	No	Yes	0	0	0	0	0	No	0
York Township	Imperial Lane	0271	1	Yes	Yes	Yes	Yes	1	No	No	No	0	0	0	0	0	No	0
York Township	Locust Hill Road	0261	0.5	No	No	Yes	No	2	Yes	No	Yes	0	0	0	0	0	No	0
York Township	Meadowview Drive	0268	0.25	Yes	No	Yes	No	0	Yes	Yes	Yes	0	0	0	0	0	No	0
York Township	Monument Road	0270	0.125	Yes	Yes	Yes	No	0	No	No	No	0	0	0	0	0	No	0
York Township	Oak Road	0266	1.5	No	Yes	Yes	No	0	Yes	Yes	Yes	0	0	0	0	0	No	0
York Township	Park Street South	0273	0.5	Yes	No	Yes	No	3	No	No	Yes	0	0	0	0	0	Yes	0
York Township	Saint Charles Way	0267	0.125	No	Yes	Yes	No	0	No	Yes	No	0	0	0	0	0	No	0
York Township	South Queen Street	0275	0.125	No	Yes	Yes	No	0	No	No	No	0	0	1	0	0	No	0
York Township	Springwood Road	0265	1.5	Yes	No	Yes	No	0	Yes	Yes	Yes	0	0	0	1	1	No	0
York Township	Vireo Road	0272	0.5	Yes	Yes	Yes	No	0	No	No	Yes	0	0	0	0	0	No	0

Total Number of Sites: 274

Total Calculated Tons: 263.00

* Characteristics assessed at time of survey were based on what was visible.

Illegal Dumpsite Characteristics Summary Chart by County

Dumpsite Characteristics	Allegheny	Adams	Armstrong	Beaver	Bedford	Berks	Blair	Butler	Cambria	Cameron
Total Sites Surveyed	202	116	176	120	128	100	116	217	203	6
Estimated Tons	344	218	585	333	870	185	168	317	254	18
Location Demographics										
Rural	15%	94%	99%	93%	90%	73%	82%	88%	87%	100%
Suburban	70%	6%	1%	6%	10%	25%	15%	11%	13%	0%
Urban	15%	0%	0%	2%	0%	2%	3%	1%	0%	0%
Visible from Road										
Yes	62%	35%	37%	30%	70%	63%	45%	60%	61%	17%
No	11%	22%	11%	34%	7%	10%	30%	6%	7%	83%
Partial	27%	42%	52%	36%	23%	27%	25%	34%	32%	0%
Distance from Waterway										
Directly In Waterway/Wetlands	24%	9%	14%	22%	6%	7%	22%	16%	13%	0%
Within 50 Feet and/or Directly in Waterway/Wetlands	45%	35%	32%	40%	22%	37%	33%	27%	27%	17%
Over 50 Feet or No Waterway	55%	65%	68%	60%	78%	63%	67%	73%	73%	83%
Road Type										
State	37%	22%	8%	11%	24%	18%	35%	3%	13%	67%
Municipal/County	49%	64%	90%	81%	73%	81%	63%	97%	86%	33%
Forest/Park	0%	13%	1%	8%	0%	1%	0%	0%	0%	0%
Private/Undetermined	14%	1%	1%	0%	3%	0%	2%	0%	1%	0%
Terrain										
Flat	52%	65%	10%	18%	24%	30%	23%	15%	38%	0%
Gently Sloped	22%	22%	20%	19%	31%	24%	34%	29%	26%	33%
Medium Sloped	14%	10%	28%	30%	18%	28%	18%	33%	28%	17%
Steep	12%	3%	52%	33%	27%	18%	24%	23%	8%	50%

Illegal Dumpsite Characteristics Summary Chart by County

Dumpsite Characteristics	Centre	Clarion	Clearfield	Clinton	Columbia	Crawford	Cumberland	Dauphin	Elk	Erie
Total Sites Surveyed	56	102	112	50	39	82	37	138	79	83
Estimated Tons	128	263	324	65	382	115	132	468	119	121
Location Demographics										
Rural	96%	100%	98%	100%	100%	95%	78%	61%	96%	71%
Suburban	4%	0%	1%	0%	0%	5%	19%	16%	1%	16%
Urban	0%	0%	1%	0%	0%	0%	3%	23%	3%	13%
Visible from Road										
Yes	73%	52%	38%	18%	85%	48%	46%	53%	71%	53%
No	7%	13%	21%	56%	2%	33%	11%	10%	8%	27%
Partial	20%	35%	41%	26%	13%	19%	43%	37%	21%	20%
Distance from Waterway										
Directly In Waterway/Wetlands	5%	6%	11%	14%	12%	6%	11%	10%	7%	19%
Within 50 Feet and/or Directly in Waterway/Wetlands	16%	15%	27%	72%	32%	43%	24%	25%	23%	30%
Over 50 Feet or No Waterway	13%	85%	73%	28%	68%	57%	76%	75%	77%	70%
Road Type										
State	18%	6%	21%	20%	13%	6%	11%	8%	23%	20%
Municipal/County	67%	93%	77%	46%	87%	93%	89%	76%	66%	78%
Forest/Park	13%	1%	0%	34%	0%	1%	0%	0%	7%	0%
Private/Undetermined	2%	0%	2%	0%	0%	0%	0%	16%	4%	2%
Terrain										
Flat	32%	12%	15%	18%	23%	28%	14%	46%	26%	45%
Gently Sloped	27%	26%	23%	32%	41%	28%	32%	20%	37%	22%
Medium Sloped	20%	27%	44%	36%	23%	24%	32%	9%	23%	14%
Steep	21%	34%	18%	14%	13%	20%	22%	25%	14%	19%

Illegal Dumpsite Characteristics Summary Chart by County

Dumpsite Characteristics	Fayette	Forest	Franklin	Fulton	Greene	Huntingdon	Indiana	Jefferson	Juniata	Lackawanna
Total Sites Surveyed	163	15	128	19	49	202	114	67	49	92
Estimated Tons	736	64	181	169	450	259	680	541	80	424
Location Demographics										
Rural	93%	100%	77%	100%	100%	87%	99%	100%	92%	45%
Suburban	7%	0%	13%	0%	0%	12%	1%	0%	4%	30%
Urban	0%	0%	10%	0%	0%	1%	0%	0%	4%	25%
Visible from Road										
Yes	73%	33%	33%	90%	84%	34%	53%	85%	27%	66%
No	10%	34%	14%	5%	8%	13%	31%	15%	53%	8%
Partial	17%	33%	53%	5%	8%	53%	16%	0%	20%	26%
Distance from Waterway										
Directly In Waterway/Wetlands	16%	0%	13%	0%	8%	7%	15%	12%	20%	7%
Within 50 Feet and/or Directly in Waterway/Wetlands	37%	13%	49%	5%	22%	35%	37%	25%	39%	23%
Over 50 Feet or No Waterway	63%	87%	51%	95%	78%	65%	63%	75%	61%	77%
Road Type										
State	24%	33%	23%	47%	4%	39%	4%	14%	31%	32%
Municipal/County	72%	40%	64%	48%	94%	59%	90%	82%	69%	68%
Forest/Park	0%	27%	12%	5%	0%	1%	0%	0%	0%	0%
Private/Undetermined	4%	0%	1%	0%	2%	1%	6%	4%	0%	0%
Terrain										
Flat	32%	40%	36%	26%	22%	22%	25%	54%	8%	47%
Gently Sloped	17%	0%	35%	10%	29%	31%	20%	25%	31%	15%
Medium Sloped	21%	20%	14%	32%	27%	26%	28%	9%	24%	13%
Steep	30%	40%	14%	32%	22%	21%	27%	12%	37%	25%

Illegal Dumpsite Characteristics Summary Chart by County

Dumpsite Characteristics	Lancaster	Lawrence	Lebanon	Luzerne	McKean	Mercer	Mifflin	Montgomery	Northumberland	Perry
Total Sites Surveyed	16	31	43	159	73	143	31	19	125	105
Estimated Tons	74	112	36	1723	165.5	154	30	17	1634	107
Location Demographics										
Rural	87%	68%	77%	75%	100%	99%	100%	68%	99%	100%
Suburban	13%	19%	19%	23%	0%	1%	0%	11%	1%	0%
Urban	0%	13%	4%	2%	0%	0%	0%	21%	0%	0%
Visible from Road										
Yes	56%	71%	35%	59%	52%	60%	39%	84%	62%	79%
No	6%	3%	30%	18%	29%	13%	38%	0%	8%	9%
Partial	38%	26%	35%	23%	19%	27%	23%	16%	30%	12%
Distance from Waterway										
Directly In Waterway/Wetlands	13%	26%	23%	5%	12%	13%	19%	0%	11%	5%
Within 50 Feet and/or Directly in Waterway/Wetlands	31%	48%	42%	11%	26%	34%	35%	16%	19%	39%
Over 50 Feet or No Waterway	69%	52%	58%	89%	74%	66%	65%	84%	81%	61%
Road Type										
State	6%	20%	35%	32%	29%	5%	45%	11%	16%	23%
Municipal/County	88%	74%	58%	32%	60%	94%	52%	89%	50%	77%
Forest/Park	0%	3%	2%	0%	11%	0%	0%	0%	0%	0%
Private/Undetermined	6%	3%	5%	36%	0%	1%	3%	0%	34%	0%
Terrain										
Flat	44%	32%	40%	40%	10%	55%	13%	79%	31%	29%
Gently Sloped	19%	19%	16%	32%	31%	20%	16%	0%	29%	34%
Medium Sloped	25%	23%	23%	17%	18%	18%	42%	0%	18%	17%
Steep	12%	26%	21%	11%	41%	7%	29%	21%	22%	20%

Illegal Dumpsite Characteristics Summary Chart by County

Dumpsite Characteristics	Schuylkill	Snyder	Somerset	Union	Venango	Warren	Washington	Westmoreland	York
Total Sites Surveyed	74	45	210	21	174	59	126	310	274
Estimated Tons	523	58	543	43	386	292	317	335	263
Location Demographics									
Rural	96%	0%	95%	90%	98%	95%	100%	89%	67%
Suburban	4%	0%	5%	10%	2%	5%	0%	8%	24%
Urban	0%	100%	0%	0%	0%	0%	0%	3%	9%
Visible from Road									
Yes	47%	56%	42%	57%	90%	49%	60%	83%	26%
No	7%	11%	22%	5%	2%	12%	27%	6%	2%
Partial	46%	33%	36%	38%	8%	39%	13%	11%	72%
Distance from Waterway									
Directly In Waterway/Wetlands	5%	16%	5%	10%	13%	7%	6%	31%	15%
Within 50 Feet and/or Directly in Waterway/Wetlands	28%	36%	15%	24%	44%	15%	41%	44%	47%
Over 50 Feet or No Waterway	72%	64%	85%	76%	56%	84%	59%	56%	53%
Road Type									
State	42%	40%	27%	5%	19%	14%	77%	26%	9%
Municipal/County	58%	60%	72%	90%	78%	76%	23%	73%	89%
Forest/Park	0%	0%	1%	5%	3%	10%	0%	>1%	0%
Private/Undetermined	0%	0%	0%	0%	0%	0%	0%	1%	1%
Terrain									
Flat	43%	47%	33%	29%	26%	25%	48%	24%	42%
Gently Sloped	23%	31%	20%	33%	23%	14%	43%	25%	34%
Medium Sloped	14%	7%	23%	29%	25%	24%	7%	26%	17%
Steep	20%	15%	24%	9%	26%	37%	2%	25%	8%

York County Illegal Dumpsite Survey Acknowledgements

Produced by PA CleanWays – Keep Pennsylvania Beautiful in partnership with
the Penn State Cooperative Extension – York County – West Nile Virus Program

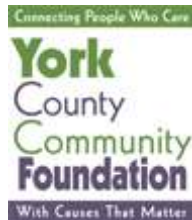
Lee Graybill, Surveyor, PSCE – York County – West Nile Virus Program
Tom L. Smith, Surveyor, PSCE – York County – West Nile Virus Program
Dianne Whitten, Surveyor, PSCE – York County – West Nile Virus Program

Yongfei Zao, University Center for Social and Urban Research, University of Pittsburgh

A special thanks to the Penn State Cooperative Extension – York County – West Nile
Virus Program and York County municipalities for their assistance on this report.

Thanks to the rest of the PA CleanWays – Keep Pennsylvania Beautiful staff for their
various contributions of report design, data management, and editing.

This report was produced with grants through:



**Robert R. Anderson Family Fund and the Codorus Watershed
Endowment of the York County Community Foundation**

And a contribution from the Watershed Alliance of York



PA CleanWays – Keep Pennsylvania Beautiful
105 West Fourth Street, Greensburg, PA 15601
Phone: 724-836-4121 • Toll Free: 877-772-3673
Fax: 724-836-1980 • www.pacleanways.org