

BUKU MAKLUMAT PERANGKAAAN *Statistical Handbook* MALAYSIA 2012

HARGA :
PRICE : RM7.00

BOLEH DIDAPATI DARI :
OBTAINABLE FROM :

Jabatan Perangkaan Malaysia
Department of Statistics, Malaysia

Unit Khidmat Pengguna
Kompleks C, Block C6
Pusat Pentadbiran Kerajaan Persekutuan
62514 Putrajaya
MALAYSIA

Tel : 03 - 8885 7000
Faks / Fax : 03 - 8888 9248
E-mel / E-Mail : jpbbkp@stats.gov.my
Laman Web / Website : <http://www.statistics.gov.my>

Diterbitkan dan dicetak oleh :
Jabatan Perangkaan Malaysia



Jabatan Perangkaan Malaysia
Department of Statistics, Malaysia

ISSN 0127-4643



9 770127 464009

**BUKU MAKLUMAT PERANGKAAN
MALAYSIA**

*STATISTICAL HANDBOOK
MALAYSIA*

2012

JABATAN PERANGKAAN MALAYSIA
DEPARTMENT OF STATISTICS, MALAYSIA

DISEMBER 2012
December 2012

PRAKATA

Buku Maklumat Perangkaan Malaysia, 2012 memaparkan data asas bagi topik terpilih dengan tujuan utama membekalkan para pengguna satu rujukan yang mudah tentang trend demografi, sosial dan ekonomi di Malaysia. Data penting dan carta disediakan pada permulaan buku ini bagi membantu pengguna memahami aliran asas sosioekonomi negara.

Buku ini diharapkan menjadi bahan rujukan yang mudah dan berguna tentang negara ini. Walau bagaimanapun, para pengguna digalakkan supaya merujuk kepada penerbitan spesifik yang dikeluarkan oleh Jabatan bagi keperluan yang lebih khusus. Penerbitan ini sentiasa dikaji dari segi kandungan dan persembahannya, sehubungan itu cadangan penambahbaikan daripada para pengguna amatlah dialu-alukan.

Segala kerjasama dan bantuan daripada semua pihak yang membekalkan maklumat bagi buku ini sangatlah dihargai.

DR. HAJI ABDUL RAHMAN BIN HASAN

Ketua Perangkawan Malaysia

Disember 2012

PREFACE

The Statistical Handbook of Malaysia, 2012 presents basic statistical information on selected topics of interest, with the main aim to provide users with an easy reference on the demographic, social and economic trends in Malaysia. Key data and charts are given at the beginning of the handbook to further assist users in understanding the basic socio-economic trends of the country.

It is hoped that this handbook will serve as a useful and convenient reference about the country. However, users are encouraged to refer to specific publications of the Department for more specialised needs. As this handbook will be continuously reviewed in term of its contents and presentation, therefore suggestions from users toward further improvement are most welcomed.

The cooperation and assistance of all parties concerned in providing data for the handbook are gratefully acknowledged.

DR. HAJI ABDUL RAHMAN BIN HASAN
Chief Statistician, Malaysia

December 2012

KANDUNGAN
CONTENTS

	Muka Surat <i>Page</i>
Prakata <i>Preface</i>	i-iv
Data Penting <i>Key Data</i>	v-ix
Carta <i>Charts</i>	xi-xvi
Senarai Jadual <i>List of Tables</i>	
1. Luas Kawasan <i>Area</i>	1
2. Iklim <i>Climate</i>	2
3. Penduduk dan Perangkaan Penting <i>Population and Vital Statistics</i>	3
4. Guna Tenaga <i>Employment</i>	7
5. Pendidikan <i>Education</i>	15
6. Kesihatan <i>Health</i>	19
7. Harga-Harga <i>Prices</i>	21
8. Pendapatan dan Perbelanjaan Isi Rumah <i>Household Income and Expenditure</i>	24

KANDUNGAN (SAMB.)
CONTENTS (CONT'D)

	Muka Surat <i>Page</i>
9. Perdagangan Luar Negeri <i>External Trade</i>	27
10. Pertanian <i>Agriculture</i>	33
11. Perlombongan dan Perindustrian <i>Mining and Industry</i>	37
12. Pengangkutan dan Komunikasi <i>Transport and Communications</i>	45
13. Kewangan <i>Finance</i>	55
14. Akaun Negara <i>National Accounts</i>	71
15. Imbangan Pembayaran <i>Balance of Payments</i>	74
16. Alam Sekitar <i>Environment</i>	75
17. Ketibaan Pelancong <i>Tourist Arrivals</i>	78
Nota/ Simbol/ Singkatan <i>Notes/ Symbols/ Abbreviations</i>	79
Peta Asia Tenggara <i>South-East Asia Map</i>	
Peta Malaysia <i>Malaysia Map</i>	

DATA PENTING - MALAYSIA

KEY DATA – MALAYSIA

LUAS KAWASAN (km. persegi)

AREA (sq.km)

Malaysia	Semenanjung Malaysia Peninsular Malaysia	Sabah	Sarawak	Wilayah Persekutuan (Kuala Lumpur, Putrajaya and Labuan)
330,290	131,554	73,902	124,450	384

PENDUDUK (juta) ¹

POPULATION (million)

<u>2010</u>	<u>2011</u>	<u>2012</u>
28.59	28.96	29.34

PERANGKAAAN PENTING

VITAL STATISTICS

2009 **2010** **2011** ^P

Kadar Kelahiran Kasar (setiap 1,000 penduduk) <i>Crude Birth Rate (per 1,000 population)</i>	18.5	17.2	17.1
Kadar Kematian Kasar (setiap 1,000 penduduk) <i>Crude Death Rate (per 1,000 population)</i>	4.8	4.6	4.6
Kadar Pertambahan Semula Jadi Kasar (setiap 1,000 penduduk) <i>Crude Rate of Natural Increase (per 1,000 population)</i>	13.6	12.6	12.5
Kadar Mortaliti Bayi (setiap 1,000 kelahiran hidup) <i>Infant Mortality Rate (per 1,000 live births)</i>	6.9	6.7	6.6

JANGKAAN HAYAT KETIKA LAHIR (bilangan tahun)

LIFE EXPECTANCY AT BIRTH (number of years)

2009 **2010** ^P **2011** ^e

Lelaki <i>Male</i>	71.6	71.7	72.0
Perempuan <i>Female</i>	76.5	76.8	77.1

Nota/Note: ¹ Anggaran Penduduk Pertengahan Tahun berasaskan data Banci Penduduk dan Perumahan Malaysia 2010 yang disesuaikan.
Mid-Year Population Estimates based on the adjusted Population and Housing Census of Malaysia 2010.

DATA PENTING – MALAYSIA (SAMB.)*KEY DATA – MALAYSIA (CONT'D)*

<u>GUNA TENAGA</u>	<u>2009</u>	<u>2010</u> ^r	<u>2011</u> ^r
<i>EMPLOYMENT</i>			
Jumlah Tenaga Buruh ('000) <i>Total Labour Force ('000)</i>	11,315.3	12,303.9	12,675.8
Bekerja ('000) <i>Employed ('000)</i>	10,897.3	11,899.5	12,284.4
Menganggur ('000) <i>Unemployed ('000)</i>	418.0	404.4	391.4
Kadar Pengangguran (%) <i>Unemployment Rate (%)</i>	3.7	3.3	3.1
Kadar Penyertaan Tenaga Buruh (%) <i>Labour Force Participation Rate (%)</i>	62.9	63.7	64.4
<u>INDEKS HARGA PENGGUNA (% perubahan)</u>	<u>2010 / 2009</u>	<u>2011 / 2010</u>	
<i>CONSUMER PRICE INDEX (% change)</i>			
MALAYSIA	1.7	3.2	
Semenanjung Malaysia <i>Peninsular Malaysia</i>	1.8	3.3	
Sabah dan WP Labuan	1.6	2.9	
Sarawak	1.5	2.6	
<u>INDEKS HARGA PENGELUAR (% perubahan)</u>	<u>2010 / 2009</u>	<u>2011 / 2010</u>	
<i>PRODUCER PRICE INDEX (% change)</i>			
Ekonomi Domestik <i>Domestic Economy</i>	5.6	9.0	
Pengeluaran Tempatan <i>Local Production</i>	7.8	12.0	
Import <i>Imports</i>	1.3	2.4	
<u>INDEKS PENGELUARAN PERINDUSTRIAN (% perubahan)</u>	<u>2010 / 2009</u>	<u>2011 / 2010</u>	
<i>INDEX OF INDUSTRIAL PRODUCTION (% change)</i>			
Indeks Keseluruhan <i>Overall Index</i>	7.3	1.4	
Perlombongan <i>Mining</i>	-1.1	-6.9	
Pembuatan <i>Manufacturing</i>	-11.1	4.7	
Elektrik <i>Electricity</i>	8.8	2.0	

DATA PENTING - MALAYSIA (SAMB.)
KEY DATA - MALAYSIA (CONT'D)

PERDAGANGAN LUAR NEGERI (RM juta) <i>EXTERNAL TRADE (RM million)</i>	2009	2010	2011^r
Jumlah Eksport <i>Total Exports</i>	552,518	638,822	697,862
Jumlah Import <i>Total Imports</i>	434,670	528,828	573,626
Imbangan Perdagangan <i>Balance of Trade</i>	117,848	109,994	124,236

EKSPORT UTAMA (RM juta) <i>MAJOR EXPORTS (RM million)</i>	2009	2010	2011^r
Barangan Elektrik dan Elektronik² <i>Electrical and Electronic Products</i>	227,778	249,907	237,261
Minyak Kelapa Sawit dan Hasil Keluaran Berasaskan Minyak Kelapa Sawit <i>Palm Oil and Palm Oil-Based Products</i>	50,728	62,223	83,257
Kayu dan Hasil Keluaran Kayu² <i>Timber and Timber-Based Products</i>	19,411	20,331	20,008
Gas Asli Cecair <i>Liquefied Natural Gas</i>	31,195	38,742	52,049
Petroleum Mentah <i>Crude Petroleum</i>	25,360	30,765	32,452
Keluaran Petroleum <i>Petroleum Products</i>	19,400	25,542	33,038
Pakaian dan Kelengkapan Pakaian² <i>Articles of Apparel and Clothing Accessories</i>	11,003	12,480	13,975
Getah Asli <i>Natural Rubber</i>	4,460	9,210	13,481
Barang-Barang dan Alat-Alat² <i>Other Manufactured Goods and Articles</i>	75,958	90,252	101,182

² Barangan ini tidak termasuk transaksi bernilai bawah RM 5,000.
These commodities exclude transactions valued below RM 5,000.

DATA PENTING - MALAYSIA (SAMB.)
KEY DATA - MALAYSIA (CONT'D)

<u>PENGELUARAN</u> <i>PRODUCTION</i>	<u>2009</u>	<u>2010</u>	<u>2011</u>
Kayu Balak ('000 meter padu) <i>Logs ('000 cu. metres)</i>	18,337	17,797	16,000 ^D
Kayu Gergaji ('000 meter padu) <i>Sawn Timber ('000 cu. metres)</i>	3,849	4,331	3,966
Padi ('000 tan metrik) <i>Paddy ('000 tonnes)</i>	2,511	2,464	2,2665 ^D
Getah ('000 tan metrik) <i>Rubber ('000 tonnes)</i>	857	939	996
Minyak Sawit Mentah ('000 tan metrik) <i>Crude Palm Oil ('000 tonnes)</i>	17,565	16,994	18,912
Minyak Mentah ('000 tong) <i>Crude Oil ('000 barrels)</i>	240,479	232,965	207,969 ^F
Gas Asli Cecair ('000 tan metrik) <i>Liquefied Natural Gas ('000 tonnes)</i>	22,452	24,363	25,822
<u>KELUARAN DALAM NEGERI KASAR (KDNK)/</u> <u>PENDAPATAN NEGARA KASAR (PNK)</u> <i>GROSS DOMESTIC PRODUCT (GDP)/</i> <i>GROSS NATIONAL INCOME (GNI)</i>	<u>2009</u>	<u>2010</u> ^e	<u>2011</u> ^P
KDNK pada harga semasa (RM juta) <i>GDP at current prices (RM million)</i>	712,857	795,037	881,080
KDNK pada harga malar 2005 (RM juta) <i>GDP at constant 2005 prices (RM million)</i>	629,885	674,946	709,261
Kadar pertumbuhan KDNK pada harga malar 2005 (%) <i>GDP growth rate at constant 2005 prices (%)</i>	-1.5	7.2	5.1
PNK pada harga semasa (RM juta) <i>GNI at current prices (RM million)</i>	698,642	768,523	859,109
PNK per kapita pada harga semasa (RM) <i>Per capita GNI at current prices (RM)</i>	24,879	26,882	29,661

DATA PENTING - MALAYSIA (SAMB.)
KEY DATA - MALAYSIA (CONT'D)

<u>IMBANGAN PEMBAYARAN (RM juta)</u> <i>BALANCE OF PAYMENTS (RM million)</i>	<u>2009</u>	<u>2010^r</u>	<u>2011^r</u>
Imbangan Akaun Semasa <i>Balance on Current Account</i>	110,727	88,079	97,108
Imbangan Akaun Modal & Kewangan <i>Balance on Capital & Financial Account</i>	- 80,300	- 19,993	22,061
Imbangan Keseluruhan <i>Overall Balance</i>	13,831	-2,628	94,682

KADAR PERTUKARAN
EXCHANGE RATES

Purata bagi Tempoh
Average for Period

RM Bagi Seunit Mata Wang Asing :

RM Per Unit of Foreign Currency :

	<u>2009</u>	<u>2010</u>	<u>2011</u>
Dolar A.S. <i>U.S. Dollar</i>	3.5246	3.2211	3.0600
Euro <i>Euro</i>	4.9068	4.2775	4.2556
Paun Sterling <i>Pound Sterling</i>	5.5127	4.9802	4.9043
Dolar Singapura <i>Singapore Dollar</i>	2.4236	2.3624	2.4329

RM Bagi 100 Unit Mata Wang Asing :

RM Per 100 Units of Foreign Currency :

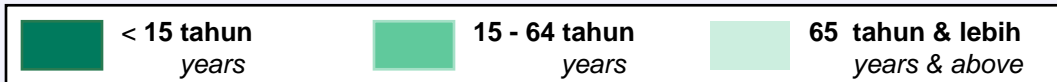
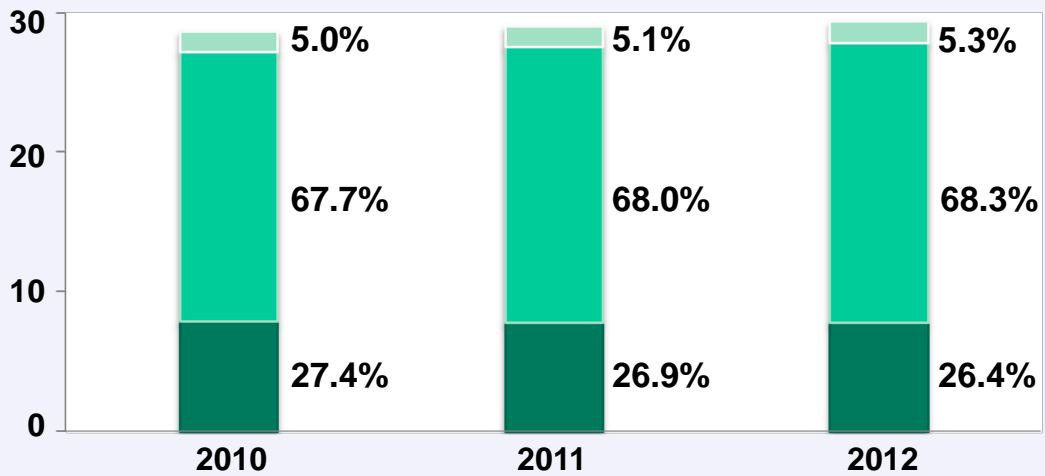
Yen Jepun <i>Japanese Yen</i>	3.7701	3.6717	3.8401
Baht Thai <i>Thai Baht</i>	10.2638	10.1540	10.0348
Peso Filipina <i>Philippine Peso</i>	7.3990	7.1410	7.0646
Rupiah Indonesia <i>Indonesian Rupiah</i>	0.0340	0.0355	0.0349

CARTA
Charts

**ANGGARAN PENDUDUK PERTENGAHAN TAHUN
MENGIKUT KUMPULAN UMUR**

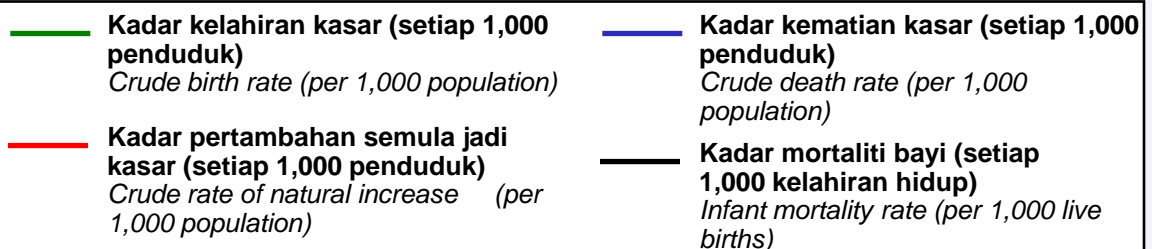
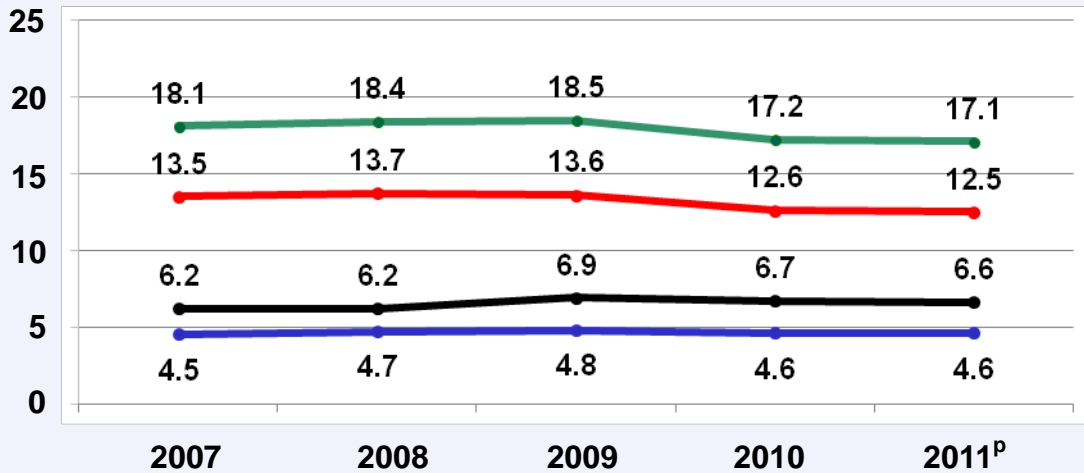
MID-YEAR POPULATION ESTIMATES BY AGE GROUP

Penduduk
Population
(Juta / Million)



**PERANGKAPAN PENTING
VITAL STATISTICS**

Kadar
Rate

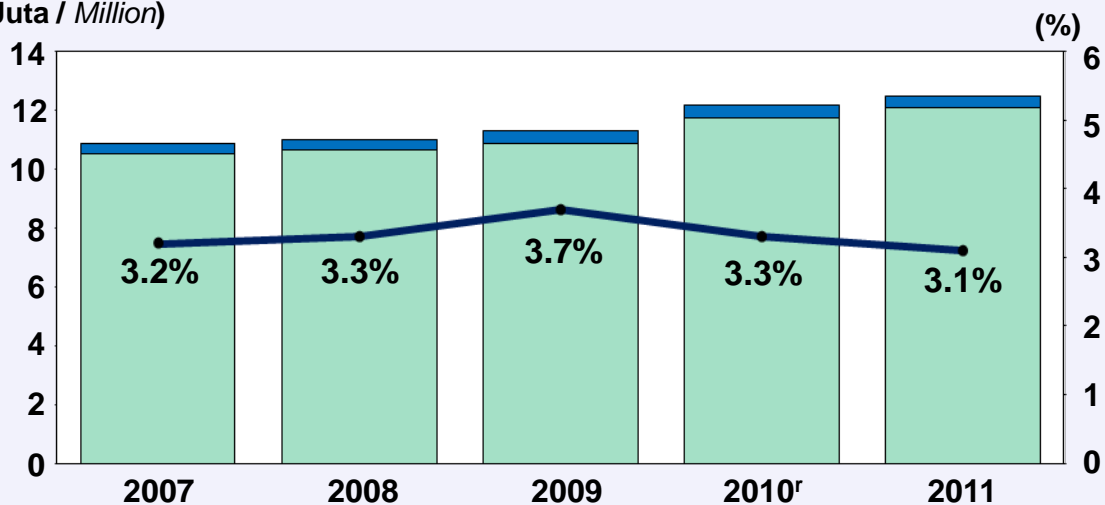


**JUMLAH TENAGA BURUH, PENDUDUK BEKERJA, BILANGAN
PENGANGGUR DAN KADAR PENGANGGURAN**

*TOTAL LABOUR FORCE, EMPLOYED PERSONS, NUMBER OF
UNEMPLOYED AND UNEMPLOYMENT RATE*

Bilangan orang
Number of persons
(Juta / Million)

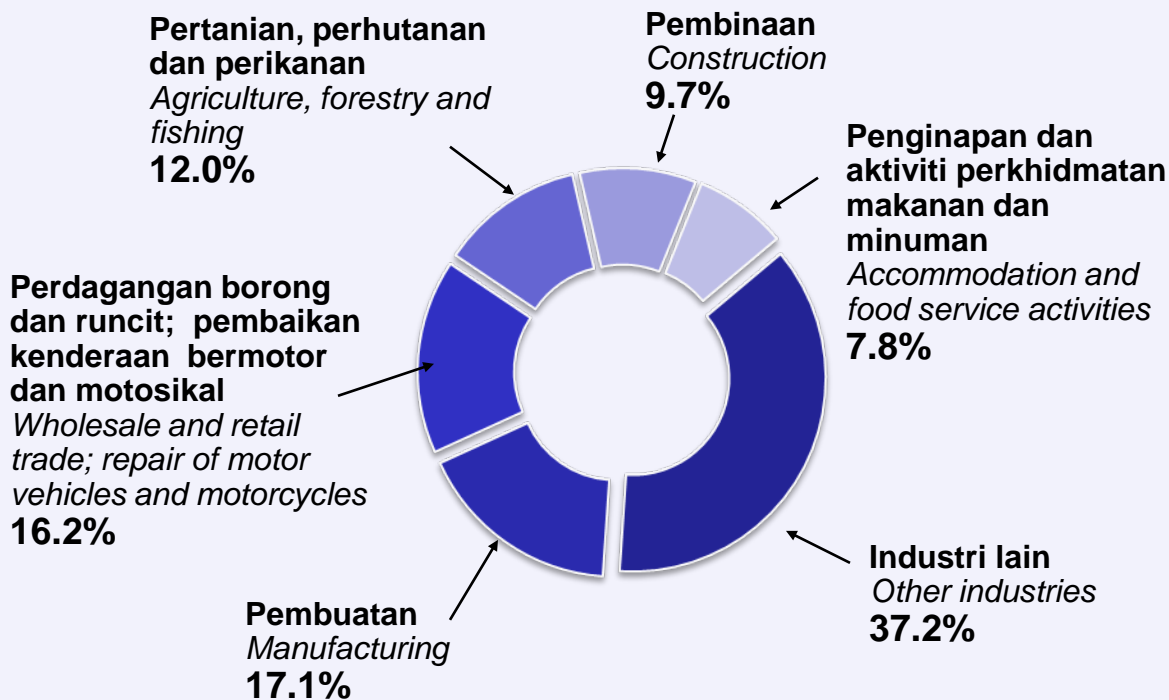
Kadar pengangguran
Unemployment rate



Penduduk bekerja
Employed persons
 Bilangan penganggur
Number of unemployed
 Kadar pengangguran
Unemployment rate

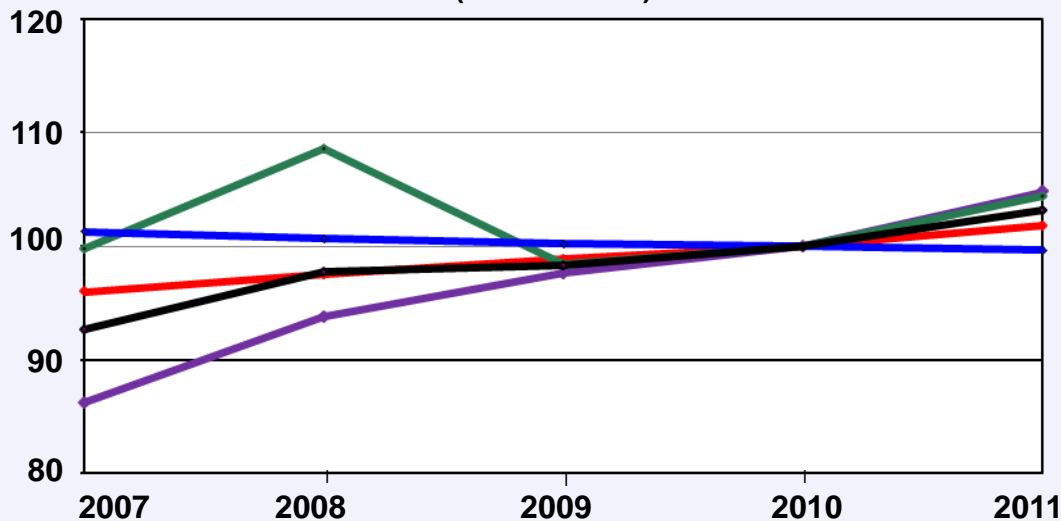
GUNA TENAGA MENGIKUT INDUSTRI, 2011

EMPLOYMENT BY INDUSTRY, 2011

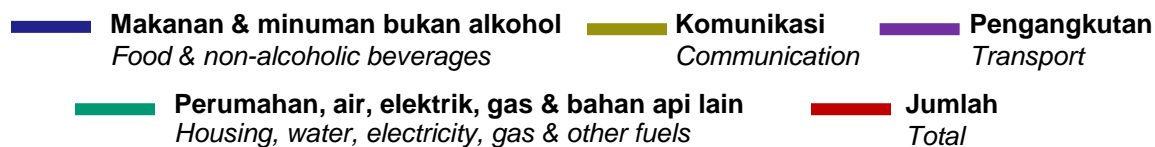
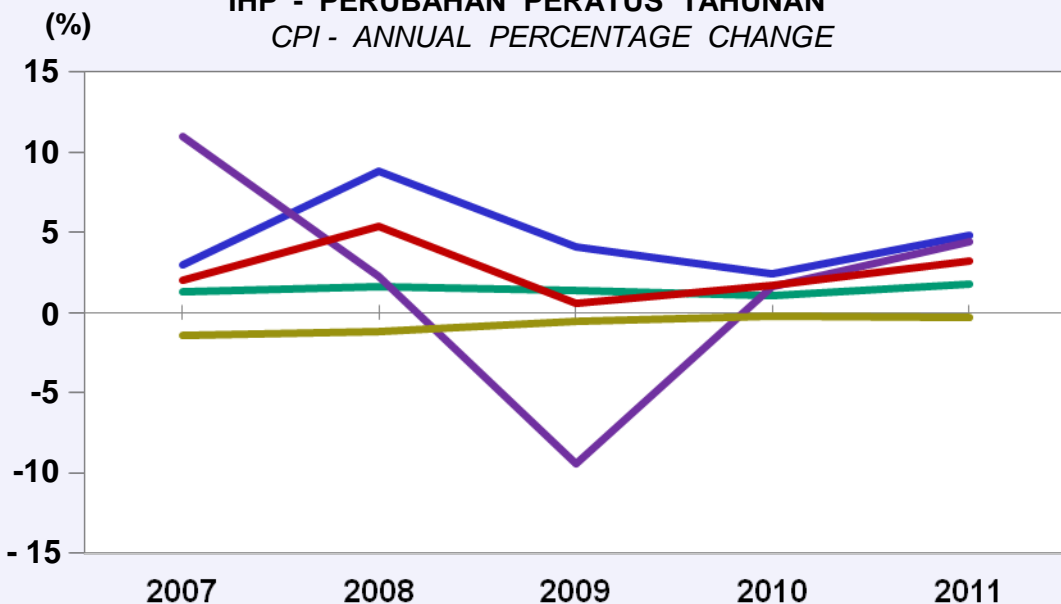


INDEKS HARGA PENGGUNA (IHP)
CONSUMER PRICE INDEX (CPI)
 (2010 = 100)

Indeks / Index



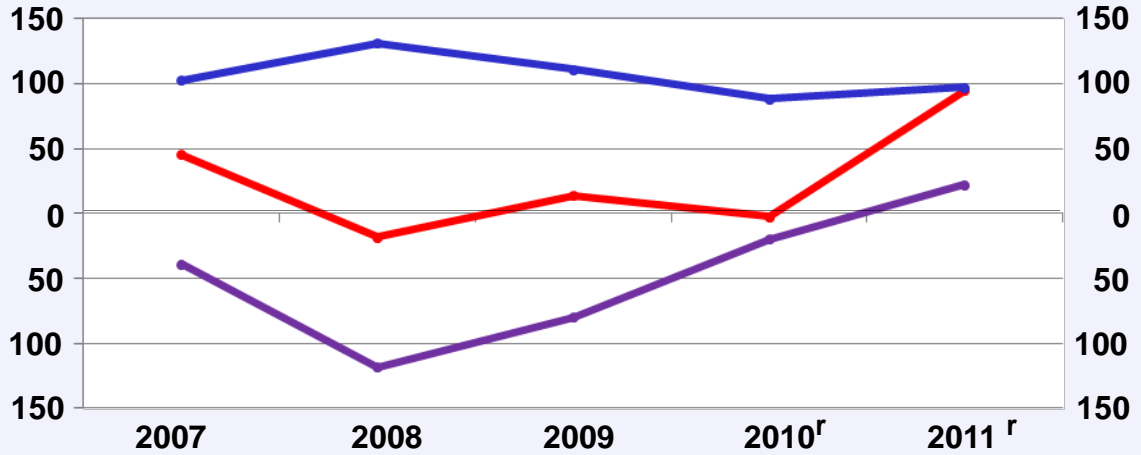
IHP - PERUBAHAN PERATUS TAHUNAN
CPI - ANNUAL PERCENTAGE CHANGE



IMBANGAN PEMBAYARAN
BALANCE OF PAYMENTS

(RM Bilion / Billion)

(RM Bilion / Billion)



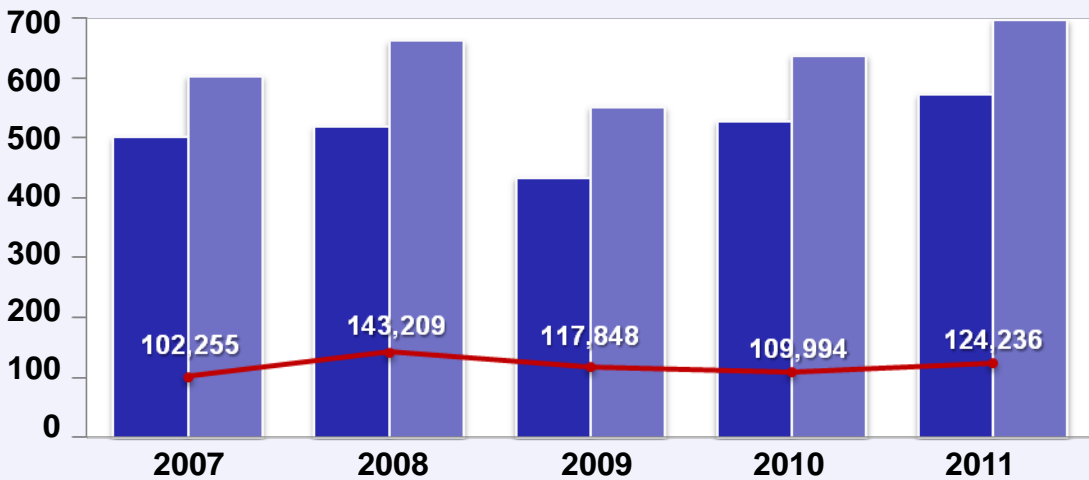
Imbangan Keseluruhan
Overall Balance

Imbangan Akaun Semasa
Balance on Current Account

Imbangan Akaun Modal dan Kewangan
Balance on Capital and Financial Accounts

IMPORT, EKSPORT DAN IMBANGAN PERDAGANGAN
IMPORTS, EXPORTS AND BALANCE OF TRADE

(RM Bilion / Billion)



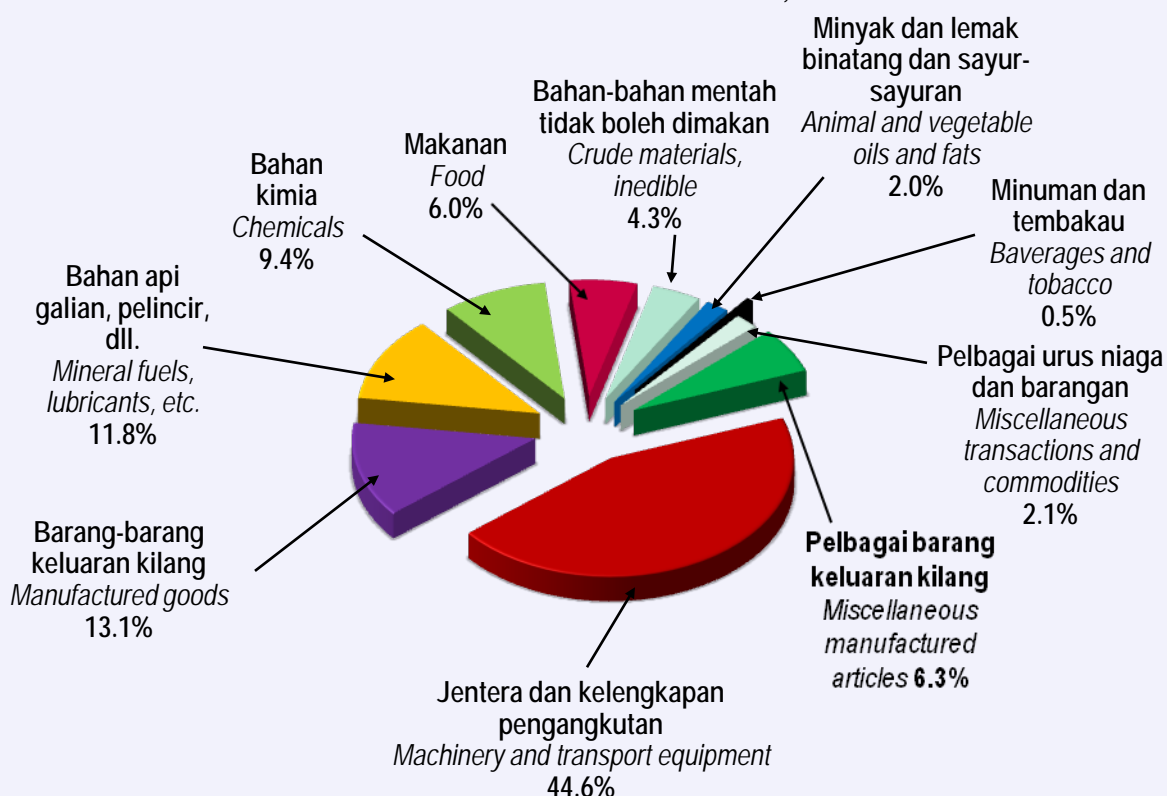
Import
Imports

Ekspor
Exports

Imbangan Perdagangan
Balance of Trade

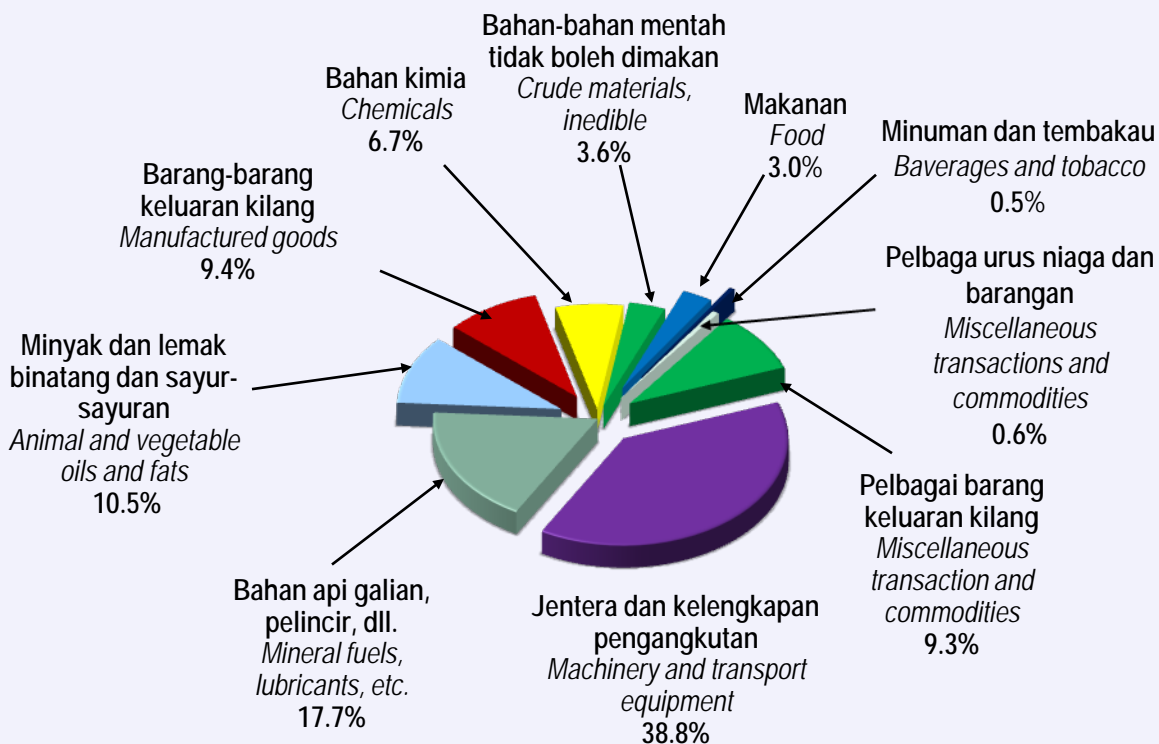
IMPORT MENGIKUT SEKSYEN BARANGAN, 2011

IMPORTS BY COMMODITY SECTIONS, 2011



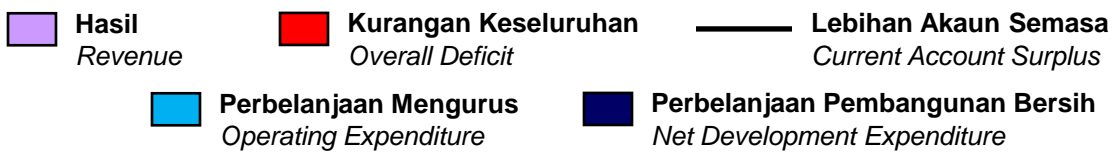
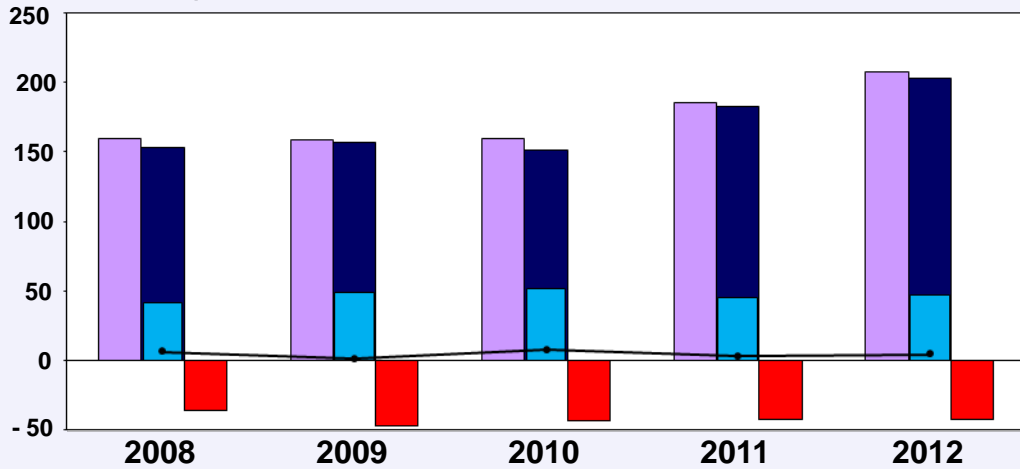
EKSPORT MENGIKUT SEKSYEN BARANGAN, 2011

EXPORTS BY COMMODITY SECTIONS, 2011

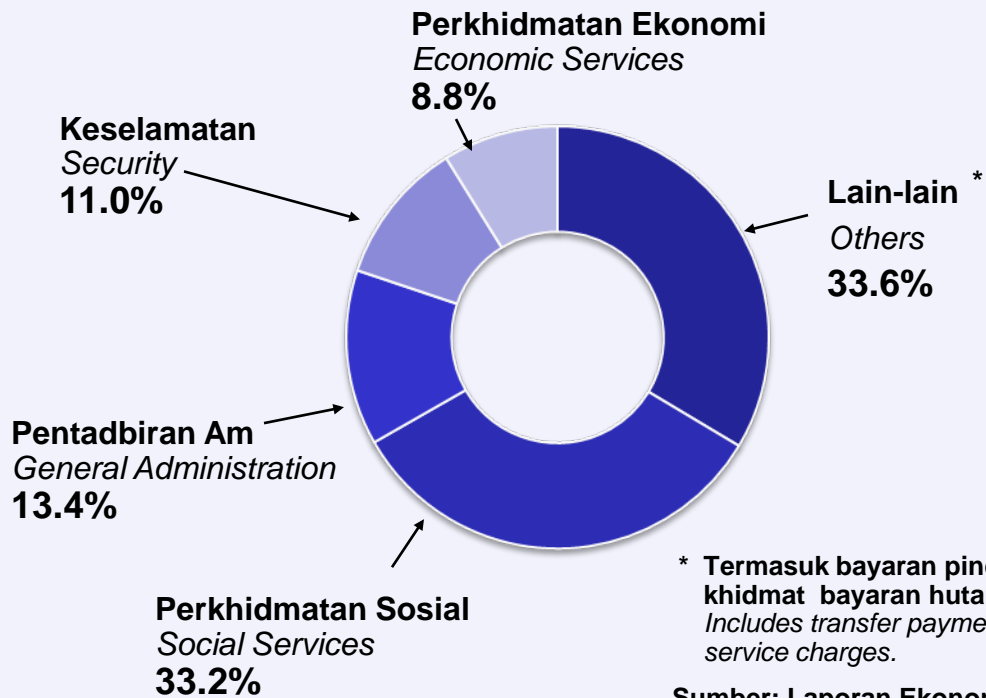


HASIL DAN PERBELANJAAN KERAJAAN PERSEKUTUAN
FEDERAL GOVERNMENT REVENUE AND EXPENDITURE

(RM Bilion / Billion)



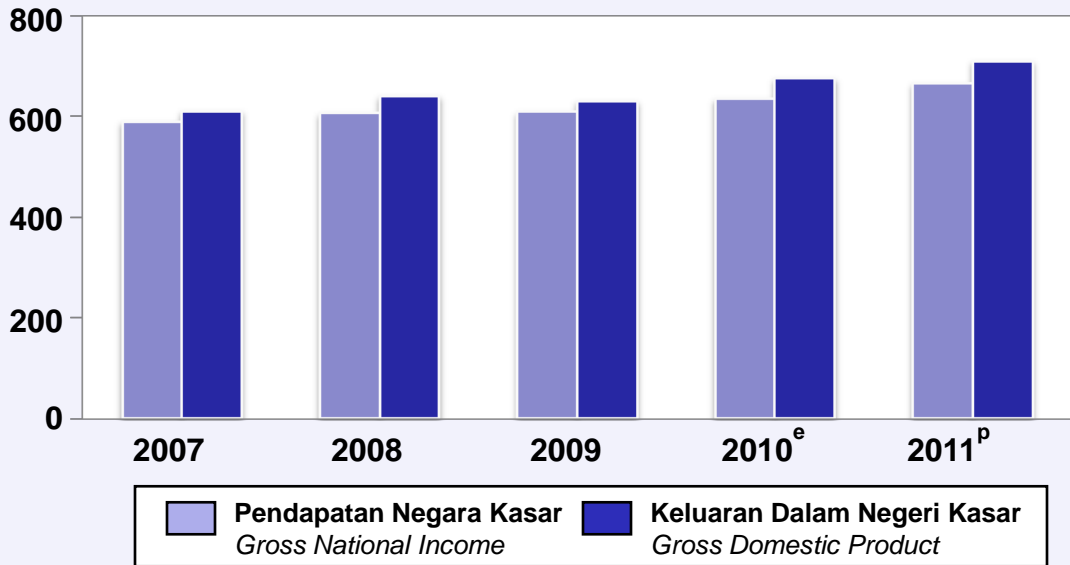
PERBELANJAAN MENGURUS KERAJAAN PERSEKUTUAN, 2012
FEDERAL GOVERNMENT OPERATING EXPENDITURE, 2012



Sumber: Laporan Ekonomi 2012/2013
 Source: Economic Report 2012/2013

PENDAPATAN NEGARA KASAR (PNK) DAN KELUARAN DALAM NEGERI KASAR (KDNK) PADA HARGA MALAR 2005
GROSS NATIONAL INCOME (GNI) AND GROSS DOMESTIC PRODUCT (GDP) AT CONSTANT 2005 PRICES

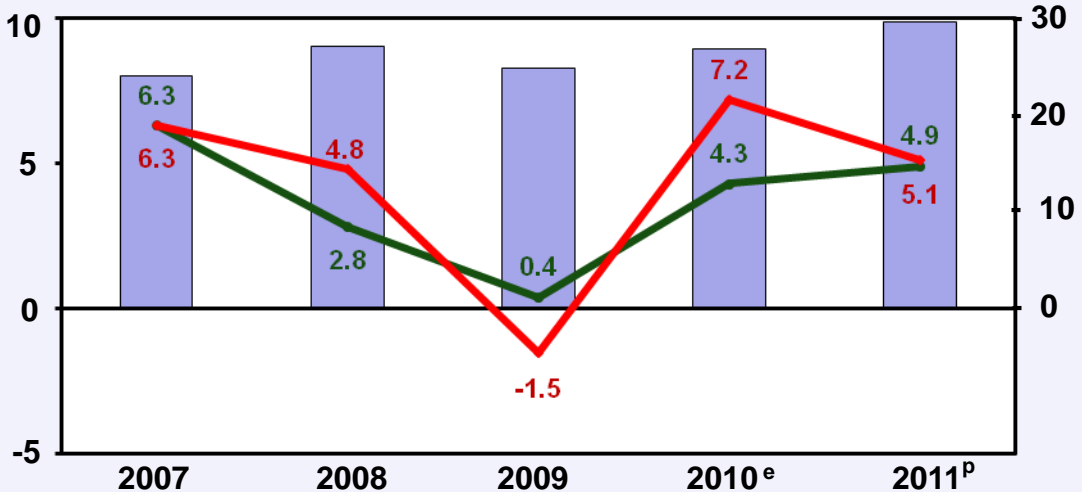
(RM Bilion / Billion)



KADAR PERTUMBUHAN PNK DAN KDNK (HARGA MALAR 2005) DAN PNK PER KAPITA (HARGA SEMASA)
GNI AND GDP GROWTH RATES (CONSTANT 2005 PRICES) AND GNI PER CAPITA (CURRENT PRICES)

Kadar Pertumbuhan
Growth Rates (%)

PNK Per Kapita
Per Capita GNI
(RM '000)



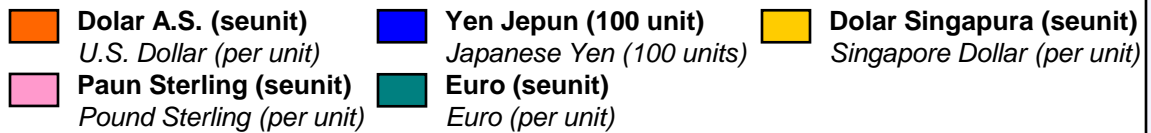
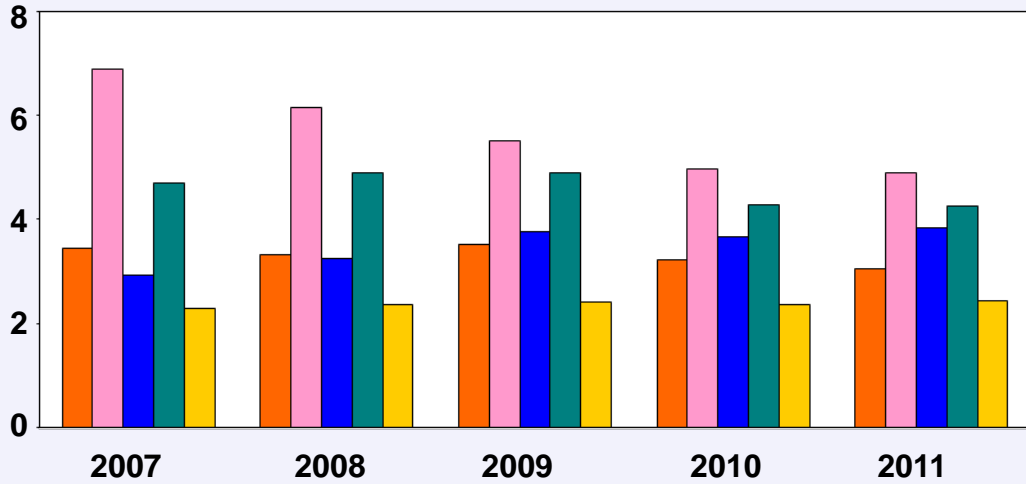
PNK Per Kapita / Per Capita GNI

PNK (% Pertumbuhan) / GNI (% Growth)

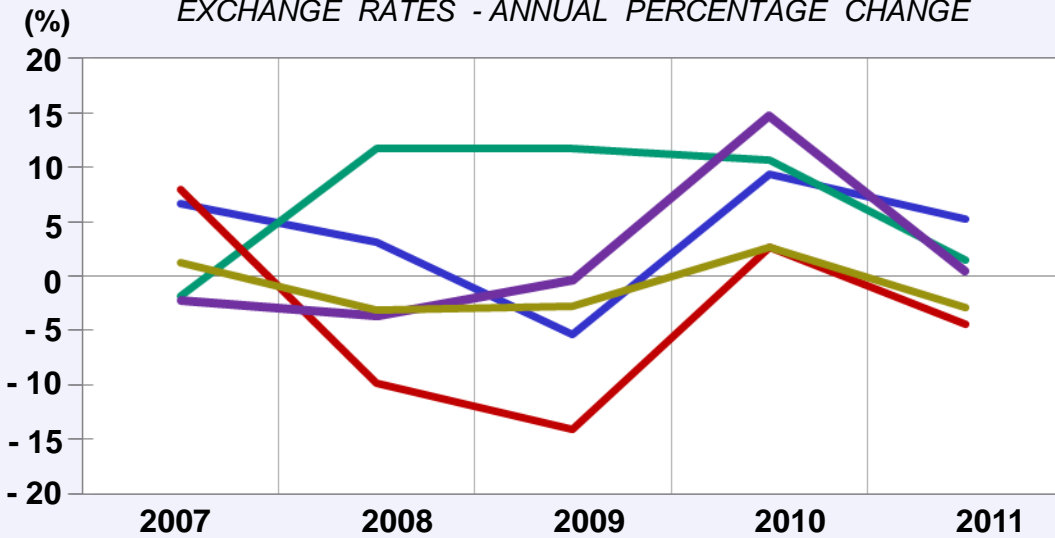
KDNK (% Pertumbuhan) / GDP (% Growth)

KADAR PERTUKARAN RINGGIT MALAYSIA (PURATA)
EXCHANGE RATES OF RINGGIT MALAYSIA (AVERAGE)

Ringgit Malaysia



KADAR PERTUKARAN - PERUBAHAN PERATUS TAHUNAN
EXCHANGE RATES - ANNUAL PERCENTAGE CHANGE



LUAS KAWASAN & IKLIM

Area & Climate

1. LUAS KAWASAN

Area

Negeri <i>State</i>	Kilometer persegi <i>Square kilometres</i>	% Taburan <i>Distribution</i>
MALAYSIA	330,290	100.00
Johor	19,016	5.76
Kedah	9,425	2.85
Kelantan	15,105	4.57
Melaka	1,652	0.50
Negeri Sembilan	6,657	2.02
Pahang	35,965	10.89
Perak	21,022	6.37
Perlis	795	0.24
Pulau Pinang	1,031	0.31
Sabah	73,902	22.38
Sarawak	124,450	37.66
Selangor	7,930	2.40
Terengganu	12,956	3.92
W.P. Kuala Lumpur	243	0.07
W.P. Labuan	49	0.01
W.P. Putrajaya	92	0.03

Sumber : Jabatan Ukur dan Pemetaan Malaysia

Source : Department of Survey and Mapping Malaysia

2. IKLIM

Climate

	Tahun <i>Year</i>	Kuala Lumpur	Kota Kinabalu	Kuching
Min suhu harian (°C) <i>Mean daily temperature</i>	2011	27.3	27.4	26.4
	2010	27.5	27.6	26.5
Suhu maksimum tertinggi (°C) <i>Highest maximum temperature</i>	2011	35.4	35.1	35.6
	2010	35.5	34.5	34.9
Suhu minimum terendah (°C) <i>Lowest minimum temperature</i>	2011	21.4	22.3	21.3
	2010	21.5	21.5	21.3
Jumlah hujan (mm) <i>Total rainfall</i>	2011	1,632.4	2,782.2	4,616.4
	2010	2,264.8	3,394.6	4,564.2
Bilangan hari hujan <i>Number of rain days</i>	2011	178	216	244
	2010	192	200	261
Min kelembapan relatif (%) <i>Mean relative humidity</i>	2011	83.6	81.1	85.5
	2010	83.4	81.5	85.6

Sumber : Jabatan Meteorologi Malaysia
Source : Malaysian Meteorological Department

Nota/Note:

Berdasarkan pencerapan di KLIA Sepang, Lapangan Terbang Antarabangsa Kota Kinabalu dan Lapangan Terbang Antarabangsa Kuching.

Based on observations at KLIA Sepang, Kota Kinabalu International Airport and Kuching International Airport.

**PENDUDUK & PERANGKAAN
PENTING DAN GUNA TENAGA**
*Population & Vital Statistics
and Employment*

3. PENDUDUK DAN PERANGKAAAN PENTING

Population and Vital Statistics

3.1 ANGGARAN PENDUDUK PERTENGAHAN TAHUN ¹ MENGIKUT NEGERI

Mid-year Population Estimates ¹ by State

Negeri State	('000)		
	2010	2011 ^P	2012 ^P
MALAYSIA	28,588.6	28,964.3	29,336.8
Johor	3,362.9	3,401.8	3,439.6
Kedah	1,949.3	1,973.1	1,996.8
Kelantan	1,589.9	1,615.2	1,640.4
Melaka	823.6	833.0	842.5
Negeri Sembilan	1,029.5	1,042.9	1,056.3
Pahang	1,501.9	1,524.8	1,548.4
Perak	2,379.0	2,397.6	2,416.7
Perlis	235.8	237.5	239.4
Pulau Pinang	1,575.9	1,593.6	1,611.1
Sabah	3,260.0	3,316.4	3,371.7
Sarawak	2,487.1	2,516.2	2,545.8
Selangor ²	5,502.1	5,577.4	5,650.8
Terengganu	1,055.4	1,074.0	1,092.9
W. P. Kuala Lumpur	1,674.8	1,694.5	1,713.4
W. P. Labuan	88.2	89.8	91.6
W. P. Putrajaya	73.4	76.4	79.4

Nota/Notes:

¹ Anggaran Penduduk Pertengahan Tahun berasaskan data Banci Penduduk dan Perumahan Malaysia 2010 yang disesuaikan.

Mid-Year Population Estimates based on the adjusted Population and Housing Census of Malaysia 2010.

² Data 2000 adalah termasuk W.P. Putrajaya.

2000 data includes W.P. Putrajaya.

3.2 ANGGARAN PENDUDUK PERTENGAHAN TAHUN MENGIKUT KUMPULAN ETNIK

Mid-year population estimates by ethnic group

Kumpulan Etnik <i>Ethnic Group</i>	2010		2011		2012	
	('000)	(%)	('000)	(%)	('000)	(%)
Jumlah <i>Total</i>	28,588.6	100.0	28,964.3	100.0	29,336.8	100.0
Warganegara Malaysia <i>Malaysian citizens</i>	26,264.1	91.9	26,618.2	91.9	26,974.1	91.9
Bumiputera	17,676.8	67.3	17,962.2	67.5	18,251.1	67.7
Melayu <i>Malay</i>	14,322.1	54.5	14,545.6	54.7	14,771.8	54.8
Bumiputera lain <i>Other Bumiputera</i>	3,354.7	12.8	3,416.6	12.8	3,479.3	12.9
Cina <i>Chinese</i>	6,430.4	24.5	6,474.9	24.3	6,517.4	24.2
India <i>Indians</i>	1,924.9	7.3	1,942.5	7.3	1,959.9	7.3
Lain-lain <i>Others</i>	232.0	0.9	238.7	0.9	245.6	0.9
Bukan Warga-negara Malaysia <i>Non-Malaysian Citizens</i>	2,324.5	8.1	2,346.1	8.1	2,362.7	8.1

Nota/Notes:

Anggaran Penduduk Pertengahan Tahun berasaskan data Banci Penduduk dan Perumahan Malaysia 2010 yang disesuaikan.
Mid-Year Population Estimates based on the adjusted Population and Housing Census of Malaysia 2010.

3.3 ANGGARAN PENDUDUK PERTENGAHAN TAHUN MENGIKUT KUMPULAN UMUR

Mid-year population estimates by age group

Kumpulan umur <i>Age group</i>	2010		2011		2012	
	('000)	(%)	('000)	(%)	('000)	(%)
Jumlah <i>Total</i>	28,588.6	100.0	28,964.3	100.0	29,336.8	100.0
0 - 14	7,822.1	27.4	7,784.6	26.9	7,757.4	26.4
15 - 24	5,749.3	20.1	5,730.4	19.8	5,710.1	19.5
25 - 44	8,717.5	30.5	8,929.1	30.8	9,128.2	31.1
45 - 64	4,874.6	17.1	5,044.9	17.4	5,196.2	17.7
65 dan lebih <i>65 and over</i>	1,425.1	5.0	1,475.3	5.1	1,544.9	5.3

Nota/Notes:

Anggaran Penduduk Pertengahan Tahun berasaskan data Banci Penduduk dan Perumahan Malaysia 2010 yang disesuaikan.
Mid-Year Population Estimates based on the adjusted Population and Housing Census of Malaysia 2010.

3.4 PERANGKAAAN PENTING

Vital Statistics

	2009	2010	2011 ^p
Kadar kelahiran kasar <i>Crude birth rate</i> (setiap 1,000 penduduk / per 1,000 population)	18.5	17.2	17.1
Kadar kematian kasar <i>Crude death rate</i> (setiap 1,000 penduduk / per 1,000 population)	4.8	4.6	4.6
Kadar pertambahan semula jadi kasar <i>Crude rate of natural increase</i> (setiap 1,000 penduduk / per 1,000 population)	13.6	12.6	12.5
Kadar mortaliti bayi <i>Infant mortality rate</i> (setiap 1,000 kelahiran hidup / per 1,000 live births)	6.9	6.7	6.6
Kadar mortaliti kanak-kanak <i>Toddler mortality rate</i> (setiap 1,000 penduduk berumur 1 - 4 tahun / per 1,000 population aged 1 - 4 years)	0.4	0.4	0.4
Kadar mortaliti ibu bersalin <i>Maternal mortality rate</i> (setiap 100,000 kelahiran hidup / per 100,000 live births)	27.0	26.1	25.5
Kadar kesuburan jumlah <i>Total fertility rate</i> (setiap perempuan berumur 15-49 tahun/ per woman aged 15-49 years)	2.3	2.1	2.1
Jangkaan hayat ketika lahir (tahun) <i>Life expectancy at birth (years)</i>	2009	2010^p	2011^e
Lelaki <i>Male</i>	71.6	71.7	72.0
Perempuan <i>Female</i>	76.5	76.8	77.1

4. GUNATENAGA

Employment

4.1 PERANGKAAN UTAMA TENAGA BURUH

Principal statistics of labour force

Perangkaan utama <i>Principal statistics</i>	2011		
	Jumlah <i>Total</i>	Lelaki <i>Male</i>	Perempuan <i>Female</i>
Penduduk umur bekerja ('000) <i>Working age population</i>	19,684.6	10,200.5	9,484.1
Tenaga buruh ('000) <i>Labour force</i>	12,675.8	8,129.5	4,546.3
Penduduk bekerja ('000) <i>Employed persons</i>	12,284.4	7,889.8	4,394.7
Bandar <i>Urban</i>	8,528.4	5,318.9	3,209.5
Luar Bandar <i>Rural</i>	3,756.0	2,570.9	1,185.1
Bilangan penganggur ('000) <i>Number of unemployed</i>	391.4	239.8	151.6
Luar tenaga buruh ('000) <i>Outside labour force</i>	7,008.8	2,071.0	4,937.8
Kadar penyertaan tenaga buruh (%) <i>Labour force participation rates</i>	64.4	79.7	47.9
Kadar pengangguran (%) <i>Unemployment rate</i>	3.1	2.9	3.3

4.2 GUNA TENAGA MENGIKUT INDUSTRI

Employment by Industry

Industri <i>Industry</i>	2011	
	(`000)	(%)
Jumlah <i>Total</i>	12,284.4	100.0
Pertanian, perhutanan dan perikanan <i>Agriculture, forestry and fishing</i>	1,410.0	11.5
Perlombongan dan pengkuarian <i>Mining and quarrying</i>	76.0	0.6
Pembuatan <i>Manufacturing</i>	2,222.3	18.1
Bekalan elektrik, gas, wap dan pendingin udara <i>Electricity, gas, steam and air conditioning supply</i>	51.6	0.4
Bekalan air; pembentungan, pengurusan sisa dan aktiviti pemulihan <i>Water supply; sewerage, waste management and remediation activities</i>	70.8	0.6
Pembinaan <i>Construction</i>	1,133.6	9.2
Perdagangan borong dan runcit; pembaikan kenderaan bermotor dan motosikal <i>Wholesale and retail trade; repair of motor vehicles and motorcycles</i>	1,999.5	16.3
Pengangkutan dan penyimpanan <i>Transportation and storage</i>	605.2	4.9
Penginapan dan aktiviti perkhidmatan makanan dan minuman <i>Accommodation and food and beverage service activities</i>	942.3	7.7
Maklumat dan komunikasi <i>Information and communication</i>	207.6	1.7
Aktiviti kewangan dan insurans/takaful <i>Financial and insurance/takaful activities</i>	317.6	2.6

Nota: Industri dikelaskan mengikut 'Piawaian Klasifikasi Industri Malaysia (MSIC) 2008'.

Notes: Industry is classified according to the 'Malaysia Standard Industrial Classifications (MSIC) 2008'.

4.2 GUNA TENAGA MENGIKUT INDUSTRI (SAMB.)

Employment by Industry (Cont'd)

Industri <i>Industry</i>	2011	
	('000)	(%)
Aktiviti hartanah <i>Real estate activities</i>	61.2	0.5
Aktiviti profesional, saintifik dan teknikal <i>Professional, scientific and technical activities</i>	329.0	2.7
Aktiviti pentadbiran dan khidmat sokongan <i>Administrative and support service activities</i>	448.9	3.7
Pentadbiran awam dan pertahanan; aktiviti keselamatan sosial wajib <i>Public administration and defence; compulsory social security</i>	749.0	6.1
Pendidikan <i>Education</i>	785.0	6.4
Aktiviti kesihatan kemanusiaan dan kerja sosial <i>Human health and social work activities</i>	382.5	3.1
Kesenian, hiburan dan rekreasi <i>Arts, entertainment and recreation</i>	86.4	0.7
Aktiviti perkhidmatan lain <i>Other service activities</i>	181.5	1.5
Aktiviti isi rumah sebagai majikan <i>Activities of households as employers</i>	222.5	1.8
Aktiviti badan dan pertubuhan luar wilayah <i>Activities of extra-territorial organisations and bodies</i>	2.1	0.0

Nota: Industri dikelaskan mengikut 'Piawaian Klasifikasi Industri Malaysia (MSIC) 2008'.

Notes: Industry is classified according to the 'Malaysia Standard Industrial Classifications (MSIC) 2008'.

4.3 GUNA TENAGA MENGIKUT PEKERJAAN

Employment by Occupation

Pekerjaan <i>Occupation</i>	2011	
	(`000)	(%)
Jumlah <i>Total</i>	12,284.4	100.0
Pengurus <i>Managers</i>	695.6	5.7
Profesional <i>Professionals</i>	1,225.1	10.0
Juruteknik dan profesional bersekutu <i>Technician and associate professionals</i>	1,313.0	10.7
Pekerja sokongan perkeranian <i>Clerical support workers</i>	1,178.3	9.6
Pekerja perkhidmatan dan jualan <i>Service and sales workers</i>	2,495.1	20.3
Pekerja mahir pertanian, perhutanan dan perikanan <i>Skilled agricultural, forestry and fishery workers</i>	1,007.9	8.2
Pekerja kemahiran dan pekerja pertukangan yang berkaitan <i>Craft and related trades workers</i>	1,330.2	10.8
Operator loji dan mesin serta pemasang <i>Plant and machine-operators and assemblers</i>	1,554.9	12.7
Pekerjaan asas <i>Elementary occupations</i>	1,484.2	12.1

Nota: Pekerjaan dikelaskan mengikut 'Piawaian Pengelasan Pekerjaan Malaysia (MASCO) 2008'.

Notes: Occupation is classified according to the 'Malaysia Standard Classification of Occupations (MASCO) 2008'.

4.4 BILANGAN AHLI PROFESIONAL YANG BERDAFTAR

Number of Registered Professionals

Profesion <i>Profession</i>	2009	2010	2011
Arkitek <i>Architects</i>	3,292	3,369	3,486
Akauntan <i>Accountants</i>	26,456	26,267	27,315
Jurutera <i>Engineers</i>	68,172	73,469	75,896
Doktor gigi <i>Dentists</i>	3,606	3,810	4,253
Doktor <i>Doctors</i>	22,355	23,055	24,782
Doktor veterinar <i>Veterinary surgeons</i>	1,607	1,717	1,789
Juruukur <i>Surveyors</i>	4,152	4,469	6,600
Peguam <i>Lawyers</i>	15,001	15,030	16,047

Sumber : Pelbagai Pertubuhan dan Lembaga Profesional

Source : Various Professional Associations and Boards

4.5 PERHUBUNGAN PERUSAHAAN

Industrial Relations

	2009	2010	2011
Bilangan kesatuan sekerja ¹ <i>Number of trade unions</i>	680	690	697
Keahlian ¹ <i>Membership</i>	805,584	803,289	800,171
Pertikaian perusahaan <i>Trade disputes</i>	330	344	311
Pertikaian perusahaan yang berakhir dengan mogok atau "lockout" <i>Trade disputes resulting in strikes or lockouts</i>	4	2	0
Perjanjian kolektif yang diiktiraf dalam tahun semasa <i>Collective agreements taken cognizance during the year</i>	276	330	322
Bilangan pekerja diliputi oleh perjanjian kolektif <i>Number of workers covered by collective agreements</i>	75,356	141,411	148,772

¹ Akhir tempoh
End of period

Sumber : Kementerian Sumber Manusia, Malaysia
Source : Ministry of Human Resources, Malaysia

4.6 KEMALANGAN PERUSAHAAN

Industrial Accidents

	2009	2010	2011
Bilangan kes di bawah Pertubuhan Keselamatan Sosial <i>Number of cases under</i> <i>Social Security Organization</i>	55,208	57,656	59,897
Bilangan kes di bawah Akta Pampasan Pekerja <i>Number of cases under</i> <i>Workmen's Compensation Act</i>	6,303	4,942	4,759

Sumber : Kementerian Sumber Manusia, Malaysia
Source : Ministry of Human Resources, Malaysia

4.7 PERANGKAAAN PERTUBUHAN KESELAMATAN SOSIAL (PERKESO)
Statistics of Social Security Organisation (SOCSO)

	2009	2010	2011
Bilangan majikan berdaftar ¹ <i>Number of registered employers</i>	724,290	769,684	819,915
Bilangan pekerja berdaftar ¹ <i>Number of registered employees</i>	13,277,574	13,831,875	14,569,450
Bilangan kemalangan perusahaan yang dilaporkan <i>Number of industrial accidents reported</i>	55,186	57,639	59,897
Bilangan kemalangan perusahaan yang diselesaikan ² <i>Number of industrial accidents settled</i>	57,585	55,751	58,796
Bilangan penerima faedah <i>Number of beneficiaries</i>	324,798	351,433	378,377
Jumlah faedah wang tunai yang dibayar oleh PERKESO (RM '000) <i>Total amount of cash benefit paid by SOCSO (RM '000)</i>	1,354,128	1,678,160	1,710,765

Sumber : Pertubuhan Keselamatan Sosial Malaysia
Source : Social Security Organisation Malaysia

Nota/Notes:

¹ Akhir tempoh.
End of period.

² Termasuk bilangan kemalangan yang dilaporkan sebelum tahun penyelesaian.
Including the number of accidents reported prior to the year of settlement.

PENDIDIKAN DAN KESIHATAN
Education and Health

5. PENDIDIKAN

Education

5.1 BILANGAN SEKOLAH KERAJAAN, SEKOLAH BANTUAN KERAJAAN DAN INSTITUSI PENGAJIAN TINGGI

*Number of Government School, Government-Aided School
and Higher Education Institutions*

	2009	2010	2011
Sekolah rendah ¹ <i>Primary schools</i>	7,664	7,695	7,714
Sekolah menengah <i>Secondary schools</i>	2,219	2,248	2,282
Akademik ² <i>Academic</i>	2,128	2,160	2,194
Teknik <i>Technical</i>	90	60	34
Vokasional <i>Vocational</i>	1	28	54
Institusi Pengajian Tinggi <i>Higher Education Institution</i>			
Politeknik ³ <i>Polytechnic</i>	70	70	73
Institut Pendidikan Guru ⁴ <i>Institute of Teacher Education</i>	28	28	28
Universiti Awam <i>Public University</i>	20	20	20

Sumber: Kementerian Pelajaran, Malaysia

Source: Ministry of Education, Malaysia

Kementerian Pengajian Tinggi, Malaysia

Ministry of Higher Education, Malaysia

Nota/Notes:

¹ **Termasuk Prasekolah yang berada di Sekolah Rendah, Sekolah Model Khas dan Sekolah Sukan**
Includes Pre-schools that is part of Primary Schools, Special Model Schools and Sports Schools

² **Termasuk Sekolah Model Khas, Sekolah Sukan dan Sekolah Seni**
Includes Special Model Schools, Sports Schools and Arts School

³ **Termasuk Kolej Komuniti dan Kolej Tunku Abdul Rahman (KTAR)**
Includes Community Colleges and Kolej Tunku Abdul Rahman (KTAR)

⁴ **Termasuk Pusat Pengajian Bahasa Inggeris, Malaysia**
Includes English Language Teaching Centres, Malaysia (ELTC)

5.2 ENROLMEN PELAJAR DI SEKOLAH KERAJAAN, SEKOLAH BANTUAN KERAJAAN DAN INSTITUSI PENGAJIAN TINGGI

Enrolment in Government School, Government-Aided Schools and Higher Education Institutions

	2009	2010	2011
Prasekolah <i>Pre-school</i>	154,682	163,746	178,622
Peringkat rendah ¹ <i>Primary level</i>	2,959,092	2,899,228	2,860,340
Peringkat menengah <i>Secondary level</i>	2,229,338	2,242,341	2,222,882
Peringkat Pasca Menengah <i>Post secondary level</i>	102,563	102,551	104,565
Institusi Pengajian Tinggi <i>Higher Education Institution</i>	606,326	630,614	669,991
Politeknik ² <i>Polytechnic</i>	128,929	129,616	119,318
Institut Pendidikan Guru ³ <i>Institute of Teacher Education</i>	39,977	38,218	42,417
Universiti Awam <i>Public University</i>	437,420	462,780	508,256

Sumber : Kementerian Pelajaran, Malaysia
Source : Ministry of Education, Malaysia

Kementerian Pengajian Tinggi, Malaysia
Ministry of Higher Education, Malaysia

Nota/Notes:

- ¹ Termasuk Sekolah Model Khas dan Sekolah Sukan
Includes Special Model Schools and Sports Schools
- ² Termasuk Kolej Komuniti dan Kolej Tunku Abdul Rahman (KTAR)
Includes Community Colleges and Kolej Tunku Abdul Rahman (KTAR)
- ³ Termasuk Pusat Pengajian Bahasa Inggeris, Malaysia
Includes English Language Teaching Centres, Malaysia (ELTC)

**5.3 BILANGAN GURU DAN PENSYARAH DI SEKOLAH KERAJAAN,
SEKOLAH BANTUAN KERAJAAN DAN INSTITUSI PENGAJIAN TINGGI**
*Number of Teachers and Lecturers in Government School,
Government-Aided Schools and Higher Education Institutions*

	2009	2010	2011
A. Guru <i>Teachers</i>			
Sekolah rendah ¹ <i>Primary school</i>	222,473	230,448	232,095
Sekolah menengah <i>Secondary school</i>	170,708	175,241	176,669
Akademik ² <i>Academic</i>	162,737	167,459	168,730
Teknik <i>Technical</i>	7,940	5,230	2,805
Vokasional <i>Vocational</i>	31	2,552	5,134
B. Pensyarah <i>Lecturers</i>			
Politeknik ³ <i>Polytechnic</i>	9,159	9,621	10,380
Institut Pendidikan Guru ⁴ <i>Institute of Teacher Education</i>	3,795	3,319	3,703
Universiti Awam <i>Public University</i>	26,700	28,571	29,198

Sumber : Kementerian Pelajaran, Malaysia
Source : Ministry of Education, Malaysia

Kementerian Pengajian Tinggi, Malaysia
Ministry of Higher Education, Malaysia

Nota/Notes:

- ¹ Termasuk Prasekolah yang berada di Sekolah Rendah, Sekolah Model Khas dan Sekolah Sukan
Includes Pre-schools that is part of Primary Schools, Special Model Schools and Sports Schools
- ² Termasuk Sekolah Model Khas, Sekolah Sukan dan Sekolah Seni
Includes Special Model Schools, Sports Schools and Arts school
- ³ Termasuk Kolej Komuniti dan Kolej Tunku Abdul Rahman (KTAR)
Includes Community Colleges and Kolej Tunku Abdul Rahman (KTAR)
- ⁴ Termasuk Pusat Pengajian Bahasa Inggeris, Malaysia
Includes English Language Teaching Centres, Malaysia (ELTC)

**5.4 BILANGAN GURU DI SEKOLAH KERAJAAN DAN
SEKOLAH BANTUAN KERAJAAN MENGIKUT JANTINA**

*Number of Teachers in Government School and
Government-Aided Schools by Sex*

	2011		
	Lelaki <i>Male</i>	Perempuan <i>Female</i>	Jumlah <i>Total</i>
Sekolah rendah ¹ <i>Primary school</i>	1,471,562	1,388,778	2,860,340
Sekolah menengah <i>Secondary school</i>	1,113,424	1,109,458	2,222,882
Akademik ² <i>Academic</i>	1,078,824	1,093,217	2,172,041
Teknik <i>Technical</i>	12,024	7,847	19,871
Vokasional <i>Vocational</i>	22,576	8,394	30,970

Sumber : Kementerian Pelajaran, Malaysia
Source : Ministry of Education, Malaysia

Nota/Notes:

¹ Termasuk Prasekolah yang berada di Sekolah Rendah, Sekolah Model Khas dan Sekolah Sukan
Includes Pre-schools that is part of Primary Schools, Special Model schools and Sports schools

² Termasuk Sekolah Model Khas, Sekolah Sukan dan Sekolah Seni
Includes Special Model schools, Sports schools and Arts schools

6. KESIHATAN

Health

6.1 KEMUDAHAN KESIHATAN

Health Facilities

	2009	2010	2011
A. Kemudahan Kesihatan Kerajaan <i>Government Health Facilities</i>			
Hospital <i>Hospital</i>			
Bilangan hospital <i>Number of hospitals</i>	130	130	140
Bilangan katil <i>Number of beds</i>	33,083	33,083	37,134
Pusat Perubatan Khas <i>Special Medical Institution</i>			
Bilangan hospital <i>Number of hospitals</i>	6	6	6
Bilangan katil ¹ <i>Number of beds</i>	4,974	4,974	4,582
Klinik kesihatan <i>Health clinics</i>	808	808	879
Bilangan klinik desa <i>Number of rural clinics</i>	1,920	1,920	1,864
B. Pusat Perubatan Swasta ² <i>Private Medical Institution</i>			
Bilangan hospital <i>Number of hospitals</i>	245	245	263
Bilangan katil <i>Number of beds</i>	12,619	12,619	14,073

Sumber : Kementerian Kesihatan, Malaysia.

Source : Ministry of Health, Malaysia.

Nota/Notes:

¹ Tidak termasuk katil-katil yang ditempatkan di rumah penginapan pesakit di kawasan Pusat Kawalan Kusta Negara.
Excludes beds that are placed in chalets within the vicinity of the National Leprosy Control Centre.

² Meliputi hospital swasta, rumah perawatan dan bersalin yang berdaftar dengan KKM.
Comprises private hospitals, nursing and maternity homes registered with MOH.

6.2 PERSONEL PERUBATAN YANG BERDAFTAR

Registered Medical Personnel

	2009	2010	2011
Doktor <i>Doctor</i>	30,536	32,979	36,607
Doktor gigi ¹ <i>Dentist</i>	3,567	3,810	4,253
Jururawat <i>Nurse</i>	59,375	69,110	74,788
Penolong jururawat <i>Assistant nurse</i>	4,280	2,565	3,136
Bidan <i>Midwives</i>	20,127	21,089	22,266

Sumber : Kementerian Kesihatan, Malaysia

Source : Ministry of Health, Malaysia

Nota/Notes:

Personel perubatan yang berdaftar merujuk kepada perkhidmatan Kerajaan dan swasta
Registered medical personnel refer to Government and private services.

¹ **Tidak termasuk Bahagian II iaitu doktor gigi yang berdaftar tanpa kelayakan profesional.**
Excludes Division II i.e. registered dentists without professional qualifications.

**HARGA-HARGA DAN PENDAPATAN &
PERBELANJAAN ISI RUMAH**

Prices and Household income & Expenditure

7. HARGA-HARGA

Prices

7.1 INDEKS HARGA PENGGUNA

*Consumer Price Index
(2010 = 100)*

Kawasan <i>Region</i>	Purata bagi tempoh <i>Average for period</i>			% Perubahan
	2009	2010	2011	% Change 2011/2010
MALAYSIA	98.3	100.0	103.2	3.2
Semenanjung Malaysia <i>Peninsular Malaysia</i>	98.3	100.0	103.3	3.3
Sabah & W.P. Labuan	98.4	100.0	102.9	2.9
Sarawak	98.5	100.0	102.6	2.6

7.2 INDEKS HARGA PENGGUNA MENGIKUT KUMPULAN UTAMA

Consumer Price Index by Main Groups

(2010 = 100)

Kumpulan <i>Group</i>	MALAYSIA		Sem. Malaysia <i>Pen . Malaysia</i>		Sabah & W.P. Labuan		Sarawak	
	2010	2011	2010	2011	2010	2011	2010	2011
Jumlah <i>Total</i>	100.0	103.2	100.0	103.3	100.0	102.9	100.0	102.6
Makanan dan minuman bukan alkohol <i>Food and non- alcoholic beverages</i>	100.0	104.8	100.0	105.0	100.0	104.7	100.0	103.3
Minuman alkohol dan tembakau <i>Alcoholic beverages and tobacco</i>	100.0	104.6	100.0	104.7	100.0	104.8	100.0	103.7
Pakaian dan kasut <i>Clothing and footwear</i>	100.0	99.8	100.0	99.8	100.0	99.6	100.0	99.1
Perumahan, air, elektrik, gas dan bahan api lain <i>Housing, water, electricity, gas and other fuels</i>	100.0	101.8	100.0	101.7	100.0	101.4	100.0	102.3
Hiasan, perkakasan dan penyelenggaraan isi rumah <i>Furnishings, household equipment and routine household maintenance</i>	100.0	101.8	100.0	101.9	100.0	102.0	100.0	100.9

7.2 INDEKS HARGA PENGGUNA MENGIKUT KUMPULAN UTAMA (SAMB.)
Consumer Price Index by Main Groups (Cont'd)
(2010= 100)

Kumpulan <i>Group</i>	MALAYSIA		Sem. Malaysia <i>Pen . Malaysia</i>		Sabah & W.P. Labuan		Sarawak	
	2010	2011	2010	2011	2010	2011	2010	2011
Kesihatan <i>Health</i>	100.0	102.7	100.0	102.6	100.0	103.7	100.0	103.3
Pengangkutan <i>Transport</i>	100.0	104.4	100.0	104.5	100.0	103.2	100.0	104.4
Komunikasi <i>Communication</i>	100.0	99.7	100.0	99.7	100.0	100.1	100.0	99.9
Perkhidmatan rekreasi dan kebudayaan <i>Recreation services and culture</i>	100.0	102.0	100.0	102.0	100.0	103.9	100.0	100.8
Pendidikan <i>Education</i>	100.0	102.2	100.0	102.3	100.0	101.6	100.0	101.6
Restoran dan hotel <i>Restaurants and hotels</i>	100.0	105.9	100.0	105.9	100.0	105.4	100.0	105.0
Pelbagai barangan dan perkhidmatan <i>Miscellaneous goods and services</i>	100.0	102.4	100.0	102.5	100.0	102.1	100.0	101.4

8. PENDAPATAN DAN PERBELANJAAN ISI RUMAH

Household Income and Expenditure

8.1 PENDAPATAN ISI RUMAH PURATA KASAR BULANAN MENGIKUT KUMPULAN ETNIK DAN STRATA, 2004, 2007 DAN 2009

Average Monthly Gross Household Income by Ethnic Group and Strata, 2004, 2007 and 2009

Kumpulan Etnik /Strata <i>Ethnic Group / Strata</i>	Pada Harga Semasa <i>At Current Prices</i>		Kadar Pertumbuhan Tahunan Purata <i>Average Annual Growth Rate</i>	
	<u>2004</u> (RM)	<u>2007</u>	<u>2009</u>	<u>2004 - 2009</u> (%)
MALAYSIA	3,249	3,686	4,025	4.4
Bumiputera	2,711	3,156	3,624	6.0
Cina <i>Chinese</i>	4,437	4,853	5,011	2.5
India <i>Indians</i>	3,456	3,799	3,999	3.0
Lain-lain <i>Others</i>	2,312	3,651	3,640	9.5
Bandar <i>Urban</i>	3,956	4,356	4,705	3.5
Luar Bandar <i>Rural</i>	1,875	2,283	2,545	6.3

Sumber: Kajian Separuh Penggal Rancangan Malaysia Kesembilan dan Rancangan Malaysia Kesepuluh
Source: *Mid-Term Review of the Ninth Malaysia Plan and Tenth Malaysia Plan*

Nota: Data merujuk kepada Warganegara Malaysia sahaja.

Note: Data refers to Malaysian Citizens only.

**8.2 PERBELANJAAN PURATA BULANAN SETIAP ISI RUMAH MENGIKUT STRATA,
2004/05 DAN 2009/10**

*Average Monthly Expenditure Per Household by Strata,
2004/05 and 2009/10*

Kumpulan Perbelanjaan <i>Expenditure Group</i>	Jumlah <i>Total</i>		Bandar <i>Urban</i>		Luar Bandar <i>Rural</i>	
	2004/05	2009/10	2004/05	2009/10	2004/05	2009/10
	(RM)					
01 Makanan dan minuman bukan alkohol <i>Food and non-alcoholic beverages</i>	393	444	407	447	365	439
Beras <i>Rice</i>	36	42	33	37	43	51
Roti dan bijirin lain <i>Bread and other cereals</i>	44	53	47	54	40	52
Daging <i>Meat</i>	54	64	57	66	48	61
Ikan dan makanan laut <i>Fish and seafood</i>	82	98	84	97	79	101
Susu, keju dan telur <i>Milk, cheese and eggs</i>	31	38	34	40	26	36
Minyak dan lemak <i>Oils and fats</i>	12	13	12	13	11	12
Buah-buahan <i>Fruits</i>	27	26	29	28	23	22
Sayur-sayuran <i>Vegetables</i>	44	47	45	47	41	46
Gula, jem, madu, coklat dan manisan <i>Sugar, jam, honey, chocolate and confectionery</i>	13	13	13	13	13	13
Keluaran makanan yang tidak dikelaskan di mana-mana <i>Food products n.e.c.</i>	25	20	27	21	20	18
Kopi, teh, koko dan minuman bukan alkohol <i>Coffee, tea, cocoa and non-alcoholic beverages</i>	25	29	27	31	22	26

Nota/Note:

Kumpulan perbelanjaan dikelaskan berpandu kepada United Nations' "Classification of Individual Consumption According to Purpose" (COICOP).

The Expenditure group is based on the United Nations' " Classification of Individual Consumption According to Purpose" (COICOP).

8.2 PERBELANJAAN BULANAN PURATA SETIAP ISI RUMAH MENGIKUT STRATA, 2004/05 DAN 2009/10 (SAMB.)

Average Monthly Expenditure Per Household by Strata, 2004/05 and 2009/10 (cont'd)

Kumpulan Perbelanjaan <i>Expenditure Group</i>	Jumlah <i>Total</i>		Bandar <i>Urban</i>		Luar Bandar <i>Rural</i>	
	2004/05	2009/10	2004/05	2009/10	2004/05	2009/10
	(RM)					
02 Minuman alkohol dan tembakau <i>Alcoholic beverages and tobacco</i>	35	48	38	51	30	39
03 Pakaian dan kasut <i>Clothing and footwear</i>	59	75	64	78	48	67
04 Perumahan, air, elektrik, gas dan bahan api lain <i>Housing, water, electricity, gas and other fuels</i>	430	495	522	583	247	304
05 Hiasan, perkakasan dan penyelenggaraan isi rumah <i>Furnishings, household equipment and routine household maintenance</i>	83	89	97	100	56	64
06 Kesihatan <i>Health</i>	27	29	33	33	16	19
07 Pengangkutan <i>Transport</i>	314	327	372	361	200	254
08 Komunikasi <i>Communication</i>	103	124	128	147	53	72
09 Perkhidmatan rekreasi dan kebudayaan <i>Recreation services and culture</i>	92	101	115	121	48	58
10 Pendidikan <i>Education</i>	38	31	49	39	16	13
11 Restoran dan hotel <i>Restaurants and hotels</i>	213	239	260	285	120	141
Perbelanjaan makanan di luar rumah <i>Expenditure on food away from home</i>	169	194	208	231	92	115
Perbelanjaan minuman di luar rumah <i>Expenditure on beverages away from home</i>	35	39	41	47	24	22
Perkhidmatan penginapan dan lain-lain <i>Accommodation services and others</i>	9	6	11	7	4	4
12 Pelbagai barang dan perkhidmatan <i>Miscellaneous goods and services</i>	167	190	200	219	102	127
Perbelanjaan Bulanan Purata Setiap Isi Rumah (01-12) <i>Average Monthly Expenditure Per Household (01-12)</i>	1,953	2,190	2,285	2,465	1,301	1,599

Nota/Note:

Kumpulan perbelanjaan dikelaskan berpandu kepada United Nations' "Classification of Individual Consumption According to Purpose" (COICOP).

The Expenditure group is based on the United Nations' " Classification of Individual Consumption According to Purpose" (COICOP).

PERDAGANGAN LUAR NEGERI
External Trade

9. PERDAGANGAN LUAR NEGERI

External Trade

9.1 EKSPORT, IMPORT, JUMLAH PERDAGANGAN DAN IMBANGAN PERDAGANGAN

Exports, Imports, Total Trade and Balance of Trade

	2010	2011	RM Juta Million 2012 ^p Jan - Sept.
Eksport <i>Exports</i> <i>(f.o.b.)</i>	638,822	697,862	525,502
Import <i>Imports</i> <i>(c.i.f)</i>	528,828	573,626	457,239
Jumlah perdagangan <i>Total trade</i>	1,167,651	1,271,488	982,741
Imbangan perdagangan <i>Balance of trade</i>	109,994	124,236	68,263

9.2 EKSPORT MENGIKUT NEGARA YANG DITUJU

Exports by Country of Destination

Negara	2010	2011	RM Juta
			Million
			2012 ^p
			Jan - Sept.
Jumlah	638,822	697,862	525,502
Total			
United States of America	60,951	57,653	45,653
Singapore, Republic of	85,253	88,191	71,619
Japan	66,763	81,368	63,504
China, People's Republic of	80,105	91,551	66,449
Thailand	34,136	35,742	28,255
Hong Kong SAR	32,408	31,252	22,777
Korea, Republic of	24,330	26,252	18,618
India	20,934	28,154	21,196
Australia	24,016	25,683	21,778
Taiwan	20,209	23,228	16,254
Indonesia, Republic of	18,090	20,841	19,834
United Arab Emirates	12,194	12,961	9,584
Philippines	9,968	10,945	7,767
Viet Nam	11,404	11,710	8,649
Canada	3,129	2,782	2,255
European Union (EU)	68,688	72,031	46,602
Negara-negara Lain	66,243	77,518	54,708
<i>Other Countries</i>			

9.3 IMPORT MENGIKUT NEGARA ASAL

Imports by Country of Origin

Negara <i>Country</i>	2010	2011	RM Juta <i>Million</i> 2012 ^p <i>Jan - Sept.</i>
Jumlah <i>Total</i>	528,828	573,626	457,239
Japan	66,535	65,362	47,871
United States of America	56,259	55,406	37,288
China, People's Republic of	66,430	75,707	67,796
Singapore, Republic of	60,278	73,699	61,133
Thailand	32,972	34,480	27,306
Taiwan	23,829	27,133	18,509
Korea, Republic of	28,687	23,271	18,071
Indonesia, Republic of	29,390	35,113	23,646
Hong Kong SAR	12,681	13,601	10,552
Philippines	11,308	4,782	3,635
Australia	10,188	12,810	11,008
Saudi Arabia	6,450	8,466	5,634
Viet Nam	8,343	10,348	11,415
India	7,978	10,191	9,207
Switzerland	3,346	4,509	3,472
United Arab Emirates	7,606	8,203	8,882
European Union (EU)	54,122	58,858	49,021
Negara-negara Lain <i>Other Countries</i>	42,428	51,687	42,793

9.4 NILAI EKSPORT BARANGAN UTAMA

Exports Value of Major Commodities

Barangan <i>Commodity</i>	2010	2011	RM Juta <i>Million</i> 2012^P <i>Jan - Sept.</i>
Jumlah <i>Total</i>	638,822	697,862	525,502
Getah asli <i>Natural rubber</i>	9,210	13,480	6,030
Minyak kelapa sawit dan hasil keluaran berasaskan minyak kelapa sawit <i>Palm oil and palm oil-based products</i>	62,223	83,257	54,844
Petroleum mentah <i>Crude petroleum</i>	30,765	32,452	23,843
Keluaran petroleum <i>Petroleum products</i>	25,542	33,038	33,608
Gas asli cecair <i>Liquefied natural gas</i>	38,742	52,049	42,169
Kayu dan hasil keluaran kayu <i>Timber & timber-based products</i>	20,331	20,008	14,773
Barangan elektrik dan elektronik <i>Electrical and electronic products</i>	249,907	237,261	174,512
Pakaian dan segala kelengkapan pakaian <i>Articles of apparel and clothing accessories</i>	3,565	4,084	2,592
Barangan eksport lain <i>Other export commodities</i>	198,539	222,233	173,131

Nota /Notes:

Transaksi yang bernilai bawah RM5,000 telah dimasukkan di bawah 'Barangan eksport lain' kecuali empat kumpulan komoditi yang pertama.

Transactions with a value below RM5,000 have been included under 'Other export commodities' except for the first four commodity groups.

9.5 NILAI IMPORT BARANGAN TERPILIH

Imports Value of Selected Commodities

Barangan <i>Commodity</i>	2010	2011	RM Juta <i>Million</i> 2012^p <i>Jan - Sept.</i>
Jumlah <i>Total</i>	528,828	573,626	457,239
Petroleum mentah <i>Crude petroleum</i>	2,492	24,010	21,297
Keluaran petroleum <i>Petroleum products</i>	1,846	32,724	35,333
Keluaran besi gelek rata atau keluli <i>Flat-rolled products of iron or steel</i>	813	10,838	7,613
Jentera dan kelengkapan khusus untuk industri tertentu dan alat ganti <i>Machinery and equipment specialized for particular industries and parts</i>	619	7,129	5,487
Barangan elektrik dan elektronik <i>Electrical and electronic products</i>	189,361	178,147	131,951
Motokar, belum dipasang <i>Motor cars, completely knocked down</i>	398	2,761	1,957
Alat & perkakas mengukur, memeriksa, menganalisis dan kawalan <i>Measuring, checking, analysing and controlling instruments and apparatus</i>	674	7,844	6,628
Emas, bukan bentuk wang <i>Gold, non-monetary</i>	626	8,644	7,531
Barangan import lain <i>Other import commodities</i>	331,999	301,529	239,442

Nota/Notes :

Transaksi yang bernilai bawah RM5,000 telah dimasukkan di bawah 'Barangan import lain' kecuali 'Petroleum mentah', 'Keluaran petroleum' dan 'Motokar, belum dipasang'.
Transactions with a value below RM5,000 have been included under 'Other import commodities' except for 'Crude petroleum', 'Petroleum products' and 'Motor cars, completely knocked down'.

PERTANIAN

Agriculture

10. PERTANIAN

Agriculture

10.1 KELUASAN BERTANAM BAGI TANAMAN UTAMA

Planted Area for Main Crops

		'000 hektar/ hectares		
		2009	2010	2011
Getah <i>Rubber</i>	Jumlah <i>Total</i>	1,015.1 ^r	1,015.2 ^r	1,012.6
	Estet ¹ <i>Estate</i>	49.7 ^r	49.9 ^r	49.9
	Kebun kecil ² <i>Smallholding</i>	965.4 ^r	965.3 ^r	962.7
Kelapa sawit <i>Oil palm</i>	Jumlah <i>Total</i>	4,691.1	4,853.8	5,000.1
	Estet <i>Estate</i>	4,082.1	4,202.4	4,302.3
	Kebun kecil/Skim <i>Smallholding/Scheme</i>	609.0	651.4	697.8
Koko <i>Cocoa</i>	Jumlah <i>Total</i>	18.0 ^r	20.1 ^r	21.2 ^e
	Estet <i>Estate</i>	2.4	1.9 ^r	1.7 ^e
	Kebun kecil <i>Smallholding</i>	15.6 ^r	18.2 ^r	19.5 ^e
Padi ³ <i>Paddy</i>		674.9	677.8	687.5 ^p
Lada hitam <i>Pepper</i>		13.6	14.1	14.8
Tembakau <i>Tobacco</i>		7.6	3.7	4.2
Nanas <i>Pineapple</i>		15.8	15.4	15.5 ^p
Teh <i>Tea</i>		1.5	2.4	2.5 ^p

Nota/Notes:

¹ Keluasan bertanam getah di estet bagi tahun rujukan 2009 diperoleh dari Banci Estet Getah Tahunan 2010, tahun rujukan 2010 dari Banci Ekonomi 2011 manakala tahun rujukan 2011 dari Banci Getah Bulanan 2011.

Rubber planted area for reference year 2009 was obtained from Annual Census of Rubber Estates 2010, reference year 2010 from Economic Census 2011 while reference year 2011 from Monthly Census of Rubber Estates.

² Keluasan bertanam getah bagi kebun kecil dikemaskini semula dan hanya merujuk kepada kawasan di bawah RISDA, FELDA, FELCRA, KESEDAR, Lembaga Industri Getah Sabah (LIGS) dan Jabatan Pertanian Sarawak (JPS).

Rubber planted area for other smallholdings were revised and only refers to RISDA, FELDA, FELCRA, KESEDAR, LIGS and JPS.

³ Perangkaan padi bagi satu tahun rujukan, misalnya 2011 termasuk tanaman musim utama 2010/2011 dan tanaman luar musim 2011 bagi padi sawah dan padi huma.

Paddy statistics for a reference year, e.g. 2011 will include data for main season crop 2010/2011 and off season crop 2011 for wetland and dryland paddy.

Sumber/Source:

Jabatan Perangkaan Malaysia

Department of Statistics, Malaysia

Kementerian Pertanian dan Industri Asas Tani

Ministry of Agriculture and Agro-Based Industries

Lembaga Koko Malaysia

Malaysian Cocoa Board

Lembaga Kenaf dan Tembakau Negara

National Kenaf and Tobacco Board

Lembaga Minyak Sawit Malaysia

Malaysian Palm Oil Board (MPOB)

Lembaga Lada Malaysia

Malaysian Pepper Board

Pihak Berkuasa Kemajuan Pekebun Kecil

Perusahaan Getah

Rubber Industry Smallholders Development Authority (RISDA)

10.2 PENGELUARAN PERTANIAN DAN PERHUTANAN

Agricultural and Forestry Production

		'000 tan metrik/ tonnes		
		2009	2010	2011
Getah asli	Jumlah <i>Total</i>	857.0	939.2	996.2
<i>Natural rubber</i>	Estet ¹ <i>Estate</i>	56.8	56.3	53.0
	Kebun kecil <i>Smallholding</i>	800.2	882.9	943.2
Minyak sawit mentah <i>Crude palm oil</i>		17,564.9	16,993.7	18,911.5
Minyak isirong sawit mentah <i>Crude palm kernel oil</i>		2,097.1	2,014.9	2,144.7
Biji koko kering <i>Dry cocoa beans</i>		18.2 ^r	15.7	4.6
Minyak kelapa (mentah dan bertapis) <i>Coconut oil (crude and refined)</i>		41.9	45.6	37.6
Padi <i>Paddy</i>		2,511.0 ^r	2,464.0 ^r	2,665.0 ^p
Beras <i>Rice</i>		1,620.3 ^r	1,588.5 ^r	1,719.0 ^p
Lada hitam <i>Pepper</i>		21.9	24.2	25.6
Tembakau (daun kering) <i>Tobacco (cured leaves)</i>		2.5	3.1	2.9 ^p
Nanas <i>Pineapple</i>		357.7	331.0	332.7 ^p
Teh (daun hijau) ² <i>Tea (green leaves)</i>		15.6 ^r	19.9 ^r	17.0
Kayu balak ('000 meter padu) <i>Logs ('000 cu. Metres)</i>		18,336.7 ^r	17,797.5 ^r	16,000.3 ^p

Nota/Notes:

¹ Pengeluaran getah di estet bagi tahun rujukan 2009 diperoleh dari Banci Estet Getah Tahunan 2009, tahun rujukan 2010 dari Banci Ekonomi 2010, manakala tahun rujukan 2011 dari Banci Getah Bulanan 2011.

Rubber production for reference year 2009 was obtained from Annual Census of Rubber Estates 2010, reference year 2010 from Economic Census 2011 while reference year 2011 from Monthly Census of Rubber Estates.

² Merujuk kepada pengeluaran dari estet di Semenanjung Malaysia sahaja.

Refers to production from estates in Peninsular Malaysia only.

Sumber/Source:

Jabatan Perangkaan Malaysia.

Department of Statistics, Malaysia.

Kementerian Pertanian dan Industri Asas Tani

Ministry of Agriculture and Agro-Based Industries

Lembaga Koko Malaysia.

Malaysian Cocoa Board.

Lembaga Kenaf dan Tembakau Negara.

National Kenaf and Tobacco Board.

Lembaga Minyak Sawit Malaysia.

Malaysian Palm Oil Board (MPOB).

Lembaga Lada Malaysia.

Malaysian Pepper Board.

Jabatan Perhutanan Semenanjung Malaysia

Forestry Department Peninsular Malaysia

Jabatan Hutan Sarawak

Forest Department Sarawak

Jabatan Perhutanan Sabah

Sabah Forestry Department

Perbadanan Perusahaan Kemajuan Kayu Sarawak

Sarawak Timber Industry Development Corporation

10.3 POPULASI TERNAKAN DAN PENYEMBELIHAN YANG DIREKODKAN

Livestock Population and Recorded Slaughter

	(' 000)		
	2009	2010	2011 ^p
Lembu			
<i>Cattle</i>			
Populasi	860.5 ^r	837.5 ^r	855.5
<i>Population</i>			
Penyembelihan direkodkan	102.6 ^r	106.3 ^r	106.2
<i>Recorded slaughter</i>			
Kerbau			
<i>Buffaloes</i>			
Populasi	127.2	125.2 ^r	124.5
<i>Population</i>			
Penyembelihan direkodkan	10.4 ^r	9.2 ^r	9.0
<i>Recorded slaughter</i>			
Kambing			
<i>Goats</i>			
Populasi	514.2	494.5 ^r	523.8
<i>Population</i>			
Penyembelihan direkodkan	21.5 ^r	20.5 ^r	20.8
<i>Recorded slaughter</i>			
Bebiri			
<i>Sheep</i>			
Populasi	136.3	123.3 ^r	121.7
<i>Population</i>			
Penyembelihan direkodkan	4.1	4.2 ^r	4.4
<i>Recorded slaughter</i>			
Babi			
<i>Swine</i>			
Populasi ¹	1,831.3	1,880.3 ^r	1,872.2
<i>Population</i>			
Penyembelihan direkodkan	1,405.6 ^r	1,698.9 ^r	1,657.4
<i>Recorded slaughter</i>			

Sumber: Jabatan Perkhidmatan Veterinar, Malaysia
Source: Department of Veterinary Services, Malaysia

Nota/Notes:

¹ Berdasarkan SPP (*Standing Pig Population*)
Based on SPP (*Standing Pig Population*)

10.4 PERANGKAAAN PERIKANAN

Fisheries Statistics

	2009	2010	2011
Jumlah pendaratan perikanan marin ('000 Tan Metrik) <i>Total marine fish landed ('000 Tonnes)</i>	1,393.2	1,428.9	1,373.1
Jumlah bilangan nelayan <i>Total number of fishermen</i>	125,632	129,622	134,110
Jumlah bilangan vesel nelayan berlesen <i>Total number of licensed fishing vessels</i>	48,745	49,756	53,002
Vesel tidak berjentera <i>Non-powered vessels</i>	2,998	2,977	2,971
Vesel berjentera <i>Powered vessels</i>	45,747	46,779	50,031
Berjentera dalam <i>Inboard powered</i>	17,890	17,776	17,241
Berjentera sangkut <i>Outboard powered</i>	27,857	29,003	32,790
Bilangan perkakas nelayan berlesen <i>Number of licensed fishing gears</i>	47,732	48,645	51,892
Jumlah pengeluaran akuakultur ('000 Tan Metrik) <i>Total production of aquaculture ('000 Tonnes)</i>	472.3 ^r	581.0	526.5
Jumlah bilangan penternak akuakultur <i>Total number of aquaculturist</i>	23,986	26,291	29,261

Sumber : Jabatan Perikanan, Malaysia

Source : Department of Fisheries, Malaysia

PERLOMBONGAN DAN PERINDUSTRIAN
Mining and Industry

11. PERLOMBONGAN DAN INDUSTRI

Mining and Industry

11.1 INDEKS PENGELUARAN PERINDUSTRIAN

Index of Industrial Production

(2005 = 100)

	Wajaran <i>Weight</i>	2009	2010	2011
Indeks keseluruhan <i>Overall index</i>	100.00	99.9	107.1	108.4
Perlombongan ¹ <i>Mining</i>	30.61	95.5	93.9	87.1
Pembuatan <i>Manufacturing</i>	63.51	100.9	112.1	117.3
Elektrik <i>Electricity</i>	5.88	111.4	121.2	123.6

Nota/Notes:

- ¹ **Indeks Perlombongan diwakili oleh industri minyak mentah dan gas asli.**
The Mining Index is represented by crude oil and natural gas industries.

11.2 PENGELUARAN GALIAN

Production of Minerals

	2009	2010	2011 ^r
			'000 tong <i>barrels</i>
Minyak mentah ¹ <i>Crude oil</i>	240,479	232,965	207,969
			'000 tan metrik <i>tonnes</i>
Gas asli cecair <i>Liquefied natural gas</i>	22,452	24,363	25,822
Timah-dalam-konsentrat ² <i>Tin-in-concentrates</i>	2	3	3
Bijih besi <i>Iron ore</i>	1,470	3,558	7,696
Batu arang <i>Coal</i>	2,138	2,397	2,843
Bauksit <i>Bauxite</i>	263	124	188
Ilmenit <i>Ilmenite</i>	16	19	29
Tanah liat <i>China clay (Kaolin)</i>	464	473	404
			'000 grams
Emas (mentah) <i>Gold (raw)</i>	2,794	3,766	4,215

Sumber : Jabatan Mineral dan Geosains Malaysia
Source : Department of Minerals and Geoscience Malaysia

Nota/Notes:

Petroleum Nasional Berhad (PETRONAS)

¹ Termasuk kondensat
Including condensate

² Timah merujuk kepada 'Timah-dalam-konsentrat' yang mana ia adalah kandungan timah dalam "Konsentrat Timah". "Konsentrat Timah" ialah bahan-bahan mentah yang mengandungi timah yang digunakan oleh pelebur-pelebur timah.
Tin refers to 'Tin-in-concentrates' which is the tin content in "Tin Concentrate". "Tin Concentrate" refers to tin bearing materials which are used by tin smelters.

11.3 PERANGKAAAN UTAMA INDUSTRI PEMBUATAN

Principal Statistics of Manufacturing Industries

	2008	2009	2010
Nilai output kasar (RM juta) <i>Value of gross output (RM million)</i>	817,710	730,043	836,494
Bilangan pekerja pada akhir tahun ('000) <i>Number of persons engaged as at end of year ('000)</i>	1,771	1,693	1,812
Gaji dan upah yang dibayar (RM juta) <i>Salaries and wages paid (RM million)</i>	40,298	39,397	43,745

11.4 PERANGKAAAN UTAMA INDUSTRI PEMBUATAN MENGIKUT BAHAGIAN, 2010

*Principal Statistics of Manufacturing Industries
by Division, 2010*

Bahagian <i>Division</i>	Nilai output kasar <i>Value of gross output</i> (Juta/million) (RM)	Bil. pekerja pada akhir tahun <i>No. of persons engaged as at end of year</i>	Gaji & upah yang dibayar <i>Salaries & wages paid</i> (Juta/million) (RM)
Jumlah <i>Total</i>	836,494	1,812,360	43,745
Pembuatan produk makanan <i>Manufacture of food products</i>	146,644	196,084	4,012
Pembuatan minuman <i>Manufacture of beverages</i>	6,452	12,032	351
Pembuatan produk tembakau <i>Manufacture of tobacco products</i>	2,162	2,543	114
Pembuatan tekstil <i>Manufacture of textiles</i>	6,656	30,886	548
Pembuatan pakaian <i>Manufacture of wearing apparel</i>	4,736	64,652	802
Pembuatan produk kulit dan barangan berkaitan <i>Manufacture of leather and related products</i>	988	8,610	148
Pembuatan kayu dan produk kayu dan gabus, kecuali perabot; pembuatan bagi artikel jerami dan bahan-bahan anyaman <i>Manufacture of wood and products of wood and cork, except furniture; manufacture of articles of straw and plaiting materials</i>	18,869	112,613	1,718
Pembuatan kertas dan produk kertas <i>Manufacture of paper and paper products</i>	11,239	54,163	1,138
Percetakan dan penerbitan semula media rakaman <i>Printing and reproduction of recorded media</i>	7,259	56,116	1,202
Pembuatan kok dan produk petroleum bertapis <i>Manufacture of coke and refined petroleum products</i>	113,003	7,659	427
Pembuatan kimia dan produk kimia <i>Manufacture of chemicals and chemical products</i>	73,209	77,180	2,954
Pembuatan produk farmaseutikal asas, kimia perubatan dan botani <i>Manufacture of basic pharmaceutical products and pharmaceutical preparations</i>	2,720	10,359	248

11.4 PERANGKAAAN UTAMA INDUSTRI PEMBUATAN MENGIKUT BAHAGIAN, 2010 (SAMB.)

*Principal Statistics of Manufacturing Industries
by Division, 2010 (Cont'd)*

Bahagian <i>Division</i>	Nilai output kasar <i>Value of gross output</i> (Juta/million) (RM)	Bil. pekerja pada akhir tahun <i>No. of persons engaged as at end of year</i>	Gaji & upah yang dibayar <i>Salaries & wages paid</i> (Juta/million) (RM)
Pembuatan produk getah dan plastik <i>Manufacture of rubber and plastics products</i>	55,167	201,177	4,368
Pembuatan produk galian bukan logam lain <i>Manufacture of other non-metallic mineral products</i>	25,171	77,391	2,177
Pembuatan logam asas <i>Manufacture of basic metals</i>	46,112	70,192	2,559
Pembuatan produk logam, kecuali mesin dan kelengkapan <i>Manufacture of fabricated metal products, except machinery and equipment</i>	24,745	109,550	2,462
Pembuatan komputer, produk elektronik dan optikal <i>Manufacture of computer, electronics and optical products</i>	180,738	347,658	9,728
Pembuatan kelengkapan elektrik <i>Manufacture of electrical equipment</i>	21,896	71,530	1,742
Pembuatan jentera dan peralatan t.t.t.l. <i>Manufacture of machinery and equipment n.e.c.</i>	20,271	71,480	1,976
Pembuatan kenderaan bermotor, treler dan semi treler <i>Manufacture of motor vehicles, trailers and semi-trailers</i>	34,341	73,858	1,928
Pembuatan kelengkapan pengangkutan lain <i>Manufacture of other transport equipment</i>	15,601	35,498	988
Pembuatan perabot <i>Manufacture of furniture</i>	10,292	80,064	1,341
Pembuatan lain <i>Other manufacturing</i>	5,674	27,427	515
Membaiki dan pemasangan jentera dan kelengkapan <i>Repair and installation of machinery and equipment</i>	2,549	13,638	300

11.5 PERANGKAAAN UTAMA INDUSTRI PEMBINAAN

Principal Statistics of Construction Industries

	2007	2009	2010
Nilai output kasar (RM juta) <i>Value of gross output (RM million)</i>	60,716	70,600	91,342
Bilangan pekerja pada akhir tahun <i>Number of persons engaged as at end of year</i>	595,139	602,694	974,488
Gaji dan upah yang dibayar (RM juta) <i>Salaries and wages paid (RM million)</i>	12,957	13,967	19,841

Nota/Notes:

Tiada penyiasatan dijalankan untuk tahun 2003, 2006 dan 2008.

No survey was conducted for years 2003, 2006 and 2008.

Data tahun 2010 merujuk kepada data banci.

Year 2010 data refers to census data.

11.6 PENJANAAN DAN PENGGUNAAN ELEKTRIK

Electricity Generation and Consumption

	2009	2010	2011 ^P
Penjanaan elektrik <i>Electricity generation</i>			
Unit yang dijanakan (juta kilowatt-jam) <i>Units generated (million kilowatt-hours)</i>	107,116	116,808	118,642
Penggunaan elektrik (juta kilowatt-jam) <i>Electricity consumption (million kilowatt-hours)</i>	93,714	101,550	105,057

Sumber: Tenaga Nasional Berhad
Source :

Jabatan Bekalan Elektrik dan Gas,
Malaysia
*Department of Electricity and Gas Supply,
Malaysia*

Sabah Electricity Sdn. Bhd

Sarawak Energy Berhad

Pengeluar Tenaga Bebas
Independent Power Producers

PENGANGKUTAN DAN KOMUNIKASI
Transport and Communications

12. PENGANGKUTAN

Transports

12.1 JALAN RAYA DAN REL KERETA API

Roads and Railways

	Kilometer <i>Kilometre</i>		
	2009	2010	2011
Panjang jalan raya ¹ <i>Road mileage</i>	135,226	144,403	155,427
Berturap <i>Paved</i>	109,374	116,169	125,776
Kerikil <i>Gravel</i>	16,806	18,480	19,424
Tanah <i>Earth</i>	9,046	9,754	10,227
Hitungan rel kereta api <i>Length of railway track</i>	1,792	1,792	1,792

Sumber : Jabatan Kerja Raya, Malaysia
Source : Public Works Department, Malaysia
Keretapi Tanah Melayu Berhad
Keretapi Sabah

Nota/Notes:

¹ Tidak termasuk jalan di bawah selenggaraan Pihak Berkuasa Tempatan.
Excludes roads maintained by Local Authorities.

12.2 KENDERAAN BERMOTOR YANG BERDAFTAR

Registered Motor Vehicles

Jenis Kenderaan <i>Type of Vehicles</i>	Akhir Tempoh <i>End of Period</i>		
	2009	2010	2011
Jumlah <i>Total</i>	19,016,782	20,188,565	21,401,269
Motokar <i>Motorcar</i>	8,506,080	9,114,920	9,721,447
Motosikal <i>Motorcycle</i>	8,940,230	9,441,907	9,985,308
Teksi dan kereta sewa <i>Taxi and hired car</i>	95,728	102,961	109,214
Bas <i>Bus</i>	66,581	69,149	71,784
Kenderaan barang <i>Goods vehicle</i>	936,222	966,177	997,649
Kenderaan lain ¹ <i>Other vehicles</i>	471,941	493,451	515,867

Sumber : Jabatan Pengangkutan Jalan, Malaysia

Source : Road Transport Department, Malaysia

Nota/Notes:

¹ Merangkumi kenderaan seperti karavan, kenderaan bomba kerajaan & swasta, kenderaan sekolah memandu, kenderaan mayat, kenderaan orang cacat, kenderaan kerajaan, kenderaan pihak berkuasa tempatan, ambulan dan kenderaan kedutaan.

Includes vehicles such as caravans, government & private fire vehicles, driving school vehicles, hearse, vehicle for disabled, government vehicles, local authority vehicles, ambulance and embassy vehicles.

12.3 PENGANGKUTAN UDARA

Air Transport

	2009	2010	2011
Penerbangan Mendarat/berlepas (Bilangan)			
<i>Flights Landed/Take-off (Number)</i>			
Dalam Negeri	417,809	440,169	466,894
<i>Domestic</i>			
Antarabangsa	187,247	207,645	228,988
<i>International</i>			
Jumlah	605,056	647,814	695,882
<i>Total</i>			
Penumpang (Bilangan)			
<i>Passengers (Number)</i>			
Berlepas			
<i>Embarked</i>			
Dalam Negeri	14,722,528	15,480,593	17,192,435
<i>Domestic</i>			
Antarabangsa	11,558,871	13,784,044	15,301,413
<i>International</i>			
Jumlah	26,281,399	29,264,637	32,493,848
<i>Total</i>			
Mendarat			
<i>Disembarked</i>			
Dalam Negeri	14,667,249	15,473,903	17,218,293
<i>Domestic</i>			
Antarabangsa	11,344,550	13,791,313	15,159,629
<i>International</i>			
Jumlah	26,011,799	29,265,216	32,377,922
<i>Total</i>			
Muatan (Tan Metrik)			
<i>Cargo (Tonnes)</i>			
Turun	2,801,360	3,417,067	3,369,965
<i>Discharged</i>			
Dihantar	3,310,552	4,351,524	3,346,128
<i>Loaded</i>			
Mel (Tan Metrik)			
<i>Mail (Tonnes)</i>			
Turun	20,208	22,018	21,286
<i>Landed</i>			
Dihantar	149,677	155,101	84,935
<i>Despatched</i>			

Sumber : Malaysia Airports Holding Berhad
Source :

Jabatan Penerbangan Awam Malaysia
Department of Civil Aviation Malaysia

12.4 KAPAL LAUT TERLIBAT DALAM PERDAGANGAN ANTARABANGSA

Ocean Going Vessel Enggaged in International Trade

Pelabuhan Terpilih <i>Selected Ports</i>	2010				2011			
	Ketibaan <i>Arrivals</i>		Belayar <i>Departures</i>		Ketibaan <i>Arrivals</i>		Belayar <i>Departures</i>	
	Bilangan ('000) T.B.B. <i>Number ('000) N.R.T.</i>		Bilangan ('000) T.B.B. <i>Number ('000) N.R.T.</i>		Bilangan ('000) T.B.B. <i>Number ('000) N.R.T.</i>		Bilangan ('000) T.B.B. <i>Number ('000) N.R.T.</i>	
Klang	14,592	179,471	14,592	179,471	14,912	175,525	14,912	175,525
Pulau Pinang	3,296	39,328	3,597	42,277	3,099	38,049	3,512	43,341
Tanjung Pelepas	2,405	66,809	2,382	65,872	3,296	87,394	3,244	85,605
Pasir Gudang	8,515	36,368	8,517	36,182	8,452	34,190	8,237	33,246
Port Dickson	606	4,110	580	4,511	558	3,863	585	4,738
Kuantan	2,078	17,796	2,078	17,796	2,108	20,190	2,108	20,190
Kuching	1,488	3,558	1,143	2,596	1,423	3,460	1,143	2,770
Bintulu	2,524	19,084	2,886	20,796	2,172	17,504	2,386	17,880
Rajang ¹	1,035	2,760	881	1,748	878	2,503	768	1,569
Miri	664	2,390	729	2,724	807	2,260	872	2,473
Kota Kinabalu	256	1,318	256	1,318	260	949	260	949
Sandakan	1,779	3,559	1,779	3,559	1,725	3,516	1,725	3,516
W.P. Labuan	1,322	8,830	1,322	8,830	1,368	7,530	1,368	7,530
Tawau	1,079	1,758	1,079	1,758	983	1,745	983	1,745

Nota/ Notes:

¹ Termasuk pelabuhan-pelabuhan di Sibul, Sarikei dan Tg. Manis.
Include ports at Sibul, Sarikei and Tg. Manis.

Sumber: Jabatan Laut, Semenanjung Malaysia
Source: Marine Department, Peninsular Malaysia

Jabatan Laut, Sarawak
Marine Department, Sarawak

Jabatan Laut, Wilayah Persekutuan Labuan
Marine Department, Wilayah Persekutuan Labuan

Lembaga Pelabuhan Klang
Port Klang Authority

Penang Port Sdn. Bhd
Kuantan Port Consortium Sdn. Bhd
Sabah Ports Sdn. Bhd

12.5 KARGO YANG DIKENDALIKAN DI SEMENANJUNG MALAYSIA

Cargo throughput at Peninsular Malaysia

Pelabuhan Terpilih <i>Selected Ports</i>	('000) Freightweight Tonnes(FWT)			
	Kargo yang dikendalikan di Semenanjung Malaysia <i>Cargo throughput at Peninsular Malaysia</i>			
	Eksport <i>Exports</i>		Import <i>Imports</i>	
	2010	2011	2010	2011
Kelang	78,728	88,375	91,635	103,679
Pulau Pinang	13,131	13,340	15,795	16,049
Johor	11,585	11,762	16,544	20,464
Port Dickson	2,335	2,096	10,182	11,255
Kuantan	8,050	11,073	4,029	4,133

Sumber: Jabatan Laut Negeri Sembilan
Source: Marine Department Negeri Sembilan

Penang Port Sdn. Bhd.

Lembaga Pelabuhan Klang
Port Klang Authority

Johor Port Berhad

Kuantan Port Consortium Sdn. Bhd.

12.6 KONTENA YANG DIKENDALIKAN DI SEMENANJUNG MALAYSIA

Container throughput at Peninsular Malaysia

Pelabuhan Terpilih <i>Selected Ports</i>	<i>Twenty-Footer Equivalent Units (TEUs)</i>			
	Kontena yang dikendalikan di Semenanjung Malaysia <i>Container throughput at Peninsular Malaysia</i>			
	Eksport <i>Exports</i>		Import <i>Imports</i>	
	2010	2011	2010	2011
Klang	4,434,209	4,755,518	4,437,536	4,848,211
Pulau Pinang	599,257	642,101	506,841	556,743
Johor	504,805	371,463	481,068	346,632
Kuantan	72,942	69,138	67,536	65,260
Tanjung Pelepas	3,410,549	3,125,975	3,920,436	3,620,492

Sumber: **Jabatan Laut Negeri Sembilan**
Marine Department Negeri Sembilan

Penang Port Sdn. Bhd

Lembaga Pelabuhan Klang
Port Klang Authority

Johor Port Berhad

Kuantan Port Consortium Sdn. Bhd

Pelabuhan Tanjung Pelepas Sdn. Bhd

12.7 PERANGKAAAN POS

Postal Statistics

	2009	2010	2011
Bilangan pejabat pos <i>Number of post offices</i>	697	702	704
Bilangan pejabat pos bergerak <i>Number of mobile post offices</i>	1	2	24
Bilangan pejabat pos mini <i>Number of mini post offices</i>	352	344	327
Bilangan wakil pos <i>Number of postal agencies</i>	227	134	120
Pos 2020	6	6	5
Barangan pos yang diposkan dalam Malaysia untuk penyerahan di Malaysia ('000) <i>Postal items posted in Malaysia for delivery in Malaysia ('000)</i>	1,203,630	1,130,104	1,073,838
Barangan pos yang diposkan dalam Malaysia untuk penyerahan di negeri-negeri seberang laut ('000) <i>Postal items posted in Malaysia for delivery overseas ('000)</i>	13,848	16,410	18,116
Barangan pos yang diposkan di seberang laut untuk penyerahan di Malaysia ('000) <i>Postal items posted overseas for delivery in Malaysia ('000)</i>	27,928	24,804	26,535

Sumber : Pos Malaysia Berhad
Source :

12.8 PERANGKAAAN TELEKOMUNIKASI

Telecommunications Statistics

Butir-butir <i>Items</i>	2009	2010	2011
Bilangan langganan 3G ('000) <i>Number of 3G subscriptions ('000)</i>	7,347	8,602	10,335
Bilangan langganan			
Talian Ibusawat Terus (DEL) ('000) <i>Number of Direct Exchange Line (DEL) Subscriptions ('000)</i>	4,312	4,404	4,406
Kediaman <i>Residential</i>	2,734	2,804	2,491
Perniagaan <i>Business</i>	1,578	1,600	1,600
Telefon awam ¹ <i>Public payphone</i>	79	39	44
Bilangan langganan			
telefon selular ('000) <i>Number of cellular phones subscriptions ('000)</i>	30,144	33,859	36,661
Pasca bayar <i>Post paid</i>	6,265	6,716	7,067
Prabayar <i>Prepaid</i>	23,879	27,143	29,595
Bilangan perkhidmatan pesanan pendek yang dihantar (bilion) <i>Number of short message services (SMS) sent (billion)</i>	89.4	96.8	93.1

¹ Telefon awam merujuk kepada jumlah bilangan semua jenis termasuk yang menggunakan duit syiling, kad atau pun kombinasi
Payphones refer to the total number of all types of public telephones including coin, card-operated ones and combos.
Termasuk semua telefon awam, beroperasi ataupun tidak.
No distinction is made between operational and not operational payphones.

12.8 PERANGKAAAN TELEKOMUNIKASI (SAMB.)

Telecommunications Statistics (Cont'd)

Butir-butir Items	2009	2010	2011
Kadar penembusan <i>Penetration rate</i>			
Talian Ibusawat Terus per 100 isi rumah <i>DEL per 100 households</i>	44.0	42.5	37.3
Jalur lebar per 100 isi rumah <i>Broadband per 100 households</i>	31.7	55.6	62.3
Telefon selular per 100 penduduk ² <i>Cellular phone per 100 inhabitants</i>	105.4	116.6	127.7
Bilangan langganan jalur lebar mengikut teknologi ('000) <i>Number of broadband subscriptions by technology ('000)</i>	2009	2010	2011
Tetap <i>Fixed</i>			
<i>Asymmetric Digital Subscriber Line (ADSL)</i>	1,513.5	1,786.3	1,737.8
<i>Symmetric Digital Subscriber Line (SDSL)</i>	10.2	9.6	6.4
<i>Fiber</i>	-	-	249.5
Lain-lain/ Other ³	20.8	30.1	10.5
Tanpa wayar <i>Wireless</i>			
Mudah alih/Mobile	927.8	2,011.9	2,442.9
Bayar Guna/Pay per use	-	601.7	601.7
Lain-lain/Others	-	25.3	358.9
1 Malaysia Netbook ('000) ⁴	-	-	279.2

Sumber : Suruhanjaya Komunikasi dan Multimedia Malaysia

Source : Malaysian Communications and Multimedia Commission

Nota/Notes:

² Kadar penembusan telefon selular dikira sebagai jumlah langganan dan dibahagi jumlah penduduk dan didarab dengan 100. Penembusan yang melebihi 100.0% boleh berpunca daripada pelanggan yang melanggan melebihi daripada satu langganan.

The penetration rate refer to the total subscriptions divided by the total population and multiplied by 100. A penetration rate over 100% can occur because of multiple subscriptions.

³ Termasuk satelit, fixed wireless dan VDSL. Mulai 2011, langganan jalur lebar dikategorikan semula kepada Tetap (berwayar) dan Tanpa wayar. WiMax dikategorikan sebagai Tanpa wayar.

Include satellite, fixed wireless and VDSL. Beginning 2011, broadband subscriptions are recategorised into Fixed (wired) and Wireless. Wimax falls under Wireless.

⁴ Pengkelasan semula 1Malaysia Netbook dalam kumpulannya sendiri.

Reclassified 1Malaysia Netbook as a group of its own.

KEWANGAN

Finance

13. KEWANGAN

13.1 HASIL DAN PERBELANJAAN KERAJAAN PERSEKUTUAN

Federal Government Revenue and Expenditure

	RM Juta Million		
	2010	2011	2012 ¹
Jumlah Hasil <i>Total Revenue</i>	159,653	185,419	207,246
Cukai tidak langsung <i>Indirect taxes</i>	30,507	32,643	35,668
Hasil bukan cukai <i>Non-tax revenue</i>	50,138	50,534	54,753
Perbelanjaan Mengurus <i>Operating Expenditure</i>	151,633	182,594	202,617
Perbelanjaan Pembangunan (Kasar) <i>Development Expenditure (Gross)</i>	52,792	46,416	49,822

¹ Anggaran disemak
Revised estimate

Sumber : Kementerian Kewangan Malaysia
Source : Ministry of Finance, Malaysia

13.2 HASIL KERAJAAN PERSEKUTUAN

Federal Government Revenue

	RM Juta Million		
	2010	2011	2012 ¹
Jumlah hasil [(A)+(B)+(C)] <i>Total revenue</i>	159,653	185,419	207,246
Jumlah cukai langsung (A) <i>Total direct taxes</i>	79,009	102,242	116,825
Syarikat <i>Companies</i>	36,266	46,888	54,136
Perseorangan <i>Individuals</i>	17,805	20,203	22,445
Petroleum <i>Petroleum</i>	18,713	27,748	31,962
Koperasi dan lain-lain <i>Co-operatives and others</i>	1,667	1,893	2,712
Lain-lain <i>Others</i>	4,558	5,509	5,570
Jumlah cukai tidak langsung (B) <i>Total indirect taxes</i>	30,507	32,643	35,668
Duti eksport <i>Export duties</i>	1,810	2,081	2,393
Duti import <i>Import duties</i>	1,966	2,026	2,245
Eksais <i>Excise</i>	11,770	11,517	12,338
Cukai jualan <i>Sales tax</i>	8,171	8,577	9,185
Cukai perkhidmatan <i>Service tax</i>	3,926	4,982	6,197
Lain-lain <i>Others</i>	2,863	3,460	3,309
Jumlah hasil bukan cukai (C) <i>Total non-tax revenue</i>	50,138	50,534	54,753

¹ Anggaran disemak
Revised estimate

Sumber : Kementerian Kewangan Malaysia
Source : Ministry of Finance, Malaysia

13.3 PERBELANJAAN MENGURUS KERAJAAN PERSEKUTUAN

Federal Government Operating Expenditure

			RM Juta Million
	2010	2011	2012 ¹
(i) Mengikut Objek <i>By Object</i>	151,633	180,283	181,584
Emolumen <i>Emoluments</i>	46,663	49,913	52,017
Pencen dan ganjaran <i>Pensions and gratuities</i>	11,515	12,957	12,088
Bayaran khidmat hutang <i>Debt service charges</i>	15,621	18,517	20,453
Pemberian kepada Kerajaan Negeri <i>Grants to State Governments</i>	4,689	5,511	5,846
Bekalan dan perkhidmatan <i>Supplies and services</i>	23,841	29,532	30,480
Subsidi <i>Subsidies</i>	23,106	32,798	33,197
Lain-lain <i>Others</i>	26,197	31,055	27,503
(ii) Mengikut Sektor <i>By Sector</i>	151,633	180,283	181,584
Keselamatan <i>Security</i>	18,683	20,700	21,437
Perkhidmatan sosial <i>Social services</i>	57,765	65,085	66,922
Perkhidmatan ekonomi <i>Economic services</i>	14,527	19,922	17,165
Pentadbiran am <i>General administration</i>	15,342	16,869	17,123
Lain-lain <i>Others</i>	45,316	57,708	58,937

¹ Anggaran disemak
Revised estimate

Sumber : Kementerian Kewangan Malaysia
Source : Ministry of Finance, Malaysia

13.4 PERBELANJAAN PEMBANGUNAN KERAJAAN PERSEKUTUAN

Federal Government Development Expenditure

	RM Juta		
	2010	2011	2012 ¹
Jumlah /Total	52,792	49,305	49,249
Keselamatan <i>Security</i>	3,970	4,373	4,383
Pertahanan <i>Defence</i>	2,666	3,506	3,562
Keselamatan dalam negeri <i>Internal security</i>	1,304	867	821
Perkhidmatan Sosial <i>Social Services</i>	20,784	15,774	13,623
Pendidikan dan latihan <i>Education and training</i>	12,046	10,363	8,537
Kesihatan <i>Health</i>	3,780	2,216	1,948
Perumahan <i>Housing</i>	1,333	918	738
Lain-lain <i>Others</i>	3,625	2,278	2,399
Perkhidmatan Ekonomi <i>Economic Services</i>	26,121	28,201	29,819
Pertanian dan pembangunan luar bandar <i>Agriculture and rural development</i>	2,920	836	1,880
Kemudahan awam <i>Public utilities</i>	5,286	5,882	5,781
Perdagangan dan perindustrian <i>Trade and industry</i>	6,987	9,317	5,052
Pengangkutan <i>Transport</i>	8,665	9,670	9,973
Perhubungan <i>Communications</i>	688	838	587
Lain-lain <i>Others</i>	1,574	1,658	6,546
Pentadbiran am <i>General administration</i>	1,917	957	1,424

¹ Anggaran disemak
Revised estimate

Sumber : Kementerian Kewangan Malaysia
Source : Ministry of Finance, Malaysia

13.5 RIZAB LUAR MALAYSIA

External Reserves of Malaysia

		Akhir tempoh <i>End of period</i>		
		RM Juta <i>Million</i>		
	2009	2010	2011	
Bank Negara Malaysia				
Rizab antarabangsa kasar <i>Gross International reserves</i>	331,300.6	328,670.5	423,357.7	
Hak-hak Pengeluaran Khas <i>Special Drawing Rights</i>	7,279.2	6,442.5	6,253.0	
Kedudukan rizab di IMF <i>IMF reserves position</i>	1,515.8	1,453.5	2,672.2	
Emas dan pertukaran Mata wang asing <i>Gold and foreign exchange</i>	322,505.6	320,774.4	414,432.5	
Tanggungjawab luar negeri <i>External liabilities</i>	23.9	21.4	26.7	
Rizab antarabangsa bersih <i>Net international reserves</i>	331,276.7	328,649.1	423,331.0	
Lain-lain rizab rasmi <i>Other official reserves</i>	113.8	98.4	100.5	
Rizab rasmi bersih <i>Net official reserves</i>	331,390.5	328,747.5	423,431.5	

Sumber : Bank Negara Malaysia
Source :

13.6 CUKAI PENDAPATAN DITAKSIR DAN DIPUNGUT

Assessments Made and Income Tax Collected

		Seperti pada akhir tempoh <i>As at end of period</i>	
	2009	2010	2011
Bilangan taksiran ¹ <i>Number of assessments</i>	3,815,946	3,844,758	4,091,985
			RM Juta
Cukai kasar dipungut ² <i>Gross tax collected</i>	90,650.9	86,499.5	109,609.8
Tolak bayaran balik <i>Less repayment</i>	8,559.7	7,683.6	6,960.4
Cukai bersih dipungut <i>Net tax collected</i>	82,091.2	78,815.9	102,649.4

Nota/Notes:

Sumber : Lembaga Hasil Dalam Negeri Malaysia
Source : *Inland Revenue Board Malaysia*

¹ **Bilangan taksiran dan amaun taksiran bersih terdiri daripada taksiran tahun semasa dan tahun kebelakang diproses.**

The number of assessments and amount of net assessment processed for current and previous year.

² **Data tidak termasuk cukai langsung yang lain iaitu Duti Setem, Cukai Keuntungan Harta Tanah, Duti Harta Pusaka dan Pendaftaran Perniagaan.**

Data exclude other direct taxes i.e. Stamp Duty, real Property Gains tax, Estate Duty and Business Registration.

13.7 PENANGGUNG INSURANS BERLESEN
Licensed Insurers

	2008 ¹	2009 ¹	2010 ¹
Mengikut Tempat Ditubuhkan <i>By Place of Incorporation</i>			
Syarikat-syarikat yang ditubuhkan dalam Malaysia <i>Malaysian incorporated companies</i>	42	40	39
Syarikat-syarikat yang ditubuhkan di luar Malaysia <i>Foreign incorporated companies</i>	7	7	7
Jumlah <i>Total</i>	49	47	46
Mengikut Jenis Perniagaan <i>By Type of Business</i>			
Insurans Hayat sahaja <i>Life Insurance only</i>	9	9	9
Insurans Semula Hayat <i>Life Reinsurance</i>	1	1	1
Insurans Am sahaja <i>General Insurance only</i>	26	24	24
Insurans Semula Am <i>General Reinsurance</i>	5	5	5
Insurans Hayat dan Am <i>Life and General Insurance</i>	7	7	6
Insurans Semula Hayat dan Am <i>Life and General Reinsurance</i>	1	1	1
Jumlah <i>Total</i>	49	47	46

Nota/Notes:

¹ Seperti pada akhir tahun kewangan.
As at end of financial year.

Sumber :
Source : Bank Negara Malaysia

13.8 PERNIAGAAN INSURANS HAYAT DAN AM

Life and General Insurance Business

	2010 ¹	2011 ²
Insurans Hayat		
<i>Life Insurance</i>		
Perniagaan langsung berkuatkuasa :		
<i>Direct business in force :</i>		
Bilangan polisi (Unit)	11,809,112	12,121,041
<i>Number of policies (Units)</i>		
		RM Juta <i>Million</i>
Jumlah wang diinsuranskan	791,361	852,254
<i>Sum insured</i>		
Premium tahunan	17,347	19,275
<i>Annual premiums</i>		
Insurans Am		
<i>General Insurance</i>		
Premium langsung kasar ³	11,531	12,569
<i>Gross direct premiums</i>		
Premium bersih	9,377	10,112
<i>Net premiums</i>		

Sumber : Bank Negara Malaysia
Source :

Nota/Notes:

- ¹ Seperti pada akhir tahun kewangan
As at end of financial year.
- ² Seperti pada akhir tahun kalendar.
As at end of calendar year.
- ³ Pertukaran asas laporan daripada premium kasar kepada premium langsung kasar.
Change in basis of reporting from gross premiums to gross direct premiums.

13.9 JUMLAH BEKALAN WANG
Total Money Supply

	Akhir tempoh End of period		
	2009	2010	2011
	RM Juta Million		
M1 Bekalan wang secara kecil ¹ <i>Narrow money supply</i>	200,916.6	224,384.0	258,209.5
Mata wang dalam edaran <i>Currency in circulation</i>	43,439.2	47,685.2	53,488.5
Deposit permintaan <i>Demand deposits</i>	157,477.4	176,698.8	204,721.0
M2 Mudah tunai sektor swasta ² <i>Private sector liquidity</i>	989,342.9	1,060,153.6	1,214,857.1
M3 Bekalan wang secara luas ³ <i>Broad money supply</i>	1,017,303.2	1,086,094.0	1,240,928.6

Nota/Notes:

Sumber : Bank Negara Malaysia
 Source :

- ¹ M1 terdiri daripada mata wang dalam edaran dan deposit permintaan sektor swasta yang disimpan dengan bank perdagangan dan bank Islam.
M1 consists of currency in circulation and demand deposits of the private sector placed with commercial banks and Islamic banks.
- ² M2 terdiri daripada M1 campur separuh wang secara kecil. Separuh wang secara kecil terdiri daripada deposit tabungan dan tetap, instrumen deposit boleh niaga (NID), repo dan deposit mata wang asing oleh sektor swasta yang disimpan dengan bank perdagangan dan bank Islam.
M2 consists of M1 plus narrow quasi-money. Narrow quasi-money comprising savings and fixed deposits, negotiable instruments of deposits (NIDs), repos and foreign currency deposits of the private sector placed with commercial banks and Islamic banks.
- ³ M3 terdiri daripada M2 campur deposit oleh sektor swasta yang disimpan dengan syarikat kewangan, bank saudagar dan syarikat diskaun. Tidak termasuk penyimpanan di antara institusi perbankan.
M3 consists of M2 plus deposits of the private sector placed with finance companies, merchant banks and discount houses. Excludes interplacement among the banking institutions.

13.10 BANK-BANK PERDAGANGAN DAN BANK-BANK ISLAM: PENYATA ASET*Commercial Banks and Islamic Banks: Statement of Assets*

Jenis Aset <i>Type of Assets</i>	Akhir tempoh <i>End of period</i>		
	2009	2010	2011
	RM Juta <i>Million</i>		
Jumlah aset / Total assets	1,364,664.1	1,486,332.9	1,713,821.3
Wang Tunai <i>Cash</i>	7,699.3	8,102.6	8,385.6
Deposit yang disimpan dan Repo berbalik <i>Deposits Placed and Reverse Repos</i>	27,008.0	29,944.4	59,480.9
Jumlah yang akan diterima daripada institusi perbankan <i>Amounts due from banking institutions</i>	240,032.9	231,534.7	275,380.7
Instrumen deposit bolehniaga yang dipegang <i>Negotiable instruments of deposit held</i>	37,063.3	29,150.6	38,812.8
Sekuriti Malaysia <i>Malaysian securities</i>	180,373.1	208,612.7	215,031.3
Pinjaman dan pendahuluan ¹ <i>Loans and advances</i>	777,792.2	875,572.1	994,890.1
Aset tetap <i>Fixed assets</i>	13,764.5	14,459.6	15,879.5
Lain-lain aset <i>Other assets</i>	80,930.9	88,956.2	105,960.3

Nota/Notes:

Sumber : Bank Negara Malaysia
Source :Data termasuk bank Islam.
Figure includes Islamic banks.¹ Butir ini termasuk pinjaman konvensional yang dijual kepada Cagamas dengan rekursa.
This item includes conventional loans sold to Cagamas with recourse.

**13.11 BANK-BANK PERDAGANGAN DAN BANK-BANK ISLAM:
PENYATA LIABILITI**

Commercial Banks and Islamic Banks: Statement of Liabilities

Jenis Liabiliti <i>Type of Liabilities</i>	Akhir tempoh <i>End of period</i>		
	2009	2010	2011
	RM Juta <i>Million</i>		
Jumlah liabiliti <i>Total liabilities</i>	1,364,664.1	1,486,332.9	1,713,789.2
Modal dan rizab ¹ <i>Capital and reserves</i>	123,362.6	135,635.1	148,646.4
Jumlah deposit <i>Total deposits</i>	1,028,347.3	1,104,794.2	1,262,754.7
Jumlah yang akan dibayar kepada institusi perbankan <i>Amounts due to banking institutions</i>	71,446.3	87,469.5	120,042.1
Penerimaan jurubank yang belum dijelaskan <i>Bankers acceptances outstanding</i>	12,953.2	15,114.7	16,143.3
Bil kena bayar <i>Bills payable</i>	5,486.1	6,092.1	6,768.7
Liabiliti lain ² <i>Other liabilities</i>	123,068.5	137,227.3	159,433.9

Nota/Notes:

Sumber : Bank Negara Malaysia
Source :

Data termasuk bank Islam.
Figure includes Islamic banks.

¹ **Termasuk penyata akaun untung rugi semasa yang belum diselaraskan dan diaudit.**
Includes current unaudited unadjusted profit/loss.

² **Butir ini termasuk tanggungan rekursa ke atas pinjaman yang dijual kepada Cagamas.**
This item includes recourse obligations on loans sold to Cagamas.

**13.12 BANK-BANK PERDAGANGAN DAN BANK-BANK ISLAM:
 KLASIFIKASI PINJAMAN/PEMBIAYAAN MENGIKUT TUJUAN**
*Commercial Banks and Islamic Banks:
 Classification of Loans/Financing by Purpose*

Tujuan <i>Purpose</i>	Akhir tempoh <i>End of period</i>	
	2010	2011
	RM Juta <i>Million</i>	
Jumlah Pinjaman <i>Total Loans</i>	878,442.7	998,190.8
Pembelian sekuriti <i>Purchase of securities</i>	35,150.1	42,134.9
Pembelian kenderaan pengangkutan <i>Purchase of transport vehicles</i>	132,198.4	143,635.0
Pembelian harta kediaman¹ <i>Purchase of residential property</i>	237,748.5	269,114.9
Pembelian harta bukan kediaman <i>Purchase of non-residential property</i>	90,560.7	109,829.7
Pembelian aset tetap selain tanah dan bangunan <i>Purchase of fixed assets other than land and building</i>	8,779.4	9,093.3
Kegunaan persendirian <i>Personal Use</i>	42,270.1	50,762.3
Kad kredit <i>Credit Card</i>	30,138.4	32,684.7
Pembelian barangan pengguna <i>Purchase of consumer durables</i>	91.9	78.9
Pembinaan <i>Construction</i>	21,583.8	25,006.5
Modal kerja <i>Working Capital</i>	225,874.0	252,212.0
Tujuan lain <i>Other purpose</i>	54,047.4	63,638.7

Nota/Notes:

Sumber : Bank Negara Malaysia
 Source :

¹ Hanya termasuk pinjaman yang dijual kepada Cagamas.
Includes loans sold to Cagamas only.

**13.13 BANK-BANK PERDAGANGAN DAN BANK-BANK ISLAM:
 KLASIFIKASI PINJAMAN/PEMBIAYAAN MENGIKUT SEKTOR**
*Commercial Banks and Islamic Banks:
 Classification of Loans/Financing by Sector*

Sector ¹ Sectors	2010	2011
Jumlah Pinjaman <i>Total Loans</i>	878,442.7	998,190.8
Pertanian primer <i>Primary agriculture</i>	19,883.3	21,821.7
Perlombongan dan kuari <i>Mining and quarrying</i>	3,119.6	4,689.1
Pembuatan <i>Manufacturing</i>	82,804.7	91,728.3
Elektrik, gas dan bekalan air <i>Electricity, gas, and water supply</i>	11,159.5	10,389.9
Perdagangan borong dan runcit, restoran dan hotel <i>Wholesale, retail, restaurants and hotels</i>	65,210.8	72,747.5
Pembinaan <i>Construction</i>	38,171.2	39,747.3
Harta tanah <i>Real estate</i>	38,593.7	50,629.9
Pengangkutan, penyimpanan dan perhubungan <i>Transport, storage and communication</i>	24,817.0	30,113.8
Perkhidmatan kewangan, insurans dan perniagaan <i>Financing, insurance and business services</i>	62,225.5	71,009.2
Pendidikan, kesihatan dan lain-lain <i>Education, health & others</i>	32,541.8	37,541.8
Sektor isi rumah ² <i>Household sector</i>	487,498.4	550,617.7
Sektor lain t.t.d.l. <i>Other sector n.e.c.</i>	12,417.0	17,154.6

Nota/Notes:

Data termasuk bank Islam.
Figure includes Islamic banks.

Sumber : Bank Negara Malaysia
 Source :

¹ Definisi bagi sektor ekonomi/industri adalah berdasarkan Klasifikasi Standard Perindustrian Malaysia (MSIC) 2000.
The definitions of the economic sectors/industries are based on the Malaysian Standard Industrial Classification (MSIC) 2000.

² Sektor isirumah = Jumlah tujuan pinjaman mengikut tujuan kepada isi rumah.
Household sector = total loans by purpose to households.

13.14 KUMPULAN WANG SIMPANAN PEKERJA

Employees Provident Fund

		Akhir tempoh <i>End of period</i>	
	2009	2010	2011
Bilangan akaun pencarum <i>Number of contributors' accounts</i>	12,351,415	12,721,780	13,149,654
			RM Juta <i>Million</i>
Jumlah yang ada bagi kredit pencarum <i>Amount standing to credit of contributors</i>	374,543	444,959	476,526
Jumlah pelaburan mengikut nilai buku <i>Total investments at book value</i>	371,263	440,517	469,220
Sekuriti Kerajaan Persekutuan <i>Federal Government Securities</i>	114,098 ^r	118,517	124,569
Pelaburan Malaysia lain <i>Other Malaysian investments</i>	257,165 ^r	322,000	344,651

Sumber : Kumpulan Wang Simpanan Pekerja
Source : *Employees Provident Fund*

13.15 KADAR PERTUKARAN RINGGIT MALAYSIA

Exchange Rates of Ringgit Malaysia

	Purata bagi tempoh <i>Average for period</i>		
	2009	2010	2011
Ringgit Malaysia bagi seunit mata wang asing <i>Ringgit Malaysia per unit of foreign currency</i>			
Dolar A.S. <i>U.S. Dollar</i>	3.5246	3.2211	3.0600
Paun Sterling <i>Pound Sterling</i>	5.5127	4.9802	4.9043
Dolar Australia <i>Australian Dollar</i>	2.7830	2.9592	3.1550
Dolar Kanada <i>Canadian Dollar</i>	3.0729	3.1262	3.0934
Dolar Singapura <i>Singapore Dollar</i>	2.4236	2.3624	2.4329
Mark Jerman <i>Deutsche Mark</i>	2.5089	2.1871	2.1759
Dolar Euro <i>Euro Dollar</i>	4.9068	4.2775	4.2556
Ringgit Malaysia bagi 100 unit mata wang asing <i>Ringgit Malaysia per 100 units of foreign currency</i>			
Yen Jepun <i>Japanese Yen</i>	3.7701	3.6717	3.8401
Baht Thai <i>Thai Baht</i>	10.2638	10.1540	10.0348
Peso Filipina <i>Philippine Peso</i>	7.3990	7.1410	7.0646
Rupiah Indonesia <i>Indonesian Rupiah</i>	0.0340	0.0355	0.0349
Dolar Hong Kong <i>Hong Kong Dollar</i>	45.4685	41.4583	39.3074

Sumber : Bank Negara Malaysia
Source :

Nota/Note:

Kadar AS\$ adalah kadar purata belian dan jualan antara bank-bank pada jam 12.00 tengah hari. Kadar bagi mata wang asing selain daripada AS\$ adalah kadar silang yang diperoleh daripada kadar mata wang asing tersebut terhadap AS\$ dan kadar RM/AS\$.

US\$ rates are the average of buying and selling interbank rates at noon. Rates for foreign currencies other than US\$ are cross rates derived from the rates of such foreign currencies against the US\$ and the RM/US\$.

13.16 KOPERASI
Cooperative

	Akhir tahun <i>End of year</i>		
	2009	2010	2011
Bilangan syarikat kerjasama berdaftar <i>Number of registered cooperative societies</i>	7,215	8,146	9,074
Keahlian <i>Membership</i>	6,783,775	6,600,041	7,040,309

Sumber : Suruhanjaya Koperasi Malaysia
Source : Cooperative Commission Malaysia

Nota : Tidak termasuk syarikat kerjasama yang berasaskan pertanian dan perikanan.
Note : Excludes cooperative societies pertaining to agriculture and fisheries.

**AKAUN NEGARA DAN IMBANGAN
PEMBAYARAN**

National Account and Balance of Payment

14. AKAUN NEGARA
National Accounts

14.1 AKAUN NEGARA
National Accounts

	RM Juta Million		
	<u>2009</u>	<u>2010</u> ^e	<u>2011</u> ^p
Keluaran Dalam Negeri Kasar (KDNK) pada harga semasa <i>Gross Domestic Product (GDP) at current prices</i>	712,857	795,037	881,080
Keluaran Dalam Negeri Kasar (KDNK) pada harga malar 2005 <i>Gross Domestic Product (GDP) at constant 2005 prices</i>	629,885	674,946	709,261
Pendapatan Negara Kasar (PNK) pada harga semasa <i>Gross National Income (GNI) at current prices</i>	698,638	768,523	859,102
PNK per kapita (harga semasa) <i>GNI per capita(current prices)</i>	24,879	26,882	29,661

**14.2 KELUARAN DALAM NEGERI KASAR (KDNK) MENGIKUT JENIS
AKTIVITI EKONOMI PADA HARGA MALAR 2005**

*Gross Domestic Product (GDP) by Kind of Economic Activity
at Constant 2005 Prices*

	<u>2009</u>	<u>2010</u> ^e	RM Juta Million <u>2011</u> ^p
Pertanian <i>Agriculture</i>	50,063	51,263	54,299
Perlombongan dan kuari <i>Mining and quarrying</i>	66,386	66,122	62,334
Pembuatan <i>Manufacturing</i>	152,150	170,258	178,333
Pembinaan <i>Construction</i>	19,270	20,428	21,370
Perkhidmatan <i>Services</i>	335,027	359,215	384,272
Perkhidmatan perantaraan <i>Intermediate services</i>	136,227	146,925	156,068
Pengangkutan, penyimpanan dan komunikasi <i>Transport, storage and communication</i>	45,484	49,122	52,302
Kewangan, insurans, hartanah dan perkhidmatan perniagaan <i>Finance, insurance, real estate and business services</i>	90,744	97,803	103,766
Perkhidmatan akhir <i>Final Services</i>	152,655	163,532	173,416
Utiliti <i>Utilities</i>	16,246	17,386	17,922
Perdagangan borong dan runcit, penginapan dan restoran <i>Wholesale and retail trade, accomodation and restaurant</i>	103,444	111,755	119,486
Perkhidmatan-perkhidmatan lain <i>Other services</i>	32,965	34,391	36,008
Perkhidmatan kerajaan <i>Government services</i>	46,145	48,758	54,789
Campur : Duti import <i>Plus : Import duties</i>	6,989	7,660	8,653
KDNK pada harga pembeli <i>GDP at purchasers' prices</i>	629,885	674,946	709,261

**14.3 PERBELANJAAN ATAS KELUARAN DALAM NEGERI KASAR (KDNK)
MENGIKUT JENIS PERBELANJAAN PADA HARGA MALAR 2005**
*Expenditure on Gross Domestic Product (GDP) by Type of Expenditure
at Constant 2005 Prices*

Jenis Perbelanjaan <i>Type of Expenditure</i>	<u>2009</u>	<u>2010</u> ^e	RM Juta <i>Million</i> <u>2011</u> ^p
Perbelanjaan penggunaan akhir kerajaan <i>Government final consumption expenditure</i>	78,675	80,936	93,976
Perbelanjaan penggunaan akhir swasta <i>Private final consumption expenditure</i>	309,169	329,433	352,919
Pembentukan modal kasar ¹ <i>Gross capital formation</i>	132,902	164,507	169,728
Imbangan barangan dan perkhidmatan <i>Balance of goods and services</i>	109,139	100,069	92,637
Perbelanjaan atas KDNK pada harga pembeli <i>Expenditure on GDP at purchasers' prices</i>	629,885	674,946	709,261

Nota/Notes:

- ¹ **Termasuk perbezaan perangkaan hasil dari pengimbangan.**
Includes statistical discrepancy arising from balancing.

15.1 IMBANGAN PEMBAYARAN (BERSIH)

Balance of Payments (Net)

	2009	2010 ^r	RM Juta Million 2011 ^r
Imbangan Akaun Semasa <i>Balance on Current Account</i>	110,727	88,079	97,108
Barangan <i>Goods</i>	140,725	134,726	148,071
Perkhidmatan <i>Services</i>	3,804	1,698	-8,013
Pendapatan <i>Income</i>	-14,215	-26,514	-21,979
Pindahan semasa <i>Current Transfers</i>	-19,587	-21,831	-20,971
Imbangan Akaun Modal & Kewangan <i>Balance on Capital & Financial Account</i>	-80,300	-19,993	22,061
Kesilapan dan Ketinggalan <i>Errors and Omissions</i>	-16,596	-70,713	-24,487
Imbangan Keseluruhan <i>Overall Balance</i>	13,831	-2,628	94,682

**ALAM SEKITAR DAN KETIBAAN
PELANCONG**

Environment and Tourist Arrivals

16. ALAM SEKITAR

Environment

16.1 KUALITI AIR SUNGAI

River Water Quality

Kategori <i>Category</i>	<u>2009</u>		<u>2010</u>		<u>2011</u>	
	Bil. <i>No.</i>	%	Bil. <i>No.</i>	%	Bil. <i>No.</i>	%
Bilangan lembangan sungai yang diawasi <i>Number of river basins monitored</i>	143	100.0	143	100.0	140	100.0
Tercemar <i>Polluted</i>	9	6.3	13	9.2	11	7.8
Sederhana tercemar <i>Slightly polluted</i>	64	44.8	65	45.4	53	37.9
Bersih <i>Clean</i>	70	48.9	65	45.4	76	54.3

Sumber : Jabatan Alam Sekitar

Source : Department of Environment

Nota/Notes:

Indeks Kualiti Air (IKA) digunakan untuk menilai kualiti air sungai.

The Water Quality Index (WQI) is used to evaluate the river water quality.

Kategori/Category

IKA/WQI

Tercemar/ Polluted

0 - 59

Sederhana Tercemar/Slightly Polluted

60 - 80

Bersih/Clean

81 - 100

16.2 PELEPASAN BAHAN PENCEMAR UDARA

Air Pollutant Emission

Jenis/type	Tan metrik/Tonnes				
	2007	2008	2009	2010	2011
Karbon Monoksida(CO) <i>Carbon Monoxide</i>	1,774.4	1,451.7	1,621.3	1,681.4	1,759.2
Nitrogen Dioksida (NO₂) <i>Nitrogen Dioxide</i>	563.1	410.0	756.4	740.0	770.1
Sulfur Dioksida (SO₂) <i>Sulphur Dioxide</i>	157.1	161.9	179.9	174.8	190.1
Habuk Halus (PM) <i>Particulate Matter</i>	38.8	31.7	27.7	27.0	26.7

Sumber : Jabatan Alam Sekitar
Source : Department of Environment

16.3 BUANGAN TERJADUAL
Scheduled Waste

Negeri <i>State</i>	Tan metrik/Tonnes		
	2009	2010	2011
Malaysia	1,705,308	1,880,929	1,622,032
Johor	338,101	295,207	345,342
Kedah	53,496	147,349	117,057
Kelantan	1,846	2,064	1,877
Melaka	16,800	21,243	21,298
Negeri Sembilan	236,345	55,573	198,711
Pahang	7,334	69,407	106,248
Perak	182,332	224,786	49,392
Perlis	873	2,116	1,932
Pulau Pinang	257,089	273,370	194,279
Sabah	4,563	5,297	7,054
Sarawak	32,486	54,932	42,775
Selangor	197,923	211,411	212,247
Terengganu	367,701	506,227	302,641
W.P. Kuala Lumpur	7,359	9,537	18,662
W.P. Labuan	1,060	2,410	2,518

Sumber : Jabatan Alam Sekitar
Source : Department of Environment

17. KETIBAAN PELANCONG

Tourist Arrivals

17.1 KETIBAAN PELANCONG MENGIKUT NEGARA ASAL

Tourist Arrivals by Country of Residence

Negara <i>Country</i>	2010	2011
Jumlah <i>Total</i>	24,577,196	24,714,324
ASEAN	18,937,179	18,885,302
Australia & New Zealand	646,847	639,798
Benua Eropah ¹ <i>Continental Europe</i>	..	580,058
United Kingdom	429,965	403,940
India	690,849	693,056
Jepun <i>Japan</i>	415,881	386,974
Taiwan	211,143	233,783
Amerika Syarikat <i>United States of America</i>	232,965	216,755
The People's Republic of China (PRC) ²	1,130,261	1,250,536
Republik Korea <i>Republic of Korea</i>	264,052	263,428
Arab Saudi <i>Saudi Arabia</i>	86,771	87,693
Jerman <i>Germany</i>	130,896	124,670
Negara Lain <i>Other Countries</i>	1,400,387	948,331

Sumber : Lembaga Penggalakan Pelancongan Malaysia

Source : Malaysia Tourism Promotion Board

Nota/Notes:

¹ Tidak termasuk United Kingdom dan Jerman.
Excludes United Kingdom and Germany.

² Termasuk Hong Kong dan Macau.
Includes Hong Kong and Macao.

Nota/ Simbol/ Singkatan
Notes/ Symbols/ Abbreviations

-	tidak ada <i>nil</i>	p	sementara/ permulaan <i>provisional/ preliminary</i>
..	tidak diperoleh <i>not available</i>	e	anggaran <i>estimate</i>
c.i.f.	kos, insuran dan tambang <i>cost, insurance and freight</i>	r	pindaan <i>revised</i>
f.o.b	<i>free on board</i>	RM	Ringgit Malaysia
T.B.B.	Tan Bersih Berdaftar	W.P.	Wilayah Persekutuan
N.R.T.	<i>Net Registered Tons</i>		
t.s.t.l.	Tidak tersebut di tempat lain <i>n.e.s. Not elsewhere specified</i>		
t.t.t.l./t.t.d.l	Tidak terkelas di tempat lain <i>n.e.c. Not elsewhere specified</i>		

- 1. Jumlah angka komponen mungkin tidak bersamaan dengan angka jumlah kecil atau jumlah besar disebabkan pembundaran.**
The sum of the component figures may not tally with the sub-total or total figures due to rounding.
- 2. Nama agensi yang membekalkan data ditunjukkan di bawah setiap jadual kecuali yang mana Jabatan Perangkaan adalah sumber tunggal data itu.**
The names of the agencies providing the data are given below each table except in cases where the Department of Statistics is the sole source of the data.
- 3. Angka-angka bagi tahun-tahun lalu telah dipinda di mana perlu.**
Past year figures have been revised wherever necessary.

**ASIA TENGGARA
SOUTH-EAST ASIA**



