



**GIBRALTAR  
PARLIAMENT  
ELECTION**

Thursday 8<sup>th</sup> December 2011



**THE POLL**

**Gibraltar General Election**  
**Thursday 8th December 2011**  
**Turnout In Hourly Periods**

Polling Station	No. of Electors	10am		11am		Noon		1pm		2pm	
		No. voted	Percentage	No. voted	Percentage	No. voted	Percentage	No. voted	Percentage	No. voted	Percentage
1	1680	128	7.62%	266	15.83%	366	21.79%	486	28.93%	605	36.01%
2	1877	101	5.38%	220	11.72%	304	16.20%	402	21.42%	526	28.02%
3	1395	105	7.53%	190	13.62%	268	19.21%	371	26.59%	458	32.83%
4	2026	142	7.01%	290	14.31%	416	20.53%	526	25.96%	672	33.17%
5	1704	93	5.46%	215	12.62%	316	18.54%	417	24.47%	521	30.58%
6	1464	183	12.50%	215	14.69%	321	21.93%	430	29.37%	540	36.89%
7	1233	91	7.38%	131	10.62%	323	26.20%	400	32.44%	500	40.55%
8	1940	128	6.60%	257	13.25%	381	19.64%	496	25.57%	630	32.47%
9	1921	106	5.52%	212	11.04%	328	17.07%	447	23.27%	587	30.56%
10	1881	100	5.32%	217	11.54%	323	17.17%	428	22.75%	575	30.57%
11	1794	140	7.80%	240	13.38%	400	22.30%	510	28.43%	630	35.12%
12	1779	102	5.73%	203	11.41%	296	16.64%	409	22.99%	544	30.58%
Rvg 13	58	0	0.00%	0	0.00%	0	0.00%	0	0.00%	16	27.59%
Rvg 14	52	0	0.00%	0	0.00%	0	0.00%	0	0.00%	23	44.23%
Rvg 15	73	0	0.00%	0	0.00%	0	0.00%	0	0.00%	28	38.36%
<b>Sub Total</b>	<b>20877</b>	<b>1419</b>	<b>6.80%</b>	<b>2656</b>	<b>12.72%</b>	<b>4042</b>	<b>19.36%</b>	<b>5322</b>	<b>25.49%</b>	<b>6855</b>	<b>32.84%</b>
Postal	835	671	80.36%	675	80.84%	681	81.56%	684	81.92%	684	81.92%
<b>TOTAL</b>	<b>21712</b>	<b>2090</b>	<b>9.63%</b>	<b>3331</b>	<b>15.34%</b>	<b>4723</b>	<b>21.75%</b>	<b>6006</b>	<b>27.66%</b>	<b>7539</b>	<b>34.72%</b>

**Previous General Elections**

<b>2007</b>	19660	1574	8.01%	2750	13.99%	3876	19.72%	5013	25.50%	6273	31.91%
<b>2003</b>	18452	1310	7.10%	2412	13.07%	3510	19.02%	4526	24.53%	5574	30.21%
<b>2000</b>	17874	1082	6.05%	2187	12.24%	3374	18.88%	4380	24.50%	5609	31.38%
<b>1996</b>	18437	1250	6.78%	2435	13.21%	3891	21.10%	5158	27.98%	6448	34.97%
<b>1992</b>	17087	782	4.58%	1671	9.78%	2588	15.15%	3461	20.26%	4482	26.23%
<b>1988</b>	17530	977	5.57%	2028	11.57%	3105	17.71%	3985	22.73%	5096	29.07%
<b>1984</b>	16960	815	4.81%	1668	9.83%	2582	15.22%	3518	20.74%	4429	26.11%
<b>1980</b>	16200	711	4.39%	1498	9.25%	2198	13.57%	2928	18.07%	4089	25.24%

**Previous By-Elections**

<b>1999</b>	18297	555	3.03%	1195	6.53%	1946	10.64%	2632	14.38%	3241	17.71%
<b>1991</b>	17538	315	1.80%	645	3.68%	981	5.59%	1268	7.23%	1631	9.30%

**Gibraltar General Election**  
**Thursday 8th December 2011**  
**Turnout In Hourly Periods**

Polling Station	No. of Electors	3pm		4pm		5pm		6pm		7pm	
		No. voted	Percentage	No. voted	Percentage	No. voted	Percentage	No. voted	Percentage	No. voted	Percentage
1	1680	698	41.55%	811	48.27%	927	55.18%	1060	63.10%	1203	71.61%
2	1877	655	34.90%	750	39.96%	864	46.03%	997	53.12%	1109	59.08%
3	1395	547	39.21%	638	45.73%	733	52.54%	844	60.50%	1006	72.11%
4	2026	838	41.36%	966	47.68%	1098	54.20%	1254	61.90%	1501	74.09%
5	1704	636	37.32%	746	43.78%	844	49.53%	961	56.40%	1115	65.43%
6	1464	642	43.85%	736	50.27%	817	55.81%	913	62.36%	1037	70.83%
7	1233	588	47.69%	653	52.96%	731	59.29%	800	64.88%	905	73.40%
8	1940	737	37.99%	850	43.81%	981	50.57%	1111	57.27%	1246	64.23%
9	1921	699	36.39%	816	42.48%	956	49.77%	1088	56.64%	1235	64.29%
10	1881	678	36.04%	788	41.89%	925	49.18%	1038	55.18%	1188	63.16%
11	1794	750	41.81%	880	49.05%	891	49.67%	1138	63.43%	1314	73.24%
12	1779	680	38.22%	795	44.69%	924	51.94%	1065	59.87%	1224	68.80%
Rvg 13	58	16	27.59%	16	27.59%	16	27.59%	16	27.59%	41	70.69%
Rvg 14	52	23	44.23%	23	44.23%	23	44.23%	51	98.08%	51	98.08%
Rvg 15	73	28	38.36%	28	38.36%	28	38.36%	28	38.36%	68	93.15%
<b>Sub Total</b>	<b>20877</b>	<b>8215</b>	<b>39.35%</b>	<b>9496</b>	<b>45.49%</b>	<b>10758</b>	<b>51.53%</b>	<b>12364</b>	<b>59.22%</b>	<b>14243</b>	<b>68.22%</b>
Postal	835	684	81.92%	684	81.92%	720	86.23%	720	86.23%	737	88.26%
<b>TOTAL</b>	<b>21712</b>	<b>8899</b>	<b>40.99%</b>	<b>10180</b>	<b>46.89%</b>	<b>11478</b>	<b>52.86%</b>	<b>13084</b>	<b>60.26%</b>	<b>14980</b>	<b>68.99%</b>

**Previous General Elections**

<b>2007</b>	19660	7419	37.74%	8422	42.84%	9543	48.54%	10935	55.62%	12631	64.25%
<b>2003</b>	18452	6765	36.66%	7715	41.81%	8754	47.44%	10231	55.45%	11663	63.21%
<b>2000</b>	17874	6834	38.23%	7883	44.10%	8809	49.28%	10210	57.12%	11818	66.12%
<b>1996</b>	18437	7926	42.99%	9136	49.55%	10235	55.51%	11569	62.75%	13242	71.82%
<b>1992</b>	17087	5632	32.96%	6305	36.90%	7047	41.24%	8287	48.50%	9741	57.01%
<b>1988</b>	17530	6285	35.85%	7164	40.87%	8015	45.72%	9275	52.91%	10573	60.31%
<b>1984</b>	16960	5649	33.31%	6663	39.29%	7431	43.81%	8834	52.09%	10258	60.48%
<b>1980</b>	16200	5148	31.78%	5799	35.80%	6499	40.12%	7563	46.69%	8657	53.44%

**Previous By-Elections**

<b>1999</b>	18297	4052	22.15%	4629	25.30%	5160	28.20%	6065	33.15%	7226	39.49%
<b>1991</b>	17538	1984	11.31%	2232	12.73%	2506	14.29%	2940	16.76%	3462	19.74%

**Gibraltar General Election**  
**Thursday 8th December 2011**  
**Turnout In Hourly Periods**

Polling Station	No. of Electors	8pm		9pm		10pm	
		No. voted	Percentage	No. voted	Percentage	No. voted	Percentage
1	1680	1281	76.25%	1331	79.23%	1354	80.60%
2	1877	1257	66.97%	1433	76.35%	1474	78.53%
3	1395	1104	79.14%	1167	83.66%	1180	84.59%
4	2026	1645	81.19%	1717	84.75%	1738	85.78%
5	1704	1213	71.19%	1259	73.88%	1288	75.59%
6	1464	1114	76.09%	1148	78.42%	1160	79.23%
7	1233	962	78.02%	1000	81.10%	1002	81.27%
8	1940	1420	73.20%	1573	81.08%	1607	82.84%
9	1921	1380	71.84%	1561	81.26%	1599	83.24%
10	1881	1391	73.95%	1493	79.37%	1535	81.61%
11	1794	1424	79.38%	1487	82.89%	1513	84.34%
12	1779	1435	80.66%	1512	84.99%	1552	87.24%
Rvg 13	58	41	70.69%	50	86.21%	57	98.28%
Rvg 14	52	51	98.08%	51	98.08%	51	98.08%
Rvg 15	73	68	93.15%	68	93.15%	68	93.15%
<b>Sub Total</b>	<b>20877</b>	<b>15786</b>	<b>75.61%</b>	<b>16850</b>	<b>80.71%</b>	<b>17178</b>	<b>82.28%</b>
Postal	835	737	88.26%	737	88.26%	737	88.26%
<b>TOTAL</b>	<b>21712</b>	<b>16523</b>	<b>76.10%</b>	<b>17587</b>	<b>81.00%</b>	<b>17915</b>	<b>82.51%</b>

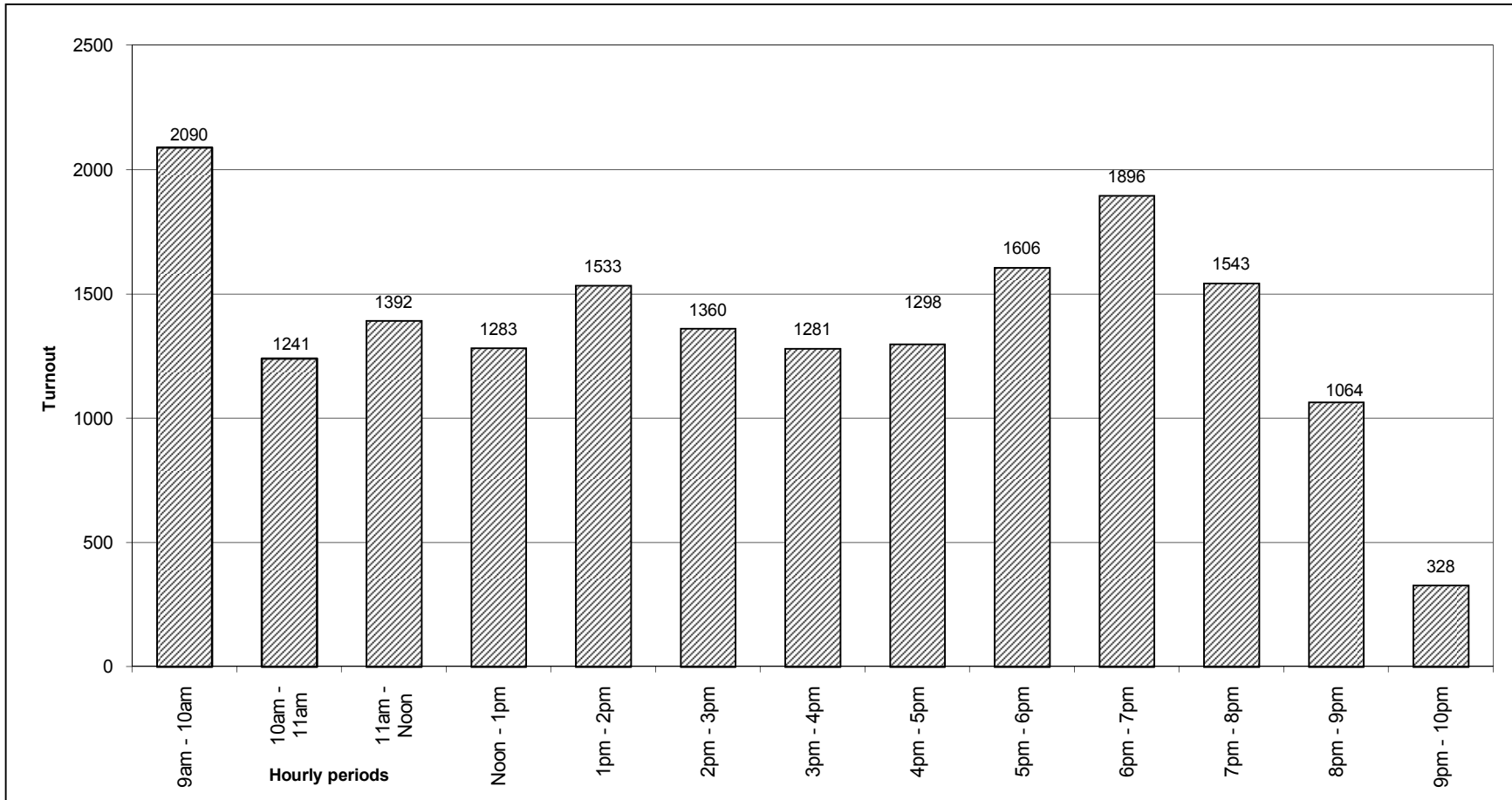
**Previous General Elections**

<b>2007</b>	19660	14171	72.08%	15450	78.59%	16004	81.40%
<b>2003</b>	18452	12852	69.65%	13963	75.67%	14610	79.18%
<b>2000</b>	17874	13221	73.97%	14132	79.06%	14936	83.56%
<b>1996</b>	18437	14583	79.10%	15502	84.08%	16169	87.70%
<b>1992</b>	17087	11023	64.51%	11881	69.53%	12244	71.66%
<b>1988</b>	17530	11879	67.76%	12960	73.93%	13473	76.86%
<b>1984</b>	16960	11529	67.98%	12287	72.45%	12626	74.45%
<b>1980</b>	16200	9688	59.80%	10352	63.90%	10636	65.65%

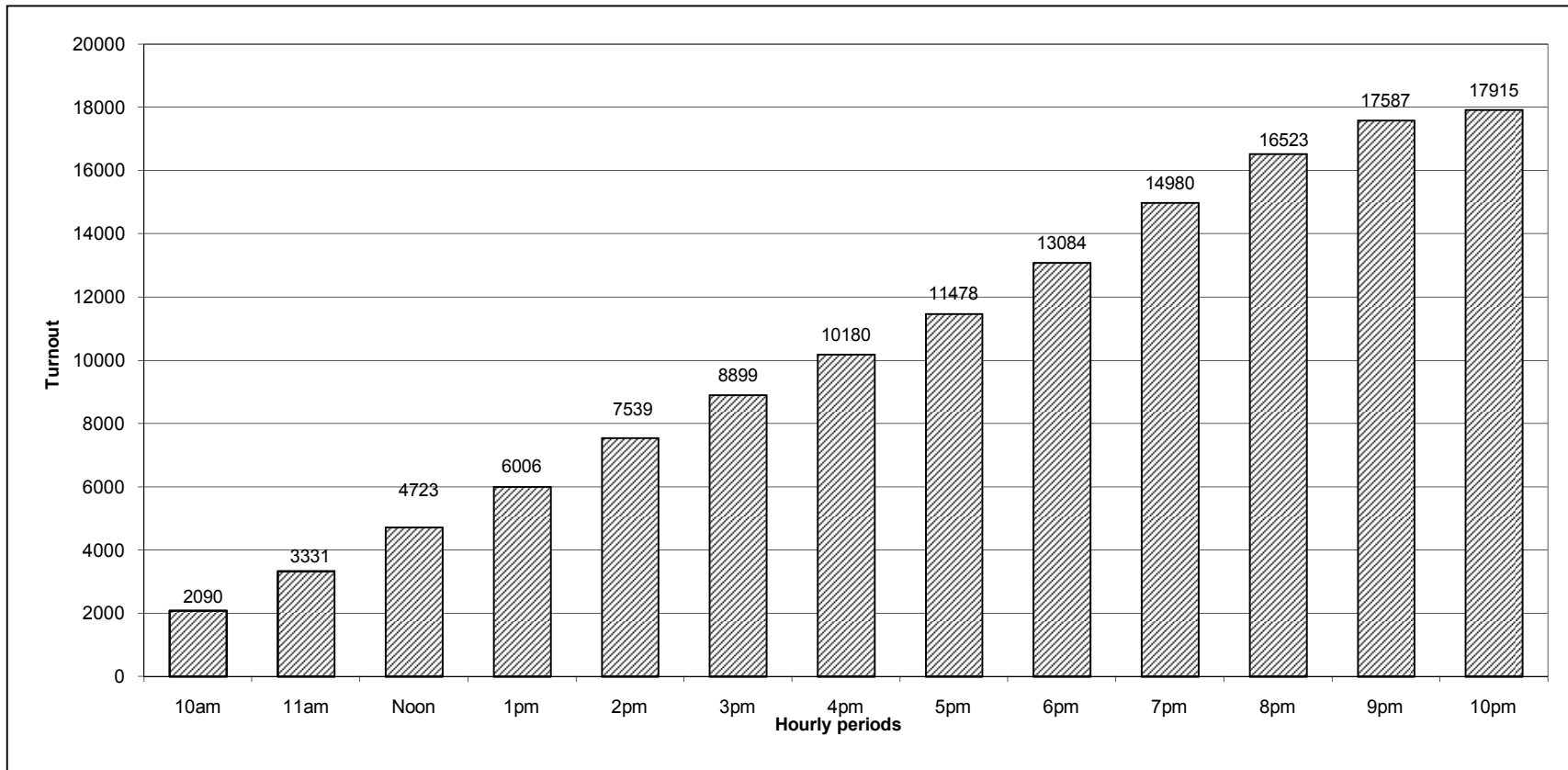
**Previous By-Elections**

<b>1999</b>	18297	8151	44.55%	8671	47.39%	8934	48.83%
<b>1991</b>	17538	3952	22.53%	4539	25.88%	4553	25.96%

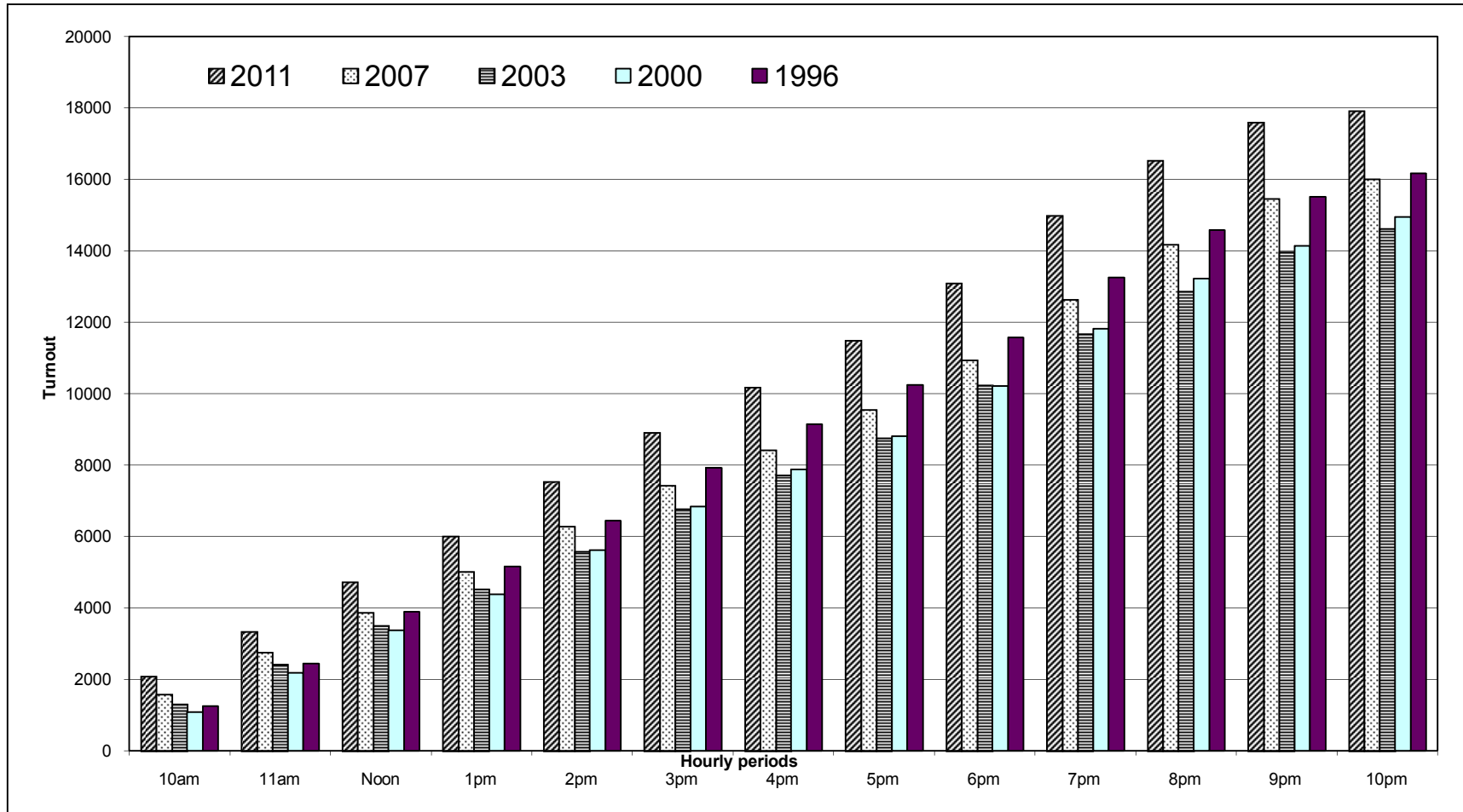
**Gibraltar General Election  
Thursday 8th December 2011  
Turnout Per Hourly Period**



**Gibraltar General Election  
Thursday 8th December 2011  
Total Turnout**

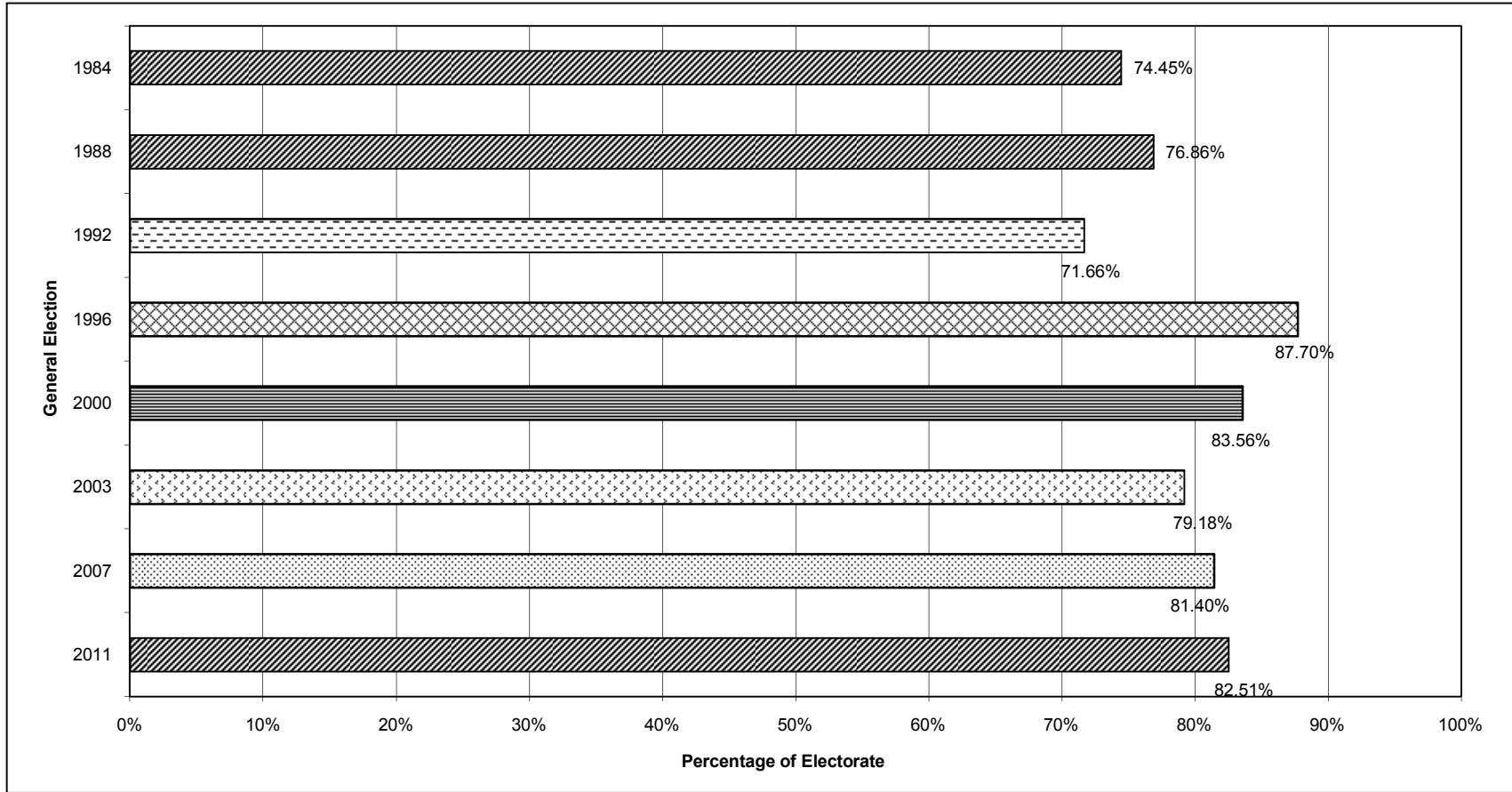


**Gibraltar General Election**  
**Thursday 8th December 2011**  
**Comparison Of Turnout With Previous General Elections**

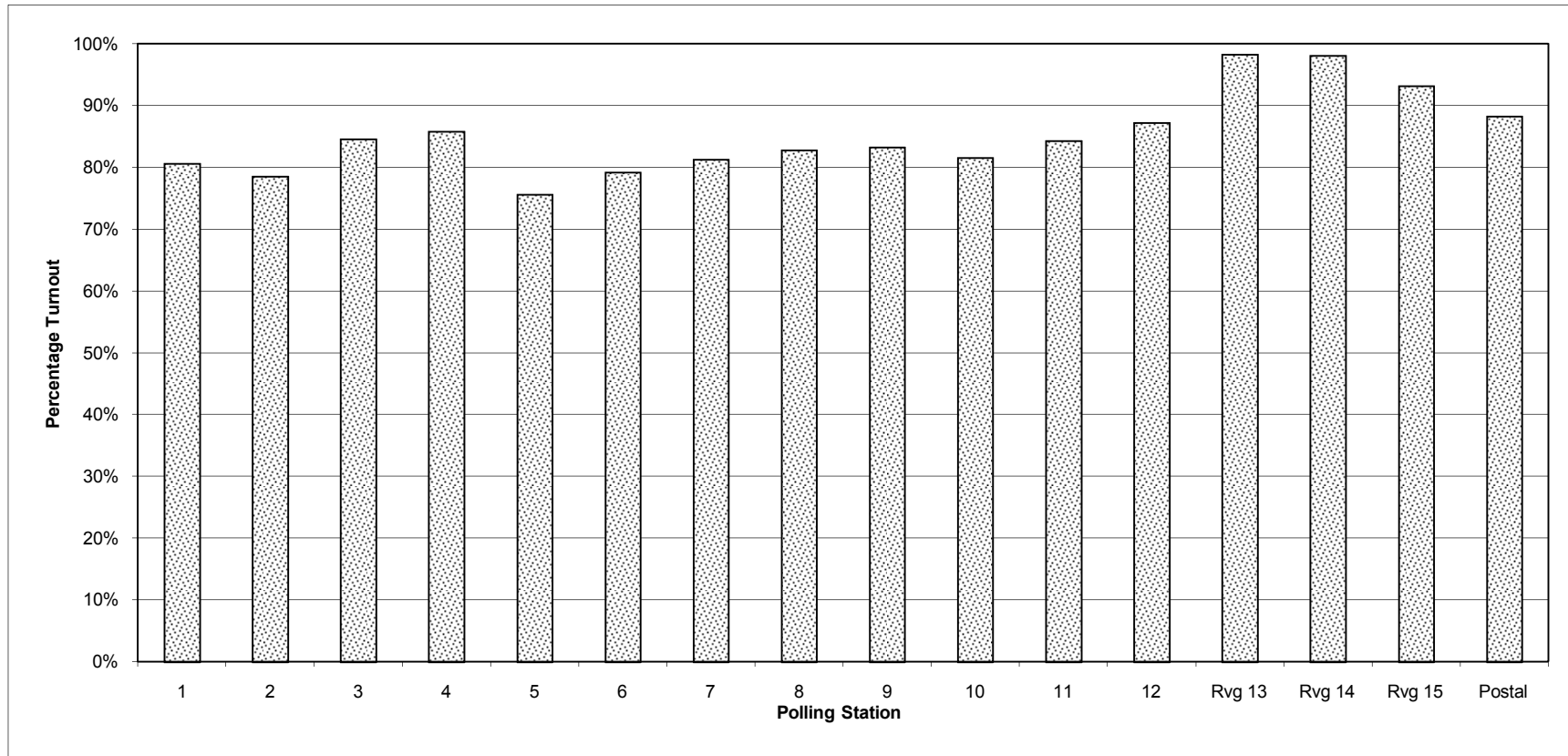




**Gibraltar General Election**  
**Thursday 8th December 2011**  
**Comparison Of Percentage Turnout With Previous General Elections**



**Gibraltar General Election  
Thursday 8th December 2011  
Percentage Turnout Per Polling Station**





**THE RESULT**

**Gibraltar General Election**  
**Thursday 8th December 2011**  
**Votes Recorded Per Candidate By Counting Room**

Candidate		Room Number												
No.	Name	1	2	3	4	5	6	7	8	9	10	11	12	13
1	AZOPARDI, Keith	66	96	84	98	91	97	88	73	76	61	80	77	70
2	AZZOPARDI, Lianne Elise	319	451	353	398	332	413	431	356	356	313	308	334	284
3	BALBAN, Paul John	331	371	387	401	356	384	402	352	344	336	314	307	305
4	BOSSANO, Joseph John	349	388	398	425	372	411	417	367	357	337	325	316	310
5	BOSSINO, Damon James	332	463	370	414	342	437	433	385	368	316	325	338	295
6	BRUZON, Charles Arthur	339	377	397	417	363	402	417	365	349	336	329	323	316
7	CARUANA, Peter Richard	337	488	378	426	348	452	444	396	376	327	332	347	309
8	CORTES, John Emmanuel	350	385	404	426	378	417	422	366	360	349	331	334	322
9	COSTA, Neil Francis	340	372	397	418	371	404	412	358	350	333	323	317	312
10	CRUZ, Nicholas Peter	36	44	40	55	46	34	40	34	30	30	38	30	35
11	DEL AGUA, Yvette	309	452	355	398	330	413	419	367	350	301	307	321	282
12	ELLUL-HAMMOND, Isobel Marie	329	468	370	419	345	440	439	383	364	318	325	336	300
13	EVESON, David Gordon	22	28	26	27	35	25	34	16	17	22	25	17	21
14	FALLER, Rebecca Trevelayne	33	32	23	29	33	27	33	22	21	23	28	17	25
15	FEETHAM, Daniel Anthony	331	479	377	429	348	439	447	390	373	323	327	345	304
16	FIGUERAS, Selwyn Matthew	316	460	363	408	337	416	436	374	354	309	313	334	295
17	GARCIA, Joseph John	344	384	404	435	373	413	417	366	360	342	334	321	321
18	HOLLIDAY, Joseph John	314	442	362	402	327	407	428	364	347	307	310	323	285
19	LICUDI, Gilbert Horace	344	380	397	432	372	411	412	363	357	336	328	323	327
20	LINARES, Steven Ernest	336	371	392	408	366	389	410	365	354	335	312	313	311
21	NAVAS, Kenneth John	26	34	28	36	47	30	35	24	25	19	28	25	29
22	NETTO, James Joseph	323	460	360	407	331	425	430	380	355	309	326	334	294
23	PEACH, Rosemarie	31	28	31	33	33	20	38	20	22	20	27	25	26
24	PHILLIPS, Elliott John	30	38	29	32	38	29	37	23	25	28	30	25	34
25	PICARDO, Fabian Raymond	355	397	402	430	373	425	428	376	374	348	334	329	321
26	REYES, Edwin Joseph	319	462	368	405	338	436	436	378	356	305	319	333	300
27	SACRAMENTO, Samantha Jane	331	368	391	416	355	387	402	354	346	332	317	307	308
28	SENE, Giselle Anne	29	35	32	37	39	23	35	21	20	20	28	23	28
29	TAILOR, Dilipkumar Chhotubhai	26	29	30	27	34	30	33	24	22	18	25	21	25
30	WALSH, Moira Elsie	29	24	26	29	38	23	39	19	18	24	28	20	25
<b>Total</b>		6976	8806	7974	8717	7491	8659	8894	7681	7426	6777	6776	6815	6419

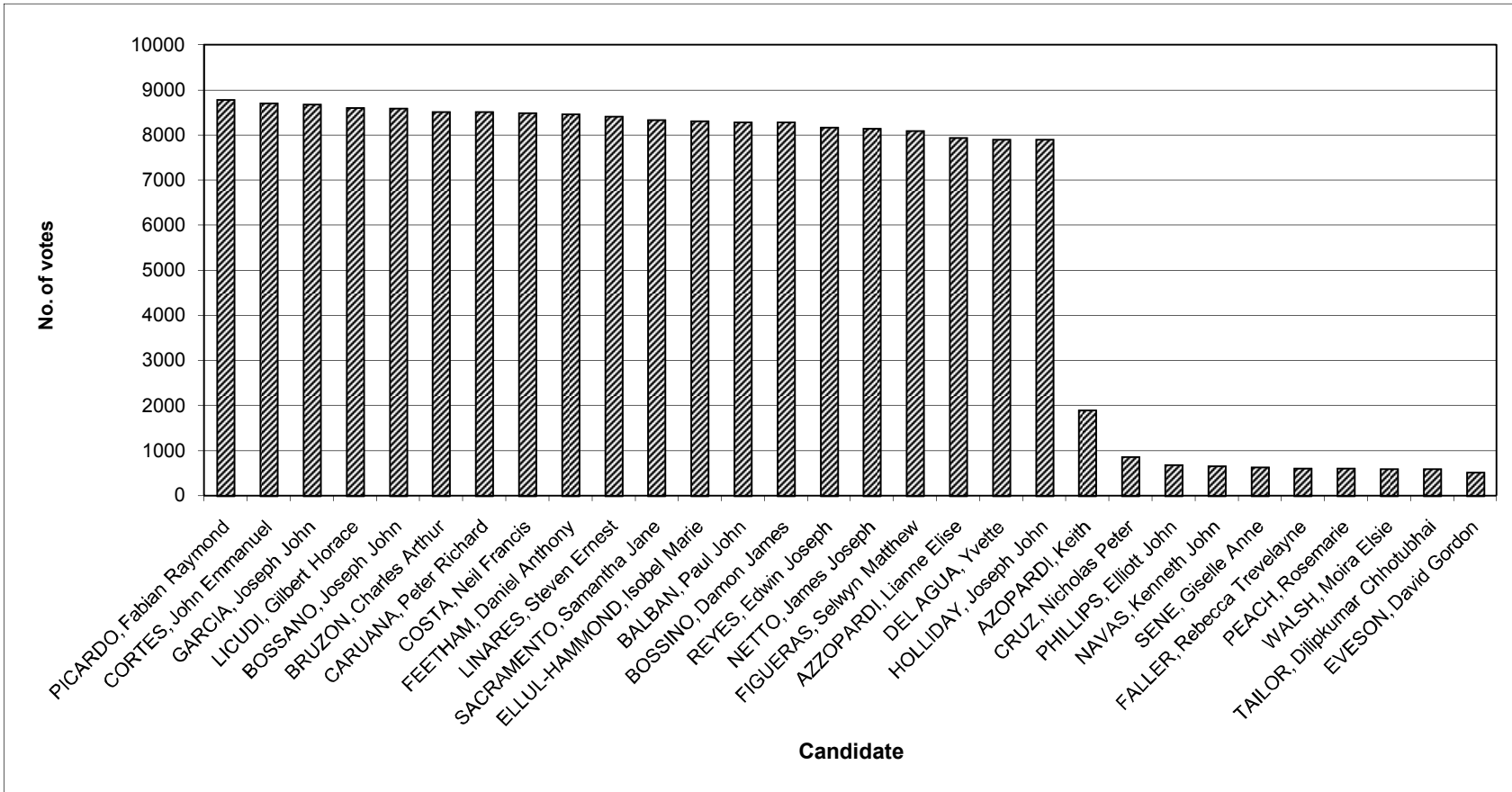
**Gibraltar General Election**  
**Thursday 8th December 2011**  
**Votes Recorded Per Candidate By Counting Room**

Candidate		Room Number												Total
No.	Name	14	15	16	17	18	19	20	21	22	23	24	25	
1	AZOPARDI, Keith	91	64	80	73	67	59	78	64	60	85	60	58	<b>1896</b>
2	AZZOPARDI, Lianne Elise	291	261	280	294	281	277	268	236	298	257	262	291	<b>7944</b>
3	BALBAN, Paul John	317	341	297	299	302	310	311	345	281	311	281	296	<b>8281</b>
4	BOSSANO, Joseph John	330	349	310	315	312	320	331	350	292	325	290	302	<b>8598</b>
5	BOSSINO, Damon James	313	262	298	305	308	290	285	259	303	272	268	300	<b>8281</b>
6	BRUZON, Charles Arthur	326	347	305	312	302	317	325	344	291	329	290	300	<b>8518</b>
7	CARUANA, Peter Richard	313	277	310	312	310	297	292	260	315	286	276	307	<b>8515</b>
8	CORTES, John Emmanuel	332	347	313	315	310	326	328	352	297	339	301	302	<b>8706</b>
9	COSTA, Neil Francis	327	343	309	304	304	314	321	351	293	325	294	298	<b>8490</b>
10	CRUZ, Nicholas Peter	30	28	31	29	30	32	32	36	23	36	24	31	<b>854</b>
11	DEL AGUA, Yvette	292	255	287	287	292	282	269	242	299	258	249	290	<b>7906</b>
12	ELLUL-HAMMOND, Isobel Marie	307	265	301	304	301	294	286	248	312	277	269	306	<b>8306</b>
13	EVESON, David Gordon	23	16	13	16	15	16	18	22	16	23	12	14	<b>519</b>
14	FALLER, Rebecca Trevelayne	31	20	23	20	20	18	22	26	20	26	14	20	<b>606</b>
15	FEETHAM, Daniel Anthony	318	271	317	312	303	299	290	260	318	272	284	306	<b>8462</b>
16	FIGUERAS, Selwyn Matthew	305	258	290	299	297	279	276	247	307	266	262	298	<b>8099</b>
17	GARCIA, Joseph John	338	350	315	317	307	325	320	354	303	336	298	304	<b>8681</b>
18	HOLLIDAY, Joseph John	289	248	282	292	289	281	268	242	294	262	249	290	<b>7904</b>
19	LICUDI, Gilbert Horace	332	347	310	311	313	320	321	353	294	330	295	297	<b>8605</b>
20	LINARES, Steven Ernest	326	340	298	307	303	317	320	347	291	321	289	298	<b>8419</b>
21	NAVAS, Kenneth John	33	26	22	26	16	26	21	26	16	24	13	18	<b>653</b>
22	NETTO, James Joseph	304	263	294	304	299	286	279	248	301	269	263	295	<b>8139</b>
23	PEACH, Rosemarie	30	23	21	22	18	23	20	22	17	24	15	17	<b>606</b>
24	PHILLIPS, Elliott John	32	23	21	28	25	25	20	27	22	29	15	22	<b>687</b>
25	PICARDO, Fabian Raymond	342	354	318	312	314	329	326	351	297	340	298	308	<b>8781</b>
26	REYES, Edwin Joseph	295	265	290	309	300	290	282	249	301	265	268	296	<b>8165</b>
27	SACRAMENTO, Samantha Jane	322	336	300	301	296	311	321	342	291	312	292	297	<b>8335</b>
28	SENE, Giselle Anne	32	27	21	23	19	15	21	21	18	24	15	18	<b>624</b>
29	TAILOR, Dilipkumar Chhotubhai	30	22	20	19	21	17	21	21	14	24	18	17	<b>588</b>
30	WALSH, Moira Elsie	31	21	16	23	21	20	23	21	14	28	15	14	<b>589</b>
<b>Total</b>		<b>6682</b>	<b>6349</b>	<b>6292</b>	<b>6390</b>	<b>6295</b>	<b>6315</b>	<b>6295</b>	<b>6266</b>	<b>6198</b>	<b>6275</b>	<b>5779</b>	<b>6210</b>	<b>174757</b>

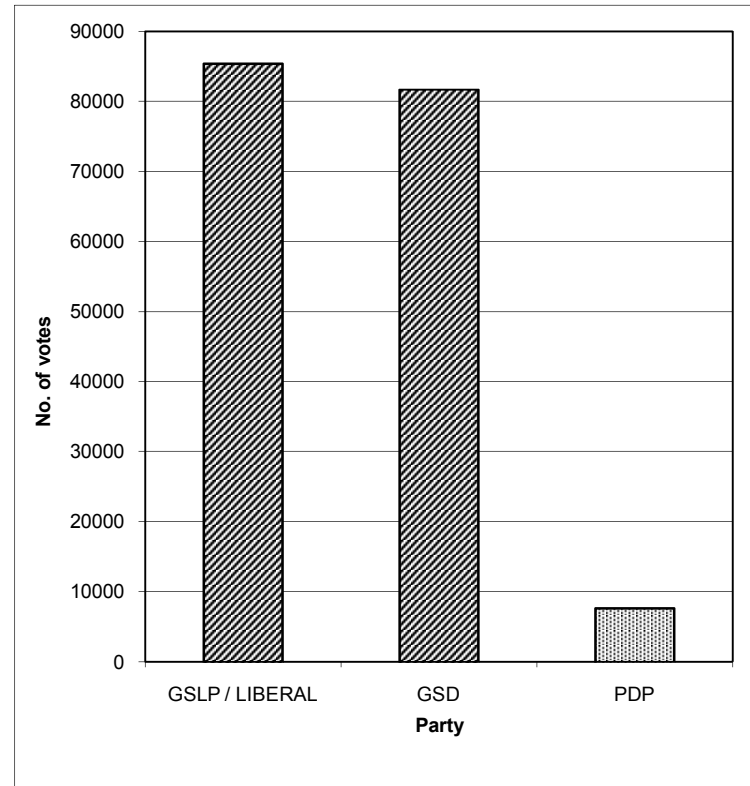
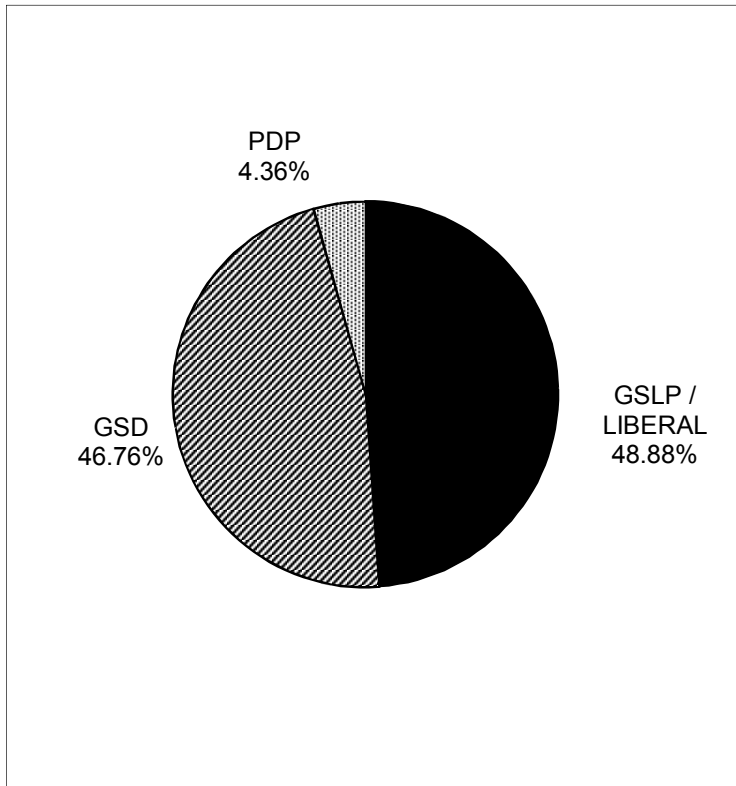
**Gibraltar General Election**  
**Thursday 8th December 2011**  
**Votes Received Per Candidate**

Name of Candidate	Number of Votes Received	Percentage of Total Votes
PICARDO, Fabian Raymond	8781	5.02%
CORTES, John Emmanuel	8706	4.98%
GARCIA, Joseph John	8681	4.97%
LICUDI, Gilbert Horace	8605	4.92%
BOSSANO, Joseph John	8598	4.92%
BRUZON, Charles Arthur	8518	4.87%
CARUANA, Peter Richard	8515	4.87%
COSTA, Neil Francis	8490	4.86%
FEETHAM, Daniel Anthony	8462	4.84%
LINARES, Steven Ernest	8419	4.82%
SACRAMENTO, Samantha Jane	8335	4.77%
ELLUL-HAMMOND, Isobel Marie	8306	4.75%
BALBAN, Paul John	8281	4.74%
BOSSINO, Damon James	8281	4.74%
REYES, Edwin Joseph	8165	4.67%
NETTO, James Joseph	8139	4.66%
FIGUERAS, Selwyn Matthew	8099	4.63%
AZZOPARDI, Lianne Elise	7944	4.55%
DEL AGUA, Yvette	7906	4.52%
HOLLIDAY, Joseph John	7904	4.52%
AZOPARDI, Keith	1896	1.08%
CRUZ, Nicholas Peter	854	0.49%
PHILLIPS, Elliott John	687	0.39%
NAVAS, Kenneth John	653	0.37%
SENE, Giselle Anne	624	0.36%
FALLER, Rebecca Trevelayne	606	0.35%
PEACH, Rosemarie	606	0.35%
WALSH, Moira Elsie	589	0.34%
TAILOR, Dilipkumar Chhotubhai	588	0.34%
EVESON, David Gordon	519	0.30%
Total number of votes cast	174757	

**Gibraltar General Election**  
**Thursday 8th December 2011**  
**Votes Per Candidate**



**Gibraltar General Election  
Thursday 8th December 2011  
Total Votes Per Party**





**Gibraltar General Election**  
**Thursday 8th December 2011**  
**Duly Elected Members of the Parliament**

PICARDO, Fabian Raymond	GSLP / Liberal
CORTES, John Emmanuel	GSLP / Liberal
GARCIA, Joseph John	GSLP / Liberal
LICUDI, Gilbert Horace	GSLP / Liberal
BOSSANO, Joseph John	GSLP / Liberal
BRUZON, Charles Arthur	GSLP / Liberal
CARUANA, Peter Richard	GSD
COSTA, Neil Francis	GSLP / Liberal
FEETHAM, Daniel Anthony	GSD
LINARES, Steven Ernest	GSLP / Liberal
SACRAMENTO, Samantha Jane	GSLP / Liberal
ELLUL-HAMMOND, Isobel Marie	GSD
BALBAN, Paul John	GSLP / Liberal
BOSSINO, Damon James	GSD
REYES, Edwin Joseph	GSD
NETTO, James Joseph	GSD
FIGUERAS, Selwyn Matthew	GSD