

MetEye™

A simple guide to using MetEye

MetEye is a great tool for looking at the current and forecast weather conditions, at your place, and around Australia.

When you enter MetEye™ you'll see a map of all the current temperatures around Australia. You can zoom in to get a clearer view. The latest rain radar activity is also shown on this map.

On the left side of the screen is a column of options to see different kinds of **LATEST WEATHER**, like:

- Current temperature
- Current relative humidity
- Rainfall since 9am
- Rainfall in the last 10 minutes (mm)
- Wind speed and direction (km/h)
- Wind speed and direction (knots)
- Current Sea Surface Temperature

Below these options is the **Overlay** section where you can also turn on or off information like **Latest rain radar**, tropical cyclone tracks (when a cyclone is active), **River conditions** and **Current cloud cover**.

Also on the left side of the screen, the next main section shows options to see different kinds of **FORECASTS** on the map, like:

- Rainfall forecasts
- Temperature forecasts
- Storms, snow, fog, frost, etc
- Humidity forecasts
- Wind forecasts
- Waves forecasts

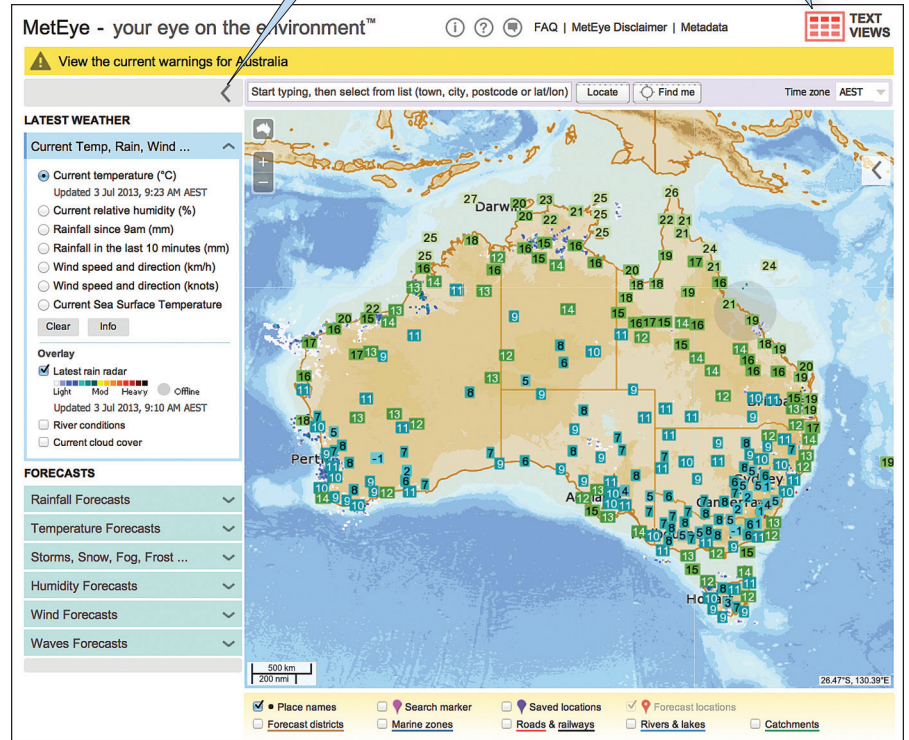
Whenever you change any of the options, the map overlay and legend automatically adjusts to display your selections. When you select one of the **FORECAST** options, a timeline also appears above the map, with the forecast date or time highlighted. Use this **clickable timeline** to shift the displayed information through time, or animate it using the large **Play** button.



Australian Government
Bureau of Meteorology

MetEye home page

MAP VIEW MODE



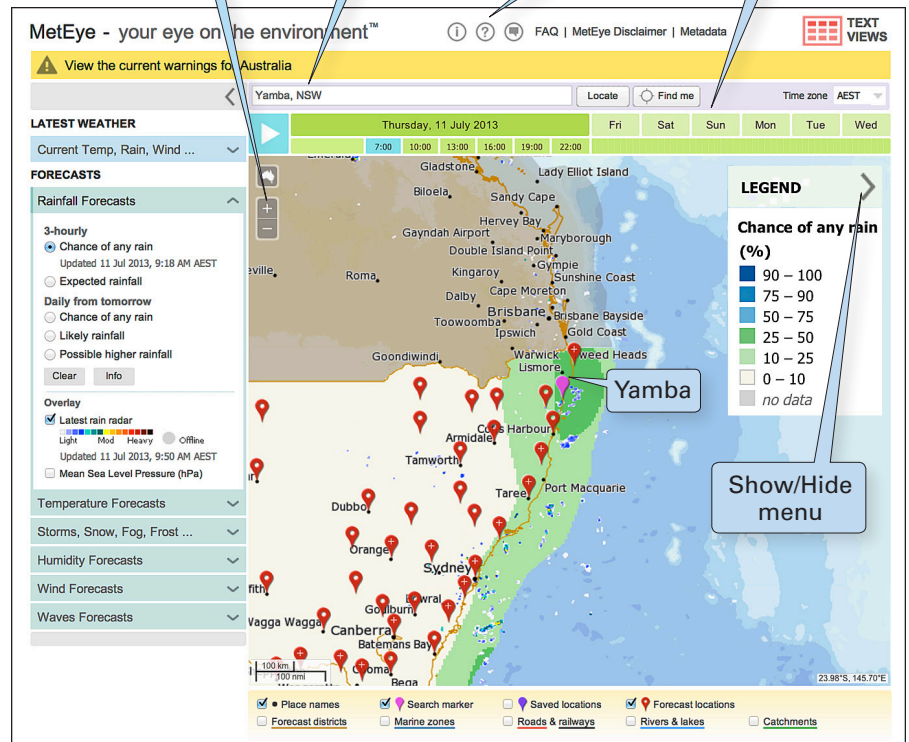
+ , - zoom for the map

Enter your location in the text box

MetEye 'Help'

Timeline for the map forecast

MAP VIEW MODE



Show/Hide menu

A simple guide to using MetEye™

How to find a forecast for your location:

In MetEye's Map View you can enter your location into the text box above the map. When you begin to type, a list of locations drops down for you to make a selection. Picking a location from this list puts a location marker on the map, zooms there and displays its forecast weather popup box. Yamba, NSW has been selected as the location for the examples in this guide.

You can move around the map using its + or - buttons and click-and-drag. You can also click any point on the map to display the forecast weather popup box for that location. We call this a "click-anywhere" forecast.

The forecast weather popup box provides many useful features. Clicking on its 'See text views for location' link takes you to the location's Text View mode, showing much more information about your location.

Click on the Find me button to automatically display the 7-day forecast for your location

TEXT VIEW MODE

Yamba Detailed Forecast

View the current warnings for New South Wales

Change location

Wednesday 3 July

	1:00 AM	4:00 AM	7:00 AM	10:00 AM	1:00 PM	4:00 PM	7:00 PM	10:00 PM
Chance of any rain	-	-	-	10%	10%	5%	5%	5%
Expected rainfall (mm)	-	-	-	0	0	0	0	0

	1:00 AM	4:00 AM	7:00 AM	10:00 AM	1:00 PM	4:00 PM	7:00 PM	10:00 PM
Air temperature (°C)	-	-	-	18	20	20	17	16
Feels like (°C)	-	-	-	14	16	17	15	15
Dew Point Temperature (°C)	-	-	-	15	15	14	13	11

	1:00 AM	4:00 AM	7:00 AM	10:00 AM	1:00 PM	4:00 PM	7:00 PM	10:00 PM
Thunderstorms	-	-	-	○	○	○	○	○
Snow	-	-	-	○	○	○	○	○
Rain	-	-	-	●	○	○	○	○
Fog	-	-	-	○	○	○	○	○
Frost	-	-	-	○	○	○	○	○

	1:00 AM	4:00 AM	7:00 AM	10:00 AM	1:00 PM	4:00 PM	7:00 PM	10:00 PM
Wind Speed (km/h)	-	-	-	28	28	22	17	9
Wind Direction	-	-	-	SSW	S	SSE	SSE	S
Relative Humidity (%)	-	-	-	83	71	69	77	70
Forest fuel dryness factor	-	-	-	0.4	0.4	0.4	0.4	0.4
Mixing height (m)	-	-	-	1380	1376	1308	764	506

	1:00 AM	4:00 AM	7:00 AM	10:00 AM	1:00 PM	4:00 PM	7:00 PM	10:00 PM
Waves combined sea & swell (m)	-	-	-	-	-	-	-	-

Thursday 4 July

Friday 5 July

Saturday 6 July

Sunday 7 July

Monday 8 July

Tuesday 9 July

You can enter a location in this box to search again

Select the date table to operate detailed forecast for that day

If you want more information click on the popup box's Detail button to get 3-hourly data.

Link to Current and Past Weather at the nearest weather station.

For detailed weather forecasts select 'Detailed 3-Hourly Forecast'

Click to round trip to Map View mode for your location using this symbol

Click here for a detailed daily forecast for the next 7 days.

Link to the nearby radars

Current satellite image and link to descriptive text



This family can use MetEye™ (at left) to plan their perfect day at Shelley Beach Walk, Yuraygir National Park near Yamba in New South Wales.

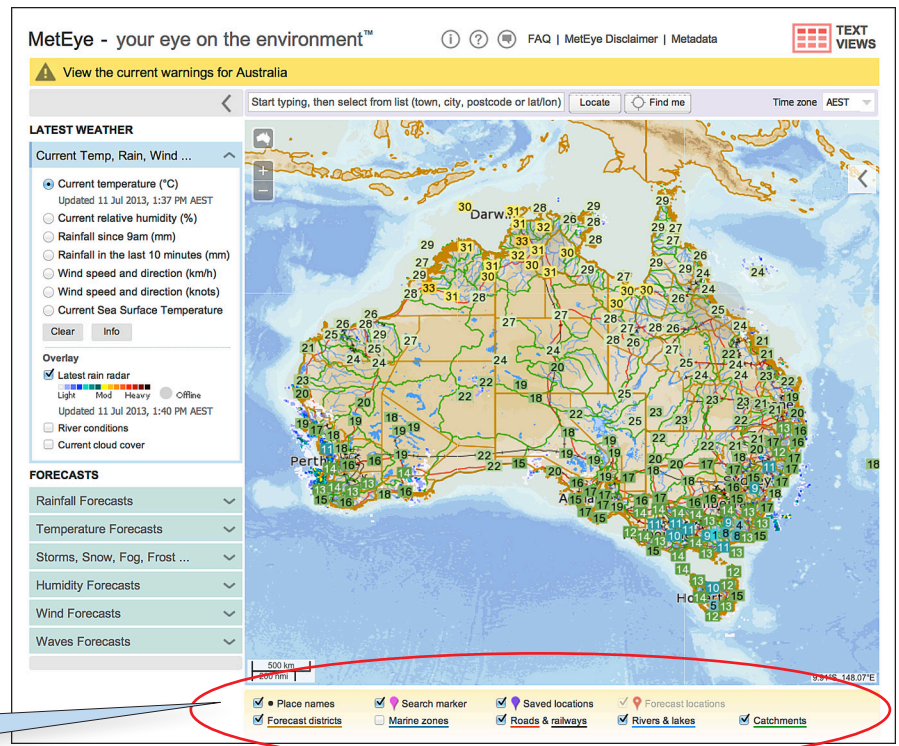
A simple guide to using MetEye™

The MetEye™ system is great for a quick overview, but if you delve deeper you'll be rewarded with highly detailed forecast information out to 7 days for most states (Queensland data will be added in early 2014 and the Northern Territory in early 2015).

Reference layers are available at the bottom of the map, and they can be used to refine your view or help you orient to a remote location. These appear below the map in Map View mode, and include:

- Bureau Forecast districts
- Bureau Marine zones
- Roads & railways
- Rivers & lakes
- Catchments boundaries

Selectable map reference layers. You can also display these features on the map by using the controls.



Need more comprehensive assistance?

In MetEye at the top of the screen you can access the full on line help guide by clicking on the question mark icon. A series of Frequently Asked Questions and answers are also provided and these can be accessed by clicking on the **FAQ** icon at the top of the MetEye screen.

HOT TIP

Did you know you can save a location from the map view or the text view mode as a “bookmark-friendly” browser link or URL?

This is how you do it:

First open MetEye: go to the URLs: <http://www.bom.gov.au/australia/meteye/>

1. Search for your location in map view, eg Sydney: the URL remains: <http://www.bom.gov.au/australia/meteye/>
2. Click the “See text views for location” link from the forecast weather popup box and the URL becomes: <http://www.bom.gov.au/places/nsw/sydney/>. You are now in Text View mode.
3. Round-trip click back to Map View mode using the “MAP VIEW MetEye” button (top right of page). The URL now becomes: <http://www.bom.gov.au/australia/meteye/?lat=-33.85&lon=151.22&url=/nsw/sydney/&name=Sydney>
This can be bookmarked, shared or copied.

This process also works for unnamed places on the map, eg:

- <http://www.bom.gov.au/places/sa/DFJB/>
- <http://www.bom.gov.au/australia/meteye/?lat=-26.2&lon=129.51&url=/sa/DFJB/&name=26.2°S,%20129.51°E>