

# Commercial River Use in the State of **COLORADO**

1988-2011

**Colorado**  
River Outfitters Association  
(CROA)

# EXECUTIVE SUMMARY

## COMMERCIAL RIVER USE IN COLORADO

### 2011 Year End Report

Colorado's essentially flat rafting use in 2011 has combined with an inflation rate in the United States of 3% to increase the economic impact of commercial rafting to \$155 million dollars. This is an increase of \$3 million dollars or 2.1%. This year's \$155 million dollars of economic impact is only slightly lower than the record \$156 million economic impact of 2007.

2011 river use in the State of Colorado totaled 508,000 user days, which is a slight decline of .9% or 4,574 user days from the 2010 totals. Use in this mature industry has fluctuated between 496,000 and 552,000 user days since 2005. Total use in Colorado is down 7% from the peak of 552,000 user days in 2007.

The small decrease this year may be partly due to the unusually high water that we experienced and outfitters increasing minimum ages for their trips during in 2011. The slow economy continues to affect bookings as well.

Use increased on smaller rivers that typically run too low to raft in the late season during normal year. Those small rivers include the San Juan, Roaring Fork and Eagle as well as the ever growing Clear Creek. Those increases mostly offset the decreases in the larger volume rivers such as the Colorado, Arkansas and Green Rivers.

The outlook for 2012 is bright as consumer spending increases, the stock market rises, and unemployment begins to subside. Unknown factors such as Middle East unrest, European debt and the Presidential election create unknown factors that could offset growth in the US rafting industry.

**The Colorado River Outfitters Association (CROA) compiled this study. Copies are available by contacting Joe Greiner at [rapids@inaraft.com](mailto:rapids@inaraft.com). It can also be downloaded from the web at:**

<http://croa.org/media/documents/pdf/2011-commercial-rafting-use-report-final.pdf> .

**Members of CROA adhere to a Code of Ethics and offer quality trips on all of Colorado's rivers.**

## COMMERCIAL USER DAYS IN THE STATE OF COLORADO 1988 - 2011

River	1988	1989	1990	1991	1992	1993	1994	1995	1996	1997	1998	1999	2000
Animas	12,000	13,000	10,000	18,000	22,000	26,000	28,600	30,200	23,000	37,000	36,000	45,000	29,000
Animas - Upper	510	510	690	730	810	887	369	368	0	400	920	989	700
Arkansas	109,883	119,045	157,380	157,862	181,716	185,123	201,040	199,109	228,153	235,931	250,098	243,709	250,861
Blue	2,138	1,400	1,928	2,288	2,173	4,129	416	9,338	5,854	5,361	1,300	2,100	2,347
Clear Creek		600	650	800	900	3,700	4,400	5,900	7,543	11,889	12,908	16,887	13,616
Colorado - Glenwood	15,000	21,300	26,938	32,435	39,149	31,256	46,579	26,150	32,764	43,146	59,822	60,191	57,265
Colorado - Upper	21,500	21,000	26,593	33,032	30,877	33,571	34,405	31,020	36,757	36,758	40,309	40,000	42,933
Colorado - Horsethief/Ruby	2,540	2,660	3,560	3,870	5,013	4,954	4,614	5,387	3,654	4,875	4,171	4,410	4,508
Colorado - Westwater	7,041	6,468	6,351	6,841	7,473	8,780	9,456	8,108	7,977	6,614	7,452	7,208	6,859
Dolores	1,595	1,111	10	968	1,258	1,707	1,493	3,257	0	2,333	2,406	439	921
Eagle - Upper	1,956	2,246	5,466	7,055	5,935	10,285	6,482	18,735	11,906	11,738	6,361	7,290	3,830
Eagle - Lower		1,108	1,642	2,182	949	952	700	2,862	2,038	2,825	2,226	2,500	2,167
Green/Yampa	14,885	15,204	16,836	17,700	13,772	29,290	28,261	31,804	31,586	30,935	32,546	30,176	35,010
Gunnison Gorge	1,942	3,056	2,760	3,618	2,921	3,304	3,996	1,804	3,377	3,289	3,155	3,169	3,928
Gunnison - Upper	957	1,038	835	2,201	1,808	1,946	1,485	1,123	1,365	1,774	1,420	1,720	1,400
Gunnison - Escalante		24	115	241	286	213	179	275	2,083	2,340	899	1,011	1,884
Gunnison - Lake Fork	293	394	178	426	292	276	446	1,476	1,081	1,850	1,315	1,848	1,310
North Platte	1,289	297	481	620	97	864	157	1,277	1,351	1,232	804	882	165
Piedra		14	71	55	35	37	67	76	17	31	294	305	50
Poudre	7,148	8,581	11,779	14,345	19,355	21,415	24,949	30,845	33,235	31,981	32,721	32,446	29,012
Rio Grande	2,800	2,800	2,800	2,800	2,800	2,800	2,000	2,900	2,800	3,000	2,800	3,100	1,950
Roaring Fork - Above Basalt	1,500	1,500	1,500	1,500	1,500	1,500	2,000	4,000	4,500	5,074	4,500	5,000	4,500
Roaring Fork - Below Basalt	3,000	3,000	1,500	1,500	1,500	2,000	2,500	5,000	1,100	1,200	1,500	2,000	1,500
San Juan - Pagosa	300	400	600	800	800	800	1,400	1,600	1,200	2,680	3,460	3,400	2,200
San Miguel	50	60	125	365	1,518	2,181	1,642	3,321	1,157	2,000	2,500	3,442	1,379
South Platte				5,000	5,000	700	101	816	1,112	3,137	3,650	1,306	2,035
Taylor		5,843	5,683	9,008	8,400	11,910	12,877	12,859	15,655	13,612	15,367	15,367	13,989
<b>Total User Days</b>	<b>208,327</b>	<b>232,659</b>	<b>286,471</b>	<b>326,242</b>	<b>358,337</b>	<b>390,580</b>	<b>420,614</b>	<b>439,610</b>	<b>461,265</b>	<b>503,005</b>	<b>530,904</b>	<b>535,895</b>	<b>515,319</b>
<b>% Change From Previous Year</b>		<b>11.7%</b>	<b>23.1%</b>	<b>13.9%</b>	<b>9.8%</b>	<b>9.0%</b>	<b>7.7%</b>	<b>4.5%</b>	<b>4.9%</b>	<b>9.0%</b>	<b>5.5%</b>	<b>0.9%</b>	<b>-3.8%</b>
<b>User Day Change From Previous Year</b>		<b>24,332</b>	<b>53,812</b>	<b>39,771</b>	<b>32,095</b>	<b>32,244</b>	<b>30,034</b>	<b>18,995</b>	<b>21,656</b>	<b>41,739</b>	<b>27,899</b>	<b>4,991</b>	<b>-20,576</b>

Sources: National Park Service  
 US Forest Service  
 Bureau of Land Management  
 Local Outfitters  
 Colorado State Parks

Compiled By: Joe Greiner & Jody Werner  
 For Colorado River Outfitters Assoc.  
 Wilderness Aware Rafting  
 PO Box 1550  
 Buena Vista, CO 81211  
 719-395-2112 / www.inaraft.com

Revised: 1/31/2012

## COMMERCIAL USER DAYS IN THE STATE OF COLORADO 1988 - 2011

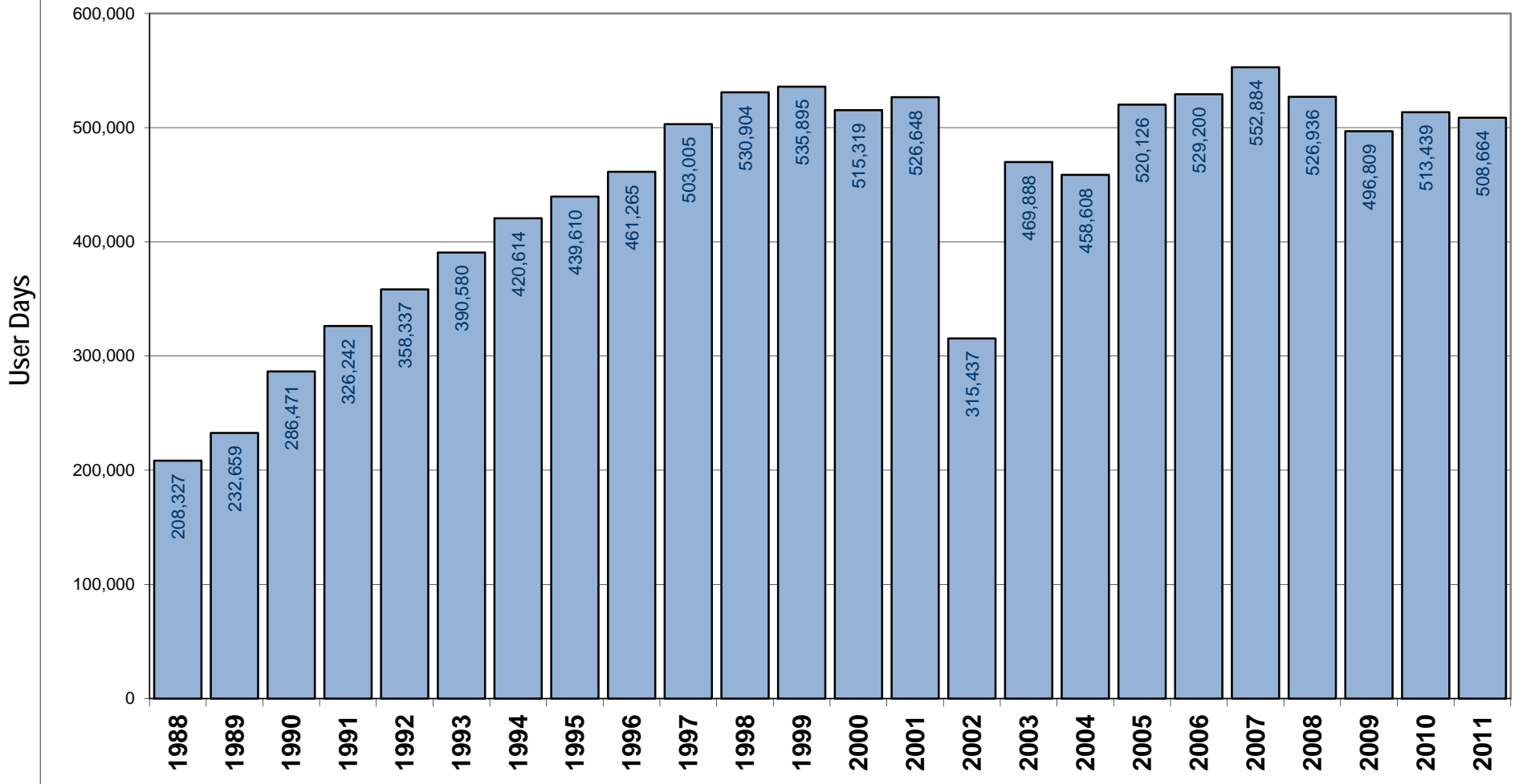
River	2001	2002	2003	2004	2005	2006	2007	2008	2009	2010	2011
Animas	42,000	12,000	34,500	35,470	52,700	42,500	44,322	42,250	41,921	41,000	45,000
Animas - Upper	721	300	690	658	872	167	598	533	500	411	411
Arkansas	252,213	139,178	214,555	203,840	228,091	237,160	239,887	214,234	205,876	211,150	208,329
Blue	14	0	264	788	1,212	760	2,038	2,906	3,089	1,181	6,580
Clear Creek	20,798	7,498	24,495	20,115	32,357	36,889	49,190	52,340	50,167	51,301	60,644
Colorado - Glenwood	55,829	42,581	56,876	58,751	57,712	62,652	65,502	52,738	52,737	61,890	44,007
Colorado - Upper	34,381	37,801	32,188	33,224	29,449	36,280	37,068	34,769	33,077	41,626	32,842
Colorado - Horsethief/Ruby	4,188	2,324	3,222	3,383	3,318	2,810	2,761	3,283	3,090	2,718	3,008
Colorado - Westwater	6,858	6,626	7,352	7,548	7,043	7,233	7,632	7,624	6,833	7,621	6,069
Dolores	0	0	214	174	936	81	195	868	536	194	393
Eagle - Upper (Dowd Chutes)	3,702	0	1,239	858	3,630	4,621	4,390	4,390	1,374	1,640	1,286
Eagle (Below Edwards)	594	446	1,153	820	1,419	1,441	1,369	1,369	1,369	1,710	4,362
Green/Yampa	32,083	23,030	29,249	27,987	27,171	26,650	23,833	25,564	17,667	19,692	17,294
Gunnison Gorge	3,401	3,292	2,328	3,010	3,016	3,800	2,826	4,342	3,956	1,390	2,148
Gunnison - Upper	2,690	1,334	1,590	1,982	2,112	2,212	2,500	2,669	2,669	2,669	2,669
Gunnison - Escalante	1,887	1,044	2,113	2,988	3,363	2,265	3,272	2,106	2,549	1,784	2,198
Gunnison - Lake Fork	1,543	0	160	177	195	165	126	369	203	149	284
North Platte	137	0	312	191	566	511	372	851	712	482	850
Piedra	650	0	210	454	725	400	500	547	547	190	190
Poudre	34,192	26,004	34,164	31,042	36,088	34,533	37,824	37,566	36,991	37,392	37,869
Rio Grande	3,300	92	1,300	2,800	3,060	2,900	3,100	3,200	2,464	2,016	2,016
Roaring Fork - Above Basalt	2,500	0	2,000	1,500	2,215	2,609	2,834	6,187	4,248	2,404	6,672
Roaring Fork - Below Basalt	1,000	0	500	500	10	79	100	2,500	1,263	1,366	912
San Juan - Pagosa	2,000	138	1,586	2,550	2,500	1,900	1,900	2,280	4,107	4,986	6,171
San Miguel	3,625	120	1,959	2,212	4,493	2,800	2,943	5,969	3,782	1,762	1,900
South Platte	2,055	453	935	836	901	655	690	1,150	750	383	430
Taylor	14,287	11,176	14,734	14,750	14,972	15,127	15,112	14,332	14,332	14,332	14,130
<b>Total User Days</b>	<b>526,648</b>	<b>315,437</b>	<b>469,888</b>	<b>458,608</b>	<b>520,126</b>	<b>529,200</b>	<b>552,884</b>	<b>526,936</b>	<b>496,809</b>	<b>513,439</b>	<b>508,664</b>
<b>% Change From Previous Year</b>	<b>2.2%</b>	<b>-40.1%</b>	<b>49.0%</b>	<b>-2.4%</b>	<b>13.4%</b>	<b>1.7%</b>	<b>4.5%</b>	<b>-4.7%</b>	<b>-5.7%</b>	<b>3.3%</b>	<b>-0.9%</b>
<b>User Day Change From Previous Year</b>	<b>11,329</b>	<b>-211,211</b>	<b>154,452</b>	<b>-11,281</b>	<b>61,518</b>	<b>9,074</b>	<b>23,684</b>	<b>-25,949</b>	<b>-30,127</b>	<b>16,630</b>	<b>-4,776</b>

Sources: National Park Service  
 US Forest Service  
 Bureau of Land Management  
 Local Outfitters  
 Colorado State Parks

Compiled By: Joe Greiner & Jody Werner  
 For Colorado River Outfitters Assoc.  
 Wilderness Aware Rafting  
 PO Box 1550  
 Buena Vista, CO 81211  
 719-395-2112 / www.inaraft.com

Revised: 1/31/2012

# COMMERCIAL USER DAYS IN COLORADO 1988-2011



Sources: National Park Service  
US Forest Service  
Bureau of Land Management  
Local Outfitters  
Colorado State Parks

For Colorado River Outfitters Assoc.  
Wilderness Aware Rafting  
PO Box 1550  
Buena Vista, CO 81211  
719-395-2112 / [www.inaraft.com](http://www.inaraft.com)

Revised: 1/31/2012

## ECONOMIC IMPACT OF COMMERCIAL RIVER RAFTING IN COLORADO

YEAR	TOTAL USER DAYS	INFLATION RATE (CPI)	EXPENDITURES-INFLATION ADJUSTED	DIRECT EXPENDETURES	ECONOMIC IMPACT	% CHANGE
1988	208,327		\$63.80	\$14,166,236	\$36,265,564	
1989	232,659	4.6%	\$66.73	\$15,526,325	\$39,747,392	9.6%
1990	286,471	6.1%	\$70.81	\$20,283,592	\$51,925,995	30.6%
1991	326,242	3.1%	\$73.00	\$23,815,666	\$60,968,105	17.4%
1992	358,337	2.9%	\$75.12	\$26,917,193	\$68,908,014	13.0%
1993	390,580	2.7%	\$77.15	\$30,131,387	\$77,136,351	11.9%
1994	420,614	2.7%	\$79.23	\$33,324,463	\$85,310,624	10.6%
1995	439,610	2.5%	\$81.21	\$35,700,168	\$91,392,429	7.1%
1996	461,265	3.3%	\$83.89	\$38,694,941	\$99,059,049	8.4%
1997	503,005	1.7%	\$85.31	\$42,913,717	\$109,859,115	10.9%
1998	530,904	1.7%	\$86.77	\$46,063,936	\$117,923,677	7.3%
1999	535,895	2.7%	\$89.11	\$47,752,418	\$122,246,189	3.7%
2000	515,319	3.4%	\$92.14	\$47,480,170	\$121,549,236	-0.6%
2001	526,648	1.9%	\$93.89	\$49,445,914	\$126,581,540	4.1%
2002	315,437	2.2%	\$95.95	\$30,267,287	\$77,484,255	-38.8%
2003	469,888	1.9%	\$97.78	\$45,944,146	\$117,617,014	51.8%
2004	458,608	3.3%	\$101.00	\$46,320,904	\$118,581,515	0.8%
2005	520,126	3.4%	\$104.44	\$54,320,610	\$139,060,760	17.3%
2006	529,200	2.0%	\$106.53	\$56,373,673	\$144,316,602	3.8%
2007	552,884	4.1%	\$110.89	\$61,311,435	\$156,957,273	8.8%
2008	526,936	0.1%	\$111.00	\$58,492,308	\$149,740,309	-4.6%
2009	496,809	2.7%	\$114.00	\$56,637,113	\$144,991,010	-3.2%
2010	513,439	1.5%	\$115.71	\$59,411,004	\$152,092,171	4.9%
2011	508,664	3.0%	\$119.18	\$60,624,175	\$155,197,888	2.0%

% Change from 1988 - 1993 = 53.0%

% Change from 1994 - 1999 = 30.2%

% Change from 2000 - 2005 = 12.6%

% Change from 2006 - 2011 = 7.0%

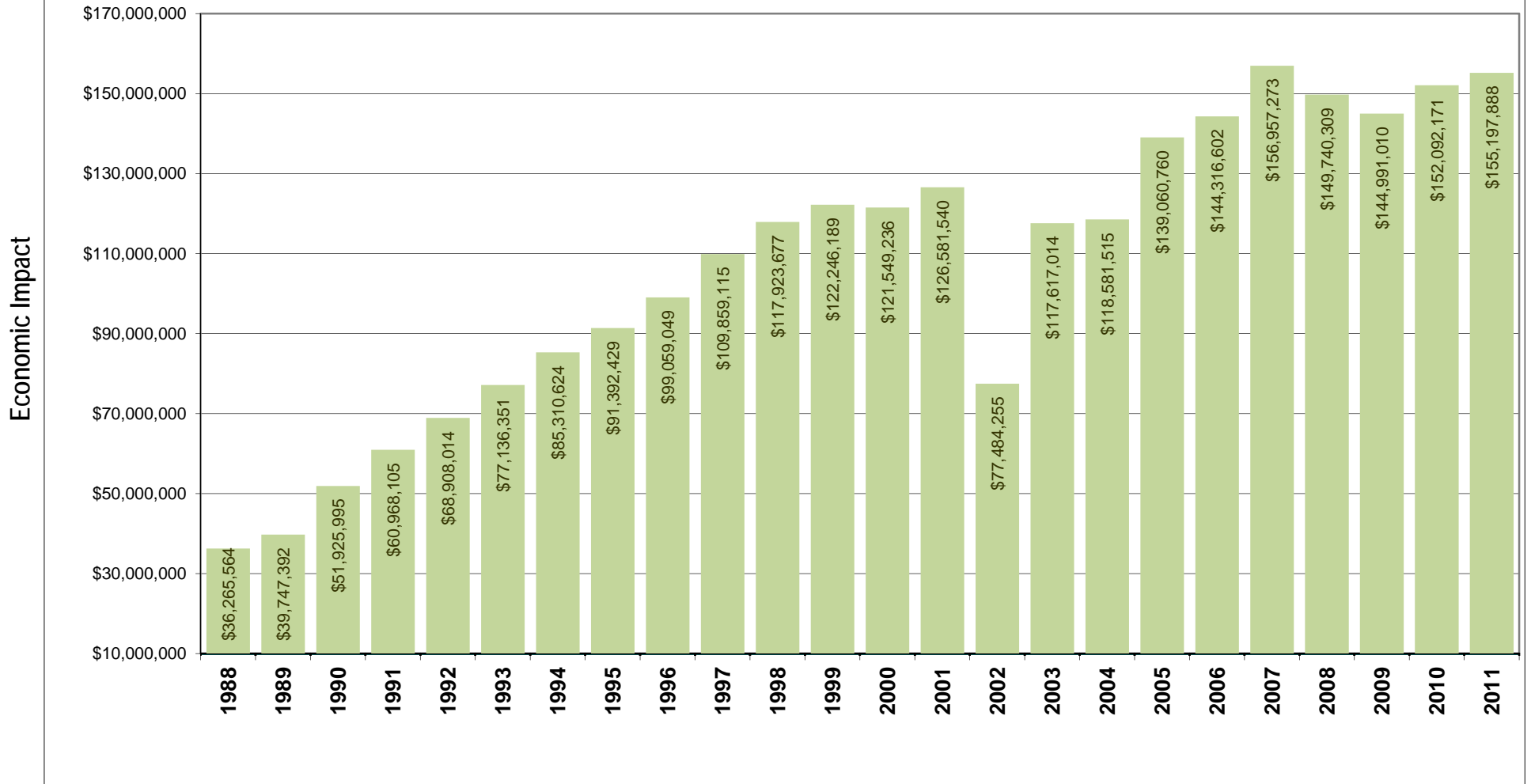
See glossary for above economic impact formulas and sources

Sources: National Park Service  
 US Forest Service  
 Bureau of Land Management  
 Local Outfitters  
 Colorado State Parks

Compiled By: Joe Greiner & Jody Werner  
 For Colorado River Outfitters Assoc.  
 Wilderness Aware Rafting  
 PO Box 1550  
 Buena Vista, CO 81211  
 719-395-2112 / www.inaraft.com

Revised: 1/31/2012

# ECONOMIC IMPACT OF COMMERCIAL RIVER RAFTING IN COLORADO 1988-2011



Sources: National Park Service  
 US Forest Service  
 Bureau of Land Management  
 Local Outfitters  
 Colorado State Parks

Compiled By: Joe Greiner & Jody Werner  
 For Colorado River Outfitters Assoc.  
 PO Box 1550  
 Buena Vista, CO 81211  
 719-395-2112 / [www.inaraft.com](http://www.inaraft.com)

Revised: 1/31/2012

## 2011 ECONOMIC IMPACT BY RIVER

RIVER	USER DAYS	DIRECT EXPENDITURES	ECONOMIC IMPACT
Animas	45,000	\$5,207,033	\$13,330,004
Animas - Upper	411	\$47,558	\$121,747
Arkansas	208,329	\$24,106,131	\$61,711,696
Blue	6580	\$761,384	\$1,949,143
Clear Creek	60,644	\$7,017,229	\$17,964,105
Colorado - Glenwood	44007	\$5,092,131	\$13,035,855
Colorado - Upper	32,842	\$3,800,208	\$9,728,533
Colorado - Horsethief/Ruby	3008	\$348,061	\$891,037
Colorado - Westwater	6,069	\$702,255	\$1,797,773
Dolores	393	\$45,475	\$116,415
Eagle - Upper	1,286	\$148,805	\$380,942
Eagle - Lower	4362	\$504,735	\$1,292,122
Green/Yampa	17,294	\$2,001,097	\$5,122,809
Gunnison Gorge	2148	\$248,549	\$636,286
Gunnison - Upper	2,669	\$308,835	\$790,617
Gunnison - Escalante	2198	\$254,335	\$651,097
Gunnison - Lake Fork	284	\$32,862	\$84,127
North Platte	850	\$98,355	\$251,789
Piedra	190	\$21,985	\$56,282
Poudre	37869	\$4,381,892	\$11,217,642
Rio Grande	2,016	\$233,275	\$597,184
Roaring Fork - Above Basalt	6672	\$772,029	\$1,976,395
Roaring Fork - Below Basalt	912	\$105,529	\$270,155
San Juan - Pagosa	6171	\$714,058	\$1,827,988
San Miguel	1,900	\$219,852	\$562,822
South Platte	430	\$49,756	\$127,376
Taylor	14,130	\$1,635,008	\$4,185,621
<b>Totals</b>	<b>508,664</b>	<b>\$58,858,422</b>	<b>\$150,677,561</b>

See glossary for above economic impact formulas and sources

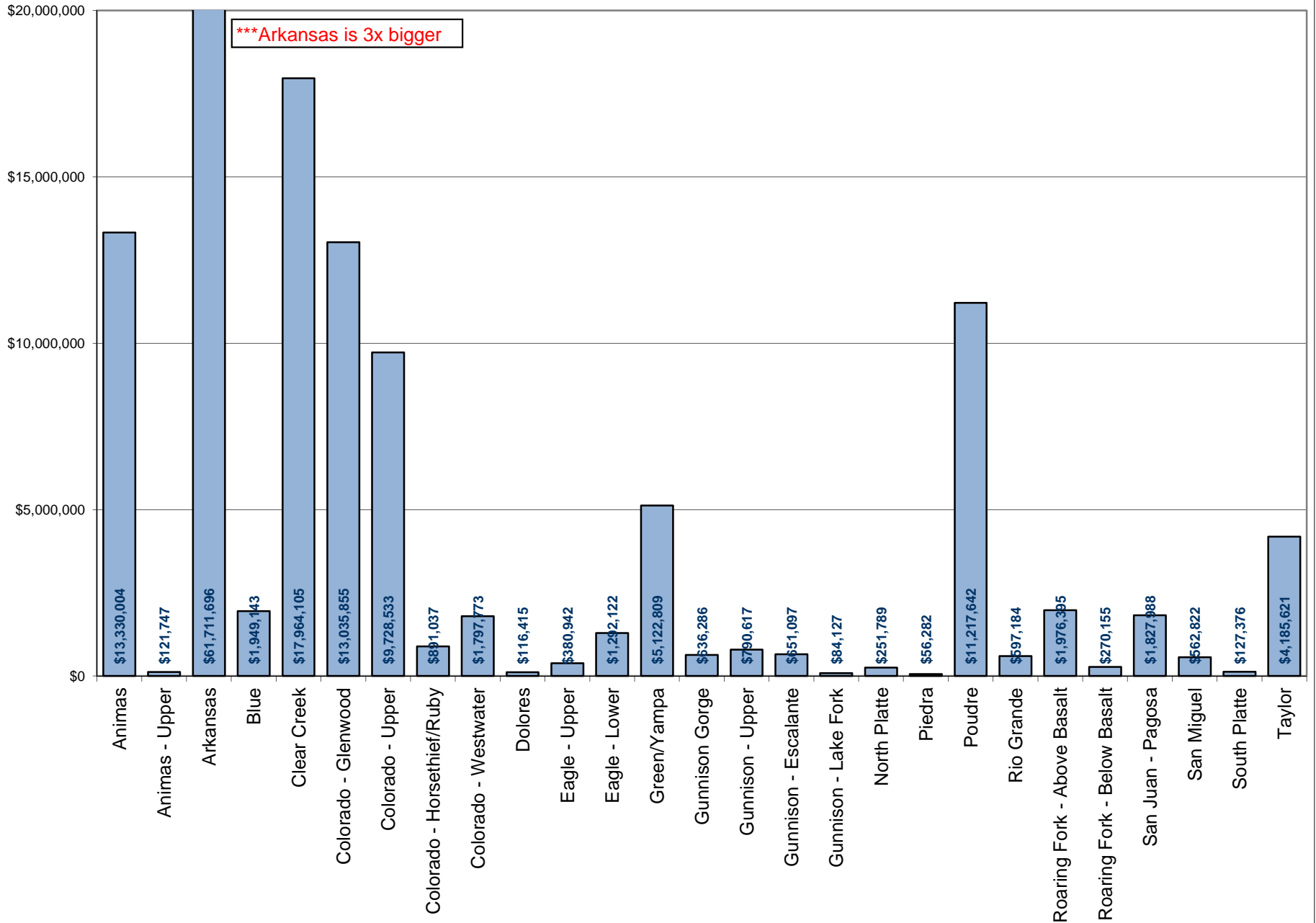
Sources: National Park Service  
 US Forest Service  
 Bureau of Land Management  
 Local Outfitters  
 Colorado State Parks

Compiled By: Joe Greiner & Jody Werner  
 For Colorado River Outfitters Assoc.  
 Wilderness Aware Rafting  
 PO Box 1550  
 Buena Vista, CO 81211  
 719-395-2112 / www.inaraft.com

Revised: 1/31/12



# ECONOMIC IMPACT OF COMMERCIAL RIVER RAFTING IN COLORADO - 2011



## INDIVIDUAL RIVER COMMERCIAL RAFTING STATISTICS - 3 YR RANGE

RIVER	2009 USER DAYS	2010 USER DAYS	2011 USER DAYS	% CHANGE '09 - '10	% CHANGE '10 - 11	2009 % MARKET SHARE	2010 % MARKET SHARE	2011 % MARKET SHARE
Animas	41,921	41,000	45,000	2.2%	9.8%	8.4%	8.0%	8.8%
Animas - Upper	500	411	411	21.7%	0.0%	0.1%	0.1%	0.1%
Arkansas	205,876	211,150	208,329	-2.5%	-1.3%	41.4%	41.1%	41.0%
Blue	3,089	1,181	6,580	161.6%	457.2%	0.6%	0.2%	1.3%
Clear Creek	50,167	51,301	60,644	-2.2%	18.2%	10.1%	10.0%	11.9%
Colorado - Glenwood	52,737	61,890	44,007	-14.8%	-28.9%	10.6%	12.1%	8.7%
Colorado - Upper	33,077	41,626	32,842	-20.5%	-21.1%	6.7%	8.1%	6.5%
Colorado - Horsethief/Ruby	3,090	2,718	3,008	13.7%	10.7%	0.6%	0.5%	0.6%
Colorado - Westwater	6,833	7,621	6,069	-10.3%	-20.4%	1.4%	1.5%	1.2%
Dolores	536	194	393	176.3%	102.6%	0.1%	0.0%	0.1%
Eagle - Upper	1,374	1,640	1,286	-16.2%	-21.6%	0.3%	0.3%	0.3%
Eagle - Lower	1,369	1,710	4,362	-19.9%	155.1%	0.3%	0.3%	0.9%
Green/Yampa	17,667	19,692	17,294	-10.3%	-12.2%	3.6%	3.8%	3.4%
Gunnison Gorge	3,956	1,390	2,148	184.6%	54.5%	0.8%	0.3%	0.4%
Gunnison - Upper	2,669	2,669	2,669	0.0%	0.0%	0.5%	0.5%	0.5%
Gunnison - Escalante	2,549	1,784	2,198	42.9%	23.2%	0.5%	0.3%	0.4%
Gunnison - Lake Fork	203	149	284	36.2%	90.6%	0.0%	0.0%	0.1%
North Platte	712	482	850	47.7%	76.3%	0.1%	0.1%	0.2%
Piedra	547	190	190	187.9%	0.0%	0.1%	0.0%	0.0%
Poudre	36,991	37,392	37,869	-1.1%	1.3%	7.4%	7.3%	7.4%
Rio Grande	2,464	2,016	2,016	22.2%	0.0%	0.5%	0.4%	0.4%
Roaring Fork - Above Basalt	4,248	2,404	6,672	76.7%	177.5%	0.9%	0.5%	1.3%
Roaring Fork - Below Basalt	1,263	1,366	912	-7.5%	-33.2%	0.3%	0.3%	0.2%
San Juan - Pagosa	4,107	4,986	6,171	-17.6%	23.8%	0.8%	1.0%	1.2%
San Miguel	3,782	1,762	1,900	114.6%	7.8%	0.8%	0.3%	0.4%
South Platte	750	383	430	95.8%	12.3%	0.2%	0.1%	0.1%
Taylor	14,332	14,332	14,130	0.0%	-1.4%	2.9%	2.8%	2.8%
<b>Totals</b>	<b>496,809</b>	<b>513,439</b>	<b>508,664</b>	<b>3.3%</b>	<b>-0.9%</b>	<b>100.0%</b>	<b>100.0%</b>	<b>100.0%</b>

Sources: National Park Service  
 US Forest Service  
 Bureau of Land Management  
 Local Outfitters  
 Colorado State Parks

For Colorado River Outfitters Assoc.  
 Wilderness Aware Rafting  
 PO Box 1550  
 Buena Vista, CO 81211  
 719-395-2112 / www.inaraft.com

Revised: 1/31/12

# GLOSSARY

**User Day:** A user day is defined as a paying guest on a river for any part of a day.

**Direct Expenditures:** The total cash outlay for rafting, food, lodging, souvenirs, etc. spent in the local area by one river rafting customer in one day. Taken from a survey conducted in 1991 and published in 1993 titled "The Use and User Characteristics, Management Preferences, and Satisfaction of Boaters and Anglers on the Arkansas Headwaters Recreation Area (Colorado)"

Report to the Bureau of Land Management  
Canon City District Office  
PO Box 2200  
Canon City, CO 81215

by:

Joseph W Roggenbuck  
William T Borrie  
Daniel R Williams  
Department of Forestry  
Virginia Tech  
Blacksburg, VA 24061-0324

**Economic Multiplier:** The number of times a dollar is spent (2.56 times) in the local area before being spent outside that area. Colorado Tourism Board.

**Inflation Rate (CPI):** Consumer Price Index for all items, all urban consumers. Customary source for measuring the inflation rate nationwide.

<http://www.bls.gov/news.release/cpi.nr0.htm>

**Economic Impact:** Direct Expenditures x User Days x Economic Multiplier

2012 CROA Membership

COMPANY NAME	CONTACT	ADDRESS	CITY, STATE, ZIP	PHONE	EMAIL
A Wanderlust Adventure	Bob Klein	3500 Bingham Hill Rd.	Fort Collins, CO 80521	800-745-7238	info@awanderlustadventure.com
Adventure Bound River Expeditions	Tom Kleinschnitz	2392 H Road	Grand Junction, CO 81505	800-423-4668	tomk@AdventureBoundUSA.com
American Adventure Expeditions	Michael Kissack	12844 E. Hwys 24/285	Buena Vista, CO 81211	719-395-2409	Mike@AmericanAdventure.com
Arkansas River Tours	Bob Hamel	PO Box 337	Cotopaxi, CO 81223	719-942-4362	bob@arkansasrivertours.com
Arkansas Valley Adventures	Duke Bradford	PO Box 4310	Buena Vista, CO 81211	970-406-0321	duke@coloradorafting.net
Aspen Whitewater Rafting	Jim Ingram	520 East Durant Avenue	Aspen, CO 81611	866-377-4837	jim@aspenwhitewater.com
Bill Dvorak's Kayak and Rafting Expeditions	Bill Dvorak	17921 Hwy 285	Nathrop, CO 81236	800-824-3795	bill@dvorakexpeditions.com
Black Canyon Anglers	Ben Olson	PO Box 180	Austin, CO 81410	970-835-5050	info@blackcanyonanglers.com
Blazing Adventures	Dan McMahon	PO Box 5552	Snowmass Village, CO 81615	800-282-7238	danm@blazingadventures.com
Blue Sky Adventures	Patrick Drake	P.O. Box 3195	Glenwood Springs, CO 81601	877-945-6605	blueskyraft@gmail.com
Breckenridge Adventure Tours	Eric Carlson	PO Box 4086	Breckenridge, CO 80424	970-485-4399	eric@breckenridgeadventuretours.com
Browns Canyon Rafting	Byron Brown	PO Box 1273	Silverthorne, CO 80498	719-275-2890	admin@raftbrownscanyon.com
Buffalo Joe's Whitewater Rafting	Coby & Jaheva Vidakovich	P.O. Box 1526	Buena Vista, CO 81211	719-395-8757	coby@buffalोजoe.com
Centennial Canoe Outfitters	Marty Genereux	PO Box 3365	Centennial, CO 80122	877-353-1850	marty@centennialcanoe.com
Clear Creek Rafting Company	John Rice	P.O. Box 3178	Idaho Springs, CO 80452-3178	303-567-1000	John@clearcreekrafting.com
Colorado Adventure Center	Johnny Cantamessa	1308 CR 129	Glenwood Springs, CO 81601	970-945-6737	johnny@raftingcolorado.com
Colorado Discover Ability	Martin Wiesiolek	PO Box 1924	Grand Junction, CO 81502	970-257-1222	martin@coloradodiscoverability.com
Colorado Mountain College	Sameta Rush	821 Grand Avenue	Glenwood Springs, CO 81601	970-870-4527	srush@coloradomtn.edu
Colorado River & Trail Expeditions	Vicki Mackay	P.O. Box 57575	Salt Lake City, UT 84107	801-261-1789	crate@crateinc.com
Echo Canyon	Andy Neinas	45000 US HWY 50 N	Canon City, CO 81212	800-748-2953	Andy@raftecho.com
GEO Tours Whitewater Raft Trips	Bruce Becker	P.O. Box 483	Morrison, CO 80465	303-756-6070	bruce@georrafting.com
Glenwood Canyon Rafting, Inc.	Gary Hansen	Box 1566	Glenwood Springs, CO 81601	970-384-0445	gcraft@raftingglenwoodsprings.com
Gunnison River Expeditions	Alan DeGrange	PO Box 2858	Hotchkiss, CO 81419	970-874-8184	gre@sopris.net
Holiday River Expeditions	Karen Johnson	544 East 3900 South	Salt Lake City, UT 84107	801-266-2087	karen@BikeRaft.com
Independent Whitewater	Mike Whittington	333 Maxwell	Salida, CO 81201	719-539-7737	twodogs@salida.net
KODI Rafting	Chris Campton	P.O. Box 4275	Frisco, CO 80443	970-668-1548	campy@whitewatercolorado.com
Kokopeli Rafting Adventures	John Seiner	551 W. Cordova Rd #540	Santa Fe, NM 87505	800-879-9035	john@kokopelliraft.com
Lakota Guides	Karl Borski	PO Box 4175	Vail, CO 81658	970-845-7238	jmseelig@lakotaguides.com
Liquid Descent	Alan Blado	PO Box 1957	Idaho Springs, 80452	970-393-0158	alan@liquiddescent.com
AAM's Mild to Wild Rafting	Alex Mickel	50 Animas View Drive	Durango, CO 81301	970-247-4789	alex@mild2wildrafting.com
Mile Hi Rafting LLC	Suzen Raymond	P.O. Box 1744	Lawson, Co 80439	303-567-0717	info@milehirafting.com
Mountain Man Tours, Inc.	Ryan Daugherty	PO Box 839	Creede, CO 81130	719-658-2663	mountainmantours@gmail.com
Mountain Waters	James Wilkes	P.O. Box 2681	Durango, CO 81302	970-903-9428	booth@durangorrafting.com
Noah's Ark Whitewater Rafting Co.	Micah Salazar	P.O. Box 850	Buena Vista, CO 81211	719-395-2158	micah@noahsark.com
OARS and Don Hatch River Expeditions	Bruce Lavoie	P.O. Box 67	Angels Camp, CA 95222	800-346-6277	jimw@oars.com
Pagosa Outside Adventures	Toby Rohwer	PO Box 2106	Pagosa Springs, CO 81147	970 264-4202	info@pagosaoutside.com
Performance Tours Rafting	Kevin Foley	P.O. Box 7305	Breckenridge, CO 80424	970-453-0661	ptbreck@aol.com
Raft Masters	Dennis Weid	2315 E. Main Street	Canon City, CO 81212	719-275-6645	dennis@raftmasters.com
RIGS Fly Shop and GUIDE SERVICE	Tim Patterson	PO Box 2086	Rigeway, CO 81432	970-626-4460	info@fishrigs.com
Rimrock Adventures	Travis Baier	P.O. Box 608	Fruita, CO 81521	970-858-9555	info@rradventures.com
River Runners	Jon Donaldson	24070 C.R. 301	Buena Vista, CO 81211	719-395-2466	jon@whitewater.net
Rocky Mountain Adventures	Ryan Barwick	P.O. Box 1989	Fort Collins, CO 80522	970-493-4005	rbarwick@shoprma.com
Royal Gorge Rafting & Zipline Tours	Jim Whiteside	45045 US HWY 50	Canon City, CO 81212	719-275-7238	raft@royalgorgerafting.net
Sage Outdoor Adventures	Daryll Bangert	PO Box 460	Wolcott, CO 81655	970-476-3700	darrylbangert@msn.com
Scenic River Tours	Ches Russell	703 W. Tomichi Avenue	Gunnison, CO 81230	970-641-3131	info@scenicrivertours.com
The Colorado Angler	Andrew Peterson	P.O. Box 7225	Dillon, CO 80435	970-513-8055	thecoloradoangler@yahoo.com
Three Rivers Resort and Outfitting	Mark Schumacher	P.O. Box 339	Almont, CO 81210	970-641-1303	mark@3riversresort.com
Timberline Tours	Greg Kelchner	Box 131	Vail, CO 81658	800-831-1414	gKelchner@hotmail.com
Vessels For Honor Rafting	Mark Anderson	27077 HWY 50, Ste. #4	Texas Creek, CO 81223	719-276-2227	mark.a@journeyquest.org
Wilderness Aware	Joe Greiner	P.O. Box 1550	Buena Vista, CO 81211	719-395-2112	joe@inaraft.com

## 2011 Report Providers

Name	Address1	City	State	Zip	Contact Person	Phone	EmailAddress	River(s)
USFS- Bayfield	PO Box 439	Bayfield	CO	81122	Mike Herin	(970) 884-1404	mjherin@fs.fed.us	Upper Animas, Piedra
AHRA	307 W Sackett St	Salida	CO	81201	John Kreski	(719) 539-7289	john.kreski@state.co.us	Arkansas
USFS - Blue River	PO Box 620	Silverthorne	CO	80498	Jackie Brown	(970) 468-5400	jbrown05@fs.fed.us	Blue River
USFS- Glenwood Canyon	PO Box 720	Eagle	CO	81631	Kerry Pitt	(970)827-5154	kpitt@fs.fed.us	Glenwood Canyon, Upper Eagle at Dowd Chutes
BLM Kremmling	PO Box 68	Kremmling	CO	80459	Terri Parvin	(970) 724-3027	tparvin@blm.gov, Hannah_Schechter@blm.gov	Upper colorado
BLM Grand Junction	2815 H Road	Grand Junction	CO	81506	Mike Jones	(970) 244-3044	mdjones@blm.gov	Lower Gunnison (Escalante), Horsethief/Ruby, lower Dolores
BLM Moab	82 E. Dogwood Ste G	Moab	UT	84532	Jennifer Jones	(435) 259-2136	jjones@blm.gov	Colorado River - Westwater, Lower Dolores, Horsethief / Loma
Dolores Public Lands Office	29211 Hwy 184	Dolores	CO	81323	Tom Kelly	(970) 882-7296	tjkelly@fs.fed.us	Upper Dolores
Colorado River Valley Field Office	2300 River Frontage Rd	Silt	CO	81652	Greg Wolfgang, Kim Miller	(970) 876-9075	gregory_wolfgang@blm.gov; kmmiller@blm.gov	Lower Eagle, Lower Roaring Fork, Colorado - State Bridge down
Dinosaur National Monument	4545 Hwy 40	Dinosaur	CO	81610	Kelley Kager	(970) 374-3020	kelly_kager@nps.gov	Green, Yampa
Dinosaur National Monument	4545 Hwy 40	Dinosaur	CO	81610	Kelley Kager	(970) 374-3020	<a href="http://www.nature.nps.gov/stats/park.cfm?parkid=289">www.nature.nps.gov/stats/park.cfm?parkid=289</a>	Gunnison Gorge, San Miguel, Lower Gunnison (Escalante)
BLM Montrose	2505 S. Townsend	Montrose	CO	81401	Edd Franz	(970) 240-5309	edd_franz@blm.gov	
BLM Gunnison	216 N. Colorado	Gunnison	CO	81230	Sally Thode	(970) 642-4940	Sally_Thode@blm.gov	Gunnison - Lake Fork
USFS - N. Platte	South Hwy 130, PO Box 249	Saratoga	WY	82331	Diana Hood	(307) 326-2532	dlhood@fs.fed.us	North Platte
USFS - Ft Collins	2150 Centre Ave Bldg E	Ft. Collins	CO	80526	Jon Halverson	(970) 295-6723	jhalverson@fs.fed.us	Poudre
Clear Creek Rafting	PO Box 3178	Idaho Springs	CO	80452	John Rice	(303) 567-1000	john@clearcreekrafting.com	Clear Creek, South Platte
Pagosa Outside Adventures	PO Box 2106	Pagosa Springs	CO	81147	Toby Rohwer	(970) 264-4202	info@pagosaoutside.com	San Juan / Pagosa
Scenic River Tours	703 W Tomichi Ave	Gunnison	CO	81230	Ches Russell	(970) 641-3131	info@scenicrivertours.com	Taylor, Gunnison - Upper (town run)
Mountain Man Tours	408 Starlight Circle	Creede	CO	81130	Ryan Daugherty	(719) 658-2663	mountainmantours@gmail.com	Rio Grande
Pitkin County Open Space & Trails	530 E Main St 3rd Floor	Aspen	CO	81611	Fran Soroka	(970) 920-5232	fran.soroka@co.pitkin.co.us	Upper Roaring Fork,