



## CONSTRUCTION/CLASSIFICATION

Year of construction	1976
Registration	Rotterdam
Classification	GL ✕ 100 A5 MC
Call sign	P H W N

## FEATURES

Accommodation for 36 persons (can be increased)

## ANCHOR WINCHES

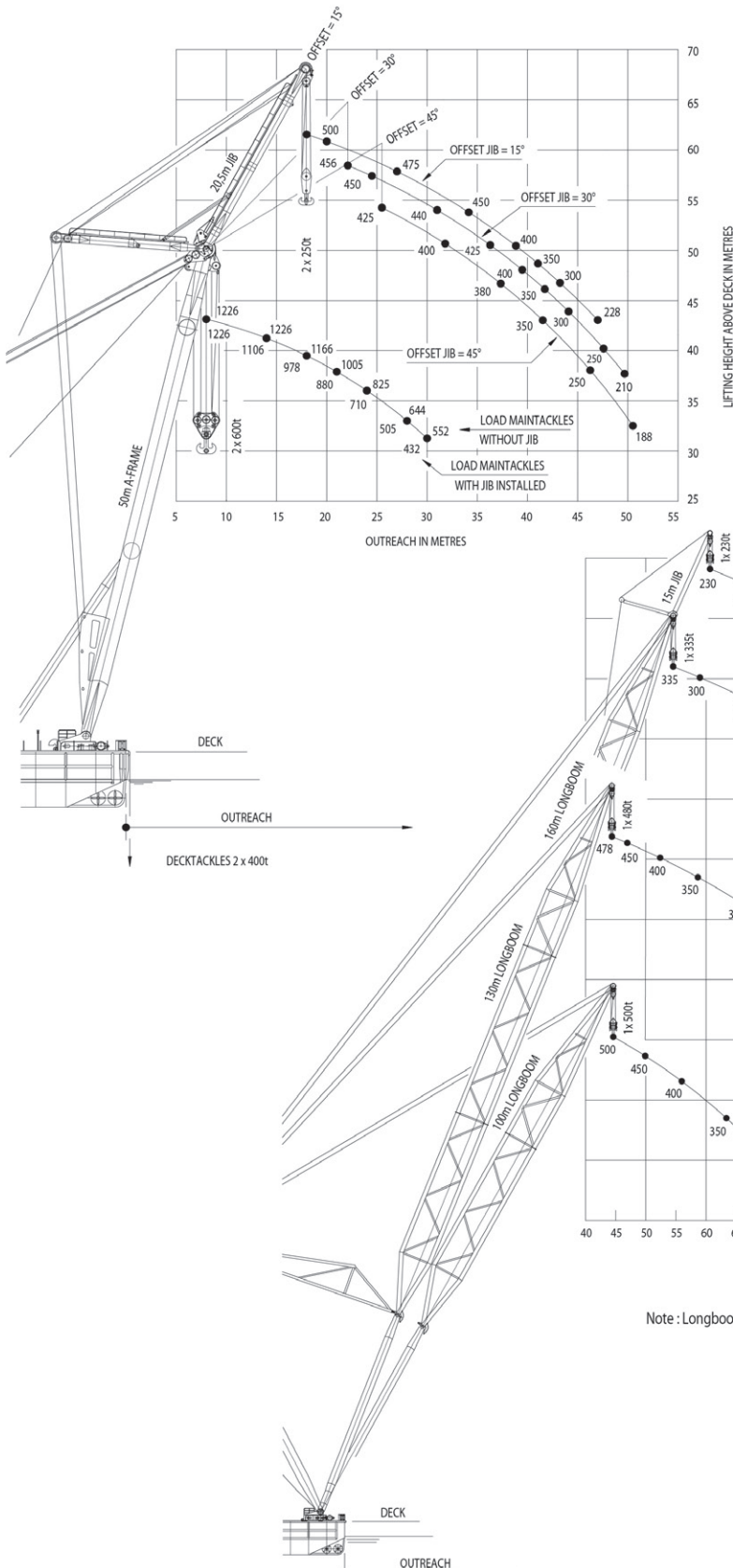
Aft	1 x 10 t capacity 235 m of 56 mm Ø chain
-----	---

## MOORING WINCHES

Aft	3 x 10/5 t capacity 220 m of 28 mm Ø wire rope 2 x 30/10 t capacity 1000 m of 50 mm Ø wire rope
Forward	4 x 10/5 t capacity 220 m of 28 mm Ø wire rope 2 x 30/10 t capacity 1000 m of 50 mm Ø wire rope

## MAIN DATA

Gross tonnage	3,343 R.T.
Nett tonnage	1,003 R.T.
Length overall	72,56 m
Beam overall	30.50 m
Depth	5.50 m
Min. draught	2.50
Max. draught	4.90 m
Sailing height min.	49.00 m
Propulsion	3 x 460 kW
Bowthruster	2 x 386 kW



- Both main tackles and jib tackles can operate together, load capacity on request.
- Loads in metric tonnes [ t ].
- Using deck tackles and main tackles together, loads upto 1600 t can be raised to water level

Note : Longboom tackles and jib tackles can not be used together.

**CAPACITY DIAGRAM**

Royal Boskalis Westminster N.V.  
PO Box 43  
3350 AA Papendrecht  
The Netherlands  
T +31 78 69 69 000  
F +31 78 69 69 555  
royal@boskalis.com  
www.boskalis.com