

Table 1.5
Age-Adjusted SEER Incidence and U.S. Death Rates and 5-Year Relative Survival (Percent)
By Primary Cancer Site, Sex and Time Period

All Races

Site	Incidence ^a (2007-2011)			US Mortality ^b (2007-2011)			Survival ^c (%) (2004-2010)		
	Total	Males	Females	Total	Males	Females	Total	Males	Females
All Sites	460.4	529.4	411.3	173.8	211.6	147.4	66.1	66.5	65.6
Oral Cavity & Pharynx:	11.0	16.5	6.2	2.5	3.8	1.4	62.7	61.9	64.6
Lip	0.7	1.1	0.3	0.0	0.0	0.0	89.5	90.5	86.5
Tongue	3.2	4.8	1.8	0.6	0.9	0.4	62.7	62.9	62.2
Salivary gland	1.3	1.7	1.0	0.2	0.4	0.1	72.4	65.4	81.5
Floor of mouth	0.6	0.8	0.3	0.0	0.0	0.0	51.4	49.1	57.4
Gum & other oral cavity	1.5	1.8	1.3	0.4	0.4	0.3	59.7	57.9	61.8
Nasopharynx	0.7	1.0	0.4	0.2	0.3	0.1	59.2	57.9	62.4
Tonsil	1.8	3.1	0.6	0.2	0.4	0.1	70.8	71.6	67.0
Oropharynx	0.4	0.7	0.2	0.2	0.4	0.1	41.7	43.1	36.5
Hypopharynx	0.6	1.1	0.2	0.1	0.2	0.0	31.9	31.5	33.6
Other oral cavity & pharynx	0.2	0.3	0.1	0.5	0.8	0.2	35.4	37.3	30.6
Digestive System:	84.3	103.2	68.9	42.5	54.6	32.8	44.3	42.6	46.4
Esophagus	4.4	7.7	1.8	4.2	7.5	1.6	17.5	17.6	17.2
Stomach	7.5	10.3	5.3	3.5	4.7	2.5	28.3	26.6	30.8
Small intestine	2.1	2.5	1.8	0.4	0.4	0.3	65.2	65.1	65.3
Colon & Rectum:	43.7	50.6	38.2	15.9	19.1	13.5	64.7	65.0	64.5
Colon	31.1	34.8	28.2	-	-	-	64.0	64.5	63.6
Rectum	12.6	15.7	10.0	-	-	-	66.5	66.0	67.2
Anus, anal canal & anorectum	1.8	1.5	2.0	0.2	0.2	0.3	65.5	60.8	68.6
Liver & intrahepatic bile duct	7.9	12.4	4.1	5.8	8.5	3.4	16.6	16.4	17.2
Gallbladder	1.2	0.8	1.4	0.6	0.5	0.7	17.4	15.5	18.2
Other biliary	1.9	2.3	1.5	0.4	0.5	0.4	16.3	17.6	14.8
Pancreas	12.3	14.0	10.9	10.9	12.5	9.6	6.7	6.3	7.0
Retroperitoneum	0.4	0.4	0.4	0.1	0.1	0.1	54.4	55.1	53.6
Peritoneum, omentum & mesentery	0.6	0.1	1.1	0.3	0.1	0.4	31.6	44.5	30.7
Other digestive system	0.6	0.7	0.5	0.3	0.4	0.2	11.3	10.4	12.1
Respiratory System:	64.3	79.3	53.0	49.8	64.0	39.1	19.8	18.9	20.9
Nose, nasal cavity & middle ear	0.7	0.9	0.5	0.1	0.2	0.1	54.7	55.7	53.4
Larynx	3.3	5.9	1.2	1.1	2.0	0.4	60.0	61.0	56.1
Lung & bronchus	60.1	72.2	51.1	48.4	61.6	38.5	16.8	14.4	19.6
Pleura ^d	0.0	0.0	0.0	0.1	0.1	0.0	19.3	16.4	23.5
Trachea & other respiratory organs	0.2	0.3	0.1	0.1	0.1	0.0	48.8	50.2	45.0
Bones & joints	0.9	1.1	0.8	0.4	0.5	0.3	66.6	64.9	68.7
Soft tissue (including heart)	3.3	4.0	2.8	1.3	1.5	1.1	65.3	64.5	66.4
Skin (excl. basal & squamous):	23.3	30.5	18.1	3.6	5.6	2.1	90.7	88.7	93.2
Melanoma of the skin	21.3	27.7	16.7	2.7	4.1	1.7	91.3	89.3	93.7
Other non-epithelial skin	2.0	2.8	1.4	0.9	1.5	0.4	84.3	81.7	87.7
Breast	67.1	1.2	124.6	12.4	0.3	22.2	89.2	83.2	89.2
Breast (<i>in situ</i>)	16.8	0.2	31.7	-	-	-	100.0	100.0	100.0

Note: Incidence and death rates are per 100,000 and are age-adjusted to the 2000 US Std Population (19 age groups - Census P25-1130).

^a SEER 18 areas (San Francisco, Connecticut, Detroit, Hawaii, Iowa, New Mexico, Seattle, Utah, Atlanta, San Jose-Monterey, Los Angeles, Alaska Native Registry, Rural Georgia, California excluding SF/SJM/LA, Kentucky, Louisiana, New Jersey and Georgia excluding ATL/RG).

^b US Mortality Files, National Center for Health Statistics, Centers for Disease Control and Prevention.

^c SEER 18 areas. Based on follow-up of patients into 2011.

^d Mesotheliomas of the Pleura are included in the separate group Mesothelioma for incidence but are included in the Pleura grouping for mortality.

- Statistic could not be calculated due to less than 16 cases in the time interval.

Table 1.5 - continued
 Age-Adjusted SEER Incidence and U.S. Death Rates and 5-Year Relative Survival (Percent)
 By Primary Cancer Site, Sex and Time Period

All Races

Site	Incidence ^a (2007-2011)			US Mortality ^b (2007-2011)			Survival ^c (%) (2004-2010)		
	Total	Males	Females	Total	Males	Females	Total	Males	Females
Female Genital System:	26.1	-	48.8	8.6	-	15.5	68.4	-	68.4
Cervix uteri	4.0	-	7.8	1.2	-	2.3	67.9	-	67.9
Corpus uteri	12.8	-	23.9	1.1	-	1.9	82.8	-	82.8
Uterus, NOS	0.4	-	0.7	1.4	-	2.4	26.4	-	26.4
Ovary ^d	6.6	-	12.3	4.4	-	7.9	44.6	-	44.6
Vagina	0.4	-	0.7	0.1	-	0.2	51.8	-	51.8
Vulva	1.3	-	2.4	0.3	-	0.5	70.5	-	70.5
Other female genital system	0.5	-	1.0	0.1	-	0.2	59.1	-	59.1
Male Genital System:	70.3	154.5	-	9.0	22.8	-	98.6	98.6	-
Prostate	67.0	147.8	-	8.8	22.3	-	98.9	98.9	-
Testis	2.8	5.6	-	0.1	0.2	-	95.3	95.3	-
Penis	0.4	0.9	-	0.1	0.2	-	67.9	67.9	-
Other male genital system	0.1	0.3	-	0.0	0.0	-	86.9	86.9	-
Urinary System:	36.9	58.8	20.1	8.6	13.8	4.9	74.7	75.9	72.2
Urinary bladder	20.5	36.2	8.8	4.4	7.7	2.2	77.4	78.9	72.7
Kidney & renal pelvis	15.5	21.2	10.7	4.0	5.8	2.6	72.4	72.1	72.9
Ureter	0.6	0.8	0.4	0.1	0.1	0.1	47.6	47.6	47.9
Other urinary system	0.3	0.5	0.2	0.1	0.2	0.1	50.7	54.6	44.3
Eye & Orbit	0.8	0.9	0.7	0.1	0.1	0.1	81.8	82.0	81.7
Brain & Nervous System: ^e	6.4	7.6	5.4	4.3	5.2	3.5	33.4	32.5	34.5
Brain	6.0	7.3	5.0	-	-	-	30.3	29.8	30.9
Cranial nerves & other nervous system	0.4	0.4	0.4	-	-	-	77.2	75.6	78.7
Endocrine System:	13.6	7.3	19.8	0.8	0.8	0.8	95.8	91.4	97.2
Thyroid	12.9	6.4	19.1	0.5	0.5	0.5	97.8	95.6	98.5
Other endocrine & thymus	0.8	0.9	0.7	0.3	0.3	0.3	64.1	64.0	64.3
Lymphoma:	22.4	27.0	18.8	6.7	8.5	5.3	71.6	70.4	73.0
Hodgkin lymphoma	2.7	3.1	2.4	0.4	0.5	0.3	85.3	84.4	86.4
Non-Hodgkin lymphoma	19.7	23.9	16.3	6.3	8.1	5.0	69.3	68.0	70.9
Myeloma	6.1	7.7	4.9	3.4	4.3	2.7	44.9	46.0	43.5
Leukemia:	13.0	16.7	10.2	7.0	9.4	5.3	57.2	58.0	56.2
Lymphocytic:	6.5	8.6	4.9	2.0	2.8	1.4	76.4	76.5	76.1
Acute lymphocytic	1.7	1.9	1.5	0.5	0.5	0.4	66.7	67.1	66.3
Chronic lymphocytic	4.4	6.0	3.1	1.4	2.0	0.9	80.2	79.5	81.1
Other lymphocytic	0.4	0.6	0.2	0.1	0.2	0.1	81.1	85.4	69.1
Myeloid & Monocytic:	5.9	7.3	4.8	3.4	4.5	2.6	36.3	36.0	36.7
Acute myeloid	3.8	4.6	3.2	2.8	3.7	2.2	24.9	23.9	26.1
Chronic myeloid	1.7	2.2	1.2	0.3	0.4	0.2	62.0	61.2	63.0
Acute monocytic	0.3	0.3	0.2	0.0	0.0	0.0	22.5	21.5	23.6
Other myeloid & monocytic	0.2	0.2	0.1	0.2	0.3	0.1	33.4	32.7	34.2
Other leukemia:	0.6	0.8	0.5	1.7	2.2	1.3	30.8	30.9	30.5
Other acute leukemia	0.2	0.3	0.2	0.6	0.8	0.5	18.4	18.7	18.1
Aleukemic, subleukemic & NOS	0.4	0.5	0.3	1.0	1.4	0.8	39.0	40.0	38.0
Kaposi Sarcoma ^f	0.5	1.0	0.1	-	-	-	72.1	71.5	76.5
Mesothelioma ^f	1.0	1.9	0.4	-	-	-	8.3	6.6	13.5
Ill-defined & unspecified	8.9	10.3	7.8	12.9	16.3	10.3	17.2	21.3	13.2

Note: Incidence and death rates are per 100,000 and are age-adjusted to the 2000 US Std Population (19 age groups - Census P25-1130).

^a SEER 18 areas (San Francisco, Connecticut, Detroit, Hawaii, Iowa, New Mexico, Seattle, Utah, Atlanta, San Jose-Monterey, Los Angeles, Alaska Native Registry, Rural Georgia, California excluding SF/SJM/LA, Kentucky, Louisiana, New Jersey and Georgia excluding ATL/RG).

^b US Mortality Files, National Center for Health Statistics, Centers for Disease Control and Prevention.

^c SEER 18 areas. Based on follow-up of patients into 2011.

^d Ovary excludes borderline cases or histologies 8442, 8451, 8462, 8472, and 8473.

^e Due to coding changes, Brain & Nervous System mortality are no longer shown separately.

^f Rate not shown for mortality. Category did not exist in mortality coding until 1999.

- Statistic could not be calculated due to less than 16 cases in the time interval.

Table 1.6
Age-Adjusted SEER Incidence and U.S. Death Rates and 5-Year Relative Survival (Percent)
By Primary Cancer Site, Sex and Time Period

Site	Whites								
	Incidence ^a (2007-2011)			US Mortality ^b (2007-2011)			Survival ^c (%) (2004-2010)		
	Total	Males	Females	Total	Males	Females	Total	Males	Females
All Sites	468.9	532.1	424.4	173.3	209.8	147.5	66.7	66.9	66.4
Oral Cavity & Pharynx:	11.4	17.0	6.4	2.4	3.7	1.4	64.3	64.0	65.1
Lip	0.8	1.3	0.4	0.0	0.0	0.0	89.3	90.4	86.1
Tongue	3.5	5.2	1.9	0.6	0.9	0.4	64.7	65.2	63.4
Salivary gland	1.3	1.8	1.0	0.2	0.4	0.1	71.3	64.0	81.1
Floor of mouth	0.6	0.9	0.4	0.0	0.0	0.0	52.5	50.5	57.6
Gum & other oral cavity	1.5	1.8	1.3	0.4	0.4	0.3	59.8	58.1	61.9
Nasopharynx	0.4	0.6	0.3	0.2	0.2	0.1	55.3	55.5	54.7
Tonsil	2.0	3.4	0.7	0.2	0.4	0.1	72.8	73.5	69.1
Oropharynx	0.4	0.6	0.2	0.2	0.3	0.1	45.4	47.5	37.8
Hypopharynx	0.6	1.1	0.3	0.1	0.1	0.0	34.7	34.8	34.1
Other oral cavity & pharynx	0.2	0.4	0.1	0.4	0.8	0.2	38.1	40.7	32.0
Digestive System:	81.7	99.9	66.6	41.2	52.8	31.6	45.0	43.4	46.9
Esophagus	4.6	8.0	1.7	4.3	7.8	1.5	18.3	18.4	17.8
Stomach	6.6	9.2	4.5	3.0	4.1	2.1	26.9	25.3	29.5
Small intestine	2.1	2.5	1.8	0.3	0.4	0.3	66.0	66.6	65.2
Colon & Rectum:	42.9	49.6	37.3	15.5	18.5	13.0	65.4	65.7	65.0
Colon	30.6	34.3	27.5	-	-	-	65.0	65.5	64.4
Rectum	12.3	15.4	9.7	-	-	-	66.4	66.2	66.7
Anus, anal canal & anorectum	1.9	1.5	2.2	0.2	0.2	0.3	67.2	63.0	69.8
Liver & intrahepatic bile duct	7.0	10.8	3.6	5.3	7.8	3.2	16.1	15.9	16.5
Gallbladder	1.1	0.8	1.4	0.6	0.4	0.7	17.5	15.7	18.2
Other biliary	1.8	2.3	1.5	0.4	0.5	0.4	16.2	17.9	14.3
Pancreas	12.2	14.0	10.7	10.8	12.5	9.4	6.6	6.3	6.9
Retroperitoneum	0.4	0.4	0.4	0.1	0.1	0.1	54.9	54.6	54.9
Peritoneum, omentum & mesentery	0.7	0.1	1.2	0.3	0.1	0.4	31.3	44.4	30.4
Other digestive system	0.5	0.6	0.5	0.3	0.4	0.2	11.4	11.3	11.3
Respiratory System:	66.0	79.6	55.7	50.4	63.7	40.4	20.1	19.2	21.1
Nose, nasal cavity & middle ear	0.7	0.9	0.5	0.1	0.2	0.1	55.9	58.0	53.0
Larynx	3.4	5.9	1.3	1.0	1.8	0.4	60.8	61.8	56.7
Lung & bronchus	61.7	72.4	53.8	49.1	61.4	39.8	17.1	14.7	19.8
Pleura ^d	0.0	0.0	0.0	0.1	0.1	0.0	16.7	16.7	16.9
Trachea & other respiratory organs	0.2	0.3	0.1	0.1	0.1	0.0	49.2	51.6	42.1
Bones & joints	1.0	1.2	0.8	0.4	0.6	0.4	66.9	64.7	69.7
Soft tissue (including heart)	3.4	4.2	2.8	1.3	1.5	1.1	66.5	65.6	67.6
Skin (excl. basal & squamous):	27.2	35.3	21.4	4.1	6.3	2.4	90.4	88.3	93.0
Melanoma of the skin	25.2	32.3	20.0	3.1	4.6	2.0	91.0	89.0	93.5
Other non-epithelial skin	2.1	2.9	1.4	1.0	1.6	0.5	82.1	79.3	86.2
Breast	68.3	1.2	128.0	12.1	0.3	21.7	90.4	85.7	90.4
Breast (<i>in situ</i>)	16.8	0.1	32.1	-	-	-	100.0	100.0	100.0

Note: Incidence and death rates are per 100,000 and are age-adjusted to the 2000 US Std Population (19 age groups - Census P25-1130).

^a SEER 18 areas (San Francisco, Connecticut, Detroit, Hawaii, Iowa, New Mexico, Seattle, Utah, Atlanta, San Jose-Monterey, Los Angeles, Alaska Native Registry, Rural Georgia, California excluding SF/SJM/LA, Kentucky, Louisiana, New Jersey and Georgia excluding ATL/RG).

^b US Mortality Files, National Center for Health Statistics, Centers for Disease Control and Prevention.

^c SEER 18 areas. Based on follow-up of patients into 2011.

^d Mesotheliomas of the Pleura are included in the separate group Mesothelioma for incidence but are included in the Pleura grouping for mortality.

- Statistic could not be calculated due to less than 16 cases in the time interval.

Table 1.6 - continued
 Age-Adjusted SEER Incidence and U.S. Death Rates and 5-Year Relative Survival (Percent)
 By Primary Cancer Site, Sex and Time Period

Site	Whites								
	Incidence ^a (2007-2011)			US Mortality ^b (2007-2011)			Survival ^c (%) (2004-2010)		
	Total	Males	Females	Total	Males	Females	Total	Males	Females
Female Genital System:	26.7	-	50.5	8.4	-	15.3	69.6	-	69.6
Cervix uteri	4.0	-	7.8	1.1	-	2.1	69.1	-	69.1
Corpus uteri	13.1	-	24.8	1.0	-	1.8	84.8	-	84.8
Uterus, NOS	0.3	-	0.6	1.2	-	2.2	27.3	-	27.3
Ovary ^d	6.9	-	13.0	4.5	-	8.2	44.4	-	44.4
Vagina	0.4	-	0.7	0.1	-	0.2	52.9	-	52.9
Vulva	1.4	-	2.6	0.3	-	0.5	70.0	-	70.0
Other female genital system	0.5	-	1.0	0.1	-	0.2	59.9	-	59.9
Male Genital System:	68.1	147.7	-	8.4	21.1	-	98.9	98.9	-
Prostate	64.2	139.9	-	8.1	20.6	-	99.3	99.3	-
Testis	3.4	6.6	-	0.1	0.3	-	95.4	95.4	-
Penis	0.4	0.9	-	0.1	0.2	-	66.9	66.9	-
Other male genital system	0.1	0.3	-	0.0	0.0	-	88.4	88.4	-
Urinary System:	39.2	62.5	21.0	8.9	14.3	5.0	75.2	76.3	72.8
Urinary bladder	22.4	39.4	9.5	4.6	8.1	2.2	77.9	79.2	73.7
Kidney & renal pelvis	15.9	21.7	11.0	4.0	5.9	2.6	72.6	72.4	73.1
Ureter	0.6	0.9	0.4	0.1	0.2	0.1	48.1	49.0	47.1
Other urinary system	0.3	0.5	0.2	0.1	0.2	0.1	51.9	53.7	48.2
Eye & Orbit	0.9	1.1	0.8	0.1	0.1	0.1	81.2	81.4	80.9
Brain & Nervous System: ^e	7.1	8.4	6.0	4.6	5.6	3.8	32.0	31.3	32.8
Brain	6.7	8.0	5.5	-	-	-	29.1	28.8	29.4
Cranial nerves & other nervous system	0.4	0.4	0.4	-	-	-	78.5	76.9	80.1
Endocrine System:	14.4	7.7	21.1	0.8	0.8	0.8	96.3	92.2	97.6
Thyroid	13.7	6.9	20.4	0.5	0.5	0.5	98.1	95.9	98.7
Other endocrine & thymus	0.7	0.8	0.6	0.3	0.3	0.3	64.1	64.8	63.3
Lymphoma:	23.6	28.2	19.8	7.0	8.9	5.5	72.1	71.1	73.3
Hodgkin lymphoma	2.9	3.3	2.6	0.4	0.5	0.3	85.7	85.0	86.6
Non-Hodgkin lymphoma	20.6	24.9	17.2	6.6	8.4	5.2	69.9	68.9	71.2
Myeloma	5.6	7.2	4.3	3.1	4.0	2.5	44.8	46.7	42.4
Leukemia:	13.7	17.5	10.7	7.3	9.7	5.4	57.4	58.1	56.5
Lymphocytic:	7.0	9.2	5.3	2.0	2.9	1.4	76.6	76.7	76.3
Acute lymphocytic	1.9	2.1	1.7	0.5	0.6	0.4	66.6	66.9	66.2
Chronic lymphocytic	4.7	6.4	3.4	1.4	2.1	1.0	80.2	79.6	81.1
Other lymphocytic	0.4	0.7	0.2	0.1	0.2	0.1	82.2	86.1	71.2
Myeloid & Monocytic:	6.1	7.6	4.9	3.5	4.6	2.7	35.2	34.9	35.6
Acute myeloid	3.9	4.8	3.3	2.9	3.8	2.3	24.2	23.2	25.3
Chronic myeloid	1.7	2.2	1.2	0.3	0.4	0.2	60.5	60.1	61.1
Acute monocytic	0.3	0.4	0.2	0.0	0.0	0.0	22.8	22.2	23.4
Other myeloid & monocytic	0.2	0.2	0.1	0.2	0.3	0.2	32.7	31.9	33.5
Other leukemia:	0.6	0.8	0.5	1.7	2.2	1.3	29.8	28.9	30.5
Other acute leukemia	0.2	0.3	0.2	0.6	0.8	0.5	16.1	15.7	16.6
Aleukemic, subleukemic & NOS	0.4	0.5	0.3	1.0	1.4	0.8	39.2	39.1	38.9
Kaposi Sarcoma ^f	0.5	0.9	0.1	-	-	-	78.0	77.2	84.8
Mesothelioma ^f	1.1	2.1	0.5	-	-	-	8.2	6.5	13.7
Ill-defined & unspecified	9.0	10.5	7.9	12.9	16.4	10.3	17.8	22.6	13.1

Note: Incidence and death rates are per 100,000 and are age-adjusted to the 2000 US Std Population (19 age groups - Census P25-1130).

^a SEER 18 areas (San Francisco, Connecticut, Detroit, Hawaii, Iowa, New Mexico, Seattle, Utah, Atlanta, San Jose-Monterey, Los Angeles, Alaska Native Registry, Rural Georgia, California excluding SF/SJM/LA, Kentucky, Louisiana, New Jersey and Georgia excluding ATL/RG).

^b US Mortality Files, National Center for Health Statistics, Centers for Disease Control and Prevention.

^c SEER 18 areas. Based on follow-up of patients into 2011.

^d Ovary excludes borderline cases or histologies 8442, 8451, 8462, 8472, and 8473.

^e Due to coding changes, Brain & Nervous System mortality are no longer shown separately.

^f Rate not shown for mortality. Category did not exist in mortality coding until 1999.

- Statistic could not be calculated due to less than 16 cases in the time interval.

Table 1.7
Age-Adjusted SEER Incidence and U.S. Death Rates and 5-Year Relative Survival (Percent)
By Primary Cancer Site, Sex and Time Period

Site	Blacks								
	Incidence ^a (2007-2011)			US Mortality ^b (2007-2011)			Survival ^c (%) (2004-2010)		
	Total	Males	Females	Total	Males	Females	Total	Males	Females
All Sites	480.8	600.9	398.8	206.4	269.3	169.0	59.7	62.7	56.4
Oral Cavity & Pharynx:	9.4	14.7	5.3	3.0	5.1	1.4	43.7	39.9	52.0
Lip	0.1	0.1	0.1	-	-	-	79.4	72.3	89.6
Tongue	2.2	3.6	1.1	0.6	0.9	0.3	35.9	34.5	38.2
Salivary gland	1.0	1.1	1.0	0.2	0.3	0.1	73.7	66.4	79.5
Floor of mouth	0.5	0.9	0.3	0.0	0.1	-	38.3	35.4	46.4
Gum & other oral cavity	1.4	1.7	1.2	0.3	0.5	0.2	52.7	47.7	57.8
Nasopharynx	0.7	1.1	0.3	0.3	0.4	0.1	53.4	52.3	56.4
Tonsil	1.6	2.9	0.6	0.3	0.5	0.1	49.5	49.7	48.2
Oropharynx	0.6	1.1	0.3	0.4	0.6	0.2	22.0	21.6	23.3
Hypopharynx	1.0	1.9	0.3	0.2	0.3	0.1	18.3	16.6	27.1
Other oral cavity & pharynx	0.3	0.4	0.2	0.8	1.5	0.3	20.4	20.5	21.9
Digestive System:	104.7	129.4	86.9	56.8	74.9	44.3	39.1	35.8	42.6
Esophagus	4.9	7.9	2.6	4.2	7.4	2.0	11.6	10.7	13.7
Stomach	11.2	15.3	8.5	6.5	9.6	4.5	27.2	24.0	31.2
Small intestine	3.5	4.2	3.0	0.6	0.7	0.5	63.0	59.0	66.6
Colon & Rectum:	53.6	62.3	47.5	22.1	27.7	18.5	57.7	56.6	58.8
Colon	40.1	45.4	36.4	-	-	-	56.2	55.8	56.7
Rectum	13.5	16.9	11.1	-	-	-	62.0	58.5	65.6
Anus, anal canal & anorectum	1.8	2.0	1.6	0.2	0.3	0.2	55.7	49.1	62.2
Liver & intrahepatic bile duct	9.4	15.6	4.6	7.6	12.1	4.2	11.5	10.1	15.3
Gallbladder	1.5	1.2	1.8	0.9	0.7	1.0	14.4	14.0	14.5
Other biliary	1.8	2.1	1.6	0.4	0.4	0.4	12.4	10.6	13.9
Pancreas	15.6	17.2	14.2	13.6	15.3	12.4	6.1	5.8	6.3
Retroperitoneum	0.4	0.3	0.4	0.0	0.0	0.0	45.2	48.4	43.5
Peritoneum, omentum & mesentery	0.4	0.1	0.5	0.2	0.1	0.2	31.3	45.2	28.2
Other digestive system	0.7	1.0	0.6	0.4	0.5	0.3	10.8	9.5	12.1
Respiratory System:	73.6	103.2	53.5	54.2	79.9	37.3	17.3	16.7	18.2
Nose, nasal cavity & middle ear	0.6	0.9	0.4	0.2	0.2	0.1	44.9	42.3	49.2
Larynx	4.8	9.0	1.7	1.9	3.8	0.6	53.6	54.1	51.6
Lung & bronchus	68.0	93.0	51.2	52.0	75.7	36.5	13.9	11.8	16.5
Pleura ^d	-	-	-	0.0	0.1	-	-	-	-
Trachea & other respiratory organs	0.2	0.3	0.1	0.1	0.1	0.0	46.6	44.6	49.5
Bones & joints	0.8	0.9	0.7	0.4	0.6	0.3	64.4	63.3	65.4
Soft tissue (including heart)	3.3	3.4	3.2	1.4	1.5	1.4	58.7	57.6	59.7
Skin (excl. basal & squamous):	2.1	2.2	2.0	0.9	1.3	0.6	84.7	83.5	85.0
Melanoma of the skin	1.0	1.0	1.0	0.4	0.5	0.4	71.1	60.8	76.9
Other non-epithelial skin	1.1	1.2	1.1	0.5	0.8	0.2	94.6	98.3	90.8
Breast	70.0	1.8	122.8	18.0	0.5	30.6	79.1	67.8	79.1
Breast (<i>in situ</i>)	16.8	0.3	29.9	-	-	-	100.0	98.2	100.0

Note: Incidence and death rates are per 100,000 and are age-adjusted to the 2000 US Std Population (19 age groups - Census P25-1130).

^a SEER 18 areas (San Francisco, Connecticut, Detroit, Hawaii, Iowa, New Mexico, Seattle, Utah, Atlanta, San Jose-Monterey, Los Angeles, Alaska Native Registry, Rural Georgia, California excluding SF/SJM/LA, Kentucky, Louisiana, New Jersey and Georgia excluding ATL/RG).

^b US Mortality Files, National Center for Health Statistics, Centers for Disease Control and Prevention.

^c SEER 18 areas. Based on follow-up of patients into 2011.

^d Mesotheliomas of the Pleura are included in the separate group Mesothelioma for incidence but are included in the Pleura grouping for mortality.

- Statistic could not be calculated due to less than 16 cases in the time interval.

Table 1.7 - continued
 Age-Adjusted SEER Incidence and U.S. Death Rates and 5-Year Relative Survival (Percent)
 By Primary Cancer Site, Sex and Time Period

Site	Blacks								
	Incidence ^a (2007-2011)			US Mortality ^b (2007-2011)			Survival ^c (%) (2004-2010)		
	Total	Males	Females	Total	Males	Females	Total	Males	Females
Female Genital System:	26.0	-	45.9	11.3	-	19.1	55.0	-	55.0
Cervix uteri	5.2	-	9.4	2.3	-	4.1	58.8	-	58.8
Corpus uteri	12.5	-	21.9	1.8	-	3.0	63.5	-	63.5
Uterus, NOS	0.8	-	1.3	2.7	-	4.5	22.1	-	22.1
Ovary ^d	5.6	-	9.8	3.9	-	6.6	35.3	-	35.3
Vagina	0.5	-	0.9	0.2	-	0.3	45.8	-	45.8
Vulva	1.0	-	1.7	0.2	-	0.3	70.9	-	70.9
Other female genital system	0.4	-	0.8	0.1	-	0.3	50.3	-	50.3
Male Genital System:	95.9	226.4	-	17.5	49.4	-	96.6	96.6	-
Prostate	94.8	223.9	-	17.4	48.9	-	96.7	96.7	-
Testis	0.7	1.4	-	0.1	0.1	-	90.9	90.9	-
Penis	0.4	0.9	-	0.1	0.3	-	61.1	61.1	-
Other male genital system	0.1	0.2	-	0.0	0.1	-	75.4	75.4	-
Urinary System:	31.1	47.0	20.2	7.7	11.2	5.4	67.5	69.3	64.5
Urinary bladder	12.6	21.3	6.9	3.6	5.4	2.6	63.8	68.6	54.7
Kidney & renal pelvis	17.9	24.7	12.7	3.9	5.6	2.6	70.6	70.2	71.0
Ureter	0.3	0.4	0.2	0.1	0.1	0.0	41.0	34.8	45.2
Other urinary system	0.4	0.6	0.3	0.1	0.1	0.1	37.6	48.5	29.2
Eye & Orbit	0.2	0.3	0.2	0.0	0.0	0.0	81.9	79.8	84.8
Brain & Nervous System: ^e	4.1	4.7	3.6	2.5	3.0	2.1	40.4	37.8	43.0
Brain	3.7	4.4	3.3	-	-	-	36.8	34.9	38.7
Cranial nerves & other nervous system	0.4	0.3	0.4	-	-	-	71.9	68.1	73.3
Endocrine System:	8.5	4.3	12.1	0.9	0.8	0.9	92.8	83.1	95.4
Thyroid	7.6	3.3	11.3	0.5	0.4	0.6	96.7	91.4	97.6
Other endocrine & thymus	0.9	1.0	0.9	0.4	0.4	0.3	63.2	59.9	66.1
Lymphoma:	17.0	20.5	14.2	4.8	6.2	3.8	66.0	62.5	70.1
Hodgkin lymphoma	2.7	3.1	2.3	0.3	0.4	0.3	81.6	79.2	84.4
Non-Hodgkin lymphoma	14.3	17.4	11.9	4.5	5.8	3.5	62.2	58.4	66.6
Myeloma	12.2	14.8	10.5	6.3	7.7	5.3	44.9	44.1	45.8
Leukemia:	10.0	12.9	8.0	6.0	8.0	4.8	50.7	51.8	49.3
Lymphocytic:	4.2	5.8	3.0	1.7	2.4	1.2	66.1	65.8	66.3
Acute lymphocytic	1.0	1.2	0.8	0.3	0.4	0.2	64.1	66.1	61.0
Chronic lymphocytic	3.0	4.2	2.1	1.3	1.9	0.9	68.2	66.3	70.7
Other lymphocytic	0.2	0.4	0.1	0.1	0.1	0.1	51.4	57.7	32.8
Myeloid & Monocytic:	5.1	6.1	4.5	2.7	3.4	2.2	39.8	39.7	39.8
Acute myeloid	3.3	3.8	2.9	2.2	2.7	1.8	26.3	25.9	26.4
Chronic myeloid	1.6	1.9	1.3	0.3	0.5	0.3	64.6	62.8	66.4
Acute monocytic	0.1	0.2	0.1	0.0	-	-	24.1	13.6	34.7
Other myeloid & monocytic	0.1	0.2	0.1	0.2	0.2	0.1	38.3	38.1	39.0
Other leukemia:	0.7	1.0	0.6	1.7	2.2	1.4	29.6	32.1	26.4
Other acute leukemia	0.2	0.3	0.2	0.5	0.7	0.4	26.8	28.1	24.2
Aleukemic, subleukemic & NOS	0.5	0.6	0.4	1.2	1.5	1.0	30.8	35.0	26.8
Kaposi Sarcoma ^f	1.1	2.1	0.2	-	-	-	53.8	53.4	56.5
Mesothelioma ^f	0.5	1.0	0.2	-	-	-	10.2	8.2	15.0
Ill-defined & unspecified	10.1	11.4	9.1	14.7	19.2	11.7	12.7	12.9	12.5

Note: Incidence and death rates are per 100,000 and are age-adjusted to the 2000 US Std Population (19 age groups - Census P25-1130).

^a SEER 18 areas (San Francisco, Connecticut, Detroit, Hawaii, Iowa, New Mexico, Seattle, Utah, Atlanta, San Jose-Monterey, Los Angeles, Alaska Native Registry, Rural Georgia, California excluding SF/SJM/LA, Kentucky, Louisiana, New Jersey and Georgia excluding ATL/RG).

^b US Mortality Files, National Center for Health Statistics, Centers for Disease Control and Prevention.

^c SEER 18 areas. Based on follow-up of patients into 2011.

^d Ovary excludes borderline cases or histologies 8442, 8451, 8462, 8472, and 8473.

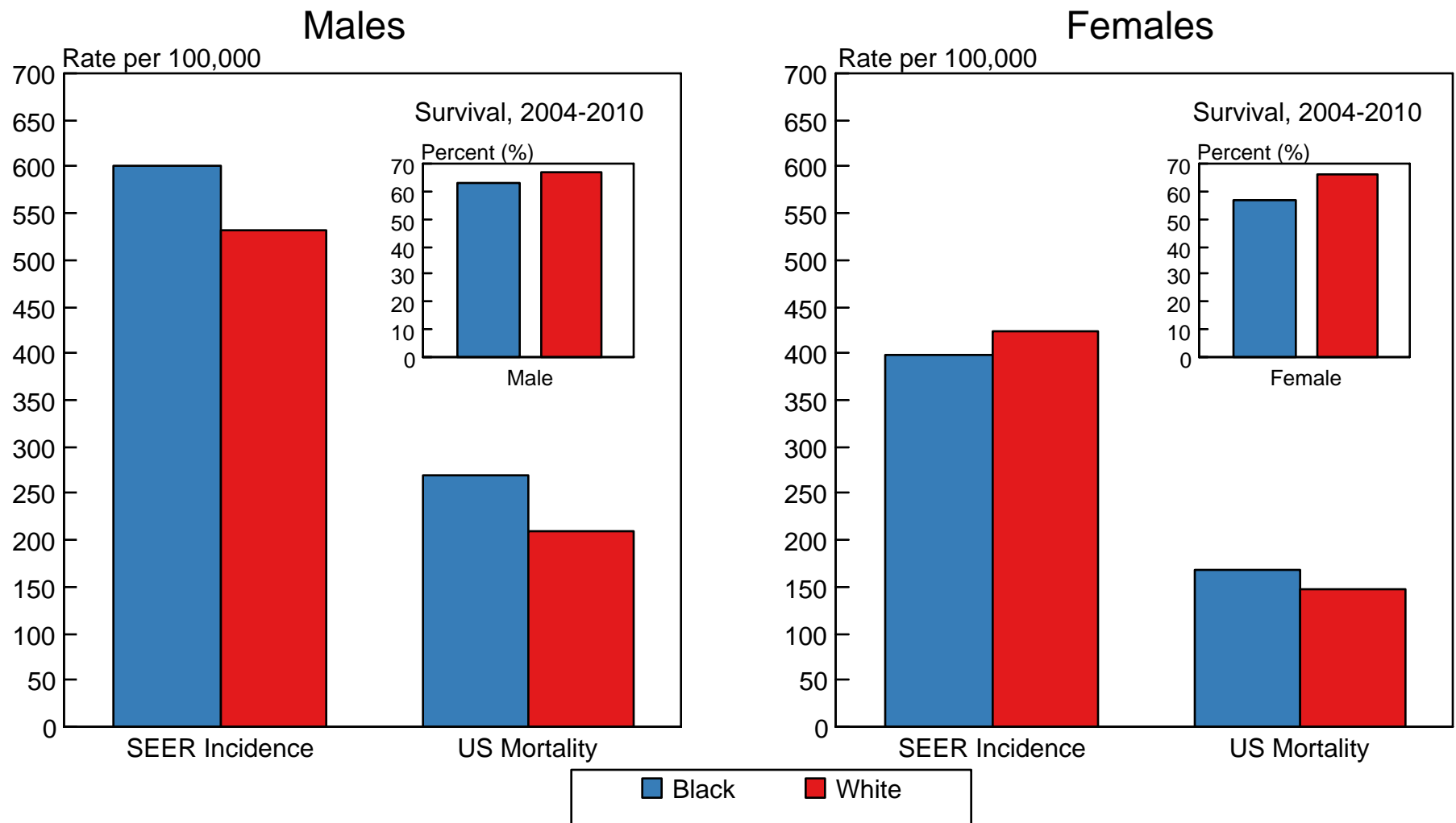
^e Due to coding changes, Brain & Nervous System mortality are no longer shown separately.

^f Rate not shown for mortality. Category did not exist in mortality coding until 1999.

- Statistic could not be calculated due to less than 16 cases in the time interval.

Figure 1.9

SEER Incidence^a and US Death Rates,^b 2007-2011 5-Year Relative Survival,^c 2004-2010 All Cancer Combined, by Race and Sex



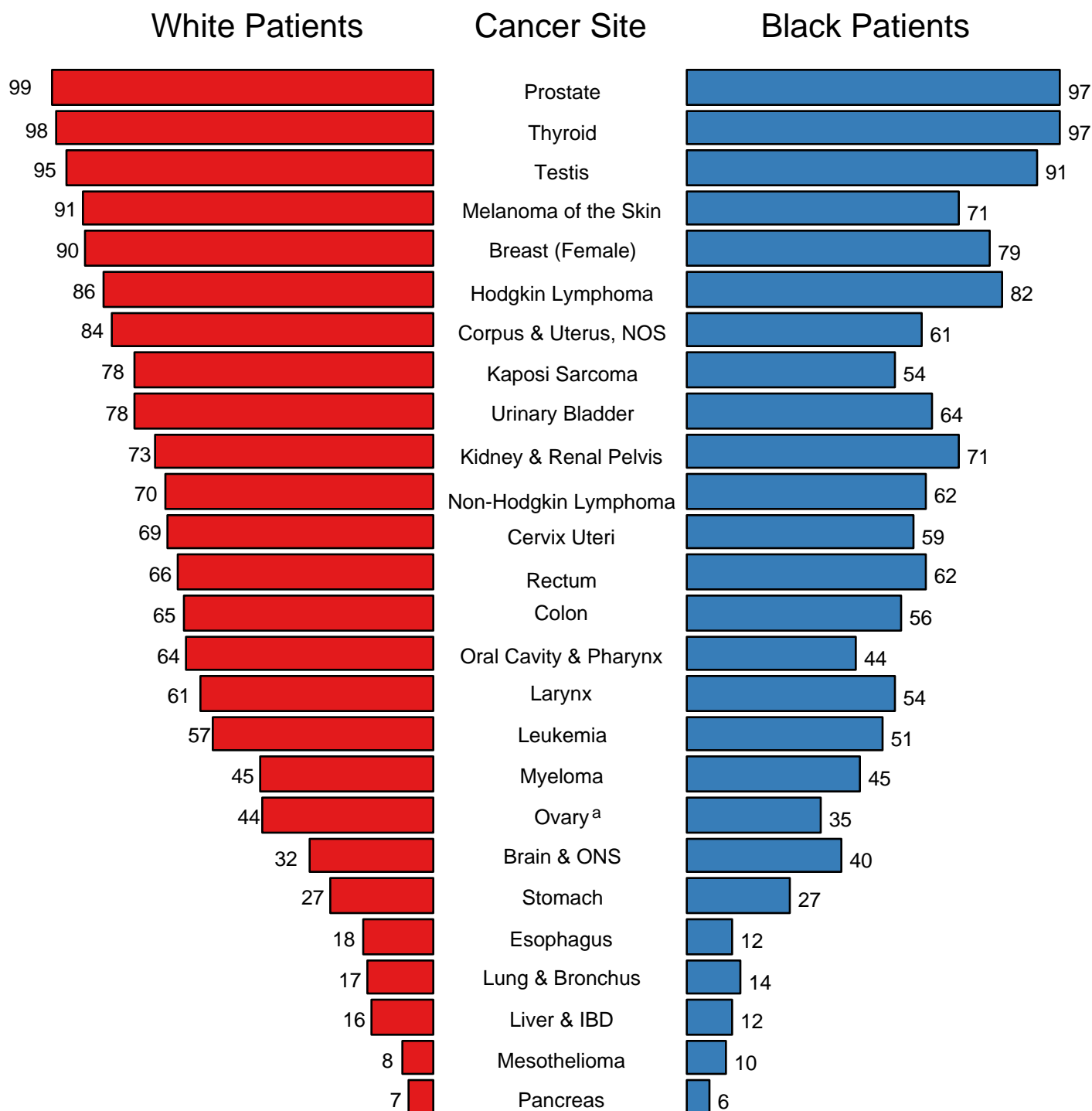
^a Incidence rates are from the SEER 18 areas (San Francisco, Connecticut, Detroit, Hawaii, Iowa, New Mexico, Seattle, Utah, Atlanta, San Jose-Monterey, Los Angeles, Alaska Native Registry, Rural Georgia, California excluding SF/SJM/LA, Kentucky, Louisiana, New Jersey and Georgia excluding ATL/RG) and are age-adjusted to the 2000 US Std Population (19 age groups - Census P25-1103).

^b Death rates are from the US Mortality Files, National Center for Health Statistics, Centers for Disease Control and Prevention and are age-adjusted to the 2000 US Std Population (19 age groups - Census P25-1103).

^c Survival rates are from the SEER 18 areas (San Francisco, Connecticut, Detroit, Hawaii, Iowa, New Mexico, Seattle, Utah, Atlanta, San Jose-Monterey, Los Angeles, Alaska Native Registry, Rural Georgia, California excluding SF/SJM/LA, Kentucky, Louisiana, New Jersey and Georgia excluding ATL/RG).

Figure 1.11

5-Year Relative Survival (%) SEER Program, 2004-2010 Both Sexes, by Race and Cancer Site



Source: SEER 18 areas (San Francisco, Connecticut, Detroit, Hawaii, Iowa, New Mexico, Seattle, Utah, Atlanta, San Jose-Monterey, Los Angeles, Alaska Native Registry, Rural Georgia, California excluding SF/SJM/LA, Kentucky, Louisiana, New Jersey and Georgia excluding ATL/RG).

^a Ovary excludes borderline cases or histologies 8442, 8451, 8462, 8472, and 8473.

Table 2.8
All Cancer Sites (Invasive)

5-Year Relative and Period Survival (Percent) by Race, Sex, Diagnosis Year and Age

	All Races			Whites			Blacks		
	Total	Males	Females	Total	Males	Females	Total	Males	Females
5-Year Relative Survival (Percent)									
Year of Diagnosis:									
1960-1963 ^a	-	-	-	39	-	-	27	-	-
1970-1973 ^a	-	-	-	43	-	-	31	-	-
1975-1977 ^b	48.9	41.7	55.9	49.8	42.7	56.5	39.0	32.7	46.2
1978-1980 ^b	49.0	43.1	54.9	50.0	44.3	55.6	38.9	33.3	45.6
1981-1983 ^b	50.2	45.2	55.1	51.3	46.6	56.0	38.7	34.1	44.4
1984-1986 ^b	52.4	47.1	57.6	53.6	48.6	58.5	40.1	35.4	45.5
1987-1989 ^b	55.3	51.1	59.6	56.7	52.8	60.6	42.9	38.8	47.7
1990-1992 ^b	59.9	59.1	60.9	61.4	60.8	62.0	47.7	47.5	48.1
1993-1995 ^b	61.3	60.8	61.8	62.4	62.0	62.8	52.7	54.4	50.5
1996-1998 ^b	63.3	63.0	63.6	64.4	64.1	64.7	55.1	57.8	51.9
1999-2003 ^b	66.4	66.8	66.0	67.7	68.1	67.2	58.4	61.9	54.3
2004-2010 ^b	68.3 ^e	69.0 ^e	67.6 ^e	69.4 ^e	70.0 ^e	68.7 ^e	61.5 ^e	64.9 ^e	57.7 ^e
5-Year Period Survival (Percent) ^{cd}									
2010	66.6	66.9	66.3	67.1	67.2	67.0	60.6	63.6	57.3
5-Year Relative Survival (Percent), 2004-2010 ^c									
Age at Diagnosis:									
Ages <45	81.1	76.4	84.1	82.7	78.3	85.6	69.7	63.3	73.5
Ages 45-54	73.0	67.6	77.5	74.5	68.8	79.1	62.6	61.1	64.2
Ages 55-64	69.8	69.7	69.9	70.7	70.3	71.1	62.8	65.6	58.5
Ages 65-74	65.6	68.8	61.0	66.1	68.9	62.0	60.4	66.6	51.4
Ages 75+	51.3	55.7	47.1	51.9	55.8	48.2	43.1	50.7	36.7
Ages <65	73.1	70.2	76.0	74.3	71.2	77.4	64.1	63.9	64.3
Ages 65+	58.6	62.9	53.4	59.0	62.9	54.3	53.4	61.1	44.2

^a Based on End Results data from a series of hospital registries and one population-based registry.
^b SEER 9 areas (San Francisco, Connecticut, Detroit, Hawaii, Iowa, New Mexico, Seattle, Utah, Atlanta).
Based on follow-up of patients into 2011.
^c SEER 18 areas (San Francisco, Connecticut, Detroit, Hawaii, Iowa, New Mexico, Seattle, Utah, Atlanta, San Jose-Monterey, Los Angeles, Alaska Native Registry, Rural Georgia, California excluding SF/SJM/LA, Kentucky, Louisiana, New Jersey and Georgia excluding ATL/RG).
Based on follow-up of patients into 2011.
^d Period survival provides a 2010 estimate of survival by piecing together the most recent conditional survival estimates from several cohorts. It is computed here using three year calendar blocks (2007-2009: 0-1 year survival), (2006-2008: 1-2 year survival), (2005-2007: 2-3 year survival), (2004-2006: 3-4 year survival), (2003-2005: 4-5 years survival).
^e The difference between 1975-1977 and 2004-2010 is statistically significant (p<.05).
^f The standard error is between 5 and 10 percentage points.
^g The standard error is greater than 10 percentage points.
- Statistic could not be calculated due to fewer than 25 cases during the time period.

Table 3.8
Cancer of the Brain and Other Nervous System (Invasive)

5-Year Relative and Period Survival (Percent) by Race, Sex, Diagnosis Year, Stage and Age

	All Races			Whites			Blacks		
	Total	Males	Females	Total	Males	Females	Total	Males	Females
5-Year Relative Survival (Percent)									
Year of Diagnosis:									
1960-1963 ^a	-	-	-	18	16	21	19	17	21
1970-1973 ^a	-	-	-	20	18	22	19	19	19
1975-1977 ^b	22.4	20.7	24.7	21.8	20.2	24.0	25.4	19.6	34.7 ^g
1978-1980 ^b	23.6	22.4	25.1	23.0	22.0	24.4	28.2	28.7	27.5
1981-1983 ^b	24.1	23.0	25.4	23.3	22.4	24.4	30.8	31.7	29.2 ^g
1984-1986 ^b	26.9	25.6	28.5	26.1	24.8	27.8	30.8	32.8	28.3
1987-1989 ^b	28.9	27.3	31.0	28.2	26.3	30.7	31.6	33.5	29.3
1990-1992 ^b	30.1	30.4	29.7	29.1	29.4	28.8	39.5	40.7	38.1
1993-1995 ^b	32.2	32.9	31.2	30.9	31.3	30.3	41.4	46.1	36.3
1996-1998 ^b	31.1	30.5	32.0	30.4	29.9	30.9	35.8	33.3	38.2
1999-2003 ^b	34.1	31.7	37.2	33.4	31.5	35.9	37.8	31.7	45.1
2004-2010 ^b	35.0 ^f	34.4 ^f	35.8 ^f	33.4 ^f	32.9 ^f	33.9 ^f	42.2 ^f	39.2 ^f	45.0
5-Year Period Survival (Percent) ^{cd}									
2010	33.7	32.7	34.9	32.3	31.6	33.3	39.3	35.6	43.1
Stage Distribution (%) 2004-2010 ^{ce}									
All Stages									
Number of cases	32,984	18,326	14,658	28,615	16,060	12,555	2,269	1,134	1,135
Percent	100%	100%	100%	100%	100%	100%	100%	100%	100%
Localized	76	77	75	77	78	75	77	78	75
Regional	16	16	16	16	16	16	15	14	16
Distant	2	2	2	2	2	2	3	3	3
Unstaged	5	5	6	5	4	6	5	5	6
5-Year Relative Survival (Percent), 2004-2010 ^c									
Age at Diagnosis:									
Ages <45	67.1	64.8	70.2	67.5	65.2	70.7	63.8	61.2	66.2
Ages 45-54	31.8	29.2	35.6	30.9	28.6	34.4	32.8	30.1	36.2
Ages 55-64	16.1	14.5	18.3	15.5	13.6	18.3	19.5	19.2	19.2
Ages 65-74	8.9	7.7	10.3	8.6	7.6	9.8	7.7	3.9	11.7
Ages 75+	4.3	4.5	4.1	3.6	4.1	3.2	12.3	7.8	14.8
Ages <65	45.0	42.2	48.8	43.9	41.2	47.8	48.4	45.4	51.5
Ages 65+	6.6	6.2	7.0	6.1	6.0	6.2	9.9	5.1	13.2
Stage ^e :									
All Stages	33.4	32.5	34.5	32.0	31.3	32.8	40.4	37.8	43.0
Localized	36.6	35.1	38.3	35.2	34.0	36.8	43.0	40.1	45.8
Regional	21.4	21.2	21.6	20.0	20.3	19.6	29.3	26.2	31.8
Distant	35.6	36.2	34.8	35.5	36.7	34.1	29.5 ^g	27.4 ^g	31.1 ^g
Unstaged	22.8	24.4	21.2	20.3	21.9	18.8	40.1 ^g	36.6 ^g	42.2 ^g

^a Based on End Results data from a series of hospital registries and one population-based registry.

^b SEER 9 areas (San Francisco, Connecticut, Detroit, Hawaii, Iowa, New Mexico, Seattle, Utah, Atlanta).

Based on follow-up of patients into 2011.

^c SEER 18 areas (San Francisco, Connecticut, Detroit, Hawaii, Iowa, New Mexico, Seattle, Utah, Atlanta, San Jose-Monterey, Los Angeles, Alaska Native Registry, Rural Georgia, California excluding SF/SJM/LA, Kentucky, Louisiana, New Jersey and Georgia excluding ATL/RG).

Based on follow-up of patients into 2011.

^d Period survival provides a 2010 estimate of survival by piecing together the most recent conditional survival estimates from several cohorts. It is computed here using three year calendar blocks (2007-2009: 0-1 year survival), (2006-2008: 1-2 year survival), (2005-2007: 2-3 year survival), (2004-2006: 3-4 year survival), (2003-2005: 4-5 years survival).

^e Stage at diagnosis is classified using SEER Summary Stage 2000. Stage distribution percentages may not sum to 100 due to rounding.

^f The difference between 1975-1977 and 2004-2010 is statistically significant ($p < .05$).

^g The standard error is between 5 and 10 percentage points.

^h The standard error is greater than 10 percentage points.

- Statistic could not be calculated due to fewer than 25 cases during the time period.

Table 4.14
Cancer of the Female Breast (Invasive)

5-Year Relative and Period Survival (Percent) by Race, Diagnosis Year, Stage and Age

	All Races, Females			White Females			Black Females		
	All	<50	50+	All	<50	50+	All	<50	50+
5-Year Relative Survival (Percent)									
Year of Diagnosis:									
1960-1963 ^a	-	-	-	63	-	-	46	-	-
1970-1973 ^a	-	-	-	68	-	-	51	-	-
1975-1977 ^b	74.8	76.5	74.3	75.6	77.8	74.9	62.0	62.3	61.9
1978-1980 ^b	74.4	75.5	74.1	75.1	76.1	74.8	63.3	67.0	61.3
1981-1983 ^b	76.1	77.4	75.7	77.1	78.6	76.7	63.3	65.0	62.5
1984-1986 ^b	78.9	77.8	79.3	80.0	79.5	80.2	65.0	63.9	65.7
1987-1989 ^b	84.0	81.4	85.0	85.1	82.7	85.9	71.0	69.5	71.9
1990-1992 ^b	85.2	83.3	85.9	86.5	85.1	87.0	71.4	70.1	72.3
1993-1995 ^b	86.4	84.2	87.1	87.7	86.2	88.1	72.6	70.2	74.0
1996-1998 ^b	88.2	86.5	88.9	89.4	88.2	89.8	76.1	73.9	77.4
1999-2003 ^b	89.9	88.5	90.4	91.2	90.2	91.5	78.1	77.2	78.6
2004-2010 ^b	90.5 ^f	90.6 ^f	90.4 ^f	91.8 ^f	92.2 ^f	91.7 ^f	80.0 ^f	80.4 ^f	79.9 ^f
5-Year Period Survival (Percent) ^{cd}									
2010	89.4	89.5	89.4	90.5	90.6	90.5	80.0	80.9	79.6
Stage Distribution (%) 2004-2010 ^{ee}									
All Stages									
Number of cases	320,768	79,483	241,285	259,205	60,031	199,174	33,950	10,472	23,478
Percent	100%	100%	100%	100%	100%	100%	100%	100%	100%
Localized	61	54	63	62	55	64	52	48	54
Regional	32	40	29	31	40	29	37	43	35
Distant	5	5	6	5	4	5	9	8	9
Unstaged	2	1	2	2	1	2	2	1	2
5-Year Relative Survival (Percent), 2004-2010 ^c									
Age at Diagnosis:									
Ages <45	88.0	-	-	89.4	-	-	78.6	-	-
Ages 45-54	90.3	-	-	91.7	-	-	80.3	-	-
Ages 55-64	90.0	-	-	91.1	-	-	80.7	-	-
Ages 65-74	90.4	-	-	91.4	-	-	80.8	-	-
Ages 75+	86.4	-	-	87.7	-	-	72.2	-	-
Ages <65	89.7	-	-	90.9	-	-	80.0	-	-
Ages 65+	88.5	-	-	89.6	-	-	77.2	-	-
Stage ^e :									
All Stages	89.2	89.4	89.2	90.4	90.7	90.3	79.1	79.7	78.9
Localized	98.5	96.6	99.0	99.1	97.1	99.6	94.0	93.0	94.4
Regional	84.6	86.4	83.8	86.0	88.1	85.1	74.6	75.7	74.0
Distant	25.0	33.8	22.6	26.2	36.2	23.8	16.4	22.7	13.8
Unstaged	49.8	73.0	44.9	48.1	74.6	43.2	45.6	56.8 ^g	42.1
<i>In Situ</i> ^j	100.0	100.0	100.0	100.0	100.0	100.0	100.0	99.9	100.0

^a Based on End Results data from a series of hospital registries and one population-based registry.

^b SEER 9 areas (San Francisco, Connecticut, Detroit, Hawaii, Iowa, New Mexico, Seattle, Utah, Atlanta).

Based on follow-up of patients into 2011.

^c SEER 18 areas (San Francisco, Connecticut, Detroit, Hawaii, Iowa, New Mexico, Seattle, Utah, Atlanta, San Jose-Monterey, Los Angeles, Alaska Native Registry, Rural Georgia, California excluding SF/SJM/LA, Kentucky, Louisiana, New Jersey and Georgia excluding ATL/RG).

Based on follow-up of patients into 2011.

^d Period survival provides a 2010 estimate of survival by piecing together the most recent conditional survival estimates

from several cohorts. It is computed here using three year calendar blocks (2007-2009: 0-1 year survival), (2006-2008: 1-2 year survival), (2005-2007: 2-3 year survival), (2004-2006: 3-4 year survival), (2003-2005: 4-5 years survival).

^e Stage at diagnosis is classified using SEER Summary Stage 2000. Stage distribution percentages may not sum to 100 due to rounding.

^f The difference between 1975-1977 and 2004-2010 is statistically significant ($p < .05$).

^g The standard error is between 5 and 10 percentage points.

^h The standard error is greater than 10 percentage points.

^j *In situ* cases are not included in the All Stages group.

- Statistic could not be calculated due to fewer than 25 cases during the time period.

Table 5.8
Cancer of the Cervix Uteri (Invasive)

5-Year Relative and Period Survival (Percent) by Race, Diagnosis Year, Stage and Age

	All Races, Females			White Females			Black Females		
	All	<50	50+	All	<50	50+	All	<50	50+
5-Year Relative Survival (Percent)									
Year of Diagnosis:									
1960-1963 ^a	-	-	-	58	-	-	47	-	-
1970-1973 ^a	-	-	-	64	-	-	61	-	-
1975-1977 ^b	69.1	82.5	57.9	69.7	83.9	58.1	64.6	75.6	55.1
1978-1980 ^b	67.4	78.4	57.8	68.1	79.8	58.2	60.9	70.4	52.0
1981-1983 ^b	66.9	79.5	54.6	67.8	80.7	55.0	59.2	73.6	46.2
1984-1986 ^b	67.2	77.8	55.3	68.8	79.5	56.3	57.8	68.0	48.1
1987-1989 ^b	70.1	79.6	58.1	72.5	82.6	58.5	57.0	62.7	52.0
1990-1992 ^b	69.6	79.1	56.8	70.9	81.3	56.4	57.9	63.5	50.8
1993-1995 ^b	72.6	81.8	59.8	74.1	83.4	60.1	63.1	71.0	53.6
1996-1998 ^b	72.6	81.0	60.3	73.6	82.6	59.2	64.7	68.0	60.5
1999-2003 ^b	71.4	82.4	56.3	72.6	84.3	55.4	64.5	73.3	54.4
2004-2010 ^b	69.6	79.6 ^f	56.7	71.0	81.7	56.4	62.0	69.1 ^f	54.5
5-Year Period Survival (Percent) ^{cd}									
2010	68.1	77.9	56.1	69.5	79.7	56.2	58.2	64.2	52.4
Stage Distribution (%) 2004-2010 ^{ce}									
All Stages									
Number of cases	22,238	12,241	9,997	16,797	9,504	7,293	3,089	1,550	1,539
Percent	100%	100%	100%	100%	100%	100%	100%	100%	100%
Localized	47	59	33	48	60	33	39	47	30
Regional	36	30	45	36	29	45	41	38	44
Distant	12	8	18	12	8	18	15	10	20
Unstaged	4	3	5	4	3	5	5	5	6
5-Year Relative Survival (Percent), 2004-2010 ^c									
Age at Diagnosis:									
Ages <45	79.5	-	-	80.8	-	-	69.7	-	-
Ages 45-54	67.5	-	-	68.6	-	-	56.7	-	-
Ages 55-64	59.0	-	-	59.6	-	-	50.8	-	-
Ages 65-74	56.0	-	-	54.9	-	-	54.8	-	-
Ages 75+	36.8	-	-	35.5	-	-	36.3	-	-
Ages <65	71.9	-	-	73.3	-	-	61.6	-	-
Ages 65+	48.0	-	-	47.2	-	-	46.9	-	-
Stage ^e :									
All Stages	67.9	77.4	56.0	69.1	78.9	56.2	58.8	66.4	50.8
Localized	90.9	93.5	85.0	91.4	93.9	85.2	85.5	88.8	79.6
Regional	57.4	62.0	53.5	58.3	63.9	53.4	50.4	50.3	50.7
Distant	16.1	19.5	14.0	17.1	21.6	14.3	11.6	10.0	12.0
Unstaged	54.4	76.6	37.4	53.7	75.2	37.4	54.2	80.0 ^g	32.0 ^g

^a Based on End Results data from a series of hospital registries and one population-based registry.

^b SEER 9 areas (San Francisco, Connecticut, Detroit, Hawaii, Iowa, New Mexico, Seattle, Utah, Atlanta).
Based on follow-up of patients into 2011.

^c SEER 18 areas (San Francisco, Connecticut, Detroit, Hawaii, Iowa, New Mexico, Seattle, Utah, Atlanta, San Jose-Monterey, Los Angeles, Alaska Native Registry, Rural Georgia, California excluding SF/SJM/LA, Kentucky, Louisiana, New Jersey and Georgia excluding ATL/RG).
Based on follow-up of patients into 2011.

^d Period survival provides a 2010 estimate of survival by piecing together the most recent conditional survival estimates from several cohorts. It is computed here using three year calendar blocks (2007-2009: 0-1 year survival), (2006-2008: 1-2 year survival), (2005-2007: 2-3 year survival), (2004-2006: 3-4 year survival), (2003-2005: 4-5 years survival).

^e Stage at diagnosis is classified using SEER Summary Stage 2000. Stage distribution percentages may not sum to 100 due to rounding.

^f The difference between 1975-1977 and 2004-2010 is statistically significant ($p < .05$).

^g The standard error is between 5 and 10 percentage points.

^h The standard error is greater than 10 percentage points.

- Statistic could not be calculated due to fewer than 25 cases during the time period.

Table 6.12
Cancer of the Colon and Rectum (Invasive)

5-Year Relative and Period Survival (Percent) by Race, Sex, Diagnosis Year, Stage and Age

	All Races			Whites			Blacks		
	Total	Males	Females	Total	Males	Females	Total	Males	Females
5-Year Relative Survival (Percent)									
Year of Diagnosis:									
1960-1963 ^a	-	-	-	-	-	-	-	-	-
1970-1973 ^a	-	-	-	-	-	-	-	-	-
1975-1977 ^b	49.8	48.9	50.6	50.0	49.3	50.7	44.6	43.3	45.8
1978-1980 ^b	51.2	50.2	52.2	51.6	50.6	52.5	45.4	43.3	46.9
1981-1983 ^b	54.0	53.8	54.2	54.4	54.4	54.3	46.4	42.7	49.5
1984-1986 ^b	57.7	57.7	57.6	58.4	58.5	58.2	48.3	47.4	49.0
1987-1989 ^b	59.6	59.8	59.3	60.0	60.5	59.5	52.2	49.9	54.4
1990-1992 ^b	61.2	61.0	61.3	61.9	61.7	62.1	52.7	54.3	51.3
1993-1995 ^b	59.9	59.7	60.0	60.5	60.3	60.6	51.7	51.2	52.1
1996-1998 ^b	62.5	62.4	62.5	63.1	62.9	63.2	53.8	54.8	53.0
1999-2003 ^b	65.5	66.0	65.0	66.7	67.2	66.2	55.6	55.8	55.4
2004-2010 ^b	66.1 ^f	66.4 ^f	65.7 ^f	66.9 ^f	67.6 ^f	66.2 ^f	57.8 ^f	56.2 ^f	59.2 ^f
5-Year Period Survival (Percent) ^{cd}									
2010	65.0	65.2	64.8	65.6	65.9	65.4	57.9	56.7	58.9
Stage Distribution (%) 2004-2010 ^{ee}									
All Stages									
Number of cases	211,799	108,547	103,252	167,307	86,572	80,735	25,047	11,893	13,154
Percent	100%	100%	100%	100%	100%	100%	100%	100%	100%
Localized	40	40	39	40	40	39	38	37	38
Regional	36	35	36	36	36	36	33	33	33
Distant	20	20	20	20	20	20	24	25	24
Unstaged	5	4	5	4	4	5	5	5	5
5-Year Relative Survival (Percent), 2004-2010 ^c									
Age at Diagnosis:									
Ages <45	67.6	66.2	69.3	69.3	67.3	71.5	59.2	56.1	62.2
Ages 45-54	70.8	69.6	72.3	71.6	70.5	73.0	63.5	60.7	66.2
Ages 55-64	68.4	67.8	69.2	69.0	68.5	69.8	62.0	60.3	63.9
Ages 65-74	67.4	66.9	67.9	67.9	67.7	68.3	59.6	56.9	62.1
Ages 75+	57.0	57.2	56.8	58.2	58.5	58.1	44.8	44.4	45.0
Ages <65	69.1	68.2	70.3	69.9	69.1	71.2	62.2	59.9	64.5
Ages 65+	61.4	62.0	60.8	62.2	62.9	61.6	52.5	51.7	53.0
Stage ^e :									
All Stages	64.7	65.0	64.5	65.4	65.7	65.0	57.7	56.6	58.8
Localized	89.8	89.9	89.8	90.0	90.1	90.0	86.7	86.3	87.0
Regional	70.5	70.4	70.7	71.1	71.2	71.1	64.4	62.3	66.4
Distant	12.9	12.4	13.3	13.4	12.8	14.1	9.2	8.6	9.6
Unstaged	33.2	36.2	30.7	30.6	33.4	28.3	36.9	40.4	34.0

^a Based on End Results data from a series of hospital registries and one population-based registry.

^b SEER 9 areas (San Francisco, Connecticut, Detroit, Hawaii, Iowa, New Mexico, Seattle, Utah, Atlanta).

Based on follow-up of patients into 2011.

^c SEER 18 areas (San Francisco, Connecticut, Detroit, Hawaii, Iowa, New Mexico, Seattle, Utah, Atlanta, San Jose-Monterey, Los Angeles, Alaska Native Registry, Rural Georgia, California excluding SF/SJM/LA, Kentucky, Louisiana, New Jersey and Georgia excluding ATL/RG).

Based on follow-up of patients into 2011.

^d Period survival provides a 2010 estimate of survival by piecing together the most recent conditional survival estimates from several cohorts. It is computed here using three year calendar blocks (2007-2009: 0-1 year survival), (2006-2008: 1-2 year survival), (2005-2007: 2-3 year survival), (2004-2006: 3-4 year survival), (2003-2005: 4-5 years survival).

^e Stage at diagnosis is classified using SEER Summary Stage 2000. Stage distribution percentages may not sum to 100 due to rounding.

^f The difference between 1975-1977 and 2004-2010 is statistically significant ($p < .05$).

^g The standard error is between 5 and 10 percentage points.

^h The standard error is greater than 10 percentage points.

- Statistic could not be calculated due to fewer than 25 cases during the time period.

Table 6.13
Cancer of the Colon (Invasive)

5-Year Relative and Period Survival (Percent) by Race, Sex, Diagnosis Year, Stage and Age

	All Races			Whites			Blacks		
	Total	Males	Females	Total	Males	Females	Total	Males	Females
5-Year Relative Survival (Percent)									
Year of Diagnosis:									
1960-1963 ^a	-	-	-	43	42	44	34	32	35
1970-1973 ^a	-	-	-	49	47	50	37	36	38
1975-1977 ^b	50.6	50.1	51.1	50.9	50.5	51.3	44.7	44.0	45.3
1978-1980 ^b	52.3	51.3	53.2	52.4	51.3	53.4	48.9	47.4	49.8
1981-1983 ^b	55.2	55.6	54.8	55.4	56.1	54.8	48.5	44.5	51.5
1984-1986 ^b	58.3	58.8	57.8	59.0	59.6	58.5	49.1	48.9	49.2
1987-1989 ^b	60.2	60.7	59.6	60.6	61.4	59.9	52.3	50.6	53.6
1990-1992 ^b	62.0	62.3	61.7	62.8	63.1	62.4	53.2	54.5	52.1
1993-1995 ^b	59.8	60.1	59.5	60.5	60.7	60.2	51.1	51.1	51.0
1996-1998 ^b	62.4	62.4	62.0	62.9	62.9	62.9	53.5	55.4	51.9
1999-2003 ^b	64.9	65.5	64.4	66.3	66.9	65.6	54.1	54.2	54.0
2004-2010 ^b	65.4 ^f	66.0 ^f	64.8 ^f	66.5 ^f	67.3 ^f	65.8 ^f	55.8 ^f	55.4 ^f	56.1 ^f
5-Year Period Survival (Percent) ^{cd}									
2010	64.3	64.9	63.8	65.3	65.8	64.8	56.0	55.8	56.2
Stage Distribution (%) 2004-2010 ^{ee}									
All Stages									
Number of cases	148,788	72,777	76,011	117,707	58,145	59,562	18,481	8,492	9,989
Percent	100%	100%	100%	100%	100%	100%	100%	100%	100%
Localized	38	39	37	38	39	37	35	35	35
Regional	37	36	37	37	37	37	35	35	35
Distant	21	21	21	21	21	21	26	26	26
Unstaged	4	4	5	4	3	5	4	4	4
5-Year Relative Survival (Percent), 2004-2010 ^c									
Age at Diagnosis:									
Ages <45	66.3	66.1	66.4	68.7	68.1	69.3	57.4	55.1	59.4
Ages 45-54	68.5	68.0	69.0	69.5	69.1	70.1	61.2	59.4	62.8
Ages 55-64	67.1	67.0	67.4	68.1	67.9	68.3	60.4	59.6	61.3
Ages 65-74	67.4	67.0	67.7	68.2	68.0	68.5	58.5	56.7	60.1
Ages 75+	58.2	58.5	58.1	59.7	60.0	59.5	45.3	45.0	45.4
Ages <65	67.5	67.2	67.8	68.6	68.3	69.1	60.3	59.0	61.6
Ages 65+	61.9	62.5	61.4	63.0	63.6	62.4	52.0	51.7	52.2
Stage ^e :									
All Stages	64.0	64.5	63.6	65.0	65.5	64.4	56.2	55.8	56.7
Localized	90.8	91.2	90.4	91.3	91.7	90.9	86.9	87.2	86.7
Regional	70.9	70.6	71.1	71.5	71.5	71.5	65.0	63.0	66.6
Distant	12.7	12.3	13.0	13.3	12.7	14.0	8.7	8.0	9.2
Unstaged	25.4	29.4	22.5	24.1	27.7	21.5	26.0	32.7	21.2

^a Based on End Results data from a series of hospital registries and one population-based registry.

^b SEER 9 areas (San Francisco, Connecticut, Detroit, Hawaii, Iowa, New Mexico, Seattle, Utah, Atlanta).
Based on follow-up of patients into 2011.

^c SEER 18 areas (San Francisco, Connecticut, Detroit, Hawaii, Iowa, New Mexico, Seattle, Utah, Atlanta, San Jose-Monterey, Los Angeles, Alaska Native Registry, Rural Georgia, California excluding SF/SJM/LA, Kentucky, Louisiana, New Jersey and Georgia excluding ATL/RG).
Based on follow-up of patients into 2011.

^d Period survival provides a 2010 estimate of survival by piecing together the most recent conditional survival estimates from several cohorts. It is computed here using three year calendar blocks (2007-2009: 0-1 year survival), (2006-2008: 1-2 year survival), (2005-2007: 2-3 year survival), (2004-2006: 3-4 year survival), (2003-2005: 4-5 years survival).

^e Stage at diagnosis is classified using SEER Summary Stage 2000. Stage distribution percentages may not sum to 100 due to rounding.

^f The difference between 1975-1977 and 2004-2010 is statistically significant (p<.05).

^g The standard error is between 5 and 10 percentage points.

^h The standard error is greater than 10 percentage points.

- Statistic could not be calculated due to fewer than 25 cases during the time period.

Table 6.14
Cancer of the Rectum (Invasive)

5-Year Relative and Period Survival (Percent) by Race, Sex, Diagnosis Year, Stage and Age

	All Races			Whites			Blacks		
	Total	Males	Females	Total	Males	Females	Total	Males	Females
5-Year Relative Survival (Percent)									
Year of Diagnosis:									
1960-1963 ^a	-	-	-	38	36	41	27	28	27
1970-1973 ^a	-	-	-	45	43	48	30	20	40
1975-1977 ^b	48.1	46.9	49.5	48.2	47.3	49.4	44.4	41.4	46.8
1978-1980 ^b	48.9	48.3	49.5	49.7	49.3	50.2	34.6	33.5	35.5
1981-1983 ^b	51.4	50.2	52.8	52.0	51.0	53.2	39.9	37.7	42.2
1984-1986 ^b	56.2	55.5	57.1	57.0	56.4	57.7	45.8	43.1	48.2
1987-1989 ^b	58.1	57.9	58.4	58.7	58.9	58.4	52.3	47.7	56.9
1990-1992 ^b	59.2	58.4	60.2	59.9	59.0	61.0	51.1	53.5	48.5
1993-1995 ^b	60.1	59.0	61.6	60.5	59.4	62.0	53.9	51.6	56.4
1996-1998 ^b	63.3	62.4	64.3	63.6	62.9	64.5	54.8	53.2	56.2
1999-2003 ^b	67.1	67.0	67.1	67.8	67.9	67.8	60.2	60.1	60.0
2004-2010 ^b	67.8 ^f	67.4 ^f	68.3 ^f	68.0 ^f	68.3 ^f	67.5 ^f	63.2 ^f	58.1 ^f	68.3 ^f
5-Year Period Survival (Percent) ^{cd}									
2010	66.7	66.0	67.6	66.4	66.0	67.0	63.0	59.1	67.3
Stage Distribution (%) 2004-2010 ^{ee}									
All Stages									
Number of cases	63,011	35,770	27,241	49,600	28,427	21,173	6,566	3,401	3,165
Percent	100%	100%	100%	100%	100%	100%	100%	100%	100%
Localized	44	43	45	43	43	44	45	42	49
Regional	33	34	32	34	34	33	27	29	25
Distant	18	18	17	18	18	17	20	22	17
Unstaged	6	5	6	5	5	6	8	7	8
5-Year Relative Survival (Percent), 2004-2010 ^c									
Age at Diagnosis:									
Ages <45	69.7	66.3	73.8	70.2	66.2	74.8	62.6	57.8	67.9
Ages 45-54	74.2	71.7	77.7	74.5	72.4	77.6	67.9	62.8	73.6
Ages 55-64	70.8	69.3	73.2	70.8	69.6	72.9	66.4	62.2	71.8
Ages 65-74	67.3	66.5	68.6	67.2	66.9	67.7	63.1	57.1	69.6
Ages 75+	52.3	53.2	51.6	52.9	53.9	52.0	42.6	41.7	43.1
Ages <65	71.9	69.8	75.1	72.1	70.2	75.0	66.4	61.7	71.9
Ages 65+	59.9	60.8	58.9	59.9	61.1	58.5	54.2	51.9	56.2
Stage ^{ee} :									
All Stages	66.5	66.0	67.2	66.4	66.2	66.7	62.0	58.5	65.6
Localized	87.9	87.5	88.5	87.6	87.2	88.1	86.1	84.5	87.7
Regional	69.8	69.9	69.6	70.3	70.7	69.7	62.5	60.3	65.2
Distant	13.4	12.7	14.3	13.6	13.0	14.4	10.9	10.4	11.6
Unstaged	46.4	46.1	46.7	42.4	42.1	42.5	53.0	50.2	55.2

^a Based on End Results data from a series of hospital registries and one population-based registry.

^b SEER 9 areas (San Francisco, Connecticut, Detroit, Hawaii, Iowa, New Mexico, Seattle, Utah, Atlanta).

Based on follow-up of patients into 2011.

^c SEER 18 areas (San Francisco, Connecticut, Detroit, Hawaii, Iowa, New Mexico, Seattle, Utah, Atlanta, San Jose-Monterey, Los Angeles, Alaska Native Registry, Rural Georgia, California excluding SF/SJM/LA, Kentucky, Louisiana, New Jersey and Georgia excluding ATL/RG).

Based on follow-up of patients into 2011.

^d Period survival provides a 2010 estimate of survival by piecing together the most recent conditional survival estimates from several cohorts. It is computed here using three year calendar blocks (2007-2009: 0-1 year survival), (2006-2008: 1-2 year survival), (2005-2007: 2-3 year survival), (2004-2006: 3-4 year survival), (2003-2005: 4-5 years survival).

^e Stage at diagnosis is classified using SEER Summary Stage 2000. Stage distribution percentages may not sum to 100 due to rounding.

^f The difference between 1975-1977 and 2004-2010 is statistically significant ($p < .05$).

^g The standard error is between 5 and 10 percentage points.

^h The standard error is greater than 10 percentage points.

- Statistic could not be calculated due to fewer than 25 cases during the time period.

Table 7.8
Cancer of the Corpus and Uterus, NOS (Invasive)

5-Year Relative and Period Survival (Percent) by Race, Diagnosis Year, Stage and Age

	All Races, Females			White Females			Black Females		
	All	<50	50+	All	<50	50+	All	<50	50+
5-Year Relative Survival (Percent)									
Year of Diagnosis:									
1960-1963 ^a	-	-	-	73	-	-	31	-	-
1970-1973 ^a	-	-	-	81	-	-	44	-	-
1975-1977 ^b	86.9	92.7	86.2	88.0	93.3	87.4	60.2	84.4 ^g	55.6
1978-1980 ^b	82.5	91.7	81.3	83.7	93.0	82.6	54.9	82.3 ^g	49.5
1981-1983 ^b	80.7	91.3	79.4	82.2	92.3	81.0	50.7	82.7 ^g	45.6
1984-1986 ^b	82.4	93.6	81.0	84.0	93.9	82.8	56.2	83.5 ^g	52.7
1987-1989 ^b	82.3	89.9	81.2	83.9	90.9	83.0	56.9	84.5 ^g	52.9
1990-1992 ^b	83.6	90.0	82.7	85.8	92.3	84.8	53.9	72.5 ^g	50.2
1993-1995 ^b	83.2	90.0	82.0	84.9	91.5	83.8	58.4	81.9	53.7
1996-1998 ^b	83.5	90.1	82.4	85.2	91.3	84.3	61.5	82.6	57.0
1999-2003 ^b	83.8	89.4	82.8	85.9	91.0	85.1	60.5	73.9	57.0
2004-2010 ^b	83.2 ^f	88.6 ^f	82.3 ^f	85.3 ^f	90.3 ^f	84.5 ^f	64.7 ^f	76.7	62.3 ^f
5-Year Period Survival (Percent) ^{cd}									
2010	81.6	88.6	80.3	83.8	89.7	82.8	62.8	78.9	60.1
Stage Distribution (%) 2004-2010 ^{ce}									
All Stages									
Number of cases	66,187	10,183	56,004	54,173	7,770	46,403	6,198	897	5,301
Percent	100%	100%	100%	100%	100%	100%	100%	100%	100%
Localized	68	72	67	70	73	69	54	65	52
Regional	20	17	21	20	17	20	26	18	27
Distant	8	7	9	8	7	8	15	13	16
Unstaged	3	4	3	3	3	3	5	5	5
5-Year Relative Survival (Percent), 2004-2010 ^c									
Age at Diagnosis:									
Ages <45	89.6	-	-	90.6	-	-	80.1	-	-
Ages 45-54	88.2	-	-	90.0	-	-	71.7	-	-
Ages 55-64	84.8	-	-	87.3	-	-	64.5	-	-
Ages 65-74	77.5	-	-	80.5	-	-	55.3	-	-
Ages 75+	66.6	-	-	69.5	-	-	39.8	-	-
Ages <65	86.6	-	-	88.6	-	-	68.9	-	-
Ages 65+	73.1	-	-	75.9	-	-	50.3	-	-
Stage ^e :									
All Stages	81.5	88.8	80.1	83.7	90.1	82.6	61.3	78.1	58.3
Localized	95.1	96.5	94.8	96.0	96.9	95.9	85.4	92.2	83.8
Regional	67.7	81.9	65.4	70.3	83.6	68.3	46.9	68.4	44.4
Distant	17.5	29.1	15.6	18.8	30.3	17.1	11.3	21.9	9.6
Unstaged	47.9	88.6	40.4	48.3	89.4	41.4	31.5	80.9 ^g	24.1

^a Based on End Results data from a series of hospital registries and one population-based registry.

^b SEER 9 areas (San Francisco, Connecticut, Detroit, Hawaii, Iowa, New Mexico, Seattle, Utah, Atlanta).

Based on follow-up of patients into 2011.

^c SEER 18 areas (San Francisco, Connecticut, Detroit, Hawaii, Iowa, New Mexico, Seattle, Utah, Atlanta, San Jose-Monterey, Los Angeles, Alaska Native Registry, Rural Georgia, California excluding SF/SJM/LA, Kentucky, Louisiana, New Jersey and Georgia excluding ATL/RG).

Based on follow-up of patients into 2011.

^d Period survival provides a 2010 estimate of survival by piecing together the most recent conditional survival estimates from several cohorts. It is computed here using three year calendar blocks (2007-2009: 0-1 year survival), (2006-2008: 1-2 year survival), (2005-2007: 2-3 year survival), (2004-2006: 3-4 year survival), (2003-2005: 4-5 years survival).

^e Stage at diagnosis is classified using SEER Summary Stage 2000. Stage distribution percentages may not sum to 100 due to rounding.

^f The difference between 1975-1977 and 2004-2010 is statistically significant ($p < .05$).

^g The standard error is between 5 and 10 percentage points.

^h The standard error is greater than 10 percentage points.

- Statistic could not be calculated due to fewer than 25 cases during the time period.

Table 8.8
Cancer of the Esophagus (Invasive)

5-Year Relative and Period Survival (Percent) by Race, Sex, Diagnosis Year, Stage and Age

	All Races			Whites			Blacks		
	Total	Males	Females	Total	Males	Females	Total	Males	Females
5-Year Relative Survival (Percent)									
Year of Diagnosis:									
1960-1963 ^a	-	-	-	4	4	6	1	0	2
1970-1973 ^a	-	-	-	4	4	4	4	4	3
1975-1977 ^b	5.0	4.0	7.5	5.5	4.8	7.0	3.5	2.0	7.7
1978-1980 ^b	5.0	4.8	5.6	5.3	5.3	5.2	4.3	3.4	6.8
1981-1983 ^b	6.6	6.0	8.2	7.3	6.5	9.0	4.3	3.7	6.5
1984-1986 ^b	9.5	8.4	12.1	10.2	9.0	13.0	8.7	8.2	9.9
1987-1989 ^b	9.4	9.4	9.5	10.5	11.0	9.2	6.6	5.3	10.2
1990-1992 ^b	12.1	11.7	13.4	12.9	12.3	14.8	9.1	9.4	8.4
1993-1995 ^b	12.1	12.2	11.7	13.4	13.6	12.7	7.6	7.8	6.9
1996-1998 ^b	13.4	13.0	14.4	14.2	14.0	14.7	10.2	8.5	13.6
1999-2003 ^b	17.7	17.4	18.8	18.7	18.7	18.7	12.0	9.5	17.3
2004-2010 ^b	20.0 ^f	19.9 ^f	20.0 ^f	21.0 ^f	20.9 ^f	21.5 ^f	13.2 ^f	12.8 ^f	13.9 ^f
5-Year Period Survival (Percent) ^{cd}									
2010	17.9	18.2	16.7	18.6	19.0	17.0	11.9	10.8	14.3
Stage Distribution (%) 2004-2010 ^{ee}									
All Stages									
Number of cases	20,656	16,155	4,501	17,121	13,640	3,481	2,344	1,627	717
Percent	100%	100%	100%	100%	100%	100%	100%	100%	100%
Localized	21	21	24	22	21	24	19	18	22
Regional	30	30	29	30	30	28	32	32	32
Distant	37	39	31	37	39	31	37	39	32
Unstaged	11	10	17	11	10	17	12	11	13
5-Year Relative Survival (Percent), 2004-2010 ^c									
Age at Diagnosis:									
Ages <45	20.0	21.1	15.4	20.6	21.5	15.2	15.6	16.4 ^g	15.3 ^g
Ages 45-54	20.0	18.8	25.8	21.8	20.2	30.9	10.0	8.5	14.2
Ages 55-64	19.7	19.3	21.8	20.8	20.5	22.4	13.6	11.8	18.7
Ages 65-74	19.3	19.3	19.4	20.1	20.1	19.9	12.3	11.3	14.8
Ages 75+	11.6	11.9	10.9	12.0	12.1	11.2	7.5	8.4	6.0
Ages <65	19.8	19.3	22.6	21.1	20.5	24.6	12.5	11.0	16.7
Ages 65+	15.5	16.0	14.3	16.0	16.5	14.6	10.3	10.2	10.5
Stage ^{ee} :									
All Stages	17.5	17.6	17.2	18.3	18.4	17.8	11.6	10.7	13.7
Localized	39.6	41.4	33.8	41.8	43.7	35.4	22.7	21.5	24.8
Regional	21.1	21.4	19.7	21.9	22.2	20.8	14.6	15.0	14.1
Distant	3.8	3.6	4.8	3.8	3.6	4.8	3.3	2.3	6.2
Unstaged	11.5	11.3	11.9	11.1	11.2	10.8	11.5	10.3	14.0 ^g

^a Based on End Results data from a series of hospital registries and one population-based registry.

^b SEER 9 areas (San Francisco, Connecticut, Detroit, Hawaii, Iowa, New Mexico, Seattle, Utah, Atlanta).

Based on follow-up of patients into 2011.

^c SEER 18 areas (San Francisco, Connecticut, Detroit, Hawaii, Iowa, New Mexico, Seattle, Utah, Atlanta, San Jose-Monterey, Los Angeles, Alaska Native Registry, Rural Georgia, California excluding SF/SJM/LA, Kentucky, Louisiana, New Jersey and Georgia excluding ATL/RG).

Based on follow-up of patients into 2011.

^d Period survival provides a 2010 estimate of survival by piecing together the most recent conditional survival estimates from several cohorts. It is computed here using three year calendar blocks (2007-2009: 0-1 year survival), (2006-2008: 1-2 year survival), (2005-2007: 2-3 year survival), (2004-2006: 3-4 year survival), (2003-2005: 4-5 years survival).

^e Stage at diagnosis is classified using SEER Summary Stage 2000. Stage distribution percentages may not sum to 100 due to rounding.

^f The difference between 1975-1977 and 2004-2010 is statistically significant ($p < .05$).

^g The standard error is between 5 and 10 percentage points.

^h The standard error is greater than 10 percentage points.

- Statistic could not be calculated due to fewer than 25 cases during the time period.

Table 9.8
Hodgkin Lymphoma

5-Year Relative and Period Survival (Percent) by Race, Sex, Diagnosis Year and Age

	All Races			Whites			Blacks		
	Total	Males	Females	Total	Males	Females	Total	Males	Females
5-Year Relative Survival (Percent)									
Year of Diagnosis:									
1960-1963 ^a	-	-	-	40	34	48	-	-	-
1970-1973 ^a	-	-	-	67	66	69	-	-	-
1975-1977 ^b	71.8	69.9	74.3	72.1	70.2	74.5	70.1	68.5 ^g	73.3 ^g
1978-1980 ^b	71.7	70.3	73.5	71.8	69.8	74.3	70.6	74.7 ^g	63.1 ^g
1981-1983 ^b	74.2	72.9	75.8	74.6	73.8	75.6	71.5	69.2 ^g	75.9 ^g
1984-1986 ^b	78.2	76.4	80.6	78.7	76.8	81.1	74.7	75.7 ^g	72.1 ^g
1987-1989 ^b	79.2	76.6	82.5	79.7	76.9	83.3	72.3	70.9 ^g	74.0 ^g
1990-1992 ^b	81.7	79.2	84.7	82.8	81.0	85.0	74.0	64.5	84.3
1993-1995 ^b	81.6	79.1	84.6	82.1	79.9	84.7	78.3	74.1	82.8
1996-1998 ^b	85.1	84.4	85.9	85.7	84.3	87.3	81.2	84.3	77.7
1999-2003 ^b	85.6	83.6	87.9	86.5	85.1	88.2	80.9	75.1	87.6
2004-2010 ^b	87.7 ^f	86.8 ^f	88.7 ^f	88.3 ^f	87.9 ^f	88.7 ^f	84.7 ^f	80.9 ^f	88.9 ^f
5-Year Period Survival (Percent) ^{cd}									
2010	86.1	84.7	87.7	86.7	85.6	88.1	81.3	77.6	85.6
Stage Distribution (%) 2004-2010 ^{ce}									
All Stages									
Number of cases	14,949	8,123	6,826	12,238	6,659	5,579	1,808	965	843
Percent	100%	100%	100%	100%	100%	100%	100%	100%	100%
Localized	17	18	15	17	18	15	19	20	19
Regional	41	35	47	41	36	48	33	28	39
Distant	38	42	34	38	41	33	45	50	39
Unstaged	4	4	5	4	4	5	3	3	3
5-Year Relative Survival (Percent), 2004-2010 ^c									
Age at Diagnosis:									
Ages <45	93.7	92.7	94.8	94.4	93.8	95.2	88.0	84.7	91.6
Ages 45-54	84.9	83.1	87.7	87.0	85.7	89.0	72.8	67.3	81.5
Ages 55-64	76.5	76.0	76.9	78.7	78.4	79.0	60.5 ^g	56.8 ^g	63.3 ^g
Ages 65-74	64.2	62.7	65.6	63.6	61.0	66.6	67.1 ^g	78.1 ^g	57.3 ^g
Ages 75+	40.7	39.0	41.2	41.4	38.4	42.7	37.9 ^h	-	26.4 ^h
Ages <65	90.5	89.1	92.2	91.5	90.5	92.8	83.1	79.2	87.7
Ages 65+	52.8	52.6	52.7	52.7	51.2	53.7	58.3 ^g	75.1 ^g	45.6 ^g
Stage ^e :									
All Stages	85.3	84.4	86.4	85.7	85.0	86.6	81.6	79.2	84.4
Localized	90.8	91.6	89.7	90.8	91.2	90.3	89.9	92.2	86.2
Regional	92.1	91.1	92.9	92.5	91.8	93.0	87.6	84.2	90.4
Distant	76.2	75.9	76.5	76.2	76.2	76.1	74.4	71.5	78.7
Unstaged	80.7	80.7	80.7	81.9	82.0	81.5	67.1 ^g	66.4 ^h	67.9 ^h

^a Based on End Results data from a series of hospital registries and one population-based registry.

^b SEER 9 areas (San Francisco, Connecticut, Detroit, Hawaii, Iowa, New Mexico, Seattle, Utah, Atlanta). Based on follow-up of patients into 2011.

^c SEER 18 areas (San Francisco, Connecticut, Detroit, Hawaii, Iowa, New Mexico, Seattle, Utah, Atlanta, San Jose-Monterey, Los Angeles, Alaska Native Registry, Rural Georgia, California excluding SF/SJM/LA, Kentucky, Louisiana, New Jersey and Georgia excluding ATL/RG). Based on follow-up of patients into 2011.

^d Period survival provides a 2010 estimate of survival by piecing together the most recent conditional survival estimates from several cohorts. It is computed here using three year calendar blocks (2007-2009: 0-1 year survival), (2006-2008: 1-2 year survival), (2005-2007: 2-3 year survival), (2004-2006: 3-4 year survival), (2003-2005: 4-5 years survival).

^e Stage at diagnosis is classified using SEER Summary Stage 2000. Stage distribution percentages may not sum to 100 due to rounding.

^f The difference between 1975-1977 and 2004-2010 is statistically significant ($p < .05$).

^g The standard error is between 5 and 10 percentage points.

^h The standard error is greater than 10 percentage points.

- Statistic could not be calculated due to fewer than 25 cases during the time period.

Table 10.6
Kaposi Sarcoma

5-Year Relative and Period Survival (Percent) by Race, Sex, Diagnosis Year, Stage and Age

	All Races			Whites			Blacks		
	Total	Males	Females	Total	Males	Females	Total	Males	Females
5-Year Relative Survival (Percent)									
Year of Diagnosis:									
1960-1963 ^a	-	-	-	-	-	-	-	-	-
1970-1973 ^a	-	-	-	-	-	-	-	-	-
1975-1977 ^b	80.7 ^f	80.1 ^f	-	79.9 ^f	79.0 ^f	-	-	-	-
1978-1980 ^b	78.1 ^f	79.0 ^f	73.1 ^g	77.7 ^f	78.0 ^f	72.5 ^g	-	-	-
1981-1983 ^b	35.3	32.9	64.3 ^g	33.8	31.4	64.2 ^g	-	-	-
1984-1986 ^b	13.0	11.7	70.5 ^g	12.7	11.4	70.2 ^g	16.8	15.7	-
1987-1989 ^b	9.9	9.2	68.5 ^g	9.4	8.7	72.3 ^g	12.4	11.3	-
1990-1992 ^b	9.2	8.5	52.6 ^f	8.8	8.1	52.3 ^f	11.5	10.5	-
1993-1995 ^b	21.7	21.0	53.8 ^f	22.3	21.5	62.1 ^g	16.7	15.9	-
1996-1998 ^b	52.3	51.4	72.1 ^g	57.0	55.7	86.5 ^f	39.1	38.5	-
1999-2003 ^b	59.6	59.2	62.7 ^f	67.2	65.9	75.3 ^f	43.4	44.7	-
2004-2010 ^b	72.0 ^e	71.6 ^e	75.4 ^f	80.7	80.2	82.2 ^f	53.3	53.4	-
5-Year Period Survival (Percent) ^{cd}									
2010	73.8	73.3	77.6	79.2	78.3	86.0	57.4	57.1	-
5-Year Relative Survival (Percent), 2004-2010 ^c									
Age at Diagnosis:									
Ages <45	66.4	66.6	59.8 ^f	72.9	72.8	-	51.7	52.0	46.7 ^g
Ages 45-54	69.2	69.8	-	73.0	73.1	-	56.0 ^f	57.8 ^f	-
Ages 55-64	81.0	80.0	-	86.2	84.9	-	43.9 ^g	29.1 ^g	-
Ages 65-74	78.6	76.2 ^f	86.1 ^f	79.4	77.6 ^f	85.9 ^f	-	-	-
Ages 75+	87.7	89.0	80.5 ^f	88.4	88.5	83.5 ^f	-	-	-
Ages <65	68.6	68.7	64.7 ^f	74.6	74.3	85.3 ^f	52.3	52.6	49.0 ^f
Ages 65+	87.5	88.2	82.1 ^f	88.5	88.4	84.1 ^f	73.8 ^g	-	-

^a Based on End Results data from a series of hospital registries and one population-based registry.
^b SEER 9 areas (San Francisco, Connecticut, Detroit, Hawaii, Iowa, New Mexico, Seattle, Utah, Atlanta).
Based on follow-up of patients into 2011.
^c SEER 18 areas (San Francisco, Connecticut, Detroit, Hawaii, Iowa, New Mexico, Seattle, Utah, Atlanta, San Jose-Monterey, Los Angeles, Alaska Native Registry, Rural Georgia, California excluding SF/SJM/LA, Kentucky, Louisiana, New Jersey and Georgia excluding ATL/RG).
Based on follow-up of patients into 2011.
^d Period survival provides a 2010 estimate of survival by piecing together the most recent conditional survival estimates from several cohorts. It is computed here using three year calendar blocks (2007-2009: 0-1 year survival), (2006-2008: 1-2 year survival), (2005-2007: 2-3 year survival), (2004-2006: 3-4 year survival), (2003-2005: 4-5 years survival).
^e The difference between 1975-1977 and 2004-2010 is statistically significant (p<.05).
^f The standard error is between 5 and 10 percentage points.
^g The standard error is greater than 10 percentage points.
- Statistic could not be calculated due to fewer than 25 cases during the time period.

Table 11.8
Cancer of the Kidney and Renal Pelvis (Invasive)

5-Year Relative and Period Survival (Percent) by Race, Sex, Diagnosis Year, Stage and Age

	All Races			Whites			Blacks		
	Total	Males	Females	Total	Males	Females	Total	Males	Females
5-Year Relative Survival (Percent)									
Year of Diagnosis:									
1960-1963 ^a	-	-	-	37	36	39	38	38	37
1970-1973 ^a	-	-	-	46	44	50	44	40	49
1975-1977 ^b	50.1	50.2	49.9	49.8	50.1	49.4	48.8	47.9	50.4 ^g
1978-1980 ^b	52.9	52.7	53.3	52.6	52.8	52.1	56.8	51.9	62.8 ^g
1981-1983 ^b	50.1	51.0	48.3	49.9	51.2	47.7	50.6	50.2	51.2
1984-1986 ^b	54.5	55.0	53.8	54.7	55.4	53.6	52.5	49.0	57.7
1987-1989 ^b	56.6	57.0	56.1	57.2	58.0	56.0	54.5	52.7	56.7
1990-1992 ^b	60.2	60.5	59.6	60.6	61.2	59.8	56.9	55.2	58.8
1993-1995 ^b	61.4	61.7	61.1	62.0	62.8	60.7	57.4	54.1	62.0
1996-1998 ^b	62.5	62.9	61.9	62.0	62.6	61.1	66.9	68.1	64.6
1999-2003 ^b	66.4	65.4	67.8	66.5	65.8	67.7	63.9	61.2	67.5
2004-2010 ^b	73.7 ^f	73.0 ^f	74.8 ^f	73.8 ^f	73.3 ^f	74.7 ^f	72.3 ^f	71.5 ^f	73.4 ^f
5-Year Period Survival (Percent) ^{cd}									
2010	73.6	73.1	74.4	73.9	73.5	74.6	72.0	71.2	73.2
Stage Distribution (%) 2004-2010 ^{ee}									
All Stages									
Number of cases	68,114	42,026	26,088	56,335	34,900	21,435	7,375	4,383	2,992
Percent	100%	100%	100%	100%	100%	100%	100%	100%	100%
Localized	64	63	66	64	62	66	70	68	72
Regional	17	17	15	17	18	16	12	12	11
Distant	16	17	15	16	17	15	15	17	13
Unstaged	3	3	4	3	3	4	3	3	3
5-Year Relative Survival (Percent), 2004-2010 ^c									
Age at Diagnosis:									
Ages <45	86.0	84.4	88.3	87.8	86.1	90.2	75.2	74.7	76.0
Ages 45-54	79.1	76.9	83.5	79.4	77.2	84.0	76.3	74.3	80.2
Ages 55-64	73.9	72.1	77.5	74.1	72.2	77.9	72.4	70.8	75.2
Ages 65-74	71.4	71.2	71.7	71.7	71.3	72.4	69.9	70.9	68.5
Ages 75+	57.7	60.2	55.0	58.3	61.4	54.9	52.4	48.3	54.6
Ages <65	78.0	75.9	81.8	78.4	76.2	82.5	74.4	72.8	77.1
Ages 65+	65.1	66.6	63.1	65.4	67.0	63.2	63.4	64.2	62.5
Stage ^{ee} :									
All Stages	72.4	72.1	72.9	72.6	72.4	73.1	70.6	70.2	71.0
Localized	91.8	92.0	91.5	92.2	92.4	92.0	88.1	88.7	87.1
Regional	64.6	66.8	60.6	65.4	67.3	61.8	57.5	60.6	52.7
Distant	12.1	12.1	12.2	12.2	12.3	11.9	9.7	8.6	11.8
Unstaged	32.2	33.3	30.8	31.5	32.2	30.7	29.6	30.0 ^g	28.3 ^g

^a Based on End Results data from a series of hospital registries and one population-based registry.

^b SEER 9 areas (San Francisco, Connecticut, Detroit, Hawaii, Iowa, New Mexico, Seattle, Utah, Atlanta).

Based on follow-up of patients into 2011.

^c SEER 18 areas (San Francisco, Connecticut, Detroit, Hawaii, Iowa, New Mexico, Seattle, Utah, Atlanta, San Jose-Monterey, Los Angeles, Alaska Native Registry, Rural Georgia, California excluding SF/SJM/LA, Kentucky, Louisiana, New Jersey and Georgia excluding ATL/RG).

Based on follow-up of patients into 2011.

^d Period survival provides a 2010 estimate of survival by piecing together the most recent conditional survival estimates from several cohorts. It is computed here using three year calendar blocks (2007-2009: 0-1 year survival), (2006-2008: 1-2 year survival), (2005-2007: 2-3 year survival), (2004-2006: 3-4 year survival), (2003-2005: 4-5 years survival).

^e Stage at diagnosis is classified using SEER Summary Stage 2000. Stage distribution percentages may not sum to 100 due to rounding.

^f The difference between 1975-1977 and 2004-2010 is statistically significant ($p < .05$).

^g The standard error is between 5 and 10 percentage points.

^h The standard error is greater than 10 percentage points.

- Statistic could not be calculated due to fewer than 25 cases during the time period.

Table 12.8
Cancer of the Larynx (Invasive)

5-Year Relative and Period Survival (Percent) by Race, Sex, Diagnosis Year, Stage and Age

	All Races			Whites			Blacks		
	Total	Males	Females	Total	Males	Females	Total	Males	Females
5-Year Relative Survival (Percent)									
Year of Diagnosis:									
1960-1963 ^a	-	-	-	53	54	46	-	-	-
1970-1973 ^a	-	-	-	62	63	56	-	-	-
1975-1977 ^b	66.0	66.6	62.6	66.7	67.4	62.3	58.2	57.1	63.3 ^g
1978-1980 ^b	65.2	65.2	64.1	66.0	66.3	64.8	56.9	57.2	55.8 ^g
1981-1983 ^b	68.1	68.3	66.9	69.5	69.7	68.5	56.2	57.3	50.7 ^g
1984-1986 ^b	65.2	65.8	62.2	67.0	67.6	63.9	52.7	52.9	51.1 ^g
1987-1989 ^b	65.5	66.6	61.1	67.0	68.5	60.6	55.9	54.1	61.3 ^g
1990-1992 ^b	65.7	66.6	62.3	67.6	68.4	64.4	53.5	54.0	51.3 ^g
1993-1995 ^b	63.6	65.3	56.6	65.2	67.0	57.6	53.1	54.5	47.4 ^g
1996-1998 ^b	65.0	66.8	58.7	66.9	68.4	61.1	54.0	57.1	45.0 ^g
1999-2003 ^b	62.7	63.5	59.6	65.2	65.9	62.2	49.3	50.3	46.3
2004-2010 ^b	62.6 ^f	63.1 ^f	60.6	64.0	64.4	62.4	52.2	52.7	50.3
5-Year Period Survival (Percent) ^{cd}									
2010	59.7	60.8	55.2	60.4	61.6	55.4	53.6	54.1	51.7
Stage Distribution (%) 2004-2010 ^{ce}									
All Stages									
Number of cases	16,331	13,169	3,162	13,184	10,610	2,574	2,469	1,972	497
Percent	100%	100%	100%	100%	100%	100%	100%	100%	100%
Localized	56	57	48	57	59	50	45	48	35
Regional	21	19	29	20	19	28	24	22	34
Distant	19	19	18	17	17	17	27	27	27
Unstaged	5	5	5	5	5	5	4	4	5
5-Year Relative Survival (Percent), 2004-2010 ^c									
Age at Diagnosis:									
Ages <45	73.9	73.8	74.4	76.6	77.3	75.1	62.2 ^g	61.1 ^g	-
Ages 45-54	61.3	60.6	64.0	63.7	62.8	67.5	49.6	48.9	52.3
Ages 55-64	60.1	60.7	57.3	61.2	62.0	57.6	52.7	52.5	52.6
Ages 65-74	61.7	63.8	52.4	61.5	63.6	52.6	58.7	60.7	50.3 ^g
Ages 75+	52.6	54.7	44.3	52.6	54.9	43.8	49.3 ^g	50.5 ^g	43.1 ^g
Ages <65	61.5	61.5	61.5	63.2	63.2	63.0	52.2	51.9	53.5
Ages 65+	58.2	60.4	49.1	58.0	60.2	49.0	56.1	58.1	48.3
Stage ^e :									
All Stages	60.0	61.0	56.1	60.8	61.8	56.7	53.6	54.1	51.6
Localized	75.1	75.8	71.4	74.9	75.7	70.9	73.1	73.3	70.3
Regional	43.4	42.6	45.3	43.7	42.9	45.7	40.9	39.7	43.8
Distant	35.1	35.0	35.4	35.5	35.5	35.7	32.2	31.7	34.5
Unstaged	55.6	57.3	48.9	55.7	57.9	47.0 ^g	52.2 ^g	52.7 ^g	-

^a Based on End Results data from a series of hospital registries and one population-based registry.^b SEER 9 areas (San Francisco, Connecticut, Detroit, Hawaii, Iowa, New Mexico, Seattle, Utah, Atlanta).
Based on follow-up of patients into 2011.^c SEER 18 areas (San Francisco, Connecticut, Detroit, Hawaii, Iowa, New Mexico, Seattle, Utah, Atlanta, San Jose-Monterey, Los Angeles, Alaska Native Registry, Rural Georgia, California excluding SF/SJM/LA, Kentucky, Louisiana, New Jersey and Georgia excluding ATL/RG).
Based on follow-up of patients into 2011.^d Period survival provides a 2010 estimate of survival by piecing together the most recent conditional survival estimates from several cohorts. It is computed here using three year calendar blocks (2007-2009: 0-1 year survival), (2006-2008: 1-2 year survival), (2005-2007: 2-3 year survival), (2004-2006: 3-4 year survival), (2003-2005: 4-5 years survival).^e Stage at diagnosis is classified using SEER Summary Stage 2000. Stage distribution percentages may not sum to 100 due to rounding.^f The difference between 1975-1977 and 2004-2010 is statistically significant (p<.05).^g The standard error is between 5 and 10 percentage points.^h The standard error is greater than 10 percentage points.

- Statistic could not be calculated due to fewer than 25 cases during the time period.

Table 13.14
Leukemia

5-Year Relative and Period Survival (Percent) by Race, Sex, Diagnosis Year and Age

	All Races			Whites			Blacks		
	Total	Males	Females	Total	Males	Females	Total	Males	Females
5-Year Relative Survival (Percent)									
Year of Diagnosis:									
1960-1963 ^a	-	-	-	14	-	-	-	-	-
1970-1973 ^a	-	-	-	22	-	-	-	-	-
1975-1977 ^b	34.2	33.0	35.6	34.6	33.6	35.8	33.2	30.0	36.7
1978-1980 ^b	36.0	35.0	37.4	36.7	35.8	38.0	28.2	27.3	29.3
1981-1983 ^b	37.3	37.0	37.8	38.1	37.8	38.4	33.9	33.4	34.3
1984-1986 ^b	40.5	40.1	41.1	41.6	41.3	42.0	32.7	31.5	34.1
1987-1989 ^b	42.9	44.0	41.3	43.9	45.5	41.8	35.0	32.7	37.8
1990-1992 ^b	45.2	44.6	46.0	46.4	46.2	46.7	35.7	30.5	41.3
1993-1995 ^b	47.3	48.2	46.1	48.3	49.2	47.2	41.0	41.3	40.6
1996-1998 ^b	48.1	48.3	47.7	49.4	49.3	49.5	38.2	38.8	37.3
1999-2003 ^b	53.1	53.6	52.3	54.1	54.6	53.3	45.4	46.3	44.4
2004-2010 ^b	60.3 ^e	61.4 ^e	58.7 ^e	61.0 ^e	61.9 ^e	59.9 ^e	54.0 ^e	58.1 ^e	48.9 ^e
5-Year Period Survival (Percent) ^{cd}									
2010	57.7	58.5	56.6	57.8	58.4	57.1	51.1	52.0	50.0
5-Year Relative Survival (Percent), 2004-2010 ^c									
Age at Diagnosis:									
Ages <45	72.5	72.1	73.1	73.4	72.9	74.0	63.5	62.5	64.8
Ages 45-54	66.2	67.8	63.7	67.1	68.8	64.4	58.4	58.5	58.0
Ages 55-64	64.5	64.3	64.7	65.0	64.5	65.8	54.2	54.3	53.9
Ages 65-74	54.0	53.7	54.4	55.0	54.2	56.3	41.7	42.9	40.1
Ages 75+	36.8	36.6	37.0	37.4	37.3	37.5	28.0	27.0	28.5
Ages <65	68.5	68.5	68.6	69.2	69.1	69.4	59.8	59.3	60.4
Ages 65+	44.1	44.6	43.5	44.7	45.1	44.3	34.5	35.6	33.3

^a Based on End Results data from a series of hospital registries and one population-based registry.

^b SEER 9 areas (San Francisco, Connecticut, Detroit, Hawaii, Iowa, New Mexico, Seattle, Utah, Atlanta).

Based on follow-up of patients into 2011.

^c SEER 18 areas (San Francisco, Connecticut, Detroit, Hawaii, Iowa, New Mexico, Seattle, Utah, Atlanta, San Jose-Monterey, Los Angeles, Alaska Native Registry, Rural Georgia, California excluding SF/SJM/LA, Kentucky, Louisiana, New Jersey and Georgia excluding ATL/RG).

Based on follow-up of patients into 2011.

^d Period survival provides a 2010 estimate of survival by piecing together the most recent conditional survival estimates from several cohorts. It is computed here using three year calendar blocks (2007-2009: 0-1 year survival), (2006-2008: 1-2 year survival), (2005-2007: 2-3 year survival), (2004-2006: 3-4 year survival), (2003-2005: 4-5 years survival).

^e The difference between 1975-1977 and 2004-2010 is statistically significant ($p < .05$).

^f The standard error is between 5 and 10 percentage points.

^g The standard error is greater than 10 percentage points.

- Statistic could not be calculated due to fewer than 25 cases during the time period.

Table 13.15
Lymphocytic Leukemia

5-Year Relative and Period Survival (Percent) by Race, Sex, Diagnosis Year and Age

	All Races			Whites			Blacks		
	Total	Males	Females	Total	Males	Females	Total	Males	Females
<u>Acute Lymphocytic Leukemia</u>									
5-Year Relative Survival (Percent)									
Year of Diagnosis:									
1975-1977 ^a	40.6	36.9	45.6	40.8	37.4	45.7	33.5 ^e	-	-
1978-1980 ^a	48.8	45.4	53.6	49.3	45.9	54.2	31.4 ^e	30.9 ^e	-
1981-1983 ^a	50.6	47.0	55.4	51.4	47.9	56.2	42.3 ^e	36.2 ^e	48.4 ^e
1984-1986 ^a	52.0	49.1	56.1	52.8	49.3	57.9	36.0 ^e	43.5 ^e	27.3 ^e
1987-1989 ^a	54.3	53.7	55.0	54.8	54.8	54.9	44.7 ^e	42.0 ^e	47.1 ^e
1990-1992 ^a	58.0	54.5	63.1	57.7	54.9	62.0	57.1 ^e	50.4 ^e	63.3 ^e
1993-1995 ^a	60.1	57.8	63.3	59.7	57.9	62.3	52.6 ^e	44.6 ^e	63.8 ^e
1996-1998 ^b	65.4	64.3	66.9	66.1	63.8	68.9	56.2 ^e	60.3 ^e	50.2 ^e
1999-2003 ^a	64.8	63.2	67.0	65.6	64.2	67.3	58.0	48.6 ^e	68.8 ^e
2004-2010 ^a	70.0 ^d	70.1 ^d	70.0 ^d	70.7 ^d	70.4 ^d	70.9 ^d	64.7 ^d	69.3	57.0 ^e
5-Year Period Survival (Percent) ^{bc}									
2010	67.2	67.0	67.4	67.3	66.9	67.9	63.6	64.5	62.0
5-Year Relative Survival (Percent), 2004-2010 ^b									
Age at Diagnosis:									
Ages <45	77.8	76.4	79.9	78.0	76.6	79.9	74.1	73.0	75.8
Ages 45-54	32.8	36.7	27.4	31.7	35.0	26.8	31.3 ^e	-	-
Ages 55-64	24.2	22.4	26.0	24.7	22.4	26.9	22.1 ^e	-	-
Ages 65-74	16.8	18.8	14.9	17.6	18.6	16.0	0.0	-	-
Ages 75+	6.3	10.6	1.8	5.7	10.5	1.7	0.0	-	-
Ages <65	71.3	70.6	72.3	71.1	70.5	72.1	69.1	69.6	68.2
Ages 65+	12.2	15.5	9.4	12.2	15.4	9.5	0.0	-	0.0
<u>Chronic Lymphocytic Leukemia</u>									
5-Year Relative Survival (Percent)									
Year of Diagnosis:									
1975-1977 ^a	67.1	64.7	70.3	67.9	65.4	71.2	56.9 ^e	55.1 ^e	59.0 ^e
1978-1980 ^a	67.8	64.7	71.9	68.5	65.3	72.8	56.8 ^e	56.7 ^e	56.9 ^e
1981-1983 ^a	65.7	65.0	66.8	66.2	65.7	67.0	57.3 ^e	55.0 ^e	60.4 ^e
1984-1986 ^a	72.3	71.0	73.9	72.6	71.3	74.3	67.0 ^e	64.4 ^e	68.4 ^e
1987-1989 ^a	72.7	72.7	72.8	73.8	73.9	73.6	58.1	55.5 ^e	61.5 ^e
1990-1992 ^a	74.0	71.7	77.2	75.2	73.0	78.2	52.2	43.4 ^e	60.9 ^e
1993-1995 ^a	76.8	76.7	76.9	77.9	77.7	78.1	63.0	63.6 ^e	62.1 ^e
1996-1998 ^b	75.2	73.6	77.4	76.2	74.7	78.2	58.1 ^e	52.1 ^e	65.3 ^e
1999-2003 ^b	79.9	79.4	80.7	80.7	80.0	81.6	66.3	63.5	69.1 ^e
2004-2010 ^a	83.5 ^d	83.1 ^d	84.2 ^d	83.6 ^d	83.1 ^d	84.2 ^d	79.3 ^d	79.9 ^d	77.7
5-Year Period Survival (Percent) ^{bc}									
2010	80.4	80.2	80.7	80.4	80.3	80.4	67.9	65.6	70.6
5-Year Relative Survival (Percent), 2004-2010 ^b									
Age at Diagnosis:									
Ages <45	91.4	88.8	95.5	91.2	88.6	95.4	84.3 ^e	83.5 ^f	-
Ages 45-54	91.8	91.9	91.3	92.5	92.6	92.2	78.0	79.7 ^e	74.6 ^e
Ages 55-64	88.5	86.6	92.0	88.7	86.9	92.0	76.9	71.9	86.8
Ages 65-74	83.1	80.8	86.9	83.8	81.0	88.2	66.1	64.4	68.0 ^e
Ages 75+	67.4	65.9	69.0	67.3	66.3	68.3	55.2	47.3 ^e	61.3 ^e
Ages <65	89.7	88.3	92.1	90.0	88.7	92.4	77.8	75.4	82.4
Ages 65+	74.5	73.3	75.9	74.6	73.5	75.9	60.6	56.9	64.1

^a SEER 9 areas (San Francisco, Connecticut, Detroit, Hawaii, Iowa, New Mexico, Seattle, Utah, Atlanta).

Based on follow-up of patients into 2011.

^b SEER 18 areas (San Francisco, Connecticut, Detroit, Hawaii, Iowa, New Mexico, Seattle, Utah, Atlanta, San Jose-Monterey, Los Angeles, Alaska Native Registry, Rural Georgia, California excluding SF/SJM/LA, Kentucky, Louisiana, New Jersey and Georgia excluding ATL/RG).

Based on follow-up of patients into 2011.

^c Period survival provides a 2010 estimate of survival by piecing together the most recent conditional survival estimates from several cohorts. It is computed here using three year calendar blocks (2007-2009: 0-1 year survival), (2006-2008: 1-2 year survival), (2005-2007: 2-3 year survival), (2004-2006: 3-4 year survival), (2003-2005: 4-5 years survival). The difference between 1975-1977 and 2004-2010 is statistically significant (p<.05).

^d The standard error is between 5 and 10 percentage points.

^e The standard error is greater than 10 percentage points.

^f - Statistic could not be calculated due to fewer than 25 cases during the time period.

Table 13.16
Myeloid Leukemia

5-Year Relative and Period Survival (Percent) by Race, Sex, Diagnosis Year and Age

	All Races			Whites			Blacks		
	Total	Males	Females	Total	Males	Females	Total	Males	Females
<u>Acute Myeloid Leukemia</u>									
5-Year Relative Survival (Percent)									
Year of Diagnosis:									
1975-1977 ^a	6.2	5.5	7.0	5.8	5.4	6.2	10.1	8.2	11.7
1978-1980 ^a	7.6	6.9	8.4	7.1	6.1	8.3	8.8	5.1	12.6
1981-1983 ^a	8.4	7.2	9.8	7.7	6.4	9.3	12.1	15.3 ^e	9.0
1984-1986 ^a	10.6	9.2	12.3	10.2	8.9	11.8	9.8	6.7	12.9
1987-1989 ^a	11.4	9.1	14.1	11.3	9.6	13.2	9.2	4.4	15.7 ^e
1990-1992 ^a	13.7	12.6	15.1	13.4	12.2	14.9	13.5	12.9	13.9
1993-1995 ^a	16.2	14.9	17.5	15.4	14.2	16.8	21.5	20.6 ^e	22.0
1996-1998 ^b	16.9	15.9	18.2	15.6	14.4	17.1	22.1	25.2	18.2
1999-2003 ^a	20.5	19.2	22.1	20.2	18.4	22.2	21.4	26.2	16.3
2004-2010 ^a	25.4 ^d	24.5 ^d	26.4 ^d	24.9 ^d	23.9 ^d	26.0 ^d	24.8 ^d	24.2 ^d	25.4 ^d
5-Year Period Survival (Percent) ^{bc}									
2010	25.8	24.7	27.1	24.9	23.8	26.1	27.8	28.5	27.3
5-Year Relative Survival (Percent), 2004-2010 ^b									
Age at Diagnosis:									
Ages <45	55.6	54.1	57.2	56.6	55.2	58.2	46.7	43.0	50.1
Ages 45-54	39.0	36.0	42.5	39.5	36.7	42.8	37.4	33.9 ^e	41.2 ^e
Ages 55-64	27.1	25.6	29.1	27.4	25.5	29.9	20.6	19.6	21.0
Ages 65-74	11.1	10.1	12.3	11.2	10.0	12.7	9.3	7.2	10.8
Ages 75+	1.8	1.6	1.9	1.8	1.8	1.8	1.0	0.0	1.2
Ages <65	42.8	40.3	45.8	42.9	40.3	46.1	38.3	35.4	41.0
Ages 65+	5.6	5.4	5.7	5.6	5.4	5.7	5.1	4.7	5.2
<u>Chronic Myeloid Leukemia</u>									
5-Year Relative Survival (Percent)									
Year of Diagnosis:									
1975-1977 ^a	21.8	19.3	25.1	20.5	18.4	23.4	27.7 ^e	21.6 ^e	35.5 ^e
1978-1980 ^a	23.3	23.0	23.8	23.5	23.6	23.5	21.4 ^e	20.6 ^e	22.7 ^e
1981-1983 ^a	28.3	24.6	32.5	28.4	25.2	32.0	29.7	20.8 ^e	40.1 ^e
1984-1986 ^a	22.4	20.2	25.6	22.9	20.2	26.8	21.4	20.3 ^e	22.2 ^e
1987-1989 ^a	30.4	30.7	30.0	30.4	31.3	29.4	33.3 ^e	28.1 ^e	41.3 ^e
1990-1992 ^a	30.7	29.6	32.2	30.3	30.0	30.6	34.9 ^e	25.5 ^e	44.9 ^e
1993-1995 ^a	35.3	35.0	35.7	35.0	34.9	35.2	35.3 ^e	33.2 ^e	38.5 ^e
1996-1998 ^b	36.9	37.7	35.7	37.9	37.7	38.0	28.3	27.6 ^e	28.9 ^e
1999-2003 ^a	49.3	48.1	51.0	47.9	46.4	50.0	52.3	54.8 ^e	49.0 ^e
2004-2010 ^a	59.9 ^d	59.0 ^d	61.3 ^d	58.7 ^d	57.7 ^d	60.3 ^d	61.2 ^d	62.8 ^{de}	58.8 ^e
5-Year Period Survival (Percent) ^{bc}									
2010	63.4	61.9	65.7	62.0	60.4	64.3	67.1	64.6	69.6
5-Year Relative Survival (Percent), 2004-2010 ^b									
Age at Diagnosis:									
Ages <45	86.4	85.5	87.8	87.8	86.7	89.1	75.3	74.2	76.6
Ages 45-54	81.8	80.0	84.3	81.7	81.4	82.0	78.4	71.1 ^e	86.0 ^e
Ages 55-64	70.1	67.4	74.5	70.2	67.8	74.4	66.6	63.9 ^e	69.0 ^e
Ages 65-74	50.8	47.3	56.3	50.1	46.4	56.0	52.2 ^e	54.7 ^f	49.6 ^f
Ages 75+	26.8	25.9	27.8	26.5	25.0	28.2	27.0 ^e	21.9 ^e	27.4 ^f
Ages <65	80.2	78.4	82.9	80.5	79.1	82.8	73.5	70.6	76.7
Ages 65+	37.1	35.9	38.7	36.5	34.9	38.5	39.2 ^e	40.6 ^e	37.7 ^e

^a SEER 9 areas (San Francisco, Connecticut, Detroit, Hawaii, Iowa, New Mexico, Seattle, Utah, Atlanta).
Based on follow-up of patients into 2011.

^b SEER 18 areas (San Francisco, Connecticut, Detroit, Hawaii, Iowa, New Mexico, Seattle, Utah, Atlanta, San Jose-Monterey, Los Angeles, Alaska Native Registry, Rural Georgia, California excluding SF/SJM/LA, Kentucky, Louisiana, New Jersey and Georgia excluding ATL/RG).
Based on follow-up of patients into 2011.

^c Period survival provides a 2010 estimate of survival by piecing together the most recent conditional survival estimates from several cohorts. It is computed here using three year calendar blocks (2007-2009: 0-1 year survival), (2006-2008: 1-2 year survival), (2005-2007: 2-3 year survival), (2004-2006: 3-4 year survival), (2003-2005: 4-5 years survival).
The difference between 1975-1977 and 2004-2010 is statistically significant (p<.05).

^d The standard error is between 5 and 10 percentage points.

^e The standard error is greater than 10 percentage points.

^f -
Statistic could not be calculated due to fewer than 25 cases during the time period.

Table 14.8
Cancer of the Liver and Intrahepatic Bile Duct (Invasive)

5-Year Relative and Period Survival (Percent) by Race, Sex, Diagnosis Year, Stage and Age

	All Races			Whites			Blacks		
	Total	Males	Females	Total	Males	Females	Total	Males	Females
5-Year Relative Survival (Percent)									
Year of Diagnosis:									
1960-1963 ^a	-	-	-	-	-	-	-	-	-
1970-1973 ^a	-	-	-	-	-	-	-	-	-
1975-1977 ^b	3.4	1.8	6.3	3.4	1.9	5.8	1.8	0.0	5.6
1978-1980 ^b	3.3	2.2	5.4	3.3	2.2	4.8	3.6	3.0	5.0
1981-1983 ^b	3.6	2.9	5.0	3.8	3.0	5.2	2.8	2.1	4.7
1984-1986 ^b	5.7	3.7	9.5	5.7	3.7	9.1	4.4	2.1	9.1
1987-1989 ^b	4.8	3.2	7.9	5.6	3.4	9.2	2.7	1.6	4.9
1990-1992 ^b	5.6	4.9	7.0	6.2	5.1	8.3	2.6	2.0	3.6
1993-1995 ^b	5.5	5.3	6.0	5.2	5.0	5.6	4.0	2.8	7.3
1996-1998 ^b	8.5	8.3	9.1	8.4	7.6	10.2	4.6	5.9	2.0
1999-2003 ^b	12.7	12.5	13.0	11.8	11.7	12.1	8.5	7.4	11.3
2004-2010 ^b	17.7 ^f	17.6 ^f	17.7 ^f	17.1 ^f	17.4 ^f	16.4 ^f	12.9 ^f	11.6	16.5 ^f
5-Year Period Survival (Percent) ^{cd}									
2010	17.4	17.0	18.5	16.8	16.5	17.7	12.3	11.2	15.1
Stage Distribution (%) 2004-2010 ^{ce}									
All Stages									
Number of cases	37,857	27,478	10,379	26,048	19,020	7,028	4,699	3,476	1,223
Percent	100%	100%	100%	100%	100%	100%	100%	100%	100%
Localized	42	42	42	42	42	41	42	42	42
Regional	27	28	24	26	27	24	28	28	27
Distant	18	18	18	18	18	18	21	21	19
Unstaged	13	12	16	14	13	17	10	9	13
5-Year Relative Survival (Percent), 2004-2010 ^c									
Age at Diagnosis:									
Ages <45	35.0	32.7	40.0	38.4	36.0	43.0	24.9	23.9	27.5 ^g
Ages 45-54	20.0	19.1	24.9	20.2	19.5	23.5	12.3	10.4	19.6
Ages 55-64	18.9	17.6	24.2	19.5	18.0	25.3	10.4	9.0	15.8
Ages 65-74	14.5	13.8	15.8	12.8	11.9	14.6	11.1	9.0	14.1
Ages 75+	6.4	6.7	6.0	5.0	5.0	4.9	4.8	4.7	4.9
Ages <65	20.8	19.4	26.8	21.3	19.9	27.4	12.5	10.8	19.0
Ages 65+	10.6	10.8	10.3	8.9	8.9	8.9	8.8	7.5	10.0
Stage ^e :									
All Stages	16.6	16.4	17.2	16.1	15.9	16.5	11.5	10.1	15.3
Localized	29.7	29.6	29.8	28.7	28.7	28.7	22.1	19.8	28.5
Regional	10.9	10.5	12.0	11.1	10.6	12.6	5.3	4.6	7.1
Distant	2.8	2.3	4.3	2.9	2.3	4.6	2.4	1.9	4.0
Unstaged	5.6	5.5	5.8	5.3	5.4	5.3	3.6	1.7	6.5

^a Based on End Results data from a series of hospital registries and one population-based registry.

^b SEER 9 areas (San Francisco, Connecticut, Detroit, Hawaii, Iowa, New Mexico, Seattle, Utah, Atlanta).

Based on follow-up of patients into 2011.

^c SEER 18 areas (San Francisco, Connecticut, Detroit, Hawaii, Iowa, New Mexico, Seattle, Utah, Atlanta, San Jose-Monterey, Los Angeles, Alaska Native Registry, Rural Georgia, California excluding SF/SJM/LA, Kentucky, Louisiana, New Jersey and Georgia excluding ATL/RG).

Based on follow-up of patients into 2011.

^d Period survival provides a 2010 estimate of survival by piecing together the most recent conditional survival estimates from several cohorts. It is computed here using three year calendar blocks (2007-2009: 0-1 year survival), (2006-2008: 1-2 year survival), (2005-2007: 2-3 year survival), (2004-2006: 3-4 year survival), (2003-2005: 4-5 years survival).

^e Stage at diagnosis is classified using SEER Summary Stage 2000. Stage distribution percentages may not sum to 100 due to rounding.

^f The difference between 1975-1977 and 2004-2010 is statistically significant ($p < .05$).

^g The standard error is between 5 and 10 percentage points.

^h The standard error is greater than 10 percentage points.

- Statistic could not be calculated due to fewer than 25 cases during the time period.

Table 15.12
Cancer of the Lung and Bronchus (Invasive)

5-Year Relative and Period Survival (Percent) by Race, Sex, Diagnosis Year, Stage and Age

	All Races			Whites			Blacks		
	Total	Males	Females	Total	Males	Females	Total	Males	Females
5-Year Relative Survival (Percent)									
Year of Diagnosis:									
1960-1963 ^a	-	-	-	8	7	11	5	5	6
1970-1973 ^a	-	-	-	10	9	14	7	6	10
1975-1977 ^b	12.2	11.1	15.3	12.2	11.1	15.4	11.3	10.6	13.8
1978-1980 ^b	12.8	11.4	16.3	12.9	11.5	16.2	11.7	9.7	17.8
1981-1983 ^b	13.1	11.5	16.4	13.3	11.7	16.5	11.3	10.1	14.9
1984-1986 ^b	12.8	11.2	16.0	13.0	11.3	16.3	11.1	10.3	12.8
1987-1989 ^b	13.0	11.9	14.9	13.3	12.0	15.3	10.9	10.8	11.1
1990-1992 ^b	13.6	12.1	15.9	14.0	12.4	16.2	10.4	9.3	12.5
1993-1995 ^b	14.3	12.5	16.9	14.5	12.6	17.1	12.9	11.3	15.7
1996-1998 ^b	14.6	12.9	16.8	14.8	13.0	17.0	12.3	10.7	14.8
1999-2003 ^b	15.5	13.4	18.0	15.8	13.7	18.3	12.7	11.3	14.5
2004-2010 ^b	17.8 ^f	15.5 ^f	20.4 ^f	18.2 ^f	15.8 ^f	20.7 ^f	14.9 ^f	13.0 ^f	17.1 ^f
5-Year Period Survival (Percent) ^{cd}									
2010	17.4	14.9	20.2	17.7	15.3	20.4	14.3	12.2	17.0
Stage Distribution (%) 2004-2010 ^{ee}									
All Stages									
Number of cases	268,159	142,878	125,281	221,014	116,179	104,835	29,906	16,797	13,109
Percent	100%	100%	100%	100%	100%	100%	100%	100%	100%
Localized	15	14	17	16	14	18	13	11	14
Regional	22	22	22	22	22	22	22	21	22
Distant	57	59	55	56	58	54	61	62	59
Unstaged	6	5	6	6	5	6	4	5	4
5-Year Relative Survival (Percent), 2004-2010 ^c									
Age at Diagnosis:									
Ages <45	28.9	25.2	32.4	30.4	25.9	34.8	24.2	23.0	25.3
Ages 45-54	19.7	15.8	24.3	20.6	16.5	25.2	15.2	12.0	19.4
Ages 55-64	19.1	16.2	23.1	19.6	16.6	23.4	15.1	12.6	19.1
Ages 65-74	17.9	15.2	21.2	18.2	15.4	21.4	14.5	12.4	17.3
Ages 75+	12.2	10.7	13.7	12.6	10.9	14.1	8.5	7.5	9.4
Ages <65	19.9	16.6	24.1	20.5	17.1	24.7	15.7	13.0	19.7
Ages 65+	15.0	13.0	17.2	15.3	13.3	17.5	12.0	10.6	13.6
Stage ^g :									
All Stages	16.8	14.4	19.6	17.1	14.7	19.8	13.9	11.8	16.5
Localized	54.0	48.6	58.9	54.5	49.0	59.4	46.1	41.9	50.5
Regional	26.5	24.2	29.2	26.6	24.4	29.1	23.8	21.1	27.2
Distant	4.0	3.3	4.8	3.8	3.1	4.6	3.9	3.3	4.7
Unstaged	7.4	6.9	7.9	6.8	6.1	7.5	10.5	10.2	10.7

^a Based on End Results data from a series of hospital registries and one population-based registry.

^b SEER 9 areas (San Francisco, Connecticut, Detroit, Hawaii, Iowa, New Mexico, Seattle, Utah, Atlanta).
Based on follow-up of patients into 2011.

^c SEER 18 areas (San Francisco, Connecticut, Detroit, Hawaii, Iowa, New Mexico, Seattle, Utah, Atlanta, San Jose-Monterey, Los Angeles, Alaska Native Registry, Rural Georgia, California excluding SF/SJM/LA, Kentucky, Louisiana, New Jersey and Georgia excluding ATL/RG).
Based on follow-up of patients into 2011.

^d Period survival provides a 2010 estimate of survival by piecing together the most recent conditional survival estimates from several cohorts. It is computed here using three year calendar blocks (2007-2009: 0-1 year survival), (2006-2008: 1-2 year survival), (2005-2007: 2-3 year survival), (2004-2006: 3-4 year survival), (2003-2005: 4-5 years survival).

^e Stage at diagnosis is classified using SEER Summary Stage 2000. Stage distribution percentages may not sum to 100 due to rounding.

^f The difference between 1975-1977 and 2004-2010 is statistically significant (p<.05).

^g The standard error is between 5 and 10 percentage points.

^h The standard error is greater than 10 percentage points.

- Statistic could not be calculated due to fewer than 25 cases during the time period.

Table 15.13
Small Cell Cancer of the Lung and Bronchus (Invasive)

5-Year Relative and Period Survival (Percent) by Race, Sex, Diagnosis Year, Stage and Age

	All Races			Whites			Blacks		
	Total	Males	Females	Total	Males	Females	Total	Males	Females
5-Year Relative Survival (Percent)									
Year of Diagnosis:									
1975-1977 ^a	3.6	3.1	4.8	3.7	3.1	4.9	3.7	3.8	3.6
1978-1980 ^a	4.2	3.2	6.4	4.3	3.3	6.4	3.1	2.4	5.0
1981-1983 ^a	4.5	3.5	6.2	4.6	3.6	6.1	5.0	3.7	8.2
1984-1986 ^a	4.5	3.5	6.2	4.7	3.6	6.4	3.5	2.2	5.6
1987-1989 ^a	5.1	3.9	6.6	5.1	3.9	6.8	4.0	3.3	5.1
1990-1992 ^a	5.4	4.5	6.4	5.5	4.5	6.6	3.9	3.9	3.9
1993-1995 ^a	6.4	5.1	7.9	6.3	5.1	7.7	6.7	4.0	10.4
1996-1998 ^b	5.9	5.2	6.5	6.1	5.4	6.7	3.6	2.7	4.5
1999-2003 ^a	6.1	4.8	7.4	6.0	4.5	7.6	5.2	5.4	4.9
2004-2010 ^a	6.6 ^e	4.9 ^e	8.3 ^e	6.5 ^e	4.8 ^e	8.2 ^e	6.9 ^e	5.7 ^e	8.0
5-Year Period Survival (Percent) ^{bc}									
2010	6.5	5.2	7.8	6.4	5.0	7.7	7.4	6.2	8.5
Stage Distribution (%) 2004-2010 ^{bd}									
All Stages									
Number of cases	35,840	18,203	17,637	31,308	15,711	15,597	3,077	1,564	1,513
Percent	100%	100%	100%	100%	100%	100%	100%	100%	100%
Localized	5	4	5	5	4	5	5	4	5
Regional	21	19	22	21	19	22	21	19	23
Distant	72	74	70	72	74	70	73	75	70
Unstaged	3	3	3	3	3	3	2	2	2
5-Year Relative Survival (Percent), 2004-2010 ^b									
Age at Diagnosis:									
Ages <45	10.1	10.3	9.8	8.9	9.2	8.4	15.6	17.4 ^f	14.1 ^f
Ages 45-54	9.0	7.4	10.8	8.7	6.8	10.8	9.0	7.2	11.0
Ages 55-64	8.1	5.8	10.7	8.1	5.9	10.4	7.8	4.8	12.2
Ages 65-74	5.7	4.7	6.8	5.8	4.5	6.9	5.3	5.1	5.5
Ages 75+	3.4	2.9	3.8	3.3	2.7	3.8	3.9	6.0	2.9
Ages <65	8.4	6.5	10.6	8.3	6.3	10.4	8.7	6.0	12.0
Ages 65+	4.7	3.9	5.5	4.7	3.8	5.6	4.7	5.3	4.2
Stage ^d :									
All Stages	6.3	5.0	7.6	6.2	4.9	7.5	6.8	5.7	7.8
Localized	24.2	20.7	27.3	24.5	21.0	27.7	20.7	20.9 ^f	20.1 ^f
Regional	14.3	12.0	16.4	14.3	11.7	16.4	14.9	13.3	16.1
Distant	2.8	2.3	3.4	2.7	2.1	3.2	3.5	2.5	4.7
Unstaged	7.8	6.6	9.0	7.7	5.4	9.9	10.4	19.1 ^f	-

Note: Small Cell Cancer of the Lung and Bronchus includes histologies 8002, 8041-8045.

^a SEER 9 areas (San Francisco, Connecticut, Detroit, Hawaii, Iowa, New Mexico, Seattle, Utah, Atlanta).

Based on follow-up of patients into 2011.

^b SEER 18 areas (San Francisco, Connecticut, Detroit, Hawaii, Iowa, New Mexico, Seattle, Utah, Atlanta, San Jose-Monterey, Los Angeles, Alaska Native Registry, Rural Georgia, California excluding SF/SJM/LA, Kentucky, Louisiana, New Jersey and Georgia excluding ATL/RG).

Based on follow-up of patients into 2011.

^c Period survival provides a 2010 estimate of survival by piecing together the most recent conditional survival estimates from several cohorts. It is computed here using three year calendar blocks (2007-2009: 0-1 year survival), (2006-2008: 1-2 year survival), (2005-2007: 2-3 year survival), (2004-2006: 3-4 year survival), (2003-2005: 4-5 years survival).

^d Stage at diagnosis is classified using SEER Summary Stage 2000. Stage distribution percentages may not sum to 100 due to rounding.

^e The difference between 1975-1977 and 2004-2010 is statistically significant ($p < .05$).

^f The standard error is between 5 and 10 percentage points.

^g The standard error is greater than 10 percentage points.

- Statistic could not be calculated due to fewer than 25 cases during the time period.

Table 15.14
Non-Small Cell Cancer of the Lung and Bronchus (Invasive)

5-Year Relative and Period Survival (Percent) by Race, Sex, Diagnosis Year, Stage and Age

	All Races			Whites			Blacks		
	Total	Males	Females	Total	Males	Females	Total	Males	Females
5-Year Relative Survival (Percent)									
Year of Diagnosis:									
1975-1977 ^a	16.4	14.8	21.0	16.7	15.0	21.4	13.6	12.5	17.7
1978-1980 ^a	16.7	14.8	21.4	17.0	15.2	21.5	14.2	11.6	22.8
1981-1983 ^a	17.1	15.0	21.8	17.5	15.4	22.1	13.9	12.2	19.2
1984-1986 ^a	16.6	14.4	21.0	17.0	14.7	21.5	13.2	11.9	16.4
1987-1989 ^a	16.9	15.2	19.8	17.4	15.5	20.6	13.2	12.9	14.0
1990-1992 ^a	17.6	15.5	21.1	18.3	16.1	21.7	12.8	11.1	16.1
1993-1995 ^a	18.7	16.1	22.5	19.3	16.5	23.2	15.1	13.3	18.4
1996-1998 ^b	19.4	16.7	22.9	19.9	17.1	23.5	15.2	12.8	19.3
1999-2003 ^a	19.7	16.8	23.4	20.5	17.5	24.1	14.6	12.7	17.4
2004-2010 ^a	21.7 ^e	18.7 ^e	25.1 ^e	22.6 ^e	19.5 ^e	26.0 ^e	16.7 ^e	14.2 ^e	19.6
5-Year Period Survival (Percent) ^{bc}									
2010	21.4	18.0	25.4	22.2	18.7	26.1	16.4	13.6	19.9
Stage Distribution (%) 2004-2010 ^{bd}									
All Stages									
Number of cases	198,887	107,826	91,061	161,471	86,539	74,932	23,496	13,360	10,136
Percent	100%	100%	100%	100%	100%	100%	100%	100%	100%
Localized	18	16	21	19	17	22	14	13	16
Regional	24	24	24	24	25	24	23	23	24
Distant	55	57	53	54	55	51	60	62	58
Unstaged	3	3	3	3	3	3	3	3	2
5-Year Relative Survival (Percent), 2004-2010 ^b									
Age at Diagnosis:									
Ages <45	30.6	26.3	34.6	33.0	27.9	37.9	23.5	21.3	25.7
Ages 45-54	22.1	17.6	27.2	23.6	18.9	28.8	15.9	12.2	20.5
Ages 55-64	22.4	19.0	27.2	23.3	19.8	27.9	16.7	14.1	21.0
Ages 65-74	21.8	18.3	26.0	22.3	18.8	26.6	17.0	14.3	20.7
Ages 75+	16.6	14.1	19.1	17.2	14.5	19.9	10.8	9.1	12.2
Ages <65	22.9	19.0	27.8	24.0	20.0	28.9	16.9	13.9	21.2
Ages 65+	19.3	16.4	22.6	19.9	16.8	23.2	14.6	12.5	17.1
Stage ^d :									
All Stages	20.7	17.4	24.5	21.4	18.0	25.2	15.8	13.3	19.1
Localized	58.2	52.5	63.3	58.7	53.0	63.8	49.8	45.3	54.4
Regional	29.8	26.7	33.5	30.1	27.2	33.5	26.0	22.8	30.1
Distant	4.5	3.7	5.6	4.4	3.6	5.4	4.1	3.5	5.1
Unstaged	12.3	10.4	14.3	12.3	10.1	14.5	10.6	9.2	12.5

Note: Non-Small Cell Cancer of the Lung and Bronchus includes histologies 8003-8004, 8012-8015, 8021-8022, 8030-8035, 8046, 8050-8052, 8070-8076, 8078, 8082-8084, 8090, 8094, 8120, 8123, 8140-8141, 8143-8145, 8147, 8190, 8200-8201, 8211, 8240-8241, 8243-8246, 8249-8255, 8260, 8290, 8310, 8320, 8323, 8333, 8401, 8430,8440,8470-8471,8480-8481, 8490, 8503, 8507, 8525, 8550, 8560, 8562, 8570-8572, 8574-8576.

^a SEER 9 areas (San Francisco, Connecticut, Detroit, Hawaii, Iowa, New Mexico, Seattle, Utah, Atlanta).

Based on follow-up of patients into 2011.

^b SEER 18 areas (San Francisco, Connecticut, Detroit, Hawaii, Iowa, New Mexico, Seattle, Utah, Atlanta, San Jose-Monterey, Los Angeles, Alaska Native Registry, Rural Georgia, California excluding SF/SJM/LA, Kentucky, Louisiana, New Jersey and Georgia excluding ATL/RG).

Based on follow-up of patients into 2011.

^c Period survival provides a 2010 estimate of survival by piecing together the most recent conditional survival estimates from several cohorts. It is computed here using three year calendar blocks (2007-2009: 0-1 year survival), (2006-2008: 1-2 year survival), (2005-2007: 2-3 year survival), (2004-2006: 3-4 year survival), (2003-2005: 4-5 years survival).

^d Stage at diagnosis is classified using SEER Summary Stage 2000. Stage distribution percentages may not sum to 100 due to rounding.

^e The difference between 1975-1977 and 2004-2010 is statistically significant ($p < .05$).

^f The standard error is between 5 and 10 percentage points.

^g The standard error is greater than 10 percentage points.

- Statistic could not be calculated due to fewer than 25 cases during the time period.

Table 16.8
Melanoma of the Skin (Invasive)

5-Year Relative and Period Survival (Percent) by Race, Sex, Diagnosis Year, Stage and Age

	All Races			Whites			Blacks		
	Total	Males	Females	Total	Males	Females	Total	Males	Females
5-Year Relative Survival (Percent)									
Year of Diagnosis:									
1960-1963 ^a	-	-	-	60	51	68	-	-	-
1970-1973 ^a	-	-	-	68	62	75	-	-	-
1975-1977 ^b	81.9	77.5	86.3	82.0	77.7	86.2	56.7 ^g	-	-
1978-1980 ^b	82.7	77.7	87.7	82.8	77.8	87.8	59.8 ^h	-	-
1981-1983 ^b	82.7	78.3	87.2	82.7	78.4	87.1	61.9 ^g	-	-
1984-1986 ^b	86.6	82.5	91.0	86.3	82.2	90.9	70.0 ^h	-	-
1987-1989 ^b	88.0	84.8	91.5	87.9	84.7	91.3	78.6 ^g	-	89.5 ^g
1990-1992 ^b	89.2	86.9	91.7	89.2	86.9	91.7	59.6 ^g	-	-
1993-1995 ^b	89.7	87.2	92.6	89.5	87.0	92.6	70.2 ^g	65.3 ^g	69.7 ^h
1996-1998 ^b	90.9	89.5	92.7	90.8	89.2	92.7	73.9 ^g	68.0 ^h	78.6 ^g
1999-2003 ^b	92.6	90.5	95.0	92.6	90.5	95.0	72.6 ^g	73.7 ^g	71.4 ^g
2004-2010 ^b	92.9 ^f	91.1 ^f	95.0 ^f	92.9 ^f	91.1 ^f	95.0 ^f	75.1	64.6 ^g	81.2 ^g
5-Year Period Survival (Percent) ^{cd}									
2010	91.3	89.3	93.9	90.9	88.8	93.7	72.9	71.0	73.5
Stage Distribution (%) 2004-2010 ^{ce}									
All Stages									
Number of cases	94,432	52,680	41,752	88,467	49,631	38,836	462	196	266
Percent	100%	100%	100%	100%	100%	100%	100%	100%	100%
Localized	84	82	86	84	82	86	55	46	62
Regional	9	10	7	9	10	8	26	28	24
Distant	4	5	3	4	5	3	14	20	10
Unstaged	3	3	3	3	3	3	5	6	4
5-Year Relative Survival (Percent), 2004-2010 ^c									
Age at Diagnosis:									
Ages <45	94.5	91.3	96.7	94.4	91.1	96.7	82.9	62.7 ^h	90.7
Ages 45-54	92.6	90.3	95.3	92.4	90.0	95.2	66.7 ^g	59.3 ^h	72.0 ^g
Ages 55-64	91.0	89.2	94.0	90.5	88.7	93.7	73.4 ^g	63.7 ^g	84.9 ^g
Ages 65-74	90.5	89.2	92.9	90.4	89.0	92.8	59.4 ^g	51.0 ^g	65.9 ^g
Ages 75+	85.6	86.2	84.7	85.2	85.8	84.2	64.8 ^g	63.7 ^h	62.7 ^h
Ages <65	92.7	90.1	95.6	92.4	89.7	95.4	75.4	62.4 ^g	84.2
Ages 65+	88.2	87.9	88.7	87.9	87.6	88.5	63.6 ^g	58.3 ^g	64.2 ^g
Stage ^e :									
All Stages	91.3	89.3	93.7	91.0	89.0	93.5	71.1	60.8	76.9
Localized	98.1	97.6	98.7	98.0	97.4	98.6	91.1	87.7 ^g	91.2
Regional	62.6	59.5	67.7	62.6	59.8	67.7	56.4 ^g	49.2 ^g	62.3 ^g
Distant	16.1	14.7	18.9	16.1	14.8	18.9	16.1 ^g	14.7 ^g	-
Unstaged	78.3	75.4	81.9	77.3	74.4	80.9	-	-	-

^a Based on End Results data from a series of hospital registries and one population-based registry.

^b SEER 9 areas (San Francisco, Connecticut, Detroit, Hawaii, Iowa, New Mexico, Seattle, Utah, Atlanta).
Based on follow-up of patients into 2011.

^c SEER 18 areas (San Francisco, Connecticut, Detroit, Hawaii, Iowa, New Mexico, Seattle, Utah, Atlanta, San Jose-Monterey, Los Angeles, Alaska Native Registry, Rural Georgia, California excluding SF/SJM/LA, Kentucky, Louisiana, New Jersey and Georgia excluding ATL/RG).
Based on follow-up of patients into 2011.

^d Period survival provides a 2010 estimate of survival by piecing together the most recent conditional survival estimates from several cohorts. It is computed here using three year calendar blocks (2007-2009: 0-1 year survival), (2006-2008: 1-2 year survival), (2005-2007: 2-3 year survival), (2004-2006: 3-4 year survival), (2003-2005: 4-5 years survival).

^e Stage at diagnosis is classified using SEER Summary Stage 2000. Stage distribution percentages may not sum to 100 due to rounding.

^f The difference between 1975-1977 and 2004-2010 is statistically significant ($p < .05$).

^g The standard error is between 5 and 10 percentage points.

^h The standard error is greater than 10 percentage points.

- Statistic could not be calculated due to fewer than 25 cases during the time period.

Table 17.4
Mesothelioma

5-Year Relative and Period Survival (Percent) by Race, Sex, Diagnosis Year, Stage and Age

	All Races			Whites			Blacks		
	Total	Males	Females	Total	Males	Females	Total	Males	Females
5-Year Relative Survival (Percent)									
Year of Diagnosis:									
1960-1963 ^a	-	-	-	-	-	-	-	-	-
1970-1973 ^a	-	-	-	-	-	-	-	-	-
1975-1977 ^b	9.7	3.0	26.7	10.4	3.3	27.4 ^f	-	-	-
1978-1980 ^b	6.0	5.5	8.1	5.9	5.2	8.7	-	-	-
1981-1983 ^b	7.7	5.3	15.1	8.1	5.4	16.2	-	-	-
1984-1986 ^b	6.6	4.3	13.9	6.1	3.7	14.1	-	-	-
1987-1989 ^b	6.2	4.6	12.2	6.3	4.8	12.1	4.8	-	-
1990-1992 ^b	7.7	4.2	20.6	7.4	4.1	20.1	10.2 ^f	8.5 ^f	-
1993-1995 ^b	6.5	3.2	18.7	5.9	2.8	18.0	9.0	8.0 ^f	-
1996-1998 ^b	9.8	8.2	15.2	9.9	8.2	16.1	11.7 ^f	-	-
1999-2003 ^b	7.0	5.3	13.3	6.7	5.1	12.5	14.6 ^f	12.9 ^f	-
2004-2010 ^b	8.0	6.0 ^e	13.8	8.0	5.8 ^e	14.8	8.7	8.1 ^f	9.7 ^f
5-Year Period Survival (Percent) ^{cd}									
2010	9.0	7.5	13.5	9.1	7.6	13.5	10.3	8.2	13.0
5-Year Relative Survival (Percent), 2004-2010 ^c									
Age at Diagnosis:									
Ages <45	44.2	41.2 ^f	47.6 ^f	42.8 ^f	40.0 ^f	46.8 ^f	-	-	-
Ages 45-54	15.6	13.9	18.8	16.3	15.0	18.6	15.8 ^f	-	-
Ages 55-64	10.4	8.9	15.5	11.1	9.1	17.8	6.7	10.2 ^f	-
Ages 65-74	8.0	6.8	12.8	8.2	7.0	13.2	7.9	5.2	-
Ages 75+	3.1	2.3	5.3	3.0	2.1	5.7	-	-	-
Ages <65	15.9	13.1	22.6	16.1	13.4	23.1	16.9	14.2 ^f	23.9 ^f
Ages 65+	5.1	4.3	8.0	5.1	4.2	8.4	4.7	4.0	5.2

^a Based on End Results data from a series of hospital registries and one population-based registry.^b SEER 9 areas (San Francisco, Connecticut, Detroit, Hawaii, Iowa, New Mexico, Seattle, Utah, Atlanta).

Based on follow-up of patients into 2011.

^c SEER 18 areas (San Francisco, Connecticut, Detroit, Hawaii, Iowa, New Mexico, Seattle, Utah, Atlanta, San Jose-Monterey, Los Angeles, Alaska Native Registry, Rural Georgia, California excluding SF/SJM/LA, Kentucky, Louisiana, New Jersey and Georgia excluding ATL/RG).

Based on follow-up of patients into 2011.

^d Period survival provides a 2010 estimate of survival by piecing together the most recent conditional survival estimates from several cohorts. It is computed here using three year calendar blocks (2007-2009: 0-1 year survival), (2006-2008: 1-2 year survival), (2005-2007: 2-3 year survival), (2004-2006: 3-4 year survival), (2003-2005: 4-5 years survival).^e The difference between 1975-1977 and 2004-2010 is statistically significant (p<.05).^f The standard error is between 5 and 10 percentage points.^g The standard error is greater than 10 percentage points.

- Statistic could not be calculated due to fewer than 25 cases during the time period.

Table 18.8
Myeloma

5-Year Relative and Period Survival (Percent) by Race, Sex, Diagnosis Year and Age

	All Races			Whites			Blacks		
	Total	Males	Females	Total	Males	Females	Total	Males	Females
5-Year Relative Survival (Percent)									
Year of Diagnosis:									
1960-1963 ^a	-	-	-	12	13	10	-	-	-
1970-1973 ^a	-	-	-	19	20	17	-	-	-
1975-1977 ^b	24.6	24.0	25.3	24.1	23.6	24.7	29.5	29.3	29.5
1978-1980 ^b	25.9	24.4	27.5	24.8	24.2	25.5	32.5	27.4	37.5
1981-1983 ^b	27.6	25.7	29.4	27.2	25.4	29.0	28.9	29.6	27.9
1984-1986 ^b	27.2	27.6	26.8	25.9	25.7	26.2	31.8	33.3	30.3
1987-1989 ^b	27.2	28.9	25.5	26.9	29.1	24.5	30.0	29.7	30.3
1990-1992 ^b	29.2	30.4	27.9	28.3	29.5	26.9	34.3	38.1	30.7
1993-1995 ^b	31.6	32.1	31.2	30.5	31.2	29.7	35.1	34.7	35.5
1996-1998 ^b	32.3	34.4	30.2	32.2	34.2	29.9	30.9	32.4	29.8
1999-2003 ^b	36.9	38.7	34.7	37.0	39.0	34.6	36.5	38.7	34.5
2004-2010 ^b	46.7 ^f	47.5 ^f	45.8 ^f	46.8 ^f	48.6 ^f	44.6 ^f	46.5 ^f	43.5 ^f	49.2 ^f
5-Year Period Survival (Percent) ^{cd}									
2010	46.3	47.4	45.1	46.3	48.2	43.9	45.8	44.2	47.4
Stage Distribution (%) 2004-2010 ^{ce}									
All Stages									
Number of cases	28,326	15,384	12,942	20,855	11,675	9,180	5,487	2,664	2,823
Percent	100%	100%	100%	100%	100%	100%	100%	100%	100%
Localized	5	6	4	5	6	4	4	5	4
Regional	0	0	0	0	0	0	0	0	0
Distant	95	94	96	95	94	96	96	95	96
Unstaged	0	0	0	0	0	0	0	0	0
5-Year Relative Survival (Percent), 2004-2010 ^c									
Age at Diagnosis:									
Ages <45	68.3	69.0	67.4	67.9	69.1	65.6	67.1	66.3	67.5
Ages 45-54	61.1	60.5	62.0	63.2	63.6	62.7	54.2	49.6	59.4
Ages 55-64	54.0	53.7	54.4	54.0	54.4	53.5	52.9	51.2	54.9
Ages 65-74	43.6	43.1	44.2	44.4	44.0	45.1	41.2	39.7	42.6
Ages 75+	26.9	28.1	25.7	27.5	29.8	25.4	24.4	22.8	25.5
Ages <65	57.8	57.5	58.3	58.3	58.8	57.5	55.2	52.3	58.5
Ages 65+	34.9	36.0	33.8	35.3	37.0	33.5	33.8	33.5	34.1
Stage ^e :									
All Stages	44.9	46.0	43.5	44.8	46.7	42.4	44.9	44.1	45.8
Localized	66.9	70.8	60.2	68.2	73.1	58.7	55.8	54.5 ^g	57.1 ^g
Regional	-	-	-	-	-	-	-	-	-
Distant	43.7	44.5	42.8	43.5	45.0	41.7	44.4	43.6	45.3
Unstaged	-	-	-	-	-	-	-	-	-

^a Based on End Results data from a series of hospital registries and one population-based registry.^b SEER 9 areas (San Francisco, Connecticut, Detroit, Hawaii, Iowa, New Mexico, Seattle, Utah, Atlanta). Based on follow-up of patients into 2011.^c SEER 18 areas (San Francisco, Connecticut, Detroit, Hawaii, Iowa, New Mexico, Seattle, Utah, Atlanta, San Jose-Monterey, Los Angeles, Alaska Native Registry, Rural Georgia, California excluding SF/SJM/LA, Kentucky, Louisiana, New Jersey and Georgia excluding ATL/RG). Based on follow-up of patients into 2011.^d Period survival provides a 2010 estimate of survival by piecing together the most recent conditional survival estimates from several cohorts. It is computed here using three year calendar blocks (2007-2009: 0-1 year survival), (2006-2008: 1-2 year survival), (2005-2007: 2-3 year survival), (2004-2006: 3-4 year survival), (2003-2005: 4-5 years survival).^e Stage at diagnosis is classified using SEER Summary Stage 2000. Stage distribution percentages may not sum to 100 due to rounding.^f The difference between 1975-1977 and 2004-2010 is statistically significant (p<.05).^g The standard error is between 5 and 10 percentage points.^h The standard error is greater than 10 percentage points.

- Statistic could not be calculated due to fewer than 25 cases during the time period.

Table 19.8
Non-Hodgkin Lymphoma

5-Year Relative and Period Survival (Percent) by Race, Sex, Diagnosis Year and Age

	All Races			Whites			Blacks		
	Total	Males	Females	Total	Males	Females	Total	Males	Females
5-Year Relative Survival (Percent)									
Year of Diagnosis:									
1960-1963 ^a	-	-	-	31	31	31	-	-	-
1970-1973 ^a	-	-	-	41	39	43	-	-	-
1975-1977 ^b	46.5	45.5	47.5	46.8	46.3	47.3	48.4	42.6	54.8 ^g
1978-1980 ^b	47.9	46.1	49.8	47.9	46.2	49.5	51.1	46.9	56.7
1981-1983 ^b	50.5	50.2	50.9	50.8	50.5	51.1	49.4	49.0	49.8
1984-1986 ^b	51.6	50.0	53.3	52.0	50.6	53.6	46.7	44.5	49.6
1987-1989 ^b	50.9	47.6	54.9	51.3	48.1	55.3	46.1	41.7	51.2
1990-1992 ^b	50.7	46.7	55.8	51.6	47.6	56.5	42.0	38.1	47.5
1993-1995 ^b	52.5	48.7	57.4	53.2	49.7	57.6	42.0	35.9	53.7
1996-1998 ^b	58.9	57.0	61.0	59.5	57.6	61.6	54.2	52.7	56.4
1999-2003 ^b	66.3	64.2	68.7	67.4	65.7	69.4	59.0	54.0	64.9
2004-2010 ^b	71.4 ^f	70.1 ^f	72.8 ^f	72.5 ^f	71.5 ^f	73.6 ^f	63.0 ^f	58.8 ^f	67.7 ^f
5-Year Period Survival (Percent) ^{cd}									
2010	70.4	69.1	71.9	70.7	69.6	72.1	64.7	61.4	68.7
Stage Distribution (%) 2004-2010 ^{ee}									
All Stages									
Number of cases	92,653	49,978	42,675	77,541	41,843	35,698	7,475	4,057	3,418
Percent	100%	100%	100%	100%	100%	100%	100%	100%	100%
Localized	28	27	29	28	27	29	28	25	31
Regional	15	15	16	15	15	16	15	14	15
Distant	49	51	47	50	51	48	51	54	47
Unstaged	8	7	8	7	7	8	7	6	7
5-Year Relative Survival (Percent), 2004-2010 ^c									
Age at Diagnosis:									
Ages <45	79.4	76.7	83.6	81.4	78.7	86.0	65.9	62.7	70.8
Ages 45-54	77.8	74.5	82.6	79.6	76.4	84.3	63.0	58.5	70.0
Ages 55-64	75.2	72.3	79.0	76.3	73.6	79.8	65.0	59.8	71.7
Ages 65-74	70.3	67.4	73.5	70.9	68.2	73.9	63.6	53.8	71.3
Ages 75+	53.1	52.3	53.7	53.7	52.8	54.4	44.9	44.8	44.4
Ages <65	77.2	74.3	81.3	78.6	75.9	82.6	64.8	60.6	70.9
Ages 65+	60.9	59.8	62.0	61.4	60.3	62.3	55.5	50.6	58.7
Stage ^e :									
All Stages	69.3	68.0	70.9	69.9	68.9	71.2	62.2	58.4	66.6
Localized	81.6	81.3	82.0	82.1	82.1	82.1	76.3	72.4	80.0
Regional	72.9	72.3	73.5	73.5	73.4	73.6	67.2	63.9	70.4
Distant	61.6	60.1	63.6	62.7	61.2	64.5	53.2	50.6	56.7
Unstaged	66.9	66.0	67.8	65.6	64.8	66.5	61.0	56.7	65.3

^a Based on End Results data from a series of hospital registries and one population-based registry.
^b SEER 9 areas (San Francisco, Connecticut, Detroit, Hawaii, Iowa, New Mexico, Seattle, Utah, Atlanta).
Based on follow-up of patients into 2011.
^c SEER 18 areas (San Francisco, Connecticut, Detroit, Hawaii, Iowa, New Mexico, Seattle, Utah, Atlanta, San Jose-Monterey, Los Angeles, Alaska Native Registry, Rural Georgia, California excluding SF/SJM/LA, Kentucky, Louisiana, New Jersey and Georgia excluding ATL/RG).
Based on follow-up of patients into 2011.
^d Period survival provides a 2010 estimate of survival by piecing together the most recent conditional survival estimates from several cohorts. It is computed here using three year calendar blocks (2007-2009: 0-1 year survival), (2006-2008: 1-2 year survival), (2005-2007: 2-3 year survival), (2004-2006: 3-4 year survival), (2003-2005: 4-5 years survival).
^e Stage at diagnosis is classified using SEER Summary Stage 2000. Stage distribution percentages may not sum to 100 due to rounding.
^f The difference between 1975-1977 and 2004-2010 is statistically significant (p<.05).
^g The standard error is between 5 and 10 percentage points.
^h The standard error is greater than 10 percentage points.
- Statistic could not be calculated due to fewer than 25 cases during the time period.

Table 20.10
Cancer of the Oral Cavity and Pharynx (Invasive)

5-Year Relative and Period Survival (Percent) by Race, Sex, Diagnosis Year, Stage and Age

	All Races			Whites			Blacks		
	Total	Males	Females	Total	Males	Females	Total	Males	Females
5-Year Relative Survival (Percent)									
Year of Diagnosis:									
1960-1963 ^a	-	-	-	45	-	-	-	-	-
1970-1973 ^a	-	-	-	43	-	-	-	-	-
1975-1977 ^b	52.5	51.5	54.8	54.0	53.7	54.8	35.8	29.7	48.6
1978-1980 ^b	53.3	51.8	56.5	55.3	54.4	57.4	34.7	29.7	45.5
1981-1983 ^b	51.7	50.0	55.1	54.0	52.8	56.5	30.9	25.3	45.9
1984-1986 ^b	54.1	51.6	59.0	56.3	54.8	59.4	35.1	29.5	49.4
1987-1989 ^b	53.5	51.0	58.7	55.9	54.1	59.7	33.9	29.8	44.2
1990-1992 ^b	55.4	53.2	60.0	57.9	56.4	61.0	32.6	28.1	45.3
1993-1995 ^b	57.6	56.2	60.5	60.0	59.4	61.2	37.9	33.1	50.3
1996-1998 ^b	57.7	56.2	61.0	59.9	59.1	61.4	36.0	31.1	48.9
1999-2003 ^b	61.6	60.7	63.5	63.5	63.5	63.5	45.0	39.8	56.9
2004-2010 ^b	65.6 ^f	65.3 ^f	66.3 ^f	67.4 ^f	67.4 ^f	67.2 ^f	44.9 ^f	42.3 ^f	50.3
5-Year Period Survival (Percent) ^{cd}									
2010	63.6	63.0	65.1	65.0	64.8	65.4	45.5	42.1	52.3
Stage Distribution (%) 2004-2010 ^{ee}									
All Stages									
Number of cases	51,074	35,952	15,122	41,772	29,695	12,077	4,877	3,366	1,511
Percent	100%	100%	100%	100%	100%	100%	100%	100%	100%
Localized	31	26	42	32	27	43	20	15	31
Regional	47	50	37	47	51	38	49	53	41
Distant	18	19	15	16	17	13	27	29	23
Unstaged	5	5	6	5	5	6	4	4	6
5-Year Relative Survival (Percent), 2004-2010 ^c									
Age at Diagnosis:									
Ages <45	78.4	75.3	83.5	80.4	78.3	84.2	66.0	56.3	78.4
Ages 45-54	67.8	66.9	70.8	70.8	69.9	73.9	43.1	41.2	47.3
Ages 55-64	63.8	62.5	68.3	65.8	64.6	69.7	41.3	39.2	48.7
Ages 65-74	58.0	56.4	61.8	60.0	58.8	62.7	36.7	31.9	47.9
Ages 75+	48.6	49.0	48.2	49.6	50.2	48.9	32.1	29.8	33.6
Ages <65	67.7	65.9	72.8	69.8	68.3	74.3	46.7	42.5	56.5
Ages 65+	53.8	53.5	54.4	55.2	55.3	55.1	35.3	31.6	41.6
Stage ^{ee} :									
All Stages	62.7	61.9	64.6	64.3	64.0	65.1	43.7	39.9	52.0
Localized	82.7	81.6	84.3	82.6	81.8	83.8	76.6	71.2	82.2
Regional	60.5	61.9	56.3	62.4	64.1	56.5	41.5	40.8	43.7
Distant	37.3	37.5	36.9	38.2	38.7	36.9	24.1	22.6	28.2
Unstaged	49.3	48.9	49.8	49.0	49.0	48.8	37.0	32.4 ^g	42.2 ^g

^a Based on End Results data from a series of hospital registries and one population-based registry.

^b SEER 9 areas (San Francisco, Connecticut, Detroit, Hawaii, Iowa, New Mexico, Seattle, Utah, Atlanta).
Based on follow-up of patients into 2011.

^c SEER 18 areas (San Francisco, Connecticut, Detroit, Hawaii, Iowa, New Mexico, Seattle, Utah, Atlanta, San Jose-Monterey, Los Angeles, Alaska Native Registry, Rural Georgia, California excluding SF/SJM/LA, Kentucky, Louisiana, New Jersey and Georgia excluding ATL/RG).
Based on follow-up of patients into 2011.

^d Period survival provides a 2010 estimate of survival by piecing together the most recent conditional survival estimates from several cohorts. It is computed here using three year calendar blocks (2007-2009: 0-1 year survival), (2006-2008: 1-2 year survival), (2005-2007: 2-3 year survival), (2004-2006: 3-4 year survival), (2003-2005: 4-5 years survival).

^e Stage at diagnosis is classified using SEER Summary Stage 2000. Stage distribution percentages may not sum to 100 due to rounding.

^f The difference between 1975-1977 and 2004-2010 is statistically significant ($p < .05$).

^g The standard error is between 5 and 10 percentage points.

^h The standard error is greater than 10 percentage points.

- Statistic could not be calculated due to fewer than 25 cases during the time period.

Table 21.8
Cancer of the Ovary(Invasive)

5-Year Relative and Period Survival (Percent) by Race, Diagnosis Year, Stage and Age

	All Races, Females			White Females			Black Females		
	All	<65	65+	All	<65	65+	All	<65	65+
5-Year Relative Survival (Percent)									
Year of Diagnosis:									
1960-1963 ^a	-	-	-	32	-	-	32	-	-
1970-1973 ^a	-	-	-	36	-	-	32	-	-
1975-1977 ^b	36.0	44.2	21.4	35.3	43.5	21.1	41.8	48.9	24.9 ^g
1978-1980 ^b	37.7	47.3	22.1	36.8	46.5	22.3	38.8	49.2	12.8
1981-1983 ^b	38.8	50.2	23.1	38.5	50.2	23.1	37.5	45.4	22.6
1984-1986 ^b	38.4	49.4	24.1	37.5	48.5	23.7	39.4	52.2	21.2
1987-1989 ^b	38.2	51.1	23.6	38.1	51.2	23.9	33.7	46.9	17.1
1990-1992 ^b	40.5	55.3	24.2	40.3	55.9	24.1	35.6	49.1	16.9
1993-1995 ^b	41.4	55.7	26.5	40.5	55.4	25.9	41.5	54.8	26.9
1996-1998 ^b	43.8	57.0	28.4	43.2	56.5	28.4	39.1	53.1	20.6
1999-2003 ^b	43.7	56.4	27.9	43.3	56.5	28.0	35.7	46.0	19.9
2004-2010 ^b	44.6 ^f	57.4 ^f	27.5 ^f	44.3 ^f	57.7 ^f	27.9 ^f	36.4	45.3	21.6
5-Year Period Survival (Percent) ^{cd}									
2010	45.3	58.6	27.7	45.2	59.0	28.1	35.0	45.6	20.4
Stage Distribution (%) 2004-2010 ^{ce}									
All Stages									
Number of cases	33,841	19,018	14,823	28,189	15,336	12,853	2,790	1,646	1,144
Percent	100%	100%	100%	100%	100%	100%	100%	100%	100%
Localized	15	20	7	14	20	7	15	20	8
Regional	18	22	13	18	22	14	15	17	11
Distant	61	54	69	61	55	69	62	58	69
Unstaged	6	3	10	6	3	10	8	6	12
5-Year Relative Survival (Percent), 2004-2010 ^c									
Age at Diagnosis:									
Ages <45	74.9	-	-	75.8	-	-	65.2	-	-
Ages 45-54	58.0	-	-	59.0	-	-	39.6	-	-
Ages 55-64	47.4	-	-	48.1	-	-	33.1	-	-
Ages 65-74	37.1	-	-	38.0	-	-	24.8	-	-
Ages 75+	19.1	-	-	19.1	-	-	16.8	-	-
Ages <65	57.5	-	-	57.9	-	-	44.9	-	-
Ages 65+	27.3	-	-	27.7	-	-	21.1	-	-
Stage ^e :									
All Stages	44.6	57.5	27.3	44.4	57.9	27.7	35.3	44.9	21.1
Localized	92.3	93.3	87.9	92.4	93.8	87.2	87.4	87.6	86.0 ^g
Regional	71.7	79.2	55.3	72.1	79.8	56.6	54.1	62.2	36.6 ^g
Distant	27.4	36.1	18.2	27.7	37.1	18.6	19.5	24.6	13.3
Unstaged	21.8	50.8	8.9	20.8	49.9	9.3	25.4	50.5 ^g	6.3

Ovary excludes borderline cases or histologies 8442, 8451, 8462, 8472, and 8473.

^a Based on End Results data from a series of hospital registries and one population-based registry.

^b SEER 9 areas (San Francisco, Connecticut, Detroit, Hawaii, Iowa, New Mexico, Seattle, Utah, Atlanta).

Based on follow-up of patients into 2011.

^c SEER 18 areas (San Francisco, Connecticut, Detroit, Hawaii, Iowa, New Mexico, Seattle, Utah, Atlanta, San Jose-Monterey, Los Angeles, Alaska Native Registry, Rural Georgia, California excluding SF/SJM/LA, Kentucky, Louisiana, New Jersey and Georgia excluding ATL/RG).

Based on follow-up of patients into 2011.

^d Period survival provides a 2010 estimate of survival by piecing together the most recent conditional survival estimates from several cohorts. It is computed here using three year calendar blocks (2007-2009: 0-1 year survival), (2006-2008: 1-2 year survival), (2005-2007: 2-3 year survival), (2004-2006: 3-4 year survival), (2003-2005: 4-5 years survival).

^e Stage at diagnosis is classified using SEER Summary Stage 2000. Stage distribution percentages may not sum to 100 due to rounding.

^f The difference between 1975-1977 and 2004-2010 is statistically significant (p<.05).

^g The standard error is between 5 and 10 percentage points.

^h The standard error is greater than 10 percentage points.

- Statistic could not be calculated due to fewer than 25 cases during the time period.

Table 22.8
Cancer of the Pancreas (Invasive)

5-Year Relative and Period Survival (Percent) by Race, Sex, Diagnosis Year, Stage and Age

	All Races			Whites			Blacks		
	Total	Males	Females	Total	Males	Females	Total	Males	Females
5-Year Relative Survival (Percent)									
Year of Diagnosis:									
1960-1963 ^a	-	-	-	1	1	2	1	0	3
1970-1973 ^a	-	-	-	2	2	2	2	0	3
1975-1977 ^b	2.5	2.6	2.2	2.5	2.7	2.3	2.3	2.5	1.9
1978-1980 ^b	2.8	2.7	3.0	2.5	2.6	2.5	5.6	4.1	7.0
1981-1983 ^b	2.7	2.4	3.1	2.5	2.1	3.0	3.6	3.7	3.2
1984-1986 ^b	2.9	2.3	3.5	2.6	2.1	3.1	4.7	3.9	5.3
1987-1989 ^b	3.5	3.3	3.7	3.2	3.1	3.3	5.5	5.1	5.8
1990-1992 ^b	4.3	4.1	4.5	4.4	4.2	4.5	3.6	3.2	4.0
1993-1995 ^b	3.9	3.6	4.3	3.9	3.5	4.2	3.6	3.3	3.7
1996-1998 ^b	4.4	4.6	4.1	4.1	4.7	3.6	3.4	3.1	3.5
1999-2003 ^b	5.2	5.2	5.3	5.3	5.6	5.1	4.5	3.0	5.8
2004-2010 ^b	7.2 ^f	7.0 ^f	7.4 ^f	7.2 ^f	6.9 ^f	7.4 ^f	6.7 ^f	7.6 ^f	5.9 ^f
5-Year Period Survival (Percent) ^{cd}									
2010	7.2	7.0	7.4	7.2	7.0	7.3	6.3	6.8	6.0
Stage Distribution (%) 2004-2010 ^{ee}									
All Stages									
Number of cases	55,377	27,443	27,934	44,286	22,220	22,066	6,733	3,114	3,619
Percent	100%	100%	100%	100%	100%	100%	100%	100%	100%
Localized	9	8	10	9	8	10	9	8	10
Regional	28	28	28	28	28	28	25	25	25
Distant	53	56	50	52	55	50	57	60	55
Unstaged	11	9	12	11	9	13	9	7	10
5-Year Relative Survival (Percent), 2004-2010 ^c									
Age at Diagnosis:									
Ages <45	25.1	20.4	30.9	25.4	21.5	30.6	22.9	15.9	30.0
Ages 45-54	11.1	9.7	13.1	11.0	9.4	13.4	11.0	10.9	11.5
Ages 55-64	7.4	6.3	8.9	7.6	6.6	8.9	5.1	3.4	7.4
Ages 65-74	6.1	5.7	6.6	6.2	5.6	6.8	4.5	4.1	4.7
Ages 75+	3.6	3.4	3.7	3.6	3.3	3.7	3.1	4.4	2.6
Ages <65	10.0	8.5	12.1	10.1	8.7	12.0	8.5	6.8	10.7
Ages 65+	4.6	4.5	4.7	4.6	4.4	4.8	3.8	4.3	3.5
Stage ^e :									
All Stages	6.7	6.3	7.0	6.6	6.3	6.9	6.1	5.8	6.3
Localized	25.8	25.0	26.3	25.0	24.7	25.0	22.5	18.3	24.8
Regional	9.9	9.9	9.9	10.2	10.0	10.2	9.6	11.1	8.3
Distant	2.3	2.3	2.3	2.3	2.4	2.2	1.5	1.3	1.7
Unstaged	4.4	4.3	4.4	3.7	3.4	4.0	7.9	9.6	6.9

^a Based on End Results data from a series of hospital registries and one population-based registry.^b SEER 9 areas (San Francisco, Connecticut, Detroit, Hawaii, Iowa, New Mexico, Seattle, Utah, Atlanta). Based on follow-up of patients into 2011.^c SEER 18 areas (San Francisco, Connecticut, Detroit, Hawaii, Iowa, New Mexico, Seattle, Utah, Atlanta, San Jose-Monterey, Los Angeles, Alaska Native Registry, Rural Georgia, California excluding SF/SJM/LA, Kentucky, Louisiana, New Jersey and Georgia excluding ATL/RG). Based on follow-up of patients into 2011.^d Period survival provides a 2010 estimate of survival by piecing together the most recent conditional survival estimates from several cohorts. It is computed here using three year calendar blocks (2007-2009: 0-1 year survival), (2006-2008: 1-2 year survival), (2005-2007: 2-3 year survival), (2004-2006: 3-4 year survival), (2003-2005: 4-5 years survival).^e Stage at diagnosis is classified using SEER Summary Stage 2000. Stage distribution percentages may not sum to 100 due to rounding.^f The difference between 1975-1977 and 2004-2010 is statistically significant (p<.05).^g The standard error is between 5 and 10 percentage points.^h The standard error is greater than 10 percentage points.⁻ Statistic could not be calculated due to fewer than 25 cases during the time period.

Table 23.8
Cancer of the Prostate (Invasive)

5-Year Relative and Period Survival (Percent) by Race, Diagnosis Year, Stage and Age

	All Races, Males			White Males			Black Males		
	All	<65	65+	All	<65	65+	All	<65	65+
5-Year Relative Survival (Percent)									
Year of Diagnosis:									
1960-1963 ^a	-	-	-	50	-	-	35	-	-
1970-1973 ^a	-	-	-	63	-	-	55	-	-
1975-1977 ^b	67.8	73.4	66.1	68.5	75.2	66.6	60.7	62.0	60.1
1978-1980 ^b	70.1	75.2	68.6	71.2	76.7	69.6	62.1	65.0	60.6
1981-1983 ^b	72.0	75.9	70.9	73.1	77.6	71.9	62.7	64.9	61.9
1984-1986 ^b	75.2	77.3	74.6	76.4	79.1	75.7	65.6	67.1	64.8
1987-1989 ^b	82.8	83.2	82.7	84.4	84.7	84.3	71.1	72.7	70.6
1990-1992 ^b	92.9	93.0	92.9	94.1	94.0	94.1	84.3	86.7	83.4
1993-1995 ^b	95.2	95.8	94.9	95.9	96.5	95.6	91.6	93.2	90.7
1996-1998 ^b	97.4	98.5	96.8	97.9	98.9	97.3	94.8	96.7	93.3
1999-2003 ^b	99.6	99.3	99.6	99.8	99.5	99.6	97.5	98.6	96.1
2004-2010 ^b	99.6 ^f	99.6 ^f	99.5 ^f	99.8 ^f	99.8 ^f	99.6 ^f	97.9 ^f	98.7 ^f	97.0 ^f
5-Year Period Survival (Percent) ^{cd}									
2010	98.8	99.1	98.6	99.1	99.3	98.9	97.1	98.3	95.6
Stage Distribution (%) 2004-2010 ^{ee}									
All Stages									
Number of cases	364,197	157,722	206,475	282,577	119,665	162,912	51,954	27,786	24,168
Percent	100%	100%	100%	100%	100%	100%	100%	100%	100%
Localized	81	80	82	81	79	82	82	81	82
Regional	12	16	9	12	17	9	10	14	7
Distant	4	3	5	4	3	5	5	4	7
Unstaged	3	2	5	3	1	4	3	1	4
5-Year Relative Survival (Percent), 2004-2010 ^c									
Age at Diagnosis:									
Ages <45	96.2	-	-	95.7	-	-	96.9	-	-
Ages 45-54	98.3	-	-	98.4	-	-	97.5	-	-
Ages 55-64	99.3	-	-	99.6	-	-	98.1	-	-
Ages 65-74	100.0	-	-	100.0	-	-	98.0	-	-
Ages 75+	95.7	-	-	96.0	-	-	88.8	-	-
Ages <65	99.1	-	-	99.3	-	-	98.0	-	-
Ages 65+	98.8	-	-	99.2	-	-	95.3	-	-
Stage ^g :									
All Stages	98.9	99.1	98.8	99.3	99.3	99.2	96.7	98.0	95.3
Localized	100.0	100.0	100.0	100.0	100.0	100.0	100.0	100.0	100.0
Regional	100.0	100.0	100.0	100.0	100.0	100.0	100.0	100.0	99.3
Distant	28.0	31.5	26.5	27.1	31.0	25.6	28.6	31.0	26.8
Unstaged	74.0	86.0	70.8	69.8	84.0	66.5	62.6	77.0	56.7

^a Based on End Results data from a series of hospital registries and one population-based registry.

^b SEER 9 areas (San Francisco, Connecticut, Detroit, Hawaii, Iowa, New Mexico, Seattle, Utah, Atlanta).
Based on follow-up of patients into 2011.

^c SEER 18 areas (San Francisco, Connecticut, Detroit, Hawaii, Iowa, New Mexico, Seattle, Utah, Atlanta, San Jose-Monterey, Los Angeles, Alaska Native Registry, Rural Georgia, California excluding SF/SJM/LA, Kentucky, Louisiana, New Jersey and Georgia excluding ATL/RG).
Based on follow-up of patients into 2011.

^d Period survival provides a 2010 estimate of survival by piecing together the most recent conditional survival estimates from several cohorts. It is computed here using three year calendar blocks (2007-2009: 0-1 year survival), (2006-2008: 1-2 year survival), (2005-2007: 2-3 year survival), (2004-2006: 3-4 year survival), (2003-2005: 4-5 years survival).

^e Stage at diagnosis is classified using SEER Summary Stage 2000. Stage distribution percentages may not sum to 100 due to rounding.

^f The difference between 1975-1977 and 2004-2010 is statistically significant ($p < .05$).

^g The standard error is between 5 and 10 percentage points.

^h The standard error is greater than 10 percentage points.

- Statistic could not be calculated due to fewer than 25 cases during the time period.

Table 24.8
Cancer of the Stomach (Invasive)

5-Year Relative and Period Survival (Percent) by Race, Sex, Diagnosis Year, Stage and Age

	All Races			Whites			Blacks		
	Total	Males	Females	Total	Males	Females	Total	Males	Females
5-Year Relative Survival (Percent)									
Year of Diagnosis:									
1960-1963 ^a	-	-	-	11	10	13	8	5	14
1970-1973 ^a	-	-	-	13	12	14	13	15	10
1975-1977 ^b	15.2	14.4	16.6	14.1	13.1	15.8	16.1	16.1	16.1
1978-1980 ^b	16.1	14.3	18.9	15.4	13.6	18.2	16.4	15.6	18.0
1981-1983 ^b	17.2	16.4	18.7	16.2	15.4	17.6	16.4	16.2	16.7
1984-1986 ^b	17.6	15.5	20.9	16.8	14.4	20.8	19.1	16.9	22.1
1987-1989 ^b	19.7	17.0	24.3	18.3	15.5	23.1	18.8	16.6	22.5
1990-1992 ^b	20.9	18.0	25.4	18.8	16.0	23.2	22.7	22.0	23.7
1993-1995 ^b	21.0	20.1	22.6	19.9	18.9	21.8	19.3	17.5	22.0
1996-1998 ^b	22.3	21.1	24.1	20.4	18.6	23.3	22.4	20.2	25.0
1999-2003 ^b	25.2	23.8	27.5	23.7	22.0	26.6	24.8	24.0	25.7
2004-2010 ^b	29.0 ^f	27.1 ^f	32.2 ^f	28.1 ^f	26.7 ^f	30.4 ^f	28.2 ^f	23.0 ^f	35.1 ^f
5-Year Period Survival (Percent) ^{cd}									
2010	29.1	27.7	31.1	27.6	26.0	30.2	28.1	27.1	29.4
Stage Distribution (%) 2004-2010 ^{ee}									
All Stages									
Number of cases	35,267	21,222	14,045	24,798	15,370	9,428	4,851	2,707	2,144
Percent	100%	100%	100%	100%	100%	100%	100%	100%	100%
Localized	26	24	29	25	23	29	26	24	29
Regional	29	31	26	29	31	25	28	30	27
Distant	35	36	33	36	37	34	35	37	31
Unstaged	10	9	12	10	9	13	11	9	13
5-Year Relative Survival (Percent), 2004-2010 ^c									
Age at Diagnosis:									
Ages <45	31.8	27.9	35.8	30.4	25.4	36.3	29.7	25.1	34.0
Ages 45-54	31.5	29.7	34.8	29.9	27.8	33.9	31.8	28.0	37.4
Ages 55-64	31.2	29.2	35.4	29.4	27.8	33.4	31.4	27.5	38.1
Ages 65-74	31.3	28.9	36.0	30.0	27.8	34.4	30.6	26.6	36.6
Ages 75+	22.0	20.5	23.7	21.3	19.8	22.9	16.8	12.1	19.9
Ages <65	31.4	29.2	35.3	29.8	27.5	34.2	31.2	27.2	36.9
Ages 65+	26.0	24.6	28.0	24.9	23.6	26.7	23.6	20.6	26.6
Stage ^{ee} :									
All Stages	28.3	26.6	30.8	26.9	25.3	29.5	27.2	24.0	31.2
Localized	64.1	61.6	67.2	63.4	60.9	66.7	59.0	54.3	63.7
Regional	28.8	29.0	28.5	27.4	27.8	26.6	25.7	24.6	27.0
Distant	4.2	4.2	4.2	3.8	3.7	4.1	5.3	5.2	5.5
Unstaged	20.2	17.1	23.3	18.3	15.7	21.1	24.9	18.8	30.0

^a Based on End Results data from a series of hospital registries and one population-based registry.^b SEER 9 areas (San Francisco, Connecticut, Detroit, Hawaii, Iowa, New Mexico, Seattle, Utah, Atlanta). Based on follow-up of patients into 2011.^c SEER 18 areas (San Francisco, Connecticut, Detroit, Hawaii, Iowa, New Mexico, Seattle, Utah, Atlanta, San Jose-Monterey, Los Angeles, Alaska Native Registry, Rural Georgia, California excluding SF/SJM/LA, Kentucky, Louisiana, New Jersey and Georgia excluding ATL/RG). Based on follow-up of patients into 2011.^d Period survival provides a 2010 estimate of survival by piecing together the most recent conditional survival estimates from several cohorts. It is computed here using three year calendar blocks (2007-2009: 0-1 year survival), (2006-2008: 1-2 year survival), (2005-2007: 2-3 year survival), (2004-2006: 3-4 year survival), (2003-2005: 4-5 years survival).^e Stage at diagnosis is classified using SEER Summary Stage 2000. Stage distribution percentages may not sum to 100 due to rounding.^f The difference between 1975-1977 and 2004-2010 is statistically significant (p<.05).^g The standard error is between 5 and 10 percentage points.^h The standard error is greater than 10 percentage points.

- Statistic could not be calculated due to fewer than 25 cases during the time period.

Table 25.8
Cancer of the Testis (Invasive)

5-Year Relative and Period Survival (Percent) by Race, Diagnosis Year, Stage and Age

	All Races, Males			White Males			Black Males		
	All	<50	50+	All	<50	50+	All	<50	50+
5-Year Relative Survival (Percent)									
Year of Diagnosis:									
1960-1963 ^a	-	-	-	63	-	-	-	-	-
1970-1973 ^a	-	-	-	72	-	-	-	-	-
1975-1977 ^b	82.6	83.3	77.6	82.5	83.2	77.3	-	-	-
1978-1980 ^b	88.9	89.6	82.2	89.2	89.9	83.1	73.1 ^g	78.0 ^g	-
1981-1983 ^b	92.0	92.5	85.5	92.2	92.7	86.2	87.7 ^g	84.7 ^g	-
1984-1986 ^b	92.6	93.6	80.4	92.9	94.0	80.6	87.0 ^g	89.4 ^g	-
1987-1989 ^b	95.2	95.0	95.7	95.5	95.4	95.3	88.4 ^g	87.8 ^g	-
1990-1992 ^b	95.8	95.8	93.7	96.2	96.1	94.6	83.5 ^g	-	-
1993-1995 ^b	95.8	96.4	86.7	96.1	96.6	87.8	88.0	89.4	-
1996-1998 ^b	95.6	96.3	86.6	95.8	96.4	86.6	88.7	90.1	-
1999-2003 ^b	96.2	96.6	91.2	96.6	96.9	92.0	86.9	88.3	-
2004-2010 ^b	96.6 ^f	96.7 ^f	95.3 ^f	97.0 ^f	97.1 ^f	96.0 ^f	90.0	89.0	-
5-Year Period Survival (Percent) ^{cd}									
2010	95.7	95.6	95.8	95.7	95.7	96.1	93.6	94.2	-
Stage Distribution (%) 2004-2010 ^{ce}									
All Stages									
Number of cases	15,354	13,688	1,666	13,957	12,428	1,529	431	379	52
Percent	100%	100%	100%	100%	100%	100%	100%	100%	100%
Localized	68	68	70	68	68	70	62	62	60
Regional	18	18	18	18	18	18	20	20	23
Distant	12	12	10	12	12	10	16	16	13
Unstaged	1	1	3	1	1	3	2	2	4
5-Year Relative Survival (Percent), 2004-2010 ^c									
Age at Diagnosis:									
Ages <45	95.5	-	-	95.6	-	-	91.3	-	-
Ages 45-54	94.9	-	-	95.1	-	-	89.1	-	-
Ages 55-64	93.2	-	-	93.5	-	-	-	-	-
Ages 65-74	89.5	-	-	89.2 ^g	-	-	-	-	-
Ages 75+	80.6 ^h	-	-	80.6 ^h	-	-	-	-	-
Ages <65	95.4	-	-	95.5	-	-	91.2	-	-
Ages 65+	86.6	-	-	86.4 ^g	-	-	-	-	-
Stage ^e :									
All Stages	95.3	95.4	94.2	95.4	95.5	94.6	90.9	91.4	87.6 ^g
Localized	99.2	99.2	99.3	99.2	99.2	99.4	99.4	99.1	98.3 ^g
Regional	96.0	96.1	94.0	96.3	96.4	94.7	90.1	91.8	-
Distant	73.1	73.9	64.0	73.6	74.3	65.3	60.4 ^g	60.6 ^g	-
Unstaged	79.1	85.1	61.9 ^g	78.9	85.5	60.9 ^g	-	-	-

^a Based on End Results data from a series of hospital registries and one population-based registry.^b SEER 9 areas (San Francisco, Connecticut, Detroit, Hawaii, Iowa, New Mexico, Seattle, Utah, Atlanta).

Based on follow-up of patients into 2011.

^c SEER 18 areas (San Francisco, Connecticut, Detroit, Hawaii, Iowa, New Mexico, Seattle, Utah, Atlanta, San Jose-Monterey, Los Angeles, Alaska Native Registry, Rural Georgia, California excluding SF/SJM/LA, Kentucky, Louisiana, New Jersey and Georgia excluding ATL/RG).

Based on follow-up of patients into 2011.

^d Period survival provides a 2010 estimate of survival by piecing together the most recent conditional survival estimates from several cohorts. It is computed here using three year calendar blocks (2007-2009: 0-1 year survival), (2006-2008: 1-2 year survival), (2005-2007: 2-3 year survival), (2004-2006: 3-4 year survival), (2003-2005: 4-5 years survival).^e Stage at diagnosis is classified using SEER Summary Stage 2000. Stage distribution percentages may not sum to 100 due to rounding.^f The difference between 1975-1977 and 2004-2010 is statistically significant (p<.05).^g The standard error is between 5 and 10 percentage points.^h The standard error is greater than 10 percentage points.

- Statistic could not be calculated due to fewer than 25 cases during the time period.

Table 26.8
Cancer of the Thyroid (Invasive)

5-Year Relative and Period Survival (Percent) by Race, Sex, Diagnosis Year, Stage and Age

	All Races			Whites			Blacks		
	Total	Males	Females	Total	Males	Females	Total	Males	Females
5-Year Relative Survival (Percent)									
Year of Diagnosis:									
1960-1963 ^a	-	-	-	83	75	87	-	-	-
1970-1973 ^a	-	-	-	86	82	87	-	-	-
1975-1977 ^b	92.1	91.1	92.5	91.8	90.7	92.2	89.8	-	91.1
1978-1980 ^b	92.1	87.2	93.6	91.5	87.5	92.7	90.1	68.0 ^h	95.4
1981-1983 ^b	93.6	92.2	93.9	93.1	90.9	93.7	96.4	100.0	93.2
1984-1986 ^b	93.2	89.8	94.2	93.2	89.4	94.3	89.3	85.5 ^g	90.3
1987-1989 ^b	94.4	91.6	95.2	94.1	91.5	95.0	92.3	91.2 ^g	92.3
1990-1992 ^b	94.3	90.5	95.5	94.9	91.6	96.0	85.8	84.5 ^g	86.2
1993-1995 ^b	95.4	91.6	96.6	95.5	91.6	96.8	93.2	88.1 ^g	94.3
1996-1998 ^b	95.6	91.0	97.0	95.9	91.3	97.3	95.0	86.1 ^g	96.4
1999-2003 ^b	96.8	94.2	97.6	97.0	94.5	97.8	94.1	94.0	93.9
2004-2010 ^b	98.1 ^f	96.3 ^f	98.5 ^f	98.3 ^f	96.6 ^f	98.8 ^f	96.4 ^f	88.1	98.0 ^f
5-Year Period Survival (Percent) ^{cd}									
2010	98.0	95.8	98.6	98.2	96.0	98.8	97.7	91.6	98.5
Stage Distribution (%) 2004-2010 ^{ce}									
All Stages									
Number of cases	59,613	13,582	46,031	48,752	11,481	37,271	3,889	700	3,189
Percent	100%	100%	100%	100%	100%	100%	100%	100%	100%
Localized	68	59	71	69	59	71	78	69	80
Regional	26	32	24	26	32	24	15	20	14
Distant	4	8	3	4	7	3	5	10	4
Unstaged	2	2	2	2	2	1	2	2	2
5-Year Relative Survival (Percent), 2004-2010 ^c									
Age at Diagnosis:									
Ages <45	99.7	98.8	99.8	99.7	98.9	99.9	98.9	95.0	99.3
Ages 45-54	99.1	97.3	99.6	99.2	97.5	99.7	97.8	93.3	98.7
Ages 55-64	97.3	95.2	98.2	97.7	95.6	98.5	96.9	91.4	97.7
Ages 65-74	94.7	90.5	96.3	95.2	90.9	96.9	91.6	87.3 ^g	92.0
Ages 75+	84.7	83.5	84.8	85.6	84.2	86.0	74.1	63.8 ^h	76.1
Ages <65	99.0	97.4	99.5	99.2	97.6	99.6	98.3	93.5	99.0
Ages 65+	91.2	88.3	92.3	91.9	88.8	93.2	86.6	79.9 ^g	88.3
Stage ^e :									
All Stages	97.8	95.6	98.5	98.1	95.9	98.7	96.7	91.4	97.6
Localized	99.9	99.8	99.9	99.9	99.8	99.9	99.7	98.3	99.8
Regional	97.6	96.4	98.1	97.8	96.5	98.2	94.4	91.0	95.4
Distant	54.7	49.8	57.8	55.4	48.5	60.2	41.9	45.2 ^g	39.6 ^g
Unstaged	88.1	82.0	89.6	86.8	80.8	88.3	88.4	-	90.6

^a Based on End Results data from a series of hospital registries and one population-based registry.^b SEER 9 areas (San Francisco, Connecticut, Detroit, Hawaii, Iowa, New Mexico, Seattle, Utah, Atlanta). Based on follow-up of patients into 2011.^c SEER 18 areas (San Francisco, Connecticut, Detroit, Hawaii, Iowa, New Mexico, Seattle, Utah, Atlanta, San Jose-Monterey, Los Angeles, Alaska Native Registry, Rural Georgia, California excluding SF/SJM/LA, Kentucky, Louisiana, New Jersey and Georgia excluding ATL/RG). Based on follow-up of patients into 2011.^d Period survival provides a 2010 estimate of survival by piecing together the most recent conditional survival estimates from several cohorts. It is computed here using three year calendar blocks (2007-2009: 0-1 year survival), (2006-2008: 1-2 year survival), (2005-2007: 2-3 year survival), (2004-2006: 3-4 year survival), (2003-2005: 4-5 years survival).^e Stage at diagnosis is classified using SEER Summary Stage 2000. Stage distribution percentages may not sum to 100 due to rounding.^f The difference between 1975-1977 and 2004-2010 is statistically significant (p<.05).^g The standard error is between 5 and 10 percentage points.^h The standard error is greater than 10 percentage points.

- Statistic could not be calculated due to fewer than 25 cases during the time period.

Table 27.8
Cancer of the Urinary Bladder (Invasive and *In Situ*)

5-Year Relative and Period Survival (Percent) by Race, Sex, Diagnosis Year, Stage and Age

	All Races			Whites			Blacks		
	Total	Males	Females	Total	Males	Females	Total	Males	Females
5-Year Relative Survival (Percent)									
Year of Diagnosis:									
1960-1963 ^a	-	-	-	53	53	53	24	24	24
1970-1973 ^a	-	-	-	61	61	60	36	38	27
1975-1977 ^b	72.3	73.7	68.3	73.3	74.3	70.2	50.3	56.5	38.1 ^g
1978-1980 ^b	73.9	75.1	70.3	74.7	75.4	72.2	54.5	62.6	40.1
1981-1983 ^b	76.7	78.0	72.7	77.4	78.5	74.0	59.5	64.9	47.0 ^g
1984-1986 ^b	76.7	78.1	72.6	77.2	78.4	73.6	59.4	62.3	52.8
1987-1989 ^b	78.9	81.3	71.9	79.8	81.9	73.1	62.6	67.5	52.9
1990-1992 ^b	79.2	81.7	71.9	80.2	82.6	73.1	63.3	66.1	58.5
1993-1995 ^b	80.3	82.1	75.1	81.1	82.5	76.9	59.9	67.0	45.9
1996-1998 ^b	79.1	80.4	75.4	79.8	81.1	76.0	62.1	65.3	54.8
1999-2003 ^b	80.1	81.3	76.5	81.0	81.9	78.5	65.9	71.0	57.1
2004-2010 ^b	79.1 ^f	80.9 ^f	73.9 ^f	79.8 ^f	81.4 ^f	74.8 ^f	64.0 ^f	68.0 ^f	56.6 ^f
5-Year Period Survival (Percent) ^{cd}									
2010	77.1	78.5	72.8	77.6	78.8	73.8	62.9	67.7	53.4
Stage Distribution (%) 2004-2010 ^{ee}									
All Stages									
Number of cases	87,423	65,711	21,712	77,757	58,894	18,863	4,669	3,050	1,619
Percent	100%	100%	100%	100%	100%	100%	100%	100%	100%
In Situ	51	52	49	52	52	51	39	43	33
Localized	35	35	34	35	35	33	39	37	41
Regional	7	7	8	7	7	8	11	9	13
Distant	4	4	5	4	3	5	8	7	9
Unstaged	3	2	3	2	2	3	4	4	4
5-Year Relative Survival (Percent), 2004-2010 ^c									
Age at Diagnosis:									
Ages <45	87.8	88.9	84.6	88.1	89.1	85.4	76.7	78.8	68.3 ^g
Ages 45-54	84.2	84.7	82.6	84.9	84.9	84.8	70.6	75.1	59.1
Ages 55-64	83.0	83.3	82.1	83.5	83.5	83.2	69.1	71.5	61.9
Ages 65-74	79.1	80.0	76.0	79.6	80.3	77.0	66.3	69.7	59.1
Ages 75+	70.3	72.9	63.7	71.0	73.5	64.4	52.6	56.9	46.7
Ages <65	83.8	84.1	82.5	84.2	84.3	83.9	70.6	73.7	61.8
Ages 65+	74.1	76.1	68.3	74.6	76.5	69.1	59.2	64.1	51.7
Stage ^e :									
All Stages	77.4	78.9	72.7	77.9	79.2	73.7	63.8	68.6	54.7
In Situ	96.2	96.1	96.4	96.3	96.2	96.7	90.1	91.0	87.5
Localized	69.2	71.4	62.4	69.4	71.4	62.9	60.5	66.3	50.6
Regional	33.7	35.9	27.8	34.0	36.2	27.9	25.7	27.5	23.1
Distant	5.5	5.9	4.8	5.4	5.6	5.0	6.3	6.9	5.1
Unstaged	48.7	52.4	41.0	46.6	50.6	37.8	42.6	47.7 ^g	32.3 ^g

^a Based on End Results data from a series of hospital registries and one population-based registry.

^b SEER 9 areas (San Francisco, Connecticut, Detroit, Hawaii, Iowa, New Mexico, Seattle, Utah, Atlanta).

Based on follow-up of patients into 2011.

^c SEER 18 areas (San Francisco, Connecticut, Detroit, Hawaii, Iowa, New Mexico, Seattle, Utah, Atlanta, San Jose-Monterey, Los Angeles, Alaska Native Registry, Rural Georgia, California excluding SF/SJM/LA, Kentucky, Louisiana, New Jersey and Georgia excluding ATL/RG).

Based on follow-up of patients into 2011.

^d Period survival provides a 2010 estimate of survival by piecing together the most recent conditional survival estimates from several cohorts. It is computed here using three year calendar blocks (2007-2009: 0-1 year survival), (2006-2008: 1-2 year survival), (2005-2007: 2-3 year survival), (2004-2006: 3-4 year survival), (2003-2005: 4-5 years survival).

^e Stage at diagnosis is classified using SEER Summary Stage 2000. Stage distribution percentages may not sum to 100 due to rounding.

^f The difference between 1975-1977 and 2004-2010 is statistically significant ($p < .05$).

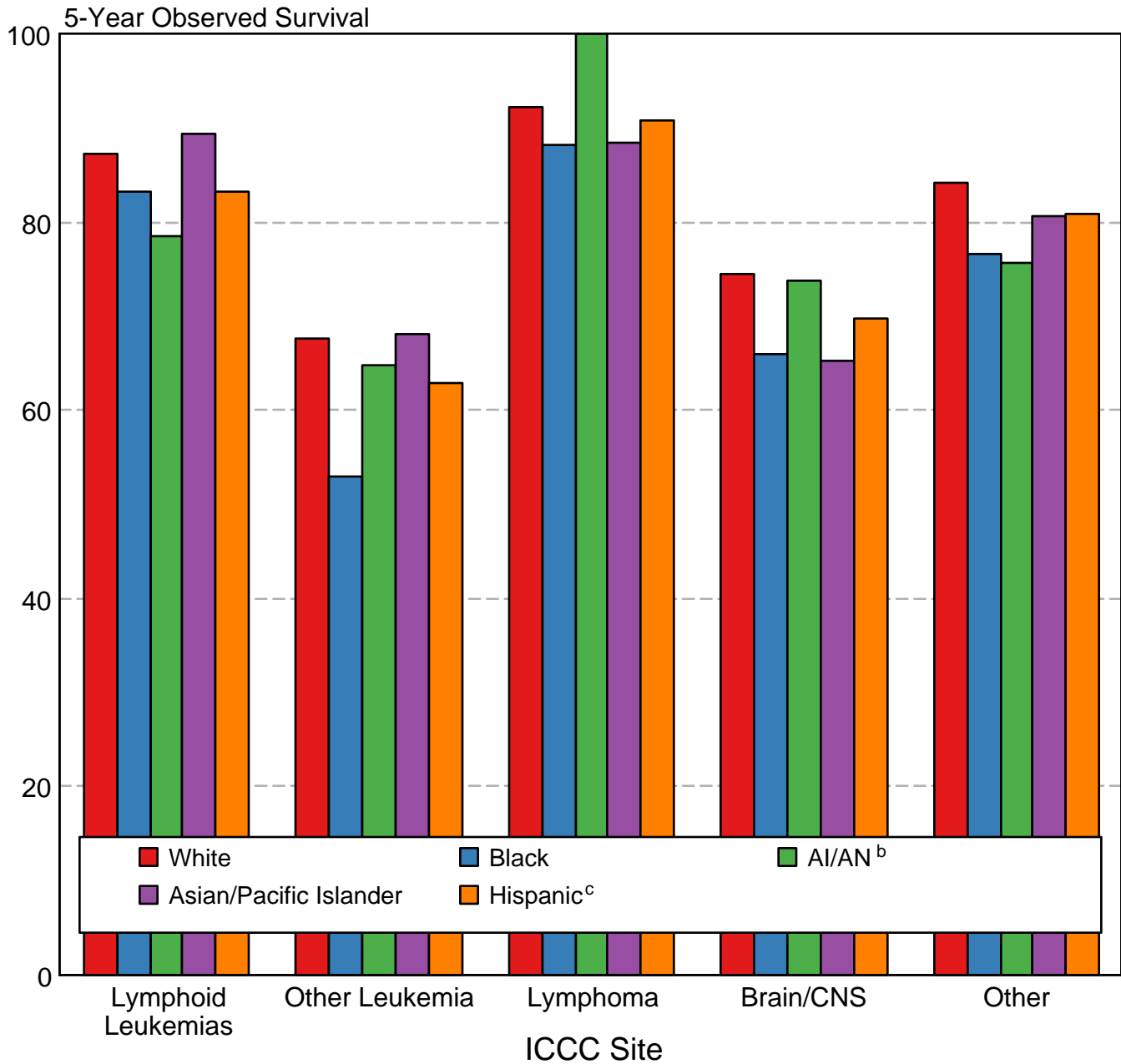
^g The standard error is between 5 and 10 percentage points.

^h The standard error is greater than 10 percentage points.

- Statistic could not be calculated due to fewer than 25 cases during the time period.

Figure 29.3

Childhood Cancer 5-Year Observed Survival (%) by ICCC Group^a and Race/Ethnicity Both Sexes, Under 20 Years of Age, 2004-2010



Source: SEER 18 areas (San Francisco, Connecticut, Detroit, Hawaii, Iowa, New Mexico, Seattle, Utah, Atlanta, San Jose-Monterey, Los Angeles, Alaska Native Registry, Rural Georgia, California excluding SF/SJM/LA, Kentucky, Louisiana, New Jersey and Georgia excluding ATL/RG).

International Classification of Childhood Cancer is based on ICD-O-3. Steliarova-Foucher E, Stiller C, Lacour B, Kaatsch P. International Classification of Childhood Cancer, Third Edition. Cancer. April 1, 2005; Vol 103, No. 7, pg 1457-1467.

^a Excludes myelodysplastic syndromes (MDS) and benign brain tumors.

^b American Indian/Alaska Native. Survival data for American Indian/Alaska Native are based on the CHSDA (Contract Health Service Delivery Area) counties.

^c Hispanic is not mutually exclusive from whites, blacks, Asian/Pacific Islanders, and American Indians/Alaska Natives. Survival data for Hispanics are based on NHIA and excludes cases from the Alaska Native Registry.