

Green Line Extension Phase 1 Early Bridge & Demolition Public Meeting

FITCHBURG LINE OVER MEDFORD ST.



HARVARD ST



Agenda

- **Welcome**
- **Upcoming Public Meetings**
- **Current Overall GLX Phasing:**
 - **Phase 1: Early Bridge/Demo Package**
 - **Phase 2/2A: Service to Washington/Union Square**
 - **Phase 3: Maintenance Facility**
 - **Phase 4: Service from Washington to College Ave**
- **GLX Phase 1 Package Scope of Work & Schedule**
- **Description of Work at Each Location:**
 - **21 Water Street**
 - **Medford Street Bridge**
 - **Harvard Street Bridge**
- **GLX Communication Plan**
- **Comments/Questions**

Upcoming Meetings

Phase 1 Harvard Street Bridge Abutters Meeting

March 5, 2013 7PM

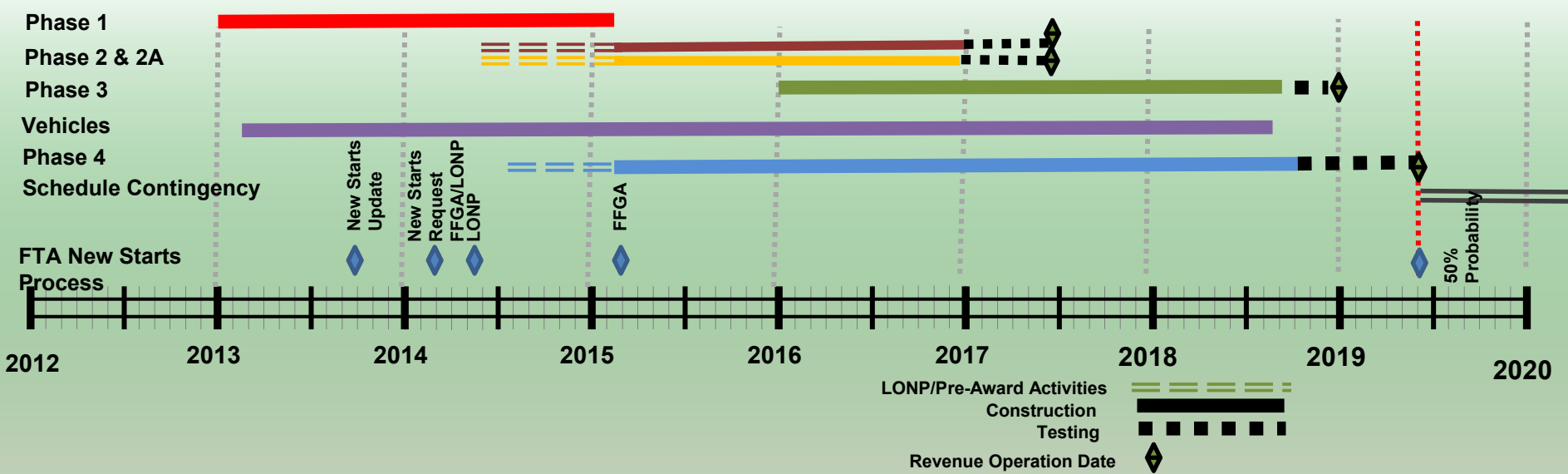
Phase 1 Construction Meeting

March 14, 2013 6PM-8PM

Holiday Inn Hotel Somerville



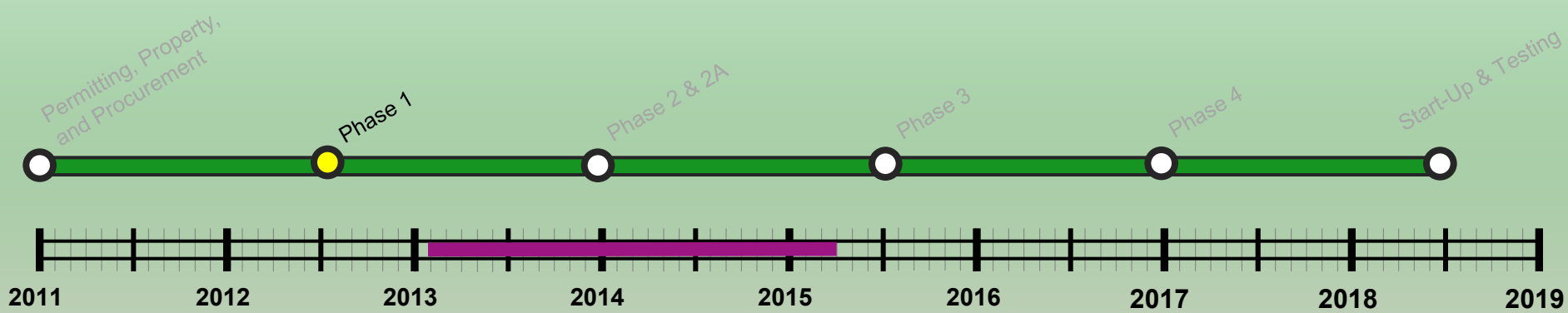
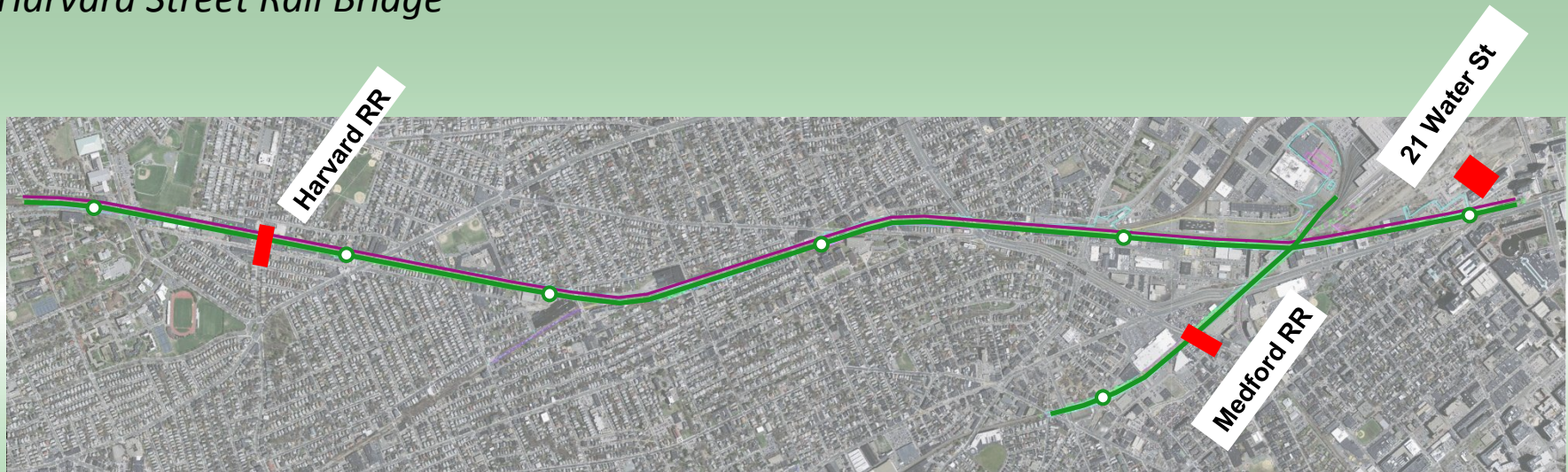
Current Phasing Scenarios



Phase 1 Early Bridge and Demolition Package

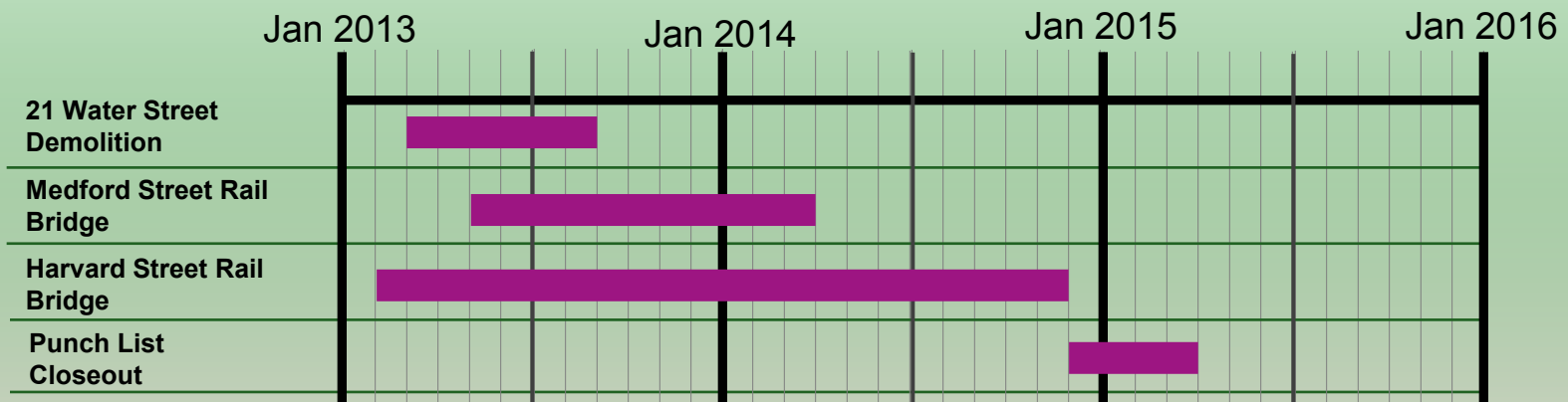
Phase 1: Early Bridge & Demolition Package

21 Water Street Demolition
Medford Street Rail Bridge
Harvard Street Rail Bridge



Phase 1: Schedule

- **Construction Notice To Proceed: January 31, 2013**
- **Construction Duration: 26 Months to March 2015 (26 Months)**
 - **21 Water Street Demolition: March 2013 to August 2013**
 - **Medford Street Rail Bridge: March 2013 to March 2014**
 - **Harvard Street Rail Bridge: February 2013 to November 2014**



Phase 1

Early Bridge and Demolition

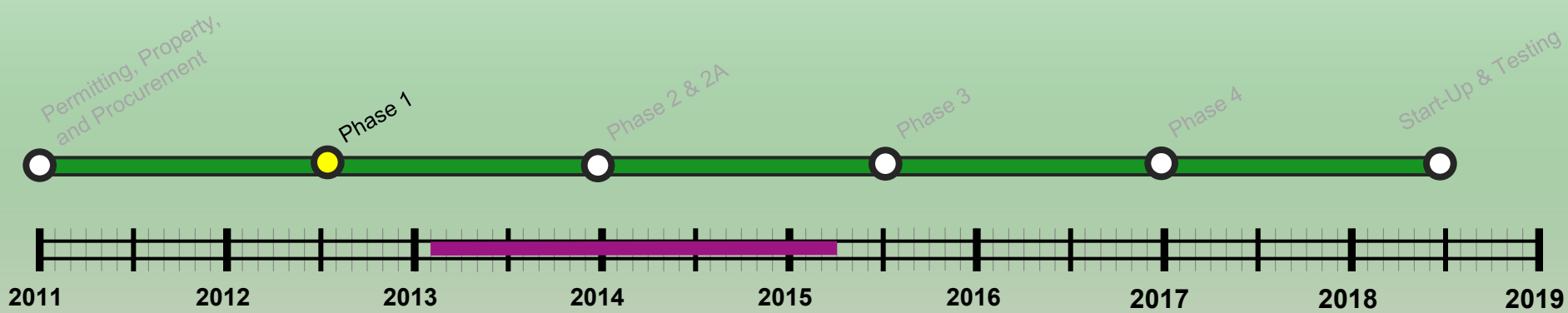
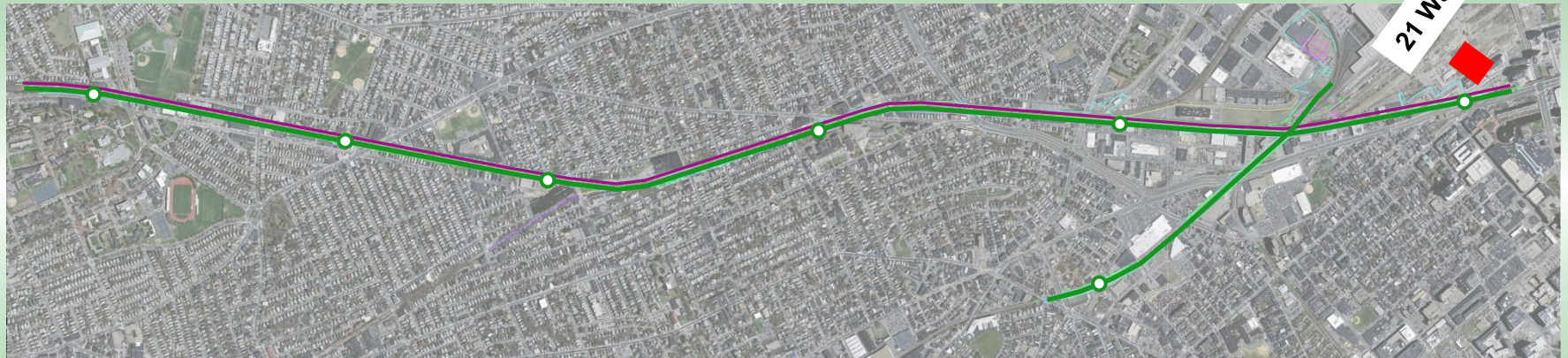
Package

21 Water Street Demolition
Cambridge, MA

Phase 1: Early Bridge & Demolition Package

21 Water Street Demolition

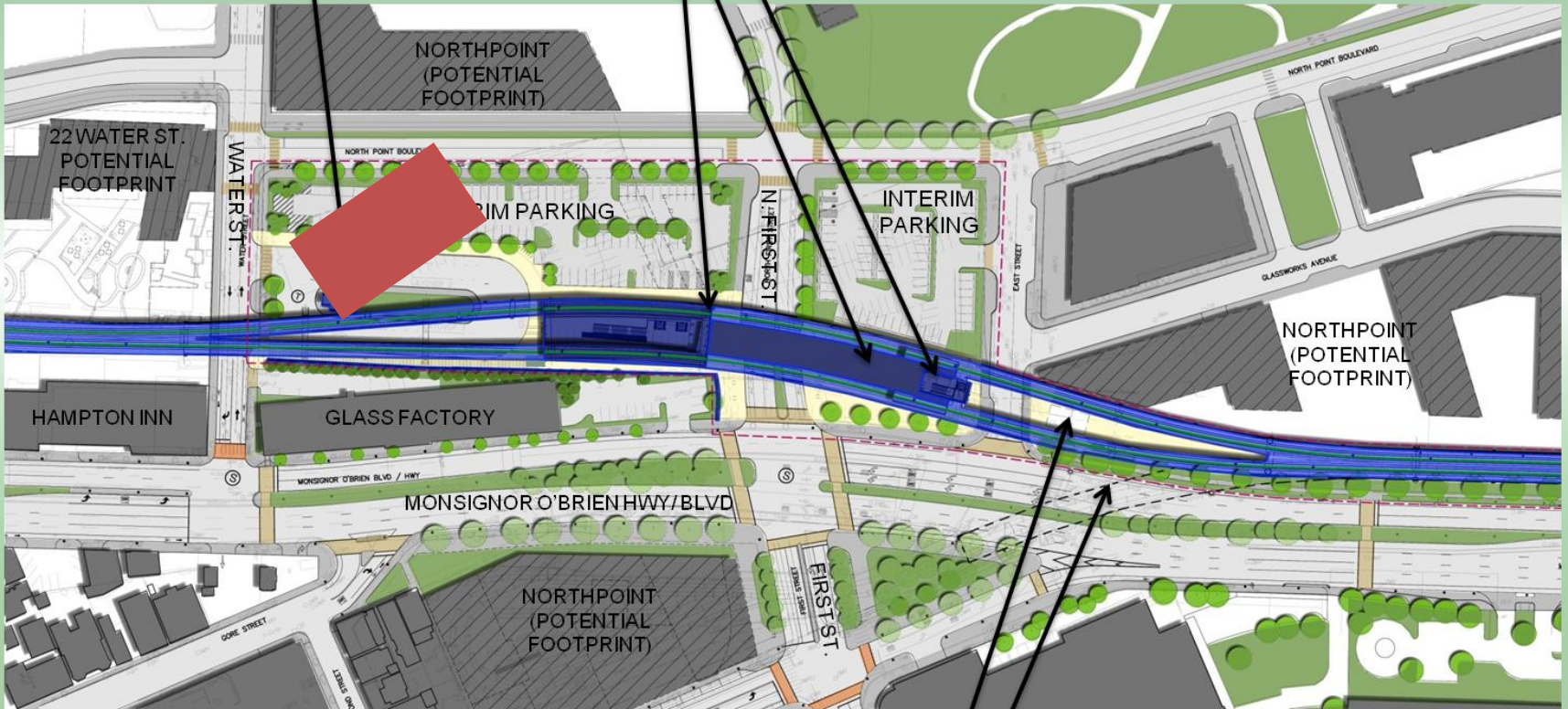
Duration: March 2013 – August 2013



Lechmere Viaduct Level Plan – North Section/Station

Existing 21 Water St

EGRESS CORE
STATION PLATFORM
LECHMERE STATION



FUTURE EGRESS CORE
EXISTING VIADUCT

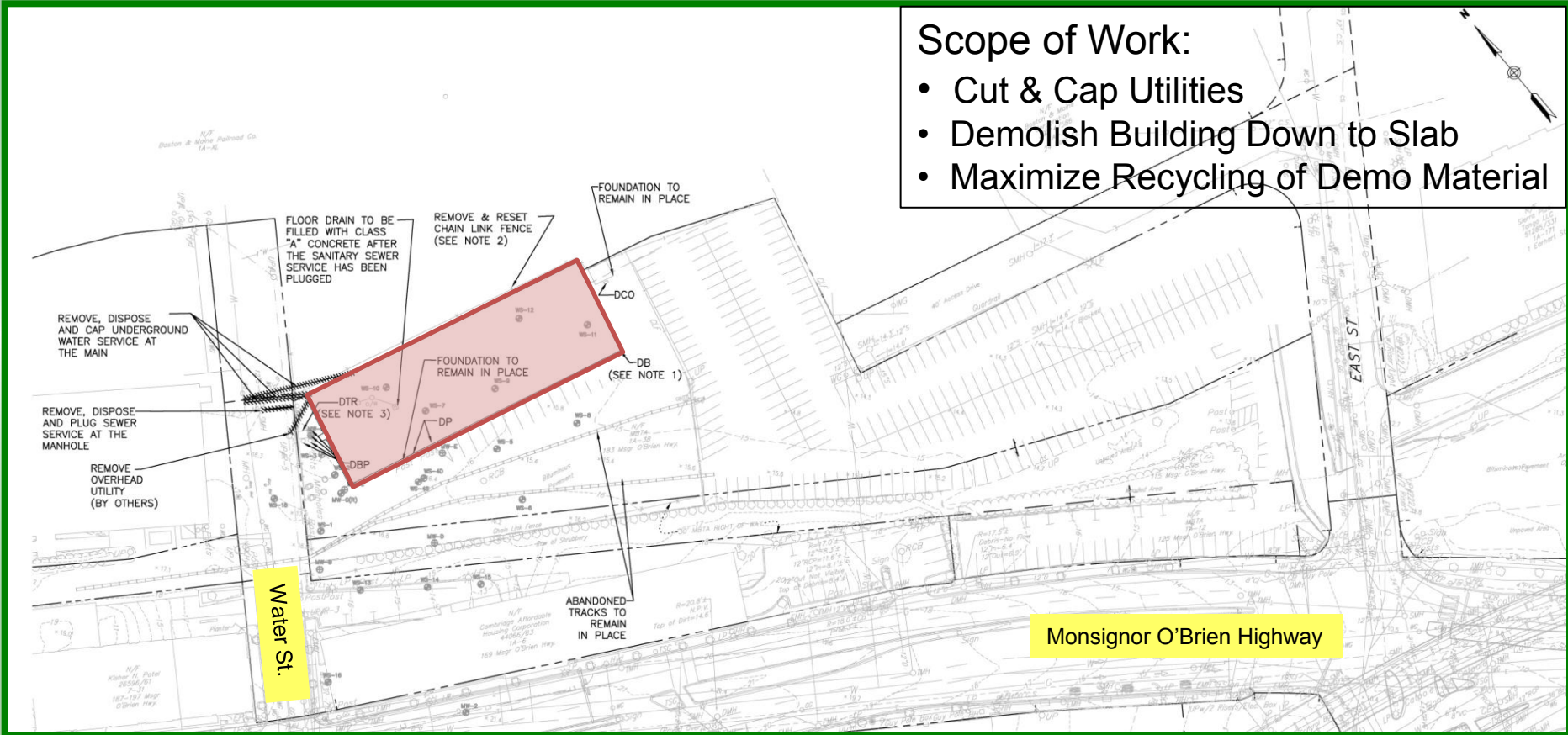
21 Water Street Demolition & Site Prep, Cambridge



21 Water Street Demolition & Site Prep

Scope of Work:

- Cut & Cap Utilities
- Demolish Building Down to Slab
- Maximize Recycling of Demo Material



Phase 1

Early Bridge and Demolition

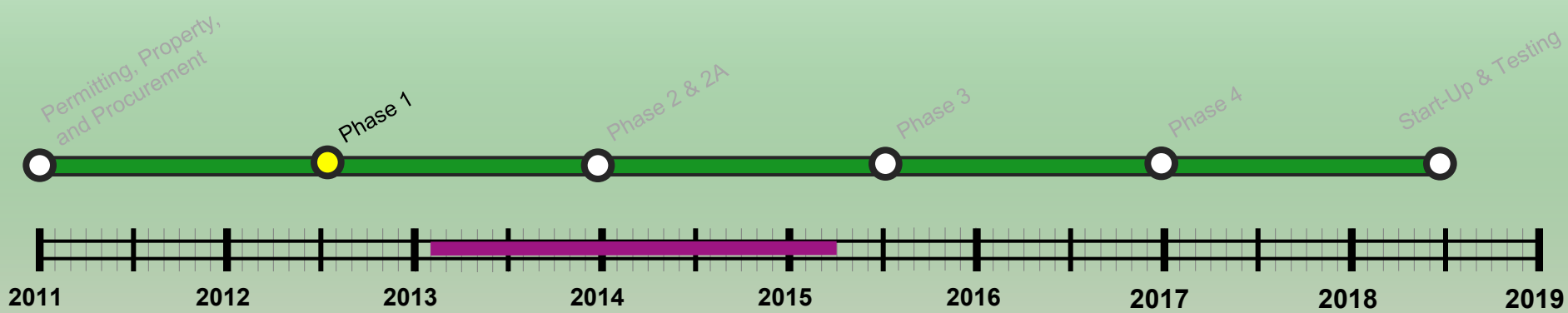
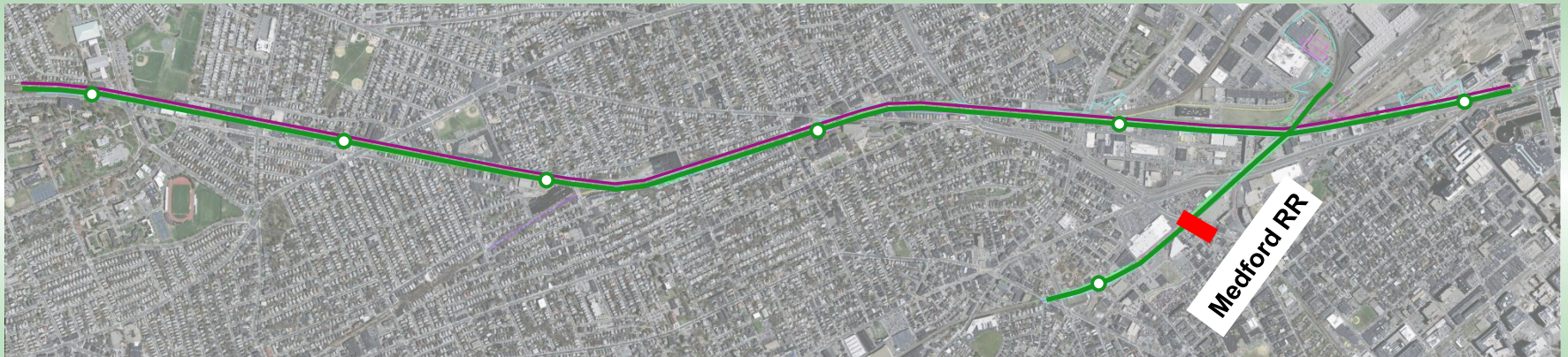
Package

Medford Street Railroad Bridge
Somerville, MA

Phase 1: Early Bridge & Demolition Package

Medford Street Rail Bridge

Duration: March 2013 – March 2014



Medford Street Railroad Bridge, Somerville



Medford Street Railroad Bridge, Somerville

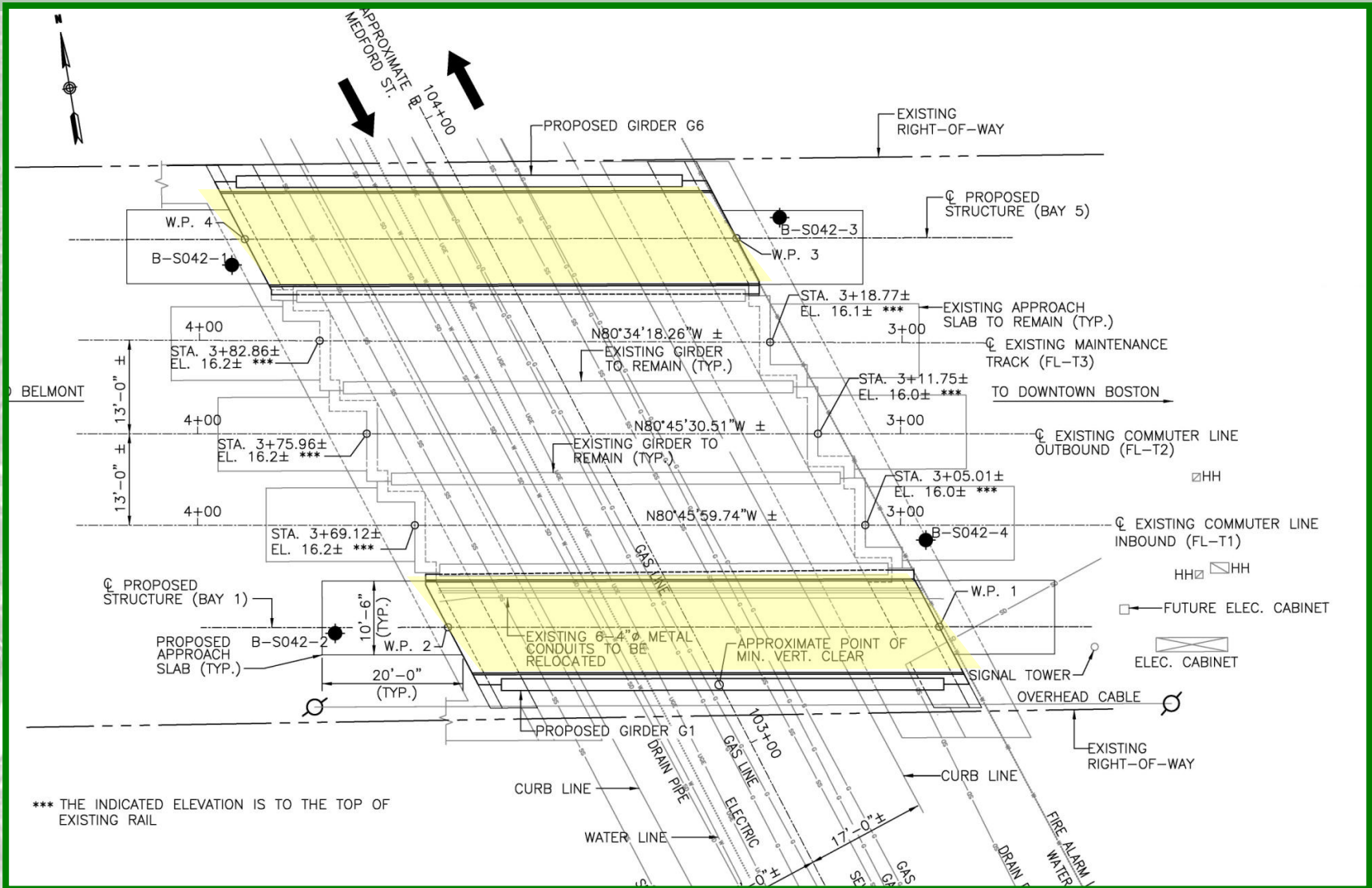


Medford Street Railroad Bridge, Somerville

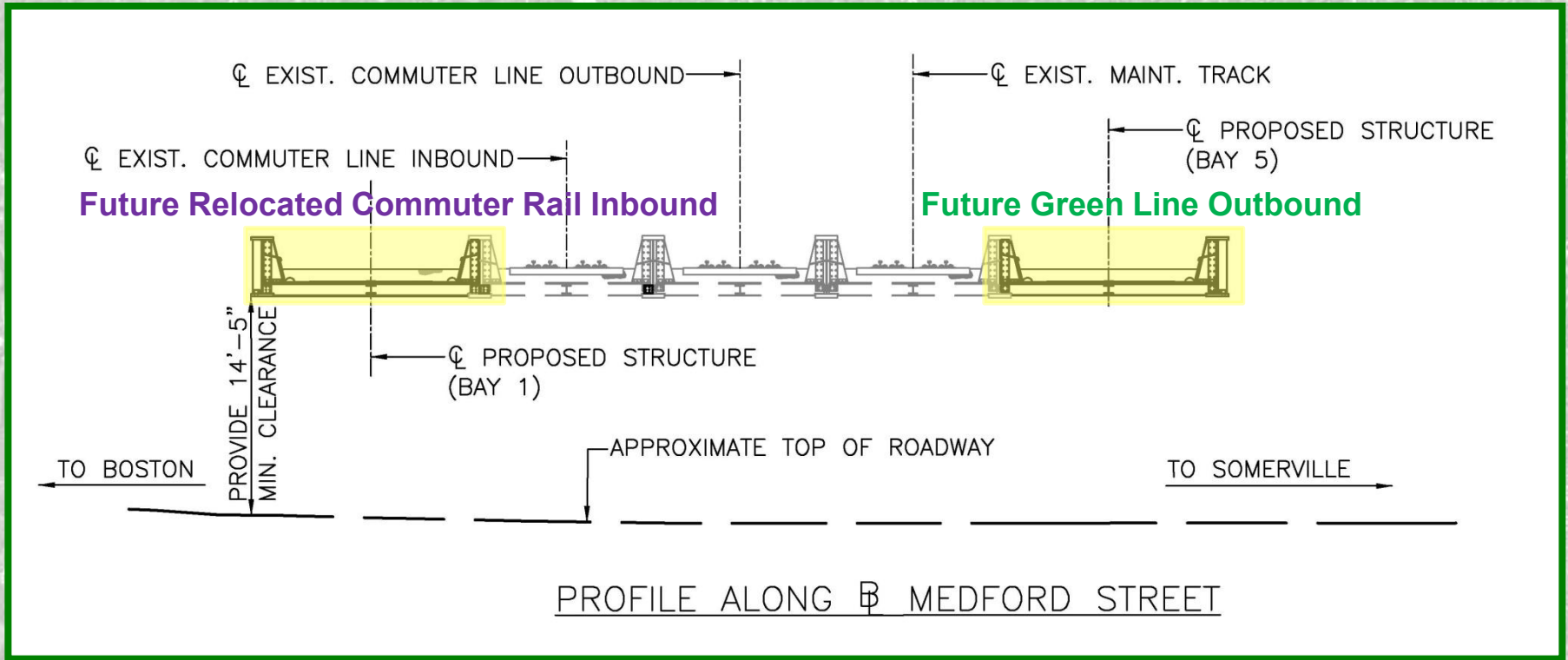
FITCHBURG LINE OVER MEDFORD ST.



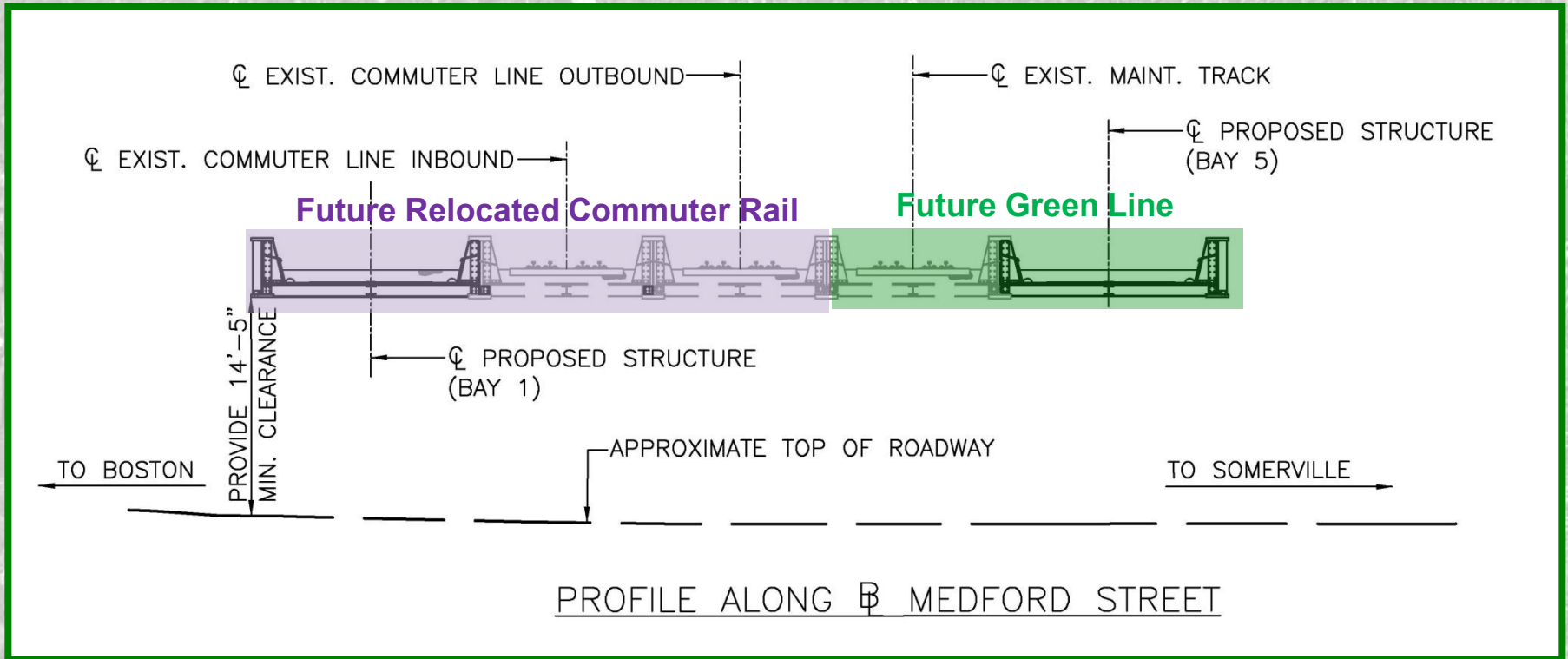
Medford Street Railroad Bridge Widening



Medford Street Railroad Bridge Widening



Medford Street Railroad Bridge Widening



Phase 1

Early Bridge and Demolition

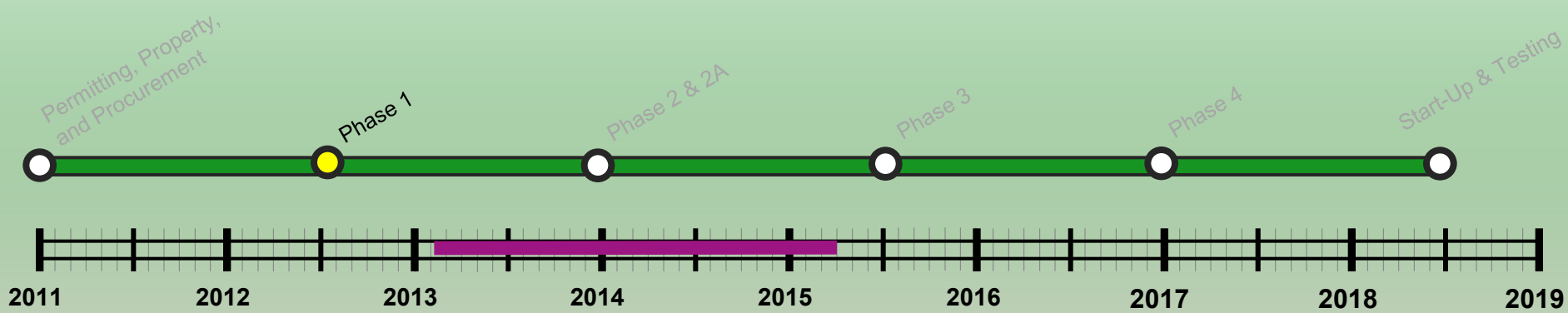
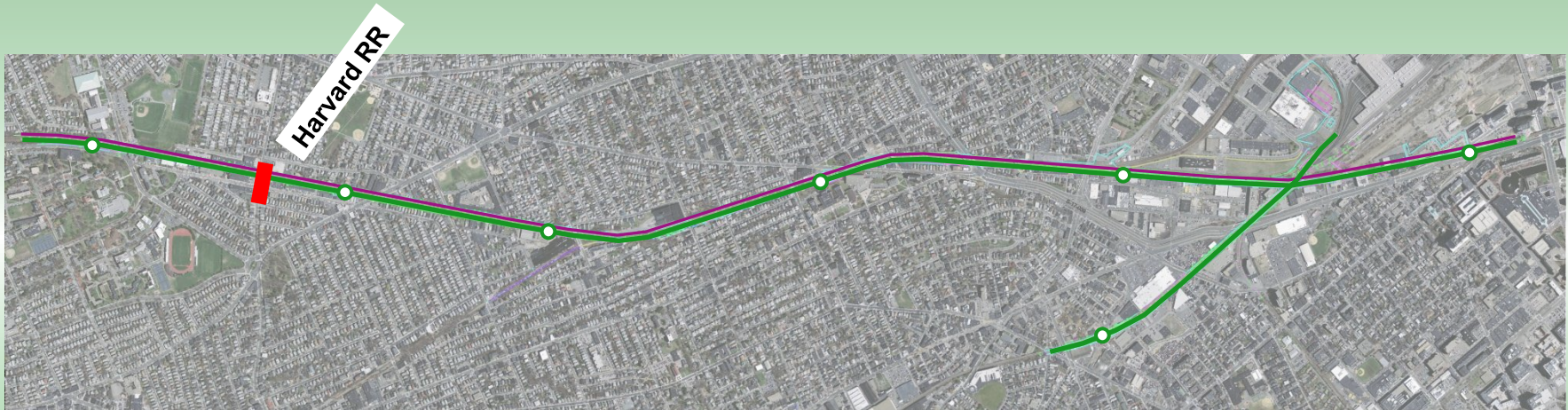
Package

Harvard Street Railroad Bridge
Medford, MA

Phase 1: Early Bridge & Demolition Package

Harvard Street Rail Bridge

Duration: February 2013 – November 2014



Harvard Street Railroad Bridge, Medford



Harvard Street Railroad Bridge, Medford



HARVARD STREET

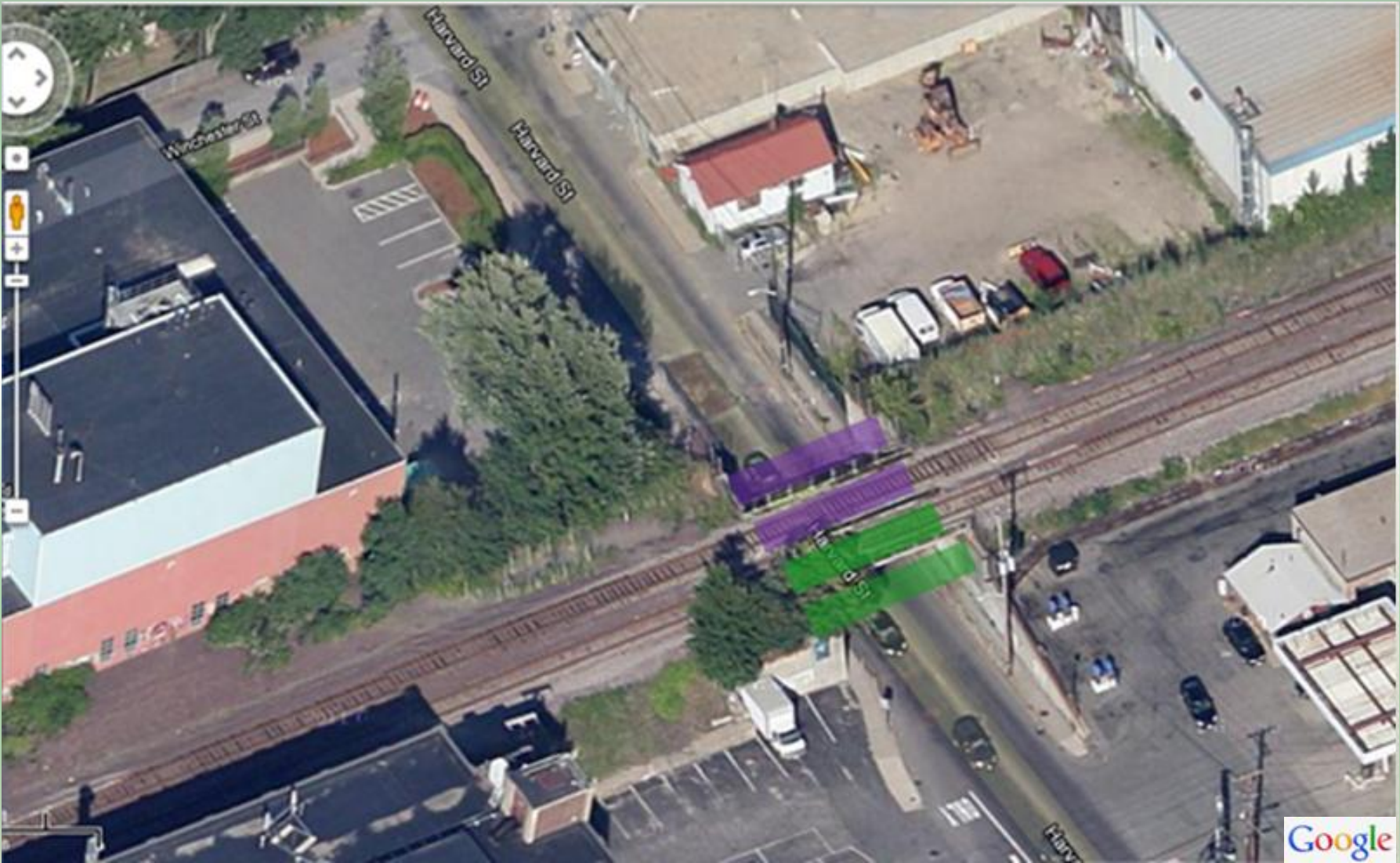


Harvard Street Railroad Bridge Widening Scope of Work

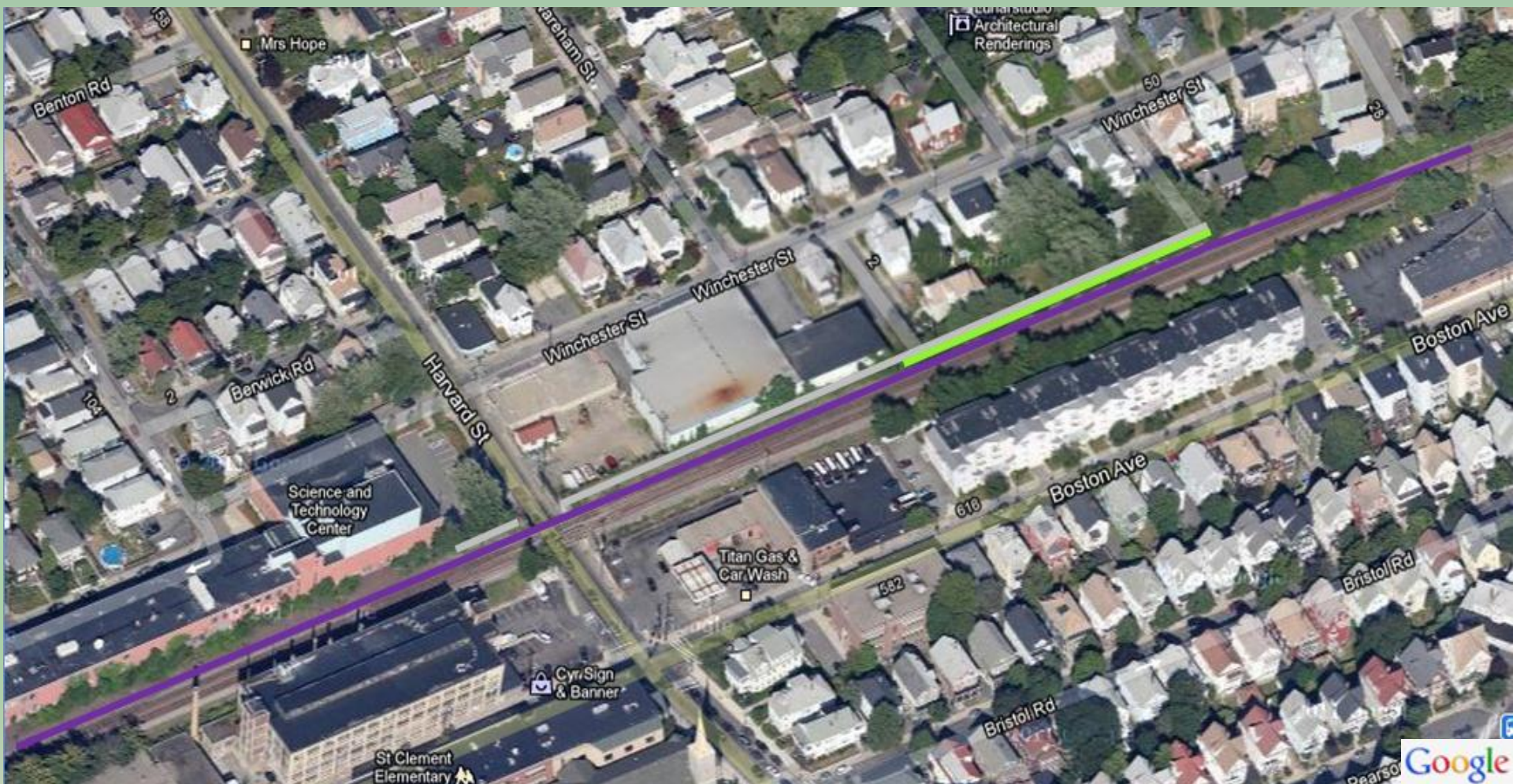
Green Line Extension

- Retaining Walls Adjacent to Harvard Street Bridge
- Noise Walls and Mitigation Activities Adjacent to Harvard Street Bridge
- Reconstruction & Widening of Harvard Street Bridge
- MBTA Commuter Rail Track Relocations

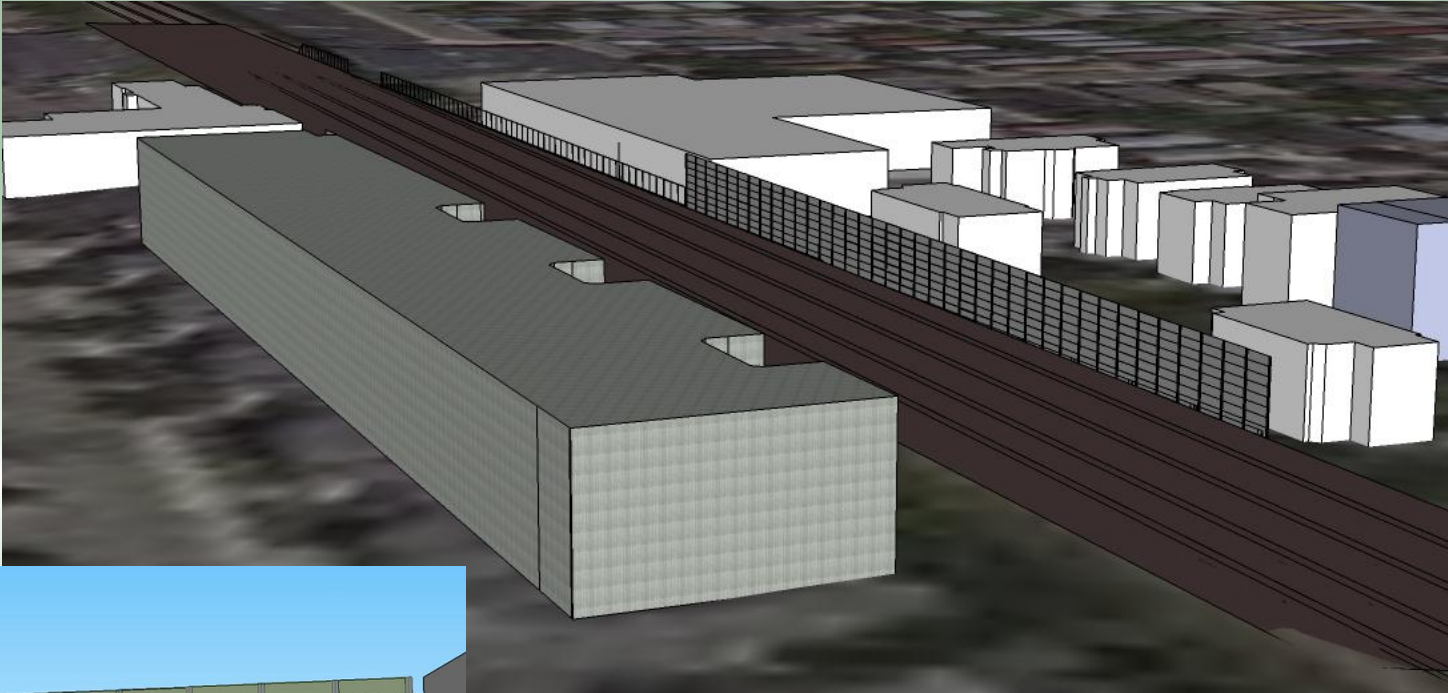
Harvard Street Railroad Bridge Future Track Location



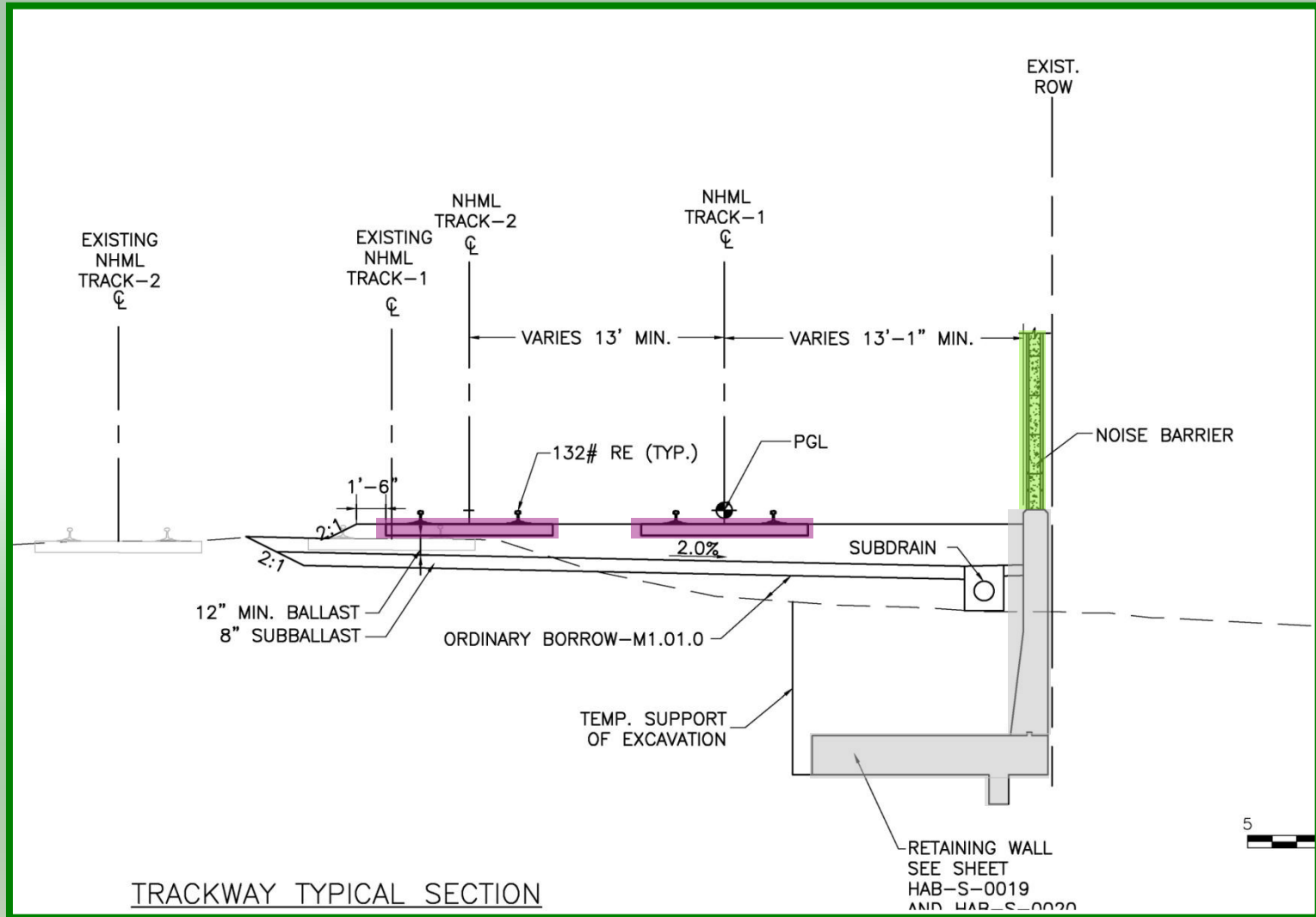
Retaining Wall, Noise Wall and Track Reconfiguration



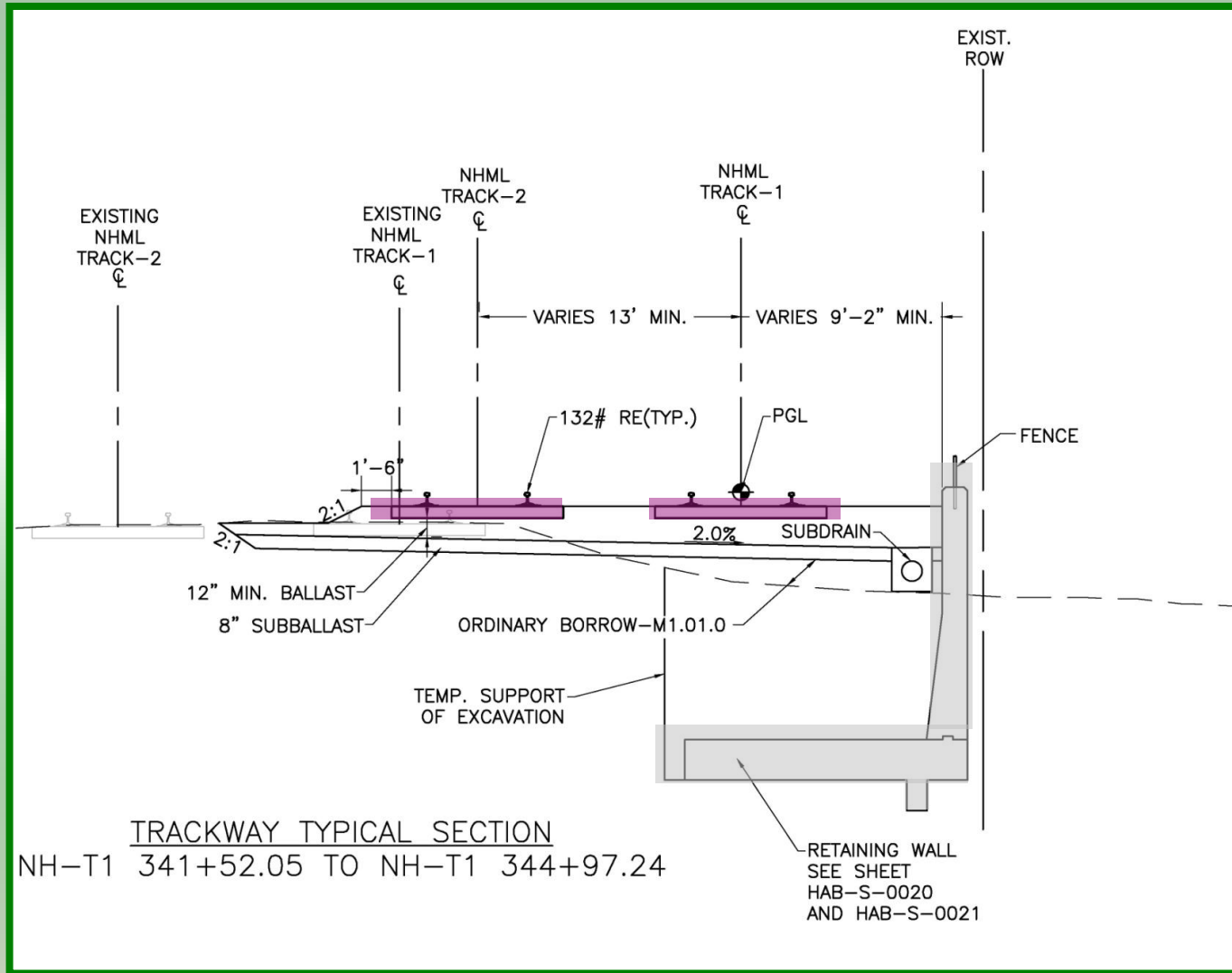
Proposed Retaining Wall Study (Looking Northeast)



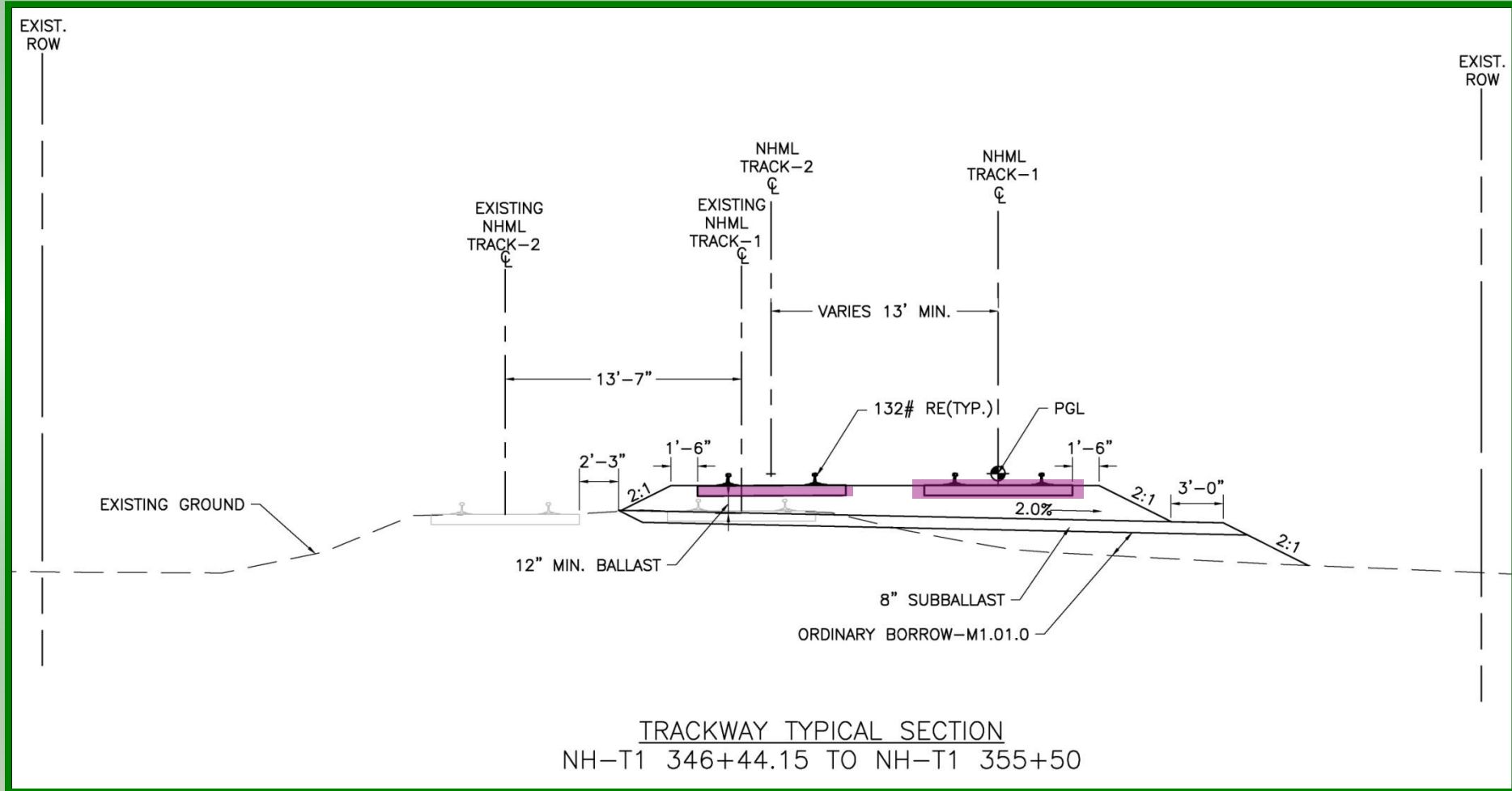
Retaining Wall Sections from Winchester Place to Winchester Court



Retaining Wall Sections Adjacent to Harvard Street Railroad Bridge



Grading & Relocation of Track Adjacent to Tufts Science Center



Harvard Street Railroad Bridge Widening

Scope of Work

Harvard Street to Granville Ave Storm Drain System

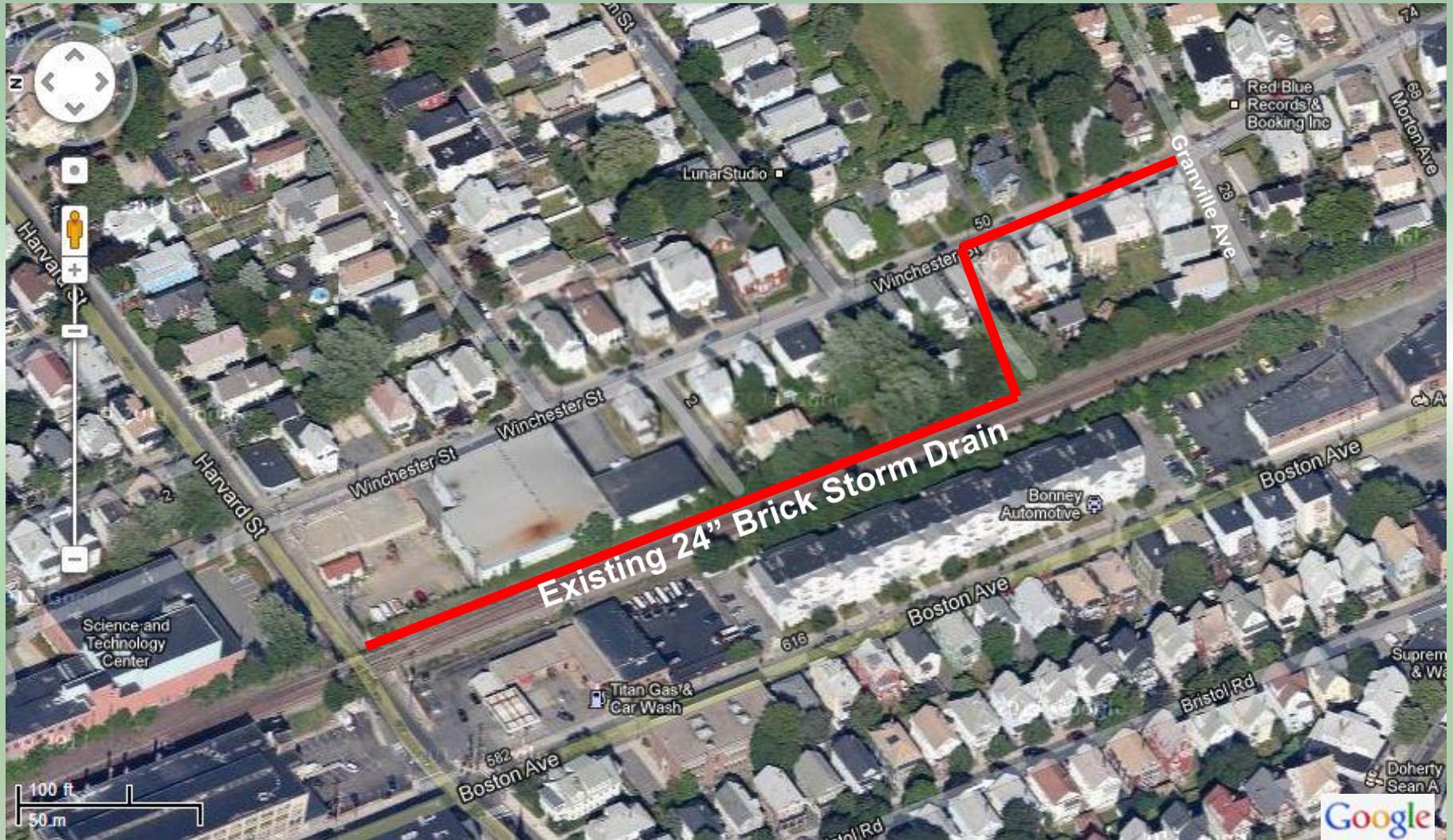
Existing Conditions:

- Aging and Undersized Drainage Infrastructure
- Flooding Under Harvard Street Bridge

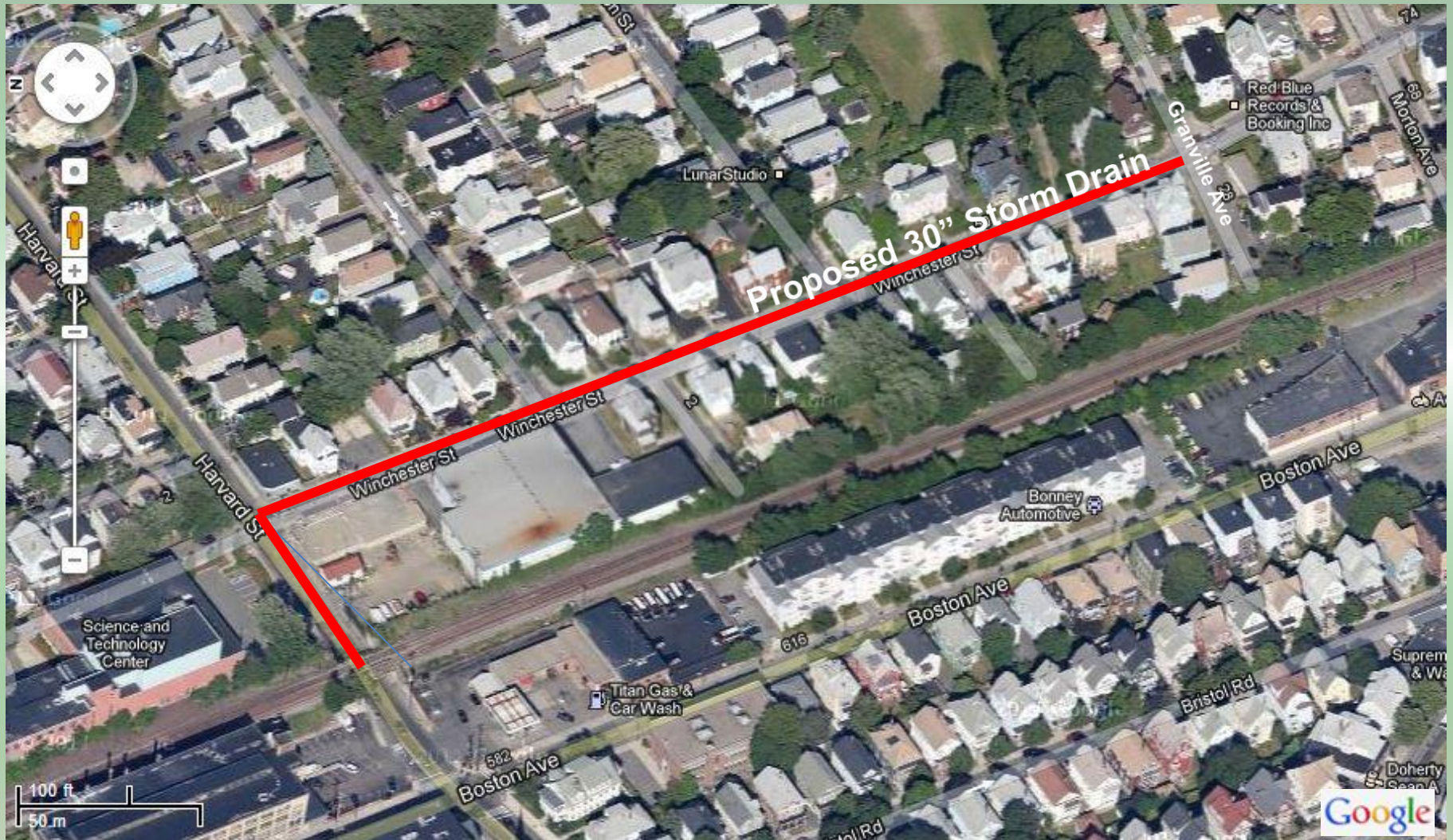
Long Term Improvements Included in Phase 1:

- Upgrade and Replacement of Existing Storm Drain System
- Improved Drainage by Increasing the Pipe from 24" to 30"
- Raising Road Profile Under Bridge

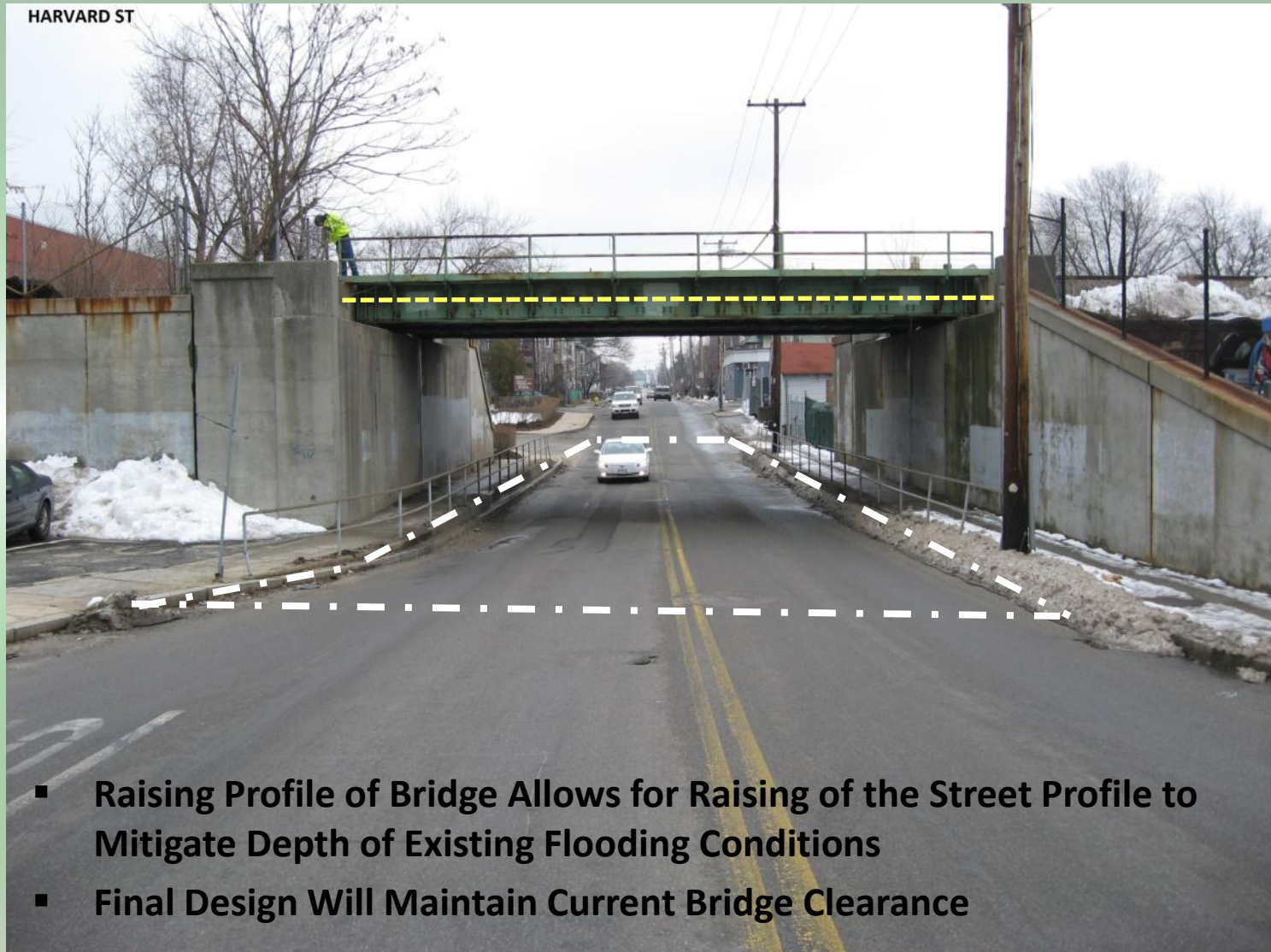
Existing Drainage System from Harvard Street to Granville Avenue



Upgraded Drainage System from Harvard Street to Granville Avenue



Harvard Street Railroad Bridge, Medford

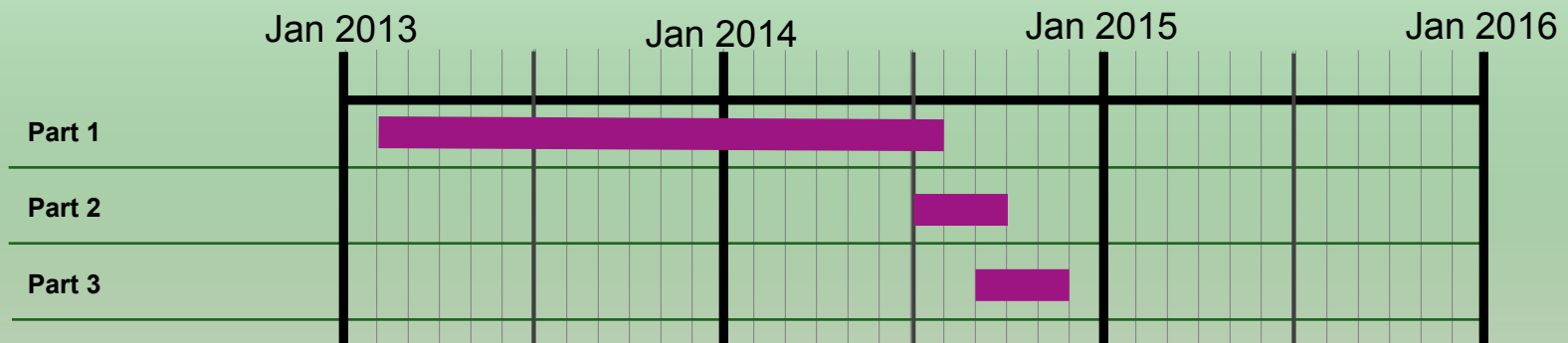


- Raising Profile of Bridge Allows for Raising of the Street Profile to Mitigate Depth of Existing Flooding Conditions
- Final Design Will Maintain Current Bridge Clearance

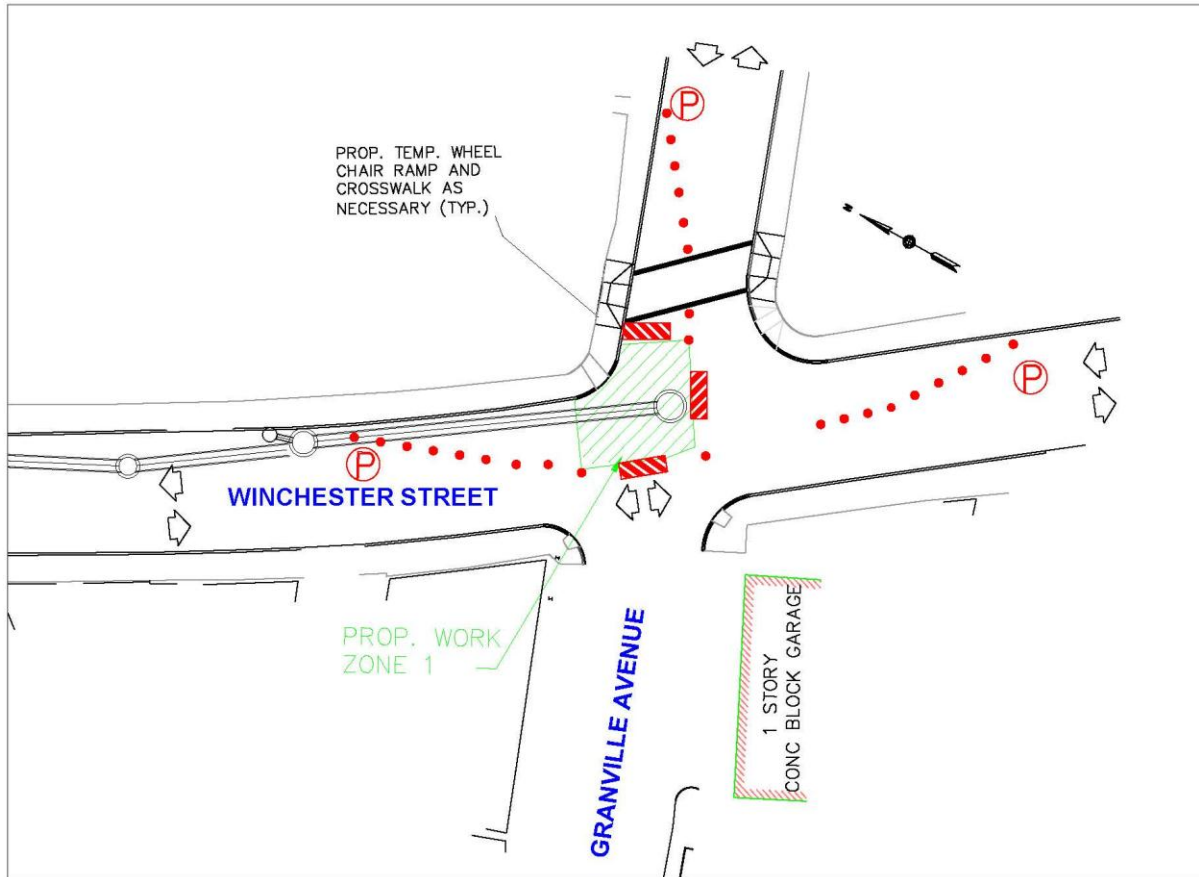
Phase 1: Schedule

Harvard Street Rail Bridge

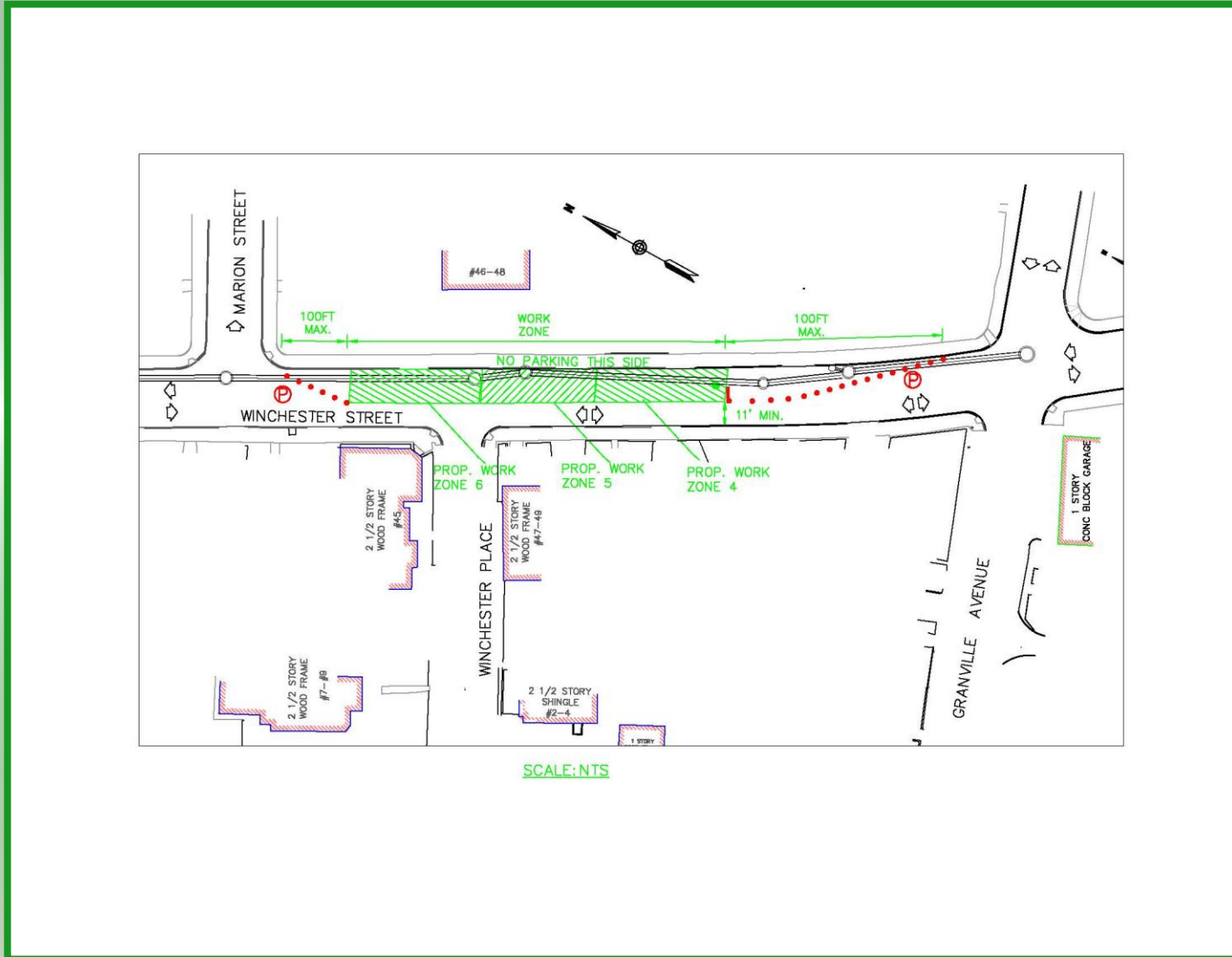
- Part 1: February 2013 – June 2014
 - Private Utility Relocation
 - 830 Foot Retaining Wall
 - Track 1
 - East Abutment
 - Harvard and Winchester Street Drainage Pipe (Daily Lane Closures – Phased)
- Part 2: June 2014 – September 2014
 - Track 2 (Remove Abandoned Track 1)
 - Middle Section of Abutment
- Part 3: September 2014 – November 2014
 - Track 3
 - West Abutment
 - Noise Barriers



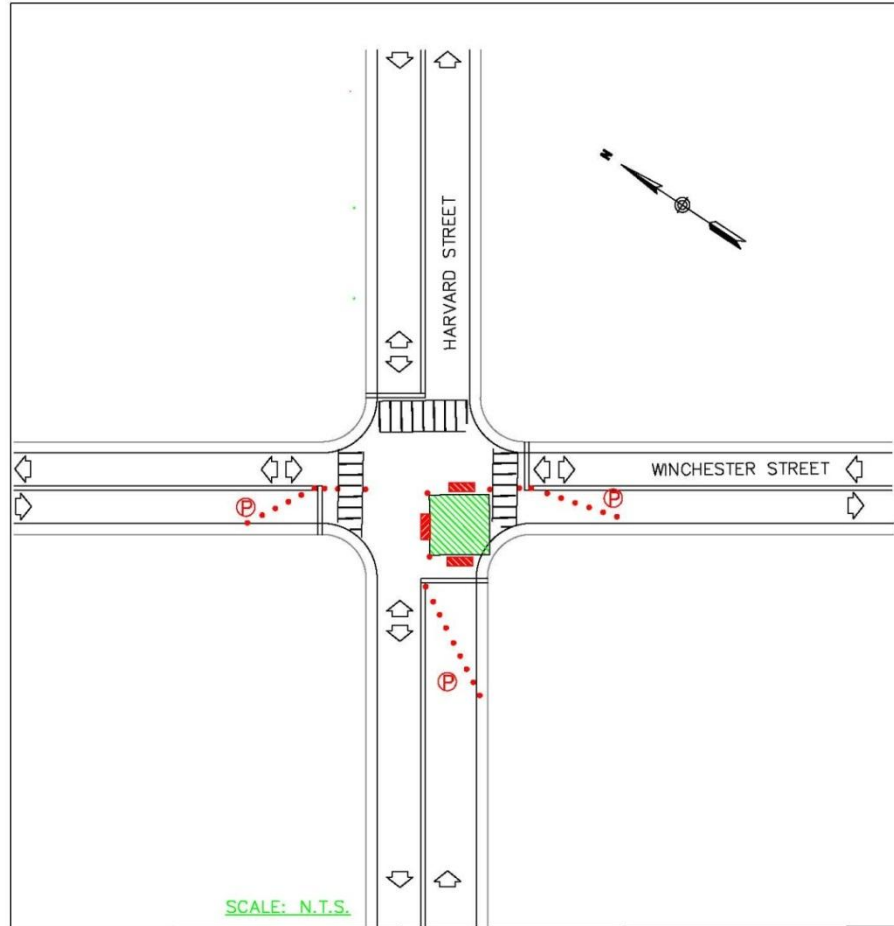
Utility Traffic Work Zone 1



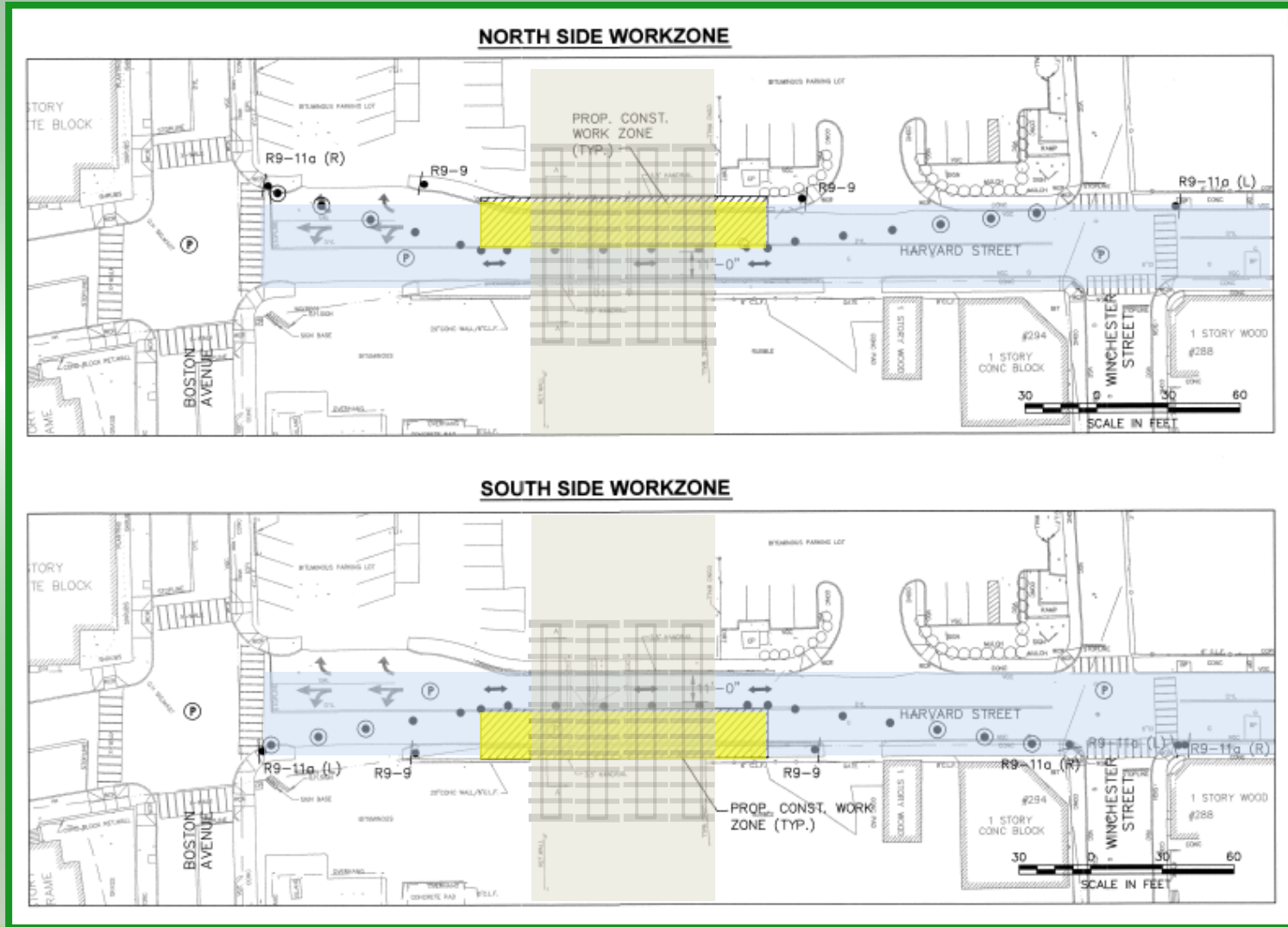
Example Rolling Lane Closure for Winchester Street Utility Traffic Zones 4, 5, and 6



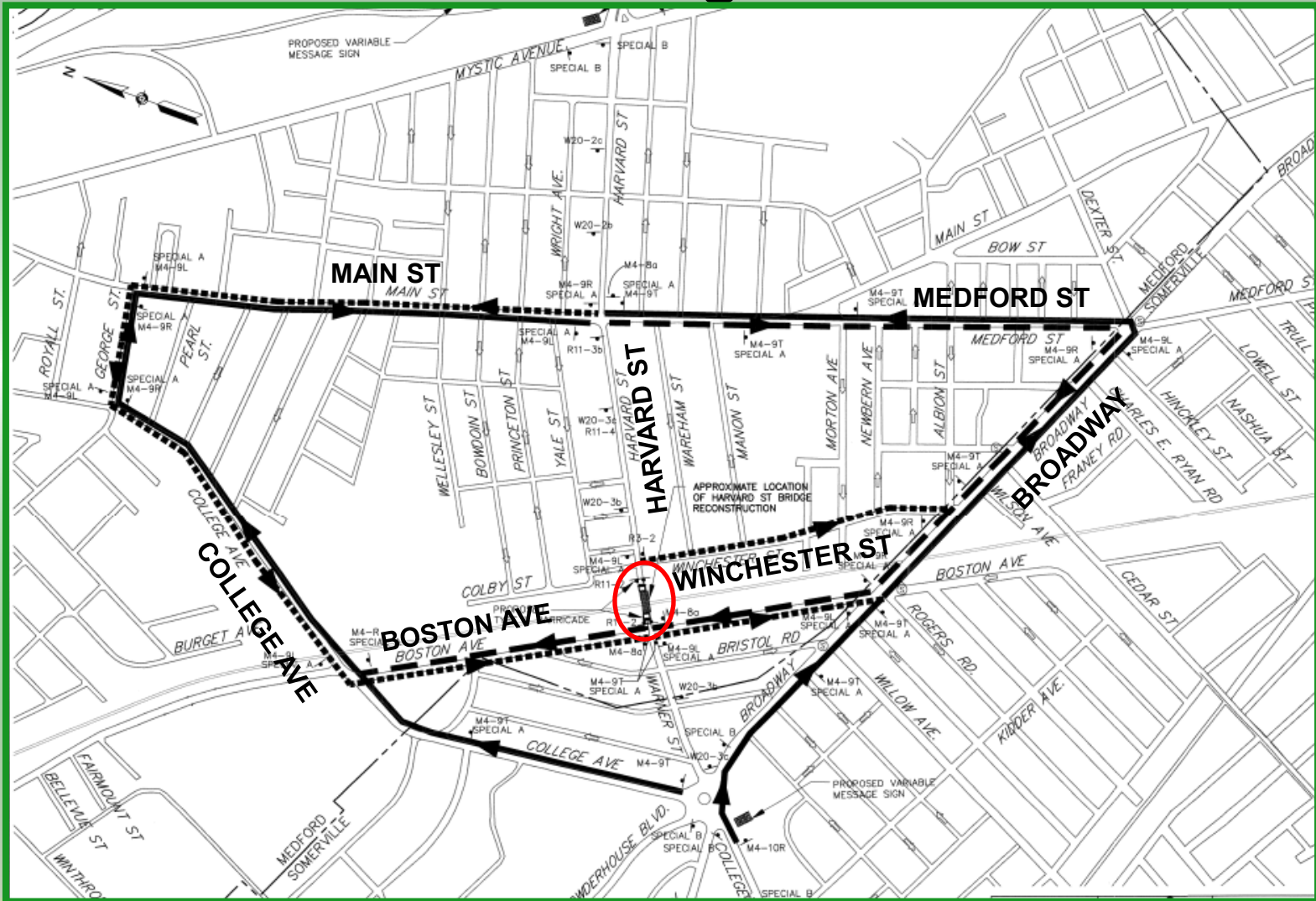
Utility Traffic Closure at the Side of a Typical Intersection



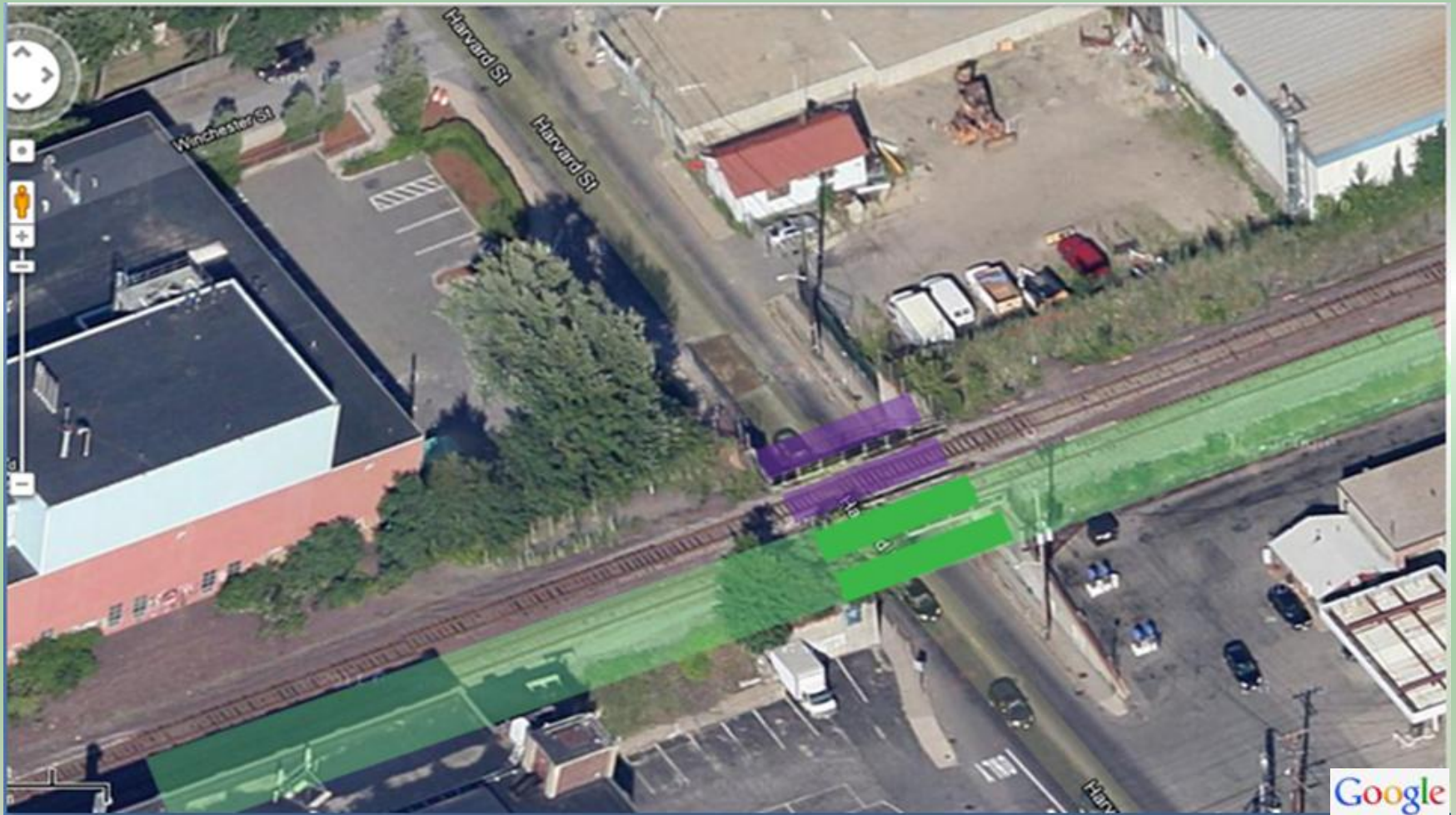
Single Lane Closures For Bridge Abutments



Limited Weekend Traffic Diversions For Harvard Street Bridge and Pavement



Future Contract Will Include Corridor Work on South Side and Build Green Line



How to Stay Informed and Follow the Progress of Phase 1 Construction

MassDOT GLX Website:

- www.greenlineextension.com
- 2 Week “Look Ahead” Schedules
- Progress Photos
- Traffic Updates
- Timely Public Meetings

Public Meetings

Next Meeting: March 14 at Holiday Inn Somerville, 6PM-8PM

GLX Contact Information

E-Mail

info@glxinfo.com

Emergency Construction Hotline

- 1-855-GLX-INFO
- 24/7 Coverage

Green Line Extension Phase 1

Comments/Questions?

