



GREEN LINE EXTENSION PROJECT



massDOT
Massachusetts Department of Transportation

LECHMERE STATION



LECHMERE STATION
JUNE 18, 2013

AGENDA

- GLX Project Update
- Design Development & Community Input
- Station Site Design
- Station Design
- Summary of Design Progression
- HYM/NorthPoint Lechmere Planning Update
- Schedule/Upcoming Meetings
- Q&A

GLX PROJECT UPDATE



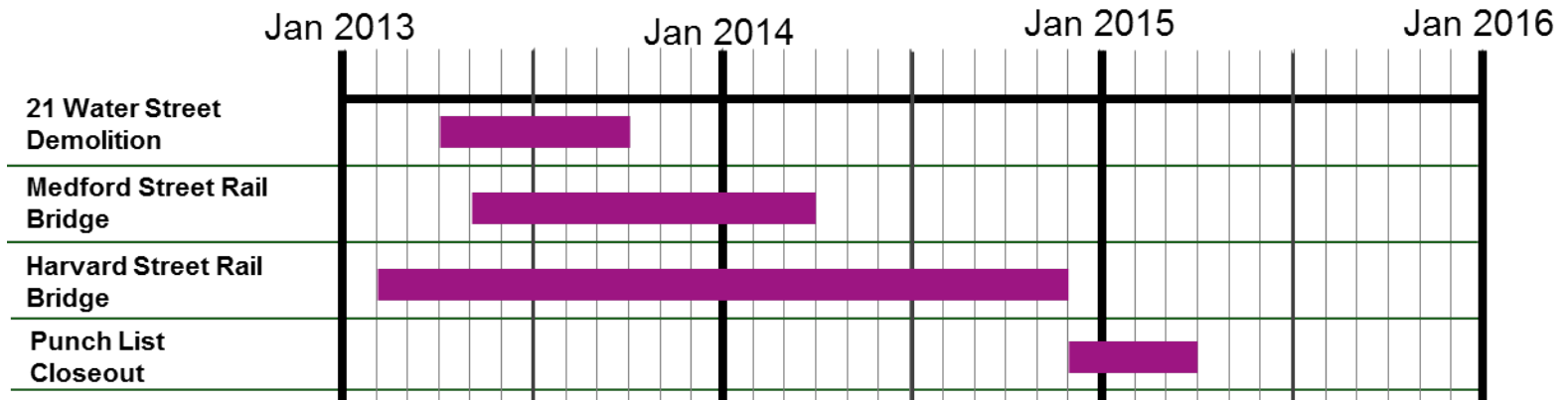
DESIGN PROJECT UPDATE

- Last round of station meetings Feb/March 2012
- Completed Advanced Conceptual Design (ACD) Summer 2012
- Notice to Proceed for Advanced Preliminary Engineering (APE) & Final Engineering to AECOM/HNTB Sept. 2012
- Completed Value Engineering on ACD Fall 2012
- Projected to complete APE Sept. 2013

PHASE 1 UPDATE

Barletta Heavy Division

- Construction Notice To Proceed: January 31, 2013
- Construction Duration: 26 Months to March 2015
 - 21 Water Street Demolition: April 2013 to August 2013
 - Medford Street Rail Bridge: March 2013 to March 2014
 - Harvard Street Rail Bridge: February 2013 to November 2014



PHASE 1 CONSTRUCTION



PHASE 2-4 UPDATE

CM/GC Contractor

- LOI Due: January 4, 2013 (A)
- Issue RFQ: January 9, 2013 (A)
- RFQ submitted February 14, 2013 (A)
- RFP to selected teams: March 11, 2013 (A)
- RFP Proposals Due: April 22, 2013 (A)
- CM/GC Interviews: May 16, 2013 (A)
- Announce Best Value Proposal: May 21, 2013 (A)
- Board for approval: July 17, 2013
- CM/GC Notice of Award: July/August, 2013

DESIGN DEVELOPMENT & COMMUNITY INPUT



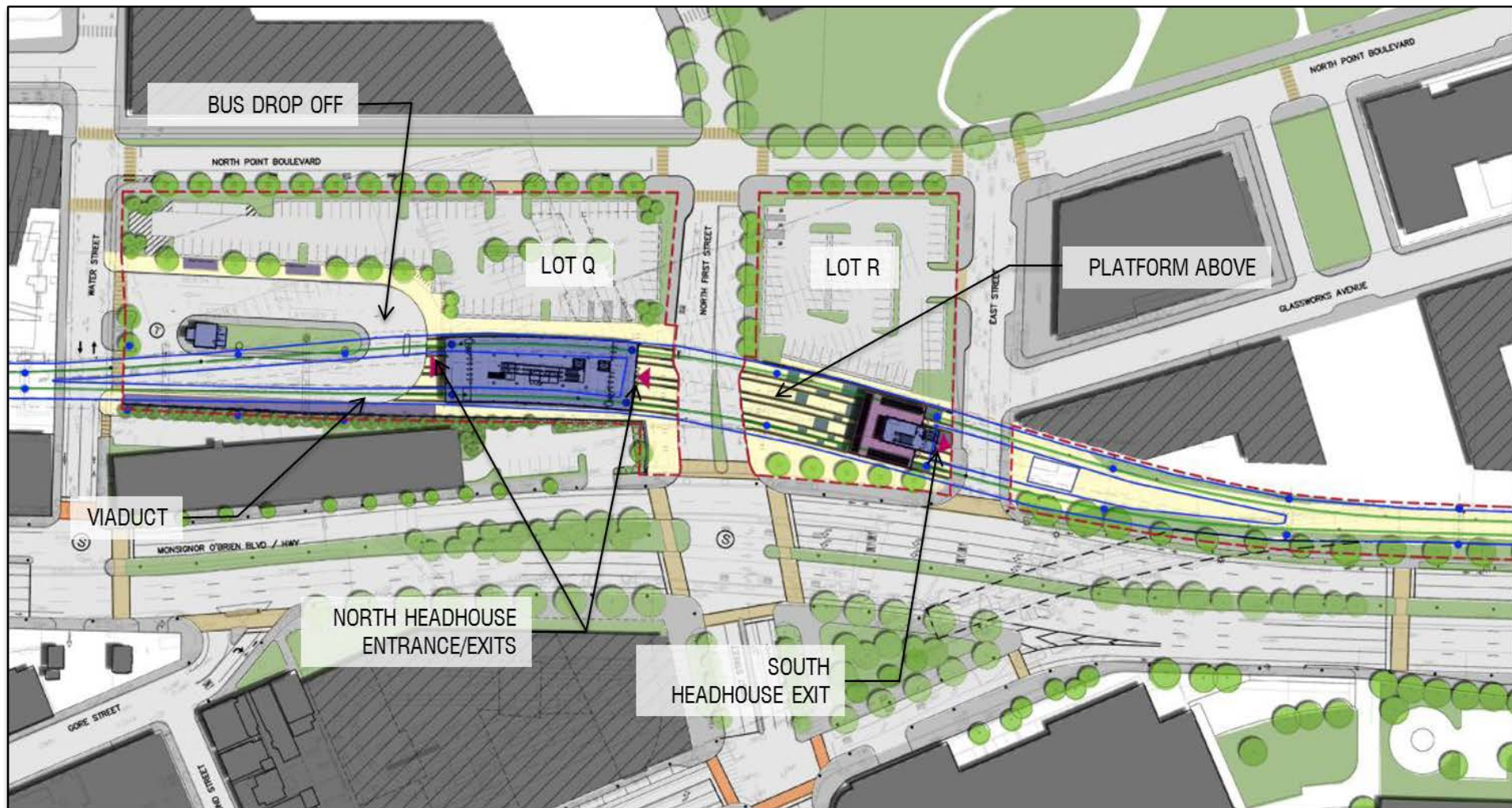
GREEN LINE EXTENSION



LECHMERE STATION



ADVANCED CONCEPTUAL DESIGN SITE PLAN



DESIGN DEVELOPMENT PHASE

- Received the Advanced Conceptual Design (ACD) from the HDR/Gilbane Team
- AECOM/HNTB has now:
 - Participated in the Value Engineering Effort
 - Performed our own Design Validation
 - Now to Progress Design from ACD through Advanced Preliminary Engineering (APE)

COMMUNITY CONCERNS/ISSUES

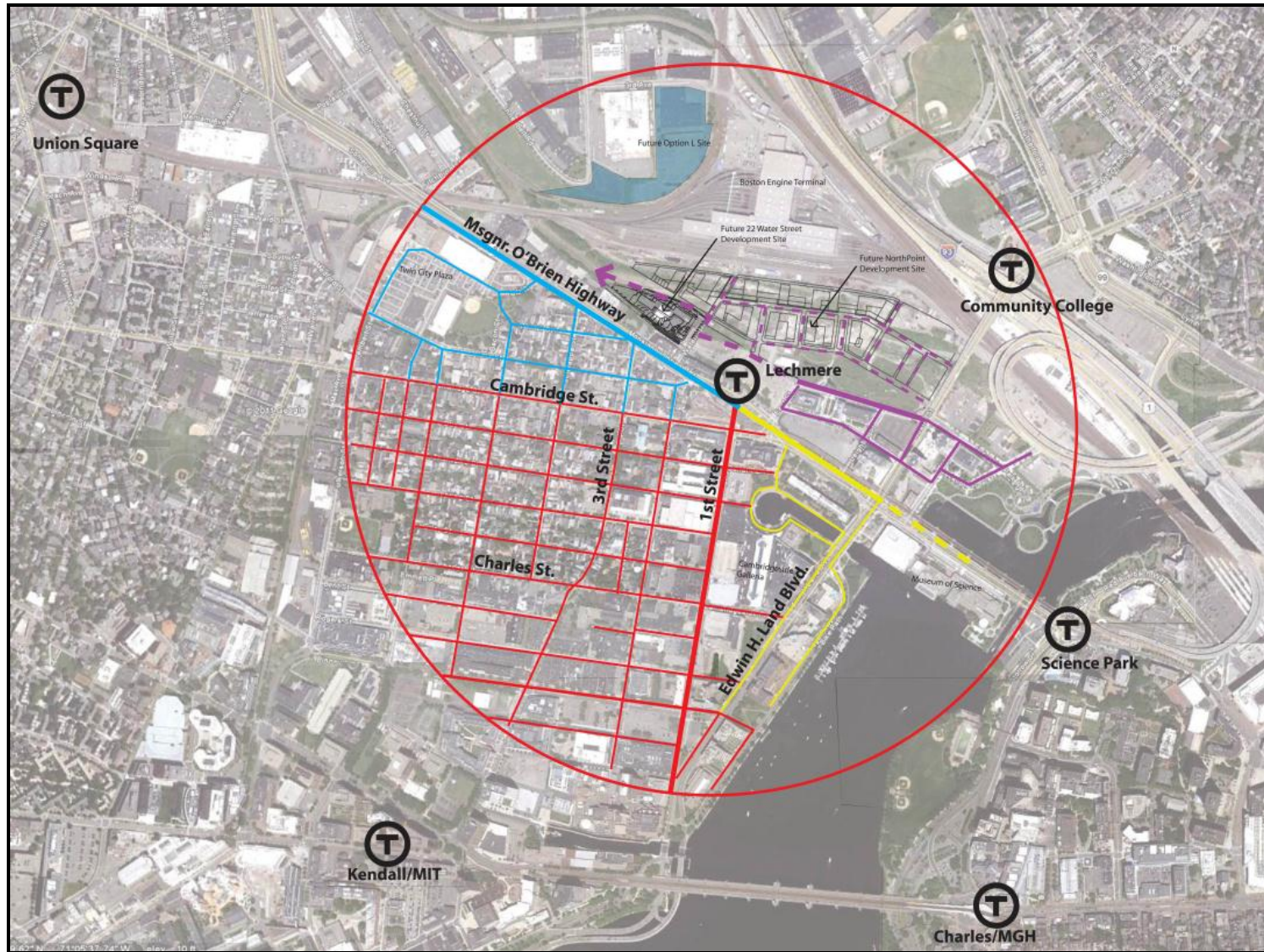
- Entrances and Orientation
- Pedestrian access across Monsignor O'Brien Highway
- Renaming O'Brien Highway to O'Brien Boulevard
- Coordinating the concerns of Glass Factory residents
- Station Parking
- Neighborhood Planning Studies
- Pedestrian experience at Water Street
- Busway and shelter designs



STATION SITE DESIGN



NEIGHBORHOOD ACCESS DIAGRAM



LECHMERE STATION – EXISTING SITE



LECHMERE STATION – EXISTING SITE



EXISTING CONDITIONS



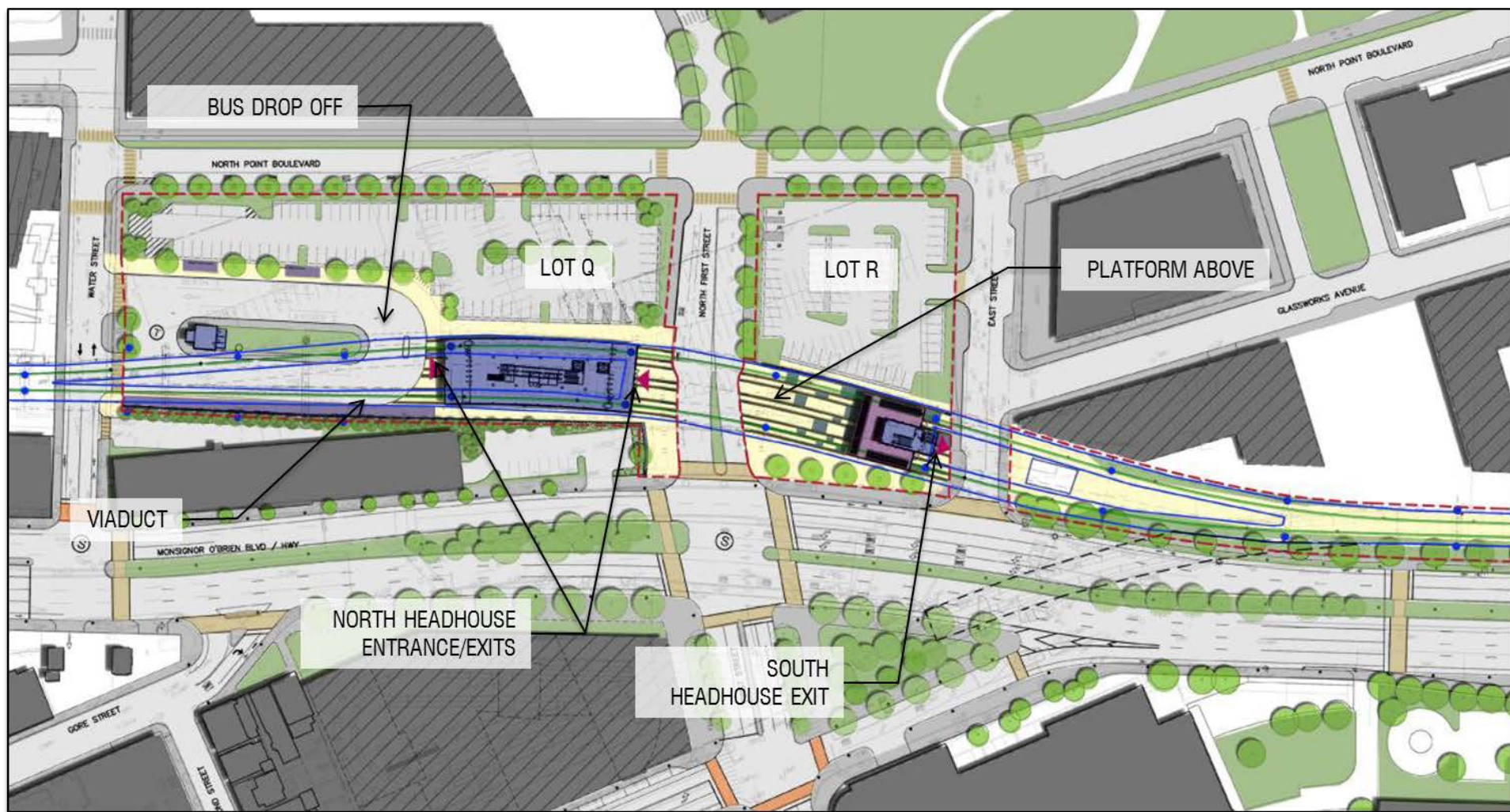
View toward station site from East St (North Head House)

EXISTING CONDITIONS

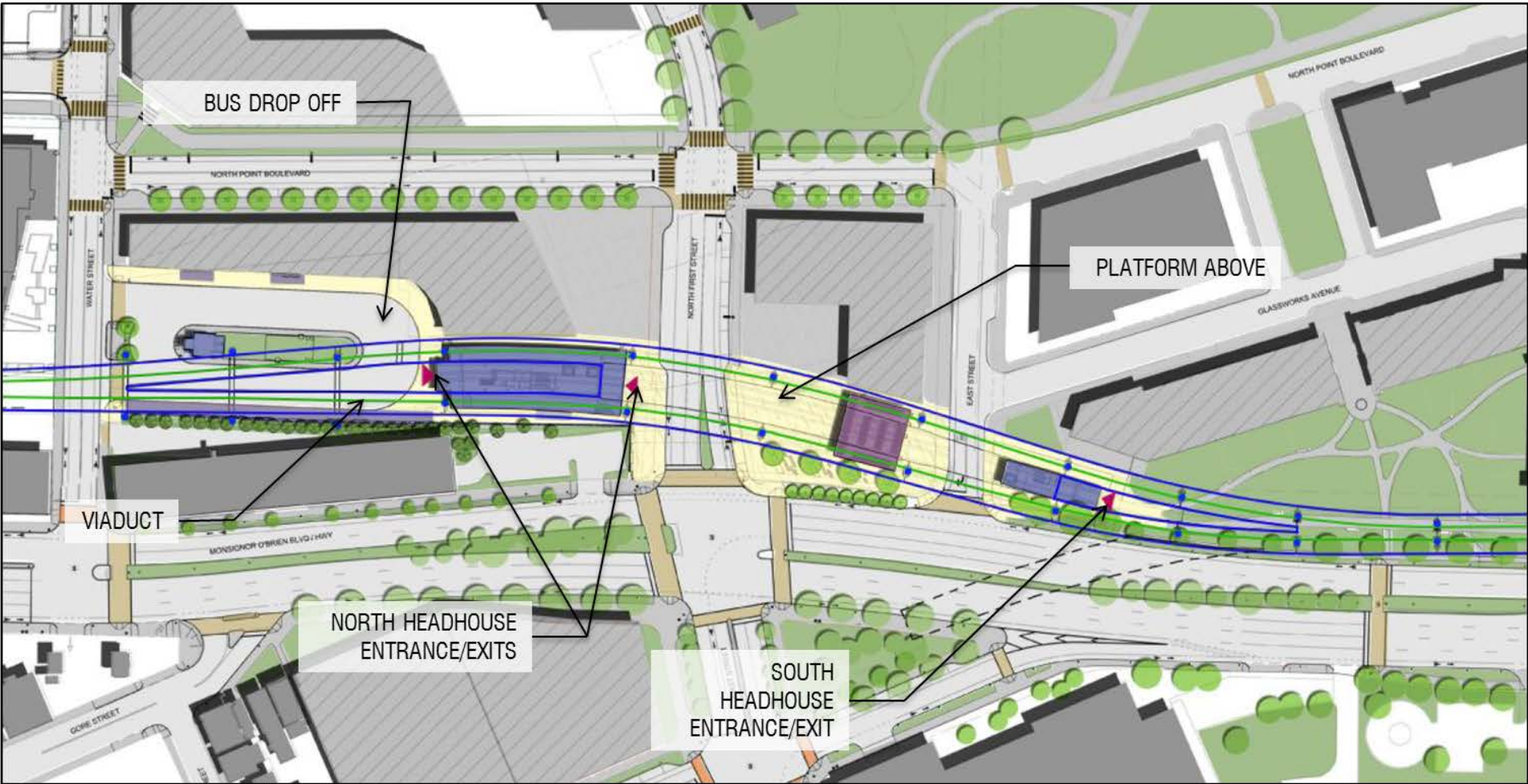


View toward station site from East St (South Head House)

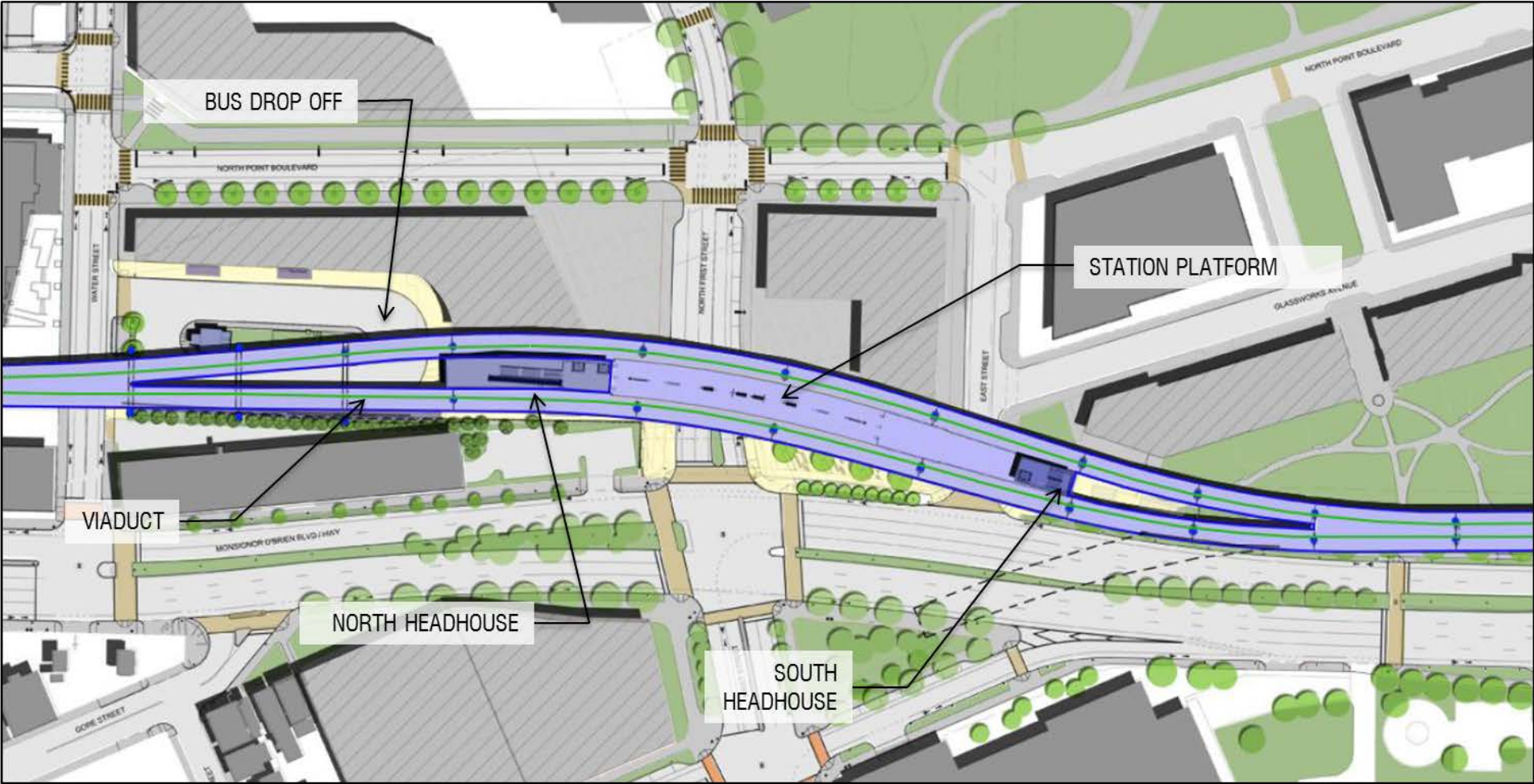
ADVANCED CONCEPTUAL DESIGN SITE PLAN



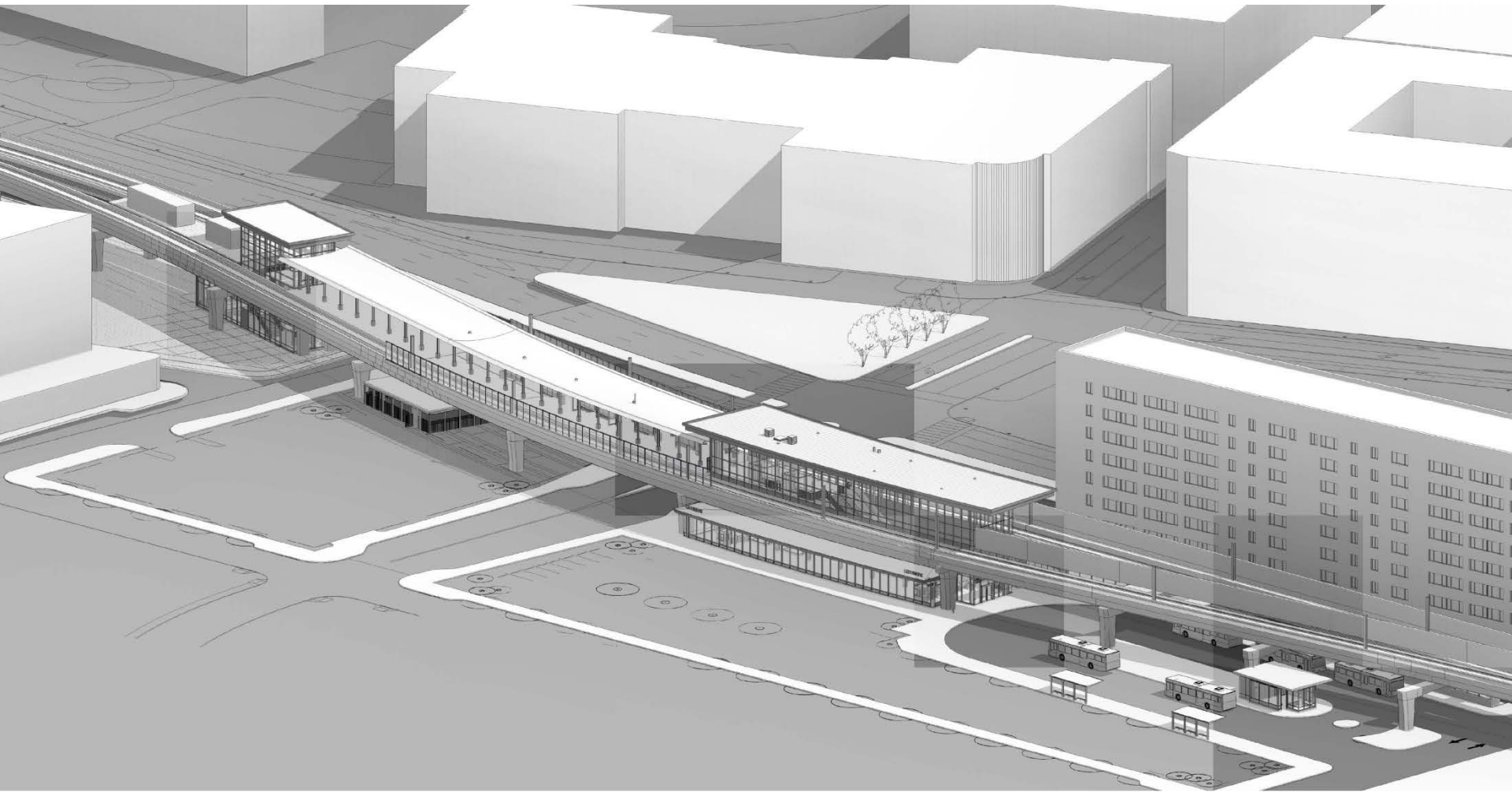
CURRENT PROPOSED SITE PLAN



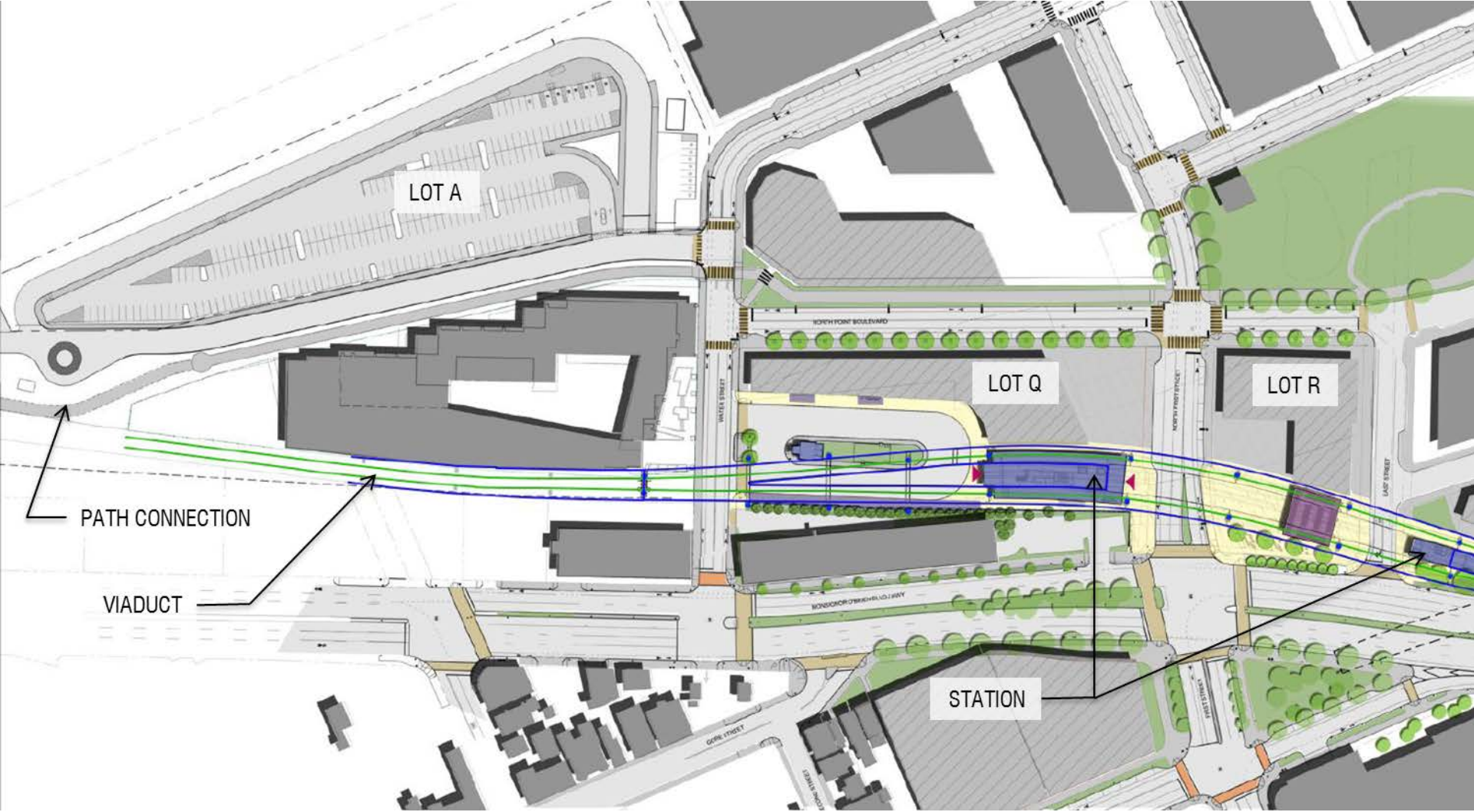
CURRENT PROPOSED SITE PLAN



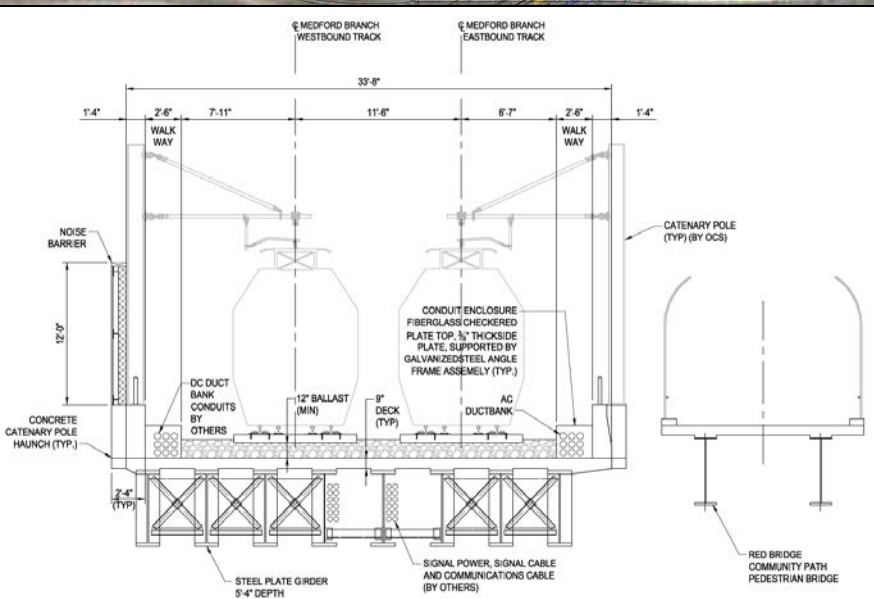
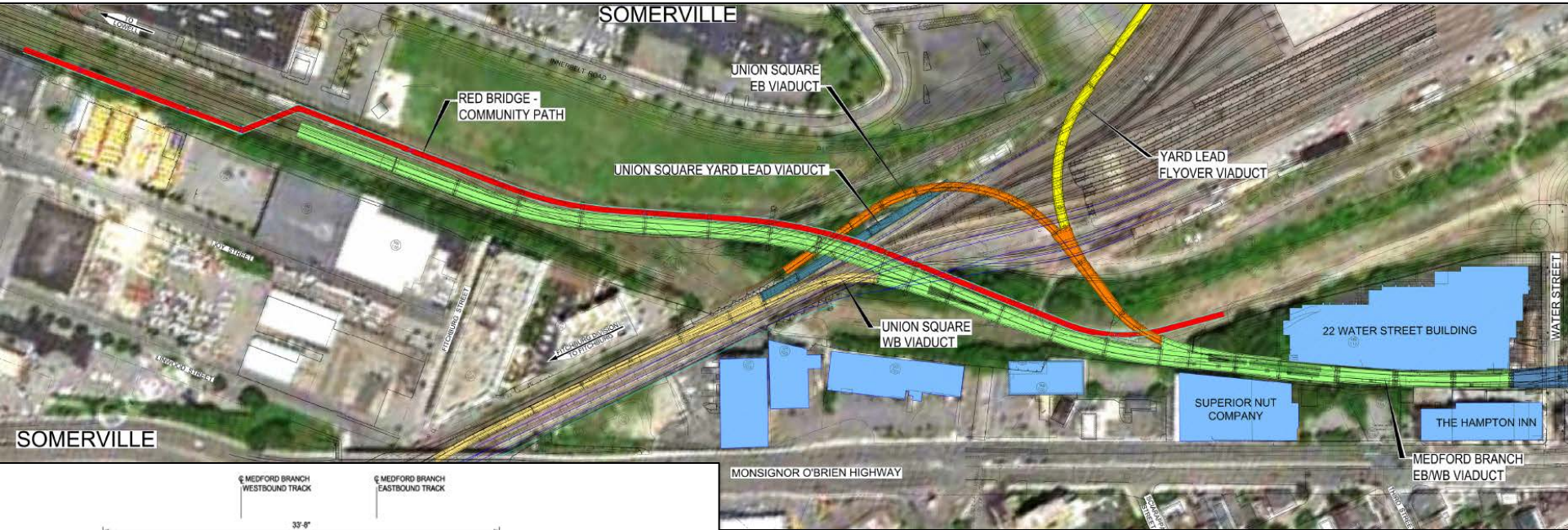
BIRD'S EYE VIEW



LOT A PARKING



RED BRIDGE CROSSING VIADUCT



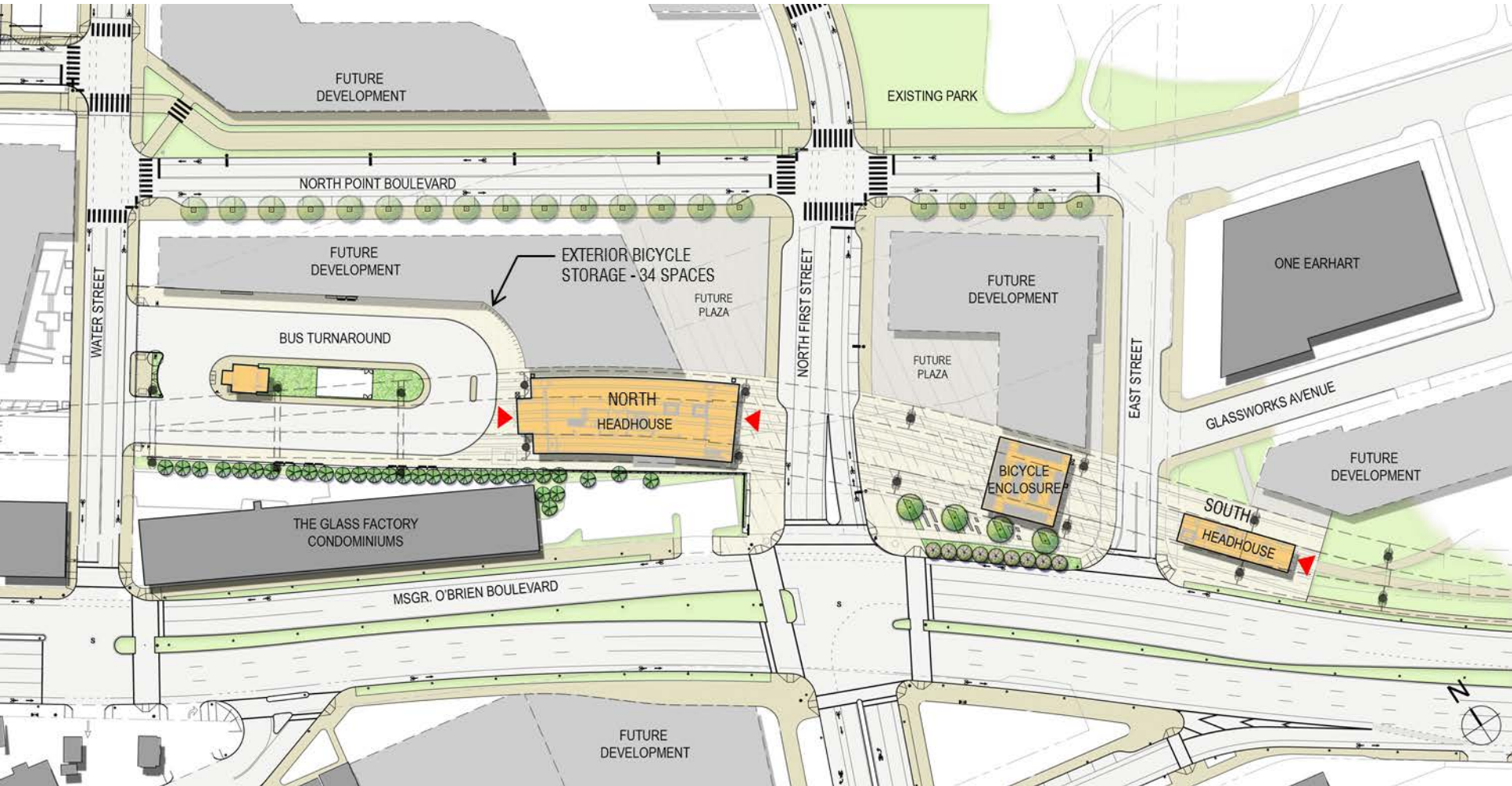
STATION DESIGN



STATION DESIGN DEVELOPMENT

- Extended platform for future four car service
- Relocated South Headhouse becomes an entrance
- Separated viaduct from station interior
- Increased bike parking

SITE PLAN

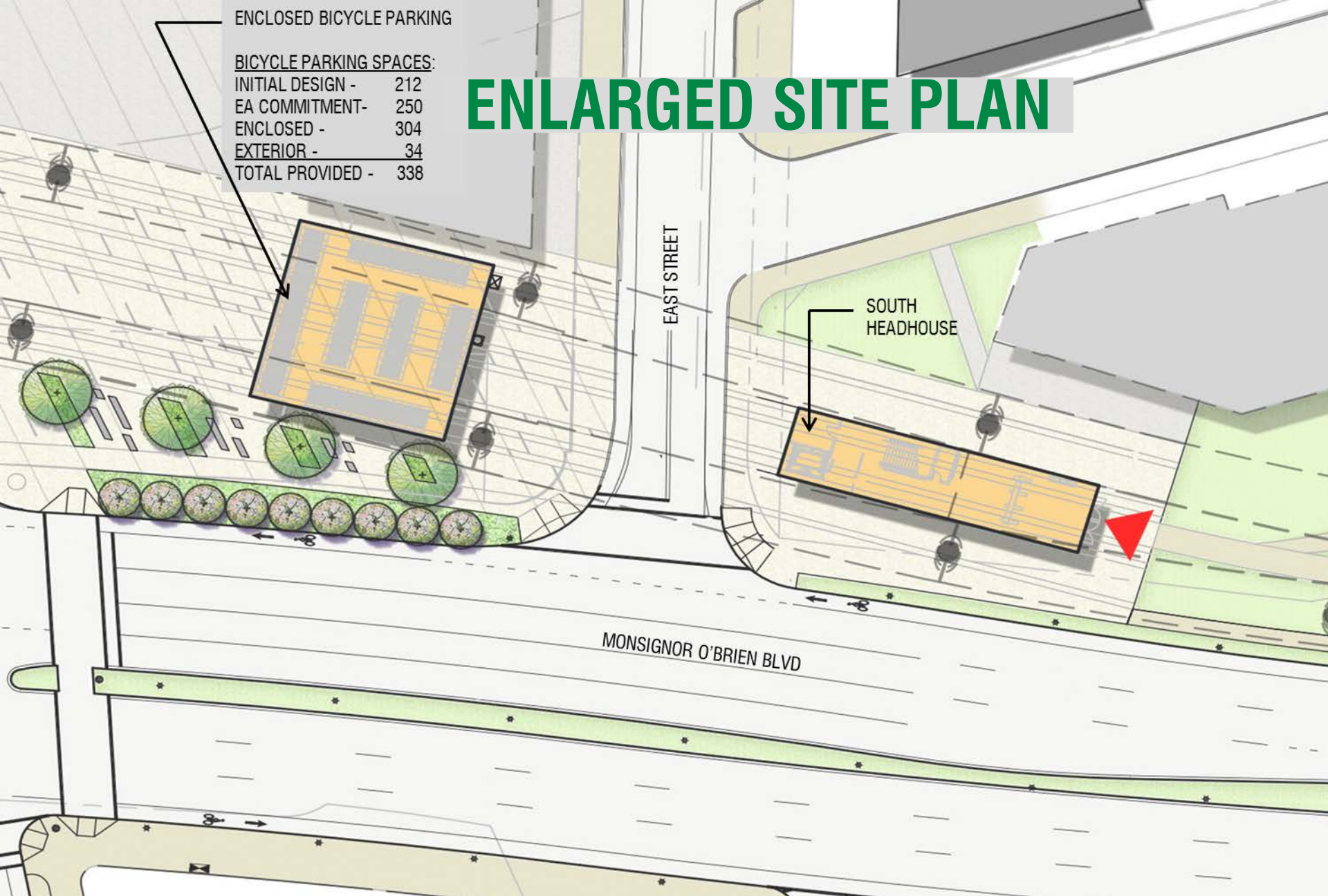


ENCLOSED BICYCLE PARKING

BICYCLE PARKING SPACES:

INITIAL DESIGN -	212
EA COMMITMENT-	250
ENCLOSED -	304
EXTERIOR -	34
TOTAL PROVIDED -	338

ENLARGED SITE PLAN



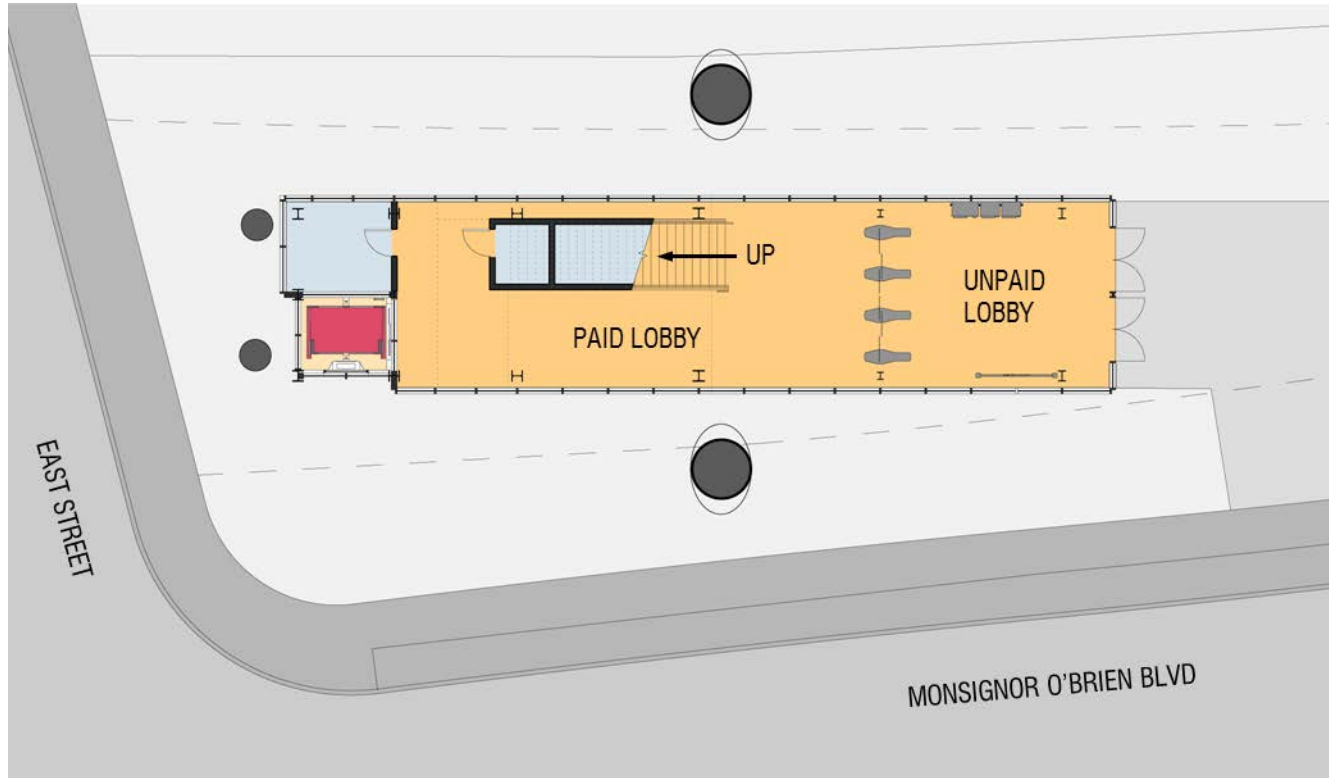
SOUTH HEADHOUSE FROM EAST STREET



SOUTH HEADHOUSE FROM O'BRIEN BLVD



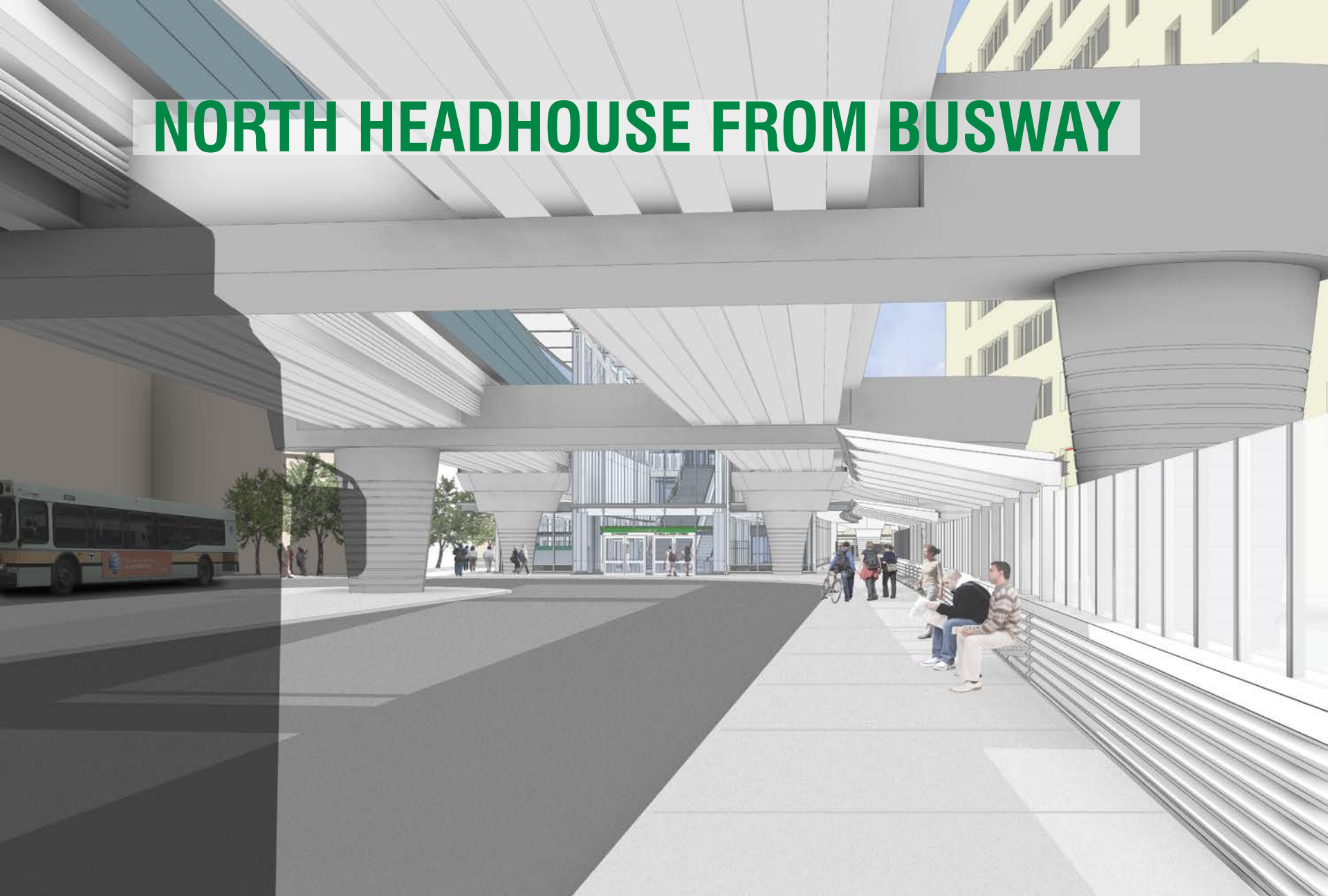
GROUND FLOOR PLAN – SOUTH HEADHOUSE



NORTH HEADHOUSE FROM ACROSS O'BRIEN BLVD



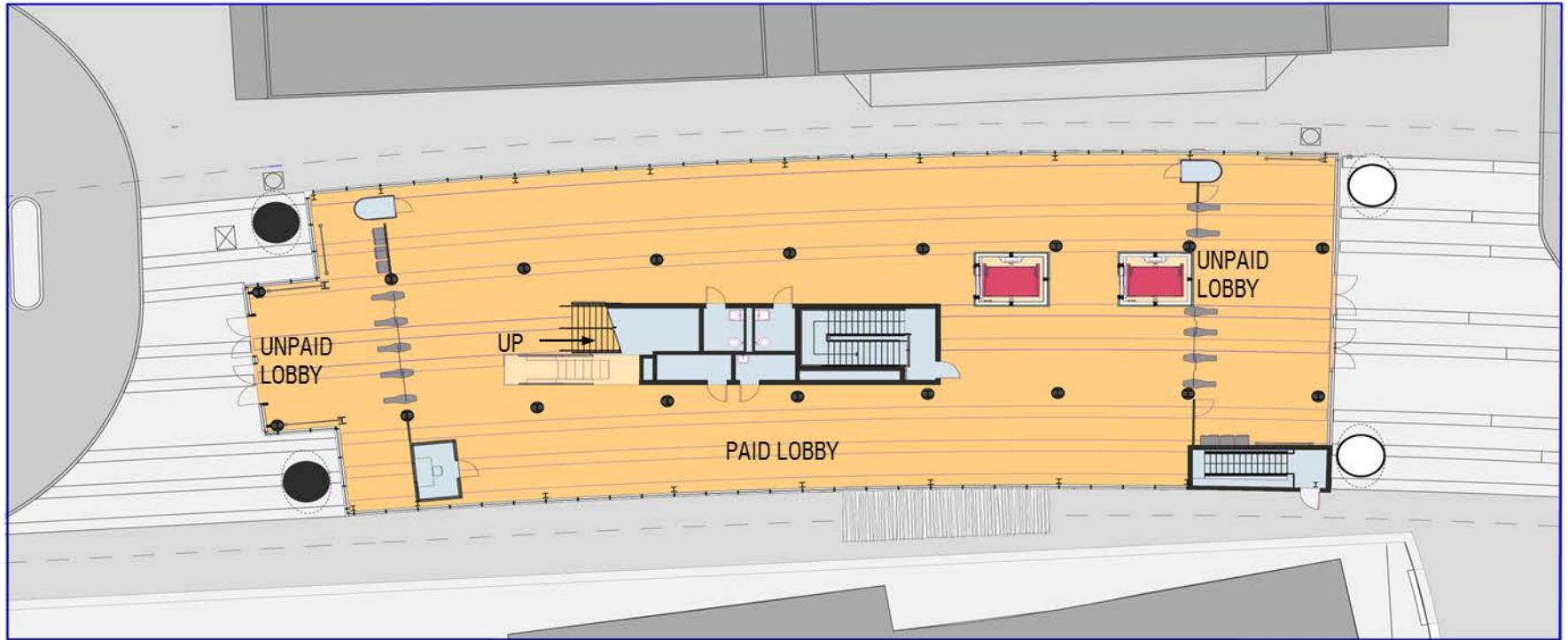
NORTH HEADHOUSE FROM BUSWAY



NORTH HEADHOUSE NORTH ENTRANCE



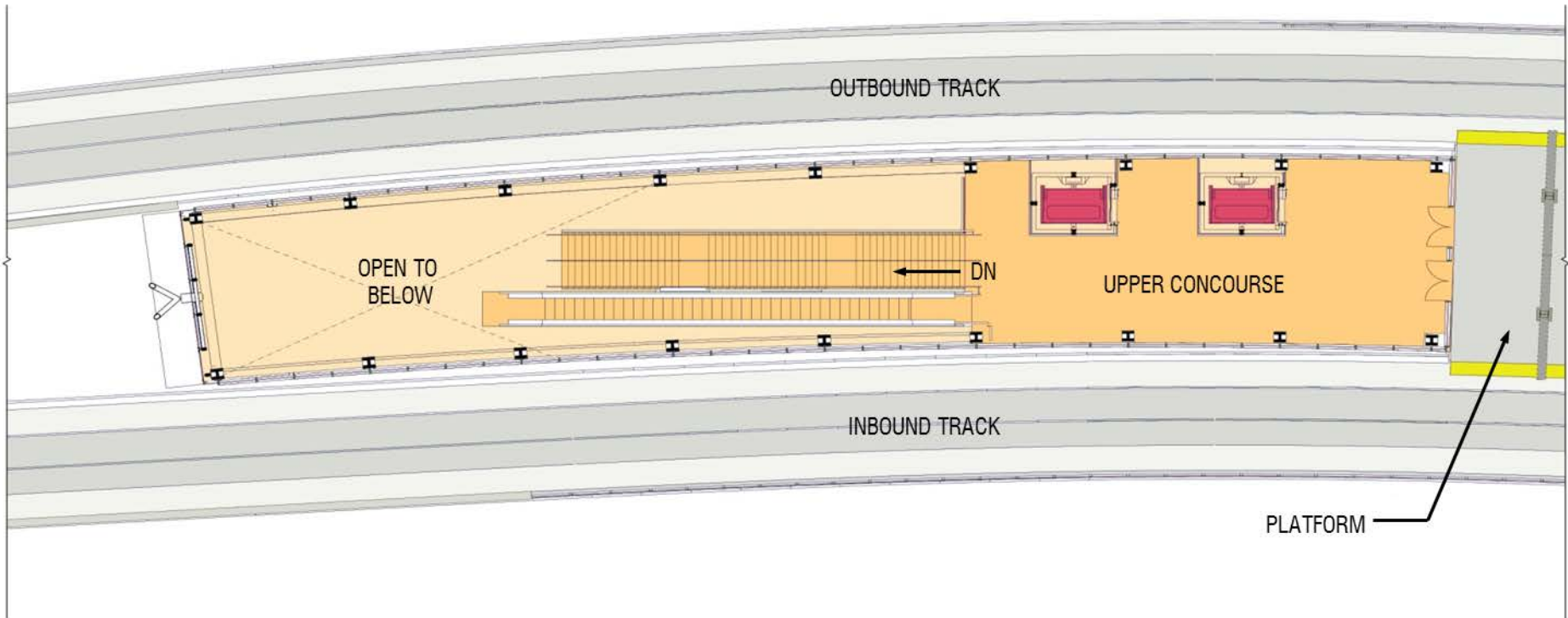
GROUND FLOOR PLAN – NORTH HEADHOUSE



NORTH HEADHOUSE AT NORTH ENTRANCE



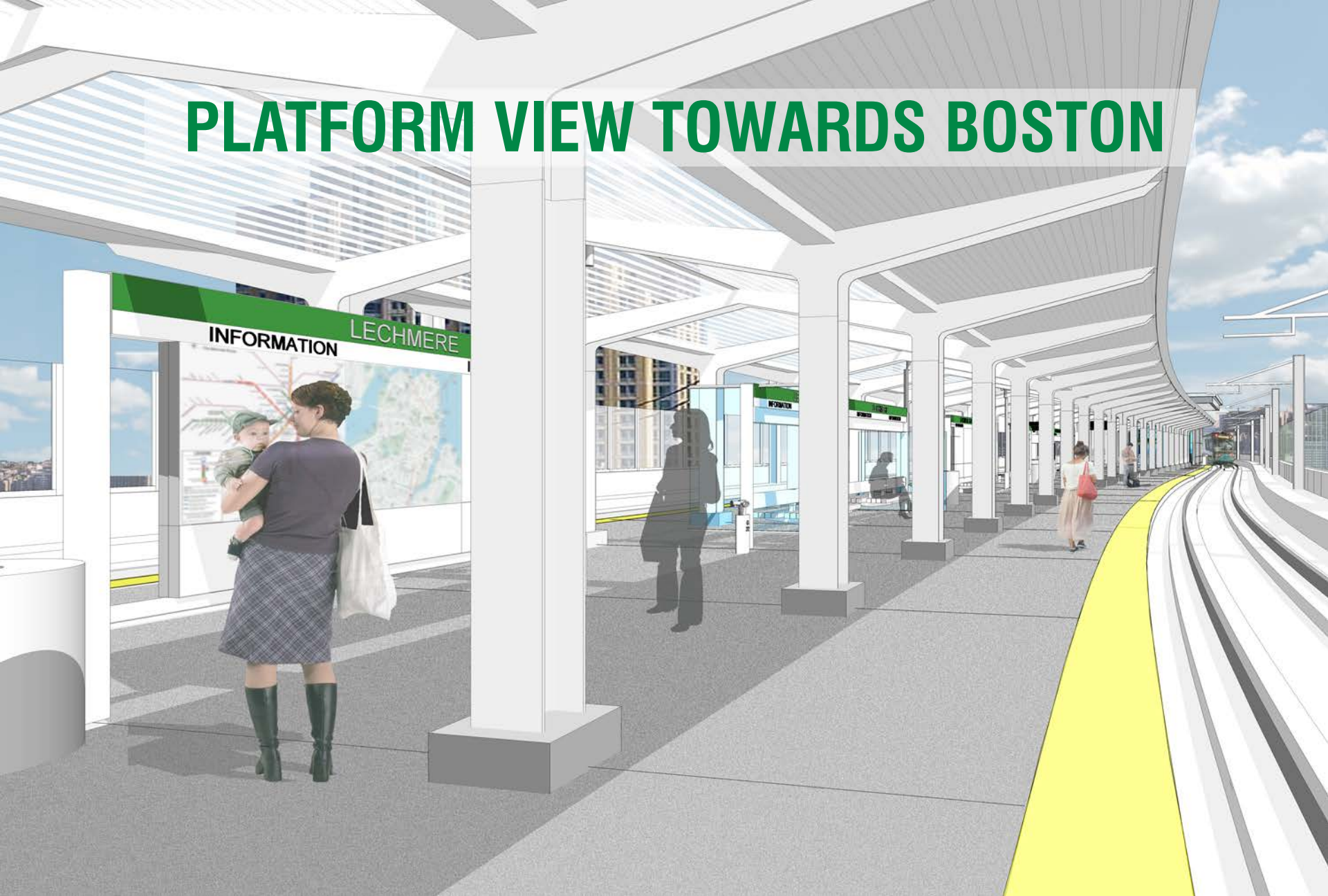
PLATFORM LEVEL PLAN – NORTH HEADHOUSE



NORTH HEADHOUSE AT PLATFORM LEVEL



PLATFORM VIEW TOWARDS BOSTON



STATION VIEW FROM WEST



SUMMARY OF DESIGN PROGRESSION



HYM/NORTHPOINT LECHMERE PLANNING UPDATE



EXISTING SITE CONDITIONS



SITE MASTER PLAN



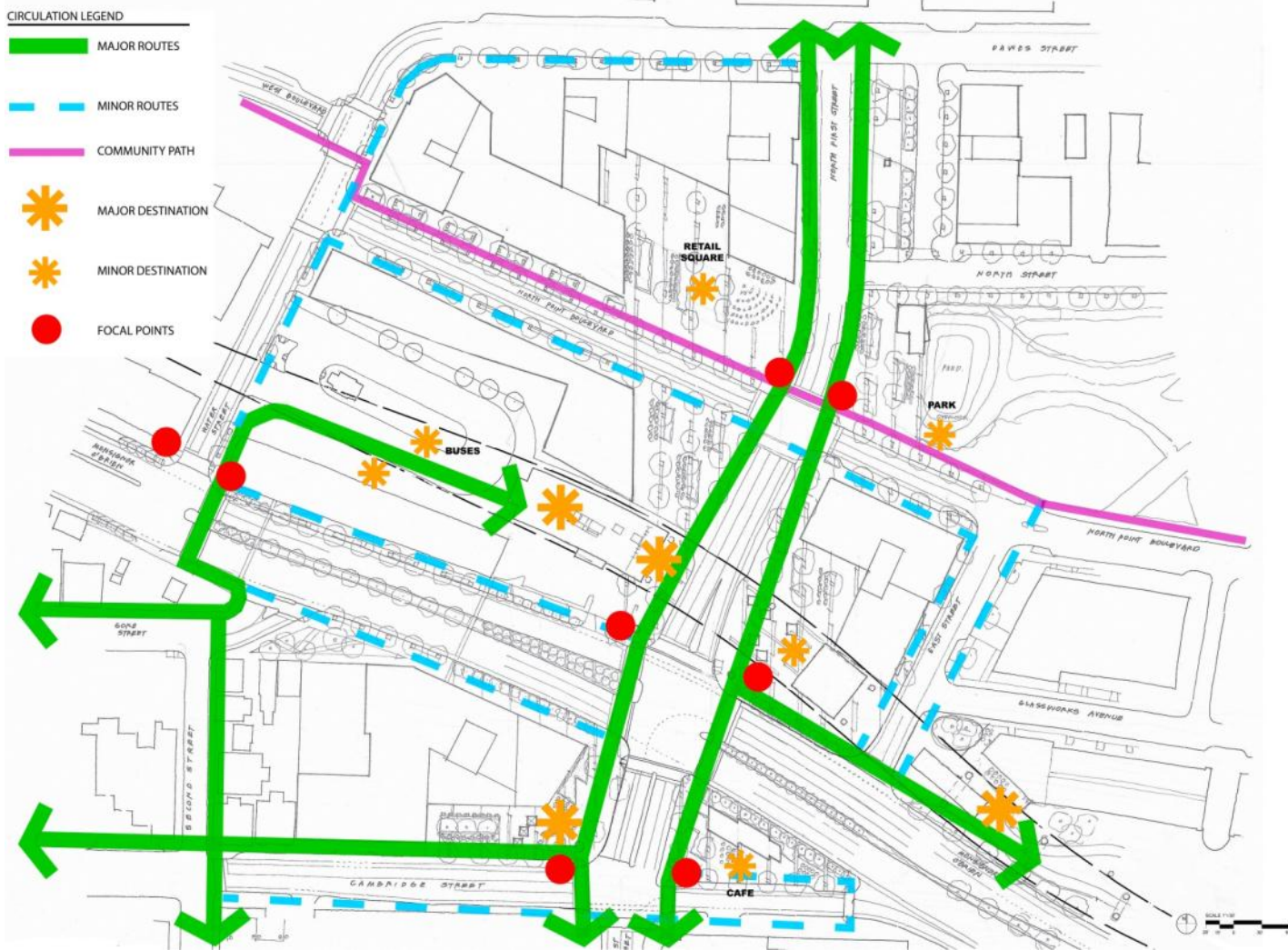
CONCEPTUAL LIGHTING PLAN



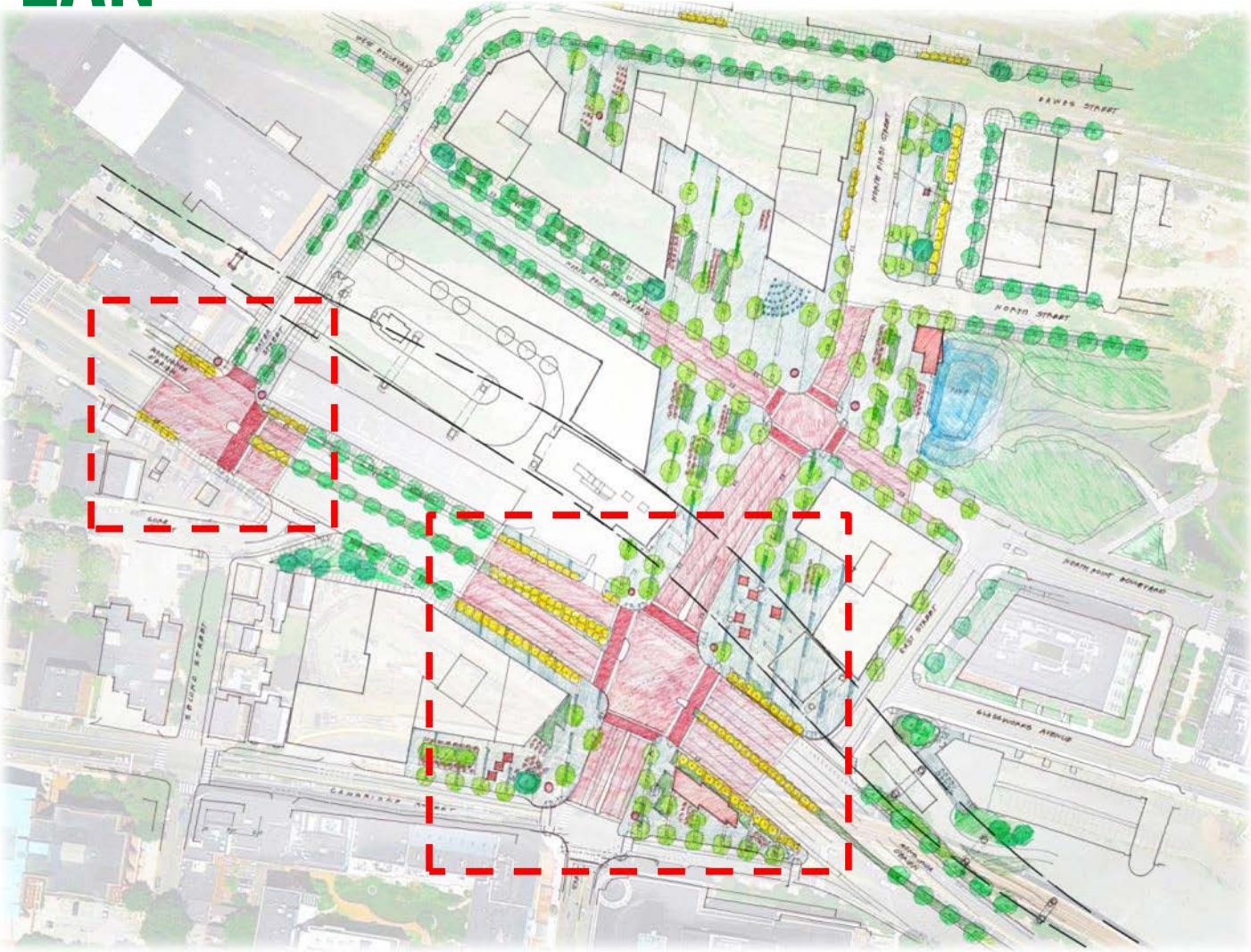
PEDESTRIAN CIRCULATION PLAN

CIRCULATION LEGEND

-  MAJOR ROUTES
-  MINOR ROUTES
-  COMMUNITY PATH
-  MAJOR DESTINATION
-  MINOR DESTINATION
-  FOCAL POINTS



SITE PLAN



WATER STREET INTERSECTION



WATER STREET INTERSECTION - EXISTING



WATER STREET CONCEPT SKETCH



FIRST STREET INTERSECTION



FIRST STREET INTERSECTION - EXISTING



FIRST STREET CONCEPT SKETCH



BOULEVARD PRECEDENT



SUMMARY

- Extension of 4-car platform
- New station entrance at East Street
- Increased bicycle parking
- Design of the Community Path from Lechmere to Washington Street
- Reduction in duration of Lechmere shutdown & temporary busing program
- Creation of a boulevard concept
- Enhanced pedestrian crossings with landscape and lighting



UPCOMING PUBLIC MEETINGS

GLX Ball Sq. Station Design Update

St. Clement School, Medford - June 3, 2013

GLX Gilman Sq. Station & Lowell St. Station Design Update

Center for the Arts at the Armory, Somerville - June 4, 2013

GLX Washington St. & Union Sq. Station Design Update

Holiday Inn, Somerville - June 11, 2013

GLX Lechmere Station Design Update

Cambridge Multi Cultural Arts Center - June 18, 2013

College Ave. Station Design Update

St. Clement School, Medford June 20, 2013



GREEN LINE EXTENSION PROJECT

COMMENTS/QUESTIONS?



massDOT
Massachusetts Department of Transportation



LECHMERE STATION
JUNE 18, 2013