

# Green Line Extension Project

## “Station Design Workshop” Lechmere Station

Cambridge, MA

June 29, 2011

6:00 PM – 8:00 PM



# Agenda for Tonight

## Project Overview

- Introductions
- GLX Overview Presentation
- Goals and Objectives of Workshop
- Station Presentation

## Breakout Groups

- Station Design
- Urban Design
- Community Concerns

## Reconvene into larger group

- Share thoughts/ideas of breakout groups
- Wrap-up & Next Steps



# WELCOME & INTRODUCTIONS



# Station Design Workshop

**College Avenue**

**Tufts University  
51 Winthrop Street  
Medford, Ma**

**June 7**

**Ball Square**

**Somerville High School  
Cafeteria – 81 Highland Avenue  
Somerville, MA**

**June 9**

**Lowell Street**

**Somerville High School  
Cafeteria**

**June 13**

**Gilman Square**

**Somerville High School  
Cafeteria**

**June 15**

**Union Square**

**Cummings Elementary School  
42 Prescott Street  
Somerville**

**June 22**

**Washington Street**

**Holiday Inn  
30 Washington Street  
Somerville**

**June 23**

**Lechmere**

**Kennedy/Longfellow School  
158 Spring Street  
Cambridge, Ma**

**June 29**



# Upcoming Public Meetings

- **Brick bottom Area Meeting – Summer 2011**
- **Community Path Workshop – Fall 2011**
- **Maintenance Facility – Fall 2011**
- **Corridor Retaining Walls & Noise & Vibration Mitigation – Fall 2011**
- **Station Design Meetings – Fall 2011**
- **Federal Environmental Review Public Process – Summer/Fall 2011**

## **Note:**

- **MAPC Rte. 16 Mystic Valley Parkway ongoing separate Community Process**



# Why Are We Here Tonight?

## To Talk About GLX Station Design

- To listen to your thoughts about the needs and priorities of your community and how they affect the design of your station
- To discuss the operational needs of the Green Line
- To discuss layout of the station & surrounding site
- To begin discussions on architectural treatments



# Discussion Guidelines

- Respect all speakers
- One speaker at a time
- We want to hear from all participants
- Moderator will enforce the guidelines
- Thanks for your cooperation, patience and comments



# Breakout Group Site Discussion Points

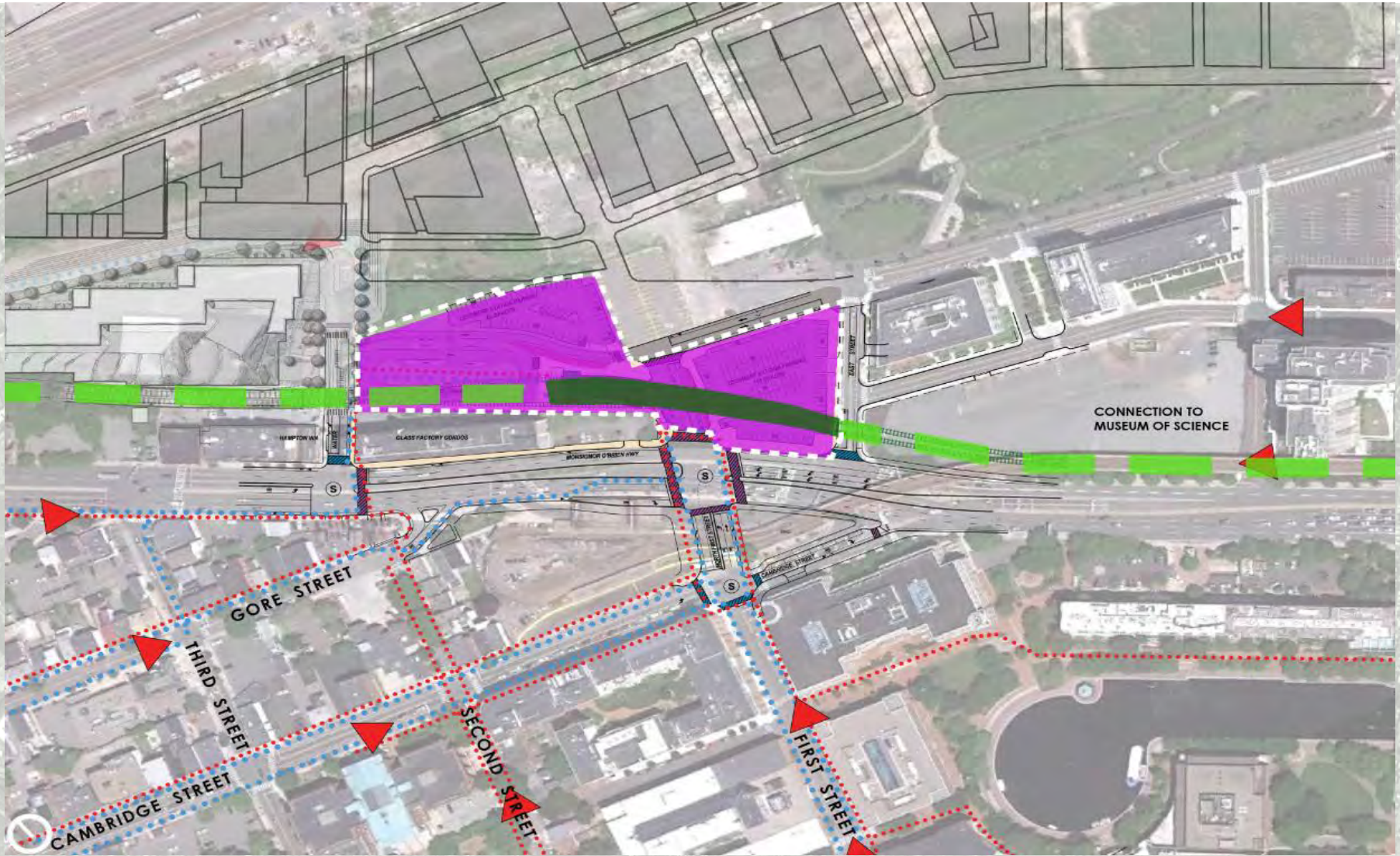
1. **Station Design**
2. **Urban Design**
3. **Community Concerns**

## Potential Topics

- Pedestrian Traffic Flow/Connections
- Vehicular Routing and Drop off
- Bus Connections
- Community Path Connections
- Platforms/Buildings
- Aesthetics/Visual Character/Materials
- Safety/Security
- Accessibility
- Station Amenities
- Other Neighborhood or Community Concerns
- General Issues for Discussion



# Lechmere Station



# Planning History

- 1962: *North Terminal Area Study*
- 1973: *Boston Transportation Planning Review Northwest*
- 1981: *Green Line Northwest Project Study*
- 1984: *Beyond Lechmere Alternatives Evaluation Report*
- 1990's: Central Artery/Tunnel Project Transit Commitments and State Implementation Plan (SIP) for air quality conformity
- 2005: MBTA *Beyond Lechmere (MIS/AA)*
- 2006: MassDOT (formerly EOT) *EENF* for Green Line Extension to Medford
- 12/2006: Secretary of the Executive Office of Energy and Environmental Affairs (EEA formerly EOEA) issued a certificate requiring the preparation of a Draft Environmental Impact Report (DEIR)



# Planning History

- 10/2009: MassDOT DEIR/EA for Green Line Extension
- 01/2010: Secretary of EEA issued a certificate requiring the preparation of a limited scope FEIR for the Proposed Action
- 06/2010: MassDOT FEIR for Green Line Extension Project
- 07/2010: Secretary of EEA issued a final certificate stating the project adequately and properly complies with MEPA requirements
- Summer 2011: Anticipated EA filing



# Green Line Extension Project

**Extend Green Line from  
Lechmere Station to  
Somerville, Medford in order to:**

- Improve regional air quality
- Improve corridor mobility and regional access
- Boost transit ridership
- Ensure equitable distribution of transit services
- Support opportunities for smart growth initiatives and sustainable development



# Green Line Extension Program Elements

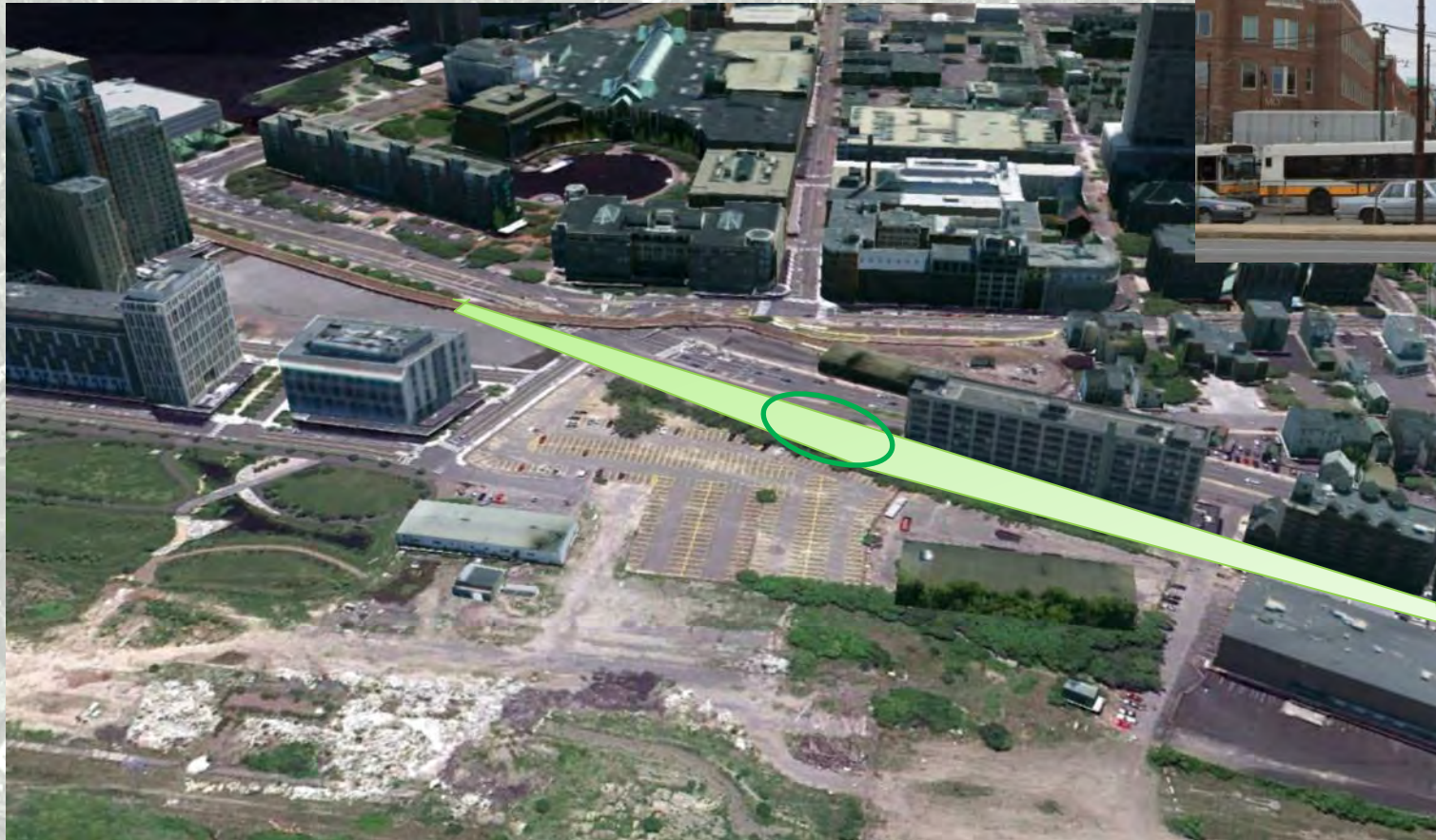
- Seven Stations
- Maintenance Facility
- 3.4-mile Medford Line
- 0.9-mile Union Square Branch
- Community Path Design



# Project Design Upcoming Milestones

- Preliminary Engineering and Design/Build Bid Package
  - February 2011 – Dec. 2011
- Design/Build Procurement Goals
  - RFQ – Fall 2011
  - Shortlist D/B Teams – Fall 2011
  - RFP – Winter/Spring 2012
  - Award – Summer 2012

# Lechmere Station



# Lechmere Station





# Lechmere Station



View from the south from the Museum of Science parking garage



View from the south at East Street

# Views from the Neighborhoods



View along First Street



View from North Point Park



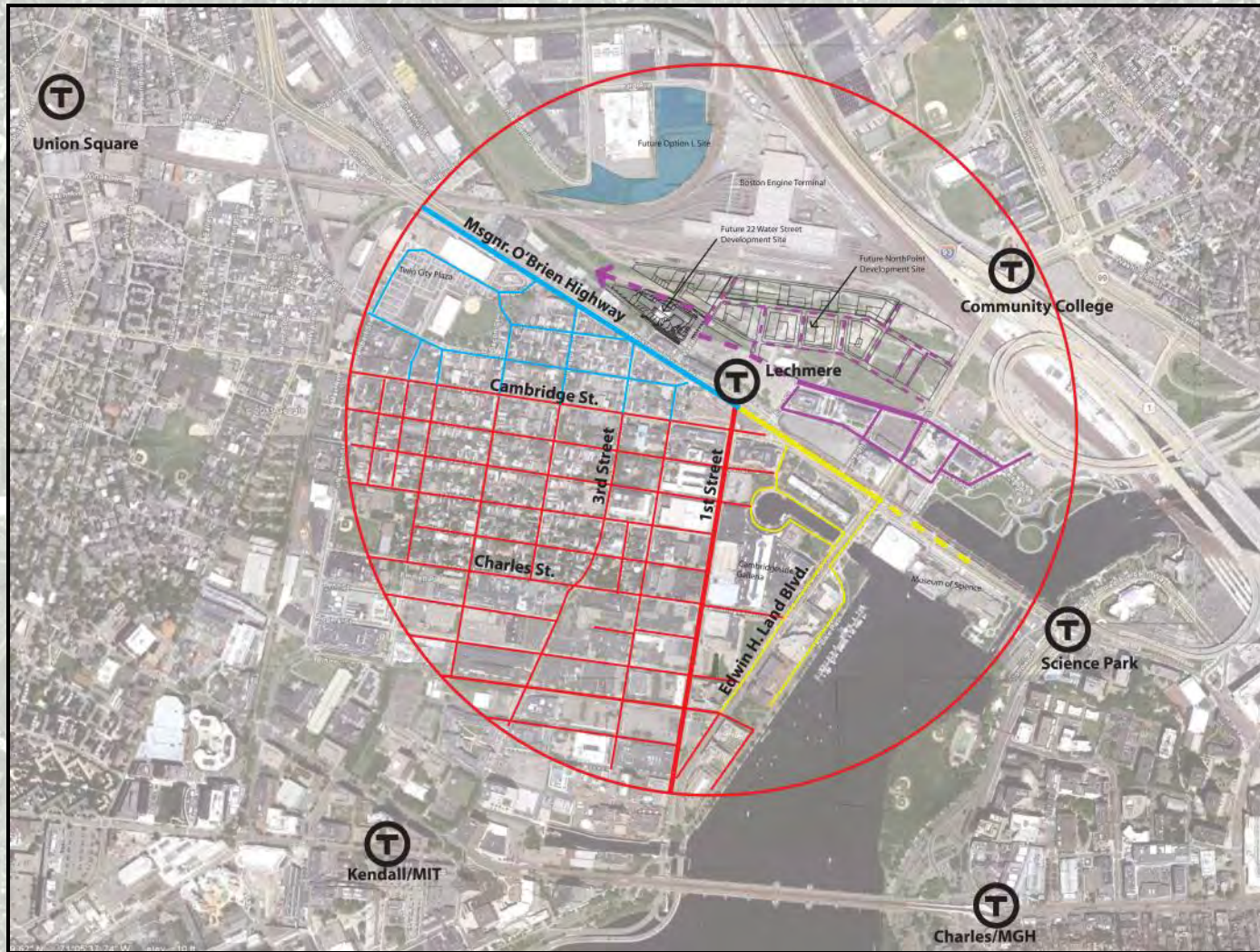
View beneath existing viaduct



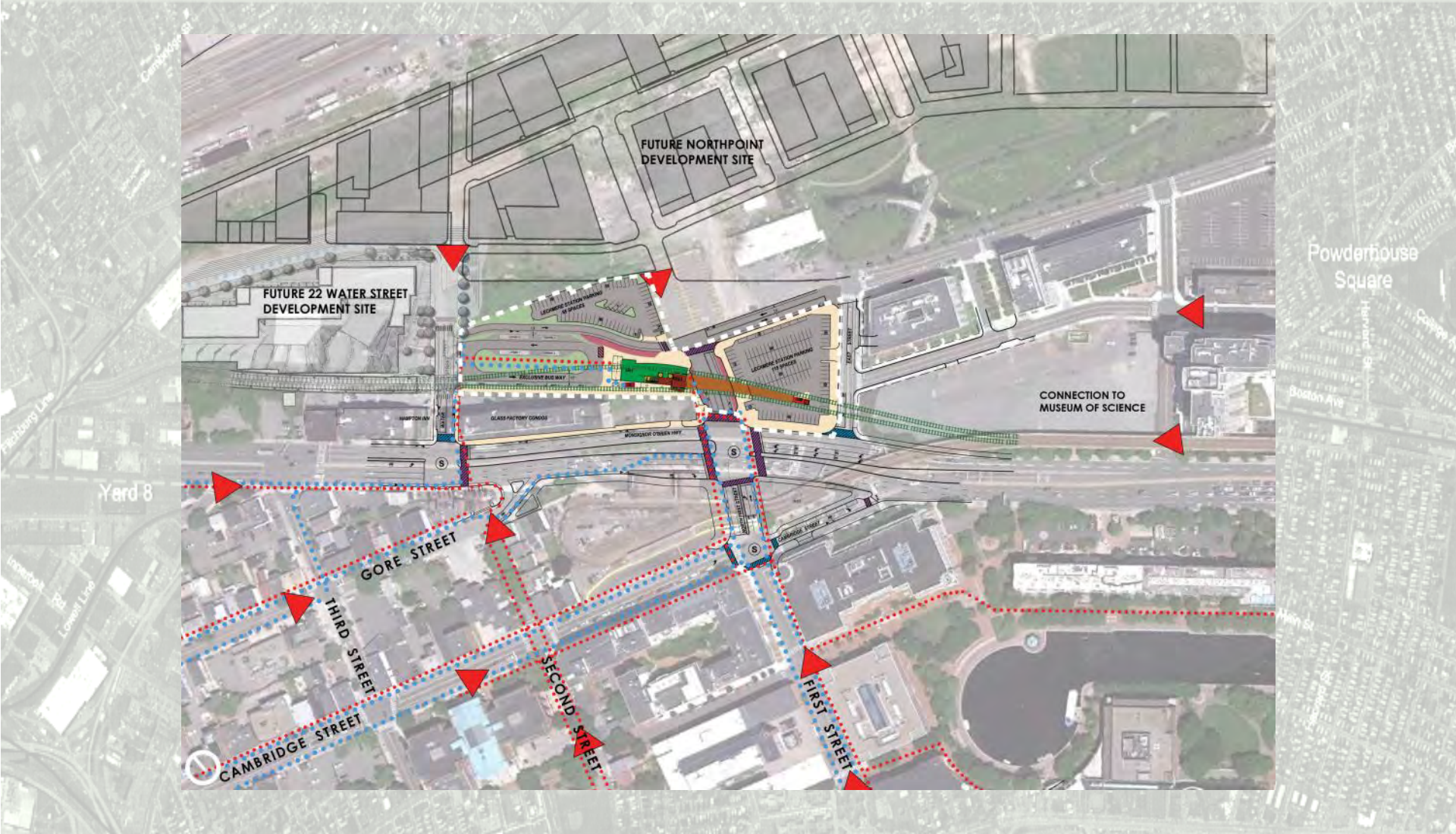
View behind Glass Factory



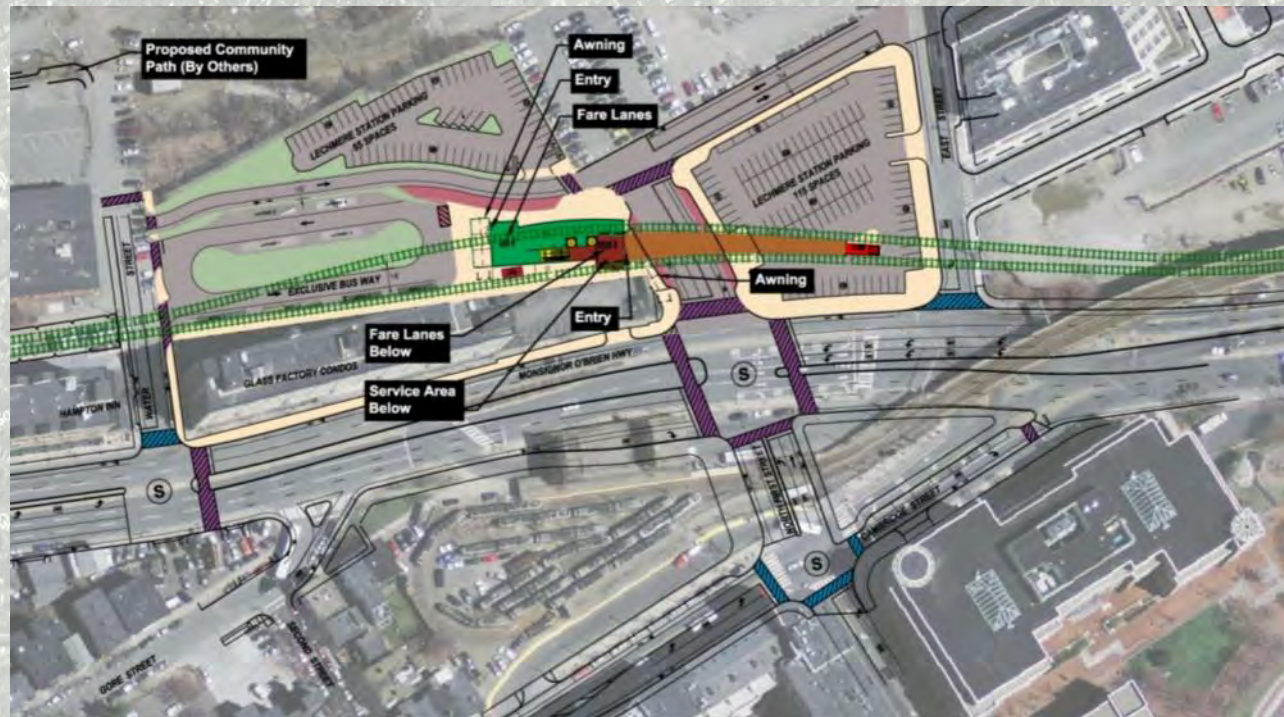
# Neighborhood Access Diagram



# Lechmere Station

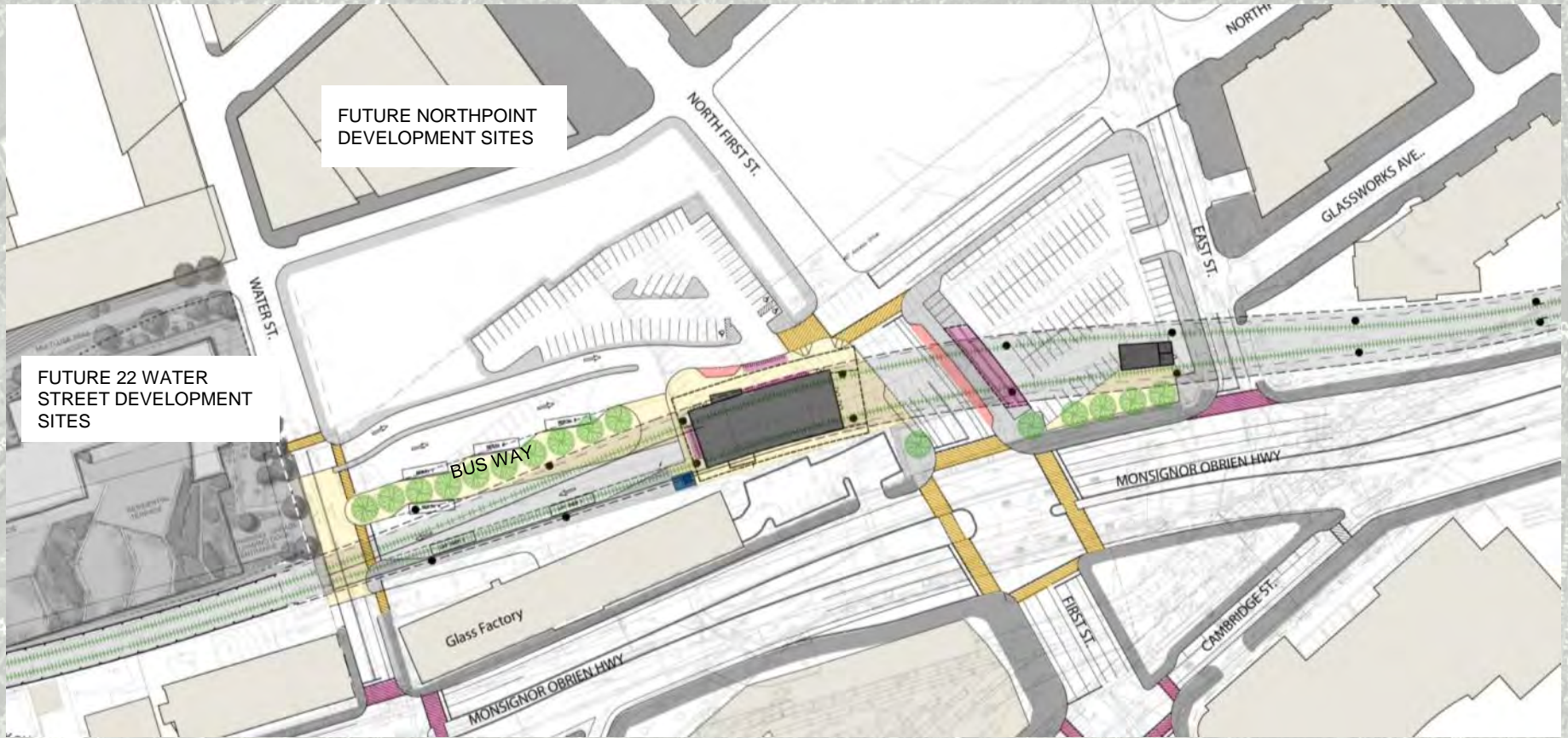


# Community Concerns & Environmental Assessment Document



- Pedestrian crossing at Monsignor O'Brien Highway
- Station designed to face the neighborhood
- Adequate bicycle parking
- Access from Water Street

# Lechmere Station



FUTURE NORTHPOINT DEVELOPMENT SITES

FUTURE 22 WATER STREET DEVELOPMENT SITES

Note:  
22 Water St. and North Point proposed plans are previously published conceptual designs included for coordination purposes only.

	Existing Sidewalks		Plaza		Existing Crosswalk
	Proposed Sidewalks		Kiss-N-Ride		Proposed Crosswalk
	Transformer		Vegetation		Bike Parking



# Lechmere Station



house  
are



# Lechmere Station



**Legend**

	MTA Bus Stop		Platform		MTA "THE 900C" Parking
	Proposed Traffic Signal		Upper Level Lobby		Wall
	Bicycle Storage		Lower Level Lobby		
	Existing Crosswalk		Service Area		
	Proposed Crosswalk		Stairs, Elevators, Escalators, Ramps		
	Pick-Up/Drop-Off Area		New Sidewalk		
	Emergency Egress		New Landscaping		



Green Line Extension Project

Figure 4.4-3  
Lechmere Station  
Site Plan





# Lechmere Station

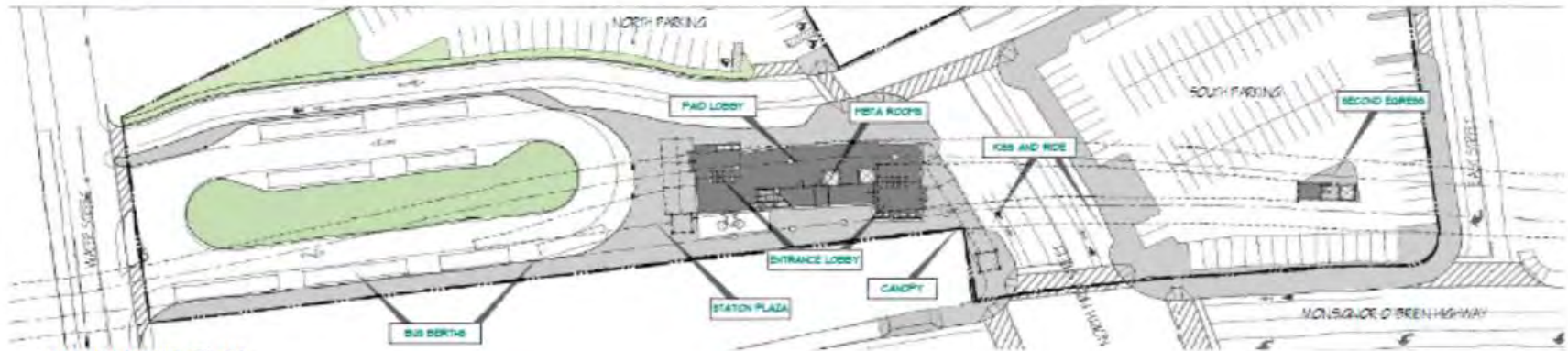
CROSS SECTION LOOKING SOUTH



PLATFORM LEVEL PLAN



STREET LEVEL PLAN

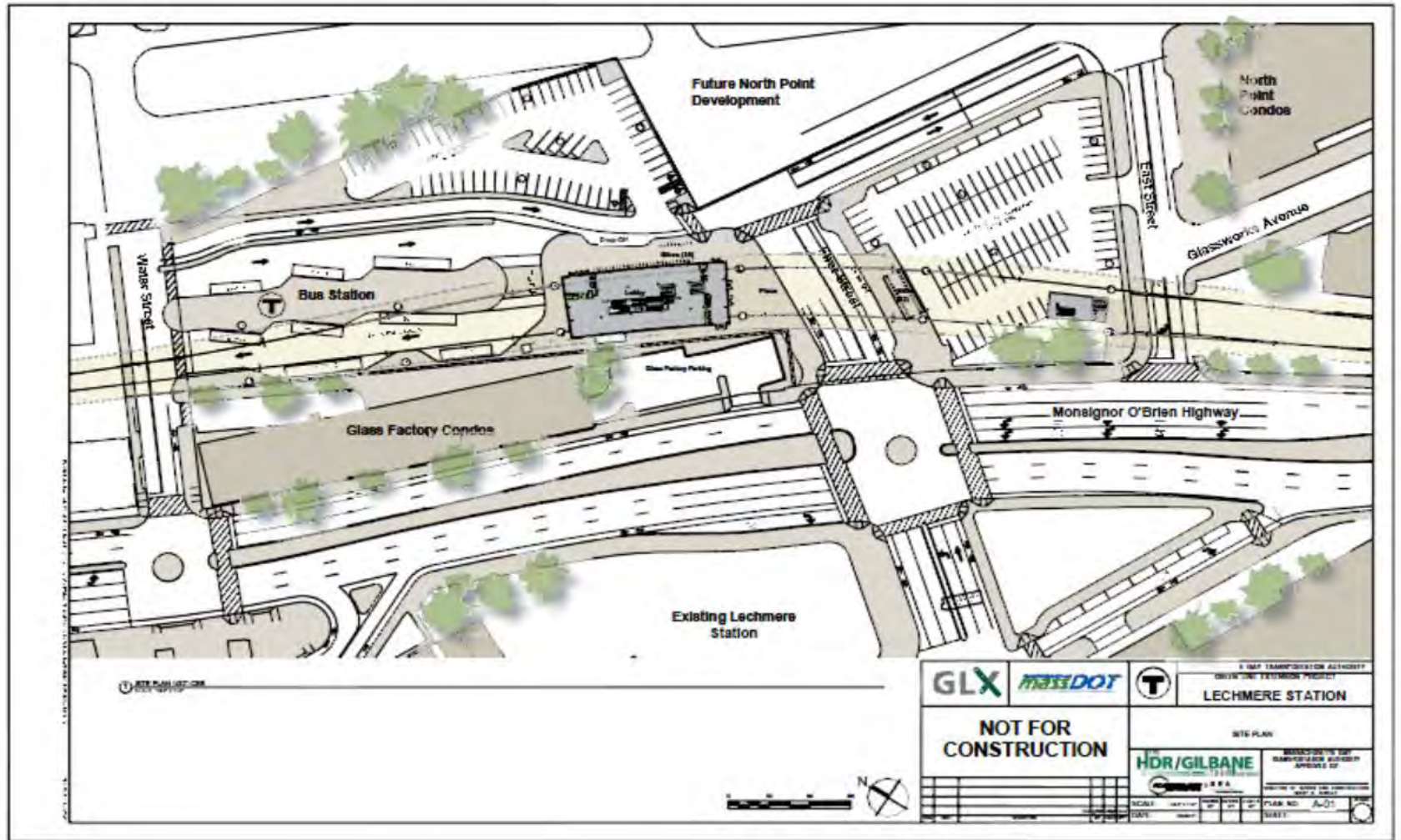


LECHMERE STATION

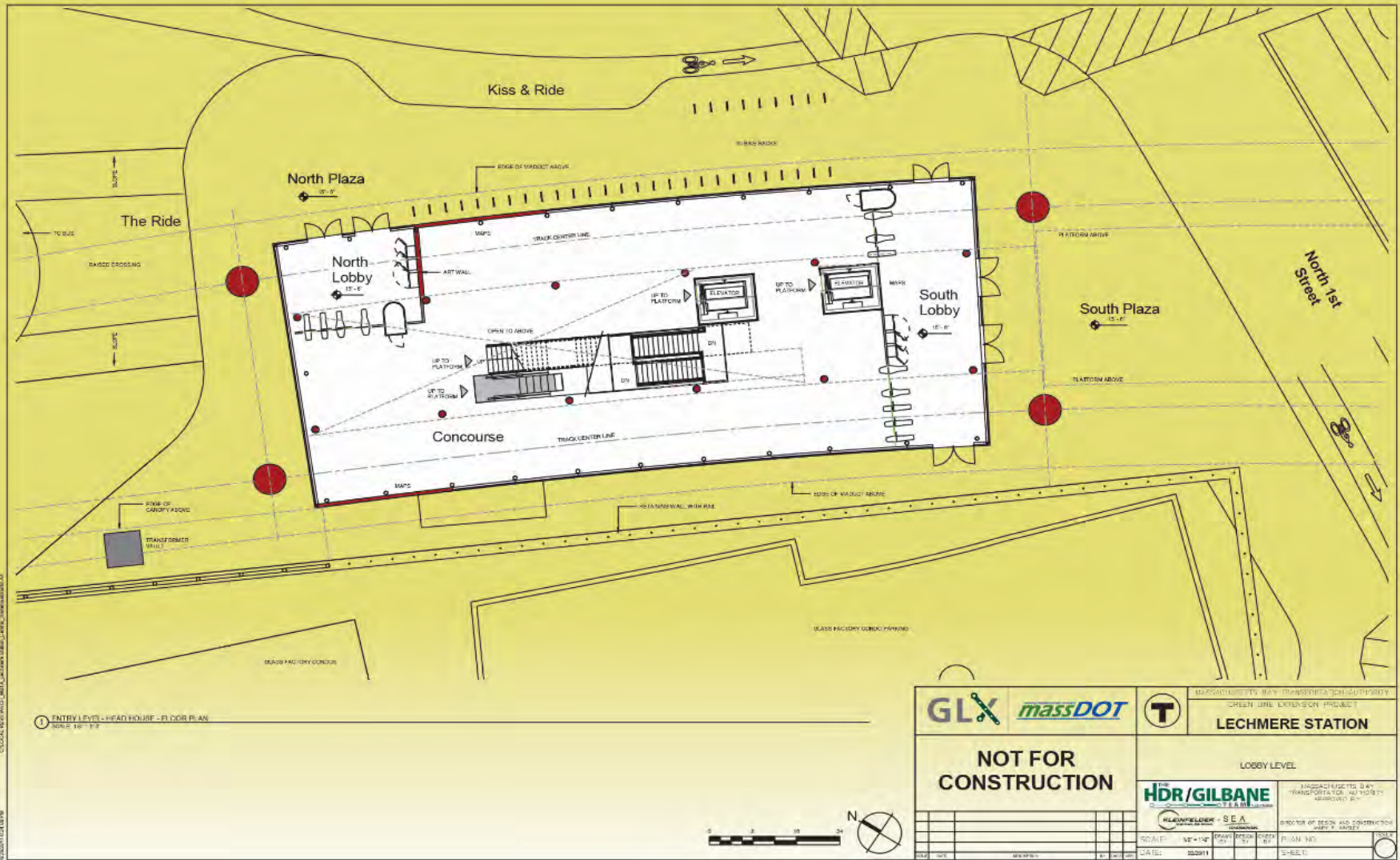
SEPTEMBER 2010  
INFORMATIONAL MEETINGS AT  
SOMERVILLE AND MEDFORD



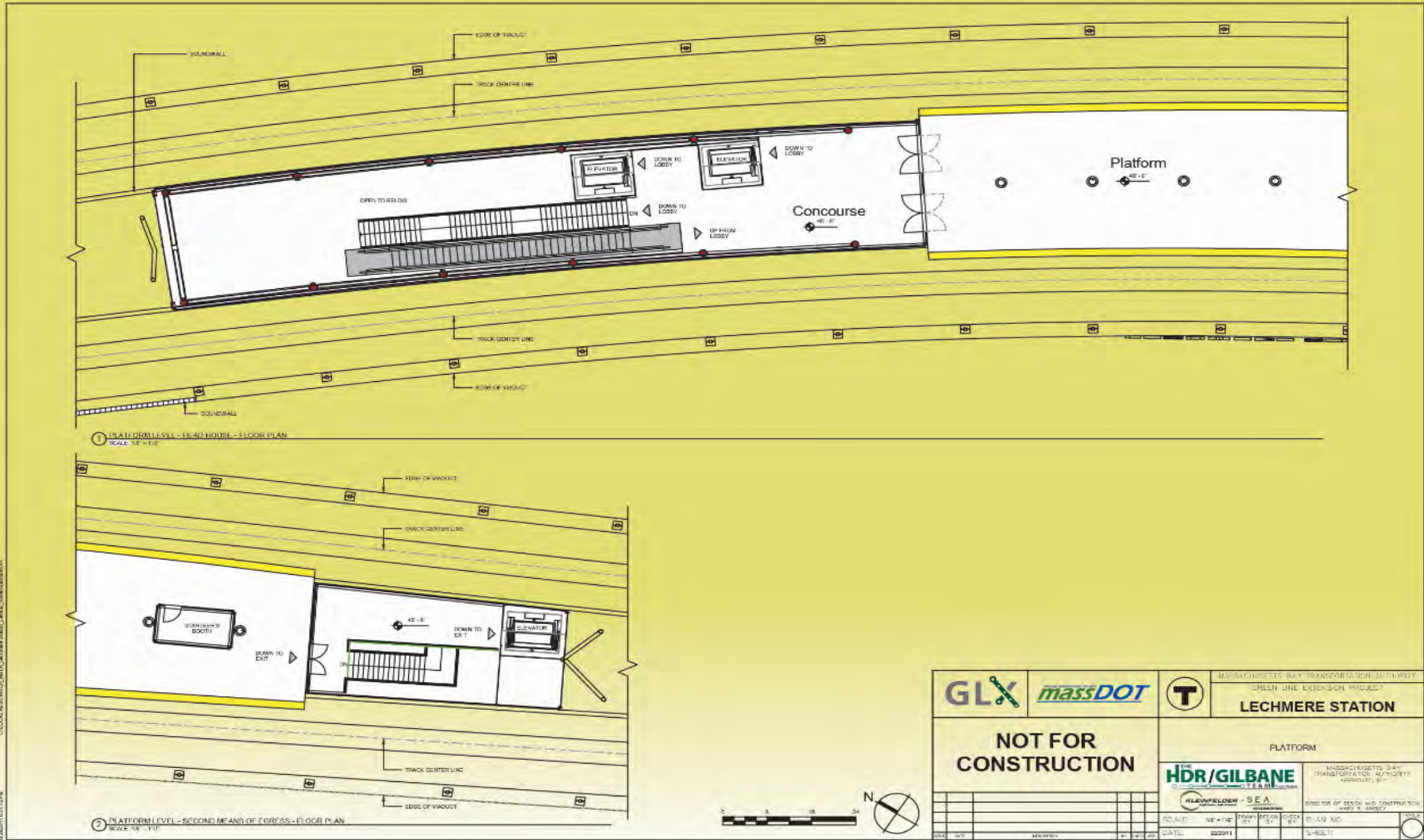
# Lechmere Station



# Lechmere Station



# Lechmere Station



			MASSACHUSETTS BAY TRANSPORTATION AUTHORITY GREEN LINE EXTENSION PROJECT <b>LECHMERE STATION</b>	
			PLATFORM	
<b>NOT FOR CONSTRUCTION</b>				
			MASSACHUSETTS BAY TRANSPORTATION AUTHORITY GREEN LINE EXTENSION PROJECT 13-AD HOUSE - SECOND MEANS OF EGRESS - FLOOR PLAN	
DATE: 02/20/11			DRAWN BY: [ ] CHECK BY: [ ] TITLE: [ ]	



# Next Steps



**Future Meetings to  
continue your involvement  
in the development of the  
Stations**

**Fall 2011**



# Next Steps

- **Brick bottom Area Meeting – Summer 2011**
- **Community Path Workshop – Fall 2011**
- **Maintenance Facility – Fall 2011**
- **Corridor Retaining Walls & Noise & Vibration Mitigation – Fall 2011**
- **Station Design Meetings – Fall 2011**
- **Federal Environmental Review Public Process – Summer/Fall 2011**

## **Note:**

- **MAPC Rte. 16 Mystic Valley Parkway ongoing separate Community Process**

