

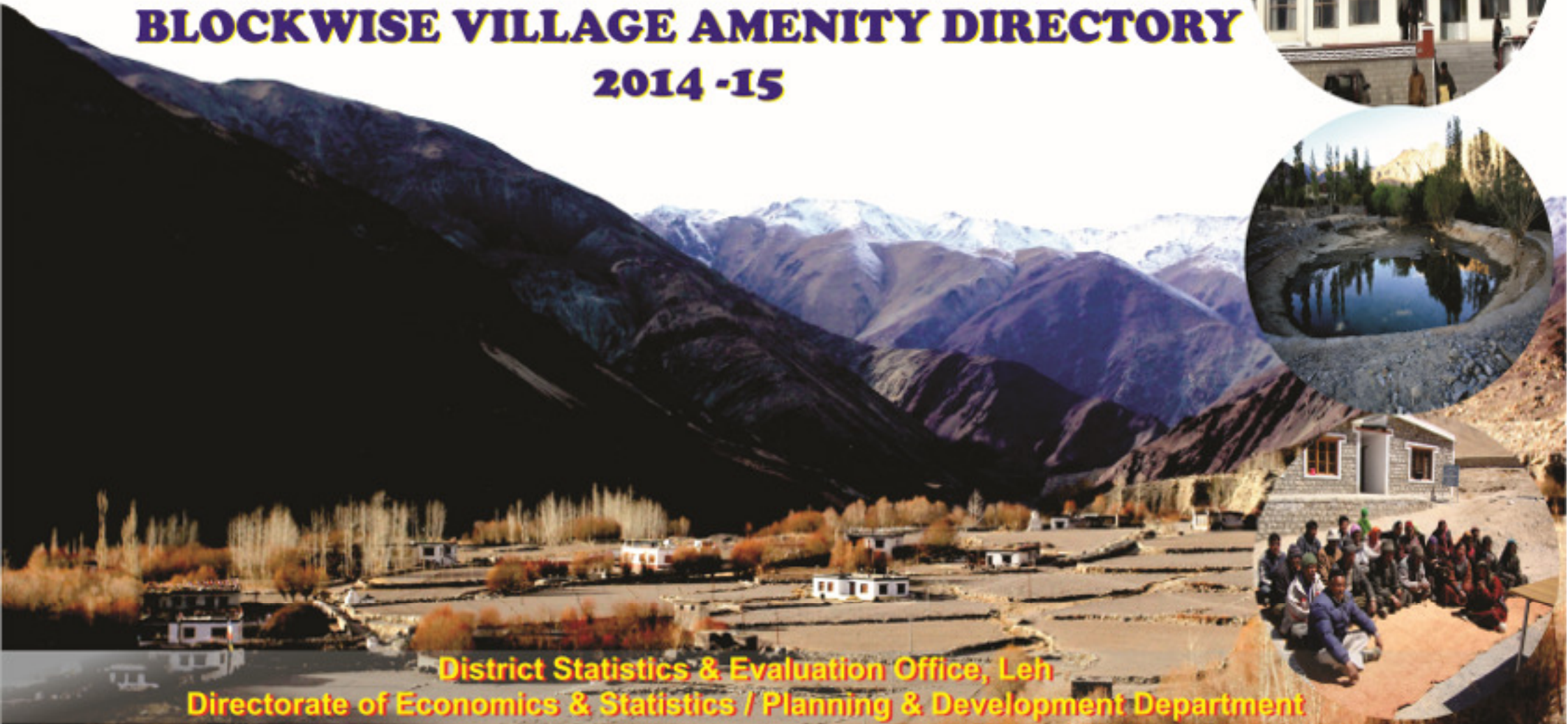


SERIES: 16

**GOVERNMENT OF JAMMU & KASHMIR**  
**Ladakh Autonomous Hill Development Council Leh**



**BLOCKWISE VILLAGE AMENITY DIRECTORY**  
**2014 -15**



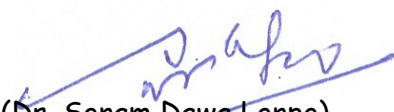
**District Statistics & Evaluation Office, Leh**  
**Directorate of Economics & Statistics / Planning & Development Department**

## MESSAGE

I am glad to learn that the District Statistics and Evaluation Agency Leh is publishing its Annual Publication viz, Village Amenity Directory of District Leh for the Year 2014-15 which is 16<sup>th</sup> in the series.

The publication presents the Block wise and Village wise population, area and basic amenities available in each village of the District.

I hope the publication will be of immense use to the planner, researchers and all other alike and I extend my best wishes to the District Statistics and Evaluation Officer, Leh and his staff who were associated in bringing out this broad based Annual Publication.



(Dr. Sonam Dawa Lonpo)  
Chairman/ Chief Executive Councillor  
LAHDC Leh



## FOREWORD

Availability of reliable and accurate data forms the basis for proper monitoring and evaluation of socio economic policies and development programs.

New challenges are countenanced on the data front. Therefore, strengthening of data collection mechanism at various levels become highly imperative. The enactment of the “Collection of Statistics Act, 2010” has made it obligatory on the part of data source agencies to provide requisite data to the Directorate of Economics and Statistics and its field agencies on demand.

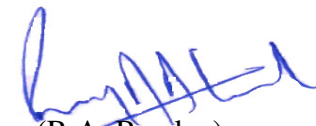
The Directorate of Economics & Statistics and its field agencies (District Statistical Agencies) are charged with the responsibility of collecting, compiling, analyzing and disseminating data in the shape of various publications/reports. Constituency-wise **Village Amenity Directory** is one of the premier district level publications of Directorate of Economics & Statistics. The publication provides insight of key parameters relating to socio-economic & demographic profile of the district with village wise details.

District Statistical Agency, Leh is publishing its 16<sup>th</sup> edition of the aforesaid publication for the year 2014-15. I place on record my appreciation for the co-operation extended by the district level officers for providing the requisite information to the District Statistics & Evaluation Officer, Leh in time.

It is hoped that this publication will meet data requirements of its users in general and that of the planners, administrators and researchers etc.in particular.

The efforts put in by **District Statistics &Evaluation Officer, Leh and the staff** associated, in bringing out this publication in its present form are highly commendable.

Suggestions for further improvement in the quality, coverage and content of the publication are welcome.




(R.A. Banday)  
Director General  
Economics and Statistics  
Jammu & Kashmir

## **FOREWORD**

The present issue of Village Amenity Directory of District Leh for the year 2014-15 is 16<sup>th</sup> in the series. The booklet gives a handy and factual account of various Amenities in the Villages. The District Statistics and Evaluation, cell has rendered a very useful service in the collection, compilation and editing of important data. The compilation of Village Amenity Directory by the District Statistical Agency Leh is a laudable effort. I have no doubt that it will serve as a useful reference book of a basic Statistics at District, Block and Village level.

I hope the publication will be of immense use to the planners, researchers and all other users and I compliment the District Statistics & Evaluation Officer, Leh and his staff who were associated in bringing out this booklet.

  
8/3/14  
(Prasanna Ramaswamy G) IAS  
Deputy Commissioner/CEO  
LAHDC, Leh.

## **PREFACE**

It is important to have adequate reliable information on the amenities available to the people of District Leh which can serve as a basis for policy formulation and programme planning in the field. This booklet 15<sup>th</sup> in the series presents a concise form for easy reference, which gives diverse type of basic amenities available in each village of the District, has been compiled for the reference period as on ending March 2015. The issue of Amenity Directory, which is prepared block-wise, gives a handy and factual account of basic amenities available in all the villages of Leh District.

I hope the publication will be useful to planners, policy makers, researchers and all other users in knowing about the amenities available in the villages.

The suggestion for further improvement in the future issues of the publication will be appreciated.



(Tashi Tundup)

District Statistics and Evaluation Officer,  
Leh

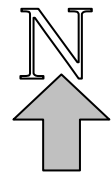
## CONTENT

<b>S.No</b>	<b>Description</b>	<b>Page No.</b>
1.	Leh Block	1-6
2.	Nimoo Block	7-12
3.	Saspol Block	13-18
4.	Khaltsi Block	19-24
5.	Skurbuchan	25-30
6.	Singaylallok HQ at Wanla	31-36
7.	Chuchot Block	37-42
8.	Thiksay	43-48
9.	Kharu Block	49-54
10.	Nyoma Block	55-60
11.	RongChugut HQ at Chumathang Block	61-66
12.	Rupshow HQ at Puga Block	67-72
13.	Durbuk Block	73-78
14.	Diskit Block	79-84
15.	Turtuk Block	85-90
16.	Panamic Block	91-96
17.	Leh Town	97-102

**MAP OF**  
**LEH DISTRICT**



Chinese  
Occupied  
Ladakh





## LEH TOWN

Leh, as the capital is the only town of the district. The town is comprised of 21 wards under the supervision of Municipal Committee, Leh. The population of the town is 30870 souls as per census 2011 which is comprised of 1697 souls of (0-6 yrs). Literacy rate of the town is 90% as per census 2011. Sex ratio is 425 females per 1000 males. Over the past few years, tourism Sector has developed to a greater extent. The town has large nos. of Hotels, Guest Houses, Restaurants, Shops & Travel Agencies which has become an important source of income for the people of Leh. Large no. of unemployed youths are being absorbed in the tourism sector. The people of the town are also engaged in agriculture production ie, vegetable, Food grain & other non food productions. The monastery of Sankar, Shanti Stupa & Leh palace, which was built in the 17<sup>th</sup> century are the main tourist attracting places in the town. Jama Masjid of Leh is also an important place of worship having great historic & religious significance.

For the purpose of education there is one Degree college, one Polytechnic College, one ITI center, 2 Higher Sec. Schools, 1 High school and 10 other educational institutions run by the State government and number of private educational institutions run by different NGOs and societies. To provide health facilities there is one Govt. hospital namely SNM hospital, one General Hospital run by the army and few other medical institutions run by the NGOs like Ladakh Heart Foundation & Men Tsee Khang.

### **LEH BLOCK**

Block Leh is the oldest block of the district, which was established in the year 1954 comprising 13 census villages. After the creation of 7 new blocks in the District in 2014, Leh is now comprised of only 5 census/revenue villages and 5 Panchayat Halqas. According to 2011 Census, the population of the Block is 18401, which is comprised of 1656 souls (0-6yrs), the literacy level of the block is 79% & the sex ratio is 712 females per 1000 males. The people of the block are mostly engaged in Agriculture (Vegetable production) and Dairy farming.

### NYOMA BLOCK

The Block Nyoma is located on the south-east of Leh District was established in the year 1966 consisting of 17 Census villages. The block Headquarter Nyoma is situated at a distance of 183 Kms from district headquarter Leh. With the creation of 7 new Blocks in the District in 2014, the block is now comprised of 5 census/revenue villages and 4 Panchayat Halqas. According to 2011 Census, the population of the block is 4043 souls which include 504 souls (0-6 yrs). The literacy rate as per 2011 Census is 58% and sex ratio is 1120 females per 1000 males. The main occupation of the people of the block is livestock rearing and agriculture. The block is famous for pashmina & wool production from which the people earn good income.

The World's highest Observatory Centre "Indian Astronomical Observatory" is situated at 4500 mtrs. above the sea level at Anley.

### KHALTSI BLOCK

The Block was established in the year 1975 comprising of 17 Census/Revenue villages. After the creation of new blocks in the District in 2014, Khaltse is now comprised of only 9 census/ revenue villages and 6 Panchayat Halqas. The block Headquarter Khaltsi is situated at a distance of 98 Kms away from District Headquarter Leh. As per 2011 census the population of the block is 6114 souls comprising of 649 souls (0-6 Yrs, literacy rate is 73% and sex ratio is 1035 females per 1000 males. The main occupation of the people is agriculture and horticulture.

### DISKET BLOCK

The Block is located on the North- East of the District was established in the year 1966. The headquarter of the block i.e. Diskit is situated at a distance of 118 Kms from Leh across the world Highest Motorable road " Khardongla"(5650 mts. above sea level).After the creation of 7 new blocks in the District the block is now comprised of 17 census villages and 9 Panchayat Halqas.. As per 2011 Census, total population of the block is 10404 souls including 817 souls (0-6 Yrs), literacy level of the block is 73% and the Sex Ratio is 597 females per 1000 males. The main agriculture production of the block is Wheat, Grim and Potato/Vegetable. Double Hump (Bacterian) Camel, which is an unique animal is found in some parts of Nubra block. There are two rivers in the block namely, Shayok & Nubra. Shayok river originates from the Himalayas and river Nubra which originates from the Karakoram Range, meets at confluence point near Disket.

### DURBUK BLOCK

The Block Durbuk is located on the East of Leh District was established in the year 1977. The block Headquarter is Tangtsi which is 118 Kms away from District Headquarter Leh across Changla Pass (5540 mts. from sea level). The block consists of 6 census/ revenue villages and 7 Panchayat Halqas.. As per 2011 Census, population of the block is 4911 souls which includes 581 souls (0-6 Yrs.), literacy level of the block is 66% and the Sex Ratio is 1004 females per 1000 males.

Livestock and Agriculture are the main occupation of the people of the block. All the villages of the block are connected with motorable road. The Pangong lake is the attracting place for both domestic as well as for foreign tourist.

### KHARU BLOCK

Kharu is located on the South-East of Leh District was established in the year 2000. The block Headquarter is Kharu which is 35 Kms away from District Headquarter Leh. There are 15 census/revenue village in the block, the block is divided into 7 Panchayat Halqas for grass root development. As per 2011 census, population of the block is 12343 souls which includes 791 souls (0-6 Yrs.), literacy rate is 79.41% and the sex ratio is 466 females per 1000 males. Agriculture and Livestock are the main occupation of the people of the block. All the village of the block are connected with motorable road. The Monastery of Hemis, Chemray and Takthok are the main attracting places for the tourists. The literacy level of the block is 74 % as per the census 2011.

### PANAMIC BLOCK

The Block is located on the North of Leh District was established in the year 2006-07. The Block was comprised of 7 census villages. After the creation of new Blocks in the District in 2014, Panamic is now comprised of 6 census/revenue villages. The block Headquarter is situated at the distance of 150 Kms. from District Headquarter Leh. The population of the block is 5165 souls including 476 souls (0-6 Yrs.) as per 2011 census. The literacy level of the block is 66% as per census 2011. The sex ratio as per Census 2011 is 790 females per 1000 males. Agriculture and consisting of 6 Panchayat Halqas Livestock are the main occupation of the people of the block. The main attractions for tourist in the block are Hot spring at Panamic, Samstanling monastery at Tiger village and Anza monastery.



### CHUCHOT BLOCK

Block Chuchot was established in the year 2006-07 comprising of 10 census villages. After the creation of 7 new block in the district in 2014, Chuchot is now consisting of 6 census villages divided into 9 Panchayat Halqas. The population of the block as per census 2011 is 8556 souls including 970 souls (0-6 Yrs.). As per the census 2011 the literacy level of the block is 78% & Sex ratio is 1062 females per 1000 males. Monastery & Palace of Stok, Matho and Stakna are the main tourist attraction of the block. People of the block are mostly engaged in Agriculture and dairy products.

### SASPOL BLOCK

Saspol was established in the year 2006-07, which comprises of 06 census villages. With the creation of 7 new Blocks in the District in 2014, Saspol is now comprised of 06 Census/ Revenue villages and 4 Panchayat Halqas. As per 2011 Census, total population of the block is 3599 souls, which includes 361 souls (0-6Yrs.), the literacy level of the block is 74% and the sex ratio is 867 females per 1000 males.

People of the block are mostly engaged in Agriculture and Horticulture production

## District Leh

Leh with an area of 45110 Sq. Kms which probably makes it the second largest district in the country in terms of area, is one of the coldest and most elevated inhabited region of the world having 112 inhabited villages and one uninhabited village with an altitude ranging from 2900 to 5900 meters. The district is located in the Eastern portion on Ladakh region of Jammu and Kashmir State, bordered by Chinese sinking in the north, Tibet in the East and Lahul Spiti area of Himachal Pradesh in the South, along with the other district of the Ladakh region of Kargil. The district Leh form the northern tip of the Indian sub continent. The whole of the district is mountainous region with three parallel ranges of the Himalayas, the Zanskar, the Ladakh and the Karakoram ranges. Between these ranges the Shayok, Indus and Zanskar rivers flow and most of the population lives in the valleys of these rivers. With the creation of 7 new blocks in 2014, Leh is now consisting of 16 blocks namely, Leh, Khaltsi, Kharu, Nyoma, Durbuk, Panamic, Chuchot, Saspol, Disket and newly created blocks of Nimmo, Thiksay, Skurbuchan, Singayllok(Wanla), Turtuk, Rong Chumathang & Rupsho Puga. Leh is the District Headquarter. There are 8 Tehsils in the District i.e, Leh, Khaltse, Sumur, Nyoma, Durbuk, Kharu, Deskit and Saspol.

The District has extremely cold climate. Due to its location and high altitude, the entire block remains cool throughout the year. The winters are always severe and make the region inaccessible, as road link from Srinagar as well as Himachal Pradesh remain closed due to closure of Zojila and Rohtang Passes due to heavy snowfall. Besides the temperature falls as low as (-30) degree Celsius at several places. The rainfall is scanty and negligible, this attributes towards making the district a cold desert. However, on an average 225 days annually remain sunny in the district.

As per 2011 census, the population of Leh district is 133487 souls comprising 12016 souls (0-6 yrs). The density of population is 3 person per Sq Km. Leh is one of the places where population density is lowest on the inhabited parts of the earth. The main occupation engaging the working force is cultivation, Agriculture labour, household industry and other works. Sex ratio is 690 females per 1000 males. Literacy level of Leh is 77% (Males 86% and female 64%) & Sex ratio is 690 females per 1000Males.

The Ladakh Autonomous Hill Development Council, Leh has emerged on September 1995 as the main development agency of the District.

### THIKSAY BLOCK

Thiksay block was established in 2014 is comprised of 4 census/revenue villages and 6 Panchayat Halqas. As per the census 2011, the population of the block is 5403 souls which is comprised of 586 souls (0-6 Yrs.), literacy rate is 77% and sex ratio is 1054 females per 1000 males. People are mostly engaged in agriculture & dairy farming. The beautiful monastery of Thiksay attracts thousands of domestic as well as foreign tourists every year.

### NIMMO BLOCK

The Block was established in the year 2014. The block is comprised of 9 census villages and 6 Panchayat Halqas. According to 2011 Census, total population of the block is 5042 souls, consisting of 502 souls (0-6 Yrs., literacy rate is 70% and the sex ratio is 1002 females per 1000. People are mostly engaged in agriculture & horticulture production. The famous monastery of Likir is the main attracting monument of the block which attracts thousands of tourists every year.

### **SKURBUCHAN BLOCK**

The block was established in the year 2014 comprising of 4 census/revenue villages and 5 Panchayat Halqas. According to 2011 Census, the population of the block is 4950 souls which include 642 souls (0-6 Yrs.), literacy rate of the block is 60% and the sex ratio is 1033 females per 1000 males. The main occupation of the people is agriculture & horticulture production.

### **SINGAYLALOK BLOCK**

The block was established in the year 2014 comprising of 4 Census Villages and 5 Panchayat Halqas. According to the Census 2011, total population is 2430 souls comprising of 273 souls (0-6 Yrs.), literacy rate is 68 % and the sex ratio is 918 females per 1000 males. The main occupation of the people is agricultural activities and horticulture. The world famous Chadar track road passes through this block.

### TURTUK BLOCK

The block was established in the year 2014 comprising of 5 Census Villages and 5 Panchayat Halqas. According to the Census 2011, total population is 6864 souls comprising of 1027 souls (0-6 Yrs.), literacy rate is 76 % and the sex ratio is 581 females per 1000 males. The main occupation of the people is agricultural activities and horticulture.



### RONG CHUMATHANG BLOCK

The block was established in the year 2014 comprising of 9 Census Villages and 5 Panchayat Halqas. According to the Census 2011, total population is 2546 souls comprising of 241 souls (0-6 Yrs.), literacy rate is 72 % and the sex ratio is 1206 females per 1000 males. The major population is engaged in livestock activities and many of them are nomad.

### **RUPSHO PUGA BLOCK**

The block was established in the year 2014 comprising of 3 Census Villages and 4 Panchayat Halqas.. According to the Census 2011, total population is 1846 souls comprising of 243 souls (0-6 Yrs.), literacy rate is 50 % and the sex ratio is 941 females per 1000 males. The major population is engaged in livestock activities.

**District:- Leh**

**Block:- Leh**

**Assembly constituency:- Leh**

S No	Name of village/Ward	Status Urban/Rural	Census Code	Panchayat Halqa	Block/Town	Tehsil	No. of households Census 2011	Area in Hectares			Source of Irrigation Canal/Stream/Well/Others	P o p u l a t i o n (2011 census)					No. of Literates	
								Total area as per village papers	Cropped area	Irrigated area		Male	female	total	Sch. caste	Sch. tribe	Male	female
	2.	3.	4.	5.	6.	7.	8.	9.	10.	11.	12.	13.	14.	15.	16.	17.	18.	19.
1	Phyang	Rural	61	Phyang	Leh	Leh	352	550	213	213	Stream	1064	972	2036	0	1998	789	573
2	Saboo	-do-	57	Saboo	-do-	-do-	259	347	133	133	Stream	609	624	1233	0	1228	497	429
3	Phey	-do-	60	Spituk	-do-	-do-	57	114	41	41	Stream	184	147	331	0	281	150	97
4	Choglamsar	-do-	83	Choglamsar-I Choglamsar-II	-do-	-do-	1931	483	123	123	River	6524	4230	10754	351	4072	5212	2589
5	Spituk	-do-	59	Spituk	-do-	-do-	696	1059	145	145	River	2367	1680	4047	7	1605	1809	1030

**District:- Leh**  
**Block:- Leh**  
**Assembly constituency:- Leh**

**DISTANCE FROM VILLAGE ( In Kilometers ) UPTO -----**

Village	Motor able roads				Bus stop/ Passenger Shed	Railway Station	Agri/ Fruit/Veg. Market	General Market	Forest Sale depot	Plant Distribution centre	Improved Seed centre	Ration depot/ Fair price shop	K.Oil Depot	LPG Outlet	Cooperative Fair price shop	Cooperative Society	Handicraft Trg.Prod. Center
	BT	MT	Shingled	FW													
	20	21	22	23	24	25	26	27	28	29	30	31	32	33	34	35	36
Phyang	10	-	2.50	-	<b>0</b>	<b>724</b>	<b>20</b>	<b>20</b>	<b>20</b>	<b>20</b>	<b>20</b>	<b>0</b>	<b>20</b>	<b>20</b>	<b>20</b>	<b>0</b>	<b>20</b>
Saboo	10	-	-	-	<b>0</b>	<b>744</b>	<b>10</b>	<b>10</b>	<b>10</b>	<b>10</b>	<b>10</b>	<b>0</b>	<b>10</b>	<b>10</b>	<b>10</b>	<b>0</b>	<b>10</b>
Phey	4	-	-	-	<b>0</b>	<b>719</b>	<b>15</b>	<b>15</b>	<b>15</b>	<b>15</b>	<b>5</b>	<b>0</b>	<b>15</b>	<b>15</b>	<b>15</b>	<b>5</b>	<b>15</b>
Spituk	2	-	-	-	<b>0</b>	<b>724</b>	<b>10</b>	<b>10</b>	<b>10</b>	<b>10</b>	<b>0</b>	<b>0</b>	<b>10</b>	<b>10</b>	<b>10</b>	<b>10</b>	<b>10</b>
Choglamsar	3	-	-	-	<b>0</b>	<b>742</b>	<b>10</b>	<b>10</b>	<b>10</b>	<b>10</b>	<b>10</b>	<b>0</b>	<b>10</b>	<b>10</b>	<b>10</b>	<b>0</b>	<b>5</b>

**District:- Leh**

**Block:- Leh**

**Assembly constituency:- Leh**

**DISTANCE FROM VILLAGE ( In Kilometers ) UPTO -----**

Name of village	Handloom Trg/Prod. Centre	Cold Storage facility	Bank Branch	Post Office	PCO/Tel. Facility	Community Hall/Centre	Panchayat Ghar	Tourist hut/Guest House	Govt. Primary School			Govt. Middle School			Govt. High School		
									Boys	Girls	Common	Boys	Girls	Common	Boys	Girls	Common
	37	38	39	40	41	42	43	44	45	46	47	48	49	50	51	52	53
Phyang	<b>20</b>	-	<b>20</b>	<b>0</b>	<b>0</b>	<b>0</b>	<b>0</b>	<b>20</b>	-	<b>0</b>	<b>0</b>	-	<b>0</b>	-	-	-	<b>0</b>
Saboo	<b>10</b>	-	<b>10</b>	<b>0</b>	<b>0</b>	<b>0</b>	<b>0</b>	<b>0</b>	-	-	<b>0</b>	-	-	<b>0</b>	-	-	<b>10</b>
Phey	<b>15</b>	-	<b>15</b>	<b>5</b>	<b>0</b>	<b>0</b>	<b>5</b>	<b>5</b>	-	-	<b>0</b>	-	-	<b>0</b>	-	-	<b>15</b>
Spituk	<b>10</b>	-	<b>10</b>	<b>0</b>	<b>0</b>	<b>0</b>	<b>0</b>	<b>0</b>	-	-	<b>0</b>	-	-	<b>0</b>	-	-	<b>10</b>
Choglamsar	<b>10</b>	-	<b>0</b>	<b>0</b>	<b>0</b>	<b>0</b>	<b>0</b>	<b>10</b>	-	-	<b>0</b>	-	-	<b>0</b>	-	-	<b>10</b>

**District:- Leh**

**Block:- Leh**

**Assembly constituency:- Leh**

DISTANCE FROM VILLAGE ( In Kilometers) UPTO -----

Name of the village	Govt. Hr. Sec. School			Govt. College			Private School				Private College	Hospital	SDH/CHC	PHC	Allopathic/Unani/Ayurv. Dispensary	Med. Sub Centre/MAC	Pvt. Clinic Hospital	Medicine Shop
	Boys	Girls	Common	Boys	Girls	Common	Pry.	Middle	High	Hr. Sec.								
	54	55	56	57	58	59	60	61	62	63	64	65	66	67	68	69	70	71
Phyang	-	-	<b>20</b>	-	-	<b>20</b>	<b>20</b>	<b>20</b>	<b>20</b>	<b>20</b>	-	<b>20</b>	<b>20</b>	<b>20</b>	-	<b>0</b>	<b>20</b>	<b>20</b>
Saboo	-	-	<b>10</b>	-	-	<b>10</b>	<b>10</b>	<b>10</b>	<b>10</b>	<b>10</b>	-	<b>10</b>	<b>10</b>	<b>10</b>	-	<b>0</b>	<b>10</b>	<b>10</b>
Phey	-	-	<b>15</b>	-	-	<b>15</b>	<b>15</b>	<b>15</b>	<b>15</b>	<b>15</b>	-	<b>15</b>	<b>15</b>	<b>15</b>	-	<b>0</b>	<b>15</b>	<b>15</b>
Spituk	-	-	<b>10</b>	-	-	<b>10</b>	<b>10</b>	<b>10</b>	<b>10</b>	<b>10</b>	-	<b>10</b>	<b>10</b>	<b>10</b>	-	<b>0</b>	<b>10</b>	<b>10</b>
Choglamsar	-	-	<b>10</b>	-	-	<b>10</b>	<b>0</b>	<b>0</b>	<b>0</b>	<b>0</b>	-	<b>10</b>	<b>10</b>	<b>10</b>	-	<b>0</b>	<b>10</b>	<b>0</b>



**District:- Leh**  
**Block:- Leh**  
**Assembly constituency:- Leh**

Name of the villages	Source of potable water	Whether covered with lighting.	Whether Lanes/drains facilities provided	No.of families covered with Housing facilities under IAY/RHS etc.	Remarks
	Tap/Spring/Tubewell/ Nallah	If yes, indicate source	Fully/Partly/Not provided		
	84	85	86	87	88
Phyang	<b>Spring/ Tap/Handpump</b>	<b>Hydel/Diesel</b>	Information Not Provided	<b>8</b>	
Saboo	<b>Spring/ Tap/Handpump</b>	<b>Hydel/Diesel</b>		<b>6</b>	
Phey	<b>Tube well/H. pump</b>	<b>Hydel/Diesel</b>		<b>3</b>	
Spituk	<b>Tube well/H. pump</b>	<b>Hydel/Diesel</b>		<b>3</b>	
Choglamsar	<b>Tube well/ Tap/Handpump</b>	<b>Hydel/Diesel</b>		<b>6</b>	



**District:- Leh**

**Block:- Nimoo**

**Assembly constituency:- Leh**

S No	Name of village/Ward	Status Urban/Rural	Census Code	Panchayat Halqa	Block/Town	Tehsil	No. of households Census 2011	Area in Hectares			Source of Irrigation Canal/Stream/Well/Others	P o p u l a t i o n (2011 census)					No. of Literates	
								Total area as per village papers	Cropped area	Irrigated area		Male	female	total	Sch. Caste	Sch. Tribe	male	female
1.	2.	3.	4.	5.	6.	7.	8.	9.	10.	11.	12.	13.	14.	15.	16.	17.	18.	19.
1	Basgo	Rural	65	Basgo	Nimoo	Leh	172	340	136	136	Stream	436	514	950	0	925	283	315
	Nimo	-do-	63	Nimo	-do-	-do-	193	270	145	145	Stream	568	566	1134	0	1071	405	331
3	Ney	-do-	66	Ney	-do-	-do-	103	310	102	102	Stream	275	285	560	0	560	174	161
4	Rumbak	-do-	84	Rumbak	-do-	-do-	36	195	38	38	Stream	128	120	248	0	248	101	78
5	Sku-Markha	-do-	103	-do-	-do-	-do-	43	414	61	61	Stream	162	166	328	0	325	93	84
6	Cheiling Sumdha	-do-	105	-do-	-do-	-do-	31	204	26	26	Stream	120	103	223	0	220	68	53
7	Umla	-do-	64	Taru	-do-	-do-	21	29	12	12	Stream	53	46	99	0	97	36	23
8	Taroo	-do-	62	-do-	-do-	-do-	71	103	60	60	Stream	203	239	442	0	429	141	137
9	Likeer	-do-	70	Likeer	-do-	-do-	218	384	136	136	Stream	573	485	1058	0	1056	432	263

**District:- Leh**

**Block:- Nimoo**

**Assembly constituency:- Leh**

**DISTANCE FROM VILLAGE ( In Kilometers ) UPTO -----**

Village	Motor able roads				Bus stop/ Passenger Shed	Railway Station	Agri/ Fruit/Veg. Market	General Market	Forest Sale depot	Plant Distribution centre	Improved Seed centre	Ration depot/ Fair price shop	K.Oil Depot	LPG Outlet	Cooperative Fair price shop	Cooperative Society	Handicraft Trg.Prod. Center
	BT	MT	Shingled	FW													
	20	21	22	23	24	25	26	27	28	29	30	31	32	33	34	35	36
Basgo	On Leh –Srinagar road				0	694	40	40	40	40	5	0	40	40	40	0	40
Ney	0.70	-	-	14.4	0	699	45	45	45	45	10	0	45	45	45	0	45
Nimo	On Leh –Srinagar road				0	699	35	35	35	35	0	0	35	35	35	0	35
Rumbak	-	-	-	14	14	738	24	24	24	24	14	0	24	24	24	24	24
Sku-Markha	-	-	-	-	25	749	85	85	85	85	25	0	85	85	85	55	85
Cheiling Sumdha	10	-	20	-	0	725	60	60	60	60	30	0	60	60	60	30	60
Umla	-	-	2	5.7	0	713	30	30	30	30	10	0	30	30	30	5	30
Taroo	4.75	-	-	-	0	720	25	25	25	25	20	0	25	25	25	0	25
Likeer	5	-	-	-	0	684	50	50	50	50	15	0	50	50	50	0	50

**District:- Leh**

**Block:- Nimoo**

**Assembly constituency:- Leh**

**DISTANCE FROM VILLAGE ( In Kilometers ) UPTO -----**

Name of village	Handloom Trg/Prod. Centre	Cold Storage facility	Bank Branch	Post Office	PCO/Tel. Facility	Community Hall/Centre	Panchayat Ghar	Tourist hut/Guest House	Govt. Primary School			Govt. Middle School			Govt. High School		
									Boys	Girls	Common	Boys	Girls	Common	Boys	Girls	Common
	37	38	39	40	41	42	43	44	45	46	47	48	49	50	51	52	53
Basgo	<b>10</b>	-	<b>5</b>	<b>0</b>	<b>0</b>	<b>0</b>	<b>0</b>	<b>0</b>	-	-	<b>0</b>	-	-	-	-	-	<b>0</b>
Ney	<b>5</b>	-	<b>10</b>	<b>0</b>	<b>0</b>	<b>0</b>	<b>5</b>	<b>0</b>	-	-	<b>0</b>	-	-	<b>0</b>	-	-	<b>5</b>
Nimo	<b>35</b>	-	<b>0</b>	<b>0</b>	<b>0</b>	<b>0</b>	<b>0</b>	<b>0</b>	-	<b>0</b>	<b>0</b>	-	<b>0</b>	-	-	-	<b>0</b>
Rumbak	<b>24</b>	-	<b>24</b>	<b>14</b>	<b>0</b>	<b>0</b>	<b>0</b>	<b>0</b>	-	-	<b>0</b>	-	-	<b>14</b>	-	-	<b>24</b>
Sku-Markha	<b>85</b>	-	<b>55</b>	<b>50</b>	<b>0</b>	<b>0</b>	<b>25</b>	<b>0</b>	-	-	<b>0</b>	-	-	<b>0</b>	-	-	<b>85</b>
Cheiling Sumdha	<b>60</b>	-	<b>30</b>	<b>30</b>	<b>0</b>	<b>0</b>	<b>18</b>	<b>0</b>	-	-	<b>0</b>	-	-	<b>30</b>	-	-	<b>30</b>
Umla	<b>30</b>	-	<b>10</b>	<b>7</b>	<b>0</b>	<b>0</b>	<b>7</b>	<b>10</b>	-	-	<b>0</b>	-	-	<b>7</b>	-	-	<b>7</b>
Taroo	<b>25</b>	-	<b>15</b>	<b>15</b>	<b>0</b>	<b>0</b>	<b>10</b>	<b>0</b>	-	-	<b>0</b>	-	-	<b>0</b>	-	-	<b>10</b>
Likeer	<b>0</b>	-	<b>15</b>	<b>0</b>	<b>0</b>	<b>0</b>	<b>0</b>	<b>0</b>	-	-	<b>0</b>	-	<b>0</b>	-	-	-	<b>0</b>

**District:- Leh**

**Block:- Nimoo**

**Assembly constituency:- Leh**

DISTANCE FROM VILLAGE ( In Kilometers) UPTO -----

Name of the village	Govt. Hr. Sec. School			Govt. College			Private School				Private College	Hospital	SDH/CHC	PHC	Allopathic/Unani/Ayurv. Dispensary	Med. Sub Centre/MAC	Pvt. Clinic Hospital	Medicine Shop
	Boys	Girls	Common	Boys	Girls	Common	Pry.	Middle	High	Hr. Sec.								
	54	55	56	57	58	59	60	61	62	63	64	65	66	67	68	69	70	71
Basgo	-	-	<b>40</b>	-	-	<b>40</b>	<b>40</b>	<b>40</b>	<b>40</b>	<b>40</b>	-	<b>40</b>	<b>40</b>	<b>0</b>	-	-	<b>40</b>	<b>40</b>
Ney	-	-	<b>45</b>	-	-	<b>45</b>	<b>45</b>	<b>45</b>	<b>45</b>	<b>45</b>	-	<b>45</b>	<b>45</b>	<b>5</b>	-	<b>0</b>	<b>45</b>	<b>45</b>
Nimo	-	-	<b>35</b>	-	-	<b>35</b>	<b>35</b>	<b>35</b>	<b>35</b>	<b>35</b>	-	<b>35</b>	<b>35</b>	<b>5</b>	-	<b>0</b>	<b>35</b>	<b>35</b>
Rumbak	-	-	<b>24</b>	-	-	<b>24</b>	<b>24</b>	<b>24</b>	<b>24</b>	<b>24</b>	-	<b>24</b>	<b>24</b>	<b>24</b>	-	<b>0</b>	<b>24</b>	<b>24</b>
Sku-Markha	-	-	<b>85</b>	-	-	<b>85</b>	<b>85</b>	<b>85</b>	<b>85</b>	<b>85</b>	-	<b>85</b>	<b>85</b>	<b>70</b>	-	<b>0</b>	<b>85</b>	<b>85</b>
Cheiling Sumdha	-	-	<b>60</b>	-	-	<b>60</b>	<b>60</b>	<b>60</b>	<b>60</b>	<b>60</b>	-	<b>60</b>	<b>60</b>	<b>45</b>	-	<b>0</b>	<b>60</b>	<b>60</b>
Umla	-	-	<b>30</b>	-	-	<b>30</b>	<b>30</b>	<b>30</b>	<b>30</b>	<b>30</b>	-	<b>30</b>	<b>30</b>	<b>10</b>	-	<b>0</b>	<b>30</b>	<b>30</b>
Taroo	-	-	<b>25</b>	-	-	<b>25</b>	<b>25</b>	<b>25</b>	<b>25</b>	<b>25</b>	-	<b>25</b>	<b>25</b>	<b>25</b>	-	<b>0</b>	<b>25</b>	<b>25</b>
Likeer	-	-	<b>15</b>	-	-	<b>50</b>	<b>15</b>	<b>50</b>	<b>50</b>	<b>50</b>	-	<b>50</b>	<b>50</b>	<b>10</b>	-	<b>0</b>	<b>50</b>	<b>50</b>

**District:- Leh**  
**Block:- Nimoo**  
**Assembly constituency:- Leh**

**DISTANCE FROM VILLAGE ( In Kilometers ) UPTO -----**

Name of the village	Family Welfare Plg. Centre	Nari Niketan/ Bal-Ashram	Anganwari Centre	Vety. Disp/ Animal Husb. Centre	Sheep Husb./Ext. Centre	Police Station/ Post	Fire Station	Tehsil Office	Block Office	District Headquarter	Court	Potable water
	72	73	74	75	76	77	78	79	80	81	82	83
Basgo	<b>20</b>	<b>40</b>	<b>0</b>	<b>0</b>	<b>5</b>	<b>40</b>	<b>40</b>	<b>40</b>	<b>40</b>	<b>40</b>	<b>40</b>	<b>0</b>
Ney	<b>25</b>	<b>45</b>	<b>0</b>	<b>5</b>	<b>0</b>	<b>45</b>	<b>45</b>	<b>45</b>	<b>45</b>	<b>45</b>	<b>45</b>	<b>0</b>
Nimo	<b>15</b>	<b>35</b>	<b>0</b>	<b>0</b>	<b>0</b>	<b>35</b>	<b>35</b>	<b>35</b>	<b>35</b>	<b>35</b>	<b>35</b>	<b>0</b>
Rumbak	<b>24</b>	<b>24</b>	<b>0</b>	<b>14</b>	<b>24</b>	<b>24</b>	<b>24</b>	<b>24</b>	<b>24</b>	<b>24</b>	<b>24</b>	<b>0</b>
Sku-Markha	<b>0</b>	<b>85</b>	<b>0</b>	<b>85</b>	<b>0</b>	<b>85</b>	<b>85</b>	<b>85</b>	<b>85</b>	<b>85</b>	<b>85</b>	<b>0</b>
Cheiling Sumdha	<b>25</b>	<b>60</b>	<b>0</b>	<b>30</b>	<b>30</b>	<b>60</b>	<b>60</b>	<b>60</b>	<b>60</b>	<b>60</b>	<b>60</b>	<b>0</b>
Umla	<b>0</b>	<b>30</b>	<b>0</b>	<b>5</b>	<b>5</b>	<b>30</b>	<b>30</b>	<b>30</b>	<b>30</b>	<b>30</b>	<b>30</b>	<b>0</b>
Taro	<b>0</b>	<b>25</b>	<b>0</b>	<b>0</b>	<b>5</b>	<b>25</b>	<b>25</b>	<b>25</b>	<b>25</b>	<b>25</b>	<b>25</b>	<b>0</b>
Likeer	<b>25</b>	<b>50</b>	<b>0</b>	<b>0</b>	<b>15</b>	<b>50</b>	<b>50</b>	<b>50</b>	<b>15</b>	<b>50</b>	<b>50</b>	<b>0</b>

**District:- Leh**  
**Block:- Nimoo**  
**Assembly constituency:- Leh**

Name of the villages	Source of potable water	Whether covered with lighting.	Whether Lanes/drains facilities provided	No.of families covered with Housing facilities under IAY/RHS etc.	Remarks
	Tap/Spring/Tubewell/ Nallah	If yes, indicate source	Fully/Partly/Not provided		
	84	85	86	87	88
Basgo	<b>Nallah/Tap/Handpump</b>	<b>Hydel/Diesel</b>		<b>3</b>	
Ney	<b>Spring/Tap</b>	<b>Hydel/Diesel</b>		<b>3</b>	
Nimo	<b>Spring/ Tap/Handpump</b>	<b>Hydel/Diesel</b>	Not Provided.	<b>4</b>	
Rumbak	<b>Spring</b>	<b>Solar</b>		<b>2</b>	
Sku-Markha	<b>Nallah</b>	<b>Solar</b>		<b>2</b>	
Cheiling Sumdha	<b>Spring</b>	<b>Solar</b>		<b>3</b>	
Umla	<b>Spring/Tap</b>	<b>Hydel/Diesel</b>		<b>1</b>	
Taroo	<b>Spring/ Tap/Handpump</b>	<b>Hydel/Diesel</b>		<b>1</b>	
Likeer	<b>Spring</b>	<b>Hydel/Diesel</b>		<b>6</b>	

**District:- Leh**  
**Block:- Saspol**  
**Assembly constituency:- Leh**

S. No	Name of the Village/Ward	Status Urban/Rural	Census Code	Panchayat Halqa	Block/Town	Tehsil	No. of House-Hold (2011 census)	Area in Hectares			Source of Irrigation Canal/Stream/Well/Other	P o p u l a t i o n (2011 census)					No. of Literates	
								Total area as per village paper	Cropped area	Irrigated area		Male	Female	Total	Sch. caste	Sch. Tribe	Male	Female
1.	2.	3.	4.	5.	6.	7.	8.	9.	10.	11.	12.	13.	14.	15.	16.	17.	18.	19.
1.	Alchi	Rural	82	Alchi	Saspol	Saspol	145	342	87	87	Stream	575	357	932	0	712	422	190
2.	Gara-Mangu	-do-	80	Mangu	-do-	-do-	67	208	42	42	Stream	206	201	407	0	406	128	108
3.	Tar Hepti	-do-	78	-do-	-do-	-do-	20	39	13	13	Stream	56	46	102	0	101	29	25
4	Saspol	-do-	67	Saspol	-do-	-do-	198	226	89	89	Stream	641	564	1205	0	1159	522	395
5	Saspochey	-do-	71	-do-	-do-	-do-	36	109	30	30	Stream	99	115	214	0	214	74	61
6	Hemis-shukpachan	-do-	69	Hemis-shukpachan	-do-	-do-	144	438	100	100	Stream	351	388	739	0	734	238	201

**District:- Leh**

**Block:- Saspol**

**Assembly constituency:- Leh**

DISTANCE FROM VILLAGE ( In Kilometers ) UPTO -----

Village	Motor able roads				Bus stop/ Passenger Shed	Railway Station	Agri/Fruit/ Veg. Market	General Market	Forest Sale Depot	Plant Distribution Centre	Improved Seed Centre	Ration Depot /Fair price shop	K.Oil Depot	LPG Outlet	Cooperative Fair price Shop	Cooperative Society	Handicraft Trg./ Prod. Centre
	BT	MT	Shingled	FW													
	20	21	22	23	24	25	26	27	28	29	30	31	32	33	34	35	36
Alchi	4.00	-	-	-	0	671	40	40	40	40	8	0	40	40	40	0	30
Gara-Mangu	5.00	2	-	4	0	666	30	30	30	30	22	0	30	30	30	0	25
Tar Hepti	-	-	-	-	6	662	25	25	25	25	25	0	25	25	25	25	23
Saspol	On Leh-Srinagar road				0	669	35	35	35	35	0	0	35	35	35	0	30
Saspochey	2	-	-	8	0	694	65	65	65	65	5	0	65	65	65	5	35
Hemis- shukpachan	2	7	-	13	0	709	90	90	90	90	90	0	90	90	90	0	25



**District:- Leh**

**Block:- Saspol**

**Assembly constituency:- Leh**

**DISTANCE FROM VILLAGE ( In Kilometers ) UPTO -----**

Name of the Village/ward	Handloom Trg/Prod. Centre	Cold Storage facility	Bank Branch	Post Office	PCO/Tel. facility	Community Hall/Centre	Panchayat Ghar	Tourist hut/Guest House	Govt. Primary School			Govt. Middle School			Govt. High School		
									Boys	Girls	Common	Boys	Girls	Common	Boys	Girls	Common
	37	38	39	40	41	42	43	44	45	46	47	48	49	50	51	52	53
Alchi	<b>10</b>	-	<b>8</b>	<b>0</b>	<b>0</b>	<b>0</b>	<b>0</b>	<b>0</b>	-	-	-	-	-	<b>0</b>	-	-	<b>8</b>
Gara-Mangu	<b>0</b>	-	<b>12</b>	<b>7</b>	<b>0</b>	<b>0</b>	<b>7</b>	<b>0</b>	-	-	<b>0</b>	-	-	<b>0</b>	-	-	<b>12</b>
Tar Hepti	<b>12</b>	-	<b>21</b>	<b>6</b>	<b>0</b>	<b>0</b>	<b>0</b>	<b>10</b>	-	-	<b>0</b>	-	-	<b>17</b>	-	-	<b>17</b>
Saspol	<b>12</b>	-	<b>0</b>	<b>0</b>	<b>0</b>	<b>0</b>	<b>0</b>	<b>0</b>	-	-	<b>0</b>	-	-	<b>0</b>	-	-	-
Saspochey	<b>17</b>	-	<b>5</b>	<b>5</b>	<b>0</b>	<b>5</b>	<b>5</b>	<b>5</b>	-	-	-	-	-	<b>0</b>	-	-	<b>5</b>
Hemis-shukpachan	<b>15</b>	-	<b>55</b>	<b>0</b>	<b>0</b>	<b>0</b>	<b>0</b>	<b>0</b>	-	-	<b>0</b>	-	-	-	-	-	<b>0</b>

**District:- Leh**

**Block:- Saspol**

**Assembly constituency:- Leh**

**DISTANCE FROM VILLAGE ( In Kilometers ) UPTO -----**

Name of Village/ward	Govt. Hr. Sec. School			Govt. College			Private School				Private College	Hospital	SDH/CHC	PHC	Allopathic/Unani/Ayur. Dispensary	Med. sub Centre/MAC	Pvt. Clinic/Hospital	Medicine Shop
	Boys	Girls	Common	Boys	Girls	Common	Pry.	Middle	High	Hr. Sec.								
	54	55	56	57	58	59	60	61	62	63	64	65	66	67	68	69	70	71
Alchi	-	-	<b>8</b>	-	-	<b>70</b>	<b>0</b>	<b>70</b>	<b>70</b>	<b>70</b>	-	<b>70</b>	<b>40</b>	<b>8</b>	<b>8</b>	<b>0</b>	<b>70</b>	<b>70</b>
Gara-Mangu	-	-	<b>22</b>	-	-	<b>77</b>	<b>12</b>	<b>77</b>	<b>77</b>	<b>77</b>	-	<b>77</b>	<b>30</b>	<b>20</b>	<b>22</b>	<b>0</b>	<b>77</b>	<b>77</b>
Tar Hepti	-	-	<b>17</b>	-	-	<b>90</b>	<b>20</b>	<b>90</b>	<b>90</b>	<b>90</b>	-	<b>90</b>	<b>25</b>	<b>25</b>	<b>12</b>	<b>10</b>	<b>90</b>	<b>90</b>
Saspol	-	-	<b>0</b>	-	-	<b>65</b>	<b>0</b>	<b>65</b>	<b>65</b>	<b>65</b>	-	<b>65</b>	<b>35</b>	<b>0</b>	<b>0</b>	-	<b>65</b>	<b>65</b>
Saspochey	-	-	<b>5</b>	-	-	<b>65</b>	<b>10</b>	<b>65</b>	<b>65</b>	<b>65</b>	-	<b>65</b>	<b>65</b>	<b>5</b>	<b>5</b>	<b>0</b>	<b>65</b>	<b>65</b>
Hemis-shukpachan	-	-	<b>20</b>	-	-	<b>90</b>	<b>35</b>	<b>90</b>	<b>90</b>	<b>90</b>	-	<b>90</b>	<b>90</b>	<b>20</b>	<b>20</b>	<b>0</b>	<b>90</b>	<b>90</b>

**District:- Leh**

**Block:- Saspol**

**Assembly constituency:- Leh**

**DISTANCE FROM VILLAGE ( In Kilometers ) UPTO -----**

Name of the village/ward	Family Welfare Sub Centre	Nari Niketan/ Bal-Ashram	Anganwari Centre	Vety. Disp/ Animal Husb. Centre	Sheep Husb. Centre	Police Station/ Post	Fire station	Tehsil Office	Block Office	District Headquarter	Court	Potable water
	72	73	74	75	76	77	78	79	80	81	82	83
Alchi	20	70	0	8	0	40	70	70	5	70	70	0
Gara-Mangu	0	77	0	12	12	30	77	77	15	77	77	0
Tar Hepti	15	90	0	10	10	25	90	90	20	90	90	0
Saspol	5	65	0	0	10	35	65	65	0	65	65	0
Saspochey	0	65	0	5	15	65	65	65	10	65	65	0
Hemis-shukpachan	25	90	0	0	0	90	90	90	25	90	90	0

**District:- Leh**

**Block:- Saspol**

**Assembly constituency:- Leh**

Name of the village	Source of potable water	Whether covered with lighting	Whether Lanes/drains facilities provided	No.of families covered with Housing facility under IAY/RHS etc.	Remarks
	Tap/Spring/Tubewell/Nallah	If yes, indicate source	(Fully/Partly/Not Provided)		
	84	85	86	87	88
Alchi	<b>Spring/Hand pump</b>	<b>Diesel</b>		<b>6</b>	
Gara-Mangu	<b>Spring</b>	<b>Solar /Hydel/Diesel</b>		<b>3</b>	
Tar Hepti	<b>Spring</b>	<b>Solar</b>		<b>2</b>	
Saspol	<b>Spring/HandPump</b>	<b>Diesel</b>		<b>4</b>	
Saspochey	<b>Spring</b>	<b>Solar /Hydel/Diesel</b>		<b>3</b>	
Hemis-shukpachan	<b>Spring</b>	<b>Diesel</b>		<b>5</b>	

**District:- Leh**  
**Block:- Khaltse**  
**Assembly constituency:- Leh**

S.	Name of the Village/Ward	Status Urban/Rural	Census Code	Panchayat Halqa	Block/Town	Tehsil	No. of House Hold (2011 census)	Area in Hectares			Source of Irrigation Canal/Stream/Well/Other	P o p u l a t i o n (2011 Census)s					No. of Literates	
								Total area as per village paper	Cropped area	Irrigated area		Male	Female	Total	Sch. caste	Sch. Tribe	Male	Female
1.	2.	3.	4.	5.	6.	7.	8.	9.	10.	11.	12.	13.	14.	15.	16.	17.	18.	19.
1	Kanji	Rural	109	Kanji	Khaltse	Khaltse	52	248	30	30	Stream	165	160	325	0	324	94	82
2	Khaltsi	-do-	77	Khaltsi	-do-	-do-	156	147	38	38	Stream	381	386	767	0	751	324	279
3	Skindiyang	-do-	76	-do-	-do-	-do-	38	49	22	22	Stream	122	115	237	0	236	80	59
4	Takmachik	-do-	110	Takmachik	-do-	-do-	95	129	50	50	Stream	314	293	607	0	606	204	147
5	Leh Dho	-do-	111	-do-	-do-	-do-	55	107	27	27	Stream	188	182	370	0	344	144	105
6	Lamayuru	-do-	79	Lamayuru	-do-	-do-	117	208	61	61	Stream	331	336	667	0	642	228	200
7	Temisgam	-do-	72	Temisgam	-do-	-do-	234	201	102	102	Stream	744	773	1517	3	1431	553	463
8	Nurla	-do-	68	-do-	-do-	-do-	52	82	38	38	Stream	168	183	351	0	347	125	102
9	Tia	-do-	73	Tia	-do-	-do-	196	385	150	150	Stream	591	682	1273	1	1261	395	406

**District:- Leh**

**Block:- Khaltse**

**Assembly constituency:- Leh**

DISTANCE FROM VILLAGE ( In Kilometers ) UPTO -----

Village	Motor able roads				Bus stop/ Passenger Shed	Railway Station	Agri/Fruit/ Veg. Market	General Market	Forest Sale Depot	Plant Distribution Centre	Improved Seed Centre	Ration Depot /Fair price shop	K.Oil Depot	LPG Outlet	Cooperative Fair price Shop	Cooperative Society	Handicraft Trg./ Prod. Centre
	BT	MT	Shingled	FW													
	20	21	22	23	24	25	26	27	28	29	30	31	32	33	34	35	36
Kanji	-	-	-	12	0	614	60	60	60	60	60	0	35	60	60	35	60
Khaltsi	On Leh-Srinager road				0	634	0	0	0	0	0	0	0	0	0	0	15
Skindiyang	-	2	3	10	0	649	15	15	15	15	15	0	15	15	15	15	0
Lamayuru	On Leh-Srinager road				0	609	25	25	25	25	25	0	0	25	25	0	40
Takmachik	1	-	-	1	0	649	16	16	16	16	16	0	16	16	16	0	31
Leh Dho	-	-	-	2	0	652	32	32	32	32	32	0	32	32	32	6	47
Temisgam	5	-	-	-	0	659	20	20	20	20	0	0	20	20	20	0	5
Nurla	On Leh-Srinager road				0	649	15	15	15	15	5	0	15	15	15	0	10
Tia	10	-	-	-	0	664	25	25	25	25	5	0	25	25	25	0	0

**District:- Leh**

**Block: - Khaltse**

**Assembly constituency:- Leh**

**DISTANCE FROM VILLAGE ( In Kilometers) UPTO -----**

Name of the Village/ward	Handloom Trg/Prod. Centre	Cold Storage facility	Bank Branch	Post Office	PCO/Tel. facility	Community Hall/Centre	Panchayat Ghar	Tourist hut/Guest House	Govt. Primary School			Govt. Middle School			Govt. High School		
									Boys	Girls	Common	Boys	Girls	Common	Boys	Girls	Common
	37	38	39	40	41	42	43	44	45	46	47	48	49	50	51	52	53
Kanji	20	-	60	35	0	0	0	35	-	-	-	-	-	0	-	-	35
Khaltsi	11	-	0	0	0	0	0	0	-	-	-	-	-	0	-	-	-
Skinding	26	-	15	15	0	15	15	15	-	-	-	-	-	0	-	-	15
Lamayuru	36	-	25	0	0	0	0	0	-	-	-	-	-	-	-	-	0
Takmachik	5	-	16	0	0	0	0	16	-	-	-	-	-	0	-	-	5
Leh Dho	21	-	5	4	0	0	16	5	-	-	0	-	-	0	-	-	7
Temisgam	0	-	20	0	0	0	0	0	-	-	0	-	0	-	-	-	-
Nurla	5	-	15	0	0	0	5	0	-	-	0	-	-	5	-	-	5
Tia	0	-	25	0	0	0	0	0	-	-	0	-	-	-	-	-	0

**District:- Leh**  
**Block:- Khaltse**  
**Assembly constituency:- Leh**

**DISTANCE FROM VILLAGE ( In Kilometers ) UPTO -----**

Name of Village/ward	Govt. Hr. Sec. School			Govt. College			Private School				Private College	Hospital	SDH/CHC	PHC	Allopathic/Unani/Ayur. Dispensary	Med. sub Centre/MAC	Pvt. Clinic/Hospital	Medicine Shop
	Boys	Girls	Common	Boys	Girls	Common	Pry.	Middle	High	Hr. Sec.								
	54	55	56	57	58	59	60	61	62	63	64	65	66	67	68	69	70	71
Kanji	-	-	<b>60</b>	-	-	<b>160</b>	<b>60</b>	<b>160</b>	<b>160</b>	<b>160</b>	-	<b>160</b>	<b>60</b>	<b>60</b>	<b>58</b>	<b>0</b>	<b>160</b>	<b>160</b>
Khaltsi	-	-	<b>0</b>	-	-	<b>100</b>	<b>0</b>	<b>100</b>	<b>100</b>	<b>100</b>	-	<b>100</b>	<b>27</b>	<b>0</b>	-	-	<b>100</b>	<b>100</b>
Skinding	-	-	<b>15</b>	-	-	<b>115</b>	<b>15</b>	<b>115</b>	<b>115</b>	<b>115</b>	-	<b>115</b>	<b>15</b>	<b>15</b>	<b>35</b>	<b>0</b>	<b>115</b>	<b>115</b>
Takmachik	-	-	<b>16</b>	-	-	<b>116</b>	<b>16</b>	<b>116</b>	<b>116</b>	<b>116</b>	-	<b>116</b>	<b>16</b>	<b>11</b>	<b>11</b>	<b>0</b>	<b>116</b>	<b>116</b>
Leh Dho	-	-	<b>5</b>	-	-	<b>132</b>	<b>32</b>	<b>132</b>	<b>132</b>	<b>132</b>	-	<b>132</b>	<b>32</b>	<b>3</b>	<b>3</b>	<b>0</b>	<b>132</b>	<b>132</b>
Lamayuru	-	-	<b>25</b>	-	-	<b>125</b>	<b>25</b>	<b>125</b>	<b>125</b>	<b>125</b>	-	<b>125</b>	<b>25</b>	<b>25</b>	<b>25</b>	<b>0</b>	<b>125</b>	<b>125</b>
Temisgam	-	-	<b>0</b>	-	-	<b>90</b>	<b>0</b>	<b>0</b>	<b>90</b>	<b>90</b>	-	<b>90</b>	<b>20</b>	<b>0</b>	-	-	<b>90</b>	<b>90</b>
Nurla	-	-	<b>5</b>	-	-	<b>85</b>	<b>10</b>	<b>10</b>	<b>85</b>	<b>85</b>	-	<b>85</b>	<b>15</b>	<b>5</b>	<b>5</b>	<b>0</b>	<b>85</b>	<b>85</b>
Tia	-	-	<b>5</b>	-	-	<b>95</b>	<b>5</b>	<b>5</b>	<b>95</b>	<b>95</b>	-	<b>95</b>	<b>25</b>	<b>5</b>	<b>5</b>	<b>0</b>	<b>95</b>	<b>95</b>



**District: - Leh**

**Block: - Khaltse**

**Assembly constituency:- Leh**

**DISTANCE FROM VILLAGE ( In Kilometers) UPTO -----**

Name of the village/ward	Family Welfare Sub Centre	Nari Niketan/ Bal-Ashram	Anganwari Centre	Vety. Disp/ Animal Husb. Centre	Sheep Husb. Centre	Police Station/ Post	Fire station	Tehsil Office	Block Office	District Headquarter	Court	Potable water
	72	73	74	75	76	77	78	79	80	81	82	83
Kanji	53	138	0	60	35	60	160	160	60	160	160	0
Khaltsi	25	100	0	0	0	0	100	100	0	100	100	0
Skindiyang	40	115	0	15	15	15	115	115	15	115	115	0
Takmachik	16	116	0	17	0	16	116	116	16	116	116	0
Leh Dho	0	132	0	4	4	32	132	132	32	132	132	0
Lamayuru	50	125	0	25	0	25	125	125	25	125	125	0
Temisgam	5	90	0	0	0	20	90	90	20	90	90	0
Nurla	10	85	0	0	5	15	85	85	15	85	85	0
Tia	0	95	0	0	5	25	95	95	25	95	95	0

**District:- Leh**

**Block:- Khaltse**

**Assembly constituency:- Leh**

Name of the village	Source of potable water	Whether covered with lighting	Whether Lanes/drains facilities provided	No.of families covered with Housing facility under IAY/RHS etc.	Remarks
	Tap/Spring/Tubewell/Nallah	If yes, indicate source	(Fully/Partly/Not Provided)		
	84	85	86	87	88
Kanji	<b>Nallah/Tap</b>	<b>Solar</b>		<b>3</b>	
Lamayuru	<b>Spring /Tap/Handpump</b>	<b>Diesel</b>		<b>5</b>	
Khaltsi	<b>Nallah/ Tap/Handpump</b>	<b>Diesel</b>	<b>Not Provided.</b>	<b>3</b>	
Skindiyang	<b>Spring/Tap</b>	<b>Diesel</b>		<b>2</b>	
Takmachik	<b>Spring/Tap</b>	<b>Diesel</b>		<b>3</b>	
Leh Dho	<b>Spring/ Tap/Handpump</b>	<b>Diesel</b>		<b>3</b>	
Temisgam	<b>Spring/ Tap/Handpump</b>	<b>Diesel</b>		<b>4</b>	
Nurla	<b>Spring/ Tap/Handpump</b>	<b>Diesel</b>		<b>2</b>	
Tia	<b>Spring/Hand Pump/Tap</b>	<b>Diesel</b>		<b>6</b>	

**District:- Leh**  
**Block:- Skurbuchan**  
**Assembly constituency:- Leh**

S.No.	Name of the Village/Ward	Status Urban/Rural	Census Code	Panchayat Halqa	Block/Town	Tehsil	No. of House Hold (2011 census)	Area in Hectares			Source of Irrigation Canal/Stream/Well/Other	Population (2011 Census)					No. of Literates	
								Total area as per village paper	Cropped area	Irrigated area		Male	Female	Total	Sch. caste	Sch. Tribe	Male	Female
1.	2.	3.	4.	5.	6.	7.	8.	9.	10.	11.	12.	13.	14.	15.	16.	17.	18.	19.
1	Dha	Rural	113	Dha	Skurbuchan	Khaltsi	103	172	83	83	Stream	324	285	609	0	607	176	127
2	Hanoo	-do-	112	Hanu	-do-	-do-	224	544	164	164	Stream	587	620	1207	1	1204	241	244
3	Domkhar	-do-	75	Domkhar	-do-	-do-	199	411	130	130	Stream	608	594	1202	17	1177	371	306
4	Skurbuchan	-do-	74	1.Skurbuchan-I 2. Skurbuchan-II	-do-	-do-	299	453	181	181	Stream	916	1016	1932	4	1905	555	562

**District:- Leh**

**Block:- Skurbuchan**

**Assembly constituency:- Leh**

DISTANCE FROM VILLAGE ( In Kilometers ) UPTO -----

Village	Motor able roads				Bus stop/ Passenger Shed	Railway Station	Agri/Fruit/ Veg. Market	General Market	Forest Sale Depot	Plant Distribution Centre	Improved Seed Centre	Ration Depot /Fair price shop	K.Oil Depot	LPG Outlet	Cooperative Fair price Shop	Cooperative Society	Handicraft Trg./ Prod. Centre
	BT	MT	Shingled	FW													
	20	21	22	23	24	25	26	27	28	29	30	31	32	33	34	35	36
Dha	On Khartse-Gurgurdo road				<b>0</b>	<b>666</b>	<b>52</b>	<b>52</b>	<b>52</b>	<b>52</b>	<b>52</b>	<b>0</b>	<b>52</b>	<b>52</b>	<b>52</b>	<b>0</b>	<b>67</b>
Hanoo	-	-	-	-	<b>0</b>	<b>660</b>	<b>70</b>	<b>70</b>	<b>70</b>	<b>70</b>	<b>70</b>	<b>0</b>	<b>70</b>	<b>70</b>	<b>70</b>	<b>0</b>	<b>85</b>
Domkhar	On Khartse-Gurgurdo road				<b>0</b>	<b>655</b>	<b>28</b>	<b>28</b>	<b>28</b>	<b>28</b>	<b>28</b>	<b>0</b>	<b>28</b>	<b>28</b>	<b>28</b>	<b>0</b>	<b>43</b>
Skurbuchan	On Khartse-Gurgurdo road				<b>0</b>	<b>664</b>	<b>27</b>	<b>27</b>	<b>27</b>	<b>27</b>	<b>27</b>	<b>0</b>	<b>27</b>	<b>27</b>	<b>27</b>	<b>0</b>	<b>42</b>

**District:- Leh**

**Block: Skurbuchan**

**Assembly constituency:- Leh**

**DISTANCE FROM VILLAGE ( In Kilometers) UPTO -----**

Name of the Village/ward	Handloom Trg/Prod. Centre	Cold Storage facility	Bank Branch	Post Office	PCO/Tel. facility	Community Hall/Centre	Panchayat Ghar	Tourist hut/Guest House	Govt. Primary School			Govt. Middle School			Govt. High School		
									Boys	Girls	Common	Boys	Girls	Common	Boys	Girls	Common
	37	38	39	40	41	42	43	44	45	46	47	48	49	50	51	52	53
Dha	<b>41</b>	-	<b>25</b>	<b>0</b>	<b>0</b>	<b>0</b>	<b>8</b>	<b>0</b>	-	-	<b>0</b>	-	-	<b>0</b>	-	-	<b>0</b>
Hanu Yokma	<b>59</b>	-	<b>43</b>	<b>0</b>	<b>0</b>	<b>0</b>	<b>0</b>	<b>0</b>	-	-	<b>0</b>	-	-	<b>0</b>	-	-	<b>0</b>
Domkhar	<b>0</b>	-	<b>18</b>	<b>0</b>	<b>0</b>	<b>0</b>	<b>0</b>	<b>18</b>	-	-	<b>0</b>	-	-	<b>0</b>	-	-	<b>0</b>
Skurbuchan	<b>16</b>	-	<b>0</b>	<b>0</b>	<b>0</b>	<b>0</b>	<b>0</b>	<b>0</b>	-	-	<b>0</b>	-	-	<b>0</b>	-	-	-

**District:- Leh**

**Block:- Skurbuchan**

**Assembly constituency:- Leh**

**DISTANCE FROM VILLAGE ( In Kilometers ) UPTO -----**

Name of Village/ward	Govt. Hr. Sec. School			Govt. College			Private School				Private College	Hospital	SDH/CHC	PHC	Allopathic/Unani/Ayur. Dispensary	Med. sub Centre/MAC	Pvt. Clinic/Hospital	Medicine Shop
	Boys	Girls	Common	Boys	Girls	Common	Pry.	Middle	High	Hr. Sec.								
	54	55	56	57	58	59	60	61	62	63	64	65	66	67	68	69	70	71
Dha	-	-	<b>25</b>	-	-	<b>152</b>	<b>52</b>	<b>152</b>	<b>152</b>	<b>152</b>	-	<b>152</b>	<b>52</b>	<b>25</b>	<b>9</b>	<b>0</b>	<b>152</b>	<b>152</b>
Hanu Yokm	-	-	<b>32</b>	-	-	<b>170</b>	<b>70</b>	<b>170</b>	<b>170</b>	<b>170</b>	-	<b>170</b>	<b>70</b>	<b>43</b>	<b>0</b>	<b>0</b>	<b>170</b>	<b>170</b>
Domkhar	-	-	<b>8</b>	-	-	<b>128</b>	<b>28</b>	<b>128</b>	<b>128</b>	<b>128</b>	-	<b>128</b>	<b>28</b>	<b>2</b>	<b>2</b>	<b>0</b>	<b>128</b>	<b>128</b>
Skurbuchan	-	-	<b>0</b>	-	-	<b>127</b>	<b>27</b>	<b>127</b>	<b>127</b>	<b>127</b>	-	<b>127</b>	<b>0</b>	-	-	-	<b>127</b>	<b>127</b>

**District: - Leh**

**Block: - Skurbuchan**

**Assembly constituency:- Leh**

**DISTANCE FROM VILLAGE ( In Kilometers) UPTO -----**

Name of the village/ward	Family Welfare Sub Centre	Nari Niketan/ Bal-Ashram	Anganwari Centre	Vety. Disp/ Animal Husb. Centre	Sheep Husb. Centre	Police Station/ Post	Fire station	Tehsil Office	Block Office	District Headquarter	Court	Potable water
	72	73	74	75	76	77	78	79	80	81	82	83
Dha	20	152	0	35	0	52	152	152	52	152	152	0
Hanu Yokma	38	170	0	30	0	70	170	170	70	170	170	0
Domkhar	0	128	0	15	0	28	128	128	28	128	128	0
Skurbuchan	5	127	0	0	0	27	127	127	27	127	127	0

**District:- Leh**  
**Block:- Skurbuchan**  
**Assembly constituency:- Leh**

Name of the village	Source of potable water	Whether covered with lighting	Whether Lanes/drains facilities provided	No.of families covered with Housing facility under IAY/RHS etc.	Remarks
	Tap/Spring/Tubewell/Nallah	If yes, indicate source	(Fully/Partly/Not Provided)		
	84	85	86	87	88
Dha	<b>Spring/Tap</b>	<b>Solar</b>		<b>5</b>	
Hanoo	<b>Spring/Tap</b>	<b>Solar</b>		<b>6</b>	
Domkhar	<b>Spring/Tap/Handpump</b>	<b>Diesel</b>		<b>7</b>	
Skurbuchan	<b>Spring/Tap</b>	<b>Diesel</b>		<b>5</b>	



**District:- Leh**  
**Block:- Singaylalok HQ at Wanla**  
**Assembly constituency:- Leh**

S.No.	Name of the Village/Ward	Status Urban/Rural	Census Code	Panchayat Halqa	Block/Town	Tehsil	No. of House Hold (2011 census)	Area in Hectares			Source of Irrigation Canal/Stream/Well/Other	P o p u l a t i o n (2011 Census)s					No. of Literates	
								Total area as per village paper	Cropped area	Irrigated area		Male	Female	Total	Sch. caste	Sch. Tribe	Male	Female
1.	2.	3.	4.	5.	6.	7.	8.	9.	10.	11.	12.	13.	14.	15.	16.	17.	18.	19.
1	Lingshed		108	1.Lingshet 2. Dipling	Wanla	Khaltse	116	288	91	91	Stream	494	419	913	0	912	347	220
2	Yulchung	-do-	106	-do-	-do-	-do-	42	183	35	35	Stream	136	125	261	0	261	108	61
3	Wanla	-do-	81	Wanla-A Wanla-B	-do-	-do-	170	440	138	138	Stream	518	497	1015	0	1014	327	253
4	Photoksar	-do-	107	Photoksar	-do-	-do-	48	193	34	34	Stream	119	122	241	0	241	83	68

**District:- Leh**

**Block:- Singayllok HQ at Wanla**

**Assembly constituency:- Leh**

DISTANCE FROM VILLAGE ( In Kilometers ) UPTO -----

Village	Motor able roads				Bus stop/ Passenger Shed	Railway Station	Agri/Fruit/ Veg. Market	General Market	Forest Sale Depot	Plant Distribution Centre	Improved Seed Centre	Ration Depot /Fair price shop	K.Oil Depot	LPG Outlet	Cooperative Fair price Shop	Cooperative Society	Handicraft Trg./ Prod. Centre
	BT	MT	Shingled	FW													
	20	21	22	23	24	25	26	27	28	29	30	31	32	33	34	35	36
Lingshed	7	-	8	5	<b>92</b>	<b>664</b>	<b>116</b>	<b>116</b>	<b>116</b>	<b>116</b>	<b>116</b>	<b>0</b>	<b>116</b>	<b>116</b>	<b>116</b>	<b>0</b>	<b>131</b>
Yulchung	7	-	8	5	<b>67</b>	<b>660</b>	<b>98</b>	<b>98</b>	<b>98</b>	<b>98</b>	<b>98</b>	<b>0</b>	<b>98</b>	<b>98</b>	<b>98</b>	<b>18</b>	<b>114</b>
Wanla	7	-	-	-	<b>0</b>	<b>634</b>	<b>25</b>	<b>25</b>	<b>25</b>	<b>25</b>	<b>25</b>	<b>0</b>	<b>25</b>	<b>25</b>	<b>25</b>	<b>0</b>	<b>40</b>
Photoksar	7	-	8	5	<b>0</b>	<b>659</b>	<b>58</b>	<b>58</b>	<b>58</b>	<b>58</b>	<b>58</b>	<b>0</b>	<b>58</b>	<b>58</b>	<b>58</b>	<b>32</b>	<b>73</b>

**District:- Leh**  
**Block: - Singaylajok HQ at Wanla**  
**Assembly constituency:- Leh**

**DISTANCE FROM VILLAGE ( In Kilometers) UPTO -----**

Name of the Village/ward	Handloom Trg/Prod. Centre	Cold Storage facility	Bank Branch	Post Office	PCO/Tel. facility	Community Hall/Centre	Panchayat Ghar	Tourist hut/Guest House	Govt. Primary School			Govt. Middle School			Govt. High School		
									Boys	Girls	Common	Boys	Girls	Common	Boys	Girls	Common
	37	38	39	40	41	42	43	44	45	46	47	48	49	50	51	52	53
Lingshed	<b>0</b>	-	<b>116</b>	<b>106</b>	<b>0</b>	<b>0</b>	<b>18</b>	<b>0</b>	-	-	<b>0</b>	-	-	<b>0</b>	-	-	<b>106</b>
Yulchung	<b>16</b>	-	<b>98</b>	<b>88</b>	<b>0</b>	<b>0</b>	<b>0</b>	<b>18</b>	-	-	<b>0</b>	-	-	<b>18</b>	-	-	<b>88</b>
Wanla	<b>43</b>	-	<b>15</b>	<b>0</b>	<b>0</b>	<b>0</b>	<b>0</b>	<b>0</b>	-	-	<b>0</b>	-	-	<b>0</b>	-	-	<b>0</b>
Photoksar	<b>0</b>	-	<b>58</b>	<b>31</b>	<b>0</b>	<b>31</b>	<b>31</b>	<b>43</b>	-	-	<b>0</b>	-	-	<b>0</b>	-	-	<b>43</b>

**District:- Leh**  
**Block:- Singaylajok HQ at Wanla**  
**Assembly constituency:- Leh**

**DISTANCE FROM VILLAGE ( In Kilometers ) UPTO -----**

Name of Village/ward	Govt. Hr. Sec. School			Govt. College			Private School				Private College	Hospital	SDH/CHC	PHC	Allopathic/Unani/Ayur. Dispensary	Med. sub Centre/MAC	Pvt. Clinic/Hospital	Medicine Shop
	Boys	Girls	Common	Boys	Girls	Common	Pry.	Middle	High	Hr. Sec.								
	54	55	56	57	58	59	60	61	62	63	64	65	66	67	68	69	70	71
Lingshed	-	-	<b>116</b>	-	-	<b>216</b>	<b>0</b>	<b>216</b>	<b>216</b>	<b>216</b>	-	<b>216</b>	<b>116</b>	<b>116</b>	<b>0</b>	-	<b>216</b>	<b>216</b>
Yulchung	-	-	<b>98</b>	-	-	<b>198</b>	<b>98</b>	<b>198</b>	<b>198</b>	<b>198</b>	-	<b>198</b>	<b>98</b>	<b>98</b>	<b>18</b>	<b>0</b>	<b>198</b>	<b>198</b>
Wanla	-	-	<b>15</b>	-	-	<b>115</b>	<b>25</b>	<b>115</b>	<b>115</b>	<b>115</b>	-	<b>115</b>	<b>25</b>	<b>15</b>	<b>35</b>	<b>0</b>	<b>115</b>	<b>115</b>
Photoksar	-	-	<b>43</b>	-	-	<b>158</b>	<b>58</b>	<b>158</b>	<b>158</b>	<b>158</b>	-	<b>158</b>	<b>58</b>	<b>58</b>	<b>38</b>	<b>0</b>	<b>158</b>	<b>158</b>

**District: - Leh**  
**Block: - Singayllok HQ at Wanla**  
**Assembly constituency:- Leh**

**DISTANCE FROM VILLAGE ( In Kilometers) UPTO -----**

Name of the village/ward	Family Welfare Sub Centre	Nari Niketan/ Bal-Ashram	Anganwari Centre	Vety. Disp/ Animal Husb. Centre	Sheep Husb. Centre	Police Station/ Post	Fire station	Tehsil Office	Block Office	District Headquarter	Court	Potable water
	72	73	74	75	76	77	78	79	80	81	82	83
Lingshed	18	216	0	101	0	116	216	216	116	216	216	0
Yulchung	0	198	0	83	18	98	198	198	98	198	198	0
Wanla	40	115	0	15	0	25	115	115	25	120	120	0
Photoksar	10	158	0	0	43	62	162	162	62	162	162	0

**District:- Leh**

**Block:- Singayllok HQ at Wanla**

**Assembly constituency:- Leh**

Name of the village	Source of potable water	Whether covered with lighting	Whether Lanes/drains facilities provided	No.of families covered with Housing facility under IAY/RHS etc.	Remarks
	Tap/Spring/Tubewell/Nallah	If yes, indicate source	(Fully/Partly/Not Provided)		
	84	85	86	87	88
Lingshed	<b>Spring</b>	<b>Solar</b>		<b>4</b>	
Yulchung	<b>Spring</b>	<b>Solar</b>		<b>3</b>	
Wanla	<b>Spring/Hand Pump/Tap</b>	<b>Solar/Diesel</b>		<b>7</b>	
Photoksar	<b>Spring</b>	<b>Solar</b>		<b>3</b>	

**District:- Leh**  
**Block:- Chushot**  
**Assembly constituency:- Leh**

1.	Name of village/Ward	Status Urban/Rural	Census Code	Panchayat Halqa	Block/Town	Tehsil	No. of the Households 2011 census	Area in Hectares			Source of Irrigation Canal/Stream /Well/Others	P o p u l a t i o n (2011 Census)					No. of Literates	
								Total area as per village papers	Cropped area	Irrigated area		Male	female	total	Sch. caste	Sch. tribe	male	female
2.	3.	4.	5.	6.	7.	8.	9.	10.	11.	12.	13.	14.	15.	16.	17.	18.	19.	
1	Chu.Shama	Rural	86	Chu.shama-I Chu.shama-II	Chuchot	Leh	296	488	196	196	River	768	799	1567	0	1558	611	529
2	Chu.Gongma	-do-	87	Chu.gongma-I Chu.gongma-II	-do-	-do-	368	730	282	282	River	987	939	1836	0	1804	721	567
3	Chu.Yokma	-do-	104	Chu.yokma-I Chu.yokma-II	-do-	-do-	428	471	208	208	River	1054	1108	2162	0	2066	868	718
4	Matho	-do-	88	Matho	-do-	-do-	279	811	375	375	Stream	554	611	1165	0	1160	360	337
5	Stakna	-do-	50	Stakna	-do-	-do-	88	295	99	99	River	171	184	355	0	355	109	112
6	Stok	-do-	85	Stok	-do-	-do-	300	584	328	328	Stream	706	765	1471	4	1457	513	461

**District:- Leh**  
**Block:- Chushot**  
 Assembly constituency:- Leh

**DISTANCE FROM VILLAGE ( In Kilometers ) UPTO -----**

Village	Motor able roads				Bus stop/ Passenger Shed	Railway Station	Agri/ Fruit/Veg. Market	General Market	Forest Sale depot	Plant Distribution centre	Improved Seed centre	Ration depot/ Fair price shop	K.Oil Depot	LPG Outlet	Cooperative Fair price shop	Cooperative Society	Handicraft Trg.Prod. Center
	BT	MT	Shingled	FW													
	20	21	22	23	24	25	26	27	28	29	30	31	32	33	34	35	36
Chu.Shama	10	-	-	-	<b>0</b>	<b>751</b>	<b>20</b>	<b>20</b>	<b>20</b>	<b>20</b>	<b>5</b>	<b>0</b>	<b>20</b>	<b>20</b>	<b>20</b>	<b>0</b>	<b>0</b>
Chu.Gongma	15	-	-	-	<b>0</b>	<b>759</b>	<b>25</b>	<b>25</b>	<b>25</b>	<b>25</b>	<b>0</b>	<b>0</b>	<b>25</b>	<b>25</b>	<b>25</b>	<b>0</b>	<b>0</b>
Chu.Yokma	5	-	-	-	<b>0</b>	<b>746</b>	<b>15</b>	<b>15</b>	<b>15</b>	<b>15</b>	<b>10</b>	<b>0</b>	<b>15</b>	<b>15</b>	<b>15</b>	<b>0</b>	<b>0</b>
Matho	15	-	-	-	<b>0</b>	<b>759</b>	<b>25</b>	<b>25</b>	<b>25</b>	<b>25</b>	<b>5</b>	<b>0</b>	<b>25</b>	<b>25</b>	<b>25</b>	<b>0</b>	<b>5</b>
Stakna	20	-	-	-	<b>0</b>	<b>759</b>	<b>27</b>	<b>27</b>	<b>27</b>	<b>27</b>	<b>3</b>	<b>0</b>	<b>27</b>	<b>27</b>	<b>27</b>	<b>0</b>	<b>5</b>
Stok	5	-	-	-	<b>0</b>	<b>749</b>	<b>15</b>	<b>15</b>	<b>15</b>	<b>15</b>	<b>15</b>	<b>0</b>	<b>15</b>	<b>15</b>	<b>15</b>	<b>0</b>	<b>5</b>



**District:- Leh**

**Block:- Chushot**

Assembly constituency:- Leh

**DISTANCE FROM VILLAGE ( In Kilometers ) UPTO -----**

Name of village	Handloom Trg/Prod. Centre	Cold Storage facility	Bank Branch	Post Office	PCO/Tel Facility	Community Hall/Centre	Panchayat Ghar	Tourist hut/Guest House	Govt. Primary School			Govt. Middle School			Govt. High School		
									Boys	Girls	Common	Boys	Girls	Common	Boys	Girls	Common
	37	38	39	40	41	42	43	44	45	46	47	48	49	50	51	52	53
Chu.Shama	<b>0</b>	-	<b>10</b>	<b>0</b>	<b>0</b>	<b>0</b>	<b>0</b>	<b>10</b>	-	-	<b>0</b>	-	-	<b>0</b>	-	-	-
Chu.Gongma	<b>3</b>	-	<b>15</b>	<b>0</b>	<b>0</b>	<b>0</b>	<b>0</b>	<b>15</b>	-	-	<b>0</b>	-	-	-	-	-	<b>0</b>
Chu.Yokma	<b>5</b>	-	<b>5</b>	<b>0</b>	<b>0</b>	<b>0</b>	<b>0</b>	<b>5</b>	-	-	-	-	-	<b>0</b>	-	-	<b>0</b>
Matho	<b>25</b>	-	<b>15</b>	<b>0</b>	<b>0</b>	<b>0</b>	<b>0</b>	<b>15</b>	-	-	<b>0</b>	-	-	<b>0</b>	-	-	<b>0</b>
Stakna	<b>27</b>	-	<b>17</b>	<b>5</b>	<b>0</b>	<b>0</b>	<b>7</b>	<b>10</b>	-	-	<b>0</b>	-	-	-	-	-	<b>5</b>
Stok	<b>15</b>	-	<b>5</b>	<b>0</b>	<b>0</b>	<b>0</b>	<b>0</b>	<b>0</b>	-	<b>0</b>	<b>0</b>	-	-	-	-	-	<b>0</b>

**District:- Leh**

**Block:- Chushot**

Assembly constituency:- Leh

DISTANCE FROM VILLAGE ( In Kilometers) UPTO -----

Name of the village	Govt. Hr. Sec. School			Govt. College			Private School				Private College	Hospital	SDH/CHC	PHC	Allopathic/Unani/Ayurv. Dispensary	Med. Sub Centre/MAC	Pvt. Clinic Hospital	Medicine Shop
	Boys	Girls	Common	Boys	Girls	Common	Pry.	Middle	High	Hr. Sec.								
	54	55	56	57	58	59	60	61	62	63	64	65	66	67	68	69	70	71
Chu.Shama	-	-	<b>0</b>	-	-	<b>20</b>	<b>5</b>	<b>5</b>	<b>5</b>	<b>20</b>	-	<b>20</b>	<b>20</b>	<b>0</b>	-	<b>0</b>	<b>20</b>	<b>20</b>
Chu.Gongma	-	-	<b>5</b>	-	-	<b>25</b>	<b>0</b>	<b>0</b>	<b>0</b>	<b>25</b>	-	<b>25</b>	<b>25</b>	<b>5</b>	-	<b>0</b>	<b>25</b>	<b>25</b>
Chu.Yokma	-	-	<b>5</b>	-	-	<b>15</b>	<b>0</b>	<b>0</b>	<b>5</b>	<b>15</b>	-	<b>15</b>	<b>15</b>	<b>5</b>	-	<b>0</b>	<b>15</b>	<b>15</b>
Matho	-	-	<b>10</b>	-	-	<b>25</b>	<b>0</b>	<b>5</b>	<b>5</b>	<b>25</b>	-	<b>25</b>	<b>25</b>	<b>5</b>	-	<b>0</b>	<b>25</b>	<b>25</b>
Stakna	-	-	<b>10</b>	-	-	<b>27</b>	<b>5</b>	<b>5</b>	<b>5</b>	<b>27</b>	-	<b>27</b>	<b>27</b>	<b>7</b>	-	<b>0</b>	<b>27</b>	<b>27</b>
Stok	-	-	<b>15</b>	-	-	<b>15</b>	<b>0</b>	<b>0</b>	<b>0</b>	<b>15</b>	-	<b>15</b>	<b>15</b>	<b>15</b>	-	<b>0</b>	<b>15</b>	<b>15</b>

**District:- Leh**

**Block:- Chushot**

**Assembly constituency:- Leh**

**DISTANCE FROM VILLAGE ( In Kilometers ) UPTO -----**

Name of the village	Family Welfare Plg. Centre	Nari Niketan/ Bal-Ashram	Anganwari Centre	Vety. Disp/ Animal Husb. Centre	Sheep Husb./Ext. Centre	Police Station/ Post	Fire Station	Tehsil Office	Block Office	District Headquarter	Court	Potable water
	72	73	74	75	76	77	78	79	80	81	82	83
Chu.Shama	5	20	0	0	0	20	20	20	0	20	20	0
Chu.Gongma	10	25	0	0	5	25	25	25	5	25	25	0
Chu.Yokma	0	15	0	0	5	15	15	15	5	15	15	0
Matho	10	25	0	0	10	25	25	25	6	25	25	0
Stakna	12	27	0	6	10	27	27	27	10	27	27	0
Stok	5	15	0	0	10	15	15	15	10	15	15	0

**District:- Leh**  
**Block:- Chushot**  
**Assembly constituency:- Leh**

Name of the villages	Source of potable water	Whether covered with lighting.	Whether Lanes/drains facilities provided	No.of families covered with Housing facilities under IAY/RHS etc.	Remarks
	Tap/Spring/Tubewell/ Nallah	If yes, indicate source	Fully/Partly/Not provided		
	84	85	86	87	88
Chu.Shama	<b>Hand pump</b>	<b>Hydel/Diesel</b>		<b>6</b>	
Chu.Gongma	<b>Hand pump/spring</b>	<b>Hydel/Diesel</b>		<b>6</b>	
Chu.Yokma	<b>Hand pump</b>	<b>Hydel/Diesel</b>		<b>7</b>	
Matho	<b>Spring</b>	<b>Hydel/Diesel</b>		<b>4</b>	
Stakna	<b>Tube well</b>	<b>Hydel/Diesel</b>		<b>2</b>	
Stok	<b>Spring</b>	<b>Hydel/Diesel</b>		<b>6</b>	

**District:- Leh**  
**Block:- Thiksay**  
**Assembly constituency:- Leh**

S No	Name of village/Ward	Status Urban/ Rural	Census Code	Panchayat Halqa	Block/ Town	Tehsil	No. of the Households 2011 census	Area in Hectares			Source of Irrigation Canal/Stream /Well/Others	P o p u l a t I o n (2011 Census)					No. of Literates	
								Total area as per village papers	Cropped area	Irrigated area		Male	female	Total	Sch. caste	Sch. tribe	Male	Female
1.	2.	3.	4.	5.	6.	7.	8.	9.	10.	11.	12.	13.	14.	15.	16.	17.	18.	19.
1	Shey	Rural	58	1. Shey-A 2. Shey-B	Thiksay	Leh	398	647	177	177	River	1057	1181	2238	0	1935	750	814
2	Thiksay	-do-	55	1.Thiksay-A 2. Thiksay-A	-do-	-do-	433	646	297	297	River	1111	1126	2237	0	2150	841	675
3	Ranbirpur	-do-	54	Ranbirpur	-do-	-do-	122	212	79	79	River	307	287	594	0	586	230	203
4	Nang	-do-	56	Nang	-do-	-do-	74	126	53	53	Stream	156	178	334	0	333	94	81

**District:- Leh**  
**Block:- Thiksay**  
**Assembly constituency:- Leh**

**DISTANCE FROM VILLAGE ( In Kilometers ) UPTO -----**

Village	Motor able roads				Bus stop/ Passenger Shed	Railway Station	Agri/ Fruit/Veg. Market	General Market	Forest Sale depot	Plant Distribution centre	Improved Seed centre	Ration depot/ Fair price shop	K.Oil Depot	LPG Outlet	Cooperative Fair price shop	Cooperative Society	Handic raft Trg.Pro d. Center
	BT	MT	Shingled	FW													
	20	21	22	23	24	25	26	27	28	29	30	31	32	33	34	35	36
Shey	On Leh- Manali road				<b>0</b>	<b>749</b>	<b>15</b>	<b>15</b>	<b>15</b>	<b>15</b>	<b>5</b>	<b>0</b>	<b>15</b>	<b>15</b>	<b>15</b>	<b>0</b>	<b>15</b>
Thiksay	On Leh- Manali road				<b>0</b>	<b>755</b>	<b>20</b>	<b>20</b>	<b>20</b>	<b>20</b>	<b>0</b>	<b>0</b>	<b>20</b>	<b>20</b>	<b>20</b>	<b>0</b>	<b>20</b>
Ranbirpur	On Leh- Manali road				<b>0</b>	<b>761</b>	<b>25</b>	<b>25</b>	<b>25</b>	<b>25</b>	<b>5</b>	<b>0</b>	<b>25</b>	<b>25</b>	<b>25</b>	<b>0</b>	<b>25</b>
Nang	2	-	-	3	<b>0</b>	<b>765</b>	<b>30</b>	<b>30</b>	<b>30</b>	<b>30</b>	<b>10</b>	<b>0</b>	<b>30</b>	<b>30</b>	<b>30</b>	<b>0</b>	<b>30</b>

**District:- Leh**  
**Block:- Thiksay**  
**Assembly constituency:- Leh**

**DISTANCE FROM VILLAGE ( In Kilometers ) UPTO -----**

Name of village	Handloom Trg/Prod. Centre	Cold Storage facility	Bank Branch	Post Office	PCO/Tel. Facility	Community Hall/Centre	Panchayat Ghar	Tourist hut/Guest House	Govt. Primary School			Govt. Middle School			Govt. High School		
									Boys	Girls	Common	Boys	Girls	Common	Boys	Girls	Common
	37	38	39	40	41	42	43	44	45	46	47	48	49	50	51	52	53
Shey	<b>15</b>	-	<b>5</b>	<b>0</b>	<b>0</b>	<b>0</b>	<b>0</b>	<b>0</b>	-	-	<b>0</b>	-	<b>0</b>	-	-	-	<b>0</b>
Thiksay	<b>20</b>	-	<b>0</b>	<b>0</b>	<b>0</b>	<b>0</b>	<b>0</b>	<b>0</b>	-	<b>0</b>	<b>0</b>	-	-	-	-	-	<b>0</b>
Ranbirpur	<b>25</b>	-	<b>5</b>	<b>5</b>	<b>0</b>	<b>0</b>	<b>5</b>	<b>5</b>	-	-	-	-	-	<b>0</b>	-	-	<b>5</b>
Nang	<b>30</b>	-	<b>10</b>	<b>10</b>	<b>0</b>	<b>0</b>	<b>0</b>	<b>10</b>	-	-	-	-	-	<b>0</b>	-	-	<b>10</b>

**District:- Leh**  
**Block:- Thiksay**  
**Assembly constituency:- Leh**

**DISTANCE FROM VILLAGE ( In Kilometers) UPTO -----**

Name of the village	Govt. Hr. Sec. School			Govt. College			Private School				Private College	Hospital	SDH/CHC	PHC	Allopathic/Unani/Ayurv Dispensary	Med. Sub Centre/MAC	Pvt. Clinic Hospital	Medicine Shop
	Boys	Girls	Common	Boys	Girls	Common	Pry.	Middle	High	Hr. Sec.								
	54	55	56	57	58	59	60	61	62	63	64	65	66	67	68	69	70	71
Shey	-	-	<b>15</b>	-	-	<b>15</b>	<b>0</b>	<b>0</b>	<b>5</b>	<b>15</b>	-	<b>15</b>	<b>15</b>	<b>5</b>	-	<b>0</b>	<b>15</b>	<b>15</b>
Thiksay	-	-	<b>20</b>	-	-	<b>20</b>	<b>0</b>	<b>0</b>	<b>10</b>	<b>20</b>	-	<b>20</b>	<b>20</b>	<b>0</b>	-	<b>0</b>	<b>20</b>	<b>20</b>
Ranbirpur	-	-	<b>25</b>	-	-	<b>25</b>	<b>5</b>	<b>5</b>	<b>15</b>	<b>25</b>	-	<b>25</b>	<b>25</b>	<b>5</b>	-	<b>0</b>	<b>25</b>	<b>25</b>
Nang	-	-	<b>30</b>	-	-	<b>30</b>	<b>10</b>	<b>10</b>	<b>20</b>	<b>30</b>	-	<b>30</b>	<b>30</b>	<b>10</b>	-	<b>0</b>	<b>30</b>	<b>30</b>



**District:- Leh**  
**Block:- Thiksay**  
**Assembly constituency:- Leh**

**DISTANCE FROM VILLAGE ( In Kilometers ) UPTO -----**

Name of the village	Family Welfare Plg. Centre	Nari Niketan/ Bal-Ashram	Anganwari Centre	Vety. Disp/ Animal Husb. Centre	Sheep Husb./Ext. Centre	Police Station/ Post	Fire Station	Tehsil Office	Block Office	District Headquarter	Court	Potable water
	72	73	74	75	76	77	78	79	80	81	82	83
Shey	<b>10</b>	<b>15</b>	<b>0</b>	<b>0</b>	<b>5</b>	<b>15</b>	<b>15</b>	<b>15</b>	<b>5</b>	<b>15</b>	<b>15</b>	<b>0</b>
Thiksay	<b>15</b>	<b>20</b>	<b>0</b>	<b>0</b>	<b>0</b>	<b>20</b>	<b>20</b>	<b>20</b>	<b>10</b>	<b>20</b>	<b>20</b>	<b>0</b>
Ranbirpur	<b>20</b>	<b>25</b>	<b>0</b>	<b>5</b>	<b>5</b>	<b>25</b>	<b>25</b>	<b>25</b>	<b>15</b>	<b>25</b>	<b>25</b>	<b>0</b>
Nang	<b>25</b>	<b>30</b>	<b>0</b>	<b>10</b>	<b>10</b>	<b>30</b>	<b>30</b>	<b>30</b>	<b>20</b>	<b>30</b>	<b>30</b>	<b>0</b>

**District:- Leh**  
**Block:- Thiksay**  
**Assembly constituency:- Leh**

Name of the villages	Source of potable water	Whether covered with lighting.	Whether Lanes/drains facilities provided	No.of families covered with Housing facilities under IAY/RHS etc.	Remarks
	Tap/Spring/Tubewell/ Nallah	If yes, indicate source	Fully/Partly/Not provided		
	84	85	86	87	88
Shey	<b>Hand pump</b>	<b>Hydel/Diesel</b>		<b>3</b>	
Thiksay	<b>Hand pump</b>	<b>Hydel/Diesel</b>		<b>5</b>	
Ranbirpur	<b>Hand pump</b>	<b>Hydel/Diesel</b>		<b>3</b>	
Nang	<b>Spring</b>	<b>Hydel/Diesel</b>		<b>6</b>	

District:- Leh  
Block:- Kharu  
Assembly constituency:- LEH

S. No	Name of the village/Ward	Status Urban/Rural	Census Code	Panchayat Halqa	Block/Town	Tehsil	No. of House Hold 2011 census	Area in Hectares			Source of Irrigation Canal/Stream /Well/Others	P o p u l a t i o n (2011 census)					No. of Literates	
								Total area as per village papers	Cropped area	Irrigated area		Male	Female	Total	Sch. caste	Sch. tribe	Male	Female
1.	2.	3.	4.	5.	6.	7.	8.	9.	10.	11.	12.	13.	14.	15.	16.	17.	18.	19.
1.	Gia	Rural	100	Gia	Kharu	Kharu	140	290	89	89	Stream	301	357	658	0	657	172	163
2.	Meroo	-do-	101	-do-	-do-	-do-	34	114	34	34	Stream	79	109	188	0	188	44	46
3.	Upshi	-do-	90	-do-	-do-	-do-	26	66	48	48	Stream	64	64	128	0	128	46	39
4.	Igoo	-do-	48	Igoo	-do-	-do-	238	677	151	151	Stream	505	598	1103	0	1103	320	292
5.	Langkor	-do-	47	-do-	-do-	-do-	16	18	10	10	Stream	44	43	87	0	87	34	23
6.	Martselang	-do-	102	Martselang	-do-	-do-	69	180	69	69	Stream	175	206	381	0	379	125	120
7.	Hemis	-do-	89	-do-	-do-	-do-	24	54	13	13	Stream	256	57	313	0	85	230	31
8.	Shang.	-do-	90	-do-	-do-	-do-	51	192	38	38	Stream	115	115	230	0	229	66	56
9.	Changa	-do-	49	-do-	-do-	-do-	58	121	43	43	Stream	119	124	423	0	242	84	59
10.	Sakti	-do-	53	Sakti Sakti-A	-do-	-do-	370	679	285	285	Stream	816	902	1718	1	1713	577	473
11.	Chemday	-do-	52	Chemday	-do-	-do-	353	454	178	178	Stream	5450	772	6222	0	1846	5143	408
12.	Kharu	-do-	51	-do-	-do-	-do-	42	64	27	27	Stream	77	90	167	0	167	53	48
13.	Shara	-do-	46	Shara	-do-	-do-	57	116	57	57	Stream	134	156	290	0	290	108	91
14.	Phuktse	-do-	33	-do-	-do-	-do-	60	119	55	55	Stream	142	174	316	0	312	92	62
15.	Sharnos	-do-	45	-do-	-do-	-do-	61	145	53	53	Stream	142	157	299	0	298	104	64

**District:- Leh**

Block:- Kharu

Assembly constituency:- LEH

Village	Motor able roads				Bus stop/ Passenger Shed	Railway Station	Agri/Fruit /Veg. Market	General Market	Forest Sale Depot	Plant Distribution Centre	Improved Seed Centre	Ration Depot/Fair Price Shop	K.Oil Depot	LPG Outlet	Cooperative Fair price Shop	Cooperative Society	Handicraft Trg./Prod. Centre
	BT	MT	Shingled	FW													
	20	21	22	23	24	25	26	27	28	29	30	31	32	33	34	35	36
Gia	On Leh- Manali road				0	809	75	40	75	75	40	0	75	75	75	0	75
Miru	On Leh- Manali road				0	798	64	29	64	64	29	0	64	64	64	0	64
Upshi	On Leh- Manali road				0	784	50	15	50	50	15	0	50	50	50	10	50
Igoo	5.00	2.00	1.00	1.00	0	784	45	15	45	45	15	0	45	45	45	0	45
Langkor	5.00	2.00	1.00	3.00	0	787	50	20	50	50	20	0	50	50	50	5	50
Martselang	2.00	-	-	1.00	0	774	40	5	40	40	5	0	40	40	40	0	40
Hemis	5.00	-	-	-	0	779	43	8	43	43	8	7	43	43	43	5	43
Shang.	2.00	-	-	6.00	0	787	50	15	50	50	15	0	50	50	50	12	50
Changa	1.00	-	-	2.00	0	774	42	7	42	42	7	0	42	42	42	5	42
Sakti	On Leh – Pangong road				0	784	50	15	50	50	15	0	50	50	50	0	50
Chemday	On Leh – Pangong road				0	774	45	10	40	40	5	0	40	40	40	0	40
Kharu	On Leh – Pangong road				0	769	35	0	35	35	0	0	35	35	35	0	35
Shara	3.00	-	-	-	0	794	60	25	60	60	25	0	60	60	60	0	60
Phuktse	4.00	-	1.00	-	0	799	65	30	65	65	30	0	65	65	65	5	65
Sharnos	1.00	-	-	-	0	795	61	26	61	61	26	0	61	61	61	1	61

**District:- Leh**

Block:- Kharu

Assembly constituency:- LEH

**DISTANCE FROM VILLAGE ( In Kilometers ) UPTO -----**

Name of Village/ Ward	Handloom Trg/Prod. Centre	Cold Storage facility	Bank Branch	Post Office	PCO/Tel facility	Community Hall/Centre	Panchay Ghar	Tourist hut/Guest House	Govt. Primary School			Govt. Middle School			Govt. High School		
									Boys	Girls	Common	Boys	Girls	Common	Boys	Girls	Common
	37	38	39	40	41	42	43	44	45	46	47	48	49	50	51	52	53
Gia	75	-	40	11	0	0	0	0	-	-	0	-	-	0	-	-	0
Miru	64	-	29	0	0	0	11	11	-	-	0	-	-	11	-	-	11
Upshi	50	-	15	14	0	0	25	0	-	-	0	-	-	25	-	-	25
Igoo	45	-	15	0	0	0	0	10	-	-	-	-	-	0	-	-	0
Langkor	50	-	20	5	0	0	5	15	-	-	0	-	-	0	-	-	5
Martselang	40	-	5	2	0	0	0	4	-	-	-	-	-	0	-	-	20
Hemis	43	-	8	0	0	0	4	6	-	-	4	-	-	4	-	-	25
Shang.	50	-	15	10	0	0	7	0	-	-	0	-	-	0	-	-	25
Changa	42	-	7	0	0	0	3	6	-	-	0	-	-	3	-	-	20
Sakti	50	-	15	0	0	0	0	0	-	-	0	-	-	0	-	-	-
Chemday	40	-	10	0	0	0	0	5	-	-	0	-	-	0	-	-	5
Kharu	35	-	0	0	0	0	10	0	-	-	0	-	-	0	-	-	15
Shara	60	-	25	0	0	0	0	10	-	-	-	-	-	-	-	-	0
Phuktse	65	-	30	5	0	0	5	15	-	-	0	-	-	0	-	-	5
Sharnos	61	-	26	1	0	0	1	9	-	-	0	-	-	1	-	-	1

**District:- Leh**

**Block:- Kharu**

Assembly constituency:- LEH

**DISTANCE FROM VILLAGE ( In Kilometers ) UPTO -----**

Name of village/ward	Govt. Hr. Sec. School			Govt. College			Private School				Private College	Hospital	SDH/CHC	PHC	Allopathic/Unani/Ayurv. Dispensary	Med. sub Centre/MAC	Pvt. Clinic/Hospital	Medicine Shop
	Boys	Girls	Common	Boys	Girls	Common	Pry.	Middle	High	Hr. Sec.								
	54	55	56	57	58	59	60	61	62	63	64	65	66	67	68	69	70	71
Gia	-	-	55	-	-	75	40	40	75	75	-	75	75	55	75	0	75	75
Miru	-	-	44	-	-	64	29	29	64	64	-	64	64	44	64	11	64	64
Upshi	-	-	30	-	-	50	15	15	50	50	-	50	50	30	50	0	50	50
Igoo	-	-	25	-	-	45	10	10	45	45	-	45	45	25	45	0	45	45
Langkor	-	-	30	-	-	50	15	15	50	50	-	50	50	30	50	5	50	50
Martselan	-	-	20	-	-	38	3	3	38	38	-	38	38	18	38	0	38	38
Hemis	-	-	25	-	-	43	8	8	43	43	-	43	43	23	43	0	43	43
Shang.	-	-	25	-	-	45	10	10	45	45	-	45	45	25	45	0	45	45
Changa	-	-	22	-	-	42	7	7	42	42	-	42	42	22	42	0	42	42
Sakti	-	-	0	-	-	50	0	0	50	50	-	50	50	0	50	0	50	50
Chemday	-	-	5	-	-	45	5	5	45	45	-	45	45	25	45	0	45	45
Kharu	-	-	15	-	-	35	0	0	35	35	-	35	35	15	35	0	35	35
Shara	-	-	40	-	-	60	25	25	60	60	-	60	60	40	60	0	60	60
Phuktse	-	-	45	-	-	65	30	30	65	65	-	65	65	45	65	0	65	65
Sharnos	-	-	41	-	-	61	26	26	61	61	-	61	61	41	61	1	61	61

**District:- Leh**

Block:- Kharu

Assembly constituency:- LEH

----- **DISTANCE FROM VILLAGE ( In Kilometers ) UPTO** -----

Name of the village/ward	Family Welfare Plg. Centre	Nari Niketan/ Bal-Ashram	Anganwari Centre	Vety. Disp/ Animal Husb. Centre	Sheep Husbandry Centre	Police Stationh/ Post	Fire Station	Tehsil Office	Block Office	District Headquarter	Court	Potable water
	72	73	74	75	76	77	78	79	80	81	82	83
Gia	39	75	0	0	11	25	75	75	40	75	75	0
Miru	27	64	0	11	0	14	64	64	29	64	64	0
Upshi	15	50	0	25	14	0	50	50	15	50	50	0
Igoo	9	45	0	20	0	13	45	45	15	45	45	0
Langkor	19	50	0	25	5	18	50	50	20	50	50	0
Martselang	0	38	0	0	18	20	38	38	5	38	38	0
Hemis	5	43	0	20	23	23	43	43	8	43	43	0
Shang.	0	45	0	25	25	25	45	45	15	45	45	0
Changa	5	42	0	15	22	22	42	42	7	42	42	0
Sakti	9	50	0	0	0	30	50	50	15	50	50	0
Chemday	4	45	0	0	5	25	45	45	10	45	45	0
Kharu	1	35	0	10	15	15	35	35	0	35	35	0
Shara	4	60	0	35	0	10	60	60	25	60	60	0
Phuktse	0	65	0	40	5	15	65	65	30	65	65	0
Sharnos	5	61	0	34	1	11	61	61	26	61	61	0

**District:- Leh**

Block:- Kharu

Assembly constituency:- LEH

Name of the village/Ward	Source of potable water	Whether covered with lighting	Whether Lanes/drains facilities provided	No.of families covered with Housing facility under IAY/RHS etc.	Remarks
	Tap/Spring/Tubewell/Nallah	If yes, indicate source	(Fully/Partly/Not provided)		
	84	85	86	87	88
Gia	Spring/Hand pump	Hydel/Diesel		2	
Miru	Spring/Hand pump	Hydel/Diesel		2	
Upshi	Hand pump	Hydel/Diesel		2	
Igoo	Spring	Hydel/Diesel		3	
Langkor	Spring	Hydel/Diesel		3	
Martselang	Tube well	Hydel/Diesel		2	
Hemis	Hand pump/ nallah	Hydel/Diesel		2	
Shang.	Hand pump	Hydel/Diesel		1	
Changa	Spring/Hand pump	Hydel/Diesel		1	
Sakti	Spring/Tap/Handpump	Hydel/Diesel		6	
Chemday	Tube well/ Handpump	Hydel/Diesel		5	
Kharu	Hand pump	Hydel/Diesel		1	
Shara	Hand pump/ nallah/Tap	Hydel/Diesel		2	
Phuktse	Hand pump/ nallah	Hydel/Diesel		2	
Sharnos	Tap/ Handpump	Hydel/Diesel		2	



**District:- Leh**  
**Block:- Nyoma**  
**Assembly constituency:- Leh**

S. No	Name of the village/Ward	Status Urban/Rural	Census Code	Panchayat Halqa	Block/Town	Tehsil	No. of House Hold 2011 census	Area in Hectares			Source of Irrigation Canal/Stream /Well/Others	P o p u l a t i o n (2011 census)s					No. of Literates	
								Total area per village paper	Cropped area	Irrigated area		Male	female	Total	Sch. caste	Sch. tribe	Male	Female
1.	2.	3.	4.	5.	6.	7.	8.	9.	10.	11.	12.	13.	14.	15.	16.	17.	18.	19.
1.	Anlay	Rural	38	Anlay	Nyoma	Nyoma	371	222	105	105	Stream	883	996	1879	2	888	559	449
2.	Koyul	-do-	37	Kuyul	-do-	-do-	115	193	28	28	Stream	236	257	493	0	201	161	122
3.	Demjok	-do-	36	-do-	-do-	-do-	31	33	1	1	Stream	43	35	78	1	64	20	11
4.	Nyoma	-do-	40	Nyoma	-do-	-do-	202	153	42	42	Stream	427	491	918	2	707	198	198
5.	Mudh	-do-	39	1.Nyoma 2. Tsaga	-do-	-do-	127	77	47	47	Stream	318	357	675	0	675	206	141

**District:- Leh**

**Block:- Nyoma**

**Assembly constituency:- Leh**

**DISTANCE FROM VILLAGE ( In Kilometers ) UPTO -----**

Name of the Village/ward	Motor able roads				Bus stop/ Passenger Shed	Railway Station	Agri/Fruit/ Veg. Market	General Market	Forest Sale Depot	Plant Distributio Centre	Improved Seed Centre	Ration Depot/ Fair Price Shop	K.Oil Depot	LPG Outlet	Cooperative Fair price Shop	Cooperative Society	Handicraft Trg./Prod Centre
	BT	MT	Shingled	FW													
	20	21	22	23	24	25	26	27	28	29	30	31	32	33	34	35	36
Anlay	20	-	-	70	0	1007	273	90	90	90	90	0	0	90	90	0	90
Koyul	20	-	-	70	0	1004	273	90	90	90	90	0	0	90	90	0	90
Demjok	20	-	-	110	0	1044	313	130	130	130	130	0	40	130	130	40	130
Nyoma	2	-	-	-	0	917	183	0	0	0	0	0	0	0	0	0	0
Mood	1.5	-	-	-	0	925	193	10	10	10	10	0	10	10	10	10	10

**District:- Leh**

**Block:- Nyoma**

**Assembly constituency:- Leh**

**DISTANCE FROM VILLAGE ( In Kilometers ) UPTO -----**

Name of Village/ward	Handloom Trg/Prod. Centre	Cold Storage facility	Bank Branch	Post Office	PCO/Tel. facility	Community Hall/centre	Panchayat Ghar	Tourist hut/guest House	Govt. Primary School			Govt. Middle School			Govt. High School		
									Boys	Girls	Common	Boy	Girls	Common	Boys	Girls	Common
	37	38	39	40	41	42	43	44	45	46	47	48	49	50	51	52	53
Anlay	<b>0</b>	-	<b>90</b>	<b>90</b>	<b>0</b>	<b>0</b>	<b>0</b>	-	-	-	<b>0</b>	-	-	<b>0</b>	-	-	<b>90</b>
Koyul	<b>90</b>	-	<b>90</b>	<b>90</b>	<b>0</b>	<b>0</b>	<b>0</b>	<b>90</b>	-	-	<b>0</b>	-	-	<b>0</b>	-	-	<b>90</b>
Demjok	<b>130</b>	-	<b>130</b>	<b>130</b>	<b>0</b>	<b>40</b>	<b>40</b>	<b>130</b>	-	-	<b>40</b>	-	-	<b>40</b>	-	-	<b>130</b>
Nyoma	<b>0</b>	-	<b>0</b>	<b>0</b>	<b>0</b>	<b>0</b>	<b>0</b>	<b>0</b>	-	-	-	-	-	<b>0</b>	-	-	-
Mood	<b>10</b>	-	<b>10</b>	<b>10</b>	<b>0</b>	<b>0</b>	<b>0</b>	<b>10</b>	-	-	-	-	-	<b>0</b>	-	-	<b>10</b>

**District:- Leh**

**Block:- Nyoma**

Assembly constituency:- Leh

**DISTANCE FROM VILLAGE ( In Kilometers ) UPTO -----**

Name of the village/ward	Govt. Hr. Sec. School			Govt. College			Private School				Private College	Hospital	SDH/CHC	PHC	Allopathic/Unani/Ayurv. Dispensary	Med. sub Centre/MAC	Pvt. Clinic/Hospital	Medicine Shop
	Boys	Girls	Common	Boys	Girls	Common	Pry.	Middle	High	Hr. Sec.								
	54	55	56	57	58	59	60	61	62	63	64	65	66	67	68	69	70	71
Anlay	-	-	<b>90</b>	-	-	<b>273</b>	<b>273</b>	<b>273</b>	<b>273</b>	<b>273</b>	-	<b>273</b>	<b>273</b>	<b>90</b>	<b>90</b>	<b>0</b>	<b>273</b>	<b>273</b>
Koyul	-	-	<b>90</b>	-	-	<b>273</b>	<b>273</b>	<b>273</b>	<b>273</b>	<b>273</b>	-	<b>273</b>	<b>273</b>	<b>90</b>	<b>90</b>	<b>0</b>	<b>273</b>	<b>273</b>
Demjok	-	-	<b>130</b>	-	-	<b>313</b>	<b>313</b>	<b>313</b>	<b>313</b>	<b>313</b>	-	<b>313</b>	<b>313</b>	<b>130</b>	<b>130</b>	<b>40</b>	<b>313</b>	<b>313</b>
Nyoma	-	-	<b>0</b>	-	-	<b>183</b>	<b>183</b>	<b>183</b>	<b>183</b>	<b>183</b>	-	<b>183</b>	<b>183</b>	<b>0</b>	<b>0</b>	<b>0</b>	<b>183</b>	<b>183</b>
Mood	-	-	<b>10</b>	-	-	<b>193</b>	<b>193</b>	<b>193</b>	<b>193</b>	<b>193</b>	-	<b>193</b>	<b>193</b>	<b>10</b>	<b>10</b>	<b>0</b>	<b>193</b>	<b>193</b>

**District:- Leh**

Block:- Nyoma

Assembly constituency:- Leh

**DISTANCE FROM VILLAGE ( In Kilometers ) UPTO -----**

Name of the village/ward	Family Welfare Plg.Centre	Nari Niketan/ Bal-Ashram	Anganwari Centre	Vety. Disp/ Animal Husbandry Centre	Sheep Husbandry/ Ext. Centre	Police Station/ Post	Fire Station	Tehsil Office	Block Office	District Headquarter	Court	Potable water
	72	73	74	75	76	77	78	79	80	81	82	83
Anlay	<b>0</b>	<b>273</b>	<b>0</b>	<b>90</b>	<b>0</b>	<b>90</b>	<b>273</b>	<b>273</b>	<b>90</b>	<b>273</b>	<b>273</b>	<b>0</b>
Koyul	<b>70</b>	<b>273</b>	<b>0</b>	<b>90</b>	<b>0</b>	<b>90</b>	<b>273</b>	<b>273</b>	<b>90</b>	<b>273</b>	<b>273</b>	<b>0</b>
Demjok	<b>110</b>	<b>313</b>	<b>0</b>	<b>130</b>	<b>40</b>	<b>130</b>	<b>313</b>	<b>313</b>	<b>130</b>	<b>313</b>	<b>313</b>	<b>0</b>
Nyoma	<b>20</b>	<b>183</b>	<b>0</b>	<b>0</b>	<b>0</b>	<b>0</b>	<b>183</b>	<b>183</b>	<b>0</b>	<b>183</b>	<b>183</b>	<b>0</b>
Mood	<b>15</b>	<b>193</b>	<b>0</b>	<b>10</b>	<b>0</b>	<b>10</b>	<b>193</b>	<b>193</b>	<b>10</b>	<b>193</b>	<b>193</b>	<b>0</b>

**District:- Leh**  
**Block:- Nyoma**  
**Assembly constituency:- Leh**

Name of the village/ ward	Source of potable water	Whether covered with lighting.	Whether Lanes/drains facilities provided	No.of families covered with Housing facility under IAY/RHS etc.	Remarks
	Tap/Spring/Tubewell/Nallah	If yes, indicate source.	(Fully/Partly/Not provided)		
	84	85	86	87	88
Anlay	<b>Hand pump</b>	<b>Diesel/Solar</b>		<b>9</b>	
Koyul	<b>Hand pump</b>	<b>Solar</b>		<b>5</b>	
Demjok	<b>Hand pump</b>	<b>Solar</b>		<b>1</b>	
Nyoma	<b>Hand pump/Tap</b>	<b>Diesel/Solar</b>		<b>8</b>	
Mood	<b>Nallah/Hand pump</b>	<b>Diesel/Solar</b>		<b>8</b>	

**District:- Leh**  
**Block:- RongChugut HQ at Chumathang**  
**Assembly constituency:- Leh**

S. No	Name of the village/Ward	Status Urban/ Rural	Census Code	Panchayat Halqa	Block/ Town	Tehsil	No. of House Hold 2011 census	Area in Hectares			Source of Irrigation Canal/Stream /Well/Others	P o p u l a t I o n (2011 census)s					No. of Literate	
								Total area per village paper	Cropped area	Irrigated area		Male	female	Total	Sch. caste	Sch. tribe	Male	Fem ale
1	2	3	4	5	6	7	8	9	10	11	12	13	14	15	16	17	18	19
1	Chumathang	Rural	41	Chumathang	Rong Chugut	Nyoma	127	76	38	38	Stream	237	404	641	0	635	159	239
2	Hemya	-do-	93	Hemya	-do-	-do-	52	60	26	26	Stream	132	133	265	0	265	107	69
3	Tarchit	-do-	92	-do-	-do-	-do-	32	76	30	30	Stream	83	84	167	0	166	59	34
4	Kungam	-do-	34	Kungam	-do-	-do-	68	119	45	45	Stream	173	201	374	0	374	143	132
5	Teri	-do-	94	-do-	-do-	-do-	31	21	15	15	Stream	96	106	202	0	202	66	54
6	Liktsay	-do-	43	Liktsey	-do-	-do-	28	38	22	22	Stream	71	81	152	0	152	59	48
7	Tukla	-do-	44	-do-	-do-	-do-	54	64	33	33	Stream	123	143	266	0	265	96	72
8	Keray	-do-	95	Skitmang	-do-	-do-	60	52	29	29	Stream	140	150	290	0	290	113	89
9	Skidmang	-do-	96	-do-	-do-	-do-	37	55	18	18	Stream	99	90	189	0	189	68	42

**District:- Leh**  
**Block:- RongChugut HQ at Chumathang**  
**Assembly constituency:- Leh**

**DISTANCE FROM VILLAGE ( In Kilometers ) UPTO -----**

Name of the Village/ward	Motor able roads				Bus stop/ Passenger Shed	Railway Station	Agri/Fruit Veg. Market	General Market	Forest Sale Depot	Plant Distributi Centre	Improved Seed Centre	Ration Depot/ Fair Price Shop	K.Oil Depot	LPG Outlet	Cooperative Fair price Shop	Cooperative Society	Handicraft Trg./Prod Centre
	BT	MT	Shingled	FW													
	20	21	22	23	24	25	26	27	28	29	30	31	32	33	34	35	36
Chumathang	On Leh- Numa road				0	872	138	45	45	45	45	0	0	45	45	0	45
Hemya	On Leh- Numa road				0	814	80	103	103	103	103	0	0	103	103	0	103
Tarchit	-	5	-	2	0	814	83	120	120	120	120	0	10	120	120	10	120
Kungiam	-	-	2	8	0	832	100	103	103	103	103	0	20	103	103	0	103
Teri	-	-	-	-	5	833	94	95	95	95	95	0	15	95	95	0	95
Liktsay	On Leh- Numa road				0	804	70	113	113	113	113	0	10	113	113	0	113
Tukla	-	-	-	5	0	809	76	119	119	119	119	0	15	119	119	6	119
Keray	On Leh- Numa road				0	844	110	80	80	80	80	0	20	80	80	28	80
Skidmang	On Leh- Numa road				0	866	132	51	51	51	51	0	8	51	51	7	51



**District:- Leh**

**Block:- RongChugut HQ at Chumathang**

**Assembly constituency:- Leh**

**DISTANCE FROM VILLAGE ( In Kilometers ) UPTO -----**

Name of Village/ward	Handloom Trg/Prod. Centre	Cold Storage facility	Bank Branch	Post Office	PCO/Tel. facility	Community Hall/centre	Panchayat Ghar	Tourist hut/guest House	Govt. Primary School			Govt. Middle School			Govt. High School		
									Boys	Girls	Common	Boys	Girls	Common	Boys	Girls	Common
	37	38	39	40	41	42	43	44	45	46	47	48	49	50	51	52	53
Chumathang	<b>45</b>	-	<b>45</b>	<b>0</b>	<b>0</b>	<b>0</b>	<b>0</b>	<b>0</b>	-	-	-	-	-	-	-	-	<b>0</b>
Hemya	<b>10</b>	-	<b>0</b>	<b>0</b>	<b>0</b>	<b>0</b>	<b>0</b>	-	-	-	<b>0</b>	-	-	<b>0</b>	-	-	<b>10</b>
Tarchit	<b>10</b>	-	<b>10</b>	<b>10</b>	<b>0</b>	<b>0</b>	<b>7</b>	<b>10</b>	-	-	-	-	-	<b>0</b>	-	-	<b>10</b>
Kungjam	<b>28</b>	-	<b>15</b>	<b>0</b>	<b>0</b>	<b>0</b>	<b>0</b>	<b>18</b>	-	-	<b>0</b>	-	-	<b>0</b>	-	-	<b>28</b>
Teri	<b>28</b>	-	<b>13</b>	<b>20</b>	<b>0</b>	<b>20</b>	<b>20</b>	<b>18</b>	-	-	<b>0</b>	-	-	<b>0</b>	-	-	<b>28</b>
Liktsay	<b>0</b>	-	<b>10</b>	<b>10</b>	<b>0</b>	<b>0</b>	<b>0</b>	<b>10</b>	-	-	-	-	-	-	-	-	<b>0</b>
Tukla	<b>6</b>	-	<b>16</b>	<b>16</b>	<b>0</b>	<b>0</b>	<b>0</b>	<b>16</b>	-	-	<b>0</b>	-	-	<b>0</b>	-	-	<b>6</b>
Keray	<b>73</b>	-	<b>30</b>	<b>0</b>	<b>0</b>	<b>0</b>	<b>30</b>	-	-	-	<b>10</b>	-	-	<b>10</b>	-	-	<b>40</b>
Skidmang	<b>51</b>	-	<b>50</b>	<b>22</b>	<b>0</b>	<b>0</b>	<b>6</b>	<b>6</b>	-	-	-	-	-	<b>0</b>	-	-	<b>6</b>

**District:- Leh**  
**Block:- RongChugut HQ at Chumathang**  
**Assembly constituency:- Leh**

**DISTANCE FROM VILLAGE ( In Kilometers ) UPTO -----**

Name of the village/ward	Govt. Hr. Sec. School			Govt. College			Private School				Private College	Hospital	SDH/CHC	PHC	Allopathic/Unani/Ayurved. Dispensary	Med. sub Centre/MAC	Pvt. Clinic/Hospital	Medicine Shop
	Boys	Girls	Common	Boys	Girls	Common	Pry.	Middle	High	Hr. Sec.								
	54	55	56	57	58	59	60	61	62	63	64	65	66	67	68	69	70	71
Chumathang	-	-	<b>45</b>	-	-	<b>138</b>	<b>138</b>	<b>138</b>	<b>138</b>	<b>138</b>	-	<b>138</b>	<b>138</b>	<b>45</b>	<b>45</b>	<b>0</b>	<b>138</b>	<b>138</b>
Hemya	-	-	<b>103</b>	-	-	<b>80</b>	<b>80</b>	<b>80</b>	<b>80</b>	<b>80</b>	-	<b>80</b>	<b>80</b>	<b>103</b>	<b>103</b>	<b>0</b>	<b>80</b>	<b>80</b>
Tarchit	-	-	<b>113</b>	-	-	<b>75</b>	<b>75</b>	<b>75</b>	<b>75</b>	<b>75</b>	-	<b>75</b>	<b>75</b>	<b>120</b>	<b>120</b>	<b>0</b>	<b>75</b>	<b>75</b>
Kungiam	-	-	<b>111</b>	-	-	<b>98</b>	<b>98</b>	<b>98</b>	<b>98</b>	<b>98</b>	-	<b>98</b>	<b>98</b>	<b>103</b>	<b>103</b>	<b>0</b>	<b>98</b>	<b>98</b>
Teri	-	-	<b>95</b>	-	-	<b>99</b>	<b>99</b>	<b>99</b>	<b>99</b>	<b>99</b>	-	<b>99</b>	<b>99</b>	<b>95</b>	<b>95</b>	<b>0</b>	<b>99</b>	<b>99</b>
Liktsay	-	-	<b>113</b>	-	-	<b>70</b>	<b>70</b>	<b>70</b>	<b>70</b>	<b>70</b>	-	<b>70</b>	<b>70</b>	<b>113</b>	<b>113</b>	<b>0</b>	<b>70</b>	<b>70</b>
Tukla	-	-	<b>119</b>	-	-	<b>76</b>	<b>76</b>	<b>76</b>	<b>76</b>	<b>76</b>	-	<b>76</b>	<b>76</b>	<b>119</b>	<b>119</b>	<b>0</b>	<b>76</b>	<b>76</b>
Keray	-	-	<b>73</b>	-	-	<b>110</b>	<b>110</b>	<b>110</b>	<b>110</b>	<b>110</b>	-	<b>110</b>	<b>110</b>	<b>80</b>	<b>80</b>	<b>10</b>	<b>110</b>	<b>110</b>
Skidmang	-	-	<b>51</b>	-	-	<b>132</b>	<b>132</b>	<b>132</b>	<b>132</b>	<b>132</b>	-	<b>132</b>	<b>132</b>	<b>51</b>	<b>51</b>	<b>0</b>	<b>132</b>	<b>132</b>

**District:- Leh**

**Block:- RongChugut HQ at Chumathang**

**Assembly constituency:- Leh**

**DISTANCE FROM VILLAGE ( In Kilometers ) UPTO -----**

Name of the village/ward	Family Welfare Plg.Centre	Nari Niketan/ Bal-Ashram	Anganwari Centre	Vety. Disp/ Animal Husbandry Centre	Sheep Husbandry/ Ext. Centre	Police Station / Post	Fire Station	Tehsil Office	Block Office	District Headquarter	Court	Potable water
	72	73	74	75	76	77	78	79	80	81	82	83
Chumathang	<b>18</b>	<b>138</b>	<b>0</b>	<b>0</b>	<b>0</b>	<b>45</b>	<b>138</b>	<b>138</b>	<b>45</b>	<b>138</b>	<b>138</b>	<b>0</b>
Hemya	<b>0</b>	<b>80</b>	<b>0</b>	<b>17</b>	<b>0</b>	<b>103</b>	<b>80</b>	<b>80</b>	<b>103</b>	<b>80</b>	<b>80</b>	<b>0</b>
Tarchit	<b>13</b>	<b>75</b>	<b>0</b>	<b>10</b>	<b>10</b>	<b>120</b>	<b>75</b>	<b>75</b>	<b>120</b>	<b>75</b>	<b>75</b>	<b>0</b>
Kungiam	<b>11</b>	<b>98</b>	<b>0</b>	<b>0</b>	<b>18</b>	<b>103</b>	<b>98</b>	<b>98</b>	<b>103</b>	<b>98</b>	<b>98</b>	<b>0</b>
Teri	<b>0</b>	<b>99</b>	<b>0</b>	<b>11</b>	<b>19</b>	<b>95</b>	<b>99</b>	<b>99</b>	<b>95</b>	<b>99</b>	<b>99</b>	<b>0</b>
Liktsay	<b>6</b>	<b>70</b>	<b>0</b>	<b>6</b>	<b>0</b>	<b>113</b>	<b>70</b>	<b>70</b>	<b>113</b>	<b>70</b>	<b>70</b>	<b>0</b>
Tukla	<b>0</b>	<b>76</b>	<b>0</b>	<b>0</b>	<b>6</b>	<b>119</b>	<b>76</b>	<b>76</b>	<b>119</b>	<b>76</b>	<b>76</b>	<b>0</b>
Keray	<b>10</b>	<b>110</b>	<b>0</b>	<b>28</b>	<b>28</b>	<b>80</b>	<b>110</b>	<b>110</b>	<b>80</b>	<b>110</b>	<b>110</b>	<b>0</b>
Skidmang	<b>10</b>	<b>132</b>	<b>0</b>	<b>6</b>	<b>6</b>	<b>51</b>	<b>132</b>	<b>132</b>	<b>51</b>	<b>132</b>	<b>132</b>	<b>0</b>

**District:- :eh**

**Block:- RongChugut HQ at Chumathang**

**Assembly constituency:- Leh**

Name of the village/ward	Source of potable water	Whether covered with lighting.	Whether Lanes/drains facilities provided	No.of families covered with Housing facility under IAY/RHS etc.	Remarks
	Tap/Spring/Tubewell/Nallah	If yes, indicate source.	(Fully/Partly/Not provided)		
	84	85	86	87	88
Chumathang	<b>Nallah/Hand pump</b>	<b>Diesel</b>		<b>2</b>	
Hemya	<b>Spring</b>	<b>Diesel/Hydel</b>		<b>3</b>	
Tarchit	<b>Spring</b>	<b>Diesel/Hydel</b>		<b>1</b>	
Kungiam	<b>Spring</b>	<b>Diesel/Hydel</b>		<b>4</b>	
Teri	<b>Spring</b>	<b>Solar/Hydel</b>		<b>3</b>	
Liktsay	<b>Hand pump</b>	<b>Diesel/Hydel</b>		<b>3</b>	
Tukla	<b>Nallah</b>	<b>Diesel/Hydel</b>		<b>3</b>	
Keray	<b>Spring</b>	<b>Solar/Diesel</b>		<b>2</b>	
Skidmang	<b>Spring</b>	<b>Diesel</b>		<b>2</b>	

**District:- Leh**  
**Block:- Rupshow HQ at Puga**  
**Assembly constituency:- Leh**

S. No	Name of the village/Ward	Status Urban/ Rural	Census Code	Panchayat Halqa	Block/ Town	Tehsil	No. of House Hold 2011 census	Area in Hectares			Source of Irrigation Canal/Stream /Well/Others	P o p u l a t I o n (2011 census)s					No. of Literates	
								Total area per village paper	Cropped area	Irrigated area		Male	femal e	Tota l	Sch. caste	Sch. tribe	Male	Female
1	2	3	4	5	6	7	8	9	10	11	12	13	14	15	16	17	18	19
1	Korzok	Rural	98	1. Korzok 2. Chumur	Nyoma	Nyoma	253	58	21	21	Stream	673	618	1291	4	931	292	222
2	Samad - Rockchen	-do-	97	Samad Rockchen	-do-	-do-	71	13	2	2	Stream	188	173	361	1	229	112	67
3	Kharnak	-do-	99	Kharnak	-do-	-do-	35	28	9	9	Stream	90	104	194	0	152	66	45

**District:- Leh**  
**Block:- Rupshow HQ at Puga**  
**Assembly constituency:- Leh**

**DISTANCE FROM VILLAGE ( In Kilometers ) UPTO -----**

Name of the Village/ward	Motor able roads				Bus stop/ Passenger Shed	Railway Station	Agri/Fruit Veg. Market	General Market	Forest Sale Depot	Plant Distributi Centre	Improved Seed Centre	Ration Depot/ Fair Price Shop	K.Oil Depot	LPG Outlet	Cooperative Fair price Shop	Cooperative Society	Handicraft Trg./Prod Centre
	BT	MT	Shingled	FW													
	20	21	22	23	24	25	26	27	28	29	30	31	32	33	34	35	36
Korzok	15	-	-	45	<b>0</b>	<b>954</b>	<b>220</b>	<b>83</b>	<b>83</b>	<b>83</b>	<b>83</b>	<b>0</b>	<b>0</b>	<b>83</b>	<b>83</b>	<b>0</b>	<b>83</b>
Samad - Rockchen	-	-	4	2	<b>0</b>	<b>864</b>	<b>80</b>	<b>80</b>	<b>80</b>	<b>80</b>	<b>80</b>	<b>0</b>	<b>80</b>	<b>80</b>	<b>80</b>	<b>0</b>	<b>80</b>
Kharnak	-	-	-	10	<b>0</b>	<b>854</b>	<b>125</b>	<b>125</b>	<b>125</b>	<b>125</b>	<b>125</b>	<b>0</b>	<b>125</b>	<b>125</b>	<b>125</b>	<b>0</b>	<b>125</b>

**District:- Leh**

**Block:- Rupshow HQ at Puga**

**Assembly constituency:- Leh**

**DISTANCE FROM VILLAGE ( In Kilometers ) UPTO -----**

Name of Village/ward	Handloom Trg/Prod. Centre	Cold Storage facility	Bank Branch	Post Office	PCO/Tel. facility	Community Hall/centre	Panchayat Ghar	Tourist hut/guest House	Govt. Primary School			Govt. Middle School			Govt. High School		
									Boys	Girls	Common	Boys	Girls	Common	Boys	Girls	Common
	37	38	39	40	41	42	43	44	45	46	47	48	49	50	51	52	53
Korzok	<b>83</b>	-	<b>83</b>	<b>83</b>	<b>0</b>	<b>0</b>	<b>0</b>	<b>0</b>	-	-	<b>0</b>	-	-	<b>0</b>	-	-	<b>83</b>
Samad - Rockchen	<b>80</b>	-	<b>80</b>	<b>80</b>	<b>0</b>	<b>0</b>	<b>0</b>	<b>0</b>	-	-	-	-	-	<b>0</b>	-	-	<b>80</b>
Kharnak	<b>90</b>	-	<b>105</b>	<b>105</b>	<b>0</b>	<b>0</b>	<b>0</b>	<b>90</b>	-	-	-	-	-	<b>0</b>	-	-	<b>90</b>

**District:- Leh**  
**Block:- Rupshow HQ at Puga**  
**Assembly constituency:- Leh**

**DISTANCE FROM VILLAGE ( In Kilometers ) UPTO -----**

Name of the village/ward	Govt. Hr. Sec. School			Govt. College			Private School				Private College	Hospital	SDH/CHC	PHC	Allopathic/Unani/Ayurved. Dispensary	Med. sub Centre/MAC	Pvt. Clinic/Hospital	Medicine Shop
	Boys	Girls	Common	Boys	Girls	Common	Pry.	Middle	High	Hr. Sec.								
	54	55	56	57	58	59	60	61	62	63	64	65	66	67	68	69	70	71
Korzok	-	-	<b>83</b>	-	-	<b>220</b>	<b>220</b>	<b>220</b>	<b>220</b>	<b>220</b>	-	<b>220</b>	<b>220</b>	<b>83</b>	<b>0</b>	<b>0</b>	<b>220</b>	<b>220</b>
Samad - Rockchen	-	-	<b>80</b>	-	-	<b>217</b>	<b>217</b>	<b>217</b>	<b>217</b>	<b>217</b>	-	<b>217</b>	<b>217</b>	<b>80</b>	<b>80</b>	<b>0</b>	<b>217</b>	<b>217</b>
Kharnak	-	-	<b>90</b>	-	-	<b>125</b>	<b>125</b>	<b>125</b>	<b>125</b>	<b>125</b>	-	<b>125</b>	<b>125</b>	<b>125</b>	<b>125</b>	<b>0</b>	<b>125</b>	<b>125</b>





**District:- :eh**  
**Block:- Rupshow HQ at Puga**  
**Assembly constituency:- Leh**

Name of the village/ward	Source of potable water	Whether covered with lighting.	Whether Lanes/drains facilities provided	No.of families covered with Housing facility under IAY/RHS etc.	Remarks
	Tap/Spring/Tubewell/Nallah	If yes, indicate source.	(Fully/Partly/Not provided)		
	84	85	86	87	88
Korzok	<b>Spring/Tap//Handpump</b>	<b>Diesel/Solar</b>		<b>6</b>	
Samad - Rockchen	<b>Hand pump</b>	<b>Solar</b>		<b>3</b>	
Kharnak	<b>Hand pump</b>	<b>Solar</b>		<b>3</b>	

**District:- Leh**  
**Block:- Durbuk**  
**Assembly constituency:- Leh**

S. No	Name of the village/ Ward	Status Urban /Rural	Census Code	Panchayat Halqa	Block/ Town	Tehsil	No. of House Hold (2011 Census)	Area in Hectares			Source of Irrigation Canal/Stream /Well/Others	P o p u l a t i o n (2011 census)					No. of literates	
								Total area per village paper	Cropped area	Irrigated area		Male	Female	Total	Sch. caste	Sch. tribe	Male	Female
1.	2.	3.	4.	5.	6.	7.	8.	9.	10.	11.	12.	13.	14.	15.	16.	17.	18.	19.
1.	<b>Man-Pangong</b>	<b>Rural</b>	<b>32</b>	1, Maan-Pangong 2, Phobrang	<b>Durbuk</b>	<b>Durbuk</b>	<b>171</b>	<b>178</b>	<b>48</b>	<b>48</b>	<b>Stream</b>	<b>459</b>	<b>518</b>	<b>977</b>	<b>0</b>	<b>969</b>	<b>338</b>	<b>264</b>
2.	<b>Tangtsi</b>	<b>-do-</b>	<b>30</b>	Tangtsi	<b>-do-</b>	<b>-do-</b>	<b>126</b>	<b>351</b>	<b>99</b>	<b>99</b>	<b>Stream</b>	<b>356</b>	<b>325</b>	<b>681</b>	<b>0</b>	<b>679</b>	<b>261</b>	<b>160</b>
3.	<b>Durbuk</b>	<b>-do-</b>	<b>29</b>	Durbuk	<b>-do-</b>	<b>-do-</b>	<b>160</b>	<b>858</b>	<b>72</b>	<b>72</b>	<b>Stream</b>	<b>416</b>	<b>436</b>	<b>852</b>	<b>0</b>	<b>846</b>	<b>298</b>	<b>213</b>
4.	<b>Shachikul</b>	<b>-do-</b>	<b>31</b>	Shachukul	<b>-do-</b>	<b>-do-</b>	<b>147</b>	<b>272</b>	<b>56</b>	<b>56</b>	<b>Stream</b>	<b>451</b>	<b>437</b>	<b>888</b>	<b>0</b>	<b>887</b>	<b>320</b>	<b>221</b>
5.	<b>Chushul</b>	<b>-do-</b>	<b>34</b>	Chushul	<b>-do-</b>	<b>-do-</b>	<b>148</b>	<b>119</b>	<b>45</b>	<b>45</b>	<b>Stream</b>	<b>489</b>	<b>460</b>	<b>949</b>	<b>0</b>	<b>945</b>	<b>315</b>	<b>194</b>
6	Kargaim	<b>-do-</b>	<b>42</b>	Kargaim	<b>-do-</b>	<b>-do-</b>	<b>106</b>	<b>179</b>	<b>37</b>	<b>37</b>	<b>Stream</b>	<b>279</b>	<b>285</b>	<b>564</b>	<b>0</b>	<b>468</b>	<b>169</b>	<b>113</b>

**District:- Leh**  
**Block:- Durbuk**  
**Assembly constituency:- Leh**

**DISTANCE FROM VILLAGE ( In Kilometers ) UPTO -----**

Name of the Village/ward	Motorable roads				Bus stop/ Passenger Shed	Railway Station	Agri/ Fruit/ Veg. Market	General Market	Forest Sale Depot	Plant Distb. Centre	Improved Seed Centre	Ration Depot/ Fair Price Shop	K.Oil Depot	LPG Outlet	Cooperative/ Fair price shop	Cooperative Society	Handicraft Trg./Prod. Centre
	BT	MT	Shingled	FW													
	20	21	22	23	24	25	26	27	28	29	30	31	32	33	34	35	36
<b>Man-Pangong</b>	<b>On Leh-Chushul road</b>				<b>0</b>	<b>894</b>	<b>160</b>	<b>50</b>	<b>160</b>	<b>160</b>	<b>50</b>	<b>0</b>	<b>50</b>	<b>50</b>	<b>50</b>	<b>0</b>	<b>160</b>
<b>Tangtsi</b>	<b>On Leh-Chushul road</b>				<b>0</b>	<b>844</b>	<b>110</b>	<b>0</b>	<b>110</b>	<b>110</b>	<b>0</b>	<b>0</b>	<b>0</b>	<b>0</b>	<b>0</b>	<b>0</b>	<b>110</b>
<b>Durbuk</b>	<b>3.00</b>	-	-	-	<b>0</b>	<b>840</b>	<b>106</b>	<b>6</b>	<b>106</b>	<b>106</b>	<b>6</b>	<b>0</b>	<b>0</b>	<b>6</b>	<b>6</b>	<b>0</b>	<b>106</b>
<b>Shachukul</b>	<b>8.00</b>	-	-	-	<b>0</b>	<b>855</b>	<b>121</b>	<b>11</b>	<b>121</b>	<b>121</b>	<b>11</b>	<b>0</b>	<b>11</b>	<b>121</b>	<b>11</b>	<b>0</b>	<b>121</b>
<b>Chuchul-Kargaim</b>	<b>On Leh-Chushul road</b>				<b>0</b>	<b>884</b>	<b>150</b>	<b>40</b>	<b>150</b>	<b>150</b>	<b>40</b>	<b>0</b>	<b>0</b>	<b>40</b>	<b>40</b>	<b>0</b>	<b>150</b>

District:- Leh  
 Block:- Durbuk  
 Assembly constituency:- Leh

**DISTANCE FROM VILLAGE ( In Kilometers ) UPTO -----**

Name of the Village/ward	Handloom Trg/Prod. Centre	Cold Storage facility	Bank Branch	Post Office	PCO/Tel facility	Community Hall/Centre	Panchayat Ghar	Tourist hut/ Guest House	Govt. Primary School			Govt. Middle School			Govt. High School		
									Boys	Girls	Common	Boys	Girls	Common	Boys	Girls	Common
	37	38	39	40	41	42	43	44	45	46	47	48	49	50	51	52	53
<b>Man-Pangong</b>	<b>50</b>	-	<b>50</b>	<b>55</b>	<b>0</b>	<b>0</b>	<b>0</b>	<b>0</b>	-	-	<b>0</b>	-	-	<b>0</b>	-	-	<b>50</b>
<b>Tangtsi</b>	<b>0</b>	-	<b>0</b>	<b>4</b>	<b>0</b>	<b>0</b>	<b>0</b>	<b>0</b>	-	-	<b>0</b>	-	-	-	-	-	-
<b>Durbuk</b>	<b>4</b>	-	<b>4</b>	<b>0</b>	<b>0</b>	<b>0</b>	<b>0</b>	<b>4</b>	-	-	<b>0</b>	-	-	<b>0</b>	-	-	<b>10</b>
<b>Shachukul</b>	<b>11</b>	-	<b>11</b>	<b>15</b>	<b>0</b>	<b>0</b>	<b>0</b>	<b>11</b>	-	-	<b>0</b>	-	-	<b>0</b>	-	-	<b>11</b>
<b>Chuchul-Kargaim</b>	<b>40</b>	-	<b>40</b>	<b>0</b>	<b>0</b>	<b>0</b>	<b>0</b>	<b>0</b>	-	-	<b>0</b>	-	-	<b>0</b>	-	-	<b>0</b>

District:- Leh  
 Block:- Durbuk  
 Assembly constituency:- Leh

**DISTANCE FROM VILLAGE ( In Kilometers ) UPTO -----**

Name of the village/ward	Govt. Hr. Sec. School			Govt. College			Private School				Private College	Hospital	SDH/CHC	PHC	Allopathic/Unani/Ayurv Dispensary	Med. Sub Centre/MAC	Pvt. Clinic/Hospital	Medicine Shop
	Boys	Girls	Common	Boys	Girls	Common	Pry.	Middle	High	Hr. Sec.								
	54	55	56	57	58	59	60	61	62	63	64	65	66	67	68	69	70	71
<b>Man-Pangong</b>	-	-	<b>50</b>	-	-	<b>160</b>	<b>110</b>	<b>110</b>	<b>160</b>	<b>160</b>	-	<b>160</b>	<b>160</b>	<b>50</b>	<b>160</b>	<b>0</b>	<b>160</b>	<b>160</b>
<b>Tangtsi</b>	-	-	<b>0</b>	-	-	<b>110</b>	<b>60</b>	<b>60</b>	<b>110</b>	<b>110</b>	-	<b>110</b>	<b>110</b>	<b>0</b>	<b>110</b>	<b>0</b>	<b>110</b>	<b>110</b>
<b>Durbuk</b>	-	-	<b>4</b>	-	-	<b>106</b>	<b>56</b>	<b>56</b>	<b>106</b>	<b>106</b>	-	<b>106</b>	<b>106</b>	<b>4</b>	<b>106</b>	<b>0</b>	<b>106</b>	<b>106</b>
<b>Shachukul</b>	-	-	<b>11</b>	-	-	<b>121</b>	<b>71</b>	<b>71</b>	<b>121</b>	<b>121</b>	-	<b>121</b>	<b>121</b>	<b>11</b>	<b>121</b>	<b>0</b>	<b>121</b>	<b>121</b>
<b>Chuchul-Kargaim</b>	-	-	<b>80</b>	-	-	<b>150</b>	<b>100</b>	<b>100</b>	<b>150</b>	<b>150</b>	-	<b>150</b>	<b>150</b>	<b>0</b>	<b>150</b>	<b>0</b>	<b>150</b>	<b>150</b>

**District:- Leh**  
**Block:- Durbuk**  
**Assembly constituency:- Leh**

**DISTANCE FROM VILLAGE ( In Kilometers ) UPTO -----**

Name of the village/ward	Family Welfare Plg. Centre	Nari Niketan/ Bal-Ashram	Anganwari Centre	Vety. Disp/ Animal Husbandry Centre	Sheep Husbandry /Ext.Centre	Police Station/ Post	Fire Station	Tehsil Office	Block Office	District Headquarter	Court	Potable water
	72	73	74	75	76	77	78	79	80	81	82	83
<b>Man-Pangong</b>	<b>0</b>	<b>160</b>	<b>0</b>	<b>40</b>	<b>0</b>	<b>50</b>	<b>160</b>	<b>160</b>	<b>50</b>	<b>160</b>	<b>160</b>	<b>0</b>
<b>Tangtsi</b>	<b>6</b>	<b>110</b>	<b>0</b>	<b>6</b>	<b>0</b>	<b>0</b>	<b>110</b>	<b>110</b>	<b>0</b>	<b>110</b>	<b>110</b>	<b>0</b>
<b>Durbuk</b>	<b>0</b>	<b>106</b>	<b>0</b>	<b>0</b>	<b>0</b>	<b>4</b>	<b>106</b>	<b>106</b>	<b>4</b>	<b>106</b>	<b>106</b>	<b>0</b>
<b>Shachukul</b>	<b>11</b>	<b>121</b>	<b>0</b>	<b>20</b>	<b>0</b>	<b>11</b>	<b>121</b>	<b>121</b>	<b>11</b>	<b>121</b>	<b>121</b>	<b>0</b>
<b>Chuchul-Kargaim</b>	<b>0</b>	<b>150</b>	<b>0</b>	<b>0</b>	<b>0</b>	<b>0</b>	<b>150</b>	<b>150</b>	<b>0</b>	<b>150</b>	<b>150</b>	<b>0</b>

**District:- Leh**  
**Block:- Durbuk**  
**Assembly constituency:- Leh**

Name of the village/ward	Source of potable water	Whether covered with lighting.	Whether Lanes/drains facility provided	No.of families covered with housing facilities under IAY/RHS etc.	Remarks
	Tap/Spring/Tubewell/Nallah	If yes, indicate source	(Fully/Partly/Not provided)		
	84	85	86	87	88
<b>Man-Pangong</b>	<b>Spring/Hand pump</b>	<b>Solar</b>	<b>Not provided</b>	<b>6</b>	
<b>Tangtsi</b>	<b>Spring/Hand pump</b>	<b>Solar/Diesel</b>		<b>15</b>	
<b>Durbuk</b>	<b>Spring/Hand pump</b>	<b>Solar/Diesel</b>		<b>23</b>	
<b>Shachukul</b>	<b>Spring/Hand pump</b>	<b>Solar/Diesel</b>		<b>15</b>	
<b>Chuchul-Kargaim</b>	<b>Spring/Hand pump</b>	<b>Solar/Diesel</b>		<b>9</b>	



**District:- Leh**  
**Block:- Deskit (Nubra)**  
**Assembly constituency:- Nubra**

S. No	Name of the Village/Ward	Status Urban/Rural	Census Code	Panchayat Halqa	Block/Town	Tehsil	No. of House Hold (2011 Census)	Area in Hectares			Source of Irrigation Canal/Stream/Well/Others	P o p u l a t i o n (2011 census)s					No. of Literates	
								Total area as per village paper	Cropped area	Irrigated area		Male	Female	Total	Sch. caste	Sch. tribe	Male	Female
1.	2.	3.	4.	5.	6.	7.	8.	9.	10.	11.	12.	13.	14.	15.	16.	17.	18.	19.
1	Deskit	Rural	22	Deskit	Deskit	Deskit	344	495	99	99	Stream	924	836	1760	3	1519	707	499
2	Diger	-do-	26	Diger	-do-	-do-	53	71	44	44	Stream	86	106	192	0	192	32	45
3	KhemaKhungru	-do-	27	-do-	-do-	-do-	38	107	48	48	Stream	63	79	142	0	142	42	24
4	Tangyar	-do-	28	-do-	-do-	-do-	42	88	39	39	Stream	79	105	184	0	184	46	47
5	Hundar	-do-	18	Hundar	-do-	-do-	269	414	139	139	Stream	548	631	1179	0	1170	341	291
6	Khardong	-do-	23	Khardong	-do-	-do-	144	587	81	81	Stream	227	241	468	0	466	97	57
7	Khalsar	-do-	24	-do-	-do-	-do-	22	115	20	20	Stream	37	61	98	0	98	19	19
8	Hunder Dok	-do-	17	Partapur	-do-	-do-	21	113	21	21	Stream	46	49	95	0	94	25	20
9	Partapur	-do-	16	-do-	-do-	-do-	197	92	47	47	Stream	3198	363	3561	9	588	3079	208
10	Warisfastan	-do-	6	Warisfastan	-do-	-do-	52	74	34	34	Stream	139	119	258	0	258	55	27
11	Skampuk	-do-	15	-do-	-do-	-do-	93	154	53	53	Stream	197	219	416	0	415	137	103
12	Terchey	-do-	10	Terchey	-do-	-do-	57	340	47	47	Stream	136	134	270	0	267	91	64
13	Udmaroo	-do-	11	Udmaroo	-do-	-do-	84	363	47	47	Stream	180	198	378	0	377	103	72
14	Hundri	-do-	14	-do-	-do-	-do-	53	52	22	22	Stream	108	130	238	0	238	59	47
15	Lagyab	-do-	8	Terchey	-do-	-do-	89	86	35	35	Stream	219	202	421	0	421	130	85
16	Skuru	-do-	9	-do-	-do-	-do-	52	107	26	26	Stream	100	130	230	0	230	55	48
17	Lakjung	-do-	25	Lakjung	-do-	-do-	105	339	64	64	River	226	288	514	2	511	139	138



**District:- Leh**  
**Block:- Deskit (Nubra)**  
**Assembly constituency:- Nubra**

**DISTANCE FROM VILLAGE ( In Kilometers ) UPTO -----**

Name of Village/ ward	Handloom Trg/Prod. Centre	Cold Storage facility	Bank Branch	Post Office	PCO/Tel. facility	Community Hall/Centre	Panchayat Ghar	Tourist hut/guest House	Govt. Primary School			Govt. Middle School			Govt. High School		
									Boys	Girls	Common	Boys	Girls	Common	Boys	Girls	Common
	37	38	39	40	41	42	43	44	45	46	47	48	49	50	51	52	53
Deskit	<b>118</b>	-	<b>0</b>	<b>0</b>	<b>0</b>	<b>0</b>	<b>0</b>	<b>0</b>	-	-	<b>0</b>	-	-	<b>0</b>	-	-	-
Warisfastan	<b>188</b>	-	<b>70</b>	<b>45</b>	<b>0</b>	<b>0</b>	<b>0</b>	<b>63</b>	-	-	<b>0</b>	-	-	<b>0</b>	-	-	<b>12</b>
Diger	<b>85</b>	-	<b>57</b>	<b>50</b>	<b>0</b>	<b>0</b>	<b>0</b>	<b>40</b>	-	-	<b>0</b>	-	-	<b>0</b>	-	-	<b>50</b>
Khema Khung-ru	<b>80</b>	-	<b>55</b>	<b>55</b>	<b>0</b>	<b>8</b>	<b>8</b>	<b>36</b>	-	-	<b>3</b>	-	-	<b>3</b>	-	-	<b>35</b>
Tangyar	<b>82</b>	-	<b>51</b>	<b>51</b>	<b>0</b>	<b>0</b>	<b>7</b>	<b>45</b>	-	-	-	-	-	<b>0</b>	-	-	<b>51</b>
Hundar	<b>125</b>	-	<b>7</b>	<b>0</b>	<b>0</b>	<b>0</b>	<b>0</b>	<b>0</b>	-	-	<b>0</b>	-	-	-	-	-	<b>0</b>
Hunder Dok	<b>139</b>	-	<b>21</b>	<b>14</b>	<b>0</b>	<b>14</b>	<b>14</b>	<b>14</b>	-	-	-	-	-	<b>0</b>	-	-	<b>7</b>
Partapur	<b>135</b>	-	<b>11</b>	<b>17</b>	<b>0</b>	<b>0</b>	<b>4</b>	<b>3</b>	-	-	-	-	-	<b>0</b>	-	-	<b>0</b>
Skampuk	<b>137</b>	-	<b>14</b>	<b>19</b>	<b>0</b>	<b>0</b>	<b>7</b>	<b>5</b>	-	-	<b>0</b>	-	-	<b>0</b>	-	-	<b>8</b>
Kharzong	<b>70</b>	-	<b>45</b>	<b>0</b>	<b>0</b>	<b>0</b>	<b>0</b>	<b>0</b>	-	-	<b>0</b>	-	-	<b>0</b>	-	-	<b>45</b>
Khalsar	<b>78</b>	-	<b>25</b>	<b>17</b>	<b>0</b>	<b>0</b>	<b>27</b>	<b>0</b>	-	-	<b>0</b>	-	-	<b>0</b>	-	-	<b>18</b>
Terchey	<b>143</b>	-	<b>35</b>	<b>0</b>	<b>0</b>	<b>0</b>	<b>0</b>	<b>0</b>	-	-	-	-	-	<b>0</b>	-	-	<b>28</b>
Udmaroo	<b>153</b>	-	<b>62</b>	<b>15</b>	<b>0</b>	<b>0</b>	<b>18</b>	<b>18</b>	-	-	-	-	-	<b>0</b>	-	-	<b>6</b>
Hundri	<b>158</b>	-	<b>30</b>	<b>16</b>	<b>0</b>	<b>5</b>	<b>20</b>	<b>20</b>	-	-	<b>0</b>	-	-	<b>0</b>	-	-	<b>23</b>
Lagyab	<b>150</b>	-	<b>55</b>	<b>25</b>	<b>0</b>	<b>0</b>	<b>22</b>	<b>22</b>	-	-	<b>0</b>	-	-	<b>0</b>	-	-	<b>6</b>
Skuru	<b>135</b>	-	<b>51</b>	<b>2</b>	<b>0</b>	<b>0</b>	<b>2</b>	<b>2</b>	-	-	<b>0</b>	-	-	<b>0</b>	-	-	<b>30</b>
Lakjung	<b>0</b>	-	<b>3</b>	<b>3</b>	<b>0</b>	<b>0</b>	<b>0</b>	<b>0</b>	-	-	<b>0</b>	-	-	<b>0</b>	-	-	<b>3</b>

**District:- Leh**  
**Block:- Deskit (Nubra)**  
**Assembly constituency:- Nubra**

**DISTANCE FROM VILLAGE ( In Kilometers ) UPTO -----**

Name of Village/ward	Govt. Hr. Sec. School			Govt. College			Private School				Private College	Hospital	SDH/CHC	PHC	Allopathic/Unani/Ayurv. Dispensary	Med. Sub Centre/MAC	Pvt. Clinic/Hospital	Medicine Shop
	Boys	Girls	Common	Boys	Girls	Common	Pry.	Middle	High	Hr. Sec.								
	54	55	56	57	58	59	60	61	62	63	64	65	66	67	68	69	70	71
Deskit	-	-	0	-	-	0	-	0	118	118	-	0	0	0	-	0	118	0
Warisfastan	-	-	80	-	-	70	-	61	198	198	-	70	70	70	-	0	188	70
Diger	-	-	50	-	-	50	-	50	130	130	-	50	50	0	-	0	85	50
Khema Khung-ru	-	-	35	-	-	55	-	55	135	135	-	55	55	2	-	2	80	55
Tangyar	-	-	51	-	-	51	-	51	132	132	-	51	51	2	-	0	82	51
Hundar	-	-	7	-	-	7	-	2	125	125	-	7	7	0	-	0	125	7
Hunder Dok	-	-	21	-	-	21	-	16	139	139	-	21	21	14	-	0	139	21
Partapur	-	-	11	-	-	9	-	0	129	129	-	9	9	10	-	0	139	9
Skampuk	-	-	15	-	-	12	-	2	133	133	-	12	12	12	-	0	135	12
Kharzong	-	-	45	-	-	40	-	40	73	73	-	40	40	40	-	0	73	40
Khalsar	-	-	17	-	-	17	-	17	100	100	-	17	17	17	-	0	78	17
Terchey	-	-	35	-	-	30	-	12	153	153	-	30	30	30	-	0	143	30
Udmaroo	-	-	42	-	-	35	-	23	180	180	-	35	35	35	-	0	153	35
Hundri	-	-	45	-	-	40	-	33	148	148	-	40	40	40	-	0	158	40
Lagyab	-	-	46	-	-	45	-	45	192	192	-	45	45	45	-	0	150	45
Skuru	-	-	37	-	-	32	-	15	155	155	-	32	32	0	-	0	135	32
Lakjung	-	-	3	-	-	115	31	31	115	115	-	115	31	31	-	0	115	115

**District:- Leh**  
**Block:- Deskit (Nubra)**  
**Assembly constituency:- Nubra**

**DISTANCE FROM VILLAGE ( In Kilometers ) UPTO -----**

Name of the village	Family Welfare Plg. Centre	Nari Niketan/ Bal-Ashram	Anganwari Centre	Vety. Disp/ Animal Husbandry Centre	Sheep Husb./Ext centre	Police station/ post	Fire station	Tehsil Office	Block Office	District headquarter	Court	Potable water
	72	73	74	75	76	77	78	79	80	81	82	83
Deskit	15	118	0	7	7	0	118	32	0	118	0	0
Warisfastan	0	188	0	17	70	70	188	102	70	188	70	0
Diger	130	85	0	7	0	50	85	43	50	85	50	0
Khema Khung-ru	135	80	0	5	5	55	80	47	55	80	55	0
Tangyar	132	82	0	0	7	51	82	49	51	82	51	0
Hundar	4	125	0	0	0	7	125	39	7	125	7	0
Hunder Dok	0	139	0	14	14	21	139	53	21	139	21	0
Partapur	0	135	0	0	0	10	135	40	9	135	9	0
Skampuk	0	137	0	4	2	12	137	42	12	137	12	0
Kharzong	73	70	0	0	0	40	70	57	40	70	40	0
Khalsar	34	78	0	25	17	17	78	18	17	78	17	0
Terchey	2	143	0	0	8	30	143	55	30	143	30	0
Udmaroo	12	153	0	27	0	35	153	65	35	153	35	0
Hundri	0	158	0	5	30	40	158	70	40	158	40	0
Lagyab	45	150	0	16	28	45	150	79	45	150	45	0
Skuru	18	135	0	7	0	27	135	57	32	135	32	0
Lakjung	0	115	0	0	3	31	115	115	35	115	115	0

**District:- Leh**  
**Block:- Deskit (Nubra)**  
**Assembly constituency:- Nubra**

**DISTANCE FROM VILLAGE ( In Kilometers ) UPTO -----**

Name of the village/ward	Source of potable water	Whether covered with lighting.	Whether Lanes/drains facility provided	No.of families covered with Housing facility under IAY/RHS etc.	Remarks
	Tap/Spring/Tubewell/Nallah	If yes, indicate source.	Fully/Partly/Not provided		
	84	85	86	87	88
Deskit	<b>Nallah</b>	<b>Diesel/Hydr</b>	<b>Partly</b>	<b>30</b>	
Warisfastan	<b>Spring</b>	<b>Solar</b>	<b>Not provided</b>	<b>15</b>	
Diger	<b>Spring</b>	<b>Solar</b>	<b>Not provided</b>	<b>8</b>	
Khema Khung-ru	<b>Spring</b>	<b>Solar</b>		<b>4</b>	
Tangyar	<b>Spring</b>	<b>Diesel</b>		<b>5</b>	
Hundar	<b>Nallah</b>	<b>Hydel/Diesel</b>	<b>Partly</b>	<b>20</b>	
Hunder Dok	<b>Nallah</b>	<b>Solar</b>	<b>Not provided</b>	<b>4</b>	
Partapur	<b>Hand pump</b>	<b>Hydel/Diesel</b>	<b>Not provided</b>	<b>8</b>	
Skampuk	<b>Nallah</b>	<b>Hydel/Diesel</b>	<b>Not provided</b>	<b>6</b>	
Kharzong	<b>Spring</b>	<b>Solar</b>	<b>Not provided</b>	<b>6</b>	
Khalsar	<b>Spring</b>	<b>Solar</b>	<b>Not provided</b>	<b>4</b>	
Terchey	<b>Hand pump</b>	<b>Hydel/Diesel</b>		<b>8</b>	
Udmaroo	<b>Nallah</b>	<b>Solar</b>		<b>6</b>	
Hundri	<b>Nallah</b>	<b>Solar</b>	<b>Not provided</b>	<b>5</b>	
Lagyab	<b>Spring</b>	<b>Solar</b>	<b>Not provided</b>	<b>4</b>	
Skuru+	<b>Nallah</b>	<b>Hydel/Diesel</b>	<b>Not provided</b>	<b>4</b>	
Lakjung	<b>Hand pump</b>	<b>Hydel</b>	<b>-</b>	<b>4</b>	

**District:- Leh**  
**Block:- Turtuk (Nubra)**  
**Assembly constituency:- Nubra**

S. No	Name of the Village/Ward	Status Urban/Rural	Census Code	Panchayat Halqa	Block/Town	Tehsil	No. of House Hold (2011 Census)	Area in Hectares			Source of Irrigation Canal/Stream /Well/Others	P o p u l a t i o n (2011 census)s					No. of Literates	
								Total area as per village paper	Cropped area	Irrigated area		Male	Female	Total	Sch. caste	Sch. tribe	Male	Female
1.	2.	3.	4.	5.	6.	7.	8.	9.	10.	11.	12.	13.	14.	15.	16.	17.	18.	19.
1.	Bogdang	<b>Rural</b>	<b>7</b>	<b>Bogdang-A</b>	<b>Deskit</b>	<b>Deskit</b>	<b>272</b>	<b>87</b>	<b>19</b>	<b>19</b>	<b>Stream</b>	<b>1005</b>	<b>983</b>	<b>1988</b>	<b>0</b>	<b>1975</b>	<b>631</b>	<b>367</b>
2.	Chulungkha	<b>-do-</b>	<b>4</b>	<b>Bogdang-B</b>	<b>-do-</b>	<b>-do-</b>	<b>42</b>	<b>NA</b>	<b>NA</b>	<b>NA</b>	<b>Stream</b>	<b>403</b>	<b>113</b>	<b>516</b>	<b>53</b>	<b>223</b>	<b>372</b>	<b>58</b>
3	Turtuk	<b>-do-</b>	<b>3</b>	<b>Turtuk-I</b> <b>Turtuk-II</b>	<b>-do-</b>	<b>-do-</b>	<b>384</b>	<b>NA</b>	<b>NA</b>	<b>NA</b>	<b>Stream</b>	<b>2429</b>	<b>942</b>	<b>3371</b>	<b>0</b>	<b>1766</b>	<b>2115</b>	<b>384</b>
4	Takshi	<b>-do-</b>	<b>2</b>	<b>Takshi</b>	<b>-do-</b>	<b>-do-</b>	<b>112</b>	<b>NA</b>	<b>NA</b>	<b>NA</b>	<b>Stream</b>	<b>452</b>	<b>434</b>	<b>886</b>	<b>0</b>	<b>876</b>	<b>283</b>	<b>184</b>
5	Thang	<b>-do-</b>	<b>1</b>	<b>-do-</b>	<b>-do-</b>	<b>-do-</b>	<b>16</b>	<b>NA</b>	<b>NA</b>	<b>NA</b>	<b>Stream</b>	<b>53</b>	<b>50</b>	<b>103</b>	<b>0</b>	<b>88</b>	<b>27</b>	<b>25</b>

**District:- Leh**  
**Block Turtuk (Nubra)**  
**Assembly constituency:- Nubra**

**DISTANCE FROM VILLAGE ( In Kilometers ) UPTO -----**

Village	Motor able roads				Bus stop/ Passenger Shed	Railway Station	Agri/ Fruit/ Veg. Market	General Market	Forest Sale Depot	Plant Distribution Centre	Improved Seed Centre	Ration Depot/ Fair price	K.Oil Depot	LPG Outlet	Cooperative Fair price Shop	Cooperative Society	Handicraft Trg./Prod centre
	BT	MT	Shingled	FW													
	20	21	22	23	24	25	26	27	28	29	30	31	32	33	34	35	36
Bogdang	<b>On Deskit-Takshi road</b>				<b>0</b>	<b>920</b>	<b>68</b>	<b>68</b>	<b>68</b>	<b>68</b>	<b>68</b>	<b>0</b>	<b>186</b>	<b>68</b>	<b>68</b>	<b>0</b>	<b>60</b>
Chulungkha	<b>2.00</b>	-	-	-	<b>0</b>	<b>928</b>	<b>75</b>	<b>75</b>	<b>0</b>	<b>75</b>	<b>75</b>	<b>0</b>	<b>192</b>	<b>75</b>	<b>75</b>	<b>0</b>	<b>73</b>
Turtuk	<b>On Deskit-Takshi road</b>				<b>0</b>	<b>935</b>	<b>85</b>	<b>85</b>	<b>85</b>	<b>85</b>	<b>85</b>	<b>0</b>	<b>199</b>	<b>85</b>	<b>85</b>	<b>0</b>	<b>10</b>
Takshi	-	-	<b>949</b>	<b>5</b>	<b>0</b>	<b>938</b>	<b>95</b>	<b>95</b>	<b>95</b>	<b>95</b>	<b>95</b>	<b>0</b>	<b>202</b>	<b>95</b>	<b>95</b>	<b>0</b>	<b>70</b>
Thang	-	-	-	<b>5</b>	<b>0</b>	<b>940</b>	<b>100</b>	<b>100</b>	<b>100</b>	<b>100</b>	<b>100</b>	<b>0</b>	<b>204</b>	<b>100</b>	<b>100</b>	<b>0</b>	<b>75</b>



**District:- Leh**  
**Block:- Turtuk (Nubra)**  
**Assembly constituency:- Nubra**

**DISTANCE FROM VILLAGE ( In Kilometers ) UPTO -----**

Name of Village/ward	Handloom Trg/Prod. Centre	Cold Storage facility	Bank Branch	Post Office	PCO/Tel. facility	Community Hall/Centre	Panchayat Ghar	Tourist hut/guest House	Govt. Primary School			Govt. Middle School			Govt. High School		
									Boys	Girls	Common	Boys	Girls	Common	Boys	Girls	Common
	37	38	39	40	41	42	43	44	45	46	47	48	49	50	51	52	53
Bogdang	<b>186</b>	-	<b>0</b>	<b>0</b>	<b>0</b>	<b>0</b>	<b>0</b>	<b>0</b>	-	-	<b>0</b>	-	-	<b>0</b>	-	-	-
Chulungkha	<b>192</b>	-	<b>8</b>	<b>8</b>	<b>0</b>	<b>0</b>	<b>7</b>	<b>7</b>	-	-	<b>0</b>	-	-	<b>0</b>	-	-	<b>7</b>
Turtuk	<b>199</b>	-	<b>20</b>	<b>0</b>	<b>0</b>	<b>0</b>	<b>0</b>	<b>0</b>	-	-	<b>0</b>	-	-	<b>0</b>	-	-	-
Takshi	<b>202</b>	-	<b>23</b>	<b>3</b>	<b>0</b>	<b>0</b>	<b>0</b>	<b>0</b>	-	-	<b>0</b>	-	-	<b>0</b>	-	-	<b>0</b>
Thang	<b>204</b>	-	<b>25</b>	<b>4</b>	<b>0</b>	<b>0</b>	<b>5</b>	<b>5</b>	-	-	<b>0</b>	-	-	<b>0</b>	-	-	<b>10</b>

**District:- Leh**

**Block:- Turtuk (Nubra)**

**Assembly constituency:- Nubra**

**DISTANCE FROM VILLAGE ( In Kilometers ) UPTO -----**

Name of Village/ward	Govt. Hr. Sec. School			Govt. College			Private School				Private College	Hospital	SDH/CHC	PHC	Allopathic/Unani/Ayurv. Dispensary	Med. Sub Centre/MAC	Pvt. Clinic/Hospital	Medicine Shop
	Boys	Girls	Common	Boys	Girls	Common	Pry.	Middle	High	Hr. Sec.								
	54	55	56	57	58	59	60	61	62	63	64	65	66	67	68	69	70	71
Bogdang	-	-	<b>0</b>	-	-	<b>68</b>	-	<b>0</b>	<b>186</b>	<b>186</b>	-	<b>68</b>	<b>68</b>	<b>0</b>	-	<b>0</b>	<b>186</b>	<b>68</b>
Chulungkha	-	-	<b>7</b>	-	-	<b>74</b>	-	<b>8</b>	<b>192</b>	<b>193</b>	-	<b>74</b>	<b>74</b>	<b>15</b>	-	<b>23</b>	<b>192</b>	<b>74</b>
Turtuk	-	-	<b>0</b>	-	-	<b>81</b>	-	<b>2</b>	<b>199</b>	<b>208</b>	-	<b>81</b>	<b>81</b>	<b>81</b>	-	<b>81</b>	<b>199</b>	<b>81</b>
Takshi	-	-	<b>3</b>	-	-	<b>83</b>	-	<b>0</b>	<b>202</b>	<b>215</b>	-	<b>83</b>	<b>83</b>	<b>83</b>	-	<b>83</b>	<b>202</b>	<b>83</b>
Thang	-	-	<b>5</b>	-	-	<b>85</b>	-	<b>2</b>	<b>204</b>	<b>218</b>	-	<b>85</b>	<b>85</b>	<b>0</b>	-	<b>0</b>	<b>204</b>	<b>85</b>

**District:- Leh**  
**Block:- Turtuk t (Nubra)**  
**Assembly constituency:- Nubra**

**DISTANCE FROM VILLAGE ( In Kilometers ) UPTO -----**

Name of the village	Family Welfare Plg. Centre	Nari Niketan/ Bal-Ashram	Anganwari Centre	Vety. Disp/ Animal Husbandry Centre	Sheep Husb./Ext centre	Police station/ post	Fire station	Tehsil Office	Block Office	District headquarter	Court	Potable water
	72	73	74	75	76	77	78	79	80	81	82	83
Bogdang	53	<b>186</b>	<b>0</b>	<b>0</b>	<b>0</b>	<b>15</b>	<b>186</b>	<b>98</b>	<b>68</b>	<b>186</b>	<b>68</b>	<b>0</b>
Chulungkha	60	<b>192</b>	<b>0</b>	<b>7</b>	<b>7</b>	<b>2</b>	<b>192</b>	<b>115</b>	<b>74</b>	<b>192</b>	<b>74</b>	<b>0</b>
Turtuk	<b>72</b>	<b>199</b>	<b>0</b>	<b>0</b>	<b>0</b>	<b>0</b>	<b>199</b>	<b>112</b>	<b>81</b>	<b>199</b>	<b>81</b>	<b>0</b>
Takshi	<b>78</b>	<b>202</b>	<b>0</b>	<b>7</b>	<b>0</b>	<b>2</b>	<b>202</b>	<b>115</b>	<b>83</b>	<b>202</b>	<b>83</b>	<b>0</b>
Thang	<b>83</b>	<b>204</b>	<b>0</b>	<b>3</b>	<b>2</b>	<b>3</b>	<b>204</b>	<b>116</b>	<b>85</b>	<b>204</b>	<b>85</b>	<b>0</b>

**District:- Leh**  
**Block:- Turtuk t (Nubra)**  
**Assembly constituency:- Nubra**

Name of the village/ ward	Source of potable water	Whether covered with lighting.	Whether Lanes/drains facility provided	No.of families covered with Housing facility under IAY/RHS etc.	Remarks
	Tap/Spring/Tubewell/Nallah	If yes, indicate source.	Fully/Partly/Not provided		
	84	85	86	87	88
Bogdang	<b>Nallah</b>	<b>Diesel</b>	<b>Not provided</b>	<b>25</b>	
Chulungkha	<b>Hand pump</b>	<b>Solar</b>	<b>Not provided</b>	<b>6</b>	
Turtuk	<b>Spring</b>	<b>Diesel</b>	<b>Not provided</b>	<b>25</b>	
Takshi	<b>Spring</b>	<b>Solar</b>	<b>Not provided</b>	<b>10</b>	
Thang	<b>Spring</b>	<b>Solar</b>		<b>5</b>	

**District:- Leh**

**Block:- Panamic**

**Assembly constituency:- NUBRA**

S. No	Name of the Village/Ward	Status Urban/Rural	Census Code	Panchayat Halqa	Block/Town	Tehsil	No. of House-Hold (2011 census)	Area in Hectares			Source of Irrigation Canal/Stream /Well/Others	P o p u l a t i o n(2011 census)					No. of Literates	
								Total area as per village paper	Cropped area	Irrigated area		Male	Female	Total	Sch. caste	Sch. tribe	Male	Female
1.	2.	3.	4.	5.	6.	7.	8.	9.	10.	11.	12.	13.	14.	15.	16.	17.	18.	19.
1	Kubet	<b>Rural</b>	<b>12</b>	<b>Kubet</b>	<b>Panamic</b>	<b>Sumur</b>	<b>210</b>	<b>1960</b>	<b>121</b>	<b>121</b>	<b>Stream</b>	<b>385</b>	<b>439</b>	<b>824</b>	<b>0</b>	<b>0</b>	<b>231</b>	<b>191</b>
2	Khemi	<b>-do-</b>	<b>5</b>	<b>Khemi</b>	<b>-do-</b>	<b>-do-</b>	<b>121</b>	<b>4310</b>	<b>67</b>	<b>67</b>	<b>Stream</b>	<b>299</b>	<b>277</b>	<b>576</b>	<b>0</b>	<b>0</b>	<b>207</b>	<b>134</b>
3	Panamic	<b>-do-</b>	<b>13</b>	<b>Panamic</b>	<b>-do-</b>	<b>-do-</b>	<b>186</b>	<b>2825</b>	<b>84</b>	<b>84</b>	<b>Stream</b>	<b>1083</b>	<b>395</b>	<b>1478</b>	<b>0</b>	<b>0</b>	<b>944</b>	<b>187</b>
4	Tiger	<b>-do-</b>	<b>20</b>	<b>Tiger</b>	<b>-do-</b>	<b>-do-</b>	<b>204</b>	<b>820</b>	<b>106</b>	<b>106</b>	<b>Stream</b>	<b>397</b>	<b>462</b>	<b>859</b>	<b>0</b>	<b>0</b>	<b>223</b>	<b>200</b>
5	Sumur	<b>-do-</b>	<b>21</b>	<b>Sumur</b>	<b>-do-</b>	<b>-do-</b>	<b>164</b>	<b>324</b>	<b>77</b>	<b>77</b>	<b>Stream</b>	<b>385</b>	<b>326</b>	<b>711</b>	<b>0</b>	<b>0</b>	<b>260</b>	<b>160</b>
6	Chamshen Charasha	<b>-do-</b>	<b>19</b>	<b>Chamshen Charasa</b>	<b>-do-</b>	<b>-do-</b>	<b>180</b>	<b>2759</b>	<b>78</b>	<b>78</b>	<b>Stream</b>	<b>336</b>	<b>381</b>	<b>717</b>	<b>0</b>	<b>0</b>	<b>195</b>	<b>164</b>

**District:- Leh**  
**Block:- Panamic**  
**Assembly constituency:- NUBRA**

Village	DISTANCE FROM VILLAGE ( In Kilometers )				UPTO -----												
	Motor able roads	BT	MT	Shingled	FW	Bus stop/ Passenger Shed	Railway Station	Agri/ Fruit/ Veg. Market	General Market	Forest Sale Depot	Plant Distribution Centre	Improved Seed Centre	Ration Depot/ Fair price	K.Oil Depot	LPG Outlet	Cooperative Fair price Shop	Cooperative Society
	20	21	22	23	24	25	26	27	28	29	30	31	32	33	34	35	36
Kubet	-	-	-	3	0	895	68	68	68	68	68	5	68	68	68	0	0
Khemi	-	-	-	5	0	909	87	87	87	87	87	0	87	87	87	0	19
Panamik	<b>On Leh-sasoma road</b>				0	885	63	63	63	63	63	0	63	63	63	0	0
Tiger	<b>On Leh-Panamic road</b>				0	854	36	36	36	36	2	0	36	36	36	0	2
Sumur	<b>On Leh-Panamic road</b>				0	852	34	34	34	34	0	0	34	34	34	0	0
Chamshen Charasha	-	-	-	2	0	880	43	43	43	43	7	0	43	43	43	0	0

**District:- Leh**  
**Block:- Panamik**  
**Assembly constituency:- NUBRA**

**DISTANCE FROM VILLAGE ( In Kilometers ) UPTO -----**

Name of Village/ward	Handloom Trg/Prod. Centre	Cold Storage facility	Bank Branch	Post Office	PCO/Tel. facility	Community Hall/Centre	Panchayat Ghar	Tourist hut/guest House	Govt. Primary School			Govt. Middle School			Govt. High School		
									Boys	Girls	Common	Boys	Girls	Common	Boys	Girls	Common
	37	38	39	40	41	42	43	44	45	46	47	48	49	50	51	52	53
Kubet	<b>30</b>	-	<b>33</b>	<b>0</b>	<b>0</b>	<b>0</b>	<b>0</b>	-	-	-	-	-	-	<b>0</b>	-	-	<b>30</b>
Khemi	<b>2</b>	-	<b>62</b>	<b>29</b>	<b>0</b>	<b>0</b>	<b>7</b>	-	-	<b>0</b>	-	-	<b>19</b>	-	-	<b>62</b>	
Panamik	<b>0</b>	-	<b>22</b>	<b>0</b>	<b>0</b>	<b>0</b>	<b>0</b>	<b>0</b>	-	-	-	-	-	-	-	-	<b>0</b>
Tiger	<b>2</b>	-	<b>2</b>	<b>0</b>	<b>0</b>	<b>0</b>	<b>0</b>	<b>0</b>	-	-	-	-	-	<b>0</b>	-	-	<b>2</b>
Sumur	<b>2</b>	-	<b>0</b>	<b>0</b>	<b>0</b>	<b>0</b>	<b>2</b>	<b>0</b>	-	-	<b>0</b>	-	-	-	-	-	-
Chamshen Charasha	<b>12</b>	-	<b>14</b>	<b>12</b>	<b>0</b>	<b>0</b>	<b>12</b>	<b>0</b>	-	-	<b>0</b>	-	-	<b>0</b>	-	-	<b>0</b>

**District:- Leh**  
**Block:- Panamik**  
**Assembly constituency:- NUBRA**

**DISTANCE FROM VILLAGE ( In Kilometers ) UPTO -----**

Name of Village/ward	Govt. Hr. Sec. School			Govt. College			Private School				Private College	Hospital	SDH/CHC	PHC	Allopathic/Unani/Ayurv. Dispensary	Med. sub Centre/MAC	Pvt. Clinic/Hospital	Medicine Shop
	Boys	Girls	Common	Boys	Girls	Common	Pry.	Middle	High	Hr. Sec.								
	54	55	56	57	58	59	60	61	62	63	64	65	66	67	68	69	70	71
Kubet	-	-	<b>33</b>	-	-	<b>156</b>	<b>68</b>	<b>68</b>	<b>156</b>	<b>156</b>	-	<b>156</b>	<b>68</b>	<b>10</b>	-	<b>0</b>	<b>156</b>	<b>156</b>
Khemi	-	-	<b>62</b>	-	-	<b>175</b>	<b>87</b>	<b>87</b>	<b>175</b>	<b>175</b>	-	<b>175</b>	<b>87</b>	<b>29</b>	-	<b>0</b>	<b>175</b>	<b>175</b>
Panamik	-	-	<b>22</b>	-	-	<b>146</b>	<b>63</b>	<b>63</b>	<b>146</b>	<b>146</b>	-	<b>146</b>	<b>63</b>	<b>0</b>	-	-	<b>146</b>	<b>146</b>
Tiger	-	-	<b>2</b>	-	-	<b>120</b>	<b>36</b>	<b>36</b>	<b>120</b>	<b>120</b>	-	<b>120</b>	<b>36</b>	<b>26</b>	-	<b>0</b>	<b>120</b>	<b>120</b>
Sumur	-	-	<b>0</b>	-	-	<b>118</b>	<b>34</b>	<b>34</b>	<b>118</b>	<b>118</b>	-	<b>118</b>	<b>34</b>	<b>28</b>	-	<b>0</b>	<b>118</b>	<b>118</b>
Chamshen Charasha	-	-	<b>14</b>	-	-	<b>132</b>	<b>43</b>	<b>43</b>	<b>132</b>	<b>132</b>	-	<b>132</b>	<b>43</b>	<b>14</b>	-	<b>0</b>	<b>132</b>	<b>132</b>



**District:- Leh**

**Block:- Panamic**

**Assembly constituency:- NUBRA**

**DISTANCE FROM VILLAGE ( In Kilometers ) UPTO -----**

Name of the village	Family Welfare Plg. Centre	Nari Niketan/ Bal-Ashram	Anganwari Centre	Vety. Disp/ Animal Husbandry Centre	Sheep Husb./Ext centre	Police station/post	Fire station	Tehsil Office	Block Office	District headquarter	Court	Potable water
	72	73	74	75	76	77	78	79	80	81	82	83
Kubet	<b>20</b>	<b>156</b>	<b>0</b>	<b>0</b>	<b>24</b>	<b>72</b>	<b>156</b>	<b>156</b>	<b>10</b>	<b>156</b>	<b>156</b>	<b>0</b>
Khemi	<b>0</b>	<b>175</b>	<b>0</b>	<b>9</b>	<b>43</b>	<b>91</b>	<b>175</b>	<b>175</b>	<b>24</b>	<b>175</b>	<b>175</b>	<b>0</b>
Panamik	<b>15</b>	<b>146</b>	<b>0</b>	<b>0</b>	<b>14</b>	<b>62</b>	<b>146</b>	<b>146</b>	<b>0</b>	<b>146</b>	<b>146</b>	<b>0</b>
Tiger	<b>0</b>	<b>120</b>	<b>0</b>	<b>2</b>	<b>2</b>	<b>36</b>	<b>120</b>	<b>120</b>	<b>30</b>	<b>120</b>	<b>120</b>	<b>0</b>
Sumur	<b>0</b>	<b>118</b>	<b>0</b>	<b>0</b>	<b>0</b>	<b>34</b>	<b>118</b>	<b>118</b>	<b>32</b>	<b>118</b>	<b>118</b>	<b>0</b>
Chamshen Charasha	<b>7</b>	<b>132</b>	<b>0</b>	<b>20</b>	<b>0</b>	<b>48</b>	<b>132</b>	<b>132</b>	<b>20</b>	<b>132</b>	<b>132</b>	<b>0</b>

**District:- Leh**  
**Block:- Panamic**  
**Assembly constituency:- NUBRA**

Name of the village/ward	Source of potable water	Whether covered with lighting.	Whether Lanes/drains facility provided	No.of families covered with Housing facility under IAY/RHS etc.	Remarks
	Tap/Spring/Tubewell/Nallah	If yes, indicate source.	Fully/Partly/Not provided		
	84	85	86	87	88
Kubet	<b>Spring</b>	<b>Diesel</b>	<b>Not Provided.</b>	<b>3</b>	
Khemi	<b>Spring</b>	<b>Solar</b>		<b>3</b>	
Panamik	<b>Spring/Tap</b>	<b>Diesel</b>		<b>6</b>	
Tiger	<b>Spring/Tap/Handpump</b>	<b>Hydel</b>		<b>2</b>	
Sumur	<b>Spring/Tap/Handpump</b>	<b>Hydel</b>		<b>4</b>	
Chamshen Charasha	<b>Spring/Tap/Handpump</b>	<b>Diesel/Solar</b>		<b>2</b>	

**District:- Leh**  
**Name the Town :- Leh**  
**Assembly constituency:- Leh**

S. No.	Name of the village/Ward	Status Urban/ Rural	Census Code	Ward No.	Block/ Town	Tehsil	No. of House-Holds (2011 census)	Area in Hectares			Source of Irrigation Canal/Stream /Well/Others	P o p u l a t i o n (2011 census)					No. of Literate	
								Total area as per village paper	Cropped area	Irrigated area		Male	Female	Total	Sch. caste	Sch. tribe	Male	Female
1	2	3.	4.	5.	6.	7.	8.	9.	10.	11.	12.	13.	14.	15.	16.	17.	18.	19.
1	Gonpa Gangles	Urban	-	1	Leh	Leh	4377	-	-	-	Stream	21669	9201	30870	22	16391	19751	6590
2	Sanker Yourtung	Urban	-	2	Leh	Leh		-	-	-	Stream							
3	Changspa Karzoo	Urban	-	3	Leh	Leh		-	-	-	Stream							
4	Tukcha	Urban	-	4	Leh	Leh		-	-	-	Stream							
5	Shenam	Urban	-	5	Leh	Leh		-	-	-	Stream							
6	Skara	Urban	-	6	Leh	Leh		-	-	-	Stream/ Spring							
7	Skalzangling	Urban	-	7	Leh	Leh		-	-	-	-							
8	Murtse	Urban	-	8	Leh	Leh		-	-	-	-							
9	Housing Colony	Urban	-	9	Leh	Leh		-	-	-	-							
10	Manetselding	Urban	-	10	Leh	Leh		-	-	-	-							
11	Skampari	Urban	-	11	Leh	Leh		-	-	-	-							
12	Skyanos	Urban	-	12	Leh	Leh		-	-	-	-							
13	Zangsti	Urban	-	13	Leh	Leh		-	-	-	Stream							

**District:- Leh**  
**Name the Town :- Leh**  
**Assembly constituency:- Leh**

**DISTANCE FROM Ward ( In Kilometers ) UPTO -----**

Ward	Motor able roads				Bus stop/ Passenger Shed	Railway Station	Agri/ Fruit/ Veg. Market	General Market	Forest Sale Depot	Plant Distb. Centre	Improved Seed Centre	Ration Depot/Fair Price shop	K.Oil Depot	LPG Outlet	Cooperative Fair price shop	Cooperative society	Handicraft Trg.Prod. Centre
	BT	MT	Shingled	FW													
	20	21	22	23	24	25	26	27	28	29	30	31	32	33	34	35	36
Gonpa Gangles	0	-	-	-	8	-	8	8	8	8	8	0	8	8	-	8	8
Sanker Yourtung	0	-	-	-	3	-	3	3	3	3	3	0	3	3	-	3	3
Changspa Karzoo	0	-	-	-	2	-	2	2	2	2	2	2	2	2	-	2	2
Tukcha	0	-	-	-	2	-	2	2	2	2	2	0	2	2	-	2	2
Shenam	0	-	-	-	1	-	1	1	1	1	1	0	2	1	-	1	1
Skara	0	-	-	-	1	-	0	0	1	1	1	0	3	1	-	1	1
Skalzangling	0	-	-	-	0	-	0	0	0	0	0	1	4	0	-	2	1
Murtse	0	-	-	-	2	-	2	2	2	2	2	0	4	2	-	3	2
Housing Colony	0	-	-	-	0	-	0	0	0	0	0	0	4	0	-	0	1
Manetselding	0	-	-	-	0	-	0	0	0	0	0	1	2	0	-	0	1
Skampari	0	-	-	-	1	-	1	1	1	1	1	1	1	1	-	1	1
Skyanos	0	-	-	-	1	-	0	0	1	1	1	0	0	1	-	0	1
Zangsti	0	-	-	-	1	-	0	0	1	1	1	1	1	1	-	1	1

**District:- Leh**  
**Name the Town :- Leh**  
**Assembly constituency:- Leh**

----- DISTANCE FROM Ward ( In Kilometers ) UPTO -----																	
Ward	Handloom Trg/Prod. Centre	Cold Storage facility	Bank Branch	Post Office	PCO/Tel. Facility	Community Hall/centre	Panchayat Ghar	Tourist hut/guest House	Govt. Primary School			Govt. Middle School			Govt. High School		
									Boys	Girls	Common	Boys	Girls	Common	Boys	Girls	Common
	<b>37</b>	<b>38</b>	<b>39</b>	<b>40</b>	<b>41</b>	<b>42</b>	<b>43</b>	<b>44</b>	<b>45</b>	<b>46</b>	<b>47</b>	<b>48</b>	<b>49</b>	<b>50</b>	<b>51</b>	<b>52</b>	<b>53</b>
Gonpa Gangles	8	-	7	10	0	0	-	0	-	-	0	-	-	0	-	8	10
Sanker Yourtung	3	-	3	6	0	0	-	0	-	-	0	-	-	0	-	2	4
Changspa Karzoo	2	-	1	4	0	0	-	0	-	-	0	-	-	2	-	2	4
Tukcha	2	-	1	5	0	0	-	0	-	-	0	-	-	1	-	3	5
Shenam	1	-	1	3	0	0	-	0	-	-	0	-	-	2	-	1	3
Skara	1	-	0	0	0	0	-	0	-	-	0	-	-	0	-	1	3
Skalzangling	1	-	0	0	0	0	-	0	-	-	0	-	-	0	-	3	2
Murtse	2	-	1	2	0	0	-	0	-	-	2	-	-	2	-	3	1
Housing Colony	1	-	1	1	0	0	-	0	-	-	0	-	-	0	-	-	0
Manetselding	1	-	0	1	0	0	-	0	-	-	1	-	-	1	-	1	1
Skampari	1	-	1	3	0	0	-	0	-	-	1	-	-	1	-	1	2
Skyanos	1	-	0	4	0	0	-	0	-	-	1	-	-	1	-	1	2
Zangsti	1	-	0	3	0	0	-	0	-	-	0	-	-	0	-	-	2

District:- Leh

Name the Town :- Leh

Assembly constituency:- Leh

**DISTANCE FROM Ward ( In Kilometers ) UPTO -----**

Ward	Govt. Hr. Sec. School			Govt. College			Private School				Private College	Hospital	SDH/CHC	PHC	Allopathic/Unani/Ayurv. Dispensary	Med. sub Centre/MAC	Pvt. Clinic/Hospital	Medicine Shop
	Boys	Girls	Common	Boys	Girls	Common	Pry.	Middle	High	Hr. Sec.								
	<b>54</b>	<b>55</b>	<b>56</b>	<b>57</b>	<b>58</b>	<b>59</b>	<b>60</b>	<b>61</b>	<b>62</b>	<b>63</b>	<b>64</b>	<b>65</b>	<b>66</b>	<b>67</b>	<b>68</b>	<b>69</b>	<b>70</b>	<b>71</b>
Gonpa Gangles	-	8	10	-	-	7	5	5	5	5	-	10	-	10	-	10	8	8
Sanker Yourtung	-	2	4	-	-	6	0	0	0	0	-	4	-	4	-	4	3	3
Changspa Karzoo	-	2	4	-	-	4	0	0	0	2	-	4	-	4	-	4	2	2
Tukcha	-	3	5	-	-	5	2	2	2	4	-	5	-	5	-	5	2	2
Shenam	-	1	3	-	-	3	0	0	0	5	-	3	-	3	-	3	1	1
Skara	-	1	3	-	-	3	0	0	0	6	-	3	-	3	-	3	1	1
Skalzangling	-	3	2	-	-	1	1	1	1	6	-	2	-	2	-	2	0	0
Murtse	-	3	1	-	-	0	0	0	0	6	-	1	-	1	-	1	0	0
Housing Colony	-	2	0	-	-	1	1	1	1	6	-	1	-	1	-	1	1	1
Manetselding	-	1	1	-	-	1	1	1	1	5	-	1	-	1	-	1	0	0
Skampari	-	1	2	-	-	3	2	2	2	4	-	2	-	2	-	2	1	1
Skyanos	-	1	2	-	-	4	1	1	1	4	-	2	-	2	-	2	0	0
Zangsti	-	0	2	-	-	3	1	1	1	3	-	2	-	2	-	2	0	0
Spituk(CT)	-	-	<b>10</b>	-	-	<b>10</b>	<b>10</b>	<b>10</b>	<b>10</b>	<b>10</b>	-	<b>10</b>	<b>10</b>	<b>10</b>	-	<b>0</b>	<b>10</b>	<b>10</b>
Choglamsar(CT)	-	-	<b>10</b>	-	-	<b>10</b>	<b>0</b>	<b>0</b>	<b>0</b>	<b>0</b>	-	<b>10</b>	<b>10</b>	<b>10</b>	-	<b>0</b>	<b>10</b>	<b>0</b>

**District:- Leh**  
**Name the Town :- Leh**  
**Assembly constituency:- Leh**

**DISTANCE FROM Ward ( In Kilometers ) UPTO -----**

Name of the village/ Ward	Family Welfare Plg. Centre	Nari Niketan/ Bal-Ashram	Anganwari Centre	Vety. Disp/ Animal Hub. Centre	Sheep Hub./Ext Centre	Police station/ Post	Fire Station	Tehsil Office	Block Office	District headquarter	Court	Potable water
	<b>72</b>	<b>73</b>	<b>74</b>	<b>75</b>	<b>76</b>	<b>77</b>	<b>78</b>	<b>79</b>	<b>80</b>	<b>81</b>	<b>82</b>	<b>83</b>
Gonpa Gangles	10	10	0	0	-	6	12	8	-	0	8	0
Sanker Yourtung	4	4	0	5	-	2	7	2	-	0	2	0
Changspa Karzoo	4	4	0	2	-	1	5	2	-	0	2	0
Tukcha	5	5	0	2	-	2	4	1	-	0	1	0
Shenam	3	3	0	2	-	2	3	1	-	0	1	0
Skara	3	3	0	0	-	1	2	2	-	0	2	0
Skalzangling	2	1	0	1	-	1	0	2	-	0	2	0
Murtse	1	0	0	2	-	2	1	2	-	0	2	0
Housing Colony	1	0	0	2	-	0	2	2	-	0	2	0
Manetselding	1	1	0	3	-	1	3	1	-	0	1	0
Skampari	2	1	0	2	-	2	4	0	-	0	0	0
Skyanos	2	2	0	4	-	1	4	1	-	0	1	0
Zangsti	2	2	0	3	-	1	4	1	-	0	1	0

**District:- Leh**  
**Name of town:- Leh**  
**Assembly constituency:- Leh**

Name of the Villages/ward	Source of potable water	Whether covered with lighting.	Whether vanes/drains facilities provided	No.of families covered with Housing facilities under IAY/RHS etc.	Remarks
	Tap/Spring/Tubewell/Nallah	If yes, indicate source	Fully/Partly/Not provided		
	<b>84</b>	<b>85</b>	<b>86</b>	<b>87</b>	<b>88</b>
Gonpa Gangles	Tap/Hand pump	Diesel/Hydro	Not Provided		
Sanker Yourtung	Tap	Diesel/Hydro	Not Provided		
Changspa Karzoo	Tap/Spring	Diesel/Hydro	Partly		
Tukcha	Tap/Spring	Diesel/Hydro	Not Provided		
Shenam	Tap/Hand pump	Diesel/Hydro	Not Provided		
Skara	Tap/Hand pump/Spring	Diesel/Hydro	Partly		
Skalzangling	Tap/Hand pump	Diesel/Hydro	Partly		
Murtse	Tap/Hand pump	Diesel/Hydro	Not Provided		
Housing Colony	Tap/Hand pump	Diesel/Hydro	Partly		
Manetselding	Tap	Diesel/Hydro	Partly		
Skampari	Tap	Diesel/Hydro	Partly		
Skyanos	Tap	Diesel/Hydro	Partly		
Zangsti	Tap	Diesel/Hydro	Partly		