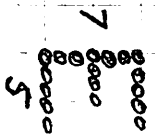
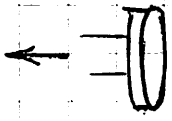
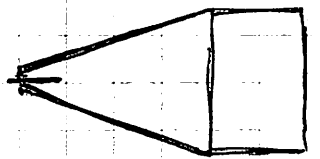
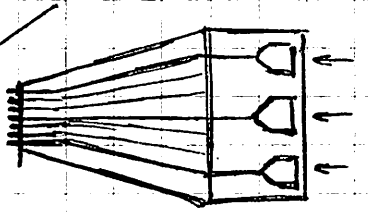


TELETYPEWRITER
1954-56

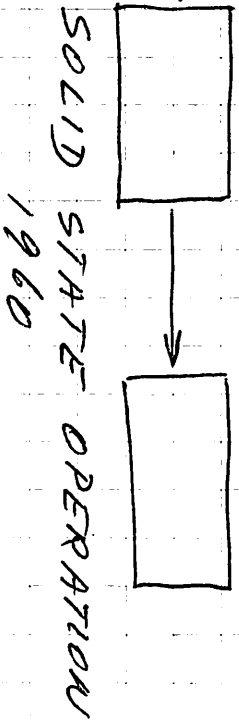
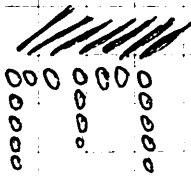
KEYBOARD



7x5 MATRIX
CODE 35 + 7 (SPACE)



RECORDER
7 STYL1
ELECTRONICALLY
OPERATED.



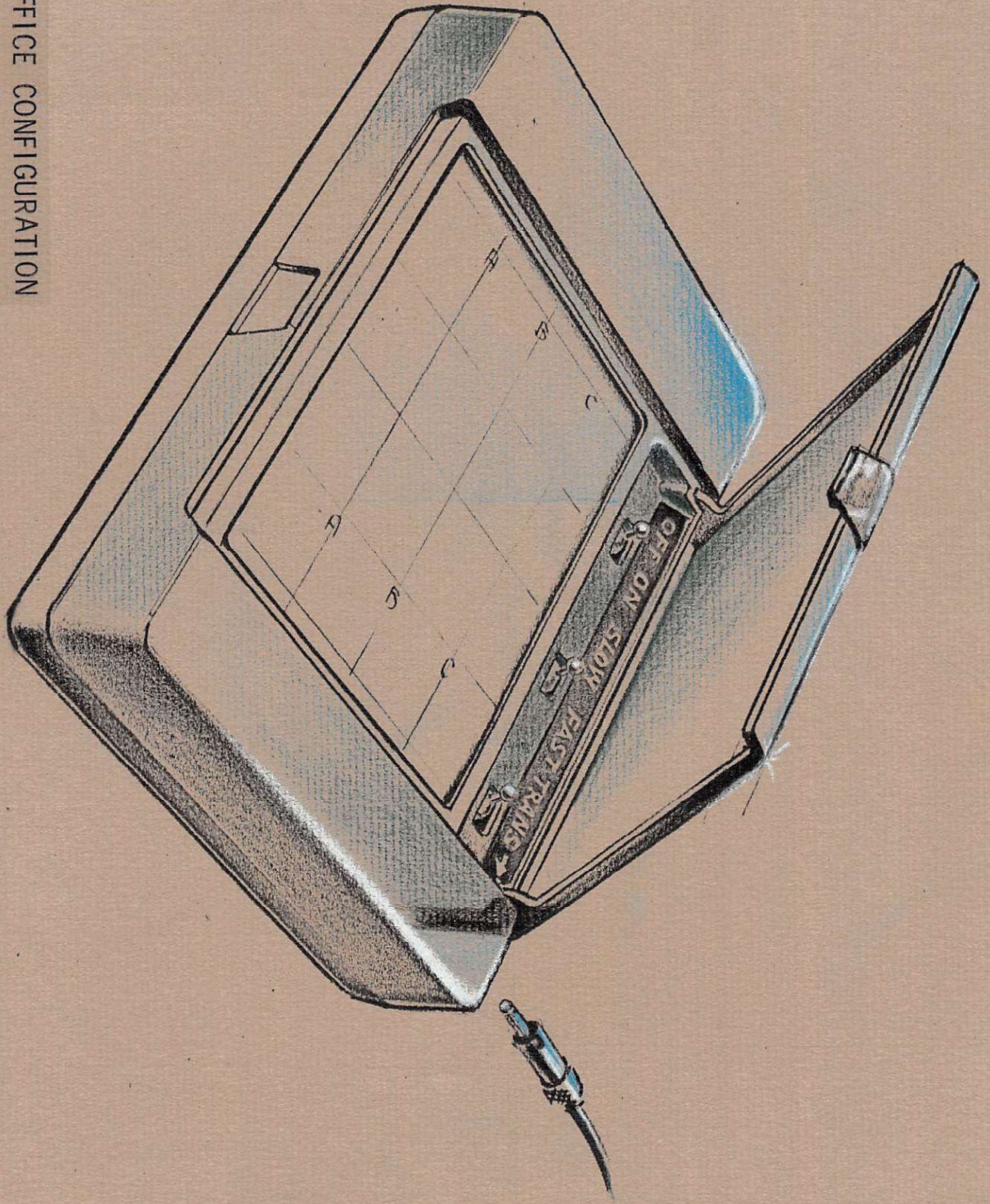
SOLID STATE OPERATION
1960

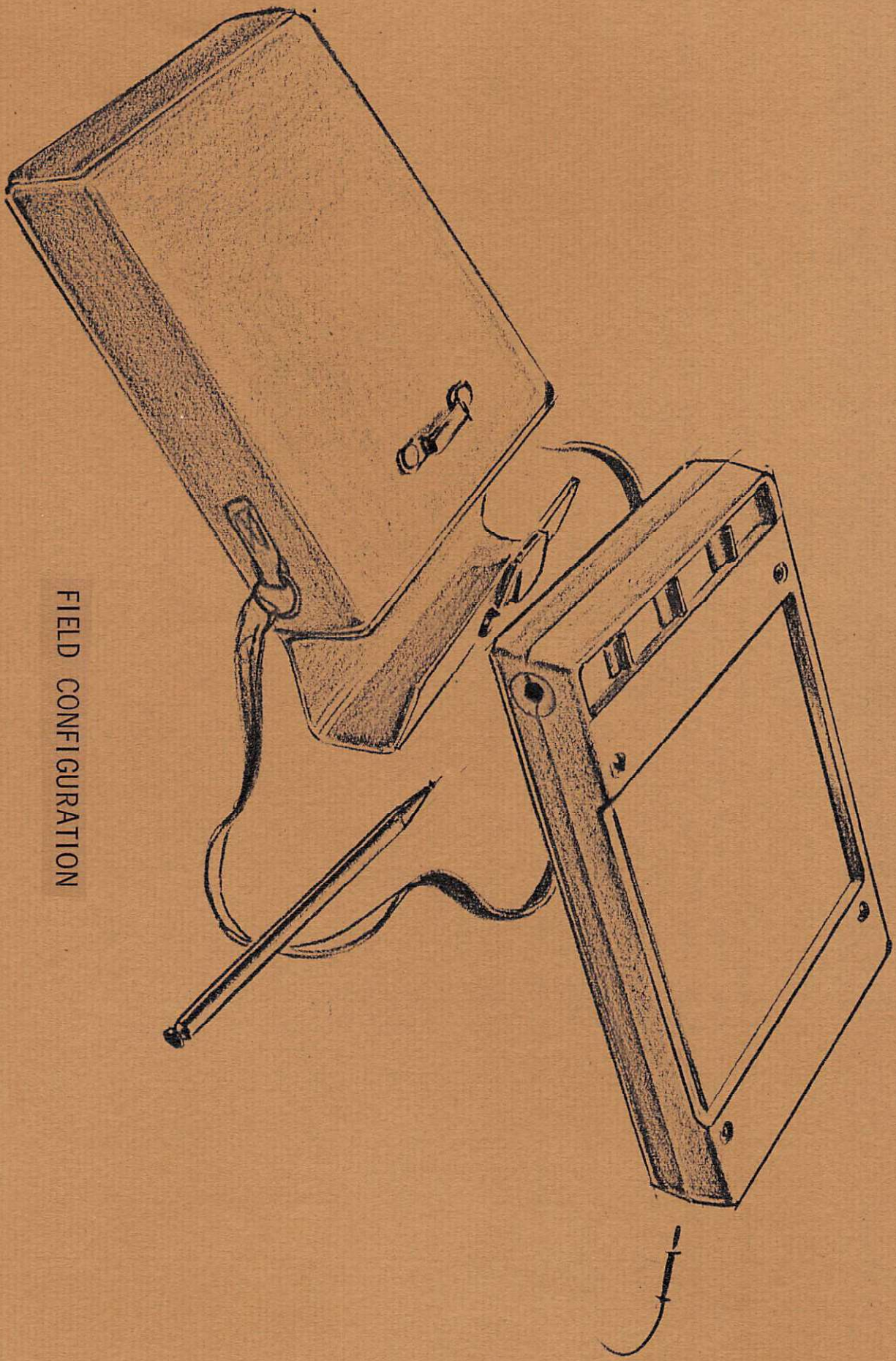
MINIATURE PERSONAL FACSIMILE

SPECIAL FEATURES

- USED WITH ANY VOICE QUALITY CIRCUIT
- CAN BE EASILY ENCRYPTED
- SILENT TRANSMISSION AND RECEPTION
- TRANSMISSION CAN BE SLOWED TO USE EXTREMELY NOISY CHANNELS
- REQUIRES LITTLE TRAINING FOR USE
- RECEIVED DATA CAN BE STORED ON AN ORDINARY TAPE RECORDER
- CAN PROVIDE HARD COPY
- IS SMALL, LIGHT AND PORTABLE

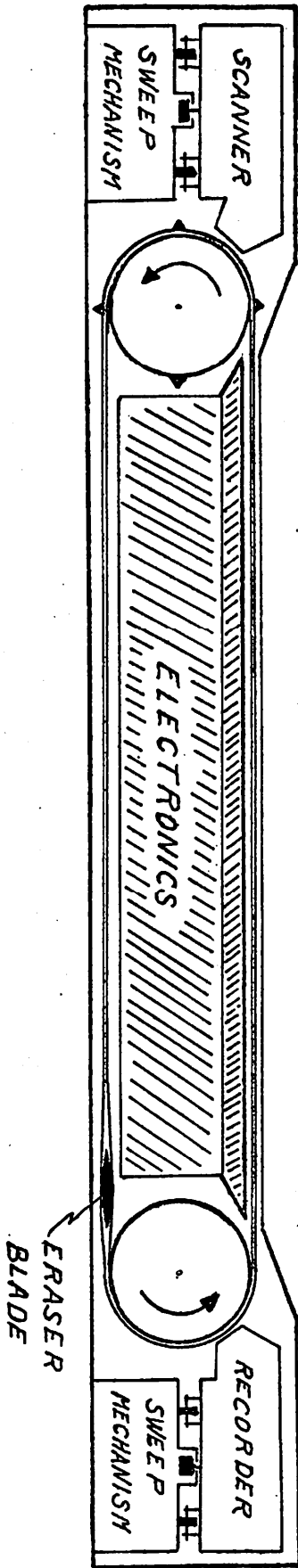
OFFICE CONFIGURATION





FIELD CONFIGURATION

INTERNAL PARTS ARRANGEMENT



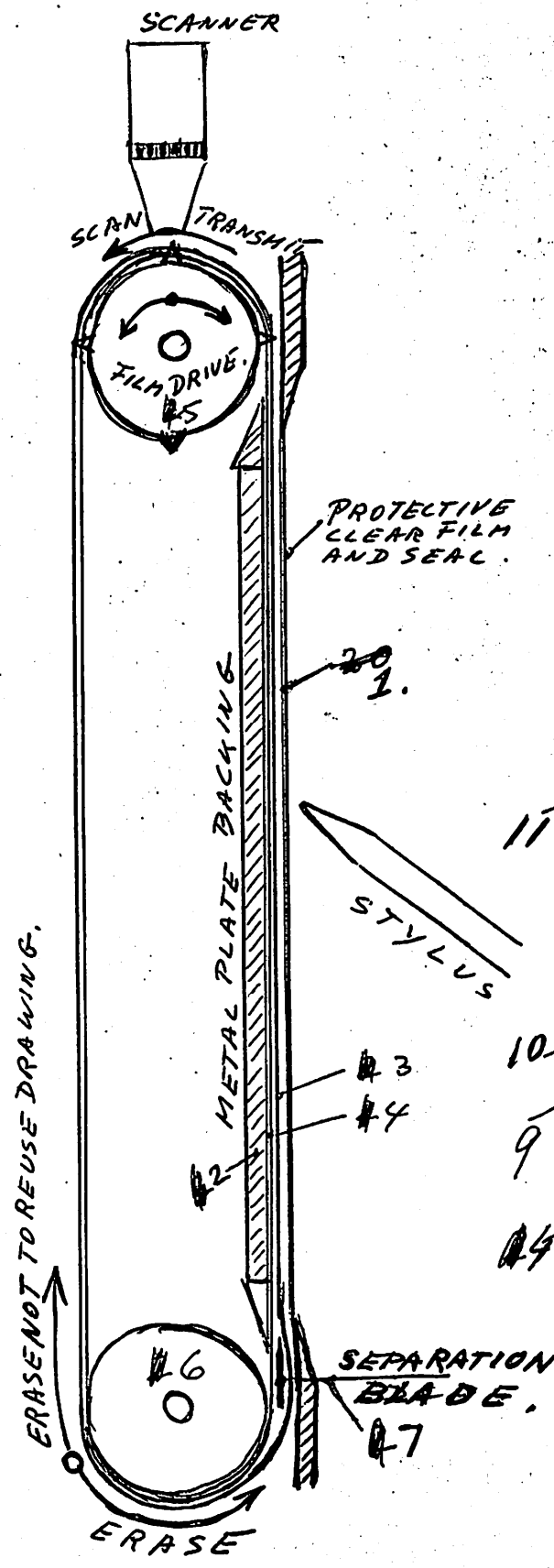


Fig. 2.

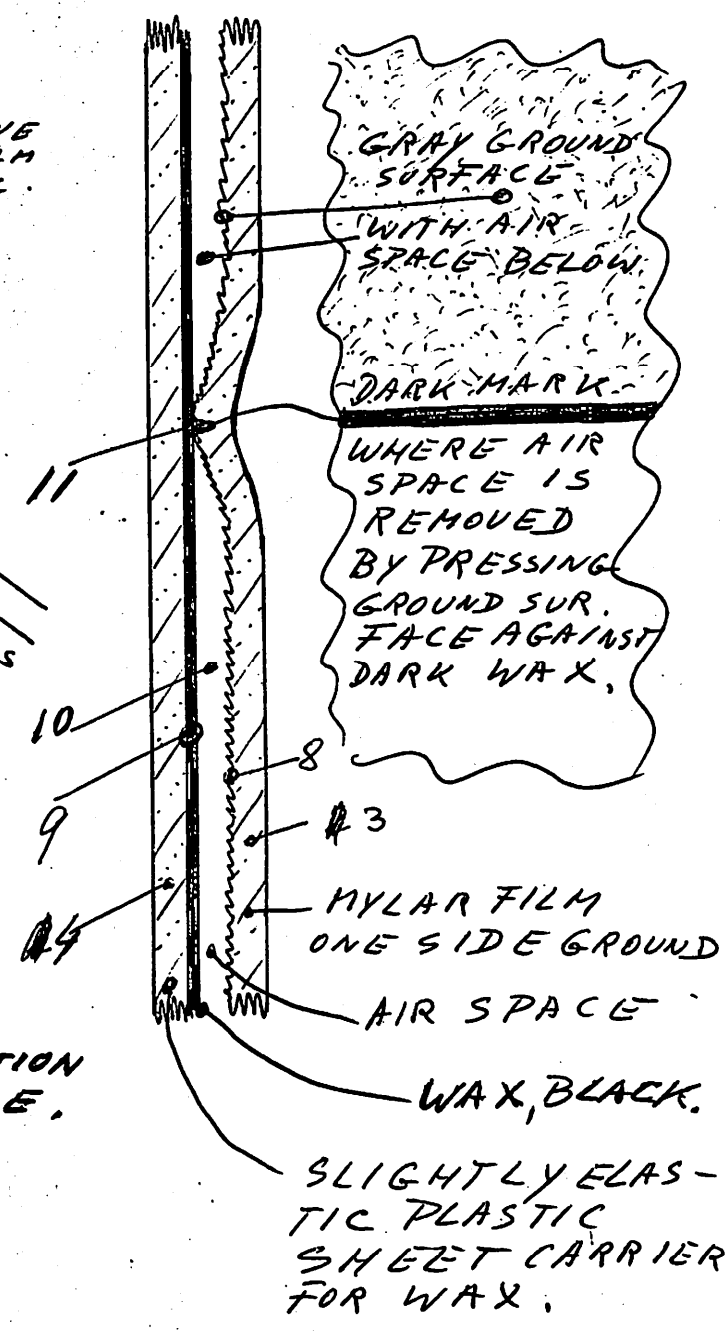
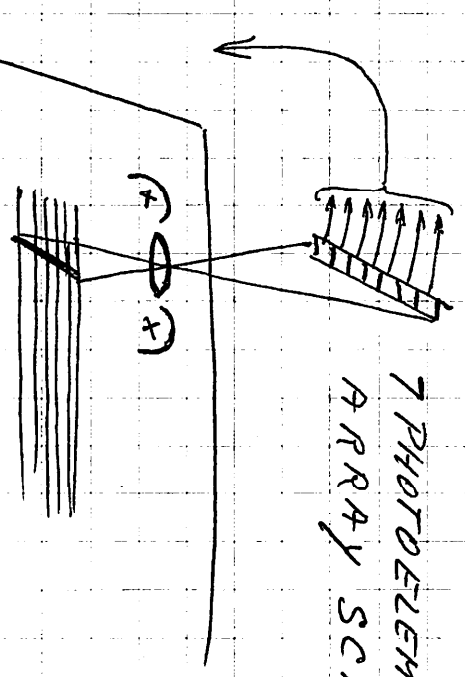


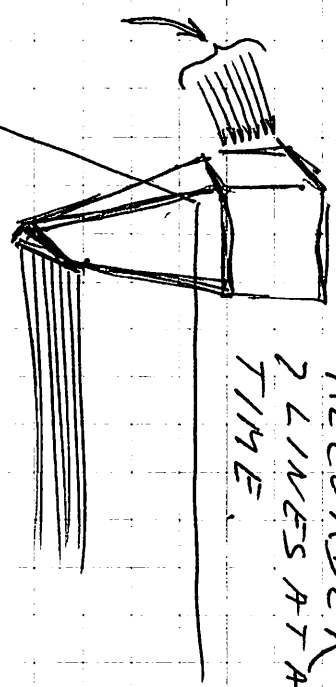
Fig. 3.

FACSIMILE TRANSMITTER
1966, LAB. MODEL.

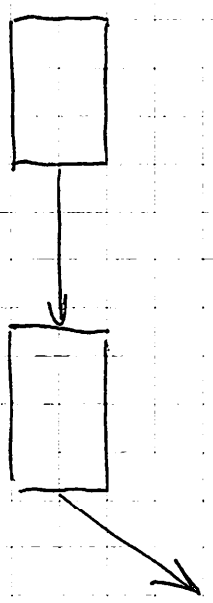
7 PHOTOELEMENT
ARRAY SCANNER



RECORDER
2 LINES AT A
TIME



SOLID STATE PACKAGE



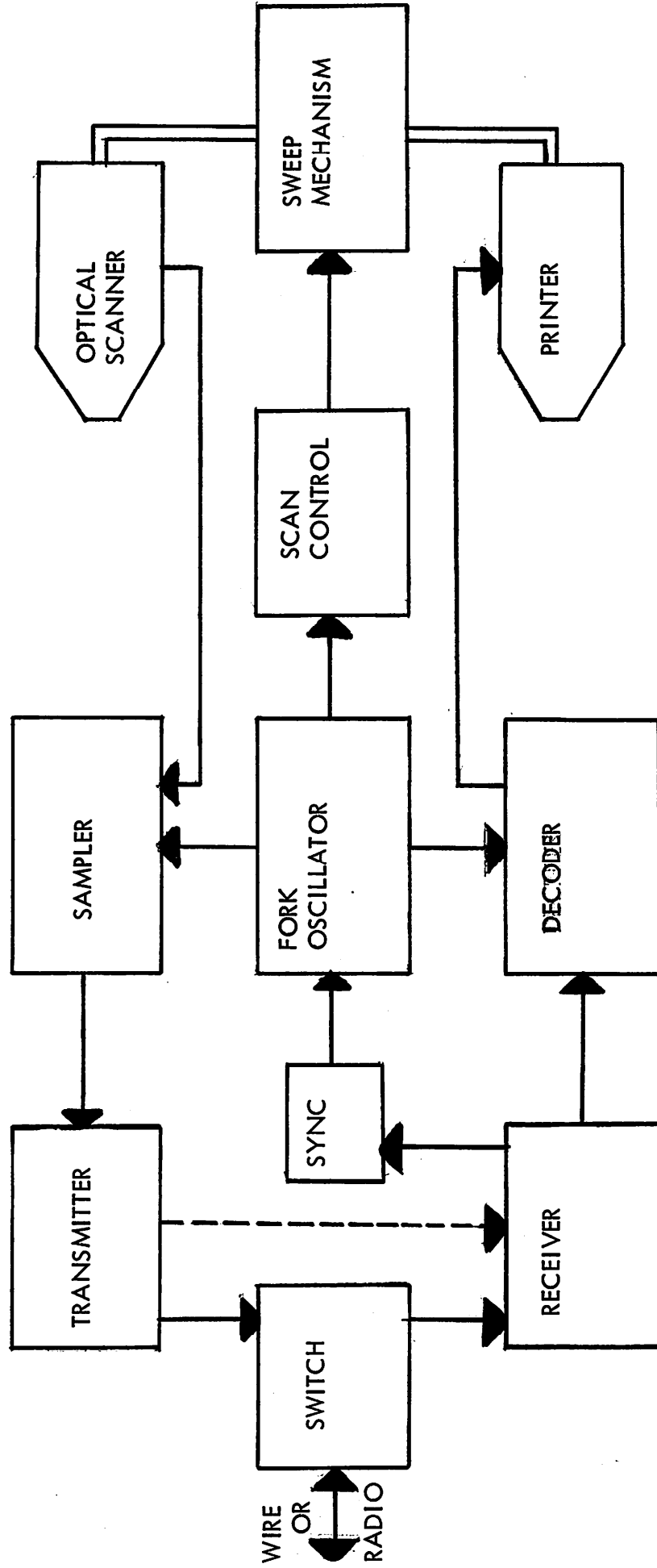
P. SY.
CODE 7+1
250-300/20c
PER STYLUS

8

381

3200 max.

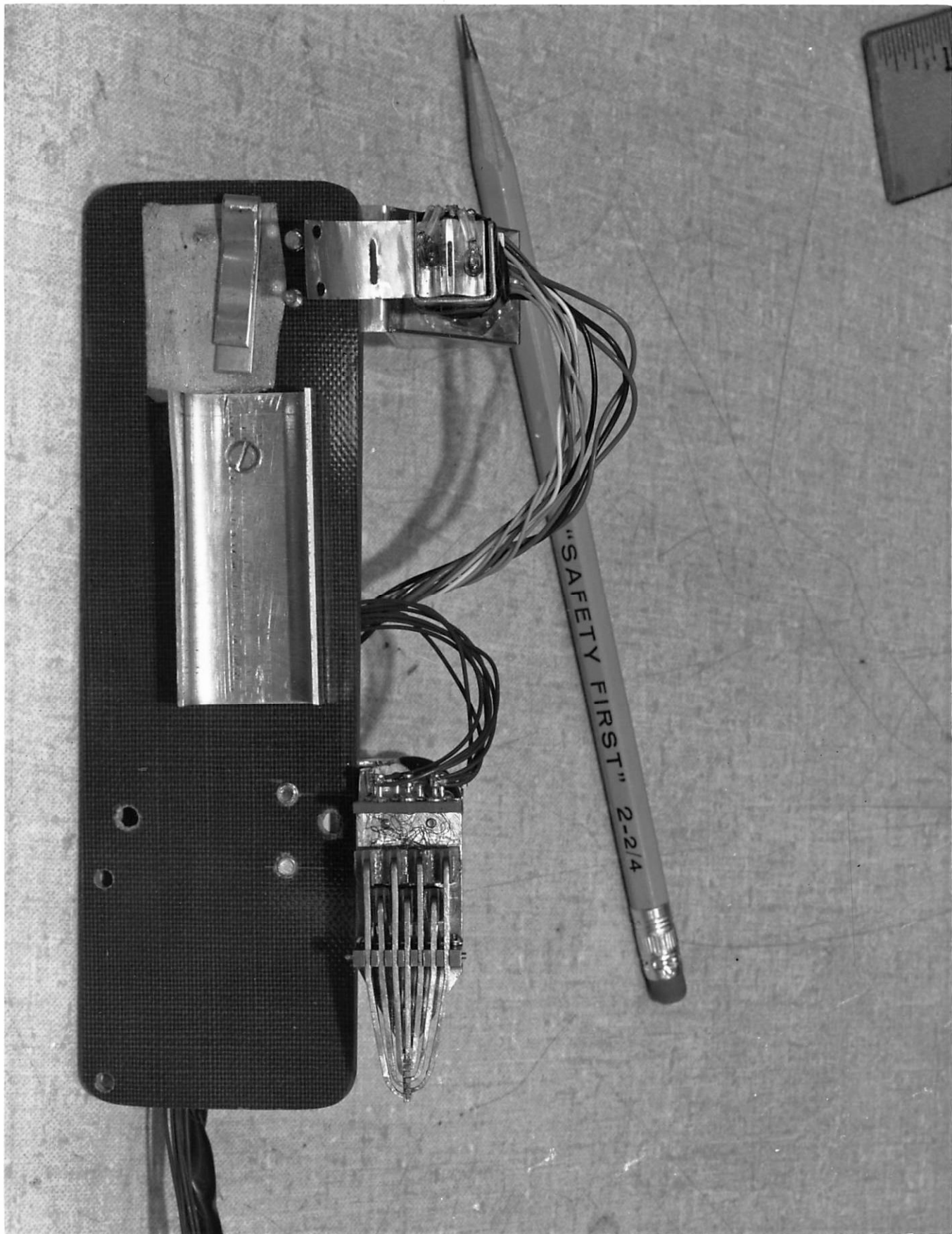
TRANSPONDER BLOCK DIAGRAM



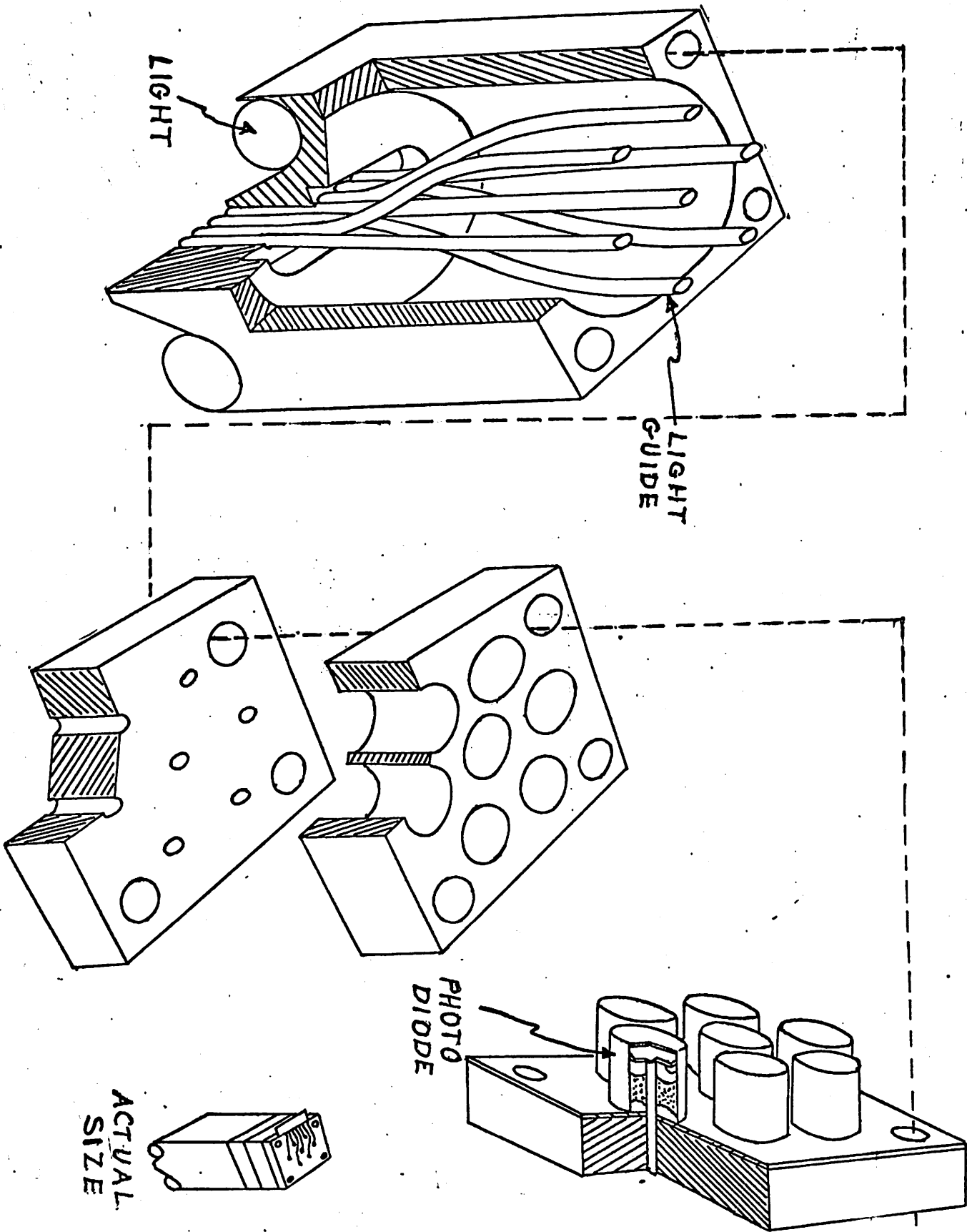


SCANNER & PRINTER

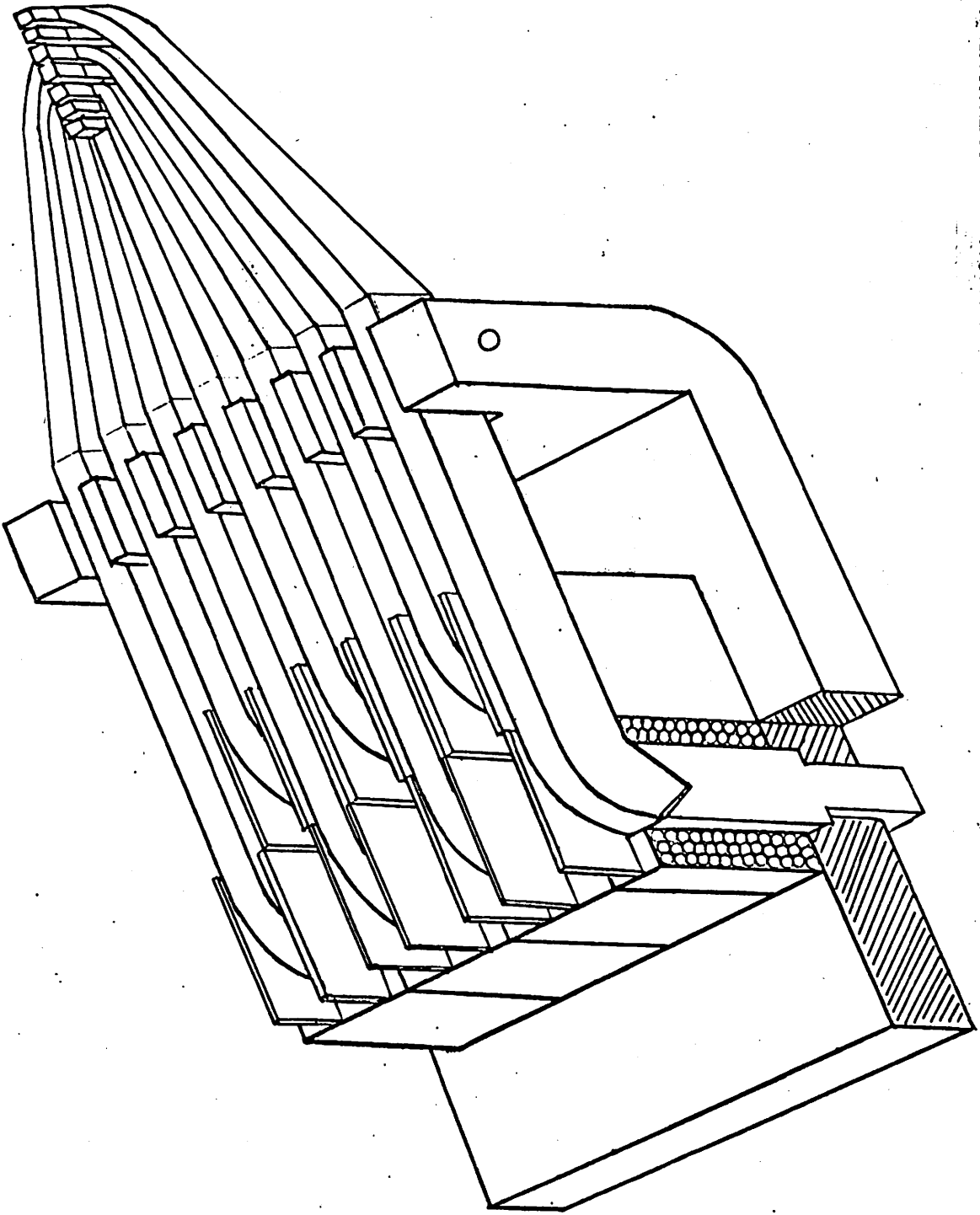
SCANNER & PRINTER DETAILS



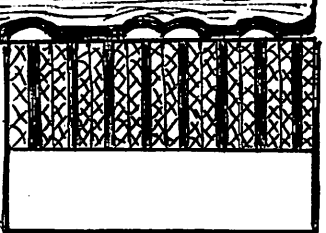
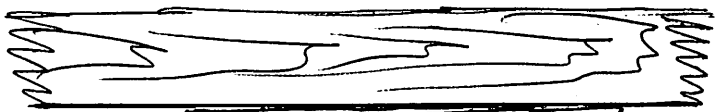
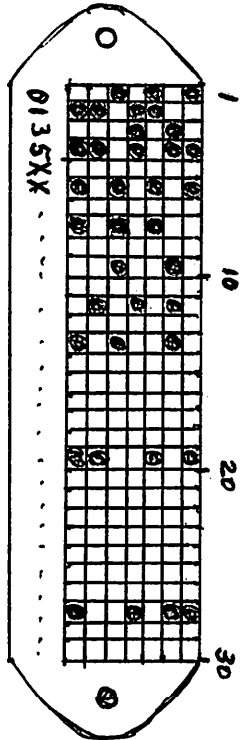
EXPERIMENTAL SCANNER

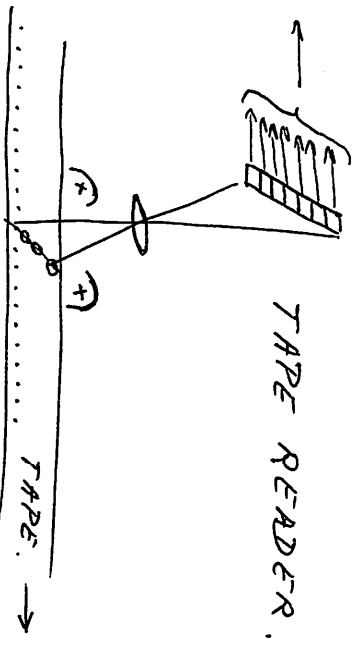
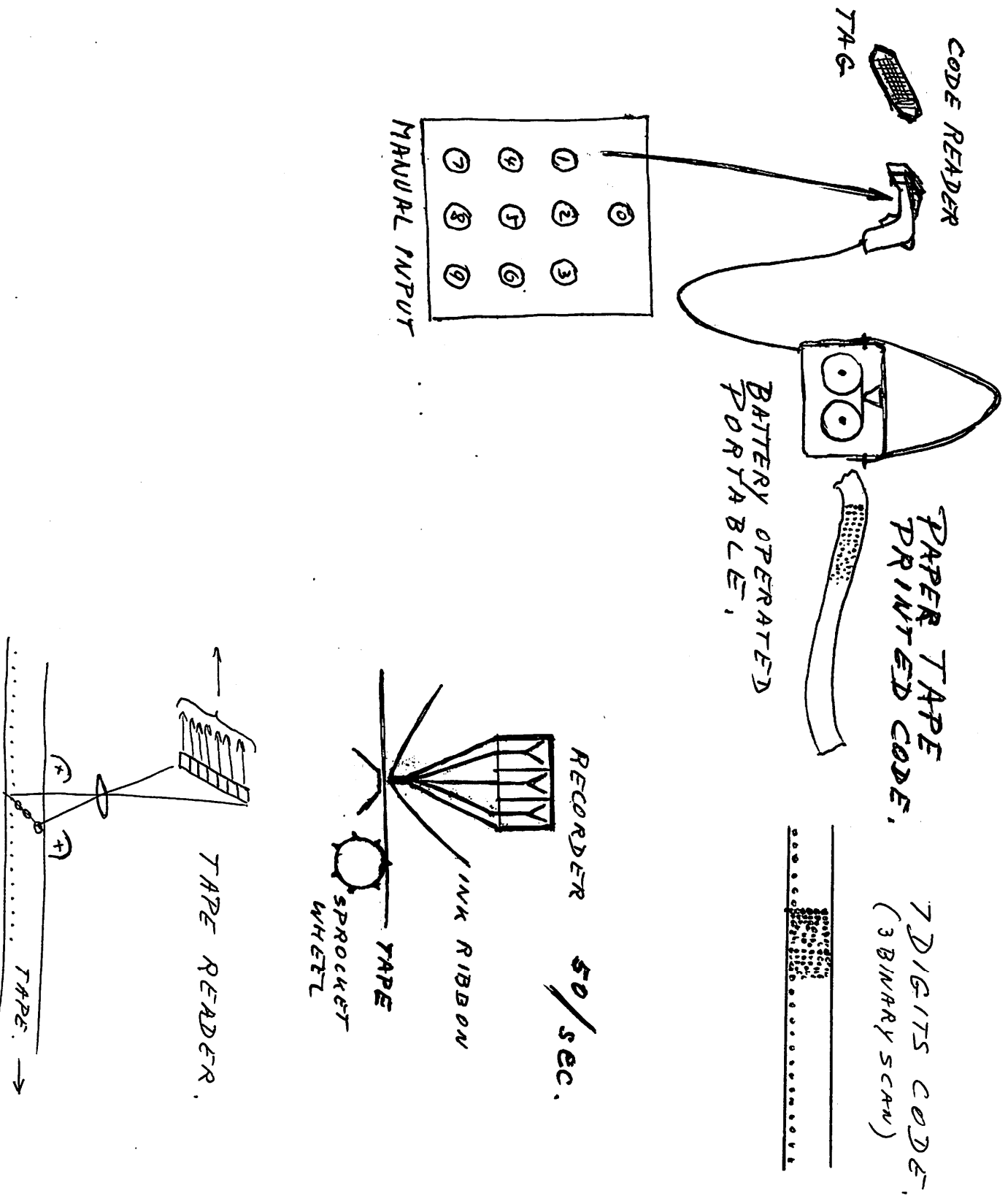


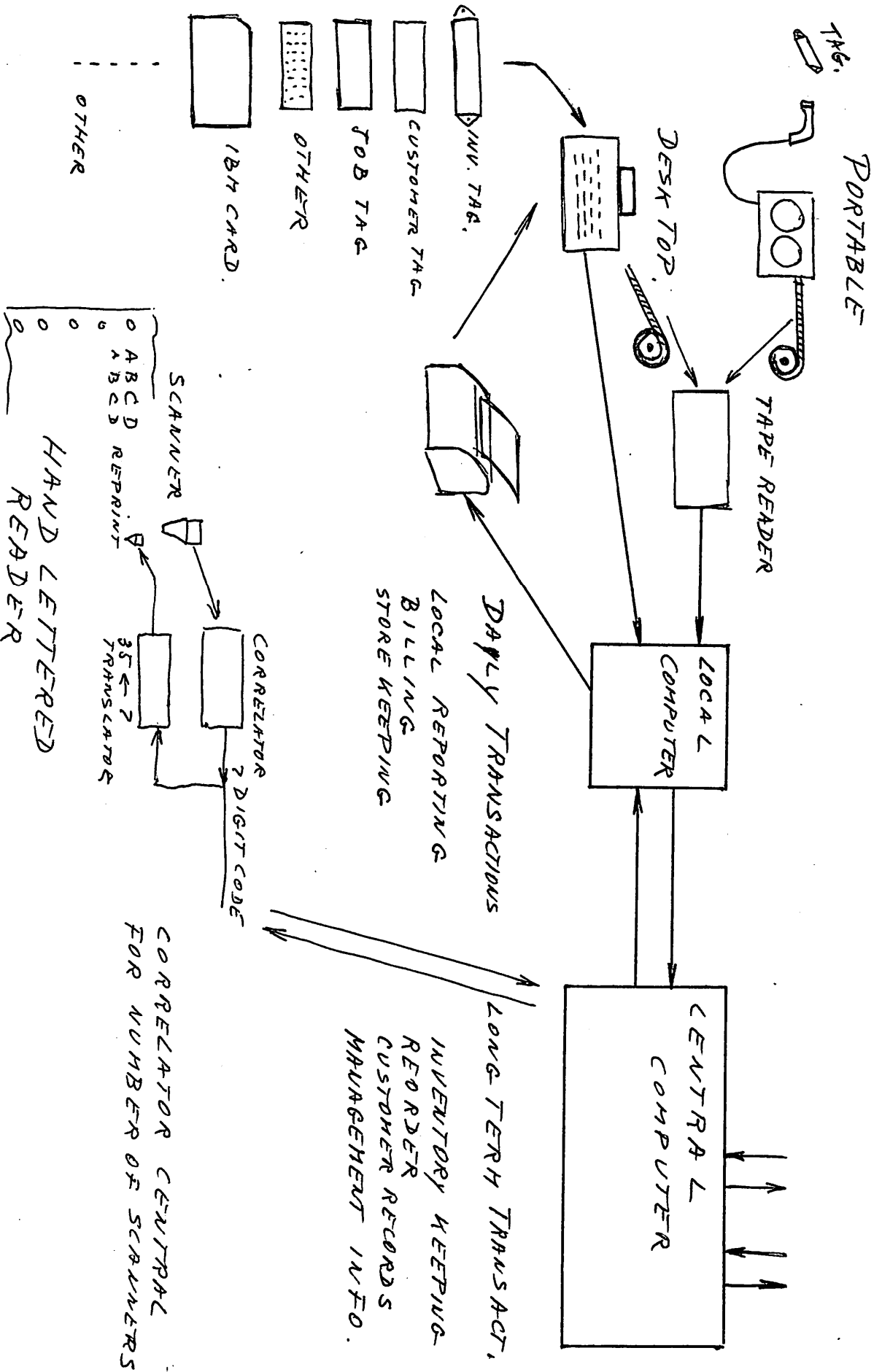
EXPERIMENTAL PRINTER



THE BOEING CO
0135XX -- 00ABCDEF .. XXXX KKKKKK ..







ABCDEF

A B C D ← REPEAT PRINT.

HAND LETTERED PRINT READER.

