

400 Golden Oriole



Golden Oriole. Adult. Male (24-VI).

GOLDEN ORIOLE (*Oriolus oriolus*)

IDENTIFICATION

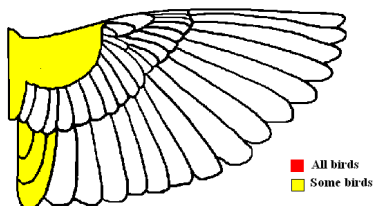
22-25 cm. **Male** with deep yellow body and wings and tail black. **Female** and **juveniles** with green olive feathers; underparts with diffuse streaks; wing and tail brownish; in **adults** bill and eye reddish.

SIMILAR SPECIES

This species is unmistakable.

MOULT

Partial **postbreeding** moult; changing body feathers, lesser coverts and some tertials and secondaries; usually finished in August. Partial **postjuvenile** moult, including body feathers, lesser coverts and, some birds, tertials. Both types of age have a complete **prebreeding** moult in their wintering quarters, retaining some unmoulted secondaries.



Golden Oriole. Extent of postjuvenile moult.

PHENOLOGY

I	II	III	IV	V	VI	VII	VIII	IX	X	XI	XII

STATUS IN ARAGON

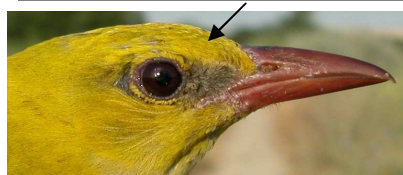
Summer visitor. Widely distributed throughout all forests of the Region, absent from the Pyrenees.

AGEING AND SEXING

4 types of age can be recognized:

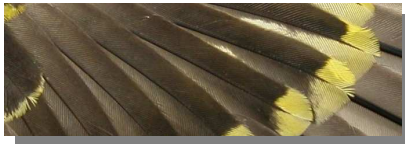
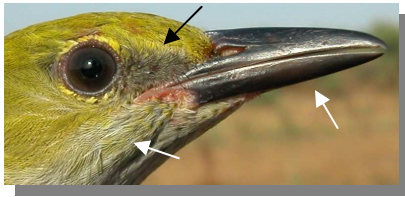
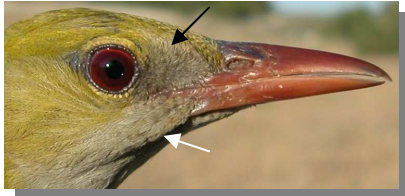
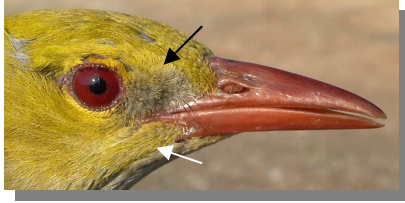
Juveniles and **1st year** with fresh plumage; upperpart feathers and wing coverts brown-olive with yellow edges; underparts distinctly streaked; bill dark brown; iris brownish or blackish; central tail feathers with pointed tips. **Juveniles** and **1st year** cannot be sexed using plumage characters.

2nd year males and **females** have juvenile-like plumage with underparts always streaked; central tail feathers with rounded tips; iris reddish; if some unmoulted secondaries are retained then very worn; outermost tail feathers with yellow patch about 19-25 mm. **Males** usually with primary coverts black with pale tip about 3-6 mm. **Females** usually with primary coverts grey-greenish with pale tips about 1-2 mm. (**CAUTION:** intermediate birds are very common). Some **adult females** are similar, but can be recognized by outermost tail feathers with yellow patch about 24-31 mm; if some secondaries are unmoulted then less worn than **2nd year**; **adult female** is different from **2nd year males** by her grey patch between bill and eye; upperparts with greenish tinge; central tail feathers greenish on their basal half; **adult female** is different from **2nd year females** by her primary coverts with larger white-yellowish patch on tips and more diffuse streaked on underparts. **Adult male** with body feathers deep yellow; patch between eye and bill black; central tail feathers black till base; wing feathers black; primary coverts with large yellow patches on tips.



Golden Oriole. Ageing and sexing. Adult. Pattern of head: top male; middle female; bottom male-like female.

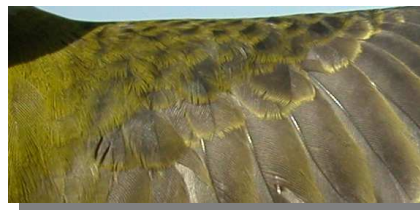
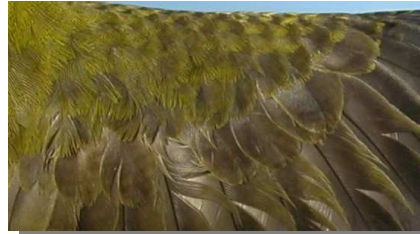
400 Golden Oriole



Golden Oriole. Ageing and sexing. Pattern of head: top 2nd year male; middle 2nd year female; bottom 1st year.

Golden Oriole. Ageing and sexing. Adult. Pattern of primary coverts: top male; bottom female.

Golden Oriole. Ageing and sexing. Pattern of primary coverts: top 2nd year male; middle 2nd year female; bottom 1st year.



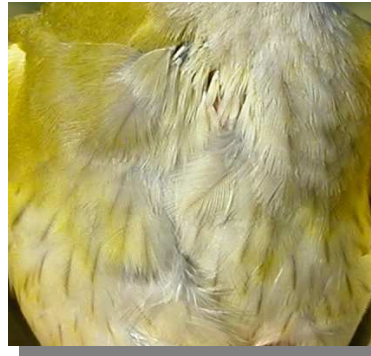
Golden Oriole. Ageing and sexing. Adult. Pattern of wing coverts: top male; middle female; bottom male-like female.

Golden Oriole. Ageing and sexing. Pattern of wing coverts: top 2nd year male; middle 2nd year female; bottom 1st year.

400 Golden Oriole



Golden Oriole. Ageing and sexing. Adult. Pattern of the outermost tail feather: left male; right female.



Golden Oriole. Ageing. Pattern of breast: top adult female; middle 2nd year; bottom 1st year.



Golden Oriole. Ageing. Pattern of the outermost tail feather: left 2nd year; right 1st year.



Golden Oriole. Ageing. Pattern of the tip of the central tail feather: left adult/2nd year; right juvenile/1st year.

400 Golden Oriole



Golden Oriole. Adult. Female (30-VI).



Golden Oriole. 1st year (27-VIII).



Golden Oriole. Adult. Female with male-like plumage (24-VI).



Golden Oriole. Juvenile (22-VII).



Golden Oriole. Male. 2nd year (26-VI).

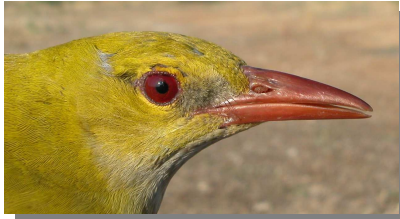


Golden Oriole. Adult Head pattern: top male (24-VI); middle female (30-VI); bottom female with male-like plumage (24-VI).



Golden Oriole. Female. 2nd year (22-VI).

400 Golden Oriole



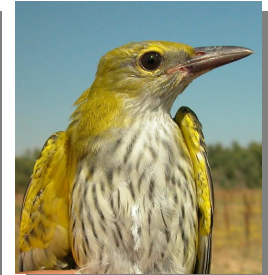
Golden Oriole. 2nd year. Head pattern: top male (26-VI); bottom female (22-VI)



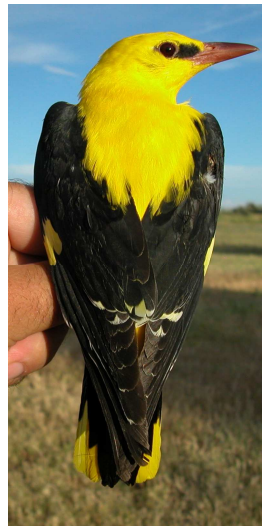
Golden Oriole. 2nd year. Breast pattern: left male (26-VI); right female (22-VI)



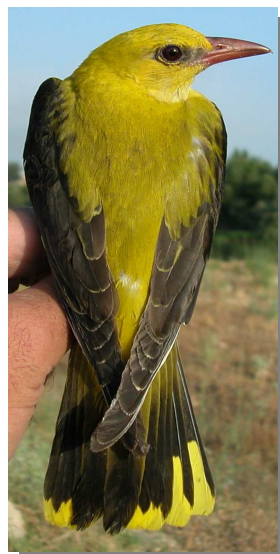
Golden Oriole. Head pattern: top 1st year (27-VIII); bottom juvenile (22-VII).



Golden Oriole. Breast pattern: left 1st year (27-VIII); right juvenile (22-VII).



Golden Oriole. Adult. Breast pattern: top left male (22-VIII); top right female (30-VI); left female with male-like plumage (24-VI).



Golden Oriole. Adult. Upperpart pattern: top left male (22-VIII); top right female (30-VI); left female with male-like plumage (24-VI).

400 Golden Oriole



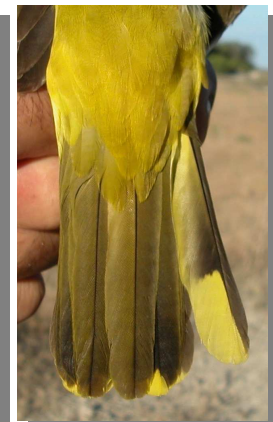
Golden Oriole. 2nd year. Upperpart pattern: left male (26-VI); right female (22-VI)



Golden Oriole. Adult. Pattern of tail and its outermost feather: top left male (22-VIII); top right female (30-VI); left female with male-like plumage (24-VI).

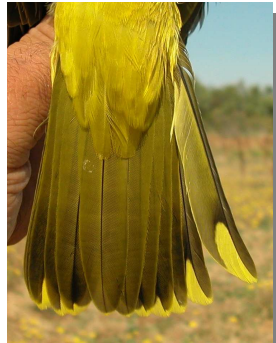


Golden Oriole. Upperpart pattern: left 1st year (27-VIII); right juvenile (22-VII).



Golden Oriole. 2nd year. Pattern of tail and its outermost feather: left male (26-VI); right female (22-VI)

400 Golden Oriole



Golden Oriole. Pattern of tail and its outermost feather: left 1st year (27-VIII); right juvenile (22-VII).



Golden Oriole. 2nd year. Male: pattern of flank (26-VI)



Golden Oriole. Adult. Male: pattern of flank (24-VI)



Golden Oriole. 2nd year. Female: pattern of flank (22-VI)



Golden Oriole. Adult. Female with male-like plumage: pattern of flank (24-VI)



Golden Oriole. 1st year: pattern of flank (27-VIII)



Golden Oriole. Adult. Female: pattern of flank (30-VI)

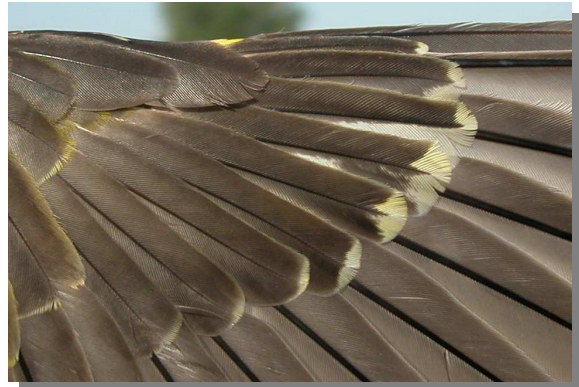


Golden Oriole. Juvenile: pattern of flank (22-VII)

400 Golden Oriole



Golden Oriole. Adult. Male: pattern of primary coverts (24-VI)



Golden Oriole. 2nd year. Male: pattern of primary coverts (26-VI)



Golden Oriole. Adult. Female with male-like plumage: pattern of primary coverts (24-VI)



Golden Oriole. 2nd year. Female: pattern of primary coverts (22-VI)



Golden Oriole. Adult. Female: pattern of primary coverts (30-VI)



Golden Oriole. 1st year: pattern of primary coverts (27-VIII)

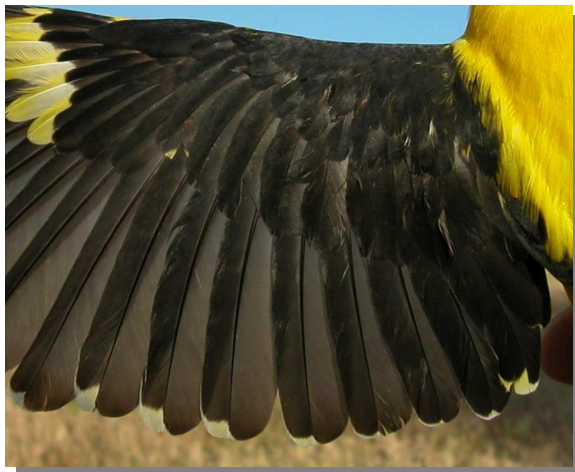
400 Golden Oriole



Golden Oriole. Juvenile: pattern of primary coverts (22-VII)



Golden Oriole. Adult. Female: pattern of secondaries with a retained feather (30-VI)



Golden Oriole. Adult. Male: pattern of secondaries (24-VI)



Golden Oriole. 2nd year. Male: pattern of secondaries with a replaced greater covert due to accidental loss (26-VI)



Golden Oriole. Adult. Female: pattern of secondaries with all feathers moulted (24-VI)



Golden Oriole. 2nd year. Female: pattern of secondaries with all feathers moulted (22-VI)

400 Golden Oriole



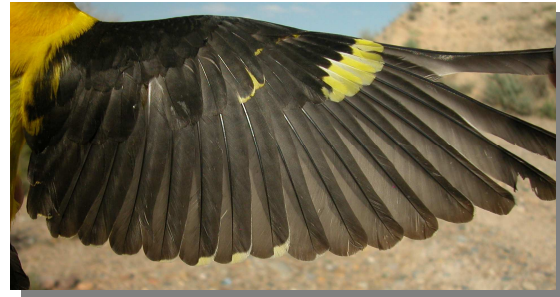
Golden Oriole. 2nd year. Female: pattern of secondaries with a retained feather (30-VI)



Golden Oriole. 1st year: pattern of secondaries (27-VIII)



Golden Oriole. Juvenile: pattern of secondaries (22-VII).



Golden Oriole. Adult. Male: pattern of wing (24-VI)



Golden Oriole. Adult. Female: pattern of wing with all feathers moulted (24-VI)

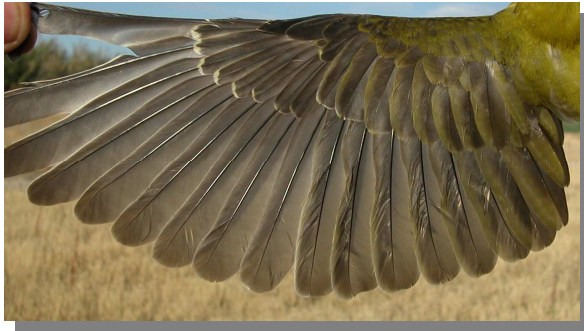


Golden Oriole. Adult. Female: pattern of wing with one secondary retained (30-VI)



Golden Oriole. 2nd year. Male: pattern of wing with a replaced greater covert due to accidental loss (26-VI)

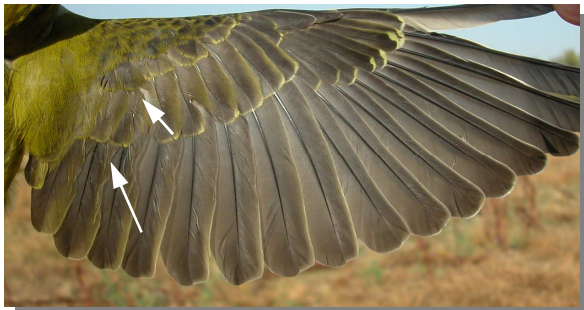
400 Golden Oriole



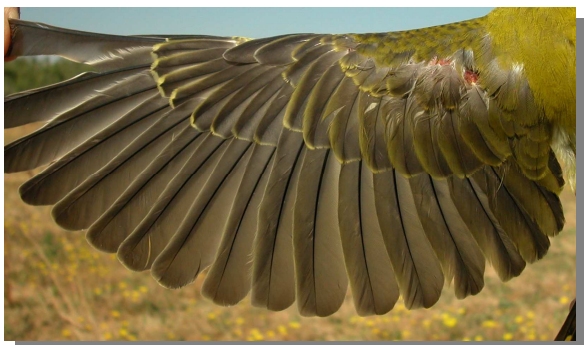
Golden Oriole. 2nd year. Female: pattern of wing with all feathers moulted (22-VI)



Golden Oriole. 2nd year. Female: pattern of wing with a retained secondary (30-VI)



Golden Oriole. 1st year: pattern of wing (27-VIII)



Golden Oriole. Juvenile: pattern of wing (22-VII).