

# LUXE HOTELS



SPECIAL EDITION 2018



☆  
**attitude**  
granville  
瑞生尖沙咀酒店

20 Granville Road, Tsim Sha Tsui  
尖沙咀加連威老道20號 (Nike旗艦店旁)  
Tel: (852) 2105 3888



§  
**SORAVIT**  
ON GRANVILLE ROAD  
瑞生嘉威酒店

29A Granville Road, Tsim Sha Tsui  
尖沙咀加連威老道29A號 (龍城大藥房對面)  
Tel: (852) 2105 3999

# SORAVIT HOTELS

'Soravit' is defined as an influential figure in Thailand with a strong sense of morals and great attention to details. With the cultural backgrounds of our founder, Soravit Hotels strives to exert this spirit in every project we have an opportunity to explore. From conceptualization, design, to hospitality, we aim to execute with tremendous care and thoughts despite the given limitations and constraints. There is no better reward than a simple smile of satisfaction.

# Best of all, it's in Hong Kong

From dining and shopping to mega events in arts, entertainment and sports, the great outdoors and a vibrant living culture, Hong Kong encapsulates a kaleidoscope of attractions that appeals to overseas visitors. It's a city where contrast and harmony, together with trendiness and heritage, live side by side.

A pillar industry in the local economy and one that is envied by the world, Hong Kong's tourism industry has staged a comeback last year with 2017 arrival numbers growing by 3.2% to more than 58 million. Aside from the dominant source market of Mainland China, short-haul markets like Taiwan, South Korea and Japan have all fared well.

The global tourism market is intensely competitive, and it is no longer appropriate for any country or region to adopt a laissez faire approach towards its tourism industry. It demands a holistic approach to ensure that visitors thoroughly enjoy their stay. Whilst the Hong Kong Tourism Board has, over the years, done a fine job in promoting Hong Kong to the world, it is clear that many legislative, planning, regulatory and monitoring functions are outside its purview of operation.

There is a clear and urgent need for Hong Kong to co-ordinate its efforts, with a whole spectrum of stakeholders working closely in concert to ensure the balanced, healthy and sustainable development of the tourism industry.

It is pleasing to note that the new government has recognized past deficiencies and loopholes in the industry. According to CE Carrie Lam, the Financial Secretary has convened a high-level tourism co-ordinating meeting at which he directed bureaux and departments to drive the implementation of various tourism-related measures through closer co-operation.

The government has also mapped out four major development strategies, and is in the process of enacting a Travel Industry Bill to tighten up tourist rights protection.

Let's hope the myriad of projects and measures can promptly translate into concrete action that paves the way for a promising industry to further develop and prosper.



Andy Ng  
Features Editor



## Bolstering Hong Kong's tourism credentials

In her first Policy Address since taking office as the Chief Executive, Carrie Lam reiterated the government's determination to develop Hong Kong into a world-class premier tourism destination.

Among her initiatives is the adoption of four development strategies to boost the further development of tourism:

### *Develop visitor source markets*

With an emphasis on attracting high-yield overnight visitors, efforts will include assisting the industry in seizing the tourism opportunities brought by the Bay Area development; organising a "Belt and Road" tourism forum with the participation of Belt and Road countries and the relevant tourism sectors so as to help the local industry expand their visitor source markets; and providing continuous support to the Hong Kong Tourism Board in its promotion of Hong Kong's tourism features and image, including "multi-destination" products and itineraries, to source markets. For the medium and long term, the government will discuss with the China National Tourism Administration and the tourism industry to continue to deepen tourism collaboration between the Mainland and Hong Kong.

### *Explore tourism products and projects*

With local and international characteristics in mind, the government aims to develop cultural tourism, heritage tourism, green tourism and creative tourism to enrich visitors' experience. For example, in the short and medium term, it will explore different green tourism attractions and collaborate with local districts to promote the development of sustainable green tourism,

and examine ways to improve their supporting transport arrangements. It will also explore the feasibility of co-collaborating with creative media schools to enable visitors to experience, through the use of multimedia and creative technology, the historical landscape and community culture of places with a rich historical culture amidst the modern urban setting of these places today. This would enrich our cultural and heritage tourism products. In addition, it will consolidate and enhance Hong Kong's status as a travel destination for meetings, incentive travels, conventions and exhibitions (MICE) tourism and a regional cruise hub. It will also strive to attract different kinds of new and mega events to Hong Kong.

### *Promote smart tourism*

Short- and medium-term measures include improving Wi-Fi facilities in tourist hotspots, and exploring ways to use smart technology to provide travel facilitation services for tourists at suitable attractions and border control points, such as sending messages to inbound tourists' mobile phones to provide them with basic and useful tourist information and public transport information of different attractions for itinerary planning. It will also encourage the industry to make good use of innovative technology to enhance their competitiveness.

### *Upgrade service quality*

The government will seek the Legislative Council's early approval of the Travel Industry Bill to safeguard the rights of tourists. It will also promote good business practices in the industry with a view to enhancing Hong Kong's image as a tourist destination.

# CONTENTS

02 Editor's Message



## Hong Kong

- 08 Lanson Place Hotel, Hong Kong
- 10 Two MacDonnell Road
- 12 Island Shangri-La, Hong Kong
- 13 Grand Hyatt, Hong Kong
- 14 Conrad Hong Kong
- 15 JW Marriott Hotel Hong Kong
- 16 Four Seasons Hotel Hong Kong
- 17 Mandarin Oriental, Hong Kong
- 18 The Upper House
- 19 The Landmark Mandarin Oriental, Hong Kong
- 20 The Park Lane Hong Kong, A Pullman Hotel
- 21 The Excelsior
- 22 Le Méridien Cyberport
- 23 Mira Moon Hotel

## Kowloon

- 26 Kowloon Shangri-La, Hong Kong
- 27 The Peninsula Hong Kong
- 28 The Langham, Hong Kong
- 29 Marco Polo Hongkong Hotel
- 30 The Ritz-Carlton, Hong Kong
- 31 Marco Polo Gateway Hotel
- 32 Holiday Inn Golden Mile Hong Kong
- 33 Marco Polo Prince Hotel
- 34 Attitude on Granville
- 36 Soravit on Granville
- 38 Panorama by Rhombus, Hong Kong
- 40 Xi Hotel

## New Territories

- 44 Harbour Plaza Resort City
- 46 Bay Bridge Hong Kong by Hotel G
- 48 Hong Kong SkyCity Marriott Hotel
- 49 Novotel Citygate Hong Kong
- 50 Disney Explorers Lodge
- 51 Auberge Discovery Bay Hong Kong
- 52 Royal View Hotel
- 53 Crowne Plaza Hong Kong Kowloon East
  
- 54 Directory

"LUXE HOTELS Special Edition 2018" is published by The Standard in March 2018



### Display Advertising Department

3/F, Sing Tao News Corporation Building,  
7 Chun Cheong Street, Tseung Kwan O  
Industrial Estate, N.T., Hong Kong

**Advertising Hotline:** (852) 3181 3311

**Fax:** (852) 2758 3579

All rights reserved.

**Features Editor:** Andy Ng

**Reporter:** Bryan Wong

**Art Director:** Daniel Lai

**Designer:** Raymond Wong

**Business Director:** Irene Chan

**Website:** [www.thestandard.com.hk](http://www.thestandard.com.hk)

**Email:** [advertise@thestandard.com.hk](mailto:advertise@thestandard.com.hk)



# HONG KONG

LUXE HOTELS



Only member of Small Luxury Hotels of the World™ in Hong Kong

## LANSON PLACE HOTEL, HONG KONG

Exemplifying timeless luxury and elegance

*Located amidst Hong Kong's vibrant lifestyle hub Causeway Bay, Lanson Place Hotel, Hong Kong provides impeccable service within its captivating French-inspired contemporary interior.*



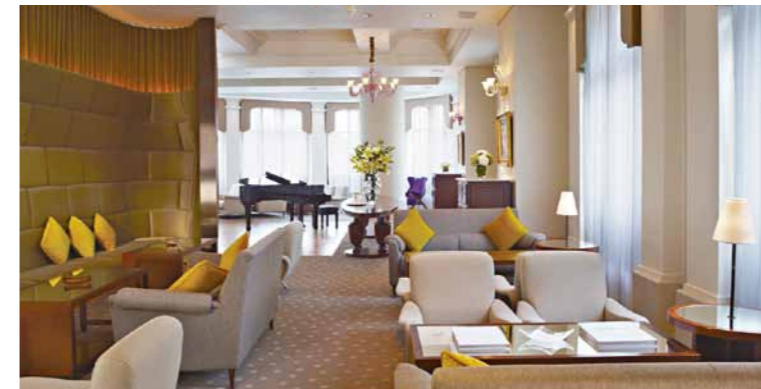
### **Accommodation and Facilities**

The hotel features 194 modern and chic guestrooms and suites that start from 380 sq. ft. Its comprehensive amenities include a fully-equipped kitchenette, LCD IPTV, docking stations, complimentary Wi-Fi, and a handy smartphone with free international and local calls and unlimited mobile data for travellers to stay connected wherever they roam. Its suites win the heart of even the most demanding guests with a palatial space of 520 - 2,000 sq. ft., displaying rare original lithographic prints and etchings that exude timeless elegance, with some pieces dating back to the 1930's. The antiques are matched with a contemporary décor that emanate a unique classic ambience.

Facilities of the hotel include a state-of-the-art gym with Techno Gym equipment for fitness buffs to maintain their routines while admiring stunning views of Victoria Park, while meeting rooms and the business centre cater to business travellers' every need. For undisturbed unwinding, guests may head to the 133 Lounge & Library to lose themselves in a book while indulging in breakfast buffet, afternoon floral tea, or a selection of cocktails accompanied by live piano jazz music.

### **Location and Accessibility**

Located at the heart of Causeway Bay, one of the Hong Kong's most vibrant business and entertainment hubs, Lanson Place Hotel, Hong Kong is within walking distance to many famed shopping destinations, such as Lee Gardens and Times Square. There is also a whole colony of cinemas, bars and restaurants serving an array of international cuisines nearby. For guests who would like to travel beyond Causeway Bay, the MTR station nearby provides easy access to other parts of town and the airport through airport express. Alternatively, enjoy door-to-door shuttle bus service or hire a private limousine.



Address: 133 Leighton Road, Causeway Bay Total no. of rooms: 194 Room size: 380 - 2,000 sq. ft.  
Price range (published rates): HK\$1,800 - HK\$12,800 Tel: (852) 3477 6888 Fax: (852) 3477 6999  
Website: hongkong.lansonplace.com Email: enquiry.lphk@lansonplace.com

## Two MacDonnell Road

A haven amidst the urban hustle

Step into Two MacDonnell Road and guests will find themselves greeted by the newly renovated aparthotel's irresistible charm. Proud winner of the Certificate of Excellence 2017 by Trip Advisor, the aparthotel will make guests feel right at home.



### Accommodation and facilities

Two MacDonnell Road features 215 chic and homey rooms and suites ranging from 336 to 750 sq. ft. with floor-to-ceiling windows that offer stunning views of the tranquil beauty of Central Mid-Levels amidst the hustle and bustle of Central CBD. All rooms feature complimentary Wi-Fi, and a fully equipped kitchenette with microwave oven, refrigerator, electronic stove with hood, and utensils and cookware, giving guests their very own private kitchen even as they travel.

A fully-equipped gymnasium allows guests to stay active and feeling great while the multi-purpose communal room is the perfect place for a mingling and networking. Fancy a blast instead? It can even be booked for parties of up to 12 persons.

### Location and accessibility

Two MacDonnell Road is at an incredibly advantageous location, only minutes away from Central- one of the world's major financial hubs with world-famous entertainment attractions like Lan Kwai Fong, SoHo, and a range of shopping destinations. Furthermore, it is within a 10 minute ride to in-town airport check-in counters or the airport express Hong Kong station and Central MTR station, providing smooth access to Hong Kong International Airport and other parts of the city.

### café bar on 8

This newly renovated café offers stunning views of Hong Kong's lush botanical garden and city skyline along with exceptional international fare, a favourite among locals and residents alike. Whether you're in the mood for a brightening continental breakfast, a convenient grab & go meal, a sumptuous lunch, an indulging afternoon tea, or a delectable dinner in the show kitchen, café bar on 8 will deliver. An array of international delicacies like Margherita Pizza and Old English Fish and Chips and Hong Kong favourites like Hainanese Chicken Rice and Mild Red Curry Prawns will make guests' stay even more memorable.



## A PLACE WITH ROOM TO THINK

Situated among the tranquil beauty of Central Mid-Levels, yet just minutes away from the hustle and bustle of Central CBD, Two MacDonnell Road is the perfect short and long-term living solution for travellers and expats seeking a place that feels like home while in Hong Kong.



2 MacDonnell Road Mid-levels, Hong Kong  
Tel +852 2132 2132 Fax +852 2131 1000  
resv@mr2.com.hk www.twomr.com.hk



twomrhk



# ISLAND SHANGRI-LA HONG KONG

An iconic sanctuary at the heart of Hong Kong

Admire Island Shangri-La's transcendent beauty right at the heart of the city with direct access to an array of superb facilities and fabled attractions in town.



### Accommodation and facilities

The hotel comprises 531 exquisite guestrooms and 34 resplendent suites up to 2,260 sq. ft. which are among the largest in any hotel in Hong Kong. All rooms are well-appointed with Asian-accented European furnishings and command magnificent views of the city such as the Peak or the world-famous Victoria Harbour.

The Horizon Club Lounge on level 56 of the hotel is the highest executive lounge on Hong Kong Island. It connects to an outdoor landscaped roof garden – the only venue of its kind in Hong Kong, offering seamless service, meeting facilities, complimentary breakfast as well as evening cocktails. These privileges and enhanced amenities are available exclusively for guests residing on the dedicated Horizon Club floors.

Guests may access the hotel's luxurious health club and swimming pool to relax their bodies and rejuvenate their minds. A range of relaxing massages, facials and body treatments tailored by skilled therapists will satisfy any specific needs.

### Location and accessibility

Island Shangri-La, Hong Kong is conveniently located at the heart of Central and amidst the city's most prestigious shopping, cultural and business locales. The hotel is directly linked to Pacific Place shopping mall and the Admiralty MTR station, and is just a short stroll to Hong Kong Park, the Peak Tram station and the popular entertainment hubs of Soho and Lan Kwai Fong.

### Dining

Perched high above the city with breath-taking views of Victoria Harbour, Restaurant Petrus redefines fine dining with a refreshing interpretation of contemporary French cuisine. It is also the ultimate place in town for premium wines that will elevate guests' dining experience to a whole new level, snatching the Best By-the-Glass Wine List in Asia and The World of Fine Wine (USA) awards in 2017 with its exceptional cellar collection of over 1,500 references and 12,000 bottles of wines.



# GRAND HYATT HONG KONG

Experience true glamour

Situated on Hong Kong Island fronting the many-splendored Victoria Harbour, Grand Hyatt Hong Kong is recently reborn after completing a 4-year renovation, becoming The Choice for the ultimate pampering travel experience.



### Accommodation and facilities

Grand Hyatt Hong Kong features 542 diverse and unique guestrooms and suites with the majority of them commanding stunning views of Victoria Harbour. The luxurious accommodation highlights a refreshing contemporary charm, enriched seamlessly by state-of-the-art amenities such as individually controlled air-conditioning, luxurious bathroom with separate glass-walled shower, and complimentary handy smartphone with unlimited internet and local and international calls to specific countries.

On the 11th floor of the hotel guests will find the Plateau Spa which offers seclusion and pampering massages, facials, and body treatments. Alternatively, enjoy a dip in the hotel's 50-meter outdoor heated swimming pool, a great workout at the 24-hour fitness studio or a sprint at the 400-meter jogging track. Kids may also have a blast at the expansive children's playground.

### Location and accessibility

Located along the prime waterfront of Hong Kong Island, the hotel commands striking water views. It is directly connected to the Hong Kong Convention & Exhibition Centre and is only minutes from the Central, Pacific Place and Causeway Bay business and shopping areas. The Star Ferry to the buzzing entertainment hub Kowloon is also only a 5-minute walk away.

### Dining

Grand Hyatt Hong Kong features nine world-class restaurants and bars offering a fabulous range of international cuisines including Chinese, Italian, and Japanese fare. One Harbour Road combines the traditional elegance of Taipan mansions in the 1930s with authentic Cantonese cuisine against the backdrop of the breath-taking Victoria Harbour. Grand Hyatt Steakhouse is celebrated for its prime cuts of the world's finest beef, complete with a stylish wine room and an intimate cigar room. Grissini serves true-

to-form Italian delicacies in a casual chic ambiance, and Kaetsu delivers traditional Japanese cuisine with an extensive sake menu featuring several rare vintages, taking guests on a culinary journey of a lifetime.



Address: Pacific Place, Supreme Court Road, Central, Hong Kong Total no. of rooms: 565  
 Room size: 440 – 2,260 sq. ft. Price range (published rates): HK\$2,800 – \$37,000 Tel: (852) 2877 3838  
 Fax: (852) 2521 8742 Website: www.shangri-la.com/island Email: isl@shangri-la.com



Address: 1 Harbour Road, Hong Kong Total no. of rooms: 542 Room size: 430 - 1,184 sq. ft.  
 Price range (published rates): HK\$2,500 - HK\$28,000 Tel: (852) 2588 1234 Fax: (852) 2802 0677  
 Website: hongkong.grand.hyatt.com Email: hongkong.grand@hyatt.com





## CONRAD HONG KONG

### Genuinely first-class

At the heart of the city's business district, Conrad Hong Kong fuses modern Chinese design with contemporary charm. Together with its exceptional facilities and award-winning restaurants, it wins the hearts of locals and visitors alike.

CONRAD  
HONG KONG



#### Accommodation and facilities

Occupying the top 21 floors of the building, the hotel's accommodation commands panoramic views stretching from The Peak to the Victoria Harbour and beyond. All guestrooms and suites are equipped with Espresso machine, with access to other deluxe facilities such as the hotel spas which offer a choice of mind, body and soul therapies including yoga, Pilates, personal training and lifestyle consultations for a more balanced and harmonious self, while the spacious fitness centre offers state-of-the-art equipments.

#### Location and accessibility

Conveniently located in the central business district, Conrad Hong Kong towers 61 floors above Pacific Place – one of the city's most prestigious shopping and entertainment complex. The hotel is in close proximity to Hong Kong Convention and Exhibition Centre, Macau Ferry Pier and a short stroll to the renowned Victoria Harbour and the tram to Victoria Peak, offering strategic access to major business locations and tourist attractions.

#### F&B

Conrad Hong Kong gives guests a taste of flavors around the world. Nicholini's specializes in authentic northern Italian cuisine and homemade pastas, while Golden Leaf serves exquisite Cantonese cuisine. Visit Brasserie on the Eighth for French-Continental dishes in a vibrant open kitchen setting, or Garden Café for lavish buffets and an a la carte menu of international favorites in an indoor and outdoor poolside seating. The Lobby Lounge is popular with its curry lunch buffet, afternoon tea, evening cocktails and supper buffet with live entertainment.



## JW MARRIOTT HOTEL HONG KONG

### A stay that brings lasting memories

Located at renowned lifestyle hub Admiralty, JW Marriott Hotel is a luxury getaway in downtown Hong Kong that will exceed your expectations with its luxurious and sophisticated quarters, state-of-the-art amenities, and exquisite dining options.

  
JW MARRIOTT  
HONG KONG  
香港JW萬豪酒店



#### Accommodation and facilities

JW Marriott boasts luxurious and elegant rooms that offer stunning panoramic views of Victoria Harbour, lush green mountains or modern high-rises of Hong Kong. The spacious rooms span up to 1,803 sq. ft., all offering complimentary Wi-Fi, elegant marble bathrooms and 42" flat-screen TVs with cutting-edge BOSE audio systems, as well as mini-bar with coffee and tea making facilities.

Additional perks include a heated outdoor pool for a relaxing dip, an on-site gym with state-of-the-art equipments for fitness enthusiasts to maintain their routines, and a full-service business center that takes care of business travellers' every need.

#### Location and accessibility

The hotel resides at the heart of the renowned lifestyle hub Admiralty where many famed shopping and gastronomic destinations like Pacific Place or the Star Street precinct can be found. If guests would like to get up close with nature, Hong Kong Park is only minutes away, and right next to it is the Peak Tram which takes passengers directly to The Peak, a top tourist attraction. The closest MTR station is also just a stroll away, connecting guests to other parts of the city with ease.

#### F&B experience

JW Marriott features 8 refined restaurants that give guests a never ending surprise of flavours. From the Man Ho Chinese restaurant that serves authentic Cantonese delicacies to The Lounge where foodies can enjoy sumptuous buffets at its signature noodle bar and new Asian bistro-inspired highlights, everyday is a new culinary journey.



Address: Pacific Place, 88 Queensway, Admiralty Total no. of rooms: 512  
Room size: 450 – 1,700 sq. ft. Tel: (852) 2521 3838 Fax: (852) 2521 3888  
Website: www.conradhotels.com/hongkong Email: hongkonginfo@conradhotels.com



Address: Pacific Place, 88 Queensway, Hong Kong Total no. of rooms: 602  
Room size: 348 – 1,803 sq. ft. Tel: (852) 2810 8366 Fax: (852) 2845 0737  
Website: jwmarriotthongkong.com Email: jwmarriott.hk@marriott.com



## FOUR SEASONS HOTEL HONG KONG

### Redefined excellency

Situated at the prime location on Hong Kong Island in the heart of Central, Four Seasons Hotel Hong Kong is housed in the city's landmark establishment, International Finance Centre, overlooking the spectacular views of Victoria Harbor.



#### Accommodation and facilities

Four Seasons Hotel Hong Kong features 399 guest rooms, including 54 suites, which are exquisitely decorated with a fusion of Western and Chinese elements. Wall-to-wall windows offer captivating vistas of Hong Kong's lively and colorful cityscape, Victoria Harbor, Kowloon or the Peak.

Every guest room is equipped with up-to-the-minute technology, including a 42-inch flat-screen TV, a DVD player and an iPod dock. Some rooms include a Nespresso machine or specially formulated toiletries from Paris. The marble en suite bathroom comes with a deep soaking tub and a separating walk-in rain shower.

It is home to two Michelin award-winning restaurants. Lung King Heen is first Chinese restaurant ever to receive three Michelin stars and continues to receive the honor in ten consecutive

years. Caprice features an open kitchen serving French food, while Blue Bar and the Lounge offer a daily breakfast for guests. In the evenings, you can enjoy a superb cheese and wine pairing experience at Caprice Bar.

Enjoy the city's best view from an infinity-edge pool that seems to pour into Victoria Harbor. There is also a lap-pool, whirlpool and plunge pool to offer swimmers and sunbathers a resort-like experience with an urban backdrop.

#### Location and accessibility

The hotel is a 15-minute walk from the trendy restaurants and pubs at Lan Kwai Fong and Soho. It is within a 10-minute walk from The Central Pier, where guests can hop on a ferry to Tsim Sha Tsui and other islands. Hong Kong MTR Station is only 10-minute walk through the International Finance Centre (IFC), directly linked to the hotel.



## MANDARIN ORIENTAL, HONG KONG

### The epitome of timeless luxury

The iconic Mandarin Oriental, Hong Kong is the epitome of contemporary luxury combined with Oriental heritage. Having delighted guests with award-winning services and impressive facilities for over 50 years, it is a much-loved address for those seeking an exclusive sanctuary in the heart of this exciting city.



#### Accommodation and facilities

The historic hotel features 434 guest rooms and 67 suites with views of Victoria Harbor or the surrounding cityscape. Each room has been individually furnished and decorated to embrace the hotel's Oriental heritage. Modern comforts such as an iPod dock and flat-screen TV are also included.

Diners are spoilt for choice from ten outstanding restaurants and bars, while three restaurants are awarded with Michelin Stars. Mandarin Grill and Bar serves fresh seafood and continental cuisine. Cantonese specialties can be sampled at Man Wah and informal, stylish all-day dining is available at Cafe Causette. Those with a sweet tooth are pampered in the Mandarin Cake shop, which provides mouth-watering cakes, patisseries, light dishes and coffee.

For those seeking total relaxation, the Mandarin Spa offers a haven of tranquility, while holistic treatments are available alongside an indoor swimming pool and 24-hour fitness centre. The Mandarin Salon and The Mandarin Barber offer urban grooming services for both men and women. The hotel's luxurious function space can cater for groups of 12 to 600 people. Its dedicated event planners also provide tailor made services to suit the needs of any guest.

#### Location and accessibility

The hotel is located in the heart of Central, a major business and shopping district. Close to the Central Station, it takes guests around 22 minutes to go to the airport or any parts of the city. It also has a short distance to Lan Kwai Fong and the Convention and Exhibition Centre.



# THE UPPER HOUSE

Full of intimate surprises

Warm, friendly and informal, The Upper House is a place where every guest is treated as an individual. Designed by architect Andre Fu to create an understated feeling of residential calmness, the hotel is centrally located in Hong Kong Island right on top of Pacific Place, with panoramic views of Victoria Harbour and the city.



### Accommodation and facilities

The hotel's 117 guest rooms, which include 21 suites and two penthouses, come fitted with modern amenities. They have a large flat-screen TV, a luxurious bathroom with rain shower facilities and a bathtub. All rooms have an iPod touch providing all information that travelers need.

With its paperless policy, guests can head straight to their room upon arrival and the hotel team will approach to complete the check-in process. When it is time to depart, guests can simply send an email to the front desk.

Located on the 49th floor, One-Michelin-starred Cafe Gray Deluxe offers arrays of European classics and modern dishes. Grab a special drink at Cafe Gray Bar, which offers uniquely

blended cocktails and an extensive wine list around the world. For a refreshing workout, head to the fitness centre, equipped with cardiovascular and weight training equipment. Yoga sessions are held on The Lawn on every Saturday and Sunday mornings.

### Location and accessibility

The Upper House sits above Pacific Place, Hong Kong's premier integrated commercial, retail and hospitality complex. Conveniently located in the heart of Hong Kong's business district, the hotel is just 40 minutes away from the airport and 10-minute walk from Star Street featuring galleries, chic furniture outlets, trendy booksellers, cozy cafe and stylish restaurants.



# THE LANDMARK MANDARIN ORIENTAL, HONG KONG

Modern chic

Superbly located in the heart of Central, The Landmark Mandarin Oriental, Hong Kong sets new standards for deluxe contemporary accommodation and state-of-the-art in-room facilities. This ultra-chic hotel offers beautifully appointed rooms and suites, providing the largest average room size of any hotel in Hong Kong.



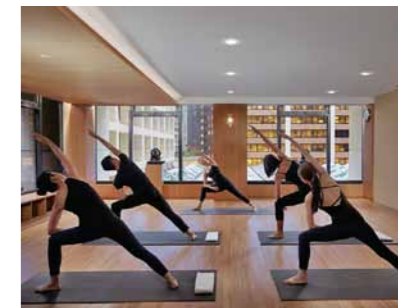
### Accommodation and facilities

Crafted by local award-winning designer Joyce Wang, its 111 guestrooms are charm with bespoke furniture and opulence lightings. A calming color palette and luxurious fabrics have been used throughout the room, while the bathrooms with deep soaking tubs and power showers have a sleek light-filled feel.

Delicate French cuisine by renowned chef Richard Ekkebus can be tasted at Amber while cocktails and organic dining at MO Bar is also a good choice for a light meal. The Oriental Spa offers two floors of sensory indulgence in a 25,000 square feet complex, featuring a fitness centre, an indoor heated swimming pool in addition to Pilates and yoga studios.

### Location and accessibility

The hotel is just steps to Central MTR Station and takes only 10 minutes on foot to Airport Express Station. It is right above LANDMARK, which is a home to six towers of grade-A premium offices, 208 finest stores and restaurants including 30 flagship stores of top-tier luxury brands and over 50 shops totally unique to Hong Kong. Central District is also a great choice for travelers interested in nightlife, restaurants and gourmet food.



Address: Pacific Place, 88 Queensway, Hong Kong Total no. of rooms: 117 Room size: 730 - 1,960 sq. ft.  
 Price range (published rates): HK\$5,200 - \$18,000 Tel: (852) 2918 1838 Fax: (852) 3968 1200  
 Website: www.upperhouse.com Email: guestexperience@upperhouse.com



Address: The Landmark, 15 Queen's Road Central, Hong Kong Total no. of rooms: 111 Room size: 450 - 2,250 sq. ft.  
 Price range (published rates): HK\$4,100 - HK\$128,000 Tel: (852) 2132 0188 Fax: (852) 2132 0199  
 Website: www.mandarinoriental.com/landmark Email: lmhk-reservations@mohg.com



# THE PARK LANE HONG KONG, A PULLMAN HOTEL

A sanctuary in the city

A contemporary oasis in the urban jungle, The Park Lane Hong Kong, a Pullman Hotel, is a home away from home for global jetsetters and discerning business travellers.



## Accommodation and facilities

The Park Lane Hong Kong offers 832 well-appointed guest rooms with breath-taking views of the city landscape, Victoria Park and Harbour. Amenities include complimentary Wi-Fi for unlimited devices, coffee machines, yoga mat and more. Its Executive Rooms also offer the added benefits of the Executive Floor Lounge which include buffet breakfast, cocktail 'happy hour', complimentary meeting room and express check-in & out.

The hotel's 13 function rooms are equipped with flexible configurations and span over 1200 m2, with an outdoor Rooftop Garden over 350 m2, perfect for alfresco weddings, parties or cocktails. A state-of-the-art gym and contemporary business centre also cater to different needs of its guests.

## Location and accessibility

Conveniently situated in heart of Causeway Bay, The Park Lane Hong Kong, a Pullman Hotel has easy access to

the city's business and financial centers, and shopping and entertainment districts. The hotel is ideally located on Gloucester Road within walking distance to major transport routes, tourism landmarks and in close proximity to the Hong Kong Convention and Exhibition Centre. It is also in the vicinity of renowned shopping hotspots including Time Square, Hysan Place, Sogo and Fashion walk, offering world class shopping experiences on the door step.

## F&B

The Park Lane Hong Kong's 27th floor restaurant and rooftop bar SKYE is sophisticated in décor, showcasing electrifying views of Hong Kong's skyline and Victoria Harbour. PLAYT offers all day buffets with a la carte menus presented with an urban street style. Ebb & Flow transforms itself from an airy daytime den to sultry night-time hotspot, always welcoming round-the-clock with its mellow beats and a smorgasbord of light bites and alluring cocktails.



# THE EXCELSIOR HONG KONG

Unrivalled first-class experience

One of the most famous hotels in Hong Kong, The Excelsior enjoys a fantastic location in Causeway Bay. Combining luxury with elegant harbour living, the hotel provides top-notch service and excellent facilities.



## Accommodation and facilities

The largest hotel on Hong Kong Island, The Excelsior features 869 guestrooms and suites with complimentary Wi-Fi and handy smartphones with unlimited Internet access, local calls and international calls for travellers to stay connected at all times. The spacious Executive Lounge is available for guests staying on the Executive floors, offering express check-in and check-out service, complimentary breakfast, afternoon snacks, cocktails and more. A fully equipped business center takes care of business travellers' every need, and the hotel also features a fitness centre with state-of-the-art equipment, steam and sauna rooms with a team of professional therapists that offer the most pampering experience.

## Location and accessibility

The Excelsior is conveniently located at the heart of the renowned shopping-cum-entertainment district of Causeway Bay. Right next to the stunning Victoria Harbour, the hotel is only five minutes by car from the Hong Kong Convention and Exhibition Centre, and ten minutes from Hong Kong's financial and banking CBD.

The hotel is connected to two shopping arcades – World Trade Centre and Laforet, and is in close proximity to Sogo Department Store, Times Square, Lee Gardens and Hysan Place, which house a variety of well-known local and international brands. Victoria Park- a peaceful retreat that offers a tranquil escape from the bustle of the city is also within walking distance where many local and international sports and cultural performances can also be enjoyed there all year round.

## Gourmet experience

The Excelsior features a range of acclaimed eateries, including Yee Tung Heen – One-Michelin star Chinese restaurant with stunning Cantonese specialties and freshly made dim sum. ToTT's and Roof Terrace offers modern cuisine and drinks in al fresco dining setting overlooking panoramic views of Victoria Harbour, while Cammino highlights exceptional Italian cuisine and Dickens Bar traditional British pub food and a wide range of beers with live sports broadcast.



## LE MÉRIDIEN CYBERPORT

### Cutting-edge seaside haven

A gem on Hong Kong's Southside right beside the high-tech business park Cyberport, modish hotel Le Méridien Cyberport is a retreat of effortlessly stylish and futuristic design, coupled with cutting-edge technology and upscale amenities.

Le MERIDIEN  
CYBERPORT  
數碼港艾美酒店



#### Accommodation and facilities

The hotel's 170 guest rooms provide comprehensive amenities in a striking and modern décor. Floor-to-ceiling windows capture enthralling Telegraph Bay views and allow natural sunlight to penetrate. Facilities include a state-of-the-art virtual business center that provides a range of services including printing, faxing, laminating and binding; the hotel gym will allow guests to stay active while the sleek outdoor swimming pool coupled with a sauna and steam room will guarantee a renewing experience.

#### Location and accessibility

On the edge of the stunning Telegraph Bay offering views of the parkland greenery and the sea's sparkling turquoise waters, Le Méridien is only within 15 to 20 minutes from Hong Kong's CBD. Secluded but well connected, the hotel represents a perfect retreat for guests who want to get away while still remaining in touch with the city center.

#### Culinary experience

Le Méridien Cyberport offers a range of culinary delights from around the world. From superb Cantonese specialties and top quality Dim Sum from celebrated Chinese restaurant Nam Fong, to the Podium where tantalising tapas along with vintner's secrets and celebrated cult wines are served in an intimate and elegant wine bar, to the restaurant and bar Umami where unique temaki and sushi can be savoured, gourmets will have a ball.



Address: 100 Cyberport Road, Hong Kong Total no. of rooms: 170 Room size: 355 – 947 sq. ft.  
Price range (published rates): HK\$1,200 – \$4,500 Tel: (852) 2980 7788 Fax: (852) 2980 7888  
Website: [www.lemeridien.com](http://www.lemeridien.com) Email: [Resolutions.LMC@lemeridien.com](mailto:Resolutions.LMC@lemeridien.com)



## MIRA MOON

### Stylish and striking

The award-winning boutique hotel Mira Moon, is one of the most uniquely designed hotels in Hong Kong, lending inspiration from the Mid-Autumn Festival and presenting a contemporary abstract interpretation of Chinese tradition in modern Hong Kong.

mira moon  
HOTEL



#### Accommodation and facilities

Mira Moon features 91 stylish guestrooms and one luxurious penthouse suite. All rooms are equipped with complimentary Wi-Fi, HD LED IPTV, iPad mini, Bluetooth music system, Nespresso coffee machine with capsules, gourmet teacake and laptop-sized safe. There is also a 24-hour fitness center with a full range of modern equipments available for in-house guests to stay active and maintain their routines, and a business services center to provide all-round administrative support for business travellers.

#### Location and accessibility

Located at the heart of bustling Causeway Bay on Hong Kong Island, Mira Moon is part of the vibrant entertainment and dining district with famous landmarks like Times Square, Sogo and Hysan Place. Conveniently situated for both business and leisure travellers, the Hong Kong Convention and Exhibition Centre (HKCEC) and Hong Kong Arts Centre are just a short walk away from the hotel. Moreover, the vibrancy of nearby renowned lifestyle hubs like Causeway Bay and Wan Chai and diverse dining options and night life venues of Soho in Central can also be experienced with ease.

#### Dining

The Supergiant Tapas & Cocktail Bar is an award-winning restaurant, and the go-to place for sharing Spanish tapas along with Chinese mythology inspired cocktails. The champagne bar provides a more private and elegant setting for chic and indulging drinks.



Address: 388 Jaffe Road, Causeway Bay, Hong Kong Total no. of rooms: 91 Room size: 220 – 1,250 sq. ft.  
Price range (published rates): HK\$1,600 – \$12,888 Tel: (852) 2643 8888 Fax: (852) 2643 8992  
Website: [www.miramoonhotel.com](http://www.miramoonhotel.com) Email: [enquiry@miramoonhotel.com](mailto:enquiry@miramoonhotel.com)





# KOWLOON

LUXE HOTELS

## KOWLOON SHANGRI-LA, HONG KONG

### A sublime retreat

The award-winning Kowloon Shangri-La, known for its warm hospitality, is conveniently situated in the Tsim Sha Tsui East shopping and entertainment district, offering guests luxury and comfort accompanied by an elevated level of personalised service.



#### Accommodation and facilities

Kowloon Shangri-La, Hong Kong boasts 688 spacious and elegant guestrooms that offer breath-taking Victoria Harbour or metropolis vistas from floor-to-ceiling windows. The rooms are all decorated with contemporary art, marble bathrooms, soothing earth-tone fabrics and sleek furnishings. The Horizon Club – on the top three floors – offers executive travellers an exalted level of personalised service. Complimentary Wi-Fi access is available throughout the hotel which also includes a business center that offers comprehensive support for business travelers, a gym, indoor swimming pool, and sauna, solarium and steam bath.

#### Location and accessibility

Kowloon Shangri-La, Hong Kong is conveniently located in the heart of the shopping, entertainment and commercial hub of Tsim Sha Tsui East, overlooking the world famous Victoria Harbour. It is

directly next to a shopping arcade where hair and beauty salons, gift shops, and the florist can be found. The hotel is also just minutes from the Airport Express Station, Mass Transit Railway, East Rail to the mainland China border and the Star Ferry for convenient transport to other parts of, or out of Hong Kong.

#### Gourmet experience

Kowloon Shangri-La offers some of the best fine dining experience. Shang Palace was awarded two Michelin Stars for 10 years. Decorated in red and gold motifs reminiscent of the Sung Dynasty, the restaurant renowned for its authentic Cantonese cuisine exudes an ambience of refined Chinese elegance. Inheriting 180 years of tradition, Nadaman features authentic Japanese cuisine with a contemporary western twist in its modern décor, while Angelini delivers Italian cuisine using only the finest ingredients, accompanied by an extensive wine list of over 100 Italian wines.



## THE PENINSULA

### Grande Dame of the Far East

With 90 years under its belt as a global beacon of hospitality, The Peninsula Hong Kong is one of the world's most reputable grand hotels. It has built its reputation on the finest traditions of service, offering a blend of the best Eastern and Western hospitality in an atmosphere of unmatched classic grandeur and timeless elegance.

THE PENINSULA  
HONG KONG



#### Accommodation and facilities

Simplicity and chic elegance define the décor of The Peninsula's accommodation. From the 425 sq. ft. grand deluxe harbour view rooms that offer stunning views of Victoria Harbour, to the luxurious harbour view suites at 1,422 sq. ft., guests can expect exceptional comfort.

Facilities of the hotel include the 12,000 sq. ft. Peninsula Spa which offers guests a deeply personalised spa experience, pampering to the core. For fitness enthusiasts that would like to stay active, the hotel's state-of-the-art fitness centre allows guests to maintain personal goals and routines away from home. Alternatively, enjoy a dip like never before at the indoor pool on the 8th floor that offers panoramic views of Hong Kong's iconic skyline through floor-to-ceiling windows, or go on a little retail therapy at the hotel's shopping arcades.

Not a fan of mingling with the masses? Enjoy private transport options which include a fleet of 14 Rolls-Royces and two helicopters for "flight-seeing" tours or airport transfers.

#### Location and accessibility

Located on Salisbury Road, Tsimshatsui, The Peninsula overlooks Victoria Harbour, and is right at the heart of Kowloon's business, shopping and entertainment district. Access to Hong Kong's Mass Transit Railway subway system is less than one minute's walk from the hotel, enabling guests to travel around the city, the New Territories and into China. The Star Ferry, a more leisurely way to reach the Island, is only a five-minute walk from the hotel, with the new Kai Tak Cruise Terminal a 20-minute drive away and the International Airport a 40-minute drive away.



#### Spring Moon

The hotel's Michelin-starred restaurant offers an extensive menu featuring the best of traditional Cantonese specialties. Guests can also admire top chefs preparing gourmet dinners exclusively at Chefs' Tables in the restaurant's kitchen.



Address: 64 Mody Road, Tsim Sha Tsui East, Kowloon Total no. of rooms: 688 Room size: 452 – 2,422 sq. ft.  
Price range (published rates): HK\$4,200 – \$23,880 Tel: (852) 2721 2111 Fax: (852) 2723 4966  
Website: www.shangri-la.com/hongkong/kowloonshangrila Email: patsy.chan1@shangri-la.com



Address: The Peninsula Hong Kong, Salisbury Road, Kowloon Total no. of rooms: 300  
Room size: 425 – 1,422 sq. ft. Tel: (852) 2920 2888 Fax: (852) 2722 4170  
Website: http://hongkong.peninsula.com Email: phk@peninsula.com



# THE LANGHAM, HONG KONG

## A palatial legend

This Forbes Five Star hotel represents the epitome of luxury with its European heritage and commitment to excellence. Showcasing designer rooms and suites with inspiring features, the hotel captivates the senses with signature amenities and bespoke personalised service.

## THE LANGHAM

HONG KONG



### Accommodation and facilities

The hotel features 498 spacious and elegantly appointed rooms and suites with floor-to-ceiling windows, plush furnishings, luxurious bathroom amenities and personal butler service.

The newly refurbished 604-square metre rooftop Chuan Body and Soul wellness sanctuary features two stylish treatment rooms with saunas, a heated outdoor swimming pool and a state-of-the-art health club.

Featuring a lavish European style and luxurious detailing, The Langham Club lounge is the perfect retreat where guests can enjoy all-day refreshments, daily breakfast, afternoon tea and evening canapés.

### Location and accessibility

Perfectly located at the sought-after location of Tsim Sha Tsui in Kowloon, the hotel is perfectly placed within walking distance to Hong Kong's wealth of attractions including the scenic Star ferry ride, Victoria Harbour, or the renowned shopping and dining destination Harbour City on Canton Road. Easily accessible to all points of the city, the hotel is a 5-minute walk to the MTR station and a 10-minutes drive to the West Kowloon Cultural District.

### Gourmet experience

The Langham, Hong Kong boasts an extensive array of high-quality and award-winning restaurants. For the third year in a row, T'ang Court at The Langham, Hong Kong hotel has been awarded the coveted Three Michelin Stars in the Hong Kong and Macau Michelin Guide. T'ang Court is one of only four Cantonese restaurants in the world to achieve this accolade, retaining its title on gourmet excellence.



# MARCO POLO HONGKONG HOTEL

## Driven by excellence

Overlook the spectacular Victoria Harbour in unparalleled comfort after a day of shopping at Hong Kong's largest shopping complex, followed by a meal savouring a sumptuous array of international specialties. Life does not get much better.



MARCO POLO  
HONGKONG HOTEL  
HONG KONG



### Accommodation and facilities

Marco Polo Hongkong Hotel embodies 665 elegant guestrooms and suites that range from 540-1,615 sq.ft. All suites include a lounge area, walk-in closet, and private bathroom with separate shower and bath, while Continental Club rooms provide around-the-clock butler service and full access to business facilities. On top of the comfy accommodation, all rooms come with complimentary Wi-Fi service, and handy smartphone for guests to stay connected during their venture. Continental Club guests may also enjoy a repertoire of benefits from daily breakfast buffet, afternoon tea, to all-day coffee and tea service.

For guests that would like to stay active, get a good pump at the hotel gym where a full range of fitness equipments can be found, or enjoy a dip at the pool for a bit of relaxation.

### Location and accessibility

Marco Polo Hongkong Hotel is located adjacent to the Harbour City shopping mall, which is the ultimate destination for shopping, dining and entertainment. Overlooking the stunning Victoria harbour, it also provides convenient access to local attractions such as Kowloon Park, Hong Kong Museum of Art, Hong Kong Space Museum and Hong Kong Cultural Centre. If guests are leaving Hong Kong, the airport is only a mere half an hour away by taxi.

### Restaurants & Bars

Expect some of the most tantalizing international cuisine at Marco Polo Hongkong Hotel. Showcasing truly authentic Italian fare, Cucina offers an exquisite culinary experience against the backdrop of the spectacular Victoria Harbour. An array of international specialties is also available at Cafe Marco

while the 54-seat Lobby Lounge is the perfect mingle place for lunch, teatime treats or cocktails.





# THE RITZ-CARLTON, HONG KONG

## Luxury high above the skyline

As the highest hotel in the world, The Ritz-Carlton, Hong Kong perches on the top floors of Hong Kong's tallest building, International Commerce Centre, revealing a virtual map of the city with an expansive panoramic harbor views at 490 meters above sea level.



THE RITZ-CARLTON  
HONG KONG



### Accommodation and facilities

All of its 312 luxurious guest rooms provides spectacular views of the city and Victoria Harbour, equipped with state-of-the-art technology including Wi-Fi, iPod docking stations, Blu-ray DVD players, stylish flat screen TVs and Bang & Olufsen sound systems.

A fully equipped fitness center and an indoor infinity pool on the 118th floor allows guests to do workout and maintain a balanced life. Its largest ballrooms in the city at 870 square meters, complemented by an additional four meeting rooms. The Ritz-Carlton Spa, Hong Kong is the highest hotel spa in the world, featuring 11 treatment rooms with sweeping views across the city.

The award-winning hotel boasts an eclectic selection of restaurants and

bars, offering a variety of food and drinks. Tosca is a one-Michelin-starred fine dining restaurant serving Italian cuisine. The open kitchen design and high ceiling complete the one-of-a-kind dining experience. For a traditional taste of Hong Kong, two-Michelin-starred Tin Lung Heen presents refined authentic Cantonese cuisine and dim sum.

### Location and accessibility

Situated on the West Kowloon waterfront, the hotel occupies a prestigious address surrounded by luxury residential development, modern financial and connected to the Elements shopping mall. It also offers direct connections to the airport in just 20 minutes and Central Hong Kong in five minutes.



# GATEWAY HOTEL

## Surpassing expectations

Gateway Hotel is the ultimate choice that combines modern accommodation with unrivalled shopping experience. Housed in Harbour City – Hong Kong's largest shopping complex - the hotel is a gateway that leads guests to a truly satisfying experience.



GATEWAY  
HONG KONG  
MARCO POLO HOTELS



### Accommodation and facilities

Gateway Hotel has 400 modern rooms including 51 suites, each of them dashing refurbished in 2012 to the highest standards, earning them the Global Excellence award for Best Hotel by The International Interior Design Association.

All rooms and suites are equipped with full range of amenities including complimentary Wi-Fi and handy smartphones for guests to stay connected when wanderlust strikes. Complimentary mini-bar service, tea making facilities and a Nespresso coffee machine are also available in every room while transformable rain shower to bathtub option in suites' stylishly designed marble bathrooms keep guests refreshed and nourished at all times.

Guests are also welcome to access the swimming pool at the neighbouring Marco Polo Hongkong Hotel for a relaxing dip and state-of-the-art gym at Prince Hotel for a good workout.

### Location and accessibility

Gateway Hotel is conveniently located amidst the popular Tsim Sha Tsui district, only a short walk to popular attractions like Kowloon Park, the Hong Kong Museum of Art, and the Space Museum. For guests looking to travel further, the MTR station and Star Ferry are only minutes away, transporting them to the Hong Kong Convention and Exhibition Centre or other hotspots with ease.

### Dining

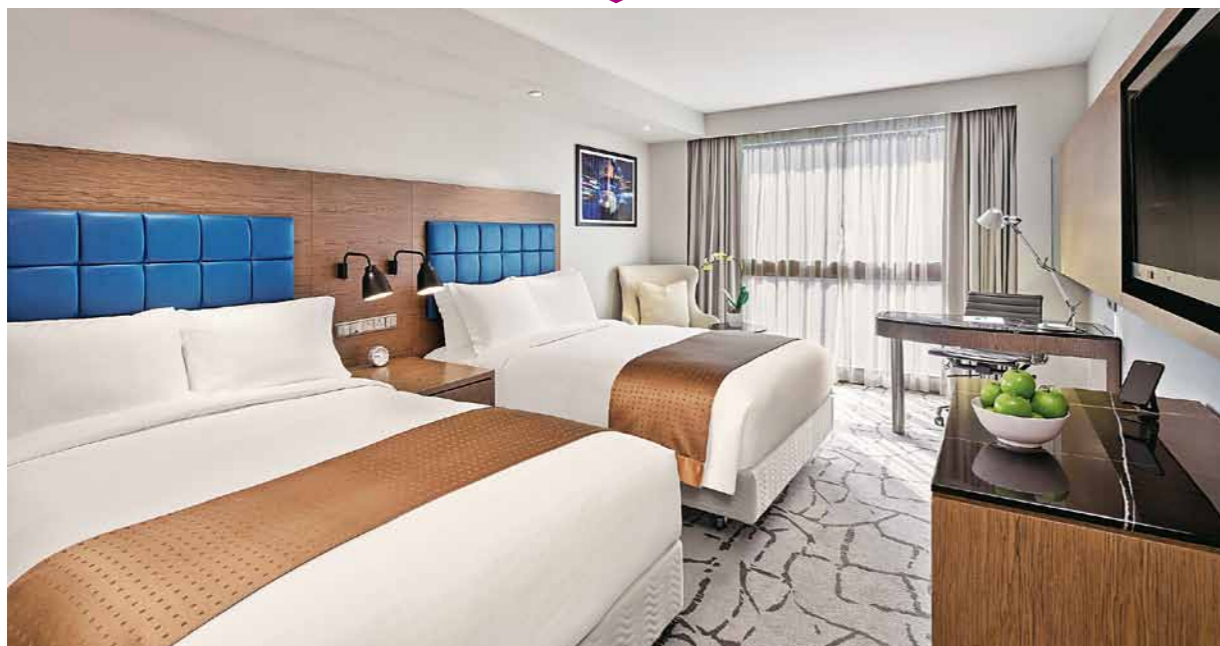
Dine, wine and be all you can be at Three on Canton. Experience a tempting selection of the world's most popular cuisines. Guests can enjoy an amazing night at its lounge and bar, or bring your private parties to the wine room or four exclusive function rooms. Be on Canton offers stylish al fresco dining at the terrace on Canton Road. Visit its hip and sensual venue that offers phenomenal resort style dining, cocktails and aperitifs!



## HOLIDAY INN GOLDEN MILE

### Exceeding expectations

One of the best business hotels in Hong Kong, the recently revamped Holiday Inn Golden Mile unveils a brand new look and fantastic amenities, the best choice for business professionals seeking comfort and convenience.



#### Accommodation and facilities

Holiday Inn Golden Mile's inviting and comfortable rooms all include comprehensive amenities such as refreshments like a mini bar, coffee and tea supplies, and a mini-fridge. Flat-screen TV with cable and satellite provides great entertainment and private bathrooms which include a full range of amenities will help guests wash away all the stress.

For facilities, guests may enjoy the complimentary fitness centre with modern fitness equipments. There is also an outdoor pool for a dip and an on-site barber and beauty shop to give guests a new look or a little touch up if needed. A business centre is also available to provide services like printing and scanning.

#### Location and accessibility

Located at the heart of Tsim Sha Tsui, the hotel is at the ideal location for both business and leisure travellers. It is adjacent to the MTR which leads to many of Hong Kong's major commercial and tourist districts. The famous Star Ferry is also only within five-minute walking distance and the HK International Airport is just a forty minute drive away.

#### F&B

Three restaurants and a bar offer a wide variety of Western and Chinese cuisine. The award-winning Loong Yuen Cantonese Restaurant serves regional Chinese cuisine, while Osteria Ristorante Italiano offers multi-regional Italian cuisine in an inviting and relaxed setting. Bistro on the Mile, which has seafood buffets and an a la carte menu, offers international favorites, while Hari's Bar has live entertainment and a long Happy Hour nightly.



Address: 50 Nathan Road, Kowloon Total no. of rooms: 624 Room size: 210 – 310 sq. ft.  
Price range (published rates): HK\$1,200 – \$3,500 Tel: (852) 2369 3111 Fax: (852) 2369 8016  
Website: www.holidayinn.com/hongkong-gldn Email: reserv@goldenmile.com



## PRINCE HOTEL

### Impressively comfortable and spacious

Strategically located close to top shopping and tourist attractions, Prince Hotel is equipped to bring guests an unforgettable travel experience



PRINCE  
HONG KONG  
MARCO POLO HOTELS



#### Accommodation and facilities

For an exceptional hotel experience, it is indisputable that fantastic living quarters play a central role. There are 394 spacious air-conditioned rooms in Prince Hotel. All rooms are decorated in a modern decor and are equipped with a full range of complimentary amenities including Wi-Fi service, handy smartphone to keep travellers connect while they explore, an extensive selection of TV channels, tea and coffee making facilities, mini-bar and refrigerator, and an in-room safe to keep essentials secure.

Facilities of the hotel make it a top choice for business and leisure travellers alike. Aside from a well equipped gym room for guests to maintain their fitness routine, there is also a business centre that provides professional and all-round services such as printing, translation and secretarial support to make sure that business travellers are on top of their game at all times. Last but not least, travelling families can give their young the fairy-tale journey they've always

wanted with gifts and surprises that come with Piccolo Kids Club's special care!

#### Location and accessibility

Located on Canton Road in Tsim Sha Tsui, Prince Hotel is within walking distance to many astounding local attractions such as the Hong Kong Museum of Art, the Space Museum, Hong Kong Cultural Centre, and of course Harbour City- Hong Kong's largest shopping and commercial complex. MTR station and the ferry terminals are minutes away with easy access to the Hong Kong International Airport, giving guests an array of choices to travel in style.

#### Culinary Journey

The 3rd floor of the hotel is where you will find a selection of international delights. add@Prince offers a delectable range of dining options, and is a combination of an urban bistro, café and the ultimate buffet destination where Thai, Indian and Hong Kong chefs serve

authentic buffet dishes with an amazing selection of seafood. Here guests can also savour world-class signature Cantonese, Japanese and Pan Asian delicacies.



Address: 23 Canton Road, Harbour City, Tsim Sha Tsui, Kowloon Total no. of rooms: 394 Room size: 314-602 sq. ft.  
Price range (published rates): HK\$1,450-\$4,300+ Tel: (852) 2113 1888 Fax: (852) 2113 0066  
Website: marcopolohotels.com Email: resv.pri@marcopolohotels.com



## ATTITUDE ON GRANVILLE

Enjoy a culturally enriching and pampering stay

*A hip and trendy boutique hotel that radiates old Hong Kong at the same time, Attitude on Granville immediately distinguishes itself in the celebrated lifestyle hub of Tsim Sha Tsui with its out-of-the-box décor and artistic vibes.*



### Accommodation and facilities

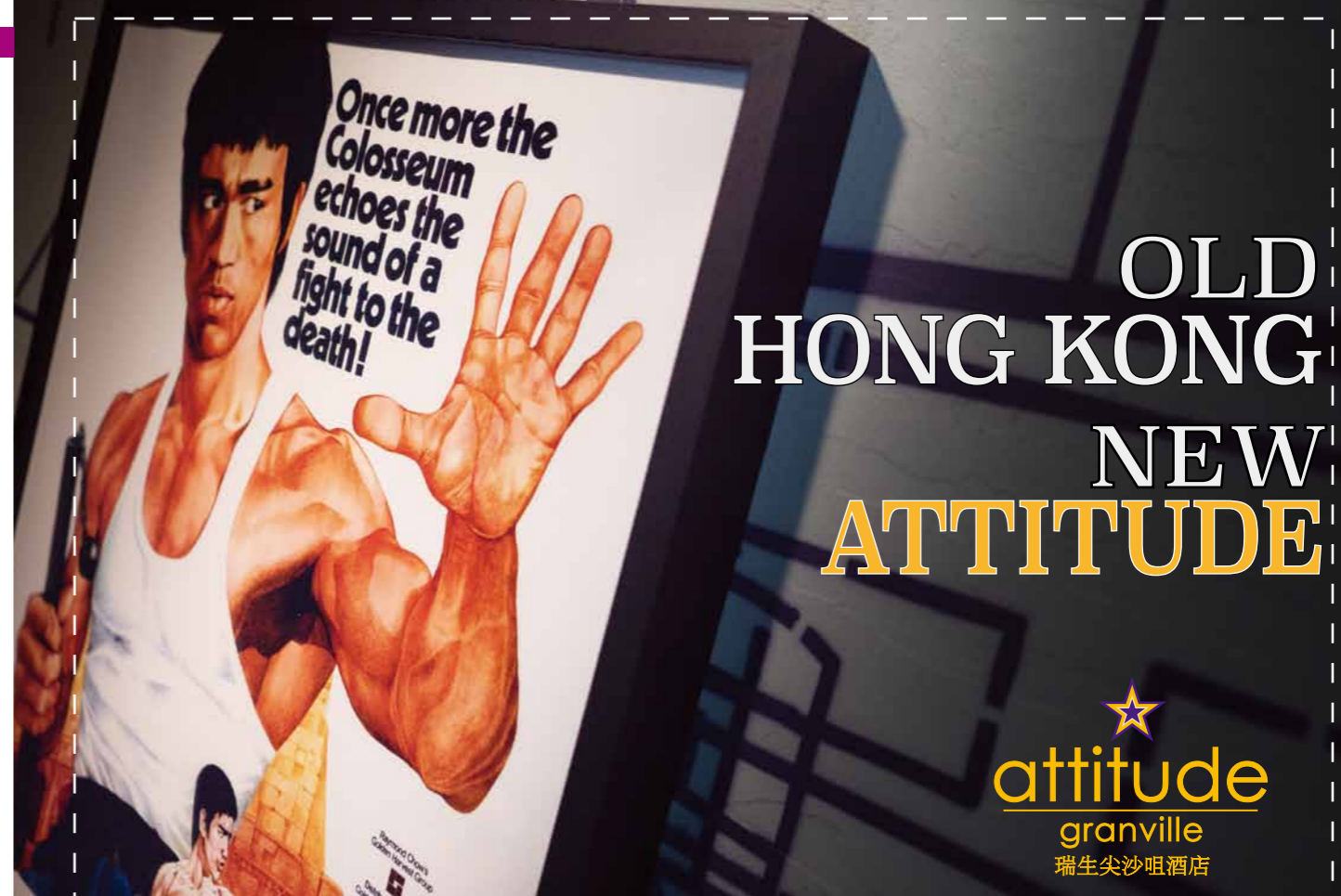
Attitude on Granville features 81 vibrant guestrooms that give guests a glimpse into old Hong Kong. Each room comes with complimentary amenities including LED TV, handy smartphone, in-room safe, mini-fridge, as well as tea and coffee making facilities, all individually designed with lively graffiti and antique objects like traditional radios, chairs and cameras of a bygone era. Tsim Sha Tsui themed wall art, a specially curated collection of retro furniture and references to iconic cultural figures like Jacky Chan, can also be found throughout the hotel, walking guests down Hong Kong's memory lane.

### Location and accessibility

Being only 3 minutes away from Tsim Sha Tsui MTR Exit B, the hotel gives access to many attractions outside of Tsim Sha Tsui with ease. Alternatively, many top shopping destinations are also in close proximity, such as The One diagonally across, and K11 Shopping Centre and Art Gallery only a few steps away. For guests with a cultural bent, the Hong Kong Museum of History and Hong Kong Science Museum are nearby while the magnificent Kowloon Park is also just a short stroll away.

### F&B

Attitude on Granville is sited amidst an endless array of international cuisines and bars. Contemporary Chinese restaurant YUM CHA on the 3rd floor serves traditional dim sum with a modern twist, creating authentic flavors with fresh, seasonal and quality ingredients. On the 4th floor, modern European restaurant Urban Park serves inspiring western dishes and craft cocktails. It also possesses an open-air terrace that overlooks Granville Road, giving diners an option for an al fresco culinary experience.



OLD  
HONG KONG  
NEW  
ATTITUDE



Attitude on Granville features the theme of Tsim Sha Tsui and old Hong Kong including a wide variety of landmarks in the area ranging from the Star Avenue, the Clock Tower, Canton Road, Cultural Museum and the famous Big Yellow Floating Duck, reflecting the exterior touristy atmosphere upon the interior to create a lively ambience for our hotel guests.



Operated by Soravit Hotels

20 Granville Road, Tsim Sha Tsui | facebook / instagram : attitudegranville  
尖沙咀加連威老道20號 (Nike旗艦店旁) | (852) 2105 3888 | www.soravithotels.com



## SORAVIT ON GRANVILLE

### Experience mystical Thai glamour

The first-ever Thai-themed hotel in Hong Kong, the brand new Soravit on Granville infatuates and impresses guests with its authentic Thai interior designs and artwork by traditional artists from Bangkok, and the utmost attention to detail and comfort.



#### Accommodation and facilities

All 76 rooms of the hotel feature custom-made Thai silk linens and traditional Thai wood furniture, together with ancient decorations like majestic elephants, Buddha and guardian angels, illustrating the authentic beauty of Thai culture. All rooms come with complimentary Wi-Fi, LED TV up to 55", daily replenishment of water, tea, coffee and bathroom amenities, a fridge and electronic in-room safe to keep essentials secure, soothing rain shower, and a handy smartphone for travellers to stay connected during their ventures. The mattresses used are also Simmons, giving guests a pampering and undisturbed sleep every night.

#### Location and accessibility

Strategically located at the heart of the vibrant Tsim Sha Tsui neighborhood, Soravit on Granville is surrounded by an array of top attractions which include Hong Kong's largest shopping complex, Harbour City, and the renowned 23-storey lifestyle hub, The One. Stroll to nearby Kowloon Park to admire the beauty of nature, or to the waterfront for spectacular views and exhilarating harbour cruises. The hotel is also surrounded with numerous MTR access points within a mere 5 minutes' walk, giving guests convenient access to other parts of Hong Kong.

#### Gourmet experience

Located on the 1st floor, Queen's Dining brings a combination of cuisines that takes guests' taste buds on an adventure to Vietnam and Thailand. The mixture of southeast Asian dishes brings forth a variety of enticing flavors through different spices, textures and fragrances in a dining space stunningly decorated with Thai oil paintings that will give guests a multi-sensory experience.



## THAI WAY OF LIFE

In the heart of Granville Road, Tsim Sha Tsui, and influenced by Thai cultural and traditional elements, Soravit on Granville aims to illustrate the beauty of Thai culture, the harmony of Buddha and the traditional Songkran (Thai Water festival). Inviting guests to experience the tranquility, hospitality, and comfort in the midst of the hustle-and-bustle city centre of Hong Kong.



Operated by Soravit Hotels

No. 29A Granville Road, Tsim Sha Tsui | facebook / instagram : soravitgranville  
尖沙咀加連威老道29A號(龍城大藥房對面) | (852) 2105 3999 | www.soravithotels.com

Address: 29A Granville Road, Tsim Sha Tsui, Kowloon Total no. of rooms: 76 Room size: 190 – 370 sq. ft.  
Price range (published rates): HK\$1,000 – \$3,700+ Tel: (852) 2105 3999 Fax: (852) 2105 3820  
Website: www.soravitgranville.com Email: info@soravithotels.com



# HOTEL PANORAMA BY RHOMBUS

## Live the high life

With a distinctive triangular architecture, exquisite quarters that overlook magnificent Victoria Harbour views and comprehensive amenities, Hotel Panorama by Rhombus instantly stands out as one of the most exclusive business hotels in Tsim Sha Tsui.



### Accommodation and facilities

Hotel Panorama by Rhombus boasts 324 luxurious guestrooms and suites that showcase a modern and elegant décor. Ranging from 190 - 550 sq. ft., they come with floor-to-ceiling windows that frame breathtaking views of Victoria Harbour. All rooms feature comprehensive amenities including Wi-Fi, LCD/LED TV, a mini bar, and even handy smartphones with unlimited local and international calls to selected countries and mobile data to keep guests connected at all times.

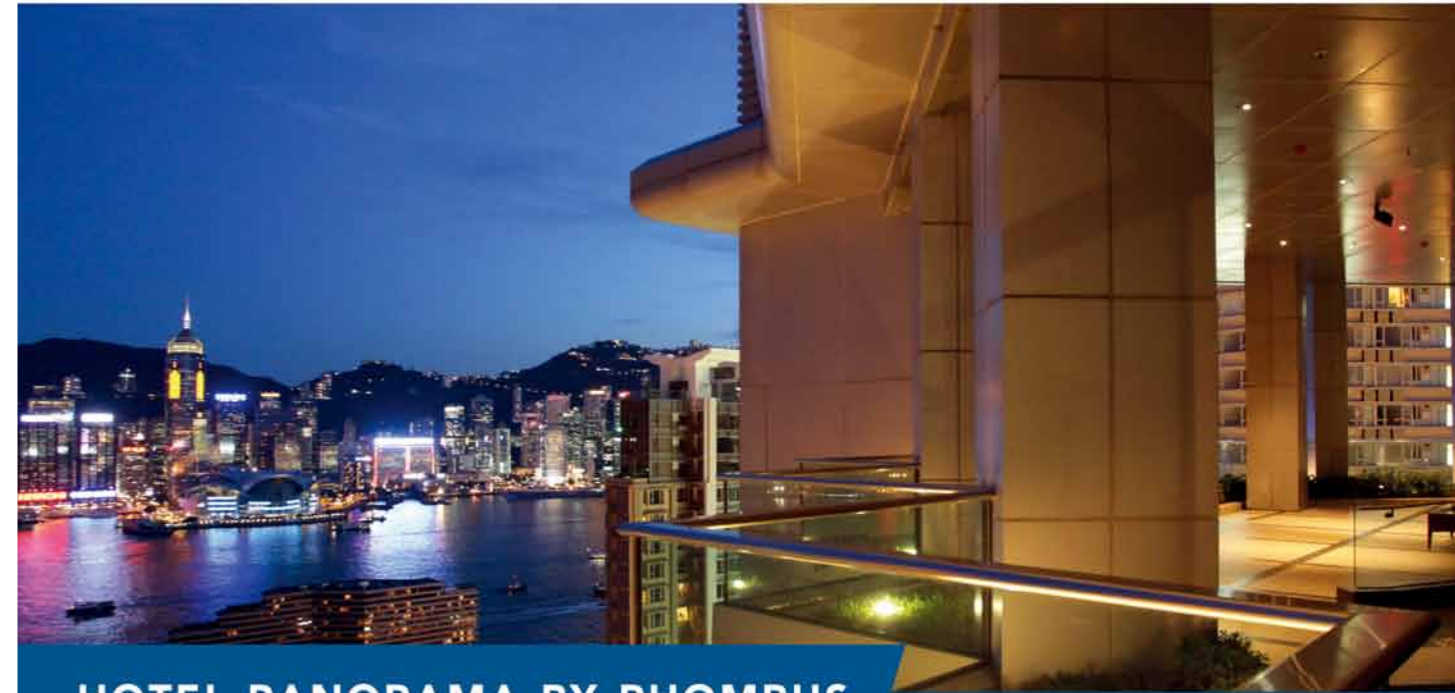
The Rhombus Executive Club Lounge offers impeccable service in a refined and exclusive environment, an ideal place to entertain guests and clients, or simply to mingle while enjoying evening cocktails and hors d'oeuvres. Fitness enthusiasts may choose to stay active at the hotel fitness centre where modern equipments can be accessed, while guests that would like a little al fresco experience may unwind at the spectacular Sky Garden that offers sweeping harbour views. Not a fan of travelling alone? Feel free to bring your pet with you where it will be housed in a separately paid guestroom!

### Location and accessibility

Located in the vibrant commercial hub of Tsim Sha Tsui, the hotel is within walking distance to top tourist attractions like the Avenue of Stars and shopping destinations such as Harbour City- Hong Kong's largest shopping arcade. It is just a 2-minute walk away from the MTR East Tsim Sha Tsui station and a 5-minute drive from the Hong Kong China Ferry Terminal.

### Dining

Savour an array of tantalizing modern international cuisine, and alluring international wines, champagnes, and creative cocktails at the hotel's award-winning AVA Restaurant Slash Bar overlooking stunning 270° Victoria Harbour views. Located on the first floor of Hotel Panorama by Rhombus, Café Express is an informal all-day restaurant providing buffet breakfast, lunch, tea, dinner or à la carte menu. Whether you are in a rush or would like to leisurely enjoy a relaxing meal, Café Express will have something for you.



## HOTEL PANORAMA BY RHOMBUS

Your Personal View of Hong Kong

With its distinctive triangular architecture, Hotel Panorama by Rhombus is a deluxe business hotel overlooking Victoria Harbour in Tsim Sha Tsui. It is located a mere 2-minute walk from the MTR East Tsim Sha Tsui Station, one stop from the MTR Hung Hom Station and a 5-minute drive from the Hong Kong China Ferry Terminal. The Hong Kong's trendiest shopping district, malls and attractions are all within walking distance.

8A Hart Avenue, Tsim Sha Tsui, Kowloon, Hong Kong (MTR East Tsim Sha Tsui Station Exit N1)  
T: (852) 3550 0333 F: (852) 3550 0288  
E: reservations@hotelpanorama.com.hk





## Xi HOTEL

Contemporary elegance at an impeccable location

*The Chinese character 'xi' reflects joy and passion, sentiments embodied by Xi Hotel. With stylish cosy rooms and helpful staff that strive for excellence, guests can expect nothing less than perfect satisfaction with this luxury boutique hotel.*



### Accommodation and facilities

Exuding Asian artistic flair, the 64-room hotel features a contemporary and elegant décor with size ranging from 220 to 320 sq. ft. All rooms come with comprehensive amenities, including free broadband internet connection, in-room safe, LED TV with satellite and cable channels, air-conditioning and air purifier that nurture a comfortable environment, and coffee and tea making facilities with mini-bar. It is a haven away from the fast-paced hustle and bustle lifestyle, meeting guests' every need and desire.

The Drawing Room on the 1st floor is a new multi-purpose venue that provides not only respite for travellers, but is also an exceptional space to hold leisure or business functions alike, such as cocktail parties, or meetings and conferences. Featuring sophisticated furnishings, the spacious room is incredibly practical, accommodating a long conference table that fits 12 people, a stylish sofa with a large TV & computer screen, and a library all in one room.

### Location and accessibility

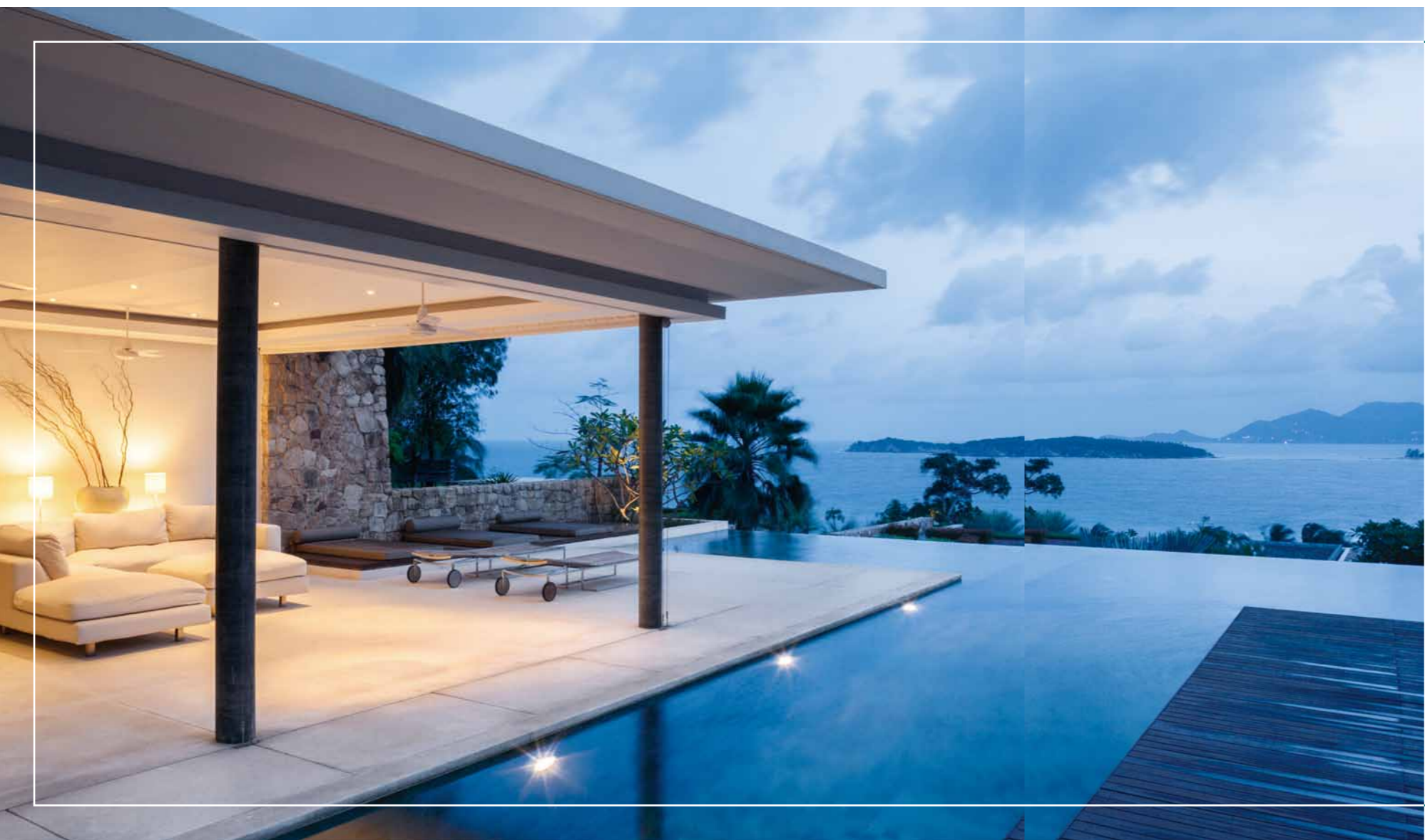
Located in Tsim Sha Tsui, the heart of culture in Hong Kong and a renowned entertainment destination, Xi Hotel is just a 5-minute walk to the MTR or the iconic Victoria Harbour, hailed for its world-famous panoramic night views. It is also within walking distance to many other iconic tourist attractions, such as the Hong Kong Space Museum, Hong Kong Cultural Centre, and Harbour city - Hong Kong's largest shopping arcade. If guests would like to travel beyond Hong Kong, the airport is within 30 minutes' reach via Airport Express at the nearby Kowloon Station.

### Courtney's Wine Bar

Named after celebrated paint-cum-artist Pauline Courtney, Courtney's Wine Bar radiates bohemian sophistication, and is rated as one of the top five bars in Tsim Sha Tsui by Lonely Planet. Guests can indulge in its wooden décor that exudes mystique, or experience its alfresco outdoors setting in an overhanging garden, while enjoying breakfast and drinks overlooking the breathtaking Victoria Harbour skyline.



Address: 7 Minden Avenue, Tsim Sha Tsui, Kowloon Total no. of rooms: 64  
 Room size: 220 – 320 sq. ft. Tel: (852) 2739 7777 Fax: (852) 2739 7777  
 Website: [www.xihotel.com.hk](http://www.xihotel.com.hk) Email: [rsvm@xihotel.com.hk](mailto:rsvm@xihotel.com.hk)



# NEW TERRITORIES

LUXE HOTELS

# HARBOUR PLAZA RESORT CITY

A hidden gem waiting to be discovered

The largest resort hotel in the north-west of Hong Kong New Territories, Harbour Plaza Resort City represents a distinctive blend of comfortable elegance, refreshing luxury and value for money that rivals some of the best in the industry.



Harbour Plaza Resort City Limited  
(Incorporated in British Virgin Islands)  
海逸國際酒店集團成員



## Accommodation and facilities

The hotel consists of two towers with 1,102 modern rooms and luxurious serviced suites which can be as big as 1,200 sq. ft. The rooms and suites are all equipped with top-notch provisions and amenities, including satellite TV with cable channels, refrigerator, microwave oven, electronic safe, with free local calls and in-room Wi-Fi service available. Additionally, all suites feature a refreshing contemporary décor, guaranteeing a memorable stay.

The hotel club and spa provide a spacious oasis for pure pampering. Tennis courts and a fully equipped fitness centre featuring one of Hong Kong's longest indoor running track, fine Italian

gymnasium machines, saunas and steam rooms keep you active and uplifted at all times. The large swimming pool on the landscaped garden at podium level gives you panoramic views of the nearby mountains, the perfect place to relax and unwind.

## Location and accessibility

Located near the MTR Tin Shui Wai station - Exit E2, the hotel is also conveniently accessible by the Route 3 Expressway, or the frequent hotel shuttles from Tsim Sha Tsui and the Airport. Access to Shenzhen is equally convenient through the new Hong Kong - Shenzhen Western Corridor.

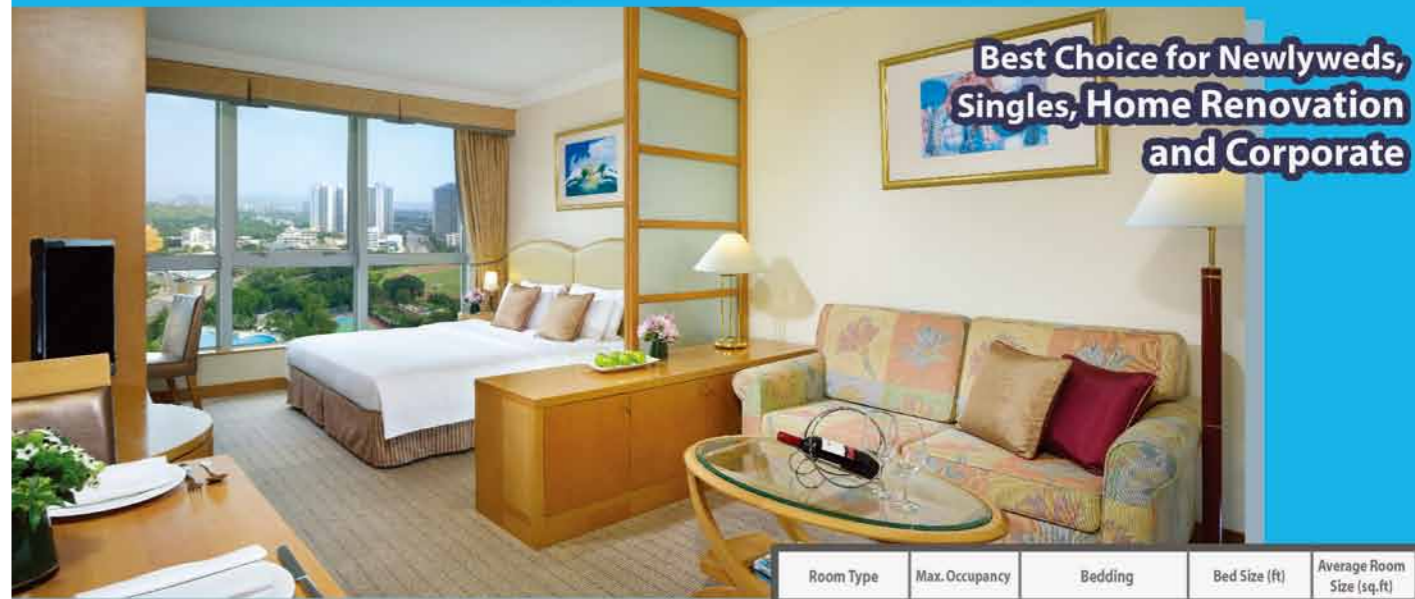


Address: 12 Tin Yan Road, Tin Shui Wai Total no. of rooms: 1,102 Room size: 408 – 1,200 sq. ft.  
Price range (published rates): HK\$13,800 up/month Tel: (852) 2123 8888  
Website: www.harbour-plaza.com/hprc Email: servicedsuites.hprc@harbour-plaza.com



# HARBOUR PLAZA RESORT CITY

## Monthly Serviced Suites Package



HK\$13,800<sup>up\*</sup>

- In-room Kitchenette
- Free use of gymnasium and kid's club
- No security deposit required for short-term lease
- Utilities and housekeeping services included
- Complimentary In-room Wi-Fi
- Enjoy early-bird offers
- Special rate for Hotel shuttle bus service (Routes to Airport and Tsim Sha Tsui, via Tuen Mun)

\*Terms and conditions apply

Just 30-mins from / to City, China and Macau  
Connected with Control Points by bus / MTR

More transportation details

For enquiries (852) 2123-8888

servicedsuites.hprc@harbour-plaza.com

Room Type	Max. Occupancy	Bedding	Bed Size (ft)	Average Room Size (sq.ft)
Standard (with microwave oven)			6'x 6.5'	408'
Deluxe (with kitchenette facilities) OR Deluxe (with microwave oven)		OR	6'x 6.5' + Sofa Bed	516'
			3'x 6.5' + Sofa Bed	



www.harbour-plaza.com/hprc

12 Tin Yan Road, Tin Shui Wai (MTR Tin Shui Wai Station – Exit E2 Ginza)



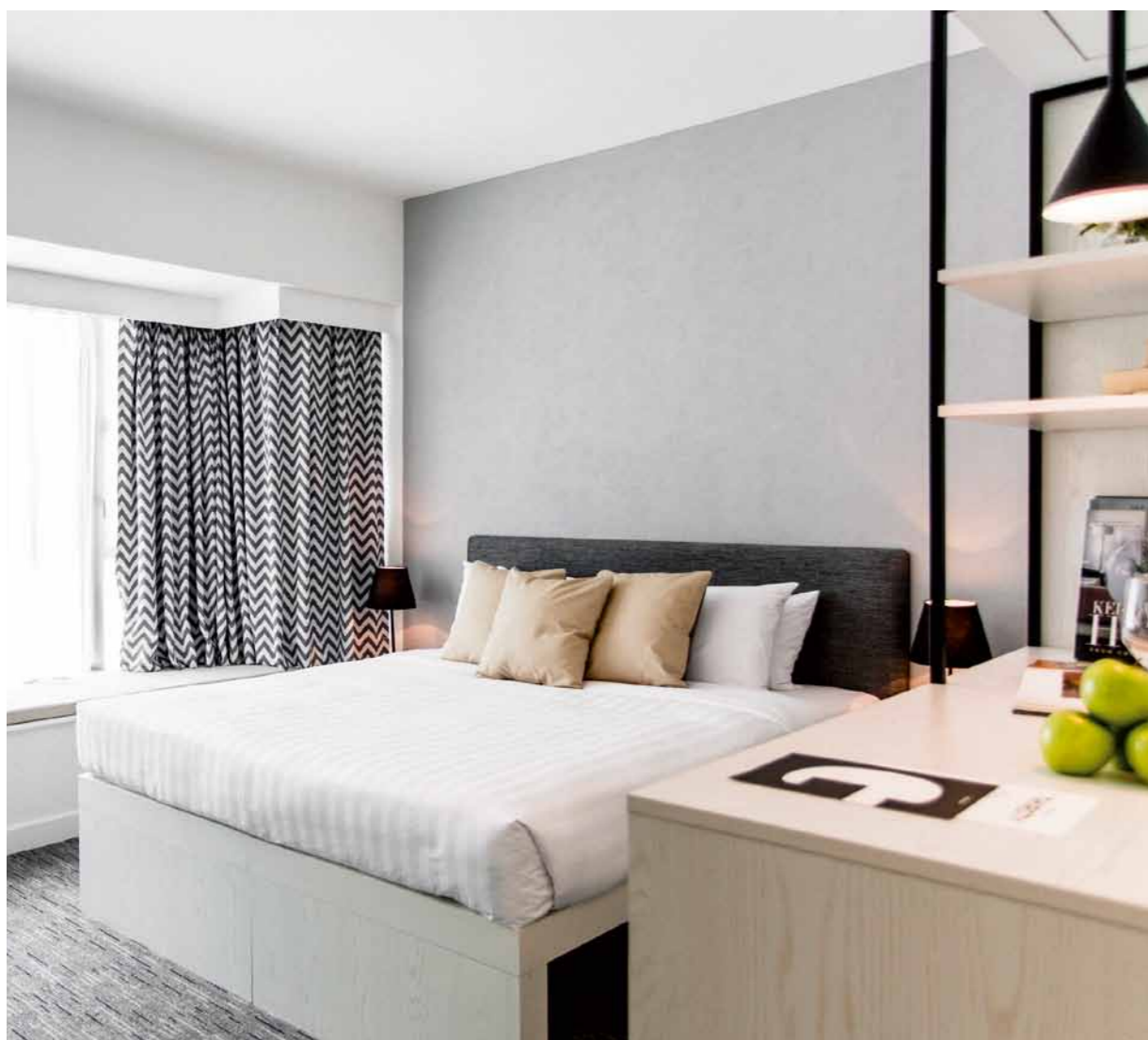
Harbour Plaza Resort City Limited  
(Incorporated in British Virgin Islands) 海逸國際酒店集團成員



# BAY BRIDGE HONG KONG BY HOTEL G

## A tranquil and idyllic hotel experience

*Bay Bridge by Hotel G offers a one-of-a-kind hotel experience with its fantastic accommodation and comprehensive amenities in a stunning location that will make guests feel right at home.*



### Accommodation and facilities

Bay Bridge by Hotel G offers rooms that radiate a contemporary, stylish and relaxing ambience. Located in a prime area in Tsuen Wan, the renovated units range from 440 to 660 sq.ft. Set in light color tones and a modern décor, the picturesque rooms are spacious and comfortable, overlooking a mesmerizing skyline of the Tsing Ma Bridge and the South China Sea, a perfect urban escape in Tsuen Wan.

All Bay Bridge one-bedroom units are equipped with full kitchenettes plus residents enjoy access to recreational facilities including an outdoor swimming pool, sauna, jacuzzi and a 24-hour state-of-the-art fitness center. Offering complimentary Wi-Fi and a shuttle bus service to main MTR stations Bay Bridge caters to all guests needs.

### Location and accessibility

With its waterfront location, Bay Bridge by Hotel G is a welcome sanctuary from the maddening hustle and bustle of the city and yet surprisingly convenient, only 7 minutes away from Tsuen Wan MTR station however the regular shuttle bus offers access to other parts of Hong Kong with ease. Hong Kong International Airport is also only 30 minutes away should guests decide to travel beyond Hong Kong.

### Gourmet experience

For a complete lifestyle hotel experience, Anchor's Seafood and Beer House is the ideal place for friends and family gatherings with the freshest seafood, sumptuous à la carte menu and daily buffet options available for breakfast, lunch, dinner and weekend brunch. Anchor's features a wide range of promotions including happy hour which guests are encouraged to enjoy whilst overlooking the sea in this spacious and contemporary restaurant. Residents can enjoy up to 30% discount for dinner & brunch buffets available Monday - Sunday, 15% off the semi-buffet lunch available Monday - Friday and similarly 15% off the extensive à la carte menu available 7 days a week.



Address: 123 Castle Peak Rd, Yau Kom Tau, Tsuen Wan Total no. of rooms: 430 Room size: 440 – 660 sq. ft.  
Price range (published rates): HK\$500 – \$770+ Tel: (852) 2945 1111 Fax: (852) 2493 8033  
Website: [www.baybridgehongkong.com](http://www.baybridgehongkong.com) Email: [sales@baybridgehongkong.com](mailto:sales@baybridgehongkong.com)

# HONG KONG SKYCITY MARRIOTT HOTEL

## A luxurious retreat

Nestled on the edge of Lantau Island, the Hong Kong SkyCity Marriott Hotel provides a refreshing escape from the bustling city and a perfect spot for staycations.



### Accommodation and facilities

The hotel has 658 spacious king or double rooms featuring ocean or skyline views. All rooms are equipped with luxurious bedding, flat-screen TVs, in-room safes, mini-bars, and marble bathrooms. Plug-in technology panels and high-speed internet access are also available in all rooms.

### Location and accessibility

The hotel is closely located to the Hong Kong International Airport, and various tourist attractions and business venues, such as Hong Kong Disneyland, Ngong Ping 360, Citygate Outlets, The Big Buddha, Po Lin Monastery, and AsiaWorld-Expo. The central business district is a 28-minute train ride away. Complimentary shuttle bus service is available to the airport, Tung Chung MTR station and Hong Kong Disneyland.

### Restaurants and lounges

Food and beverage options abound within the hotel, including Man Ho Chinese Restaurant – authentic Cantonese cuisine; SkyCity Bistro – international buffets; The Lounge for afternoon tea; Java+ serving gourmet coffee and cakes; Velocity Bar & Grill, a contemporary sports bar serving your favorite American cuisine and beers.

### Recreation and leisure

Hong Kong SkyCity Marriott Hotel has a well-equipped Health Club comprising a 24-hour gym, a 27-meter indoor heated swimming pool and the Marriott's signature Quan Spa. Renowned for its tranquility zones and strict adherence to offering local and authentic treatments, Quan Spa offers a variety of treatments which draw on the restorative properties of water to offer an oasis of healing and rejuvenation.



# NOVOTEL CITYGATE HONG KONG

## A transcendent beauty

An airport hotel with near-city convenience, Novotel Citygate embodies both luxury and comfort, offering guests a new hotel experience in Hong Kong.



### Accommodation and facilities

This contemporary and dashing designed hotel has 440 stylish rooms and suites with spectacular airport, ocean and hill views. Facilities include 7 function rooms for up to 300 persons, an outdoor swimming pool and 24-hour gymnasium with state-of-the-art equipments.

### Location and accessibility

The hotel is connected to Citygate Outlets shopping mall with over 80 international brands. Just a 5-minute stroll away is Ngong Ping Cable Car, a 25-minute cable car journey which runs along the green hilltops near the stunning Big Buddha and Wisdom Path. It is also in close proximity to Hong Kong's largest exhibition and events complex AsiaWorld-Expo, Tai O fishing village and Discovery Bay.

### Dining

Olea Mediterranean Restaurant features an open kitchen with a traditional pizza oven. It specializes in Mediterranean cuisines including a variety of classic tapas and mezze dishes, made-to-order pizza and other daily specials from the region. Essence offers a taste of tantalizing Asian fusion cuisine. Also featuring an open kitchen, talented chefs bring guests fresh breakfast, lunch and dinner buffets or an a la carte menu blending all your Asian and Western favorites, while Andante tempts your taste buds with an extensive list of wines and snacks, a perfect venue to unwind and relax.



Address: 1 Sky City Road East, Hong Kong International Airport, Lantau, Hong Kong

Total no. of rooms: 658 Room size: 377 – 1905 sq.ft. Tel: (852) 3969 1888 Fax: (852) 3969 2288

Website: www.skycitymarriott.com Email: skycity.ays@marriott.com



Address: 51 Man Tung Road, Tung Chung Total no. of rooms: 440

Room size: 301 – 376 sq.ft. Tel: (852) 3602 8888 Fax: (852) 3602 8899

Website: www.novotelcitygate.com Email: H6239-sl5@accor.com



## DISNEY EXPLORERS LODGE

The adventure now begins...

Take a break from your exciting adventures and join fellow explorers at Disney Explorers Lodge. As the third hotel of Hong Kong Disneyland Resort, the adventure-themed establishment provides an one-of-a-kind experience with its exotic and laid-back environment.



### Accommodation and facilities

The seven-story hotel has 750 rooms, each featuring an open sea view or a landscape view. The design and architecture stays true to its adventure theme, along with its four wings and themed gardens, drawing reference from the cultures in Asia, Oceania, South America and Africa.

Over 1,000 original art pieces from around the world spread throughout the hotel, including ceremonial items, antique toys, crafts, textiles, clothing and jewelry. The family-friendly rooms feature kids' amenities, such as children's bathrobes, toothbrush sets, bathtubs and stepping stools.

Cuisine from different parts of the world is served in the three restaurants. Dragon Wind serves rural and classical provincial Chinese flair inspired by the Five Elements of traditional Chinese

culture. International cuisine and creative dishes can be tasted at World of Color Restaurant, while Chart Room Cafe offers casual bites and light refreshments.

Outdoor activities are largely encouraged with four themed gardens named after characters from Disney and Pixar animated film. Young guests are welcome to participate in Arts & Crafts Workshops to create unique Disney crafts, or learn about the four regions plants and cultures by collecting hidden stamps in the hotel. There is also an outdoor pool and a gift shop of Disney souvenirs.

### Location and accessibility

Hong Kong Disneyland is 700 m from Disney Explorers Lodge, while AsiaWorld-Expo is 10 km away. It is also 11 km away from Hong Kong International Airport.



## AUBERGE DISCOVERY BAY HONG KONG

An oasis in the city

Located on picturesque shores of Lantau Island, Auberge Discovery Bay Hong Kong is an island oasis surrounded by greenery, tranquil seas and natural beauty. Experience a resort-like lifestyle with its exceptional range of leisure facilities and event space.



### Accommodation and facilities

Designed for today's discerning travellers, guest can enjoy a soothing views of either the mountains or the ocean in its 325 stylish rooms and suites. A 40-inch flat-screen TV and sofa are included. En suite bathrooms are equipped with either a shower or bathtub or sunken bath. However, free Wi-Fi is provided for 2 hours only per stay.

All-day dining is available in Café bord de Mer & Lounger which serves international buffets and a la-carte menu. For sports fan, The Bounty Entertainment & Sports Bar has a large LCD screens & TVs perfect for live sports.

Stay loose at Spa Botanica, which comprises 10 private spa rooms with ocean views. From cleansing facials to stress-relieving massages, it provides 30 different treatments. Guest can

experience a variety of outdoor activities as the hotel is extremely close to Sam Pak Beach and Lantau Island hiking trail.

The hotel also has the city's only seaside chapel. With its sleek design, waterfront location and romance-evoking views, it serves as the perfect location for weddings. A horse-drawn open-air carriage is also available to transport couples to their wedding ceremony. The Grand Azure ballroom can accommodate up to 180 guests with a custom-made menu.

### Location and accessibility

The hotel is a 15-minute drive from Sunny Bay Station or Tung Chung Station. A coach service is provided to and from Hong Kong International Airport, about 25 minutes away by bus.



## ROYAL VIEW HOTEL

Live like nobility

Situated on the waterfront between Lido and Ting Kau beaches, Royal View Hotel's remarkable rooms coupled with unrivalled recreational facilities will grant guests a hotel experience of a lifetime.



### Accommodation and facilities

The hotel's 688 rooms and suites are furnished in soft hues with touches of modern Chinese design. The majority of rooms and suites include balconies which capture the splendor of the Tsing Ma and Ting Kau bridges and the South China Sea. All rooms include complimentary Wi-Fi, 24-hour concierge, and laundry service, plus access to the Health Club which is equipped with free weights and treadmills to challenge guests' physique while its sauna, steam bath and Jacuzzi remove all stress and fatigue. Alternatively, the outdoor swimming pool situated on a landscape garden surrounded by lush bushes is also available for relaxing dips.

### Location and accessibility

Located at Tsuen Wan, the hotel provides easy access to different shopping and sightseeing districts, only 8-10 minutes away from the Tsuen Wan MTR station and Tsuen Wan West MTR station which provide easy access to other parts of Hong Kong. It is also within a 30-minute ride from the hotel to many popular attractions and destinations like the Hong Kong International Airport, AsiaWorld-Expo, Hong Kong Disneyland, Ngong Ping 360, and Tsim Sha Tsui and Central lifestyle hubs with complimentary shuttle bus service available.

### F&B

Café Lido features floor-to-ceiling window design which allows natural sunlight to penetrate into the restaurant. It offers a-la-carte all-day dining, with breakfast, lunch and dinner buffets also available made with top-notch seasonal ingredients.



## CROWNE PLAZA HONG KONG KOWLOON EAST

An exceptional urban escape

Located atop Tseung Kwan O MTR station and PopCorn shopping mall, Crowne Plaza Hong Kong Kowloon East provides a convenient and opulent urban retreat. With its comprehensive and state-of-the-art amenities, it is a top choice be it for business or holiday.



### Accommodation and facilities

The 359 rooms and suites of the hotel range from 323 to 753 sq. ft. with a unique ceiling height of 2.85 metres, giving rooms an extra spacious feel. All rooms are equipped with top-notch amenities which include a 40-inch high-definition LED TV, iHome docking station with Bluetooth speaker, alarm clock and radio, ergonomic desk chair by Herman Miller, Simmons mattress, RFID door lock and high-speed Wi-Fi. Spacious bathrooms with bathtubs and separate glass-enclosed rain shower cubicle make guests' stay even more pampering. There is also an on-site fitness center, outdoor pool, a business center, and a total of 2,400 square meters of event space including 11 meeting rooms, and can accommodate 1,600 guests for a sit down banquet and 2,000 guests for receptions.

### Location and accessibility

Conveniently located atop MTR Tseung Kwan O station and PopCorn shopping mall, the hotel provides an easy access point to travel freely around the city. Tseung Kwan O is situated at the mid-point between Hong Kong Island and Kowloon, offering easy access to Kowloon East, Hong Kong's new central business district.

### Dining

The Chef's Table invites guests to share the culinary magic savouring tantalizing international buffets and an extensive 'East meets West' a la carte menu. Tze Yuet Heen offers great dim sum and authentic Chinese delicacies prepared by talented chefs in an intimate yet elegant setting. Cielo is a roof-top alfresco dining restaurant and bar; while Lobby Lounge overlooks stunning outdoor views from three-storey panel windows and provides delightful light snacks and refreshing drinks.



Address: 353 Castle Peak Road, Ting Kau, Tsuen Wan Total no. of rooms: 688 Room size: 248 – 390 sq. ft.  
Price range (published rates): HK\$2,600 – \$4,700 Tel: (852) 3716 2888 Fax: (852) 3716 2999  
Website: www.royalview.com.hk/en/main Email: sales@royalview.com.hk



Address: 3 Tong Tak Street, Tseung Kwan O Total no. of rooms: 359 Room size: 323 – 753 sq. ft.  
Price range (published rates): HK\$950 – \$6,500 Tel: (852) 3983 0388 Fax: (852) 3983 0399  
Website: www.crowneplaza.com/kowlooneast Email: info@cptko.com





**Attitude on Granville**

A 20 Granville Road, Tsim Sha Tsui  
 T (852) 2105 3888 F (852) 2105 3820  
 W www.attitudegranville.com



**Auberge Discovery Bay Hong Kong**

A 88 Siena Avenue, Discovery Bay, Lantau Island  
 T (852) 2295 8299 F (852) 2295 8188  
 W www.aubergediscoverybay.com



**EAST, Hong Kong**

A 29 Taikoo Shing Road, Island East  
 T (852) 3968 3968 F (852) 3968 3988  
 W www.east-hongkong.com



**Four Seasons Hotel Hong Kong**

A 8 Finance Street, Central, Hong Kong  
 T (852) 3196 8888 F (852) 3196 8899  
 W www.fourseasons.com/hongkong



**Bay Bridge Hong Kong by Hotel G**

A 123 Castle Peak Rd, Yau Kom Tau, Tsuen Wan  
 T (852) 2945 1111 F (852) 2493 8033  
 W www.baybridgehongkong.com



**Conrad Hong Kong**

A Pacific Place, 88 Queensway, Admiralty  
 T (852) 2521 3838 F (852) 2521 3888  
 W www.conradhotels.com/hongkong



**Gateway Hotel**

A Harbour City, Tsim Sha Tsui  
 T (852) 2113 0888 F (852) 2113 0022  
 W marcopolohotels.com



**Grand Hyatt Hong Kong**

A 1 Harbour Road, Hong Kong  
 T (852) 2588 1234 F (852) 2802 0677  
 W hongkong.grand.hyatt.com



**Cordis Hong Kong**

A 555 Shanghai Street, Mongkok  
 T (852) 3552 3388 F (852) 3552 3322  
 W www.cordishotels.com/en/hong-kong



**Courtyard by Marriott Hong Kong**

A 167 Connaught Road West  
 T (852) 3717 8888 F (852) 3717 8228  
 W www.courtyardhongkong.com



**Harbour Grand Hong Kong**

A 23 Oil Street, North Point  
 T (852) 2121 2688 F (852) 2121 2699  
 W www.harbourgrand.com/hongkong



**Harbour Grand Kowloon**

A 20 Tak Fung Street, Whampoa Garden, Hung Hom  
 T (852) 2621 3188 F (852) 2621 3311  
 W www.harbourgrand.com/kowloon



**Crowne Plaza Hong Kong Causeway Bay**

A 8 Leighton Road, Causeway Bay  
 T (852) 3980 3980 F (852) 3980 3900  
 W www.cphongkong.com



**Crowne Plaza Hong Kong Kowloon East**

A 3 Tong Tak Street, Tseung Kwan O  
 T (852) 3983 0388 F (852) 3983 0399  
 W www.crowneplaza.com/kowlooneast



**Harbour Plaza 8 Degrees**

A 199 Kowloon City Road, To Kwa Wan  
 T (852) 3900 3000 F (852) 3900 3008  
 W www.harbour-plaza.com/hp8d



**Harbour Plaza Metropolis**

A 7 Metropolis Drive, Hung Hom  
 T (852) 3160 6822 F (852) 3160 6926  
 W www.harbour-plaza.com



**Disney Explorers Lodge**

A Hong Kong Disneyland Resort, Lantau Island  
 T (852) 3510 2000  
 W www.hongkongdisneyland.com/hotels/disney-explorers-lodge



**Disney's Hollywood Hotel**

A Hong Kong Disneyland Resort, Lantau Island  
 T (852) 3510 5000 F (852) 3510 5333  
 W www.hongkongdisneyland.com/hotels/disneys-hollywood-hotel



**Harbour Plaza North Point**

A 665 King's Road, North Point  
 T (852) 2187 8888 F (852) 2187 8899  
 W www.harbour-plaza.com/hpnp



**Harbour Plaza Resort City**

A 12 Tin Yan Road, Tin Shui Wai  
 T (852) 2123 8888  
 W www.harbour-plaza.com/hprc



**Holiday Inn Golden Mile**

A 50 Nathan Road, Tsim Sha Tsui  
 T (852) 2369 3111 F (852) 2369 8016  
 W www.holidayinn.com/hongkong-gldn



**Hong Kong Gold Coast Hotel**

A 1 Castle Peak Road, Gold Coast  
 T (852) 2452 8888 F (852) 2440 7368  
 W www.goldcoasthotel.com.hk



**Hotel sáv Hong Kong**

A 83 Wuhu Street, Hunghom  
 T (852) 2275 8888 F (852) 2275 8999  
 W www.hotelsav.com



**Hullett House**

A 1881 Heritage, 2A Canton Road, Tsim Sha Tsui  
 T (852) 3988 0000  
 W www.hulletthouse.com



**Hong Kong SkyCity Marriott Hotel**

A 1 Sky City Road East, Hong Kong International Airport, Lantau  
 T (852) 3969 1888 F (852) 3969 2288  
 W www.skycitymarriott.com



**Hotel Bonaparte by Rhombus**

A 11 Morrison Hill Road, Wan Chai  
 T (852) 3518 6688 F (852) 3518 6699  
 W www.hotelbonaparte.com.hk



**Hyatt Regency Hong Kong, Sha Tin**

A 18 Chak Cheung Street, Sha Tin  
 T (852) 3723 1234 F (852) 3723 1235  
 W www.hongkongshatin.regency.hyatt.com



**Hyatt Regency Hong Kong, Tsim Sha Tsui**

A 18 Hanoi Road, Tsim Sha Tsui  
 T (852) 2311 1234 F (852) 3721 1235  
 W www.hongkongtsimshatsui.hyatt.com



**Hotel ICON**

A 17 Science Museum Road, Tsim Sha Tsui East  
 T (852) 3400 1000 F (852) 3400 1001  
 W www.hotel-icon.com



**Hotel Jen Hong Kong**

A 508 Queen's Road West, Western District  
 T (852) 2974 1234 F (852) 2974 0333  
 W www.hoteljen.com



**iclub Sheung Wan Hotel**

A 138 Bonham Strand, Sheung Wan  
 T (852) 3963 6288 F (852) 3963 6299  
 W www.iclub-hotels.com



**InterContinental Grand Stanford Hong Kong**

A 70 Mody Road, Tsim Sha Tsui East  
 T (852) 2721 5161 F (852) 2732 2233  
 W www.hongkong.intercontinental.com



**Hotel Madera Hollywood**

A 53-55 Hollywood Street, Central, Hong Kong  
 T (852) 3913 2888 F (852) 3913 2800  
 W www.maderagroup.com/hollywood



**Hotel Panorama by Rhombus**

A 8A Hart Avenue, Tsim Sha Tsui  
 T (852) 3550 0388 F (852) 3550 0288  
 W www.hotelpanorama.com.hk



**InterContinental Hong Kong**

A 18 Salisbury Road, Tsim Sha Tsui  
 T (852) 2721 1211 F (852) 2739 4546  
 W www.hongkong-ic.intercontinental.com



**Island Shangri-La, Hong Kong**

A Pacific Place, Supreme Court Road, Central  
 T (852) 2877 3838 F (852) 2521 8742  
 W www.shangri-la.com/island



**Hotel Pennington by Rhombus**

A 13-15 Pennington Street, Causeway Bay  
 T (852) 3970 0688 F (852) 3970 0699  
 W www.hotelpennington.com.hk



**Hotel Pravo Hong Kong**

A No.10 Peking Road, Tsim Sha Tsui  
 T (852) 3188 7888  
 W www.citadines.com/china/hong-kong/hotel-pravo-hong-kong



**JW Marriott Hotel Hong Kong**

A Pacific Place, 88 Queensway, Hong Kong  
 T (852) 2810 8366 F (852) 2845 0737  
 W jwmarriothongkong.com



**Kowloon Shangri-La, Hong Kong**

A 64 Mody Road, Tsim Sha Tsui East  
 T (852) 2721 2111 F (852) 2723 4966  
 W www.shangri-la.com/hongkong/kowloonshangrila



**L'hotel élan**  
 A 38 Chong Yip Street, Kwun Tong  
 T (852) 3968 8666 F (852) 3968 8333  
 W www.lhotelgroup.com/en/hotel/lhotel-elan/Home



**L'hotel Island South**  
 A 55 Wong Chuk Hang Road, Aberdeen  
 T (852) 3968 8838 F (852) 3968 8899  
 W www.lhotelgroup.com/en/hotel/lhotel-island-south/Home



**Panda Hotel**  
 A 3 Tsuen Wan Street, Tsuen Wan  
 T (852) 2409 1111 F (852) 2409 1818  
 W www.pandahotel.com.hk



**PRINCE**  
 HONG KONG  
 MARCO POLO HOTELS

**Prince Hotel**  
 A Harbour City, Tsim Sha Tsui  
 T (852) 2113 1888 F (852) 2113 0066  
 W marcopolohotels.com



**Lan Kwai Fong Hotel @ Kau U Fong**  
 A 3 Kau U Fong, Central  
 T (852) 2922 9922 F (852) 2922 9923  
 W www.lankwaifonghotel.com.hk



**Lanson Place Hotel, Hong Kong**  
 A 133 Leighton Road, Causeway Bay  
 T (852) 3477 6888 F (852) 3477 6999  
 W hongkong.lansonplace.com



**Regal Airport Hotel**  
 A 9 Cheong Tat Road, Hong Kong International Airport, Chek Lap Kok  
 T (852) 2286 8888 F (852) 2286 8686  
 W www.regalhotel.com



**Regal Hongkong Hotel**  
 A 88 Yee Wo Street, Causeway Bay  
 T (852) 2890 6633 F (852) 2881 0777  
 W www.regalhotel.com



**Le Méridien Cyberport**  
 A 100 Cyberport Road, Hong Kong  
 T (852) 2980 7788 F (852) 2980 7888  
 W www.lemeridien cyberport.com/



**Mandarin Oriental Hong Kong**  
 A 5 Connaught Road, Central  
 T (852) 2522 0111 F (852) 2810 6190  
 W www.mandarinoriental.com/hongkong



**Regal Kowloon Hotel**  
 A 71 Mody Road, Tsim Sha Tsui  
 T (852) 2313 8638 F (852) 2739 0670  
 W www.regalhotel.com



**Regal Oriental Hotel**  
 A 30-38 Sa Po Road, Kowloon City  
 T (852) 2718 0333 F (852) 2718 4111  
 W www.regalhotel.com



**Marco Polo Hongkong Hotel**  
 A Harbour City, Tsim Sha Tsui  
 T (852) 2113 0088 F (852) 2113 0011  
 W marcopolohotels.com



**Mira Moon**  
 A 388 Jaffe Road, Causeway Bay, Hong Kong  
 T (852) 2643 8888 F (852) 2643 8992  
 W www.miramoonhotel.com



**Regal Riverside Hotel**  
 A 34-36 Tai Chung Kiu Road, Sha Tin  
 T (852) 2132 1111 F (852) 2648 0505  
 W www.regalhotel.com



**Rosedale Hotel Kowloon**  
 A 86 Tai Kok Tsui Road  
 T (852) 3919 8606 F (852) 3919 8600  
 W www.kowloon.rosedalehotels.com



**Novotel Citygate Hong Kong**  
 A 51 Man Tung Road, Tung Chung  
 T (852) 3602 8888 F (852) 3602 8899  
 W www.novotelcitygate.com



**Ovolo Southside**  
 A 64 Wong Chuk Hang Road, Southside  
 T (852) 3460 8100 F (852) 3196 8899  
 W ovolohotels.com



**Royal Park Hotel**  
 A 8 Pak Hok Ting Street, Sha Tin  
 T (852) 2601 2111 F (852) 2601 3666  
 W www.royalpark.com.hk



**Royal Plaza Hotel**  
 A 193 Prince Edward Road West  
 T (852) 2928 8822 F (852) 2606 0088  
 W www.royalplaza.com.hk



**Royal View Hotel**

A 353 Castle Peak Road, Ting Kau, Tsuen Wan  
 T (852) 3716 2888 F (852) 3716 2999  
 W www.royalview.com.hk/en/main



**Sheraton Hong Kong Hotel & Towers**

A 20 Nathan Road, Tsim Sha Tsui  
 T (852) 2369 1111 F (852) 2739 8707  
 W www.sheratonhongkonghotel.com



**The Park Lane Hong Kong, a Pullman Hotel**

A 310 Gloucester Road, Causeway Bay  
 T (852) 2293 8888 F (852) 2881 1752  
 W www.parklane.com.hk



**The Peninsula Hong Kong**

A The Peninsula Hong Kong, Salisbury Road, Kowloon  
 T (852) 2920 2888 F (852) 2722 4170  
 W hongkong.peninsula.com



**Somerset Victoria Park Hong Kong**

A No.118 Electric Road, Causeway Bay  
 T (852) 3653 8088  
 W www.somerset.com/china/hong-kong/somerset-victoria-park-hong-kong



**Soravit on Granville**

A 29A Granville Road, Tsim Sha Tsui  
 T (852) 2105 3999 F (852) 2105 3820  
 W www.soravitgranville.com



**The Ritz-Carlton, Hong Kong**

A International Commerce Centre, 1 Austin Road West, Kowloon  
 T (852) 2263 2263  
 W www.ritzcarlton.com/HongKong



**The Royal Garden**

A 69 Mody Road, Tsim Sha Tsui East  
 T (852) 2721 5215 F (852) 2369 9976  
 W www.rghk.com.hk



**The Charterhouse Causeway Bay**

A 209-219 Wanchai Road  
 T (852) 2591 0000 F (852) 2833 5888  
 W www.charterhouse.com



**The Excelsior Hong Kong**

A 281 Gloucester Road, Causeway Bay  
 T (852) 2894 8888 F (852) 2895 6459  
 W mandarinoriental.com/excelsior



**The Royal Pacific Hotel and Towers**

A 33 Canton Road, Tsim Sha Tsui  
 T (852) 2736 1188 F (852) 2736 1212  
 W www.royalpacific.com.hk



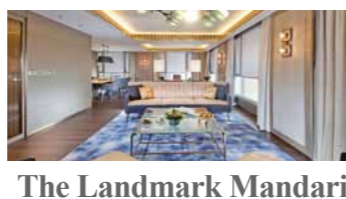
**The Stanley Oriental Hotel**

A 2/F, 90B Stanley Main Street, Stanley  
 T (852) 2899 1688  
 W www.stanleyorientalhotel.com.hk



**The Kowloon Hotel**

A 19-21 Nathan Road, Tsim Sha Tsui  
 T (852) 2929 2888 F (852) 2739 9811  
 W www.harbour-plaza.com/klnh



**The Landmark Mandarin Oriental, Hong Kong**

A The Landmark, 15 Queen's Road Central, Hong Kong  
 T (852) 2132 0188 F (852) 2132 0199  
 W www.mandarinoriental.com/landmark



**The Upper House**

A Pacific Place, 88 Queensway, Admiralty  
 T (852) 2918 1838 F (852) 3968 1200  
 W www.upperhouse.com



**Two MacDonnell Road**

A 2 MacDonnell Road, Mid-Levels  
 T (852) 2132 2132 F (852) 2131 1000  
 W twomr.com.hk



**The Langham, Hong Kong**

A 8 Peking Road, Tsim Sha Tsui  
 T (852) 2378 9988 F (852) 2375 6611  
 W www.langhamhotels.com/hongkong



**The Luxe Manor**

A 39 Kimberley Road, Tsim Sha Tsui  
 T (852) 3763 8888 F (852) 3763 8899  
 W www.theluxemanor.com



**W Hong Kong**

A 1 Austin Road West, Kowloon Station  
 T (852) 3717 2222 F (852) 3717 2888  
 W www.w-hongkong.com



**Xi Hotel**

A 7 Minden Avenue, Tsim Sha Tsui, Kowloon  
 T (852) 2739 7777 F (852) 2739 3777  
 W www.xihotel.com.hk



# HONG KONG

Hotel	No. of Rooms	Layout			Facilities						Tel.	District
		#SBD	TBD	DBD	📶	🏊	🏋️	🚌	🏢	🛀		
Conrad Hong Kong	512	*	*	*	*	*	*	*	*	*	2521 3838	Admiralty
Courtyard by Marriott Hong Kong Hotel	245	*	*		*	*	*		*		3717 8888	Sai Wan
Crowne Plaza Hong Kong Causeway Bay	263	*	*		*	*	*	*	*		3980 3980	Causeway Bay
EAST, Hong Kong	345		*	*	*			*	*		3968 3968	Island East
Four Seasons Hotel Hong Kong	399	*	*	*	*	*	*	*	*	*	3196 8888	Central
Grand Hyatt Hong Kong	542		*	*	*	*	*	*	*	*	2588 1234	Wan Chai
Harbour Grand Hong Kong	828		*	*	*	*	*	*	*	*	2121 2688	North Point
Harbour Plaza North Point	669		*	*	*	*	*	*	*	*	2187 8888	Quarry Bay
Hotel Bonaparte by Rhombus	80	*	*	*	*	*	*				3518 6688	Wan Chai
Hotel Jen Hong Kong	283		*	*	*	*	*	*	*		2974 1234	Western District
Hotel Madera Hollywood	38	*	*	*	*			*			3913 2888	Central
Hotel Pennington by Rhombus	79	*	*	*	*		*				3970 0688	Causeway Bay
iclub Sheung Wan Hotel	248	*	*	*	*	*		*			3963 6100	Hong Kong
Island Shangri-La, Hong Kong	565	*	*	*	*	*		*	*	*	2877 3838	Central
JW Marriott Hotel Hong Kong	602		*	*	*	*	*	*	*	*	2810 8366	Admiralty
L'hotel Island South	432		*	*	*	*		*	*		3968 8838	Southern District
Lan Kwai Fong Hotel @ Kau U Fong	162		*	*	*			*			2922 9922	Central
Lanson Place Hotel, Hong Kong	194		*	*	*	*	*		*		3477 6888	Causeway Bay
Le Méridien Cyberport	170		*	*	*	*		*	*	*	2980 7788	Pok Fu Lam
Mandarin Oriental, Hong Kong	501	*	*	*	*	*		*	*	*	2522 0111	Central
Mira Moon	91		*	*	*	*	*		*		2643 8888	Causeway Bay
Ovolo Southside	162	*	*	*	*	*	*		*		3460 8100	Southside
Regal Hongkong Hotel	482		*	*	*	*	*	*	*	*	2890 6633	Causeway Bay
Somerset Victoria Park Hong Kong	68		*	*	*	*		*			3653 8088	Causeway Bay
The Charterhouse Causeway Bay	294	*	*	*	*	*	*		*		2591 0000	Causeway Bay
The Excelsior Hong Kong	869		*	*	*	*	*		*	*	2894 8888	Causeway Bay
The Landmark Mandarin Oriental, Hong Kong	111		*	*	*			*	*	*	2132 0188	Central
The Park Lane Hong Kong	832	*	*	*	*	*	*		*		2293 8888	Causeway Bay
The Stanley Oriental Hotel	9			*	*						2899 1688	Stanley
The Upper House	117	*	*	*	*			*			2918 1838	Admiralty
Two MacDonnell Road	215			*	*	*	*		*		2132 2132	Mid-Levels

# KOWLOON

Hotel	No. of Rooms	Layout			Facilities						Tel.	District
		#SBD	TBD	DBD	📶	🏊	🏋️	🚌	🏢	🛀		
Attitude on Granville	81	*	*	*	*	*	*				2105 3888	Tsim Sha Tsui
Cordis, Hong Kong	664	*	*	*	*	*	*	*	*	*	3552 3388	Mong Kok
Gateway Hotel	400	*	*	*	*	*	*				2113 0888	Tsim Sha Tsui
Harbour Grand Kowloon	554	*	*	*	*	*	*	*	*	*	2621 3188	Hung Hom
Harbour Plaza 8 Degrees	702	*	*	*	*	*	*	*	*	*	3900 3000	To Kwa Wan
Harbour Plaza Metropolis	819		*	*	*	*	*	*	*	*	3160 6822	Hung Hom
Holiday Inn Golden Mile	624	*	*	*	*	*	*	*	*	*	2369 3111	Tsim Sha Tsui
Hotel Icon	262		*	*	*	*	*	*	*	*	3400 1000	Tsim Sha Tsui East
Hotel Panorama by Rhombus	324	*	*	*	*	*	*	*	*	*	3550 0388	Tsim Sha Tsui
Hotel Pravo Hong Kong	92			*	*	*		*			3188 7888	Tsim Sha Tsui
Hotel sáv	388	*	*	*	*	*	*	*	*	*	2275 8888	Hung Hom
Hullett House	10			*	*						3988 0000	Tsim Sha Tsui
Hyatt Regency Hong Kong, Tsim Sha Tsui	381	*	*	*	*	*	*	*	*	*	2311 1234	Tsim Sha Tsui
InterContinental Grand Stanford Hong Kong	579		*	*	*	*	*	*	*	*	2721 5161	Tsim Sha Tsui East
InterContinental Hong Kong	503	*	*	*	*	*	*	*	*	*	2721 1211	Tsim Sha Tsui
Kowloon Shangri-La, Hong Kong	688		*	*	*	*	*	*	*	*	2721 2111	Tsim Sha Tsui East
L'hotel élan	254	*	*	*	*	*	*	*	*	*	3968 8666	Kwun Tong
Marco Polo Hongkong Hotel	665	*	*	*	*	*	*	*	*	*	2113 0088	Tsim Sha Tsui
Prince Hotel	394	*	*	*	*	*	*	*	*	*	2113 1888	Tsim Sha Tsui
Regal Kowloon Hotel	600		*	*	*	*	*	*	*	*	2313 8638	Tsim Sha Tsui
Regal Oriental Hotel	494	*	*	*	*	*	*	*	*	*	2718 0333	Kowloon City
Rosedale Hotel Kowloon	435	*	*	*	*	*	*	*	*	*	3919 8606	Tai Kok Tsui
Royal Plaza Hotel	699	*	*	*	*	*	*	*	*	*	2928 8822	Mong Kok
Sheraton Hog Kong Hotel & Towers	782	*	*	*	*	*	*	*	*	*	2369 1111	Tsim Sha Tsui
Soravit on Granville	76	*	*	*	*	*	*	*	*	*	2105 3999	Tsim Sha Tsui
The Kowloon Hotel	736		*	*	*	*	*	*	*	*	2929 2888	Tsim Sha Tsui
The Langham, Hong Kong	498		*	*	*	*	*	*	*	*	2378 9988	Tsim Sha Tsui
The Luxe Manor	159		*	*	*	*	*	*	*	*	3763 8888	Tsim Sha Tsui
The Peninsula Hong Kong	300		*	*	*	*	*	*	*	*	2920 2888	Tsim Sha Tsui
The Ritz-Carlton, Hong Kong	312		*	*	*	*	*	*	*	*	2263 2263	West Kowloon
The Royal Garden	417	*	*	*	*	*	*	*	*	*	2721 5215	Tsim Sha Tsui East
The Royal Pacific Hotel and Towers	673		*	*	*	*	*	*	*	*	2736 1188	Tsim Sha Tsui
W Hong Kong	393	*		*	*	*	*	*	*	*	3717 2222	West Kowloon
Xi Hotel	64		*	*	*	*	*	*	*	*	2739 7777	Tsim Sha Tsui

## NEW TERRITORIES

Hotel	No. of Rooms	Layout			Facilities							Tel.	District
		#SBD	TBD	DBD	📶	🚿	🚌	♨️	🏊	🧘	🛀		
Auberge Discovery Bay	325	*	*	*	*	*	*	*	*	*	*	2295 8299	Lantau Island
Bay Bridge Hong Kong by Hotel G	430	*	*	*	*	*	*	*	*	*	*	2945 1111	Tsuen Wan
Crowne Plaza Hong Kong Kowloon East	359	*	*	*	*	*	*	*	*	*	*	3983 0388	Tseung Kwan O
Disney Explorers Lodge	750	*	*	*	*	*	*	*	*	*	*	3510 2000	Lantau Island
Disney's Hollywood Hotel	600	*	*	*	*	*	*	*	*	*	*	3510 5000	Lantau Island
Harbour Plaza Resort City	1102	*	*	*	*	*	*	*	*	*	*	2123 8888	Tin Shui Wai
Hong Kong Gold Coast Hotel	453	*	*	*	*	*	*	*	*	*	*	2452 8888	Castle Peak Bay
Hong Kong SkyCity Marriott Hotel	658	*	*	*	*	*	*	*	*	*	*	3969 1888	Lantau Island
Hyatt Regency Hong Kong, Sha Tin	559	*	*	*	*	*	*	*	*	*	*	3723 1234	Sha Tin
Novotel Citygate Hong Kong	440	*	*	*	*	*	*	*	*	*	*	3602 8888	Tung Chung
Panda Hotel	1026	*	*	*	*	*	*	*	*	*	*	2409 1111	Tsuen Wan
Regal Airport Hotel	1171	*	*	*	*	*	*	*	*	*	*	2286 8888	Chek Lap Kok
Regal Riverside Hotel	1138	*	*	*	*	*	*	*	*	*	*	2132 1213	Sha Tin
Royal Park Hotel	443	*	*	*	*	*	*	*	*	*	*	2601 2111	Sha Tin
Royal View Hotel	688	*	*	*	*	*	*	*	*	*	*	3716 2888	Tsuen Wan

