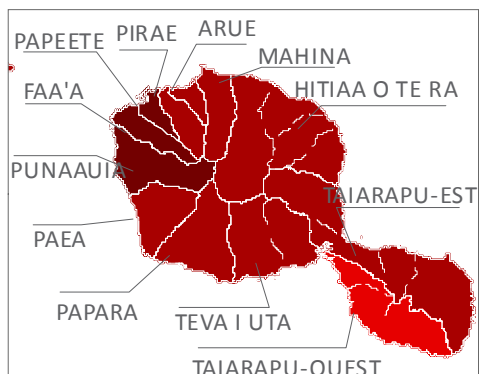
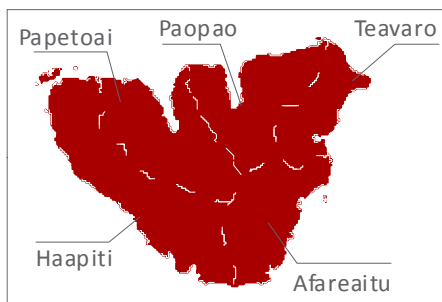


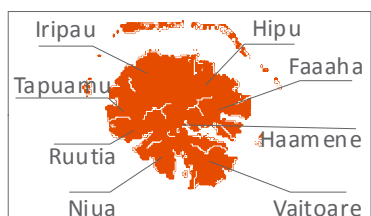
# Répartition de la population en Polynésie française en 2017



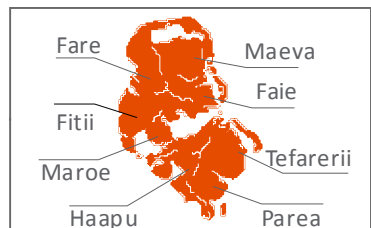
TAHITI



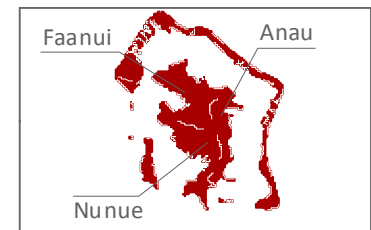
MOOREA



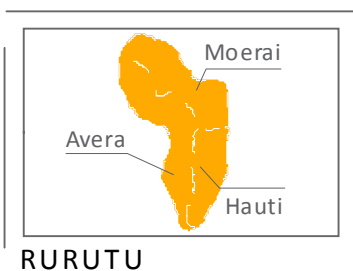
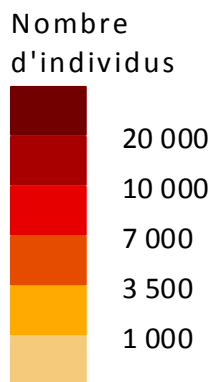
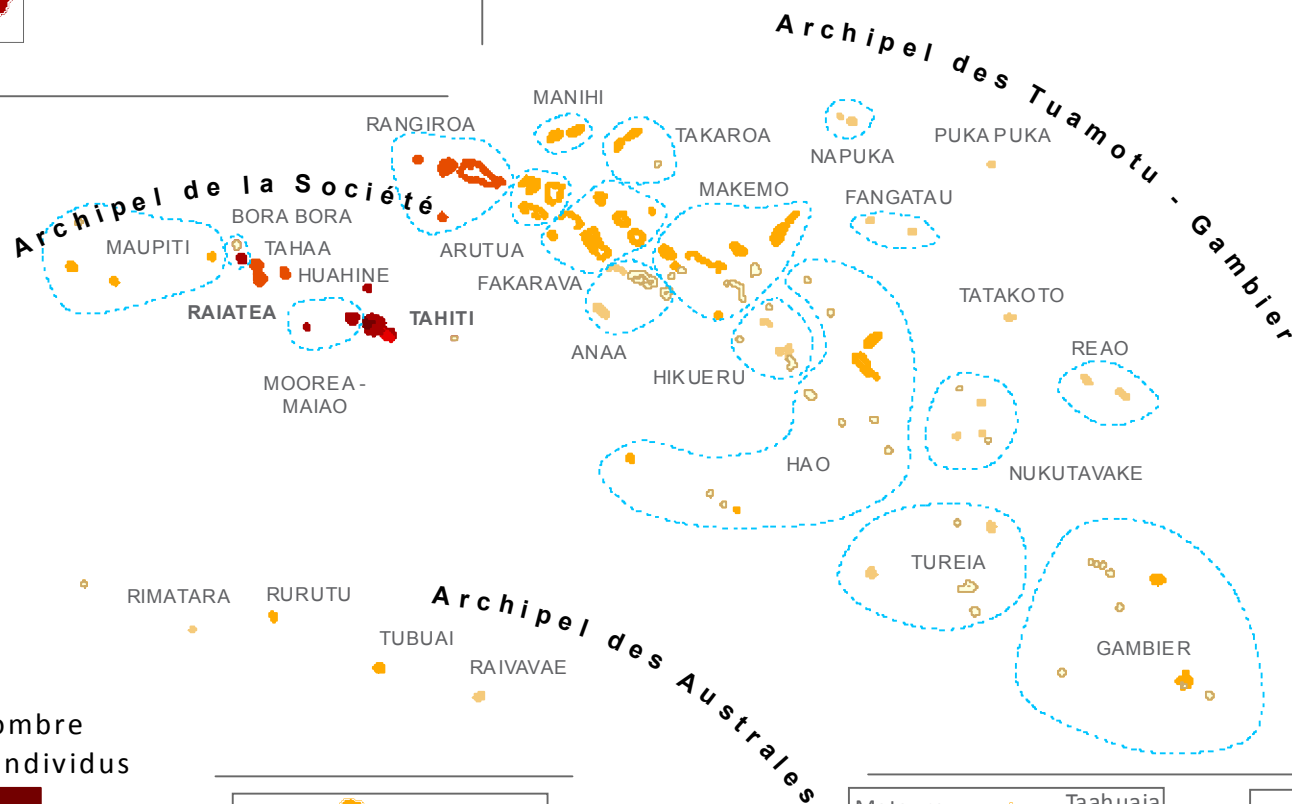
TAHAA



HUAHINE



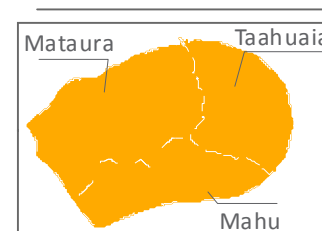
BORA BORA



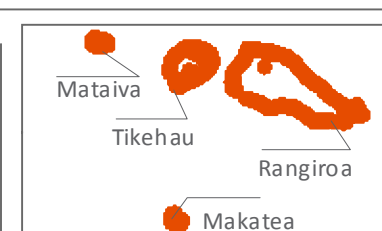
RURUTU



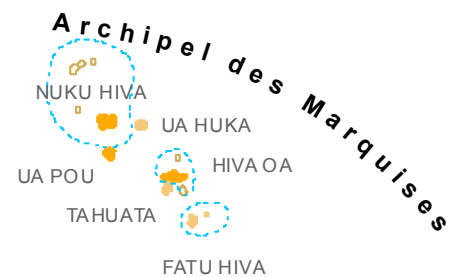
RAPA



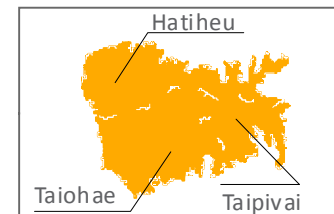
TUBUAI



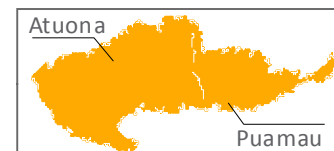
RANGIROA



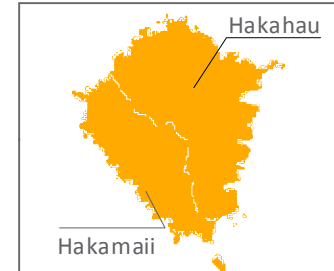
Archipel des Marquises



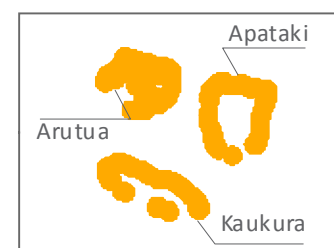
NUKU HIVA



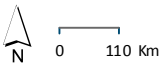
HIVA OA



UA POU



ARUTUA



# Répartition de la population aux Îles Du Vent en 2017

TAHITI

MAHINA

PAPEETE PIRAE ARUE

HITIAA O TE RA

FAAA

PUNAAUIA

PAEA

PAPARA

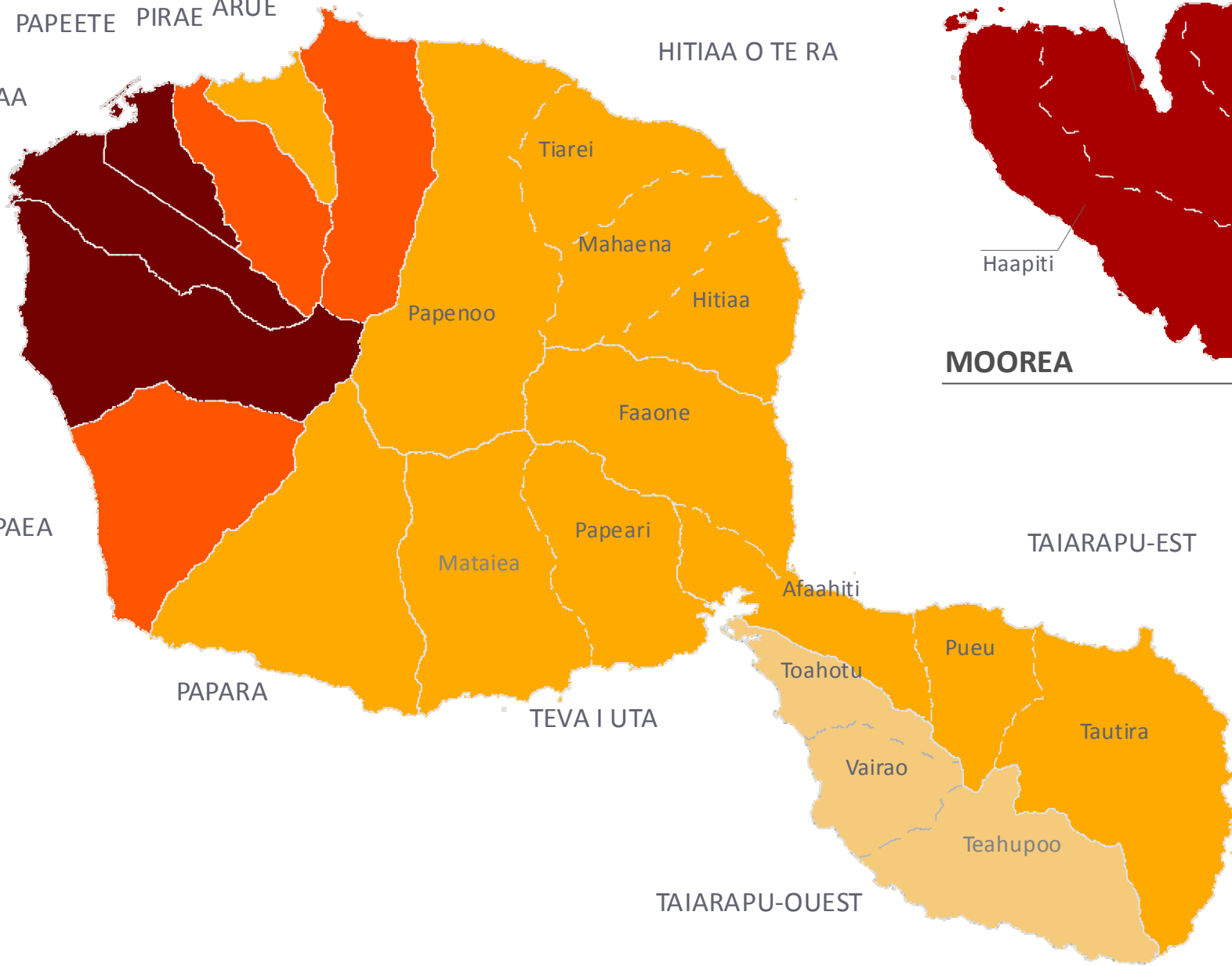
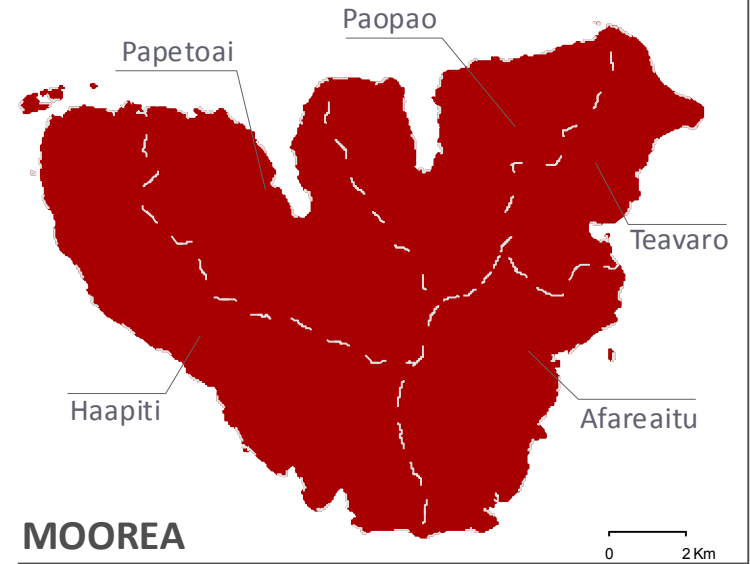
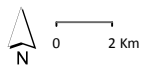
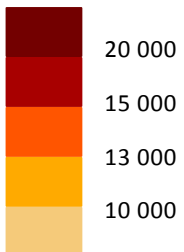
TEVA I UTA

MOOREA

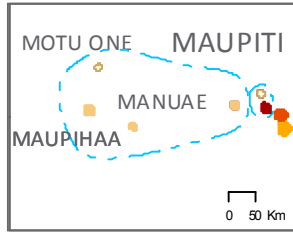
TAIARAPU-EST

TAIARAPU-OUEST

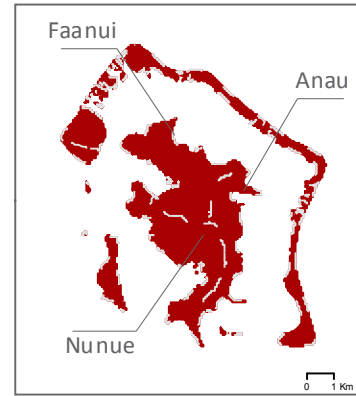
Nombre d'individus



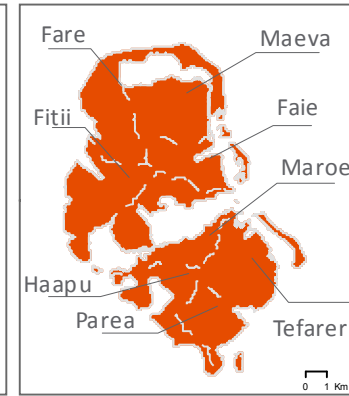
# Répartition de la population aux Îles Sous Le Vent en 2017



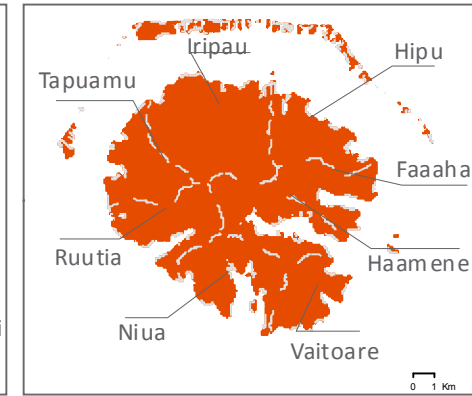
MAUPITI



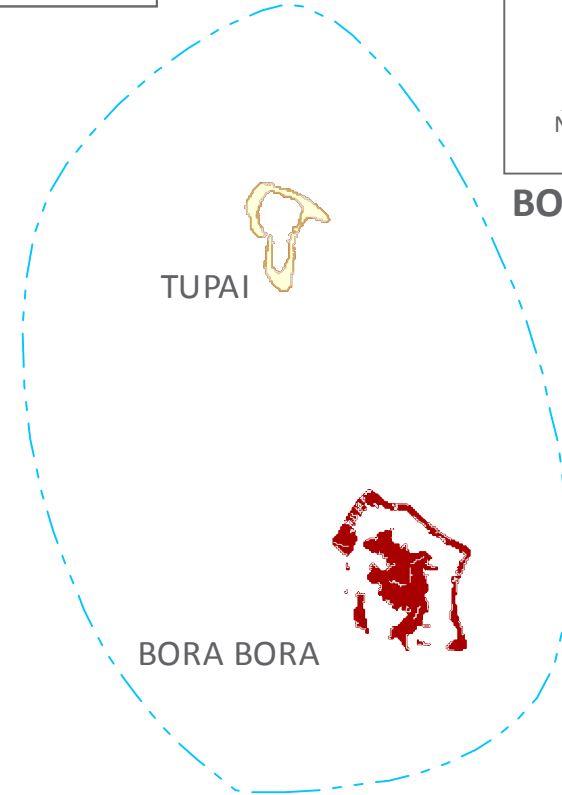
BORA BORA



HUAHINE



TAHAA

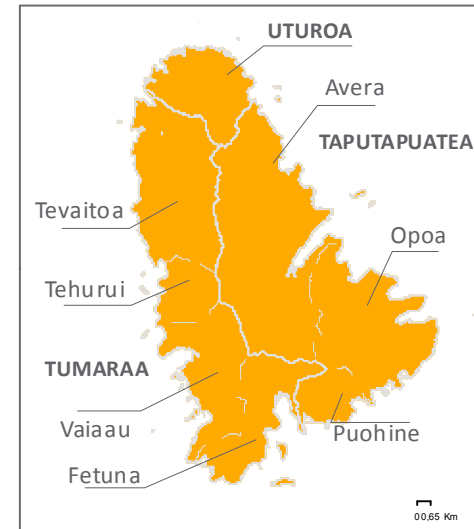


TUPAI

BORA BORA

MAUPITI

TAHAA

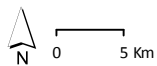
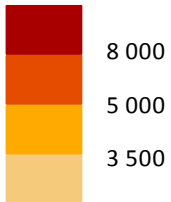


RAIATEA

RAIATEA

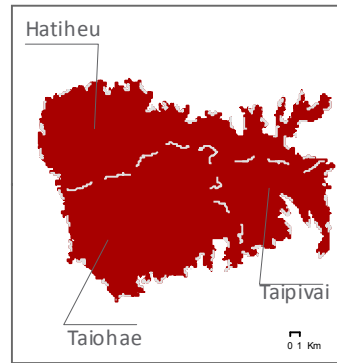
HUAHINE

Nombre d'individus

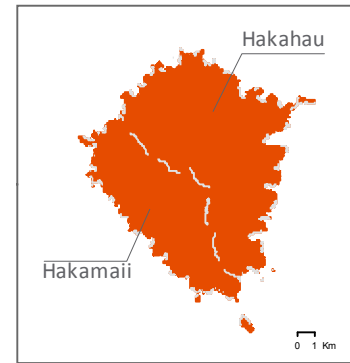


# Répartition de la population aux îles Marquises en 2017

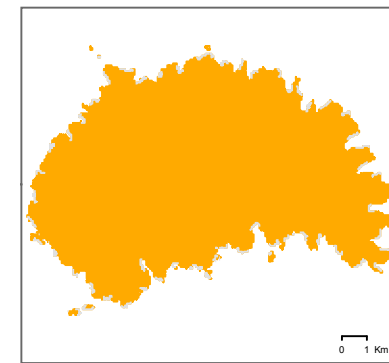
HATUTAA  
MOTU ONE  
EIAO



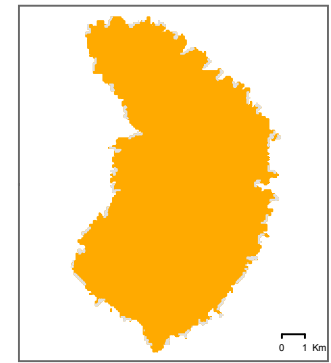
**NUKU HIVA**



**UA POU**



**UA HUKA**



**FATU HIVA**

HATU ITI

NUKU HIVA



UA HUKA

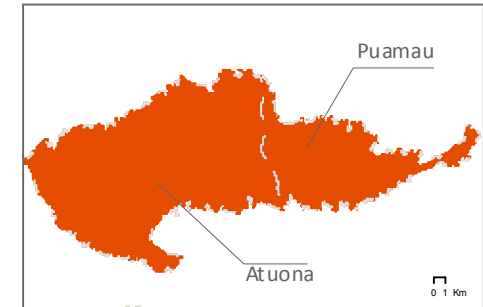


UA POU



FATU HUKU

HIVA OA

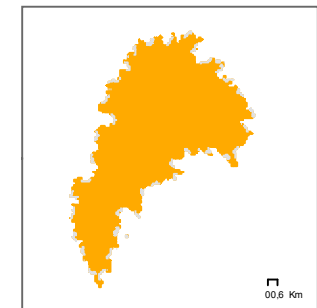


**HIVA OA**

TAHUATA

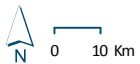
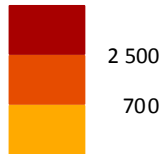


MOHOTANI



**TAHUATA**

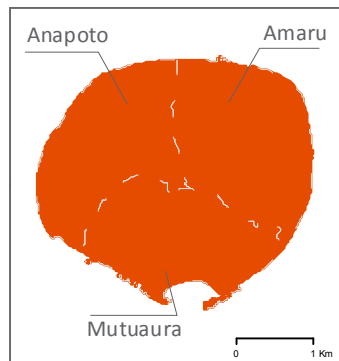
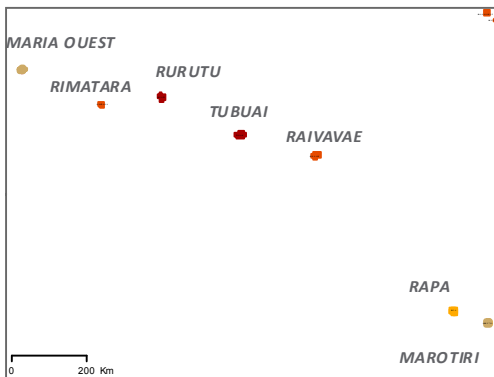
Nombre  
d'individus



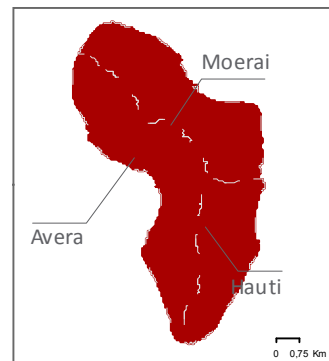
FATU HIVA



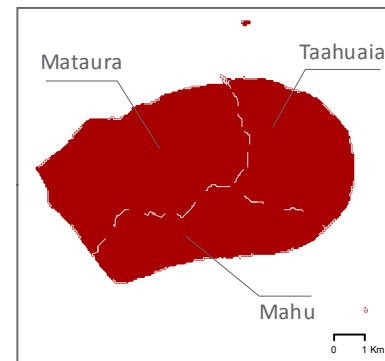
# Répartition de la population aux îles Australes en 2017



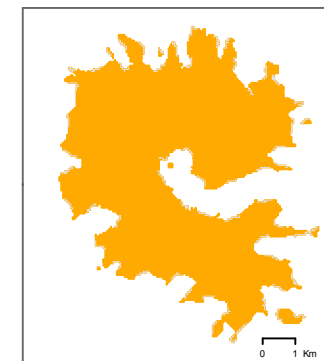
**RIMATARA**



**RURUTU**



**TUBUAI**



**RAPA**



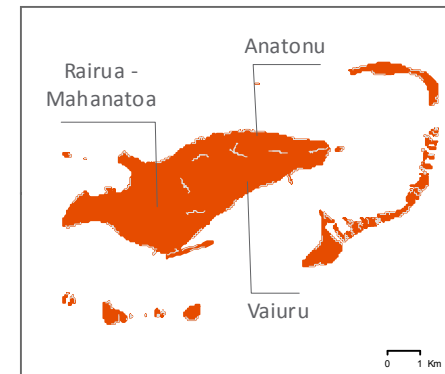
**RIMATARA**



**RURUTU**



**TUBUAI**

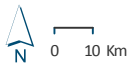
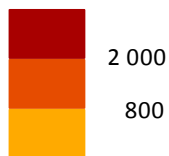


**RAIVAVAE**

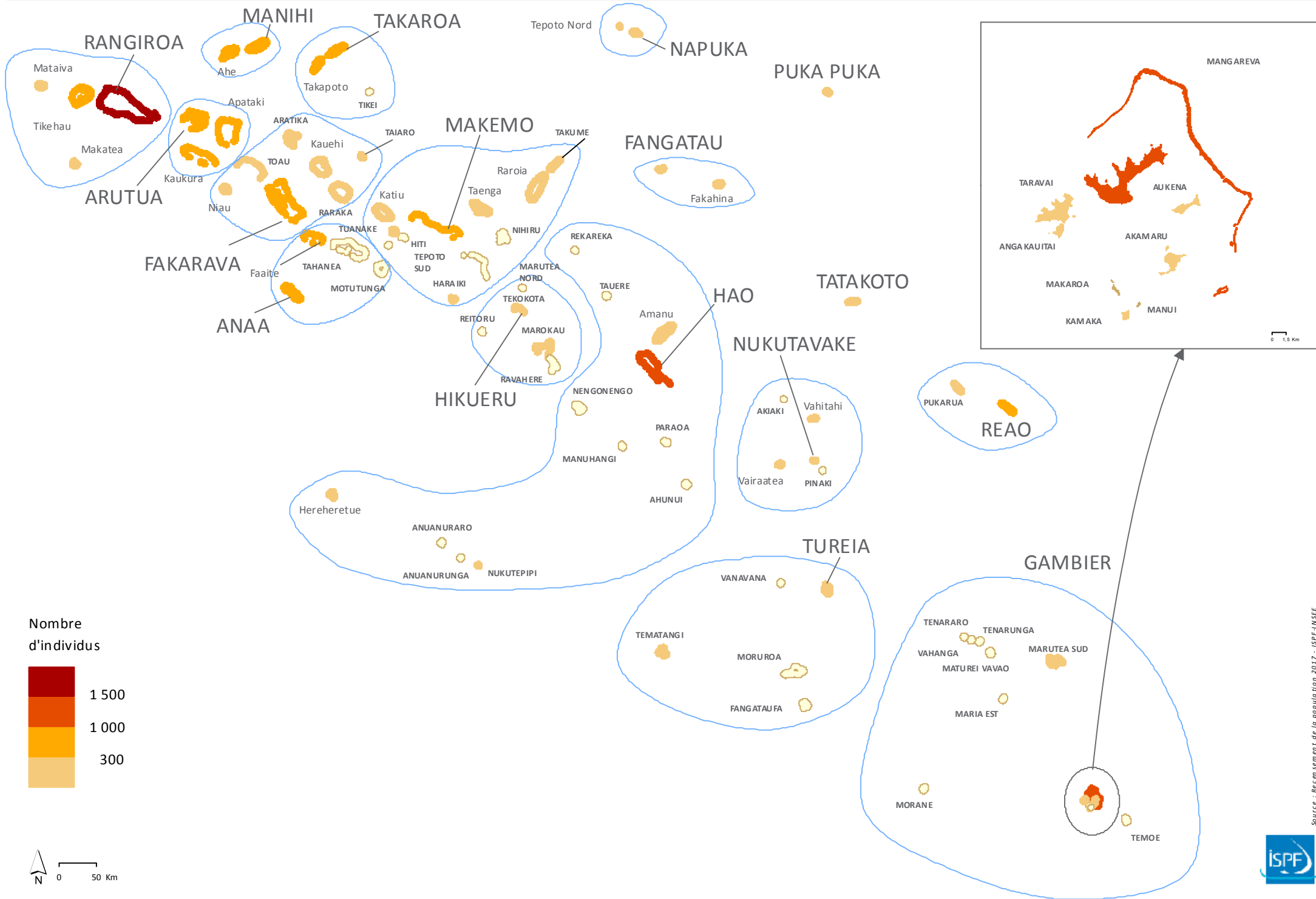


**RAIVAVAE**

Nombre d'individus



# Répartition de la population aux îles Tuamotu-Gambier en 2017



Source : Recensement de la population 2017 - ISPF-INSEE

<b>SUBDIVISIONS administratives</b>	<b>NOMBRE de communes</b>	<b>SOMME des populations municipales 2012</b>	<b>SOMME des populations municipales 2017</b>	<b>Evolution 2017/2012</b>	<b>SOMME des populations totales 2017 (avec doubles comptes)</b>
îles du Vent	13	200 881	207 333	3,21%	210 831
îles Sous-le-Vent	7	34 622	35 393	2,23%	36 216
îles Marquises	6	9 264	9 346	0,89%	9 835
îles Australes	5	6 839	6 965	1,84%	7 233
îles Tuamotu-Gambier	17	16 664	16 881	1,30%	17 559
<b>Polynésie française</b>	<b>48</b>	<b>268 270</b>	<b>275 918</b>	<b>2,85%</b>	<b>281 674</b>

COMMUNES y compris communes associées et îles rattachées	POPULATION municipale 2012	POPULATION municipale 2017	Evolution 2017/2012	POPULATION comptée à part 2017	POPULATION totale 2017
11. Anaa	897	811	-9,59%	12	823
111. Anaa	496	494	-0,40%		494
112. Faaite	401	317	-20,95%		317
11201. Motutunga	0	0			0
11202. Tahanea	0	0			0
12. Arue	9 537	10 243	7,40%	90	10 333
12001. Tetiaroa	0	240			240
13. Arutua	1 500	1 664	10,93%	30	1 694
131. Apataki	350	442	26,29%		442
132. Arutua	677	808	19,35%		808
133. Kaukura	473	414	-12,47%		414
14. Bora-Bora	9 610	10 549	9,77%	56	10 605
141. Anau	1 786	1 973	10,47%		1 973
142. Faanui	2 626	2 962	12,80%		2 962
143. Nunue	5 198	5 614	8,00%		5 614
14301. Tupai	2	0			0
15. Faaa	29 687	29 506	-0,61%	372	29 878
16. Fakarava	1 579	1 637	3,67%	22	1 659
161. Fakarava	824	844	2,43%		844
162. Kauehi	529	547	3,40%		547
163. Niau	226	246	8,85%		246
16101. Toau	17	14	-17,65%		14
16201. Aratika	158	225	42,41%		225
16202. Raraka	110	96	-12,73%		96
16203. Taiaro	4	2	-50,00%		2
17. Fangatau	300	296	-1,3%	6	302
171. Fakahina	155	161	3,9%		161
172. Fangatau	145	135	-6,9%		135
18. Fatu-Hiva	611	612	0,2%	21	633
19. Gambier	1 421	1 535	8,0%	57	1 592
19001. Akamaru	22	12			12
19002. Angakauitai	0	1			1
19003. Aukena	40	25			25
19004. Kamaka	0	1			1
19005. Makarua	0	0			0
19006. Mangareva	1 239	1 384			1 384
19007. Manui	0	0			0
19008. Maria (Gambier)	0	0			0
19009. Marutea Sud	111	104			104
19010. Maturei Vavao	0	0			0
19011. Morane	0	0			0
19012. Taravai	9	8			8
19013. Temoe	0	0			0
19014. Tenararo	0	0			0
19015. Tenarunga	0	0			0
19016. Vahanga	0	0			0



COMMUNES y compris communes associées et îles rattachées	POPULATION municipale 2012	POPULATION municipale 2017	Evolution 2017/2012	POPULATION comptée à part 2017	POPULATION totale 2017
20. Hao	1 328	1 258	-5%	158	1 416
201. Amanu	196	174	-11%		174
202. Hao	1 077	1 027	-5%		1 027
203. Hereheretue	55	57	4%		57
20101. Rekareka	0	0			0
20102. Tauere	3	0			0
20201. Ahunui	0	0			0
20202. Nengonengo	0	0			0
20203. Manuhangi	0	0			0
20204. Paraoa	0	0			0
20301. Anuanuraro	0	0			0
20302. Anuanurunga	0	0			0
20303. Nukutepipi	0	12			12
21. Hikueru	240	275	14,58%	0	275
211. Hikueru	149	179	20,13%		179
212. Marokau	91	96	5,49%		96
21101. Reitoru	0	0			0
21102. Tekokota	0	0			0
21201. Ravahere	0	0			0
22. Hitiaa O Te Ra	9 585	10 033	4,67%	68	10 101
221. Hitiaa	1 944	2 012	3,50%		2 012
222. Mahaena	1 106	1 109	0,27%		1 109
223. Papenoo	3 765	4 005	6,37%		4 005
224. Tiarei	2 770	2 907	4,95%		2 907
23. Hiva-Oa	2 190	2 243	2,42%	195	2 438
231. Atuona	1 845	1 934	4,82%		1 934
232. Puamau	345	309	-10,43%		309
23101. Mohotani	0	0			0
23201. Fatu Huku	0	0			0
24. Huahine	6 313	6 075	-3,77%	103	6 178
241. Faie	395	387	-2,03%		387
242. Fare	1 603	1 562	-2,56%		1 562
243. Fitiï	1 161	1 049	-9,65%		1 049
244. Haapu	633	637	0,63%		637
245. Maeva	1 013	934	-7,80%		934
246. Maroe	535	576	7,66%		576
247. Parea	517	492	-4,84%		492
248. Tefarerii	456	438	-3,95%		438
25. Mahina	14 351	14 763	2,87%	353	15 116
26. Makemo	1 558	1 508	-3,21%	82	1 590
261. Katiu	249	240	-3,61%		240
262. Makemo	832	825	-0,84%		825
263. Raroia	352	326	-7,39%		326
264. Taenga	125	117	-6,40%		117
26101. Hiti	0	0			0
26102. Tepoto Sud	0	0			0
26103. Tuanake	0	6			6
26201. Haraiki	0	1			1
26202. Marutea Nord	0	0			0
26301. Takume	98	152			152
26401. Nihiru	11	0			0
27. Manihi	1 240	1 141	-7,98%	38	1 179
271. Ahe	555	491	-11,53%		491
272. Manihi	685	650	-5,11%		650

COMMUNES y compris communes associées et îles rattachées	POPULATION municipale 2012	POPULATION municipale 2017	Evolution 2017/2012	POPULATION comptée à part 2017	POPULATION totale 2017
28. Maupiti	1 234	1 286	4,21%	9	1 295
28001. Maupihaa (Mopelia)	11	20			20
28002. Manuae (Scilly)	32	21			21
28003. Motu One (Bellinghaus)	0	0			0
29. Moorea-Maiao	17 236	17 816	3,37%	255	18 071
291. Afareaitu	3 452	3 674	6,43%		3 674
292. Haapiti	4 058	4 254	4,83%		4 254
293. Maiao	335	353	5,37%		353
294. Paopao	4 583	4 639	1,22%		4 639
295. Papetoai	2 324	2 329	0,22%		2 329
296. Teavaro	2 484	2 567	3,34%		2 567
30. Napuka	359	284	-20,89%	10	294
301. Napuka	298	234	-21,48%		234
302. Tepoto Nord	61	50	-18,03%		50
31. Nuku-Hiva	2 966	2 951	-0,51%	169	3 120
311. Hatiheu	370	352	-4,86%		352
312. Taiohae	2 132	2 183	2,39%		2 183
313. Taipivai	464	416	-10,34%		416
31201. Eiao	0	0			0
31202. Hatu Iti	0	0			0
31203. Hatutaa	0	0			0
31204. Motu One (Marquises)	0	0			0
32. Nukutavake	352	295	-16,19%	27	322
321. Nukutavake	190	177	-6,84%		177
322. Vahitahi	105	68	-35,24%		68
323. Vairaatea	57	50	-12,28%		50
32101. Pinaki	0	0			0
32201. Akiaki	0	0			0
33. Paea	12 541	13 021	3,83%	100	13 121
34. Papara	11 143	11 680	4,82%	240	11 920
35. Papeete	25 769	26 926	4,49%	461	27 387
36. Pirae	14 129	14 209	0,57%	492	14 701
37. Pukapuka	166	163	-1,81%	0	163
38. Punaauia	27 613	28 103	1,77%	649	28 752
39. Raivavae	947	903	-4,65%	34	937
391. Anatonu	253	237	-6,32%		237
392. Rairua-Mahanatoa	453	468	3,31%		468
393. Vaiuru	241	198	-17,84%		198
40. Rangiroa	3 281	3 657	11,46%	198	3 855
401. Makatea	68	94	38,24%		94
402. Mataiva	272	294	8,09%		294
403. Rangiroa	2 401	2 709	12,83%		2 709
404. Tikehau	540	560	3,70%		560
41. Rapa	515	507	-1,55%	8	515
41001. Marotiri	0	0			0
42. Reao	606	587	-3,14%	12	599
421. Pukarua	227	236	3,96%		236
422. Reao	379	351	-7,39%		351

COMMUNES y compris communes associées et îles rattachées	POPULATION municipale 2012	POPULATION municipale 2017	Evolution 2017/2012	POPULATION comptée à part 2017	POPULATION totale 2017
43. Rimatara	879	872	-0,80%	13	885
431. Amaru	301	289	-3,99%		289
432. Anapoto	270	268	-0,74%		268
433. Mutuaura	308	315	2,27%		315
43101. Maria (Australes)	0	0			0
44. Rurutu	2 325	2 466	6,06%	108	2 574
441. Avera	844	919	8,89%		919
442. Hauti	402	446	10,95%		446
443. Moerai	1 079	1 101	2,04%		1 101
44101. Maria (Australes)	0	0			0
45. Tahaa	5 220	5 234	0,27%	79	5 313
451. Faaaha	476	428	-10,08%		428
452. Haamene	910	908	-0,22%		908
453. Hipu	500	428	-14,40%		428
454. Iripau	1 250	1 242	-0,64%		1 242
455. Niua	567	542	-4,41%		542
456. Ruutia	466	548	17,60%		548
457. Tapuamu	631	653	3,49%		653
458. Vaitoare	420	485	15,48%		485
46. Tahuata	703	653	-7,11%	18	671
47. Tairapu-Est	12 253	12 701	3,66%	213	12 914
471. Afaahiti	5 815	6 163	5,98%		6 163
472. Faaone	1 996	2 005	0,45%		2 005
473. Pueu	2 024	2 084	2,96%		2 084
474. Tautira	2 418	2 449	1,28%		2 449
47401. Mehetia	0	0			0
48. Tairapu-Ouest	7 639	8 078	5,75%	94	8 172
481. Teahupoo	1 289	1 419	10,09%		1 419
482. Toahotu	3 566	3 769	5,69%		3 769
483. Vairao	2 784	2 890	3,81%		2 890
49. Takaroa	1 243	1 175	-5,47%	20	1 195
491. Takapoto	355	501	41,13%		501
492. Takaroa	888	674	-24,10%		674
49201. Tikei	0	0			0
50. Taputapuatea	4 786	4 792	0,13%	57	4 849
501. Avera	3 228	3 265	1,15%		3 265
502. Opoa	1 236	1 183	-4,29%		1 183
503. Puohine	322	344	6,83%		344
51. Tatakoto	294	259	-11,90%	6	265
52. Teva I Uta	9 398	10 254	9,11%	111	10 365
521. Mataiea	4 723	5 214	10,40%		5 214
522. Papeari	4 675	5 040	7,81%		5 040
53. Tubuai	2 173	2 217	2,02%	105	2 322
531. Mahu	571	602	5,43%		602
532. Mataura	1 030	970	-5,83%		970
533. Taahuaia	572	645	12,76%		645
54. Tumaraa	3 762	3 721	-1,09%	40	3 761
541. Fetuna	413	390	-5,57%		390
542. Tehurui	492	555	12,80%		555
543. Tevaitoa	1 978	1 939	-1,97%		1 939
544. Vaiaau	879	837	-4,78%		837

<b>COMMUNES y compris communes associées et îles rattachées</b>	<b>POPULATION municipale 2012</b>	<b>POPULATION municipale 2017</b>	<b>Evolution 2017/2012</b>	<b>POPULATION comptée à part 2017</b>	<b>POPULATION totale 2017</b>
55. Tureia	300	336	12,00%	0	336
55001. Fangataufa	0	0			0
55002. Moruroa	0	0			0
55003. Tematangi	58	61			61
55004. Vanavana	0	0			0
56. Ua-Huka	621	674	8,53%	4	678
57. Ua-Pou	2 173	2 213	1,84%	82	2 295
571. Hakahau	1 608	1 683	4,66%		1 683
572. Hakamaii	565	530	-6,19%		530
58. Uturoa	3 697	3 736	1,05%	479	4 215
<b>Polynésie française</b>	<b>268 270</b>	<b>275 918</b>	<b>2,85%</b>	<b>5 756</b>	<b>281 674</b>