

COWLES FOUNDATION FOR RESEARCH IN ECONOMICS

AT YALE UNIVERSITY

Box 2125, Yale Station
New Haven, Connecticut 06520

COWLES FOUNDATION DISCUSSION PAPER NO. 353

Note: Cowles Foundation Discussion Papers are preliminary materials circulated to stimulate discussion and critical comment. Requests for single copies of a Paper will be filled by the Cowles Foundation within the limits of the supply. References in publications to Discussion Papers (other than mere acknowledgment by a writer that he has access to such unpublished material) should be cleared with the author to protect the tentative character of these papers.

INCENTIVES AND RISK-SHARING IN SHARECROPPING

Joseph E. Stiglitz

March 1, 1973

INCENTIVES AND RISK-SHARING IN SHARECROPPING*

by

Joseph E. Stiglitz

At least from the time of Ricardo, economists have begun their investigations of how competitive markets work, how wages, rents, and prices are determined, by a detailed examination of agriculture. Even today, agriculture is taken as the paradigm--and perhaps almost the only important example--of a truly competitive market (or at least this was the case until the widespread government intervention in this market). For a number of years, I have been concerned with how competitive markets handle risk taking, and how risk affects real resource allocation. Risks in agriculture are clearly tremendously important, yet remarkably the traditional theoretical literature has avoided explicit treatment¹ of risk sharing in agricultural environments. The consequences of this are important. First, it makes suspect the traditional conclusions regarding sharecropping: Is it really true that sharecropping results in too little supply of labor, because workers equate their share of output times the (value of the) marginal productivity of labor to the marginal disutility of work, whereas Pareto Optimality requires the (value of the) marginal productivity of labor be equal to the marginal disutility of work? Or is it true, as Wicksell asserted, that there is no distinction between landlords hiring labor or labor renting land? Second, it leaves unanswered many of the important economic questions: How is the equilibrium share determined? Why have some economies (in the past or at present) used one distribution system, other economies used others?

*The research described in this paper was supported under grants from the National Science Foundation and from the Ford Foundation. The author is indebted to G. Heal and G. Hughes for helpful comments.

Our object is to formulate a simple general equilibrium model of a competitive agricultural economy. (Other general equilibrium models of competitive economies with uncertainty have been formulated by Arrow [2] and Debreu [9], Diamond [10], and Stiglitz [14]. Each of these has its serious limitations in describing the workings of the modern capitalist economy. (See Stiglitz [15].) The model is of interest not only for extending our understanding of these simple economies, but also in gaining some insight into the far more complex phenomena of shareholding in modern corporations. Our focus is on the risk sharing and incentive properties of alternative distribution systems.

The analysis is divided into two parts. In the first, the amount of labor (effort) supplied by an individual is given, and the analysis focuses on the risk sharing aspects of sharecropping. Among the major qualitative propositions are the following:

- (a) If workers and landlords can both "mix contracts" (i.e. workers can work for several different landlords and landlords hire workers on several different "contracts" then the economy is productively efficient (the land-labor ratio is the same on every plot of land); if not, the economy may not be productively efficient.
- (b) In the former case, there is, in our model, a linear relationship between the fixed payment a worker receives (his "wages") and his share. We can thus identify a "price of risk absorption."
- (c) The mean marginal product of a laborer is greater or less than his mean income as the worker pays a rent or receives a wage (in addition to some share in the total output). Thus the landlord's income can be thought of as a payment for "rent of land" plus a payment for absorbing some of the laborers' proportionate share of risk. In the case of pure sharecropping (i.e. no fixed payments to or from workers), the mean marginal product is equal to the mean income.
- (d) There will be (in our model) a pure wage (rental) system if and only if landlords (workers) are risk neutral.

(e) If workers cannot mix contracts, more risk averse landlords may have a smaller number of workers per acre than less risk averse landlords (so the economy may not be productively efficient). If there are systematic relations between size of farm (wealth of landlord) and the landlords degree of risk aversion, as one might expect, then there would be a systematic relation between size of farm and output per acre.

The derivation of further qualitative properties requires the assumptions of a "representative" landlord and a "representative" worker.

(f) The worker pays some fixed rent to the landlord (in addition to a share of the return) or receives a fixed wage (in addition to a "share" of the return) as the worker is less or more risk averse than the landlord. An increase in the variance of the output of the farm increases (decreases) the share of the crop paid to the landlord as well as the share of mean income received on average by the landlord if the landlord is less (more) risk averse than the worker. Other qualitative propositions are derived but have no simple interpretation.

In the second part of the paper, the supply of labor (effort) is assumed to be variable. If effort can easily (costlessly) be observed, and quantified, then the level of effort is specified in the contract. It is shown then that, contrary to the classical proposition, there is not an undersupply of labor (effort) as a result of a sharecropping system.

On the other hand, if effort (labor supply) cannot be easily observed, then sharecropping has an important positive incentive effect. If the landlord were risk neutral, and if there were no incentive effects (as in the models of Part I), he would absorb all the risk. Here, on the contrary, the worker still receives a share of the output. The more responsive the individual is to incentive effects the greater the incentive share (and the greater the risk he must absorb). On the other hand, whether the worker receives more or less on average than his mean marginal product depends solely on whether the elasticity of substitution between land and labor is greater or less than unity.

Although we have not developed a normative framework within which to evaluate the competitive "incentive" system we are able to establish the following: (a) in comparing a wage system with a sharecropping system, there is no presumption in a general equilibrium model that sharecropping reduces effort (labor) from what it would have been under a wage system with enforceable contracts; (b) the economy will not be "productively efficient"; there will be differences in output per acre arising because of differences in the efficacy of incentives among different individuals.

The presence of a third factor (capital) considerably complicates the analysis; we are able to show, however, that the capital will be general, be entirely provided either by the landlord or the worker; in the former case, we argue that there is a greater return to closer supervision, and because of the non-convexity associated with supervision, a greater likelihood of using a wage system. This part of the paper closes with some speculative remarks about alternative incentive schemes.

PART I. Risk Sharing with Inelastic Labor Supply

1. Basic Model

The economy consists of two groups of individuals, landlords (who own the land, but do no work) and workers, who own no land.

On each farm, output, Q , is a stochastic constant returns to scale function of land, T , and labor, L :

$$Q = g(\theta)F(L,T) \quad (1.1)$$

where θ is the "state of nature." (1.1) has two strong implications:

- (a) "risk" is independent of inputs, e.g. rainfall affects the crop output the same way, regardless of what techniques are used to generate that output;
- (b) the returns to different farms (laborers) are perfectly correlated.

Much of the literature on the economics of uncertainty has focused on the role of diversification. Risk sharing can, however, be treated as an important economic phenomena quite apart from risk diversification; the particular assumption that we have made is chosen with that in mind.²

Because F is homogeneous of degree one, we have

$$Q/T = g(\theta)F(L/T; 1) \equiv g(\theta)f(l) \quad (1.2)$$

where

$$l = L/T \quad \text{and} \quad E g(\theta) \equiv 1$$

$$\sigma_g^2 \equiv E(g-1)^2 > 0 .$$

We assume moreover that f is an increasing, concave function of l

$$f' > 0 , \quad f'' < 0 . \quad (1.3)$$

Our primary concern in this section is the determination of the equilibrium distribution of income. We limit ourselves to linear distribution systems, i.e. if Y_w is the income of the workers and Y_r the income of the landlords (rentiers) then

$$Y_w = \frac{\alpha Q}{L} + \beta \quad (1.4a)$$

$$Y_r = (1-\alpha)Q - \beta L \quad (1.4b)$$

where

$$0 \leq \alpha \leq 1 .$$

Three special cases should be noted

$\beta = 0$ the pure sharecropping system

$\alpha = 0$ the wage system: landlords hire labor at a fixed fee

$\alpha = 1$ workers rent land at a fixed fee.

There is no reason to expect on a priori grounds that the economy will be in one of these polar cases. Note that if $\beta < 0$, the worker pays the landlord a fixed fee for the use of the land, and the landlord is entitled, in addition, to a given percentage of the crop. $\beta > 0$ is the case where the worker receives a base wage plus "incentive pay."

Our problem then is the competitive determination of α and β , which determine the distribution of income as well as the distribution of risk taking.

The process for the determination of the equilibrium levels of α and β is, in some ways, fundamentally different from that discussed in the usual competitive models. For there, we have a single price, say the wage, for allocating a single factor, labor, and another price, rent, for allocating the other factor, land. Here we have two "prices," "a fixed fee" and "a share" for allocating land and labor, and risk, and they are intertwined in a most complex way.

Moreover, the fixed fee and the share do not, by themselves determine the value of a contract, since if $\alpha > 0$ the worker must know how much land he will be allowed to work, and if $\alpha < 1$, the landlord must know how much "labor" his laborers will supply. In the usual competitive analysis, physical data, such as the amount of land the worker is to work, plays no role in the decision making of the individual; only the price data of the wage he will receive per hour is of relevance.

In the corresponding competitive model without uncertainty there is, in effect, only one equilibrium condition: at the announced wage, all firms hire workers up to the point when the wage, w , is just equal to the value of the marginal product. This generates a demand curve for labor, L^d , and equilibrium requires demand equal supply.

Here, we must have the demand for laborers under each kind of contract (each specification of α and β) equal to the supply of laborers for that contract. Most of our analysis focuses on the contracts which will actually be made. For a contract to be signed, three conditions must be satisfied.

Equilibrium Condition (a). Workers choice among existing contracts. Of the set of contracts available in the economy, there exists none which the individual worker prefers to the one which he has.³

Equilibrium Condition (b). Landlords choice among existing contracts. Of the set of contracts available in the economy, there exists no subset which the landlord prefers to the subset which he employs.⁴

The implicit assumption underlying these two equilibrium conditions is that there is a reasonable amount of "mobility" of agricultural laborers. For traditional agricultural environments, this is probably not a very good assumption. On the other hand, in such societies, variations, for instance, in attitudes towards risk may not be as important, so that essentially a "uniform" contract develops for all workers. In that case, equilibrium conditions (a) and (b) are of no concern. Moreover, in most such societies today workers have a choice between working for a wage and working on their farm, with the resulting "risk" in the income stream. Different individuals allocate their time between these alternative "contracts" differently.

Equilibrium Condition (c). Determination of available contracts. Of the set of utility equivalent contracts--the set of contracts which give the worker the same level of (expected) utility--the contract(s) signed must be the most preferred by the landlord.⁵

We explicitly assume here that the kinds of contracts offered are not determined by tradition, but are determined by economic forces.

The remainder of this section is devoted to the elucidation of these conditions and their implications.

1.1. Choice of Preferred Contract From Given Set of Contracts

All individuals are assumed to be expected utility maximizers. We shall denote the utility function of workers by U_w and of landlords (rentiers) by U_r . Workers are risk averse ($U_w'' < 0$). In Part I we assume that landlords are risk averse ($U_r'' < 0$), and that the supply of labor by a worker is inelastic. Each worker has one "unit" of labor.

Let us first look at the problem from the point of view of the workers. Income in any state of nature from a contract which has share α , fixed payment β per worker, and assigns to the worker an amount of land such that the labor-land ratio is l , is given by

$$\begin{aligned}
 Y_w(\theta) &= \alpha g(\theta) \frac{f(l)}{l} + \beta \\
 &= g(\theta)x + \beta
 \end{aligned}
 \tag{1.5}$$

where

$$x \equiv \frac{\alpha f(l)}{l} . \tag{1.6}$$

(1.5) has the important implication that the income stream can be characterized by two parameters x and β , alone.⁶ It is easy to see that for all θ , Y_w increases with x and β . Thus all individuals prefer, at any given β , more " x " to less " x " and at any given x more " β " to less " β ". Denote the function giving the maximum value of β attainable for any given value of x in the set of available contracts by

$$\beta = \beta(x) . \tag{1.7}$$

Then the worker maximizes

$$\max_{\{x\}} EU_w [Y_w(\theta)] = EU_w [xg(\theta) + \beta(x)]$$

or, if β is differentiable,

$$\frac{EU'_w g}{EU'_w} = -\beta' . \tag{1.8}$$

Diagrammatically, we can see the nature of the solution if we write

$$EU_w [Y_w(\theta)] = V_w(x, \beta) . \tag{1.9}$$

Since U is a concave function of Y , and Y a linear function of x and β , $V(x, \beta)$ is a concave function, the indifference curves of which look as in Figure (1.1a). The set of possible contracts is also drawn in Figure (1.1a). The nature of this set is one of the objects of this study. Note that if the function $\beta(x)$ is convex and if the worker can supply fractions of his labor to different landlords, then he can attain any point on the line defined by $\max_{\{\gamma_i\}} \sum \gamma_i \beta(x_i)$ s.t. $\sum \gamma_i = 1$, $\gamma_i \geq 0$ as in Figure (1.1b).

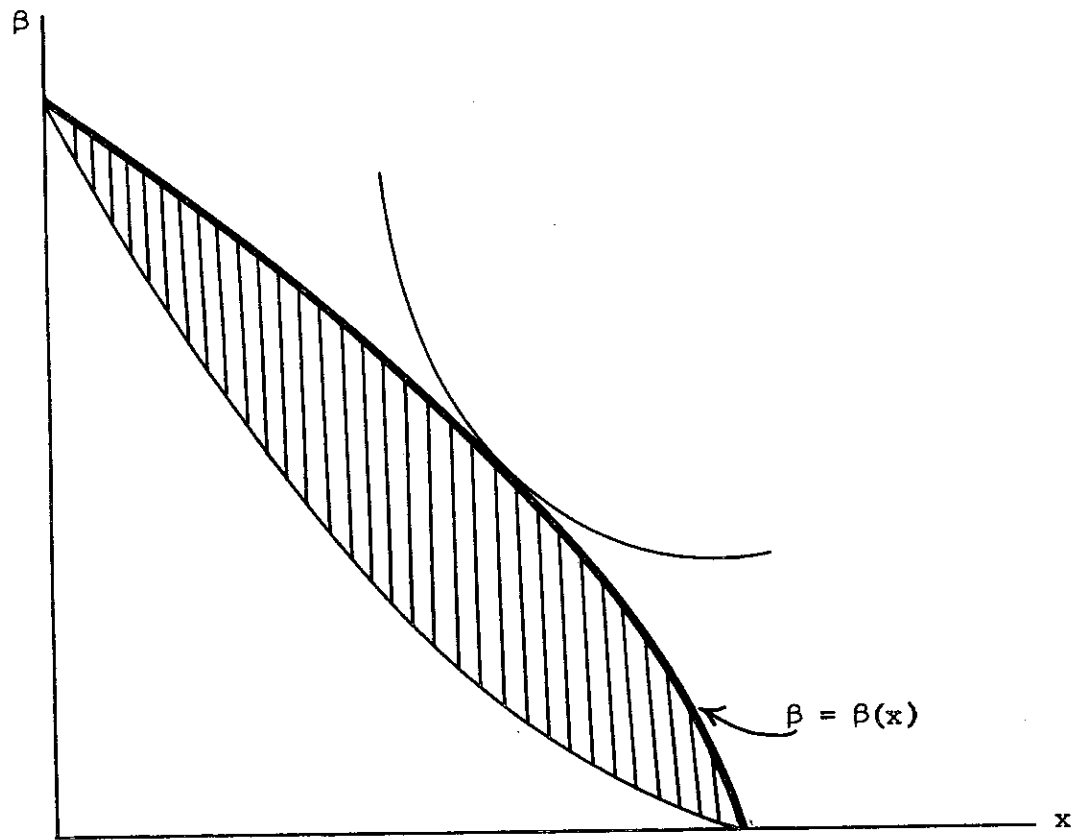


FIGURE 1.1a

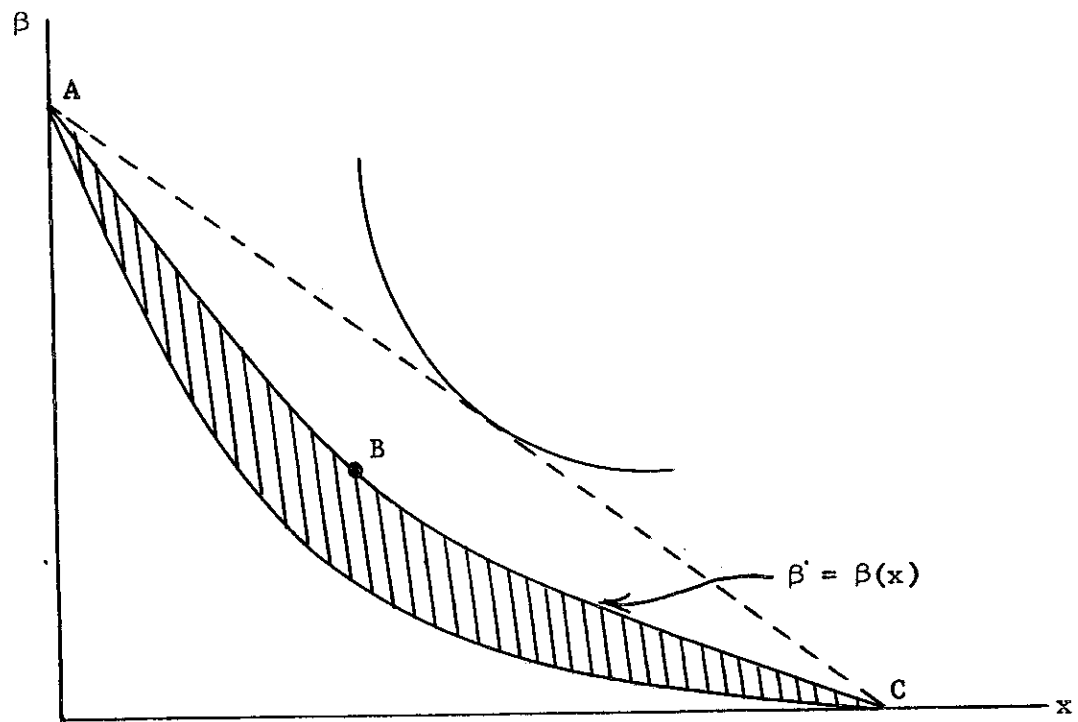


FIGURE 1.1b

Thus, if the worker is allowed to work for more than one landlord, the contracts along the line ABC will never be signed by risk averse workers. Only the contracts A and C will be observed.

A perfectly symmetric analysis applies to the landowner. His income, $Y_r(\theta)$, if he signs a contract with share α , fixed payment β , and assigns l workers to a unit of land is,

$$Y_r(\theta) = [(1-\alpha)g(\theta)f(l) - \beta]T \quad (1.10)$$

where T is the total land ownership of the landlord. This may be rewritten

$$Y_r(\theta) = \left[\left(\frac{f(l)}{l} - x \right) g(\theta) - \beta \right] lT . \quad (1.10')$$

His income depends not only on β and x , but also on l .⁷ The landlord must choose not only a contract, (β, x) , but also the number of such contracts (laborers per acres). Let $\hat{\beta}(x)$ = the minimum value of β associated with any x . He wishes to maximize

$$\max_{\{l, x\}} EU_r[Y_r(\theta)] = EU_r \left[\left(\left(\frac{f(l)}{l} - x \right) g - \hat{\beta}(x) \right) lT \right] . \quad (1.11)$$

Again, if $\hat{\beta}$ is differentiable, he obtains as first order conditions⁸

$$\frac{EU'_r g}{EU'_r} = -\hat{\beta}' \quad (1.12a)$$

$$EU'_r \left(\frac{f - f'(l)}{l} \right) g = EU'_r Y_r(\theta) . \quad (1.12b)$$

It is not so easy to depict diagrammatically the solution to (1.11), for there are three variables involved. But let us assume that we have somehow chosen l . Then we can write

$$EU_r[Y_r(\theta)] = V_r(x, \beta; l)$$

where V_r is now a convex function of x and β . Since utility decreases with x and β , the only contracts which will be signed are those which, at any value of x , minimize β . Since workers sign only contracts which, at any value of x , maximize β , the set of contracts actually signed must lie along a line, i.e. $\beta(x) \equiv \hat{\beta}(x)$. Moreover, by exactly the same argument as before, if landlords can mix the kinds of contracts they sign, if $\beta(x)$ is a convex function, such as we have depicted in Figure (1.2b), they can attain any point on the line AC. Hence the only contracts they will sign are A and C.

Proposition I. The set of contracts actually observed must lie along a line defined by $\beta = \beta(x)$. If labor and landlords can both mix contracts, the set of contracts that are observed must lie along a straight line, i.e.

$$\beta = -ax + b . \quad (1.13)$$

If workers can mix contracts but landlords cannot, β is a concave function of x ; if landlords mix contracts but workers do not, β is a convex function of x .

Proposition I has the following immediate

Corollary. There is a linear relationship in the contracts signed between mean and standard deviation (of workers' income).

Defining

$$\mu_w \equiv EY_w = x + \beta \quad (1.14)$$

$$\sigma_{Y_w} = x\sigma_g ,$$

(1.13) can be rewritten

$$\mu_w = p\sigma_{Y_w} + b \quad (1.15)$$

where

$$p = \frac{1-a}{\sigma_g} .$$

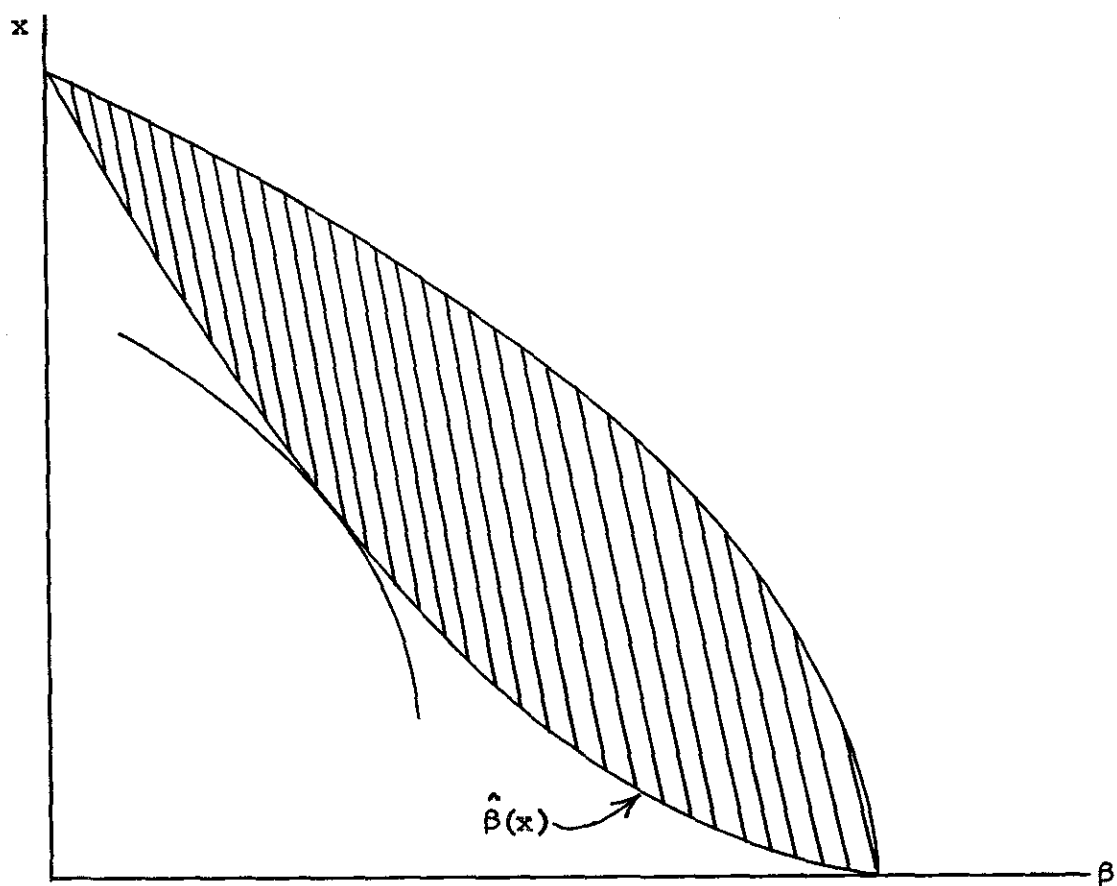


FIGURE 1.2a

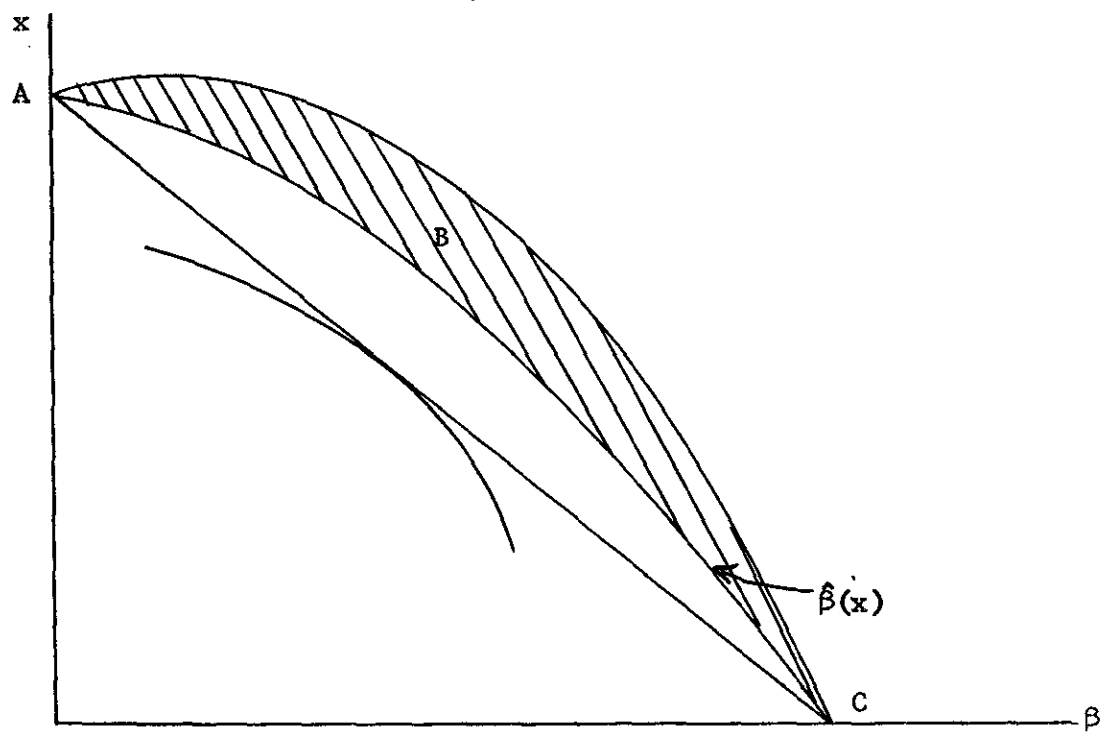


FIGURE 1.2b

Note that nowhere in the analysis have we made the usual assumptions required for mean variance analysis to be applicable. p is like a price of "risk" and indeed we shall show later that if workers and landlords treat it as such, the economy will possess the usual optimality properties associated with the price system.

The assumption that landlords can sign different kinds of contracts with different laborers seems a reasonable one; the other assumption required for the validity of these results, that workers can work half their time with one landlord, half with another, is somewhat more suspect, particularly in more traditional agricultural environments. The difficulty is that there is nothing in the assumptions made so far which would seem to warrant a requirement that a worker work with only one landlord. (That is, under the assumptions of constant returns to scale, there is no difference between a worker selling half his time to a landlord to work on a half an acre, or selling all his time to a landlord to work on a whole acre.) The fixed costs of moving from one landlord to another, the difficulty of making sure that the laborer is really spending half his time with each of the two landlords, the suspicion that the worker will allocate more of his "effort" at certain crucial times to the contract with the greater incentive payoffs (greater x)⁹--all important considerations which we have omitted from our analysis--provide some explanation of why workers work only with one landlord.

1.2. Determination of Set of Available Contracts: Identical Individuals

We now turn to an examination of equilibrium condition (c), for a determination of the set of contracts that will be available in the economy.¹⁰ The problem is seen most clearly in the case of the economy in which all landlords are identical and in which all workers are identical. In equilibrium, there will be only one contract observed. How are the competitive values of α and β determined simultaneously?

To answer this question, we introduce the concept of "utility equivalent contracts"--contracts which yield the same level of expected utility,

U_w^j , to the j^{th} worker:

$$EU^j \equiv W_w^j = EU_w^j \left[\alpha \frac{f(\ell)}{\ell} g(\theta) + \beta \right] = EU_w^j [xg + \beta] . \quad (1.16)$$

For a given value of W_w we can solve (1.15) for β as a function of x

$$\beta = h^j(x; W_w) , \quad (1.17)$$

with¹¹

$$- \frac{\partial h}{\partial x} = \frac{EU'_w g}{EU'_w} \leq 1 \quad \text{as } U''_w \leq 0 \quad (1.17a)$$

$$- \frac{\partial^2 h}{\partial x^2} = \frac{EU'_w EU''_w g^2 - (EU'_w g)^2}{(EU'_w)^2} \geq 0 \quad (\text{by Schwartz's inequality}) \quad (1.17b)$$

and

$$\frac{\partial h}{\partial W_w} = \frac{1}{EU'_w} > 0 . \quad (1.17c)$$

The difference between h^j and the function $\beta(x)$ introduced earlier should be clear. The latter is simply a description of the set of contracts available on the market; the former is a kind of "offer curve" of the individual. Indeed (1.17) is just an analytic representation of the (x, β) indifference curves given in Figure (1.1). While we argued that under certain conditions, the former had to be linear, the latter is always a concave function. The offer curve will, of course, differ from individual to individual and for each individual, it will depend on his level of utility.

Assume that the landlord knew this function, i.e. individuals trade-offs between "x" and fixed payments. Then, he would choose that particular contract which maximized his expected utility, i.e. choosing our units so the representative landlord has one unit of land, the landlord

$$\begin{aligned} \text{maximizes } & EU_r [(1-\alpha)f(\ell)g - \beta\ell] \quad (1.18) \\ & = EU_r \left[\left(\left(\frac{f(\ell)}{\ell} - x \right) g - \beta \right) \ell \right] \end{aligned}$$

subject to the constraint that he be able to obtain workers. If W is the level of utility that the representative worker can obtain elsewhere, he can obtain workers provided he offers them a contract yielding a level

of expected utility at least equal to W .¹² Thus, we replace the simple price taking assumption of the usual competitive model by a "utility taking" assumption; the landlord maximizes (1.18) subject to (1.17) where he takes W_w as given. The landlord makes two decisions--a choice of contract (x, β) and a "density" decision, l .

The first order conditions are

$$\frac{dEU_r}{dx} = -EU'_r \left(g + \frac{dh}{dx} \right) l = 0 \quad (1.19a)$$

$$\frac{dEU_r}{dl} = EU'_r ((f' - x)g - \beta) = 0. \quad (1.19b)$$

These can be rewritten as (using (1.17a) and (1.15))

$$f' = -1 / \left(\frac{d \ln \beta}{dx} \right) \bar{U} + \frac{\alpha f}{l} = \bar{Y}_w - h \left(1 + \frac{1}{h'} \right) \quad (1.20a)$$

and

$$\frac{EU'_r g}{EU'_r} = \frac{EU'_w g}{EU'_w}. \quad (1.20b)$$

A Mean-Variance Interpretation. The interpretation of the first order conditions may be somewhat clearer in terms of mean-variance analysis. The mean and standard deviation of the landlord's income are given by

$$\begin{aligned} \bar{Y}_r &\equiv (1-\alpha)f - lh \\ \sigma_{Y_r} &\equiv ((1-\alpha)f)\sigma_g, \end{aligned} \quad (1.21)$$

and (using (1.17a) and (1.15))

$$\begin{aligned} \frac{\partial \bar{Y}_r}{\partial \alpha} &= -f(1+h') \leq 0 & \frac{\partial \bar{Y}_r}{\partial l} &= f' - \bar{Y}_w + \frac{\alpha}{l} (1+h')(f - f'l) \\ \frac{\partial \sigma_{Y_r}}{\partial \alpha} &= -f\sigma_g < 0 & \frac{\partial \sigma_{Y_r}}{\partial l} &= (1-\alpha)f'\sigma_g > 0. \end{aligned}$$

If workers are risk neutral, $1+h' = 0$, hence increasing α leaves the mean unchanged but reduces the variance. Thus, α is set at unity, and l is chosen to maximize \bar{Y}_r (since σ_{Y_r} is identically zero), i.e.

$f' = \bar{Y}_w$, workers receive on average their mean marginal product. Similarly, if landlords are risk neutral, they choose α to maximize \bar{Y}_r , so $\alpha = 0$, and again, l is chosen so that $f' = \bar{Y}_w$. More generally, however, landlords will stop short of maximizing expected output, because as expected output increases, so does standard deviation. If α is given, the choice of l is depicted in Figure (1.4). Increasing l increases σ_{Y_r} , and, up to a point, increases \bar{Y}_r as well.

If l is given, the mean and standard deviation of total output is given: The standard deviation of the workers' income plus the standard deviation of the capitalists' income equals the total standard deviation,¹³ and the mean income of the workers plus the mean income of the landlords equals the total mean income; thus we can represent the set of possible allocations by means of a standard Edgeworth Box. Our only question is how is mean and standard deviation divided between the two groups. To the landlord, the utility level of the workers is given, and so he faces the following possibilities: he can give his workers a wage of $w = h(0;W)$ and absorb all the risk himself, or by increasing the share, he can increase the mean he gives the workers but decrease the standard deviation along the indifference curve WW .

Obviously, the landlord choose a point where his indifference curve is tangent to that of the workers. If this point of tangency occurs along the diagonal, it means that there is a pure sharecropping system, i.e. mean and standard deviation are shared proportionately; if we have a corner solution along the lower horizontal axis, it means that we have a pure wage system, and if along the upper horizontal axis, it means we have a pure rental system.

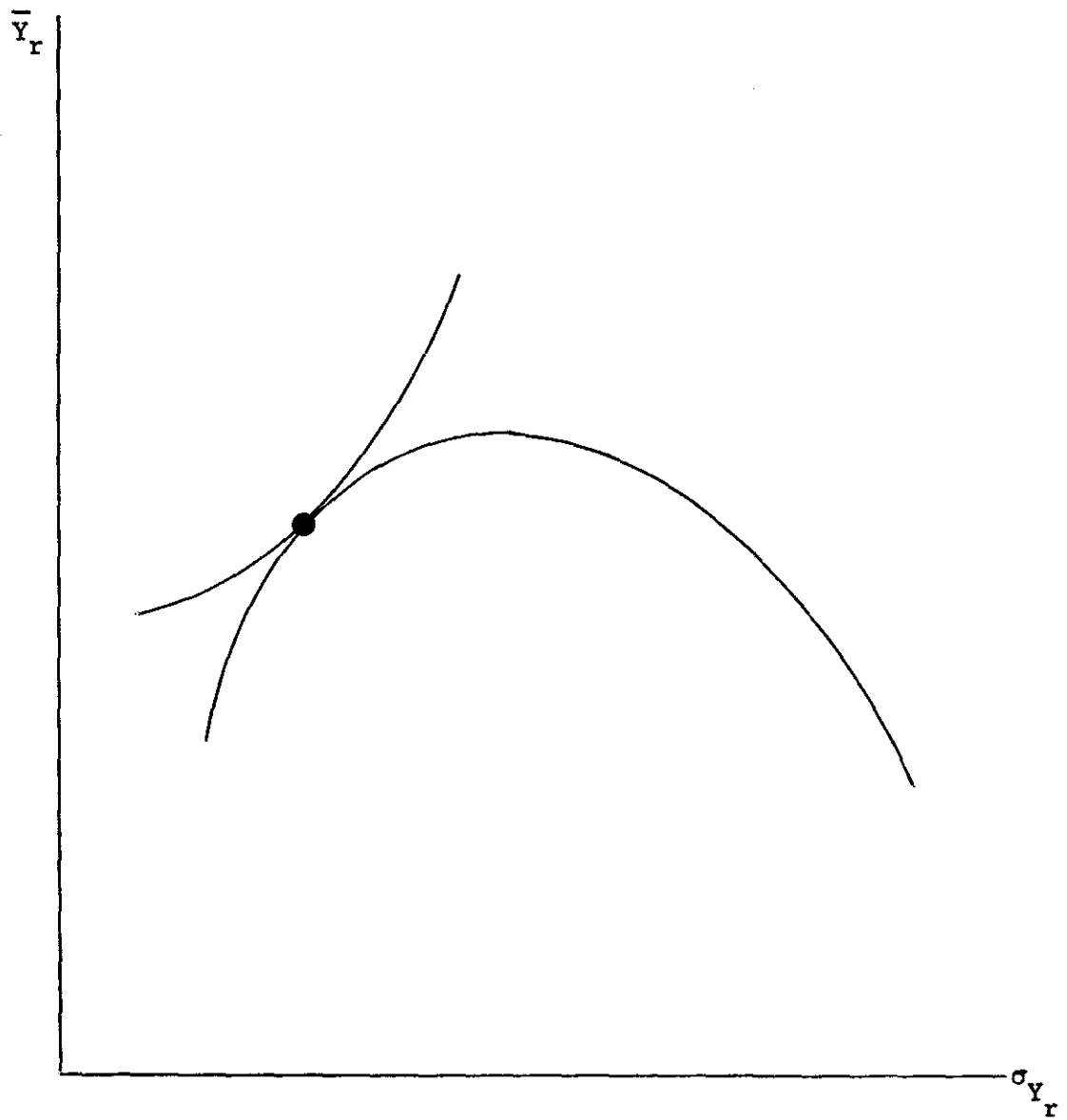


FIGURE 1.3

Choice of l given α

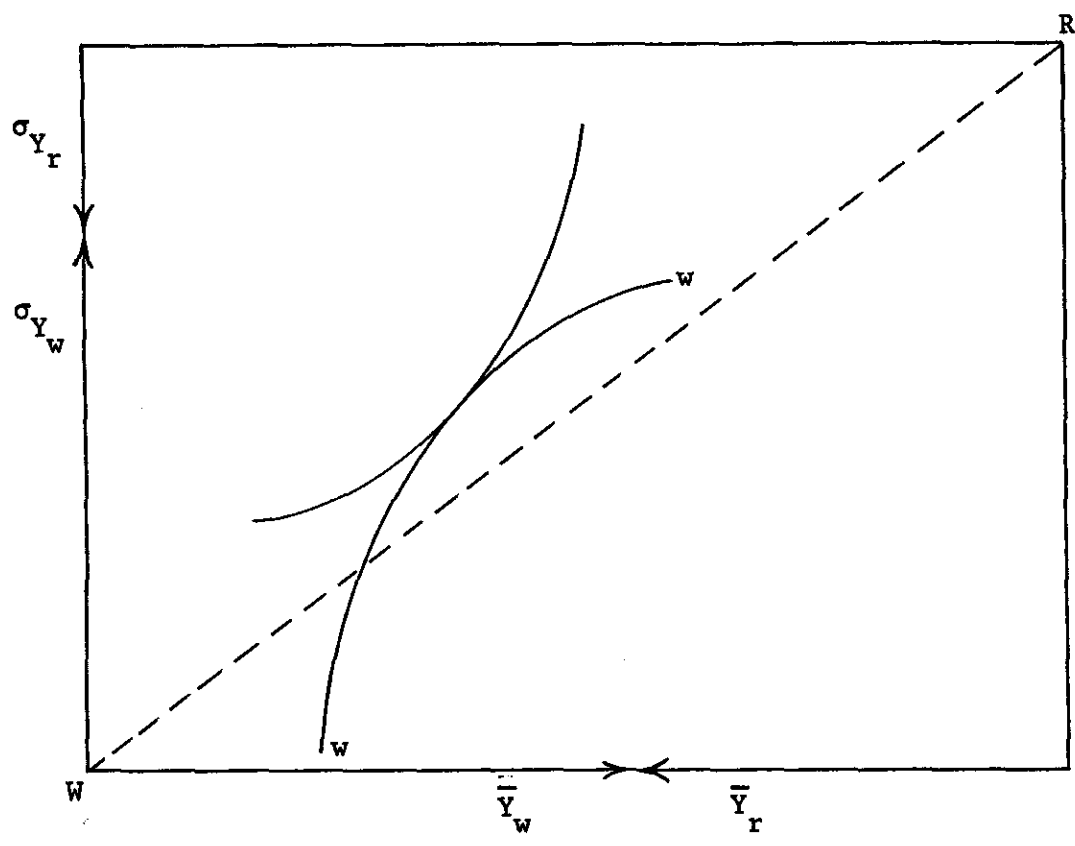


FIGURE 1.4a. $\beta < 0$

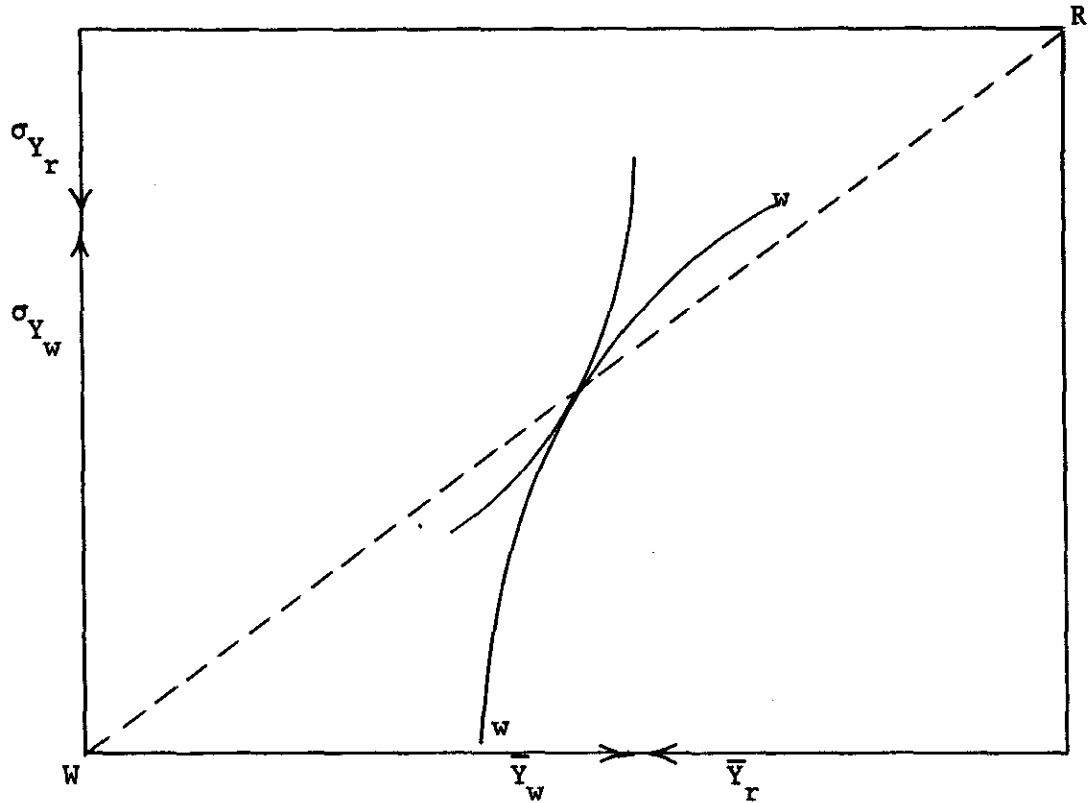


FIGURE 1.4b. Pure Sharecropping
Choice of $\{\alpha, \beta\}$ (given l)

Further Implications of First Order Conditions. To see in more detail the nature of the equilibrium, first we note that if $U_w'' < 0$, $U_r'' < 0$, $EU_r'g/EU_r' \leq 1$ as $\alpha \leq 1$, and $EU_w'g/EU_w' \leq 1$ as $\alpha \geq 0$, so that if both groups are risk averse, we will never have a pure wage or rentals system. We have thus established

Proposition 2. A pure wage or pure rentals system will occur if and only if workers or landlords are risk neutral. The risk neutral group absorbs all the risk, and the whole economy acts as if there were no uncertainty with factors on average receiving their mean marginal products.

The existence of pure rental and wage systems requires introducing other factors not yet taken into account in the model.

Secondly, from (1.17a), we have $-h' < 1$ unless¹⁴ $U_w'' = 0$ or $\alpha = 0$ or $g(\theta)$ identically 1. Hence from (1.20a) we obtain

Proposition 3. If both workers and landlords are risk averse, then if workers receive a share plus fixed fee contract, they are hired to the point where their mean marginal product is less than their average income, and by symmetry if landlords receive a share plus a fixed fee, then laborers are hired to a point where their mean marginal product is greater than their average income. The amount $-h(1 + 1/h')$ is like a "risk premium."

The difficult question is the determination of whether $\beta > 0$, i.e. whether laborers take more or less than their proportionate share of the risk. The answer clearly depends on the degrees of risk aversion and incomes of the two groups; there are no general theorems to be had. What we can do, however, is to ascertain, on the basis of reasonable values of the "parameters" the likely sign of β , and to determine how β changes with certain changes in the economy.

We assume both groups have constant elasticity utility functions,

$$U_w = \frac{Y}{\eta_w^{-\eta_w}}, \quad U_r = \frac{Y}{\eta_r^{-\eta_r}}.$$

We can establish

$$\beta \begin{matrix} > \\ < \end{matrix} 0 \text{ as } \eta_w \begin{matrix} \geq \\ < \end{matrix} \eta_r .$$

Proposition 4. The group which is relatively risk averse assumes less than its proportion of the risk. The proof is presented in the appendix.

Determination of α and β for Small Variances. Explicit expressions for the equilibrium values of the relevant variables can be derived if we assume the variance of g is small. We can then make the following approximations

$$1 - \frac{EU'_w g}{EU'_w} \approx A_w x \sigma_g^2 = \eta_w \frac{x}{Y_w} \sigma_g^2$$

$$1 - \frac{EU'_r g}{EU'_r} \approx A_r (f - lx) \sigma_g^2 = \eta_r \frac{(f - lx)}{Y_r} \sigma_g^2$$

where $A = -U''/U'$, $\eta = (U''/U')Y$ are the measures of absolute and relative risk aversion. Thus from our equilibrium conditions (1.20b) we obtain (after some manipulation)

$$\beta = \frac{\frac{f}{l} \left(\frac{1}{\eta_r} - \frac{1}{\eta_w} \right)}{\frac{1}{\alpha \eta_w} + \frac{1}{(1-\alpha) \eta_r}} \quad (1.22)$$

which may be alternatively written as

$$\alpha = \frac{A_r}{\frac{A_w}{l} + A_r} = \frac{A_r Y_r}{A_w \frac{Y_w Y_r}{l Y_w} + A_r Y_r} = \frac{\eta_r S_w}{\eta_w S_r + S_w \eta_r} = \frac{\eta_r / S_r}{\frac{\eta_w}{S_w} + \frac{\eta_r}{S_r}} \quad (1.23)$$

where $S_r =$ landlord's share of (mean) national income and $S_w =$ worker's share of (mean) national income. From (1.20a) we obtain

$$(\gamma - S_w) = \frac{(\gamma \eta_w S_r - (1-\gamma) \eta_r S_w) \eta_w \eta_r \sigma_g^2}{(\eta_w S_r + \eta_r S_w)^2} \quad (1.24)$$

(where $\gamma = f'l/f$) from which it is clear that shares approach "average marginal productivity shares" as $\sigma_g^2 \rightarrow 0$ or as $\eta_w \rightarrow \eta_r$. We can thus approximate

$$\gamma - s_w \approx \frac{\gamma(1-\gamma)\sigma_g^2 \left(\frac{1}{\eta_r} - \frac{1}{\eta_w} \right)}{\left(\frac{\gamma}{\eta_w} + \frac{1-\gamma}{\eta_r} \right)^2}. \quad (1.24')$$

(1.22) and (1.24) have one further important implication: although when $\sigma_g^2 = 0$, α is indeterminate (all contracts are "equivalent"), as $\sigma_g^2 \rightarrow 0$,

$$\alpha \rightarrow \frac{\eta_r/1-\gamma}{\frac{\eta_w}{\gamma} + \frac{\eta_r}{1-\gamma}} \equiv \alpha^* \quad (1.25a)$$

and

$$\frac{\beta}{f/l} \rightarrow \gamma - \alpha^* = \frac{\gamma(1-\gamma)(\eta_w - \eta_r)}{\eta_w(1-\gamma) + \eta_r\gamma} \equiv \frac{\beta^*}{f/l}. \quad (1.25b)$$

(1.25) also makes clear that we approach a pure wage system ($\alpha = 0$) if η_r is small (relative to η_w) and a pure rental system ($\alpha = 1$) as η_w is small (relative to η_r).

We wish to solve now for α and β explicitly in terms of the parameters of the problem:

$$\alpha = \alpha^* - \frac{\gamma(1-\gamma)}{\eta_w\eta_r} \frac{\sigma_g^2 \left(\frac{1}{\eta_r} - \frac{1}{\eta_w} \right)}{\left(\frac{\gamma}{\eta_w} + \frac{1-\gamma}{\eta_r} \right)^2} \quad (1.26)$$

$$\frac{\beta}{f/l} = \gamma - \alpha^* - \frac{\gamma(1-\gamma) \left(\frac{1}{\eta_r} - \frac{1}{\eta_w} \right)}{\left(\frac{\gamma}{\eta_w} + \frac{1-\gamma}{\eta_r} \right)^2} \left(1 - \frac{\eta_w\eta_r}{(\eta_w(1-\gamma) + \gamma\eta_r)^2} \right) \sigma_g^2.$$

Thus, if $\eta_w = 2$, $\eta_r = 1/2$, $\gamma = 2/3$, and $\sigma_g^2 = 1/2$, $\alpha^* = 1/3$, $s_w = 1/2$, $\alpha = 1/6$.

Comparative Statics. We now analyze the effect of changes in risk, in labor capital ratios, and on technical progress on the equilibrium of the system. In addition to the assumptions made in the previous analysis of small variance, we now assume constant relative risk aversion. We focus our remarks on the case where $\eta_w > \eta_r$ (so $\beta > 0$); the other case follows symmetrically.

(a) Changes in Risk (σ_g^2)

From (1.24)-(1.26) it is clear that

Proposition 5a. An increase in risk lowers (raises) α , lowers (raises) S_w and may raise or lower β if $\beta > (<) 0$. β is lowered (raised) when $\gamma \geq 1/2$ and $\beta > (<) 0$.

(b) Effects of Changes in the Labor-Land Ratio

For simplicity, we focus on the effects on (α^*, β^*) , the limiting value of the distribution parameters. Straightforward calculations establish

$$\frac{d\alpha^*}{d\ell} = \frac{\eta_w \eta_r \gamma^i}{(\eta_w(1-\gamma) + \eta_r \gamma)^2} \begin{matrix} \geq \\ \leq \end{matrix} 0 \text{ as } m \begin{matrix} \geq \\ < \end{matrix} 1$$

where $m = \text{elasticity of substitution} = -f'(f - \ell f')/f \ell f''$.

The percentage of worker's income received as fixed payments β/\bar{Y}_w , is given by

$$\frac{\bar{Y}_w}{\beta} \approx 1 + \frac{\eta_r}{(1-\gamma)(\eta_w - \eta_r)} = \frac{(1-\gamma)\eta_w + \gamma\eta_r}{(1-\gamma)(\eta_w - \eta_r)}$$

so

$$\frac{d \frac{\bar{Y}_w}{\beta}}{d\ell} = - \frac{(\eta_w - \eta_r)\eta_r \gamma^i}{(1-\gamma)^2} \begin{matrix} \geq \\ < \end{matrix} 0 \text{ as } m \begin{matrix} \leq \\ > \end{matrix} 1.$$

The actual change in β is more complicated, because when l increases, \bar{Y}_w falls, so even if β/\bar{Y}_w increases, β may actually fall:

$$\begin{aligned} \frac{d\beta}{dl} &\sim \gamma^2 \eta_r - (1-\gamma)^2 \eta_w - m\gamma \eta_r \\ &\sim \frac{-(1-\gamma)}{m} - (1 - 1/m) \frac{\gamma \eta_r}{\gamma \eta_r + (1-\gamma) \eta_w} . \end{aligned}$$

Note that $d\beta/dl < 0$ if $m \geq 1$; but that if m is sufficiently small, even though total mean wage payments are decreasing, the fixed part is increasing. Alternatively, if $\gamma \leq 1/2$ (and $\eta_w > \eta_r$), then regardless of the value of m , $d\beta/dl < 0$. We thus have

Proposition 5b. If the variance is small, an increase in the labor-land ratio increases (decreases) α and increases (decreases) the proportion of workers' income received in the form of fixed payments, and increases (decreases) the share of (mean) national income received by workers if the elasticity of substitution is greater (less) than unity.

That is, as the workers become relatively better (worse) off, even though the degree of relative risk aversion is constant, the workers absorb proportionately more (less) of the risk although at the same time the proportion of their income received in fixed payments also increases (decreases).

(c) Technical Change

Consider the more general production function

$$Q = F(\lambda(\tau)L, \mu(\tau)T)$$

where λ is the rate of laborer augmentation and μ is the rate of land augmentation. Then

$$\frac{d\alpha^*}{d\tau} > 0 \quad \text{as} \quad (m-1) \left(\frac{\lambda'}{\lambda} - \frac{\mu'}{\mu} \right) \geq 0$$

$$\frac{1}{\beta^*} \frac{d\beta^*}{d\tau} = \frac{\lambda'}{\lambda} \quad \text{for a Hicks neutral change (when } \lambda'/\lambda = \mu'/\mu \text{)}$$

$$= \frac{\lambda'}{\lambda} + \frac{d\beta^*}{\beta dl} \quad \text{for a Harrod neutral change}$$

$$\sim - \frac{d\beta^*}{dl} \quad \text{for a pure land augmenting invention.}$$

Proposition 5c. α^* increases or decreases as technical change is land or labor saving in the Hicksian sense. β increases for a Hicks neutral change, but may increase or decrease in other cases.

1.2. Diverse Individuals: Both Landlords and Workers Mix Contracts

Essentially all the results of the preceding sub-section can be extended in a straightforward manner to the case where there are diverse individuals if both workers and landlords can mix contracts.

We argued in Section 1.1 that if both landlords and workers can "mix" contracts, the set of contracts (x, β) must lie along the straight line defined by (1.13). Although not all points on the line are available in the form of a single contract, by mixing contracts, the individual can get any point¹⁵ along the line.

Thus the j^{th} landlord (who owns T^j units of land)

$$\text{maximizes } EU_r^j [(f - xl)g - bl + axl]T^j \\ \{x, l\}$$

so

$$EU_r^{j'} (-lg + al)T^j = 0 \quad (1.27)$$

$$EU_r^{j'} [(f' - x)g - \beta]T^j = 0$$

or

$$\frac{EU_r^{j'} g}{EU_r^{j'}} = a = \frac{\beta}{f' - x} \text{ for all } j \quad (1.28)$$

or

$$f' = b/a \text{ for all } j. \quad (1.29)$$

We have thus established

Proposition 6. The economy is productively efficient, i.e. all landlords use the same land/labor ratio.

From (1.8), (1.13), and (1.23) we obtain

$$\frac{EU_w^{j'} g}{EU_w^{j'}} = a = \frac{EU_r^{j'} g}{EU_r^{j'}} \quad (1.30a)$$

$$f' = \bar{Y}_w - \beta \left(1 - \frac{EU_w^{j'} g}{EU_w^{j'}} \right) . \quad (1.30b)$$

Equations (1.30) are identical to equations (1.20) and it is thus apparent that Propositions 2 and 3 apply here without modification.

The determination of the equilibrium values of b and a can be shown diagrammatically in Figure 1.5, using the Edgeworth-Bowley Box introduced earlier. Since in equilibrium, the labor/land ratio must be the same on every farm, it must be the same as the aggregate labor land ratio. This determines the mean and standard deviation of income. We assume there are two groups of equal size of laborers and one kind of landlord. Thus the point chosen by the landlord (E) must lie halfway between the points chosen by the two groups of workers (E' and E'').

A higher value of a would¹⁶ increase the landlord's demand for "risky" contracts, but decreases the supply of risky contracts by both groups of workers as illustrated in Figure 1.5. Hence, it is not an equilibrium.

If there are only a limited number of contracts (say because there are only two kinds of workers), differences in attitudes towards risk by landlords are reflected not in the contract they sign with any particular individual, but in the mix of individuals they have on the farm. This is illustrated in Figure 1.6. The large landlord can "mix" workers with different risk attitudes. Although under our assumptions, there is no risk diversification from mixing, since the returns to each plot of land (each farmer) are perfectly correlated, this "mixing" allows, in effect, workers with different risk attitudes to "trade" risks with one another through the intermediation of the landlord.

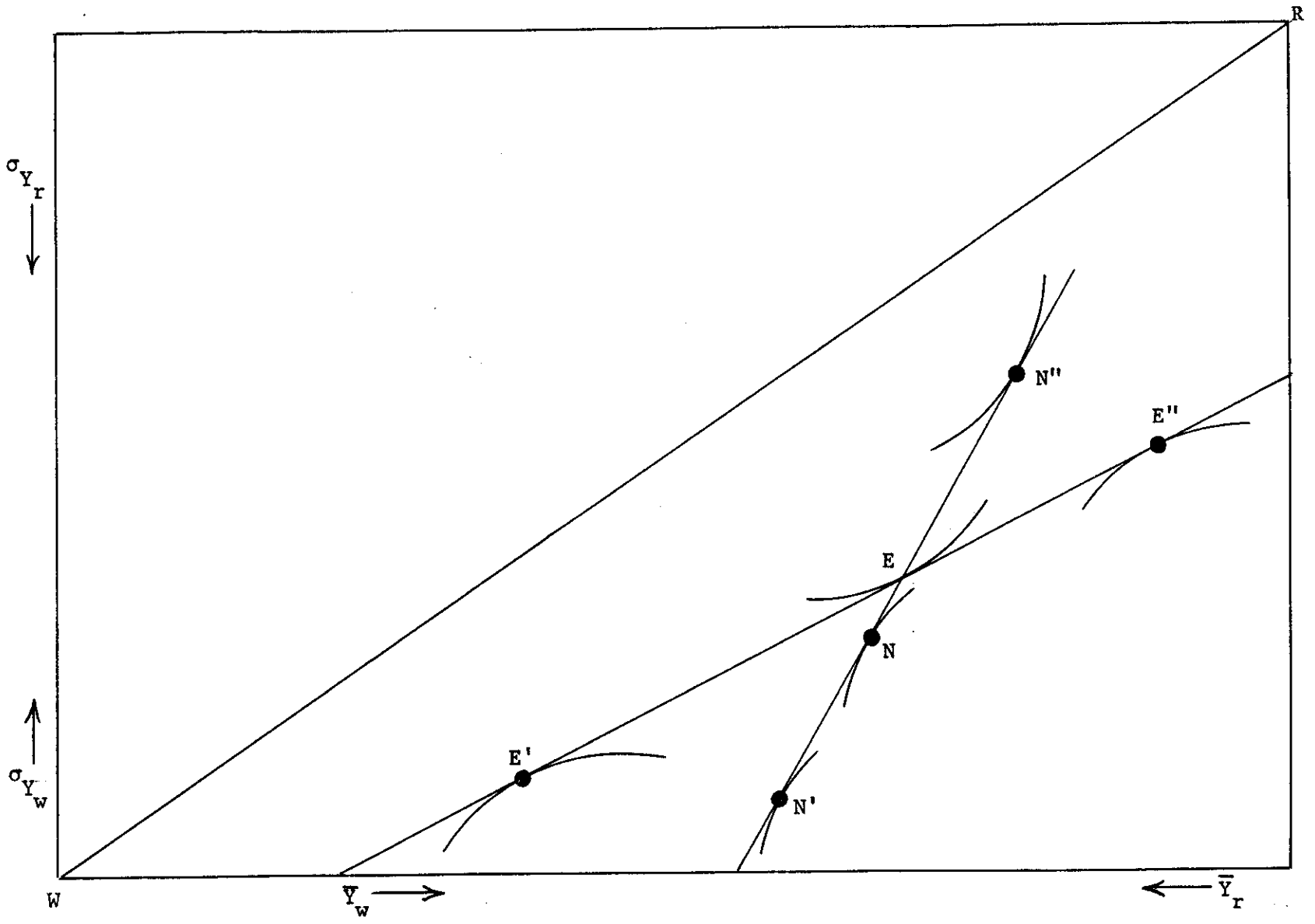


FIGURE 1.5

1.3. Diverse Individuals: Workers Cannot Mix Contracts

The more interesting--and perhaps realistic--case is where workers cannot mix contracts. Then, as we argued in Section 1, the set of contracts available to the landlord could be described by

$$\beta = \beta(x) \text{ with } \beta' < 0, \beta'' \geq 0.$$

The first order conditions for the landlords maximization can then be written as

$$\frac{EU^j_r g}{EU^j_l} = -\beta' = \frac{\beta}{f' - x}.$$

Thus

$$\frac{d\ell}{dx} = \frac{\beta\beta''}{\beta'^2 f''} < 0 \text{ as } \beta > 0$$

$$\frac{d\ell}{d\alpha} = - \frac{\frac{f}{l} \frac{d\ell}{dx}}{\frac{d\ell}{dx} \frac{x}{l} (1-\gamma) + 1} \geq 0 \text{ if } \beta \leq 0,$$

where $\gamma = f'l/f =$ share of labor in the absence of uncertainty. If $\beta > 0$, $d\ell/d\alpha$ may be of either sign. Since less risk averse landlords choose contracts with a high β , and a lower x , we have established:

Proposition 7. The presence of even a perfect rentals market for land--in the absence of a perfect risk market--will not necessarily lead to productive efficiency for the economy. The more risk averse landlords who are less risk averse than their workers (so $\beta > 0$) have fewer workers per acre. The more risk averse landlords who are more risk averse than their workers (so $\beta < 0$) have more workers per acre, and their workers receive a larger share α . Note, however, that all landlords signing a particular contract $\{\beta, x\}$, employ the same land/labor ratio.¹⁷

Proposition 7 may provide part of the explanation of the phenomena, noted in a number of L.D.C.'s, that there are sizeable variations in output per acre on different farms,¹⁸ and if, as we might expect, risk aversion

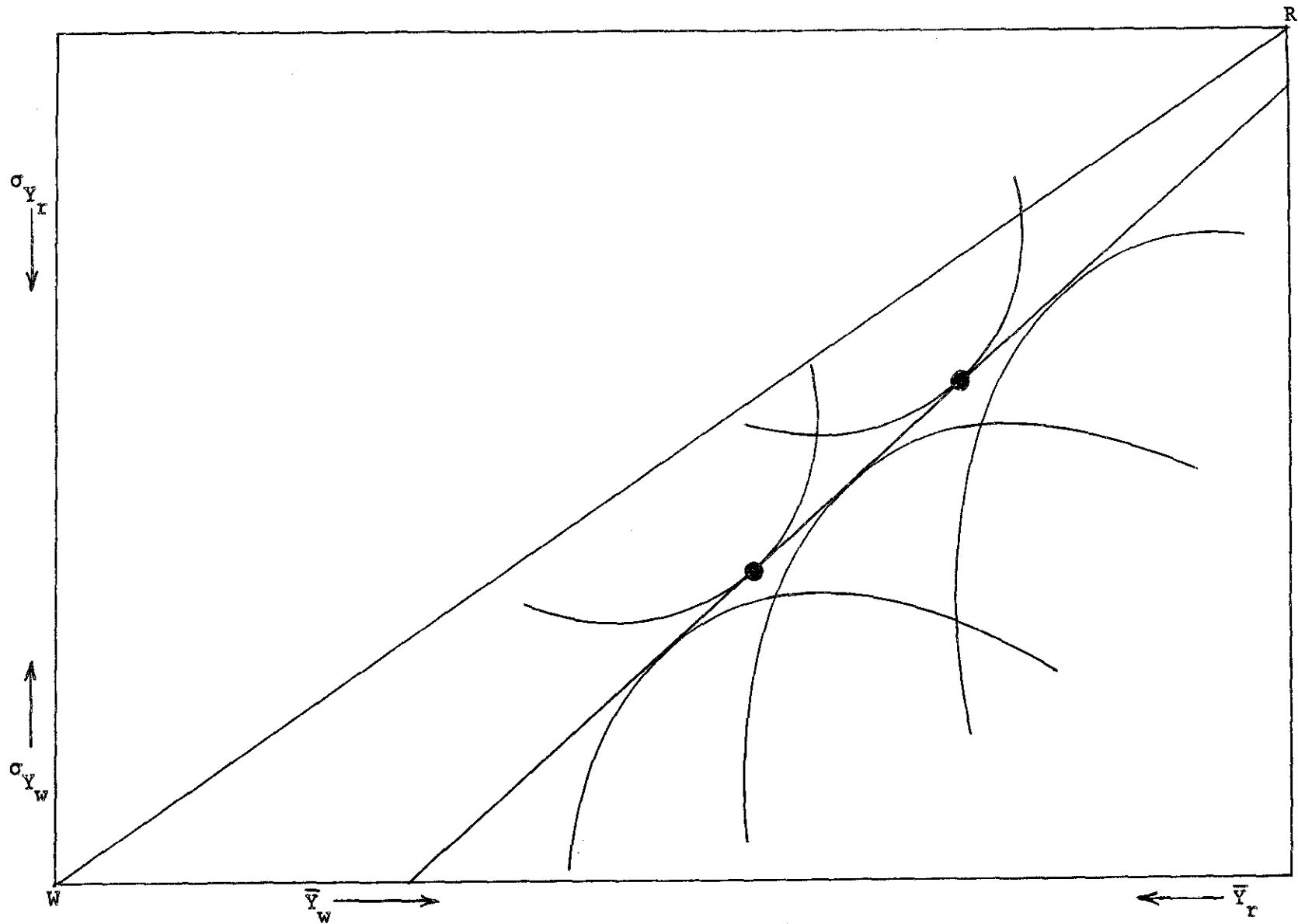


FIGURE 1.6

is systematically related to the wealth of the landlord (the size of his farm), we would expect output per acre to vary systematically with the size of farm.

There is, in these circumstances, an incentive for the creation of a "stock market" for farms. If there were a "stock market," in which different landlords could buy shares in each others farms in equilibrium the value of an acre would have to be the same regardless of the contract signed; hence the price of a "share" is the same regardless of the farm. We wish to know, will the introduction of this stock market result in production efficiency.

We are primarily interested in this question not for its implications for agricultural policy--with the exception of a few large American farms, share in farms are not generally traded, probably because of the high "costs of information" which we have not taken into account here--but for its possible relevance to the "shares market" in modern capitalist economies. There has been some controversy over whether a stock market (without the full set of Arrow-Debreu securities) will in general lead to the correct investment decisions being made. In the particular model presented here, we shall now establish that,

Proposition 8. The economy will be productively efficient with a stock market--even though workers cannot sell shares in their own "wage" income.

To see this, we must rewrite the income equations for landlords: Let w^j be the j^{th} farmer's ownership share on the i^{th} farm. For simplicity, we assume all farms are of the same size. Then

$$Y_r^j = \sum_i w_i^j (f(l_i)(1 - \alpha_i)g - \beta_i l_i), \quad \sum_i w_i^j = 1$$

where $\{l_i, \alpha_i, \beta_i\}$ is the "contract" signed by the i^{th} farm with its laborers.¹⁹ Hence, expected utility maximization results in

$$\frac{EU_r^j}{EU_r^i} = \frac{\beta_i l_i}{(1 - \alpha_i) f(l_i)} \quad \text{all } j \text{ and } i \text{ (for which } 0 < w_i^j < 1) \quad (1.31)$$

If $\omega_1^j = 0$,

$$EU_r^j [(1 - \alpha_i)f(l_i)g - \beta_i l_i] \leq 0 \quad (1.31a)$$

and if $\omega_1^j = 1$

$$EU_r^j [(1 - \alpha_i)f(l_i)g - \beta_i l_i] \geq 0. \quad (1.31b)$$

Hence, it is clear for an "interior solution"

$$\beta = - \left(x - \frac{f(l)}{l} \right) \left(\frac{EU_r^j g}{EU_r^j} \right).$$

From (1.31) we can establish that $EU_r^j g / EU_r^j$ must be the same regardless of j . If two individuals held shares in the same farm, this would follow immediately from (1.31). On the other hand, assume, for instance, that no individual held shares in both farm 1 and 2. Label an individual owning shares in 1 with superscript 1, and similarly for farm 2. Then

$$\frac{\beta_2 l_2}{(1 - \alpha_2)f(l_2)} \geq \frac{EU_r^{11} g}{EU_r^{11}} \geq \frac{\beta_1 l_1}{(1 - \alpha_1)f(l_1)}$$

and

$$\frac{\beta_1 l_1}{(1 - \alpha_1)f(l_1)} \geq \frac{EU_r^{12} g}{EU_r^{12}} \geq \frac{\beta_2 l_2}{(1 - \alpha_2)f(l_2)}$$

from which it immediately follows that

$$\frac{EU_r^j g}{EU_r^j} = \frac{\beta_i l_i}{(1 - \alpha_i)f(l_i)} \quad \text{all } i \text{ and } j.$$

It is easy to show then that the only contracts signed will entail

$$-\beta^k = \frac{EU_w^k g}{EU_w^k} = \frac{EU_r^j g}{EU_r^j} \quad \text{all } j, k$$

i.e. β is a linear function of x --and hence as before the economy will be efficient.²⁰

Although we have argued that in the absence of a stock market, the economy need not be productively efficient, it can be shown that there exists a competitive equilibrium which is productively efficient. Consider the stock market equilibrium. Recall that

$$Y_r^j = \sum_i^j [(f_i - x_i)g - \beta_i l] .$$

But the same equilibrium could have been obtained if the farmer took his own plot of land and divided it up in proportions given by $\{w_i^j\}$ for each of which he hired laborers with the appropriate contract.^{20a} (This follows from our assumption of constant returns to scale; if there were any indivisibilities, this would not be possible.)

I had originally thought that when the economy was productively efficient, there would be incentives for "mergers," for a new farm to "integrate" the farms which previously had been owned by farmers with different risk attitudes. This does not in fact turn out to be the case-- unless the merged farm can issue financial instruments other than safe bonds and common shares.

1.4. Choice of Techniques and Crops

Until now, we have assumed that the only decisions that the landlord has to make are (a) the land labor ratio he uses and (b) the kind of contracts he signs. There are, of course, a number of other decisions to be made: what crop to grow, irrigation techniques, fertilization techniques, etc. A number of considerations are involved in making these decisions: the pattern of allocation of labor over the year, required levels of fixed investment, and, in an economy in which there is only limited trading of commodities, the diversity of food in the diet. As Boserup has argued some crops and techniques seem more suited for low density situations, others for high densities. But for our purposes, we are concerned primarily with the implications that these choices have for the pattern of returns across the states of nature.

We no longer will assume, in other words, that $g(\theta)$ is given. Indeed, we will not even assume that there is "multiplicative uncertainty." The interest in this question arises in part from the fact that in other models without a full set of risk markets which analyze the problem of choice of technique, where there is not multiplicative uncertainty, the choices are not Pareto Optimal. (See Stiglitz [14] and Jensen and Long [11].) Here on the contrary, we shall be able to establish that,

Proposition 9. If workers and landlords can both mix contracts, then the choice of techniques will be Pareto Optimal.

Both for purposes of simplicity and to make our analysis directly comparable to earlier models referred to above, we shall employ in this section mean variance analysis. We shall assume that both landlords and workers evaluate alternative income patterns in terms of their means and standard deviations

$$EU_R = U_R(\mu_R, \sigma_R) \quad (1.32a)$$

$$EU_W = U_W(\mu_W, \sigma_W) \quad (1.32b)$$

where $\mu_R(\mu_W)$ is the mean income of the landlord (worker) and $\sigma_R(\sigma_W)$ is its standard deviation.

We shall assume that the mean and standard deviation of the output of a worker is a function of the land-labor ratio, l , and the choice of technique, which we shall denote simply by k .

$$\mu = \mu(l, k)$$

$$\sigma = \sigma(l, k) .$$

For simplicity assuming there is a single landlord, but several kinds of labor,²¹ which we denote by subscript i ;

$$\begin{aligned} \frac{\mu_R}{T} &= \sum \mu(l_i, k_i) \varphi_i l_i (1 - \alpha_i) - \beta_i l_i \varphi_i \\ &= \sum \mu(l_i, k_i) \varphi_i l_i - \mu_{w_i} l_i \end{aligned} \quad (1.33)$$

$$\frac{\sigma_r^2}{T^2} = \sum_i \sum_j (1 - \alpha_i) \sigma_{ij} (l_i, l_j, k_i, k_j) (1 - \alpha_j) \varphi_i \varphi_j l_i l_j \quad (1.34)$$

where φ_i is the percentage of land allocated to the i^{th} type labor
 σ_{ij} is the covariance between output (per man) of i^{th} and j^{th}
kinds of workers, assumed to be a function only of l_i , l_j ,
 k_i , and k_j .

Similarly,

$$\mu_{w_i} = \alpha_i \mu(l_i, k_i) + \beta_i$$

$$\sigma_{w_i} = \alpha_i \sigma_{ii}(l_i, k_i).$$

The problem of the competitive farm is to

$$\text{Max}_{\{l_i, k_i, \varphi_i, \mu_{w_i}, \sigma_{w_i}\}} U(\mu_r, \sigma_r)$$

subject to (1.15).

The problem of Pareto Optimality may be written

$$\text{Max}_{\{l_i, k_i, \varphi_i, \mu_{w_i}, \sigma_{w_i}\}} U(\mu_r, \sigma_r)$$

$$\text{subject to } U_{w_i}(\mu_{w_i}, \sigma_{w_i}) = \bar{U}_{w_i}.$$

If we form the corresponding Lagrangians,

$$\mathcal{U} = U(\mu_r, \sigma_r) + \lambda(p\sigma_{w_i} + b - \mu_{w_i})$$

and

$$\hat{\mathcal{U}} = U(\mu_r, \sigma_r) + \sum \hat{\lambda}_i (\bar{U}_{w_i} - U_{w_i}(\mu_{w_i}, \sigma_{w_i}))$$

we obtain the same expressions for the derivatives with respect to k , l , and ϕ (since neither involve the constraints). Thus any differences must arise in one of the following expressions:

$$\frac{\partial u}{\partial \mu_{w_i}} = \frac{\partial U_r}{\partial \mu_{w_i}} - \lambda = 0 \qquad \frac{\partial u}{\partial \sigma_{w_i}} = \frac{\partial U_r}{\partial \sigma_{w_i}} + p\lambda = 0 \qquad (1.34a)$$

$$\frac{\partial \hat{u}}{\partial \mu_{w_i}} = \frac{\partial U_r}{\partial \mu_{w_i}} - \hat{\lambda}_1 \frac{\partial U_{w_i}}{\partial \mu_{w_i}} = 0 \qquad \frac{\partial \hat{u}}{\partial \sigma_{w_i}} = \frac{\partial U_r}{\partial \sigma_{w_i}} - \hat{\lambda}_1 \frac{\partial U_{w_i}}{\partial \sigma_{w_i}} = 0 \qquad (1.34b)$$

so from (1.34a) and (1.34b) we obtain, respectively

$$-\frac{\partial U_r / \partial \mu_{w_i}}{\partial U_r / \partial \sigma_{w_i}} = p$$

$$\frac{\partial U_r / \partial \mu_{w_i}}{\partial U_r / \partial \sigma_{w_i}} = \frac{\partial U_{w_i} / \partial \mu_{w_i}}{\partial U_{w_i} / \partial \sigma_{w_i}}.$$

The two are equivalent if

$$p = \frac{\partial U_{w_i} / \partial \mu_{w_i}}{\partial U_{w_i} / \partial \sigma_{w_i}}$$

which will be true if workers choose the contract which maximizes utility.

The assumption about the ability of both landlords and workers to mix contracts is essential here; for it is this which ensures the linearity of the relationship between mean and standard deviations of contracts offered to workers. If this assumption is not satisfied, we already noted that the economy may not be productively efficient; different farms will have different labor-land ratios. Here we note an additional complication.

In the previous sections the factors "land" and "labor" played a perfectly symmetrical role in the analysis. This may no longer be true when, as returns to different plots of land and different workers are not perfectly correlated and workers and/or landlords cannot mix contracts. The question may be put as follows: assume each worker makes the decision of the choice of technique. He may "negotiate" with the landlord about which crops to grow, etc., but in the negotiations, the landlord takes as given his contracts with all other workers. Will the equilibrium which emerges be the same as that which would arise if the landlord made all the decisions? The answer is not necessarily. (For an example of the misallocation resulting from failure to "coordinate," see Stiglitz [15].)

PART II. Elastic Labor Supply

In the traditional literature, share cropping arrangements have been criticized in terms of their incentive effects on the supply of labor. In the previous analysis, we focused on the risk sharing aspects of sharecropping, and explicitly assumed that the labor supply was inelastic. On the other hand, there is a fundamental objection to the usual analyses of sharecropping: they fail to take account of the original motivations in using a sharecropping arrangement rather than a wage or rental system. Thus, if the motivation is risk sharing, as we have described it in the previous sections, then in general, the average income received by a worker will not be equal to his marginal product; an analysis of the "efficiency" of the sharecropping system must explicitly take into account the attitudes towards risk of the workers and landlords, and how this affects their behavior. Clearly, a full analysis of a sharecropping economy must take into account both incentive risk-sharing effects, and that we propose to do in the next two sections. In Section 2 we assume that contracts specify precisely the amount of labor to be provided and that they are enforceable without cost, while in Section 3, we examine the other polar case where the contract makes no specification concerning the labor to be supplied by the worker.

2. Enforecable Contracts

The landlord is interested in the amount of labor that will be supplied to any piece of land; he is not particularly interested in the number of laborers on a piece of land. Thus, contracts between landlords and their laborers will specify the amount of labor that a worker is to provide. (But this in itself is not sufficient to guarantee that the correct optimality conditions will be satisfied.)

Thus, there are two decisions of the worker: what kind of contract is he to sign, and how much labor will he supply. A contract, recall, is specified by an assignment of labor per acre, l , a fixed fee, β , and a share, α . We assume laborers can "mix contracts." Hence, as we argued above, in equilibrium, the labor (not however laborers) per acre is the same for all acres, and so can be taken as given by the worker; and we can take the fixed fee to be a linear function of the share

$$\beta = -a \frac{\alpha f(l)}{l} + b . \quad (2.1)$$

Thus the workers maximization problem is to

$$\text{Max}_{\{\alpha, L\}} V(L) + EU_w [(xg + \beta)L] \quad (2.2)$$

where we have assumed for simplicity that workers have an additive utility function and $V' < 0$, $V'' < 0$. Substituting (2.1) into (2.2) we obtain

$$\text{max } V(L) + EU_w \{(x(g-a) + b)L\} . \quad (2.2')$$

The first order conditions are thus

$$V' + EU_w' \left\{ \frac{\alpha f(l)}{l} g + \beta \right\} = 0 \quad (2.3a)$$

$$EU' (g-a) = 0 . \quad (2.3b)$$

The second condition is just another form of the familiar condition we have already discussed above [equation (1.8)]. Here our concern is with (2.3a).

$\frac{\alpha f(L)}{L} g + \beta$ is just the return per unit of labor. (2.3a) says that the marginal disutility of labor should be just equal to the expected marginal utility of the income we receive as a result.

To compare this with the optimal allocation, we consider a "command" economy in which the same risk sharing possibilities exist but in which the decision of the supply of labor is made centrally. Then, if all workers are identical and landlords are identical (the general case follows along identical lines, but is slightly more complicated notationally) we wish to

$$\text{Max } EU_r [(1-\alpha)f(L)g - \beta L] \quad (2.4)$$

subject to the constraint that

$$V(L) + EU_w [\alpha f(L)g + \beta L] = \bar{U} \quad (2.5)$$

where we have normalized the supply of land at unity. We then obtain as first order conditions

$$EU_r' g = v EU_w' g \quad (2.6a)$$

$$EU_r' = v EU_w' \quad (2.6b)$$

$$EU_r' [(1-\alpha)f'g - \beta] + v EU_w' (\alpha f'g + \beta) + vV' = 0 \quad (2.6c)$$

where v is the lagrange multiplier associated with the constraint (2.5).

Using (2.6a) and (2.6b), we can rewrite the condition (2.6c) as

$$V' + EU_w' g f' = 0 .$$

This should be contrasted with (2.3a), which may be rewritten, using (1.20a) and (2.3b), to read

$$V' = EU_w' g f' = 0$$

i.e. the competitive supply of labor is optimal. The divergences between expected marginal products of labor and the marginal disutility of labor are just those which are "optimal" given the attitudes towards risk of the two groups. We have thus established

Proposition 10. If labor is elastically supplied, and contracts are enforceable without cost, landlords will specify the amount of labor to be supplied by the sharecropper in the sharecropping contract and, if both landlords and workers can mix contracts, the equilibrium will be Pareto Optimal.

3. Incentive Effects

3.1. The Basic Model

It is curious that economists, in discussing the misallocation of resources resulting from a sharecropping arrangement, have focused on the undersupply of labor ("negative incentive") in the sharecropping system, while businessmen talk about the positive incentive effects of "sharing" arrangements (e.g. commissions) as one of their major advantages. The reason for the discrepancy lies in the economists' conventional simplifications of the production processes. There is a "book of blueprints," (a recipe book) with a simple set of instructions on how to combine two homogeneous factors to produce the maximum output. There are no unexpected circumstances, no contingencies in the "field" to be taken account of, and no difficulty in ascertaining whether a given individual has followed the instructions in the book of blueprints. The "contract" between the worker and the employer specifies that the worker will follow the appropriate page in the book for blueprints, and if he fails to do so, he receives no compensation. For some purposes, this is a useful simplification; for others --and in particular for the purpose of understanding the nature of the contract signed between landlord and worker--it is not.

To describe the input provided by a laborer, we must not only know the number of hours he works, but also what we shall loosely call, the "effort" of the individual. As difficult as it may be to ascertain the former (in an agricultural situation), it is even more difficult to ascertain the latter. "Effort" effects the output in a number of ways: first, and most obvious, is the pace at which an individual works, say the number of weeds removed per hour. If this were the only consideration, we could simply measure labor supplied by the corresponding output (a piece work system)

and not by the hour. Secondly, there is the thoroughness; say the completeness with which a given acre is weeded. Two individuals may pick the same number of weeds per hour, but one picks the most obvious weeds in a two acre plot, while the other picks all the weeds in a one acre plot. The point of course is that there are different costs associated with picking different weeds, and that is one of the reasons that pay cannot be simply proportional to the number of weeds picked. But it is difficult except by very close supervision to ascertain the cost associated with each weed. Thirdly, there is the efficiency of the individual, which is equivalent to the individual equating the marginal cost of a weed picked on each plot of land.²² This is even more difficult to ascertain than the thoroughness. Fourthly, there is the efficiency of decision making under uncertainty: if it rains right before harvest, will the farmer make the "correct" decision about revising plans about harvesting and carry those plans out. Presumably, if all the possible contingencies, e.g. all the possible sequences of rain, sun, and visitations by insects and disease were spelled out in the "book of blueprints" this would not be a factor. In fact, however, only a few of the possible contingencies can be simply described, and the appropriate courses of action to take specified. Finally, there is the inventiveness of the individual: as he picks weeds, he may develop more efficient and better ways of doing it. These "inventions" may be specific to the specific circumstances of the given farm, and therefore are not likely to be discussed except in very broad terms in any general treatment of weeding. This list of "qualities" associated with labor is not meant to be exhaustive. One of the very important considerations when a third factor, such as capital, is present, is the care which the worker takes of the capital supplies by the landlord.^{22a}

A contract, accordingly, may not only specify the hours of labor to be provided, but also something about the effort required of the individual, the degree of "control" over the day to day decisions that are to rest in his hands and the amount of supervision (direction) he will receive from managers. There is also an implicit or explicit penalty-rewards function. A piece work wage and a commission for sales beyond a certain level are examples of rewards; being fired is an example of a penalty.

Contracts clearly vary in preciseness with which the labor inputs (effort) required of the worker are specified, and in the extent and manner in which those terms are enforced. In this section we consider the polar case to that analyzed in the previous one: there we implicitly assumed that the contract specified everything, here we assume that the contract specifies nothing concerning the amount (quality) of labor to be provided.²³ The reward to greater effort is thus provided by his share of the output (α). Both models are polar cases, but given the complexity of completely specifying (and enforcing) the labor inputs, as we have described them above, it may be argued that the model of this section is the better approximation to reality.

We assume the landlord is risk neutral, but that the worker is not.²⁴ Without incentive effects, the landlord would absorb all the risk; workers would all face a pure wage contract. We can show now, however, that there will still be some sharecropping (i.e., $\alpha > 0$).

We return to our simpler model in which all individuals are identical. The workers utility function is of the form,^{25,26}

$$U = EU[Y_w] + V(e) \quad (3.1)$$

where $V' < 0$ is the marginal disutility from an increment in "e" "effort" or "effective labor supply per individual." If this worker faces a contract (α, β, l) he chooses e to maximize U . Now l refers to the density of workers. An increase in e increases Q , so if $\alpha > 0$, it increases Y_w . Assume that effort is "purely labor augmenting."²⁷ Then we have

$$Q = Tf(el) \quad (3.2)$$

and

$$Y_w = \frac{\alpha f(el)}{l} g + \beta \quad (3.3)$$

so, given α , l , and β , e is chosen so that

$$EU'_w \alpha f'(el)g + V' = 0. \quad (3.4)$$

A worker is indifferent among contracts that yield, when he has optimally chosen e , the same level of U . Thus, the set of utility equivalent contracts is given by

$$\bar{W} = \max_{\{e\}} EU \left[\frac{\alpha f(e)l}{l} + \beta \right] + V(e) \quad (3.5)$$

which, as before, we can solve for β as a function of α and l :

$$\beta = h(\alpha, l, \bar{W}) \quad (3.6)$$

$$\frac{\partial \beta}{\partial \alpha} = - \frac{f}{l} \frac{EU'g}{EU'} < 0, \quad \frac{\partial \beta}{\partial l} = \frac{\alpha(f - f'el)}{l^2} \frac{EU'g}{EU'} > 0. \quad (3.6a)$$

Different contracts, which are equivalent in utility terms to the worker, have different incentive effects: from (3.4) and (3.6) we obtain

$$\left(\frac{\partial \ln e}{\partial \ln l} \right)_{\bar{W}} = - \frac{E \left\{ U''\alpha f'g \left[\frac{\alpha(f - f'el)}{l} \left(\frac{EU'g}{EU'} - g \right) \right] + U'\alpha f''elg \right\}}{E \left\{ U''\alpha f' \frac{(\alpha f'el)}{l} g^2 + U'\alpha f''elg \right\} + V''} \quad (3.7a)$$

$$\left(\frac{\partial \ln e}{\partial \ln \alpha} \right)_{\bar{W}} = - \frac{E \left\{ -U''\alpha f'g \left[\frac{\alpha f}{l} \left(\frac{EU'g}{EU'} - g \right) \right] + U'\alpha f'g \right\}}{E \left\{ U''\alpha f' \frac{(\alpha f'el)}{l} g^2 + U'\alpha f''elg \right\} + V''e} \quad (3.7b)$$

The landlord wishes to maximize,

$$\max_{\{\alpha, l\}} (1-\alpha)f(el) - hl \quad (3.8)$$

which yields the first order conditions

$$-f - l \frac{\partial h}{\partial \alpha} + (1-\alpha)f'l \left(\frac{\partial e}{\partial \alpha} \right)_{\bar{W}} = 0 \quad (3.9a)$$

$$\left(e + l \left(\frac{de}{dl} \right)_{\bar{W}} \right) (1-\alpha)f' - h - l \frac{\partial h}{\partial l} = 0. \quad (3.9b)$$

(3.9) may be rewritten as

$$\alpha = \frac{\gamma \left(\frac{\partial \ln e}{\partial \ln \alpha} \right)_{\bar{W}}}{c + \gamma \left(\frac{\partial \ln e}{\partial \ln \alpha} \right)_{\bar{W}}}, \quad \frac{S_w - \gamma}{\gamma} = \frac{c \left(\left(\frac{\partial \ln e}{\partial \ln \ell} \right)_{\bar{W}} + (1-\gamma) \left(\frac{\partial \ln e}{\partial \ln \alpha} \right)_{\bar{W}} \right)}{c + \gamma \left(\frac{\partial \ln e}{\partial \ln \alpha} \right)_{\bar{W}}} \quad (3.10)$$

where $c \equiv 1 - \frac{EU'g}{EU'} \geq 0$, with equality only if $U'' = 0$ or $\alpha = 0$.

From (3.10) we can establish

Proposition 11. If workers are risk averse, then $0 < \alpha < 1$, and α is the greater the greater is the responsiveness of effort to an increase in the share; α is smaller the more risk averse the individual. For a given response elasticity and degree of risk aversion, α is greater the greater is γ (the share of labor in the absence of uncertainty). If workers are risk neutral $\alpha = 1$.

Proposition 12. If workers are risk averse, they receive a mean income greater than, equal to or less than their mean marginal product as the elasticity of substitution is greater than, equal to, or less than unity. If workers are risk neutral, they receive on average their mean marginal product.

This proof of Proposition 11 is straightforward;²⁸ Proposition 12 follows from observing that

$$S_w - \gamma > 0 \quad \text{as} \quad - \frac{\left(\frac{\partial \ln e}{\partial \ln \ell} \right)_{\bar{W}}}{\left(\frac{\partial \ln e}{\partial \ln \alpha} \right)_{\bar{W}}} < (1-\gamma)$$

and substituting (3.7) into the above.²⁹ As usual, $\beta \geq 0$ as $S_w \geq \alpha$.

We have not been able to find simple conditions for determining whether $S_w \geq \alpha$ except when the elasticity of substitution is unity. Then, from (3.10) $S_w = \gamma$; then

$$\beta \geq 0 \quad \text{as} \quad \left(\frac{\partial \ln e}{\partial \ln \alpha} \right)_{\bar{W}} \leq \frac{c}{1-\gamma}. \quad (3.11)$$

Earlier, we noted that if workers could not "mix" contracts, differences in attitudes towards risk would result in variations in output per acre. The economy would not be "productively efficient." Similar variations in output per acre arise because of differences in the efficacy of incentives among different individuals.

We first observe that the landlord must get the same rent from each piece of land, i.e.

$$(1-\alpha)f - \beta l = \bar{R} \quad (\text{a constant}) \quad (3.12)$$

From (3.10) we obtain

$$f(e\ell) = \frac{\bar{R}}{1 - S_w} . \quad (3.13)$$

Since S_w will differ with different laborers, because $(\partial \ln e / \partial \ln \ell)_{\bar{w}}$, $(\partial \ln e / \partial \ln \alpha)_{\bar{w}}$, or c differ, unless $m = 1$ (so $S_w = \gamma$), $f(e\ell)$ will differ.

We have thus shown

Proposition 13. Output per acre will in general differ on different farms: the economy will not be productively efficient unless the production function has unitary elasticity of substitution.

Other things being equal, an increase in uncertainty increases c and hence increases differences in S_w arising from differences in the strength of incentive effects. Other things being equal, the more risk averse, the greater c , and hence the higher or lower S_w and output per acre as $m \begin{matrix} > \\ < \end{matrix} 1$.³⁰

A question of some interest in L.D.C.'s is whether output per acre is higher or lower in more densely populated land. Conventional analysis ignores the effect of effort, so argues the greater ℓ , the greater $e\ell$, the greater $f(e\ell)$; e may, however, decrease with an increase in ℓ , and if it decreases enough, $e\ell$ is reduced. To put it another way, if $m > 1$ and risk averse individuals tend to be very lazy, then density and output may be inversely related.

3.2. Comparison with Wage System

We argued earlier that the conventional wisdom, that the sharecropping system results in too little supply of labor, errs in that it ignores the very reasons for introducing sharecropping. In Section 2, we showed that, when risk was taken into account, the supply of labor under sharecropping was in fact optimal with fully enforceable contracts. Here, we wish to make two further observations:

(1) It is not really meaningful--from a welfare point of view--to compare a situation where a particular kind of contract is enforceable at zero cost, with one in which it is not enforceable (or enforceable only at an infinite cost). By ignoring the costs of enforcing the contract, one is ignoring part of the essence of the problem.

(2) But even if we simply limit ourselves to comparing the allocation of resources, the conventional presumption does not appear to be correct. For it is a partial equilibrium analysis, and in going from one system to the other, the distribution of income as well as the sharing of risk will change. Since the switch of a wage system from a sharecropping system will in general change the individual's level of utility, the net result is a mixture of substitution and income effects.

We can compare this equilibrium with one where the contracts are enforceable (Section 2). Then $\alpha = 0$ (except in the case where there is no uncertainty when $\alpha = 1$ or $\alpha = 0$). We define β^* as the price of a unit of effort. The worker chooses e so that

$$v' + U'\beta^* = 0 \quad (3.4')$$

while the landlord sets (if he is risk neutral)

$$f' = \beta^*. \quad (3.9')$$

Let superscripts s and w denote the variables for the sharecropping and wage systems respectively). There are two questions: (a) at $e = e^s$, is the increment in expected utility from additional effort greater or less under sharecropping than under the wage system, i.e. is

$$\alpha^s EU' \left[\frac{\alpha^s f(e^s l) g}{l} + \beta^s \right] g \stackrel{>}{<} U'[f'(e^s l) e^s] ? \quad (3.14)$$

In the absence of uncertainty, the context in which these questions are usually investigated, the LHS of (3.14) always exceeds the RHS. That either inequality may hold may be seen by considering the Cobb-Douglas Production Function. By Proposition 12, $EY_w = f'e$, and hence by Jensen's inequality,

$$EU'Y_w \stackrel{<}{>} f'eU'(f'e) \text{ as } \eta \stackrel{<}{>} 1$$

and

$$\alpha f'e EU'g \stackrel{>}{<} EU'Y_w \text{ as } \beta \stackrel{<}{>} 0.$$

It is clear that if $\eta > 1$, $\beta < 0$, the LHS of (3.11) exceeds the RHS, and conversely if $\eta < 1$ and $\beta > 0$. In other cases, the result is ambiguous.³¹
 (b) What is the effect of a change in e on

$$U'\beta^* + v' ?$$

The conventional partial equilibrium analysis observes that by the second order condition

$$U''\beta^{*2} + v'' < 0$$

but the general equilibrium analysis takes into account the change in β^* ; the general equilibrium effect depends on the sign of

$$\begin{aligned} v'' + U''f'^2 + U''f''elf' + U'f'''l &\sim - \frac{1}{d \ln e / d \ln \beta} - (1-\eta) \frac{(1-\gamma)}{m} \quad (3.15) \\ &\leq \eta \left(\frac{1-\gamma}{m} - 1 \right) - \frac{1-\gamma}{m} \end{aligned}$$

where m is the elasticity of substitution and $\eta = -U''\beta e / U'$. Since $d \ln e / d \ln \hat{\beta} > 0$, if $\eta < 1$, or $m \geq 1-\gamma$, (3.15) is unambiguously negative.

We can thus establish that

Proposition 14.

$$e^w > e^s \text{ as } \left\{ \alpha^s EU' \left(\frac{\alpha^s f(e^s l)}{l} + \beta^s \right) g - U'(f'(e^s l)e^s) \right\} \left\{ - \frac{1}{\frac{d \ln e}{d \ln \beta}} - (1-\eta) \left(\frac{1-\gamma}{m} \right) > 0 \right\}$$

There appears to be no presumption that sharecropping reduces effort (labor) from what it would be under a wage system with enforceable contracts.

3.3. Choices of Techniques

Unlike the earlier economies analyzed, where even though workers and landlords had different attitudes towards risk, if both landlords and workers could mix contracts the sharecropping system was able to equate their marginal rates of substitution (say between mean and standard deviation of income), here this is not true. In our example in the previous subsections, landlords were risk neutral, while workers still bore a large part of the risks. Thus, in questions of choice of technique and crops, there will appear to be conflicts of interest between the landlord and workers. At any specified share contract, the landlord wants only to have the worker choose whatever technique or crop maximizes expected output; the worker is willing at the margin to sacrifice some mean output for a reduction in risk. Although some of the "conflict" can be avoided by careful stipulation within the contract (although both sides may feel "unhappy" in the sense that they could imagine a better "contract" presumably neither side would sign if there existed other individuals with whom they could sign a better contract) for many of the same reasons that it is difficult to enforce a contract for a stated level of "effort," requirements on technique of production may be difficult to enforce without close (and costly) supervision.

One of the most important choices in technique involves the use of other factors of production, in particular, of capital.

If, as in Sections 1-2, there were no problems in contract enforcement, a contract would be specified by the amount of capital contributed by both the landlord and the worker. It can be shown

Proposition 15. With completely enforceable contracts, if contracts can be mixed, and if there is a safe investment yielding a return of r , the mean marginal product of capital is just $r/(EU'g/EU')$, and will be the same for all farms. If workers' contracts cannot be mixed, then the more risk averse individuals will have a higher mean marginal product of capital. ³²

The more interesting and difficult problems arise when there are "enforcement" problems. First, the operations that need to be specified in the contract are likely to be increased, and hence the need for supervision is increased. Did the machine break down because the worker did not treat it correctly? Secondly, in the absence of close supervision, it is important to provide an incentive for the worker to use the capital goods supplied by the landlord appropriately. Thirdly, it is advantageous to the landlord (as long as he receives any share of the output) to have the worker supply as much of his own capital as possible, and conversely (for any given share-fixed fee contract) it is advantageous to the worker to have the landlord supply as much of the capital as possible.

We can use a simple modification of the model presented earlier to illustrate these points. The landlord, in deciding how much capital he should invest, needs to take account of the fact that, in general, the more capital he invests, the less his workers will invest; but that the more capital he supplies, the higher the return to effort, and hence the greater effort he is likely to obtain out of his workers. Thus, if he is risk neutral, he

$$\text{Maximizes } (1-\alpha)f(e\ell, k_w + k_r) + \beta(k_r, \alpha, \ell)\ell + r(\bar{k} - k_r) \quad (3.17)$$

so that

$$f_k - r \leq \alpha f_k - \left[(1-\alpha)f_{e\ell} \ell \left(\frac{de}{dk_r} \right)_{\bar{w}} + \frac{d\beta}{dk_r} \right] \quad (3.17a)$$

$$e(1-\alpha)f_{e\ell} \left(1 + \left(\frac{d \ln e}{d \ln \ell} \right)_{\bar{w}} \right) + \beta + \frac{\ell d\beta}{d\ell} + (1-\alpha)f_k \left(\frac{dk_w}{d\ell} \right)_{\bar{w}} = 0 \quad (3.17b)$$

$$-f + \frac{\ell d\beta}{d\alpha} + (1-\alpha) \left[f_{e\ell} \ell \left(\frac{de}{d\alpha} \right)_{\bar{w}} + f_k \left(\frac{dk_w}{d\alpha} \right)_{\bar{w}} \right] = 0 \quad (3.17c)$$

(3.17a) can be rewritten

$$f_k \leq \frac{r - (1-\alpha)f_{el} \left(\frac{de}{dk_r} \right) \bar{W}}{(1-\alpha)c \frac{EU'_g}{EU'}} \quad (3.18a)$$

with equality holding if the landlord does any investing. Similarly, if the worker does any investing

$$f_k = \frac{r}{\alpha(1-c)} \quad (3.18b)$$

Hence, we obtain

Proposition 16. If contracts cannot be enforced either all the capital is supplied by the worker or by the capitalist, depending on whether

$$r(\alpha(1-c) - c(1-\alpha)) \begin{matrix} < \\ > \end{matrix} \alpha(1-\alpha)(1-c)f_{el} \left(\frac{de}{dk_r} \right) \bar{W}.$$

The case where $k_w = 0$ follows essentially along the lines developed earlier. On the other hand when $k_r = 0$, from (3.17c) it is clear that α will be larger than in the cases analyzed earlier: in addition to the incentive effect on effort, there is an incentive effect on the supply of capital, and the increased capital is likely to lead to a further increase in effort because it raises the marginal return to effort. It is still true however, that $\alpha < 1$.³³

4. General Remarks on Incentive Schemes

In the previous section, we analyzed equilibrium in an economy with a particular incentive scheme, one in which there was no supervision at all of the individual. Such incentive schemes are particularly important in economies (processes) subject to great uncertainty: on the one hand, the uncertainty makes it difficult to ascertain whether a low output was a result of a low level of input by the worker or of "bad luck" on his particular plot of land (see Stiglitz [15]); moreover, the multiplicity of contingencies would entail an impossible degree of complexity in the work contract were it to attempt to specify the action to be taken in each

contingency. On the other hand, the incentive schemes force the worker to bear a greater share of the risk than he otherwise would.

Most industrial processes--and many agricultural processes as well--rely on a fair amount of supervision in addition to, or as an alternative to, the incentive schemes sketched here. This is partly because, in production processes involving many individuals working together it may be difficult to separate out each individual's contribution but also partly because the same effort may be obtained without forcing the worker to bear as much risk. Supervision would affect the analysis of the previous section in several ways: (a) There is probably an important element of fixed costs in supervision. That is, in the rental system, no supervision is required, but if $\alpha < 1$, some supervision is required simply to ensure that the worker delivers the appropriate share of output. At $\alpha = 0$, the landlord replaces incentive structures with direct supervision. If supervision costs look as in Figure 4.1 there is some inducement to use one of the "polar contracts"--a pure rent or pure wage system.³⁴ (b) The more supervision, the less effort (decision making) is required of the individual worker.

In most industrial processes, supervision serves an additional function: a higher degree of supervision results in a more accurate assessment of the individual's efforts; that is, supervision for the purpose of imposing rewards and penalties may be looked at as essentially a sampling of how the individual behaves under various circumstances; the larger the sample, the smaller the variance in the estimate of the workers effort (the "quality" of his performance). Thus, considerations of equity require that a reward-penalty structure system with very high rewards and penalties have a higher degree of supervision than those with low rewards and penalties; employers, of course, are not likely to be directly concerned with equity; but the variability in income from the more random application of the penalty structure requires either a higher share or a higher fixed payment to induce the individual worker to accept a contract.

Many reward-penalty structures take the form of a fixed wage with a reward or penalty for a deviation from the "norm" or average performance.

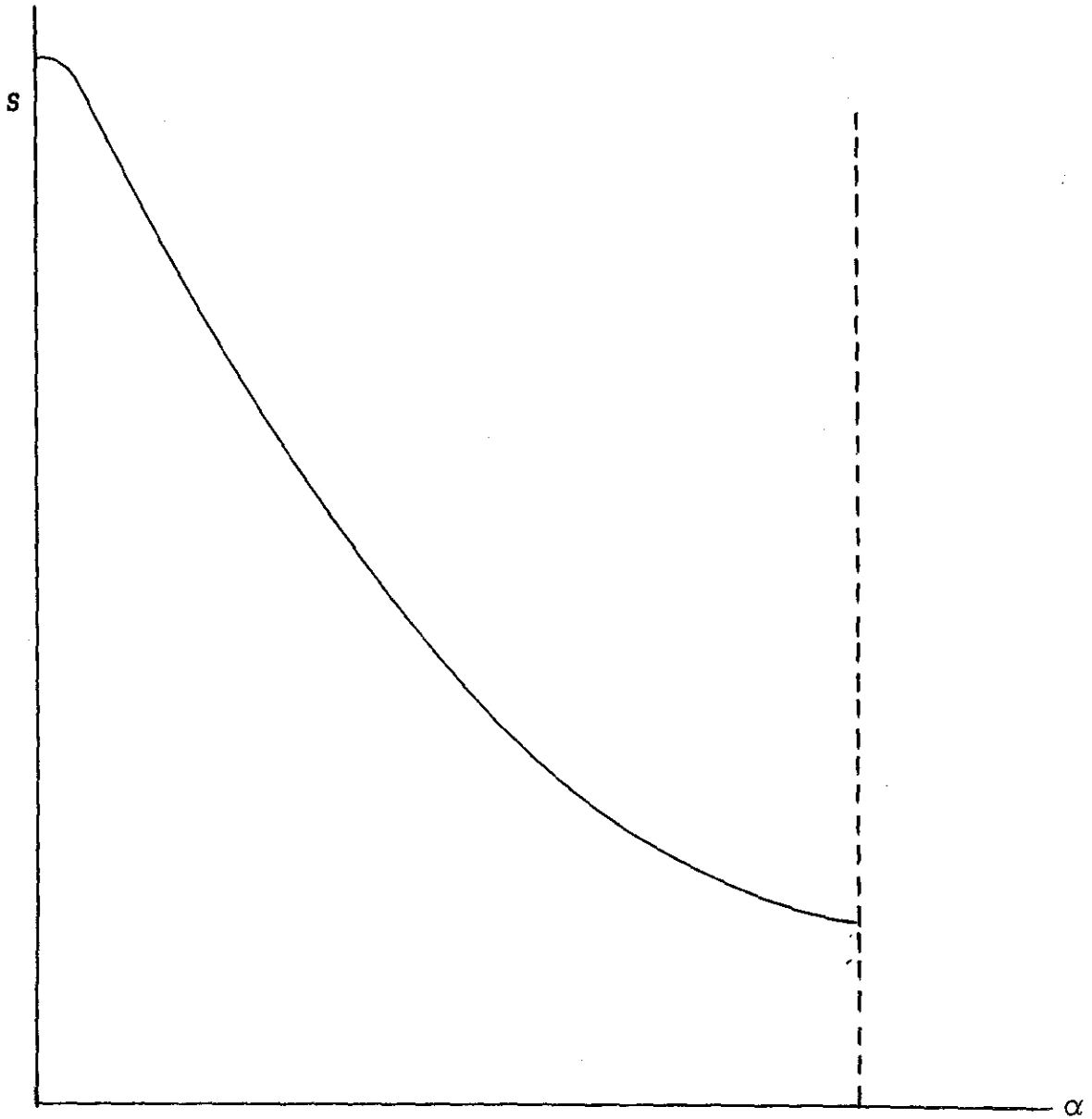


FIGURE 4.1

The deviations from the norm are more likely to be detected--and hence the incentives likely to be more effective--under close supervision.

A similar reward-penalty structure could be used in agriculture as an alternative to sharecropping. For instance, the following is a linear reward structure:

$$Y_w = \bar{Y}_w + \rho \left(\frac{f}{l} - \frac{\bar{f}}{\bar{l}} \right) g$$

where \bar{f}/\bar{l} is the average output per man. Since the average pay is just Y_w , a risk neutral landlord will hire workers up to the point where

$$ef'(el) = Y_w$$

(the super bars denote averages taken over the population working for a given landlord), and workers supply effort up to the point where

$$\rho f'EU'g + V' = 0 .$$

Increasing ρ has several effects: (a) If the level of effort of all other individuals were to remain constant, then it would increase the work effort of those near and below the mean but might decrease the work effort of those above the mean.³⁵ (b) An increase in average work effort results in all individuals working still harder; a decrease, in them all working still less hard. (c) If there is an increase in average work effort, it decreases the marginal productivity of the average worker if the elasticity of substitution is very low; thus "base pay" is reduced and this income effect again results in their working harder.³⁶ (d) If the base pay is fixed in the short run for some reason, it results in a decrease in the marginal product of the average worker and so workers will be "laid off."

This simple example illuminates a number of the statements one hears about incentive schemes (or about redistributive schemes more generally): Those who favor a high " ρ " argue that it is only "fair" that those who work harder--the others are, at least partially, just free-riders--should get more pay, and point to the favorable effects on work effort of high " ρ ". Those who oppose point out three things: (a) incentive schemes result

in greater inequality; (b) it results in an important externality, commonly known as the rat race: the fact that others work harder "forces" all of them to work harder (i.e. an increase in mean work effort leads each utility maximizing individual to work harder). This is often couched in normative terms: observing the fact that there is an externality, it is alleged that individuals are lead to work too hard. I find it too difficult to evaluate such statements, since the normative reference allocation scheme against which this is being compared is not clear.³⁷ (c) Finally, observing the general equilibrium effects of either reduced wages per unit of effective effort or reduced employment, they point out that such schemes may not be in the interests of workers in general.

This raises the general problem of devising reward-penalty-supervisory structures which are "optimal," a question which we hope to pursue elsewhere.

5. Concluding Comments

We began the analysis of this paper with two objectives in mind: (a) could we "explain" the change in the agricultural sector away from the use of sharecropping and to the use of the other two polar contracts: the wage system, primarily in the context of large farms and plantations, and the rental system (leasing-in land), primarily in smaller, family farms. (b) Could a model of sharecropping in agricultural shed any light on "shareholding" in the industrial sector.

It initially appeared to me curious that while earlier economies used sharing arrangements in the agricultural sector but not in the urban (artisan) sector, modern economies use sharing arrangements in the manufacturing sector, not in the agricultural sector. As I shall suggest in a moment, the two phenomena may be more closely related than at first seems to be the case.

In these concluding comments, I shall sketch, in a suggestive rather than definitive manner, the implications of our earlier analysis for these problems.

The End of Sharecropping

First, it appears from the results of Section 2, that the increase in wealth or a change in risk in agriculture cannot in themselves explain the change in the payments system; although they might have had an effect on the actual values of the parameters of the contract, there is no reason to believe that the differences in relative risk aversion between landlords and workers would have increased as a result of an increase in wealth to a sufficient extent to lead the economy near to one of the polar contracts, and even then it could only explain the use of a wage system.³⁸ And even as the risk goes to zero, the share goes to a limiting value that is not one of the polar (rental or wage) cases.

Secondly, the sharecropping system--in the absence of other methods of risk sharing--is not an inefficient system. It is not as if landlords and workers, anticipating the analysis of Marshall and other economists, discovered that it provided too little incentive to work and therefore they replaced the inefficient payments system with a more efficient one. Indeed, we argued that the labor supply in our simple model is identical to that which would result from a centrally controlled agricultural economy.

The sharecropping system may result in the economy not being productively efficient, i.e. the effective labor land ratio may differ on different plots of land. But this does not demonstrate the inefficiency of the system as a whole given the relevant economic constraints. The sharecropping system is adopted because of its incentive effects (when direct supervision is costly or ineffective) and because of its risk sharing features. Although the rental system has greater incentive effects, it forces the worker to bear all the risks, and although the wage system allows the landlord, if he is risk neutral, to absorb all the risk, it may force heavy supervision costs on him.

We come then to the following hypotheses concerning the elimination of the sharecropping system.

- (a) The development of capital markets in which landlords and workers (to the extent that they had capital), could diversity their portfolio meant that the relative importance of sharecropping as a risk sharing arrangement declined.
- (b) The increasing capital intensity of agriculture meant that either the landlord had to provide strong incentives (the rental system) or had to provide close supervision leading to the wage system. Since there is a natural nonconvexity associated with supervision, it was the larger farms which used the wage system. Similarly, since the rental system required the worker to provide the capital, it was the wealthier workers who became renters, the poorer workers becoming landless workers.
- (c) The increase in the rate of technological change has much the same effect as the increased capital intensity of production. The landlord wants the best techniques to be used. Either he must provide a strong incentive to the worker to acquire these techniques or he must supervise the workers closely. Again technological change (information gathering) introduces another non-convexity into the production process (i.e. the fixed costs of acquiring the information may be large relative to the variable cost of disseminating the information among the workers). This would imply that large farms might be technologically more advanced than smaller farms.³⁹

The Corporation as a Form of Sharecropping

The relationship between sharecropping and joint stock companies may best be seen in terms of the early formation of such firms. There are two factors of production, "capital" and "entrepreneurship." The entrepreneur "hires" the capital (or the "capitalists" hire the entrepreneur) to work for him. The capital gets paid a fixed fee (bonds) and/or "a share"; the entrepreneur usually gets a share of the capital value of the firm as his payment (in addition often to a fixed fee). In a "closely held firm," we have then a simple theory of the optimal (or equilibrium) debt equity-ratio. It is a simple translation of our theory of the contract in agriculture.

There are, however, several important differences between the modern corporation and the simple agricultural economy. The first two differences arise out of the fact that shares of the firm are publicly marketed. In the simpler closely held corporation, there was no ambiguity about the objective of the firm. It was to maximize the utility of the worker (entrepreneur) (and the contract arrangements were such that it simultaneously maximized the utility of the landlord (the capitalist)). Now, we must consider the possibility of a new objective: maximizing the stockmarket value of the firm. Under certain very restricted conditions, again there is no conflict between this objective and maximizing the utility of the entrepreneur, and of the capitalists. But in general, in the absence of perfect insurance (futures) markets the objectives may not be congruent.⁴⁰

Secondly, again because shares are publicly marketed, the entrepreneur can divest himself of his shares, and this may eliminate one of the major advantages of the sharing arrangement--its incentive effects. This in turn has two effects (a) it becomes necessary to devise more complicated incentive arrangements; and (b) because the entrepreneur has "inside information," he can take advantage of "bad news" as well as "good news" to make a profit. It is possible--at least in the short-run--for there to be perverse incentive effects.

Thirdly, because of the greater complexity of the operations of the modern corporation, it becomes much more difficult for the "capitalist" to supervise his worker ("the entrepreneur") to ascertain even whether he is doing a good job. This becomes all the more important because of the two difficulties we already noted: (a) the presence of conflicts of interest and (b) the difficulties in providing correct incentives.

Thus, it would appear that the main contribution of the model of risk sharing and incentives in agriculture may be more in extending our understanding of the operations of the closely held firm and the differences between it and the modern widely-held corporation, than in its direct implications for the modern widely held corporation.

REFERENCES

- [1] Akerlof, G. "Structural Unemployment in a Neoclassical Framework," Journal of Political Economy (1969), pp. 399-407.
- [2] Arrow, K. J. "The Role of Securities in the Optimal Allocation of Risk Bearing," Review of Economic Studies (April 1964), 31, pp. 91-96.
- [3] Bardhan, P. "Size, Productivity and Returns to Scale: An Analysis of Farm Level Data in Indian Agriculture," mimeo, 1971.
- [4] _____ and T. N. Srinivasan. "Crop-Sharing Tenancy in Agriculture: A Theoretical and Empirical Analysis," American Economic Review (1971).
- [5] Boserup, E. The Conditions of Agricultural Growth: The Economics of Agrarian Change Under Population Pressure. Chicago, 1965.
- [6] Cheung. The Theory of Share Tenancy, 1969.
- [7] _____. "Private Property Rights and Share-Cropping," Journal of Political Economy (1968).
- [8] _____. "Transactions Costs Risk Aversion and the Choice of Contractual Arrangements," JLE (1969), Vol. XIX, No. 1.
- [9] Debreu, G. The Theory of Value. New York, 1959.
- [10] Diamond, P. "The Role of a Stock Market in a General Equilibrium Model with Technological Uncertainty," American Economic Review (Sept. 1967), 57, pp. 759-76.
- [11] M. Jensen and J. Long. "Corporate Investment under Uncertainty and Pareto Optimality in the Capital Markets," The Bell Journal, Vol. 3, No. 1, 1972, pp. 151-74.
- [12] Leibenstein, H. "Allocative Efficiency vs. X-Efficiency," American Economic Review, 56 (June 1966), pp. 392-415.
- [13] Rao, C. H. "Uncertainty Entrepreneurship and Share Cropping in India," Journal of Political Economy (1971).
- [14] Stiglitz, J. E. "On the Optimality of the Stock Market Allocation of Investment," Quarterly Journal of Economics (February 1972), pp. 25-60.
- [15] _____. "Perfect and Imperfect Capital Markets," paper presented to New Orleans Meetings of Econometric Society, December 1971.

APPENDIX A

PROOF OF PROPOSITION 4

Proof: (1.20b) requires

$$\frac{E\left(\frac{\alpha f}{l} g + \beta\right)^{-\eta_w - 1} g}{E\left(\frac{\alpha f}{l} g + \beta\right)^{-\eta_w - 1}} = \frac{E\left(\frac{(1-\alpha)f}{l} g - \beta\right)^{-\eta_r - 1} g}{E\left(\frac{(1-\alpha)f}{l} g - \beta\right)^{-\eta_r - 1}}.$$

Assume $\eta_w > \eta_r$. Assume $\beta \leq 0$. Then

$$\frac{E\left(\frac{\alpha f}{l} g + \beta\right)^{-\eta_w - 1} g}{E\left(\frac{\alpha f}{l} g + \beta\right)^{-\eta_w - 1}} \leq \frac{E g^{-\eta_w}}{E g^{-\eta_w - 1}} < \frac{E g^{-\eta_r}}{E g^{-\eta_r - 1}} \leq \frac{E((1-\alpha)fg - \beta l)^{-\eta_r - 1} g}{E((1-\alpha)fg - \beta l)^{-\eta_r - 1}}.$$

To see the first inequality, write

$$\varepsilon_2 \equiv \frac{\left(\frac{\alpha f}{l} g + \beta\right)^{-(\eta_w + 1)}}{E\left(\frac{\alpha f}{l} g + \beta\right)^{-(\eta_w + 1)}}$$

$E\varepsilon_2 = 1$ for all β , i.e.

$E\varepsilon_{2\beta} = 0$

$$\varepsilon_{2\beta} = \frac{-\left(\frac{\alpha f}{l} g + \beta\right)^{-(\eta_w + 2)} (\eta_w + 1) E\left(\frac{\alpha f}{l} g + \beta\right)^{-(\eta_w + 1)} + \left(\frac{\alpha f}{l} g + \beta\right)^{-(\eta_w + 1)} E\left(\frac{\alpha f}{l} g + \beta\right)^{-(\eta_w + 2)} (\eta_w + 1)}{\left[E\left(\frac{\alpha f}{l} g + \beta\right)^{-(\eta_w + 1)}\right]^2}$$

$$> 0 \text{ as } \frac{\alpha f}{l} g + \beta > \frac{E\left(\frac{\alpha f}{l} g + \beta\right)^{-(\eta_w + 1)}}{E\left(\frac{\alpha f}{l} g + \beta\right)^{-(\eta_w + 2)}}.$$

Thus, there exists some $\hat{\theta}$, $g(\hat{\theta})$ such that

$$\tilde{\varphi}_{\beta} > 0 \text{ as } g(\theta) > g(\hat{\theta}) .$$

Hence

$$\frac{\partial E\tilde{\varphi}_{\beta}}{\partial \beta} = E\varphi_{\beta}g = E\varphi_{\beta}(g - \hat{g}) > 0 .$$

The third inequality follows in exactly the same way. To see the second inequality, write

$$\tilde{\psi} \equiv \frac{g^{-z-1}}{Eg^{-z-1}}$$

$$E\tilde{\psi} = 1$$

$$E\tilde{\psi}_z = 0$$

$$\tilde{\psi}_z = \frac{-g^{-z-1} \ln g E g^{-z-1} + g^{-z-1} E g^{-z-1} \ln g}{(E g^{-z-1})^2}$$

$$> 0 \text{ as } \ln g < \frac{E g^{-z-1} \ln g}{E g^{-z-1}} \equiv \ln \hat{g}$$

$$\frac{\partial E\tilde{\psi}_z}{\partial z} = E\tilde{\psi}_z g = E\tilde{\psi}_z (g - \hat{g}) < 0 .$$

FOOTNOTES

¹With a few exceptions. See, in particular, Cheung [6] and the extensive bibliography he provides. This work has begun before the appearance of Cheung's work, and his conclusions closely parallel those reached by this study. His analytic approach is, however, markedly different. Since his study, two further important papers have appeared: that of Rao, which provides empirical support of some of the hypotheses advanced here, and that of Bardhan and Srinivasan, which does not explicitly treat uncertainty.

Because of Cheung's excellent discussion of the literature, I shall omit any further references to the literature.

²Since some of the variations in output are due to events which effect particular individuals (a particular worker becoming sick at harvest time) or particular pieces of land (a small creek floods, destroying the crop) there are advantages to be had from risk diversification by the landlord, in hiring more individuals, and by the worker, by working on several different plots of land. The implications of risk diversification are discussed briefly in Section 3.

³For simplicity, we have expressed the condition for the case when each worker signs a contract with only one landlord. When he can sign several contracts, i.e. allocate different fractions of his labor to different landlords with different contracts, we obtain:

Equilibrium Condition (a'). Of the set of contracts available in the economy, there exists no (feasible) subset which the worker prefers to the subset which he has.

The conditions in which equilibrium condition (a') is more "reasonable" than (a) are discussed below.

⁴Again, if the landlord had to sign the same contract with all his workers, we would have:

Equilibrium Condition (b'). Of the set of available contracts, there exists none which the landlord prefers to the one which he employs.

⁵Given the other contracts he has signed. Provided both landlords and workers can mix contracts, the analysis could have been conducted completely symmetrically, in terms of workers hiring land. The formal symmetry breaks down later.

⁶That is, the worker is indifferent among contracts with the same value of β and x ; there can be a higher value of l if at the same time α is increased to keep x constant.

⁷Although this makes the analysis appear slightly assymmetrically, note that we could have defined an alternative (but somewhat less natural) set of variables symmetric to x and β for the landlord. (l obviously is important to the worker, but its effects are subsumed in " x ".)

⁸We shall return later to a detailed interpretation of these first order conditions.

⁹See below, Section 4.

¹⁰The problem is somewhat analogous to the problem that arises in ordinary competitive analysis when fewer commodities can be produced than the total number of commodities; given the commodities which are produced, the theory provides an explanation of the quantities that are produced and the prices they sell at. But how are the commodities that are actually produced determined?

$$\begin{aligned} \text{11} \quad EU'_w(g-1) &= E[U'_w - U'_w(x+\beta)][g-1] + U'_w E(g-1) \\ &= E[U'_w - U'_w(x+\beta)][g-1] < 0 \quad \text{if } U''_w < 0 . \end{aligned}$$

Where there is no ambiguity, we omit the superscript j and subscript w .

¹²Clearly, he will not offer them a higher level of utility since that will not be maximizing his own utility. Thus he must offer them exactly W .

¹³Throughout this and the next section, we assume that the both groups have no other sources of income.

¹⁴From the previous paragraph, we know that $\alpha \neq 0$ unless $U''_r \equiv 0$.

¹⁵If β_{\max} is the "maximum" β available in a single contract and β_{\min} the "minimum" β then $\beta_{\min} \leq \beta \leq \beta_{\max}$, and $(q - \beta_{\max})/p < x < q - \beta_{\min}/p$.

¹⁶From (1.24) given l we know b/a .

¹⁷As long as there are only a finite number of types of individuals, $\beta(x)$ will be a piecewise linear function. The necessary modifications to the analysis are obvious.

¹⁸However, we should also expect to see these variations in output per acre to be systematically related to the kind of contracts signed. In practice, the variations of contracts in use at any point of time in a given economy probably has been much more limited than the variations in the contracts that have been employed over time. This may be either because, at any point of time, divergences in attitudes towards risk among landlords or among workers may be relatively small, or because preferences are of far less importance than the basic underlying technological considerations, or because the extreme assumptions of mobility which we employ were not satisfied in traditional societies. Nonetheless, there is usually some range of choice (i.e. some sharecropping arrangement, a rental arrangement, or a wage arrangement).

¹⁹For simplicity, we have assumed each farm signs only one kind of contract. In the more general case, we would have

$$Y_r^j = \sum_i^j (\sum_i^k ((f(l_i^k) - x_i^k)g - \beta_i^k l_i^k))$$

with $\sum_i^k = 1$.

²⁰A similar analysis would have obtained if we allowed workers to trade shares with their fixed income.

^{20a}Assuming all firms are sufficiently large so that the indivisibility of labor is no problem.

²¹This assumption is adopted only for notational simplicity.

²² Assuming the marginal benefit is constant, or equating the net marginal benefit of a weed picked on each piece of land, if the marginal benefit is not constant.

^{22a} In the absence of uncertainty, we could infer the level of input from the level of output; with uncertainty, this may not be possible. See [15].

²³ Presumably because, even if there were specifications, the contract would not be enforceable because of prohibitive supervisory costs.

²⁴ Thus, in this section we can drop the subscript W on U_W without ambiguity.

²⁵ It should be clear that our analysis of incentive effects and "effort" is closely related to Leibenstein's important work on X-efficiency.

²⁶ "Effort" appears in this formulation exactly like "labor" in Section 2.

²⁷ G. Akerlof has argued that improvements in labor effort by reducing, for instance, damage to machines, is capital augmenting [1].

²⁸ At $\alpha = 0$, $c = \left(\frac{\partial \ln e}{\partial \ln \alpha} \right)_{\bar{W}} = \left(\frac{\partial \ln e}{\partial \ln l} \right)_{\bar{W}} = \frac{\partial h}{\partial l} = 0$, but clearly (3.9b) cannot be satisfied.

$$29 \quad \left(\frac{\partial \ln e}{\partial \ln \alpha} \right)_{\bar{W}} (1-\gamma) + \left(\frac{\partial \ln e}{\partial \ln l} \right)_{\bar{W}} \sim \alpha \left(\frac{f'(f - f'el)}{f} + f''el \right) EU'g .$$

³⁰ For m near unity. Otherwise, there may be large offsetting changes in γ .

³¹ E.g. if $\eta = 2$, $\left(\frac{\partial \ln e}{\partial \ln \alpha} \right)_{\bar{W}} = \frac{c}{1-\gamma}$, so $\beta = 0$, $\alpha = \gamma$. Let

$$g = \begin{cases} 1/2 & \text{with probability } .5 \\ 3/2 & \text{with probability } .5 \end{cases}$$

Then the L.H.S. exceeds the right as $\gamma > 3/4$.

³²Let k_r be the capital per acre contributed by the landlord, k_w be the capital per acre contributed by worker. Then $\beta = \beta(\alpha, l, k_w, k_r)$. The worker maximizes

$$EU \left[\frac{\alpha f(l, k_w + k_r)}{l} g + \beta + r \left(\frac{k}{l} - \frac{k_w}{l} \right) \right]$$

so

$$\alpha f_k \frac{EU'_w g}{EU'_w} \geq r - \beta_{k_w} l \quad (3.16a)$$

with equality always holding if workers can borrow

$$\alpha f_k \frac{EU'_w g}{EU'_w} = -\beta_{k_r} l . \quad (3.16b)$$

Similarly, for the landlord, we obtain

$$(1-\alpha) f_k \frac{EU'_r g}{EU'_r} = \beta_{k_w} l \quad (3.16c)$$

$$(1-\alpha) f_k \frac{EU'_r g}{EU'_r} \geq r + \beta_{k_r} l \quad (3.16d)$$

with equality always holding if landlords can borrow. Assume (3.16a) or (3.16d) hold with equality. If

$$\frac{EU'_w g}{EU'_w} = \frac{EU'_r g}{EU'_r}$$

then

$$f_k \frac{EU'_r g}{EU'_r} = r .$$

Note also that if either (3.16a) or (3.16d) holds with equality, then they both must hold with equality.

³³It should be emphasized that throughout our analysis, we have been exploring the implications of first order conditions only. The problem described by (3.17) is not, however, in general a "nice concave" problem, so there may be local optimum as well.

³⁴The level of expenditure on supervision is in fact an endogenous variable, as we suggested earlier. To completely model the consequences of supervision would take us beyond the scope of this paper. Needless to say, the remarks in the last paragraph are meant only to be suggestive.

³⁵I.e., the ambiguity arises because of the income effect.

³⁶If the elasticity of substitution is not "very low," the opposite occurs.

³⁷See above, p. 38.

³⁸Assuming that landlords are less risk averse than workers. Note that if there is decreasing relative risk aversion, this is what we would expect, since landlords have, in general, a larger income, than workers.

³⁹This model suggests in addition a possible interpretation to the enclosure movement. The essential question is, why did the landlords decide to capture rents from land which they previously had not been capturing. Two hypotheses have been put forward.

The first argues that until that time, the implicit rents were small, but increased land scarcity and technological advances made it more worthwhile for the landlord to capture these rents.

The second argues that there was an institutional change: the development of the market economy and the associated ideas of private ownership led landlords to take for themselves what until then had been viewed as public land.

In our view, the common land may be viewed as part of a complicated payments system. The rights to use the "common" land were part of this payments system, but in some sense all the land belonged to the landlord. Changes in technology and markets made it advantageous to change the payments system, including the "rights" to the common land. For instance, consider a situation where on some of the land, crops were grown, providing the basis for survival. The inherent uncertainties in small scale agriculture and the absence of appropriate insurance markets made a sharecropping system advantageous. For traditional crops grown in traditional methods, variations in effort may not have been significant, and so close supervision was not required. On the other hand, for other commodities, in particular for animal raising (which by its very nature is "capital intensive (including cattle as "capital")) incentive effects were important. Thus the landlord gave the right to use