

Please address all correspondence
To Government Statistician
In reply, please quote the file reference



File Ref: CPI 7/2019

GOVERNMENT OF SAMOA

SAMOA BUREAU OF STATISTICS

CONSUMER PRICE INDEX JULY 2019

Key findings:

The Consumer Price Index for July 2019 increased by 1.5 percent compared to the previous month.

- Housing, Water, Electricity, Gas and other Fuels increased by 5.0 percent.
- The Food and Non Alcoholic Beverages index also increased by 3.2 percent.
- Clothing and Footwear index decreased by 3.8 percent.
- The Average Annual Inflation for the year ended July 2019 was 1.7 percent.

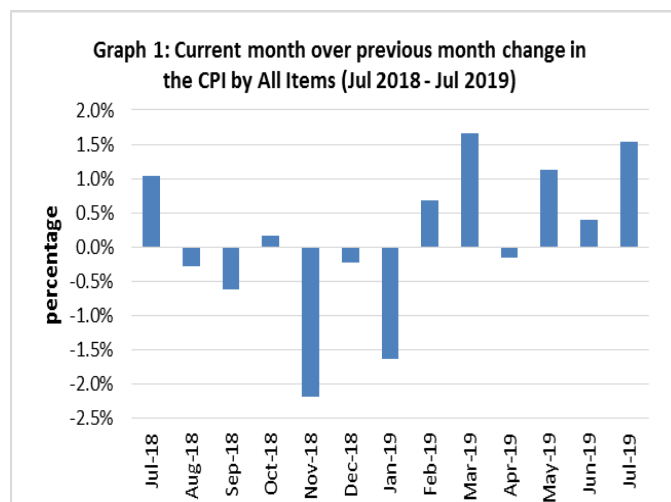
In the year to July 2019, the CPI rose 0.4 percent.

SUMMARY

The Consumer Price Index for July 2019 was 1.5 percent higher than June 2019, and was 0.4 percent higher than July 2018.

The increase of the Local Goods component by 1.7 percent from the previous month was due to higher prices for water (treated water) and local food, which was also the main contributor to the increase of 1.5 percent in the All Items Consumer Price Index.

Increased prices recorded for imported food and washing powder resulted in the 1.4 percent increase in the Imported Goods Component. Graph 1 shows the month to month percentage changes in the Consumer Price Index by all Divisions from July 2018 to July 2019.

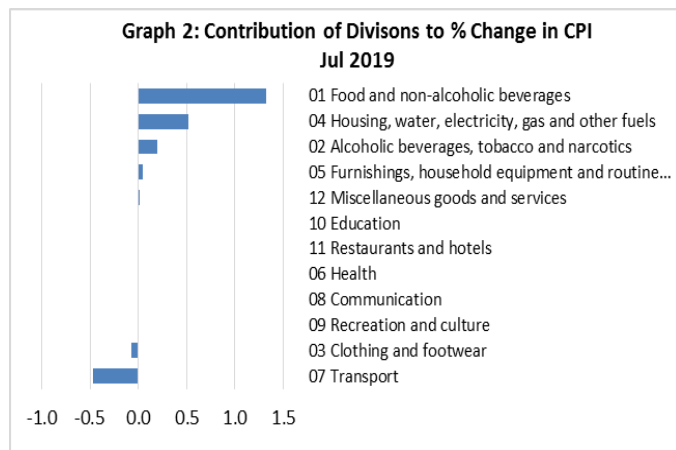


Source : Samoa Bureau of Statistics

Total All Divisions Contribution

Food and Non Alcoholic Beverages divisions along with Housing, Water, Electricity, Gas and other Fuels were the main contributors to the overall increase of 1.5 percent in the All Division Consumer Price Index.

On the other hand, there was offsetting negative contribution from the Transport division with 0.47 percent.



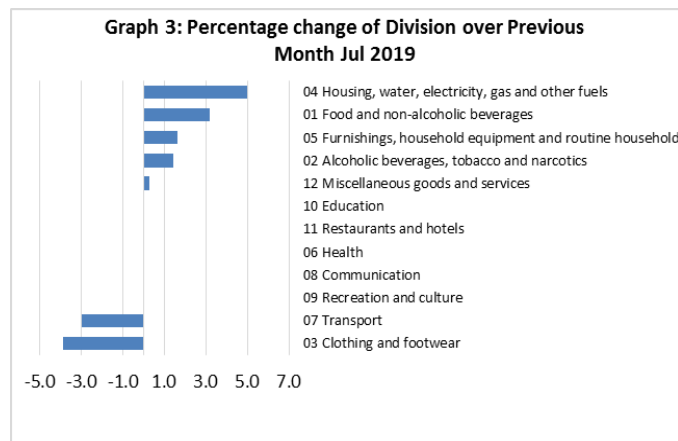
Source : Samoa Bureau of Statistics

Consumer Price Index (% Change)

The 1.5 percent increase in the Overall Index was mainly due to an increase of 5.0 percent in the Housing, Water, Electricity Gas and Other Fuel index. The Food and Non Alcoholic Beverages index also registered an increase of 3.2 percent while Furnishing, Household Equipment and Maintenance, Alcoholic Beverages and Tobacco and Miscellaneous Goods and Services indices showed increases of 1.6, 1.4 and 0.3 percent respectively.

On the other contrary, decreases were registered for Clothing and Footwear index with 3.8 percent and Transport index with 3.0 percent.

No changes were recorded for the Health, Communication, Recreation, Education and Restaurants indices. Graphically presented in Graph 3 is the July 2019 percentage change for all divisions from June 2019.



Source : Samoa Bureau of Statistics

Local Goods Component

The Local Goods Component of the Consumer Price Index registered an increase of 1.7 percent when compared to the previous month. This increase was mainly due to higher prices recorded for water (treated water), local food and cigarette.

Imported Goods Component

Increased prices recorded for Imported food, washing powder, washing soap and batteries have resulted in the 1.4 percent increase in the Imported Goods Component.

Housing, Water, Electricity, Gas and other Fuels Index

Higher prices recorded for water (treated water) and paint is reflected in the 5.0 percent increase in the Housing, Water, Electricity, Gas and other Fuels index.

Food and Non Alcoholic Beverages Index

Higher prices recorded for chicken leg quarter, sausage, corned beef, taro, fresh fish (piece, string and large), cucumber and taamu is resulted in the 3.2 percent increase in the Food and Non Alcoholic Beverages index.

Furnishings, Household Equipment, and Maintenance Index

The Furnishing, Household, Equipment and Maintenance Index recorded an increase of 1.6 percent higher due to the rise in prices recorded for washing powder, washing soap and batteries.

Alcoholic Beverages and Tobacco Index

The 1.4 percent increase in the Alcoholic Beverages and Tobacco index was a result of the higher prices recorded for cigarettes, beer and samoan kava.

Clothing and Footwear Index

A decrease of 3.8 percent in the Clothing and Footwear index was a reflection of the lower prices recorded for school uniform and ie faitaga.

Transport Index

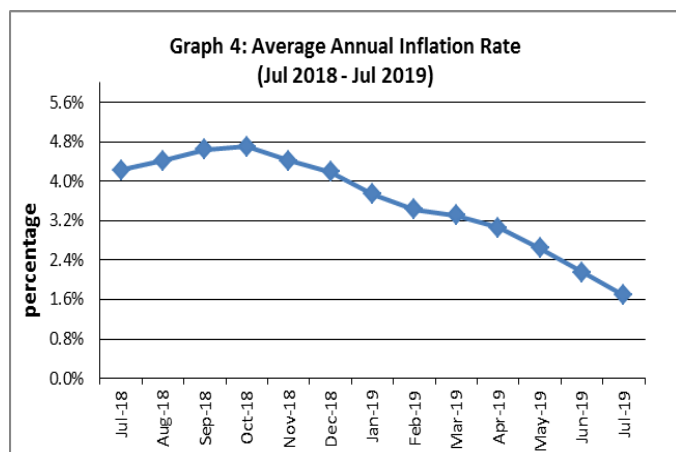
Decreased prices recorded for fuel (petrol) and airline fare (Apia-Auckland-Apia) is reflected in the 3.0 percent decrease in the Transport index.

Underlying Indices ^{1/}

The All Items Underlying Index for July 2019 registered an increase of 1.6 percent when compared to June 2019, and a decrease of 0.7 percent when compared to July 2018. The Imported Items Underlying Index registered an increase of 2.2 percent, while the Local Items Underlying Index also recorded an increase of 0.3 percent from the previous month.

Inflation Rate

The average annual inflation rate for the year ended July 2019 was 1.7 percent. For the twelve months ending July 2018 the inflation rate was 4.2 percent. Presented in Graph 4 is the Average annual inflation rate (July 2018 - July 2019).



Source : Samoa Bureau of Statistics

The attached Tables and Graphs provide the user with more detailed analysis.

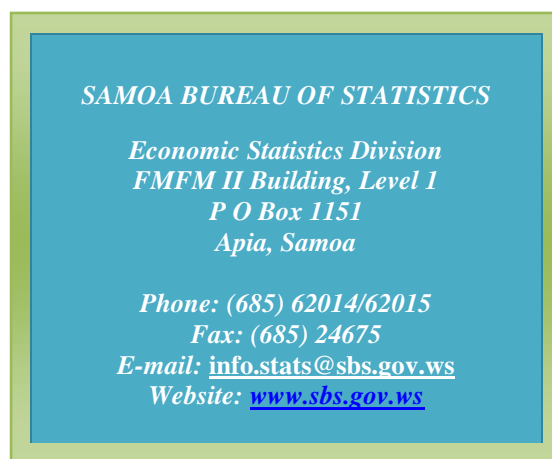
Technical Notes:

The Consumer Price (CPI) measures the rate of inflation for Samoa. It is designed to measure the change in prices for the goods purchased by households in Samoa. The CPI measures the change in prices by comparing the prices for a basket of goods and services at the collection period with the price for the same goods in a base period.

The basket of goods that is priced is based on the average expenditures of households as recorded in the Household Income and Expenditure Survey (HIES). The HIES survey identifies how much households spend on different items. The more households spend on an item on average, the more important it is to the price index, and the higher the weight in the index.

^{1/} Monthly movements in the 'headline' CPI series can be volatile. This volatility reflects price changes in particular items that may be due, among other factors, to fluctuations in commodity markets and agricultural conditions, policy changes, or seasonal or infrequent price resetting.

Underlying inflation is a measure of inflation that excludes certain items that face volatile price movements. Underlying inflation eliminates products that can have temporary price shocks because these shocks can diverge from the overall trend of inflation and give a false measure of inflation.



Date of release: 9th August 2019

The next Consumer Price Index will be released on 9th September 2019.

Aliimuamua Malaefono Tauā - T.Faasalaina
GOVERNMENT STATISTICIAN/(CEO)

Table 1. CONSUMER PRICE INDEX.

(Base Period : Average Prices February 2016 = 100)

Group	All Items	Food and Non Alcoholic Beverages	Alcoholic Beverages, Tobacco and Narcotics	Clothing and Footwear	Housing, Water, Electricity, Gas and other Fuels	Furnishings, Household Equipment, and Maintenance	Health	Transport	Communication	Recreation and Culture	Education	Restaurants	Miscellaneous goods and services
<i>Weights</i>	1000.0	403.7	128.4	21.2	119.6	30.8	4.6	148.5	51.5	6.1	19.7	22.4	43.5
<i>Ave - 2016</i>	101.1	103.7	102.8	98.8	92.6	99.4	99.2	101.3	100.0	95.4	101.1	99.3	100.6
<i>Ave - 2017</i>	102.9	105.1	107.6	96.6	92.2	99.1	95.6	107.3	101.2	90.7	97.9	98.3	98.1
<i>Ave - 2018</i>	107.2	111.0	112.3	95.3	91.0	98.0	97.0	115.0	103.3	92.6	110.4	99.0	97.8
2018													
July	109.7	116.7	112.0	95.0	89.7	97.6	98.5	117.4	103.4	93.2	111.6	98.6	98.3
August	109.4	115.6	113.2	95.0	92.9	97.2	98.5	114.9	103.4	92.0	111.6	98.6	98.1
September	108.7	113.1	113.6	94.8	93.5	98.2	98.5	116.1	103.4	92.0	111.6	98.6	97.9
October	108.9	112.4	113.8	96.0	95.2	97.9	98.5	117.4	103.4	93.8	111.6	98.6	98.0
November	106.5	108.1	113.6	96.2	89.7	97.6	98.5	117.8	103.4	92.3	111.6	100.6	98.0
December	106.3	107.0	113.6	96.3	89.6	96.8	99.9	119.3	102.9	90.9	111.6	100.6	98.2
2019													
January	104.6	106.0	115.4	93.7	89.4	97.6	99.9	109.3	102.9	91.0	111.6	100.6	98.1
February	105.3	108.3	116.3	95.2	89.0	96.2	99.9	107.5	102.9	91.0	110.5	100.6	98.5
March	107.0	111.3	116.8	94.7	93.3	95.5	100.1	106.4	105.2	89.8	110.6	102.8	98.3
April	106.8	110.3	116.3	95.0	93.4	95.2	100.1	108.2	105.2	90.1	110.6	103.4	98.0
May	108.0	111.6	115.9	95.3	93.6	93.6	100.1	113.1	104.3	88.2	114.9	103.4	98.0
June	108.5	111.2	116.0	95.9	93.6	95.8	100.1	116.8	104.3	87.1	114.9	103.4	97.2
July (P)	110.1	114.7	117.7	92.2	98.3	97.4	100.1	113.3	104.3	87.1	114.9	103.4	97.4
<u>Percentage Change (P)</u>													
Jul 2019 over Jun 2019	1.5%	3.2%	1.4%	-3.8%	5.0%	1.6%	0.0%	-3.0%	0.0%	0.0%	0.0%	0.0%	0.3%
Jul 2019 over Jul 2018	0.4%	-1.7%	5.1%	-3.0%	9.6%	-0.2%	1.6%	-3.5%	0.9%	-6.5%	3.0%	4.8%	-0.8%

Source : Samoa Bureau Statistics

(P) : Provisional figures

Note : n.a. Not applicable

Table 2. ALL ITEMS UNDERLYING INDEX
(Base Period : Average Prices February 2016 = 100)

Group	All Items	Food and Non Alcoholic Beverages	Alcoholic Beverages, Tobacco and Narcotics	Clothing and Footwear	Housing, Water, Electricity, Gas and other Fuels	Furnishings, Household Equipment, and Maintenance	Health	Transport	Communication	Recreation and Culture	Education	Restaurants	Miscellaneous goods and services
<i>Weights</i>	586.7	345.3	<i>n.a</i>	21.2	24.2	30.8	3.5	26.4	51.5	5.6	12.3	22.4	43.5
<i>Ave - 2016</i>	101.7	103.2		98.8	97.5	99.4	99.0	100.2		95.0		99.3	100.6
<i>Ave - 2017</i>	104.1	107.9		96.6	93.8	99.1	94.2	104.2	101.2	90.0	96.7	98.3	98.1
<i>Ave - 2018</i>	106.6	110.8		95.3	93.4	98.0	96.0	110.8	103.3	92.0	114.0	99.0	97.8
2018													
July	109.2	115.2		95.0	93.2	97.6	98.0	111.3	103.4	92.7	115.6	98.6	98.3
August	108.8	114.7		95.0	92.6	97.2	98.0	111.3	103.4	91.3	115.6	98.6	98.1
September	107.9	113.0		94.8	92.9	98.2	98.0	109.9	103.4	91.4	115.6	98.6	97.9
October	107.7	112.7		96.0	94.0	97.9	98.0	107.7	103.4	93.3	115.6	98.6	98.0
November	105.5	108.8		96.2	94.5	97.6	98.0	107.8	103.4	91.7	115.6	100.6	98.0
December	103.1	105.0		96.3	94.1	96.8	99.8	108.2	102.9	90.2	115.6	100.6	98.2
2019													
January	102.0	103.2		93.7	94.5	97.6	99.8	107.5	102.9	90.3	115.6	100.6	98.1
February	104.8	108.0		95.2	94.9	96.2	99.8	106.5	102.9	90.3	113.9	100.6	98.5
March	106.5	110.5		94.7	94.7	95.5	100.1	107.4	105.2	89.0	113.9	102.8	98.3
April	106.1	109.8		95.0	94.6	95.2	100.1	108.4	105.2	89.3	113.9	103.4	98.0
May	106.4	110.3		95.3	94.6	93.6	100.1	108.4	104.3	87.3	120.6	103.4	98.0
June	106.7	110.8		95.9	94.1	95.8	100.1	108.4	104.3	86.2	120.6	103.4	97.2
July (P)	108.4	113.7		92.2	94.5	97.4	100.1	108.4	104.3	86.2	120.6	103.4	97.4
<u>Percentage Change (P)</u>													
Jul 2019 over Jun 2019	1.6%	2.6%		-3.8%	0.4%	1.6%	0.0%	0.0%	0.0%	0.0%	0.0%	0.0%	0.3%
Jul 2019 over Jul 2018	-0.7%	-1.2%		-3.0%	1.4%	-0.2%	2.2%	-2.7%	0.9%	-7.1%	4.4%	4.8%	-0.8%

Source : Samoa Bureau Statistics

(P) : Provisional figures

Note : n.a. Not applicable

Table 3. AVERAGE RETAIL PRICES OF SELECTED COMMODITIES

Commodities	Wt	Unit	2018			2019		
			May	Jun	Jul	May	Jun	Jul (P)
01 Food and non-alcoholic beverages								
Leg Quarters Chicken	62.2	kg	4.30	4.97	4.86	4.22	4.30	4.74
Raw Sugar	21.3	kg	2.90	2.89	2.88	2.47	2.49	2.45
Bread	17.2	loaf	1.68	1.68	1.68	1.72	1.71	1.72
Corned Beef (a)	15.9	12 oz	8.17	8.17	8.17	8.13	7.97	7.88
Taro	15.2	kg	2.38	2.70	3.19	2.56	2.62	2.82
Re-packed medium grain rice	13.4	kg	3.22	3.27	3.21	2.93	2.92	2.93
Prepacked medium grain rice (a)	13.4	907g	3.08	3.00	3.00	3.23	3.25	3.25
Canned fish between \$3.00 and \$3.99 Natural Oil	12.7	15 oz	3.53	3.53	3.52	3.42	3.50	3.49
Bongo	10.2	20grms	0.84	0.84	0.84	0.80	0.80	0.80
Keke Saina Biscuits (a)	9.2	pkt 10	6.54	6.58	6.58	6.25	6.18	6.30
Tip Top Ice Cream (a)	9.2	2 ltr	14.93	14.93	14.93	15.32	15.32	15.32
Ramen maggie	9.0	85gms	1.12	1.12	1.12	1.07	1.08	1.08
Fish (Piece)	7.9	kg	18.75	17.68	19.95	20.10	16.75	18.67
Butter Anchor	7.7	454g	13.46	13.44	13.44	14.07	14.07	14.67
Round Pancake (a)	7.5	sml	0.15	0.15	0.15	0.15	0.15	0.15
Mutton Flaps	6.6	kg	20.81	20.61	20.31	22.13	22.56	22.38
Canned fish \$4:00 or over N/Oil	6.4	15 oz	4.84	4.75	4.76	4.93	4.96	4.85
Canned fish under \$3.00 in N/Oil	6.4	15 oz	2.47	2.53	2.68	2.60	2.58	2.52
Wings Turkey	6.3	kg	5.50	6.13	6.16	6.17	6.22	6.27
Fish (string)	6.0	kg	9.99	10.82	10.90	10.73	10.43	12.37
Fish (large)	6.0	kg	17.35	14.64	18.33	19.43	17.47	21.82
02 Alcoholic beverages, tobacco and narcotics								
Lager Beer	37.9	355 mls	3.63	3.61	3.43	3.56	3.59	3.58
Pall Mall Filter Cigarettes (Red)	24.3	20 rolls	12.60	12.60	13.00	13.40	13.40	13.80
Pall Mall Menthol Cigarettes (Green)	24.3	20 rolls	12.60	12.60	13.00	13.40	13.40	13.80
Beer (a)	16.3	330 mls	3.34	3.31	3.34	3.36	3.36	3.40
Winfield Tobacco (a)	12.6	packet	15.00	15.00	15.00	15.00	15.00	15.00
03 Clothing and footwear								
Uniform le Faitaga College boys	4.3	size 8-10	31.33	31.33	31.33	29.67	29.67	29.67
Uniform Pa'ave (a)	3.7	size 7	32.67	32.67	32.67	35.33	36.33	32.00
04 Housing, water, electricity, gas and other fuels								
Electricity / Cashpower / kwh 1- 100 / total cost per unit ,	50.6	kwh	0.60	0.56	0.59	0.67	0.67	0.67
Reservoir treated Water	28.5	15-40 m3	1.40	1.40	1.40	1.40	1.40	1.67
Liquid gas	15.8	9kg	61.00	61.00	61.00	62.00	62.00	62.00
Government house Rent	12.2	2 b/room	650.00	650.00	650.00	650.00	650.00	650.00
05 Furnishings, household equipment and routine household maintenance								
Washing powder (a)	6.3	200g	1.82	1.79	1.81	1.60	1.78	1.90
Soap yellow Washing soap	5.9	bar	2.88	2.88	2.88	2.74	2.74	2.78
Mosquito coil	4.4	10 coil	1.18	1.18	1.18	1.20	1.18	1.20

06 Health

Amoxicillin mg Tablets (a)	2.5	500 mg	6.83	6.83	7.53	7.58	7.58	7.58
Hospital Charge	1.1	night	22.50	22.50	22.50	22.50	22.50	22.50

07 Transport

Petrol	60.8	1 ltr	2.67	2.76	2.87	2.69	2.81	2.74
Taxi Fare PO Motootua Hosp	8.2	per trip	4.80	4.80	4.80	4.80	4.80	4.80
Taxi Fares PO Malua	8.2	per trip	31.30	31.30	31.30	31.30	31.30	31.30
Taxi Fares PO Falefa	8.2	per trip	43.20	43.20	43.20	43.20	43.20	43.20
Air Fares Fagalii Pago Fagalii	6.8	return trip	380.00	380.00	380.00	395.00	395.00	395.00
Air Fares Apia Auckland Apia	6.8	1 month	1544.53	1472.87	1522.83	1441.63	1795.77	1221.69

08 Communication

Calling per minute Rate cell phone (a)	10.02	per minute	0.45	0.45	0.45	0.43	0.43	0.43
Internet data bundles per mb Rate (a)	10.02	per mb	0.25	0.25	0.25	0.25	0.25	0.25
Calling per minute Rate cell phone (a)	10.02	per minute	0.44	0.44	0.44	0.44	0.44	0.44
Internet data bundles per mb Rate (a)	10.02	per mb	0.20	0.20	0.20	0.20	0.20	0.20

09 Recreation and culture

Television (a)	2.30	LCD	966.00	966.00	966.00	861.00	827.67	827.67
Exercise Book warwick	1.44	1B4 64 paç	1.45	1.45	1.45	1.37	1.37	1.37
Laptop (a)	1.33	each	2998.60	2998.60	2998.60	2918.60	2918.60	2918.60

10 Education

Fees PTA Primary Y Urban Registration fees (a)	7.23	Year 6	82.50	82.50	82.50	82.50	82.50	82.50
Fees PTA Secondary Y Urban Registration fees (a)	5.11	Year 10	52.00	52.00	52.00	58.00	58.00	58.00
Fees Tertiary NUS registration School Fees	3.79	registration	320.00	320.00	320.00	322.00	322.00	322.00
Fees Secondary Y Examination Fees (a)	3.61	Y12-13	25.50	25.50	25.50	25.50	25.50	25.50

11 Restaurants and hotels

Fish & Chip Meal	7.79	1 serve	9.17	9.17	9.17	9.17	9.17	9.17
Curry & Chopsuey Meal	4.87	1 serve	3.00	3.00	3.00	3.67	3.67	3.67
Chicken & Chips Meal (a)	4.87	1 serve	9.36	9.36	9.36	9.64	9.64	9.64
Steam rice & chicken Meal (a)	4.87	1 serve	4.83	4.83	4.83	4.83	4.83	4.83

12 Miscellaneous goods and services

Paper Sofan deluxe ply Toilet Paper	8.52	250 sheets	1.00	1.00	1.01	1.03	1.00	1.00
Hair Gel	4.59	1124ml	4.39	4.46	4.49	4.43	4.44	4.43
Price for Storage of remains (a)	4.41	per day	60.00	60.00	60.00	60.00	60.00	60.00
Basic Casket (a)	4.41	each	1966.67	1966.67	1966.67	1966.67	1966.67	1966.67
Standard Embalming (a)	4.41	1 person	1500.00	1500.00	1500.00	1500.00	1500.00	1500.00
Toilet soap (a)	4.38	90g	1.86	1.86	1.85	1.85	1.86	1.91
Diapers (a)	4.19	5kg-10kg	9.97	9.56	9.56	9.13	8.99	8.99

Source : Samoa Bureau Statistics

(a) : New commodity from February 2016

(P) : Provisional figures

Note : Please note unit of conversion was in pound's (lb's) but been converted into kilograms (kg)

Table 4. IMPORTED GOODS COMPONENT OF THE CONSUMER PRICE INDEX
(Base Period : Average Prices February 2016 = 100)

Group	All Items	Food and Non Alcoholic Beverages	Alcoholic Beverages, Tobacco and Narcotics	Clothing and Footwear	Housing, Water, Electricity, Gas and other Fuels	Furnishings, Household Equipment and Maintenance	Health	Transport	Communication	Recreation and Culture	Education	Restaurants	Miscellaneous goods and services
<i>Weights</i>	494.7	269.1	23.8	15.2	28.3	26.9	2.5	88.6	<i>n.a</i>	5.6	<i>n.a</i>	<i>n.a</i>	34.7
<i>Ave - 2016</i>	102.5	103.9	105.1	98.8	98.7	99.3	98.5	101.8		95.0			100.7
<i>Ave - 2017</i>	107.3	110.1	110.0	97.0	97.6	98.9	91.7	111.2		90.0			97.1
<i>Ave - 2018</i>	111.9	113.8	113.5	96.1	100.6	97.6	94.3	124.0		92.0			96.6
2018													
July	115.6	119.4	115.0	95.5	101.0	97.2	97.1	127.2		92.7			97.2
August	114.7	118.8	115.0	95.5	100.1	96.7	97.1	124.5		91.3			97.1
September	113.9	116.6	115.0	95.5	100.9	97.9	97.1	126.2		91.4			96.8
October	113.8	116.2	115.0	97.0	101.9	97.5	97.1	126.5		93.3			96.9
November	111.7	111.1	115.0	97.2	103.0	97.2	97.1	129.6		91.7			96.9
December	108.6	106.2	115.0	97.6	102.9	96.3	99.8	127.3		90.2			97.2
2019													
January	105.2	103.9	115.0	94.5	101.8	97.2	99.8	116.3		90.3			97.0
February	107.4	110.0	116.6	95.4	100.0	95.6	99.8	110.4		90.3			97.5
March	109.2	113.2	119.5	94.8	99.8	94.8	97.5	110.3		89.0			97.2
April	109.3	112.4	119.6	95.1	100.5	94.5	97.5	113.4		89.3			96.9
May	110.6	112.7	119.3	95.5	101.2	92.6	97.5	120.3		87.3			96.9
June	111.9	113.5	119.3	96.3	101.2	95.2	97.5	124.2		86.2			95.9
July (P)	113.4	117.0	119.7	91.2	101.5	96.9	97.5	122.0		86.2			96.2
<u>Percentage Change (P)</u>													
Jul 2019 over Jun 2019	1.4%	3.1%	0.4%	-5.3%	0.3%	1.9%	0.0%	-1.8%		0.0%			0.4%
Jul 2019 over Jul 2018	-2.0%	-2.0%	4.1%	-4.5%	0.5%	-0.2%	0.4%	-4.1%		-7.1%			-1.1%

Source : Samoa Bureau Statistics

(P) : Provisional figures

Note : n.a. Not applicable

Table 5. IMPORTED ITEMS UNDERLYING INDEX

(Base Period : Average Prices February 2016 = 100)

Group	All Items	Food and Non Alcoholic Beverages	Alcoholic Beverages, Tobacco and Narcotics	Clothing and Footwear	Housing, Water, Electricity, Gas and other Fuels	Furnishings, Household Equipment and Maintenance	Health	Transport	Communication	Recreation and Culture	Education	Restaurants	Miscellaneous goods and services
Weights	401.2	269.1	n.a	15.2	24.2	26.9	2.5	23.0	n.a	5.6	n.a	n.a	34.7
Ave - 2016	102.4	103.9		98.8	97.5	99.3	98.5	100.1		95.0			100.7
Ave - 2017	106.0	110.1		97.0	93.8	98.9	91.7	104.5		90.0			97.1
Ave - 2018	108.8	113.8		96.1	93.4	97.6	94.3	111.2		92.0			96.6
2018													
July	112.6	119.4		95.5	93.2	97.2	97.1	111.7		92.7			97.2
August	112.0	118.8		95.5	92.6	96.7	97.1	111.7		91.3			97.1
September	110.6	116.6		95.5	92.9	97.9	97.1	110.1		91.4			96.8
October	110.3	116.2		97.0	94.0	97.5	97.1	107.5		93.3			96.9
November	106.9	111.1		97.2	94.5	97.2	97.1	107.7		91.7			96.9
December	103.6	106.2		97.6	94.1	96.3	99.8	108.1		90.2			97.2
2019													
January	101.9	103.9		94.5	94.5	97.2	99.8	107.3		90.3			97.0
February	105.9	110.0		95.4	94.9	95.6	99.8	106.2		90.3			97.5
March	108.0	113.2		94.8	94.7	94.8	97.5	107.3		89.0			97.2
April	107.5	112.4		95.1	94.6	94.5	97.5	108.3		89.3			96.9
May	107.6	112.7		95.5	94.6	92.6	97.5	108.3		87.3			96.9
June	108.2	113.5		96.3	94.1	95.2	97.5	108.3		86.2			95.9
July (P)	110.5	117.0		91.2	94.5	96.9	97.5	108.3		86.2			96.2
<u>Percentage Change (P)</u>													
Jul 2019 over Jun 2019	2.2%	3.1%		-5.3%	0.4%	1.9%	0.0%	0.0%		0.0%			0.4%
Jul 2019 over Jul 2018	-1.8%	-2.0%		-4.5%	1.4%	-0.2%	0.4%	-3.0%		-7.1%			-1.1%

Source : Samoa Bureau Statistics

(P) : Provisional figures

Note : n.a. Not applicable

Table 6. LOCAL GOODS COMPONENT OF THE CONSUMER PRICE INDEX
(Base Period : Average Prices February 2016 = 100)

Group	All Items	Food and Non Alcoholic Beverages	Alcoholic Beverages, Tobacco and Narcotics	Clothing and Footwear	Housing, Water, Electricity, Gas and other Fuels	Furnishings, Household Equipment and Maintenance	Health	Transport	Communication	Recreation and Culture	Education	Restaurants	Miscellaneous goods and services
Weights	505.3	134.6	104.6	6.0	91.3	3.9	2.2	59.9	51.5	0.4	19.7	22.4	8.8
Ave - 2016	99.7	102.5	102.3	98.6	90.7	100.0	100.0	100.5	100.0	100.0	101.1	99.3	
Ave - 2017	98.6	95.0	107.1	95.7	90.6	100.1	100.0	101.6	101.2	100.0	97.9	98.3	102.3
Ave - 2018	102.6	105.3	112.0	93.3	88.1	100.3	100.0	101.7	103.3	100.0	110.4	99.0	102.3
2018													
July	103.9	111.3	111.3	93.7	86.2	100.3	100.0	102.8	103.4	100.0	111.6	98.6	102.3
August	104.2	109.2	112.8	93.6	90.6	100.3	100.0	100.8	103.4	100.0	111.6	98.6	102.3
September	103.6	106.1	113.3	93.0	91.3	100.3	100.0	101.1	103.4	100.0	111.6	98.6	102.3
October	104.1	104.9	113.5	93.6	93.2	100.3	100.0	104.1	103.4	100.0	111.6	98.6	102.3
November	101.5	101.9	113.3	93.5	85.5	100.3	100.0	100.2	103.4	100.0	111.6	100.6	102.3
December	104.0	108.7	113.2	93.0	85.5	100.3	100.0	107.5	102.9	100.0	111.6	100.6	102.3
2019													
January	103.9	110.1	115.5	91.8	85.5	100.3	100.0	98.8	102.9	100.0	111.6	100.6	102.3
February	103.2	105.1	116.2	94.8	85.5	100.3	100.0	103.2	102.9	100.0	110.5	100.6	102.3
March	104.9	107.5	116.2	94.2	91.3	100.3	103.0	100.7	105.2	100.0	110.6	102.8	102.3
April	104.4	106.2	115.6	94.6	91.3	100.3	103.0	100.5	105.2	100.0	110.6	103.4	102.3
May	105.5	109.4	115.1	94.7	91.3	100.3	103.0	102.4	104.3	100.0	114.9	103.4	102.3
June	105.2	106.5	115.3	94.7	91.3	100.3	103.0	105.7	104.3	100.0	114.9	103.4	102.3
July (P)	107.0	110.1	117.2	94.7	97.3	100.3	103.0	100.4	104.3	100.0	114.9	103.4	102.3
<u>Percentage Change (P)</u>													
Jul 2019 over Jun 2019	1.7%	3.4%	1.7%	0.0%	6.6%	0.0%	0.0%	-5.0%	0.0%	0.0%	0.0%	0.0%	0.0%
Jul 2019 over Jul 2018	3.0%	-1.1%	5.3%	1.1%	12.9%	0.0%	3.0%	-2.4%	0.9%	0.0%	3.0%	4.8%	0.0%

Source : Samoa Bureau Statistics

(P) : Provisional figures

Note : n.a. Not applicable

Table 7. LOCAL ITEMS UNDERLYING INDEX

(Base Period : Average Prices February 2016 = 100)

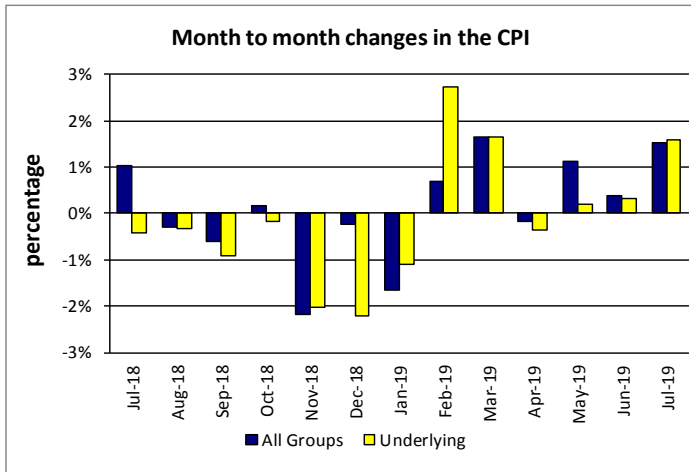
Group	All Items	Food and Non Alcoholic Beverages	Alcoholic Beverages, Tobacco and Narcotics	Clothing and Footwear	Housing, Water, Electricity, Gas and other Fuels	Furnishings, Household Equipment and Maintenance	Health	Transport	Communication	Recreation and Culture	Education	Restaurants	Miscellaneous goods and services
Weights	185.5	76.1	n.a	6.0	n.a	3.9	1.0	3.4	51.5	n.a	12.3	22.4	8.8
Ave - 2016	100.3	100.6		98.6		100.0	100.0	101.0				99.3	
Ave - 2017	99.9	100.1		95.7		100.1	100.0	101.8	101.2		96.7	98.3	102.3
Ave - 2018	101.9	100.3		93.3		100.3	100.0	108.3	103.3		114.0	99.0	102.3
2018													
July	101.9	100.0		93.7		100.3	100.0	108.6	103.4		115.6	98.6	102.3
August	101.9	100.2		93.6		100.3	100.0	108.6	103.4		115.6	98.6	102.3
September	102.0	100.3		93.0		100.3	100.0	108.6	103.4		115.6	98.6	102.3
October	102.0	100.4		93.6		100.3	100.0	108.6	103.4		115.6	98.6	102.3
November	102.4	100.7		93.5		100.3	100.0	108.6	103.4		115.6	100.6	102.3
December	102.2	100.7		93.0		100.3	100.0	108.6	102.9		115.6	100.6	102.3
2019													
January	102.2	100.7		91.8		100.3	100.0	108.6	102.9		115.6	100.6	102.3
February	102.4	101.1		94.8		100.3	100.0	108.6	102.9		113.9	100.6	102.3
March	103.3	101.3		94.2		100.3	106.3	108.6	105.2		113.9	102.8	102.3
April	103.3	101.0		94.6		100.3	106.3	108.6	105.2		113.9	103.4	102.3
May	103.8	101.7		94.7		100.3	106.3	108.6	104.3		120.6	103.4	102.3
June	103.6	101.2		94.7		100.3	106.3	108.6	104.3		120.6	103.4	102.3
July (P)	103.9	102.0		94.7		100.3	106.3	108.6	104.3		120.6	103.4	102.3
Percentage Change (P)													
Jul 2019 over Jun 2019	0.3%	0.7%		0.0%		0.0%	0.0%	0.0%	0.0%		0.0%	0.0%	0.0%
Jul 2019 over Jul 2018	2.0%	2.0%		1.1%		0.0%	6.3%	0.0%	0.9%		4.4%	4.8%	0.0%

Source : Samoa Bureau Statistics

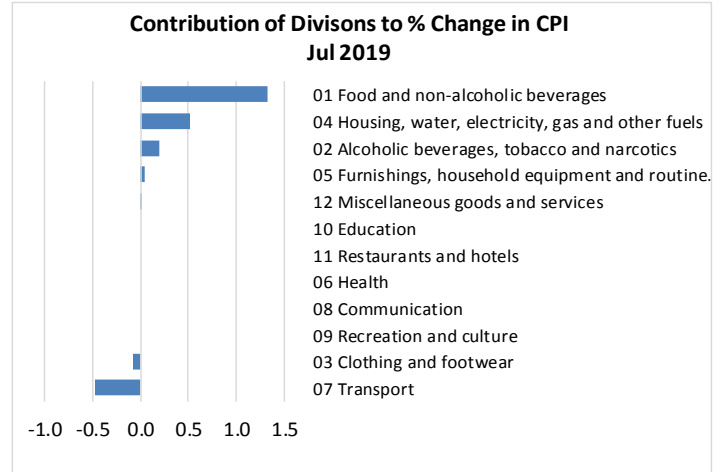
(P) : Provisional figures

Note : n.a. Not applicable

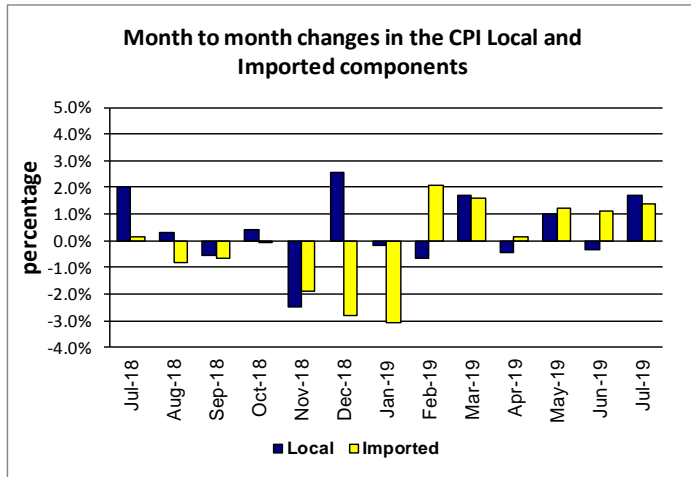
Graph.5



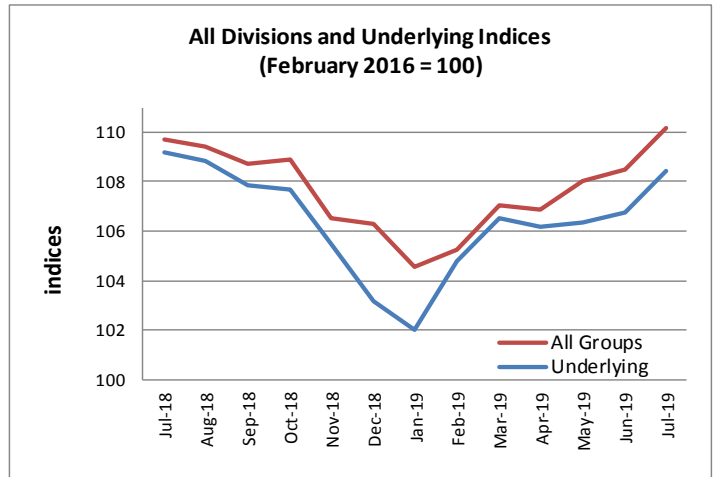
Graph.6



Graph.7



Graph.8



Graph.9

