

# International Schools Guide

INTERNATIONAL SCHOOLS GUIDE 2020



# CREATING MEMORIES



**CALL NOW!  
2885 6262**

LONDON • HONG KONG • NEW YORK



Find us on:  
**facebook**

 Venture Studios Hong Kong

 [Venturephotography.com/hk](http://Venturephotography.com/hk)

 [venturestudioshk](https://www.instagram.com/venturestudioshk)

 +852 5304 7363

## International schools realize students' full potentials

Parents have long despaired over Hong Kong's mainstream education system as they see their children dread school instead of deriving pleasure and acquiring knowledge and wisdom from it. The recent spate of teenager arrests in social unrest incidents further reflects the deficiencies in the education system, and reinforces parents' conviction to find better alternatives.

The growing popularity of a more liberal and innovative education is a direct result of parents' general dissatisfaction with the mainstream education system where the emphasis lies in the quantity of students' homework instead of the quality of the teaching; where rote learning predominates over reasoning and imagination; and where examination results override every other consideration.

International schools offer a welcome alternative, and are increasingly held in high regard by parents because of their broader curriculum and well-

researched teaching methodology. They like the fact that international schools encourage and support students to use their own initiatives, and to seek the knowledge and answers for themselves.

In addition to academic pursuits, international school students learn to broaden their perspective, hone their communication skills with people of different backgrounds, and develop into creative and independent problem-solvers, as well as caring global citizens. These qualities stand them in good stead for further education and advancement in society.

In assembling experts from this education sector, The Standard's International Schools Fair will provide you with the most updated information, and answers to a comprehensive range of questions to help you make the optimum choice for your children.

  
Features Editor





# CONTENTS



- 01 Editor's Message  
**International schools realize students' full potentials**
  
- 08 Yew Chung International School  
**What is an Emergent Curriculum?**
  
- 10 Top School  
**Mind your language: why a strong mother tongue is essential for children's learning and development**
  
- 12 Hong Kong Academy  
**Preparing students for a sustainable future at HKA**
  
- 14 Christian Alliance International School  
**Fostering future pillars of the world**
  
- 16 MAGART International Kindergarten  
**Balancing language and academic excellence through holistic approach**
  
- 18 American School Hong Kong  
**A stimulating American education experience**
  
- 20 Aristle International Kindergarten and Nursery  
**Well-balanced bilingual school-based curriculum**



## Community of Learners

Hong Kong Academy offers a highly personalised and holistic education that empowers each student to pursue their passions and fulfill their greatest potential. We invite you to visit our welcoming community and learn more about our programmes.

*"As a through-train IB school founded upon strong family values and small class sizes, HKA was the natural choice for us. The learning program is transparent and has allowed us as parents to be a part of their learning journey."*

*Sulin & Min, HKA parents*



"International Schools Guide" is published by The Standard in June 2020

**Display Advertising Department**

3/F, Sing Tao News Corporation Building, 7 Chun Cheong Street, Tseung Kwan O Industrial Estate, Tseung Kwan O, New Territories, Hong Kong

**Advertising Hotline:** (852) 3181 3311

**Fax:** 2758 3579

All rights reserved.

**Features Editor:** Andy Ng

**Reporters:** Gigi Wong, Christie Cheung

**Designer:** Lucy Ng

**Business Director:** Irene Chan

**Website:** [www.thestandard.com.hk](http://www.thestandard.com.hk)

**Email:** [advertise@thestandard.com.hk](mailto:advertise@thestandard.com.hk)



**ENROLMENT OPEN**

Apply now. Contact us for a personalised tour.

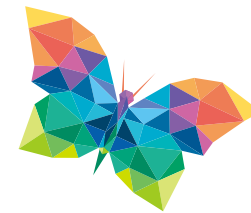
[admissions@hkacademy.edu.hk](mailto:admissions@hkacademy.edu.hk) | +852 2655 1111 | [hkacademy.edu.hk/admissions](http://hkacademy.edu.hk/admissions)

[f](#) [i](#) [t](#) [in](#) @HongKongAcademy | [www.hkacademy.edu.hk](http://www.hkacademy.edu.hk)



# CONTENTS

- 22 Box Hill (HK) International Kindergarten and Pre-school  
**Box Hill leads your child to a delighting start of learning**
- 24 Christian Alliance P.C. Lau Memorial International School  
**Engaged, ethical, and entrepreneurial**
- 26 Fairchild Kindergarten & Fairchild Junior Academy  
**Life in the happy lane at Fairchild**
- 28 ISF Academy  
**Cultivating curious students with the passion to learn**
- 30 Island Christian Academy  
**Preparing students for life beyond the classroom**
- 32 Kingston International Kindergarten & Kingston Children's Centre  
**Fostering inquisitive lifelong learners**
- 34 Korean International School – International Section  
**Inclusive education**
- 36 Lou Pichoun École Maternelle Française Internationale Hong Kong & French International Preschool Hong Kong  
**Multilingual learning leads to excellence**
- 38 Maple Bear Canadian International Kindergarten Hong Kong  
**Integrative play-based and bilingual education**



蝴蝶展翅 蛻變成才

## A UNIQUE TRANSFORMATIVE EDUCATIONAL EXPERIENCE

Join a vibrant school community that prepares its students to be the best for Hong Kong and the world!

Be part of a Christian School community that sharpens the mind, shapes the heart and strengthens serving hands for the glory of God and be of benefit to others.

Our mission is to **cultivate learners** with **knowledge, skills, integrity** and **discernment**, growing in **love** for God and **service** to humanity.



CHRISTIAN ALLIANCE  
INTERNATIONAL SCHOOL  
宣道國際學校

Alberta  
Accredited  
International School  
Canada

(852) 3699 3862 · 3699 3863  
admissions@caisbv.edu.hk  
www.caisbv.edu.hk  
CAIS.HK  
CAISBV

Christian Alliance International School is a candidate school for the International Baccalaureate (IB) Diploma Programme.





# CONTENTS



耀中國際學校  
YEW CHUNG INTERNATIONAL SCHOOL

- 40 Mount Kelly School Hong Kong  
**Integrating interdisciplinary learning**
- 42 Norwegian International School  
**A community that fosters active lifelong learners**
- 44 Shrewsbury International School Hong Kong  
**The best primary education in Hong Kong**
- 46 Small World Christian Kindergarten  
**Nurturing children's natural curiosity through play**
- 48 United Christian Mucis Kindergarten  
**UCM: holistic music education for young learners**
- 50 Victoria Shanghai Academy  
**Helping students to value, strive and act**
- 52 Wycombe Abbey School Hong Kong  
**Building confidence for life**
- 54 YLPSK & GAPSK  
**Transform your Chinese Mandarin proficiency**
- 57 **Directory – International Schools**
- 67 **Directory – Educational Centres / Others**



## Global Education

YCIS prepares students to face the challenges of the unknown future and equips them to embrace the world with confidence.

To learn more, register for an upcoming **information session**.

📞 2338 7106    ✉ admissions@ycef.com

🌐 info.ycis-hk.com/online\_info\_session



### ► Why choose YCIS?

- ✓ Strong bilingual focus
- ✓ Globally competent
- ✓ 100% university acceptance
- ✓ Character formation
- ✓ East meets West
- ✓ Multicultural environment



Committed to **Global Education**



# What is an Emergent Curriculum?

Written by Rachel Blois, YCIS Educator

*“Emergent Curriculum begins with an openness to what children are doing, thinking, and saying.” (Stacey, 2009). At Yew Chung International School (YCIS), each child is treated as a unique individual, ‘with innate talents and gifts that should be nurtured to the fullest potential’. In Early Childhood Education, YCIS educators spend a long time discovering how to carefully curate a supportive, warm and holistic environment for each child.*

## Why is an Emergent Curriculum important?

In each YCIS classroom, there is a unique group of learners, each with their own interests, passions and curiosities. One child might be fascinated by insects, big and small. Another might want to sit and paint for some time each day. While another builds imaginatively with construction toys. An Emergent Curriculum allows children to choose their own activities and resources. This child-centred approach allows children to explore, develop and grow at their own pace.

At YCIS, teachers observe the child and notice what he or she is doing in the environment. This is a complex process as the teachers have to go beyond the obvious to observe the underlying meaning behind their play. Before responding, the teachers will reflect on what they have seen as a teaching team and engage in a reflective discussion on how they can extend the learning playing out within their own classrooms. Teachers will also talk to parents about their observations of what their child has been engaging

with at home. At YCIS, parent perspectives are always welcomed as it helps to give the teachers a deeper insight into the learning that is happening.

From there, the teachers respond in a way that provides opportunities to support and extend the learning. This could be a conversation with the children to find out more, adding new resources to scaffold the children’s development or creating a provocation to explore something new.

## What do teachers do in class?

Each class has Co-Teachers who are able to support children by speaking English, Cantonese or Mandarin. The first priority in the class is to make every child feel safe and welcome. Relationships play a critical role within our teaching and learning (Lee, Carr & Green, 2001). YCIS teachers spend extended amounts of time observing children as they play, engaging in dialogue with them and supporting them as their relationships develop. As the teachers get to know the students and their families, they learn more about what interests the children and create learning experiences specifically for each child.

## How do I know my child is learning?

A common question the teachers might be asked is “How will my child learn the alphabet if he’s only playing with trains?” YCIS teachers seek to observe a range of learning areas within children’s play, including social and emotional development, problem-solving, resilience and confidence. The development of these skills is essential in becoming a competent learner, and they start in the early years!

YCIS teachers will take observations, guided by the seven learning areas within the Early Years Foundation Stages (EYFS). This helps them ensure each child is developing holistically, and identify areas where a child might need extra support. The teachers are creative in how they observe as children have so many ways of exploring, creating and developing their knowledge. These observations may take place as they play with their friends, or in conversations with teachers. YCIS believes that each child learns at their own pace and the teachers work to provide holistic learning opportunities which cover all the learning areas within a child’s current interest and play.

YCIS teachers want to involve the parents, as much as possible in this process. As a parent, you are your child’s first teacher. You know your child the best, what makes your child excited, what frustrates your child and what their interests are at home. At YCIS, teachers will share the child’s progress as they make regular weekly contact with the parents as well as through Portfolios, Learning Journeys, Parent Teacher Conferences and Reports. YCIS values a strong Home-School Partnership and the relationships the teachers build with families.

## References

Lee, W., Carr, M., & Green, P. (2001). Documentation of Learning Stories : a Powerful Assessment Tool for Early Childhood, 1–26.  
Stacey, S. (2009). Emergent Curriculum in Early Childhood Settings: From Theory to Practice. Redleaf Press.



Our Co-Teachers engage with children's interests as a way to strengthen their relationships with them.

## TIPS

### How can I support my child at home using an emergent approach to learning?

YCIS teachers’ advice is to start slow! There are so many ways to develop your child’s emergent play at home, so take some time to figure out what might work for your family. Rather than buying specific toy sets or models, you can buy or collect ‘open-ended’ materials. Open-ended toys and resources are objects which may have many uses and are not bound to one form of play.

For example, plastic food items, such as fruits and vegetables, have one function – to be pretend fruits and vegetables. However, a resource such as pom-poms could be used for role-play, dramatic play, sensory play or creative play. They stimulate your child’s imagination and creativity. There are lots of open-ended materials that you can find within your home as well as in nature.

## Yew Chung International School

Enquiry: 2338 7106  
Email: admissions@ycef.com  
Website: www.ycis-hk.com



Children have daily opportunities to explore with sensory and messy play, allowing them develop a deeper understanding of the world around them.



Children explore various loose parts and classroom resources to extend and solidify their learning.



An Emergent Curriculum allows children to choose their own activities and resources.



# Mind your language: why a strong mother tongue is essential for children's learning and development

Hong Kong is a melting pot of cultures. People move here from all over the world, bringing with them a whole host of different languages. As a result, the city's international school scene is thriving and is a popular choice with both international and local families alike.

The majority of Hong Kong's international schools – though not all – use English as the main medium of instruction. Students applying to these schools are therefore expected to be proficient in English so as to understand lesson content and keep up with the curriculum.

For those from native English-speaking homes, that's generally not much of a problem. However, for children who have had limited exposure to native-spoken English, things can be a bit more challenging.

## Which language?

With parents eager to provide their children with a top-quality English language education, a new trend has emerged. We are now seeing families opting to speak only English at home when, in fact, this is not their mother tongue. They hope that by doing so, they can prepare their children to navigate the notoriously competitive school admissions process.

While this might seem like a good strategy on the face of things, it does, unfortunately, have its downsides. First, unless parents possess strong (ie native) English-language skills themselves, they risk passing bad habits on to their children. Second, they run the risk that their children will grow up not being able to speak their mother tongue properly. It may surprise you to hear that there's a growing number of children born to Hong Kong parents who speak very little Cantonese, preferring to use (non-native) English instead. Combine these facts and there's a very real danger of children growing up without fluency in any language at all.



## A strong mother tongue

Stephanie Kroeker, CEO and head educational consultant at Acorn Care ([www.acorncare.com.hk](http://www.acorncare.com.hk)), says that developing a secure native-language base at a young age is crucial for children's ongoing learning and development. "Research shows that having a strong mother tongue in the earliest years helps children learn more than just a language," she says. "It introduces important critical-thinking skills and key learning concepts that will enable them to switch into a different language at a later stage more easily."

Dr Andrew Adler, director and clinical psychologist at Adler Family Centre ([adlerfamilycentre.com.hk](http://adlerfamilycentre.com.hk)), agrees. "Becoming highly skilled in understanding and speaking one's mother tongue has advantages in many areas of children's development. Developing strong native conversational skills equips children with grammatical proficiency and an understanding of how languages are organised. These skills then generally transfer fairly easily to the learning of other languages.

"There are several other important advantages too. Children who have solid skills in their native languages tend to feel better about themselves and are more confident in general. These children are more strongly connected to their cultures and, as a result, usually have better-developed characters and identities. Their intellectual development and ability to succeed academically is also significantly better. Those of us who specialise in child development therefore strongly encourage parents to speak the family's

mother tongue at home, regardless of the language of instruction at school."

With all this mind, how should parents go about introducing a second language? "When parents choose to switch languages early on, the kids often don't have a strong enough base," warns Stephanie. "If they haven't developed the ability to think and reason in their native tongue, they'll struggle to pick up a second language. Another problem is that parents often focus purely on vocabulary and forget to teach concepts. A better solution is to explain a concept in your mother tongue first. Kids pick things up much quicker this way, and it makes it a lot easier for them to learn the foreign words."

## Application anomalies

Interestingly, despite the fact that more people in Hong Kong speak Cantonese than English, schools are seeing an increasing number of applications with English listed as the child's native language. It's a risky strategy. While the parents undoubtedly have the best of intentions, if the child can't speak English properly in the interview, the school will naturally see this as a red flag. Inadvertently, parents are doing their kids a disservice.

"By putting a child in a situation they can't quite handle, you are setting them up for failure," says Stephanie. "This can cause self-esteem and confidence issues. The better option is to give your child a good grounding in their native language and be honest on the application form. Schools are more likely to accept students with a lower level of English if they have those all-important conceptual ideas in the way they learn."

At Top Schools, we can confirm that the number one reason children do not pass assessments is due to a lack of the requisite English language skills – skills a child cannot learn with a tutor a couple of hours a week.

## A helping hand

If any of this is ringing true and you're struggling to figure out how to help your child develop the language skills they need for school, don't panic – help is available. We're always happy to chat with parents and provide advice and guidance. We partner with specialist consultants such as Stephanie and Dr Adler, who have helped countless children work on their language skills over the years, with sessions tailored to each child/family situation.

How long does it typically take for children's language skills to improve? "That's really kid specific," says Stephanie. "Younger children – those aged around three or four – tend to pick things up very quickly, and I notice a big difference in a matter of weeks. With older children, it can take longer – often three to six months. A lot depends on how well the parents speak English."

Outside of professional help, Stephanie says one of the best things parents can do for their children is sign them up for a hobby they enjoy where they can converse with native-English-speaking children. "If they can find something they're interested in where other children are speaking English, they're going to learn a lot more than by sitting with a tutor once a week," she says. To clarify, this means a class IN English, but NOT an English class!!

## The future's bright

Looking ahead, another benefit of children learning their native language first is that they're much more likely to become bi- or even trilingual in the future. This is a big draw for potential employers, as it demonstrates the ability to think in a different way than monolingual speakers.

Karin Ann, co-founder of International Montessori School ([www.ims.edu.hk](http://www.ims.edu.hk)), is a strong advocate of multilingualism. "The benefits of giving your children two or more languages are well documented in terms of brain development, linguistic flexibility and the ability to make connections," she explains.

"English is very prevalent in Hong Kong. It's in the media; it's all around us. If families have a different native language, we strongly encourage them to speak it. Living in this city, we're in a very privileged position. People all over the world want to learn Chinese. If you're able to provide your children with the opportunity, do it – it will serve them very well."

Just remember though: be sure to lay the foundations first. Speak to your children in their mother tongue (ie their mother's first language; the language she was hearing in the womb) at home; teach them how to communicate naturally; then give them the additional building blocks they need to flourish.



With thanks to:

Acorn Care - [www.acorncare.com.hk](http://www.acorncare.com.hk)

Adler Family Centre - [adlerfamilycentre.com.hk](http://adlerfamilycentre.com.hk)

International Montessori School - [www.ims.edu.hk](http://www.ims.edu.hk)



# Preparing students for a sustainable future at HKA



The World Economic Forum suggests that almost 65% of the jobs which primary school students will do in the future may not yet exist. It is the responsibility of educators to prepare children to enter this dynamic future and shape meaningful lives for themselves as they grow into adulthood. At Hong Kong Academy, we are embracing the challenge of balancing the skills and knowledge needed for today with the application of these skills and knowledge for future contexts. Our programmes are designed to challenge students to explore new perspectives, maximise opportunities for growth and develop a strong sense of their own identity.

As a non-profit, independent IB World School, we offer the Primary Years, Middle Years and Diploma Programmes. Using these frameworks as a foundation, we develop and deliver rigorous units of study which we enrich with project-based programmes such as hkaFlow and our schoolwide service learning model. Through hkaFlow, we provide an environment in which students apply their academic knowledge and develop transferable skills by engaging with complex issues. Students participate in at least three project-based learning units each year; working in cross-grade level teams, they bring their individual knowledge and interests to the group to collectively implement their planning, decision-making, creative and ethical thinking skills.



All HKA students are encouraged to be active and reflective members of their local and global communities. Service as action begins in the early years and continues through primary school as a key component of our inquiry programme. Secondary school students partner with a variety of NGOs and, as a result, connect with real world situations building their compassion, resilience and empathy. The culmination of this learning is celebrated through the Global Citizen Diploma, an external credential that recognises the many ways HKA students in Grades 9-12 are growing into global citizens.

We know that every child is unique, and our holistic approach to teaching and learning encourages every learner to fulfill their greatest potential both within and beyond the classroom. Each semester, over 100 co-curricular choices are available to our students with teachers and external providers expanding student passions through a host of clubs and activities through after school activities, instrumental lessons, performing arts masterclasses and sports teams. HKA students represent the school at national and international competitions in both individual and team sports. We are also the proud host of the International Schools Theatre Association Performing Arts Academy, which provides opportunities for our students to create and connect through performing arts and learn from world renowned artists each year.

As we approach our 20th anniversary, HKA graduates are studying in a variety of programmes at universities around the world. These alumni embody our commitment to maintaining a diverse, collaborative and captivating learning environment in which students become adaptable, confident and tolerant, equipping them for a sustainable future.

## Hong Kong Academy

33 Wai Man Road, Sai Kung, New Territories, Hong Kong

Tel: 2655 1111

Website: [hkacademy.edu.hk](http://hkacademy.edu.hk)





# Fostering future pillars of the world






“

*The crux of education is how students can make use of the learnt skills and knowledge to make a practical and positive impact within the society. – Richard Vanderpyl*

The climate of education today has changed, slowly but surely shifting towards a spectrum that values academic excellence or what is in students' trophy case above all, but should this be what education is truly about?



## The Alberta advantages

- 1 Rigorous Curriculum 
- 2 Focus on Critical Thinking 
- 3 Globally Recognized 
- 4 Comprehensive Education 
- 5 Highly Professional Teachers 
- 6 Gateway to Top Universities 

Established by the Kowloon Tong Church of the Chinese Christian and Missionary Alliance, Christian Alliance International School (CAIS) is an international school that provides Christian education from preparatory to grade 12 with the Canadian curriculum of Alberta Education. The school is also in the process of gaining the accreditation to offer the International Baccalaureate (IB) programs.

Aspiring to cultivate learners with knowledge, skills, integrity and discernment, growing in love for God and service to humanity, the school offers students a transformative educational experience, empowering them to fulfill their potential as Christian leaders and global citizens.

“At CAIS, we strive not to be the best school in Hong Kong, but the best school for Hong Kong. We pride ourselves in growing not only students' knowledge and talents, but their hearts as well, instilling in them the Christian value and a heart of compassion that will allow them to have a positive impact in the future of our world,” said Richard Vanderpyl, Head of School, CAIS.



Inside CAIS's well equipped campus which is expected to complete its expansion soon, students are immersed in a nurturing and stimulating learning environment allowing them to have a well balanced development. Upon completion, the school will have five laboratories, two gymnasiums, a football pitch, a 300-seat lecture theater, a 600-seat concert theater, and more, allowing students to pursue their true interests and passions.

“Community is extremely important for us at CAIS. We do not measure children by what they can achieve; every child is unique as they are created by God. All of our teachers are Christians, and when our students come to school, they learn with their family of teachers and friends without inhibition,” said Vanderpyl.



## CAIS at a glance

### Prospect of graduates

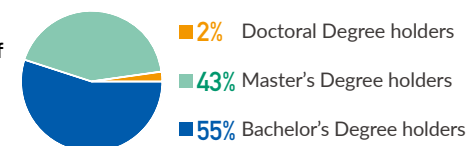
Almost **100%** graduates received admission offers by recognized universities and colleges in Hong Kong and around the world

### Excellent reputation

CAIS was founded by Kowloon Tong Church of the Chinese Christian and Missionary Alliance that has close to 30 years of experience in international education with a strong track record of success

**30 years** 

### Quality of teaching staff



### Location

Centrally located, only **15-17 minutes** away from key residential areas in Hong Kong Island, Kowloon and the New Territories

### Culturally diverse team

A team of **107** qualified teachers from Canada, United States, Europe, Africa, Australia, New Zealand, Hong Kong, Mainland China and other parts of Asia

## Christian Alliance International School

33 King Lam Street, Lai Chi Kok, Kowloon, Hong Kong  
 Tel: 3699 3899  
 Email: info@caisbv.edu.hk  
 Website: www.caisbv.edu.hk  
 Facebook: @CAIS.HK  
 Instagram: @caisbv





# Balancing language and academic excellence through holistic approach

*MAGART International Kindergarten adopts a hands-on learning approach with a strong and balanced academic curriculum for every child to reach their full potential and bilingual language excellence.*

## Happy school and strong academic ability

“There is a mis-conception that play-based learning and a happy school means that academic ability and achievement is sacrificed. We believe that isn't so and we provide the perfect balance...a happy, hands-on and exploratory learning approach with strong and enriched academic curriculum to ensure our children reach their full potential and are ready for the next step in their learning journey (primary school), whether that be local or international school.” says Ms. Khardine Rendall, Director of School Development of MAGART International Kindergarten.

The foundation of the school curriculum is based on the Early Years Foundation Stage (EYFS) from the United Kingdom with some amendments to ensure to meet

the needs and culture of children and families here in Hong Kong. “The increased focus on cultural awareness, appreciation and international mindedness ensures children grow up to be truly global citizens, equipped with life skills, etiquette and manners” adds Rendall.

## Culture awareness and language ability

To ensure a strong academic foundation and ability, our curriculum is supplemented with established phonics programs (Jolly Phonics and Letters and Sounds), an especially designed and researched life education curriculum, as well as a specialist mathematics program from Taiwan.

As a bilingual school, MAGART adopts a unique language learning approach whereby there are two qualified teachers, English and Chinese speaking respectively. “Children are completely immersed in a natural and safe bilingual environment, it is incredible how quickly they gain vocabulary, fluency and confidence in language!” says Rendall.

Children are exposed to a print-rich environment even from playgroup (1-2 years old), building strong pre-reading and writing skills from an early age. They learn about the history of traditional Chinese characters through stories and poetry, and have opportunity to join competitions and performances.



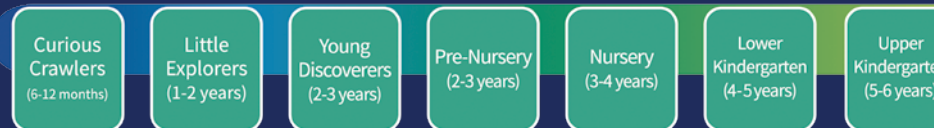
## Parent's comment

“ I originally enrolled my son in another school but changed when I found MAGART. Since attending MAGART my son expresses himself more often and with more confidence! Bond has shown a lot of improvement since attending MAGART and I can tell he likes school very much!”

– Mrs Wu, son Bond attends 2-3 years class at MAGART



## MAGART Learning Path -Natural Transitions from 6 months to 6 years old



## MAGART International Kindergarten

### Whampoa Campus

Shop G3A, Site 7, Whampoa Garden,  
9 Tak On Street, Hong Kong

Tel: 2786 9314 / 2788 0788

Whatsapp: 9879 1509

Email: info.wp@magartedu.com

### Tai Koo Campus

Shop B, UG/F, Park Vale,  
No. 1060 King's Road, Hong Kong

Tel: 2786 9152 / 2786 9189

Whatsapp: 6717 3175

Email: info.tk@magartedu.com

### Fanling Campus

G/F, Phase 1, Fanling Centre,  
New Territories, Hong Kong

Tel: 2677 8109

Whatsapp: 9445 8322

Email: info.fl@magartedu.com

Website: magartedu.com



# A stimulating American education experience



[www.ashk.edu.hk](http://www.ashk.edu.hk)



American School Hong Kong (ASHK) is a kindergarten (KG2) to Grade 12, non-profit, college preparatory program located in the Tai Po community. With a rigorous American and international program, our inquiry and concept-based approach to teaching and learning promotes the development of 21st century skills to prepare our students for their future. The US Common Core, Next Generation Science Standards (NGSS), and American Education Reaches Out (AERO) Social Studies Standards provide the framework for learning with English serving as the language of instruction and communication. Through our STEAM focus, students experience a culture of creativity and innovation. While intellectual development is of paramount importance, significant emphasis is placed on the social, physical, emotional, and creative domains to provide a holistic supportive experience for the development of the whole child.

Fully Accredited by the Western Association of Schools and Colleges and the Middle States Association of Schools and Colleges, American School Hong Kong is owned and operated by Esol Education, the world's largest operator of international American schools. Esol Education currently operates 10 high quality international schools across three

continents with more than 10,000 students registered. Graduates from Esol schools are now attending leading universities worldwide, including Stanford University, Massachusetts Institute of Technology (MIT), Yale University, Columbia University, University of Toronto, and the London School of Economics.

Our scholarship program allows students an equal opportunity to enjoy this amazing educational experience with financial assistance available.

**American School Hong Kong**

Website: [www.ashk.edu.hk](http://www.ashk.edu.hk)



lifelong learning

## NOW ACCEPTING APPLICATIONS FOR STUDENTS AGED 4 - 16

### School Tours & Information Sessions Available

an  **Esol Education** school

Admissions Office  
6 Ma Chung Road, Tai Po,  
New Territories, Hong Kong

T: +852 3919 4111  
F: +852 3919 4112  
E: [admissions@ashk.edu.hk](mailto:admissions@ashk.edu.hk)





# Well-balanced bilingual school-based curriculum

## Popular and well-balanced bilingual school in Hong Kong

Aristle International Kindergarten and Nursery (AIK) is well-known for its school-based English curriculum in addition to Mathematical and Logical programme. Despite the ever-changing international education environment in Hong Kong, AIK students continue to graduate with exceptional results and a competitive number of school offers to choose from. Aristle is a popular choice for parents and in 2018 the average admission ratio was 10 applicants for each available place.

As well as their superb English curriculum, AIK is also an authorised GAPS (developed by the Language Education Research Institute of Peking University) examination centre, and students have often obtained excellent results in Chinese programme. Last year, K2 student attended the Level III (usually for K3) examination, and 100% of participants obtained either 'Merit' or 'Excellent'.

## Students with rich experiences, both inside and outside of school

AIK hosts events or field trips every month outside of the classroom or outside of school. Students have been given the opportunity to experience the role of a server in a restaurant, run a real ice-cream store in school, run a real zoo and interact with different animals in school, visit the museum of climate change, and visit the museum of town planning, among others. These activities provide the training and exposure a child needs to build a positive self image, as well as team spirit and cooperation.



## Students with exceptional academic results

Aristle International Kindergarten and Nursery (AIK) graduates have entered a number of well-known international schools in Hong Kong, such as Harrow School Hong Kong, Canadian International School, American International School Hong Kong, and Hong Kong International School. AIK also regularly visits and maintains good relationships with the newly opened international schools of Hong Kong, such as Shrewsbury International School Hong Kong, Stamford American School Hong Kong, Malvern College Hong Kong, and Wycombe Abbey School Hong Kong.

AIK has proactively assisted their parents to apply for their desired schools, regularly providing schooling consultation to parents and students, in order to help them find the school that is the best fit for them.

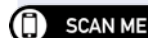


**Aristle International Kindergarten and Nursery**

Shop 1, G/F., Emerald Twenty Eight,  
22 & 26 Tai Po Road Kowloon  
Tel: 2323 2982

Whatsapp: 6689 6165

Enquiries & Admissions: [www.aik.edu.hk](http://www.aik.edu.hk)



**ARISTLE**  
INTERNATIONAL KINDERGARTEN  
INTERNATIONAL NURSERY

**BOOK A  
CAMPUS TOUR**  
WhatsApp: 6689 6165



**Well-balanced  
bilingual curriculum**

**Learning both inside and  
outside the classroom**

**Passionate and  
Experienced team**



**Experiential Learning**

**Science and Technology**

**School bus facilities**



**Weekly photo update  
on the mobile app**

**Students admitted to top local  
and international schools**

**Events & field trips  
for every theme**

**ONLINE  
APPLICATION**



Address: 28 Tai Po Road, Kowloon (Prince Edward)  
Website: [www.aik.edu.hk](http://www.aik.edu.hk)  
Tel: 2323 2982 WhatsApp: 6689 6165  
Kindergarten Registration Number: 604470  
Pre-nursery Registration Number: CCC/915



**SCHOOL FEE  
& TRANSPORT**



# Box Hill leads your child to a delighting start of learning



Built on its success in Melbourne, Australia, Box Hill established its first school in Hong Kong in 2004. Over the past 15 years, Box Hill has been aiming to provide a delightful and valued early childhood education to young children.

Box Hill believes that kindergarten is the first step to lifelong learning, and it is important for early childhood educators to help children build up their love and interest in learning at this stage. To achieve this, they make sure their learning environment is supportive and pressure-free, and that all learning is conveyed in a fun and engaging manner. Teachers at Box Hill respect children as individuals and thus foster their development at their own pace and style. This supportive culture helps children develop their confidence and resilience to try out their ideas and thoughts, which paves the way to nurture confident individuals.

Box Hill understands that early childhood is the crucial period for building up good value. The school emphasises on planting the good seeds in children since young, making them respect and care for one another, being confident and responsible to self and community. Their unique 'BoxHillian Qualities' encompasses and instils positive and prosocial characters in young children through their daily encounters.

Children learn best through first-hand experience. Therefore, teachers at Box Hill dedicate to creating a wide array of engaging hands-on activities for children to explore and discover. They emphasise that it is not the knowledge they are teaching children, but the love and motivation of learning are what they want to nurture in children. Children at Box Hill are busy players and learners. Every day children

come to school busy participating in all sorts of play, ranging from teacher-led to child-led free play, so to facilitate their development through active participation.

Planning the learning pathway for children is never easy. In view of this, Box Hill aims at constructing a curriculum that can equip children with the essential skills for interfacing to a diversified learning pathway for its children. Box Hill offers a high standard of English environment where children primarily learn and communicate in English with peers and teachers. The school adopts the UK National Curriculum, which allows children to achieve a balanced development in seven learning areas and to meet or exceed the expectations of the English preparatory or other international schooling systems. Besides, the Maths and Chinese learning contents are carefully designed according to the local requirement, which enables a seamless transition for those who choose to join local primary schools after K3.

With its dedication to education, Box Hill has awarded the ABFA Outstanding Individual Brand Award- Education 2018. With this encouragement, Box Hill pledges to continue to offer a valuable and delightful learning journey to young children.

## Box Hill (HK) International Kindergarten and Pre-school (4 campuses)

**Address:** Ma On Shan, Fo Tan, Tseung Kwan O, Kwai Chung

**Class arrangement:** PN-K3 (Half-day, Full-day class available at certain branches)

**Website:** [www.boxhill.edu.hk/eng/home.php](http://www.boxhill.edu.hk/eng/home.php)



Box Hill (HK) International Kindergarten & Preschool  
博士山(香港)國際幼稚園暨幼兒園

*Confidence for a brighter future*

# ADMISSIONS OPEN NOW

## PN-K3 (2-6 YEARS OLD)

-  **MULTILINGUAL DEVELOPMENT**
-  **POSITIVE CHARACTER EDUCATION**
-  **NEW! FULL-DAY CLASS AVAILABLE**



## PLAYGROUP (1-2 YEARS OLD)

-  **FULL ENGLISH LEARNING ENVIRONMENT**
-  **PRIORITY FOR ADMISSION TO PRE-NURSERY PROGRAMME**

**Ma On Shan**  
Vista Paradiso Campus  
Tel : 2750 6323  
[mos@boxhill.com.hk](mailto:mos@boxhill.com.hk)

**Fo Tan**  
Jubilee Square Campus  
Tel : 2688 2161  
[fotan@boxhill.com.hk](mailto:fotan@boxhill.com.hk)

**Kwai Chung**  
Wonderland Villas Campus  
Tel : 2151 1383  
[WL@boxhill.com.hk](mailto:WL@boxhill.com.hk)

**Tseung Kwan O**  
Metro Town Campus  
Tel : 2623 0023  
[tko@boxhill.com.hk](mailto:tko@boxhill.com.hk)



[www.boxhill.edu.hk](http://www.boxhill.edu.hk)

 Please follow us on facebook

Please visit our school website for more details



# Engaged, ethical, and entrepreneurial

Founded in 1992, Christian Alliance P.C. Lau Memorial International School (CAPCL) is the first international school set up by The Kowloon Tong Church of the Chinese Christian and Missionary Alliance. In 2017, CAPCL closed down for renovation, with new facilities including Treehouse Library, Heavenly Studio, Makerspace, Lift Tower, Indoor and Outdoor Play Spaces.

CAPCL will adopt a bilingual program under Canada's Alberta education system. Not only is language learning useful in preparing students for their future, it is also mentally stimulating which in turn supports a growth mindset development. In the PISA study released in December, 2019, Canadian students ranked the fourth in the world, in reading, mathematics, and science. This global measure shows that the Canadian curriculum is well-designed to equip learners for their future.

**“Each CAPCL student is an engaged thinker and ethical citizen with an entrepreneurial spirit,”** says Dr. Cora Hui, Head of School at CAPCL.

An **engaged thinker** knows how to think critically and creatively and make discoveries through inquiry, reflection, exploration, experimentation, and trial and error; as a team member, integrates ideas from a variety of sources into a coherent whole and communicates these ideas to others; as a lifelong learner, believes there is no limit to what knowledge may be gleaned, what skills may be accumulated, and what may be achieved in cooperation with others; and always keeps growing and learning.

An **ethical citizen** understands that it is not all about them, has learned about and is appreciative of the effort and sacrifice that built this city and country, and sees beyond self-interests to the needs of the community; builds relationships through fairness, humility, and open-mindedness, with teamwork, collaboration, and

communication; demonstrates respect, empathy, and compassion for all people; cares for themselves physically, emotionally, intellectually, socially and spirituality; is able to ask for help, when needed, from others, and also for others; and assumes the responsibilities of life in a variety of roles.

An individual with an **entrepreneurial spirit** is motivated, resourceful, self-reliant and tenacious; continuously sets goals and works with perseverance and discipline to achieve them; through hard work, earns achievements and the respect of others; strives for excellence and personal, family and community success; develops opportunities where others only see adversity; has the confidence to take risks and make bold decisions in the face of adversity, recognizing that to hold back is to be held back; and has the courage to dream.

These are CAPCL's learning and teaching outcomes. Let us partner together and nurture your child, who will grow in wisdom and stature, in favor with God and men.

## Christian Alliance P.C. Lau Memorial International School

2 Fu Ning Street, Kowloon, Hong Kong

Tel: 2713 3733

Email: [info@capcl.edu.hk](mailto:info@capcl.edu.hk)

Website: [www.capcl.edu.hk](http://www.capcl.edu.hk)



Christian Alliance P.C. Lau Memorial International School

宣道會劉平齋紀念國際學校

Founded in 1992



## Welcoming Admissions

Learn and Grow in God's Love  
Serve and Flourish in God's Grace  
學習成長在神愛 服事綻放沐恩光



Rejuvenated school campus



**Canadian curriculum** – Alberta English-Chinese bilingual program (65% English and 35% Chinese-Mandarin & traditional script)



**Christian ethos** – cultivate students' character development and servant leadership



**Small learning community** – develop an engaging learning journey

Enrollment for  
Preparatory to Grade 4

**2021-2022**  
academic year

**Apply Now!**

<https://www.capcl.edu.hk/admissions>



+852 2713 3733



[info@capcl.edu.hk](mailto:info@capcl.edu.hk)



2 Fu Ning Street, Kowloon, Hong Kong



[www.capcl.edu.hk](http://www.capcl.edu.hk)



[www.fb.com/CAPCL.HK](https://www.facebook.com/CAPCL.HK)





# Life in the happy lane at Fairchild

Our mission at Fairchild is to cultivate curiosity, creativity and confidence through bringing the outdoors in, and in a happy learning environment. Through our philosophy of following the Reggio Emilia approach, we are one of the few schools in Hong Kong which genuinely honours that children are capable individuals and able to direct their own learning through following their interests. We embrace the learning journey as one in which children can fully enjoy early childhood, after all, we only have one childhood.

Our world of today increasingly shows that children need to have skills other than knowledge - they need to be able to communicate effectively, to collaborate with peers, to have critical thinking and problem-solving skills. These are all nurtured through play and building positive relationships in our classroom settings, supported by a close working relationship with our families and our school community.

Day to day hands-on learning experiences help children to find their way in the world. Our classrooms are well resourced with natural materials and opportunities for children to engage in many sensory activities, which appeal to all their senses. Our well-designed schools help children naturally feel comfortable and at home, ready to play and learn as soon as they arrive at school. Regardless of whether they are in the classroom, our treehouse, or shared discovery areas such as our vertical garden or creative arts space, children will have fun and access to



a range of engaging activities, including close encounters with our resident pets, such as our earthworms, turtles, fish, frog or hamster!

Learning through play is not only how children learn best, but is most developmentally appropriate. Their learning through hands-on experiences prepares our children for the very best start in their learning journey. It is a happy and rewarding process for us to see our children move to excellent international and local schools, both in Hong Kong and overseas. Why not come and visit our playgroup in Tin Hau, or our kindergarten in Sai Ying Pun to see our unique schools for yourself - make your child happy!

### Fairchild Kindergarten

G/F & 1/F Kong Chian Building, Block 1,  
351 Des Voeux Road West, Sai Ying Pun, Hong Kong  
Tel: 2803 2638

### Fairchild Junior Academy

22/F, Park Commercial Centre, 180 Tung Lo Wan Road,  
Tin Hau, Hong Kong  
Tel: 2898 1611



## OPEN FOR ADMISSION 2020/21

Contact us to book a school tour or sign up for an Open House on our websites.

- PLAYGROUP
- PRE-NURSERY
- K1-K3



CURIOSITY



CREATIVITY



CONFIDENCE

At Fairchild, the process of inquiry-based learning through play, is inspired by the Reggio Emilia approach which recognises and values each child's potential. Fairchild brings 'the outdoors in' in an urban setting, providing great learning opportunities in natural environments that promote a child's innate instinct to play, inquire and learn.

Fairchild Junior Academy | Tin Hau | 2898 1611 | www.fairchild.academy

Fairchild Kindergarten | Sai Ying Pun | 2803 2638 | www.fairchild.edu.hk







## Cultivating curious students with the passion to learn

The Independent Schools Foundation Academy (The ISF Academy) is a non-profit private independent primary and secondary school providing a unique inquiry-based Putonghua and English bilingual immersion education. We are a Chinese school with a global perspective.

We believe that learning is the active construction of knowledge best experienced through meaningful activities that foster exploration and creativity. An ISF education emphasizes probing discussions, passionate debates, and critical thinking. As cheerful high achievers, ISF learners

exude a joy of learning that drives the development of culturally agile and confident communicators who possess the social, creative, analytical thinking skills necessary to succeed and thrive in a complex world.

We are a strong proponent of learning by doing. Our hallmark Experiential Learning Program features unfamiliar settings and novel challenges that build character and confidence. An ISF learner is at home building dormitories in Laos, researching ancient texts in Cambridge, or exploring the rich history of the Silk Road.

We are an accredited International Baccalaureate (IB) World school. Our Diploma results place us in the top tier of Hong Kong IB schools; and more than two thirds of our graduates achieve the coveted Bilingual Diploma, twice the global average. We are proud of our graduates who receive offers from the world's most prestigious universities.

To submit an application or register for a visit, please go to Friends of The ISF at [admissions.isf.edu.hk](http://admissions.isf.edu.hk).



### Personalized University Counseling

Our systematic and personalized university guidance and careers program spans from Grade 9 to 12 and allows our students to make informed decisions for their DP subject choices and subsequent university applications.

### Small Class Size

ISF Academy students benefit from small class sizes which range from 5 to 16 students per class. The overall student teacher ratio for all grades is 6:1.

### Bilingual Diploma and Bilingual Theory of Knowledge

We offer both English and Chinese as first language options (Group 1). Students also receive Theory of Knowledge instruction in both English and Chinese, and may choose either language for their written paper.

### University offers received in the last three years include:

- Canada:** McGill University, The University of British Columbia, University of Toronto
- Hong Kong:** Hong Kong University of Science and Technology, The Chinese University of Hong Kong, The University of Hong Kong,
- U.K.:** Durham University, Imperial College London, London School of Economics and Political Science, University of Cambridge, University of Oxford, University of St Andrews
- U.S.A.:** Brown University, Cornell University, Dartmouth College, Harvard University, Princeton University, Stanford University, University of California, Berkeley, University of California, Los Angeles, University of Pennsylvania



Independent

Chinese

Global

### The Admissions Office

Tel: 2202 2028 | Email: [admissions@isf.edu.hk](mailto:admissions@isf.edu.hk)  
 Address: 1 Kong Sin Wan Road, Pokfulam, Hong Kong  
 Website: [academy.isf.edu.hk](http://academy.isf.edu.hk)





# Preparing students for life beyond the classroom



Educational experts have recognized for many years that academic learning in the classroom is only part of the whole picture of a strong education. Schools that prepare students for life beyond the classroom are marked by integrating academic rigour with a focus on holistic development of character and helping students learn how to relate to the world around them.

At Island Christian Academy, students' relationship with the world around them is a key part of school life. It's vital for students to understand the diversity around them and to have the opportunity to participate in serving others in Hong Kong. 'Loving for Today' in the school's motto doesn't only mean showing love within the walls of the school, but also being a loving community that learns how to share that love with others in our city.

This year, the senior students at Island Christian Academy have embarked on two strands of service-learning. One group of students have been focused on connecting with elderly people living in a care home, where the students plan, prepare, and lead activities for them. The students have learned much from their relationships with these elderly people, both through the process of forming and leading the activities and also through growing in friendship with the elderly, learning how much these members of the community still have to offer.

A second group of students have been focused on sustainable development, collaborating with Tai Kwun Centre for Heritage & Arts and learning to build and



cultivate rooftop farms in our densely packed city. The senior students not only learn to do this themselves, but also share these skills by teaching younger students to build their own rooftop garden.

Through service-learning, Island Christian Academy has seen these students develop empathy, creative thinking, and responsibility, as well as a sense of international mindedness and connection with the world around them. These young leaders are developing the understanding that leadership is rooted in the practice of serving others, building a strong foundation for their future. All of these qualities inform and enrich the learning that takes place in the classroom and expand the world of ideas and concepts that the students will explore in their subject areas.

Island Christian Academy offers weekly school tours, and would be delighted to introduce all interested families to this learning community.

## Island Christian Academy

70 Bridges Street, Sheung Wan  
Tel: 2537 2552  
Email: [office@islandca.edu.hk](mailto:office@islandca.edu.hk)



## ISLAND CHRISTIAN ACADEMY

Island Christian Academy is a learning community dedicated to whole-child education, developing the next generation of international leaders into individuals of character, compassion, courage and competence.

Conveniently located in Sheung Wan, we are a year 1-7 school welcoming families of all faiths and backgrounds. Book a school tour at [www.islandca.edu.hk](http://www.islandca.edu.hk) today!

70 Bridges Street, Sheung Wan

Phone: 2537 2552

email: [office@islandca.edu.hk](mailto:office@islandca.edu.hk)





# Fostering inquisitive lifelong learners

## A play based learning environment

Kingston Children's Centre caters to children aged 1 and 2 and provides an ideal introduction to Kingston's bilingual programme. Children are supported in their English and Putonghua learning by our fully-qualified, native-speaking teachers. Caring and dedicated teachers are instrumental in the natural acquisition of both languages and provide a strong basis for each child's continued learning.

Carefully planned play based environments provide a safe and nurturing space for children to learn while learning engagements are designed to address the development of each child and guide their continued growth. The Children's Centre supports children in their transition to Kingston International Kindergarten as confident, active inquirers.

## Good pedagogy matters

Kingston International Kindergarten is a warm and comfortable bilingual environment for children aged 3 and 4. We understand that young children are naturally inquisitive and we have created the perfect environment for exploring the world through both English and Putonghua. It is here that Kingston students begin their IBPYP journey, guided by native speaking, fully qualified early years practitioners. Four concept-driven PYP units of bilingual inquiry provide the framework for Kingston's engaging curriculum.

Kingston offers a developmentally appropriate curriculum that involves children in inquiry, critical thinking and active learning. The pedagogy and environments are designed to support bilingual, immersed learning, providing the best possible foundation for continued language fluency and a bright future of communicating in the two most significant languages of our time.

## 25 years of excellence in bilingual education

The Kingston community feels like an extended family in which multi-cultural collaboration has resulted in an excellent, rigorous, bilingual program. The Kingston bilingual experience begins as early as playgroup and



continues through to Year 6 at Kingston International School. Graduates then have the through-train option of attending International College Hong Kong (ICKH).

Kingston provides the perfect environment for native fluency in both English and Putonghua and we are very proud of our students' abilities in both languages. Our small class numbers and high teacher-to-student ratio form the cornerstone of our bilingual approach, which is delivered through the IBPYP framework.

In the 2020/2021 school year Kingston will be celebrating 25 years of providing quality bilingual education. If you would like to find out more about our exciting programme please contact the school to arrange a tour.



**Kingston International Kindergarten**  
**Kingston Children's Centre**

12-14 Cumberland Road, Kowloon Tong

Tel: 2337 9049

Email: [enquiry@kingston.edu.hk](mailto:enquiry@kingston.edu.hk)

Website: [www.kingston.edu.hk](http://www.kingston.edu.hk)



INTERNATIONAL KINDERGARTEN 1997

CHILDREN CENTRE



**KINGSTON - FIRST IN BILINGUALISM, FIRST IN IBPYP**



**Apply now for 2020/2021 Playgroup to Kindergarten**



九龍塘金巴倫道 12 - 14 號

12 - 14 Cumberland Road, Kowloon Tong

+852 23379049

[enquiry@kingston.edu.hk](mailto:enquiry@kingston.edu.hk)



**Book a school tour today**



# Inclusive education

*Korean International School's International Section provides comprehensive learning support for students of all abilities.*

The principal of the International Section at Korean International School, Christopher Chadwick, chuckles as he relays the two questions he always gets asked: "Does my child have to be Korean to attend your school? Do they have to learn Korean?"

To clear any misconceptions, Pamela Kwok, Vice Principal at KIS says, "We have two streams at KIS: the International stream and the Korean stream. Our International stream offers a British style academic education that's based upon the National Curriculum in England."

That means the school uses English to teach all their subjects, with the exception of foreign languages. "We offer Chinese, Spanish and Korean," says Chadwick. Within the Chinese curriculum, which is taught in Mandarin, Chadwick says that the school's specialist teachers are trained to work with students who use either traditional or simplified characters.

This flexibility and inclusivity within the teaching staff stretches beyond language lessons; KIS is also a welcoming school for students with mild to moderate learning difficulties.

Pamela Kwok, who is the Head of Springboard Primary, explains their inclusive program: "The Springboard program caters to students with mild to moderate learning difficulties. We have three classes of about 10 students each. Springboard Primary, which is from ages 6 to 11; Springboard Secondary for kids aged 12 to 16 and a newly-piloted program Springboard Post-16 for students aged 16 to 19."

In terms of the curriculum, the Springboard program parallels with the rest of the school, tweaked to adapt to the students' needs. "About 80% of the time, the children are within the Springboard class, a special needs classroom, and 20% of the time, they are integrated into the mainstream with support."

This can come in the form of special needs teaching assistants, or the mainstream teaching assistants, who ensure that each Springboard student is comfortable and engaged during mainstream lessons. "There's a very good staff to student ratio of 3 to 10 in Springboard," adds Kwok.

The goal of the Springboard program is to facilitate students' sense of independence. "If and when possible, we want the child to experience lessons in the mainstream, to see if he or she can manage," Kwok explains. "We will then meet with the specialist teachers and go from there, based on how the student is doing."

Activities in Springboard classrooms aim to foster students' self-reliance through the life skills program, as part of the enrichment curriculum. KIS Springboard offers lessons like cooking, and life skills numeracy, to increase students' chances of employing the skills they've learnt in the classroom to real-life situations.

Over on the mainstream side, Chadwick says that the students are also exposed to subjects and activities that are more practical. "We've introduced the IGCSE Travel and Tourism subject to get the kids to think more outside the box. They've got to create a travel brochure and persuade people to explore different places, so it's not just a lot of writing. It's applicable skills to the real world, too."

KIS also has very adventurous field study courses, especially for students doing Geography. Years 7 through 11 and senior students who take Geography in Years 12 and 13 regularly go outside the classroom to hike, take soil samples and do river studies.

The love of the outdoors doesn't stop there. "For Year 10 and 11, we do AYP," adds Chadwick, "It gets the kids out to the hillside and learn survival skills. All of our kids got bronze awards last school year and we're very proud of that."

He believes that this is a different, more dynamic way of learning at KIS. "It's good preparation for school, university, or for whatever students choose to do next."

"It makes them independent and more confident; it gives them life skills that I think are very valuable to them."

## Korean International School – International Section

55 Lei King Road, Sai Wan Ho, Hong Kong

Tel: 2569 5500

Website: [www.kis.edu.hk/is](http://www.kis.edu.hk/is)



# KOREAN INTERNATIONAL SCHOOL

International Section | [WWW.KIS.EDU.HK](http://www.kis.edu.hk)



**Applications Now Open!**





# Multilingual learning leads to excellence

French International Preschool Lou Pichoun offers a wide range of trilingual playgroups and after-school programs to nurture students' academic achievement and artistic skills.

Founded in 1997 in Hong Kong, Lou Pichoun is a French International Preschool with three campuses in Stanley, Happy Valley and Tseung Kwan O. We welcome children from the Très Petite Section (2-3 years old) to the Grande Section (5-6 years old). Our trilingual preschool curriculum - French, English and Mandarin thoroughly follows the French National Education Official Bulletin and relevant guidelines in terms of programs and objectives. Students can choose between French Stream and International Stream. Our diversified theme-based preschool activities are curated to encourage students to discover, to achieve and to build self-confidence, with a great deal of arts!

We organise Mini Pichoun playgroup in French, English and Mandarin in small classes for toddlers between 15-24 months with fun and interactive activities designed to develop your child's emotional, cognitive, physical development and social skills to prepare them for preschool.

Club Pichoun is an after-school program French, English and Mandarin popular for the children between 2 to 6 years

old. These language immersion classes are designed to give opportunities for children with or without a French-speaking, English-speaking or Mandarin-speaking family background to perfect their languages through playing, by means of diverse pedagogical tools aimed at putting what they have learned into practice.

Lou Pichoun Tseung Kwan O campus is an EDB registered kindergarten in the process of getting the AEFÉ certification for its French program. AEFÉ (Agency for French Education Abroad) is the government institution supervised by the French Ministry of Foreign Affairs. It is responsible for monitoring the quality of 500 accredited French schools abroad. Students of this program gain priority to enrol in other AEFÉ schools worldwide.

Lou Pichoun École Maternelle Française Internationale Hong Kong

French International Preschool Hong Kong

Campuses: Stanley | Happy Valley | Tseung Kwan O

Tel: 2813 4277

Whatsapp: 6304 1021

Email: info@loupichoun.com

Website: loupichoun.com



## French Preschool and Playgroup

Since 1997

Welcome 15 months - 6 years old

Trilingual Environment: French, English and Chinese  
Small and Personalized Class



23+ Years of Experience



Trilingual Preschool



French School System



Emphasis in Arts



Small Classes

2020 / 2021 REGISTRATIONS NOW OPEN



JOIN THE FUN!

2813 4277 6304 1021

loupichoun.com info@loupichoun.com

STANLEY | HAPPY VALLEY | TSEUNG KWAN O



# Integrative play-based and bilingual education

*Maple Bear Canadian International Kindergarten Hong Kong offers the best of Canadian education through intensive bilingual immersion and play-based learning.*

Maple Bear Canadian International Kindergarten brings the best of Canadian education to students around the world by offering high-quality early childhood education to prepare young learners to succeed in life.

With over 447 Maple Bear schools in over 20 countries around the world, we operate in conformity by offering an international experience to every school, while still providing educational experiences personalized to each community's unique needs. Our Maple Bear Hong Kong campus is located in Tseung Kwan O.

The Maple Bear Kindergarten Curriculum is designed by our own team of Canadian early childhood educators, the Maple Bear Faculty. Faculty members continually update the preschool materials to reflect the latest in research and Canadian educational practices. Every year the Maple Bear Global Schools team of educators also go out in the field to Maple Bear locations around the world as trainers to help teachers deliver the program, and as Quality Assurance evaluators to ensure that schools are meeting quality education standards.

Alongside the English immersion program developed by the Canadian faculty members, Maple Bear Kindergarten Hong Kong students' learning experiences are enriched by a locally developed Mandarin full-fledged curriculum. Students begin learning both English and Chinese using a student-focused language immersion learning system based



on Canadian educational pedagogy and best practices. Students study all academic subjects in both English and Chinese to ensure a bilingual immersive learning experience.

Maple Bear organizes Bear Care playgroup classes for ages from 12 to 24 months old. Students then bridge directly into our Kindergarten classes from 2-6 years old. We cater for having both a mixed student ratio of both international and local students. English enrichment classes are modelled upon current Canadian early childhood practices. The fun-filled play-based program is designed to educate the child in a wholesome holistic manner: physically, cognitively, intellectually, emotionally, and socially. Bear Care provides a secure and stimulating environment where risk-taking is encouraged, and where children perceive themselves as capable and competent learners.

We accept applications for all grade levels. To apply, visit our website at [www.maplebear.hk](http://www.maplebear.hk). We welcome prospective families to book a private school tour. Bookings can be made at [admissions@maplebear.hk](mailto:admissions@maplebear.hk) or through WhatsApp at 6848 1264.

## Maple Bear Canadian International Kindergarten Hong Kong

Shop 7, G/F Alto Residences,  
29 Tong Yin Street, Tseung Kwan O  
Tel: 2813 4887  
Whatsapp: 6848 1264  
Email: [admissions@maplebear.hk](mailto:admissions@maplebear.hk)  
Website: [maplebear.hk](http://maplebear.hk)



# MAPLE BEAR HONG KONG



## Maple Bear Canadian International Kindergarten

The best of Canadian education for a global future.  
**REGISTRATION NOW OPEN**

☎ **2813 4887** 📞 **6848 1264**

Shop 7, G/F Alto Residences,  
29 Tong Yin Street, Tsueng Kwan O

✉ [admissions@maplebear.hk](mailto:admissions@maplebear.hk)

🌐 [maplebear.hk](http://maplebear.hk)





# Integrating interdisciplinary learning

*Mount Kelly's Mathematically Musically Minded Programme fosters students in becoming successful across all curriculum areas and excel in maths and music.*

The link between mathematics and music has been known since the time of Pythagoras in the 6th century BC. The two disciplines have been influencing each other. At some level, all music is math. It's about time signatures, beats per minute and formulaic progressions. Both involve patterns and structures and notions such as octaves, chords, scales and keys are all based in mathematics. Performing music, therefore, reinforces parts of the brain used when doing math. What's more, studies have shown that children who play instruments are able to complete complex mathematical problems better than others who don't play music instruments.

At Mount Kelly, with the Mathematically Musically Minded Programme, students will be encouraged to actively pursue their areas of interest in music through a highly adaptable programme. This programme is tailor made for students to become successful across all curriculum areas and excel in maths and music. Because of the integration of maths and music in the curriculum, students will enjoy the benefits of better pattern recognition, language development, improved test scores, special-temporal skills, reduced stress level, an increase in the neurotransmitter



dopamine in the brain and a boost in the immune system.

Combining music into maths enables students to benefit from developing the musical understanding and skills whilst studying the fascinating and challenging subject of Mathematics. A considerable amount of research suggests that listening to music may improve cognitive skills. More recent studies show that the Mozart Effect. In 1993 Rauscher made the claim that, after listening to Mozart's sonata for two pianos (K448) for 10 minutes, normal subjects showed significantly better spatial reasoning skills than after periods of listening to relaxation instructions designed to lower blood pressure or silence.

The children learn to communicate effectively and connect with others intellectually and emotionally. Through Mount Kelly's tailor made program, students will become better prepared for presenting, communicating and leading in the future.

**Mount Kelly School – School office  
(Admission Department)**

Upper G/F, Austin Tower, 152 Austin Road, Tsim Sha Tsui,  
Kowloon, Hong Kong  
Tel: 2157 9557  
Email: admissions@mountkelly.edu.hk



The Gateway to British Excellence

Contact Us For School Tours:

 2157 9557



Babies and Toddlers

Nursery and Preschool

Preparatory School and College

## NOW ACCEPTING APPLICATIONS FOR 2021/2022



British School



Through-Train Education



Multilingual Environment  
(English, Mandarin, French)



Innovative Learning



Effective EAL Programme



Accredited Mandarin Programme



Shackleton Outdoor Learning



Guaranteed placement in the UK



140+ Years of Academic Excellence



   admissions@mountkelly.edu.hk | www.mountkelly.edu.hk

Mount Kelly School Hong Kong EDB Registration Number: 609781 • Mount Kelly International Preschool EDB Registration Number: 608092 • Mount Kelly International Nursery School Registration Number: CCC/948



# A community that fosters active lifelong learners



Norwegian International School (NIS) is a unique school in Hong Kong - a small learning community that fosters character development alongside academic learning, which embraces the very best of life in Tai Po.

At both Primary and Kindergarten campuses, students at NIS are active, involved learners who explore their world along with their peers in creative, thematic, enquiry-based units. Learning in the classroom leads seamlessly into time spent outdoors, where students participate in the growing cycle of vegetables and plants, and investigate the living history of the decades-old trees that provide shade to the playground.

The pursuit of academic learning at NIS is accompanied and strengthened by the school's focus on character growth and development of international mindedness, with all three elements woven together as integral parts of the International Primary Curriculum (IPC) and International Early Years Curriculum (IEYC). Eight personal goals are taught, modelled and developed in every subject and integrated throughout school life: thoughtfulness, cooperation, respect, enquiry, communication, adaptability, resilience, and morality. Viewing each subject through the lens of the personal goals helps students relate their learning to their everyday experiences and prepares them for life in and beyond school.

An active, healthy lifestyle is vital to a child's development, and at NIS it's an essential part of daily life. The primary

campus' large outdoor playing field has led not only to impressive inter-school sports results, but more importantly to students who love to be physically active for the simple enjoyment of it.

A strong sense of community is also key to NIS's identity. There's plenty of opportunity for parents to be involved in classroom life, and it's a common sight to see parents and children laughing, talking, and playing together in the school playground long after the school day has ended. As a member of Generations Christian Education, NIS provides parent education opportunities throughout the year to strengthen families and help them support learning at home.

NIS offers weekly school tours, and would be delighted to introduce all interested families to this vibrant community.

## Norwegian International School

### Primary campus

170 Kam Shan Road, Tai Po

Tel: 2658 0341

Email: [office@nis.edu.hk](mailto:office@nis.edu.hk)

### Kindergarten campus

175 Kwong Fuk Road, Tai Po

Tel: 2638 0269

Email: [kinder@nis.edu.hk](mailto:kinder@nis.edu.hk)



# Norwegian International School

A Member of Generations Christian Education

We believe that children develop best in a caring, active, and healthy environment. Norwegian International School is a welcoming place where students of all faiths and backgrounds become young people of character, compassion, courage, and competence.

Come and visit us in beautiful Tai Po to find out more!

Primary Campus: 170 Kam Shan Road, Tai Po

Phone: 2658 0341

Email: [office@nis.edu.hk](mailto:office@nis.edu.hk)

Kindergarten Campus: 175 Kwong Fuk Road, Tai Po

Phone: 2638 0269

Email: [kinder@nis.edu.hk](mailto:kinder@nis.edu.hk)



# The best primary education in Hong Kong

*Shrewsbury International School Hong Kong offer an unrivalled commitment to specialist provision within a broad and fulfilling curriculum that promotes interconnection, independence and high attainment.*

Shrewsbury International School educates children between the ages of 3 and 11 in a purpose-built campus just 30 minutes from Central in Tseung Kwan O. The school draws directly upon the proud heritage of its British sister school, which was founded by Royal Charter in 1552.

Offering an enhanced thematic programme of study founded upon the rigorous standards underpinning the English National Curriculum, specialist study is led by teachers holding specific qualification and experience.

An Auditorium and Recital Hall supplement provision for the Performing Arts and Physical Education benefits from an equally impressive arrangement. Weekly swimming classes take place in an Aquatics Centre - athletics, gymnastics and dance all have their own ambitiously equipped, designated spaces. Daily Chinese language classes are offered at three different levels to ensure that all children are given the opportunity to engage at their own pace.

The school library is located in the heart of the campus. It offers an open view of the mountainside and plays an important part in the development of a connected and collectively ambitious community. Shrewsbury students are kind, respectful and committed – they are happy and love to learn.



The uniquely personalised service available is perhaps best illustrated by a secondary school selection programme, led by a designated School Partnership Coordinator. Designed to recognise and celebrate the strengths of every child, successful graduation is carefully guided to ensure that every child thrives both within and beyond their primary years.

A commitment to the provision of outstanding experiences and opportunities for every child is deeply engrained at Shrewsbury.

## Shrewsbury International School Hong Kong

10 Shek Kok Road, Tseung Kwan O

Tel: 2480 1500

Fax: 2480 1231

Email: [admissions@shrewsbury.edu.hk](mailto:admissions@shrewsbury.edu.hk)

Website: [www.shrewsbury.edu.hk](http://www.shrewsbury.edu.hk)



SHREWSBURY  
INTERNATIONAL  
SCHOOL

HONG KONG



## PRIMARY SPECIALIST PROVISION

Shrewsbury offers an inspirational English National Curriculum. Nurturing creativity, confidence and a life-long love of learning for children aged 3 to 11 years, providing outstanding opportunities through primary education and beyond.

- Purpose built primary school with state of the art facilities
- Specialist Provision in Chinese Language, Physical Education, Music and Performing Arts
- Indoor and outdoor spaces designed for young children
- Indoor heated swimming pools
- Full day learning programme from 8 am to 3 pm for Early Years and Primary
- Personalised Secondary School Selection Programme to ensure smooth transition

## ENROLL YOUR CHILD NOW

Bursary and Scholarship application welcome

SHREWSBURY INTERNATIONAL SCHOOL HONG KONG

📍 10 Shek Kok Road, Tseung Kwan O, Hong Kong

☎ 2480 1500

✉ [admissions@shrewsbury.edu.hk](mailto:admissions@shrewsbury.edu.hk)



@ShrewsburyHKG

[www.shrewsbury.edu.hk](http://www.shrewsbury.edu.hk)



# Nurturing children's natural curiosity through play

Small World Christian Kindergarten is an international kindergarten that has educated curious young learners for more than 30 years, welcoming families of a diverse range of backgrounds, faiths, and nationalities.

Designed around the International Early Years Curriculum (IEYC), Small World's play-based programme supports learning and development through holistic enquiry, nurturing young children's natural curiosity, building their confidence and igniting their desire to learn. The IEYC also integrates the development of social skills and character development through the eight personal goals of thoughtfulness, cooperation, respect, enquiry, communication, adaptability, resilience, and morality.

Mandarin time is integrated into learning at Small World, with more than a third of the day for each class overseen by Small World's talented Mandarin teachers. The 2020-21 school year will also see the launch of the school's 50/50 English/Mandarin programme in selected afternoon classes. Small World believes that the key to sustainable language acquisition is for children to be immersed in a meaningful language programme in the early years. The Storybook Approach gives children a stimulating way to learn a new language as they engage in listening, speaking, reading, meaningful play, creating, and developing positive relationships with the Mandarin teachers. This research-based programme has been developed in conjunction with the Education University of Hong Kong and Hong Kong University, and uses traditional characters to connect meaningfully with children's daily life experience in Hong Kong.

The school offers a warm and caring environment, with plenty of indoor and outdoor learning space. Children enjoy daily time in the Small World's outdoor playground amongst the trees, and cultivate vegetables and flowers in the school's outdoor garden, learning about the natural world and the cycles of growth. The benefits of daily outdoor time cannot be overstated, aiding not only physical development but also building emotional and mental health in young children.



Small World is committed to whole-child development and learning in close engagement with families. The kindergarten is the hub of an active community, with parenting courses, parent volunteer opportunities, and parent involvement helping to forge strong family-school partnerships.

A member of Generations Christian Education, alumni of Small World have a priority in admission to Island Christian Academy and Norwegian International School.

Small World offers weekly school tours, and would be delighted to introduce all interested families to this loving community.

## Small World Christian Kindergarten

10 Borrett Road, Mid-Levels

Tel: 2525 0922

Email: [office@smallworld.edu.hk](mailto:office@smallworld.edu.hk)



# small world

CHRISTIAN KINDERGARTEN

Small World Christian Kindergarten has been nurturing curious children for over 30 years, building character, confidence, and a love of learning!

Come and visit us at our beautiful Mid-Levels campus, with lush green outdoor garden and playground spaces.

Book a school tour at [www.smallworld.edu.hk](http://www.smallworld.edu.hk) today!

10 Borrett Road, Mid-Levels

Phone: 2525 0922

email: [office@smallworld.edu.hk](mailto:office@smallworld.edu.hk)





Every Master was once a beginner

**K1-K3, EC Foundation and Playgroup**

**Info Session on 07/06**

[ucm.edu.hk](http://ucm.edu.hk)



UCM is an IEYC accredited kindergarten  
School Registration Number: 611352

# UCM: holistic music education for young learners

Upon the solid foundation of inquiry-based learning and holistic education led by our Founding Principal Dr. Christina Lidman, United Christian Music Kindergarten (UCM) offers a unique music-focused curriculum in its spacious, safe and beautiful 35,000-sq. ft. campus located in Tseung Kwan O.

UCM utilises the International Early Years Curriculum (IEYC) in which the focus of learning shifts from measuring outcomes to driving children's learning and development. Children's progress is assessed via observation by teachers and recorded in learning journals.

Music is a core addition to the formula of the UCM difference. Music improves the development of language processing abilities, as well as a wide range of cognitive functions such as attention and concentration, visual-spatial perception, and executive function. Playing music also helps build self-esteem and develop social and emotional awareness. In preparing for a musical performance, children learn to focus, be patient and resilient, be cooperative, and acquire self-confidence and interpersonal skills.

Parents are children's first educators. Our teachers work closely with parents to understand the developmental needs of each student and let children develop at their own

pace. At the end of each IEYC learning unit, parents are invited to attend their children's "Celebration of Learning". UCM conducts parent workshops to share techniques that help improve the effectiveness of communication with their children.

UCM also offers the Play Miles programme which is inspired by Montessori's 'Practical Life' and 'Sensorial' activities. This programme uses a holistic approach for all infants and toddlers to learn about caring for oneself, seek knowledge based on interests and respect the environment.

Info days will be held on May 30th and June 7th. An introduction to UCM will be offered by way of an online webinar, followed by private school tours for parents to experience our beautiful purpose-built campus and to talk to the dedicated staff. Prior registration is required.

**United Christian Music Kindergarten**  
Capri Entire 1/F, 33 Tong Yin St, Tseung Kwan O  
Tel: 2110 1791  
Email: [admissions@ucm.edu.hk](mailto:admissions@ucm.edu.hk)  
Website: [www.ucm.edu.hk](http://www.ucm.edu.hk)

## Let Children be the Masterpiece that God created them to be

**"Early childhood is not a rehearsal, it won't come back". Give your children the best possible start in life.**

Dr Maria-Christina J. A. Weemaes-Lidman  
Founding Principal and Head of School



**International** Kindergarten with a curiosity capturing environment focusing on music and STEAM.



**Professional** and systematic music curriculum that develops critical, creative and confident learners.



**Equip** and assist learners to be ready for the new age of technology with our comprehensive UCM STEAM programme.

**Grow** self-confidence by performing in our state-of-the-art Music Theatre.



**Develop** independent thinking through a child-centred, enquiry-based and Montessori inspired Curriculum.





# Helping students to **VALUE, STRIVE AND ACT**

With the mission to develop passionate, healthy and accomplished globally-engaged bilingual learners, Victoria Shanghai Academy (VSA) is the first through-train IB World School in Hong Kong to offer International Baccalaureate programmes for over 1,800 students from years 1 to 12, including Primary Years Programme, Middle Years Programme and Diploma Programme.

The main features of the IB programmes at VSA include the integration of the best of international and local bilingual education to develop active learners and well-rounded individuals with a strong bilingual foundation in Putonghua and English.

Committed to providing a high-quality environment to give students the best opportunities to excel, VSA has recently unveiled its campus expansion plan to launch a new \$420 million development by fall 2021 to cater to the educational needs of its students, including their intellectual and physical growth, and social and emotional wellbeing.

One of VSA's core principles is to help students VALUE themselves and others by providing a holistic education that emphasises emotional and physical well-being and character development. The new learning complex, which will provide nearly 9,000 sqm of extra learning space, is designed to support this goal. It will have specially designed flexible spaces inside and outside, for active exploration and play that best support the balanced and holistic learning of the IB programs.

Aiming to help students STRIVE to be the best they can be, VSA creates an environment in which students exercise agency in their learning and are encouraged to explore and



pursue their interests and passions. The completion of the new Performing Arts Centre will be able to offer a greater range of extra-curricular opportunities for all students to allow them to challenge themselves further, and to maximize their potential in performing arts. With its enhanced professional lighting and sound system, and state-of-the-art display capabilities, it will better support students' creative potentials in composing, performing and recording.

In addition, VSA aims to help students ACT to make a better world through the school's green initiatives and incorporating green elements into the new development, such as rainwater irrigation, solar panels and a green terrace. This provides students with opportunities to engage in and learn about sustainability and to enhance VSA's ecological footprint.



## Victoria Shanghai Academy

19 Shum Wan Road, Aberdeen, Hong Kong

Tel: 3402 1000

Email: [enquiries@vsa.edu.hk](mailto:enquiries@vsa.edu.hk)

Website: [www.vsa.edu.hk](http://www.vsa.edu.hk)

Facebook: [www.facebook.com/VSAHKG](https://www.facebook.com/VSAHKG)



滬江維多利亞學校  
VICTORIA SHANGHAI ACADEMY



ENVISIONING A  
**BILINGUAL  
IB EDUCATION**  
FOR YOUR CHILDREN  
IN HONG KONG

**Victoria Shanghai Academy (VSA)** is one of Hong Kong's top IB World Schools, with over 1,800 students enrolled in the IB Primary Years Programme (Years 1-5), Middle Years Programme (Years 6-10) and Diploma Programme (Years 11-12). Every year, VSA graduates receive offers from prestigious universities around the world.

The school emphasizes a holistic approach at the heart of which is inquiry-based teaching and learning in a bilingual environment of English and Putonghua. This ensures that its graduates not only have a strong sense of Chinese heritage but also equipped with 21st century learning skills and international perspectives.

19 Shum Wan Road, Aberdeen, Hong Kong

3402 1000

[www.vsa.edu.hk](http://www.vsa.edu.hk)





# Building confidence for life

*Our unique educational model combines the best of East & West*

Wycombe Abbey School Hong Kong opened its doors on 5th September 2019. Based on the well-established heritage and academic excellence of Wycombe Abbey School in England, our exciting new co-educational school offers a quintessentially British independent education for primary aged children. The school provides a proven holistic education which is complimented by a curriculum that combines the National Curriculum for England and Wales with an extensive Chinese language syllabus drawn from the Chinese National Curriculum and International Baccalaureate Primary Year Programme. This dynamic combination prepares our pupils to excel when they join the finest secondary schools around the world.

We emphasize our commitment to a broad education including 14 Primary Subjects and learning outside of conventional classroom settings - Drama, Music, Art, Science, Physical Education, iSTEAM and a wide range of carefully selected extracurricular enrichment activities to widen our pupils' curiosity and interests.

## Our bespoke curriculum

Our pupils develop total fluency in English and access a curriculum which is built around the core components of the internationally renowned National Curriculum for England and Wales. At the same time, we ensure that our pupils have a firm grounding in the Chinese language and culture through our exceptional Chinese curriculum.

In addition to our core primary subjects of English, Chinese, and Mathematics, we provide a diverse and varied programme of experiences and extra-curricular activities for every child. Highlighted by the modern facilities and themed specialist classrooms at Wycombe Abbey School Hong Kong, our pupils have the opportunity to experience an inspiring choice of different activities, from individual and team sports to Creative Arts, Music, Chess, Cookery, Drama, Dance, iSTEAM and much more, in an exciting range of teams, clubs, and societies.



## Our Chinese curriculum

Chinese language learning is an integral part of the daily class schedule for all Wycombe Abbey Hong Kong pupils. Putonghua is the medium of instruction for all Chinese lessons. Our pupils are taught primarily to read and write in simplified characters, with exposure to traditional characters through lessons in calligraphy, voluntary supplementary reading lessons, and a variety of extra-curricular activities. Our school offers curriculum streams for both Native Speaking and Non-Native Speaking groups, differentiated within classes to provide an immersive environment promoting Chinese culture. Our curriculum design is based on the Chinese National Curriculum and International Baccalaureate Primary Year Programme, while our authentic curriculum materials are sourced from Hong Kong, Mainland China, Singapore, and Taiwan to ensure a variety and balance of Chinese language and culture.



## Parent testimonial

*“ It has been a wonderful journey so far for my two daughters at the Wycombe Abbey Hong Kong. The decision to move away from the local system turned out to be a well-made one as the school, in addition to having the image of academic excellence, offers ample amount of physical education and, to our surprise, a very proper and strong Chinese curriculum.*

*- Parent of Year 1 and Year 4 students*

## Wycombe Abbey School Hong Kong

17 Tin Wan Street, Aberdeen, Hong Kong

Tel: 2129 7100

Email: [admissions@was.edu.hk](mailto:admissions@was.edu.hk)

Website: [www.was.edu.hk](http://www.was.edu.hk)



WYCOMBE ABBEY SCHOOL  
HONG KONG



- At Wycombe Abbey School Hong Kong we offer our pupils an enriched, British based education, complimented by an outstanding Chinese program.
- Our enriched curriculum prepares our children for entry to the best secondary schools in Hong Kong and around the world.
- Our proven teaching methods enable each individual child to achieve their academic potential via an immersive learning environment that educates the whole child.

**BURSARIES AVAILABLE**  
Please enquire

Apply Now for the  
2020-2021 Academic Year  
Primary Year 1 to Year 6

(852) 2129 7100

[www.was.edu.hk](http://www.was.edu.hk)

[Wycombe Abbey School HK](#)

[admissions@was.edu.hk](mailto:admissions@was.edu.hk)

Daily  
School Tours  
Book Now







# Transform your Chinese Mandarin proficiency

YLPSK offers a complete Chinese Mandarin solution for all educational stages to help students enhance their acquisition of the language.

Since 2004, the Institute of Chinese Language Education of Peking University has developed GAPSK (General Aptitude Putonghua Shuiping Kaoshi) and YLPSK (Tests of Chinese for Young Learners) to provide comprehensive Chinese Mandarin proficiency assessment for different levels of students. Among which, YLPSK is for non-native students (Chinese as foreign language) and GAPSK is for Chinese as second language students.

We are the only Chinese Mandarin proficiency assessment approved by the Ministry of Education of China and accredited by Peking University.

We offer complete Chinese Mandarin solution for all educational stages throughout K12, which include



curriculum, assessment and teaching support. We also organize the Mandarin recitation competition for international schools, which aims to cultivate students' understanding of cultural connotations, enhance students' acquisition of Chinese Mandarin, and extend their expressing and performing ability into an aesthetic form so as to equip them with confidence and interest in learning.

### YLPSK & GAPSK

Unit 92, 15/F, Langham Place,  
8 Argyle Street, Mong Kok, Kowloon  
Tel: (852) 3101 0800 / 3977 1577  
Email: info@gapsk.org / info@ylpsk.org  
Website: www.gapsk.org / www.ylpsk.org



Chinese Mandarin Assessment for native or non-native Chinese speaker.

**普通话评估** 专为母语为中文或非中文的学生而设

Stimulate language talent  
发挥语言天赋

Fulfill children's future  
成就孩子未来

Chinese Mandarin  
中文普通话



### YLPSK

网页 Website: [www.YLPSK.org](http://www.YLPSK.org) 电话 Tel: 3977 1577  
电邮 Email: [info@ylpsk.org](mailto:info@ylpsk.org) 传真 Fax: 2869 8218

### GAPSK

网页 Website: [www.GAPSK.org](http://www.GAPSK.org) 电话 Tel: 3101 0800  
电邮 Email: [info@gapsk.org](mailto:info@gapsk.org) 传真 Fax: 2869 8218

Address: Room 92, 15/F, Office Tower, Langham Place, 8 Argyle Street, Mong Kok, Kowloon  
地址: 香港九龙旺角亚皆老街8号朗豪坊办公大楼15楼92室





## Our Services

### One-stop Admissions Counseling:

- University admissions counseling
- Boarding school admissions counseling
- International school admissions counseling



### English Tuition Courses:

- IB | GCSE English language and Literature
- Foundational English training
- Jolly Phonics



[www.leeeducation.com](http://www.leeeducation.com)

1625A, 16th Floor, Star House, 3 Salisbury Road, Tsim Sha Tsui, Hong Kong

Free assessments available

**2722 7128**

We offer in person & online classes



Helped  
**450+**  
students



"LEC helped me a lot during my US college application process, from planning my ECA profile to editing my college essays. Without their guidance, I would not be able to obtain college offers from Princeton, UPenn and Berkeley."

Princeton University, Class of 2024



"LEC teachers are professional and dedicated. They patiently taught me how to show my characteristics and strengths in the application essays. They also taught me how to answer interview questions confidently, which ultimately helped me receive an offer from UWCLPC!"

Li Po Chun United World College, Class of 2022

#### ABC Pathways International Kindergarten

**Tai Koo Campus**  
G/F, Block 8&9, Kornhill Garden,  
1124 King's Road, Quarry Bay  
Tel: 2110 1211  
Email: enquiry.tk@ABCpathways.edu.hk  
**Whampoa Campus**  
Shop No. 25, G/F, Site 11,  
Whampoa Garden, Hung Hom  
Tel: 2110 9993  
Email: enquiry.wp@ABCpathways.edu.hk  
Website: abcpathways.edu.hk  
Year founded: 2014  
Curriculum: International

#### Alison's Letterland International Kindergarten

Flat C, 2/F, Marco Polo Mansions,  
10 Cleveland Street, Causeway Bay, Hong Kong  
Tel: 2504 1978  
Email: admin@ais.edu.hk  
Website: www.international-playgroup-kindergarten.com  
Year founded: 1996  
Curriculum: Early Years Foundation Stage

#### American International School

125 Waterloo Road, Kowloon Tong, Hong Kong  
Tel: 2336 3812  
Email: admissions@ais.edu.hk  
Website: www.ais.edu.hk  
Year founded: 1986  
Curriculum: US Common Core State Standards and AP Courses

#### American School Hong Kong

6 Ma Chung Road, Tai Po, N.T.  
Tel: 3919 4111  
Email: admissions@ashk.edu.hk  
Website: www.ashk.edu.hk  
Year founded: 2016  
Curriculum: US, IB

#### Anchors International Nursery

Shop G07B, G/F-2/F, Fuller Gardens,  
8 Chui Lok Street, Tai Po  
Tel: 2666 5650  
Website: www.anchors.edu.hk  
Year Founded: 2008

#### Anchors International Nursery (Constellation Cove Campus)

Kindergarten Premises, Constellation Cove,  
1 Hung Lam Drive, Tai Po  
Tel: 2650 6660  
Website: www.anchors.edu.hk

#### Anfield International Kindergarten

5 Cumberland Road, Kowloon Tong, Kowloon  
Tel: 2794 3668  
Email: admin@anfield.edu.hk  
Website: www.anfield.edu.hk  
Year founded: 1999

#### Anfield International Kindergarten and Nursery

L2, Phase 1, Laguna Verde,  
8 Laguna Verde Avenue, Hungghom, Kowloon  
Tel: 2766 3882  
Email: admin-lv@anfield.edu.hk

#### Antonia International Kindergarten

Shop Nos. 31-33, 78-80 & 84-87, LG/F,  
Tsuen Wan Garden Phase I,  
15-23 Castle Peak Road,  
Tsuen Wan, New Territories  
Tel: 2612 0984  
Email: admin@antonia-kindergarten.com  
Website: www.antonia-kindergarten.com  
Year founded: 2014  
Curriculum: Early Years Foundation Stage

#### Aristle International Kindergarten and Nursery

Shop 1, G/F & Shop 2, 1/F, Emerald Twenty-Eight, 22 & 26 Tai Po Road, Tai Po, Kowloon  
Tel: 2323 2982  
Email: info@aik.edu.hk  
Website: www.aik.edu.hk  
Year founded: 2010  
Curriculum: International

#### Ashville International Kindergarten (Lantau Island)

Shop 1, G/F, Sea Crest Terrace,  
19 Mui Wo Ferry Pier Road,  
Mui Wo, Lantau Island  
Tel: 2109 9886  
Website: www.kht.edu.hk

#### Australian International School Hong Kong

3A Norfolk Road, Kowloon Tong  
Tel: 2304 6078  
Email: info@aishk.edu.hk  
Website: www.aishk.edu.hk  
Year founded: 1995  
Curriculum: Australian National Curriculum, IBDP

#### Avendale international Kindergarten Whampoa Campus

3/F Harbourfront Landmark, 11 Wan Hoi Street,  
Whampoa, Hung Hom, Kowloon  
Tel: 3461 3173  
Harmony Garden Campus  
Kindergarten, Harmony Garden,  
9 Siu Sai Wan Road, Siu Sai Wan  
Tel: 2866 8260

#### Sai Wan Campus

1-2 Floor, 554-560 Queen's Road West, Sai Wan  
Tel: 3619 1136  
Email: enquiry@avendale.school  
Website: www.avendale.school  
Year founded: 2018  
Curriculum: Reggio Emilia inspired emergent curriculum

#### Bambino English Playschool

Causeway Tower, 4/F, Flat F,  
16-22 Causeway Road,  
Causeway Bay, Hong Kong  
Tel: 2576 5269  
Email: kgtan@netnavigator.com  
Year founded: 1978

#### Baumhaus Wan Chai

1/F Kar Yau Building,  
36-44 Queen's Road East, Wan Chai  
Tel: 2321 5898  
Website: www.baumhaus.com.hk

#### Baumhaus Harbour City

Suite 614-615, World Commerce Centre,  
11 Canton Road, Tsim Sha Tsui, Hong Kong  
Tel: 3585 8577  
Website: www.baumhaus.com.hk

#### Blooming Buds Preschool

Unit 7, 1/F, Island Crest, 8 First Street,  
Sai Ying Pun, Hong Kong  
Tel: 2887 9921  
Email: enquiry@bloomingbuds.com.hk  
Website: www.bloomingbuds.com.hk  
Year founded: 2012  
Curriculum: Reggio Emilia Approach and the Creative Curriculum

#### Box Hill (HK) International Kindergarten & Pre-school

**Ma On Shan Campus**  
G/F, Tower 10, Phase 1, Vista Paradiso,  
No. 2 Hang Ming Street, Ma On Shan  
Tel: 2750 6323  
Email: mos@boxhill.com.hk  
**Fo Tan Campus**  
No. 327, Podium of Jubilee Square, Fo Tan  
Tel: 2688 2161  
Email: fotan@boxhill.com.hk

#### Tseung Kwan On Campus

Shop K01, Level 2,  
Metro Town, Tseung Kwan O, N.T.  
Tel: 2623 0023  
Email: tko@boxhill.com.hk  
**Kwai Chung Campus**  
No. 21, G/F, Commercial Complex of Wonderland Villas, 9 Wah King Hill Road, Kwai Chung, N.T.  
Tel: 2151 1383  
Email: wl@boxhill.com.hk  
Website: www.boxhill.edu.hk  
Year founded: 2004  
Curriculum: Early Years Foundation Stage

#### Brightland International Kindergarten

Shop 1, Wing A, Block A, Tak Nga Court,  
2 Hiu Wan Road, Tai Po  
Tel: 2651 3311  
Email: info@brightland.edu.hk  
Website: brightland.edu.hk  
Year Founded: 2016

#### British Council International Pre-School

1/F, British Council,  
3 Supreme Court Road, Admiralty  
Tel: 2913 5290  
Email: preschool@britishcouncil.org.hk  
Website: www.britishcouncil.hk  
Year founded: 2016  
Curriculum: Other

#### Canadian International School of Hong Kong

36 Nam Long Shan Road, Aberdeen  
Tel: 2525 7088  
Email: schoolinfo@cdnis.edu.hk  
Website: www.cdnis.edu.hk  
Year founded: 1991  
Curriculum: IB and OSSD



**California School**

3/F, Front Block, Lung Ma Building,  
550 Nathan Road, Yau Ma Tei  
**Tel:** 2388 9844 / 9822 7549  
**Email:** info@californiaschool.edu.hk  
**Website:** www.californiaschool.edu.hk  
**Year founded:** 1992  
**Curriculum:** IGCSE, A-Levels

**Cannan Kindergarten (Whampoa Garden)**

Portion of G/F, Commercial Podium,  
Site 10, Whampoa Garden, Hung Hom  
**Tel:** 2330 3336  
**Website:** www.cannan.edu.hk  
**Year Founded:** 1997

**Carmel School**

10 Borrett Road, Mid-Levels  
**Tel:** 2964 1600  
**Email:** brcadmin@carmel.edu.hk  
**Website:** www.carmel.edu.hk  
**Year founded:** 1991

**Cherish English School & Kindergarten**

Shop KG01, G/F & M/F, Sai Wan Estate,  
East Terrace, Kennedy Town  
**Tel:** 2855 0080  
**Website:** www.cherish.edu.hk  
**Year Founded:** 1988

**Chinese Academy**

77 Caroline Hill Road, Causeway Bay, Hong Kong  
**Tel:** 2499 8000  
**Email:** enquiry@caps.edu.hk  
**Website:** www.caps.edu.hk  
**Year founded:** 2017  
**Curriculum:** Primary: Bilingual Immersion in English & Chinese (Putonghua);  
Secondary: IB MYP, IB DP

**Chinese International School**

1 Hau Yuen Path, Braemar Hill, North Point  
**Tel:** 2510 7288  
**Email:** cis\_info@cis.edu.hk  
**Website:** www.cis.edu.hk  
**Year founded:** 1983

**Curriculum:** Primary: balanced and integrated dual language curriculum in both English and Chinese; Secondary: IBMYP & IBDP. In Year 10, students study the IB MYP in our satellite campus in Hangzhou (CIS Hangzhou)

**Christian Alliance International School**

33 King Lam Street, Lai Chi Kok, Kowloon  
**Tel:** 3699 3899  
**Email:** info@caisbv.edu.hk  
**Website:** www.caisbv.edu.hk  
**Facebook:** @cais.hk  
**Instagram:** @caisbv

**Christian Alliance P.C. Lau Memorial International School**

2 Fu Ning Street, Kowloon, Hong Kong  
**Tel:** 2713 3733  
**Email:** info@capcl.edu.hk  
**Website:** www.capcl.edu.hk  
**Curriculum:** Canada's Alberta Curriculum

**Concordia International School**

68 Begonia Road, Yau Yat Chuen  
**Tel:** 2789 9890  
**Email:** office@concordiaintl.edu.hk  
**Website:** www.cihs.edu.hk  
**Year founded:** 1990  
**Curriculum:** North American

**Creative Kindergarten**

G/F, 6 Rutland Quadrant, Kowloon Tong  
**Tel:** 2336 1139  
**Website:** www.creative.edu.hk  
**Year Founded:** 1984

**Creative Primary School's Kindergarten**

2A Oxford Road, Kowloon Tong, Kowloon, HK  
**Tel:** 2336 0266  
**Email:** cps@creativeprisch.edu.hk  
**Website:** www.creativeprisch.edu.hk

**Creative Secondary School**

3 Pung Loi Road, Tseung Kwan O, Sai Kung  
**Tel:** 2336 0233  
**Email:** admin@css.edu.hk  
**Website:** www.ccs.edu.hk  
**Year founded:** 2006  
**Curriculum:** HKDSE, IBMYP, IBDP

**Dalton School Hong Kong**

G/F, Imperial Cullinan, 10 Hoi Fai Road, Kowloon  
**Tel:** 3612 4660  
**Email:** info@dshk.edu.hk  
**Website:** www.dshk.edu.hk  
**Year founded:** 2017  
**Curriculum:** US Common Core Standards, Own  
**Website:** www.boxhill.edu.hk  
**Year founded:** 2004  
**Curriculum:** Early Years Foundation Stage

**David Exodus Kindergarten**

Upper Ground Podium, Block 4,  
Julimount Garden, Tai Wai, Shatin, N.T.  
**Tel:** 2699 0100  
**Website:** www.davidexodus.edu.hk  
**Year founded:** 1989  
**Curriculum:** Own

**Deborah Educational Institute:**

**Deborah International Pre-school / Play school (Tseung Kwan O)**  
Kindergarten Tower, Bauhinia Garden,  
11 Tong Chun Street, Tseung Kwan O  
**Tel:** 3403 4393  
**Curriculum:** International  
**Deborah International Pre-school / Play-school (Hung Hom)**  
1/F, Site 2 and G/F, Site 7,  
Whampoa Garden, Hung Hom, Kowloon  
**Tel:** 2362 8379 (Site 2) / 2774 1669 (Site 7)  
**Curriculum:** International / Japanese International

**Delia Memorial School (Glee Path)**

1-3 Glee Path,  
Mei Foo Sun Chuen, Kowloon  
**Tel:** 2741 5239  
**Email:** gp@deliagroup.edu.hk  
**Website:** www.deliagp.edu.hk  
**Curriculum:** HKDSE, IBDP

**Delia School of Canada**

5-7, Tai Fung Avenue, Taikoo Shing  
**Tel:** 3658 0400  
**Email:** admissions@delia.edu.hk  
**Website:** www.delia.edu.hk  
**Year founded:** 1987  
**Curriculum:** Ontario Curriculum / Alberta Curriculum, Canada

**Diocesan Boys School Primary Division & Diocesan Boys School**

131 Argyle Street, Mongkok, Kowloon  
**Tel:** 2711 5191  
**Email:** dbsadmin@dbs.edu.hk  
**Website:** www.dbs.edu.hk  
**Year founded:** 1869  
**Curriculum:** HKDSE, IBDP

**Diocesan Girls' School**

1 Jordan Road, Kowloon  
**Tel:** 2277 9100  
**Email:** info@dgs.edu.hk  
**Website:** www.dgs.edu.hk  
**Year founded:** 1860  
**Curriculum:** HKDSE, A-Levels

**Discovery Bay International School**

Discovery Bay, Lantau Island  
**Tel:** 2914 2142 (Kindergarten) /  
2987 7331 (Primary / Secondary)  
**Email:** dbis@dbis.edu.hk  
**Website:** www.dbis.edu.hk  
**Year founded:** 1983  
**Curriculum:** British National Curriculum and International Primary Curriculum

**Discovery Mind Kindergarten/ International Play Centre**

**Discovery Bay Campus**  
401, Marina Commercial Centre,  
G/F, 2-8 Coastline Villa,  
Peninsula Village, Discovery Bay  
**Tel:** 2987 8088  
**Email:** dmk@discoverymind.edu.hk  
**Tung Chung Campus**  
G/F, Seaview Crescent,  
No. 8 Waterfront Road, Tung Chung  
**Tel:** 2987 8070  
**Email:** dmtc@discoverymind.edu.hk

**Discovery Mind Primary School**

**Discovery Bay Campus**  
1/F, Shop 102, 92 Siena Avenue,  
North Plaza, Discovery Bay  
**Tel:** 2914 2202  
**Email:** admission\_db@discoverymind.edu.hk  
**Tung Chung Campus**  
G/F, Shop A-D Seaview Crescent,  
No. 8 Waterfront Road, Tung Chung  
**Tel:** 2915 0666  
**Email:** admission\_tc@discoverymind.edu.hk  
**Website:** www.discoverymind.edu.hk  
**Year founded:** 2012  
**Curriculum:** IPC

**Discovery Montessori Academy**

Block 1, 92 Siena Ave, Discovery Bay,  
Lantau Island, Hong Kong  
**Tel:** 2812 9206  
**Email:** primary@dms.edu.hk  
**Website:** www.dms.edu.hk  
**Year founded:** 2015  
**Curriculum:** Montessori

**Discovery Montessori School**

**Discovery Bay Campus**  
Shop 101, 1/F, 92 Siena Avenue,  
Discovery Bay, Lantau Island, Hong Kong  
**Tel:** 2987 1201  
**Email:** enquiry@discoverymontessori.info  
**Central Campus**  
3/F, Mandarin Building,  
34-43 Bonham Strand, Central, Hong Kong  
**Tel:** 2850 8006  
**Email:** enquiry@dms.edu.hk  
**Website:** www.dms.edu.hk  
**Year founded:** 2010  
**Curriculum:** Montessori

**Elsa High School, Carmel School Association**

460 Shau Kei Wan Road, Shau Kei Wan  
**Tel:** 3665 5388  
**Email:** elsahighschool@carmel.edu.hk  
**Website:** www.carmel.edu.hk  
**Year founded:** Carmel School Association was founded in 1991 and Elsa High School was established in 2009  
**Curriculum:** International Baccalaureate

**English Schools Foundation**

25/F, 1063 King's Road, Quarry Bay, Hong Kong  
**Tel:** 2574 2351  
**Email:** info@esfcentre.edu.hk  
**Website:** www.esf.edu.hk  
**Year founded:** 1967

**ESF Abacus International Kindergarten**

1A Mang Kung Uk Road, Clearwater Bay  
**Tel:** 2719 5712  
**Email:** kinder@abacus.edu.hk  
**Website:** www.abacus.edu.hk  
**Year founded:** 2002  
**School Type:** Private  
**Curriculum:** IB Primary Years Programme

**ESF Beacon Hill School**

23 Ede Road, Kowloon Tong  
**Tel:** 2336 5221  
**Email:** bhs@bhs.edu.hk  
**Website:** www.beaconhill.edu.hk  
**Year founded:** 1967  
**School Type:** ESF  
**Curriculum:** IB Primary Years Programme

**ESF Bradbury School**

43C Stubbs Road, Happy Valley  
**Tel:** 2574 8249  
**Email:** enquiries@bradbury.edu.hk  
**Website:** www.bradbury.edu.hk  
**Year founded:** 1992  
**School Type:** ESF  
**Curriculum:** IB Primary Years Programme

**ESF Clearwater Bay School**

DD 229, Lot 235, Clearwater Bay Road,  
Clearwater Bay  
**Tel:** 2358 3221  
**Email:** info@cwbs.edu.hk  
**Website:** www.cwbs.edu.hk  
**Year founded:** 1980  
**School Type:** ESF  
**Curriculum:** IB Primary Years Programme

**ESF Discovery College**

38 Siena Avenue, Discovery Bay, Lantau Island  
**Tel:** 3969 1000  
**Email:** office@dc.edu.hk  
**Website:** www.discovery.edu.hk  
**Year founded:** 2007  
**School Type:** Private  
**Curriculum:** IB Primary Years Programme,  
IB Middle Years Programme, IB Diploma

**ESF Glenealy School**

7 Hornsey Road, Mid Levels  
**Tel:** 2522 1919  
**Email:** enquiry@glenealy.edu.hk  
**Website:** www.glenealy.edu.hk  
**Year founded:** 1959  
**School Type:** ESF  
**Curriculum:** IB Primary Years Programme

**ESF Hillside International Kindergarten**

43B Stubbs Road, Mid-Levels East  
**Tel:** 2540 0066  
**Email:** kinder@hillside.edu.hk  
**Website:** www.hillside.edu.hk  
**Year founded:** 1999  
**School Type:** Private  
**Curriculum:** IB Primary Years Programme

**ESF Island School**

20 Borrett Road, Mid Levels (permanent campus currently under redevelopment)  
**Temporary campuses:**  
**Island School Sha Tin Wai (Years 7, 8, 12, 13)**  
Pok Hong Estate, Area 5A,  
Sha Tin, New Territories  
**Island School Tai Wai (Years 9, 10, 11)**  
Estate Secondary School No. 2,  
Sun Chui Estate, Sha Tin, New Territories  
**Tel:** 2524 7135  
**Email:** school@online.island.edu.hk  
**Website:** www.island.edu.hk  
**Year founded:** 1967  
**School Type:** ESF  
**Curriculum:** GCSE/IGCSEs, IB Diploma,  
Applied Learning Programme (BTEC qualifications)

**ESF Jockey Club Sarah Roe School**

2B Tin Kwong Road, Homantin  
**Tel:** 2761 9893  
**Email:** info@jcsrs.edu.hk  
**Website:** www.jcsrs.edu.hk  
**Year founded:** 1985  
**School Type:** ESF  
**Curriculum:** Primary Learning Programme,  
ASDAN Award Programme, Transition  
Challenge Programme, Towards Independence  
Challenge

**ESF Kennedy School**

19 Sha Wan Drive, Pokfulam  
**Tel:** 2579 5600  
**Email:** admissions@kennedy.edu.hk  
**Website:** www.kennedy.edu.hk  
**Year founded:** 1961  
**School Type:** ESF  
**Curriculum:** IB Primary Years

**ESF King George V School**

2 Tin Kwong Road, Homantin  
**Tel:** 2711 3029  
**Email:** office@kgv.edu.hk  
**Website:** www.kgv.edu.hk  
**Year founded:** 1902  
**School Type:** ESF  
**Curriculum:** GCSE/IGCSEs, IB Diploma,  
Applied Learning Programme (BTEC qualifications)

**ESF Kowloon Junior School**

20 Perth Street, Homantin, Kowloon, Hong Kong  
**Tel:** 3765 8700  
**Email:** office@kjs.edu.hk  
**Website:** www.kjs.edu.hk  
**Year founded:** 1902  
**School Type:** ESF  
**Curriculum:** IB Primary Years Programme

**ESF Peak School**

20 Plunketts Road, The Peak  
**Tel:** 2849 7211  
**Email:** office@peakschool.net  
**Website:** www.ps.edu.hk  
**Year founded:** 1911  
**School Type:** ESF  
**Curriculum:** IB Primary Years Programme

**ESF Quarry Bay School**

6 Hau Yuen Path,  
Braemar Hill, North Point  
**Tel:** 2566 4242  
**Email:** office@qbs.edu.hk  
**Website:** www.qbs.edu.hk  
**Year founded:** 1926  
**School Type:** ESF  
**Curriculum:** IB Primary Years Programme

**ESF Sha Tin College**

3 Lai Wo Lane, Fo Tan, Sha Tin  
**Tel:** 2699 1811  
**Email:** info@shatincollege.edu.hk  
**Website:** www.shatincollege.edu.hk  
**Year founded:** 1982  
**School Type:** ESF  
**Curriculum:** IGCSE, IB Diploma

**ESF Sha Tin Junior School**

3A Lai Wo Lane, Fo Tan, Sha Tin,  
New Territories, Hong Kong  
**Tel:** 2692 2721  
**Email:** info@sjs.esf.edu.hk  
**Website:** www.sjs.edu.hk  
**Year founded:** 1988  
**School Type:** ESF  
**Curriculum:** IB Primary Years Programme

**ESF South Island School**

50 Nam Fung Road,  
Aberdeen, Hong Kong  
**Tel:** 2555 9313  
**Email:** sis@sis.edu.hk  
**Website:** www.sis.edu.hk  
**Year founded:** 1977  
**School Type:** ESF  
**Curriculum:** GCSE/IGCSEs, IB Diploma,  
IB Career-related Programme, Applied Learning  
Programme (BTEC qualifications)



### ESF Tsing Yi International Kindergarten

Maritime Square,  
33 Tsing King Road, Tsing Yi  
**Tel:** 2436 3355  
**Email:** admissions@tyk.edu.hk  
**Website:** www.esf.edu.hk  
**Year founded:** 1999  
**School Type:** Private  
**Curriculum:** IB Primary Years Programme

### ESF Tung Chung International Kindergarten

1/F, Commercial Accommodation, The Visionary,  
1 Ying Hong Street, Tung Chung, Lantau, N.T.  
**Tel:** 3742 3500  
**Email:** kinder@tc.esf.org.hk  
**Website:** www.tck.edu.hk  
**Year founded:** 2016  
**School Type:** Private  
**Curriculum:** IB Primary Years Programme

### ESF West Island School

250 Victoria Road, Pok Fu Lam, Hong Kong  
**Tel:** 2819 1962  
**Email:** wis@wis.edu.hk  
**Website:** www.wis.edu.hk  
**Year founded:** 1991  
**School Type:** ESF  
**Curriculum:** GCSE/IGCSEs, IB Diploma, Applied Learning Programme (BTEC qualifications)

### ESF Wu Kai Sha International Kindergarten

Level 1, Lake Silver Tower,  
599 Sai Sha Road, Ma On Shan  
**Tel:** 2435 5291  
**Email:** kinder@wksk.edu.hk  
**Website:** www.wksk.edu.hk  
**Year founded:** 2009  
**School Type:** Private  
**Curriculum:** IB Primary Years Programme

### EtonHouse International Pre-School

LG/F Kindergarten, Mayfair By The Sea I,  
23 Fo Chun Road, Tai Po  
**Tel:** 2780 5700  
**Email:** enquiry@etonhouse.com.hk  
**Website:** www.etonhouse.com.hk  
**Year founded:** 1995  
**Curriculum:** Inquiry based Reggio Emilia inspired curriculum

### Fairchild Junior Academy

22/F, Park Commercial Centre,  
180 Tung Lo Wan Road, Tin Hau, Hong Kong  
**Tel:** 2898 1611  
**Email:** info@fairchild.academy  
**Website:** www.fairchild.academy  
**Year founded:** 2016  
**Curriculum:** Canadian Early Learning Framework

### Fairchild Kindergarten

G/F & 1/F, Kong Chian Tower,  
Block 1, 351 Des Voeux Road West,  
Sai Ying Pun, Hong Kong  
**Tel:** 2803 2638  
**Email:** info@fairchild.edu.hk  
**Website:** www.fairchild.edu.hk  
**Year founded:** 2017  
**Curriculum:** Canadian Early Learning Framework and Hong Kong Kindergarten Education Curriculum Guide

### Forest House Waldorf School

Commercial Development Floral Villas,  
18 Tso Wo Road, Sai Kung  
**Tel:** 2792 6055  
**Email:** info@foresthous.edu.hk  
**Website:** www.waldorf.edu.hk  
**Year founded:** 2014  
**Curriculum:** Waldorf

### French International School

**Blue Pool Road Campus**  
165 Blue Pool Road, Happy Valley  
**Chai Wan Campus**  
1 Cheung Man Road, Chai Wan, Hong Kong  
**Jardine's Lookout Campus**  
34 Price Road, Jardine's Lookout, Hong Kong  
**Tseung Kwan O Campus**  
28 Tong Yin Street, Tseung Kwan O, N.T.  
**Tel:** 2577 6217  
**Email:** info@lfi.edu.hk  
**Website:** www.fis.edu.hk  
**Year founded:** 1963  
**Curriculum:** English National Curriculum to IGCSE then IBDP; French National Curriculum

### Galilee International School – Kindergarten & Nursery

1/F Peace Garden, 2 Peace Avenue,  
Ho Man Tin, Kowloon  
**Tel:** 2390 3000  
**Email:** gis@gis.edu.hk  
**Website:** www.gis.edu.hk  
**Year founded:** 2014  
**Curriculum:** International Baccalaureate (Primary Years Programme)

### Garden House Pre-school and Playgroup

G/F, Silverstrand Shopping Centre,  
7 Silverstrand Beach Road, Clearwater Bay  
**Tel:** 2358 1177  
**Email:** info@gardenhouse.edu.hk  
**Website:** www.gardenhouse.edu.hk  
**Year founded:** 2008  
**Curriculum:** Waldorf

### German Swiss International School Main Campus

11 Guildford Road, The Peak  
**Tel:** 2849 6216  
**Pok Fu Lam Campus (Kindergarten, Lower Primary & Business College)**  
162 Pok Fu Lam Road, Pok Fu Lam, Hong Kong  
**Tel:** 2849 6217  
**Email:** info@gsis.edu.hk  
**Website:** www.gsis.edu.hk  
**Year founded:** 1969  
**Curriculum:** Primary: drawn from best practices from the UK, Canada, Australia, New Zealand; Year 7-9: broadly based on the National Curriculum of England and Wales; Year 10-11: I/GCSE; Year 12-13: IB Diploma

### Gigamind English Primary School

Block A, 9 Tin Lung Road, Phase 6, Maywood Court,  
Kingswood Villas, Tin Shui Wai, N.T.  
**Tel:** 2446 9883  
**Email:** info@gigamind.edu.hk

### Gigamind Kindergarten & Children's House

Block B, 9 Tin Lung Road, Phase 6, Maywood Court,  
Kingswood Villas, Tin Shui Wai, N.T.  
**Tel:** 2446 9210  
**Email:** kginfo@gigamind.edu.hk  
**Website:** www.gigamind.edu.hk  
**Year founded:** 2001  
**Curriculum:** Own

### Good Time Play School

**Fanling Centre**  
G/F Block A & B, Fanling Centre Phase 1,  
33 San Wan Road, Fanling  
**Tel:** 2677 8109  
**Website:** www.goodtime.edu.hk  
**Sha Tin Plaza**  
Level 4, Block C & D, Sha Tin Plaza, Sha Tin  
**Tel:** 2601 3278  
**Website:** www.goodtime.edu.hk  
**Year Founded:** 1986

### Grace Garden International Nursery and Kindergarten

**Tiu Keng Leng Campus**  
Shop F, G/F, Phase 3, Ocean Shores,  
88 O King Road, Tiu Keng Leng  
**Tel:** 3547 1338  
**Whatsapp:** 9216 6411  
**Lei King Wan Campus**  
Shop GA, 12B-14, G/F, Site A,  
55 Tai Hong Street, Lei King Wan  
**Tel:** 2702 9778  
**Whatsapp:** 6100 8339  
**Email:** enquiry@gracegarden.edu.hk  
**Website:** www.gracegarden.edu.hk  
**Year founded:** 2015  
**Curriculum:** Early Years Foundation Stage

### Greenfield English (International) Kindergarten

**The Long Beach**  
Unit 1 Kindergarten Area UG/F,  
8 Hoi Fai Road, The Long Beach, West Kowloon  
**Tel:** 3514 8081  
**Website:** www.greenfield.edu.hk  
**Year Founded:** 2011  
**Tung Chung**  
Podium, 1/F, Caribbean Bazaar, Caribbean Coast,  
1 Kin Tung Road, Tung Chung, Lantau Island  
**Tel:** 2162 5538  
**Website:** www.greenfield.edu.hk  
**Lohas Park**  
Kindergarten Site, Hemera,  
Lohas Park III, Tseung Kwan O  
**Tel:** 2246 4801  
**Website:** www.greenfield.edu.hk  
**Year Founded:** 2016  
**Sheung Ning Road**  
Shop A-B, G/F & 1/F,  
The Kindergarten Building, On Ning Garden,  
10 Sheung Ning Road, Tseung Kwan O  
**Tel:** 2701 2808  
**Website:** www.greenfield.edu.hk  
**Mont Vert**  
The Kindergarten, Mont Vert,  
9 Fung Yuen Road, Tai Po  
**Tel:** 3907 0178  
**Website:** www.greenfield.edu.hk

### Hamilton Hill International Kindergarten

UG/F, Ching Wah Mansion,  
No.1-3 Ching Wah Street, North Point  
**Tel:** 3461 9750  
**Email:** admissions@hhik.edu.hk  
**Website:** www.hhik.edu.hk  
**Year founded:** 2015  
**Curriculum:** International

### Han Academy

G/F-2/F, 33-35 Wong Chuk Hang Road,  
Aberdeen, Hong Kong  
**Tel:** 3998 6300  
**Email:** admission@hanacademy.edu.hk  
**Website:** www.hanacademy.edu.hk  
**Year Founded:** 2017  
**Curriculum:** Cambridge (Primary, Secondary, IGCSE, A Level), IBDP (candidate school)

### Harrow International School Hong Kong

38 Tsing Ying Road, Tuen Mun  
**Tel:** 2824 9099  
**Email:** admissions@harrowschool.hk  
**Website:** www.harrowschool.hk  
**Year founded:** 2012  
**Curriculum:** International

### Highgate House School

2/F, 100 Peak Road, The Peak  
**Tel:** 2849 6336  
**Website:** www.highgatehouse.edu.hk  
**Year founded:** 1992  
**Curriculum:** Waldorf

### HKCA Po Leung Kuk School

62 Tin Hau Temple Road, Hong Kong  
**Tel:** 3465 8400  
**Email:** info@plkis.edu.hk  
**Website:** www.plkis.edu.hk  
**Year Founded:** 2017  
**Curriculum:** IBPYP

### Hong Kong Academy

33 Wai Man Road, Sai Kung  
**Tel:** 2655 1111  
**Email:** admissions@hkacademy.edu.hk  
**Website:** www.hkacademy.edu.hk  
**Year founded:** 2000  
**Curriculum:** IBPYP, IBMYP, IBDP

### Hong Kong Adventist Academy

1111 Clear Water Bay Road, Sai Kung  
**Tel:** 2623 0034  
**Email:** info@hkaa.edu.hk  
**Website:** www.hkaa.edu.hk  
**Year founded:** 2011  
**Curriculum:** Local curriculum with electives from the American curriculum

### Hong Kong Chinese Christian Churches Union Logos Academy

**Campus I**  
No. 5, Ling Kwong Street, Tseung Kwan O, N.T.  
**Tel:** 2337 2126  
**Campus II**  
No. 1, Kan Hok Lane, Tseung Kwan O, N.T.  
**Tel:** 2337 2123  
**Email:** info@logosacademy.edu.hk  
**Website:** www.logosacademy.edu.hk  
**Year founded:** 2011  
**Curriculum:** HKDSE, IBDP

### Hong Kong International Learning Academy

Unit 7 & 8G Office Block One, North Plaza,  
92 Siena Avenue, Discovery Bay  
**Tel:** 2416 3198  
**Email:** hkilacademy@gmail.com  
**Website:** https://www.studyhkila.com

### Hong Kong International School

**Tai Tam Campus**  
1 Red Hill Road, Tai Tam  
**Tel:** 3149 7000  
**Repulse Bay Campus**  
23 South Bay Close, Hong Kong  
**Tel:** 2812 5000  
**Email:** admissions@hkis.edu.hk  
**Website:** www.hkis.edu.hk  
**Year founded:** 1966  
**Curriculum:** American with Advanced Placement courses offered in High School

### Hong Kong Man Sang Kindergarten

**Western District**  
Shop A, G/F & 1/F, Nice Garden,  
513-519 Queen's Road West  
**Tel:** 2336 3232  
**Website:** www.mansangkg.edu.hk  
**Year Founded:** 2016  
**North Point**  
2/F Foo Yet Kai Building,  
52-60 Java Road, North Point  
**Tel:** 2578 6763  
**Website:** www.mansangkg.edu.hk  
**Year Founded:** 1969  
**Email:** admission@mansangkg.edu.hk

### Hong Kong Nobel Preschool

G/F-2/F, 65 Waterloo Road, Kowloon  
**Tel:** 2338 7899  
**Website:** www.nobelpreschool.org  
**Year Founded:** 2015

### International Christian School

**Shek Mun Campus**  
1 On Muk Lane, Shek Mun  
**Tel:** 3920 0000  
**Ma On Shan Campus (International Kindergarten)**  
G/F, Kam Ho House (Block H),  
Kam Fung Court, Ma On Shan, Shatin, N.T.  
**Email:** ics@ics.edu.hk  
**Website:** www.ics.edu.hk  
**Year founded:** 1991  
**Curriculum:** American, AP

### International College Hong Kong (Secondary)

60 Sha Tau Kok Road,  
Shek Chung Au, Sha Tau Kok  
**Tel:** 2655 9018  
**Email:** info@ichk.edu.hk  
**Website:** www.ichk.edu.hk  
**Year founded:** 1984  
**Curriculum:** IBPYP, English, IGCSE, IBDP

### International College Hong Kong Hong Lok Yuen (Kindergarten & Primary)

3, Twentieth Street, Hong Lok Yuen, Tai Po  
**Tel:** 3955 3000  
**Email:** info@ichkhly.edu.hk  
**Website:** www.ichk.edu.hk  
**Year founded:** 1984  
**Curriculum:** IBPYP, English, IGCSE, IBDP

### Invictus School Hong Kong

Monterey Place,  
23 Tong Chun Street, Tseung Kwan O  
**Tel:** 3643 1868  
**Website:** www.invictusschool.hk

### Island Children's Montessori Kindergarten

**Tin Hau Campus**  
Units B & C, LG/F & UG/F,  
16 Tin Hau Temple Road, Tin Hau  
**Lei King Wan Campus**  
Shop GC 19-21 Site C, Tai Hong Street,  
Lei King Wan, Hong Kong

### Island Christian Academy

70 Bridges Street, Sheung Wan  
**Tel:** 2537 2552  
**Email:** office@islandca.edu.hk  
**Website:** www.islandca.edu.hk  
**Year founded:** 2012  
**Curriculum:** IPC

### Island Montessori International Kindergarten

**North Point Campus**  
Commercial Unit, G/F, Bedford Gardens,  
151-173 Tin Hau Temple Road, North Point, HK  
**Tel:** 3427 9100  
**Email:** info@icms.edu.hk  
**Website:** www.icms.edu.hk  
**Year founded:** 2010  
**Curriculum:** Montessori  
**Lei King Wan Campus**  
Shop GC 19-21, G/F, Lei King Wan,  
Site C, 35 Tai Hong Street, Sai Wan Ho  
**Tel:** 2562 8500  
**Website:** http://icms.edu.hk  
**Year Founded:** 2012

### Island Christian Academy

70 Bridges Street, Sheung Wan  
**Tel:** 25372552  
**Email:** office@islandca.edu.hk  
**Website:** www.islandca.edu.hk  
**Year founded:** 2012  
**Curriculum:** IPC

### Island Waldorf School of Hong Kong

G/F 71-77 Smithfield, Kennedy Town, Hong Kong  
**Tel:** 5114 1451  
**Email:** info@iwshk.org  
**Website:** www.iwshk.org  
**Year Founded:** 2017  
**Curriculum:** Waldorf

### Italian International Kindergarten

Podium Level 1, Block 4, Phase 1,  
South Horizons, Ap Lei Chau, Hong Kong  
**Tel:** 2662 3066  
**Email:** info@iikg.edu.hk  
**Website:** www.iikg.edu.hk  
**Year Founded:** 2019

### Japanese International School (International Section)

4663 Tai Po Road, Tai Po  
**Tel:** 2834 3531  
**Email:** esinfo@jis.edu.hk  
**Website:** es.jis.edu.hk  
**Year founded:** 1997  
**Curriculum:** IB Primary Years Programme



**Kellett School****Kowloon Bay Preparatory and Senior Campus**

7 Lam Hing Street, Kowloon Bay

**Po Fu Lam Preparatory Campus**

2 Wah Lok Path, Wah Fu,

Pok Fu Lam, Hong Kong

**Tel:** 3120 0700**Email:** admissions@kellettschool.com**Website:** www.kellettschool.com**Year founded:** 1976**Curriculum:** English National Curriculum

including IGCSE and A-level

**Kendall International Preschool**

G/F, Residence 228, 228 Fuk Wing Street,

Cheung Sha Wan, West Kowloon, Hong Kong

**Tel:** 2328 8223**Email:** info@kendallpreschool.edu.hk**Website:** www.kendall.edu.hk/**Year Founded:** 2017**Curriculum:** Own**Kiangsu & Chekiang Primary School & Kiangsu-Chekiang College (International Section)****Lower School**

30 Ching Wah Street, North Point, Hong Kong

**Tel:** 2570 4594**Upper School**

20 Braemar Hill Road, North Point

**Tel:** 2570 1281**Email:** inter@kcis.edu.hk (Primary)**Email:** inter2@kcis.edu.hk (Secondary)**Website:** www.kcis.edu.hk**Year founded:** 1993**Curriculum:** Early Years Foundation Stage (EYFS);

British National Curriculum; IB Diploma

**Kingston International Kindergarten and Children Centre**

G/F &amp; 1/F, 12-14 Cumberland Road,

Kowloon Tong

**Tel:** 2337 9049**Email:** enquiry@kingston.edu.hk**Website:** www.kingston.edu.hk**Curriculum:** IB Primary Years Programme**Kingston International School****Lower Primary Campus**

113 Waterloo Road, Kowloon Tong, Kowloon

**Tel:** 2337 9031**Upper Primary Campus**

105 Waterloo Road, Kowloon Tong, Kowloon

**Tel:** 2337 9012**Email:** enquiry@kingston.edu.hk**Website:** www.kingston.edu.hk**Curriculum:** IB Primary Years Programme**Kohitsuji Kindergarten**

Shop 1, G/F, Site 10,

Whampoa Garden, Hung Hom

**Tel:** 2330 6677**Website:** www.kohitsujiyouchien.com**Year Founded:** 2013**Korean International School**

55 Lei King Road, Sai Wan Ho, Hong Kong

**Tel:** 2569 5500**Email:** syeung@kis.edu.hk

(International Section – Primary)

**Email:** jchoi@kis.edu.hk

(International Section – Secondary)

**Email:** enoh@kis.edu.hk (Korean Section)**Website:** www.kis.edu.hk**Curriculum:** IPC, UK, IGCSE, A-Levels, Korean**Kornhill Anglo-Chinese Kindergarten**

16 Hong Shing Street, Quarry Bay

**Tel:** 2884 4186**Website:** www.kornhill-edu.com**Year Founded:** 1986**Kowloon Baptist Church Kindergarten**

2/F, 300 Junction Road, Kowloon Tong, Kowloon

**Tel:** 2336 6213**Email:** kbck@netvigator.com**Website:** www.kbck.edu.hk**Year founded:** 1975**Curriculum:** Own**Kowloon Cannan Anglo-Chinese Kindergarten**

G/F, 28B Grampan Road, Kowloon Tong

**Tel:** 2336 2096**Website:** www.cannan.edu.hk**Year Founded:** 1983**Lantau International School****Cheung Sha Campus**

No. 22, Upper Cheung Sha Village, Lantau Island, HK

**Tel:** 2984 0302**Tong Fuk Campus**

House 113, Tong Fuk Village, Lantau, HK

**Tel:** 2980 3676**Pui O Campus**

No. 17-19, Lo Wai Tsuen, Pui O, Lantau Island, HK

**Tel:** 2984 0302**Email:** lisadmin@lis.edu.hk**Website:** www.lis.edu.hk**Year founded:** 1995**Curriculum:** British Curriculum**La Petite Enfance Kindergarten**

Units 5, 6 &amp; 8, LG/F, Office Block One,

92 Siena Avenue, Discovery Bay, Lantau Island

**Tel:** 8191 0813**Website:** www.ecole-discovery.com**Leapfrog Kindergarten and Playgroup**

11 Pak Tam Chung Village,

Sai Kung Country Park, Sai Kung

**Tel:** 2791 1540**Email:** admim@leapfrogkindergarten.org**Website:** www.leapfrogkindergarten.org**Year founded:** 1992**Curriculum:** EYFS**Learning Habitat Kindergarten****Hampton Loft Campus**

Shop 2, 5/F Hampton Loft,

11 Hoi Fan Road, Tai Kok Tsui

**Tel:** 2501 5105**Website:** www.learninghabitat.org**Year Founded:** 2005**Papillons LP Campus**

Shop 12, 15 &amp; 16, G/F Papillons Square,

21 Tong Chun Street, Tseung Kwan O

**Tel:** 2363 3005**Website:** www.learninghabitat.org**Year Founded:** 2010**Li Po Chun United World College**

10 Lok Wo Sha Lane, Sai Sha Road, Shatin

**Tel:** 2640 0441**Email:** office@lpcuwc.edu.hk**Website:** www.lpcuwc.edu.hk**Year founded:** 1992**Curriculum:** IBDP**Little Dalton Kindergarten****Hong Kong Island Campus**

KG01, Wah Sin House, Wah Kwai Estate,

Pok Fu Lam, Hong Kong

**Tel:** 2792 2566**Email:** info@littledalton.com**West Kowloon Campus**

G/F, Imperial Cullinan, 10 Hoi Fai Road, Kowloon

**Tel:** 3612 5760**Email:** info@littledalton.com**Website:** www.littledalton.com**Year founded:** 2013**Curriculum:** Own**Little Lantau Montessori Kindergarten**

Unit 12 &amp; 13, G/F, Silverview Centre, 8 Ngan Kwong

Wan Road, Mui Wo, Lantau Island

**Tel:** 3689 7033**Lou Pichoun French International Preschool Hong Kong****Tseung Kwan O Campus**

1A-2A, G/F, Alto Residences,

29 Tong Yin Street, Tseung Kwan O

**Tel:** 2813 4277 / 6304 1021**Website:** www.loupichoun.com**Lou Pichoun Stanley Campus**

1/F, 5 Stanley New Street, Stanley, Hong Kong

**Tel:** 2813 2456**Happy Valley Campus**

G/F Door C, 22 Fung Fai Terrace, Hong Kong

**Tel:** 2813 2456**Email:** info@loupichoun.com**Website:** www.loupichoun.com**Year founded:** 1997**Curriculum:** French, Own**Ludus Kindergarten**

2/F, Le Billionnaire, 46 Sa Po Road, Kowloon City

**Tel:** 2382 0061**Website:** www.ludus.edu.hk**Year Founded:** 2015**MAGART International Kindergarten****Whampoa Campus**

Shop G3A, Site 7,

Whampoa Garden, 9 Tak On Street, Hong Kong

**Tel:** 2786 9314 / 2788 0788**WhatsApp:** 9879 1509**Email:** info.wp@magartedu.com**Tai Koo Campus**

Shop B, UG/F, Park Vale,

No. 1060 King's Road, Hong Kong

**Tel:** 2786 9152 / 2786 9189**WhatsApp:** 6717 3175**Email:** info.tk@magartedu.com**Fanling Campus**

G/F, Phase 1, Fanling Centre,

New Territories, Hong Kong

**Tel:** 2677 8109**WhatsApp:** 9445 8322**Email:** info.fl@magartedu.com**Year Founded:** 2018**Curriculum:** Enhanced EYFS, Reggio Emilia and

inquiry approach

**Malvern College Hong Kong**

3 Fo Chun Road, Pak Shek Kok, Tai Po

**Tel:** 3898 4699**Email:** info@malverncollege.org.hk**Website:** www.malverncollege.org.hk**Year founded:** 2018**Curriculum:** IB**Malvern College Pre-school Hong Kong**

Units 9-12, Coronation Circle,

1 Yau Cheung Road, Southwest Kowloon

**Tel:** 3898 4668**Email:** mcpsinfo@malvermpreschool.hk**Website:** www.malvermpreschool.hk**Maple Bear Canadian International Kindergarten Hong Kong**

Shop 7, G/F, Alto Residences,

29 Tong Yin Street, Tseung Kwan O

**Tel:** 2813 4887 / 6848 1264**Email:** admissions@maplebear.hk**Website:** www.maplebear.hk**MASS International Preschool**

Shop 2, G/F &amp; LG/F, Lai Tak Plaza,

Tai Hang Road, Causeway Bay

**Tel:** 3955 1588**Email:** info@masspreschool.edu.hk**Website:** www.masspreschool.com**Year founded:** 2012**Curriculum:** Other**Mighty Oaks Nursery & Kindergarten**

1/F, Lungga Mansion, 46A Belcher's Street,

Kennedy Town, Hong Kong

**Tel:** 2806 8383**Email:** info@mightyoaks.edu.hk**Website:** www.mightyoaks.edu.hk**Year founded:** 2015**Curriculum:** Early Years Foundation Stage**Ming Wai International Kindergarten**

Flat A &amp; B, G/F &amp; 1/F, Alice Court,

10-12 Tsat Tsz Mui Road, North Point

**Tel:** 2561 5008**Website:** www.mingwai.edu.hk**Year Founded:** 1982**North Point Branch**

Shop 1 G/F &amp; 1/F, Fairview Court,

5-13 Tsat Tsz Mui Road, North Point

**Prince Edward Branch**

Shop 6 of G/F &amp; Flat 1-5 of 1/F,

Kenwood Mansion, 15 Playing Field Road,

Prince Edward

**Tel:** 2522 2688**Mills International Preschool**

The Spectacle, 8 Cho Yuen Street,

Yau Tong, Kowloon, Hong Kong

**Tel:** 2717 6336**Email:** preschool@millsinternational.edu.hk**Website:** www.millsinternational.edu.hk**Year founded:** 2013**Curriculum:** Early Years Foundation Stage**Mink International Pre-School**

Level 1, Sun Hing Garden, Tai Po, New Territories

**Tel:** 2665 4333**Website:** www.mink.edu.hk**Year Founded:** 1986**Montessori for Children**

House A, Phoenix Garden,

RBL 1033 Tai Tam Village, Stanley, Hong Kong

**Tel:** 2813 9589**Email:** hongkong@montessori.edu.sg**Website:** www.montessori.edu.sg**Year founded:** 1986**Curriculum:** Montessori**Mori Lisa International Kindergarten**

Level 5 Flat Roof, Block 7,

Greenwood Terrace, Chai Wan

**Tel:** 3176 1236**Email:** info@morilisa.hk**Website:** www.morilisa.hk**Year founded:** 2014**Curriculum:** Early Years Foundation Stage**Morningstar Preschool and Kindergarten**

Block 2, G/F, Chi Fu Fa Yuen, Pok Fu Lam

**Tel:** 6993 7157**Email:** hello@morningstarschools.com**Website:** www.morningstarpreschool.com.hk**Year founded:** 2011**Curriculum:** International**Mount Kelly School Hong Kong****Babies and Toddlers Centre**

The Austine Place, 38 Kwun Chung Street,

Jordan, Kowloon, Hong Kong

**Tel:** 2317 8881**Email:** admissions@mountkelly.edu.hk**Website:** www.mountkellytoddlers.com.hk**Mount Kelly International Preschool and Nursery School**

The Austine Place, 38 Kwun Chung Street,

Kowloon, Hong Kong

**Preschool Phone No.:** 2736 0800**Nursery School Phone No.:** 2736 8688**Email:** admissions@mountkelly.edu.hk**Website:** www.mountkellypreschool.edu.hk**Mount Kelly School Hong Kong****(Primary and Secondary)**

152 Austin Road, Tsim Sha Tsui,



### **Parkview-Rhine Garden International Nursery**

Tower 5, 1Podium Level 2, Rhine Garden,  
38 Castle Peak Road, Sham Tseng, N.T.  
**Tel:** 2496 2080  
**Email:** school@pipsrg.edu.hk  
**Website:** pipsrg.edu.hk  
**Year founded:** 1994

### **Po Leung Kuk Choi Kai Yau School**

6 Caldecott Road, Piper's Hill, Kowloon  
**Tel:** 2148 2052  
**Email:** info@cky.edu.hk  
**Website:** www.cky.edu.hk  
**Year founded:** 2002  
**Curriculum:** Own, IGCSE, IBDP

### **Pods Kindergrten & Preschool**

**Tin Hau Campus**  
11 Tin Hau Temple Road,  
Tin Hau, Hong Kong  
**Tel:** 3460 3560  
**Harbour Heights Campus**  
G01B & 1/F, Harbour Heights,  
1 Fook Yum Road, North Point, Hong Kong  
**Tel:** 2242 2261  
**Email:** info@pods.com.hk  
**Website:** www.pods.com.hk  
**Year founded:** 2013  
**Curriculum:** Own

### **Renaissance College ESF**

5 Hang Ming Street, Ma On Shan  
**Tel:** 3556 3556  
**Email:** admissions@rchk.edu.hk  
**Website:** www.rchk.edu.hk  
**Year founded:** 2006  
**School Type:** Private  
**Curriculum:** IB Primary Years Programme,  
IB Middle Years Programme, IB Diploma,  
IB Career-related Programme

### **Rightmind International Nursery & Kindergarten**

**Shum Wan Campus**  
G/F, Broadview Court,  
No. 11 Shum Wan Road, Hong Kong  
**Tel:** 2795 1018  
**South Horizons Campus**  
UG/F, Tower 26-28, South Horizons,  
Phase 4, Ap Lei Chau  
**Tel:** 2875 0452  
**Email:** parentservice@kinderu.org  
**Website:** www.rmkog.org  
**Year founded:** 1980  
**Curriculum:** Other

### **Rosebud Primary School**

UG 28-37 Waterside Plaza,  
38 Wing Shun Street, Tsuen Wan  
**Tel:** 2406 7300  
**Email:** info@rosebud.edu.hk  
**Website:** www.rosebud.edu.hk  
**Year Founded:** 2004  
**Curriculum:** IPC

### **SCAD – THE Savannah College of Art and Design**

292 Tai Po Road, Shum Shui Po  
**Tel:** 2253 8044  
**Email:** admission@scad.edu.hk  
**Website:** Scad.edu.hk

### **Safari Kid International Kindergarten**

**Happy Valley Campus**  
16 Min Fat Street, Happy Valley, Hong Kong  
**Tel:** 2177 0001  
**Email:** happyvalley@safarikidasia.com  
**Pok Fu Lam Campus**  
L101 Chi Fu Landmark,  
Chi Fu Fa Yuen, Pok Fu Lam  
**Tel:** 2177 0001  
**Email:** infohk@safarikidasia.com  
**Website:** www.safarikidasia.com  
**Year founded:** 2005  
**Curriculum:** Other

### **Sai Kung International Pre-school**

159 Che Keng Tuk Road, Sai Kung  
**Tel:** 2791 7354  
**Email:** skip@skip.edu.hk  
**Website:** skip.edu.hk  
**Year founded:** 1989  
**Curriculum:** Early Years Foundation Stage

### **Sai Kung Montessori**

Unit SB, 787 Tan Cheung,  
Po Tung Road, Sai Kung  
**Tel:** 5369 8587  
**Email:** info@saikungmontessori.com  
**Website:** www.saikungmontessori.com  
**Year Founded:** 2017  
**Curriculum:** Montessori

### **Saint Bright International Kindergarten**

G/F & 1/F, Cameron Mansion,  
29-31 Lion Rock Road, Kowloon City  
**Tel:** 2337 5255  
**Website:** www.stbrigt.edu.hk  
**Year Founded:** 2014

### **Sear Rogers International School**

15 Tong Yam Street,  
Tai Hang Tung, Kowloon  
**Tel:** 2547 5479  
**Email:** enquiry@srishk.com  
**Website:** www.srishk.com  
**Year founded:** 1982  
**Curriculum:** English, IGCSE, A-Levels

### **SDM-Chatsworth International Kindergarten & Nursery**

166 Boundary Street, Kowloon Tong  
**Tel:** 2560 3322  
**Email:** info@sdm-chatsworth.hk  
**Website:** www.sdm-chatsworth.hk  
**Year Founded:** 2017  
**Curriculum:** Singapore-based curriculum

### **Shrewsbury International School Hong Kong**

10 Shek Kok Road,  
Tseung Kwan O, New Territories  
**Tel:** 2480 1500  
**Email:** admissions@shrewsbury.edu.hk  
**Website:** www.shrewsbury.edu.hk  
**Year founded:** 2018  
**Curriculum:** English National Curriculum

### **Singapore International School**

**Preparatory Years and Primary Section**  
23 Nam Long Shan Road, Aberdeen  
**Tel:** 2872 0266  
**Email:** general@singapore.edu.hk  
**Secondary Section**  
2 Police School Road,  
Wong Chuk Hang, Hong Kong  
**Tel:** 2919 6966  
**Email:** secondary@singapore.edu.hk  
**Website:** www.singapore.edu.hk  
**Year founded:** 1991  
**Curriculum:** Singapore curriculum, IGCSE, IBDP

### **Sky Wide International Kindergarten & Playschool**

Shop B on G/F & 1/F, 1 San Wai Street,  
Hung Hom, Kowloon, Hong Kong  
**Tel:** 2827 7868  
**Email:** enquiry@skywide.hk  
**Website:** www.skywide.hk  
**Year founded:** 2017  
**Curriculum:** Finnish

### **Small World Christian Kindergarten**

10 Borrett Road, Mid-Levels  
**Tel:** 2525 0922  
**Email:** office@smallworld.edu.hk  
**Website:** smallworld.edu.hk  
**Year founded:** 1986  
**Curriculum:** International

### **Spanish Primary School**

130 Shuen Wan Chan Uk Tai Po,  
N.T., Hong Kong  
**Tel:** 3955 1588  
**Email:** info@spis.com.hk  
**Website:** www.spis.com.hk

### **St. Catherine's International Kindergarten**

**Campus 1**  
1 Essex Crescent, Kowloon Tong  
**Tel:** 2337 7273  
**Website:** www.stcatherines.edu.hk  
**Year Founded:** 1970  
**Campus 2**  
4 & 6 Norfolk Road, Kowloon Tong  
**Tel:** 2337 7344 / 2337 7680  
**Website:** www.stcatherines.edu.hk  
**Year Founded:** 1970

### **St. Catherine's Kindergarten (Harbour Place)**

1/F Harbour Place, 8 Oi King Street, Hung Hom  
**Tel:** 2670 6600  
**Website:** www.stcatherines.edu.hk  
**Year Founded:** 2011

### **St. Paul's Covent School (Secondary Section)**

140 Leighton Road, Causeway Bay, Hong Kong  
**Tel:** 2576 0601  
**Website:** www.spcs.edu.hk  
**Year founded:** 1854  
**Curriculum:** HKDSE, IGCSE, A-Levels

### **St. Stephen's College**

22 Tung Tau Wan Road, Stanley, Hong Kong  
**Tel:** 2813 0360  
**Email:** sschk@ssc.edu.hk  
**Website:** www.ssc.edu.hk  
**Year founded:** 1903  
**Curriculum:** IBDP, HKDSE

### **Stamford American School Hong Kong**

25 Man Fuk Road, Ho Man Tin  
**Tel:** 2500 8688  
**Email:** admissions@sais.edu.hk  
**Website:** www.sais.edu.hk  
**Year founded:** 2017  
**Curriculum:** Inquiry-based American  
**Curriculum** with AERO and Common Core Plus Standards

### **Sunshine House International Pre-school**

**Chi Fu Campus**  
G/F, Block 1, Fu Lai Yuen, Chi Fu Fa Yuen,  
1 Chi Fu Road, Pok Fu Lam  
**Tel:** 2551 3781  
**Email:** chifu@sunshinehouse.com.hk  
**Clearwater Bay Campus**  
Level 7, Silverstrand Mart,  
No. 2 Silver Cape Road, Clearwater Bay, Sai Kung  
**Tel:** 2358 3803  
**Email:** clearwaterbay@sunshinehouse.com.hk  
**Discovery Bay Campus**  
Shop 106, 1/F, Blk 6,  
Discovery Bay North Development,  
Discovery Bay, Lantau Island  
**Tel:** 2259 4066  
**Email:** dbay@sunshinehouse.com.hk  
**Pok Fu Lam Campus**  
Commercial Development Block A,  
Pok Fu Lam Gardens  
**Tel:** 2551 3213  
**Email:** pokfulam@sunshinehouse.com.hk  
**Tung Chung Campus**  
No. 2 Mei Tung Street,  
Tung Chung Crescent, Lantau Island  
**Tel:** 2109 3873  
**Email:** tungchung@sunshinehouse.com.hk  
**Website:** www.sunshinehouse.com.hk  
**Year founded:** 1990  
**Curriculum:** Other

### **The Harbour School**

**Main campus**  
2/F, 23 Belcher's Street,  
Kennedy Town, Hong Kong  
**Tel:** 2816 5222  
**The Garden Campus**  
138 Lee Chi Road, Ap Lei Chau  
**Tel:** 3708 9060  
**The Grove Campus**  
332 Ap Lei Chau Bridge Road, Ap Lei Chau  
**Tel:** 3905 0180  
**Email:** info@ths.edu.hk  
**Website:** www.ths.edu.hk  
**Year founded:** 2007  
**Curriculum:** American (AERO standards)

### **The International Montessori School of Hong Kong**

**Aldrich Bay Campus**  
G/F, i-UniQ Grand, 155 Shau Kei Wan Road,  
Shau Kei Wan, Hong Kong  
**Tel:** 2156 9033  
**Email:** admin.ab@ims.edu.hk  
**Mid-Level Campus**  
Mezzanine Entrance, Tung Fai Gardens,  
17 Po Yan Street, Sheung Wan, Hong Kong  
**Tel:** 2857 7007  
**Email:** admin.ml@ims.edu.hk  
**South Horizons Campus**  
G/F, Blocks 23 to 23A, South Horizons,  
Phase III, Ap Lei Chau, Hong Kong  
**Tel:** 2861 0339  
**Email:** admin.sh@ims.edu.hk  
**Stanley Campus**  
Phase III, Ma Hang Estate,  
Stanley (off Stanley Plaza), Hong Kong  
**Tel:** 2566 7196  
**Email:** admin.st@ims.edu.hk  
**Website:** www.ims.edu.hk  
**Year founded:** 2002  
**Curriculum:** Montessori

### **The ISF Academy**

1 Kong Sin Wan Road, Pokfulam  
**Tel:** 2202 2028  
**Email:** admissions@isf.edu.hk  
**Website:** academy.isf.edu.hk  
**Year founded:** 2003  
**Curriculum:** Own, IBMYP, IBDP

### **The ISF Pre-School**

Shop G01, G/F, 97 Belcher's Street,  
Kennedy Town, Hong Kong  
**Tel:** 2559 8518  
**Email:** psenquiry@isf.edu.hk  
**Website:** preschool.isf.edu.hk  
**Year founded:** 2015  
**Curriculum:** Other

### **The Woodland Pre-School**

**Kennedy Town Campus**  
1/F & 2/F Hau Wo Building,  
3C Davis Street, Kennedy Town  
**Tel:** 2817 2011  
**Beachside Campus**  
Shop A2-H, 2/F, 35 Beach Road, Repulse Bay  
**Tel:** 2812 0274  
**Website:** http://www.woodlandschools.com/channel.php?channel=schools-woodland-beachside-pre-school-about  
**Harbourside Campus**  
Shop 1 & 2, G/F, Ocean Court,  
3 Aberdeen Praya Road  
**Tel:** 2559 1377  
**Website:** http://www.woodlandschools.com/channel.php?channel=schools-woodland-harbourside-pre-school-about  
**Pokfulam Campus**  
Shop 29, G/F & Shop 28 7/F,  
Commercial Complex, Wah Fu(II) Estate  
**Tel:** 2551 7177  
**Website:** http://www.woodlandschools.com/channel.php?channel=schools-woodland-pokfulam-pre-school-about  
**Sai Kung Campus**  
Shop D1, D2 and Yard & Shop D,  
G/F, Marina Cove Shopping Centre, Sai Kung  
**Tel:** 2813 0290  
**Website:** www.woodlandschools.com

### **Think International Academy**

11 Kwong Lee Road, Cheung Sha Wan  
**Tel:** 2157 2111  
**Email:** think\_ta@think.edu.hk  
**Website:** www.think.edu.hk  
**Year founded:** 2016  
**Curriculum:** IBPYP, Cambridge CIE Secondary 1 & 2, IBDP

### **Think International School**

117 Boundary Street, Kowloon Tong, Kowloon  
**Tel:** 2338 3949  
**Email:** think\_tis@think.edu.hk

### **Think International Kindergarten**

**Kowloon Tong Campus**  
5 Lincoln Road, Kowloon Tong  
**Tel:** 2338 0211  
**Email:** thinkkg\_kt@think.edu.hk  
**Laguna Campus**  
99 Cha Kwo Ling Road G/F, Kowloon  
**Tel:** 2727 4747  
**Email:** thinkkg\_lc@think.edu.hk  
**Ma On Shan Campus**  
Level 2, Sunshine Bazaar,  
628 Sai Sha Road, Ma On Shan, New Territories  
**Tel:** 2633 7800  
**Email:** thinkkg\_mos@think.edu.hk  
**Mei Foo Campus**  
The Podium, Nob Hill,  
8 King Lai Path, Mei Foo, Kowloon  
**Tel:** 2727 7585  
**Email:** thinkkg\_mf@think.edu.hk  
**Website:** www.think.edu.hk  
**Year founded:** 2003  
**Curriculum:** Other

### **Topkids International Kindergarten (Yuen Long)**

G/F (part of) & 1/F, Shing Fat Building,  
14 Yuen Long Tai Cheung Street, Yuen Long  
**Tel:** 2447 2669  
**Website:** www.topkids.edu.hk

### **Tsim Sha Tsui Funful International Kindergarten**

No. 136 Nathan Road, Tsim Sha Tsui, Kowloon  
**Tel:** 2311 3883 / 2311 4707  
**Website:** www.funful.hk  
**Year founded:** 1969  
**Curriculum:** Local, International

### **Tutor Time International Nursery & Kindergarten**

**Kowloon Tong – Dorset Crescent**  
No. 1 Dorset Crescent, Kowloon Tong  
**Tel:** 2573 9188  
**Kowloon Tong – Suffolk Road**  
No. 9 Suffolk Road, Kowloon Tong  
**Tel:** 2529 1188  
**Mid Level – Caine Road**  
Shop A-B, G/F, Botanical Court,  
5 Caine Road, Mid-Levels, Hong Kong  
**Tel:** 2529 2288  
**North Point - Braemar Hill**  
LG/F & G/F Braemar Hill Shopping Center,  
45 Braemar Hill Road, Hong Kong  
**Tel:** 3529 1833  
**Yuen Long – Yoho**  
Shop G011, Ground Level and Mezzanine Level,  
Yoho Mall 1, No. 9 Yuen Lung Street,  
Yuen Long, N.T.  
**Tel:** 2392 8188  
**Email:** info@tutortime.com.hk  
**Website:** www.tutortime.com.hk  
**Year founded:** 2001



### Umah International Primary School

Fung Chi Tsuen, Wang Chau, Yuen Long, N.T.  
**Tel:** 2618 3172 / 2450 5401  
**Email:** umahdin@umahhk.com  
**Website:** umahhk.com  
**Year founded:** 1996  
**Curriculum:** Own

### United Christian Music Kindergarten

Capri Entire 1/F, 33 Tong Yin St, Tseung Kwan O  
**Tel:** 2110 1791  
**Email:** admissions@ucm.edu.hk  
**Website:** www.ucm.edu.hk  
**Year Founded:** 2018  
**Curriculum:** IEYC, Mucis Curriculum, STEAM, Sports and Greenery

### Victoria Shanghai Academy

19 Shum Wan Road, Aberdeen  
**Tel:** 3402 1000  
**Email:** enquiries@vsa.edu.hk  
**Website:** www.vsa.edu.hk  
**Year founded:** 2004  
**Curriculum:** IBPYP, IBMYP, IDBP

### Victoria Education Organisation

**Belcher Campus**  
Podium of Level 3 (Kindergarten Area),  
The Westwood, 8 Belcher's Street, Hong Kong  
**Tel:** 2542 7001  
**Email:** bgvkoffc@victoria.edu.hk  
**Causeway Bay Campus**  
32 Hing Fat Street, Causeway Bay, Hong Kong  
**Tel:** 2578 9998

**Website:** www.cbvictoria.edu.hk

#### Harbour Green Campus

G/F, Harbour Green,  
8 Sham Mong Road, Kowloon  
**Tel:** 2885 1928

**Email:** hgvk@victoria.edu.hk

#### Harbour Heights Campus

Ko Fung Court, Harbour Heights,  
5 Fook Yum Road, North Point, Hong Kong  
**Tel:** 2571 7888

**Email:** hhnvoff2@victoria.edu.hk

#### Homantin Campus

1/F, Carmel-on-the-Hill,  
9 Carmel Village Street,  
Homatin, Kowloon  
**Tel:** 2762 9130

**Email:** hmtoffc@victoria.edu.hk

#### Lower Kornhill Campus

2-8 Hong On Street, Kornhill, Hong Kong  
**Tel:** 2885 3331

**Email:** lkvkoffc@victoria.edu.hk

#### Middle Kornhill Campus

2/F, No. 18 Hong On Street, Kornhill, Hong Kong  
**Tel:** 2885 1888

**Email:** mkvkoffc@victoria.edu.hk

#### South Horizons Campus

Phase II, Podium Level,  
South Horizons, Hong Kong  
**Tel:** 2580 8633

**Email:** shvkoffc@victoria.edu.hk

#### Upper Kornhill Campus

G/F, 14 Hong Yue Street, Kornhill, Hong Kong  
**Tel:** 2513 1208

**Email:** ukoffc@victoria.edu.hk

**Website:** www.victoria.edu.hk

**Year founded:** 1965

**Curriculum:** IBPYP, TCRWP

### Wellborn International Pre-school

G/F, Nursery Block,  
Chevalier Garden, Ma On Shan  
**Tel:** 2642 6033  
**Website:** www.wellborn.edu.hk

### Wilderness International Kindergarten

Ground Floor, Po Tak Mansion,  
85 Smithfield Rd, Kennedy Town, Hong Kong  
**Tel:** 2595 9066  
**Email:** admissions@wilderness.asia  
**Website:** www.wilderness.asia  
**Year founded:** 2016

### Woodland Montessori Academy

On Fung Building, 110-118 Caine Road,  
Mid Levels, Hong Kong  
**Tel:** 2549 1211

### Woodland Repulse Bay Montessori Pre-school

G118-119 Ground Floor, The Repulse Bay,  
109 Repulse Bay Road, Hong Kong  
**Tel:** 2803 1885  
**Email:** montessorirb@woodlandschools.com

### Woodland Group of Preschool Head Office

Suite 2405 Universal Trade Centre,  
3-5A Arbutnot Road, Central, Hong Kong  
**Tel:** 2559 4855  
**Email:** enquiry@woodlandschools.com

### Woodland Junior Academy

G/F, Kam Kin Mansion, 119-125 Caine Road,  
Mid Levels, Hong Kong  
**Tel:** 2549 1211  
**Email:** montessoricr@woodlandschools.com  
**Website:** www.woodlandschools.com  
**Year founded:** 1978  
**Curriculum:** Montessori, EYFS

### Wycombe Abbey School Hong Kong

17 Tin Wan Street, Aberdeen, Hong Kong  
**Tel:** 2129 7100  
**Email:** admissions@was.edu.hk  
**Website:** www.was.edu.hk  
**Year Founded:** 2019  
**Curriculum:** National Curriculum for England

### Yew Chung International School (YCIS) Secondary Section

3 To Fuk Road, Kowloon Tong

#### Primary Section (3 campuses)

- 2 Kent Road, Kowloon Tong
- 11 Kent Road, Kowloon Tong
- 22 Somerset Road, Kowloon Tong

#### Early Childhood Education (5 campuses)

- 29 Kent Road, Kowloon Tong
- 151 Waterloo Road, Kowloon Tong
- 3 Somerset Road, Kowloon Tong
- 20 Somerset Road, Kowloon Tong
- Savannah Place, 3 Chi Shin Street, Tseung Kwan O

**Tel:** 2338 7106

**Email:** admissions@ycef.com

**Website:** www.ycis-hk.com

**Year founded:** 1932

**Curriculum:** International curriculum, IGCSE, IB Diploma Programme

### YMCA of Hong Kong

**Christian International Kindergarten (West Kowloon)**  
Lower Ground Floor, No. 373 Po On Road,  
Cheung Sha Wan, Kowloon  
**Tel:** 2281 6089

**Email:** christianikgw@ymcahk.org.hk

**Website:** www.bcymcahk.org.hk

**Year founded:** 2011

**Curriculum:** EYFS, Own

### YMCA of Hong Kong Christian College

12 Chung Yat Street, Tung Chung, Lantau  
**Tel:** 2988 8123

**Email:** info@ymcacc.edu.hk

**Website:** www.ymcacc.edu.hk

**Year founded:** 2003

**Curriculum:** HKDSE, IGCSE, A-Levels

### YMCA of Hong Kong International Kindergarten

2/F, 41 Salisbury Road, Tsim Sha Tsui, Kowloon  
**Tel:** 2268 7766

**Email:** kindergarten@ymcahk.org.hk

**Website:** www.ymcaikg.edu.hk

**Year founded:** 2003

**Curriculum:** EYFS, Own

### York International Pre-School (Hong Kong)

1/F & 2/F, Tsui King Court,  
18 Water Street, Sai Ying Pun  
**Tel:** 2368 7038

**Website:** www.york.edu.hk

### York International Kindergarten

51 Cumberland Road, Kowloon Tong  
**Tel:** 2336 1483

**Website:** www.york.edu.hk

**Year Founded:** 1979

### York International Pre-School

G/F & 1/F, 14 Stafford Road, Kowloon Tong  
**Tel:** 2339 0728  
**Website:** www.york.edu.hk  
**Year Founded:** 2012

### York Montessori International Pre-School (Yuen Long)

G/F, Commercial Accomodation,  
No. 18 Castle Peak Road Tam Mei,  
Kam Tin, Yuen Long  
**Tel:** 3485 9268  
**Website:** www.york.edu.hk

### Zebedee International Kindergarten & Nursery

G/F Yat Wing House,  
Yat Nga Court, Nam Wan Road, Tai Po  
**Tel:** 2650 3339  
**Email:** admin@zebedee.edu.hk  
**Website:** www.zebedee.edu.hk  
**Year founded:** 2008  
**Curriculum:** Early Years Foundation Stage

### Zenith Kindergarten (Kowloon Tong)

G/F & 1/F, No. 6 Kent Road, Kowloon Tong  
**Tel:** 2337 3818  
**Website:** www.zenith.edu.hk  
**Year Founded:** 2010

### Ace Academy

1305 Universal Trade Center,  
3 Arbutnot Road, Central  
**Tel:** 2523 5533  
**Email:** info@AceAcademy.com  
**Website:** www.AceAcademy.com

### Aegis Advisors

16/F Vulcan House,  
21-23 Leighton Road,  
Causeway Bay, Hong Kong  
**Tel:** 8175 5687  
**Email:** inquiries@aegis-advisors.com  
**Website:** aegis-advisors.com

### Aria Academy of Music (AAM)

2402-03, 24/F,  
Keen Hung Commercial Building,  
80 Queen's Road East, Admiralty  
**Tel:** 2622 1003  
**Email:** aam@ariamusic.com.hk  
**Website:** www.ariamusic.com.hk  
**Curriculum:** Classical singing, musical theatre,  
piano, musicianship training, music theory  
**Year Groups:** Ages 3-16, and above

### Ars Mathematica Education Centre

Shop 835A, Level 8, Fortune Metropolis,  
6 Metropolis Drive, Hunghom  
**Tel:** 9243 0550  
**Email:** admin@artofmath.edu.hk  
**Website:** www.artofmath.edu.hk  
**Year Founded:** 2017

### Baby Steps

25/F, 2501-2502 Universal Trade Centre  
**Entrance 1:** 3-5A Arbutnot Road, Central, HK  
**Entrance 2:** 17-19 Caine Road, Central  
**Tel:** 2887 7585  
**Email:** enquiries@babysteps.com.hk  
**Website:** www.babysteps.com.hk

### Bebegarten Education Centre

Unit 301-305, Level 3,  
One Island South, 2 Heung Yip Road,  
Wong Chuk Hang  
**Tel:** 3487 2255  
**Email:** info@bebegarten.com  
**Website:** www.bebegarten.com  
**Year Founded:** 2013  
**Curriculum:** Other

### Bridge Academy Education Centre

3<sup>rd</sup> & 6<sup>th</sup> Floor, Wui Tat Centre,  
55 Connaught Road West, Sheung Wan  
**Tel:** 3563 8060  
**Email:** info@bridge.edu.hk  
**Website:** www.bridge.edu.hk  
**Year Founded:** 2014

### CANA Elite Education Centre

**Sheung Wan Branch**  
2/F, 135 Bonham Strand Trade Centre,  
Bonham Strand (MTR Exit A2), Sheung Wan  
**Tel:** 2302 6500  
**Shek Mun Branch**  
Unit H, 6/F, Kings Wing Plaza I, 3 On Kwan Street,  
Shek Mun (MTR Exit C), New Territories  
**Tel:** 2459 9718  
**Fo Tan Branch**  
506B, 5/F, Jubilee Square,  
2-18 Lok King Street, Fo Tan, N.T.  
**Tel:** 2389 2918  
**Email:** cana@canaelite.com  
**Website:** www.canaelite.com

### Capstone Prep Education Center Primary Section

5-6/F, 111 Leighton Road,  
Causeway Bay, Hong Kong  
**Tel:** 2893 6067  
**Secondary Section**  
2/F, One Hysan Avenue,  
Causeway Bay, Hong Kong  
**Tel:** 2893 6060  
**Email:** info@capstoneprep.com  
**Website:** www.capstoneprep.com  
**Year founded:** 2003

### City Kids Preschool & Playgroup

2<sup>nd</sup> Floor, East Wing, 12 Borrett Road,  
Mid Levels, Hong Kong  
**Tel:** 2522 4446  
**Email:** officemanager@citykidshk.org  
**Website:** www.citykidshk.org  
**Year founded:** 1984  
**Curriculum:** Early Years Foundation Stage

### De la mano Spanish

**Tel:** 9317 7006  
**Email:** info@delamanospanish.com  
**Website:** www.delamanospanish.com

### Eye Level Hong Kong

Unit 601, Island Place Tower,  
510 Kind's Road, North Point, HK  
**Tel:** 2104 0188  
**Email:** hongkong@myeyelevel.com  
**Website:** www.myeyelevel.com

### Fairchild Junior Academy

22/F Park Commercial Centre,  
180 Tung Lo Wan Road, Tin Hau  
**Tel:** 2898 1611  
**Email:** info@fairchild.academy  
**Website:** www.fairchild.academy  
**Year Founded:** 2015  
**Curriculum:** Reggio Emilia

### First Code Academy

5/F, Gee Tuck Building,  
16-20 Bonham Strand, Sheung Wan  
(Opening June 25, 2018)  
**Tel:** 2772 2108  
**Email:** hello@firstcodeacademy.com  
**Website:** www.firstcodeacademy.com  
**Year Founded:** 2013  
**Year groups:** Tinker: Age 6-8; Explorer: Age 9-11;  
Creator: Age 12-14; App Entrepreneur: 15+

### Foundation Global Education

13/F, Chinachem Hollywood Centre,  
1 Hollywood Road, Central, Hong Kong  
**Tel:** 3107 8810  
**Email:** info@foundationge.com  
**Website:** www.foundationge.com

### Goethe-Institut Hong Kong

14/F HK Arts Centre, 2 Harbour Road,  
Wanchai, Hong Kong  
**Tel:** 2802 0088  
**Email:** info@hongkong.goethe.org  
**Website:** goethe.de

### Groots Education Centre

Shop No. 33, 1/F Corinthia By The Sea,  
23 Tong Yin Street, Tseung Kwan O  
**Tel:** 2566 9928  
**Email:** contact@grooteducation.com

### Kip McGrath Education Centre

Shop B, G/F, Caine Way Mansion,  
132 Caine Road, Mid-levels, HK  
**Tel:** 2291 6188  
**Email:** enquiries@kipmcgrath.com.hk  
**Website:** kipmcgrath.com.hk  
**Year founded:** 1989

### Le Club des cinq French Learning Centre

2F King Dao Building,  
14 Burrows Street, Wanchai  
**Tel:** 2575 4555 / 9773 7941  
**Email:** contact@clubdes5.hk

### Lee Educational Consulting

1625A, 16th Floor, Star House,  
No. 3 Salisbury Road, Tsim Sha Tsui, Hong Kong  
**Mobile:** 9416 0798  
**Wechat:** ljasonkh  
**Website:** www.leeeducation.com

### Monkey Tree English Learning Center (Head Office)

Room 2801, 28/F Citicorp Centre,  
18 Whitfield Road, Hong Kong  
**Tel:** 3563 6771  
**Email:** enquiry@monkeytree.com.hk  
**Website:** www.monkeytree.com.hk

### Mini Mandarins Learning Centre Causeway Bay Centre

7/F, Capital Commercial Building,  
26 Leighton Road, Causeway Bay  
**Tel:** 2320 1128  
**Email:** info@minimandarins.com  
**Central Centre**  
Room 1703 17/F Universal Trade Centre,  
No. 3-5A Arbutnot Road, Hong Kong  
**Tel:** 2320 5208  
**Email:** central@minimandarins.com  
**Website:** www.minimandarins.com  
**Year founded:** 2014



### NTK Academic Group

**Main Campus**  
3-5/F & 7/F (Front office),  
Lee Garden Five, 18 Hysan Avenue,  
Causeway Bay  
Tel: 2577 7844  
Email: enquiry@ntk.edu.hk

### Kowloon Campus

2/F, the Avery, 16 Hau Wong Road, Kowloon City  
Tel: 2718 3000  
Email: enquiry@ntk.edu.hk  
Website: www.ntk.edu.hk  
Year founded: 1996  
Curriculum: SAT, AP, TOEFL, IB, IELTS

### Seriously Addictive Maths Hong Kong

#### Wong Chuk Hang Campus

Unit 10, 6/F., One Island South,  
2 Heung Yip Road,  
Wong Chuk Hang,  
Hong Kong  
Phone: 3102 8003  
WhatsApp: 9311 1066  
Email: info-wch@seriouslyaddictivemaths.hk

#### Tsim Sha Tsui Campus

Unit 320, Hankow Centre,  
5-15 Hankow Road,  
Tsim Sha Tsui, Kowloon, Hong Kong  
Phone & WhatsApp: 9480 7613  
Email: tst@seriouslyaddictivemaths.hk

#### Central Campus

803 Lansing House,  
41-47 Queen's Road Central,  
Central, Hong Kong  
Phone: 2115 9015  
WhatsApp: 9178 0381  
Email: qrc@seriouslyaddictivemaths.hk

#### Kowloon City Campus

Unit D, 2/F., Hang Seng Kowloon City Building,  
360 Prince Edward Road West,  
Kowloon City, Kowloon, Hong Kong  
Phone & WhatsApp: 9683 6891  
Email: klc@seriouslyaddictivemaths.hk

### Spanish World Leading Language Group

701, 7/F Lap Fei Building,  
6-8 Pottinger Street, Central, Hong Kong  
Tel: 2526 9927  
Email: hk@spanishworldgroup.com  
Website: www.spanishworld.hk

### The Edge Learning Center

**Causeway Bay**  
2F, Zoroastrian Building,  
101 Leighton Road, Causeway Bay  
Tel: 2972 2555

#### Mong Kok

Unit A, 2/F, Silvercorp International Tower  
707-713 Nathan Road, Mong Kok  
Tel: 2783 7100  
Email: info@theedge.com.hk  
Website: www.theedge.com.hk

### Welkin

#### Central

2/F, Chinachem Tower,  
34-37 Connaught Road, Central,  
Hong Kong (Opposite Exchange Square, Entrance  
on Pottinger Street)  
Tel: 3605 3322

Email: info@welkin.com.hk

Website: www.welkin.com.hk

#### Mongkok

3/F Righteous Centre,  
585 Nathan Road, Mongkok, Kowloon  
(Opposite Sino Centre)  
Tel: 3605 3377

Email: info@welkin.com.hk

Website: www.welkin.com.hk

### YLPSK & GAPSK

Room 92, 15/F,  
Office Tower Langham Place,  
8 Argyle Street, Mongkok,  
Kowloon, Hong Kong  
Tel: 3101 0800 / 3977 1577  
Email: info@ylpsk.org  
Email: info@gapsk.org  
Website: www.ylpsk.org  
Website: www.gapsk.org

# Youth Summer Sailing and Multi-Activity Weeks at Hebe Haven Yacht Club

## 白沙灣遊艇會帆船及夏日奇趣訓練營

**The Standard Readers ONLY!**  
Enjoy **10% off** for your next sailing course,  
if you enroll in 2020, with the promotion code  
**HHYC\_TheStandardSumCamps2020**  
英文虎報讀者全年禮遇:  
2020年內報名之航海課程,  
以優惠碼HHYC\_TheStandardSumCamps2020  
尊享9折優惠

	會員價 Member	非會員價 Non Member
<b>Multi-Activity Weeks</b> 夏日奇趣訓練營	\$3,000	\$4,000
<b>Optimist Stage 1 - 4</b> (One Sailing stage per week) Optimist 小艇1-4級 (每級為期一週)	\$3,000	\$4,000
<b>HKSF Level 1 &amp; 2</b> 香港帆船運動總會1級及2級	\$3,800	\$5,500
<b>HKSF Level 3</b> 香港帆船運動總會3級	\$3,800	\$5,500
<b>Race Training for Beginners</b> 初級帆船競賽訓練	\$3,000	\$4,300

Each course runs every week of the Summer holidays, Mondays to Fridays from 10am-5pm. Bring your own packed lunch OR just pay \$500 for a Club Buffet lunch!

課程時間為逢星期一至五早上10時至下午5時(6月22日至8月21日)。  
可選擇自攜午餐 或 以夏日優惠價\$500預訂會所特色自助午餐

### Course Dates 課程日期 :

Week 1	22-26 June 2020
Week 2	29 June - 3 July 2020
Week 3	6-10 July 2020
Week 4	13-17 July 2020
Week 5	20-24 July 2020
Week 6	27-31 July 2020
Week 7	3-7 Aug 2020
Week 8	10-14 Aug 2020
Week 9	17-21 Aug 2020



HHYC is delighted to be teaming up with Coach Ash this Summer. Ash will be running Basketball Sessions, Land Activities and Beach Games as part of the Multi-Activity Weeks.

Ash 教練將會在夏日奇趣訓練營主持籃球、團體活動和沙灘遊戲

白沙灣遊艇會  
**HHYC**  
HEBE HAVEN YACHT CLUB

For further information contact the HHYC Sail Training Centre on:  
如需更多資訊, 敬請聯絡白沙灣遊艇會航海訓練中心:  
E: sailtraining@hhyc.org.hk T: +852 2719 0926 w: www.hhyc.org.hk







瑪歌瑞特國際幼稚園  
MAGART INTERNATIONAL KINDERGARTEN



## Good News about Primary Placement

Our graduates have received offers from

- ESF Quarry Bay School
- Hong Kong International School
- Stamford American School
- Nord Anglia International School
- St. Johannes College (Primary Section)
- G.C.E. Past Student 's Association Whampoa Primary School
- S.K.H. Ka Fuk Wing Chun Primary School

不一樣的奇妙與成長  
An Extraordinary Learning Experience



Please RSVP



MAGART is an international learning community that provides a holistic education through focus on balance, academic achievement, development of character, etiquette and life skills. Our international curriculum adopts enhanced EYFS with strong influence and inspiration from Reggio Emilia and inquiry approach for children from 6 months to 6 years old.

Ms. Khardine Rendall  
Director of School Development



### MAGART Learning Path -Natural Transitions from 6 months to 6 years old

Curious  
Crawlers  
(6-12 months)

Little  
Explorers  
(1-2 years)

Young  
Discoverers  
(2-3 years)

Pre-Nursery  
(2-3 years)

Nursery  
(3-4 years)

Lower  
Kindergarten  
(4-5 years)

Upper  
Kindergarten  
(5-6 years)

#### Whampoa

Shop G3A, Site 7, Whampoa Garden, 9 Tak On Street,  
Whampoa (Whampoa MTR Exit D2)

T: 2786 9314 9879 1509  
E: info.wp@magartedu.com

#### Tai Koo

Shop B, UG/F, Park Vale, No. 1060 King's Road,  
Tai Koo (Tai Koo MTR Exit B)

T: 2786 9189 6717 3175  
E: info.tk@magartedu.com

#### Fanling

G/F, Phase 1, Fanling Centre, New Territories  
(Fanling Station Exit A)

T: 2677 8109 9445 8322  
E: info.fl@magartedu.com